

Global emissions pathways under different socioeconomic scenarios for use in CMIP6: a dataset of harmonized emissions trajectories through the end of the century

Matthew J. Gidden¹, Keywan Riahi¹, Steven J. Smith², Shinichiro Fujimori^{3,4}, Gunnar Luderer⁵, Elmar Kriegler⁵, Detlef P. van Vuuren⁶, Maarten van den Berg⁶, Leyang Feng², David Klein⁵, Katherine Calvin², Jonathan C. Doelman⁶, Stefan Frank¹, Oliver Fricko¹, Mathijs Harmsen⁶, Tomoko Hasegawa⁴, Petr Havlik¹, Jérôme Hilaire^{5,7}, Rachel Hoesly², Jill Horing², Alexander Popp⁵, Elke Stehfest⁶, and Kiyoshi Takahashi⁴

¹International Institute for Applied Systems Analysis, Schlossplatz 1, A-2361 Laxenburg, Austria

²Joint Global Change Research Institute, 5825 University Research Court, Suite 3500, College Park, MD 20740

³Kyoto University, 361, C1-3, Kyoto University Katsura Campus, Nishikyo-ku, Kyoto-city, 615-8540 Japan

⁴Center for Social and Environmental Systems Research, National Institute for Environmental Studies, 16-2 Onogawa, Tsukuba, Ibaraki 305-8506, Japan

⁵Potsdam Institute for Climate Impact Research, Member of the Leibniz Association, P.O. Box 60 12 03, D-14412 Potsdam, Germany

⁶PBL Netherlands Environmental Assessment Agency, Postbus 30314, 2500 GH The Hague, Netherlands

⁷Mercator Research Institute on Global Commons and Climate Change (MCC) gGmbH, EUREF Campus 19, Torgauer Str. 12-15, 10829 Berlin

Correspondence: Matthew J. Gidden (gidden@iiasa.ac.at)

Abstract. We present a suite of nine scenarios of future emissions trajectories of anthropogenic sources, a key deliverable of the ScenarioMIP experiment within CMIP6. Integrated Assessment Model results for 14 different emissions species and 13 emissions sectors are provided for each scenario with consistent transitions from the historical data used in CMIP6 to future trajectories using automated harmonization before being downscaled to provide higher emission source spatial detail. We find that the scenarios span a wide range of end-of-century radiative forcing values, thus making this set of scenarios ideal for exploring a variety of warming pathways. The set of scenarios are bounded on the low end by a 1.9W m^{-2} scenario, ideal for analyzing a world with end-of-century temperatures well below 2°C , and on the high-end by a 8.5W m^{-2} scenario, resulting in an increase in warming of nearly 5°C over pre-industrial levels. Between these two extremes, scenarios are provided such that differences between forcing outcomes provide statistically significant regional temperature outcomes to maximize their usefulness for downstream experiments within CMIP6. A wide range of scenario data products are provided for the CMIP6 scientific community including global, regional, and gridded emissions datasets.

1 Introduction

Scenario development and analysis play a crucial role in linking socioeconomic and technical progress to potential future climate outcomes by providing future trajectories of various emissions species including greenhouse gases, aerosols, and their precursors. These assessments and associated datasets allow for wide-ranging climate analyses including pathways of future warming, localized effects of pollution emissions, and impacts studies, among others. By spanning a wide range of possible futures, including varied levels of emissions mitigation, pollution control, and socioeconomic development, scenarios provide a large multivariate space of potential near, medium, and long-term outcomes for study by the broader scientific community.

The result of scenario exercises have been used widely by national and international assessment bodies and the global scientific community. They have informed previous Assessment Reports by the Intergovernmental Panel on Climate Change (Solomon et al., 2007; Stocker et al., 2013) as well as reports on more topical issues including the Special Report on Emissions Scenarios (SRES) (Nakićenović et al., 2000). The SRES scenarios were used extensively in the 3rd Phase of the Coupled Model Intercomparison Project (CMIP3)(Solomon et al., 2007), whereas the following generation of scenarios denoted the “Representative Concentration Pathways” (RCPs) were used to generate emissions trajectories in CMIP5 (Moss et al., 2010; van Vuuren et al., 2011; Taylor et al., 2012). These emissions scenarios have been used by a broad audience, including national governments (e.g., Walsh et al. (2014); Hayhoe et al. (2017)) and climate scientists (e.g., Kawase et al. (2011); Lamarque et al. (2013); Holmes et al. (2013); Westervelt et al. (2018)).

As initially described in Moss et al. (2010), a new framework has been utilized to design scenarios that combine socioeconomic and technological development, named the Shared Socioeconomic Pathways (SSPs), with future climate radiative forcing (RF) outcomes (RCPs) in a scenario matrix architecture (O’Neill et al., 2013; Kriegler et al., 2014; van Vuuren et al., 2013). This new structure provides two critical elements to the scenario design space: first, it standardizes all socioeconomic assumptions (e.g., population, GDP, and poverty, among others) across modeled representations of each scenario; second, it allows for more nuanced investigation of the variety of pathways by which climate outcomes can be reached. Five different SSPs exist, with model quantifications that span potential futures of green or fossil-fueled growth (SSP1 (van Vuuren et al., 2017) and SSP5 (Kriegler et al., 2017)), high inequality between or within countries (SSP3 (Fujimori et al., 2017) and SSP4 (Calvin et al., 2017)), and a “middle of the road” scenario (SSP2 (Fricko et al., 2017)). For each SSP, a number of different RF targets can be met depending on policies implemented, either locally or globally, over the course of the century (Riahi et al., 2017).

Scenarios provide critical input for climate models through their description and quantification of both land-use change as well as emissions trajectories. Of the total population of newly available scenarios produced with Integrated Assessment Models (IAMs), nine have been chosen for inclusion for study in ScenarioMIP, one of the dedicated CMIP6-endorsed MIPs (Eyring et al., 2016). The selection of scenarios is designed to allow investigation of two primary scientific questions: “How does the Earth system respond to climate forcing?” and “How can we assess future climate changes given climate variability. . . and uncertainties in scenarios?” (O’Neill et al., 2016). In order to support an experimental design that can address these fundamental questions, scenarios were chosen that explore a wide range of future climate forcing that both complement and expand

on prior work in CMIP5. While a given forcing pathway could be met with potentially many different SSPs, a specific SSP is chosen for each pathway according to three governing principles: “[maximizing] facilitation of climate research, minimizing differences in climate between outcomes produced by the [chosen] SSP, and ensuring consistency with scenarios that are most relevant to the IAM and Impacts, Adaptation, and Vulnerability (IAV) communities” (O’Neill et al., 2016, p. 3469).

5 Selected scenarios sample a range of forcing outcomes ($1.9\text{--}8.5\text{ W m}^{-2}$, calculated with the simple climate model MAGICC6 (Meinshausen et al., 2011a)), with sufficient spacing between forcing outcomes to provide statistically significant regional temperature outcomes (Tebaldi et al., 2015; O’Neill et al., 2016). The nine selected scenarios can be divided into two groups: four scenarios update the RCPs studied in CMIP5, achieving forcing levels of 2.6, 4.5, 6.0, and 8.5 W m^{-2} , whereas five scenarios fill gaps not previously studied in the RCPs, including, a lower-bound 1.9 W m^{-2} scenario (Rogelj et al., 2018) corresponding to the most optimistic interpretation of Article 2 of the Paris Agreement (United Nations, 2016). Additionally, a new ‘overshoot’ scenario is included in the Tier 2 set in which forcing peaks and then declines to 3.4 W m^{-2} by 2100 in order to assess the climatic outcomes of such a pathway.

In order to provide historically consistent and spatially detailed emissions datasets for other scientists collaborating in CMIP6, scenario results are processed using methods of harmonization and downscaling, respectively. Harmonization refers to the alignment of model results with a common historical dataset. Historical data consistency is paramount for use in climate models which perform both historic and future runs, for which there must be smooth transitions between the two sets of emissions trajectories. Harmonization has been applied in previous studies (e.g., in SRES (Nakićenović et al., 2000) and the RCPs (van Vuuren et al., 2011; Meinshausen et al., 2011b)); however, systematic harmonization for which common rules and algorithms are applied across all models has not heretofore been performed (Rogelj et al., 2011). We harmonize emissions trajectories, therefore, with a newly-available methodology and software (*aneris*) (Gidden, 2017; Gidden et al., 2018) in order to address this need. We further downscale these results from their native model region spatial dimension to individual countries using techniques which take into account current and future emissions levels as well as socioeconomic progress (van Vuuren et al., 2007). An overview of the scenario selection and processing steps that comprise this study as well as its contributions to the broader CMIP6 community is shown in Figure 1.

25 The remainder of the paper is as follows. First, we discuss scenario selection, historical data aggregation, harmonization, and downscaling methods in Section 2. We then present harmonized model results, focusing on overall emissions trajectories, climate response outcomes, and the spatial distribution of key emissions species in Section 3. Finally, in Section 4, we discuss conclusions drawn from this study as well as guidelines for using the results presented herein in further CMIP6 experiments.

2 Data and Methods

30 2.1 Socioeconomic and Climate Scenarios

The global IAM community has developed a family of scenarios that describe a variety of possible socioeconomic futures (the SSPs). The formation, qualitative, and quantitative aspects of these scenarios have been discussed widely in the literature (O’Neill et al., 2017; KC and Lutz, 2014; Dellink et al., 2015; Jiang and O’Neill, 2015). We briefly summarize here relevant

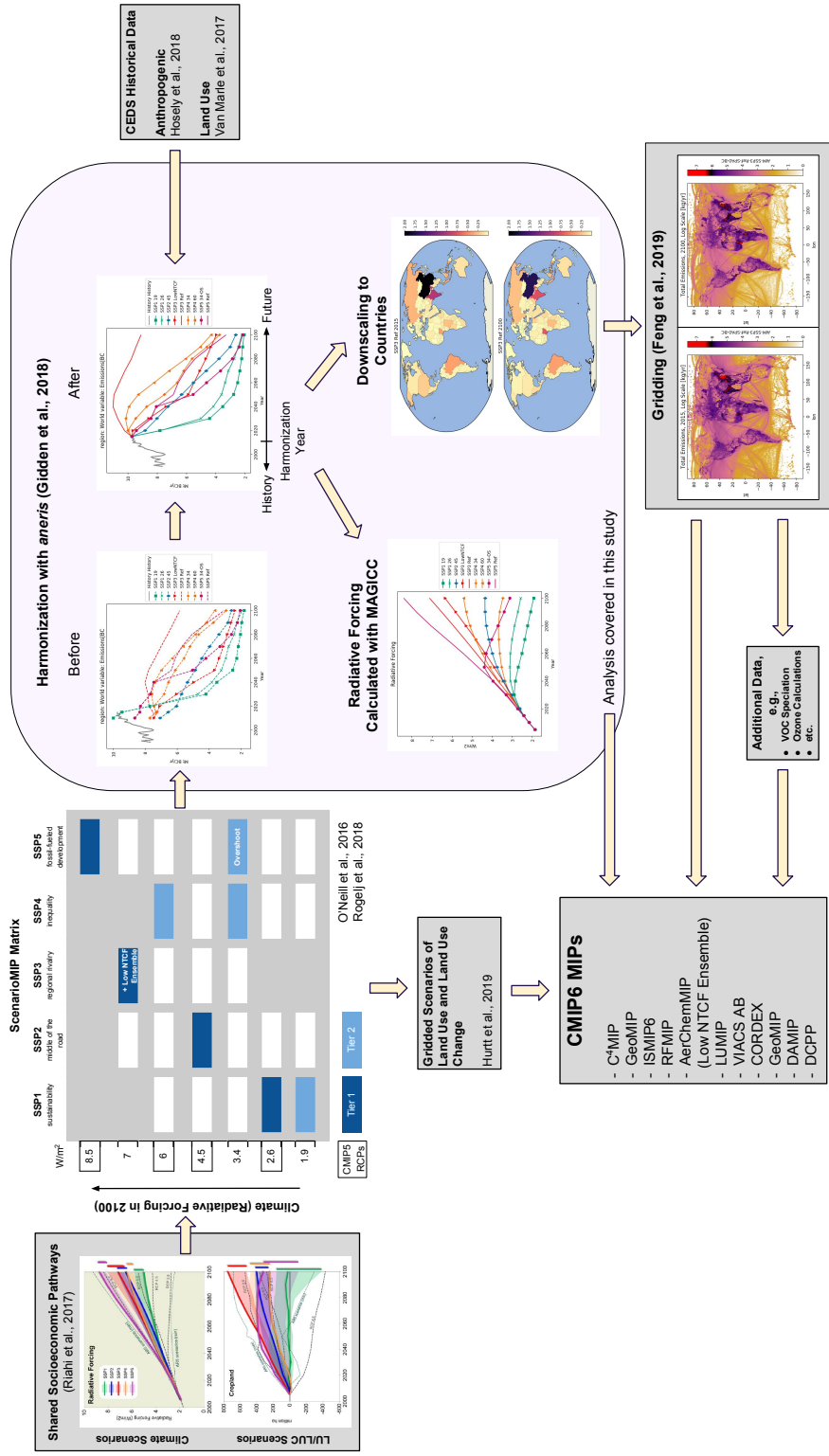


Figure 1. The role of ScenarioMIP in the CMIP6 ecosystem. From a population of over 40 possible SSPs, nine are downselected in order to span the climatic and social dimensions of the ScenarioMIP SSP-RCP Matrix. Emissions trajectories developed from these scenarios then undergo harmonization to a common and consistent historical dataset, downscaling, and gridding. The resulting emissions datasets are then provided to the CMIP6 scientific community, in conjunction with future scenarios of land use (Hurtt, 2019), concentrations (Meinshausen, 2019), and other domain-specific datasets (e.g., VOC speciation and ozone concentrations).

narratives of the baseline SSPs concerning socioeconomic development (see, e.g., Figure A1), energy systems (Bauer et al., 2017), land use (Popp et al., 2017), Greenhouse Gas (GHG) emissions (Riahi et al., 2017), and air pollution (Rao et al., 2017).

SSPs 1 and 5 describe worlds with strong economic growth via sustainable and fossil-fuel pathways, respectively. In both scenarios, incomes increase substantially across the globe and inequality within and between countries is greatly reduced; however, this growth comes at the expense of potentially large impacts from climate change in the case of SSP5. Demand for energy and resource intensive agricultural commodities such as ruminant meat is significantly lower in SSP1 due to changes in behavior and advances in energy efficiency. In both scenarios, pollution controls are expanded in high-income economies with other nations catching up relatively quickly with the developed world, resulting in reductions in air pollutant emissions. SSP2 is a so-called “middle of the road scenario” with moderate population growth and slower convergence of income levels across countries. In SSP2, food consumption especially for resource-intensive livestock based commodities, is expected to increase and energy generation continues to rely on fossil fuels at approximately the same rates as today, resulting in continued growth of GHG emissions. Efforts at curbing air pollution continue along current trajectories with developing economies ultimately catching up to high-income nations, resulting in an eventual decrease in pollutant emissions. Finally, SSPs 3 and 4 depict futures with high inequality between countries (i.e., “regional rivalry”) and within countries, respectively. Global GDP growth is low in both scenarios and concentrated in currently high-income nations whereas population increase is focused in low and middle-income countries. Energy systems in SSP3 see a resurgence of coal dependence whereas reductions occur in SSP4 as the high-tech energy and economy sectors see increased developments and investments leading to higher diversification of technologies (Bauer et al., 2017). Policy making (either regionally or internally) in areas including land-use regulation, air pollution control, and GHG emission limits are less effective. Thus policies vary regionally in both SSPs with weak international institutions resulting in the highest levels of pollutant and aerosol emissions and potential effect on climate outcomes (Shindell et al., 2013).

A matrix of socioeconomic-climate scenarios relevant to the broad scientific community was created with SSPs on one axis and climate policy futures (i.e. mitigation scenarios) delineated by end-of-century (EOC) RF on the other axis (see Figure 1). The scenarios selected for inclusion in ScenarioMIP, shown in Table 1, are comprised of both baseline and mitigation cases, in which long-term climate policies are lacking or included, respectively. They are divided into Tier-1 scenarios, which span a wide range of uncertainty in future forcing and are utilized by other MIPs, and Tier-2 scenarios, which enable more detailed studies of the effect of mitigation and adaptation policies which fall between the Tier-1 forcing levels. Each scenario is run by a single model within ScenarioMIP, comprised of the AIM/CGE, GCAM4, IMAGE, MESSAGE-GLOBIOM, and REMIND-MAgPIE modeling teams. We provide a short discussion here on their selection and refer the reader to (O’Neill et al., 2016, Section 3.2.2) for fuller discussion of the experimental design.

The Tier-1 scenarios include SSP1-2.6, SSP2-4.5, SSP3-7.0, and SSP5-8.5, designed to provide a full range of forcing targets similar in both magnitude and distribution to the RCPs as used in CMIP5. Each EOC forcing level is paired with a specific SSP which is chosen based on the relevant experimental coverage. For example, SSP2 is chosen for the 4.5 W m⁻² experiment because of its high relevance as a reference scenario to IAV communities as a scenario with intermediate vulnerability and climate forcing and its median positioning of land use and aerosol emissions (of high importance for DAMIP and DCPD)

Table 1. All scenarios and associated attributes used in the ScenarioMIP experiment ensemble.

Scenario Name	SSP	Target Forcing Level (W m^{-2})	Scenario Type	Tier	IAM	Contributing to other MIPs
SSP1-1.9	1	1.9	Mitigation	2	IMAGE	ScenarioMIP
SSP1-2.6	1	2.6	Mitigation	1	IMAGE	ScenarioMIP
SSP2-4.5	2	4.5	Mitigation	1	MESSAGE-GLOBIOM	ScenarioMIP, VIACS AB, CORDEX, GeoMIP, DAMIP, DCPD
SSP3-7.0	3	7	Baseline	1	AIM/CGE	ScenarioMIP, AerChemMIP, LUMIP
SSP3-LowNTCF	3	6.3	Mitigation	2	AIM/CGE	ScenarioMIP, AerChemMIP, LUMIP
SSP4-3.4	4	3.4	Mitigation	2	GCAM4	ScenarioMIP
SSP4-6.0	4	6	Mitigation	2	GCAM4	ScenarioMIP, GeoMIP
SSP5-3.4-OS	5	3.4	Mitigation	2	REMIND-MAGPIE	ScenarioMIP
SSP5-8.5	5	8.5	Baseline	1	REMIND-MAGPIE	ScenarioMIP, C4MIP, GeoMIP, ISMIP6, RFMIP

whereas SSP3 is chosen for the 7.0 W m^{-2} experiment as it allows for quantification of avoided impacts (e.g. relative to SSP2) and has significant emissions from near-term climate forcing (NTCF) species such as aerosols and methane (also referred to as Short-Lived Climate Forcers, or SLCF).

The Tier-2 scenarios include SSP1-1.9, SSP3-LowNTCF, SSP4-3.4, SSP4-6.0, and SSP5-3.4-Overshoot (OS), chosen to both complement and extend the types of scenarios available to climate modelers beyond those analyzed in CMIP5. SSP1-1.9 provides the lowest estimate of future forcing matching the most ambitious goals of the Paris Agreement (i.e., “pursuing efforts to limit the [global average] temperature increase to 1.5°C above pre-industrial levels”). The SSP3-LowNTCF scenario provides an important experimental comparison to scenarios with high NTCFs for use in AerChemMIP (Collins et al., 2017) contrasting with SSP3-7.0 (see SI Section C for more detail on differences in assumptions between SSP3-7.0 and SSP3-LowNTCF). Both SSP4 scenarios fill gaps in Tier-1 forcing pathways and allow investigations of impacts in scenarios with relatively strong land use and aerosol climate effects but relatively low challenges to mitigation. Finally, SSP5-3.4-OS allows for the study of a scenario in which there is large overshoot in RF by mid-century followed by the implementation of substantive policy tools to limit warming in the latter half of the century. It is specifically designed to be twinned with SSP5-8.5, following the same pathway through 2040, and support experiments examining delayed climate action.

2.2 Historical Emissions Data

We construct a common dataset of historical emissions for the year 2015¹, the transition year in CMIP6 between historic and future model runs, using two primary sources developed for CMIP6. Hoesly et al. (2018) provides data over 1750-2014 for anthropogenic emissions by country. They include a detailed sectoral representation (59 sectors in total) which has been aggregated into nine individual sectors (see SI Table B1), including Agriculture, Aircraft, Energy, Industry, International Shipping, Residential and Commercial, Solvent Production and Application, Transportation, and Waste. Values for 2015 were approximated by extending fossil fuel consumption using aggregate energy statistics (BP, 2016) and trends in emission factors from the GAINS ECLIPSE V5a inventory (Klimont et al., 2017; Stohl et al., 2015). Sulfur (SO_x) emissions in China were trended from 2010 using values from Zheng et al. (2018).

van Marle et al. (2017) provide data on historical emissions from open burning, specifically including burning of Agricultural Waste on Fields (AWB), Forests, Grasslands, and Peatlands out to 2015. Due to the high amount of inter-annual variability in the historical data which is not explicitly modeled in IAMs, we use a decadal mean over 2005-2014 to construct a representative value for 2015 (see, e.g., Figure A2). When used in conjunction with model results, we aggregate country-level emissions to the individual model regions of which they are comprised.

Emissions of N₂O and fluorinated gas species were harmonized only at the global level, with 2015 values from other data sources. Global N₂O emissions were taken from PRIMAP (Gütschow et al., 2016) and global emissions of HFCs were developed by Velders et al. (2015). The HFC-23 and total PFC and SF₆ emissions were provided by Guus Velders, based on Carpenter et al. (2014) mixing ratios and were extended from 2012 to 2015 by using the average 2008-2012 trend.

2.3 Automated Emissions Harmonization

Emissions harmonization is defined as a procedure designed to match model results to a common set of historical emissions trajectories. The goal of this process is to match a specified base-year dataset while retaining consistency with the original model results to the best extent possible while also providing a smooth transition from historical trajectories. This non-disjoint transition is critical for global climate models when modeling projections of climate futures which depend on historical model runs, guaranteeing a smooth functional shape of both emissions and concentration fields between the historical and future runs. Models differ in their 2015 data points in part because the historical emissions datasets used to calibrate the models differ (e.g., PRIMAP (Gütschow et al., 2016), EDGAR (Crippa et al., 2016), CEDS (Hoesly et al., 2018)). Another cause of differences is that 2015 is a projection year for all of these models (the original scenarios were originally finalized in 2015).

Harmonization can be simple in cases where a model's historical data is similar to the harmonization dataset. However, when there are strong discrepancies between the two datasets, the choice of harmonization method is crucial for balancing the dual goals of accurate representation of model results and reasonable transitions from historical data to harmonized trajectories.

The quantity of trajectories requiring harmonization increases the complexity of the exercise. In this analysis, given the available sectoral representation of both the historical data and models, we harmonize model results for 14 individual emissions

¹For sulfur emissions in China, we include values up to 2017, due to a drastic reduction in these emissions in the most recently available datasets.

Table 2. Harmonized Species and Sectors, adapted from Gidden et al. (2018) with permission of the authors. A mapping of original model variables (i.e., outputs) to ScenarioMIP sectors is shown in SI Table B2.

Emissions Species	Sectors
Black Carbon (BC)	Agricultural Waste Burning ^c
Hexafluoroethane (C ₂ F ₆) ^a	Agriculture ^c
Tetrafluoromethane (CF ₄) ^a	Aircraft ^b
Methane (CH ₄)	Energy Sector
Carbon Dioxide (CO ₂) ^c	Forest Burning ^c
Carbon Monoxide (CO)	Grassland Burning ^c
Hydrofluorocarbons (HFCs) ^a	Industrial Sector
Nitrous Oxide (N ₂ O) ^a	International Shipping ^b
Ammonia (NH ₃)	Peat Burning ^c
Nitrogen Oxides (NO _x)	Residential Commercial Other
Organic Carbon (OC)	Solvents Production and Application
Sulfur Hexafluoride (SF ₆) ^a	Transportation Sector
Sulfur Oxides (SO _x)	Waste
Volatile Organic Compounds (VOCs)	

^a Global total trajectories are harmonized due to lack of detailed historical data.

^b Global sectoral trajectories are harmonized due to lack of detailed historical data.

^c A global trajectory for AFOLU CO₂ is used; non-land-use sectors are harmonized for each model region.

Table 3. The number of model regions and total harmonized emissions trajectories for each IAM participating in the study. The number of trajectories are calculated from Table 2, including gas species for which global trajectories are harmonized.

Model	Regions	Harmonized Trajectories
AIM/CGE	17	1486
GCAM4	32	2776
IMAGE	26	2260
MESSAGE-GLOBIOM	11	970
REMIND-MAGPIE	11	970

species and 13 sectors as described in Table 2. The majority of emissions-sector combinations are harmonized for every native model region² (Table 3). Global trajectories are harmonized for fluorinated species and N₂O, aircraft and international shipping sectors, and CO₂ agriculture, forestry, and other land-use (AFOLU) emissions due to historical data availability and regional detail. Therefore between 970 and 2776 emissions trajectories require harmonization for any given scenario depending on the model used.

²Further information regarding the model region definitions is available via the IAMC Wiki at <https://www.iamcdocumentation.eu> and Calvin et al. (2019).

We employ the newly available open-source software *aneris* (Gidden et al., 2018; Gidden, 2017) in order to perform harmonization in a consistent and rigorous manner. For each trajectory to be harmonized, *aneris* chooses which harmonization method to use by analyzing both the relative difference between model results and harmonization historical data as well as the behavior of the modeled emissions trajectory. Available methods include ratio and offset methods, which utilize the quotient and difference of unharmonized and harmonized values respectively, as well as convergence methods which converge to the original modeled results at some future time period. We refer the reader to Gidden et al. (2018) for a full description of the harmonization methodology and implementation.

Override methods can be specified for any combination of species, sectors, and regions which are used in place of the default methods provided by *aneris*. Override methods are useful when default methods do not fully capture either the regional or sectoral context of a given trajectory. Most commonly, we observed this in cases where there are large relative differences in the historical datasets, the base-year values are small, and there is substantial growth in the trajectory over the modeled time period, thereby reflecting the large relative difference in the harmonized emissions results. However, the number of required override methods is small: 5.1% of trajectories use override messages for the IMAGE model, 5.6% for MESSAGE-GLOBIOM, and 9.8% for REMIND. The AIM model elected not to use override methods, and GCAM uses a relatively large number (35%).

Finally, in order to provide additional detail for fluorinated gases (F-gases) we extend the set of reported HFCs and CFCs species based on exogenous scenarios. We take scenarios of future HFCs from Velders et al. (2015) which provide detailed emissions trajectories for F-gases. We downscale the global HFC emissions reported in each harmonized scenario to arrive at harmonized emissions trajectories for all constituent F-gases, deriving the HFC-23 from the RCP emission pathway. We further include trajectories of CFCs as reported in scenarios developed by the World Meteorological Organization (WMO) (Carpenter et al., 2014) which are not included in all model results.

2.4 Region-to-Country Downscaling

Downscaling, defined here as distributing aggregated regional values to individual countries, is performed for all scenarios in order to improve the spatial resolution of emissions trajectories, and as a prelude to mapping to a spatial grid (discussed in SI Section D). We developed an automated downscaling routine that differentiates between two classes of sectoral emissions: those related to AFOLU and those related to fuel combustion and industrial and urban processes. In order to preserve as much of the original model detail as possible, the downscaling procedures here begin with harmonized emission data at the level of native model regions and the aggregate sectors (Table 2). Here we discuss key aspects of the downscaling methodology and refer the reader to the downscaling documentation³ for further details.

AFOLU emissions, including Agricultural Waste Burning, Agriculture, Forest Burning, Peat Burning, and Grassland Burning are downscaled using a linear method. Linear downscaling means that the fraction of regional emissions in each country stays constant over time. Therefore, the total amount of open-burning emissions allocated to each country will vary over time as economies evolve into the future, following regional trends from the native IAM. However there is no sub-regional change in the spatial distribution of land-use related emissions over time. This is in contrast to other anthropogenic emissions, where

³https://github.com/iiasa/emissions_downscaling/wiki

the IPAT method is used to dynamically downscale to the country level as discussed above. Note that Peat Burning emissions were not modeled by the IAMs and are constant into the future.

All other emissions are downscaled using the Impact, Population, Affluence, and Technology (IPAT) (Ehrlich and Holdren, 1971) based method developed by van Vuuren et al. (2007), where population and GDP trajectories are taken from the SSP scenario specifications (KC and Lutz, 2014; Dellink et al., 2015). The overall philosophy behind this method is to assume that emission intensity values (i.e., the ratio of emissions to GDP) for countries within a region will converge from a base year, t_i (2015 in this study), over the future. A convergence year, t_f , is specified beyond 2100, the last year for the downscaled data, meaning that emission intensities do not converge fully by 2100. The choice of convergence year reflects the rate at which economic and energy systems converge toward similar structures within each native model region. Accordingly, the SSP1 and SSP5 scenarios are assigned relatively near-term convergence years of 2125, while SSP3 and SSP4 scenarios are assigned 2200, and SSP2 an intermediate value of 2150.

The downscaling method first calculates an emission intensity, I , for the base and convergence years using emission level, E , and GDP .

$$I_t = \frac{E_t}{GDP_t} \quad (1)$$

An emissions intensity growth factor, β , is then determined for each country, c , within a model region, R , using convergence year emission intensities, I_{R,t_f} , determined by extrapolating from the last 10 years (e.g., 2090 to 2100) of the scenario data.

$$\beta_c = \frac{I_{R,t_f}^{\frac{1}{t_f - t_i}}}{I_{c,t_i}} \quad (2)$$

Using base-year data for each country and scenario data for each region, future downscaled emission intensities and patterns of emissions are then generated for each subsequent time period.

$$I_{c,t} = \beta_c I_{c,t-1} \quad (3)$$

$$E_{c,t}^* = I_{c,t} GDP_{c,t} \quad (4)$$

These spatial patterns are then scaled with (i.e., normalized to) the model region data to guarantee consistency between the spatial resolutions, resulting in downscaled emissions for each country in each time period

$$E_{c,t} = \frac{E_{R,t}}{\sum_{c' \in R} E_{c',t}^*} E_{c,t}^* \quad (5)$$

For certain countries and sectors the historical dataset has zero-valued emissions in the harmonization year. This would result in zero downscaled future emissions for all years. Zero emissions data occurs largely for small countries, many of them small island nations. This could either be due to lack of actual activity in the base-year, or missing data on activity in those countries. In order to allow for future sectoral growth in such cases, we adopt, for purposes of the above calculations, an initial emission intensity of $\frac{1}{3}$ the value of the lowest country in the same model region. We then allocate future emissions in the same manner discussed above, which is consistent with our overall convergence assumptions. Note that we exclude the industrial sector (Table 2) from this operation as it might not be reasonable to assume the development of substantial industrial activity in these countries.

Finally, some scenarios include negative CO₂ emissions at some point in the future (notably from energy use). For CO₂ emissions, therefore, we apply a linear rather than exponential function to allow a smooth transition to negative emissions values for both the emissions intensity growth factor and future emission intensity calculations. In such cases, Equations 2 and 3 are replaced by 6 and 7, respectively.

$$\beta_c = \left(\frac{I_{R,t_f}}{I_{c,t_i}} - 1 \right) \frac{1}{t_f - t_i} \quad (6)$$

$$I_{c,t} = (1 + \beta_c) I_{c,t-1} \quad (7)$$

3 Results

Here we present the results of harmonization and downscaling applied to all nine scenarios under consideration. We discuss in Section 3.1 the relevance of each selected scenario to the overall experimental design of ScenarioMIP, focusing on their RF and mean global temperature pathways. In Section 3.2, we discuss general trends in global trajectories of important GHGs and aerosols and their sectoral contributions over the modeled time horizon. In Section 3.3, we explore the effect of harmonization on model results and the difference between unharmonized and harmonized results. Finally, in Section 3.4, we provide an overview of the spatial distribution of emissions species at both regional and spatial grids.

3.1 Experimental Design and Global Climate Response

The nine ScenarioMIP scenarios were selected to provide a robust experimental design space for future climate studies as well as IAV analyses with the broader context of CMIP6. Chief among the concerns in developing such a design space is both the range and spacing of the global climate response within the portfolio of scenarios (Moss et al., 2008). Prior work for the RCPs studied a range of climate outcomes between ~ 2.6 - 8.5 W m⁻² at EOC. Furthermore, recent work (Tebaldi et al., 2015) finds that statistically significant regional temperature outcomes (>5% of half the land surface area) are observable with a minimum separation of 0.3°C, which is approximately equivalent to 0.75 W m⁻² (O'Neill et al., 2016). Given the current policy context, notably the recent adoption of the UN Paris Agreement, the primary design goal for the ScenarioMIP scenario selection is

thus twofold: span a wider range of possible climate futures ($1.9\text{--}8.5 \text{ W m}^{-2}$) in order to increase relevance to the global climate dialogue and provide a variety of scenarios between these upper and lower bounds such that they represent statistically significant climate variations in order to support a wide variety of CMIP6 analyses.

We find that the selected scenarios meet this broad goal, as shown in Figure 2, by using the simple climate model MAGICC6 with central climate-system and gas-cycle parameter settings for all scenarios to calculate pathways of both RF and the resulting response of global mean temperature (see SI Table B3 for a listing of all EOC RF values).

We also present illustrative global-mean temperature pathways. EOC temperature outcomes span a large range, from 1.4°C at the lower end to 4.9°C for SSP5-8.5, the scenario with highest warming emissions trajectories. Notably, two scenarios (SSP1-1.9, which reaches 1.4°C by EOC and SSP1-2.6, reaching 1.7°C) can be used for studies of global outcomes of the implementation of the UN Paris Agreement, which has a desired goal of “[h]olding the increase in the global average temperature to well below 2°C above pre-industrial levels and pursuing efforts to limit the temperature increase to 1.5°C above pre-industrial levels” (United Nations, 2016, Article 2.1(a)). The difference between scenario temperature outcomes is statistically significant in nearly all cases, with a minimum difference of 0.37°C (SSP1-1.9 and SSP1-2.6) and maximum value of 0.77°C (SSP3-7.0 and SSP5-8.5). The EOC difference between SSP4-3.4 and SSP5-3.4-OS is not significant (0.07°C); however global climate outcomes are likely sensitive to the dynamics of the forcing pathway (Tebaldi et al., 2015).

A subset of four scenarios (SSP1-2.6, SSP2-4.5, SSP4-6.0, and SSP5-8.5) were also designed to provide continuity between CMIP5 and CMIP6 by providing similar forcing pathways to their RCP counterparts assessed in CMIP5. We find that this aspect of the scenario design space is also met by the relevant scenarios. SSP2-4.5 and SSP5-8.5 track RCP4.5 and RCP8.5 pathways nearly exactly. We observe slight deviations between SSP1-2.6 and RCP2.6 as well as SSP4-6.0 and RCP6.0 at mid-century due largely to increased methane emissions in the historic period (i.e., methane emissions broadly follow RCP8.5 trajectories after 2000 resulting in higher emissions in the harmonization year of this exercise; see Figure 3 below).

The remaining five scenarios were chosen to “fill gaps” in the previous RCP studies in CMIP5 and enhance the potential policy relevance of CMIP6 MIP outputs (O’Neill et al., 2016). SSP3-7.0 was chosen to provide a scenario with relatively high vulnerability and land use change with associated near-term climate forcer (NTCF) emissions resulting in a high RF pathway. We find that it reaches an EOC forcing target of $\sim 7.1 \text{ W m}^{-2}$ and greater than 4°C mean global temperature increase. While contributions to RF from CO_2 in SSP3-7.0 are lower than that of SSP5-8.5, methane and aerosol contributions are considerably higher (see, e.g., Etminan et al. (2016) for a discussion on the effect of shortwave forcing on methane’s contribution to overall RF). A companion scenario, SSP3-LowNTCF, was also included in order to study the effect of NTCF species in the context of AerChemMIP. Critically, emissions factors of key NTCF species are assumed to develop similar to an SSP1 (rather than SSP3) scenario. SSP3-LowNTCF sees substantially less contributions to EOC forcing from NTCF emissions (notably SO_x and methane), resulting in a forcing level of 6.3 W m^{-2} and global mean temperature increase of 3.75°C by the end of the century. This significant reduction is largely due to updating emissions coefficients for air pollutants and other NTCF to match the SSP1 assumptions. SSP4-3.4 was chosen to provide a scenario at the lower end of the range of future forcing pathways. Reaching a EOC mean global temperature between SSP2-4.5 and SSP1-2.6 ($\sim 2.25^\circ\text{C}$), it is an ideal scenario for scientists to study the mitigation costs and associated impacts between forcing levels of 4.5 and 2.6 W m^{-2} .

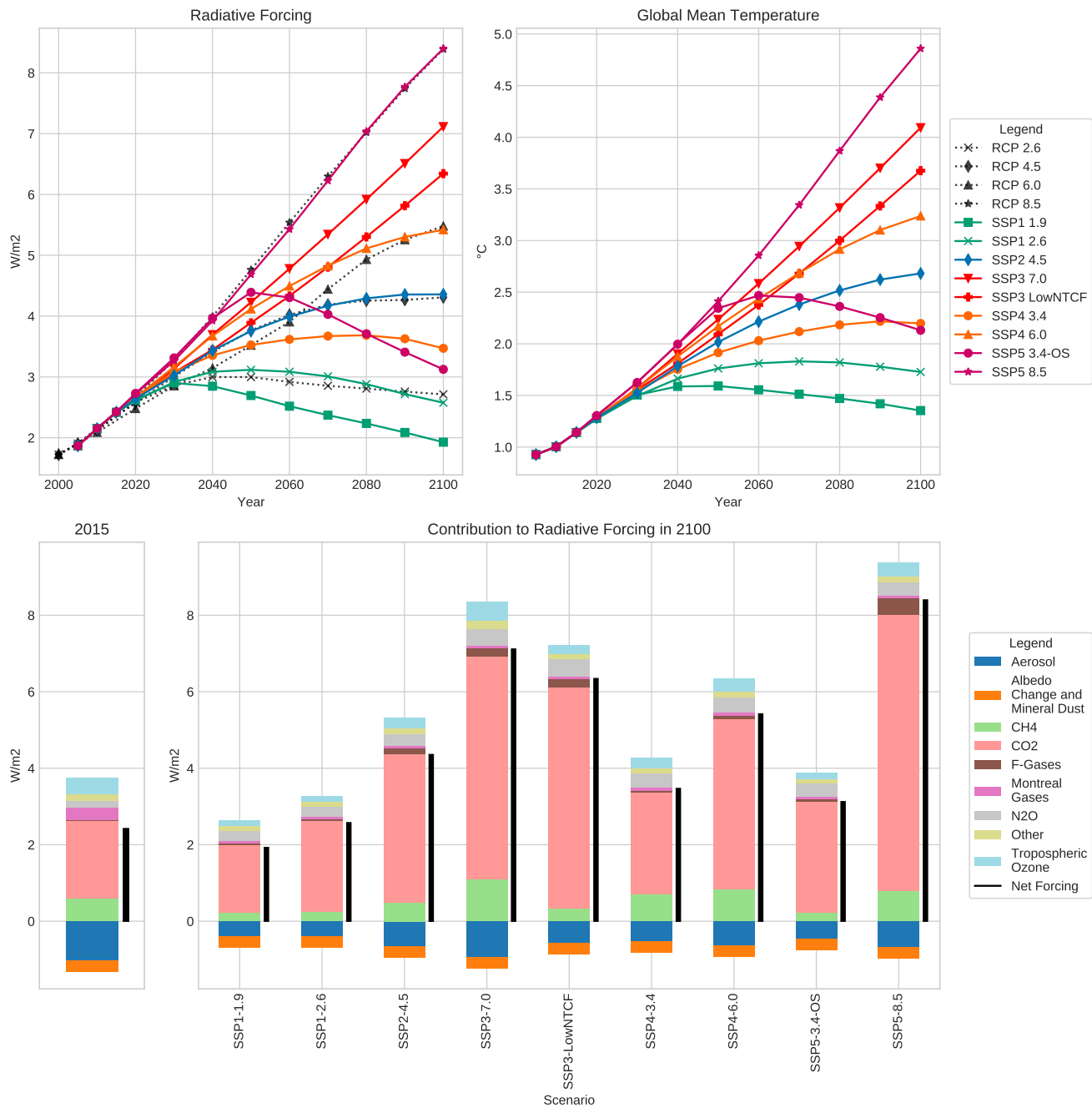


Figure 2. Trajectories of RF and global mean temperature (above pre-industrial levels) are presented as are the contributions to RF for a number of different emissions types native to the MAGICC6 model. The RF trajectories are displayed with their RCP counterparts analyzed in CMIP5. For those scenarios with direct analogues, trajectories are largely similar in shape and match the same EOC forcing values.

The final two scenarios, SSP1-1.9 and SSP5-3.4-OS were chosen to study policy-relevant questions of near and medium-term action on climate change. SSP1-1.9 provides a new low-end to the RF pathway range. It reaches an EOC forcing level of $\sim 1.9 \text{ W m}^{-2}$ and an associated global mean temperature increase of $\sim 1.4^\circ\text{C}$ (with temperature peaking in 2040), in line with the goals of the Paris Agreement. SSP5-3.4-OS, on the other hand, is designed to represent a world in which action towards climate change mitigation is delayed but vigorously pursued after 2050, resulting in a forcing and mean global temperature “overshoot”. A peak temperature of 2.5°C above pre-industrial levels is reached in 2060 after which global mitigation efforts reduce EOC warming to $\sim 2.25^\circ\text{C}$. In tandem, and including SSP2-4.5 (which serves as a reference experiment in ScenarioMIP (O’Neill et al., 2016)), these scenarios provide a robust experimental platform to study the effect of the timing and magnitude of global mitigation efforts which can be especially relevant to science-informed policy discussions.

3.2 Global Emissions Trajectories

Emissions contributions to the global climate system are myriad but can broadly be divided into contributions from Greenhouse Gases (GHGs) and aerosols. The models used in this analysis explicitly represent manifold drivers and processes involved in the emissions of various gas species. For a fuller description of these scenario results see the original SSP quantification papers (van Vuuren et al., 2017; Fricko et al., 2017; Fujimori et al., 2017; Calvin et al., 2017; Kriegler et al., 2017). Here, we focus on emissions species that most strongly contribute to changes in future mean global temperature and scenarios with the highest relevance and uptake for other MIPs within CMIP6, namely the Tier-1 scenarios SSP1-2.6, SSP2-4.5, SSP3-7.0, and SSP5-8.5. Where insightful, we provide additional detail on results from other scenarios; however results for all scenarios are available in SI Section E.

CO_2 emissions have a large span across scenarios by the end of the century (-20 Gt/yr to 125 Gt/yr), as shown in Figure 3. Scenarios can be categorized based on characteristics of their trajectory profiles: those that have consistent downwards trajectories (SSP1, SSP4-3.4), those that peak in a given year and then reduce in magnitude (SSP2-4.5 in 2040 and SSP4-6.0 in 2050), and those that have consistent growth in emissions (SSP3). SSP5 scenarios, which model a world with fossil-fuel driven development, have EOC emissions which bound the entire scenario set, with the highest CO_2 emissions in SSP5-8.5 peaking in 2080 and the lowest CO_2 emissions in SSP5-3.4-OS resulting from the application of stringent mitigation policies after 2040 in an attempt to stabilize RF to 3.4 W m^{-2} after overshooting this limit earlier in the century. A number of scenarios exhibit negative net CO_2 emissions before the end of the century. SSP1-1.9, the scenario with the most consistent negative emission trajectory, first reports net negative emissions in 2060 with EOC emissions of -14 Gt/yr . SSP5-3.4-OS, SSP1-2.6, and SSP4-3.4 each cross the 0-emissions threshold in 2070, 2080, and 2090, respectively.

Global emissions trajectories for CO_2 are driven largely by the behavior of the energy sector in each scenario, as shown in Figure 4. Positive emissions profiles are also greatly influenced by the industry and transport sectors whereas negative emissions profiles are driven by patterns of agriculture and land-use as well as the means of energy production. In SSP1-2.6, early-mid century emissions continue to be dominated by the energy sector with substantial contributions from industry and transport. Negative emissions from land use are observed as early as 2030 due to large-scale afforestation (Popp et al., 2017; van Vuuren et al., 2017) while net negative emissions from energy conversion first occur in 2070. Such net negative emissions are achieved

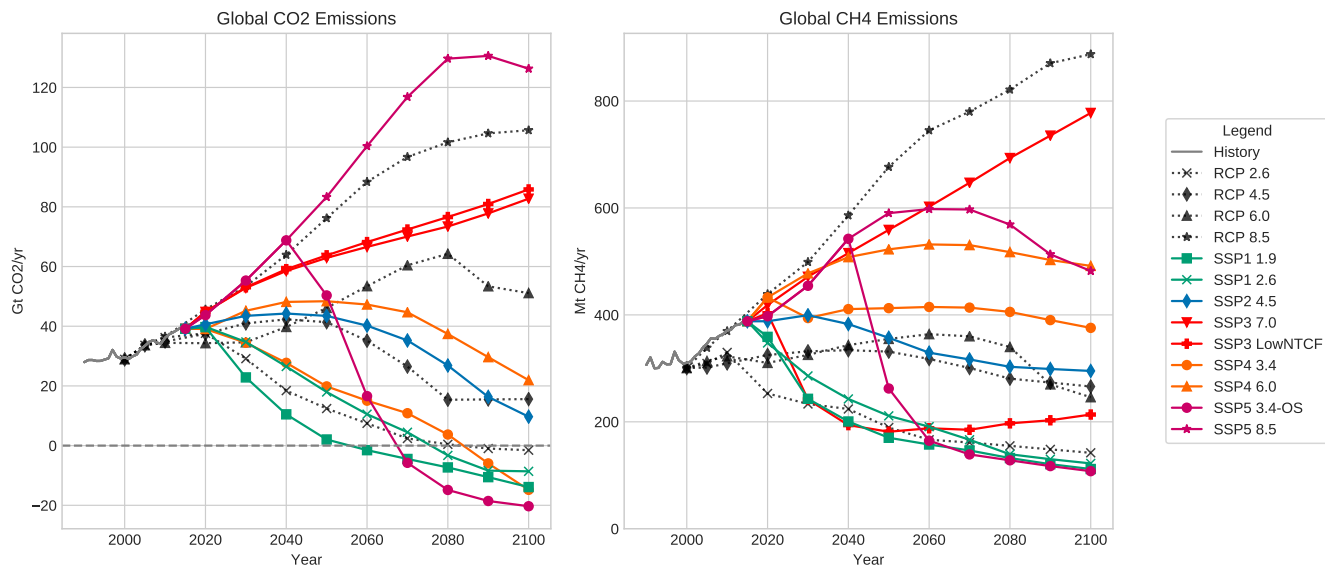


Figure 3. Trajectories of CO₂ and CH₄, primary contributors to GHG emissions, including both historical emissions, emissions analyzed for the RCPs, and all nine scenarios covered in this study.

when carbon dioxide removal from bioenergy with CCS exceeds residual fossil CO₂ emissions from the combustion of coal, oil and gas. Emissions contributions from the transport sector diminish over the century as heavy and light-duty transport fleets are electrified. Emissions from industry peak and then reduce over time such that the residential and commercial sector (RC) provides the majority of positive CO₂ emissions by the end of the century. SSP2-4.5 experiences similar trends among sectors but with smaller magnitudinal changes and temporal delays. Negative emissions, for example, are experienced in the land-use sector for the first time in 2060 and are not experienced in the energy sector until the end of the century. Energy-sector CO₂ emissions continue to play a large role in the overall composition until 2080, at which point the industrial sector provides the plurality of CO₂. Emissions from the transport sector peak at mid-century, but are still a substantive component of positive CO₂ emissions at the end of the century. Finally, the SSP5-8.5 scenario's emission profile is dominated by the fossil-fueled energy sector for the entirety of the century. Contributions from the transport and industrial sectors grow in magnitude but are diminished as share of total CO₂ emissions, CO₂ emissions from the AFOLU sector decrease steadily over time. By the end of the century, the energy sector comprises almost 75% of all emitted CO₂ in this scenario relative to 50% today.

Methane (CH₄) is an emissions species with substantial contributions to potential future warming mainly due to its immediate GHG effect, but also because of its influence on atmospheric chemistry, as a tropospheric ozone precursor, and its eventual oxidation into CO₂ in the case of CH₄ from fossil sources (Boucher et al., 2009). At present, approximately 400 Mt/yr of CH₄ is emitted globally, and the span of future emissions developed in this scenario set range from 100 to nearly 800 Mt/yr by the end of the century. Global emissions of methane in SSP1 scenarios follow similar trajectories to CO₂, with large emissions

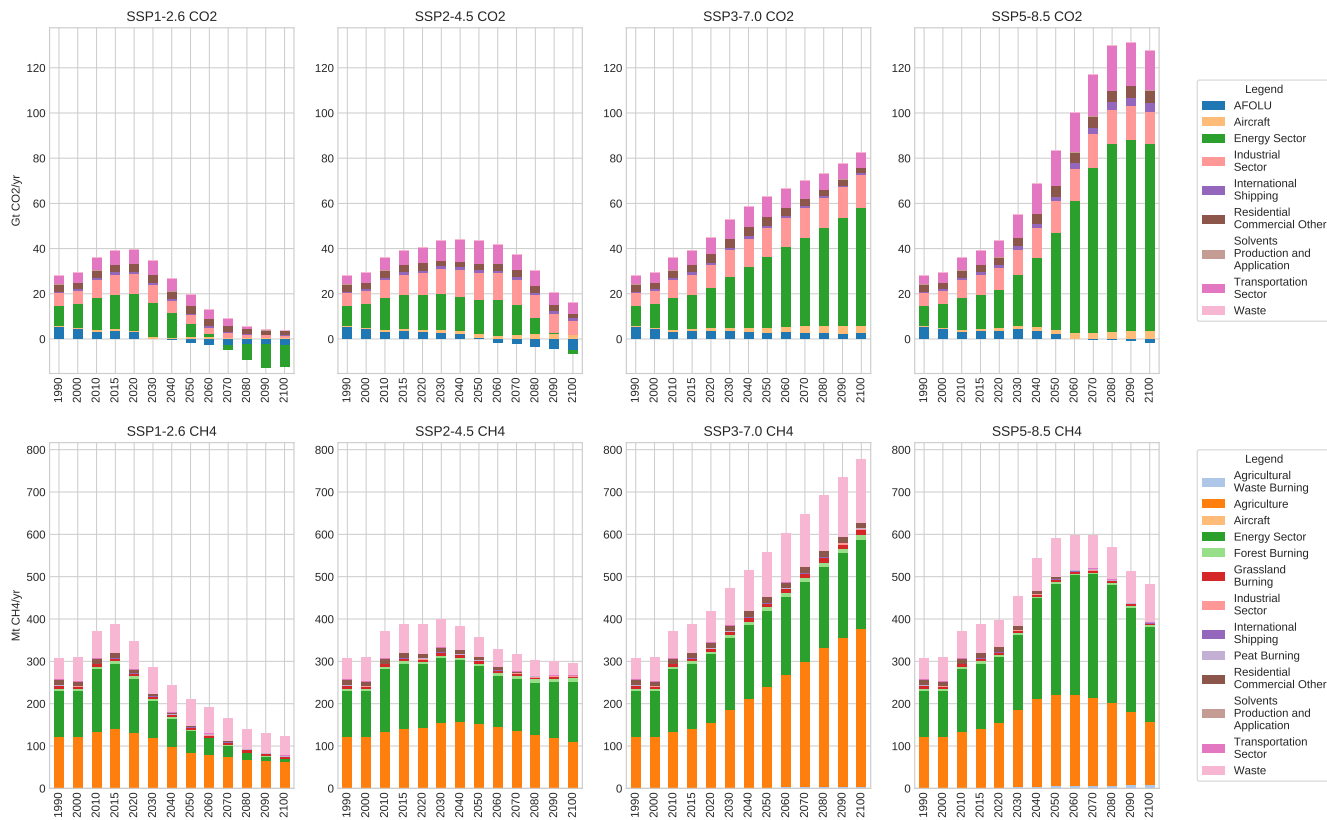


Figure 4. The sectoral contributions to CO₂ and CH₄ emissions for Tier-1 scenarios.

reductions; SSP2 follows suit, with emissions peaking in 2030 and then reducing throughout the rest of the century; in SSP3's baseline scenario, emissions continue to grow while in the NTCF scenario, they are reduced drastically as policies are implemented to reduce forcing from short-lived emissions species; SSP4 is characterized by growing (SSP4-6.0) or mostly stable (SSP4-3.4) CH₄ emissions until the middle of the century which peak in 2060 and then decline; and finally SSP5's baseline scenario sees a plateauing of CH₄ emissions between 2050 and 2070 before their eventual decline while the overshoot scenario has drastic CH₄ emissions reductions in 2040 corresponding to significant mid-century mitigation efforts in that scenario.

Historically, CH₄ emissions are dominated by three sectors: energy (due to fossil fuel production, and natural gas transmission), agriculture (largely enteric fermentation from livestock and rice production), and waste (i.e., landfills). In each scenario, global emissions of CH₄ are largely dominated by the behavior of activity in each of these sectors over time. For example, in the SSP1 scenarios, significant reductions in energy emissions are observed as energy supply systems shift from fossil to renewable sources while agriculture and waste-sector emissions see only modest reductions as global population stabilizes around mid-century. In the SSP2 scenario, emissions from the energy sector peak in 2040 as there is continued reliance on energy from natural gas but large expansions in renewables in the future; however, emissions from the agricultural and waste

sectors are similar to today's levels by the end of the century. Finally, CH₄ emissions in SSP5's baseline scenario is characterized by growth in energy sector from continued expansion of natural gas and a peak and reduction in agricultural emission resulting in 20% higher emissions at the end of the century relative to the present as population grows in the near term before contracting globally.

GHG emissions are broadly similar between the main scenarios in CMIP5 (RCPs) and CMIP6 (SSPs). Notably, we observe that the SSPs exhibit slightly lower CO₂ emissions in the 2.6 W m⁻² scenarios and higher emissions in the 8.5 W m⁻² scenarios due to lower and higher dependence on fossil fuels relative to their RCP predecessors. CH₄ emissions are largely similar at EOC for 2.6 and 4.5 W m⁻² scenarios between the RCPs and SSPs, with earlier values differing due to continued growth in the historical period (RCPs begin in 2000 whereas SSPs begin in 2015). The 8.5 W m⁻² scenario exhibits the largest difference in CH₄ emissions between the RCPs and SSPs because of the SSP5 socioeconomic story line depicting a world which largely develops out of poverty in less-developed countries, reducing CH₄ emissions from waste and agriculture. This contrasts with a very different story line behind RCP-8.5 (Riahi et al., 2011).

In nearly all scenarios, aerosol emissions are observed to decline over the century; however, the magnitude and speed of this decline is highly dependent on the evolution of various drivers based on the underlying SSP story lines, resulting in a wide range of aerosol emissions, as shown in Figure 5. For example, sulfur emissions (totaling 112 Mt/yr globally in 2015) are dominated at present by the energy and industrial sectors. In SSP1, where the world transitions away from fossil-fuel related energy production (namely coal in the case of sulfur), emissions decline sharply as the energy sector transitions to non-fossil based fuels and end-of-pipe measures for air pollution control are ramped up swiftly. The residual amount of sulfur remaining at the end of the century (~10 Mt/yr) is dominated by the industrial sector. SSP2-4.5 sees a similar transition but with delayed action: total sulfur emissions decline due primarily to the decarbonization of the energy sector. SSP5 also observes declines in overall sulfur emissions led largely by an energy mix that transitions from coal dependence to dependence on natural gas, as well as strong end-of-pipe air pollution control efforts. These reductions are similarly matched in the industrial sector, where natural gas is substituted for coal use as well. Thus, overall reductions in emissions are realized across the scenario set. Only SSP3 shows EOC sulfur emissions equivalent to the present day, largely due to increased demand for industrial services from growing population centers in developing nations with a heavy reliance on coal-based energy production, and weak air pollution control efforts.

Aerosols associated with the burning of traditional biomass, crop, and pasture residues, as well as municipal waste, such as black carbon (BC) and organic carbon (OC, see SI Figure E3) are affected most strongly by the degree of economic progress and growth in each scenario, as shown in Figure 6. For example, BC emissions from the residential and commercial sector comprise nearly 40% of all emissions in the historical time period with a significant contribution from mobile sources. By the end of the century, however, emissions associated with crop and pasture activity comprise the plurality of total emissions in each of SSPs 1, 2, and 5 due to a transition away from traditional biomass usage based on increased economic development and population stabilization and emissions controls on mobile sources. Only SSP3, in which there is continued global inequality and the persistence of poor and vulnerable urban and rural populations, is there continued quantities of BC emissions across sectors similar to today. OC emissions are largely from biofuel and open burning and follow similar trends: large reductions

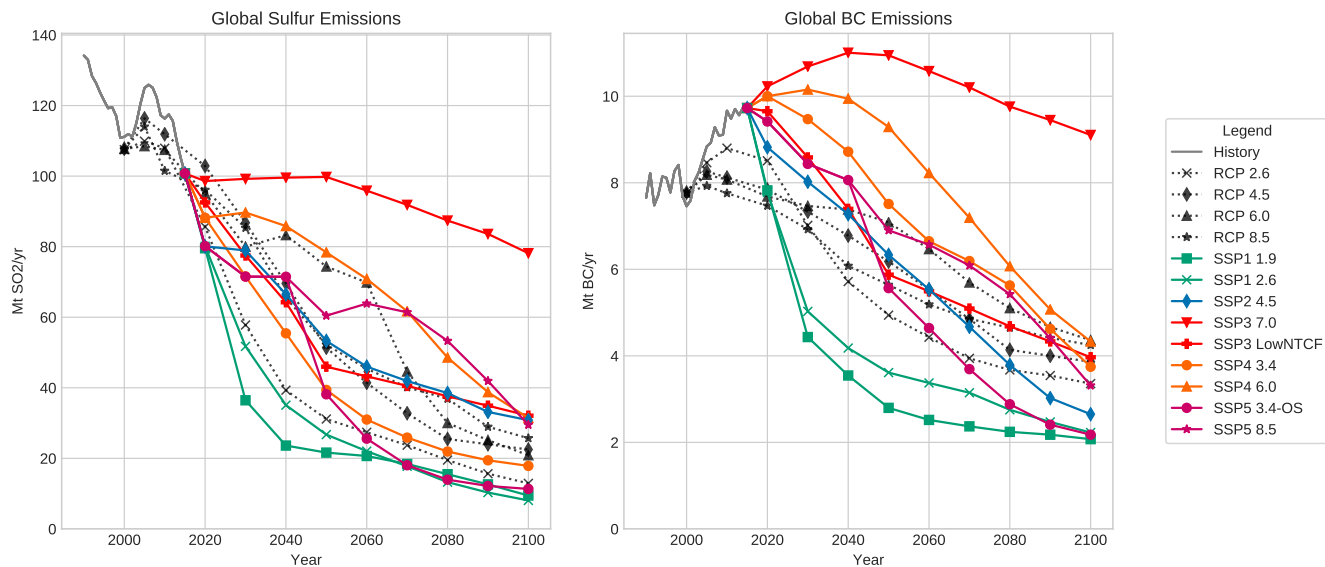


Figure 5. Emissions trajectories for sulfur and black carbon (BC), for history, the RCPs, and all nine scenarios analyzed in this study. SSP trajectories largely track with RCP values studied in CMIP5. A notable difference lies in BC emissions, which have seen relatively large increases in past years, thus providing higher initial emissions for the SSPs.

10 in scenarios with higher income growth rates with a residual emissions profile due largely to open burning-related emissions. Other pollutant emissions (e.g., NO_x , carbon monoxide (CO), and volatile organic carbon (VOC)) also see a decline in total global emissions at rates depending on the story line (Rao et al., 2017).

3.3 The Effects of Harmonization

Harmonization, by definition, modifies the original model results such that base-year values correspond to an agreed-upon
 15 historical source, with an aim for future values to match the original model behavior as much as possible. Model results are harmonized separately for each individual combination of model region, sector, and emissions species. In the majority of cases, model results are harmonized using the default methods described in Section 2.3; however, it is possible for models to provide harmonization overrides in order to explicitly set a harmonization method for a given trajectory.

We assess the impact that harmonization has on model results by analyzing the harmonized and unharmonized trajectories. Figure 7 shows global trajectories for each scenario of a selected number of emissions species. Qualitatively, the CO_2 and sulfur
 5 emissions trajectories match relatively closely to the magnitude of model results due to general agreement between historical sources used by individual models and the updated historical emissions datasets. This leads to convergence harmonization routines being used by default. In the case of CH_4 and BC, however, there is larger disagreement between model results and

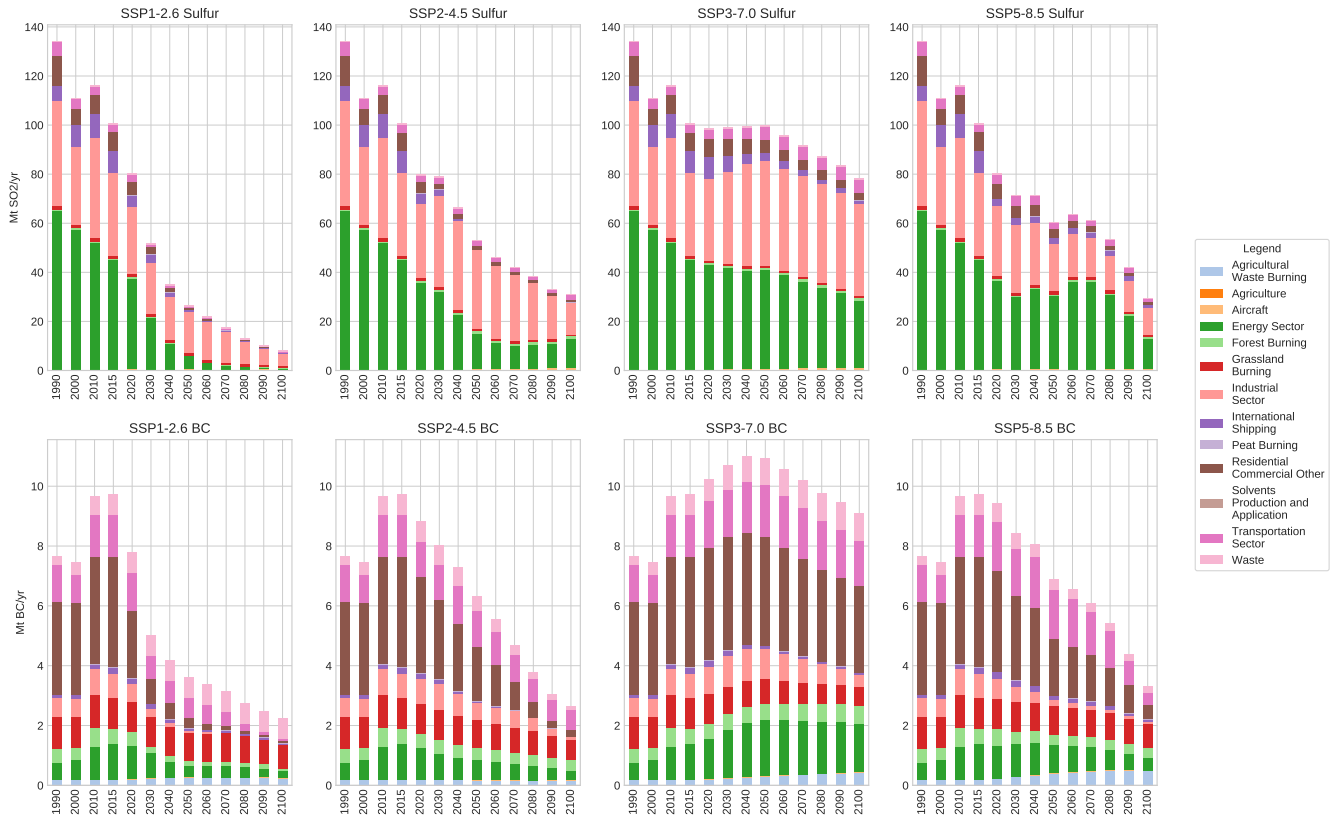


Figure 6. The sectoral contributions to sulfur and black carbon emissions for Tier-1 scenarios.

harmonized results in the base year. In such cases, *aneris* chooses harmonization methods that match the shape of a given trajectory rather than its magnitude in order to preserve the relationship between driver and emission for each model.

10 We find that across all harmonized trajectories the difference between harmonized and unharmonized model results decreases over the modeled time horizon. The lower panel in Figure 7 shows the distribution of all 15,954 trajectories (unharmonized less harmonized result) for the harmonization year (2015) and two modeled years (2050 and 2100). Each emissions species data population exhibits the same trend of reduced difference between modeled and harmonized results. Not only do the deviation of result distributions reduce over time, but the median value also converges toward zero in all cases.

The trajectory behavior for a number of important emissions species are dominated by certain sectors, as shown in SI Figure F1. Notably, the energy sector tends to dominate behavior of CO₂ emissions, agriculture dominates CH₄ emission trajectories, 5 the industrial sector largely determines total sulfur emissions, and emissions from the residential and commercial sectors tend to dominate BC emissions across the various scenarios. Accordingly, we further analyzed the harmonization behavior of these sector-species combinations. Importantly, we again observe an overall trend towards convergence of results at the end of the century; thus harmonized results largely track unharmonized results for these critical emissions sectors. The deviation of

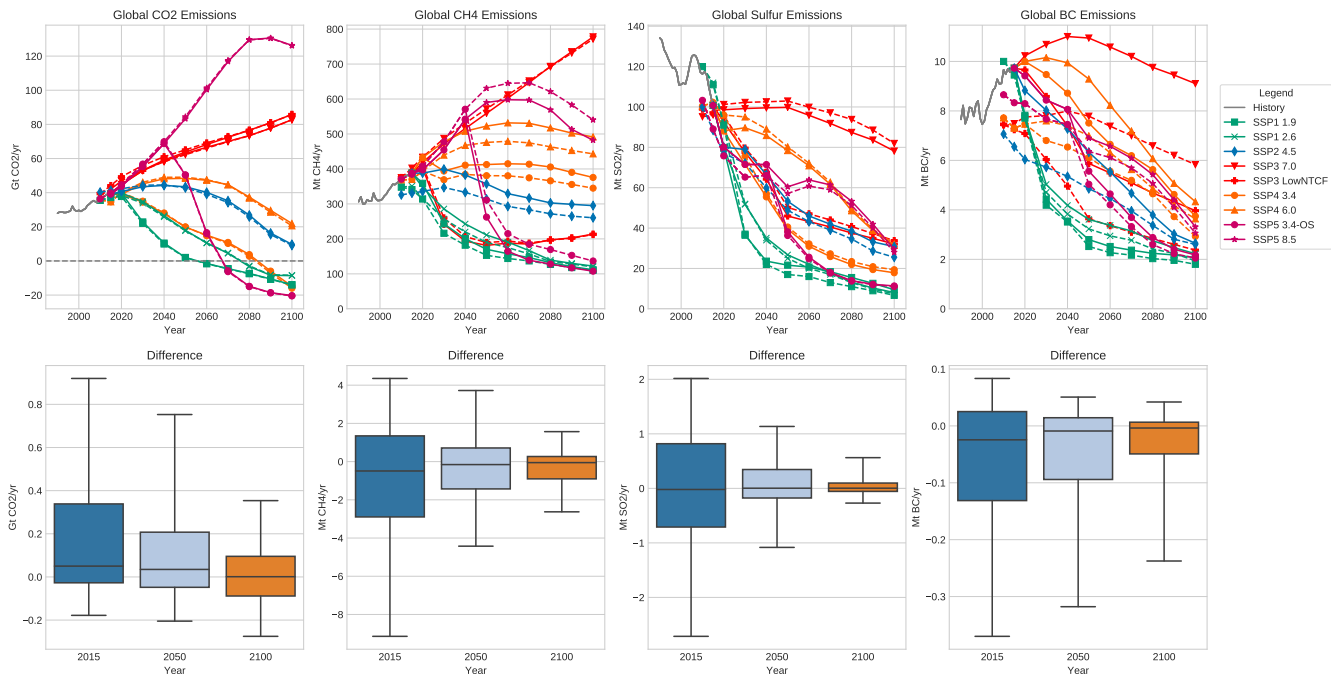


Figure 7. Harmonized (solid) and unharmonized (dashed) trajectories are shown in the upper panel. The lower panel depicts the distribution of differences (harmonized less unharmonized) for every modeled region. All box plots show upper and lower quartiles as solid boxes, median values as solid lines, and whiskers extending to 10th and 90th percentiles. Median values for all are near zero, however, the deviation reduces with time as harmonized values begin to more closely match unharmonized model results largely due to the use of convergence methods.

distributions of differences consistently reduce with time for all scenarios, and nearly all medians converge consistently towards zero, save for energy-related CO₂ SSP5-8.5 which has a higher growth rate than convergence rate, thus larger differences in 2050 than 2015. Overall, we find the harmonization procedure successfully harmonized results historical base year and closely matches model results across the scenarios by EOC.

3.4 Spatial Distribution of Emissions

The extent to which reductions or growth of emissions are distributed regionally varies greatly among scenarios. The regional breakdown of primary contributors to future warming potential, CO₂ and CH₄, is shown in Figure 8. While present-day CO₂ emissions see near-equal contributions from the OECD and Asia, future CO₂ emissions are governed largely by potential developments in Asia (namely China and India). For SSP1-2.6, in which deep decarbonization and negative CO₂ emissions occur before the end of the century, emissions in Asia peak in 2020 before reducing to zero by 2080. Mitigation efforts occur across all regions, and the majority of carbon reduction is focused in the OECD; however, all regions have net negative CO₂

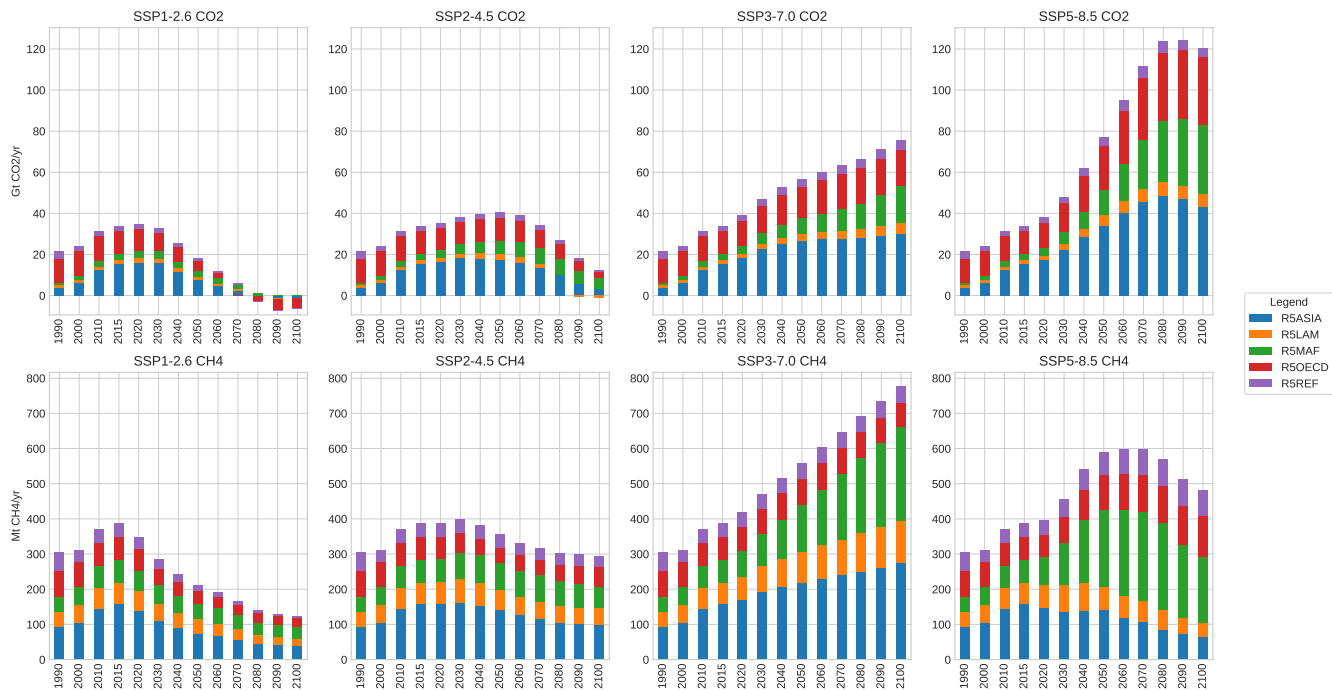


Figure 8. Regional emissions for five global regions for CO₂ and CH₄ in each Tier-1 scenario.

emissions by 2090. Asian CO₂ emissions in SSP2-4.5 peak in 2030, and most other regions see overall reductions except Africa, in which continued development and industrialization results in emissions growth. Notably, Latin America is the only region in which negative emissions occur in SSP2-4.5 due largely to increased deployment of biomass-based energy production and carbon sequestration. Sustained growth across regions is observed in SSP5-8.5, where emissions in Asia peak by 2080, driving the global emissions peaking in the same year. Other scenarios (see SI Figure G1) follow similar trends with future CO₂ emissions driven primarily by developments in Asia.

CH₄ emissions, resulting from a mix of energy use, food production, and waste disposal, show a different regional breakdown across scenarios. In SSP1-2.6, CH₄ emissions are reduced consistently across regions as energy systems transition away from fossil fuel use (notably natural gas) and the husbandry of livestock is curtailed globally. CH₄ emissions in other scenarios tend to be dominated by developments in Africa. In SSP5-8.5, for example, emissions in Africa begin to dominate the global profile by mid-century, due largely to expansion of fossil-fuel based energy production. SSPs 3 and 4 see continued growth in African CH₄ emissions across the century, even when global emissions are reduced as in the case of SSP4 scenarios.

CO₂ and CH₄ are well-mixed climate forcers (Stocker et al., 2013) and thus their spatial variation have a higher impact from a political rather than physical perspective. Aerosols, however, have substantive spatial variability which directly impacts both regional climate forcing via scattering and absorption of solar radiation and cloud formation as well as local and regional air quality. Thus in order to provide climate models with more detailed and meaningful datasets, we downscale emissions

trajectories from model regions to individual countries. In most cases, models explicitly represent countries with large shares
10 of emissions (e.g., USA, China, India, etc.). MESSAGE-GLOBIOM and REMIND-MAGPIE are notable exceptions; however,
their regional aggregations are such that these important countries comprise the bulk of emissions in their aggregate regions
(e.g., the MESSAGE-GLOBIOM North America region comprises the USA and Canada). For regions constituted by many
countries, country-level emissions are driven largely by bulk region emissions and country GDP in each scenario (per Section
2.4). Afterwards, country-level emissions are subsequently mapped to spatial grids (Feng, 2019). We here present global maps
15 of two aerosol species with the strongest implications on future warming, i.e., BC in Figure 9 and sulfur in Figure 10. We
highlight three cases which have relevant aerosol emissions profiles: SSP1-2.6 which has significantly decreasing emissions
over the century, SSP3-7.0 which has the highest aerosol emissions, and SSP3-LowNTCF which has similar socioeconomic
drivers as the SSP3 baseline but models the inclusion of policies which seek to limit emission of near-term climate forcing
species.

20 At present, BC has the highest emissions in China and India due largely to traditional biomass usage in the residential sector
and secondarily to transport-related activity. In scenarios of high socioeconomic development and technological progress, such
as SSP1-2.6, emissions across countries decline dramatically such that by the end of the century, total emissions in China, for
example, are equal to that of the USA today. In almost all countries, BC emissions are nearly eradicated by mid-century while
emissions in southeast Asia reach similar levels by the end of the century. In SSP3-7.0, however, emissions from southeast Asia
25 and central Africa increase until the middle of the century as populations grow while still depending on fossil-heavy energy
supply technologies, transportation, and cooking fuels. By the end of the century in SSP3-7.0, global BC emissions are nearly
equivalent to the present day (see, e.g., Figure 5), but these emissions are concentrated largely in central Africa, southeast Asia,
and Brazil while they are reduced in North America, Europe, and Central Asia. By enacting policies that specifically target
near-term climate forcers in SSP3-LowNTCF, the growth of emissions in the developing world is muted by mid-century and
30 are cut by more than half of today's levels (~9 Mt/yr vs. ~4 Mt/yr) by the end of the century. These policies result in similar
levels of BC emissions in China as in SSP1-2.6, while most of the additional emissions are driven by activity in India and
central Africa due to continued dependence on traditional biomass for cooking and heating.

The spatial distribution of sulfur emissions varies from that of BC due to large contributions from energy and industrial
sectors, and thus being driven by a country's economic size and composition, as opposed to household activity. Emissions today
are largely concentrated in countries having large manufacturing, industrial, and energy supply sectors with heavy reliance on
5 coal, such as the China, India, the USA, Russia, and some parts of the Middle East. Again, we observe in SSP1-2.6 a near
elimination of sulfur emissions by the end of the century with some continued reliance on sulfur-emitting technologies in India
and China in the middle of the century. In SSP3-7.0, although global sulfur emissions over the course of the century peak
slightly before reducing to below current levels, increased emissions in southeast Asia offset reductions in emissions elsewhere
due to an expanding industrial sector with continued reliance on coal. Notably, emissions in India peak around mid-century
10 before reducing to a magnitude lower than emissions levels today. In the SSP3-LowNTCF scenario, NTCF policies have the
added effect of reducing sulfur emissions, resulting in more RF but less potential health impacts due to sulfur pollution. By the

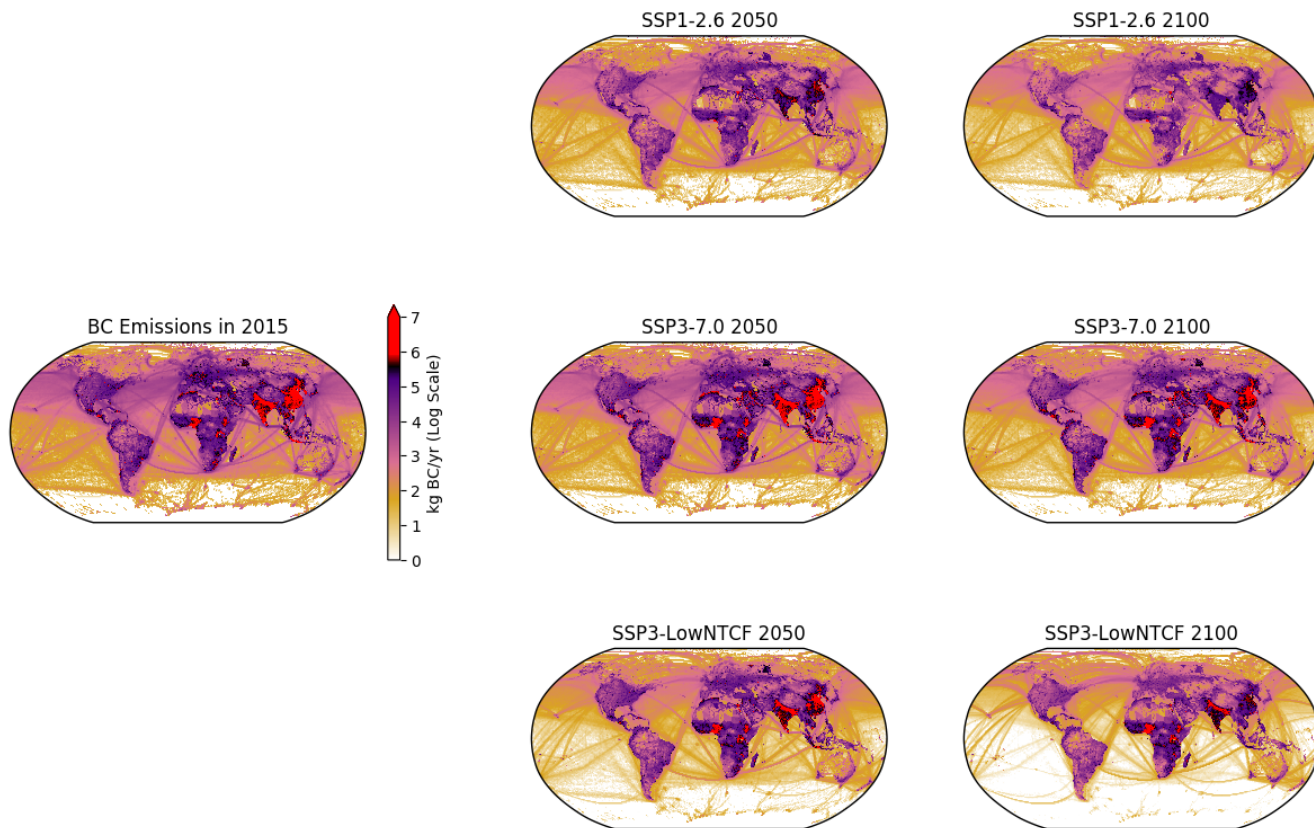


Figure 9. Downscaled and gridded emissions of Black Carbon at present and in 2050 and 2100 for SSP1-2.6, SSP3-7.0, and SSP3-LowNTCF.

end of the century in SSP3-LowNTCF, only India, China, and Brazil have non-trivial quantities of emissions at significantly lower magnitudes than today.

4 Conclusions

We present a suite of nine scenarios of future emissions trajectories of anthropogenic sources, a key deliverable of the ScenarioMIP experiment within CMIP6. IAM results for 14 different emissions species and 13 individual sectors are provided for each scenario with consistent transitions from the historical data used in CMIP6 to future trajectories using automated harmonization before being downscaled to provide higher emission source spatial detail. Harmonized emissions at global, original native model region, and gridded resolution have been delivered to participating climate teams in CMIP6 for further analysis and study by a number of different MIPs.

Scenarios were selected from a candidate pool of over 40 different SSP realizations such that a range of climate outcomes are represented which provide sufficient spacing between EOC forcing to sample statistically significant global and regional

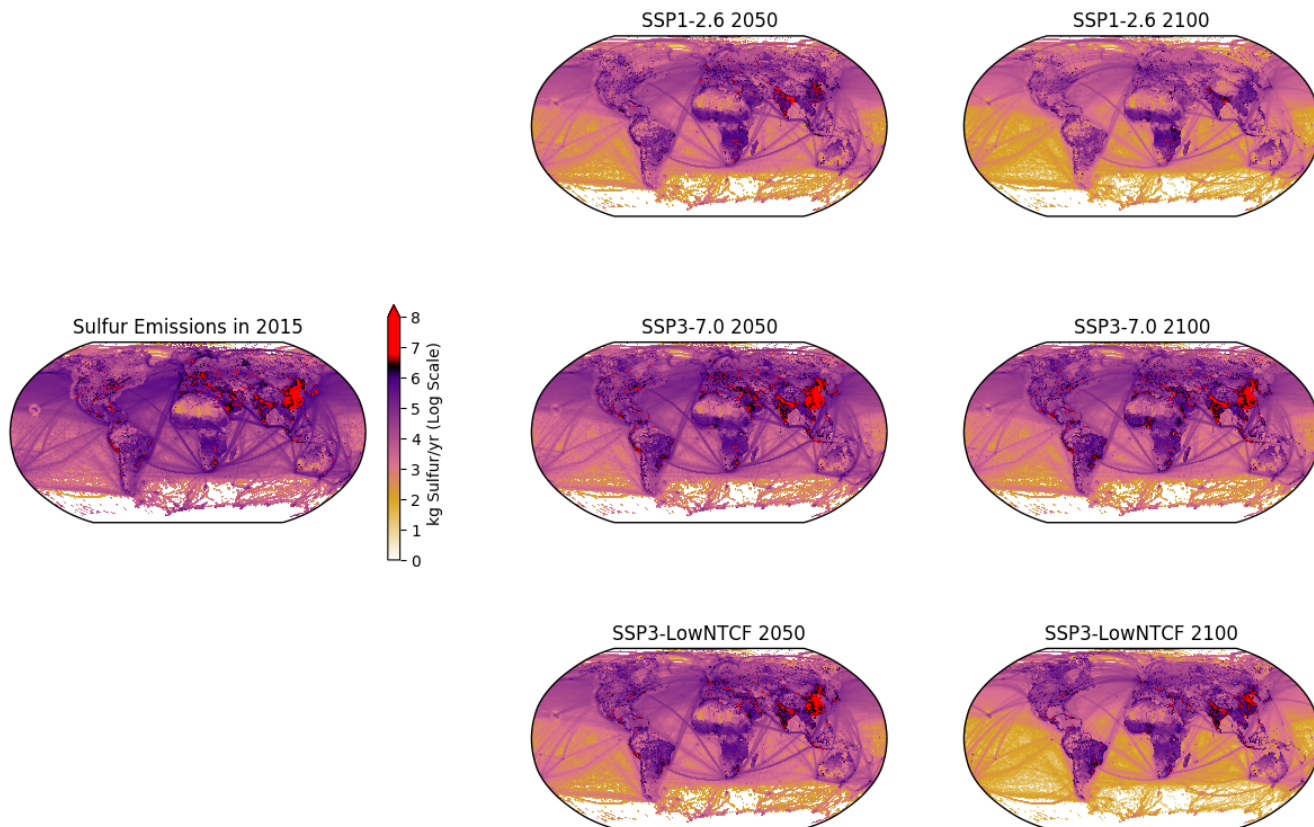


Figure 10. Downscaled and gridded emissions of sulfur at present and in 2050 and 2100 for SSP1-2.6, SSP3-7.0, and SSP3-LowNTCF.

temperature outcomes. Of the nine scenarios, four were selected to match forcing levels previously provided by the RCP scenarios used in CMIP5. RF trajectories are largely comparable between two scenario sets. Five additional scenarios were analyzed in order to enrich the possible studies of physical and climate impact modeling teams as well as support the scientific goals of specific MIPs. The additional scenarios provide both a variety of statistically different EOC climate outcomes as well as enhanced policy and scientific relevance of potential analyses.

- 5 These emission data are now being used in a variety of multi-model climate model studies (e.g., Fiedler et al. (2018)), including ScenarioMIP. Identifying sources of uncertainties is a critical component of the larger exercise of CMIP6. As such, it is important that scientists using these datasets for further model input and analysis take care when assessing the uncertainty not only between scenarios but between model results for a certain scenario. While each scenario is presented by a single model in ScenarioMIP, models have also provided a wider range of results as part of the SSP process.

10 A multi-model dispersion⁴ analysis is discussed in SI Section H in order to provide further insight into the robustness of results of emissions trajectories across models for specific forcing targets. Notably, we observe large disagreement between models for F-gas trajectories (>100% dispersion by EOC in certain cases); thus uncertainty for these species can be considered large by climate modeling teams. We further observe small but non-negligible EOC dispersion (>20%) for certain aerosol emissions species, including CO, NH₃, OC, and sulfur. In general, dispersion between models of GHG species increases as
15 EOC RF decreases as the wide array of mitigation options chosen to meet these lower climate targets can vary across models. The importance of this measure of uncertainty is also scenario dependent. For example, models in general report low emissions in SSP1 and high emissions in SSP3; thus, the impact of dispersion may have a higher relevance to climate modelers in SSP3 than SSP1.

The ability for other IAM teams to generate and compare results with ScenarioMIP scenarios is also of considerable im-
20 portance in conjunction with CMIP6 and, after its completion, for further scientific discovery and interpretation of results. As such, we have striven to make openly available all of the tools used in this exercise. The harmonization tool used in this study, *aneris*, is provided as open-source software on Github as is the downscaling and gridding methodology. Documentation for both is provided to users online. Such efforts and standardizations not only make the efforts of ScenarioMIP robust and reproducible, but also can prove useful for future exercises integrating a variety of complex models.

Code and data availability. The harmonization tool used in this study, *aneris*, is available at <https://github.com/iiasa/aneris> and documentation for using the tool is available at <http://software.ene.iiasa.ac.at/aneris/>. Similarly, the downscaling tool used is available at https://github.com/iiasa/emissions_downscaling and its documentation can be found at https://github.com/iiasa/emissions_downscaling/wiki. Model data, both unharmonized and harmonized is publicly available at the SSP database v1.1 (<https://tntcat.iiasa.ac.at/SspDb>) via the “CMIP6 Emissions” tab while gridded data is available via the ESGF Input4MIPs data repository (<https://esgf-node.llnl.gov/projects/input4mips/>). Within ESGF, gridded data follows the naming convention <species_specification>-em-<sector_specification>_input4MIPs_ emissions_<MIP_specification>_IAMC-<model_specification>-<scenario_specification>-1-1_gn_<time_specification>.nc, e.g., BC-em-AIR-anthro_input4MIPs_emissions_ScenarioMIP_IAMC-AIM-ssp370-1-1_gn_201501-210012.nc.

⁴Dispersion here is defined as the coefficient of variation of model results. The coefficient of variation is defined here as the ratio of the standard deviation to mean (absolute value) of a given population of data. See further discussion in SI Section H.

Appendix A: Supplementary Figures

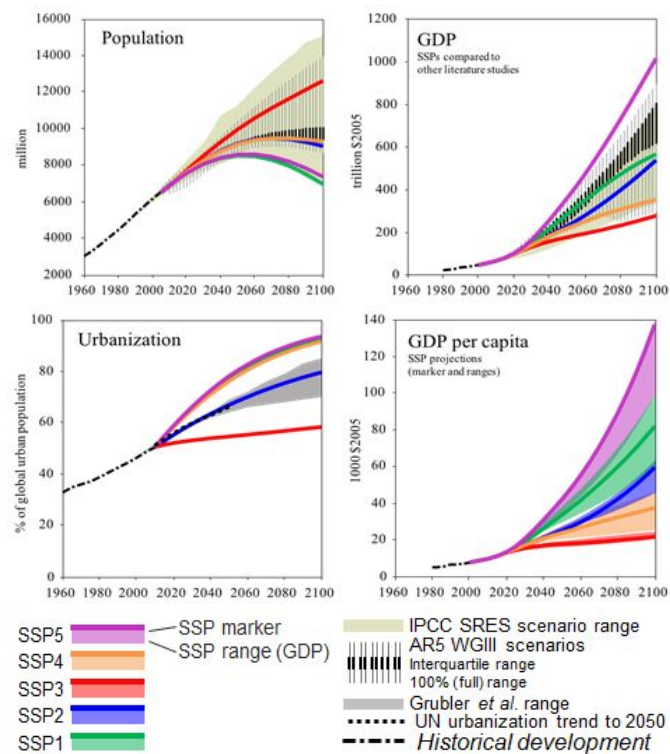


Figure A1. The primary socioeconomic assumptions associated with each SSP, including population (KC and Lutz, 2014), urbanization (Jiang and O’Neill, 2015), and GDP (Dellink et al., 2015). The figure is adapted from Riahi et al. (2017) with permission from the authors.

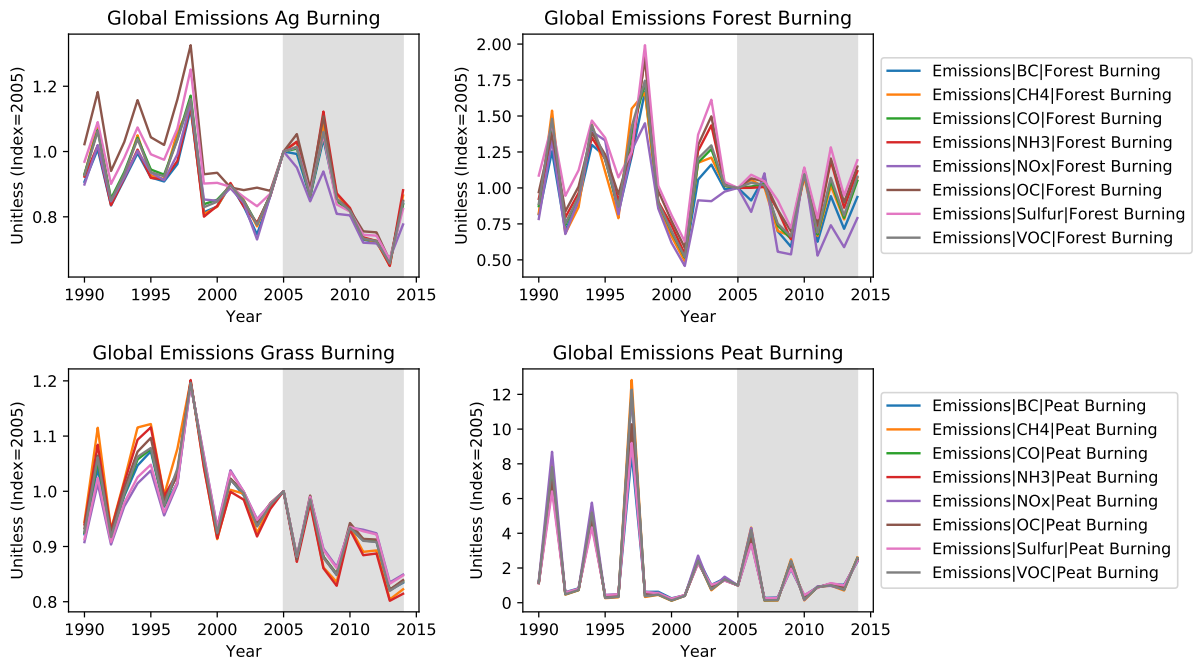


Figure A2. Historic values for land-burning emissions from 1990 until 2014. All values for each emissions species are normalized to their value in 2005. The climatological mean window used for harmonization is shown in grey. While decadal trends are present for some sectors, year-on-year trends see large variation.

Appendix B: Supplementary Tables

Table B1. The sectoral mapping used to aggregate historical data to a common sectoral definition.

CEDS Sectors	ScenarioMIP Sectors
1A1a_Electricity-public	Energy Sector
1A1a_Electricity-autoproducer	Energy Sector
1A1a_Heat-production	Energy Sector
1A1bc_Other-transformation	Energy Sector
1A2a_Ind-Comb-Iron-steel	Industrial Sector
1A2b_Ind-Comb-Non-ferrous-metals	Industrial Sector
1A2c_Ind-Comb-Chemicals	Industrial Sector
1A2d_Ind-Comb-Pulp-paper	Industrial Sector
1A2e_Ind-Comb-Food-tobacco	Industrial Sector
1A2f_Ind-Comb-Non-metalic-minerals	Industrial Sector
1A2g_Ind-Comb-Construction	Industrial Sector
1A2g_Ind-Comb-transpequip	Industrial Sector
1A2g_Ind-Comb-machinery	Industrial Sector
1A2g_Ind-Comb-mining-quarrying	Industrial Sector
1A2g_Ind-Comb-wood-products	Industrial Sector
1A2g_Ind-Comb-textile-leather	Industrial Sector
1A2g_Ind-Comb-other	Industrial Sector
1A3ai_International-aviation	Aircraft
1A3aii_Domestic-aviation	Aircraft
1A3b_Road	Transportation Sector
1A3c_Rail	Transportation Sector
1A3di_International-shipping	International shipping
1A3dii_Domestic-navigation	Transportation Sector
1A3eii_Other-transp	Transportation Sector
1A4a_Commercial-institutional	Residential Commercial Other
1A4b_Residential	Residential Commercial Other
1A4c_Agriculture-forestry-fishing	Residential Commercial Other
1A5_Other-unspecified	Industrial Sector

CEDS Sectors	ScenarioMIP Sectors
1B1_Fugitive-solid-fuels	Energy Sector
1B2_Fugitive-petr-and-gas	Energy Sector
1B2d_Fugitive-other-energy	Energy Sector
2A1_Cement-production	Industrial Sector
2A2_Lime-production	Industrial Sector
2A6_Other-minerals	Industrial Sector
2B_Chemical-industry	Industrial Sector
2C_Metal-production	Industrial Sector
2D_Degreasing-Cleaning	Solvents Production and Application
2D3_Other-product-use	Solvents Production and Application
2D_Paint-application	Solvents Production and Application
2D3_Chemical-products-manufacture-processing	Solvents Production and Application
2H_Pulp-and-paper-food-beverage-wood	Industrial Sector
2L_Other-process-emissions	Industrial Sector
3B_Manure-management	Agriculture
3D_Soil-emissions	Agriculture
3I_Agriculture-other	Agriculture
3D_Rice-Cultivation	Agriculture
3E_Enteric-fermentation	Agriculture
3F_Agricultural-residue-burning-on-fields	Biomass Burning
11B_Forest-fires	Forest Burning
11B_Grassland-fires	Grassland Burning
11B_Peat-fires	Peat Burning
5A_Solid-waste-disposal	Waste
5E_Other-waste-handling	Waste
5C_Waste-incineration	Waste
6A_Other-in-total	Industrial Sector
5D_Wastewater-handling	Waste
7A_Fossil-fuel-fires	Energy Sector

Table B2. The sectoral mapping used to aggregate model output data to a common sectoral definition.

IAM Model Variable	ScenarioMIP Sectors
AFOLU Agriculture	Agriculture
AFOLU Biomass Burning	Agricultural Waste Burning
AFOLU Land Forest Burning	Forest Burning
AFOLU Land Grassland Pastures	Grassland Burning
AFOLU Land Grassland Burning	Grassland Burning
AFOLU Land Wetlands	Peat Burning
Energy Demand Industry	Industrial Sector
Energy Demand Other Sector	Industrial Sector
Energy Demand Residential and Commercial and AFOFI	Residential Commercial Other
Energy Demand Transportation Aviation	Aircraft
Energy Demand Transportation Road Rail and Domestic Shipping	Transportation Sector
Energy Demand Transportation Shipping International	International Shipping
Energy Supply	Energy Sector
Fossil Fuel Fires	Energy Sector
Industrial Processes	Industrial Sector
Other	Industrial Sector
Product Use Solvents	Solvents Production and Application
Waste	Waste

Table B3. EOC RF values for unharmonized, harmonized scenario results, and differences between the two. The ScenarioMIP design (O'Neill et al., 2016) states that absolute differences must be within $\pm 0.75 \text{ W m}^{-2}$, for which all scenarios fall well within the acceptable value.

Scenario	Unharmonized	Harmonized	Difference	Relative Difference
SSP1-2.6	2.624	2.581	0.043	1.6%
SSP2-4.5	4.269	4.38	-0.111	-2.6%
SSP3-Ref	7.165	7.213	-0.048	-0.7%
SSP4-3.4	3.433	3.477	-0.044	-1.3%
SSP4-6.0	5.415	5.431	-0.016	-0.3%
SSP5-Ref	8.698	8.424	0.274	3.2%

Appendix C: SSP3-LowNTCF Scenario Assumptions

15 SSP3-LowNTCF is the scenario of which basic socioeconomic assumptions are SSP3 but the assumptions concerned with near-term climate forcing (NTCF) species differ from SSP3-7.0 so that SSP3-LowNTCF can be used as a low NTCF scenario contrasting with SSP3-7.0. Here we list the assumptions additionally made to SSP3-7.0.

– Regarding CH₄, the CH₄ emissions' reduction rates in SSP1-26 relative to SSP1-Baseline is adopted to SSP3-7.0. This implicitly assumes that SSP3-LowNTCF can reduce CH₄ as if SSP1's stringent climate mitigation policy is implemented in the SSP3 world.

– For air pollutant species (Sulfur, NO_x, VOC, CO, NH₃, BC, and OC), the emissions factors assumed in SSP1 is adopted. This assumption implicitly assumes that SSP1's air pollutant legislation and technological progress can be achieved in the SSP3 world.

– Other species such as CFC, HFC, SF₆, and C₂H₆ are identical with SSP3-Baseline

25 Along with these changes, CH₄ emissions reduction further changes other air pollutants and GHG emissions drivers. CH₄ reduction generates emissions abatement costs which changes economic outputs in all sectors and household consumption in AIM/CGE. Consequently energy consumption and CO₂ emissions in all sectors are affected, which causes small differences between SSP3-7.0 and SSP3-LowNTCF. Not only CO₂ but N₂O, CH₄ and air pollutants emissions are also affected by these activity level changes although this indirect effect is relatively minor.

30 Appendix D: Emissions Gridding

Emissions data were mapped to a spatial grid generally following the methodologies described in Hoesly et al. (2018). A brief description is given here, and a fuller discussion of the gridding process will be provided in Feng (2019). For most anthropogenic sectors, emissions at the level of country and aggregate sector are mapped to a 0.5° spatial grid by scaling the 2010 base-year country-level spatial pattern. Open-burning emissions from forest fires, grassland burning, and agricultural waste burning on fields are mapped to a spatial grid in the same manner, except that the spatial pattern is taken to be the average from the last 10-years of the historical dataset (e.g., 2005-2014). For each aggregate gridding sector the spatial pattern of emissions within a country does not change over time in the future scenarios. This means that, for example, the ratio of energy-sector NO_x emissions from Shaanxi and Beijing provinces in China is constant over time, even though total NO_x emissions from China vary over time. Because sectors are mapped to the grid separately, however, total anthropogenic emissions (e.g. sum from all sectors) from any two regions within a country will, in general, not have the same time evolution.

5 International shipping and aircraft emissions are gridded globally such that the global pattern does not change, only the overall emissions magnitude. One other exception occurs for net negative CO₂ emissions. Negative CO₂ emissions occur in these models when biomass feedstocks are used together with geologic carbon dioxide capture and storage (CCS). In this case, physically, the emissions are taken out of the atmosphere at the locations where biomass is grown, not at the point of

energy consumption. In order to avoid large, unphysical, net negative CO₂ point source emissions, net negative CO₂ quantities are, therefore, summed globally and mapped to a spatial grid corresponding to 2010 global cropland net primary production (NPP).

Appendix E: Global Emissions

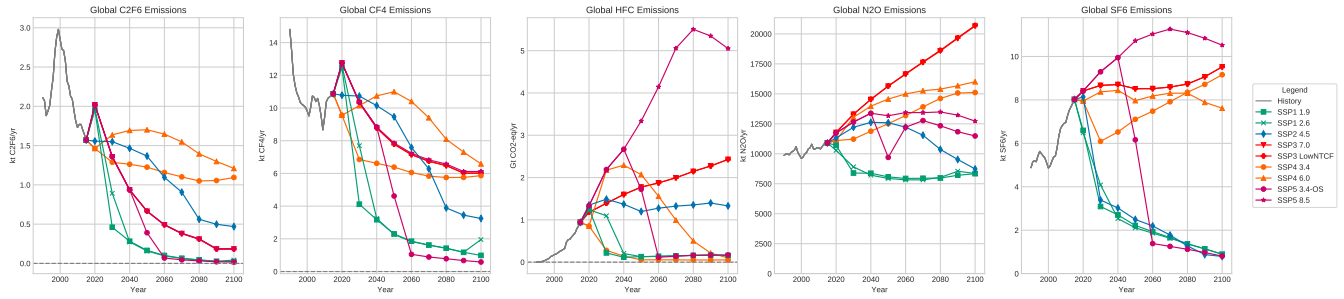


Figure E1. Emissions trajectories for all GHGs and all scenarios analyzed in this study.

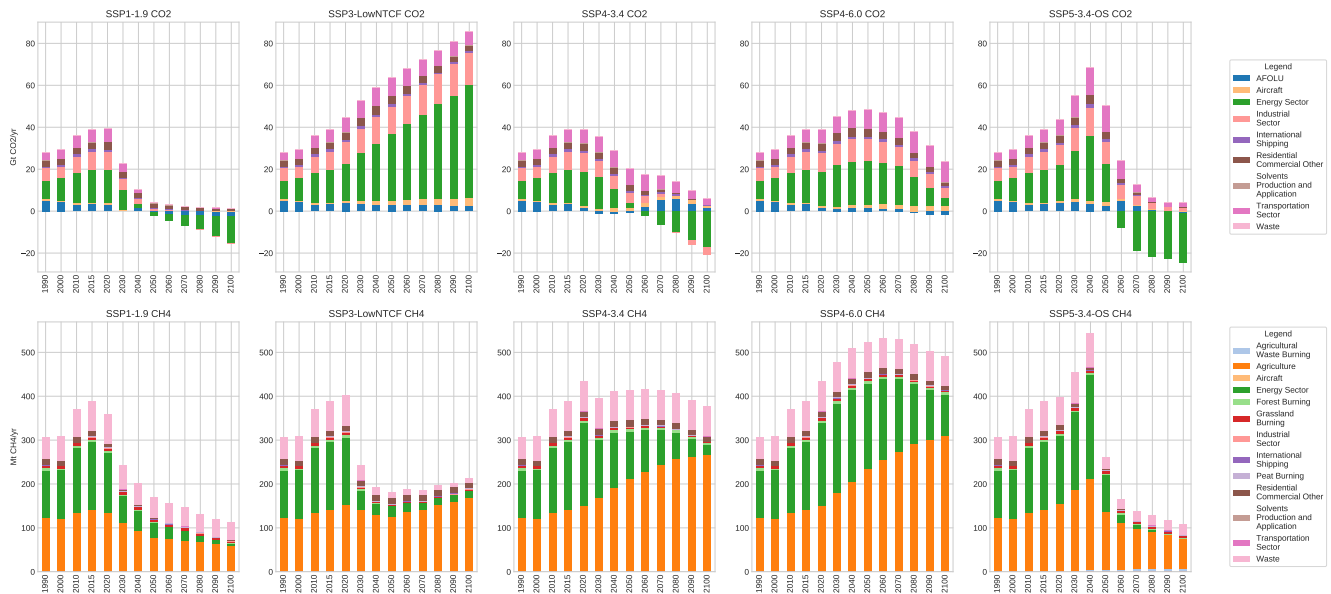


Figure E2. Sectoral breakdown for CO₂ and CH₄ emissions per year for all scenarios analyzed in this study.

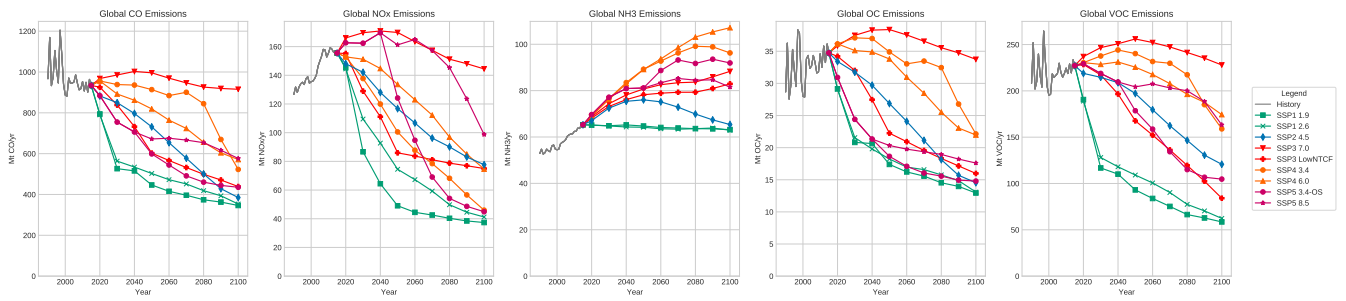


Figure E3. Emissions trajectories for all aerosols and all scenarios analyzed in this study.

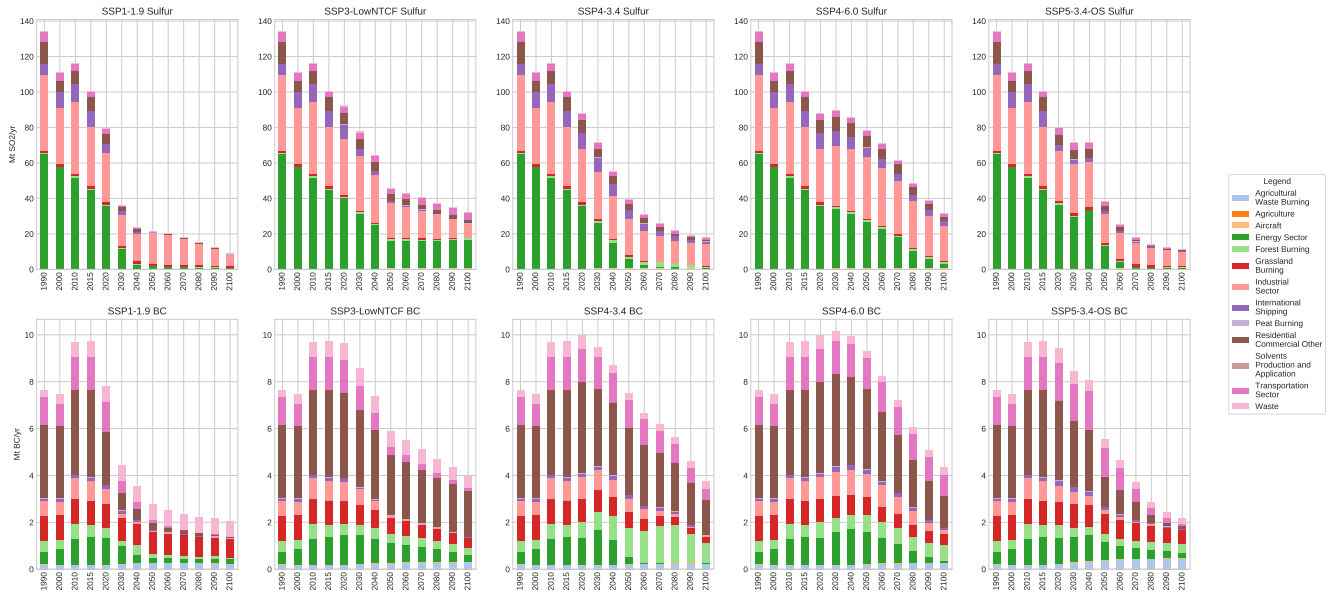


Figure E4. Sectoral breakdown for sulfur and BC emissions per year for all scenarios analyzed in this study.

Appendix F: Harmonization

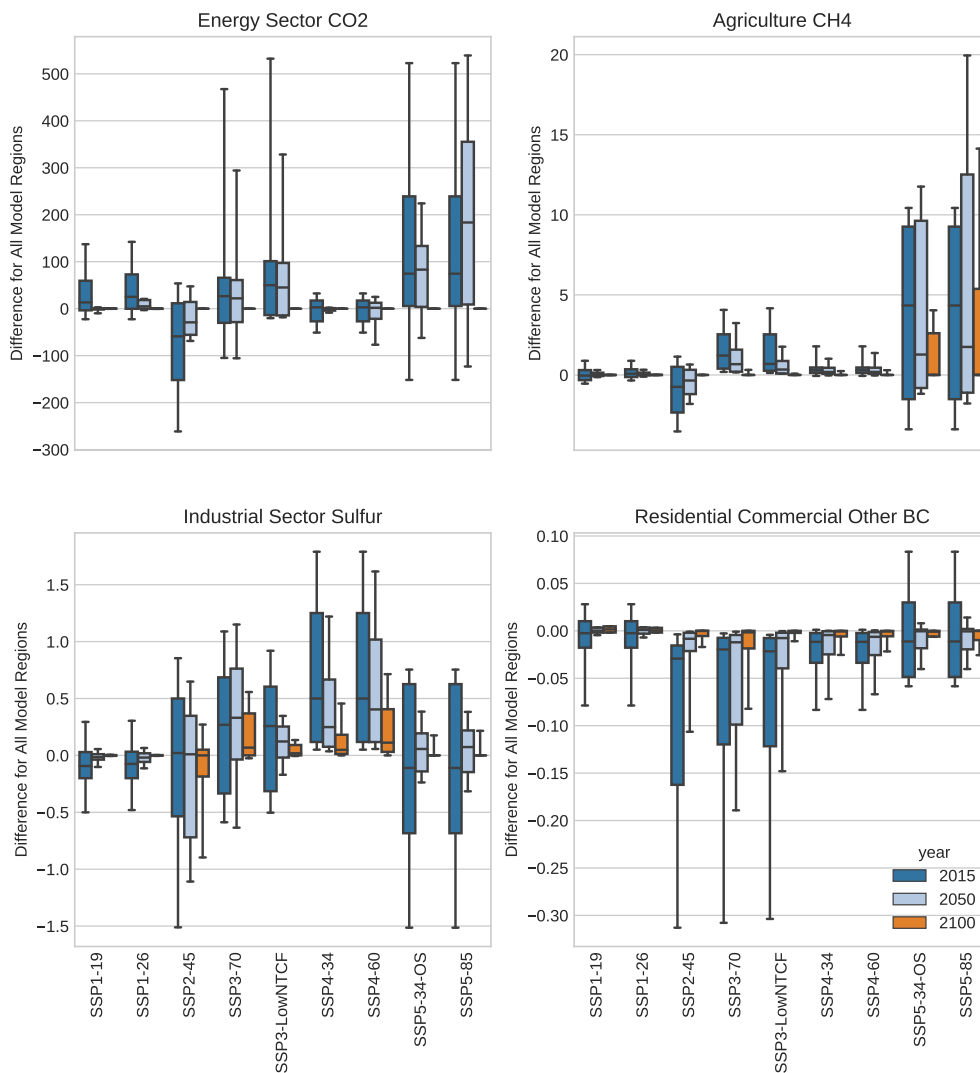


Figure F1. The relative difference between harmonized and unharmonized trajectories are shown for the primary sectoral contributor for various emissions species in each scenario. Boxes are comprised of the population of differences for all regions in a given model-scenario combination (see, e.g., Table 3). All box plots show upper and lower quartiles as solid boxes, median values as solid lines, and whiskers extending to 10th and 90th percentiles. In general, the largest deviations are observed in the base year. The spread of values decrease in time across almost all observations, with the convergence to zero or near-zero by EOC.

Appendix G: Regional Emissions

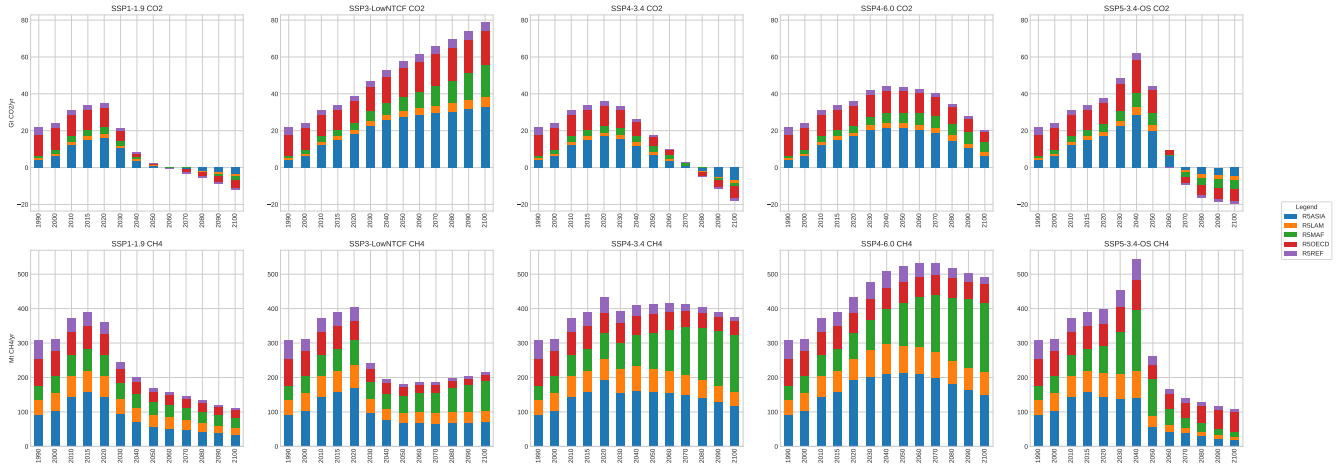


Figure G1. Emissions for 5 global regions for all other scenarios analyzed in this study.

Appendix H: Dispersion Analysis

We here discuss the results of a dispersion analysis measuring the variation of emissions trajectories across models for a given scenario. Dispersion is a measure the spread of model values for a given global emissions value in a given year. It is calculated in this context as the coefficient of variation (c_v) shown in Equation H1 which is defined as the ratio of the standard deviation, σ , to mean, μ , of a given population of data.

$$c_v = \frac{\sigma}{|\mu|} \quad (\text{H1})$$

In order to perform a consistent analysis, we select scenarios for which all participating models provide results: SSP1-2.6, SSP2-4.5, and SSP3-7.0. Scenario data is taken from the available SSP Database at <https://tntcat.iiasa.ac.at/SspDb> (Riahi et al., 2017). To note, dispersion has a non-zero value in the initial year of analysis due to model results not being harmonized in this dataset. We show the dispersion for GHGs (with aggregated F-gases) in Figure H1, individual F-gases in Figure H2, and aerosols in Figure H3.

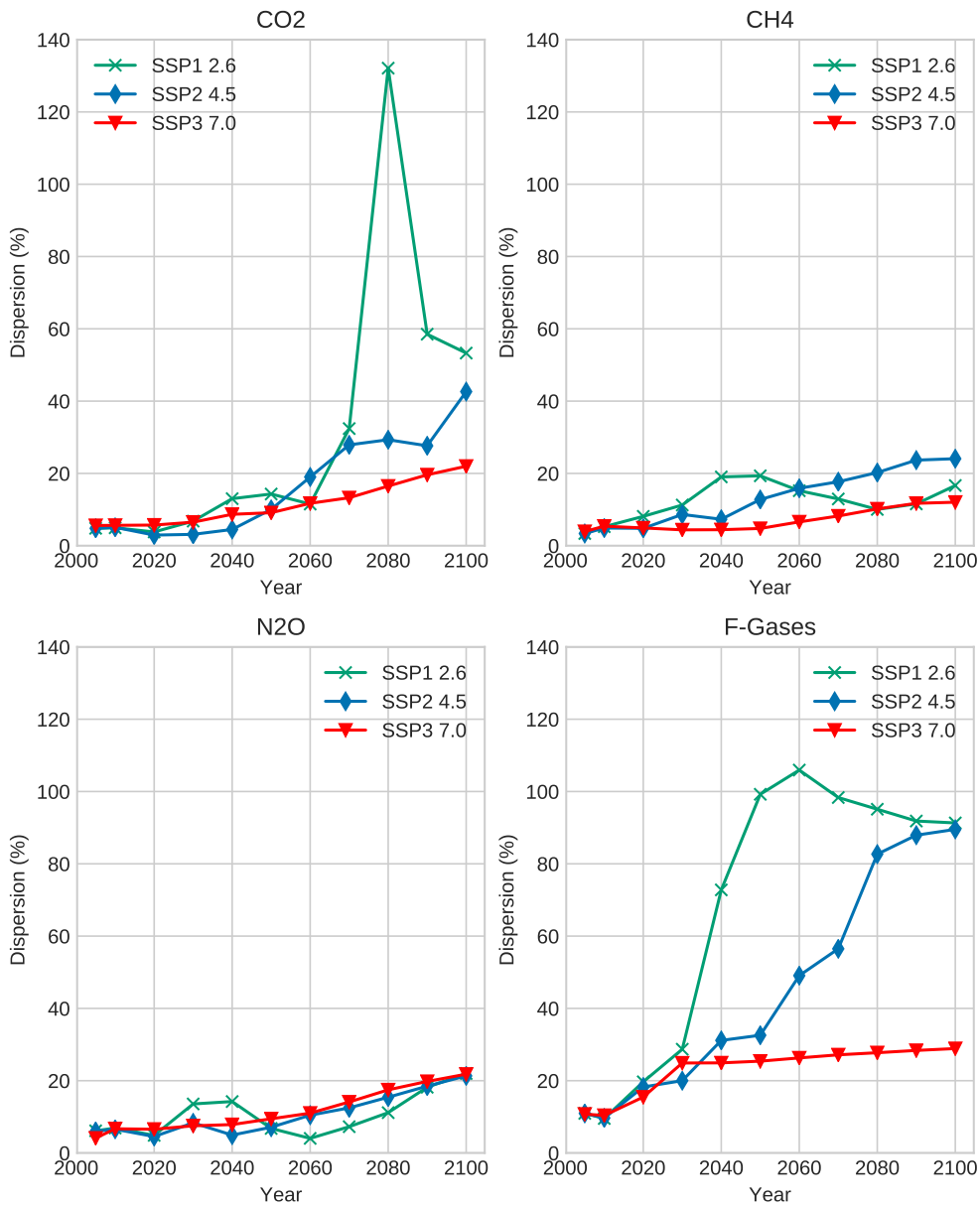


Figure H1. Dispersion analysis results for GHGs with aggregated F-gases.

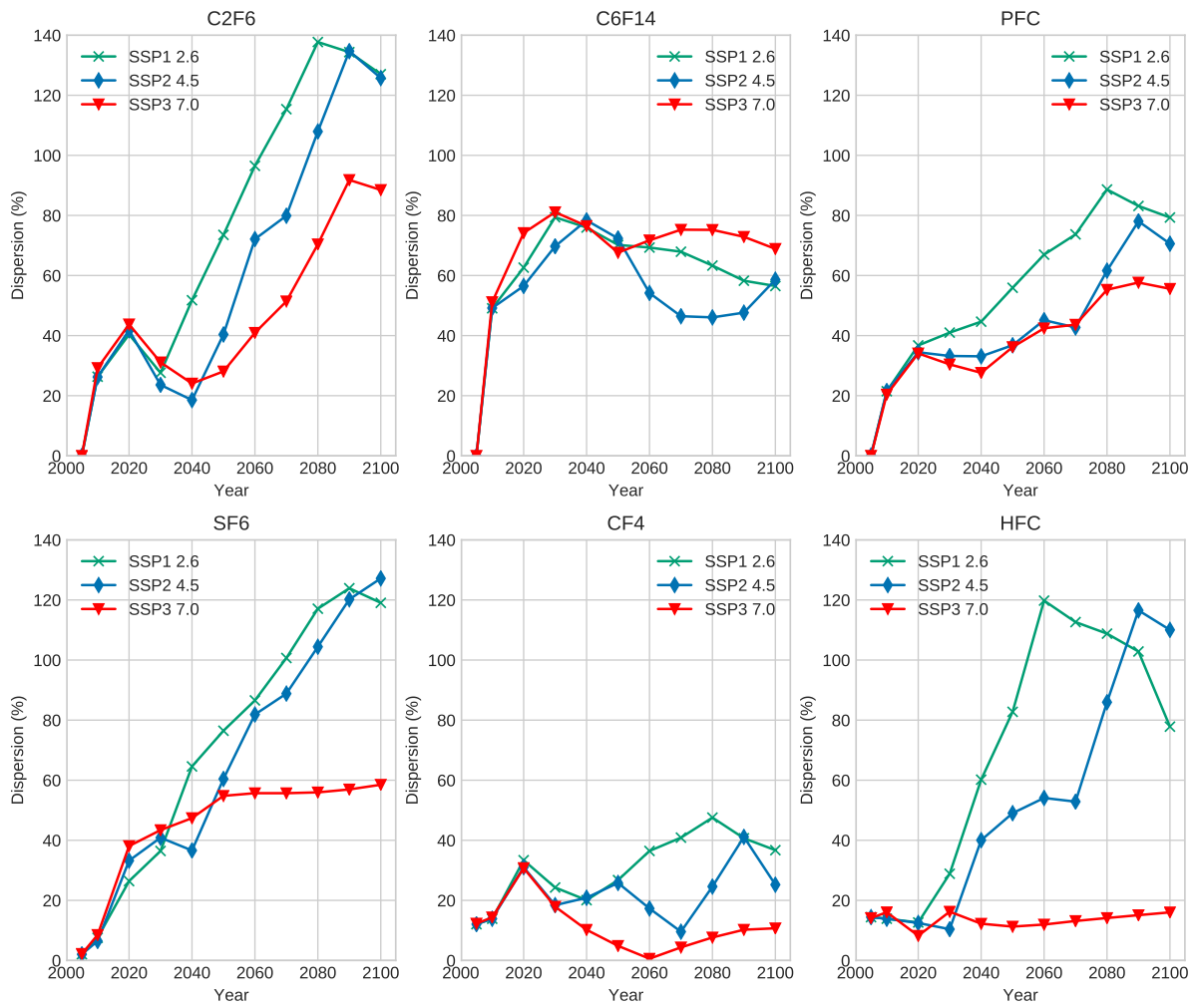


Figure H2. Dispersion analysis results for individual F-gases.

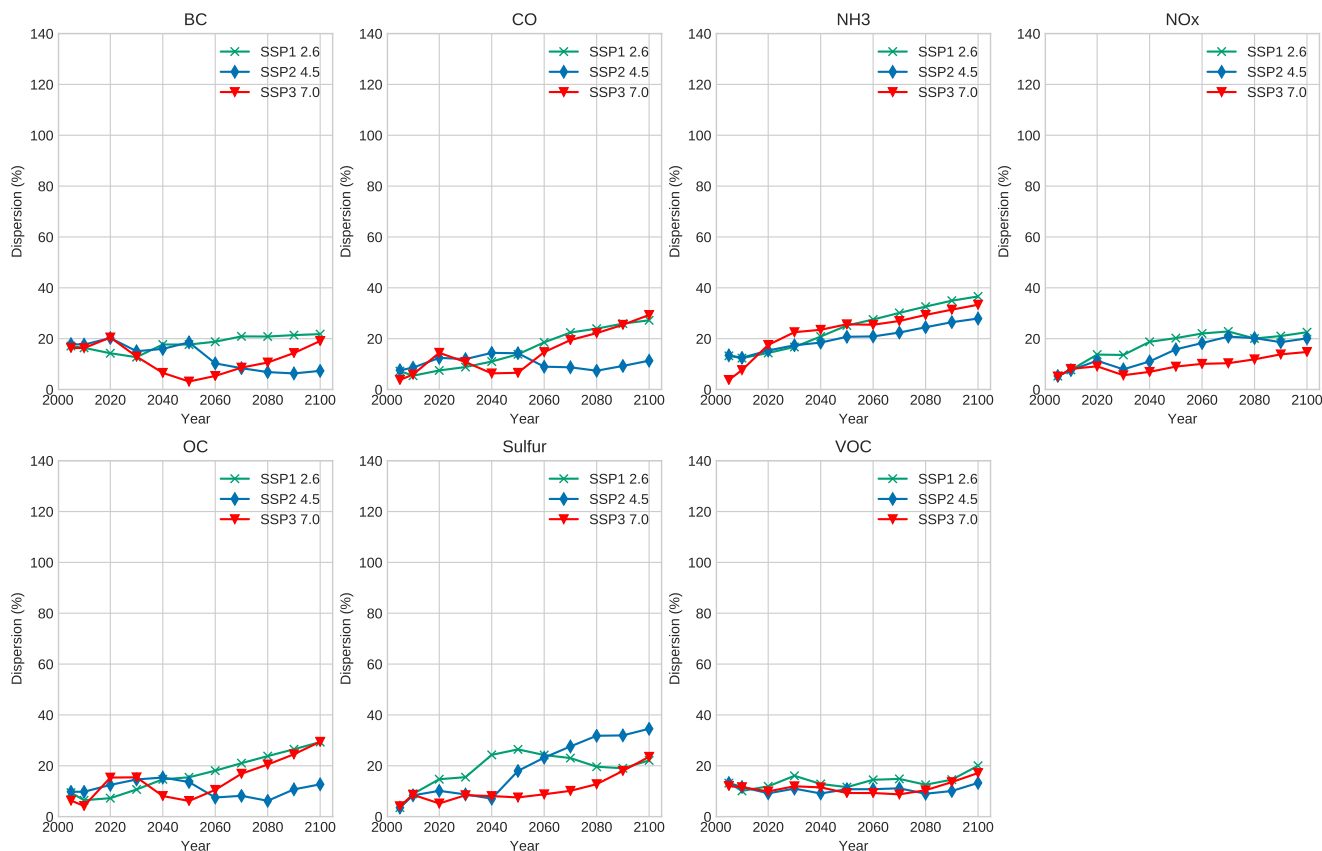


Figure H3. Dispersion analysis results for aerosols.

- 5 Table H1 shows gas species with the largest values of dispersion. The highest dispersion occurs for F-gases, notably C_2F_6 , SF_6 , and HFCs, implying that models generally do not agree on total magnitudes for these gases. CO_2 is also observed to have relatively high dispersion in high mitigation scenarios. Finally, aerosol species such as NH_3 , sulfur, and OC show relative high dispersion values (>30%). In almost every case, magnitudes of emissions with high dispersion decrease substantially with time, thus this measure, while important for understanding sources of error, may result in small total system error in climate models. There are important scenario-species combinations to take account of, however. First, CO_2 dispersion in SSP1-2.6 can be of high consequence because this is a scenario with substantial negative emissions at the end of century. Additionally, users of the data should be aware of the dispersion for aerosols in SSP3, as many aerosol species have large EOC magnitudes, thus showing significant variation across models for these species-scenario combinations.

Table H1. The dispersion (c_v) for the first modeled period and last modeled period for scenarios with maximum model representation. Here we show the 10 highest EOC dispersion values for a given scenario-species combination.

Scenario	Gas	2005	2100	Difference	Relative Difference (%)
SSP1-2.6	F-gases	10.96	91.31	80.34	7.33
SSP2-4.5	F-gases	10.96	89.52	78.56	7.16
SSP1-2.6	CO ₂	4.81	53.29	48.48	10.08
SSP2-4.5	CO ₂	4.80	42.63	37.83	7.89
SSP1-2.6	NH ₃	13.24	36.61	23.37	1.77
SSP2-4.5	Sulfur	3.54	34.57	31.03	8.77
SSP3-7.0	NH ₃	3.76	33.33	29.58	7.87
SSP3-7.0	OC	6.34	29.45	23.11	3.65
SSP1-2.6	OC	9.42	29.33	19.90	2.11
SSP3-7.0	CO	3.76	29.31	25.56	6.81

Author contributions. MG, KR, SS, ShF, GL, EK, DV, MV, and DK contributed to the harmonization process and provided extensive data validation efforts. LF led the downscaling effort assisted by SS and MG. KC, JD, StF, OF, MH, TH, PH, JeH, RH, JiH, AP, ES, KT contributed scenario data. All authors contributed to the writing of the paper.

10 *Competing interests.* The authors have no competing interests.

Acknowledgements. The authors would like to thank Dr. Joeri Rogelj for his thoughtful comments during the development of this paper. This project has received funding from the European Union's Horizon 2020 research and innovation programme under grant agreement No 641816 (CRESCENDO).

References

- 15 Bauer, N., Calvin, K., Emmerling, J., Fricko, O., Fujimori, S., Hilaire, J., Eom, J., Krey, V., Kriegler, E., Mouratiadou, I., and others: Shared socio-economic pathways of the energy sector—quantifying the narratives, *Global Environmental Change*, 42, 316–330, 2017.
- Boucher, O., Friedlingstein, P., Collins, B., and Shine, K. P.: The indirect global warming potential and global temperature change potential due to methane oxidation, *Environmental Research Letters*, 4, 044 007, 2009.
- BP: BP Statistical Review of World Energy June 2016, Tech. rep., London, 2016.
- 20 Calvin, K., Bond-Lamberty, B., Clarke, L., Edmonds, J., Eom, J., Hartin, C., Kim, S., Kyle, P., Link, R., Moss, R., and others: The SSP4: A world of deepening inequality, *Global Environmental Change*, 42, 284–296, 2017.
- Calvin, K., Patel, P., Clarke, L., Asrar, G., Bond-Lamberty, B., Cui, R. Y., Di Vittorio, A., Dorheim, K., Edmonds, J., Hartin, C., Hejazi, M., Horowitz, R., Iyer, G., Kyle, P., Kim, S., Link, R., McJeon, H., Smith, S. J., Snyder, A., Waldhoff, S., and Wise, M.: GCAM v5.1: representing the linkages between energy, water, land, climate, and economic systems, *Geoscientific Model Development*, 12, 677–698, <https://doi.org/10.5194/gmd-12-677-2019>, <https://www.geosci-model-dev.net/12/677/2019/>, 2019.
- 25 Carpenter, L., Reimann, S., Burkholder, J., Clerbaux, C., Hall, B., Hossaini, R., Laube, J., and Yvon-Lewis, S.: Scientific Assessment of Ozone Depletion: 2014, World Meteorological Organization Geneva, 2014.
- Collins, W. J., Lamarque, J.-F., Schulz, M., Boucher, O., Eyring, V., Hegglin, M. I., Maycock, A., Myhre, G., Prather, M., Shindell, D., and Smith, S. J.: AerChemMIP: quantifying the effects of chemistry and aerosols in CMIP6, *Geosci. Model Dev.*, 10, 585–607, <https://doi.org/10.5194/gmd-10-585-2017>, <https://www.geosci-model-dev.net/10/585/2017/>, 2017.
- 30 Crippa, M., Janssens-Maenhout, G., Dentener, F., Guizzardi, D., Sindelarova, K., Muntean, M., Van Dingenen, R., and Granier, C.: Forty years of improvements in European air quality: regional policy-industry interactions with global impacts, *Atmospheric Chemistry and Physics*, 16, 3825–3841, 2016.
- Dellink, R., Chateau, J., Lanzi, E., and Magné, B.: Long-term economic growth projections in the Shared Socioeconomic Pathways, *Global Environmental Change*, <https://doi.org/10.1016/j.gloenvcha.2015.06.004>, <http://www.sciencedirect.com/science/article/pii/S0959378015000837>, 2015.
- Ehrlich, P. R. and Holdren, J. P.: Impact of population growth, *Science*, 171, 1212–1217, 1971.
- Etminan, M., Myhre, G., Highwood, E., and Shine, K.: Radiative forcing of carbon dioxide, methane, and nitrous oxide: A significant revision of the methane radiative forcing, *Geophysical Research Letters*, 43, 2016.
- Eyring, V., Bony, S., Meehl, G. A., Senior, C. A., Stevens, B., Stouffer, R. J., and Taylor, K. E.: Overview of the Coupled Model Intercomparison Project Phase 6 (CMIP6) experimental design and organization, *Geosci. Model Dev.*, 9, 1937–1958, <https://doi.org/10.5194/gmd-9-1937-2016>, <http://www.geosci-model-dev.net/9/1937/2016/>, 2016.
- 5 Feng, L.: In Preparation, 2019.
- Fiedler, S., Stevens, B., Gidden, M., Smith, S. J., Riahi, K., and van Vuuren, D.: First forcing estimates from the future CMIP6 scenarios of anthropogenic aerosol optical properties and an associated Twomey effect, *Geoscientific Model Development Discussions*, pp. 1–26, <https://doi.org/10.5194/gmd-2018-244>, <https://www.geosci-model-dev-discuss.net/gmd-2018-244/>, 2018.
- 10 Fricko, O., Havlik, P., Rogelj, J., Klimont, Z., Gusti, M., Johnson, N., Kolp, P., Strubegger, M., Valin, H., Amann, M., Ermolieva, T., Forsell, N., Herrero, M., Heyes, C., Kindermann, G., Krey, V., McCollum, D. L., Obersteiner, M., Pachauri, S., Rao, S., Schmid, E., Schoepp, W., and Riahi, K.: The marker quantification of the Shared Socioeconomic Pathway 2: A middle-of-the-road scenario for

- the 21st century, *Global Environmental Change*, 42, 251–267, <https://doi.org/10.1016/j.gloenvcha.2016.06.004>, <http://www.sciencedirect.com/science/article/pii/S0959378016300784>, 2017.
- 15 Fujimori, S., Hasegawa, T., Masui, T., Takahashi, K., Herran, D. S., Dai, H., Hijioka, Y., and Kainuma, M.: SSP3: AIM implementation of shared socioeconomic pathways, *Global Environmental Change*, 42, 268–283, 2017.
- Gidden, M.: aneris: Harmonization for Integrated Assessment Models, <https://doi.org/10.5281/zenodo.802832>, 2017.
- Gidden, M. J., Fujimori, S., van den Berg, M., Klein, D., Smith, S. J., van Vuuren, D. P., and Riahi, K.: A methodology and implementation
20 of automated emissions harmonization for use in Integrated Assessment Models, *Environmental Modelling & Software*, 105, 187–200, 2018.
- Gütschow, J., Jeffery, M. L., Gieseke, R., Gebel, R., Stevens, D., Krapp, M., and Rocha, M.: The PRIMAP-hist national historical emissions time series, *Earth System Science Data*, 8, 571–603, 2016.
- Hayhoe, K., Edmonds, J., R.E., K., LeGrande, A., Sanderson, B., M.F., W., and D.J., W.: Climate models, scenarios, and projections, in:
25 *Climate Science Special Report: Fourth National Climate Assessment, Volume I*, pp. "133–160", U.S. Global Change Research Program, Washington D.C., USA, 2017.
- Hoesly, R. M., Smith, S. J., Feng, L., Klimont, Z., Janssens-Maenhout, G., Pitkanen, T., Seibert, J. J., Vu, L., Andres, R. J., Bolt, R. M., Bond, T. C., Dawidowski, L., Kholod, N., Kurokawa, J.-I., Li, M., Liu, L., Lu, Z., Moura, M. C. P., O'Rourke, P. R., and Zhang, Q.:
30 *Geosci. Model Dev.*, 11, 369–408, <https://doi.org/10.5194/gmd-11-369-2018>, <https://www.geosci-model-dev.net/11/369/2018/>, 2018.
- Holmes, C. D., Prather, M. J., Søvde, O., and Myhre, G.: Future methane, hydroxyl, and their uncertainties: key climate and emission parameters for future predictions, *Atmospheric Chemistry and Physics*, 13, 285–302, 2013.
- Hurt, G. C.: In Preparation, 2019.
- Jiang, L. and O'Neill, B. C.: Global urbanization projections for the Shared Socioeconomic Pathways, *Global Environmental Change*,
35 <https://doi.org/10.1016/j.gloenvcha.2015.03.008>, <http://www.sciencedirect.com/science/article/pii/S0959378015000394>, 2015.
- Kawase, H., Nagashima, T., Sudo, K., and Nozawa, T.: Future changes in tropospheric ozone under Representative Concentration Pathways (RCPs), *Geophysical Research Letters*, 38, 2011.
- KC, S. and Lutz, W.: The human core of the shared socioeconomic pathways: Population scenarios by age, sex and level of education for all countries to 2100, *Global Environmental Change*, <https://doi.org/10.1016/j.gloenvcha.2014.06.004>, <http://www.sciencedirect.com/science/article/pii/S0959378014001095>, 2014.
- Klimont, Z., Kupiainen, K., Heyes, C., Purohit, P., Cofala, J., Rafaj, P., Borcen-Kleefeld, J., and Schöpp, W.: Global anthropogenic emissions of particulate matter including black carbon, *Atmospheric Chemistry and Physics*, 17, 8681–8723, 2017.
- 5 Kriegler, E., Edmonds, J., Hallegatte, S., Ebi, K. L., Kram, T., Riahi, K., Winkler, H., and Vuuren, D. P. v.: A new scenario framework for climate change research: the concept of shared climate policy assumptions, *Climatic Change*, 122, 401–414, <https://doi.org/10.1007/s10584-013-0971-5>, <http://link.springer.com/article/10.1007/s10584-013-0971-5>, 2014.
- Kriegler, E., Bauer, N., Popp, A., Humpenöder, F., Leimbach, M., Strefler, J., Baumstark, L., Bodirsky, B. L., Hilaire, J., Klein, D., and others: Fossil-fueled development (SSP5): an energy and resource intensive scenario for the 21st century, *Global environmental change*,
10 42, 297–315, 2017.
- Lamarque, J.-F., Shindell, D. T., Josse, B., Young, P., Cionni, I., Eyring, V., Bergmann, D., Cameron-Smith, P., Collins, W. J., Doherty, R., et al.: The Atmospheric Chemistry and Climate Model Intercomparison Project (ACCMIP): overview and description of models, simulations and climate diagnostics, *Geoscientific Model Development*, 6, 179–206, 2013.

- Meinshausen, M.: In Preparation, 2019.
- 15 Meinshausen, M., Raper, S. C., and Wigley, T. M.: Emulating coupled atmosphere-ocean and carbon cycle models with a simpler model, *MAGICC6–Part 1: Model description and calibration*, *Atmospheric Chemistry and Physics*, 11, 1417–1456, 2011a.
- Meinshausen, M., Smith, S. J., Calvin, K., Daniel, J. S., Kainuma, M. L. T., Lamarque, J.-F., Matsumoto, K., Montzka, S. A., Raper, S. C. B., Riahi, K., Thomson, A., Velders, G. J. M., and Vuuren, D. P. P. v.: The RCP greenhouse gas concentrations and their extensions from 1765 to 2300, *Climatic Change*, 109, 213, <https://doi.org/10.1007/s10584-011-0156-z>, <https://link.springer.com/article/10.1007/s10584-011-0156-z>, 2011b.
- 20 Moss, R., Babiker, W., Brinkman, S., Calvo, E., Carter, T., Edmonds, J., Elgizouli, I., Emori, S., Erda, L., Hibbard, K., and others: Towards new scenarios for the analysis of emissions: Climate change, impacts and response strategies, *Intergovernmental Panel on Climate Change Secretariat (IPCC)*, 2008.
- Moss, R. H., Edmonds, J. A., Hibbard, K. A., Manning, M. R., Rose, S. K., van Vuuren, D. P., Carter, T. R., Emori, S., Kainuma, M., Kram, T., 25 Meehl, G. A., Mitchell, J. F. B., Nakicenovic, N., Riahi, K., Smith, S. J., Stouffer, R. J., Thomson, A. M., Weyant, J. P., and Wilbanks, T. J.: The next generation of scenarios for climate change research and assessment, *Nature*, 463, 747–756, <https://doi.org/10.1038/nature08823>, <http://www.nature.com/doi/10.1038/nature08823>, 2010.
- Nakićenović, N., Alcamo, J., Davis, G., de Vries, B., Fenhann, J., Gaffin, S., Gregory, K., Grübler, A., Jung, T. Y., Kram, T., Lebre La Rovere, E., Michaelis, L., Mori, S., Morita, T., Pepper, W., Pitcher, H., Price, L., Riahi, K., Roehrl, A., Rogner, H. H., Sankovski, A., Schlesinger, 30 M., Shukla, P., Smith, S., Swart, R., van Rooijen, S., Victor, N., and Dadi, Z.: *IPCC Special Report on Emissions Scenarios (SRES)*, Cambridge University Press, UK, <http://www.ipcc.ch/ipccreports/sres/emission/index.php?idp=0>, 2000.
- O’Neill, B. C., Tebaldi, C., van Vuuren, D. P., Eyring, V., Friedlingstein, P., Hurtt, G., Knutti, R., Kriegler, E., Lamarque, J.-F., Lowe, J., Meehl, G. A., Moss, R., Riahi, K., and Sanderson, B. M.: The Scenario Model Intercomparison Project (ScenarioMIP) for CMIP6, *Geosci. Model Dev.*, 9, 3461–3482, <https://doi.org/10.5194/gmd-9-3461-2016>, <https://www.geosci-model-dev.net/9/3461/2016/>, 2016.
- 35 O’Neill, B. C., Kriegler, E., Riahi, K., Ebi, K. L., Hallegatte, S., Carter, T. R., Mathur, R., and Vuuren, D. P. v.: A new scenario framework for climate change research: the concept of shared socioeconomic pathways, *Climatic Change*, 122, 387–400, <https://doi.org/10.1007/s10584-013-0905-2>, <http://link.springer.com/article/10.1007/s10584-013-0905-2>, 2013.
- O’Neill, B. C., Kriegler, E., Ebi, K. L., Kemp-Benedict, E., Riahi, K., Rothman, D. S., van Ruijven, B. J., van Vuuren, D. P., Birkmann, J., Kok, K., and others: The roads ahead: narratives for shared socioeconomic pathways describing world futures in the 21st century, *Global Environmental Change*, 42, 169–180, 2017.
- Popp, A., Calvin, K., Fujimori, S., Havlik, P., Humpenöder, F., Stehfest, E., Bodirsky, B. L., Dietrich, J. P., Doelmann, J. C., Gusti, M., and 5 others: Land-use futures in the shared socio-economic pathways, *Global Environmental Change*, 42, 331–345, 2017.
- Rao, S., Klimont, Z., Smith, S. J., Van Dingenen, R., Dentener, F., Bouwman, L., Riahi, K., Amann, M., Bodirsky, B. L., van Vuuren, D. P., Aleluia Reis, L., Calvin, K., Drouet, L., Fricko, O., Fujimori, S., Gernaat, D., Havlik, P., Harmsen, M., Hasegawa, T., Heyes, C., Hilaire, J., Luderer, G., Masui, T., Stehfest, E., Strefler, J., van der Sluis, S., and Tavoni, M.: Future air pollution in the Shared Socio-economic Pathways, *Global Environmental Change*, 42, 346–358, <https://doi.org/10.1016/j.gloenvcha.2016.05.012>, <http://www.sciencedirect.com/science/article/pii/S0959378016300723>, 2017.
- 10 Riahi, K., Rao, S., Krey, V., Cho, C., Chirkov, V., Fischer, G., Kindermann, G., Nakicenovic, N., and Rafaj, P.: RCP 8.5—A scenario of comparatively high greenhouse gas emissions, *Climatic Change*, 109, 33–57, <https://doi.org/10.1007/s10584-011-0149-y>, <http://link.springer.com/article/10.1007/s10584-011-0149-y>, 2011.

- Riahi, K., van Vuuren, D. P., Kriegler, E., Edmonds, J., O'Neill, B. C., Fujimori, S., Bauer, N., Calvin, K., Dellink, R., Fricko, O., Lutz, W., Popp, A., Cuaresma, J. C., Kc, S., Leimbach, M., Jiang, L., Kram, T., Rao, S., Emmerling, J., Ebi, K., Hasegawa, T., Havlik, P., Humpenöder, F., Da Silva, L. A., Smith, S., Stehfest, E., Bosetti, V., Eom, J., Gernaat, D., Masui, T., Rogelj, J., Strefler, J., Drouet, L., Krey, V., Luderer, G., Harmsen, M., Takahashi, K., Baumstark, L., Doelman, J. C., Kainuma, M., Klimont, Z., Marangoni, G., Lotze-Campen, H., Obersteiner, M., Tabeau, A., and Tavoni, M.: The Shared Socioeconomic Pathways and their energy, land use, and greenhouse gas emissions implications: An overview, *Global Environmental Change*, 42, 153–168, <https://doi.org/10.1016/j.gloenvcha.2016.05.009>, <http://linkinghub.elsevier.com/retrieve/pii/S0959378016300681>, 2017.
- Rogelj, J., Hare, W., Chen, C., and Meinshausen, M.: Discrepancies in historical emissions point to a wider 2020 gap between 2 °C benchmarks and aggregated national mitigation pledges, *Environmental Research Letters*, 6, 024002, <https://doi.org/10.1088/1748-9326/6/2/024002>, <http://stacks.iop.org/1748-9326/6/i=2/a=024002>, 2011.
- Rogelj, J., Popp, A., Calvin, K. V., Luderer, G., Emmerling, J., Gernaat, D., Fujimori, S., Strefler, J., Hasegawa, T., Marangoni, G., and others: Scenarios towards limiting global mean temperature increase below 1.5° C, *Nature Climate Change*, 8, 325, 2018.
- Shindell, D. T., Lamarque, J.-F., Schulz, M., Flanner, M., Jiao, C., Chin, M., Young, P. J., Lee, Y. H., Rotstayn, L., Mahowald, N., Milly, G., Faluvegi, G., Balkanski, Y., Collins, W. J., Conley, A. J., Dalsoren, S., Easter, R., Ghan, S., Horowitz, L., Liu, X., Myhre, G., Nagashima, T., Naik, V., Rumbold, S. T., Skeie, R., Sudo, K., Szopa, S., Takemura, T., Voulgarakis, A., Yoon, J.-H., and Lo, F.: Radiative forcing in the ACCMIP historical and future climate simulations, *Atmospheric Chemistry and Physics*, 13, 2939–2974, <https://doi.org/10.5194/acp-13-2939-2013>, <https://www.atmos-chem-phys.net/13/2939/2013/>, 2013.
- Solomon, S., Qin, D., Manning, M., Chen, Z., Marquis, M., Averyt, K. B., Tignor, M., and Miller, H. L., eds.: *Climate Change 2007 - The Physical Science Basis: Working Group I Contribution to the Fourth Assessment Report of the IPCC*, Cambridge University Press, Cambridge, UK and New York, NY, USA, <http://www.amazon.com/exec/obidos/redirect?tag=citeulike07-20&path=ASIN/0521880092>, published: Hardcover, 2007.
- Stocker, T. F., Qin, D., Plattner, G., Tignor, M., Allen, S., Boschung, J., Nauels, A., Xia, Y., Bex, V., and Midgley, P.: *Climate Change 2013: The Physical Science Basis, Working Group I (WG1) Contribution to the Intergovernmental Panel on Climate Change (IPCC) 5th Assessment Report (AR5)*, Cambridge University Press, Cambridge, UK and New York, NY, USA, 2013.
- Stohl, A., Aamaas, B., Amann, M., Baker, L. H., Bellouin, N., Berntsen, T. K., Boucher, O., Cherian, R., Collins, W., Daskalakis, N., and others: Evaluating the climate and air quality impacts of short-lived pollutants, *Atmospheric Chemistry and Physics*, 15, 10 529–10 566, 2015.
- Taylor, K. E., Stouffer, R. J., and Meehl, G. A.: An overview of CMIP5 and the experiment design, *Bulletin of the American Meteorological Society*, 93, 485–498, 2012.
- Tebaldi, C., O'Neill, B., and Lamarque, J.-F.: Sensitivity of regional climate to global temperature and forcing, *Environmental Research Letters*, 10, 074001, 2015.
- United Nations: Paris Agreement, 2016.
- van Marle, M. J. E., Kloster, S., Magi, B. I., Marlon, J. R., Daniau, A.-L., Field, R. D., Arneth, A., Forrest, M., Hantson, S., Kehrwald, N. M., Knorr, W., Lasslop, G., Li, F., Mangeon, S., Yue, C., Kaiser, J. W., and van der Werf, G. R.: Historic global biomass burning emissions for CMIP6 (BB4CMIP) based on merging satellite observations with proxies and fire models (1750–2015), *Geosci. Model Dev.*, 10, 3329–3357, <https://doi.org/10.5194/gmd-10-3329-2017>, <https://www.geosci-model-dev.net/10/3329/2017/>, 2017.
- van Vuuren, D. P., Lucas, P. L., and Hilderink, H.: Downscaling drivers of global environmental change: Enabling use of global SRES scenarios at the national and grid levels, *Global environmental change*, 17, 114–130, 2007.

- van Vuuren, D. P., Edmonds, J., Kainuma, M., Riahi, K., Thomson, A., Hibbard, K., Hurtt, G. C., Kram, T., Krey, V., Lamarque, J.-F., Masui, T., Meinshausen, M., Nakicenovic, N., Smith, S. J., and Rose, S. K.: The representative concentration pathways: an overview, *Climatic Change*, 109, 5–31, <https://doi.org/10.1007/s10584-011-0148-z>, <http://link.springer.com/article/10.1007/s10584-011-0148-z>, 2011.
- van Vuuren, D. P., Kriegler, E., O'Neill, B. C., Ebi, K. L., Riahi, K., Carter, T. R., Edmonds, J., Hallegatte, S., Kram, T., Mathur, R., and Winkler, H.: A new scenario framework for Climate Change Research: scenario matrix architecture, *Climatic Change*, 122, 373–386, <https://doi.org/10.1007/s10584-013-0906-1>, <http://link.springer.com/article/10.1007/s10584-013-0906-1>, 2013.
- 20 van Vuuren, D. P., Stehfest, E., Gernaat, D. E., Doelman, J. C., Van den Berg, M., Harmsen, M., de Boer, H. S., Bouwman, L. F., Daioglou, V., Edelenbosch, O. Y., and others: Energy, land-use and greenhouse gas emissions trajectories under a green growth paradigm, *Global Environmental Change*, 42, 237–250, 2017.
- Velders, G. J., Fahey, D. W., Daniel, J. S., Andersen, S. O., and McFarland, M.: Future atmospheric abundances and climate forcings from scenarios of global and regional hydrofluorocarbon (HFC) emissions, *Atmospheric Environment*, 123, 200–209, 2015.
- 745 Walsh, J., Wuebbles, D., Hayhoe, K., Kossin, J., Kunkel, K., Stephens, G., Thorne, P., Vose, R., Wehner, M., Willis, J., Anderson, D., Doney, S., Feely, R., Hennon, P., Kharin, V., Knutson, T., Landerer, F., Lenton, T. Kennedy, J., and Somerville, R.: Our Changing Climate, in: *Climate Change Impacts in the United States: The Third National Climate Assessment*, pp. "19–67", U.S. Global Change Research Program, Washington D.C., USA, 2014.
- Westervelt, D. M., Conley, A. J., Fiore, A. M., Lamarque, J.-F., Shindell, D. T., Previdi, M., Mascioli, N. R., Faluvegi, G., Correa, G., and
750 Horowitz, L. W.: Connecting regional aerosol emissions reductions to local and remote precipitation responses, *Atmospheric Chemistry and Physics*, 18, 12 461–12 475, <https://doi.org/10.5194/acp-18-12461-2018>, <https://www.atmos-chem-phys.net/18/12461/2018/>, 2018.
- Zheng, B., Tong, D., Li, M., Liu, F., Hong, C., Geng, G., Li, H., Li, X., Peng, L., Qi, J., and others: Trends in China's anthropogenic emissions since 2010 as the consequence of clean air actions, *Atmospheric Chemistry and Physics*, 18, 14 095–14 111, 2018.