

Replies Reviewer #1:

Please note that changes to the paper in response to reviewers 1 and 2 are highlighted in blue and red colours, respectively, while the colour green indicates changes that refer to both reviewers. The colour magenta marks our own revisions implemented to improve the presentation. Cosmetic changes improving grammar and style are not marked.

1.) Section 2.1.2. There seem to be several levels of iteration: equations (11a) and (11b); the weakly nonlinear (19); and the line Jacobi preconditioner (appendix B), with various corresponding lagged terms (p11 line 28, p30 line 8). Could the relation of these to each other be clarified, for example with a section of pseudocode?

We have extended the text in Section 2.1.2 with more detailed information about the iterative approach in IFS-FVM, and in particular how the outer iterations in the model algorithm relate to the GCR solution and its preconditioner;
pg. 10 lines 17-20, pg. 11 line 28 to pg. 12 line 15, pg. 21 lines 12-16., pg. 34 line 7.

2.) P7: Could the authors say something about whether the perturbation form of the equations still works for more complex flows and in the presence of significant orography? Is a more complex 'ambient' state needed?

The ambient state can be as simple as vertical profiles in hydrostatic balance, which is a minimal specification that works generally, including complex flows with real orography. However, such a minimal specification is not optimal for NWP and climate modelling. In the authors' experience, customized multidimensional specifications can substantially simplify model initialization, boundary conditions and benefit the overall robustness and accuracy of the semi-implicit integration. We have extended the text on pg. 7 lines 17-19 to address this comment.

3.) P7: Do the metric terms (caligraphic M) blow up at the poles, and, if so, does this cause any difficulty? Check for consistent font ((5) and (C3)).

The longitude-latitude system has singularities at the poles that is well understood; cf. Prusa JCP 2018 and references therein. The octahedral mesh and all other meshes employed by IFS-FVM are specified such that there are no nodes directly at the poles. The nodes are always arranged around the poles, and the information on the polar singularity is accounted for in the finite-volume differencing across the poles; see Szmelter and Smolarkiewicz JCP 2010. Consequently, the metric terms $\mathbf{\mathcal{M}}$ are well defined and do not cause any difficulty. The font in (5) and (C3) has been made consistent.

4.) P9 Table 2: Since there is no prognostic equation for Exner pressure in (1a)-(1e), could you explain why there is an off-centring parameter for the Exner perturbation?

To explain, we have extended Table 2 (pg. 9), the text on pg. 11 lines 22-25 and pg. 12 lines 18-23, and added new results in Fig. 5 (middle panel). This comprehensively addresses the reviewer's comment.

5.) P16 line 15: Could a reference be given for the IFS documentation?

On pg. 15 lines 20-21, we refer now explicitly to Wedi et al. 2015, which is a recent overview of IFS-ST and provides a comprehensive list of references as well as the IFS documentation that is available from the ECMWF website.

6.) P19 line 16: It is a shame that the baroclinic instability was not triggered in just one hemisphere, as grid imprinting can be revealed in the quiescent hemisphere. In the present case 'no signs of any significant grid imprinting' (P19 line 31) is rather a weak statement because the fully developed wave could be hiding any grid imprinting.

To corroborate our statement in the paper we have now added a comparison of IFS-FVM and IFS-ST dry simulation results at day 15, where the trigger is applied only in the northern hemisphere. This is shown now in Fig. 6, the original result with the dual triggering in the northern and southern hemispheres is still given in Fig. 5. The new Fig. 6 shows that for the applied O320 grid, there is indeed no significant imprinting at day 15 visible in the depicted surface pressure field. Grid imprinting generally becomes smaller with higher resolution, and the O320 grid is the coarsest grid that will ever be used by IFS-FVM at ECMWF. Moreover, IFS-FVM is participating in the DCMIP-2016 model intercomparison, and a corresponding paper about the baroclinic instability test case will soon be submitted to GMD.

7.) Minor points, typos, etc.

All done. Thank you.

Replies Reviewer #2:

Please note that changes to the paper in response to reviewers 1 and 2 are highlighted in blue and red colours, respectively, while the colour green indicates changes that refer to both reviewers. The colour magenta marks our own revisions implemented to improve the presentation. Cosmetic changes improving grammar and style are not marked.

1.) Page 5, Table 1: Isn't the surface pressure forecast variable in IFS-ST $\ln(p_s)$ instead of ps ?

The reviewer is right. We have modified Table 1 accordingly.

2.) Page 6, after Eq. (1): Point to the Tables D1 and D2 right away for the explanations of the variables and physical constants. The first reference to the tables is currently on page 7 line 28 which is too late.

Done. The reference to the Tables D1 and D2 has been moved right after Eq. (1).

3.) Page 6, Eq. (1):. Have you also experimented with moist adjustments of the physical constants like c_p ?

Due to the excellent agreement of the IFS-FVM results with the IFS-ST under moist/precipitating dynamics with the coupling to the IFS cloud scheme, we have not considered this to be a priority. However, the impact of moisture on thermodynamic parameters will be addressed in the near future.

4.) Page 6, line 25: spell out 'rhs' here (first appearance of the acronym).

Done.

5.) Page 7, Eq. (4): Please provide additional explanations how the ambient state is determined. Is the balance presented here computed numerically? This paper uses a stationary atmosphere in thermal wind balance as an example, but keeps it open whether this is always the best choice or whether the ambient state can (or must) also be time-dependent for more complex flows.

In the baroclinic instability test case, the ambient state is specified using the analytic initial condition of the test case minus the triggering perturbation. This state is in thermal wind balance, while being variable in latitude and in height, but invariant in longitude; see pg. 20 lines 26-29. The optimal specification of ambient states for NWP and climate modelling is ongoing research. In general, ambient states can be as simple as stationary vertical profiles in hydrostatic balance, but in the authors' experience customized specifications for a particular application can benefit the accuracy and robustness of the model integration; see the text on pg. 7 lines 17-19.

6.) Page 7, line 24: Refer to Appendix C for further explanations of the Coriolis term (not just for the metric term). Also point out that Appendix C discusses the differences between the shallow- and deep atmosphere equation sets for f and M .

Done; pg. 7 lines 31-32.

7.) Page 8, Eq. (7): Point to the Kühnlein and Smolarkiewicz (2017) paper right away to explain the meaning of the operator A_i .

Done; pg. 8 lines 18-19.

8.) Page 11, bottom: From the description of the semi-implicit time integration it is not clear whether this algorithm avoids any global communication. Is the iterative preconditioned GCR solution technique entirely local without global communication? Please clarify.

The GCR solver uses global communication for the computation of inner products and residual error norms. We have extended the text accordingly on pg. 15 lines 5-9.

9.) Page 13, Fig. 1: the grid lines are too faint when printed, e.g. the open circles are barely visible. Reprint the figure with thicker contours.

Done.

10.) Page 13, line 5: When switching to the deep-atmosphere equation set the surface area and volume of an element are no longer independent of height. Please clarify whether this statement only refers to the shallow-atmosphere configuration.

The presented formulation applies to both the shallow- and deep-atmosphere equations. The surface area and volume of the dual cells, as well as Δz , are quantities of the computational space, and these are independent of height. Deep-atmosphere effects such as the widening of the vertical columns with height is present in physical space, which is accounted for by the curvilinear coordinate framework described in Appendix C. We have extended Section 2.1.3 including an example of the velocity divergence in physical space, pg. 13 lines 13 and 15, pg. 14 lines 6-12. This exposes the connection of the operators in computational space with the corresponding physical-space quantities.

11.) Page 14, section 2.1: The biggest omission in section 2.1 is the description of the generalized vertical coordinate and an explanation how topography is included. Please add this information for completeness, despite the fact that the presented test case does not have topography. Where is the lowest model level located in FVM: directly at the ground with $z=0$ or at about 12 m? Do you use equidistant grid spacing in the vertical direction in FVM? What is the accuracy of the finite-difference technique in the vertical, when non-equidistant grid spacing is used, e.g. does it reduce to a first-order numerical scheme?

We have added the description of the generalized terrain-following vertical coordinate and its specification at the beginning of Section 3 (pg. 20 lines 4-15) and Appendix C (pg. 35 lines 4-8). Our design based on curvilinear coordinates warrants second-order accuracy for non-equidistant grid spacing in the physical space (see Kühnlein et al. JCP 2012 and references therein).

12.) Page 16/17, section 2.3: Describe how FVM with the height-based vertical coordinate deals with the fact that IFS's physical parameterizations assume a constant-pressure framework. The physics are not

allowed to change the pressure. How is the pressure adjustment (after the variations of moisture) handled?

Do you couple the IFS physics to FVM in an 'anelastic' way as analyzed by Malardel (ECMWF Workshop on Non-hydrostatic Modelling, 8-10 November 2010)?

Correct, the IFS physical parametrisations assume constant pressure. This applies also when called from IFS-FVM. How the pressure adjustment is handled is already described in the paper; see the discussion around Eq. (17). It represents a 'compressible' (in contrast to 'anelastic') coupling, when referring to Malardel, ECMWF Workshop of Non-hydrostatic Modelling, 8-10 November 2010. However, in contrast to the internal energy form, in IFS-FVM the thermodynamic equation (or first law of thermodynamics) is for potential temperature and thus in enthalpy form. We have specified the forcing from the parametrisations to the prognostic pressure equation (17) in the new Eq. (19), and adjusted the text accordingly (pg. 11 lines 21-22).

13.) Page 17, line 20: Please clarify whether the octahedral grid always adds about 20 points to the first latitude close to the poles regardless of the anticipated grid spacing.

The standard procedure is 20 points on the first latitude, at least for mesh sizes between O90 (120km) and O8000 (1km). However, somewhat larger values between 24 and 28 could be used in the future. We revised the text on pg. 18 line 17.

14.) Page 18, Fig. 2: I recommend re-plotting the right (color) figure and picking a more adequate color range for the grid spacings. E.g. the range between 4-7 km is not present and the colors are not used. Just display the range 7-9.5 km with a finer spacing like 0.25 km to enhance the near the details near the poles.

We changed the range of the colour bar from 7-9.5 km, but kept the spacing at 0.5 km, as 0.25 km does not really reveal more detail near the poles.

15.) Page 19, line 29: the '30' seems to be spurious. Explain in the text (not just in the caption) which variable is shown in Figs. 3 and 4.

Yes, the number '30' must have entered by accident. We have added the shown variables to the main text on pg. 21 lines 4-5.

16.) Page 20: Fig. 3, also other figures: Explain how this comparison was conducted. Since FVM uses a height coordinate and ST a pressure-based vertical coordinate, a comparison at the lowest full model level does not display the same cross sections. Do you use vertical interpolation/extrapolations to bring the results to the same vertical positions? Or do you assume that the variations of the vertical positions are so small (how small, please quantify) that you ignore them here. Please clarify.

Done. It is explained in the introduction to Section 3 on pg. 20 lines 4-15.

17.) Page 22, line 12: remove one of the double 'to to'

Done.

18.) Page 27: Please comment briefly on the domain decompositions for FVM and ST. Are ghost cell added to the parallel domains? If yes, how wide are they?

We have extended the existing text about the domain decomposition with more details such as halo width; pg. 15 lines 5-8.

19.) Page 30, Appendix C: The appendix should be renamed to also reflect the fact that it contains the discussion of the shallow- versus deep-atmosphere configuration. There seems to be an inaccuracy how the deep atmosphere equations are formulated. In line 25, the deep atmosphere should use 'r' instead of the fixed Earth's radius 'a' in the formulation of geospherical coordinates in the horizontal direction. This also requires changes of related equations on page 31 that display the radius 'a' instead of 'r'. For example, the metric term in Eq. C3 is formulated with 'a' instead of 'r' for the deep atmosphere. Please clarify this issue and correct. How is this implemented in the model FVM?

We have again verified what was written. All provided formulae with respect to 'r' and 'a' are correct for both the shallow- and the deep-atmosphere equations. However, for clarity, we have revised Appendix C, and now have a separate numbered equation for Γ in (C3) that exposes the switch between deep- and shallow-atmosphere equations.

20.) Page 32, Table D1: add the symbol 'r' to the Table. Note that 'r' is also used in a different context as a residual in Appendix B which should be changed (e.g. with a subscript).

Done. We use now \hat{r} for the residual error when discussing the Line Jacobi preconditioner in Appendix B.

21.) Page 33, Table D2: add the values of the Earth's radius 'a' and the Earth's angular velocity $|\Omega|$ to the table of physical constants.

Done.

Many thanks.

FVM 1.0: A nonhydrostatic finite-volume dynamical core for the IFS

Christian Kühnlein¹, Willem Deconinck¹, Rupert Klein², Sylvie Malardel^{1,3}, Zbigniew P. Piotrowski⁴, Piotr K. Smolarkiewicz¹, Joanna Szmelter⁵, and Nils P. Wedi¹

¹European Centre for Medium-Range Weather Forecasts, Reading, UK

²FB Mathematik und Informatik, Freie Universität Berlin, Berlin, Germany

³Laboratoire de l'Atmosphère et des Cyclones, Météo-France, La Reunion, France

⁴Institute of Meteorology and Water Management - National Research Institute, Warsaw, Poland

⁵Loughborough University, UK

Correspondence: Christian Kühnlein (christian.kuehnlein@ecmwf.int)

Abstract.

We present a nonhydrostatic finite-volume global atmospheric model formulation for numerical weather prediction with the Integrated Forecasting System (IFS) at ECMWF, and compare it to the established operational spectral-transform formulation. The novel Finite-Volume Module of the IFS (henceforth IFS-FVM) integrates the fully compressible equations using semi-implicit time stepping and non-oscillatory forward-in-time (NFT) Eulerian advection, whereas the spectral-transform IFS solves the hydrostatic primitive equations (optionally the fully compressible equations) using a semi-implicit semi-Lagrangian scheme. The IFS-FVM complements the spectral-transform counterpart by means of the finite-volume discretisation with a local low-volume communication footprint, fully conservative and monotone advective transport, all-scale deep-atmosphere fully compressible equations in a generalised height-based vertical coordinate and flexible horizontal meshes. Nevertheless, both the finite-volume and spectral-transform formulations can share the same quasi-uniform horizontal grid with co-located arrangement of variables, geospherical longitude-latitude coordinates, and physics parametrizations, thereby facilitating their comparison, coexistence and combination in the IFS.

We highlight the advanced semi-implicit NFT finite-volume integration of the fully compressible equations of IFS-FVM considering comprehensive moist-precipitating dynamics with coupling to the IFS cloud parametrization by means of a generic interface. These developments—including a new horizontal-vertical split NFT MPDATA advective transport scheme, variable time stepping, effective preconditioning of the elliptic Helmholtz solver in the semi-implicit scheme, and a computationally-efficient implementation of the median-dual finite-volume approach—provide a basis for the efficacy of IFS-FVM and its application in global numerical weather prediction. Here, numerical experiments focus on relevant dry and moist-precipitating baroclinic instability at various resolutions. We show that the presented semi-implicit NFT finite-volume integration scheme on co-located meshes of IFS-FVM can provide highly competitive solution quality and computational performance to the proven semi-implicit semi-Lagrangian integration scheme of the spectral-transform IFS.

1 Introduction

Notwithstanding the achievements made over the last decades (Bauer et al., 2015), numerical weather prediction (NWP) faces the formidable challenge to resolve rather than parametrize essential small-scale forcings and circulations in the multi-scale global flow—most notably processes associated with the surface, convective clouds, gravity waves and troposphere-stratosphere interaction. While there is a need for advancement in many aspects of global NWP model infrastructures, prerequisite are the ability of the numerical model formulations to accurately predict atmospheric flows throughout the large-scale hydrostatic and small-scale nonhydrostatic regimes, and to run efficiently on emerging and future high-performance computing (HPC) architectures.

The spectral-transform (ST)—also known as pseudo-spectral—method was introduced in NWP following the work by Eliassen et al. (1970) and Orszag (1970). As a model representation entirely in spectral (i.e. wavenumber) space is impractical for NWP, the ST method maps between spectral and grid-point space, in order to solve different parts of the governing equations in the space where the computations can be performed most efficiently. Typically, nonlinear terms and the physics parametrizations are computed in grid-point space. Horizontal derivatives are computed in spectral space with formally high accuracy, as are linear terms of the discretised governing model equations—in particular the constant-coefficient Helmholtz problem resulting from the semi-implicit time stepping (Robert et al., 1972) can be solved directly and accurately in spectral space. Facilitated by the ST method, the unconditional stability of the semi-implicit scheme combined with semi-Lagrangian (SL) advection in grid-point space permits very long time steps ¹ and high efficiency (Ritchie et al., 1995; Temperton et al., 2001). In global models, the ST method typically uses a spherical harmonics representation in spectral space and (reduced, i.e. quasi-uniform) Gaussian grids (Hortal and Simmons, 1991; Wedi et al., 2015).

At ECMWF, the first forecast model using the ST method became operational in 1983, and the technique is still successfully applied today with the efficient SISL integration of the hydrostatic primitive equations in the Integrated Forecasting System (IFS) (Wedi et al., 2015). Recent [advances](#) helped to sustain the performance of the ST method (for details see Wedi et al. (2013); Wedi (2014); Wedi et al. (2015) and Section 2.2) and enabled real-time medium-range global weather forecasts at ECMWF with ≈ 9 km horizontal grid spacings in 2016 (Malardel et al., 2016). Furthermore, current research advanced the applicability of the ST method into the realm of global convection-permitting forecasts with kilometer-scale horizontal grid spacings (Wedi and Düben, 2017). While the viability of the ST method at ECMWF is ensured for the next decade, uncertainties concerning the scalability of the non-local high-volume parallel communications in the STs exist in the longer term (Wedi et al., 2013, 2015). These scalability issues could be exacerbated from the time when the increase in horizontal resolution makes the nonhydrostatic formulation based on the fully compressible equations (Bubnová et al., 1995; Bénard et al., 2010) essential. This is because the associated solution procedure in the IFS requires—at least in its current implementation—a predictor-corrector approach in the semi-implicit integration scheme that involves a considerably larger number of STs per model time step (Bénard

¹The SL schemes are subject to a topological realisability condition based on the Lipschitz number which is related to the flow deformation (Smolarkiewicz and Pudykiewicz, 1992; Cossette et al., 2014). However, in NWP this condition is typically much less restrictive than the advective CFL stability condition of Eulerian schemes, see e.g. Diamantakis and Magnusson (2016).

et al., 2010; Wedi et al., 2015). Furthermore, the large overlap regions between parallel distributed-memory partitions required in the SL scheme of IFS-ST can also be an issue in the longer term.

The uncertainties concerning the SISL integration based on the ST method with regard to emerging and future HPC architectures is one of the main reasons for ECMWF and its European partners to look into alternative nonhydrostatic, all-scale global model formulations and discretisation schemes to be incorporated in the IFS. With this objective in mind, the Finite-Volume Module of the IFS (henceforth IFS-FVM) is under development at ECMWF (Smolarkiewicz et al., 2016; Kühnlein and Smolarkiewicz, 2017; Smolarkiewicz et al., 2017). An important property of the finite-volume (FV) method applied in IFS-FVM is a compact spatial discretisation stencil in "grid-point" space, associated with distributed-memory communication footprint that is predominantly local and performed using thin overlap regions with the nearest neighbours, in contrast to the non-local high-volume communications required in IFS-ST. In addition, advantages of the FV method are inherently local conservation and the ability to operate in complex, unstructured-mesh geometries. The lack of conservation is a common issue with standard SL schemes and a shortcoming in the current operational IFS. Conservation errors are presumed to contribute to significant (moisture and temperature) biases in the upper-troposphere lower-stratosphere region (Wedi et al., 2015), and an albeit small but systematic drift in air mass and tracer fields may affect the forecast quality at longer (sub-)seasonal forecast ranges (Thuburn, 2008; Diamantakis and Flemming, 2014). The ability of FV methods to operate in complex, unstructured mesh geometries is of high relevance to global NWP. In the global (spherical or spheroidal) domains, the FV technique provides ample freedom for implementing efficient quasi-uniform resolution meshes, that circumvent the polar anisotropy of the classical regular longitude-latitude grids commonly employed with finite-difference (FD) discretisation methods (Prusa et al., 2008; Wood et al., 2014). Flexibility with respect to the mesh is also important for implementing variable and/or adaptive resolution in atmospheric modeling systems, where locally finer mesh spacings in sensitive regions (e.g. storm-tracks) may provide an efficient way towards a more accurate representation of multi-scale interactions (Bacon et al., 2000; Weller et al., 2010; Kühnlein et al., 2012; Zarzycki et al., 2014).

By default, IFS-FVM employs 3D semi-implicit integrators for the nonhydrostatic fully compressible equations (Smolarkiewicz et al., 2014). The all-scale integrators in IFS-FVM are conceptually akin to the semi-implicit schemes in IFS-ST but more general. In both formulations, accurate and robust integration with large time steps is achieved by 3D implicit representation of fast acoustic and buoyant modes supported by the fully compressible equations. Furthermore, fully implicit representation of slow rotational modes is another common feature of both IFS-FVM and IFS-ST (Temperton, 2011; Smolarkiewicz et al., 2016). Although implicit time stepping is predominantly associated with the computational stability, there are indications for favourable balance and accuracy in multi-scale flows (Knoll et al., 2003; Dörnbrack et al., 2005; Wedi and Smolarkiewicz, 2006). In contrast to IFS-ST, IFS-FVM's semi-implicit schemes do not rely on constant coefficients of the operator that is represented implicitly, as is required with the spectral space representation (Bénard et al., 2010). In IFS-ST, the operator that is represented implicitly results from linearisation of the full nonlinear governing equations about a horizontal reference state, and the semi-implicit integration then treats the nonlinear residual (i.e. full nonlinear equations minus the linear operator) explicitly (see Section 2.2). Constant coefficients effectively exclude orographic forcing from the linear operator of

the semi-implicit scheme ², leaving the associated effects solely to the explicit nonlinear residual. Furthermore, in the constant-coefficient semi-implicit scheme different (i.e. split) boundary conditions are applied in the linear operator and the nonlinear residual. Albeit still a research issue, the constant-coefficient semi-implicit scheme may incur reduced stability under more complex orography for future high-resolution forecasts in the nonhydrostatic regime.

5 At ECMWF, the reign of the ST method with the SISL integrators still continues, but future challenges especially with respect to HPC, nonhydrostatic modeling and complex orography can be foreseen. IFS-FVM represents an alternative dynamical core formulation that can complement IFS-ST with regard to these issues. However, to make IFS-FVM a useful option for global medium-range weather forecasting at ECMWF, it needs to be shown that the model formulation can provide (at least) comparable solution quality to the established IFS. In particular, a fundamental scientific question is whether a second-order
10 FV method on the co-located meshes employed in IFS-FVM can sustain the accuracy of the ST method of IFS-ST. Another important question concerns the computational efficiency of IFS-FVM. At ECMWF and generally in NWP, tight constraints exist with regard to the runtime of the forecast models on the employed supercomputers. Therefore, we will evaluate the basic efficiency in terms of time-to-solution of the current IFS-FVM formulation relative to the operational hydrostatic IFS-ST and its nonhydrostatic extension. In the present paper, these issues are investigated using relevant atmospheric flow benchmarks
15 such as those defined in the context of the Dynamical Core Model Intercomparison Project (DCMIP, Ullrich et al., 2017). The DCMIP-2016 benchmarks involve large-scale hydrostatic and small-scale nonhydrostatic flows on the sphere, and also emphasise the interaction of the dynamical core with selected parametrizations of sub-grid scale physical processes. In the present paper IFS-FVM is verified against the proven IFS-ST at ECMWF for the baroclinic instability benchmark in the hydrostatic regime, considering specific configurations and parametrizations of interest at ECMWF. IFS-FVM also participates
20 in the wider DCMIP-2016 model intercomparison, and this includes the nonhydrostatic supercell test case (Zarzycki et al., 2018).

The paper is organised as follows. Section 2 addresses the IFS-FVM and IFS-ST model formulations, and juxtaposes their main formulation features. In particular, while Section 2.1 provides a description of the advanced semi-implicit finite-volume integration scheme of the novel IFS-FVM, Section 2.2 summarises briefly the established IFS-ST. Furthermore, Section 2.3
25 discusses some basic aspects of the coupling to physics parametrizations, and Section 2.4 describes the common octahedral reduced Gaussian grid applied at ECMWF. Having described the model formulations, the IFS-FVM and IFS-ST benchmark simulations are then compared in Section 3. Section 4 concludes the paper.

2 IFS model formulations

The IFS comprises a comprehensive model infrastructure to perform data assimilation and to run deterministic and probabilistic
30 global weather forecasts with various ranges and resolutions, supplemented with pre- and post-processing capabilities. The dynamical core lies at the heart of the NWP model infrastructure.

²Including orography in the implicit part involves multiplications which are standardly performed in grid-point space in the context of the ST method. In principle, one could carry out the necessary multiplications in spectral space but this is usually avoided because of computational complexity.

Table 1. Summary of the main formulation features of IFS-FVM and IFS-ST. For IFS-ST, information about the hydrostatic formulation and its nonhydrostatic extension are provided (see main text for description). Abbreviations are: finite-element (FE), finite-difference (FD), spectral-transform (ST), finite-volume (FV), two-time-level (2-TL), semi-implicit (SI), iterative-centred-implicit (ICI). A summary of variables is provided in Table D1.

<i>Model aspect</i>	IFS-FVM	IFS-ST	IFS-ST (NH option)
<i>Equation system</i>	fully compressible	hydrostatic primitive	fully compressible
<i>Prognostic variables</i>	$\rho_d, u, v, w, \theta', \varphi', r_v, r_l, r_r, r_i, r_s$	$\ln p_s, u, v, T_v, q_v, q_l, q_r, q_i, q_s$	$\ln \pi_s, u, v, d_4, T_v, \hat{q}, q_v, q_l, q_r, q_i, q_s$
<i>Horizontal coordinates</i>	λ, ϕ (lon-lat)	λ, ϕ (lon-lat)	λ, ϕ (lon-lat)
<i>Vertical coordinate</i>	generalised height	hybrid sigma-pressure	hybrid sigma-pressure
<i>Horizontal discretisation</i>	unstructured finite-volume (FV)	spectral-transform (ST)	spectral-transform (ST)
<i>Vertical discretisation</i>	structured FD/FV	structured FE	structured FD/FE
<i>Horizontal staggering</i>	co-located	co-located	co-located
<i>Vertical staggering</i>	co-located	co-located	co-located/Lorenz
<i>Horizontal grid</i>	octahedral Gaussian/arbitrary	octahedral Gaussian	octahedral Gaussian
<i>Time-stepping scheme</i>	2-TL SI	2-TL constant-coefficient SI	2-TL constant-coefficient SI with ICI
<i>Advection</i>	conservative FV Eulerian	non-conservative SL	non-conservative SL

2.1 Finite-volume module of the IFS

IFS-FVM solves the deep-atmosphere³, non-hydrostatic, fully compressible equations with a generalised height-based terrain-following vertical coordinate. Numerical integration of the governing equations employs a centred two-time-level semi-implicit scheme that provides unconditional stability in 3D with respect to the fast acoustic and buoyant modes, as well as slower rotational modes (Smolarkiewicz et al., 2014, 2016). In Section 2.1.2, we extend the IFS-FVM semi-implicit integration to comprehensive moist-precipitating dynamics coupled to the IFS cloud physics parametrizations—this generalises the simplified moist-precipitating dynamics with different cloud physics coupling described in Smolarkiewicz et al. (2017). The IFS-FVM semi-implicit integration is combined with non-oscillatory forward-in-time (NFT) Eulerian advection based on MPDATA (Multidimensional Positive Definite Advection Transport Algorithm) (Kühnlein and Smolarkiewicz, 2017). In the present work, new efficient horizontal-vertical split NFT advective transport schemes based on MPDATA are developed and applied (Section 2.1.2 and Appendix A). In addition, improved efficacy with the Eulerian NFT MPDATA advection is sought by rigorous implementation of variable time stepping. The unstructured horizontal spatial discretisation uses the median-dual FV approach of Szmelter and Smolarkiewicz (2010), combined with a structured-grid FD/FV approach in the vertical direction (Smolarkiewicz et al., 2016). **In Section 2.1.3, we present a revised computationally-efficient implementation of the median-dual FV approach. High efficacy also results from effective preconditioning of the Krylov-subspace solver for the Helmholtz problem arising in the**

³The shallow-atmosphere equations, the default in IFS-ST, are available by means of a simple switch γ (Appendix C).

semi-implicit time stepping of the fully compressible equations addressed in Section 2.1.2 and Appendix B. To facilitate interoperability between the different numerical methods in the IFS, IFS-FVM uses the median-dual FV mesh about the nodes of the octahedral reduced Gaussian grid. However, the IFS-FVM numerical formulation is not restricted to this grid and offers capabilities towards broad classes of meshes including adaptivity (Szmelter and Smolarkiewicz, 2010; Kühnlein et al., 2012).

- 5 The IFS-FVM employs flexible parallel data structures provided by ECMWF’s Atlas library (Deconinck et al., 2017). The main model formulation features of IFS-FVM are summarised in Table 1, and shown alongside the corresponding IFS-ST properties discussed below in Section 2.2.

2.1.1 Governing equations

Building on the formulation of moist-precipitating dynamics described in Smolarkiewicz et al. (2017), the fully compressible

- 10 equations considered in IFS-FVM are given as

$$\frac{\partial \mathcal{G} \rho_d}{\partial t} + \nabla \cdot (\mathbf{v} \mathcal{G} \rho_d) = 0, \quad (1a)$$

$$\frac{\partial \mathcal{G} \rho_d \mathbf{u}}{\partial t} + \nabla \cdot (\mathbf{v} \mathcal{G} \rho_d \mathbf{u}) = \mathcal{G} \rho_d \left[-\theta_\rho \tilde{\mathbf{G}} \nabla \varphi' + \mathbf{g} \left(1 - \frac{\vartheta}{\theta_{\rho a}} (\theta_a + \theta') \right) - \mathbf{f} \times \left(\mathbf{u} - \frac{\theta_\rho}{\theta_{\rho a}} \mathbf{u}_a \right) + \mathbf{M}' + \mathbf{P}^{\mathbf{u}} \right], \quad (1b)$$

$$\frac{\partial \mathcal{G} \rho_d \theta'}{\partial t} + \nabla \cdot (\mathbf{v} \mathcal{G} \rho_d \theta') = \mathcal{G} \rho_d \left[-\tilde{\mathbf{G}}^T \mathbf{u} \cdot \nabla \theta_a + P^{\theta'} \right], \quad (1c)$$

$$\frac{\partial \mathcal{G} \rho_d r_k}{\partial t} + \nabla \cdot (\mathbf{v} \mathcal{G} \rho_d r_k) = \mathcal{G} \rho_d P^{r_k}, \quad r_k = r_v, r_l, r_r, r_i, r_s \quad (1d)$$

15 $\varphi' = c_{pd} \left[\left(\frac{R_d}{p_0} \rho_d \theta (1 + r_v / \varepsilon) \right)^{R_d / c_{pd}} - \pi_a \right], \quad (1e)$

which describe the conservation laws of dry mass (1a), momentum (1b), dry entropy (1c) and water substance (1d). **A summary of variables and physical constants is provided in Tables D1 and D2, respectively.** Dependent variables in (1) are dry density

ρ_d , three-dimensional physical velocity vector $\mathbf{u} = [u, v, w]^T$, potential temperature perturbation θ' , and a modified Exner pressure perturbation $\varphi' \equiv c_{pd} \pi'$, as well as the water substance mixing ratios $r_k \equiv \rho_k / \rho_d$ (i.e. the ratio of density of the

- 20 individual water substance category ρ_k to the density of dry air ρ_d)—with the current cloud parametrization of the IFS (Forbes et al., 2010), five categories for water substance are considered (vapor r_v , liquid r_l , rain r_r , ice r_i , snow r_s), each described by the respective PDE (1d). An additional prognostic equation for cloud fraction Λ_a employed with the IFS cloud parametrization is implemented as

$$\frac{\partial \mathcal{G} \rho_d \Lambda_a}{\partial t} + \nabla \cdot (\mathbf{v} \mathcal{G} \rho_d \Lambda_a) = \mathcal{G} \rho_d P^{\Lambda_a}. \quad (2)$$

- 25 Furthermore, the thermodynamic variables are related by the gas law (1e)—the Exner pressure is $\pi = (p/p_0)^{R_d/c_{pd}}$ and the potential temperature is $\theta = T/\pi$, where p is the total pressure, $p_0 \equiv 10^5$ Pa, and T is the (absolute) temperature. **In Section 2.1.2, the fully compressible system (1) is augmented with the prognostic Helmholtz equation (17) derived from the advective form of the gas law (1e), for the implicit (rather than explicit) solution with respect to the Exner pressure perturbation φ' .**

- A quantity which appears in various **right-hand-side (rhs)** terms of the momentum equation (1b) is the density potential
30 temperature $\theta_\rho = \theta \vartheta$, where $\vartheta \equiv (1 + r_v / \varepsilon) / (1 + r_t)$ (Emanuel, 1994) with $\varepsilon = R_d / R_v$ and the total water mixing ratio r_t

represents the sum over all the individual mixing ratios

$$r_t = \sum_k r_k = r_v + r_l + r_r + r_i + r_s . \quad (3)$$

The multiplying factor ϑ appears explicitly in the buoyancy term of (1b), in order to expose the potential temperature perturbation θ' for implicit coupling to the thermodynamic equation (1c) (see Section 2.1.2). Note that a high-order approximation of the buoyancy term applied in Kurowski et al. (2014); Smolarkiewicz et al. (2017) for consistency with soundproof models at mesoscales, has been replaced here by the full, unabbreviated form essential for the accurate representation of moist-precipitating dynamics at planetary scales (Section 3).

Another important aspect of the governing equations (1) is the underlying perturbation form. The perturbations of potential temperature $\theta' = \theta - \theta_a$ and Exner pressure $\pi' = \pi - \pi_a$ correspond to deviations from an ambient state (denoted by the subscript "a") that satisfies a general balanced subset of (1). A straightforward example applied in Section 3 of this paper is a stationary atmosphere $\mathbf{u}_a(\mathbf{x})$, $\theta_a(\mathbf{x})$, $\pi_a(\mathbf{x})$, $r_{va}(\mathbf{x})$ in thermal wind balance, which in terms of the momentum equation (1b) is

$$0 = -\theta_{\rho a} \tilde{\mathbf{G}} \nabla \varphi_a - \mathbf{g} - \mathbf{f} \times \mathbf{u}_a + \mathcal{M}(\mathbf{u}_a) , \quad (4)$$

where $\varphi_a \equiv c_{pd} \pi_a$ and $\theta_{\rho a} = \theta_a (1 + r_{va}/\varepsilon)/(1 + r_{va})$. The perturbation form (1) is analytically equivalent to the fully compressible equations for full variables but has favourable properties for numerical integration; see Section 2.1.2 and Prusa et al. (2008); Smolarkiewicz et al. (2014). Moreover, there are other analytically equivalent perturbation forms of the fully compressible equations implemented in IFS-FVM, which may differ in the degree of implicitness permitted in the integration (Smolarkiewicz et al., 2019). **The optimal specification of ambient states for NWP and climate modelling is ongoing research. In general, ambient states can be as simple as stationary vertical profiles in hydrostatic balance, but bespoke definitions designed for a particular class of applications can substantially benefit the accuracy and robustness of the model integration.**

The governing equations in (1)-(2) are formulated with respect to generalised curvilinear coordinates embedded in a geospherical framework. At the most elementary level, the generalised curvilinear coordinate formulation can be used to implement fixed terrain-following levels with appropriate boundary conditions, but the model formulation optionally permits quite general moving meshes in the vertical and the horizontal directions. Symbols associated with the geometric aspects of the model are the transformed curvilinear coordinates $\mathbf{x} = [x, y, z]^T$, the 3D nabla operator ∇ with respect to \mathbf{x} , the Jacobian \mathcal{G} of the coordinate transformations (i.e. the square root of the determinant of the metric tensor), a matrix of metric coefficients $\tilde{\mathbf{G}}$, its transpose $\tilde{\mathbf{G}}^T$, and the contravariant velocity $\mathbf{v} = \dot{\mathbf{x}} = \tilde{\mathbf{G}}^T \mathbf{u} + \mathbf{v}^g$ where $\mathbf{v}^g \equiv \partial \mathbf{x} / \partial t$ is the mesh velocity; see Prusa and Smolarkiewicz (2003); Kühnlein et al. (2012) for extended discussion. Following Smolarkiewicz et al. (2017), further symbols on the rhs of the momentum equation (1b) denote the gravity vector $\mathbf{g} = [0, 0, -g]^T$, the Coriolis parameter $\mathbf{f} \equiv 2\boldsymbol{\Omega}$ with $\boldsymbol{\Omega}$ the angular velocity vector of the Earth's rotation, and \mathcal{M}' subsumes the metric forces due to the curvature of the sphere

$$\mathcal{M}'(\mathbf{u}, \mathbf{u}_a, \theta_\rho / \theta_{\rho a}) = \mathcal{M}(\mathbf{u}) - (\theta_\rho / \theta_{\rho a}) \mathcal{M}(\mathbf{u}_a) . \quad (5)$$

Details about the specification of the curvilinear space, as well as explicit expressions of the Coriolis term $-\mathbf{f} \times \mathbf{u}$, the metric forces \mathcal{M} , and the gravity g under shallow- or deep-atmosphere equations, are given in Appendix C. Last but not least, the symbols $\mathbf{P}^{\mathbf{u}} = [P^u, P^v, P^w]^T$, $P^{\theta'}$, P^{r_k} on the rhs of (1) denote the respective forcings from physics parametrizations.

Note that additional rhs terms not explicitly provided in the governing equations (1) may describe Rayleigh-type damping and/or Laplacian diffusion, applied especially to model wave-absorbing layers at the domain boundaries, see e.g. Prusa and Smolarkiewicz (2003); Klemp et al. (2008).

2.1.2 Semi-implicit numerical integration

- 5 To facilitate a compact description of the integration scheme, each of the governing equations of the system (1) is accommodated in a generalised conservation law form

$$\frac{\partial G\Psi}{\partial t} + \nabla \cdot (\mathbf{V}\Psi) = G (\mathcal{R}^\Psi + P^\Psi) , \quad (6)$$

in which Ψ denotes the prognostic model variable, \mathbf{V} the advector, G a generalised density, P^Ψ represents the forcing from physics parametrization and \mathcal{R}^Ψ the remaining right-hand-side;⁴ see Table 2 for the respective specifications of Ψ , \mathbf{V} , G . The
 10 homogeneous mass continuity equation (1a) is a particular case of (6) and plays a fundamental role for the conservative advective transport of all other scalar variables. Note that because of the mass continuity equation (1a), the other scalar conservation laws (6) are equivalent to the Lagrangian form $d\Psi/dt = \mathcal{R}^\Psi + P^\Psi$, where $d/dt = \partial/\partial t + \mathbf{v} \cdot \nabla$ represents the total derivative.

Building on the earlier works by Smolarkiewicz et al. (2014, 2016), the two-time-level numerical integrators of IFS-FVM for (6) can be subsumed in the following template scheme

$$15 \quad \Psi_{\mathbf{i}}^{n+1} = \mathcal{A}_{\mathbf{i}}(\tilde{\Psi}, \mathbf{V}^{n+1/2}, G^n, G^{n+1}, \delta t) + b^\Psi \delta t \mathcal{R}^\Psi|_{\mathbf{i}}^{n+1} \equiv \hat{\Psi}_{\mathbf{i}} + b^\Psi \delta t \mathcal{R}^\Psi|_{\mathbf{i}}^{n+1} , \quad (7)$$

where

$$\tilde{\Psi} = \Psi^n + a^\Psi \delta t \mathcal{R}^\Psi|_n + \delta t P^\Psi|_n , \quad (8)$$

and $\hat{\Psi}_{\mathbf{i}} = \mathcal{A}_{\mathbf{i}}(\tilde{\Psi}, \mathbf{V}^{n+1/2}, G^n, G^{n+1}, \delta t)$ in (7) symbolises a flux-form Eulerian NFT advective transport scheme based on MP-DATA, as described in Kühnlein and Smolarkiewicz (2017) and Appendix A of the present paper. The n , $n+1/2$, $n+1$ indices
 20 denote full and half time levels, and $\delta t = t^{n+1} - t^n$ the time step increment of the semi-implicit dynamics. The vector index $\mathbf{i} = (k, i)$ marks the node positions k and i of the, respectively, vertical and horizontal computational mesh, thereby revealing the 3D co-located spatial arrangement of all dependent variables underlying IFS-FVM's discretisation. The definitions of the weights a^Ψ and b^Ψ for the incorporation of the right-hand-side terms \mathcal{R}^Ψ at t^n and t^{n+1} , respectively, are given in Table 2. Apart from the incorporation of the physics parametrization P^Ψ , the semi-implicit scheme (7) with weights $a^\Psi \equiv b^\Psi \equiv 0.5$ is
 25 fully congruent with the second-order trapezoidal-rule trajectory integral of the corresponding ordinary differential equation

$$\frac{d\Psi}{dt} = \mathcal{R}^\Psi \quad (9)$$

of (6) (Smolarkiewicz and Margolin, 1993). Due to the congruency of (7) with the ODE (9), the advection operator $\hat{\Psi}_{\mathbf{i}}$ may equally represent a second-order accurate semi-Lagrangian scheme (Smolarkiewicz et al., 2014). In terms of the coupling to

⁴As an example, $\mathcal{R}^{\theta'}$ $\equiv -\tilde{\mathbf{G}}^T \mathbf{u} \cdot \nabla \theta_a$ when considering (1c).

physics parametrizations, formally incorporated with first-order accuracy, the associated forcing $P^\Psi|n = P^\Psi(t_{phys}, \Delta t_{phys})$ can optionally be evaluated with an equal or longer time step $\Delta t_{phys} = N_s \delta t$ (with integer $N_s = 1, 2, 3, \dots$) than δt applied in (7); see Section 2.3 about physics-dynamics coupling.

There are two alternative implementations of the NFT advective transport scheme $\mathcal{A}_i(\tilde{\Psi}, \mathbf{V}^{n+1/2}, G^n, G^{n+1}, \delta t)$ based on MPDATA. First, the standard MPDATA formulations for integrating the fully compressible equations in the horizontally-unstructured vertically-structured discretisation framework of IFS-FVM are provided in Kühnlein and Smolarkiewicz (2017). These schemes are fully multidimensional (i.e. unsplit), equipped with non-oscillatory enhancement (Smolarkiewicz and Grabowski, 1990; Smolarkiewicz and Szmelter, 2005), and qualify for implicit large-eddy simulation (ILES) of high-Reynolds number atmospheric flows, e.g. Domaradzki et al. (2003); Piotrowski et al. (2009); Smolarkiewicz et al. (2013). Secondly, a more efficient horizontal-vertical split advective transport scheme based on MPDATA has been developed and it is outlined in Appendix A. All IFS-FVM results presented in Section 3 were obtained with this horizontal-vertical split scheme. Note that the basic unsplit and horizontal-vertical split MPDATA schemes are second-order accurate given the advector $\mathbf{V}^{n+1/2}$ at the intermediate time level $t^{n+1/2}$ is provided as an $\mathcal{O}(\delta t^2)$ estimate, which is explained in the following.

Table 2. Specification of prognostic model variables and corresponding parameters in the template scheme (7)-(8). Columns represent the dependent variable Ψ , the advector \mathbf{V} , a generalised density G , and a^Ψ , b^Ψ the weights for the incorporation of the rhs forcings \mathcal{R}^Ψ . The rightmost column refers to the governing equation for each dependent variable Ψ .

Variable	Ψ	\mathbf{V}	G	a^Ψ	b^Ψ	Equation
Dry density	ρ_d	$\mathbf{v}\mathcal{G}$	\mathcal{G}	-	-	(1a)
Zonal physical velocity	u	$\mathbf{v}\mathcal{G}\rho_d$	$\mathcal{G}\rho_d$	0.5	0.5	(1b)
Meridional physical velocity	v	$\mathbf{v}\mathcal{G}\rho_d$	$\mathcal{G}\rho_d$	0.5	0.5	(1b)
Vertical physical velocity	w	$\mathbf{v}\mathcal{G}\rho_d$	$\mathcal{G}\rho_d$	0.5	0.5	(1b)
Potential temperature perturbation	θ'	$\mathbf{v}\mathcal{G}\rho_d$	$\mathcal{G}\rho_d$	0.5	0.5	(1c)
Water vapor mixing ratio	r_v	$\mathbf{v}\mathcal{G}\rho_d$	$\mathcal{G}\rho_d$	-	-	(1d)
Liquid water mixing ratio	r_l	$\mathbf{v}\mathcal{G}\rho_d$	$\mathcal{G}\rho_d$	-	-	(1d)
Rain water mixing ratio	r_r	$\mathbf{v}\mathcal{G}\rho_d$	$\mathcal{G}\rho_d$	-	-	(1d)
Ice mixing ratio	r_i	$\mathbf{v}\mathcal{G}\rho_d$	$\mathcal{G}\rho_d$	-	-	(1d)
Snow mixing ratio	r_s	$\mathbf{v}\mathcal{G}\rho_d$	$\mathcal{G}\rho_d$	-	-	(1d)
Cloud fraction	Λ_a	$\mathbf{v}\mathcal{G}\rho_d$	$\mathcal{G}\rho_d$	-	-	(2)
Exner pressure perturbation	φ'	$\mathbf{v}\mathcal{G}\rho_d$	$\mathcal{G}\rho_d$	$(1 - \alpha)$	α	(17)

Given the preceding discussion, the semi-implicit solution procedure of the governing system (1) proceeds from an atmospheric state at t^n to a state at t^{n+1} as described in the following. The solution procedure commences with the integration of the mass continuity equation (1a) as

$$\rho_{di}^{n+1} = \mathcal{A}_i(\rho_d^n, (\mathbf{v}\mathcal{G})^{n+1/2}, G^n, G^{n+1}, \delta t), \quad (10)$$

which straightforwardly returns the updated density ρ_{di}^{n+1} . The $\mathcal{O}(\delta t^2)$ estimate for the advector $(\mathbf{v}\mathcal{G})^{n+1/2}$ in (10) is implemented here by linear extrapolation of the advective velocities from the previous time levels t^{n-1} and t^n ; see Appendix A of Kühnlein et al. (2012) for the procedure accounting for a variable time step δt . In addition, the algorithm (10) defines the advector $\mathbf{V}^{n+1/2} \equiv (\mathbf{v}\mathcal{G}\rho_d)^{n+1/2}$ —as face-normal mass fluxes to the dual cell $(\mathbf{v}\mathcal{G}\rho_d)^\perp|^{n+1/2}$ —for the advective transport of all other scalar variables (see Table 2), a common approach to enable mass-compatible and monotonic solutions; see Smolarkiewicz et al. (2016) and Kühnlein and Smolarkiewicz (2017) for discussion in the context of IFS-FVM.

Given the tendencies from physics parametrization $P^{\theta'}$, P^u , P^v , P^{r_k} , P^{Λ_a} formally evaluated at t^n , and the advective transport of all scalar variables $\hat{\theta}'_i$, $\hat{\mathbf{u}}_i \equiv (\hat{u}_i, \hat{v}_i, \hat{w}_i)$, $r_{k_i}^{n+1} \equiv \hat{r}_{k_i}$, $\Lambda_{a_i}^{n+1} \equiv \hat{\Lambda}_{a_i}$ —with the advected water content mixing ratios \hat{r}_{k_i} and cloud fraction $\hat{\Lambda}_{a_i}$ representing already the final solutions at t^{n+1} —the scheme (7)-(8) for the thermodynamic (1c) and momentum (1b) equations is implemented as

$$\theta'_i = \hat{\theta}'_i - 0.5\delta t \left[\tilde{\mathbf{G}}^T \mathbf{u} \cdot \nabla \theta_a \right]_i \quad (11a)$$

$$\mathbf{u}_i = \hat{\mathbf{u}}_i + 0.5\delta t \left[-\theta_\rho^* \tilde{\mathbf{G}} \nabla \varphi' + \mathbf{g} \left(1 - \frac{\vartheta^{n+1}}{\theta_{\rho a}} (\theta_a + \theta') \right) - \mathbf{f} \times \left(\mathbf{u} - \frac{\theta_\rho^*}{\theta_{\rho a}} \mathbf{u}_a \right) + \mathcal{M}'(\mathbf{u}^*, \mathbf{u}_a, \frac{\theta_\rho^*}{\theta_{\rho a}}) \right]_i. \quad (11b)$$

where

$$\theta_\rho^* = \theta^* \vartheta^{n+1} \equiv \frac{\theta^* (1 + r_v^{n+1} / \varepsilon)}{(1 + r_t^{n+1})}. \quad (12)$$

Due to the presence of nonlinear terms, the discrete system (11) is executed iteratively (Smolarkiewicz and Dörnbrack, 2008; Smolarkiewicz et al., 2014), with lagged quantities from the previous iteration denoted by the superscript $*$. Typically, it uses one corrective iteration, which results in a predictor-corrector approach. The predictor of (11) alone is second-order accurate, and the predictor-corrector already closely approximates the corresponding trapezoidal integral (Smolarkiewicz and Szmelter, 2009; Smolarkiewicz et al., 2014, 2019). With the respective prognostic model variables θ' and \mathbf{u} in (11) the $n+1$ time level index has been dropped, but the $n+1$ time level index is retained with the coefficient ϑ^{n+1} defined in (12) that is composed of the already completed r_k^{n+1} . At the beginning of the iterative execution of (11), a first guess θ^0 for θ^* is provided as the explicit solution of full potential temperature

$$\theta_i^0 = \hat{\theta}_i = \mathcal{A}_i(\theta^n + \delta t P^{\theta'}|^{n}, (\mathbf{v}\mathcal{G}\rho_d)^\perp|^{n+1/2}, (\mathcal{G}\rho_d)^n, (\mathcal{G}\rho_d)^{n+1}, \delta t), \quad (13)$$

whereas a first guess \mathbf{u}^0 for \mathbf{u}^* is prescribed by linear extrapolation of \mathbf{u} from the t^{n-1} and t^n time levels (again, taking into account the variable time step δt).

From (11), closed-form expressions for the discrete velocity update are derived by eliminating (11a) for θ'_i in the buoyancy term of (11b)—thereby implementing 3D fully implicit treatment of buoyant modes in a moist-precipitating atmosphere—and gathering the terms with linear dependence on \mathbf{u}_i on the lhs, which results in

$$\mathbf{u} + 0.5\delta t \mathbf{f} \times \mathbf{u} - (0.5\delta t)^2 \frac{\mathbf{g}}{\theta_a} \tilde{\mathbf{G}}^T \mathbf{u} \cdot \nabla \theta_a = \hat{\mathbf{u}} - 0.5\delta t \left[\frac{\mathbf{g}}{\theta_{\rho a}} \left(\theta_{\rho a} - \vartheta^{n+1} \theta_a - \vartheta^{n+1} \hat{\theta}' \right) - \mathbf{f} \times \frac{\theta_\rho^*}{\theta_{\rho a}} \mathbf{u}_a - \mathcal{M}'(\mathbf{u}^*, \mathbf{u}_a, \frac{\theta_\rho^*}{\theta_{\rho a}}) \right] - 0.5\delta t \theta_\rho^* \tilde{\mathbf{G}} \nabla \varphi' \equiv \hat{\mathbf{u}} - 0.5\delta t \theta_\rho^* \tilde{\mathbf{G}} \nabla \varphi'. \quad (14)$$

As all terms are co-located, the spatial mesh vector index \mathbf{i} has been omitted in (14). The rhs of (14) is composed of all explicitly known terms, summarised as $\widehat{\mathbf{u}}$, and the pressure gradient term with the lagged coefficient θ_ρ^* . Defining \mathbf{L} as the linear operator acting on \mathbf{u} on the lhs, and \mathbf{L}^{-1} its inverse, (14) can be symbolised, respectively as

$$\mathbf{L}\mathbf{u} = \widehat{\mathbf{u}} - 0.5\delta t\theta_\rho^*\widetilde{\mathbf{G}}\nabla\varphi', \quad (15)$$

5 and

$$\mathbf{u} = \check{\mathbf{u}} - \mathbf{C}\nabla\varphi', \quad (16)$$

where $\check{\mathbf{u}} = \mathbf{L}^{-1}\widehat{\mathbf{u}}$, and $\mathbf{C} = \mathbf{L}^{-1}0.5\delta t\theta_\rho^*\widetilde{\mathbf{G}}$ denotes a 3×3 matrix of known coefficients. The solution algorithm presented up to (16), still requires the Exner pressure perturbation φ' to be specified. A straightforward computation may employ the gas law (1e), using the updated variables ρ_d , θ , and r_v . However, the resulting 3D explicit acoustic integration is subject to very small
10 time steps in order to maintain numerical stability, and inefficient for NWP. Therefore, a final step in IFS-FVM's numerical solution procedure is to augment the fully compressible equations (1) with an auxiliary 3D implicit boundary value problem for the pressure perturbation variable φ' (Smolarkiewicz et al., 2014). The formulation of this implicit boundary value problem originates from the advective (or Lagrangian) form of the gas law (1e), combined with the respective advective forms of the mass continuity (1a), thermodynamic (1c) and water vapour (1d) equations, see Smolarkiewicz et al. (2014, 2017) for further
15 details. The governing equation for φ' is then implemented in conservation form consistent with (1), and reads

$$\frac{\partial\mathcal{G}\rho_d\varphi'}{\partial t} + \nabla \cdot (\mathbf{v}\mathcal{G}\rho_d\varphi') = \mathcal{G}\rho_d \left[-\frac{R_d}{c_{vd}}\frac{\varphi}{\mathcal{G}}\nabla \cdot (\mathcal{G}\widetilde{\mathbf{G}}^T\mathbf{u}) - \frac{1}{\mathcal{G}\rho_d}\nabla \cdot (\mathcal{G}\rho_d\widetilde{\mathbf{G}}^T\mathbf{u}\varphi_a) + \frac{\varphi_a}{\mathcal{G}\rho_d}\nabla \cdot (\mathcal{G}\rho_d\widetilde{\mathbf{G}}^T\mathbf{u}) + \frac{R_d}{c_{vd}}\varphi\Pi \right], \quad (17)$$

where $\varphi = \varphi_a + \varphi'$ and

$$\Pi = \left(\frac{P^{\theta'}}{\theta} + \frac{P^{r_v}/\varepsilon}{1+r_v/\varepsilon} \right). \quad (18)$$

We interpret (17) in terms of the generalised transport equation (6) for $\Psi \equiv \varphi'$ (cf. Table 2), while setting

$$20 \quad P^{\varphi'} = (R_d/c_{vd})\varphi\Pi, \quad (19)$$

and $\mathcal{R}^{\varphi'}$ as the remaining rhs consisting of the three divergence operators. **Importantly, the $P^{\varphi'}$ given by (19) describes the pressure adjustment from the physics parametrization tendencies $P^{\theta'}$ and P^{r_v} . We have implemented the integration of (17) using the template semi-implicit scheme (7) with parameters $a^{\varphi'} = (1 - \alpha)$ and $b^{\varphi'} = \alpha$, where $\alpha \in [0.5, 1.0]$. In the limit $\alpha = 1.0$, the template (7) represents the first-order backward Euler scheme with regard to $\mathcal{R}^{\varphi'}$. For $\alpha = 0.5$, the template (7)
25 becomes the second-order trapezoidal scheme; in practice we may use weak off-centring (e.g. $\alpha = 0.51$) for regularisation. For any specification of α , coupling with the solution procedure of the fully compressible equations (1) is implemented through (16) that enters into the three occurrences of \mathbf{u} on the rhs of (17) in $\mathcal{R}^{\varphi'}|^{n+1}$. Furthermore, as indicated in (7), the (explicit) forward Euler scheme is used with regard to the forcing $P^{\varphi'}$. Reorganising terms finally yields the elliptic Helmholtz equation for the pressure perturbation variable φ' at the future time level t^{n+1} , which can be written compactly as**

$$30 \quad 0 = -\sum_{\ell=1}^3 \left(\frac{A_\ell^*}{\zeta_\ell} \nabla \cdot \zeta_\ell \widetilde{\mathbf{G}}^T (\check{\mathbf{u}} - \mathbf{C}\nabla\varphi') \right) - B^*(\varphi' - \widehat{\varphi}') \equiv \mathcal{L}(\varphi') - R, \quad (20)$$

where the spatial grid index \mathbf{i} has been omitted again. The summation ℓ in (20) is over the three divergence operators on the rhs of (17). The symbolic notations $\mathcal{L}(\varphi')$ and R refer to the implicit and explicit parts of the equation, respectively. The coefficients A_ℓ^* , ζ_ℓ and B^* are defined accordingly as

$$A_1^* = 1, \quad A_2^* = A_3^* = \frac{c_{vd}}{R_d} \frac{\varphi_a}{\varphi}, \quad \zeta_1 = \mathcal{G}, \quad \zeta_2 = \mathcal{G}\rho_d\varphi_a, \quad \zeta_3 = \mathcal{G}\rho_d, \quad B^* = \frac{1}{\alpha\delta t} \frac{c_{vd}}{R_d\varphi}, \quad (21)$$

5 and $\widehat{\varphi}' = \mathcal{A}(\varphi'^n + (1-\alpha)\delta t \mathcal{R}\varphi'^n + \delta t P\varphi'^n, (\mathbf{v}\mathcal{G}\rho_d)^\perp|^{n+1/2}, (\mathcal{G}\rho_d)^n, (\mathcal{G}\rho_d)^{n+1}, \delta t)$. The Helmholtz equation (20) extends the implementations in Smolarkiewicz et al. (2016, 2017); Kühnlein and Smolarkiewicz (2017) that all used the backward Euler scheme $\alpha = 1$. The 3D elliptic boundary value problem (20) is solved using a nonsymmetric preconditioned Generalised Conjugate Residual (GCR) approach, see Smolarkiewicz and Szmelter (2011) for a recent discussion and Smolarkiewicz and Margolin (2000); Smolarkiewicz et al. (2004) for tutorials. The crux of the preconditioning is the direct inversion of the vertical
10 part of the problem that dramatically reduces the condition number of the full linear operator \mathcal{L} and enables rapid convergence of the GCR solver. The preconditioner $\mathcal{P} \approx \mathcal{L}$ discards the off-diagonal entries of the matrix $\widetilde{\mathbf{G}}^T \mathbf{C}$. Inversion of \mathcal{P} then utilizes a weighted line Jacobi method explained in Appendix B. In the GCR solver and the preconditioner \mathcal{P} , the coefficients A_2^* , A_3^* and B^* in (21) depend on $\varphi = \varphi_a + \varphi'$, lagged behind in the outer iteration of (11b). Importantly, in the predictor step of the outer iteration, an improved first guess for φ' can be achieved by employing the explicit forward Euler scheme for (17),
15 obtained by setting $\alpha = 0$ in (7).

As far as the adiabatic dynamics is concerned, the $\mathcal{O}(\delta t^2)$ integration of (17) with the first-order backward Euler scheme $\alpha = 1$ maintains second-order accuracy of all variables except φ' over a single time step, because φ' enters the pressure gradient term of the momentum equation with the factor $0.5\delta t$, hence resulting in an $\mathcal{O}(\delta t^3)$ integral. The accumulation of first-order errors in φ' can be mitigated by solving (17) with the weakly off-centred trapezoidal scheme using $\alpha = 0.51$; see Benacchio
20 et al. (2014) for alternative design and pertinent discussion. All IFS-FVM results presented in Section 3 were obtained with the backward Euler scheme $\alpha = 1$, as this has been the default in the earlier implementations. However, using the extended-range forecast of the baroclinic instability benchmark, we will demonstrate that either $\alpha = 1$ or $\alpha = 0.51$ show the same close agreement with IFS-ST. Moreover, both choices $\alpha = 1$ or $\alpha = 0.51$ provide essentially identical computational performance.

Overall, the 3D implicit scheme with respect to φ' permits time steps equivalent to soundproof models (Kurowski et al.,
25 2014; Smolarkiewicz et al., 2014; Kühnlein and Smolarkiewicz, 2017). Together with the full 3D implicit incorporation of buoyant and rotational modes described above, the semi-implicit integration is unconditionally stable with respect to all waves supported by the fully compressible equations (1), and thus the semi-implicit model time step δt can be selected according to the stability of the advective transport scheme $\mathcal{A}_i(\widetilde{\Psi}, \mathbf{V}^{n+1/2}, G^n, G^{n+1}, \delta t)$ in (7).

2.1.3 Spatial discretization

30 The discretisation framework of IFS-FVM combines a structured-grid FD/FV method in the vertical with an unstructured⁵ FV approach in the horizontal (Smolarkiewicz et al., 2016). The FV discretisation and differentiation on the spherical surfaces

⁵Note that although the presented IFS-FVM formulation assumes an unstructured mesh with indirect addressing in the horizontal, the model may exploit structured or semi-structured grids on future HPC architectures.

adopts the median-dual approach described in Szmelter and Smolarkiewicz (2010). All dependent variables are co-located in the nodes in 3D. The consistent spatial discretisation of the applied MPDATA schemes in IFS-FVM, symbolised by the operator \mathcal{A}_i in (7), is described in Kühnlein and Smolarkiewicz (2017).

The schematic in Fig. 1 illustrates an arbitrary unstructured mesh on a 2D horizontal plane. The median-dual FV approach defines the control volume containing the node i by connecting the barycentres of polygonal mesh cells encompassing the node i with the midpoints of the edges originating in the node i . All geometric elements such as cell volume \mathcal{V}_i , cell face area S_j , and face normals \mathbf{n}_j are evaluated from vector calculus in the computational space, i.e. in terms of x and y coordinates (see Section 2.1.1) on a zonally-periodic horizontal plane (Szmelter and Smolarkiewicz, 2010). The unstructured FV discretisation in the horizontal is combined with standard second-order FD/FV method on the vertical structured grid with independent coordinate z .

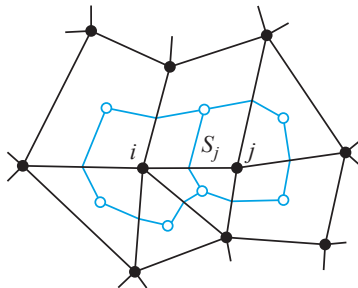


Figure 1. Schematic of the median-dual mesh in 2D. The edge connecting nodes i and j of the primary polygonal mesh pierces, precisely in the edge centre, the face S_j shared by computational dual cells surrounding nodes i and j . Open circles represent geometrical barycentres of the primary mesh, solid black lines mark the primary mesh and blue lines indicate dual cells with control volumes \mathcal{V}_i and \mathcal{V}_j , respectively.

For a differentiable vector field \mathbf{A} , the Gauss divergence theorem $\int_{\Omega} \nabla \cdot \mathbf{A} = \int_{\partial\Omega} \mathbf{A} \cdot \mathbf{n}$ applied over the control volume surrounding node $\mathbf{i} = (k, i)$ in 3D **computational space** is given as

$$(\nabla \cdot \mathbf{A})_{\mathbf{i}} = \frac{1}{\mathcal{V}_i} \sum_{j=1}^{l(i)} A_{k,j}^{\perp} S_j + \frac{A_{k+1/2,i}^z - A_{k-1/2,i}^z}{\delta z}, \quad (22)$$

where $l(i)$ numbers edges connecting node (k, i) with its horizontal neighbours (k, j) , and S_j refers both to the face per se and its surface area ⁶. The geometric quantities S_j , \mathcal{V}_i and δz **of the computational space** are independent of height. The fields $A_{k,j}^{\perp}$ and $A_{k+1/2,i}^z$ are interpreted as the mean normal components of the vector \mathbf{A} at the horizontal and vertical cell faces, respectively. **Elementary approximations are given as $A_{k,j}^{\perp} = 0.5 \mathbf{n}_j \cdot (\mathbf{A}_{k,i} + \mathbf{A}_{k,j})$ in the horizontal and $A_{k+1/2,i}^z = 0.5(A_{k+1,i}^z + A_{k,i}^z)$ in the vertical (Szmelter and Smolarkiewicz, 2010; Smolarkiewicz et al., 2016). However, when applied in (22) without nonlinear operations involved at the faces, cancellation of the node value $\mathbf{A}_{k,i}$ occurs, and this is exploited here to obtain a more efficient implementation of the median-dual approach by simply using $A_{k,j}^{\perp} = 0.5 \mathbf{n}_j \cdot \mathbf{A}_{k,j}$ and $A_{k+1/2,i}^z =$**

⁶Note that in IFS-FVM, S_j and \mathcal{V}_i have dimensions of length and area, and the actual face areas and volumes of prismatic cells are, respectively, $S_j \delta z$ and $\mathcal{V}_i \delta z$, in computational space (Smolarkiewicz et al., 2016).

$0.5A_{k+1,i}^z$. Similarly, applying the same cancellation of the node value $\Psi_{k,i}$ of a differentiable scalar field Ψ , the 3D nabla operator $\nabla\Psi$ in computational space interpreted in terms of the Gauss divergence theorem is

$$(\nabla\Psi)_{k,i} = \left(\frac{1}{\mathcal{V}_i} \sum_{j=1}^{l(i)} 0.5\Psi_{k,j} S_j^x, \frac{1}{\mathcal{V}_i} \sum_{j=1}^{l(i)} 0.5\Psi_{k,j} S_j^y, 0.5 \frac{\Psi_{k+1,i} - \Psi_{k-1,i}}{\delta z} \right), \quad (23)$$

where S_j^x and S_j^y denote the x and y components of the oriented surface element $\mathbf{S}_j = S_j \mathbf{n}_j$. Given (22) and (23) in the computational space, they are augmented with metrics of the curvilinear coordinate framework, to obtain the respective physical divergence and gradient appearing in the governing equations of the previous Sections 2.1.1 and 2.1.2, respectively. For illustration, one example for the revised implementation of the velocity divergence in the first term on the rhs of (17) at the node (k, i) is

$$\begin{aligned} \left(\frac{1}{\mathcal{G}} \nabla \cdot (\mathcal{G} \tilde{\mathbf{G}}^T \mathbf{u}) \right)_{k,i} &= \frac{0.5}{\mathcal{G}_{k,i} \mathcal{V}_i} \sum_{j=1}^{l(i)} \mathcal{G}_{k,j} (\tilde{G}_1^1 u)_{k,j} S_j^x + \mathcal{G}_{k,j} (\tilde{G}_2^2 v)_{k,j} S_j^y \\ &+ \frac{0.5}{\mathcal{G}_{k,i} \delta z} \left(\mathcal{G}_{k+1,i} (\tilde{G}_1^3 u + \tilde{G}_2^3 v + \tilde{G}_3^3 w)_{k+1,i} - \mathcal{G}_{k-1,i} (\tilde{G}_1^3 u + \tilde{G}_2^3 v + \tilde{G}_3^3 w)_{k-1,i} \right). \end{aligned} \quad (24)$$

The details about the specification of the curvilinear coordinate framework under shallow- and deep-atmosphere equations are described in Appendix C.

For IFS-FVM, the mesh generation and mesh data structures as well as the nearest-neighbour distributed-memory communication using MPI, are handled by ECMWF's Atlas library, comprehensively described in Deconinck et al. (2017). Atlas is also designed to make use of specific programming paradigms to support accelerators, although these have not yet been explored with IFS-FVM. For the quasi-uniform octahedral reduced Gaussian grid (Section 2.4), the parallelisation of Atlas adopts the equal-regions horizontal domain decomposition of IFS. The nearest-neighbour communications enabling the FV stencil operations in the parallel horizontal domain are performed on overlap regions (halos) between partitions, as well as a 'periodic overlap' for the east-west boundary on the spherical/spheroidal Earth. With the median-dual FV approach presented above, an overlap region of one element is typically used.

In the present work, the programming of the discrete differential operators (22) and (23) in the IFS-FVM modern Fortran code has been comprehensively reviewed from earlier implementations in Smolarkiewicz et al. (2016). While Smolarkiewicz et al. (2016) used a hybrid edge- and node-based programming, already different from the edge-based codes described in Szmelter and Smolarkiewicz (2010), the current IFS-FVM programming represents a purely node-based implementation. When evaluating (22) and (23), outer loops over nodes of the co-located grid (re)compute the required quantities on edges 'on the fly'. The code based on the resulting longer, fused node-based loops perform a larger overall number of computations as quantities on the edges are computed more than once, but it is overall more efficient as many intermediate memory stores are avoided and there is a greater chance for data in cache to be reused. Due to the underlying FD/FV discretisation leading to stencil computations, IFS-FVM is naturally cache and memory-bandwidth bound. The node-based programming improves flop-per-byte ratio and relaxes the dependency on relatively (as compared to pure computation) slow memory access. As a consequence, it provides a significant gain in efficiency as compared to the hybrid edge- and node-based programming applied

in Smolarkiewicz et al. (2016). In addition, the fused loops and data locality in the node-based code effectively enabled the performance of the shared-memory parallelisation with OpenMP, as the threads may operate on more local memory regions and avoid thread conflicts and cache trashing. An overall speed-up of IFS-FVM by a factor of $\sim 3-4$ has been found on ECMWF's Cray XC40 by converting from the hybrid edge- and node-based to the purely node-based code.

- 5 We note that the GCR solver for the Helmholtz problem (20) uses global communications in the computation of inner products (characteristic of Krylov-subspace methods) and residual error norms. This has been implemented for the present paper such that summation is first done locally for each distributed-memory task, and the resulting single numbers are then reduced over all tasks.

2.2 Spectral-transform IFS

- 10 The spectral-transform IFS (simply denoted as IFS-ST in this paper) that is operational at ECMWF is based on the hydrostatic primitive equations (HPEs). The HPEs are formulated in a hybrid sigma-pressure terrain-following vertical coordinate following Simmons and Burridge (1981). The HPEs are integrated numerically using the efficient centred two-time-level SISL scheme, that permits long time steps due to the unconditional stability provided by the fully implicit treatment of the fast acoustic⁷ and buoyant modes, and the 3D SL advection (Ritchie et al., 1995; Temperton et al., 2001; Hortal, 2002). Therefore,
- 15 the constant time step of the SISL integration in IFS-ST can be selected according to optimal efficacy, rather than stability. The ST method, which is applied along model levels in the horizontal, is combined with a finite-element (FE) approach to discretize the integral operator in the vertical direction (Untch and Hortal, 2004)⁸. In 2002, this vertical FE scheme of Untch and Hortal (2004) with a co-located arrangement of prognostic variables replaced the former FD scheme of Simmons and Burridge (1981) with the Lorenz staggering. Prognostic variables of the HPEs and other main formulation features of IFS-ST
- 20 are given in Table 1. Wedi et al. (2015) provide a recent overview of IFS-ST and a comprehensive list of references, while the official IFS documentation and changes with model cycles can be found on the ECMWF website (www.ecmwf.int).

- The IFS-ST uses a discrete spherical-harmonics representation of the spectral space (Wedi et al., 2013). At every time step, the model fields are transposed between grid-point, Fourier and spherical-harmonics representation. General concerns about the computational efficiency of the Legendre transforms between Fourier modes and spherical-harmonics (Williamson, 2007),
- 25 could be mitigated by adopting a fast Legendre transform (FLT, Wedi et al., 2013), which is employed together with fast Fourier transforms (FFTs). Furthermore, the increasing importance of nonlinearities of the rhs forcing terms in the governing equations and aliasing at higher resolutions stimulated the adoption of a cubic truncation of the spherical harmonics in the ST method (Wedi, 2014). The cubic versus the former linear truncation basically samples the highest wavenumber with four instead of two grid points. Special treatment is required near the poles with the reduced grids where it always approaches
- 30 the linear truncation (Wedi, 2014). The extra sampling of a particular spectral resolution with a relatively larger grid size in the cubic truncation led to substantial further improvement in efficiency and accuracy of the IFS-ST at ECMWF (Wedi et al., 2015). The cubic truncation in combination with the octahedral reduced Gaussian grid went operational at ECMWF in 2016.

⁷The HPEs analytically filter internal acoustic modes but support the external Lamb mode.

⁸The FE implementation of the discrete vertical integral operator is based on the Galerkin method using cubic B-splines as basis functions.

The nomenclature for this grid configuration is defined as "TCo" (for "Triangular-Cubic" truncation and "octahedral" grid) followed by the number of waves in spectral space (Malardel et al., 2016). The octahedral reduced Gaussian grid (or simply "octahedral grid"), which is also employed with IFS-FVM, is reviewed in Section 2.4.

The semi-Lagrangian advection scheme in IFS-ST is based on Ritchie et al. (1995). The SL trajectories are computed with an iterative algorithm. At each iteration of the algorithm, the wind at the midpoint in time and space is re-evaluated using the second order time-extrapolating algorithm SETTLS (Stable Extrapolation Two-Time-Level Scheme, Hortal, 2002). The two-time-level semi-implicit integration of IFS-ST follows the template

$$X_A^{n+1} = X_D^n + \mathcal{N}_M^{n+1/2} + \frac{1}{2} (\mathcal{L}_D^n + \mathcal{L}_A^{n+1}) . \quad (25)$$

Here, X represents the prognostic variables, the subscripts A , M and D denote, respectively, the arrival, mid- and departure points, while n and $n + 1$ again refer to the current and future time step. In addition, the operator \mathcal{L} symbolises the linear operator and \mathcal{N} the nonlinear residual $\mathcal{N} = \mathcal{M} - \mathcal{L}$, with \mathcal{M} being the full nonlinear model. The operator \mathcal{L} results from linearisation of \mathcal{M} with regard to a horizontally-homogeneous reference state. Before the final semi-implicit solution with (25) at each time step, the explicit guess of the future model state X is computed by replacing \mathcal{L}_A^{n+1} with \mathcal{L}_A^n . Generally, X_D^n is interpolated at the departure point by quasi-cubic interpolation. A horizontal quasi-monotonic interpolation is used for the horizontal wind, the temperature and the surface pressure and a 3D quasi-monotonic limiter is used for the specific humidity. All the other water content variables are estimated at the departure point using linear interpolation and thus no monotonic filter is needed. The SL scheme in IFS-ST is applied to specific (per unit mass) variables whose equations are written in advective form. It is then intrinsically non-conservative (Malardel and Ricard, 2015), but global mass-fixers have been developed for the atmospheric composition applications (Diamantakis and Flemming, 2014; Diamantakis and Augusti-Panareda, 2017). Notably, with the cubic truncation and the octahedral reduced Gaussian grid, global mass conservation is nearly exact in IFS, see Wedi et al. (2015).

The IFS also includes various research options which are not yet applied in the operational configuration. Most notably, the nonhydrostatic (NH) formulation based on the fully compressible equations (Bubnová et al., 1995; Bénard et al., 2010), which has been made available to ECMWF by Météo-France and the Aladin Consortium. The HPE and NH formulations of IFS-ST employ the same SISL integrators, but the NH extension requires a predictor-corrector approach—the so-called iterative-centred-implicit (ICI) scheme (Bénard et al., 2010)—for stability in global configurations. **The ICI scheme in IFS-ST requires re-computation of the semi-Lagrangian trajectory and interpolations in the corrector step, which is not needed in the predictor-corrector approach of IFS-FVM (Section 2.1.2).** Prognostic variables and main characteristics of the NH formulation are also given in Table 1. Furthermore, currently the NH formulation is restricted to the vertical FD scheme by Bubnová et al. (1995). By default, the HPE and NH formulations of IFS-ST use the shallow-atmosphere approximation. In Section 3, we will compare the computational performance of the HPE and NH formulations of IFS-ST against IFS-FVM.

2.3 Some aspects about physics-dynamics coupling

The IFS physics parametrization package at ECMWF is applied in the same configuration throughout the medium-range, sub-seasonal and seasonal forecasting systems. The physics package includes parametrization of radiation, moist convection, clouds and stratiform precipitation, surface processes, sub-grid scale turbulence, as well as orographic and non-orographic gravity wave drag.

In IFS-ST, the physics-dynamics coupling employs the SLAVEPP (Semi-Lagrangian Averaging of Physical Parametrization) scheme (Wedi, 1999). SLAVEPP targets second-order accuracy by averaging tendencies from selected physics parametrizations along the SL trajectory, at the midpoint in space-time between the departure point at t^n and arrival point at t^{n+1} .⁹ Thereby, the tendencies at t^{n+1} use a provisional first guess from the explicit dynamics as input, and the final tendencies are applied at the arrival point of the SL trajectory, see Wedi (1999) for details. The basic approach of the physics-dynamics coupling in the IFS uses sequential splitting of tendencies, i.e. the various processes are integrated one after another, and the updated tendencies are used as input to the subsequent process, see Beljaars et al. (2018) for discussion. More details about the IFS physics parametrizations can be found in the general IFS documentation.

The physics-dynamics coupling in IFS-FVM differs from IFS-ST. As explained in Section 2.1.2, the current implementation of IFS-FVM incorporates the tendencies from physics parametrizations P^Ψ by means of a first-order coupling at t^n . Therefore, the fields that enter the parametrizations are from t^n , and there is no averaging between tendencies from t^n and t^{n+1} . While the incorporation of the tendencies from physics parametrization deviates from IFS-ST, the sequential splitting between the various IFS physics parametrizations is kept exactly the same. Incorporating the physics parametrizations with first order at t^n is motivated by the generally smaller time steps δt in IFS-FVM than in IFS-ST, and the desire to implement straightforward options for subcycling of the dynamics (see below). In addition, numerical experimentation with IFS-FVM so far has shown favourable results in terms of the incorporation of the physics at t^n . Nevertheless, different forms of coupling IFS-FVM to the physics parametrizations will be explored in the future.

The IFS-FVM code has its own interface to the IFS physics parametrizations. Among others, it involves conversion between IFS-FVM's variables and those employed in IFS-ST (see Table 1)¹⁰, interpolations to vertical interfaces, and provision of local quantities describing the mesh geometry, but also a number of technical aspects due to some differences in the computational design of IFS-FVM and IFS-ST. Some of these operations in the interface may be removed at a later stage when the IFS physics parametrization package becomes more harmonised with IFS-FVM. However, generally the coupling is facilitated by common features of IFS-FVM and IFS-ST, such as longitude-latitude coordinates, the octahedral grid, and co-located arrangement of variables. The IFS-FVM interface to the physics parametrizations also includes an option for subcycling of the dynamics. The template scheme (7) for one physics time step from t^N to $t^N + \Delta t_{phys} \equiv t^N + N_s \delta t$, can be written as $\ell = 1, N_s$:

$$\Psi_{\mathbf{i}}(t^N + \ell \delta t) = \mathcal{A}_{\mathbf{i}}(\tilde{\Psi}, \mathbf{V}(t^N + (\ell \delta t - 0.5)), G(t^N + (\ell - 1)\delta t), G(t^N + \ell \delta t), \delta t) + b^\Psi \delta t \mathcal{R}_{\mathbf{i}}^\Psi(t^N + \ell \delta t), \quad (26)$$

⁹SLAVEPP is applied to tendencies from radiation, moist convection and the cloud scheme, whereas tendencies from turbulence and gravity wave drag parametrizations are incorporated with first order at t^{n+1} (Wedi, 1999).

¹⁰Examples are conversions between mixing-ratios r_k and specific water content variables q_k , or between quantities in the height- versus pressure-based coordinate systems.

where

$$\tilde{\Psi} = \Psi(t^N + (\ell - 1)\delta t) + a^\Psi \delta t \mathcal{R}^\Psi(t^N + (\ell - 1)\delta t) + \delta t P^\Psi(t^N, \Delta t_{phys}) . \quad (27)$$

The physics tendency P^Ψ is evaluated with the physics time step Δt_{phys} and is then reused for the N_s subcycling steps with δt . IFS-FVM has been coded rigorously with a variable time stepping capability (Kühnlein and Smolarkiewicz, 2017). In case of the physics-dynamics coupling with subcycling (26), we adapt the semi-implicit time step δt only every N_s time steps with the corresponding physics time step given as $\Delta t_{phys} = N_s \delta t$. Apart from radiation ¹¹, the current operational IFS-ST evaluates the physics parametrizations at every semi-implicit time step δt . However, due to the Eulerian versus SL advection, IFS-FVM uses considerably smaller time steps than IFS-ST ¹², and therefore physics-dynamics coupling may use some form of subcycling as indicated above, or other approaches such as parallel splitting, to remain competitive. The cost per time step of the full IFS physics parametrization package can be up to 40 % of the forecast model. For the idealized DCMIP experiments considered in the present work, we focus on the parametrization of clouds and stratiform precipitation, incorporated by means of the general IFS-FVM and IFS-ST interfaces described above.

2.4 Octahedral reduced Gaussian grid

As with the classical reduced Gaussian grid of Hortal and Simmons (1991), the octahedral reduced Gaussian grid (or simply "octahedral grid") (Wedi et al., 2015; Malardel et al., 2016; Smolarkiewicz et al., 2016) specifies the latitudes according to the roots of the Legendre polynomials. The two grids differ in the arrangement of the points along the latitudes, which follows a simple rule for the octahedral grid: starting with a minimum of ~ 20 points on the first latitude around the poles, four points are added with every latitude towards the equator, whereby the spacing between points along the individual latitudes is uniform and there are no points at the equator. The octahedral grid is suitable for transformations involving spherical harmonics, and has been introduced for operational weather prediction with the IFS at ECMWF in 2016. Figure 2 depicts the 'O24' octahedral grid nodes, together with the corresponding edges of the primary mesh as applied in IFS-FVM. Also shown is the dual mesh spacing of the 'O1280' grid. Compared to the classical reduced Gaussian grid of Hortal and Simmons (1991), the octahedral grid provides a much more uniform dual mesh resolution in the FV context (Malardel et al., 2016). Negligible grid imprinting in IFS-FVM with the octahedral grid will be shown by means of numerical experiments in Section 3.

¹¹In the current high-resolution deterministic IFS forecasts on the O1280 grid, the radiation scheme is called every hour, compared to the semi-implicit model time step $\delta t = 450s$, and is also run on the coarser O400 grid.

¹²With the current formulations, the time step δt in IFS-FVM is typically about a factor of 6-7 smaller than in IFS-ST.

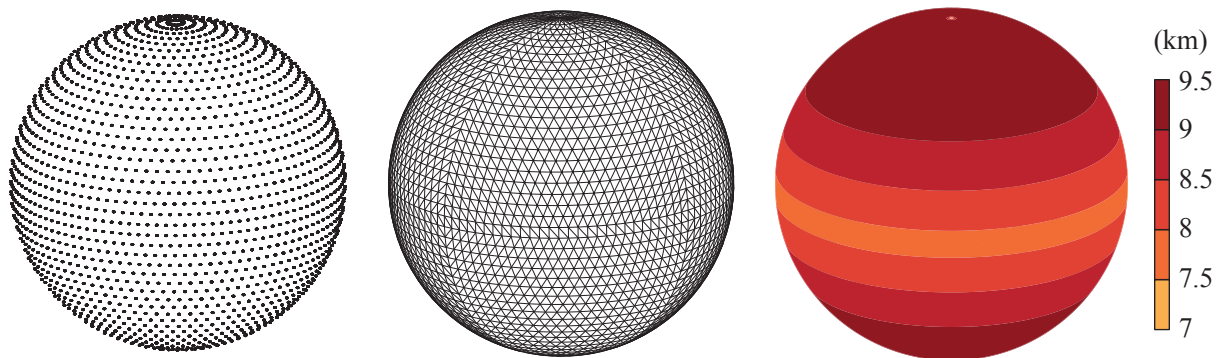


Figure 2. The locations of the octahedral reduced Gaussian grid nodes are shown in the left panel, using for illustration the very coarse O24 grid example with 24 latitudes between the pole and equator. The middle panel depicts the associated edges of the primary mesh connecting the nodes as applied in the context of the FV discretisation of IFS-FVM. The right panel provides the local spacing of the FV dual mesh for the O1280 grid corresponding to the highest-resolution deterministic forecast model at ECMWF currently.

3 Benchmark simulation results

We study the solution quality and also the computational efficiency of IFS-FVM in comparison to the established IFS-ST. The hydrostatic IFS-ST represents a proven formulation for global medium-range NWP at ECMWF, and the aim is to reproduce its results with the novel IFS-FVM.

5 Baroclinic instability represents a common and relevant test problem to evaluate the performance of global NWP models in the large-scale hydrostatic regime. The underlying processes are fundamental to the life cycle (i.e. formation to decay) of high and low pressure systems in the mid-latitude "storm tracks" of the Earth's atmosphere. Here, we adopt the experimental setup for a baroclinic wave life cycle used in the 2016 edition of DCMIP following Ullrich et al. (2014) and the documentation available in Ullrich et al. (2016). Note that the IFS is a highly-optimized single-application model for real-time numerical weather prediction, and adapting the code to idealized configurations is not straightforward. Because of this and also a particular interest on requirements and applications at ECMWF, we consider configurations and physics parametrizations that depart from the test case specifications of DCMIP in Ullrich et al. (2016).

To study the accuracy of the novel nonhydrostatic IFS-FVM based on the finite-volume discretisation, we verify its solution quality against IFS-ST based on the spectral-transform approach. This comparison is performed in Section 3.1 for dry adiabatic simulations of the baroclinic instability, i.e. dynamical-core only, and then in Section 3.2 under consideration of moist-precipitating processes that involve coupling to the prognostic single-moment bulk microphysics parametrization of the operational IFS at ECMWF (Forbes et al., 2010). The computational efficiency of IFS-FVM alongside the hydrostatic and nonhydrostatic IFS-ST is studied in Section 3.3. Note that we use the nonhydrostatic IFS-ST only when looking at the efficiency of the various dynamical core formulations. In terms of the solution quality for the baroclinic instability, nonhydrostatic effects are entirely negligible at the considered coarse resolutions (see next paragraph), and therefore only results with the hydrostatic IFS-ST are shown and analysed.

We use two different sizes of the octahedral reduced Gaussian grid for comparing the solution quality of IFS-FVM and IFS-ST. Considered are very coarse (O160,TCo159) and coarse (O320,TCo319) grids by current NWP standards, corresponding to about 64 and 32 km nominal horizontal grid spacings, respectively; see Section 2.2 and 2.4 for the nomenclature that defines the grids. For the two horizontal grid sizes, both IFS-FVM and IFS-ST employ 60 stretched vertical levels. The height coordinate of IFS-FVM (Appendix C) is specified exactly according to the computed height of the hybrid sigma-pressure coordinate of IFS-ST at the initial time of the simulation. The lowest full level is located at a height of about 10 m, and the vertical spacing between model levels ranges from about 12 m near the ground to 4 km near to model top located at 48 km. In contrast to the height coordinate levels in IFS-FVM, the hybrid sigma-pressure coordinate levels in IFS-ST change with time, but overall the vertical spacing remains quite similar in both models over the course of the 15-day simulations. The similar spacing is true particularly for the vertical levels near the surface, where the terrain-following character of the hybrid sigma-pressure coordinate dominates. Note that, as the maximum local difference in height of the lowest full levels is found to be smaller than 1 m over the 15-day baroclinic instability simulation, output fields of IFS-FVM and IFS-ST may be straightforwardly compared at this level without using interpolation¹³. For the comparison of computational efficiency in Section 3.3, we employ the (O1280,TCo1279) horizontal grid, corresponding to about 9 km spacing, with 137 stretched vertical levels, again with a similar distribution in IFS-FVM and IFS-ST. With regard to the time step size, IFS-ST uses constant increments δt of 1800, 1200, and 450 s for the TCo159, TCo319, and TCo1279 grids, respectively. In contrast, IFS-FVM generally applies variable time stepping that targets a maximum horizontal advective Courant number of 0.95—the actual maximum 3D Courant number can be significantly larger than one as this is permitted by the horizontal-vertical split NFT advection in IFS-FVM (Appendix A). As explained in Section 2.1.2, we have implemented the integration of (17) using an off-centred variant of the template semi-implicit scheme (7). All IFS-FVM results presented in this paper used the backward Euler scheme $\alpha = 1$, as this has been the default so far in the previous implementations. However, one exception to this is the middle panel in Fig. 5, which shows, for comparison to the default $\alpha = 1$, the corresponding result obtained with the weakly off-centred trapezoidal scheme using $\alpha = 0.51$.

All IFS-FVM and IFS-ST results presented in this section were obtained without any explicit diffusion or regularization. For the dry and moist configurations, the baroclinic instability evolution starts from two zonal jet flows in the mid-latitudes of each global hemisphere, that are in thermal wind balance with the meridional temperature gradient. The definition of the balanced initial state is given by analytical functions provided in Ullrich et al. (2014). Here, this balanced zonal flow is used also to specify the ambient state variables $\mathbf{u}_a(y, z)$, $\theta_a(y, z)$, $\pi_a(y, z)$ of the governing fully compressible equations (1) that fulfil (4). A local zonal velocity perturbation in the form of a simple exponential bell (tapered to zero in the vertical) excites the instability, leading to eastward propagating Rossby modes (Ullrich et al., 2016). Here, we apply the triggering zonal velocity perturbation in both the northern and southern global hemispheres. This dual triggering departs from (Ullrich et al., 2016), where the perturbation was only applied in the northern hemisphere, but it permits a clean evaluation of kinetic energy spectra relatively early in the baroclinic wave evolution, enables study of the solution symmetry about the equator and is more relevant to real weather. Nevertheless, for reference we provide one illustration in Fig. 6 for the setup where the triggering of the

¹³For instance, the 1 m height difference corresponds to about 0.1 hPa near the surface, which is negligible with regard to the subsequent analysis.

baroclinic instability is applied in the northern hemisphere only. After an initial period of linear growth, the instability enters the nonlinear stage from 6-7 days of simulation time. Our analysis will focus on simulation results at day 10 and day 15.

3.1 Results for dry simulations

5 **Figures 3 and 4 present the horizontal cross section of near-surface pressure and the zonal-height cross section of meridional**
wind, respectively, for the dry adiabatic simulations at day 10. At this stage, a large amplitude baroclinic wave has developed and formed sharp fronts in the lower troposphere. Generally very close agreement is found between the finite-volume (IFS-FVM) and spectral-transform (IFS-ST) solutions. This is emphasised by the difference plots in the bottom row of the horizontal and vertical cross sections in Figs. 3 and 4, respectively. The solutions show identical phase propagation and amplitude of the baroclinic wave throughout the entire vertical depth of the simulation domain, which applies to the very coarse (O160, TCo159)
10 and coarse (O320, TCo319) grids. Where present, differences between IFS-FVM and IFS-ST become smaller with the higher resolution. Figure 5 compares the pressure field much later into the nonlinear baroclinic instability evolution at day 15, for the finer of the two grids. This depiction shows close agreement between IFS-FVM (using the default $\alpha = 1$ as well as the $\alpha = 0.51$) and IFS-ST also at this later stage. The various dynamical core formulations provide visibly symmetric solutions around the equator, and there are no signs of any significant grid imprinting at the scale of the wavenumber-four irregularities
15 of the octahedral grid. The latter is corroborated by Fig. 6, that shows the analogous result to Fig. 5 (again only $\alpha = 1$ for IFS-FVM), but in contrast to all other plots, the trigger of the baroclinic instability is applied in the northern hemisphere only.

Kinetic energy spectra evaluated at day 15 in Fig. 7 reveal a strikingly similar distribution of variance across wave numbers from 1 to ~ 200 . As all the simulations are without any explicit diffusion, the IFS-FVM spectra at the high wave numbers attest to the implicit scale-selective regularisation with artificial viscosity provided by the non-oscillatory finite-volume MPDATA
20 advection¹⁴. The slope of the IFS-ST and IFS-FVM spectra with respect to wavenumber l is somewhat shallower than l^{-3} at large scales. This is consistent with results from other dynamical cores for this baroclinic instability test case studied in the context of the High-Impact Weather Prediction Project (HIWPP, Whitaker, 2014). The spectra of IFS-ST feature some accumulation of energy near the scale of the triangular-cubic truncation, corresponding to four times the grid spacing. This increased energy at these scales does not grow and is to a large extent controlled by the spectral filtering of the nonlinear terms
25 at every time step, among other mechanisms of implicit dissipation such as the semi-Lagrangian interpolation.

¹⁴The unsplit NFT MPDATA advection (Kühnlein and Smolarkiewicz, 2017) features lower implicit diffusion near the grid scale than the split advection applied here.

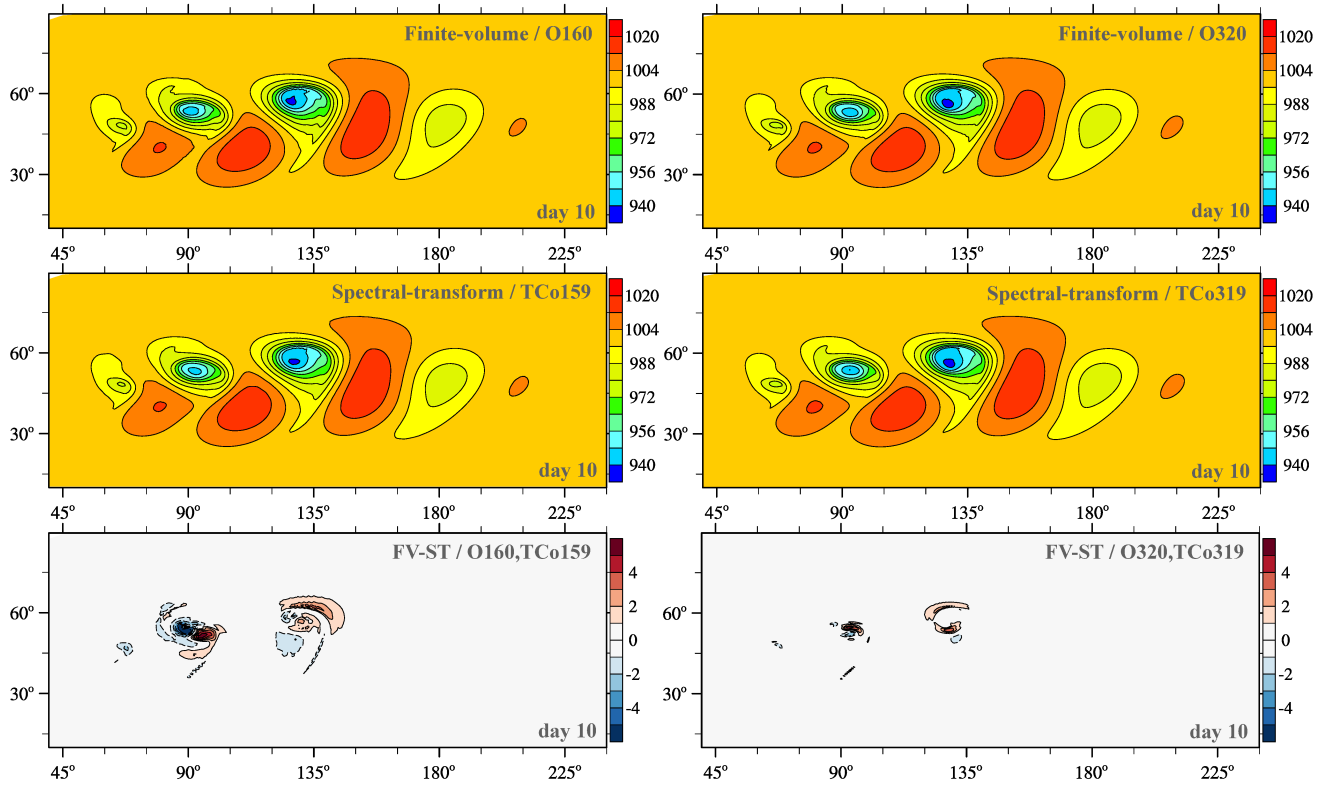


Figure 3. Dry baroclinic instability at day 10: the first two rows show pressure on the lowest full level (hPa) obtained with IFS-FVM and IFS-ST, while the last row depicts the corresponding difference between the solutions. The left and right columns are for the (O160, TCo159) and (O320, TCo319) horizontal grids, respectively.

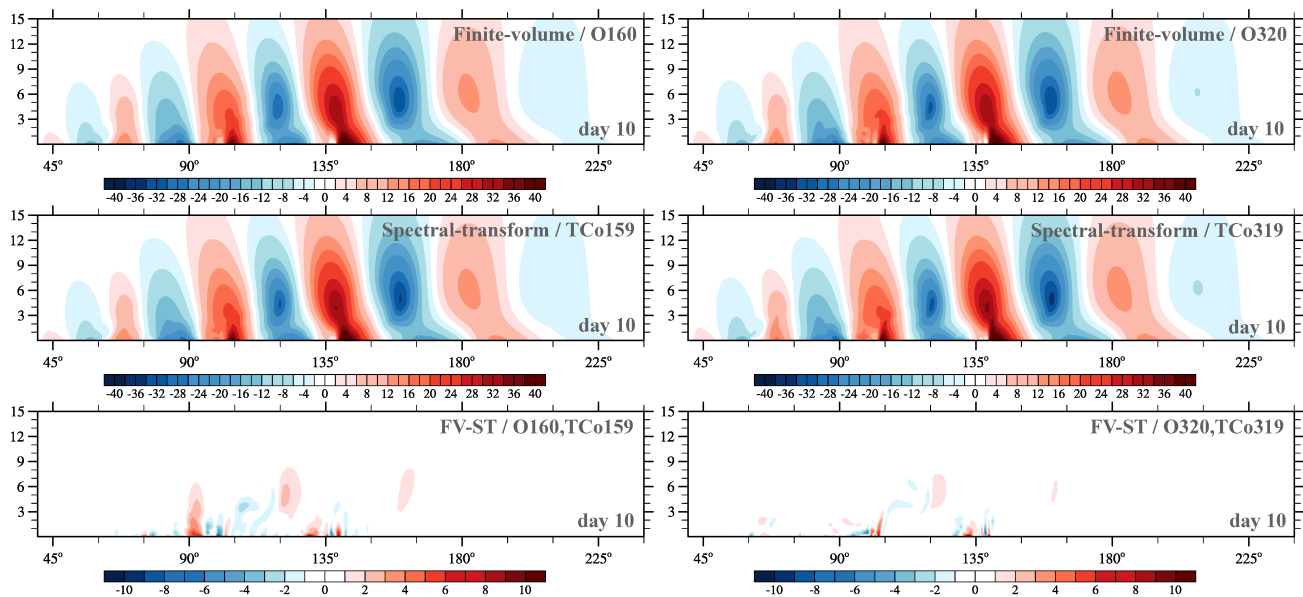


Figure 4. Dry baroclinic instability at day 10: the first two rows show meridional wind v (m s^{-1}) along a zonal-height cross section at 50°N obtained with IFS-FVM and IFS-ST, while the last row depicts the difference of v (m s^{-1}) between their solutions. The left and right columns are for the (O160, TCo159) and intermediate (O320, TCo319) horizontal grids, respectively.

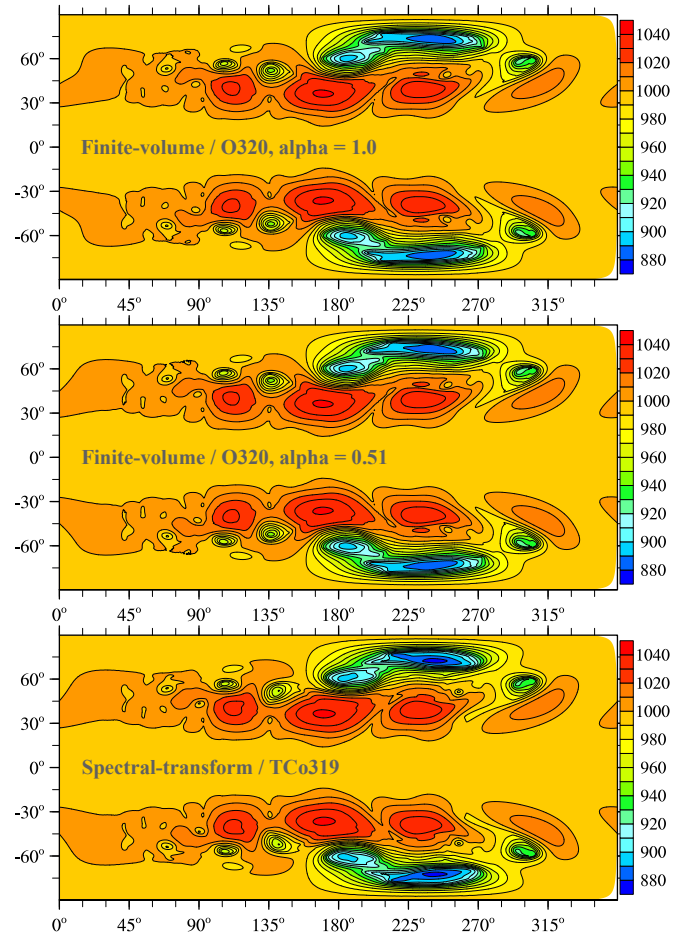


Figure 5. Dry baroclinic instability at day 15: pressure on the lowest full level (hPa) obtained with IFS-FVM (default backward Euler scheme with $\alpha = 1$ or trapezoidal scheme with weak off-centring $\alpha = 0.51$ in the integration of (17) for the Exner pressure perturbation φ') and IFS-ST using the (O320,TCo319) grid.

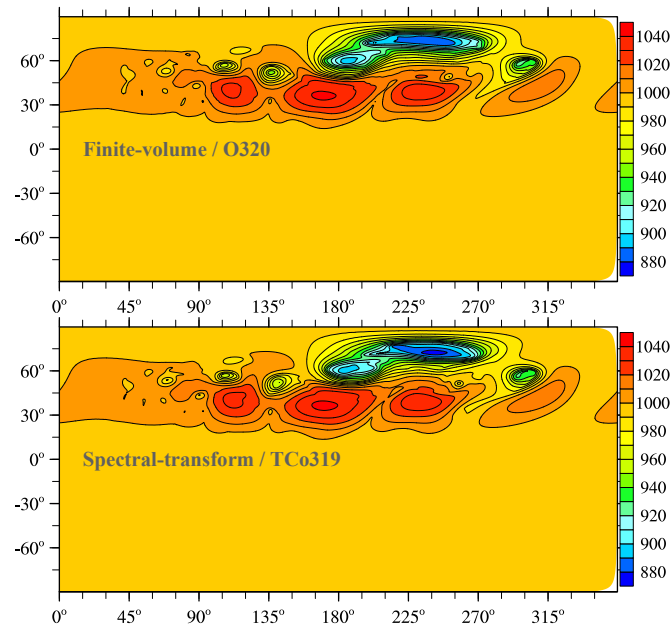


Figure 6. Dry baroclinic instability at day 15, where the triggering of the baroclinic instability was applied in the northern hemisphere only: pressure on the lowest full level (hPa) obtained with IFS-FVM and IFS-ST using the (O320,TCo319) grid.

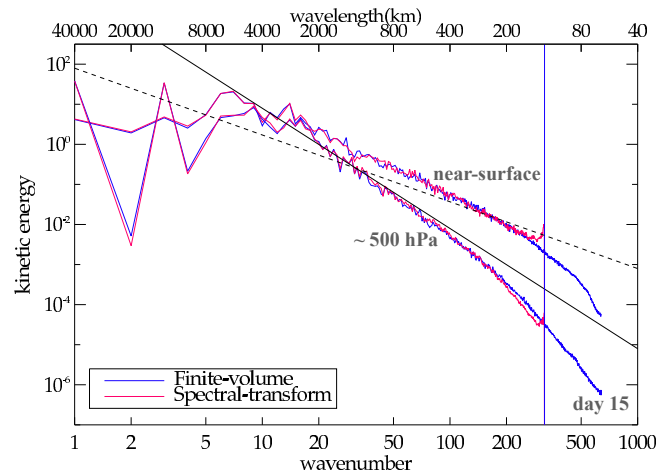


Figure 7. Dry baroclinic instability at day 15: Kinetic energy spectra obtained with IFS-FVM and IFS-ST using the (O320,TCo319) grid. The blue vertical line indicates the spatial scale corresponding to four times the nominal grid spacing of the O320 octahedral grid, which also represents the cubic truncation scale with TCo319 applied in IFS-ST. The spectra are shown on models levels near the surface and at ~ 500 hPa.

3.2 Simulation results for moist-precipitating configuration with the IFS cloud parametrization

Next we present results for the moist-precipitating baroclinic instability with coupling to the IFS cloud parametrization. Figure 8 shows the instantaneous large-scale precipitation rate at the surface ¹⁵ for the (O160,TCO159) and (O320,TCO319) grids at day 10. For any of these grids, both model formulations show five rainbands with essentially identical phase, as emphasized by the overlay with the 0.5 mm/day black contour line of the corresponding other model formulation. The elongated rainbands are associated with the lifting along sharp frontal zones. Precipitation amounts are overall similar but somewhat higher local values exist for IFS-FVM, particularly in the two easternmost rainbands when looking at the (O160,TCO159) grid. Figure 9 is analogous to Fig. 8 but for day 15. As can be expected, the spread between the different model formulations becomes larger. However, there is still reasonably close agreement, especially for the higher-resolution grid (O320,TCO319) in the right column of Fig. 9. Here, the location of the easternmost frontal zone and associated rainband agrees closely considering the late stage of the baroclinic instability evolution. Figure 10 supplements the precipitation plots with the corresponding pressure field on day 15. In addition to the standard configurations of IFS-FVM and IFS-ST where the physics parametrization is evaluated every dynamics time step $N_s = 1$, Fig. 10 also provides the IFS-FVM result with subcycling (middle panel) where the parametrizations are evaluated every $N_s = 3$ semi-implicit time steps δt ; see 2.3 for discussion of the physics-dynamics coupling. Again, the pressure fields of all three simulations resemble each other closely, often even in the location and magnitude of smaller structures, while the modified physics-dynamics coupling frequency $N_s = 3$ to the cloud parametrization seems to have only a small impact on the solution. Furthermore, none of the simulations shows significant grid imprinting in the pressure fields, but the solution symmetry about the equator is broken in both IFS-FVM and IFS-ST as a result of the incorporation of the cloud parametrization (in contrast to the dry results shown before in Fig. 5). The analysis of the simulations is supplemented in Fig. 11 with the time series of the minimum near-surface pressure (left panel) and the area-integrated precipitation rate (right panel). The temporal evolution of these two quantities is close between IFS-FVM and IFS-ST. Particularly, the minimum near-surface pressure agrees almost exactly at day 15, although small differences occur over the course of the simulation. The onset and subsequent increase of the precipitation matches well in IFS-FVM and IFS-ST, and the later variations in the precipitation rate are similar, with no systematic under- or overestimation. Kinetic energy spectra evaluated at day 15 are shown in Fig. 12. Compared to the spectra of the dry simulations in Fig. 7, IFS-FVM and IFS-ST consistently show a considerably larger kinetic energy in the scales smaller than wave number ≈ 120 in the mid-troposphere at about 500 hPa. Overall, the presented consistent results of IFS-FVM and IFS-ST attest to the quality of the presented dry and moist-precipitating FV formulations along with the coupling to the IFS physics parametrization.

¹⁵The precipitation rate represents the liquid and rain (excluding ice and snow) sedimentation flux at the surface.

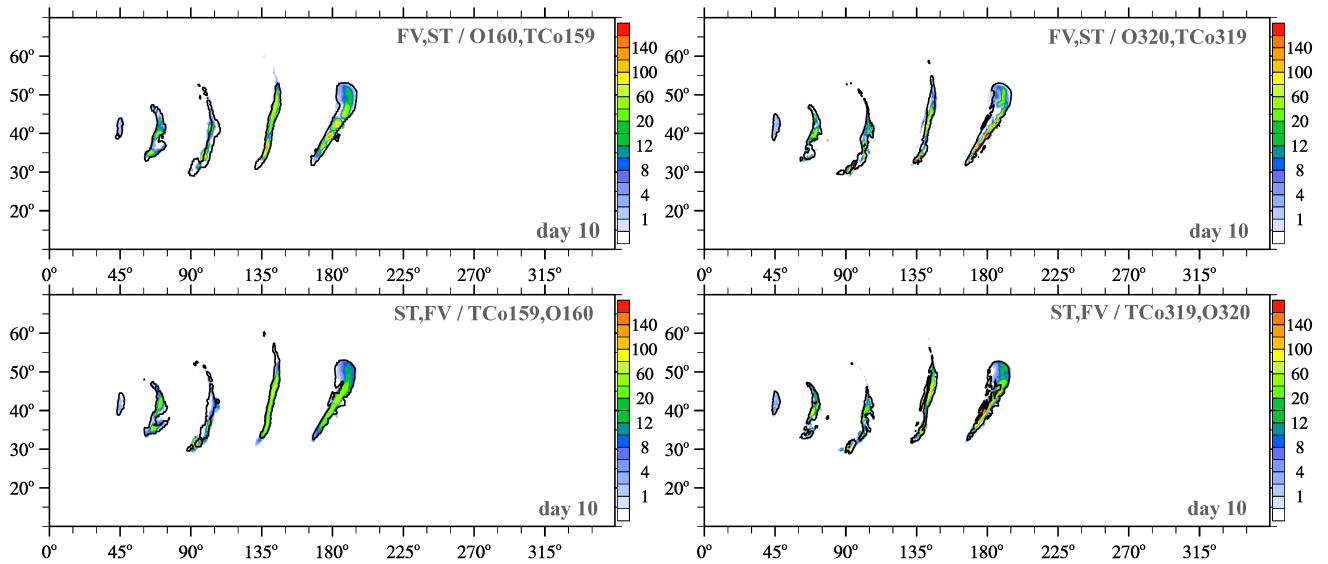


Figure 8. Moist-precipitating baroclinic instability at day 10: surface precipitation rate (mm/day) obtained with IFS-FVM and IFS-ST coupled to the same IFS cloud microphysics parametrization. The upper (lower) row shows shaded contours from the IFS-FVM (IFS-ST) simulations, overlaid by the IFS-ST (IFS-FVM) black contour line of 0.5 mm/day. The left and right columns are for the (O160,TCo159) and (O320,TCo319) horizontal grids, respectively.

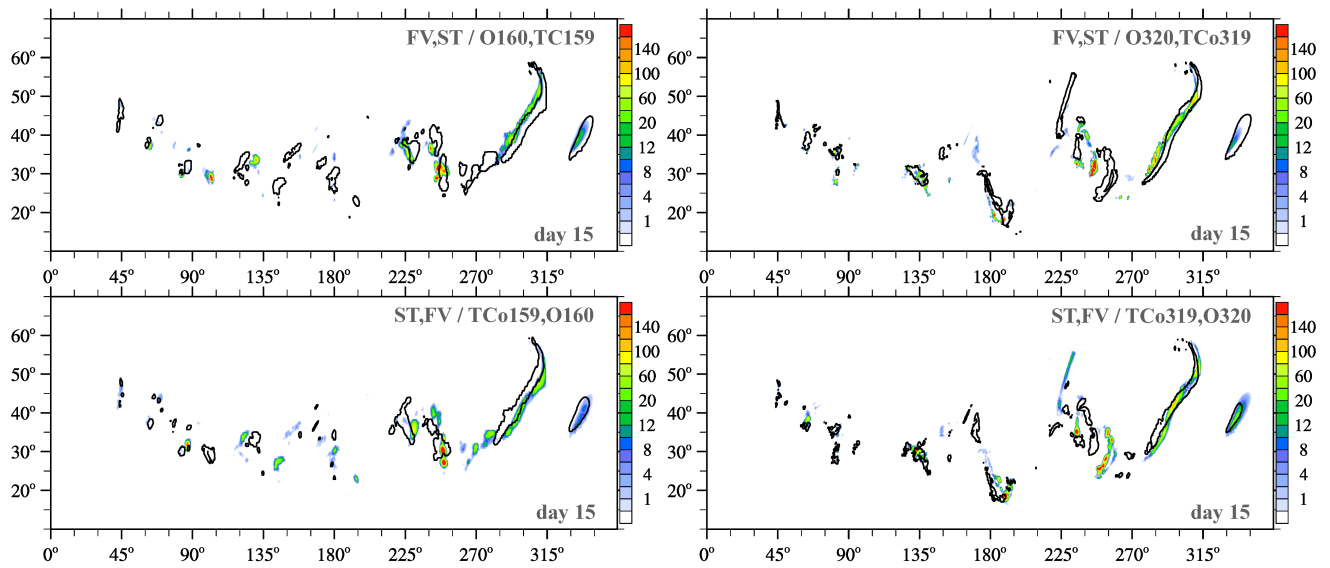


Figure 9. Moist-precipitating baroclinic instability at day 15: surface precipitation rate (mm/day) obtained with IFS-FVM and IFS-ST coupled to the same IFS cloud microphysics parametrization. The upper (lower) row shows shaded contours from the IFS-FVM (IFS-ST) simulations, overlaid by the IFS-ST (IFS-FVM) black contour line of 0.5 mm/day. The left and right columns are for the (O160,TCo159) and (O320,TCo319) horizontal grids, respectively.

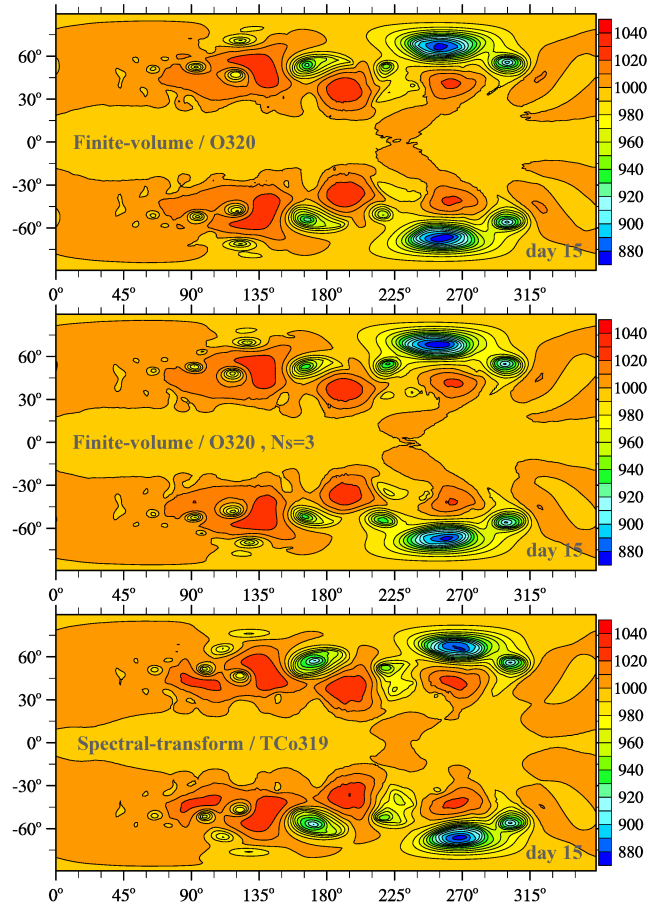


Figure 10. Moist-precipitating baroclinic instability at day 15: pressure on the lowest full level (hPa) obtained with IFS-FVM and IFS-ST coupled to the same IFS cloud microphysics parametrization. The IFS-FVM results in the first and second row employed the standard coupling at every time step $N_s = 1$ or subcycling of dynamics for three time steps $N_s = 3$, respectively. The simulations were performed with the (O320,TCo319) grid.

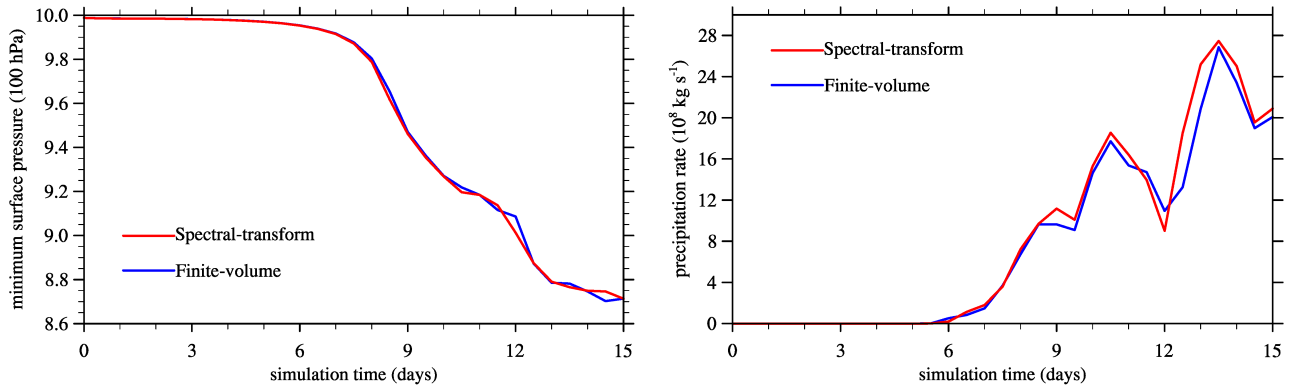


Figure 11. Moist-precipitating baroclinic instability: Time series of minimum pressure on the lowest full level (left) and area-integrated rain rate (right). The blue and red lines correspond to the IFS-FVM and IFS-ST results, respectively.

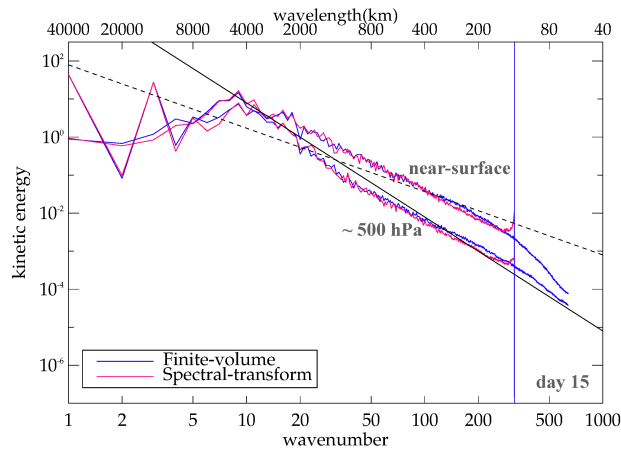


Figure 12. Moist-precipitating baroclinic instability at day 15: Kinetic energy spectra obtained with IFS-FVM and IFS-ST using the (O320,TCO319) grid. The blue vertical line indicates the spatial scale corresponding to four times the nominal grid spacing of the O320 octahedral grid, which also represents the cubic truncation scale with TCO319 applied in IFS-ST. The spectra are shown on model levels near the surface and at ~ 500 hPa.

3.3 Computational efficiency

Computational efficiency of NWP models is crucial. For current HPC architectures and model resolutions, the operational IFS-ST at ECMWF represents one of the most efficient dynamical core formulations for global NWP. IFS-FVM is envisaged for future applications in the nonhydrostatic regime running on future HPC architectures, but its computational performance on the current HPC facility at ECMWF sheds some light on its potential. Of interest is the relative performance of IFS-FVM to both the hydrostatic IFS-ST and its nonhydrostatic extension (see Section 2.2). In order to emphasise elementary aspects of

the dynamical cores, here we assess the efficiency of the dry formulations only; i.e. no tracers or moisture variables, no physics parametrizations or coupled models, no I/O, minimal diagnostics. Furthermore, we use the baroclinic instability benchmark of Section 3.1 but configured similar to HRES—ECMWF’s highest-resolution deterministic forecast model.

Figure 13 highlights runtimes of the three different dynamical core formulations. The HRES forecast model configuration at ECMWF is currently based on the O1280/TCo1279 horizontal grid (corresponding to about 9 km grid spacing; cf. right panel of Fig. 2) with 137 vertical levels, and run using 350 nodes (about one electrical group) on ECMWF’s Cray XC40 supercomputer¹⁶. Importantly, while IFS-ST used the constant time step of 450s, IFS-FVM employed the variable time stepping according to the maximum permitted advective Courant number—therefore, in order to obtain realistic numbers for IFS-FVM, the timings were evaluated between day 10 and 15 in the fully nonlinear stage of the baroclinic instability evolution.

Figure 13 reveals the time-to-solution that can be achieved with IFS-FVM for this configuration is only about twice as large as the operational hydrostatic IFS-ST, and compares favourably with the nonhydrostatic IFS-ST. Although these performance measures merely represent snapshots at the current state of development, they highlight the potential of the numerical integration schemes applied in IFS-FVM to become competitive with state-of-the-art operational global weather forecasting models. Important aspects are that the FV method offers the prospect of better scalability and efficiency with respect to future HPC, and that IFS-FVM employs substantially smaller time steps (again, about a factor 6-7 smaller compared to IFS-ST) which can be beneficial for accuracy. Further significant efficiency improvements of the IFS-FVM dynamical core are in preparation, and the work will be extended to physics-dynamics coupling with the smaller time steps.

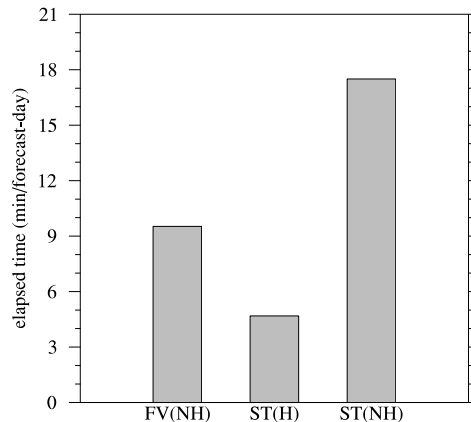


Figure 13. Elapsed time to run one day of the dry baroclinic instability benchmark similar to the current HRES configuration at ECMWF, i.e. the three different models—the nonhydrostatic IFS-FVM designated as FV(NH), the hydrostatic IFS-ST designated as ST(H), the nonhydrostatic IFS-ST designated as ST(NH)—are set up for the O1280/TCo1279 horizontal grid (corresponding to about 9 km grid spacing) with 137 stretched vertical levels, and employ 350 nodes of ECMWF’s Cray XC40.

¹⁶Each node on this supercomputer consists two Intel Xeon EP E5-2695 v4 “Broadwell” processors each with 18 cores, which for the employed 350 compute nodes results in a total number of 12600 cores. Here, a hybrid MPI-OpenMP parallelisation with 6 threads was used by all three dynamical cores.

4 Conclusions

Supporting substantially higher resolution in global NWP may ultimately demand local numerical discretisations to solve the governing nonhydrostatic equations in NWP models in a computationally efficient manner. The IFS-FVM successfully implements such a discretisation and thus complements the operational hydrostatic IFS-ST and its nonhydrostatic extension at ECMWF. At the same time, the IFS-FVM introduces several useful new features into the IFS, such as conservative and monotone advective transport, deep-atmosphere all-scale governing equations, and fully flexible unstructured FV meshes with optional variable resolution or meshes defined about the nodes of the operational octahedral grid.

The paper highlighted the semi-implicit NFT finite-volume integration of the fully compressible equations of the novel IFS-FVM considering comprehensive moist-precipitating dynamics with coupling to the IFS cloud parametrization by means of a generic interface applicable for coupling to the full IFS physics parametrization package. Developments such as the new horizontal-vertical directionally-split NFT advective transport scheme based on MPDATA, variable time stepping, effective preconditioning of the Krylov-subspace solver for the elliptic Helmholtz problem arising in the semi-implicit scheme, and a computationally-efficient node-based implementation of the median-dual FV approach, provide a basis for the overall efficacy of IFS-FVM and application in global NWP at ECMWF.

IFS-ST is applied successfully for operational forecasting at ECMWF and is therefore considered an appropriate reference model. It was shown that the presented semi-implicit NFT finite-volume integration scheme on co-located meshes can achieve comparable solutions to the proven spectral-transform IFS-ST. Here, the study focused on medium-and extended-range simulation of the dry and moist-precipitating baroclinic instability benchmark at various resolutions. While the baroclinic instability benchmark aims at global atmospheric dynamics in the hydrostatic regime, referenced supplementary studies with IFS-FVM emphasise non-orographic and orographic flows in the nonhydrostatic regime. In addition to solution quality, we have demonstrated highly competitive computational efficiency of the presented semi-implicit NFT finite-volume integration of IFS-FVM in comparison to the semi-implicit semi-Lagrangian integration of IFS-ST.

Common aspects of the finite-volume and spectral-transform model formulations are the octahedral reduced Gaussian grid, the co-location of variables, the geospherical framework, and the physics parametrizations. Sharing these properties facilitates the comparison of the different discretisations and physics-dynamics coupling. Moreover, it provides numerous benefits for the general IFS model infrastructure and data assimilation. Ongoing work advances IFS-FVM to full-physics global medium-range NWP at convection-resolving resolutions.

Appendix A: Horizontal-vertical splitting of the NFT advective transport

We consider the advection operator \mathcal{A}_1 in the two-time-level semi-implicit integration scheme (7) to be directionally-split in the horizontal and vertical directions. This splitting is motivated by the observation that NWP models typically have a larger restriction on the time step in the vertical than the horizontal direction. For example, in the current operational configuration of the IFS run at TCo1279/L137 (≈ 9 km horizontal grid spacing and 137 stretched vertical levels), the advective Courant numbers are up to a factor of two larger in the vertical than in the horizontal direction. The horizontal-vertical splitting also

accommodates to IFS-FVM's unstructured horizontal discretisation enabling broad classes of meshes over the surface of the Earth's sphere/spheroid, and the structured grid in the (stiff) vertical direction.

The proposed scheme implements mass-compatible second-order Strang-splitting as explained in the following. The overall semi-implicit integration of the fully compressible equations (1) proceeds exactly as explained in Section 2.1.2, but with the 3D NFT advection operator \mathcal{A}_i split into purely horizontal \mathcal{A}_i^{xy} and vertical \mathcal{A}_i^z schemes, respectively. For each model time step δt , these are applied in the sequence $\mathcal{A}_i^z \rightarrow \mathcal{A}_i^{xy} \rightarrow \mathcal{A}_i^z$ using half time steps in the two vertical sweeps and the full time step in the horizontal part. Specifically, the split scheme commences with the integration of the mass continuity equation (1a) as

$$\begin{aligned} \rho_{di}^{[1]} &= \mathcal{A}_i^z(\rho_d^n, (v^z \mathcal{G})^{n+1/2}, \mathcal{G}^n, \mathcal{G}^{[1]}, 0.5\delta t), \\ \rho_{di}^{[2]} &= \mathcal{A}_i^{xy}(\rho_d^{[1]}, (\mathbf{v}_h \mathcal{G})^{n+1/2}, \mathcal{G}^{[1]}, \mathcal{G}^{[2]}, \delta t), \\ \rho_{di}^{n+1} = \rho_{di}^{[3]} &= \mathcal{A}_i^z(\rho_d^{[2]}, (v^z \mathcal{G})^{n+1/2}, \mathcal{G}^{[2]}, \mathcal{G}^{n+1}, 0.5\delta t), \end{aligned} \quad (\text{A1})$$

which provides the updated densities $\rho_d^{[1]}$, $\rho_d^{[2]}$, ρ_d^{n+1} and accumulates normal mass fluxes $(v^z \mathcal{G} \rho_d)^{[1]}$, $(v_h^\perp \mathcal{G} \rho_d)^{[2]}$, $(v^z \mathcal{G} \rho_d)^{[3]}$ for the three sub-steps. For compatibility with mass continuity, these quantities are then all employed in the subsequent advective transport of scalar variables $\tilde{\Psi}$ (8) as

$$\begin{aligned} \Psi_i^{[1]} &= \mathcal{A}_i^z(\tilde{\Psi}, (v^z \mathcal{G} \rho_d)^{[1]}, (\mathcal{G} \rho_d)^n, (\mathcal{G} \rho_d)^{[1]}, 0.5\delta t), \\ \Psi_i^{[2]} &= \mathcal{A}_i^{xy}(\Psi_i^{[1]}, (v_h^\perp \mathcal{G} \rho_d)^{[2]}, (\mathcal{G} \rho_d)^{[1]}, (\mathcal{G} \rho_d)^{[2]}, \delta t), \\ \hat{\Psi}_i = \Psi_i^{[3]} &= \mathcal{A}_i^z(\Psi_i^{[2]}, (v^z \mathcal{G} \rho_d)^{[3]}, (\mathcal{G} \rho_d)^{[2]}, (\mathcal{G} \rho_d)^{n+1}, 0.5\delta t). \end{aligned} \quad (\text{A2})$$

In (A1) and (A2), the implementation of the horizontal advection transport \mathcal{A}^{xy} follows the horizontal part of the unstructured-mesh FV MPDATA of Kühnlein and Smolarkiewicz (2017). The vertical scheme \mathcal{A}^z is a corresponding 1D structured-grid MPDATA. Results from numerical experimentation relevant to NWP show that the presented horizontally-vertically split NFT scheme based on MPDATA can be considerably more efficient than the standard fully multidimensional (unsplit) MPDATA of Kühnlein and Smolarkiewicz (2017). This is particularly due to the integration of the vertical parts \mathcal{A}_i^z with $\delta t/2$ each, which mitigates the vertical stability restriction while not adding any significant computational cost¹⁷. Overall, the horizontal-vertical splitting of \mathcal{A}_i can enable a more than twice larger time step in the integration than the unsplit formulation. In addition, the split scheme facilitates the application of higher-order, e.g. Waruszewski et al. (2018), and/or flux-form semi-Lagrangian advective transport in the vertical. While a detailed presentation and analysis will be provided in a future publication, results so far indicate comparable solution quality of the split versus unsplit schemes for global atmospheric flow benchmarks. All IFS-FVM results presented in this paper were obtained using the split scheme (A1)-(A2) for \mathcal{A}_i in (7)-(8).

¹⁷Compared to the unsplit scheme, the particular horizontal-vertical splitting also does not incur any additional parallel communication in the context of the horizontal domain decomposition of IFS-FVM.

Appendix B: Weighted line Jacobi preconditioner

The bespoke preconditioner solves for the solution error e of the pressure perturbation variable φ'

$$\mathcal{P}(e) = \hat{r}, \quad (\text{B1})$$

where here \hat{r} denotes the residual error of (20). The preconditioning operator \mathcal{P} is then decomposed into vertical and horizontal parts (Smolarkiewicz and Margolin, 2000) and the residual problem is solved iteratively according to

$$\mathcal{P}_z(e^{\mu+1}) + \mathcal{P}_h(e^\mu) - \hat{r} = 0, \quad (\text{B2})$$

where μ numbers the iterations, of which there are typically two. The vertical part \mathcal{P}_z is inverted directly with a tridiagonal algorithm. The horizontal part \mathcal{P}_h is lagged behind, except for its diagonal entries. The actual implementation is given as

$$\mathcal{P}_z(e^{\mu+1}) + \mathcal{P}_h(e^\mu) + \mathcal{D}(e^{\mu+1} - e^\mu) - \hat{r} = 0, \quad (\text{B3})$$

where \mathcal{D} is the diagonal coefficient of \mathcal{P}_h , specified as

$$\mathcal{D}_{k,i} = -\frac{1}{4\mathcal{V}_i} \sum_{\ell=1}^3 \frac{A_{\ell k,i}^*}{\zeta_{\ell k,i}} \sum_{j=1}^{l(i)} \frac{\zeta_{\ell k,j}}{\mathcal{V}_j} \left(\mathcal{B}_{k,j}^{11} S_j^{x2} + \mathcal{B}_{k,j}^{22} S_j^{y2} \right), \quad (\text{B4})$$

with \mathcal{B}^{11} and \mathcal{B}^{22} referring to the diagonal entries of $\tilde{\mathbf{G}}^T \mathbf{C}$. Subsequently, (B3) is executed as

$$e^{\mu+1} = \omega [\mathcal{D} - \mathcal{P}_z]^{-1} (\mathcal{D}e^\mu - \mathcal{P}_h(e^\mu) + \hat{r}) + (1 - \omega) e^\mu \quad (\text{B5})$$

with the weight $\omega = 0.7$.

15 Appendix C: Geospherical framework, generalised terrain-following vertical coordinate, shallow- and deep-atmosphere equations

IFS-FVM's ability to accommodate complex mesh geometries results from two aspects of its formulation, the horizontal unstructured-mesh FV discretisation and generalized curvilinear coordinate mappings embedded in a geospherical framework (Prusa and Smolarkiewicz, 2003; Szmelter and Smolarkiewicz, 2010).

In the geospherical curvilinear coordinate framework of Prusa and Smolarkiewicz (2003), the vector $\mathbf{u} = [u, v, w]^T$ represents the physical velocity with zonal, meridional and vertical components aligned at every point of the spherical shell with axes of a local Cartesian frame (marked with the superscript $_c$) tangent to the lower surface ($r = a$); here r is the radial component of the vector radius, and a is the radius of the sphere. Relations between the local Cartesian and the geospherical frame are therefore $dx_c = r \cos \phi d\lambda$, $dy_c = r d\phi$ and $z_c = r - a$, where λ and ϕ denote longitude and latitude, respectively, in radians.

Consistent with Prusa and Smolarkiewicz (2003) (but not with their notation), we define a set of geospherical coordinates of the physical space \mathbf{S}_p as $\tilde{x} = a\lambda$, $\tilde{y} = a\phi$, $\tilde{z} = z_c$ ($\tilde{x}, \tilde{y}, \tilde{z}$ in units of meters). The latter are related to the curvilinear coordinates $\mathbf{x} = [x, y, z]^T$ of the computational space \mathbf{S}_t (see Section 2.1.1) by the general transformation

$$(t, \mathbf{x}) = (\tilde{t}, \mathcal{F}(\tilde{t}, \tilde{\mathbf{x}})) , \quad (\text{C1})$$

where $\mathcal{F}(\tilde{t}, \tilde{\mathbf{x}})$ represents a bijective map between the physical and computational systems (Prusa and Smolarkiewicz, 2003; Kühnlein et al., 2012). A default mapping in IFS-FVM uses no stretching with respect to the horizontal positions of the unstructured computational mesh $x \equiv \tilde{x}$, $y \equiv \tilde{y}$, combined with a height-based terrain-following vertical coordinate of the general form $z = z(\tilde{x}, \tilde{y}, \tilde{z})$. **The most straightforward specification of the mapping $z = z(\tilde{x}, \tilde{y}, \tilde{z})$ is a basic terrain-following vertical coordinate given by means of analytical functions, e.g. Gal-Chen and Somerville (1975). However, the implemented general form $z = z(\tilde{x}, \tilde{y}, \tilde{z})$ admits variable vertical stretching with horizontal location, implicit/explicit smoothing of coordinate levels (Schär et al., 2002; Klemp, 2011), and hybrid specifications. Further note that in the numerical experiments of Section 3, IFS-FVM employed the vertical levels defined by the height of the hybrid sigma-pressure coordinate levels of IFS-ST. Overall, under the described coordinate mappings, the 3×3 coefficient matrix $\tilde{\mathbf{G}}$ employed in the formalism of Section 2.1.1 is given**

10 as

$$\tilde{\mathbf{G}} = \begin{bmatrix} \tilde{G}_1^1 & \tilde{G}_1^2 & \tilde{G}_1^3 \\ \tilde{G}_2^1 & \tilde{G}_2^2 & \tilde{G}_2^3 \\ \tilde{G}_3^1 & \tilde{G}_3^2 & \tilde{G}_3^3 \end{bmatrix} = \begin{bmatrix} (\Gamma \cos(\tilde{y}/a))^{-1} & 0 & (\Gamma \cos(\tilde{y}/a))^{-1} \partial z / \partial \tilde{x} \\ 0 & \Gamma^{-1} & \Gamma^{-1} \partial z / \partial \tilde{y} \\ 0 & 0 & \partial z / \partial \tilde{z} \end{bmatrix}, \quad (\text{C2})$$

where

$$\Gamma = 1 + \gamma \tilde{z} / a, \quad (\text{C3})$$

with $\gamma = 0$ and $\gamma = 1$ for the shallow- and deep-atmosphere form of the governing equations (1), respectively, and the indices 1, 2, and 3 correspond to x , y , and z components. The corresponding Jacobian of the coordinate mappings \mathcal{G} , which appears in the system (1) as well as other equations, is

$$\mathcal{G} = \Gamma^2 \cos(\tilde{y}/a) (\partial z / \partial \tilde{z})^{-1}. \quad (\text{C4})$$

The inverse metrics $\partial z / \partial \tilde{x}$, $\partial z / \partial \tilde{y}$, and $\partial z / \partial \tilde{z}$ in (C2) and (C4) are computed consistently with the FV discretization of Section 2.1.3 and using the Kronecker-delta identity, e.g. Kühnlein et al. (2012).

20 Furthermore, in the momentum equation (1b), the components of the Coriolis acceleration are

$$-\mathbf{f} \times \mathbf{u} = \left[v f_0 \sin(\tilde{y}/a) - \gamma w f_0 \cos(\tilde{y}/a), -u f_0 \sin(\tilde{y}/a), \gamma u f_0 \cos(\tilde{y}/a) \right]^T, \quad (\text{C5})$$

where $f_0 = 2|\mathbf{\Omega}|$, and the metric forcings due to the curvature of the sphere (i.e. component-wise Christoffel terms associated with the advective derivative of the physical velocity) are

$$\mathcal{M}(\mathbf{u}) = (\Gamma a)^{-1} \left[\tan(\tilde{y}/a) uv - \gamma uw, -\tan(\tilde{y}/a) uu - \gamma vw, \gamma (uu + vv) \right]^T. \quad (\text{C6})$$

25 The buoyancy term of (1b) contains the gravitational acceleration g , which is given as

$$g = g_0 \Gamma^{-2}. \quad (\text{C7})$$

Although not applied in the present paper, the optional time-dependence of the generalised curvilinear coordinates enters through the mesh velocity \mathbf{v}^g , as indicated in Section 2.1.1; see Prusa and Smolarkiewicz (2003); Kühnlein et al. (2012) for further discussion.

Appendix D: Summary of variables and physical constants

Table D1. List of variables

Symbol	Description	Units
λ	Longitude	rad
ϕ	Latitude	rad
z	Height with respect to mean sea level where it is set to zero	m
r	radial distance	m
p_s	Surface hydrostatic pressure, used with the HPEs in IFS-ST	Pa
π_s	Surface hydrostatic pressure, used with the fully compressible equations in IFS-ST	Pa
u	Zonal wind velocity	m s^{-1}
v	Meridional wind velocity	m s^{-1}
w	Vertical wind velocity	m s^{-1}
\mathbf{u}	3D wind vector	m s^{-1}
p	Pressure	Pa
ρ	Total air density	kg m^{-3}
ρ_d	Dry air density	kg m^{-3}
T	Temperature	K
T_v	Virtual temperature	K
θ	Potential temperature	K
θ_ρ	Density potential temperature	K
d_4	Vertical divergence variable, used with the fully compressible equations in IFS-ST	s^{-1}
\hat{q}	Nonhydrostatic pressure departure, used with the fully compressible equations in IFS-ST	1
π	Exner pressure	1
φ	normalised Exner pressure	$\text{J kg}^{-1} \text{K}^{-1}$
r_k	Mixing ratio moisture variables (vapour r_v , liquid r_l , rain r_r , ice r_i , snow r_s)	kg kg^{-1}
q_k	Specific moisture variables (vapour q_v , liquid q_l , rain q_r , ice q_i , snow q_s)	kg kg^{-1}

Table D2. List of physical constants

Constant	Description	Value
g_0	Gravitational acceleration at the Earth's surface	9.80616 m s^{-2}
a	Earth's mean radius	$6.371229 \cdot 10^6 \text{ m}$
$\Omega \equiv \Omega $	Earth's angular velocity	$7.29212 \cdot 10^{-5} \text{ m}^{-1}$
p_0	Reference pressure	1000 hPa
c_{pd}	Specific heat capacity of dry air at constant pressure	$1004.5 \text{ J kg}^{-1} \text{ K}^{-1}$
c_{vd}	Specific heat capacity of dry air at constant volume	$717.5 \text{ J kg}^{-1} \text{ K}^{-1}$
R_d	Gas constant for dry air	$287.0 \text{ J kg}^{-1} \text{ K}^{-1}$
R_v	Gas constant for water vapor	$461.5 \text{ J kg}^{-1} \text{ K}^{-1}$
ε	Ratio of R_d to R_v	0.622

Code availability. Model codes developed at ECMWF are intellectual property of ECMWF and its member states, and therefore the IFS code is not publicly available. Access to a reduced version of the IFS code may be obtained from ECMWF under an OpenIFS license (see “<http://www.ecmwf.int/en/research/projects/openifs>” for further information).

Data availability. The model output data can be downloaded from <http://doi.org/10.5281/zenodo.1445597>.

- 5 *Acknowledgements.* Support from members of the physics parametrization team at ECMWF is gratefully acknowledged. This work was supported in part by funding received from the European Research Council under the European Union's Seventh Framework Programme FP7/2012/ERC (grant agreement no. 320375), and the Horizon 2020 Research and Innovation Programme ESCAPE (grant agreement no. 671627) and ESIWACE (grant agreement no. 675191). Rupert Klein thanks ECMWF for support under their Fellowship program, and acknowledges partial support of his contributions by Deutsche Forschungsgemeinschaft, Grant CRC 1114 “Scaling Cascades in Complex
- 10 Systems”, Project A02. Zbigniew Piotrowski acknowledges partial support from the “Numerical weather prediction for sustainable Europe” project, carried out within the FIRST TEAM programme of the Foundation for Polish Science co-financed by the European Union under the European Regional Development Fund.

References

- Bacon, D. P., Ahmad, N. N., Boybeyi, Z., Dunn, T. J., Hall, M. S., Lee, P. C. S., Sarma, R. A., Turner, M. D., Waight, K. T., Young, S. H., and Zack, J. W.: A dynamically adapting weather and dispersion model: the operational multiscale environment model with grid adaptivity (OMEGA), *Mon. Wea. Rev.*, 128, 2044–2076, 2000.
- 5 Bauer, P., Thorpe, A., and Brunet, G.: The quiet revolution of numerical weather prediction, *Nature*, 525, 47–55, 2015.
- Beljaars, A., Balsamo, G., Bechthold, P., Bozzo, A., Forbes, R., Hogan, R. J., Köhler, M., Morcrette, J. J., Tompkins, A., Viterbo, P., and Wedi, N. P.: The numerics of physical parameterization in the ECMWF model, *Front. Earth Sci.*, <https://doi.org/https://doi.org/10.3389/feart.2018.00137>, 2018.
- Benacchio, T., O’Neill, W. P., and Klein, R.: A blended soundproof-to-compressible numerical model for small- to mesoscale atmospheric dynamics, *Mon. Weather Rev.*, 142, 4416–4438, 2014.
- 10 Bénard, P., Vivoda, J., Mašek, J., Smolíková, P., Yessad, K., Smith, C., Brožková, R., and Geleyn, J.-F.: Dynamical kernel of the Aladin-NH spectral limited-area model: Revised formulation and sensitivity experiments, *Q. J. Roy. Meteorol. Soc.*, 136, 155–169, 2010.
- Bubnová, R., Hello, G., Bénard, P., and Geleyn, J.-F.: Integration of the fully elastic equations cast in the hydrostatic pressure terrain-following coordinate in the framework of the ARPEGE/Aladin NWP system, *Mon. Weather Rev.*, 123, 515–535, 1995.
- 15 Cossette, J.-F., Smolarkiewicz, P. K., and Charbonneau, P.: The Monge-Ampère trajectory correction for semi-Lagrangian schemes, *J. Comput. Phys.*, 274, 208–229, 2014.
- Deconinck, W., Bauer, P., Diamantakis, M., Hamrud, M., Kühnlein, C., Maciel, P., Mengaldo, G., Quintino, T., Raoult, B., Smolarkiewicz, P. K., and Wedi, N. P.: Atlas : A library for numerical weather prediction and climate modelling, *Comput. Phys. Commun.*, 220, 188–204, 2017.
- 20 Diamantakis, M. and Augusti-Panareda, A.: A positive definite tracer mass fixer for high resolution weather and atmospheric composition forecasts, *ECMWF Technical Memorandum*, 819, 2017.
- Diamantakis, M. and Flemming, J.: Global mass fixer algorithms for conservative tracer transport in the ECMWF model, *Geosci. Model Dev.*, 7, 777–814, 2014.
- Diamantakis, M. and Magnusson, L.: Sensitivity of the ECMWF model to semi-Lagrangian departure point iterations, *Mon. Weather Rev.*, 25 144, 3233–3250, 2016.
- Domaradzki, J. A., Xiao, Z., and Smolarkiewicz, P. K.: Effective eddy viscosities in implicit large eddy simulations of turbulent flows, *Physics of Fluids*, 15, 3890–3893, 2003.
- Dörnbrack, A., Doyle, J. D., Lane, T. P., Sharman, R. D., and Smolarkiewicz, P. K.: On physical realizability and uncertainty of numerical solutions, *Atmosph. Sci. Lett.*, 6, 118–122, 2005.
- 30 Eliassen, E., Machenbauer, B., and Rasmussen, E.: On a numerical method for integration of the hydrodynamical equations with a spectral representation of the horizontal fields, *Tech. Rep. 2*, Institute of Theoretical Meteorology, University of Copenhagen, 1970.
- Emanuel, K. A.: *Atmospheric convection*, Oxford University Press on Demand, 1994.
- Forbes, R. M., Tompkins, A. M., and Untch, A.: A new prognostic bulk microphysics scheme for the IFS, *ECMWF Technical Memorandum*, 649, 2010.
- 35 Gal-Chen, T. and Somerville, R. C. J.: On the use of a coordinate transformation for the solution of the Navier-Stokes equations, *J. Comput. Phys.*, 17, 209–228, 1975.

- Hortal, M.: The development and testing of a new two-time-level semi-Lagrangian scheme (SETTLS) in the ECMWF forecast model, *Q. J. Roy. Meteorol. Soc.*, 128, 1671–1687, <https://doi.org/10.1002/qj.200212858314>, 2002.
- Hortal, M. and Simmons, A.: Use of reduced Gaussian grids in spectral models, *Mon. Weather Rev.*, 119, 1057–1074, 1991.
- Klemp, J. B.: A terrain-following coordinate with smoothed coordinate surfaces, *Mon. Weather Rev.*, 139, 2163–2169, 2011.
- 5 Klemp, J. B., Dudhia, J., and Hassiotis, A. D.: An upper gravity-wave absorbing layer for NWP applications, *Mon. Weather Rev.*, 136, 3987–4004, 2008.
- Knoll, D. A., Chacon, L., Margolin, L. G., and Mousseau, V. A.: On balanced approximations for time integration of multiple time scale systems, *J. Comput. Phys.*, 185, 583–611, [https://doi.org/10.1016/S0021-9991\(03\)00008-1](https://doi.org/10.1016/S0021-9991(03)00008-1), 2003.
- Kühnlein, C. and Smolarkiewicz, P. K.: An unstructured-mesh finite-volume MPDATA for compressible atmospheric dynamics, *J. Comput. Phys.*, 334, 16–30, 2017.
- 10 Kühnlein, C., Smolarkiewicz, P. K., and Dörnbrack, A.: Modelling atmospheric flows with adaptive moving meshes, *J. Comput. Phys.*, 231, 2741–2763, 2012.
- Kurowski, M. J., Grabowski, W. W., and Smolarkiewicz, P. K.: Anelastic and compressible simulation of moist deep convection, *J. Atmos. Sci.*, 71, 3767–3787, 2014.
- 15 Malardel, S. and Ricard, D.: An alternative cell-averaged departure point reconstruction for pointwise semi-Lagrangian transport schemes, *Q. J. Roy. Meteorol. Soc.*, 141, 2114–2126, 2015.
- Malardel, S., Wedi, N. P., Deconinck, W., Diamantakis, M., Kühnlein, C., Mozdzyński, G., Hamrud, M., and Smolarkiewicz, P. K.: A new grid for the IFS, *ECMWF Newsletter*, 146, 23–28, 2016.
- Orszag, S. A.: Transform method for the calculation of vector-coupled sums: application to the spectral form of the vorticity equation., *J. Atmos. Sci.*, 27, 890–895, [https://doi.org/10.1175/1520-0469\(1970\)027<0890:TMFTCO>2.0.CO;2](https://doi.org/10.1175/1520-0469(1970)027<0890:TMFTCO>2.0.CO;2), 1970.
- 20 Piotrowski, Z. P., Smolarkiewicz, P. K., Malinowski, S. P., and Wyszogrodzki, A. A.: On numerical realizability of thermal convection, *J. Comp. Phys.*, 228, 6268–6290, 2009.
- Prusa, J. M. and Smolarkiewicz, P. K.: An all-scale anelastic model for geophysical flows: dynamic grid deformation, *J. Comput. Phys.*, 190, 601–622, 2003.
- 25 Prusa, J. M., Smolarkiewicz, P. K., and Wyszogrodzki, A. A.: EULAG, a computational model for multiscale flows, *Comput. Fluids*, 37, 1193–1207, 2008.
- Ritchie, H., Temperton, C., Simmons, A., Hortal, M., Davies, T., Dent, D., and Hamrud, M.: Implementation of the semi-Lagrangian method in a high-resolution version of the ECMWF forecast model, *Mon. Weather Rev.*, 123, 489, 1995.
- Robert, A., Henderson, J., and Turnbull, C.: An implicit time integration scheme for baroclinic models of the atmosphere, *Mon. Weather Rev.*, 100, 329–335, 1972.
- 30 Schär, C., Leuenberger, D., Fuhrer, O., Lüthi, D., and Girard, C.: A new terrain-following vertical coordinate formulation for atmospheric prediction models, *Mon. Weather Rev.*, 130, 2459–2480, 2002.
- Simmons, A. J. and Burridge, D. M.: An energy and angular-momentum conserving vertical finite-difference scheme and hybrid vertical coordinates, *Mon. Weather Rev.*, 109, 758–766, 1981.
- 35 Smolarkiewicz, P. and Szmelter, J.: A nonhydrostatic unstructured-mesh soundproof model for simulation of internal gravity waves, *Acta Geophys.*, 59, 1109–1134, 2011.
- Smolarkiewicz, P. K. and Dörnbrack, A.: Conservative integrals of adiabatic Durran’s equations, *Int. J. Numer. Meth. Fluids*, 56, 1513–1519, 2008.

- Smolarkiewicz, P. K. and Grabowski, W.: The multidimensional positive definite advection transport algorithm: nonoscillatory option, *J. Comput. Phys.*, 86, 355–375, 1990.
- Smolarkiewicz, P. K. and Margolin, L.: Variational methods for elliptic problems in fluid models, In: *ECMWF Proceedings, Workshop on developments in numerical methods for very high resolution global models*. Reading, UK, pp. 137–159, 2000.
- 5 Smolarkiewicz, P. K. and Margolin, L. G.: On forward-in-time differencing for fluids - Extension to a curvilinear framework, *Mon. Wea. Rev.*, 121, 1847–1859, 1993.
- Smolarkiewicz, P. K. and Pudykiewicz, J. A.: A class of semi-Lagrangian approximations for fluids, *J. Atmos. Sci.*, 49, 2082–2096, 1992.
- Smolarkiewicz, P. K. and Szmelter, J.: MPDATA: an edge-based unstructured-grid formulation, *J. Comput. Phys.*, 206, 624–649, 2005.
- Smolarkiewicz, P. K. and Szmelter, J.: Iterated upwind schemes for gas dynamics, *J. Comput. Phys.*, 228, 33–54, 2009.
- 10 Smolarkiewicz, P. K., Temperton, C., Thomas, S. J., and Wyszogrodzki, A. A.: Spectral Preconditioners for nonhydrostatic atmospheric models: extreme applications, In: *Proceedings of the ECMWF seminar series on recent developments in numerical methods for atmospheric and ocean modelling*. Reading, UK, pp. 203–220, 2004.
- Smolarkiewicz, P. K., Szmelter, J., and Wyszogrodzki, A. A.: An unstructured-mesh atmospheric model for nonhydrostatic dynamics, *J. Comput. Phys.*, 254, 184–199, 2013.
- 15 Smolarkiewicz, P. K., Kühnlein, C., and Wedi, N. P.: A consistent framework for discrete integrations of soundproof and compressible PDEs of atmospheric dynamics, *J. Comput. Phys.*, 263, 185–205, 2014.
- Smolarkiewicz, P. K., Deconinck, W., Hamrud, M., Kühnlein, C., Mozdzyński, G., Szmelter, J., and Wedi, N. P.: A finite-volume module for simulating global all-scale atmospheric flows, *J. Comput. Phys.*, 314, 287–304, <https://doi.org/10.1016/j.jcp.2016.03.015>, 2016.
- Smolarkiewicz, P. K., Kühnlein, C., and Grabowski, W.: A finite-volume module for cloud-resolving simulations of global atmospheric flows, *J. Comput. Phys.*, 341, 208–229, 2017.
- 20 Smolarkiewicz, P. K., Kühnlein, C., and Wedi, N. P.: Semi-implicit integrations of perturbation equations for all-scale atmospheric dynamics, *J. Comput. Phys.*, 376, 145–159, 2019.
- Szmelter, J. and Smolarkiewicz, P. K.: An edge-based unstructured mesh discretisation in geospherical framework, *J. Comput. Phys.*, 229, 4980–4995, 2010.
- 25 Temperton, C.: Treatment of the Coriolis terms in semi-Lagrangian spectral models, *Atmosphere-Ocean*, 35, 293–302, 2011.
- Temperton, C., Hortal, M., and Simmons, A.: A two-time-level semi-Lagrangian global spectral model, *Q. J. Roy. Meteorol. Soc.*, 127, 111–127, 2001.
- Thuburn, J.: Some conservation issues for the dynamical cores of NWP and climate models, *J. Comput. Phys.*, 227, 3715–3730, 2008.
- Ullrich, P. A., Melvin, T., Jablonowski, C., and Staniforth, A.: A proposed baroclinic wave test case for deep- and shallow-atmosphere dynamical cores, *Q. J. Roy. Meteorol. Soc.*, 140, 1590–1602, 2014.
- 30 Ullrich, P. A., Jablonowski, C., Reed, K. A., Zarzycki, C., Lauritzen, P. H., Nair, R. D., Kent, J., and Verlet-Banide, A.: Dynamical Core Model Intercomparison Project (DCMIP2016) Test Case Document, <https://github.com/ClimateGlobalChange/DCMIP2016>, 2016.
- Ullrich, P. A., Jablonowski, C., Kent, J., Lauritzen, P. H., Nair, R., Reed, K. A., Zarzycki, C. M., Hall, D. M., Dazlich, D., Heikes, R., Konor, C., Randall, D., Dubos, T., Meurdesoif, Y., Chen, X., Harris, L., Kühnlein, C., Lee, V., Qaddouri, A., Girard, C., Giorgetta, M., Reinert, D., Klemp, J., Park, S.-H., Skamarock, W., Miura, H., Ohno, T., Yoshida, R., Walko, R., Reinecke, A., and Viner, K.: DCMIP2016: a review of non-hydrostatic dynamical core design and intercomparison of participating models, *Geosci. Model Dev.*, 10, 4477–4509, 2017.
- 35 Untch, A. and Hortal, M.: A finite-element scheme for the vertical discretization of the semi-Lagrangian version of the ECMWF forecast model, *Q. J. Roy. Meteorol. Soc.*, 130, 1505–1530, 2004.

- Waruszewski, M., Kühnlein, C., Pawlowska, H., and Smolarkiewicz, P. K.: MPDATA: Third-order accuracy for variable flows, *J. Comput. Phys.*, 359, 361–379, 2018.
- Wedi, N. and Düben, P.: Extreme scaling for global weather forecasts at O(1km) horizontal resolution, in: EGU General Assembly Conference Abstracts, vol. 19 of *EGU General Assembly Conference Abstracts*, p. 8671, 2017.
- 5 Wedi, N. P.: The numerical coupling of the physical parametrizations to the dynamical equations in a forecast model, ECMWF Technical Memorandum, 274, 1999.
- Wedi, N. P.: Increasing horizontal resolution in numerical weather prediction and climate simulations: illusion or panacea?, *Phil. Trans. R. Soc. A*, 372, 20130289, <https://doi.org/10.1098/rsta.2013.0289>, 2014.
- Wedi, N. P. and Smolarkiewicz, P. K.: Direct numerical simulation of the Plumb McEwan laboratory analog of the QBO, *J. of Atmos. Sci.*,
10 63, 3226–3252, 2006.
- Wedi, N. P., Hamrud, M., and Mozdzyński, G.: A fast spherical harmonics transform for global NWP and climate models, *Mon. Weather Rev.*, 141, 3450–3461, 2013.
- Wedi, N. P., Bauer, P., Deconinck, W., Diamantakis, M., Hamrud, M., Kühnlein, C., Malardel, S., Mogensen, K., Mozdzyński, G., and Smolarkiewicz, P. K.: The modelling infrastructure of the Integrated Forecasting System: Recent advances and future challenges, ECMWF
15 Technical Memorandum, 760, 1–48, 2015.
- Weller, H., Ringler, T., Piggott, M., and Wood, N.: Challenges facing adaptive mesh modeling of the atmosphere and ocean, *Bull. Am. Meteorol. Soc.*, 91, 105–108, 2010.
- Whitaker, J.: HIWPP non-hydrostatic dynamical core tests: Results from idealized test cases, Tech. rep., 2014.
- Williamson, D. L.: The evolution of dynamical cores for global atmospheric models, *J. Meteor. Soc. Japan*, 85b, 241–269, 2007.
- 20 Wood, N., Staniforth, A., White, A., Allen, T., Diamantakis, M., Gross, M., Melvin, T., Smith, C., Vosper, S., Zerroukat, M., and Thuburn, J.: An inherently mass-conserving semi-implicit semi-Lagrangian discretization of the deep-atmosphere global non-hydrostatic equations, *Q. J. Roy. Meteorol. Soc.*, 140, 1505–1520, 2014.
- Zarzycki, C. M., Jablonowski, C., and Taylor, M. A.: Using variable-resolution meshes to model tropical cyclones in the Community Atmosphere Model, *Mon. Weather Rev.*, 142, 1221–1239, 2014.
- 25 Zarzycki, C. M., Jablonowski, C., Kent, J., Lauritzen, P. H., Nair, R., Reed, K. A., Ullrich, P. A., Hall, D. M., Dazlich, D., Heikes, R., Konor, C., Randall, D., Chen, X., Harris, L., Giorgetta, M., Reinert, D., Kühnlein, C., Walko, R., Lee, V., Qaddouri, A., Tanguay, M., Miura, H., Ohno, T., Yoshida, R., Park, S.-H., Klemp, J., and Skamarock, W.: "DCMIP2016: The Splitting Supercell Test Case", *Geosci. Model Dev. Discuss.*, pp. 1–18, <https://doi.org/10.5194/gmd-2018-156>, <https://www.geosci-model-dev-discuss.net/gmd-2018-156/>, in review, 2018.