

February 15, 2019

Topical Editor Jackson and GMD staff,

Please find our response to reviewers and a marked up version of the manuscript attached to this letter.

In my initial revised submission I informed Topical Editor Jackson of the following to items related to the revision of this manuscript.

- We have not yet changed the version number of the software package hosted on GitHub and distributed through Conda Forge. Thus the DOI links in the manuscript do not point to the 1.0 version. We plan to make the v1.0 release only once the manuscript has been accepted and plan to provide updated DOIs as part of final copy editing.
- Between initial submission of this manuscript in August 2018 and receipt of reviews in December 2018 and January 2019, we made a few changes to the code base (e.g. input file format changes, consistent use of discharge, instead of drainage area in governing equations) to make the 1.0 release forward compatible with the upcoming 1.0 release of the Community Surface Dynamics Modeling System Python Modeling Tool (PyMT). We have updated the manuscript to align it with the implementation changes. Accordingly, the description of model instantiation, input files, and some equations have changed.

In response to Editor Jackson's technical correction instructions we have made the v1.0 version release on GitHub and conda-forge, created new Zenodo DOIs and updated the DOIs in the manuscript. Editor Jackson's comments also indicated that we should attend to the minor comments of reviewer 1. As noted in the previous response to reviewers and the public author comment, we have already addressed these comments. We also added one sentence to the acknowledgments section of the manuscript.

Best Regards,

Katy Barnhart and coauthors

Response to reviewers

Changes made based on comments from Reviewer 1:

- Fixed the typos pointed out by reviewer 1 in lines 802 and 904.

Changes made based on comments from Reviewer 2:

- In response to reviewer 2's recommendation #1 we moved the initial explanation regarding the relationship between the number of binary choices and the number of models earlier in the document. Specifically we changed text in the abstract and in the introduction.
- We revised the text regarding numerical smoothing of functions with hard thresholds (reviewer 2's comment #2). We agree with reviewer 2 that the best place to do this is at the first mention of the smoothed functions.
- Based on reviewer 2's comment #3 on terminology, we have revised to text to qualify the word "model" wherever necessary.
- In response to reviewer 2's comment #4, we revised Figure 1 to have larger legends and no scientific notation.
- Additionally, we made many in-text changes in response to reviewer 2's supplementary file which contained a scan of the manuscript.

terrainbento 1.0: a Python package for multi-model analysis in long-term drainage basin evolution

Katherine R. Barnhart^{1,2}, Rachel C. Glade^{2,3}, Charles M. Shobe^{1,2}, and Gregory E. Tucker^{1,2}

¹Cooperative Institute for Research in Environmental Sciences, University of Colorado at Boulder, Boulder, CO, USA

²Department of Geological Sciences, University of Colorado at Boulder, Boulder, CO, USA

³Institute for Arctic and Alpine Research, University of Colorado at Boulder, Boulder, CO, USA

Correspondence to: Katherine Barnhart (katherine.barnhart@colorado.edu)

Abstract. Models of landscape evolution provide insight into the ~~development~~ geomorphic history of specific field areas, create testable predictions of landform development, demonstrate the consequences of current geomorphic process theory, and spark imagination through hypothetical scenarios. While the last four decades have brought the proliferation of many alternative formulations for the redistribution of mass by Earth surface processes, relatively few studies have systematically compared and tested these alternative equations. We present a new Python ~~modeling~~ package, terrainbento 1.0, that enables multi-model comparison, sensitivity analysis, and calibration of Earth surface process models. terrainbento provides a set of 28 model programs that implement alternative transport laws related to four ~~model~~ process elements: hillslope processes, surface-water hydrology, erosion by flowing water, and material properties. The 28 model programs ~~stem from 13 binary choices~~ are a systematic subset of the 2048 possible numerical models associated with 11 binary choices. Each binary choice is related to one of these four elements—for example, the use of linear or non-linear hillslope diffusion. terrainbento is an extensible framework: ~~model~~-base classes that treat the elements common to all numerical models (such as input/output and boundary conditions) make it possible to create a new numerical model without re-inventing these common methods. terrainbento is built on top of the Landlab framework, such that new Landlab components directly support the creation of new terrainbento ~~models~~ model programs. terrainbento is fully documented, has 100% unit test coverage including numerical comparison with analytical solutions for process models, and continuous integration testing. We support future users and developers with introductory Jupyter notebooks and a template for creating new terrainbento model programs. In this paper, we describe the package structure, process ~~model~~-theory, and software implementation of terrainbento.

Finally, we illustrate the utility of terrainbento with a benchmark example highlighting the differences in ~~steady-state~~ steady-state topography between five different ~~process~~ numerical models.

1 Introduction

25 Computational models of long-term drainage basin and landscape evolution have a wide spectrum of applications in geomorphology, ranging from addressing fundamental questions about how climatic and tectonic processes shape topography, to performing engineering assessments of landform stability and potential for hazardous-waste containment (~~see, e.g., reviews by Coulthard, 2001; Pazzaglia, 2003; Martin and Church, 2004~~ (see, e.g., reviews by Coulthard, 2001; Pazzaglia, 2003; Martin and Church, 2004; Willgoose, 2005; Codilean et al., 2006; Bishop, 2007)).

30 . Although the basic principles of drainage basin evolution are reasonably well understood—such as the fundamental concept that erosion is driven by gravitational and water-runoff processes, the latter of which depend strongly on surface gradient and water flow—there remains uncertainty concerning the appropriate forms of the governing transport laws for any particular set of materials and environmental conditions (Dietrich et al., 2003). This situation creates a need for comparative testing

35 in order to gauge the overall performance of various ~~model~~ mathematical formulations, to identify knowledge gaps in areas where numerical models perform poorly, and to assess which transport laws are most appropriate for various ~~types of~~ environmental conditions, time ~~seale~~ scales, and spatial ~~seale~~ scales.

~~To date, there have been relatively few studies that~~ Relatively few studies have systematically compared and tested alternative transport laws, and those that do usually address only a single, quasi-one-dimensional landform element, such as the shape of an idealized hillslope (~~Roering, 2008; Doane et al., 2018~~ , or (Doane et al., 2018), the longitudinal profile of a particular stream channel (Tomkin et al., 2003; van der Beek and Bishop, 2003; (Tomkin et al., 2003; van der Beek and Bishop, 2003; Loget et al., 2006; Valla et al., 2010; Attal et al., 2011; Hobbie et al., 2011; , or a fault scarp (Andrews and Hanks, 1985; Andrews and Bucknam, 1987b; Hanks, 2000; Pelletier et al., 2006)).

45 . Two-dimensional numerical models have focused on testing alternative formulations of soil production and transport (Herman and Braun, 2006; Roering, 2008; Petit et al., 2009; Pelletier et al., 2011) and studies that test two-dimensional numerical models that couple hillslope and channel processes are much more limited (Hancock and Willgoose, 2001; Willgoose et al., 2003; Hancock et al., 2010; Gray et al., 2018).

. Models that combine hillslope and channel processes—often referred to as Landscape Evolution

50 Models (LEMs)—can simulate the formation of three-dimensional landforms that arise from interaction of multiple processes, and in principle comparative testing ought to be straightforward (Hancock et al., 2010). Yet the algorithms behind these numerical models commonly differ from one another in multiple ways, which makes one-to-one comparison difficult. For example, if two numerical model codes differ simultaneously in their treatments of hydrology, sediment transport,

55 and material properties, diagnosing any differences in their performance requires disentangling each of these effects. Often research questions focus on a combination of geological process and bound-

any conditions; classic examples include morphologic dating of fault scarps and glacial moraines. In this way, boundary conditions become a core [numerical](#) model component. To help address this challenge, it would be useful to have a software framework in which an investigator could alter one
60 “process ingredient” or boundary condition at a time, and thereby conduct meaningful parameter studies, sensitivity analyses, calibrations, multi-model analyses, and comparisons with data.

terrainbento is a Python-language software product designed to help meet this need. terrainbento version 1.0 provides three resources for exploring alternative process ~~models~~-[formulations](#) for landscape evolution. First, terrainbento 1.0 includes a collection of 28 distinct model programs for the
65 long-term (order 10^4 – 10^6 years) evolution of drainage basin topography; most of these ~~models~~ [programs](#) vary from a simple “base” [numerical](#) model in just one or two particular process descriptions. [We consider a systematic subset of the 2048 possible numerical models derived from 11 binary options \(Section 3.9 describes the basis for the subset\).](#)

Second, terrainbento takes advantage of Python class inheritance such that all common features
70 of terrainbento ~~models~~-[model programs](#) (such as input/output, and the handling of boundary conditions) are provided in a generic “ErosionModel” base class from which specific ~~models~~-[programs](#) are derived. This ErosionModel [template-class](#) enables modelers to craft and apply their own ~~model~~ implementations without needing to re-invent the overarching software framework or the necessary utility functions. terrainbento 1.0 builds on the Landlab Toolkit (Hobley et al., 2017), using Land-
75 lab Components to represent individual hillslope, hydrologic, and channel process components, and taking advantage of Landlab to handle common tasks such as input and output management. ~~Finally,~~
~~model-~~

[Finally,](#) boundary conditions can have a profound impact on model behavior. terrainbento has a set of extensible features called “boundary handlers” that can be used to implement many common
80 and complex boundary conditions.

Earth’s landscapes are incredibly diverse, and the scientific questions that they pose are equally extensive. No one model [program](#), or even a general framework like terrainbento, can hope to encompass all of this diversity. terrainbento 1.0 was originally created to address landscape evolution in a humid-temperate, soil-mantled, post-glacial environment with moderate relief (order
85 10^2 m, on a horizontal scale of order 10^4 m) and relatively rapid erosion rates (10^{-4} to 10^{-2} m/yr), over a time scale of order 10^4 years. The choices of algorithms and process laws among the constituent [numerical](#) models reflect this motivation. Nonetheless, through the model template, terrainbento provides a sufficiently generic platform that it can be readily adapted to address a range of other scales and environments. This paper presents and describes terrainbento version 1.0, including its basic structure, mathematical underpinnings, software implementation, and the 28 constituent
90 ~~models~~[model programs](#).

2 General structure of a terrainbento model program

A terrainbento model program begins with a gridded representation of topography. ~~By default, a regular raster grid is used.~~ Landlab's `HexModelGrid` type is also supported as an option. `RasterModelGrid`, `HexModelGrid`, `RadialModelGrid`, and irregular Delaunay-Voronoi grids are all supported in terrainbento version 1.0~~does not support Landlab's irregular Delaunay-Voronoi grid type, but the framework could readily be modified to accommodate it in the future.~~

The elevation, and regolith thickness if present, at each grid node evolves according to a specified set of erosion and/or sediment transport laws, which vary ~~from model to model.~~ between model programs. terrainbento is agnostic to time and space units but expects that a user will ensure consistency between the grid units, timestep units, and model input parameters.

In this section, we start by outlining the governing equations in a generic form. We then examine the software framework that implements elements common to all terrainbento ~~models~~ model programs. The subsequent section (3) then presents the collection of process laws and algorithms used to represent hillslope erosion, hydrology, water erosion, and material properties. Section 4 ~~then~~ describes handling of boundary conditions. The governing equations for all 28 ~~models~~ model programs in terrainbento 1.0 are listed in Appendix B.

2.1 A note on terminology

The word “model” can have multiple meanings in scientific computing, and indeed in science generally. Here we will use the term *mathematical model* to mean a set of governing equations, which in this case describe landscape evolution under a given set of assumed process dynamics, material properties, and boundary conditions. Under this definition, two mathematical models may have governing equations that are structurally quite similar, but which are nonetheless considered to be distinct models either because certain constants take on different values, or because a term is included in one version but not the other. For example, as described below, water erosion is commonly treated as proportional to either hydraulic power or hydraulic stress. We consider these to be distinct mathematical models, despite the fact that the difference lies only in the choice of two exponent values in the governing equation.

Each *mathematical model* contains terms that represent individual processes (or closely related collections of processes), such as erosion by surface water flow. The mathematical representation for an individual process will be referred to as a *process law* or *rate law*. By this definition, a *mathematical model* in terrainbento consists of a set of *process laws* embedded within an overall mass-conservation equation.

The term *numerical model* is used here to refer to a numerical algorithm that solves a particular mathematical model by marching forward in time from a given initial condition under given boundary conditions. The term *model program* will refer to a set of source-code files that performs the

calculations needed to implement a *numerical model*. In some cases in terrainbento 1.0, a single *model program* can be configured to implement many *numerical models*, depending on its input parameters. One can consider alternative models that require only a different set of model program parameter values alternative *parametric models*, whilst models that require a different program are different *structural models*. The combination of a model program plus the inputs that control this type of choice will be referred to as a *model configuration*.

2.2 Basic Ingredients and Governing Equation

Topography in a terrainbento [mathematical](#) model is represented as a two-dimensional field of elevation values, $\eta(x, y, t)$. The general governing equation describes the rate of change of η as the sum of two terms: one representing erosion (or deposition) of mass by water-driven processes, and one representing gravitational (“hillslope”) processes:

$$\frac{\partial \eta}{\partial t} = -E_W - E_H, \quad (1)$$

where E_W is the rate of erosion (or deposition, if negative) by water-driven processes such as channelized flow, and E_H is the rate for gravitationally driven processes such as soil creep and shallow landsliding (the subscript H stands for “hillslope,” recognizing that gravitational processes will tend to be most important on hillslopes). Water erosion is assumed to depend on local slope gradient, S , water discharge, Q (which in many terrainbento [models-model programs](#) will be treated using drainage area as a surrogate, as discussed below [and in Section 3.6](#)), and material properties. Erosion or accumulation by gravitational processes is assumed to be a function of gradient, material properties, and (in some [models-model programs](#)) soil thickness.

While many terrainbento model programs only treat the evolution of the topographic surface η , two types of [models-model program](#) treat a more complex set of layers. The first type adds an explicit mobile-regolith layer on top of bedrock. The second type treats two different bedrock lithologies in a user-determined spatial configuration.

2.2.1 Soil-tracking [models-model programs](#)

Several of terrainbento’s [models-model programs](#) explicitly track a layer of regolith, defined here as unconsolidated and potentially mobile sediment, such as soil or alluvium (see Section 3.7.1). Here, for simplicity we will refer to this material as soil, keeping in mind that our operational definition is more general than the one commonly used by soil scientists ([Soil Survey Staff, 1999](#)). The land surface height is the sum of bedrock elevation, η_b , and soil thickness, H :

$$\eta = \eta_b + H. \quad (2)$$

Here too the term “bedrock” is used in its broadest possible sense, and may include for example cohesive sedimentary material such as glacial till [or saprolite](#). The time rate of change of soil thickness

160 is the difference between the rate soil production and erosion,

$$\frac{\partial H}{\partial t} = P - E_{WHS}, \quad (3)$$

where P is the rate of soil production from bedrock, and E_{WHS} denotes the total rate of soil erosion (or accumulation, if negative) resulting from water-driven and gravity-driven transport processes. Similarly, the rate of change of bedrock surface height is the sum of soil production rate (scaled
165 by any density contrast between rock and soil), and the rate of bedrock incision by running water, E_{WR} :

$$\frac{\partial \eta_b}{\partial t} = -\frac{\rho_s}{\rho_r} P - E_{WR}. \quad (4)$$

~~The rate of lowering of the bedrock surface is therefore the sum of the rate of rock-to-soil conversion and the rate of removal by water erosion.~~

170 2.2.2 Multi-lithology ~~models~~model programs

Nine terrainbento ~~models~~model programs allow for spatial juxtaposition of two different lithologies, L_1 and L_2 . Layer L_1 is assumed to overlie L_2 , but it may be absent (thickness zero) at any particular location. Let $\eta_{L2}(x, y, t)$ denote the elevation of the top of L_2 , and $T_{L1}(x, y, t)$ represent the thickness of L_1 . Then the land surface elevation (in the absence of an explicit soil layer) is given
175 by:

$$\eta = \eta_{L2} + T_{L1}. \quad (5)$$

In ~~models~~model programs that honor both a soil layer and two different lithologies, the surface elevation is:

$$\eta = \eta_{L2} + T_{L1} + H, \quad (6)$$

180 in which case the height of the bedrock surface is

$$\eta_b = \eta_{L2} + T_{L1}. \quad (7)$$

Where the top layer exists, it lowers as a result of water erosion and (if soil is tracked) rock-to-soil conversion. This can be expressed mathematically as

$$\frac{\partial T_{L1}}{\partial t} = -\delta_L(E_W + P), \quad (8)$$

185 where δ_L is a spatially varying function equal to 1 where $L_1 > 0$, and 0 elsewhere (here P is considered to be zero in non-soil-tracking ~~models~~model programs). The rate of change of elevation of the top of L_2 is given by

$$\frac{\partial \eta_{L2}}{\partial t} = -(1 - \delta_L)(E_W + P), \quad (9)$$

which ~~simply~~ means that the lower layer L_2 is vulnerable to erosion and weathering wherever the top layer is missing (for example, having been eroded through). Note that for reasons reflecting the original application of terrainbento, within the source code and input files the top layer is referred to as ‘till’ and the bottom layer as ‘rock.’ Note also that the BasicHySa model [program](#) allows simultaneous water erosion of soil and rock, as discussed below.

3 Process formulations

Each ~~model~~[of the 28 model programs](#) in the terrainbento 1.0 collection has four elements, reflecting the ~~model’s~~ treatment of hillslope processes, surface-water hydrology, erosion by running water, and material properties. The possible formulations for each of these elements are constructed around a set of binary choices. Each choice represents a decision about how a particular element might be formulated. For example, the downhill soil transport rate could be represented as either a linear or nonlinear function of local topographic gradient, while the lithology could either be treated as being uniform, or divided into two distinct types as discussed in Section 2.2.2. The binary-choice design makes it possible to test the behavior of one alternative ~~model~~[process](#) element at a time. The binary options that form the basis for the terrainbento 1.0 constituent ~~models~~[model programs](#) are listed in Table 1. In Table 1, option B in each row usually represents a more sophisticated choice than option A: one that may bring more realism, but generally involves more parameters.

Each of terrainbento’s ~~models~~[model programs](#) uses Landlab components to implement the numerical algorithms behind channel erosion, hillslope processes, and water-flow routing. The components used are briefly identified by name in the following descriptions~~of terrainbento model ingredients~~. The software architecture that supports this component-based approach is then discussed further in Section 5. Further information about Landlab and its component-modeling capability is provided by Hobley et al. (2017).

3.1 Model domain options

terrainbento supports ~~both regular raster grids and hexagonal grids. Raster grids may be initialized using an input Digital Elevation Model (DEM) or generated as a rectangular grid of user-specified dimensions and spacing with synthetic initial topography. Hexagonal grids may only be generated with synthetic topography~~[all types of Landlab model grids](#). Many options for the creation of synthetic topography [and instantiation from a DEM are available. These options](#) are ~~available and are~~ described in the User Manual.

3.2 Drainage area, flow direction, and flow accumulation

All terrainbento ~~models~~[model programs](#) calculate drainage area and surface water discharge using the Landlab FlowDirectors and FlowAccumulator. Flow direction algorithms presently supported in

Table 1. ~~Binary-Model program binary options for process formulations and boundary conditions.~~

Category	Option A	Option B
Hillslope processes	linear transport law	non-linear transport law
Surface-water hydrology	deterministic uniform runoff	stochastic variable source area runoff
<u>Erosion by flowing water</u>	$\omega_c = 0$ stream power constant ω_c detachment-limited uniform sediment*	$\omega_c > 0$ shear stress ω_c increases with incision depth sediment-tracking fine vs. coarse*
Material properties	no separate soil layer homogeneous lithology	tracks soil layer $H(x, y, t)$ two lithologies
Paleoclimate	constant climate	time-varying K

* only applies to sediment-tracking model programs(see text).

Landlab include: SteepestDescent/D4, D8, D_∞ , and Multiple Flow Direction ([O'Callaghan and Mark, 1984](#); [Freeman, 1991](#); [Tarboton, 1996](#)). Water routing across closed depressions is optionally handled using a lake-fill algorithm implemented by the Landlab DepressionFinderAndRouter component (the current version of which uses an implementation based on Tucker et al. (2001)). Once flow directions and surface water runoff are calculated, the contributing drainage area or surface water discharge at a given grid cell i is calculated by adding up the area of all cells whose flow eventually passes through i , plus the area or discharge of i itself using the Landlab FlowAccumulator component.

Table 2. Summary of 28 individual ~~models-model programs~~ in the terrainbento 1.0 collection.

Model configuration	Element varied		
	#1	#2	#3
Basic	-	-	-
BasicTh	variable ω_c	-	-
BasicDd	$\omega_{ct} \propto$ incision depth	-	-
BasicHy	sediment-tracking channel erosion rule	-	-
BasicCh	nonlinear (cubic) hillslope soil transport	-	-
BasicSt	stochastic runoff generation	-	-
BasicVs	variable source area runoff generation	-	-
BasicSa	tracks soil/alluvium	-	-
BasicRt	tracks two lithologies	-	-
BasicCc	K varies over time	-	-
BasicStTh	variable ω_c	stochastic runoff generation	-
BasicThVs	variable ω_c	variable source area runoff generation	-
BasicRtTh	variable ω_c	tracks two lithologies	-
BasicDdHy	$\omega_{ct} \propto$ incision depth	sediment-tracking channel erosion rule	-
BasicDdSt	$\omega_{ct} \propto$ incision depth	stochastic runoff generation	-
BasicDdVs	$\omega_{ct} \propto$ incision depth	variable source area runoff generation	-
BasicDdRt	$\omega_{ct} \propto$ incision depth	tracks two lithologies	-
BasicHySt	sediment-tracking channel erosion rule	stochastic runoff generation	-
BasicHyVs	sediment-tracking channel erosion rule	variable source area runoff generation	-
BasicHySa	sediment-tracking channel erosion rule	tracks soil/alluvium	-
BasicHyRt	sediment-tracking channel erosion rule	tracks two lithologies	-
BasicChSa	nonlinear (cubic) hillslope soil transport	tracks soil/alluvium	-
BasicChRt	nonlinear (cubic) hillslope soil transport	tracks two lithologies	-
BasicStVs	stochastic runoff generation	variable source area runoff generation	-
BasicSaVs	variable source area runoff generation	tracks soil/alluvium	-
BasicRtVs	variable source area runoff generation	tracks two lithologies	-
BasicRtSa	tracks soil/alluvium	tracks two lithologies	-
BasicChRtTh	nonlinear (cubic) hillslope soil transport	tracks two lithologies	variable ω_c

3.3 Basic model ~~program~~

230 The simplest of the component ~~models-model programs~~ in terrainbento is known as the Basic model
~~Its program. It implements a discretized numerical solution to the following~~ governing equation for

land-surface elevation $\eta(x, y, t)$ is:

$$\frac{\partial \eta}{\partial t} = -K A K Q^m S^n + D \nabla^2 \eta, \quad (10)$$

where K is an erosion coefficient with dimensions of $[L^{1-2m} T^{-1} L^{1-3m} T^{m-1}]$, A is upstream contributing drainage area, Q is the surface water discharge, S is the gradient in the steepest down-slope direction [-], m and n are the area-discharge and slope exponents, respectively, and D is a soil-creep coefficient with dimensions of $[L^2 T^{-1}]$. Here the first term on the right hand side represents channel and gully erosion, while the second term represents erosion or deposition by gravitational sediment movement. An example of a landscape simulated using the terrainbento Basic model program, using the common choice $m = 1/2$ and $n = 1$, is shown in Figure 1a. Each of the five panels in Figure 1 illustrates different terrainbento models-model programs constructed with the same boundary conditions. The model runs that produced all of these example landscapes, including the parameter dictionary input that specifies the model run and slope area diagrams like that shown in Figure 2 can be found in the Jupyter Notebook tutorials on GitHub <https://doi.org/10.5281/zenodo.2566608>.

The second term on the right is the popular linear diffusion rule for hillslopes (Culling, 1963). The first term on the right represents channel incision, and is based on the widely used stream-power formulation (Howard et al., 1994; Whipple and Tucker, 1999), in which the long-term average rate of channel downcutting is taken to be proportional to hydraulic power per unit bed area. A key assumption behind the Basic model program is that the erosion rate is limited by the capacity to detach and remove material, rather than by along-stream variations in the capacity to transport sediment. Drainage area A appears as a surrogate for effective water discharge. Often the choice $m = 1/2$ is made, reflecting the assumption that discharge per unit channel width scales as the square root of drainage area (Wohl and David, 2008). Similarly, n is commonly taken to be unity, based on the derivation from stream power. The examples presented below use the exponent values $m = 1/2$ and $n = 1$ unless otherwise noted.

Rather than hard coding values for the water erosion drainage area exponent m and slope exponent n , terrainbento model programs permit varying these two exponents as parameters. Thus within terrainbento 1.0 the same model program can be configured to represent either a stream-power or shear-stress representation of water erosion. Similarly, alternative forms of the fluvial erosion process law can be implemented by changing the value of m or n to reflect drainage area-channel width scaling (Snyder et al., 2003b; ?) (for example) a different channel width-discharge scaling relation (Snyder et al., 2003b; Wohl and David, 2008) or different fluvial erosion processes-mechanisms (Whipple et al., 2000a). For example, Figure 1b shows an example of an alternative parametric model which uses the Basic model program with a value of $m = 1/4$.

Although Equation 10 is rather simple, having just ~~two~~four parameters (~~K and D~~ , m , and n), it represents a formulation that has been widely used in geomorphic ~~models~~modeling (e.g., Miller and Slingerland, 2006; Miller et al., 2007; Perron et al., 2009; Pelletier, 2010; Duvall and Tucker, 2015).

The equations are commonly solved numerically on a regular or irregular grid. ~~The drainage area factor is~~ Discharge and drainage area are normally evaluated using a downslope routing algorithm in which the water output from one grid cell is passed to one or more downhill neighboring cells (see, for example, review in Tucker and Hancock, 2010). Despite its simplicity, this two-parameter numerical model has been shown to reproduce first-order properties of drainage basin topography, including dendritic drainage networks, concave-upward channel longitudinal profiles, and convex-upward hillslopes.

One arrives at the terrainbento Basic model program by choosing option A for each item in Table 1. In the following sub-sections, we review the various options that terrainbento offers for alternative treatment of hillslope processes, surface-water hydrology, channel incision, materials, and boundary conditions.

3.4 Hillslope processes

To ~~model~~simulate hillslope evolution processes in a soil-mantled landscape, we use components of varying complexity that treat soil transport as a diffusion-like process in which sediment flux is governed by topographic gradient. terrainbento offers two alternative soil-flux rules with which to ~~model~~simulate the downslope transport of soil and its dependence on topographic gradient: linear and nonlinear.

In addition, as discussed previously, terrainbento also allows for the option of explicitly tracking a dynamic soil layer. ~~This~~ Our representation and treatment of soil evolution is simpler than in existing models focused on soil production and evolution (e.g., Cohen et al., 2010; Vanwallegghem et al., 2013) The dynamic soil option is provided to address the possibility that soil may become thin enough to limit flux, and this limitation may in turn influence the rate and style of landscape evolution. Inclusion of a dynamic soil layer requires an equation for soil production from the underlying lithology (P in equation 3), and furthermore that the flux law be modified to account for the local soil thickness such that soil flux goes smoothly to zero as thickness declines.

3.4.1 Continuity law for soil creep

The simplest forms of the so-called “geomorphic diffusion” equation (Dietrich et al., 2003) assume transport-limited conditions, in which the production rate of soil is always much greater than the transport rate; thus, transport rate does not depend on soil availability or thickness. In this case, the hillslope term in the continuity equation (1) is:

$$E_H = \frac{1}{1 - \phi} \nabla q_h, \quad (11)$$

where q_h is the hillslope soil volume flux per unit width, ϕ is the porosity of the soil, and the ∇ operator represents differentiation in ~~two~~both horizontal directions ($\nabla = \partial/\partial x + \partial/\partial y$).

3.4.2 Linear creep law

A variety of formulae exist for the soil flux, q_h . The simplest and most common formula (Culling, 1963) treats the soil transport rate as a simple linear function of topographic gradient, using a transport efficiency constant, D' :

$$q_h = -D'\nabla\eta, \quad (12)$$

where $\nabla\eta$ is the slope gradient. Using this flux rule with equation 11, the hillslope term in the continuity equation becomes:

$$E_H = -D\nabla^2\eta, \quad (13)$$

where D , sometimes referred to as hillslope diffusivity, is equivalent to $D'/(1 - \phi)$ and has dimensions of L^2/T . This simplest form of the evolution equation for soil creep on hillslopes results in convex-upward topography at steady state.

3.4.3 Nonlinear creep law

A more complex version of the creep law for soil-mantled slopes involves a nonlinear relationship between soil flux and topographic gradient. The nonlinear formulation captures accelerated creep and shallow landsliding as gradient approaches an effective angle of repose for loose granular material. Several nonlinear creep-transport laws have been suggested in the literature. The most popular of these is the Andrews-Bucknam equation (Andrews and Bucknam, 1987a), which performs reasonably well when compared with experimental and field data (Roering et al., 1999, 2001; Roering, 2008). One problem with the Andrews-Bucknam law, however, is that the flux diverges when the slope gradient, S , equals the threshold gradient S_c , and is undefined for $S > S_c$. This property makes it challenging to incorporate into a landscape evolution model program, where other processes may produce gradients equal to or greater than S_c . Some authors have addressed this problem with a modified form that avoids divergence at gradient $S = S_c$ (e.g., Carretier and Lucazeau, 2005).

terrainbento uses a truncated Taylor Series formulation for soil flux, which was derived by Ganti et al. (2012) for the Andrews-Bucknam law. The flux is given by

$$q_h = -DS \left[1 + \left(\frac{S}{S_c} \right)^2 + \left(\frac{S}{S_c} \right)^4 + \dots + \left(\frac{S}{S_c} \right)^{2(N-1)} \right], \quad (14)$$

where $S = -\nabla\eta$ is topographic gradient (positive downhill), D is the transport efficiency factor, and S_c is a critical gradient. The user specifies the number of terms N to be used in the approximation. The nonlinear flux rule results in convex-up topography for shallow slopes, and transitions to linear

hillslopes for steeper slopes. An example terrainbento simulation using the nonlinear creep law is shown in Figure 1c.

3.4.4 Linear depth-dependent creep law

335 For ~~models~~[model programs](#) that explicitly track a soil layer $H(x, y, t)$, one needs to modify the creep law to incorporate a relationship between flux, q_h , and local soil thickness. terrainbento uses an approach proposed by Johnstone and Hilley (2015), in which the flux decays exponentially as soil thickness approaches zero,

$$q_h = -D \left[1 - \exp \left(-\frac{H}{H_0} \right) \right] \nabla \eta, \quad (15)$$

340 where H_0 represents the soil thickness for which q_h shrinks to $(1 - 1/e)$ of its maximum value for a given slope gradient. (Note that in the original formulation of Johnstone and Hilley (2015), D is treated as the product of H_0 and a transport coefficient with dimensions of length per time; here we lump them together as D).

3.4.5 Nonlinear depth-dependent creep law

345 We can modify the nonlinear flux rule (equation 14) to accommodate soil, again assuming an exponential velocity distribution in the subsurface (Johnstone and Hilley, 2015):

$$q_h = -DS \left[1 - \exp \left(-\frac{H}{H_0} \right) \right] \left[1 + \left(\frac{S}{S_c} \right)^2 + \left(\frac{S}{S_c} \right)^4 + \dots + \left(\frac{S}{S_c} \right)^{2(N-1)} \right]. \quad (16)$$

This approach is somewhat similar to that used by Roering (2008) in a study that compared the predictions of a nonlinear, depth-dependent flux law with observed hillslope forms.

350 3.4.6 Soil production

Models that track a layer of soil must include an expression to specify the rate at which soil is produced from the underlying parent material. The most commonly applied formula, and the one used by terrainbento's soil-tracking ~~models~~[model programs](#), treats the rate of soil production from the underlying lithology as an inverse-exponential function of soil thickness (Ahnert, 1976; Heimsath et al., 1997; Small et al., 1999):

$$P = P_0 \exp(-H/H_s), \quad (17)$$

where P_0 is the maximum production rate (with dimensions of length per time), and H_s is a depth-decay constant on the order of decimeters.

3.5 Hydrology

360 Treatments of surface-water hydrology in landscape evolution models are commonly quite straightforward, reflecting the need for both simplicity and computational efficiency. Erosion formulae nor-

mally require specification of water discharge or (less commonly) depth. The most common parameterization is to use contributing drainage area, A , as a surrogate for surface-flow discharge, Q . This is effectively states that $Q = rA$, where r , a runoff rate per unit area, is equal to 1. This is the default option in terrainbento's ~~models~~model programs. Operationally, this means that the water-erosion law includes A as the effective discharge (see Section 3.6 below), and that the erosion law parameters embed information about climatic factors such as precipitation frequency and intensity, as well as material properties such as soil infiltration capacity (e.g., Tucker, 2004).

3.5.1 Variable source-area hydrology

In vegetated, humid-temperate regions, storm runoff is commonly produced by the saturation-excess mechanism, in which rain falls on areas that have become saturated (Dunne and Black, 1970). Such areas tend to occur in locations with either gentle topography, large contributing area, or both. Because the source area for runoff generation is both limited in spatial extent and varies over time, the phenomenon has come to be known as variable source-area hydrology, or VSA for short. Previous modeling studies have suggested that VSA can impact long-term landform evolution, as steeper upland areas tend to experience less intense and/or less frequent erosion and sediment transport by runoff (Ijjasz-Vasquez et al., 1993; Tucker and Bras, 1998). For this reason, terrainbento 1.0 includes a set of ~~models~~model programs that provide a relatively simple treatment of VSA. This treatment is based on the approach of O'Loughlin (1986) and Dietrich et al. (1993), and is similar to the TOPMODEL concept of Beven and Kirkby (1979). Each element on the landscape is considered to have an upper permeable soil layer of thickness H and saturated hydraulic conductivity K_{sat} . The soil layer is assumed to overlie relatively impermeable material. From Darcy's Law, the maximum shallow subsurface flow discharge when the soil is fully saturated is the product of conductivity, depth, and local hydraulic gradient, which is assumed to be equal to topographic gradient, S . The maximum subsurface discharge per unit contour width is therefore given by:

$$q_{ss} = K_{sat}HS = TS, \quad (18)$$

where $T = K_{sat}H$ is the soil transmissivity. Next, we consider a recharge rate, R , which represents the average rate of water input per unit area (dimensions of length per time). The total unit discharge is the product of recharge and drainage area per unit contour length, a :

$$q_{tot} = aR. \quad (19)$$

Using these two principles, the surface water unit discharge, q at any location, is:

$$q = \begin{cases} 0 & \text{if } aR < TS \\ aR - TS & \text{otherwise.} \end{cases} \quad (20)$$

This threshold-based approach has been used, for example, in numerical models that explore how hillslope hydrology influences landform evolution (Ijjasz-Vasquez et al., 1993; Tucker and Bras,

1998). One drawback, however, is that the use of mathematical thresholds in numerical models can complicate the calibration process by creating “numerical demons”: sharp discontinuities in a numerical model’s response surface (i.e., the N_p -dimensional surface that describes a particular model-simulation output quantity as a function of its N_p input parameters) (e.g., Kavetski and Kuczera, 2007; Hill et al., 2016). In this particular case, we can create a smoothed version of (20) without any loss of realism, by positing that within any given patch of land there is actually a distribution of effective recharge rates. The use of a smooth version in this formulation has two benefits—it is physically more realistic, and is less prone to numerical discontinuities. The simplest strictly positive probability distribution is an exponential function

$$p(R) = (1/R_m)e^{-R/R_m}, \quad (21)$$

where $p(R)$ is the probability density function of R , and R_m is the mean recharge rate. The mean surface-water unit discharge can then be found by integrating as follows:

$$\bar{q} = \int_{R_c}^{\infty} q(R)p(R)dR = aR_me^{\frac{TS/R_m a - TS/R_m a}{R_m}}, \quad (22)$$

where $R_c = TS/a$ is the minimum recharge needed to produce surface runoff.

It is useful to re-cast this in terms of an effective contributing area, A_{eff} , defined as

$$A_{eff} = \frac{q\Delta x}{R_m} = Ae^{-T\Delta x S/R_m A}, \quad (23)$$

where Δx represents flow width (in a gridded digital elevation model, it would be natural to use cell width). Note that we have assumed that the contour width is approximated by the flow width. By this definition, the effective drainage area is always less than or equal to the actual drainage area, reflecting the fact that some of the water runs through the shallow subsurface rather than across the surface as overland (or channelized) flow. Where slope gradient is small or drainage area is large, the effective area approaches the actual area. If the surface is flat ($S = 0$), the exponential factor equals unity and $A_{eff} = A$, reflecting the fact that no water can be conveyed by shallow subsurface flow. At locations where the gradient declines in the down-slope direction, water previously carried by subsurface flow effectively “exfiltrates” from subsurface flow within the soil layer and is carried as surface water discharge. Conversely, where S is large and/or A is small—as might be the case in steep headwater areas—the effective drainage area becomes much smaller than the actual area, indicating that most of the incoming water is traveling beneath the surface rather than contributing to overland flow.

A final step is to note that one can collapse the various factors in (23) into a single parameter, $\alpha = T\Delta x/R_m$. ~~This parameter has dimensions of length squared; we will refer to it henceforth as the~~, the saturation area scale (dimensions of length squared). A high value of α represents soils that have a large capacity to carry subsurface flow, relative to the recharge rate; a low value reflects a more limited subsurface flow capacity.

Seven of terrainbento's ~~models~~ model programs implement variable source-area hydrology by using A_{eff} , as defined in (23), in place of drainage area, A (Table 2). One of these (BasicSaVs) also explicitly tracks a soil layer, and the time- and space-varying thickness of this soil layer, $H(x, y, t)$, is used to calculate T ($T = K_{sat} H(x, y, t)$) ~~in this particular model~~. An eighth model program (BasicStVs) also uses a stochastic treatment of precipitation; in this model program, the randomly generated precipitation rate p is used for R_m in equation (23).

An example simulation with a terrainbento model program (BasicVs) that includes a variable source-area component is shown in Figure 1d. The only difference in formulation between this example and the Basic model program illustrated in Figure 1a is that BasicVs calculates channel erosion using effective drainage area, A_{eff} , as defined in equation (23), in place of total drainage area. The result is a drainage network bounded by steep, convex-upward ridges. These ridges are sufficiently steep that $A_{eff} \ll A$, so that their erosion is dominated by soil creep. The bases of the hills represent locations where water emerges from the shallow subsurface to become surface flow that feeds the channel network.

3.5.2 Stochastic precipitation and runoff

Many landscape evolution models use an *effective discharge* approach, in which a single value of precipitation or runoff (either given explicitly or embedded in a lumped rate coefficient) is used as a surrogate for the full range of runoff-producing events (e.g., Willgoose et al., 1991; Kooi and Beaumont, 1994; Tucker and Slingerland, 1997). This approach has the advantages of simplicity and computational efficiency, but also has limitations. For example, the appropriate effective discharge may vary in space and time (Huang and Niemann, 2006). One solution is to use a stochastic treatment of precipitation and/or discharge, in which events are drawn from a specified probability distribution (Tucker and Bras, 2000; Snyder et al., 2003a; Tucker, 2004; Lague et al., 2005).

In order to facilitate comparison between numerical models with deterministic and stochastic treatments of water discharge, terrainbento 1.0 includes a set of six ~~models~~ model programs that each implement two stochastic precipitation algorithms available in the PrecipitationDistribution Landlab component. The aim of these algorithms is not to reproduce individual storm events, but rather to capture a spectrum of runoff and stream-flow events of varying frequency and magnitude. The first of these two methods is a stochastic-in-time approach based on Tucker and Bras (2000). The second option uses deterministic time steps but stochastic precipitation intensity.

In the first option, a series of “storms” is generated based on a specified mean storm duration T_r , mean interstorm duration T_b , and mean storm depth h_r . The mean storm and interstorm durations are generated from exponential distributions, after Eagleson (1978). For each individual storm, the mean storm depth is generated from a gamma distribution. The gamma shape parameter used to draw a random storm depth is equal to that specific storm's duration divided by the mean storm duration.

The scale parameter is equal to the mean storm depth. The depth and duration of an individual storm
 465 are then used to calculate a rainfall intensity (Ivanov et al., 2007).

In the second option, in which the time-step duration is fixed, the frequency of occurrence of rainfall is described using an intermittency factor, F , which is defined as the fraction of time rain occurs rain, and a mean event precipitation rate, p_d .

Thus, the mean precipitation rate (averaged over wet and dry periods), p_{ma} , is given as

$$470 \quad p_{ma} = F p_d . \quad (24)$$

The probability distribution of precipitation rate, p , is ~~modeled~~simulated using a stretched exponential survival function,

$$Pr(P > p) = \exp \left[- \left(\frac{p}{\lambda} \right)^c \right] , \quad (25)$$

where c is a shape parameter and λ is a scale parameter. Use of the stretched exponential function
 475 is based on Rossi et al. (2016), who found that the function provides a good approximation for daily rainfall distributions in the continental US and Puerto Rico. While Rossi et al. (2016) found this distribution to be appropriate for mean *daily* rainfall, note that terrainbento is agnostic to the time units ~~these~~chosen by a user. Wilson and Toumi (2005) argued that theoretical considerations suggest $c \approx 2/3$, while Rossi et al. (2016) found a mean value of $c = 0.74$ for weather stations in the
 480 continental US.

The shape parameter λ associated with a mean daily precipitation rate p_d and shape factor c is given by

$$\lambda = \frac{p_d}{\Gamma(1 + \frac{1}{c})} , \quad (26)$$

where Γ is the gamma function.

485 To describe the frequency-magnitude spectrum probabilistically in terrainbento's stochastic ~~models~~model programs, time is discretized into a series of steps of duration $\delta t/n_{ts}$, where δt is the “global” time step used for all other process components. During each step, an “event” with precipitation rate p is drawn at random from the cumulative distribution in equation (25). One of two approaches is then used to calculate the corresponding runoff rate, r . The first approach, which is the default used in
 490 five of the six stochastic ~~models~~model programs, assumes a mean soil infiltration capacity I_m . The rate of runoff is calculated as

$$r = p - I_m(1 - e^{-p/I_m}) . \quad (27)$$

This formulation is a smoothed version of the simple threshold approach $r = \max(p - I_m, 0)$, which has been used in prior studies to represent infiltration-excess overland flow generation (e.g., Tucker
 495 and Bras, 2000). The smoothed version avoids the sharp discontinuity at $p = I_m$, and is arguably more realistic as it honors natural variability in soil infiltration capacity. The runoff rate approaches zero when $p \ll I_m$, and approaches p when $p \gg I_m$.

The second approach uses the variable source-area runoff generation model-formulation described in Section 3.5.1, using p in place of recharge R_m . This approach is used only in model program

500 BasicStVs (Table 2).

3.6 Water erosion

Several different expressions have been proposed as models-process formulations for long-term channel incision (and for erosion by surface water more generally). terrainbento 1.0 was originally designed to address erosion of cohesive sediments (including glacial till) and clastic sedimentary
505 rocks with a relatively high fracture density, both of which are prone to erosion by hydraulic detachment of sediment grains and fracture-bounded fragments (“plucking”). This focus guided the choice of water-erosion laws in terrainbento 1.0. Each terrainbento model program uses one of two main types of erosion law: a simple area-slope detachment formula (sometimes referred to in the literature as the *stream power* family of erosion laws (e.g., Howard et al., 1994; Whipple and Tucker,
510 1999)), and an erosion formula that accounts for sediment discharge, particle entrainment from the bed, and particle deposition onto the bed. Within these two broad categories, terrainbento models model programs express several variations in form; for example, some include a threshold term, and in some of these the threshold increases with progressive incision depth. Each variation is presented and discussed in the sections below. Here, we start with a description of the simplest formulation,
515 which serves as the default choice.

The area-slope (a.k.a., stream power) family of models-erosion laws derives from the assumption that the erosion rate, E_W , depends primarily on the hydraulic gradient, S , and the water discharge, Q , and the channel width W ,

$$E_W = k_1 \left(\frac{Q}{W} \right)^\mu S^\nu - \underline{\Omega\omega_c}, \quad (28)$$

520 where k_1 is a coefficient that depends on material properties, channel geometry, and other factors, and $\underline{\Omega\omega_c}$ is a threshold below which no erosion occurs (in practice, the threshold is often assumed negligible, or its effects are taken to be subsumed in the exponents). The exponents μ and ν reflect the nature of the erosional processes; for example, Whipple et al. (2000a) argued that different values may be appropriate for abrasion-dominated and for plucking-dominated systems. The discharge
525 exponent μ also embeds information about channel geometry. Often, drainage area A is used as a surrogate for discharge. One limitation of equation (28) is that it does not allow for sediment deposition; for this reason, it is sometimes referred to as a *detachment-limited* law (a term first coined by Howard (1994)), reflecting the assumption that the rate of downcutting is limited by the rate at which material can be detached and removed.

530 Despite the simplicity of equation (28), its various permutations have shown reasonable success when tested against field observations (Stock and Montgomery, 1999; Whipple et al., 2000b; Kirby and Whipple, 2001; Snyder et al., 2000; Lavé and Avouac, 2001; Tomkin et al., 2003; van der Beek

and Bishop, 2003; Duvall et al., 2004; Loget et al., 2006; Whittaker et al., 2007; Attal et al., 2008; Yanites et al., 2010; Attal et al., 2011; Hobley et al., 2011; Gran et al., 2013). Landscape evolution models that use the generic stream-power approach are able to reproduce basic properties of erosional landscapes, such as dendritic channel networks with concave-upward longitudinal profiles (e.g., Howard, 1994; Whipple and Tucker, 1999; Tucker and Whipple, 2002).

One of the most commonly used versions of equation (28) is obtained by making the following assumptions: (1) ~~effective discharge and~~ channel width can be represented as a power ~~functions~~ function of drainage area, and (2) the erosion threshold is negligible. Under these conditions, the erosion law becomes:

$$E_W = K \underline{A}^m \underline{S}^n, \quad (29)$$

where K is a coefficient that includes information about precipitation and hydrology as well as material properties and channel geometry. ~~If one further assumes that~~ The change from ν to n reflects the possibility that slope-dependent information is included in K . This is the fluvial erosion law introduced earlier in the discussion of the Basic model program. If one also assumes that $Q = rA$, with r representing runoff rate, then equation (29) can be cast in the commonly used form:

$$\underline{E_W} = K' \underline{A}^m \underline{S}^n, \quad (30)$$

where $K' = Kr^m$.

With respect to the exponents m and n , if one assumes that (1) the rate of downcutting depends on stream power per unit surface area, (2) effective discharge is proportional to drainage area, and (3) channel width is proportional to the square root of discharge, then the exponent values become $m = 1/2$ and $n = 1$.

The simplicity of ~~equation (29)~~ Equation 29—it has only one parameter if m and n are assumed to be accurate representations of process—together with its ability to reproduce common features of drainage basins and networks have led to its widespread use in landscape evolution studies, especially with the exponent values $m = 1/2$ and $n = 1$ (e.g., Duvall and Tucker, 2015). One might think of this particular configuration as the “model to beat”: to justify a more complex formulation, one would ideally need to demonstrate that such a formulation performs distinctly better.

Equation ~~(28)~~ 29, which we will refer to as the simple stream power law, forms the default choice for water erosion in terrainbento’s model programs. ~~By also providing models with alternative (often more complex) erosion laws to (28), terrainbento’s model collection allows one both to compare the behavior of several different formulations, and to test their performance against data. In other words, terrainbento is designed to enable systematic, quantitative hypothesis testing among a collection of different fluvial erosion laws. In~~ In the following sub-sections, we describe the variations and alternatives to simple unit stream power among the terrainbento 1.0 ~~models~~ model programs. The complete governing equations for each of the terrainbento 1.0 ~~models~~ model programs are given in Appendix A.

3.6.1 Erosion threshold

570 Bed-load sediment transport is well known to exhibit threshold-like behavior, in which the transport rate is negligible until a certain minimum hydraulic tractive stress is reached, at which point significant transport begins. Similar behavior applies to the erosion of highly cohesive sediment (e.g., Julien, 1998), and presumably also to bedrock (though the values of the operative thresholds for bedrock are not known). For this reason, models of landscape or longitudinal channel profile
575 evolution often include a threshold term below which no erosion takes place.

Several terrainbento ~~models~~model programs include a threshold in the water-erosion law. In order to promote mathematically smooth behavior, acknowledge evidence for distributions of transport thresholds (Kirchner et al., 1990; Wilcock and McARDell, 1997; McEwan and Heald, 2001), and avoid numerical daemons associated with threshold-type equations (e.g., Kavetski and Kuczera, 2007), the basic thresholded erosion law in terrainbento uses an exponential smoothing function
580 following Shobe et al. (2017). terrainbento's thresholded erosion laws take the form:

$$E_W = \omega - \omega_c(1 - e^{-\omega/\omega_c}). \quad (31)$$

Here ω represents the erosion rate that would occur in the absence of a threshold, and is a function of slope gradient and either drainage area or discharge. For example, for those ~~models~~model programs
585 that add a threshold term to the area-slope erosion in equation 29, ω is defined as

$$\omega = \underline{KAKQ^m S^n}. \quad (32)$$

The factor ω_c is a threshold with dimensions of length per time. The functional form of the smooth-threshold erosion function (~~equation~~Equation 31) is illustrated in Figure 3. A constant threshold term is included in the water-erosion laws for five of terrainbento's constituent ~~models~~model programs
590 (Table 2). Several others use a space- and time-varying threshold, as we describe next.

3.6.2 Incision depth-dependent erosion threshold

In a study of river incision into glacial deposits following ice recession in the US upper midwest, Gran et al. (2013) found evidence for an erosion threshold that increased with progressive incision depth. They attributed this to a downstream increase in median grain diameter resulting from enrichment of coarse gravel in bed material as the channel cuts through glacial deposits and the valley
595 widens. In comparing alternative long-profile evolution numerical models with the observed profile, they found that the best match was achieved when the erosion threshold was allowed to increase linearly as a function of cumulative incision depth. Inspired by the findings of Gran et al. (2013), terrainbento 1.0 includes the option to allow the erosion threshold ω_{ct} to increase with erosion depth
600 according to:

$$\omega_{ct}(x, y, t) = \max(\omega_c + bD_I(x, y, t), \omega_c), \quad (33)$$

where D_I is the cumulative incision depth at location (x, y) and time t , ω_c is the threshold when no incision has taken place yet, and b (with dimensions of inverse time) sets the rate at which the threshold increases with progressive incision depth. As before, an exponential term is used to smooth the threshold, such that the water erosion rate approaches zero when $\omega \ll \omega_c$, and asymptotes to $\omega - \omega_c$ when $\omega \gg \omega_c$ (Figure 3). The max function is included to prevent the threshold from decreasing in locations where hillslope processes produce net deposition (i.e., negative incision).

3.6.3 Shear-stress erosion law

Two important and commonly used measures of the erosional potential of stream flow are unit stream power and shear stress. The first represents the rate of energy dissipation per unit surface area, while the second represents the hydraulic traction force per unit area. Erosion rates in cohesive or rocky material tend to correlate strongly with both quantities (e.g., Howard and Kerby, 1983; Whipple et al., 2000b), and both are widely used as the basis for long-term erosion laws. To support studies that compare and test these two approaches, terrainbento 1.0 allows one to configure the erosion law to represent bed shear stress rather than unit stream power. This is accomplished simply by changing the exponents on discharge (or drainage area) and channel gradient in equation (28). If one uses the Manning equation to describe channel roughness and assumes that channel width is proportional to the square root of discharge, the applicable exponent values are $m = 3/5$ and $n = 7/10$ (Howard and Kerby, 1983; Howard, 1994). Use of the Darcy-Weisbach roughness law leads to a slightly different values, $m = 1/3$ and $n = 2/3$ (Tucker and Slingerland, 1997), which we use in the examples that accompany the terrainbento 1.0 documentation.

In terrainbento 1.0, the choice of exponent values is set using an input file [or keyword arguments](#), and so separate code is not needed to implement the shear-stress option. Nonetheless, we consider the stream-power and shear-stress formulations to form distinct parametric models.

3.6.4 Sediment-tracking entrainment-deposition hybrid model [program](#)

The sediment-tracking model ~~, following Davy and Lague (2009),~~ [program](#) computes changes in river bed elevation resulting from competition between entrainment of bed material into the water column and deposition from the water column onto the bed, [using a combined erosion-deposition law discussed by Davy and Lague \(2009\)](#). The governing equations, derived from a mass balance, state that changes in channel bed elevation η over time are driven by bed material erosion E and bed material deposition D_s :

$$\frac{\partial \eta}{\partial t} = -E + \frac{D_s}{1 - \phi}, \quad (34)$$

where E and D_s are volume fluxes of bed material per unit bed area representing entrainment from the bed and deposition onto the bed, respectively, and ϕ is the porosity of bed material. Note that here our equation is different from ~~Davy and Lague (2009)~~ Equation 3 [of Davy and Lague \(2009\)](#) in

that $1 - \phi$ is not in the denominator of E . This discrepancy is due to a difference in whether bulk or sediment density is used to convert between mass and volume for E .

Equation 34 is coupled with conservation of sediment concentration in the water column of depth h :

$$\frac{\partial(c_s h)}{\partial t} = E - D_s - \frac{\partial q_s}{\partial \hat{x}}, \quad (35)$$

where \hat{x} represents distance along the path of flow. The above states that sediment in the water column involves a balance between erosion, deposition, and the streamwise spatial gradient in fluvial sediment flux per unit width, q_s . Again following Davy and Lague (2009), we assume that the time rate of change of sediment in the water column is negligible (as it is meant to represent an average

over time), so that

$$q_s = \int_0^{\hat{x}} [E(\hat{x}) - D_s(\hat{x})] d\hat{x}. \quad (36)$$

In other words, the sediment flux at a particular downstream point \hat{x} is the integral of all the erosion minus deposition that has taken place upstream.

The erosion flux E may be written in a number of ways, but in general depends on water discharge Q (or drainage area as a proxy), bed slope S , and some parameter or set of parameters describing the erodability of the channel bed. As with other terrain-based ~~models~~model programs, we treat m and n as ~~model program~~the exponents of Q and S , as parameters. The entrainment term may also include a threshold, and that threshold may be constant or may vary with incision depth or with lithology.

Sediment deposition flux D_s is a function of the concentration of sediment in the water column c_s and the effective settling velocity V of the sediment particles. Adding that c_s is the volumetric sediment flux divided by the volumetric water flux, the deposition flux may be written:

$$D_s = V \frac{Q_s}{Q} \quad (37)$$

where Q is volumetric water discharge and Q_s is volumetric sediment discharge (equal to q_s times flow width). Importantly, V is the net settling velocity after accounting for upward-directed turbulence and sediment concentration gradients in the water column. Davy and Lague (2009) separate the latter effects into a dimensionless parameter d^* such that $D_s = d^* V \frac{Q_s}{Q}$, but here for simplicity we combine both effects into an effective settling velocity V .

The entrainment-deposition model program provides greater flexibility than detachment-limited ~~models~~model programs in that it can freely transition between detachment-limited and transport-limited behavior, depending on the relative importance of the erosion and deposition fluxes. If the deposition flux is negligible relative to the erosion flux, ~~model~~ behavior becomes detachment-limited. In the opposite case, the numerical model becomes transport-limited. The entrainment-deposition

model [program](#) is therefore uniquely able to treat landscapes that may exhibit both types of behavior at different points in space and time, at the cost of only a single extra parameter (V) relative to basic stream-power type [models](#) [model programs](#). For a full description of the entrainment-deposition [model-formulation](#) and its implications, see Davy and Lague (2009).

3.6.5 Entrainment-deposition hybrid model [program](#) with fine sediment

In the entrainment-deposition approach proposed by Davy and Lague (2009), all material eroded from the channel bed is included in sediment flux and deposition calculations. While this fully mass-conservative approach is a useful general case, it neglects the fact that clay- and silt-sized sediment may have such a low settling velocity [as-to-be-that they](#) remain permanently suspended until and unless they enter a body of standing water. A simple modification to the entrainment-deposition model [program](#) allows for treatment of a scenario in which the finest fraction of eroded sediment is in permanently from the erosional landscape upon entrainment. In the general case, the change in Q_s along the river is written:

$$\frac{dQ_s}{dx} = E dx_f - D_s dx_f . \quad (38)$$

where [dx-dx_f](#) is the width of flow. To account for permanently suspendable fine sediment, represented as a fraction of total bed sediment F_f , we simply exclude the fine sediment from the sediment flux and write:

$$\frac{dQ_s}{dx} = (1 - F_f) E dx_f - D_s dx_f , \quad (39)$$

such that the material incorporated into the sediment flux is reduced in proportion to the amount of fine sediment on the bed. This approach is simple and efficient, but would likely be limited in settings with very high proportions of fine sediment, as large concentrations of even very fine grains in the water column may inhibit further sediment entrainment (Davy and Lague, 2009).

3.6.6 Entrainment-deposition model [program](#) with bedrock and alluvium

One weakness of the erosion-deposition model [program](#) described above is its limitation to a single type of bed material. For example, one can configure the parameters to represent erodible material such as loose sediment, or resistant material such as indurated bedrock, but not both at once. This limitation means that the basic form of the entrainment-deposition model [program](#) cannot honor the reality that many bedrock-incising rivers are blanketed by alluvium, nor can it be used to assess the relative contributions of sediment entrainment and bedrock erosion to channel morphology and sediment flux. One potential solution is to use the erosion-deposition model [program](#) in conjunction with a substrate layering system (i.e., a layer of sediment overlying bedrock), in which each layer is defined by its own erodability factor and erosion threshold (e.g., Gasparini et al., 2004; Carretier et al., 2016). However, such an approach does not allow the simultaneous erosion of sediment and

bedrock, which can occur in real rivers when the alluvial cover is spatially discontinuous and/or intermittent in time. Some recent [numerical](#) modeling approaches allow a smooth transition between alluviated and bare-bedrock beds, and simultaneous evolution of the sediment and bedrock surfaces (Lague, 2010; Zhang et al., 2015; Shobe et al., 2017). Lague (2010) tracked sediment thickness and allowed progressively more bedrock erosion as sediment thickness H declined relative to median grain size D_{50} . He tested both exponential and linear [numerical](#) models for the relationship between bedrock exposure and the ratio H/D_{50} . Zhang et al. (2015) compared sediment thickness to a statistical description of the macro-scale bedrock roughness to determine the probability of bedrock being exposed. The probability of bedrock exposure increased with declining sediment thickness and increasing bedrock surface roughness.

In terrainbento we use the Landlab Component developed by Shobe et al. (2017), which expresses the Stream Power with Alluvium Conservation and Entrainment [SPACE\(SPACE\) numerical](#) model. They used an exponential expression describing increases in bedrock exposure as sediment thickness declines relative to bedrock surface roughness. The [SPACE numerical](#) model tracks topographic elevation η as well as bedrock surface elevation η_b and sediment thickness H , such that

$$\frac{\partial \eta}{\partial t} = \frac{\partial \eta_b}{\partial t} + \frac{\partial H}{\partial t} . \quad (40)$$

Changes in sediment thickness are treated identically to the erosion-deposition [model-formulation](#) (equation 34), and changes in bedrock height are driven by bedrock erosion E_r (there is no deposition of bedrock):

$$\frac{\partial \eta_r}{\partial t} = -E_r . \quad (41)$$

Erosion and deposition of sediment are computed using the same approach as used in the more basic entrainment-deposition [model-formulation](#), with the addition of a factor that limits the rate of sediment entrainment, E_s , as sediment availability declines:

$$E_s = K_s \underline{A} \underline{Q}^m S^n \left(1 - e^{-H/H_*} \right) . \quad (42)$$

where K_s is an entrainment coefficient for alluvium. Here H_* is the bedrock surface roughness length scale. Large H_* corresponds to a rough bedrock surface and vice versa.

The [SPACE numerical](#) model includes a similar formulation for the bedrock, where bedrock erosion becomes more efficient as sediment thickness declines:

$$E_r = K_r \underline{A} \underline{Q}^m S^n e^{-H/H_*} . \quad (43)$$

Here, r subscripts denote bedrock parameters. Adding bedrock erosion to the entrainment-deposition [model-formulation](#) requires that eroded bedrock material be added to sediment flux calculations:

$$\frac{dQ_s}{dA(\hat{x})} = E_s + (1 - F_f) E_r - D_s , \quad (44)$$

where $A(\hat{x})$ represents drainage area, which increases as a function of streamwise distance \hat{x} . The factor F_f indicates the proportion of the bedrock that is made up of fine sediment that goes into permanent suspension when entrained, and is no longer included in model program calculations. Q_s therefore only includes grains not considered “fine.”

As demonstrated by Shobe et al. (2017), ~~the SPACE model~~ SPACE is capable of transitioning between detachment-limited and transport-limited behavior. In a further advance over basic entrainment-deposition numerical models, SPACE can ~~model-simulate~~ bare-bedrock channels, fully alluvial channels, and mixed bedrock-alluvial channels, allowing the transition between these states to be set by sediment flux and erosive power. SPACE enables ~~modeling-simulation~~ of channels that may alternate between bedrock, bedrock-alluvial, and alluvial states in response to changing tectonic forcing, climate, or sediment supply conditions. For a full derivation and discussion of ~~the SPACE model~~ SPACE, as well as a development of steady-state analytical solutions, see Shobe et al. (2017).

3.6.7 How ~~the alternative hydrology models~~ formulations influence terrainbento’s erosion laws

For those ~~models-model~~ programs that use variable-source area hydrology, the drainage area factor in the water-erosion law is replaced by effective drainage area, A_{eff} , as defined by equation (23). Models that use stochastic hydrology replace A with $Q = rA$, using r as defined in equation (27).

One model program, BasicStVs, combines stochastic runoff generation with variable source-area hydrology. With this model program, as in the variable-source model program more generally, the capacity to carry subsurface discharge is defined as

$$Q_{ss} = TS\Delta x, \quad (45)$$

where as before T is transmissivity, S is surface gradient, and Δx is flow width. Assuming interception loss and leakage to deeper groundwater are negligible, the total discharge produced by a storm event with rainfall rate p is

$$Q_{tot} = pA. \quad (46)$$

The surface discharge, Q , should then be the difference between these two quantities, or zero if $Q_{ss} > Q_{tot}$. However, a simple “either-or” differencing formulation is somewhat unrealistic (given small-scale natural variability in T), and if implemented numerically would risk creating numerical daemons in the ~~model’s~~ response surface. To avoid these issues, the BasicStVs model program uses the exponentially smoothed formula

$$Q = Q_{tot} - Q_{ss}[1 - \exp(-Q_{tot}/Q_{ss})], \quad (47)$$

so that $Q \rightarrow 0$ when $Q_{tot} \ll Q_{ss}$, and $Q \rightarrow Q_{tot}$ when $Q_{tot} \gg Q_{ss}$. The form of this equation is similar to that of the smooth-threshold erosion law illustrated in Figure 3. Substituting the definitions

of Q_{tot} and Q_{ss} above,

$$Q = pA - TS\Delta x[1 - \exp(-pA/TS\Delta x)] . \quad (48)$$

770 The precipitation rate calculated for each stochastic event is used to calculate Q , which is then used as the discharge factor in the erosion law $E_W = K_q Q^m S^n$ $E_W = K Q^m S^n$.

3.7 Material properties

3.7.1 Soil and alluvium

One of the binary options listed in Table 1 is the ability to track explicitly a dynamic soil layer.

775 Models that use this option implement the depth-dependent form of the applicable soil-creep law (i.e., either the linear or nonlinear form).

When the dynamic-soil option is used in combination with a sediment-tracking entrainment-deposition erosion law (model [program](#) BasicHySa), the SPACE [numerical](#) model described above is used in place of the simpler (single-material-type) entrainment-deposition law. In all other cases,

780 the use of a dynamic soil layer does not directly influence the water-erosion law.

When dynamic soil is combined with variable source-area hydrology (model [program](#) BasicSaVs), the actual soil thickness at each point $H(x, y, t)$ is used to calculate transmissivity.

3.7.2 Multiple lithologies

With two-lithology ~~models~~[model programs](#), the material-dependent parameters in the water-erosion equation, including the coefficient (K , ~~K_{ss}~~ or K_q) and, if applicable, the threshold (ω_c), vary in space and time as a function of the local surface elevation, η , in relation to the elevation of the contact between lithologies 1 and 2, $\eta_C(x, y)$. If $\eta > \eta_C$, lithology 1 is exposed at the surface; otherwise, the surface unit is lithology 2.

To acknowledge that lithological contacts are not razor thin and to preserve smoothness in the numerical solution, we allow there to be a finite “contact zone” within which the two lithologies are both considered to influence the material erodability. One might imagine this zone as representing a gradational transition from one unit to another, or alternatively an uneven contact surface. We define a weight factor w that defines the relative influence of each of the two lithologies:

$$w(x, y, t) = \frac{1}{1 + \exp\left(-\frac{(\eta - \eta_C)}{W_c}\right)} . \quad (49)$$

795 Here, w represents the influence of lithology 1, and $1 - w$ describes the influence of lithology 2. At each location, the channel erosion rate coefficient is calculated by applying this weight factor. For example, in model [program](#) BasicRt, which uses the simple unit stream power formula, the rate coefficient K is calculated as

$$K(\eta, \eta_C) = wK_1 + (1 - w)K_2 , \quad (50)$$

800 where K_1 and K_2 are the rate coefficients associated with each lithology, and W_c is the contact-zone width.

3.8 Variable climate

As a simpler representation of variable climate than available in the PrecipChanger described in Section 4.2, one model [program](#) (BasicCc) provides the ability to change parameter K linearly through
805 time. The representation of change is as follows. At the beginning of a [model-simulation](#) run, K is assumed to be larger or smaller than its final value (K_0) by a factor f ; if $f > 1$, K starts out larger than K_0 (representing a more erosive climate) and declines through time, and conversely if $f < 1$. K stops changing after a time period T_s , whereupon it assumes its final value K_0 . Mathematically, this linear variation in K is

$$810 \quad K(t) = \begin{cases} \kappa t + fK_0, & \text{when } t < T_s, \\ K_0 & \text{otherwise.} \end{cases} \quad (51)$$

where $\kappa = (1 - f)K_0/T_s$ is the rate of change.

3.9 Pairwise process combinations

As noted earlier, the various [process-model-process](#) options described above can be arranged into a set of 11 binary choices (Table 1). terrainbento 1.0 is designed to support experimentation and
815 hypothesis testing among these (and other) alternative formulations. The number of possible unique combinations among this set of 11 options is unwieldy (2^{11} , though some are not physically sensible). In creating the individual terrainbento model configurations, we used an approach that focuses on single and pairwise variations on the Basic (simplest) model [program](#), which is the first entry in Table 2. The next 11 entries are [models-model programs](#) or model configurations that differ from Basic in just one element. The remaining entries represent pairwise combinations. Not all possible pairwise combinations are included. Instead, the pairwise process combinations selected represent those for which we thought there might be nonlinear interactions between the two process elements—in other words, those combinations where we expected the whole to be greater (or less) than the sum of the parts. An example of such a nonlinear interaction that has been explored in the literature is
825 temporal variability in water discharge in a river system where the erosion process is strongly thresholded (Tucker and Bras, 2000; Snyder et al., 2003a; Lague et al., 2005; DiBiase and Whipple, 2011). This particular combination is represented in terrainbento by model [program](#) BasicStTh.

The particular list of model [program](#) choices in Table 2 is not meant to be exhaustive. The terrainbento software was designed to be easily extensible as needed for any given application, so that for
830 example if a researcher wishes to explore combinations that are not included in the present collection of [models-model programs](#), or to add a new process formulation, he or she can do so with relative ease. In the next section, we describe how the software is designed to promote extensibility.

4 Boundary conditions

Just as process representation influences ~~model~~-simulation results, so do ~~model~~ boundary conditions.

835 Representing boundary conditions in a component-like fashion permits systematic and reproducible changes in boundary conditions through either boundary condition component choice or parameter choice. To support alternative boundary conditions, terrainbento 1.0 includes five boundary condition handler classes. These boundary condition handlers are similar in construction to Landlab components: they are Python objects, they must have an `__init__` method that takes as a first argument
840 a Landlab model grid, and a `run_one_step` method that takes as its only argument the timestep duration `dt`. Four of these classes are called “~~Baselevel Handlers,~~” baselevel handlers, reflecting that they modify the elevations on the boundaries of the ~~modeled~~-simulated terrain. The final class is the `PrecipChanger`, a boundary condition handler that either modifies precipitation statistics or the value of K , K_r , K_s , K_1 , or K_2 , depending on the model program.

845 4.1 Baselevel Handlers

Each of the four baselevel handlers modifies the elevations of specific grid nodes. Before describing these baselevel handlers it is worth reviewing the boundary condition types available to Landlab model grid nodes (Hobley et al., 2017). A boundary node can be open (with either a fixed value or fixed gradient), looped, or closed. A boundary node need not live on the edge of a rectangular
850 grid—for example, many nodes may be closed boundary nodes if the ~~model~~-simulated domain is a single watershed. All nodes that are not boundary nodes are called “core nodes.”

The four baselevel handlers were designed to capture the most common cases for boundary conditions in Earth surface processes modeling. The `SingleNodeBaselevelHandler` controls the elevation of a single open, fixed-value boundary node, meant to represent a watershed outlet. The outlet lowering rate is specified either as a constant or through a ~~time or through a~~ user-supplied text file that
855 specifies the elevation change through time. The `NotCoreNodeBaselevelHandler` moves either the core nodes or the not-core nodes at a constant rate through time or based on a text file. The `CaptureNodeBaselevelHandler` was designed to simulate drainage basin capture by a basin external to the ~~model~~-simulated domain. It changes the boundary condition status of a single node from closed
860 to fixed-value open at a user defined time and lowers its elevation.

The final baselevel handler is the `GenericFunctionBaselevelHandler`. It is similar to the `NotCoreBaselevelHandler` in that it either moves the core nodes or the not-core nodes. However, instead of taking a constant rate or time-elevation pattern as input, it requires that a user define a function of two arguments that returns an at-node field of uplift rate. The two required arguments are the model
865 grid and the ~~model~~-simulation integration time. As the model grid contains attributes `x_of_node` and `y_of_node`, this boundary condition handler thus permits a user to define the relative uplift rate as any function of space and time.

4.2 PrecipChanger

The final boundary condition handler was designed to implement the impacts of changing climate on the precipitation distribution and, by extension, the erodability of material by water. For ~~models~~ model programs with stochastic precipitation and uniform time steps, this method modifies the intermittency factor and the mean rainfall rate, whereas for ~~models~~ model programs with an effective discharge it modifies the erodability by water. This boundary condition handler does not presently support stochastic precipitation with stochastic event durations.

For “St” ~~models~~ model programs that explicitly represent the intermittency factor F and mean rainfall rate p_d (Section 3.5.2), the PrecipChanger must only modify those parameters. For ~~models~~ model programs with effective discharge, deriving a relation between K (or K_r , K_s , K_1 , or K_2), p_d , and F requires defining ~~an underlying hydrology model~~ a mathematical model of the underlying hydrology and tracing how variations in precipitation ~~model~~-parameters influence the long term erosion rate. We start by noting that drainage area serves as a surrogate for discharge, Q . We can therefore write an instantaneous version of the erosion law in the Basic ~~models-as~~ model programs as

$$E_i = K_{qi} Q^m S^n. \quad (52)$$

This formulation represents the erosion rate during a particular daily event with daily-average discharge Q , as opposed to the long-term average rate of erosion, E . It uses an instantaneous erosion coefficient K_i . We next assume that discharge is the product of runoff rate, r , and drainage area:

$$Q = rA. \quad (53)$$

Combining these we can write

$$E_i = K_{qi} r^m A^m S^n. \quad (54)$$

This equation establishes the dependence of short-term erosion rate on catchment-average runoff rate, r .

Next we need to relate runoff rate to precipitation rate. A common method is to acknowledge that there exists a soil infiltration capacity, I_c , such that when $p < I_c$, no runoff occurs, and when $p > I_c$,

$$r = p - I_c. \quad (55)$$

An advantage of this simple approach is that I_c can be measured directly or inferred from stream-flow records.

To relate short-term (“instantaneous”) erosion rate to the long-term average, one can first integrate the erosion rate over the full probability distribution of daily precipitation intensity. This operation yields the average erosion rate produced on wet days. To convert this into an average that includes

Greg, let me know if you have problems with my use of K_i here. It was what made the most sense to me in order to switch from using A to using Q .
MAKES SENSE TO ME

dry days, we simply multiply the integral by the wet-day fraction F . Thus, the long-term erosion rate by water can be expressed as:

$$E = F \int_{I_c}^{\infty} K_{qi} (p - I_c)^m A^m S^n f(p) dp, \quad (56)$$

where $f(p)$ is the probability density function (PDF) of daily precipitation intensity. By equating the
 905 above definition of long-term erosion E with the simpler definition in [equationEquation](#) (52), we can solve for the effective erosion coefficient, K :

$$K = F K_{qi} \int_{I_c}^{\infty} (p - I_c)^m f(p) dp. \quad (57)$$

In this case, what is of interest is the *change* in K given some change in precipitation frequency distribution $f(p)$. Suppose we have an original value of the effective erodability coefficient, K_0 , and
 910 an original precipitation distribution, $f_0(p)$. Given a future change to a new precipitation distribution $f(p)$, we wish to know what is the ratio of the new effective erodability coefficient K to its original value. Using the definition of K above, the ratio of old to new coefficient is:

$$\frac{K}{K_0} = \frac{\int_{I_c}^{\infty} (p - I_c)^m f(p) dp}{\int_{I_c}^{\infty} (p - I_c)^m f_0(p) dp}. \quad (58)$$

Thus, if we know the original and new precipitation distributions, we can determine the resulting
 915 change in K .

We use a Weibull distribution for the precipitation intensity PDF ([Rossi et al., 2016](#)), [after Rossi et al. \(2016\)](#)

$$f(p) = \frac{c}{\lambda} \left(\frac{p}{\lambda} \right)^{(c-1)} e^{-(p/\lambda)^c}, \quad (59)$$

where λ is the distribution scale factor. Its relationship with p_d is defined as

$$920 \quad p_d = \lambda \Gamma(1 + 1/c). \quad (60)$$

The above definition can be substituted into the integrals in equation (58). We are not aware of a closed-form solution to the resulting integrals. Therefore, the erosion ~~models~~ [model programs](#) used for projection apply a numerical integration to convert the input values of F , c , and p_d (the last of which can change over time) into a corresponding new value of K .

925 5 Software implementation

5.1 Overview

In creating a software product that manifests not one but rather dozens of potential model configurations, efficiency and reuse are key design considerations. To meet this goal, terrainbento 1.0 uses an

object-oriented approach to its high-level design. Each terrainbento model [program](#) is implemented
930 as a Python class. The class that implements any particular terrainbento model [program](#) inherits from
a common base class called ErosionModel. Here we describe the main functions of the base class,
the typical structure of the derived class, and the use of a driver program to configure and execute a
terrainbento model [program](#).

5.2 terrainbento base classes

935 terrainbento contains three base classes to minimize duplicate code and maximize extensibility of
the [model-modeling](#) framework. The first of these, ErosionModel, handles common [model-methods](#)
[such as](#) instantiation, run, output creation, and model finalization [methods](#). These include creating
the model grid, reading initial topography from a file, creating synthetic topography, calculating
elevation change, writing netCDF and xarray datasets of [model-simulation](#) output, and interfacing
940 with the boundary condition handlers. All [models-model programs](#) except the “St” and “Rt” series
inherit directly from the ErosionModel base class.

The stochastic and two-lithology [models-model programs](#) each have a sufficient number of spe-
cialized methods to justify having their own base classes, which are the StochasticErosionModel and
TwoLithologyErosionModel, respectively. Both of these inherit from ErosionModel. The Stochas-
945 ticErosionModel handles setting up the stochastic rain generator; calculating precipitation, runoff,
and water erosion; and keeping records of storm sequences. The TwoLithologyErosionModel han-
dles setting up the lithology contact elevation and updating any fields that depend on the depth to the
contact.

5.3 Basic Model Interface

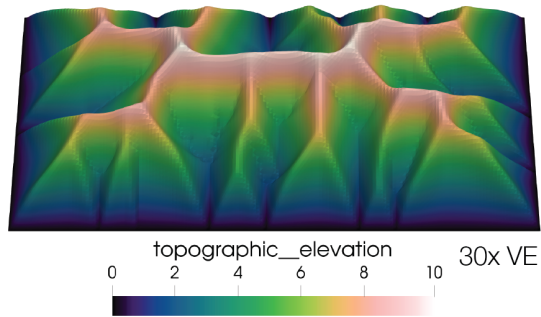
950 The Community Surface Dynamics Modeling System (CSDMS) has promoted use of an interface
standard known as the Basic Model Interface (BMI) for geoscientific numerical models (Peckham
et al., 2013). Although terrainbento does not yet fully implement a BMI, its model-control functions
follow the conventions used by the Landlab Toolkit, which themselves have a close parallel with
the main BMI model-control functions. The terrainbento `initialize` method is fully compatible
955 with the BMI method of the same name, which takes as an argument a string containing the name of
a parameter-input file (terrainbento’s version can alternatively accept a Python dictionary containing
parameter name-value pairs). The terrainbento `run_one_step` method serves the same function
as BMI’s `update`, but accepts step size as an argument. terrainbento’s `run_for` is similar to BMI’s
`update_until` (the former takes a duration whereas the latter takes an absolute time).

Table 3. Public base class methods.

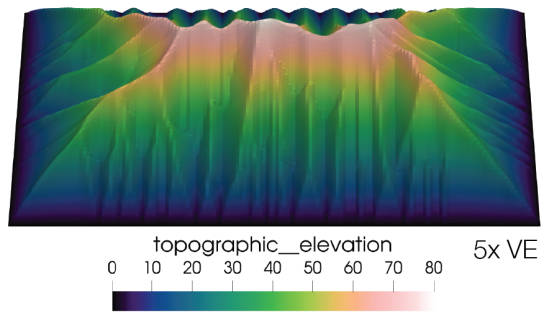
Name	Purpose
<code>__init__</code>	Initialize model <u>program</u>
<code>run_one_step</code>	Execute one time-step of duration dt ¹
<code>run_for</code>	Call <code>run_one_step</code> repeatedly to execute model <u>program</u> for given total duration
<code>run</code>	Execute complete model <u>program</u> run, pausing periodically to write output
<code>write_output</code>	Write output at current model <u>simulation</u> time to netCDF file
<code>calculate_cumulative_change</code>	Calculate cumulative node-by-node changes in elevation
<code>finalize__run_one_step</code>	Update model <u>simulation</u> time and boundary conditions
<code>finalize</code>	Clean up prior to ending execution ¹
<code>to_xarray_dataset</code>	Convert all previously written netCDF files to a single xarray dataset
<code>save_to_xarray_dataset</code>	Save a model run xarray dataset <u>the results of a simulation</u> to a netCDF file
<code>remove_output_netcdfs</code>	Cleanup single timestep netCDF files

¹ empty function intended to be overridden by child class.

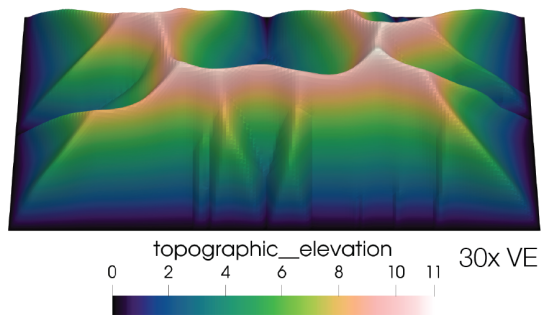
a. Basic



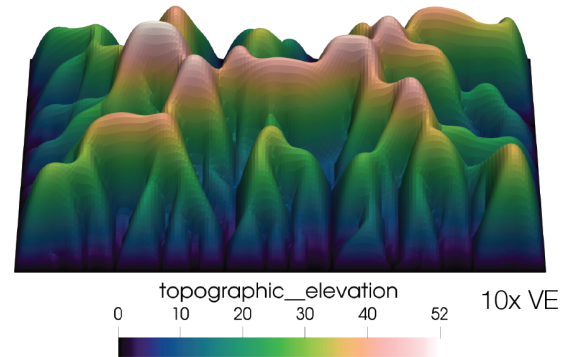
b. Basic with $m = 0.25$



c. BasicCh



d. BasicVs



e. BasicRt

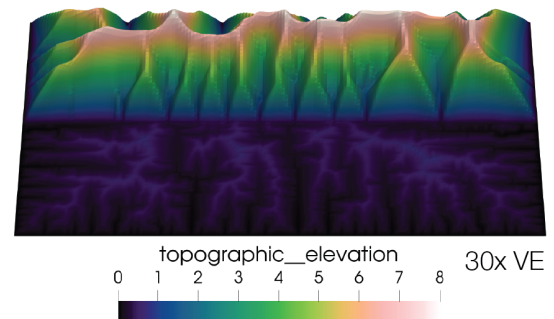


Figure 1. Three dimensional view of simulated topography illustrating the use of five different terrainbento ~~models~~model programs: a) ~~model~~-Basic, b) ~~model~~-BasicCh, c) ~~model~~-Basic with $m = 0.25$, d) ~~model~~-BasicVs, e) ~~model~~-BasicRt. Each landscape was initialized with the ~~exact~~-same random noise field, has the same boundary conditions of the center core nodes uplifted relative to a fixed boundary, and was run to steady state (based on topographic change between 1000 year intervals exceeding 1 mm at no grid cell). Each ~~model~~-domain is 1x1.6 km, ~~is represented at~~has 10 m grid spacing, and ~~has between 5 and 30x~~is displayed with a vertical exaggeration of 5 to 30 \times .

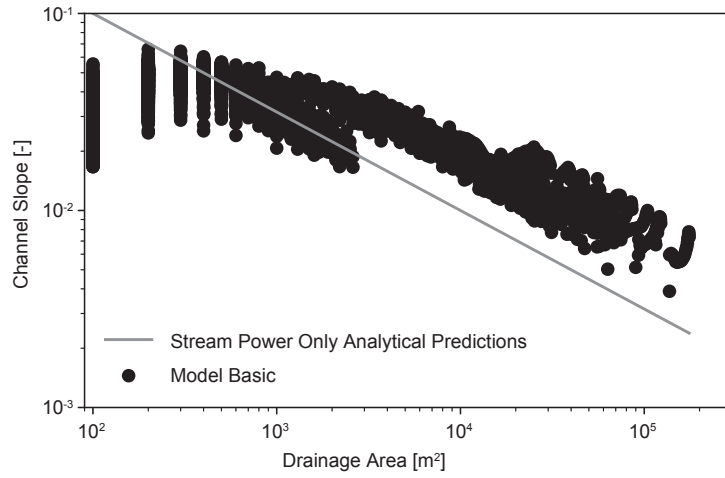


Figure 2. Slope area relationship for the example ~~model~~simulation in Figure 1a

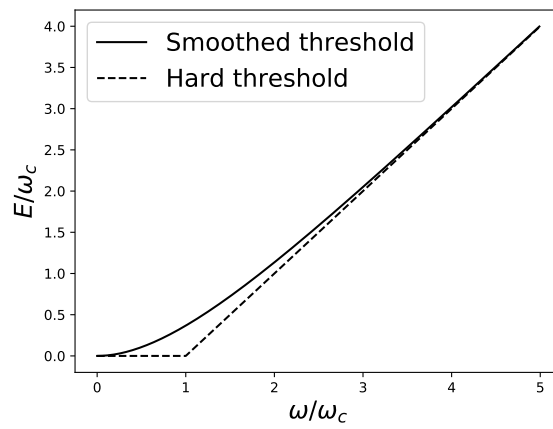


Figure 3. Illustration of the functional form of the smoothed-threshold erosion law (~~equation~~Equation 31), compared with the more traditional hard-threshold formulation.

960 5.4 Derived classes and use of Landlab Components

Two features make the process of writing a new model program in terrainbento relatively fast and efficient: the ability to inherit functionality from the ~~terrainbenot~~[terrainbento](#) base classes, and the use of Process Components in the Landlab Toolkit to handle individual process laws. Having already discussed the base class, it is useful to say a few words about Landlab. The Landlab Toolkit is
965 a Python-language software library designed to support efficient creation, exploration, and modification of two-dimensional numerical models of earth-surface processes (Hobley et al., 2017). Landlab accomplishes this by using a CSDMS-inspired plug-and-play method, in which the functionality needed for a numerical implementation of a single process is encapsulated in a standard-format *Process Component*. Process Components are implemented as Python classes. Landlab also uses an
970 object-oriented approach to grid creation and management, so that a simulation grid is encapsulated as a Python object. Components normally interact with a Grid object, and share *fields* (arrays) of grid-linked data by creating and attaching the necessary fields to a common grid. More information about Landlab can be found in Hobley et al. (2017).

terrainbento uses Landlab Components to implement its process laws. Each terrainbento model
975 program is implemented as a class that derives from the ErosionModel base class. The model program's `__init__` method handles parameter retrieval, and instantiates the necessary Landlab Components. The model program's `run_one_step` method then advances each component in turn, normally by calling the component-level `run_one_step`. In addition to the definition of the model class, each terrainbento model program includes a short `main` function that allows the model pro-
980 gram to be run in a stand-alone fashion (as opposed to being instantiated and run from an outside script, which can also be done). This simple design allows the main model program files to be quite short, often with between 100 and 300 lines, of which only 20-50 are “true” lines of code and the remainder are comments or built-in documentation.

5.5 Model and class naming scheme

985 The naming scheme for the classes that implement the individual terrainbento ~~models~~[model programs](#) starts with the name “Basic” and then adds a two-letter code for each element in which the model [program](#) differs from the Basic model [program](#) (Table 2). For example, the BasicTh model [program](#) uses a threshold formula for water erosion, but is otherwise identical to the Basic model [program](#). Model BasicRtTh uses a threshold and also implements two separate lithologies (here, “Rt” stands
990 for “rock and till,” a name that reflects the original motivation for this particular capability).

5.6 Input/output formats and semantics

terrainbento 1.0 provides ~~two options for handling input~~[multiple options for model instantiation and specification](#) of parameter values and run-control options. Parameters can be listed in an ASCII-text

```

# Example inputs for terrainbento model Basic

# Create the Grid.
grid:
  grid:
    RasterModelGrid:
      - [100, 160]
      - xy_spacing: 10.0 # meters
  fields:
    at_node:
      topographic_elevation:
        random:
          - where: "CORE_NODE"

# Create the Clock.
clock:
  start: 0.0
  step: 10 # years
  stop: 1e7 # years

# Control writing of output.
output_interval: 1e7 # years

# Parameters that control process rates.
water_erosion: 0.001
m_sp: 1
n_sp: 0.5
regolith_transport_parameter: 0.01

```

Figure 4. Example of a terrainbento input file.

input file, using YAML format (“YAML Ain’t Markup Language”), as in the example in Figure 4

995 ~~-. The name of the input file is then passed as an argument when a model object is instantiated and~~
~~passed to a from_file constructor.~~ Alternatively, ~~parameter name-value pairs can be entered in~~
~~a Python dictionary and passed as an input when the model object is instantiated~~ models can be
~~instantiated using a dictionary or with parameters passed as keyword arguments.~~

If a user wishes to read in a digital elevation model (DEM) to use as the initial topography, the
1000 name of the DEM file is given as a parameter in the input file or dictionary. ~~As of terrainbento~~
~~1.0, the file must be in ESRI ASCII format. terrainbento 1.0 treats the DEM as a watershed, using~~
~~All input/output methods supported by~~ Landlab’s watershed setup functionality. ~~Any grid nodes with~~
~~elevation values equal to -9999 (the ESRI “no-data” code) are set to closed boundary~~ create_grid
~~status (for more on Landlab grids, see Hobbey et al., 2017). The user may optionally specify a particular~~
1005 ~~grid node as the watershed outlet, using Landlab’s standard node numbering scheme. Otherwise,~~
~~an outlet node will be identified automatically. If the user does not specify the name of a DEM~~
~~file, terrainbento will create a rectangular grid and initialize its elevation field with zeros. Options to~~
~~make hexagonal grids and add random noise are available and described in the User Guide~~ function
~~are supported by terrainbento.~~ For two-lithology (“Rt”) ~~models~~ model programs, the user must ~~also~~
1010 ~~provide an ESRI ASCII file containing~~ specify the elevations of the contact between the two units at
each grid node.

Gridded output is written in netCDF format. The base name for the output files must be specified
as an input parameter. When a terrainbento model program runs, output is written at regular intervals,
with the frequency set by the user via an input parameter. One file is created for every output interval;
1015 these files are numbered sequentially. A terrainbento output file contains all of the grid fields used in
that particular ~~model~~ simulation, which is to say all the grid fields created by that model program’s
Landlab Components plus any created in the main model program.

In addition to ~~model~~ output in the form of netCDF files, terrainbento supports the supply of one
or more function or class, termed an ~~“OutputWriter”~~ output writer that is run at output intervals. If

1020 writing and then postprocessing the netCDF files is not sufficient for a user’s application, the user
can define an ~~OutputWriter~~output writer to suit the application. For example, if users wanted to
make a diagnostic plot to monitor a ~~model~~simulation run as it progresses, they could define an
~~OutputWriter~~output writer that does this. The interface constraints on ~~OutputWriters~~output writers
are minimal: a function must take only one argument, expected to be a terrainbento model instance; a
1025 class must take one argument at instantiation, also expected to be a model instance, and must have a
“run_one_step” method that takes no arguments. Examples of ~~OutputWriter~~output writer usage
are presented in the Jupyter Notebook “Introduction to terrainbento ~~OutputWriters~~output writers”
and in the coupled model notebooks.

Unique names are assigned to each terrainbento input parameter and each data field. terrainbento
1030 1.0 parameter and field names are listed in Table 4, together with their equivalent mathematical
symbols. terrainbento 1.0 follows the naming conventions used by Landlab (see Hobley et al., 2017).
These conventions are loosely based on the CSDMS Standard Names (Peckham et al., 2013), whose
syntax uses an “object plus value” pattern (for example, *topographic__elevation*). Both Landlab and
terrainbento 1.0 names seek a balance between brevity, information content, and consistency with
1035 the CSDMS Standard Names. Many of the terrainbento/Landlab names are shorter than their full
Standard Name equivalents (which can be quite lengthy), but are designed to be similar enough to
allow one-to-one automated mapping. Examples of input-parameter names are shown in the input file
example in Figure 4. Similar principles apply to the field names, which are encoded in the netCDF
output files.

Table 4. terrainbento parameter names and unit dimensions.

Symbol	Name	Dimensions
b	water_erosion_rule__thresh_depth_derivative	T^{-1}
c	rainfall__shape_factor	-
f	climate_factor	-
h_r	mean_storm_depth	L
m	m_sp	-
n	n_sp	-
n_{ts}	number_of_sub_time_steps	integer
p_d	rainfall__mean_rate	LT^{-1}
D	regolith_transport_parameter	L^2T^{-1}
F_f	fraction_fines	-
F	rainfall_intermittency_factor	-
H_*	roughness__length_scale	L
H_0	soil_transport__decay_depth	L
H_{init} soil__initial_thickness H_s	soil_production__decay_depth	L
I_m	infiltration_capacity	LT^{-1}
K	water_erodability ²	T^{-1} $L^{-1/2}T^{-1/2}$
K_r	water_erodability rock ²	T^{-1} $L^{-1/2}T^{-1/2}$
K_s	water_erodability sediment ²	T^{-1} $L^{-1/2}T^{-1/2}$
K_1	water_erodability upper ²	T^{-1} $L^{-1/2}T^{-1/2}$
K_2	water_erodability lower ²	T^{-1} $L^{-1/2}T^{-1/2}$
K_{sat}	hydraulic_conductivity	LT^{-1} K_q water_erodability stochastic²
P_0	soil_production__maximum_rate	LT^{-1}
R_m	recharge_rate	LT^{-1}
S_c	critical_slope	-
S_r	random_seed	integer
T_b	mean_interstorm_duration	T
T_r	mean_storm_duration	T
T_s	climate_constant_date	T
V_s	normalized_settling_velocity	-
V	settling_velocity	LT^{-1}
W_c	contact_zone__width	L
ϕ	sediment_porosity	-
ω_c	erosion__threshold ¹	LT^{-1}
ω_{c1}	till_erosion__threshold ¹	LT^{-1}
ω_{c2}	rock_erosion__threshold ¹	LT^{-1}

¹ Becomes field rather than single-value parameter in Dd models ² Units depend on value of m . Here we use $m = 0.5$. The common simplification of $Q = A$ also changes the units of K

Table 5. terrainbento field names and unit dimensions.

Symbol	Name	Dimensions
A	drainage_area	L^2
A_{eff}	effective_drainage_area	L^2
H	soil__depth	L
Q	surface_water__discharge	L^3T^{-1}
Q_s	sediment__flux	L^3T^{-1}
S	topographic__steepest_slope	-
η	topographic__elevation	L
η_b	bedrock__elevation	L
η_C	lithology_contact__elevation	L

1040 5.7 Unit tests and model program verification

terrainbento follows modern software engineering best practices by incorporating documentation and testing into the package source code. The terrainbento documentation Docstrings include simple examples showing, for each model ~~-, a minimal parameter dictionary~~program, the minimum requirements to instantiate a model program instance. For each model program, unit tests verify that all value and compatibility checks raise the correct errors and that all existing analytical solutions are reached. These unit tests ensure that any refactoring of the code, additions or improvements in later terrainbento versions, or changes to Landlab components do not change the results produced by the model. terrainbento 1.0 has 100% coverage, which means that all lines of code in the base classes, derived models, and boundary condition handlers are tested by unit or Docstring tests.

1050 The analytical solution unit tests represent model program verification. Tests of the ErosionModel base class include verification that the same random seed reproduces the same initial condition topography, that ErosionModel can work with different instantiation methods and Landlab grid types, and that ErosionModel is compatible with boundary condition handlers and ~~OutputWriters~~output writers. For base classes like the StochasticErosionModel, we test random seed reproducibility and that the sequence of rain events generated matches the desired distribution. For each model program, we test at least two process end members: a case with only hillslope processes, and a case with only water erosion process. Here, for the sake of illustration, we provide the example of an analytical solution for the Basic model program.

The Basic model program has the following governing equation

$$1060 \quad \frac{\partial \eta}{\partial t} = -\cancel{K} \cancel{A} \cancel{K} \cancel{Q}^m S^n + D \nabla^2 \eta. \quad (61)$$

Given boundary conditions of a constant relative uplift rate U of the core nodes, and taking that $Q = A$, at steady state this equation becomes

$$0 = U - K A^m S^n + D \nabla^2 \eta. \quad (62)$$

1065 In the water-erosion-only endmember, $D = 0$ and the equation can be re-arranged for a relationship between slope and drainage area:

$$S = \left(\frac{U}{K A^m} \right)^{1/n}. \quad (63)$$

In unit tests we assert that the Basic model program run to steady state conforms to this slope-area relationship. With regard to the hillslope-process-only case ($K = 0$), the governing equation under conditions of constant uplift can be re-arranged for an expression of elevation as a function of position within the domain. For a ~~model-simulation~~ domain of size L in the x dimension and only 1 row of core nodes in the y dimension, this analytical solution is

$$1070 \quad \eta = \frac{U}{2D} (L^2 - x^2). \quad (64)$$

Unit tests for all other ~~models~~model program can be found in the source code under the folder tests.

1075 6 Support for users and potential developers

terrainbento includes eight Jupyter notebooks designed to introduce new users to terrainbento and demonstrate five benchmark examples. These notebooks are available on GitHub at (https://github.com/terrainbento/examples_tests_and_tutorials). Three introductory notebooks go over the philosophy of terrainbento ~~models~~model programs and an introduction to using them, an overview of how to use the baselevel handler methods, and examples of creating and using ~~OutputWriters~~output writers.

The five example landscapes shown in Figure 1 are benchmark examples in which a terrainbento model program is created from a Python dictionary and run to steady state with output saved to a compiled netCDF. In each of these benchmark example notebooks a 2D image of elevation and slope area plot shows example model results.

As terrainbento was designed to be generic, it includes a ~~model~~-template to support interested developers to build their own model programs within the framework. This ~~model~~-template provides an example file with the skeleton of a terrainbento model program and extensive comments on the type of documentation and public functions required of new terrainbento ~~models~~model programs. Throughout the documentation we have made notes encouraging users and developers to make a GitHub issue if they have questions, find errors, or feel that the functionality should be expanded to meet research needs.

7 Conclusions

terrainbento 1.0 is a model analysis package and collection of alternative ~~models-of~~model program for long-term landscape evolution built using the Landlab framework. terrainbento was designed to enable hypothesis testing among alternative numerical models of Earth surface processes. terrainbento 1.0 focuses on ~~13-11~~ binary options for process formulation and 28 model programs that systematically explore these options. As boundary conditions can substantially influence ~~model~~simulation results, terrainbento also includes five boundary condition handlers, which permit consideration of boundary conditions in a parameterized way. Integration between terrainbento and Landlab permits process component development within Landlab and use of new components in terrainbento. Thus, while the process combinations available within terrainbento 1.0 are not exhaustive, its extensible design facilitates inclusion of additional terrainbento ~~models~~model programs using new and existing Landlab components.

Recent work has yielded a plethora of numerical models of Earth surface processes, yet comparison among these models has long been difficult and inconsistent. terrainbento enables effi-

cient [numerical](#) model intercomparison with standardized parameters, input/output, and handling of boundary conditions. Consistent, reproducible comparison among landscape evolution models using the terrainbento modeling package will support model evaluation and advance quantitative understanding of Earth surface dynamics.

8 Code Availability

The terrainbento source code is available in a publicly available GitHub repository distributed under a MIT license (<https://github.com/terrainbento/terrainbento>, <https://doi.org/10.5281/zenodo.2566501>), the User Manual is built into the source code Docstrings and compiled into a Read The Docs webpage (<http://terrainbento.readthedocs.io/en/latest/>), and Jupyter notebooks that introduce terrainbento usage and show example ~~models runs~~ [simulations](#) are located in a public GitHub repository (https://github.com/terrainbento/examples_tests_and_tutorials,). ~~The terrainbento conda channel provides access to a conda package version of the software (author note to reviewers and editors: as of initial manuscript submission this conda channel is not active as we anticipate incorporating any revisions into the code before distributing the package~~ <https://doi.org/10.5281/zenodo.2566608>). [Prebuilt binaries are available through conda forge](#) (<https://anaconda.org/conda-forge/terrainbento>).

8.1 Continuous Integration and Dependencies

terrainbento 1.0 is tested with continuous integration tools TravisCI and AppVeyor to ensure that it can be installed and all tests pass on three operating systems (Windows, Ubuntu Linux, and Mac OSX) and ~~three Python version (2.7, 3.5,~~ [two Python versions \(3.6 and 3.7\)](#). Installing terrainbento from source requires Python and setuptools. Running terrainbento additionally requires numpy (version 1.11 or higher), scipy, xarray, dask, ~~sympy,~~ six, pyyaml, pytest, and Landlab (version ~~4.3-1.7~~ or higher). Testing terrainbento additionally requires ~~pytest-cov, and pytest-runner~~ [pytest](#).

Appendix A: Table of Mathematical Symbols

Table 6. Table of dimensions and constants

Symbol	Definition	Dimensions
x	x dimension	L
y	y dimension	L
z	z dimension	L
t	time	T
e	Euler's constant	-

Table 7: Mathematical symbols¹

Symbol	Definition	Dimensions
a	drainage area per unit contour length	L
d^*	dimensionless number	-
dx_f	flow width	L
i	model grid node index	-
k_1	fluvial incision coefficient	units depend on μ
p	precipitation rate	LT^{-1}
p_{ma}	mean precipitation rate	LT^{-1}
q	surface water unit discharge	L^2T^{-1}
q_{tot}	total unit discharge	L^2T^{-1}
q_s	fluvial sediment flux per unit width	L^2T^{-1}
q_h	hillslope sediment flux per unit width	L^2T^{-1}
q_{ss}	maximum subsurface unit discharge	L^2T^{-1}
r	runoff rate	LT^{-1}
w	lithology weight factor	-
D_{50}	median grain size	L
D_I	cumulative erosion	L
D_s	deposition rate	LT^{-1}
E_H	rate of erosion by hillslope processes	LT^{-1}
E_i	instantaneous erosion rate	LT^{-1}
E_r	bedrock erosion rate	LT^{-1}
E_s	sediment entrainment rate	LT^{-1}
E_W	rate of erosion by water	LT^{-1}
E_{WHS}	rate of soil erosion	LT^{-1}
E_{WR}	rate of bedrock erosion by water	LT^{-1}

Table 7: (continued)

Symbol	Definition	Dimensions
K_i	<u>instantaneous water erodability</u>	T^{-1}
P	soil production rate	LT^{-1}
T	soil transmissivity	L^2T^{-1}
T_{L1}	thickness of layer 1	L
Q_{ss}	subsurface water discharge	L^3T^{-1}
Q_{tot}	total discharge	L^3T^{-1}
R	recharge rate	LT^{-1}
R_c	critical recharge rate	LT^{-1}
U	relative uplift rate	LT^{-1}
W	<u>channel width</u>	L
α	saturation area scale	L^2
δ_L	binary lithology factor	-
η_{L2}	elevation of top of layer 2	L
κ	climate factor rate of change	T^{-1}
λ	precipitation distribution scale factor	-
μ	generic water discharge exponent	-
ν	generic slope exponent	-
ω	erosion rate that would occur without a threshold	LT^{-1}
ω_{ct}	erosion-depth-dependent erosion threshold	LT^{-1}
ρ_r	bedrock density	ML^{-3}
ρ_s	soil bulk density	ML^{-3}
Γ	gamma function	-
Δx	flow width/grid cell width	L
Ω_c threshold under which no erosion occurs LT^{-1}		

¹ here we only list symbols not defined in Tables 4, 5, or 6.

1130 Appendix B: Governing equations for each terrainbento 1.0 model program

B1 Basic

The governing equation for elevation change in the Basic model ~~is:~~ program is:

$$\frac{\partial \eta}{\partial t} = -\frac{K}{A} \frac{K}{Q} S^n + D \nabla^2 \eta, \quad (B1)$$

Parameters: K , m , n , and D .

1135 B2 BasicTh

BasicTh adds a threshold to the water erosion term in the Basic model [÷program:](#)

$$\frac{\partial \eta}{\partial t} = -[\omega - \omega_c(1 - e^{-\omega/\omega_c})] + D\nabla^2 \eta, \quad (\text{B2})$$

$$\omega = K \underline{A} \underline{Q}^m S^n. \quad (\text{B3})$$

The threshold is smoothed such that the water erosion term approaches zero when $\omega \ll \omega_c$, and

1140 asymptotes to $\omega - \omega_c$ as $\omega \gg \omega_c$.

Parameters: K , D , m , n , and ω_c .

B3 BasicDd

BasicDd includes a threshold to the water erosion term that increases with progressive incision depth:

$$\frac{\partial \eta}{\partial t} = -[\omega - \omega_c(1 - e^{-\omega/\omega_c})] + D\nabla^2 \eta, \quad (\text{B4})$$

$$1145 \quad \omega = K \underline{A} \underline{Q}^m S^n, \quad (\text{B5})$$

$$\omega_{ct}(x, y, t) = \max(\omega_c + bD_I(x, y, t), \omega_c). \quad (\text{B6})$$

Parameters: K , m , n , D , b , and ω_c .

B4 BasicHy

BasicHy uses a sediment-tracking (“hybrid”) water-erosion law:

$$1150 \quad \frac{\partial \eta}{\partial t} = \frac{VQ_s}{A(1-\phi)} - \underline{K} \underline{A} \underline{K} \underline{Q}^m S^n + D\nabla^2 \eta, \quad (\text{B7})$$

$$Q_s = \int_0^{\underline{sA}} \left(\left[K(1 - F_f) \underline{A} \underline{Q}^m S^n \right]_s - \left[\frac{VQ_s}{A(1-\phi)} \frac{VQ_s}{Q(1-\phi)} \right]_s \right) \underline{dsdA}. \quad (\text{B8})$$

Parameters: K , m , n , D , ϕ , F_f and V .

B5 BasicCh

BasicCh uses a nonlinear law for hillslope erosion and transport:

$$1155 \quad \frac{\partial \eta}{\partial t} = -\underline{K} \underline{A} \underline{K} \underline{Q}^m S^n - \nabla q_h, \quad (\text{B9})$$

$$q_h = -DS \left[1 + \left(\frac{S}{S_c} \right)^2 + \left(\frac{S}{S_c} \right)^4 + \dots \left(\frac{S}{S_c} \right)^{2(N-1)} \right], \quad (\text{B10})$$

where S_c is a critical slope gradient. Parameters: K , m , n , D , S_c , N .

B6 BasicSt

BasicSt uses a stochastic representation of precipitation, in which the rainfall rate p is a random

1160 variable. The evolution equation is

$$\frac{\partial \eta}{\partial t} = -K \hat{Q}^m S^n + D\nabla^2 \eta. \quad (\text{B11})$$

The discharge, \hat{Q} , associated with a particular value of p is

$$\hat{Q} = p - I_m \left(1 - e^{-p/I_m} \right), \quad (\text{B12})$$

The probability distribution of p is given by a stretched exponential survival function

$$1165 \quad Pr(P > p) = \exp \left[- \left(\frac{p}{\lambda} \right)^c \right], \quad (\text{B13})$$

with shape parameter c and scale parameter λ . The relationship between λ and the mean rainfall rate p_d is

$$p_d = \lambda \Gamma(1 + 1/c). \quad (\text{B14})$$

Parameters: K, m, n, D, I_m, p_d, c .

1170 **B7 BasicVs**

The BasicVs model [program](#) implements variable source area runoff using the “effective area” approach described in Section 3.5.1:

$$\frac{\partial \eta}{\partial t} = -K A_{eff}^m S^n + D \nabla^2 \eta, \quad (\text{B15})$$

$$A_{eff} = A e^{-\alpha S/A}, \quad (\text{B16})$$

$$1175 \quad \alpha = \frac{\frac{K_{sat} H_{init} dx}{R_m}}{\frac{K_{sat} H dx}{R_m}}. \quad (\text{B17})$$

Parameters: $K, m, n, D, K_{sat}, \textcolor{red}{H_{init}}, R_m$.

B8 BasicSa

BasicSa modifies the Basic model [program](#) by explicitly tracking a dynamic soil layer of thickness $H(x, y, t)$. Its governing equations are:

$$1180 \quad \eta = \eta_b + H, \quad (\text{B18})$$

$$\frac{\partial H}{\partial t} = P_0 \exp(-H/H_s) - \delta(H) K \textcolor{red}{A} \textcolor{blue}{Q}^m S^n - \nabla q_h, \quad (\text{B19})$$

$$\frac{\partial \eta_b}{\partial t} = -P_0 \exp(-H/H_s) - (1 - \delta(H)) K \textcolor{red}{A} \textcolor{blue}{Q}^m S^n, \quad (\text{B20})$$

$$q_h = -D \left[1 - \exp \left(-\frac{H}{H_0} \right) \right] \nabla \eta. \quad (\text{B21})$$

The function $\delta(H)$ is used to indicate that water erosion will act on soil where it exists, and on the
1185 underlying lithology where soil is absent. To achieve this, $\delta(H)$ is defined to equal 1 when $H > 0$ (meaning soil is present), and 0 if $H = 0$ (meaning the underlying parent material is exposed).

Parameters: $K, m, n, D, P_0, H_s, H_0$.

B9 BasicRt

BasicRt modifies Basic by allowing for two lithologies, as described in Sections 2.2.2 and 3.7.2.

$$1190 \quad \frac{\partial \eta}{\partial t} = -K(\eta, \eta_C) \underline{A} \underline{Q}^m S^n + D \nabla^2 \eta, \quad (\text{B22})$$

$$K(\eta, \eta_C) = w K_1 + (1 - w) K_2, \quad (\text{B23})$$

$$w = \frac{1}{1 + \exp\left(-\frac{(\eta - \eta_C)}{W_c}\right)}, \quad (\text{B24})$$

where W_c is the contact-zone width.

Parameters: K_1, K_2, m, n, D, W_c (plus specification of $\eta_C(x, y)$).

1195 B10 BasicCc

BasicCc uses the same governing equation as Basic, but allows the parameter K to vary through time according to a linear function:

$$K(t) = \begin{cases} \mu t + f K_0, & \text{when } t < T_s, \\ K_0 & \text{otherwise.} \end{cases} \quad (\text{B25})$$

$$\mu = (1 - f) K_0 / T_s. \quad (\text{B26})$$

1200 Parameters: K_0, m, n, D, f (factor by which K is larger ($f > 1$) or smaller ($f < 1$) than K_0 at $t = 0$), and T_s (time at which K becomes constant).

B11 BasicStTh

The land surface evolution equation is:

$$\frac{\partial \eta}{\partial t} = -\left[\hat{\omega} - \omega_c(1 - e^{-\hat{\omega}/\omega_c})\right] + D \nabla^2 \eta, \quad (\text{B27})$$

$$1205 \quad \hat{\omega} = K \underline{q} \hat{Q}^m S^n. \quad (\text{B28})$$

The discharge, \hat{Q} , associated with a particular value of p is

$$\hat{Q} = p - I_m \left(1 - e^{-p/I_m}\right), \quad (\text{B29})$$

The probability distribution of p is given by a stretched exponential survival function

$$Pr(P > p) = \exp\left[-\left(\frac{p}{\lambda}\right)^c\right], \quad (\text{B30})$$

1210 with shape parameter c and scale parameter λ . The relationship between λ and the mean rainfall rate p_d is

$$p_d = \lambda \Gamma(1 + 1/c). \quad (\text{B31})$$

Parameters: $K, m, n, D, \omega_c, I_m, p_d, c$.

B12 BasicThVs

1215 The BasicThVs model [program](#) implements variable source area runoff using the “effective area” approach plus a threshold on the water-erosion law:

$$\frac{\partial \eta}{\partial t} = - \left[\omega - \omega_c (1 - e^{-\omega/\omega_c}) \right] + D \nabla^2 \eta, \quad (\text{B32})$$

$$\omega = K A_{eff}^{1/2} S, \quad (\text{B33})$$

$$A_{eff} = A e^{-\alpha S/A}, \quad (\text{B34})$$

$$1220 \quad \alpha = \frac{\frac{K_{sat} H_{init} dx}{R_m}}{\frac{K_{sat} H dx}{R_m}}. \quad (\text{B35})$$

Parameters: $K, m, n, D, \omega_c, K_{sat}, \underline{H_{init}}, R_m$.

B13 BasicRtTh

BasicRtTh modifies Basic by allowing for two lithologies, and applying a threshold to the channel incision law:

$$1225 \quad \frac{\partial \eta}{\partial t} = - \left[\omega - \omega_c (1 - e^{-\omega/\omega_c}) \right] + D \nabla^2 \eta, \quad (\text{B36})$$

$$\omega = K(\eta, \eta_C) \underline{A} Q^m S^n, \quad (\text{B37})$$

$$K(\eta, \eta_C) = w K_1 + (1 - w) K_2, \quad (\text{B38})$$

$$\omega_c(\eta, \eta_C) = w \omega_{c1} + (1 - w) \omega_{c2}, \quad (\text{B39})$$

$$w = \frac{1}{1 + \exp\left(-\frac{(\eta - \eta_C)}{W_c}\right)}, \quad (\text{B40})$$

1230 where W_c is the contact-zone width.

Parameters: $K_1, K_2, m, n, D, \omega_{c1}, \omega_{c2}, W_c$ (plus specification of $\eta_C(x, y)$).

B14 BasicDdHy

This is a sediment-tracking (hybrid) erosion law with a depth-dependent threshold:

$$\frac{\partial \eta}{\partial t} = \frac{\underline{V Q_s}}{\underline{A(1-\phi)}} \frac{\underline{V Q_s}}{\underline{Q(1-\phi)}} - [\omega - \omega_{ct}(1 - e^{-\omega/\omega_{ct}})] + D \nabla^2 \eta, \quad (\text{B41})$$

$$1235 \quad Q_s = \int_0^A \left((1 - F_f) [\omega - \omega_c (1 - e^{-\omega/\omega_c})] - \frac{V Q_s}{A(1-\phi)} \right) dA, \quad (\text{B42})$$

$$\omega = K \underline{A} Q^m S^n, \quad (\text{B43})$$

$$\omega_{ct}(x, y, t) = \max(\omega_c + b D_I(x, y, t), \omega_c). \quad (\text{B44})$$

Parameters: K, m, n, D, V, b , and ω_c, ϕ, F_f .

B15 BasicDdSt

1240 This model [program](#) uses stochastic precipitation, and the water-erosion law includes a depth-dependent threshold:

$$\frac{\partial \eta}{\partial t} = -[\omega - \omega_{ct}(1 - e^{-\omega/\omega_{ct}})] + D\nabla^2 \eta, \quad (\text{B45})$$

$$\omega = K \hat{Q}^{1/2} S, \quad (\text{B46})$$

$$\omega_{ct}(x, y, t) = \max(\omega_c + bD_I(x, y, t), \quad (\text{B47})$$

$$1245 \quad \hat{Q} = p - I_m \left(1 - e^{-p/I_m}\right), \quad (\text{B48})$$

$$Pr(P > p) = \exp \left[- \left(\frac{p}{\lambda} \right)^c \right], \quad (\text{B49})$$

$$p_d = \lambda \Gamma(1 + 1/c). \quad (\text{B50})$$

Parameters: $K, m, n, D, I_m, p_d, c, \omega_c, b$.

B16 BasicDdVs

1250 Model BasicDdVs uses variable source-area hydrology, and an erosion threshold that increases with progressive erosion depth:

$$\frac{\partial \eta}{\partial t} = -[\omega - \omega_{ct}(1 - e^{-\omega/\omega_{ct}})] + D\nabla^2 \eta, \quad (\text{B51})$$

$$\omega = K A_{eff}^{1/2} S, \quad (\text{B52})$$

$$A_{eff} = A e^{-\alpha S/A}, \quad (\text{B53})$$

$$1255 \quad \alpha = \frac{K_{sat} H_{init} dx}{R_m} \frac{K_{sat} dx}{R_m}, \quad (\text{B54})$$

$$\omega_{ct}(x, y, t) = \max(\omega_c + bD_I(x, y, t). \quad (\text{B55})$$

Parameters: $K, m, n, D, \omega_c, b, K_{sat}, H_{init}, R_m$.

B17 BasicDdRt

1260 BasicDdRt modifies Basic by allowing for two lithologies, and applying a depth-dependent threshold to the channel incision law. Unlike BasicRtTh, the (initial) threshold is taken to be uniform across the two lithologies; the rate of increase in threshold with depth (b) is also assumed uniform.

$$\frac{\partial \eta}{\partial t} = -[\omega - \omega_{ct}(1 - e^{-\omega/\omega_{ct}})] + D\nabla^2 \eta, \quad (\text{B56})$$

$$\omega = K(\eta, \eta_C) \hat{Q}^m S^n, \quad (\text{B57})$$

$$K(\eta, \eta_C) = wK_1 + (1 - w)K_2, \quad (\text{B58})$$

$$1265 \quad \omega_{ct}(x, y, t) = \max(\omega_c + bD_I(x, y, t), \quad (\text{B59})$$

$$w = \frac{1}{1 + \exp \left(- \frac{(\eta - \eta_C)}{W_c} \right)}, \quad (\text{B60})$$

where W_c is the contact-zone width and $D_I(x, y, t)$ is the cumulative erosion at each point through time.

Parameters: $K_1, K_2, m, n, D, \omega_c, b, W_c$ (plus specification of $\eta_C(x, y)$).

1270 **B18 BasicHySt**

$$\frac{\partial \eta}{\partial t} = \frac{VQ_s}{\hat{Q}} - K_{\underline{q}} \hat{Q}^m S^n + D \nabla^2 \eta, \quad (\text{B61})$$

$$Q_s = \int_0^A \left(K_{\underline{q}} (1 - F_f) \hat{Q}^m S^n - \frac{VQ_s}{A(1 - \phi)} \right) dA, \quad (\text{B62})$$

$$\hat{Q} = A \left[p - I_m \left(1 - e^{-p/I_m} \right) \right], \quad (\text{B63})$$

$$Pr(P > p) = \exp \left[- \left(\frac{p}{\lambda} \right)^c \right], \quad (\text{B64})$$

$$1275 \quad p_d = \lambda \Gamma (1 + 1/c). \quad (\text{B65})$$

Parameters: $\underline{K_{\underline{q}}} K$, $m, n, V, D, I_m, p_d, c, \phi, F_f$.

B19 BasicHyVs

Sediment-tracking (hybrid) model [program](#) that uses variable source-area hydrology:

$$\frac{\partial \eta}{\partial t} = \frac{VQ_s}{A_{eff}} - K A_{eff}^m S^n + D \nabla^2 \eta, \quad (\text{B66})$$

$$1280 \quad Q_s = \int_0^A \left(K(1 - F_f) A_{eff}^m S^n - \frac{VQ_s}{A_{eff}} \right) dA, \quad (\text{B67})$$

$$A_{eff} = A e^{-\alpha S/A}, \quad (\text{B68})$$

$$\alpha = \frac{\underline{K_{sat}} \underline{H_{init}} dx}{\underline{R_m}} \frac{K_{sat} H dx}{\underline{R_m}}. \quad (\text{B69})$$

Parameters: $K, m, n, D, V, K_{sat}, \underline{H_{init}}, \underline{R_m}$.

B20 BasicHySa

1285 This model [program](#) uses a continuous layer of soil/alluvium, which influences both hillslope transport and water erosion and transport. This model ~~configuration~~-[program](#) uses the SPACE algorithm

of Shobe et al. (2017), whose governing equations can be summarized as:

$$\eta = \eta_b + H, \quad (\text{B70})$$

$$\frac{\partial H}{\partial t} = P_0 \exp(-H/H_s) + \frac{V_s Q_s}{A(1-\phi)} \frac{V_s Q_s}{Q(1-\phi)} - K_s \underline{A} \underline{Q}^m S^n (1 - e^{-H/H_*}) - \nabla q_h, \quad (\text{B71})$$

$$\frac{\partial \eta_b}{\partial t} = -P_0 \exp(-H/H_s) - K_r \underline{A} \underline{Q}^m S^n e^{-H/H_*}, \quad (\text{B72})$$

$$Q_s = \int_0^A \left(K_s \underline{A} \underline{Q}^m S^n (1 - e^{-H/H_*}) + K_r (1 - F_f) \underline{A} \underline{Q}^m S^n e^{-H/H_*} - \frac{V_s Q_s}{A(1-\phi)} \right) dA, \quad (\text{B73})$$

$$q_h = -D \left[1 - \exp\left(-\frac{H}{H_0}\right) \right] \nabla \eta. \quad (\text{B74})$$

Parameters: $K_s, K_r, m, n, H_*, V_s, D, H_0, P_0, H_s, \phi, F_f$.

B21 BasicHyRt

1295 Sediment-tracking (hybrid) model [program](#) with two lithologies:

$$\frac{\partial \eta}{\partial t} = \frac{V Q_s}{A(1-\phi)} \frac{V Q_s}{Q(1-\phi)} - K \underline{A} \underline{Q}^m S^n + D \nabla^2 \eta, \quad (\text{B75})$$

$$Q_s = \int_0^A \left(K(1 - F_f) \underline{A} \underline{Q}^m S^n - \frac{V Q_s}{A(1-\phi)} \frac{V Q_s}{Q(1-\phi)} \right) dA, \quad (\text{B76})$$

$$K(\eta, \eta_C) = w K_1 + (1 - w) K_2, \quad (\text{B77})$$

$$w = \frac{1}{1 + \exp\left(-\frac{(\eta - \eta_C)}{W_c}\right)}. \quad (\text{B78})$$

1300 Parameters: $K_1, K_2, m, n, V, D, W_c, \phi, F_f$.

B22 BasicChSa

BasicChSa modifies the Basic model [program](#) by explicitly tracking a dynamic soil layer of thickness $H(x, y, t)$, and using a nonlinear (cubic) hillslope transport law. Its governing equations are:

$$\eta = \eta_b + H, \quad (\text{B79})$$

$$\frac{\partial H}{\partial t} = P_0 \exp(-H/H_s) - \delta(H) K \underline{A} \underline{Q}^m S^n - \nabla q_h, \quad (\text{B80})$$

$$\frac{\partial \eta_b}{\partial t} = -P_0 \exp(-H/H_s) - (1 - \delta(H)) K \underline{A} \underline{Q}^m S^n, \quad (\text{B81})$$

$$q_h = -DS \left[1 + \left(\frac{S}{S_c} \right)^2 + \left(\frac{S}{S_c} \right)^4 + \dots \left(\frac{S}{S_c} \right)^{2(N-1)} \right]. \quad (\text{B82})$$

Parameters: $K, m, n, D, S_c, N, P_0, H_s, H_0$.

B23 BasicChRt

1310 This model [program](#) uses nonlinear hillslope transport and two lithologies:

$$\frac{\partial \eta}{\partial t} = -K(\eta, \eta_C) \underline{A} \tilde{Q}^m S^n - \nabla q_h, \quad (\text{B83})$$

$$K(\eta, \eta_C) = wK_1 + (1-w)K_2, \quad (\text{B84})$$

$$w = \frac{1}{1 + \exp\left(-\frac{(\eta - \eta_C)}{W_c}\right)}, \quad (\text{B85})$$

$$q_h = -DS \left[1 + \left(\frac{S}{S_c}\right)^2 + \left(\frac{S}{S_c}\right)^4 + \dots + \left(\frac{S}{S_c}\right)^{2(N-1)} \right]. \quad (\text{B86})$$

1315 Parameters: $K_1, K_2, m, n, D, S_c, W_c, N$, (plus specification of $\eta_C(x, y)$).

B24 BasicStVs

BasicStVs uses a stochastic representation of precipitation, together with variable source-area hydrology:

$$\frac{\partial \eta}{\partial t} = -K \hat{Q}^m S^n + D \nabla^2 \eta, \quad (\text{B87})$$

$$1320 \quad \hat{Q} = pA - TS \Delta x [1 - \exp(-pA/TS \Delta x)], \quad (\text{B88})$$

$$T = K_{sat} H, \quad (\text{B89})$$

$$Pr(P > p) = \exp\left[-\left(\frac{p}{\lambda}\right)^c\right], \quad (\text{B90})$$

$$p_d = \lambda \Gamma(1 + 1/c). \quad (\text{B91})$$

Parameters: $K, m, n, D, p_d, c, K_{sat}$, and H (the latter two effectively form a single lumped parameter, T , but each one needs to be specified in the input file).

B25 BasicSaVs

This model [program](#) combines variable source-area hydrology with a dynamic soil layer. Unlike other model [configurations](#) [programs](#) with variable source-area hydrology, here the actual soil thickness $H(x, y, t)$ is used to calculate transmissivity.

$$1330 \quad \eta = \eta_b + H, \quad (\text{B92})$$

$$\frac{\partial H}{\partial t} = P_0 \exp(-H/H_s) - \delta(H) K A_{eff}^m S^n - \nabla q_h, \quad (\text{B93})$$

$$\frac{\partial \eta_b}{\partial t} = -P_0 \exp(-H/H_s) - (1 - \delta(H)) K A_{eff}^m S^n, \quad (\text{B94})$$

$$q_h = -D \left[1 - \exp\left(-\frac{H}{H_0}\right) \right] \nabla \eta, \quad (\text{B95})$$

$$A_{eff} = A \exp\left(-\frac{\underline{K_{sat} H \Delta x S}}{\underline{R_m A}} \frac{\underline{K_{sat} H \Delta x S}}{\underline{R_m A}}\right). \quad (\text{B96})$$

1335 Parameters: $K, m, n, K_{sat}, R_m, D, H_0, P_0, H_s$.

B26 BasicRtVs

BasicRtVs is a two-lithology model [configuration-program](#) that uses variable source-area hydrology:

$$\frac{\partial \eta}{\partial t} = -K(\eta, \eta_C) A_{eff}^m S^n + D \nabla^2 \eta, \quad (B97)$$

$$K(\eta, \eta_C) = w K_1 + (1 - w) K_2, \quad (B98)$$

$$1340 \quad w = \frac{1}{1 + \exp\left(-\frac{(\eta - \eta_C)}{W_c}\right)}, \quad (B99)$$

$$A_{eff} = A \exp\left(-\frac{-\alpha S}{A} \frac{\alpha S}{A}\right), \quad (B100)$$

$$\alpha = \frac{K_{sat} H dx}{R_m}. \quad (B101)$$

Parameters: $K_1, K_2, m, n, K_{sat}, \underline{H_{mit}}, R_m, D, W_c$ (plus specification of $\eta_C(x, y)$).

B27 BasicRtSa

1345 This model [configuration-program](#) combines a dynamic soil layer and two lithologies:

$$\eta = \eta_b + H, \quad (B102)$$

$$\frac{\partial H}{\partial t} = P_0 \exp(-H/H_s) - \delta(H) K \underline{A} \underline{Q}^m S^n - \nabla q_h, \quad (B103)$$

$$\frac{\partial \eta_b}{\partial t} = -P_0 \exp(-H/H_s) - (1 - \delta(H)) K \underline{A} \underline{Q}^m S^n, \quad (B104)$$

$$q_h = -D \left[1 - \exp\left(-\frac{H}{H_0}\right) \right] \nabla \eta, \quad (B105)$$

$$1350 \quad K(\eta, \eta_C) = w K_1 + (1 - w) K_2, \quad (B106)$$

$$w = \frac{1}{1 + \exp\left(-\frac{(\eta - \eta_C)}{W_c}\right)}. \quad (B107)$$

Parameters: $K_1, K_2, m, n, P_0, H_s, D, H_0, W_c$ (plus specification of $\eta_C(x, y)$).

B28 BasicChRtTh

This model [program](#) uses nonlinear hillslope transport, two lithologies, and an erosion threshold:

$$1355 \quad \frac{\partial \eta}{\partial t} = -\left[\omega - \omega_c(1 - e^{-\omega/\omega_c})\right] + D \nabla^2 \eta, \quad (B108)$$

$$\omega = K(\eta, \eta_C) \underline{A} \underline{Q}^m S^n, \quad (B109)$$

$$K(\eta, \eta_C) = w K_1 + (1 - w) K_2, \quad (B110)$$

$$w = \frac{1}{1 + \exp\left(-\frac{(\eta - \eta_C)}{W_c}\right)}, \quad (B111)$$

$$q_h = -DS \left[1 + \left(\frac{S}{S_c}\right)^2 + \left(\frac{S}{S_c}\right)^4 + \dots + \left(\frac{S}{S_c}\right)^{2(N-1)} \right]. \quad (B112)$$

1360 Parameters: K_1 , K_2 , m , n , D , S_c , W_c , N , (plus specification of $\eta_C(x, y)$).

Author contribution

All authors contributed to the creation of the software package, including developing source code, example Jupyter notebooks, embedded documentation, and internal tests. All authors contributed to the writing and editing of the manuscript.

1365 *Acknowledgements.* We thank Eric Hutton at the Community Surface Dynamics Modeling System Integration Facility for assistance in best practices for scientific software development and setting up continuous integration (CSDMS is supported by NSF Award 1226297). Comments from two anonymous reviewers improved the structure and clarity of the manuscript. Support for this work was provided by NSF Award 1450409 to Tucker and an NSF EAR Postdoctoral Fellowship to Barnhart (Award Number 1725774). Shobe was supported by a National Defense Science and Engineering Graduate Fellowship and a University of Colorado Chancellor's Fellowship. An early version of this software was developed in support of a project that was carried out under contract with Enviro Compliance Solutions, Inc. (Contract Number DE-EM0002446/0920/13/DE-DT0005364/001). We thank members of the Erosion Working Group for their collaboration and insights into the original application that motivated this software.

1370

1375 **References**

- Ahnert, F.: Brief description of a comprehensive three-dimensional process-response model of landform development, *Zeitschrift für Geomorphologie, Supplementband*, 25, 29–49, 1976.
- Andrews, D. and Bucknam, R. C.: Fitting degradation of shoreline scarps by a nonlinear diffusion model, *Journal of Geophysical Research*, 92, 12 857–12, 1987a.
- 1380 Andrews, D. J. and Bucknam, R. C.: Fitting degradation of shoreline scarps by a nonlinear diffusion model, *Journal of Geophysical Research: Oceans*, 92, 12 857–12 867, doi:10.1029/JB092iB12p12857, <https://agupubs.onlinelibrary.wiley.com/doi/full/10.1029/JB092iB12p12857>, 1987b.
- Andrews, D. J. and Hanks, T. C.: Scarp degraded by linear diffusion: Inverse solution for age, *Journal of Geophysical Research: Oceans*, 90, 10 193–10 208, doi:10.1029/JB090iB12p10193, [https://agupubs.](https://agupubs.onlinelibrary.wiley.com/doi/full/10.1029/JB090iB12p10193)
- 1385 [onlinelibrary.wiley.com/doi/full/10.1029/JB090iB12p10193](https://agupubs.onlinelibrary.wiley.com/doi/full/10.1029/JB090iB12p10193), 1985.
- Attal, M., Tucker, G. E., Whittaker, A. C., Cowie, P. A., and Roberts, G. P.: Modeling fluvial incision and transient landscape evolution: Influence of dynamic channel adjustment, *Journal of Geophysical Research*, 113, F03 013, 2008.
- Attal, M., Cowie, P., Whittaker, A., Hopley, D., Tucker, G., and Roberts, G.: Testing fluvial erosion models using
- 1390 the transient response of bedrock rivers to tectonic forcing in the Apennines, Italy, *Journal of Geophysical Research*, 116, F02 005, 2011.
- Beven, K. and Kirkby, M.: A physically based, variable contributing area model of basin hydrology, *Hydrological Sciences Journal*, 24, 43–69, 1979.
- Bishop, P.: Long-term landscape evolution: linking tectonics and surface processes, *Earth Surface Processes and Landforms*, 32, 329–365, 2007.
- 1395 Carretier, S. and Lucazeau, F.: How does alluvial sedimentation at range fronts modify the erosional dynamics of mountain catchments?, *Basin Research*, 17, 361–381, 2005.
- Carretier, S., Martinod, P., Reich, M., and Godderis, Y.: Modelling sediment clasts transport during landscape evolution, *Earth Surface Dynamics*, 4, 237–251, 2016.
- 1400 Chen, A., Darbon, J., and Morel, J.-M.: Landscape evolution models: A review of their fundamental equations, *Geomorphology*, 219, 68–86, doi:10.1016/j.geomorph.2014.04.037, <http://dx.doi.org/10.1016/j.geomorph.2014.04.037>, 2014.
- Codilean, A. T., Bishop, P., and Hoey, T. B.: Surface process models and the links between tectonics and topography, *Progress in Physical Geography*, 30, 307–333, 2006.
- 1405 Cohen, S., Willgoose, G., and Hancock, G.: The mARM3D spatially distributed soil evolution model: Three-dimensional model framework and analysis of hillslope and landform responses, *Journal of Geophysical Research*, 115, F04 013, 2010.
- Coulthard, T. J.: Landscape evolution models: a software review, *Hydrological Processes*, 15, 165–173, 2001.
- Culling, W. E. H.: Soil Creep and the Development of Hillside Slopes, *The Journal of Geology*, 71, 127–161,
- 1410 <http://www.jstor.org/stable/30066150>, 1963.
- Davy, P. and Lague, D.: Fluvial erosion/transport equation of landscape evolution models revisited, *Journal of Geophysical Research-Earth Surface*, 114, F03 007, 2009.
- DiBiase, R. and Whipple, K.: The influence of erosion thresholds and runoff variability on the relationships among topography, climate, and erosion rate, *Journal of Geophysical Research*, 116, F04 036, 2011.

- 1415 Dietrich, W., Wilson, C., Montgomery, D., and McKean, J.: Analysis of erosion thresholds, channel networks, and landscape morphology using a digital terrain model, *The Journal of Geology*, 101, 259–278, 1993.
- Dietrich, W. E., Bellugi, D. G., Sklar, L. S., Stock, J. D., Heimsath, A. M., and Roering, J. J.: Geomorphic transport laws for predicting landscape form and dynamics, in: *Prediction in geomorphology*, edited by Wilcock, P. and Iverson, R., *Geophysical Monograph Series*, AGU, Washington, D.C., doi:10.1029/135GM09, 2003.
- 1420 Doane, T. H., Furbish, D. J., Roering, J. J., Schumer, R., and Morgan, D. J.: Nonlocal Sediment Transport on Steep Lateral Moraines, Eastern Sierra Nevada, California, USA, *Journal of Geophysical Research: Earth Surface*, 123, 187–208, doi:10.1002/2017JF004325, <https://agupubs.onlinelibrary.wiley.com/doi/abs/10.1002/2017JF004325>, 2018.
- Dunne, T. and Black, R.: Partial area contributions to storm runoff in a small New England watershed, *Water Resources Research*, 6, 1296–1311, 1970.
- 1425 Duvall, A., Kirby, E., and Burbank, D.: Tectonic and lithologic controls on bedrock channel profiles and processes in coastal California, *Journal of Geophysical Research*, 109, F03 002, 2004.
- Duvall, A. R. and Tucker, G. E.: Dynamic Ridges and Valleys in a Strike-Slip Environment, *Journal of Geophysical Research: Earth Surface*, 120, 2016–2026, 2015.
- 1430 Eagleson, P.: Climate, soil, and vegetation, 2, The distribution of annual precipitation derived from observed storm sequences, *Water Resources Research*, 14, 713–721, 1978.
- Freeman, T. G.: Calculating catchment area with divergent flow based on a regular grid, *Computers and Geosciences*, 17, 413–422, doi:10.1016/0098-3004(91)90048-I, <http://linkinghub.elsevier.com/retrieve/pii/009830049190048I>, 1991.
- 1435 Ganti, V., Passalacqua, P., and Fofoula-Georgiou, E.: A sub-grid scale closure for nonlinear hillslope sediment transport models, *Journal of Geophysical Research: Earth Surface*, 117, 2012.
- Gasparini, N., Tucker, G., and Bras, R.: Network-scale dynamics of grain-size sorting: Implications for downstream fining, stream-profile concavity, and drainage basin morphology, *EARTH SURFACE PROCESSES AND LANDFORMS*, 29, 401–421, doi:10.1002/esp.1031, 2004.
- 1440 Gran, K. B., Finnegan, N., Johnson, A. L., Belmont, P., Wittkop, C., and Rittenour, T.: Landscape evolution, valley excavation, and terrace development following abrupt postglacial base-level fall, *Geological Society of America Bulletin*, 125, 1851–1864, 2013.
- Gray, H. J., Shobe, C. M., Hobley, D. E. J., Tucker, G. E., Duvall, A. R., Harbert, S. A., and Owen, L. A.: Off-fault deformation rate along the southern San Andreas fault at Mecca Hills, southern California, inferred from landscape modeling of curved drainages, *Geology*, 46, 59–62, doi:10.1130/G39820.1, <https://pubs.geoscienceworld.org/geology/article-lookup?doi=10.1130/G39820.1>, 2018.
- 1445 Hancock, G. and Willgoose, G.: Use of a landscape simulator in the validation of the SIBERIA catchment evolution model: Declining equilibrium landforms, *Water Resources Research*, 37, 1981–1992, 2001.
- Hancock, G., Lowry, J., Coulthard, T., Evans, K., and Moliere, D.: A catchment scale evaluation of the SIBERIA and CAESAR landscape evolution models, *Earth Surface Processes and Landforms*, 35, 863–875, 2010.
- 1450 Hanks, T. C.: The age of scarplike landforms from diffusion-equation analysis, *Quaternary Geochronology: Methods and Applications*, pp. 313–338, 2000.
- Heimsath, A., Dietrich, W., Nishiizumi, K., and Finkel, R.: The soil production function and landscape equilibrium, *Nature*, 388, 358–361, 1997.

- 1455 Herman, F. and Braun, J.: A parametric study of soil transport mechanisms, in: Special Paper 398: Tectonics, Climate, and Landscape Evolution, pp. 191–200, Geological Society of America, doi:10.1130/2006.2398(11), <https://pubs.geoscienceworld.org/books/book/569/chapter/3803089/>, 2006.
- Hill, M. C., Kavetski, D., Clark, M., Ye, M., Arabi, M., Lu, D., Foglia, L., and Mehl, S.: Practical use of computationally frugal model analysis methods, *Groundwater*, 54, 159–170, 2016.
- 1460 Hobley, D. E., Sinclair, H. D., Mudd, S. M., and Cowie, P. A.: Field calibration of sediment flux dependent river incision, *Journal of Geophysical Research: Earth Surface* (2003–2012), 116, 2011.
- Hobley, D. E., Adams, J. M., Nudurupati, S. S., Hutton, E. W., Gasparini, N. M., Istanbuluoglu, E., and Tucker, G. E.: Creative computing with Landlab: an open-source toolkit for building, coupling, and exploring two-dimensional numerical models of Earth-surface dynamics, *Earth Surface Dynamics*, 5, 21, 2017.
- 1465 Howard, A. D.: A detachment-limited model of drainage basin evolution, *Water Resources Research*, 30, 2261–2285, 1994.
- Howard, A. D. and Kerby, G.: Channel changes in badlands, *Geological Society of America Bulletin*, 94, 739–752, 1983.
- Howard, A. D., Dietrich, W. E., and Seidl, M. A.: Modeling fluvial erosion on regional to continental scales, *Journal of Geophysical Research*, 99, 13 971–13 986, 1994.
- 1470 Huang, X. and Niemann, J.: An evaluation of the geomorphically effective event for fluvial processes over long periods, *Journal of Geophysical Research*, 111, F03 015, 2006.
- Ijjasz-Vasquez, E. J., Bras, R. L., and Rodriguez-Iturbe, I.: Hack’s relation and optimal channel networks: The elongation of river basins as a consequence of energy minimization, *Water Resources Research*, 20, 1583–1586, 1993.
- 1475 Ivanov, V. Y., Bras, R. L., and Curtis, D. C.: A weather generator for hydrological, ecological, and agricultural applications, *Water resources research*, 43, 2007.
- Johnstone, S. A. and Hilley, G. E.: Lithologic control on the form of soil-mantled hillslopes, *Geology*, 43, 83–86, 2015.
- 1480 Julien, P.: Erosion and sedimentation, Cambridge Univ Pr, 1998.
- Kavetski, D. and Kuczera, G.: Model smoothing strategies to remove microscale discontinuities and spurious secondary optima in objective functions in hydrological calibration, *Water Resources Research*, 43, 2007.
- Kirby, E. and Whipple, K.: Quantifying differential rock-uplift rates via stream profile analysis, *Geology*, 29, 415–418, 2001.
- 1485 Kirchner, J. W., Dietrich, W. E., Iseya, F., and Ikeda, H.: The variability of critical shear stress, friction angle, and grain protrusion in water-worked sediments, *Sedimentology*, 37, 647–672, doi:10.1111/j.1365-3091.1990.tb00627.x, <https://onlinelibrary.wiley.com/doi/abs/10.1111/j.1365-3091.1990.tb00627.x>, 1990.
- Kooi, H. and Beaumont, C.: Escarpment evolution on high-elevation rifted margins: Insights derived from a surface processes model that combines diffusion, advection, and reaction, *Journal of Geophysical Research*, 99, 12,191–12,209, 1994.
- 1490 Lague, D.: Reduction of long-term bedrock incision efficiency by short-term alluvial cover intermittency, *Journal of Geophysical Research: Earth Surface*, 115, 2010.
- Lague, D., Hovius, N., and Davy, P.: Discharge, discharge variability, and the bedrock channel profile, *J. Geophys. Res.*, 110, doi:10.1029/2004JF000259, 2005.

- 1495 Lavé, J. and Avouac, J.: Fluvial incision and tectonic uplift across the Himalayas of central Nepal, *Journal of Geophysical Research*, 106, 26 561, 2001.
- Loget, N., Davy, P., and Van Den Driessche, J.: Mesoscale fluvial erosion parameters deduced from modeling the Mediterranean sea level drop during the Messinian (late Miocene), *Journal of Geophysical Research: Earth Surface* (2003–2012), 111, 2006.
- 1500 Martin, Y. and Church, M.: Numerical modelling of landscape evolution: Geomorphological perspectives, *Progress in Physical Geography*, 28, 317–339, 2004.
- McEwan, I. and Heald, J.: Discrete particle modeling of entrainment from flat uniformly sized sediment beds, *Journal of Hydraulic Engineering*, 127, 588–597, 2001.
- Miller, S. R. and Slingerland, R. L.: Topographic advection on fault-bend folds: Inheritance of valley positions
1505 and the formation of wind gaps, *Geology*, 34, 769–772, 2006.
- Miller, S. R., Slingerland, R. L., and Kirby, E.: Characteristics of steady state fluvial topography above fault-bend folds, *Journal of Geophysical Research*, 112, F04 004, 2007.
- O’Callaghan, J. F. and Mark, D. M.: The extraction of drainage networks from digital elevation data, *Computer Vision, Graphics, and Image Processing*, 28, 323–344, doi:10.1016/S0734-189X(84)80011-0, <https://linkinghub.elsevier.com/retrieve/pii/S0734189X84800110>, 1984.
- 1510 O’Loughlin, E.: Prediction of surface saturation zones in natural catchments by topographic analysis, *Water Resources Research*, 22, 794–804, 1986.
- Pazzaglia, F. J.: Landscape evolution models, *Developments in Quaternary Sciences*, 1, 247–274, 2003.
- Peckham, S. D., Hutton, E. W., and Norris, B.: A component-based approach to integrated modeling in the
1515 geosciences: The design of CSDMS, *Computers & Geosciences*, 53, 3–12, 2013.
- Pelletier, J.: Fundamental Principles and Techniques of Landscape Evolution Modeling, in: *Treatise on Geomorphology*, Elsevier Inc., 2013.
- Pelletier, J. D.: How do pediments form?: A numerical modeling investigation with comparison to pediments in southern Arizona, USA, *Geological Society of America Bulletin*, 122, 1815–1829, 2010.
- 1520 Pelletier, J. D., DeLong, S. B., Al-Suwaidi, A. H., Cline, M., Lewis, Y., Psillas, J. L., and Yanites, B.: Evolution of the Bonneville shoreline scarp in west-central Utah: Comparison of scarp-analysis methods and implications for the diffusion model of hillslope evolution, *Geomorphology*, 74, 257–270, doi:10.1016/j.geomorph.2005.08.008, <https://www.sciencedirect.com/science/article/pii/S0169555X05002746>, 2006.
- 1525 Pelletier, J. D., McGuire, L. A., Ash, J. L., Engelder, T. M., Hill, L. E., Leroy, K. W., Orem, C. A., Rosenthal, W. S., Trees, M. A., Rasmussen, C., and Chorover, J.: Calibration and testing of upland hillslope evolution models in a dated landscape: Banco Bonito, New Mexico, *Journal of Geophysical Research: Earth Surface*, 116, doi:10.1029/2011JF001976, <https://agupubs.onlinelibrary.wiley.com/doi/abs/10.1029/2011JF001976>, 2011.
- 1530 Perron, J. T., Kirchner, J. W., and Dietrich, W. E.: Formation of evenly spaced ridges and valleys, *Nature*, 460, 502–505, 2009.
- Petit, C., Gunnell, Y., Saholiariliva, N. G., Meyer, B., and Séguinot, J.: Faceted spurs at normal fault scarps: Insights from numerical modeling, *Journal of Geophysical Research-Solid Earth*, 114,

367, doi:10.1029/2008JB005955, <https://agupubs.onlinelibrary.wiley.com/doi/full/10.1029/2008JB005955>,
1535 2009.

Roering, J.: How well can hillslope evolution models “explain” topography? Simulating soil transport and
production with high-resolution topographic data, *Geological Society of America Bulletin*, 120, 1248–1262,
2008.

Roering, J., Kirchner, J., and Dietrich, W.: Evidence for nonlinear, diffusive sediment transport on hillslopes
1540 and implications for landscape morphology, *Water Resources Research*, 35, 853–870, 1999.

Roering, J., Kirchner, J., Sklar, L., and Dietrich, W.: Hillslope evolution by nonlinear creep and landsliding: An
experimental study, *Geology*, 29, 143–146, 2001.

Rossi, M. W., Whipple, K. X., and Vivoni, E. R.: Precipitation and evapotranspiration controls on daily runoff
variability in the contiguous United States and Puerto Rico, *Journal of Geophysical Research: Earth Surface*,
1545 121, 128–145, 2016.

Shobe, C. M., Tucker, G. E., and Barnhart, K. R.: The SPACE 1.0 model: a Landlab component for 2-D calcu-
lation of sediment transport, bedrock erosion, and landscape evolution, *Geoscientific Model Development*,
10, 4577–4604, 2017.

Small, E., Anderson, R., and Hancock, G.: Estimates of the rate of regolith production using ^{10}Be and ^{26}Al
1550 from an alpine hillslope, *Geomorphology*, 27, 131–150, 1999.

Snyder, N., Whipple, K., Tucker, G., and Merritts, D.: Landscape response to tectonic forcing: Digital elevation
model analysis of stream profiles in the Mendocino triple junction region, northern California, *Bulletin of
the Geological Society of America*, 112, 1250, 2000.

Snyder, N., Whipple, K., Tucker, G., and Merritts, D.: Importance of a stochastic distribution of floods and
1555 erosion thresholds in the bedrock river incision problem, *Journal of Geophysical Research*, 108, 2117, 2003a.

Snyder, N. P., Whipple, K. X., Tucker, G. E., and Merritts, D. M.: Channel response to tectonic forcing: analysis
of stream morphology and hydrology in the Mendocino triple junction region, northern California, *Geomor-
phology*, 97–127, 2003b.

Soil Survey Staff: Soil taxonomy: A basic system of soil classification for making and interpreting soil surveys,
1560 Natural Resources Conservation Service. U.S. Department of Agriculture Handbook, 436, 1999.

Stock, J. D. and Montgomery, D. R.: Geologic constraints on bedrock river incision using the stream power law,
Journal of Geophysical Research: Solid Earth (1978–2012), 104, 4983–4993, 1999.

Tarboton, D. G.: A new method for the determination of flow directions and upslope areas in grid digi-
tal elevation models, *Water Resources Research*, 33, 309–319, doi:10.1029/96WR03137, [https://agupubs.
1565 onlinelibrary.wiley.com/doi/full/10.1029/96WR03137](https://agupubs.onlinelibrary.wiley.com/doi/full/10.1029/96WR03137), 1997.

Temme, A., Schoorl, J., Claessens, L., Veldkamp, A., and Shroder, F.: Quantitative modeling of landscape
evolution, treatise on geomorphology, in: *Quantitative Modeling of Geomorphology*, 2.13, pp. 180–200,
Academic Press, 2013.

Tomkin, J. H., Brandon, M. T., Pazzaglia, F. J., Barbour, J. R., and Willett, S. D.: Quantitative testing of bedrock
1570 incision models for the Clearwater River, NW Washington State, *Journal of Geophysical Research*, 108,
2308, 2003.

- Tucker, G.: Drainage basin sensitivity to tectonic and climatic forcing: Implications of a stochastic model for the role of entrainment and erosion thresholds, *Earth Surface Processes and Landforms*, 29, 185–205, doi:10.1002/esp.1020, 2004.
- 1575 Tucker, G. and Whipple, K.: Topographic outcomes predicted by stream erosion models: Sensitivity analysis and intermodel comparison, *Journal of Geophysical Research*, 107, 2179, 2002.
- Tucker, G. E. and Bras, R. L.: Hillslope processes, drainage density, and landscape morphology, *Water Resources Research*, 36, 1953–1964, 1998.
- Tucker, G. E. and Bras, R. L.: A stochastic approach to modeling the role of rainfall variability in drainage basin
1580 evolution, *Water Resources Research*, 36, 1953–1964, 2000.
- Tucker, G. E. and Hancock, G. R.: Modelling Landscape Evolution, *Earth Surface Processes and Landforms*, 46, 28–50, 2010.
- Tucker, G. E. and Slingerland, R. L.: Drainage basin response to climate change, *Water Resources Research*, 33, 2031–2047, 1997.
- 1585 Tucker, G. E., Lancaster, S. T., Gasparini, N. M., Bras, R. L., and Rybarczyk, S. M.: An object-oriented framework for hydrologic and geomorphic modeling using triangular irregular networks, *Computers and Geosciences*, 27, 959–973, 2001.
- Valla, P., van der Beek, P., and Lague, D.: Fluvial incision into bedrock: Insights from morphometric analysis and numerical modeling of gorges incising glacial hanging valleys (Western Alps, France), *Journal of*
1590 *Geophysical Research*, 115, F02 010, 2010.
- Valters, D.: Modelling Geomorphic Systems: Landscape Evolution, *Geomorphological Techniques*, 12, 1–24, 2016.
- van der Beek, P. and Bishop, P.: Cenozoic river profile development in the Upper Lachlan catchment (SE Australia) as a test quantitative fluvial incision models, *Journal of Geophysical Research*, 108,
1595 10.1029/2002JB002125, 2003.
- Vanwalleghe, T., Stockmann, U., Minasny, B., and McBratney, A. B.: A quantitative model for integrating landscape evolution and soil formation, *Journal of Geophysical Research-Earth Surface*, 118, 331–347, doi:10.1029/2011JF002296, <http://doi.wiley.com/10.1029/2011JF002296>, 2013.
- Whipple, K. X. and Tucker, G. E.: Dynamics of the stream-power river incision model: Implications for height
1600 limits of mountain ranges, landscape response timescales, and research needs, *Journal of Geophysical Research*, 104, 17 661–17 674, 1999.
- Whipple, K. X., Hancock, G. S., and Anderson, R. S.: River incision into bedrock: Mechanics and relative efficacy of plucking, abrasion, and cavitation, *Geological Society of America Bulletin*, 112, 490–503, 2000a.
- Whipple, K. X., Snyder, N. P., and Dollenmayer, K.: Rates and processes of bedrock incision by the Upper
1605 Ukak River since the 1912 Novarupta ash flow in the Valley of Ten Thousand Smokes, Alaska, *Geology*, 28, 835–838, 2000b.
- Whittaker, A., Cowie, P., Attal, M., Tucker, G., and Roberts, G.: Contrasting transient and steady-state rivers crossing active normal faults: new field observations from the Central Apennines, Italy, *Basin Research*, 19, 529–556, 2007.

- 1610 Wilcock, P. R. and McArdell, B. W.: Partial transport of a sand/gravel sediment, *Water Resources Research*, 33, 235–245, doi:10.1029/96WR02672, <https://agupubs.onlinelibrary.wiley.com/doi/abs/10.1029/96WR02672>, 1997.
- Willgoose, G.: Mathematical modeling of whole landscape evolution, *Annual Review of Earth and Planetary Sciences*, 33, 14.1–14.17, 2005.
- 1615 Willgoose, G., Bras, R. L., and Rodriguez-Iturbe, I.: A physical explanation of an observed link area-slope relationship, *Water Resources Research*, 27, 1697–1702, 1991.
- Willgoose, G. R. and Hancock, G. R.: Applications of long-term erosion and landscape evolution models, in: *Handbook of Erosion Modelling*, John Wiley & Sons, 2011.
- Willgoose, G. R., Hancock, G. R., and Kuczera, G.: A Framework for the Quantitative Testing of Landform Evolution Models, in: *Prediction in Geomorphology*, pp. 195–216, American Geophysical Union (AGU), Washington, D. C, doi:10.1029/135GM14, <https://agupubs.onlinelibrary.wiley.com/doi/abs/10.1029/135GM14>, 2003.
- 1620 Wilson, P. and Toumi, R.: A fundamental probability distribution for heavy rainfall, *Geophysical Research Letters*, 32, 2005.
- 1625 Wohl, E. and David, G. C. L.: Consistency of scaling relations among bedrock and alluvial channels, *Journal of Geophysical Research: Earth Surface*, 113, doi:10.1029/2008JF000989, <https://agupubs.onlinelibrary.wiley.com/doi/abs/10.1029/2008JF000989>, 2008.
- Yanites, B., Tucker, G., Mueller, K., Chen, Y., Wilcox, T., Huang, S., and Shi, K.: Incision and channel morphology across active structures along the Peikang River, central Taiwan: Implications for the importance of
- 1630 channel width, *Geological Society of America Bulletin*, 122, 1192, 2010.
- Zhang, L., Parker, G., Stark, C., Inoue, T., Viparelli, E., Fu, X., and Izumi, N.: Macro-roughness model of bedrock-alluvial river morphodynamics, *Earth Surface Dynamics*, 3, 113, 2015.