



## **Nemo-Nordic 1.0: A NEMO based ocean model for Baltic & North Seas, research and operational applications**

**Robinson Hordoir<sup>1</sup>, Lars Axell<sup>1</sup>, Anders Höglund<sup>1</sup>, Christian Dieterich<sup>1</sup>, Filippa Fransner<sup>2</sup>, Matthias Gröger<sup>1</sup>, Ye Liu<sup>1</sup>, Per Pemberton<sup>1</sup>, Semjon Schimanke<sup>1</sup>, Helen Andersson<sup>1</sup>, Patrik Ljungemyr<sup>1</sup>, Petter Nygren<sup>1</sup>, Saeed Falahat<sup>1</sup>, Adam Nord<sup>1</sup>, Anette Jönsson<sup>1</sup>, Iréne Lake<sup>1</sup>, Kristofer Döös<sup>2</sup>, Magnus Hieronymus<sup>2</sup>, Heiner Dietze<sup>3</sup>, Ulrike Löptien<sup>3</sup>, Ivan Kuznetsov<sup>4</sup>, Antti Westerlund<sup>5</sup>, Laura Tuomi<sup>5</sup>, and Jari Haapala<sup>5</sup>**

<sup>1</sup>Swedish Meteorological and Hydrological Institute, Norrköping, Sweden

<sup>2</sup>Department of Meteorology, Stockholm University, Sweden

<sup>3</sup>GEOMAR, Helmholtz Centre for Ocean Research, Kiel, Germany

<sup>4</sup>Institute of Coastal Research, Helmholtz-Zentrum, Geesthacht, Germany

<sup>5</sup>Finnish Meteorological Institute, Helsinki, Finland



**Abstract.** We present Nemo-Nordic, a Baltic & North Sea model based on the NEMO ocean engine. Surrounded by highly industrialised countries, the Baltic and North seas, and their assets associated with shipping, fishing and tourism; are vulnerable to anthropogenic pressure and climate change. Ocean models providing reliable forecasts, and enabling climatic studies, are important tools for the shipping infrastructure and to get a better understanding of effects of climate change on the marine ecosystems. Nemo-Nordic is intended to come as a tool for both short term and long term simulations, and to be used for ocean forecasting as well as process and climatic studies. Here, the scientific and technical choices within Nemo-Nordic are introduced, and the reasons behind the design of the model and its domain, and the inclusions of the two seas, are explained. The model's ability to represent barotropic and baroclinic dynamics, as well as the vertical structure of the water column, is presented. Biases are shown and discussed. The short term capabilities of the model are presented, and especially its capabilities to represent sea level on an hourly timescale with a high degree of accuracy. We also show that the model can represent longer time scale, with a focus on the Major Baltic Inflows and the variability of deep water salinity in the Baltic Sea.

## 1 Introduction

The Baltic Sea is a semi-enclosed sea that is heavily influenced by freshwater input from large continental rivers. The large freshwater input, and the narrow connection with the North Sea and the Atlantic Ocean through the Danish straits, gives the Baltic Sea its brackish characteristics with a strongly stratified water column, and a water residence time of ca 40 years (Döös et al., 2004). Due to the long residence time and the strong stratification, the Baltic Sea ecosystem is vulnerable to anthropogenic pressure. As a result of large nutrient inputs the sea is today classified as eutrophied (Andersen et al., 2017), and a spreading of anoxic bottom waters has been observed during the last century (Carstensen et al., 2014). Eutrophication and anoxia can have severe impacts on the ecosystem. The cod, for example, which is a economically important fish species (Köster et al., 2003; Wieland et al., 1994), suffers from anoxic deep waters as its eggs reside in the Baltic Sea deep waters. Further, although all underlying mechanisms are still not clear, increases in cyanobacteria blooms are often related to eutrophication (Vahtera et al., 2007).

The vertical structure of the Baltic Sea, and its ecosystem, is on the long term influenced by inflows of salt water masses from the North Sea through the Danish Straits (e.g Boesch et al., 2006; Eilola et al., 2009; Fonselius and Valderrama, 2003; Neumann et al., 2012; Pawlak et al., 2009; Wasmund and Uhlig, 2003; Fredrik Wulff, 1990). The time scale of a typical "Major Baltic Inflow" (MBI hereafter), which provides salt and oxygen to the deepest parts of the Baltic Sea and fuels the Baltic Sea baroclinic circulation (Döös et al., 2004), is on the order of 40 days (Schimanke et al., 2014). MBIs are barotropic in nature, and the variability of the barotropic circulation on time scales of hours to days can affect the Baltic Sea ecosystem on time scales up to several decades or a whole century.

Fueled by advances in computer hardware, the quest towards a more comprehensive understanding of the crucial ventilation of the Baltic Sea has been aided by simulations of inflows with numerical general ocean circulation models (Hordoir et al., 2015), and it has been shown that these inflows are closely correlated to the sea surface height (SSH hereafter) variability in both the Baltic and the North Sea (Gustafsson and Andersson, 2001). An ocean model that provides a consistent representation of the Baltic Sea long term ecosystem with its specific haline dynamics and stratification on one side, and that allows to make an accurate forecast of SSH for the Baltic & North Sea basin, is not incompatible: it is complementary.

The North Sea is, compared to the Baltic Sea, a dynamical region with a water residence time of only a few years (Otto et al., 1990). It is characterized by strong tidal currents and a general cyclonic large scale circulation pattern (Winther and Johannessen, 2006) with major inflow along the British Islands in the western part of northern boundary and an outflow along the Norwegian Channel in the East. Strong local inflow of 0.29 Sv occurs via the straits of Pentland Firth and Faire Isle, and 1.33 Sv are obtained east of the Shetland Islands (Thomas et al., 2005). Besides this, around 0.15 Sv come through the English Channel (Otto et al., 1990; Thomas et al., 2005) and around 0.016 Sv are received from the Baltic Sea (Stigebrandt, 2001). Outflow to the North Atlantic at the Northern end of the Norwegian Channel amounts to 1.79 Sv. Unlike the Baltic Sea, the North Sea is not permanently stratified. During winter, enhanced wind induced mixing in combination with convective mixing maintain well mixed conditions almost everywhere with the exception of the Norwegian Channel region where fresh outflow waters from the Baltic Sea dominate (Schrum, 2001; Schrum et al., 2003; Ådlandsvik and Bentsen, 2007; Huthnance et al., 2009; Holt et al., 2010; Mathis et al., 2013; Emeis et al., 2015; Mathis et al., 2015). During summer, the deeper parts of the central and northern North Sea experience a strong thermal stratification (Mathis et al., 2013) whereas the shallow Southern North Sea remains mostly well mixed around the year though short term stratified periods are possible, (Baretta-Bekker et al., 2009). The timing and intensity of the seasonal stratification plays an impor-



tant role for biogeochemical processes as it influences primary production, the start of the spring phytoplankton bloom, and the nutrient cycling in the North Sea (Pätsch and Kühn, 2008; Holt et al., 2012; Daewel and Schrum, 2013; Gröger et al., 2013).

55

For both the North Sea (Mathis et al., 2013; Graham et al., 2017), and the Baltic Sea (Meier et al., 2003; Burchard et al., 2009; Hordoir et al., 2015), there is a number of models of different complexity. Because the two seas differ so much in their oceanographical and biogeochemical characteristics it is plausible to setup separate models specific for each region, and to prescribe lateral boundaries at a reasonable location in the transition zone between the two seas. However, recent studies provide evidence that the simulation of the Skagerrak and Kattegat hydrography are often problematic in these model setups (Pätsch et al., 2017). As the dynamics in this transition zone between the Baltic and the North Sea are essential for a realistic simulation of major Baltic Sea inflows (MBIs), a combined Baltic-North Sea model is necessary to better understand their dynamics and their impact on the Baltic and North Sea physics and ecosystem. Especially for climate scenario simulations it is more appropriate to explicitly simulate potential changes in the Kattegat/Skagerrak region, than relying on a present day climatological prescription. Further, ocean models that include only the North Sea do not take into account the interaction with the Baltic Sea, and therefore rely on a freshwater provision to the North Sea that is not accurate in strength nor in time (Hordoir et al., 2013).

60

Early attempts of combined North Sea - Baltic Sea modelling were limited by a relative coarse resolution (6 nm) and constrained on short term simulations of one year (Schrum and Backhaus, 2011). Only recently, attempts have been done to include the two seas in one model setup for longer periods and in high resolution. Daewel and Schrum (2013) used a coupled hydrodynamic-biogeochemical model and concluded that coupled Baltic and North Sea model setups can help to improve the performance in the Skagerrak area. Moreover, the model reasonably simulated the major MBIs during the hindcast period (Daewel and Schrum, 2013). Gräwe et al. (2015) presented a hydrodynamic model using adaptive vertical coordinates and with a resolution of 1 nm. The authors found the mean state for the period 1997-2012 as well as the timing and amplitude of MBIs were well represented by the model. Tian et al. (2013) as well as Pham et al. (2014) presented each a hydrodynamic model coupled to an atmospheric model but they focused more on atmospheric dynamics and air sea interactions than on oceanographic topics.

65

In the present article, we provide a description and validation of Nemo-Nordic in its first mature version, Nemo-Nordic 1.0, based on Nemo 3.6. First prototype versions were already used for process studies in (Hordoir et al., 2013, 2015) or to specifically investigate the added value of interactive air-sea exchange of mass and energy fluxes (Gröger et al., 2015). The present version is the first reference, used both for research and forecast. This article provides a full validation of both barotropic and baroclinic dynamics, it shows the qualities and biases of the model. It is also a milestone that will be used for further development at a time when Nemo-Nordic extends beyond SMHI in different European institutions within the Copernicus framework for operational applications for example, but also for research.

70

Nemo-Nordic is a NEMO (Madec and the NEMO system team, 2015) based ocean model for Baltic & North Sea that can be used for climate, oceanographic process study, and operational oceanographic applications. Nemo-Nordic has been designed to be an advanced compromise to provide forecast or study Baltic and/or North Sea dynamics, at various time scales (operational or climate time scales), with a representation of processes occurring in both basins including overflows and sea-ice, within a reasonable range of computing resource. The inclusion of the both seas makes it possible to study the exchange between the two seas because its boundary condition is far enough from where this exchange occurs, unlike for example a Baltic Sea only ocean model (Meier et al., 2003). Unlike Nemo-Nordic, this latest model being in any case limited by its linear free surface, which produce conservation errors for the Baltic Sea in long term simulations, and forbids any possibility of representing properly ocean dynamics in any region of higher sea level variability, such as Kattegat, Skagerrak and the entire North Sea.

75

Nemo-Nordic is also not the first model to include both Baltic and North-Sea basins, one could cite (Funkquist and Kleine, 2007) or (Madsen et al., 2015) as examples of models who already do. However these models do not permit to represent the main driver of the Baltic Sea ecosystem, the dense overflows that feed its very specific sill bounded estuarine circulation.

## 2 Model setup: Nemo-Nordic

Nemo-Nordic is an ocean model setup for Baltic & North Sea. It is based on the "Nemo ocean engine", a set of ocean modeling tools supported by a large community, and in constant watch towards developments done in other community ocean models. More specifically, we apply the stable Nemo 3.6 version (Madec and the NEMO system team, 2015). The ocean component is coupled to the sea ice model LIM3 (Vancoppenolle et al., 2009).

100



## 2.1 Grid and bathymetry

105 The model domain of Nemo Nordic covers the English Channel, the North Sea and the Baltic Sea (Fig. 1). The area reaches from 4.15278 W to 30.1802 E and 48.4917 N to 65.8914 N. The horizontal grid has zonal/meridional increments of  $0.05^\circ$ , which corresponds to a horizontal resolution of approximately 2 nautical miles (3704 m).

Nemo-Nordic uses  $z^*$  vertical coordinates, which is more simple as some other Baltic Sea models such as Gräwe et al. (2015). Advanced hybrid coordinates permit a better representation of dense overflows to the Baltic Sea, but have a higher computational cost. However, the salinity biases based on the latest advances made in Nemo-Nordic show very acceptable range, as showed in Section 4, and the benefit of  $z^*$  coordinates from a vertical point of view allow multiple long term simulations with realistic computing power. Our model setup comprises 56 vertical levels. The vertical resolution is adopted to the physical properties of the Baltic and North Seas: the upper levels have a thickness of approximately 3m until the typical level of the halocline is reached at 60m. Below 60m the layer thickness increases substantially: the layer thickness is 10m at a 100m depth, which is the typical halocline depth of the Norwegian Coastal Current (NCC hereafter) (Skagseth et al., 2011). Maximum values of 22m are reached below 200 m. Note that the maximum decrease in resolution between two consecutive vertical levels is below 11%. With these increments, the vertical resolution of Nemo-Nordic is adapted to Baltic Sea conditions and less optimal to resolve the halocline of the NCC. However the NCC is a baroclinic Kelvin wave which has a permanent renewal of stratification coming from the constant runoff flux of the Baltic Sea and all the river inputs located along the Western Swedish and Norwegian coasts. Thus the NCC halocline is less sensitive to coarse vertical resolution than the halocline of the Baltic Sea, which is not permanently renewed and is suspected to impact spurious salt water inflows in ocean models. Partial steps are used at bottom level to ensure a proper fit between the input bathymetry and the vertical grid.

The cross section area of the Danish Straits is critical as it ensures the exchange between Baltic and North Seas. The resolution of the model does not permit to have a proper representation of the Danish Straits. However, it is possible to represent each cross-section so that it has the same hydraulic impedance as in reality. This was achieved by fitting the area of each critical cross-section of the model with its equivalent area in the real world. More precisely, this means that the area of each critical "numerical cross-section" of the model is made to fit with the surface of the real cross-sections of the Danish Straits.

## 130 2.2 Physical Settings

### 2.2.1 Free Surface and Time Stepping

Nemo-Nordic uses a non-linear free surface (`key_vv1`) with a time-splitting option (`key_dynspg_ts`) that decouples the barotropic and baroclinic modes. In comparisons with previous ocean models such as that used by Meier (2004) for example which used a linear free surface, these features enable Nemo-Nordic to run in regions of high tidal amplitude like the North Sea and the English Channel, but from a more general perspective also provide a better degree of conservation of active and passive tracers.

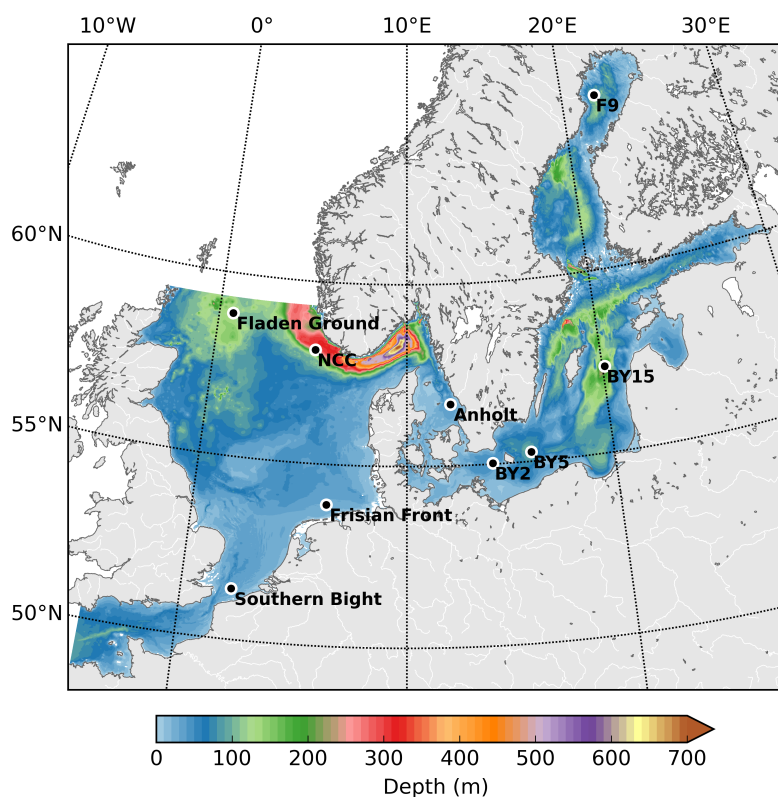
Tuning is done in order to obtain an accurate SSH representation. We use a variable bottom roughness (`ln_bfr2d = .true.`) along the cyclonic pathway of barotropic Kelvin waves in the North Sea. Nemo-Nordic runs with a baroclinic time step of 360 s, which proved to be the best compromise between stability and computational speed. The barotropic time step is set to be 30 times smaller.

### 2.2.2 Mixing and Dense Overflows Representation

Vertical and horizontal mixing (and the connections between each of them) is a critical element when it comes to a Baltic & North Sea configuration. The major difficulty is to simulate the crucial dense water overflows in the Baltic Sea (Hordoir et al., 2015). In order to ease this process, Nemo-Nordic uses a bottom-boundary-layer parametrization (Beckmann and Döscher, 1997) for tracers (`key_trabbl`) in order to reduce the biases of a z-coordinate ocean models when it comes to the representation of dense overflows. In NEMO, the bottom-boundary-layer can be used with an upstream advection scheme or with a purely diffusive scheme, or with a mixture of both. For Nemo-Nordic, sensitivity experiments have shown that the use of a purely diffusive scheme results in more realistic deep salinity in the Baltic Sea. Using an advective scheme results in a lower deep salinity, most likely due to a higher entrainment rate during major Baltic inflow events.

150 However, the use of the bottom-boundary-layer parametrization is not enough to achieve a correct representation of the overflows. The tuning of the mixing was a major issue and required a tuning process. Nemo-Nordic includes two basins which have very different dynamical features: The North Sea is strongly influenced by tides, tidal mixing and relatively strong winds. In the North Sea, the stratification is relatively weak, with the exception of a summer thermocline in some regions,





**Fig. 1.** The model domain and bathymetry of NEMO-Nordic. The filled circles show the locations of validation stations for salinity and temperature.

regions of freshwater influence (Simpson and Souza, 1995) and the region of the Norwegian Coastal current (Hordoir et al., 2013). In contrast, the Baltic Sea has almost no tides, is less exposed to wind forcing and has a strong permanent stratification. Nemo-Nordic uses a two equation turbulence closure, based on a  $k-\epsilon$  turbulence scheme (`key_zdfgls`). In addition, the Galperin parameterization is used (Galperin et al., 1988), in order to preserve the Baltic Sea permanent stratification. Experiments done on the configuration without this latest parameterization yield a Baltic Sea permanent halocline that vanishes in a few years only. The Galperin coefficient is set to 0.17 which proves to be a good compromise between deep salinity and seasonal thermal stratification. A too high Galperin coefficient produces a higher deep salinity, but also a very thin and un-realistic seasonal thermocline.

Horizontal mixing is based on a Laplacian approach combined with the rotation of the horizontal diffusion tensor (`key_ldfslp`). However, this does not result in a real isopycnal diffusion in the sense that Nemo-Nordic is still based on a  $z$  coordinate system and not on isopycnal coordinates. Close to the bottom, sensitivity experiments have demonstrated that the rotation of the diffusion tensor did not enable to follow dense salt inflows: increasing horizontal diffusivity resulted in lower deep salinity, or even no penetration of dense inflows at all, showing that diapycnal mixing is created by horizontal diffusion, even when the rotation of the diffusion tensor is activated. The first versions of Nemo-Nordic used a Smagorinsky approach in order to limit horizontal mixing as much as possible, but this approach finally resulted in very weak Baltic Sea salt inflows, and a diffusivity impossible to control. Our final strategy has therefore been to create a viscosity/diffusivity coefficient which is high where model stability requires it the most (i.e.: above the halocline), and low where it is crucial for diffusivity to



be as low as possible to avoid diapycnal mixing. After a suite of sensitivity runs we decided on using spatially varying values for viscosity and diffusivity. From the surface to a depth of 30m the viscosity is set to values ranging from 30 to 50 m<sup>2</sup> s<sup>-1</sup> for the Baltic and the North Sea respectively, while we set diffusivity to a tenth of this value. Below this depth the values of viscosity is reduced to 0.1 m<sup>2</sup> s<sup>-1</sup>. The same increase was applied to the diffusivity which is still set to a tenth of the value for viscosity. Along the open boundaries, the viscosity is increased to 800 m<sup>2</sup> s<sup>-1</sup> over the entire water column, decreasing rapidly to standard values within a few grid points inside the domain.

A free slip option is taken for the lateral boundary conditions.

### 2.3 Boundary Conditions

#### 2.3.1 Open Boundaries

Nemo-Nordic has two open boundaries, a meridional one in the western part of the English Channel, and a zonal one set between Scotland and Norway. The setting of the boundary conditions uses the open boundary condition module of Nemo (`key_bdy`), as well as the tide module (`key_tide`).

The temperature and salinity boundary conditions come from climatological data. The splitting between barotropic and baroclinic modes is also applied to the treatment of boundary conditions. Tidal harmonics are taken from Egbert and Erofeeva (2002); Egbert et al. (1994). Harmonical values for SSH are interpolated on the open boundaries of Nemo-Nordic. Harmonical tidal transports (in m<sup>2</sup> s<sup>-1</sup>) are also interpolated in the same manner and then divided by the local depth of the Nemo-Nordic domain. Storm surge data (i.e. : wind driven SSH created over the Northern Atlantic) is added linearly to the tidal data, for both SSH and currents. These data are based on a storm surge model that does not include haline or thermal effects and its domain is restricted to a portion of the Northern Atlantic. For long term simulations, these deficiencies are bias-corrected at a monthly time scale by using temperature and salinity data from a global ORCA0.25 configuration. By sensitivity experiments it turned out that the inclusion of storm surge currents improves the simulation of SSH extreme event forecast along the Danish and Swedish West Coasts.

#### 2.3.2 Atmospheric forcing

Nemo-Nordic has been so far used in forced mode using prescribed atmospheric conditions and the CORE bulk formulation (Large and Yeager, 2009).

To cover a long period, the atmospheric forcing is based on different sources. The driving data of the period 1961-1978 is based on downscaled ERA40 data (Uppala et al., 2005). The ERA40 reanalysis is downscaled with the Rossby Centre regional atmospheric model version 4 (RCA4) with spectral nudging (Berg et al., 2013). The downscaling is necessary to improve the horizontal resolution of the global reanalysis data set. Here, we use data from an RCA4 set-up with a horizontal resolution of 11km. The frequency of the driving data is hourly.

With the beginning of 1979 we change the atmospheric forcing to the SMHI reanalysis product EURO4M which is available until the end of 2013 (Dahlgren et al., 2016; Landelius et al., 2016). The EURO4M data is available 3 hourly and with a horizontal resolution of 22km. EURO4M incorporates data assimilation which assures the best quality for our driving data. In operational mode (Nemo-Nordic 1nm), the simulations were forced by HIRLAM C11 ([hirlam.org](http://hirlam.org)).

#### 2.3.3 Light Penetration

A proper light penetration parameterization proved to be an important feature in order to reproduce the proper thermal structure, and especially the formation of a summer “Cold Intermediate Layer”. The Baltic Sea has turbid waters which prevent deep light penetration, concentrating the summer heat input close to the surface, and hence easing the autumn cooling. Nemo-Nordic uses a Red-Green-Blue light penetration parameterization, together with a constant chlorophyll value of 0.5 mg m<sup>-3</sup> to represent the turbid Baltic Sea waters. Failing to use chlorophyll concentration results in a too thin and too shallow cold intermediate layer. This chlorophyll concentration does not pretend to be realistic from a biogeochemical point of view, it corresponds to a mean value for both basins which allow a realistic light penetration in an area which has a water turbidity higher than that of the global ocean.

#### 2.3.4 River discharge

The Baltic Sea salinity is sensitive to the accumulated freshwater input since the exchange with the open ocean is very limited (e.g. Meier and Kauker, 2003). Freshwater supply to the Baltic Sea in the simulation must therefore be handled with care.



Here, we are using data from the HYDrological Predictions for the Environment (HYPE) model (Donnelly et al., 2016). The model simulates a mean runoff to the Baltic Sea of roughly  $16000 \text{ m}^3 \text{ s}^{-1}$  for the period 1981-1998. However, Meier and Kauker (2003) state that the observed runoff for the same period is  $15053 \text{ m}^3 \text{ s}^{-1}$  with an even lower value ( $14085 \text{ m}^3 \text{ s}^{-1}$ ) for the period 1902-1998. Consequently, we reduced the freshwater supply computed by HYPE. We have chosen a general reduction of 10% which gives more realistic runoff for the Baltic Sea. Moreover, this improved the Baltic Sea salinity (not shown). The freshwater input to the North Sea including the Skagerrak and Kattegat area amounts to  $11515 \text{ m}^3 \text{ s}^{-1}$  after the reduction by 10%. The river runoff is spread over 424 river mouths in the entire model domain whereas more than 250 are located in the Baltic Sea (excluding the Skagerrak and Kattegat area).

### 2.3.5 Sea-Ice

Nemo-Nordic benefits from the uses of the Nemo ocean engine and of its advanced sea ice model LIM3. Sea ice is a Baltic Sea specific feature that owes to the Baltic Sea low salinity. Being able to represent sea ice dynamics properly is compulsory when it comes to a Baltic Sea ocean model. Models such as Gräwe et al. (2015) do not include this feature. The sea ice in the Nemo-Nordic is validated in Pemberton et al. (2017). Comparison done with (Funkquist and Kleine, 2007) suggest that Nemo-Nordic reaches so far the highest accuracy of sea ice representation for the Baltic Sea.

## 3 Validation of barotropic mode and surface currents

### 3.1 Sea Level

To model and forecast SSH is one of the major aims of Nemo-Nordic. This section provides a statistical comparison between measured and modeled SSH at different tide gauges in the Baltic & North Seas.

In Figures 2 to 4 we have chosen tide gauges which are as representative as possible for the respective regions. The Figures are subdivided into tide gauges in the Baltic Sea (Fig. 2), the Danish Straights plus Kattegat and Skagerrak (Fig. 3) and the North Sea, including the English Channel (Fig. 4). The comparisons, in the form of Taylor diagrams, are based on a 18 month period, lasting from July 1st 2011 and ends on December 31st 2012 on an hourly frequency. The respective model simulation was started one month before to allow for a spinup time.

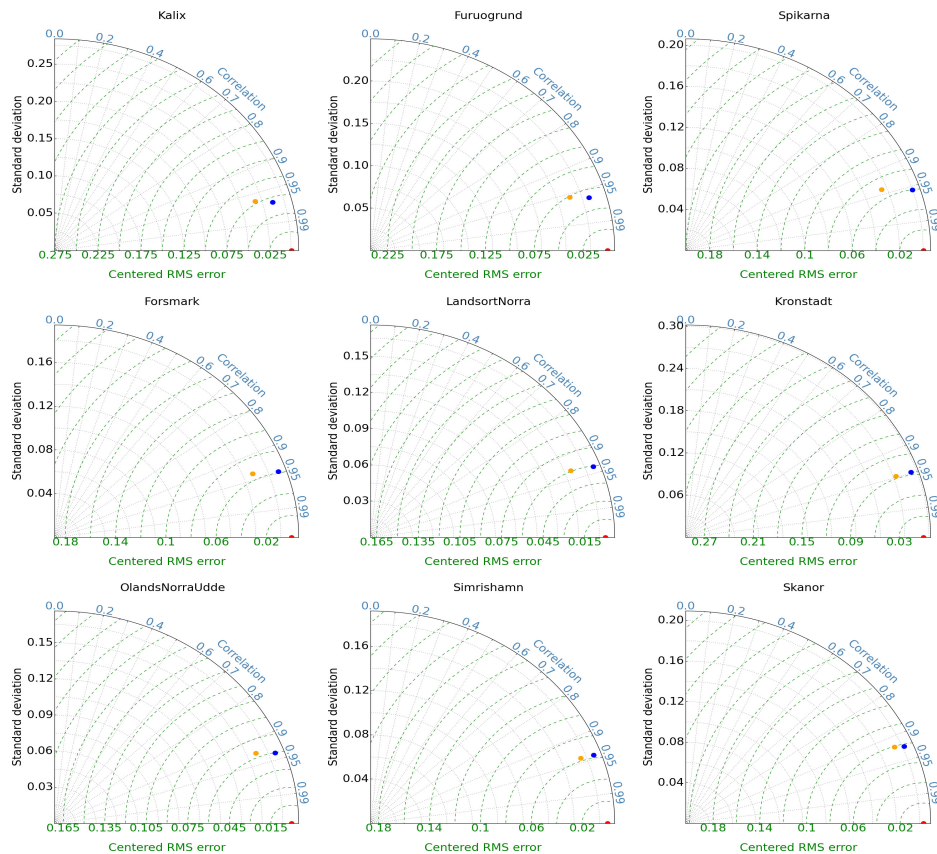
The Taylor diagrams show generally very high correlations between model and observations in almost all regions. In the North Sea and the English Channel, correlations are highest and mostly close to 0.99, with the one exception of Hanstholm, where correlations are around 0.94 (Fig. 4). In the Baltic Sea, correlations are always close to 0.95 (Fig. 2). In the narrow Danish Straights and the Kattegat, regions with complicated topography, the correlations are lowest, but still exceed generally 0.9. Exceptionally low correlations (0.6) are obtained in Barseback and only when Nemo-Nordic 2nm is used. When Nemo-Nordic 1nm is used, the minimum depth of the ocean model is set to 3m, compared to 9m, which gives a better representation of the shallow banks located in the Öresund area, and of the amplification of barotropic waves. This feature was not implemented in Nemo-Nordic 2nm where the main focus is the Baltic / North Sea exchange.

The Taylor diagrams illustrate also that the amplitude of the simulated SSH variations are close to the observed one.

Biases in terms of SSH representation can be summarised as follows. Nemo-Nordic usually has a low bias in terms of representation of the low frequencies in the North Sea, Skagerrak and Kattegat. In the same regions, the opposite bias can be noticed when it comes to higher frequencies: tidally driven SSH can present overshoots in some places. In the Baltic Sea, one can notice that the tidal signal is usually a bit too high, but since its amplitude remains very small in comparison of other frequencies it does not affect the quality of the SSH representation significantly. The representation of lower frequencies does not reveal any significant bias in the Baltic Sea.

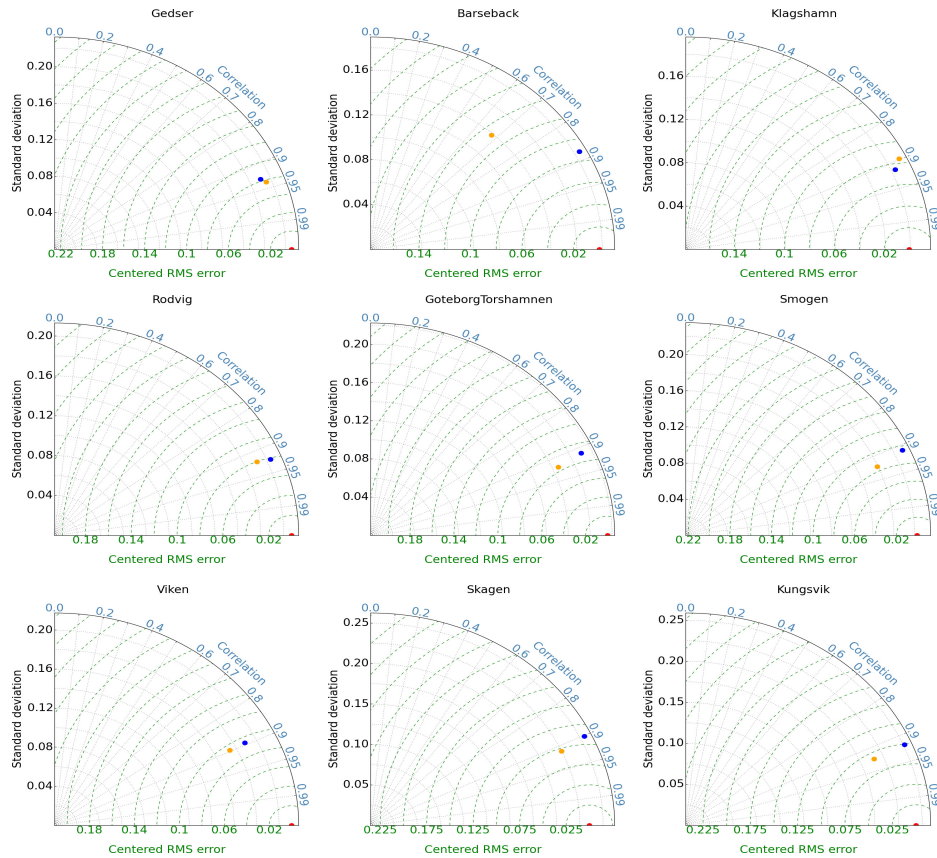
Nemo-Nordic 1nm represents SSH better than Nemo-Nordic 2nm, which partially is due to the higher resolution for most features. For example in the Danish Straits, the representation of shallow banks has been taken into account in Nemo-Nordic 1nm, and the size of the cross sections has been adapted to represent the North Sea / Baltic Sea exchange. This allows to amplify incoming barotropic waves which is essential in order to get the right SSH variability in the Danish Straits tide gauges. In Nemo-Nordic 2nm, the main concern has been to insure the right Baltic / North Sea exchange which is crucial for having a correct representation of Baltic Sea salt inflows, which are one of the main driver of the Baltic Sea ecosystem, and of its long term thermo-haline structure. The SSH in the Danish Straits bearing a high variability part along the coasts was less of a concern.

In summary, we identified the following key processes to model realistic SSH variations:



**Fig. 2.** Taylor diagrams assessing the SSH representation, in terms of correlation, STD (meters) and RMSE (meters), made by Nemo-Nordic for 9 Baltic Sea stations, from left to right and up to bottom: Kalix, FurÅúgrund, Spikarna, Forsmark, Landsort Norra, Kronstadt, Öllands Norra Udde, Simrishamn and Skanör. The diagrams are based on a 18 months period, starting on July 1st 2011, and based on hourly output SSH. The simulation of Nemo-Nordic is represented by the orange dots. The blue dots show a setup with increased resolution of 1 nautical mile, for comparison. The red dot represents the observations.

- In Nemo-Nordic, the SSH and SSH variability in the North Sea is to a first order barotropically driven, and is built by a combination of tidal waves entering through the Northern boundary and Western Boundaries, wind driven SSH built over the Northern Atlantic, and wind driven SSH over the North Sea. To get a correct representation of the SSH variability and the cyclonic circulation in the North Sea, it is important to have high frequency (hourly) boundary conditions that takes into account all these aspects.
- In the Kattegat/Skagerrak region, as one moves further towards the entrance of the Baltic Sea, the effect of tides and of high frequency waves generated in the Northern Atlantic or the North Sea becomes less important. The low frequencies, on the other hand, generated by the storm surge model over the North Atlantic turned out to be important for this region. The shelf break along the coast amplifies the effect of coasts on barotropic waves arriving from the North Sea and helps representing the SSH variability and its extremes. A higher vertical resolution in the shallow areas improves the representation of the SSH variability, especially in the Skagerrak-Kattegat. This last effect becomes crucial in the Danish Straits where the shallow banks need to be represented.
- The SSH variability in the Baltic Sea is barely influenced by any tidal variability, but is highly influenced by low frequency forcing coming from the Northern Atlantic and the North Sea. In addition, local wind forcing over the Baltic Sea explains higher frequencies. The only communication between the Baltic and the North Sea being the Danish Straits, the adjustment of cross-sections and of the friction in this area are of crucial importance to chose which barotropic frequencies can



**Fig. 3.** Taylor diagrams assessing the SSH representation, in terms of correlation, STD (meters) and RMSE (meters), made by Nemo-Nordic for 9 stations located in the Danish Straits, Kattegat and Skagerrak, from left to right and up to bottom: Gedser, Barsebäck, Klagshamn, Rödvig, Göteborg Torshamn, Smögen, Viken, Skagen and Kungsvik. The diagrams are based on a 18 months period, starting on July 1st 2011, and based on hourly output SSH. The simulation of Nemo-Nordic is represented by the orange dots. The blue dots show a setup with increased resolution of 1 nautical mile, for comparison. The red dot represents the observations.

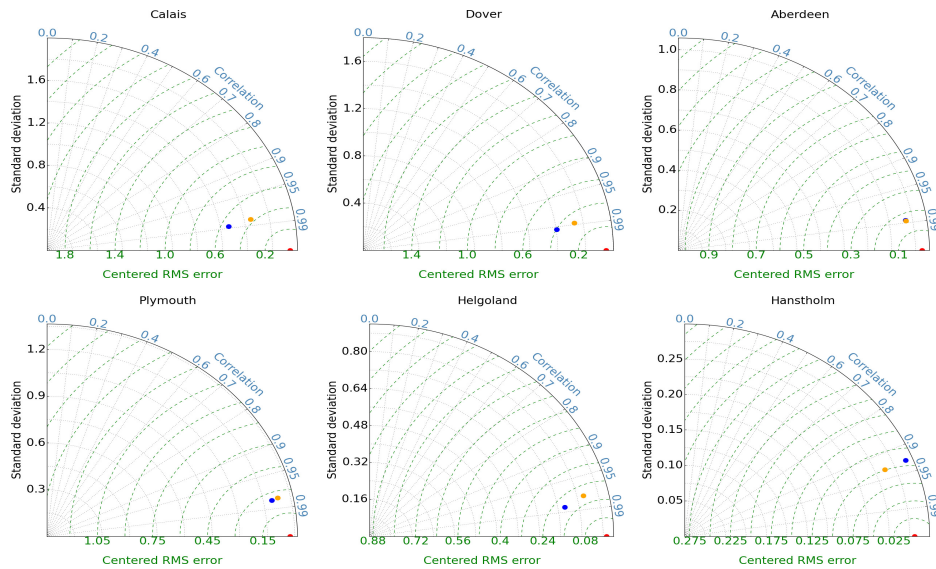
penetrate the Baltic Sea. The Danish Straits should act as a well tuned low pass filter which allows low frequency waves to penetrate the Baltic Sea, but lets little high frequency power enter the Baltic Sea.

## 3.2 Surface Currents

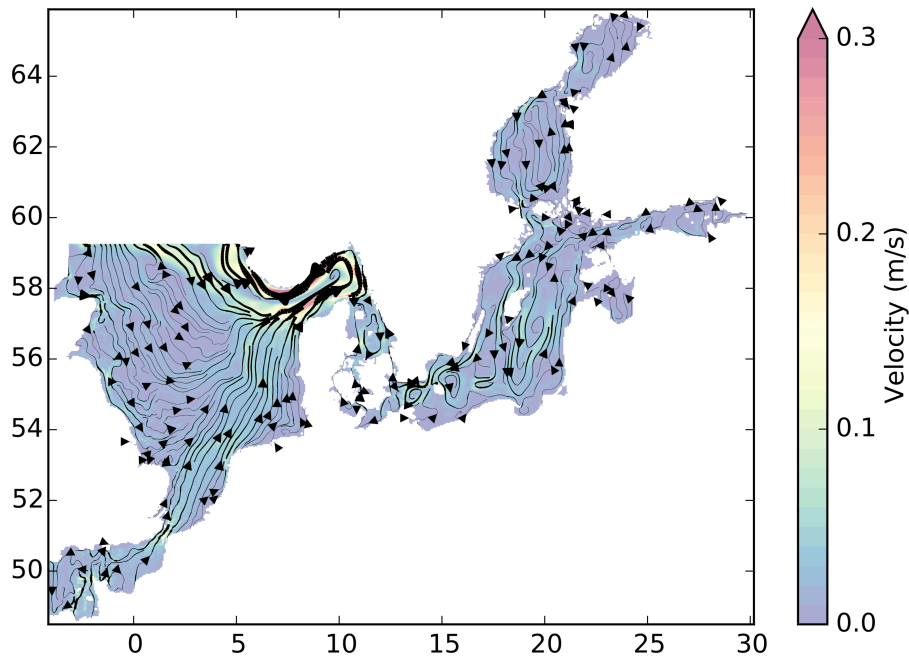
### 3.2.1 General circulation

The model reproduces the general cyclonic surface circulation pattern in the North Sea (OSPAR, 2000), with a southward flow in the western part of the basin, a northeastward flow along the southern coast, and a northward flow along the Norwegian coast in the Norwegian coastal current (Fig. 5). The strongest modelled southward flow of Atlantic water through the Northern boundary occurs just next to the NCC. This flow forms a current that flows South-East and enters the well known cyclonic circulation pattern in the Skagerrak, in good agreement with the observed surface currents in the North Sea (OSPAR, 2000). A part of the southward flow along the British Islands also deviates eastward to directly join the eastward flow towards the Skagerrak. Another part flows further to the South and mixes with inflow from the English channel. The larger part of inflowing Atlantic water from the Northern boundary is restricted to north of 54 °N and then recirculates mainly following the topography of the Dogger Bank. The southern North Sea is dominated by inflows waters from the English Channel.





**Fig. 4.** Taylor diagrams assessing the SSH representation, in terms of correlation, STD (meters) and RMSE (meters), made by Nemo-Nordic for 6 stations located in the North Sea and Channel, from left to right and up to bottom: Calais, Dover, Aberdeen, Plymouth, Helgoland and Hantsholm. The diagrams are based on an 18 months period, starting on July 1st 2011, and based on hourly output SSH. The simulation of Nemo-Nordic is represented by the orange dots. The blue dots show a setup with increased resolution of 1 nautical mile, for comparison. The red dot represents the observations.



**Fig. 5.** Simulated surface (0-30m) currents, climatology for 1979-2010. The lines and arrows show the streamlines and directions of the current vector field. The thickness of the line is scaled with respect to the speed of the current. The filled contours show the current speed in m/s





In the Baltic Sea and its sub-basins the model reproduces the observed general cyclonic circulation patterns (Elken and Matthäus, 2008), with a Southward flow in its Western part, and a Northward flow in its Eastern part. In the Gotland basin the model reproduces the Southward flow on both sides of Gotland, and the Northward flow along the coast of Baltic, giving rise to the cyclonic structure over the Gotland deep (Fig. 5). In the Kattegat the model simulates a general anticyclonic flow in agreement with Nielsen (2005), and resolves the northward flowing Baltic Current along the Swedish coast, that feeds low saline waters into the NCC.

### 3.3 Overturning circulation

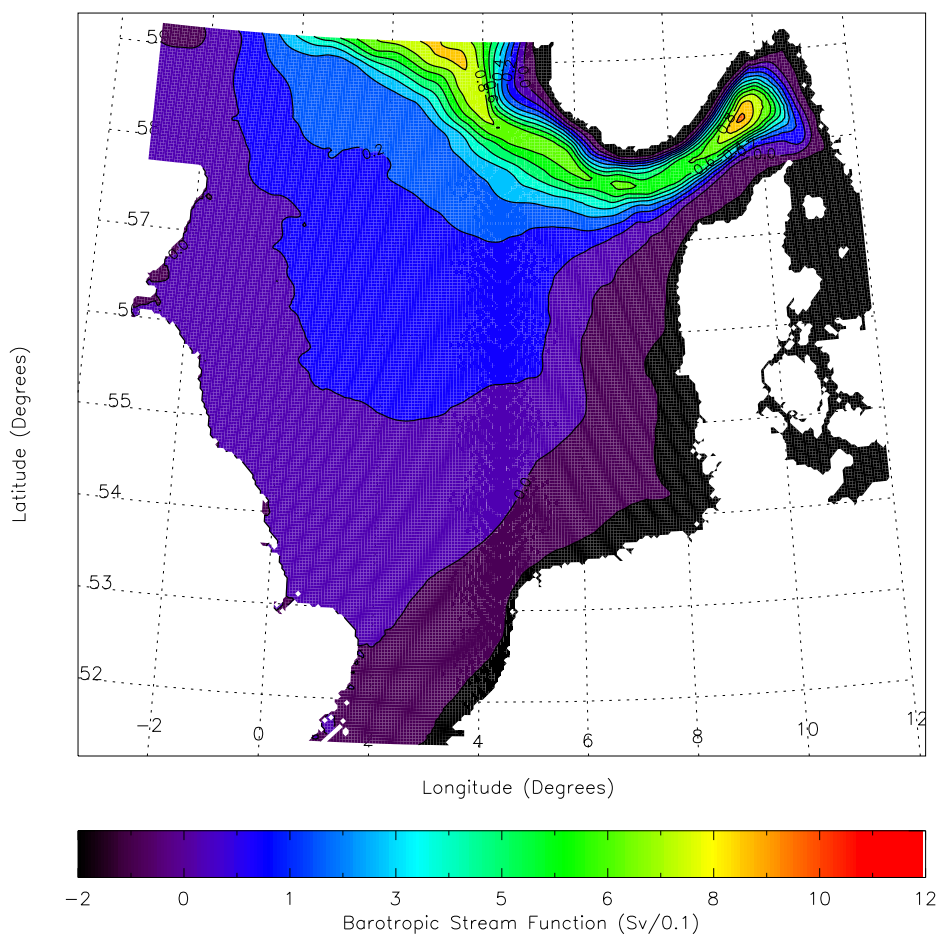
The inflows and outflows through critical cross-sections, where observational estimates exists, have been calculated for the period 1979-2010. Inflows are defined as volume transports directed inwards to the domain, and outflows are defined as transports directed outwards. For the Baltic Sea a longitudinal cross section has been taken along 12.90 °E, and inflowing waters are defined as transports in the positive x-direction, and outflows in the negative. For the strait of Dover a longitudinal cross-section has been taken along 50.99 °N. Here the flow is barotropic and there is only a mean inflow to the North Sea. For the Northern Boundary, taken along 58.06 °N, the inflow is all transports in the negative y-direction, and the outflow is all transports in the positive y-direction.

As shown in table 1, the modelled transports agrees well with observational estimates, which is an additional indication that the general circulation of the North and the Baltic Sea is well reproduced by the model. The modelled flows gives a water residence time of 23 and 1.8 years in the Baltic Sea and the North Sea, respectively.

The circulation in the North Sea is mainly of a barotropic feature. Barotropic stream functions of the horizontal overturning circulation, showing the general cyclonic circulation of the North Sea, are displayed in Figure 6. The largest flows are found in the Norwegian trench, where the overturning barotropic circulation amounts to 0.9 Sv, in good agreement with the calculated fluxes in Table 1

**Table 1.** Volume flow (Sv) through cross-sections, climatological mean for 1979-2010.

Cross section	Model		Observations		Reference
	Inflow	Outflow	Inflow	Outflow	
Strait of Dover	0.110	-	0.11-0.17	-	Otto et al. (1990), and references therein
Northern boundary	0.794	0.928	0.93-0.173	1.34-1.8	Otto et al. (1990), and references therein
Baltic Sea	0.029	0.044	0.027	0.043	Savchuk (2005)



**Fig. 6.** Barotropic stream function (Sv), climatology for 1979-2010.



## 4 Salinity and temperature

### 4.1 Surface temperature and salinity

320 A validation of the simulated mean surface salinity and temperature is made (Figures 7 and 8) using the Janssen et al. (1999) climatology. The values are computed as a mean value over the first ten meters. For the Baltic and North Sea, the overall surface salinity is well reproduced. There is, however, a positive surface bias in the Baltic Sea. Especially one can notice that the penetration of the 8 PSU iso-haline within the estuary is too high. The 7 PSU iso-haline is also located a few nautical miles too far North. In the North Sea there is a negative bias in freshwater-influenced areas (the NCC and in the Southern German Bight). For Sea Surface Temperature (SST), the structure is similar to observations but there is a positive bias of less than 1 degree over all the domain. This bias seems to partially come from a warm bias in the atmospheric forcing (in winter) (Landelius et al., 2016), and partially from surface overshoots during the summer period. Sensitivity experiments have shown that the positive SST bias during summer time is lower if the Galperin coefficient used to maintain a stable haline stratification is lowered. In order to avoid this effects, further development is being made to decouple the Galperin parameterisation from thermal effects.

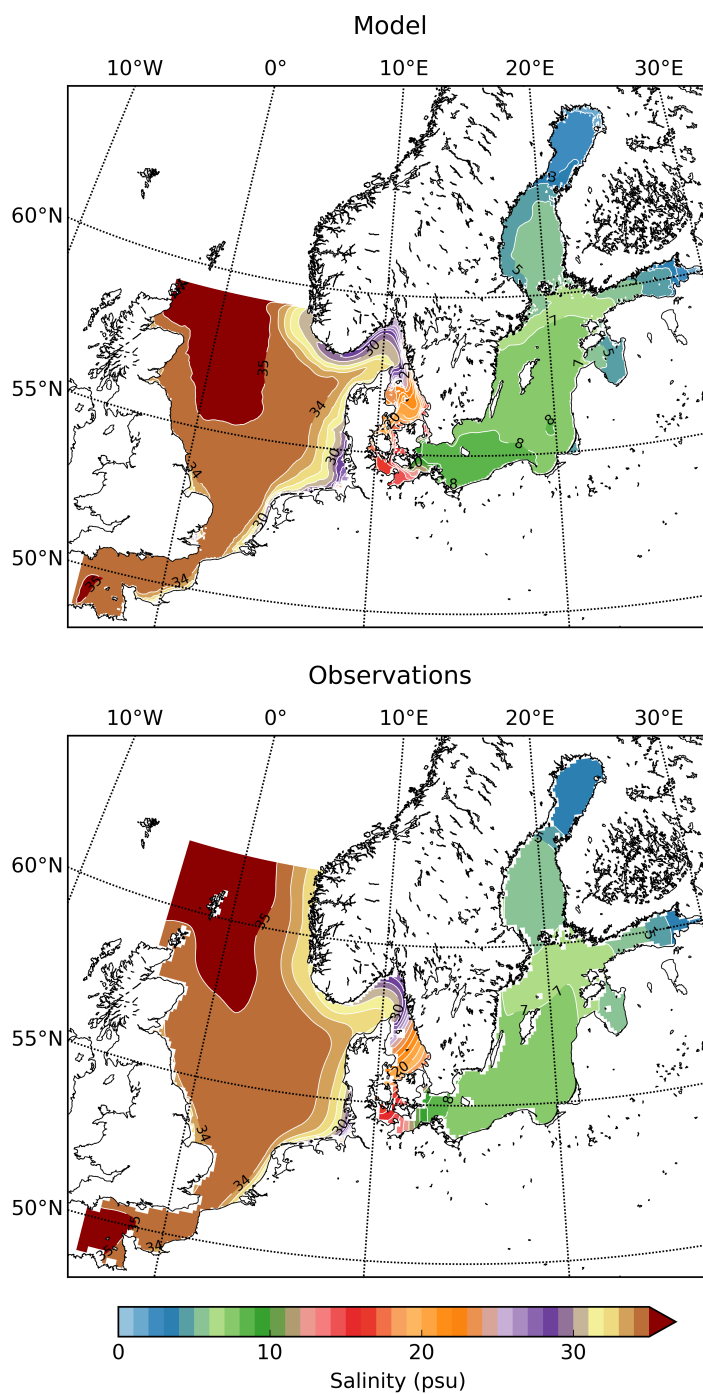
### 4.2 Thermohaline structure of the Baltic Sea

The thermohaline structure of the Baltic Sea exhibits two types of variability. First, a spatial variability which makes that the Baltic Sea has strong salinity gradients from the surface towards the bottom, but also presents estuarine features which results in a decreasing salinity from South towards North. Strong temperature gradients also exist as the Northern regions of the Baltic Sea have a much colder climate than those located in its Southern part. From a temporal point of view, surface salinity exhibits a seasonal variability (Hordoïr and Meier, 2010), and deep salinity has a lower variability highly related to the occurrence of deep salt inflows (Hordoïr et al., 2015). Surface temperature has a strong seasonal cycle related with summer stratification and its destruction during autumn. The models ability to reproduce the thermohaline structure and its variability on different time scales will be validated below.

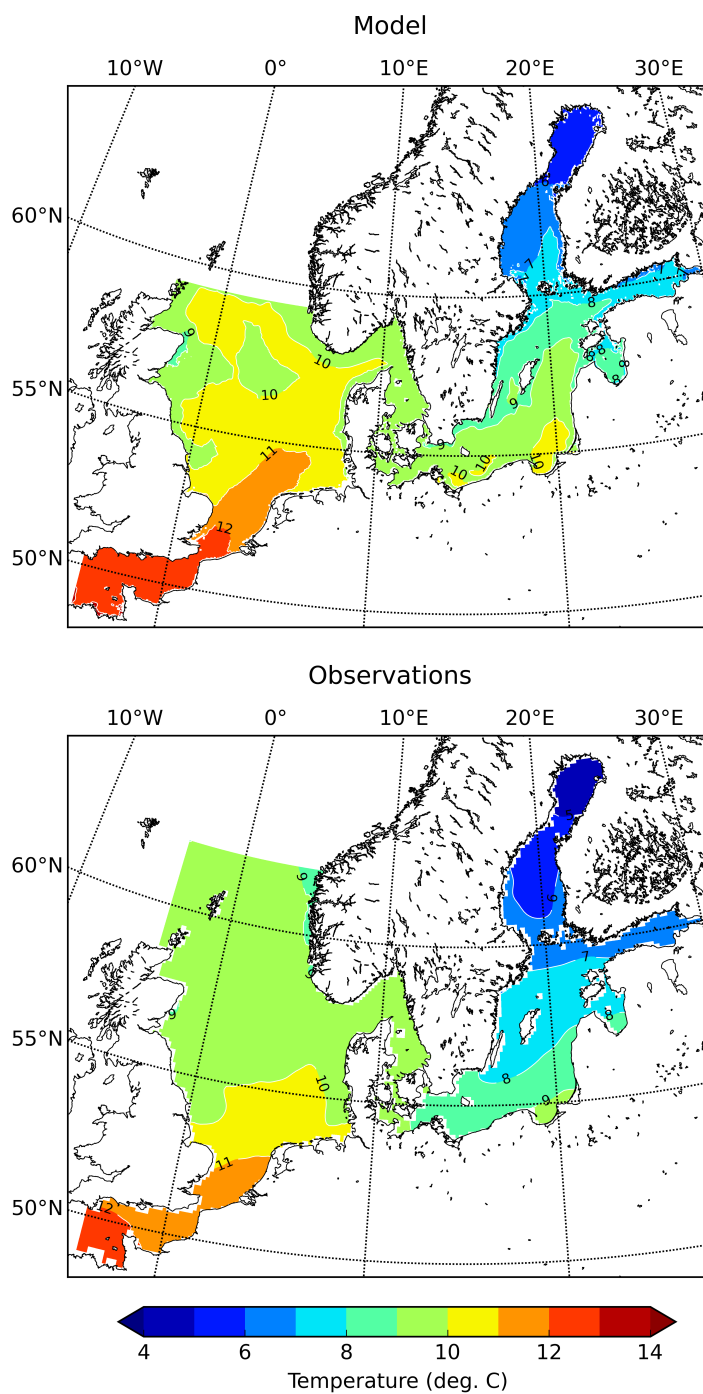
#### 4.2.1 Vertical structure and seasonal variability

The haline vertical structure of the Baltic Sea is in general well reproduced by Nemo Nordic (Fig. 9), with a distinct halocline separating the surface waters from the deeper waters. In the Bothnian Bay and the Kattegat (F9-A13 and Anholt), the modeled depth (50 and 20 meters, respectively) and strength of the halocline, corresponds well to observations. There is a small negative salinity bias over the whole water column in the Bothnian Bay, while the overall salinity is well reproduced in the Kattegat. In the Baltic proper and the Bornholm Basin (BY15 and BY5), the modeled halocline is weaker and shallower than the observed one. The surface water at these station tend to have a positive bias, while the deeper waters tend to have a negative bias, suggesting a too strong mixing between surface and deep waters. No stronger seasonal cycles exist in the haline structure, except for a freshwater pulse arriving in the surface waters during summer months, which is captured by the model at all stations.

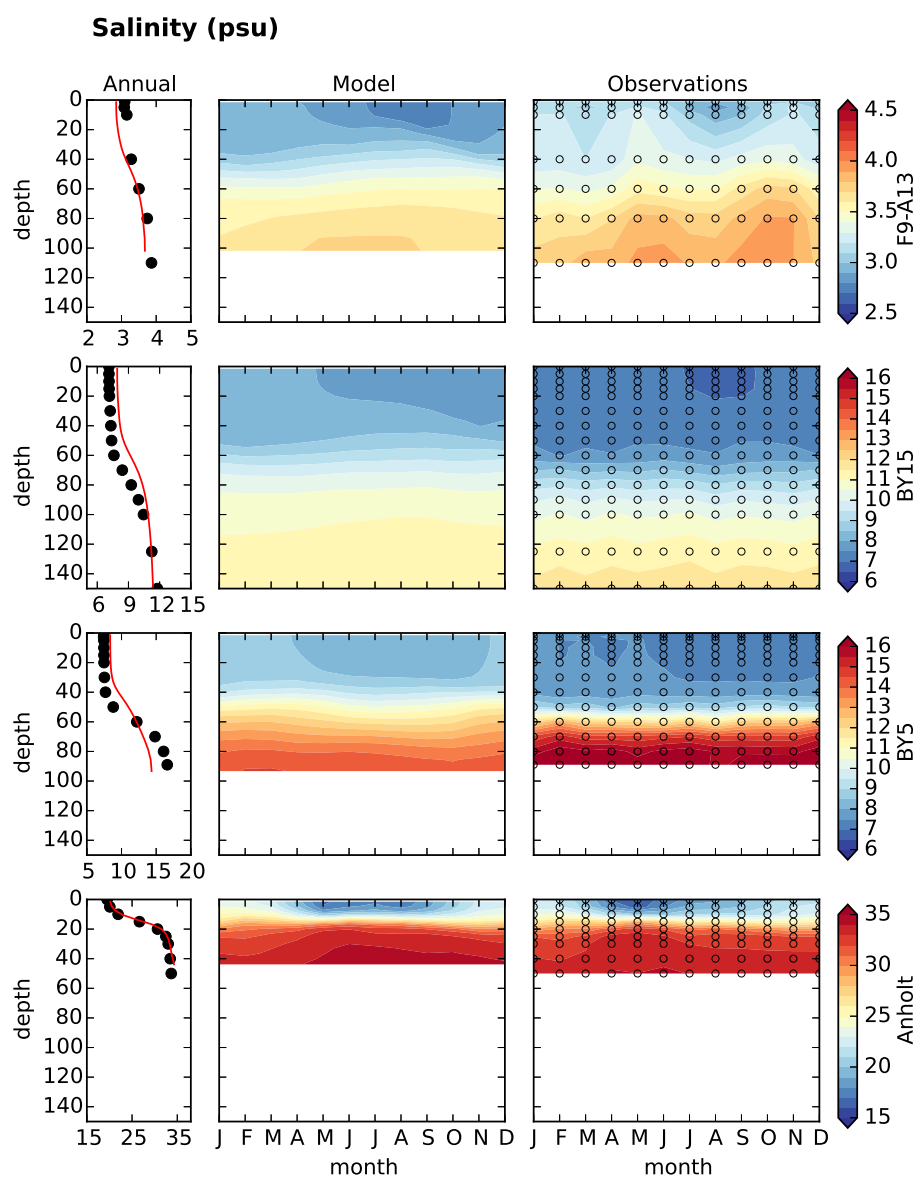
350 The thermal vertical structure is dominated by the seasonal thermocline. In the Kattegat, Bornholm Basin and the Baltic proper (Anholt, BY5 and BY15), it starts forming earlier than in the Bothnian Bay (F9-A13), both in the model and in the observations (Fig. 10). The later formation of the thermocline in the Bothnian Bay is partially due to the lower insolation at higher latitudes, but also due to the non-linearity of the equation of state at low salinities. The temperature of maximum density is higher at lower salinities, meaning that the water column has to completely mix before the formation of the thermocline can start, which is well reproduced by the model. The model's development of the seasonal thermocline and its deepening agrees well with observations in the Kattegat, the Bornholm basin and in the Baltic proper. In the Bothnian Bay no conclusions can be drawn on this aspect due to a lack of measurements between 15 and 40 meters, where the thermocline is situated. The break up of the thermocline is also well represented in the model. The model has on the other hand difficulties in representing the colder intermediate waters in the Bornholm basin and the Baltic Proper, which have a warm bias. This might be related to biases in the atmospheric forcing (Landelius et al., 2016), as these waters are formed during winter convection. Indeed, the simulated winter surface temperatures at BY5 and BY15 tend to have a warm bias. The modelled cold intermediate waters also descend too deep towards the end of the year. This might be related to the weaker halocline, and thus probably stronger mixing, in the model. The deep waters below the halocline are warmer than the intermediate waters, which is reproduced by the model. In the model it is, however, about 0.5 degrees warmer than in the observations at the BY15 station.



**Fig. 7.** Mean surface (0-10m) salinity for Baltic and North Seas, as simulated by Nemo-Nordic for the period 1979-2010 (upper figure) and from observations (lower figure) from Janssen et al. (1999)

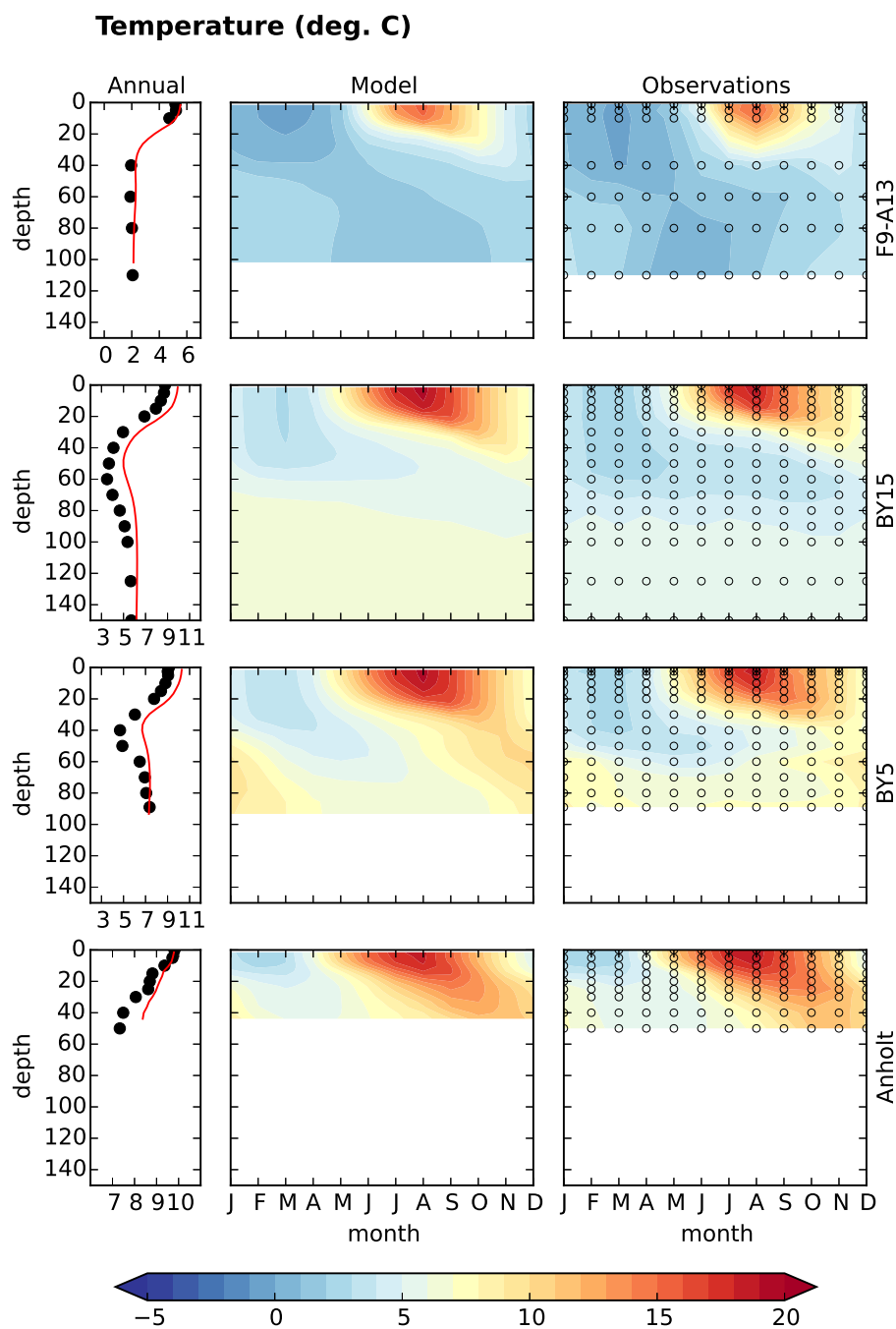


**Fig. 8.** Mean surface (0-10m) temperature for Baltic and North Seas, as simulated by Nemo-Nordic for the period 1979-2010 (upper figure) and from observations (lower figure) from Janssen et al. (1999)



**Fig. 9.** Haline structure for four different stations of the Baltic Sea, from top to bottom F9-A13 station in the Bothnian Bay, BY14 station in the Baltic Proper, BY5 station in the Bornholm Basin and Anholt station in Kattegat. The left column displays annual mean depth profiles, where the red line is simulated salinity and black dots are observations. The middle and the left columns show seasonal variations in the model and the observations, respectively. In the left column the transparent circles show sample depths, the observations are based on a 1979-2010 climatology.



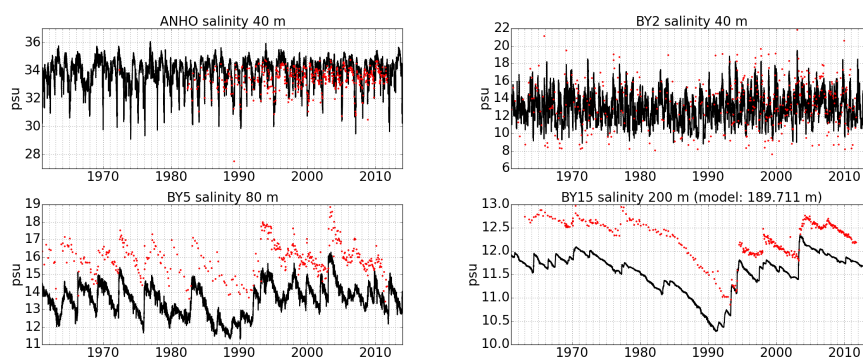


**Fig. 10.** Thermal structure for four different stations of the Baltic Sea, from top to bottom F9-A13 station in the Bothnian Bay, BY14 station in the Baltic Proper, BY5 station in the Bornholm Basin and Anholt station in Kattegat. The left column displays annual mean depth profiles, where the red line is simulated temperature and black dots are observations. The middle and the left columns show seasonal variations in the model and the observations, respectively. In the left column the transparent circles show sample depths, the observations are based on a 1979-2010 climatology.



#### 365 4.2.2 Interannual variability

From the comparison between the observations and their variability (Figure 11), one notices that Nemo-Nordic in general well reproduces the variability in the deep water salinity close to the bottom, both in the Kattegat and in the Baltic Sea, despite the constant background bias in the salinity. Especially, it is interesting to note from the BY15 salinity that the model is able to reproduce the Major Baltic Inflows 1993 and 2003. A comparison of the modelled and measured sea level differences during the recorded duration these inflows shows the models accuracy to represent the underlying barotropic processes. During the duration of the 1993 major Baltic inflow, the sea level at Landsort increases by 1m in observations against 1.02m in the model, while during the 2003 major Baltic inflow, the sea level at Landsort increases by 0.58m both in the model and in the observations. This further suggest that a miss-represented baroclinic process must be responsible for the negative bias in deep water salinity in the Baltic Sea. Even though this model uses a bottom boundary layer parameterisation (Beckmann and Döscher, 1997), it is still a z coordinate model which makes that the representation of dense overflows is not as accurate as it would be in a sigma or generalized vertical coordinate model. It is also interesting to note that Nemo-Nordic tends to overestimate the variability in deep water salinity at the Anholt station in the Kattegat, while it slightly underestimates the variability at the BY2 station.



**Fig. 11.** Time series of modeled salinity (black) and observations (red) for different stations. The stations are from top to bottom Anholt, BY2, BY5 and BY15 (check Fig 1 for their location). All stations are relevant for inflowing salty water masses from the North Sea to the Baltic Sea. The chosen levels are all close to the bottom of the corresponding location.

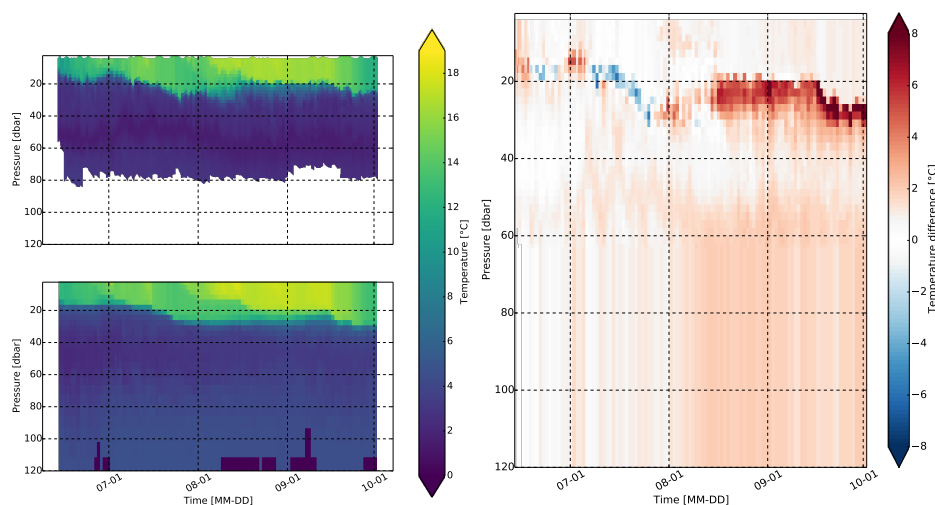
#### 4.2.3 Short term variability - Comparison with Argo Floats Data

380 As an example of Nemo-Nordic's performance on shorter term, we compared the model results to temperature observations from an autonomous Argo buoy. Over 100 profiles were collected during a mission in the Bothnian Sea, which lasted from 13 Jun 2013 to 2 Oct 2013. The profiles were taken from between 61.57 and 62.47 in latitude and between 19.59 and 20.42 in longitude. This dataset has been described in detail by (Westerlund and Tuomi, 2016), who also provided an illustration of the buoy route. From a comparison of observed and modelled temperature profiles we see that the seasonal thermocline is visible throughout the summer (Figure 12). The vertical structure of temperature was relatively well reproduced by Nemo-Nordic near the surface. In August the thermocline reached maximum depth and temperature. The model was able to describe well how the mixed layer deepened during the summer. The temperature gradient of the thermocline was also well represented. The surface layer responded to atmospheric forcing in a similar way in observations and model. In layers under the thermocline, model temperatures were somewhat too high. This bias increased in late summer. Deeper, the diathermal (old winter water) layer was not as pronounced in the model as it was in the observations. In late August, model predicted larger thermocline depths than were observed. In general, temperature profiles were smoother in the model than in observations. Furthermore, some finer scale features were not completely reproduced by the model.

385 Observed and modelled near-surface temperatures, along with estimated thermocline depths, are show in Figure (?). Near-surface temperature was taken to be the temperature of the model point at the depth of the topmost data point in the observations, which was typically around 4 metres, depending on the profile. In most cases this is very close to the surface temperature. Location of the thermocline was taken as the place of the maximum temperature gradient along the z-axis. Near-surface temperature in the model reproduced overall seasonal temperature cycle, although in early September surface temperatures were around 1 degree greater in the model than in observations. Thermocline depths were represented in the model quite



well, except for the aforementioned time in late August. (Westerlund and Tuomi, 2016) presented a similar comparison to a  
400 different model configuration, derived from an earlier version of Nemo-Nordic. That model used different atmospheric forcing  
fields taken from an operational HIRLAM forecast from the FMI (Finnish Meteorological institute), climatological boundary  
conditions, climatological river runoffs and initial conditions from FMI's operational Baltic Sea forecast. Furthermore, it  
did not have the light penetration parameterization present in the official Nemo-Nordic configuration described in this paper.  
Compared to those results, the near-surface temperature in the official Nemo-Nordic results differs more from the observations  
405 in autumn, but shows less bias in early summer. Thermocline depths were quite similar in both configurations.



**Fig. 12.** Comparison of temperature profiles from an Argo float (upper left panel) and Nemo-Nordic. Observational data in the upper panel has been redrawn from the dataset used by Westerlund and Tuomi (2016). The panel on the right hand side shows the difference between the observation and model run. The model was larger than the measurement where the difference is positive. Model results have been taken along the buoy route in the Bothnian Sea in 2013.

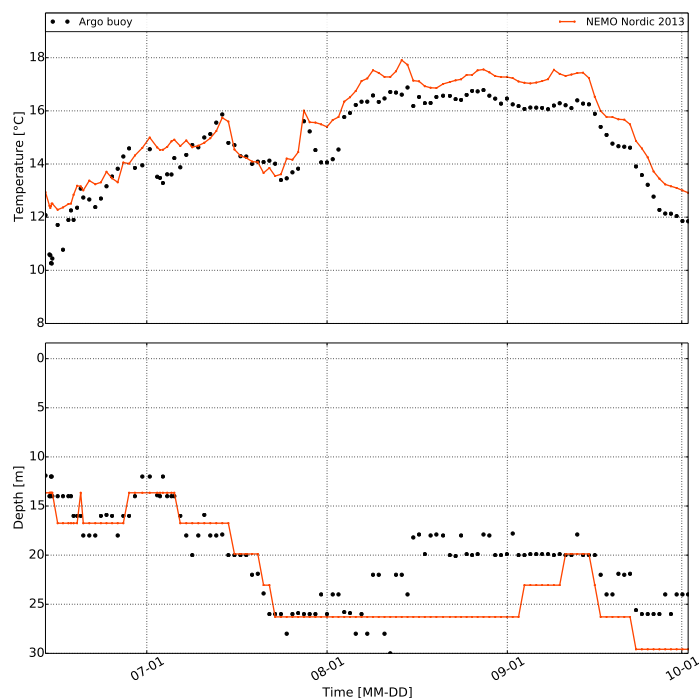
### 4.3 Thermohaline structure of the North Sea

Compared to the Baltic Sea, the North Sea is more homogeneous regarding its thermohaline structure. It exhibits mostly  
seasonal variations in form of the formation of the seasonal thermocline and seasonal variations in freshwater forcing. Haline  
fronts between coastal and offshore areas are found in the Southern and Eastern North Sea due to the relatively large river  
410 runoff from continental rivers at the Southern shore of the North Sea, and the Norwegian Coastal Current carrying low saline  
waters from the Baltic Sea.

#### 4.3.1 Vertical structure and seasonal variability

In this section we validate the vertical structure and seasonal variability at four stations representative for different hydrological  
regimes in the North Sea. Two stations are located near the boundaries towards the Atlantic Ocean (Fladen Ground and the  
415 Southern Bight). Validating the temperature and salinity structure in these areas also gives a validation of the boundary  
conditions and the properties of the inflowing water. The two other stations (NCC and Frisian Front), are located in areas  
where there are relatively large horizontal and vertical (only NCC) salinity gradients due to the freshwater forcing from the  
Baltic Sea and the continental rivers draining into the Southern North Sea. The observational data comes from the KLIWAS  
dataset provided by the University of Hamburg (Bersch et al., 2013). It is composed of all available measurements between  
420 1970 and 2013 in the North Sea, that have been put into a 1x1 grid.

The haline vertical structure at the four stations in the North Sea is displayed in Figure 14. The only station with a distinct  
permanent haline stratification is the NCC station. The vertical haline structure at this station is well reproduced by the model,  
although the surface waters are less saline than the observations by about 1 PSU. The other stations are rather homogeneous  
in the vertical with respect to salinity. In the Southern Bight and the Fladen Ground the model captures the overall mean



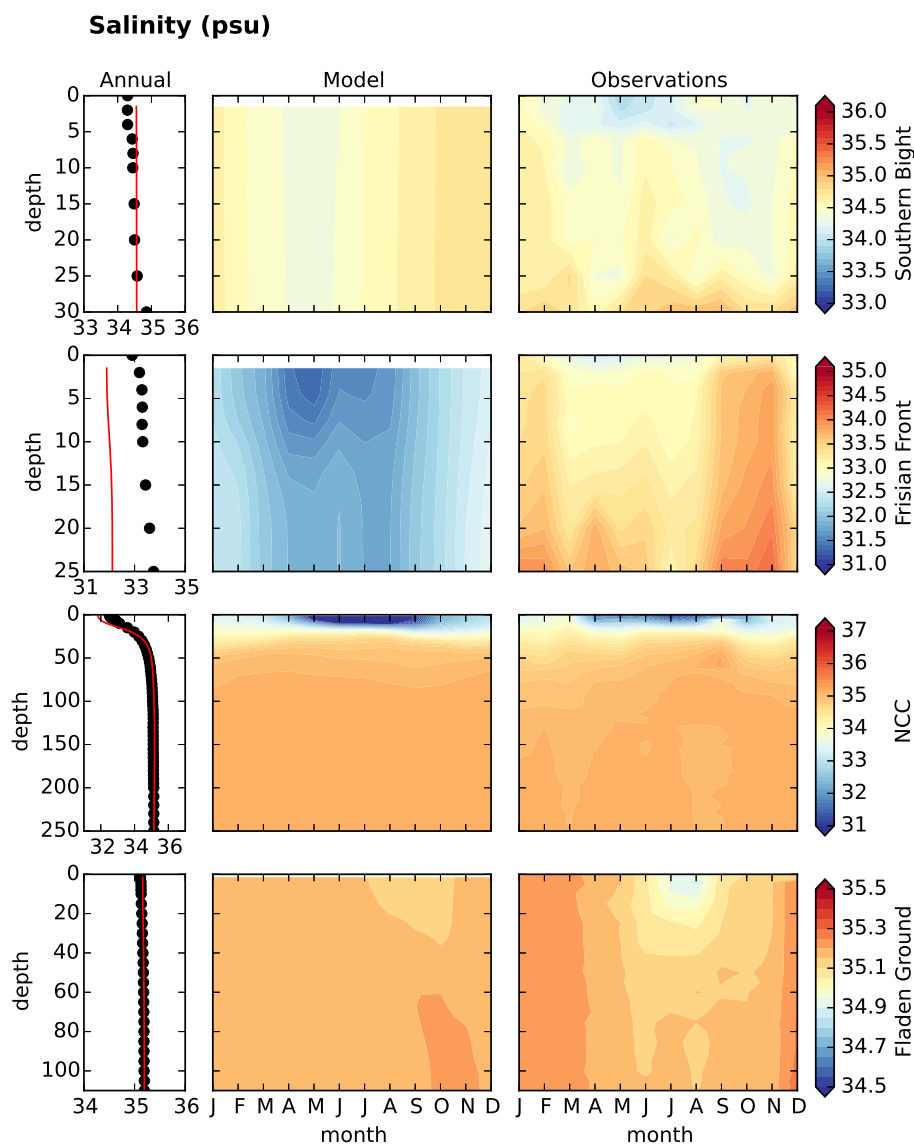
**Fig. 13.** Near-surface temperature in 2013 from the Argo float data and from Nemo-Nordic. Thermocline depth estimated as the maximum of vertical temperature gradient in the lower panel.

425 salinity. At the Frisian Front the modelled salinity is about 1.5 PSU too low, which probably is related to a displacement of the front between coastal waters with lower salinity and offshore waters. At all stations the model simulates a seasonal cycle in the surface salinity with a freshening during the summer months, in agreement with the observations. The timing and the amplitude of this summer freshening is however subject to some biases. Because the dataset does not contain regular measurements from these positions it can on the other hand give rise to biases in the observational estimates of the seasonal cycle.

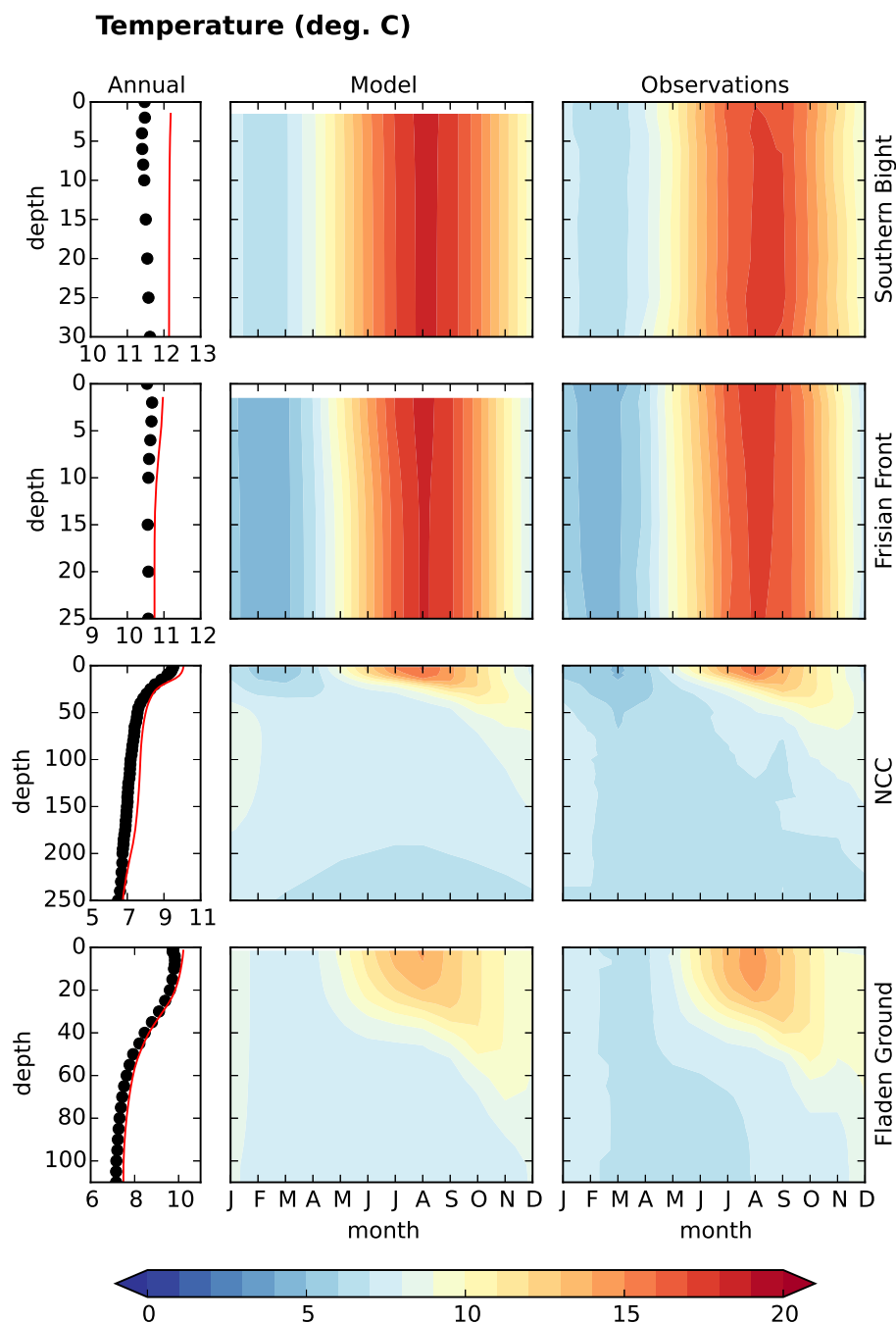
430 The thermal vertical and seasonal structure is, as for the Baltic Sea, dominated by the seasonal warming and cooling of the surface waters (Fig. 15). In the Southern Bight and at the Frisian Front the waters are well mixed from surface to bottom throughout the year, and no seasonal thermocline develops, which is well reproduced by the model. In the Southern Bight there is a warm bias in the order of 0.5 °C (annual mean) in the model throughout the water column. At the Frisian front there is a warm bias of about 0.3 °C in the surface waters. At the two deeper stations, the seasonal development, and the depth, of the thermocline is well reproduced in the model, although the start of the thermocline formation is somewhat too early in the model. This is the case especially at the Fladen Ground, where it starts almost one month too early. Also the winter SST's are too warm in the model, resulting in a too weak winter convection/ too warm temperatures of the convecting water, which in its turn gives a warm bias in the deep waters. At both stations there is a warm bias of about 0.5 °C (annual mean) in the surface waters.

#### 440 4.3.2 Modelled thermocline dynamics

For biogeochemical processes summer thermal conditions are important when water temperature and light intensity stimulate the growth of phytoplankton. Contemporaneously, thermal stratification develops in the deeper basin of the northern North Sea and the inflow of Atlantic water weakens (Skogen et al., 2011) and accordingly atmospheric forcing at the surface becomes more important. This leads to substantially better reproduction of interannual variability even in the North (Fig. 17b). We analyze in the following the modelled thermocline dynamics following previous approaches for the North Sea (Pohlmann, 1996; Meyer et al., 2011; Mathis and Pohlmann, 2014), which define the presence of thermocline conditions when a certain

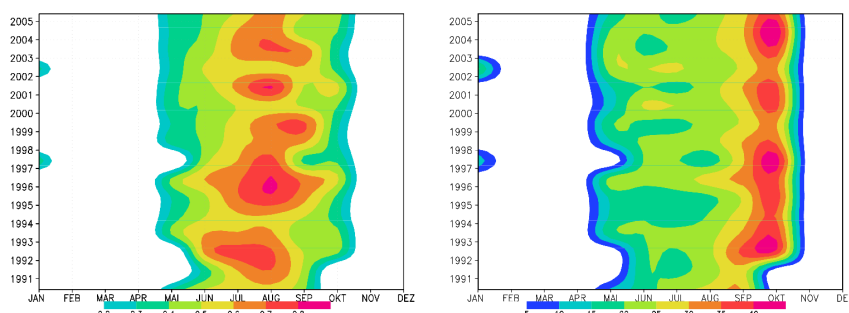


**Fig. 14.** Haline structure for four different stations of the North Sea, from top to bottom Southern Bight station, Frisian Front station, NCC station, and Fladen Ground station. The left column displays annual mean depth profiles, where the red line is simulated salinity and black dots are observations. The middle and the left columns show seasonal variations in the model and the observations, respectively. In the left column the transparent circles show sample depths, the observations are based on a 1979-2010 climatology.



**Fig. 15.** Thermal structure for four different stations of the North Sea, from top to bottom Southern Bight station, Frisian Front station, NCC station, and Fladen Ground station. The left column displays annual mean depth profiles, where the red line is simulated temperature and black dots are observations. The middle and the left columns show seasonal variations in the model and the observations, respectively. In the left column the transparent circles show sample depths, the observations are based on a 1979-2010 climatology.





**Fig. 16.** a) Seasonal cycle of thermocline structure. Left: thermocline intensity [K/m] averaged over the entire thermal stratified area. Right same as left but for for thermocline depth [m].

vertical temperature gradient is exceeded. We here chose a critical gradient of 0.25 K/m. The yearly maximum extent of stratified areas is primarily governed by topography and wind stress (Mathis and Pohlmann, 2014) and varies between 1990 and 2005 between 100,000 and 185,000 km<sup>2</sup>. Stratified conditions begin to develop in May and reaches its maximal intensity during July and August. Already during September wind stress strengthens and temperatures lower which increases mixing. The thermocline weakens then and is shifted downward. As a result, nutrient rich water reaches the euphotic zone. During this time a second phytoplankton bloom can be sometimes observed in the North Sea (van Haren et al., 2003; Moll, 1998).

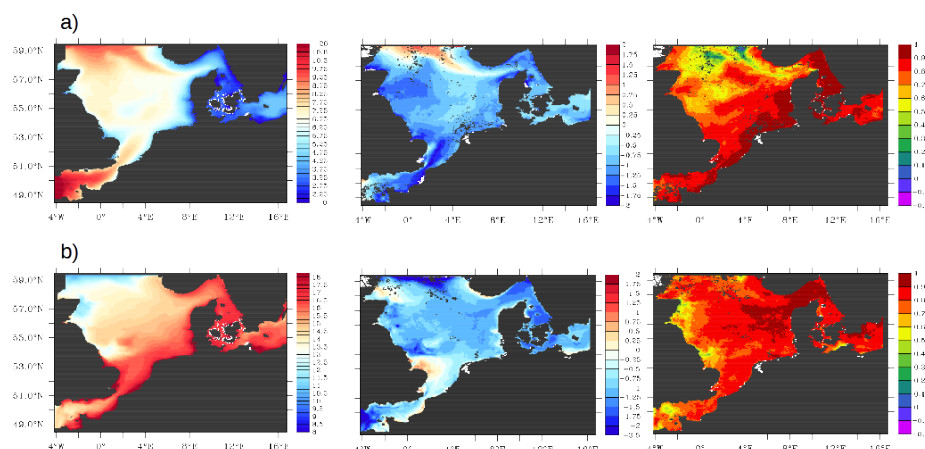
### 4.3.3 Interannual variability

Surface properties are in many cases dominated by local meteorological forcing (Skogen et al., 2011). Therefore, its important to validate also subsurface properties which are also influenced also the by circulation dynamics (like e.g. Atlantic inflow). For this, we use the KLIWAS observational data set (Bersch et al., 2013). We here follow previous approaches an subdivide the North Sea into 1° x 1° boxes for which for each month, at each box and standard level Taylor statistics (Taylor, 2001) is calculated (for details see Raddach and Moll, 2006, Gröger et al. 2013). In order to estimate the interannual variability of seasonal signals we chose January and July as representative for winter and summer as in these month observations were most abundant in the observational data set. The results are shown in table 2. In total 25619 observations were used for the analysis.

Overall good correlation with the temperature and salinity observations for summer and winter indicates the models skill to capture interannual variability and thus, the ability to realistically respond to low frequency modes of climate variations such as decadal variability or the NAO which likely influence the North Sea hydrography (e.g. Hjøllø et al.2009, Mathis et al., 2015). The root mean square values lie well within the standard deviation of the observations (with the exception of January salinities where rms is slightly higher,table 2). The models salinity variability (as indicated by standard deviation) is too high (~50%), but the spatial distribution of the observations is much coarser than the model grid which explains this result.

**Table 2.** Quantitative comparison of simulated and observed state variables derived from Taylor statistics (Taylor, 2001). rms = root mean squared, corr = Pearson's correlation, stddev = standard deviation, N = number of observations. The statistics have been derived from all 1° x 1° boxes. See text for details about data set and data handling.

State variable	rms	corr	stddev observation	stddev simulation	N
Winter					
Temperature	0.74	0.78	0.86	1.18	6139
Salinity	0.56	0.79	0.54	0.88	6034
Summer					
Temperature	1.10	0.94	3.06	3.15	6808
Salinity	0.56	0.83	0.72	0.98	6638



**Fig. 17.** a) left: NEMO-Nordic multiyear (1990-2005) DJF average sst. middle: NEMO-Nordic minus BSH sst. right: Correlation between NEMO-Nordic sst and BSH sst. Note regions where not enough observational data were present have been coloured grey. b) same as a) but for JJA.

#### 4.3.4 Comparison with satellite data

470 In the following we compare the modelled SST with a widely used satellite product provided by the Federal Maritime and Hydrographic Agency of Germany, Hamburg. By this we are able to investigate how the modelled SST reproduces interannual variability which is important for the application of the model for climate services and the simulation of various climate scenarios.

475 In contrast to the warm bias relative to the in-situ temperature measurements, the simulated winter SST (Fig.17) is almost everywhere colder than the satellite estimations of SST. Cold biases relative to satellite measurements were also obtained in other ocean models driven by ERA40 reanalysis data set in the (Tian et al., 2013); (Gröger et al., 2015)). Given that in-situ temperature measurements give a more direct measure than satellite estimations of SST's, and that the atmospheric forcing used for these simulations has a warm bias, especially in the North Sea during winter (Landelius et al., 2016), it is likely that the satellite underestimates the SST. Despite this, the satellite SSTs can be used for validation of spatial and temporal variability.

480 Figure 17 (a) shows an overall good correlation of modelled interannual SST variations with the BSH data set. Likewise the lower correlation in the Northern deeper parts could indicate problems with convective and/or wind induced mixing which would influence the heat transfer from the deeper layers to the surface. In contrast, in the Southern and shallower parts, SSTs are dominated largely by the atmospheric forcing (Skogen et al., 2011) and, thus correlation increases. Good correlation is also seen along the Norwegian coast where the effective heat capacity is limited due to haline stratification which make SSTs more sensitive to the atmospheric forcing. The same is true for nearly the entire Baltic Sea where correlation almost nowhere drops below 0.8.



## 5 Conclusions

490 In this article we provide a detailed description of the dynamic features of Nemo-Nordic, a newly developed joint setup for the Baltic Sea and the North Sea. Its performance when it comes to sea-ice is the subject of a specific article on its own (Pemberton et al., 2017). We have shown that Nemo-Nordic is able to reproduce the barotropic and baroclinic dynamics, as well as the thermohaline structure, of Baltic & North Sea basins. The key to achieve this overall good representation of the physics in the Baltic Sea and the North Sea has been to get a representation of the barotropic dynamics as good  
495 as possible. This ability, which is detailed in the present article, has been validated with the most demanding procedure: Nemo-Nordic is used as the official forecast model of SMHI for Baltic & North Seas, including for SSH for which the model does not benefit of any data assimilation. In forecast mode, Nemo-Nordic is used with a higher resolution (1nm), compared to longer integrations where the setup is used with a 2nm resolution. The ability of the model to represent barotropic dynamics at high frequency time scales (hours to several days) is the main reason for its good representation of transports and water exchanges in and between the Baltic Sea and the North Sea. It also allows for an accurate representation of the  
500 Baltic Sea inflows, and the initiation of the Baltic Sea baroclinic dynamics. In order for Nemo-Nordic to properly represent baroclinic dynamics in both basins, a specific tuning of mixing is done from both horizontal and vertical points of view. For example a limitation of the vertical mixing length in order to help the model keep the Baltic Sea halocline at a realistic level.

505 Although Nemo-Nordic well reproduces the overall physics of Baltic & North Sea, some biases can be noticed. The sea level representation is better in forecast mode than that of the previous SMHI operational model HIROMB, but some improvements are still needed to better represent extreme events. Regarding this precise point, a coupling with wind waves appears to be the next step, as it was recently shown that the contribution of wind waves has a major impact on extreme sea levels (Staneva et al., 2016). Ongoing development based on the new implementations within the NEMO ocean engine concerns the inclusion of  
510 wetting and drying processes which can also affect sea level in shallow areas. Further, an important margin of improvements exist in atmospheric forcing, bottom friction and bathymetry. A margin that should lead to an even greater accuracy in sea level representation: recent tests done with a bathymetry computed from the GEBCO database (The GEBCO-2014 Grid, version 20150318, <http://www.gebco.net>) show a high improvement of sea level representation in the North Sea and along the Swedish West coast.

515 From a baroclinic perspective, several aspects can be improved in the model. First, even though we could show that the barotropic variability of the Baltic & North Sea basins allows the Baltic Sea MBIs, there is still a bias in the deep salinity due to an over ventilation of the intermediate layers. So far, the only solutions which were found to solve this bias is to increase resolution. But a major future development would be the use of a hybrid vertical coordinate system with  $z^*$  close to the surface and  $\sigma$  coordinates close to the bottom. A minor development concerns the Galperin parameterization as mentioned  
520 before, which needs to be decoupled from thermal dynamics. Ongoing tests are being made concerning this latest point. Other developments in Nemo-Nordic concern its coupling with biogeochemical models. Nemo-Nordic has been coupled with the SCOBI model (Eilola et al., 2009), for which a validation work is ongoing. Nemo-Nordic has also been coupled with the BFM model (Vichi et al., 2007, 2015) on a part of its domain (Fransner et al., 2017).

525 Nemo-Nordic, and spin-off configurations, provide a tool not only for ocean forecasting, but also for a wide variety of ocean research. It can be used for long term simulations either for process purpose studies (Hordoïr et al., 2013; Godhe et al., 2013; Moksnes et al., 2014; Westerlund and Tuomi, 2016, e.g.) or climate change related studies (Hordoïr et al., 2015; Höglund et al., 2017). It can be also used for biogeochemical-ecosystem studies, using a simple passive tracer with a decay rate (Fransner et al., 2016) or coupled with a complex biogeochemical model (Fransner et al., 2017). Nemo-Nordic is also the ocean component  
530 of an RCA4-NEMO coupled model which is the basis of a regional climate model used in several studies (Wang et al., 2015; Pätsch et al., 2017).

Finally, Nemo-Nordic has also been used as a boundary condition for high-resolution sub-basin scale setups (Westerlund et al., 2017).

## 6 Code and data availability

535 NEMO-Nordic builds on the standard NEMO code (nemo\_v3\_6\_STABLE, revision 5628) with only minor changes, including the fast-ice parametrization and a spatial varying background viscosity/diffusivity that could be read in from the file. The standard NEMO code can be downloaded from the NEMO web site (<http://www.nemo-ocean.eu/>). The nemo\_v3\_6\_STABLE version is available from the following link: [http://forge.ipsl.jussieu.fr/nemo/vn/branches/2015/nemo\\_v3\\_6\\_STABLE](http://forge.ipsl.jussieu.fr/nemo/vn/branches/2015/nemo_v3_6_STABLE). The new code blocks that are introduced (relative to the standard NEMO code



540 `nemo_v3_6_STABLE`, revision 5628) into our NEMO-Nordic code are included as supplemental material. The full NEMO-Nordic code is in a Subversion revision control system repository, available under [http://54.73.141.37/subversion/repository/source\\_code/trunk/NEMOGCM](http://54.73.141.37/subversion/repository/source_code/trunk/NEMOGCM). However, a user account is needed to gain full access. This work used revision 339 of the NEMO-Nordic code. Access to the NEMO-Nordic code and all input data, analysis scripts, and data used to produce the figures in this study can be made available upon request to the corresponding author.

545 *Acknowledgements.* The research presented in this study is part of the project BONUS STORMWINDS and has received funding from BONUS, the joint Baltic Sea research and development programme (Art 185), funded jointly from the European Union's Seventh Programme for research, technological development and demonstration and from the Swedish research council for environment, agriculture sciences and spatial planning (FORMAS).

## References

- 550 Ådlandsvik, B. and Bentsen, M.: Downscaling a twentieth century global climate simulation to the North Sea, *Ocean Dynamics*, 57, 453–466, 2007.
- Andersen, J. H., Carstensen, J., Conley, D. J., Dromph, K., Fleming-Lehtinen, V., Gustafsson, B. G., Josefson, A. B., Norkko, A., Villnäs, A., and Murray, C.: Long-term temporal and spatial trends in eutrophication status of the Baltic Sea, *Biological Reviews*, 92, 135–149, doi:10.1111/brv.12221, <http://dx.doi.org/10.1111/brv.12221>, 2017.
- 555 Baretta-Bekker, J., Baretta, J., Latuhipin, M., Desmit, X., and Prins, T.: Description of the long-term (1991–2005) temporal and spatial distribution of phytoplankton carbon biomass in the Dutch North Sea, *Journal of Sea Research*, 61, 50 – 59, doi:<http://dx.doi.org/10.1016/j.seares.2008.10.007>, <http://www.sciencedirect.com/science/article/pii/S1385110108001159>, long-term Phytoplankton Time Series Time Series Data Relevant to Eutrophication and Ecological Quality Indicators [WKEUT], 2009.
- Beckmann, A. and Döscher, R.: A method for improved representation of dense water spreading over topography in geopotential-coordinate models, *J. Phys. Oceanogr.*, 27, 581–591, 1997.
- 560 Berg, P., Döscher, R., and Koenig, T.: Impacts of using spectral nudging on regional climate model RCA4 simulations of the Arctic, *GEOSCIENTIFIC MODEL DEVELOPMENT*, 6, 849–859, doi:10.5194/gmd-6-849-2013, 2013.
- Bersch, M., Gouretski, V., Sadikni, R., and Hinrichs, I.: Hydrographic climatology of the North Sea and surrounding regions, Centre for Earth System Research and Sustainability (CEN), University of Hamburg, <http://icdc.zmaw.de/1/daten/ocean/knsc-hydrographic.html>, 2013.
- 565 Boesch, D., R., H., C., O., D., S., and S, S.: Eutrophication of Swedish seas, Swedish Environmental Protection Agency Report, pp. 1–72, 2006.
- Burchard, H., Janssen, F., Bolding, K., Umlauf, L., and Rennau, H.: Model simulations of dense bottom currents in the Western Baltic Sea, *Continental Shelf Research*, 29, 205 – 220, doi:<https://doi.org/10.1016/j.csr.2007.09.010>, <http://www.sciencedirect.com/science/article/pii/S0278434307002920>, physics of Estuaries and Coastal Seas: Papers from the PECS 2006 Conference, 2009.
- 570 Carstensen, J., Andersen, J. H., Gustafsson, B. G., and Conley, D. J.: Deoxygenation of the Baltic Sea during the last century, *Proceedings of the National Academy of Sciences*, 111, 5628–5633, doi:10.1073/pnas.1323156111, <http://www.pnas.org/content/111/15/5628.abstract>, 2014.
- Daewel, U. and Schrum, C.: Simulating long-term dynamics of the coupled North Sea and Baltic Sea ecosystem with {ECOSMO} II: Model description and validation, *Journal of Marine Systems*, 119–120, 30 – 49, doi:<http://dx.doi.org/10.1016/j.jmarsys.2013.03.008>, <http://www.sciencedirect.com/science/article/pii/S0924796313000705>, 2013.
- 575 Dahlgren, P., Landelius, T., Kallberg, P., and Gollvik, S.: A high resolution regional reanalysis for Europe Part 1: 3-dimensional reanalysis with the regional HIGH Resolution Limited Area Model (HIRLAM), *Q. J. R. Meteorol. Soc.*, 2016.
- Donnelly, C., Andersson, J. C., and Arheimer, B.: Using flow signatures and catchment similarities to evaluate the E-HYPE multi-basin model across Europe, *Hydrological Sciences Journal*, 61, 255–273, doi:10.1080/02626667.2015.1027710, <http://dx.doi.org/10.1080/02626667.2015.1027710>, 2016.
- 580 Döös, K., Meier, M., and Döscher, R.: The Baltic Haline Conveyor Belt or The Overturning Circulation and Mixing in the Baltic, *Ambio*, 33, doi:10.1357/002224006777606506, 2004.
- Egbert, G., Bennett, A., and Foreman, M.: TOPEX/Poseidon tides estimated using a global inverse model, *J. of Geophys. Res.*, 99, 24,821 – 24, 852, doi:10.1029/94JC01894, 1994.
- 585 Egbert, G. D. and Erofeeva, S. Y.: Efficient Inverse Modeling of Barotropic Ocean Tides, *Journal of Atmospheric and Oceanic Technology*, 19, 183–204, doi:10.1175/1520-0426, <http://journals.ametsoc.org/doi/abs/10.1175/1520-0426282002%29019%3C01833AEIMOB0E2.0.CO3B2>, 2002.
- Eilola, K., Meier, H. M., and Almroth, E.: On the dynamics of oxygen, phosphorus and cyanobacteria in the Baltic Sea; A model study, *Journal of Marine Systems*, 75, 163 – 184, doi:<http://dx.doi.org/10.1016/j.jmarsys.2008.08.009>, <http://www.sciencedirect.com/science/article/pii/S0924796308002182>, 2009.
- 590 Elken, J. and Matthäus, W.: Physical system Description, in: Assessment of Climate Change for the Baltic Sea Basin, edited by author team, T. B., chap. Annex A1, pp. 379–386, Springer-Verlag, Berlin, 2008.
- Emeis, K.-C., van Beusekom, J., Callies, U., Ebinghaus, R., Kannen, A., Kraus, G., Kröncke, I., Lenhart, H., Lorkowski, I., Matthias, V., Möllmann, C., Pätsch, J., Scharfe, M., Thomas, H., Weisse, R., and Zorita, E.: The North Sea — A shelf sea in the Anthropocene, *Journal*



- 595 of Marine Systems, 141, 18 – 33, doi:<http://dx.doi.org/10.1016/j.jmarsys.2014.03.012>, <http://www.sciencedirect.com/science/article/pii/S0924796314000724>, biogeochemistry-ecosystem interaction on changing continental margins in the Anthropocene, 2015.
- Fonselius, S. and Valderrama, J.: One hundred years of hydrographic measurements in the Baltic Sea, *Journal of Sea Research*, 49, 229 – 241, doi:[http://dx.doi.org/10.1016/S1385-1101\(03\)00035-2](http://dx.doi.org/10.1016/S1385-1101(03)00035-2), <http://www.sciencedirect.com/science/article/pii/S1385110103000352>, proceedings of the 22nd Conference of the Baltic Oceanographers (CBO), Stockholm 2001, 2003.
- 600 Fransner, F., Nycander, J., Mörth, C.-M., Humborg, C., Markus Meier, H. E., Hordoir, R., Gustafsson, E., and Deutsch, B.: Tracing terrestrial DOC in the Baltic Sea—A 3-D model study, *Global Biogeochemical Cycles*, 30, 134–148, doi:10.1002/2014GB005078, <http://dx.doi.org/10.1002/2014GB005078>, 2014GB005078, 2016.
- Fransner, F., Gustafsson, E., Tedesco, L., Vichi, M., Hordoir, R., Roquet, F., Spilling, K., Kuznetsov, I., Eilola, K., Mörth, C. M., Humborg, C., and Nycander, J.: Non-Redfieldian dynamics explain seasonal pCO<sub>2</sub> drawdown in the Gulf of Bothnia, *J. Geophys. Res. Oceans*, In revision, 2017.
- 605 Fredrik Wulff, Anders Stigebrandt, L. R.: Nutrient Dynamics of the Baltic Sea, *Ambio*, 19, 126–133, <http://www.jstor.org/stable/4313678>, 1990.
- Funkquist, L. and Kleine, E.: HIROMB - An introduction to HIROMB, an operational baroclinic model for the Baltic Sea, Tech. rep., SMHI, 2007.
- 610 Galperin, B., Kantha, L. H., Hassid, S., and Rosati, A.: A Quasi-equilibrium Turbulent Energy Model for Geophysical Flows, *J. of the Atmospheric Sciences*, 45, 55–62, 1988.
- Godhe, A., Egardt, J., Kleinhans, D., Sundqvist, L., Hordoir, R., and Jonsson, P.: Seascape analysis reveals regional gene flow patterns among populations of a marine planktonic diatom, *Proc R Soc B*, doi:10.1098/rspb.2013.1599, 2013.
- Graham, J. A., O’Dea, E., Holt, J., Polton, J., Hewitt, H. T., Furner, R., Guihou, K., Brereton, A., Arnold, A., Wakelin, S., Castillo Sanchez, J. M., and Mayorga Adame, C. G.: AMM15: A new high resolution NEMO configuration for operational simulation of the European North West Shelf, *Geoscientific Model Development Discussions*, 2017, 1–23, doi:10.5194/gmd-2017-127, <https://www.geosci-model-dev-discuss.net/gmd-2017-127/>, 2017.
- 615 Gräwe, U., Burchard, H., Naumann, M., and Mohrholz, V.: Anatomizing one of the largest saltwater inflows into the Baltic Sea in December 2014, *Journal of Geophysical Research: Oceans*, 120, 7676–7697, doi:10.1002/2015JC011269, 2015.
- 620 Gräwe, U., Holtermann, P., Klingbeil, K., and Burchard, H.: Advantages of vertically adaptive coordinates in numerical models of stratified shelf seas, *Ocean Modelling*, 92, 56 – 68, doi:<https://doi.org/10.1016/j.ocemod.2015.05.008>, <http://www.sciencedirect.com/science/article/pii/S1463500315000979>, 2015.
- Gröger, M., Maier-Reimer, E., Mikolajewicz, U., Moll, A., and Sein, D.: NW European shelf under climate warming: implications for open ocean-shelf exchange, primary production, and carbon absorption, *Biogeosciences*, 10, 3767–3792, 2013.
- 625 Gröger, M., Dieterich, C., Meier, M., and Schimanke, S.: Thermal air–sea coupling in hindcast simulations for the North Sea and Baltic Sea on the NW European shelf, *Tellus A*, 67, <http://www.tellusa.net/index.php/tellusa/article/view/26911>, 2015.
- Gustafsson, B. G. and Andersson, H. C.: Modeling the exchange of the Baltic Sea from the meridional atmospheric pressure difference across the North Sea, *Journal of Geophysical Research: Oceans*, 106, 19731–19744, doi:10.1029/2000JC000593, <http://dx.doi.org/10.1029/2000JC000593>, 2001.
- 630 Höglund, A., Pemberton, P., Hordoir, R., and Schimanke, S.: Ice conditions for maritime traffic in the Baltic Sea in future climate, *Boreal Env. Res.*, 22, 245–265, 2017.
- Holt, J., Wakelin, S., Lowe, J., and Tinker, J.: The potential impacts of climate change on the hydrography of the northwest European continental shelf, *Progress in Oceanography*, 86, 361–379, 2010.
- Holt, J., Butenschön, M., Wakelin, S. L., Artioli, Y., and Allen, J. I.: Oceanic controls on the primary production of the northwest European continental shelf: model experiments under recent past conditions and a potential future scenario, *Biogeosciences*, 9, 97–117, doi:10.5194/bg-9-97-2012, <http://www.biogeosciences.net/9/97/2012/>, 2012.
- 635 Hordoir, R. and Meier, H. E. M.: Freshwater Fluxes in the Baltic Sea - A Model Study, *J. Geophys. Res.*, 10.1029/2009JC005604, <http://onlinelibrary.wiley.com/doi/10.1029/2009JC005604/full>, 2010.
- Hordoir, R., Dieterich, C., Basu, C., Dietze, H., and Meier, M.: Freshwater outflow of the Baltic Sea and transport in the Norwegian current: A statistical correlation analysis based on a numerical experiment, *Continental Shelf Research*, 64, 1 – 9, doi:<http://dx.doi.org/10.1016/j.csr.2013.05.006>, <http://www.sciencedirect.com/science/article/pii/S0278434313001532>, 2013.
- Hordoir, R., Axell, L., Löptien, U., Dietze, H., and Kuznetsov, I.: Influence of sea level rise on the dynamics of salt inflows in the Baltic Sea, *Journal of Geophysical Research: Oceans*, doi:10.1002/2014JC010642, <http://dx.doi.org/10.1002/2014JC010642>, 2015.
- Huthnance, J. M., Holt, J. T., and Wakelin, S. L.: Deep ocean exchange with west-European shelf seas, *Ocean Science*, 5, 621–634, doi:10.5194/os-5-621-2009, <http://www.ocean-sci.net/5/621/2009/>, 2009.
- 645 Janssen, F., Schrum, C., and Backhaus, J. O.: A climatological data set of temperature and salinity for the Baltic Sea and the North Sea, *Deutsche Hydrografische Zeitschrift*, 51, 5, doi:10.1007/BF02933676, <https://doi.org/10.1007/BF02933676>, 1999.
- Köster, F. W., Möllmann, C., Neuenfeldt, S., Vinther, M., Kraus, G., and Voss, R.: Fish stock development in the central Baltic Sea (1974–1999) in relation to variability in the environment, *ICES Marine Science Symposium*, 219, 2003.
- 650 Landelius, T., Dahlgren, P., Gollvik, S., Jansson, A., and Olsson, E.: A high resolution regional reanalysis for Europe Part 2: 2D analysis of surface temperature, precipitation and wind, *Q. J. R. Meteorol. Soc.*, 2016.
- Large, W. and Yeager, S.: The global climatology of an interannually varying air-sea flux data set, *Climate Dynamics*, 33, 341–364, <http://dx.doi.org/10.1007/s00382-008-0441-3>, 10.1007/s00382-008-0441-3, 2009.





- Madec, G. and the NEMO system team: NEMO Ocean Engine, Version 3.6 Stable, Tech. rep., IPSL, <http://www.nemo-ocean.eu/>, note du  
655 Pôle de modélisation de l'Institut Pierre-Simon Laplace No 27, 2015.
- Madsen, K. S., Høyer, J. L., Fu, W., and Donlon, C.: Blending of satellite and tide gauge sea level observations and its assimilation in a storm  
surge model of the North Sea and Baltic Sea, *Journal of Geophysical Research: Oceans*, 120, 6405–6418, doi:10.1002/2015JC011070,  
<http://dx.doi.org/10.1002/2015JC011070>, 2015.
- Mathis, M. and Pohlmann, T.: Projection of physical conditions in the North Sea for the 21st century, *Climate Research*, 61, 1–17, doi:  
660 10.3354/cr01232, <http://www.int-res.com/abstracts/cr/v61/n1/p1-17>, 2014.
- Mathis, M., Mayer, B., and Pohlmann, T.: An uncoupled dynamical downscaling for the North Sea: Method and evaluation,  
*Ocean Modelling*, 72, 153 – 166, doi:<http://dx.doi.org/10.1016/j.ocemod.2013.09.004>, <http://www.sciencedirect.com/science/article/pii/S1463500313001662>, 2013.
- Mathis, M., Elizalde, A., Mikolajewicz, U., and Pohlmann, T.: Variability patterns of the general circulation and sea water temperature in the  
665 North Sea, *Progress in Oceanography*, 135, 91 – 112, doi:<http://dx.doi.org/10.1016/j.pocean.2015.04.009>, <http://www.sciencedirect.com/science/article/pii/S0079661115000695>, 2015.
- Meier, H. and Kauker, F.: Sensitivity of the Baltic Sea salinity to the freshwater supply, *CLIMATE RESEARCH*, 24, 231–242, 2003.
- Meier, H. E. M. and Kauker, F.: Modeling decadal variability of the Baltic Sea: 2. Role of freshwater inflow and large-scale atmospheric  
circulation for salinity, *Journal of Geophysical Research*, 108, 3368, doi:10.1029/2003JC001799, 2003.
- 670 Meier, H. E. M., Döscher, R., and Faxén, T.: A multiprocessor coupled ice-ocean model for the Baltic Sea: Application to salt inflow, *J.  
Geophys. Res.*, 108(C8), 3273, doi:10.1029/2000JC000521, 2003.
- Meier, M.: Simulated sea level in past and future climates of the Baltic Sea, *Climate Research*, 27, 59–75, <http://www.int-res.com/abstracts/cr/v27/n1/p59-75>, 2004.
- Meyer, E. M., Pohlmann, T., and Weisse, R.: Thermodynamic variability and change in the North Sea (1948–2007) derived from a multi-  
675 decadal hindcast, *Journal of Marine Systems*, 86, 35 – 44, doi:<http://dx.doi.org/10.1016/j.jmarsys.2011.02.001>, <http://www.sciencedirect.com/science/article/pii/S0924796311000145>, 2011.
- Moksnes, P.-O., Corell, H., Tryman, K., Hordoir, R., and Jonsson, P. R.: Larval behavior and dispersal mechanisms in shore crab larvae  
(*Carcinus maenas*): Local adaptations to different tidal environments?, *Limnology and Oceanography*, 59, 588–602, doi:10.4319/lo.2014.  
59.2.0588, <http://dx.doi.org/10.4319/lo.2014.59.2.0588>, 2014.
- 680 Moll, A.: Regional distribution of primary production simulated by a three dimensional model, *Journal of Marine Systems*, 16, 150–170,  
1998.
- Neumann, T., Eilola, K., Gustafsson, B., Müller-Karulis, B., Kuznetsov, I., Meier, H. E. M., and Savchuk, O. P.: Extremes of Temperature,  
Oxygen and Blooms in the Baltic Sea in a Changing Climate, *AMBIO*, 41, 574–585, doi:10.1007/s13280-012-0321-2, <http://dx.doi.org/10.1007/s13280-012-0321-2>, 2012.
- 685 Nielsen, M. H.: The baroclinic surface currents in the Kattegat, *Journal of Marine Systems*, 55, 97 – 121, doi:<https://doi.org/10.1016/j.jmarsys.2004.08.004>, <http://www.sciencedirect.com/science/article/pii/S0924796304002921>, 2005.
- OSPAR: Quality Status Report 2000 Region II – Greater North Sea, OSPAR Commission for the Protection of the Marine Environment of  
the North-East Atlantic, London, 2000.
- Otto, L., Zimmerman, J., Furnes, G., Mork, M., Saetre, R., and Becker, G.: Review of the physical oceanography of the North Sea,  
690 *Netherlands Journal of Sea Research*, 26, 161 – 238, doi:[http://dx.doi.org/10.1016/0077-7579\(90\)90091-T](http://dx.doi.org/10.1016/0077-7579(90)90091-T), <http://www.sciencedirect.com/science/article/pii/007775799090091T>, 1990.
- Pätsch, J. and Kühn, W.: Nitrogen and carbon cycling in the North Sea and exchange with the North Atlantic—A model study. Part I. Nitrogen  
budget and fluxes, *Continental Shelf Research*, 28, 767 – 787, doi:<http://dx.doi.org/10.1016/j.csr.2007.12.013>, <http://www.sciencedirect.com/science/article/pii/S0278434307003470>, 2008.
- 695 Pätsch, J., Burchard, H., Dieterich, C., Gräwe, U., Gröger, M., Mathis, M., Kapitzka, H., Bersch, M., Moll, A., Pohlmann, T., Su, J., Ho-  
Hagemann, H. T., Schulz, A., Elizalde, A., and Eden, C.: An evaluation of the North Sea circulation in global and regional models relevant  
for ecosystem simulations, *Ocean Modelling*, 116, 70 – 95, 2017.
- Pawlak, J., Laamanen, M., and Andersen, J.: Eutrophication in the Baltic Sea — an integrated thematic assessment of the effects of nutrient  
enrichment in the Baltic Sea region. An executive summary., *Baltic Sea Environment Proceedings*, Helsinki Commission, 2009.
- 700 Pemberton, P., Löptien, U., Hordoir, R., Höglund, A., Schimanke, S., Axell, L., and Haapala, J.: Sea-ice evaluation of NEMO-Nordic 1.0: a  
NEMO-LIM3.6-based ocean-sea-ice model setup for the North Sea and Baltic Sea, *Geoscientific Model Development*, 10, 3105–3123,  
doi:10.5194/gmd-10-3105-2017, <https://www.geosci-model-dev.net/10/3105/2017/>, 2017.
- Pham, T. V., Brauch, J., Dieterich, C., Frueh, B., and Ahrens, B.: New coupled atmosphere-ocean-ice system COSMO-CLM/NEMO:  
assessing air temperature sensitivity over the North and Baltic Seas, *Oceanologia*, 56, 167 – 189, doi:<https://doi.org/10.5697/oc.56-2.167>,  
705 <http://www.sciencedirect.com/science/article/pii/S0078323414500115>, 2014.
- Pohlmann, T.: Calculating the development of the thermal vertical stratification in the North Sea with a three-dimensional baroclinic circula-  
tion model, *Continental Shelf Research*, 16, 163 – 194, doi:[http://dx.doi.org/10.1016/0278-4343\(95\)00018-V](http://dx.doi.org/10.1016/0278-4343(95)00018-V), <http://www.sciencedirect.com/science/article/pii/027843439500018V>, 1996.
- Savchuk, O. P.: Resolving the Baltic Sea into seven subbasins: N and P budgets for 1991–1999, *Journal of Marine Systems*, 56, 1–15, 2005.
- 710 Schimanke, S., Dieterich, C., and Meier, H. E. M.: An algorithm based on sea-level pressure fluctuations to identify major Baltic inflow  
events, *Tellus A*, 66, doi:<http://dx.doi.org/10.3402/tellusa.v66.23452>, <http://www.tellusa.net/index.php/tellusa/article/view/23452>, 2014.
- Schrum, C.: Regionalization of climate change for the North Sea and Baltic Sea, *Climate Research*, 18, 31–37, 2001.





- Schrum, C. and Backhaus, J.: Sensitivity of atmosphere–ocean heat exchange and heat content in the North Sea and the Baltic Sea, *Tellus A*, 51, <http://www.tellusa.net/index.php/tellusa/article/view/13825>, 2011.
- 715 Schrum, C., Hübner, U., Jacob, D., and Podzun, R.: A coupled atmosphere/ice/ocean model for the North Sea and the Baltic Sea, *Climate Dynamics*, 21, 131–151, doi:10.1007/s00382-003-0322-8, <http://dx.doi.org/10.1007/s00382-003-0322-8>, 2003.
- Simpson, J. and Souza, A.: Semidiurnal switching of stratification in the region of freshwater influence of the Rhine, *J. Geophys. Res.*, 100, 7037–7044, 1995.
- Skagseth, Ø., Drinkwater, K. F., and Terrile, E.: Wind- and buoyancy-induced transport of the Norwegian Coastal Current in the Barents Sea, *Journal of Geophysical Research: Oceans*, 116, n/a–n/a, doi:10.1029/2011JC006996, <http://dx.doi.org/10.1029/2011JC006996>, c08007, 2011.
- 720 Skogen, M. D., Drinkwater, K., Hjøllø, S. S., and Schrum, C.: North Sea sensitivity to atmospheric forcing, *Journal of Marine Systems*, 85, 106 – 114, doi:<http://dx.doi.org/10.1016/j.jmarsys.2010.12.008>, <http://www.sciencedirect.com/science/article/pii/S0924796310002241>, 2011.
- 725 Staneva, J., Wahle, K., Günther, H., and Stanev, E.: Coupling of wave and circulation models in coastal ocean predicting systems: a case study for the German Bight, *Ocean Science*, 12, 797–806, doi:10.5194/os-12-797-2016, <https://www.ocean-sci.net/12/797/2016/>, 2016.
- Stigebrandt, A.: *Physical Oceanography of the Baltic Sea*, pp. 19–74, Springer Berlin Heidelberg, Berlin, Heidelberg, doi:10.1007/978-3-662-04453-7\_2, [http://dx.doi.org/10.1007/978-3-662-04453-7\\_2](http://dx.doi.org/10.1007/978-3-662-04453-7_2), 2001.
- Taylor, K. E.: Summarizing multiple aspects of model performance in a single diagram, *Journal of Geophysical Research: Atmospheres*, 106, 7183–7192, 2001.
- 730 Thomas, H., Bozec, Y., de Baar, H. J. W., Elkalay, K., Frankignoulle, M., Schiettecatte, L.-S., Kattner, G., and Borges, A. V.: The carbon budget of the North Sea, *Biogeosciences*, 2, 87–96, doi:10.5194/bg-2-87-2005, <http://www.biogeosciences.net/2/87/2005/>, 2005.
- Tian, T., Boberg, F., Christensen, O., Christensen, J., She, J., and Vihma, T.: Resolved complex coastlines and land-sea contrasts in a high-resolution regional climate model: a comparative study using prescribed and modelled SSTs, *Tellus A*, 65, <http://www.tellusa.net/index.php/tellusa/article/view/19951>, 2013.
- 735 Uppala, S. M., Kallberg, P. W., Simmons, A. J., Andrae, U., and M. Fiorino, V. D. C. B., Gibson, J. K., Haseler, J., Kelly, A. H. G. A., Li, X., Onogi, K., Saarinen, S., Sokka, N., Allan, R. P., Andersson, E., Arpe, K., Balmaseda, M. A., Beljaars, A. C. M., Berg, L. V. D., Bidlot, J. ., Bormann, N., Caires, S., Chevallier, F., Dethof, A., Dragosavac, M., Fisher, M., Fuentes, M., Hagemann, S. ., Holm, E., Hoskins, B. J., Isaksen, I., Janssen, P. A. E. M., Jenne, R., McNally, A. P., Mahfouf, J.-F., Morcrette, J.-J., Rayner, N. A., Saunders, R. W., Simon, P., Sterl, A., Trenberth, K. E., tch, A. U., Vasiljevic, D., Viterbo, P., and Woollen, J.: The ERA-40 re-analysis, *Quarterly Journal of the Royal Meteorological Society*, 131, 2961–3012, doi:10.1256/qj.04.176, 2005.
- 740 Vahtera, E., Conley, D. J., Gustafsson, B. G., Kuosa, H., Pitkänen, H., Savchuk, O. P., Tamminen, T., Viitasalo, M., Voss, M., Wasmund, N., et al.: Internal ecosystem feedbacks enhance nitrogen-fixing cyanobacteria blooms and complicate management in the Baltic Sea, *AMBIO: A journal of the Human Environment*, 36, 186–194, 2007.
- 745 van Haren, H., Howarth, M., Jones, K., and Ezzi, I.: Autumnal reduction of stratification in the northern North Sea and its impact, *Continental Shelf Research*, 23, 177–191, 2003.
- Vancoppenolle, M., Fichefet, T., Goosse, H., Bouillon, S., Madec, G., and Maqueda, M. A. M.: Simulating the mass balance and salinity of Arctic and Antarctic sea ice. I. Model description and validation, *Ocean Modelling*, 27, 33 – 53, doi:<http://dx.doi.org/10.1016/j.ocemod.2008.10.005>, <http://www.sciencedirect.com/science/article/pii/S1463500308001613>, 2009.
- 750 Vichi, M., Masina, S., and Navarra, A.: A generalized model of pelagic biogeochemistry for the global ocean ecosystem. Part II: Numerical simulations, *Journal of Marine Systems*, 64, 110 – 134, doi:<https://doi.org/10.1016/j.jmarsys.2006.03.014>, <http://www.sciencedirect.com/science/article/pii/S0924796306001096>, contributions from *Advances in Marine Ecosystem Modelling Research*, 27-29 June, 2005, Plymouth, UK, 2007.
- Vichi, M., Lovato, T., Lazzari, P., Cossarini, G., Gutierrez Mlot, E., Mattia, G., Masina, S., McKiver, W. J., Pinardi, N., Solidoro, C., Tedesco, L., and Zavatarelli, M.: *The Biogeochemical Flux Model (BFM): Equation Description and User Manual*. BFM version 5.1, BFM Consortium, 2015.
- 755 Wang, S., Dieterich, C., Döscher, R., Höglund, A., Hordoir, R., Meier, H. E. M., Samuelsson, P., and Schimanke, S.: Development and evaluation of a new regional coupled atmosphere–ocean model in the North Sea and Baltic Sea, *Tellus A: Dynamic Meteorology and Oceanography*, 67, 24 284, doi:10.3402/tellusa.v67.24284, 2015.
- 760 Wasmund, N. and Uhlig, S.: Phytoplankton trends in the Baltic Sea, *ICES Journal of Marine Science: Journal du Conseil*, 60, 177–186, doi:10.1016/S1054-3139(02)00280-1, <http://icesjms.oxfordjournals.org/content/60/2/177.abstract>, 2003.
- Westerlund, A. and Tuomi, L.: Vertical temperature dynamics in the Northern Baltic Sea based on 3D modelling and data from shallow-water Argo floats, *Journal of Marine Systems*, 158, 34 – 44, doi:<https://doi.org/10.1016/j.jmarsys.2016.01.006>, <http://www.sciencedirect.com/science/article/pii/S0924796316000191>, 2016.
- 765 Westerlund, A., Tuomi, L., Alenius, P., Miettunen, E., and Vankevich, R. E.: Attributing mean circulation patterns to physical phenomena in the Gulf of Finland, *Oceanologia*, doi:<http://dx.doi.org/10.1016/j.oceano.2017.05.003>, in press, 2017.
- Wieland, K., Waller, U., and Schnack, D.: Development of Baltic cod eggs at different levels of temperature and oxygen content, *Dana*, 10, 163–177, 1994.
- 770 Winther, N. G. and Johannessen, J. A.: North Sea circulation: Atlantic inflow and its destination, *Journal of Geophysical Research: Oceans*, 111, n/a–n/a, doi:10.1029/2005JC003310, <http://dx.doi.org/10.1029/2005JC003310>, c12018, 2006.