

Interactive comment on “A High-resolution Biogeochemical Model (ROMS 3.4 + bio_Fennel) of the East Australian Current System” by Carlos Rocha et al.

Carlos Rocha et al.

c.vieirarocha@student.unsw.edu.au

Received and published: 15 November 2018

We thank the reviewers for their helpful comments and suggestions. We have taken these into careful consideration and changed the manuscript accordingly, which has improved it in content, clarity and presentation. Please find our responses in the attached .pdf document.

We have also attached the updated figures, separately, in an attempt to keep the original resolution.

Please also note the supplement to this comment:

C1

[Printer-friendly version](#)

[Discussion paper](#)



<https://www.geosci-model-dev-discuss.net/gmd-2018-187/gmd-2018-187-AC1-supplement.pdf>

Interactive comment on Geosci. Model Dev. Discuss., <https://doi.org/10.5194/gmd-2018-187>, 2018.

GMDD

Interactive
comment

Printer-friendly version

Discussion paper



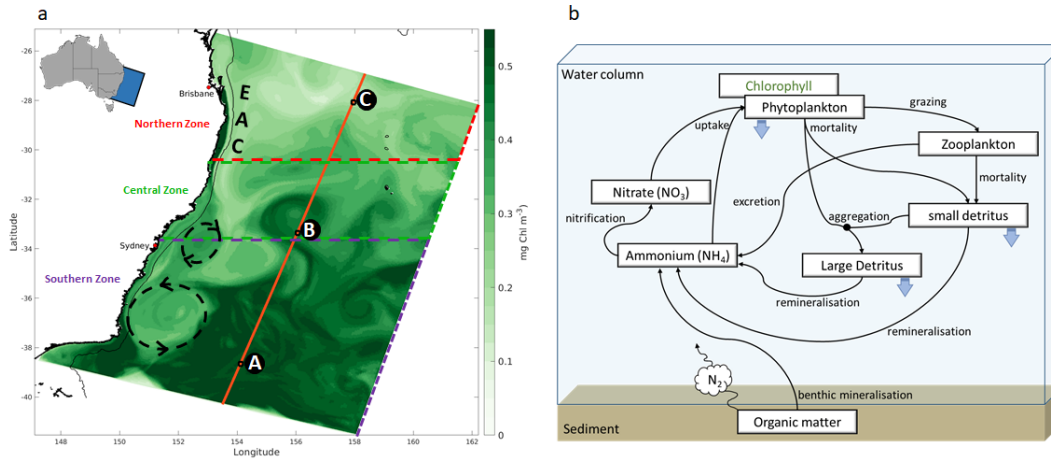


Fig. 1. Updated Fig1

Printer-friendly version

Discussion paper



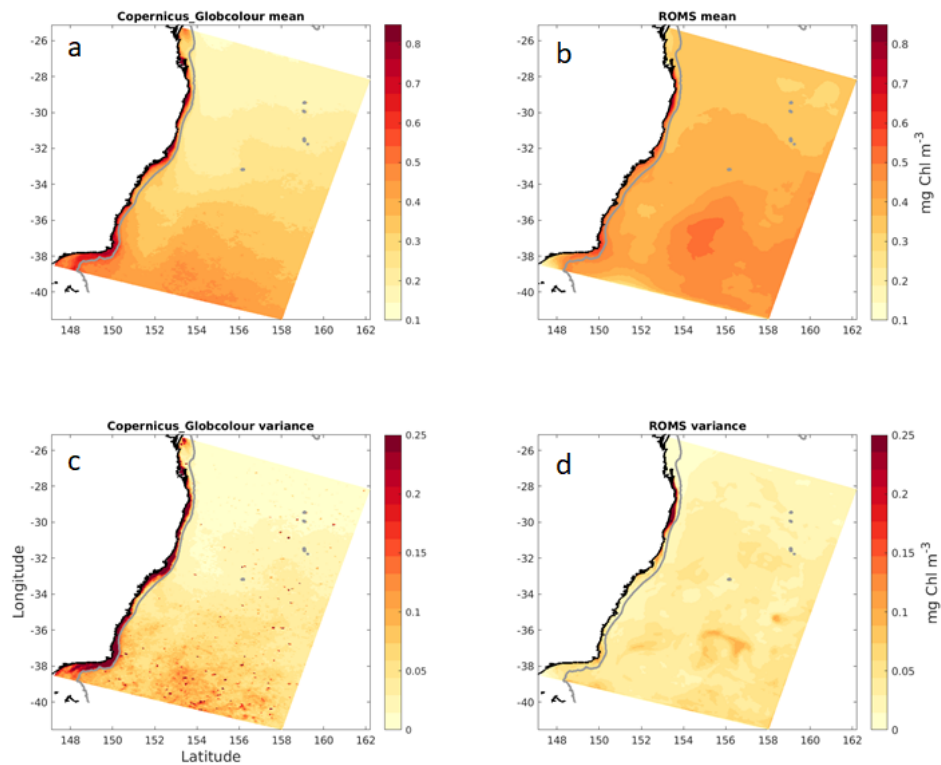


Fig. 2. Updated Fig3

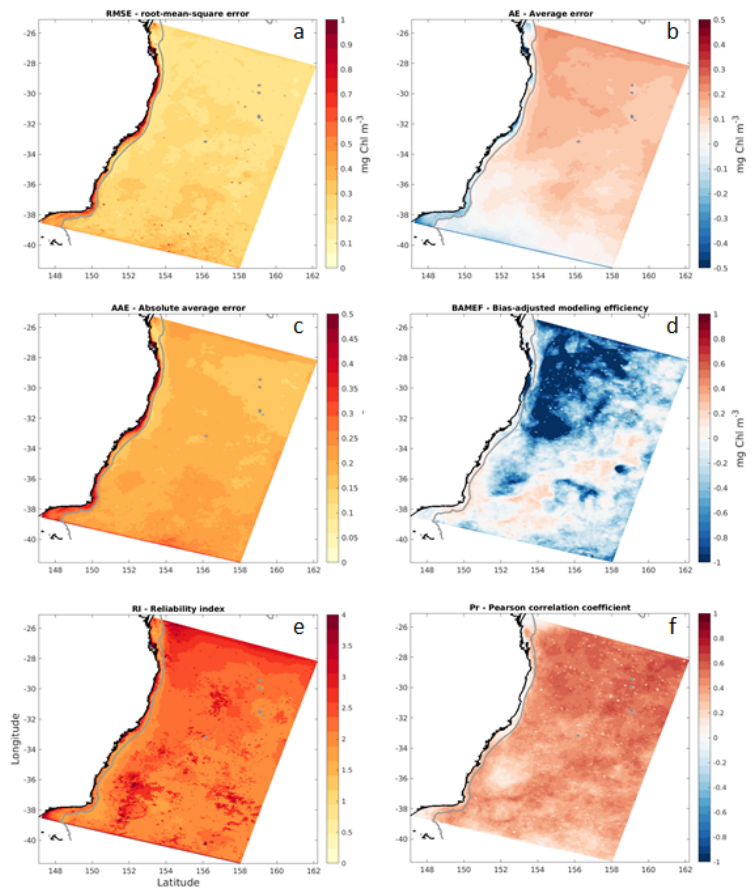


Fig. 3. Updated Fig5

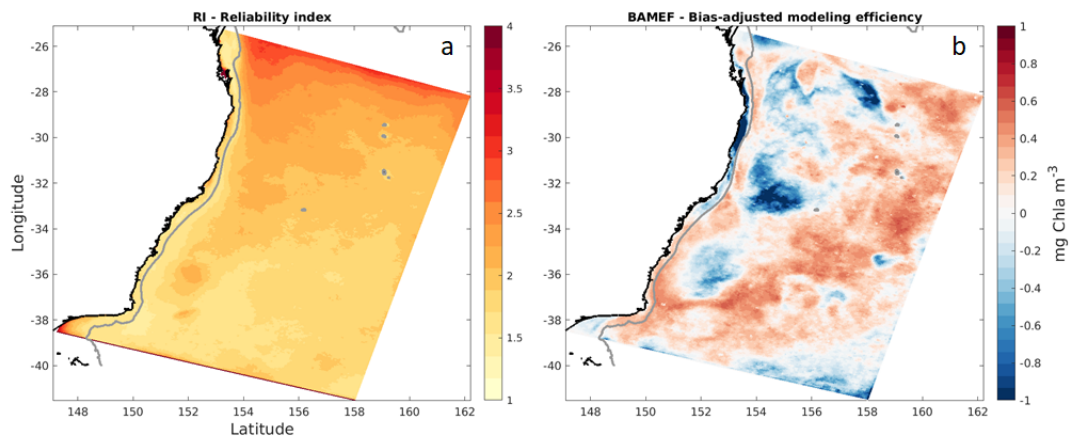


Fig. 4. Updated Fig6

Printer-friendly version

Discussion paper



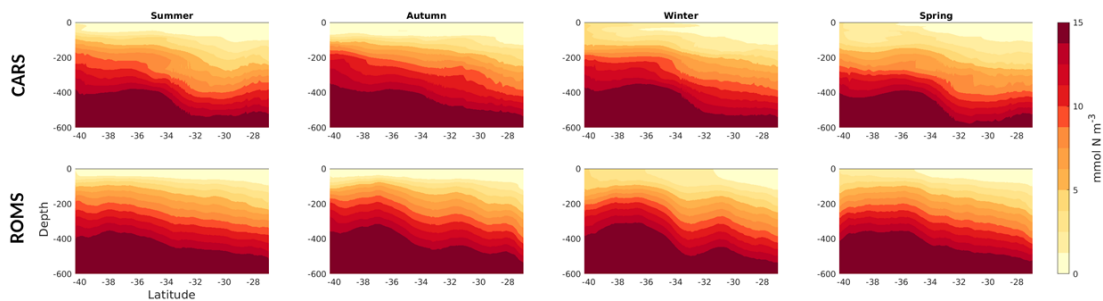


Fig. 5. Updated Fig8

[Printer-friendly version](#)

[Discussion paper](#)



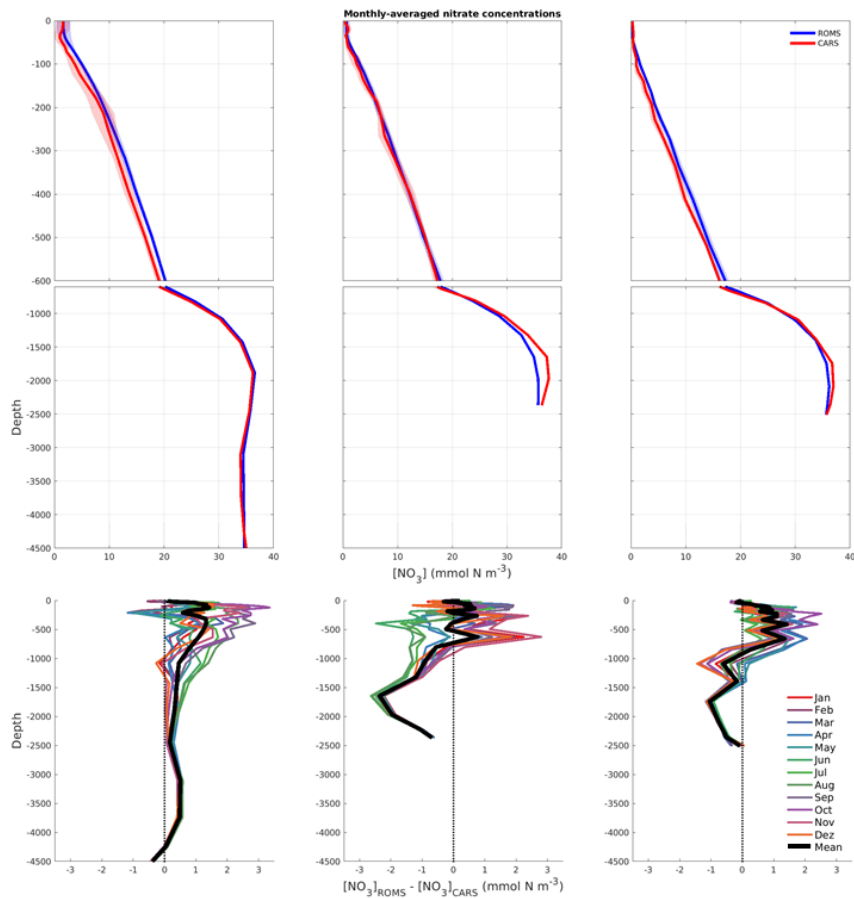


Fig. 6. Updated Fig9

Printer-friendly version

Discussion paper



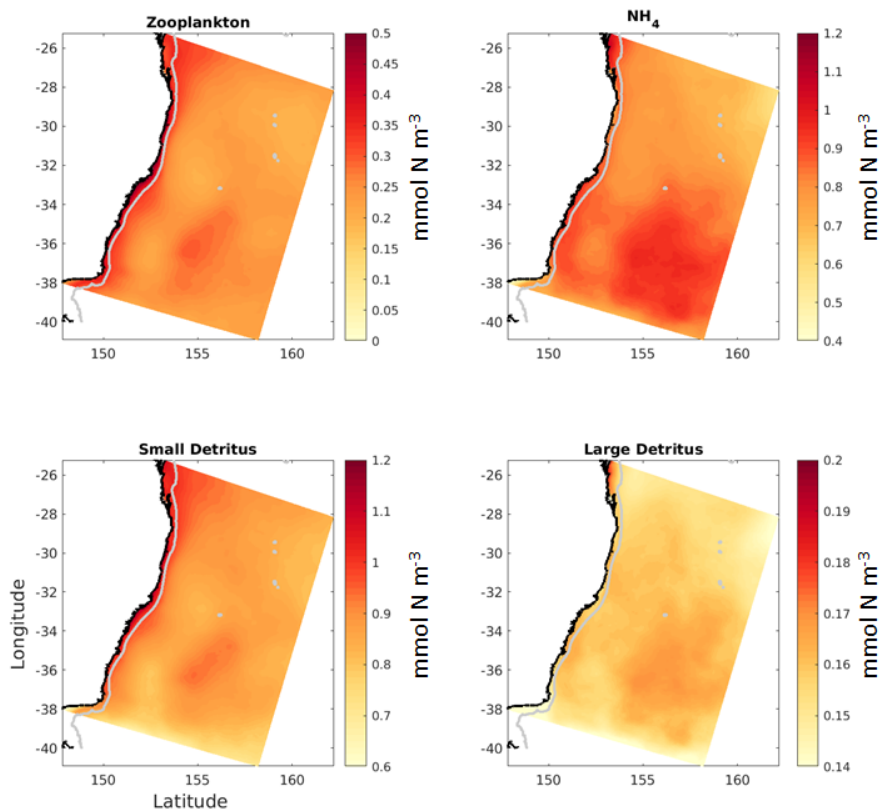


Fig. 7. Fig S1

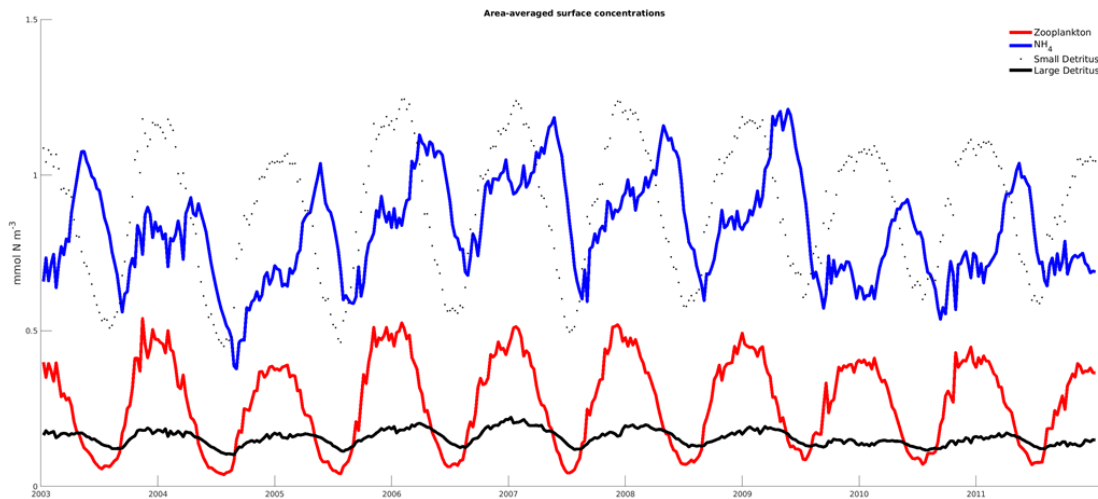


Fig. 8. Fig S2

[Printer-friendly version](#)[Discussion paper](#)