

Interactive comment on “A High-resolution Biogeochemical Model (ROMS 3.4 + bio_Fennel) of the East Australian Current System” by Carlos Rocha et al.

Carlos Rocha et al.

c.vieirarocha@student.unsw.edu.au

Received and published: 15 November 2018

We thank the reviewers for their helpful comments and suggestions. We have taken these into careful consideration and changed the manuscript accordingly, which has improved it in content, clarity and presentation. Please find our responses in the attached .pdf document.

We have also attached the updated figures, separately, in an attempt to keep the original resolution.

Please also note the supplement to this comment:

C1

<https://www.geosci-model-dev-discuss.net/gmd-2018-187/gmd-2018-187-AC1-supplement.pdf>

Interactive comment on Geosci. Model Dev. Discuss., <https://doi.org/10.5194/gmd-2018-187>, 2018.

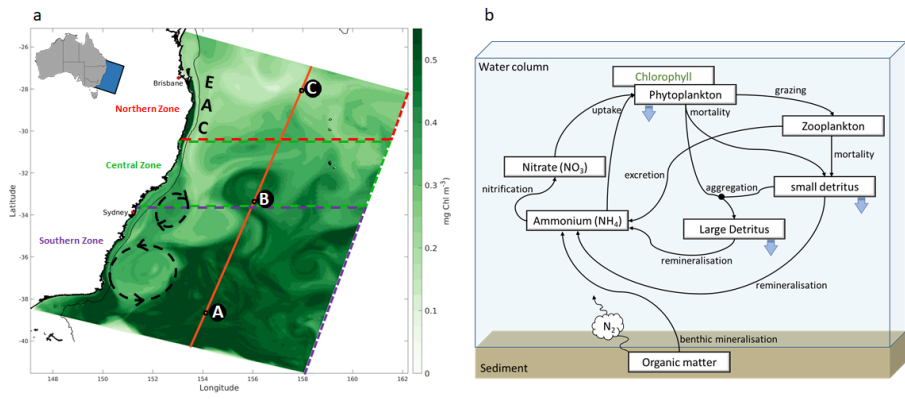


Fig. 1. Updated Fig1

C3

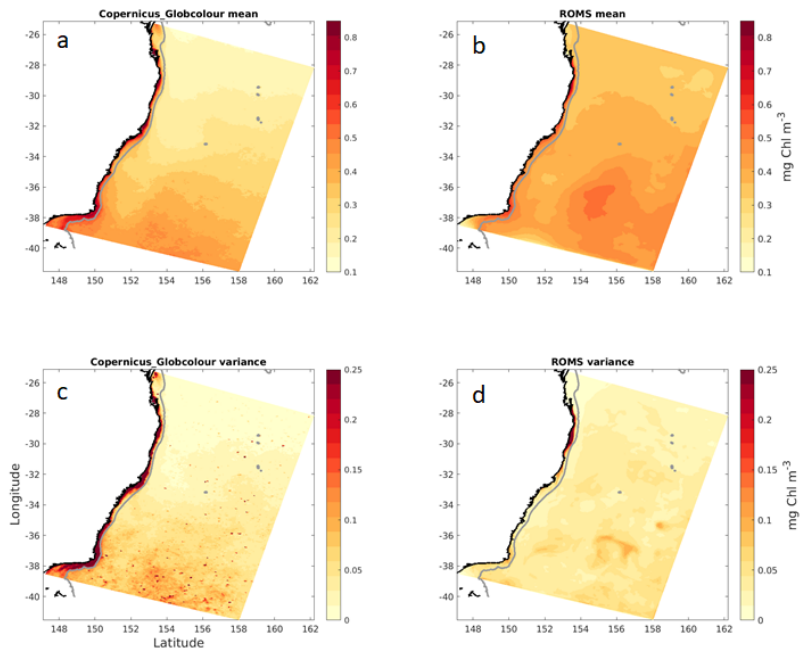


Fig. 2. Updated Fig3

C4

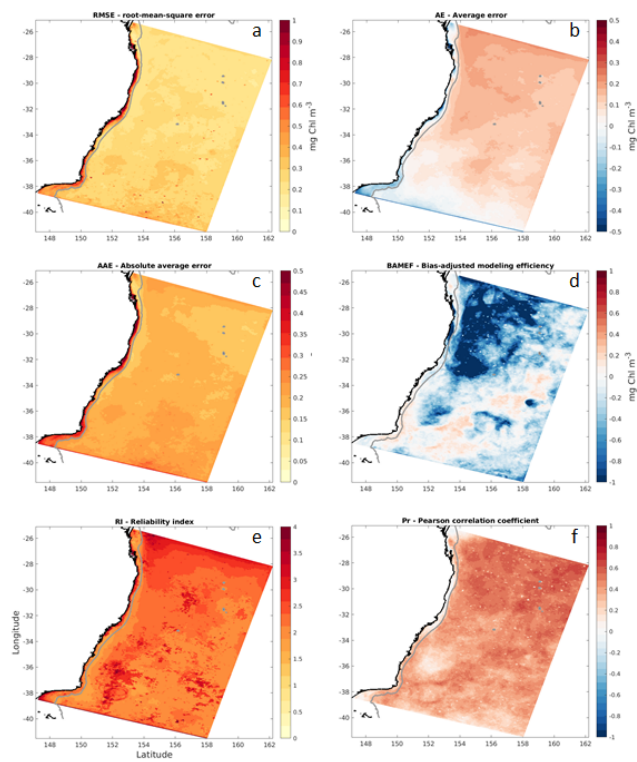


Fig. 3. Updated Fig5

C5

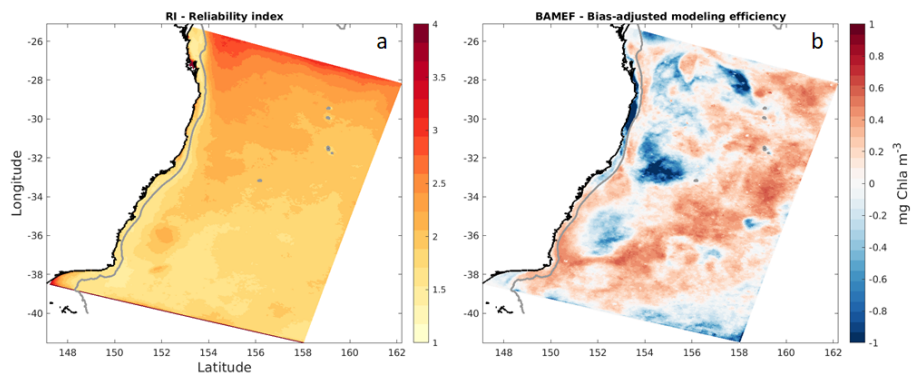


Fig. 4. Updated Fig6

C6

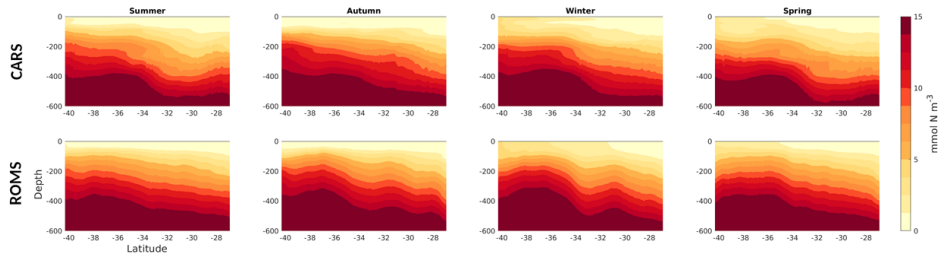


Fig. 5. Updated Fig8

C7

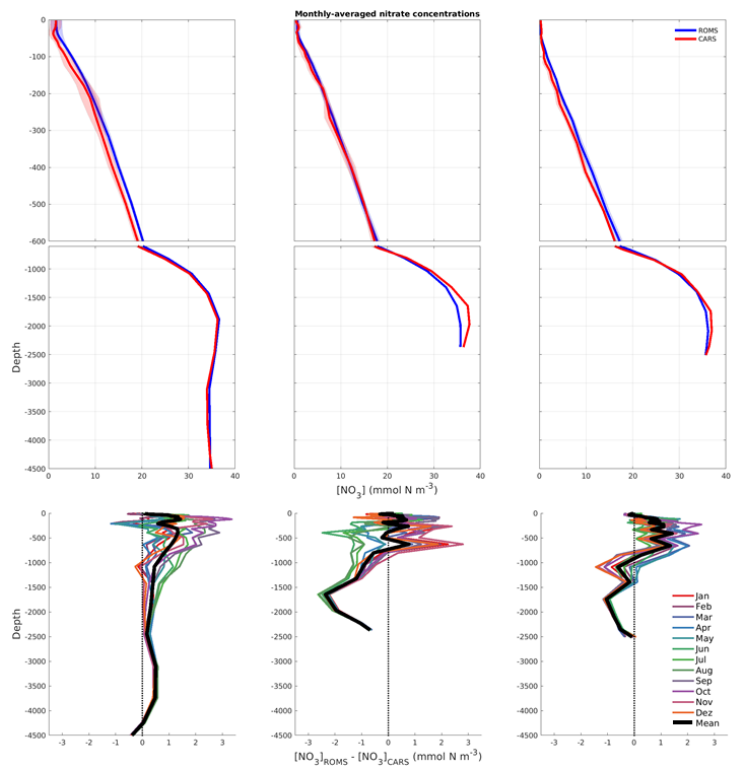


Fig. 6. Updated Fig9

C8

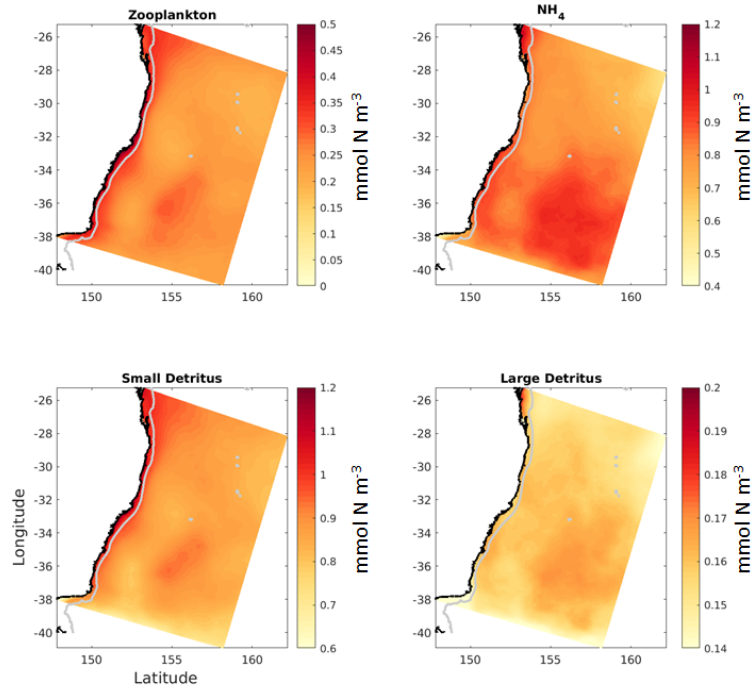


Fig. 7. Fig S1

C9

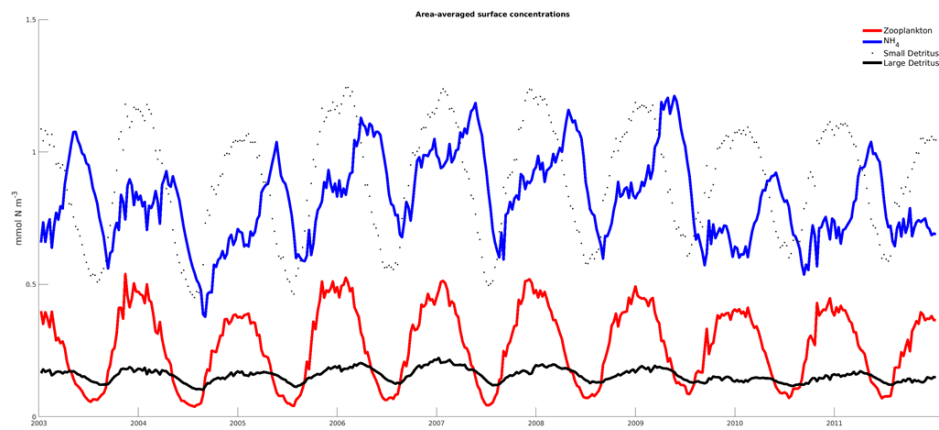


Fig. 8. Fig S2

C10