

Response to reviewer 1

We would like to thank reviewer 1 for a very thoughtful and detailed review of our manuscript that helped to improve the paper. In the following, we address all the points raised in the review (denoted by italic letters). Our responses are highlighted in blue. The references to the attached manuscript as well as substantial changes in the manuscript are highlighted in red.

General comments:

1. *Title: The term “parametrisation of convection” suggests, that you describe a more or less comprehensive convection parametrisation with up- and downdrafts and compensation motion. But what you actually show (you mentioned it in the abstract) is “convective uplift and mixing”. Please, modify the title accordingly.*
Yes, we completely agree, so we changed our title following the recommendation.
2. *The citation of other publications describing Lagrangian models, which already use Lagrangian convection is missing. Please, cite other work introducing Lagrangian convection or convective mixing, e.g. Collins et. al. (2002) Q.J.R.M., Erukhimova and Bowman (2006), J. Geophys. Res., Forster et al. (2007), J. Appl. Meteorol. Clim.*
All these references are now included. Thanks a lot for these important citations.
P4, L10-14
3. *I would suggest to select the word “simulations” instead of “runs”.*
...was done
4. *Vaisala or Väisälä? Decide for one notation.*
We changed everywhere to Vaisala.

Specific comments:

1. *Page 2, line 18: Ri_c : omit the subscript here.*
...was done
2. *Page 2, line 28: “considered” instead of “detected”*
...was done
3. *Page 2, line 30: Instead of “roughly” just say “above”*
...was done
4. *Page 2, line 32: heuristic (not heuristic)*
...was done
5. *Page 3, line 34: reasonable*
...was done
6. *Page 3, line 35: Please specify here, at what height your lowest model boundary is.*
...was done: (thickness: 1.1-1.3 km)

7. *From your Figures I would suggest that it is the surface layer?*
 We explain now all the details of the definition of the lowest model layer in the rewritten section 4.1
 P13, L16-19, P14, L4-8
8. *Page 3, line 38: upward*
 ...was done
9. *Page 3, line 7: Please explain: is there a reason why you compare a one year mean of 2007 (CLaMS) with a WACCM climatology over 1955-2099? Is the WACCM simulation of AMIP type or a time-slice experiment?*
 The WACCM climatology over 1955-2099 is published in Abalos 2017, see their Fig. 1. The year-to-year variability in the WACCM simulation is much smaller if compared with the deviation of CLaMS, so it is enough to compare CLaMS with the climatology. The respective text was included
 P4, L2-4
10. *Page 4, line 5-7: What did you wanted to say with this sentence?*
 This paragraph is reformulated now
 P4, L10-16
11. *Page 5, line 3: The point at the end of the sentence is missing.*
 ...was included
12. *Page 5, line 6: "condition"*
 ...was included
13. *Page 6, line 17: In Table 1 you list 2 reference simulations. Please use the same abbreviation in the text. Is REF or REF-6h meant by the reference simulation?*
 We unified all abbreviations which are listed in Table 1 and use only these abbreviations both in text and in the figures
14. *Page 6, line 22: You refer to a period between 2005-2008 of the reference simulation. Please explain, how do you calculate Age-of-Air from such a short simulation? I would expect that at least a 20-year model simulation had to be performed to calculate Age- of-Air.*
 Both reviewers asked for more details describing the details of our runs. For this we put these informations into our revised text: see first paragraphs in section 3.1 and 4.1
 P6 L26-30, P13, L9-15
15. *Page 7, line 11: Vertical boundaries of layers on the left side? What do the tics on the right side of Figure 7 mean?*
 ...it should be "on the right side". We reformulated our text.
16. *Page 11, line 12: Instead of "validate" please say "evaluate".*
 ...was done
17. *Page 12, line 2: You refer to a relatively short period of the control simulation (2005- 2008). Please explain, how you calculate Age-of-Air from such a short simulation.(Figure 7 and 11)*
 See above our answer to the specific comment 14

18. Page 13, Fig.7: Please use a color bar, which better shows the differences of Age-of-Air in the troposphere, because your modifications in CLaMS have only less influence on the stratospheric distribution of Age-of-Air. Moreover, the influence of the reference pressure on the results in the troposphere should be better visible for a discussion. Alternatively, you might also present the difference of the (control-300hPa) minus (control-700hPa) simulation. In Table 1 you list the simulations TROP_MIX and UNRES_CONV, representing simulations with either tropospheric mixing or convective uplift. Could you please show the result of Age-of-Air for these simulations, also? This would provide more information on the spacial impact of different mixing attempts on the troposphere.

We changed the color bar in Fig. 7 and we completed Fig. 11 following the recommendation. In this way, the reader can see step by step (Fig. 11b to f), how our changes of transport can be seen in the AoA distribution.

P20 L8 - P21 L17

19. Page 14, Figure 8: Please describe the simulations you analyzed in the Figure caption. 8a-d. 8cd) seems to be the reference simulation, but it is not clear, if it is REF or REF- 6h.

The notation was completed following the definition in Table 1

20. Page 15, line 22-25: Please explain, why it is plausible, that you find a faster upward propagation in the CLaMS control simulations compared to REF. Why is the inter- hemispheric transport weaker in the sigma=0.7 simulation?

We can only speculate that in the sigma=0.7 simulations the diabatic transport is less noisy than the more kinematic transport in the sigma=0.3 case. We slightly reformulated our text but avoid any type of speculations (following the recommendation of the reviewer 2)

21. Page 16, Figure 9: The date in the Figure caption should be 25.9.

...was changed

22. Page 19, Figure 11: 11c) shows a simulation not described in Table 1. I found 3 simulations with the same name (FULL_EXT), but with different set-ups. Are 11b+c) simulations with the reference pressure at 300hPa or 700hPa?

The notation was corrected

23. Page 18, 10-10: Please use the abbreviations for the simulations TROP_MIX and UNRES_CONV also in the text. So far they can only be found in Figure 10 and Table 1.

...was done

24. Page 18, line 5: “Although there” instead of “Also there”?

...was changed

25. Page 18, line 1-5: If you mention simulations, please refer to the notations in Table 1. All control simulations should be described in section 4.1 and summarized in Table 1.

was done

26. Page 20, line 3-5: The last part of the sentence “especially the effects on the stratospheric water vapor” makes no sense.

The second part of the sentence was removed.

27. *Page 20, line 26: temperature*
...was done
28. *Page 21, Figure caption A1: removed*
..was done
29. *Page 24, line 7: air parcel*
was done

Response to reviewer 2

We would like to thank reviewer 2 for a very thoughtful and detailed review of our manuscript that helped to improve the paper. In the following, we address all the points raised in the review (denoted by italic letters). Our responses are highlighted in blue. The references to the attached manuscript as well as substantial changes in the manuscript are highlighted in red.

General comments:

1. *Mass conservation in CLaMS: For this topic, the focus is on the new parameterisation of unresolved convection, because the new tropospheric mixing scheme does not change the redistribution of mass compared to the actual reference version of CLaMS. Although, it is relevant to understand what the adaptive regridding is doing in terms of mass conservation. In this context, I highly appreciate the comments by Ingo Wohltmann and the conclusion by the authors to his comments: “We conclude that we certainly have to improve the explanation of our procedure in the revised version of our paper”. My suggestion would be to use the mass flux residuum of ERA-Interim as shown in Fig.1 in the answer to Ingo Wohltmann’s comments motivating their heuristic approach (in section 1 or 2). Additionally, it would be very interesting to see also, how the mass flux residuum looks for the CLaMS reference simulations with standard adaptive regridding and for the control simulations with additional convective uplift (in section 4). The latter should show that the deficit in the range of 700 to 200 hPa has been reduced significantly.*

We completely agree with this criticism. See for this the revised section 3.3 (first two and last three paragraphs, Figure 4) and appendix C. We also thank Ingo Wohltmann in the acknowledgments for his contribution.

P9 L2-13, P10 L13 - P12 L33, P26 L12-25

2. *Validation of UTLS transport in CLaMS with in-situ CO₂ observations (CONTRAIL) CO₂ and especially the propagation of its seasonal cycle from the PBL into the UTLS is highly useful for model transport validation. Here, the authors use as benchmarks the in-situ CO₂ measurements by CONTRAIL aboard of passenger aircraft and the assimilated CO₂ data set provided by CarbonTracker. The latter is mainly constraint by surface measurements (see Table 1 in ...). Therefore, the CONTRAIL data are the reference for CO₂ in the UTLS and the CarbonTracker data are the reference for the PBL.*

My criticism is the way the CONTRAIL data are used for the evaluation in section 4.3. The CONTRAIL CO₂ measurements are zonally and monthly averaged between 2005 and 2008 and interpolated at a latitude-altitude grid with 10 by 1 km resolution and extending between 20S to 60N and 5.5 to 12.5 km. In the extratropics, this approach is highly problematic, because the mean (or the interpolated) CO₂ mixing ratios in the grid boxes will be strongly affected by (the irregular and sparse) sampling, especially above 7-8 km, because the individual probed air mass could be tropospheric or stratospheric. This matters for the months when cross-tropopause gradients are large, i.e. February to May in the NH. Also, the seasonal cycle of CO₂ is quite different below and above the extratropical tropopause. My suggestion is to filter out the stratospheric CONTRAIL CO₂ data to avoid this issue. This would not weaken the evaluation, because the CO₂ seasonal cycle in the free and upper

troposphere is the relevant diagnostic for the introduced new tropospheric transport scheme in CLaMS. Also the representation of the CO₂ seasonal cycle in the tropical, subtropical (shown exemplarily) and extratropical free and upper troposphere should be discussed in a bit more detail. It is a known issue that modeled tracer transport from the PBL into the extratropical UT is often too weak, especially during summer.

Here, we also agree but we are not able to do all these calculations in the revised version because this is beyond the scope of this paper. We will certainly follow these ideas in our next paper. In the meantime few comments:

- (a) In Figure 10a and b, we added the standard deviation for all CONTRAIL gridded points (dot black points with vertical black lines). In this way, the variability of the gridded data can be seen. A little surprising, the variability at the lower level (5.5 km) is higher than at the higher level (10.5) where a disadvantage of our simple gridding can be expected where tropospheric *and* stratospheric values may contribute.
- (b) We also completely agree that tropopause-based coordinates would be a much better approach but, in the moment, we cannot complete this task in due time. On the other hand, the intention of this paper is to present the extension of tropospheric transport in CLaMS and of the way how it can be validated at “a global scale” by using the upward propagation of the CO₂ seasonal cycle. Thus, we would like to shift a more detailed validation of all relevant critical parameters to our next paper.
- (c) We also agree, that a comparison of the seasonal cycle of CO₂ with the model should be done for different regions of the atmosphere (tropics, subtropics, extratropics, polar regions) This is also something that we will complete in the future. Note also a poor coverage of CONTRAIL observations in the tropics.

Specific comments:

1. p.2, l.30: *I think you mean here “...above the level of 300 hPa...” and not “...about 300 hPa...”*
was changed
2. p.2, l.31-33: *Why you use only the nominator - the buoyant production of turbulence - of the gradient Richardson number Ri to parametrise tropospheric instabilities and not Ri itself?*
The standard mixing scheme is driven by the (isentropic) flow deformations and is always active. In particular, in the troposphere, a combination of both the deformation-driven part and of the new part driven by the vertical instabilities is considered. To get more freedom in our parameterisation, we do not combine both effects in only one Richardson number Ri but but keep both parts independent. This is also motivated by the fact that the use of a predefined gradient Richardson number is strongly related to the resolved spatial scales. To keep it open, we use both parts in an independent way. Thus, gradient Richardson number Ri is a heuristic idea which only guides us how to proceed.
3. p.3, l.34-38: *Just for curiosity, would the actual CLaMS transport scheme accumulate tracer in the PBL, if one uses emissions instead of prescribed PBL mixing ratios?*
We've never tried it. CLaMS is a CTM with prescribed boundary conditions in terms of

prescribed mixing ratios. If fluxes are prescribed it is not clear if such fluxes are consistent with the vertical velocities derived from the reanalysis. Nevertheless, for simple mass conservation experiments, we plan to start with such a setup of the model in the future.

4. p.4, l.5-7: *“Although we are aware of numerous convective schemes (e.g. Tiedtke (1989); Emanuel (1991)), our approach mainly intends to cover the range of possible variability due to unresolved tropospheric transport”*. It is quite unclear to me what is meant here, see also point 1.) in the general comments.

We completely reformulated this paragraph

P4 L10-16

5. p.5, Figure 2: *It seems that the TIL in the extratropics is (very) weakly pronounced compared to e.g. Birner et al. (2006). Is there an explanation? Birner, T., D. Sankey, and T. G. Shepherd (2006), The tropopause inversion layer in models and analyses, Geophys. Res. Lett., 33(14), doi:Doi 10.1029/2006gl026549.*

In the revised version, we explained this point more carefully

P6 3-6

6. p.7, l.23-26: *How the free parameter N_c , the critical limit for static stability, below which enhanced tropospheric mixing is triggered in the new parameterisation, is estimated? Which N_c value has been used for the CLaMS control simulations? How sensitive are the results to the choice of N_c ?*

N_c^2 is set 1.10^{-4} ($1/s^2$). This value is now explicitly given in caption of Table 1. Furthermore, we decided to shift all sensitivity studies to the next paper (see our concluding remarks in the last section of the paper). There are also other parameters which have to be analysed. For this we would like to use tropopause-based coordinated and maybe more experimental data

7. p.8, l.1-2: *I understand, that it is technically easier and better comparable to the previous CLaMS version, if the step of the additional tropospheric mixing is executed after the adaptive regridding, but does this also make sense from a physical point of view? Would the result be different with the inverse transport operator: First step: mixing due to vertical instability and second step: mixing due to strong horizontal wind shear (deformation)?*

Yes, we agree that there is this type of freedom which should be analysed in the future. This is also related to our answer to specific comment 2.

8. p.9, Figure 4: *A similar question: Why you implemented the vertical displacement in your new parameterisation for unresolved deep convection after the horizontal displacement? Is this realistic for deep convection?*

We think that this is a misunderstanding of Fig. 4b. For 6h trajectories, the convective uplift of trajectory may happen either at the beginning or at the end of the trajectory step. We tried now to make it more clear in the caption of Fig. 4b as well as in the main text.

9. p.9, l.11: *Same question as for N_c : How sensitive are the results to the choice of the criteria $N_m^2 < 0$ triggering convective events in the parameterisation?*

See our answer to your specific comment 6

10. p.11, l.1-2: “It means that the mixing procedure is able to adjust a certain increase or decrease in the number of air parcels, but this amount should be below $\pm 10\%$ ”. This has to be better explained, see point 1.) in the general comments.

This is related to our default mixing scheme, in particular, how often we run it to “put together” all the air parcels which are too close to each other (and it happens, if too many air parcels are lifted by convection). This also a point, which we would like to handle more carefully in the future

11. p.11, l.1-2: Again, how sensitive are the results of the control simulations to the choice of criteria that only $\theta > 35\text{ K}$ triggers convection? Would it not be better to use instead of a fix value the criteria $\theta + \Delta\theta > \text{upper level of the PBL}$? This would mean that only convective events are considered that lift the air parcel out of the PBL, where the CO₂ mixing ratios of the air parcel will be overwritten by the prescribed value in the next time step anyway.

In our convection updrafts we consider only air parcels within the lowest model layer which approximates the PBL. The lowest layer (i.e. the PBL) is then overwritten by the prescribed boundary condition. Thus, in these two points (only air parcels from the PBL are lifted and CO₂ in the PBL is always prescribed) we exactly follow the recommendations. Concerning the sensitivity to the used parameter, we would like to do in the future, in particular in connection with the correction of the mass conservation as we discuss it in our completely revised section 3.3

P9 L1 - 13, P10 L27 - P12 L33

12. p.12, l.17-20: “It should be emphasized...” What would this mean for simulations using emission fluxes rather than prescribed surface mixing ratios (see also my question p.3, l.34-38 above)?

See our answer of your specific comment 3

13. p.13, Table 1: The critical values of the dry and moist Brunt Vaisala frequency used for the simulations should be added here. Also, it would be easier to use different names for both simulations FULL_EXT (e.g. FULL_EXT_0.3 and _0.7).

Here, we completely followed your recommendations

14. p.14, Figure 8: Please specify the simulations: Top: FULL_EXT_0.3 or FULL_EXT_0.7? Bottom: REF or REF-6h?

was done

15. p.15, l.4: Boucher et al. (2009) is not really a good citation for stratospheric CO₂ and methane oxidation. The chemistry of methane in the middle atmosphere was to my knowledge first considered by Bates and Nicolet (1950). Early measurements of stratospheric CO₂ and CH₄ profiles date back to the 1960s and 70s, e.g. by Ehhalt. Bates, R. D., and M. Nicolet (1950), Atmospheric Hydrogen, Publications of the Astronomical Society of the Pacific, 62(365), 106. Ehhalt, D.H., The atmospheric cycle of methane. Tellus: 26, 58, 1974. Ehhalt, D.H., L.E. Heidt, R.H. Lueb, and E.A. Martell, Concentrations of CH₄, CO, CO₂, H₂, H₂O and N₂O in the upper stratosphere. J Atmos Sci: 32, 163, 1975.

Thanks a lot for these citations, so we included 2 of them

16. *p.15, l.16: How the reference simulations has been initialized on 1.1.2000? With an empty atmospheric domain - no CO2 ? If so, the spin-up of only 5 years might be a bit too short for UTLS CO2 analysis.*
Both reviewers asked for more details describing the details of our runs. For this we put this information into our revised text: see first paragraphs in section 3.1 and 4.1
17. *p.15, l.16: "... all other control runs were started using the output of the reference run for the initial distribution." This is a bit unclear to me. Does this mean that the control runs have started with the output of the reference run from 31.12.2004? If so, the results of the control runs for 2005, at least for the LS, is influenced by the prescribed distribution of the reference simulation. In the UT, this should only influence the first months of 2015, but still, this is not optimal for the comparison.*
see the above answer
18. *p.15, l.25: "...on, the former being in better agreement with CarbonTracker". I think, this statement is a bit misleading, because CO2 assimilated from CarbonTracker data set is not the reference for the middle troposphere or UTLS, see also general comment point 2.).*
Yes, we agree, so we removed the second part of the sentence.
19. *p.17, Figure 10: Should be improved, see general comment point 2.).*
Was partially done by including the standard deviations. See also our answer to your main second point.
20. *p.17, Figure 10, Legend: According to Table 1, the name of the data set in the legend should be TROP_MIX and not VERT_MIX.*
We adjusted all abbreviations following the recommendation
21. *p.17, Figure 10, Caption: The altitude range in (b) is 10.5 km and not 15.5 km.*
was changed
22. *p.17, l.3-5: For the extratropics the gridding of the aircraft data has to be done in tropopause related coordinates or has to be filtered for tropospheric data, see general comment point 2.). Otherwise the averages are strongly biased by the sampling statistic of tropospheric and stratospheric air in the individual bins.*
See also our answer to your main second point.
23. *p.17, l.5-6: Has CLaMS simulations been sampled along the flight track?*
No, we use the same type of climatologies as described in Diallo et al., ACP, 2017. See also our answer to your main second point.
24. *Sec.4.4, p.18, l.10-11: This should be simply demonstrated by comparing REF vs. REF-6h.*
was done
25. *Sec.4.4, p.18, l.16-18: This might be true, but I cannot really see the differences in AoA between Fig 11b and c. To demonstrate this, a difference plot would be necessary.*
Figure 11 was completely changed, so we show now the differences of AoA and not the absolute values. In this way, the reader can see step by step (Fig. 11b to f), how our changes of tropospheric transport can be seen in the AoA distribution. The related subsection 4.4 was

completely rewritten.
P20 L8 - P21 L17

Tropospheric mixing and parametrization of **unresolved convective updrafts** as implemented into the Chemical Lagrangian Model of the Stratosphere (CLaMS)

Paul Konopka, Mengchu Tao, Felix Ploeger, Mohamadou Diallo, and Martin Riese

Forschungszentrum Jülich, (IEK-7), Germany

Correspondence to: Paul Konopka (p.konopka@fz-juelich.de)

Abstract. Inaccurate representation of mixing in chemistry transport models, mainly suffering from an excessive numerical diffusion, strongly influences the quantitative estimates of the stratosphere-troposphere exchange (STE). The Lagrangian view of transport offers an alternative to exploit the numerical diffusion for parametrization of the physical mixing. Here, we follow this concept and discuss how to extend the representation of tropospheric transport in the Chemical Lagrangian Model of the Stratosphere (CLaMS).

Although the current transport scheme in CLaMS shows good ability of representing transport of tracers in the stably stratified stratosphere (Pommrich et al. (2014) and the references therein), there are deficiencies in representation of the effects of convective uplift and mixing due to weak vertical stability in the troposphere. We show how the CLaMS transport scheme was modified by including additional tropospheric mixing and vertical transport due to unresolved convective updrafts by parametrizing these processes in terms of the dry and moist Brunt-Vaisala frequency, respectively. The regions with enhanced convective updrafts in the novel CLaMS simulation covering the 2005-08 period coincide with regions of enhanced convection as diagnosed from the satellite observations of the Outgoing Longwave Radiation (OLR).

We analyze how well this approach improves the CLaMS representation of CO₂ in the upper troposphere and lower stratosphere, in particular the propagation of the CO₂ seasonal cycle from the Planetary Boundary Layer (PBL) into the lower stratosphere. The CO₂ values in the PBL are specified by the CarbonTracker data set (version CT2013B) and the Comprehensive Observation Network for TRace gases by AirLiner (CONTRAIL) observations are used to validate the model. The proposed extension of tropospheric transport increases **the influence of the PBL in the middle and upper troposphere and at the same time impacts the STE**. The effect on mean age away from the troposphere in the deep stratosphere is weak.

1 Introduction

Modeling of transport from a Lagrangian perspective has gained increasing popularity in the last few decades not only within the atmospheric community. The chance to avoid, or at least to minimize, the numerical diffusion ever present in Eulerian numerical schemes is the strongest motivation for the Lagrangian formulation of transport. Despite the obvious advantage of the Lagrangian view separating mixing from the advective part of transport, only very few Lagrangian chemical transport

models (CTMs) with explicit mixing exist so far (e.g. Collins et al., 1997; Fairlie et al., 1999; Reithmeier and Sausen, 2002; McKenna et al., 2002b; Konopka et al., 2007; Wohltmann and Rex, 2009; Pugh et al., 2012).

In this paper, the 3D version of the Chemical Lagrangian Model of the Stratosphere (CLaMS) will be used (McKenna et al., 2002b, a; Konopka et al., 2004). The novel approach of CLaMS is its parametrization of atmospheric mixing, especially in the stratosphere where vertical mixing is extremely weak due to a strong vertical stability. Whereas the common approach is to minimize the numerical diffusion ever present in the modeling of transport, CLaMS is a first attempt to apply this “undesirable disturbing effect” to parametrize the “true” physical mixing. This idea is realized by using some scaling properties of numerical diffusion, which are the same as of the atmospheric diffusivity (Konopka et al., 2007, 2012; Pommrich et al., 2014) and by applying numerical regridding only to the strongly deformed parts of the Lagrangian grid where physical mixing is expected anyway (McKenna et al., 2002b; Konopka et al., 2004). This novel parametrization of mixing was included into the well-known pure Lagrangian, i.e., trajectory-based representation of transport (e.g. Stohl et al., 2005; Legras et al., 2005; Bowman et al., 2007; Wernli and Davies, 1997).

However, in the current version of CLaMS (Pommrich et al., 2014) only deformations within quasi-isentropic layers driven by horizontal strain and vertical shear rates are taken into account. This is certainly a good approximation in a stably stratified stratosphere suppressing vertical mixing but not in the troposphere where vertical mixing is expected. To extend the CLaMS idea of “sufficiently strong”, almost isentropic deformations triggering mixing to the troposphere we use the concept of atmospheric stability. The flow is called unstable if a small perturbation at initial time will exponentially grow during the course of the evolution of the flow.

One of the widely used parameters quantifying instabilities is the gradient Richardson number, Ri describing the onset of instabilities driven by wind shear and/or buoyancy (e.g. Turner, 1973; Stull, 1988). Ri is defined as $Ri = N^2 / [(du/dz)^2 + (dv/dz)^2]$ with du/dz , dv/dz denoting the vertical shear of the horizontal wind components. N is the (dry) Brunt-Vaisala frequency quantifying buoyancy-driven turbulence in terms of the potential temperature lapse rate, i.e. $N^2 = (g/\theta)d\theta/dz$ (θ - potential temperature, g - gravity of Earth and z geometric altitude). The flow becomes dynamically unstable or even turbulent when $Ri < Ri_c$ (Ri_c critical value of Ri). This occurs either when the wind shear is strong enough to outweigh any stabilizing buoyant forces (denominator in the definition of Ri is large), or when the dry or, more general, moist environment is statically unstable (numerator in the definition of Ri is small or even negative because the lapse rate $d\theta/dz$ is small or even negative). The scale-dependent value of Ri_c , is about 0.25 although reported values have ranged from roughly 0.2 to 1.0 (Balsley et al., 2008).

In the stratosphere, where the flow is characterized by high static stability, only almost isentropic deformations driven by the horizontal strain and vertical shear are considered in the current version of CLaMS (Pommrich et al. (2014) and the references therein). These deformations measured in terms of the Lyapunov exponent λ are used in CLaMS to parametrize mixing within layers, which are parallel to the isentropes about the level of 300 hPa. However, the effect of vertical instabilities being a dominant feature of tropospheric transport is not taken into account. To parametrize such (potentially) vertically unstable regions by using “sufficiently small” values of the dry or moist Brunt-Vaisala frequency N or N_m is our main heuristic idea,

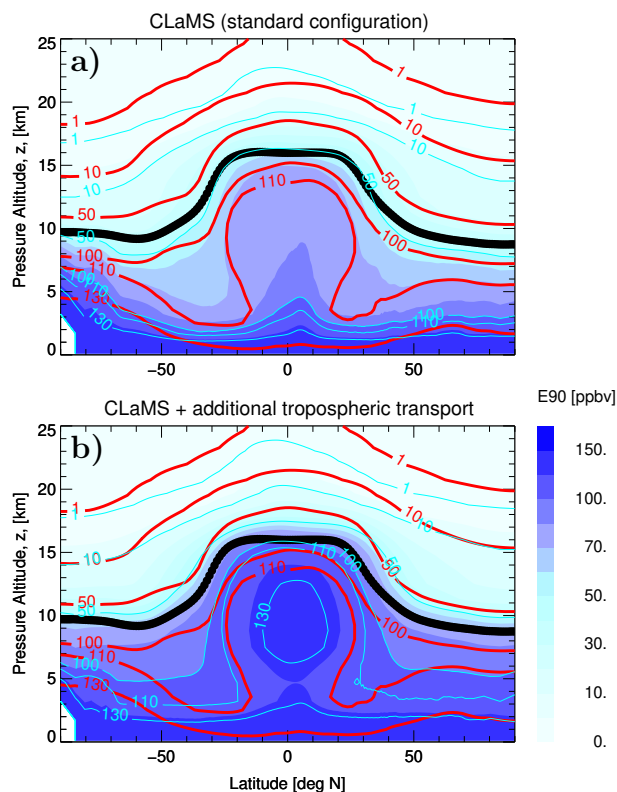


Figure 1. The different shades of blue quantify the annual mean of the e90 tracer mixing ratios (calculated for 2007) as a function of latitude and log-pressure altitude and are derived from the current version of CLaMS described in Pommrich et al. (2014) (a) and from the here discussed version with extended tropospheric transport (b). For comparison, the WACCM 1955-2099 climatology of e90 is also shown (red isolines) as described in Abalos et al. (2017). The mean tropopause is depicted by the black line.

how to extend the CLaMS transport scheme from the deformation-driven to the deformation- and vertical instability-driven scheme.

Generally, CLaMS tropospheric tracers like CO or CH₄ show reasonable mixing ratios in the Upper Troposphere and Lower Stratosphere (UTLS) only if their values in the orography-following lowest model boundary (thickness: 1.1-1.3 km) are artificially enhanced by a factor 1.5-2 (Pommrich et al., 2014). The consequence of this enhancement are too strong vertical gradients of these tracers, especially in the lower and middle troposphere if compared with observations (not shown). A possible reason might be that a significant part of the upward vertical transport within the troposphere is underestimated.

Figure 1 shows a comparison in terms of the e90 tracer between the current CLaMS version (top), the here discussed extension of tropospheric transport (bottom) with the Whole Atmospheric Community Climate Model (WACCM, red isolines) which is known for a good representation of tropospheric transport and chemistry (see e.g. Park et al. (2013) and the references

therein). Here, the CLaMS annual means (calculated for 2007) are compared with the WACCM 1955-2099 climatology derived from the REF-C2 reference simulations which have coupled atmosphere, ocean, ice, and land components (Abalos et al., 2017) (year-to-year variability in WACCM climatology is much smaller if compared with deviation of CLaMS from the WACCM climatology).

5 Similar like in WACCM, the artificial e90 tracer, with a constant e-folding lifetime of 90 days, is set to 150 ppb everywhere in the lowest layer of CLaMS. The e90 tracer is suitable to diagnose typical timescale of transport from the Planetary Boundary Layer (PBL) into the lower stratosphere (Prather et al., 2011; Abalos et al., 2017). Figure 1 shows that CLaMS in the current version significantly underestimates the upward transport if compared with the WACCM model and that this comparison improves if the new version of transport is included.

10 In this paper, we aim to parametrize the unresolved processes like convective updrafts and tropospheric mixing whose representation in global reanalysis data is uncertain (Russo et al., 2011). Although more complex convective schemes exist both in the Eulerian (e.g. Tiedtke (1989); Emanuel (1991)) as well as in the Lagrangian formulation (e.g. Collins et al. (2002); Erukhimova and Bowman (2006); Forster et al. (2007); Pugh et al. (2012); Ueyama et al. (2018); Brinkop and Jöckel (2018)), our approach mainly intends to cover the range of possible variability due to unresolved tropospheric transport. Guided by diabatic rather than kinematic thinking and by the wish to reduce the complexity of convection as much as possible, we aim here
15 to create a technical framework which allows us in the future to estimate the impact of such uncertainties on the composition of the UTLS as well as on the Stratosphere-Troposphere-Exchange (STE). Even small changes in the concentration and distribution of radiatively active gases in the UTLS such as water vapor or ozone significantly impact radiative forcing on surface temperature (Riese et al. (2012), IPCC2014).

In the next section, we describe the properties and mean distributions of the dry or moist Brunt-Vaisala frequency N or N_m as derived from the meteorological data. N and N_m are used in this paper to parametrize the additional tropospheric transport. Section 3 explains technical details of this parametrization. Section 4 describes the CLaMS setup, details of the performed model simulations as well as some results diagnosing which regions of the atmosphere are mainly affected by our extension of transport. To validate these new properties, we discuss the transport of CO₂ from the PBL into the lower stratosphere and compare the respective distributions with the airborne observations and the CarbonTracker model simulations. Finally, we
25 discuss our results in section 5.

2 Vertically unstable troposphere versus stably stratified stratosphere

Static stability can be quantified in terms of the (dry) Brunt-Vaisala frequency (BVF) via $N^2 = (g/\theta)(d\theta/dz)$. N describes the frequency at which an air parcel oscillates when displaced vertically in a statically stable environment, i.e. within a region with a positive lapse rate $d\theta/dz > 0$ (for some details see appendix A). Because the well-mixed troposphere is characterized
30 by low values of N and the stably stratified stratosphere by high values of N , it is expected that this difference also manifests in the corresponding vertical diffusivities (large and small for the troposphere and the stratosphere, respectively).

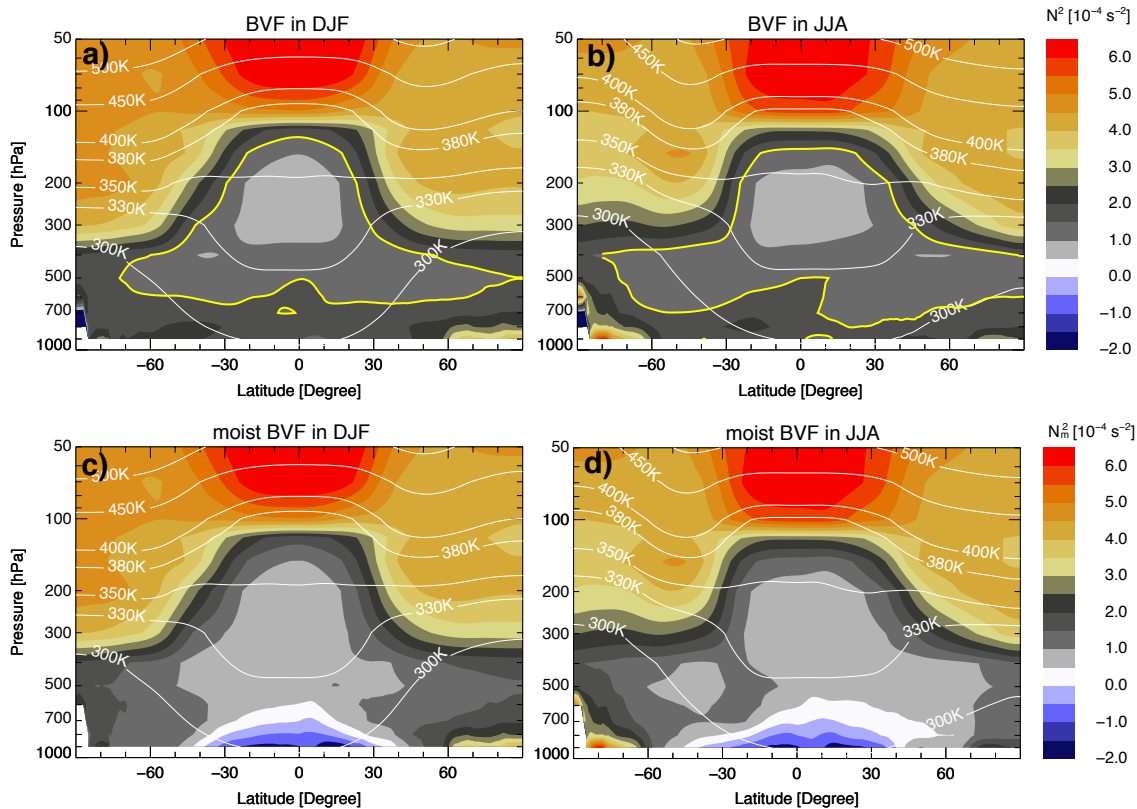


Figure 2. The zonal mean distribution of dry, N^2 (top) and moist, N_m^2 (bottom) Brunt-Vaisala frequency (BVF) in the troposphere and the lower stratosphere for DJF (a, c) and JJA (b, d) as calculated from 2005 ERA-Interim data. The thick yellow contours in the top row highlight those part of the atmosphere where the tropospheric mixing is included into CLaMS. The bluish colored regions in the bottom panels mark places from which additional parametrization of convection lifts the CLaMS air parcels from the PBL into the upper troposphere.

To take into account the contribution of latent heat release to the vertical instabilities, N^2 can be modified by introducing the moist Brunt-Vaisala frequency N_m with $N_m^2 = (g/\theta_e)(d\theta_e/dz)$ where θ_e is equivalent potential temperature, i.e. the temperature an air parcel would reach if all the water vapor in the air parcel were to condense, releasing its latent heat and then were brought down adiabatically to 1000 hPa (for details see also appendix A). The zonal mean of the dry and moist BVF distribution during boreal winter and summer 2005 is exemplary shown in Fig. 2.

Thus, lowest values of the dry BVF are distinctive for the middle troposphere especially in the tropics. The minimum in lapse rate $d\theta/dz$ above the PBL represents the level of maximum convective impact (Gettelman and de Forster, 2002) which is also characterized by a vertically broad maximum of tropospheric signatures with enhanced CO and strongly reduced ozone (Pan et al. (2017) and references therein). Obviously, the values of N^2 clearly increase by crossing the tropopause but they also increase in the region below 700 hPa and are the lowest in the tropical and sub-tropical middle troposphere (i.e. within the

yellow contour in the top panel of Fig. 2). In the following section, we use this middle tropospheric minimum of N^2 , although
10 zonally-resolved, to parametrize tropospheric mixing in CLaMS and, in this way, to include unresolved mixing processes in
the middle and upper troposphere into the CLaMS transport. **Finally, we note that simple zonal means shown in Fig. 2 instead
of tropopause-based zonal means smear out the strong stability contrasts across the tropopause (Birner, 2006; Birner et al.,
2006). However, we use the climatology shown in Fig. 2 only to explain our procedure; the presented transport extension is
based on full 3d stability fields which contain all the details of the tropopause as far as they are resolved by the reanalysis.**

5 On the other hand, low values of the moist BVF (i.e. bluish regions with $N_m^2 < 0$ in the bottom panel of Fig. 2) can be found
at altitudes below 700 hPa between 30°S and 30°N, i.e. in the tropical and subtropical PBL. The air parcels with $N_m^2 < 0$ are
conditionally unstable (see appendix A), i.e. they may undergo strong vertical uplift, if some other favorable condition causing
saturation may happen within such air masses (e.g. gravity wave-induced temperature fluctuations which are not resolved in the
meteorological data). In the following section, we show how conditional instability can be used to trigger additional (advective)
10 upward transport due to unresolved convection.

3 Extension of transport scheme: tropospheric mixing and unresolved convection

To extend the CLaMS mixing scheme, we follow two heuristic ideas: First, due to a much lower vertical stability in the
troposphere than in the stratosphere, we enhance tropospheric mixing in the model everywhere where (dry) vertical stability
is sufficiently small. Second, we take into account additional transport driven by convection, especially by deep convection
15 which is not sufficiently resolved in the reanalysis data.

Thus, whereas the first approach is related to changes in the mixing part of CLaMS and affects the next neighbors of each
Lagrangian air parcel, the second goal is related to changes in the advection part of CLaMS, i.e. to modification of the trajectory
calculation. Both extensions should be driven by instabilities quantified in terms of the dry and moist BVF, respectively, which
were introduced in the previous section. By including such a revised transport scheme, we seek for a better representation of
20 transport in the free troposphere, which also likely improves the performance of the model within the UTLS region. Because all
our changes are confined to the troposphere, we expect a weak influence on stratospheric transport in CLaMS which has been
successfully validated in many previous studies. Furthermore, the scheme should not give a heavy burden on the computation
time compared to the current version of CLaMS. Before going into the details, we shortly describe the standard version of
CLaMS (in the following denoted as the reference setup).

25 3.1 Reference setup

**As the reference, we use the 2005-2008 timeslice of the 40-years CLaMS transient simulation started on 1st January 1979 and
driven by the horizontal winds and diabatic heating rates (vertical velocities) derived from the ERA-Interim reanalysis (Dee
et al., 2011; Ploeger et al., 2010). This configuration as well as the model initialization follow the model setup described in
(Pommrich et al., 2014) (100 km horizontal/400 m vertical resolution around 380 K). The first 10 years of the CLaMS transient
30 simulation can be considered as the model spinup. Zonal mean distribution of the mean age of air (AoA), calculated relative**

to the Earth's surface is exemplarily shown for one day (19.08.2005) as the function of the latitude and the hybrid potential temperature ζ (Fig. 7a) and will be used for comparison with CLaMS simulations including the extended tropospheric transport (section 4).

The vertical coordinate ζ is the hybrid σ - θ which allows to resolve transport processes in the troposphere influenced by the orography and transport processes in the stratosphere where adiabatic horizontal transport dominates (Mahowald et al., 2002). More precisely, we replace η by σ in the hybrid η - θ coordinate as proposed by Mahowald et al. (2002), i.e.:

$$\zeta := f(\sigma)\theta(p, T), \quad (1)$$

with

$$f(\sigma) = \begin{cases} \sin\left(\frac{\pi}{2} \frac{1-\sigma}{1-\sigma_r}\right) & \sigma > \sigma_r \\ 1 & \sigma \leq \sigma_r, \quad \sigma_r = \frac{p_r}{p_0} \end{cases} \quad (2)$$

Here, p_0 denotes the constant reference pressure level set to 1000 hPa. p_r defines the pressure level around which the dry potential temperature θ smoothly transforms into the terrain-following coordinate $\sigma = p/p_s$.

For p_r , Mahowald et al. (2002) used the value 300 hPa, i.e. $\sigma_r = 0.3$. For situations with no orography (e.g. see surface with $p_s = 1000$ hPa) this means that the condition $\sigma = p/p_s < \sigma_r$ is valid everywhere above the level of 300 hPa. Consequently, in this region the vertical coordinate ζ is given by the dry potential temperature θ . Conversely, below the level of 300 hPa, θ smoothly transforms into σ . For situations with orography (e.g. at the summit of Mount Everest with $p_s \approx 330$ hPa), the condition $\sigma = p/p_s < \sigma_r$ is first valid everywhere above ≈ 100 hPa. Note that all p_r values between 0 and 1000 hPa are possible with the consequence that higher p_r values extend the applicability of θ as a vertical coordinate down to the lower troposphere. **In the here used setup ζ covers the range between $\zeta = 0$ (i.e. orography-following) and $\zeta = \theta = 2500$ K (Pommrich et al., 2014).**

Thus, because ζ in the troposphere is a less intuitive coordinate (hybrid mixture between σ and θ), isolines of pressure and potential temperature as well as the zonal mean of the WMO tropopause are also shown in Fig. 7a. Furthermore, vertical boundaries of the layers $\Delta\zeta_i$, $i = 1, \dots, N$ within which CLaMS mixing is organized (for more details see Konopka et al. (2007)) are depicted at the right side of Fig. 7a. In the CLaMS reference run, the lowest layer $\Delta\zeta_0$ approximating the PBL extends between $\zeta = 0$ (Earth's surface) and 100 K, i.e. $\Delta\zeta_0 = \Delta\zeta_{pbl} = 100\text{K}$. After each trajectory step Δt , mixing ratios of all air parcels within this layer are replaced by their initial configuration and prescribed by a lower boundary condition **(the same procedure is applied for the upper boundary $\Delta\zeta_N = 300\text{K}$ covering the ζ -range between 2200 and 2500 K).**

In the default mixing scheme, CLaMS uses the integral deformations $\gamma = \lambda\Delta t$ derived from the relative motion of the next neighbors within each layer $\Delta\zeta_i$ (adaptive grid procedure). **Here, λ is the Lyapunov exponent of such a deformation and Δt denotes the advective time step (typically between 6 and 24 hours).** In the stratosphere and in large parts of the UTLS, where the flow is characterized by a high static stability, only sufficiently strong deformations with $\gamma > \gamma_c$ (γ_c denoting an empirical critical deformation) are expected to trigger mixing with the best choice for γ_c between 0.8 and 1.5 (Konopka et al., 2004). This also means that there is some freedom in the choice of the parameters λ and Δt . Whereas for the stratosphere the values of $\Delta t = 24$ h and $\lambda = 1.5 \text{ day}^{-1}$ ($\gamma_c = 1.5$) were used in the past (Konopka et al., 2004) (and are used here as the reference

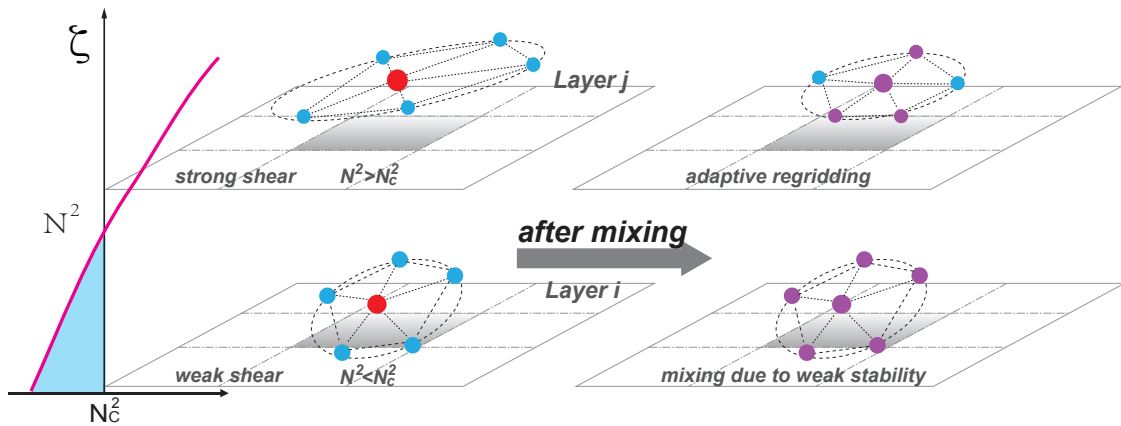


Figure 3. Mixing driven by vertical instability and strong wind shear. The profile on the left side is an idealized N^2 profile derived from the reanalysis and interpolated on the CLaMS air parcels (red). The lower part is representative for the troposphere with $N^2 < N_c^2$ and the upper part for the stratosphere with $N^2 > N_c^2$. Thus, in the lower layer static stability is weak with the opposite configuration in the upper layer where, in addition, the wind shear is strong. In the upper layer, adaptive regridding is used to include mixing between a subset of the next neighbors of the considered air parcel (default mixing in CLaMS). In addition, in the lower layer, all next neighbors will be mixed with the considered air parcel if criterion $N^2 < N_c^2$ is valid. The purple parcels are mixed parcels of red and blue parcels.

configuration), a larger mixing frequency with $\Delta t = 6$ h seems to give better results in the well-mixed troposphere and in the UTLS region (Vogel et al., 2011; Konopka and Pan, 2012).

3.2 Tropospheric mixing

In the following, we assume that the additional tropospheric mixing should be triggered whenever the corresponding value of N^2 interpolated at the CLaMS air parcel is less than a critical value denoted in the following as N_c^2 . N_c^2 is a free parameter which, basically, can be adjusted by comparison with the experimental data. We expect that N_c^2 should be around zero and should identify regions with (statistically) enhanced tropospheric mixing. If an air parcel fulfills the criterion $N^2 < N_c^2$, the air parcel will be mixed with all next neighbors diagnosed by Delaunay triangulation in the respective CLaMS layer under consideration (so we use the same next neighbors as in the standard CLaMS mixing scheme). In this way the composition of the considered air parcels are affected, but not their geometric positions.

Figure 3 is a schematic diagram illustrating how the tropospheric extension of mixing works. If this additional mixing is applied, we set the new mixing ratio of a considered air parcel and its next neighbors through averaging their composition, which is shown as a change of the parcel's color. This setting completes the mixing without changing any model parcel position and the number of parcels because it can be executed directly in the current mixing module (more precisely, after deformation driven adaptive grid procedure of CLaMS).

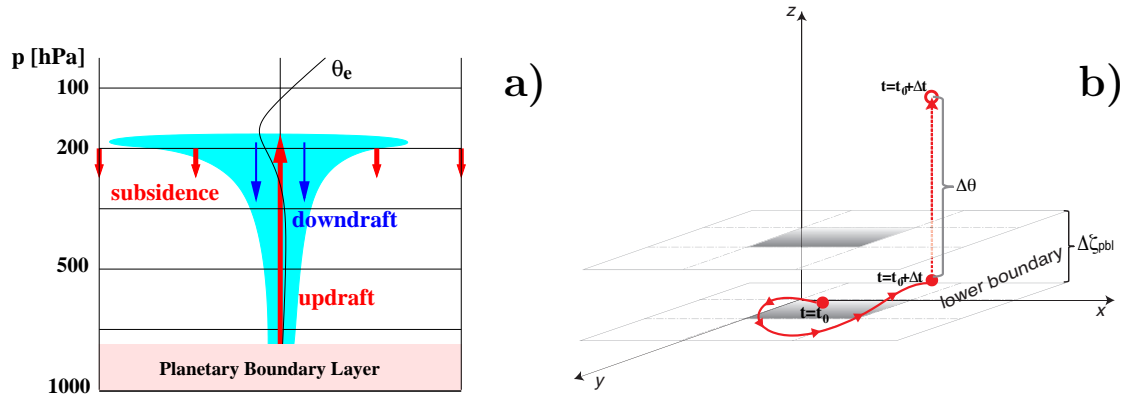


Figure 4. a) Schematic definition of convective fluxes and scales. Vertically unstable profile of the equivalent potential temperature θ_e (black thin line) triggers convective updraft in our simplified scheme. b) Convective updraft in CLaMS: the original trajectory (thick solid red) and the modified trajectory (dashed red) with convective transport from the lowest CLaMS layer Δz_{pbl} at time step $t_0 + \Delta t$. The vertical displacement $\Delta\theta$ of the considered air parcel is estimated through the latent heat release of condensation and may happen at every time step along the trajectory when the reanalysis data is read (i.e. every $\Delta t = 6$ hours for ERA-Interim, see text for more details).

3.3 Unresolved (deep) convection

Commonly, convection is understood as a vigorous vertical updraft resulting from instabilities in the vertical temperature and water distribution profiles, preferably connecting the PBL with the free troposphere and is schematically shown in Fig. (4a). Convection starts on relatively small horizontal scales of the order of few kilometers and is mainly driven by the latent heat release of the gaseous and liquid water content. Such diabatic processes may lift a large amount of air. The respective upward mass flux is traditionally denoted as an updraft (thick upward red arrow in Fig. 4a).

The reverse diabatic mass transport, the so-called downdraft is related to the evaporation of water or melting of ice and is in general much smaller than the original convective updraft (thin blue arrows). A much larger part of the downward mass flux, the so-called subsidence, occurs on much larger horizontal scales of the order 10-100 km, or even larger if Rossby- or gravity-waves are induced by convection (thick downward red arrows). A significant part of subsidence results mainly from long-wave cooling of radiatively active water vapor which is vertically transported and freeze-dried within convective tower and subsequently spread horizontally at the level of main convective outflow. Note that the horizontal scale of this outflow region is at least one order of magnitude larger than the horizontal extension of the convective tower at the ground.

It is generally believed that the exchange of mass driven by deep convection can efficiently inject the air masses from the PBL into the upper troposphere or even, although very rarely, into the lower stratosphere (Schiller et al., 2009; Corti et al., 2006). In fact, the extension of mixing presented in the previous subsection is still limited by the model layers and, consequently, is not suitable to parametrize unresolved convective events which connect the PBL with layers in the upper troposphere on a time scale of minutes to hours.

Now, we present an alternative method to enhance upward transport for conditionally unstable air parcels with $N_m^2 < 0$ in order to lift such air masses from the lowest layer of CLaMS $\Delta\zeta_{pbl}$ (following the orography and approximating here the PBL) into the upper troposphere. Figure 4b shows the concept of estimating the uplift of boundary air by adding a $\Delta\theta$ to the trajectory in the vertical direction when the condition $N_m^2 < 0$ is diagnosed along the trajectory (i.e. using diabatic concept of vertical motion).

5 Following Ertel (1938) (for details see appendix B), we use the following approximation for $\Delta\theta$:

$$\Delta\theta = \frac{L_v\theta_0\mu_w}{c_p T}, \quad (3)$$

where θ_0 and μ_w denote the potential temperature and the total water vapor mass mixing ratio in the air parcel where the condition $N_m^2 < 0$ is fulfilled. T denotes the temperature in the air parcel and approximates here the saturation temperature. L_v is the specific latent heat for evaporation and c_p denotes the specific heat at constant p .

10 To illustrate, how such a parametrization works, the zonally-resolved fraction of events with $N_m^2 < 0$ occurring within the lowest CLaMS layer are shown in Fig. 5. The respective DJF and JJA climatologies derived from ERA-Interim for 2005 reveal the expected spatial distribution, land-ocean contrasts as well as the seasonality. To justify the use of $N_m^2 < 0$ as a proxy of convection, we compare its spatial distribution with the satellite-based Outgoing Longwave Radiation (OLR, top row, cyan isolines) as well as with the ERA-Interim-based convective available potential energy (CAPE) as an alternative
 15 method to detect convection (for definition of CAPE, see appendix B). The comparison shows a good correlation between the climatology of the regions with $N_m^2 < 0$ and the respective OLR (top panel of Fig. 5) whereas the correlation with the CAPE is less pronounced (e.g. in the region around 30-50E, 45°N during JJA). Motivated by this finding and because of the simplicity of tracing conditionally unstable air parcels, we use in the following the criterion $N_m^2 < 0$ as the first condition to trigger convective events.

Our second condition is related to the question if every conditionally unstable air parcel is a source of convection which should be taken into account. This question is also related to the fact that the number of air parcels in CLaMS is not strictly
 5 conserved but kept roughly constant within about $\pm 10\%$ flexibility through the adaptive regridding procedure (current mixing scheme). It means that the mixing procedure is able to adjust a certain increase or decrease in the number of air parcels, but this amount should be below $\pm 10\%$. Figure 6 shows the one-year climatological PDF of $\Delta\theta$ in the tropics (30°S- 30°N). The probability of $\Delta\theta$ larger than 35 K is around 30% and it decreases rapidly from 35 K to 60 K. When the $\Delta\theta$ is too small to leave the lower boundary, it is not necessary to add $\Delta\theta$ to the trajectory. Thus, as our second condition, we only uplift such air
 10 parcel along the trajectory (i.e. within the advective step) if $\Delta\theta$ is sufficiently large. In our control runs, the minimum of $\Delta\theta$ is set to $\Delta\theta_{crit} = 35$ K and is shown as the dashed line in Fig. 6. This choice is also the reason that we call this parametrization “deep” convection scheme.

To estimate the influence of our convection parametrization on the mass budget, we calculate the annually and globally averaged mass flux due to parametrized convective updrafts (for details see appendix C). Because only updrafts are parametrized,
 15 this has an impact on the total mass budget in CLaMS with a surplus of the annually and globally averaged mass flux density of around 10 kg/m²day between the upper edge of the lowest CLaMS layer and around 360 K (highest level of the here

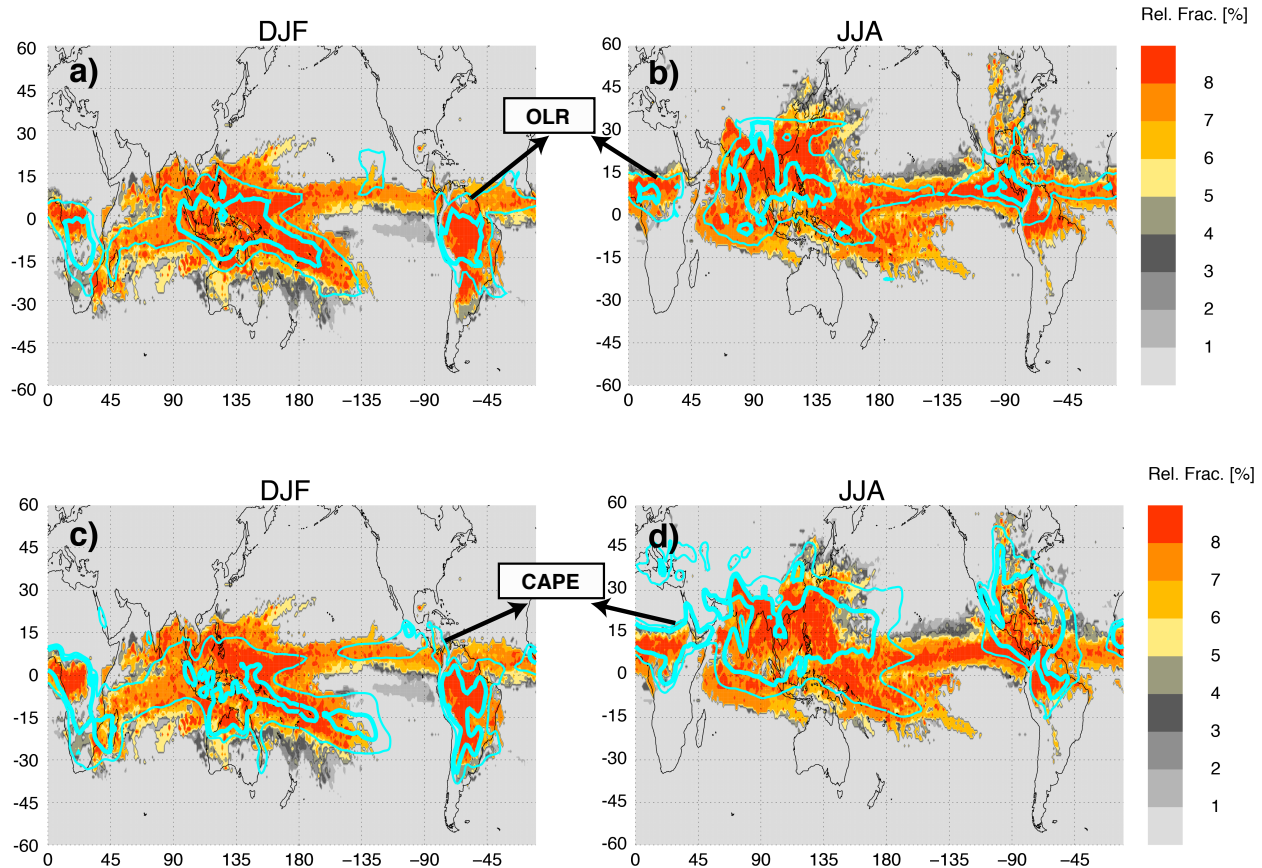


Figure 5. Color-coded is the fraction of ERA-Interim time steps (6h-frequency) within a season when the criterion triggering the deep convection scheme is fulfilled at CLaMS air parcels within the lowest layer of the model $\Delta\zeta_{pbl} = 250\text{K}$ ($\sigma_r = 0.7$, for details see text). Left and right column show DJF and JJA 2005 climatologies, respectively. In the top row the isolines of the Outgoing Longwave Radiation (OLR) as derived from the NOAA satellite archive are highlighted while in the bottom row the isolines of the convective available potential energy (CAPE) are overplotted (cyan).

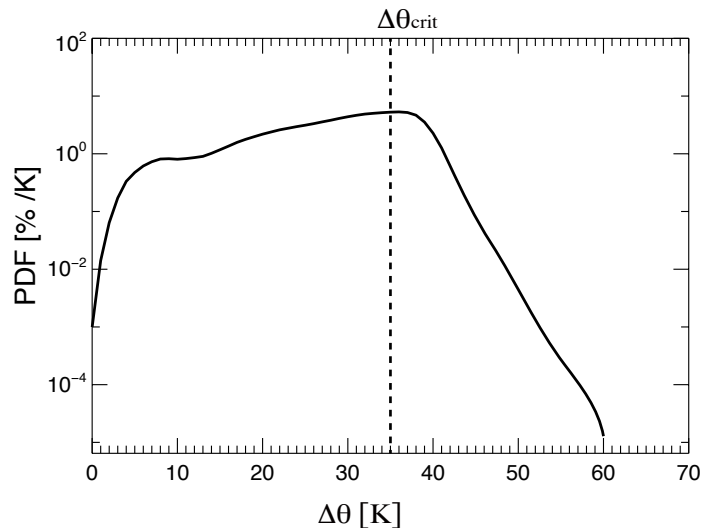


Figure 6. The probability distribution function (PDF, in units of %/K) of convective uplift $\Delta\theta$ in the tropics (30°S - 30°N) for the air parcels in the lowest level of CLaMS ($\Delta\zeta = 250$ K, $\Delta z \approx 1.4 - 2$ km) where N_m^2 is negative using the ERA-interim reanalysis data of the year 2005. The restriction used for the “deep” convection scheme ($\Delta\theta > \Delta\theta_{crit} = 35$ K) is marked as the dashed straight line.

parametrized convection). On the other hand, the used ERA-Interim diabatic vertical velocities are *per se* not mass-conserving. Fueglistaler et al. (2009) have shown that there is a significant deficit of mass of the order of $20 \text{ kg/m}^2\text{day}$ (c.f. their Figure 10), roughly in the same altitude range where the CLaMS convective parametrization works.

20 A possible explanation for this deficit can be related to the fact that the horizontal resolution of the ERA-Interim reanalysis (roughly 80 km) does not sufficiently resolve the convective towers (which are of the order 1 km) but does better resolve the large-scale subsidence which may be better reproduced in the ERA-Interim diabatic vertical velocities. Thus, our parametrization aims to close this in-balance by including some additional convective updrafts. The results show that qualitatively our simple approach roughly balances such a deficit and there is still some potential to enhance the strength of parametrized convection. At least the influence of our parametrization on the mass budget is comparable with “intrinsic uncertainties” in the mass budget of the reanalysis itself. Following the procedure described in Rosenlof (1995) and applied in Konopka et al. (2010) (see their appendix), it is possible to restore the mass balance violations at least in the annual mean.

30 Finally, it should be mentioned that our Lagrangian parcels are still too large (around 100 km in horizontal and few hundred meter in vertical direction) to be transported by realistic convective systems. Thus, they are more suitable to describe large-scale convective outflow rather than the convective towers which are well below their horizontal resolution. This fact justifies to a certain extent our restriction to consider only “deep” convective events with $\Delta\theta > 35$ K. Note also that by increasing model resolution by a factor of 2, both horizontally and vertically, the respective convective mass flux would decrease by a factor of 8.

Table 1. List of CLaMS reference and control simulations with different configurations of mixing, unresolved convective updrafts and parameters σ_r defining the transition between the σ - and θ -related vertical coordinate. For all simulations with unresolved convective updrafts and tropospheric mixing, the critical values of N_m^2 and N^2 are set to 0 and $1 \cdot 10^{-4} \text{ m}^2/\text{s}$, respectively, and $\Delta\theta_{crit} = 35 \text{ K}$.

Name	time step Δt [hr]	λ_c [day^{-1}]	unres. convection	trop. mixing	σ_r	$\Delta\zeta_{pbl}$ [K]
REF	24	1.5	N	N	0.3	100
REF_0.7	24	1.5	N	N	0.7	250
REF_0.3	24	1.5	N	N	0.3	140
MIX_0.7	6	3.5	N	N	0.7	250
TROP_MIX_0.7	6	3.5	N	Y	0.7	250
UNRES_CONV_0.7	6	3.5	Y	N	0.7	250
FULL_EXT_0.7	6	3.5	Y	Y	0.7	250
FULL_EXT_0.3	6	3.5	Y	Y	0.3	140
FULL_EXT_LM_0.7	6	4.0	Y	Y	0.7	250

4 CLaMS performance with additional tropospheric transport

In this section, we describe the details of the CLaMS configuration for the simulations with extended tropospheric transport, show in which part of the atmosphere the CLaMS air parcels are affected by this extension and compare the respective AoA distributions. Especially, we investigate the propagation of the CO_2 distribution from the boundary layer into the lower stratosphere for different model configurations and evaluate the related CO_2 variability (annual cycle and trend) with the observations and the CarbonTracker model simulations.

4.1 Setup for reference/control simulations

Like for the reference simulation described in the subsection 3.1 (in the following denoted as REF), all other simulations cover the same time period 2005-2008 and have the same vertical and horizontal resolution above the tropopause. All these simulations start on 01.01.2005 and are initialized with the REF concentrations. The length of 3 years for all our simulation is long enough to see the changes in the troposphere and tropical lower stratosphere. However, 3 years are certainly too short for the whole stratosphere but this is our compromise concerning the available computing time and is long enough to see at least in which direction the changes of the model have to be expected. Table 1 provides the key information for all CLaMS simulations discussed in this paper.

In addition to the REF configuration, we use two slightly different configurations: $\sigma_r = 0.7$, $\Delta\zeta_{pbl} = 250\text{K}$ (REF_0.7, Fig. 7b) and $\sigma_r = 0.3$, $\Delta\zeta_{pbl} = 140\text{K}$ (REF_0.3, Fig. 7c) with the latter choice being very close to the REF case with $\sigma_r = 0.3$ and $\Delta\zeta_{pbl} = 100\text{K}$ (see below). Grid configurations for all cases listed in Table 1 are the same in the stratosphere although significant differences are in the troposphere: By using $\sigma_r = 0.7$, isentropic mixing and diabatic vertical velocities, two central concepts of CLaMS, can be extended to a larger part of the troposphere, in particular to the middle tropical troposphere. Note

that the 320, 330K isentropes in Fig. 7b are within CLaMS layers defined by the ζ coordinate and, consequently, mixing within such layers is roughly isentropic. Thus, almost the whole UTLS region, down to the tropical middle troposphere, is covered by such isentropic layers in the $\sigma_r = 0.7$ simulation (see Tao et al. (2018), especially their appendix 1).

Furthermore, both apparently different choices of $\Delta\zeta_{pbl}$ for REF_0.7 and REF_0.3 correspond roughly to the same geometric thickness of the lowest CLaMS layer, which varies between 1.4 and 2.2 km and approximates here the PBL. Because in the REF case this thickness is certainly too small (between 1.1 and 1.3 km), we decided to enhance these values to more realistic numbers. Thus, for a more fair comparison, we take REF_0.7 or REF_0.3 as the main reference (instead of REF) with $\sigma_r = 0.7$ being our main choice. It should be emphasized that by using predefined boundary conditions in the PBL, we do not resolve any transport in this part of the atmosphere and confine our efforts only to improve transport in the free troposphere extending between the PBL and the tropopause.

As a first step toward extended tropospheric transport (in the following denoted as control runs), we decrease the advective time step of trajectories from 24 to 6 hours and, to keep the intensity of the standard CLaMS mixing scheme roughly constant, we also increase the Lyapunov exponent from 1.5 to 3.5 day⁻¹ corresponding to the critical deformation $\gamma_c = 0.85$ (case MIX_0.7 in Table 1). Such a slightly higher mixing frequency relative to the reference case (every 6 instead of every 24 hours) has proven to give better representation of the CO-ozone correlations in the UTLS region (Vogel et al., 2011; Konopka and Pan, 2012). Higher mixing frequency resolves also the diurnal cycle of our new parametrization of tropospheric transport described in the last section.

The next step is to add new tropospheric transport, i.e. tropospheric mixing (TROP_MIX) and unresolved convective updrafts (UNRES_CONV). Before discussing this new contributions we exemplarily show our results in Figure 7. Here, the zonal mean distribution of AoA, calculated relative to the Earth's surface for one day (19.08.2005) is plotted for the three cases discussed above: REF (Fig. 7a) and two control simulations with full extension of tropospheric transport FULL_EXT_0.7 (Fig. 7b) and FULL_EXT_0.3 (Fig. 7c). Both types of control simulations show much younger air in the troposphere if compared with the reference run. Also the gradients across the tropopause are more pronounced. On the other hand, stratospheric distributions are very similar for all three cases. Now, we go more into the details of such a tropospheric extension.

4.2 Diagnostic of extended tropospheric transport

It is easy to tag and count all air parcels in CLaMS which undergo additional tropospheric mixing and which are lifted from the lower boundary to the middle and upper troposphere by the deep-convection scheme introduced in the previous section. In Fig. 8a/b the DJF/JJA zonally averaged fractions of additionally mixed air parcels (calculated for 2005) are color coded as the function of latitude and pressure. The black isolines in the top panel approximate the fraction of the CLaMS air parcels which were lifted from the lowest boundary layer to the middle and upper tropical troposphere using the deep convection parametrization. For comparison, the fractions of the number of air parcels affected by the default CLaMS mixing scheme are shown in the bottom panels of Fig. 8, which always happens, independent if the here discussed extension of transport is included or not. In addition, the respective mean WMO tropopause as well as the isentropes are shown.

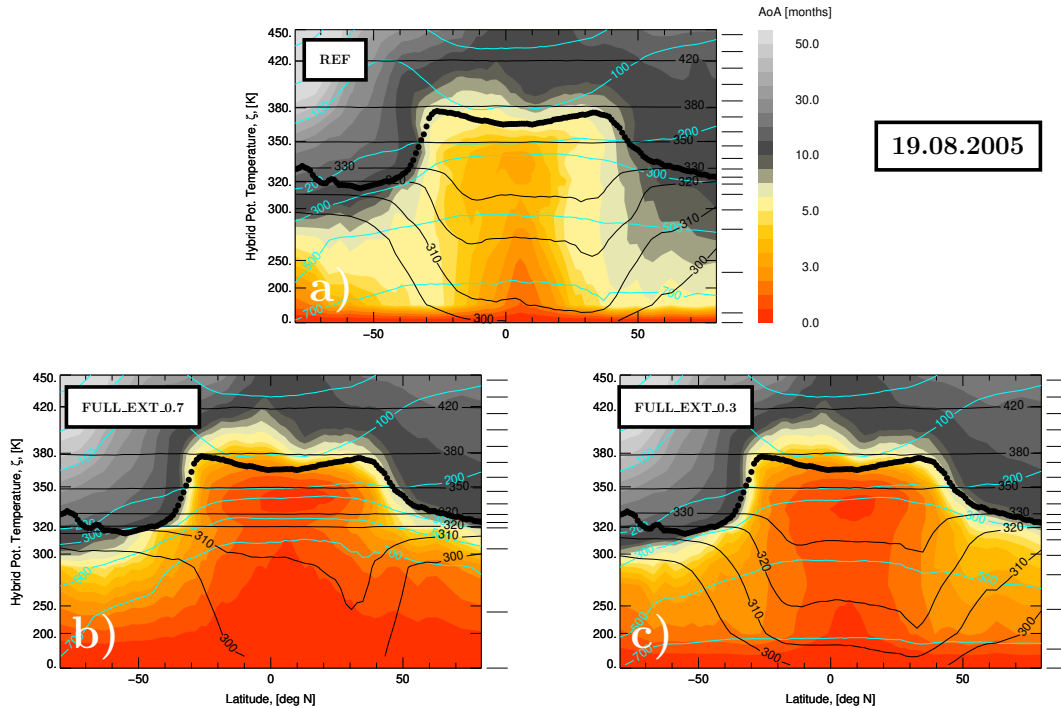


Figure 7. Zonal mean of mean age (AoA) for the reference simulation (a) and for the simulations with the full extension of tropospheric transport (bottom) exemplarily calculated for 19.08.2005 (i.e. after more than 8 months of transport). For the definition of the abbreviations see Table 1. The hybrid vertical coordinate ζ is used and the isolines of the potential temperature θ (black), pressure p (cyan) as well as the zonal mean of the WMO tropopause are also shown. On the right side of each panel, the boundaries of the CLaMS layers $\Delta\zeta_i$, $i = 1, \dots, N$ are plotted (see text for more details).

Note that CLaMS tropospheric mixing practically does not affect any air parcels in the stratosphere (the zero line of the calculated fraction is well below the tropopause, not shown). Note also that numbers of air parcels affected by the deep convection scheme are smaller than 10% with highest levels (around 360 K) during JJA, mainly related to the Asian Summer Monsoon (not shown). Furthermore, both tropospheric mixing and the deep convection transport show some seasonality like N^2 and N_m^2 , respectively (i.e. higher in the summer hemisphere). Finally, the default mixing scheme is much weaker than the tropospheric mixing although the seasonality is very similar. Note that this part of mixing is also present in the vicinity of the tropopause although with stronger signatures on the tropical side of the jets and below the tropopause. At least in this climatological picture, only standard mixing in CLaMS contributes to a direct STE.

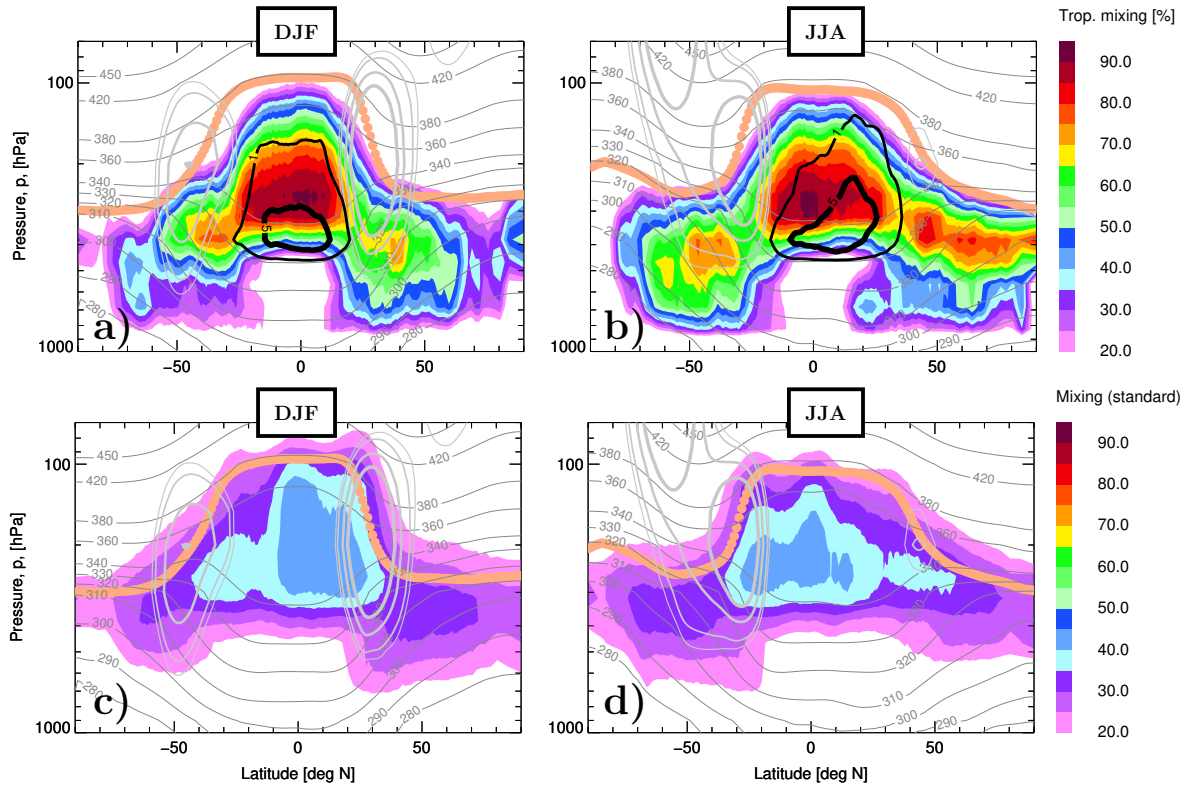


Figure 8. Top: DJF/JJA 1-year (2005) climatology of percentage of CLaMS air parcels undergoing tropospheric mixing (colors) and of air parcels lifted from the lowest layer of the model into the middle and upper (tropical) troposphere (black contours). Bottom: Same type of climatology but for air parcels which undergo the standard CLaMS mixing procedure (adaptive regridding driven by horizontal strain and vertical shear within the CLaMS layers). The respective WMO tropopause (beige), horizontal wind marking the position of the jets (light gray) and the isentropes (dark gray) are also shown.

4.3 Validation with CO₂ observations

CO₂ is a useful tracer for validation of transport in the models, mainly in the troposphere and lower stratosphere where CO₂ is basically chemically inert (Waugh and Hall, 2002). The only stratospheric source of CO₂ is a small contribution (<1 ppmv) from methane oxidation (Bates and Nicolet, 1950; Ehhalt, 1974; Boucher et al., 2009) that is taken into account in all CLaMS simulations discussed here (Pommrich et al., 2014). Thus, the quality of the CO₂ distribution reproduced in CLaMS is determined largely by the quality of the lower boundary condition and the quality of the representation of transport. For the latter, tropospheric transport, is a significant part.

The atmospheric mixing ratios of CO₂ are essentially both monotonically increasing (trend) and periodic (seasonality) signals which define a stringent test for the model representation of tropospheric transport and STE (Bönisch et al., 2008, 2009). As recently shown by Diallo et al. (2017), even inverted vertical profiles of CO₂ across the extratropical tropopause

are possible during the Northern Hemispheric summer despite of a continuous increase of the mean CO₂ in the PBL resulting from the growing anthropogenic emissions.

In CLaMS, CO₂ mixing ratios propagate upwards from the lowest layer $\Delta\zeta_{pbl}$ for which the CarbonTracker data set was used (Peters et al. (2007), the updates are documented at <http://carbontracker.noaa.gov>) with CO₂ mixing ratios available for the 2000-12 period (simulation CT2013B, available every 3 hours, see ftp://products/carbontracker/co2/CT2013B/molefractions/co2_total/). In particular, the first five lowest levels of each CarbonTracker data set were vertically averaged and used to overwrite CLaMS
5 air parcels within the PBL layer every 6 hours. The reference simulation was initialized at 01.01.2000 and beginning from 01.01.2005 all other control simulations were started using the output of the reference simulation for the initial distribution.

The zonal means of CO₂, exemplarily calculated for two representative days, 5th of Mai and 25th of September, 2005, are shown in Fig. 9. In particular, results for the reference simulation (REF) and for the two control simulations with full tropospheric transport (FULL_EXT, $\sigma_r = 0.3/0.7$) can be compared with the respective CarbonTracker distribution which
10 was used in CLaMS to initialize the lower boundary of the model. In all CO₂ distributions, the upward propagation of the annual cycle can be clearly diagnosed with higher values during the boreal summer and vertical inversion during the fall. However, the propagation of the tropospheric signal shows some obvious differences with a faster upward propagation in CLaMS control simulations than in the CLaMS reference run. Note that the cross-hemispheric transport is weaker in the $\sigma_r = 0.7$ than in the $\sigma_r = 0.3$ CLaMS configuration. Note also that the upward propagation of the CO₂ annual cycle is well-
15 confined by the position of the tropopause (black dots) in all CLaMS runs while in the CarbonTracker data this property is less pronounced, although like in CLaMS, ERA-Interim reanalysis is in the underlying transport model (see CT2013B documentation: <https://www.esrl.noaa.gov/gmd/ccgg/carbontracker/CT2013B>). We will come to this point later.

Now, the CO₂ time-space evolution derived from CLaMS simulations are compared with the observations of the Comprehensive Observation Network for TRace gases by AirLiner (CONTRAIL) (Machida et al., 2008). CO₂ mixing ratios were
20 measured during regular flights by Japan Airlines from Japan to Australia, Europe, North America, and Asia with continuous measuring equipment (CME) for in situ CO₂ observations, as well as improved automatic air sampling equipment (ASE) for flask sampling (for more details about the instrument see Machida et al. (2002)). This data set provides significant spatial coverage, particularly in the Northern Hemisphere (Sawa et al., 2015). CONTRAIL observations have a vertical resolution of a few meters (during ascents and descents) and a horizontal resolution of a few hundred meters, resulting from the high sampling
25 frequency of these instruments.

Here, we use the zonally and monthly averaged time evolution of these observations between 2005 and 2008 interpolated at a latitude-altitude grid with $10^\circ \times 1$ km resolution and extending between 20°S to 60°N and 5.5-12.5 km, respectively (for more details see Diallo et al. (2017)). Comparison of these mean CONTRAIL observations with the respective CLaMS results for the reference and all control simulations are shown in Fig. 10.

In particular, the comparison of the seasonal cycle and trend at 15°N for two selected altitudes of 5.5 and 10.5 km is plotted
30 in the left panel of Fig. 10. The right panel shows the accumulated error, i.e. the zonal mean of the mean square deviation between the CLaMS simulation and CONTRAIL observations averaged over all latitude-altitude grid points where gridded (mean) measurements and their standard deviations are available. Note a higher variability of CO₂ at 5.5 than 10.5 km level

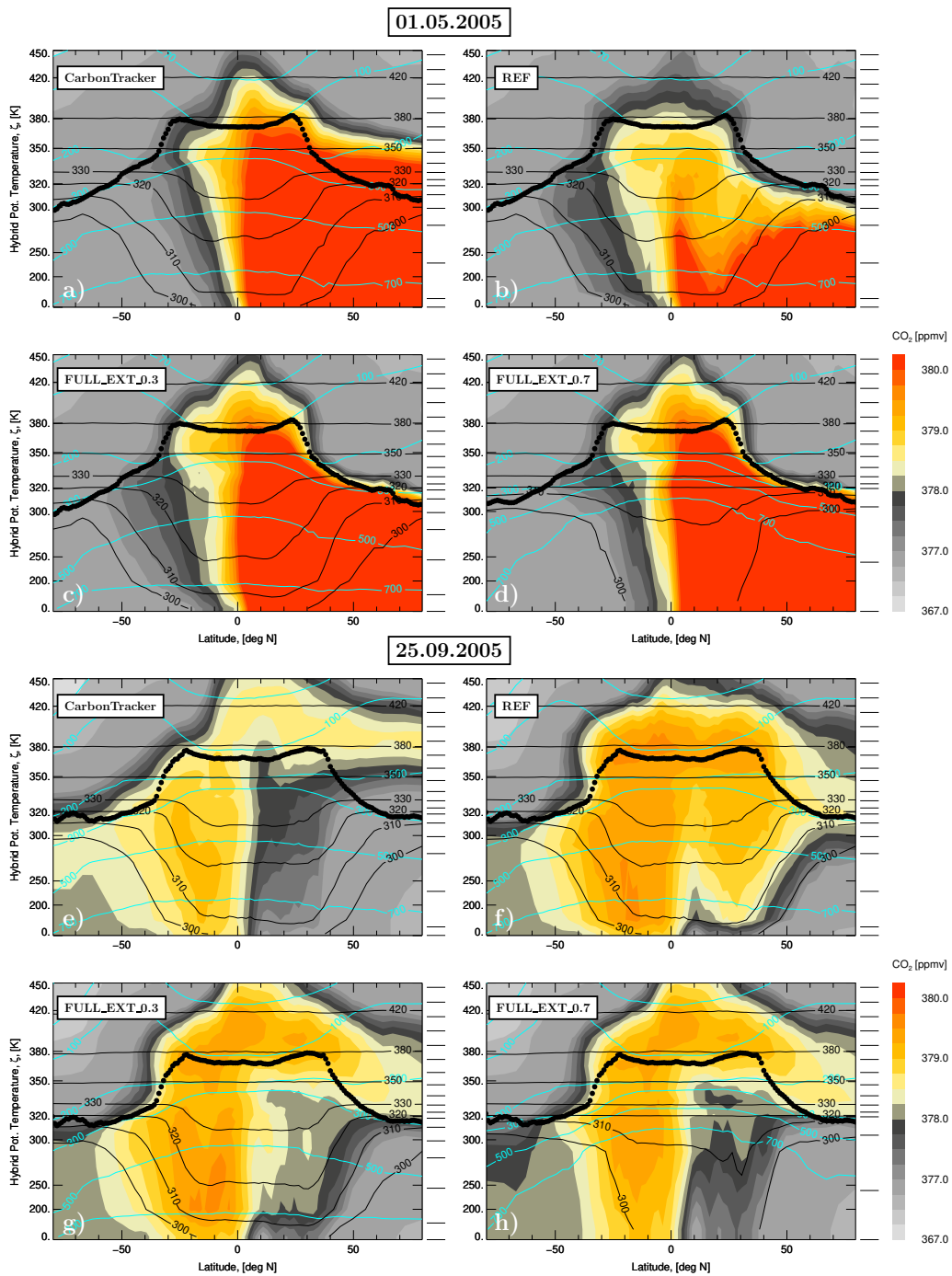


Figure 9. Upward propagation of the CO_2 distribution from the lowest layer of the model where CO_2 was initialized by the CarbonTracker data (CT2013B) on two exemplary days: 01.05.2005 (a to d) and 25.09.2005 (e to h). The CLaMS zonal means for different model configurations are compared with the CarbonTracker distribution itself. Black dots denote the tropopause derived from the ERA-Interim data.

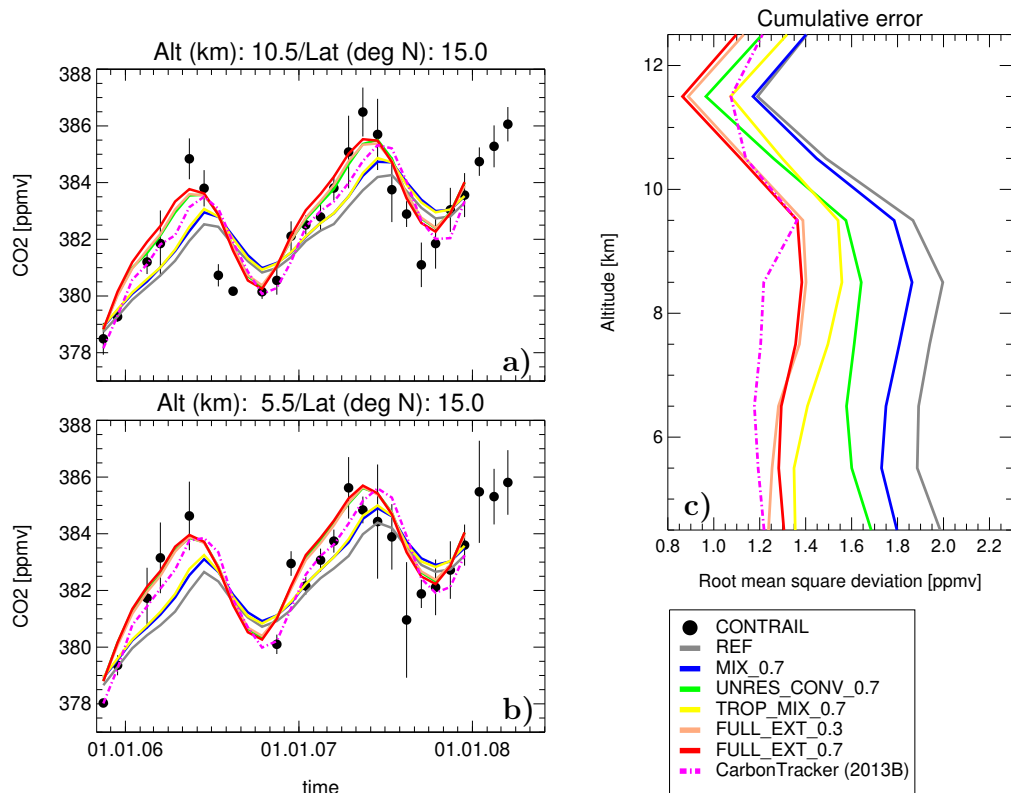


Figure 10. Left: Seasonality of CO₂ for CLaMS simulations compared with CONTRAIL observations (black filled circles/vertical lines denote mean values and their standard deviations, respectively) at two locations: 15°N, 5.5 km (a) and 15°N, 10.5 km (b) Right: The accumulated errors of CO₂ for CLaMS simulations compared with all CONTRAIL observations as the function of the altitude.

indicating a stronger variability due to the differences in the sources of CO₂ than due to vicinity of the tropopause where our gridding procedure does not differ between the stratospheric and tropospheric values. Thus, the reference simulation (REF) and the simulation with 6h mixing frequency (MIX_0.7) show not only too small amplitude but also their phase is delayed if compared with the CONTRAIL observations.

- 5 There is a clear improvement of the representation of the CO₂ distribution quantified in terms of the phase and the amplitude of the seasonal cycle as well as in terms of the accumulated error by taking additional tropospheric transport into account. The best results are achieved by including both the tropospheric mixing and the convection parametrization (orange and red curves are for FULL_EXT_0.7 and FULL_EXT_0.3). By switching off the tropospheric mixing or the convection parametrization or both (here the results only for $\sigma_r = 0.7$ are shown), the cumulative error increases up to 80%. While the tropospheric mixing
- 10 is more important below 9 km, the improvement due to convection parametrization dominates between 9 and 13 km. Although there are still some errors in the amplitude, the additional tropospheric transport significantly improves the overall agreement. Note that also the CarbonTracker distribution, even achieved by assimilating observations does not show a perfect comparison

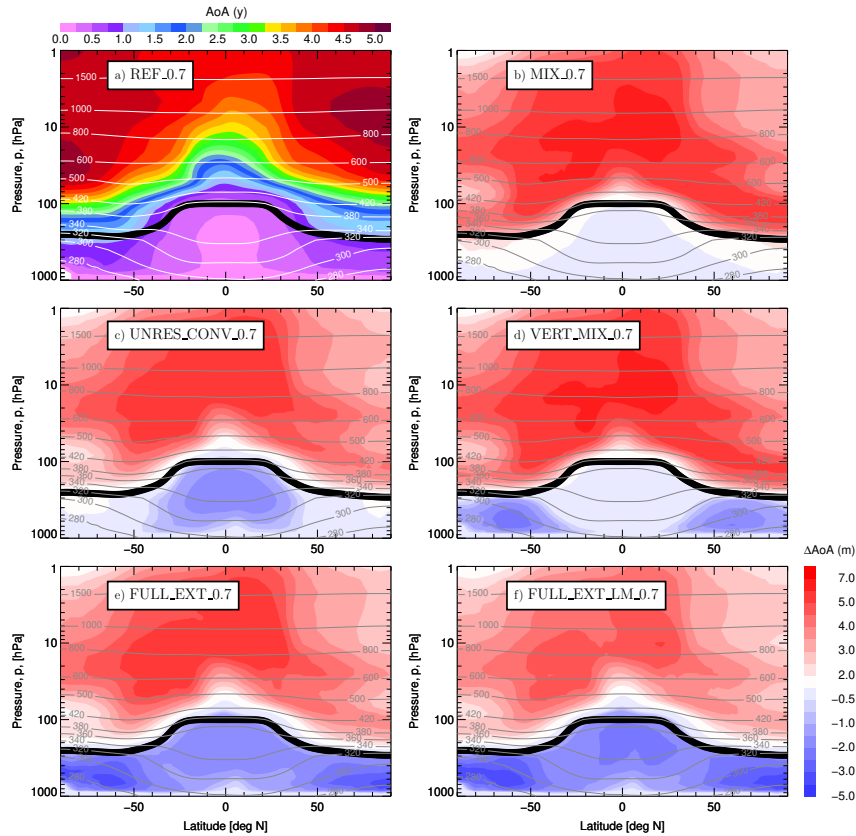


Figure 11. Annual and zonal mean of AoA (for 2007, in years) as derived from the reference simulation REF_0.7 (a) and the differences relative to this distributions (in month) calculated for some configurations listed in Table 1. Black line denotes the tropopause.

with the CONTRAIL observations (which are not included into the assimilation procedure of the here used version CT2013B). Remarkably, CLaMS control simulations are becoming even better than CarbonTracker distributions in the region above 10 km (c.f. Fig. 9) probably caused by a very limited vertical resolution of the CarbonTracker data around the tropopause (only 6 levels between 9 and 18 km).

4.4 Impacts on the stratosphere

For this purpose, we discuss in Fig. 11 the differences in the distribution of AoA due to extension of tropospheric transport by considering its annual and zonal mean calculated for the year 2007 (last year of our simulations covering the 2005-07 period). As a reference distribution we use the AoA of the REF_0.7 case shown in the Fig. 11a) and calculate the respective differences in the AoA distributions of the simulations with 6h default mixing (MIX_0.7, panel b), with added unresolved convective updrafts (UNRES_CONV_0.7, panel c), with added tropospheric mixing (TROP_MIX_0.7, panel d), with the full

tropospheric extension (FULL_EXT_0.7, panel e) and with full tropospheric extension but slightly reduced default mixing by increasing λ_c from 3.5 to 4.0 day^{-1} (FULL_EXT_SM_0.7, panel f).

5 As expected, the air below the tropical tropopause becomes younger by up to 6 months if the additional tropospheric transport is included (panels (c) to (f)). The effect of convection is mainly confined to the tropics while the strongest impact of tropospheric mixing can be diagnosed in the high latitudes. However, and at first surprisingly, the air becomes slightly older in the stratosphere (around 6 months). Note that this is not a consequence of enhanced tropospheric transport but of the change in the default mixing scheme from $\Delta t = 24$ hours, $\lambda_c = 1.5 \text{ day}^{-1}$ (reference) to $\Delta t = 6$ hours, $\lambda_c = 3.5 \text{ day}^{-1}$ and can be
10 deduced from the panel (b). Such a change leads to a slightly enhanced isentropic mixing across the tropical pipe, which also enhances the stratospheric re-circulation and makes the stratospheric air older due to aging by mixing (Garny et al., 2014; Poshyvailo et al., 2018). Consistently, aging by mixing in the stratosphere becomes smaller by reducing the isentropic part of CLaMS mixing by setting $\Delta t = 6$ hours, $\lambda_c = 4.0 \text{ day}^{-1}$ in the default mixing scheme (panel (f)) although the tropospheric AoA is only weakly affected. This indicates a secondary role of CLaMS standard mixing scheme in the troposphere and underlines its primary role in the stratosphere. In this way, the cross-tropopause gradient of AoA can be enhanced by combining
15 the stratospheric mixing with the proposed extension of tropospheric transport.

5 Conclusions

Implementation of mixing in Lagrangian transport models is still an important issue in the ongoing scientific discussion. Here, we follow the idea of using numerical diffusion to parametrize physical mixing which was first proposed and implemented in
20 connection with the Chemical Lagrangian Model of the Stratosphere (CLaMS). In particular, we extend this idea to the troposphere where vertical stability is much smaller if compared with the stratosphere for which CLaMS was originally developed. By using the lapse rates of the dry and moist potential temperature mainly defining the squares of the dry and moist Brunt-Vaisaila frequencies N^2 and N_m^2 , we parametrize two important tropospheric processes which are not sufficiently resolved in the current version of CLaMS (Pommrich et al., 2014), i.e.: tropospheric mixing in regions with small lapse rates of the dry
25 potential temperature and unresolved (deep) convection in regions with conditionally unstable lapse rates of the moist potential temperature.

The implementation of both processes improves CLaMS performance measured here in terms of the quality of the simulated CO_2 seasonality. However, there is still some freedom in the choice of the free parameters (like critical values for N^2 , N_m^2 or $\Delta\theta$) and in the representation of the PBL in the model. In particular the choice of the critical displacement $\Delta\theta$ triggering the onset of convective updrafts (currently set to 35K) needs further investigations. Using smaller values for this parameter would enhance the violation of the mass conservation and would make it mandatory to include some diabatic correction to the vertical winds following the procedure described in Rosenlof (1995) and Konopka et al. (2010).

By including other species like CO, ozone, CH_4 and water vapor and comparing such distributions with observations, we
5 plan in the future to reduce these degrees of freedom. On the other hand, by covering the whole range of possible variability of tropospheric transport, we will be also able to find the respective variability of the air composition entering the stratosphere.

Appendix A: Vertical instability, Brunt-Vaisala frequency and convective available potential energy (CAPE)

Vertical instability is strongly related to the concept of buoyancy. We condense now some textbook knowledge and start from the Boussinesq approximation of the vertical momentum equation by taking into account only buoyancy effects (see e.g. Salby (1996) or Vallis (2006)), i.e.:

$$\frac{Dw}{Dt} = -\frac{1}{\rho_0} \frac{\partial \Delta p}{\partial z} - g \frac{\Delta \rho}{\rho_0} \approx -g \frac{\Delta \rho}{\rho_0}. \quad (\text{A1})$$

The solution of this equation describes the vertical velocity w of an air parcel in a hydrostatic reference atmosphere, i.e. defined by the relation $\partial_z p_0 = -\rho_0 g$ with mean pressure and air mass density profiles given by $p_0(z)$ and $\rho_0(z)$, respectively (z - geometric altitude, g - gravity of Earth). The Δ -quantities, i.e., Δp and $\Delta \rho$ describe the deviation from such a mean state.

The right hand side of eq. (A1) quantifies the buoyancy. Following Archimedes, the mass-related buoyancy F_b/m can be derived from the weight of the environmental fluid replaced by the parcel, i.e.

$$-\frac{F_b}{m} = \frac{\rho g V - \rho_0 g V}{\rho V} = g \frac{\rho - \rho_0}{\rho} \stackrel{\text{Boussinesq}}{=} g \frac{\rho - \rho_0}{\rho_0} = g \frac{\Delta \rho}{\rho_0}, \quad (\text{A2})$$

where, using the Boussinesq approximation, ρ was replaced by ρ_0 . With $w = \Delta z/dt$ and $\Delta \rho = -(d\rho_0/dz)\Delta z$, the following equation for Δz can be derived:

$$\frac{d^2}{dt^2} \Delta z + N^2 \Delta z = 0, \quad N^2 = -\frac{g}{\rho_0} \frac{d\rho_0}{dz}, \quad (\text{A3})$$

with N denoting the Brunt-Vaisala frequency. Using the ideal gas law and assuming the incompressibility of the flow, we get (for details see e.g. Vallis (2006)):

$$\frac{\Delta \rho}{\rho_0} = -\frac{\Delta \theta}{\theta_0}. \quad (\text{A4})$$

With $\Delta \rho = -\Delta \theta (\rho_0/\theta_0) = -(\rho_0/\theta_0)(d\theta_0/dz)\Delta z$, the Brunt-Vaisala frequency can be also rewritten to the well-known definition (index “o” is omitted):

$$N^2 = \frac{g}{\theta} \frac{d\theta}{dz}. \quad (\text{A5})$$

In general, eq. (A3) has two types of solutions: periodic (i.e. stable) solutions for $N^2 > 0$ and exponentially increasing (i.e. unstable) solutions for $N^2 < 0$. We conclude that the lapse rate of the potential temperature θ defines the stability and the instability of the atmospheric environment through the positive and negative lapse rate $d\theta/dz$ (or through the positive and negative values of N^2), respectively.

Now, we generalize this concept to the atmosphere containing water vapor, i.e. to the moist atmosphere (see e.g. Salby (1996)). First, we define the equivalent potential temperature θ_e by using the equivalent temperature, i.e. the temperature of an air parcel from which all the water vapor has been extracted by an adiabatic process (see also Fig. A1):

$$\theta_e = \frac{T_e}{T} \theta, \quad T_e = T + \frac{L}{c_p} \mu_w. \quad (\text{A6})$$

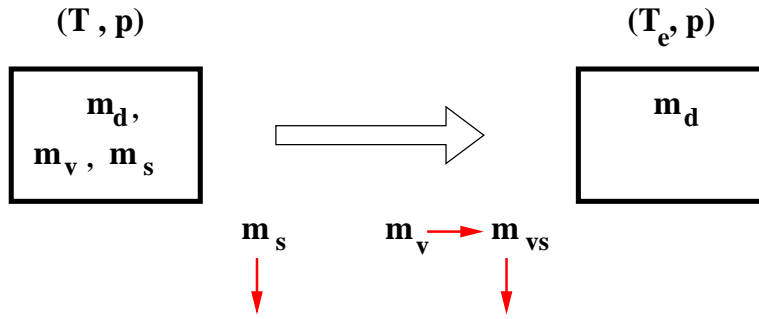


Figure A1. The equivalent potential temperature T_e of an air parcel with temperature T and pressure p and with the dry mass m_d , water vapor content m_v and the liquid/solid water content m_s . T_e is defined by a reversible process completely removing m_v by vapor-water condensation (i.e. transforming pseudoadiabatically m_v into m_{vs}) and by using this energy to heat the original air parcel by $p = \text{const}$, i.e. $T_e > T$. Liquid and/or solid water (m_s) are removed, but without any correction of T_e . (i.e. due to sedimentation this is a pseudoadiabatic and not a pure adiabatic process).

L is the latent heat of evaporation and μ_w the water vapor mixing ratio. The energy released by the phase transition from liquid water to the ice phase can be neglected in most cases because the respective latent heat is smaller by a factor of 10 than the latent heat of gas-liquid transition (334 kJ for melting versus 2270 kJ for evaporation for 1 kg liquid water). There is a number of different definitions of the equivalent potential temperature (Bolton, 1980). Our definition corresponds to the simplified formula proposed by Stull (1988).

Using the same type of arguments as for the dry atmosphere, we also quantify the vertical instability of the moist atmosphere in terms of the lapse rate of the equivalent potential temperature θ_e or in terms of the respective (moist) Brunt-Vaisala Frequency N_m , i.e.

$$N_m^2 = \frac{g}{\theta_e} \frac{d\theta_e}{dz}. \quad (\text{A7})$$

However, atmospheric environments with a negative lapse rate of the equivalent potential temperature or with negative values of N_m^2 define only the so-called conditionally unstable atmosphere (see e.g. Salby (1996)), i.e. regions which could be unstable if the respective phase transition releasing latent heat would happen (such air parcels with $N_m^2 < 0$ are not necessarily saturated, so some unresolved motions like adiabatic gravity waves are needed to get saturation).

For comparison, we also use the known concept of convective available potential energy (CAPE) which can be understood as a different measure of the unstable buoyancy (Emanuel, 1994). Starting from (A2) and (A4), we can write:

$$-\frac{F_b}{m} = g \frac{\rho - \rho_0}{\rho_0} = -g \frac{\theta - \theta_0}{\theta_0} \quad (\text{A8})$$

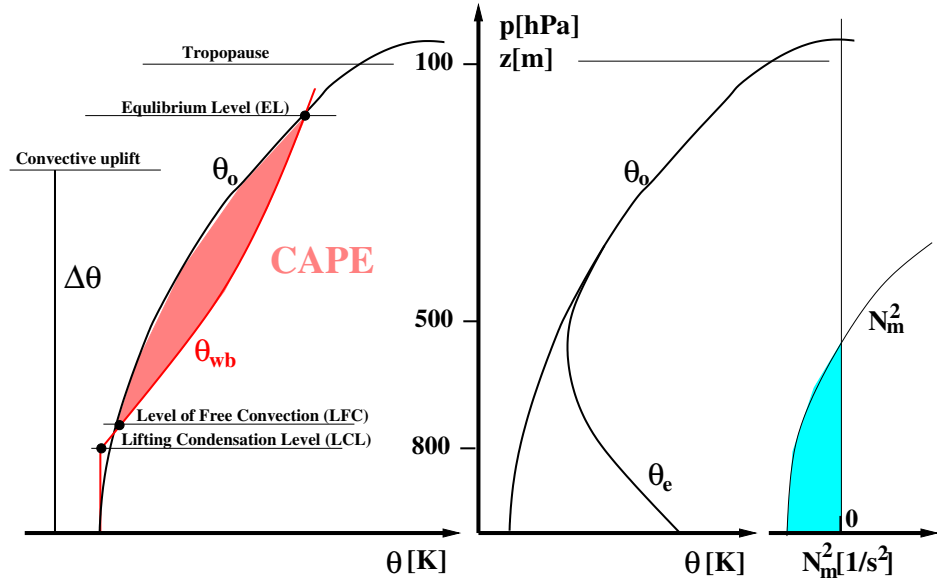


Figure A2. CAPE (red) versus stability-based (cyan) measure of potential convective uplift $\Delta\theta$ transporting CLaMS air parcels from the PBL to the upper troposphere. For more explanation see text.

Then, CAPE is defined as the following integral (in J/kg, see also Fig. A2):

$$\text{CAPE} = \int_{z_{min}}^{z_{max}} \text{“unstable buoyancy force”} dz = \int_{\text{LFC}}^{\text{EL}} g \frac{\theta_{wb}(z) - \theta_0(z)}{\theta_0(z)} dz. \quad (\text{A9})$$

Whereas $\theta_0(z)$ is the dry potential temperature of the environment (ambient air), $\theta_{wb}(z)$ is the so-called wet-bulb potential temperature which needs some further explanations: We begin with the lifting condensation level (LCL) defined as the height at which a parcel of air becomes saturated when it is lifted adiabatically from the Earth’s surface (so the potential temperature does not change). Starting from the LCL the air parcel is then transported along a moist adiabat (also known as saturation-adiabatic process, i.e. an pseudoadiabatic process for which the air is saturated). The corresponding dry potential temperature **along such a moist adiabat** defines the wet-bulb potential temperature. Note that a distinction is made between the reversible process, in which total water is conserved, and the pseudoadiabatic or irreversible moist adiabatic process, in which liquid water is assumed to be removed as soon as it is condensed (see also Fig. A1). The cross points of such a moist adiabat with $\theta_0(z)$ define the region with unstable conditions (red). The lowest cross point defines the level of free convection (LFC) whereas the equilibrium level (EL) is the height where the (potential) temperature of a buoyantly rising parcel again equals the (potential) temperature of the environment.

In this paper, we use the condition $N_m^2 < 0$ rather than condition $\text{CAPE} > 0$ to find those air parcels in the lowest model level (approximating the PBL) which might undergo convection (see Fig. A2). In the next appendix, we discuss an additional assumption quantifying the vertical displacement of such air parcels.

5 Appendix B: Latent heat release versus vertical transport

To derive the expression (B7) quantifying the convection-driven vertical uplift $\Delta\theta$ from the latent heat δQ available within the air parcel, we assume that the source of heating is only the latent heat release of water vapor condensation. For a unit mass, we get along a moist adiabat (see e.g. Salby (1996)):

$$\delta Q = -L_v d\mu_s \quad (\text{B1})$$

10 where L_v is the specific latent heat for water evaporation (or condensation, in J/kg) and μ_s is the saturation water vapor mass mixing ratio.

Using the entropy definition of the potential temperature $\theta := \theta_0 \exp(s/c_p)$ with s being the specific entropy measured in J/(K kg) (i.e. entropy per unit mass), c_p denoting the specific heat at constant p and θ_0 being the temperature T_0 that the air parcel would acquire if adiabatically brought to the surface pressure p_0 , we get:

$$15 \quad ds = c_p \frac{d\theta}{\theta}. \quad (\text{B2})$$

Thus, using the second law of thermodynamics, $ds = \delta Q/T$, and substituting δQ by the relation (B1), $d\theta$ can be derived as

$$d\theta = -\frac{L_v \theta d\mu_s}{c_p T}, \quad (\text{B3})$$

where T is the saturation temperature. Furthermore, we assume that during the condensation process, when the saturated air parcel moves from the initial state θ_0 to the final state $\theta_0 + \Delta\theta$, the saturation temperature T does not change. Thus, eq. (B3)

20 can be simply integrated, i.e.:

$$\int_{\theta_0}^{\theta_0 + \Delta\theta} \frac{d\theta}{\theta} = - \int_{\mu_s(\theta_0)}^{\mu_s(\theta_0 + \Delta\theta)} \frac{L_v d\mu_s}{c_p T}. \quad (\text{B4})$$

The result of the integral can be written as:

$$\Delta\theta = \theta_0 \left[\exp\left(\frac{L_v \Delta\mu_s}{c_p T}\right) - 1 \right], \quad (\text{B5})$$

where $\Delta\mu_s = \mu_s(\theta_0) - \mu_s(\theta_0 + \Delta\theta)$. Because $\frac{L_v \Delta\mu_s}{c_p T} \ll 1$, a first order approximation of the right hand side of eq. (B5) through
25 the Taylor expansion of the exponential function (Ertel, 1938) is

$$\Delta\theta = \frac{L_v \theta_0 \Delta\mu_s}{c_p T}, \quad (\text{B6})$$

which gives a relationship between the total change of the potential temperature and the change of water vapor mass mixing ratio. Strictly, $\Delta\mu_s$ is the change of the water vapor saturation mass mixing ratio before and after a model time step. In our “deep convection” scheme, $\Delta\mu_s$ is estimated by the total water vapor mass mixing ratio μ_w before the model time step with the assumption that 1) the time scale of deep convection and its associated condensation is smaller than one model time step (here: 6 hours), 2) the residual water vapor content after deep convection ($\mu_s(\theta_0 + \Delta\theta)$) is so small that it can be neglected.

- 5 Thus, the $\Delta\mu_s$ is assumed to be the total water vapor mass mixing ratio μ_w in the air parcel within the lowest layer of CLaMS where the criterion ($N_m^2 < 0$) is fulfilled. Therefore, the uplifting of an air parcel in our “deep convection” scheme is estimated by

$$\Delta\theta = \frac{L_v\theta_0\mu_w}{c_pT}. \quad (\text{B7})$$

10 Appendix C: Mass flux due to unresolved convective updrafts

To estimate the influence of our convection parametrization on the mass budget, we calculate the zonally-resolved (i.e. per latitude bin $\Delta\phi$), mass density change $\dot{M}_c = dM_c/dt$ within CLaMS layer $\Delta\zeta$ for all convective events which were initiated during one advection time step $\Delta t = 1/4$ day, i.e.:

$$\dot{M}_c(\phi, \zeta) = \sigma(\phi, \zeta) f_m(\phi, \zeta) \frac{\Delta\zeta}{\Delta t} \quad (\text{C1})$$

- 15 Units of \dot{M}_c are $\text{kg/m}^2\text{day}$. The ζ -related air density σ is given as $-(1/g)\partial p/\partial\zeta$ (units: kg/Km^2). Furthermore, f_m is the fraction of air parcels convectively transported within the latitude bin $\Delta\phi$ to a target layer $\Delta\zeta$ denoted here as n_{conv} relative to the total number number of air parcels in this destination region denoted here as N_{tot} , i.e. $f_m = n_{conv}/N_{tot}$ (we assume that all air parcels are uniformly distributed within the layer, both horizontally and vertically). The related convective updraft mass flux density, F_c , is given through $\partial_z F_c = \dot{M}_c$ or as a discretized solution:

$$F_c(\phi_i, \zeta_j) = \sum_{k=j}^{k=N} \dot{M}_c(\phi_i, \zeta_k) \quad (\text{C2})$$

- 5 where N denotes the total number of CLaMS layers an $\phi_i, i = 1, \dots, M$ are the latitude bins.

Fig. C1 shows the annually averaged values of F_c (a) and its global mean (b). The latter profile quantifies the additional mass flux into the model caused by parametrized convective updrafts and it roughly balances the mass deficit diagnosed in Fueglistaler et al. (2009) (c.f. their Figure 10) due to use of the non mass-conserving diabatic vertical velocities.

Acknowledgements. The European Centre for Medium-Range Weather Forecasts (ECMWF) provided meteorological analysis for this study.

- 5 We thank to the CONTRAIL team, in particular to Toshinobu Machida and Yousuke Sawa for helping us to use this data set. The authors sincerely thank Andy Jacobson and Pieter Tans from NOAA for support related to the CarbonTracker data. We also thank Rolf Müller

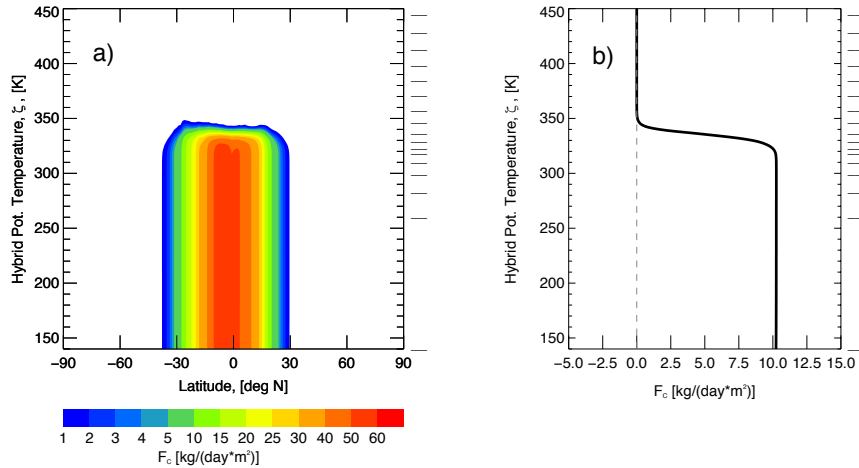


Figure C1. Annually averaged and zonally resolved updrafts due to parametrized convection ($\sigma_r = 0.3$) (a) and their global mean (b). On the right side of panel (a) the boundaries of CLaMS layers, $\Delta\zeta_i$, $i = 1 \dots N$, are shown.

and Michael Volk for helpful discussions. We are thankful to Marta Abalos for providing us with the WACCM e90 climatology. Excellent programming support was provided by N. Thomas. Finally, we would like to thank all 2 reviewers for their insightful and probably very time-consuming reviews, as these comments led us to an improvement of the work. Especially, we thank Ingo Wohltmann for his important comment related to the mass budget violation if unresolved convective updrafts are considered. This research was supported by the German Helmholtz-Gemeinschaft within the Helmholtz-CAS joint research group (JRG) “Climatological impact of increasing anthropogenic emissions over Asia”.

Code and data availability. The CLaMS code as used in Pommrich et al. (2014) is now implemented into the Modular Earth Submodel System (MESSy) system (Version 2.53, <https://www.messy-interface.org/>). The here described extension will be included into the one of next releases of MESSy and until then this code can be requested from the corresponding author (p.konopka@fz-juelich.de) or can be found in the supplement. The CONTRAIL CO₂ data are openly accessible (doi:10.17595/20180208.001). The CarbonTracker data (version 2013B) can be downloaded from ftp://products/carbontracker/co2/CT2013B/molefractions/co2_total/. For more detailed model data, please contact the authors.

References

- 20 Abalos, M., Randel, W. J., Kinnison, D., and Garcia, R.: Using the artificial tracer e90 to examine present and future UTLS tracer transport in WACCM, *J. Geophys. Res.*, 74, <https://doi.org/10.1029/2002JD002634>, 2017.
- Balsley, B. B., Svensson, G., and Tjernström, M.: On the Scale-dependence of the Gradient Richardson Number in the Residual Layer, *Boundary-Layer Meteorol.*, 72, 57:72, <https://doi.org/10.1007/s10546-007-9251-0>, 2008.
- Bates, D. R. and Nicolet, M.: The photochemistry of atmospheric water vapor, *J. Geophys. Res.*, 55, 301–327, 1950.
- 25 Birner, T.: Fine-scale structure of the extratropical tropopause region, *J. Geophys. Res.*, 111, <https://doi.org/10.1029/2005JD006301>, 2006.
- Birner, T., Sankey, D., and Shepherd, T. G.: The tropopause inversion layer in models and analyses, *Geophys. Res. Lett.*, 33, 2006.
- Bolton, D.: The Computation of Equivalent Potential Temperature. *Mon. Wea. Rev.*, 108, 1046–1053, 1980.
- Bönisch, H., Hoor, P., Gurk, C., Feng, W., and Chipperfield, M.: Model evaluation of CO₂ and SF₆ in the extratropical UT/LS region, *J. Geophys. Res.*, D06101, <https://doi.org/10.1029/2007JD008829>, 2008.
- 30 Bönisch, H., Engel, A., Curtius, J., Birner, T., and Hoor, P.: Quantifying transport into the lowermost stratosphere using simultaneous in-situ measurements of SF₆ and CO₂, *Atmos. Chem. Phys.*, 9, 5905–5919, 2009.
- Boucher, O., Friedlingstein, P., Collins, B., and Shine, K. P.: The indirect global warming potential and global temperature change potential due to methane oxidation, *Environ. Res. Lett.*, 4, <https://doi.org/10.1088/1748-9326/4/4/044007>, 2009.
- Bowman, K. P., Pan, L. L., Campos, T., and Gao, R. S.: Observations of fine-scale transport structure in the upper troposphere from the High-
35 performance Instrument Airborne Platform for Environmental Research, *J. Geophys. Res.*, 112, <https://doi.org/10.1029/2007JD008685>, 2007.
- Brinkop, S. and Jöckel, P.: ATTILA 4.0 - Lagrangian Advective and Convective Transport of Passive Tracers within the ECHAM5/MESSy (2.53.0) Chemistry Climate Model, *Geosci. Model Dev. Discuss.*, ..., ..., 2018.
- Collins, W., Derwent, R., Johnson, C., and Stevenson, D.: A comparison of two schemes for the convective transport of chemical species in a Lagrangian global chemistry model, *qjrms*, 128, 991–1009, 2002.
- Collins, W. J., Stevenson, D. S., Johnson, C. E., and Derwent, R. G.: Tropospheric ozone in a global-scale three-dimensional Lagrangian
5 model and its response to NO_x emission controls, *J Atmos Chem*, 26, 223–274, 1997.
- Corti, F., Luo, B. P., Fu, Q., Vömel, H., and Peter, T.: The impact of cirrus clouds on tropical troposphere-to-stratosphere transport, *Atmos. Chem. Phys.*, 6, 1725–1747, 2006.
- Dee, D. P., Uppala, S. M., Simmons, A. J., Berrisford, P., Poli, P., Kobayashi, S., Andrae, U., Balmaseda, M. A., Balsamo, G., Bauer, P.,
Bechtold, P., Beljaars, A. C. M., van de Berg, L., Bidlot, J., Bormann, N., Delsol, C., Dragani, R., Fuentes, M., Geer, A. J., Haimberger, L.,
10 Healy, S. B., Hersbach, H., Holm, E. V., Isaksen, L., Kallberg, P., Kohler, M., Matricardi, M., McNally, A. P., Monge-Sanz, B. M., Morcrette, J. J., Park, B. K., Peubey, C., de Rosnay, P., Tavolato, C., Thepaut, J. N., and Vitart, F.: The ERA-Interim reanalysis: configuration and performance of the data assimilation system, *Q. J. R. Meteorol. Soc.*, 137, 553–597, <https://doi.org/10.1002/qj.828>, 2011.
- Diallo, M., Legras, B., Ray, E., Engel, A., and Anel, J.: Global distribution of CO₂ in the upper troposphere and stratosphere, *Atmos. Chem. Phys.*, 17, 3861–3878, <https://doi.org/10.5194/acp-17-3861-2017>, 2017.
- 15 Ehhalt, D.: The atmospheric cycle of methane, *Tellus*, 26, 58–70, 1974.
- Emanuel, K.: Atmospheric convection, Oxford University Press, New York, 1994.
- Emanuel, K. A.: A scheme for representing cumulus convection in large-scale models, *J. Atmos. Sci.*, 48, 2313 – 2335, 1991.
- Ertel, H.: Methoden und Probleme der dynamischen Meteorologie, Springer, 1938.

- Erukhimova, T. and Bowman, K. P.: Role of convection in global-scale transport in the troposphere, *J. Geophys. Res.*, 111, <https://doi.org/10.1029/2005JD006006>, 2006.
- Fairlie, T. D., Pierce, R. B., Al-Saadi, J. A., Grose, W. L., Russell, J. M., Proffitt, M. H., and Webster, C. R.: The contribution of mixing in Lagrangian Photochemical predictions of polar ozone loss over the Arctic in summer 1997, *J. Geophys. Res.*, 104, 26 597–26 609, 1999.
- Forster, C., Stohl, A., and Seibert, P.: Parameterization of convective transport in a Lagrangian particle dispersion model and its evaluation, *J. Appl. Meteor. Climatol.*, 46, 403–422, 2007.
- 25 Fueglistaler, S., Legras, B., Beljaars, A., Morcrette, J.-J., Simmons, A., Tompkins, A. M., and Uppapla, S.: The diabatic heat budget of the upper troposphere and lower/mid stratosphere in ECMWF reanalyses, *Q. J. R. Meteorol. Soc.*, 135, 21–37, <https://doi.org/10.1002/qj.361>, 2009.
- Garny, H., Birner, T., Bönisch, H., and Bunzel, F.: The effects of mixing on Age of Air, *J. Geophys. Res.*, 119, <https://doi.org/10.1002/2013JD021417>, 2014.
- 30 Gettelman, A. and de Forster, P. M.: Definition and climatology of the tropical tropopause layer, *jmsj*, 80:4B, 911–924, 2002.
- Konopka, P. and Pan, L. L.: On the mixing-driven formation of the Extratropical Transition Layer (ExTL), *J. Geophys. Res.*, 117, <https://doi.org/10.1029/2012JD017876>, 2012.
- Konopka, P., Steinhorst, H.-M., Groöß, J.-U., Günther, G., Müller, R., Elkins, J. W., Jost, H.-J., Richard, E., Schmidt, U., Toon, G., and McKenna, D. S.: Mixing and Ozone Loss in the 1999-2000 Arctic Vortex: Simulations with the 3-dimensional Chemical Lagrangian
- 35 Model of the Stratosphere (CLaMS), *J. Geophys. Res.*, 109, D02315, <https://doi.org/10.1029/2003JD003792>, 2004.
- Konopka, P., Günther, G., Müller, R., dos Santos, F. H. S., Schiller, C., Ravegnani, F., Ulanovsky, A., Schlager, H., Volk, C. M., Viciani, S., Pan, L. L., McKenna, D.-S., and Riese, M.: Contribution of mixing to upward transport across the tropical tropopause layer (TTL), *Atmos. Chem. Phys.*, 7, 3285–3308, 2007.
- Konopka, P., Groöß, J.-U., Günther, G., Ploeger, F., Pommrich, R., Müller, R., and Livesey, N.: Annual cycle of ozone at and above the tropical tropopause: observations versus simulations with the Chemical Lagrangian Model of the Stratosphere (CLaMS), *Atmos. Chem. Phys.*, 10, 121–132, <https://doi.org/10.5194/acp-10-121-2010>, <http://www.atmos-chem-phys.net/10/121/2010/>, 2010.
- Konopka, P., Ploeger, F., and Müller, R.: Entropy- and static stability-based Lagrangian model grids, vol. 200, pp. 99–109, American Geophysical Union, Washington, DC, *Geophys. Monogr.*, <https://doi.org/10.1029/95GL00814>, 2012.
- 5 Legras, B., Pissot, I., Berthet, G., and Lefevre, F.: Variability of the Lagrangian turbulent diffusion in the lower stratosphere, *Atmos. Chem. Phys.*, 5, 1605–1622, 2005.
- Machida, T., Kita, K., Kondo, Y., Blake, D., Kawakami, S., Inoue, G., and Ogawa, T.: Vertical and Meridional Distributions of the Atmospheric CO₂ Mixing Ratio between Northern Midlatitudes and Southern Subtropics, *Journal of Geophysical Research*, 108, <https://doi.org/10.1029/2001JD000910>, 2002.
- 10 Machida, T., Matsueda, H., Sawa, Y., Nakagawa, Y., Hirofani, K., Kondo, N., Goto, K., Nakazawa, T., Ishikawa, K., and Ogawa, T.: World-wide Measurements of Atmospheric CO₂ and Other Trace Gas Species Using Commercial Airlines, *Journal of Atmospheric and Oceanic Technology*, 25, 1744–1754, <https://doi.org/10.1175/2008JTECHA1082.1>, 2008.
- Mahowald, N. M., Plumb, R. A., Rasch, P. J., del Corral, J., and Sassi, F.: Stratospheric transport in a three-dimensional isentropic coordinate model, *J. Geophys. Res.*, 107, 4254, <https://doi.org/10.1029/2001JD001313>, 2002.
- 15 McKenna, D. S., Groöß, J.-U., Günther, G., Konopka, P., Müller, R., Carver, G., and Sasano, Y.: A new Chemical Lagrangian Model of the Stratosphere (CLaMS): 2. Formulation of chemistry scheme and initialization, *J. Geophys. Res.*, 107, 4256, <https://doi.org/10.1029/2000JD000113>, 2002a.

- McKenna, D. S., Konopka, P., Grooß, J.-U., Günther, G., Müller, R., Spang, R., Offermann, D., and Orsolini, Y.: A new Chemical Lagrangian Model of the Stratosphere (CLaMS): 1. Formulation of advection and mixing, *J. Geophys. Res.*, 107, 4309, <https://doi.org/10.1029/2000JD000114>, 2002b.
- Pan, L. L., Atlas, E. L., Salawitch, R. J., Honomichl, S. B., Bresch, J. F., Randel, W. J., Apel, E. C., Hornbrook, R. S., Weinheimer, A. J., Anderson, D. C., Andrews, S. J., Baidar, S., Beaton, S. P., Campos, T. L., Carpenter, L. J., Chen, D., Dix, B., Donets, V., Hall, S. R., Hanisco, T. F., Homeyer, C. R., Huey, L. G., Jensen, J. B., Kaser, L., Kinnison, D. E., Koenig, T. K., Lamarque, J.-F., Liu, C., Luo, J., Luo, Z. J., Montzka, D. D., Nicely, J. M., Pierce, R. B., Riemer, D. D., Robinson, T., and Romashkin, P.: The Convective Transport of Active Species in the Tropics (CONTRAST) Experiment, *Bull. Am. Meteorol. Soc.*, 98, 106–128, 2017.
- Park, M., Randel, W. J., Kinnison, D. E., Emmons, L. K., Bernath, P. F., Walker, K. A., Boone, C. D., and Livesey, N. J.: Hydrocarbons in the upper troposphere and lower stratosphere observed from ACE-FTS and comparisons with WACCM, *J. Geophys. Res.*, 118, 1964–1980, 2013.
- Peters, W., Jacobson, A. R., Sweeney, C., Andrews, A. E., Conway, T. J., Masarie, K., Miller, J. B., Bruhwiler, L. M. P., Petron, G., Hirsch, A. I., Worthy, D. E. J., van der Werf, G. R., Randerson, J. T., Wennberg, P. O., Krol, M. C., and Tans, P. P.: An atmospheric perspective on North American carbon dioxide exchange: CarbonTracker, *Proc. Natl. Acad. Sci.*, 104, 18 925 – 18 930, 2007.
- Ploeger, F., Konopka, P., Günther, G., Grooß, J.-U., and Müller, R.: Impact of the vertical velocity scheme on modeling transport across the tropical tropopause layer, *J. Geophys. Res.*, 115, D03301, <https://doi.org/10.1029/2009JD012023>, 2010.
- Pommrich, R., Müller, R., Grooß, J.-U., Konopka, P., Ploeger, F., Vogel, B., Tao, M., Hoppe, C., Günther, G., Spelten, N., et al.: Tropical troposphere to stratosphere transport of carbon monoxide and long-lived trace species in the Chemical Lagrangian Model of the Stratosphere (CLaMS), *Geoscientific Model Development*, 7, 2895–2916, 2014.
- Poshyvailo, L., Müller, R., Konopka, P., Günther, G., Riese, M., Podglajen, A., and Ploeger, F.: Sensitivities of modelled water vapour in the lower stratosphere: temperature uncertainty, effects of horizontal transport and small-scale mixing, *Atmos. Chem. Phys.*, 18, 8505–8527, 2018.
- Prather, M., Zhu, X., Tang, Q., Hsu, J., and Neu, J.: An atmospheric chemist in search of the tropopause, *J. Geophys. Res.*, 116, 2011.
- Pugh, T. A. M., Cain, M., Methven, J., Wild, O., Arnold, S. R., Real, E., Law, K. S., Emmerson, K. M., Owen, S. M., Pyle, J. A., Hewitt, C. N., and MacKenzie, A. R.: A Lagrangian model of air-mass photochemistry and mixing using a trajectory ensemble: the Cambridge Tropospheric Trajectory model of Chemistry And Transport (CiTTYCAT) version 4.2, *Geosci. Model Dev.*, 5, 193–221, 2012.
- Reithmeier, C. and Sausen, R.: ATTILA - Atmospheric Tracer Transport in a Lagrangian Model, *Tellus B*, 54, 278–299, <https://doi.org/10.1034/j.1600-0889.2002.01236.x>, 2002.
- Riese, M., Ploeger, F., Rap, A., Vogel, B., Konopka, P., Dameris, M., and Forster, P. M.: Impact of uncertainties in atmospheric mixing on simulated UTLS composition and related radiative effects, *J. Geophys. Res.*, 117, D16, <https://doi.org/doi:10.1029/2012JD017751>, 2012.
- Rosenlof, K. H.: Seasonal cycle of the residual mean meridional circulation in the stratosphere, *J. Geophys. Res.*, 100, 5173 – 5191, 1995.
- Russo, M. R., Marecal, V., C. R. Hoyle and, J. A., Chemel, C., Chipperfield, M. P., Dessens, O., Feng, W., Hosking, J. S., Telford, P. J., Wild, O., Yang, X., , and Pyle, J. A.: Representation of tropical deep convection in atmospheric models (Part 1): Meteorology and comparison with satellite observations, *Atmos. Chem. Phys.*, 11, 2765–2786, 2011.
- Salby, M. L.: *Fundamentals of atmospheric physics*, Academic Press, San Diego, 1996.
- Sawa, Y., Machida, T., Matsueda, H., Niwa, Y., Tsuboi, K., Murayama, S., Morimoto, S., and Aoki, S.: Seasonal changes of CO₂, CH₄, N₂O and SF₆ in the upper troposphere/lower stratosphere over the Eurasian continent observed by commercial airliner, *Geophys. Res. Lett.*, 42, 2001–2008, <https://doi.org/10.1002/2014GL062734>, 2015.

- Schiller, C., Groß, J.-U., Konopka, P., Ploeger, F., Silva dos Santos, F. H., and Spelten, N.: Hydration and dehydration at the tropical tropopause, *Atmos. Chem. Phys. Discuss.*, 9, 17 495–17 529, *Atmos. Chem. Phys.*, in press, 2009.
- 20 Stohl, A., Forster, C., Frank, A., Seibert, P., and Wotawa, G.: Technical note: The Lagrangian particle dispersion model FLEXPART version 6.2, *Atmos. Chem. Phys.*, 5, 2461–2474, 2005.
- Stull, R. B.: *An introduction to boundary layer meteorology*, vol. 13, Springer Science & Business Media, 1988.
- Tao, M., Pan, L. L., Konopka, P., Honomichl, S. B., Kinnison, D. E., and Apel, E. C.: A Lagrangian model diagnosis of stratospheric contributions to tropical mid-tropospheric air, *J. Geophys. Res.*, almost accepted, 2018.
- 660 Tiedtke, M.: A comprehensive mass flux scheme for cumulus parameterization in large-scale models, *Mon. Wea. Rev.*, 117, 1779–1800, 1989.
- Turner, J. S.: *Buoyancy Effects in Fluids*, Cambridge University Press, 1973.
- Ueyama, R., Jensen, E. J., and Pfister, L.: Convective Influence on the Humidity and Clouds in the Tropical Tropopause Layer During Boreal Summer, *J. Geophys. Res.*, 123, 7576–7593, <https://doi.org/10.1029/2018JD028674>, 2018.
- 665 Vallis, G. K.: *Atmospheric and oceanic fluid dynamics: fundamentals and large-scale circulation*, Cambridge University Press, 2006.
- Vogel, B., Pan, L. L., Konopka, P., Günther, G., Müller, R., Campos, T., Hall, W., Pollack, I., Weinheimer, A., Wei, J., Atlas, E. L., and Bowman, K. P.: Transport pathways and signatures of mixing in the extratropical tropopause region derived from Lagrangian model simulations, *J. Geophys. Res.*, 116, <https://doi.org/10.1029/2010JD014876>, 2011.
- 670 Waugh, D. W. and Hall, T. M.: Age of stratospheric air: Theory, observations, and models, *Rev. Geophys.*, 40, 1–27, 2002.
- Wernli, H. and Davies, H. C.: A Lagrangian-based analysis of extratropical cyclones I: The method and some applications, *Q. J. R. Meteorol. Soc.*, 123, 467–489, 1997.
- Wohltmann, I. and Rex, M.: The Lagrangian chemistry and transport model ATLAS: validation of transport and mixing, *Geosci. Model Dev.*, 2, 153–173, 2009.