

Response to reviews for “Three-dimensional methane distribution simulated with FLEXPART 8-CTM-1.1 constrained with observation data”, gmd-2018-117

We thank all referees for their useful comments and suggestions. Our response to all comments is given below.

In summary, we have:

- analyzed GOSAT satellite data in comparison to the aircraft profiles for possible inclusion in our model evaluation. However, based on the large bias of the satellite data, we did not consider this helpful. Further explanations are given in the detailed response below.
- added a figure and discussion in our manuscript on how the nudging method influences methane concentrations over time at different altitudes
- added clarifications and discussions in our manuscript where needed

Anonymous Referee #1

This paper is nicely written and addresses sharply the question whether local nudging of CH₄ mixing ratios at the surface towards stationary observations does improve the overall 3-dimensional performance.

It is an attractive method to directly include several local surface observations instead of averaged two dimensional fields. The authors provided a coherent evaluation with surface stations and aircraft profiles. However, I also would be interested in the comparison with spatially inclusive and comprehensive data sets as satellite data, which would further evaluate the whole column.

In the following I list a couple of questions concerning the manuscript.

We have considered including satellite data, but the potential biases of such data compared to observations are so large that we found it rather complicates than clarifies the evaluation and results of our model. For an impression, we show in the figure below the bias of GOSAT data compared to aircraft observations at different altitude ranges. Mean absolute bias of all profiles for these altitudes ranged from roughly 7 to 12 ppb for FLEXPART-CTM as well as GOSAT methane fields.

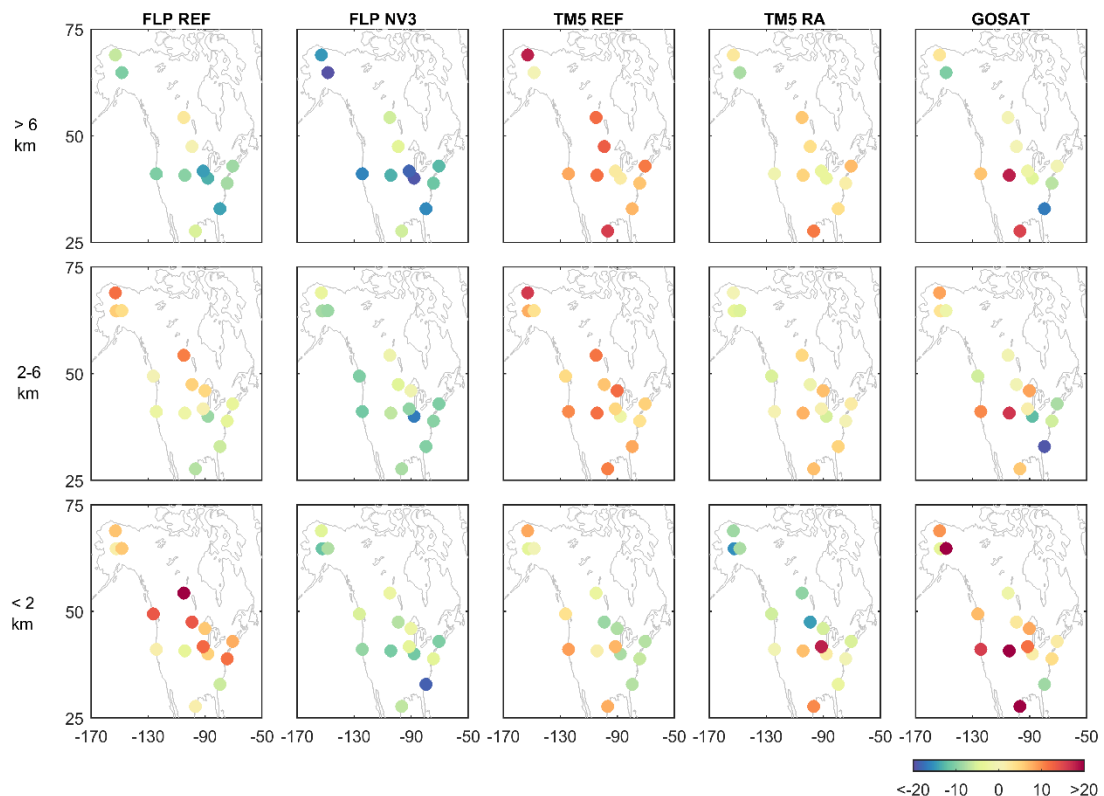


Figure 1 Bias (ppb) of modelled fields and satellite fields of methane compared to NOAA aircraft profiles at several locations at 3 altitude ranges. The model simulations cover data for 2013. GOSAT data (Product L4B, Three-dimensional global distribution of CH₄ concentration) was only available for months January until September in 2013.

On page 2 line 44 you state that inverse modeling approaches need GHG concentrations as input. That is likely the case, however, I wonder if you mean the inverse modeling of CH₄. In this case, nudging towards observations as in your case would influence the a priori. Maybe you could be a little more specific in what kind of situation the 3D concentrations are needed. Moreover, what do you think about the use of these 3D data sets for radiation simulations?

We wrote that “Inverse modelling of greenhouse gas emissions often requires global 3D greenhouse gas concentrations as input”. For regional inverse modelling of greenhouse gases, 3D fields of GHG concentrations are used to account for the influence of mixing ratios outside the time and space domains of the regional model on the observations. This may be done by coupling the regional model to the 3D fields to calculate the transport of gas from outside the domain to the observation points. This is independent of the a priori, but is a source of uncertainty in the inversion. Applications of the 3D concentration fields reach further than inverse modelling of greenhouse gases (which was our main motivation). Radiation simulations is another relevant example and we added this in our introduction.

- Introduction: To my knowledge there are a couple of models which perform nudging of GHGs. Could you list some and describe the difference or similarity to your method?

We are not aware of any 3D model that is nudged to observed GHG concentrations. There are atmospheric transport models that are nudged to observed meteorology, or nudging between model scales, and there is for example the data assimilation of CO₂

in one of the ECMWF models but this is different (far more computationally demanding etc.).

- Page 3 line 108-110: Where does those fields come from? Simulations of Chemistry-Climate Models? I understand that some reference work is not published, but the loss of methane is an important part in the simulations and needs to be replicable.

The monthly OH concentration fields are from the GEOS-Chem model (Bey et al., 2001). Note that any errors in the estimated loss due to e.g. OH are corrected for by nudging to observed CH₄ mixing ratios. We added this information in the manuscript.

- Page 3 line 118-121: This is a very long sentence. However, the information it holds is very crucial (simulation period). Please reformulate. Furthermore, why is the scaling factor applied?

The scaling factor was applied to remove the bias from the initial fields used in our simulations. We reformulate to:

“A spin-up simulation without nudging was run for years 2000-2012. At the end of this spin-up a single global scaling factor was applied to the simulated methane molar mixing ratios derived by a comparison to surface observations for the year 2012. This scaling allowed us to remove part of the bias from the spin-up. The sensitivity analysis and evaluation of FLEXPART CTM and the nudging method was made for 2013.”

Could you also invest a sentence in this paragraph on the introduction of your reference and sensitivity simulations? It gets lost in the results. I like the table 1 as an overview, however, it is difficult to understand without a short explanation (what is important?).

We added a brief description here. An introduction to table 1 is given in section 2.2 after explaining the nudging routine.

page 8 line 307: Have you considered the methane lifetime? Compared the one of FLEXPART and TM5? What about OH and temperature?

We have not looked further into differences in TM5 and FLEXPART-CTM. There are indeed many components that can be relevant here. However, we do not wish to make this into a study comparing FLEXPART CTM and TM5 in detail, but like to focus on the nudging routine and final background fields. We added other factors that may be important.

page 9 line 333: Are the simulated profiles sampled to the campaign profiles? Or is a certain spot chosen?

Yes, simulated profiles are sampled at campaign observations. We now repeat this information in the results section.

General: If the performance of this nudging method decreases at higher altitude, I am curious to what extent does this improve the 3 dimensional field of the whole atmosphere/troposphere. Since the 3D fields are part of the motivation, could you comment on that?

Indeed we find most improvement of modelled fields near the surface, up to heights of 6 km, and less confidence should be given to the fields at higher altitudes.

However, we also show that at higher altitudes model performance is similar to TM5.

Although there are larger uncertainties for these regions, one should consider that there are currently not many alternatives.

Technical corrections:

page 6 line 207: What about NW1 and NW2? I would assume that it should be (NV1-3 and NW1-3).

NW1 should be include here. Corrected.

Table 1: Could you highlight (additional horizontal line) the simulations with variable spatial width? What do the variable temporal width (NW1-3) mean? How are they constructed?

We added additional horizontal lines. The variable temporal width is explained in section 2.2.

Fig 11, legend: Should it be TM5 RA instead of RM5 RA?

Yes. Corrected

Anonymous Referee #2

This is a good and valid paper without major flaws prohibiting publication. The methodology is sound. The writing is clear and well-structured. The nudging method seems to be a cost-effective and robust way to improve the simulation of 3-D field CH₄ concentration. However, I found it's a bit hard to follow the Results part as some of the statement lacks explanation and conclusive sentence.

I also have a few questions listed below:

- It seems the simulation of vertical profile didn't get improved after nudging. How does this affect the potential applications of 3-D CH₄ concentration from FLEXPART?

Improvements are mainly seen below 6 km altitude, which is clearly stated in the manuscript. Of course this should be considered when using these fields for applications and other alternatives might be more appropriate if the interest is only in the upper troposphere. However, for applications where the lower atmosphere is of interest, we show that surface results are better than optimized TM5 fields and performance based on vertical profiles is similar. We therefore see an advantage in the nudging method anyway. Especially for our purpose of regional inverse modelling based on surface observations, where it is crucial to have limited bias in the background fields in this region and the bias at higher altitudes is similar to other alternatives currently available.

- How large is the influence of priori CH₄ fluxes on the model performance? It would be helpful to address it more clearly as this will help readers from a broader background.

The a priori CH₄ fluxes are important for model performance. The nudging is only able to correct the modelled values to some extent and does not make accurate a priori fluxes redundant. However, note that the performance of FLEXPART-CTM with default a priori fluxes and nudging surpasses that of the TM5 with optimized fluxes, demonstrating that although the a priori fluxes have some influence, the nudging method is still valid for deriving accurate 3D concentration fields.

- How does modeled CH₄ distribution compared with satellite observations like GOSAT? It would be interesting to see the evaluation against this spatially comprehensive dataset.

We compared the NOAA aircraft profiles of methane to GOSAT data, similar to our model comparison. Figure 1 (response review 1) shows that the bias of GOSAT data compared to the aircraft observations generally exceeds the bias of the different model simulations. We therefore have little confidence in an evaluation against this dataset. Although we agree that a spatial dataset is interesting to include in our evaluation, we find it doubtful that we can retrieve clear conclusions from this comparison and think it will overly complicate the manuscript.

Specific comments:

Line 42: reference needed.

References are given for specific examples following line 42.

Section 2.1: more details about the setup of the methane sinks are needed.

We added a reference for the OH fields.

Line 119: Please explain the reason for why applying a single global scaling factor is necessary.

This was needed because we found a bias of the fields after the spin-up period (without nudging). With a single global scaling factor we could remove large parts of this bias and start with improved initial conditions for our simulation. We added a comment on this.

Line 159: What is NOAA_2004 scale. and why NIES data is needed to be converted into NOAA-2004 scale. More statements are needed to justify this treatment.

This is a calibration scale for methane and is used to make observations intercomparable. We added a reference for clarification. All data we used for the 2013 simulations has been converted to this scale. The conversion of NIES data has been mentioned explicitly because different conversion methods exist.

Line 177. Does the TM5 reference simulation use same priori information as FLEXPART? Do you think it will affect the evaluation of FLEXPART with TM5?

No, there are some differences in the a priori information. This was mentioned as a reason for differences in line 307. We now repeat this in the conclusions. Because of this we can only evaluate the final methane fields compared to observations, considering it a combination of a priori information and optimized transport modelling. Only looking at the improvements in each of the models would be somewhat misleading. That is, the improvements, a nudging or other optimization routine needs to add, will partly depend on a priori information and a larger improvement of either of the models compared to its reference could be due to the a priori information rather than the effectiveness of the optimization scheme. Simulations with the same a priori information could exclude this effect, as suggested in the conclusions. A priori information used for both model simulations is quite similar in our study.

Anonymous Referee #3

The article by Groot Zwaaftink et al deals with nudging of modelled methane concentration fields towards surface observation data. It is an interesting and important contribution in its field, and suitable for publication in GMD. The paper is well written. I have a couple of minor comments, which are given in the following:

I agree that using spatially inclusive data sets, such as satellite data, would provide a valuable addition for evaluation of the model results. The data has limitations (biases etc.) but still they could possibly be used for retrieving e.g. latitudinal band averages of the column concentrations and compared to corresponding model products, to see e.g. the changes in the north-south gradient and annual cycle.

Indeed we tried to include methane fields from satellite data (GOSAT). However, we found that bias of this data compared to in situ observations is so large that it is not possible to draw conclusions on accuracy of our model simulations. In Figure 1 (response review 1) we illustrate this with an example of bias of all models and GOSAT data compared to aircraft observations at 3 altitude ranges.

Moreover, I am missing an example (figure?) of how the effect of nudging is seen on the evolution of concentrations at different altitudes over a time period of days/weeks.

We now included Figure 3 in the manuscript, showing how nudging influences methane concentrations over 31 days at altitudes up to 16 km.

You mention in line 123 that you save the output in 2x2 degree resolution. Why is this resolution chosen, though you have the ability for 1x1 resolution? Generally, how would the results change if you made the simulations in a higher spatial resolution? And the kernel settings, e.g. choices for the spatial nudging kernel sizes?

Higher resolution could improve results in regions with highly variable methane concentrations and especially the comparison to point observations. However, the 2x2 degree resolution already includes the level of detail necessary for our applications and is a compromise to limit computational efforts and data storage.

The nudging kernel sizes are independent of the output resolution because we use a Lagrangian model.

Is the vertical kernel size h_z (Eq. 2) related to tropospheric boundary layer height? Could you use e.g. model predictions of boundary layer height for h_z ? Or add night/day variation to h_z ? Boundary layer height might not be meaningful for all stations, as they are located at different altitudes and sampling routines vary, but should there be some variation in the h_z from station to station?

The vertical kernel size is the same for all locations in NV3 (300 m). Thus, for daytime observations the kernel most likely does not exceed the boundary layer height for the majority of observation locations. Including the boundary layer height and night/day variation is technically possible but we did not do this because it may overly complicate the nudging routine while the sensitivity analysis showed that the horizontal extent of the kernel is more important for our model results.

Seems that quite much trust is given to the stations with low standard deviation, as in NV3 the concentrations are forced to follow observations at Palmer Station almost from point to point (Fig 5). The bias is corrected, but the concentration is forced to stay close to the value given by the observation, which is made only once per week. Could you elaborate this a little

bit more, you say that this is a more realistic choice for a remote low emission site, but is the model ability to make predictions and fill in the gaps then lost?

Palmer station is an extreme example of the nudging routine. If the temporal kernel width exceeds the gaps between observations, the model abilities are indeed limited. However, strong deviations between observations and model will not always be compensated by the nudging routine and the model does not necessarily follow the observations from point to point. The example below (Figure 2) shows a different site, where model values adjust more gradually.

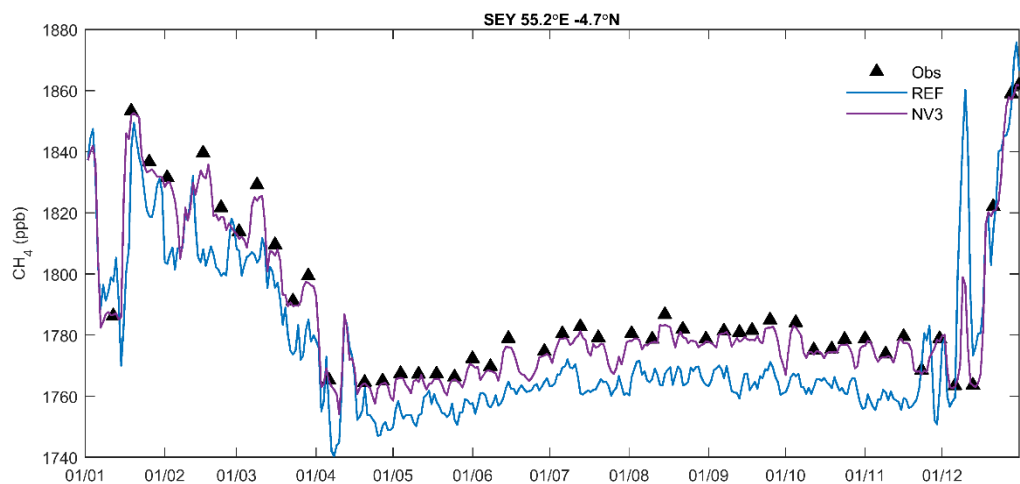


Figure 2 Observed and FLEXPART CTM simulated methane values at Mahe Island (Seychelles) without nudging (REF) and with nudging (NV3).

Three-dimensional methane distribution simulated with FLEXPART 8-CTM-1.1 constrained with observation data

Christine D. Groot Zwaaftink¹, Stephan Henne², Rona L. Thompson¹, Edward J. Dlugokencky³, Toshinobu Machida⁴, Jean-Daniel Paris⁵, Motoki Sasakawa⁴, Arjo Segers⁶, Colm Sweeney³, Andreas Stohl¹

¹ Norwegian Institute for Air Research NILU, Kjeller, Norway

² Empa, Swiss Federal Laboratories for Materials Science and Technology, Air Pollution/Environmental Technology, Dübendorf, Switzerland

³ NOAA Earth System Research Laboratory, Boulder, Colorado, USA

⁴ National Institute for Environmental Studies, Tsukuba, Japan

⁵ Laboratoire des Sciences du Climat et de l'Environnement, Gif sur Yvette, France

⁶ Netherlands Organisation for Applied Scientific Research (TNO), Utrecht, The Netherlands

Correspondence to: Christine Groot Zwaaftink (cgz@nilu.no)

Abstract

A Lagrangian particle dispersion model (FLEXPART CTM) is used to simulate global three-dimensional fields of trace gas abundance. These fields are constrained with surface observation data through nudging, a data assimilation method, which relaxes model fields to observed values. Such fields are of interest to a variety of applications, such as inverse modelling, satellite retrievals, radiative forcing models, and estimating global growth rates of greenhouse gases. Here, we apply this method to methane using 6 million model particles filling the global model domain. For each particle methane mass tendencies due to emissions (based on several inventories), loss by reaction with OH, Cl, and O(¹D), as well as observation data nudging were calculated. Model particles were transported by mean, turbulent and convective transport driven by 1°x1° ERA Interim meteorology. Nudging is applied at 79 surface stations, which are mostly included in the WDCGG database or JR-STATION network in Siberia. For simulations of one year (2013), we perform a sensitivity analysis to show how nudging settings affect modelled concentration fields. These are evaluated with a set of independent surface observations and with vertical profiles in North America (NOAA/ESRL) and Siberia (YAK-AEROSIB and NIES). FLEXPART CTM results are also compared to simulations from the global Eulerian model, TM5, based on optimized fluxes. Results show that nudging strongly improves modelled methane near the surface, not only at the nudging locations, but also at independent stations. Mean bias at all surface locations could be reduced from over 20 ppb to less than 5 ppb through nudging. Near the surface, FLEXPART CTM, including nudging, appears better able to capture methane molar mixing ratios than TM5 with optimized fluxes, based on a larger bias of over 13 ppb in TM5 simulations. The vertical profiles indicate that nudging affects model methane at high altitudes, yet leads to very little improvement in the model results there. Averaged from 19 aircraft profile locations in North America and Siberia, root-mean square error (RMSE) changes only from 16.3 to 15.7 ppb through nudging, while the mean absolute bias increases from 5.3 to 8.2 ppb. The performance for vertical profiles is thereby similar to TM5 simulations based on TM5 optimized fluxes where we found a bias of 5 ppb and RMSE of 15.9 ppb. With this rather simple model setup, we thus provide three-dimensional methane fields suitable for use as boundary conditions in regional inverse modelling, as a priori information for satellite retrievals, and for more accurate estimation of mean mixing ratios and growth rates. The method is should also be applicable to other long-lived trace gases.

1. Introduction

Three-dimensional (3D) global concentration fields of different trace gases, such as methane (CH₄), carbon dioxide (CO₂) or carbon monoxide (CO), are of interest for many applications. They can for instance inform regional air quality policies, verify climate policies via a comparison of global emissions and atmospheric concentration growth rates, and are required as input

for many types of applications [like radiation simulations or satellite retrievals](#). For instance, 3D global concentration fields used as initial and boundary conditions for regional chemical transport models have a substantial influence on the results from these models (e.g. Tang et al., 2007; Andersson et al., 2015; Pendlebury et al., 2018). [Regional inverse](#) modelling of greenhouse gas emissions often requires global 3D greenhouse gas concentrations as ~~input-boundary conditions~~ (Thompson and Stohl, 2014). These and many other applications explain the popularity of 3D concentration fields produced with different tools (e.g., Carbon Tracker; Peters et al., 2007).

In-situ measurements are typically too sparse to provide global 3D concentration fields. Interpolation methods are associated with large errors in regions with few observations (e.g., in the free troposphere, over oceans, etc.). They are, therefore, rarely used for constructing 3D concentration fields for the atmosphere, while interpolation of maritime CO₂ measurements is more popular (Laruelle et al., 2017). Satellite retrievals can in principle produce global coverage but generally lack sufficient temporal and/or vertical resolution, spatial coverage (especially in polar regions) and the calibration necessary to make them comparable to ground-based measurements and they can, therefore, contain substantial uncertainties and biases. Often, satellite observations require input of [a priori](#) vertical concentration profiles in their retrieval (Schepers et al., 2012). Concentration fields can also be simulated with atmospheric chemistry transport models, yet uncertainties in the fluxes (emissions and surface uptake) and atmospheric chemistry and transport errors in modelling will lead to mismatches between modelled and observed concentrations. In particular, if simulated concentrations are globally or regionally too high or too low compared to reality, such biases may render these concentration fields unusable. For example, for regional inverse modelling of surface emissions, a “background” concentration field biased high would lead to low (or even, for many species, unrealistic negative) emissions (Manning et al., 2003; Stohl et al., 2009). For example, an average increase by 10 ppb in the methane background leads to a 20% decrease in the Swiss national methane emissions (Henne, unpublished results).

Therefore, often a combination of (transport) models with data assimilation techniques is used to obtain more accurate model results. One prominent technique uses observation data and a data assimilation or inverse modelling approach to optimize the surface fluxes of greenhouse gases. Such methods can improve our understanding of greenhouse gas emissions and quantify sources and sinks (e.g., Meirink et al., 2008; Bergamaschi et al., 2013; Berchet et al., 2015). Simulations using the optimized emissions will generally also improve the 3D concentration distribution compared to simulations with non-optimized emissions. The TM5 simulations used in this paper were made following this approach. However, these methods cannot correct for transport errors and errors in the chemical sinks, although such errors may partly be offset by compensating errors in optimized emissions. Furthermore, emissions are only improved for certain large regions, emission types and often at low (e.g., monthly) time resolution. Thus, to improve 3D concentration distributions, direct “correction” of simulated concentrations using observation data is preferable over improvement of emission fluxes. A combination of both approaches can also be conceived.

Data assimilation techniques such as 4-dimensional variational assimilation (4D-var) also allow simulated concentrations to be corrected in a formal fully consistent model framework. These techniques are, however, relatively computationally expensive and may not offer substantial benefits over more simple methods. Newtonian relaxation (also known as nudging or repeated insertion) is a much simpler data assimilation method to correct simulated concentrations with observation data (e.g., Anthes, 1974; Stauffer and Seaman, 1990). While it may lead to violations of the model’s underlying physics and mass conservation, the method has gained popularity because of its computational efficiency, robustness and simple implementation. In contrast to complex data assimilation techniques such as 4D-var, which require adjoint versions of the simulation model, implementing Newtonian relaxation requires only a few lines of extra code.

Apart from the question of how observation data are used to correct model biases, there exists a separate problem with current Eulerian chemistry transport models. These models struggle with the simulation of large-scale transport of chemical species e.g., over intercontinental distances due to numerical diffusion introduced by the advection schemes (Rastigejev et al., 2010; Eastham and Jacob, 2017). In remote areas, where concentration enhancements occur mainly through transport from far-away

85 source regions, these models are not very reliable. Lagrangian transport models, which do not suffer from numerical diffusion to a comparable extent, have often been used successfully to simulate pollution transport over intercontinental distances (e.g., Stohl et al., 2003).

In this study, we improve modelled concentration fields of long-lived trace gases in a Lagrangian transport model (FLEXPART CTM) by nudging simulated concentrations towards observations where and when available. We explore the method with the application to methane. Concentration fields obtained with and without nudging are evaluated based on (independent) surface observations and vertical profiles from aircraft campaigns in different regions. Furthermore, we compare the model skill to that of a frequently used Eulerian model (TM5) using non-optimized and optimized emission fields. For this comparison we chose TM5 because this is a state-of-the-art transport model and the TM5-4DVar is the inversion framework used in Europe's Copernicus Atmospheric Monitoring Service.

95 A description of the transport model, nudging method and observations is given in section 2. In section 3 we will first discuss the sensitivity of modelled concentration fields to settings of the nudging method and then evaluate model performance in comparison to surface and profile observations, and TM5 modelled concentration fields.

2. Methods and Data

2.1 FLEXPART CTM

100 The FLEXPART CTM model was developed at Empa based on FLEXPART (Stohl et al., 1998; 2005). FLEXPART is a Lagrangian particle dispersion model that calculates trajectories of parcels to describe transport processes in the atmosphere. Parcels, which can represent gases or aerosols, are influenced by dry deposition and wet deposition. For the current study we used FLEXPART8-CTM1.1 (Henne et al., 2018), which is based on FLEXPART 8.0 and described in detail by Henne et al. (in preparation). Important differences between FLEXPART and FLEXPART CTM are found in the implementation of flux fields and chemistry. For the current purpose, simulations are ~~done-made~~ in domain filling mode (Stohl and James, 2004). This means that at initialization air parcels are randomly distributed over the whole model domain (in this case global) proportionally to air density. Each parcel represents a fraction of the total atmospheric mass. In addition to an air tracer, each parcel can also carry a number of chemical species including methane. Whenever air parcels reside near the surface, methane fluxes are accounted for by changing the methane masses of the respective parcel. Methane loss through reaction with OH, Cl and O(¹D) radicals is also accounted for in form of a pseudo first order reaction with prescribed, monthly variable concentration fields (Henne et al., in preparation). ~~We used OH concentration fields from the GEOS-Chem model (Bey et al., 2001).~~ As such, we can simulate methane concentrations if initial conditions are well represented and a spin-up time is included.

The simulations presented here are driven with methane fluxes from a combination of several inventories. For anthropogenic sources, we included fluxes from the Emissions Database for Global Atmospheric Research (EDGAR), versions v4.2 for 2000-2008, while 2008 emissions were repeated for 2009-2013. Monthly biomass burning emissions are based on the Global Fire Emissions Database (GFED) version 3 (Van der Werf et al., 2010). Wetland emissions were obtained from the Lund-Potsdam-Jena dynamic global vegetation model with Wetland Hydrology and Methane (LPJ-WHyMe, Spahni et al., 2011). Additional sources taken into account include ocean hydrates (Houweling et al., 1999), wild ruminants (Houweling et al., 1999) and termites (Sanderson, 1996). Flux fields are averaged or interpolated to monthly intervals with 1° x 1° spatial resolution. ~~A spin-up simulation without nudging was run for years 2000-2012. At the end of this spin-up a single global scaling factor was applied to the simulated methane molar mixing ratios derived by a comparison to surface observations for the year 2012. This scaling allowed us to remove part of the bias from the spin-up. The sensitivity analysis and evaluation of FLEXPART CTM and the nudging method was made for 2013. A spin-up simulation without nudging was made over 2000-2012, by the end of which a single global scaling factor was applied to the simulated methane molar mixing ratios derived by a comparison to surface observations, and the sensitivity analysis and evaluation was made for 2013.~~ The first 20 days of the simulation year

Formatted: Font: 10 pt

with nudging are also considered spin-up time and not analysed further. [In the sensitivity analysis we consider different settings for our nudging routine \(see section 2.2 and Table 1\) and in our evaluation we compare simulations with and without nudging to observations as well as other model simulations.](#) Meteorological input data are ERA Interim Reanalysis fields ($1^\circ \times 1^\circ$, 3-hourly) from the European Centre for Medium-Range Weather Forecasts (ECMWF). Output fields are saved as daily averages at $2^\circ \times 2^\circ$ spatial resolution at 24 levels. The output levels follow topography and resolution ranges from 500 m near the surface, 1000 m in the troposphere and increasing up to 5000 m at the top level. The simulations include approximately 6 million particles each.

2.2 Nudging routine

In our simulations, we will test and use the nudging routine presented by Henne et al. (in preparation). For each observation, we consider a symmetrical kernel in which modelled data should be relaxed towards the observation. The weight of the kernel varies in space and time. An Epanechnikov function is used for the spatial weight of the kernel (w_s) for each pair of observation (i) and parcel (j):

$$w_{s,ij} = (1 - r_{ij}^2)I, \quad I = \begin{cases} 1 & \text{for } r^2 < 1 \\ 0 & \text{otherwise} \end{cases} \quad (1),$$

where, r_{ij} is based on the kernel extent h in directions x , y and z following:

$$r_{ij}^2 = \left(\frac{X_j - x_i}{h_{x,j}} \right)^2 + \left(\frac{Y_j - y_i}{h_{y,j}} \right)^2 + \left(\frac{Z_j - z_i}{h_{z,j}} \right)^2 \quad (2)$$

X_j , Y_j and Z_j refer to the parcel location, x_i , y_i , and z_i to the observation location.

The temporal kernel has a tricubic weight function following

$$w_{t,ij} = \left(1 - \left| \frac{t_j - t_i}{h_t} \right|^3 \right)^3 \quad (3)$$

where h_t is the temporal kernel width, t_j the current model time and t_i the time of the closest valid observation. Using the spatial and temporal weight the nudging tendency is calculated as

$$\Delta m_{ji} = w_{s,ij} w_{t,ij} \frac{M_i - m_j}{\tau_i} \Delta t \quad (4)$$

where m_j is the modelled mass and M_i is the observed mass, which is calculated from observed mole fractions. τ_i is the nudging relaxation time scale and Δt the model synchronisation time step. The latter should be smaller than the former to assure numerical stability. The kernel widths and nudging relaxation time scale can be set for each observation location. Different settings have been tested as shown in [Table 1](#) ~~Table 1~~ [Table 4](#). In tests NF1 to NF6 we analysed the influence of specific parameters and kernel settings, which were the same at all stations. In tests NV1 to NV3 we introduced a kernel size dependent on the variability of the observed methane concentrations over one year at each station. We thereby assumed that the kernel size should be smaller in case of larger variability (standard deviation). In all these tests, the temporal kernel width is assumed to be proportional to the spatial width. In test NW1 we reduced the temporal kernel size with increasing mean wind speed at each location, assuming air masses will reside less time around the nudging location if wind speeds are strong and observations are representative of a shorter time period. To determine the mean wind speed, we used the wind speed in 2013 at the stations interpolated from ERA Interim data. In test NW2 we tested an influence of wind speed on the spatial extent of the kernel. Finally, in NW3 we assumed that spatial kernel size increases with wind speed, yet the temporal kernel width decreases with increased variability of the observed methane mole fractions.

2.3 Observations

Several data sources were used for different purposes in this study. Input data for the FLEXPART CTM simulations have been described in section 2.1. At the surface, we included observations of CH₄ (reported in units of dry air mole fraction, nmol mol⁻¹, abbreviated ppb) from the World Data Centre for Greenhouse Gases (WDCGG, <https://ds.data.jma.go.jp/gmd/wdcgg/>) and EBAS (<http://ebas.nilu.no/>) at 85 locations and 5 locations in the JR-STATION tall tower network in Siberia (Sasakawa et al., 2010). Observations include flask-air sampled at intervals of a few days up to months and continuous measurements. All observations have been converted to the NOAA-2004 methane standard scale (Dlugokencky et al., 2005). NIES data were converted to NOAA-2004 scale assuming $CH_4^{NOAA-2004} = (CH_4^{NIES} + 12.2)/1.0087$. Of 90 surface or tower observation locations in total, we arbitrarily selected 11 for validation purposes that were not used for nudging. Locations are shown in Figure 1. Figure 1, a full list of surface stations is given in the Supplement (Table S1).

Further validation of the nudging routine was based on the comparison to aircraft measurements. These include regular vertical profiles of NOAA at 13 locations (Sweeney et al., 2015). Profiles were taken from the surface up to about 8000 m altitude in approximately monthly intervals. Furthermore, we include methane profiles observed in Siberia during a YAK-AEROSIB campaign (Paris et al., 2008) in July 2013 and observed by NIES at monthly intervals at Surgut and Novosibirsk (Sasakawa et al., 2017) for validation. Locations are shown in Figure 1. Figure 1, We interpolated FLEXPART CTM data to each measurement during NOAA, NIES or YAK-AEROSIB flights. We then calculated mean profiles per month based on the vertical grid resolution of FLEXPART CTM output (24 layers).

2.4 TM5 simulations

To compare the performance of FLEXPART CTM with the nudging routine, we also evaluate reference and reanalysis fields of methane from the global chemistry transport model TM5 (Huijnen et al., 2010; Krol et al., 2005) with the same observations and methods. Methane inversion simulations are provided by TNO-SRON and are available through the Copernicus Atmosphere Monitoring Service (CAMS). The TM5-4DVAR inverse modelling system provides optimized methane fluxes (e.g., Bergamaschi et al., 2013). The TM5 methane fields are averaged daily and have a 2° x 3° resolution. In our evaluation we include TM5 simulations based on a-priori information (here referred to as the TM5 reference simulation) and a simulation with optimized fluxes (referred to as TM5 reanalysis simulation) that included all NOAA surface observations. Notice that TM5 has assimilated data also from the surface stations used for evaluation and, thus, the comparison is not totally independent, giving the TM5 reanalysis simulation a (perhaps small) advantage over the FLEXPART CTM simulations. We did not use TM5 reanalysis simulations with assimilated Greenhouse Gases Observing Satellite (GOSAT) data (Bergamaschi et al., 2009) since the bias in comparison to surface observations was larger than in the presented simulations, as shown in the Supplement (Figures S1 and S2).

3. Results and discussion

3.1 Sensitivity analysis

The nudging kernel settings such as the size, described in section 2.2, will affect the influence of observations on the methane fields. To show this influence and to find appropriate settings for our application, we performed a sensitivity analysis. The different kernel settings are listed in Table 1. Table 1, Figure 2. Figure 2 shows the annual mean surface methane molar mixing ratios as simulated with FLEXPART CTM without nudging. Additionally, the difference in annual mean mixing ratios between the reference simulation and two nudging simulations is shown. With relatively small nudging kernels (NF2, middle panel) some influence on global methane fields is seen. The strongest effects, however, are restricted to

the nudging locations. Increasing the kernel size for background stations (NV3, bottom panel) shows that the nudging can influence simulated methane values strongly in a far larger region. The nudging appears to mostly lower modelled methane mole fractions in the Northern Hemisphere and to increase methane in the Southern Hemisphere, indicating a positive and negative bias of methane concentrations respectively. This will later be discussed based on a comparison to observations. Furthermore, [Figure 3 illustrates how nudging influences simulated methane values over time in a region in the Southern Hemisphere at different altitudes. Methane starts to increase in the planetary boundary layer, because nudging occurs at surface stations, and over time the influence of nudging extends to higher altitudes. The differences come from nudging stations within this particular region, but also effects from elsewhere will reach this region with time and likely at higher altitudes.](#)

A more quantitative analysis of the sensitivity to nudging kernel settings is given in [Figure 4](#)~~Figure 4~~[Figure 3](#). We compare observed and modelled daily averaged methane concentrations in 2013 through the coefficient of determination (r^2), root mean squared error (RMSE) and bias for nudged FLEXPART CTM simulations and the reference simulation at all surface locations (including both stations used for the nudging and independent validation stations). Generally, model performance in terms of root mean squared error, correlation and bias improves for all tested nudging kernel settings compared to the reference simulation. Already for a rather small kernel size (NF1), the coefficient of determination increases, while there remains a relatively large spread in model bias. It also appears that the chosen relaxation time (NF4 vs NF3 or NV3 vs NV2) affects the coefficient of determination. Especially large changes are seen for the temporal kernel width (NW3 vs NW2 and NF5 vs NF3). The representativeness of a station is directly linked to the variability of the observed methane concentrations. If the variability is high, this may indicate that the station is often influenced by emissions in its vicinity or by small-scale transport phenomena. Such a station should exert less weight on the simulated concentration field than a station with greater representativeness and its area (and/or time period) of influence should be smaller. Therefore, in another set of tests (NV1-3, [NW1](#) and NW3) we assumed that the variability of observed concentrations (expressed in terms of the annual standard deviation) limits either the temporal or spatial kernel width. Unlike tests NF1-NF6, the kernel size is thereby no longer identical for all locations. Based on the small values of RMSE it appears that changing the spatial kernel size based on the observed variability can improve the performance of the nudging routine (NV1 and NV3). The mean RMSE in the reference case is 35.3 ppb for all stations and 23.6 ppb for validation stations, and is reduced to 10.3 ppb for all and 18.7 ppb for validation stations in the NV3 simulation. The correlation improves mostly at nudging stations, as can be concluded from an increase of mean r^2 for all stations from 0.54 in the reference to 0.92 in the NV3 simulation, yet at validation stations remains at 0.62 for REF and NV3.

We are particularly interested if the nudging routine can remove some of the bias of modelled methane simulations, as bias is detrimental for many applications (e.g., inverse modelling). In [Figure 5](#)~~Figure 5~~[Figure 4](#) we therefore show the model bias and coefficient of determination at surface stations for a selection of sensitivity simulations. In the reference simulation, methane concentrations tend to be underestimated in the Southern Hemisphere and overestimated in the Northern Hemisphere by FLEXPART CTM with the used emission inventories. The nudging routine removes most of the model bias at many stations. We found a large variation of observed methane in Siberia, at the stations of the JR-STATION network. At some of these stations daily mean mixing ratios reach values exceeding 2000 ppb (Sasakawa et al., 2010). The stations are located in taiga, steppe and wetland biomes. Sasakawa et al. (2010) showed that during summer methane emissions from wetlands and during winter from fossil fuel extraction can explain most of the variation in methane values in this region. Also biomass burning is locally contributing to elevated methane. It appears that in this region, the model benefits from nudging kernel sizes related to the standard deviation of observations (compare NV3 to NF3). For simulation NV3, the nudging kernel sizes are relatively small and there is less overlap of the different kernels in this region, allowing for a larger spatial variability in simulated concentrations.

Bias and r^2 shown in [Figure 5](#)~~Figure 5~~[Figure 4](#) summarize model performance at many stations. To get a better understanding of how nudging changes the modelled methane concentrations we discuss the annual cycle at two surface stations ([Figure 6](#)~~Figure 6~~[Figure 5](#) and 6). As an example of a nudging location we look at the remotely located Palmer Station, Antarctica

(PSA, -64.00°E, -64.92°N). Here, observations include approximately weekly flask-air samples. Modelled and observed mixing ratios in 2013 are shown as time series and a scatter plot (Figure 6Figure-6Figure-5). Additionally, model performance statistics for PSA are given in the table in Figure 6Figure-6Figure-5. The figures and table show that correlation between model and observations is already large for the reference simulation as the seasonal cycle is well captured by the model, but the bias can be reduced through nudging. For the smallest nudging kernel size (NF1), the improvement is limited, from -8.5 ppb (REF) to -8.4 ppb (NF1). For all other nudged simulations, however, the bias is reduced to less than -2.3 ppb. The time series [reveals](#) more differences. Since the variation of observed methane mixing ratios at PSA is relatively small, the nudging kernel in simulation NV3 was large (over 10 degrees radius). In case of small nudging kernels (NF3), methane deviates from the reference simulation only during measurement periods but nearly returns to the reference values in between measurements. For larger kernels (NV3), the methane concentrations are kept at a level similar to the observations also in between observations. Given the remote site location and the lack of local emissions this scenario appears more realistic. This behaviour is particular to remote stations and rather extreme at PSA, where the reference model has a pronounced bias and there are no other observations to correct it. At other stations, the influence of other close-by nudging stations is generally larger and better results are obtained for small kernels as well. Besides the kernel settings the number of nudging stations included in a simulation will thus also affect model performance, as will be discussed at the end of this section.

Another station for which we show observations and simulations in more detail is Heimaey (ICE, [Figure 7Figure-7Figure-6](#)). Heimaey is located close to the southern coast of Iceland and is an independent station where no nudging is applied in FLEXPART CTM simulations. At this location, the reference simulation has a relatively large bias of over 28 ppb. With the introduction of nudging at other stations, the bias is reduced to approximately 6 ppb and also all other statistical parameters improve (see table in [Figure 7Figure-7Figure-6](#)). Most improvement, both in correlation and bias reduction, was seen in simulation NV3. In this simulation the relatively large kernel given to background stations helps to reduce bias globally. In the time series ([Figure 7Figure-7Figure-6](#), left) it can be seen that model performance at the start of the year is worse than at the end of the year. Although the deviation between reference and nudged simulations occurs from the start, the difference between several simulations accumulates during the simulation period as more observations are included. We show the simulations over the complete nudging period to demonstrate this, but did not include the first 20 days with nudging in the model performance calculations. Deviations can of course also increase if the model performs worse in particular periods, for instance due to errors in emissions, inducing stronger nudging effects.

To demonstrate that the nudging routine generally improves model results throughout the domain, we evaluate the bias at all independent validation stations in [Table 2Table-2Table-2](#). Effects are smaller than at many nudging stations shown in [Figure 5Figure-5Figure-4](#). Nonetheless, there is a clear improvement at some stations, even though they are remote, such as USH (Ushuaia, Tierra del Fuego, Argentina). Table 2 also shows that FLEXPART CTM model performance at some stations can decrease depending on nudging kernel settings. This is the case at THD (Trinidad Head, California, United States of America) and YAK1 (Yakutsk, Siberia, Russia). While methane mixing ratios were slightly underestimated at THD in the reference simulation, an overestimation was observed at close-by nudging locations. In the nudging simulations methane concentrations were thus decreased in this region and underestimation at the independent station increased. At Yakutsk measurements are made at a low inlet (11 m, here called YAK1) and a high inlet (77 m, YAK2). Nudging appears to decrease bias of the methane values at the high inlet, but not at lower altitude. A large bias both in reference and nudged simulations is seen at BKT (Bukit Koto Tabang, Indonesia). This station is influenced by near-by biomass burning emissions and a sea-breeze system that is difficult to resolve in the FLEXPART simulations (Henne et al., in preparation).

JFJ is a high-altitude station and the strongly decreased bias of modelled mixing ratios indicates that surface nudging has a beneficial influence also at higher altitudes (observations from JFJ were not used in nudging). To verify the influence of kernel settings on methane mixing ratios at high altitude we selected two locations with NOAA/ESRL vertical profiles.

Nudging at the surface changes modelled methane concentrations up to heights of 8 km (Figure 8Figure 8Figure 7). At ACG (Alaska Coast Guard, Alaska, United States of America) differences due to surface nudging even appear largest at heights between 2 and 6 km. The number of nudging observations is limited in this region and differences are, therefore, mostly due to nudging in well observed regions further south, followed by northward transport accompanied by isentropic uplift of those air masses to higher altitudes. Similarly, Sweeney et al. (2015) showed, based on vertical profiles of CO₂, that air transported to this region, from the mid-Pacific, is well mixed throughout the observed column (<8000 m). In a region with multiple nudging locations such as DND (Dahlen, North Dakota, United States of America) on the other hand, mainly the methane concentrations near the surface are affected by nudging. As for surface validation stations, improvements are seen mostly in RMSE and bias rather than correlation (Table 3).

Finally, we noted earlier that, besides nudging kernel properties, the number of nudging observations included in the simulation can affect the model performance. We, therefore, tested model performance for simulations with different numbers of particles and where some of the nudging locations in NV3 were removed. As expected, reducing the number of particles somewhat increases the noise in the simulation but does not strongly influence overall model performance (not shown), because as long as the parcels in the simulation are well-mixed the same fraction of particles will be influenced by nudging. We expect a larger difference in the case where we randomly remove nudging stations from our simulations. We tested this for the kernel settings used in NV3, with 50% and 80% of the nudging stations included. A summary of model performance results is given in Table 4Table 4Table 4. Looking at all stations, correlation increases and RMSE decreases with an increase in number of stations. As already discussed, the influence on correlation between model and observations at independent sites is limited. RMSE at independent validation sites does decrease if 50% or 80% of the nudging locations are included, but the final 20% do not improve results here. With 80% of the nudging locations the background methane mixing ratios were thus already improved globally, or the nudging stations most relevant for the validation stations were already included in the 80%.

3.2 Model performance

Based on results shown in previous sections we selected the NV3 run to provide the best nudged FLEXPART CTM methane distribution. For further analysis of model performance we will only use this simulation. We will evaluate this best case simulation in comparison with the methane field simulated by the Eulerian TM5 model (see section 2.4).

Surface mixing ratios

As for FLEXPART-CTM in Figure 5Figure 5Figure 4, we show bias and correlation values for one year of TM5 simulations at all surface stations (Figure 9Figure 9Figure 8). We include TM5 simulations that are based on a-priori information (TM5 REF) and TM5 reanalysis simulations that include fluxes optimized by the TM5-4DVAR system (e.g. Bergamaschi et al., 2010). When comparing the reference versions of FLEXPART CTM and TM5, similar biases can be found for both models, although FLEXPART CTM's performance with mean RMSE equal to 35.3 ppb and mean absolute bias of 20.9 ppb appears slightly poorer than that of TM5 with mean RMSE equal to 33.9 ppb and mean absolute bias of 17.3 ppb (also see Table 5). On the other hand, correlation is higher for FLEXPART CTM ($r^2 = 0.54$) than for TM5 ($r^2 = 0.39$). Differences may be due to the use of different emission inventories but can also be related to other modelling aspects, such as (e.g., differences in methane lifetime) and OH fields. More interesting however, are the performance of FLEXPART CTM when the nudging routine is switched on and TM5 based on optimized fluxes, shown in Figure 9Figure 9Figure 8 and Table 5. Especially if nudging stations and validation stations are both considered, the performance of the nudged FLEXPART CTM simulation (NV3) is better than that of the TM5 simulations. Mean bias of all stations was reduced to 4.9 ppb in NV3, but 13.3 ppb in the optimized TM5 simulation. At independent stations (for FLEXPART CTM), methane mixing ratios are on average biased by 8.8 ppb in NV3 and 8.1 ppb in TM5 reanalysis. It should be noted that most of the nudging data are also used in the reanalysis version of TM5.

In fact, data from independent NOAA surface stations (diamonds in [Figure 9](#)~~Figure 9~~~~Figure 8~~) such as ICE, USH, AZR and GMI are not used in FLEXPART CTM, but are ingested in the TM5 reanalysis system and better performance by TM5 may, therefore, be expected. Observations from the Yakutsk tower are not used in either of the simulations. Here, the model bias is lower in the nudged FLEXPART CTM simulations. This is probably also related to the inclusion of data from the JR-STATION network in FLEXPART CTM, which are not included in TM5. It appears that both models, with optimization, are well able to capture background concentrations in the Southern Hemisphere. In the northern mid-latitudes, deviations from observations are generally largest. This is also the region with the most observations and spatial variability appears large. Here, the models are, with the current setup, not able to capture this large spatial variability and observations are representative of small regions only. This is further demonstrated in a comparison of averaged zonal mean values from FLEXPART CTM and TM5 simulations and zonal mean values from the GLOBALVIEW-CH4 product in [Figure 10](#)~~Figure 10~~~~Figure 9~~. GLOBALVIEW-CH4 extends surface measurements of methane in time and space to provide model independent trace gas climatology (Masarie and Tans, 1995; GLOBALVIEW-CH4, 2009). Differences between the three products are largest from the equator to the northern mid-latitudes. The GLOBALVIEW-CH4 product is probably more representative of a maritime baseline and biased low in the Northern Hemisphere, partly explaining the larger difference here between both models and GLOBALVIEW-CH4.

Aircraft profiles

To assess model performance above the surface we use vertical profiles obtained from aircraft measurements at 16 locations. 12 of these are located in North America and are part of the NOAA/ESRL aircraft program, one is also part of NOAA but is in the region of the Cook Islands in the Central-Southern Pacific Ocean (Rarotonga). In Siberia, we obtained data from the YAK-AEROSIB campaign and regular NIES profiles at Surgut and Novosibirsk. We show mean profiles in 2013 at each location in [Figure 11](#)~~Figure 11~~~~Figure 10~~. [The simulations are interpolated to profile observation locations and times and averaging is done at FLEXPART CTM vertical resolution.](#) Besides comparing FLEXPART and observations, we again also include results of TM5 reference and reanalysis (or 4DVAR) output. As was also shown before based on vertical profiles at two stations ([Figure 8](#)~~Figure 8~~~~Figure 7~~), nudging FLEXPART CTM simulations at the surface influences vertical profiles throughout the troposphere. In North America, many surface observations used for nudging FLEXPART CTM are also included in the TM5 Reanalysis simulations. Good results are therefore obtained with both models at some locations, such as DND (Dahlen) or CMA (Cape May). It appears that FLEXPART CTM tends to underestimate methane concentrations at altitudes above 6000 m (see for instance SCA, WBI and YAK-AEROSIB). This may indicate that the exchange between troposphere and stratosphere is too strong in FLEXPART CTM, or that the stratospheric methane may be underestimated. Obviously, the performance of both models varies with altitude, as will be discussed later. An especially large difference between FLEXPART CTM and TM5 is seen at Novosibirsk, even though this does not appear related only to the inclusion of Siberian data in the FLEXPART CTM nudging routine. This may be due to the use of different emission inventories.

The profiles shown in [Figure 11](#)~~Figure 11~~~~Figure 10~~ are averages of all available monthly profiles per site. Model performance of FLEXPART CTM and TM5 varies throughout the year however, and as an example we show seasonally averaged profiles at ESP (Estevan Point, British Columbia, Canada) in [Figure 12](#)~~Figure 12~~~~Figure 11~~. Both models appear to benefit from the nudging and reanalysis techniques, respectively, with improved concentrations, especially near the surface, compared to reference simulations. For both models, strong deviations from measurements occur in autumn with very similar profiles for TM5 and nudged FLEXPART CTM. The nudging appears to improve modelled FLEXPART CTM concentrations up to roughly 3 km altitude in all seasons except for autumn.

To assess if modelled vertical profiles deviate systematically from observed vertical profiles, we split the profiles into three altitude ranges, below 2000 m altitude, from 2000 up to 6000 m altitude, and above 6000 m. In [Figure 13](#)~~Figure 13~~~~Figure 12~~, the bias of each model is shown for all NOAA profiles in North America for each of the altitude ranges. As was already

indicated by the average profiles in [Figure 11](#)~~Figure 11~~[Figure 40](#), FLEXPART CTM tends to underestimate methane at altitudes above 6000 m. The nudging routine near the surface partly enhances this bias in this altitude range. In TM5, values are rather overestimated at this altitude and an improvement between the reference and reanalysis run is visible. At the altitude range between 2000 and 6000 m, FLEXPART CTM performs better than at upper levels. For TM5 there seems to be a small overestimation of methane concentrations at this altitude range. Near the surface, below 2000 m, a clear impact of the nudging routine for FLEXPART CTM is shown. For TM5, strong positive as well as negative biases occur near the surface and are larger in the reanalysis simulation. For this region, it appears that the FLEXPART CTM nudging routine improves near-surface concentration fields, while the TM5 reanalysis scheme is better able to improve high-altitude concentrations. Similarly, Bergamaschi et al. (2013) showed for a comparison between TM5 modelled methane concentrations and NOAA aircraft measurements during 2003 to 2010, that RMSE in the boundary layer was larger than in the free troposphere. The underestimation of methane concentrations at high altitude by FLEXPART CTM means that the bias of average profiles is mostly negative ([Table 6](#)~~Table 6~~[Table 6](#)), and averaged absolute bias of all profiles increases in case of nudging. The removal of methane near the surface can cause too low values at higher altitudes. Looking at RMSE, both models show similar values (~16 ppb) for average profiles ([Table 7](#)~~Table 7~~[Table 7](#)). Although nudging was particularly useful to reduce the bias near the surface, as we concluded based on surface observations, it is less effective at improving vertical profiles above about 2000 m. Nonetheless, it appears that FLEXPART CTM nudged concentration profiles are of similar accuracy as alternatives available at present.

Conclusions

We presented a nudging routine in combination with FLEXPART CTM to provide three-dimensional fields of long-lived trace gas abundance constrained with surface observations. In particular, this study focuses on the optimization of methane. However, with the right settings this frame-work could be used for other species. [The nudging constrains model results with observations and thereby partly considerably levels out \(combined\) model errors in emissions, transport modelling and methane losses.](#)

In a sensitivity analysis, we showed that modelled methane near the surface greatly improves through the inclusion of observations at 79 locations. To show that the observations improve the concentration fields not only locally, but globally, we compare model results to independent observations. These were at the surface (11 sites) as well as vertical profiles from aircraft campaigns (19 sites). For very small kernels (0.5° width), nudging was too weak and not much improvement was seen. Large kernels are suitable for background stations, but for stations with large variability in the observations a smaller kernel leads to better results. The number of observations included in the simulation also influences model performance. We concluded that nudging kernel settings of test NV3 (see [Table 1](#)~~Table 1~~[Table 1](#)) were best to improve modelled methane concentrations. This setting is based on a kernel whose bandwidth is dependent on the observed methane variability over one year at a site.

A comparison with methane fields from TM5 simulations was made. We included reference TM5 simulations, based on bottom-up emission information, as well as reanalysis simulations that use optimized emission fluxes (TM5-4DVAR). [There are small differences in the bottom-up emission inventories driving the two models FLEXPART CTM and TM5.](#) Results showed that in the upper troposphere FLEXPART CTM underestimates methane and best results are obtained near the surface. In contrast, TM5 appears to be better in the upper atmosphere, yet model performance near the surface is poorer. The mean RMSE of all averaged vertical profiles was 15.7 ppb for FLEXPART CTM (nudged), yet 15.9 ppb for TM5 (reanalysis). For all surface stations mean RMSE values were 10.3 ppb and 29.7 ppb for FLEXPART CTM and TM5 respectively and at independent surface stations values were 18.7 ppb and 20.6 ppb, respectively. It should be noted, however, that the independent stations are only strictly independent for FLEXPART CTM simulations but are partly included in TM5 assimilation runs. In future experiments it might be useful to use the same data selections for the FLEXPART nudging and the TM5-4D-~~var~~[VAR](#)

inversion. It could also be interesting to drive the FLEXPART nudging with a posteriori emissions from the TM5 inversion, to see the differences in how the models simulate 3D concentrations. Increases in correlation between observations and modelled values at surface stations are considerable at nudging locations, but low at independent validation stations. In summary, we can simulate three-dimensional fields of methane with a Lagrangian model constrained with observations through nudging. We have shown that in the troposphere this simple assimilation technique, which is computationally inexpensive, can give similarly good results as a Eulerian chemistry transport model combined with a computationally expensive 4-dimensional variational data assimilation scheme. Near the surface, the Lagrangian model with nudging even seems to outperform the Eulerian model with data assimilation.

Code and data availability

The FLEXPART 8-CTM1.1 source code is available under <https://doi.org/10.5281/zenodo.1249190> (Henne et al., 2018).

Modelled methane concentration fields from the nudged NV3 FLEXPART CTM simulation are currently available at <https://folk.nilu.no/~christine/ch4.html>. Moreover, we will update this website with modelled monthly mean global methane fields simulated with FLEXPART CTM using the NV3 kernel settings starting from year 2005. ~~Modelled methane concentration fields from the nudged NV3 FLEXPART CTM simulation are currently available for 2013 (<https://folk.nilu.no/~christine/ch4.html>) and updates will be added.~~ Other model results discussed here are available upon request.

Acknowledgements

A large set of observations was used in our simulations. We thank all those involved in the EBAS and WDCGG efforts, and those who have contributed by operating sites, performing chemical analysis and making the data publically available in the data bases.

We acknowledge the following people, institutes or projects for providing observations: AGAGE, Chris M. Harth and Prof. Ray Weiss at Scripps Institution of Oceanography (SIO), Prof. Ron Prinn at Massachusetts Institute of Technology (MIT), Paul B. Krummel at CSIRO Oceans & Atmosphere, Dr. Ray H. Wang at Georgia Institute of Technology, Prof. Simon O'Doherty and Dr. Kieran Stanley at the University of Bristol. AGAGE operations for the methane data used here were primarily supported by NASA grants to MIT (NNX11AF17G) and SIO (NNX11AF15G, NNX11AF16G). The operation of all UK DECC Network stations, TAC, RGL and TTA was funded by the UK Department of Business, Energy and Industrial Strategy (contract TRN1028/06/2015) with additional funding at Mace Head, Ireland and Ragged Point, Barbados under NASA contract NNX16AC98G through MIT with a sub award 5710004056 to University of Bristol, and NOAA contract RA-133R-15-CN-0008 for Ragged Point; Cathrine Lund Myhre (NILU); China Meteorological Administration; Climate Science Centre – CSIRO Oceans & Atmosphere; Agency for Meteorology, Climatology and Geophysics (BMKG); Direcccion Meteorologica de Chile; EMEP; Environment and Climate Change Canada; Federal Environment Agency, Austria; Federal Environment Agency, Germany; Institute of Arctic and Alpine Research at the University of Colorado, Boulder, funded by US National Science Foundation grant AON 1108391; Italian National Agency for New Technology, Energy and the Environment; Izana Atmospheric Research Center; Meteorological State Agency of Spain; Japan Meteorological Agency, Korea Meteorological Administration; National Institute of Water & Atmospheric Research Ltd. (NIWA), New Zealand; Ricerca sul Sistema Energetico – RSE S.p.A.; South African Weather Service; Swiss Federal Laboratories for Materials Science and Technology (Empa); University of Malta and University of Urbino.

This study was funded by the Norwegian Research Council as part of ICOS-Norway (project 245927) and was part of the Nordic Centre of Excellence eSTICC (eScience Tools for Investigating Climate Change in Northern High Latitudes) funded by Nordforsk (grant 57001).

450 References

- Andersson, E., Kahnert, M., and Devasthale, A.: Methodology for evaluating lateral boundary conditions in the regional chemical transport model MATCH (v5.5.0) using combined satellite and ground-based observations, *Geosci. Model Dev.*, 8, 3747-3763, 10.5194/gmd-8-3747-2015, 2015.
- Anthes, R. A.: Data assimilation and initialization of hurricane prediction models, *Journal of the Atmospheric Sciences*, 31, 702-719, 1974.
- Berchet, A., Pison, I., Chevallier, F., Bousquet, P., Bonne, J. L., and Paris, J. D.: Objectified quantification of uncertainties in Bayesian atmospheric inversions, *Geosci. Model Dev.*, 8, 1525-1546, 10.5194/gmd-8-1525-2015, 2015.
- Bergamaschi, P., Frankenberg, C., Meirink, J. F., Krol, M., Villani, M. G., Houweling, S., Dentener, F., Dlugokencky, E. J., Miller, J. B., and Gatti, L. V.: Inverse modeling of global and regional CH₄ emissions using SCIAMACHY satellite retrievals, *Journal of Geophysical Research: Atmospheres*, 114, 2009.
- Bergamaschi, P., Krol, M., Meirink, J. F., Dentener, F., Segers, A., Aardenne, J. v., Monni, S., Vermeulen, A. T., Schmidt, M., Ramonet, M., Yver, C., Meinhardt, F., Nisbet, E. G., Fisher, R. E., O'Doherty, S., and Dlugokencky, E. J.: Inverse modeling of European CH₄ emissions 2001–2006, *Journal of Geophysical Research: Atmospheres*, 115, doi:10.1029/2010JD014180, 2010.
- Bergamaschi, P., Houweling, S., Segers, A., Krol, M., Frankenberg, C., Scheepmaker, R. A., Dlugokencky, E., Wofsy, S. C., Kort, E. A., Sweeney, C., Schuck, T., Brenninkmeijer, C., Chen, H., Beck, V., and Gerbig, C.: Atmospheric CH₄ in the first decade of the 21st century: Inverse modeling analysis using SCIAMACHY satellite retrievals and NOAA surface measurements, *Journal of Geophysical Research: Atmospheres*, 118, 7350-7369, 10.1002/jgrd.50480, 2013.
- Bey, I., Jacob, D. J., Logan, J., and Yantosca, R. M.: Asian chemical outflow to the Pacific in spring: Origins, pathways, and budgets, *Journal of Geophysical Research: Atmospheres*, 106, 23097-23113, 2001.
- Dlugokencky, E., Myers, R., Lang, P., Masarie, K., Crotwell, A., Thoning, K., Hall, B., Elkins, J., and Steele, L.: Conversion of NOAA atmospheric dry air CH₄ mole fractions to a gravimetrically prepared standard scale, *Journal of Geophysical Research: Atmospheres*, 110, 2005.
- Eastham, S. D., and Jacob, D. J.: Limits on the ability of global Eulerian models to resolve intercontinental transport of chemical plumes, *Atmospheric Chemistry and Physics*, 17, 2543-2553, 2017.
- GLOBALVIEW-CH₄: GLOBALVIEW-CH₄: Cooperative Atmospheric Data Integration Project - Methane. , in, NOAA ESRL, Boulder, Colorado, https://www.esrl.noaa.gov/gmd/ccgg/globalview/ch4/ch4_intro.html, 2009.
- Henne, S.: FLEXPART 8-CTM-1.1: Atmospheric Lagrangian Particle Dispersion Model for global tracer transport, available at: <https://doi.org/10.5281/zenodo.1249190>, last access: 18 May 2018.
- Houweling, S., Kaminski, T., Dentener, F., Lelieveld, J., and Heimann, M.: Inverse modeling of methane sources and sinks using the adjoint of a global transport model, *Journal of Geophysical Research: Atmospheres*, 104, 26137-26160, 1999.
- Huijnen, V., Williams, J., van Weele, M., van Noije, T., Krol, M., Dentener, F., Segers, A., Houweling, S., Peters, W., de Laat, J., Boersma, F., Bergamaschi, P., van Velthoven, P., Le Sager, P., Eskes, H., Alkemade, F., Scheele, R., Nédélec, P., and Pätz, H. W.: The global chemistry transport model TM5: description and evaluation of the tropospheric chemistry version 3.0, *Geosci. Model Dev.*, 3, 445-473, 10.5194/gmd-3-445-2010, 2010.
- Krol, M., Houweling, S., Bregman, B., van den Broek, M., Segers, A., van Velthoven, P., Peters, W., Dentener, F., and Bergamaschi, P.: The two-way nested global chemistry-transport zoom model TM5: algorithm and applications, *Atmos. Chem. Phys.*, 5, 417-432, 10.5194/acp-5-417-2005, 2005.
- Laruelle, G. G., Landschützer, P., Gruber, N., Tison, J.-L., Delille, B., and Regnier, P.: Global high-resolution monthly p CO₂ climatology for the coastal ocean derived from neural network interpolation, *Biogeosciences*, 14, 4545, 2017.

Manning, A., Ryall, D., Derwent, R., Simmonds, P., and O'Doherty, S.: Estimating European emissions of ozone-depleting and greenhouse gases using observations and a modeling back-attribution technique, *Journal of Geophysical Research: Atmospheres*, 108, 2003.

Masarie, K. A., and Tans, P. P.: Extension and integration of atmospheric carbon dioxide data into a globally consistent measurement record, *Journal of Geophysical Research: Atmospheres*, 100, 11593-11610, doi:10.1029/95JD00859, 1995.

Meirink, J. F., Bergamaschi, P., and Krol, M. C.: Four-dimensional variational data assimilation for inverse modelling of atmospheric methane emissions: method and comparison with synthesis inversion, *Atmospheric chemistry and physics*, 8, 6341-6353, 2008.

Paris, J. D., Ciais, P., NÉDÉLec, P., Ramonet, M., Belan, B. D., Arshinov, M. Y., Golitsyn, G. S., Granberg, I., Stohl, A., Cayez, G., Athier, G., Boumard, F., and Cousin, J. M.: The YAK-AEROSIB transcontinental aircraft campaigns: new insights on the transport of CO₂, CO and O₃ across Siberia, *Tellus B*, 60, 551-568, 10.1111/j.1600-0889.2008.00369.x, 2008.

Pendlebury, D., Gravel, S., Moran, M. D., and Lupu, A.: Impact of chemical lateral boundary conditions in a regional air quality forecast model on surface ozone predictions during stratospheric intrusions, *Atmospheric Environment*, 174, 148-170, <https://doi.org/10.1016/j.atmosenv.2017.10.052>, 2018.

Peters, W., Jacobson, A. R., Sweeney, C., Andrews, A. E., Conway, T. J., Masarie, K., Miller, J. B., Bruhwiler, L. M., Pétron, G., and Hirsch, A. I.: An atmospheric perspective on North American carbon dioxide exchange: CarbonTracker, *Proceedings of the National Academy of Sciences*, 104, 18925-18930, 2007.

Rastigejev, Y., Park, R., Brenner, M. P., and Jacob, D. J.: Resolving intercontinental pollution plumes in global models of atmospheric transport, *Journal of Geophysical Research: Atmospheres*, 115, 2010.

Sanderson, M.: Biomass of termites and their emissions of methane and carbon dioxide: A global database, *Global Biogeochemical Cycles*, 10, 543-557, 1996.

Sasakawa, M., Shimoyama, K., Machida, T., Tsuda, N., Suto, H., Arshinov, M., Davydov, D., Fofonov, A., Krasnov, O., Saeki, T., Koyama, Y., and Maksyutov, S.: Continuous measurements of methane from a tower network over Siberia, *Tellus B*, 62, 403-416, 10.1111/j.1600-0889.2010.00494.x, 2010.

Sasakawa, M., Machida, T., Ishijima, K., Arshinov, M., Patra, P. K., Ito, A., Aoki, S., and Petrov, V.: Temporal Characteristics of CH₄ Vertical Profiles Observed in the West Siberian Lowland Over Surgut From 1993 to 2015 and Novosibirsk From 1997 to 2015, *Journal of Geophysical Research: Atmospheres*, 122, 11,261-211,273, 10.1002/2017JD026836, 2017.

Schepers, D., Guerlet, S., Butz, A., Landgraf, J., Frankenberg, C., Hasekamp, O., Blavier, J. F., Deutscher, N., Griffith, D., and Hase, F.: Methane retrievals from Greenhouse Gases Observing Satellite (GOSAT) shortwave infrared measurements: Performance comparison of proxy and physics retrieval algorithms, *Journal of Geophysical Research: Atmospheres*, 117, 2012.

Spahni, R., Wania, R., Neef, L., Weele, M. v., Pison, I., Bousquet, P., Frankenberg, C., Foster, P., Joos, F., and Prentice, I.: Constraining global methane emissions and uptake by ecosystems, *Biogeosciences*, 8, 1643-1665, 2011.

Stauffer, D. R., and Seaman, N. L.: Use of Four-Dimensional Data Assimilation in a Limited-Area Mesoscale Model. Part I: Experiments with Synoptic-Scale Data, *Monthly Weather Review*, 118, 1250-1277, 10.1175/1520-0493(1990)118<1250:uofdda>2.0.co;2, 1990.

Stohl, A., Hittenberger, M., and Wotawa, G.: Validation of the lagrangian particle dispersion model FLEXPART against large-scale tracer experiment data, *Atmospheric Environment*, 32, 4245-4264, [http://dx.doi.org/10.1016/S1352-2310\(98\)00184-8](http://dx.doi.org/10.1016/S1352-2310(98)00184-8), 1998.

Stohl, A., Forster, C., Eckhardt, S., Spichtinger, N., Huntrieser, H., Heland, J., Schlager, H., Wilhelm, S., Arnold, F., and Cooper, O.: A backward modeling study of intercontinental pollution transport using aircraft measurements, *Journal of Geophysical Research: Atmospheres*, 108, 2003.

Stohl, A., and James, P.: A Lagrangian analysis of the atmospheric branch of the global water cycle. Part I: Method description, validation, and demonstration for the August 2002 flooding in central Europe, *Journal of Hydrometeorology*, 5, 656-678, 2004.

Stohl, A., Forster, C., Frank, A., Seibert, P., and Wotawa, G.: Technical note: The Lagrangian particle dispersion model
535 FLEXPART version 6.2, *Atmospheric Chemistry and Physics*, 5, 2461-2474, 2005.

Stohl, A., Seibert, P., Arduini, J., Eckhardt, S., Fraser, P., Grealley, B., Lunder, C., Maione, M., Mühle, J., and O'doherty, S.:
An analytical inversion method for determining regional and global emissions of greenhouse gases: Sensitivity studies and
application to halocarbons, *Atmospheric Chemistry and Physics*, 9, 1597-1620, 2009.

Sweeney, C., Karion, A., Wolter, S., Newberger, T., Guenther, D., Higgs, J. A., Andrews, A. E., Lang, P. M., Neff, D., and
540 Dlugokencky, E.: Seasonal climatology of CO₂ across North America from aircraft measurements in the NOAA/ESRL Global
Greenhouse Gas Reference Network, *Journal of Geophysical Research: Atmospheres*, 120, 5155-5190, 2015.

Tang, Y., Carmichael, G. R., Thongboonchoo, N., Chai, T., Horowitz, L. W., Pierce, R. B., Al-Saadi, J. A., Pfister, G.,
Vukovich, J. M., and Avery, M. A.: Influence of lateral and top boundary conditions on regional air quality prediction: A
multiscale study coupling regional and global chemical transport models, *Journal of Geophysical Research: Atmospheres*, 112,
545 2007.

Thompson, R. L., and Stohl, A.: FLEXINVERT: an atmospheric Bayesian inversion framework for determining surface fluxes
of trace species using an optimized grid, *Geoscientific Model Development*, 7, 2223-2242, 2014.

Van der Werf, G. R., Randerson, J. T., Giglio, L., Collatz, G., Mu, M., Kasibhatla, P. S., Morton, D. C., DeFries, R., Jin, Y.
v., and van Leeuwen, T. T.: Global fire emissions and the contribution of deforestation, savanna, forest, agricultural, and peat
550 fires (1997–2009), *Atmospheric Chemistry and Physics*, 10, 11707-11735, 2010.

Table 1 Overview of kernel settings in the sensitivity analysis. The spatial width in x-direction is equal to the width in y-direction (in meters). σ_{obs} is the standard deviation of observations in two years at each nudging location, σ_{max} is the maximum value of σ_{obs} from all nudging locations, h_{min} is 1° and \bar{u} is the mean wind speed at the nudging location based on ERA Interim data.

Sim	Spatial width (h_y , $^\circ$)	Height (h_z , m)	Temporal width (h_t , s)	Relaxation time (τ_n , s)
Ref	-	-	-	-
NF1	0.5	250	$3 \cdot 3600 \cdot h_y / h_{min}$	3600
NF2	2°	500	$86400 h_y / h_{min}$	7200
NF3	2°	500	$86400 h_y / h_{min}$	3600
NF4	2°	250	$86400 h_y / h_{min}$	7200
NF5	2°	500	$43200 h_y / h_{min}$	7200
NF6	4°	500	$86400 h_y / h_{min}$	7200
NV1	$\sigma_{max} / \sigma_{obs} \cdot h_{min}$ ($\sim 1\text{-}20^\circ$)	500	$86400 h_y / h_{min}$	7200
NV2	$\sigma_{max} / \sigma_{obs} \cdot h_{min}$ ($\sim 1\text{-}20^\circ$)	300	$86400 h_y / h_{min}$	7200
NV3	$\sigma_{max} / \sigma_{obs} \cdot h_{min}$ ($\sim 1\text{-}20^\circ$)	300	$86400 h_y / h_{min}$	3600
NW1	$\sigma_{max} / \sigma_{obs} \cdot h_{min}$ ($\sim 1\text{-}20^\circ$)	300	$111 \cdot 10^3 \cdot h_y / \bar{u}$ (~ 6 hours - 4 days)	3600
NW2	$h_t \bar{u} / 111 \cdot 10^3$ ($\sim 2\text{-}9^\circ$)	300	$24 \cdot 3600$	3600
NW3	$86400 \cdot \bar{u} / 111 \cdot 10^3$ ($\sim 2\text{-}9^\circ$)	300	$24 \cdot 3600 \cdot \sqrt{\sigma_{obs}} / \sigma_{obs}$	3600

Formatted Table

560 **Table 2 Bias of modelled methane (ppb) at independent surface validation stations. The mean value is the mean of absolute bias**
565 **value at all stations listed. Settings of FLEXPART CTM simulations are given in Table 1. Station locations are shown in [Figure 1](#)**

	REF	NF1	NF2	NF3	NF4	NF5	NF6	NV1	NV2	NV3	NW1	NW2	NW3
YAK1	5.6	4.3	1.3	1.1	1.6	2.8	-1.1	-11.2	-10.1	-11.4	-8.2	0.3	1.4
YAK2	12.7	11.3	8.4	8.3	8.6	9.7	5.9	-4.1	-3.1	-4.3	-1.1	7.4	8.5
USH	-9.1	-9.0	-7.3	-6.9	-8.1	-7.9	-3.7	-0.8	-1.0	-0.6	-1.4	-3.9	-4.4
BHD	-7.5	-7.9	-4.0	-3.0	-5.6	-5.6	1.7	6.1	4.7	6.1	5.0	-0.9	-2.3
BKT	-38.5	-38.7	-39.3	-39.5	-39.6	-38.9	-39.5	-39.4	-38.9	-39.3	-37.8	-40.1	-39.3
GMI	-5.2	-5.6	-6.4	-6.3	-6.6	-6.5	-5.9	-4.9	-6.0	-5.8	-4.1	-6.5	-6.0
KUM	-2.5	-1.6	1.6	2.7	-1.2	1.4	3.2	4.6	2.2	3.6	4.8	3.1	3.2
AZR	12.4	11.8	8.0	6.8	8.4	7.9	5.6	-3.4	-2.5	-3.3	-1.2	3.9	3.8
THD	-0.8	-1.5	-4.7	-5.1	-3.9	-4.4	-7.6	-11.9	-12.0	-12.0	-10.7	-9.0	-8.9
CBA	18.4	18.3	12.5	12.2	13.6	14.4	9.6	-1.0	-1.0	-1.7	1.9	11.0	11.2
ICE	28.4	27.2	21.0	20.1	22.0	22.1	16.5	6.5	7.2	6.2	7.1	16.8	17.4
JFJ	24.2	21.9	14.5	14.8	15.5	14.5	14.7	10.8	10.6	10.7	9.8	13.2	11.7
Mean	13.8	13.2	10.8	10.6	11.2	11.3	9.6	8.7	8.3	8.8	7.8	9.7	9.8

565 **Table 3 Model performance at ACG (Alaska Coast Guard, USA) and Dahlen (DND) in terms of r^2 , RMSE and bias (ppb) of a**
selection of simulations according to table 1.

	ACG			DND		
	r^2	RMSE	bias	r^2	RMSE	bias
REF	0.50	14.89	5.36	0.53	24.17	7.55
NF1	0.60	13.17	4.42	0.55	23.13	6.91
NF3	0.59	12.38	2.35	0.56	19.71	2.69
NV3	0.58	13.73	-6.46	0.58	18.49	-5.54
NW3	0.58	13.73	2.21	0.57	18.73	0.70

Table 4 Average of coefficient of determination, root-mean-square error and absolute bias at all surface stations and at surface
validation stations only for different FLEXPART CTM simulations. The percentage refers to the number of nudging locations that
were included in the simulation.

	R^2		RMSE		Bias	
	all	validation	all	validation	all	validation
REF	0.54	0.62	35.3	23.6	20.9	13.8
NV3 50%	0.74	0.63	18.6	19.5	9.6	9.0
NV3 80%	0.85	0.62	13.9	18.7	6.9	8.3
NV3	0.92	0.62	10.3	18.7	4.9	8.8

570

Table 5 Mean values of r^2 , RMSE and absolute bias for different FLEXPART CTM and TM5 simulations at surface stations for all stations or independent validation stations only.

	R2		RMSE		Bias	
	All	Validation	All	Validation	All	Validation
REF	0.54	0.62	35.3	23.6	20.9	13.8
NF1	0.62	0.62	30.1	23.3	17.8	13.2
NF3	0.92	0.63	9.4	20.6	4.9	10.6
NV3	0.92	0.62	10.3	18.7	4.9	8.8
NW3	0.78	0.59	18.4	20.2	9.6	9.8
TM5 REF	0.39	0.41	33.9	22.2	17.3	7.9
TM5 RA	0.46	0.54	29.7	20.6	13.3	8.1

575 Table 6 Bias (ppb) of averaged methane profiles at NOAA and NIES profiles sites and during the YAK-Aerosib flight campaign. Bias is determined with equal weight of each vertical layer.

	FLEXPART- CTM REF	FLEXPART- CTM NV3	TM5 REF	TM5 RA
ACG	5.4	-6.5	13.6	-2.5
CAR	-3.6	-8.8	8.7	7.0
CMA	0.6	-8.2	0.7	0.5
CRV	4.1	-9.7	2.6	-8.8
DND	7.5	-5.5	2.2	-5.1
ESP	6.0	-8.2	4.2	-5.4
ETL	14.2	-2.4	6.2	-0.3
HIL	-5.7	-15.7	-2.9	-2.8
LEF	5.6	-1.9	0.2	-0.6
NHA	-0.8	-11.0	2.4	1.0
PFA	2.3	-10.2	1.4	-6.8
RTA	-11.0	-3.5	-3.8	0.9
SCA	-8.1	-14.2	3.0	2.4
TGC	-3.8	-6.9	11.2	9.0
THD	-2.9	-11.6	9.3	-0.1
WBI	2.4	-9.1	5.2	6.0
YAK-Aerosib	3.6	-13.6	3.0	-5.4
Novosibirsk	-3.4	-8.3	18.3	19.5
Surgut	10.2	0.3	-2.6	-10.9
Mean of absolute values	5.3	8.2	5.3	5.0

Table 7 RMSE (ppb) of averaged methane profiles at NOAA and NIES profiles sites and during the YAK-Aerosib flight campaign. Bias is determined with equal weight of each vertical layer.

	FLEXPART- CTM REF	FLEXPART- CTM NV3	TM5 REF	TM5 RA
ACG	14.9	13.7	19.6	10.4
CAR	11.6	14.5	20.6	15.4
CMA	15.4	13.6	17.8	15.1
CRV	19.3	20.4	24.8	20.2
DND	24.2	18.5	22.0	19.1
ESP	19.6	14.1	17.7	14.6
ETL	23.1	13.2	20.2	19.9
HIL	19.3	21.4	24.9	25.2
LEF	11.9	11.8	19.6	12.1
NHA	14.8	17.1	17.6	15.5
PFA	15.7	16.6	15.1	12.8
RTA	13.3	7.7	7.8	6.8
SCA	18.9	21.6	21.8	18.6
TGC	13.0	14.7	17.9	17.4
THD	15.5	17.8	20.3	15.5
WBI	14.9	13.8	10.7	12.8
YAK-Aerosib	18.6	20.4	13.2	13.8
Novosibirsk	6.1	10.5	22.4	23.8
Surgut	19.0	17.5	5.8	12.3
<i>Mean</i>	<i>16.3</i>	<i>15.7</i>	<i>17.9</i>	<i>15.9</i>

580

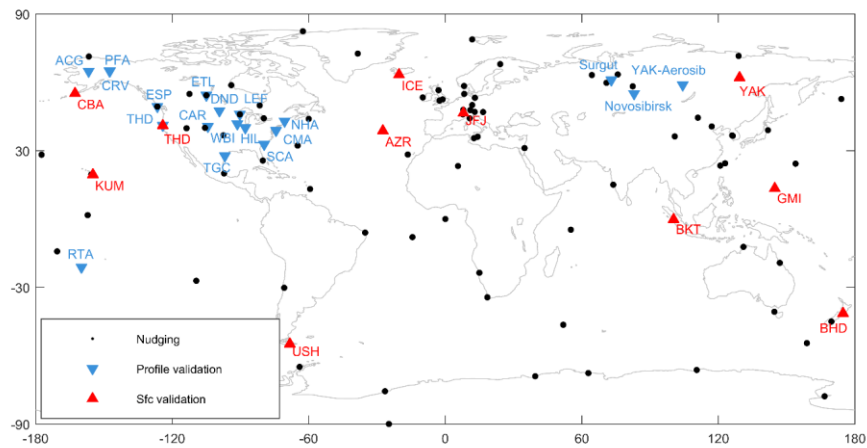


Figure 1 Map of surface and profile locations used for nudging or validation. For profiles that span a larger domain only the centre location is indicated.

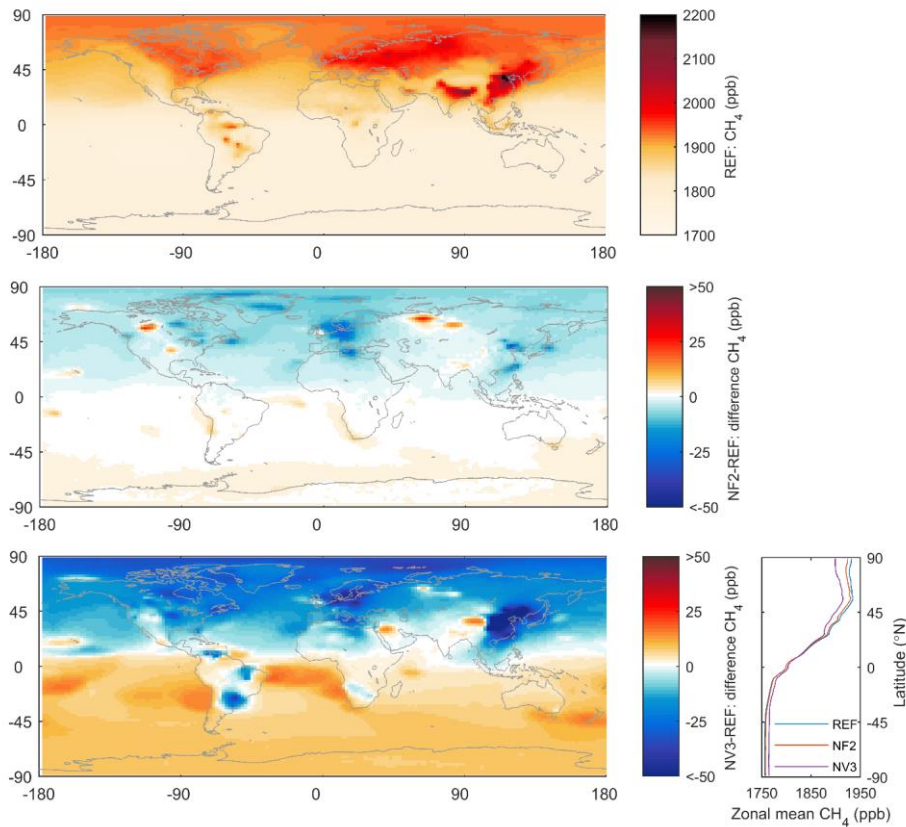


Figure 2 Simulated annual mean surface methane (ppb) for 2013 in the FLEXPART CTM reference simulation (top) and the difference in annual mean surface methane for FLEXPART CTM NF2 (middle) and NV3 (bottom, left) compared to the reference simulation. Additionally, zonal averages of surface methane (ppb) for all three simulations are also shown (bottom, right).

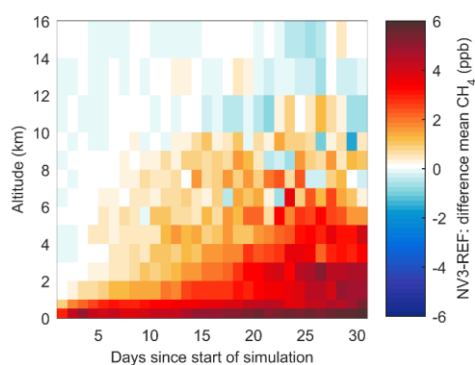
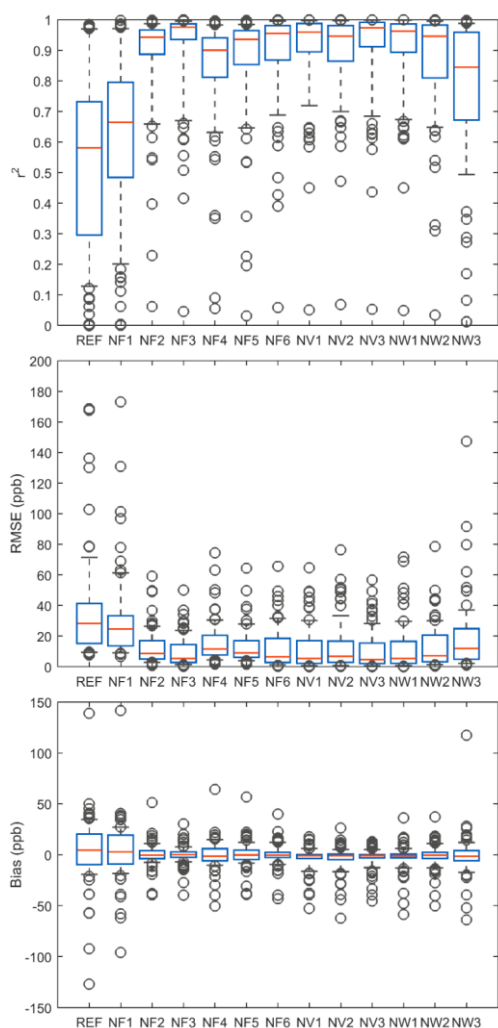


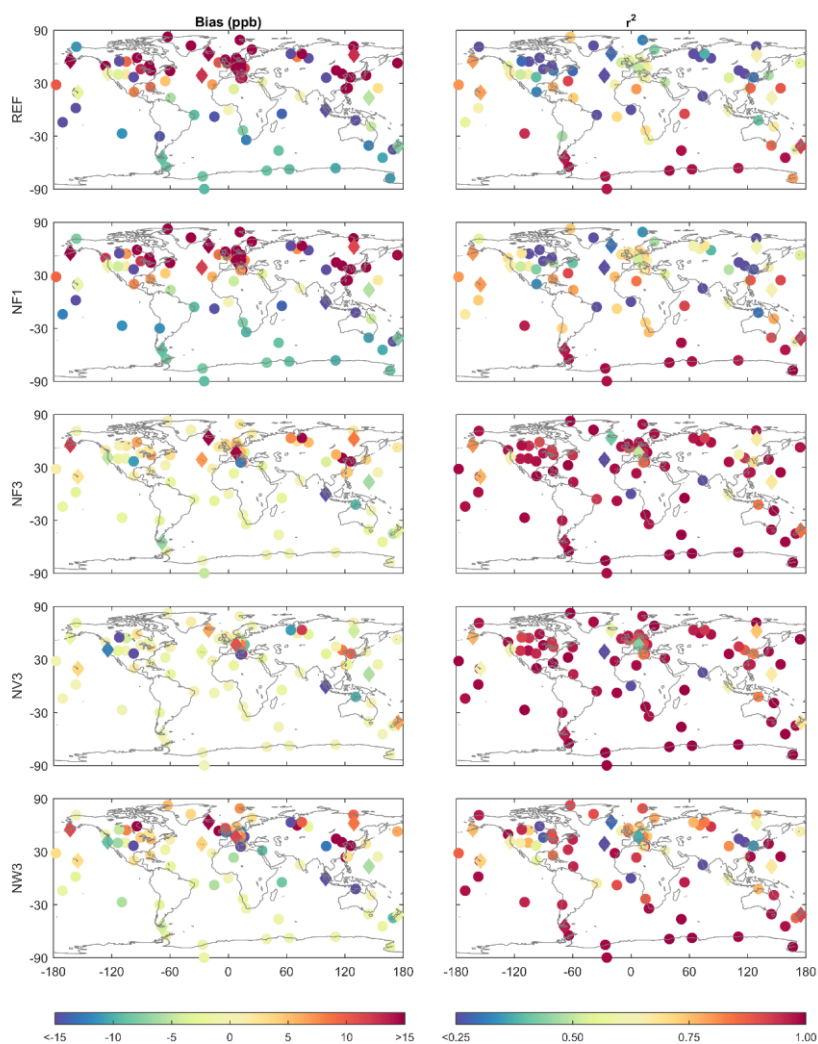
Figure 3 Difference in simulated regional mean methane (ppb) per altitude for FLEXPART CTM simulations NV3-REF in January 2013. The values are averages per altitude level for the region south of 60°S.

Formatted: Keep with next

Formatted: Font: (Default) Times New Roman



595 **Figure 443** FLEXPART CTM model performance based on boxplots of coefficient of determination, RMSE and bias in daily average methane model fractions at surface stations for different kernel settings (see Table 1). Independent validation stations are included. The red line in the boxplots indicates the median, the bottom and top box edges are the 25th and 75th percentiles, and whisker ends are at 9th and 91st percentiles. The circles are outliers.



600 **Figure 554** Bias and coefficient of determination of modelled methane at all surface stations, including validation stations (diamonds) for a selection of simulations (see Table 1 for settings). Some bias values exceed (-)15 ppb (also see [Figure 4Figure 4Figure 3](#)); colour limits were chosen to show the influence of nudging at the majority of stations.

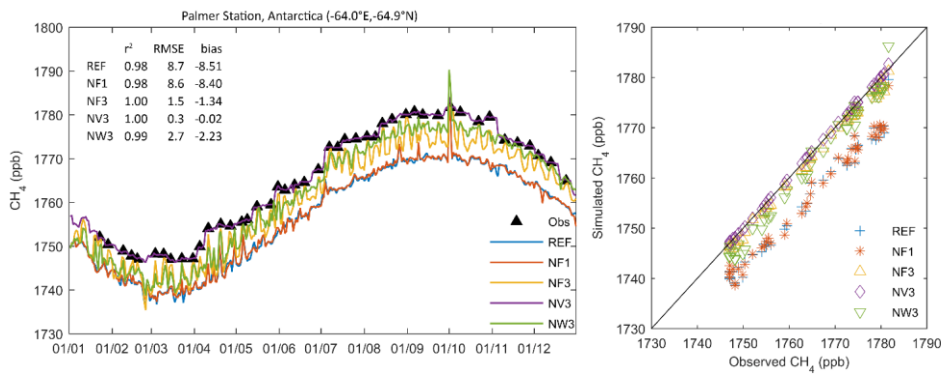


Figure 665 Methane (ppb) as observed and modelled at Palmer Station in 2013 for a selection of FLEXPART CTM simulations, shown as time series (left) and scatter plot (right).

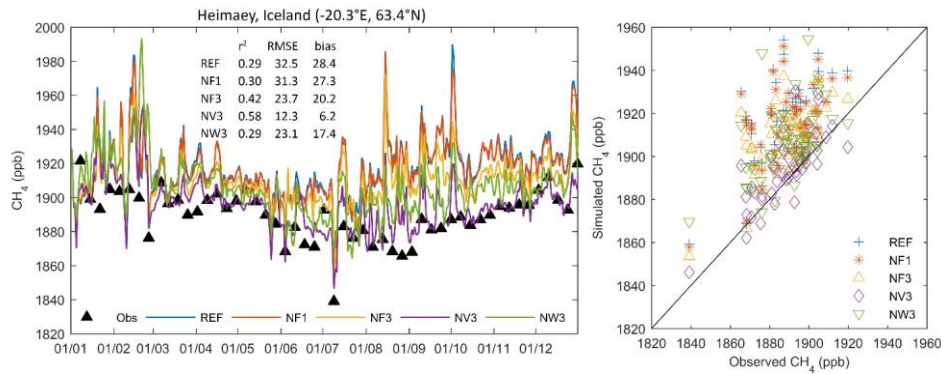


Figure 776 Methane (ppb) as observed and modelled at Heimaey in 2013 for a selection of FLEXPART CTM simulations, shown as time series (left) and scatter plot (right).

610

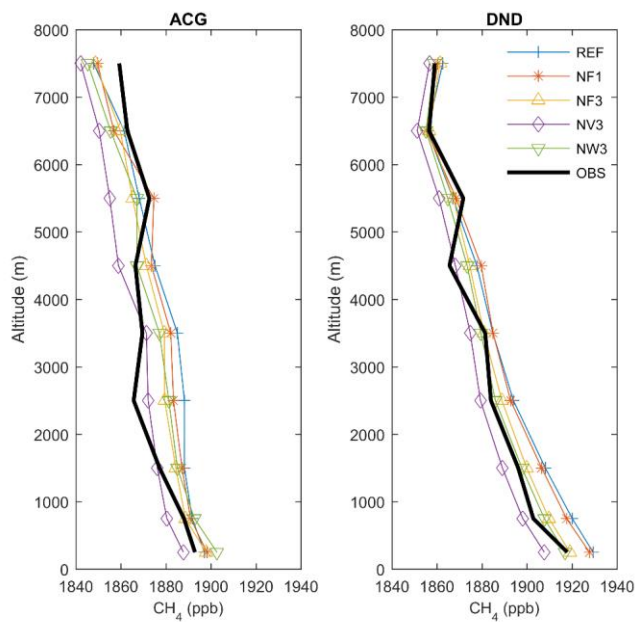


Figure 887 Averaged annual vertical methane profiles for 2013 based on monthly averaged data at NOAA profile locations ACG (Alaska Coast Guard, United States of America) and DND (Dahlen, North Dakota, United States of America). See Figure 1Figure 1Figure 1 for approximate profile locations.

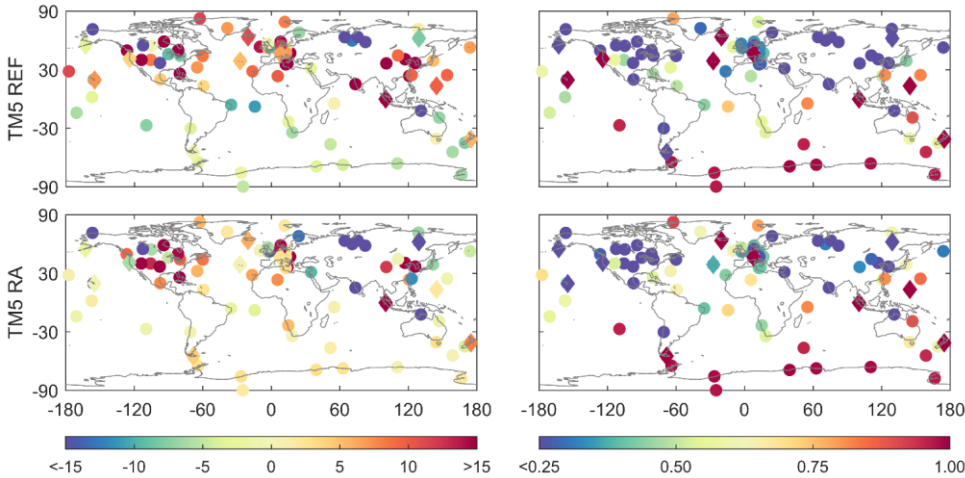


Figure 998 Bias (ppb, left) and r^2 (right) of modelled methane at all surface stations for TM5 (reference, top and reanalysis, bottom) simulations.

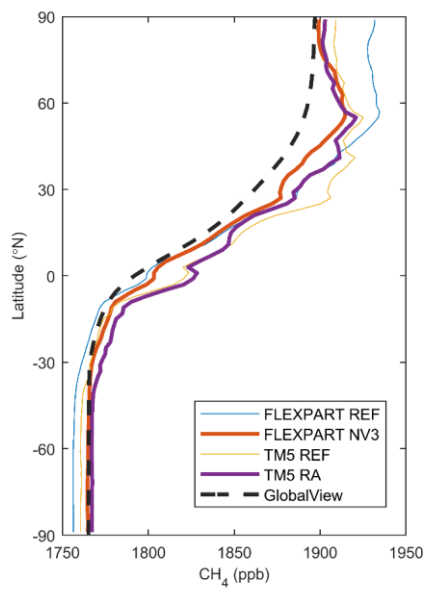


Figure 10109 Zonal mean surface methane (ppb) in 2013 based on FLEXPART CTM, TM5 and GLOBALVIEW-CH₄.

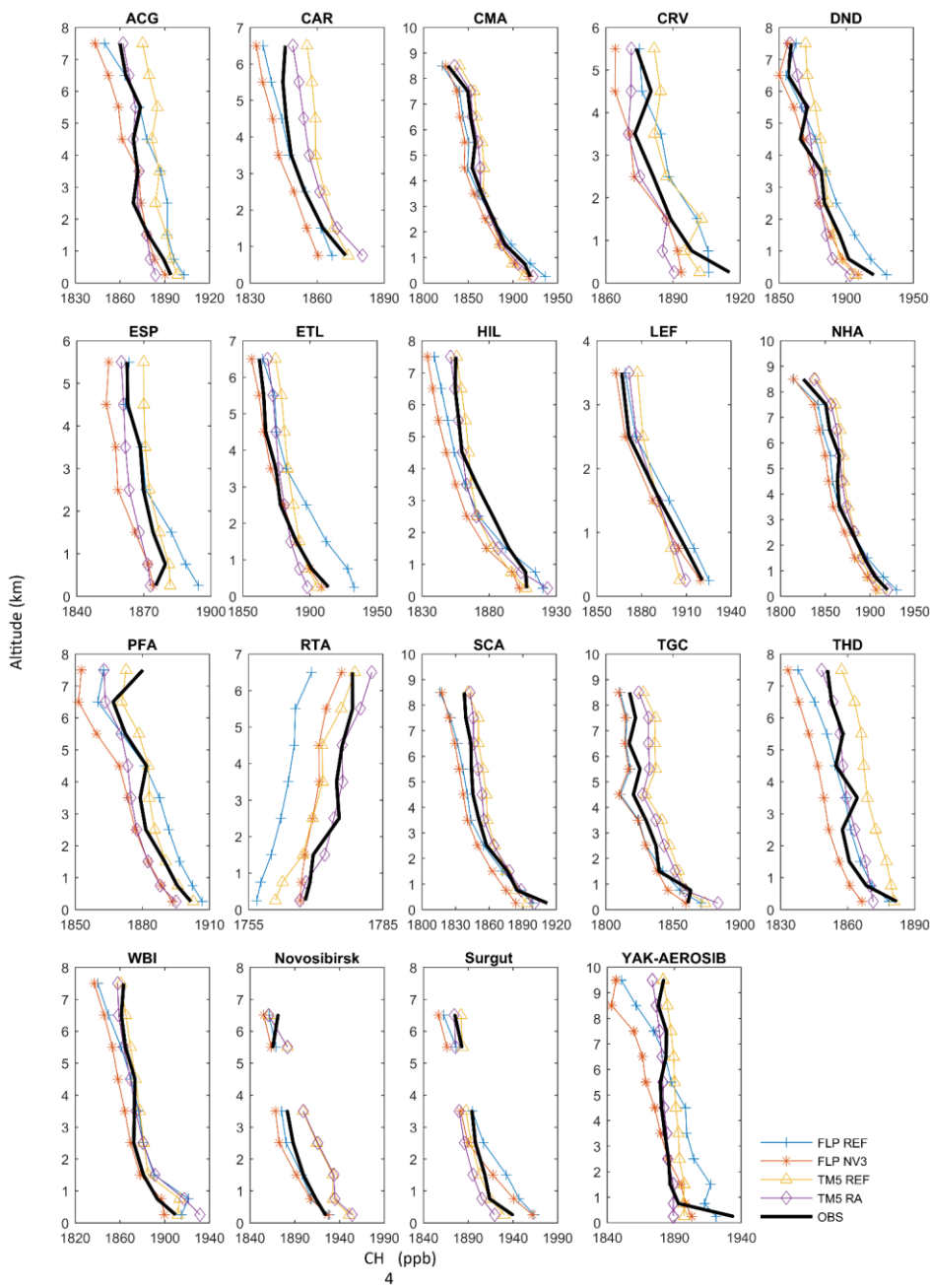


Figure 111110 Averaged modelled and observed vertical profiles in 2013 at 16 NOAA locations, during the YAK-Aerosib campaign and at Surgut and Novosibirsk. FLP refers to FLEXPART CTM.

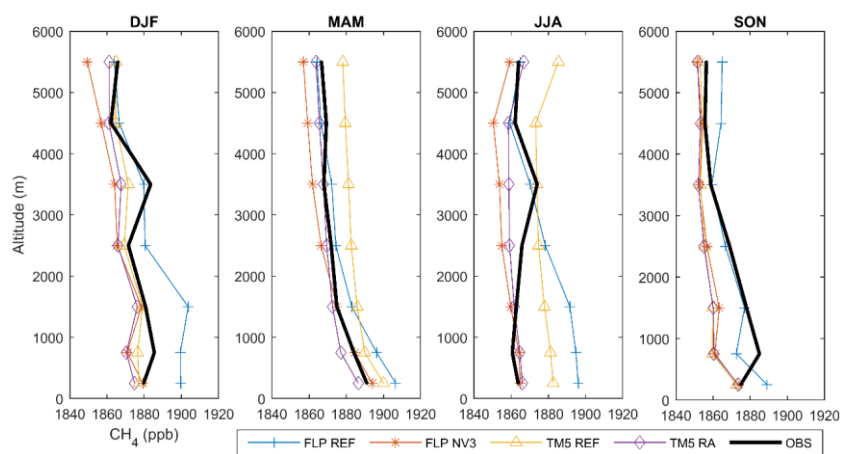


Figure 121214 Seasonal observed and modelled methane profiles in 2013 at Estevan Point (Canada). FLP refers to FLEXPART CTM.

Formatted: Font: Palatino Linotype

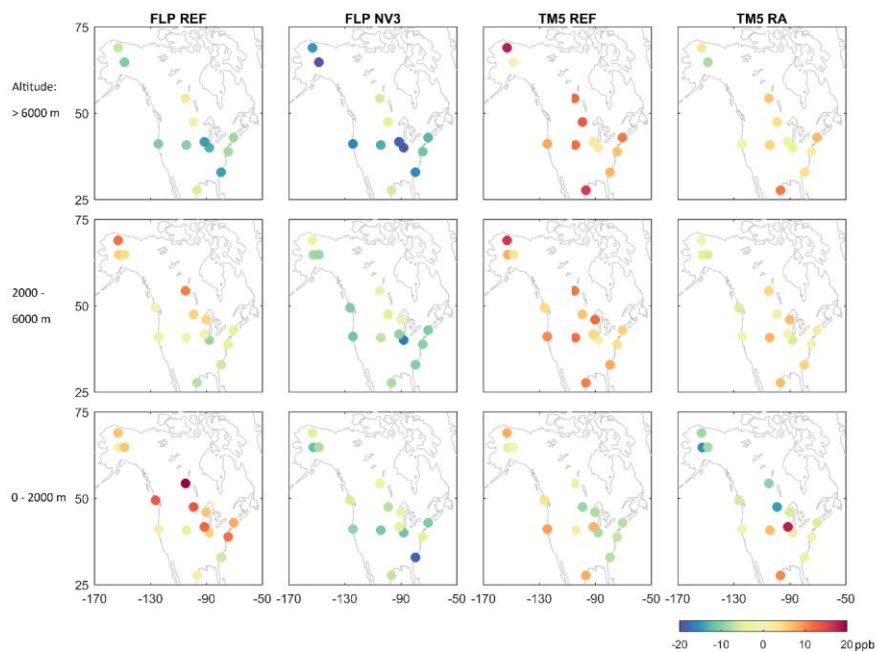


Figure 131312 Model bias of FLEXPART CTM (abbreviated FLP) and TM5 at three altitude ranges for NOAA profiles in 2013 in North America.