

We thank the two referees for the useful comments. In what follows, we have included the original referee comments in black, followed by our response in blue, with new text shown in **bold**. On page 12, we list all relevant changes made in the manuscript.

Anonymous Referee #1

The manuscript implemented a major improvement to the representation of secondary CO production in the CO-only simulation. The improved CO-only simulation resolves the discrepancy between the full chemistry and CO-only simulations in both the magnitude and spatial distribution. It also includes a new capability of source-region tagging of secondary CO produced from oxidation of non-methane volatile organic compounds. These two improvements help us get a better understanding on CO sources and transport over the remote regions. In general, I found the main points and the structure of this manuscripts are clear. But some of discussions are weak and unclear. Below are my comments for making the manuscript more concise. I recommended the paper to be published with revision.

Main comments:

Section 4: global evaluation with observations

I understand that the observational data used in this paper is the same data used to benchmark new version of the full GEOS-Chem model. However, it is not proper of using observed climatology to justify model improvements in reference to the original simulation and the standard chemistry simulation. The observed climatology is normally used to do an initial sanity check of simulated mean and seasonality. The authors argue that Figure 4 does not help illustrating the improvements of the new scheme because of the larger observation-model mismatch. To me, the failure of figure 4 is also partly because we are referencing orange to apple. The results would be convincing if the authors compare monthly mean of simulated CO in 2009 to that of GMD surface CO over the same year. What is the measurement frequency for GMD surface CO? The authors should also plot the continuous monthly mean of model output as well as the mean calculated from dates with GMD measurements.

The comparison would probably not change significantly using the observed monthly mean from 2009, but at least that gives us a quantity evaluation of CO simulation in GEOS-Chem full chemistry run and CO-only run.

We appreciate the suggestion. In digging through the standard benchmark dataset, we realised that the surface CO data included were not multi-year means as expected but rather monthly means for 2005 only. We now follow the reviewer's suggestion and compare the simulation to the observed data from the same year (e.g., 2009 in Fig. 4). The agreement does improve, although the message remains the same: the observation-model mismatch is larger than the differences between the three simulations. Due to different data availability in 2009, we replaced two sites shown in the original Fig. 4 (Bermuda and Palmer) with nearby sites (Key Biscayne and Syowa, respectively).

Figure 4 now shows the 2009 monthly means for the model. We only saved the global model output at monthly time resolution, so we are unable to also plot the mean calculated only from dates with GMD measurements.

We have also used this opportunity to update the CO data used by the GEOS-Chem Support Team for the standard full chemistry benchmarking, which uses model output from 2013.

Please modify Figure 4 as follows:

1) The title should be surface CO instead of CO vertical profiles.

Fixed.

2) The lon and lat of Crozet should be: (-46, 52). Please double check whether this is just a typo in the caption, or extracted from the wrong grid box (-46, -52).

Fixed. This was in fact extracted from the wrong gridbox – and appears to have been for all earlier versions of the GEOS-Chem benchmark as well. This has now been fixed in Figure 4 and reported to the GEOS-Chem Support Team to fix in the public benchmark as well.

3) It is hard to distinguish the blue and purple lines. please use another color, dark green?

It is a challenge to find colors that are distinguishable both in general and for a red-green colorblind reader. We have replaced the solid blue line with solid orange in Figs. 4 & 5. While the orange and red lines may look similar to some colorblind readers, the dashing will help distinguish these, and the lines are now more easily distinguished for the non-colorblind reader.

4) Use the monthly mean and standard deviation of GMD surface CO data for 2009 as discussed above.

Fixed as discussed above.

In addition, I suggest the authors use specific names (instead of original or improved CO-only simulation) for these two versions of CO-only simulation.

In response to a comment from Referee #2, we changed the name “original” to “base”. We use the terms “base” and “improved” to avoid any ambiguity in the figures and text. Because the GEOS-Chem model itself (of which the CO-only simulation is one part) already has version numbers, we feel it would be confusing to replace the names with a version. In the absence of short names that could clearly and succinctly encapsulate the differences between the two versions of the simulation, we prefer to retain “base” and “improved”, which we use consistently throughout the text and figures. We would be happy to consider any specific suggestions for clearer version names. To further improve the clarity of these names for the readers, we now include information about the differences between the two in the figure captions for Fig. 1 (first model-model comparison figure) and Fig. 4 (first model-observation comparison figure):

“The main difference between the two CO-only simulations is the vertical distribution of the CO source from NMVOCs, which is 3-dimensional in the improved simulation but surface-only in the base simulation.”

Detailed comments:

P4 Line 3: We use the GEOS Chem CTM version 9-01-03 as the based version.

Fixed: “We use the GEOS-Chem CTM version 9-01-03 as the base version...”

P4 Line 6: Goddard Earth Observing System, Version 5

Fixed: “Goddard Earth Observing System, **version 5** (GEOS-5).”

P6 Line 11: It is not surprise to see the total CO in improved CO-only simulation improves significantly when comparing to the full chemistry CO simulation, since the $P(\text{CO})$ are same in these two runs.

Yes precisely – the goal is to quantify how large the discrepancy was in the original (standard) simulation. We have added the following to the text when we first discuss the improved agreement with the full chemistry simulation:

P8 line 33-P9 line 5: “While some differences remain between the improved CO-only and full chemistry simulations, these are much smaller (less than 6 ppbv / 5% everywhere, and less than 3 ppbv / 3% outside the African plume) and show a greatly diminished spatial extent. **The improved agreement is expected, as the spatial distribution of CO production is now the same in the two simulations.** Lingering differences likely reflect use of scaled monthly mean OH concentrations and $P(\text{CO})$ fields in the CO-only simulation, which may introduce some offset between the timing and locations of CO production and CO loss.”

P7, Line 19: China and India also show large overestimate in the surface in the original CO-only run. What causes that?

Although it’s not visible on the color scale used in the figure, these overestimates are smaller. They come from anthropogenic and/or biomass burning VOCs. We now add this to the text:

P8, lines 9-14: “At the surface, the base CO-only model greatly overestimates CO compared to the full chemistry simulation over the continents, with differences of more than 100 ppbv (60-80%) in major biogenic VOC source regions (e.g., Amazon, central Africa, Indonesia, and the Southeast US). **Similar, smaller (up to 50 ppbv / 10-15%) effects are present in regions with elevated VOC emissions from anthropogenic and biomass burning sources (e.g., China, Alaska). These overestimates** reflect the assumed instantaneous CO production from VOCs in the surface layer in the base model, whereas in the full chemistry and updated models this production happens more gradually.”

P7, Line 23: For the remote region: dose CO from NMVOC represent 1) CO produced locally through NMVOC transported from source region or 2) transported CO from source region which was produced there or 3) a combination of them?

We are unsure what text the referee was referring to, as P7, line 23 does not discuss CO from NMVOC. We now clarify this issue earlier, after Equation 5:

P7, lines 28-30: “**In other words, $CO_{NMVOC,j}$ from region j represents the CO that was produced within the boundaries of region j , regardless of the origin of the NMVOC (i.e., local vs. transported). As most precursor NMVOCs have short atmospheric lifetimes, most $CO_{NMVOC,j}$ will derive from NMVOCs emitted in region j .**”

P7 line 31: similar overestimates seen over Tibetan Plateau, probably related to the deep convection storms in summer time

We have added this region to the discussion. In the improved version of the figure, the overestimate appears centred over southern China. Precursors in this region are likely to include anthropogenic emissions, and so we have modified the accompanying text accordingly:

P8 lines 19-21: “In a few regions (central Amazon, Indonesia, **and southern China**), the base

CO-only simulation actually overestimates the full chemistry simulation at 500 hPa by 7-8 ppb (10-12%). These are regions where **large NMVOC sources** are coupled with frequent deep convective activity.”

P11, line 2: largest differences between two CO-only simulations

Fixed: “The largest differences **between the two CO-only simulations** are seen...”

P11 Lin32: Not sure if it is necessary to discuss the comparison with IASI here.

We disagree – while we found that the impact was small, one of the motivations for the work was the possibility that the original treatment of secondary CO would degrade comparisons with satellite instruments that are most sensitive in the mid-troposphere (such as IASI). We prefer to include this text as it may be relevant to other readers who have the same concern.

P12 Figure 4 caption: specify the year range of multi-year monthly mean

See earlier comments – we now instead show the 2009 data and specify this in the caption.

P15 Figure 6: For overlapping period, the light purple and dark purple circles look same to me.

Fixed

P16 Line 7-8: Can you be more specific on the NMVOCs setting in these two version runs? I understand how CO from NMVOCs emitted by biomass burning or anthropogenic emission is in the NMVOCs contribution in the new scheme. But I am confused with the setting of these sources in the old scheme.

This is explained in Section 2.2.1, and we now also re-iterate it here:

Pg 17, lines 9-11: “**In the base simulation, these were included with the primary emissions as they were calculated by increasing primary anthropogenic and biomass burning emissions by 19% and 11%, respectively (Sect. 2.2.1); whereas in the improved simulation, they are part of the NMVOC contribution.**”

P18 Figure 8: adding labels for the locations of three stations in Figure 7.

Fixed

Anonymous Referee #2

The manuscript 'Improved method for linear carbon monoxide simulation and source attribution in atmospheric chemistry models illustrated using GEOS-Chem v9' by Fisher et al. describes an update of the linear CO method which is available in the GEOS-Chem model. Details about the technical implementation (usage of CO production rates from a prior model run instead of yield rates for NMVOC emissions), as well as an comparison of the 'old' and 'new' version with observation data are given. In addition an example of the new source attribution capabilities of the method is presented. As the paper describes an improvement of a current model it is in general well suited for GMD, before publication, however, major revisions are necessary.

General comments:

The manuscript is in general well written, but especially the description of the model details lacks in clarity. I would suggest to condense the evaluation (more details below) and to describe the model updates as well as the general performance of the model with respect to changes of the CO production rates in more detail.

The authors seem to describe three main updates. The first updates are the improvements described at the end of the Sect. 2.2. These changes are applied in both presented model simulations. Accordingly, the term 'original CO-only simulation' is somewhat misleading as these model results are different from the 'CO-only' method which is the 'status quo' prior to the changes described by the manuscript.

We have clarified the text in Section 2.2 to explain that these updates are effectively bug fixes and that these are part of the current standard ('status quo') GEOS-Chem CO-only simulation (v11-01). The only non-standard change described in this section is the OH fields, discussed below. We are sensitive to the concern that the term "original" is misleading, and have replaced in with "base" throughout the manuscript (except in the abstract, where we feel it would be confusing without additional context).

The paragraph in question now reads:

P5, lines 25-32: **"We also fixed a few minor problems in the v9-01-03 CO-only simulation to bring it up-to-date with the current public version (v11-01) and to make it more compatible with the full chemistry simulation. Specifically, we implemented optional non-local mixing in the planetary boundary layer (Lin and McElroy, 2010) and the centralized chemistry timestep (http://wiki.seas.harvard.edu/geos-chem/index.php/Centralized_chemistry_time_step) – both of which are defaults in the v9-01-03 standard full chemistry simulation but were missing from the CO-only simulation. We also added diurnal scaling of the monthly mean [OH] fields based on the cosine of the solar zenith angle. This is the same method used in all other offline simulations in GEOS-Chem, and is an objective improvement compared to using a single monthly mean value in each grid box. All of these updates are included in both the base and improved versions compared below."**

The main update are the improvements described in Sect. 2.2.2. The description of these updates seems insufficient to me. For readers which want to implement this method in their own model

implementation details are missing. For people of the GEOS-Chem community which might be interested in using the method a user manual or similar (in the supplement) is missing. In addition not all simplifications/assumptions are discussed in detail (see below for details).

We have addressed all the specific comments and suggestions below, and hope that this now covers all previously missing implementation details. We have also expanded the Section 7 on Code Availability to more clearly explain how users in the GEOS-Chem community can apply the changes:

P21, lines 14-19: “The standard GEOS-Chem code is freely accessible to the public by following the guidelines at <http://wiki.geos-chem.org/>. Updates described here will be included in the standard code once this paper has been accepted, likely after version 11-02. In the interim, the version 9-01-03 code used here is available at https://github.com/jennyfisher/GEOS-Chem_TaggedCO_v9.01.03_updated. **The standard GEOS-Chem code is distributed as a git repository, and the code updates described here can be added to a standard v9-01-03 code repository by pulling the branch linked above.** The provisional version of v11-01 where we have implemented these updates is available by contacting the authors.”

We have also added a link to the user manual, which provides all details for compiling and running GEOS-Chem (none of which have changed in this version):

P21, lines 19-20: “**Instructions for running the GEOS-Chem model, including the CO-only simulation, are provided in the GEOS-Chem User’s Guide:** <http://acmg.seas.harvard.edu/geos/doc/man/>.”

In general I would recommend to give proper version numbers to the different updates to make the model changes clearly traceable (e.g. 1.0 original Version, 1.1 updates described in Sect 2.2 etc.).

Because the GEOS-Chem model itself (of which the CO-only simulation is one part) already has version numbers, we feel it would be confusing to replace the names with a version. In the absence of short names that could clearly and succinctly encapsulate the differences between the two versions of the simulation, we prefer to retain simulation names “base” and “improved”, which we use consistently throughout the text and figures.

To track the model development it would also be very interesting to show the difference of the model results between ‘version 1.0’ and ‘version 1.1’.

As described above, most of the minor changes described in Section 2.2 were essentially bug fixes (already made in the public version 11-01), and we have updated the text to clarify this. The only non-standard change described in this section is the OH fields. As described below, we have added an extra figure to the Supplement (new Fig. S1) to show the magnitude of the changes due to OH (in essence, comparing ‘v1.0’ and ‘v1.1’).

Further I am missing a discussion about how the inter-annual variability of the production and loss rates saved from the full chemistry model influence the results of the ‘improved CO only’

simulation. Especially as the author state that results from one simulation year are sufficient for the improved model. For interested users it would be very important to see, how critical these pre-calculated production and loss rates are. If dynamics and pre-calculated production rates stem from different years they might not fit to each other and errors/biases are introduced. Please discuss these simplifications. Especially when thinking about sensitivity studies with changed biogenic emissions (e.g. to check the influence of additional source) a new calculation of the secondary CO production (with the full model) seems crucial to me.

This is an important point. We have added to the Supplement a section (new Section S1) and a figure (new Fig. S2) to explain that the interannual variability in the improved CO-only simulation is dominated by meteorology and emissions, with only a very minor contribution from the pre-calculated chemical production rates. We agree with the referee that some specific applications (e.g., evaluating differences in biogenic emissions) would require the user to re-calculate the secondary production fields, and this is why we originally noted in the text that an interested user could easily run the standard chemistry simulation as required. We now explicitly provide examples of when this step may be necessary. The updated text now reads:

P6, lines 23-29: “For many applications, use of a single model year (e.g., that used in the 1-year benchmarking process) will be sufficient—as **discussed in the Supplement, interannual variability in simulated CO is dominated by variability in the meteorology and primary emissions with only a very minor contribution from variability in the CO production rates (Sect. S1, Fig. S2)**. However, the code is designed in such a way that an interested user could easily re-run the standard chemistry simulation to save the CO production fields for a specific year of interest. **This extra step would generally only be necessary for changes likely to significantly impact chemical production (for example, different biogenic emissions or meteorological fields).**”

We would also note that in the past, the CO-only simulation has been applied to a broad range of problems (see for example references in the introduction), and for many of these the small errors introduced by using a single year for the chemical production will not be important.

In this context it would also be interesting to show how large the changes with the new OH fields instead of the OH field used in previous version of the CO-only simulation are.

We have re-written this paragraph to add detail, and have added an extra figure to the Supplement (new Fig. S1) to show the magnitude of the changes due to OH:

P5, lines 15-21: “Previously, the CO-only simulation used OH from earlier versions of the model, **typically v5-07-08** (e.g., Kopacz et al., 2010; Fisher et al., 2010; Jiang et al., 2011, **2017**), to mitigate a known OH high bias in more recent versions of GEOS-Chem. Here, we use OH from v9-01-03 in both our base and improved CO-only simulations to maintain consistency with the full chemistry model and to ensure all changes are due to the new representation of chemical production rather than differences in OH. **Global annual mean OH is about 5% larger in v9-01-03 ($11.4 \cdot 10^5$ molecules cm^{-3} ; http://wiki.seas.harvard.edu/geos-chem/index.php/Mean_OH_concentration) than in the default v5-07-08 ($10.8 \cdot 10^5$ molecules cm^{-3} ; Evans and Jacob, 2005; Kopacz et al., 2010).** As a result, CO is systematically lower when using the updated OH fields, as shown in Fig. S1.”

One problematic thing about the described update is that the amount of needed simulations are doubled. What is the benefit of using first the full model and then the CO-only model? In this context a discussion about the influence of the used CO production rates is important to see if results for different years are dominated by meteorological variability or by variability of the CO production (which of course is also influenced by the meteorological conditions). Especially if users are interest in one specific year it would be interesting to add the source attribution capabilities to the full chemistry model. The source attribution can then be calculated directly during the full model run and the second run (CO only) would not be necessary.

As described in the comment above, we now explicitly show that the interannual variability in simulated CO is dominated by meteorology and emissions, with only a very minor contribution from secondary CO production. This means that many users who are not specifically focusing on e.g. biogenic emissions or biogenic source regions will still be able to run only the CO-only simulation. Relative to the full chemistry simulation, the CO-only simulation is 6 times faster and requires only ~40% as much memory, so there are significant advantages to the GEOS-Chem community to maintaining a CO-only simulation (e.g., for use in forecasting, source attribution, interpreting multi-model ensembles, etc.). This is particularly useful for the four-dimensional variational data assimilation scheme in GEOS-Chem, which can require 20-40 iterations of the model simulation when inverse modeling CO emissions. We agree that adding CO source attribution capabilities to the full chemistry model would also be a useful future addition (that could be maintained in parallel to the CO-only simulation) – but that would require additional code development that is outside the scope of this work.

The comparison of the 'original CO' and 'improved CO' to the results of GEOS-Chem using the full chemistry clearly show the improvements of the new version. The authors might discuss shortly that the good agreement between the full chemistry and the 'improved CO only' runs can be expected, as same dynamics, chemical tendencies, emissions and OH-field from the full model run are used by the 'improved CO only'.

We now clarify that the good agreement between the full chemistry and improved simulations is expected (see also response to Referee #1):

P9, lines 2-3: **“The improved agreement is expected, as the spatial distribution of CO production is now the same in the two simulations.”**

Given the small difference between all three model simulations compared to the observations presented in this Section it can be condensed a lot. Of course, a comparison to observation is important. As the differences between all versions are much smaller as the difference between observations and model most of the figures might be moved to the Supplement and the text of this Section can be condensed to the most important findings.

We believe it is important to give the readers a thorough (and visual) understanding of the comparison to observations. From Figs. 1-3, one would expect to see a large change in the model-observation agreement between the old and new simulations. The fact that this isn't the case (shown in Fig. 4) is an important result from this work – showing that the GEOS-Chem

benchmark data are not sufficiently representative to constrain current model uncertainties. The aircraft are useful for showing the magnitude of the change in regions with enhanced biogenic emissions that are not captured in the surface data.

We feel this section will be of interest to some readers and is already condensed, with only 4 paragraphs of text and all but two figures in the Supplement. We therefore prefer to leave Section 4 in place.

Specific comments:

Sect. 2.1: Please provide a table with the different performed simulations.
We now include a table with the simulation details (P4, new Table 1).

Instead of 'improved CO only' etc. I would recommend more handy names of the simulations. We have not been able to come up with a better succinct name that clearly communicates the updates made to this simulation, but we would be happy to consider any specific suggestions.

In general this Section might be moved to the end of Section 2, meaning that first model improvements and at the end the model set-up are discussed.
We prefer to retain the order as-is as it allows the text to flow directly from the description of the new simulation to the implications of the changes. We feel this flow would be lost by moving Section 2.1 to the end of Section 2.

Sect. 2.2.2: Please clarify which production rates are written out from the full chemistry model run. From my understanding only the total CO production and the methane loss rates are written out, from which the production of CO from NMVOC are then calculated off-line.

We now clarify which rates are saved from the full chemistry model and that the methane and NMVOC production are calculated offline.

P6, lines 30-31: "The total $P(\text{CO})$ saved from the full chemistry model is split **offline** into contributions from methane ($P(\text{CO})_{\text{CH}_4}$) and from NMVOCs ($P(\text{CO})_{\text{NMVOC}}$) by also saving the methane loss rates ($L(\text{CH}_4)$) from the full chemistry simulation."

Meaning you solve the eqn:

$$d\text{CO}/dt = E + P\text{CO}_{\text{CH}_4} + P\text{CO}_{\text{NMHC}} - k[\text{OH}][\text{CO}] \quad (1)$$

If so, please clearly state the equation you are solving in the description of the improved model. We have also added a new Equation (2) that shows the equation solved in the improved model.

P7, line 9: $d[\text{CO}]/dt = E + P(\text{CO})_{\text{CH}_4} + P(\text{CO})_{\text{NMVOC}} - k[\text{OH}][\text{CO}] \quad (2)$

Figure 1: The figure could be improved a lot by using different color scales for the surface and 500 hPa.

Fixed – we now use a color scale of -50 to 50 ppb for surface CO and -10 to 10 ppb for 500 hPa CO.

Please indicate also the differences in percent in the text.

We now also state the differences in percent in the text everywhere differences are quantified.

Section 4: Why are you only evaluating values for the year 2009, while the years 2010 and 2011 are also simulated. Is the difference to the observations in these years similar or different from the values presented for 2009?

As we state at the start of Section 4, results from the three different years are indistinguishable in terms of model-observation comparisons. See P9, lines 7-8: “As in Sect. 3, we show model output from 2009, which is virtually identical to output from our other simulation years (2010 and 2011).”

The used color coding of Fig. 4, 5 and 6 is problematic. Especially the difference between the blue and the purple color is very hard to see.

Fixed – see response to Referee #1 – blue has been changed to orange.

P10L1ff: In my opinion it is very problematic to refer to additional graphs (and software) which are available somewhere on the internet. In some years these URLs might not be valid any more. If the graph/software are relevant for the publication then they should be part of the electronic supplement (or get a DOI in any other way).

We were hesitant to make the Supplement unreadably long (each yearly benchmark is 41 pages), and so chose to post the extra benchmark plots at a large online publishing company unlikely to disappear. Nonetheless, we are sensitive to the referee’s concern and will include all 3 benchmarks in the Supplement of the revised version.

Figure 4: Please indicate the years for which the observations are averaged. Again, I don’t understand why the observations are averaged over many years but the model results not.

Fixed – see response to Referee #1. Figure 4 now shows 2009 results for both model and observations.

Figure 6: The text and symbols are rather small.

We have now magnified the figure as much as can be done in the GMDD latex template (making the figure any larger within the template causes it and all subsequent figures to appear after the references). We expect a larger version of the figure to appear in the final version.

Are the model results sampled at the same time as the observations or are ‘simply’ daily average values of the model used when observations are available.

The model results are daily mean values for days when observations are available, as we now state in the figure caption:

P16, Fig. 6 caption: “Simulated **daily mean** CO from the base CO-only (red) and improved CO-only (purple) has been sampled from the relevant grid boxes only for days with available observations...”

Figure 7: Please clarify - Anthropogenic and biomass burning does only consider primary emissions of CO, right? All production of CO by NMVOC (anthropogenic, biomass burning and biogen) are part of the NMVOC oxidation. If so, please clarify the sentence line P16L9ff.

As explained in Section 2.2.1 and now re-iterated here, in the base model secondary production from anthropogenic and biomass burning NMVOC was included as part of the primary source.

We now repeat this information here:

Pg 17, lines 9-11: “In the base simulation, these were included with the primary emissions **as they were calculated by increasing primary anthropogenic and biomass burning emissions by 19% and 11%, respectively (Sect. 2.2.1); whereas in the improved simulation, they are part of the NMVOC contribution.**”

P19L16ff: Please clarify this paragraph. Do you mean that the improved model should perform better as the full chemistry model or are you discussing the small difference between the original and the improved model?

We have reorganised this text to explicitly state that the differences between the simulations are smaller than the observation-model mismatch:

P20, lines 22-24: “Our comparisons showed that at the benchmark sites, **the differences between the base and improved CO-only simulations** are in most cases significantly smaller than the observation-model mismatch, despite the large differences between **the** simulations seen elsewhere.”

Technical comments:

P5L6: Please give a proper reference to the used JPL version.
Added.

Figure 4 Title: This figure does not show vertical profiles.
Fixed

Relevant major changes – *page numbers refer to difference version*

1. Replaced “original” simulation with “base” simulation throughout.
2. Added Table 1 to show difference between different simulations (p4)
3. Added reference for OH+CO rate constant (p5)
4. Added further discussion of change to OH concentration and impacts on simulation (p5, Fig. S1)
5. Clarified that changes besides CO were necessary to bring simulation up-to-date (p5)
6. Added discussion in text and in new section in Supplement on the influence of interannual variability in CO production from NMVOCs on total interannual variability in simulated CO (p6, Sect. S1, Fig. S2)
7. Clarified equation solved in improved simulation (p7, Eqn. 2).
8. Clarified source attribution of secondary NMVOC source in improved simulation (p8)
9. Added percent differences throughout
10. Added information on base vs improved simulations to figure captions.
11. Moved full benchmark evaluations to the Supplement (instead of online location)
12. Updated Figs. 4 and 5 and figures in supplement to use observed values from the same year as the simulation (p13, 14)
13. Changed colors in Figs. 4 and 5 and figures in the supplement to make the different lines easier to distinguish (p13, 14)
14. Fixed title in Fig. 4 and fixed incorrect location of Crozet site (p13)
15. Clarified treatment of secondary anthropogenic and biomass burning CO production in the original / base model (p16)
16. Expanded Code Availability section to clarify where user guide can be found (p19)
17. Fixed issue with dark purple circles on Fig. 6 (p24)
18. Added locations of TCCON sites to maps in Fig. 8 (p26)

Improved method for linear carbon monoxide simulation and source attribution in atmospheric chemistry models illustrated using GEOS-Chem v9

Jenny A. Fisher^{1,2}, Lee T. Murray³, Dylan B.A. Jones^{4,5}, and Nicholas M. Deutscher¹

¹Centre for Atmospheric Chemistry, School of Chemistry, University of Wollongong, NSW, Australia

²School of Earth and Environmental Sciences, University of Wollongong, NSW, Australia

³Department of Earth and Environmental Sciences, University of Rochester, Rochester, NY, USA

⁴Department of Physics, University of Toronto, Toronto, ON, Canada

⁵Joint Institute for Regional Earth System Science and Engineering, University of California, Los Angeles, CA, USA

Correspondence to: Jenny A. Fisher, jennyf@uow.edu.au

Abstract. Carbon monoxide (CO) simulation in atmospheric chemistry models is frequently used for source-receptor analysis, emission inversion, interpretation of observations, and chemical forecasting due to its computational efficiency and ability to quantitatively link simulated CO burdens to sources. While several methods exist for modelling CO source attribution, most are inappropriate for regions where the CO budget is dominated by secondary production rather than direct emissions. Here, we introduce a major update to the linear CO-only capability in the GEOS-Chem chemical transport model that for the first time allows source-region tagging of secondary CO produced from oxidation of non-methane volatile organic compounds. Our updates also remove fundamental inconsistencies between the CO-only simulation and the standard full chemistry simulation by using consistent CO production rates in both. We find that relative to the standard chemistry simulation, CO in the original CO-only simulation was overestimated by more than 100 ppb in the model surface layer and underestimated in outflow regions. The improved CO-only simulation largely resolves these discrepancies by improving both the magnitude and location of secondary production. Despite large differences between the original and improved simulations, however, model evaluation with the global dataset used to benchmark GEOS-Chem shows negligible change to the model's ability to match the observations. This suggests that the current GEOS-Chem benchmark is not well suited to evaluate model changes in regions influenced by biogenic emissions and chemistry, and expanding the dataset to include observations from biogenic source regions (including those from recent aircraft campaigns) should be a priority for the GEOS-Chem community. Using Australasia as a case study, we show that the new ability to geographically tag secondary CO production provides significant added value for interpreting observations and model results in regions where primary CO emissions are low. Secondary production dominates the CO budget across much of the world, especially in the southern hemisphere, and we recommend future model-observation and multi-model comparisons implement this capability to provide a more complete understanding of CO sources and their variability.

1 Introduction

Carbon monoxide (CO) has long been considered an excellent tracer for air mass origin. It has large direct sources from incomplete combustion and a lifetime of weeks-months that is sufficiently long for transport on intercontinental scales, but sufficiently short for enhancements to be distinct from the atmospheric background. CO emitted directly from combustion sources is straightforward to model in chemical transport models (CTMs) and chemistry-climate models (CCMs) as its only chemical loss is through reaction with OH. As long as the OH distribution and chemical sources are known (i.e., extracted from a full chemical simulation) or can be parameterized, then the concentration of CO can be recalculated with an ordinary differential equation that is linear in the CO concentration and not coupled to other time-varying species. This linear CO simulation is highly computationally efficient, avoiding the need to solve the stiff chemical equations that dominate resource use in CTMs and CCMs (Duncan et al., 2007). Emitted CO can also easily be “tagged” by source region or type and followed as it is transported to receptor regions downwind, providing a quantitative metric for source-receptor influence. This capability to determine air mass origin, along with the efficiency of CO-only simulation, means the linear CO capability has frequently been applied in a variety of CTMs and CCMs to interpret in situ observations of CO and co-varying species (e.g., Staudt et al., 2001; Liang et al., 2004; Fisher et al., 2010; Pfister et al., 2011), analyze satellite data (e.g., Park et al. 2009; Kumar et al. 2013), improve emission estimates (e.g., Kopacz et al. 2010; Jiang et al. 2011), disentangle multi-model ensembles (e.g., Monks et al. 2015; Zeng et al. 2015) and forecast expected chemical conditions for field campaigns.

In regions where primary emissions dominate, the standard method of tagging CO based on primary emissions generally provides an accurate picture of the sources contributing to regional atmospheric composition. However, in much of the world (and especially in the southern hemisphere), direct CO emissions are small, localized, and/or episodic, and secondary production dominates the CO budget (Zeng et al., 2015). In these regions, source attribution becomes more challenging. Models have addressed the problem of attribution for secondary CO in different ways. The simplest method is to treat secondary production as the difference between total CO and CO from primary emissions (e.g., Zeng et al., 2015). This method provides limited additional information as it cannot distinguish between source regions or differentiate between long-lived (e.g., methane) versus short-lived (e.g., isoprene, monoterpene) precursor sources. A second method has been to track the carbon from emission of a precursor species (e.g., isoprene), distinguished if desired by region, through all intermediate products until it eventually ends up as CO (Pfister et al., 2008). This is by far the most accurate way to identify source influence for secondary CO, but it adds computational expense and is technically challenging to implement, especially as chemical mechanisms become increasingly complex. As a result, CO attribution using this method tends to lag advances in standard model mechanisms, and such attribution studies are not standard in any major atmospheric chemistry model. In principle, adjoint and similar sensitivity methods can also be used for source attribution (Zhang et al., 2009); however, we are unaware of any study that has explicitly used such methods to constrain source influence for secondary CO, in part because co-location of primary and secondary sources can make it difficult to reliably distinguish between the two (Jiang et al., 2011).

The GEOS-Chem linear CO-only simulation has historically employed a different method (Duncan et al., 2007). Emissions of a subset of known CO precursors (isoprene, acetone, methanol, and monoterpenes) are assumed to instantaneously produce

CO. Precursor emissions are thus scaled by an assumed CO yield, and the CO produced is treated simply as an additional CO emission. Production from methane is treated similarly, but with CO scaled to the methane mixing ratio rather than methane emissions. While this method provides a decent approximation in the northern mid-latitudes where primary emissions dominate the CO budget (Duncan et al., 2007), it has several important flaws, particularly when applied to remote regions. First, it
5 assumes that all CO production occurs in the model surface layer, when in reality much of the production will be in the free troposphere. This is problematic because the surface layer is often decoupled from the free troposphere, resulting in potentially different transport pathways depending on source altitude (Leung et al., 2007; Chen et al., 2009). This vertical offset will impact longer-lived precursors that are oxidised during transport rather than immediately upon emission. Methanol, for example, has a lifetime of several days and represents up to 20% of the CO source in remote regions (Wells et al., 2014), but in the ~~original~~
10 ~~standard~~ GEOS-Chem treatment is assumed to only produce CO in the continental boundary layer.

In addition, the current method decouples the source attribution capability of GEOS-Chem from the standard tropospheric chemistry simulation. Frequent updates and improvements to the chemical mechanism, driven largely by new understanding of biogenic chemistry (e.g., Mao et al. 2013; Fisher et al. 2016; Travis et al. 2016) impact CO production in ways that are non-linearly related to the abundance of precursors. These updates are not straightforward to translate to the CO simulation, which
15 relies on fixed yields from precursor oxidation. Updating the CO yields to match the standard chemistry simulation would require first applying the carbon tracing method described above, a time-consuming process that has not to our knowledge been performed for any recent version of GEOS-Chem.

The differences between the linear CO-only simulation and the standard full chemistry simulation are especially problematic when the two simulations are used in concert to interpret observations. Relative to the full chemistry simulation, secondary
20 CO in the CO-only simulation is produced with the wrong yield and at the wrong altitude. This disconnect between the two simulations complicates use of the CO-only simulation for attribution of co-varying species with potential biogenic origin (e.g., ozone, secondary organic aerosols). The vertical offset of secondary CO production may also be problematic for interpreting satellite CO observations. In the current CO-only simulation, CO that should be produced in the free troposphere is instead being emitted into the boundary layer, where many CO retrievals have limited sensitivity (Kopacz et al., 2010). This creates
25 an apparent artificial bias in the CO-only simulation (in addition to any actual bias in the full chemistry simulation) that could bias results of satellite-constrained inversions (Jiang et al., 2011).

Here we introduce a major update to the GEOS-Chem linear CO-only simulation that provides a more reliable source attribution capability. This method retains the computational expediency of the CO-only simulation while introducing full alignment with the standard full chemistry simulation. In the following sections, we first describe the new method (Sect. 2)
30 and compare the resulting global distribution of CO to the original (~~base~~) CO-only and full chemistry simulations (Sect. 3). We then evaluate the ~~original~~-~~base~~ and improved CO-only simulations and the full chemistry simulation against a suite of global CO observations (Sect. 4). Finally, we use the Australasian region as a case study, comparing the ~~original~~-~~base~~ and improved simulations against observations from the Total Carbon Column Observing Network (TCCON) to explore the benefits of the improved source attribution capability for regions with limited impact from primary CO emissions (Sect. 5).

2 Model description

2.1 GEOS-Chem version, inputs, and experimental set-up

We use ~~as base version~~ the GEOS-Chem CTM version 9-01-03 [as the base version](#), but the method described here is easily translatable to more recent versions with minor updates to the code, and we have recently implemented it in a provisional version of v11-01 (v10-01 did not include the CO-only capability). GEOS-Chem is driven by assimilated meteorology from the Global Modeling and Assimilation Office (GMAO) Goddard Earth Observing System, [version 5](#) (GEOS-5). The native horizontal resolution of GEOS-5 is $0.5^\circ \times 0.667^\circ$, with 3-hourly (2-D surface fields) or 6-hourly (3-D fields) temporal resolution.

In subsequent sections, we compare CO from three GEOS-Chem simulations ~~:-a~~ ([Table 1](#)): (1) a “standard full chemistry” run that simulates the full suite of chemical species in the GEOS-Chem mechanism (including CO) and their coupled production and loss; (2) ~~an “original a~~ a “base CO-only” run that uses the standard CO-only capability included in GEOS-Chem v9-01-03 ([with minor modifications](#) described below); and (3) an “improved CO-only” run that incorporates the modifications described in this work. For all simulations, we use a horizontal resolution of $2^\circ \times 2.5^\circ$ with model timesteps of 15 minutes for transport and 60 minutes for chemistry. Biomass burning CO emissions are from GFEDv3 and anthropogenic emissions are from EDGARv3.2 (fossil fuels) and Yevich and Logan (2003) (biofuels), with regional overwrites as detailed in Fisher et al. (2010). We simulate a three-year period (2009-2011) to understand the influence of interannual variability on our results.

Table 1. [Chemical production, loss, and source attribution details for simulations performed in this work.](#)

	Full chemistry	Base CO-only	Improved CO-only
P(CO)_{CH4}	calculated online	assumed 100% CO yield from CH₄	from full chemistry (=L(CH₄))^a
P(CO)_{NMVOG}	calculated online	scaled to VOC surface fluxes (biogenic)^b included with primary emissions (combustion)^c	from full chemistry (=P(CO) - L(CH₄))^a
P(CO) altitude	throughout troposphere	surface only	throughout troposphere
[OH]	calculated online	from full chemistry v9-01-03^a	from full chemistry v9-01-03^a
Source attribution	n/a	regional (primary+secondary combustion) global by NMVOC type (secondary biogenic)^d	regional (primary combustion) regional (secondary, all NMVOCs)

^a Archived fields from full chemistry simulation are input as monthly mean values.

^b Assumed CO yields are 100% from methanol, 67% from acetone, 30% from isoprene, and 20% from monoterpenes.

^c Calculated by scaling primary fossil fuel emissions by 19% and primary biomass burning emissions by 11%.

^d For methanol, acetone, isoprene, and monoterpenes only.

2.2 CO-only simulation in GEOS-Chem

Linear CO-only simulation (also known as “Tagged CO”) has been a capability included in the GEOS-Chem CTM since version 2-08 (http://acmg.seas.harvard.edu/geos/geos_versions.html). The code for the CO-only simulation (as well as other speciality simulations) is embedded in the standard GEOS-Chem code, with the choice of simulation selected at runtime.

Hence, version numbers for the CO-only simulation are the same as for the full GEOS-Chem release. In what follows, the “original base” CO-only simulation refers to v9-01-03, ~~our base version~~ with minor modifications as described below.

The CO simulation operates as follows. In a given model grid box, the rate of change in the CO concentration ($[CO]$) due to emissions and the chemistry is given by:

$$5 \quad \frac{d[CO]}{dt} = E + P(CO) - k[OH][CO] \quad (1)$$

where E represents surface emissions, $P(CO)$ represents chemical production of CO from methane and non-methane volatile organic compounds (NMVOCs), $[OH]$ is the OH concentration, and k represents the pressure- and temperature-dependent rate constant for oxidation of CO by OH, ~~and OH is the OH concentration from the JPL data evaluation (Burkholder et al., 2015)~~. In Eqn. 1 we neglected transport to and from neighboring grid boxes since our focus here is on the influence of the chemistry, but the effects of advection are accounted for in the model. Surface emissions come from external inventories, as described in Sect. 2.1. In the standard GEOS-Chem simulation, $P(CO)$ and $k[OH][CO]$ in Eqn. 1 would be coupled to the concentrations of other chemical species (methane, NMVOCs, OH, each represented by similar differential equations) using a chemistry solver. In contrast, the CO-only simulation is run in a chemically offline mode, in which the simulation is decoupled from the chemistry solver.

15 To calculate the chemical loss term ($k[OH][CO]$), monthly mean $[OH]$ fields are saved from a prior run of the standard full chemistry simulation. Previously, the CO-only simulation used OH from earlier versions of the model, typically v5-07-08 (e.g., ~~v5-v7 in Kopacz et al., 2010; Jiang et al., 2011; Fisher et al., 2010~~) Kopacz et al., 2010; Fisher et al., 2010; Jiang et al., 2011, 2017, to mitigate a known OH high bias in more recent versions of GEOS-Chem. Here, we use OH from v9-01-03 in both our original base and improved CO-only simulations to maintain consistency with the full chemistry model and to ensure all changes are due to the new representation of chemical production rather than differences in OH. ~~Both original and improved versions use the pressure- and temperature-dependent OH + CO rate constant (k) from the JPL data evaluation.~~ Global annual mean OH is about 5% larger in v9-01-03 ($11.4 \cdot 10^5$ molecules cm^{-3} ; http://wiki.seas.harvard.edu/geos-chem/index.php/Mean_OH_concentration) than in the default v5-07-08 ($10.8 \cdot 10^5$ molecules cm^{-3} ; Evans and Jacob, 2005; Kopacz et al., 2010). As a result, CO is systematically lower when using the updated OH fields, as shown in Fig. S1.

25 The chemical production term ($P(CO)$) requires special treatment as it depends on the time-varying concentrations of methane and NMVOC precursors. This term is treated differently in the original base and improved versions of the CO-only simulation, as described in detail in Sects. 2.2.1 and 2.2.2.

We ~~made a few other small updates to the~~ also fixed a few minor problems in the v9-01-03 CO-only simulation that are included in both the original and improved versions compared below. We ~~simulations to bring them up-to-date with the current public version (v11-01) and to make them more compatible with the full chemistry simulation.~~ Specifically, we implemented optional non-local mixing in the planetary boundary layer (Lin and McElroy, 2010) and the centralized chemistry timestep (http://wiki.seas.harvard.edu/geos-chem/index.php/Centralized_chemistry_time_step) – both of which are defaults in the v9-01-03 standard full chemistry simulation but were missing from the CO-only simulation. We also added diurnal scaling of the monthly mean $[OH]$ fields based on the cosine of the solar zenith angle. This is the same method used in all other offline sim-

ulations in GEOS-Chem, and is an objective improvement to use of a single monthly mean value in each grid box. All of these updates are ~~now implemented in the current public version of the GEOS-Chem linear CO-only simulation, v11-01~~ included in both the base and improved versions compared below.

2.2.1 Original (base) CO-only simulation

- 5 In the original CO-only model, subsequently referred to as the base simulation, CO is produced chemically from 5 precursors: methane, acetone, methanol, isoprene, and monoterpenes. In other words, $P(\text{CO}) = P(\text{CO})_{\text{methane}} + P(\text{CO})_{\text{acetone}} + P(\text{CO})_{\text{methanol}} + P(\text{CO})_{\text{isoprene}} + P(\text{CO})_{\text{monoterpenes}}$. For methane, the model assumes a 100% molar CO yield from oxidation by OH, with methane concentrations defined as averages of surface observations from NOAA carbon cycle surface flasks over four latitudinal bands (30-90°N/S, 0-30°N/S). These assumptions are applied throughout the troposphere.
- 10 For NMVOC precursors, CO production occurs in the model surface layer only (i.e., it is treated as an additional emission), with assumed molar yields of 67% from acetone, 100% from methanol, 30% from isoprene, and 20% from monoterpenes (Duncan et al., 2007). Isoprene and monoterpene emissions are from the Model of Emissions of Gases and Aerosols from Nature (MEGAN), as in the standard full chemistry simulation. Acetone emissions come from Jacob et al. (2002), and the methanol flux is scaled to the isoprene flux assuming a methanol:isoprene molar ratio of ~1:4. Acetone and methanol are
- 15 therefore decoupled from the full chemistry simulation and do not take into account recent updates to their budgets (e.g., Fischer et al. 2012; Wells et al. 2014). CO production from NMVOCs emitted during combustion is accounted for by increasing primary CO emissions from anthropogenic and biomass burning sources by 19% and 11%, respectively (Duncan et al., 2007). As for the biogenic NMVOC source, this production is applied directly in the surface layer.

2.2.2 Improved CO-only simulation

- 20 Our approach in the improved model is to couple $P(\text{CO})$ in the CO-only model to the standard chemistry model, using a 2-step approach similar to that applied in the Model for Ozone and Related chemical Tracers (MOZART-4) by Park et al. (2013). We first complete a run of the full chemistry simulation, from which we save monthly mean CO chemical production rates (in molecules $\text{cm}^{-3} \text{ s}^{-1}$). These rates are then used as inputs to calculate production in the CO-only simulation. While this method requires an extra step, the full chemistry run need only be completed once for every new GEOS-Chem model
- 25 version, and this can easily be completed as part of the standard benchmarking procedure for new public releases of the model (http://acmg.seas.harvard.edu/geos/geos_benchmark.html). For many applications, use of a single model year (e.g., that used in the 1-year benchmarking process) will be ~~sufficient; however, the~~ sufficient—as discussed in the Supplement, interannual variability in simulated CO is dominated by variability in the meteorology and primary emissions with only a very minor contribution from variability in the CO production rates (Sect. S1, Fig. S2). However, the code is designed in such a way that
- 30 an interested user could easily re-run the standard chemistry simulation to save the CO production fields for a specific year of interest. This extra step would generally only be necessary for changes likely to significantly impact chemical production (for example, different biogenic emissions or meteorological fields).

The total $P(\text{CO})$ is split saved from the full chemistry model is split offline into contributions from methane ($P(\text{CO})_{\text{CH}_4}$) and from NMVOCs ($P(\text{CO})_{\text{NMVOC}}$) by also saving the methane loss rates ($L(\text{CH}_4)$) from the full chemistry simulation. We maintain the assumption from the original CO-only simulation of a 100% CO yield from methane oxidation, such that $P(\text{CO})_{\text{CH}_4} = L(\text{CH}_4)$. The NMVOC contribution is then the difference between the total CO production and the methane contribution:

5 $P(\text{CO})_{\text{NMVOC}} = P(\text{CO}) - P(\text{CO})_{\text{CH}_4}$. The assumption of a 100% CO yield will somewhat overestimate the contribution from methane relative to the contribution from NMVOCs. This mainly affects the tropical lower troposphere, where we occasionally find that methane loss exceeds total CO production, likely due to rapid vertical transport of intermediate products. Scavenging of soluble intermediate products (for example, methyl hydroperoxide) also reduces the CO yield from methane, although this is expected to be a small effect (e.g., $<0.1\%$ in our 1-day tests for methyl hydroperoxide). In the few cases where $P(\text{CO})_{\text{CH}_4}$

10 overestimates total $P(\text{CO})$, we cap $P(\text{CO})_{\text{CH}_4}$ at the total CO production rate. This assumption does not affect the total CO production, retaining consistency with the standard full chemistry simulation.

The saved CO production fields $P(\text{CO})_{\text{CH}_4}$ and $P(\text{CO})_{\text{NMVOC}}$ are then used as input to the linear CO-only model:

$$\frac{d[\text{CO}]}{dt} = E + P(\text{CO})_{\text{CH}_4} + P(\text{CO})_{\text{NMVOC}} - k[\text{OH}][\text{CO}] \quad (2)$$

This is similar to the approach used for the GEOS-Chem tagged odd oxygen simulation (Li et al., 2002). The archived fields

15 are scaled diurnally using the cosine of the solar zenith angle, as done for OH concentrations in GEOS-Chem and for source profiles in other models (e.g., the model intercomparison of Zeng et al., 2015). Our updated treatment is applied in a flexible manner that allows a user to choose the original CO production method (scaling surface emissions) if so desired.

2.2.3 Source attribution capability

In both the original base and improved simulations, Eqn. 1 is linear in $[\text{CO}]$. As a result of this linearity, CO from different

20 sources and regions can be treated independently (referred to as tagged CO tracers; Bey et al., 2001). For primary emitted CO, Eqn. 1 becomes

$$\frac{d[\text{CO}_{i,j}]}{dt} = E_{i,j} - k[\text{OH}][\text{CO}_{i,j}] \quad (3)$$

where i represents the emission type (e.g. fossil fuel, biomass burning), j the geographical region in which that source is emitted, and $[\text{CO}_{i,j}]$ is a separate CO tracer for each emission type and geographical region.

25 For secondary chemically produced CO, the treatment differs between the two model versions. In the original base model, secondary CO is distinguished by the precursor NMVOC but not by region, such that Eqn. 1 becomes

$$\frac{d[\text{CO}_{k,global}]}{dt} = P(\text{CO})_{k,global} - k[\text{OH}][\text{CO}_{k,global}] \quad (4)$$

where k represents the precursor (i.e. acetone, methanol, isoprene, or monoterpenes). In the improved model, we can no longer distinguish between different NMVOCs. Instead, we now tag secondary CO from NMVOCs by the geographical region where

30 production occurs, similar to the tagging used for primary CO emissions, such that Eqn. 1 becomes

$$\frac{d[\text{CO}_{\text{NMVOC},j}]}{dt} = P(\text{CO})_{\text{NMVOC},j} - k[\text{OH}][\text{CO}_{\text{NMVOC},j}] \quad (5)$$

In other words, $CO_{NMVOC,j}$ from region j represents the CO that was produced within the boundaries of region j , regardless of the origin of the NMVOC (i.e., local vs. transported). As most precursor NMVOCs have short atmospheric lifetimes, most $CO_{NMVOC,j}$ will derive from NMVOCs emitted in region j . While the improved method does not allow us to distinguish between production from different precursor NMVOCs (e.g., isoprene vs. monoterpenes) or types of NMVOC emissions (e.g., biogenic vs. anthropogenic), we find that by combining these regional secondary CO tracers with the primary CO tracers we are usually able to infer the likely source of secondary enhancements. An example is discussed in Sect. 5. In both **original-base** and improved simulations, secondary CO produced from methane is carried as a single, global tracer.

3 Implications for global CO distribution

Figure 1 compares the global distribution of CO from the standard full chemistry simulation to both the **original-base** and improved CO-only simulations at the surface and at 500 hPa (the pressure used in the standard GEOS-Chem benchmark and also near the sensitivity maximum for satellites that measure in the thermal infrared). Results shown are for July 2009, but are similar for other months and years (see Supplement, Figs. **S1 and S2**, **S3 and S4** for examples). At the surface, the **original-base** CO-only model greatly overestimates CO compared to the full chemistry simulation over the continents, with differences of more than 100 ppbv (60-80%) in major biogenic VOC source regions (e.g., Amazon, central Africa, Indonesia, and the Southeast US). ~~This reflects~~ Similar, smaller (up to 50 ppbv / 10-15%) effects are present in regions with elevated VOC emissions from anthropogenic and biomass burning sources (e.g., China, Alaska). These overestimates reflect the assumed instantaneous CO production from VOCs in the surface layer in the **original-base** model, whereas in the full chemistry and updated models this production happens more gradually. As a result, the high bias over continents in the **original-base** simulation is balanced by a low bias in continental outflow (e.g. the west African plume), at higher altitudes, and in remote regions where there is delayed production following transport.

At 500 hPa, the **original-base** CO-only simulation underestimates the full chemistry simulation across much of the globe, again due to delayed CO production during transport. These differences are generally much smaller (4-5 ppbv / 4-7%) than at the surface, reflecting the more widespread nature of secondary production. In a few regions (central Amazon, Indonesia, and southern China), the **original-base** CO-only simulation actually overestimates the full chemistry simulation at 500 hPa by 7-8 ppb (10-12%). These are regions where high-biogenic-emissions-large NMVOC sources are coupled with frequent deep convective activity. In the full chemistry simulation, deep convection rapidly transports biogenic-CO precursors to high altitude, and CO production is offset to the middle and upper troposphere (Fisher et al., 2015). In the **original-base** CO-only simulation, however, the CO is already present in surface air, and it is CO itself rather than the precursors that is transported to higher altitudes.

The impacts on the vertical distribution are more clearly seen in Fig. 2, which shows longitudinal cross sections at the equator and at 30°N, and Fig. 3, which shows latitudinal cross sections at 60°W and 0°E. Consistent with the maps in Fig. 1, the cross sections show that the **original-base** simulation overestimates CO over continental source regions from the surface to

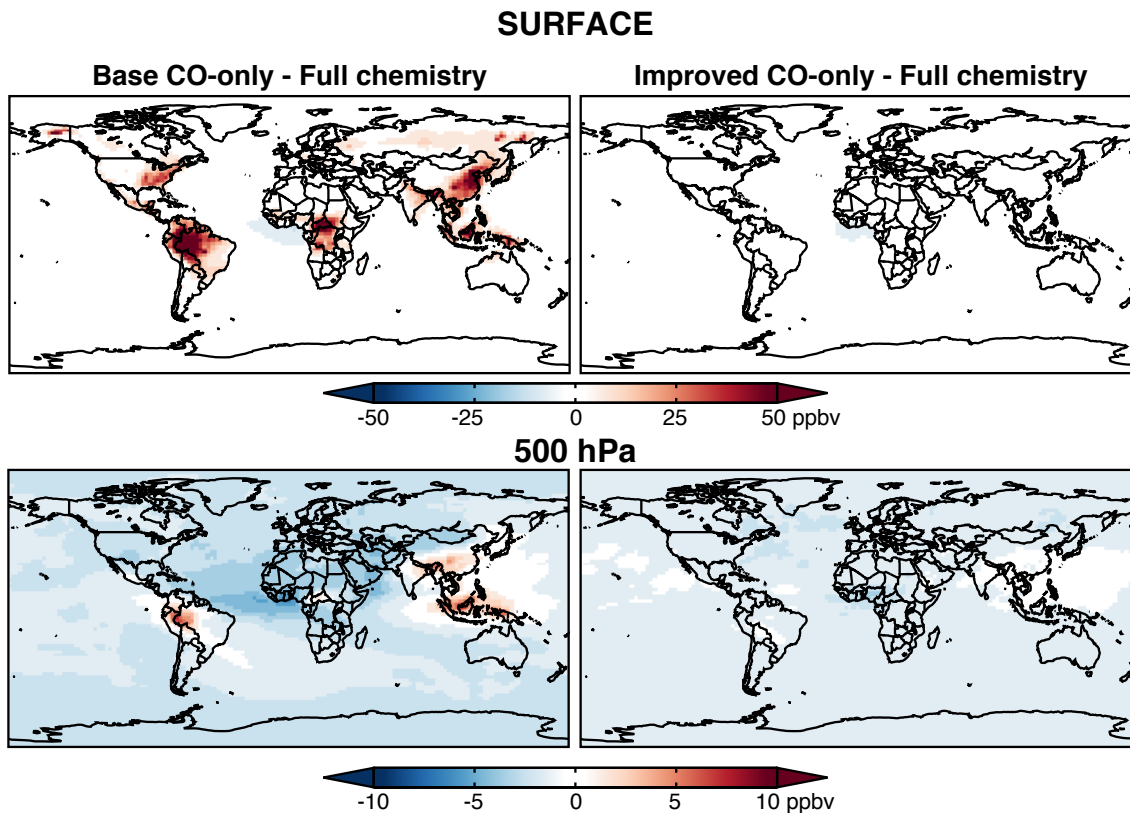


Figure 1. July 2009 surface (top) and 500 hPa (bottom) maps of the biases in the CO mixing ratio in the CO-only simulations relative to the full chemistry simulation (used here as reference). Left panels show biases in the original-base CO-only simulation and right panels show biases in the improved CO-only simulation. The main difference between the two CO-only simulations is the vertical distribution of the CO source from NMVOCs, which is 3-dimensional in the improved simulation but surface-only in the base simulation.

as high as 5 km over South America and Africa, and as high as 10-12 km over Indonesia and China. As seen previously, the high biases over source regions are coupled with low biases in downwind outflow regions.

The right panels of Figs. 1, 2, and 3 show that these issues are largely resolved in the improved CO-only simulation, which simulates less CO in the continental boundary layer and more in the free troposphere and in remote regions downwind of sources. The spatial structure of the changes to the CO distribution are consistent with those seen by Nassar et al. (2010) for carbon dioxide when they introduced a 3-D chemical production source. While some differences remain between the improved CO-only and full chemistry simulations, these are much smaller (less than 6 ppbv / 5% everywhere, and less than 3 ppbv / 3% outside the African plume) and show a greatly diminished spatial extent. Lingering differences between the two simulations-The improved agreement is expected, as the spatial distribution of CO production is now the same in the two simulations. Lingering

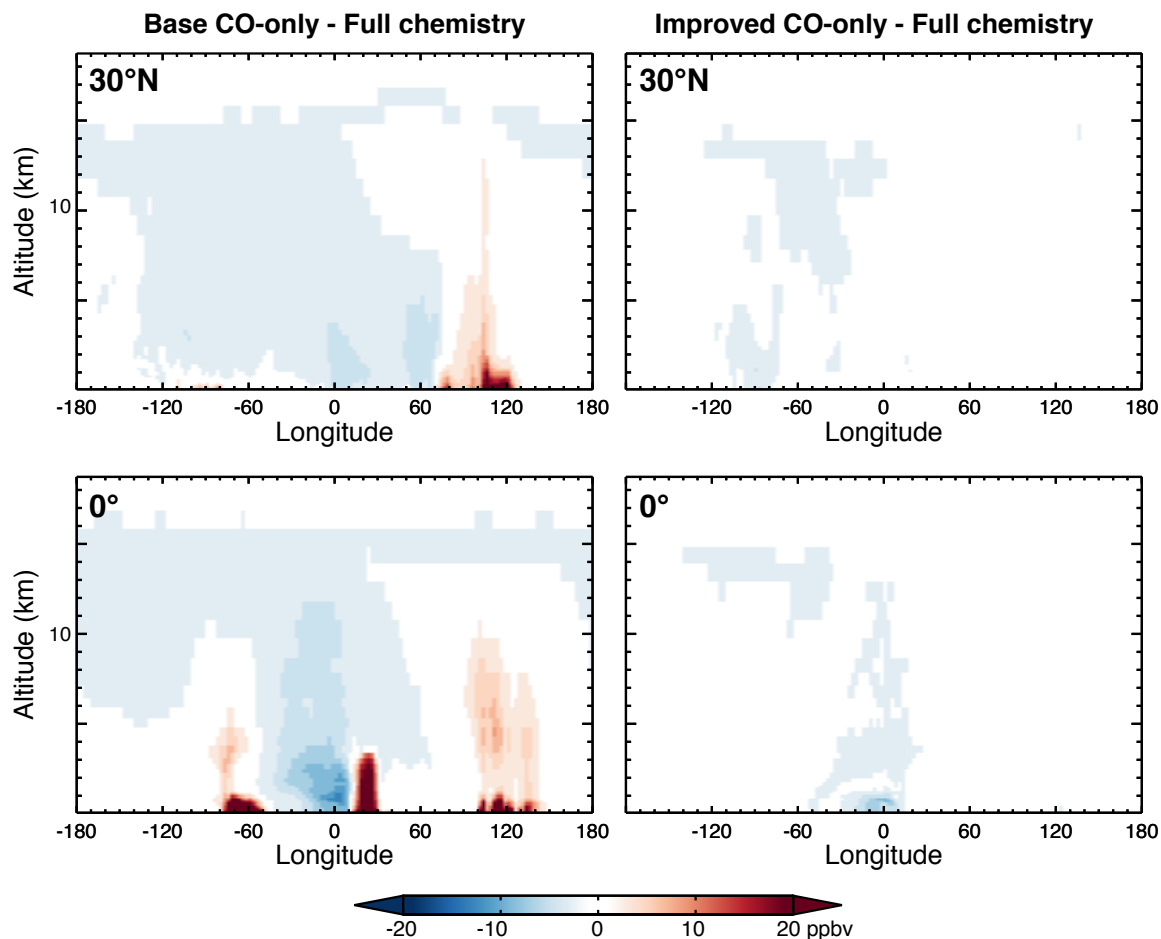


Figure 2. July 2009 longitude-altitude cross sections at 30°N (top) and 0° (bottom) of the biases in CO mixing ratio in the CO-only simulations relative to the full chemistry simulation (used here as reference). Left panels show biases in the [original-base](#) CO-only simulation and right panels show biases in the improved CO-only simulation.

10 [differences](#) likely reflect use of scaled monthly mean OH concentrations and $P(\text{CO})$ fields in the CO-only simulation, which may introduce some offset between the timing and locations of CO production and CO loss.

4 Implications for global evaluation with observations

We use a global dataset of ground-based and airborne CO observations to evaluate the improved CO-only simulation in reference to the [original-base](#) simulation and the standard chemistry simulation. As in Sect. 3, we show model output from 2009, which is virtually identical to output from our other simulation years (2010 and 2011). The observations are the same data

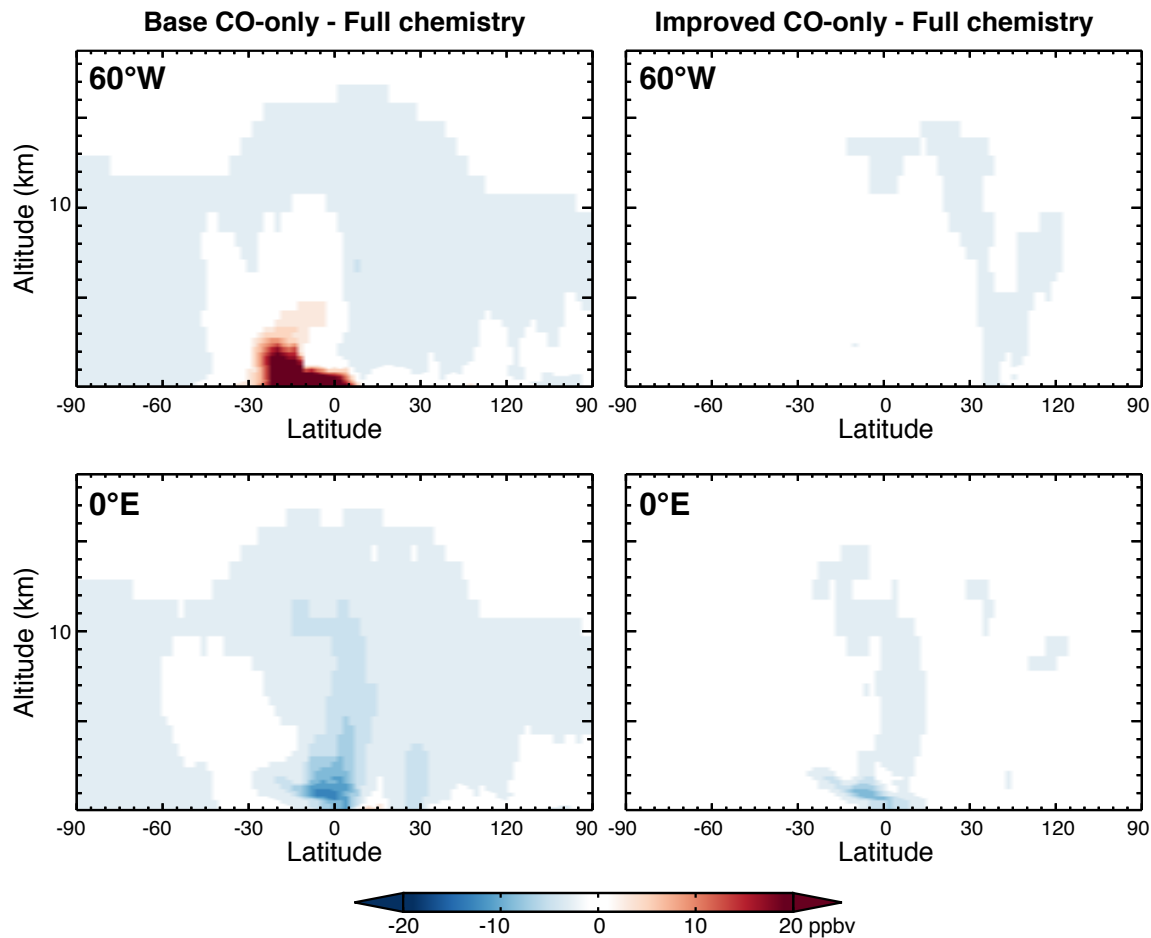


Figure 3. July 2009 latitude-altitude cross sections at 60°W (top) and 0°E (bottom) of the biases in CO mixing ratio in the CO-only simulations relative to the full chemistry simulation (used here as reference). Left panels show biases in the ~~original~~^{base} CO-only simulation and right panels show biases in the improved CO-only simulation.

- 5 used to benchmark new versions of the full GEOS-Chem model (http://acmg.seas.harvard.edu/geos/geos_benchmark.html), and the software to perform the evaluation is a modified version of the full benchmarking code (https://bitbucket.org/gcst/gc_1yr_benchmark/). A version of the CO-only benchmarking code and relevant observations are available at https://github.com/jennyfisher/CO_Benchmark. The benchmark evaluation produces over 200 plots, of which representative examples are provided in [the Supplement \(Fig. S3\)](#). [Fig. S5 in the Supplement](#). The full set of plots, including for other simulations years, is [available from also included in the Supplement](#).

Figure 4 compares the ~~original-base~~ and updated CO-only and full chemistry simulations to observations at a subset of the
5 sites in the NOAA Global Monitoring Division (GMD) network. The largest differences between the two CO-only simulations
are seen at the northern mid-latitude continental sites (e.g., up to 20 ppbv at Wendover, Utah, USA; 27 ppbv at Hegyhatsal,
Hungary; 47 ppbv at Tae-ahn, Korea), but in all cases these differences are significantly smaller than the observation-model
mismatch. On a relative scale, differences are largest at the Antarctic sites (up to 15%), where they are sufficient to improve
(e.g., Palmer) or degrade (e.g., South Pole) agreement with the observations. No sites are located in the major biogenic NMVOC
source regions where differences are largest (Fig. 1), and at most sites the surface-level differences between simulations are
negligible. This suggests that our current global benchmark dataset is not well situated for evaluating model updates to biogenic
5 emissions and the subsequent chemistry leading to CO production, or for evaluating regional-scale changes to sources (Deng
et al., 2014). Expanding the dataset to include additional monitoring sites in biogenic source regions would improve our ability
to constrain future changes in the model.

The airborne data included in the benchmark dataset tell a similar story – differences between the simulations are
generally not large enough to significantly affect the match to the observations (Fig. ~~S4~~S6). The largest exceptions, shown
10 in Fig. 5, are over New Guinea and the Amazon – both major biogenic source regions. In both regions, the ~~original-base~~
simulation significantly overestimates the observations in surface air. The reduced boundary layer CO concentrations in the
improved simulation bring the model into better agreement with the observations. Over New Guinea the bias is reduced but
not removed, while over the Amazon the improvement brings the models within (ABLE-2A) or slightly below (ABLE-2B)
the variability of the observations. Note that for consistency with benchmarking procedures for the full chemistry simulation,
15 we have included here only the aircraft data in the standard GEOS-Chem benchmark (all data available at https://bitbucket.org/gcst/gc_1yr_benchmark/). This dataset does not include any recent aircraft campaigns, and we therefore do not expect a
quantitative match to our simulations (which span 2009-2011), especially near anthropogenic source regions where emissions
have changed dramatically over the last few decades (Worden et al., 2013; Yoon and Pozzer, 2014; Strode et al., 2016). The full
GEOS-Chem benchmark is similarly conducted for a much more recent year (2013), and updating the benchmark dataset to
20 include more recent ~~surface-and~~ airborne observations, including those in regions sensitive to biogenic emissions and chemical
production, should be a priority for the GEOS-Chem community.

We also evaluated the simulation using quantitative metrics derived from airborne data that describe the CO seasonal
cycle (first harmonic) and vertical profile (polynomial terms) in the remote southern hemisphere (see Fisher et al., 2015 for
details). The resulting coefficients are given in the Supplement (Figs. ~~S5 and S6~~S7 and S8). Consistent with the results above,
25 the fit parameters for the full chemistry simulation are more closely approximated by the improved CO-only simulation than
the ~~original-base~~ version; however, the changes do not significantly impact the match to the observed parameters. Additional
southern hemisphere evaluation specific to the Australasian region is provided in the next section.

Finally, we compared CO total columns from the IASI satellite instrument to those calculated from the ~~original-base~~
and improved simulations (with a priori and averaging kernel smoothing applied). Due to storage constraints, we limited this
30 analysis to the tropics and southern hemisphere extratropics (70°S to 30°N). Unlike the surface and airborne data, IASI does
sample geographic regions where we see large changes in our simulation; however, the retrieval is mainly sensitive to CO in

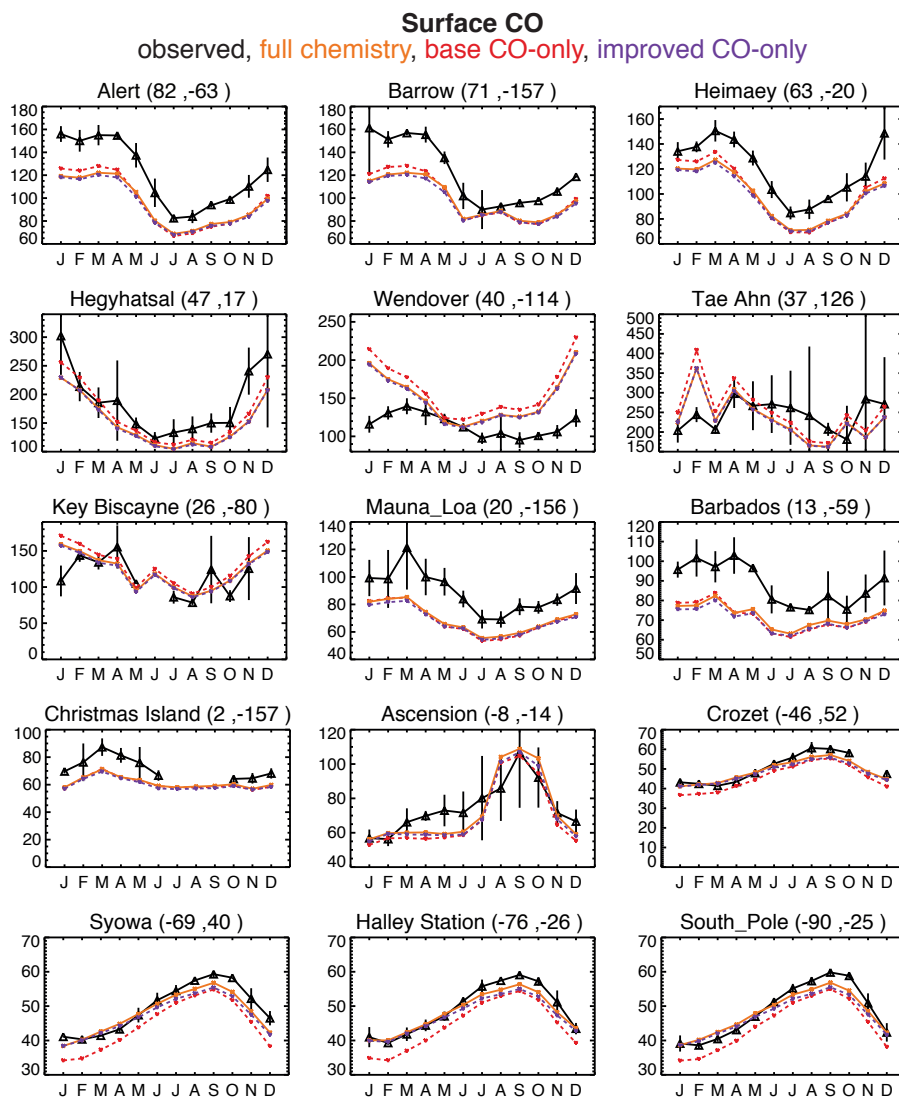


Figure 4. Observed and modelled CO seasonal cycle in surface air from a subset of sites in the GEOS-Chem benchmark dataset. [Additional site comparisons can be seen in the full benchmark evaluations included in the Supplement.](#) Sites are ordered from top left to bottom right by latitude, with coordinates for each given as ($^{\circ}$ N, $^{\circ}$ E). [Both observations and model results are for the year 2009.](#) Observations are shown in black as multi-year monthly means and standard deviations as provided in the benchmark dataset. Model results are monthly means for 2009 at the location of each site from the full chemistry (solid blue), original base CO-only (dashed red), and improved CO-only (dashed purple) simulations. [Additional site comparisons can be seen at](#) [The main difference between the two CO-only simulations is the vertical distribution of the CO source from NMVOCs, which is 3-dimensional in the improved simulation but surface-only in the base simulation.](#)

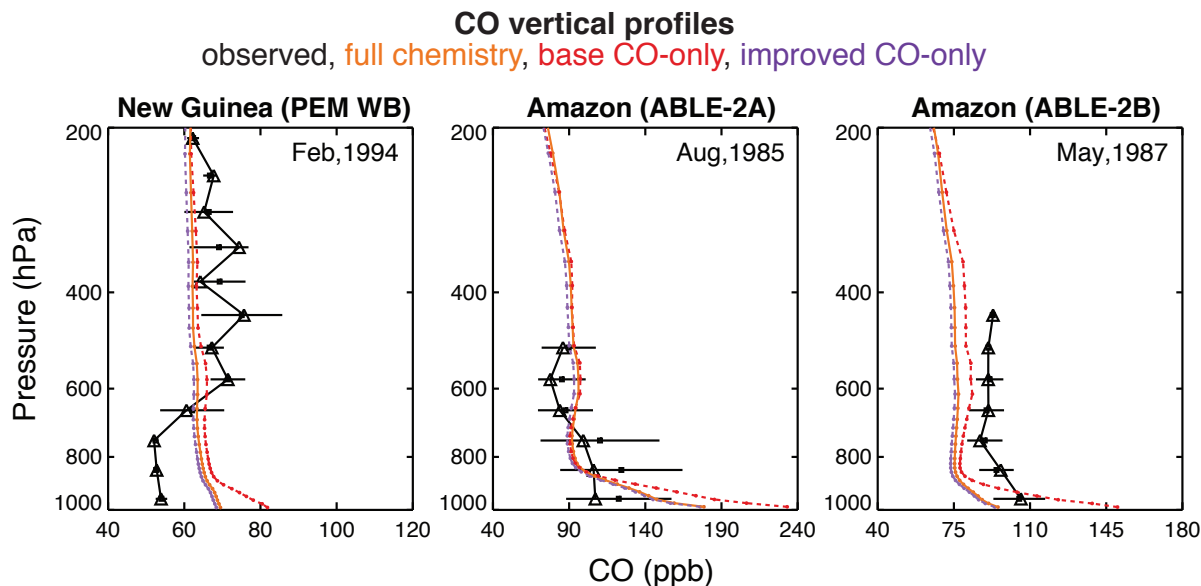


Figure 5. Observed and modelled CO vertical profiles from a subset of aircraft campaigns in the GEOS-Chem benchmark dataset. Observations are shown in black with model results for 2009 from the full chemistry (solid blue/orange), original-base CO-only (dashed red), and improved CO-only (dashed purple) simulations. The month and year during which the aircraft data were collected are provided inset. Additional aircraft comparisons can be seen in Fig. S4-S6 and [at in the full benchmark evaluations included in the Supplement](#).

the middle and upper troposphere, where the difference between simulations is generally small (Figs. 1-3). Consistent with the rest of the evaluation, we find that the improved simulation provides a marginally better simulation of the observations, but the improvement (~1%) is much smaller than the model bias relative to IASI (~18%) (not shown given the small impact of the simulation change).

5 Implications for source attribution: case study for Australasia

Our improved CO-only simulation includes for the first time in GEOS-Chem the ability to geographically tag secondary CO from NMVOC oxidation (see Sect. 2.2.3). Previously, geographic tagging was only available for direct emissions from fossil fuel and biofuel combustion and biomass burning. Outside of the northern hemisphere extratropics, direct emissions are generally responsible for only a small fraction of CO (Duncan et al., 2007; Pfister et al., 2008; Zeng et al., 2015), and so tagging direct emissions only is insufficient for understanding CO or air mass origin. This is especially true in the southern hemisphere tropics and mid-latitudes, where anthropogenic emissions are low and biogenic emissions are large.

To illustrate the new tagging capabilities and their implications, we perform a case study for the Australasian region (Australia and New Zealand). Like much of the southern hemisphere extratropics, Australasia is characterized by very low

10 anthropogenic emissions coupled with episodically high biomass burning emissions in austral spring (October–November; Edwards et al., 2006). Biogenic emissions are also expected to be large in austral summer (December–February) in northern and southeastern Australia (Guenther et al., 2012; Bauwens et al., 2016), although the magnitude of the biogenic enhancement remains uncertain (Emmerson et al., 2016). As local emissions are generally low, Australasian tropospheric composition is frequently impacted by intercontinental transport of air masses from elsewhere in the southern hemisphere (Gloude-
 5 mans et al., 2006; Zeng et al., 2012; Buchholz et al., 2016). Significant attention has been paid to transported biomass burning plumes (e.g., Pak et al., 2003; Gloude-
 mans et al., 2006; Edwards et al., 2006; Zeng et al., 2012). However, recent work by Buchholz et al. (2016) and Té et al. (2016) suggests that NMVOC oxidation dominates over biomass burning as a CO source throughout the year in the Australian extratropics, and in all months except September–October in the tropics. The origin and impact of
 5 transport from biogenic source regions in Australasia has not previously been explored.

We evaluate the CO source attribution in Australasia at three locations spanning a range of southern hemisphere environments: a tropical site at Darwin, Australia (12.4°S, 130.9°E), a mid-latitude site near the Sydney metropolitan area at Wollongong, Australia (34.4°S, 150.9°E), and a remote site with minimal anthropogenic influence at Lauder, New Zealand (45.0°S, 169.7°E). All three sites make total column measurements of CO as part of the Total Carbon Column Observing Net-
 10 work (TCCON, Wunch et al., 2011) and the Network for the Detection of Atmospheric Composition Change (NDACC). Total column CO measurements have previously been compared to the standard GEOS-Chem simulation by Zeng et al. (2015) at all three sites (using the NDACC record) and by Té et al. (2016) at Wollongong (using both NDACC and TCCON records). Here we use the TCCON data only.

TCCON CO is reported as dry column-average mole fraction, X_{CO} , in ppb. We convert this to CO total column, Ω_{CO} , in
 15 molecules cm^{-2} , using total column O_2 , Ω_{O_2} :

$$\Omega_{CO} = 10^{-9} X_{CO} \times \frac{\Omega_{\text{O}_2}}{0.2095}. \quad (6)$$

Ω_{O_2} is calculated from variables available in the standard public TCCON files including p (pressure, in hPa) and $X_{\text{H}_2\text{O}}$ (column-averaged water vapour, in ppm), along with an ancillary product created during TCCON data processing called X_{air} (the ratio between the calculated pressure-derived and retrieved dry air columns) as follows:

$$20 \quad \Omega_{\text{O}_2} = 0.2095 \cdot 10^{-2} \times \frac{pN_A}{M_{air}g} \times \frac{1}{X_{air} + 10^{-6}X_{\text{H}_2\text{O}}}, \quad (7)$$

where N_A is Avogadro’s constant, M_{air} is the molar mass of air in kg mol^{-1} , g is the gravitational constant in m s^{-2} , and 10^{-2} and 10^{-6} are unit conversion terms.

Figure 6 compares total column CO from the improved (purple) and [original-base](#) (red) GEOS-Chem CO-only simulations to the TCCON observations (black/gray) from 2009–2011 at the three sites. Consistent with the previous sections, differences
 25 between the two CO-only simulations are small. The improved CO-only simulation is in general somewhat higher than the [original-base](#) simulation, especially at Lauder, implying that the CO column is primarily sensitive to transported CO in the free troposphere rather than local surface sources, as expected. As seen in previous comparisons (Zeng et al., 2015; Té et al., 2016), GEOS-Chem underestimates the total column at all sites, with the best agreement at Lauder.

The CO source attribution from both the original-base and improved model versions is illustrated in Fig. 7 for 2009. The figure shows three months selected to sample different source influences: February (austral summer), when large biogenic emissions are expected in northern and southeastern Australia as well as upwind continents; June (austral winter), the start of the dry (burning) season in Darwin but with minimal biogenic and biomass burning emissions elsewhere; and October (austral spring), a period with near-peak biomass burning across much of the southern hemisphere. Contributions are shown from anthropogenic (fossil fuel + biofuel) emissions (purple), biomass burning (orange), and oxidation of NMVOCs (green), with the remaining CO from methane oxidation (not shown, but equivalent to the difference between 100% and the sum of the stacked contributions). For clarity, the anthropogenic and biomass burning contributions from different regions have been summed globally. The new capability to distinguish regional signatures in the NMVOC source is highlighted for the improved model with different shading.

Figure 7 shows that the contribution from NMVOC oxidation dominates over the emitted primary CO at the mid-latitudes sites, with the two approximately equal at Darwin. In all cases, the improved simulation shows a larger contribution from NMVOC oxidation than in the original-base simulation. This is in part due to a change in the treatment of NMVOCs from biomass burning and anthropogenic sources (see Sect. 2), which in the original simulation. In the base simulation, these were included with the primary emissions but are now as they were calculated by increasing primary anthropogenic and biomass burning emissions by 19% and 11%, respectively (Sect. 2.2.1); whereas in the improved simulation, they are part of the NMVOC contribution. However, the figure also shows that this cannot explain the entirety of the difference, as the sum of the non-methane contributions (anthropogenic + biomass burning + NMVOC oxidation) is consistently larger in the improved simulation. The difference is particularly large at Lauder, where the influence from primary emissions is generally small. This suggests the improved simulation corrects a consistent underestimate of secondary production found in the original-base CO-only simulation, with largest impact in remote regions downwind of biogenic sources.

The source attribution of the NMVOC oxidation term provided in the improved model (Fig. 7, right bars) shows that the TCCON sites are sensitive to secondary CO produced in a diverse range of environments, including not only Australia but also South America, Africa, and (at Darwin) Indonesia. Biogenic emissions of CO precursors in our simulations are from the MEGAN model, which estimates very high and likely overestimated isoprene across most of northern Australia (Guenther et al., 2012; Bauwens et al., 2016), including the region surrounding the Darwin site. Despite the magnitude of these emissions, we find that typically less than half of the NMVOC source at Darwin is local to Australia. At the mid-latitude sites, transported CO produced from South American and African NMVOCs provides a large contribution to the column, especially outside of austral summer (>10%). The ability to disaggregate these different contributions can aid in future interpretation of the TCCON data from these sites, including for co-measured species like methane and carbon dioxide.

More generally, Fig. 8 shows the dominant non-methane contribution to surface and 500 hPa CO over Australasia in February, June, and October. At the surface, oxidation of Australian NMVOCs dominates the CO burden over much of the Australian continent, and in February this dominance extends horizontally to New Zealand and vertically to the free troposphere. As noted previously, this is likely due to the large estimated biogenic emissions in austral summer. We see also from Fig. 8 that transported CO produced from South American NMVOC emissions typically dominates the Australasian background

(complemented by a similar contribution from African NMVOC oxidation in northern Australia in June). Even in October, at the height of the southern hemisphere burning season, transported chemically produced CO dominates over primary CO (local or transported) in the free troposphere. We note that there is significant interannual variability in source dominance in October, with a larger contribution from African biomass burning in 2011 and a much larger contribution from South American biomass burning in 2010. In other months, there is limited interannual variability, and the dominant contributions are very similar to those presented here.

The additional information provided by tagging the NMVOC contribution can aid in the interpretation of both observations and models, especially in remote regions like much of the southern hemisphere, where the NMVOC source outweighs the contribution from primary emissions (Zeng et al., 2015). For example, Fisher et al. (2015) found large differences in the ability of four different models to simulate observed CO vertical gradients over the southern ocean. These could not be explained by primary CO and were therefore attributed to differences in secondary CO, primarily produced from biogenic NMVOC emissions in South America. However, the authors could not unambiguously deconvolve the effects of differences in chemical production versus transport. Tagging the secondary CO by region of production in the different models would have allowed a quantitative analysis of differences in transport vs. production. Implementation of this capability in multiple models could pave the way for improved interpretation of multi-model comparisons, especially those focused on remote regions.

6 Conclusions

We have implemented a major improvement to the representation of secondary CO production in the GEOS-Chem linear “tagged” CO-only simulation, which is frequently used for emission inversion, data interpretation, and chemical forecasting. The improvement targets the production of CO from non-methane volatile organic compounds (NMVOCs), which was previously scaled to NMVOC emissions (assuming fixed yields) and injected into the model surface layer only. This resulted in a decoupling between the full chemistry and CO-only simulations in both the magnitude and location of secondary CO production. The improved simulation remedies both problems.

In the improved CO-only model, we now use archived CO chemical production rates from the full chemistry simulation, ensuring consistency between the two simulations. We use the methane loss rate (also archived from the full chemistry simulation) to distinguish between CO produced from methane oxidation and that produced from NMVOCs. The latter contribution is for the first time tagged by the geographical region where the production occurs, providing a more comprehensive understanding of air mass origin.

Using the full chemistry simulation as a reference, we showed that the original-base CO-only simulation greatly overestimates CO in the model surface layer, especially over biogenic source regions (by more than 100 ppbv), due to the assumption of instantaneous surface production. In regions where biogenic emissions coincide with deep convective activity (e.g., South America, Indonesia), the overestimate is expressed throughout much of the troposphere. This reflects the fact that it is typically NMVOCs and/or their intermediate oxidation products that are lifted from the surface layer, with CO production largely happening downwind. The model overestimates at the surface and over major source regions are paired with more diffuse

30 underestimates in outflow regions. Both overestimates and underestimates are largely resolved in the improved CO-only simulation, which shows much closer agreement with the full chemistry.

We compared all three simulations (full chemistry, ~~original-base~~ CO-only, and improved CO-only) with the global dataset of ground-based and airborne CO observations typically used to benchmark GEOS-Chem. Our comparisons showed that ~~the improvements to the CO-only simulation~~ at the benchmark sites, the differences between the base and improved CO-only simulations are in most cases significantly smaller than the observation-model mismatch, despite the large differences between the simulations seen elsewhere. This inconsistency reflects the geographic representativeness of the data included in the benchmark, with no ground-based sites and few aircraft campaigns that sample air dominantly influenced by secondary
5 production. The current CO benchmark dataset is therefore better placed to monitor the impacts impacts of model updates to primary emissions (anthropogenic and/or biomass burning) than biogenic emissions and their ensuing chemistry. The dataset does not include recent aircraft campaigns targeting biogenic source regions (e.g., GoAmazon, SEAC4RS, SENEX) and the remote atmosphere (e.g., HIPPO, ATom), and updating the benchmark to include these data ~~as well as more recent observations from the surface sites~~ should be a priority for the GEOS-Chem community.

10 The improved CO-only simulation includes a new capability to geographically tag secondary CO by the region where production occurs. To illustrate this capability, we performed a case study for the Australasian region, where CO is dominated by secondary production. We found that observed total column CO at three TCCON sites across Australasia (Darwin, Wollongong, and Lauder) is sensitive to secondary CO from a range of sources. Throughout much of the year, transported secondary CO dominates over secondary CO produced within Australia, despite large biogenic emissions there, with particularly large
15 contributions from South America followed by Africa and (in the north) Indonesia. Even at the height of the austral biomass burning season that has been the focus of most analysis of intercontinental transport in the southern hemisphere, we show that transported secondary CO from NMVOC oxidation can outweigh transported primary CO from biomass burning.

Linear “tagged” CO-only simulations are used across the atmospheric chemistry community and are of particular value for interpreting field observations and understanding variation in multi-model ensembles. While tagging is generally reserved for
20 primary emissions, secondary production dominates the CO budget throughout much of the world and especially in the southern hemisphere. Because much of that secondary source comes from oxidation of NMVOCs that are enhanced in biogenic source regions and low elsewhere, there is a geographic signature to secondary CO that can aid in interpretation of observations and model results. We recommend that future attribution studies in regions where primary emissions are low follow the methods described here to include source attribution of secondary CO contributions.

25

7 Code Availability

The standard GEOS-Chem code is freely accessible to the public by following the guidelines at <http://wiki.geos-chem.org/>. Updates described here will be included in the standard code once this paper has been accepted, likely after version 11-02. In the interim, the version 9-01-03 code used here is available at https://github.com/jennyfisher/GEOS-Chem_TaggedCO_v9.01.

30 03_updated. The [standard GEOS-Chem code is distributed as a git repository, and the code updates described here can be added to a standard v9-01-03 code repository by pulling the branch linked above. The provisional version of v11-01 where we have implemented these updates is available by contacting the authors. Instructions for running the GEOS-Chem model, including the CO-only simulation, are provided in the GEOS-Chem User's Guide: <http://acmg.seas.harvard.edu/geos/doc/man/>.](#)

The CO-only benchmark code is a condensed and slightly adapted version of the standard GEOS-Chem 1-year benchmark code, available at https://bitbucket.org/gcst/gc_1yr_benchmark/. The CO-only version of the benchmarking code (including the CO observations used to evaluate the model) is available at https://github.com/jennyfisher/CO_Benchmark.

Author contributions. J.A. Fisher, L.T. Murray, and D.B.A. Jones formulated the method for the improved simulation. J.A. Fisher developed the model code with contributions from L.T. Murray and D.B.A. Jones, performed the simulations, and conducted the analysis. N.M. Deutscher provided the methodology for converting the TCCON data from X_{CO} to Ω_{CO} . J.A. Fisher prepared the manuscript with contributions from all authors.

Competing interests. The authors declare that they have no conflict of interest.

Acknowledgements. This work was funded by a University of Wollongong Vice Chancellor's Postdoctoral Fellowship to JAF with the assistance of resources provided at the NCI National Facility systems at the Australian National University through the National Computational Merit Allocation Scheme supported by the Australian Government. NMD is supported by an ARC-DECRA, DE140100178. TCCON data from Wollongong and Darwin are supported by NASA grants NAG5-12247 and NNG05-GD07G, and Australian Research Council grants DP140101552, DP110103118, DP0879468 and LP0562346. Technical support for TCCON measurements at Darwin from the Bureau of Meteorology, and formerly the DOE ARM program is gratefully acknowledged. The Lauder TCCON program is core-funded by NIWA through the New Zealand Ministry of Business, Innovation and Employment. We thank Rebecca Buchholz and Clare Paton-Walsh for helpful discussions in the initial stages of this work, and Voltaire Velazco and Dave Pollard for providing the ancillary TCCON variables not available in the public files.

References

- Bauwens, M., Stavrou, T., Müller, J.-F., Smedt, I. D., Roozendaal, M. V., Werf, G. R., Wiedinmyer, C., Kaiser, J. W., Sindelarova, K., and Guenther, A.: Nine years of global hydrocarbon emissions based on source inversion of OMI formaldehyde observations, *Atmospheric Chemistry and Physics*, 16, 10 133–10 158, 2016.
- 5 Bey, I., Jacob, D. J., Logan, J. A., and Yantosca, R. M.: Asian chemical outflow to the Pacific in spring: Origins, pathways, and budgets, 2001.
- Buchholz, R., Paton-Walsh, C., Griffith, D., Kubistin, D., Caldow, C., Fisher, J., Deutscher, N., Kettlewell, G., Riggenbach, M., Macatangay, R., Krummel, P., and Langenfelds, R.: Source and meteorological influences on air quality (CO CH₄ & CO₂) at a Southern Hemisphere urban site, *Atmospheric Environment*, 126, 274–289, doi:10.1016/j.atmosenv.2015.11.041, <https://doi.org/10.1016%2Fj.atmosenv.2015.11.041>, 2016.
- 10 Burkholder, J. B., Sander, S. P., Abbatt, J., Barker, J. R., Huie, R. E., Kolb, C. E., Kurylo, M. J., Orkin, V. L., Wilmouth, D. M., and Wine, P. H.: Chemical Kinetics and Photochemical Data for Use in Atmospheric Studies, Evaluation No. 18, Tech. Rep. JPL Publication 15-10, Jet Propulsion Laboratory, <http://jpldataeval.jpl.nasa.gov>, 2015.
- Chen, Y., Li, Q., Randerson, J., Lyons, E., Kahn, R., Nelson, D., and Diner, D.: The sensitivity of CO and aerosol transport to the temporal and vertical distribution of North American boreal fire emissions, *Atmospheric Chemistry and Physics*, 9, 6559–6580, 2009.
- 15 Deng, F., Jones, D., Henze, D., Bousserez, N., Bowman, K., Fisher, J., Nassar, R., O'Dell, C., Wunch, D., Wennberg, P., et al.: Inferring regional sources and sinks of atmospheric CO₂ from GOSAT XCO₂ data, *Atmospheric Chemistry and Physics*, 14, 3703–3727, 2014.
- Duncan, B. N., Logan, J. A., Bey, I., Megretskaia, I. A., Yantosca, R. M., Novelli, P. C., Jones, N. B., and Rinsland, C. P.: Global budget of CO 1988–1997: Source estimates and validation with a global model, *Journal of Geophysical Research*, 112, doi:10.1029/2007jd008459, 2007.
- 20 <https://doi.org/10.1029%2F2007jd008459>, 2007.
- Edwards, D. P., Emmons, L. K., Gille, J. C., Chu, A., Attié, J.-L., Giglio, L., Wood, S. W., Haywood, J., Deeter, M. N., Massie, S. T., Ziskin, D. C., and Drummond, J. R.: Satellite-observed pollution from Southern Hemisphere biomass burning, *Journal of Geophysical Research*, 111, doi:10.1029/2005jd006655, <https://doi.org/10.1029%2F2005jd006655>, 2006.
- Emmerson, K. M., Galbally, I. E., Guenther, A. B., Paton-Walsh, C., Guerette, E.-A., Cope, M. E., Keywood, M. D., Lawson, S. J., Moll, S. B., Dunne, E., Thatcher, M., Karl, T., and Maleknia, S. D.: Current estimates of biogenic emissions from eucalypts uncertain for southeast Australia, *Atmospheric Chemistry and Physics*, 16, 6997–7011, doi:10.5194/acp-16-6997-2016, <https://doi.org/10.5194%2F2016-6997-2016>, 2016.
- 25 Evans, M. J. and Jacob, D. J.: Impact of new laboratory studies of N₂O₅ hydrolysis on global model budgets of tropospheric nitrogen oxides, ozone, and OH, *Geophysical Research Letters*, 32, n/a–n/a, doi:10.1029/2005GL022469, <http://dx.doi.org/10.1029/2005GL022469>, 2005.
- 30 Fischer, E. V., Jacob, D. J., Millet, D. B., Yantosca, R. M., and Mao, J.: The role of the ocean in the global atmospheric budget of acetone, *Geophysical Research Letters*, 39, n/a–n/a, doi:10.1029/2011gl050086, <https://doi.org/10.1029%2F2011gl050086>, 2012.
- Fisher, J. A., Jacob, D. J., Purdy, M. T., Kopacz, M., Sager, P. L., Carouge, C., Holmes, C. D., Yantosca, R. M., Batchelor, R. L., Strong, K., Diskin, G. S., Fuelberg, H. E., Holloway, J. S., Hyer, E. J., McMillan, W. W., Warner, J., Streets, D. G., Zhang, Q., Wang, Y., and Wu, S.: Source attribution and interannual variability of Arctic pollution in spring constrained by aircraft (ARCTAS ARCPAC) and satellite (AIRS) observations of carbon monoxide, *Atmospheric Chemistry and Physics*, 10, 977–996, doi:10.5194/acp-10-977-2010, <https://doi.org/10.5194%2F2010-977-2010>, 2010.
- 35

- Fisher, J. A., Wilson, S. R., Zeng, G., Williams, J. E., Emmons, L. K., Langenfelds, R. L., Krummel, P. B., and Steele, L. P.: Seasonal changes in the tropospheric carbon monoxide profile over the remote Southern Hemisphere evaluated using multi-model simulations and aircraft observations, *Atmospheric Chemistry and Physics*, 15, 3217–3239, doi:10.5194/acp-15-3217-2015, <https://doi.org/10.5194/acp-15-3217-2015>, 2015.
- 5 Fisher, J. A., Jacob, D. J., Travis, K. R., Kim, P. S., Marais, E. A., Chan Miller, C., Yu, K., Zhu, L., Yantosca, R. M., Sulprizio, M. P., et al.: Organic nitrate chemistry and its implications for nitrogen budgets in an isoprene-and monoterpene-rich atmosphere: constraints from aircraft (SEAC 4 RS) and ground-based (SOAS) observations in the Southeast US, *Atmospheric Chemistry and Physics*, 16, 5969–5991, 2016.
- Gloudemans, A. M. S., Krol, M. C., Meirink, J. F., de Laat, A. T. J., van der Werf, G. R., Schrijver, H., van den Broek, M. M. P., and Aben, I.: Evidence for long-range transport of carbon monoxide in the Southern Hemisphere from SCIAMACHY observations, *Geophysical Research Letters*, 33, doi:10.1029/2006gl026804, <https://doi.org/10.1029/2006gl026804>, 2006.
- 10 Griffith, D. W. T., Deutscher, N., Velazco, V. A., Wennberg, P. O., Yavin, Y., Aleks, G. K., Washenfelder, R., Toon, G. C., Blavier, J.-F., Murphy, C., Jones, N., Kettlewell, G., Connor, B., Macatangay, R., Roehl, C., Ryzek, M., Glowacki, J., Culgan, T., and Bryant, G.: TCCON data from Darwin, Australia, Release GGG2014R0, <http://dx.doi.org/10.14291/tccon.ggg2014.darwin01.R0/1149290>, doi:10.14291/tccon.ggg2014.darwin01.R0/1149290, TCCON data archive, hosted by the Carbon Dioxide Information Analysis Center, Oak Ridge National Laboratory, Oak Ridge, Tennessee, U.S.A., 2014a.
- 15 Griffith, D. W. T., Velazco, V. A., Deutscher, N., Murphy, C., Jones, N., Wilson, S., Macatangay, R., Kettlewell, G., Buchholz, R. R., and Riggenbach, M.: TCCON data from Wollongong, Australia, Release GGG2014R0, <http://dx.doi.org/10.14291/tccon.ggg2014.wollongong01.R0/1149291>, doi:10.14291/tccon.ggg2014.wollongong01.R0/1149291, TCCON data archive, hosted by the Carbon Dioxide Information Analysis Center, Oak Ridge National Laboratory, Oak Ridge, Tennessee, U.S.A., 2014b.
- 20 Guenther, A. B., Jiang, X., Heald, C. L., Sakulyanontvittaya, T., Duhl, T., Emmons, L. K., and Wang, X.: The Model of Emissions of Gases and Aerosols from Nature version 2.1 (MEGAN2.1): an extended and updated framework for modeling biogenic emissions, *Geoscientific Model Development*, 5, 1471–1492, doi:10.5194/gmd-5-1471-2012, <https://doi.org/10.5194/gmd-5-1471-2012>, 2012.
- 25 Jacob, D. J., Field, B. D., Jin, E. M., Bey, I., Li, Q., Logan, J. A., Yantosca, R. M., and Singh, H. B.: Atmospheric budget of acetone, *Journal of Geophysical Research: Atmospheres*, 107, ACH 5–1–ACH 5–17, doi:10.1029/2001jd000694, <https://doi.org/10.1029/2001jd000694>, 2002.
- Jiang, Z., Jones, D., Kopacz, M., Liu, J., Henze, D. K., and Heald, C.: Quantifying the impact of model errors on top-down estimates of carbon monoxide emissions using satellite observations, *Journal of Geophysical Research: Atmospheres*, 116, 2011.
- 30 Jiang, Z., Worden, J. R., Worden, H., Deeter, M., Jones, D. B. A., Arellano, A. F., and Henze, D. K.: A 15-year record of CO emissions constrained by MOPITT CO observations, *Atmospheric Chemistry and Physics*, 17, 4565–4583, doi:10.5194/acp-17-4565-2017, <http://www.atmos-chem-phys.net/17/4565/2017/>, 2017.
- Kopacz, M., Jacob, D. J., Fisher, J., Logan, J. A., Zhang, L., Megretskaia, I. A., Yantosca, R. M., Singh, K., Henze, D., Burrows, J., et al.: Global estimates of CO sources with high resolution by adjoint inversion of multiple satellite datasets (MOPITT, AIRS, SCIAMACHY, TES), *Atmospheric Chemistry and Physics*, 10, 855–876, 2010.
- 35 Kumar, R., Naja, M., Pfister, G., Barth, M., and Brasseur, G.: Source attribution of carbon monoxide in India and surrounding regions during wintertime, *Journal of Geophysical Research: Atmospheres*, 118, 1981–1995, 2013.

- Leung, F.-Y. T., Logan, J. A., Park, R., Hyer, E., Kasischke, E., Streets, D., and Yurganov, L.: Impacts of enhanced biomass burning in the boreal forests in 1998 on tropospheric chemistry and the sensitivity of model results to the injection height of emissions, *Journal of Geophysical Research: Atmospheres*, 112, 2007.
- Li, Q., Jacob, D. J., Bey, I., Palmer, P. I., Duncan, B. N., Field, B. D., Martin, R. V., Fiore, A. M., Yantosca, R. M., Parrish, D. D., et al.: 5 Transatlantic transport of pollution and its effects on surface ozone in Europe and North America, *Journal of Geophysical Research: Atmospheres*, 107, 2002.
- Liang, Q., Jaeglé, L., Jaffe, D. A., Weiss-Penzias, P., Heckman, A., and Snow, J. A.: Long-range transport of Asian pollution to the northeast Pacific: Seasonal variations and transport pathways of carbon monoxide, *Journal of Geophysical Research: Atmospheres*, 109, 2004.
- Lin, J.-T. and McElroy, M. B.: Impacts of boundary layer mixing on pollutant vertical profiles in the lower troposphere: Implications to 10 satellite remote sensing, *Atmospheric Environment*, 44, 1726–1739, doi:10.1016/j.atmosenv.2010.02.009, <https://doi.org/10.1016%2Fj.atmosenv.2010.02.009>, 2010.
- Mao, J., Paulot, F., Jacob, D. J., Cohen, R. C., Crounse, J. D., Wennberg, P. O., Keller, C. A., Hudman, R. C., Barkley, M. P., and Horowitz, L. W.: Ozone and organic nitrates over the eastern United States: Sensitivity to isoprene chemistry, *Journal of Geophysical Research: Atmospheres*, 118, 11,256–11,268, doi:10.1002/jgrd.50817, <https://doi.org/10.1002%2Fjgrd.50817>, 2013.
- 15 Monks, S., Arnold, S., Emmons, L., Law, K. S., Turquety, S., Duncan, B., Flemming, J., Huijnen, V., Tilmes, S., Langner, J., et al.: Multi-model study of chemical and physical controls on transport of anthropogenic and biomass burning pollution to the Arctic, *Atmospheric Chemistry and Physics*, 15, 3575–3603, 2015.
- Nassar, R., Jones, D., Suntharalingam, P., Chen, J., Andres, R., Wecht, K., Yantosca, R., Kulawik, S., Bowman, K., Worden, J., et al.: 20 Modeling global atmospheric CO₂ with improved emission inventories and CO₂ production from the oxidation of other carbon species, *Geoscientific Model Development*, 3, 689–716, 2010.
- Pak, B. C., Langenfelds, R. L., Young, S. A., Francey, R. J., Meyer, C. P., Kivlighon, L. M., Cooper, L. N., Dunse, B. L., Allison, C. E., Steele, L. P., Galbally, I. E., and Weeks, I. A.: Measurements of biomass burning influences in the troposphere over southeast Australia during the SAFARI 2000 dry season campaign, *Journal of Geophysical Research: Atmospheres*, 108, n/a–n/a, doi:10.1029/2002jd002343, <https://doi.org/10.1029%2F2002jd002343>, 2003.
- 25 Park, K., Emmons, L. K., Wang, Z., and Mak, J. E.: Large interannual variations in nonmethane volatile organic compound emissions based on measurements of carbon monoxide, *Geophysical Research Letters*, 40, 221–226, doi:10.1029/2012gl052303, <https://doi.org/10.1029%2F2012gl052303>, 2013.
- Park, M., Randel, W. J., Emmons, L. K., and Livesey, N. J.: Transport pathways of carbon monoxide in the Asian summer monsoon diagnosed from Model of Ozone and Related Tracers (MOZART), *Journal of Geophysical Research: Atmospheres*, 114, 2009.
- 30 Pfister, G., Emmons, L., Hess, P., Lamarque, J.-F., Orlando, J., Walters, S., Guenther, A., Palmer, P., and Lawrence, P.: Contribution of isoprene to chemical budgets: A model tracer study with the NCAR CTM MOZART-4, *Journal of Geophysical Research: Atmospheres*, 113, 2008.
- Pfister, G., Avise, J., Wiedinmyer, C., Edwards, D., Emmons, L., Diskin, G., Podolske, J., and Wisthaler, A.: CO source contribution analysis for California during ARCTAS-CARB, *Atmospheric Chemistry and Physics*, 11, 7515–7532, 2011.
- 35 Sherlock, V., Connor, B., Robinson, J., Shiona, H., Smale, D., and Pollard, D.: TCCON data from Lauder, New Zealand, 120HR, Release GGG2014R0, <http://dx.doi.org/10.14291/tccon.ggg2014.lauder01.R0/1149293>, doi:10.14291/tccon.ggg2014.lauder01.R0/1149293, TCCON data archive, hosted by the Carbon Dioxide Information Analysis Center, Oak Ridge National Laboratory, Oak Ridge, Tennessee, U.S.A., 2014a.

- Sherlock, V., Connor, B., Robinson, J., Shiona, H., Smale, D., and Pollard, D.: TCCON data from Lauder, New Zealand, 125HR, Release GGG2014R0, <http://dx.doi.org/10.14291/tccon.ggg2014.lauder02.R0/1149298>, doi:10.14291/tccon.ggg2014.lauder02.R0/1149298, TCCON data archive, hosted by the Carbon Dioxide Information Analysis Center, Oak Ridge National Laboratory, Oak Ridge, Tennessee, U.S.A., 2014b.
- 5 Staudt, A., Jacob, D. J., Logan, J. A., Bachiochi, D., Krishnamurti, T., and Sachse, G.: Continental sources, transoceanic transport, and interhemispheric exchange of carbon monoxide over the Pacific, *Journal of Geophysical Research: Atmospheres*, 106, 32 571–32 589, 2001.
- Strode, S. A., Worden, H. M., Damon, M., Douglass, A. R., Duncan, B. N., Emmons, L. K., Lamarque, J.-F., Manyin, M., Oman, L. D., Rodriguez, J. M., Strahan, S. E., and Tilmes, S.: Interpreting space-based trends in carbon monoxide with multiple models, *Atmospheric Chemistry and Physics*, 16, 7285–7294, doi:10.5194/acp-16-7285-2016, <https://doi.org/10.5194/acp-16-7285-2016>, 2016.
- 10 Té, Y., Jeseck, P., Franco, B., Mahieu, E., Jones, N., Paton-Walsh, C., Griffith, D. W. T., Buchholz, R. R., Hadji-Lazaro, J., Hurtmans, D., and Janssen, C.: Seasonal variability of surface and column carbon monoxide over the megacity Paris high-altitude Jungfraujoch and Southern Hemispheric Wollongong stations, *Atmospheric Chemistry and Physics*, 16, 10 911–10 925, doi:10.5194/acp-16-10911-2016, <https://doi.org/10.5194/acp-16-10911-2016>, 2016.
- 15 Travis, K. R., Jacob, D. J., Fisher, J. A., Kim, P. S., Marais, E. A., Zhu, L., Yu, K., Miller, C. C., Yantosca, R. M., Sulprizio, M. P., et al.: Why do models overestimate surface ozone in the Southeast United States?, *Atmospheric Chemistry and Physics*, 16, 13 561–13 577, 2016.
- Wells, K., Millet, D., Cady-Pereira, K., Shephard, M., Henze, D., Bousserrez, N., Apel, E., de Gouw, J., Warneke, C., and Singh, H.: Quantifying global terrestrial methanol emissions using observations from the TES satellite sensor, *Atmospheric Chemistry and Physics*, 14, 2555–2570, 2014.
- 20 Worden, H. M., Deeter, M. N., Frankenberg, C., George, M., Nichitiu, F., Worden, J., Aben, I., Bowman, K. W., Clerbaux, C., Coheur, P. F., de Laat, A. T. J., Detweiler, R., Drummond, J. R., Edwards, D. P., Gille, J. C., Hurtmans, D., Luo, M., Martínez-Alonso, S., Massie, S., Pfister, G., and Warner, J. X.: Decadal record of satellite carbon monoxide observations, *Atmospheric Chemistry and Physics*, 13, 837–850, doi:10.5194/acp-13-837-2013, <https://doi.org/10.5194/acp-13-837-2013>, 2013.
- Wunch, D., Toon, G. C., Blavier, J.-F. L., Washenfelder, R. A., Notholt, J., Connor, B. J., Griffith, D. W., Sherlock, V., and Wennberg, P. O.:
25 The total carbon column observing network, *Philosophical Transactions of the Royal Society of London A: Mathematical, Physical and Engineering Sciences*, 369, 2087–2112, 2011.
- Yoon, J. and Pozzer, A.: Model-simulated trend of surface carbon monoxide for the 2001–2010 decade, *Atmospheric Chemistry and Physics*, 14, 10 465–10 482, doi:10.5194/acp-14-10465-2014, <https://doi.org/10.5194/acp-14-10465-2014>, 2014.
- Zeng, G., Wood, S. W., Morgenstern, O., Jones, N. B., Robinson, J., and Smale, D.: Trends and variations in CO, C₂H₆ and HCN in the
30 Southern Hemisphere point to the declining anthropogenic emissions of CO and C₂H₆, *Atmospheric Chemistry and Physics*, 12, 7543–7555, doi:10.5194/acp-12-7543-2012, <https://doi.org/10.5194/acp-12-7543-2012>, 2012.
- Zeng, G., Williams, J. E., Fisher, J. A., Emmons, L., Jones, N. B., Morgenstern, O., Robinson, J., Smale, D., Paton-Walsh, C., and Griffith, D. W.: Multi-model simulation of CO and HCHO in the Southern Hemisphere: comparison with observations and impact of biogenic emissions, *Atmos. Chem. Phys.*, 15, 7217–7245, 2015.
- 35 Zhang, L., Jacob, D. J., Kopacz, M., Henze, D. K., Singh, K., and Jaffe, D. A.: Intercontinental source attribution of ozone pollution at western U.S. sites using an adjoint method, *Geophysical Research Letters*, 36, n/a–n/a, doi:10.1029/2009GL037950, <http://dx.doi.org/10.1029/2009GL037950>, 11 1810, 2009.

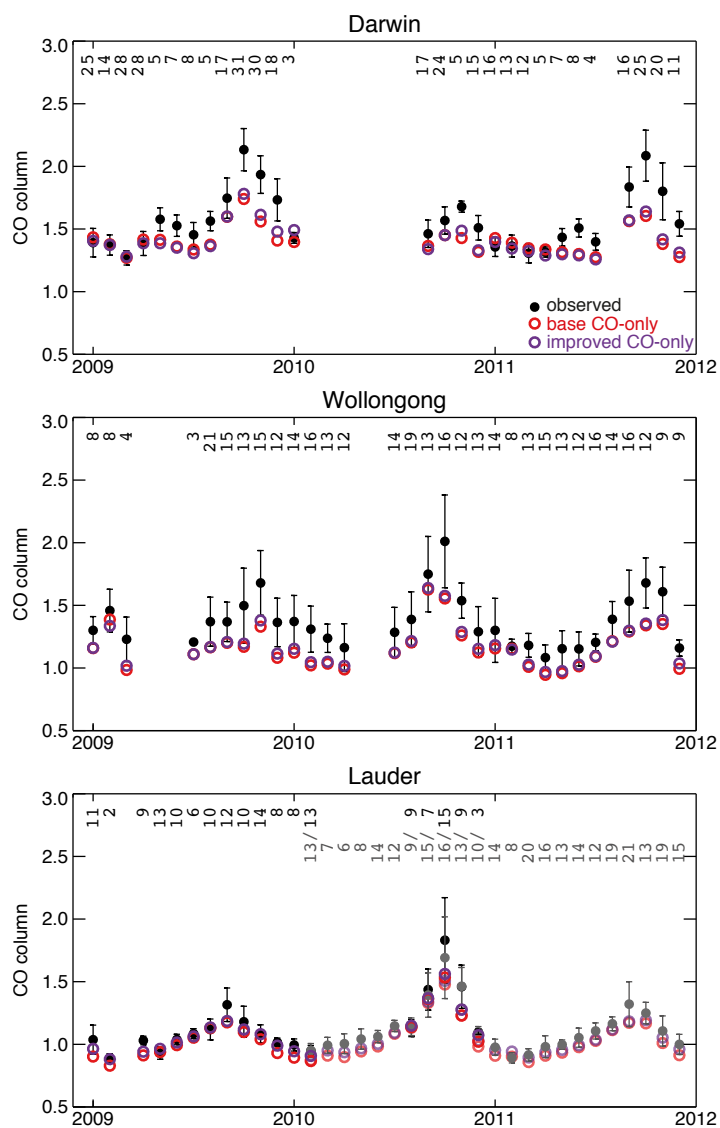


Figure 6. Observed and modelled time series of 2009-2011 monthly mean CO total columns in the Australasian region. Observations from the TCCON sites at Darwin (12.4°S, 130.9°E; Griffith et al. 2014a), Wollongong (34.4°S, 150.9°E; Griffith et al. 2014b), and Lauder (45.0°S, 169.7°E; Sherlock et al. 2014a, b) are shown in black as monthly means and standard deviations of all data within each month, with the number of days of data in each month given inset in the figures. Simulated [daily mean](#) CO from the [original-base](#) CO-only (red) and improved CO-only (purple) has been sampled from the relevant grid boxes only for days with available observations, and smoothed using observed averaging kernels. For Lauder, the spectrometer changed from a Bruker 120HR (dark points/counts) to a Bruker 125HR (light points/counts); both measurements are shown for periods of overlapping data availability. [For site locations, see Fig. 8.](#)

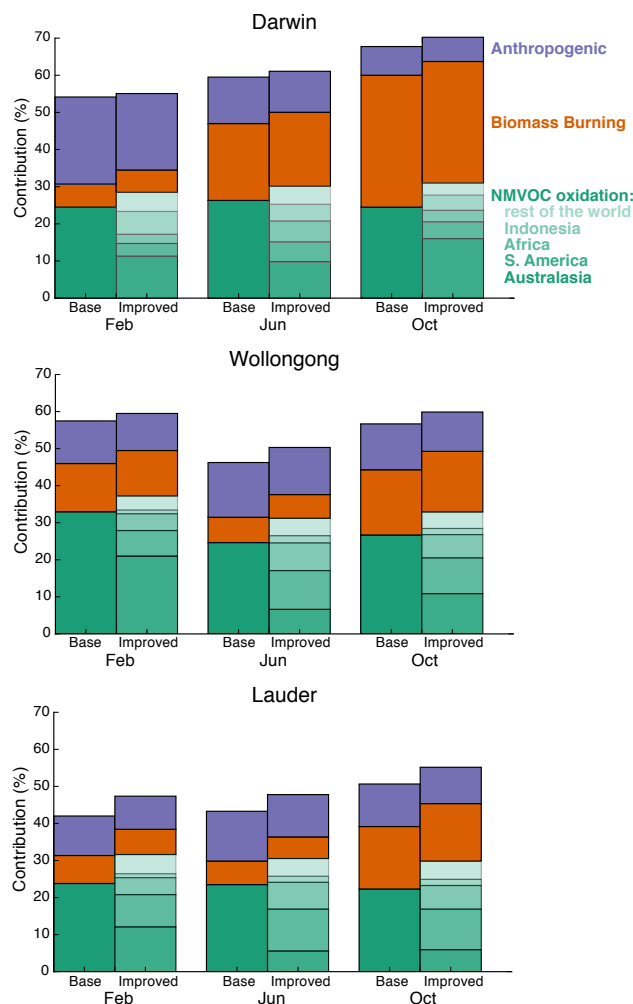


Figure 7. Simulated contributions of different sources to total simulated CO at the Australasian TCCON sites in 2009-2009 (see Fig. 8 for site locations). The figure compares the original base (left bars) and improved (right bars) CO-only simulated at the TCCON sites at three times of the year: February (left, austral summer); June (middle, austral winter); and October (right, peak southern hemisphere biomass burning). Colored bars show the percent contributions from anthropogenic emissions (purple), biomass burning emissions (orange), and secondary production from NMVOC oxidation (green). The remainder comes from methane oxidation. For the NMVOC source, the contributions in the improved simulation are divided into source regions (from darkest to lightest): Australasia (112.5-180°E, 48-10°S), South America (120-30°W, 58°S-15°N), Africa (30°W-60°E, 36°S-36°N), Indonesia (95-165°E, 10°S-6°N), and the rest of the world. Note that the region definitions include some ocean areas to capture continental outflow, but the majority of the NMVOC production happens over the continents.

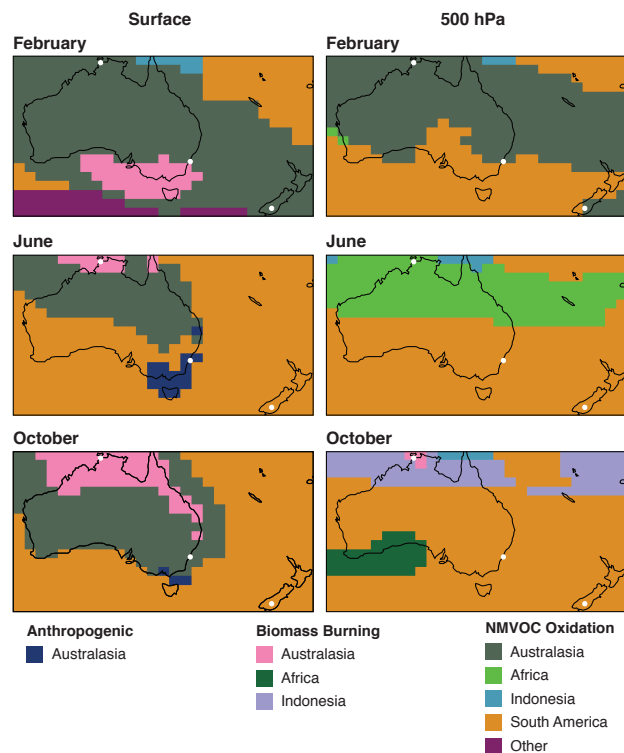


Figure 8. GEOS-Chem simulation of the dominant non-methane contribution to Australasian CO at the surface (left) and at 500 hPa (right) in three months, using the improved CO-only simulation with CO source tagged by both type (anthropogenic, biomass burning, or NMVOC oxidation) and region of emissions/production (with regional boundaries the same as in Fig. 7). [White circles show the locations of the TCCON sites used in Figs. 6 and 7.](#)