

Reply to Anonymous Referee #1

Review: 'Curriculum Vitae of the LOTOS-EUROS (v2.0) chemistry transport model' by Astrid M. M. Manders, et al. in GMD, manuscript number: gmd-2017-88 This paper presents the latest version of the LOTOS-EUROS model (v2.0) which is open source. It outlines typical model settings/conditions, as well as optional features that are under development. It also provides an historical perspective on the model development, and provides a substantial number of references for its application and improvements to the model performance. Overall I think this paper should be published, however there are a few revisions that I would recommend before publication. For one, there are a number of English language edits that should be taken care of that would improve the readability of the paper.

We thank the referee for the conscious and critical reading and detailed comment, which has contributed significantly to the quality of the text of the revised paper. The issues that were raised are answered in detail below in italics.

Comments:

P4L1-2: Is this really a contrast? The US is also one country unless North America is being referred to. And in that sense, it was one community in the same way that each country in Europe has a community.

What we wanted to indicate here is that in North America only a few models exist but with rather large communities, whereas in Europe many models were developed, with each their own small communities. This has set the scene for the model intercomparison studies on Europe, which do not have an American counterpart before AQMEII to our knowledge. Text has been adapted.

P4L14-17: These lines seem to be in direct disagreement with what this paper is doing. While the authors may argue that the paper is different from other model description papers, that is also basically what this paper is as well, even if there is some other information included. I would suggest removing this as it seems to be a contradiction.

We understand the point of the reviewer. Indeed, our paper does have many aspects in common with other model development and description papers, like references to parameterizations and an evaluation. Other model papers often include detailed descriptions of their parameterizations, including formulas, which we wanted to avoid here because these are already covered in the reference guide. What we wanted to achieve is to put model development more in context and give a broader overview that what we see is generally done. The text is modified to reflect this point.

P5: why is it that the LOTOS model development is described in detail whereas the EUROS model gets references. Even if it has been written about before, this is very unbalanced, it would be good to include some short summary for EUROS as well, so that the sections are a bit more similar.

We agree that this is unbalanced but it is difficult to find this information for EUROS. We did not manage to get input from the people involved in the early development of EUROS.

P6L6: Why does this sentence say 2004 when all previous text says 2005?

The process was started in 2004 and completed in 2005, in 2005 the version was released. This was added to the text.

P6L9: This section would be more appropriately titled if it included something like 'development and applications' in the subject heading.

The section title has been adapted

P6L17: What 'new EU legislation' is being referred to? It would be good to include a year, also because PM10 and PM2.5 regulations came into effect at different times.

Also what is meant by the 'new European monitoring capacity'?

Reference to EC 99 and EC 2008 added, and sentence changed (The European monitoring network and methods related to this legislation for PM10, and later on also PM2.5, clearly revealed a systematic gap between observed and modelled concentrations)

P7: the paragraph that ends at the top of the page and the first full paragraph need a connecting sentence. The earlier paragraph ends as if the PM discussion were closed and then the authors go on to discuss nitrogen and ammonia emissions. I would suggest something along the lines of 'Another aspect of modeling PM that has received significant attention is secondary inorganic aerosol.'

The sentence 'Secondary inorganic aerosols have also gained significant attention in the light of reactive nitrogen.' has been added

P7L15: what is the 'compensation point for ammonia'? Please explain the concept as it is referred to multiple times throughout the manuscript. (also on P9L8)

Clarification added: 'the compensation point for ammonia, which describes the net deposition velocity taking into account ammonia re-emissions from the surface...'

P8L1: include a very short (less than a sentence) description of what AQMEII-2 is.
Also a semi-online coupling between RACMO2 and LOTOS-EUROS was established (Baklanov et al 2014) and contributed simulations to Phase II of the Air Quality Model Evaluation International Initiative (AQMEII) (Brunner et al 2014, Im et al 2015a,b) in which on-line coupled models were evaluated for simulations of ozone and particulate matter for the year 2010. .

5 P8L2-3: this sentence seems to be a bit of a non-sequitur to the sentences surrounding it.

Sentence has been added to better guide the reader: Also land use change scenarios have been explored with LOTOS-EUROS.

10 P8L5-6: ref??
The reference seems all right, we do not understand the issue

P8L8-10: This sentence is not clear at all.
Rephrased: A study to the impact of shifting from combustion energy production to solar and wind energy without ample energy storage showed that air quality is less positively affected than is often assumed, since combustion energy is needed to replace solar and wind energy at instances where air pollution accumulation is favoured

15 P8L24: this doesn't make sense. What does it mean to 'warrant an availability' and what does that have to do with KNMI?
Rephrased: The LOTOS-EUROS forecasting service is run at the Royal Dutch Meteorological Institute (KNMI) in an operational weather forecasting environment so that disturbances are quickly resolved, warranting....

20 P9L5-6: that the VBS approach depends heavily on assumptions – isn't that true for many things in modelling? Be more specific rather than making such a vague statement.
Why or what aspects make this more dependent on assumptions than any of the other inputs or modules? If it doesn't fit here, reference the discussion elsewhere.
25 *A reference to section 4.3 and 6.4 is made, and the description in 4.3 has been extended.*

P9L6-8: explain this, not clear currently. Level of detail of a process should match the general level of accuracy of a model????
It doesn't make sense to model one process in great detail if uncertainties or inaccuracies in other processes, inputs and model resolution would counteract the net effect of such detailing. The sentence has been adapted.

30 Section 4: I assume that the description that is included about the features of the model includes the options used for the model evaluation/plots presented in this work, as well as additional options that could be used. It would be good to be more explicit about this here. The reason that I mention this is because in e.g., emissions, the TNO-MACC-III database is discussed as being used as input, but other EI can be used as well. So this isn't really a model feature.
35 *We agree with the reviewer that in particular for anthropogenic emissions the description is too narrow. The text has been extended to include other inventories as well.*

P11L8-10: the description of the layers needs to be clarified. There are a lot of different layers mention that are all relatively close to the surface. Do any of these overlap? How do they fit together? It might be good to include a depiction of these.

We did not include a picture of the model structure but we changed the text to make the description more explicit.

40 P11L24-25: the tracers can be easily selected. Does this refer only to CO2 or also other tracers? Please clarify.
45 *Clarifying examples have been added*

P12L1: is the heterogeneous chemistry on wet aerosol also part of Isorropiall or is that a different module? Also, the cloud chemistry, no module is mentioned, is this part of the core model or ?
heterogeneous chemistry is not part of the ISORROPIA II routine or gas-phase chemistry but is a separate module, using the aerosol water as calculated by ISORROPIA II. Cloud chemistry was not present in v1.0 but is now part of the core model. This has been clarified in the text.

50 P12L5-7: so SOA isn't really taken into account, is anything used to compensate or otherwise account for SOA? Please address this.
55 *No, there is no compensation for such missing component. The motivation for not including SOA has been added explicitly to the text.*

P12L15-16: The authors mention that when not all met fields are available, representative average values can be used. Are there a minimum number of or certain critical parameters where an average would not be acceptable? E.g., for these certain parameters, rep avg values are acceptable?

60 *The statement is indeed too strong/general. This approach makes sense for compartments with buffer capacity: soil properties, as in the example, or sea water temperature, but not for parameters that should represent synoptic timescales. The statement has been rephrased accordingly.*

- P12L28: will people know what the 'sand blasting approach' is? Might be good to describe this a bit.
The process of dust emissions has been extended to better clarify its nature and which processes are included.
- 5 P12L30: 'region-specific' and 'local' seem redundant/one would supersede the other. Prob best to choose just one, or be more explicit.
Region-specific has been deleted
- P13L1-4: the TNO MACC III database was used for emissions. In this study for the model performance runs? In all of the papers presented? The context needs to be more explicitly clear. Also, why PPM and not PM?
10 *Text has been adapted to clarify this. PPM stands for primary particulate matter, this has been stated explicitly in the text now.*
- P13L6-7: the temporal disaggregation that is mentioned, are these defined by the user? As part of the EI? If these are model defined, it would be good to include a table or similar, as in e.g., the Simpson paper on the EMEP model, to document what these are. Can be in the SI.
15 *The text has been extended to clarify these points, the original reference is included.*
- P13L27-29: Why is the reference for these processes that is included in Table 1 not included here? Also, it is not clear whether one approach needs to be chosen or if both are used in parallel given the following sentences.
20 *The reference in Table 1 is now added to the main text. The text has been clarified, one has to choose between the two options.*
- P13L32-P14L1: this aspect of translating concentrations to obs height needs more explanation. It is not clear at all.
The idea of the approach has been stated more explicitly
- P14L22-25: if the effect of these is so large, what makes what is chosen the best? What should be considered?
25 *The motivation has been added, including a reference to an analysis of the MACC-reanalysis product.*
- P15L4-5: what does this sentence mean? What is being distinguished here with the aerosol samplers and PM10 samplers?
30 *Some aerosol samplers do not have an explicit inlet specification but are reported as _aerosol, these data are included for SIA species to increase the number of available stations. This is now stated in the text.*
- P15L27-28: why are dust and sea salt boundary conditions not used?
An explanation has been added to 5.1
- 35 P15L32: explicitly mention what kind of emissions are coming from the Ruhr area as not everyone might know this.
Added to the text
- P16:1-6: Couldn't this underestimate also be related to the lack of SOA in the model? How is this accounted for?
40 *The reviewer is right, also SOA will be part of the underestimation. This point is now addressed in the text.*
- P16L8-13: Spatial correlation and spatial correlation for annual mean are both referred to, with one yielding good results and the other not, in addition Table 2 also has two columns (mean and spatial correlation). Please outline what the differences in these two different correlations are, with explanations as to why the differences exist, as it is not clear from the current text.
45 *Clarifications were added to main text and table caption.*
- P16L26-27: How are Table 2 and Figure 3 showing a comparison with rain water conc observations? Rain water doesn't seem to be among any of the stats listed or plotted, unless this is a ref to the e.g., wetNH3 in table 2.
50 *The reference to figure 3 is indeed the wrong one here. The caption of Table 2 and the main text have been adapted to clarify this issue, we indeed refer to wetNH4, wetNO3 and wetSO4, and the behavior is illustrated in Figure 4. Figure 5 illustrates the annual totals of wet and dry deposition, without reference to rainwater concentration.*
- P16L31: as above, explain what exactly is being correlated.
Explained in the text
- 55 P17L5 (also P21L13): technically, aerosol includes the gas-phase. I would aim to be consistent and refer to gas-phase and PM.
Done
- P17section6: I would suggest mentioning already how to get access to these features that are not part of the open source version, or where to find this information. It would make it more user/reader-friendly.
60 *Although this information is already at the end of the paper we included it here as well, and we tried to make a better separation between what is included and excluded.*
- P17L11-12: please mention explicitly what the aim of these techniques are, so that the reader easily understands what is being improved through their application.

We assume that the referee refers to L12-13. We indicated the aim more clearly.

P17L24-26: as with the previous comment, please explain what this technique does – how is it different from all those already mentioned above?

5 Explanatory sentence was added.

P18L1/Figure 6: is the black line the model w/o assimilation? If so, can the model output really be all that useful w/o incorporating assimilation techniques? Or was this example chosen because of the significant improvement?

10 This example indeed deserves more attention. This example is chosen because it represented an episode with exceptionally high PM10 concentrations over large parts of Europe, that could not be explained by merely changing the emissions of the existing tracers. For the baseline concentrations the model performs reasonably well, but for the episode with high concentrations an unspecified tracer had to be added. This tracer could represent large contributions of SOA from wood burning or wind-blown dust from bare soil during this cold and dry period. The example shows the considerable gain in forecast skill by using data assimilation in the right way. This explanation is added to the main text.

P18L8-9: does the reference apply to both AOD and NO2 or just AOD? If both, please move the reference, if only AOD, ok, but then please add a reference for NO2 if possible.

Reference to ISOTROP final report added for NO2.

20

P19L8: 'leads to better model performance' – can some more quantitative description be given for the improvement?

Yes, the paper by Mues et al (2013) provides relevant values, that are now added to the text: When using all new time profiles simultaneously the time correlation coefficient of daily average values increased by 0.05 (NO2), 0.07 (SO2) and 0.03 (PM10) at urban background stations in Germany.

25

P21L2-3: this sentence is not clear and doesn't fit together. Need to extend the community and therefore the code was made open source? Or ?

This sentence was moved to the beginning of the paragraph and slightly modified to be more clear.

30

P21L19-20: how is the improvement of the emissions one of the focal points of LOTOSEUROS? These are two separate products, and models can be used to test changes to EI, but are model developers working on this? This doesn't really seem to fit?

It is not so straightforward to separate emissions and air quality modeling in practice. The sentence has been altered to read: "is a focal point for development and applications of LOTOS-EUROS". Data assimilation with LOTOS-EUROS can indicate structural changes in emission inventories and emission time profiles, and more accurate emissions are important for good model performance, in particular when higher resolutions are used. Model developers are researchers who spend part of their time to activities like improving time distributions of anthropogenic or natural emissions (e.g. Mues et al 2014, Hendriks et al 2016b), which is work of different nature than constructing annual total emission inventories. The text has been adapted to reflect this.

40

P21L29-P22L6: all solid points, but it seems to be a bit of a laundry list. How realistic are these different points? Are they all equally close to realization? And even if all of these were implemented, would the model then even be able to run anymore in an acceptable amount of time? It would be good to have a somewhat more nuanced discussion of such points rather than just listing them off.

45

The paragraph has been extended to indicate how difficult/relevant it would be to realize the points.

P22L13-14: the description of the vertical structure and the link to the horizontal grid is not at all clear, nor what the implications are. Also on L17, the layers of the driving met model??? Please clarify.

50

The text has been made more explicit.

Figure 7: why is 'natural' all from 'shipping'? That does not line up.

'Natural' is a separate bar, with by nature only natural contribution. It is in a different colour scale than shipping but we understand the confusion, both being purplish. The choice of colours is adapted and the caption is extended to clarify this.

55

Minor edits:

The text has been checked for consistency of cases, spacings, subscript, and several minor corrections have been made including the suggested corrections.

60

-there seem to be a lot of spacing issues where there are multiple spaces instead of 1. Make sure this is corrected at the proof stage.

-various subscripts in chemical shorthand for e.g. NH4 are missing. Please find and correct.

- P2L2: 'combining' rather than 'combination of'
P2L13: no comma after the ()
P2L18: '...to keep a good...'
P2L19: '...to keep a good record of the effect...'
- 5 P3L16:) missing at end of reference
P3L23: 2nd reference needs an e.g.
P3L24: include the abbreviation CTMs here, as it needs to be defined before the abbreviation is used later; also in this line replace 'nowadays' with 'currently'
P3L29: '...(e.g. Baklanov et al., 2014), as well as informing the design of monitoring
- 10 strategies...'
P4L1: '...were developed...'
P5L4: remove 'have'
P5L22: remove 'has'
P5L23: write out 'RCG' or explain
- 15 P5L23-24: '...sister models with intensive exchange among their developers during their development.' (or something similar, as the models themselves cannot exchange knowledge, only the people behind the models)
P5L29: no apostrophe in POPs. That indicates possession. There is an extra (in the Jacobs and van Pul ref.
- 20 P6L11: '...specific feature that uses a dynamic...'
C7
P6L12: '...enabling the application of the model...'
P6L14: '...and advances in remote...'
P6L22:) needed after 2012
- 25 P6L25: in the references, either a ref is missing, or the ; is in error
P6L31: 'To better understand the origin of PM, a...'
P6L32: '...which enables quantification of the...'
P7L18: remove 'also'
P7L21: '...improve the model's skill to capture the intra-annual...'
- 30 P7L24: ozone is not capitalized
P7L28: remove 'to perform' and add at the end 'to be run' or 'to be performed'
P7L29: '...to evaluate scenarios including...'. The following list is confusing, is it climate change and energy policies, air quality mitigation, and land use change. Or separate climate change futures, energy policies, etc? Please clarify.
- 35 P7L31/L34: be consistent with abbreviation for RACMO-2
P7L31: explain transient scenario simulations.
P8L16: '...project was preparation for the...'
P8L17: '...forecasts made it possible to use...'
P8L22: a.o. ??
- 40 P9L15: 'adds'
P9L28: remove 'also'; '...test was updated to cover 2012 as well.'; Make sure the cases in your sentences and paragraphs match. This is not the only occurrence of this.
C8
P9L10: explicitly mention that 2003 was the heatwave
- 45 P9L29: '...in a new way to investigate behavior...'
P9L31: something seems to be missing in this sentence. As compared to what??
P11L20: was aimed at?? Is still primarily aimed at??
P11L30: remove 'the'
P12L5: '...is not currently taken...'
- 50 P12L11: replace 'also' with 'and'
P12L13: 'The default for the model is 3-hourly ECMWF...'
P12L15: 'online' is one word
P12L22: do you mean 'variables' when you use 'relations'? or relationships? Relations is not correct.
- 55 P12L25: 'are' not 'was'
P13L8: 'in the vertical, fixed emission profiles...'
P13L9: 'If desired, scenario factors for specific... can be integrated without changes to the code.'
P13L19: 1/112th as a decimal for consistency.
- 60 P13L23-24: '...database, were relabeled as "ocean or sea", since...'
P13L27: replace 'over' with 'between'; '...and below-cloud scavenging.'
P14L13-14: move 'also' to '... data are also available...'
P14L22-23: move 'often' to '...models are often used...'
Section 5.2: consistency in case – sometimes past, sometimes present, edit this

C9

P15L7: ‘.. all data points with . . .’

P15L14: write out RMSE the first time it is used

P15L31: ‘Figure 4 illustrates a time series for ozone and PM10 for a station in the

5 Netherlands, comparing observed and modeled concentrations.’

-There are a lot of other edits that should be taken care of for English, please have a native English speaker read through the paper to catch these things.

P19L31/P20L10: why are these words bolded?

These are bolded to guide the eye of the reader to the species that is treated in the paragraph

10 P20L17: the BL is part of the troposphere, please edit wording to make this clear.

P20L16: include a reference for the original nucleation scheme by Vehkamäki

P21L16: ‘the role of reactive nitrogen becomes more clear’ please rephrase. How so?

P21L22-23: how are met conditions going to be modeled more realistically in the future?

Do the authors mean that ‘by taking met conditions into account’, the soil Nox,

15 etc will be modeled more accurately?

Table 1: for anthro emissions, please be consistent with the EI abbreviation. Previously it was TNO-MACC-III; for fire emission, is this the same as the Kaiser ref? please add it if so.

Figure 4: please add labels to each of the plots (a, b, c) and update the references to

20 them in the text. In the legend, an explanation for the red dots is missing.

Reply to Dr Rouil, referee #2

25 *We thank Dr. Rouil for her valuable comment, that contributed to the quality of the revised paper. The response to her comments is below in italics.*

The idea of a curriculum vitae for the LOTOS-EUROS model, which is one of the most famous and efficient chemistry-transport model in Europe is very interesting and welcome in this period when, as mentioned by the authors such models have reached a certain level of maturity. The article also introduces some history about the development of air quality models over the twenty past years which is also well documented. As a general comment, we have here a good and relevant paper. The main added-value of this paper is to explain the history of a chemistry-transport model like LOTOS-EUROS, the drivers that led to the current open-source version, the current and future challenges.

35 In that perspective it would have been interesting to get more details about the merging process between both initial models LOTOS and EUROS. EUROS is briefly described compared to LOTOS and how the Dutch teams managed to get only one model is not really explained although this is a quite original approach. For instance, it would be relevant to know how the experts selected the model parametrizations, etc ..,(in paragraph 2.1).

40 *This is a good point. The merging was quite a pragmatic process in which LOTOS was used as a backbone for the structure. Many of the parameterizations were quite comparable between the models, and where EUROS had a more advanced scheme this was included (in particular POP and deposition). A brief remark was added to the text.*

I understand the authors decided to tell a story avoiding equations describing more in detail the model (this is not a peer-reviewed model description). This choice is valuable to focus on the model development strategy, but as a consequence, some parts of the paper may remain a little unclear for non experts readers (reference to EnKF method and VBS model in paragraphs 6.1 and 6.4 for instance or the paragraph on emissions modelling -6.3- which may be confusing for someone who did not understand that emissions modelling is a part of the CTM).

Brief explanations on VBS, EnKF and emission modelling were added to the text

50 Also, the discussion on high resolution runs (page 22) is relevant but not conclusive (finally is the combination of LOTOSEUROS and OPS the most promising approach? added value of the plume-in-grid?) I would recommend to review those paragraphs and to amend them with few more explanations.

The present OPS-LOTOS-EUROS coupling is a useful product for specific applications, but does not fully exploit the possibilities of a more advanced plume in grid approach. This is added to the text.

55 This paper is pleasant to read for air quality modellers who share the authors’ concerns and philosophy but may be more difficult for people outside the field. It is mainly due to the fact that a number of references and definitions, useful for good understanding, is missing. I have noted the following terms used without any explanations: GEOSS, PoDY, Ensemble approach, NOy, SDS-WAS and some references to models: HARMONIE, COSMO, VBS, OPS... few words to introduce them are necessary

60 *Clarifications were added for GEOSS, PoDY, SDS-WAS, VBS, HARMONIE and COSMO, OPS. The meaning of ensemble should be clear from the context.*

Please note that schemes provided on figure 2 are very difficult to understand, and for this reason are almost useless. It is necessary to revise and simplify them, making the acronyms more explicit and focusing on the key messages those schemes are supposed to bear. The other figures are correctly chosen.

- 5 *We agree that Figure 2 may contain too much detail for the general reader. It was drastically simplified, thereby better highlighting the natural cooperation between RIVM, KNMI and TNO as model consortium partners. In addition the aspect of data assimilation is now illustrated more clearly.*

10

I would just recommend to add, if possible, a representation of modelling fields or their performances with assimilation of satellite information. This aspect is well discussed in the paper but not illustrated.

15

We feel that Figure 6 demonstrates the impact of data assimilation (albeit with ground observations) quite well and its caption has been extended to give more information. Adding another figure on data assimilation would give the topic too much weight for this paper.

- 20 A good point is the extensive bibliography provided. However, I would recommend to add a reference (for example page 4 line 15 with Menut et al. 2013) to the last peerreviewed paper related to the evolutions of the CHIMERE model (<https://www.geoscientificmodel-development.net/10/2397/2017/>).

The reference is added

- 25 Here are a number of typo corrections I noted: - Page 3 line 16 a parenthesis is missing after 1972; - Page 16 line 31 "months" instead of "mont", - Page 21 line 26 a dot is missing - Page 22 line 17, add a "s" to "application", - Page 22 line 18 "from" instead of "form", line 19 add a reference for HARMONIE and COSMO (at least institutes that develop them), - A number of times in the text PM10, PM2,5, NO2 or NOX are written without indices - Check the References to "Collette", the correct name is "Colette"

30

These and several other minor textual corrections were made

Curriculum Vitae of the LOTOS-EUROS (v2.0) chemistry transport model

5

Astrid M. M. Manders¹, Peter J.H. Builtjes^{1,4}, Lyana Curier¹, Hugo A.C. Denier van der Gon¹, Carlijn Hendriks¹, Sander Jonkers¹, Richard Kranenburg¹, Jeroen Kuenen¹, Arjo J. Segers¹, Renske M.A. Timmermans¹, Antoon Visschedijk¹, Roy J. Wichink Kruit², W. Addo J. van Pul², Ferd J. Sauter², Eric van der Swaluw², Daan P.J. Swart², John Douros³, Henk Eskes³, Erik van Meijgaard³, Bert van Ulft³, Peter van Velthoven³, Sabine Banzhaf⁴, Andrea Mues⁴, Rainer Stern⁴, Guangliang Fu⁵, Sha Lu⁵, Arnold Heemink⁵, Nils van Velzen⁶, Martijn Schaap^{1,4}

15

¹ TNO, PO Box 80015, 3508TA Utrecht, The Netherlands

² RIVM, Antonie van Leeuwenhoeklaan 9, 3721 MA Bilthoven, The Netherlands

³ KNMI, PO Postbus 201, 3730 AE De Bilt, The Netherlands

⁴ Institute of Meteorology, Freie Universität, Berlin Carl-Heinrich-Becker-Weg 6-10, 12165, Berlin, Germany

20 ⁵ TU Delft, P.O. Box 5031 2600 GA Delft, The Netherlands

⁶ VORtech⁶VORtech, Martinus Nijhofflaan 2, 2624 ES Delft, The Netherlands

25

Correspondence to: A. M. M. Manders (astrid.manders@tno.nl)

30

Abstract

The development and application of chemistry transport models has a long tradition. Within the Netherlands the LOTOS-EUROS model has been developed by a consortium of institutes, after ~~combiningeombination-combiningof~~ its independently developed predecessors in 2005. Recently, version 2.0 of the model was released as an open source version. -This paper presents the curriculum vitae of the model system, describing the model's history, model philosophy, basic features, a validation -with EMEP stations for the new benchmark year 2012, and presents cases with the model's most recent -and key developments. By setting the model developments in context and providing an outlook for directions for further development, the paper goes beyond the common model description.

10 With an origin in ozone and sulphur modelling for the models LOTOS and EUROS, the application areas were gradually extended with POPs, reactive nitrogen and primary and secondary particulate matter. After the combination of the models to LOTOS-EUROS in 2005, the model was further developed to include new source parametrizations (e.g. road resuspension, desert dust, wildfires); applied for operational smog forecasts in the Netherlands and Europe, and has been used for emission scenarios, source apportionment and long-term hindcast and climate change scenarios. LOTOS-EUROS has been a front-
15 runner in data assimilation of ground-based and satellite observations and has participated in many model intercomparison studies. The model is no longer confined to applications over Europe but is also applied to other regions of the world, e.g. China. Also the increasing interaction with emission experts has contributed to the improvement of the model's performance. The philosophy for model development- has always been to use knowledge that is state of the art and proven, to keep a good balance in the level of detail of process description and accuracy of input and output, and -to keep a good ~~track-record~~
20 effect of model changes using benchmarking and validation. The performance of v2.0 with respect to EMEP observations is good, with spatial correlations around 0.8 or higher for concentrations and wet deposition. Temporal correlations are around 0.5 or higher. Recent innovative applications include source apportionment and data assimilation, particle number modelling, energy transition scenarios including corresponding land use changes as well as Saharan dust forecasting. Future developments would enable more flexibility with respect to model horizontal and vertical resolution and further detailing of model input
25 data. This includes use of different sources of land use characterization (roughness length and vegetation), detailing of emissions in space and time,- and efficient coupling to meteorology from different meteorological models.

1 Introduction

The most pressing environmental challenges relate to the composition of the atmosphere. Air pollution, climate change and ecosystem degradation have wide-ranging effects on human well-being as well as biodiversity and affect sustainable growth in general. Air pollution has been recognized as a harm for public health and the environment since the 1950's, with the recognition of elevated tropospheric ozone levels in Los Angeles (Haagen-Smit, 1952). The impact of acid deposition was recognized in Europe in the 1950's (Chamberlain, 1953). Whereas air quality was originally regarded as an urban problem, large scale acidification of soils and surface water as well as summertime ozone episodes have made it clear that air quality was a transboundary problem that needed to be solved at the international level (Eliassen, 1978). Based on this consideration the Convention on Long Range Transboundary Air Pollution (CLRTAP) was established in 1979. Although emission reduction strategies have been successful for a number of pollutants, air pollution is still an issue. It largely contributes to the burden of lung cancer and respiratory and cardiovascular diseases, which are associated with a considerable loss of life expectancy (EEA, 2016).

In the early 1970s the first models for air pollution were developed in the US, mainly aimed at studying episodic photochemistry of ozone (e.g. Reynolds et al, 1973). Simultaneously, models aimed at analyzing acid deposition were developed in Europe (Rohde, 1972). In the beginning, in the US 3-D Eulerian grid models were preferred while trajectory models were favored in Europe. The difference was partly motivated by the focus of the models: ozone in the US and deposition in Europe, but also the background of the scientists played a role; atmospheric chemists in the US and meteorologists in Europe. To underpin cost effective mitigation strategies for air pollution, chemistry transport models were further developed and applied in Europe under the LRTAP convention and within the member states. During the subsequent decades the scope of application of chemistry transport models has increased enormously to study acid rain (e.g. Eliassen and Saltbones, 1983), particulate matter (e.g. Mebust et al 2003; Schaap et al., 2004b), reactive nitrogen (e.g. Derwent et al 1989), persistent pollutants (e.g. Pekar et al 1998) and mercury (e.g. Ryaboshabko, 2002).

Besides fundamental research, chemistry transport models (CTMs) are ~~currently~~currently~~nowadays~~ used for operational chemical weather forecasting (e.g. Marecal et al., 2015), air quality reanalyses on annual to decadal time scales (e.g. Andersson et al., 2007, Banzhaf et al., 2015), exploring mitigation measures either by direct comparison of scenario simulations (Thunis et al., 2008, 2010) or indirectly by providing underlying material for assessment models like GAINS (Amman et al., 2011), climate change through coupling with climate models (e.g. Jacob and Winner, 2009) and modelling of feedbacks between meteorology and aerosols by on-line coupled numerical weather and chemistry models (e.g. Baklanov et al., 2014), as well as ~~indesigning~~informing the design of monitoring strategies using in-situ observations or new satellite instruments (e.g. Timmermans et al., 2015). Nowadays, a large number of CTMs exist with a few widely used open source systems such as EMEP (Simpson et al., 2012), CHIMERE (Menut et al., 2013a, Mailler et al., 2017), WRF-CHEM (Fast et al 2006, Grell et al 2004), CMAQ (Byun and Schere, 2006) and CAMx (Environ, 2014).

~~In contrast to the US, North America was originally covered by only a few air quality models, but these models had relatively large user communities. In contrast, in Europe was covered by a variety of air quality models since many countries or even regions in Europe invested in their own model. These European models each had a relatively small user community. was developed with relatively small user communities for each model since countries invested in their own model.~~ Model intercomparison exercises have contributed to the acceptance of these models and determined the robustness of single model results for policy support purposes (starting with Hass et al., (1997) and continuing with TFMM-EURODELTA, Colette~~Collette~~ et al., 2017). Nowadays models are more flexible and input has become more standardized so that models can be applied over any continent.

Within the Netherlands the LOTOS-EUROS model has been developed by a consortium of institutes. The model system originates from a merger of two model systems (LOTOS and EUROS) developed individually since the eighties at TNO ([Netherlands Organization for Applied Scientific Research](#)) and RIVM ([National Institute for Public Health and the Environment](#)), and RIVM. After integration in 2005 an overview paper was published (Schaap et al., 2008). During the last ten years there have been numerous changes involving new or revised parameterisations, additional functionalities and application areas. Also KNMI ([Royal Netherlands Meteorological Institute](#)) came in as a consortium partner for air quality forecasting. In addition, the LOTOS-EUROS system was released in an open source version in 2016. The reason for open source is to increase the number of users and developers, which would make the basis for the model more solid and would enhance further model development.

In this paper we present LOTOS-EUROS v2.0 and its Curriculum Vitae. ~~Other models have published their model description (e.g. Simpson et al. (2012) for EMEP and Menut et al. (2013a) for CHIMERE) in peer-reviewed journals.~~ Since the LOTOS-EUROS reference guide is already available at the LOTOS-EUROS website we do not explicitly write out the used parameterizations but merely refer to the relevant literature from which they originate. do not feel the need for a peer-reviewed version. However, a kind of model CV reflecting the long-term model evolution, model portfolio as well as development and benchmarking strategy has not been published before. Such an overview gives a broader perspective on the model philosophy and research directions and is complementary to the regular documentation. This aspect goes beyond other model description papers (e.g. Simpson et al. (2012) for EMEP and MenutMeut et al (2013a) for CHIMERE). First, the model history is presented, relating key developments to societal questions, new scientific knowledge and technical possibilities. Second, the model development and benchmarking strategy is presented. Next, an overview of the model version 2.0 is provided and complemented with the results of the new internal benchmark test. The model portfolio is then sketched with illustrations of special features like source apportionment and data assimilation. Finally possibilities and motivations for further model improvement will be outlined.

2 History

2.1 Origin of LOTOS-EUROS

LOTOS-EUROS started as two separate models. Since the late 1970s the Dutch institutes RIVM and TNO ~~have~~ independently developed their Eulerian models to calculate the dispersion and chemical transformation of air pollutants in the lower troposphere over Europe.

The Long Term Ozone Simulation (LOTOS) model originates from the US Urban Airshed Model (UAM). In the early 1970's, Steven Reynolds and colleagues in the group of John Seinfeld at Caltech and later at the private firm Systems Applications Incorporated (SAI) made the pioneering attempts at modelling photochemical air quality (Reynolds et al, 1973). These efforts resulted in the UAM model, a local Eulerian grid air quality model focused on ozone in episodic situations in urbanized areas.

It was firstly designed to investigate ozone formation over Los Angeles (US). Los Angeles showed the highest peak levels of ozone concentrations that were a major concern in the US, and UAM was used for emission scenario studies. In a cooperation between SAI and TNO, the UAM was modified for application over the Netherlands and its surroundings (Bultjes et al, 1980, Bultjes et al, 1982). In the beginning of the 1980's, TNO and SAI started cooperation with the FU Berlin (Freie Universität Berlin, Institute of Meteorology) to apply UAM for parts of Germany. In the 1980's the awareness increased that next to episodic ozone, also more long term values were of importance. In the US, SAI extended the UAM to cover larger areas and longer periods, which was partly possible due to the increase in computer resources. The new model was subsequently called RTM (Regional Transport Model). RTM is the direct predecessor of LOTOS (Bultjes, 1992). LOTOS contained special features of the original UAM/RTM. It is the vertical structure with a time-varying mixing layer and two reservoir layers which makes the now called LOTOS model unique in its existence. It was later extended with aerosol components (Schaap et al., 2004a, 2004b). The UAM/RTM ~~has~~ also formed the basis of the further model development at the Freie Universität Berlin, leading to the ~~RCG-model~~, REM (Regional European Model)-Calgrid ~~model~~ (also known as RCG-model, Stern et al, 2003). LOTOS and REM-Calgrid were sister models with intensive exchange of knowledge ~~by their developers, during their development.~~

The Eulerian air quality model EUROS (EUropean Operational Smog model) was originally developed at RIVM for the modelling of winter smog (SO₂) episodes in Europe (van Egmond and Kesseboom, 1981). Later on, the model was used for simulating various air polluting compounds in the lower troposphere over Europe, such as ozone and Persistent Organic Pollutants (POPs) (Jacobs and van Pul (1996). The ~~technical~~ development of EUROS is ~~documented~~ described in De Leeuw and van Rheineck Leyssius (1990), van Rheineck Leyssius et al. (1990), Van Loon (1994, 1995), Hammingh et al. (2001) and Matthijssen et al. (2001).

In both LOTOS and EUROS, aerosols were included around the year 2000 to simulate the inorganic secondary aerosols SO₄, NH₄ and NO₃ (Schaap et al., 2004a; Erisman and Schaap, 2004; Matthijssen et al., 2002) and carbonaceous aerosols (Schaap et al., 2004b). In addition, data assimilation was implemented in LOTOS (Van Loon et al., 2000) and EUROS (Hanea et al., 2004) in collaboration with the same research group at TU Delft. Since the two models had a similar structure and comparable application areas, based on strategic and practical reasoning, RIVM and TNO agreed to collaborate on the development of a single chemistry transport model: LOTOS-EUROS. ~~A pragmatic approach was taken: the backbone of the model was formed by LOTOS with its efficient vertical structure, and for the process descriptions the most advanced scheme of the two models was selected for each process. In~~ ~~During~~ ~~In~~ 2004 the ~~process of merging the~~ two models was ~~started~~ ~~started~~ ~~ere~~ unified which resulted in ~~the release of a~~ LOTOS-EUROS version 1.0 ~~in~~ 2005 (Schaap et al., 2005, Schaap et al 2008).

Formatted: Subscript

Formatted: Subscript

Formatted: Subscript

2.2 ~~Development from LOTOS-EUROS v1.0 to~~ Development and applications from LOTOS-EUROS v1.0 to v2.0

After release of version 1.0 in 2005 the LOTOS-EUROS model has been developed further to be able to (better) respond to new science and policy questions. We have retained the model's specific feature that uses using a dynamic boundary layer approach in the vertical, handling vertical mixing in a different way than other models and enabling ~~the to apply~~ the application of the model over long time spans. The development was facilitated by the increasing quality and detail of input data, better process knowledge, increased computational capacity, and advances in of remote sensing data. Societal challenges and political attention to adverse health impacts, biodiversity loss and climate change have set the scene for new developments and applications.

The new EU legislation for particulate matter (EC, 1999, with limit values to be met in 2005 and 2010, and its successor EC, 2008 which included PM_{2.5}) initiated strong interest in establishing the levels and origin of particulate matter during average and episodic conditions. ~~The new~~ European monitoring capacity network and methods related to this legislation for PM₁₀, and later on also PM_{2.5}, clearly revealed a systematic gap between observed and modelled concentrations. To improve the model skill for particulate matter the parametrizations for the formation, emission and removal of individual components were revisited. To improve the modelling of secondary inorganic aerosol updates were made in the schemes for heterogeneous chemistry, cloud chemistry based on Banzhaf et al. (2012) and dry deposition (Zhang et al., 2001). To estimate the natural contribution to PM levels the source parametrization for sea salt was updated (Manders et al., 2010) and the impact of wild fire emissions explored (Martins et al., 2012). This process also led to the introduction of mineral dust in LOTOS-EUROS with emission parametrizations for road resuspension, agricultural land management and wind erosion or desert dust (Schaap et al., 2009). Specific source contributions from e.g. brake wear were addressed with new inventories for tracer components such as copper (Denier van der Gon et al., 2007). Although elemental carbon levels were modelled satisfactorily (Schaap and Denier van der Gon, 2004b; Hendriks et al., 2013), a major challenge remained for organic material. Although several schemes for the formation of secondary organic material were tested, no satisfactory model parameterization is available yet. The development of the Volatility Base Set (VBS) approach (Donahue et al 2006, 2009) in which organic species are organized in volatility classes, with part of the material in aerosol phase and part in the gas phase and allowing for transitions to lower volatility classes due to chemical reactions, seems the most promising approach. It has been implemented in LOTOS-EUROS, but its results still depend heavily on assumptions like the distribution of emissions over volatility bins. To made. Towards understanding To better understand the origin of PM a labeling tool was implemented in LOTOS-EUROS (Kranenburg et al., 2013), which enables the quantification of of quantify the contributions of user specified emission sectors and regions to the modelled mass. Complementary to the model development, emission inventories (e.g. Kuenen et al., 2014) have improved in aspects such as resolution, spatial allocation, consistency and completeness. These inventories have been tested consistently with LOTOS-EUROS (e.g. Timmermans et al., 2013). In short, major advances were have been made to model particulate matter, although the systematic bias has not been solved yet, mostly due to the challenges remaining for organic aerosol.

Secondary inorganic aerosols have also gained significant attention in the light of reactive nitrogen. Current reactive nitrogen emissions to the atmosphere are estimated to be up to four times higher than pre-industrial levels and result in a cascade of environmental effects, including adverse health impacts through ozone and particulate matter formation and a loss of biodiversity through eutrophication and acidification of soils and surface waters (Fowler et al., 2013). Prior to the unification of LOTOS and EUROS most attention was given to the formation of secondary inorganic aerosol (e.g. Erisman and Schaap, 2004; Schaap et al., 2004a). Over the following years focus shifted to analyzing (the origin of) episodic PM levels with high ammonium nitrate levels (Hendriks et al., 2016b). Reducing ammonia emissions can be effective, as long as it is not present

Formatted: Subscript

Formatted: Subscript

Formatted: Subscript

in a large excess (Banzhaf et al., 2013; Hendriks et al., 2016b). Furthermore, the model system ~~was also been~~ intensively used to assess land use specific nitrogen deposition and subsequent critical load exceedances for Germany (Bultjes et al., 2011; Schaap et al., 2017). ~~The Continuous development has been performed on the~~ deposition modelling ~~was developed further to include~~including e.g. the compensation point for ammonia, which describes the net deposition velocity taking into account ammonia re-emissions from the surface (water, soil and vegetation, (Wichink Kruit et al., 2010, 2012a) and droplet saturation effects for wet deposition (Banzhaf et al., 2012). These developments ~~have~~ resulted in a much larger consistency of the modelled air concentrations and wet deposition fluxes with observations. Still large uncertainties exist in the atmospheric budget of reactive nitrogen species, especially ~~also~~ in relation to ammonia (Sutton et al., 2013). This is explained by the short atmospheric lifetime and thus high spatial and temporal variability in ammonia levels combined with a lack of high quality monitoring capacity and large uncertainties in emission distributions. Detailing the temporal emission variability based on meteorology and agricultural practices is pursued to improve the model's skill to ~~capture~~reflect the intra annual variability of ammonia (Hendriks et al., ~~2016~~2016; Kranenburg et al., 2017). Currently, satellite products for ammonia are emerging, which show a great promise for the validation of the LOTOS-EUROS model and its emission information (van Damme et al., 2014). Besides nitrogen deposition, specific attention has been given to the exposure of terrestrial ecosystems to ~~ozone (ozone (i.e. Phytotoxic Ozone Dose or- PODy,~~ accumulated stomatal ozone flux over a threshold) (Bender et al 2017) and heavy metals (Nickel and Schröder, 2016). Figure 1 illustrates deposition and PODy applications of LOTOS-EUROS over Germany.

The modest computational demand for running LOTOS-EUROS enables ~~to perform~~ many or long term scenarios to be run. ~~With respect to climate change air quality interactions the~~ LOTOS-EUROS model has been used to evaluate scenarios assuming climate change, assuming energy policies and air quality mitigation policies, as well as land use change scenarios. At first, these were addressed separately. The LOTOS-EUROS model was connected to the regional climate model RACMO2-2 (Meijgaard et al., 2008) and ~~two transient~~ scenario simulations covering the gradual transition of climate (1989-2100) ~~from two global climate models downscaling global climate scenarios~~ were performed to assess the feedback of climate change on air pollutant concentrations. These simulations showed a significant climate penalty on ozone levels (Manders et al., 2012), whereas none was quantified for particulate matter (Manders et al., 2012, Mues et al., 2013). Also a semi-online coupling between RACMO2 and LOTOS-EUROS was established (Baklanov et al 2014) and contributed simulations to Phase II of the Air Quality Model Evaluation International Initiative (AQMEII) (AQMEII 2 (Brunner et al 2014, Im et al 2015a,b) in which on-line coupled models were evaluated for simulationssimulations of ozone and particulate matter for the year 2010. ~~Also land use change scenarios have been explored with LOTOS-EUROS.~~ The potential impact of future wide spread biomass plantations on ozone distributions was highlighted by Beltman et al., (2013). A recent scenario study for ozone showed that the impact of climate policies largely dominates over the concurring impact of land use change and that climate change might counterbalance the impacts of energy policies for ozone (Hendriks et al., 2016a). So far, common understanding is that except for ozone the impact of emission reduction largely exceeds the impact of climate change. However, dynamic evaluation of LOTOS-EUROS ~~showed~~shows that it does not fully capture the impact of hotter and dryer summers as occurred in 2003 in Europe on PM₁₀ levels (Mues et al., 2012) indicating that this issue is not fully resolved. ~~Dedicated energy transition scenarios targeted renewable energy generation with the EnerGEO project.~~ A study to the impact of shifting from combustion energy production to solar and wind energy without ample energy storage facilities showed thattemporal profiles of energy production facilities under a scenario with renewable energy deployment showed that the issue of increasing variability is relevant for that air quality is less positively affected than is often assumed, since combustion energy is needed to replace solar and wind energy at instances where air pollution accumulation is favouredfavouredduring the transition phase (Hendriks et al., 2015). In addition, the impact of a transition to a hydrogen economy was evaluated (Popa et al., 2015). To evaluate the ability of LOTOS-

EUROS to perform scenario studies the model was used to evaluate air quality trends over the past 25 years (Banzhaf et al., 2015, ~~Colette~~Collette et al., 2017-2016).

An important development for LOTOS-EUROS was the participation in the EU-FP6 project MACC and its successors. This project ~~was meant to prepare~~ was a preparation for the operational Copernicus Atmosphere Service (CAMS). ~~This~~ which is a European contribution to Global Earth Observation System of Systems (GEOSS) which provides Earth information to a broad range of users. Access to ECMWF analyses and forecasts ~~allowed~~ made it possible to use LOTOS-EUROS for the provision of a daily air quality forecast over Europe and the Netherlands, thereby outperforming and replacing the Dutch statistical models (Manders et al 2009). In this process KNMI came in as a partner for forecasting activities and assimilation.

The air quality forecast was shown to have considerable skill for the first 96 hours (de Ruijter de Wildt et al., 2011). In addition, time resolved information for boundary conditions and e.g. fire emissions became available. Currently LOTOS-EUROS is part of the regional air quality forecasting and analyses service ~~within the Copernicus Atmosphere Monitoring Service (CAMS).~~ This service provides operational forecasts and analyses of ~~a.e.~~ ozone, nitrogen dioxide and particulate matter based on an ensemble of seven models (Marécal et al, 2015). The LOTOS-EUROS forecasting service is run at

~~KNMI run operated at by the Royal Dutch Meteorological Institute (KNMI) in an operational weather forecasting environment so that disturbances are quickly resolved.~~ warranting a forecast availability of at least 98% of time. The forecasting system (Figure 2) provides 96-hr forecasts of air quality twice per day. The national service is now delivered through nesting within the European scale CAMS service. Figure 2 illustrates the data streams, nesting, and also shows the necessity for cooperation of the consortium partners. In addition to air pollutants, birch pollen concentrations are forecasted (Sofiev et al 2015). Currently, near real time surface observations of ozone, NO₂ and PM and satellite based OMI tropospheric NO₂ column data are assimilated to provide near real time-analyses of air quality (Denby et al., 2008, Curier et al., 2012).

Assimilation strategies for other components such as SO₂ (Barbu et al., 2009) and AOD (Segers et al., 2010) have also been investigated, but are not yet fully operational. The access to global input data has allowed to extend the area of operation to other regions in the world -(e.g. Timmermans et al 2017). Currently, operational forecasts are delivered for China (<http://www.marcopolo-panda.eu/forecast/>) and northern Africa (<http://sds-was.aemet.es/forecast-products/dust-forecasts/compared-dust-forecasts>).

Formatted: English (United Kingdom)

3 Model development strategy

3.1 Philosophy

The basic philosophy is that the model is both state of the art and reliable, since it has to be used for operational air quality forecasts and policy support applications. Scientific developments are included in the base version of the model after thorough testing of their benefits. This is the reason that we were and still are reluctant in the use of for example the VBS approach, ~~as for which the outcome depends heavily on assumptions as will be argued in Sections 4.3 and 6.4.~~ Furthermore, the level of detailing of a process ~~in the model~~ should match the general level of ~~detailing accuracy~~ detailing of the model, ~~regarding other modelled processes, model resolution, and the given~~ uncertainties in e.g. meteorological and emission input, ~~model resolution and the accuracy of other modelled processes.~~ On the other hand, the use of the compensation point for NH₃, the source apportionment (labelling) approach and data assimilation are features which distinguish LOTOS-EUROS from other models.

Formatted: Subscript

3.2 Version control

To be able to perform operational calculations, respond to customer requests and to be able to explain differences in model behaviour a development system has been adopted at TNO. The idea is that the impact of every model development, even as small as an alternative calculation of a meteorological parameter, is traceable. Hence, to document the impact of a development a benchmark test has to be performed to document the isolated impact of an alteration in the code. Although this approach adds additional workload, it is crucial for quality control, scientific understanding and documentation.

The model development is performed in projects based on a single base version. For each new development the developer adapts particular pieces of code, which are saved in a separate folder dedicated to the development project. The base code is combined with the altered code in the project folder to build an executable of the model. In this way several developments can be performed at the same time. Compilation of the model code takes place as a part of the initialisation of a (test) simulation. The model code, executable and simulation settings file are copied to the model output directory so that every simulation can be reproduced exactly.

Annually, the developments and their impacts are reviewed to select the functionalities which need to be maintained in a new base version. After completion of the new model version the full benchmark test is performed to perform quality assessment and quality control (QAQC) and assess the model performance in a statistical way. Previously, the benchmark test covered the year 2006. With the completion of the open source version of LOTOS-EUROS ~~also~~ the benchmark test ~~was/was~~ updated covering 2012. The new benchmark test described below was chosen as the measurement data availability has increased over recent years in Europe. Moreover, new input data become available (e.g. CAMS boundary conditions) for recent years, but are normally not provided for historical years. Hence, it appeared practical to start performing the benchmark tests for a more recent year.

3.3 Model evaluation

A major aspect of air quality modelling has always been model performance/-model validation (e.g. Fox, 1981, Rao and Visalli, 1981).- Each new model version as well as (dedicated) codes for use in particular projects are evaluated in comparison to

observations using standard statistical parameters. As such the operational evaluation as defined by Dennis et al. (2010) is executed very often. Dynamic and diagnostic evaluations are much more effort to carry out and are performed occasionally. For example, Mues et al. (2012) addressed the ability of the model system to reproduce the summer of 2003 with its exceptional heat wave, whereas Stern et al., (2008) showed general difficulties of capturing pollutant distributions during very stagnant conditions. Recently, Banzhaf et al. (2015) showed that the model system is able to reproduce non-linear behaviour observed in trends of secondary inorganic aerosol across Europe. In addition to the traditional model evaluation strategies a new perspective on assessing model performances is through data assimilation. Data assimilation techniques can be used to detect shortcomings in model descriptions and input data (see Section 6.1, below).

Apart from our own validations, LOTOS-EUROS participates as much as possible in model comparison studies in which the model performance is assessed in comparison to its peers. These exercises have increased the interaction with colleagues through dedicated discussions and exchange of experiences and have contributed to the detection of model flaws and subsequent improvement, in particular during the first studies. The first intercomparison was launched within EUROTRAC-GLOREAM (Hass et al., 1997), which was extended into the review of the EMEP model in 2004 (van Loon et al., 2004).

These studies were the basis of the CITYDELTA and EURODELTA studies in which the robustness of model responses to emission changes was studied with an ensemble of 7 chemistry transport models (van Loon et al., 2007). In addition, LOTOS-EUROS took part in intercomparison studies from COST (Stern et al., 2006) and AQMEII phase I (Solazzo et al 2012a, 2012b), phase II (Im et al 2015a,b) and the ongoing phase III –and has recently taken part in the EURODELTA phase III (Bessagnet et al 2016, Garcia Vivanco et al 2017) -and EURODELTA trend analysis in which several models have simulated the period 1990-2010 (Colette et al 2017). Through the intercomparison studies the team also benefits from (new) analysis techniques and expertise from a range of scientists. Such an innovation in model evaluation is applied in Solazzo and Galmarini (2016) -who analysed results in a new way to investigate behaviour of models on different time scales (seasonal-synoptic-daily-hourly). The model intercomparison studies have demonstrated that a model ensemble generally provides the best performance in comparison to observations, (e.g. Vautard et al 2009) as compared to the performance of individual models although this requires that models or model versions are independent (Potemski et al 2009).

4 Model description

This section briefly describes the most important features of the model version v2.0. A more elaborate description can be found in the model documentation (Manders et al 2016a)

4.1 Domain, grid

LOTOS-EUROS is a regional model on a regular longitude-latitude grid. It is typically used with a resolution of $0.5 \times 0.25^\circ$ on a domain covering most of Europe and the Mediterranean sea, but can be applied anywhere and with arbitrary grid resolution, provided that the horizontal resolution is not smaller than about 3 km. This is related to the vertical structure which is quite special to the model. In the vertical, the model consists of a static surface layer of 25 m, a dynamic layer extending from 25 m to the top of representing the mixing layer, and three dynamic reservoir layers, together covering, together filling the vertical between the top of the mixing layer to the lower-5 km altitude, of the troposphere altitude. In earlier version two reservoir layers extending up to 3.5 km were often used, with the top of the model domain at 3.5 km altitude, but also extension to 10 km has been done by adding more reservoir layers. The mixing layer is defined by the mixing height of the meteorological input and is interpolated in time. It has a minimum height of 50 m. The lower two reservoir layers are equally thick with a minimum of 500 m, and the third reservoir layer is designed to be 1500 m thick in order to extend from 3.5 to 5 km, unless the

mixing layer is very thick. In the mountains (or the tropics), the mixing layer may extend to more than 3500 m and the top of the model is extended to fulfil the requirements for minimum thickness of the reservoir layers. The large advantage of the current vertical structure is that it makes the model very efficient in terms of solving the chemistry, the most time-consuming process. However, if higher resolution is desired, the horizontal and vertical dimension could be out of balance -for the used parameterizations and- more layers have to be added within the mixing layer.

4.2 Tracers/species

The model ~~is~~was primarily aimed at air pollution. It models the gas-phase chemistry of ozone (O₃, NO_x, VOC, isoprene, CO), and gas-phase/aerosol conversions of -sulfur components (SO₂, SO₄), reduced nitrogen (NH₃, NH₄) and oxidised nitrogen (NO₃). It also explicitly models other primary PM constituents (elemental carbon, organic carbon, other primary PM, mineral dust, sea spray, heavy metals like Cr, base cations like Ca and Mg). -There is the possibility to calculate secondary organic aerosol with a 1-dimensional VBS scheme. For climate applications, CO₂ can be modelled as a tracer. The required groups of tracers for a simulation can be easily selected, e.g. including or excluding dust or CO₂, or modelling only inert species.

4.3 Chemistry

The gas-phase chemistry is a condensed version of CBM-IV (Gery et al 1999), with some modifications in reaction rates and can be found in (Manders et al ~~2016a~~2016). A kinetic pre-processor is used which makes it relatively straightforward to add or modify chemical reactions. For ~~the~~ secondary inorganic chemistry Isorropia II (Fountoukis and Nenes, 2007) is used and for the heterogeneous chemistry on wet aerosol we refer to (Wichink Kruit et al., (-2012b). Also a pH-dependent cloud chemistry is used (Banzhaf et al 2012). These chemical processes are used by default. Currently secondary organic aerosol is by default not modelled. Given the unrealistically small amounts of SOA added by modules like SORGAM (Schell et al 2001) that are used by other models the impact of SOA on total modelled particulate matter was too small to enhance model performance. Even more importantly, the uncertainties involved in such approaches may even introduce errors. We have now included the option to use the one-dimensional VBS approach (Donahue et al., 2006) with nine volatility classes in a very conservative way. Anthropogenic emissions of primary organic material are assigned to the four lowest volatility classes and an additional 1.5 times this mass is assigned to the higher five classes. There is no consensus in literature on how emissions should be distributed over the volatility classes. Our choice is based on the idea that emissions of organic material including condensables is 2.5 times the primary organic material as reported the emission inventory (an assumption based on Shrivastava et al., 2008) but with our own constraint that the total of the lower four classes should match the reported primary organic material emissions to be consistent with the default option without VBS. Isoprene and VOC contribute to SOA formation but the impact of terpene is not currently ~~not~~ taken into account. Although the impact of the latter is significant due to the relatively high mass of terpene as compared to isoprene, emissions and conversion rates are rather uncertain (Bergström et al 2012, Zhang et al 2013). Therefore, ~~therefore~~ the VBS is not used by default.

4.4 Meteorology

LOTOS-EUROS has interfaces to several meteorological model output sets. Atmospheric input fields must cover ~~Apart from~~ temperature, wind fields, boundary layer height, cloud cover and vertical distribution, incoming radiation and rain/snow and specific humidity. In addition the ~~also~~ surface properties (soil moisture,); sea surface temperature and snow/ice coverage are required. These are relevant for sea spray emissions, dust emissions and deposition velocities The ~~By~~ default for the model is ~~it uses~~ 3-hourly ECMWF short-term forecasts meteorology, interpolated to hourly values, but the model has also been run with

~~WRF and HARMONIE~~ meteorological input ~~from the regional-scale models WRF (Fast 2006, Grell 2004) and HARMONIE (Bengtsson et al., 2017) which run at higher resolution~~, and has been coupled semi-online to the regional climate model RACMO2 (Meijgaard et al 2008). ~~For when not all~~ ~~For some slowly-changing~~ meteorological ~~drivers/drivers fields are available~~, e.g. soil water content, representative average values can be used ~~when they are not directly available from the meteorological model~~. Friction velocity and Monin-Obukhov length are calculated on-line based on the land use parameters (roughness length) of LOTOS-EUROS and -wind speed, solar zenith angle and cloud cover.

4.5 Emissions

Emissions of biogenic NMVOC, mineral dust (wind-blown dust and resuspension caused by traffic and agricultural practices) and sea salt are calculated on-line using meteorology-dependent ~~parameterizations/relations~~ described in Schaap et al. (2009). Sea salt emissions are calculated according to Mårtensson et al., (2003) and Monahan et al., (1986) based on 10m wind speed and sea surface temperature. Hourly emissions from forest fires are taken from the MACC global fire assimilation system (Kaiser et al., 2012). Emissions of NO from soils ~~are/was~~ included using the parameterization depending on soil type and soil temperature from Novak and Pierce (1993). For the emissions of isoprene and terpene the MEGAN routine is available (Guenther et al 2006), but for Europe a slightly different approach is taken using a tree species database, as described in Beltman et al (2013). LOTOS-EUROS calculates on-line dust emissions based on the sand blasting approach by Marticorena & Bergametti (1995) ~~based on the concept that large sand particles that are transported horizontally by the wind, hit the ground and then release small dust aerosol particles that are then taken up higher in the atmosphere and contribute to the dust load. The full This process description includes the impact of and includes/ding~~ soil moisture, soil composition and uses as input a soil database and a map that indicates the areas that are most prone to emissions due to their topography (~~inhibition~~, potential sources ~~and a soil map~~) (e.g. Mokhtari et al 2012). Since soil emissions are very sensitive to ~~region-specific~~ local conditions the optimal settings depend on the region.

~~Several sets of anthropogenic emission inventories are available. For applications over Europe, the~~ TNO-MACC-III emission database (available for 2000-2011) ~~is mostly/was~~ used for the anthropogenic emissions of NO_x, SO₂, CH₄, CO, NMVOC, NH₃, ~~primary PM_{2.5} and primary PM₁₀ and are therefore used/PPM₁₀ in this study~~. Primary PM is assigned to the fine and coarse EC, OC and PPM (other) tracers using PM split tables. ~~The his~~ TNO-MACC-III database is an update from the TNO-MACC-II dataset (Kuenen et al., 2014) and contains high-resolution (0.125 x 0.0625 ° lon-lat) gridded emission information based mainly on official country reporting of national emissions to UNECE and the EU. ~~To construct the emission database, reported emissions,~~ ~~Emissions,~~ are presented in aggregated source categories (SNAP levels) as a total annual sum for each country. ~~These~~ have been disaggregated spatially using actual point source locations and strengths as well as several proxy maps for area sources (Kuenen et al., 2014). ~~The emission inventory itself contains annual totals of emissions, which have to be distributed over time.~~ The temporal disaggregation of emissions is done using sector-specific monthly, daily and hourly time factors and include temperature-dependent factors for CO and VOC to account for a cold start for passenger cars. ~~These time factors are part of the model's input and are based on Roemer et al. (2003).~~ In the vertical, fixed emission profile per SNAP code are used (following the approach of EURODELTA, Thunis et al., 2008, see Manders et al., 2016a for details). ~~If desired, scenario/Scenario~~ factors on specific countries or source sectors can be defined in a separate file and dedicated emission sets can be ~~integrated/ingested~~ without changes to the code. ~~Data from other emission inventories (e.g. EDGAR, EURODELTA emission sets) have been used as well, and can be used without changes in the model code after some preprocessing to meet the rather straightforward input conventions.~~

4.6 Land use

Land use data are an important input parameter to model biogenic emissions of NMVOC, emissions of mineral dust and NO from soils. Moreover, the land use type determines dry deposition characteristics of atmospheric species. We use the Corine2000 Land Cover database (EEA, 2000) with a grid resolution of 0.0167° (~1.9 x 1.2 km² at 50° North) in longitude and latitude over Europe. This database is complemented with the distribution of 115 tree species over Europe (Koeble and Seufert, 2001). The combined database (which can be updated with Corine2006, EEA 2007) has a resolution of 0.0166° X 0.0166° which is aggregated to the required resolution during the start-up of a model simulation. Each grid cell in LOTOS-EUROS is characterised by the fraction of several types of land use in that particular grid cell. A land-sea mask at 0.00894/442 degree lon-lat resolution (based on the World Waterbodies GIS map, <http://library.duke.edu/data/files/esri/esridm/2013/world/data/hydropolys.html>) is used to distinguish land area, inland water and seas in more detail. The Black Sea, Caspian Sea and Sea of Azov, labelled "perennial inland water" in the World Waterbodies database where ~~relabelled~~ to "ocean or sea" instead, since they are so large that waves may develop that have significant impact on deposition velocity.

4.7 Deposition

Wet deposition is divided ~~between~~ in-cloud and below-~~cloud~~ scavenging. An in-cloud scavenging module based on the approach described in Seinfeld and Pandis (2006) and Banzhaf et al (2012) is included, the previous simple below-cloud scavenging approach with scavenging coefficients for aerosols and gases (Simpson et al. 2003, Scott 1978) was left for backward compatibility. Although the first option is preferred for new simulations, the latter options was used for the simulation in this study as the conservative option to compare with previous versions. For dry deposition, a resistance approach is taken. The parameterizations by Zhang et al (2001) are implemented for particles, for gases the DEPAC module is used (Van Zanten et al 2010). Dry deposition velocities are not only used for the calculation of removal of species, but also to translate concentrations ~~in the surface at the lowest model level~~ to concentrations at observations height (2.5 m). This is done by calculating Assuming a constant flux, a concentration gradient can be derived between observation height and the height at which the deposition velocity is calculated, assuming and the observation height. by using a constant flux over this part of approach in the column lowest layer. For NH₃ a compensation point approach is implemented (Wichink Kruit et al., 2010, 2012a).

4.8 Boundary conditions

Boundary conditions are an essential part of regional models, in particular for components with long lifetime like CH₄ and high hemispheric background concentrations like O₃. As a basis set, the climatologies by Isaakson and Logan are chosen, with the Mace Head correction for ozone as provided by EMEP (based on Derwent et al 2007). More detailed boundary conditions can be provided by global models (e.g. TM5) or the global systems in the CAMS system. For operational applications, CAMS boundaries are used for several components. Near real time boundary conditions originated from the global MOZART model in the past and for more recent years boundary conditions from ~~more recently~~ the CIFS system (Flemming et al 2015) are available. When model versions are updated or new data become available for assimilation the signature of the boundary conditions may change significantly, with large impact on e.g. ozone background levels and thus on model performance of LOTOS-EUROS. Next to near real-time boundary conditions ~~also~~ reanalysis data are available from CAMS that provide longer and consistent series. Which set of boundary conditions is used depends on the application. For high-resolution applications we use a LOTOS-EUROS simulation on a larger domain to nest our smaller high-resolution domain.

Formatted: Subscript

5 Benchmark for 2012

5.1 Set-up

5 To evaluate LOTOS-EUROS model performance, we use a simulation for 2012 with input datasets specified in Table 1. These inputs are commonly used in LOTOS-EUROS studies. In operational applications, ~~often~~ boundary conditions from global models are often used (e.g. MACC products) but their quality depends on the year they are produced. The MACC reanalysis product has brought an improvement on this but still seasonal and regional biases were observed (Katragkou et al., 2015). For ~~Since their impact is rather large, For~~ this validation study we have chosen to use climatological boundary conditions and the Mace Head correction for ozone based on Derwent et al 2007, provided by EMEP. This dataset lacks day-to-day variability but has representative monthly average background levels that are based on long-term observations. Such climatologies were not available for sea salt and dust. A substantial part of the sea salt is generated internally in LOTOS-EUROS, covering part of the Atlantic. The zero boundary condition ~~This will lead to an underestimation of sea salt mainly at the West coasts of Ireland and Spain.. For dust the inflow is highly episodic with high aerosol loads. For dust, the main sources are outside the current~~ modelling domain. Dust products from models covering the Sahara and Middle East. are still very uncertain and are therefore not used in this model evaluation. The impact of zero dust boundary conditions will be an ~~and~~ underestimation of dust for some episodes mainly in the Mediterranean area.

20 5.2 Observation data and evaluation

The principal source of observation data used in this benchmark is the EMEP network (Tørseth et al., 2012), which provides data from rural and remote measurement stations on an hourly or daily basis. Time series for concentrations of O₃, NO₂, NH₃, SO₂, PM₁₀, PM_{2.5}, EC, Na, dust, NO₃, TNO₃, SO₄, NH₄ and TNH₄ ~~were~~ are available and were used for the model evaluation. For ~~secondary aerosol composition data~~ secondary inorganic aerosols the time series for the EMEP aerosol samplers without inlet specification ~~and as well as~~ and PM₁₀ samplers were both ~~are combined~~ both used to increase the data availability. In addition, chemical analysis of monthly rain water samples was used to evaluate the modelled wet ~~depositions,~~ deposition fluxes. Stations located at an altitude above 700 m ~~were~~ are not considered, and data flags ~~were~~ are taken into account by excluding all data points with irregularity. Moreover, a visual screening of the data was performed to assess the quality of the data. Obvious reporting errors mostly concerning unit conversions were found and corrected when confirmed through checks with earlier data downloads. A data availability of >75% was chosen for a station to be included, which is rather strict but prevents comparison of stations that have operated for only part of the year, omitting for example a full season. Only for Na and EC the availability criterion was set to 50% since these require laboratory filter analysis which is for most stations done less often. The observation data set is frozen as the dataset needs to be used for the validation of future versions for a number of years ahead, and EMEP may update its data. The operational model evaluation was ~~is~~ carried out through the calculation of standard statistical measures such as root mean square error (RMSE), bias, ~~Bias~~ and spatial and temporal variability. To ~~Average correlation and bias are presented to~~ reduce the size of the tables, we displayed the average over all stations of the mean and bias of time correlations per station. The spatial correlation is based on annual mean values of all stations. For the performance on individual stations we refer to the validation report (Manders et al 2016b).

5.3 Results

Annual average modelled concentrations of O₃, NO₂, NH₃, SO₂, PM₁₀, PM_{2.5}, EC, sea salt, NO₃, SO₄ and NH₄ are shown in Figure 3. They represent the common features related to emission hotspots for emissions related to combustion (large cities, densely populated areas for NO_x, EC) and agriculture (NH₃, most prominently North Western Europe, southern Germany, -Po Valley and Bretagne). For SO₂ and SO₄ Poland and South-Eastern Europe are dominant, where coal use is relatively large and desulfurization is not applied everywhere. OC concentrations are larger in areas with wood combustion. Ozone shows a pattern that is related to both temperature (increasing concentrations for southern latitudes) combined with lower concentrations in areas with high NO for ozone titration. The secondary inorganic aerosols show a pattern that is a smoothed version of the precursors due their longer lifetime and resulting transport distances. Sea salt clearly shows a strong gradient near the coast, with generation over sea and rapid removal by deposition over land. The zero boundary conditions for sea salt result in unrealistic values at the western boundary of the domain. Not using a dust boundary condition leads to too low PM₁₀ concentrations in the southern boundary of the domain.

Figure 4 illustrates ~~the time series correlation~~ for ozone (a) and PM₁₀(b) for a station in the Netherlands, ~~comparing modelled and observed concentrations.~~ Vredepeel is a rural station in a region with intense agriculture and part of the time influenced by the ~~traffic and household emissions from the nearby and densely populated Ruhr area in Germany.~~ Ozone is slightly overestimated in summer but in general in close agreement with observations, with periods of elevated concentrations during warm conditions. For PM₁₀ LOTOS-EUROS generally underestimates the concentrations with a few µg/m³ but clearly underestimates concentrations in a few peak episodes. ~~These are mostly related to cold and stagnant winter episodes with more emissions and less ventilation.~~ ~~Cold, cold~~ and stagnant conditions are generally an issue for air quality models as input for wind speed, stability and boundary layer height from numerical weather models is not always accurate (Bessagnet et al., 2016). In addition, cold weather leads to more emissions for residential heating, which is not taken into account with the emission time profiles used here. ~~This has in particular impact on the effect of wood burning emissions, that may contribute significant amounts of (secondary or condensable) organic aerosol which is not accounted for in the present emission inventory or accounted for by a SOA implementation.~~

Table 2 reveals that the spatial correlation, ~~based on the annual mean values for the different stations,~~ is very good for all components, with 0.68 for ozone as the lowest values and values up to 0.95 for NH₃. ~~This means that the model is able to represent spatial differences between regions.~~ Spatial correlations for annual mean ozone are relatively poor due the following aspects, which differ per region and station. The annual cycle is strong in the South and weak in the North of Europe ~~and the annual cycle is relatively poorly reproduced for Scandinavian and Baltic stations.~~ ~~Very, very~~ low night time concentrations for some stations are not captured by the model ~~and,~~ there is an overestimation of baseline concentrations at the western part of the Iberian peninsula due to high boundary conditions. ~~and a relatively poor reproduction of the annual cycle for Scandinavian and Baltic stations.~~ For summer daily maximum and 8-hourly maximum, for which these effects are much reduced, the spatial correlation is indeed very high. This also influences the average performance in time correlations. ~~Time correlations are calculated per stations and then averaged, and these averages, which~~ are quite low, although for many individual stations high correlations for daily maximum and summer 8-hourly maximum are found (e.g. 0.75 for Kollumerwaard). In contrast, despite the excellent spatial correlation, the time correlation for NH₃ is one of the poorest. The reason is that emissions of NH₃ depend strongly on meteorology in reality (favourable circumstances for manure application, temperature-dependent stable emissions) and NH₃ is deposited quickly. In the simulation long-time average time profiles were used for emissions, thus day-to-day variations in emissions were not taken into account. In section 6.3 this is explained further.

Formatted: Subscript

Due to different uncertainties per model component (emissions, chemical conversions, chemical interactions between species, deposition) all modelled species have a different behaviour.

5 Figure 5 shows modelled annual total wet and dry deposition of oxidized and reduced nitrogen and oxidized sulphur in terms of equivalents per hectare per year, a commonly used unit for ecosystem modelling. For dry deposition fluxes, patterns broadly reflect the emission patterns, smeared out by transport. For wet deposition areas with large precipitation sums (coast and mountain areas) are additional hot spots, particularly well visible for oxidized nitrogen..NO_x. The comparison of modelled with monthly mean rain water concentrations concentration observations of NH₄, NO₃, and SO₄ with observations from the
10 EMEP network is in Table 2, and Figure 3. The spatial correlation of annual mean concentrations in rain water across Europe is very good with values around 0.8, but the temporal variability of monthly observations per station is poorly reproduced. Figure 4c4 illustrates this for Kollumerwaard, a rural station in the North of the Netherlands, close to the Wadden Sea. Annual average values are underestimated for most station, although in the time series per station in some months overestimations and
15 in other months underestimations occur, resulting in modest time correlation. For wet deposition samples only 12 values per year are available. This limited set of data points drastically reduces the significance of the correlation and eventual outliers are not easily identified. Wet and dry deposition process descriptions are relatively poorly constrained by direct measurements of deposition velocities and scavenging rates. Additional inaccuracies arise from the sometimes local character of rain which is not captured by the scale of the model and meteorological model input. A detailed discussion and model intercomparison of wet and dry deposition can be found in Garcia Vivanco et al 2017.

20

6 Research areas and innovative applications

The core of the model is a reliable and efficient calculation of gas-phase and PM_{aerosol} components. This core version is the open source version, that can be obtained after submission of an agreement form on www.lotos-euros.nl. Here we highlight the
25 model's special functionalities and applications, which are not all part of the open source version. The source apportionment and particle number modelling features are not part of the open source version of LOTOS-EUROS v2.0 as they are in the research phase and the code is updated relatively often. The data assimilation system is a separate shell around the model and not part of LOTOS-EUROS itself.

6.1 Data assimilation system

30 A range of techniques can be used to assimilate, or combine, observations with modelled concentration maps for analyses of air pollution situations. Passive data assimilation methods include statistical assimilation techniques such as optimal interpolation methods, residual kriging methods, regression and multiple regression techniques, e.g. Blond et al. (2003); Horálek et al. (2005; 2007). These assimilation techniques are most often applied 'off-line' in a sense that the model output is combined with observations as a post-processing step. Modelled air pollutant distributions of LOTOS-EUROS and its predecessors have regularly been used to investigate new offline methodologies (e.g. Kasstele and Velders, 2006; Kasstele et al., 2006; Hamm et al., 2015) in order to construct the optimal representation of air pollutant concentration or wet deposition fields. However, these techniques do not provide information on uncertain model parameters, such as emissions, and are often difficult to apply within an operational forecasting system. These methods can be applied for long-term-averages as well as for instantaneous concentration fields. For air quality forecasting applications the positive impact of the data assimilation of
35 observations is usually quickly lost (within 1 day) when only updating the initial state. However, This is because these

40

techniques do not provide information on uncertain model parameters, such as emissions, that should be adapted to reduce differences between model results and observations, and are often difficult to apply within an operational forecasting system.

Additional updates of emissions through active data assimilation have been shown to lead to improvements that last longer (Lahoz et al., 2007; Timmermans et al., 2009; Curier et al., 2012). To allow parameter estimation and further improvements of forecasts, emission monitoring assimilation strategies for air pollutants were developed since the late nineties. Central to the assimilation of observations with LOTOS-EUROS has been the development of an Ensemble Kalman filter system (EnKF) (Evensen 1994), which allows updates of model parameters, e.g. emissions, through the assimilation of observations. In this case an ensemble of model simulations is realised, each with slightly different settings representing the uncertainties in the parameters, depending on the match with observations the optimal settings can be selected. LOTOS-EUROS with EnKF has been applied in a number of applications directed at ozone, sulphur dioxide and/or nitrogen dioxide (e.g. van Loon et al., 2000; Hanea et al., 2004; Barbu et al., 2009; Van Velzen et al 2010, Curier et al., 2012) as well as particulate matter (Denby et al., 2008 and Figure 6) and volcanic ash (Fu et al., 2015). Besides in-situ data, satellite tropospheric NO₂ column observations (OMI: Curier et al., 2016) as well as Aerosol Optical Depth (AOD) (SEVIRI: Segers et al., 2010) have been successfully assimilated in the LOTOS-EUROS model. Figure 6 illustrates the improvement in PM₁₀ forecasting by assimilating PM₁₀ ground observations. This example is chosen because it represented an episode with exceptionally high PM₁₀ concentrations over large parts of Europe, that could not be explained by merely changing the emissions of the existing tracers within the ranges of uncertainty. For the baseline concentrations the model performs reasonably well, but for the episode with high concentrations an unspecified tracer had to be added. This tracer could represent large contributions of SOA from wood burning or wind-blown dust from bare soil during this cold and dry period. The example shows the considerable gain in forecast skill by using data assimilation in the right way.

Formatted: Subscript

The assimilation system has also been used to assess the added value of future satellite instruments through so-called Observation System Simulation Experiments (OSSE's, Timmermans et al., 2015). The added value of a future observation system is investigated by producing synthetic observations using a different model simulation (nature run), and assimilate these data in the model. Experience has been obtained for potential new instruments for aerosol optical depth (Timmermans et al., 2009) and nitrogen dioxide (Eskes et al., 2017). To improve the parameter estimation with respect to emission strengths a new direction is to explore variational assimilation techniques that ~~do~~ not require the implementation of the adjoint model of LOTOS-EUROS (Lu et al, 2016). Also remote sensing has evolved from only detecting AOD to retrievals of microphysical properties like aerosol size and number, which may be assimilated in the future.

6.2 Source apportionment

LOTOS-EUROS includes a source apportionment technique to track the origin of air pollutants (Kranenburg et al., 2013). This module tracks the contribution of sources through the model system using a labeling approach similar to Wagstrom et al. (2008). The emissions can be categorized and labeled in several types of categories (e.g. countries, sectors, time of emission) before the model is executed. The labeling routine is implemented for both inert and chemically active tracers containing a C, N (reduced and oxidized) or S atom. Among other applications, this module was used to study the origin of particulate matter in the Netherlands (Hendriks et al., 2013), changing source receptor relations for energy scenarios in Europe (Hendriks et al., 2015) and particulate matter sources in Chinese cities and regions (Timmermans et al 2016). Another application was to investigate the sensitivity of the OMI instrument to NO_x emission sources in Europe (Schaap et al., 2013, Curier et al., 2014). The module was also recently used on a high resolution application for the Netherlands to determine the influence of several

source sectors (e.g. shipping, road transport and residential heating) to PM concentrations at city scale. Figure 7 illustrates the case for Rotterdam, giving detailed insight in the contribution of several sectors at specific air concentration levels. By splitting the information in contributions of source regions and sectors, the potential of local measures to reduce air pollution can be quantified and could be used ~~to issue~~for local measures when poor air quality is forecasted.

5

6.3 Emissions modelling

~~Emissions are partly model input and partly integrated in the model, therefore we speak of emissions modelling here. Annual totals of anthropogenic~~Annual totals of emissions are known relatively accurately due to emission reporting obligations and the spatial distribution can be derived from e.g. population density and road networks. ~~These inventories are pure model input data. Natural emissions of sea spray, dust and biogenic VOC are strongly dependent on meteorology and are calculated on-line.~~Assessments of emission information can be done by comparing model outcomes with satellite or ground-based observations. This method can be used to check the total quantity of emissions (Curier et al., 2014) or mislocations of sources.

10

Relatively much improvement in model performance comes from improving the timing of emissions. The distributions of emissions over time are poorly represented by the default time profiles that are used, as they are based on average annual cycles. In a study focused on Germany, timing of emissions was improved by using traffic counts for the road transport sector, electricity demand for the power plant emissions, and using air temperature for redistributing residential combustion emissions (concept of heating degree days), leading to better model performance. ~~When using all new time profiles simultaneously the time correlation coefficient of daily average values increased by 0.05 (NO₂), 0.07 (SO₂) and 0.03 (PM₁₀) at urban background stations in Germany.~~ (Mues et al., 2014). Also ammonia emissions from agriculture are strongly depending on meteorology (temperature, temperature sums, rain). Figure 8 shows an example where local legislation and meteorology were taken into account in the NH₃ emission time profiles (Hendriks et al 2016b), extending the work of Skjøth et al. (2004;2011). Such advanced timing of anthropogenic emissions is accounted for in a pre-processor of the emissions and not part of the LOTOS-EUROS code. The relatively recent availability of new meteorological variables for soil conditions (moisture, temperature, evaporation) can further improve the timing and amount of natural emissions from soils (~~more advanced NO_x scheme, Dammers 2013, not part of LOTOS-EUROS v2.0~~); and mineral dust, see below) which are calculated on-line.

15

20

25

6.4 Aerosol modelling improvement

There is still a gap between observed and modelled PM₁₀ concentrations. For some species the correspondence with observations is quite good. For others it is more uncertain. Recent developments in aerosol modelling in LOTOS-EUROS include the implementation of the VBS scheme, an update of the modelling of desert dust and the implementation of a module including nucleation, condensation and coagulation to describe particle number concentration and evolution, which are described in the following paragraphs.

30

35

LOTOS-EUROS v2.0 has now an implementation of the VBS scheme for **secondary organic aerosols** as a promising method. The use of previous existing parameterizations (e.g. SORGAM, Schell et al. 2001) did not lead to a significant improvement of model performance in LOTOS-EUROS and SOA chemistry was therefore not applied. Model intercomparison studies with models that did include VBS or SORGAM justified this decision. Depending on settings of the model, still a wide range of results can be produced (Bergström et al 2012). In its current conservative implementation in LOTOS-EUROS, differences with and without VBS are in the order of less than 1 µg/m³ (less than 3%) on the annual average concentrations and therefore

40

Formatted: Subscript

VBS is not used by default. But when settings and reaction rates become more well established the VBS scheme can be activated or extended.

Mineral dust is the dominant contributor to PM₁₀ in some areas of the world and during specific events. It is generated from deserts but also from bare agricultural soils outside the growing season. Good modelling of mineral dust emissions is a challenge and results from different models are easily a factor ten apart. This is because generation of windblown dust is very sensitive to local wind speed and to regional and local roughness length (Menut et al., 2013b) and soil characteristics (Mokhtari et al., 2012). Therefore all models use tuning factors to come to optimal settings for the region of interest. LOTOS-EUROS has been used to model dust from ~~European dust events (unpublished), from the Gobi desert (Timmermans et al 2016) and from the Sahara.~~ (LOTOS-EUROS is ~~now~~ part of operational ~~Sand and Dust Storm Warning Advisory and Assessment System (SDS-WAS) for the Northern Africa-Middle East-Europe region dust warning system~~ since November 2016, see also Figure 9.) ~~and for European dust events (unpublished).~~ LOTOS-EUROS is one of the few models that explicitly includes dust from road resuspension and agricultural activity (input in this moment only available for Europe).

LOTOS-EUROS can use the M7 module (Vignati et al 2004) to model **particle number (PN) concentrations**, including the processes of nucleation and condensation of H₂SO₄ and coagulation of particles. Particle numbers are dominated by the size range of a few nm up to 300 nm which includes ultrafine particles (UFP, corresponding to PM_{0.1}). UFP contribute little to total PM mass but they are relevant since they are abundant, ~~and~~ can intrude deeply into the lungs with adverse health effects. Slightly larger particles in the range of 100-300 nm are relevant for climate modelling as they may grow towards the size of cloud condensation nuclei ~~make them relevant for climate~~ (e.g. Kulmala et al 2011, Paasonen et al 2013). In LOTOS-EUROS, M7's original nucleation scheme by Vehkamäki ~~et al (2002)~~ has been replaced by an activation type (Kulmala et al 2006) to be more representative of the boundary layer instead of the ~~free~~ troposphere, leading to a better correspondence with observations. The model performance ~~was~~ best for areas that are dominated by anthropogenic sources. For model validation, a description of emission input, and application as background model for city-scale models we refer to Kukkonen et al., 2016. The modelled size distribution ~~does~~ not match the observations very well, with an overestimation of small particles concentrations and an underestimation of large particles. This problem with size distribution ~~was~~ comparable to a similar model application with CAMx (Fountoukis et al., 2012). Nevertheless, the overall total modelled number concentrations ~~were~~ in the right range. It has also been applied at high resolution over the Benelux area (see Fig. 10), showing the large contribution of road and ship traffic to ultrafine particle concentrations. In general, UFP and PN modelling, as well as PN emission inventories, needed as input, are a recent development where significant further research is needed.

7 Discussion and outlook

The decision to join the Dutch modelling capacity and unite LOTOS and EUROS has proven fruitful. ~~The next step is to extend the user community from the Dutch consortium to a larger group. To facilitate this the model version 2.0 was made available as an open source model.~~ After ten years of model development the LOTOS-EUROS model is in good shape and the general performance of v2.0 is satisfactory. In model intercomparison studies LOTOS-EUROS falls well within the range of other models and is for some species among the best performing models (see e.g. Bessagnet et al., 2016, Im et al. 2015a, 2015b for the performance of recent previous versions). These studies also show that there is no single model that is best for all species. During its development from v1.0 to v2.0 LOTOS-EUROS has retained the original set-up with the efficient layer system and the model can be applied for both operational forecasts and long-term climate and scenario applications. The

Formatted: Subscript

Formatted: Subscript

Formatted: Subscript

labelling technique and data assimilation make LOTOS-EUROS stand out. ~~The next step is to extend the community and the model version 2.0 was made available as an open source model.~~ There are several lines of research for further improvement.

5 A large remaining issue is the general underestimation of PM mass by LOTOS-EUROS, –a feature that is shared by most chemistry transport models. In v2.0 this underestimation of PM₁₀ was reduced as compared to previous versions, amongst others by a change in deposition velocity for arable land outside the growing season, new meteorological input data, and taking soil NO_x emissions into account. –To further improve upon this, we need to further develop several aspects of the model that we will discuss now. Model evaluation showed that secondary inorganic aerosols were underestimated on average, in particular SO₄ and NH₄ and to a minor extent NO₃. –Part of the SO₄ underestimation is related to PM peak episodes in winter, and thus related to issues with emission timing and poor representation of mixing during stagnant conditions. Also too inefficient heterogeneous chemistry could play a role in the underestimation by underestimating the conversion of SO₂ to SO₄. As indicated above, another part of the missing ~~PMaerosol~~ must come from secondary organic aerosol. The VBS approach seems a good starting point (Bergström et al 2012), but not all issues are solved yet. Next to the current 1-D VBS scheme, 2-D schemes have been developed, not only taking into account the saturation vapour pressure but also the O:C ratio (oxygenation state) (Donahue et al 2011). In addition, the ~~importance and pathways role~~ of reactive nitrogen ~~were demonstrated by becomes more clear~~ (Pye et al., 2010, 2015). ~~Reactive nitrogen~~, which is not ~~yet~~ taken into account ~~yet~~. These developments have contributed to a better description in other studies (Pye et al., 2013). But also using a better emission inventory for OC, including the condensable fraction of the aerosol directly in the emission inventory (Denier van der Gon et al., 2015) made a large difference in bridging the gap. The improvement of emissions ~~and emissions modelling~~ (e.g. Mues et al., 2014, Hendriks et al., 2016b) is and will be one of the focal points of –LOTOS-EUROS ~~development and application.~~ It brings together expertise on emission inventorying and data assimilation. Improvements ~~in absolute quantity, spatial distribution and time distribution~~ are possible as more detailed information becomes available in terms of reporting, near-real time activity data, and satellite observation. Also ~~dependency on the variability of emissions with~~ meteorological conditions will be modelled more ~~explicitly/realistically~~ in the future (e.g. ~~more advanced~~ soil NO_x emissions, manure spreading, heating degree days).
25 Natural emissions of NO_x from soil are dependent on soil type, soil moisture, precipitation and evaporation, and temperature. An improved description of soil NO_x emissions was developed (Dammers,2013), making use of more detailed soil characteristics like soil moisture, but as yet this was not implemented in an official model release. More differentiated time profiles become even more important when going to higher resolution.

30 More detailed land cover information is required for improved model performance, in particular now that the model is applied over different regions in the world. A step forward would be the harmonization of all soil characteristics, vegetation maps and land use maps necessary for the calculation of –natural emissions and for deposition. A future development would be to include a roughness length map instead of a using fixed roughness length for land use categories (e.g. Menut et al., 2013b), ~~which is particularly relevant for areas which are classified as desert but the nature of this desert varies strongly per region. This could be achieved relatively easily.~~–In addition, areas may be partly covered by vegetation during part of the year and bare during other seasons, which is not taken into account yet and leads to overestimations of dust emissions or deposition for some regions. ~~–A better incorporation of knowledge of local agricultural practices would be needed in order to determine when and where large areas of agricultural land are susceptible to wind erosion, and when dust emitting activities like ploughing or harvesting take place (Schaap et al., 2009). Such a calendar for agricultural activities is implemented in LOTOS-EUROS for Europe. Technically it is easy to adapt this calendar, but it has not been done for other regions.~~ Deposition on vegetation, pollen release and release of biogenic VOC would benefit from vegetation indices that go beyond climatological growing season descriptions. ~~Satellite.~~ ~~A better incorporation of knowledge of local agricultural practices would be needed in order to determine when and~~

~~where large areas of agricultural land are susceptible to wind erosion, and when dust-emitting activities like ploughing or harvesting take place (Schaap et al 2009). Also ~~S~~satellite-based vegetation indices could be used, even near-real time. This would be a relevant development in terms of modelling soil-biosphere-atmosphere exchange which is getting more attention in view of earth system modelling and understanding of chemical cycles of N or CO₂ budgets. This would however include an additional data stream and the gain in model performance is still uncertain.~~

A recent development in regional-scale chemistry transport models is to run at high resolution (e.g. ~~Colette~~Collette et al 2014 at 2 km resolution, Kuik et al 2016 at 1 km resolution) to describe strong gradients within cities. Next to representing strong gradients in cities, for some areas with intensive agriculture, it is desirable to calculate ammonia concentrations and deposition at this high resolution so that the model can be better used for regulatory purposes. LOTOS-EUROS is being developed to function at this high resolution. ~~Because of the specific vertical structure of the model, with the mixing layer as first dynamical layer, this is not possible by simply increasing the horizontal grid resolution as this layer may easily become thicker than 1 km. Also In particular~~ the vertical structure has to be adapted, with more vertical sublayers in the mixing ~~layer-layer~~. ~~The efficient use of mixing layer and reservoir layers has been one of the distinguishing features of the model but is out of balance at high resolution.~~ A version in which more vertical layers are implemented without losing the model's characteristic efficiency is under construction. ~~The concept is to relate the model's vertical layer structure and will be closely related to the vertical layers of the driving meteorological model, combining a few of them in a single LOTOS-EUROS layer.~~ For high-resolution ~~applications~~resolution application meteorology at higher resolution than now available ~~from form~~ ECWMF is required. Such high-resolution meteorology is available from regional models like WRF ~~and regional~~(Past 2006, Grell 2004) ~~and~~ models operational at European weather institutes (e.g. HARMONIE, COSMO (<http://www.cosmo-model.org/>), ~~both consortium models of several national weather institutes~~) that are aimed at short-term forecasts at high resolution. Interfacing to these meteorologies is under development. To overcome the intrinsic larger computation times at high resolution, the implementation of domain decomposition would be necessary to enable efficient parallel computing.

Alternatives for a high resolution of LOTOS-EUROS itself are the implementation of a plume in grid approach (Seigneur et al 1983, Karamchandani 2011, Rissman et al., 2013) and the (off-line) coupling with plume or street models (Brandt et al, 2001, Kukkonen et al 2015). An intermediate solution for the calculation of annual average maps, has been demonstrated for the Netherlands by combining the LOTOS-EUROS results with those of the Dutch Operational Priority Substances (OPS) model (Van Jaarsveld, 2004; Sauter et al., 2015), ~~which is based on Gaussian dispersion.~~ Van der Swaluw et al., (2017) describe how model outputs were combined in such a way that contributions to concentrations in the Netherlands that stemmed from Dutch emission sources were obtained at high resolution from OPS and contributions from abroad were delivered by LOTOS-EUROS. This intermediate approach is useful for certain applications, however it does not fully exploit the possibilities of a full plume in grid approach in which the plume and the regional-scale model interact at each time step.

The development towards high resolution is largely a technical one. Societal needs will involve more than high resolution. These include questions related to more detailed health- and climate related scenarios, such as emission and transport of ultrafine particles and man-made particles including nanomaterials, emissions and monitoring of species related to shale gas production. Operational services like CAMS and new satellites that will be launched in the (near) future will push the generation and use of data streams to a next level. Not only air quality is relevant, but also derived quantities like forecasting solar energy are emerging. Areas which receive much solar radiation in cloud-free conditions suffer most from dust. On the input side, near real time data on land cover, vegetation height etcetera could improve model performance. The increased level of detail that is represented in the denser network of ground-based and satellite observations can only be mimicked if the model input is in the same detail, since process parameterizations in the model are generic with as little tuning as possible.

The wealth of new input data, –verification data, societal and scientific questions ensures that modelling of atmospheric composition is still a lively field of research and LOTOS-EUROS has the potential for further development to meet future needs.

5

Code availability

LOTOS-EUROS is written in FORTRAN90 and uses NetCDF libraries and python scripts. The open source version of LOTOS-EUROS can be obtained through <http://www.lotos-euros.nl/open-source/index.php>. Additional functionalities can be disclosed upon request (astrid.manders@tno.nl).

10

Author contributions

A. Manders: Preparation of text with contribution of other authors, contribution to development, validation and applications of LOTOS-EUROS

15

P. Buitjes: contributions to LOTOS development, applications of LOTOS-EUROS and description of model history

L. Curier: contribution to data assimilation applications

H. Denier van der Gon: contribution to emissions input

C. Hendriks: contribution to model validation, ammonia emissions, scenario simulations

S. Jonkers: contribution to model development and applications

20

R. Kranenburg: contribution to model development, labelling, deposition

J. Kuenen: contribution to emissions input

R. Timmermans: contribution to data assimilation, OSSE and operational forecasting

A. Segers: contribution to data assimilation and CAMS, model development, dust modelling

A. Visschedijk: contribution to emission input

25

A. van Pul: Contribution to development of EUROS, model applications

F. Sauter: contribution to model development of EUROS, LOTOS-EUROS and applications

E van der Swaluw: contribution to model development and applications

D. Swart :contribution to operational smog forecasting in the Netherlands

R. Wichink Kruit: contribution to model development (SIA and NH3)

30

H. Eskes: Contribution to data assimilation and forecasting

J. Douros: Contribution to model applications (CAMS)

E. van Meijgaard: Contribution to RACMO coupling and climate scenario simulations

B. van Ulft: Contribution to RACMO coupling and climate scenario simulations

P. van Velthoven: contribution to operational forecasting

35

A. Mues: Contribution to model applications (climate scenario and emission timing)

S. Banzhaf: Development of cloud chemistry and wet deposition approach, scenario analysis

R. Stern: Contribution to LOTOS development

G. Fu: Contribution to development of data assimilation system

S. Lu: Contribution of development of data assimilation system

40

A. Heemink; Contribution to development of data assimilation system

N. van Velzen: Contribution to development of data assimilation system

M. Schaap: Major contributions to text, development and applications of LOTOS and LOTOS-EUROS

References

- Andersson, C., Langner, J., Bergstrom, R.: Interannual variations and trends in air pollution over Europe due to climate variability during 1958-2001 simulated with a regional CTM coupled to the ERA-40 reanalysis. *Tellus* 59B 77-98, 2007
- 5 Amann, M., Bertok, I., Borken-Kleefeld, J., Cofala, J., Heyers, C., Höglund-Isaksson, Klimont, Z., Nguyen, N., Posch, M., Rafaj, P., Sandler, R., Wchöpp, W., Wagner, F., Winiwarter, W.: Cost-effective control of air quality and greenhouse gases in Europe: Modeling and policy applications, *Environmental Modeling & Software* 26, 1489-1501, 2011.
- Barbu, A., Segers, A.J., Schaap, M., Heemink, A., and Buitjes, P.J.H.: A multi-component data assimilation experiment
10 directed to sulphur dioxide and sulphate over Europe, *Atmos. Env.*, 43(9), 1622-1631, 2009.
- Baklanov, A., Schlünzen, K., Suppan, P., Baldasano, J., Brunner, D., Aksoyoglu, S., Carmichael, G., Douros, J., Flemming, J., Forkel, R., Galmarini, S., Gauss, M., Grell, G., Hirtl, M., Joffre, S., Jorba, O., Kaas, E., Kaasik, M., Kallos, G., Kong, X., Korsholm, U., Kurganskiy, A., Kushta, J., Lohmann, U., Mahura, A., Manders-Groot, A., Maurizi, A., Moussiopoulos, N.,
15 Rao, S. T., Savage, N., Seigneur, C., Sokhi, R. S., Solazzo, E., Solomos, S., Sørensen, B., Tsegas, G., Vignati, E., Vogel, B., and Zhang, Y.: Online coupled regional meteorology chemistry models in Europe: current status and prospects, *Atmos. Chem. Phys.* 14, 317-398, doi:10.5194/acp-14-317-2014, 2014
- Banzhaf, S., Schaap, M., Kerschbaumer, A., Reimer, E., Stern, R., van der Swaluw, E., Buitjes, P.: Implementation and
20 evaluation of pH-dependent cloud chemistry and wet deposition in the chemical transport model REM-Calgrid, *Atmos. Environ.*, 49, 378-390, 2012.
- Banzhaf, S., Schaap, M., Wichink Kruit, R.J., Denier van der Gon, H. A. C., Stern, R., and Buitjes, P. J. H.: Impact of emission changes on secondary inorganic aerosol episodes across Germany, *Atmos. Chem. Phys.*, 13, 11675-11693, doi:10.5194/acp-
25 13-11675-2013, 2013.
- Banzhaf, S., Schaap, M., Kranenburg, R., Manders, A. M. M., Segers, A. J., Visschedijk, A. J. H., Denier van der Gon, H. A. C., Kuenen, J. J. P., van Meijgaard, E., van Ulft, L. H., Cofala, J., and Buitjes, P. J. H.: Dynamic model evaluation for secondary inorganic aerosol and its precursors over Europe between 1990 and 2009, *Geosci. Model Dev.*, 8, 1047-1070,
30 doi:10.5194/gmd-8-1047-2015, 2015
- Beltman, J.B., Hendriks, C., Tum, M., Schaap, M.: The impact of large scale biomass production on ozone air pollution in Europe. *Atmospheric Environment* 71, 352-363, doi:10.1016/j.atmosenv.2013.02.019, 2013
- 35 Bender, J., Bergmann, E., Weigel, H.-J., Grünhage, L., Schröder, M., Buitjes, P., Schaap, M., Kranenburg, R., Wichink Kruit, R., Stern, R., Baumgarten: Anwendung und Überprüfung neuer Methoden zur flächenhaften Bewertung der Auswirkung von bodennahem Ozon auf die Biodiversität terrestrischer Ökosysteme, UBA TEXTE 70/2015 Umweltforschungsplan des Bundesministeriums für Umwelt, Naturschutz, Bau und Reaktorsicherheit, Forschungskennzahl 3711 63 235 UBA-FB 002142/1, 2015.
- 40 [Bengtsson, L., Andrae, U., Trygve Aspelien, T., Yurii Batrak, Y., Javier Calvo, J., Rooy, W. de, Gleeson, E., Hansen-Sass, B., Homleid, M., Hortal, M., Ivarsson, K.-I., Lenderink, G., Niemelä, S., Pagh Nielsen, K., Onvlee, J., Rontu, L., Samuelsson, P.,](#)

Formatted: English (United Kingdom)

[Santos Muñoz, D., Alvaro Subias, A., Tijm, S., Toll, V., Yang, X., Morten Ødegaard Køltzow, M., The HARMONIE-AROME model configuration in the ALADIN-HIRLAM NWP system, *Monthly Weather Review* 145\(5\), pp. 1919-1935, 2017](#)

5 Bergström, R., Denier van der Gon, H. A. C., Prévôt, A. S. H., Yttri, K. E., and Simpson, D.: Modelling of organic aerosols over Europe (2002–2007) using a volatility basis set (VBS) framework: application of different assumptions regarding the formation of secondary organic aerosol, *Atmos. Chem. Phys.*, 12, 8499-8527, doi:10.5194/acp-12-8499-2012, 2012.

10 Bessagnet, B., Pirovano, G., Mircea, M., Cuvelier, C., Aulinger, A., Calori, G., Ciarelli, G., Manders, A., Stern, R., Tsyro, S., García Vivanco, M., Thunis, P., Pay, M.-T., Colette, A., Couvidat, F., Meleux, F., Rouil, L., Ung, A., Aksoyoglu, S., Baldasano, J. M., Bieser, J., Briganti, G., Cappelletti, A., D'Isidoro, M., Finardi, S., Kranenburg, R., Silibello, C., Carnevale, C., Aas, W., Dupont, J.-C., Fagerli, H., Gonzalez, L., Menut, L., Prévôt, A. S. H., Roberts, P., and White, L.: Presentation of the EURODELTA III intercomparison exercise – evaluation of the chemistry transport models' performance on criteria pollutants and joint analysis with meteorology, *Atmos. Chem. Phys.*, 16, 12667-12701, doi:10.5194/acp-16-12667-2016, 2016.

15 Blond, N., Bel, L. and Vautard, R. Three-dimensional ozone data analysis with an air quality model over the Paris area. *Journal of Geophysical Research: Atmospheres*, 108(D23), 2003

Brandt, J., Christensen, J.H., Frohn, L.M., Palmgren, F., Berkowicz, R., Zlatev, Z.: Operational air pollution forecasts from European to local scale, *Atmospheric Environment* vol 35, 2001

20 Brunner, D., Savage, N., Jorba, O., Eder, E., Giordano, L., Badia, A., Balzarini, A., Baró, R., Bianconi, R., Chemel, C., Curci, G., Forkel, R., Jiménez-Guerrero, P., Hirtl, M., Hodzic, A., Honzak, L., Im, U., Knote, C., Makar, P., Manders-Groot, A., Meijgaard, E. van, Neal, L., Pérez, J.L., Pirovano, G., San Jose, R., Schröder, W., Sokhi, R.S., Syrakov, D., Torian, A., Tuccella, P., Werhahn, J., Wolke, R., Yahya, K., Zabkar, R., Zhang, Y., Hogrefe, C., Galmarini, S., Comparative analysis of meteorological performance of coupled chemistry-meteorology models in the context of AQMEII phase 2, *Atmospheric Environment*, Volume 115, Pages 470-498, , 2014

30 Builtjes, P. D. van de Hout, C.Veldt, H.Huldy, J.Hulshoff, W.Basting, R. van Aalst, 1980. Application of a photochemical dispersion model to the Netherlands and its surroundings, *Proc. Of the 11th ITM, Amsterdam*, 6121-637

Builtjes, P. K.van den Hout, S.D. Reynolds: Evaluation of the performance of a photochemical dispersion models in practical applications. *Proc 13th ITM. Ile der Embiez, France*, 1982

35 Builtjes, P.J.H.: The LOTOS-Long Term Ozone Simulation-project, Summary report TNO report TNO-MW-R92/40.

Builtjes, P.J.H: Major twentieth century milestones in air pollution modellings and its application, Invited paper, *Proceedings Air pollution modelling and its Application XIV*, 2001

40 Builtjes, P., Hendriks, E., Koenen, M., Schaap, M., Banzhaf, S., Kerschbaumer, A., Gauger, T., Nagel, H.-D., Scheuschner, T. and von Schlutow, A.: Erfassung, Prognose und Bewertung von Stoffeintraegen und ihren Wirkungen in Deutschland (in German). MAPESI-Project: Modeling of Air Pollutants and Ecosystem Impact, Dessau., 2011

- Byun, D. W. and Schere, K. L.: Review of the governing equations, computational algorithms, and other components of the Models-3 Community Multiscale Air Quality (CMAQ) Modeling System, *Appl. Mech. Rev.*, 59, 51–77, 2006
- Chamberlain, A.C.: Aspects of travel and deposition of aerosol and vaour clouds, A.E.R.E. , HP/ R 1261, H.M.S.O., 1953
- 5 Colette, A., Bessagnet, B., Meleux, F., Terrenoire, E., and L. Rouil: *Frontiers in air quality modelling*, *Geosci. Model Dev.*, 7, 203–210, 2014
- Colette, A., Andersson, C., Manders, A., Mar, K., Mircea, M., Pay, M.-T., Raffort, V., Tsyro, S., Cuvelier, C., Adani, M.,
10 Bessagnet, B., Bergström, R., Briganti, G., Butler, T., Cappelletti, A., Couvidat, F., D'Isidoro, M., Doumbia, T., Fagerli, H.,
Granier, C., Heyes, C., Klimont, Z., Ojha, N., Otero, N., Schaap, M., Sindelarova, K., Stegehuis, A. I., Roustan, Y., Vautard,
R., van Meijgaard, E., Vivanco, M. G., and Wind, P.: EURODELTA-Trends, a multi-model experiment of air quality hindcast
in Europe over 1990–2010, *Geosci. Model Dev. Discuss.*, doi:10.5194/gmd-2016-309, in review, 2017.
- 15 Curier, R.L., Timmermans, R., Calabretta-Jongen, S., Eskes, H., Segers, A., Swart, D., Schaap, M.: Improving ozone forecasts
over Europe by synergistic use of the LOTOS-EUROS chemical transport model and in-situ measurements. *Atmospheric
Environment* 60 , pp. 217-226, 2012
- Curier, R.L., Kranenburg, R., Segers, A.J.S., Timmermans, R.M.A., Schaap, M.: Synergistic use of OMI NO2 tropospheric
20 columns and LOTOS–EUROS to evaluate the NOx emission trends across Europe. *Remote Sensing of Environment* 149 , 58–
69, 2014.
- Dammers, E.: Assessment of soil nitrogen oxides emissions and implementation in LOTOS-EUROS. MSc Thesis Eindhoven
University of Technology, 2013.
- 25 Denby, B., Schaap, M., Segers, A., Bultjes, P., Horalek, J., Comparison of two data assimilation methods for assessing PM10
exceedances on the European scale, *Atmospheric Environment*, Volume 42, Pages 7122–7134, 2008
- Denier van der Gon, H. A. C., Bergström, R., Fountoukis, C., Johansson, C., Pandis, S. N., Simpson, D., and Visschedijk, A.
30 J. H.: Particulate emissions from residential wood combustion in Europe – revised estimates and an evaluation, *Atmos. Chem.
Phys.*, 15, 6503-6519, doi:10.5194/acp-15-6503-2015, 2015.
- Denier van der Gon, H.A.C., J.H.J. Hulskotte, A.J.H. Visschedijk and M. Schaap: A revised estimate of copper emissions
from road transport in UNECE-Europe and its impact on predicted copper concentrations *Atmospheric Environment*, Volume
35 41, 8697-8710, 2007
- Denier van der Gon, H. A. C., Visschedijk, A. J. H., Kuenen, J., Schieberle, C., Vouitsis, I., Samaras, Z., Moldanova, J., and
Petzold, A.: European particle number emissions for 2005, 2020 and 2030 with special emphasis on the transport sector, 9th
national Conference on Air Quality – Science and Application, Garmisch-Partenkirchen, Germany, 2014.
- 40 Dennis, R., Fox, T., Fuentes, M., Gilliland, A., Hanna, S., Hogrefe, C., Irwin, J., Rao, S.T., Scheffe, R., Schere, K. Steyn, D.,
Venkatram, A.: A framework for evaluating regional-scale numerical photochemical modeling systems *Environmental Fluid
Mechanics*, Volume 10, Issue 4, pp 471–489, 2010

- Derwent, R. G., Hov, Ø, Asman, W.A.H., Van Jaarsveld, J. A. and de Leeuw, F. A. A. M.: An intercomparison of long-term atmospheric transport models; The budgets of acidifying species for the Netherlands, *Atms. Environ.*, 23, 1893-1909, 1989
- 5 Derwent, D.G., Simmonds, P.G., Manning, A.J., Spain, T.G.: Trends over a 20-year period from 1987 to 2007 in surface ozone at the atmospheric research station, Mace Head, Ireland, *Atmospheric Environment*, Volume 41, Issue 39, December 2007, Pages 9091-9098, ISSN 1352-2310, <http://dx.doi.org/10.1016/j.atmosenv.2007.08.008>.
- De Ruyter de Wildt, M., Eskes, H., Manders, A.M.M., Sauter, F.J., Schaap, M, Swart, D, Van Velthoven, P.
- 10 Six-day PM10 air quality forecasts for the Netherlands with the chemistry transport model LOTOS-EUROS, *Atmos. Env.*, 45, Issue 31, October 2011, Pages 5586-5594, doi:10.1016/j.atmosenv.2011.04.049, 2011
- Donahue, N. M., Robinson, A. L., Stanier, C. O., and Pandis, S. N.: Coupled partitioning, dilution, and chemical aging of semivolatile organics, *Environ. Sci. Technol.*, 40, 2635–2643, 2006
- 15 Donahue, N. M., Robinson, A. L., and Pandis, S. N.: Atmospheric Organic Particulate Matter: From Smoke to Secondary Organic Aerosol, *Atmos. Environ.*, 43, 94–106, doi:10.1016/j.atmosenv.2008.09.055, 2009
- Donahue, N.M, Epstein, S. A. Pandis, S. N. and Robinson, A. L.: A two-dimensional volatility basis set: 1. organic-aerosol mixing thermodynamics *Atmos. Chem. Phys.*, 11, 3303–3318, doi:10.5194/acp-11-3303-2011, 2011
- 20 [EC Council Directive 1999/30/EC of 22 April 1999 relating to limit values for sulphur dioxide, nitrogen dioxide and oxides of nitrogen, particulate matter and lead in ambient air, 1999](#)
- [EC Directive 2008/50/EC of the European Parliament and of the Council of 21 May 2008 on ambient air quality and cleaner air for Europe](#)
- 25 EEA, CORINE Land Cover 2000. URL: dataservice.eea.eu.int, 2000
- EEA, CLC2006 technical guidelines. EEA Technical report 17/2007. ISBN 978-92-9167-968-3. http://www.eea.europa.eu/publications/technical_report_2007_17, 2007.
- 30 EEA, 2016 Air Quality in Europe, EEA Report No 28/2016, <http://www.eea.europa.eu/publications/air-quality-in-europe-2016> ISBN 978-92-9213-847-9 ISSN 1977-8449 doi:10.2800/80982, 2016
- Egmond, N D, and H van Kesseboom: Numerieke verspreidingsmodellen voor de interpretatie van de meetresultaten van het nationaal meetnet voor luchtverontreiniging. Tech. rep. Bilthoven: RIVM, RIVM Report 227905048, 1981
- 35 Elbern, H., Strunk, A., Schmidt, H., and Talagrand, O.: Emission rate and chemical state estimation by 4-dimensional variational inversion, *Atmos. Chem. Phys.*, 7, 3749-3769, doi:10.5194/acp-7-3749-2007, 2007.
- Eliassen, A.: The OECD study of long range transport of air pollutants: long range transport modelling. *Atmospheric Environment* (1967) 12.1-3 : 479-487, 1978
- 40 Eliassen, A., Saltbones, J. Modelling of long-range transport of sulphur over Europe: A two-year model run and some model experiments, *Atmospheric Environment*, Volume 17, Issue 8, 1983, Pages 1457-1473, 1967

Environ: Comprehensive air quality model with extensions, User's Guide Version 6.1, ENVIRON International Corporation, California, USA, 2014

5 [Eskes, H., Veefkind, P., Oud-Nijhuis, A., Williams, J., Huijnen, V., Haan, J., de, Attié, J.-L., Abida, R., Quesada-Ruiz, S., El Amraoui, L., Ricaud, P., Zbinden, R., Timmermans, R., Segers, A., Curier, L., Lahoz, W., Kujanpää, J., Tamminen, J., Veihelmann, B., Impact of Spaceborne Observations on Tropospheric Composition Analysis and Forecast \(ISOTROP\). Exec Summary ESA4000105743-11-NL-AF ISOTROP.pdf, available from <https://gsp.esa.int/documents/10192/46710/C4000105743ExS.pdf/23faed88-4b92-41ef-a45d-aa7c767f6089>](#)

Erismán, J. W. and Schaap, M.: The need for ammonia abatement with respect to secondary PM reductions in Europe, *Environ. Pollut.*, 129, 159–163, 2004

10 Evensen, G.: Sequential data assimilation with a nonlinear quasi-geostrophic model using Monte Carlo methods to forecast error statistics, *J. Geophys. Res.*, 99, 10 143–10 162, 1994

Fast, J. D., Gustafson Jr, W. I., Easter, R. C., Zaveri, R. A., Barnard, J. C., Chapman, E. G., Grell, G. A., and Peckham, S. E.: Evolution of ozone, particulates, and aerosol direct radiative forcing in the vicinity of Houston using a fully coupled meteorology-chemistry-aerosol model, *Journal of Geophysical Research Atmospheres*, 111, 10.1029/2005JD006721, 2006

15 Flemming, J., Huijnen, V., Arteta, J., Bechtold, P., Beljaars, A., Blechschmidt, A.-M., Diamantakis, M., Engelen, R. J., Gaudel, A., Inness, A., Jones, L., Josse, B., Katragkou, E., Marecal, V., Peuch, V.-H., Richter, A., Schultz, M. G., Stein, O., and Tsikerdekis, A.: Tropospheric chemistry in the Integrated Forecasting System of ECMWF, *Geosci. Model Dev.*, 8, 975-1003, doi:10.5194/gmd-8-975-2015, 2015

20 Fountoukis, C., Riipinen, I., Denier van der Gon, H. A. C., Charalampidis, P. E., Pilinis, C., Wiedensohler, A., O'Dowd, C., Putaud, J. P., Moerman, M., and Pandis, S. N.: Simulating ultrafine particle formation in Europe using a regional CTM: contribution of primary emissions versus secondary formation to aerosol number concentrations, *Atmos. Chem. Phys.*, 12, 8663-8677, doi:10.5194/acp-12-8663-2012, 2012

25 Fowler, D., Coyle, M., Skiba, U., Sutton, M.A., Cape, J.N., Reis, S., Sheppard, L.J., Jenkins, A., Grizzetti, B., Galloway, J.N., Vitousek, P., Leach, A., Bouwman, A.F., Butterbach-Bahl, K., Dentener, F., Stevenson, D., Amann, M., Voss, M., The global nitrogen cycle in the twenty-first century, DOI: 10.1098/rstb.2013.0164. *Phil. Trans. Roy. Soc. B.*, 2013

Fox, D.G. Judging air quality model performance, *AMS-workshop Bulletin Am. Meteor. Soc.* 599-609, 1981

Fu, G., H.X. Lin, A.W. Heemink, A.J. Segers, S. Lu, T. Palsson, Assimilating aircraft-based measurements to improve forecast accuracy of volcanic ash transport, *Atmospheric Environment*, Volume 115, Pages 170-184, 10.1016/j.atmosenv.2015.05.061, 2015

30 Galmarini, S., Kioutsioukis, I., and Solazzo, E.: E pluribus unum*: ensemble air quality predictions, *Atmos. Chem. Phys.*, 13, 7153-7182, doi:10.5194/acp-13-7153-2013, 2013. Grell, G. A., Peckham, S. E., Schmitz, R., and McKeen, S. A.: Fully coupled "online" chemistry within the WRF model, *Bulletin of the American Meteorological Society*, 2079-2091, 2004

35 Guenther, A., T. Karl, P. Harley, C. Wiedinmyer, P. I. Palmer, and C. Geron.: Estimates of global terrestrial isoprene emissions using MEGAN (Model of Emissions of Gases and Aerosols from Nature). *Atmospheric Chemistry and Physics* 6.11, pp. 3181–3210, 2006

- Haagen-Smit, A.J.: Chemistry and Physiology of Los Angeles Smog. *Ind.Eng.Chem.* 44, 6, 1342-1346, 1952
- Hamm, N.A.S., Finley, A.O., Schaap, M. and Stein, A.:A spatially varying coefficient model for mapping PM10 air quality at the European scale. *Atmospheric Environment*, 102, pp.393-405, 2015
- 5
- Hammingh, P, H Th` e, F de Leeuw, F Sauter, van Pul A., and J Matthijsen: A Comparison of 3 Simplified Chemical Mechanisms for Tropospheric Ozone Modeling In: Proceedings of EUROTRAC Symposium. Ed. by J Midgley, P.M.; Reuther M.J.; Williams.Garmisch-Partenkirchen, Germany: Proceedings of EUROTRAC Symposium, 2001
- 10
- Hanea, R.G.,Velders, G.J.M., Heemink, A. Data assimilation of ground-level ozone in Europe with a Kalman filter and chemistry transport model, *J.Geophys .Res. D*, 109 D10, DOI: 10.1029/2003JD004283, 2004
- 15
- Hass, H., P.J.H. Builtjes, D. Simpson, and R. Stern: Comparison of model results obtained with several european regional air quality models. *Atmospheric Environment* 31.19, pp. 3259–3279. DOI: 10.1016/S1352-2310(97)00066-6, 1997
- Hendriks, C., Kranenburg, R., Kuenen, J., Gijlswijk, R. van, Wichink Kruit, R., Segers, A., Denier van der Gon, H., Schaap, M., The origin of ambient particulate matter concentrations in the Netherlands, *Atmospheric Environment*, Volume 69, 2013,
- 20
- Pages 289-303, ISSN 1352-2310, <http://dx.doi.org/10.1016/j.atmosenv.2012.12.017>, 2013
- Hendriks, C., Forsell, N., Kiesewetter, G., Schaap M.,Schöpp, W.:Ozone concentrations and damage for realistic future European climate and air quality scenarios, *Atmospheric Environment* 144 208-219, 2016a
- 25
- Hendriks, C., Kranenburg, R., Kuenen, J.J.P., Van den Bril, B., Verguts, V., Schaap, M.: Ammonia emission time profiles based on manure transport data improve ammonia modelling across north western Europe. *Atmospheric Environment* 131, 83–96 doi:10.1016/j.atmosenv.2016.01.043, 2016b
- Hendriks, C., Kuenen, J.J.P., Kranenburg, R., Scholz, Y., Schaap, M. : A shift in emission time profiles of fossil fuel combustion due to energy transitions impacts source receptor matrices for air quality. *Environmental Science: Processes & Impacts*, 17,510-524 doi:10.1039/C4EM00444B, 2015.
- 30
- Horálek, J., Kurfürst, P., Denby, P., de Smet, P., de Leeuw, F., Brabec, M., Fiala, J. :Interpolation and assimilation methods for European scale air quality assessment and mapping. Part II: Development and testing new methodologies. ETC/ACC
- 35
- Technical paper 2005/8., 2005
- Horálek, J., Kurfürst, P., de Smet, P., de Leeuw, F., Swart, R., Noije, T. van, Denby, B. :Spatial mapping of air quality for European scale assessment, ETC/ACC Technical Paper 2006/6, 2007
- 40
- Im, U.,Bianconi, Solazzo, E., Kioutsioukis, I., Badia, A., Balzarini, A., Baró, R., Bellasio, R, Brunner, D., Chemel, C., Curci, G.,J Flemming, J., Forkel, R., Giordano, L., Jiménez-Guerrero, P., Hirtl, M., Hodzic, A., Honzak, L., Jorba, O., Knote, C., Kuenen, J.J.P., , *et al.*: Evaluation of operational on-line-coupled regional air quality models over Europe and North America in the context of AQMEII phase 2. Part I: Ozone, *Atmospheric Environment*Volume 115, Pages 1-756, 2015a

- Im, U., Bianconi, Solazzo, E., Kioutsioukis, I., Badia, A., Balzarini, A., Baró, R., Bellasio, R., Brunner, D., Chemel, C., Curci, G., J. Flemming, J., Forkel, R., Giordano, L., Jiménez-Guerrero, P., Hirtl, M., Hodzic, A., Honzak, L., Jorba, O., Knote, C., et al.: Evaluation of operational online-coupled regional air quality models over Europe and North America in the context of AQMEII phase 2. Part II: Particulate matter. *Atmospheric Environment* Volume 115, Pages 1-756, 2015b
- 5 Jacob, D.J., Winner, D.A., : Effect of climate change on air quality. *Atmos. Env.*, 43, 51-63, 2009
- Jacobs, C M J and W A J Van Pul Long-range atmospheric transport of persistent Organic Pollutants, I: Description of surface-atmosphere exchange modules and implementation in EUROS. Tech. rep. Bilthoven: National Institute of Public Health and
10 Environmental Protection (RIVM), Report 722401013, 1996
- Kaiser, J. W., Heil, A., Andreae, M. O., Benedetti, A., Chubarova, N., Jones, L., Morcrette, J.-J., Razinger, M., Schultz, M. G., Suttie, M., and van der Werf, G. R.: Biomass burning emissions estimated with a global fire assimilation system based on observed fire radiative power, *Biogeosciences*, 9, 527-554, doi:10.5194/bg-9-527-2012, 2012
- 15 Karamchandani, P., Vijayaraghavan, K., and Yarwood, G.: Sub-Grid Scale Plume Modeling, *Atmosphere*, 2, 389-406; doi:10.3390/atmos2030389 *atmosphere* ISSN 2073-4433, 2011
- Van de Kasstele, J., Koelemeijer, R.B.A., Dekkers, A.L.M., Schaap, M., Homan, C.D. and Stein, A: Statistical mapping of
20 PM10 concentrations over Western Europe using secondary information from dispersion modeling and MODIS satellite observations. *Stochastic environmental research and risk assessment*, 21(2), pp.183-194, 2006
- Van de Kasstele, J. and Velders, G.J.: Uncertainty assessment of local NO₂ concentrations derived from error-in-variable external drift kriging and its relationship to the 2010 air quality standard. *Atmospheric Environment*, 40(14), pp.2583-2595,
25 2006
- [Katragkou, E., Zanis, P., Tsikerdekis, A., Kapsomenakis, J., Melas, D., Eskes, H., Flemming, J., Huijnen, V., Inness, A., Schultz, M. G., Stein, O., and Zerefos, C. S.: Evaluation of near-surface ozone over Europe from the MACC reanalysis, *Geosci. Model Dev.*, 8, 2299-2314, <https://doi.org/10.5194/gmd-8-2299-2015>, 2015](https://doi.org/10.5194/gmd-8-2299-2015)
- 30 Koeble, R., Seufert, G., : Novel maps for forest tree species in Europe. In: Proceedings of the Conference "A Changing Atmosphere", 2001
- Kranenburg, R., Hendriks, C., Schaap, M., and Segers, A., Source apportionment using LOTOS-EUROS: module description
35 and evaluation. *Geosci. Model Dev.*, 6, 721-733, 2013, doi:10.5194/gmd-6-721-2013, 2013
- Kuenen, J. J. P., Denier van der Gon, H. A. C., Visschedijk, A., Van der Brugh, H., and Van Gijlswijk, R.: MACC European emission inventory for the years 2003–2007, TNO report TNO-060-UT-2011-00588, Utrecht, 2011
- 40 Kuenen, J.J.P., Visschedijk, A.J.H., Jozwicka, M., Denier van der Gon, H.A.C., 2014. TNO-MACC_II emission inventory; a multi-year (2003–2009) consistent high-resolution European emission inventory for air quality modelling. *Atmos. Chem. Phys.*, 14, 10963–10976, doi:10.5194/acp-14-10963-2014

- Kulmala, M., Lehtinen, K.E.J. and Laaksonen, A. : Cluster activation theory as an explanation of the linear dependence between formation rate of 3nm particles and sulphuric acid concentration. *Atmos. Chem. Phys.* 6: 787-793, 2006.
- Kulmala, M., A. Asmi, H. K. Lappalainen, U. Baltensperger, J.-L. Brenguier, M. C. Facchini, H.-C. Hansson, Ø. Hov, C. D. O'Dowd, U. Pöschl, A. Wiedensohler, R. Boers, O. Boucher, G. de Leeuw, H. Denier van den Gon, J. Feichter, R. Krejci, P. Laj, H. Lihavainen, U. Lohmann, G. McFiggans, T. Mentel, C. Pilinis, I. Riipinen, M. Schulz, A. Stohl, E. Swietlicki, E. Vignati, M. Amann, M. Amann, C. Alves, S. Arabas, P. Artaxo, D. C. S. Beddows, R. Bergström, J. P. Beukes, M. Bilde, J. F. Burkhart, F. Canonaco, S. Clegg, H. Coe, S. Crumeyrolle, B. D'Anna, S. Decesari, S. Gilardoni, M. Fischer, A. M. Fjæraa, C. Fountoukis, C. George, L. Gomes, P. Halloran, T. Hamburger, R. M. Harrison, H. Herrmann, T. Hoffmann, C. Hoose, M. Hu, U. Hörrak, Y. Iinuma, T. Iversen, M. Josipovic, M. Kanakidou, A. Kiendler-Scharr, A. Kirkevåg, G. Kiss, Z. Klimont, P. Kolmonen, M. Komppula, J.-E. Kristjánsson, L. Laakso, A. Laaksonen, L. Labonnote, V. A. Lanz, K. E. J. Lehtinen, R. Makkonen, G. McMeeking, J. Merikanto, A. Minikin, S. Mirme, W. T. Morgan, E. Nemitz, D. O'Donnell, T. S. Panwar, H. Pawlowska, A. Petzold, J. J. Pienaar, C. Pio, C. Plass-Duelmer, A. S. H. Prévôt, S. Pryor, C. L. Reddington, G. Roberts, D. Rosenfeld, J. Schwarz, Ø. Seland, K. Sellegri, X. J. Shen, M. Shiraiwa, H. Siebert, B. Sierau, D. Simpson, J. Y. Sun, D. Topping, P. Tunved, P. Vaattovaara, V. Vakkari, J. P. Veefkind, A. Visschedijk, H. Vuollekoski, R. Vuolo, B. Wehner, J. Wildt, S. Woodward, D. R. Worsnop, G.-J. van Zadelhoff, A. A. Zardini, K. Zhang, P. G. van Zyl, V.-M. Kerminen, K. S. Carslaw, and S. N. Pandis, General overview: European Integrated project on Aerosol Cloud Climate and Air Quality interactions (EUCAARI) – integrating aerosol research from nano to global scales. *Atmos. Chem. Phys.*, 11, 13061-13143, 2011
- Kuhn, M., Buitjes, P.J.H., Poppe, D., Simpson, D., Stockwell, W.R., Andersson-Sköld, Y., Barts, A., Das, M., Fiedler, F., Hov, O., Kirchner, F., Makar, P.A., Milford, J.B., Roemer, M.G.M., Ruhnke, R., Strand, A., Vogel, B., Vogel, H., Intercomparison of the gas-phase chemistry in several chemistry and transport models. *Atm.Env.* 32, 4, 693-709, 1998
- Kukkonen, J., Karl, M., Keuken, M. P., Denier van der Gon, H. A. C., Denby, B. R., Singh, V., Douros, J., Manders, A., Samaras, Z., Moussiopoulos, N., Jonkers, S., Aarnio, M., Karppinen, A., Kangas, L., Lützenkirchen, S., Petäjä, T., Vouitsis, I., and Sokhi, R. S.: Modelling the dispersion of particle numbers in five European cities, *Geosci. Model Dev.*, 9, 451-478, doi:10.5194/gmd-9-451-2016, 2016
- Kuik, F., Lauer, A., Churkina, G., Denier van der Gon, H. A. C., Fenner, D., Mar, K. A., and Butler, T. M.: Air quality modelling in the Berlin-Brandenburg region using WRF-Chem v3.7.1: sensitivity to resolution of model grid and input data, *Geosci. Model Dev.*, 9, 4339-4363, doi:10.5194/gmd-9-4339-2016, 2016
- Lahoz, W.A., Geer, A.J., Bekki, S., Bormann, N., Ceccherini, S., Elbern, H., Errera, Q., Eskes, H.J., Fonteyn, D., Jackson, D.R. and Khattatov, B.: The Assimilation of Envisat data (ASSET) project. *Atmospheric Chemistry and Physics*, 7(7), pp.1773-1796., 2007
- Leeuw, Frank A A M de and H Jetske van Rheineck Leyssius : Modeling study of SO_x and NO_x transport during the January 1985 SMOG episode, *Water, Air, and Soil Pollution* 51.3, pp. 357–371. DOI: 10.1007/BF00158232, 1990
- Loon, M. van.: Numerical smog prediction, I: The physical and chemical model. Tech. rep. Amsterdam: CWI research report, NM-R9411, ISSN 0169-0388, 1994

- Loon, M., van: Numerical smog prediction II: grid refinement and its application to the Dutch smog prediction model. Tech. rep. Amsterdam, The Netherlands: CWI, research report, NM-R9523, ISSN 0169-0388, 1995
- Loon, M. van, Builtjes, P.J. H., Segers, A.J.: Data assimilation of ozone in the atmospheric transport chemistry model LOTOS Environmental Modelling & Software 15, pp603–609, 2000
- Loon, M. van; Roemer, M. G. M.; Builtjes, P. J. H.; Bessagnet, B.; Rouill, L.; Christensen, J.; Brandt, J.; Fagerli, H.; Tarrason, L.; Rodgers, I.; Stern, R.; Bergström, R.; Langner, J.; Foltescu, V. Model-intercomparison in the framework of the review of the unified EMEP-model. TNO-MEPO-R 2004/282, 86 p. (TNO Report, Vol. 282), 2004
- Loon M. van, Vautard R., Schaap M., Bergström R., Bessagnet B., Brandt J., Builtjes P.J.H, Christensen J.H., Cuvelier K., Graf A., Jonson J.E., Krol M., Langner J., Roberts P., Rouil L., Stern R., Tarrasón L., Thunis P., Vignati E., White L., Wind P.: Evaluation of long-term ozone simulations from 584 seven regional air quality models and their ensemble average. Atmospheric Environment 41, 2083-2097, 2006
- Lu, S., H. X. Lin, A. Heemink, A. Segers, and G. Fu: Estimation of volcanic ash emissions through assimilating satellite data and ground-based observations, J. Geophys. Res. Atmos., 121, 10,971-10,994, doi:10.1002/2016JD025131, 2016
- Manders, A.M.M, M. Schaap, R. Hoogerbrugge, Testing the capability of the chemistry transport model LOTOS-EUROS to forecast PM10 levels in the Netherlands Atmospheric Environment, pp. 4050-459 doi:10.1016/j.atmosenv.2009.05.006, 2009
- Mailler, S., Menut, L., Khvorostyanov, D., Valari, M., Couvidat, F., Siour, G., Turquety, S., Briant, R., Tuccella, P., Bessagnet, B., Colette, A., Létinois, L., Markakis, K., and Meleux, F.: CHIMERE-2017: from urban to hemispheric chemistry-transport modeling, Geosci. Model Dev., 10, 2397-2423, 2017
- Mailler, S., Menut, L., Khvorostyanov, D., Valari, M., Couvidat, F., Siour, G., Turquety, S., Briant, R., Tuccella, P., Bessagnet, B., Colette, A., Létinois, L., Markakis, K., and Meleux, F.: CHIMERE-2017: from urban to hemispheric chemistry-transport modeling, Geosci. Model Dev., 10, 2397-2423, <https://doi.org/10.5194/gmd-10-2397-2017>, 2017.
- Manders, A.M.M, M. Schaap, X. Querol, M.F.M.A. Albert, J. Vercauteren, T.A.J. Kuhlbusch, R. Hoogerbrugge, Sea salt concentrations across the European continent, Atmospheric Environment, pp 2434-2442, doi:10.1016/j.atmosenv.2010.03.028, 2010
- Manders, A.M.M, Meijgaard, E. van, Mues, A.C., Kranenburg, R., Ulft, L.H. van, Schaap, M.: The impact of differences in large-scale circulation output from climate models on the regional modeling of ozone and PM. Atmos. Chem. Phys. doi:10.5194/acp-12-9441-2012, 2012
- Manders-Groot, A.M.M, Segers, A.J., Jonkers, S.: LOTOS-EUROS v2.0 Reference Guide, TNO report TNO2016 R10898, TNO, Utrecht, The Netherlands, 2016a
- Manders-Groot, A.M.M, Kranenburg, R., Hendriks, C.: LOTOS-EUROS validation reportv2.0, TNO report TNO2016 R11147, TNO, Utrecht, The Netherlands, 2016b
- Marécal, V., Peuch, V.-H., Andersson, C., Andersson, S., Arteta, J., Beekmann, M., Benedictow, A., Bergström, R., Bessagnet, B., Cansado, A., Chéroux, F., Colette, A., Coman, A., Curier, R. L., Denier van der Gon, H. A. C., Drouin, A.,

- Elbern, H., Emili, E., Engelen, R. J., Eskes, H. J., Foret, G., Friese, E., Gauss, M., Giannaros, C., Guth, J., Joly, M., Jaumouillé, E., Josse, B., Kadyrov, N., Kaiser, J. W., Krajsek, K., Kuenen, J., Kumar, U., Liora, N., Lopez, E., Malherbe, L., Martinez, I., Melas, D., Meleux, F., Menut, L., Moinat, P., Morales, T., Parmentier, J., Piacentini, A., Plu, M., Poupkou, A., Queguiner, S., Robertson, L., Rouïl, L., Schaap, M., Segers, A., Sofiev, M., Thomas, M., Timmermans, R., Valdebenito, À., van Velthoven, P., van Versendaal, R., Vira, J., and Ung, A. A regional air quality forecasting system over Europe: the MACC-II daily ensemble production *Geosci. Model Dev.*, 8, 2777-2813, doi:10.5194/gmd-8-2777-2015, 2015
- Mårtensson, E. M., Nilsson, E.D., De Leeuw, G., Cohen, L.H., Hansson, H.-C.: Laboratory simulations and parameterization of the primary marine aerosol production. *J. Geophys. Res.*, 108(D9), 4297, doi:10.1029/2002JD002263, 2003
- Martcorena, B. and G. Bergametti: Modeling the atmospheric dust cycle: 1. Design of a soil-derived dust emission scheme. *Journal of Geophysical Research* 100.D8, p. 16415. DOI: 10.1029/95JD00690, 1995
- Martins, V., Miranda, A.I., Carvalho, A., Schaap, M., Borrego, C., Sá, E.: Forest fires impact on air quality over Portugal during the 2003, 2004 and 2005 fire seasons, *Sci Total Environ.* 2012 Jan 1;414:53-62. doi: 10.1016/j.scitotenv.2011.10.007, 2012
- Matthijsen, J, L L. Delobbe, Sauter F., and L de Waal: Changes of Surface Ozone over Europe upon the Gothenburg Protocol Abatement of 1990 Reference Emissions. In: *Proceedings of EUROTRAC Symposium, 2000*. Ed. by P M Midgley, M J Reuther, and M Williams. Garmisch-Partenkirchen, Germany., 2001
- Matthijsen, J, F J Sauter, and E S de Waal: Modelling of particulate matter on a European scale. In: *Proceedings of GLOREAM Symposium, 2001*. Ed. by J Keller and S Andreani-Aksojoglu. Wengen, Switzerland. URL: <http://www.scopus.com/inward/record.url?eid=2-s2.0.39349103202%7B%7D7B%7B%5C%7D%7B%7D7DpartnerID=tZOtx3y1>, 2002
- Mebust, M.R., B.K. Eder, F.S. Binkowski, and S.J. Roselle.: Models-3 Community multiscale air quality (CMAQ) model aerosol component, 2. Model evaluation. *Journal of Geophysical Research*, 108(D6) 4184, doi:10.1029/2001JD001410, 2003
- Menut, L., Bessagnet, B., Khvorostyanov, D., Beekmann, M., Blond, N., Colette, A., Coll, I., Curci, G., Foret, G., Hodzic, A., Mailler, S., Meleux, F., Monge, J.-L., Pison, I., Siour, G., Turquety, S., Valari, M., Vautard, R., and Vivanco, M. G.: CHIMERE 2013: a model for regional atmospheric composition modelling, *Geosci. Model Dev.*, 6, 981-1028, doi:10.5194/gmd-6-981-2013, 2013a.
- Menut, L., C. Pérez, K. Haustein, B. Bessagnet, C. Prigent, and S. Alfaro, 2013: Impact of surface roughness and soil texture on mineral dust emission fluxes modeling. *J. Geophys. Res. Atmos.*, 118, no. 12, 6505-6520, doi:10.1002/jgrd.50313. 2013b
- Meijgaard, E. van, Ulft, L.H. van, Berg, W.J. van de, Bosveld, F.C., Hurk, B.J.J.M. van den, Lenderink, G., Siebesma, A.P. et al. "The KNMI regional atmospheric climate model RACMO version 2.1." KNMI technical report TR – 302, 2008
- Mokhtari, M., L. Gomes, P. Tulet, and T. Rezug: Importance of the surface size distribution of erodible material: an improvement on the Dust Entrainment And Deposition (DEAD) Model. *Geoscientific Model Development* 5.3, pp. 581–598. DOI: 10.5194/gmd-5-581-2012, 2012

- Monahan, E.C., Spiel, D.E., Davidson, K.L., .: A model of marine aerosol generation via whitecaps and wave disruption. *Oceanic Whitecaps and their role in air/sea exchange*, edited by Monahan, E.C, and Mac Niocaill, G., pp. 167-174, 1986
- 5 Mues A., A. Manders, M. Schaap, A. Kerschbaumer, R. Stern, P. Bultjes.: Impact of the extreme meteorological conditions during the summer 2003 in Europe on particulate matter concentrations. *Atmospheric Environment* 55 (2012) 377-391, 2012
- Mues, A., A. Manders, M. Schaap, L.H. van Ulft, E. van Meijgaard, and P. Bultjes.: Differences in particulate matter concentrations between urban and rural regions under current and changing climate *Atmos. Environment*, 80, j.atmosenv.2013.07.049, 2013
- 10 Mues, A., Kuenen, J., Hendriks, C., Manders, A., Segers, A., Scholz, Y., Hueglin, C., Bultjes, P., and Schaap, M.: Sensitivity of air pollution simulations with LOTOS-EUROS to temporal distribution of anthropogenic emissions. *Atmos. Chem. Phys.*, 14, 939-955, doi:10.5194/acpd-14-939-2014, 2014
- 15 Nickel, S., Schröder, W., Wosniok, W., Harmens, H., Frontasyeva, M.V., Alber, R., Aleksiyenak, J., Barandovski, L., Blum, O., Danielsson, H., De Temmermann, L., Dunaev, A.M., Fagerli, H., Godzik, B., Ilyin, I., Jonkers, S., Jeran, Z., Pihl Karlsson, G., Lazo, P., Leblond, S., Liiv, S., Magnússon, S.H., Mankovska, B., Martínez-Abaigar, J., Piispanen, J., Poikolainen, J., Popescu, I.V., Qarri, F., Radnovic, D., Santamaria, S.M., Schaap, M., Skudnik, M., Špirić, Z., Stafilov, T., Steinnes, E., Stihl, C., Suchara, I., Thöni, Thelle Uggerud, H., Zechmeister, H.G.: Modelling and mapping heavy metal and nitrogen concentrations in moss in 2010 throughout Europe by applying Random Forests models, *Atmospheric Environment*, Available online 28 February 2017, ISSN 1352-2310, doi:10.1016/j.atmosenv.2017.02.032, 2017
- Novak, J.H. and Pierce, T.E.: Natural emissions of oxidant precursors. *Water, Air, and Soil Pollution* 67, pp. 57–77. DOI: 10.1007/BF00480814, 1993
- 25 Paasonen, P., A. Asmi, T. Petäjä, M.K. Kajos, M. Äijälä, H. Junninen, Thomas Holst, J. P. D. Abbatt, A. Arneth, W. Birmili, H. Denier van der Gon, A. Hamed, et al., Observations of the organic aerosol - climate feedback mechanism, *Nature Geosciences*, published online: 28 April 2013; DOI: 10.1038/NGEO1800, 2013
- 30 Pekar, M., A. Gusev, N. Pavlova, B. Strukov, L. Erdman, I. Ilyin, S. Dutchak, Long-range Transport of Selected POPs. Development of Transport Models for Lindane, Polychlorinated Biphenyls, Benzo[a]pyrene. Part I, EMEP/MSC-E Report 2/98, 1998
- 35 Popa, M. E., Segers, A. J., Denier van der Gon, H. A C, Krol, M. C., Visschedijk, A. J H, Schaap, M. & Röckmann, T.: Impact of a future H2 transportation on atmospheric pollution in Europe. *Atmospheric Environment*, 113, (pp. 208-222), 2015
- Potempski, S. and Galmarini, S.: Est modus in rebus: analytical properties of multi-model ensembles, *Atmos. Chem. Phys.*, 9, 9471-9489, doi:10.5194/acp-9-9471-2009, 2009.
- 40 Pye, H. O. T., A. W. H. Chan, M. P. Barkley, J. H. Seinfeld. Global modeling of organic aerosol: the importance of reactive nitrogen (NO_x and NO₃), *Atmos. Chem. Phys.*, 2010

- Pye, H. O. T., R. W. Pinder, I. Piletic, Y. Xie, S. L. Capps, Y.-H. Lin, J. D. Surratt, Z. Zhang, A. Gold, D. J. Luecken, W. T. Hutzell, M. Jaoui, J. H. Offenberg, T. E. Kleindienst, M. Lewandowski, and E. O. Edney, Epoxide pathways improve model predictions of isoprene markers and reveal key role of acidity in aerosol formation, *Environ. Sci. Technol.*, doi:10.1021/es402106h, 2013
- 5
- .Pye, H.O.T., D. J. Luecken, L. Xu, C. M. Boyd, N. L. Ng, K. Baker, B. A. Ayres, J. O. Bash, K. Baumann, W. P. L. Carter, E. Edgerton, J. L. Fry, W. T. Hutzell, D. Schwede, P. B. Shepson, Modeling the current and future roles of particulate organic nitrates in the southeastern United States, *Environ. Sci. Technol.*, 2015
- 10 Rao, S.T. and J.R.Visalli.: On the comparative assessment of the performance of air quality models, *JAPCA*, vol 31, 8 851-860 , 1981
- Reynolds, S., P.Roth and Seinfeld., Mathematical modelling of photochemical air pollution, *Atm. Env.*7, 1973
- J. Rissman, J., S. Arunachalam S., , M. Woody, M., , J. J. West, J.J., , T. BenDor, T., , and F. S. Binkowski, F.S.,
- 15 A plume-in-grid approach to characterize air quality impacts of aircraft emissions at the Hartsfield–Jackson Atlanta International Airport *Atmos. Chem. Phys.*, 13, 9285–9302, 2013 doi:10.5194/acp-13-9285-2013, 2013
- Rheineck Leyssius, H J, van, Frank A A M de Leeuw, and Bert H Kesseboom: Aregional scale model for the calculation of episodic concentrations and depositions of acidifying components, *Water, Air, and Soil Pollution* 51.3, pp. 327–344. DOI: 10.1007/BF00158230., 1990
- 20
- [Roemer, M., Bergström, R., Beekmann, M., Boerse, G., Feldmann, H., Flatoj, F., Honore, C., Langners, J., Jonson, J., Matthijsen, J., Memmesheimer, M., Simpson, D., Smeets, P., Solberg, S., Stern, R., Stevenson, D., Zandveld, P., Zlatev, Z.: Ozone trends according to ten dispersion models. Eurotrac report, Eurotrac-ISS, Garmisch-Partenkirchen, Germany, 2003.](#)
- 25
- Rohde H.:A study of the sulfur budget for the atmosphere over northern Europe, *Tellus*, 24:128 , 1972
- Ryaboshapko, A., Bullock, R., Ebinghaus, R., Ilyin, I., Lohman, K., Munthe, J., Petersen, G., Seigneur, C., Wangberg, I. Comparison of Mercury Chemistry Models. *Atmospheric Environment* 36, 3881-3898, 2002
- 30
- SAI, User's Guide to the Variable-Grid Urban Airshed Model (UAM-V), Systems Applications International, Inc./ICF Consulting, 101 Lucas Valley Road, Suite 160, San Rafael, California 94903, 1999
- Sauter, F., van Jaarsveld, J.A., van Zanten, M.C., van der Swaluw, E., Aben, J., de Leeuw, F.:The OPS-model. Description of OPS 4.4.4. <http://www.rivm.nl/media/ops/OPS-model.pdf>, 2015
- 35
- Schaap, M., Van Loon, M., Ten Brink, H.M., Dentener, F.J., Builtjes, P.J.H.:Secondary inorganic aerosol simulations for Europe with special attention to nitrate. *Atmospheric Chemistry and Physics* 4, (3), 857-874, 2004a
- 40
- Schaap, M., H Van Der Gon, FJ Dentener, AJH Visschedijk, M Van Loon: Anthropogenic black carbon and fine aerosol distribution over Europe *J. Geophys. Res* 109 (10.1029), 2004b

- Schaap, M., Roemer, M., Sauter, F., Boersen, G., Timmermans, ., Bultjes, P.J.H., LOTOS-EUROS documentation, TNO report B&O 2005/297, TNO, Apeldoorn, The Netherlands, 2005
- 5 Schaap, M., R. M. A. Timmermans, F. J. Sauter, M. Roemer, G. J. M. Velders, G. A. C Boersen, J. P. Beck, and P. J. H. Bultjes: The LOTOS-EUROS model: description, validation and latest developments. *Int. J. of Environ. and Pollution*, 32, No. 2, pp.270–290, 2008
- Schaap, M., Manders, A.M.M., Hendriks, E.C.J., Cnossen, J.M., Segers, A.J.S., Denier van der Gon, H.A.C., Jozwicka, M., Sauter, F.J., Velders, G.J.M., Matthijsen, J., Bultjes, P.J.H.:Regional Modelling of Particulate Matter for the Netherlands. PBL report 500099008, Bilthoven, The Netherlands. <http://www.rivm.nl/bibliotheek/rapporten/500099008.pdf> , 2009
- 10 Schaap, M. , Kranenburg, R. , Curier, L. , Jozwicka, M. , Dammers, E. , Timmermans, R.:Assessing the sensitivity of the OMI-NO2 product to emission changes across Europe. *Remote Sensing*, 5 (9),, pp. 4187-4208, doi:10.3390/rs5094187, 2013
- 15 Schaap,M., Banzhaf, S., Scheuschner, T., , Geupel, M., Hendriks, C., Kranenburg, R., Nagel, H.D., Segers, A.J., , Von Schlutow A., Wichink Kruit, R., Bultjes, P. J. H., Atmospheric nitrogen deposition to terrestrial ecosystems across Germany, submitted to *Biogeosciences*, 2017
- Schell, B., Ackermann I.J., Hass H., Binkowski F.S., Ebel A.,.: Modeling the formation of secondary organic aerosol within a comprehensive air quality model system. *Journal of Geophysical Research*, 106,628 28, 275-28, doi: 10.1029/2001JD000384,
- 20 2001
- Segers, A.J., Timmermans, R.M.A., Schaap, M., Bultjes, P.J.H., Study on the value of the MSG/SEVIRI derived AOD for operational air quality forecast, TNO report, TNO-034-UT-2010-00085, 2010.
- Seinfeld, J.H.: Ozone air quality models. A critical review. *JAPCA* vol 38, 5, 616-645, 1988
- 25 Seinfeld, J.H. and Pandis, S.N., *Atmospheric Chemistry and Physics: from air pollution to climate change*. Hoboken, N.J. J. Wiley., 2006
- [Shrivastava, M. K., Lane, T. E., Donahue, N. M., Pandis, S. N.,and Robinson, A. L.: Effects of gas particle partitioning and aging of primary emissions on urban and regional organic aerosol concentrations, *J. Geophys. Res.*, 113, D18301,doi:10.1029/2007JD009735, 2008.](https://doi.org/10.1029/2007JD009735)
- 30
- Simpson, D., Fagerli, H., Jonson, J.E., Tsyro, S., Wind., P, and Tuovinen, J-P.:Transboundary acidification , autrophication and grond level ozone in Europe, Part 1 Unified EMEP model description EMEP report 1/2003, Norwegina meteorological institute, Oslo, Norway, 2003
- 35 Simpson, D., Benedictow, A., Berge, H., Bergström, R., Emberson, L. D., Fagerli, H., Flechard, C. R., Hayman, G. D., Gauss, M., Jonson, J. E., Jenkin, M. E., Nyíri, A., Richter, C., Semeena, V. S., Tsyro, S., Tuovinen, J.-P., Valdebenito, Á., and Wind, P.: The EMEP MSC-W chemical transport model – technical description, *Atmos. Chem. Phys.*, 12, 7825-7865, doi:10.5194/acp-12-7825-2012, 2012
- 40

- Skjøth, C.A., Hertel, O., Gyldenkerne, S., Ellermann, Implementing a dynamical ammonia emission parameterization in the large-scale air pollution model ACDEP, *J. Geophys. Res. D*, Volume 109, Issue 6, 27 March 2004, Pages D06306 1-13, 2004
- Skjøth, C.A., Geels, C., Berge, H., Gyldenkerne, S., Fagerli, H., Ellermann, T., Frohn, L.M., Christensen, J., Hansen, K.M.,
5 Hansen, K., Hertel, O.: Spatial and temporal variations in ammonia emissions – a freely accessible model code for Europe. *Atmos. Chem. Phys.*, 11, 5221–5236, doi:10.5194/acp-11-5221-2011, 2011
- Smith, M.E.: Review of the attributes and performance of 10 rural diffusion models. *Am. Meteor. Soc.* Vol 65, no 6, 554-558, 1984
- 10 Sofiev, M., Berger, U., Prank, M., Vira, J., Arteta, J., Belmonte, J., Bergmann, K.-C., Chérour, F., Elbern, H., Friese, E., Galan, C., Gehrig, R., Khvorostyanov, D., Kranenburg, R., Kumar, U., Marécal, V., Meleux, F., Menut, L., Pessi, A.-M., Robertson, L., Ritenberga, O., Rodinkova, V., Saarto, A., Segers, A., Severova, E., Sauliene, I., Siljamo, P., Steensen, B. M., Teinmaa, E., Thibaudon, M., and Peuch, V.-H.: MACC regional multi-model ensemble simulations of birch pollen dispersion
15 in Europe, *Atmos. Chem. Phys.*, 15, 8115-8130, doi:10.5194/acp-15-8115-2015, 2015
- Solazzo, E. and Galmarini, S.: Error apportionment for atmospheric chemistry-transport models – a new approach to model evaluation *Atmos. Chem. Phys.*, 16, 6263–6283, 2016 www.atmos-chem-phys.net/16/6263/2016/ doi:10.5194/acp-16-6263-2016, 2016
- 20 Solazzo, E., Bianconi, R., Pirovano, G., Matthias, V., Vautard, R., Morann, M.D., Wyatt Appel, K., Bessagnet, B., Brandt, J., Christensen, J.H., Chemel, C., Collo, I., Ferreira, J., Forkel, R., Francis, X.V., Grell, G., Grossi, P., Hansen, A.B., Miranda, A.I., Nopmongcol, U., Prank, M., Sartelet, K.N., Schaap, M., Silver, J.D., Sokhi, R.D., Viras, J., Werhahn, J., Wolke, R., Yarwood, G., AQMEII: An International Initiative for the Evaluation of Regional-Scale Air Quality Models - Phase 1
25 Operational model evaluation for particulate matter in Europe and North America in the context of AQMEII, *Atmospheric Environment*, Volume 53, June 2012, Pages 60–74, 2012a
- Solazzo, E., Bianconi, R., Vautard, R., Appel, K.W., Morann, M.D., Hogrefe, C., Bessagnet, B., Brandt, J., Christensen, J.H., Chemel, C., Collo, I., Denier van der Gon, H., Ferreira, J., Forkel, R., Francis, X.V., Grell, G., Grossi, P., Hansen, A.B.,
30 Jeričević, A., Kraljević, L., Miranda, A.I., Nopmongcol, U., Pirovano, G., Prank, M., Riccio, A., Sartelet, K.N., Schaap, M., Silver, J.D. Model evaluation and ensemble modelling of surface-level ozone in Europe and North America in the context of AQMEII <http://dx.doi.org/10.1016/j.atmosenv.2012.02.045>, 2012b
- Stern, R. R., Yamartino, A., Graff: Dispersion modelling within the European Community air quality direction, long term
35 modelling of O₃, PM₁₀ and NO₂. Proc 26th ITM, Istanbul, Turkey, 2003
- Stern R., Builtjes P.J.H., Schaap M., Timmermans R., Vautard R., Hodzic A., Memmesheimer M., Feldmann H., Renner E., Wolke R., Kerschbaumer A.: A model inter-comparison study focussing on episodes with elevated PM₁₀ concentrations. *Atmospheric Environment* 42, 4567-4588, 2008
- 40 Sutton, M.A., Howard, C.M., Bleeker, A., Datta, A.: The global nutrient challenge: From science to public engagement, *Environmental development*, 2013, <http://dx.doi.org/10.1016/j.envdev.2013.03.003>, 2013

- Thunis, P, C Cuvelier, P Roberts, L White, Post, L Tarrason, S Tsyro, R Stern, A Kerschbaumer, L Rouil, B Bessagnet, P Bultjes, M Schaap, G Boersen, and R Bergstroem: Evaluation of a Sectoral Approach to Integrated Assessment Modelling including the Mediterranean Sea. Tech. rep. Eurodelta II, report. EUR 23444 EN. DOI: 10.2788/87066, 2008
- Thunis, P., Cuvelier, C., Roberts, P., White, L. Nyrmi, A., Stern, R., Kerschbaumer, A., Bessagnet B., Bergström, R., Schaap, M., EUR - Scientific and Technical Research Reports, Publications Office of the European Union, ISBN:978-92-79-16357-9, ISSN: 1018-5593, DOI: 10.2788/40803, EUR 24474 EN, OPOCE LB-NA-24474-EN-C, 2010
- Timmermans, R.M.A, A.J. Segers, P.J.H. Bultjes, R. Vautard, R. Siddans, H. Elbern, S.A.T. Tjemkes, M. Schaap, The Added Value of a Proposed Satellite Imager for Ground Level Particulate Matter Analyses and Forecasts, IEEE-JSTARS (Journal of Selected Topics in Applied Earth Observations and Remote Sensing), pp. 271-283, doi: 10.1109/JSTARS.2009.2034613, 2009
- Timmermans, R., H. Denier van der Gon, J. Kuenen, A. Segers, C. Honore, O. Perrussel, P. Bultjes, M. Schaap: Quantification of the urban air pollution increment and its dependency on the use of down-scaled and bottom-up city emission inventories, Urban Climate, vol. 6, dec.2013, p44-62., <http://dx.doi.org/10.1016/j.uclim.2013.10.004>, 2013
- Timmermans, R.M.A., W.A. Lahoz, J.-L. Attié, V.-H. Peuch, R.L. Curier, D.P. Edwards, H.J. Eskes, P.J.H. Bultjes, Observing System Simulation Experiments for air quality, Atmospheric Environment 05/2015; 115. DOI:10.1016/j.atmosenv.2015.05.032, 2015
- Timmermans, R. Kranenburg, A. Manders, C. Hendriks, A. Segers, E. Dammers, Q. Zhang, L. Wang, Z. Liu, H. Denier van der Gon, M. Schaap. Source apportionment of PM2.5 across China using LOTOS-EUROS, submitted to Atmospheric Environment, 2017
- Tørseth, K., Aas, W., Breivik, K., Fjæraa, A.M., Fiebig, M., Hjellbrekke, A.G., Lund Myhre, C., Solberg, S. and Yttri, K.E., Introduction to the European Monitoring and Evaluation Programme (EMEP) and observed atmospheric composition change during 1972–2009. *Atmospheric Chemistry and Physics*, 12(12), pp.5447-5481, 2012
- Van Damme, M., R. J. Wichink Kruit, M. Schaap, L. Clarisse, C. Clerbaux, P.-F. Coheur, E. Dammers, A. J. Dolman, and J. W. Erisman : Evaluating 4 years of atmospheric ammonia (NH3) over Europe using IASI satellite observations and LOTOS-EUROS model results, J. Geophys. Res. Atmos., 119, 9549–9566, doi:10.1002/2014JD021911, 2014
- Van der Swaluw, E., de Vries, W.J., Sauter, F.J., Aben, J.M.M., Velders, G.J.M., and van Pul, W.A.J.: High-resolution modelling of air pollution and deposition over the Netherlands with plume, grid and hybrid modelling, Atmospheric Environment, [155,140-153, doi.org/10.1016/j.atmosenv.2017.02.009](https://doi.org/10.1016/j.atmosenv.2017.02.009), [accepted for publication](https://doi.org/10.1016/j.atmosenv.2017.02.009), 2017
- Van Jaarsveld, J.A., The Operational Priority Substances Model, RIVM, Bilthoven, The Netherlands (2004) RIVM Report 500045001, 2004
- Van Velzen, N., Segers, A.J.: A problem-solving environment for data assimilation in air quality modeling. Environmental Modelling and Software, 25 (3), pp. 277-288, doi:10.1016/j.envsoft.2009.08.008, 2010
- Vautard, R., Schaap, M., Bergström, R., Bessagnet, B., Brandt, J., Bultjes, P.J.H., Christensen, J.H., Cuvelier, C., Foltescu, V., Graff, A., Kerschbaumer, A., Krol, M., Roberts, P., Rouil, L., Stern, R., Tarrason, L., Thunis, P., Vignati, E., Wind, P., Skill and uncertainty of a regional air quality model ensemble, Atmospheric Environment, Volume 43, Pages 4822-4832, doi:10.1016/j.atmosenv.2008.09.083, 2009

[Vehkamäki, H., Kulmala, M., Napari, I., Lehtinen, K.E.J., Timmreck, C., Nopperl, M and Laaksonen, A.: An improved parameterization for sulfuric acid-water nucleation rates for tropospheric and stratospheric conditions. *J. Geophys. Res.*, 107, D22, 4622, doi: 10.1029/2002JD002184, 2002](#)

Vignati, E., J. Wilson, and P. Stier (2004), M7: An efficient size-resolved aerosol microphysics module for large-scale aerosol transport models, *J. Geophys. Res.*, 109, D22202, doi:10.1029/2003JD004485, 2004

Vivanco, M. G., B. Bessagnet, K. Cuvelier; M. R Theobald; S Tsyro; A. Aulinger; J. Bieser; G. Calori; G. Ciarelli; A. Manders; M. Mircea; S. Aksoyoglu; G. Briganti; A. Colette; F. Couvidat; A. Cappelletti; M. D'Isidoro; R. Kranenburg; F. Meleux; L. Menu; M.-T. Pay; G. Pirovano; L. Rouil; C. Silibello; P. Thunis; A. Ung, Joint analysis of deposition fluxes and atmospheric concentrations predicted by six chemistry transport models in the frame of the EURODELTAIII project, *Atmospheric Environment*, 151, pp.152-175, <http://dx.doi.org/10.1016/j.atmosenv.2016.11.042>, 2017

Wagstrom, K.M., Pandis, S.N., Yarwood, G., Wilson, G.M., Morris, R.E: Development and application of a computationally efficient particulate matter apportionment algorithm in a three-dimensional chemical transport model, *Atmospheric Environment*, Volume 42, Pages 5650-5659, ISSN 1352-2310, <http://dx.doi.org/10.1016/j.atmosenv.2008.03.012>, 2008

Wichink Kruit, R. J., Van Pul, W. A. J., Sauter, F. J., Van den Broek, M., Nemitz, E., Sutton, M. A., Krol, M., and Holtslag, A. A. M.: Modeling the surface-atmosphere exchange of ammonia, *Atmospheric Environment* 44, 945-957, doi:10.1016/j.atmosenv.2009.11.049, 2010

Wichink Kruit, R. J., Schaap, M., Sauter, F. J., van Zanten, M. C., and van Pul, W. A. J.: Modeling the distribution of ammonia across Europe including bi-directional surface-atmosphere exchange, *Biogeosciences*, 9, 5261-5277, doi:10.5194/bg-9-5261-2012, 2012a

Wichink Kruit, R.J., Schaap, M., Sauter, F.J., van der Swaluw, E., Weijers, E.: Improving the understanding of the secondary inorganic aerosol distribution over the Netherlands. TNO report TNO-060-UT-2012-00334, TNO, Utrecht, the Netherlands. 78 pp., 2012b

Van Zanten, M. C., Sauter, F. J., Wichink Kruit, R. J., Van Jaarsveld, J. A., and Van Pul, W. A. J.: Description of the DEPAC module: Dry deposition modelling with DEPAC GCN2010, RIVM report 680180001/2010, Bilthoven, the Netherlands, 74 pp, 2010

Zhang, L., Gong S., Padro, J., and Barrie, L.: A size-segregated particle dry deposition scheme for an atmospheric aerosol module, *Atmospheric Environment*, 39, 3291-3303, 2001

Zhang, Q. J., Beekmann, M., Drewnick, F., Freutel, F., Schneider, J., Crippa, M., Prevot, A. S. H., Baltensperger, U., Poulain, L., Wiedensohler, A., Sciare, J., Gros, V., Borbon, A., Colomb, A., Michoud, V., Doussin, J.-F., Denier van der Gon, H. A. C., Haeffelin, M., Dupont, J.-C., Siour, G., Petetin, H., Bessagnet, B., Pandis, S. N., Hodzic, A., Sanchez, O., Honoré, C., and Perrussel, O.: Formation of organic aerosol in the Paris region during the MEGAPOLI summer campaign: evaluation of the volatility-basis-set approach within the CHIMERE model, *Atmos. Chem. Phys.*, 13, 5767-5790, doi:10.5194/acp-13-5767-2013, 2013

Tables

Table 1. Input datasets used in LOTOS-EUROS model run for performance evaluation

Input	dataset
Domain	5 vertical levels (5 km) 15° W-35° E, 35-70° N, 0.5x0.25° lonxlat
Land cover	Corine/Smiatek (EEA 2000) combined with European Tree species data Köble and Seufert (2001)
Boundary conditions	Climatology +Mace Head correction
Meteorology	ECMWF 12 h forecasts
Wet Deposition description	Below-cloud scavenging coefficients (Scott 1978)
Dry deposition description	Restistance approach. Van Zanten et al 2010 for gases; Zhang et al (2001) for particles; compensation point approach for ammonia (Wichink Kruit et al 2010, 2012a)
Anthropogenic emissions	TNO-MACC-III
Biogenic emissions	Tree species-dependent emission factors for isoprene (Schaap et al 2009, Beltman et al 2013)
Soil NOx emissions	Soil-temperature dependent (Novak& Pierce 1993)
Fire emission	MACC/CAMS GFAS product (Kaiser et al., 2012)
Dust emissions	On-line calculation of natural dust; agricultural activity; road resuspension
Sea spray emissions	On-line
Gas-phase chemistry	TNO CBM-IV
Secondary Inorganic Aerosol	Isorropia II (Fountoukis and Nenes, 2007)
Secondary Organic Aerosol	Not included

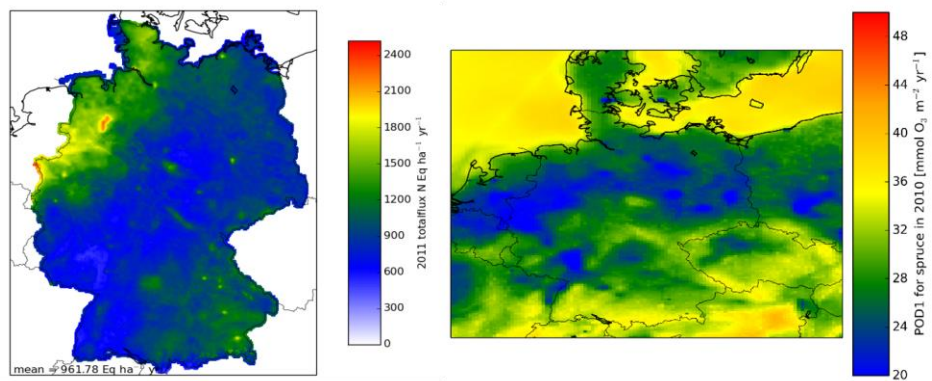
5

Table 2. Comparison of modelled and measured concentrations of air pollutants **Bold = based on hourly measurements;** regular = based on daily measurements, *italic=based on monthly measurements*. ~~Wet deposition is reported in monthly values.~~ O₃ daymax and 8hmax are based on April-September. Concentrations in air are reported in µg/m³., ~~Wet deposition is reported in terms of monthly values of concentrations.~~ Concentrations of SIA in rain water in mg/l. Mean correlation is mean of time correlation for all stations, spatial correlation is based on annual mean values of all stations.

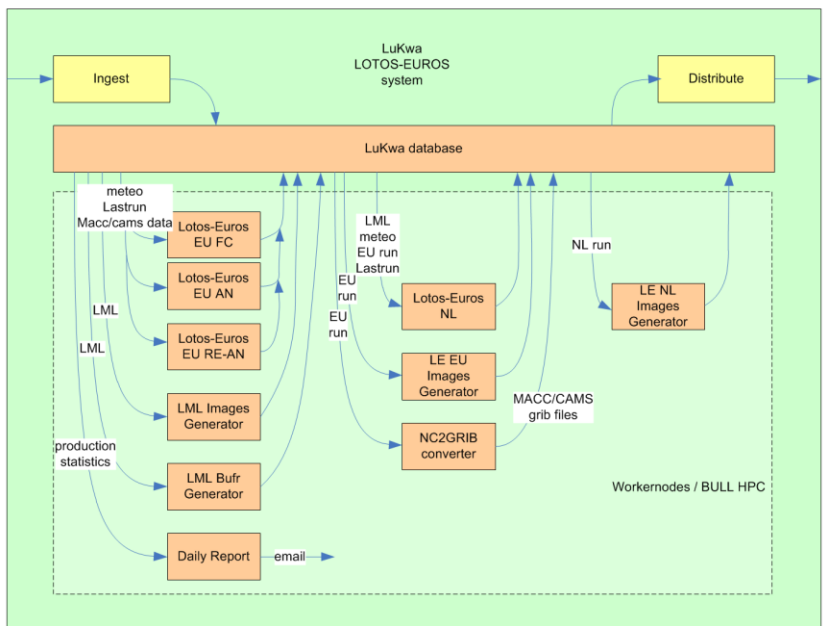
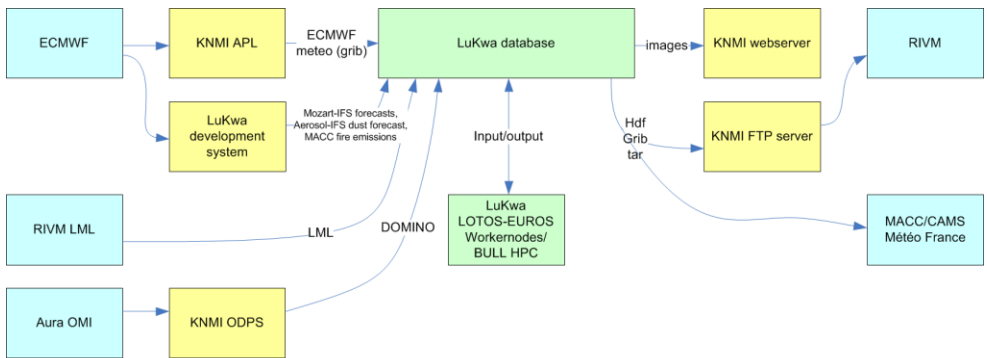
Notes: For SO₄ and Na, total aerosol matrix was taken (not PM₁₀) in order to have more stations available.

Species	Mean correlation	Observed mean	Mean rmse	Mean bias	Measure for variability $\sigma_{obs}/\sigma_{mod}$	Spatial correlation (Pearson)	#stations
O3	0.61	60.4	21.7	4.78	1.09	0.68	52
O3 daymax	0.67	91.55	16.65	6.38	1.22	0.90	51
O3 8hmax	0.66	85.97	16.75	7.41	1.20	0.88	51
NO2	0.44	7.83	7.24	1.69	1.16	0.91	13
NH3	0.26	1.70	1.65	-0.015	1.47	0.95	13
SO2	0.33	1.14	1.67	0.33	1.13	0.79	9
SO4	0.52	1.58	1.21	-0.61	1.63	0.87	28
NO3	0.50	2.08	2.04	-0.15	1.05	0.92	15
NH4	0.63	1.12	0.88	-0.26	1.35	0.89	18
EC	0.67	1.06	0.82	-0.26	2.42	(1.0)	2
Na	0.53	0.81	0.75	0.29	0.85	0.93	21
PM25	0.54	9.57	7.12	-3.11	1.65	0.88	15
PM10	0.46	16.02	9.92	-4.93	1.79	0.81	21
TNH4	0.50	1.18	0.74	-0.066	1.19	0.90	24
<i>wetNH4</i>	<i>0.51</i>	<i>0.54</i>	<i>0.41</i>	<i>-0.20</i>	<i>2.61</i>	<i>0.71</i>	<i>56</i>
<i>wetNO3</i>	<i>0.43</i>	<i>1.58</i>	<i>1.07</i>	<i>-0.67</i>	<i>2.64</i>	<i>0.83</i>	<i>56</i>
<i>wetSO4</i>	<i>0.28</i>	<i>1.18</i>	<i>0.95</i>	<i>-0.78</i>	<i>5.43</i>	<i>0.69</i>	<i>56</i>

Figures



5 **Figure 1.** Deposition of nitrogen (oxidised + reduced) over Germany, assessed using the LOTOS-EUROS model in combination with observations of wet deposition (Schaap et al 2017), and phyto-toxic ozone dose for spruce (Bender et al 2015).



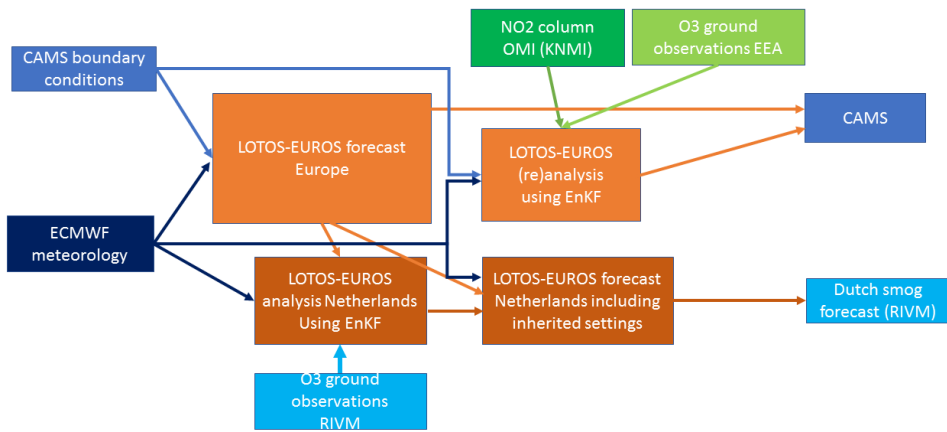


Figure 2. Schematic view of operational suite at KNMI for the production of air quality analysis (AN) and forecasts (FC) with LE (LOTOS-EUROS) for the Netherlands (NL) and Europe as used for CAMS and for the official Dutch air quality information service as used by RIVM, (EU). In data assimilation (Dutch) ground observations of ozone (and NO₂ column) are included (EML) and the European-scale simulation serves as boundary condition for the higher-resolution simulation for the Netherlands. The figure also illustrates the natural cooperation between TNO, KNMI and RIVM for air quality forecasting.

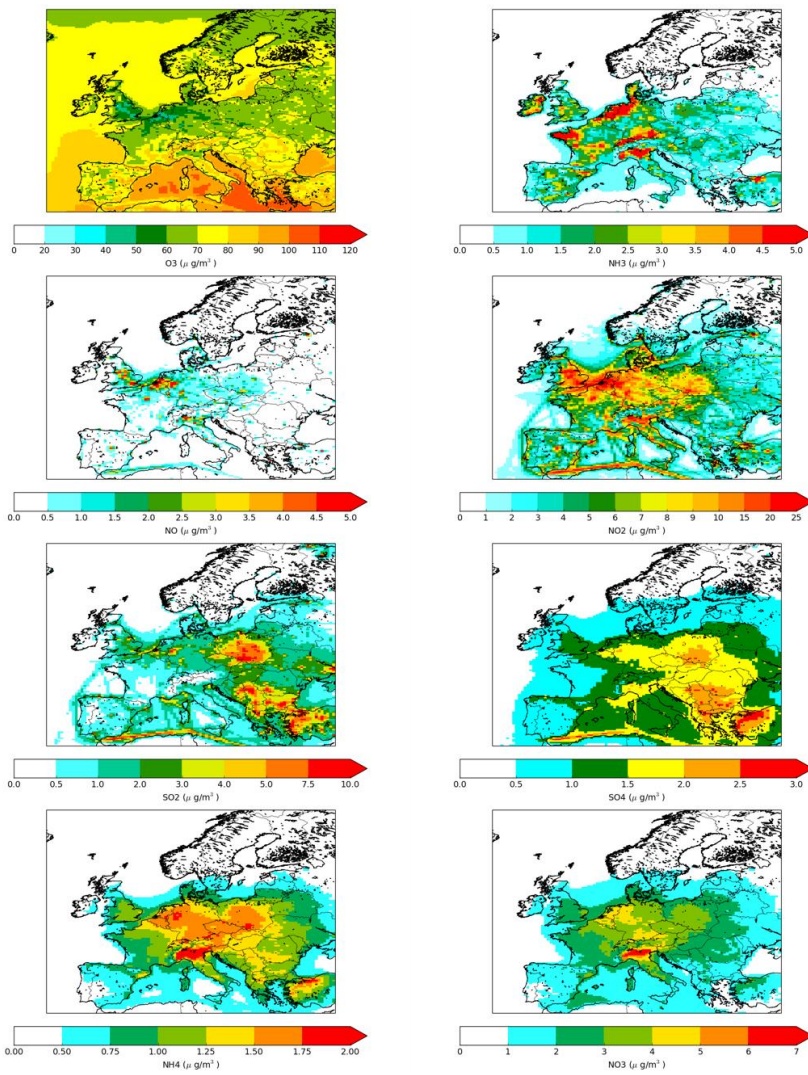


Figure 3. Annual mean surface concentrations for several model species. Note the difference in scaling between the different species and the nonlinear scaling for several species.

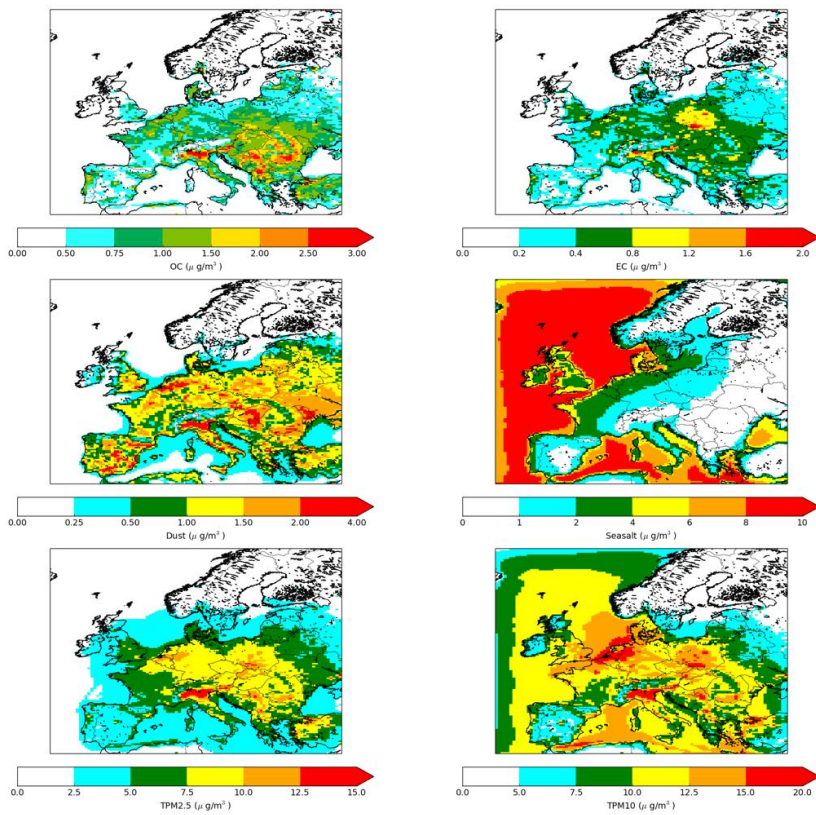
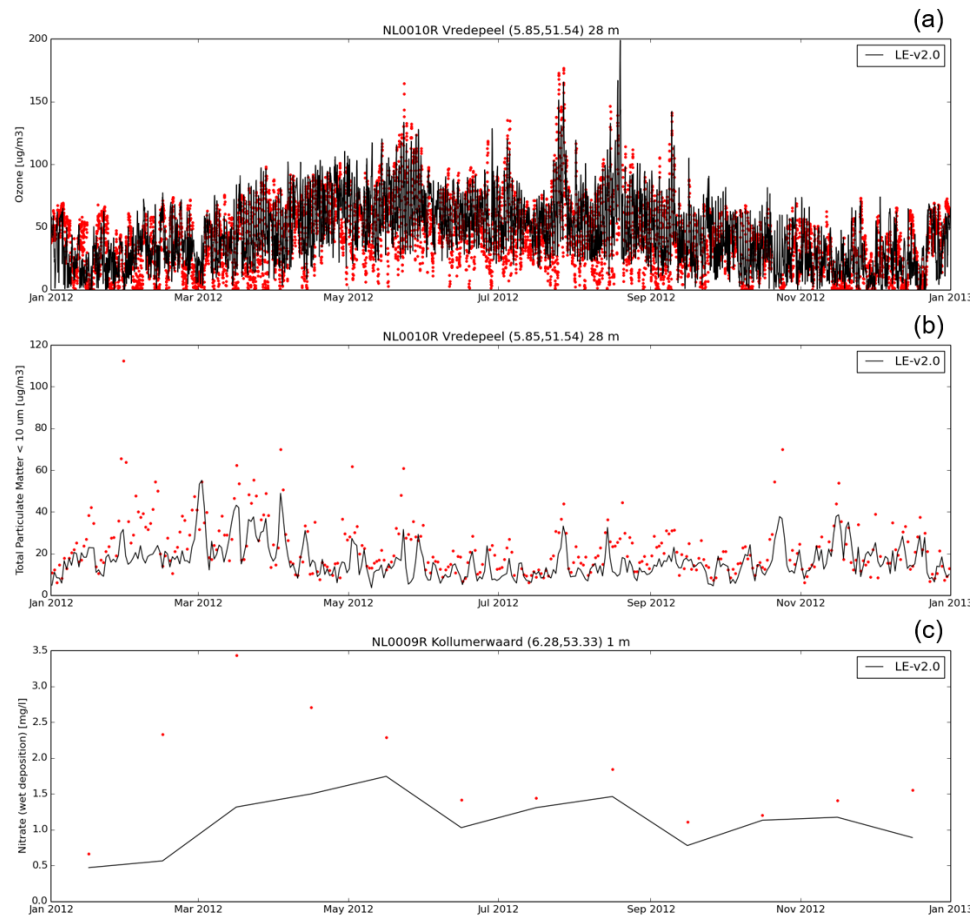


Figure 3 (Continued)



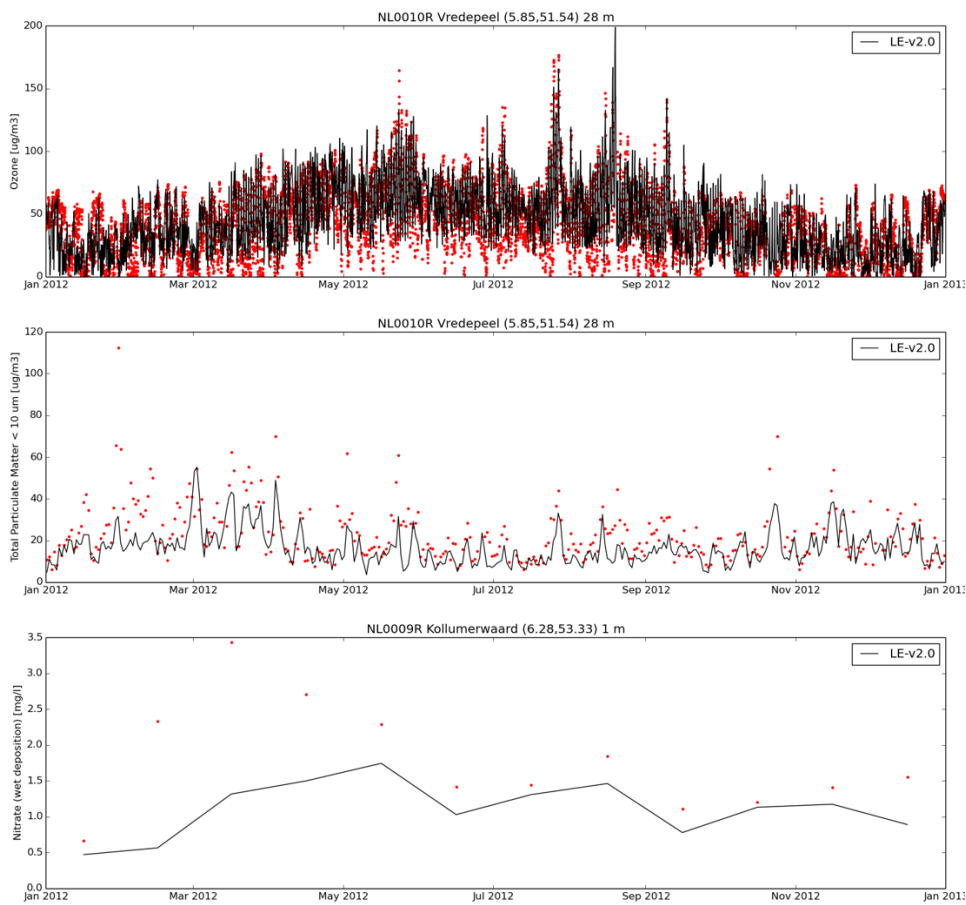


Figure 4. Time series of observed (red dots) and modelled concentrations (black lines) of ozone (a) and PM₁₀ (b) at Vredepeel (the Netherlands, 5.85 E, 51.54 N) and concentrations of NO₃ in rain water (c) in Kollumerwaard (the Netherlands, 6.28N, 53.33 N) .

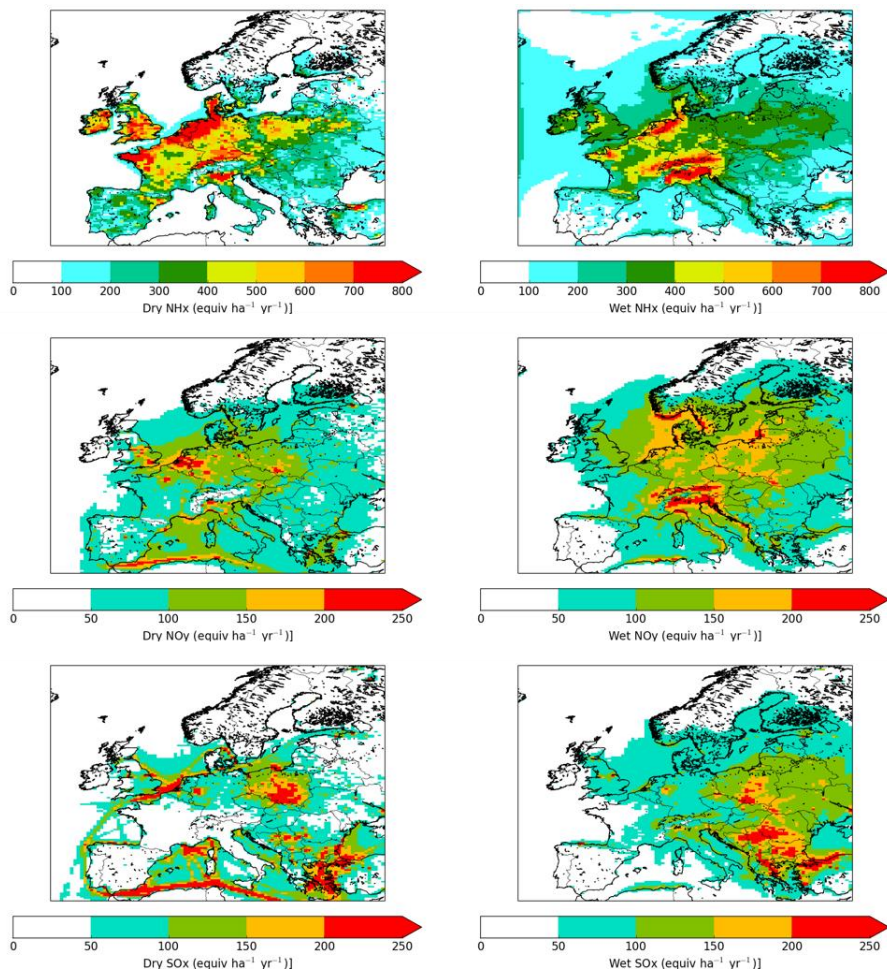
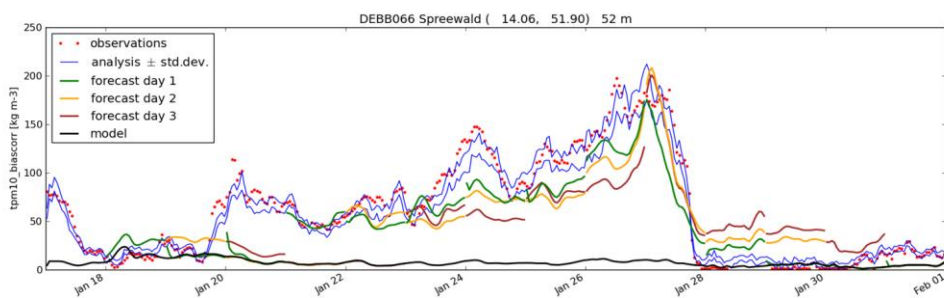


Figure 5. Modelled dry (left) and wet (right) deposition of reduced (top) nitrogen, oxidised (middle) and oxidised sulphur (bottom)



5 Figure 6. Impact of ground-based PM₁₀ data assimilation on analysis and three-day forecast during a large-scale episode of exceptionally high PM₁₀ concentrations over large parts of Europe.

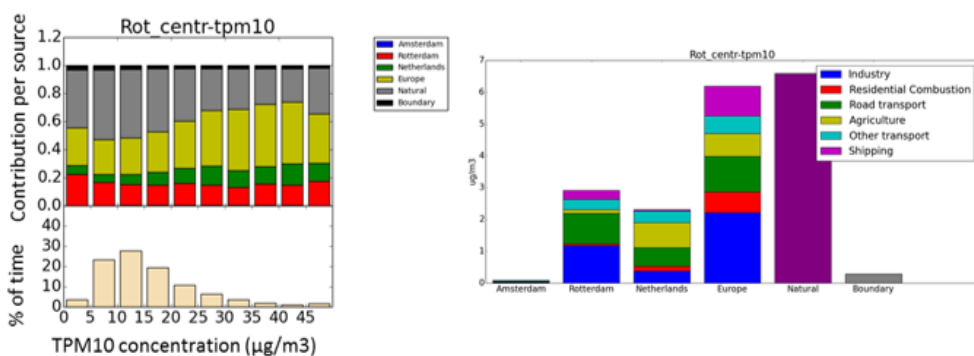
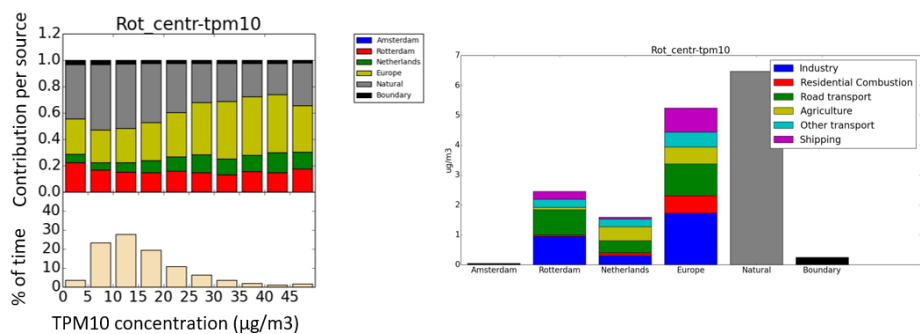


Figure 7. Source apportionment for Rotterdam City Centre, 2011. Relative contribution of several source sectors to daily average PM₁₀ concentrations (left) and annual average absolute contributions of PM₁₀ from several source regions and sectors (right). Note that the natural and boundary contributions have by construction no contributions of sectors or countries.

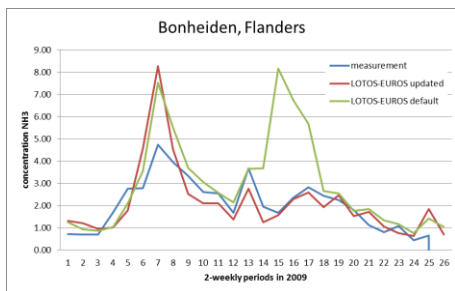


Figure 8. Time series of modelled and measured ammonia concentrations in Bonheiden (Belgium) in 2009, showing the reduction of the unrealistic second NH₃ peak of the default simulation around week 16.

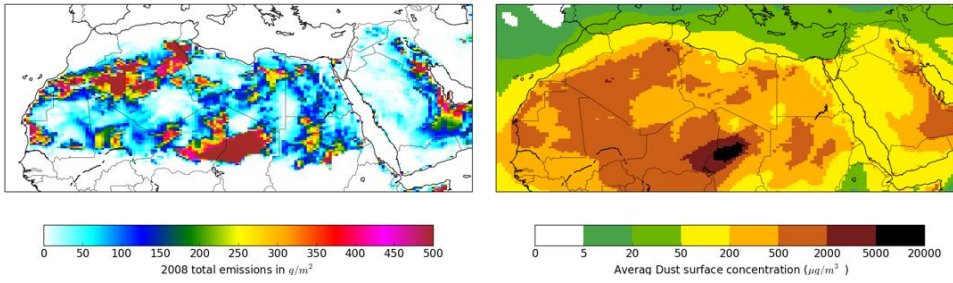


Figure 9. Annual total dust emissions and annual average dust concentration for 2008.

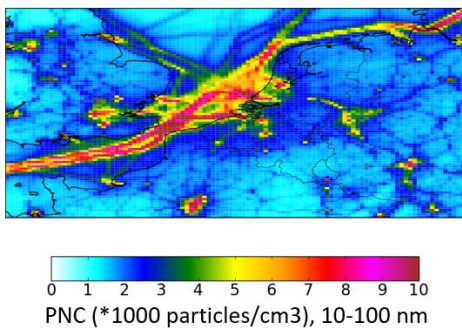


Figure 10. High-resolution modelling of particle number concentrations in the ultrafine range (10-100nm), annual mean value for 2009.

5