

Response to Reviewer's comments for Schoetter et al : Parametrisation of the variety of human behaviour related to building energy consumption in TEB (SURFEX v. 8.2)

Anonymous Referee #1

General Comments

This paper describes a method to improve the simulation of energy consumption within buildings by accounting for an ensemble of human behaviours and building uses within a single model grid point of an urban land surface model. The paper is novel, well organised, thorough and convincing. It will be useful for the urban modelling community and fits within the scope of Geoscientific Model Development. If the issues noted below are addressed, I recommend the paper be accepted for publication.

Specific Comments

Overall this is an impressive contribution, both in the technical implementation and in the reported improvement of model performance. However, some minor amendments and corrections will improve the manuscript. The paper is long, so I do wonder if readability can be improved by moving the whole of Section 2.3 into Appendix B. This section details how different human behaviours are represented in TEB. The basic methodology of this section is dealt with in Sections 2.1 and 2.2. Section 2.3 is an important contribution, but may be better placed in an Appendix to streamline the paper, and because it continuously references tables there. Also, there is no discussion of the effect that compartmentalisation has on the computation time of the various simulations. I would appreciate knowing the computational cost of the additional calculations.

Thank you for taking the time to provide a careful review of our submission. We move the entire Section 2.3 to Appendix A to render the article more readable. The text is now grouped with the related Tables. We also discuss the influence of compartmentalisation on computing time (Section 4.5). The simulation for the MAP experiment (6 compartments) takes a factor of 1.95 more wall clock time than for the DEF experiment (1 compartment). Please find our responses to the technical corrections below.

Technical Corrections

pg1 ln17: “consist of the net solar and infrared”. Much of solar radiation is in the infrared, so “short and longwave” or “net all-wave radiation” is more appropriate.

Thanks, we rephrased this sentence (Page 1, ln 17).

pg1 eq 1: “ $R_{net} = Q_{sen} + Q_{lat} + Q_{sto} + Q_{ant}$ ” This is a non-standard representation of the surface energy balance that causes confusion regarding the sign of terms, and differs from the cited source. For example, the current form of the equation is not consistent with your line 20: “The storage of heat in the construction materials leads to lower negative values of Q_{sto} during the day.” As currently formulated, if Q_{sen} is positive in the day (as stated), Q_{sto} should also be positive in the day. Also, in this form the anthropogenic term will always be negative which is inconsistent with later parts of the paper. Suggest a more common form, for example as in Oke 1982 already cited in the paper (with all daytime terms positive), or conform to the cited source (Christen and

Vogt, 2004).

The discussion of Equation (1) was indeed not very precise. We now reformulate Equation (1) to make it conform to the cited source and modify the discussion of the different terms where necessary (Page 1, ln 20-22). The sensible, latent and storage heat fluxes are now negative during the day, which is consistent with the text. The anthropogenic heat flux is now always positive, which is consistent with the rest of the article.

pg1 ln 20: “. . .which leads to higher (lower) values of Q_{sen} (Q_{lat}).” True in the daytime only, and sign doesn’t conform to cited source.

We reformulate this sentence (Page 1, ln 20).

pg1 ln20: “The storage of heat in the construction materials. . .” Other than issues noted above, I find this sentence difficult to understand with the use of lower (higher) negative (positive) etc.

Suggest simplifying to say urban Q_{sto} exhibits greater diurnal amplitudes than vegetated areas.

Done (Page 1, ln 21).

pg2 ln18: “. . .greenhouse gas emissions, its is important. . . replace “its” with “it”. Consider revising to remove multiple “it” references.

Done (Page 2, ln 19).

pg2 ln24: “. . .lack of detailed information on the diurnal, weekly and annual cycles”. Inventory approach might also lack information on spatial variability at appropriate scales.

Thanks, we rephrased this sentence (Page 2, ln 25).

pg2 ln28: “This approach therefore requires eddy flux measurements. . .” change to “. . .requires turbulent, radiant and storage flux measurements.”

Done (page 2, line 29).

pg2 ln29: “. . .knowlegde” misspelt

Corrected (page 2, line 30).

pg2 ln33: “However, they rely. . .” replace with “However, they may rely. . .”

Done (page 3, line 1).

pg3 ln10: (and other instances) “. . .in an UCP. . .” replace with “. . .in a UCP” (as “in a you-see-pee”).

Done (e.g. page 3, line 12).

pg3: ln15: “The UCP-BEM require. . .” replace with “A UCP-BEM requires. . .” or “The UCP-BEM approach requires. . .”

Done (page 3, line 17).

pg4 ln7: “UCPs represent the. . .” replace with “These UCPs represent the. . .” because not all UCPs are based on street canyon unit.

Done (page 4, line 9).

pg4 ln26: Add “In reality” before “The behaviour-related parameters. . .” to differentiate from model parameters.

Done (page 4, line 28).

pg5 ln16: “A general overview of our approach to consider for a variety. . .” replace with “A general overview of our approach for considering a variety. . .”

Done (page 5, line 20).

pg 8 eq5: “linearised Stefan-Boltzmann law.” I don’t understand why emissivity is squared in this linearised form of SB law. I can see this comes from Bueno et al. 2012, but it is not referenced or derived there, and it differs from other published forms (e.g. Eq. (7) of “Linear relationships in heat transfer” (Marin 2009)). Please explain or redefine.

The formulation takes into account for infinite reflections and absorptions of longwave radiation between the surfaces. A derivation of the exact formula (without linearisation) can be found for example at <http://web.mit.edu/16.unified/www/FALL/thermodynamics/notes/node136.html>.

We now explain that the Equation represents infinite reflections and absorptions (page 7, line 19) and also use an ϵ symbol to represent emissivity in Equation (5).

pg11 ln10: “Mean Absolute Bias” is this the same as mean absolute error (MAE)? Perhaps use MAE, which is more common name. Otherwise define MAB.

Thanks, it is indeed the Mean Absolute Error (MAE). We changed the manuscript (e.g. page 11, line 26) and Figure 6 accordingly.

pg11 ln12: “We find. . .” I appreciate the comparison to test non-linear behaviour of fractional-approach, although Section 2.2 would benefit from subheadings, as this is a mini result.

Thanks for this suggestion. We now use subheadings in Section 2.2.

pg11 ln17: “However, such situations are rare. . .” are they rare in all regions? In all building types? I can imagine certain situations that would be thermally isolated, for example in non-residential buildings. If the fractional approach satisfies your accuracy criteria for all but the heated/unheated cases, can you separate these instances and use the tiled approach there? Otherwise state, “In this study such situations are rare. . .” and justify.

We agree that this statement was too strong. It is based on our analysis of urban tissue in France, but it might not be valid worldwide. For urban areas with a lot of non heated buildings separated from heated buildings a tile approach would indeed be appropriate. We modify the discussion accordingly (page 12, line 1).

pg11 ln23: “opening window,” change to “opening windows,”

Done (page 30, line 26).

pg11 ln24: “humans or their. . .” change to “humans and their. . .”

Done (page 30, line 27).

pg12 ln5: “We consider the design temperature. . .” In this section generally I was not immediately clear whether equations were calculated separately for each compartment or aggregated across compartments. It appears from the code they are separately calculated, which is appropriate. Perhaps reiterate at the beginning of Section 2.3 that each equation is undertaken on each compartment separately.

Thanks for this remark. You got it right, each equation is calculated for each compartment, which is required due to the non-linearity of most processes. However, it was not clearly explained in the manuscript. We now explain this briefly in the beginning of this Section (page 30, line 23).

pg12 ln25: “Since we cannot take. . .” change to “Since we do not take. . .”

Done (page 33, line 7).

pg13 ln20: remove second instance of “with and without shading. . .”

Done (page 35, line 14).

pg15 ln3: “it is possible to use the fractional approach. . .” isn’t the fractional approach already being used here? Or do you mean to make an added distinction from building use and human behaviour compartments?

Indeed, the fractional approach is already used, but not to separate between different ventilation behaviours. Therefore, this formulation meant that we could use the fractional approach to distinguish different ventilation behaviours if necessary. We rephrased this part to be more clear (page 37, line 3).

pg19 ln28: “we only consider for the. . .” change to “we only account for the. . .” or “we only consider the. . .”

Done (page 16, line 7).

pg19 ln29: “In households with high RT [regulation tendency], the design temperature for heating is on average lower...” I was confused here because I would think a household with high tendency to regulate temperature would have a higher heating design temperature (i.e. smaller comfort range – more regular). I see you follow Bourgeois et al. high/low definition, but with a name change to include “regulation”. I suggest an alternative like Efficiency Tendency [ET], clarifying that those in the high category would be more efficient in their energy use, thus allowing a lower heating comfort temperature.

Done (e.g. page 16, line 6).

pg20 ln9: “Bourgeois et al. (2017) also define indicators related to equipment of buildings with electrical appliances (EQ). . .” The cited source is clearer as to what EQ is actually measuring, that is “Ownership of large household appliances”. Suggest the sentence is reworded to define EQ clearly.

Done (page 16, line 19).

pg21 ln32: “The radiative part of the internal heat release is assumed to be 0.1 for all building uses. This might be an oversimplification, but the overall contribution of lighting to the total internal heat release is only 5% to 15%”. A value of 0.1 may well be a reasonable simplification, but the justification using lighting is lacking, as the radiative component of internal heat release should include the longwave radiation emitted by all electrical appliances. For office IT equipment the radiative fraction can be 20-40% (e.g. see Wilkins, C. and Hosni, M. H.: Heat gain from office equipment, ASHRAE Journal; New York, 42(6), 33, 2000). Please make more appropriate justification or recalculate.

Thanks for this very useful remark. We indeed missed that there is also a radiative fraction due to longwave radiation. We therefore modify our discussion (page 18, line 12) and increase the radiative fraction of the internal heat release to 0.2 for the residential buildings and to 0.4 for office and commercial buildings (Table A4). We repeated our simulations with the modified parameters. However, the results are not changed in relevant manner.

pg29 ln13: “In this area, the simulated building energy consumption is larger than the inventory.” You say post-war buildings are large consumers for heating, and that construction period is not taken into account in TEB, so shouldn’t the inventory show larger building energy consumption in this area than TEB? In any case, one could say a current shortcoming of TEB is that building construction period is not accounted for.

It is the opposite way round! The building construction period is taken into account in TEB via the architectural database described in Tornay et al. (2017), but not in the spatialised inventory on energy consumption. Since post war buildings are large heating energy consumers it is plausible that TEB simulates larger values of anthropogenic heat flux than the inventory in areas with a lot of post war buildings. We rephrase the text to better explain this (page 27, line 1).

pg29 ln16: “The values for the RMSE are quite close to the absolute bias, which is consistent with the well simulated time series” Close values for RMSE and absolute bias don’t necessarily mean a well simulated time series, just that the variance of the error is low (e.g. see Willmott and Matsuura: Advantages of the mean absolute error (MAE) over the root mean square error (RMSE) in assessing average model performance, Clim Res, 30(1), 79–82, doi:10.3354/cr030079, 2005.)
Indeed, we remove this statement.

pg31-32 Figure 7 and 8: State in the caption that these results are for the MAP experiments.
Done (pages 28 and 29).

pg36 ln5: “For each day of week” add “. . .the week”.
Done (page 32, caption of Table A2).

pg38 Table A3: Define RT so the table stands alone.
Done (page 33, Table A3).

pg39 Table A4: QIN nom units should be [W m^{-2}]. Define EIU.
Done (page 34, Table A4).

pg40 Table A6: Define ‘low, medium and high design temperatures’ or refer reader to appropriate section.
Done (page 37).

Anonymous Referee #2

The paper by Schoetter et al. describes the parameterisation enhancement of TEB in building energy consumption by accounting for the variety of human behaviours and compared the spatiotemporal variability of building energy consumption produced by different configurations. The paper is very informative with detailed description of the implemented enhancement. However, my major concern is the readability of the paper considering its length. I suggest publication of this paper in a revised form with the following concerns well addressed.

Thank you for taking the time to provide a careful review of our submission. We restructured the article in order to make it more readable by following the suggestion of Referee #1 to shift Section 2.3 to Appendix A and your suggestions to add a nomenclature and modify Figure 2. Please find the responses to your specific comments below.

Specific comments:

1) A nomenclature is suggested to be added. Although the symbols are mostly explained in place, given the number of symbols used in the manuscript, a nomenclature can be more friendly to the readers.

We added a nomenclature (list of symbols) to our manuscript (Appendix C).

2) Figure 2, a key component of this paper, needs to be redrawn as its current form is a bit misleading. It is clearly stated that NO interaction is implemented across different fractional building uses. However, such assumption can hardly be interpreted from this figure: it looks to the reviewer that energy exchanges are existing between mass 1 and mass 2. In addition, mass 2 should have interaction with roof while such connection is currently missing. I would suggest a two-part figure as follows, with one part showing the separate fractional building uses and the other denoting the exchanges of energy and mass between the indoor and outdoor environments of a single building use.

Thanks for this very valuable suggestion. We have restructured Figure 2 accordingly (page 8).

3) Figure 3: determination of dominant building types should be clarified. If fractions of two building types are comparable in one grid, which would be the dominant type?

Figure 3a deals with the dominant building use at grid point scale. Building use is taken for each individual building from the French administrative dataset IGN-BDTopo. The dominant building use at grid point scale is then defined as the building use with the largest floor area at this grid point. We add a sentence to explain this (page 15, line 4).

4) Section 3.5: determination of the sub-grid fractions of building uses needs to be clarified: the current description is a bit convoluted. A flow diagram can be used to aid such description.

We agree that Section 3.5 is difficult to understand and we therefore added a table to better explain which subgrid uses and behaviours are considered for which dominant building use (Table 1; page 19). We also restructured Section 3.5 to be more clear.

Technical corrections:

1) Equation 1: the formulation is very unusual. I would suggest putting R and Q at LHS so these two become the income budgets while other three form the consumption/dissipation budgets. We perfectly agree with this point and follow the advice of Referee #1 to reformulate Equation 1 to be conform to the cited source (Christen and Vogt, 2004) (page 1).

2) Equation 5: the current form is very misleading. First, it is better to use a symbol to explicitly represent emissivity (e.g. ϵ). In addition, it is not clear to the reviewer why the emissivity is squared in this calculation.

The formulation takes into account for infinite reflections and absorptions between the surfaces. A derivation of the exact formula (without linearisation) can be found for example at <http://web.mit.edu/16.unified/www/FALL/thermodynamics/notes/node136.html>.

We now explain that the Equation represents infinite reflections and absorptions and use a symbol to represent emissivity (page 7, line 22).

Anonymous Referee #3

This paper describes a detailed parameterisation of the building energy demand as represented in urban canopy models such as TEB. The building energy demand model is coupled to TEB to predict the anthropogenic heat flux for Toulouse based on various levels of detail on building use and parameter values. I found the paper to be clearly written and has a number of important applications for studying urban climate and urban design. Although I believe that this paper should be published, there are some minor changes that may improve it.

Thank you for taking the time to provide a careful revision of our submission. Please find the responses to your review points below.

Comments:

1) I think some clarification on how ventilation is neglected during colder months could be helpful. Is this simply triggered when the air temperature during the day drops below some threshold? Or is this set to occur for certain months of the year? In particular I am thinking about how easy it is to apply this model to other locations on the globe (as mentioned by the authors in the conclusion).

First, the current formulation of TEB structurally excludes that there is ventilation in the same time as heating is made. Secondly, ventilation during cold periods is neglected by the way Equation A9 is formulated, especially due to the choice of the value of TV_{th} (25 °C). With this formulation the fraction of windows opened will tend towards zero if the indoor air temperature is much below 25 °C, which is the case during the heating season. Concerning the applicability of TEB, we believe that it is not necessarily the geographical location, but rather the type of building which restricts the applicability. Indeed for relatively old buildings lacking insulation, the relative influence of wintertime ventilation on heating energy demand is lower than for modern buildings, respecting very rigorous thermal regulation standards. For such buildings, the ventilation during the cold season is responsible for a larger fraction of the heating energy demand than for the relatively old buildings dominant in the center of Toulouse, where our evaluation took place. Future work on (fractional) ventilation during the cold season might therefore be required. We now discuss the issues related to wintertime ventilation in more detail and more precisely (page 36, line 19).

2) Although the discussion of the tile-approach and fractional-approach is sufficient (p11), I wonder if the tiled-approach was explored in more detail. For example, are there technical obstacles to completing one of the experiments using the tiles (i.e., substantial changes would be required to the offline code)? Or is it simply a computational issue (i.e, takes too long to run the simulation)? Was there any attempt to try the tiled-approach with the experiments described in section 4.2.3?

It would not be an issue of computation time to use the tile approach for test purposes. It would probably increase nearly linearly with the number of tiles, but still remain small compared to a three dimensional simulation with a mesoscale atmospheric model. However, we cannot use the tile approach for the simulations in Section 4.2.3 since this would require considerable developments in TEB, especially related to how the different tiles are initialised and also related to the postprocessing of the model output. These developments would be a bit similar to Section 3 of this manuscript since the variety of the urban tissue (building type, use, construction period, behaviours) would have to be partitioned to the different tiles in a sensible way. No changes in the manuscript.

3) Are the authors considering investigating the sensitivity of some of their parameter choices in future work? For example, which parameters are most crucial to reproducing the anthropogenic flux predictions? In particular I wonder about the parameterisation of infiltration and I imagine some of the (reasonable) choices regarding changing infiltration at night or during colder months could lead to noticeable changes in the experiment results. Or are differences in the infiltration model relatively minor compared to the differences demonstrated between the DOM and SIX experiments in section 4.2.3.

Thanks for the suggestion concerning infiltration. We repeat the MAP simulation by hardcoding the infiltration rate to 0, in order to test the influence of infiltration on the heating energy demand. For this very extreme case, we show here the time series of building energy demand corresponding to Figure 6. During the coldest periods of the year, the infiltration is responsible for about one third of the heating energy demand, which is a reasonable value. We therefore believe that, although there are many uncertainties related to infiltration, TEB simulates this processes sufficiently well to not cause substantial errors in the results. A very important result of the "no infiltration" experiment is that even without infiltration, there is still a tendency that TEB overestimates the sensitivity of the heating energy demand to air temperature. This shows that the bad results for this sensitivity for the

DEF and DOM model configuration cannot be explained by a too strong dependency of infiltration on air temperature. We briefly mention the results of this experiment in the manuscript (page 39, line 8).

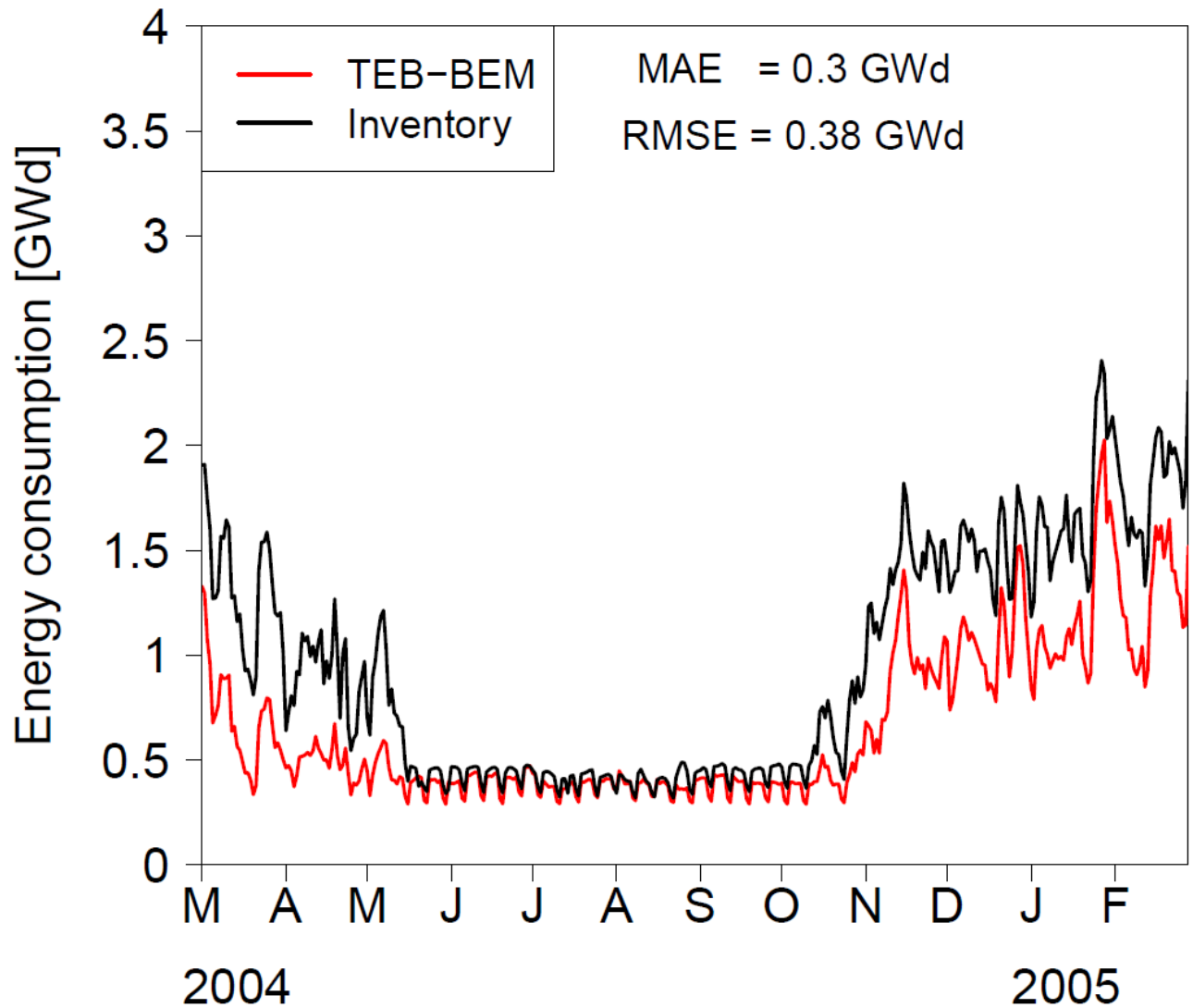


Figure 1 : Same as Figure 6d in the manuscript, but with an air exchange rate due to infiltration set to 0.

Parametrisation of the variety of human behaviour related to building energy consumption in the Town Energy Balance (SURFEX-TEB v. 8.2)

Robert Schoetter¹, Valéry Masson¹, Alexis Bourgeois², Margot Pellegrino³, and Jean-Pierre Lévy²

¹CNRM UMR 3589, Météo-France/CNRS, 42 avenue Gaspard Coriolis, 31057 Toulouse CEDEX 1, France.

²LATTS UMR 8134 CNRS, Ecole des Ponts ParisTech, Université Paris-Est Marne-la-Vallée, 6-8 avenue Blaise Pascal, Champs-sur-Marne, 77455 Marne la Vallée Cedex 2, France.

³Lab'Urba-GU, Université Paris-Est Marne-la-Vallée, 5 boulevard Descartes, 77420 Champs-sur-Marne, France.

Correspondence to: Robert Schoetter (robert.schoetter@meteo.fr)

Abstract. The anthropogenic heat flux can be an important part of the urban surface energy balance. Some of it is due to energy consumption inside buildings, which depends on building use and human behaviour, both of which are very heterogeneous in most urban areas. Urban Canopy Parametrisations (UCP), such as the Town Energy Balance (TEB), parametrise the effect of the buildings on the urban surface energy balance. They contain a simple building energy model. However, the variety of building use and human behaviour at grid point scale has not yet been represented in state of the art UCPs. In this study, we describe how we enhance the Town Energy Balance in order to take fractional building use and human behaviour into account. We describe how we parametrise different behaviours and initialise the model for applications in France. We evaluate the spatio-temporal variability of the simulated building energy consumption for the city of Toulouse. We show that a more detailed description of building use and human behaviour enhances the simulation results. The model developments lay the groundwork for simulations of coupled urban climate and building energy consumption which are relevant for both the urban climate and the climate change mitigation and adaptation communities.

1 Introduction

It is well known that the local climate differs between urban and surrounding rural areas. Phenomena such as the urban heat island (Arnfield, 2003), and the urban impact on moisture (Unger, 1999) and precipitation (Shepherd, 2005) have been described extensively. The specificity of the urban climate derives from the differences between urban and rural areas of the energy, water and momentum balances at the earth-atmosphere interface (Oke, 1982). The surface energy balance in urban areas (Equation 1; Christen and Vogt (2004)) consists of the net all-wave radiation (R_{net}), the turbulent fluxes of sensible (Q_{sen}) and latent (Q_{lat}) heat, the storage (Q_{sto}) and anthropogenic (Q_{ant}) heat fluxes.

$$R_{net} + Q_{sen} + Q_{lat} + Q_{sto} + Q_{ant} = 0 \quad (1)$$

Urban areas are usually less vegetated than rural areas, which leads to larger (lower) negative values of Q_{sen} (Q_{lat}) at daytime. The storage of heat in the construction materials leads to a larger diurnal amplitude of Q_{sto} in urban areas compared to rural

areas. The anthropogenic heat flux is related to human and animal metabolism, heating and air conditioning of buildings, electrical appliances, cooking, domestic hot water, traffic, and industrial activities (Sailor, 2011). It can be an important part of the urban surface energy balance in areas with high population density and energy consumption (e.g. in cities like Tokyo; Kikegawa et al. (2003)). It is particularly relevant during the cold season in the mid and high latitudes, as the other components of the surface energy balance are small at that time (Klysik (1996); Hamilton et al. (2009); Chow et al. (2014)).

The anthropogenic heat is released primarily inside buildings; traffic-related releases are a notable exception. Heating (air conditioning) can be the dominant part of Q_{ant} during the cold (warm) season (Klysik, 1996). The energy consumed inside buildings accounts for ~40% of global primary energy consumption and ~30% of global carbon dioxide emissions (Yang et al., 2014). About 50% of the building energy consumption is due to heating, ventilation and air conditioning. In Europe, and especially France, the building energy consumption can account for up to 50% of the primary energy consumption (Sailor, 2011).

The building energy consumption due to heating and air conditioning depends on the meteorological conditions and interacts with the urban climate. During the warm season, the waste heat due to air conditioning tends to amplify the urban heat island. Kikegawa et al. (2003) found that air conditioning can increase the urban heat island by 1 to 2 K in Tokyo. For Paris, despite a relatively low prevalence of air conditioning, de Munck et al. (2013) report an exacerbation of the urban heat island between 0.25 K and 1 K. The amplification of the urban heat island can lead to an increase of the energy demand for air conditioning. In contrast, during the cold season, the urban heat island tends to reduce the building energy consumption. There is thus a negative (positive) feedback between the building energy consumption and the urban heat island during the cold (warm) season.

Due to the relevance of building energy consumption for the urban climate and greenhouse gas emissions, its spatio-temporal variability needs to be known. In addition, numerical simulations of the coupled urban climate and building energy consumption allow the impact of mitigation and adaptation measures implemented in urban areas to be quantified. One example is the use of white roofs to reduce the energy demand for air conditioning (Akbari et al., 2012).

Sailor (2011) reviewed different approaches to determine Q_{ant} .

- The “inventory-approach” is based on the disaggregation of low resolution energy consumption data in space and time. The main disadvantages are the lack of detailed information on the spatial variability of energy consumption, the not precisely known diurnal, weekly and annual cycles of energy consumption and the difficulty of accounting for the dependency of building energy consumption on meteorological conditions.
- The “energy-budget-closure-approach” attempts to determine Q_{ant} as the residual of the observed urban energy balance (Equation 1). This approach therefore requires turbulent, radiant and storage flux measurements, which are available for only a few sites. Further, the error propagation and the lack of knowledge concerning the footprint of the measurements lead to large uncertainties.
- The third approach is to simulate the building energy demand with numerical models. One option is to simulate a selection of buildings typical for a given urban area and then aggregate the energy demand (Heiple and Sailor (2008); Nie et al. (2014)). The main advantage of using building models is that they take many details of the building physics and

human behaviour into account. However, [they may rely](#) on meteorological forcing data (e.g. a station located at an airport), which might not be representative of the meteorological conditions in the city centre, neglecting, for example, the urban heat island. To circumvent this issue, Kikegawa et al. (2003) coupled a Building Energy Model (BEM) to an Urban Canopy Parametrisation (UCP), which was itself coupled to a mesoscale atmospheric model. With this “UCP-BEM approach”, the feedbacks between the urban climate and the building energy consumption can be taken into account. Kikegawa et al. (2003) were able to reproduce the sensitivity of the cooling energy consumption on air temperature for a business district in Tokyo using this technique.

Although the UCP-BEM approach allows the interactions between urban climate and building energy consumption to be studied, its practical applicability is currently limited.

- A UCP-BEM is designed to parametrise the effects of the buildings on the urban surface energy balance at spatial resolutions from $\sim 100 \times 100 \text{ m}^2$ (very fine-scale mesoscale modelling) to $\sim 100 \times 100 \text{ km}^2$ ([for representation of urbanised areas in global climate models](#) (Oleson et al., 2008)). The Building Energy Model included in a UCP therefore does not represent one single building, but rather the ensemble of buildings at grid point scale. Within one grid point there will be a diverse range of building use and human behaviour, which are known to be relevant for building energy consumption (Andersen, 2012). The variety of building use and human behaviour should therefore be taken into account in simulations of urban climate.
- [A UCP-BEM requires](#) various input parameters, with one part related to building use, equipment and human behaviour: for example the fraction of buildings equipped with heating and air conditioning systems and the way these are used, the internal heat release due to electrical appliances, and the practices concerning ventilation and shading. These parameters are often not well known for a given urban agglomeration.

In this study, we describe how we enhance the Town Energy Balance (TEB) (Masson, 2000) coupled to the Building Energy Model (BEM) (Bueno et al., 2012) in order to parametrise the variety of building use and human behaviour related to building energy consumption. The enhancements of TEB are detailed in Section 2. In Section 3, we describe how we determine the model input parameters related to building use and human behaviour for applications in France. In Section 4, we evaluate the spatio-temporal variability of the building energy consumption simulated with our approach for the CAPITOUL observation campaign in Toulouse. Conclusions are drawn in Section 5.

2 Enhancement of TEB to parametrise the variety of building use and human behaviour

In this section, we first discuss the state of the art of the representation of human behaviour in Urban Canopy Parametrisations (Section 2.1). Then, we describe the modifications we made to TEB to account for fractional building use and behaviour (Section 2.2). [Detailed information on the representation of behaviours like heating, air conditioning, ventilation and shading is provided in Appendix A.](#) We describe only those modifications of TEB that relate to human behaviour and the Building

Energy Model with respect to the version implemented in SURFEX-v7.3 described by Bueno et al. (2012) and Pigeon et al. (2014).

2.1 Human behaviour in urban canopy parametrisations

Urban canopy parametrisations have been developed to solve the surface energy, momentum and water balances in urbanised areas in order to provide the lower boundary conditions (e.g. radiative and turbulent fluxes) for atmospheric models. These UCPs take the different position, orientation and physical properties of urban facets into account by solving separate budget equations for the roof, wall and road. UCPs can be of the single-layer-type, like the Town Energy Balance TEB (Masson, 2000) and the SLUCM (Kusaka et al., 2001), which do not vertically discretise the walls, or of the multi-layer-type, like the Building Effect Parametrisation BEP (Martilli et al., 2002), which do. The mentioned UCPs represent the complex urban morphology in a simplified way by assuming that the buildings are oriented along street canyons. In TEB, only one urban morphology (building height, aspect ratio of the street canyons) is considered per grid point, whereas in BEP a distribution of building heights can be taken into account.

Since the main purpose of a UCP is to calculate the radiative and turbulent fluxes above urban areas, not much emphasis has been placed on the indoor conditions and human behaviour. Masson (2000) prescribes 17 °C as the indoor boundary condition for the temperature of the wall and the roof. Kusaka et al. (2001) and Martilli et al. (2002) follow a similar approach. This assumes heating with a perfect heating system during the cold season. During the warm season, it assumes that buildings are air conditioned. However, the waste heat due to air conditioning is not released outside the buildings. Air conditioning thus acts as a non-physical energy sink (Thatcher and Hurley, 2012).

Due to the relevance of building energy consumption to urban climate and climate change mitigation and adaptation, the UCPs have been further developed in order to include more realistic building physics. Kikegawa et al. (2003) were the first to implement a Building Energy Model in a UCP. It takes into account heat conduction, solar heat gains through the windows, and air exchange due to ventilation, as well as internal heat release due to electrical appliances and the occupants. They further consider that the waste heat due to air conditioning is released outside the buildings. Similar developments were made by Salamanca et al. (2009) for BEP, and Bueno et al. (2012) for TEB.

The state of the art UCP-BEM thus include various aspects of human behaviour related to building energy consumption. However, two important issues remain:

- The Building Energy Model is meant to parametrise the effect of the ensemble of the buildings at grid point scale, rather than one single building. In reality, the behaviour-related parameters (e.g. design temperature for heating) often depend on the building use (e.g. residential or office), the equipment (e.g. type of heating system), the socio-economical and demographical status of the inhabitants (e.g. age). Due to the heterogeneity of most urban areas, there will often be a wide variety of building use and human behaviour at grid point scale, which may, depending on the type of city, be more diverse than urban morphology. A building block that is homogeneous in terms of morphological and architectural properties may be used in various ways (e.g. residential, office, commerce) and be inhabited by different people. The

variety of building use and behaviour at grid point scale should therefore be taken into account, even though only one type of urban morphology is considered for one grid point.

- Human behaviour related to building energy consumption is often unsteady (e.g. adjustment of the design temperature for heating). In state of the art building simulation tools, statistical models that simulate transitions of human behaviours based on, for example, Markov chains, are implemented (Haldi and Robinson (2011); Vorger (2014)). Such an approach is not useful for an UCP-BEM, since the ensemble of behaviours at grid point scale shall be represented. Abrupt transitions shall therefore not take place. Instead, smooth formulas of limited complexity need to be implemented to describe the behaviours.

In order to circumvent these issues, we modify TEB in order to optionally take fractional building use and human behaviour into account, and we adapt the representation of human behaviours to the requirements of an Urban Canopy Parametrisation. A general overview of our modifications of TEB, the urban module of the Externalised Surface (SURFEX), is displayed in Figure 1.

2.2 Fractional building use and human behaviour in TEB

2.2.1 Main purpose of TEB enhancement

The main purpose of our enhancement of TEB is to account for a potential variety of building use and human behaviour for one given urban morphology. This variety might be due to different uses and behaviours in buildings that are distinct but located in the same grid point and/or different uses and behaviours in the same building. These two cases, although different in reality, cannot be distinguished by TEB since the Building Energy Model represents the entire building volume at grid point scale. A general overview of our approach for considering a variety of use and behaviour is given in Figure 2.

We assume that building use and human behaviour primarily influence the thermal environment inside the building (e.g. indoor air temperature) and only secondarily the conditions outside the building (e.g. air temperature in street canyon). For this reason, we modify TEB in order to optionally execute the Building Energy Model N times with different settings of the input parameters related to building use and human behaviour. This can be seen as simulating N flats with different behaviours inside one building and/or N separated buildings with different uses and behaviours. These concern the design temperature for heating and air conditioning, the internal heat release, ventilation and shading. The fraction of the i^{th} use/behaviour is denoted as f_i . The Building Energy Model is simplified by taking into account only one single thermal zone for the indoor air. The intermediate floors are represented by a generic internal mass. The prognostic variables of BEM, which are the indoor air temperature (T_{air}^{ind}) and specific humidity (Q_{air}^{ind}), and the temperature of the internal mass (T_{mass}) and building floor (T_{floor}), are calculated for the N fractional use/behaviours. A comprehensive list of symbols is included in Appendix C.

In contrast to the Building Energy Model, the other components of TEB are solved only once at each time step. The components relevant for this study are:

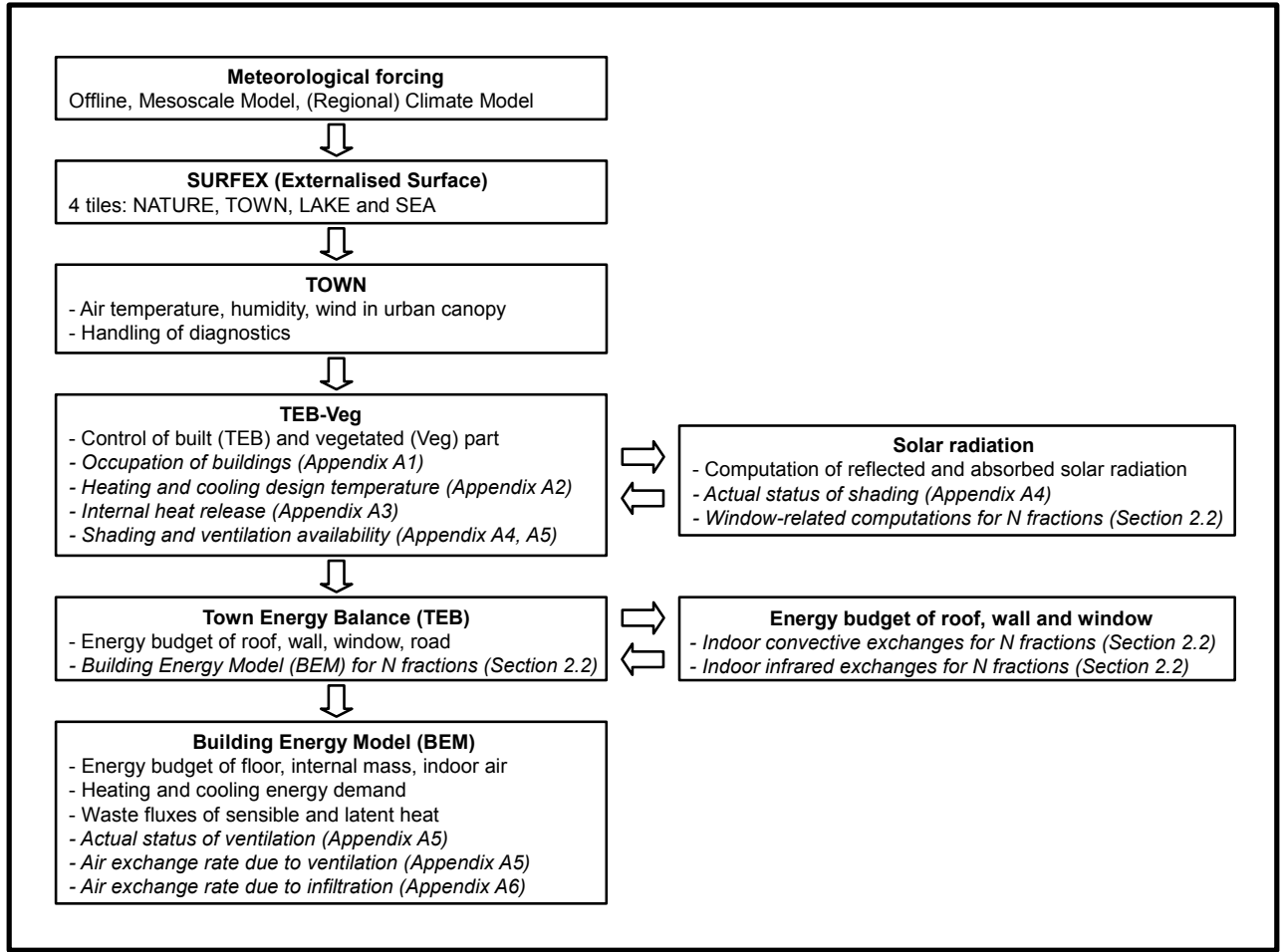


Figure 1. Overview of the components of SURFEX-TEB relevant to human behaviour and building energy consumption. The main modifications are in *italics*.

- The prognostic equations for the temperature of the building envelope (roof (T_{roof}), wall (T_{wall}) and window (T_{win})).
- The diagnostic equations for the air temperature (T_{air}^{can}) and specific humidity (Q_{air}^{can}) in the street canyon.
- The budgets of shortwave and longwave radiation outside of the building.

In order to link the components of TEB that are solved for the N fractional building uses and behaviours and those that are solved only once, we aggregate the fluxes calculated for the N fractional building uses and behaviours. The fluxes that need to be aggregated are:

- The convective fluxes between the indoor air and the roof, wall and window.

- The fluxes of longwave radiation between the floor and internal mass and the roof, wall and window.
 - The fluxes of heat and moisture due to air exchange between the inside and the outside of the building (e.g. due to ventilation).
 - The shortwave radiation reflected and absorbed by the windows.
- 5 We do not intend to represent exchanges between different compartments inside the building. For this reason, no direct exchanges between the N fractional building uses and behaviours are taken into account.

2.2.2 Modification of TEB Equations

The convective heat exchange coefficients for the exchanges between the indoor air and the roof, wall and window are calculated separately for the N fractions ($CHTC_{air,i}^{air,i}$). This is necessary since they are strongly non-linear (Bueno et al., 2012). The convective heat fluxes from the roof (H_{roof}^{ind}), wall (H_{wall}^{ind}) and window (H_{win}^{ind}) towards the indoor air are then aggregated over the N fractions (Equations 2 to 4).

$$H_{roof}^{ind} = \sum_{i=1}^N f_i CHTC_{roof}^{air,i} (T_{roof} - T_{air,i}^{ind}) \quad (2)$$

$$15 \quad H_{wall}^{ind} = \sum_{i=1}^N f_i CHTC_{wall}^{air,i} (T_{wall} - T_{air,i}^{ind}) \quad (3)$$

$$H_{win}^{ind} = \sum_{i=1}^N f_i CHTC_{win}^{air,i} (T_{win} - T_{air,i}^{ind}) \quad (4)$$

The exchanges of longwave radiation between different facets inside the building (e.g. between the roof and the internal mass) are calculated based on the linearised Stefan-Boltzmann law, [taking into account for infinite absorptions and reflections](#). The indoor radiative exchange coefficient is calculated separately for the N fractions ($C_{rad,i}$; Equation 5).

$$C_{rad,i} = 4 \epsilon_1 \epsilon_2 \sigma T_{rad,i}^3 \quad (5)$$

The emissivity of all facets inside the building is assumed to be 0.9 ($\epsilon_1 = \epsilon_2 = 0.9$). The Stefan-Boltzmann constant is denoted by σ . The indoor mean radiative temperature for the i^{th} fraction ($T_{rad,i}$) is calculated following Equation 6.

$$T_{rad,i} = \frac{T_{mass,i} A_{bld}^{mass} + T_{floor,i} + T_{wall} A_{bld}^{wall} + T_{roof} + T_{win} A_{bld}^{win}}{A_{bld}^{mass} + 1 + A_{bld}^{wall} + 1 + A_{bld}^{win}} \quad (6)$$

25 The temperatures of the different indoor facets are weighted by their surface ratios. For example, A_{bld}^{mass} is the ratio between the surface of the internal mass and the building footprint. In Appendix B, we define how the surface ratios are calculated. The

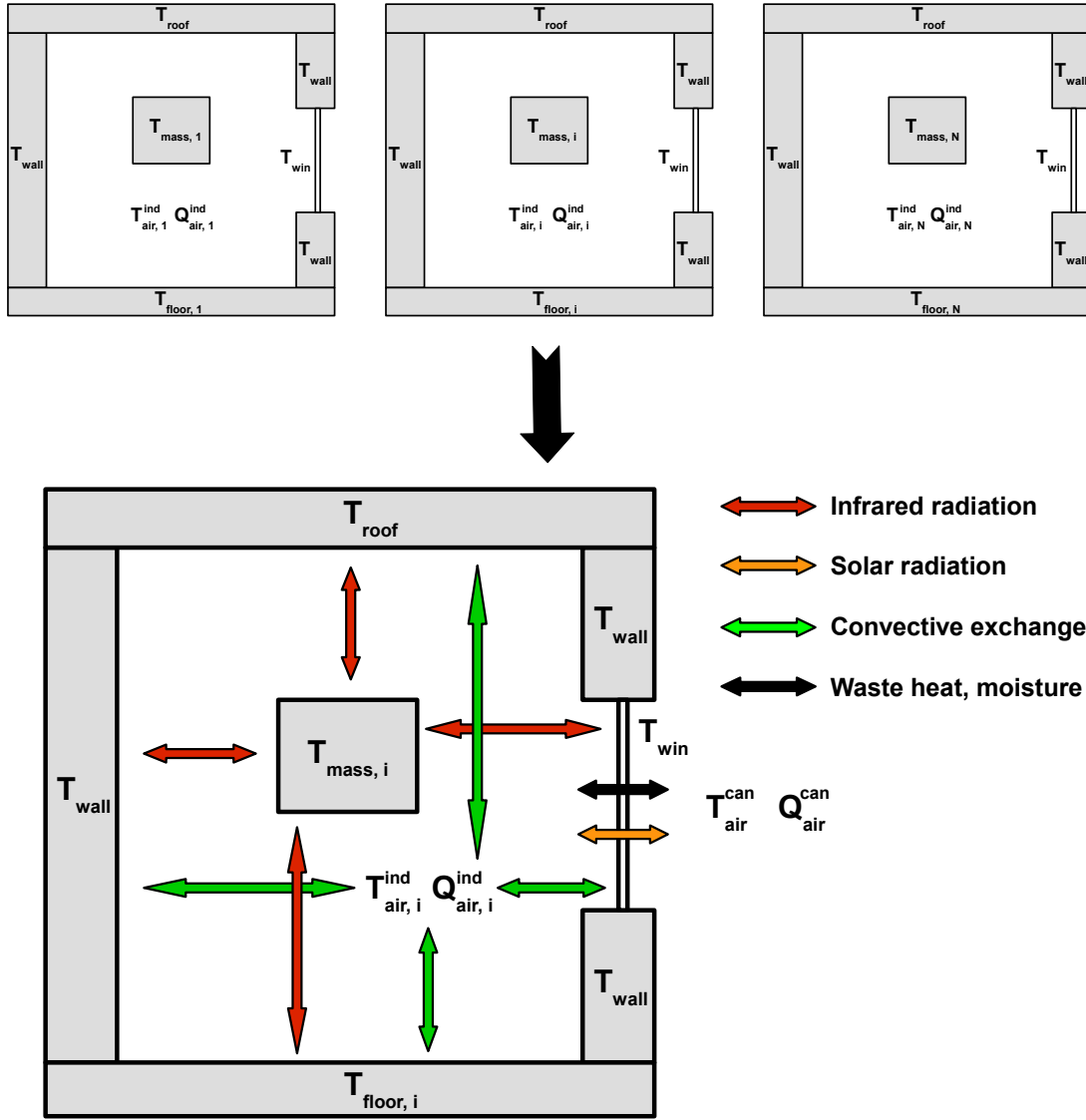


Figure 2. Overview of our methodology for parametrising fractional building use and human behaviour at grid point scale. For the N different uses/behaviours we solve the equations for the indoor air and humidity, the internal mass and the ground floor N times. The equations for the building envelope and the outside of the building are solved only once. The fluxes due to convection, shortwave and longwave radiation and air exchange towards the roof, wall, window and the outside are aggregated over the N fractional uses/behaviours. No direct exchanges between the different uses and behaviours are taken into account since we do not seek to represent exchanges between different compartments in one building.

heat fluxes due to longwave radiation (LW) between the wall, roof and window and the N masses and floors are aggregated

over the N fractions (Equations 7 to 12).

$$LW_{roof}^{mass} = \sum_{i=1}^N f_i C_{rad,i} (T_{roof} - T_{mass,i}) \quad (7)$$

$$LW_{roof}^{floor} = \sum_{i=1}^N f_i C_{rad,i} (T_{roof} - T_{floor,i}) \quad (8)$$

5

$$LW_{wall}^{mass} = \sum_{i=1}^N f_i C_{rad,i} (T_{wall} - T_{mass,i}) \quad (9)$$

$$LW_{wall}^{floor} = \sum_{i=1}^N f_i C_{rad,i} (T_{wall} - T_{floor,i}) \quad (10)$$

$$10 \quad LW_{win}^{mass} = \sum_{i=1}^N f_i C_{rad,i} (T_{win} - T_{mass,i}) \quad (11)$$

$$LW_{win}^{floor} = \sum_{i=1}^N f_i C_{rad,i} (T_{win} - T_{floor,i}) \quad (12)$$

The heat loads on the indoor facets due to the shortwave radiation transmitted by the window ($SW_{win,i}^{tra}$) and the radiative fraction of the internal heat release ($QIN_{rad,i}$) can be different for the N fractions of building use and behaviour (e.g. shades closed in one part, but open in the remaining part [of the building](#)). The heat loads (Q) received by the floor (Equation 13) and internal mass (Equation 14) are distinguished for the N fractions, whereas the heat loads received by the roof (Equation 15), wall (Equation 16) and window (Equation 17) are aggregated.

15

$$Q_{floor,i} = \frac{V_{floor}^{win} SW_{win,i}^{tra} + QIN_{rad,i}}{A_{bld}^{mass} + 1 + A_{bld}^{wall} + 1 + A_{bld}^{win}} \quad (13)$$

$$20 \quad Q_{mass,i} = \frac{V_{mass}^{win} SW_{win,i}^{tra} + QIN_{rad,i}}{A_{bld}^{mass} + 1 + A_{bld}^{wall} + 1 + A_{bld}^{win}} \quad (14)$$

$$Q_{roof} = \sum_{i=1}^N f_i \frac{V_{roof}^{win} SW_{win,i}^{tra} + QIN_{rad,i}}{A_{bld}^{mass} + 1 + A_{bld}^{wall} + 1 + A_{bld}^{win}} \quad (15)$$

$$Q_{wall} = \sum_{i=1}^N f_i \frac{V_{wall}^{win} SW_{win,i}^{tra} + QIN_{rad,i}}{A_{bld}^{mass} + 1 + A_{bld}^{wall} + 1 + A_{bld}^{win}} \quad (16)$$

$$Q_{win} = \sum_{i=1}^N f_i \frac{V_{win}^{win} SW_{win,i}^{tra} + QIN_{rad,i}}{A_{bld}^{mass} + 1 + A_{bld}^{wall} + 1 + A_{bld}^{win}} \quad (17)$$

The shortwave radiation transmitted by the windows is multiplied by the corresponding view factors. For example, V_{floor}^{win} is the view factor of the window by the floor. The calculation of the view factors is given in Appendix B. The propagation of shortwave radiation inside the building is assumed to be isotropic. This assumption is unchanged compared to previous versions of TEB.

The solar radiation reflected (SW_{win}^{ref}) and absorbed (SW_{win}^{abs}) by the windows and the shading elements is aggregated over the N fractions (Equations 18 and 19), since we do not differentiate the radiation budgets outside the building for the N fractional uses and behaviours.

$$SW_{win}^{ref} = \sum_{i=1}^N f_i SW_{win,i}^{ref} \quad (18)$$

$$SW_{win}^{abs} = \sum_{i=1}^N f_i SW_{win,i}^{abs} \quad (19)$$

The waste fluxes of sensible and latent heat ($H_{waste,i}$, $LE_{waste,i}$) can be due to infiltration, ventilation, heating and air conditioning. They are calculated separately for the N fractional uses and behaviours (e.g. ventilation in one part of the building) and the resulting fluxes towards the street canyon (can) and the air above the roof ($roof$) are aggregated (Equations 20 to 23).

$$H_{waste}^{can} = \sum_{i=1}^N f_i H_{waste,i}^{can} \quad (20)$$

$$LE_{waste}^{can} = \sum_{i=1}^N f_i LE_{waste,i}^{can} \quad (21)$$

$$H_{waste}^{roof} = \sum_{i=1}^N f_i H_{waste,i}^{roof} \quad (22)$$

$$LE_{waste}^{roof} = \sum_{i=1}^N f_i LE_{waste,i}^{roof} \quad (23)$$

The following diagnostic variables of BEM depending on building use and human behaviour are available for the N fractions:

- Status of building occupation.
- Status of shading and ventilation.

- Air exchange rate due to ventilation.
- Energy consumption due to internal heat release.
- Energy consumption due to heating and air conditioning.
- Indoor thermal comfort expressed by the Universal Thermal Climate Index (UTCI; Blazejczyk et al. (2012)).

5 2.2.3 Validation for idealised cases

The advantage of the described approach for considering fractional building use and behaviour is that the computational costs are much lower compared to calling the entire SURFEX-TEB code N times. However, this approach assumes that the variety of behaviours influences the inside of the building more than the outside. Uncertainties are introduced by averaging the fluxes towards the roof, wall and windows, since these represent the building envelope, which links the inside and the outside. For example, in the case where one part of the building is heated to 21 °C whereas the other part is heated to 19 °C, the temperature of the wall will not be the same in the two parts of the building. For behaviours that only slightly modulate the indoor conditions, such simplifications are small compared to other simplifications of TEB, especially the single-layer assumption, which does not allow distinction between the sunlit and shaded parts of the wall.

We perform one-dimensional “Offline” simulations using the meteorological data observed at the meteorological tower during the CAPITOU campaign (Section 4) as forcing to test how well different behaviours can be represented with our approach. We compare the simulated components of the urban surface energy balance (Equation 1) for two model configurations.

- “Tile-approach”: Two simulations with $N = 1$ but different settings for input parameters related to human behaviour (e.g. different design temperature for heating). The simulated fluxes (e.g. Q_{sen}) for the two simulations are aggregated 50-50.
- “Fractional-approach”: The same variety of behaviours as for the “Tile-approach” is represented by one simulation with $N = 2$ and fractional behaviours with $f_1 = 0.5$ and $f_2 = 0.5$ (e.g. fractional design temperature for heating).

The “Tile-approach” represents the “true” solution in the case where there are different behaviours in separate buildings, which therefore (nearly) do not interact. The comparison between the “Fractional-approach” and the “Tile-approach” allows us to quantify the error made by simulated interactions between the different fractional behaviours that occur due to the aggregation of the fluxes towards the building envelope. We define that the “Fractional-approach” is sufficiently accurate if the average diurnal cycles of all components of the urban surface energy balance are simulated for all seasons with a [Mean Absolute Error](#) of less than 5 Wm^{-2} and less than 10% of the differences between the two “Tile-approach”-simulations.

We find that the “Fractional-approach” is sufficiently accurate if the different use/behaviour do not cause too large a difference in the indoor air temperature. This is the case for different heating and air conditioning design temperatures, fractional ventilation and shading. The only exception is when parts of the buildings are not heated and isolated from the heated buildings. In this case, the difference in the indoor air temperature between the heated fraction and the non heated fraction becomes so large

that relative errors of ~20% appear. The “Fractional-approach” can therefore be used for urban tissues where the non heated part of a building is not completely isolated from the heated part. Otherwise a “Tile-approach” separating the heated and non heated buildings should be used.

5 3 Building use and human behaviour in France

The enhancement of TEB described in Section 2 allows the variety of building use and human behaviour at grid point scale to be represented. Detailed information on the urban area of investigation is required to make use of these enhancements. Human behaviours related to building energy consumption depend on the socio-economical characteristics of the population and cultural practices. For example, air conditioning is very common in large parts of the US (Sailor and Pavlova, 2003), whereas it is rare in western Europe. Such information is crucial for a precise simulation of building energy consumption. The determination of all relevant information on building use and behaviour for the entire world is beyond the scope of this study. In this section, we derive these data for France and describe how we take them into account in the enhanced version of TEB. Our general approach is to assign the behaviour-related parameters of TEB as a function of building use. In Section 3.1, we describe the datasets we exploit, in Section 3.2 how we determine building use. In Sections 3.3 and 3.4 we describe how we derive the TEB input parameters related to human behaviour. Finally, in Section 3.5 we provide the model configuration for simulation of urban climate and building energy consumption in France.

3.1 Datasets

In France, administrative datasets that provide centralised information on the morphology and use of buildings and the socio-economical status of the population are readily available. The following administrative datasets are used here:

- 20 – The French Geographical Institute IGN compiles a digital cadastre (the IGN-BDTopo) providing information on building morphology and use for every building in France (<http://professionnels.ign.fr/bdtopo>). This dataset is regularly updated; we use the version from 2014.
- The French Institute on Economics and Statistics (INSEE) conducts a census of the entire French population (the INSEE-Census). It provides information on the socio-economical status (e.g. age, sex, professional situation) of each person as well as on household equipment (e.g. type of heating system) and composition (e.g. habitable floor area, number of inhabitants). Here we use data from the most recent complete census, performed in 2011. To protect privacy, the census data are aggregated over about 2000 individuals. The spatial resolution therefore depends on the population density and is as low as ~300x300 m² in dense city centres. Data can be retrieved via
25 <https://www.insee.fr/fr/statistiques/2011208?sommaire=2011338>

- The INSEE also provides the population density in gridded form (hereafter INSEE-Density). The resolution is 200x200 m², we use the 2010 version. Data can be retrieved via <https://www.data.gouv.fr/fr/datasets/donnees-carroyees-a-200-m-sur-la-population/>

- The data on building morphology included in the IGN-BDTopo have been used by Amossé (2015) to determine the so-called “urban typology” via statistical classification. It describes the building type and alignment (e.g. “Detached Low-rise”, “Continuous Rows of Mid-rise”, “Extended Low-rise”). The urban typology is comparable to a French version of the built-up classes included in the Local Climate Zone classification by Stewart and Oke (2012). It can provide valuable information on building use. For example, “Detached Low-rise” corresponds mainly to individual housing, while “Extended Low-rise” is typical for commercial or industrial buildings.
- The administrative datasets cover all of France, but they do not include details on energy-related human behaviour. More detailed surveys on these aspects are thus required. The following are used in this study:
- The ENERGIHAB survey (Lévy and Roudil, 2012) provides information on energy-related behaviours for 1950 households in the Paris region (Ile de France). Data are available on the design temperature for heating, the electrical appliances installed and the frequency of their use, and practices concerning ventilation and shading. ENERGIHAB contains only very little information on air conditioning, since it is not common in the Paris region.
 - The INSEE conducts regular surveys on practices related to building energy consumption, the “Enquête Nationale sur le Logement” (ENL). Here we use the surveys from 2006 and 2013. These comprise a sample of ~36000 households (~27000 households) for 2006 (2013) distributed over all of France. The ENL survey contains information on electricity consumption and the presence of air conditioning. However, there is no information on how air conditioning is used.
- The exploration of the administrative datasets, surveys and our *a priori* knowledge of the climatic and cultural situation of France allows us to determine basic information about energy-related human behaviour. As nearly all homes are equipped with heating systems, heating during the winter contributes considerably to the building energy consumption and thus needs to be taken into account. On the other hand, air conditioning is rare in residential buildings, with a national average installation rate of 3.2% (6.7%) in 2006 (2013). Even in the regions close to the Mediterranean, which experience the mildest climate, the installation rate is only 12.8% (24.6%) in 2006 (2013). Instead of air conditioning, people tend to use shading elements to limit solar heat gains, along with ventilation in the evening. In office buildings, air conditioning is more frequent, but the market is far from saturated.

3.2 Building use

- Our general approach is to assign the behaviour-related parameters of TEB as a function of building use. Information on building use is available in the IGN-BDTopo. Four main categories of building use are defined for each building: industry, commerce, agriculture and “undefined”. This basic information allows us to identify industrial and agricultural buildings as well as large commercial buildings. In addition, all buildings of public interest (e.g. schools) are indicated in the IGN-BDTopo. By

combining this information, we can distinguish between residential (individual and collective), office, commerce, education, public health, industry, agriculture, religious, and sport use, as well as identify castles and non heated buildings.

However, one important aspect of French cities is not described in the administrative datasets. In French city centres, many formerly purely residential buildings have been partially converted to commercial and/or office buildings. For example, the ground floor of nearly all buildings close to the city centres is occupied by small shops or restaurants, which are not declared as commerce in the IGN-BDTopo. This is relevant to the modelling of building energy consumption, since the schedules of occupation and the use of the commercial and office part of these buildings differ substantially from that of the residential part. In order to determine the fraction of commercial and office buildings we use the data on urban typology, the INSEE-Density, and our *a priori* knowledge of French cities.

- The urban typologies “Detached Low-rise”, “Detached Mid-rise” and “Semi-Detached Low-rise” correspond mainly to individual houses in suburban areas or town houses. We therefore assume that their use is purely residential.
- We assume that “Extended Low-rise” buildings of “undefined” use in the IGN-BDTopo are industrial buildings.

For the remaining urban typologies of “undefined” use, we take into account the number of inhabitants N_{inh} per building floor area (A_{floor}). High-rise buildings are not very common in France and only seldom of mixed use. We therefore only distinguish purely office use in the case where $\frac{N_{inh}}{A_{floor}} > 120 \text{ m}^{-2}$ and purely residential use otherwise.

For the other urban typologies, we assume that there is a non-residential fraction (f_{nres}) in the case where $\frac{N_{inh}}{A_{floor}} > 60 \text{ m}^{-2}$ (Equation 24). This threshold is based on the value of the habitable floor area per inhabitant in residential buildings averaged over France, which is 36 m^2 in 2011 (MEDDE, 2012). We increase this value to 60 m^2 to account for the non-habitable floor area of buildings (elevators, staircase, attics and so on). However, this is only a gross assumption and therefore a considerable source of uncertainty since, for example, the habitable floor area per inhabitant might vary between different cities.

$$f_{nres} = \max\left(0, 1 - \frac{60 N_{inh}}{A_{floor}}\right) \quad (24)$$

We further divide the area of the building footprint (A_{foot}) by the total floor area to obtain the ground floor fraction (f_{ground} ; Equation 25).

$$f_{ground} = \frac{A_{foot}}{A_{floor}} \quad (25)$$

- For the urban typology “Continuous Row of Mid-rise”, we assume that the ground floor might be entirely occupied by stores since this urban typology is very typical for the centre of French cities (e.g. Figure 5d). The resulting fraction of commercial use (f_{com}) is given by Equation 26. For the buildings whose non-residential fraction is larger than the commercial fraction, we assign an office fraction (f_{off}) according to Equation 27.
- For “Discontinuous Row of Low (Mid)-rise” and “Continuous Row of Low-rise”, the same approach is used as for “Continuous Row of Mid-rise”. However, only up to half of the ground floor can be occupied by stores; the remaining non-residential fraction is assigned as office space.

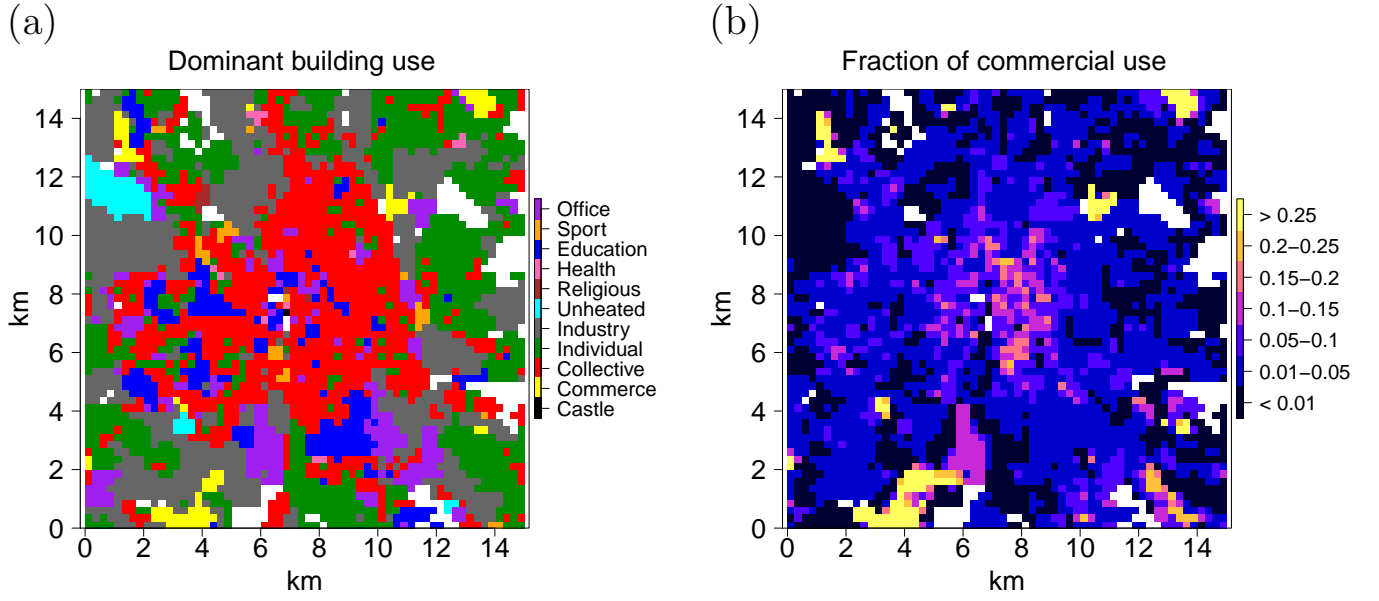


Figure 3. Spatial distribution in the agglomeration of Toulouse, France of (a): Dominant building use at grid point scale and (b): Fraction of commercial use. The horizontal resolution is 250x250 m².

$$f_{com} = \min(f_{ground}, f_{nres}) \quad (26)$$

$$f_{off} = \max(f_{nres} - f_{ground}, 0) \quad (27)$$

Based on the building use data at building scale, we define the dominant building use as the building use with the largest floor area at grid point scale. In Figure 3, we display the dominant building use and the fraction of commercial use for the domain covering the agglomeration of Toulouse, for which we will conduct the evaluation of building energy consumption in Section 4. The dominant building use (Figure 3a) is mainly collective housing close to the city centre and individual housing in suburban areas. However, considerable parts of the domain are covered by university campuses, large commercial buildings, and industrial zones. The information included in the IGN-BDTopo allows us to identify these building uses. The fraction of commercial use is mainly between 0.1 and 0.2 close to the centre of the city, which represents the presence of shops on the ground floor of the buildings, which is common in this area.

It must be kept in mind that the approach to determine building use described in this section is tailored to the structure of French cities and the availability of administrative datasets. Different approaches are needed for other regions of the world. Kunze and Hecht (2015) have shown that information on (fractional) building use might be derived from collaborative geographical datasets like OpenStreetMap. Such approaches are promising, since in many regions no detailed administrative datasets exist.

3.3 Human behaviour in residential buildings

Bourgeois et al. (2017) developed statistical models, calibrated with data from the ENERGIHAB survey that allow the prediction of indicators related to human behaviour based on the INSEE-Census data. Since these are available for each person in France, maps of the behavioural indicators can be produced for the entire country. Details concerning the methodology of

5 Bourgeois et al. (2017) are not repeated here. The following information is used:

- **The Efficiency Tendency (ET)** (ECR in Bourgeois et al. (2017)) indicates to which degree inhabitants tend to regulate equipments related with building energy consumption. For implementation in TEB we only consider the relationship between ET and the use of the heating system. In households with high (low) ET, the design temperature for heating is on average lower (higher) and more likely to be reduced when the building is vacant or during the night. Furthermore,
10 for high (low) ET a larger (smaller) part of the building is not heated. The ET is lower for collective than for individual heating systems. This is consistent with previous findings (Guerra Santin (2013); Kelly et al. (2013)). ET also depends on the type of fuel used in the heating system (e.g. electrical heating, gas, and so on). ET is high for electrical heating systems, which is plausible, since they are easy to adjust. ET tends to decrease with increasing age of the household reference person. This confirms previous studies indicating that elderly people tend to heat more (Motuziene and Vilutiene
15 (2013); de Meester et al. (2013)). The statistical model of Bourgeois et al. (2017) predicts whether one household will be of high or low ET (2 classes). For this reason, we take the values of the heating design temperature and the non heated fraction of the buildings available from the ENERGIHAB survey and average them for the households falling into the high and the low ET class, respectively. These values (Table A3) are used to initialise TEB for the residential buildings.
- Bourgeois et al. (2017) also define indicators related to **Equipment with large household appliances** (EQ) and the intensity
20 of use of large electrical appliances (IU). Similar to ET, there are two classes (high and low) for both EQ and IU. For the purpose of urban climate modelling we are only interested in the actual heat release due to electrical appliances. We therefore combine the EQ and IU indicators to the Equipment-Intensity-of-Use (EIU) indicator. It has three classes. High EIU corresponds to high EQ and high IU, low EIU to low EQ and low IU and medium EIU to high (low) EQ in combination with low (high) IU. The EIU tends to be higher for a larger number of inhabitants per household and for a
25 smaller habitable floor area. This is unsurprising since more inhabitants per habitable floor area will lead on average to more use of electrical appliances. Bourgeois et al. (2017) calculate the average electricity consumption available from the ENL dataset for the 3 classes of the EIU indicator. These values are used to initialise the parameters related to the internal heat release in TEB (Table A4). The electricity consumption due to domestic warm water has been excluded from the ENL dataset. This is justified for urban climate modelling, since a large part of the energy exits the building
30 through pipes and into the sewage system (Heiple and Sailor, 2008). The internal heat release due to metabolism is also not included, since in industrial countries it is often negligible compared to the other components of the anthropogenic heat flux (Grimmond, 1992). Metabolic heat may have to be included for cities in developing countries.

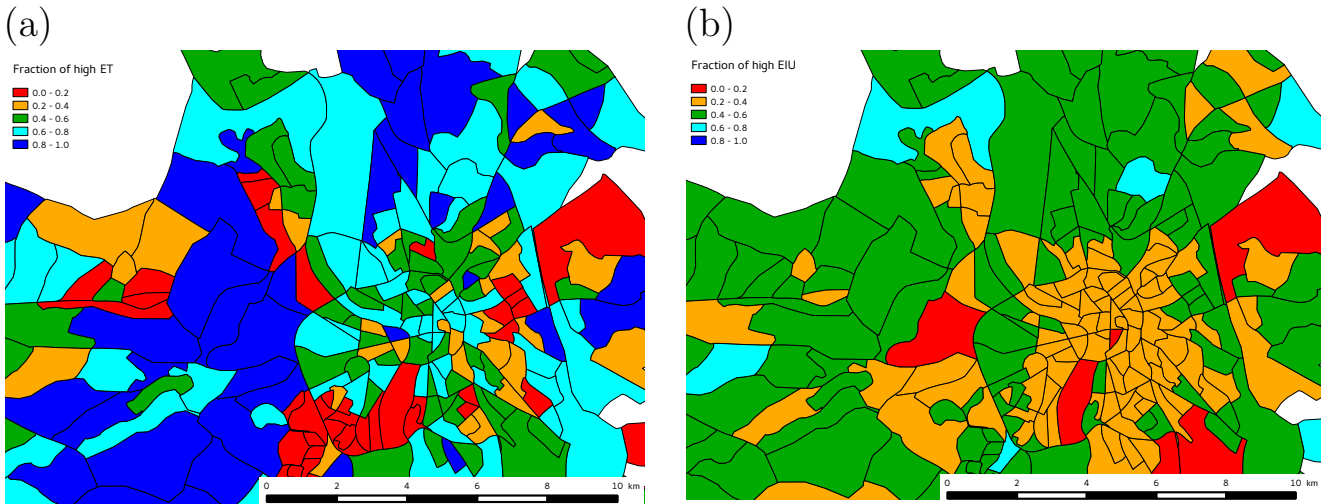


Figure 4. Spatial distribution in the agglomeration Toulouse of (a): Fraction of households with high Efficiency Tendency (ET) and (b): Fraction of households with high Equipment-Intensity-of-Use (EIU). The spatial variability is introduced by the predictors of the statistical models described in Bourgeois et al. (2017). These are the heating system type (collective/individual), the type of fuel used in the heating system, and the age of the inhabitants for ET and the number of inhabitants per habitable floor area for EIU.

- No robust statistical relationships between the behaviours related to ventilation and shading and the INSEE-Census data have been found by Bourgeois et al. (2017). The spatial variability of these behaviours can therefore not be taken into account. Nevertheless, the fraction of people applying ventilation and shading during warm conditions and during the night could be derived from the ENERGIHAB data (Table A5).
- 5 The statistical models developed by Bourgeois et al. (2017) are used to predict the behavioural indicators for each household and we then derive maps of the fraction of households with high ET as well as with high and low EIU. The behavioural indicators differ systematically between collective and individual housing. Thus, for each behavioural indicator, we produce a map for collective and individual housing. These maps are read by TEB, and we describe in Section 3.5 how we further use the indicators. In Figure 4, we display maps of the ET and EIU indicators for the city of Toulouse as an example. The spatial
- 10 variability of the ET indicator (Figure 4a) is mainly due to the spatial distribution of the heating system type and the fuel type used in the heating system. These can differ considerably in different parts of the urban agglomeration. The spatial variability of the EIU indicator (Figure 4b) is due to the spatial distribution of the number of inhabitants per habitable floor area.

3.4 Behaviours in non-residential buildings

- The behavioural indicators are not used in non-residential buildings. Instead, the behaviour-related parameters are initialised
- 15 as a function of the building use via lookup tables.

The values of the design temperature for heating and air conditioning are given in Table A3. We assume that air conditioning is used in “offices”, “commerce” and “public health”. We choose a relatively high design temperature of 28 °C, since we know that not all such buildings are air conditioned in France. Educational buildings are used only rarely during the warm season (holidays) and are therefore not equipped with air conditioning. For “industry” we assume that only a small fraction (0.05) of the building is heated. We apply only little to no heating for the uses “agriculture”, “religious”, “sport”, “castle” and “non heated”.

The values for the internal heat release and its modulation during vacancy and at night are given in Table A4. For the building uses “office”, “commerce”, “public health” and “education”, we assume higher values of the internal heat release than for residential buildings in order to represent the higher density of electrical appliances and/or the larger density of occupation. For industrial buildings we do not consider that some buildings might be power plants or other large energy consumers. Such facilities need to be taken into account by using an inventory of large energy consumers.

The contribution of lighting to the total internal heat release is only 5% to 15% (Yun et al., 2012) which does not justify a detailed modelling (e.g. depending on indoor illumination) for urban climate simulations. Apart from lighting, the radiative part of internal heat release includes also emission of longwave radiation from electrical appliances, which can be relatively important (e.g. up to 40% for computers; Hosni et al. (1999)). We therefore consider a radiative part of the internal heat release of 0.4 for office and commercial uses and 0.2 for all building uses.

We assume that no shading is made for the non-residential buildings (Table A5). Buildings of this type are normally not equipped with shading elements in France. Since we assume air conditioning for the office, commerce and public health buildings, no overheating will occur for these building uses. Ventilation is only included in educational buildings, since these are not equipped with air conditioning.

3.5 Representation of building use and human behaviour for urban climate simulations in France

Based on our knowledge of the variety of building use and human behaviour in France and its relevance for building energy consumption, we define the TEB configuration for urban climate and building energy consumption simulations in France. Depending on the dominant building use, we distinguish up to 6 fractions of sub-grid-scale building use and human behaviour (Table 1).

- For grid points with dominant residential use, we distinguish a total of 6 fractional uses and behaviours. We consider for a non heated, a commerce, an office and a residential fraction with 3 different design temperatures for heating. The values of the commerce and office fractions are given by the maps of f_{com} and f_{off} described in Section 3.2, the values for the non heated fraction are given in Table A3. In the commerce and office fraction, the schedules of building occupation and all input parameters related to human behaviour correspond to the values defined for the uses “office” and “commerce”. In the non heated fraction there is no heating, air conditioning or internal heat release. In the residential fraction, we consider 3 different design temperatures for heating. They correspond to the values for high and low ET (Table A3) and their arithmetic average. The occurrence frequencies of these 3 different design temperatures (f_{low} , f_{med} and f_{high} ;

Table 1. Overview on the detail of representation of fractional building use and human behaviour for simulations in France.

Dominant building use	Number of fractions	Type of fractional use and behaviour
Residential	6	Non heated fraction, commerce and office fraction, 3 design temperatures for heating
Office	4	Non heated fraction, 3 design temperatures for heating and air conditioning
Commerce	4	Non heated fraction, 3 design temperatures for heating and air conditioning
Education	4	Non heated fraction, 3 design temperatures for heating
Public health	4	Non heated fraction, 3 design temperatures for heating and air conditioning
Industry	2	Heated and non heated fraction
Agriculture	1	Only main use
Religious	1	Only main use
Sport	1	Only main use
Castle	1	Only main use
Non heated	1	Only main use

Equations 28 to 30) are initialised based on the maps of the ET indicator (e.g. Figure 4a). However, due to the strong variability of the human behaviours, even for the hypothetical case that all households at grid point scale fall into the high-ET class ($f_{ET}^{high} = 1$), not all households heat to the design temperature averaged over the high-ET class. For this reason, the fraction of households with high ET in Equations 28 to 30 is multiplied with the corresponding conditional probability given in Table A6. For example, p_{T-low}^{HighET} is the probability that a household will heat to the lower design temperature given that it belongs to the high ET class.

- For grid points with dominant uses “office”, “commerce”, “public health” and “education”, we distinguish 4 fractions: the non heated fraction and 3 different design temperatures for heating or air conditioning. We assume that one third of the floor area is heated to the design temperature given in Table A3 and one third to 2 K lower and higher, respectively. A similar approach is used for air conditioning, except that educational buildings are not air conditioned at all.
- For grid points with dominant industrial use we only distinguish between a heated and non heated part.
- For grid points with dominant uses “agriculture”, “religious”, “sport”, “castle” and “non heated”, we don’t consider for fractional use or behaviour.

$$f_{low} = f_{ET}^{high} p_{T-low}^{HighET} + (1 - f_{ET}^{high}) p_{T-low}^{LowET} \quad (28)$$

$$f_{med} = f_{ET}^{high} p_{T-med}^{HighET} + (1 - f_{ET}^{high}) p_{T-med}^{LowET} \quad (29)$$

$$5 \quad f_{high} = f_{ET}^{high} p_{T-high}^{HighET} + (1 - f_{ET}^{high}) p_{T-high}^{LowET} \quad (30)$$

The value for the internal heat release in the residential fraction of the buildings is initialised via the EIU indicator. We judge the differences between the values for high (5 Wm⁻²) and low (3 Wm⁻²) EIU to not be sufficiently large to justify the consideration of more fractional behaviours. Therefore, we apply the same value of the internal heat release in all 3 residential fractions. Nevertheless, the spatial variability of the internal heat release is taken into account by the maps of the EIU indicator (Figure 4b). These are used to interpolate (Equation 31) the average values of the nominative internal heat release (QIN_{nom}) for the high, medium and low EIU classes that are given in Table A4.

$$QIN_{nom} = f_{EIU}^{high} QIN_{nom}^{HighEIU} + f_{EIU}^{low} QIN_{nom}^{LowEIU} + (1 - f_{EIU}^{low} - f_{EIU}^{high}) QIN_{nom}^{MedEIU} \quad (31)$$

We do not distinguish between specific types of ventilation and shading behaviours since, given the low prevalence of air conditioning, these are more relevant for indoor human thermal comfort than for building energy consumption.

15

4 Evaluation of building energy consumption for the CAPITOUL campaign (Toulouse)

In this section, we evaluate the spatio-temporal variability of building energy consumption simulated by our enhanced version of TEB. The evaluation is made for the CAPITOUL observation campaign (Masson et al., 2008) conducted between March 2004 and February 2005 for the agglomeration of Toulouse in southern France (43.6°N; 1.4°E). Various observations of the urban boundary layer were made. They include observations at a meteorological tower in the centre of Toulouse in 18.5 to 27.5 m above the average building height. We use the tower observations to force TEB in “Offline”-Mode. An inventory of energy consumption was compiled by Pigeon et al. (2007) for the time period of the CAPITOUL campaign. In Section 4.1, we briefly describe the inventory and its uncertainties. We perform four simulations representing building use and human behaviour with different levels of complexity (Section 4.2). The results will be discussed in Sections 4.3 and 4.4. [In Section 4.5, we discuss the impact of using fractional building use and human behaviour on computation time.](#)

25

4.1 Inventory of building energy consumption

The inventory of energy consumption covers both buildings and traffic. We focus on building energy consumption only. The inventory represents the energy consumption in a domain of $15 \times 15 \text{ km}^2$ covering the agglomeration of Toulouse. The underlying basic data are 10-minute-values of electricity consumption and daily values of gas consumption. These two energy sources cover about 85% of the building energy consumption. The contributions of other sources (e.g. wood, fuel) have been estimated by Pigeon et al. (2007) based on the INSEE-Census data on the prevailing fuel types used in heating systems and statistics on the mean annual energy consumption per heating system type available from the regional observatory for energy (Observatoire Régional de l'Energie en Midi-Pyrénées - OREMIP). We assume that the time-dependency of energy consumption due to the other sources is proportional to the electricity and gas consumption. Uncertainties of the building energy consumption aggregated over the $15 \times 15 \text{ km}^2$ domain are mainly due to the spatial representativity of the gas consumption values, which is not precisely known, and the other sources. However, due to the low contribution of these other sources, we can assume that the domain-aggregated energy consumption is accurate to $\sim 15\%$. There are no large industrial or agricultural energy consumers in the domain of investigation. Most of the energy is thus consumed inside residential, office and commercial buildings.

We spatially disaggregate the daily values of energy consumption to a grid of $250 \times 250 \text{ m}^2$ resolution following a very similar methodology than Pigeon et al. (2007). However, we use the total floor area instead of the building density as spatial weight to account for the fact that, on average, higher buildings consume more energy than lower buildings. The spatially disaggregated building energy consumption can be highly uncertain at single grid points, since we do not consider the building construction period or use, which are known to strongly influence building energy consumption.

We do not investigate sub-daily energy consumption as the gas consumption, which is the largest contributor during the heating season, is only available on daily basis.

4.2 Model setup

TEB is the component of the Externalised Surface SURFEX for urban areas. The purely-vegetated part of the domain (only a few grid points) is simulated with the natural surface parametrisation ISBA (Noilhan and Planton, 1989), and the water surfaces (few small lakes and Garonne river) with the lake parametrisation FLAKE (Mironov et al., 2010). Due to the choice of the Offline-approach, ruling out any effects of advection, the ISBA and FLAKE results can be expected to have no relevant influence on the model results presented here. Nevertheless, within the urbanised areas, the fraction of urban vegetation (e.g. gardens, parks, street trees) is considered in TEB following the methodology of Lemonsu et al. (2012). The vertical distribution of air temperature, humidity, wind speed and turbulent kinetic energy within the street canyon is taken into account (Hamdi and Masson, 2008). The road directions are assumed to be uniform. The convective exchange coefficients are calculated using the “DOE-2” option implemented by Pigeon et al. (2014). The aerodynamic roughness length is assumed to be the building height divided by ten. The roughness length for scalar quantities is calculated following Kanda et al. (2007).

The domain of investigation is the same as for the spatially disaggregated inventory of energy consumption.

4.2.1 Meteorological forcing

The TEB simulation is conducted in “Offline”-Mode using 30-minute values of air temperature, specific humidity, wind speed, direct and diffuse shortwave radiation, longwave radiation, as well the rainfall and snowfall rate measured at the meteorological tower close to the centre of Toulouse [as forcing](#). The wind direction is not relevant for this “Offline” application. As the mast is located in the centre of the city, it includes urban effects like the urban heat island, which might reduce (increase) the energy consumption for heating (air conditioning). The same meteorological forcing is applied over the entire domain of investigation. Therefore, the air temperature of the forcing might be too high in the regions located in the suburban areas of Toulouse. However, as a large part of the heated floor area is located close to the city centre, the domain-aggregated energy demand might not be strongly influenced by this approximation.

4.2.2 Urban morphology and building architecture

Data related to urban morphology and building architecture is taken from the MApUCE database, which provides information on urban morphology, architecture and behaviours for 80 French cities. The TEB input parameters related to urban morphology (e.g. building density, building height) have been calculated based on the information on building geometry included in the IGN-BDTopo. The parameters related to building architecture (e.g. roof albedo) are initialised via the architectural database compiled by Tornay et al. (2017). The urban vegetation has been retrieved via satellite images (Crombette et al., 2014). In Figure 5, we display the most relevant elements of the urban morphology for the domain of investigation. The building use is displayed in Figure 3. The centre of Toulouse is characterised by a relatively small domain of about $2 \times 2 \text{ km}^2$ with a building density above 0.4 (Figure 5a), building heights between 15 and 25 m (Figure 5b) and a façade surface density above 1 (Figure 5c). The dominant urban typology of this area is “Continuous Row of Mid-Rise” (Figure 5d). The remaining part of the domain is less densely built.

There are inconsistencies in the dates of our various input data (e.g. 2014 for the IGN-BDTopo, 2011 for the INSEE-Census) and the date of the CAPITOUL [campaign](#) (2004-2005). However, the change in the number of inhabitants within the domain of investigation between 2004 and 2014 is only about 10% and therefore of a similar magnitude as the uncertainty of the inventory on building energy consumption.

4.2.3 Model experiments

We perform a total of 4 simulations in order to test the influence of the behaviour-related input parameters on the simulated building energy consumption.

- DEF: “Default” behaviour-related input parameters. Independently of building use or behavioural indicators, all buildings are heated to 19°C and air conditioned to 27°C . The internal heat release is 5 W m^{-2} , and there is neither ventilation nor shading. This would be a typical model configuration in cases where the modeller lacks specific knowledge of building use and human behaviour.

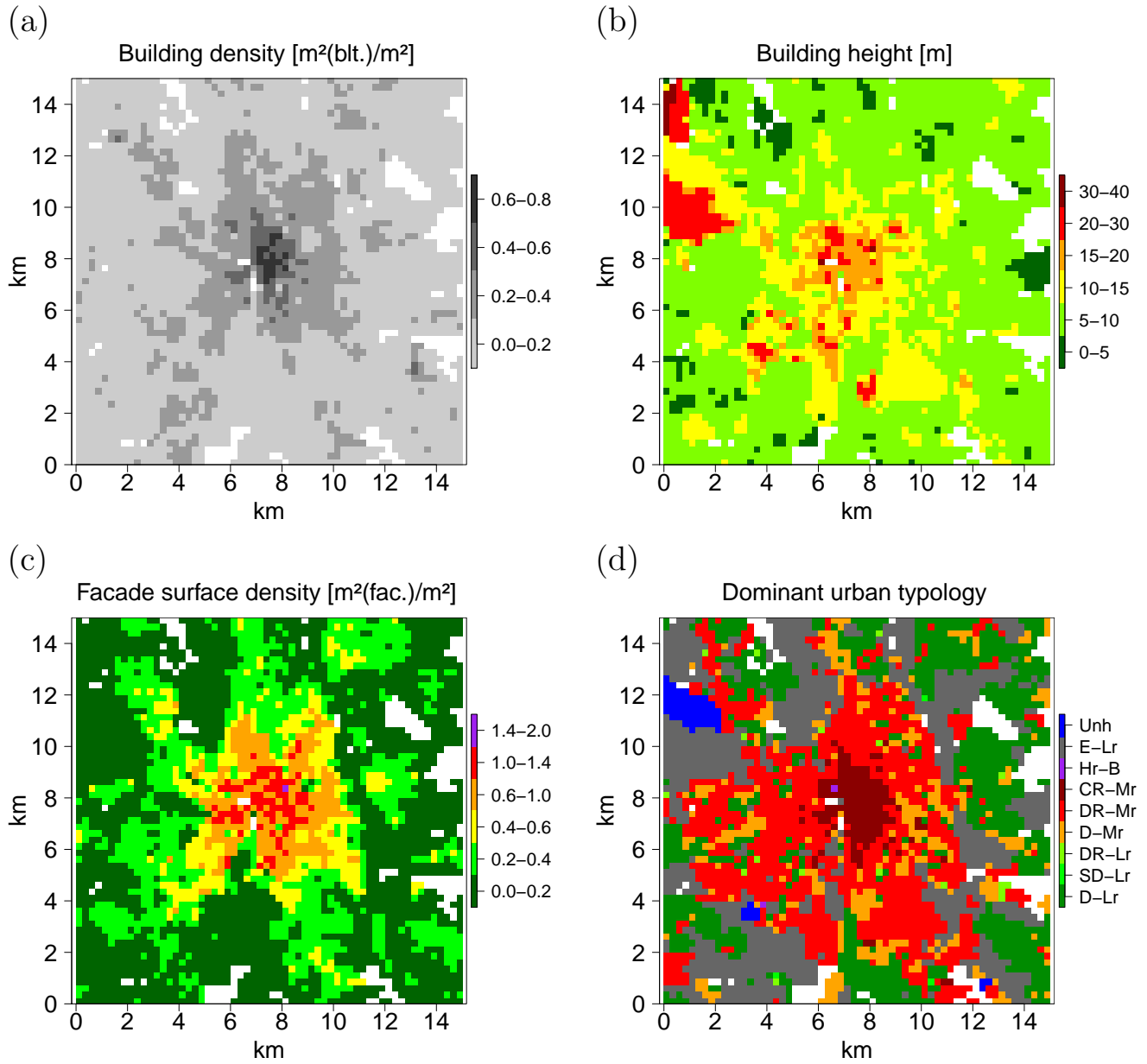


Figure 5. Urban morphology at a spatial resolution of 250x250 m² for the agglomeration of Toulouse. The prevailing dominant urban typologies are Detached Low-rise (D-Lr), Semi-Detached Low-rise (SD-Lr), Discontinuous Rows of Low-rise (DR-Lr), Detached Mid-rise (D-Mr), Discontinuous Rows of Mid-rise (DR-Mr), Continuous Rows of Mid-rise (CR-Mr), High-rise Building (Hr-B), Extended Low-rise (E-Lr) and Unheated buildings (Unh).

- DOM: Behaviour-related input parameters are assigned as a function of the “dominant” building use (Tables A3, A4, A5). The design temperature for heating in the residential buildings corresponds to the arithmetic average between the values for high and low ET, the internal heat release in the residential buildings to the values for medium EIU. No fractional building use or human behaviour is considered.
- 5 – SIX: Model configuration with 6 fractional uses and behaviours as described in Section 3.5, but with all behavioural indicators set to their “neutral” value. These are by definition of the behavioural indicators $f_{ET}^{high} = 0.5$ and $f_{EIU}^{high} = 0.25$; $f_{EIU}^{low} = 0.25$.
- MAP: Model configuration for France as described in Section 3.5. The 6 most important fractional uses and behaviours are distinguished and the input parameters related to heating and internal heat release are initialised using the maps of
10 the behavioural indicators (e.g. Figure 4).

The comparison between the 4 model configurations indicates the degree to which the more complex representation of human behaviours improves the simulated building energy consumption.

4.3 Domain-aggregated building energy consumption

In Figure 6, we display the time series of the simulated and observed daily values of domain-aggregated building energy consumption in gigawatt-day (GWd). One gigawatt corresponds to the typical power of a nuclear or conventional power plant.
15 To objectively quantify the influence of the more complex representation of human behaviour, we also calculate the [Mean Absolute Error \(MAE\)](#) and the Root Mean Square Error (RMSE) of the daily energy consumption values.

During the warm season (mid of May to end of October), the inventory values are lowest (~0.4 GWd) and vary only slightly in time. The lack of dependence of energy consumption on air temperature indicates that air conditioning plays only a minor
20 role. Energy consumption is mainly due to the use of electrical appliances. There is a weak weekly cycle, which is due to the closed shops on Sunday and the vacancy of offices on both Saturday and Sunday. During the cold season, due to the prevalence of heating, energy consumption increases [strongly and is very sensitive to](#) air temperature. For example, there is a marked increase of energy consumption to above 2 GWd during a cold spell at the end of January.

The analysis of the 4 model experiments described in Section 4.2.3 indicates that a more complex representation of human
25 behaviour enhances the simulated time series of building energy consumption. For DEF (Figure 6a), the building energy consumption is overestimated during the warm season, since all buildings are air conditioned, which is not the case in reality. During the heating season, the building energy consumption is too sensitive to air temperature. For example, there is a strong overestimation of energy consumption during the cold wave at the end of January. This is due to the overestimation of the heated floor area, since for DEF all buildings are heated to 19 °C. The results for DEF indicate that large uncertainties of the
30 building energy consumption might occur if no details on building use and human behaviour are taken into account.

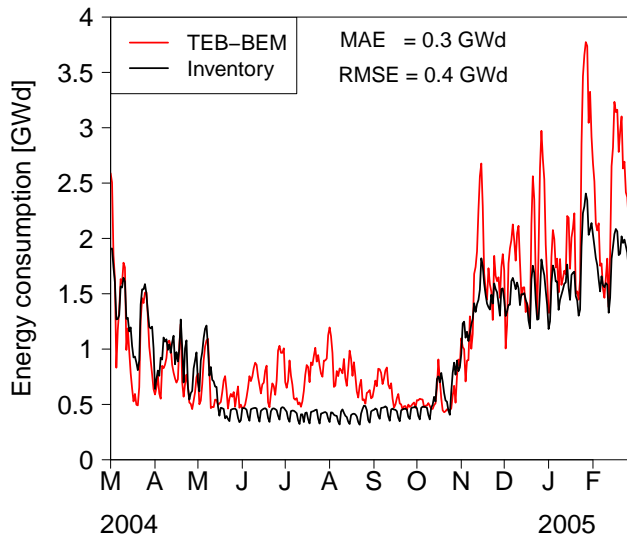
Assigning the behaviour-related input parameters as a function of the dominant building use (DOM; Figure 6b) improves the results. For example, the increase of energy consumption during warm periods is no longer simulated, since the residential buildings are no longer air conditioned. However, the sensitivity of the building energy consumption to air temperature is still

- too high. The main reason for this is that, in the real city, not all buildings are heated to the same temperature. Therefore, compared to the MAP configuration (Figure 6d), less heating is required during the transition seasons since the fraction of buildings heated to relatively high design temperatures is not considered. During the coldest periods, the simulated building energy consumption is too high for DOM since the fraction of buildings heated to lower design temperatures and the commercial and office fractions are not considered.
- The differences between the simulation with 6 fractional uses and behaviours, but neutral behavioural indicators (SIX; Figure 6c) and the simulation with maps of the behavioural indicators (MAP; Figure 6d) are small. This indicates that it is more important to account for the diverse range of heating design temperatures than for its detailed spatial variability. However, the maps of behavioural indicators might still improve the spatial pattern of simulated building energy demand.
- The model experiments indicate that a rather detailed representation of the variety of building use and human behaviour is required to obtain good results for the time series of building energy consumption at the scale of an urban agglomeration. The RMSE and MAE decrease by a factor of two between the most detailed (MAP) and the simplest (DEF) representation of behaviours. For DEF, the magnitude of the simulated anthropogenic heat flux can be inaccurate up to a factor of two. This could have adverse impacts, for example, on the simulated urban heat island when TEB is coupled to an atmospheric model.
- Even for the most complex representation of behaviours, there are remaining uncertainties of the simulated building energy consumption which must be kept in mind when applying the model to other urban agglomerations. These could be due to any of the following:
- Renovation of buildings, which is taken into account only in a simplified way in the database on building architecture.
 - The unknown capacity of the heating system. This might explain the overestimation of building energy consumption during the cold periods.
 - Neglecting ventilation during the cold season or overestimating solar heat gains, which might be responsible for the underestimation of building energy consumption in spring.

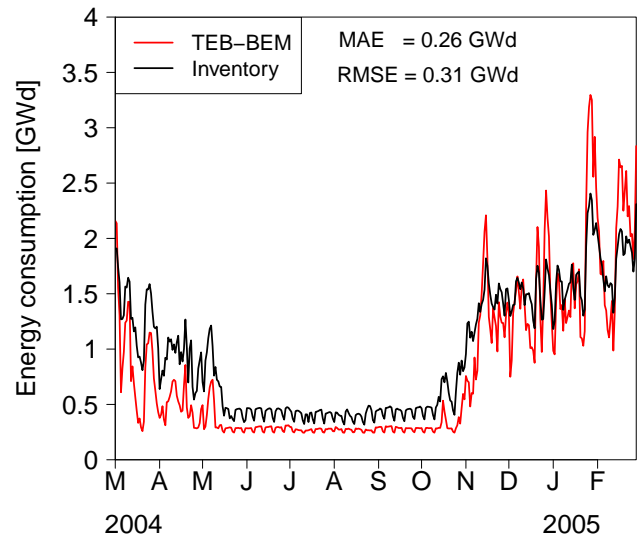
4.4 Spatial distribution of building energy consumption

- We evaluate the spatial distribution of the anthropogenic heat flux due to building energy consumption simulated for the MAP model configuration against the spatially disaggregated inventory. The simulated and observed heat fluxes averaged over December, January, February (DJF) and June, July, August (JJA) are displayed in Figure 7, with the spatial bias and RMSE for these time periods in Figure 8. Building energy consumption is highest close to the city centre (50 to 100 Wm^{-2} in DJF and 20 to 50 Wm^{-2} in JJA) and decreases towards the outskirts of the city. This spatial distribution is mainly consistent with the distribution of building density, building height and façade surface density (Figure 5).
- TEB provides a good representation of the spatial pattern of building energy consumption during both seasons. For DJF, there are areas with considerable biases which are mainly due to the spatial distribution of the dominant building construction period (not shown). For example, the area south east of the city centre is characterised by post-war buildings which are known to be

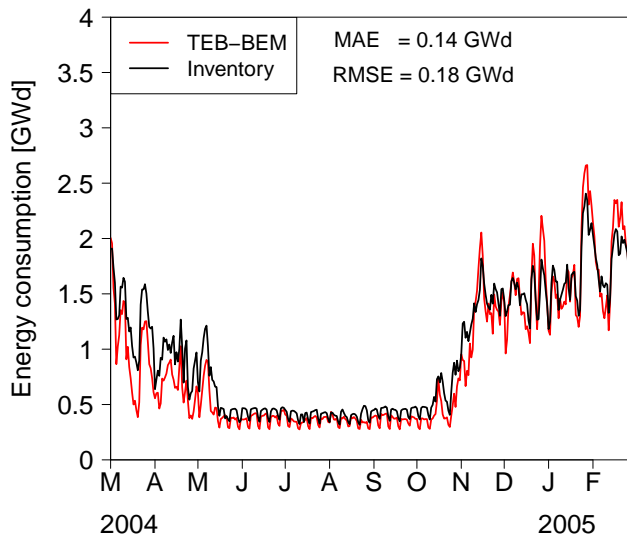
(a) DEF



(b) DOM



(c) SIX



(d) MAP

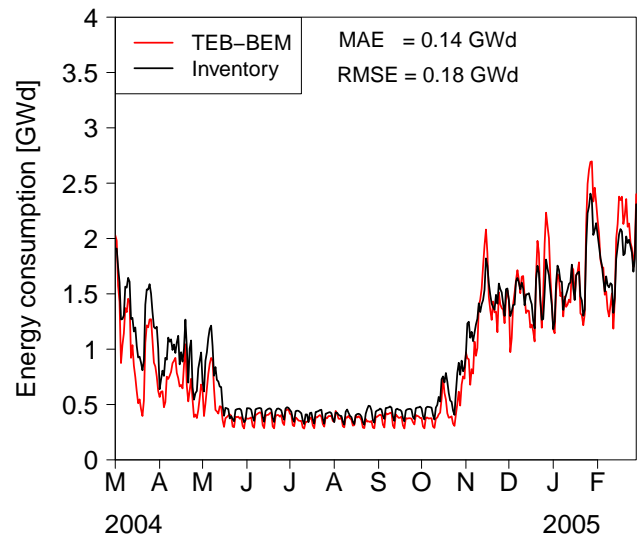


Figure 6. Simulated and observed time series of daily values of building energy consumption aggregated over the agglomeration of Toulouse for (a): Uniform default behaviours (DEF), (b): Behaviours assigned as a function of the dominant building use (DOM), (c): 6 uses and behaviours as described in Section 3.5, but with neutral behavioural indicators (SIX) and (d): 6 uses and behaviours and maps of behavioural indicators (MAP).

large consumers for heating energy. In this area, it is plausible that the simulated building energy consumption is larger than the inventory, since TEB takes into account for the influence of the construction period on construction materials whereas the construction period has not been considered for the spatial disaggregation of the energy consumption values in the inventory. For JJA, the values for the bias and RMSE are quite low. This is no surprise, since there is no heating, which is the main source of uncertainty for building energy consumption.

The evaluation of the spatial distribution of building energy consumption shows that the general pattern is represented well and the main differences between the TEB results and the inventory are not necessarily due to TEB shortcomings. Nevertheless, during the heating season, relatively large uncertainties of the simulated building energy demand remain at some grid points. Improved inventories are therefore required in order to further constrain the simulated building energy consumption.

4.5 Influence of fractional behaviour on computation time

The use of fractional behaviour leads to an increase of computation time. For the MAP simulation (6 fractional behaviours), the wall clock time is increased by a factor of 1.95 compared to the DEF simulation (1 building use and behaviour). Our approach is therefore about a factor of 3 faster than using 6 tiles for the entire TEB scheme, which would increase the computation time by about a factor of 6. However, it has to be kept in mind that computation time is very specific to the model setup, application and computer. The simulations were performed using mpi on 3 Intel Core i7-2920XM CPU (2.50GHz) processors of a notebook with a Linux operating system. Different results for the computational performance might be obtained for other applications of TEB or on a different computer.

5 Conclusions

In this article, we presented how we enhance the Town Energy Balance TEB in order to take into account fractional building use and human behaviour, and how we deal with behaviours like heating, air conditioning, ventilation and shading. These can influence the building energy consumption, which can in turn be an important contributor to the anthropogenic heat flux. We show how we determine and initialise behaviour-related input parameters of TEB for France by combining information available from administrative datasets and surveys. We evaluated the enhanced version of TEB for the CAPITOUL campaign and demonstrated that a more detailed representation of building use and human behaviours improves the spatio-temporal variability of the simulated building energy consumption.

Future work on human behaviour-related aspects in TEB is needed to address two main issues.

- First, the described model configuration for France must be further evaluated and improved. This has been limited by the availability of data on building energy consumption. Additional data is becoming available thanks to open data policies. An evaluation for a variety of French cities could reveal potential shortcomings, such as the neglect of residential air conditioning or the neglect of secondary residences in regions with a lot of tourism. The climatic differences between northern and southern France might also reveal shortcomings, since we could only evaluate the model for a city in southern France.

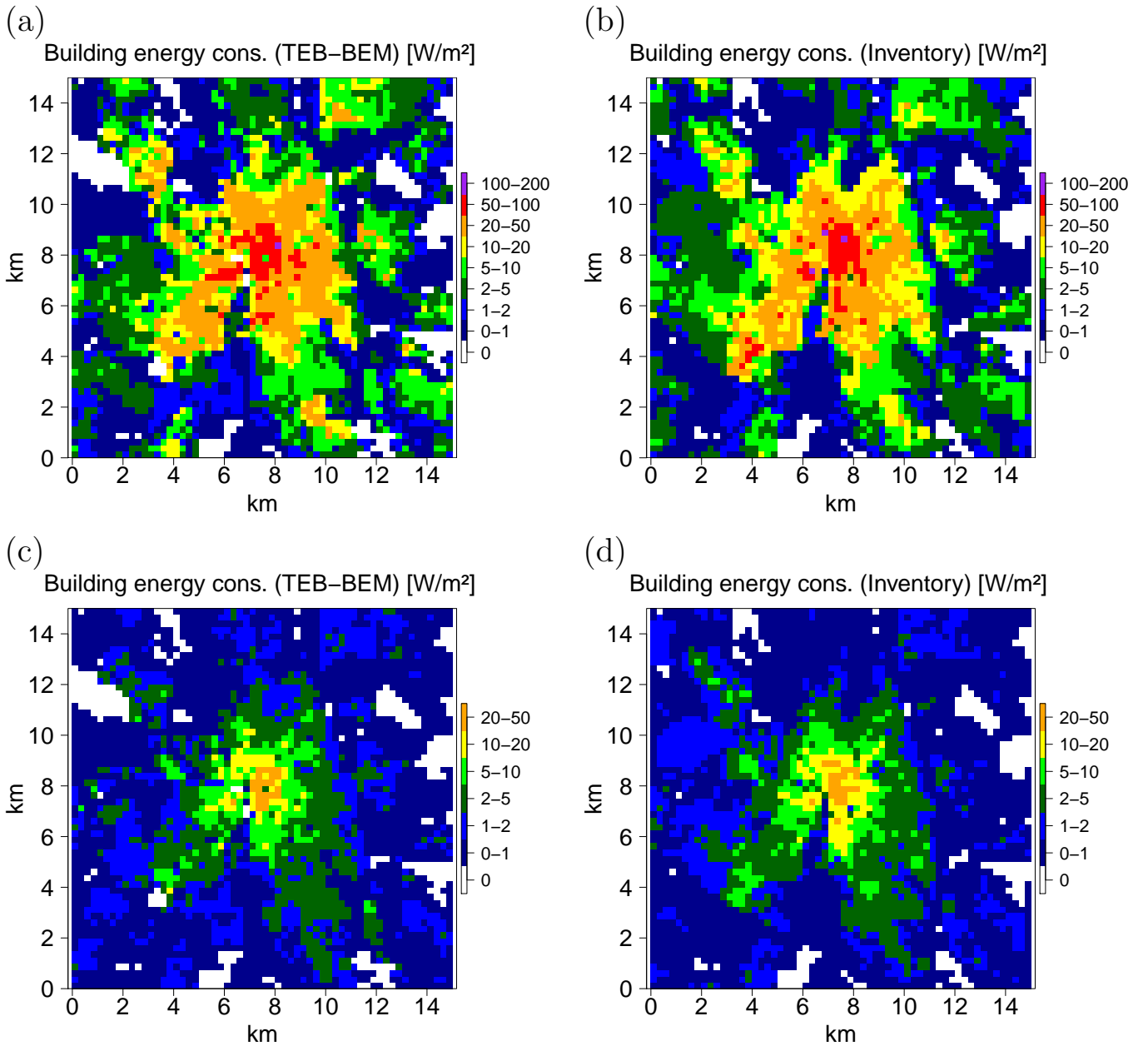


Figure 7. Anthropogenic heat flux due to building energy consumption in the agglomeration of Toulouse [simulated for the MAP model configuration](#). (a): TEB results averaged over December, January, February (DJF), (b): same as (a), but spatially disaggregated inventory, (c) and (d): same as (a) and (b), but for June, July August (JJA). The horizontal resolution is 250x250 m².

- Secondly, additional work is required in order to obtain information on human behaviour in other regions of the world. While the model developments and parametrisations presented in this article remain valid, substantial changes of the

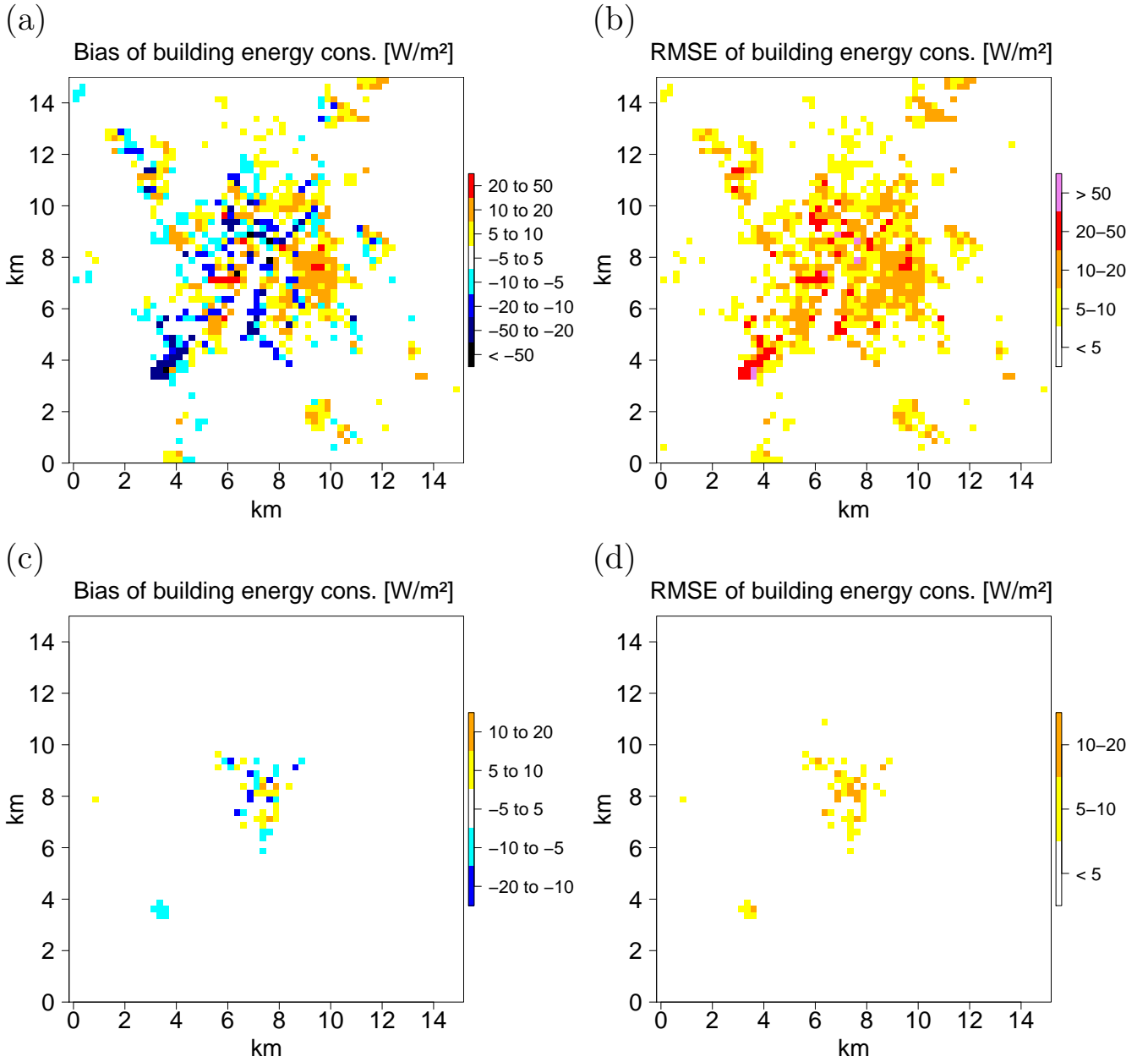


Figure 8. Evaluation of the spatio-temporal variability of simulated building energy consumption in the agglomeration of Toulouse [for the MAP model configuration](#). (a): Bias for DJF, (b): Root Mean Square Error (RMSE) of the daily values for DJF, (c) and (d): same as (a) and (b), but for JJA. The horizontal resolution is $250 \times 250 \text{ m}^2$.

model configuration will have to be made in subtropical or tropical regions, where heating plays little to no role, but the practices of the inhabitants concerning ventilation and air conditioning need to be considered in order to correctly

simulate the building energy demand. Data on building use, equipment and human behaviour might be derived from inventories, sector-wide energy consumption data, OpenStreetMap, or surveys.

The TEB developments we describe in this article lay the groundwork for simulations of urban climate coupled to building energy consumption. In future studies, the feedbacks between the building energy consumption and the urban climate should be investigated in simulations where TEB is coupled to an atmospheric model. Especially for the winter season, it would be useful to quantify the feedbacks between heating energy consumption and the urban heat island, since this has not been done much. The building energy consumption is often related to emissions of pollutants and CO₂. These emissions could be parametrised in the atmospheric models as a function of the simulated building energy consumption and the type of heating and air conditioning system. The impact of climate change mitigation and adaptation measures such as green and white roofs on both the urban climate and building energy consumption should be investigated in order to quantify their potential in different parts of the world.

6 Code availability

The TEB code is available in open source via the surface modelling platform SURFEX (<http://www.cnrm-game-meteo.fr/surfex/>). It is updated relatively infrequently (every 3 to 6 months). The developments presented here are not yet included in the latest version. However, their inclusion is planned. In the meantime, the routines modified with respect to SURFEX v.8.0 as well as the run directories of the model experiments described in Section 4.2.3 can be retrieved via <https://zenodo.org/record/818632> (DOI 10.5281/zenodo.818632).

7 Data availability

The MApUCE database describing the tissue of about 80 urban agglomerations in France can be visualised (<http://mapuce.orbisgis.org/>). The underlying data are partly available on request.

Appendix A: Representation of human behaviours in TEB

In this section, we describe how we represent different human behaviours in TEB. Due to the non-linearity of most involved processes, all model equations presented in this Appendix are solved separately for each fractional building use and behaviour.

A1 Schedules of building occupation

Human behaviours such as the adjustment of the design temperature for heating and air conditioning, opening windows, or the use of shading devices are related to the presence of humans and their activity. For each building use, we therefore define a fractional building occupation (f_{occ}) with a predefined diurnal cycle (Table A1) that might be different for weekdays (Monday

Table A1. Definition of the schedules used to assign the building occupation. A total of four time intervals per day ($S1$ to $S4$) are considered. The time period defined for $S4$ corresponds to the “night”. The values are in solar time. In France, solar time is one (two) hours earlier than local time in winter (daylight savings time).

Building use	$S1$ [h]	$S2$ [h]	$S3$ [h]	$S4$ [h]
Residential	5-7	7-16	16-23	23-5
Office	7-11	11-16	16-19	19-7
Commerce	8-11	11-14	14-19	19-8
Education	7-11	11-16	16-19	19-7
Public health	7-11	11-16	16-19	19-7

to Friday), Saturday and Sunday. The distinction between Saturday and Sunday is motivated mainly by the fact that commercial buildings in France usually open on Saturday, but only rarely on Sunday. The last column in Table A1 defines the “night”, which is the time period when the inhabitants of residential buildings are sleeping and when buildings with other uses are inactive. The term “night” is used here in the behavioural sense (e.g. the time when people are asleep for residential buildings, the inactive period for office buildings) and not in the astronomical sense. The values of f_{occ} as a function of the schedules are given in Table A2. For the residential buildings, they are adapted from Wilke (2013), who analysed a survey on the time use of 15000 individuals in France. For non-residential buildings, the values are based on general knowledge concerning office hours, school hours and so on in France. Given the lack of robust information and the relatively low importance, we do not consider occupation schedules of buildings with “agricultural”, “industry”, “religious”, “sport”, “castle” and “non heated” use.

10 In order to avoid abrupt changes in building occupation, we apply a moving average in time on the values in Table A2. The averaging window is one hour.

We assume that no modification of the state of the building is possible for the vacant part of the buildings, or at night. An exception are actively managed buildings (e.g. those with automatic ventilation), which have already been implemented by Bueno et al. (2012) in TEB; such buildings are not considered here.

15 Given the importance of summer holidays in France, we modulate the building occupation for some uses during the summer holiday period. For educational (office) buildings, we reduce the building occupation by 90% (25%) between the beginning of July and the end of August. The modulation factor for offices is adapted from Vorger (2014). For commercial and public health buildings we reduce the building occupation by 25% between the end of July and the end of August. We do not modulate building occupation for residential buildings, since the part of people leaving for holidays may be compensated by the part of people not working, but not leaving for holidays. The consideration of holidays is very specific to France and will have to be adapted for other countries.

Table A2. Fractional building occupation (f_{occ}) as a function of building use, time of day, and day of the week. The distinguished time intervals are Monday to Friday (MF), Saturday (SA) and Sunday (SU). The schedules $S1$ to $S4$ are defined in Table A1. We do not consider schedules of building occupation for the building uses “industry”, “agriculture”, “religious”, “sport”, “castle” and “non heated”.

Building use	MF_{S1}	MF_{S2}	MF_{S3}	MF_{S4}	SA_{S1}	SA_{S2}	SA_{S3}	SA_{S4}	SU_{S1}	SU_{S2}	SU_{S3}	SU_{S4}
Residential	0.90	0.40	0.75	0.90	0.85	0.65	0.75	0.85	0.85	0.65	0.75	0.85
Office	0.95	0.95	0.25	0.01	0.10	0.10	0.01	0.01	0.05	0.05	0.01	0.01
Commerce	0.95	0.95	0.80	0.00	0.90	0.75	0.75	0.00	0.10	0.10	0.05	0.00
Education	0.95	0.70	0.30	0.00	0.50	0.30	0.20	0.00	0.05	0.05	0.0	0.00
Public health	0.95	0.95	0.70	0.50	0.70	0.70	0.60	0.40	0.50	0.50	0.40	0.30

A2 Design temperature for heating and air conditioning

We consider that the design temperature for heating (TH) and air conditioning (TC) might differ between occupied (occ) and vacant (vac) buildings and during the day (day) and night (nig). The design temperatures are modulated with the building occupation and the day/night switch to obtain the current design temperature for heating (TH_{cur} , Equation A1) and air conditioning (TC_{cur} , Equation A2). This approach ensures that variations in the design temperature are smooth and thus do not create unrealistic variations of grid point scale building energy consumption.

$$TH_{cur} = f_{nig} (f_{occ} TH_{occ}^{nig} + (1 - f_{occ}) TH_{vac}^{nig}) + (1 - f_{nig})(f_{occ} TH_{occ}^{day} + (1 - f_{occ}) TH_{vac}^{day}) \quad (A1)$$

$$TC_{cur} = f_{nig} (f_{occ} TC_{occ}^{nig} + (1 - f_{occ}) TC_{vac}^{nig}) + (1 - f_{nig})(f_{occ} TC_{occ}^{day} + (1 - f_{occ}) TC_{vac}^{day}) \quad (A2)$$

10 The values for the heating and cooling design temperature are given in Table A3.

A3 Internal heat release

For the internal heat release, we consider a nominative value (QIN_{nom}), which corresponds to situations when the building is occupied during the day. This nominative value is modulated with the factor M_{vac} (M_{nig}) when the building is vacant (at night). The current internal heat release (QIN_{cur}) is then calculated following Equation A3.

$$15 \quad QIN_{cur} = f_{nig} (QIN_{nom} M_{nig}) + (1 - f_{nig})(f_{occ} QIN_{nom} + (1 - f_{occ}) QIN_{nom} M_{vac}) \quad (A3)$$

The values for the internal heat release are given in Table A4.

Table A3. Design temperature for heating (TH) and air conditioning (TC) as well as non heated fraction (f_{NH}) of the building. The values for the “night” are assumed to be equal to the values during the day when the building is vacant. A “-” indicates that no heating or air conditioning is taken into account. For the residential buildings, the values are based on the ENERGIHAB survey for the two classes of the Efficiency Tendency (ET) indicator defined by Bourgeois et al. (2017).

Building use	TH_{occ}^{day} [$^{\circ}\text{C}$]	TH_{vac}^{day} [$^{\circ}\text{C}$]	TC_{occ}^{day} [$^{\circ}\text{C}$]	TC_{vac}^{day} [$^{\circ}\text{C}$]	f_{NH}
Individual housing, high ET	18.6	17.6	-	-	0.20
Individual housing, low ET	22.0	22.0	-	-	0.10
Collective housing, high ET	18.4	17.4	-	-	0.30
Collective housing, low ET	22.3	22.3	-	-	0.15
Office	21	20	28	33	0.2
Commerce	21	20	28	33	0.2
Education	21	20	-	-	0.2
Public health	21	20	28	33	0.2
Industry	20	20	-	-	0.95
Agriculture	-	-	-	-	0.0
Religious	8	8	-	-	0.0
Sport	8	8	-	-	0.0
Castle	16	16	-	-	0.0
Non heated	-	-	-	-	0.0

A4 Shading

Shading is only possible for buildings equipped with shading elements. Here we describe the treatment of shading for such buildings.

Human behaviour related to shading depends primarily on shortwave radiation and secondarily on indoor air temperature (Raja et al. (2001); Haldi and Robinson (2010)). These meteorological parameters are particularly important in office buildings, whereas in residential buildings non-meteorological parameters like privacy or security can also influence shading (Vorger, 2014). [Since we do not take](#) the drivers of shading, such as privacy, into account, we calculate the fraction of closed shading elements as a function of the status of building occupation and the meteorological conditions, mainly the shortwave radiation

Table A4. Nominative value of the internal heat release (QIN_{nom}), modulation factor for periods when the building is vacant (M_{vac}) and during the night (M_{nig}) and radiative part of internal heat releases (f_{rad}). For the residential buildings, the values for QIN_{nom} are based on the ENERGIHAB and ENL surveys for the three classes of the [Equipment-Intensity-of-Use \(EIU\)](#) indicator.

Building use	$QIN_{nom} [\text{Wm}^{-2}]$	M_{vac}	M_{nig}	f_{rad}
Individual housing, high EIU	5	1.0	0.5	0.2
Individual housing, medium EIU	4	1.0	0.5	0.2
Individual housing, low EIU	3	1.0	0.5	0.2
Collective housing, high EIU	5	1.0	0.5	0.2
Collective housing, medium EIU	4	1.0	0.5	0.2
Collective housing, low EIU	3	1.0	0.5	0.2
Office	15	0.4	0.4	0.4
Commerce	10	0.4	0.4	0.4
Education	10	0.4	0.4	0.2
Public health	10	0.4	0.4	0.2
Industry	5	1.0	1.0	0.2
Agriculture	1	1.0	1.0	0.2
Religious	1	1.0	1.0	0.2
Sport	1	1.0	1.0	0.2
Castle	1	1.0	1.0	0.2
Non heated	0	1.0	1.0	0.2

received by the walls. The following model input parameters related to shading are specified for each building use:

- The fraction of shading elements closed when the building is vacant (f_{shade}^{vac}).
- The fraction of shading elements closed during the night (f_{shade}^{nig}).
- 5 – The fraction of shading elements adapted as a function of shortwave radiation (f_{shade}^{sw}).

The values of the input parameters are given in Table A5. Based on these, and the status of building occupation, we first calculate the fraction of closed shading elements independently of the current meteorological conditions (f_{shade}^{ind} ; Equation

A4).

$$f_{shade}^{ind} = f_{nig} f_{shade}^{nig} + (1 - f_{nig})(1 - f_{occ}) f_{shade}^{vac} LS_{vac} \quad (A4)$$

In Equation A4, the shading for vacant buildings is only applied when the indoor air temperature was above 23 °C at the end of the night (LS_{vac} -switch). This parametrises, in a simple way, the fact that people reduce (increase) solar heat gains during

5 the warm (cold) season.

Secondly, we define a fraction of shading elements that can be adapted as a function of the current meteorological conditions. It is determined following Equation A5 based on the building occupation status and f_{shade}^{sw} .

$$f_{shade}^{adapt} = (1 - f_{nig}) f_{occ} f_{shade}^{sw} \quad (A5)$$

The fraction of shading elements currently closed (f_{shade}^{cur}) is then calculated by combining f_{shade}^{ind} and the fraction closed as a
10 function of the current shortwave radiation received by the walls (SW_{toward}) following Equation A6.

$$f_{shade}^{cur} = f_{shade}^{ind} + f_{shade}^{adapt} \frac{1}{1 + \exp(-0.05(SW_{toward} - SW_{th}))} \quad (A6)$$

The use of the logistic function in Equation A6 assures smooth variations in time for the fraction of closed shading elements. The default value of the threshold for shortwave radiation (SW_{th}) is set to 150 Wm⁻².

The computations of the solar radiation reflected, absorbed and transmitted by the windows [with and without shading](#) are made
15 separately and are then weighted with f_{shade}^{cur} . This linearisation does not introduce large errors, as the processes involved are relatively linear.

A5 Ventilation

Human behaviour related to the ventilation of buildings depends on various meteorological and non-meteorological parameters. During the warm season, the air temperature inside and outside the building can be drivers for the use of ventilation in order to
20 optimise thermal comfort (Roetzel et al. (2010); Fabi et al. (2013)). However, other drivers for ventilation exist: for example, wind speed and precipitation (Roetzel et al., 2010), noise (Fabi et al., 2013), safety issues, indoor CO₂ concentration (Andersen et al., 2013), indoor air quality (Fabi et al., 2013) and so on.

In the current version of TEB, we lack information on noise, safety issues or indoor air quality, and so we cannot take them into account. We therefore calculate the fraction of windows opened as a function of the building occupation status and the air
25 temperature inside and outside of the building based on the following model input parameters:

- The fraction of windows opened when the building is vacant (f_{vent}^{vac}).
- The fraction of windows opened during the night (f_{vent}^{nig}).
- The fraction of windows opened during situations with heat stress (f_{vent}^{warm}).

The values for the model input parameters related to ventilation are given in Table A5. Similar to our treatment of shading, we first calculate the fraction of open windows independently from the current meteorological conditions (f_{vent}^{ind}) following Equation A7.

$$f_{vent}^{ind} = f_{nig} f_{vent}^{nig} LV_{nig} + (1 - f_{nig})((1 - f_{occ}) f_{vent}^{vac}) \quad (A7)$$

- 5 In Equation A7, ventilation during the night is only made if the indoor air temperature was above 23 °C at the beginning of the night (LV_{nig} -switch). This parametrises the fact that during warm conditions, people might use ventilation at night.

The fraction of windows that may be opened as a function of the current meteorological conditions (f_{vent}^{adapt}) is given by Equation A8 as a function of building occupation and day/night status and the fraction of windows that may be opened during situations with heat stress.

$$10 \quad f_{vent}^{adapt} = (1 - f_{nig}) f_{occ} f_{vent}^{warm} \quad (A8)$$

The fraction of windows currently opened (f_{vent}^{cur}) is the sum of f_{vent}^{ind} and the fraction which is opened as a function of the current meteorological conditions (Equation A9).

$$f_{vent}^{cur} = f_{vent}^{ind} + f_{vent}^{adapt} \frac{1}{1 + \exp(-(T_{air}^{ind} - TV_{th}))} \frac{1}{1 + \exp(-(T_{air}^{ind} - T_{air}^{can}))} \quad (A9)$$

- 15 In Equation A9, we assume a reasonable, but not perfect behaviour. People tend to open windows when the indoor air temperature is higher than the threshold TV_{th} . We choose a value of 25 °C for TV_{th} , since heat stress is likely to occur for higher indoor air temperatures. Further, we assume that people tend to not open the windows when the air temperature in the street canyon is higher than the indoor air temperature. The use of the logistic function in Equation A9 ensures that there are no abrupt transitions of the fraction of open windows.

- Ventilation during the cold season is not taken into account since the structural formulation of the Building Energy Model
 20 excludes that heating and ventilation are taking place at the same time. Also the formulation of Equation A9 and particularly the choice of $TV_{th} = 25^\circ C$ make sure that the fraction of opened windows tends towards zero if the indoor air temperature is below 25 °C. The neglect of ventilation during the cold season might not lead to large uncertainties for non insulated buildings, since heat conduction through the building envelope and infiltration is responsible for a large part of the heating energy demand. For modern buildings complying with rigorous thermal regulation standards, ventilation during the cold season might
 25 contribute to a larger extent to the heating energy demand. Further developments of TEB might therefore be required to take into account for ventilation during the cold season.

In order to calculate the air exchange rate due to ventilation ($VENT$, [$m^3m(bld)^{-2}s^{-1}$]), we implement the formula for single-sided ventilation defined by the European directive prEN15242 (EC, 2006) given by Equation A10.

$$VENT = 0.5 f_{vent}^{cur} A_{bld}^{win} \sqrt{0.01 + 0.001 U^2 + 0.00525 |T_{air}^{ind} - T_{air}^{can}|} \quad (A10)$$

- 30 This takes into account the ventilation due to the air temperature difference between indoor (T_{air}^{ind}) and outdoor (T_{air}^{can}) due to the stack effect and the forcing due to the wind in the street canyon (U). A_{bld}^{win} denotes the ratio between the glazed surface and

Table A5. Fraction of buildings for which ventilation (f_{vent}) or shading (f_{shade}) is applied during warm conditions ($warm$) or as a function of the shortwave radiation (sw), the night (nig) and when the building is vacant (vac). For the residential buildings, the values are based on the ENERGIHAB survey.

Building use	f_{vent}^{warm}	f_{vent}^{nig}	f_{vent}^{vac}	f_{shade}^{sw}	f_{shade}^{nig}	f_{shade}^{vac}
Individual housing	0.71	0.60	0.0	0.82	0.60	1.0
Collective housing	0.60	0.52	0.0	0.75	0.60	1.0
Education	1.0	0.0	0.0	0.0	0.0	0.0
Other uses	0.0	0.0	0.0	0.0	0.0	0.0

Table A6. Conditional probability that a household will heat to the low, medium and high design temperature as a function of its Efficiency Tendency (ET) class (high or low). [The conditional probabilities are derived from the ENERGIHAB survey, the values for the design temperature are given in Table A3](#)

Building use	p_{T-low}	p_{T-med}	p_{T-high}
Individual housing, high ET	0.52	0.36	0.12
Individual housing, low ET	0.19	0.36	0.45
Collective housing, high ET	0.56	0.28	0.16
Collective housing, low ET	0.19	0.29	0.52

the building footprint.

The value for the air exchange rate is multiplied by f_{vent}^{cur} to consider for the fraction of windows opened. Contrary to shading, this linearisation introduces considerable uncertainties, since the processes related to ventilation are non-linear. [However, if these uncertainties are judged as too important for the given application of TEB, it is possible to introduce more fractional behaviours in order to distinguish between different ventilation behaviours.](#)

For the cases where shading is applied at the same time as ventilation, the air exchange rate due to ventilation is divided by a factor of ten. A more physically-based calculation of the ventilation through closed shading elements is not possible at this time, given the large uncertainties related to the design of the shading elements, the opening angle of the window, and the building architecture.

A6 Air exchange rate due to infiltration

In addition to the air exchange due to ventilation, there is air exchange between the interior and exterior due to small holes in the building envelope. This is referred to here as infiltration. It depends on the airtightness (C_{air} [vol.h⁻¹]) of the building and the meteorological conditions. Indeed, the infiltration is caused by pressure differences between the inside and outside. These are caused by differences between indoor and outdoor air temperature (stack effect) and the forcing due to wind (wind effect). Bueno et al. (2012) specify a fixed infiltration rate. However, this neglects the dependency of infiltration on the meteorological conditions. For this reason, we now prescribe the airtightness of the building as model input parameter and use the Alberta infiltration model (Wang et al., 2009) to calculate the air exchange rate due to infiltration as a function of the meteorological conditions. The contribution of the stack effect to infiltration (I_{stack}) is given by Equation A11, and the contribution from the wind effect (I_{wind}) by Equation A12. The total infiltration rate (I_{tot}) is then the combination of the stack and wind effect (Equation A13).

$$I_{stack} = C_{air} F_{stack} \left(\rho g H_{bld} \frac{|T_{air}^{can} - T_{air}^{ind}|}{T_{air}^{ind}} \right)^{\alpha} \quad (A11)$$

$$I_{wind} = C_{air} F_{wind} (0.5 \rho U^2)^{\alpha} \quad (A12)$$

$$I_{tot} = \left(I_{stack}^{\frac{1}{\alpha}} + I_{wind}^{\frac{1}{\alpha}} + \beta (I_{stack} I_{wind})^{\frac{1}{2\alpha}} \right)^{\alpha} \quad (A13)$$

The density of air in the street canyon is denoted by ρ , the building height by H_{bld} . g is the acceleration due to gravity, U the wind speed in the street canyon. The value for the flow exponent α is set to 0.66, which is a typical value for infiltration flow that lies in between fully laminar (1.0) and fully turbulent flow (0.5) (Wang et al., 2009). The empirical constant β is set to -0.33, similar to Wang et al. (2009).

The stack factor (F_{stack}) is calculated based on Walker and Wilson (1998) (Equations A14 to A16).

$$F_{stack} = F + \left(\frac{1 + R\alpha}{1 + \alpha} \right) \left(0.5 - 0.5(M)^{1.2} \right)^{(1+\alpha)} \quad (A14)$$

$$M = \min \left(1.0, \frac{(X + Y(2\alpha + 1))^2}{2 - R} \right) \quad (A15)$$

$$F = \alpha Y (H_{flue} - 1.0)^{(\alpha - \frac{1}{3})} \left(1 - \frac{3(C - X)^2 R^{(1-\alpha)}}{2(H_{flue} + 1)} \right) \quad (A16)$$

$$C = R + \frac{2(1 - R - Y)}{1 + \alpha} - 2Y(H_{flue} - 1.0)^{\alpha} \quad (A17)$$

The values of R and X are set to 0.0, which assumes that there is no leakage through the roof, except through the flue. For the flue fraction (Y) and the normalised flue height (H_{flue}) we choose the typical values of 0.2 and 1.5 (Walker and Wilson, 1998).

The wind factor (F_{wind}) is also calculated following Walker and Wilson (1998) (Equations A18 and A19).

$$F_{wind} = 0.19 (2 - \alpha) \left(1 - (0.5 (X + R))^{(1.5 - Y)} \right) - 0.25 Y (J - 2.0 Y J^4) \quad (A18)$$

$$J = 0.5 (X + R + 2Y) \quad (A19)$$

In order to test the influence of air exchange between indoor and outdoor due to infiltration on the heating energy demand, we perform a simulation similar to the MAP experiment (Section 4.2.3), but assuming zero infiltration. During the coldest periods of the year, the infiltration is responsible for about one third of the heating energy demand (not shown), which is a reasonable value. TEB overestimates the sensitivity of the heating energy demand to air temperature for this “no infiltration” experiment. This shows that the too high values for this sensitivity found in the DEF and DOM experiments cannot be explained by a too strong dependency of infiltration on air temperature.

Appendix B: Definition of surface ratios and view factors

We describe here how the surface ratios and view factors are calculated based on model input parameters.

B1 Surface ratios

The ratios between the roof (A_{bld}^{roof}) and floor (A_{bld}^{floor}) surface and the building ground surface are 1.0 by definition (Equations B1 and B2).

$$A_{bld}^{roof} = 1 \quad (B1)$$

$$A_{bld}^{floor} = 1 \quad (B2)$$

The ratio between the wall (A_{bld}^{wall}) and window (A_{bld}^{win}) surfaces and the building ground surface are given by Equations B3 and B4.

$$A_{bld}^{wall} = \frac{A_{hor}^{fac} (1 - f_{glaz})}{f_{bld}} \quad (B3)$$

$$A_{bld}^{win} = \frac{A_{hor}^{fac} f_{glaz}}{f_{bld}} \quad (B4)$$

In Equations B3 and B4, f_{bld} corresponds to the building density, which is the fraction of horizontal surface covered by buildings (Figure 5a), f_{glaz} to the glazing ratio, which is the fraction of the façade covered by windows and A_{hor}^{fac} to the façade surface density, which is the ratio between the building façade surface and the horizontal surface (Figure 5c). f_{bld} , f_{glaz} and A_{hor}^{fac} are input parameters of TEB.

- 5 The ratio between the surface of the internal mass and the building ground surface (A_{bld}^{mass}) is given by Equation B5. There is no internal mass in one-storey buildings.

$$A_{bld}^{mass} = 2 (N_{floor} - 1) \quad (B5)$$

The number of floors (N_{floor}) is given by Equation B6.

$$N_{floor} = NINT \left(\frac{H_{bld}}{H_{floor}} \right) \quad (B6)$$

- 10 H_{bld} is the building height, H_{floor} the floor height. Both are input parameters of TEB. $NINT$ denotes the “nearest integer” function in Fortran90.

B2 View factors

- The view factors between the different indoor facets are different for one-storey and multi-storey buildings. For one-storey buildings, the roof and the ground floor exchange longwave radiation, whereas this is not the case for multi-storey buildings. Instead, the roof and the ground floor exchange longwave radiation with the internal mass.

The view factor of the window by the mass (V_{mass}^{win}) is given by Equation B7.

$$V_{mass}^{win} = \begin{cases} \frac{A_{bld}^{win} V_{win}^{mass}}{A_{bld}^{mass}}, & \text{if } N_{floor} > 1 \\ 0, & \text{otherwise} \end{cases} \quad (B7)$$

The view factor of the mass by the window (V_{win}^{mass}) is given by Equation B8.

$$20 \quad V_{win}^{mass} = \begin{cases} \frac{(1 - V_{floor}^{mass})(2 N_{floor} - 2)}{2 HWR N_{floor}}, & \text{if } N_{floor} > 1 \\ 0, & \text{otherwise} \end{cases} \quad (B8)$$

The height-to-width ratio of the floor levels (HWR) is given by Equation B9, the view factors of the mass by the floor for multi-storey buildings (V_{floor}^{mass}) or roof for one-storey buildings (V_{floor}^{roof}) are given by Equations B10 and B11.

$$HWR = \frac{A_{hor}^{fac}}{2 N_{floor} f_{bld}} \quad (B9)$$

$$25 \quad V_{floor}^{mass} = \sqrt{HWR^2 + 1} - HWR \quad (B10)$$

$$V_{floor}^{roof} = \sqrt{HWR^2 + 1} - HWR \quad (B11)$$

The view factors of the window by the floor and the roof are identical (V_{floor}^{win}) and are given by Equation B12.

$$V_{floor}^{win} = f_{glaz} (1 - (\sqrt{HWR^2 + 1} - HWR)) \quad (B12)$$

- 5 The view factor of the window by the wall (V_{wall}^{win}) is given by Equation B13.

$$V_{wall}^{win} = \begin{cases} f_{glaz} (1 - \frac{1 - V_{floor}^{mass}}{HWR}), & \text{if } N_{floor} > 1 \\ f_{glaz} (1 - \frac{1 - V_{floor}^{roof}}{HWR}), & \text{otherwise} \end{cases} \quad (B13)$$

The view factor of the window by the window of the opposite wall (V_{win}^{win}) is given by Equation B14.

$$V_{win}^{win} = \begin{cases} f_{glaz} (1 - 2V_{win}^{floor} - V_{win}^{mass}), & \text{if } N_{floor} > 1 \\ f_{glaz} (1 - 2V_{win}^{floor}), & \text{otherwise} \end{cases} \quad (B14)$$

The view factor of the floor by the window (V_{win}^{floor}) is given by Equation B15.

$$10 \quad V_{win}^{floor} = \begin{cases} \frac{1 - V_{floor}^{mass}}{2 HWR N_{floor}}, & \text{if } N_{floor} > 1 \\ \frac{1 - V_{floor}^{roof}}{2 HWR}, & \text{otherwise} \end{cases} \quad (B15)$$

Appendix C: List of symbols

We here provide a list of symbols (Tables A7 to A12).

Competing interests. The authors declare that they have no conflict of interest.

- 15 *Acknowledgements.* We thank Grégoire Pigeon for providing original code and data required for the construction of the inventory of building energy consumption and for discussions concerning the Building Energy Model in TEB. Erwan Bocher and Gwendall Petit are acknowledged for making available data characterising urban morphology via the MApUCE toolbox in the OrbisGis software. Alexandre Amossé is acknowledged for providing data on urban typology. Pauline Crombette, Julia Hidalgo and Najla Touati are acknowledged for providing data on urban vegetation. This work has received support from the French National Agency of Research for the project applied Modelling and urbAn Planning laws: Urban Climate and Energy (MApUCE) with the reference ANR-13-VBDU-0004.

References

- Akbari, H., Matthews, H. D., and Seto, D.: The long-term effect of increasing the albedo of urban areas, *Environmental Research Letters*, 7, 024 004, <http://stacks.iop.org/1748-9326/7/i=2/a=024004>, 2012.
- Amossé, A.: Identification automatique d'une typologie urbaine des îlots urbains en France, Tech. rep., Laboratoire de recherche en architecture, 2015.
- Andersen, R., Fabi, V., Toftum, J., Corgnati, S. P., and Olesen, B. W.: Window opening behaviour modelled from measurements in Danish dwellings, *Building and Environment*, 69, 101 – 113, doi:<http://dx.doi.org/10.1016/j.buildenv.2013.07.005>, <http://www.sciencedirect.com/science/article/pii/S0360132313001960>, 2013.
- Andersen, R. K.: The influence of occupants behaviour on energy consumption investigated in 290 identical dwellings and in 35 apartments, in: 10th International Conference on Healthy Buildings - Brisbane, Australia, 2012.
- Arnfield, A. J.: Two decades of urban climate research: a review of turbulence, exchanges of energy and water, and the urban heat island, *Int. J. Climatol.*, 23, 1–26, <http://dx.doi.org/10.1002/joc.859>, 2003.
- Blazejczyk, K., Epstein, Y., Jendritzky, G., Staiger, H., and Tinz, B.: Comparison of UTCI to selected thermal indices, *International Journal of Biometeorology*, 56, 515–535, doi:10.1007/s00484-011-0453-2, <http://dx.doi.org/10.1007/s00484-011-0453-2>, 2012.
- Bourgeois, A., Pellegrino, M., and Lévy, J.-P.: Modeling and mapping domestic energy behavior: Insights from a consumer survey in France, *Energy Research and Social Science*, under review, 2017.
- Bueno, B., Pigeon, G., Norford, L. K., Zibouche, K., and Marchadier, C.: Development and evaluation of a building energy model integrated in the TEB scheme, *Geoscientific Model Development*, 5, 433–448, doi:10.5194/gmd-5-433-2012, <http://www.geosci-model-dev.net/5/433/2012/>, 2012.
- Chow, W. T., Salamanca, F., Georgescu, M., Mahalov, A., Milne, J. M., and Ruddell, B. L.: A multi-method and multi-scale approach for estimating city-wide anthropogenic heat fluxes, *Atmospheric Environment*, 99, 64 – 76, doi:<http://dx.doi.org/10.1016/j.atmosenv.2014.09.053>, <http://www.sciencedirect.com/science/article/pii/S1352231014007468>, 2014.
- Christen, A. and Vogt, R.: Energy and radiation balance of a central European city, *International Journal of Climatology*, 24, 1395–1421, doi:10.1002/joc.1074, <http://dx.doi.org/10.1002/joc.1074>, 2004.
- Crombette, P., Le Corre, S., and Tinel, C.: Traitement d'images satellitaires à Très Haute Résolution Spatiale et identification de zones à enjeux dans l'aménagement des Trames Vertes urbaines, *Revue Française de Photogrammétrie et de Télédétection*, p. <http://www.sftp.fr/rfpt/index.php/RFPT/article/view/130>, <https://hal-univ-tlse2.archives-ouvertes.fr/hal-01140009>, 2014.
- de Meester, T., Marique, A.-F., Herde, A. D., and Reiter, S.: Impacts of occupant behaviours on residential heating consumption for detached houses in a temperate climate in the northern part of Europe, *Energy and Buildings*, 57, 313 – 323, doi:<http://dx.doi.org/10.1016/j.enbuild.2012.11.005>, <http://www.sciencedirect.com/science/article/pii/S0378778812005944>, 2013.
- de Munck, C., Pigeon, G., Masson, V., Meunier, F., Bousquet, P., Tréméac, B., Merchat, M., Poeuf, P., and Marchadier, C.: How much can air conditioning increase air temperatures for a city like Paris, France?, *Int. J. Climatol.*, 33, 210–227, <http://dx.doi.org/10.1002/joc.3415>, 2013.
- EC: Ventilation for buildings-Calculation methods for the determination of air flow rates in buildings including infiltration, Tech. rep., European Commission, Secretariat BSI, 2006.

- Fabi, V., Andersen, R. V., Corgnati, S. P., and Olesen, B. W.: A methodology for modelling energy-related human behaviour: Application to window opening behaviour in residential buildings, *Building Simulation*, 6, 415–427, doi:10.1007/s12273-013-0119-6, <http://dx.doi.org/10.1007/s12273-013-0119-6>, 2013.
- Grimmond, C. S. B.: The suburban energy balance: Methodological considerations and results for a mid-latitude west coast city under winter and spring conditions, *International Journal of Climatology*, 12, 481–497, doi:10.1002/joc.3370120506, <http://dx.doi.org/10.1002/joc.3370120506>, 1992.
- Guerra Santin, O.: Occupant behaviour in energy efficient dwellings: evidence of a rebound effect, *Journal of Housing and the Built Environment*, 28, 311–327, doi:10.1007/s10901-012-9297-2, <http://dx.doi.org/10.1007/s10901-012-9297-2>, 2013.
- Haldi, F. and Robinson, D.: Adaptive actions on shading devices in response to local visual stimuli, *Journal of Building Performance Simulation*, 3, 135–153, doi:10.1080/19401490903580759, <http://dx.doi.org/10.1080/19401490903580759>, 2010.
- Haldi, F. and Robinson, D.: The impact of occupants' behaviour on building energy demand, *Journal of Building Performance Simulation*, 4, 323–338, doi:10.1080/19401493.2011.558213, <http://dx.doi.org/10.1080/19401493.2011.558213>, 2011.
- Hamdi, R. and Masson, V.: Inclusion of a Drag Approach in the Town Energy Balance (TEB) Scheme: Offline 1D Evaluation in a Street Canyon, *Journal of Applied Meteorology and Climatology*, 47, 2627–2644, doi:10.1175/2008JAMC1865.1, <http://dx.doi.org/10.1175/2008JAMC1865.1>, 2008.
- Hamilton, I. G., Davies, M., Steadman, P., Stone, A., Ridley, I., and Evans, S.: The significance of the anthropogenic heat emissions of London's buildings: A comparison against captured shortwave solar radiation, *Building and Environment*, 44, 807 – 817, doi:<http://dx.doi.org/10.1016/j.buildenv.2008.05.024>, <http://www.sciencedirect.com/science/article/pii/S0360132308001418>, 2009.
- Heiple, S. and Sailor, D. J.: Using building energy simulation and geospatial modeling techniques to determine high resolution building sector energy consumption profiles, *Energy and Buildings*, 40, 1426 – 1436, doi:<http://dx.doi.org/10.1016/j.enbuild.2008.01.005>, <http://www.sciencedirect.com/science/article/pii/S0378778808000200>, 2008.
- Hosni, M. H., Jones, B. W., and Xu, H.: Experimental Results for Heat Gain and Radiant/Convective Split from Equipment in Buildings, *ASHRAE TRANSACTIONS*, 105, 1999.
- Kanda, M., Kanega, M., Kawai, T., Moriwaki, R., and Sugawara, H.: Roughness Lengths for Momentum and Heat Derived from Outdoor Urban Scale Models, *Journal of Applied Meteorology and Climatology*, 46, 1067–1079, doi:10.1175/JAM2500.1, <http://dx.doi.org/10.1175/JAM2500.1>, 2007.
- Kelly, S., Shipworth, M., Shipworth, D., Gentry, M., Wright, A., Pollitt, M., Crawford-Brown, D., and Lomas, K.: Predicting the diversity of internal temperatures from the English residential sector using panel methods, *Applied Energy*, 102, 601 – 621, doi:<http://dx.doi.org/10.1016/j.apenergy.2012.08.015>, <http://www.sciencedirect.com/science/article/pii/S0306261912005855>, special Issue on Advances in sustainable biofuel production and use - {XIX} International Symposium on Alcohol Fuels - {ISAF}, 2013.
- Kikegawa, Y., Genchi, Y., Yoshikado, H., and Kondo, H.: Development of a numerical simulation system toward comprehensive assessments of urban warming countermeasures including their impacts upon the urban buildings' energy-demands, *Applied Energy*, 76, 449 – 466, doi:[http://dx.doi.org/10.1016/S0306-2619\(03\)00009-6](http://dx.doi.org/10.1016/S0306-2619(03)00009-6), <http://www.sciencedirect.com/science/article/pii/S0306261903000096>, 2003.
- Kunze, C. and Hecht, R.: Semantic enrichment of building data with volunteered geographic information to improve mappings of dwelling units and population, *Computers, Environment and Urban Systems*, 53, 4 – 18, doi:<http://dx.doi.org/10.1016/j.compenvurbsys.2015.04.002>, <http://www.sciencedirect.com/science/article/pii/S0198971515000435>, special Issue on Volunteered Geographic Information, 2015.

- Kusaka, H., Kondo, H., Kikegawa, Y., and Kimura, F.: A Simple Single-Layer Urban Canopy Model For Atmospheric Models: Comparison With Multi-Layer And Slab Models, *Boundary-Layer Meteorology*, 101, 329–358, doi:10.1023/A:1019207923078, <http://dx.doi.org/10.1023/A:1019207923078>, 2001.
- Klysik, K.: Spatial and seasonal distribution of anthropogenic heat emissions in Lodz, Poland, *Atmospheric Environment*, 30, 3397 – 3404, doi:[http://dx.doi.org/10.1016/1352-2310\(96\)00043-X](http://dx.doi.org/10.1016/1352-2310(96)00043-X), <http://www.sciencedirect.com/science/article/pii/135223109600043X>, 1996.
- Lemonsu, A., Masson, V., Shashua-Bar, L., Erell, E., and Pearlmutter, D.: Inclusion of vegetation in the Town Energy Balance model for modelling urban green areas, *Geoscientific Model Development*, 5, 1377–1393, doi:10.5194/gmd-5-1377-2012, <http://www.geosci-model-dev.net/5/1377/2012/>, 2012.
- Lévy, J.-P. and Roudil, N.: La consommation énergétique domestique : le projet ENERGIHAB, in: Colloque ” Usages de l’énergie dans les bâtiments ”, ESIEE Paris, Cité Descartes, France, <https://hal-univ-paris8.archives-ouvertes.fr/hal-01072070>, 2012.
- Martilli, A., Clappier, A., and Rotach, M. W.: An Urban Surface Exchange Parameterisation for Mesoscale Models, *Boundary-Layer Meteorology*, 104, 261–304, doi:10.1023/A:1016099921195, <http://dx.doi.org/10.1023/A:1016099921195>, 2002.
- Masson, V.: A Physically-Based Scheme For The Urban Energy Budget In Atmospheric Models, *Boundary-Layer Meteorology*, 94, 357–397, doi:10.1023/A:1002463829265, <http://dx.doi.org/10.1023/A:1002463829265>, 2000.
- Masson, V., Gomes, L., Pigeon, G., Liousse, C., Pont, V., Lagouarde, J.-P., Voogt, J., Salmond, J., Oke, T. R., Hidalgo, J., Legain, D., Garrouste, O., Lac, C., Connan, O., Briottet, X., Lachérade, S., and Tulet, P.: The Canopy and Aerosol Particles Interactions in TOulouse Urban Layer (CAPITOUL) experiment, *Meteorology and Atmospheric Physics*, 102, 135, doi:10.1007/s00703-008-0289-4, <http://dx.doi.org/10.1007/s00703-008-0289-4>, 2008.
- MEDDE: Les conditions d’occupation des logements au 1er janvier 2011., Tech. rep., Ministère de l’Ecologie, du Développement durable et de l’Energie, 2012.
- Mironov, D., Heise, E., Kourzeneva, E., Ritter, B., Schneider, N., and Terzhevik, A.: Implementation of the lake parameterisation scheme FLake into the numerical weather prediction model COSMO, *Boreal Environment Research*, 15, 218–230, 2010.
- Motuziene, V. and Vilutiene, T.: Modelling the Effect of the Domestic Occupancy Profiles on Predicted Energy Demand of the Energy Efficient House, *Procedia Engineering*, 57, 798 – 807, doi:<http://dx.doi.org/10.1016/j.proeng.2013.04.101>, <http://www.sciencedirect.com/science/article/pii/S1877705813008345>, 2013.
- Nie, W.-S., Sun, T., and Ni, G.-H.: Spatiotemporal characteristics of anthropogenic heat in an urban environment: A case study of Tsinghua Campus, *Building and Environment*, 82, 675 – 686, doi:<http://dx.doi.org/10.1016/j.buildenv.2014.10.011>, <http://www.sciencedirect.com/science/article/pii/S0360132314003321>, 2014.
- Noilhan, J. and Planton, S.: A Simple Parameterization of Land Surface Processes for Meteorological Models, *Monthly Weather Review*, 117, 536–549, doi:10.1175/1520-0493(1989)117<0536:ASPOLS>2.0.CO;2, [http://dx.doi.org/10.1175/1520-0493\(1989\)117<0536:ASPOLS>2.0.CO;2](http://dx.doi.org/10.1175/1520-0493(1989)117<0536:ASPOLS>2.0.CO;2), 1989.
- Oke, T. R.: The energetic basis of the urban heat island, *Quarterly Journal of the Royal Meteorological Society*, 108, 1–24, doi:10.1002/qj.49710845502, <http://dx.doi.org/10.1002/qj.49710845502>, 1982.
- Oleson, K. W., Bonan, G. B., Feddema, J., Vertenstein, M., and Grimmond, C. S. B.: An Urban Parameterization for a Global Climate Model. Part I: Formulation and Evaluation for Two Cities, *Journal of Applied Meteorology and Climatology*, 47, 1038–1060, doi:10.1175/2007JAMC1597.1, <http://dx.doi.org/10.1175/2007JAMC1597.1>, 2008.
- Pigeon, G., Legain, D., Durand, P., and Masson, V.: Anthropogenic heat release in an old European agglomeration (Toulouse, France), *International Journal of Climatology*, 27, 1969–1981, doi:10.1002/joc.1530, <http://dx.doi.org/10.1002/joc.1530>, 2007.

- Pigeon, G., Zibouche, K., Bueno, B., Bras, J. L., and Masson, V.: Improving the capabilities of the Town Energy Balance model with up-to-date building energy simulation algorithms: an application to a set of representative buildings in Paris, *Energy and Buildings*, 76, 1 – 14, doi:<http://dx.doi.org/10.1016/j.enbuild.2013.10.038>, <http://www.sciencedirect.com/science/article/pii/S0378778814001340>, 2014.
- Raja, I. A., Nicol, J., McCartney, K. J., and Humphreys, M. A.: Thermal comfort: use of controls in naturally ventilated buildings, *Energy and Buildings*, 33, 235 – 244, doi:[http://dx.doi.org/10.1016/S0378-7788\(00\)00087-6](http://dx.doi.org/10.1016/S0378-7788(00)00087-6), <http://www.sciencedirect.com/science/article/pii/S0378778800000876>, 2001.
- Roetzel, A., Tsangrassoulis, A., Dietrich, U., and Busching, S.: A review of occupant control on natural ventilation, *Renewable and Sustainable Energy Reviews*, 14, 1001 – 1013, doi:<http://dx.doi.org/10.1016/j.rser.2009.11.005>, <http://www.sciencedirect.com/science/article/pii/S1364032109002676>, 2010.
- 10 Sailor, D. and Pavlova, A.: Air conditioning market saturation and long-term response of residential cooling energy demand to climate change, *Energy*, 28, 941 – 951, doi:[http://dx.doi.org/10.1016/S0360-5442\(03\)00033-1](http://dx.doi.org/10.1016/S0360-5442(03)00033-1), <http://www.sciencedirect.com/science/article/pii/S0360544203000331>, 2003.
- Sailor, D. J.: A review of methods for estimating anthropogenic heat and moisture emissions in the urban environment, *International Journal of Climatology*, 31, 189–199, doi:10.1002/joc.2106, <http://dx.doi.org/10.1002/joc.2106>, 2011.
- 15 Salamanca, F., Krpo, A., Martilli, A., and Clappier, A.: A new building energy model coupled with an urban canopy parameterization for urban climate simulations—part I. formulation, verification, and sensitivity analysis of the model, *Theoretical and Applied Climatology*, 99, 331, doi:10.1007/s00704-009-0142-9, <http://dx.doi.org/10.1007/s00704-009-0142-9>, 2009.
- Shepherd, J. M.: A Review of Current Investigations of Urban-Induced Rainfall and Recommendations for the Future, *Earth Interactions*, 9, 1–27, doi:10.1175/EI156.1, <http://dx.doi.org/10.1175/EI156.1>, 2005.
- 20 Stewart, I. D. and Oke, T. R.: Local Climate Zones for Urban Temperature Studies, *Bulletin of the American Meteorological Society*, 93, 1879–1900, doi:10.1175/BAMS-D-11-00019.1, <http://dx.doi.org/10.1175/BAMS-D-11-00019.1>, 2012.
- Thatcher, M. and Hurley, P.: Simulating Australian Urban Climate in a Mesoscale Atmospheric Numerical Model, *Boundary-Layer Meteorology*, 142, 149–175, doi:10.1007/s10546-011-9663-8, <http://dx.doi.org/10.1007/s10546-011-9663-8>, 2012.
- Tornay, N., Schoetter, R., Bonhomme, M., Faraut, S., and Masson, V.: GENIUS: A methodology to define a detailed description of buildings for urban climate and building energy consumption simulations, *Urban Climate*, 20, 75 – 93, doi:<https://doi.org/10.1016/j.uclim.2017.03.002>, <http://www.sciencedirect.com/science/article/pii/S2212095517300214>, 2017.
- 25 Unger, J.: Urban–rural air humidity differences in Szeged, Hungary, *International Journal of Climatology*, 19, 1509–1515, doi:10.1002/(SICI)1097-0088(19991115)19:13<1509::AID-JOC453>3.0.CO;2-P, [http://dx.doi.org/10.1002/\(SICI\)1097-0088\(19991115\)19:13<1509::AID-JOC453>3.0.CO;2-P](http://dx.doi.org/10.1002/(SICI)1097-0088(19991115)19:13<1509::AID-JOC453>3.0.CO;2-P), 1999.
- 30 Vorger, E.: Étude de l’influence du comportement des occupants sur la performance énergétique des bâtiments, Ph.D. thesis, École nationale supérieure des mines de Paris, 2014.
- Walker, I. and Wilson, D.: Field Validation of Algebraic Equations for Stack and Wind Driven Air Infiltration Calculations, Tech. rep., ASHRAE HVAC Research Journal, Vol. 4, No. 2, April 1998, 1998.
- Wang, W., Beausoleil-Morrison, I., and Reardon, J.: Evaluation of the Alberta air infiltration model using measurements and inter-model comparisons, *Building and Environment*, 44, 309 – 318, doi:<http://dx.doi.org/10.1016/j.buildenv.2008.03.005>, <http://www.sciencedirect.com/science/article/pii/S0360132308000449>, 2009.
- 35 Wilke, U.: Probabilistic Bottom-up Modelling of Occupancy and Activities to Predict Electricity Demand in Residential Buildings, Ph.D. thesis, École Polytechnique Fédérale De Lausanne, 2013.

- Yang, L., Yan, H., and Lam, J. C.: Thermal comfort and building energy consumption implications – A review, *Applied Energy*, 115, 164 – 173, doi:<http://dx.doi.org/10.1016/j.apenergy.2013.10.062>, <http://www.sciencedirect.com/science/article/pii/S0306261913008921>, 2014.
- Yun, G. Y., Kim, H., and Kim, J. T.: Effects of occupancy and lighting use patterns on lighting energy consumption, *Energy and Buildings*, 46, 152 – 158, doi:<http://dx.doi.org/10.1016/j.enbuild.2011.10.034>, <http://www.sciencedirect.com/science/article/pii/S037877881100497X>, sustainable and healthy buildings, 2012.
- 5

Table A7. List of symbols

Symbol	Definition [unit]
α	Flow exponent [1]
A_{bld}^{floor}	Ratio between the surface of the floor and the building footprint [1]
A_{bld}^{mass}	Ratio between the surface of the internal mass and the building footprint [1]
A_{bld}^{roof}	Ratio between the surface of the roof and the building footprint [1]
A_{bld}^{wall}	Ratio between the surface of the walls and the building footprint [1]
A_{bld}^{win}	Ratio between the surface of the windows and the building footprint [1]
A_{floor}	Total floor area of the building [m ²]
A_{foot}	Building footprint [m ²]
A_{hor}^{fac}	Façade surface density [1]
C_{air}	Airtightness [vol. hour ⁻¹]
$CHTC_{roof}^{air,i}$	Convective heat exchange coefficient between roof and indoor air for the i th compartment [Wm ⁻² K ⁻¹]
$CHTC_{wall}^{air,i}$	Convective heat exchange coefficient between wall and indoor air for the i th compartment [Wm ⁻² K ⁻¹]
$CHTC_{win}^{air,i}$	Convective heat exchange coefficient between window and indoor air for the i th compartment [Wm ⁻² K ⁻¹]
$C_{rad,i}$	Radiative exchange coefficient for the i th compartment [Wm ⁻² K ⁻¹]
ϵ	Emissivity [1]
f_{bld}	Building density [1]
f_{com}	Fraction of commercial use [1]
f_{EIU}^{high}	Fraction of households with high Equipment-Intensity-of-Use [1]
f_{EIU}^{low}	Fraction of households with low Equipment-Intensity-of-Use [1]
f_{ET}^{high}	Fraction of households with high Efficiency Tendency [1]
f_{high}	Fraction of households heating to high design temperature [1]
f_i	Fraction of i th behaviour [1]
f_{glaz}	Glazing ratio [1]
f_{ground}	Fraction of ground floor area to total floor area [1]
f_{low}	Fraction of households heating to low design temperature [1]

Table A8. List of symbols, continued

Symbol	Definition [unit]
f_{med}	Fraction of households heating to medium design temperature [1]
f_{nig}	Fraction of inactive buildings [1]
f_{nres}	Fraction of non residential use [1]
f_{occ}	Fraction of occupied building [1]
f_{off}	Fraction of office use [1]
f_{shade}^{adapt}	Fraction of shading elements adapted to meteorological conditions [1]
f_{shade}^{cur}	Fraction of shading elements currently closed [1]
f_{shade}^{ind}	Fraction of shading elements closed independently of the meteorological conditions [1]
f_{shade}^{nig}	Fraction of shading elements closed during the night [1]
f_{shade}^{sw}	Fraction of shading elements closed due to solar radiation [1]
f_{shade}^{vac}	Fraction of shading elements closed during building vacancy [1]
f_{vent}^{adapt}	Fraction of windows adapted to meteorological conditions [1]
f_{vent}^{cur}	Fraction of windows currently opened [1]
f_{vent}^{ind}	Fraction of windows opened independently of the meteorological conditions [1]
f_{vent}^{nig}	Fraction of windows opened during the night [1]
f_{vent}^{vac}	Fraction of windows opened during building vacancy [1]
f_{vent}^{warm}	Fraction of windows opened during warm conditions [1]
F_{stack}	Stack factor [1]
F_{wind}	Wind factor [1]
g	Acceleration due to gravity [ms^{-2}]
H_{bld}	Building height [m]
H_{floor}	Floor height [m]
H_{flue}	Normalised flue height [1]
H_{roof}^{ind}	Heat flux due to convection from roof to indoor air [Wm^{-2}]
H_{wall}^{ind}	Heat flux due to convection from wall to indoor air [Wm^{-2}]

Table A9. List of symbols, continued

Symbol	Definition [unit]
$H_{waste,i}^{can}$	Sensible waste heat flux from the indoor air of the i^{th} compartment towards the street canyon [Wm^{-2} (façade)]
$H_{waste,i}^{roof}$	Sensible waste heat flux from the indoor air of the i^{th} compartment towards the air above the roof [Wm^{-2} (roof)]
H_{win}^{ind}	Heat flux due to convection from window to indoor air [Wm^{-2}]
HWR	Height-to-width ratio of the floor levels [1]
I_{stack}	Air exchange rate due to stack effect [vol. hour ⁻¹]
I_{tot}	Total air exchange rate due to infiltration [vol. hour ⁻¹]
I_{wind}	Air exchange rate due to wind forcing [vol. hour ⁻¹]
$LE_{waste,i}^{can}$	Latent waste heat flux from the indoor air of the i^{th} compartment towards the street canyon [Wm^{-2} (façade)]
$LE_{waste,i}^{roof}$	Latent waste heat flux from the indoor air of the i^{th} compartment towards the air above the roof [Wm^{-2} (roof)]
LS_{vac}	Switch for shading during building vacancy [1]
LW_{roof}^{floor}	Heat flux due to longwave radiation from roof to floor [Wm^{-2}]
LW_{roof}^{mass}	Heat flux due to longwave radiation from roof to internal mass [Wm^{-2}]
LW_{wall}^{floor}	Heat flux due to longwave radiation from wall to floor [Wm^{-2}]
LW_{wall}^{mass}	Heat flux due to longwave radiation from wall to internal mass [Wm^{-2}]
LW_{win}^{floor}	Heat flux due to longwave radiation from window to floor [Wm^{-2}]
LW_{win}^{mass}	Heat flux due to longwave radiation from window to internal mass [Wm^{-2}]
LV_{nig}	Switch for ventilation during the night [1]
M_{nig}	Modulation factor for internal heat release during night [1]
M_{vac}	Modulation factor for internal heat release when the building is vacant [1]
N	Number of considered fractional behaviours [1]
N_{floor}	Number of floors in building [1]
N_{inh}	Number of building inhabitants [1]
p_{T-high}^{HighET}	Probability that a household heats to the high design temperature given that it falls into the high Efficiency Tendency class [1]
p_{T-high}^{LowET}	Probability that a household heats to the high design temperature given that it falls into the low Efficiency Tendency class [1]
p_{T-low}^{HighET}	Probability that a household heats to the low design temperature given that it falls into the high Efficiency Tendency class [1]

Table A10. List of symbols, continued

Symbol	Definition [unit]
p_{T-low}^{LowET}	Probability that a household heats to the low design temperature given that it falls into the low Efficiency Tendency class [1]
p_{T-med}^{HighET}	Probability that a household heats to the medium design temperature given that it falls into the high Efficiency Tendency class [1]
p_{T-med}^{LowET}	Probability that a household heats to the medium design temperature given that it falls into the low Efficiency Tendency class [1]
Q_{ant}	Anthropogenic heat flux [Wm^{-2}]
$Q_{floor,i}$	Heat load due to solar radiation and the radiative part of the internal heat release on the floor of the i^{th} compartment [Wm^{-2}]
Q_{lat}	Turbulent flux of latent heat [Wm^{-2}]
$Q_{mass,i}$	Heat load due to solar radiation and the radiative part of the internal heat release on the internal mass of the i^{th} compartment [Wm^{-2}]
Q_{roof}	Heat load due to solar radiation and the radiative part of the internal heat release on the indoor surface of the roof [Wm^{-2}]
Q_{sen}	Turbulent flux of sensible heat [Wm^{-2}]
Q_{sto}	Storage heat flux [Wm^{-2}]
Q_{wall}	Heat load due to solar radiation and the radiative part of the internal heat release on the indoor surface of the wall [Wm^{-2}]
Q_{win}	Heat load due to solar radiation and the radiative part of the internal heat release on the indoor surface of the window [Wm^{-2}]
QIN_{cur}	Current internal heat release [$Wm^{-2}floor^{-1}$]
QIN_{nom}	Nominative internal heat release [$Wm^{-2}floor^{-1}$]
$QIN_{nom}^{HighEIU}$	Nominative internal heat release for high EIU [$Wm^{-2}floor^{-1}$]
QIN_{nom}^{LowEIU}	Nominative internal heat release for low EIU [$Wm^{-2}floor^{-1}$]
QIN_{nom}^{MedEIU}	Nominative internal heat release for medium EIU [$Wm^{-2}floor^{-1}$]
$QIN_{rad,i}$	Radiative heat gain in the i^{th} compartment [Wm^{-2}]
ρ	Air density [kgm^{-3}]
R_{net}	Net all-wave radiation [Wm^{-2}]
SW_{th}	Solar radiation threshold [Wm^{-2}]
SW_{towall}	Solar radiation received by the wall [Wm^{-2}]
$SW_{win,i}^{abs}$	Solar radiation absorbed by the windows of the i^{th} compartment [$Wm^{-2}(window)$]
$SW_{win,i}^{ref}$	Solar radiation reflected by the windows of the i^{th} compartment [$Wm^{-2}(window)$]
$SW_{win,i}^{tra}$	Solar radiation transmitted by the windows of the i^{th} compartment [$Wm^{-2}(window)$]

Table A11. List of symbols, continued

Symbol	Definition [unit]
$T_{air,i}^{can}$	Air temperature in street canyon [K]
$T_{air,i}^{ind}$	Indoor air temperature [K]
$T_{floor,i}$	Floor temperature for the i^{th} compartment [K]
$T_{mass,i}$	Internal mass temperature for the i^{th} compartment [K]
$T_{rad,i}$	Indoor mean radiative temperature for the i^{th} compartment [K]
T_{roof}	Roof temperature [K]
T_{wall}	Wall temperature [K]
T_{win}	Window temperature [K]
TC_{cur}	Current design temperature for air conditioning [K]
TC_{occ}^{day}	Design temperature for air conditioning, building occupied, during the day [K]
TC_{occ}^{nig}	Design temperature for air conditioning, building occupied, during the night [K]
TC_{vac}^{day}	Design temperature for air conditioning, building vacant, during the day [K]
TC_{vac}^{nig}	Design temperature for air conditioning, building vacant, during the night [K]
TH_{cur}	Current design temperature for heating [K]
TH_{occ}^{day}	Design temperature for heating, building occupied, during the day [K]
TH_{occ}^{nig}	Design temperature for heating, building occupied, during the night [K]
TH_{vac}^{day}	Design temperature for heating, building vacant, during the day [K]
TH_{vac}^{nig}	Design temperature for heating, building vacant, during the night [K]
TV_{th}	Threshold temperature for window opening during warm conditions [K]
U	Wind speed in street canyon [ms^{-1}]
V_{floor}^{mass}	View factor of the mass by the floor [1]
V_{floor}^{roof}	View factor of the roof by the floor [1]
V_{floor}^{win}	View factor of the window by the floor [1]
V_{mass}^{win}	View factor of the window by the mass [1]
V_{roof}^{win}	View factor of the window by the roof [1]
V_{wall}^{win}	View factor of the window by the wall [1]

Table A12. List of symbols, continued

Symbol	Definition [unit]
V_{win}^{floor}	View factor of the floor by the window [1]
V_{win}^{mass}	View factor of the mass by the window [1]
V_{win}^{win}	View factor of the window by the opposite wall's window [1]
$VENT$	Air exchange due to ventilation [$\text{m}^3\text{m(bld)}^{-2}\text{s}^{-1}$]