

Response to Referee 1 Comments

Page 1, Line 2: I suggest appending “simultaneously” at the end of this sentence. **Done**

Page 1, Lines 14-15: “derived from a combination of modelling and observations” ->

be more specific, does this refer to reanalysis data, and if so, which?

Text modified to state: “effectively producing an analysis of annual mean surface pollutant concentrations.”

Page 1, Line 19: Please subscript “10”. **Done**

Page 1, Line 21: “consistency between nested models is also important” -> This looks like a key conclusion, so I suggest being more explicit about what is meant. In fact, after reading the manuscript I am not sure how the results presented in it lead to this conclusion. Can the authors please explain or remove?

Since one of the key differences between the RCCM and AQUM simulations for ozone arises from differences in the photolysis scheme, we believe that this study highlights the importance of aligning process modelling schemes as far as possible when comparing nested model runs. We have therefore modified the text to state: “This study highlights the point that the resolution of models is not the only factor in determining model performance - consistency between nested models is also important.”

Page 2, Line 26: I suggest changing “constituents” to “pollutants”, as otherwise it is a bit unconventional to mention ozone before CO₂ and methane as important for climate. **Done**

Page 2, Lines 44-45: Not clear what is meant – are they more inhomogeneous than, e.g. cloud distributions?

We have clarified this statement with the modification:

“Air pollutant concentrations exhibit a high degree of spatial inhomogeneity compared to meteorological fields such as temperature and wind,...”.

Page 2, Lines 46-47: Not sure why the second part of the sentence in the parenthesis is relevant here. **Removed parentheses**

Page 5, Lines 140-143: Why has the 2D scheme been chosen instead of the more detailed approach? Is it due to the computational cost?

We have explained this point in the following text which has been added:

“We used this option in the GCCM and RCCM configurations mainly for two reasons. First, the extended tropospheric chemistry version of UKCA, UKCA-ExtTC, has been developed and extensively evaluated only with the 2D-photolysis model, and there was no time within the scope of this work for development and evaluation of UKCA-ExtTC coupled to the online photolysis model FastJ. Second, there is a non-negligible, albeit not prohibitively large, extra cost attached to using the online photolysis scheme FastJ over the 2D-photolysis scheme...”

Page 5, Lines 145-148: Perhaps this sentence would seem better placed earlier on, when the use of CLASSIC is first mentioned. Again, are UKCA aerosols not chosen because of computational cost?

We have explained this point and added the following text:

“Although UKCA does include an aerosol microphysics scheme, GLOMAP-mode (Mann et al., 2010), the simpler mass-based CLASSIC aerosol scheme (Jones et al., 2001; Bellouin et al., 2011) was used across the three MetUM configurations for the following reasons: (1) the UKCA-ExtTC chemistry scheme has historically only been coupled to the CLASSIC scheme and there was no time within the scope of the current study to couple it to GLOMAP-mode, (2) the operational air quality forecast model, AQUM, also uses CLASSIC as its aerosol scheme, and one of the aims of this work was to maximise the consistency in the treatment of both meteorology and composition across the three model domains, and (3) the computational cost of running both UKCA-ExtTC and GLOMAP-mode would have been prohibitively expensive.

Page 5, Line 157: Is 89 a higher or a lower number compared to what is used in the standard (non-ExtTC) UKCA?

We have added the text:

“This version of UKCA applies a more detailed gas-phase chemistry scheme that has a significantly larger number of chemical species – 89 chemical species in comparison to the 41 and 55 in the StdTrop and TropIsop chemistry schemes in O’Connor et al. (2014), respectively – and chemical reactions – 203 in UKCA-ExtTC in comparison to the 121 and 164 described in O’Connor et al. (2014).”

Page 5, Line 164: Please add space after “ozone”. Also, I suggest adding “simulated” before “oxidant species”. **Done**

Fig. 1: I suggest either removing the more coarsely distanced lines from the map, to avoid confusion, or to add tick marks next to them. I also suggest that the resolution of the different domains is mentioned again in the caption.

We have modified the figure. The caption has been modified to include the domain resolution as follows:

“Figure 1. Nested modelling domains. The rectangular boundary of the figure is an extract of the GCCM (resolution 140km) containing the RCCM domain (resolution 50km) plotted in blue and the AQUM domain (resolution 12km) in red.

Page 7, Line 214: Why were 20 years of spin-up needed?

We have explained in the text that a pre-existing simulation was used.

Page 8, Line 251: I suggest adding “in the focus area” at the end of this sentence. **Done**

Page 8, Lines 255-258: Does this imply that the calibration described just above will not mean much for AQUM performance? That is a bit confusing.

We have added the following text to clarify:

“The calibration was performed to ascertain that the best possible boundary conditions are applied to the innermost, national-scale domain. Mace Head station was chosen because it is representative of the large-scale background tropospheric ozone level in the study area and includes the impact of transcontinental influx of pollution from North America.”

Page 11, Line 321: The fact that the simulation is for average conditions around year 2000 has been elusive throughout the Experimental Setup section. I suggest clarifying this at the very beginning of the section.

The following text has been added

“It should be pointed out here that the entire setup is intended to represent a decadal climatological mean state of near present day conditions encompassing the period from 1995 to 2005 and centred on the year 2000. This particularly applies to the meteorological drivers (sea surface temperature, SSTs, and sea ice cover) and the anthropogenic emissions of pollutants. The latter will be discussed in more detail in section 3.2”

Fig. 2: Why would some spatial structure existing in RCCM over central Britain disappear when moving to AQUM? Also, please place “-2” and “-1” in superscripts.

This is a feature of the contouring scale used in the figure. The caption has been amended with superscripts.

Page 13, Line 364: I am confused again – why 2001-2005 while earlier it was mentioned that the runs are designed for being representative of ~2000?

See above (under 'Page 11, Line 321')

Fig. 4: Please subscript “2”, “3”, “10” etc. in pollutant chemical formulas/abbreviations (also in other parts of the text), and change “2p5” to “2.5”.

Done

Page 14, Line 383: “sies” -> “sites”. Done

Page 15, Line 386: Maybe I am wrong, but wouldn't the seasonality of emissions over the UK be similar across the different scales? Not sure why the global model in particular would have an issue with the seasonality of emissions.

We have modified the text to read:

“This is possibly due to the poor representation of the monthly variation of emissions over the UK in the global model which is then inherited by the higher resolution models. However, other processes such as boundary layer mixing or chemistry could equally contribute. Further work would be required to elucidate this clearly.”

Page 15, Lines 404-405: So, the photolysis scheme seems responsible. The discussion below is useful, but maybe some further insight would be required here given this counter-intuitive behaviour, i.e. a more detailed model performing less well. At least some basic insight on whether key photolysis reactions for ozone (NO_2 , $\text{O}_3 \rightarrow \text{O}_1\text{D}$) become faster or slower?

The text has been modified to read:

Although the photolysis rates relevant to O_3 , $j(\text{NO}_2) \rightarrow \text{NO}$ and $j(\text{O}_3) \rightarrow \text{O}_1\text{D}$, are known to be biased low in the off-line photolysis scheme relative to both observations and on-line photolysis (Telford et al., 2013), the modelled O_3 bias in AQUM-h is reduced to $+6.99 \mu\text{gm}^{-3}$ with the off-line scheme, which is marginally better than the RCM.

Page 16, Lines 422-423: However, the more focused domain performs even worse, which should be mentioned. Done

Page 17, Lines 447-448: And AQUM performs somewhat better – worth mentioning. **Done**. Also, the fact that SO₂ performs ok is some (admittedly not so solid) indication that sulphate may not be the main contributor to PM biases? May be worth considering, in order to provide a bit more insight into why the PM biases occur.

The magnitude of sulphate aerosol over Europe is not sufficient to play a major role in the observed biases. We have expanded the discussion of PM₁₀ biases and the modified text now reads:

“Poor modelling performance for PM₁₀ is a common feature of many global composition and regional air quality models (e.g. Colette et al., 2011; Im et al., 2015) and is often attributed to the unreliability of primary emissions of coarse component aerosol, both from anthropogenic and biogenic sources. In our simulations the lack of sea salt in modelled values over land points plays a significant role in this under-prediction. Putaud et al. (2010) estimate that over NW Europe sea salt contributes on average between 7% (kerbside sites) 12% (rural sites) of observed annual mean PM₁₀. In periods of strong winds and at sites close to the coast downwind of the sea values may be considerably higher. A related consequence of our lack of inclusion of sea salt is that our aerosol modelling does not include sodium nitrate and so this coarse component of secondary aerosol is also missing from our estimates.”

Page 20, Line 519: Final dot is missing. **Done**

Page 21, Lines 570-571: The first reason had been marked with (i), so the second should be marked with (ii) for consistency. Also, this second reason is much less transparent here in the conclusions compared to (i), e.g. for a reader that just goes through the conclusions.

The text has been restructured and expanded. It now reads:

“The main reason for this is likely to be that in the UK, SO₂ levels have fallen dramatically over the last 25 years and ambient concentrations are now generally the result of relatively low magnitude traffic emissions and much stronger emissions from a small number of industrial point sources. This results in an annually averaged mean concentration map over the UK which shows relatively little spatial structure, but with a small number of locations having much higher concentrations due to strong local emission sources (see the PCM 1 km plot in Fig. 6(b)). This low level background with little overall spatial structure limits the quantitative increases in spatial correlation with the PCM climatologies. Another The other reason maybe the impact of is related to the introduction and removal of strong point emissions sources affecting the comparison, as noted in section 4.3. Conclusions regarding the benefits of high resolution modelling for PM_{2.5} have been hampered in the present study due to the lack of observations over the study period. This pollutant consists of has both primary and secondary contributions and one might expect improvements in the modelling of the primary component by higher resolution modelling. However the magnitude of the improvement will depend on the relative sizes of primary and secondary components and it may well be that the contribution of the large secondary component masks any improvement in the representation of the primary component. For PM₁₀, model performance remains poor regardless of model resolution, with all three regional models (RCCM, AQUM and AQUM-h) failing to capture

the observed frequency distribution and having negative biases in the range -14.41 to -12.45 μgm^{-3} . Based on the observed PM values analysed by Putaud et al. (2010), it is estimated that the lack of sea salt lowers the modelled PM10 annual mean values by around 12%. Additional important factors in the under-prediction of PM10 magnitudes include the absence of coarse component sodium nitrate aerosol, the poor representation of other coarse component primary emissions and poor modelling of the growth of aerosols to sizes in the coarse range.”

Page 22, Lines 582-583: These reasons are not mentioned in the main text, I think, and should be expanded a bit more either here or there.

These points have now been discussed in the main text (Section 4.2.3) and the discussion in the conclusions section has been expanded to read:

“For PM10 , model performance remains poor regardless of model resolution, with all three regional models (RCCM, AQUM and AQUM-h) failing to capture the observed frequency distribution and having negative biases in the range -14.41 to -12.45 μgm^{-3} . Based on the observed PM values analysed by Putaud et al. (2010), it is estimated that the lack of sea salt lowers the modelled PM10 annual mean values by around 12%. Additional important factors in the under-prediction of PM10 magnitudes include the absence of coarse component sodium nitrate aerosol, the poor representation of other coarse component primary emissions and poor modelling of the growth of aerosols to sizes in the coarse range.”

Response to Referee 2 Comments

Abstract, line3: You really only are more consistent with respect to the meteorological part of the modeling system. This should be stated. **Done**

Line 20/21: Where do you show that consistency between models is important? I believe you, but I do not see proof for this in your paper.

This comment is similar to the point raised by Referee 1 and the response is also similar:

Since one of the key differences between the RCCM and AQUM simulations arises from differences in the photolysis scheme we believe that this study highlights the importance of aligning process modelling schemes as far as possible when comparing nested model runs. We have therefore modified the abstract text to state: “This study highlights the point that the resolution of models is not the only factor in determining model performance - consistency between nested models is also important.”

Introduction: You should find references for modeling systems that you cite: WRF-CMAQ, WRF-Chem, CESM, CESM-NCSU. Done

Section 2: A little table would be nice to get an easy look at what parameterizations and chemical modules are used.

Table A4 has been added.

What atmospheric radiation scheme is used?

This is stated in Table A4.

You mention you have the capability to use radiative and microphysical feedbacks. Why did you switch them off?

We have added the following explanation:

“The reasons for this were two-fold: (1) the primary goal of this study was on the simulation of air quality, and not on the impact of air quality on model dynamics, and (2) for statistical significance, much longer simulations are required when radiative and microphysical feedbacks are active (typically 20–30 model years as opposed to 5–7 years without these feedbacks).”

Is there any direct coupling of the convective parameterization to atmospheric radiation and photolysis? This could have a significant impact on Ozone evaluations (see also section 4.2.2).

There is no direct coupling but convection does influence photolysis through the radiation and cloud schemes in the online photolysis scheme used in AQUM. In the offline scheme used in the GCCM and RCCM the cloud is prescribed. A summary outline of the photolysis treatment in all three models is included in Table A4:

	GCCM	RCCM	AQUM
Photolysis	Offline, 2-D model with prescribed cloud and aerosol		Fast-J, using online cloud and aerosol

How complex is the aqueous phase chemistry that is being used (I am assuming you have some aqueous phase chemistry, since you allow for interaction with microphysics).

This is stated in Table A4:

“oxidation of SO₂ by both H₂O₂ and O₃ to form dissolved SO₄

For my understanding, in section 3 you mention that sea salt and dust emissions are computed interactively based on surface wind speed, but in section 2 you say that sea salt is diagnosed on ocean grid points. I am assuming that means sea salt is not advected or transported in any way? And there is no memory, so it is purely instantaneous and based only on wind speed?

We have added the following text to Section 3.2 to clarify the treatment of sea salt and mineral dust:

“Mineral dust is a fully prognostic, advected species but, as mentioned in section 2.1, sea salt is not advected and makes no contribution to model aerosol concentrations over land.”

You also indicate that the missing proper treatment of sea salt could be a reason for poor performance of PM10 evaluation. Are there observations that can give you an idea on what the fraction of sea salt with respect to total PM10 is?

We believe sea salt plays a role in the biases but is not the only factor. In section 4.2.3 we have added the following text which addresses this point:

“Poor modelling performance for PM10 is a common feature of many global composition and regional air quality models (e.g. Colette et al., 2011; Im et al., 2015) and is often attributed to the unreliability of primary emissions of coarse component aerosol, both from anthropogenic and biogenic sources. In our simulations the lack of sea salt in modelled values over land points plays a significant role in this under-prediction. Putaud et al. (2010) estimate that over NW Europe sea salt contributes on average between 7% (kerbside sites) 12% (rural sites) of observed annual mean PM10. In periods of strong winds and at sites close to the coast downwind of the sea values may be considerably higher. A related consequence of our lack of inclusion of sea salt is that our aerosol modelling does not include sodium nitrate and so this coarse component of secondary aerosol is also missing from our estimates.”

A description and evaluation of an air quality model nested within global and regional composition-climate models using MetUM

Lucy S. Neal¹, Mohit Dalvi², Gerd Folberth², Rachel N. McInnes^{2,3}, Paul Agnew¹, Fiona M. O'Connor², Nicholas H. Savage¹, and Marie Tilbee¹

¹Met Office, FitzRoy Road, Exeter, EX1 3PB, United Kingdom

²Met Office Hadley Centre, FitzRoy Road, Exeter, EX1 3PB, United Kingdom

³European Centre for Environment and Human Health, University of Exeter Medical School, Knowledge Spa, Royal Cornwall Hospital, Truro, TR1 3HD, UK

Correspondence to: L. S. Neal (lucy.neal@metoffice.gov.uk)

Abstract. There is a clear need for the development of modelling frameworks for both climate change and air quality to help inform policies for addressing these issues **simultaneously**. This paper presents an initial attempt to develop a single modelling framework, by introducing a greater degree of consistency in the **meteorological** modelling framework by using a two-step, one-way nested configuration of models, from a global composition-climate model (GCCM) (140 km resolution) to a regional composition-climate model covering Europe (RCCM) (50 km resolution) and finally to a high (12 km) resolution model over the UK (AQUM). The latter model is used to produce routine air quality forecasts for the UK. All three models are based on the Met Office's Unified Model (MetUM). In order to better understand the impact of resolution on the downscaling of projections of future climate and air quality, we have used this nest of models to simulate a five year period using present-day emissions and under present-day climate conditions. We also consider the impact of running the higher resolution model with higher spatial resolution emissions, rather than simply regridding emissions from the RCCM. We present an evaluation of the models compared to in situ air quality observations over the UK, plus a comparison against an independent 1 km resolution gridded dataset, derived from a combination of modelling and observations, **effectively producing an analysis of annual mean surface pollutant concentrations**. We show that using a high resolution model over the UK has some benefits in improving air quality modelling, but that the use of higher spatial resolution emissions is important to capture local variations in concentrations, particularly for primary pollutants such as nitrogen dioxide and sulphur dioxide. For secondary pollutants such as ozone and the secondary component of PM₁₀, the benefits of a higher resolution nested model are more limited and reasons for this are discussed. This study **highlights the point** that the resolution

of models is not the only factor in determining model performance - consistency between nested models is also important.

1 Introduction

Models for studying historical climate change and for projecting future climate have increased in complexity and sophistication in recent years and the importance of including atmospheric composition as a component of such models is now well established (e.g. Eyring et al., 2013). Gas-phase pollutants, such as tropospheric ozone (O_3), exert a positive radiative forcing on climate (Stevenson et al., 2013; Myhre et al., 2013) while the radiative forcings associated with aerosol-radiation and aerosol-cloud interactions are partly masking the strong positive forcing associated with long-lived greenhouse gases (Myhre et al., 2013). A changing climate, in turn, has an impact on both natural emissions (e.g. Sanderson et al., 2003; Forkel and Knoche, 2006) and chemistry and aerosol processes themselves (e.g. Jacob and Winner, 2009; Fiore et al., 2012; Allen et al., 2016), influencing atmospheric composition. Atmospheric composition and near-surface air quality are intricately linked and poor air quality has impacts on human health (e.g. WHO, 2013b). In addition, surface O_3 can adversely impact crop growth (Sitch et al., 2007) while aerosols can potentially promote global plant productivity by increasing the diffuse fraction of photosynthetically active radiation (Mercado et al., 2009).

Given the interactions between atmospheric composition, air quality, and climate, it is essential that the development of climate change mitigation policies and air quality abatement strategies are developed jointly and consider the full spectrum of co-benefits and trade-offs (e.g. von Schneidemesser and Monks, 2013). As a result, there is a strong need for models that can simulate both climate and air quality. Likewise, it is also necessary to develop modelling frameworks which can dynamically downscale global climate and air quality projections to the regional scale, on which population centres and crop locations vary significantly. Downscaling allows a greater level of detail to be made explicit and analysed. Air pollutant concentrations exhibit a high degree of spatial inhomogeneity compared to meteorological fields such as temperature and wind, and more highly resolved regional modelling can improve the representation and evolution due to more highly-resolved emissions and the dependence of reaction rates on concentrations of reactive species. A further imperative for higher resolution modelling concerns the sensitivity of composition projections to the difference in meteorology. For example, Kunkel et al. (2008) discuss the sensitivity of O_3 under regional climate change to cumulus cloud parametrisations. In their review article, Jacob and Winner (2009) cite a number of other examples where significantly differing model predictions are attributed to differences in air pollution meteorology between global and higher resolution regional models.

Various modelling configurations have been employed in studies of regional air quality in the context of present-day climate and under future climate change scenarios. A common approach has

been to use a global-regional climate model nest to provide meteorology and then use the stored fields to drive an off-line chemistry transport model (CTM) (e.g. Lauwaet et al., 2013; Likhvar et al., 2015). This approach was used, for example, to investigate the impacts of emission changes on UK O₃ and European air quality by Heal et al. (2013) and Colette et al. (2011), respectively. Another example is Chemel et al. (2014) which nests the WRF-CMAQ (Weather Research and Forecasting - Community Multi-scale Air Quality) air quality model (Wong et al., 2012) over the UK domain inside a European regional model but takes initial and lateral boundary conditions (LBCs) for composition and climate from two different global models. Some examples of future climate and air quality simulations are those carried out by Trail et al. (2014), Meleux et al. (2007) and Langner et al. (2012). Recognising the advantages of more closely-coupled meteorology and composition, online models have increasingly been developed. Initially this was mainly in the context of global general circulation models (GCMs) for climate modelling, where long time-scale simulations potentially render even small feedback mechanisms between composition and meteorology important. Results from some of these models have been used in the latest Intergovernmental Panel on Climate Change (IPCC) Assessment reports (Boucher et al., 2013; Myhre et al., 2013; Lamarque et al., 2013). Online regional chemistry models are a more recent development, with applications to air quality forecasting (e.g. Savage et al., 2013; Baklanov et al., 2014) and impacts from a changing climate (e.g. Shalaby et al., 2012; Colette et al., 2011; Forkel and Knoche, 2006). Hong et al. (2017), for example, nests the online regional model WRF-CMAQ inside a different global model the atmospheric component of the Community Earth System Model (CESM; Hurrell et al., 2013) and referred to as CESM-NCSU (CESM - North Carolina State University; He et al., 2015). Single online chemistry models that can be used at all scales, from global through regional and even to urban scale resolutions represent the most advanced modelling configuration. The first model with this capability was GATOR-GCMM (Gas, aerosol, transport, radiation, general circulation and mesoscale model, Jacobson, 2001) which linked existing global and regional versions of the GATOR model such that the gas, aerosol and radiative parts of the two scales were the same, although the meteorological and transport parts differed. This capability has also since been implemented more recently in GU-WRF/Chem (Zhang et al., 2012) which started from a mesoscale model WRF-Chem (e.g. Grell et al., 2005) re-configured for the global scale. These models are capable of running regional models nested within a consistent global chemistry model.

In this paper we describe and evaluate a new modelling framework which uses a more consistent set of models to go from the global scale down to the UK national scale. We employ the Met Office's Unified Model, MetUM (Brown et al., 2012), to downscale from a global composition-climate model (GCCM) configuration to the UK national scale, via a regional composition-climate model (RCCM) configuration. At each scale, model configurations of MetUM appropriate to the resolution are employed, but the use of a single framework results in a higher degree of consistency across the scales. The global climate model used is based on the Global Atmosphere 3.0 (GA3.0) config-

uration of HadGEM3 (Walters et al., 2011) and the RCCM is a limited area version, described by
 95 Moufouma-Okia and Jones (2015). The inner nest is the regional air quality forecast model AQUM.
 This operates at a resolution of 12 km and is used operationally to provide the UK national air qual-
 ity forecast. The forecasts generated by AQUM are evaluated against hourly pollutant measurements
 on a daily basis (Savage et al., 2013). Whilst we have sought to maximise consistency between the
 models there do remain some differences and these are noted and described in subsequent sections.
 100 The purpose of the present paper is to describe the new modelling framework and to evaluate simu-
 lations of present day air quality by comparing against UK observations. The paper is structured as
 follows. Section 2 describes the modelling framework employed in this study. Section 3 describes
 the experimental setup of the present-day simulations. Section 4 presents results on the performance
 of the nested configurations and a discussion with concluding remarks can be found in Section 5.
 105 This modelling framework has also been used to downscale global climate and air quality projections
 for the 2050s onto the UK national scale and is discussed in Folberth et al. (In prep.a).

2 Modelling System Description

In this section, we provide a brief overview of each of the scientific configurations of the MetUM
 employed in this study (this is presented in tabular form to allow comparison of the model config-
 110 urations in Table A4). We give a summary description of the model dynamics and model physics,
 and details of the two-step, one-way nesting approach developed. A discussion of the chemistry and
 aerosol schemes is also included.

2.1 Global Composition-Climate Model (GCCM)

The GCCM is based on the Global Atmosphere 3.0/Global Land 3.0 (GA3.0/GL3.0) configuration of
 115 the Hadley Centre Global Environmental Model version 3 (HadGEM3, Walters et al., 2011), of the
 Met Office’s Unified Model (MetUM, Brown et al., 2012). Soil-vegetation-atmosphere interactions
 are calculated using the Joint UK Land Environment Simulator (JULES, Best et al., 2011) and a
 full description of the GCCM can be found in Walters et al. (2011). The model has a horizontal
 resolution of $1.875^\circ \times 1.25^\circ$, which translates to approximately 140×140 km in the mid-latitudes.
 120 The model has 63 levels in the vertical, spanning up to 41 km with the first 50 levels below 18 km.
 The model’s dynamical time-step is 20 minutes.

The GA3.0 configuration of HadGEM3 (Walters et al., 2011) incorporates an interactive aerosol
 scheme, CLASSIC (Coupled Large-scale Aerosol Simulator for Studies in Climate, Jones et al.
 (2001); Bellouin et al. (2011)). CLASSIC is a mass-based aerosol scheme in which all the aerosol
 125 components are treated as external mixtures. The scheme simulates ammonium sulphate, mineral
 dust, soot, fossil-fuel organic carbon (FFOC), biomass burning (BB) and ammonium nitrate in a
 prognostic (evolving) manner and biogenic secondary organic aerosols prescribed from a climatol-

ogy. Sea salt is treated as a diagnosed quantity over sea points in the model; a limitation of this is that it does not contribute to particulate matter predictions over land points. The aerosols can influence the atmospheric radiative and cloud properties through aerosol-radiation and aerosol-cloud interactions but for this study, these interactions have been switched off. The reasons for this were two-fold: (1) the primary goal of this study was on the simulation of air quality, and not on the impact of air quality on model dynamics, and (2) for statistical significance, much longer simulations are required when radiative and microphysical feedbacks are active (typically 20–30 model years as opposed to 5–7 years without these feedbacks).

The gas-phase chemistry in the GCCM is simulated by a tropospheric configuration of the United Kingdom Chemistry and Aerosol (UKCA) model (Morgenstern et al., 2009; O’Connor et al., 2014). However, for this study, the two tropospheric chemistry schemes described in O’Connor et al. (2014) were replaced by an extended tropospheric chemistry scheme, called UKCA-ExtTC. This version of UKCA applies a more detailed gas-phase chemistry scheme that has a significantly larger number of chemical species – 89 chemical species in comparison to the 41 and 55 in the StdTrop and TropIsop chemistry schemes in O’Connor et al. (2014), respectively – and chemical reactions – 203 in UKCA-ExtTC in comparison to the 121 and 164 described in O’Connor et al. (2014). The UKCA-ExtTC chemical mechanism has been designed to represent the key chemical species and reactions in the troposphere in as much detail as is necessary to simulate atmospheric composition and air quality, while retaining the capability to conduct decade-long climate simulations. As a result, it is more suitable for air quality studies and has been applied successfully in previous studies (e.g., Ashworth et al., 2012; Pacifico et al., 2015). A separate, detailed description of this extended version of UKCA is in preparation. The UKCA-ExtTC chemical mechanism has been designed to represent the key chemical species and reactions in the troposphere in as much detail as is necessary to simulate atmospheric composition, air quality and the interaction between atmospheric composition and climate while retaining the capability to conduct decade-long climate simulations. UKCA-ExtTC includes Of the 89 chemical species that UKCA-ExtTC considers, 63 of which are transported as ‘tracers’. For the remaining 26 species, transport is negligible in comparison to chemical transformation during one model time-step and hence they are treated as ‘steady-state’ species. UKCA-ExtTC uses the same backward Euler solver, chemical time-step (5 min), wet and dry deposition, offline 2-D photolysis scheme and large-scale, convective transport and boundary layer treatment of tracers as described in O’Connor et al. (2014). A separate, detailed description of this extended version of UKCA is in preparation (Folberth et al., In prep.b).

The large-scale transport of UKCA and CLASSIC tracers (and moisture variables) makes use of the MetUM’s dynamical core, with semi-Lagrangian advection and conservative and monotone treatment of tracers. Boundary layer mixing uses the scheme from and includes an explicit entrainment parametrisation and non-local mixing in unstable layers. Convective transport of tracers is based on the mass flux scheme, with more recent updates outlined in. Physical removal of soluble species

is parametrised as a first-order loss process based on convective and stratiform precipitation rates as described in . Dry deposition is based on the resistance in series approach of . The UKCA differential chemical equations are integrated in time using an explicit iterative backward Euler approach with a chemical time-step of 5 minutes.

Although UKCA has two options in relation to photolysis (O'Connor et al., 2014), the photolysis reactions in this configuration are handled using offline rates, calculated in the Cambridge 2-D model (Law and Pyle, 1993) using the two-stream approach of Hough (1988). We used this option in the GCCM and RCCM configurations mainly for two reasons. First, the extended tropospheric chemistry version of UKCA, UKCA-ExtTC, has been developed and extensively evaluated only with the 2D-photolysis model, and there was no time within the scope of this work for development and evaluation of UKCA-ExtTC coupled to the online photolysis model FastJ. Second, there is a non-negligible, albeit not prohibitively large, extra cost attached to using the online photolysis scheme FastJ over the 2D-photolysis scheme. With the offline photolysis scheme, the photolysis rates are read in by UKCA-ExtTC on the first time-step of the model integration and interpolated in time and space at each model grid box. The impact of cloud cover, surface albedo and aerosols is included in the form of a climatological cloud cover, prescribed albedo and aerosol loading, respectively.

A two-way coupling between the UKCA-ExtTC chemistry scheme and the CLASSIC aerosol scheme is applied through the provision of simulated oxidant species (ozone (O_3), the hydroxyl (OH) and hydroperoxyl (HO_2) radicals, and hydrogen peroxide (H_2O_2)) and the provision of nitric acid (HNO_3) as a nitrate aerosol precursor. Oxidation of sulphur dioxide (SO_2) and dimethyl sulphide (DMS) occurs in both the gas phase and the aqueous phase to form sulphate aerosol and the HNO_3 generates ammonium nitrate aerosol with any remaining ammonium ions after reaction with sulphate. The coupling is two-way because gas-phase concentrations of both H_2O_2 and HNO_3 are depleted, following sulphate and nitrate aerosol formation.

Although UKCA does include an aerosol microphysics scheme, GLOMAP-mode (Mann et al., 2010), the simpler mass-based CLASSIC aerosol scheme (Jones et al., 2001; Bellouin et al., 2011) was used across the three MetUM configurations for the following reasons: (1) the UKCA-ExtTC chemistry scheme has historically only been coupled to the CLASSIC scheme and there was no time within the scope of the current study to couple it to GLOMAP-mode, (2) the operational air quality forecast model, AQUM, also uses CLASSIC as its aerosol scheme, and one of the aims of this work was to maximise the consistency in the treatment of both meteorology and composition across the three model domains, and (3) the computational cost of running both UKCA-ExtTC and GLOMAP-mode would have been prohibitively expensive.

2.2 Regional Composition-Climate Model (RCCM)

The RCCM, referred to as the HadGEM3-A 'regional' (HadGEM3-RA) configuration, is described in detail in Moufouma-Okia and Jones (2015), and is also based on the GA3.0/GL3.0 configuration

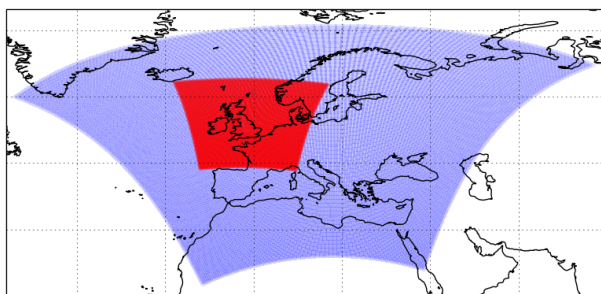


Figure 1. Nested modelling domains. The rectangular boundary of the figure is an extract of the GCCM (resolution 140 km) containing the RCCM domain (resolution 50 km) plotted in blue and the AQUM domain (resolution 12 km) in red.

of HadGEM3 (Walters et al., 2011). The RCCM has a horizontal resolution of $0.44^\circ \times 0.44^\circ$ (roughly 50×50 km) with a domain covering most of Europe and N. Africa (Figure 1) and the same 63 vertical levels as the GCCM. The RCCM closely follows the GCCM configuration (Section 2.1), with the same dynamical solver, radiation, precipitation and cloud (PC2) schemes. The same principal components are included: the UKCA-ExtTC chemistry model, the CLASSIC aerosol model and the JULES land-surface model. The model dynamical time-step was reduced to 12 minutes (20 min in GCCM) to account for the increase in resolution and shorter turnaround of dynamical processes and interactions. The chemical time-step is 5 minutes. Boundary conditions, used to drive the RCCM from the GCCM, will be discussed in Section 3.

2.3 AQUM

The final, high resolution nest employed is the air quality forecast model AQUM (Air Quality in the Unified Model). AQUM, like both the GCCM and the RCCM, is also based on the MetUM. AQUM has a horizontal resolution of $0.11^\circ \times 0.11^\circ$ (approx 12×12 km) on a 'rotated pole' grid, covering the UK and nearby Western Europe (see Figure 1), with 38 vertical levels up to 39 km. The LBCs, provided by the RCCM, are on 63 levels but interpolated onto the 38 levels of AQUM. The dynamical and chemistry time-steps are both 5 minutes.

The set-up of this model is described in detail in Savage et al. (2013) and uses the same parametrisation schemes as the Global and Regional CCMs described above, apart from large scale cloud, where AQUM uses the diagnostic cloud scheme as described by Smith (1990). As with the GCCM and RCCM, AQUM uses the CLASSIC aerosol scheme (Jones et al. (2001); Bellouin et al. (2011)) and the UKCA model for its gas-phase chemistry. This helps to improve consistency between many aspects of the models. For example, large-scale and convective transport, boundary layer mixing, and wet and dry deposition are similar between all the nests. However a different chemistry mechanism, the Regional Air Quality (RAQ) scheme is used and the photolysis scheme also differs. Photolysis

225 rates in AQUM are calculated with the on-line photolysis scheme Fast-J (Wild et al., 2000; O'Connor
et al., 2014), which is coupled to the modelled liquid water and ice content, and sulphate aerosols at
every time step.

The RAQ chemistry scheme pre-dates the ExtTC scheme and has been used in AQUM throughout
its development and use as a forecast model. The experience developed with AQUM and the under-
230 standing of model performance established relies on the continuing use of this scheme and therefore
we chose to retain this scheme for the final nest. The scheme has 40 transported species, 18 non-
advected species, 116 gas-phase reactions and 23 photolysis reactions; 16 of the transported species
are emitted: nitrogen oxide (NO), methane (CH₄), carbon monoxide (CO), formaldehyde (HCHO),
ethane (C₂H₆), acetaldehyde (CH₃CHO), propane (C₃H₈), acetone (CH₃COCH₃), isoprene (C₅H₈),
235 methanol (CH₃OH), hydrogen (H₂), ethene (C₂H₄), propene (C₃H₆), butane (C₄H₁₀), toluene and
o-xylene. As was the case in the GCCM and the RCCM, there is two-way coupling of oxidants be-
tween CLASSIC and the RAQ chemistry scheme. Further details of the RAQ scheme can be found
in Savage et al. (2013).

A comparison of the MetUM settings for all three configurations described above can be seen in
240 Table A4.

3 Experimental Setup

In this section, a description of the experimental setup for modelling present-day air quality us-
ing the configurations of MetUM is provided, covering meteorological lower boundary conditions,
emissions, upper boundary conditions, and lateral boundary conditions.

245 3.1 Model Simulations and Model Calibration

Both the GCCM and the RCCM were initialised using meteorological fields from a pre-existing 20-
year simulation spin-up of the standard HadGEM3 configuration. The model simulations for both
these model configurations cover a total period of six model years representative of the decade cen-
tered around the year 2000, for both meteorology and emissions. The first year is considered as an
250 additional spin-up and the last five years are used in the analysis. The GCCM was used to produce
the off-line lateral boundary conditions (LBCs) at six-hourly intervals to drive the RCCM, together
with the emissions and upper and lower boundary conditions described below. LBCs include meteo-
rological drivers (3D-winds, air temperature, air density, Exner pressure, humidity and cloudiness),
important chemical tracers from UKCA-ExtTC (O₃, NO, nitrogen dioxide (NO₂), HNO₃, dinitro-
255 gen pentoxide (N₂O₅), H₂O₂, CH₄, CO, HCHO, C₂H₆, C₃H₈, CH₃COCH₃, peroxy acetyl nitrate
(PAN)), gas-phase aerosol precursors (SO₂, DMS) and aerosols (dust, sulphate, nitrate, soot, FFOC
and BB) from CLASSIC. In turn, the RCCM produced meteorological and composition LBCs re-
quired to drive the national-scale air quality model AQUM. Simulations with AQUM were initialised

from the last month of the first year of the RCCM and were continued for five model years applying the LBCs supplied by the RCCM off-line at six-hourly intervals. The chemical and aerosol species provided in the LBCs are: Dust, SO₂, DMS, SO₄, Soot, OCFF, Nitrate, O₃, NO, NO₂, N₂O₅, HONO₂, H₂O₂, CH₄, CO, HCHO, C₂H₆, PAN and C₃H₈.

For lower boundary conditions the GCCM used monthly mean distributions of sea surface temperature (SST) and sea ice cover (SIC), derived for the present-day (1995-2005) from transient coupled atmosphere-ocean simulations (Jones et al., 2011) of the HadGEM2-ES model (Collins et al., 2011).

It should be pointed out here that the entire setup is intended to represent a decadal climatological mean state of near present day conditions encompassing the period from 1995 to 2005 and centred on the year 2000. This particularly applies to the meteorological drivers (sea surface temperature, SSTs, and sea ice cover) and the anthropogenic emissions of pollutants. The latter will be discussed in more

detail in section 3.2. The vegetation distribution for each of the simulations was prescribed using the simulated vegetation averaged for the same decade from this transient climate run, on which crop area, as given in the 5th Coupled Model Intercomparison Project (CMIP5) land use maps (Hurt et al., 2011; Riahi et al., 2007), was superimposed. The same present-day SST and SIC climatologies developed for the GCCM were downscaled to the RCCM and then AQUM domains using a simple linear regridding algorithm.

The GCCM was calibrated against O₃ measurements from the monitoring station located at Mace Head Atmospheric Research Station in West Ireland at 53.3° North and 9.9° West. It is part of the Automatic Urban and Rural Monitoring Network (AURN) which is run by a number of institutions coordinated by Defra. The Mace Head monitoring station is representative of rural background conditions. Model output has been compared to the annual cycle of monthly mean O₃ which is based on a multi-year climatology of observed near-surface O₃ concentrations. The parameter O₃ surface dry deposition was used to perform the calibration as the model shows very high sensitivity to this parameter. The model has been optimized to reproduce both the magnitude and seasonal cycle of O₃ at the Mace Head site in the global model domain as closely as possible by varying the O₃ surface dry deposition flux within its uncertainties limits. An increase of the O₃ dry deposition by 20% yielded the best agreement, both with respect to O₃ monthly mean surface concentration and seasonal cycle, with the observed climatology at the Mace Head station, which is representative of the O₃ background concentration in the lower troposphere, in the study area.

As the RCCM uses the same code-base as the GCCM, this calibration is inherited by the former automatically. The model calibration has been applied to optimize consistency between the individual configurations in the global-to-national model nesting chain.

Due to the different chemistry scheme used in AQUM, the calibration used by the GCCM was not incorporated into AQUM as the RAQ scheme has been developed with performance over the UK as its main focus. This is unlike the GCCM where usually performance has to be taken into account over the entire globe which may lead to worse performance in some regions such as the UK.

The calibration was performed to ascertain that the best possible boundary conditions are applied to the innermost, national-scale domain. Mace Head station was chosen because it is representative of the large-scale background tropospheric ozone level in the study area and includes the impact of transcontinental influx of pollution from North America.

300 3.2 Emissions

A consistent set of emissions has been used for all three model configurations through using the same source data, but then regridding to the required resolution for each model.

The emissions of reactive gases and aerosols from anthropogenic and biomass burning sources used in this study are based on the dataset used for Fifth Coupled Model Inter-comparison Project (CMIP5) simulations and described by Lamarque et al. (2010). The models are all driven by decadal mean present-day emissions from CMIP5, representative of the decade centred on 2000. An example of the emissions for the different domains is given for NO in Fig. 2, while a full set of emission totals can be seen in Tables A1, A2 and A3.

UKCA-ExtTC takes into account emissions for 17 of its chemical species: nitrogen oxides (NO_x = $\text{NO} + \text{NO}_2$), carbon monoxide (CO), hydrogen (H_2), methanol, formaldehyde, acetaldehyde and higher aldehydes, acetone (CH_3COCH_3), methyl ethyl ketone, ethane (C_2H_6), propane (C_3H_8), butanes and higher alkanes, ethene, propene and higher alkenes, isoprene, (mono)terpenes and aromatic species. Of these butanes and higher alkanes, propene and higher alkenes, terpenes and aromatics are treated as lumped species. Surface emissions are prescribed in most cases. The only exception is the emission of biogenic volatile organic compounds (BVOCs) which are calculated interactively in JULES using the iBVOC emission model (Pacifico et al., 2011). The emission of biogenic terpenes, methanol and acetone follows the model described in Guenther et al. (1995). As summarised in Table A2, global annual total emissions of biogenic isoprene and monoterpenes interactively computed with the iBVOC model of, for instance, $480 \text{ Tg(C) yr}^{-1}$ and of 95 Tg(C) yr^{-1} are in reasonably good agreement with most other state-of-science interactive biogenic VOC emission models (e.g., Lathière et al., 2005; Guenther et al., 2006; Arneth et al., 2007; Müller et al., 2008; Messina et al., 2016) and global bVOC emission inventories (e.g., Arneth et al., 2008; Sindelarova et al., 2014). A detailed evaluation of the model performance is presented in Pacifico et al. (2011)

Emissions of NO_x from lightning is taken into account in UKCA. Lightning NO_x emissions are calculated interactively at every time step, based on the distribution and frequency of lightning flashes following Price and Rind (1992, 1993, 1994). In this parametrisation the lightning flash frequency is proportional to the height of the convective cloud top in all the models. For cloud-to-ground (CG) flashes lightning NO_x emissions are added below 500 hPa, distributed from the surface to the 500 hPa level, while NO_x emissions resulting from intra-cloud (IC) flashes are distributed from the 500 hPa level up to the convective cloud top. The emission magnitude is related to the discharge energy where CG flashes are 10 times more energetic than IC flashes (Price et al., 1997). The scheme

implemented in the GCCM produces a total global emission source of around 7 Tg(N) yr^{-1} which is in good agreement with the literature (c.f., e.g., Schumann and Huntrieser, 2007).

335 Soil-biogenic NO_x emissions are taken from the monthly mean distributions from the Global Emissions Inventory Activity (<http://www.geiacenter.org/inventories/present.html>), which are based on the global empirical model of soil-biogenic NO_x emissions of Yienger and Levy II (1995) giving a global annual total of 5.6 Tg(N) yr^{-1} .

340 For CH_4 , the UKCA model can be run by prescribing surface emissions or prescribing either a constant or time-varying global mean surface concentration. For the simulations being evaluated here, a time-invariant CH_4 concentration of 1760 ppbv was prescribed at the surface.

The sea salt and mineral dust emissions are computed interactively at each model time step based on instantaneous near-surface wind speeds (Jones et al., 2001; Woodward, 2001). Mineral dust is a fully prognostic, advected species but, as mentioned in section 2.1, sea salt is not advected and makes no contribution to model aerosol concentrations over land.

345 Similarly the ocean DMS emissions are computed based on wind-speed, temperature and climatological ocean DMS concentrations from Kettle et al. (1999), using the sea-air exchange flux scheme from Wanninkhof (1992).

Emissions for AQUM are derived by re-gridding emissions from the regional model to the required 0.11° resolution. The ExtTC and RAQ chemistry schemes emit different anthropogenic VOC species, consequently some conversion is required. Our approach is to sum the anthropogenic VOC emission from ExtTC and apportion this total according to the values given in Table 1. These values were derived using the tabulated VOC emission fraction data over the UK for 2006 given by Dore et al. (2008). A consequence of this is that for some species the emission total in the smaller AQUM domain exceeds that of the larger RCCM domain. However the total VOC emitted is conserved between AQUM and the corresponding part of the RCCM domain. For biogenic isoprene emissions, AQUM uses an off-line, monthly varying climatology which was derived from the on-line isoprene emission fluxes generated by the RCCM. A diurnal cycle is applied to account for daylight hours.

350

355

3.3 AQUM with higher resolution emissions

Following an initial evaluation of results, an additional model run was also carried out using AQUM. This run was identical to the main AQUM run (using the same RCCM LBCs), with the exception of the anthropogenic emissions used. A new set of the latter were produced based on the higher resolution datasets which AQUM uses for its operational air quality forecast; these are described further in Savage et al. (2013). Figure 2 shows the impact of these emissions for NO. The highest resolution input data to these emissions are at 1 km over the UK, although regridded to the 12 km resolution required by AQUM. These are based on 2006 emissions, but the total emission has been rescaled to match the year-2000 decadal mean areal totals given by Lamarque et al. (2010) (as

360

365

Table 1. VOC split to convert total emitted VOCs from ExtTC to RAQ emitted VOCs. These factors sum to 1.0.

Species	Conversion factor
HCHO	0.055
C ₂ H ₆	0.156
CH ₃ CHO	0.015
C ₃ H ₈	0.110
CH ₃ COCH ₃	0.078
CH ₃ OH	0.116
C ₂ H ₄	0.079
C ₃ H ₆	0.034
C ₄ H ₁₀	0.238
toluene	0.095
o-xylene	0.024

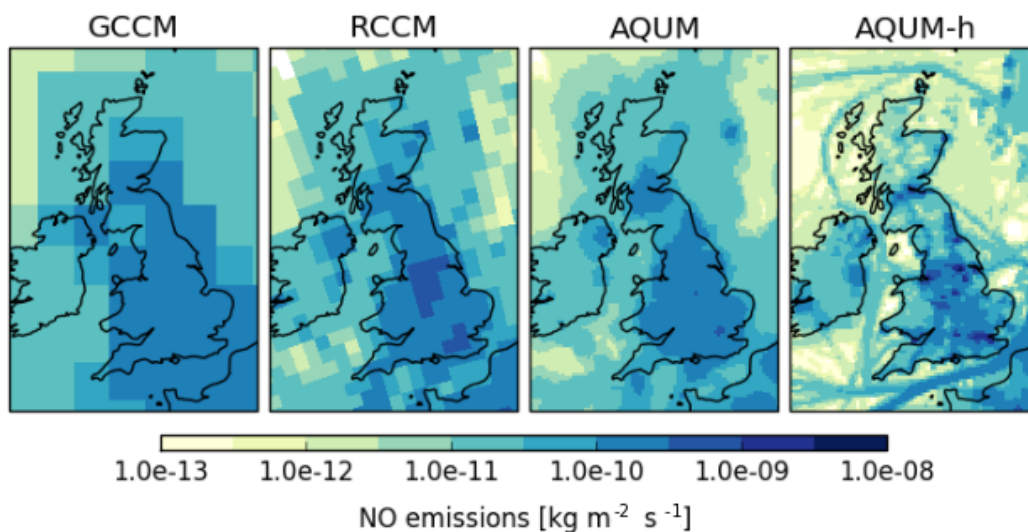


Figure 2. NO emissions for all models: GCCM (left), RCCM, AQUM and higher-resolution emissions run (AQUM-h) (right).

described in Section 3.2). For the remainder of the paper, this additional run will be referred to as AQUM-h.

3.4 Upper Boundary Conditions

370 While the chemistry is calculated interactively up to the model top in each configuration, upper boundary conditions are applied at the top of each model domain to account for missing stratospheric processes such as those related to CH₄ oxidation and bromine and chlorine chemistry. These

boundary conditions are described in detail in O'Connor et al. (2014) and are only briefly discussed here. For O_3 , the field used in the radiation scheme by MetUM in the absence of interactive chemistry is used to overwrite the modelled O_3 field in all model levels that are 3–4 km above the diagnosed tropopause (Hoerling et al., 1993). For stratospheric odd nitrogen species (NO_y), a fixed O_3 to HNO_3 ratio of $\frac{1.0}{1000.0} \frac{\text{kg(N)}}{\text{kg}(O_3)}$ from Murphy and Fahey (1994) is applied to HNO_3 in the same vertical domain. Finally, for CH_4 , an additional removal term is applied in the three uppermost levels of the model. This CH_4 loss term was calculated in O'Connor et al. (2014) to be $50 \pm 10 \text{ TgCH}_4\text{yr}^{-1}$ in a global configuration.

4 Results

Our aim is to evaluate the air pollutant concentrations output from the RCCM and AQUM simulations using different datasets representative of the true air quality in the UK. In this way, we also aim to assess the potential for improving modelled air pollutant concentrations by increasing model spatial resolution. The datasets we use include (i) in situ observations of hourly air pollutant concentrations from the UK Automatic Urban and Rural Network (AURN) and (ii) annual mean surface pollutant concentrations produced by the Pollution Climate Mapping (PCM) model which also takes into account observations, described by Brookes et al. (2013). This model produces gridded fields at a spatial resolution of 1 km over the whole of the UK.

Another aspect of the analysis undertaken is to employ two different approaches to model assessment. The first uses standard verification metrics such as bias based on site-specific comparisons averaged over the five year modelled period. The second approach uses neighbourhood verification techniques which consider the area surrounding a particular point and thus allow for some mis-match in the spatial positioning of elevated pollutant values, thereby avoiding the well-known ‘double penalty’ problem (Mittermaier, 2014).

We begin with a qualitative comparison of the GCCM against the two limited-area models in order to illustrate the need for improved resolution over that of the GCCM for air quality applications.

4.1 Comparison to GCCM

Figure 3 compares UK monthly mean NO_2 concentrations for June calculated from runs of the GCCM, RCCM, AQUM and AQUM-h models. In the GCCM plot the resolution is wholly insufficient to realistically represent the elevated NO_2 levels around the UK urban centres (London, West Midlands, Greater Manchester, West Yorkshire, Edinburgh) and in the busiest shipping lanes and ports (English Channel, Bristol Channel, Southampton, Liverpool). The representation improves qualitatively as we move to the right in this plot. It can clearly be seen that higher resolution modelling is essential for providing realistic pollutant representations at more localised spatial scales.

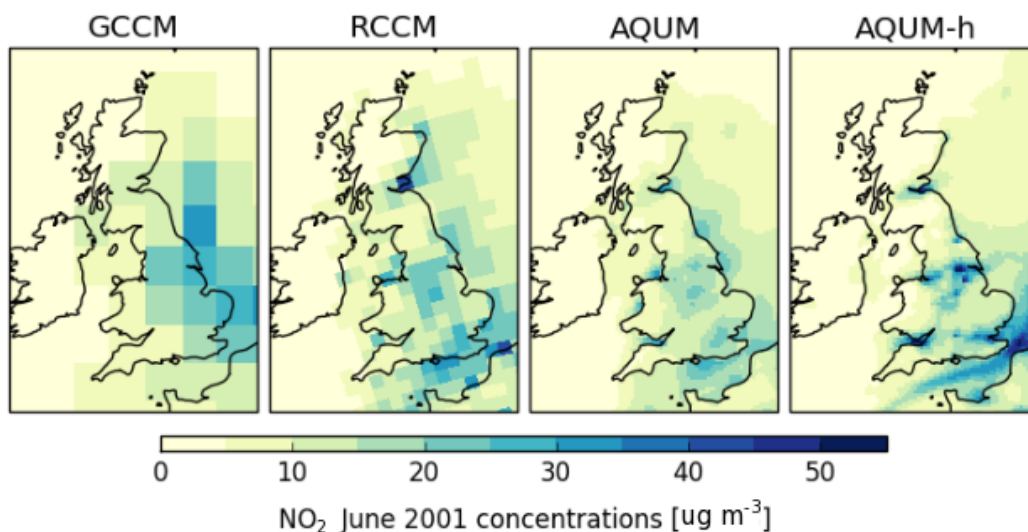


Figure 3. Monthly mean NO₂ concentrations over the UK for June for the four different model runs. From left to right: GCCM, RCCM, AQUM, AQUM-h.

4.2 Comparison against in situ observations

In this section we compare results from the RCCM, AQUM and AQUM-h simulations with suitable averages derived from observations from the UK Automatic Urban and Rural Network (AURN, <https://uk-air.defra.gov.uk/networks/network-info?view=aurn>) for 2001-2005. **Note that the years here refer only to the observation timeseries and have no intrinsic meaning for the model simulations.** As discussed in sections 3.1 and 3.2 the simulations represent climatological mean states representative of the decade from 1995 to 2005 and centred on the year 2000. We compare the model to the AURN 2001-to-2005 observational record because it represents the most complete record for the selected period available. The individual model years do not correlate with the corresponding years in the observational record. We performed the multi-year simulations to obtain a statistical sample to investigate interannual variability to some degree. The variability, of course, will be reduced due to the fact that composition and climate have been decoupled but there is still variability in the atmospheric chemistry. From the AURN network we only consider 'background' sites which include the site classifications of remote, rural, suburban and urban background. We are therefore excluding sites which we expect to be un-representative of a large area, such as roadside or industrial sites. As the models are driven by climatological meteorology, we do not expect the model results to match the hourly AURN observations, hence we compare values averaged over the five year period with corresponding averages derived from the hourly observations.

Table 2. Statistics comparing modelled air pollutant concentrations to AURN observations, for the period of the observational record 1st Jan 2001 - 31st Dec 2005 (for the correlation between model years and the observational record compare the discussion in the text).

		RCCM	AQUM	AQUM-h
NO ₂	Number of Sites	65	65	65
	Bias (μgm^{-3})	-4.76	-5.47	-0.80
	% Observations > Threshold ($=65.0 \mu\text{gm}^{-3}$)	6.21	6.21	6.21
	% Model > Threshold ($=65.0 \mu\text{gm}^{-3}$)	1.86	2.07	5.64
O ₃	Number of Sites	65	65	65
	Bias (μgm^{-3})	6.23	13.94	9.96
	% Observations > Threshold ($=100.0 \mu\text{gm}^{-3}$)	2.39	2.39	2.39
	% Model > Threshold ($=100.0 \mu\text{gm}^{-3}$)	3.18	8.54	7.07
PM ₁₀	Number of Sites	40	40	40
	Bias (μgm^{-3})	-12.45	-13.32	-14.41
	% Observations > Threshold ($=50.0 \mu\text{gm}^{-3}$)	4.18	4.18	4.18
	% Model > Threshold ($=50.0 \mu\text{gm}^{-3}$)	0.99	0.87	0.85
PM _{2.5}	Number of Sites	2	2	2
	Bias (μgm^{-3})	0.33	-0.75	-2.46
	% Observations > Threshold ($=35.0 \mu\text{gm}^{-3}$)	1.08	1.08	1.08
	% Model > Threshold ($=35.0 \mu\text{gm}^{-3}$)	3.93	3.11	2.40
SO ₂	Number of Sites	49	49	49
	Bias (μgm^{-3})	2.61	1.44	1.59
	% Observations > Threshold ($=25.0 \mu\text{gm}^{-3}$)	2.89	2.89	2.89
	% Model > Threshold ($=25.0 \mu\text{gm}^{-3}$)	3.98	3.71	5.31

4.2.1 NO₂

Figure 4(a) shows a frequency distribution of hourly observed concentrations of NO₂ with corresponding frequency distributions for modelled concentrations from the RCCM, AQUM, and AQUM-h configurations. It is clear that the AQUM-h model distribution more closely matches the observed distribution than the other model configurations, illustrating the importance of increased spatial resolution and emissions for this pollutant. Corresponding statistical measures of model skill are given in Table 2. The bias in RCCM and AQUM against AURN observations is -4.76 and -5.47 μgm^{-3} , respectively, but is reduced to -0.80 μgm^{-3} in AQUM-h. In Table 2 a comparison of the percentage of observations/model values greater than the 65.0 μgm^{-3} threshold is also included; it illustrates that AQUM-h simulates observed frequencies of higher NO₂ concentrations well, making it better suited to calculate health burdens due to elevated levels of NO₂ (e.g. Pannullo et al., 2017). However shown in Fig. 5(a) is a comparison of the seasonal cycle of observed and modelled NO₂ concentra-

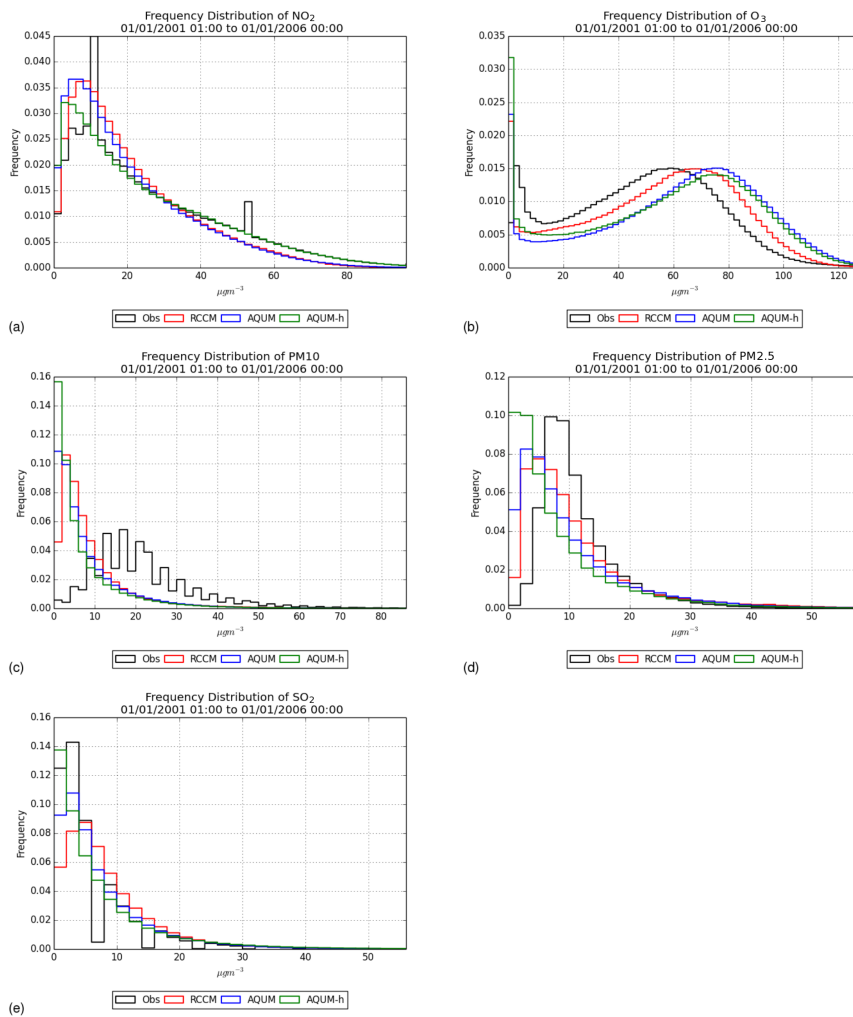


Figure 4. Frequency distribution of main pollutants: (a) NO₂, (b) O₃, (c) PM₁₀ (d) PM_{2.5} and (e) SO₂. Observations are shown in black, RCCM in red, AQUM in blue and AQUM-h in green.

tions, averaged over all AURN sites considered. This shows that none of the models are able to fully capture the seasonal cycle of NO₂, with wintertime modelled concentrations biased low, while the RCCM and AQUM straddle the observed concentrations during summer. This is possibly likely to be due to the poor representation of the monthly variation of emissions over the UK in the global model which is then inherited by the higher resolution models. However, other processes such as boundary layer mixing or chemistry could equally contribute. Further work would be required to elucidate this clearly.

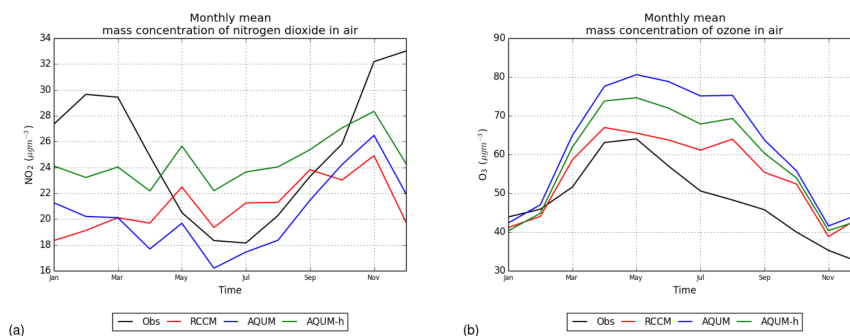


Figure 5. Monthly mean concentrations of (a) NO₂ and (b) O₃. Observations are shown in black, RCCM in red, AQUM in blue and AQUM-h in green.

4.2.2 O₃

Relevant statistics are given in Table 2, while a frequency distribution plot, showing the distribution of hourly O₃ concentrations over the entire period for models and observations, is shown in Fig. 4(b) and the seasonal cycle is given in Fig. 5(b). The latter plot illustrates that the pattern of the seasonal cycle of O₃ is captured reasonably well however the modelled spring/summer maximum persists too long and does not replicate the gradual decline in monthly mean concentrations as indicated by observations. This has implications for the use of modelled O₃ to quantify health impacts from long-term exposure to O₃ during warmer months, as indicated by studies in North America (WHO, 2013a; COMEAP, 2015). In the frequency distribution plots in Fig. 4(b), it can be seen that all models are able to reproduce the shape of the observed distribution quite well but differ in their most frequent concentration, corresponding to different model biases. The RCCM exhibits the smallest bias against observations of +6.23 μgm^{-3} and AQUM the greatest at +9.96 μgm^{-3} (see Table 2). However the RCCM used an off-line photolysis scheme (O'Connor et al., 2014) whilst both configurations of AQUM used the interactive Fast-J scheme (Wild et al., 2000). Given the different photolysis schemes used, a sensitivity experiment for a single month of July was carried out, in which AQUM-h was re-run with off-line photolysis. The O₃ bias for this month is 7.33 μgm^{-3} for the RCCM, 22.48 μgm^{-3} for AQUM and 13.95 μgm^{-3} for AQUM-h. Running AQUM-h with the off-line scheme brings the bias down to 6.99 μgm^{-3} which is marginally better than the RCCM. Although the photolysis rates relevant to O₃, $j(\text{NO}_2) \rightarrow \text{NO}$ and $j(\text{O}_3) \rightarrow \text{O}^1\text{D}$, are known to be biased low in the off-line photolysis scheme relative to both observations and on-line photolysis (Telford et al., 2013), the modelled O₃ bias in AQUM-h is reduced to +6.99 μgm^{-3} with the off-line scheme, which is marginally better than the RCCM. However, the sensitivity of surface O₃ to the choice of photolysis scheme found here, however, differs from two previous studies (O'Connor et al., 2014; Telford et al., 2013). Both of these studies found that O₃ decreased in the northern hemisphere by less than 5% when switching from off-line to on-line photolysis and indeed, the changes in the tropospheric O₃ budget were

consistent between the two studies. In addition, O'Connor et al. (2014) found no significant change in modelled O₃ evident at NH mid-latitude sites (e.g. Mace Head). However both O'Connor et al. (2014) and Telford et al. (2013) were global studies rather than the regional scale considered here. Another conflicting factor is the calibration which has been applied to the RCCM for the O₃ dry deposition which would have an impact on the O₃ concentrations, although this would have impacted AQUM through the LBCs. This calibration was not included in the papers described above which may help to explain the conflicting results. Consequently, these factors make it difficult to isolate and quantify the impact of the higher resolution third nest on model performance.

4.2.3 PM₁₀

Relevant statistics are given in Table 2, while a frequency distribution plot, showing the distribution of hourly PM₁₀ values over the entire period for models and observations, is shown in Fig. 4(c).

For PM₁₀, none of the models are able to reproduce the shape of the observed distribution and there is a significant negative bias across all the model configurations (between -12.45 and -14.41 μgm^{-3}), with AQUM-h exhibiting the poorest performance. Poor modelling performance for PM₁₀ is a common feature of many global composition and regional air quality models (e.g. Colette et al., 2011; Im et al., 2015) and is often attributed to the unreliability of primary emissions of coarse component aerosol, both from anthropogenic and biogenic sources. In our simulations the lack of sea salt in modelled values over land points plays a significant role in this under-prediction. Putaud et al. (2010) estimate that over NW Europe sea salt contributes on average between 7% (kerbside sites) and 12% (rural sites) of the observed annual mean PM₁₀. In periods of strong winds and at sites close to the coast downwind of the sea values may be considerably higher. A related consequence of our lack of inclusion of sea salt is that our aerosol modelling does not include sodium nitrate and so this coarse component of secondary aerosol is also missing from our estimates. These under-predictions could potentially affect the quantification of health effects due to short-term and long-term exposure of PM₁₀, as documented by WHO (2013a).

4.2.4 PM_{2.5}

Relevant statistics are given in Table 2, while a frequency distribution plot, showing the distribution of hourly PM_{2.5} values over the entire period for models and observations, is shown in Fig. 4(d).

For the finer PM_{2.5} component of aerosol, the models perform significantly better in capturing the shape of the observed distribution than for PM₁₀; there is a small positive bias for PM_{2.5} in the RCCM (+0.33 μgm^{-3}), whereas AQUM becomes slightly negative (-0.75 μgm^{-3}) and AQUM-h more negative still (-2.46 μgm^{-3}).

However the observed frequency distribution is only based on 2 background observational sites available for PM_{2.5} in the UK for the 2001-2005 time period. The introduction of PM_{2.5} monitoring stations in the UK increased significantly from 2009 and we explored the possibility of using ob-

servations from 2011-2015 to generate a proxy for the 2001-2005 frequency distribution. However we found that the PM_{10} distribution changed significantly over the 10 years and concluded that it was not valid to use the more recent $PM_{2.5}$ observations in place of 2001-2005 observations. Consequently, due to the paucity of $PM_{2.5}$ observations for the 2001-2005 time period against which to compare, for the remainder of this paper, we shall no longer consider $PM_{2.5}$ results.

4.2.5 SO_2

Relevant statistics are given in Table 2, while a frequency distribution plot, showing the distribution of hourly SO_2 values over the entire period for models and observations, is shown in Fig. 4(e).

For SO_2 , the model configurations exhibit similar distributions to the observed distribution, with generally positive biases of between +1.44 and +2.61 $\mu g m^{-3}$, with AQUM-h exhibiting the best performance.

4.3 Comparison against PCM

In order to assess the variation in the quality of modelled air pollutant concentrations between the different model configurations, it is necessary to consider full spatial fields rather than the site comparison afforded by in situ observations described in the preceding section. Therefore, it is essential to compare the models against a realistic spatial field and for this purpose, we use fields derived from the Pollution Climate Mapping (PCM) model, as described in Brookes et al. (2013). This sophisticated model combines information from a variety of sources, including emission inventories and observations datasets, to produce estimated annual mean surface pollutant concentrations on a 1x1 km grid over the entire UK for NO_2 , SO_2 , PM_{10} and $PM_{2.5}$. The data are freely available at <https://uk-air.defra.gov.uk/data/pcm-data>. These results are widely used in the UK to provide the background pollutant concentrations for local air quality modelling studies and new site impact assessment studies. O_3 is also modelled by PCM but the output available is the number of days exceeding 120 $\mu g m^{-3}$, (as required by the European Union ambient air quality directives (<http://eur-lex.europa.eu/LexUriServ/LexUriServ.do?uri=OJ:L:2008:152:0001:0044:EN:PDF>)) rather than pollutant concentrations and so cannot be used in our analysis. In view of the lack of AURN $PM_{2.5}$ observations (also used in deriving the PCM maps) during the period 2001-2005 (as described in Section 4.2.4) we have not considered $PM_{2.5}$ in the following analysis.

PCM data for NO_2 and PM_{10} are available for 2001-2005, while SO_2 data are only available from 2002 onwards. A comparison (not shown) of the PCM against the in situ AURN observations as done for the models in Section 4.2 proved the PCM verifies better than any of the other models. PCM Data from the available years were processed to produce five-year means (four-years for SO_2) for comparison with the similarly averaged model fields.

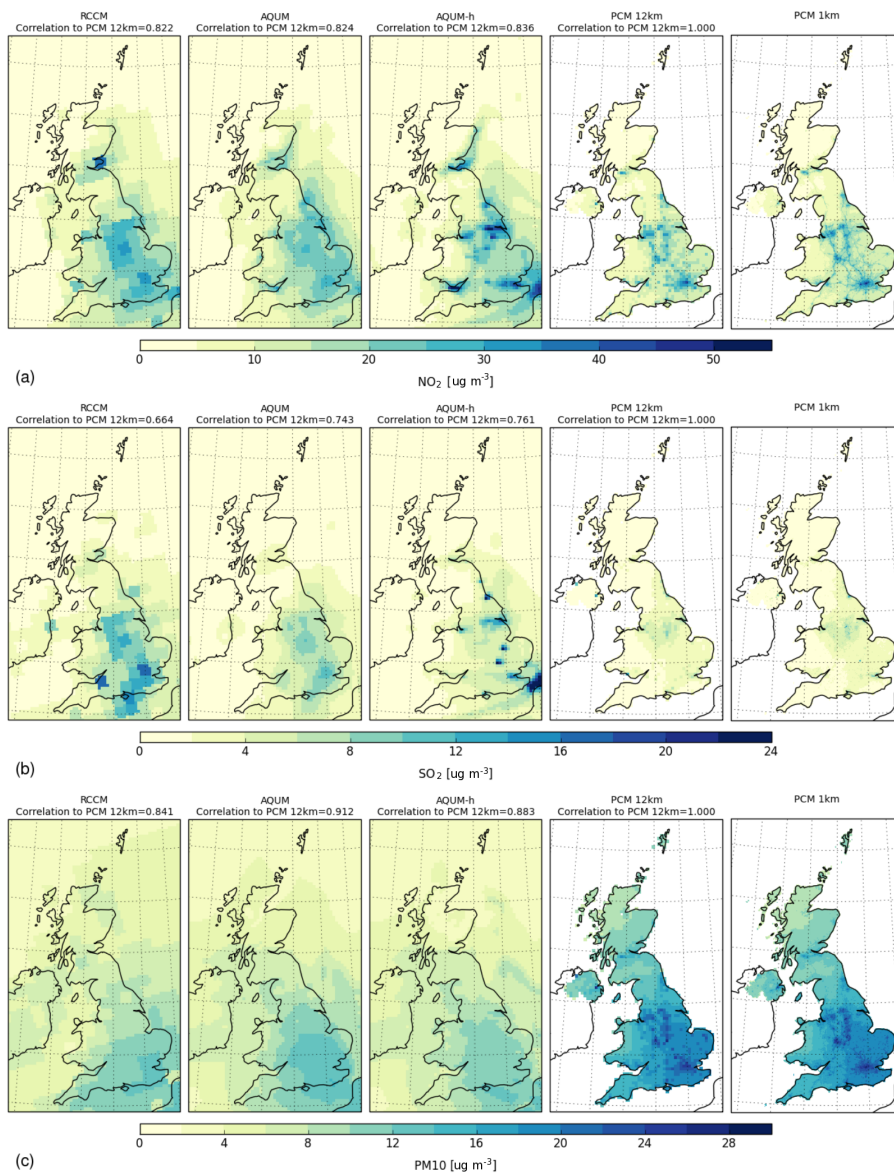


Figure 6. Model and PCM mean fields for different pollutants, regridded onto 12 km AQUM grid. From left to right the models are RCCM, AQUM, AQUM-h, 12 km version of the PCM and finally the 1 km PCM for comparison. Plots also show the correlation between the fields and the 12 km version of the PCM. Pollutants shown are (a) NO₂ (top row), (b) SO₂ (middle) and (c) PM₁₀ (bottom).

Comparisons between MetUM modelled annual mean concentrations and PCM annual mean concentrations are shown for NO₂, SO₂ and PM₁₀ in Fig. 6. In these plots nearest neighbour regridding is used to interpolate the model fields and the PCM fields onto the 12 km AQUM grid. Spatial correlations have been calculated between the regridded model and PCM fields (only at valid PCM data points, i.e UK land points) and are shown at the top of each figure.

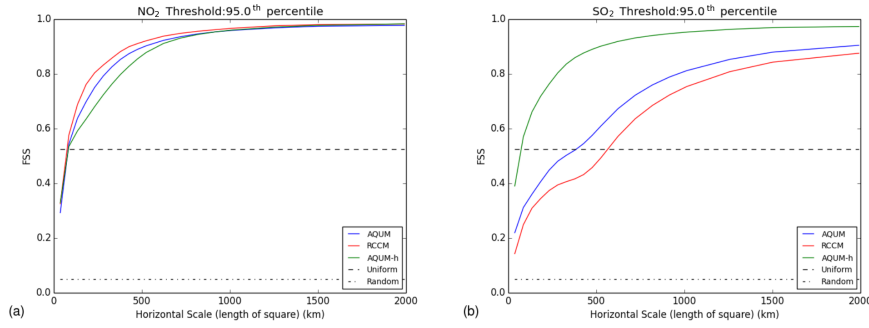


Figure 7. Fractional Skill Score for 95th Percentile for (a) NO_2 and (b) SO_2 . The RCCM is shown in red, AQUM in blue and AQUM-h in green. The ‘Random’ (dot-dashed) line represents the FSS for a random forecast with the same fraction of points over the domain exceeding the percentile threshold as the truth field. The ‘Uniform’ (dashed) line represents a forecast with the same fraction of points above the percentile threshold in the neighbourhood surrounding each grid point as the truth field for every grid point. Above this line the forecast is considered skilful.

For the primary pollutants of NO_2 (Fig. 6(a)) and SO_2 (Fig. 6(b)), there is an improvement in correlation with the PCM as we move from the RCCM to AQUM and finally AQUM-h: for NO_2 the correlations are 0.822, 0.824 and 0.836, respectively, while for SO_2 the correlations are 0.664, 0.743 and 0.761, respectively. For SO_2 , the introduction or removal of strong point sources can influence the comparison via a calculated spatial correlation. This is apparent in the AQUM-h plots in Fig. 6(b), where two new strong point sources in south-eastern England are present in the 2006 data used to generate the AQUM-h emissions. These modest increases of correlation with PCM (as our proxy for ‘truth’) as model resolution increases, illustrate the benefits of increased resolution modelling, both with respect to the model grid and the underlying emissions data, in better capturing the strongly inhomogeneous spatial distribution of these pollutants.

For PM_{10} however (Fig. 6(c)), this improvement in correlation with higher resolution is not as clear. The correlation values with the PCM are 0.841 for the RCCM, 0.912 for AQUM and 0.883 for AQUM-h. PM_{10} has a large secondary contribution which contributes a relatively smoothly varying background to the PCM maps in Fig. 6(c). This is likely to be the reason for the lack of a clear improvement in PM_{10} modelling with the high resolution AQUM-h model.

Beyond the figures shown above, we also investigated the correlation scores by just considering data above fixed threshold concentration values (plots not shown). However these results were very variable, depending on the threshold values considered, partly due to the biases (as given in Section 4.2).

4.4 Analyses based on neighbourhood comparisons: the Fractional Skill Score

In evaluating a comparison of modelled air pollutant concentrations against some gridded representation of true concentrations (such as the PCM fields described above), small offsets in the spatial location of elevated values can give an exaggerated contribution to simple metrics such as bias and root mean square error evaluated at each grid point. This is commonly referred to as the ‘double penalty’ problem. The resulting analysis may then give a misleading indication of the comparison between the two fields. So-called ‘neighbourhood’ verification techniques (Ebert, 2008; Mittermaier, 2014) have been developed to avoid these problems. Here, we consider the use of the Fractional Skill Score (FSS) (explained in detail in Roberts and Lean (2008)) to analyse the variation in model skill in representing spatial patterns. This statistic has mainly been employed in evaluating the improvements offered by high resolution precipitation forecasts, where a ‘double penalty’ problem occurs if rain is forecast in a neighbouring grid box to where it was actually observed (hence an incorrect forecast in both grid boxes). A lower resolution forecast might place the forecast and observed shower in the same grid box, resulting in an apparently improved forecast. Similar issues are found in pollution modelling due to the high degree of inhomogeneity of air pollutant concentrations and evaluation of the FSS may offer improved comparisons.

The FSS is calculated by computing, for each grid box, the fraction of neighbouring grid boxes which exceed a given threshold value (or percentile). This is done both for the gridded model fields that are to be evaluated and a gridded benchmark field representative of the ‘truth’, which in this case is the PCM fields, as described in Section 4.3. This can be repeated for varying neighbourhood sizes. As the size of the neighbourhood increases, the fractional skill score should increase towards unity. A forecast may be considered ‘skilful’ at the grid-scale where the model has the correct fraction of points above the percentile threshold in the neighbourhood surrounding each grid point as the truth field for every grid point.

We have calculated the FSS using output from the 3 model configurations (RCCM, AQUM, and AQUM-h) and compared to the PCM for various threshold values, based on both fixed thresholds and percentile values. An example set of results is shown in Fig. 7. In these plots, the variation of FSS against spatial scale is shown for the RCCM, AQUM and AQUM-h, using a 95th percentile threshold. For NO_2 , there is little difference between the three model configurations and the same is found for PM_{10} (not shown). Calculations using other fixed thresholds and different percentile thresholds also show little difference. However, for SO_2 , AQUM-h shows the best performance, crossing the threshold value of 0.5 at the shortest spatial scale and reflects the strong point sources of SO_2 in contrast to NO_2 emissions. The use of neighbourhood verification techniques to compare our different nests has therefore not offered any obvious increased insight into the differences between the models and the consequent impacts on improved predictions across the spatial scales. This may be an indication that the resolution differences between the models may not be the key factor in determining performance, particularly for NO_2 and PM_{10} .

5 Summary and Conclusions

This study describes the initial development of a more consistent framework for dynamic downscaling of climate and air quality from a global composition-climate model to the national scale, via a regional composition-climate model and thence to a higher resolution regional air quality forecast model. In this attempt, some of the difficulties in presenting a clear-cut, quantitative demonstration of the value of higher resolution modelling have been made apparent. All three models use a single modelling framework - the MetUM - but some differences between the models do remain. The most notable of these are the different chemistry mechanisms, photolysis schemes and the calibration factor that have been used in the GCCM and RCCM compared to AQUM. AQUM has been developed with forecasting air quality over the UK as its primary aim, and performance has been optimised for predicting in situ UK observations on an hourly timescale with a focus on high impact, more extreme events. By contrast, the GCCM and RCCM have been developed to predict global and regional climatologies, giving a faithful representation of seasonal and annual means across the entire globe. These differences have resulted in some of the inconsistencies highlighted in this paper. This has led to a challenge in determining the benefits of a three-level nest for downscaling to the regional scale but has highlighted important areas for consideration in future work.

The comparison of modelled air pollutant concentrations against in situ UK observations was conducted initially by a traditional site-specific analysis, with standard metrics such as bias. In addition, the impacts of model resolution on pollutant spatial patterns were assessed via comparison to the gridded PCM annual average pollution maps. In order to guard against the susceptibility of the traditional verification methods to the double penalty problem, an analysis was also carried out using a neighbourhood approach, utilising the Fractional Skill Score (FSS), although the results from this were generally inconclusive.

For NO_2 , significantly improved modelled concentrations can be quantitatively demonstrated for the higher resolution models, using higher resolution emissions (biases of -4.76, -5.47 and -0.80 μgm^{-3} for RCCM, AQUM and AQUM-h respectively. This is readily understood, given the dependence of surface concentrations of this primary pollutant on local emissions. For another primary pollutant, SO_2 , a modest benefit of high resolution modelling is demonstrated by the small increase in spatial correlation of AQUM-h with the PCM climatology maps (correlations compared to the PCM of 0.664, 0.743 and 0.761 for RCCM, AQUM and AQUM-h). However the benefit is less pronounced for SO_2 than for NO_2 . for two reasons: (i) The main reason for this is likely to be that in the UK, SO_2 levels have fallen dramatically over the last 25 years and ambient concentrations are now generally the result of relatively low magnitude traffic emissions and much stronger emissions from a small number of industrial point sources. This results in an annually averaged mean concentration map over the UK which shows relatively little spatial structure, but with a small number of locations having much higher concentrations due to strong local emission sources (see the PCM 1 km plot in Fig. 6(b)). This low level background with little overall spatial structure limits the quantitative

635 increases in spatial correlation with the PCM climatologies. ~~Another~~ ~~The other~~ reason ~~maybe the~~
~~impact of is related to~~ the introduction and removal of strong point emissions sources affecting the
comparison, as noted in section 4.3.

Conclusions regarding the benefits of high resolution modelling for PM_{2.5} have been hampered in
the present study due to the lack of observations over the study period. This pollutant consists of ~~has~~
640 both primary and secondary contributions and one might expect improvements in the modelling of
the primary component by higher resolution modelling. However the magnitude of the improvement
will depend on the relative sizes of primary and secondary components and it may well be that the
contribution of the large secondary component masks any improvement in the representation of the
primary component. For PM₁₀, model performance remains poor regardless of model resolution,
645 with all three regional models (RCCM, AQUM and AQUM-h) failing to capture the observed fre-
quency distribution ~~and~~ having negative biases in the range -14.41 to -12.45 μgm^{-3} . ~~Based on the~~
~~observed PM values analysed by Putaud et al. (2010), it is estimated that the lack of sea salt lowers~~
~~the modelled PM₁₀ annual mean values by around 12%. Additional important factors in the under-~~
~~prediction of PM₁₀ magnitudes include the absence of coarse component sodium nitrate aerosol, the~~
650 poor representation of other coarse component primary emissions and poor modelling of the growth
of aerosols to sizes in the coarse range.

For O₃, all regional models were able to reproduce the shape of the observation distribution well,
but the offset of the modelled from the observed central location varied. Tests showed that the dif-
ferences are likely to be largely due to differences in the photolysis schemes employed. However,
655 given the modest benefits of higher resolution modelling found for the other secondary pollutants
it seems unlikely that high resolution modelling with AQUM would offer significantly improved
performance for O₃ predictions beyond those demonstrated by RCCM.

The model simulations described in this paper have been evaluated in their air quality performance
under present day climate. However, the same techniques can be applied for projecting future climate
660 and air quality from the global scale to the UK national scale (Folberth et al., In prep.a). The ability
to model air quality parameters at the regional scale will be particularly important for health impact
modelling where high spatial resolution is important to allow the concentration variations to be
matched to population locations. Indeed the techniques in this paper have already been applied to
2050s climate and air quality in Pannullo et al. (2017) for assessing potential changes in UK hospital
665 admissions.

6 Code availability

Due to intellectual property right restrictions, we cannot provide either the source code or documen-
tation papers for The Met Office's Unified Model, MetUM. The MetUM is available for use under
licence. A number of research organisations and national meteorological services use the MetUM

670 in collaboration with the Met Office to undertake basic atmospheric process research, produce forecasts, develop the MetUM code and build and evaluate Earth system models. For further information on how to apply for a licence see <http://www.metoffice.gov.uk/research/modelling-systems/unified-model>. JULES is available under licence free of charge. For further information on how to gain permission to use JULES for research purposes see <https://jules.jchmr.org/software-and-documentation>.

675 *Acknowledgements.* The development of HadGEM3, UKCA, and the work of MD, GF, and FMO'C were supported by the Joint UK BEIS/Defra Met Office Hadley Centre Climate Programme (GA01101). LSN, MD, GF, RNM and PA also acknowledge the Engineering and Physical Sciences Research Council (EPSRC) for additional funding through the UK Engineering and Physical Sciences research council grant number EP/J017485/1: "A rigorous statistical framework for estimating the long-term health effects of air pollution". In addition, this
680 work and its contributors (GF and FMO'C) were partly supported by the UK-China Research & Innovation Partnership Fund through the Met Office Climate Science for Service Partnership (CSSP) China as part of the Newton Fund.

Appendix A

Summaries of emission totals are given in Tables A1, A2 and A3. In Table A4 a summary of the parameterisation schemes used the three model configurations is presented.

Table A1. Summary of the annual total emissions of trace gases used in the GCCM, RCCM and AQUM models.

Species	GCCM	RCCM	AQUM
NO_x as Tg(N) yr⁻¹	49.4	8.10	2.31
anthropogenic	26.5		
forest/grassland fires	4.3		
shipping	5.5		
soil	5.6		
lightning	7.5		
CO as Tg(CO) yr⁻¹	1112.8	83.93	20.23
anthropogenic	607.5		
forest/grassland fires	459.1		
shipping	1.2		
oceanic	45.0		
CH₄ as ppbv^a	1760	1760	1760
H₂ as Tg(H₂) yr⁻¹	28.9	0.61	0.055
forest/grassland fires	28.9		

^aCH₄ surface concentration of 1760 ppbv is prescribed at the lower-most model level;

Table A2. Summary of the annual total emissions of volatile organic compounds used in the GCCM, RCCM and AQUM models.

Species	GCCM	RCCM	AQUM		GCCM	RCCM	AQUM
C₂H₆ as Tg(C) yr⁻¹	5.4	0.29	0.35	CH₃CHO^b as Tg(C) yr⁻¹	4.8	0.06	0.02
anthropogenic	2.6			forest/grassland fires	4.8		
forest/grassland fires	2.6			CH₃C(O)CH₃			
shipping	0.2			as Tg(C) yr⁻¹	1.2	0.07	0.14
C₃H₈ as Tg(C) yr⁻¹	4.7	0.56	0.25	anthropogenic	0.2		
anthropogenic	2.8			forest/grassland fires	1.0		
forest/grassland fires	1.6			CH₃C(O)CH₂CH₃^c			
shipping	0.3			as Tg(C) yr⁻¹	2.5	0.12	0.00
C₄+ alkanes as Tg(C) yr⁻¹	24.7	4.55	0.55	anthropogenic	0.3		
anthropogenic	23.3			forest/grassland fires	2.2		
forest/grassland fires	0.6			aromatics^d as Tg(C) yr⁻¹	17.8	2.13	0.30
shipping	0.8			anthropogenic	13.8		
C₂H₄ as Tg(C) yr⁻¹	16.5	1.13	0.19	forest/grassland fires	3.7		
anthropogenic	9.4			shipping	0.3		
forest/grassland fires	6.8			BVOC as Tg(C) yr⁻¹	680		0.87
shipping	0.3			as isoprene	480		0.87
C₃+ alkenes^a as Tg(C) yr⁻¹	6.4	0.33	0.08	as (mono-)terpenes	95		0
anthropogenic	2.7			as methanol	85		0
forest/grassland fires	3.4			as acetone	20		0
shipping	0.3						
HCHO as Tg(C) yr⁻¹	3.6	0.25	0.06				
anthropogenic	1.3						
forest/grassland fires	2.3						

The method for deriving AQUM emissions of VOCs from RCCM emissions is described in Section 3.2 and involves partitioning the total VOC in the RCCM amongst the different VOC species in AQUM according to Table 1. As a consequence it is possible for emissions of some individual species in the smaller AQUM domain to exceed those in the larger RCCM domain but the total VOC emitted is conserved.

^aincludes C₃ plus higher alkenes and all volatile alkynes; ^bincludes higher aldehydes; ^cincludes methyl ethyl ketone (MEK) plus higher ketones; ^dincludes benzene, toluene, and xylenes.

Table A3. Summary of the annual total emissions of aerosols used in the GCCM, RCCM and AQUM models.

Species	GCCM	RCCM	AQUM
black carbon (BC) as Tg(BC) yr⁻¹	6.4	0.87	0.23
anthropogenic	6.4		
shipping	0.03		
organic carbon (OC) as Tg(OC) yr⁻¹	24.3	1.84	0.23
anthropogenic	23.6		
shipping	0.7		
NH₃ as Tg(N) yr⁻¹	35.4	6.98	1.67
anthropogenic	32.8		
forest/grassland fires	2.6		
SO₂ as Tg(SO₂) yr⁻¹	107.3	22.61	1.90
anthropogenic	87.6		
forest/grassland fires	12.2		
shipping	7.5		

Table A4. Summary of Model configuration settings used in the GCCM, RCCM and AQUM models.

Component	GCCM	RCCM	AQUM
Model grid			
Horizontal resolution (degrees)	1.875 x 1.25	0.44 x 0.44	0.11 x 0.11
Vertical - levels (and top height, km)	63 (41)	63 (41)	38 (39)
Dynamical core	Non-hydrostatic, fully compressible deep atmospheric formulation with Semi-Lagrangian advection of prognostic variables Davies et al. (2005)		
Dynamical solver	Generalized conjugate Residual (GCR)	GCR+ (recommended solver)	GCR+
Dynamical timestep (min)	20	12	5
Advection	Semi-Lagrangian, Monotonic for moisture, tracers	Semi-Lagrangian, monotonic for theta, moisture and tracers	
Conservation	Moisture and tracers	No	No
Boundary layer	Lock et al. (2000), Lock (2001) with scalar flux-gradient option		Lock et al. (2000), Lock (2001) compatible with JULES
Convection	Gregory and Rowntree (1990), Gregory and Allen (1991) mass flux scheme with down-draughts and convective momentum transport (CMT)		
CAPE closure	Vertical velocity dependant	Vertical velocity dependant	Vertical velocity dependant
Cloud scheme		Prognostic Cloud and Prognostic Condensate (PC2)	Diagnostic cloud and condensate Smith (1990)
Microphysics (large scale precip)		Wilson and Ballard (1999) enhanced for PC2 and graupel	Wilson and Ballard (1999)
Radiation	Edwards and Slingo (1996) with Cusack et al. (1999) for gaseous absorption and incremental adjustments to fluxes and cloud between full radiation timesteps (timestepping). 6 SW and 9 LW spectral bands		
Cloud representation	Instantaneous cloud fields, Maximum Random Overlap, water+ice as single mixture, microphysical parameterisation for Effective radius		
Land surface		Met Office Surface Exchange Scheme-II (MOSES)	Joint UK Land Surf Scheme (JULES)
Aerosols	CLASSIC Jones et al. (2001), Bellouin et al. (2011) with prognostic treatment of sulphate, dust, soot, fossil fuel organic carbon and nitrate aerosol. — — Seasalt is diagnostic with emissions derived online using windspeed — —		
Aerosol-radiation and -cloud interactions	Off	Off	On
Chemistry	Extended Tropospheric Scheme Folberth et al. (In prep.b)		Regional Air Quality Scheme Savage et al. (2013)
Chemical solver	Explicit Backward Euler	Explicit Backward Euler	Explicit Backward Euler
Species (reactions)	89 (203)	89 (203)	58 (139)
Aqueous phase reactions		— — Includes oxidation of SO ₂ by both H ₂ O ₂ and O ₃ to form dissolved SO ₄ — —	
Photolysis scheme		Offline, 2-Dimensional model with prescribed cloud and aerosol	Fast-J, uses online cloud and aerosol

References

- Allen, R. J., Landuyt, W., and Rumbold, S. T.: An increase in aerosol burden and radiative effects in a warmer world, *Nat. Clim. Chang.*, 6, 269–274, doi:10.1038/NCLIMATE2827, 2016.
- Arnth, A., Niinemets, U., Pressley, S., Bäck, J., Hari, P., Karl, T., Noe, S., Prentice, I. C., Serça, D., Hickler, T.,
 690 Wolf, A., and Smith, B.: Process-based estimates of terrestrial ecosystem isoprene emissions: incorporating the effects of a direct CO₂-isoprene interaction, *Atmos. Chem. Phys.*, 7, 31–53, doi:10.5194/acp-7-31-2007, <http://www.atmos-chem-phys.net/7/31/2007/>, 2007.
- Arnth, A., Monson, R. K., Schurgers, G., Niinemets, U., and Palmer, P. I.: Why are estimates of global terrestrial isoprene emissions so similar (and why is this not so for monoterpenes)?, *Atmos. Chem. Phys.*, 8,
 695 4605–4620, doi:10.5194/acp-8-4605-2008, <http://www.atmos-chem-phys.net/8/4605/2008/>, 2008.
- Ashworth, K., Folberth, G., Hewitt, C. N., and Wild, O.: Impacts of near-future cultivation of biofuel feedstocks on atmospheric composition and local air quality, *Atmos. Chem. Phys.*, 12, 919–939, doi:10.5194/acp-12-919-2012, <http://www.atmos-chem-phys.net/12/919/2012/>, 2012.
- Baklanov, A., Schlünzen, K., Suppan, P., Baldasano, J., Brunner, D., Aksoyoglu, S., Carmichael, G., Douros, J.,
 700 Flemming, J., Forkel, R., Galmarini, S., Gauss, M., Grell, G., Hirtl, M., Joffre, S., Jorba, O., Kaas, E., Kaasik, M., Kallos, G., Kong, X., Korsholm, U., Kurganskiy, A., Kushta, J., Lohmann, U., Mahura, A., Manders-Groot, A., Maurizi, A., Moussiopoulos, N., Rao, S. T., Savage, N., Seigneur, C., Sokhi, R. S., Solazzo, E., Solomos, S., Sørensen, B., Tsegas, G., Vignati, E., Vogel, B., and Zhang, Y.: Online coupled regional meteorology chemistry models in Europe: current status and prospects, *Atmos. Chem. Phys.*, 14, 317–398, doi:10.5194/acp-14-317-2014, <http://www.atmos-chem-phys.net/14/317/2014/>, 2014.
- Bellouin, N., Rae, J., Jones, A., Johnson, C., Haywood, J., and Boucher, O.: Aerosol forcing in the Climate Model Intercomparison Project (CMIP5) simulations by HadGEM2-ES and the role of ammonium nitrate, *J. Geophys. Res.: Atmos.*, 116, doi:10.1029/2011JD016074, <http://dx.doi.org/10.1029/2011JD016074>, 2011.
- Best, M. J., Pryor, M., Clark, D. B., Rooney, G. G., Essery, R. L. H., Ménard, C. B., Edwards, J. M., Hendry,
 710 M. A., Porson, A., Gedney, N., Mercado, L. M., Sitch, S., Blyth, E., Boucher, O., Cox, P. M., Grimmond, C. S. B., and Harding, R. J.: The Joint UK Land Environment Simulator (JULES), model description - Part 1: Energy and water fluxes, *Geosci. Model Dev.*, 4, 677–699, doi:10.5194/gmd-4-677-2011, <http://www.geosci-model-dev.net/4/677/2011/>, 2011.
- Boucher, O., Randall, D., Artaxo, P., Bretherton, C., Feingold, G., Forster, P., Kerminen, V.-M., Kondo, Y., Liao, H., Lohmann, U., Rasch, P., Satheesh, S., Sherwood, S., Stevens, B., and Zhang, X.: Clouds and Aerosols, book section 7, pp. 571–658, Cambridge University Press, Cambridge, United Kingdom and New York, NY, USA, doi:10.1017/CBO9781107415324.016, www.climatechange2013.org, 2013.
- Brookes, M. D., Stedman, J. R., Kent, A. J., Morris, R. J., Cooke, S. L., Lingard, J. J. N., Rose, R. A., Vincent, K. J., Bush, T. J., and Abbott, J.: Technical report on UK supplementary assessment under the
 720 Air Quality Directive(2008/50/EC), the Air Quality Framework Directive(96/62/EC) and Fourth Daughter Directive(2004/107/EC) for 2012, Tech. rep., The Department for Environment, Food and Rural Affairs, Welsh Government, the Scottish Government and the Department of the Environment for Northern Ireland, uk-air.defra.gov.uk/assets/documents/reports/cat09/1312231525_AQD_DD4_2012mapsrepv0.pdf, 2013.
- Brown, A., Milton, S., Cullen, M., Golding, B., Mitchell, J., and Shelly, A.: Unified Modeling And Prediction
 725 Of Weather And Climate A 25-Year Journey, *Bull. Am. Meteorol. Soc.*, 93, 1865–1877, 2012.

- Chemel, C., Fisher, B., Kong, X., Francis, X., Sokhi, R., Good, N., Collins, W., and Folberth, G.: Application of chemical transport model CMAQ to policy decisions regarding PM_{2.5} in the UK, *Atmos. Environ.*, 82, 410 – 417, doi:<http://dx.doi.org/10.1016/j.atmosenv.2013.10.001>, <http://www.sciencedirect.com/science/article/pii/S1352231013007541>, 2014.
- 730 Colette, A., Granier, C., Hodnebrog, Ø., Jakobs, H., Maurizi, A., Nyiri, A., Bessagnet, B., D’Angiola, A., D’Isidoro, M., Gauss, M., Meleux, F., Memmesheimer, M., Mieville, A., Rouïl, L., Russo, F., Solberg, S., Stordal, F., and Tampieri, F.: Air quality trends in Europe over the past decade: a first multi-model assessment, *Atmos. Chem. Phys.*, 11, 11 657–11 678, doi:10.5194/acp-11-11657-2011, <http://www.atmos-chem-phys.net/11/11657/2011/>, 2011.
- 735 Collins, W. J., Bellouin, N., Doutriaux-Boucher, M., Gedney, N., Halloran, P., Hinton, T., Hughes, J., Jones, C. D., Joshi, M., Liddicoat, Martin, G., O’Connor, F., Rae, J., Senior, C., Sitch, S., Totterdell, I., Wiltshire, A., and Woodward, S.: Development and evaluation of an Earth-System model – HadGEM2, *Geosci. Model Dev.*, 4, 1051–1075, doi:10.5194/gmd-4-1051-2011, 2011, 2011.
- COMEAP: Quantification of mortality and hospital admissions associated with ground-level ozone, Committee on the Medical Effects of Air Pollutants, UK, <https://www.gov.uk/government/collections/comeap-reports>, 2015.
- 740 Cusack, S., Edwards, J. M., and Crowther, J. M.: Investigating k distribution methods for parameterizing gaseous absorption in the Hadley Centre Climate Model, *J. Geophys. Res.: Atmos.*, 104, 2051–2057, doi:10.1029/1998JD200063, <http://dx.doi.org/10.1029/1998JD200063>, 1999.
- 745 Davies, T., Cullen, M. J. P., Malcolm, A. J., Mawson, M. H., Staniforth, A., White, A. A., and Wood, N.: A new dynamical core for the Met Office’s global and regional modelling of the atmosphere, *Q. J. R. Meteorol. Soc.*, 131, 1759–1782, doi:10.1256/qj.04.101, <http://dx.doi.org/10.1256/qj.04.101>, 2005.
- Dore, C. J., Murrells, T. P., Passant, N. R., Hobson, M. M., Thistlethwaite, G., Wagner, A., Li, Y., Bush, T., King, K. R., Norris, J., Coleman, P. J., Walker, C., Stewart, R. A., Tsagatakis, I., Conolly, C., Brophy, N.
- 750 C. J., and Hann, M. R.: UK Emissions of Air Pollutants 1970 to 2006, Tech. rep., AEA, [http://uk-air.defra.gov.uk/reports/cat07/0810291043_NAEI_2006_Report_Final_Version\(3\).pdf](http://uk-air.defra.gov.uk/reports/cat07/0810291043_NAEI_2006_Report_Final_Version(3).pdf), 2008.
- Ebert, E. E.: Fuzzy verification of high-resolution gridded forecasts: a review and proposed framework, *Meteorol. Appl.*, 15, 51–64, doi:10.1002/met.25, <http://dx.doi.org/10.1002/met.25>, 2008.
- Edwards, J. M. and Slingo, A.: Studies with a flexible new radiation code. I: Choosing a configuration for a large-scale model, *Q. J. R. Meteorol. Soc.*, 122, 689–719, doi:10.1002/qj.49712253107, <http://dx.doi.org/10.1002/qj.49712253107>, 1996.
- 755 Eyring, V., Arblaster, J. M., Cionni, I., Sedlacek, J., Perliwitz, J., Young, P. J., Bekki, S., Bergmann, D., Cameron-Smith, P., Collins, W. J., Faluvegi, G., Gottschaldt, K. D., Horowitz, L. W., Kinnison, D. E., Lamarque, J. F., Marsh, D. R., Saint-Martin, D., Shindell, D. T., Sudo, K., Szopa, S., and Watanabe, S.: Long-term ozone changes and associated climate impacts in CMIP5 simulations, *J. Geophys. Res.: Atmos.*, 118, 5029–5060, doi:10.1002/jgrd.50316, 2013.
- 760 Fiore, A. M., Naik, V., Spracklen, D. V., Steiner, A., Unger, N., Prather, M., Bergmann, D., Cameron-Smith, P. J., Cionni, I., Collins, W. J., Dalsoren, S., Eyring, V., Folberth, G. A., Ginoux, P., Horowitz, L. W., Josse, B., Lamarque, J.-F., MacKenzie, I. A., Nagashima, T., O’Connor, F. M., Righi, M., Rumbold, S. T., Shindell,

- 765 D. T., Skeie, R. B., Sudo, K., Szopa, S., Takemura, T., and Zeng, G.: Global air quality and climate, *Chem. Soc. Rev.*, 41, 6663–6683, doi:10.1039/c2cs35095e, 2012.
- Folberth, G., McInnes, R. N., Dalvi, M., Neal, L. S., Agnew, P., Clewlow, Y., Hemming, D., O'Connor, F., and Sarran, C.: Future projections of UK air quality and potential implications for health, In prep.a.
- Folberth, G. A., Abraham, N. L., Johnson, C. E., Morgenstern, O., O'Connor, F. M., Pacifico, F., Young, P. A.,
770 Collins, W. J., and Pyle, J. A.: Evaluation of the new UKCA climate-composition model. Part III. Extension to tropospheric chemistry and biogeochemical coupling between atmosphere and biosphere, In prep.b.
- Forkel, R. and Knoche, R.: Regional climate change and its impact on photooxidant concentrations in southern Germany: Simulations with a coupled regional climate-chemistry model, *J. Geophys. Res.: Atmos.*, 111, doi:10.1029/2005JD006748, <http://dx.doi.org/10.1029/2005JD006748>, 2006.
- 775 Gregory, D. and Allen, S.: The effect of convective downdraughts upon NWP and climate simulations, pp. 122–123, Ninth conference on numerical weather prediction, Denver, Colorado, 1991.
- Gregory, D. and Rowntree, P. R.: A mass flux convection scheme with representation of cloud ensemble characteristics and stability-dependent closure., *Mon. Weather Rev.*, 118, 1483–1506, doi:[http://dx.doi.org/10.1175/1520-0493\(1990\)118<1483:AMFCSW>2.0.CO;2](http://dx.doi.org/10.1175/1520-0493(1990)118<1483:AMFCSW>2.0.CO;2), 1990.
- 780 Grell, G., Peckham, S., Schmitz, R., McKeen, S., Frost, G., Skamarock, W., and Eder, B.: Fully coupled “online” chemistry within the WRF model, *Atmos. Environ.*, 39, 6957–6975, doi:10.1016/j.atmosenv.2005.04.027, 2005.
- Guenther, A., Hewitt, C. N., Erickson, D., Fall, R., Geron, C., Graedel, T., Harley, P., Klinger, L., Lerdau, M., McKay, W. A., Pierce, T., Scholes, B., Steinbrecher, R., Tallamraju, R., Taylor, J., and Zimmermann, P.: A
785 global model of natural volatile organic compound emissions, *J. Geophys. Res.*, 100, 8873–8892, 1995.
- Guenther, A., Karl, T., Harley, P., Wiedinmyer, C., Palmer, P. I., and Geron, C.: Estimates of global terrestrial isoprene emissions using MEGAN (Model of Emissions of Gases and Aerosols from Nature), *Atmos. Chem. Phys.*, 6, 3181–3210, doi:10.5194/acp-6-3181-2006, <http://www.atmos-chem-phys.net/6/3181/2006/>, 2006.
- He, J., Zhang, Y., Glotfelty, T., He, R., Bennartz, R., Rausch, J., and Sartelet, K.: Decadal simulation and
790 comprehensive evaluation of CESM/CAM5.1 with advanced chemistry, aerosol microphysics, and aerosol-cloud interactions, *J. Adv. Model. Earth Sy.*, 7, 110–141, doi:10.1002/2014MS000360, 2015.
- Heal, M. R., Heaviside, C., Doherty, R. M., Vieno, M., Stevenson, D. S., and Vardoulakis, S.: Health burdens of surface ozone in the UK for a range of future scenarios, *Environ. Int.*, 61, 36 – 44, doi:<http://dx.doi.org/10.1016/j.envint.2013.09.010>, <http://www.sciencedirect.com/science/article/pii/S0160412013002043>, 2013.
795
- Hoerling, M. P., Schaack, T. K., and Lenzen, A. J.: A Global Analysis of Stratospheric–Tropospheric Exchange during Northern Winter, *Mon. Weather Rev.*, 121, 162–172, doi:10.1175/1520-0493(1993)121<0162:AGAOSE>2.0.CO;2, [http://dx.doi.org/10.1175/1520-0493\(1993\)121\(0162:AGAOSE\)2.0.CO;2](http://dx.doi.org/10.1175/1520-0493(1993)121(0162:AGAOSE)2.0.CO;2), 1993.
- 800 Hong, C., Zhang, Q., Zhang, Y., Tang, Y., Tong, D., and He, K.: Multi-year downscaling application of two-way coupled WRF v3.4 and CMAQ v5.0.2 over east Asia for regional climate and air quality modeling: model evaluation and aerosol direct effects, *Geosci. Model Dev.*, 10, 2447–2470, doi:10.5194/gmd-10-2447-2017, 2017.

- Hough, A.: The calculation of photolysis rates for use in global tropospheric modelling studies, Tech. Rep. 13259, Atomic Energy Research Establishment, Harvel, U.K, 1988.
- Hurrell, J. W., Holland, M. M., Gent, P. R., Ghan, S., Kay, J. E., Kushner, P. J., Lamarque, J.-F., Large, W. G., Lawrence, D., Lindsay, K., Lipscomb, W. H., Long, M. C., Mahowald, N., Marsh, D. R., Neale, R. B., Rasch, P., Vavrus, S., Vertenstein, M., Bader, D., Collins, W. D., Hack, J. J., Kiehl, J., and Marshall, S.: The Community Earth System Model: a framework for collaborative research, *Bull. Am. Meteorol. Soc.*, 94, 1339–1360, doi:10.1175/BAMS-D-12-00121.1, <https://doi.org/10.1175/BAMS-D-12-00121.1>, 2013.
- Hurt, G. C., Chini, L. P., Frolking, S., Betts, R. A., Feddes, J., Fischer, G., Fisk, J. P., Hibbard, K., Houghton, R. A., Janetos, A., Jones, C. D., Kindermann, G., Kinoshita, T., Goldewijk, K. K., Riahi, K., Shevliakova, E., Smith, S., Stehfest, E., Thomson, A., Thornton, P., van Vuuren, D. P., and Wang, Y. P.: Harmonization of land-use scenarios for the period 1500–2100: 600 years of global gridded annual land-use transitions, wood harvest, and resulting secondary lands, *Clim. Chang.*, 109, 117–161, 2011.
- Im, U., Bianconi, R., Solazzo, E., Kioutsioukis, I., Badia, A., A., B., Baro, R., Bellasio, R., Brunner, D., Chemel, C., Curci, G., Denier van der Gon, H., Flemming, J., Forkel, R., Giordano, L., Jimenez-Guerrero, P., Hirtl, M., Hodzic, A., Honzak, L., Jorba, O., Knute, C., Makar, P. A., Manders-Groot, A., Neal, L., Perez, J. L., Pirovano, G., Pouliot, G., R., S. J., Savage, N., Schroder, W., Sokhi, R. S., Syrakov, D., Torian, A., Tuccella, P., Wang, K., Werhahn, J., Wolke, R., Zabkar, R., Zhang, Y., Zhang, J., Hogrefe, C., and Galmarini, S.: Evaluation of operational online-coupled regional air quality models over Europe and North America in the context of AQMEII phase 2. Part II: Particulate matter, *Atmos. Environ.*, 115, 421 – 441, doi:<http://dx.doi.org/10.1016/j.atmosenv.2014.08.072>, <http://www.sciencedirect.com/science/article/pii/S1352231014006839>, 2015.
- Jacob, D. J. and Winner, D. A.: Effect of climate change on air quality, *Atmos. Environ.*, 43, 51 – 63, doi:<http://dx.doi.org/10.1016/j.atmosenv.2008.09.051>, <http://www.sciencedirect.com/science/article/pii/S1352231008008571>, 2009.
- Jacobson, M. Z.: GATOR-GCMM: A global- through urban-scale air pollution and weather forecast model: 1. Model design and treatment of subgrid soil, vegetation, roads, rooftops, water, sea ice, and snow, *J. Geophys. Res.: Atmos.*, 106, 5385–5401, doi:10.1029/2000JD900560, <http://dx.doi.org/10.1029/2000JD900560>, 2001.
- Jones, A., Roberts, D. L., Woodage, M. J., and Johnson, C. E.: Indirect sulphate aerosol forcing in a climate model with an interactive sulphur cycle, *J. Geophys. Res.*, 106, 20 293–20 310, 2001.
- Jones, C. D., Hughes, J. K., Bellouin, N., Hardiman, S. C., Jones, G. S., Knight, J., Liddicoat, S., O'Connor, F. M., Andres, R. J., Bell, C., Boo, K.-O., Bozzo, A., Butchart, N., Cadule, P., Corbin, K. D., Doutriaux-Boucher, M., Friedlingstein, P., Gornall, J., Gray, L., Halloran, P. R., Hurt, G., Ingram, W. J., Lamarque, J.-F., Law, R. M., Meinshausen, M., Osprey, S., Palin, E. J., Parsons Chini, L., Raddatz, T., Sanderson, M. G., Sellar, A. A., Schurer, A., Valdes, P., Wood, N., Woodward, S., Yoshioka, M., and Zerroukat, M.: The HadGEM2-ES implementation of CMIP5 centennial simulations, *Geosci. Model Dev.*, 4, 543–570, doi:10.5194/gmd-4-543-2011, <http://www.geosci-model-dev.net/4/543/2011/>, 2011.
- Kettle, A. J., Andreae, M. O., Amouroux, D., Andreae, T. W., Bates, T. S., Berresheim, H., Bingemer, H., Boniforti, R., Curran, M. A. J., DiTullio, G. R., Helas, G., Jones, G. B., Keller, M. D., Kiene, R. P., Leck, C., Levasseur, M., Malin, G., Maspero, M., Matrai, P., McTaggart, A. R., Mihalopoulos, N., Nguyen, B. C.,

- Novo, A., Putaud, J. P., Rapsomanikis, S., Roberts, G., Schebeske, G., Sharma, S., Simó, R., Staubes, R.,
 845 Turner, S., and Uher, G.: A global database of sea surface dimethylsulfide (DMS) measurements and a
 procedure to predict sea surface DMS as a function of latitude, longitude, and month, *Glob. Biogeochem.*
Cycles, 13, 399–444, doi:10.1029/1999GB900004, <http://dx.doi.org/10.1029/1999GB900004>, 1999.
- Kunkel, K., Huang, H.-C., Liang, X.-Z., Lin, J.-T., Wuebbles, D., Tao, Z., Williams, A., Caughey, M., Zhu, J.,
 and Hayhoe, K.: Sensitivity of future ozone concentrations in the northeast USA to regional climate change,
 850 *Mitigation Adapt. Strateg. Glob. Chang.*, 13, 597–606, doi:10.1007/s11027-007-9137-y, <http://dx.doi.org/10.1007/s11027-007-9137-y>, 2008.
- Lamarque, J.-F., Bond, T. C., Eyring, V., Granier, C., Heil, A., Klimont, Z., Lee, D., Liousse, C., Mieville,
 A., Owen, B., Schultz, M. G., Shindell, D., Smith, S. J., Stehfest, E., Van Aardenne, J., Cooper, O. R.,
 Kainuma, M., Mahowald, N., McConnell, J. R., Naik, V., Riahi, K., and van Vuuren, D. P.: Historical
 855 (1850–2000) gridded anthropogenic and biomass burning emissions of reactive gases and aerosols:
 methodology and application, *Atmos. Chem. Phys.*, 10, 7017–7039, doi:10.5194/acp-10-7017-2010, <http://www.atmos-chem-phys.net/10/7017/2010/>, 2010.
- Lamarque, J.-F., Shindell, D. T., Josse, B., Young, P. J., Cionni, I., Eyring, V., Bergmann, D., Cameron-Smith, P.,
 Collins, W. J., Doherty, R., Dalsoren, S., Faluvegi, G., Folberth, G., Ghan, S. J., Horowitz, L. W., Lee, Y. H.,
 860 MacKenzie, I. A., Nagashima, T., Naik, V., Plummer, D., Righi, M., Rumbold, S. T., Schulz, M., Skeie,
 R. B., Stevenson, D. S., Strode, S., Sudo, K., Szopa, S., Voulgarakis, A., and Zeng, G.: The Atmospheric
 Chemistry and Climate Model Intercomparison Project (ACCMIP): overview and description of models,
 simulations and climate diagnostics, *Geosci. Model Dev.*, 6, 179–206, doi:10.5194/gmd-6-179-2013, <http://www.geosci-model-dev.net/6/179/2013/>, 2013.
- Langner, J., Engardt, M., Baklanov, A., Christensen, J. H., Gauss, M., Geels, C., Hedegaard, G. B., Nuterman,
 R., Simpson, D., Soares, J., Sofiev, M., Wind, P., and Zakey, A.: A multi-model study of impacts of climate
 change on surface ozone in Europe, *Atmos. Chem. Phys.*, 12, 10 423–10 440, doi:10.5194/acp-12-10423-
 2012, <http://www.atmos-chem-phys.net/12/10423/2012/>, 2012.
- Lathi re, J., Hauglustaine, D. A., De Noblet-Ducoudr , N., Krinner, G., and Folberth, G. A.: Past and fu-
 870 ture changes in biogenic volatile organic compound emissions simulated with a global dynamic vegeta-
 tion model, *Geophys. Res. Lett.*, 32, doi:10.1029/2005GL024164, <http://dx.doi.org/10.1029/2005GL024164>,
 120818, 2005.
- Lauwaet, D., Viaene, P., Brisson, E., van Noije, T., Strunk, A., Looy, S. V., Maiheu, B., Veldeman, N., Blyth, L.,
 Ridder, K. D., and Janssen, S.: Impact of nesting resolution jump on dynamical downscaling ozone concen-
 875 trations over Belgium, *Atmos. Environ.*, 67, 46 – 52, doi:<http://dx.doi.org/10.1016/j.atmosenv.2012.10.034>,
<http://www.sciencedirect.com/science/article/pii/S1352231012009983>, 2013.
- Law, K. and Pyle, J.: Modeling trace gas budgets in the troposphere. 1- ozone and odd nitrogen, *Journal of*
Geophysics Research, 98, 18 377–18 400, 1993.
- Likhvar, V. N., Pascal, M., Markakis, K., Colette, A., Hauglustaine, D., Valari, M., Klimont, Z., Medina, S.,
 880 and Kinney, P.: A multi-scale health impact assessment of air pollution over the 21st century, *Sci. Total*
Environ., 514, 439 – 449, doi:<http://dx.doi.org/10.1016/j.scitotenv.2015.02.002>, <http://www.sciencedirect.com/science/article/pii/S0048969715001345>, 2015.

- Lock, A., Brown, A., Bush, M., Martin, G., , and Smith, R.: A new boundary layer mixing scheme. Part I: Scheme description and single-column model tests, *Mon. Weather Rev.*, 128, 3187–3199, 2000.
- 885 Lock, A. P.: The numerical representation of entrainment in parameterizations of boundary layer turbulent mixing, *Mon. Weather Rev.*, 129, 1148–1163, doi:10.1175/1520-0493(2001)129<1148:TNROEI>2.0.CO;2, [https://doi.org/10.1175/1520-0493\(2001\)129<1148:TNROEI>2.0.CO;2](https://doi.org/10.1175/1520-0493(2001)129<1148:TNROEI>2.0.CO;2), 2001.
- Mann, G. W., Carslaw, K. S., Spracklen, D. V., Ridley, D. A., Manktelow, P. T., Chipperfield, M. P., Pickering, S. J., and Johnson, C. E.: Description and evaluation of GLOMAP-mode: a modal global aerosol microphysics model for the UKCA composition-climate model, *Geosci. Model Dev.*, 3, 519–551, doi:<http://dx.doi.org/10.5194/gmd-3-519-2010>, 2010.
- 890 Meleux, F., Solmon, F., and Giorgi, F.: Increase in summer European ozone amounts due to climate change, *Atmos. Environ.*, 41, 7577 – 7587, doi:<http://dx.doi.org/10.1016/j.atmosenv.2007.05.048>, <http://www.sciencedirect.com/science/article/pii/S1352231007004980>, 2007.
- 895 Mercado, L. M., Bellouin, N., Sitch, S., Boucher, O., Huntingford, C., Wild, M., and Cox, P. M.: Impact of changes in diffuse radiation on the global land carbon sink, *Nature*, 458, 1014–U87, doi:10.1038/nature07949, 2009.
- Messina, P., Lathière, J., Sindelarova, K., Vuichard, N., Granier, C., Ghattas, J., Cozic, A., and Hauglustaine, D. A.: Global biogenic volatile organic compound emissions in the ORCHIDEE and MEGAN models and sensitivity to key parameters, *Atmos. Chem. Phys.*, 16, 14 169–14 202, doi:10.5194/acp-16-14169-2016, <http://www.atmos-chem-phys.net/16/14169/2016/>, 2016.
- 900 Mittermaier, M. P.: A strategy for verifying near-convection-resolving model forecasts at observing sites, *Weather Forecast.*, 29, 185–204, doi:10.1175/WAF-D-12-00075.1, 2014.
- Morgenstern, O., Braesicke, P., O’Connor, F. M., Bushell, A. C., Johnson, C. E., Osprey, S. M., and Pyle, J. A.: Evaluation of the new UKCA climate-composition model – Part 1: The stratosphere, *Geosci. Model Dev.*, 2, 43–57, doi:10.5194/gmd-2-43-2009, <http://www.geosci-model-dev.net/2/43/2009/>, 2009.
- Moufouma-Okia, W. and Jones, R.: Resolution dependence in simulating the African hydroclimate with the HadGEM3-RA regional climate model, *Clim. Dynam.*, 44, 609–632, doi:10.1007/s00382-014-2322-2, <http://dx.doi.org/10.1007/s00382-014-2322-2>, 2015.
- 910 Müller, J.-F., Stavrakou, T., Wallens, S., De Smedt, I., Van Roozendael, M., Potosnak, M. J., Rinne, J., Munger, B., Goldstein, A., and Guenther, A. B.: Global isoprene emissions estimated using MEGAN, ECMWF analyses and a detailed canopy environment model, *Atmos. Chem. Phys.*, 8, 1329–1341, doi:10.5194/acp-8-1329-2008, <http://www.atmos-chem-phys.net/8/1329/2008/>, 2008.
- Murphy, D. M. and Fahey, D. W.: An estimate of the flux of stratospheric reactive nitrogen and ozone into the troposphere, *J. Geophys. Res.: Atmos.*, 99, 5325–5332, doi:10.1029/93JD03558, <http://dx.doi.org/10.1029/93JD03558>, 1994.
- 915 Myhre, G., Shindell, D., Breon, F.-M., Collins, W., Fuglestad, J., Huang, J., Koch, D., Lamarque, J.-F., Lee, D., Mendoza, B., Nakajima, T., Robock, A., Stephens, G., Takemura, T., and Zhang, H.: Anthropogenic and Natural Radiative Forcing, book section 8, pp. 659–740, Cambridge University Press, Cambridge, United Kingdom and New York, NY, USA, doi:10.1017/CBO9781107415324.018, www.climatechange2013.org, 2013.

- O'Connor, F. M., Johnson, C. E., Morgenstern, O., Abraham, N. L., Braesicke, P., Dalvi, M., Folberth, G. A., Sanderson, M. G., Telford, P. J., Voulgarakis, A., Young, P. J., Zeng, G., Collins, W. J., and Pyle, J. A.: Evaluation of the new UKCA climate-composition model - Part 2: The Troposphere, *Geosci. Model Dev.*, 7, 41–91, doi:10.5194/gmd-7-41-2014, <http://www.geosci-model-dev.net/7/41/2014/>, 2014.
- 925 Pacifico, F., Harrison, S. P., Jones, C. D., Arneth, A., Sitch, S., Weedon, G. P., Barkley, M. P., Palmer, P. I., Serca, D., Potosnak, M., Fu, T.-M., Goldstein, A., Bai, J., and Schurgers, G.: Evaluation of a photosynthesis-based biogenic isoprene emission scheme in JULES and simulation of isoprene emissions under present-day climate conditions, *Atmos. Chem. Phys.*, 11, 4271–4389, doi:10.5194/acp-11-4371-2011, [http://www.](http://www.atmos-chem-phys.net/11/4371/2011/)
- 930 [atmos-chem-phys.net/11/4371/2011](http://www.atmos-chem-phys.net/11/4371/2011/), 2011.
- Pacifico, F., Folberth, G. A., Sitch, S., Haywood, J. M., Rizzo, L. V., Malavelle, F. F., and Artaxo, P.: Biomass burning related ozone damage on vegetation over the Amazon forest: a model sensitivity study, *Atmos. Chem. Phys.*, 15, 2791–2804, doi:10.5194/acp-15-2791-2015, [http://www.atmos-chem-phys.net/15/2791/](http://www.atmos-chem-phys.net/15/2791/2015/)
- 2015/, 2015.
- 935 Pannullo, F., Lee, D., Neal, L., Dalvi, M., Agnew, P., O'Connor, F. M., Mukhopadhyay, S., Sahu, S., and Sarran, C.: Quantifying the impact of current and future air pollution concentrations on respiratory disease risk in England, *Environ. Health*, 2017.
- Price, C. and Rind, D.: A simple lightning parameterization for calculating global lightning distributions, *J. Geophys. Res.*, 97, 9919–9933, 1992.
- 940 Price, C. and Rind, D.: What determines the cloud-to-ground lightning fraction in thunderstorms, *Geophys. Res. Lett.*, 20, 463–466, 1993.
- Price, C. and Rind, D.: Modeling global lightning distributions in a general circulation model, *Mon. Weather Rev.*, 122, 1930–1939, 1994.
- Price, C., Penner, J., and Prather, M.: NO_x from lightning. 2. Constraints from the global atmospheric electric circuit, *J. Geophys. Res.*, 102, 5943–5951, doi:10.1029/96JD02551, 1997.
- 945 Putaud, J.-P., Dingenen, R. V., Alastuey, A., Bauer, H., Birmili, W., Cyrys, J., Flentje, H., Fuzzi, S., Gehrig, R., Hansson, H., Harrison, R., Herrmann, H., Hittenberger, R., Hüglin, C., Jones, A., Kasper-Giebl, A., Kiss, G., Kousa, A., Kuhlbusch, T., Löschau, G., Maenhaut, W., Molnar, A., Moreno, T., Pekkanen, J., Perrino, C., Pitz, M., Puxbaum, H., Querol, X., Rodriguez, S., Salma, I., Schwarz, J., Smolik, J., Schneider, J., Spindler, G., ten Brink, H., Tursic, J., Viana, M., Wiedensohler, A., and Raes, F.: A European aerosol phenomenology — 3: Physical and chemical characteristics of particulate matter from 60 rural, urban, and kerbside sites across Europe, *Atmos. Environ.*, 44, 1308 – 1320, doi:<http://dx.doi.org/10.1016/j.atmosenv.2009.12.011>, <http://www.sciencedirect.com/science/article/pii/S1352231009010358>, 2010.
- 950 Riahi, K., Grübler, A., and Nakicenovic, N.: Scenarios of long-term socio-economic and environmental development under climate stabilization, *Technol. Forecasting Soc.*, 74, 887 – 935, doi:<http://dx.doi.org/10.1016/j.techfore.2006.05.026>, <http://www.sciencedirect.com/science/article/pii/S0040162506001387>, greenhouse Gases - Integrated Assessment, 2007.
- Roberts, N. M. and Lean, H. W.: Scale-selective verification of rainfall accumulations from high-resolution forecasts of convective events, *Mon. Weather Rev.*, 136, 78–97, doi:10.1175/2007MWR2123.1, [http://journals.](http://journals.ametsoc.org/doi/abs/10.1175/2007MWR2123.1)
- 960 [ametsoc.org/doi/abs/10.1175/2007MWR2123.1](http://journals.ametsoc.org/doi/abs/10.1175/2007MWR2123.1), 2008.

- Sanderson, M. G., Jones, C. D., Collins, W. J., Johnson, C. E., and Derwent, R. G.: Effect of climate change on isoprene emissions and surface ozone levels, *Geophys. Res. Lett.*, 30, doi:10.1029/2003GL017642, <http://dx.doi.org/10.1029/2003GL017642>, 1936, 2003.
- 965 Savage, N. H., Agnew, P., Davis, L., Ordóñez, C., Thorpe, R., Johnson, C. E., O'Connor, F. M., and Dalvi, M.: Air quality modelling using the Met Office Unified Model (AQUUM OS24-26): model description and initial evaluation, *Geosci. Model Dev.*, 6, 353–372, doi:10.5194/gmd-6-353-2013, <http://www.geosci-model-dev.net/6/353/2013/>, 2013.
- Schumann, U. and Huntrieser, H.: The global lightning-induced nitrogen oxides source, *Atmos. Chem. Phys.*, 7, 3823–3907, doi:10.5194/acp-7-3823-2007, <http://www.atmos-chem-phys.net/7/3823/2007/>, 2007.
- 970 Shalaby, A., Zaakey, A. S., Tawfik, A. B., Solmon, F., Giorgi, F., Stordal, F., Sillman, S., Zaveri, R. A., and Steiner, A. L.: Implementation and evaluation of online gas-phase chemistry within a regional climate model (RegCM-CHEM4), *Geosci. Model Dev.*, 5, 741–760, doi:10.5194/gmd-5-741-2012, <http://www.geosci-model-dev.net/5/741/2012/>, 2012.
- 975 Sindelarova, K., Granier, C., Bouarar, I., Guenther, A., Tilmes, S., Stavrou, T., Müller, J.-F., Kuhn, U., Stefani, P., and Knorr, W.: Global data set of biogenic VOC emissions calculated by the MEGAN model over the last 30 years, *Atmos. Chem. Phys.*, 14, 9317–9341, doi:10.5194/acp-14-9317-2014, <http://www.atmos-chem-phys.net/14/9317/2014/>, 2014.
- Sitch, S., Cox, P. M., Collins, W. J., and Huntingford, C.: Indirect radiative forcing of climate change through ozone effects on the land-carbon sink, *Nature*, 448, 791–794, doi:10.1038/nature06059, http://www.nature.com/nature/journal/v448/n7155/supinfo/nature06059_S1.html, 2007.
- 980 Smith, R. N. B.: A scheme for predicting layer clouds and their water content in a general circulation model, *Q. J. R. Meteorol. Soc.*, 116, 435–460, doi:10.1002/qj.49711649210, <http://dx.doi.org/10.1002/qj.49711649210>, 1990.
- Stevenson, D. S., Young, P. J., Naik, V., Lamarque, J. F., Shindell, D. T., Voulgarakis, A., Skeie, R. B., Dalsoren, S. B., Myhre, G., Berntsen, T. K., Folberth, G. A., Rumbold, S. T., Collins, W. J., MacKenzie, I. A., Doherty, R. M., Zeng, G., van Noije, T. P. C., Strunk, A., Bergmann, D., Cameron-Smith, P., Plummer, D. A., Strode, S. A., Horowitz, L., Lee, Y. H., Szopa, S., Sudo, K., Nagashima, T., Josse, B., Cionni, I., Righi, M., Eyring, V., Conley, A., Bowman, K. W., Wild, O., and Archibald, A.: Tropospheric ozone changes, radiative forcing and attribution to emissions in the Atmospheric Chemistry and Climate Model Intercomparison Project (ACCMIP), *Atmos. Chem. Phys.*, 13, 3063–3085, doi:10.5194/acp-13-3063-2013, 2013.
- 985 Telford, P. J., Abraham, N. L., Archibald, A. T., Braesicke, P., Dalvi, M., Morgenstern, O., O'Connor, F. M., Richards, N. A. D., and Pyle, J. A.: Implementation of the Fast-JX Photolysis scheme (v6.4) into the UKCA component of the MetUM chemistry-climate model (v7.3), *Geosci. Model Dev.*, 6, 161–177, doi:10.5194/gmd-6-161-2013, 2013.
- 995 Trail, M., Tsimpidi, A., Liu, P., Tsigaridis, K., Rudokas, J., Miller, P., Nenes, A., Hu, Y., and Russell, A.: Sensitivity of air quality to potential future climate change and emissions in the United States and major cities, *Atmos. Environ.*, 94, 552 – 563, doi:<http://dx.doi.org/10.1016/j.atmosenv.2014.05.079>, <http://www.sciencedirect.com/science/article/pii/S1352231014004452>, 2014.
- 1000 von Schneidmesser, M. and Monks, P. S.: Air quality and climate — synergies and trade-offs, *Environ. Sci.: Process Impacts*, 15, 1315–1325, doi:10.1039/C3EM00178D, 2013.

- Walters, D. N., Best, M. J., Bushell, A. C., Copsey, D., Edwards, J. M., Falloon, P. D., Harris, C. M., Lock, A. P., Manners, J. C., Morcrette, C. J., Roberts, M. J., Stratton, R. A., Webster, S., Wilkinson, J. M., Willett, M. R., Boutle, I. A., Earnshaw, P. D., Hill, G., P., MacLachlan, C., Martin, G. M., Moufouma-Okia, W., Palmer, M. D., Petch, J. C., Rooney, G. G., Scaife, A. A., and Williams, K. D.: The Met Office Unified Model Global Atmosphere 3.0/3.1 and JULES Global Land 3.0/3.1 configurations, *Geosci. Model Dev.*, 4, 919 – 941, doi:<http://dx.doi.org/10.5194/gmd-4-919-2011>, <http://www.geosci-model-dev.net/4/919/2011/gmd-4-919-2011.html>, 2011.
- Wanninkhof, R.: Relationship between wind speed and gas exchange over the ocean, *J. Geophys. Res. - Oceans*, 97, 7373–7382, doi:10.1029/92JC00188, <http://dx.doi.org/10.1029/92JC00188>, 1992.
- 1010 WHO: Review of evidence on health aspects of air pollution - REVIHAAP Project: Technical Report, World Health Organisation, <http://www.euro.who.int/en/health-topics/environment-and-health/air-quality/publications/2013/review-of-evidence-on-health-aspects-of-air-pollution-revihaap-project-final-technical-report>, 2013a.
- WHO: Health risks of air pollution in Europe HRAPIE project. Recommendations for concentration-response functions for cost-benefit analysis of particulate matter, ozone and nitrogen dioxide, World Health Organisation, <http://www.euro.who.int/en/health-topics/environment-and-health/air-quality/publications/health-risks-of-air-pollution-in-europe-hrapie-project>, 2013b.
- 1015 Wild, O., Zhu, X., and Prather, M.: Fast-J: Accurate Simulation of In- and Below-Cloud Photolysis in Tropospheric Chemical Models, *J. Atmos. Chem.*, 37, 245–282, doi:10.1023/A:1006415919030, <http://dx.doi.org/10.1023/A%3A1006415919030>, 2000.
- 1020 Wilson, D. R. and Ballard, S. P.: A microphysically based precipitation scheme for the UK meteorological office unified model, *Q. J. R. Meteorol. Soc.*, 125, 1607–1636, doi:10.1002/qj.49712555707, <http://dx.doi.org/10.1002/qj.49712555707>, 1999.
- Wong, D. C., Pleim, J., Mathur, R., Binkowski, F., Otte, T., Gilliam, R., Pouliot, G., Xiu, A., Young, J. O., and Kang, D.: WRF-CMAQ two-way coupled system with aerosol feedback: software development and preliminary results, *Geosci. Model Dev.*, 5, 299–312, doi:10.5194/gmd-5-299-2012, <http://www.geosci-model-dev.net/5/299/2012/>, 2012.
- 1025 Woodward, S.: Modeling the atmospheric life cycle and radiative impact of mineral dust in the Hadley Centre climate model, *J. Geophys. Res.: Atmos.*, 106, 18 155–18 166, doi:10.1029/2000JD900795, <http://dx.doi.org/10.1029/2000JD900795>, 2001.
- 1030 Yienger, J. and Levy II, H.: Global inventory of soil-biogenic NO_x emissions, *J. Geophys. Res.*, 100, 11,447–11,464, 1995.
- Zhang, Y., Karamchandani, P., Glotfelty, T., Streets, D. G., Grell, G., Nenes, A., Yu, F., and Bennartz, R.: Development and initial application of the global-through-urban weather research and forecasting model with chemistry (GU-WRF/Chem), *J. Geophys. Res: Atmos.*, 117, doi:10.1029/2012JD017966, <http://dx.doi.org/10.1029/2012JD017966>, 2012.
- 1035