

Table S1: Conversion table use to obtained vegetation coverage map from the ESA CCI LCC map.

ID	CCI ESA Land Cover Class Description	Trees				Shrub				Herbaceous		NVPs	Non-vegetated				
		BE	BD	NE	ND	BE	BD	NE	ND	Natural	Crops		Bare soil	Water	Snow/Ice	Urban	No data
0	No data																100
10	Cropland, rainfed										100						
11	Herbaceous cover										100						
12	Tree or shrub cover						50				50						
20	Cropland, irrigated or post-flooding										100						
30	Mosaic cropland (>50%) / natural vegetation (<50%)	5	5			5	5	5		15	60						
40	Mosaic natural vegetation (>50%) / cropland (<50%)	5	5			7.5	10	7.5		25	40						
50	Tree cover, broadleaved, evergreen, closed to open (>15%)	90				5	5										
60	Tree cover, broadleaved, deciduous, closed to open (>15%)		50				20			30							
61	Tree cover, broadleaved, deciduous, closed (>40%)		70				15			15							
62	Tree cover, broadleaved, deciduous, open (15-40%)		30				25			45							

70	Tree cover, needleleaved, evergreen, closed to open (>15%)	50	2.5	2.5	15	30			
71	Tree cover, needleleaved, evergreen, closed (>40%)	70	5	5	5	15			
72	Tree cover, needleleaved, evergreen, open (15-40%)	30			25	45			
80	Tree cover, needleleaved, deciduous, closed to open (>15%)	50	2.5	2.5	2.5	12.5	30		
81	Tree cover, needleleaved, deciduous, closed (>40%)	70	5	5	5	15			
82	Tree cover, needleleaved, deciduous, open (15-40%)	30			25	45			
90	Tree cover, mixed leaf type (broadleaved and needleleaved)	30	20	10	5	5	5	25	
100	Mosaic tree and shrub (>50%) / herbaceous cover (<50%)	7	15	4	5	8	15	6	40
110	Mosaic herbaceous cover (>50%) / tree and shrub (<50%)	4	7	4	6	13	6	60	
120	Shrubland		15	30	15	40			
121	Shrubland evergreen		30		30	40			
122	Shrubland deciduous			60		40			
130	Grassland					100			

140	Lichens and mosses				10	70	20			
150	Sparse vegetation (tree, shrub, herbaceous cover) (<15%)	4.7	4.7	3.1	4.7	4.7	3.1	10.0	45.0	20.0
151	Sparse tree (<15%)	9.4	9.4	6.2				10.0	45.0	20.0
152	Sparse shrub (<15%)				7.5	7.5	5.0	15.0	45.0	20.0
153	Sparse herbaceous cover (<15%)							35.0	45.0	20.0
160	Tree cover, flooded, fresh or brakish water	37.5	37.5					25		
170	Tree cover, flooded, saline water	75			25					
180	Shrub or herbaceous cover, flooded, fresh/saline/brakish water				25	15		30	30	
190	Urban areas									100
200	Bare areas									100
201	Consolidated bare areas									100
202	Unconsolidated bare areas									100
210	Water bodies									100
220	Permanent snow and ice									100

BE : Broadleaf Evergreen, BD : Broadleaf Deciduous, NE : Needleleaf Evergreen and ND : Needleleaf Deciduous.

Bold: modified values for the introduction of new boreal vegetation (i.e., shrubs, NVPs and cold climate grass PFTs)

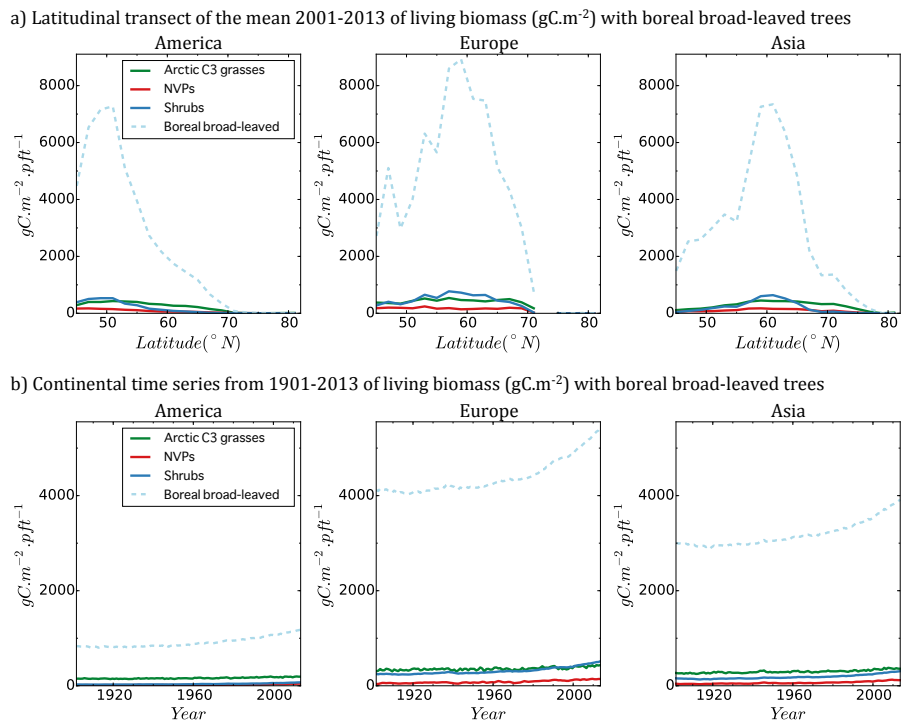


Figure S1: Latitudinal transects of the mean 2001-2013 (from 45°N) and time series from 1901 to 2013 (from 55°N) of total summer live biomass of new PFTs (cold climate C3 grasses, NVPs and boreal shrubs) and boreal broad-leaved tree (dashed).

5