

Author's Response, Minor Revision Iteration  
Nine time steps: ultra-fast statistical consistency  
testing of the Community Earth System Model  
(pyCECT v3.0)

**Referee 2**

We appreciate your feedback and address each item below. All page and line numbers refer to the diff document.

1. *Regarding the modifications for the first comment from the first round of review, some failure cases in pointing validation should be given.*

Thank you for suggesting the addition of examples of failing porting experiments. We have included results from the CESM run on Summit and Cheyenne supercomputers with Fused Multiply-Add (FMA) instructions and xCORE-AVX2 optimizations (which enable FMA instructions) in Sect. 5.1 (page 8, lines 28-32, and page 9, lines 1-6). Both machines fail CAM-ECT and UF-CAM-ECT when these instructions and optimizations are activated. FMA instructions were discovered to cause CAM-ECT failure in Milroy et al. 2016.

2. *Regarding the modifications for the fourth comment from the first round of review, I do not fully agree that “in practice none of the realistic changes suggested by climate scientists and software engineers resulted in a discrepancy between CAM-ECT and UF-CAM-ECT”. It is true that the changes in model code or computing environment can introduce changes to most of grid cells in model cases, but my example that “scientists may only change the land surface data of several grid points when simulating the atmosphere for some scientific researches, or changing a few ocean grid cells into land grid cells in coupled climate model simulations” truly happens in our model development.*

We agree that “realistic” is subjective and have rewritten the passage as

follows (see page 13, lines 31 and 33, and page 14, lines 2-3):

While devising examples where UF-CAM-ECT issues a pass and CAM-ECT issues a fail is conceptually straightforward (e.g. a seasonal or slow-propagating effect), in practice none of the changes suggested by climate scientists and software engineers resulted in discrepancy between CAM-ECT and UF-CAM-ECT. Hence, we constructed the two examples presented in Sect. 5.3.2, using changes which were formulated specifically to be undetectable by UF-CAM-ECT, but flagged as statistically distinguishable by CAM-ECT.

*I think the reason for such kind of discrepancy between CAM-ECT and UF-CAM-ECT is because UF-CAM-ECT uses globally averaged result while 9 steps are not enough to propagate local errors to the whole grid. So I guess that such kind of discrepancy can be solved when not only using the globally averaged results. If the authors agree, discussions or even update in UF-CAM-ECT should be made.*

The massive change to the soil hydrology baseflow rate in the CLM\_HYDRO\_BASEFLOW experiment does not propagate to the land surface and atmosphere by time step 9. For this experiment, an examination of spatial variation of atmospheric variables is unlikely to reveal patterns caused by the change. However, in the case of the CLM\_ALBICE.00 experiment, a modification with highly localized effects (0.36% of grid cells- predominantly in Antarctica) is detected in the atmospheric variables' global mean values by the 9<sup>th</sup> time step. Taken together, these two experiments make it unclear how to employ spatial analysis in the context of initial time step consistency testing.

Since submitting this manuscript, we have performed further work on finding root causes of statistical inconsistency in the CESM (see "Quality assurance and error identification for the Community Earth System Model" by Baker et al. in *Proceedings of the First International Workshop on Software Correctness for HPC Applications*). This work involves following a determination of statistical inconsistency back to contributing sections of code. Additional information such as spatially dependent variability could help refine this process. However, since both UF-CAM-ECT and CAM-ECT use Principal Component Analysis based on global averages, extending this framework to incorporate spatial information is non-trivial. In fact, such an enterprise is likely an entire study in itself, such as Baker et al., 2016, which created the POP-ECT based on spatial information. An investigation into root causes of statistical inconsistency, potentially including spatial analysis, is work in progress and may require an entirely different testing method.

3. *Regarding the modifications for the fifth comment from the first round of review, the authors should give related results in the paper, especially when these examples are already available.*

UF-CAM-ECT and CAM-ECT have been used with both Finite Volume (FV) and fully coupled (active ocean) models for port verification as part of the CESM software engineering workflow for pre-release versions of CESM 2.0. Such results are not published as we cannot publish results on CESM model versions that are not yet publicly available. We do not have FV and fully coupled results for the version in this manuscript.

**Note:**

We discovered a minor indexing error in the code used to generate Figure 1, and have updated the plot. The trend and the conclusions to be drawn from the plot have not changed.

# Nine time steps: ultra-fast statistical consistency testing of the Community Earth System Model (pyCECT v3.0)

Daniel J. Milroy<sup>1</sup>, Allison H. Baker<sup>2</sup>, Dorit M. Hammerling<sup>2</sup>, and Elizabeth R. Jessup<sup>1</sup>

<sup>1</sup>University of Colorado, Boulder, CO, USA

<sup>2</sup>The National Center for Atmospheric Research, Boulder, CO, USA

*Correspondence to:* Daniel Milroy (daniel.milroy@colorado.edu)

## Abstract.

The Community Earth System Model Ensemble Consistency Test (CESM-ECT) suite was developed as an alternative to requiring bitwise identical output for quality assurance. This objective test provides a statistical measurement of consistency between an accepted ensemble created by small initial temperature perturbations and a test set of CESM simulations. In this work, we extend the CESM-ECT suite by the addition of an inexpensive and robust test for ensemble consistency that is applied to Community Atmospheric Model (CAM) output after only nine model time steps. We demonstrate that adequate ensemble variability is achieved with instantaneous variable values at the ninth step, despite rapid perturbation growth and heterogeneous variable spread. We refer to this new test as the Ultra-Fast CAM Ensemble Consistency Test (UF-CAM-ECT) and demonstrate its effectiveness in practice, including its ability to detect small-scale events and its applicability to the Community Land Model (CLM). The new ultra-fast test facilitates CESM development, porting, and optimization efforts, particularly when used to complement information from the original CESM-ECT suite of tools.

**Keywords.** Community Earth System Model, Ensemble Consistency Test, statistical consistency, Community Atmosphere Model, Community Land Model, non-bit-for-bit, initial time step, ensemble spread

## 1 Introduction

Requiring bit-for-bit (BFB) identical output for quality assurance of climate codes is restrictive. The codes are complex and constantly evolving, necessitating an objective method for assuring quality without BFB equivalence. Once the BFB requirement is relaxed, evaluating the possible ways datasets can be distinct while still representing similar states is nontrivial. Baker et al. (2015) addresses this challenge by considering statistical distinguishability from an ensemble for the Community Earth System Model (CESM) (Hurrell et al., 2013), an open source Earth System Model (ESM) developed principally at the National Center for Atmospheric Research (NCAR). Baker et al. (2015) developed the CESM ensemble consistency test (CESM-ECT) to address the need for a simple method of determining whether non-BFB CESM outputs are statistically consistent with the expected output. Substituting statistical indistinguishability for BFB equivalence allows for more aggressive code optimizations, implementation of more efficient algorithms, and execution on heterogeneous computational environments.

CESM-ECT is a suite of tools which measures statistical consistency by focusing on 12 month output from two different component models within CESM: the Community Atmospheric Model (CAM), and the Parallel Ocean Program (POP), with ensemble consistency testing tools referred to as CAM-ECT and POP-ECT, respectively. The key idea of CESM-ECT is to compare new non-BFB CESM outputs (e.g., from a recently built machine or modified code) to an ensemble of simulation outputs from an “accepted” configuration (e.g., a trusted machine and software and hardware configuration), quantifying their difference by an objective statistical metric. CESM-ECT returns a pass for the new output if it is statistically indistinguishable from the distribution of the ensemble, and a fail if the results are distinct. The selection of an “accepted” ensemble is integral to CESM-ECT’s pass or fail determination for test simulations. The question of the ensemble composition and size for CAM-ECT is addressed in Milroy et al. (2016), which concludes that ensembles created by aggregating sources of variability from different compilers improve the classification power and accuracy of the test. At this time, CESM-ECT is used by CESM software engineers and scientists for both port verification and quality assurance for code modification and updates. In light of the success of CAM-ECT, the question arose as to whether the test could also be performed using a time period shorter than one year, and in particular, just a small number of time steps.

The effects of rounding, truncation and initial condition perturbation on chaotic dynamical systems is a well studied area of research with foundations in climate science. The growth of initial condition perturbations on CAM has been investigated since Rosinski and Williamson (1997), whose work resulted in the PerGro test. This test examined the rate of divergence of CAM variables at initial time steps between simulations with different initial conditions. The rates were used to compare the behavior of CAM under modification to that of an established version of the model in the context of the growth of machine roundoff error. With the advent of CAM5, PerGro became less useful for classifying model behavior, as the new parameterizations in the model resulted in much more rapid spread. Accordingly, it was commonly held that using a small number of time steps was an untenable strategy due to the belief that the model’s initial variability (that far exceeded machine roundoff) was too great to measure statistical difference effectively. Indeed, even the prospect of using runs of one simulation year for CESM-ECT was met with initial skepticism. Note that prior to the CESM-ECT approach, CESM verification was a subjective process predicated on climate scientists’ expertise in analyzing multi-century simulation output. The success of CESM-ECT’s technique of using properties of yearly CAM means (Baker et al., 2015) translated to significant cost savings for verifying the model.

Motivated by the success and cost improvement of CESM-ECT, we were curious as to whether its general technique could be applied after a few initial time steps, in analogy with Rosinski and Williamson (1997). This strategy would represent potential further cost savings by reducing the length of the the ensemble and test simulations. We were not dissuaded by the fact that the rapid growth of roundoff order perturbations in CAM5 negatively impacted PerGro’s ability to detect changes due to its comparison with machine epsilon. In fact, we show that examination of ensemble variability after several time steps permits accurate pass and fail determinations and complements CAM-ECT in terms of identifying potential problems. In this paper we present an ensemble-based consistency test that evaluates statistical distinguishability at nine time steps, hereafter designated the CAM Ultra-Fast CAM Ensemble Consistency Test (UF-CAM-ECT).

A notable difference between CAM-ECT and UF-CAM-ECT is the type of data considered. CAM-ECT spatially averages the yearly mean output to make the ensemble more robust (effectively a double average). Therefore, a limitation of CAM-ECT

is that if a bug only produces a small scale effect, then the overall climate may not be altered in an average sense at 12 months, and the change may go undetected. In this case a longer simulation time may be needed for the bug to impact the average climate. An example of this issue is the modification of the dynamics hyperviscosity parameter (NU) in Baker et al. (2015), which was not detected by CAM-ECT. In contrast, UF-CAM-ECT takes the spatial means of instantaneous values very early  
5 in the model run, which can facilitate the detection of smaller-scale modifications. In terms of simulation length for UF-CAM-ECT, we were aware that we would need to satisfy two constraints in choosing an adequate number of initial time steps: some variables can suffer excessive spread while others remain relatively constant, complicating pass/fail determinations. Balancing the run time and ensemble variability (hence test classification power) also alters the types of statistical differences the test can detect; exploring the complementarity between CAM-ECT and UF-CAM-ECT is a focus of our work.

10 In particular, we make four contributions: we demonstrate that adequate ensemble variability can be achieved at the ninth CESM time step in spite of the heterogeneous spread among the variables considered; we evaluate UF-CAM-ECT with experiments from Baker et al. (2015), code modifications from Milroy et al. (2016) and several new CAM tests; we propose an effective ensemble size; and we demonstrate that changes to the Community Land Model (CLM) can be detected by both UF-CAM-ECT and CAM-ECT.

15 In Sect. 2, we provide background for CESM-ECT, describe our experimental design and applications, and quantify CESM divergence by time step. In Sect. 3, we detail the UF-CAM-ECT method. We demonstrate the results of our investigation into the appropriate ensemble size in Sect. 4. We present experimental results in Sect. 5, and we provide guidance for the tools' usage in Sect. 6 and conclude with Sect. 7.

## 2 Background and motivation

### 20 2.1 CESM and ECT

The CESM consists of several geophysical models (e.g. atmosphere, ocean, land, etc.); the original CESM-ECT study in Baker et al. (2015) focuses on data from the Community Atmosphere Model (CAM). Currently, CESM-ECT consists of tests for CAM (CAM-ECT and UF-CAM-ECT) and POP (POP-ECT).

For CAM-ECT, CAM output data containing 12-month averages at each grid point for the atmosphere variables are written  
25 in time slices to netCDF history files. The CAM-ECT ensemble consists of CAM output data from simulations (151 by default or up to 453 simulations in Milroy et al. (2016)) of 12-month runs generated on an "accepted" machine with a trusted version of the CESM and software stack. In Baker et al. (2015), the CAM-ECT ensemble is a collection of CESM simulations with identical parameters but different perturbations to the initial atmospheric temperature field. In Milroy et al. (2016), the size and composition of the ensemble are further explored, resulting in a refined ensemble comprised of equal numbers of runs from  
30 different compilers (Intel, GNU and PGI), and a recommended size of 300 or 453.

Through sensitive dependence on initial conditions, unique initial temperature perturbations guarantee unique trajectories through the state space. The unique trajectories give rise to an ensemble of output variables which represents the model's

natural variability. Both Baker et al. (2015) and Milroy et al. (2016) use  $\mathcal{O}(10^{-14})$  perturbations to the initial atmospheric temperature field to create the ensemble at 12-months (Baker et al., 2015).

To compare the statistical characteristics of new runs, CAM-ECT begins by quantifying the variability of the accepted ensemble. Principal Component Analysis (PCA) is used to transform the original space of CAM variables into a subspace of linear combinations of the standardized variables, which are then uncorrelated. To begin, a set of new runs (three by default) is given to the Python CESM Ensemble Consistency Tool (pyCECT), which returns a pass or fail depending on the number of PC scores that fall outside a specified confidence interval (typically 95%) (Baker et al., 2015). The area weighted global means of the test runs are projected into the PC space of the ensemble, and the tool determines if the scores of the new runs are within two standard deviations of the distribution of the scores of the accepted ensemble, marking any PC score outside two standard deviations as a failure (Baker et al., 2015). For example, let  $P = \{A, B, C\}$  be the set of sets of PCs marked as failures. To make a pass or fail determination CAM-ECT operates as follows:  $S_{AB} = A \cap B, S_{AC} = A \cap C, S_{BC} = B \cap C; S = S_{AB} \cup S_{AC} \cup S_{BC}$  and returns a failure if  $|S| \geq 3$  (Milroy et al., 2016). The default parameters specifying the pass/fail criteria yield a false positive rate of 0.5%. Note that the scope of our method is flexible- we can simply add additional output variables (including diagnostic variables) to the test as long as the number of ensemble members is greater than the number of variables, and recompute the PCA. For a comprehensive explanation of the test method, see Milroy et al. (2016) and Baker et al. (2015).

More recently, another module of CESM-ECT was developed to determine statistical consistency for the Parallel Ocean Program (POP) model of CESM and designated POP-ECT (Baker et al., 2016). While similar to CAM-ECT in that an ensemble of trusted simulations is used to evaluate new runs, the statistical consistency test itself is not the same. In POP data, the spatial variation and temporal scales are much different than in CAM data, and there are many fewer variables. Hence the test does not involve PCA or spatial averages, instead making comparisons at each grid location. Note that in this work we demonstrate that CAM-ECT and UF-CAM-ECT testing can be applied directly and successfully to the Community Land Model (CLM) component of CESM, because of the tight coupling between CAM and CLM, indicating that a separate ECT module for CLM is likely unnecessary.

## 2.2 Motivation: CAM divergence in initial time steps

Applying an ensemble consistency test at nine time steps is sensible only if there is an adequate amount of ensemble variability to correctly evaluate new runs as has been shown for the one year runs. This issue is key: with too much spread a bug cannot be detected, and without enough spread the test can be too restrictive in its pass and fail determinations. Many studies consider the effects of initial condition perturbations to ensemble members on the predictability of an ESM, and the references in Kay et al. (2015) contain several examples. In particular, Deser et al. (2012) study uncertainty arising from climate model internal variability using an ensemble method, and an earlier work (Branstator and Teng, 2010) considers the predictability and forecast range of a climate model by examining the separate effects and time scales of initial conditions and forcings. Branstator and Teng (2010) also study ensemble global means and spread, as well as undertaking an entropy analysis of leading Empirical Orthogonal Functions (comparable to PCA). These studies are primarily concerned with model variability and predictability at the timescale of a several years or more. However, we note that concurrent to our work, a new method that considers one

second time steps has been developed in Wan et al. (2017). Their focus is on comparing the numerical error in time integration between a new run and control runs.

As mentioned previously, we were curious about the behavior of CESM in its initial time steps in terms of whether we would be able to determine statistical distinguishability. Fig. 1 represents our initial inquiry into this behavior. To generate the data, we ran two simulations of 11 time steps each: one with no initial condition perturbation and one with a perturbation of  $\mathcal{O}(10^{-14})$  to the initial atmospheric temperature. The vertical axis labels designate CAM variables, while the horizontal axis specifies the CESM time step. The color of each step represents the number of significant figures in common between the perturbed and unperturbed simulations' area weighted global means: a small number of figures in common (darker red) indicates a large difference. Black tiles specify time steps where the variable's value is not computed due to model sub-cycling (Hurrell et al., 2013). White tiles indicate between 10 and 17 significant figures in common (i.e., a small magnitude of difference). Most CAM variables exhibit a difference from the unperturbed simulation at the initial time step (0), and nearly all have diverged to only a few figures in common by step 10. Fig. 1 demonstrates sensitive dependence on initial conditions in CAM and suggests that choosing a small number of time steps may provide sufficient variability to determine statistical distinguishability resulting from significant changes. We further examine the ninth time step as it is the last step on the plot where sub-cycled variables are calculated. Of the total 134 CAM variables output by default in our version of CESM (see Sect. 3), 117 are utilized by CAM-ECT, as 17 are either redundant or have zero variance. In all following analyses, the first nine sub-cycled variables distinguished by red labels (AODDUST1, AODDUST3, AODVIS, BURDENBC, BURDENDUST, BURDENPOM, BURDENSEASALT, BURDENSO4, and BURDENSOA) are discarded, as they take constant values through time step 45. Thus we use 108 variables from Fig. 1 in the UF-CAM-ECT ensemble.

Next we examine the time series of each CAM variable by looking at the first 45 CESM time steps ( $t_0$  through  $t_{45}$ ) for 30 simulations to select a time step when all variables experience sufficient divergence from the values of the reference unperturbed simulation. To illustrate ensemble variability at initial time steps, Fig. 2 depicts the time evolution of three representative CAM variables from  $t_0$  to  $t_{45}$ . Most CAM variables' behavior is analogous to one of the rows in this figure. The dataset was generated by running 31 simulations: one with no initial atmospheric temperature perturbation, and 30 with different  $\mathcal{O}(10^{-14})\text{K}$  perturbations. The vertical axis labels the difference between the unperturbed simulation and the perturbed simulations' area weighted global means, divided by the unperturbed simulation's area weighted global mean value for the indicated variable at each time step. The right column visualizes the distributions of the data in the left column. Each box plot represents the values in the left column at nine time step intervals from 9-45 (inclusive). In most cases, the variables attain measurable but well-contained spread in approximately the first nine time steps. From the standpoint of CAM-ECT, Fig. 2 suggests that an ensemble created at the ninth time step will likely contain sufficient variability to categorize experimental sets correctly. Using additional time steps is unlikely to be beneficial in terms of UF-CAM-ECT sensitivity or classification accuracy, and choosing a smaller number of time steps is advantageous from the standpoint of capturing the state of test cases before feedback mechanisms take place (e.g. Sect. 5.3.3). Note that we do not claim that nine time steps is optimal in terms of computational cost, but the difference in run time between nine and 45 time steps is negligible in comparison to the cost of CAM-ECT 12-month simulations (and the majority of time for such short runs is initialization and I/O). We further discuss ensemble generation and



size in Sect. 4 with an investigation of the properties of ensembles created from the ninth time step and compare their pass/fail determinations of experimental simulations with that of CAM-ECT in Sect. 5.

### 3 UF-CAM-ECT approach

UF-CAM-ECT employs the same essential test method as CAM-ECT described in Baker et al. (2015), but with a CESM simulation length of nine time steps (which is approximately 5 simulation hours) using the default CAM time step of 1800 seconds (30 minutes). By considering a specific time step, we are using instantaneous values in contrast to CAM-ECT, which uses yearly average values. UF-CAM-ECT inputs are spatially averaged, so averaged once, whereas CAM-ECT inputs are averaged across the 12 simulation months and spatially averaged, so averaged twice. As a consequence of using instantaneous values, UF-CAM-ECT is more sensitive to localized phenomena (see Sect. 5.3.3). By virtue of the small number of modifications required to transform CAM-ECT into UF-CAM-ECT, we consider the ECT framework to have surprisingly broad applicability. Substituting instantaneous values for yearly averages permits the discernment of different features and modifications- see Sects. 5 and 5.2 for evidence of this assertion.

As in Baker et al. (2015) and Milroy et al. (2016), we run CESM simulations on a  $1^\circ$  global grid using the CAM5 model version described in Kay et al. (2015), and despite the rapid growth in perturbations in CAM5 with the default time step of 1800 seconds, we can still characterize its variability. We run simulations with 900 MPI processes and two OpenMP threads per MPI process (unless otherwise noted) on the Yellowstone machine at NCAR. Yellowstone is composed of 4,536 compute nodes, with two Xeon Sandy Bridge CPUs and 32 GB memory per node. The default compiler on Yellowstone for our CESM version is Intel 13.1.2 with -O2 optimization. We also use the CESM-supported compilers GNU 4.8.0 and PGI 13.0 in this study. With 900 MPI processes and two OpenMP threads per process, a simulation of nine time steps on Yellowstone is a factor of approximately 70 cheaper in terms of CPU time than a 12-month CESM simulation.

Either single or double precision output is suitable for UF-CAM-ECT. While CAM can be instructed to write its history files in single or double precision floating-point form, its default is single precision which was used for CAM-ECT in Baker et al. (2015) and Milroy et al. (2016). Similarly, UF-CAM-ECT takes single precision output by default. However, we chose to generate double precision output to facilitate the study represented by Fig. 1; it would have been impossible to perform a significance test of up to 17 digits otherwise. In the case of new runs written in double precision, both CAM-ECT and UF-CAM-ECT compare ensemble values promoted to double precision with the unmodified new outputs. We determined that the effects of using double or single precision outputs for ensemble generation and the evaluation of new runs did not impact statistical distinguishability.

### 4 UF-CAM-ECT ensemble size

In this section we consider the properties of the UF-CAM-ECT ensemble, particularly focusing on ensemble size. Given the use of instantaneous values at nine time steps in UF-CAM-ECT, our expectation was that the size of the ensemble would

differ from that of CAM-ECT. We considered it plausible that a larger number would be required to make proper pass and fail determinations. The ensemble should contain enough variability that UF-CAM-ECT classifies experiments expected to be statistically indistinguishable as consistent with the ensemble. Furthermore, for experiments that significantly alter the climate, UF-CAM-ECT should classify them as statistically distinct from the ensemble. Accordingly, the ensemble itself is key, and  
5 examining its size allows us to quantify the variability it contains as the number of ensemble members increases.

Our sets of experimental simulations (new runs) typically consist of 30 members, but by default pyCECT was written to do a single test on three runs. Performing the full set of possible CAM-ECT tests from a given set of experimental simulations allows us to make robust failure determinations as opposed to a single binary Pass/Fail test. In this work we utilize the Ensemble Exhaustive Test (EET) tool described in Milroy et al. (2016) to calculate an overall failure rate for sets of new runs larger than  
10 the pyCECT default. A failure percent provides more detail on the statistical difference between the ensemble and experimental set. To calculate the failure rate, EET efficiently performs all possible tests which are equal in number to the ways  $N_{test}$  simulations can be chosen from all  $N_{tot}$  simulations (i.e., the binomial coefficient:  $\binom{N_{tot}}{N_{test}}$ ). For this work most experiments consist of 30 simulations, so  $N_{tot} = 30$  and  $N_{test} = 3$  yields 4,060 possible combinations. With this tool we can make a comparison between the exhaustive test failure rate and the single-test CAM-ECT false positive rate calibrated to be 0.5%.

15 To determine a desirable UF-CAM-ECT ensemble size, we gauge whether ensembles of varying sizes contain sufficient variability by holding out sets of ensemble simulations and performing exhaustive testing against ensembles formed from the remaining elements. Since the test sets and ensemble members are generated by the same type of initial condition perturbation, the tests should pass. We begin with a set of 801 CESM simulations of nine time steps, differing by unique perturbations to the initial atmospheric temperature field in  $\{[-9.99 \times 10^{-14}, 0), (0, 9.99 \times 10^{-14}]\}$  K. The motivation for generating a  
20 large number of outputs was our expectation that ensembles created from instantaneous values would contain less variability. Moreover, since the runs are comparatively cheap, it was easy to run many simulations for testing purposes. In the following description, all draws are made without replacement. We first randomly select a subset from the 801 simulations and compute the PC loadings. From the remaining simulations, we choose 30 at random and run EET against this experimental set. For each ensemble size, we make 100 random draws to form an ensemble, and for each ensemble we make 100 random draws  
25 of experimental sets. This results in 10,000 EET results per ensemble size. For example, to test the variability of the size 350 ensemble, we choose 350 simulations at random from our set of 801 to form an ensemble. From the remaining 451 simulations, we randomly choose 30 and exhaustively test them against the generated ensemble with EET (4,060 individual tests). This is repeated 99 times for the ensemble. Then 99 more ensembles are created in the same way, yielding 10,000 tests for size 350. As such, we tested sizes from 100 through 750, and include a plot of the results in Fig. 3. Since all 801  
30 simulations are created by the same type of perturbation, we expect EET to issue a pass for each experimental set against each ensemble. This study is essentially a resampling method without replacement used jointly with cross validation to ascertain the minimum ensemble size for stable PC calculations and pass/fail determinations. With greater ensemble size the distribution of EET failure rates should narrow, reflecting the increased stability of calculated PC loadings that accompanies larger sample sizes. The EET failure rates will never be uniformly zero due to the statistical nature of the test. The chosen false positive rate of 0.5% is reflected by the red horizontal line in Fig. 3. We define an adequate ensemble size as one whose median is less  
35

than 0.5% and whose interquartile range (IQR) is narrow. The IQR is defined as the difference between the upper and lower quartiles of a distribution. For the remainder of this work we use the size 350 ensemble shown in Fig. 3, as it is the smallest ensemble that meets our criteria of median below 0.5% and narrow IQR. The larger ensembles represent diminishing returns at greater computational expense. Note that the relationship between model time step number and the ensemble size necessary to optimize test accuracy is complex. Milroy et al. (2016) concludes that ensembles of size 300 or 453 are necessary for accurate CAM-ECT test results, which bounds the 350 chosen for UF-CAM-ECT above and below. Minimizing the cost of ensemble generation and test evaluation is not a main consideration of this study, as UF-CAM-ECT is already a sizable improvement over CAM-ECT.

## 5 Results

The UF-CAM-ECT must have properties comparable or complementary to CAM-ECT including high classification accuracy. In particular, its response to modifications known to produce statistically distinguishable output should be a fail, and to changes not expected to result in statistically distinguishable output, a pass. We verify its effectiveness by performing the same tests as before with CAM-ECT: CAM namelist alterations and compiler changes from Baker et al. (2015) as well as code modifications from Milroy et al. (2016). We further explore UF-CAM-ECT properties with experiments from CLM and several new CAM experiments. In the following sections, UF-CAM-ECT experiments consist of 30 runs due to their low cost, allowing us to do exhaustive testing. For CAM-ECT, we only run EET (which is far more expensive due to the need for more than three 12-month runs) in Sect. 5.3, where the expected experiment outcomes are less certain. The UF-CAM-ECT ensemble selected for testing is of size 350 (see Fig. 3), and the CAM-ECT ensemble is size 300, comprised of 100 simulations built by Intel, GNU, and PGI compilers (the smallest size recommended in Milroy et al. (2016)).

### 5.1 Matching expectation and result: where UF and CAM-ECT agree

UF-CAM-ECT should return a pass when run against experiments expected to be statistically indistinguishable from the ensemble. A comparison between the EET failures of UF-CAM-ECT and the single test CAM-ECT for several types of experiments that all should pass is presented in the upper section of Table 1. The first type of examples for this “should pass” category includes building CESM with a different compiler or a different value-safe optimization order (e.g., with no optimization: -O0), or running CESM without OpenMP threading. These tests are labeled *INTEL-15*, *PGI*, *GNU*, *NO-OPT*, and *NO-THRD* (see Appendix A1 for further details).

A second type of “should pass” examples includes the important category of port verification to other (i.e., not Yellowstone) CESM-supported machines. [Milroy et al. \(2016\) determined that running CESM with Fused Multiply-Add \(FMA\) CPU instructions enabled resulted in statistically distinguishable output on the Argonne National Laboratory Mira supercomputer. With the instructions disabled, the machine passed CAM-ECT.](#) We list results from ~~three such the~~ machines in Table 1 [with FMA enabled and disabled on SUMMIT](#) (note that the *SUMMIT* results can also be found in Anderson et al. (2017))~~;~~, [and with xCORE-AVX2 \(a set of optimizations that activates FMA\) enabled and disabled on CHEYENNE.](#)

- ~~*CHEYENNE* SGI ICE XA cluster with Xeon Broadwell CPUs at NCAR (Intel compiler)~~
- *EDISON* Cray XC30 with Xeon Ivy Bridge CPUs at the National Energy Research Scientific Computing Center (NERSC) (Intel compiler, no FMA capability)
- *CHEYENNE* SGI ICE XA cluster with Xeon Broadwell CPUs at NCAR (Intel compiler, FMA capable)
- 5 – *SUMMIT* Dell C6320 cluster with Xeon Haswell CPUs at the University of Colorado, Boulder for the Rocky Mountain Advanced Computing Consortium (RMACC) (Intel compiler, FMA capable)

Finally, a third type of “should pass” experiments is the minimal code modifications from Milroy et al. (2016) that were developed to test the variability and classification power of CESM-ECT. These code modifications that should pass UF-CAM-ECT include: *Combine* (C), *Expand* (E), *Division-to-Multiplication* (DM), *Unpack-Order* (UO), and *Precision* (P) (see Appendix A2 for full descriptions). Note that all EET failure rates for the types of experiments that should pass (in the upper section of Table 1) are close to zero for UF-CAM-ECT, indicating full agreement between CAM-ECT and UF-CAM-ECT.

Next we further exercise UF-CAM-ECT by performing tests that are expected to fail, which are presented in the lower section of Table 1. We perform the following CAM namelist experiments from Baker et al. (2015): *DUST*, *FACTB*, *FACTIC*, *RH-MIN-LOW*, *RH-MIN-HIGH*, *CLDFRC-DP*, *UW-SH*, *CONV-LND*, *CONV-OCN*, and *NU-P* (see Appendix A1 for descriptions). For UF-CAM-ECT each “expected to fail” result in Table 1 (lower portion) is identically a 100% EET failure: a clear indication of statistical distinctness from the size 350 UF-CAM-ECT ensemble. Therefore, the CAM-ECT and UF-CAM-ECT tests are in agreement for the entire list of examples presented in Table 1, which is a testament to the utility of UF-CAM-ECT.

## 5.2 CLM Modifications

The Community Land Model (CLM), the land model component of CESM, was initially developed to study land surface processes and land-atmosphere interactions, and was a product of a merging of a community land model with the NCAR Land Surface Model (Oleson et al., 2010). More recent versions benefit from the integration of far more sophisticated physical processes than in the original code. Specifically, CLM 4.0 integrates models of vegetation phenology, surface albedos, radiative fluxes, soil and snow temperatures, hydrology, photosynthesis, river transport, urban areas, carbon-nitrogen cycles, and dynamic global vegetation, among many others (Oleson et al., 2010). Moreover, the CLM receives state variables from CAM and updates hydrology calculations, outputting the fields back to CAM (Oleson et al., 2010). It is sensible to assume that since information propagates between the land and atmosphere models, in particular between CLM and CAM, CAM-ECT and UF-CAM-ECT would be capable of detecting changes to CLM.

For our tests we use CLM version 4.0, which is the default for our CESM version (see Sect. 3) and the same version used in all experiments in this work. Our CLM experiments are described as follows:

- 30 – *CLM\_INIT* changes from using the default land initial condition file to using a cold restart.
- *CO2\_PPMV\_280* reduces the CO<sub>2</sub> type and concentration from CLM\_CO2\_TYPE = ‘diagnostic’ to CLM\_CO2\_TYPE = ‘constant’ and CCSM\_CO2\_PPMV = 280.0.

- *CLM\_VEG* activates CN mode (carbon-nitrogen cycle coupling).
- *CLM\_URBAN* disables urban air conditioning/heating and the wasteheat associated with these processes so that the internal building temperature floats freely.

See Table 2 for the test results of the experiments. The pass and fail results in this table reflect our high confidence in the expected outcome: all test determinations are in agreement, the UF-CAM-ECT passes represent EET failure rates < 1%, and failing UF-CAM-ECT tests are all 100% EET failures. We expected failures for CLM\_INIT because the CLM and CAM coupling period is 30 simulation minutes, and such a substantial change to the initial conditions should be detected immediately and persist through 12 months. CLM\_CO2\_PPMV\_280 is also a tremendous change as it effectively resets the atmospheric CO<sub>2</sub> concentration to a preindustrial value, and changes which CO<sub>2</sub> value the model uses. In particular, for CLM\_CO2\_TYPE = ‘diagnostic’ CLM uses the value from the atmosphere (367.0), while CLM\_CO2\_TYPE = ‘constant’ instructs CLM to use the value specified by CCSM\_CO2\_PPMV. Therefore both tests detect the large reduction in CO<sub>2</sub> concentration, generating failures at the ninth time step and in the 12 month average. CLM\_VEG was also expected to fail immediately, given how quickly the CN coupling is expressed. Finally, the passing results of both CAM-ECT and UF-CAM-ECT for CLM\_URBAN is unsurprising as the urban fraction is less than 1% of the land surface, and heating and air conditioning only occur over a fraction of this 1% as well.

Our experiments thus far indicate that both CAM-ECT and UF-CAM-ECT will detect errors in CLM, and that a separate CESM-ECT module for CLM (required for POP) is most likely not needed. While this finding may be unsurprising given how tightly CAM and CLM are coupled, it represents a significant broadening of the tools’ applicability and utility. Note that while we have not generated CAM-ECT or UF-CAM-ECT ensembles with CN mode activated in CLM (which is a common configuration for land modeling), we have no reason to believe that statistical consistency testing of CN-related CLM code changes would not be equally successful. Consistency testing of active CN mode code changes bears further investigation and will be a subject of future work.

### 5.3 UF-CAM-ECT and CAM-ECT disagreement

In this section we test experiments that result in contradictory determinations by UF-CAM-ECT and CAM-ECT. Due to the disagreement, all tests’ EET failure percentages are reported for 30 run experimental sets for both UF-CAM-ECT and CAM-ECT. We present the results in Table 3. The modifications are described in the following list (note that *NU* and *RAND-MT* can also be found in Baker et al. (2015) and Milroy (2015), respectively):

- *RAND-MT* substitutes the Mersenne Twister Pseudo Random Number Generator (PRNG) for the default PRNG in radiation modules.
- *TSTEP\_TYPE* changes the time stepping method for the spectral element dynamical core from 4 (Kinnmark & Gray Runge-Kutta 4 stage) to 5 (Kinnmark & Gray Runge-Kutta 5 stage).

- *QSPLIT* alters how often tracer advection is done in terms of dynamics time steps, the default is 1, and we increase it to 9.
  - *CPL\_BUG* sets albedos to zero above 57 degrees North latitude in the coupler.
  - *CLM\_HYDRO\_BASEFLOW* increases the soil hydrology baseflow rate coefficient in CLM from  $5.5 \times 10^{-3}$  to 55.
- 5
- *NU* changes the dynamics hyperviscosity (horizontal diffusion) from  $1 \times 10^{15}$  to  $9 \times 10^{14}$ .
  - *CLM\_ALBICE\_00* changes the albedo of bare ice on glaciers (visible and near-infrared albedos for glacier ice) from 0.80,0.55 to 0.00,0.00.

### 5.3.1 Minor setting changes: RAND-MT, TSTEP\_TYPE, and QSPLIT

RAND-MT is a test of the response to substituting the CAM default Pseudo Random Number Generator (PRNG) in the radiation module for a different CESM-supported PRNG (Milroy, 2015). Since the PRNG affects radiation modules which compute cloud properties, it is reasonable to conclude that the change alters the distributions of cloud-related CAM variables (such as cloud covers). Both CAM and its PRNG are deterministic; the variability at nine time steps exhibits different characteristics depending on the PRNG. However, we would not expect (nor would we want) a change to the PRNG to induce statistically distinguishable results over a longer period such as a simulation year, and this expectation is confirmed by CAM-ECT.

15 TSTEP\_TYPE and QSPLIT are changes to attributes of the model dynamics: TSTEP\_TYPE alters the time stepping method in the dynamical core, and QSPLIT modifies the frequency of tracer advection computation relative to the dynamics time step. It is well known that CAM is generally much more sensitive to the physics time step than to the dynamics time step. Time-stepping errors in CAM dynamics do not affect large-scale well-resolved waves in the atmosphere but they do affect small-scale fast waves. While short-term weather should be affected, the model climate is not expected to be affected by time-stepping method or dynamics time-step. However, like the RAND-MT example, UF-CAM-ECT registers the less “smoothed” instantaneous global means as failures for both tests, while CAM-ECT finds the yearly averaged global means to be statistically indistinguishable. Small grid-scale waves are affected by choice of TSTEP\_TYPE in short runs, however, the long-term climate is not affected by time-stepping method. The results of these experiments are shown in the top section of Table 3, and for experiments of this type, CAM-ECT yields anticipated results. This group of experiments exemplifies the categories of experiments to which UF-CAM-ECT may be sensitive: small-scale or minor changes to initial conditions or settings which are irrelevant in the long term. Therefore, while the UF-CAM-ECT results can be misleading in particular in these cases, they may indicate a larger problem as will be seen in the examples in Sect. 5.3.3.

### 5.3.2 Contrived experiments: CPL\_BUG and CLM\_HYDRO\_BASEFLOW

Motivated by experiments which bifurcate the tests’ findings, we seek the reverse of the previous three experiments in Sect. 5.3.1: examples of a parameter change or code modification that are distinguishable in the yearly global means, but are undetectable in the first time steps. We consulted with climate scientists and CESM software engineers, testing a large number of

possible modifications to find some that would pass UF-CAM-ECT and fail CAM-ECT. The results in the center section of Table 3 represent a small fraction of the tests performed, as examples that met the condition of UF-CAM-ECT pass and CAM-ECT fail were exceedingly difficult to find. In fact, CPL\_BUG and CLM\_HYDRO\_BASEFLOW were devised specifically for that purpose. That their failure rates are far from 100% is an indication of the challenge of finding an error that is not present at nine time steps, but manifests clearly in the annual average.

CPL\_BUG is devised to demonstrate that it is possible to construct an example that does not yield substantial differences in output at nine time steps, but does impact the yearly average. Selectively setting the albedos to zero above 57 degrees latitude has little effect at nine time steps since this region experiences almost zero solar radiation during the first five hours of January 1. The nonzero CAM-ECT result is a consequence of using annual averages since for the Northern hemisphere summer months this region is exposed to nearly constant solar irradiance.

CLM\_HYDRO\_BASEFLOW is another manufactured example of a change designed to be undetectable at the ninth time step. It is an increase in the exponent of the soil hydrology baseflow rate coefficient, which controls the amount of water drained from the soil. This substantial change (four orders of magnitude) cannot be detected by UF-CAM-ECT since the differences at nine time steps are confined to deep layers of the soil. However, through the year they propagate to and eventually influence the atmosphere through changes in surface fluxes, which is corroborated by the much higher CAM-ECT failure rate.

### 5.3.3 Small but consequential changes: NU and CLM\_ALBICE\_00

CAM-ECT results in Baker et al. (2015) for the NU experiment are of particular interest as climate scientists expected this experiment to fail. NU is an extraordinary case, as Baker et al. (2015) acknowledge: “Because CESM-ECT [currently CAM-ECT] looks at variable annual global means, the ‘pass’ result [for NU] is not entirely surprising as errors in small-scale behavior are unlikely to be detected in a yearly global mean.” The change to NU should be evident only where there are strong field gradients and small scale precipitation. We applied EET for CAM-ECT with 30 runs and determined the failure rate to be 33.0% against the reference ensemble. In terms of CAM-ECT this experiment was borderline, as the probability that CAM-ECT will classify three NU runs a “pass” is not much greater than a “fail” outcome. In contrast UF-CAM-ECT is able to detect this difference much more definitively in the instantaneous data at the ninth time step. We would also expect this experiment to fail more definitively for simulations longer than 12 months, once the small but nevertheless consequential change in NU had time to manifest.

CLM\_ALBICE\_00 affects a very small percent of the land area. Furthermore, of that land area, only regions where the fractional snow cover is  $< 1$  and incoming solar radiation is present will be affected by the modification to the bare ice albedo. Therefore, it was expected to pass both CAM-ECT and UF-CAM-ECT, yet the EET failure rate for UF-CAM-ECT was 96.3%. We consider the CLM\_ALBICE\_00 experiment in greater detail to better understand the differences between UF-CAM-ECT and CAM-ECT. Since the change is small and localized, we need to discover the reason why UF-CAM-ECT detects a statistical difference, particularly given that many northern regions with glaciation receive little or no solar radiation at time step 9 (January 1). To explain this unanticipated result, we created box plots of all 108 CAM variables tested by UF-CAM-ECT to compare the distributions (at nine time steps and at one year) of the ensemble versus the 30 CLM\_ALBICE\_00

simulations. Each plot was generated by subtracting the unperturbed ensemble value from each value, then rescaling by the unperturbed ensemble value. After analyzing the plots, we isolated four variables (FSDSC: clearsky downwelling solar flux at surface, FSNSC: clearsky net solar flux at surface, FSNTC: clearsky net solar flux at top of model, and FSNTOAC: clearsky net solar flux at top of atmosphere) that exhibited markedly different behaviors between the ensemble and experimental outputs.

5 Fig. 4 displays the results. The left column represents distributions from the ninth time step which demonstrate the distinction between the ensemble and experiment: the top three variables' distributions have no overlap. For the 12-month runs, the ensemble and experiments are much less distinct. It is sensible that the global mean net fluxes are increased by the albedo change, as the incident solar radiation should be a constant, while the zero albedo forces all radiation impinging on exposed ice to be absorbed. The absorption reduces the negative radiation flux, making the net flux more positive. The yearly mean

10 distributions are not altered enough for CAM-ECT to robustly detect a fail (12.8% EET failure rate), which is due to feedback mechanisms having taken hold and leading to spatially heterogeneous effects, which are seen as such in the spatial and temporal 12-month average.

The percentage of grid cells affected by the CLM\_ALBICE\_00 modification is 0.36% (calculated by counting the number of cells with nonzero FSNS, fractional snow cover (FSNO in CLM)  $\in (1, 0)$ , and PCT\_GLACIER greater than zero in the surface

15 dataset). Remarkably, despite such a small area being affected by the albice change, UF-CAM-ECT flags these simulations as statistically distinguishable. The results of CLM\_ALBICE\_00 taken together with NU indicate that UF-CAM-ECT demonstrates the ability to detect small-scale events, in fulfillment of the desired capability for CAM-ECT mentioned as future work in Baker et al. (2015).

## 6 Implications and ECT Guidelines

20 In this section we summarize the lessons learned in Sect. 5 to provide both clarification and guidance on the use of the complementary tools UF-CAM-ECT and CAM-ECT in practice. Our extensive experiments, a representative subset of which are presented in Sect. 5, indicate that UF-CAM-ECT and CAM-ECT typically return the same determination. Indeed, finding counterexamples was non-trivial. Certainly the types of modifications that occur frequently in the CESM development cycle (e.g., compiler upgrades, new CESM-supported platforms, minor code rearrangements for optimization, and initial state changes)

25 are all equally well classified by both UF-CAM-ECT and CAM-ECT. Therefore, in practice we recommend the use of the cheaper UF-CAM-ECT as a first step for port verification, code optimization and compiler flag changes, as well as other frequent CESM quality assurance procedures. Moreover, the low cost of ensemble generation provides researchers and software engineers with the ability to generate ensembles rapidly for evaluation of new physics, chemistry, or other modifications which could affect the climate.

30 CAM-ECT is used as a second step only when needed for complementary information as follows. First, our experimentation indicates that if UF-CAM-ECT issues a pass, it is very likely that CAM-ECT will also issue a pass. While ~~discovering~~ devising examples where UF-CAM-ECT issues a pass and CAM-ECT issues a fail is conceptually straightforward (e.g. a seasonal or slow-propagating effect), in practice none of the ~~realistic~~ changes suggested by climate scientists and software engineers



resulted in a discrepancy between CAM-ECT and UF-CAM-ECT. Hence, we constructed the two examples presented in Sect. 5.3.2, using changes which ~~went beyond those described as realistic~~ were formulated specifically to be undetectable by UF-CAM-ECT, but flagged as statistically distinguishable by CAM-ECT. It appears that if a change propagates so slowly as not to be detected at the ninth time step, its later effects can be smoothed by the annual averaging which includes the initial behavior. Accordingly, the change may go undetected by CAM-ECT when used without EET (e.g., failure rates for CAM-ECT in the lower third of Table 3 are well below 100%). A user may choose to run both tests, but in practice applying CAM-ECT as a second step should only be considered when UF-CAM-ECT issues a fail. In particular, because we have shown that UF-CAM-ECT is quite sensitive to small-scale errors or alterations (see CLM\_ALBICE\_00 in Sect. 5.3.3 which impacted less than 1% of land area), by running CAM-ECT when UF-CAM-ECT fails, we can further determine whether the change also impacted statistical consistency during the first year. If CAM-ECT also fails then the UF-CAM-ECT result is confirmed. On the other hand, if CAM-ECT passes, the situation is more nuanced. Either a small-scale change has occurred that is unimportant long-term for the mean climate (e.g., RAND-MT), or a small-scale change has occurred that will require a longer time scale than 12 months to manifest decisively (e.g., NU). In either case, the user must have an understanding of the characteristics of the modification being tested to reconcile the results at this point. Future work will include investigation of ensembles at longer time scales, which will aid in the overall determination of the relevance of the error.

## 7 Conclusions

We developed a new Ultra-Fast CAM Ensemble Consistency test from output at the ninth time step of the CESM. Conceived largely out of curiosity, it proved to possess surprisingly wide applicability in part due to its use of instantaneous values rather than annual means. The short simulation time translated to a cost savings of a factor of approximately 70 over a simulation of 12 months, considerably reducing the expense of ensemble and test run creation. Through methodical testing, we selected a UF-CAM-ECT ensemble size (350) that balances the variability contained in the ensemble (hence its ability to classify new runs) with the cost of generation. We performed extensive experimentation to test which modifications known to produce statistically distinguishable and indistinguishable results would be classified as such by UF-CAM-ECT. These experiments yielded clear pass/fail results that were in agreement between the two tests, allowing us to more confidently prescribe use cases for UF-CAM-ECT. Due to the established feedback mechanisms between the Community Land Model (CLM) component of CESM and CAM, we extended CESM-ECT testing to CLM. Our determination that both CAM-ECT and UF-CAM-ECT are capable of identifying statistical distinguishability resulting from alterations to CLM indicates that a separate ECT module for CLM is likely unnecessary. By studying experiments where CAM-ECT and UF-CAM-ECT arrived at different findings we concluded that UF-CAM-ECT is capable of detecting small-scale changes, a feature that facilitates root cause analysis for test failures in conjunction with CAM-ECT.

UF-CAM-ECT will be an asset to CESM model developers, software engineers, and climate scientists. The ultra-fast test is cheap and quick, and further testing is not required when a passing result indicating statistical consistency is issued. Ultimately the two tests can be used in concert to provide richer feedback to software engineers, hardware experts, and climate scientists:

combining the results from the ninth time step and 12 months enhances understanding of the time scales on which changes become operative and influential. We intend to refine our understanding of both UF-CAM-ECT and CAM-ECT via an upcoming study on decadal simulations. We hope to determine whether the tests are capable of identifying statistical consistency (or lack thereof) of modifications that may take many years to manifest fully. Another potential application of the tests is the detection of hardware or software issues during the initial evaluation and routine operation of a supercomputer.

## 8 Code and Data Availability

The current version (v3.0.0) of Python tools can be obtained directly from <https://github.com/NCAR/PyCECT>. In addition, CESM-ECT is available as part of the Common Infrastructure for Modeling Earth (CIME) at <https://github.com/ESMCI/cime>. CESM-ECT will be included in the CESM public releases beginning with the version 2.0 series (expected to be available in Spring 2017).

## Appendix A: Referenced experiments

### A1 Experiments from Baker et al. (2015)

- NO-OPT: changing the Intel compiler flag to remove optimization
- INTEL-15: changing the Intel compiler version to 15.0.0
- 15 – NO-THRD: compiling CAM without threading (MPI-only)
- PGI: using the CESM-supported PGI compiler (13.0)
- GNU: using the CESM-supported GNU compiler (4.8.0)
- EDISON: National Energy Research Scientific Computing Center (Cray XC30, Intel)
- DUST: dust emissions; dust\_emis\_fact = 0.45 (original default 0.55)
- 20 – FACTB: wet deposition of aerosols convection factor; sol\_factb\_interstitial = 1.0 (original default 0.1)
- FACTIC: wet deposition of aerosols convection factor; sol\_factic\_interstitial = 1.0 (original default 0.4)
- RH-MIN-LOW: min. relative humidity for low clouds; cldfrc\_rhminl = 0.85 (original default 0.8975)
- RH-MIN-HIGH: min. relative humidity for high clouds; cldfrc\_rhminh = 0.9 (original default 0.8)
- CLDFRC-DP: deep convection cloud fraction; cld\_frc\_dp1 = 0.14 (original default 0.10)
- 25 – UW-SH: penetrative entrainment efficiency - shallow; uwschu\_rpen = 10.0 (original default 5.0)

- CONV-LND: autoconversion over land in deep convection; `zmconv_c0_lnd` = 0.0035 (original default 0.0059)
- CONV-OCN: autoconversion over ocean in deep convection; `zmconv_c0_ocn` = 0.0035 (original default 0.045)
- NU-P: hyperviscosity for layer thickness (vertical lagrangian dynamics); `nu_p` =  $1 \times 10^{14}$  (original default  $1 \times 10^{15}$ )
- NU: dynamics hyperviscosity (horizontal diffusion); `nu` =  $9 \times 10^{14}$  (original default  $1 \times 10^{15}$ )

## 5 A2 Experiments from Milroy et al. (2016)

- **Combine (C)** is a single line code change to the `preq_omega_ps` subroutine.
- **Expand (E)** is a modification to the `preq_hydrostatic` subroutine. We expand the calculation of the variable `phi`.
- **Division-to-multiplication (DM)**: The original version of the `euler_step` subroutine of the primitive trace advection module (`prim_advection_mod.F90`) includes an operation that divides by a spherical mass matrix `spheremp`. The modification to this kernel consists of declaring a temporary variable (`tmpsphere`) defined as the inverse of `spheremp`, and substituting a multiplication for the more expensive division operation.
- **Unpack-order (UO)** changes the order that an MPI receive buffer is unpacked in the `edgeVunpack` subroutine of `edge_mod.F90`. Changing the order of buffer unpacking has implications for performance, as traversing the buffer sub-optimally can prevent cache prefetching.
- **Precision (P)** is a performance-oriented modification to the water vapor saturation module (`wv_sat_methods.F90`). From a performance perspective this could be extremely advantageous and could present an opportunity for coprocessor acceleration due to superior single-precision computation speed. We modify the elemental function that computes saturation vapor pressure by substituting `r4` for `r8` and casting to single-precision in the original.

*Acknowledgements.* Many thanks are due Haiying Xu for her help modifying pyCECT for comparison of CESM-ECT single and double precision floating-point statistical consistency results. We wish to thank Michael Levy for his suggestion of altering albedos above a certain northern latitude (CPL\_BUG), Peter Lauritzen for his fruitful discussion of CAM physics and dynamics, and Keith Oleson for his considerable assistance interpreting and visualizing CLM experiments and output.

We would like to acknowledge high-performance computing support from Yellowstone (ark:/85065/d7wd3xhc) and Cheyenne (doi:10.5065/D6RX99HX) provided by NCAR’s Computational and Information Systems Laboratory, sponsored by the National Science Foundation. This work utilized the RMACC Summit supercomputer, which is supported by the National Science Foundation (awards ACI-1532235 and ACI-1532236), the University of Colorado Boulder, and Colorado State University. The Summit supercomputer is a joint effort of the University of Colorado Boulder and Colorado State University. This research also used computing resources provided by the National Energy Research Scientific Computing Center, a DOE Office of Science User Facility supported by the Office of Science of the US Department of Energy under contract no. DEAC02-05CH11231. This work was funded in part by the Intel Parallel Computing Center for Weather and Climate Simulation (<https://software.intel.com/en-us/articles/intel-parallel-computing-center-at-the-university-of-colorado-boulder-and-the-national>).

## References

- Anderson, J., Burns, P. J., Milroy, D., Ruprecht, P., Hauser, T., and Siegel, H. J.: Deploying RMACC Summit: An HPC Resource for the Rocky Mountain Region, in: Proceedings of the Practice and Experience in Advanced Research Computing 2017 on Sustainability, Success and Impact, PEARC17, pp. 8:1–8:7, ACM, New York, NY, USA, doi:10.1145/3093338.3093379, <http://doi.acm.org/10.1145/3093338.3093379>, 2017.
- 5 Baker, A. H., Hammerling, D. M., Levy, M. N., Xu, H., Dennis, J. M., Eaton, B. E., Edwards, J., Hannay, C., Mickelson, S. A., Neale, R. B., Nychka, D., Shollenberger, J., Tribbia, J., Vertenstein, M., and Williamson, D.: A new ensemble-based consistency test for the Community Earth System Model, *Geoscientific Model Development*, 8, 2829–2840, doi:10.5194/gmd-8-2829-2015, 2015.
- Baker, A. H., Hu, Y., Hammerling, D. M., Tseng, Y.-H., Xu, H., Huang, X., Bryan, F. O., and Yang, G.: Evaluating statistical consistency in the ocean model component of the Community Earth System Model (pyCECT v2.0), *Geoscientific Model Development*, 9, 2391–2406, doi:10.5194/gmd-9-2391-2016, <http://www.geosci-model-dev.net/9/2391/2016/>, 2016.
- 10 Branstator, G. and Teng, H.: Two Limits of Initial-Value Decadal Predictability in a CGCM, *Journal of Climate*, 23, 6292–6311, doi:10.1175/2010JCLI3678.1, <http://dx.doi.org/10.1175/2010JCLI3678.1>, 2010.
- Deser, C., Phillips, A., Bourdette, V., and Teng, H.: Uncertainty in climate change projections: the role of internal variability, *Climate Dynamics*, 38, 527–546, doi:10.1007/s00382-010-0977-x, <http://dx.doi.org/10.1007/s00382-010-0977-x>, 2012.
- 15 Hurrell, J., Holland, M., Gent, P., Ghan, S., Kay, J., Kushner, P., Lamarque, J.-F., Large, W., Lawrence, D., Lindsay, K., Lipscomb, W., Long, M., Mahowald, N., Marsh, D., Neale, R., Rasch, P., Vavrus, S., Vertenstein, M., Bader, D., Collins, W., Hack, J., Kiehl, J., and Marshall, S.: The Community Earth System Model: A Framework for Collaborative Research, *Bulletin of the American Meteorological Society*, 94, 1339–1360, doi:10.1175/BAMS-D-12-00121.1, 2013.
- 20 Kay, J. E., Deser, C., Phillips, A., Mai, A., Hannay, C., Strand, G., Arblaster, J. M., Bates, S. C., Danabasoglu, G., Edwards, J., Holland, M., Kushner, P., Lamarque, J.-F., Lawrence, D., Lindsay, K., Middleton, A., Munoz, E., Neale, R., Oleson, K., Polvani, L., and Vertenstein, M.: The Community Earth System Model (CESM) Large Ensemble Project: A Community Resource for Studying Climate Change in the Presence of Internal Climate Variability, *Bulletin of the American Meteorological Society*, 96, 1333–1349, doi:10.1175/BAMS-D-13-00255.1, <http://dx.doi.org/10.1175/BAMS-D-13-00255.1>, 2015.
- 25 Milroy, D. J.: Refining the composition of CESM-ECT ensembles, *ProQuest Dissertations and Theses*, p. 60, <http://search.proquest.com/docview/1760171657?accountid=28174>, copyright - Database copyright ProQuest LLC; ProQuest does not claim copyright in the individual underlying works; Last updated - 2016-03-21, 2015.
- Milroy, D. J., Baker, A. H., Hammerling, D. M., Dennis, J. M., Mickelson, S. A., and Jessup, E. R.: Towards Characterizing the Variability of Statistically Consistent Community Earth System Model Simulations, *Procedia Computer Science*, 80, 1589 – 1600, doi:<https://doi.org/10.1016/j.procs.2016.05.489>, <http://www.sciencedirect.com/science/article/pii/S1877050916309759>, [international-International](http://www.international-conference-on-computational-science-2016.com/) Conference on Computational Science 2016, ~~HCES~~ ~~+~~ ~~ICCS~~ 2016, 6-8 June 2016, San Diego, California, ~~USA~~ ~~+~~ ~~USA~~, 2016.
- 30 Oleson, K. W., Lawrence, D. M., B, G., Flanner, M. G., Kluzek, E., J, P., Levis, S., Swenson, S. C., Thornton, E., Feddema, J., Heald, C. L., Lamarque, J., Niu, G., Qian, T., Running, S., Sakaguchi, K., Yang, L., Zeng, X., and Zeng, X.: Technical Description of version 4.0 of the Community Land Model (CLM), 2010.
- 35 Rosinski, J. M. and Williamson, D. L.: The Accumulation of Rounding Errors and Port Validation for Global Atmospheric Models, *SIAM J. Sci. Comput.*, 18, 552–564, doi:10.1137/S1064827594275534, <http://dx.doi.org/10.1137/S1064827594275534>, 1997.

Wan, H., Zhang, K., Rasch, P. J., Singh, B., Chen, X., and Edwards, J.: A new and inexpensive non-bit-for-bit solution reproducibility test based on time step convergence (TSC1.0), *Geoscientific Model Development*, 10, 537–552, doi:10.5194/gmd-10-537-2017, <http://www.geosci-model-dev.net/10/537/2017/>, 2017.

**Table 1.** CAM-ECT and UF-CAM-ECT return the same result (pass or fail) for the experiments listed. The CAM-ECT column is the result of a single test on three runs. The UF-CAM-ECT column represents EET results from 30 runs. Descriptions of the porting experiments (~~CHEYENNE~~, EDISON, CHEYENNE, and SUMMIT) are listed in Sect 5.1. The remaining experiments are described in Appendices A1 and A2.

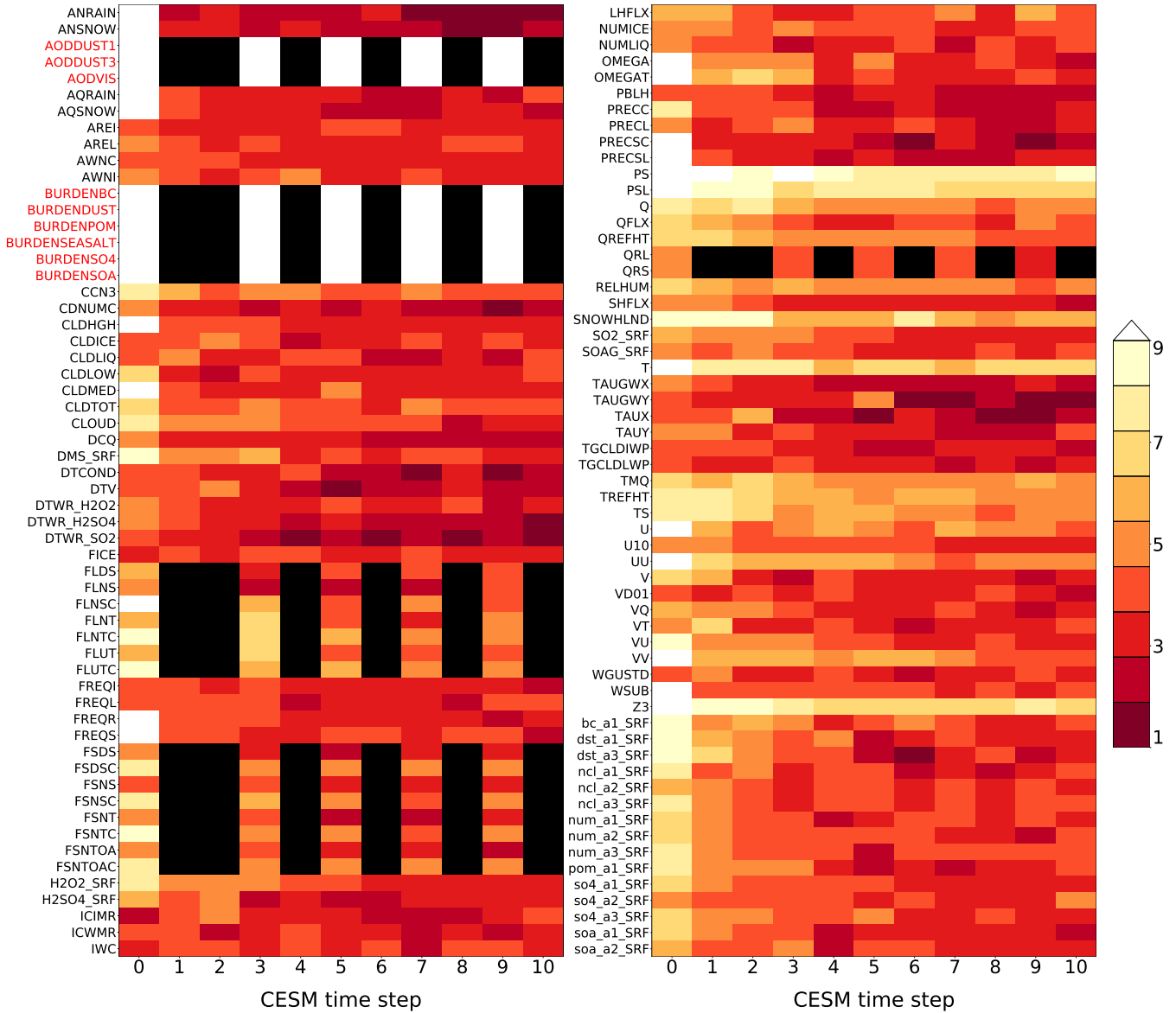
Experiment	CAM-ECT	UF-CAM-ECT	
	Result	Result	EET failure %
INTEL-15	Pass	Pass	0.1%
PGI	Pass	Pass	0.1%
GNU	Pass	Pass	0.0%
NO-OPT	Pass	Pass	0.0%
NO-THRD	Pass	Pass	0.0%
<del>CHEYENNE</del> -EDISON	Pass	Pass	<del>2.1</del> 0.1%
<del>EDISON</del> - <u>CHEYENNE (AVX2 disabled)</u>	Pass	Pass	<del>0.1</del> 2.1%
SUMMIT ( <u>FMA disabled</u> )	Pass	Pass	0.0%
C	Pass	Pass	0.7%
E	Pass	Pass	0.0%
DM	Pass	Pass	0.0%
UO	Pass	Pass	0.0%
P	Pass	Pass	0.0%
<u>CHEYENNE (AVX2 enabled)</u>	<u>Fail</u>	<u>Fail</u>	<u>92.2%</u>
<u>SUMMIT (FMA enabled)</u>	<u>Fail</u>	<u>Fail</u>	<u>77.2%</u>
DUST	Fail	Fail	100.0%
FACTB	Fail	Fail	100.0%
FACTIC	Fail	Fail	100.0%
RH-MIN-LOW	Fail	Fail	100.0%
RH-MIN-HIGH	Fail	Fail	100.0%
CLDFRC-DP	Fail	Fail	100.0%
UW-SH	Fail	Fail	100.0%
CONV-LND	Fail	Fail	100.0%
CONV-OCN	Fail	Fail	100.0%
NU-P	Fail	Fail	100.0%

**Table 2.** These CLM experiments show agreement between CAM-ECT and UF-CAM-ECT as well as with the expected outcome. The CAM-ECT column is the result of a single ECT test on three runs. The UF-CAM-ECT column represents EET failure rates from 30 runs.

<b>Experiment</b>	<b>CAM-ECT</b>	<b>UF-CAM-ECT</b>	
	<b>Result</b>	<b>Result</b>	<b>EET failure %</b>
CLM_INIT	Fail	Fail	100.0%
CLM_CO2_PPMV_280	Fail	Fail	100.0%
CLM_VEG	Fail	Fail	100.0%
CLM_URBAN	Pass	Pass	0.1%

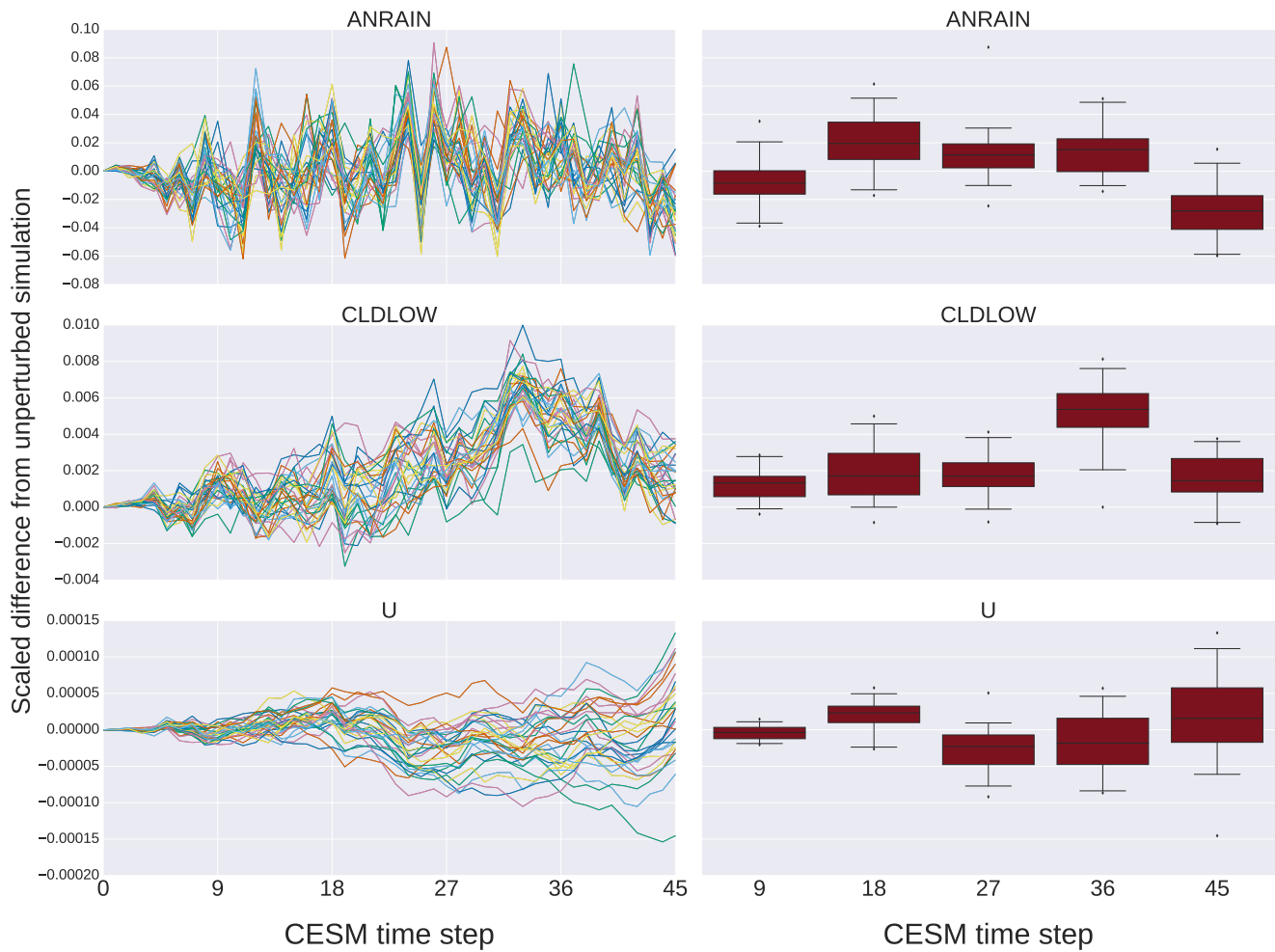
**Table 3.** These experiments represent disagreement between UF-CAM-ECT and fail CAM-ECT. Shown are the EET failure rates from 30 runs.

<b>Experiment</b>	<b>CAM-ECT</b>	<b>UF-CAM-ECT</b>
	<b>EET failure %</b>	<b>EET failure %</b>
RAND-MT	4.7%	99.4%
TSTEP_TYPE	2.5%	100%
QSPLIT	1.8%	100%
CPL_BUG	41.6%	0.1%
CLM_HYDRO_BASEFLOW	30.7%	0.1%
NU	33.0%	100%
CLM_ALBICE_00	12.8%	96.3%

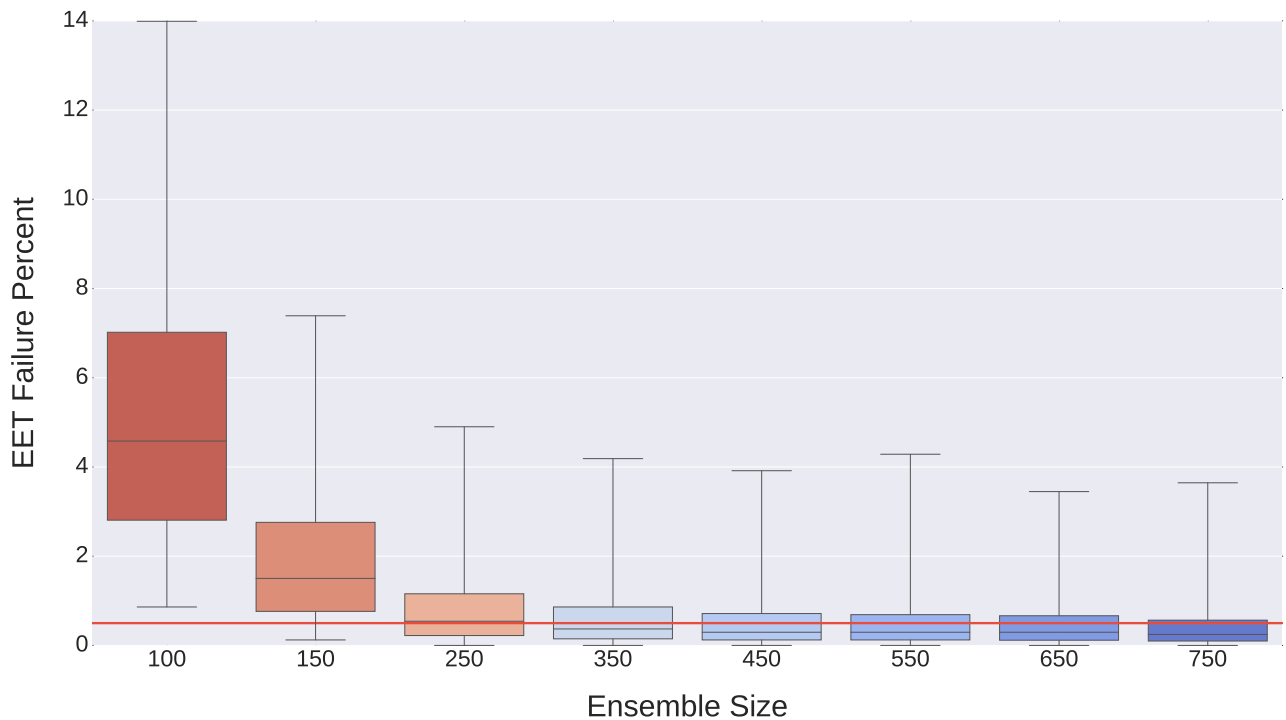


**Figure 1.** Representation of effects of initial CAM temperature perturbation over 11 time steps (including  $t = 0$ ). CAM variables are listed on the vertical axis, and the horizontal axis records the simulation time step. The color bar designates equality of the corresponding variables between the unperturbed and perturbed simulations' area weighted global means after being rounded to  $n$  significant digits ( $n$  is the color) at each time step. Time steps where the corresponding variable was not computed (subcycled variables) are colored black. White indicates equality of greater than 9 significant digits (i.e. 10-17). Red variable names are not used by UF-CAM-ECT.

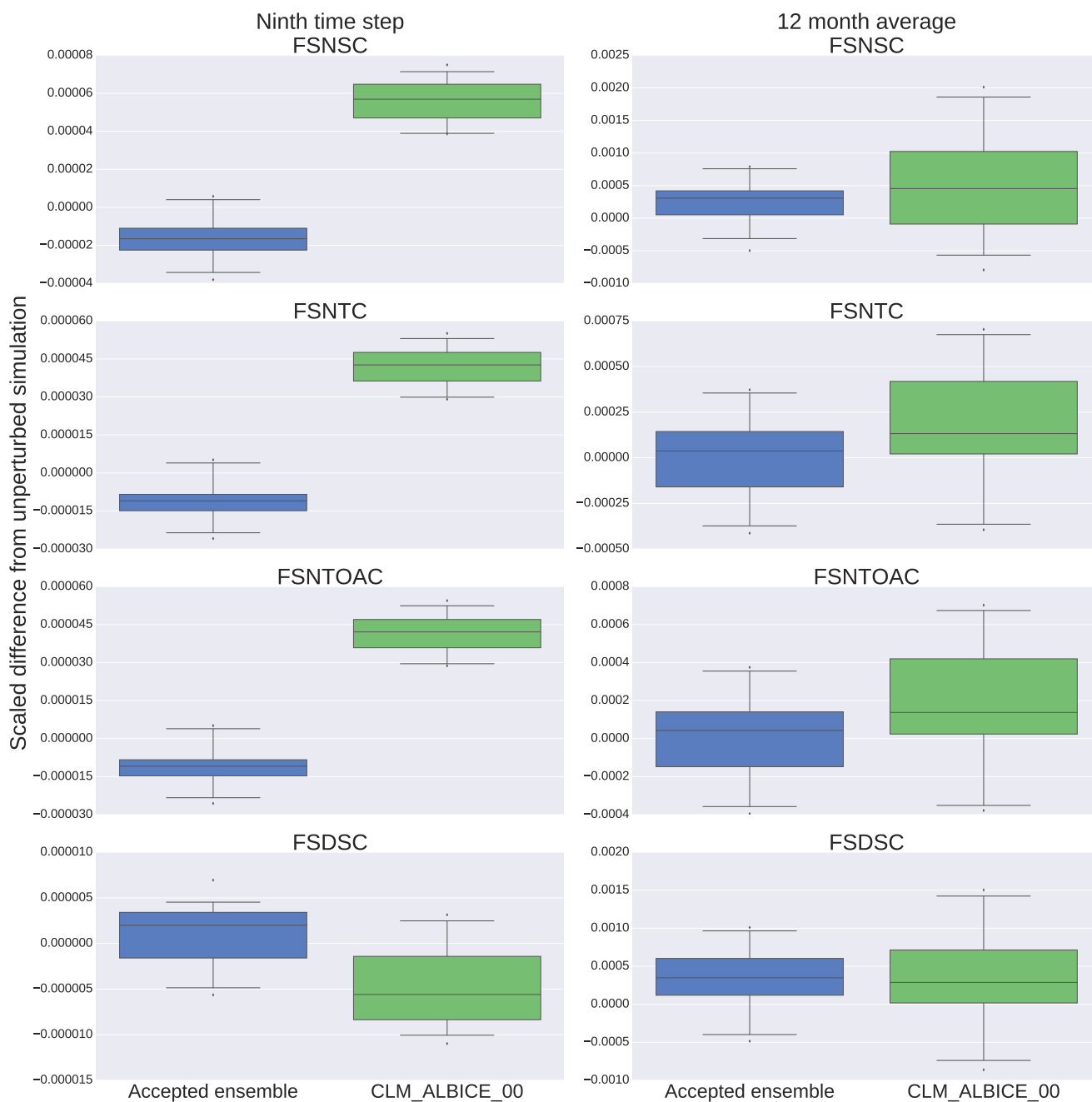




**Figure 2.** The vertical axis labels the difference between the unperturbed simulation and the perturbed simulations' area weighted global means, divided by the unperturbed simulation's area weighted global mean for the indicated variable at each time step. The horizontal axis is the CESM time step with intervals chosen as multiples of nine. The left column plots are time series representations of the values three CAM variables chosen as representatives of the entire set. (Variables behave similarly to one of these three.) The right column plots are statistical representations of the 30 values plotted at each vertical grid line of the corresponding left column. More directly, each box plot depicts the distribution of values of each variable for each time step from 9-45 in multiples of 9.



**Figure 3.** Box plot of EET failure rate distributions as a function of ensemble size. The distributions are generated by randomly selecting a number of simulations (ensemble size) from a set of 801 simulations to compute PC loadings. From the remaining set, 30 simulations are chosen at random. These simulations are projected into the PC space of the ensemble and evaluated via EET. For each ensemble size, 100 ensembles are created and 100 experimental sets are selected and evaluated. Thus each distribution contains 10,000 EET results (40,600,000 total tests per distribution). The red horizontal line indicates the chosen false positive rate of 0.5%.



**Figure 4.** Each box plot represents the statistical distribution of the difference between the global mean of each variable and the unperturbed, ensemble global mean, then scaled by the unperturbed, ensemble global mean for both the 30 ensemble members and 30 CLM\_ALBICE\_00 members. The plots on the left are generated from nine time step simulations, while those on the right are from one simulation year.