

**Topical Editor Decision: Publish subject to technical corrections** (10 Nov 2017) by Fiona O'Connor

Comments to the Author:

Dear Rachel and co-authors,

Firstly, I would like to acknowledge the tremendous effort that has gone into producing this emission dataset and the value of this dataset to the global composition climate community, as indicated by the referees. I also thank them for their effort in reviewing your manuscript and for providing useful and constructive feedback. Many thanks to you for submitting your responses to their comments and for submitting a revised manuscript.

Secondly, I also sincerely apologise for the delay in reaching a decision on your manuscript.

Having read the reviewer comments, your responses to them, and the revisions you've made to the manuscript, I am pleased to inform you that your paper has been accepted for publication in Geosci. Model Development.

However, there are a small number of minor specific comments below which I would like you to implement before final publication.

Congratulations again to you and your co-authors on your efforts,

Regards,  
Fiona O'Connor

Minor corrections:

1. Summary, page 35, line 1028: Replace "release of this data" with "the release of this data"
2. Summary, page 35, line 1036: Replace "inconstancies" with "inconsistencies"; Also, remove one of the two "that"
3. Referee (Alistair Sellar) had the following comment:

P2 L53: "(sometimes also as RCP historical data)" this is not a particularly meaningful phrase. I would suggest using only the name "CMIP5 dataset" for the collective historical and future dataset."

to which you replied with:

This text has been changed to: "This data is also used as the historical starting point for the Representative Concentration Pathways (RCP) scenarios (van Vuuren et al., 2011) and in some research communities is referred to as the RCP historical data. In this article it is referred to as the CMIP5 data set."

However, the revised manuscript does not include the full text from your response and I would ask that you correct this – see page 3, lines 93-95 (I think it has been altered in one place but not on page 3, lines 93-95)

4. Referee (Alistair Sellar) has the following specific comment:

P5 L160: Suggest "available" -> "documented" or "detailed"

Your reply was as follows:

Thank you. The following text now appears in the manuscript: Mapping of IEA products to CEDS fuels is provided in Sect.A3.

As above, the revised manuscript did not contain the response as indicated above. Although a minor point, may I please ask you to correct this oversight?

**This correction has been made. Thank you for catching this oversight.**

5. Referee (Alistair Sellar) made the following comment:

P23 L690: "In future versions of CEDS, quantitative uncertainty analysis will be included for all time periods, but is not complete as of the CMIP6 data version." Does this mean that there is partial uncertainty information in the CMIP6 data version, or none because you will wait for complete information before publishing any? If the former, please say something about the quantitative methodology.

Your response was:

There is no quantitative uncertainty analysis at this time other than what is already in the literature. (The text has been revised to refer to an existing literature summary.)

However, it is unclear to me that the text referred to was modified at all in the revised manuscript. Please clarify.

**Thank you for catching this oversight. The following text has been changed in the Uncertainty section:**

**“In future versions of CEDS, quantitative uncertainty analysis will be included for all time periods, and is further explained in the Sect. 5.”**

**The following text already appears in Section 5:**

**“A major next step in this project will be estimation of uncertainty. Our first step will be quantification of the additional uncertainty that stems from producing estimates out to the most recent full year, followed by comprehensive uncertainty estimates that will be used to produce ensembles of emissions to more fully reflect the uncertainty in these data.”**

6. Referee (Alistair Sellar) commented:

P23 L694: "emissions concentrations are observed". Would "near-source concentrations" be a more accurate description?

You replied:

We would like to note that comparison to both near-source and far field observations can be helpful in comparisons such as these, and we have compared to both in the paper (Hassler et al. 2016 and Kanaya et al. 2016).

I agree with the value of comparing to near-source and far field observations. However, I think the referee here is simply referring to your use of language in the phrase "emissions concentrations" rather than having a problem with your methodology. Therefore, I would like you to replace the phrase "emissions concentrations" to "concentrations of emitted species" (Pg 31, line 909)

This change has been made. Thank you.

7. Anonymous Referee #1 made the following comment:

L123: A reference is needed for the IPCC guidelines and Nomenclature for reporting document.

Your reply was:

This reference has been added. Thank you.

However, it is not clear that this reference has been added on page 5 line 158 of revised manuscript. Please add as requested by referee.

Thank you for catching this oversight. This reference has been added in text and in the references section as well as the following small footnote:

<sup>1</sup> Sector names were derived NFR14 nomenclature via a mapping table provided by CEIP, available from: [http://www.ceip.at/ms/ceip\\_home1/ceip\\_home/reporting\\_instructions/](http://www.ceip.at/ms/ceip_home1/ceip_home/reporting_instructions/)

8. In response to Anonymous Referee #1, you have altered the legend of Figure 2. For consistency, I would suggest that you also alter the legend of other figures (e.g. Figure 3 and 5) as, again, no aircraft emissions are considered.

This change has been made. Thank you.

9. Anonymous Referee #1 asked for a table of uncertainties. While this would be beneficial, my feeling is that it is too big a request for this paper and would be more appropriate when CEDS emission uncertainty estimates have been developed and are being published. I accept your argument on this point.

10. Anonymous Referee #1 made a comment about the potential for two-way interaction

between emission inventory developers and the modelling community. Although your response to this comment indicated that you had added something in the future work section, this wasn't evident in the marked-up manuscript. Can you please add a comment to the future work section?

Thanks.

That was our mistake in the response document. The following text was added to the Summary section, not the Future work section. We believe this text satisfies the request for a discussion on two-way interaction.

“With the release of this data set, and soon the entire data system, it is our intention that further improvements will be made through feedback from the global emissions inventory community. The CEDS data system, including R code and all input data other than the IEA energy statistics, is being prepared for public release in fall 2017 through the gitHub collaboration website. This will facilitate community comment, and direct contributions to improving these emissions data. The next data release is planned for Fall/Winter 2017, which will extend the time series to 2016 and correct, to the extent possible, any known issues with the dataset. We aim to continue annual updates in subsequent years. We welcome comments, including notes on any potential inconsistencies or relevant new data sources, so that these data can be improved in future releases.”

## Historical (1750 – 2014) anthropogenic emissions of reactive gases and aerosols from the Community Emission Data System (CEDS)

---

5 Rachel M. Hoesly<sup>1</sup>, Steven J. Smith<sup>1,2</sup>, Leyang Feng<sup>1</sup>, Zbigniew Klimont<sup>3</sup>, Greet Janssens-Maenhout<sup>4</sup>, Tyler Pitkanen<sup>1</sup>, Jonathan J. Seibert<sup>1</sup>, Linh Vu<sup>1</sup>, Robert J. Andres<sup>5</sup>, Ryan M. Bolt<sup>1</sup>, Tami C. Bond<sup>6</sup>, Laura Dawidowski<sup>7</sup>, Nazar Kholod<sup>1</sup>, Jun-ichi Kurokawa<sup>8</sup>, Meng Li<sup>9</sup>, Liang Liu<sup>6</sup>, Zifeng Lu<sup>10</sup>, Maria Cecilia P. Moura<sup>1</sup>, Patrick R. O'Rourke<sup>1</sup>, Qiang Zhang<sup>9</sup>

10 <sup>1</sup> Joint Global Change Research Institute, Pacific Northwest National Lab, College Park, MD, 20740 USA

<sup>2</sup> Department of Atmospheric and Oceanic Science, University of Maryland, College Park, Maryland, 20742 USA

<sup>3</sup> International Institute for Applied Systems Analysis, Laxenburg, Austria

15 <sup>4</sup> European Commission, Joint Research Centre, Directorate Energy, Transport & Climate, Via Fermi 2749, I-21027 ISPRA, Italy

<sup>5</sup> Carbon Dioxide Information Analysis Center, Oak Ridge National Laboratory, Oak Ridge, TN 37831-6290 USA

<sup>6</sup> Dept. of Civil & Environmental Engineering, University of Illinois at Urbana-Champaign, Urbana, IL, 61801 USA

20 <sup>7</sup> Comisión Nacional de Energía Atómica, Buenos Aires, Argentina

<sup>8</sup> Japan Environmental Sanitation Center, Asia Center for Air Pollution Research, Atmospheric Research Department

<sup>9</sup> Department of Earth System Science, Tsinghua University, Beijing, China

<sup>10</sup> Energy Systems Division, Argonne National Laboratory, Argonne, IL, USA

25 *Correspondence to:* Rachel M. Hoesly ([rachel.hoesly@pnnl.gov](mailto:rachel.hoesly@pnnl.gov)) and Steven J. Smith ([ssmith@pnnl.gov](mailto:ssmith@pnnl.gov))

30 **Abstract.** We present a new data set of annual historical (1750 - 2014) anthropogenic chemically reactive gases (CO, CH<sub>4</sub>, NH<sub>3</sub>, NO<sub>x</sub>, SO<sub>2</sub>, NMVOC), carbonaceous aerosols (BC and OC), and CO<sub>2</sub> developed with the Community Emissions Database System (CEDS). We improve upon existing inventories with a more consistent and reproducible methodology applied to all emissions species, updated emission factors, and recent estimates through 2014. The data system relies on existing energy consumption data sets and regional and country-specific inventories to produce trends over recent decades. All emissions species are consistently estimated using the same activity data over all time periods. Emissions are provided on an annual basis at the level of country and sector and gridded with monthly seasonality. These estimates are comparable to, but generally slightly higher than, existing global inventories. Emissions over the most recent years are more uncertain, particularly in low- and middle-income regions where country-specific emission inventories are less available. Future work will involve refining and updating these emission estimates, estimating emissions uncertainty, and publication of the system as open source software.

## 1 Introduction

45 Anthropogenic emissions of reactive gases, aerosols, and aerosol precursor compounds have substantially changed atmospheric composition and associated fluxes to land and ocean surfaces. As a result, increased particulate and tropospheric ozone concentrations since pre-industrial times have altered radiative balances of the atmosphere, increased human mortality and morbidity, and impacted terrestrial and aquatic ecosystems. Central to studying these effects are historical trends of emissions. Historical emissions data and consistent emissions time series are especially important for Earth Systems Models (ESMs) and atmospheric chemistry and transport models, which use emissions time series as key model inputs; Integrated Assessment Models (IAMs), which use recent emissions data as a starting point for future emissions scenarios; and to inform management decisions.

55 Despite their wide use in research and policy communities, there are a number of limitations to current inventory data sets. Emissions data from country and regional specific inventories vary in methodology, level of detail, sectoral coverage, and consistency over time and space. Existing global inventories do not always provide comprehensive documentation for assumptions and methods and few contain uncertainty estimates.

60 Several global emissions inventories have been used in global research and modeling. The Emissions Database for Global Atmospheric Research (EDGAR) is another widely used historical global emissions data set. It provides an independent estimate of historical greenhouse gas (GHG) and pollutant emissions by country, sector, and spatial grid (0.1 x 0.1 degree) from 1970 – 2010 (Crippa et al., 2016; EC-JRC/PBL, 2016), with GHG emission estimates for more recent years. The most recent set of modeling exercises by the Task Force on Hemispheric  
65 Transport of Air Pollutants (HTAP) uses a gridded emissions data set, HTAP v2 (Janssens-Maenhout et al., 2015), that merged EDGAR with regional and country-level gridded emissions data for 2008 and 2010. The GAINS (Greenhouse gas - Air pollution Interactions and Synergies) model (Amann et al., 2011) has been used to produce regional and global emission estimates for several recent years (1990– 2010; in five year intervals) together with projections to 2020 and beyond (Amann et al., 2013; Cofala et al., 2007; Klimont et al., 2009). These have been  
70 developed with substantial consultation with national experts, especially for Europe and Asia (Amann et al., 2008, 2015; Purohit et al., 2010; Sharma et al., 2015; Wang et al., 2014; Zhang et al., 2007; Zhao et al., 2013a). The newly developed ECLIPSE emission sets include several extensions and updates in the GAINS model and are also available in a gridded form (Klimont et al., 2016) and have been used in a number of recent modeling exercises (Eckhardt et al., 2015; IEA, 2016b; Rao et al., 2016; Stohl et al., 2015).

Lamarque et al. (2010) developed a historical data set for the Coupled Model Intercomparison Project Phase 5 (CMIP5), which includes global, gridded estimates of anthropogenic and open burning emissions from 1850 – 2000 at 10 year intervals. This data is also used as the historical starting point for the Representative Concentration Pathways (RCP) scenarios (van Vuuren et al., 2011) and in some research communities is referred to as the RCP historical data. In this article it is referred to as the CMIP5 data set. It was a compilation of “best available estimates” from many sources including EDGAR-HYDE (van Aardenne et al., 2001) which provides global anthropogenic emissions of carbon dioxide (CO<sub>2</sub>), methane (CH<sub>4</sub>), nitrous oxide (N<sub>2</sub>O), nitrogen  
85 oxides (NO<sub>x</sub>), non-methane volatile organic compounds (NMVOC), sulfur dioxide (SO<sub>2</sub>) and ammonia (NH<sub>3</sub>) from 1890 to 1990 every 10 years at 1 x 1 degree grids; RETRO (Schultz and Sebastian, 2007) which estimated global emissions from 1960 to 2000; and emissions reported

Deleted: a

Deleted: (Klimont et al., 2017a)

Deleted: , referred to here as the CMIP5 historical data. It was a compilation of “best available estimates” from many sources including black carbon (BC) and organic carbon (OC) from Bond et al. (2007) and

Comment [SS](1): Estimated is a better term.

Comment [SS](2): RETRO included anthropogenic

Deleted: reports

Deleted: wildland fire

by, largely, Organization for Economic Co-operation and Development (OECD) countries over recent years. While this data set was an improvement upon the country and regional specific inventories mentioned above, it lacks uncertainty estimates and reproducibility, has limited temporal resolution (10 year estimates to 2000), and does not have consistent methods across emission species. There are many existing inventories of various scope, coverage, and quality; however, no existing data set meets all the growing needs of the modeling community.

This paper describes the general methodology and results for an updated global historical emissions data set that has been designed to meet the needs of the global atmospheric modeling community and other researchers for consistent long-term emission trends. The methodology was designed to produce annual estimates, be similar to country-level inventories where available, be complete and plausible, and use a consistent methodology over time with the same underlying driver data (e.g., fuel consumption). The data set described here provides a sectoral and gridded historical inventory of climate-relevant anthropogenic GHGs, reactive gases, and aerosols for use in the Coupled Model Intercomparison Project Phase 6 (CMIP6). It does not include agricultural waste burning, which is included in van Marle et al. (van Marle et al., 2017). Gridded data were first released summer 2016 through the Earth System Grid Federation (ESGF) system including SO<sub>2</sub>, NO<sub>x</sub>, NH<sub>3</sub>, carbon monoxide (CO), black carbon (BC), organic carbon (OC), and NMVOC, with a new release in May 2017 that corrected mistakes in the gridded data (links and details in Appendix A1 and A2). The May 2017 release also included CO<sub>2</sub> emissions (annual from 1750 - 2014) and CH<sub>4</sub> emissions (annual from 1970 - 2014 and a separate decadal historical extension from 1850 - 1970, also detailed in Appendix A2). This data set was created using the Community Emissions Database System (CEDs), which is being prepared for release, as open-source software. Updated information on the system can be found at <http://www.globalchange.umd.edu/ceds/>.

An overview of the methodology and data sources are provided in Sect. 2 while further details on the methodology and data sources are included in the Supplementary Information (SI), outlined in Sect. 2.7. Section 3 compares this data set to existing inventories and Sect. 4 details future work involving this data set and system.

## 2 Data and methodology

### 2.1 Methodological overview

CEDs uses existing emissions inventories, emissions factors, and activity/driver data to estimate annual country, sector, and fuel specific emissions over time in several major phases (data system schematic shown in Figure 1):

- 1) data are collected and processed into a consistent format and timescale (detailed in Sect. 2.2 and throughout paper),
- 2) default emissions from 1960/1971 (1960 for most OECD countries and 1971 for all others) to 2014 are estimated using driver and emission factor data (Emissions = Driver × Emission Factors) (Sect. 2.2),
- 3) default estimates are scaled to match existing emissions inventories where available, complete, and plausible (Sect. 2.4),

Deleted: time and

Deleted: The Lamarque et al. year 2000 data were also used as the starting point for the Representative Concentration Pathways (RCP) scenarios spanning 2000 to 2100 (van Vuuren et al., 2011) and is, therefore, also known at the RCP historical data.

Deleted: The

Deleted: Preindustrial

Deleted: data (CEDs-v2016-06-18), 1750 - 1850, were released in June 2016 and the remaining CMIP6 data, 1851 - 2014, in July 2016 (CEDs-v2016-07-26) were released in summer 2016

Comment [SSJ](3):

Deleted: a

Deleted: (links provided in Sect. A1) and

Deleted: es estimate of

Deleted: . A

Deleted: CEDs data release

Deleted: (CEDs-v2017-05-18), which)

Deleted: previous

Deleted: previously released

Deleted: releases (see, which are

Deleted: ed

Deleted: the

Deleted: ), includes estimates of SO<sub>2</sub>, NO<sub>x</sub>, NH<sub>3</sub>, carbon monoxide (CO), BC, OC, NMVOC,

Deleted: This

Deleted: estimates

Deleted: (CH<sub>4</sub>

Deleted: estimates

Deleted: with decadal data

Deleted: will

Deleted: be

Deleted: d

Deleted: .

Deleted: in summer 2017

Deleted: and its pending release status

Deleted: 2.7

Deleted: 3

Deleted: 4

Deleted: Figure 1

- 4) scaled emissions estimates are extended back to 1750 (Sect. 2.5) to produce final aggregate emissions by country, fuel and sector,
- 5) emissions are checked and summarized to produce data for release and analysis and
- 6) gridded emissions with monthly seasonality and VOC speciation are produced from aggregate estimates using spatial proxy data (Sect. 2.6).

180

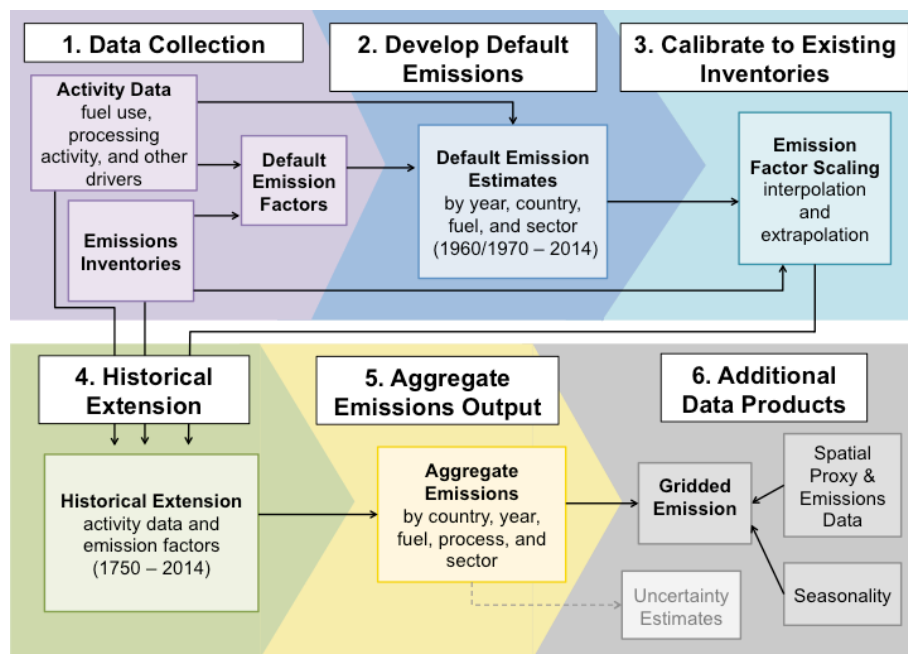


Figure 1: System Summary. Key steps in calculation are: 1) Collect and process activity, emissions factors, and emissions data 2) Develop default emissions estimates 3) Calibrate default estimates to existing inventories 4) Extend present day emission to historical time periods 5) Summarize emissions outputs 6) Produce data products including gridded emissions and uncertainty estimates.

185

Rather than producing independent estimates, this methodology relies on matching default estimates to reliable, existing emissions inventories (emission scaling) and extending those values to historical years (historical extension) to produce a consistent historical time series. While previous work (Lamarque et al., 2010) combined different data sets then smoothed over discontinuities, CEDS produces historical trends by extending the individual components (driver data and emissions factors) separately to estimate emission trends. This method captures trends in fuel use, technology, and emissions controls over time. Estimating emissions from drivers and emission factor components also allows the system to estimate emissions in recent years, using extrapolated emission factors and quickly released fuel use data, where detailed energy statistics and emission inventories are not yet available.

190

195



CEDS estimates emissions for 221 regions (and a global region for international shipping and aircraft), 8 fuels, and 55 working sectors, summarized in [Table 1](#). “Regions” refers to countries, regions, territories, or islands and are listed, along with mapping to summary regions and ISO codes in the supplemental files; they will henceforth be referred to as “countries”. CEDS working sectors (sectors 1A1-1A5) for combustion emissions follow the International Energy Agency (IEA) energy statistics sector definitions (Table A1). The IEA energy statistics are annually updated and the most comprehensive global energy statistics available, so this choice allows for maximal use of this data. Non-combustion emissions sectors (sectors 1A1bc and 1B-7) are drawn from EDGAR and generally follow EDGAR definitions (Table A2). Sector names were derived from Intergovernmental Panel on Climate Change (IPCC) reporting categories under the 1996 guidelines and Nomenclature for Reporting (NFR) 14 ([Economic Commission for Europe, 2014](#)) together with a short descriptive name<sup>b</sup>. Note that CEDS data do not include open burning, e.g. forest and grassland fires, and agricultural waste burning on fields, which was developed by van Marle et al (2017). Tables providing more detailed information on these mappings, which define the CEDS sectors and fuels, are provided in Sect. A3. We note that, while agriculture sectors include a large variety of activities, in practice in the current CEDS system these sectors largely represent NH<sub>3</sub> and NO<sub>x</sub> emissions from fertilizer application (under 3D\_Soil-emissions) and manure management, due to the focus in the current CEDS system on air-pollutant emissions.

Deleted: Table 1

In order to produce timely emissions estimates for CMIP6, several CEDS emission sectors in this version of the system aggregate somewhat disparate processes to reduce the need for the development of detailed driver and emission factor information. For example, process emissions from the production of iron and steel, aluminum, and other non-ferrous metals are grouped together as an aggregate as 2C\_Metal-production sector. Similarly, emissions from a variety of processes are reported in 2B\_Chemical-industry. Also, the 1A1bc\_Other-transformation sector includes emissions from combustion related activities in energy transformation processes including coal and coke production, charcoal production and petroleum refining, but are combined in one working sector (see Sec 2.3.2). Greater disaggregation for these sectors would improve these estimates, but will require additional effort, described in Sect.5 Limitations and Future work.

Deleted: .

The core outputs of the CEDS system are country-level emissions aggregated to the CEDS sector level. Emissions by fuel and by detailed CEDS sector are also documented within the system for analysis, although these are not released due to data confidentiality issues. Emissions are further aggregated and processed to provide gridded emissions data with monthly seasonality, detailed in Sect. 2.6.

We note that the CEDS system does not reduce the need for more detailed inventory estimates. For example, CEDS does not include a representation of vehicle fleet turnover and emission control degradation (e.g. the effectiveness of catalytic converters over time) or multiple fuel combustion technologies that are included in more detailed inventories. The purpose of this system, as described further below, is to build on a combination of global emission estimation

<sup>b</sup> Sector names were derived NFR14 nomenclature via a mapping table provided by CEIP, available from: [http://www.ceip.at/ms/ceip\\_home1/ceip\\_home/reporting\\_instructions/](http://www.ceip.at/ms/ceip_home1/ceip_home/reporting_instructions/)

240 frameworks such as GAINS and EDGAR, combined with country-level inventories, to produce reproducible, consistent emissions trends over time, space, and emissions species.

Table 1 CEDS working sectors and fuels (CEDS v2016-07-26)

CEDS Working Sectors		
<b>Energy Production</b>		
1A1a_Electricity-public	1A2g_Ind-Comb-other	<b>RCO</b> 1A4a_Commercial-institutional 1A4b_Residential 1A4c_Agriculture-forestry-fishing 1A5_Other-unspecified <b>Agriculture</b> 3B_Manure-management 3D_Soil-emissions 3I_Agriculture-other 3D_Rice-Cultivation 3E_Enteric-fermentation <b>Waste</b> 5A_Solid-waste-disposal 5E_Other-waste-handling 5C_Waste-combustion 5D_Wastewater-handling  6A_Other-in-total 6B_Other-not-in-total
1A1a_Electricity-autoproducer	2A1_Cement-production	
1A1a_Heat-production	2A2_Lime-production	
1A1bc_Other-transformation	2Ax_Other-minerals	
1B1_Fugitive-solid-fuels	2B_Chemical-industry	
1B2_Fugitive-petr-and-gas	2C_Metal-production	
1B2d_Fugitive-other-energy	2D_Other-product-use	
7A_Fossil-fuel-fires	2D_Paint-application	
<b>Industry</b>	2D_Chemical-products-manufacture-processing	
1A2a_Ind-Comb-Iron-steel	2H_Pulp-and-paper-food-beverage-wood	
1A2b_Ind-Comb-Non-ferrous-metals	2D_Degreasing-Cleaning	
1A2c_Ind-Comb-Chemicals	<b>Transportation</b>	
1A2d_Ind-Comb-Pulp-paper	1A3ai_International-aviation	
1A2e_Ind-Comb-Food-tobacco	1A3aii_Domestic-aviation	
1A2f_Ind-Comb-Non-metallic-minerals	1A3b_Road	
1A2g_Ind-Comb-Construction	1A3c_Rail	
1A2g_Ind-Comb-transpequip	1A3di_International-shipping	
1A2g_Ind-Comb-machinery	1A3di_Oil_tanker_loading	
1A2g_Ind-Comb-mining-quarrying	1A3dii_Domestic-navigation	
1A2g_Ind-Comb-wood-products	1A3eii_Other-transp	
1A2g_Ind-Comb-textile-leather		
<b>CEDS Fuels</b>		
Hard Coal	Light Oil	Natural Gas
Brown Coal	Diesel Oil	Biomass
Coal Coke	Heavy Oil	

Formatted Table

## 2.2 Activity data

245 Trends of energy consumption and other driver (activity) data are key inputs for estimating emissions. When choosing data to use in this system, priority was given to consistent trends over time rather than detailed data that might only be available for a limited set of countries or time-span.

### 2.2.1 Energy data

250 Energy consumption data are used as drivers for emissions from fuel combustion. Core energy data for 1960 - 2013 are the International Energy Agency (IEA) energy statistics, which provides energy production and consumption estimates by detailed country, fuel, and sector from 1960 – 2013 for most OECD countries and 1971 – 2013 for non-OECD countries (IEA, 2015). While most data sources used in CEDS are open source, CEDS currently requires purchase of this proprietary data set. IEA data are provided at finer fuel and sector level so data are often  
 255 aggregated to CEDS sectors and fuels. Mapping of IEA products to CEDS fuels is detailed in Sect. A4. Data for a number of small countries are provided by IEA only at an aggregate level, such as “Other Africa” and “Other Asia”, are disaggregated to CEDS countries using historical CO<sub>2</sub> emissions data from the Carbon Dioxide Information Analysis Center (CDIAC) (Andres et al., 2012; Boden et al., 1995). Sectoral splits for Former Soviet Union (FSU) countries are smoothed over time to account for changes in reporting methodologies during the transition to independent countries (see SI).  
 260

Deleted: available

Deleted: A3

265 IEA energy statistics were extended to 2014 using BP Statistical Review of World Energy (BP, 2015), which is freely available online and provides annual updates of country energy totals by aggregate fuel (oil, gas and coal). BP trends for aggregate fuel consumption from 2013 to 2014 were applied to all CEDS sectors in the corresponding CEDS fuel estimates to extrapolate to 2014 energy estimates by sector and fuel from 2012 IEA values.

270 In a few cases, IEA energy data were adjusted to either smooth over discontinuities or to better match newer information. For international shipping, where a number of studies have concluded that IEA reported consumption is incomplete (Corbett et al., 1999; Endresen et al., 2007; Eyring et al., 2010), we have added additional fuel consumption so that total consumption matches bottom-up estimates from International Maritime Organization (IMO) (2014). For China, fuel consumption appears to be underestimated in national statistics (Guan et al., 2012; Liu et al., 275 2015b), so coal and petroleum consumption were adjusted to match the sum of provincial estimates as used in the MEIC inventory (Multi-resolution Emissions Inventory for China) (Li et al., 2017) used to calibrate CEDS emission estimates. Several other changes were made, such as what appears to be spurious brown coal consumption over 1971-1984 in the IEA Other Asia region and a spike in agricultural diesel consumption in Canada in 1984. All such changes are 280 documented in CEDS source code, input files, and supplementary information provided with this article.

Residential biomass was estimated by merging IEA energy statistics and Fernandes et al. (2007) to produce residential biomass estimates by country and fuel type over 1850 - 2013. Residential biomass data were reconstructed with the assumption that sudden drops in biomass consumption going back in time are due to data gaps, rather than sudden energy consumption changes. Both 285 IEA and Fernandes et al. values were reconstructed to maintain smooth per capita (based on rural population) residential biomass use over time.

Detail on methods and assumption for energy consumption estimates are available in the Data and Assumption Supplement (SI-Text) Sect. 3.

#### 290 2.2.2 Population and other data

Consistent historical time trends are prioritized for activity driver data. For non-combustion sectors population is generally used as an activity driver. United Nations (UN) Population data (UN, 2014, 2015) is used for 1950 – 2014, supplemented from 1960 – 2014 with World Bank population statistics (The World Bank, 2016). This series was merged with HYDE historical 295 population data (Klein Goldewijk et al., 2010). More detail is available in SI-Text Sect. 2.1.

In this data version, population is used as the non-combustion emissions driver for all but three sectors. 5C\_Waste-combustion, which includes industrial, municipal, and open waste burning, is driven by pulp and paper consumption, derived from Food and Agriculture Organization of the UN (FAO) Forestry Statistics (FAOSTAT, 2015). FAO statistics converted to per capita values were smoothed and linearly extrapolated backward in time. 1B2\_Fugitive-petr-and-gas, which are fugitive and flaring emissions from production of liquid and gaseous fuels together with oil refining, is driven by a composite variable that combines domestic oil and gas production with refinery inputs, derived from IEA Energy Statistics. This same driver is also used for 1B2d\_Fugitive-other-energy. More detail is available in SI-Text Sect. 2.5. While non- 300 combustion emissions use population as an “activity driver” in calculations, emissions trends are 305 generally determined by a combination of EDGAR and country level inventories. Final

emissions estimates, therefore, reflect recent emissions inventories where these are available, rather than population trends.

### 2.3 Default estimates

310 Significant effort is devoted to creating reliable default emissions estimates, including abatement  
measures, to serve as a starting point for scaling to match country-level inventories (Sect. 2.4)  
and historical extension back to 1750 (Sect. 2.5). While most default estimates do not explicitly  
appear in the final data set as they are altered to match inventories (Sect. 2.4), some are not  
315 altered because inventories are not available for all regions, sectors, and species. The method for  
calculating default emission factors varies by sectors and regions depending on available data.

Default emissions estimates (box 2 in [Figure 1](#)), are calculated using 3 types of data (box 1 in  
[Figure 1](#)): activity data (usually energy consumption or population), emissions inventories, and  
emissions factors, according to Eq. (1).

Deleted: Figure 1

Deleted: Figure 1

$$320 \quad E_{em}^{c,s,f,t} = A^{c,s,f,t} \times EF_{em}^{c,s,f,t}$$

(1)

Where E is total emissions, A is activity or driver, EF is emissions factor, em is emission species,  
c is country, s is sector, f is fuel (where applicable), and t is year.

325 In general, default emissions for fuel combustion (sectors 1A in [Table 1](#)) are estimated from  
emission factors and activity drivers (energy consumption), while estimates of non-combustion  
emissions (sectors 1B – 7A and 1A1bc) are taken from a relevant inventory and the “implied  
emissions factor” is inferred from total emissions and activity drivers.

Deleted: Table 1

#### 2.3.1 Default fuel combustion emissions

330 Combustion sector emissions are estimated from energy consumption estimates (Sect. 2.2), and  
emissions factors according to Eq. (1). Default emission factors for the combustion of fuels are  
derived from existing global data sets that detail emissions and energy consumption by sector  
and fuel, using Eq. (2):

$$EF_{em}^{c,s,f,t} = \frac{E_{em}^{c,s,f,t}}{A^{c,s,f,t}}$$

335

(2)

Where EF is default emission factor, E is total emissions as reported by other inventories, A is  
activity data, measured in energy consumption as reported by inventories, em is emission  
species, c is country, s is sector, f is fuel (where applicable), and t is year.

340 The main data sets used to derive emission factors are shown in [Table 2](#). Default emission  
factors for NO<sub>x</sub>, NMVOC, CO, and CH<sub>4</sub> are estimated from the global implementation of the  
GAINS model as released for the Energy Modeling Forum 30 project  
(<https://emf.stanford.edu/projects/emf-30-short-lived-climate-forcers-air-quality>) (Klimont et al.,

Deleted: Table 2

2017a, 2017; Stohl et al., 2015). BC and OC emission factors from 1850 – 2000 are estimated from the latest version of the Speciated Pollutant Emission Wizard (SPEW) (Bond et al., 2007).

350 Emission factors for CO<sub>2</sub> emissions for coal and natural gas combustion are taken from CDIAC (Andres et al., 2012; Boden et al., 1995), with an additional coal mass balance check, as further described in SI-Text Sect. 5.4. For coal in China a lower oxidation fraction of 0.96 was assumed, see discussion in the SI-Text (Liu et al., 2015b). Because CEDS models liquid fuel emissions by fuel grade (light, medium, heavy), we use fuel-specific emission factors for liquid fuels also described in SI-Text Sect. 5.4.

355 Emission data are aggregated by sector and fuel to match CEDS sectors, while calculated emission factors from more aggregate data sets are applied to multiple CEDS sectors, fuels, or countries. When incomplete time series are available, emission factors are generally assumed constant back to 1970 linearly interpolated between data points, and extended forward to 2014 using trends from GAINS to produce a complete times series of default emission factors. Many of these interpolated and extended values are later scaled to match county inventories (Sect. 2.4).

360 Most of the default emission factors are derived from sources that account for technology efficiencies and mitigation controls over time, but some are estimated directly from fuel properties (e.g., fuel sulfur content for SO<sub>2</sub> emissions). A control percentage is used to adjust the emission factor in these cases. In the data reported here the control percentage is primarily used in SO<sub>2</sub> calculations (see SI-Text Sect. 5.1) where the base emission factor is derived directly from fuel properties; however, this functionality is available when needed for other emission species. In most of these cases emissions are later scaled to match inventory data.

370 **Table 2 Data Sources used to estimate default emissions factors for fuel combustion and default emissions from non-combustion sectors**

Source Sector	Emission Species	Data Source
Fuel Combustion (1A)	NO <sub>x</sub> , NMVOC, CO, CH <sub>4</sub>	GAINS energy use and emissions (Klimont et al., 2017a; Stohl et al., 2015).
	BC, OC	SPEW energy use and emissions (Bond et al., 2007)
	SO <sub>2</sub>	(Europe) GAINS sulfur content and ash retention (Amann et al., 2015; IIASA, 2014a, 2014b). Smith et al. (2011) and additional sources for other regions (SI-Text 5.1)
	NH <sub>3</sub>	US NEI energy use and emissions (US EPA, 2013)
	CO <sub>2</sub>	CDIAC (Boden et al., 2016) and additional data sources
Fugitive Petroleum and Gas (1B)	All	EDGAR emissions(EC-JRC/PBL, 2016), ECLIPSE V5a (Stohl et al., 2015)
Cement (2A1)	CO <sub>2</sub>	CDIAC (Boden et al., 2016)
Agriculture Sectors (3)	CH <sub>4</sub>	For Sectors 3B_Manure-management, 3B_Soil-emissions, and 3D_Rice-Cultivation: FAOSTAT (FAO, 2016) all others: EDGAR emissions (EC-JRC/PBL, 2016)
	Other	EDGAR emissions (EC-JRC/PBL, 2016)

Formatted Table

Waste Combustion (5C)	All	(Akagi et al., 2011; Andreae and Merlet, 2001; Wiedinmyer et al., 2014) (SI-Text Sect. 6.3)
Waste Water Treatment (5D)	NH <sub>3</sub>	CEDS estimate of NH <sub>3</sub> from human waste (SI-Text Sect. 6.4)
Other Non-Combustion (2A – 7A)	SO <sub>2</sub>	EDGAR, (Smith et al., 2011) & other sources (SI-Text Sect. 6.5)
	Other	EDGAR emissions (EC-JRC/PBL, 2016)

### 2.3.2 Default non-combustion emissions

375 Default non-combustion emissions, are generally taken from existing emissions inventories,  
 | primarily EDGAR (EC-JRC/PBL, 2016) and some additional sources for specific sectors  
 | detailed in [Table 2](#). Default emissions from sectors not specifically called out in [Table 2](#), or the  
 | text below are taken from EDGAR (EC-JRC/PBL, 2016). Other data sources and detailed  
 | methods are explained in the SI-Text Sect. 6. For detailed sector definitions refer to Sect. A3.

380 When complete trends of emissions estimates are not available, they are extended in a similar  
 | manner as combustion emissions: emission factors are inferred using Eq. (2) and (with few  
 | exceptions) using population as an activity driver; emission factors (e.g. per-capita emissions)  
 | are linearly interpolated between data points and extended forward and back to 1970 and 2014 to  
 | create a complete trend of default emission factors; and default emissions estimates are  
 | calculated using Eq. (1).

385 For this data set, all non-combustion sectors (except for 5C\_Waste-combustion) use population  
 | as the activity driver since this provides a continuous historical time series to be used where  
 | interpolations were needed. In practice, since EDGAR is generally used for default non-  
 | combustion data source, we are relying on EDGAR trends by country to extend emissions data  
 | beyond years where additional inventory information does not exist (with exceptions as noted in  
 | 390 Table 2). Sector uses pulp and paper consumption, detailed in Sect. 2.2; while the waste  
 | combustion sector, which incorporates solid waste disposal (incineration) and residential waste  
 | combustion, and is the product of combustion, in this system it is methodologically treated as a  
 | non-combustion sector.

395 We note that, while emissions from sector 1A1bc\_Other\_transformation are also due to fuel  
 | combustion, due to the complexity of the processes included, this sector is treated as a non-  
 | combustion sector in CEDS in terms of methodology. This means that fuel is not used as an  
 | activity driver and that default emissions for this sector are taken from SPEW for BC and OC  
 | and EDGAR for other emissions. The major emission processes in this sector include coal coke  
 | 400 production, oil refining, and charcoal production. A mass balance calculation for SO<sub>2</sub> and CO<sub>2</sub>  
 | focusing on coal transformation was also conducted to assure that these specific emissions were  
 | not underestimated, particularly for periods up to the mid 20<sup>th</sup> century (SI-Text Sect. 5.4, 6.5.2,  
 | and 8.3.2).

405 During the process of emissions scaling we found that default emissions were sometimes 1-2  
 | orders of magnitude different from emissions reported in national inventories. This is not  
 | surprising, since non-combustion emissions can be highly dependent on local conditions,  
 | technology performance, and there are also often issues of incompleteness of inventories. In  
 | these cases, we implemented a process whereby default non-combustion emissions were taken

Deleted: Table 2  
 Deleted: Table 2

410 directly from national inventories, and gap-filled and trended over time using EDGAR estimates. These were largely fugitive and flaring emissions (1B) for SO<sub>2</sub>; soil(3D), manure(3B), and waste water(5D) emissions for NH<sub>3</sub>; and non-combustion emissions for NMVOCs, typically associated with solvent use.

#### 2.4 Scaling emissions

415 CEDS uses a “mosaic” strategy to scale default emissions estimates to authoritative country-level inventories when available. The goal of the scaling process is to match CEDS emissions estimates to comparable inventories while retaining the fuel and sector detail of the CEDS estimates. The scaling process modifies CEDS default emissions and emission factors, but activity estimates remain the same.

420 A set of scaling sectors is defined for each inventory so that CEDS and inventory sectors overlap. These sectors are chosen to be broad, even when more inventory detail is available, because it is often unclear if sector definitions and boundaries are comparable between data sets. For example, many inventories do not consistently break out industry auto-producer electricity from other industrial combustion, so they are combined together for scaling. Additionally, 425 underlying driver data in inventories and CEDS may not match. Scaling detailed sectors that were calculated using different energy consumption estimates would yield unrealistic scaled emission factors at a detailed sector level. One example is off-road emissions; while often estimated in country inventories, energy consumption data at this level is not consistently available from the IEA energy statistics, so these emissions are combined into broader sector groupings, depending on the sector categories available in a specific inventory.

430 The first step in this process is to aggregate CEDS emissions and inventory emissions to common scaling sectors, then scaling factors are calculated with Eq. (3). Scaling factors represent the ratio between CEDS default estimates and scaling inventory estimates by scaling sector and provide a means for matching CEDS default estimates to scaling inventories.

$$435 \quad SF_{em}^{c,ss,t} = \frac{Inv_{em}^{c,ss,t}}{CEDS_{em}^{c,ss,t}} \quad (3)$$

Where SF is scaling factor, Inv is the inventory emissions estimate, CEDS is the CEDS emissions estimate, em is emission species, c is country, ss is aggregate scaling sector (unique to inventory), and t is year.

440 For each inventory, scaling factors are calculated for years when inventory data are available. Calculated scaling factors are limited to values between 1/100 and 100. Scaling factors outside this range may result from discontinuities or misreporting in inventory data; imperfect scaling maps between CEDS sectors, inventory sectors, and scaling sectors; or default CEDS emissions estimates that are drastically different than reported inventories. Many of these cases were 445 resolved by using the detailed inventory data as default emissions data, as noted above in Sect 2.3.2. Where inventory data are not available over a portion of the specified scaling timeframe, remaining scaling factors are extended, interpolated between to provide a continuous trend. Scaling factors are applied to corresponding CEDS default emissions estimates and default 450 emission factors to produce a set of scaled emissions components (total emissions and emission

factors, together with activity drivers, which are not changed), which are used in the historical extension (Sect. 2.5). Using scaling factors retains the sector and fuel level detail of CEDS default emissions estimates, while matching total values to authoritative emissions inventories.

455 We use a sequential methodology in which CEDS values are generally first scaled to EDGAR (EC-JRC/PBL, 2016) for most emission species, then national inventories, where available. Final CEDS results, over the period these inventories were available, match the last inventory scaled. SO<sub>2</sub>, CH<sub>4</sub>, BC, and OC are not scaled to EDGAR values. For all pollutant species other than BC and OC, estimates are then scaled to match country-level emissions estimates. These are  
 460 available for most of Europe through European Monitoring and Evaluation Programme (EMEP) for European countries post 1980 (EMEP, 2016); the United Nations Framework Convention on Climate Change (UNFCCC) GHG data for Belarus, Greece and New Zealand (UNFCCC, 2015) post 1990; an updated version of Regional Emissions Inventory in Asia (REAS) for Japan (Kurokawa et al., 2013a); Multi-resolution Emissions Inventory for China (MEIC) for China (Li et al., 2017); and others detailed in Table 3. BC and OC emissions estimates are entirely from  
 465 default estimates calculated using predominantly SPEW data. While BC inventory estimates were available in a few cases, OC estimates were less available, so we have retained the consistent BC and OC estimates from SPEW for all countries. CH<sub>4</sub> emissions estimates are scaled to match to the following inventories: EDGAR 4.2 (EC-JRC/PBL, 2012), UNFCCC submissions UNFCCC, 2015) for most “Annex I” countries, and the US GHG inventory (US  
 470 EPA, 2012b) for the United States.

The scaling process was designed to allow for exceptions when there are known discontinuities in inventory data or when the default scaling options resulted in large discontinuities. For example, Former Soviet Union countries were only scaled to match EDGAR and other inventories after 1992 (where energy data becomes more consistent). Romania, for example, was  
 475 only scaled to match EDGAR in 1992, 2000, and 2010 to avoid discontinuities. For the most part, these exceptions occur for countries with rather limited penetration of control measures or only low efficiency controls. Regions with more stringent emission standards requiring extensive application of high efficiency controls have typically higher quality national inventories, e.g., European Union, North America, and parts of Asia.

480 Description of the exceptions and assumptions for all scaling inventories, as well as a detailed example of the scaling process is available in SI-Text Sect. 7. Additionally, figures showing stacked area graphs of global emission, by final scaling inventory (or default estimate) are shown in Supplemental Figures and Tables Sect. J. These show the percentage of final global emissions estimates that are scaled to various inventories.

485

**Table 3 Data Sources for Inventory Scaling. All countries scaled to EDGAR, then individual estimates.**

Region/Country	Species	Years	Data Source
All, where available	NO <sub>x</sub> , NMVOC, CO, NH <sub>3</sub>	1970 - 2008	EDGAR 4.3 (EC-JRC/PBL, 2016)
	CH <sub>4</sub>	1970 - 2008	EDGAR 4.2 (EC-JRC/PBL, 2012)

Deleted: Table 3

Formatted Table



Europe	SO <sub>2</sub> , NO <sub>x</sub> , NMVOC, CO, NH <sub>3</sub>	1980 - 2012	(EMEP, 2016)
Greece, New Zealand, Belarus	SO <sub>2</sub> , NO <sub>x</sub> , NMVOC, CO, CO <sub>2</sub>	1990 - 2012	(UNFCCC, 2015)
Other Asia	SO <sub>2</sub> , NO <sub>x</sub> , NMVOC, CO, CH <sub>4</sub>	2000 - 2008	REAS 2.1 (Kurokawa et al., 2013a)
Argentina	SO <sub>2</sub> , NO <sub>x</sub> , NMVOC, CO	1990 - 1999, 2001 - 2009, 2011	(Argentina UNFCCC Submission, 2016)
Australia	SO <sub>2</sub> , NO <sub>x</sub> , NMVOC, CO	2000, 2006, 2012	(Australian Department of the Environment, 2016)
China	SO <sub>2</sub> , NO <sub>x</sub> , NMVOC, CO, NH <sub>3</sub>	2008, 2010, 2012	MEIC (Li et al., 2017)
Canada	SO <sub>2</sub> , NO <sub>x</sub> , NMVOC, CO	1985 - 2011	(Environment and Climate Change Canada, 2016; Environment Canada, 2013)
Japan	SO <sub>2</sub> , NO <sub>x</sub> , NMVOC, CO, NH <sub>3</sub>	1960 - 2010	Preliminary update of Kurokawa et al., (2013b)
South Korea	SO <sub>2</sub> , NO <sub>x</sub> , NMVOC, CO	1999 - 2012	(South Korea National Institute of Environmental Research, 2016)
Taiwan	SO <sub>2</sub> , NO <sub>x</sub> , NMVOC, CO	2003, 2006, 2010	(TEPA, 2016)
USA	SO <sub>2</sub> , NO <sub>x</sub> , NMVOC, CO	1970, 1975, 1980, 1985, 1990 - 2014	EPA Trends (US EPA, 2016b)
	NH <sub>3</sub>	1990 - 2014	
	CO <sub>2</sub>	1990 - 2014	US EPA, 2016a)
	CH <sub>4</sub>	1990 - 2014	US GHG Inventory (US EPA, 2012b)

490 The scaling process operates on sectors where emissions are present in both the CEDS default  
information for a particular sector then the default data are used. This means that some gaps in  
the scaling inventories are automatically filled by this procedure and, as a result, the CEDS  
emission totals can be larger than those in the scaling inventory. For example, waste burning and  
495 fossil fuel fires are not included in some of the inventories, while these sectors are included in  
CEDS. In a few cases, specific additional data were added where gaps were known to be present.  
For example, the CEDS totals for China are slightly larger than the MEIC totals due to both the  
inclusion of waste burning, but also the addition of SO<sub>2</sub> emissions from metal smelting, which  
are not included in MEIC. Where necessary discontinuities in inventory estimates were  
eliminated. For the USA, for example, discontinuities were present in the original EPA trends  
500 data due to methodological changes, particularly for transportation NO<sub>x</sub> and agricultural NH<sub>3</sub>.

## 2.5 Pre-1970 emissions extension

505 Historical emissions and energy data before 1970 generally do not have the same detail as more  
 modern data. In general, we extend activity and emission factors back in time separately, with  
 time and sector specific options to capture changes in technologies, fuel mixes, and activity. This  
 allows for consistent methods across time and sectors, rather than piecing together different  
 sources and smoothing over discontinuities, which was done in previous work (Lamarque et al.,  
 2010). For most emission species and sectors the assumed historical trend in activity data has a  
 large impact on emission trends. Activity for many sectors and fuels, such as fossil liquid and gas  
 fuels, are small or zero by 1900. Some cases where emission factors are known to have changed  
 over time have also been incorporated.

### 2.5.1 Pre-1970 activity drivers

515 IEA Energy Statistics, which are the foundation for energy estimates in this data set, go back to  
 1960 at the earliest. Fossil fuels are extended using CDIAC emissions, SPEW energy data, and  
 assumptions about fuel type and sector splits in 1750, 1850, and 1900, detailed in the SI-Text  
 Sect. 8.1. First total fuel use for three aggregate fossil fuel types, coal, oil, and gas, are estimated  
 over 1750 - 1960/1970 for each country using historical national CO<sub>2</sub> estimates from the Carbon  
 Dioxide Information Analysis Center (CDIAC) (Andres et al., 1999; Boden et al., 2016).

520 For coal only, these extended trends were matched with SPEW estimates of total coal use, which  
 are a composite of UN data (UN, 2016) and Andres et al., (1999). This resulted in a more  
 accurate extension for a number of key countries. SPEW estimates at every 5 years were  
 interpolated to annual values using CDIAC CO<sub>2</sub> time series, resulting in an annual time series.  
 For coal and petroleum, aggregate fuel use was disaggregated into specific fuel types (e.g.,  
 brown coal, hard coal and coal coke; light, medium, and heavy oil) by smoothly transitioning  
 between fuel splits by aggregate sector from the IEA data to SPEW fuel type splits in earlier time  
 periods. Finally fuel use was disaggregated into sectors in a similar manner, smoothly  
 transitioning between CEDS sectoral splits in either 1970 or 1960 to SPEW sectoral splits by  
 1850. A number of exogenous assumptions about fuel and sector splits over time were also  
 needed in this process. More detail on this method can be found in supplement SI-Text Sect.  
 8.1.1.

530 While most biomass fuels are consumed in the residential sector, whose estimation was  
 described above (Sect. 2.2.1), biomass consumed in other sectors are extended using SPEW  
 energy data and population. 1970 CEDS estimates of biomass used in industrial sectors are  
 merged to SPEW values by 1920. Biomass estimates from 1750 – 1850 are estimated by  
 assuming constant per-capita values.

535 Activity drivers for non-combustion sectors in modern years are primarily population estimates.  
 Most historical drivers for non-combustion sectors are also population, while some, shown in  
 Table 4, are extended with other data. These are mostly sectors related to chemicals and solvents  
 that are extended with CO<sub>2</sub> trends from liquid fuel use. Waste combustion is estimated by  
 historical trends for pulp and paper consumption. The driver for sectors 1B2 and 1B2d, refinery  
 and natural gas production, is extended using CDIAC CO<sub>2</sub> emissions for liquid and gas fuels.

Deleted: Table 4

Table 4 Historical Driver Extensions for Non-Combustion Sectors

Non-Combustion Sector	Modern Activity Driver	Historical Extension Trend
-----------------------	------------------------	----------------------------

Formatted Table

1B2_Fugitive-petr-and-gas	Refinery and natural gas production	CDIAC – liquid and gas fuels CO <sub>2</sub>
1B2d_Fugitive-other-energy	Refinery and natural gas production	CDIAC – liquid and gas fuels CO <sub>2</sub>
2B_Chemical-industry	population	CDIAC – liquid fuels CO <sub>2</sub>
2D_Degreasing-Cleaning	population	CDIAC – liquid fuels CO <sub>2</sub>
2D_Paint-application	population	CDIAC – liquid fuels CO <sub>2</sub>
2D3_Chemical-products-manufacture-processing	population	CDIAC – liquid fuels CO <sub>2</sub>
2D3_Other-product-use	population	CDIAC – liquid fuels CO <sub>2</sub>
2L_Other-process-emissions	population	CDIAC – liquid fuels CO <sub>2</sub>
5C_Waste-combustion	Pulp and paper consumption	
7A_Fossil-fuel-fires	population	CDIAC – cumulative solid fuels CO <sub>2</sub>
All Other Process Sectors	population	

## 545 2.5.2 Pre-1970 emission factors

In 1850, the only fuels are coal and biomass used in residential, industrial, rail, and international shipping sectors, and many non-combustion emissions are assumed to be zero. Emission factors are extended back in time by converging to a value in a specified year (often 0 in 1850 or 1900), remaining constant, or following a trend. For some non-combustion emissions, we use an emission trend instead of an emission factor trend. Ideally, sector-specific activity drivers would extend to zero, rather than emissions factors; however, we often use population as the activity driver, because of the lack of complete, historical trends. Extending the emissions factor (e.g., the per capita value) to zero approximates the decrease to zero in the actual activity.

555 BC and OC emission factors for combustion sectors were extended back to 1850 by sector and fuel using the SPEW database and held constant before 1850. Combustion emission factors for NO<sub>x</sub>, NMVOC, and CO in 1900 are drawn from a literature review, primarily Winijkul et al (2016). These emission factors were held constant before 1900 and linearly interpolated between 1900 and 1970. Additional data sources and details are available in the SI-Text Sect. 8.2.

560 Many non-combustion emissions were trended back with existing data from the literature. These include trends from SPEW (Bond et al., 2007), CDIAC (Boden et al., 2016), sector specific sources such as SO<sub>2</sub> smelting and pig iron production, and others, detailed in [Table 5](#). Emissions factors for remaining sectors were linearly interpolated to zero in specified years based on a literature review ((Bond et al., 2007; Davidson, 2009; Holland et al., 2005; Smith et al., 2011)). Further methods and data sources are found in SI-Text Sect. 8.3.

565 NH<sub>3</sub> and NO<sub>x</sub> emissions from mineral and manure (3B\_Manure-management and 3D\_Soil-emissions) are grouped together. While CEDS total estimates should be reliable, there might be inconsistencies going back in time. We assume that the dominant trend from 1960 to 1970 is mineral fertilizer, then scaled back in time globally using Davidson et al. (2009).

Deleted: Table 5

**Table 5 Historical Extension Method and Data Sources for Emission Factors**

Sector	Emission Species	Extension Method	Data Source
All Combustion Sectors	NMVOC, CO, NO <sub>x</sub>	Interpolate to value in 1900	Detailed in SI-Text (Sect. 8.2.1)
All Combustion Sectors	BC, OC	EF trend	SPEW
2Ax_Other-minerals, 2D_Degreasing-Cleaning, 2D_Paint-application, 2D3_Chemical-products-manufacture-processing, 2D3_Other-product-use, 2H_Pulp-and-paper-food-beverage-wood, 2L_Other-process-emissions, 5A_Solid-waste-disposal, 5C_Waste-combustion, 5E_Other-waste-handling, 7A_Fossil-fuel-fires	All	Interpolate to zero in specified year [EFs are emissions per capita values]	Detailed in SI-Text (Sect. 8.3.1)
5D_Wastewater-handling,	NH <sub>3</sub>	Interpolate to value in specified year	
3B_Manure-management	NH <sub>3</sub> , NO <sub>x</sub>	EF trend Emissions trend	Manure Nitrogen per capita (Holland et al., 2005) See SI-Text (Sect. 8.3.1)
3D_Soil-emissions	NH <sub>3</sub> , NO <sub>x</sub>	EF trend Emissions trend	1961-1970: Emissions trend using total nitrogen (N) fertilizer by country 1860-1960: per-capita emissions scaled by global N fertilizer (Davidson, 2009) See Supplemental Information (Sect. 8.3.1)
1A1a_Electricity-public, 1A1a_Heat-production, 1A2g_Ind-Comb-other, 1A3c_Rail, 1A4a_Commercial-institutional, 1A4b_Residential	SO <sub>2</sub>	EF trend	(Gschwandtner et al., 1986)
1A1bc_Other-transformation	BC, OC	Emissions Trend	Pig iron production (SPEW, USGS, other)
1A1bc_Other-transformation	others	Emissions Trend	Total fossil fuel CO <sub>2</sub> (CDIAC)
2A1_Cement-production, 2A2_Lime-production	-	Emissions Trend	CDIAC Cement CO <sub>2</sub>
2C_Metal-production	SO <sub>2</sub>	Emissions Trend	Smith et al. (2011) Emissions
2C_Metal-production	CO	Emissions Trend	Pig iron production
2C_Metal-production	others	Emissions Trend	CDIAC solid fuel CO <sub>2</sub>

Formatted Table

## 2.6 Gridded emissions

575 Final emissions are gridded to facilitate use in Earth system, climate, and atmospheric chemistry models. Gridded outputs are generated as CF-compliant NetCDF files (<http://cfconventions.org/>). Aggregate emissions by country and CEDS sector are aggregated to 16 intermediate sectors (Table 6) and downscaled to a 0.5 x 0.5 degree grid. Country-aggregate emissions by intermediate gridding sector are spatially distributed using normalized spatial proxy distributions

580 for each country, plus global spatial proxies for shipping and aircraft, then combined into global maps. For grid cells that contain more than one country, the proxy spatial distributions are adjusted to be proportional to area fractions of each country occupying that cell. Gridded emissions are aggregated to 9 sectors for final distribution: agriculture, energy, industrial, transportation, residential/commercial/other, solvents, waste, international shipping, and aircraft (shown in Table 6, more detail in SI-Text Sect 9.1).

585 Proxy data used for gridding are primarily gridded emissions from EDGAR v4.2(EC-JRC/PBL, 2012) and HYDE population (Goldewijk et al., 2011). Flaring emissions use a blend of grids from EDGAR and ECLIPSE (Klimont et al., 2017a). Road transportation uses the EDGAR 4.3 road transportation grid, which is significantly improved over previous versions (EC-JRC/PBL, 2016), but was only available for 2010, so this is used for all years. When the primary proxy for a specific country/region, sector, and year combination is not available, CEDS uses gridded population from Gridded Population of the World (GPW) (Doxsey-Whitfield et al., 2015) and HYDE as backup proxy. Whenever available, proxy data are from annual gridded data, however proxy grids for sectors other than RCO (residential, commercial, other) and waste are held constant before 1970 and after 2008. Specific proxy data sources are detailed in Table 6. As noted above, these proxy data were used to distribute emissions spatially within each country such that country totals match the CEDS inventory estimates. More detail on gridding can be found in the SI-Text Sect. 9.

600 Emissions are aggregated to 9 final gridding sectors (Table 6) and distributed over 12 months using spatially-explicit, sector-specific, monthly fractions, largely from the ECLIPSE project, except for international shipping (from EDGAR) and aircraft (from Lee et al. (2009), as used in Larmarque et al. 2010). Emissions are then converted to flux ( $\text{kg m}^{-2}\text{s}^{-1}$ ). This process is further described in the SI-Text Section 9.4.

Table 6 Proxy Data used for Gridding

CEDS final gridding sector	CEDS intermediate gridding sector definition	Proxy Data Source	Years
Residential, commercial, other (RCO)	Residential, Commercial, Other (Residential and Commercial)	HYDE Population (Decadal values, interpolated annually)	1750 - 1899
		EDGAR v4.2 (1970) blended with HYDE Population	1900 - 1969
		EDGAR v4.2 RCORC	1970 – 2008
	Residential, Commercial, Other (Other)	HYDE Population (Decadal values, interpolated annually)	1750 - 1899
		EDGAR v4.2 (1970) blended with HYDE Population	1900 - 1969
		EDGAR v4.2 RCOO	1970 – 2008
Agriculture (AGR)	Agriculture	EDGAR v4.2 AGR	1970 – 2008
Energy sector (ENE)	Electricity and heat production	EDGAR v4.2 ELEC	1970 – 2008
	Fossil Fuel Fires	EDGAR v4.2 FFFI	1970 – 2008
	Fuel Production and Transformation	EDGAR v4.2 ETRN	1970 – 2008

Deleted: Table 6

Formatted Table

	Oil and Gas Fugitive/Flaring	ECLIPSE FLR 1990, 2000, 2010 EDGAR v4.2 ETRN (1970 - 2008)	1970 – 2010
Industrial sector (IND)	Industrial Combustion	EDGAR v4.2 INDC	1970 – 2008
	Industrial process and product use	EDGAR v4.2 INPU	1970 – 2008
Transportation section (TRA)	Road Transportation	EDGAR v4.3 ROAD (2010)	1750 – 2014
	Non-road Transportation	EDGAR v4.2 NRTR	1970 – 2008
International shipping (SHP)	International Shipping	ECLIPSE + additional data (1990 – 2015)	1990 - 2010
	International Shipping (Tanker Loading)	ECLIPSE + additional data (1990 – 2015)	1990 - 2010
Solvents production and application (SLV)	Solvents production and application	EDGAR v4.2 SLV	1970 – 2008
Waste (WST)	Waste	HYDE Population, GPW v3 (modified rural population)	1750 – 2014
Aircraft (AIR)	Aircraft	CMIP5 (Lamarque et al., 2010; Lee et al., 2009)	1850 - 2008
* Spatial proxy data within each country is held constant before and after the years shown. See Supplement for further details on the gridding proxy data including definitions for the EDGAR gridding codes in this table.			

605

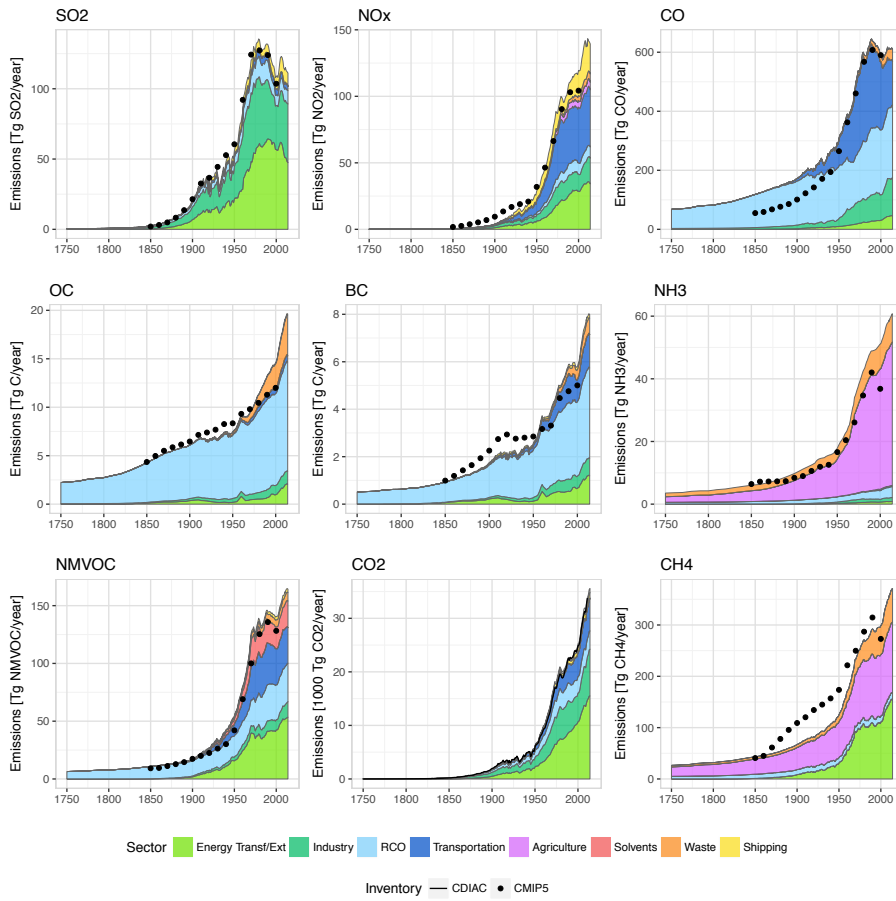
## 2.7 Additional methodological detail

The above sections discuss the general approach to the methodology used in producing this data set, but there are a number of exceptions, details on additional processing and analysis, and data sources that are discussed in the Supplemental files.

610

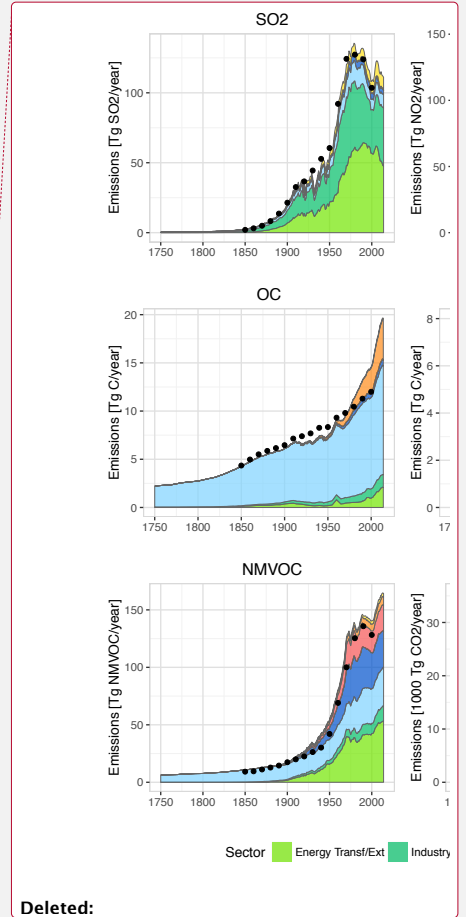
## 3 Results and discussion

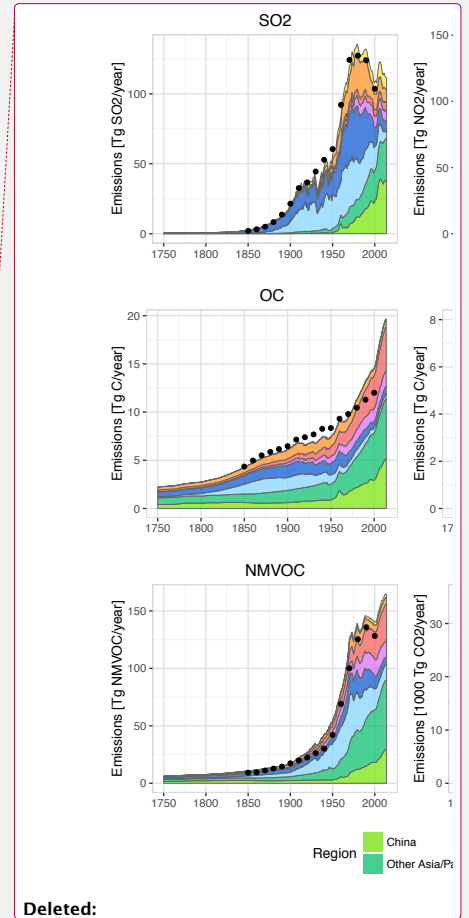
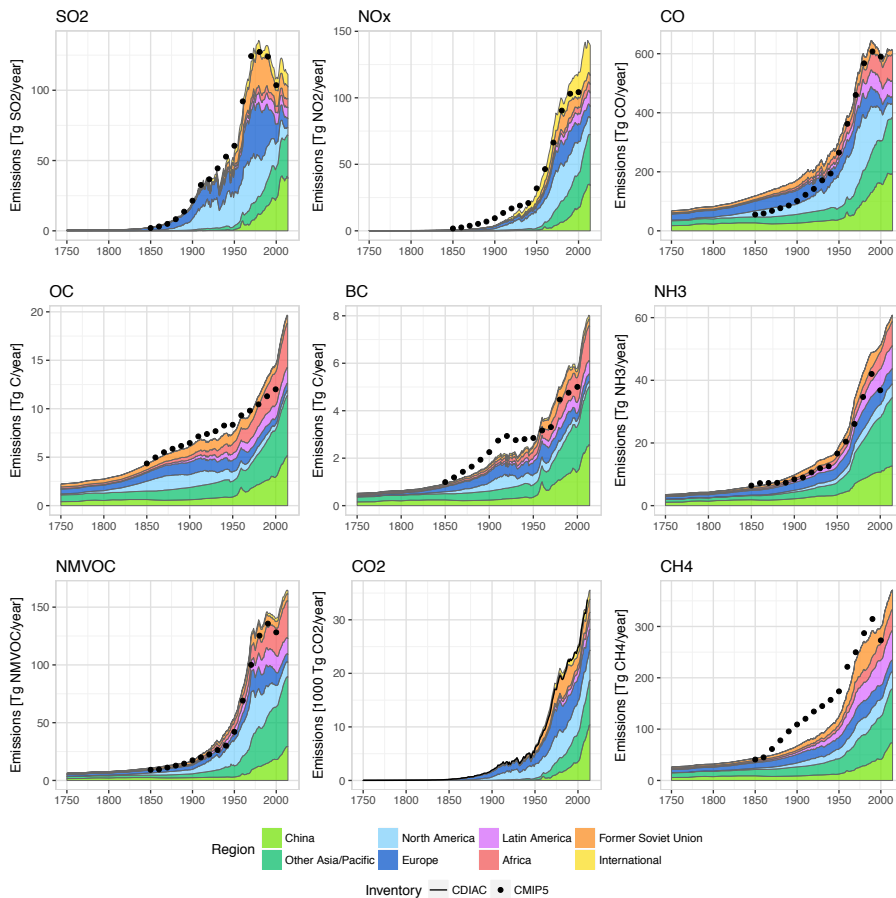
### 3.1 Emissions trends



615

Figure 2: CEDS emissions estimates by aggregate sector compared to Lamarque et al. (2010) (dots) and CDIAC (line) for CO<sub>2</sub>. For a like with like comparison, these figures do not include aviation or agricultural waste burning on fields. 'RCO' stands for residential, commercial, and other.





620 **Figure 3: Emissions estimates by region compared to Lamarque et al. (2010) (dots) and CDIAC (line) for CO<sub>2</sub>. For a like with like comparison, these figures do not include aviation or agricultural waste burning on fields. The “International” region shows international shipping emissions.**

625 **Figure 2 and Figure 3** show global emissions over time by aggregate sector and region, respectively, from 1750 – 2014. Definitions of aggregate sectors and regions are given in Supplemental Figure and Tables, Sect. A. The supplement Sect. B contains line graph versions of these figures, emissions by fuel, and regional versions of **Figure 2** and **Figure 3**.

630 In 1850, the earliest year in which most existing data sets provide estimates, anthropogenic emissions are dominated by residential sector cooking and heating and therefore products of incomplete combustion for BC, OC, CO, and NMVOC. In 1850, anthropogenic emissions (sectors included in this inventory), make up approximately 20 – 30% of total global emissions

- Deleted: Figure 2
- Deleted: Figure 3
- Deleted: Figure 2
- Deleted: Figure 3



(which also include grassland and forest burning, estimated by Lamarque et al. (2010)) for BC, OC, NMVOC, and CO but only 3% of global NO<sub>x</sub> emissions.

640 In the late 1800s through mid 20<sup>th</sup> century, global emissions transition to a mix of growing industrial, energy transformation and extraction (abbreviated as "Energy Trans/Ext"), and transportation emissions with a relatively steady global base of residential emissions (primarily biomass and later coal for cooking and heating). The 20<sup>th</sup> century brought a strong increase in emissions of pollutants associated with the industrial revolution and development of the transport sectors (SO<sub>2</sub>, NO<sub>x</sub>, CO<sub>2</sub>, NMVOC). BC and OC exhibit steadily growing emissions dominated by the residential sector over the century, while other sectors begin to contribute larger shares post 1950. The last few decades increasingly show, even at the global level, the impact of strong growth of Asian economies (Fig. 3). The Haber-Bosch invention (ammonia synthesis) about 100 years ago allowed fast growth in agricultural production, stimulating population growth and a consequent explosion of NH<sub>3</sub> emissions (Erisman et al., 2008). Before 1920 global emissions for all species are less than 10% of year 2000 global values.

650 For several decades after 1950 global emissions grow quickly for all species. SO<sub>2</sub> continues to be dominated by industry and energy transformation and extraction sectors. In the later parts of the century, while Europe and North American SO<sub>2</sub> emissions decline as a result of emission control policies, SO<sub>2</sub> emissions in Asia continue to grow. NH<sub>3</sub> is dominated by the agriculture sectors and NMVOCs by industry and energy transformation and extraction sectors. Transportation emissions have grown steadily and became an important contribution to NO<sub>x</sub>, NMVOC, and CO emissions. Growth in CO emissions over the century is due to transportation emission globally until the 1980s and 90s when North America and Europe introduced catalytic converters. Other regions followed more recently resulting in a declining transport contribution, however, CO emissions in Asia and Africa have continued to rise due to population-driven residential biomass burning. Similarly, while NO<sub>x</sub> from transportation sectors have decreased in recent years, total global NO<sub>x</sub> emissions have increased quickly since 2005 due to industry and energy sectors in all parts of Asia. BC and OC increases since 1950 have been dominated by residential emissions from Africa and Asia but growing fleets of diesel vehicles in the last decades added to the burden of BC emissions.

670 BC emissions from residential biomass are shown in [Figure 4](#) alongside rural population by region. Other Asia, Africa, and China dominate residential biomass BC emissions, which are regions with the largest rural populations. While residential biomass in most regions follow rural population trends, emissions in Latin America stay flat while its rural population has steadily increased since 1960. Emissions in China flatten more dramatically after 1990 than rural population, presumably reflecting the spread of modern energy sources as rural residential per capita biomass use decreases in this dataset.

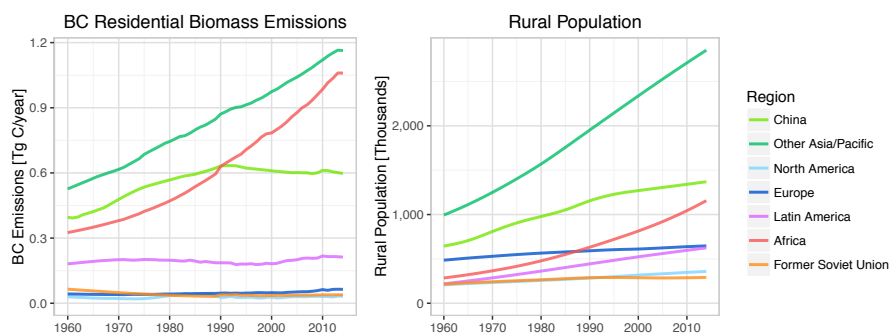
675 Of the emission species estimated, SO<sub>2</sub> is the most responsive to global events such as war and depressions. SO<sub>2</sub> emissions are primarily from non-residential fuel burning and industrial processes which vary with economic activity, where other species have a base of residential biomass burning or agriculture and waste emissions. In this data set, these emissions remain steady within the backdrop of variable economic conditions, while events such as World Wars or the collapse of the Soviet Union can be seen most clearly in annual SO<sub>2</sub> emissions. We note that 680 the relative constancy of residential and agricultural emissions is, to some extent, a result of a

Deleted: Figure 4

Deleted: , and e

Deleted: . While rural population in China continually grows, residential biomass use flattens in 1990

lack of detailed time series data for the drivers of these emissions in earlier periods. Variability for these sectors in earlier years, therefore, might be underestimated.



690 **Figure 4: (Left) BC residential biomass emissions by region and (right) rural population by region.**

### 3.2 Emissions trends in recent years (2000 - 2014)

After 2000, many species' emissions follow similar trends as the late 20<sup>th</sup> Century, as shown in Figure 5, with further details in the SI-Figures Sect. C, E, and G.

695 BC and OC steadily grow in Africa and Other Asia from residential biomass emissions, which are driven by continued growth of rural populations. While most BC emission growth in China is due to energy transformation, primarily coke production, the residential, transportation, industry and waste sectors all contribute smaller, but similar growth over 2000 – 2014 (Fig. S19). See Sect. 3.4 for a discussion of uncertainty.

700 NH<sub>3</sub> continues its steady increase mostly due to agriculture in Asia and Africa. Global CO<sub>2</sub> emissions increase due to steadily rising emissions across most sectors in China and Asia and moderately rising emissions in Africa and Latin America, while emissions in North America and Europe flatten or decline after 2007 (largely due to the energy transformation and extraction sectors).

705 Global CO emissions flatten, despite increasing CO emissions in China and Other Asia, and Africa, which is offset by a continuing decrease of transportation CO emissions in North America and Europe, shown in Fig. 2 and in more detail in the Supplemental Figures. CO emissions in China increase then flatten after 2007, despite continually decreasing transportation CO emissions, which are offset by an increase in industrial emissions (Fig. S19). Similarly, after an increase from 2000 – 2005, global SO<sub>2</sub> emissions flatten despite increasing emissions in China and Other Asia due to steadily decreasing emissions in Europe, North America, and the Former Soviet Union (Figures 2 and S3). SO<sub>2</sub> emissions from energy transformation in China have declined since 2005 with the onset of emissions controls in power plants, however industrial emissions remained largely uncontrolled and became the dominant sector in China (Fig. S19).

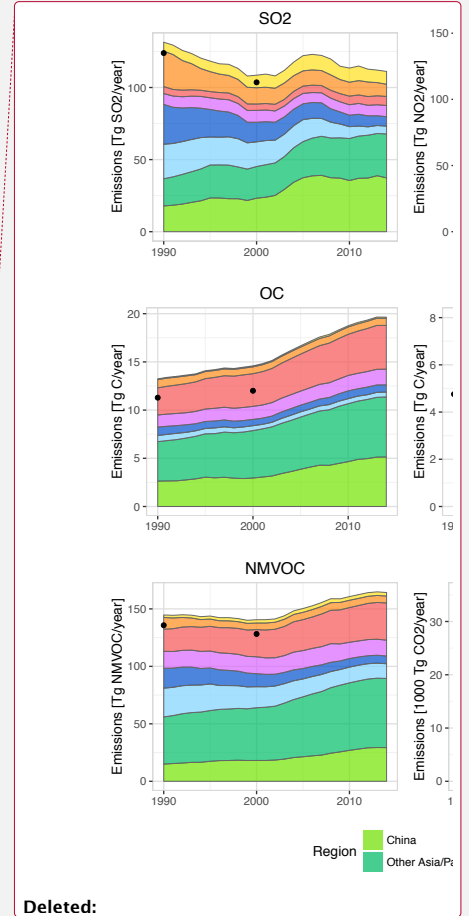
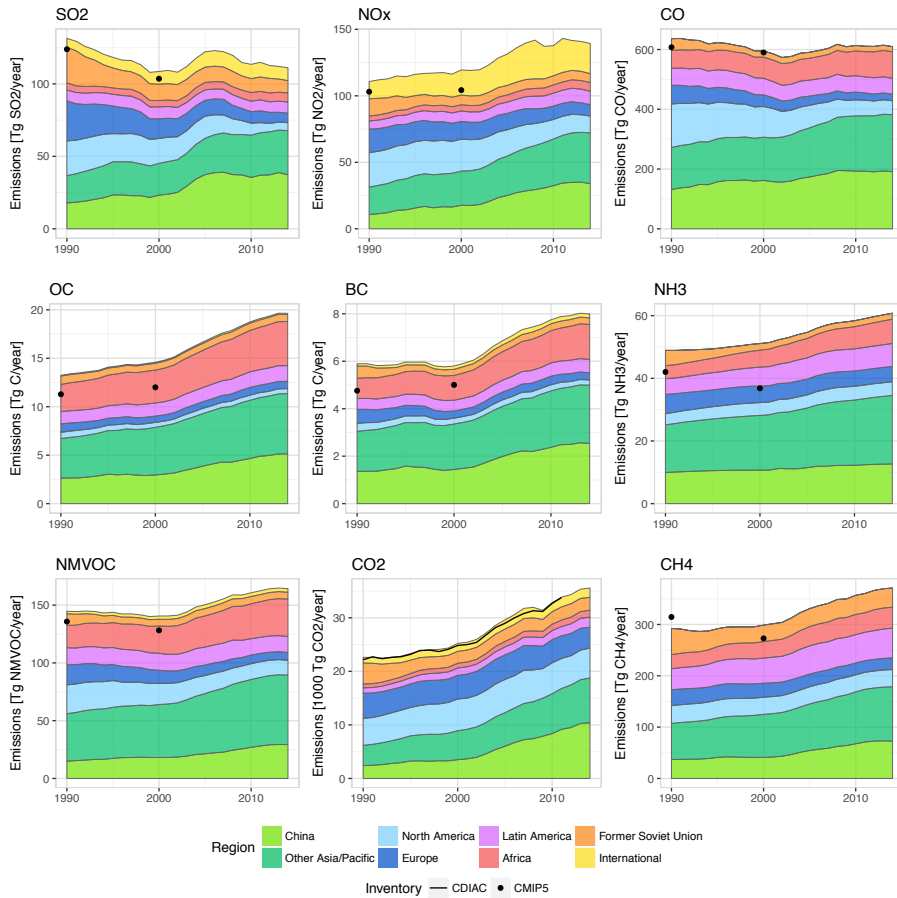
715 Global NO<sub>x</sub> emissions rise then flatten around 2008. The growth in industrial emissions after 2000 is offset in 2007 by the decrease in international shipping emissions, while global

emissions in other sectors stay flat. NO<sub>x</sub> emissions in North America and Europe decline due to transportation and energy transformation (Simon et al., 2015), while emissions in China and Other Asia continue to grow, also in the transportation and energy transformation. Growth of NO<sub>x</sub> emissions in Other Asia, almost completely offset reductions in NO<sub>x</sub> emissions in North America from 2000 – 2014. In China, industry continually grows since 2003, transportation began to flatten around 2007, and the energy transformation and extraction sectors began declining in 2011 (Fig. S19) following the introduction of more stringent emission standards for power plants (Liu et al., 2016).

Globally, NMVOC emissions increase over the period, due to varying developments across the regions but in large part due to increases in energy emissions. NMVOC emissions increase in China from solvents (Fig. S19), Other Asia from transportation (Fig. S24), and Africa from energy transformation (Fig. S18); decline in Europe and North America due to transportation and solvents (Fig. S20 and S23), and stay flat in other regions.

As discussed in the Sect. 3.5, trends in recent years are more uncertain as they rely on sometimes preliminary activity data and emission factors extended outside inventory scaling years. Some of the notable trends in CEDS emissions estimates in recent years are also from particularly uncertain sources. OC and BC emission estimates have some of the highest degrees of uncertainty in global inventories, and waste sectors in particular are highly uncertain.

Additionally, a lot of global growth can be attributed to sectors that, in the CEDS system follow population trends over the most recent few years (e.g. waste, agriculture, and residential biomass); are from inherently uncertain sectors (e.g. waste); or in China where emissions remain uncertain because the accounting of emissions factors, fuel properties, and energy use data have been subject to corrections and subsequent debate (Hong et al., 2017; Korsbakken et al., 2016; Liu et al., 2015b; Olivier et al., 2015).



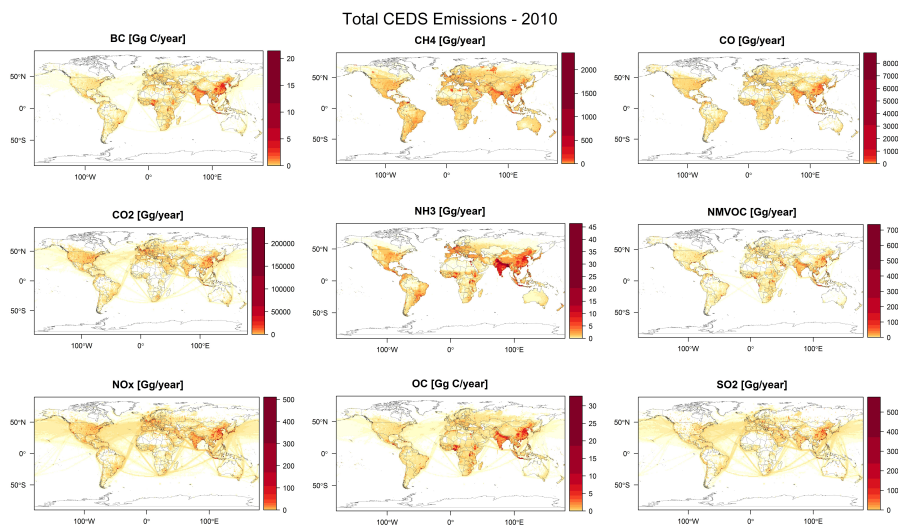
Deleted:

Deleted: Figure 3

Figure 5: Recent emissions estimates (1990 - 2014) by region compared to Lamarque et al. (2010) (dots) and CDIAC (line) for CO<sub>2</sub>. Shows same data as Figure 3 over a shorter time scale. For like with like comparison, these figures do not include aviation or agricultural waste burning on fields. The "International" region shows international shipping emissions.

745

### 3.3 Gridded Emissions



750 **Figure 6: Total gridded CEDS emissions by emission species for 2010**

755 Figure 6 shows gridded CEDS estimates of total emissions in 2010 for all emission species. CEDS maps are similar to existing maps such as EDGAR (EC-JRC/PBL, 2012) and CMIP5 (Lamarque et al., 2010) as these data sets are used in the gridding process. Emissions for most species are concentrated in high population areas such as parts of China, India, and the eastern US. BC and OC, whose emissions are dominated by heating and cooking fueled by biomass are also more concentrated in Africa. Shipping emissions are concentrated over along ocean shipping lanes for  $\text{NO}_x$ ,  $\text{SO}_2$ , and  $\text{CO}_2$ . Discussion of how gridded data varies from CMIP5 (Lamarque et al., 2010) gridded data is included in Sect 3.4.1.

### 3.4 Comparison with other inventories

760 Differences between CEDS emissions and other inventory estimates are described below. The reasons depend on emissions species, but are largely due to updated emissions factors, increased detail in fuel and sector data, and a new estimate of waste emissions (however, see Sect. 3.5).

#### 3.4.1 CMIP5 (Lamarque et al., 2010)

765 The emissions data used for CMIP5 (Lamarque et al., 2010) also used a “mosaic” methodology, combining emission estimates from different sources. The CEDS methodology provides a more consistent estimate over time since driver data are used to produce consistent trends. Emissions in earlier years, particularly before 1900, also differ because CEDS differentiates between biomass and coal combustion, which has a large impact on CO and  $\text{NO}_x$  emissions. The (Lamarque et al., 2010) estimates for early years were drawn from the EDGAR-HYDE estimates (van Aardenne et al., 2001), which did not distinguish between these fuels. Figures showing comparisons between CMIP5 and CEDS globally by sector and for the top 5 emitting CMIP5 regions are shown in Sect. H of the Figures and Tables Supplement.

775 CEDS global SO<sub>2</sub> estimates are similar to CMIP5 estimates, although slightly lower (~10%) in the mid-20<sup>th</sup> century and slightly higher (~5%) near the end of the 20<sup>th</sup> century. Similar methods and data were used to develop both estimates (Smith et al., 2011). FSU SO<sub>2</sub> emissions are larger in CEDS (see Smith et al. 2011) from 1970-2000, but smaller in Europe from 1930 - 1980. Shipping SO<sub>2</sub> emissions are lower in the early 20<sup>th</sup> century due to updated methodologies (Smith et al. 2011), and slightly lower in recent years due to updated parameter estimates (see SI and Figure S43).

- Deleted: very
- Formatted: Superscript
- Deleted: as s
- Formatted: Superscript
- Formatted: Superscript
- Comment [SJS4]: Insert figure number
- Deleted: XX)

780 CEDS NO<sub>x</sub> emissions are smaller than the CMIP5 estimates until the mid-20<sup>th</sup> century. This is largely because of explicit representation of the lower NO<sub>x</sub> emissions from biomass fuels in early periods, which combusts at lower temperatures as compared to coal. In 1970 CEDS NO<sub>x</sub> emissions begin to diverge from CMIP5 estimates, generally larger due to waste, transportation, and energy sectors. CEDS emissions remain about 10% larger than CMIP5 in 1980 and 1990.

785 Both global estimates increase and start to flatten around 1990. However, CEDS values flatten until 2000 and then increase again, while CMIP5 values decrease from 1990 to 2000.

790 CEDS CO estimates before 1960 are increasingly larger than CMIP5 estimates going back in time, reaching a factor of two by 1850 due to the explicit representation of biomass. In 1900, CEDS estimates are 70% larger than CMIP5, 98% of which is due to the RCO sector. CEDS estimates are slightly larger than CMIP5 post 1960 (8% in 1960 and 1970 and less than 5% from 1980 – 2000).

795 CEDS OC estimates are within 10% but smaller than CMIP5 estimates through 1970, when CEDS estimates quickly increase and become larger (at most 25% larger) than CMIP5 estimates. BC emissions are similar, although CEDS estimates are smaller (sometimes by 25%) than CMIP5 until 1960 when CEDS estimates increase quickly, up to 25% larger than CMIP5 estimates, in part due to larger waste sector emissions (see § 3.5). Differences in BC in the early 20th century are mostly from residential fuel use in the US. In 1910, 98% of the difference between the two inventories is from residential energy use, with 77% of that difference in the USA. US residential biomass consumption in 1949 is estimated using EIA data and propagated back in time to merge with Fernandes et al. (2007) used by SPEW in 1920. This US biomass estimate may be lower than that used in CMIP5.

Deleted:

800 NH<sub>3</sub> and NMVOC emissions are similar to CMIP5 estimates until 1950 when CEDS emissions begin to grow at a faster rate than CMIP5 emissions through 1990 when they are about 20-30% larger. Between 1990 and 2000 CMIP5 estimates show a decrease in emissions while CEDS estimates shows flattening emissions then a steep increase. Differences in NH<sub>3</sub> emissions are largely due to steadily increasing agricultural emissions and a larger estimate from wastewater/human waste, which makes up 14% of CEDS NH<sub>3</sub> estimates in recent decades but was largely missing in the RCP estimates. CEDS NMVOC emissions are much larger for global waste, while much smaller for global transportation.

Deleted: those

805 Global CEDS CH<sub>4</sub> emissions range from 93% of CMIP5 values in 1970 to 109% of CMIP5 values in 2000. CEDS estimates change more smoothly over time, without a dip in 2000. CEDS energy estimates are consistently larger than CMIP5 emissions, 22 – 58%, while CEDS agriculture emissions are consistently 10-15% smaller than CMIP5 estimates, except in 2000 (6% smaller) when CMIP5 estimates dip and CEDS emissions flatten, due to our inclusion of

815 FAO agriculture data.

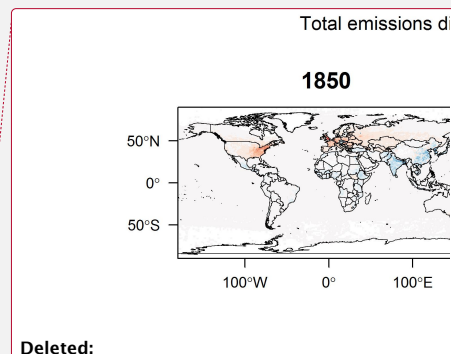
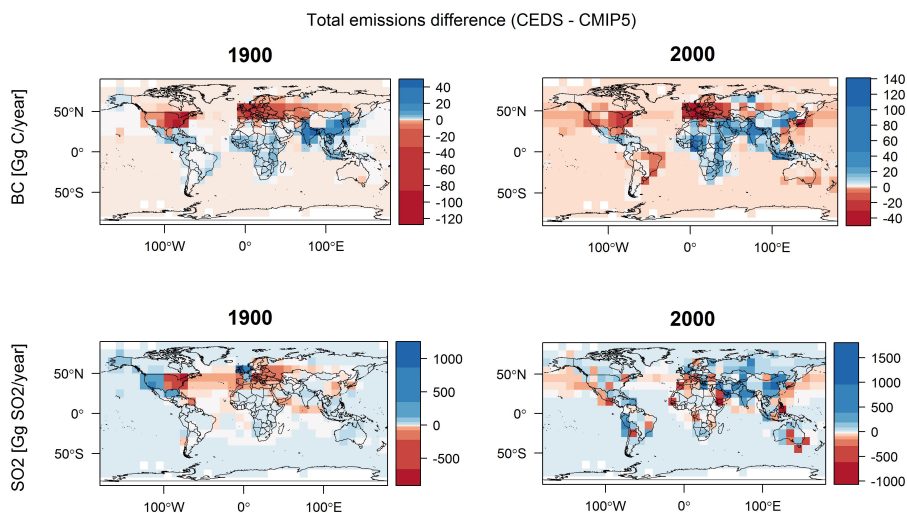


Figure 7: Difference between CEDS and CMIP5 total gridded emissions for BC (top) and SO<sub>2</sub> (bottom) in 1900 (left) and 2000 (right) at 10 degree grid cells. Values shown are CEDS – CMIP5 estimates. For like with like comparison, these figures do not include aviation or agricultural waste burning on fields.

825 Figure 7 shows differences between total gridded emissions for CEDS and CMIP5 for BC and SO<sub>2</sub> in 1900 and 2000. In 1900, CEDS BC emissions are lower over the US, Europe (especially cities in the UK) and larger over parts of India and China. Larger differences are concentrated in high population areas. In 2000, emissions follow a similar pattern. CEDS BC emissions are smaller over Europe and the eastern US, but larger over populated areas of India, China, and western Africa (particularly Nigeria), reflecting, in part higher country totals (e.g. Figure S41).

830 Additional text and similar difference maps for NO<sub>x</sub>, CO, OC, NH<sub>3</sub>, and NMVOC as well as high resolution figures for SO<sub>2</sub>, are included in Supplemental Figures and Tables, Sect. K. The magnitude of most differences in 1850 are small, as total global emissions are small, and tend to be more concentrated in populated areas, with larger differences by 1900. Differences in 2000 are a bit larger, and tend to be consistent across countries. For example, total CEDS CO emission in India in 2000 are smaller than CMIP5 values, so most grid cells in India have smaller values.

835 However, differences in gridded SO<sub>2</sub> emissions in 2000 are not as consistent across countries or regions and tend to be highly concentrated into small groups of grid cells. Globally CEDS SO<sub>2</sub> emissions are very similar to CMIP5 emissions, and emissions are dominated by large point sources, so these differences are likely due to updated proxy data for power plants and metal smelters. The distribution of SO<sub>2</sub> emissions over the US also differ from CMIP5 grids, shown in Figure 7 and Sect. K of the Supplemental Figures and Tables, and detailed in Section A2.1.

840 BC, OC and NH<sub>3</sub> CEDS emissions in 2000 are larger over India, China, and parts of Africa than CMIP5 estimates, similar to BC emission in Fig. 7. CEDS NO<sub>x</sub> emissions in 2000 are also larger over China and India, while they are smaller over the Middle East and Eastern Europe. NMVOC estimates are smaller over China and the Middle East.

Formatted: Subscript  
Deleted: 1850

Formatted: Subscript  
Deleted: 1850

Deleted: 1850

Deleted: eastern

Deleted: slightly

Deleted: However, as with country totals, as emissions in 1850 1900 are quite small, so absolute differences are also small.

Deleted: SO<sub>2</sub>

Formatted: Subscript

Deleted: ion

Deleted: Similar to BC, t

Deleted: 1900

Deleted: .

Deleted: t

Deleted:

Formatted: Subscript

Deleted: Figure

865 As discussed further in the SI (section K), these differences are due to a combination of differences in aggregate country-level emission estimates, spatial proxy data, and methodologies for mapping aggregate emissions to spatial grids. We note that the spatial proxy that is most important will also depend on emission species: for SO<sub>2</sub> power plants will generally be a key sector while for NO<sub>2</sub> mobile sources are an important sector over recent decades.

### 3.4.2 GAINS and EDGAR v4.3

870 CEDS estimates are compared to GAINS and EDGAR v4.3 emissions estimates in Fig. S40, shown in Supplemental Figures and Tables (SI-Figures).

875 Comparing GAINS with CEDS, BC, OC, NO<sub>x</sub>, and SO<sub>2</sub> CEDS estimates are within +/- 20% of global GAINS values in 2000, 2005 and 2010. OC and SO<sub>2</sub> CEDS emissions are smaller than GAINS values in 2000, but become larger than GAINS global values by 2010. CEDS NO<sub>x</sub>, CO<sub>2</sub>, and BC emissions are consistently smaller than GAINS estimates and CEDS CO estimates are consistently larger than GAINS but within 6%, while CEDS NMVOC are 26 – 43% larger than GAINS estimates from 2000 - 2010.

880 BC emissions increase by about 10% from 2000 to 2010 in GAINS while the increase is 33% in CEDS. Two particularly large differences are due to coke production in China, which are particularly uncertain, and residential emissions from biofuel use (see Figure 4), both of which increase significantly over this period in CEDS.

885 Between 2000 and 2010 global CEDS emissions for all species (except CO<sub>2</sub>) increase more than the GAINS estimates, with CEDS estimates are higher than GAINS by 2010 a number of species (Figure S40). GAINS emissions exhibit slower growth than CEDS emissions in recent years, indicating that GAINS includes more emissions controls or other changes over this period than CEDS (and the inventories to which CEDS is calibrated). The divergence in recent years, is particularly present in SO<sub>2</sub> and NO<sub>x</sub> emissions for power generation in China and India and SO<sub>2</sub> globally from refineries. This divergence continues out to 2015 (IEA, 2016b, based on an updated version of GAINS), in which global SO<sub>2</sub> emissions decline by ~25,000 Gg from 2005 to 2015, while CEDS emissions decline by only ~10,000Gg over 2005 to 2014.

890 CEDS estimates are consistently larger than EDGAR 4.3 global estimates for most emissions species. CEDS emissions follow the similar trends as EDGAR from 1970 – 2000 or all species but OC. CEDS emissions for OC grow somewhat linearly over the period, while EDGAR estimates stay relatively flat. Sectors driving the differences between CEDS and EDGAR estimates vary by emission species. However, these differences are largely due to waste burning and aggregate sector 1A4, which is dominated by residential emissions, but also includes commercial/institutional, and agriculture/forestry/fishing. A key differences is associated with estimates for waste (trash) burning which are much higher in CEDS (based on Wiedinmyer et al. (2014)) and have a strong influence on totals, particularly OC, with smaller relative impacts on NMVOC and BC (see §3.5).

905 Global CEDS CH<sub>4</sub> emissions estimates are slightly smaller than, but similar to EDGAR 4.2 estimates, ranging from 94 – 98% the EDGAR estimates. The similarity is because much of our methane emissions are either from EDGAR, or FAO (which uses similar methodologies). The largest differences can be found in 1B2 (fugitive petroleum and gas emissions) in Central and

Deleted: often the most
Deleted: .
Formatted: Subscript
Formatted: Subscript
Deleted: c
Formatted: Font:(Asian) Japanese
Moved (insertion) [1]
Formatted: Subscript
Formatted: Subscript
Deleted: in a recent report
Deleted: )
Formatted: Subscript
Moved up [1]: BC emissions increase by about 10% from 2000 to 2010 in GAINS while the increase is 33% in CEDS. Two particularly large differences are due to coke production in China, which are particularly uncertain, and residential emissions from biofuel use (see Figure 4), both of which increase significantly over this period in CEDS. .
Deleted: Overall, CEDS estimates are higher than GAINS for a number of species in 2010 (Figure S40). For many emission species, GAINS emissions exhibit slower growth than CEDS emissions in recent years, indicating that GAINS include more emissions controls or other changes over this period than CEDS (and the inventories to which CEDS is calibrated). .
Deleted: Global CEDS emissions estimates are generally comparable to GAINS global emissions, comparing only sectors common to both inventories. BC, OC, NO <sub>x</sub> , and SO <sub>2</sub> CEDS estimates are within +/- 15% of global GAINS values in 2000, 2005 and 2010. In 2000, BC, and SO <sub>2</sub> CEDS emissions are smaller than GAINS values but are larger than GAINS global values by 2010, while CEDS NO <sub>x</sub> and CO estimates are consistently larger than GAINS values. CEDS OC and NMVOC emissions are 18 – 44% larger than GAINS emissions. One of the key differences is associated with estimates for waste (trash) burning which are much higher in CEDS (based on Wiedinmyer et al. (2014)) and have a strong influence on totals, particularly OC and NMVOC (see §3.5). Between 2000 and 2010 global CEDS emissions for all species increase more quickly than the GAINS estimates. .
Deleted: somewhat
Deleted: all
Deleted: ,
Deleted: while slightly larger,
Deleted: same annual
Deleted: and
Deleted: but also



South America Africa, and the Former Soviet Union, as these default emissions also incorporate data from ECLIPSE V5a (Stohl et al., 2015), and rice cultivation in China (FAO, 2016).

### 3.5 Uncertainty

950 Emission uncertainty estimates in inventories are a critical need, however this is difficult to quantify and most inventories do not include uncertainty estimates. All the components and assumptions used in this analysis are uncertain to varying degrees, which means that uncertainty will vary with time, space, and emission species making quantification of uncertainties challenging.

955 There are some consistent trends in uncertainty estimates by emission species. Uncertainty is generally lowest for CO<sub>2</sub> and SO<sub>2</sub> emissions, which depend primarily on quality of fossil fuel statistical data and fuel properties, e.g. carbon and sulfur content, with straightforward stoichiometric relationships. Global CO<sub>2</sub> and SO<sub>2</sub> uncertainty has been estimated to be in order 8% for CO<sub>2</sub> (Andres et al., 2012) and 8-14% for SO<sub>2</sub> (Smith et al., 2011), for a roughly 5-95% confidence interval. Global uncertainties for these species tend to be relatively low also because 960 fuel properties are not thought to be highly correlated between major emitting regions.

Uncertainty in specific countries can be much higher, however. China is a major emitter of both CO<sub>2</sub> and SO<sub>2</sub>, and uncertainties regarding the level of coal consumption (Guan et al., 2012; Liu et al., 2015b) will directly impact emission estimates as well as actual implementation and efficiency of control equipment (Xu et al., 2009, 2009; Zhang et al., 2012). Since China energy 965 consumption uncertainties appear to be largest in sectors with limited emission controls they can have a large impact on SO<sub>2</sub> emissions in particular (Hong et al., 2017). There is also uncertainty regarding the appropriate CO<sub>2</sub> emission factor for coal in China (Liu et al., 2015b; Olivier et al., 2015) as discussed further in the SI-Text Sect. 5.4.

970 Emission factors for CO, NO<sub>x</sub>, NMVOC, BC and OC, tend to be dependent on details of the emitting process, and, therefore, have higher uncertainties (Blanco et al., 2014). This is particularly true for carbonaceous aerosol emissions, where emission factors can range over several orders of magnitude depending on the conditions under which combustion occurs. Uncertainties in global BC emissions have been estimated to be a factor of two (Bond et al., 975 2004). Uncertainty in country-level BC emissions in China were estimated to be -43% to +93% by Lu et al. (2011), -50% to +164% by Qin and Xie (2012) ±176% by Kurokawa et al. (2013a), and -28 to +126% by Zhao et al. (2013b). Uncertainty in activity levels also contributes. Solid biomass consumption is difficult to track and both absolute values and trends are generally much more uncertain than fossil fuel consumption data, which will contribute to BC and OC emissions 980 uncertainty.

Emissions uncertainties for CO, NO<sub>x</sub>, NMVOC typically lie between those of carbonaceous aerosols and those of CO<sub>2</sub> and SO<sub>2</sub>. In part this is because, particularly in industrialized economies, a number of sectors contribute to emissions, and sectoral uncertainties will largely be independent of each other. Substantial uncertainty can still be present for specific sectors, even in 985 countries with well-developed emission inventory processes (Parrish, 2006). For example, studies combining observations and modeling suggest that recent US national emissions inventory overestimates on road vehicle NO<sub>x</sub> emissions by about a factor of two (Anderson et al., 2014; Hassler et al., 2016; Travis et al., 2016), while recent updates of Canadian NMVOC

- Deleted: with
- Deleted: the large uncertainty in biofuel use
- Deleted: in many regions
- Deleted: ing

emissions (Environment and Climate Change Canada, 2016) are, for some sectors, a factor of two larger than previous estimates (Environment Canada, 2013).

995 There are specific sectors with particularly uncertain emissions. The level of fugitive emissions  
often depends on procedures and practices, leading to large uncertainty. Emissions that result  
from biological processes, such as NO<sub>x</sub> from fertilized soils or NH<sub>3</sub> from wastewater and  
agriculture, also generally depend on environmental conditions and would, in principle, require  
1000 adapt the methodologies used in REAS (Kurokawa et al., 2013a) and uses a single global default  
emission factor (modified to account for wastewater treatment as described in the SI). Not only is  
this emission factor uncertain, but there will certainly be regional variations due to differing  
environmental conditions that we were unable to take into account. For agricultural emissions,  
the actual practices of managing livestock manures will affect true emissions; such practices vary  
1005 significantly across the world but are not always well understood or reflected in the emission  
factors used in global inventories (Paulot et al., 2014). We note that in the CEDS historical  
extrapolation before either 1960 or 1970, depending on the sector, global trends were used for  
agricultural emissions, which means that country-specific trends were not taken into account,  
leading to additional uncertainties at the country level.

Deleted: follow

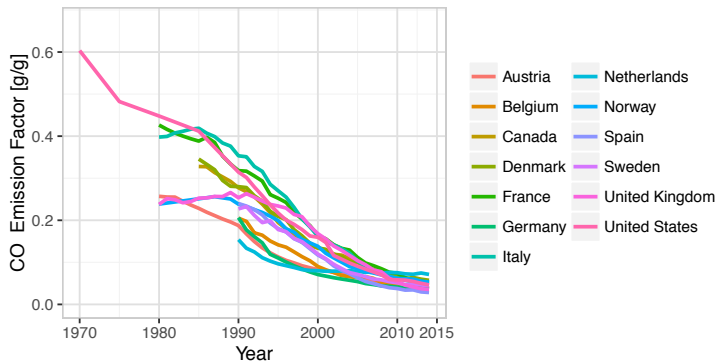
1010 Residential waste burning emissions depend on the amount of waste combusted, composition of  
the waste, and combustion conditions. This sector globally contributes a substantial fraction of  
OC emissions in particular, but substantial amounts of BC and other species. The CEDS estimate  
for this sector, except where scaled to country emission estimates (available only in a few OECD  
countries) is based on 2010 estimates from Wiedinmyer et al. (2014). Wiedinmyer et al. followed  
1015 IPCC guidelines and assumed that 60% of all waste that is not reported as collected is burnt. This  
could be an overestimate in countries where there is informal waste collection and recycling.  
Klimont et al. (2017a) recently estimated BC and OC emissions from this sector, estimating that  
from 115 to 160 Tg of waste was openly burned, while Wiedinmyer et al. (2014) derive a value  
of 970 Tg. It is possible that the CEDS values, therefore, are overestimates of emissions from  
1020 this source. Note, however, that the Wiedinmyer et al. (2014) estimate only includes residential  
waste burning. In the USA, for example, a large portion of CO<sub>2</sub> from waste burning is from  
industrial waste, particularly from tires (US EPA, 2015), which implies there may also be  
| additional air pollutant emissions from industrial waste combustion. Outside of the specific  
OECD countries where country-specific inventories include this sector, industrial waste  
1025 estimates were not explicitly included in the CEDS estimates. Overall there is substantial  
uncertainty for emissions from this sector.

Deleted: will

All other factors being equal, uncertainty will tend to increase backwards in time, as driver data  
becomes more uncertain and older technologies are used, for which emission factors are not well  
quantified. We generally expect that uncertainty in this data set will be smaller for those years  
1030 and countries where robust inventory development mechanisms are in place. However, as noted  
above for NO<sub>x</sub> in the USA, this does not eliminate uncertainty. Official country inventories can  
sometimes be developed with outdated methodologies or can be incomplete. Many countries  
have regular evaluation activities, which indicate deficiencies and potential areas for  
improvement. However, assessments of completeness and plausibility are always useful, and  
1035 inventories developed for scientific use, including CEDS, can help contribute in this area.

Our data system also allows us to examine the emission factors implied by scaling to country  
inventories. This can reveal potential inconsistencies or regional differences. One example is

1040 shown in Figure 8, which shows the implied emission factor for CO emissions from gasoline  
road vehicles. Even where there is a mix of fuels in the road sector, the much higher CO  
emission factor for gasoline tends to lead to gasoline dominating emissions, making this  
comparison a fairly unambiguous reflection of underlying inventory assumptions. There is over a  
1045 factor of two difference in implied emission factors before 1990, with some inventories  
indicating steadily increasing emission factors going back in time while others flatten out. It is  
unclear if these differences are due to local variations in vehicle types, operation, or  
environmental conditions, or if differences reflect inventory assumptions, which implies some  
inventories might be biased high or low.



1050 **Figure 8: Implied CO emissions factor for gasoline road vehicles obtained by the CEDS system after scaling to match  
country inventories. Data points only shown where an inventory value was available in units of g CO/g fuel.**

There are specific issues with uncertainty over the most recent few years in most emission data  
sets. We have, in this data set, provided emissions up to 2014. Emissions estimated for the most  
recent several years are likely to have larger uncertainty due to the use of incomplete or  
1055 preliminary data. Uncertainty in recent years comes from three main sources: activity data,  
emissions inventories that are used in our estimate, and the treatment of emission factors.  
Uncertainty from activity data comes from both uncertainty in country totals and their sector  
split. While activity data are often updated annually, recent estimates sometimes change for a  
few years after their initial release. For example, the BP estimate of Russian coal use in 2012  
1060 may be different in the 2013, 2014, and 2015 data releases. The BP estimates we use to  
extrapolate fuel use for the most recent 2 years (Sect. 2.2.1) also lacks sectoral detail, which adds  
to uncertainty. Values in the inventory estimates we use in this data set for the most recent year  
are often preliminary and are later revised, which is an additional source of uncertainty.

1065 Finally, we use emission factor trends from GAINS to project emission factors for combustion  
sectors for recent years beyond where inventory data are available. The last inventory year  
varies: 2010 for EDGAR, which is our default inventory for most species, 2008 for REAS, 2012  
for China, 2013 for most of Europe, and 2014 for the USA. Using emissions factor trends that  
are not from detailed country-specific inventories is an additional source of uncertainty.

1070 In future versions of CEDS, quantitative uncertainty analysis will be included for all time  
periods, as further discussed in Sect. 5.

Deleted: and is  
Deleted: explained  
Deleted: the

#### 4 Comparisons with observations

1075 It is challenging to evaluate emissions against observations since, other than facility-specific  
 | emissions monitors, concentrations of emitted species are observed rather than emissions fluxes  
 into the atmosphere. Satellite data (Jacob et al., 2016; Streets et al., 2013), road-side  
 measurements (Pant and Harrison, 2013), and inversion of surface observations (Bruhwiler et al.,  
 2014; Houweling et al., 2017) can all be used to estimate emissions using observational data.

Deleted: emissions

1080 These techniques can be used to gain insights into the accuracy of emission inventories, although  
 each has associated uncertainties. Emission ratios are a particularly valuable technique, and we  
 compare in this section CEDS data with observations for two cases.

Hassler et al. (2016), compare observed ambient NO<sub>x</sub>/CO enhancement ratios (measurements  
 taken during morning rush hour) with NO<sub>x</sub>/CO road emissions trends for London, Paris, and  
 1085 several US cities. Hassler et al. compare to the MAACity inventory (Granier et al., 2011), which  
 is based on CMIP5 (Lamarque et al., 2010) inventory estimates and RCP projections. They find  
 that log linear trends in observed ratios in US cities, London, and Paris are steeper than  
 MAACity ratios by a factor of 2.8 – 5.5. CEDS country-level NO<sub>x</sub>/CO emissions ratios match  
 observed trends much closer than MAACity, where observed trends are only 2-18% steeper than  
 1090 CEDS trends, shown in Table 7. Further, CEDS gridded road emissions, match even better with  
 the observed trends for London and Paris.

Deleted: Table 7

Deleted: .

**Table 7 Trends in Observed and Inventory NO<sub>x</sub>/CO emission ratios**

City/Country	Years	Observed*	MAACity*	CEDS (gridded - road)	CEDS aggregate (road)	CEDS (total)
USA (various cities)	1989-2013	4.1	1.45		3.86	2.37
UK (London)	1989-2015	7.2	1.88	6.92	6.90	5.90
France (Paris)	1995-2014	8.8	1.59	8.09	7.47	3.39

Values shown in log linear trends in units of %yr<sup>-1</sup>  
 \*(Hassler et al., 2016)

Formatted Table

1095 Kanaya et al. (2016) present observations of BC/CO ratios over six years (2009 – 2015) at Fukue  
 | Island, Japan, which, depending on wind conditions, gives region specific emission ratios under  
 dry conditions for Japan, Korea, and four regions in China, shown in Table 8, compared to CEDS  
 and REAS BC/CO emissions ratios, both of which do not include open biomass burning. Both  
 CEDS and REAS emissions ratios are similar to observed ratios for Japan, 1.64 and 1.1 times  
 larger than observed ratios respectively, but near the observational uncertainty. The 2008 – 2015  
 1100 average CEDS emission ratio is 2.1 – 2.7 times larger than observed ratios over China regions.

Deleted: Table 8

CEDS emissions ratios are substantially larger than both observed and REAS ratios for Korea.  
 Kanaya et al. attribute the difference between REAS and observations in Korea to the  
 overestimation of industry and transportation BC/CO ratios in inventories. CEDS Korea, sector-  
 specific BC/CO emissions ratios are high compared to observations: 370 and 41 ngm<sup>-3</sup>ppb<sup>-1</sup> for  
 1105 industry and transportation sectors respectively compared to 42 and 27 ngm<sup>-3</sup>ppb<sup>-1</sup> in REAS.  
 CEDS CO estimates, which are scaled to Korean national inventory from 1999 – 2012, are 5 –  
 47% lower than REAS2.1 estimates over 2000 – 2008. CEDS CO emission estimates are  
 dominated by energy transformation (20%) and transportation 68%. CEDS BC estimates use  
 SPEW assumptions. CEDS BC emissions estimates for Korea are 5-8 times larger than REAS  
 1110 estimates. While CEDS estimates are larger over all sectors, the other transformation (e.g. coal

1115 coke production) and road sectors are the primarily sources. Emissions from the CEDS other  
 1120 transformation sector, which are zero in REAS estimates, makes up 35% of CEDS Korea  
 estimates. CEDS Road BC emissions over 2000 - 2008 are 2-3 times larger than REAS estimates  
 and 34% of the CEDS total.

1125 These comparisons are approximate, given that the CEDS data represents entire countries and the  
 air trajectories sampled at Fukue Island will preferentially sample only portions of each country.  
 In future versions of CEDS we plan to produce emissions for large countries such as China at the  
 province level which will aid in such comparisons. In general, differences in these ratios could  
 be attributed to the overestimation of BC, underestimation of CO emissions, or both. Overall,  
 CEDS emissions appear consistent for Japan, but perhaps slightly too high for China. CEDS BC  
 estimates for Korea are quite high compared to other inventories and the observations, and  
 suggest that the SPEW emission factors for Korea may not have incorporated the impact of  
 transportation emission controls and new technologies for coal coke production.

Table 8 Observed and Inventory BC/CO emission ratios

Country	Observed* 2009 - 2015 [ΔBC/ΔCO]	CEDS 2009 - 2014 [BC/CO]	CEDS 2008 [BC/CO]	REAS2.1 2008 [BC/CO]
Japan	5.9 ± 3.4	9.7	9.5	6.5
Korea	6.7 ± 3.7	89.8	82.3	23
China (North East)	6.0 ± 2.8	14.3	12.8	
China (North Central East)	5.3 ± 2.1			8.3
China (South Central East)	6.4 ± 2.2			9.9
China (South)	6.9 ± 1.2			
Values shown in ngm <sup>-3</sup> ppb <sup>-1</sup> * (Kanaya et al., 2016)				

Formatted Table

1130 These examples illustrate that further comparisons would be of substantial value in better  
 resolving emissions. The use of multiple observations and methodologies would add confidence  
 to conclusions regarding the accuracy of emission inventory data.

## 5 Limitations and future work

1135 While this data set includes many improvements upon existing comprehensive, long-term  
 inventories, there are some specific limitations of the current methodology, and plans for  
 improvement, that we discuss here.

1140 Disaggregation of key non-combustion sectors, particularly 1A1bc\_Other-transformation and  
 2C\_Metal-production, should allow a more accurate estimation of emissions trends. This will  
 require collection of additional activity data and default emission factors. At the current level of  
 aggregation, emission trends for these sectors will be less accurate, particularly for years where  
 country-level emission data sets are not available.

Emissions trends could be further improved for the mid-20<sup>th</sup> century. Emission factors here are  
 often the result of scaling at later inventory years (e.g. Fig. 4), and further work to better  
 constrain emission factors over this period is needed. The sectoral spilt for fuel use is also

1145 approximated over this period; incorporation of regional activity data would improve this as well. Non-combustion emissions are particularly uncertain in the era before modern inventory data sets, which is generally before 1970/1980, since these emissions can depend on process details.

1150 We plan to incorporate more detailed data from the US National Emissions Inventory, although as with the current estimate, discontinuities due to methodological changes will need to be addressed. Use of this data to estimate emissions at the US state level is underway, which will also be used to improve the spatial gridding of emissions over time.

1155 Currently, a number of gridding proxies are static over time. Residential (and related) emissions are distributed using population distribution, which does change over time. Because residential emissions are dominant in earlier years, much of the major shifts in spatial distribution within countries are being captured. Other sectors have mix of spatial proxies, few of which are newer than 2010, and many were kept static over time. Shipping emissions patterns have changed over time, however we lack consistently constructed spatial proxies over time. The shipping spatial data used here (from ECLIPSE) has a higher fraction of emissions in the North Atlantic than the spatial distribution used in CMIP5. It is not clear if this difference is due to different methodologies or an actual change in spatial distribution over the last decade. Consistent data sets over time for spatial proxy information would be a useful addition.

1165 A major next step in this project will be estimation of uncertainty. Our first step will be quantification of the additional uncertainty that stems from producing estimates out to the most recent full year, followed by comprehensive uncertainty estimates that will be used to produce ensembles of emissions to more fully reflect the uncertainty in these data.

1170 In addition to updates, refinements, and uncertainty analysis, the CEDS system will be released as open-source software, along with associated input data. Where previous work has only released final emissions estimates, this entire data system will be released to facilitate evaluation of trends in and the relationships between emissions, emission factors, and their drivers across time, countries, sectors, and fuels; to foster transparency in assumption and methods; and allow community input and participation. While the current data system requires purchase of the IEA energy statistics, we will explore options to facilitate use with publically available data as well.

## 6 Summary

1175 This paper described the methodology and results for a new annual data set of historical anthropogenic GHGs, reactive gases, aerosols, and aerosol and ozone precursor compounds from 1750 to 2014 for use in CMIP6. This data set relies heavily on IEA energy statistics, EDGAR, and other inventory data sets to produce consistent trends over time. Key steps in estimating emission include collecting existing activity, emissions factors, and emissions data; developing default emissions estimates; calibrating default estimates to existing inventories; extending present day emission to historical time periods; and gridding emissions.

1185 Emissions before 1850 are dominated by residential biomass burning and agricultural emissions. As the industrial revolution expanded, energy, industry, and transportation related emissions then begin to grow and then quickly increase in the mid 20<sup>th</sup> century. Emissions of some species begin to slow or see global reductions in the late 20<sup>th</sup> century with the introduction of emission control policies, but emissions of many of those species increase again in recent years due to increased

Deleted:  
Deleted: a  
Deleted: y

1190 economic activity in rapidly industrializing regions. While comparable to existing data sets such  
as CMIP5 (Lamarque et al., 2010), EDGAR (EC-JRC/PBL, 2016), and GAINS (Amann et al.,  
2011; Klimont et al., 2017a), CEDS estimates are generally slightly higher than those inventories  
in recent years.

1195 Future work on this data system will involve refining and updating these emissions estimates,  
adding detail, and the release of the CEDS as an open source data system. In order to be able to  
release the current data set in time for use in CMIP6, the focus was on the development and use  
of a consistent methodology, relying in large part on IEA energy statistics and existing inventory  
1200 data over recent years. As described above and in the SI, a number of additions were made  
where inconsistencies or incompleteness in these core data sets were known and improved data  
were readily available. There are many further corrections that would likely be useful to  
implement. For example, the inventories used here for calibration may already be known to  
contain deficiencies, for example through regular validation activities. There are likely also  
country level energy and other driver data that can be used to improve the data used here.  
1205 Finally, further detailed comparisons with observations may help to indicate additional areas  
where changes to emission factor or other assumptions are warranted.

| With the release of this data set, and soon the entire data system, it is our intention that further  
improvements will be made through feedback from the global emissions inventory community.  
The CEDS data system, including R code and all input data other than the IEA energy statistics,  
is being prepared for public release in fall 2017 through the gitHub collaboration website. This  
1210 will facilitate community comment, and direct contributions to improving these emissions data.  
The next data release is planned for Fall/Winter 2017, which will extend the time series to 2016  
and correct, to the extent possible, any known issues with the dataset. We aim to continue annual  
updates in subsequent years. We welcome comments, including notes on any  
potential inconsistencies or relevant new data sources, so that these data can be improved in  
1215 future releases.

Deleted: inconstancies

Deleted: that

#### Data Availability

Gridded versions of this data are available through the Earth System Grid Federation (ESGF)  
[<https://esgf-node.llnl.gov/search/input4mips/>] under the activity\_id = "input4MIPs" and  
1220 institution = "PNNL-JGCRI". More information on the CEDS project, system release, and  
updates, can be found at <http://www.globalchange.umd.edu/ceds/>. Note that known issues with  
the data are listed at <https://github.com/JGCRI/CEDS> and users can also submit issues via the  
GitHub site.

#### Author Contributions:

1225 R.M. Hoesly and S.J. Smith prepared the manuscript with contributions from L. Feng, Z.  
Klimont, G. Janssens-Maenhout, L. Vu, R. Andres, M.C.P. Moura, L. Liu, Z. Lu, and Q. Zhang.  
The CEDS system was developed by R.M. Hoesly, S.J. Smith, L. Feng, T. Pitkanen, J.J. Seibert,  
L. Vu, and R. Bolt. Analysis was performed by R.M. Hoesly, S.J. Smith, L. Feng, L. Vu, M.C.P.  
Moura, N. Kholod, and P. O'Rourke. Data were contributed by Z. Klimont, G. Janssens-  
1230 Maenhout, R.J. Andres, T.C. Bond, L. Dawidowski, J. Kurokawa, M. Li, L. Liu, Z. Lu, and Q.  
Zhang.

#### Competing Interests

1235 The authors declare that they have no conflict of interest.

### Acknowledgements

This research was based on work supported by the U.S. Department of Energy (DOE), Office of Science, Biological and Environmental Research as part of the Earth System Modeling program. Additional support for the development of the gridded data algorithm was from the National Atmospheric and Space Administration's Atmospheric Composition: Modeling and Analysis Program (ACMAP), award NNH15AZ64I. The Pacific Northwest National Laboratory is operated for DOE by Battelle Memorial Institute under contract DE-AC05-76RLO1830. RJA was sponsored by U.S. Department of Energy, Office of Science, Biological and Environmental Research (BER) programs and performed at Oak Ridge National Laboratory (ORNL) under U.S. Department of Energy contract DE-AC05-00OR22725.

The authors would like to acknowledge Grace Duke and Han Chen for data collection and processing; Alison Delgado, Minji Joeng, and Bo Liu for data collection and translation; and Benjamin Bond-Lamberty and Robert Link for code review. We thank Kostas Tsigaridis for pointing out a discontinuity due to a data anomaly (spurious brown coal consumption over 1971-1984 in the IEA Other Asia region) in a review version of the inventory data.

### A1 Supplementary information files

Supplementary files related to this article include:

Supplemental Data and Assumptions Text (pdf)

Supplemental Figures and Tables (pdf)

1255 Data Files (zipped set of csv files)

- Emissions by country and sector (all species)
- Global emissions by sector (all species)
- Total emissions by country (all species)
- Country mapping and ISO codes

1260 The supplementary information for this article describes a number of additional data sources used in this work, including the following:

(Bartoňová, 2015; Blumberg et al., 2003; Denier van der Gon et al., 2015; EIA, 2013; Endresen et al., 2007; Environment Canada, 2016; Eyring et al., 2005; Fletcher, 1997; Foell et al., 1995; Fouquet and Pearson, 1998; Gschwandtner et al., 1986; Huo et al., 2012; IEA, 2016a; [IMO, 2014](#); Kaur et al., 2012; Kholod and Evans, 2015; Liu et al., 2015a; Ludek and Holub, 2009; McLinden et al., 2016; Mester, 2000; Mitchell, 2003, 2007, 1983; Mylona, 1996; OECD, 2016; Pretorius et al., 2015; Rowe and Morrison, 1999; Ryaboshapko et al., 1996; Sanger, 1997; Simachaya, 2015; Smith et al., 2014; Tushingham, 1996; UK DEFRA, 2015; US EPA, 2012a; Wu et al., 2012; Zhou et al., 2011)

### 1270 A2 Data Release and Known Issues

#### A2.1 Known Issues

This section lists known issues with the data released as of this writing (August 2017). Readers should refer to the project web site for general updates ([globalchange.umd.edu/CEDS](http://globalchange.umd.edu/CEDS)) and the project's gitHub site for an updated list of issues (<https://github.com/JGCRI/CEDS>).



- 1275 • Combustion emissions become zero in earlier years for several countries that have inconsistent temporal coverage in the IEA energy data. These include: Sint Maarten, Suriname, Cambodia, Mongolia, Palau, Botswana, Namibia, and Niger. Some of these instances, where alternative data sources are available, will be corrected in the next release.
- 1280 • Some of the countries in the IEA "other" aggregations (e.g. "Other Asia", "Other Africa", and "Other Non-OECD Americas") have spurious sector splits due to the simple methods used to assign fuel use to these countries (e.g. there is fuel use in the Afghanistan international shipping sector).
- 1285 • There are a few spurious small-magnitude process emissions (particularly in 2C\_Metal-production) for smaller countries before 1900 that are artifacts of the extension process. These have negligible impacts on emission totals.
- 1290 • There are some spurious emission results for early years at the sectoral level in the current database due to the sectoral resolution of the data used to extend emissions back in time. For example, aircraft emissions are present back to 1851, even though actual aircraft emissions did not begin until the early 20th century. The magnitude of these emissions are small and, while these emissions should be zero in early years, these small magnitudes will not materially impact climate model results. (NO<sub>x</sub> in the CEDS aviation sector in 1920 is 0.2% of estimated NO<sub>x</sub> from lighting (Schumann and Huntrieser 2007), for example, and very much smaller in earlier years.) The historical energy code is being revised to be more flexible to improve our ability to incorporate additional energy data sets including, for example, historical estimates of aircraft fuel consumption.
- 1295 • Due to an error, SO<sub>2</sub> emissions in the US are overestimated from about 1961 to 1969. The overestimate averages 22% over this period. This has been corrected for inclusion in the next data release. The previous and corrected time series is shown in the supplement.
- 1300 • SO<sub>2</sub> emissions in the gridded data are overestimated in the western United States relative to the eastern United States. This spatial allocation is present in the EDGAR emission grids used for spatial mapping within each country.

#### A2.2 Gridded Data Release History

1305 There have been several releases of the CEDS gridded data. The underlying emissions by country, sector and fuel have been identical in all of these releases, as are total emissions by country and gridding sector (with the exception of small changes in 1850 emissions noted below).

**v2016-05-20:** Pre-industrial 1750-1850 data release

**v2016-06-18:** 1851 – 2014 data

1310 **v2016-06-18-sectorDim:** Re-release of both preindustrial and 1851 – 2014 in a new netCDF format with sectors as an additional dimension in the data variable. This reformatting was

Deleted:

necessary due to a limitation that was discovered within the ESGF system summer 2016. The reformatted data were released early Fall 2016

1315 **v2017-05-18:** Re-release of entire dataset in order to correct two gridding errors discovered  
by users. 1) Inconsistent emission allocation to spatial grids within countries that resulted  
in incorrect spatial allocations and some large discontinuities in the gridded data. These  
issues were particularly apparent in spatially large countries such as the USA and China. 2)  
1320 Minor inconsistencies in seasonal allocation, resulting largely in emissions that were too  
high in February. Total annual emissions within each country were not impacted by either  
of these issues.

Emissions are also fully consistent across 1850 in this release. There were small  
discontinuities in 1850 between the CEDS CMIP6 preindustrial release (v2016-06-18) and  
the later full CEDS release (v2016-07-26) due to updates in the data system. These  
1325 differences are 0.5% for all species (except NMVOC which reaches 1.5%). In absolute  
terms these differences are very small (relative to, for example, open biomass burning  
emissions) and will not have a significant impact on simulation results.

A link to further examination of these issues, including comparison maps and time series  
comparisons, can be found at the project web site ([globalchange.umd.edu/CEDS](http://globalchange.umd.edu/CEDS)).

1330

### **A2.3 Methane Historical Extension**

As several modeling groups participating in CMIP6 requested CH<sub>4</sub> emissions from 1850. We  
were not able to extend the consistent CH<sub>4</sub> time series before 1970 due to the additional data that  
would need to be collected and processed. We have, however, produced a “rough cut”  
1335 supplementary extension of CH<sub>4</sub> emissions from 1850 – 1970 by scaling with CMIP5 historical  
CH<sub>4</sub> estimates (Lamarque et al. 2010). These estimates were generated by scaling the CEDS  
1970 estimates with the CMIP5 trends (ie: shifting CMIP5 trends to match CEDS values in  
1970) by aggregate sector and the 26 sub-region level of the CMIP5 data. While these emission  
1340 estimates are not fully consistent with the other CEDS emissions, they provide a longer time  
series, albeit with some additional uncertainty, for groups that would like to have these trends.  
These data are available as supplementary gridded information for CEDS version 2017-05-18  
data through ESGF (see Data Availability section).

Biases in this extended dataset have already been identified. The waste sector is 30% of total  
anthropogenic CH<sub>4</sub> emissions by 1850. This is likely because earlier CMIP5 data are scaled back  
1345 in time with population data. This is an overestimate of anthropogenic CH<sub>4</sub> emissions from this  
source at that time since landfills and wastewater treatment plants, which create the anaerobic  
conditions conducive to CH<sub>4</sub> emissions, did not start to come into widespread use until around  
1930. However, as noted in the main paper, earlier CMIP5 emission estimates did not distinguish  
1350 between biomass and coal combustion. CH<sub>4</sub> emissions from biomass combustion are much larger  
than those from coal combustion, which means methane emissions from the residential sector are  
underestimated in this extrapolation. A rough estimate indicates that these two effects are of  
similar (and offsetting) magnitude. Further work is necessary to better refine historical CH<sub>4</sub>  
emissions.

### **A3 Sector definitions**

1355 **A3.1 Combustion emissions**

Fuel combustion emission sectors in CEDS are defined in reference to corresponding IEA energy statistics energy flows as given in this table. One exception is evaporative emissions from road transport, which are mapped to the 1A3b road transport sector, following general air pollutant inventory practice, even though this is a non-combustion emissions source. Also NMVOC evaporative emissions from oil tanker loading are not combustion emissions, but are categorized together with international shipping emissions.

Note that the current calibration (e.g., scaling) to country emission inventories is generally not performed at this level of detail, which means that sectoral emission values are more reliable at the aggregate sector level.

**Table A1 Sector Definitions of Combustion Emissions (IEA and NFR14 Codes)**

IEA Energy Statistics	IEA Name	NFR14 Code	CEDS Working Sector Name	Aggregate Sector (Gridding)
MAINELEC	Main-Activity-Producer-Electricity-Plants	1A1a	1A1a_Electricity-public	Power_and_Heat
AUTOELEC	Autoproducer-Electricity-Plants	1A1a	1A1a_Electricity-autoproducer	Industrial_Combustion
MAINCHP	Main-Activity-Producer-CHP-Plants	1A1a	1A1a_Electricity-public	Power_and_Heat
AUTOCHP	Autoproducer-CHP-Plants	1A1a	1A1a_Electricity-autoproducer	Industrial_Combustion
MAINHEAT	Main-Activity-Producer-Heat-Plants	1A1a	1A1a_Heat-production	Power_and_Heat
AUTOHEAT	Autoproducer-Heat-Plants	1A1a	1A1a_Heat-production	Power_and_Heat
IRONSTL	Iron-and-Steel	1A2a	1A2a_Ind-Comb-Iron-steel	Industrial_Combustion
NONFERR	Non-Ferrous-Metals	1A2b	1A2b_Ind-Comb-Non-ferrous-metals	Industrial_Combustion
CHEMICAL	Chemical-and-Petrochemical	1A2c	1A2c_Ind-Comb-Chemicals	Industrial_Combustion
PAPERPRO	Paper,-Pulp-and-Print	1A2d	1A2d_Ind-Comb-Pulp-paper	Industrial_Combustion
FOODPRO	Food-and-Tobacco	1A2e	1A2e_Ind-Comb-Food-tobacco	Industrial_Combustion
NONMET	Non-Metallic-Minerals	1A2f	1A2f_Ind-Comb-Non-metallic-minerals	Industrial_Combustion
CONSTRUC	Construction	1A2g	1A2g_Ind-Comb-Construction	Industrial_Combustion
TRANSEQ	Transport-Equipment	1A2g	1A2g_Ind-Comb-transpequip	Industrial_Combustion
MACHINE	Machinery	1A2g	1A2g_Ind-Comb-machinery	Industrial_Combustion
MINING	Mining-and-Quarrying	1A2g	1A2g_Ind-Comb-mining-quarrying	Industrial_Combustion
WOODPRO	Wood-and-Wood-Products	1A2g	1A2g_Ind-Comb-wood-products	Industrial_Combustion
TEXTILES	Textile-and-Leather	1A2g	1A2g_Ind-Comb-textile-leather	Industrial_Combustion
INONSPEC	Non-specified-(Industry)	1A2g	1A2g_Ind-Comb-other	Industrial_Combustion
WORLDAV	World-Aviation-Bunkers	1A3ai	1A3ai_International-aviation	Aviation
DOMESAIR	Domestic-Aviation	1A3aii	1A3aii_Domestic-aviation	Aviation
ROAD	Road	1A3b	1A3b_Road	Road
* NA	Evaporative emissions from road transport	1A3b	1A3b_Road	Road
RAIL	Rail	1A3c	1A3c_Rail	Other_Surface_Transport
WORLDMAR	World-Marine-Bunkers	1A3di	1A3di_International-shipping	International-Shipping

Formatted Table

* NA	Evaporative emissions from tanker loading	1A3di	1A3di_Oil_tanker_loading	International-Shipping
DOMESNAV	Domestic-Navigation	1A3dii	1A3dii_Domestic-navigation (shipping)	Other_Surface_Transport
PIPELINE	Pipeline-Transport	1A3ei	1A3eii_Other-transp	Other_Surface_Transport
TRNONSPE	Non-specified-(Transport)	1A3eii	1A3eii_Other-transp	Other_Surface_Transport
COMMPUB	Commercial-and-Public-Services	1A4a	1A4a_Commercial-institutional	Residential_Commercial_Other
RESIDENT	Residential	1A4b	1A4b_Residential	Residential_Commercial_Other
AGRICULT	Agriculture/Forestry	1A4c	1A4c_Agriculture-forestry-fishing	Residential_Commercial_Other
FISHING	Fishing	1A4c	1A4c_Agriculture-forestry-fishing	Residential_Commercial_Other
ONONSPEC	Non-specified-(Other)	1A5	1A5_Other-unspecified	Residential_Commercial_Other

### A3.2 Non-combustion emissions

Non-combustion emission sectors (also generally referred to as process emissions in CEDS documentation) are defined in reference to corresponding EDGAR categories as given in this table. Note that the 1A1bc sector is actually combustion-related emissions, however this sector is processed the same as non-combustion emissions in CEDS (see Sec 2.3.2).

Table A2 Sector Definitions of Non Combustion Emissions (drawn from EDGAR Processes)

EDGAR Process Description	CEDS-Working-Sector-Name	Aggregate Sector
Fuel combustion petroleum refineries	1A1bc Other-transformation	Industrial Combustion
coal mines	1A1bc Other-transformation	Industrial Combustion
Fuel combustion BKB plants	1A1bc Other-transformation	Industrial Combustion
Fuel combustion blast furnaces	1A1bc Other-transformation	Industrial Combustion
Fuel combustion charcoal production plants	1A1bc Other-transformation	Industrial Combustion
Fuel combustion coal liquefaction plants	1A1bc Other-transformation	Industrial Combustion
Fuel combustion coke ovens	1A1bc Other-transformation	Industrial Combustion
Fuel combustion gasification plants for biogas	1A1bc Other-transformation	Industrial Combustion
Fuel combustion Liquefaction/Regasification	1A1bc Other-transformation	Industrial Combustion
Fuel combustion non-specified transformation	1A1bc Other-transformation	Industrial Combustion
Fuel combustion oil and gas extraction	1A1bc Other-transformation	Industrial Combustion
Fuel combustion patent fuel plants	1A1bc Other-transformation	Industrial Combustion
Gas works	1A1bc Other-transformation	Industrial Combustion
BKB plants	1B1 Fugitive-solid-fuels	Fugitive Energy Emissions
Fuel transformation coal liquefaction plants	1B1 Fugitive-solid-fuels	Fugitive Energy Emissions
Fuel transformation patent fuel plants	1B1 Fugitive-solid-fuels	Fugitive Energy Emissions
Production of brown coal	1B1 Fugitive-solid-fuels	Fugitive Energy Emissions
Production of hard coal	1B1 Fugitive-solid-fuels	Fugitive Energy Emissions
Production of peat	1B1 Fugitive-solid-fuels	Fugitive Energy Emissions
Fuel transformation charcoal production plants	1B1 Fugitive-solid-fuels	Fugitive Energy Emissions
Fuel transformation coke ovens	1B1 Fugitive-solid-fuels	Fugitive Energy Emissions
Fuel transformation in gas works	1B1 Fugitive-solid-fuels	Fugitive Energy Emissions
Chemical heat for electricity production	1B2 Fugitive-petr-and-gas	Fugitive Energy Emissions
For blended natural gas	1B2 Fugitive-petr-and-gas	Fugitive Energy Emissions
Fuel transformation gasification plants for biogas	1B2 Fugitive-petr-and-gas	Fugitive Energy Emissions
Fuel transformation Liquefaction/Regasification pl	1B2 Fugitive-petr-and-gas	Fugitive Energy Emissions
Gas-to-liquids (GTL) plants	1B2 Fugitive-petr-and-gas	Fugitive Energy Emissions
Non specified transformation activity	1B2 Fugitive-petr-and-gas	Fugitive Energy Emissions
Petrochemical industry	1B2 Fugitive-petr-and-gas	Fugitive Energy Emissions
Transformation in Gas to liquids plants	1B2 Fugitive-petr-and-gas	Fugitive Energy Emissions
Fuel transformation petroleum refineries	1B2 Fugitive-petr-and-gas	Fugitive Energy Emissions

Formatted Table

Production of oil	1B2 Fugitive-petr-and-gas	Fugitive Energy Emissions
Production of gas	1B2 Fugitive-petr-and-gas	Fugitive Energy Emissions
Production of oil	1B2 Fugitive-petr-and-gas	Fugitive Energy Emissions
(None)	1B2d Fugitive-other-energy	Fugitive Energy Emissions
Cement production	2A1 Cement-production	Minerals
Lime production	2A2 Lime-production	Minerals
Lime production	2A2 Lime-production	Minerals
Soda ash production and use	2Ax Other-minerals	Minerals
Brick production	2Ax Other-minerals	Minerals
Glass bottles	2Ax Other-minerals	Minerals
Glass production	2Ax Other-minerals	Minerals
Other non-metallic minerals	2Ax Other-minerals	Minerals
Other uses of carbonate	2Ax Other-minerals	Minerals
Ammonia production	2B Chemical-industry	Chemical-industry
Bulk chemicals production	2B Chemical-industry	Chemical-industry
Nitric acid production	2B Chemical-industry	Chemical-industry
Adipic acid production	2B Chemical-industry	Chemical-industry
Silicon carbide production	2B Chemical-industry	Chemical-industry
Calcium carbide production	2B Chemical-industry	Chemical-industry
Bulk chemicals production	2B Chemical-industry	Chemical-industry
Caprolactam production	2B Chemical-industry	Chemical-industry
Bulk chemicals production	2B Chemical-industry	Chemical-industry
N-fertilizer production	2B Chemical-industry	Chemical-industry
Specialities production	2B Chemical-industry	Chemical-industry
Sulphuric acid production	2B Chemical-industry	Chemical-industry
Titanium oxide production	2B Chemical-industry	Chemical-industry
Bulk chemicals production	2B Chemical-industry	Chemical-industry
Glyoxal production	2B Chemical-industry	Chemical-industry
Glyoxylic acid production	2B Chemical-industry	Chemical-industry
Crude steel production	2C Metal-production	Metals-industry
Blast furnaces	2C Metal-production	Metals-industry
Pig iron production	2C Metal-production	Metals-industry
Sinter production	2C Metal-production	Metals-industry
Pellet production	2C Metal-production	Metals-industry
Steel casting	2C Metal-production	Metals-industry
Ferro Alloy production	2C Metal-production	Metals-industry
Aluminium production	2C Metal-production	Metals-industry
Magnesium production	2C Metal-production	Metals-industry
Aluminium production	2C Metal-production	Metals-industry
Other non-ferrous production	2C Metal-production	Metals-industry
Gold production	2C Metal-production	Metals-industry
Copper production	2C Metal-production	Metals-industry
Mercury production	2C Metal-production	Metals-industry
Other non-ferrous production	2C Metal-production	Metals-industry
Lead production	2C Metal-production	Metals-industry
Other non-ferrous production	2C Metal-production	Metals-industry
Magnesium production	2C Metal-production	Metals-industry
Zinc production	2C Metal-production	Metals-industry
Paper production	2H Pulp-and-paper-food-beverage-	Pulp-and-paper-food-
Wood pulp production	2H Pulp-and-paper-food-beverage-	Pulp-and-paper-food-
Beer production	2H Pulp-and-paper-food-beverage-	Pulp-and-paper-food-
Bread production	2H Pulp-and-paper-food-beverage-	Pulp-and-paper-food-
Other food production	2H Pulp-and-paper-food-beverage-	Pulp-and-paper-food-
Wine production	2H Pulp-and-paper-food-beverage-	Pulp-and-paper-food-
Non energy use in petrochemical industry	2L Other-process-emissions*	Other Non-Combustion
Non energy use in industry, transformation industr	2L Other-process-emissions*	Other Non-Combustion
Non energy use in transport sector	2L Other-process-emissions*	Other Non-Combustion
Other non energy use	2L Other-process-emissions*	Other Non-Combustion
Non energy use in petrochemical industry	2L Other-process-emissions*	Other Non-Combustion
Non energy use in industry, transformation industr	2L Other-process-emissions*	Other Non-Combustion
Non energy use in transport sector	2L Other-process-emissions*	Other Non-Combustion
Other non energy use	2L Other-process-emissions*	Other Non-Combustion
Other non-combustion not elsewhere (NOT	2L Other-process-emissions*	Other Non-Combustion
Solvents in glues and adhesives	2D Paint-application	Solvents

Solvents in graphic arts	2D Paint-application	Solvents
Solvents in paint	2D Paint-application	Solvents
Solvents in dry cleaning	2D Degreasing-Cleaning	Solvents
Solvents in households products	2D Degreasing-Cleaning	Solvents
Solvents in industrial degreasing	2D Degreasing-Cleaning	Solvents
Solvents in chemical industry	2D_Chemical-products-manufacture-processing	Solvents
Other solvents use	2D Other-product-use	Solvents
Production and use of other products	2D Other-product-use	Solvents
Use of N2O as anesthesia	2D Other-product-use	Solvents
Solvents in leather production	2D Other-product-use	Solvents
Solvents in pesticides	2D Other-product-use	Solvents
Solvents in rubber and plastics industry	2D Other-product-use	Solvents
Solvents in vegetative oil extraction	2D Other-product-use	Solvents
Enteric fermentation by cattle	3E Enteric-fermentation	Agriculture non-combustion
Enteric fermentation by buffalo	3E Enteric-fermentation	Agriculture non-combustion
Enteric fermentation by sheep	3E Enteric-fermentation	Agriculture non-combustion
Enteric fermentation by goats	3E Enteric-fermentation	Agriculture non-combustion
Enteric fermentation by camels	3E Enteric-fermentation	Agriculture non-combustion
Enteric fermentation by horses	3E Enteric-fermentation	Agriculture non-combustion
Enteric fermentation by asses	3E Enteric-fermentation	Agriculture non-combustion
Enteric fermentation by swine	3E Enteric-fermentation	Agriculture non-combustion
Manure management of cattle	3B Manure-management	Agriculture non-combustion
Manure management of buffalo	3B Manure-management	Agriculture non-combustion
Manure management of sheep	3B Manure-management	Agriculture non-combustion
Manure management of geese	3B Manure-management	Agriculture non-combustion
Manure management of goats	3B Manure-management	Agriculture non-combustion
Manure management of camels	3B Manure-management	Agriculture non-combustion
Manure management of horses	3B Manure-management	Agriculture non-combustion
Manure management of asses	3B Manure-management	Agriculture non-combustion
Manure management of swine	3B Manure-management	Agriculture non-combustion
Manure management of chicken	3B Manure-management	Agriculture non-combustion
Manure management of ducks	3B Manure-management	Agriculture non-combustion
Manure management of turkey	3B Manure-management	Agriculture non-combustion
Separate category for Rice CH4 emissions (not in	3D Rice-Cultivation	Agriculture non-combustion
Agricultural soils, rice cultivation	3D Soil-emissions	Agriculture non-combustion
Agricultural soils, nitrogen fertilizers	3D Soil-emissions	Agriculture non-combustion
Agricultural soils, animal waste as fertiliser	3D Soil-emissions	Agriculture non-combustion
Agricultural soils, N-fixing crops	3D Soil-emissions	Agriculture non-combustion
Agricultural soils, crop residues	3D Soil-emissions	Agriculture non-combustion
Agricultural soils, histosols	3D Soil-emissions	Agriculture non-combustion
Agricultural soils, buffalos in pasture	3D Soil-emissions	Agriculture non-combustion
Agricultural soils, camels in pasture	3D Soil-emissions	Agriculture non-combustion
Agricultural soils, cattle in pasture	3D Soil-emissions	Agriculture non-combustion
Agricultural soils, chicken in pasture	3D Soil-emissions	Agriculture non-combustion
Agricultural soils, ducks in pasture	3D Soil-emissions	Agriculture non-combustion
Agricultural soils, goats in pasture	3D Soil-emissions	Agriculture non-combustion
Agricultural soils, horses in pasture	3D Soil-emissions	Agriculture non-combustion
Agricultural soils, mules and asses in pasture	3D Soil-emissions	Agriculture non-combustion
Agricultural soils, pigs in pasture	3D Soil-emissions	Agriculture non-combustion
Agricultural soils, sheep in pasture	3D Soil-emissions	Agriculture non-combustion
Agricultural soils, turkeys in pasture	3D Soil-emissions	Agriculture non-combustion
Indirect N2O emissions	3D Soil-emissions	Agriculture non-combustion
Indirect N2O emissions - deposition, other	3D Soil-emissions	Agriculture non-combustion
Indirect N2O emissions - deposition, agriculture	3D Soil-emissions	Agriculture non-combustion
Indirect N2O emissions - leaching and runoff	3D Soil-emissions	Agriculture non-combustion
Agricultural soils, CO2 from urea fertilization	3D Soil-emissions	Agriculture non-combustion
Agricultural soils, liming	3D Soil-emissions	Agriculture non-combustion
Solid waste disposal (landfills)	5A Solid-waste-disposal	Waste
Industrial waste water	5D Wastewater-handling	Waste
Domestic waste water	5D Wastewater-handling	Waste
Human Waste (not in EDGAR)	5D Wastewater-handling	Waste
Solid waste disposal (incineration)	5C Waste-combustion	Waste

Residential waste combustion (not in EDGAR)	5C Waste-combustion	Waste
Other waste handling	5E Other-waste-handling	Waste
Coal fires underground	7A Fossil-fuel-fires	Fossil Fuel Files
Oil fires	7A Fossil-fuel-fires	Fossil Fuel Files
Gas fires	7A Fossil-fuel-fires	Fossil Fuel Files

\* This sector is currently equal to zero in all years and countries, and not included in data files.

#### A4 Fuel mapping to IEA products

CEDS Fuel	IEA Product	
biomass	Industrial waste (TJ-net)	Primary solid biofuels (TJ-net)
	Municipal waste (renewable) (TJ-net)	Non-specified primary biofuels/waste (TJ-net)
	Municipal waste (non-renewable) (TJ-net)	Charcoal (kt)
brown_coal	Brown coal (if no detail) (kt)	Peat (kt)
	Lignite (kt)	Peat products (kt)
coal_coke	Coke oven coke (kt)	
hard_coal	Hard coal (if no detail) (kt)	Patent fuel (kt)
	Anthracite (kt)	Gas coke (kt)
	Coking coal (kt)	Coal tar (kt)
	Other bituminous coal (kt)	BKB (kt)
	Sub-bituminous coal (kt)	
light_oil	Refinery feedstocks (kt)	Kerosene type jet fuel excl. biofuels (kt)
	Additives/blending components (kt)	Other kerosene (kt)
	Other hydrocarbons (kt)	Other Kerosene (kt)
	Ethane (kt)	Naphtha (kt)
	Liquefied petroleum gases (LPG) (kt)	White spirit & SBP (kt)
	Motor gasoline excl. biofuels (kt)	Biogasoline (kt)
	Aviation gasoline (kt)	Other liquid biofuels (kt)
diesel_oil	Natural gas liquids (kt)	Lubricants (kt)
	Gas/diesel oil excl. biofuels (kt)	Biodiesels (kt)
heavy_oil	Oil shale and oil sands (kt)	Bitumen (kt)
	Crude/NGL/feedstocks (if no detail) (kt)	Paraffin waxes (kt)
	Crude oil (kt)	Petroleum coke (kt)
	Fuel oil (kt)	Other oil products (kt)
natural_gas	Gas works gas (TJ-gross)	Natural gas (TJ-gross)
	Coke oven gas (TJ-gross)	Natural Gas (TJ-gross)
	Blast furnace gas (TJ-gross)	Refinery gas (kt)
	Other recovered gases (TJ-gross)	Biogases (TJ-net)
NOT MAPPED	Elec/heat output from non-specified manufactured gases	Wind
	Heat output from non-specified combustible fuels	Other sources
	Nuclear	Electricity (GWh)
	Hydro	Heat (TJ)
	Geothermal (direct use in TJ-net)	Total
	Solar photovoltaics	Total of all energy sources
	Solar thermal (direct use in TJ-net)	Memo: Renewables
	Tide, wave and ocean	Heat from chemical sources
		Electric boilers
	Heat pumps	

Formatted Table

#### References

1380 van Aardenne, J. A., Dentener, F. J., Olivier, J. G. J., Goldewijk, C. G. M. K. and Lelieveld, J.: A  $1^\circ \times 1^\circ$  resolution data set of historical anthropogenic trace gas emissions for the period 1890-1990, *Glob. Biogeochem. Cycles*, 15(4), 909-928, doi:10.1029/2000GB001265, 2001.

Akagi, S. K., Yokelson, R. J., Wiedinmyer, C., Alvarado, M. J., Reid, J. S., Karl, T., Crounse, J. D. and Wennberg, P. O.: Emission factors for open and domestic biomass burning for use in

- 1385 atmospheric models, *Atmos Chem Phys*, 11(9), 4039–4072, doi:10.5194/acp-11-4039-2011, 2011.
- Amann, M., Bertok, I., Borken, J., Chambers, A., Cofala, J., Dentener, F., Heyes, C., Hoglund, L., Klimont, Z., Purohit, P., Rafaj, P., Schöpp, W., Teixeira, E., Toth, G., Wagner, F. and Winiwarter, W.: GAINS-Asia: A tool to combat air pollution and climate change simultaneously; Methodology., ResearchGate [online] Available from: [https://www.researchgate.net/publication/230709522\\_GAINS-Asia\\_A\\_tool\\_to\\_combat\\_air\\_pollution\\_and\\_climate\\_change\\_simultaneously\\_Methodology](https://www.researchgate.net/publication/230709522_GAINS-Asia_A_tool_to_combat_air_pollution_and_climate_change_simultaneously_Methodology) (Accessed 28 November 2016), 2008.
- 1390
- Amann, M., Bertok, I., Borken-Kleefeld, J., Cofala, J., Heyes, C., Höglund-Isaksson, L., Klimont, Z., Nguyen, B., Posch, M., Rafaj, P., Sandler, R., Schöpp, W., Wagner, F. and Winiwarter, W.: Cost-effective control of air quality and greenhouse gases in Europe: Modeling and policy applications, *Environ. Model. Softw.*, 26(12), 1489–1501, doi:10.1016/j.envsoft.2011.07.012, 2011.
- 1395
- Amann, M., Klimont, Z. and Wagner, F.: Regional and Global Emissions of Air Pollutants: Recent Trends and Future Scenarios, *Annu. Rev. Environ. Resour.*, 38(1), 31–55, doi:10.1146/annurev-environ-052912-173303, 2013.
- 1400
- Amann, M., Bertok, I., Borken-Kleefeld, J., Cofala, J., Heyes, C., Hoglund-Isaksson, L., Kiesewetter, G., Klimont, Z., Schopp, W., Vellinga, N. and Winiwarter, W.: Adjusted historic emission data, projections, and optimized emission reduction targets for 2030 – A comparison with COM data 2013, IIASA, Laxenburg, Austria. [online] Available from: [http://ec.europa.eu/environment/air/pdf/review/TSAP\\_16a.pdf](http://ec.europa.eu/environment/air/pdf/review/TSAP_16a.pdf), 2015.
- 1405
- Anderson, D. C., Loughner, C. P., Diskin, G., Weinheimer, A., Canty, T. P., Salawitch, R. J., Worden, H. M., Fried, A., Mikoviny, T., Wisthaler, A. and Dickerson, R. R.: Measured and modeled CO and NO<sub>y</sub> in DISCOVER-AQ: An evaluation of emissions and chemistry over the eastern US, *Atmos. Environ.*, 96(0), 78–87, doi:10.1016/j.atmosenv.2014.07.004, 2014.
- 1410
- Andreae, M. O. and Merlet, P.: Emission of trace gases and aerosols from biomass burning, *Glob. Biogeochem. Cycles*, 15(4), 955–966, doi:10.1029/2000GB001382, 2001.
- Andres, R. J., Marland, G., Boden, T. and Bischof, S.: Carbon dioxide emissions from fossil fuel consumption and cement manufacture, 1751-1991; and an estimate of their isotopic composition and latitudinal distribution, Oak Ridge National Lab., TN (United States); Oak Ridge Inst. for Science and Education, TN (United States). [online] Available from: <http://www.osti.gov/scitech/biblio/10185357> (Accessed 17 October 2016), 1994.
- 1415
- Andres, R. J., Fielding, D. J., Marland, G., Boden, T. A., Kumar, N. and Kearney, A. T.: Carbon dioxide emissions from fossil-fuel use, 1751–1950, *Tellus 51B*, 51(4), 759–765, 1999.
- 1420
- Andres, R. J., Boden, T. A., Bréon, F.-M., Ciais, P., Davis, S., Erickson, D., Gregg, J. S., Jacobson, A., Marland, G., Miller, J., Oda, T., Olivier, J. G. J., Raupach, M. R., Rayner, P. and Treanton, K.: A synthesis of carbon dioxide emissions from fossil-fuel combustion, *Biogeosciences*, 9(5), 1845–1871, doi:10.5194/bg-9-1845-2012, 2012.



- 1425 Argentina UNFCCC Submission: Argentinian Inventory 1990 - 2012, Submitted to UNFCCC., 2016.
- Australian Department of the Environment: National Pollutant Inventory (NPI), Canberra, Australia. [online] Available from: <http://www.npi.gov.au/substances>, 2016.
- Bartoňová, L.: Unburned carbon from coal combustion ash: An overview, *Fuel Process. Technol.*, 134, 136–158, doi:10.1016/j.fuproc.2015.01.028, 2015.
- 1430 Blanco G., R. Gerlagh, S. Suh, J. Barrett, H. C. de Coninck, C. F. Diaz Morejon, R. Mathur, N. Nakicenovic, A. Ofosu Ahenkora, J. Pan, H. Pathak, J. Rice, R. Richels, S. J. Smith, D. I. Stern, F. L. Toth, and P. Zhou, 2014: Drivers, Trends and Mitigation. In: *Climate Change 2014: Mitigation of Climate Change. Contribution of Working Group III to the Fifth Assessment Report of the Intergovernmental Panel on Climate Change* [Edenhofer, O., R. Pichs-Madruga, Y.
- 1435 Sokona, E. Farahani, S. Kadner, K. Seyboth, A. Adler, I. Baum, S. Brunner, P. Eickemeier, B. Kriemann, J. Savolainen, S. Schlömer, C. von Stechow, T. Zwickel and J.C. Minx (eds.)]. Cambridge University Press, Cambridge, United Kingdom and New York, NY, USA.
- Blumberg, K. O., Walsh, M. P. and Pera, C.: Low-sulfur gasoline & diesel: the key to lower vehicle emissions, THE INTERNATIONAL COUNCIL ON CLEAN TRANSPORTATION (ICCT), Napa, CA, USA., 2003.
- 1440 Boden, T. ., Marland, G. and Andres, R. J.: Global, Regional, and National Fossil-Fuel CO<sub>2</sub> Emissions, Carbon Dioxide Information Analysis Center, Oak Ridge National Laboratory, U.S. Department of Energy, Oak Ridge, TN, USA., 2016.
- 1445 Boden, T. A., Marland, G. and Andres, R. J.: Estimates of Global, Regional, and National Annual CO<sub>2</sub> Emissions from Fossil-Fuel Burning, Hydraulic Cement Production, and Gas Flaring: 1950-1992, Oak Ridge National Laboratory. [online] Available from: <http://cdiac.ornl.gov/epubs/ndp/ndp030/ndp0301.htm>, 1995.
- 1450 Bond, T. C., Streets, D. G., Yarber, K. F., Nelson, S. M., Woo, J.-H. and Klimont, Z.: A technology-based global inventory of black and organic carbon emissions from combustion, *J. Geophys. Res. Atmospheres*, 109(D14), D14203, doi:10.1029/2003JD003697, 2004.
- Bond, T. C., Bhardwaj, E., Dong, R., Jogani, R., Jung, S., Roden, C., Streets, D. G. and Trautmann, N. M.: Historical emissions of black and organic carbon aerosol from energy-related combustion, 1850-2000: HISTORICAL BC/OC EMISSIONS, *Glob. Biogeochem. Cycles*, 21(2), n/a–n/a, doi:10.1029/2006GB002840, 2007.
- 1455 BP: BP Statistical Review of World Energy, [online] Available from: [bp.com/statisticalreview](http://bp.com/statisticalreview), 2015.
- 1460 Bruhwiler, L., Dlugokencky, E., Masarie, K., Ishizawa, M., Andrews, A., Miller, J., Sweeney, C., Tans, P. and Worthy, D.: CarbonTracker-CH<sub>4</sub>: an assimilation system for estimating emissions of atmospheric methane, *Atmos Chem Phys*, 14(16), 8269–8293, doi:10.5194/acp-14-8269-2014, 2014.

- Cofala, J., Amann, M., Klimont, Z., Kupiainen, K. and Höglund-Isaksson, L.: Scenarios of global anthropogenic emissions of air pollutants and methane until 2030, *Atmos. Environ.*, 41(38), 8486–8499, doi:10.1016/j.atmosenv.2007.07.010, 2007.
- 1465 Corbett, J. J., Fischbeck, P. S. and Pandis, S. N.: Global nitrogen and sulfur inventories for oceangoing ships, *J. Geophys. Res.-Atmospheres*, 104(D3), 3457–3470, doi:10.1029/1998jd100040, 1999.
- 1470 Crippa, M., Janssens-Maenhout, G., Dentener, F., Guizzardi, D., Sindelarova, K., Muntean, M., Van Dingenen, R. and Granier, C.: Forty years of improvements in European air quality: regional policy-industry interactions with global impacts, *Atmos Chem Phys*, 16(6), 3825–3841, doi:10.5194/acp-16-3825-2016, 2016.
- Davidson, E. A.: The contribution of manure and fertilizer nitrogen to atmospheric nitrous oxide since 1860, *Nat. Geosci.*, 2(9), 659–662, doi:10.1038/ngeo608, 2009.
- 1475 Denier van der Gon, H. A. C., Bergström, R., Fountoukis, C., Johansson, C., Pandis, S. N., Simpson, D. and Visschedijk, A. J. H.: Particulate emissions from residential wood combustion in Europe – revised estimates and an evaluation, *Atmospheric Chem. Phys.*, 15(11), 6503–6519, doi:10.5194/acp-15-6503-2015, 2015.
- 1480 Doxsey-Whitfield, E., MacManus, K., Adamo, S. B., Pistolesi, L., Squires, J., Borkovska, O. and Baptista, S. R.: Taking Advantage of the Improved Availability of Census Data: A First Look at the Gridded Population of the World, Version 4, *Pap. Appl. Geogr.*, 1(3), 226–234, doi:10.1080/23754931.2015.1014272, 2015.
- EC-JRC/PBL: Emission Database for Global Atmospheric Research (EDGAR), release EDGARv4.2 FT2012. [online] Available from: <http://edgar.jrc.ec.europa.eu>, 2012.
- EC-JRC/PBL: Emission Database for Global Atmospheric Research (EDGAR), release version 4.3.1. [online] Available from: <http://edgar.jrc.ec.europa.eu/overview.php?v=431>, 2016.
- 1485 Eckhardt, S., Quennehen, B., Olivié, D. J. L., Berntsen, T. K., Cherian, R., Christensen, J. H., Collins, W., Crepinsek, S., Daskalakis, N., Flanner, M., Herber, A., Heyes, C., Hodnebrog, Ø., Huang, L., Kanakidou, M., Klimont, Z., Langner, J., Law, K. S., Lund, M. T., Mahmood, R., Massling, A., Myriokefalitakis, S., Nielsen, I. E., Nøjgaard, J. K., Quaas, J., Quinn, P. K., Raut, J.-C., Rumbold, S. T., Schulz, M., Sharma, S., Skeie, R. B., Skov, H., Uttal, T., von Salzen, K.
- 1490 and Stohl, A.: Current model capabilities for simulating black carbon and sulfate concentrations in the Arctic atmosphere: a multi-model evaluation using a comprehensive measurement data set, *Atmospheric Chem. Phys.*, 15(16), 9413–9433, doi:10.5194/acp-15-9413-2015, 2015.
- 1495 [Economic Commission for Europe: Guidelines for Reporting Emissions and Projections Data under the Convention on Long-range Transboundary Air Pollution. \[online\] Available from: http://www.ceip.at/fileadmin/inhalte/emep/2014\\_Guidelines/ece.eb.air.125\\_ADVANCE\\_VERSION\\_reporting\\_guidelines\\_2013.pdf, 2014.](http://www.ceip.at/fileadmin/inhalte/emep/2014_Guidelines/ece.eb.air.125_ADVANCE_VERSION_reporting_guidelines_2013.pdf)
- EIA: U.S. Total Adjusted Sales of Distillat Fuel Oil by End Use. [online] Available from: [http://www.eia.gov/dnav/pet/pet\\_cons\\_821dsta\\_dcu\\_nus\\_a.htm](http://www.eia.gov/dnav/pet/pet_cons_821dsta_dcu_nus_a.htm), 2013.

- 1500 EMEP: Officially reported emission data, Level 1. [online] Available from: <http://www.ceip.at/>, 2016.
- Endresen, O., Sorgard, E., Behrens, H. L., Brett, P. O. and Isaksen, I. S. A.: A historical reconstruction of ships' fuel consumption and emissions, *J. Geophys. Res.-Atmospheres*, 112(D12), doi:10.1029/2006jd007630, 2007.
- 1505 Environment and Climate Change Canada: Air Pollutant Emissions Inventory Report: 1990 - 2014, Environment and Climate Change Canada, Gatineau, Canada. [online] Available from: <http://www.ec.gc.ca/Air/89ED82E9-CA92-424E-9FD1-C57235A04CE0/Air%20Pollutant%20Emission%20Inventory%20Report%201990-2014.pdf>, 2016.
- 1510 Environment Canada: National Emission Trends for Key Air Pollutants, 1985-2011. [online] Available from: <http://www.ec.gc.ca/inrp-npri/default.asp?lang=en&n=0EC58C98-#sommaries>, 2013.
- Environment Canada: Sulfur in Liquid Fuels 2005. [online] Available from: [http://publications.gc.ca/site/archiv-ee/archiv-ee.html?url=http://publications.gc.ca/collections/collection\\_2014/ec/En11-6-2005-eng.pdf](http://publications.gc.ca/site/archiv-ee/archiv-ee.html?url=http://publications.gc.ca/collections/collection_2014/ec/En11-6-2005-eng.pdf), 2016.
- 1515 Erisman, J. W., Sutton, M. A., Galloway, J., Klimont, Z. and Winiwarter, W.: How a century of ammonia synthesis changed the world, *Nat. Geosci.*, 1(10), 636–639, doi:10.1038/ngeo325, 2008.
- 1520 Eyring, V., Köhler, H. W., van Aardenne, J. and Lauer, A.: Emissions from international shipping: 1. The last 50 years, *J. Geophys. Res. Atmospheres*, 110(D17), doi:10.1029/2004JD005619, 2005.
- 1525 Eyring, V., Isaksen, I. S. A., Berntsen, T., Collins, W. J., Corbett, J. J., Endresen, O., Grainger, R. G., Moldanova, J., Schlager, H. and Stevenson, D. S.: Transport impacts on atmosphere and climate: Shipping, *Transp. Impacts Atmosphere Clim. ATTICA Assess. Rep.*, 44(37), 4735–4771, doi:10.1016/j.atmosenv.2009.04.059, 2010.
- FAOSTAT: FAOSTAT-Forestry database, [online] Available from: <http://www.fao.org/forestry/statistics/84922/en/>, 2015.
- FAO: FAOSTAT database, [online] Available from: <http://www.fao.org/faostat/en/#data>, 2016.
- 1530 Fernandes, S. D., Trautmann, N. M., Streets, D. G., Roden, C. A. and Bond, T. C.: Global biofuel use, 1850–2000, *Glob. Biogeochem. Cycles*, 21(2) [online] Available from: <http://onlinelibrary.wiley.com/doi/10.1029/2006GB002836/full> (Accessed 22 September 2016), 2007.
- Fletcher, M. E.: From coal to oil in British shipping, in *The World of Shipping*, edited by D. M. Williams, Ashgate Publishing, Brookfield VT., 1997.

- 1535 Foell, W., Amann, G., Carmichael, M., Hettelingh, J., Hordijk, L. and Dianwu, Z.: RAINS- Asia: An Assessment Model For Air Pollution In Asia, IIASA., 1995.
- Fouquet, R. and Pearson, P. J. G.: A Thousand Years of Energy Use in the United Kingdom, *Energy J.*, 19(4), 1–41, 1998.
- 1540 Goldewijk, K. K., Beusen, A., van Drecht, G. and de Vos, M.: The HYDE 3.1 spatially explicit database of human-induced global land-use change over the past 12,000 years, *Glob. Ecol. Biogeogr.*, 20(1), 73–86, doi:10.1111/J.1466-8238.2010.00587.X, 2011.
- 1545 Granier, C., Bessagnet, B., Bond, T., D’Angiola, A., Gon, H. D. van der, Frost, G. J., Heil, A., Kaiser, J. W., Kinne, S., Klimont, Z., Kloster, S., Lamarque, J.-F., Lioussé, C., Masui, T., Meleux, F., Mieville, A., Ohara, T., Raut, J.-C., Riahi, K., Schultz, M. G., Smith, S. J., Thompson, A., Aardenne, J. van, Werf, G. R. van der and Vuuren, D. P. van: Evolution of anthropogenic and biomass burning emissions of air pollutants at global and regional scales during the 1980–2010 period, *Clim. Change*, 109(1-2), 163, doi:10.1007/s10584-011-0154-1, 2011.
- 1550 Gschwandtner, G., Gschwandtner, K., Eldridge, K., Mann, C. and Mobley, D.: Historic Emissions of Sulfur and Nitrogen Oxides in the United States from 1900 to 1980, *J. Air Pollut. Control Assoc.*, 36(2), 139–149, doi:10.1080/00022470.1986.10466052, 1986.
- Guan, D. B., Liu, Z., Geng, Y., Lindner, S. and Hubacek, K.: The gigatonne gap in China’s carbon dioxide inventories, *Nat. Clim. Change*, 2(9), 672–675, doi:10.1038/Nclimate1560, 2012.
- 1555 Hassler, B., McDonald, B. C., Frost, G. J., Borbon, A., Carslaw, D. C., Civerolo, K., Granier, C., Monks, P. S., Monks, S., Parrish, D. D., Pollack, I. B., Rosenlof, K. H., Ryerson, T. B., von Schneidmesser, E. and Trainer, M.: Analysis of long-term observations of NO<sub>x</sub> and CO in megacities and application to constraining emissions inventories, *Geophys. Res. Lett.*, 43(18), 2016GL069894, doi:10.1002/2016GL069894, 2016.
- 1560 Holland, E. A., Lee-Taylor, J., Nevison, C. and Sulzman, J. M.: GLOBAL N CYCLE: FLUXES AND N<sub>2</sub>O MIXING RATIOS ORIGINATING FROM HUMAN ACTIVITY. [online] Available from: [http://daac.ornl.gov/cgi-bin/dsvviewer.pl?ds\\_id=797](http://daac.ornl.gov/cgi-bin/dsvviewer.pl?ds_id=797) (Accessed 12 January 2017), 2005.
- Hong, C., Zhang, Q., He, K., Guan, D., Li, M., Liu, F. and Zheng, B.: Variations of China’s emission estimates: response to uncertainties in energy statistics, *Atmospheric Chem. Phys.*, 17(2), 1227–1239, doi:10.5194/acp-17-1227-2017, 2017.
- 1565 Houweling, S., Bergamaschi, P., Chevallier, F., Heimann, M., Kaminski, T., Krol, M., Michalak, A. M. and Patra, P.: Global inverse modeling of CH<sub>4</sub> sources and sinks: an overview of methods, *Atmos Chem Phys*, 17(1), 235–256, doi:10.5194/acp-17-235-2017, 2017.
- 1570 Huo, H., Lei, Y., Zhang, Q., Zhao, L. and He, K.: China’s coke industry: Recent policies, technology shift, and implication for energy and the environment, *Energy Policy*, 51, 397–404, doi:10.1016/j.enpol.2012.08.041, 2012.
- IEA: IEA Energy Statistics, [online] Available from: <http://www.iea.org/statistics/>, 2015.

IEA: CO2 Emissions from Fuel Combustion: 2016 Edition, IEA, Paris, France. [online] Available from: ISBN 978-92-64-25856, 2016a.

1575 IEA: World Energy Outlook Special Report 2016: Energy and Air Pollution, IEA. [online] Available from: <https://www.iea.org/publications/freepublications/publication/WorldEnergyOutlookSpecialReport2016EnergyandAirPollution.pdf>, 2016b.

IIASA: GAINS - Sulfur Content of Fuels, , doi:Scenario: TSAP\_Consultation\_2014, 2014a.

IIASA: GAINS - Sulfur Retention in Ash, , doi:Scenario: TSAP\_Consultation\_2014, 2014b.

1580 IMO: Reduction of GHG Emissions From Ships: Third IMO GHG Study 2014. MEPC-67-6-INF3-2014, 2014.

1585 Jacob, D. J., Turner, A. J., Maasackers, J. D., Sheng, J., Sun, K., Liu, X., Chance, K., Aben, I., McKeever, J. and Frankenberg, C.: Satellite observations of atmospheric methane and their value for quantifying methane emissions, *Atmos Chem Phys*, 16(22), 14371–14396, doi:10.5194/acp-16-14371-2016, 2016.

Janssens-Maenhout, G., Crippa, M., Guizzardi, D., Dentener, F., Muntean, M., Pouliot, G., Keating, T., Zhang, Q., Kurokawa, J., Wankmüller, R., Denier van der Gon, H., Kuenen, J. J. P., Klimont, Z., Frost, G., Darras, S., Koffi, B. and Li, M.: HTAP\_v2.2: a mosaic of regional and global emission grid maps for 2008 and 2010 to study hemispheric transport of air pollution, *Atmos Chem Phys*, 15(19), 11411–11432, doi:10.5194/acp-15-11411-2015, 2015.

1595 Kanaya, Y., Pan, X., Miyakawa, T., Komazaki, Y., Taketani, F., Uno, I. and Kondo, Y.: Long-term observations of black carbon mass concentrations at Fukue Island, western Japan, during 2009–2015: constraining wet removal rates and emission strengths from East Asia, *Atmospheric Chem. Phys.*, 16(16), 10689–10705, doi:10.5194/acp-16-10689-2016, 2016.

1600 Kaur, R., Wani, S. P., Singh, A. K. and Lal, K.: Wastewater production, treatment and use in India. In National Report presented at the 2nd regional workshop on Safe Use of Wastewater in Agriculture. [online] Available from: [http://www.ais.unwater.org/ais/pluginfile.php/356/mod\\_page/content/111/CountryReport\\_India.pdf](http://www.ais.unwater.org/ais/pluginfile.php/356/mod_page/content/111/CountryReport_India.pdf), 2012.

Kholod, N. and Evans, M.: Circumpolar Best Practices: Policy and Financing Options for Black Carbon Emission Reductions from Diesel Sources, *Circumpolar Best Practices*. [online] Available from: <https://oaarchive.arctic-council.org/handle/11374/1953>, 2015.

1605 Klein Goldewijk, K., Beusen, A. and Janssen, P.: Long-term dynamic modeling of global population and built-up area in a spatially explicit way: HYDE 3.1, *The Holocene*, 20(4), 565–573, doi:10.1177/0959683609356587, 2010.

Klimont, Z., Cofala, J., Xing, J., Wei, W., Zhang, C., Wang, S., Kejun, J., Bhandari, P., Mathur, R., Purohit, P., Rafaj, P., Chambers, A., Amann, M. and Hao, J.: Projections of SO<sub>2</sub>, NO<sub>x</sub> and

Formatted: Normal

Formatted: Font:

- 1610 carbonaceous aerosols emissions in Asia, *Tellus B*, 61(4), 602–617, doi:10.1111/j.1600-0889.2009.00428.x, 2009.
- Klimont Z, Kupiainen K, Heyes C, Purohit P, Cofala J, Rafaj P, Borken-Kleefeld J, & Schöpp W (2017). Global anthropogenic emissions of particulate matter including black carbon. *Atmospheric Chemistry and Physics* 17 (14): 8681-8723. DOI:10.5194/acp-17-8681-2017a.
- 1615 Klimont, Z., Hoglund-Isaksson, L., Heyes, C., Rafaj, P., Schopp, W., Cofala, J., Purohit, P., Borken-Kleefeld, J., Kupiainen, K., Kiesewetter, G., Winiwarter, W., Amann, M., Zhao, B., Wang, S., Bertok, I. and Sander, R.: Global scenarios of air pollutants and methane: 1990-2050, ACP (In preparation), 2017b.
- 1620 Korsbakken, J. I., Peters, G. P. and Andrew, R. M.: Uncertainties around reductions in China's coal use and CO<sub>2</sub> emissions, *Nat. Clim. Change*, 6(7), 687–690, doi:10.1038/nclimate2963, 2016.
- Kurokawa, J., Ohara, T., Morikawa, T., Hanayama, S., Janssens-Maenhout, G., Fukui, T., Kawashima, K. and Akimoto, H.: Emissions of air pollutants and greenhouse gases over Asian regions during 2000–2008: Regional Emission inventory in ASia (REAS) version 2, *Atmospheric Chem. Phys.*, 13(21), 11019–11058, 2013a.
- 1625 Kurokawa, J., Ohara, T., Morikawa, T., Hanayama, S., Janssens-Maenhout, G., Fukui, T., Kawashima, K. and Akimoto, H.: Emissions of air pollutants and greenhouse gases over Asian regions during 2000–2008: Regional Emission inventory in ASia (REAS) version 2, *Atmospheric Chem. Phys.*, 13(21), 11019–11058, doi:REAS ver 3 preliminary version-20150112, 2013b.
- 1630 Lamarque, J.-F., Bond, T. C., Eyring, V., Granier, C., Heil, A., Klimont, Z., Lee, D., Liousse, C., Mieville, A., Owen, B., Schultz, M. G., Shindell, D., Smith, S. J., Stehfest, E., Van Aardenne, J., Cooper, O. R., Kainuma, M., Mahowald, N., McConnell, J. R., Naik, V., Riahi, K. and van Vuuren, D. P.: Historical (1850–2000) gridded anthropogenic and biomass burning emissions of reactive gases and aerosols: methodology and application, *Atmos Chem Phys*, 10(15), 7017–7039, doi:10.5194/acp-10-7017-2010, 2010.
- 1635 Lee, D. S., Pitari, G., Grewe, V., Gierens, K., Penner, J. E., Petzold, A., Prather, M. J., Schumann, U., Bais, A., Berntsen, T., Iachetti, D., Lim, L. L. and Sausen, R.: Transport impacts on atmosphere and climate: Aviation, *Atmos. Environ.*, 44(37), 4678–4734, doi:10.1016/j.atmosenv.2009.06.005, 2009.
- 1640 Li, M., Zhang, Q., Kurokawa, J., Woo, J.-H., He, K., Lu, Z., Ohara, T., Song, Y., Streets, D. G., Carmichael, G. R., Cheng, Y., Hong, C., Huo, H., Jiang, X., Kang, S., Liu, F., Su, H. and Zheng, B.: MIX: a mosaic Asian anthropogenic emission inventory under the international collaboration framework of the MICS-Asia and HTAP, *Atmospheric Chem. Phys.*, 17(2), 935–963, doi:10.5194/acp-17-935-2017, 2017.
- 1645 Liu, F., Zhang, Q., Tong, D., Zheng, B., Li, M., Huo, H. and He, K. B.: High-resolution inventory of technologies, activities, and emissions of coal-fired power plants in China from

- 1990 to 2010, *Atmos Chem Phys*, 15(23), 13299–13317, doi:10.5194/acp-15-13299-2015, 2015a.
- 1650 Liu, Z., Guan, D., Wei, W., Davis, S. J., Ciais, P., Bai, J., Peng, S., Zhang, Q., Hubacek, K., Marland, G., Andres, R. J., Crawford-Brown, D., Lin, J., Zhao, H., Hong, C., Boden, T. A., Feng, K., Peters, G. P., Xi, F., Liu, J., Li, Y., Zhao, Y., Zeng, N. and He, K.: Reduced carbon emission estimates from fossil fuel combustion and cement production in China, *Nature*, 524(7565), 335–338, doi:10.1038/nature14677, 2015b.
- 1655 Liu, F., Zhang, Q., A, R. J. van der, Zheng, B., Tong, D., Yan, L., Zheng, Y. and He, K.: Recent reduction in NO<sub>x</sub> emissions over China: synthesis of satellite observations and emission inventories, *Environ. Res. Lett.*, 11(11), 114002, doi:10.1088/1748-9326/11/11/114002, 2016.
- Ludek and Holub: *The Century of Petrol - The History of the Refining Industry*. In *The Czech Lands*. Edited by Jaroslav Pánek and Oldrich Tuma. Karolinum Press, Charles University, 2009
- 1660 Lu, Z., Zhang, Q. and Streets, D. G.: Sulfur dioxide and primary carbonaceous aerosol emissions in China and India, 1996–2010, *Atmos Chem Phys*, 11(18), 9839–9864, doi:10.5194/acp-11-9839-2011, 2011.
- 1665 van Marle, M. J. E., Kloster, S., Magi, B. I., Marlon, J. R., Daniau, A.-L., Field, R. D., Arneth, A., Forrest, M., Hantson, S., Kehrwald, N. M., Knorr, W., Lasslop, G., Li, F., Mangeon, S., Yue, C., Kaiser, J. W., and van der Werf, G. R.: Historic global biomass burning emissions for CMIP6 (BB4CMIP) based on merging satellite observations with proxies and fire models (1750–2015), *Geosci. Model Dev.*, 10, 3329-3357, <https://doi.org/10.5194/gmd-10-3329-2017>, 2017.
- 1670 McLinden, C. A., Fioletov, V., Shephard, M. W., Krotkov, N., Li, C., Martin, R. V., Moran, M. D. and Joiner, J.: Space-based detection of missing sulfur dioxide sources of global air pollution, *Nat. Geosci*, 9(7), 496–500, doi:10.1038/ngeo2724, 2016.
- Mester, Z. C.: *Meeting sulfur specifications for 2000 and beyond*, San Francisco., 2000. Available from <http://www.environmentalconsultation.com/Meeting%20Sulfur%20Specifications%20for%202000%20and%20Beyond.pdf>
- 1675 Mitchell, B. R.: *International historical statistics : the Americas, 1750-2000*, Palgrave Macmillan, Houndmills, Basingstoke, Hampshire; New York., 2003.
- Mitchell, B. R.: *International historical statistics: Europe, 1750-2005*, Sixth edition., Palgrave Macmillan, Basingstoke, Hampshire ; New York, N.Y., 2007.
- 1680 Mitchell, B. R. (Brian R. ): *International historical statistics : the Americas and Australasia*, Gale Research Co., 1983.
- Mylona, S.: Sulphur dioxide emissions in Europe 1880–1991 and their effect on sulphur concentrations and depositions, *Tellus B*, 48(5), 662–689, doi:10.1034/j.1600-0889.1996.t01-2-00005.x, 1996.

- 1685 OECD: OECD Waste water treatment, [online] Available from: <https://data.oecd.org/water/waste-water-treatment.htm>, 2016.
- Olivier, J., Janssens-Maenhout, G., Muntean, M. and Peters, J.: Trends in global CO<sub>2</sub> emissions: 2015 Report, The Hague: PBL Netherlands Environmental Assessment Agency; Ispra: European Commission, Joint Research Centre., 2015.
- 1690 Pant, P. and Harrison, R. M.: Estimation of the contribution of road traffic emissions to particulate matter concentrations from field measurements: A review, *Atmos. Environ.*, 77, 78–97, doi:10.1016/j.atmosenv.2013.04.028, 2013.
- Parrish, D. D.: Critical evaluation of US on-road vehicle emission inventories, *Atmos. Environ.*, 40(13), 2288–2300, doi:10.1016/j.atmosenv.2005.11.033, 2006.
- 1695 Paulot, F., Jacob, D. J., Pinder, R. W., Bash, J. O., Travis, K. and Henze, D. K.: Ammonia emissions in the United States, European Union, and China derived by high-resolution inversion of ammonium wet deposition data: Interpretation with a new agricultural emissions inventory (MASAGE\_NH<sub>3</sub>), *J. Geophys. Res. Atmospheres*, 119(7), 4343–4364, doi:10.1002/2013JD021130, 2014.
- 1700 Pretorius, I., Piketh, S., Burger, R. and Neomagus, H.: A perspective on South African coal fired power station emissions, *J. Energy South. Afr.*, 26(3), 27–40, 2015.
- 1705 Purohit, P., Amann, M. and Mathur, R.: GAINS-Asia: Scenarios for Cost-Effective Control of Air Pollution and Greenhouse Gases in India. [online] Available from: <http://gains.iiasa.ac.at/gains/reports/GAINS-Asia-Methodology-20081205.pdf> (Accessed 9 August 2012), 2010.
- 1710 Qin, Y. and Xie, S. D.: Spatial and temporal variation of anthropogenic black carbon emissions in China for the period 1980–2009, *Atmos Chem Phys*, 12(11), 4825–4841, doi:10.5194/acp-12-4825-2012, 2012.
- 1715 Rao, S., Klimont, Z., Smith, S. J., Van Dingenen, R., Dentener, F., Bouwman, L., Riahi, K., Amann, M., Bodirsky, B. L., van Vuuren, D. P., Aleluia Reis, L., Calvin, K., Drouet, L., Fricko, O., Fujimori, S., Gernaat, D., Havlik, P., Harmsen, M., Hasegawa, T., Heyes, C., Hilaire, J., Luderer, G., Masui, T., Stehfest, E., Strefler, J., van der Sluis, S. and Tavoni, M.: Future air pollution in the Shared Socio-economic Pathways, *Glob. Environ. Change*, doi:10.1016/j.gloenvcha.2016.05.012, 2016.
- Rowe and Morrison, J.: Heart of a Mountain, Soul of a Town: the story of Algoma Ore and the town of Wawa, Privately Published, Wawas, Ontario. [online] Available from: <http://www.ourroots.ca/e/page.aspx?id=910392>, 1999.
- 1720 Ryaboshapko, A. G., Brukhanov, P. A., Gromov, S. A., Proshina, Y. V. and Afinogenova, O. G.: Anthropogenic emissions of oxidized sulfur and nitrogen into the atmosphere of the former Soviet Union in 1985 and 1990, Department of Meteorology, Stockholm University., 1996.



- 1725 Sanger, R. P.: Motor Vehicle Emission Regulations and Fuel Specifications - Part 2: Detailed Information and Historic Review (1970 -1996). [online] Available from: <https://www.concawe.eu/uploads/Modules/Publications/2002-00203-01-e.pdf>, 1997.
- Schultz, M. and Sebastian, R.: Emission data sets and methodologies for estimating emissions. [online] Available from: [http://retro-archiv.iek.fz-juelich.de/data/documents/reports/D1-6\\_final.pdf](http://retro-archiv.iek.fz-juelich.de/data/documents/reports/D1-6_final.pdf), 2007.
- 1730 Schumann, U. and Huntrieser, H.: The global lightning-induced nitrogen oxides source, *Atmos. Chem. Phys.*, 7, 3823-3907, <https://doi.org/10.5194/acp-7-3823-2007>, 2007.
- Sharma, S., Goel, A., Gupta, D., Kumar, A., Mishra, A., Kundu, S., Chatani, S. and Klimont, Z.: Emission inventory of non-methane volatile organic compounds from anthropogenic sources in India, *Atmos. Environ.*, 102, 209–219, doi:10.1016/j.atmosenv.2014.11.070, 2015.
- 1735 Simachaya, W.: Thailand’s Coal-fired Power Plant Pollution Control. [online] Available from: <https://eneken.ieej.or.jp/data/6467.pdf>, 2015.
- Simon, H., Reff, A., Wells, B., Xing, J. and Frank, N.: Ozone Trends Across the United States over a Period of Decreasing NO<sub>x</sub> and VOC Emissions, *Environ. Sci. Technol.*, 49(1), 186–195, doi:10.1021/es504514z, 2015.
- 1740 Smith, S. J., van Aardenne, J., Klimont, Z., Andres, R. J., Volke, A. and Delgado Arias, S.: Anthropogenic sulfur dioxide emissions: 1850–2005, *Atmos Chem Phys*, 11(3), 1101–1116, doi:10.5194/acp-11-1101-2011, 2011.
- 1745 Smith, T. W. P., Jalkanen, J. P., Anderson, B. A., Corbett, J. J., Faber, J., Hanayama, S., O’Keeffe, E., Parker, S., Johansson, L., Aldous, L., Raucci, C., Traut, M., Ettinger, S., Nelissen, D., Lee, D. S., Ng, S., Agrawal, A., Winebrake, J. J., Hoen, M., Chesworth, S. and Pandey, A.: Reduction of GHG Emissions from Ships: Third IMO GHG Study 2014 – Final Report, IMO. [online] Available from: [http://www.imo.org/en/OurWork/Environment/PollutionPrevention/AirPollution/Documents/MEPC%2067-INF.3%20-%20Third%20IMO%20GHG%20Study%202014%20-%20Final%20Report%20\(Secretariat\).pdf](http://www.imo.org/en/OurWork/Environment/PollutionPrevention/AirPollution/Documents/MEPC%2067-INF.3%20-%20Third%20IMO%20GHG%20Study%202014%20-%20Final%20Report%20(Secretariat).pdf), 2014.
- 1750 South Korea National Institute of Environmental Research: National Air Pollutants Emission Service. [online] Available from: <http://airemiss.nier.go.kr/>, 2016.
- 1755 Stohl, A., Aamaas, B., Amann, M., Baker, L. H., Bellouin, N., Berntsen, T. K., Boucher, O., Cherian, R., Collins, W., Daskalakis, N., Dusinska, M., Eckhardt, S., Fuglested, J. S., Harju, M., Heyes, C., Hodnebrog, Ø., Hao, J., Im, U., Kanakidou, M., Klimont, Z., Kupiainen, K., Law, K. S., Lund, M. T., Maas, R., MacIntosh, C. R., Myhre, G., Myriokefalitakis, S., Olivie, D., Quaas, J., Quennehen, B., Raut, J.-C., Rumbold, S. T., Samset, B. H., Schulz, M., Seland, Ø., Shine, K. P., Skeie, R. B., Wang, S., Yttri, K. E. and Zhu, T.: Evaluating the climate and air quality impacts of short-lived pollutants, *Atmospheric Chem. Phys.*, 15(18), 10529–10566, doi:10.5194/acp-15-10529-2015, 2015.
- 1760 Streets, D. G., Canty, T., Carmichael, G. R., de Foy, B., Dickerson, R. R., Duncan, B. N., Edwards, D. P., Haynes, J. A., Henze, D. K., Houyoux, M. R., Jacob, D. J., Krotkov, N. A.,

- Lamsal, L. N., Liu, Y., Lu, Z., Martin, R. V., Pfister, G. G., Pinder, R. W., Salawitch, R. J. and Wecht, K. J.: Emissions estimation from satellite retrievals: A review of current capability, *Atmos. Environ.*, 77, 1011–1042, doi:10.1016/j.atmosenv.2013.05.051, 2013.
- 1765 TEPA: Taiwan Emission Data System. [online] Available from: [teds.epa.gov.tw/](http://teds.epa.gov.tw/), 2016.
- The World Bank: World Development Indicators, [online] Available from: [databank.worldbank.org/data/download/WDI\\_excel.zip](http://databank.worldbank.org/data/download/WDI_excel.zip), 2016.
- Travis, K. R., Jacob, D. J., Fisher, J. A., Kim, P. S., Marais, E. A., Zhu, L., Yu, K., Miller, C. C., Yantosca, R. M., Sulprizio, M. P., Thompson, A. M., Wennberg, P. O., Crouse, J. D., St. Clair, J. M., Cohen, R. C., Laughner, J. L., Dibb, J. E., Hall, S. R., Ullmann, K., Wolfe, G. M., Pollack, I. B., Peischl, J., Neuman, J. A. and Zhou, X.: Why do models overestimate surface ozone in the Southeast United States?, *Atmos Chem Phys*, 16(21), 13561–13577, doi:10.5194/acp-16-13561-2016, 2016.
- 1770
- Tushingam, M.: Regional Composition of Gasoline and Diesel, Environment Canada, 1996
- 1775 UK DEFRA: National Atmospheric Emissions Inventory (NAEI): Emissions of Air Quality Pollutants 1990-2013. [online] Available from: [http://naei.defra.gov.uk/reports/reports?report\\_id=853](http://naei.defra.gov.uk/reports/reports?report_id=853), 2015.
- UN: World Urbanization Prospects: The 2014 Revision, [online] Available from: [https://esa.un.org/unpd/wup/CD-ROM/WUP2014\\_XLS\\_CD\\_FILES/WUP2014-F01-Total\\_Urban\\_Rural.xls](https://esa.un.org/unpd/wup/CD-ROM/WUP2014_XLS_CD_FILES/WUP2014-F01-Total_Urban_Rural.xls), 2014.
- 1780
- UN: World Population Prospects: The 2015 Revision, [online] Available from: <http://esa.un.org/unpd/wpp/DVD/>, 2015.
- UN: UN Energy Statistics Database, UN. [online] Available from: <http://unstats.un.org/unsd/energy/>, 2016.
- 1785 UNFCCC: National Inventory Submissions of Annex I Parties to the UNFCCC. [online] Available from: <http://unfccc.int/>, 2015.
- US EPA: Report to Congress On Black Carbon, EPA report 450/R-12-001, U.S. Environmental Protection Agency, Washington, DC, Available from <https://www3.epa.gov/airquality/blackcarbon/2012report/fullreport.pdf>, 2012.
- 1790
- US EPA: Inventory of U.S. Greenhouse Gas Emissions and Sinks 1990-2014. EPA report 430-R-16-002, U.S. Environmental Protection Agency, Washington DC. Available at <https://www.epa.gov/sites/production/files/2016-04/documents/us-ghg-inventory-2016-main-text.pdf>, 2012b
- 1795 US EPA: 2011 National Emissions Inventory (NEI) v2. [online] Available from: <https://www.epa.gov/air-emissions-inventories/2011-national-emissions-inventories> (Accessed 24 August 2016), 2013.

- 1800 US EPA: Inventory of U.S. Greenhouse Gas Emissions and Sinks: 1990 – 2013, EPA report 430-R-15-004: U.S. Environmental Protection Agency, Washington, DC, 2015. Available from <https://www.epa.gov/sites/production/files/2016-03/documents/us-ghg-inventory-2015-main-text.pdf>
- 1805 US EPA : Inventory of U.S. Greenhouse Gas Emissions and Sinks: 1990-2014. US EPA. Table 3-25. [online] Available from: <https://www.epa.gov/ghgemissions/us-greenhouse-gas-inventory-report-1990-2014>, 2016a
- US EPA: Air Pollutant Emissions Trends Data: Average Annual Emissions. [online] Available from: [https://www.epa.gov/sites/production/files/2015-07/national\\_tier1\\_caps.xlsx](https://www.epa.gov/sites/production/files/2015-07/national_tier1_caps.xlsx), 2016b.
- 1810 van Vuuren, D. P., Edmonds, J., Kainuma, M., Riahi, K., Thomson, A., Hibbard, K., Hurtt, G. C., Kram, T., Krey, V., Lamarque, J.-F., Masui, T., Meinshausen, M., Nakicenovic, N., Smith, S. J. and Rose, S. K.: The representative concentration pathways: an overview, *Clim. Change*, 109(1-2), 5, doi:10.1007/s10584-011-0148-z, 2011.
- 1815 Wang, S. X., Zhao, B., Cai, S. Y., Klimont, Z., Nielsen, C. P., Morikawa, T., Woo, J. H., Kim, Y., Fu, X., Xu, J. Y., Hao, J. M. and He, K. B.: Emission trends and mitigation options for air pollutants in East Asia, *Atmospheric Chem. Phys.*, 14(13), 6571–6603, doi:10.5194/acp-14-6571-2014, 2014.
- Wiedinmyer, C., Yokelson, R. J. and Gullett, B. K.: Global Emissions of Trace Gases, Particulate Matter, and Hazardous Air Pollutants from Open Burning of Domestic Waste, *Environ. Sci. Technol.*, 48(16), 9523–9530, doi:10.1021/es502250z, 2014.
- 1820 Winijkul, E., Fierce, L. and Bond, T. C.: Emissions from residential combustion considering end-uses and spatial constraints: Part I, methods and spatial distribution, *Atmos. Environ.*, 125, Part A, 126–139, doi:10.1016/j.atmosenv.2015.10.013, 2016.
- Wu, Q. R., Wang, S. X., Zhang, L., Song, J. X., Yang, H. and Meng, Y.: Update of mercury emissions from China’s primary zinc, lead and copper smelters, 2000–2010, *Atmos Chem Phys*, 12(22), 11153–11163, doi:10.5194/acp-12-11153-2012, 2012.
- 1825 Xu, Y., Williams, R. H. and Socolow, R. H.: China’s rapid deployment of SO<sub>2</sub> scrubbers, *Energy Environ. Sci.*, 2(5), 459–465, doi:10.1039/B901357C, 2009.
- Zhang, Q., Streets, D. G., He, K. and Klimont, Z.: Major components of China’s anthropogenic primary particulate emissions, *Environ. Res. Lett.*, 2(4), 045027, doi:10.1088/1748-9326/2/4/045027, 2007.
- 1830 Zhang, Q., He, K. and Huo, H.: Policy: Cleaning China’s air, *Nature*, 484(7393), 161–162, doi:10.1038/484161a, 2012.
- Zhao, B., Wang, S. X., Liu, H., Xu, J. Y., Fu, K., Klimont, Z., Hao, J. M., He, K. B., Cofala, J. and Amann, M.: NO<sub>x</sub> emissions in China: historical trends and future perspectives, *Atmos Chem Phys*, 13(19), 9869–9897, doi:10.5194/acp-13-9869-2013, 2013a.

1835 Zhao, Y., Zhang, J. and Nielsen, C. P.: The effects of recent control policies on trends in emissions of anthropogenic atmospheric pollutants and CO<sub>2</sub> in China, *Atmospheric Chem. Phys.*, 13(2), 487–508, doi:10.5194/acp-13-487-2013, 2013b.

Zhou, Y., Li, J., Chang, C.-C., Wei, S., Ni, Y. and Zhang, Y.: Status and development for municipal wastewater reuse in China, pp. 3183–3186, *IEEE.*, 2011.

1840