

***Interactive comment on* “Changes in regional climate extremes as a function of global mean temperature: an interactive plotting framework” by Richard Wartenburger et al.**

Richard Wartenburger et al.

richard.wartenburger@env.ethz.ch

Received and published: 27 June 2017

Comments from referee RC1 and author’s response

Minor points

- The breakdown of the importance of multi-model variability and internal variability is not particularly meaningful. The authors compare an ensemble of r1i1p1 members, with an ensemble using all initial condition members from all models. Un- surprisingly, the results are very similar, as one would expect both ensembles to be subject to both initial condition and structural uncertainty. Perhaps a more meaningful comparison

Printer-friendly version

Discussion paper



would be to look at the spread in initial condition members from a single model version, where a significant sample is available - this would give a more meaningful interpretation of what fraction of the multi-model spread is due to initial condition variability alone.

We choose to show the ensemble spread as a combined effect of structural uncertainty and initial conditions from all models, as we would like to show the magnitude by which the overall spread (based on all models) is influenced by the number of model runs used. We could of course also pick a single model with a sufficient number of realizations, but then we would not be able to say whether the magnitude of this spread is a good estimate for internal variability of models with an insufficient number of initial condition members nor could we say whether this spread dominates the magnitude of the inter-model ensemble spread or not.

- Section 3.1: would the authors like to comment a little on potential mechanisms for why different regions exhibit different gradients of response. The NEU response seems likely associated with polar amplification. Is the Amazon response typical of the tropics in general - or is there a particular feedback associated with this region?

Thanks for these suggestions. Although we do not intend to substantially extend the interpretation of our results, we added a few extra statements about the responses found in NEU and AMZ (see tracked changes document).

- Could the authors comment a little on how sensitive the 1.5 / 2 degree results are to the scenario chosen? Establishing whether there are significant differences in the distributions of response using different scenarios in any regions arising from the method would be a useful result for the pattern scaling community which could be trivially assessed from the analysis already done here.

We agree that these results may be of interest for the pattern scaling community. We added two sentences (for the temperature and the precipitation based indices) stating by what degree the significance of the differences of 1.5 vs. 2 degree is dependent on

[Printer-friendly version](#)[Discussion paper](#)

the scenario (see tracked changes document).

- the shaded regions in Figures 7/8 are a little confusing, and could do with a little more explanation. Presumably - discontinuities arise because some models never reach some levels of warming in some scenarios, but the fact that the number of models change along the x-axis makes the grey bars difficult to interpret. Are some of the apparent nonlinearities mainly due to the fact that the ensemble sample is changing along the x-axis?

The reviewer is right, the apparent discontinuities in the shaded areas arise from individual models that do not reach a specific level of warming. We still prefer to show ΔT_{glob} of up to $6^{\circ}C$ to also include models that predict very strong warming and to see the entire range. The spread always has to be interpreted as a spread in both ΔT_{glob} and ΔI . This is explained on page 5 lines 26f. We were asked by reviewer 2 to add a Figure showing the number of models simulating specific levels of global mean temperature, which we have added to the appendix.

Author's changes

Please find attached a marked-up version of the manuscript with all changes highlighted.

Printer-friendly version

Discussion paper



Comments from referee RC2 and author's response

Main points

- The relationship between ensemble mean changes in extreme indicators in terms of global mean temperature change may partly been due to changes in the ensemble itself as not all of the simulation reach the same level of warming. It is possible to illustrate this by showing the number of data points in the individual samples as a histogram to the x-axis of the plots?

This is certainly possible, but it would also require to extend Figures 3, 4, 7 and 8 by an additional row and make them thus less readable. We now provide a separate plot in the appendix (also attached below) showing the number of models in the ensemble, which can then be compared to any of the scaling plots shown in the paper or in the atlas, as the number of models used for each of the plots is independent from both the region and the index (apart from P-E, see Table 1) and only depends on the chosen length of the scenario period (1861-2099 vs. 1861-2299) and whether we use all runs or only r1i1p1.

Minor points

- It is quite relevant that the data is not only visualized but also available for download. That seems to be the case as mentioned only at the end of the manuscript. It should be highlighted earlier in the text. The data associated with the ensemble plots should also contain the information about each individual model run.

It is indeed possible to download the data associated with each plot. We added a short note in section 2.4.1. However, the down-loadable files only contain the information required for drawing the actual plot, i.e., they only contain the ensemble mean, min and max in case of scaling plots. We think that this is sufficient for most of the users of the atlas. An extension of the atlas to also provide the raw data associated with each plot, i.e. for each single model, lies beyond the current capabilities of the plotting

framework that we have used.

- P2, L21: *"the probability of exceeding a given temperature threshold" instead of "exceedance of a given temperature threshold"*

Changed.

- P5, L1: *"Derivation of the relationship between changes in regional climate indices and global mean temperature" instead of "Derivation of regional global temperature dependency relationships"?*

We agree that this is more clear. Changed.

- P5, L5: *Throughout the manuscript "predict" or "prediction" should be replaced by "project" or "projection".*

Changed (found only one occurrence).

- P5, L13: *Throughout the manuscript "global temperature" should be replaced by "global mean temperature" and "dependency relationship" could be replaced by "(functional) relationship". In this case I would suggest to write "To test the significance of the relationship between global mean temperature change and the regionally averaged..."*

Although this wording is a bit heavy, we agree that it may be clearer to use the term "global mean temperature" and now use it throughout the revised manuscript. However, we decided to keep "dependency relationship", because the term "functional relationship" is too general and we want to stress that there is a dependency between global mean temperature and the regional mean indices.

- P5, L16: *I think it is more precise to say "The number of models for which the slope of the regression line is significantly different from zero..."*

Changed.

- P5, L19-21: *I do not think that this is true. A scaling coefficient that is significantly*

different from zero does not imply that the relationship can really be explained by a linear model. That is an assumption made when fitting the data. The approach only tests whether the scaling coefficient is significantly different from zero assuming that the data follow the underlying linear model.

We have thoroughly discussed this point at time of writing, and included a statement in lines 20-22 to clarify it: "though it does not guarantee superiority of the linear model over other, higher-order polynomials". This makes clear that the linear model is not essentially the "best" model to explain the relationship, which is also not the purpose of the statistical test that we apply.

- P5, L22: Are the decadal averages not actually calculated to allow for the averaging?

We apply decadal averaging as we are interested in the longer-term signal and not the shorter-term fluctuations in the response of the indices. If the reviewer refers to spatial averaging, we note that this would also be possible with un-filtered data, so this is not the primary reason why we apply the running mean.

- P7, L5: I would suggest do name it "Functional form of the relationship" (see comment above)

We now write "Functional form of the dependency relationships".

- P7, L9: I think it is "to" instead of "than".

Changed.

- P7, L10-11: "Moreover, the relationship of these indices involves the least uncertainties..." How is that measured?

Measured by the ensemble spread. Changed.

- P7, L15-16: Similarly, "The largest departures from the identity line..." How is that measured?

[Printer-friendly version](#)[Discussion paper](#)

Simply the departures of the ensemble mean from the identity line (also shown in the plot) - this should be trivial.

- P7, L18: *"The ensemble mean changes... still show a significant linear scaling...". How is that tested? In the method section that is only described for individual runs while the entire ensemble has a more complex structure where e.g. results from different scenarios but one climate models cannot be considered as independent. Even if it is tested in this simple way it should be described in the method section and the limitations should be mentioned.*

It is not tested here, we just wanted to describe that the linear relationship is visually apparent. Replaced "significant" by "distinct".

- P7, L27: Delete "in".

OK

P7, L29-30: *How is that derived? It should be explained as it seems to be part of the plot shown in Figure 2.*

The CO2 targets were derived in S16. Added reference.

- P8, L13-14: *This description should be moved to section 2.3. Is the test only applied to individual scenarios, i.e. a sample where containing one element per climate model, or also across the four scenarios, i.e. a larger sample with up to four data point per model? In the latter case the elements of the sample cannot be considered independent. How is that addressed?*

This test is only applied to individual scenarios. Moved to section 2.3.

- P8, L31: Change "an" to "one".

Changed.

- P3, Figure 1: *The Caption should include the definition of TXx.*

Printer-friendly version

Discussion paper



Added.

- P16, Figure 2: Could the different uncertainty ranges be shown in transparent colors that one of them does not hide the other one? Would be nice to add a histogram to illustrate the number of data points behind the lines (see first comment). It has to be explained how the CO2 budgets are derived. That should be described in the main text. In the caption the term "CO2 emissions" should be adjusted. It is not precise enough.

The uncertainty ranges are actually drawn in transparent colors (also in the online atlas). The light gray uncertainty band is either identical to the dark one or slightly larger. I experimented with different colors but then there is too little focus on the colored lines depicting the scenario ensemble means.

We made the legend entry more precise by changing it to "Cumulative total CO2 emissions from 1870 (GtC) based on S16 and IPCC AR5 SPM figure 10". This change will be implemented in the public version of the atlas once the manuscript gets accepted.

- P17, Figure 3: The caption should include a reference to Table 2 where the indices are described. Why does the shaded area extent beyond the line of the ensemble mean?

Added. The shaded area extends beyond the line of the ensemble mean, as the data points on this line correspond to the ensemble mean of both ΔI_{reg} and ΔT_{glob} , while ΔT_{glob} of the uncertainty range (gray shading) corresponds to the global mean temperature based on individual model simulations. This also explains why the ensemble mean can in some situations also appear outside the ensemble spread (e.g. $\Delta P - E$ in EAS, Figure 8).

- P20, Figure 5: The caption should also say that the central line of the box plot is represents the median.

Added.

Printer-friendly version

Discussion paper



- P22, Figure 7: *Could the different uncertainty ranges be shown in transparent colors? Here, it would also be good to add the information about the number of data points (or models) included in the samples to get a better idea whether non-linearities in mean response could also be due to changes in the underlying samples.*

The uncertainty ranges are already shown in transparent colors. The uncertainty range based on the r1i1p1 ensemble is (of course) the same or smaller than the range based on all members. We have added a separate Figure to the appendix showing the number of data points for both all ensemble members available and r1i1p1 only (see main point).

- P23, Figure 8: *Why does the shaded area extent beyond the line of the ensemble mean?*

See above.

Author's changes

Please find attached a marked-up version of the manuscript with all changes highlighted.

Interactive comment on Geosci. Model Dev. Discuss., <https://doi.org/10.5194/gmd-2017-33>, 2017.

Printer-friendly version

Discussion paper



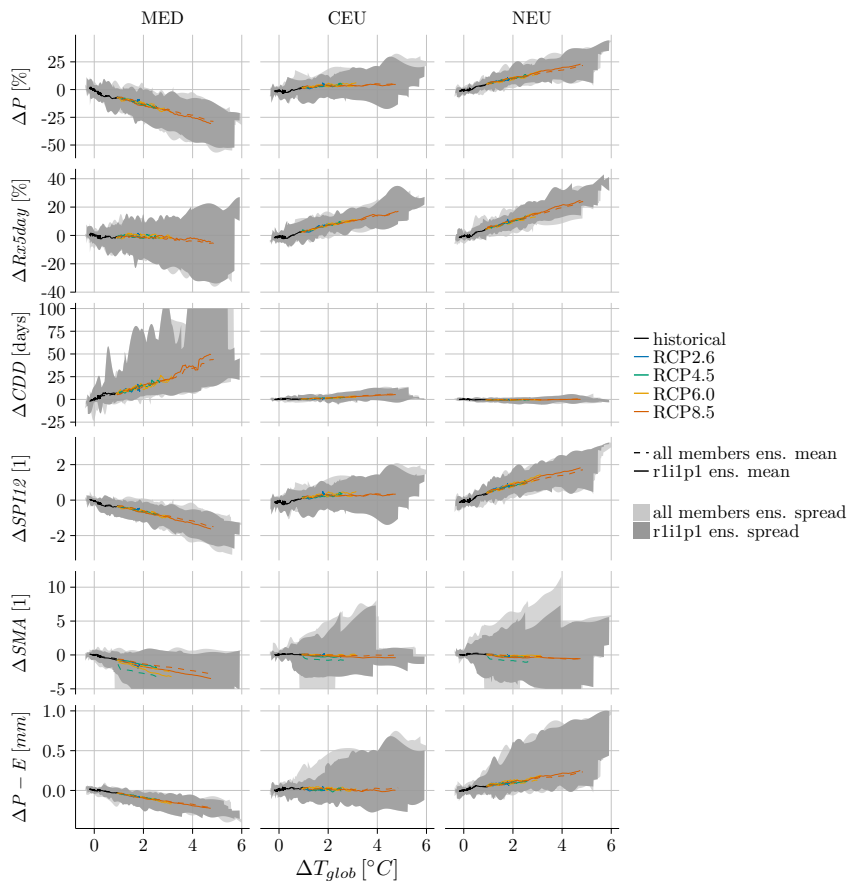


Fig. 1.

Changes in regional climate extremes as a function of global mean temperature: an interactive plotting framework

Richard Wartenburger¹, Martin Hirschi¹, Markus G. Donat^{2,3}, Peter Greve⁴, Andy J. Pitman^{2,3}, and Sonia I. Seneviratne¹

¹Institute for Atmospheric and Climate Science, ETH Zurich, Zurich, Switzerland

²ARC Centre of Excellence for Climate System Science, University of New South Wales, Sydney, Australia

³Climate Change Research Centre, University of New South Wales, Sydney, Australia

⁴International Institute for Applied Systems Analysis (IIASA), Laxenburg, Austria

Correspondence to: Richard Wartenburger (richard.wartenburger@env.ethz.ch), Sonia I. Seneviratne (sonia.seneviratne@ethz.ch)

Abstract. This article extends a previous study (Seneviratne et al., 2016) to provide regional analyses of changes in climate extremes as a function of projected changes in global mean temperature. We introduce the DROUGHT-HEAT Regional Climate Atlas, an interactive tool to analyse and display a range of well-established climate extremes and water-cycle indices and their changes as a function of global warming. These projections are based on simulations from the 5th phase of the Coupled Model Intercomparison Project (CMIP5). A selection of example results are presented here, but users can visualize specific indices of interest using the online tool. This implementation enables a direct assessment of regional climate changes associated with global [mean](#) temperature targets, such as the 2 degree and 1.5 degree limits agreed within the 2015 Paris Agreement.

1 Introduction

The 2015 United Nations Climate Change Conference in Paris (COP21) recently set the goal of limiting global [mean](#) temperature increases to "well below 2 degrees" and to pursue efforts to limit warming to 1.5 °C above pre-industrial levels. Despite this global agreement, the implications of these global [mean](#) temperature thresholds have not been fully assessed. Specifically, stakeholders, decision makers, and the public need more detailed information with respect to associated changes on regional scales, in particular for extreme events and impacts on humans and ecosystems (e.g. Seneviratne et al., 2016, hereafter S16; see also e.g. Schleussner et al., 2016, Guiot and Cramer, 2016, James et al., 2017).

Numerous approaches have recently been developed for identifying regional climate signals associated with specific global warming targets (James et al., 2017). The technique used in S16 and this study is an empirical sampling approach, which contrarily to pattern scaling (e.g., Huntingford and Cox, 2000; Mitchell, 2003; Tebaldi and Arblaster, 2014; Lopez et al., 2014), does not require a priori assumptions on the dependency on global [mean](#) temperature (or other climate variables, e.g. Frieler et al., 2012; Lynch et al., 2017 (in review); Kravitz et al., 2017 (in review)). Namely, the approach used in S16 derives for predefined regions the empirical ~~dependency-relationship~~ of changes in regional quantities (e.g. extremes or mean of climate variables, possibly also impacts (S16)) as a function of global [mean](#) temperature changes based on a range of climate model pro-

jections. This approach can be viewed as an "empirical global ~~temperature sampling~~mean temperature relationship" (hereafter referred to as "functional relationship") technique, which is a type of hybrid approach compared to the four main approaches described in James et al., 2017. S16 has shown that for some extremes (annual maximum and minimum temperature, heavy precipitation events), the ensemble mean response of absolute changes was often found to be linear, consistent with assumptions of some of the pattern scaling literature and results from other publications (e.g., Fischer et al., 2014). However, this approach also allows to visually assess non-linearities in the functional relationships.

We provide an illustration of the display used in S16 in Fig. 1. The main advantage of this approach is that it provides in a single figure information on a) the response of a given regional quantity for different global mean temperature (and greenhouse gas emissions) targets, b) an empirical assessment of this functional relationship (allowing e.g. to identify its possible (non-) linearity), and c) the range of model and scenario response around this value. Hence, complex information can be more easily conveyed to regional stakeholders, instead of being summarized in several global analyses or provided as a time- and scenario-dependent information. While globally aggregated information also has obvious value (e.g., O'Neill et al., 2017), regional information is of critical importance for adaptation and communication.

The S16 study, which focused on temperature and precipitation extremes for two emissions scenarios (RCP8.5 and RCP4.5), identified that much of the absolute changes in temperature extremes and heavy precipitation events could be related almost linearly to the changes in global mean temperature for the time period 1860–2099 (see also Fig. 1), and that this functional relationship was very similar for the two different emissions scenarios. In addition, it highlighted that – in absolute terms – changes in regional temperature extremes tended to be much larger than the global mean temperature change. The regional model spread was found to be highly variable depending on the considered quantity and region (S16). We note that all analyses focused on the transient climate response, and not on the response at climate equilibrium, which is expected to be substantially different. In addition, it does not consider aspects related to e.g. overshooting of climate targets or irreversibility in the climate response (Knutti et al., 2016). Moreover, S16 considered changes in absolute temperature extremes and not in the ~~exceedance of given temperature thresholds~~probability of exceeding a given temperature threshold, which by design would tend to change exponentially when mean regional temperature approaches the set threshold (e.g., Fischer and Knutti, 2015), even in the case of a linear ~~dependency~~relationship of the changes in absolute temperature extremes (Whan et al., 2015).

As a follow-up to the S16 study, we provide several new contributions and analyses. First, we introduce a new web-based interactive plotting framework (hereafter referred to as the "DROUGHT-HEAT Regional Climate Atlas", available via the URL <http://www.drought-heat.ethz.ch/atlas>) for the visualization of key ~~relationships~~functional relationships on global mean temperature, so that the results can be easily shared with other researchers and stakeholders. The DROUGHT-HEAT Regional Climate Atlas has been augmented by several variables compared to the analyses of S16, including responses in regional mean temperature and precipitation and additional climate extremes. In addition, the analyses are performed for all four CMIP5 emissions scenarios (RCP2.6, RCP4.5, RCP6.0, and RCP8.5). These results can be assessed interactively by users on-line. An overview of the main functional relationships and a comparison with the previous analyses of S16 are discussed in Sect. 3.1. We provide some detailed analyses of specific features of interest for the interpretation of the results. In particular, we assess differences in regional responses at 1.5 °C, 2 °C and 3 °C global mean temperature increases in Sect. 3.2. We also assess

Changes in extremes on y-axis: can be used to determine critical global temperature thresholds from a regional perspective

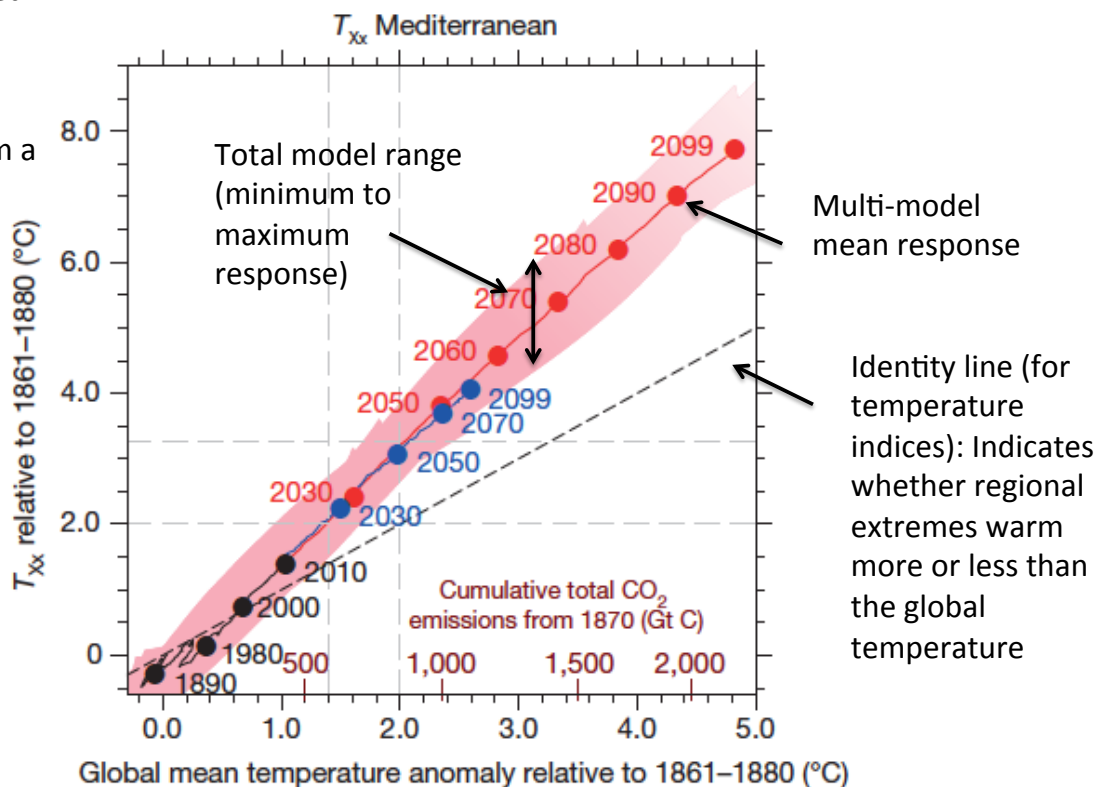


Figure 1. Example of a plot displaying the empirical-global-temperature-dependency-functional-relationship of a regional climate index (annual maximum of daily maximum temperature, T_{xx}) on global mean temperature following the S16 approach, including explanatory annotations (adapted from S16).

differences between intra-model spread (i.e. from several realisations of the same model) and inter-model spread for the derived functional relationships in Sect. 3.3. Finally, we provide analyses for regional mean temperature and precipitation based on simulations beyond 2100 (section 3.4), to assess the links between long-term vs. short-term responses.

2 Methods and data

- This section presents the data sources and methods used to produce the DROUGHT-HEAT Regional Climate Atlas. It is structured as follows: Sections 2.1 and 2.2 introduce the set of model simulations and climate and extremes indices which the

analyses are based on. The S16 empirical global ~~temperature-sampling-mean temperature relationship~~ approach is presented in Sect. 2.3. Finally, Sect. 2.4 describes the content and technical implementation of the DROUGHT-HEAT Regional Climate Atlas.

2.1 Model simulations

- 5 The presented regional-scale ~~dependencies-between-global-mean-temperature-and-functional-relationships-between~~ a range of indices ~~and global mean temperature~~ are derived from global climate model (GCM) simulations from the Coupled Model Intercomparison Project Phase 5 (CMIP5, Taylor et al., 2012). The subset of GCMs used in this study includes all models for which a) daily data is available within CMIP5 and b) for which climate change indices from the joint CCI/CLIVAR/JCOMM Expert Team on Climate Change Detection and Indices (ETCCDI) are available (Sillmann et al., 2013a, b).
- 10 To assess the impact of intra-model spread, we perform our analysis in two steps: using a) only one ensemble member per model (r1i1p1), and b) all members available. Similar to S16, we focus on model simulations over the time period 1861–2099, as this is the period covered by virtually all models. For the evaluation of the ~~global-temperature-dependency-functional-relationship-with-global-mean-temperature~~ beyond the end of the century, we also analyse a subset of simulations spanning all years from 1861 till 2299. For clarity of visual display, we excluded model simulations of the RCP8.5 scenario for which no
- 15 simulations exist in the historical period. To facilitate the calculation of regional ensemble averages, all GCM output has been bi-linearly interpolated to a horizontal resolution of $2.5^\circ \times 2.5^\circ$. The final set of model simulations employed in this study is listed in Table 1.

2.2 Climate and extremes indices

For the ensemble member e of each model m and emission scenario $rcpx$, we have analysed the 27 ETCCDI core climate

20 change indices $I_{rcpx,m,e}$, which were downloaded from the Canadian Centre for Climate Modelling and Analysis (CCMA) indices archive (<http://www.ccma.ec.gc.ca/data/climdex/>; Sillmann et al., 2013a, b) on 19 May 2016. Similar to the CMIP5 model data, the indices have been interpolated to $2.5^\circ \times 2.5^\circ$ horizontal resolution.

In addition to the ETCCDI indices, we have computed three drought indices (which can be used to monitor either anomalously dry or anomalously wet conditions) based on soil moisture, precipitation and evapotranspiration from CMIP5 model

25 simulations (see Sect. 2.1) using the R statistical language and the Climate Data Operators (CDO). The Standardized Precipitation Index (SPI) has been calculated using the SPEI package (<https://cran.r-project.org/web/packages/SPEI>, based on Vicente-Serrano et al., 2010) for an accumulation period of 12 months. Soil moisture anomalies (SMA , given in units of standard deviations in order to be independent on model-specific parametrisations of soil moisture depths) have been derived according to the procedure used in Orłowsky and Seneviratne (2012, 2013), which includes a posterior filtering of SMA using a median absolute deviation filter. In addition, we provide analyses for changes in precipitation minus evapotranspiration

30 ($P - E$), as a further measure of changes in land water availability (e.g., Greve and Seneviratne, 2015).

We also include mean temperature (T) and precipitation (P) in our analyses. We do this to assess whether the regional response of extremes is related to the regional mean climate response or rather reflects a specific behaviour of extremes in the

regions examined. For simplicity, we also refer to these variables as indices. A complete list of all indices, their data source and associated units is provided in Table 2.

2.3 Derivation of the functional relationship between changes in regional climate indices and global mean temperature dependency relationships

5 Yearly global mean temperatures $T_{glob,rcpx,m,e}$ for emission scenario $rcpx$ have been derived from each ensemble member e of model m . Both $I_{rcpx,m,e}$ and $T_{glob,rcpx,m,e}$ are treated as anomalies relative to the pre-industrial reference period 1861–1880 (subscript ref). For all time steps t , we thus compute: $\Delta T_{glob,rcpx,m,e,t} = T_{glob,rcpx,m,e,t} - T_{glob,rcpx,m,e,ref}$ and $\Delta I_{rcpx,m,e,t} = I_{rcpx,m,e,t} - I_{rcpx,m,e,ref}$. Note that T_{glob} refers to a model estimate of past and predicted-projected future global mean near-surface temperatures which is known to be biased with respect to observation-based global mean temperature records that merges air temperatures over land and sea surface temperatures over the ocean (Cowtan et al., 2015).

We apply a common land-sea mask at $2.5^\circ \times 2.5^\circ$ to all indices as we focus on (extremes) indices that are meaningful over land. We then compute regionally averaged indices $\Delta I_{reg,rcpx,m,e}$ using the set of globally distributed regions defined in Chapter 3 of the Special Report on Managing the Risks of Extreme Events and Disasters to Advance Climate Change Adaptation (SREX, Seneviratne et al., 2012, Fig. 3-1 therein), hereafter referred to as SREX regions. We also average the indices over the additional regions defined in S16 as well as over global land (including ice sheets).

To test the significance of the dependency-functional relationship between the global-temperature-signal-and-the regionally averaged indices and the global mean temperature signal, we apply an ordinary least squares fit between $\Delta T_{glob,rcpx,m,e}$ and $\Delta I_{reg,rcpx,m,e}$ for each individual model realization (focusing on $\Delta T_{glob,rcpx,m,e} \geq 1^\circ C$, which roughly represents future projections in the individual model simulations). The number of models for which the dependency-relationship-approximated by a linear regression slope of the regression line (i.e., the measure of the functional relationship) is significantly different from zero ($p = 0.01$, after controlling the false discovery rate according to Benjamini and Hochberg, 1995, as recently suggested by Wilks, 2016) is used to indicate the robustness of the functional relationship in the ensemble mean of the changes (see Sect. 3). Note that a significant response of an individual model realization implies that the corresponding dependency relationship can be explained by a linear model, though it does not guarantee superiority of the linear model over other, higher-order polynomials. We also test the significance of the differences of changes in between $1.5^\circ C$ and $2^\circ C$ global warming based on all model simulations of a specific index and scenario, using a two-sided paired Wilcoxon test ($p = 0.01$, after controlling the false discovery rate according to Benjamini and Hochberg, 1995).

To filter out short-term climatic fluctuations, a decadal running mean is applied to the anomalies starting with 1871–1880 (note that the year associated with each running mean period refers to the last year of that period). We then compute the unweighed ensemble mean change of the smoothed indices $\Delta I_{reg,rcpx} = \overline{\Delta I_{reg,rcpx,m,e}}$ and the corresponding ensemble mean change of the global mean temperatures $\Delta T_{glob,rcpx} = \overline{\Delta T_{glob,rcpx,m,e}}$.

In order to yield common, model-independent values of ΔT_{glob} and to provide a bidirectional uncertainty estimate (i.e., including both the inter-model ensemble spread in $\Delta I_{reg,rcpx}$ and $\Delta T_{glob,rcpx}$), we perform a spline interpolation of $\Delta I_{reg,rcpx,m,e}$

to a common temperature axis. The minimum and maximum of the interpolated values (across all model realizations and scenarios) are then used to determine the overall spread of ΔT_{reg} relative to ΔT_{glob} .

2.4 Plotting framework

2.4.1 Content of the plotting framework

- 5 All ~~regional dependency plots~~ [plots of the regional-scale functional relationships with global mean temperature](#) and related figures similar to those shown in the remainder of this paper are available through the web interface of the DROUGHT-HEAT Regional Climate Atlas. All plots available through this interactive interface are based on the computation of the ~~empirical dependency relationship~~ [functional relationship with global mean temperature](#) using the S16 framework as described in the previous section.
- 10 The layout and individual components of the DROUGHT-HEAT Regional Climate Atlas are shown in Fig. 2. Plots are drawn by making the appropriate selections in the data panel (left-hand side of the screen shot). The first item to select is the diagnostic (i.e., "~~Dependency~~ [Functional relationship](#) with global mean temperature" for the results of this study). After that, the data source drop-down is populated with a list of available data sets (i.e., CMIP5 model simulations for this study, for either the period 1861–2099 or 1861–2299). Equivalently, the drop-down labelled "Select Index or Variable" is filled with available
- 15 indices. Credits of the selected diagnostic and data source are displayed on the right-hand panel.

The map in the data panel shows the set of ~~SREX regions that can be chosen for the scaling analyses~~ [regions for which plots of the chosen diagnostic are available \(SREX regions for this study\)](#). Other region sets can be selected by using the drop-down on top of the map (e.g., also further regions used in S16, such as the contiguous US, central Brazil, the Arctic and Southern Asia). Once the user has selected a region (by either clicking on one of the polygons in the map or by selecting a global

20 domain), the requested plot is displayed in the main panel of the website. When the appropriate selections are made, a link appears allowing the user to navigate to a set of box plots showing the distribution of the selected index for fixed global mean temperature targets of $1.5^{\circ}C$, $2^{\circ}C$ and $3^{\circ}C$ (see more details in Sect. 3.2).

The atlas has been designed to be self-explanatory. Each item in the drop-down lists is accompanied by a short help text that shows up when hovering over it with the mouse. In addition, a pop-up window has been added providing help for first-time

25 users. [Users interested in re-using the results shown in a specific plot can download the related data in comma-separated values \(CSV\) format.](#)

2.4.2 Technical implementation of the plotting framework

The DROUGHT-HEAT Regional Climate Atlas is based on a number of web modules served through the Unicorn web application server (<http://unicorn.org/>) and the NGINX reverse-proxy server (<https://www.nginx.com/>). The website is built

30 within the Django web framework (<https://www.djangoproject.com/>). It is hosted on a web server at ETH Zurich.

The map shown in the data panel of the DROUGHT-HEAT Regional Climate Atlas (see Fig. 2) is based on Leaflet (<http://leafletjs.com/>). The background (world) layer is based on tilesets served via Mapbox (<https://www.mapbox.com/>). The region boundaries are read from text files in GeoJSON format.

There are two processing layers required to produce plots within the framework. First, a locally hosted ncl script serves static ~~comma-separated-values (CSV)~~ CSV files to the web server. The script writes the data points of each plot series into files inside a unique folder which represents the diagnostic, region and index. It also generates two customizable files containing plot and series configuration parameters for each index. In the second (server-sided) layer, the csv files are read and processed by JavaScript code. Finally, the Highcharts charting library (<http://www.highcharts.com/>) parses the input files to generate the desired plot.

10 3 Results and discussion

In the following, we demonstrate the capabilities of the DROUGHT-HEAT Regional Climate Atlas by presenting some selected results. We also discuss some more in-depth analyses considering specific features of the assessed ~~dependency-functional~~ relationships between regional climate and global mean temperature changes.

3.1 ~~Dependency-relationships~~ Functional form of the relationship

15 Figure 3 displays the relations of regional changes in temperature based climate and extremes indices in various SREX regions to global mean temperature (ΔT_{glob}). The indices show an apparent linear scaling with ΔT_{glob} when solely considering the ensemble mean change (the significance of the functional relationship of individual ensemble members is tested below, see Table 3). Moreover, the relationship is apparently not influenced by differences in ΔT_{glob} among the model simulations (see Figure A8 in the appendix). As all indices in Fig. 3 are derived from temperatures, the scaling of changes in these indices shows similar linear features ~~than to~~ the scaling of changes in regional mean temperatures (ΔT , first row of Fig. 3). ~~Moreover, the dependency-~~ Besides this, the relationship of these indices on global mean temperature involves the least uncertainties (as measured by the ensemble spread) when compared to the other indices shown in Fig. 4. For all of the indicated regions, the slope of the temperature-based indices is consistently above one (although only by a small margin for ΔTX_n in the Amazon region, AMZ, which is also the case in other tropical regions, not shown), indicating a larger change of the regional indices compared to ΔT_{glob} . For instance at 2 °C global warming, the warming in hot extremes (~~annual maximum of the daily maximum temperature,~~ TX_x) in the Mediterranean (SREX region MED) amounts to 3.2 °C. The largest departures from the identity line are found for changes in the annual minimum of both daily maximum and minimum temperatures (ΔTX_n and ΔTN_n) in NEU North Europe (NEU), which is very well in line with the observed recent decrease in temperature variance in northern mid-to high latitudes due to Arctic amplification (Screen, 2014).

30 For the precipitation-based indices discussed here, the responses are often less pronounced and subject to larger inter-model uncertainties (Fig. 4). Nevertheless, the ensemble mean changes of the purely precipitation based indices (ΔP , $\Delta Rx5day$, ΔCDD and $\Delta SPI12$) still show a ~~significant-distinct~~ linear scaling with ΔT_{glob} in some regions. For example, there is a

clear tendency for a positive scaling of heavy precipitation ($\Delta Rx5day$) with ΔT_{glob} in NEU, Central Europe (CEU), ~~North Europe (NEU)~~, Central North America (CNA) and East Asia (EAS). Moreover, MED displays a remarkable increase in the maximum dry spell lengths (ΔCDD) by the end of the century (i.e., the decade in which global mean temperature anomalies are projected to reach $\Delta T_{glob} = 4.75^\circ C$ in the RCP8.5 scenario). This is consistent with the response of the drought indices ($\Delta SPI12$, ΔSMA and $\Delta P - E$) in this region towards drying, although the large uncertainties in ΔSMA near the end of the century must not be ignored. ~~Apart~~ The trends in $\Delta SPI12$, ΔSMA and $\Delta P - E$ in AMZ point towards a drying in this region, which is unique among other tropical regions (not shown). However, it must be noted that - apart from the positive scaling of $\Delta SPI12$ in NEU and EAS and the wetting signal indicated by $\Delta P - E$ in NEU, the responses are connected with large uncertainties and both an increase and a decrease of these indices is within the projected range even for large values of ΔT_{glob} .

Note that the differences ~~in~~ between the scaling of mean precipitation and heavy precipitation could possibly be explained by different sensitivities to aerosol loading (Pendergrass et al., 2015).

Overall, the ~~dependency-functional~~ relationship is very similar for the four emission scenarios (Figures 3 and 4). Thus regional changes in the indicated indices can be usefully related to given cumulative CO_2 targets (according to S16), independently of the emission pathway.

Table 3 displays the significant linear trends of the previously discussed indices of the RCP8.5 scenario for $\Delta T_{glob} \geq 1^\circ C$. Models generally agree that changes in global mean temperatures translate into enhanced changes both in regional mean temperatures over land as well as in regional temperature extremes. The scaling with precipitation-derived indices shows a much more diverse pattern. Heavy precipitation events (as reflected by $Rx5day$) are projected to intensify over several of the selected regions, most strikingly over NEU, EAS and EAF (East Africa). Dry spells are projected to become longer mainly over MED and AMZ, which is in line with both a decrease in precipitation and enhanced soil moisture depletion as shown by ΔSMA (although projections of CDD are generally dominated by larger uncertainties, which is in part due to high model sensitivities related to the binary cut-off of $1mm$ used to distinguish dry days from days with precipitation). The Mediterranean region (MED) is the only region for which all relevant indices point towards a distinct drying. In contrast, precipitation is projected to increase with increasing global mean temperatures over NEU, EAS and EAF. While this signal is consistent with the trend in $SPI12$ in each of the three regions, soil moisture anomalies are projected to only increase in EAF. Apart from MED, the model agreement on trends in $P - E$ is mostly poor.

3.2 1.5 °C vs. 2 °C response

Figures 5 and 6 present the CMIP5-based distributions of the changes in the various indices for 1.5 °C, 2 °C and 3 °C global warming, and for the four emission scenarios (appendix ~~??~~ A shows the same type of plots for all other SREX regions as well as for global land, not discussed). ~~Significance of the differences (1.5°C vs. 2°C) was assessed using a two-sided paired Wilcoxon test ($p = 0.01$, after controlling the false discovery rate according to Benjamini and Hochberg, 1995).~~ Significant differences between 1.5°C and 2°C global warming (see section 2.3) are observable for virtually all of the temperature-based indices, when excluding the RCP2.6 scenario (where only 6 out of 18 models reach $\Delta T_{glob} = 2^\circ C$). These findings are mostly independent from the RCP scenario chosen. For the precipitation-based indices, the differences in the response between the

two global mean temperature targets is mostly insignificant. MED is projected to experience the strongest drying, as indicated by the significant increase in ΔCDD (RCP4.5 and RCP8.5) and the corresponding decrease in water availability, as reflected by the decrease in ΔSMA (RCP8.5) and a decrease in $\Delta P - E$ (RCP4.5), confirming that this region is a potential hot spot for future drought-related changes (Orlowsky and Seneviratne, 2013; Guiot and Cramer, 2016; Schleussner et al., 2016). On the other hand, NEU and EAS (Fig. 6) experience a significant increase in wet extremes. The other non-temperature indices show mostly no statistically significant distinction in the response between the two global mean temperature targets. The large spread in the precipitation based indices in AMZ indicates that precipitation projections in this region are subject to substantial uncertainties. The number of significant results for the precipitation-based indices shows some dependency on the scenario, with a slight dominance of significant differences in the RCP8.5 scenario.

A broader overview of the significance in differences between 1.5°C and 2°C global warming (using the same approach as above) considering all ETCCDI indices and SREX regions is provided in Figure 7. Note that we focus on the RCP8.5 scenario here, as (1) the simulations of this scenario all reach the 2 degree global warming level and (2) this scenario constitutes the largest ensemble of simulations (cf. Figure A8). There is an obvious dominance in significant differences for virtually all of the temperature related indices except from *FD* (frost days), *GSL* (growing season length) and *ID* (icing days), for which the changes are (nearly) zero in all (sub-)tropical regions. Precipitation changes are mostly significant in mid-to high latitude regions, as reflected by the various related indices. The drought indices (*P - E*, *SMA* and *SPI12*) show significant changes only in a few regions, either pointing towards a distinct wetting (e.g., *SPI12* in East North America (ENA)), or drying (e.g., *SMA* in South Africa (SAF)).

3.3 Intra-model variability

The dependency-functional relationships and uncertainty ranges discussed so far are based on one ensemble member (r1i1p1) of the applied models (see Table 1). In order to investigate any impact of intra-model variability on this range, Fig. 8 displays the ensemble mean and uncertainty ranges based on all ensemble members available for each model vs. the one-member based ensemble mean and uncertainty range on the example of the precipitation-based indices discussed earlier. The regional signal of the dependency-functional relationship of ΔSMA based on all ensemble members of the RCP4.5 scenario shows some inconsistencies with the other scenarios, which was found to be due to biases in an-one individual model simulation. Apart from this, the consideration of all members (and thus intra-model variability) results in a marginally enhanced uncertainty range (the largest enhancements were found for ΔCDD and ΔSMA), while the ensemble mean is nearly identical to the ensemble mean of the one-member based indices. Thus the uncertainty ranges based on one member seem to be appropriate to also cover intra-model variability. However, a number of models provide only the r1i1p1 simulation, potentially resulting in an underestimation of the true inter-model variability. Moreover, including only one run per model avoids that models which provide more runs have a higher weight in the ensemble results.

3.4 Beyond 2100

While most CMIP5 model simulations end by the end of the twenty-first century, a few simulations are available up to the year 2299 (see Table 1). These allow us to analyse the [sealing-functional](#) relationship beyond 2100 and to assess their longer-term behaviour.

5 The long-term [dependency-functional relationship](#) of changes in temperature-related indices on changes in global [mean](#) temperature is similar (i.e., mostly linear in the ensemble mean) to the one shown in Fig. 3 (not shown). For the other indices, the linear scaling assumption for the 1861–2299 period apparently only holds for a subset of indices and differs among regions (Fig. 9). Regions in which the indices scale linearly with ΔT_{glob} in the RCP8.5 scenario are also often characterized by a near-linear response in the other scenarios, which is remarkable given the fact that ΔT_{glob} is projected to remain constant or
10 to decrease over time in these scenarios. In the RCP8.5 scenario, the trend towards more extreme dry conditions in MED (and partly in AMZ) is projected to continue also beyond 2100, while NEU and EAS are characterized by a continuation of the intensification in wet extremes on both short ($\Delta Rx5day$) and longer-term ($\Delta SPI12$) time scales. Irrespective of the changes in ΔP , $\Delta Rx5day$ continues to increase in a near-linear fashion in all regions except MED.

4 Conclusions

15 We have developed the "DROUGHT-HEAT Regional Climate Atlas", a new interactive web interface available via the URL <http://www.drought-heat.ethz.ch/atlas>, which provides [dependency-relationships-plots of the functional relationship](#) between changes in regional climate indices and global mean temperature for 26 larger IPCC pre-defined regions. Beside acting as a platform to foster scientific discussion, the aim of this web interface is to increase the accessibility of peer-reviewed scientific results to the general public, which is of major concern for the communication of climate science findings (e.g., Harold et al.
20 2016). This is particularly relevant for the critical evaluation of the regional-scale implications of considered global [mean](#) temperature limits, such as the $1.5^{\circ}C$ and $2^{\circ}C$ temperature goals established in the 2015 Paris Agreement.

With the selected results presented here, we have demonstrated that a number of regionally averaged climate indices show a distinct linear relationship with global mean temperatures both in the ensemble mean and in individual CMIP5 model realizations, as also illustrated in S16 for a more limited set of indices and emissions scenarios. The linear relationship is particularly
25 obvious for the analysed temperature-derived indices, and still present for a number of drought and water cycle indices. We note, however, that some analyses display departures from such linear relationships, in particular in the case of indices showing a low signal to noise in projections (e.g. in several regions for mean precipitation, dry spell lengths, soil moisture anomalies, and precipitation minus evapotranspiration). Such departures are generally more pronounced in the RCP2.6 scenario, because of the weak overall forcing in that emission scenario, and possibly also because of differences in aerosol forcing in RCP2.6
30 compared to the other emission scenarios (Pendergrass et al. 2015). These cases of non linearities illustrate the advantage of the applied S16 approach compared to traditional pattern scaling approaches, as the derived [dependencies-functional relationships](#) are purely empirical and not assessed from a priori determined mathematical relationships.

Projected changes in the indices are overall larger in a 2°C world (i.e., $\Delta T_{glob} = 2^\circ C$ relative to pre-industrial levels) compared to a 1.5°C world (i.e., $\Delta T_{glob} = 1.5^\circ C$ relative to pre-industrial levels). The differences between the two global mean temperature limits are particularly large and generally significant for regional mean and extreme temperatures. Results tend to be less robust for water-cycle indices, in particular for those related to water availability (soil moisture anomalies or precipitation minus evapotranspiration). We encourage the reader to use the DROUGHT-HEAT Regional Climate Atlas to evaluate these regional dependency-functional relationships using other indices or other regions than those presented in this study.

The DROUGHT-HEAT Regional Climate Atlas has been designed to be easily expanded both in terms of functionality (e.g., adding support for additional plot types) and in terms of the number and type of supported data sets and diagnostics. By these means we facilitate an easy extension of the platform to include graphical material from upcoming publications within the scope of the DROUGHT-HEAT project and beyond.

5 Code availability

All code used to prepare the results discussed within this study is available upon request from the first author.

6 Data availability

All data produced within this study is available via the website <http://drought-heat.ethz.ch/atlas/> through the export functions of the plots ~~or~~ (not including individual ensemble members). Raw data is available upon request from the first author.

Appendix A: ~~1.5 C vs. 2 C response~~ Supplementary Figures

7 Competing interests

The authors declare that they have no conflict of interest.

Acknowledgements. R.W. and S.I.S acknowledge the European Research Council (ERC) 'DROUGHT-HEAT' project funded by the European Community's Seventh Framework Programme (grant agreement FP7-IDEAS-ERC-617518). This study contributes to the World Climate Research Programme (WCRP) Grand Challenge on Extremes. We acknowledge the World Climate Research Programme's Working Group on Coupled Modelling, which is responsible for CMIP, and we thank the climate modelling groups (listed in Table 1 of this paper) for producing and making available their model output. For CMIP the U.S. Department of Energy's Program for Climate Model Diagnosis and Intercomparison provides coordinating support and led development of software infrastructure in partnership with the Global Organization for Earth System Science Portals.

References

- Benjamini, Y. and Hochberg, Y.: Controlling the False Discovery Rate: A Practical and Powerful Approach to Multiple Testing, *Journal of the Royal Statistical Society*, 57, 289–300, <http://www.jstor.org/stable/2346101>, 1995.
- 5 Cowtan, K., Hausfather, Z., Hawkins, E., Jacobs, P., Mann, M. E., Miller, S. K., Steinman, B. A., Stolpe, M. B., and Way, R. G.: Robust comparison of climate models with observations using blended land air and ocean sea surface temperatures, *Geophysical Research Letters*, 42, 2015GL064888, doi:10.1002/2015GL064888, <http://onlinelibrary.wiley.com/doi/10.1002/2015GL064888/abstract>, 2015.
- Fischer, E. M. and Knutti, R.: Anthropogenic contribution to global occurrence of heavy-precipitation and high-temperature extremes, *Nature Climate Change*, 5, 560–564, doi:10.1038/nclimate2617, 2015.
- 10 Fischer, E. M., Sedlacek, J., Hawkins, E., and Knutti, R.: Models agree on forced response pattern of precipitation and temperature extremes, *Geophysical Research Letters*, 41, 2014GL062018, doi:10.1002/2014GL062018, <http://onlinelibrary.wiley.com/doi/10.1002/2014GL062018/abstract>, 2014.
- Frieler, K., Meinshausen, M., Mengel, M., Braun, N., and Hare, W.: A Scaling Approach to Probabilistic Assessment of Regional Climate Change, *Journal of Climate*, 25, 3117–3144, doi:10.1175/JCLI-D-11-00199.1, <http://journals.ametsoc.org/doi/abs/10.1175/JCLI-D-11-00199.1>, 2012.
- 15 Greve, P. and Seneviratne, S. I.: Assessment of future changes in water availability and aridity, *Geophysical Research Letters*, 42, 5493–5499, doi:10.1002/2015GL064127, 2015.
- Guiot, J. and Cramer, W.: Climate change: The 2015 Paris Agreement thresholds and Mediterranean basin ecosystems, *Science*, 354, 465–468, doi:10.1126/science.aah5015, <http://science.sciencemag.org/content/354/6311/465>, 2016.
- 20 Harold, J., Lorenzoni, I., Shipley, T. F., and Coventry, K. R.: Cognitive and psychological science insights to improve climate change data visualization, *Nature Climate Change*, 6, 1080–1089, doi:10.1038/nclimate3162, <http://www.nature.com/nclimate/journal/v6/n12/full/nclimate3162.html>, 2016.
- Huntingford, C. and Cox, P. M.: An analogue model to derive additional climate change scenarios from existing GCM simulations, *Climate Dyn.*, 16, 575–586, doi:10.1007/s003820000067, <http://link.springer.com/article/10.1007/s003820000067>, 2000.
- 25 James, R., Washington, R., Schleussner, C.-F., Rogelj, J., and Conway, D.: Characterizing half-a-degree difference: a review of methods for identifying regional climate responses to global warming targets, *Wiley Interdisciplinary Reviews: Climate Change*, pp. e457–n/a, doi:10.1002/wcc.457, e457, 2017.
- Knutti, R., Rogelj, J., Sedlacek, J., and Fischer, E. M.: A scientific critique of the two-degree climate change target, *Nature Geoscience*, 9, 13–18, doi:10.1038/ngeo2595, 2016.
- 30 Kravitz, B., Lynch, C., Hartin, C., and Bond-Lamberty, B.: Exploring precipitation pattern scaling methodologies and robustness among CMIP5 models, *Geosci. Model Dev. Discuss.*, pp. 1–37, doi:10.5194/gmd-2016-258, <http://www.geosci-model-dev-discuss.net/gmd-2016-258/>, 2017 (in review).
- Lopez, A., Suckling, E. B., and Smith, L. A.: Robustness of pattern scaled climate change scenarios for adaptation decision support, *Climate Change*, 122, 555–566, doi:10.1007/s10584-013-1022-y, <http://link.springer.com/article/10.1007/s10584-013-1022-y>, 2014.
- 35 Lynch, C., Hartin, C., Bond-Lamberty, B., and Kravitz, B.: Exploring global surface temperature pattern scaling methodologies and assumptions from a CMIP5 model ensemble, *Geosci. Model Dev. Discuss.*, pp. 1–24, doi:10.5194/gmd-2016-170, <http://www.geosci-model-dev-discuss.net/gmd-2016-170/>, 2017 (in review).

- Mitchell, T. D.: Pattern Scaling: An Examination of the Accuracy of the Technique for Describing Future Climates, *Climate Change*, 60, 217–242, doi:10.1023/A:1026035305597, <http://link.springer.com/article/10.1023/A:1026035305597>, 2003.
- O’Neill, B. C., Oppenheimer, M., Warren, R., Hallegatte, S., Kopp, R. E., Pålsson, H. O., Scholes, R., Birkmann, J., Foden, W., Licker, R., Mach, K. J., Marbaix, P., Mastrandrea, M. D., Price, J., Takahashi, K., van Ypersele, J.-P., and Yohe, G.: IPCC reasons for concern regarding climate change risks, *Nature Climate Change*, 7, 28–37, doi:10.1038/nclimate3179, <http://www.nature.com/nclimate/journal/v7/n1/full/nclimate3179.html>, 2017.
- Orlowsky, B. and Seneviratne, S.: Global changes in extreme events: regional and seasonal dimension, *Climatic Change*, 110, 669–696, doi:10.1007/s10584-011-0122-9, 2012.
- Orlowsky, B. and Seneviratne, S. I.: Elusive drought: uncertainty in observed trends and short- and long-term CMIP5 projections, *Hydrology and Earth System Sciences*, 17, 1765–1781, doi:10.5194/hess-17-1765-2013, 2013.
- Pendergrass, A. G., Lehner, F., Sanderson, B. M., and Xu, Y.: Does extreme precipitation intensity depend on the emissions scenario?, *Geophysical Research Letters*, 42, 2015GL065854, doi:10.1002/2015GL065854, <http://onlinelibrary.wiley.com/doi/10.1002/2015GL065854/abstract>, 2015.
- Schleussner, C.-F., Lissner, T. K., Fischer, E. M., Wohland, J., Perrette, M., Golly, A., Rogelj, J., Childers, K., Schewe, J., Frieler, K., Mengel, M., Hare, W., and Schaeffer, M.: Differential climate impacts for policy-relevant limits to global warming: the case of 1.5°C and 2°C, *Earth System Dynamics*, 7, 327–351, doi:10.5194/esd-7-327-2016, 2016.
- Screen, J. A.: Arctic amplification decreases temperature variance in northern mid- to high-latitudes, *Nature Climate Change*, 4, 577–582, doi:10.1038/nclimate2268, <http://www.nature.com/nclimate/journal/v4/n7/full/nclimate2268.html>, 2014.
- Seneviratne, S., Nicholls, N., Easterling, D., Goodess, C., Kanae, S., Kossin, J., Luo, Y., Marengo, J., McInnes, K., Rahimi, M., Reichstein, M., Sorteberg, A., Vera, C., and Zhang, X.: Changes in climate extremes and their impacts on the natural physical environment, in: *Managing the Risks of Extreme Events and Disasters to Advance Climate Change Adaptation*, edited by Field, C., Barros, V., Stocker, T., Qin, D., Dokken, D., Ebi, K., Mastrandrea, M., Mach, K., Plattner, G.-K., Allen, S., Tignor, M., and Midgley, P., chap. 3, pp. 109–230, Cambridge University Press, Cambridge, United Kingdom and New York, NY, USA., <http://ipcc-wg2.gov/SREX/>, 2012.
- Seneviratne, S. I., Donat, M. G., Pitman, A. J., Knutti, R., and Wilby, R. L.: Allowable CO₂ emissions based on regional and impact-related climate targets, *Nature*, 529, 477–483, doi:10.1038/nature16542, 2016.
- Sillmann, J., Kharin, V. V., Zhang, X., Zwiers, F. W., and Bronaugh, D.: Climate extremes indices in the CMIP5 multimodel ensemble: Part 1. Model evaluation in the present climate, *Journal of Geophysical Research*, 118, 1716–1733, doi:10.1002/jgrd.50203, 2013a.
- Sillmann, J., Kharin, V. V., Zwiers, F. W., Zhang, X., and Bronaugh, D.: Climate extremes indices in the CMIP5 multimodel ensemble: Part 2. Future climate projections, *Journal of Geophysical Research*, 118, 2473–2493, doi:10.1002/jgrd.50188, 2013b.
- Taylor, K. E., Stouffer, R. J., and Meehl, G. A.: An Overview of CMIP5 and the Experiment Design, *Bulletin of the American Meteorological Society*, 93, 485–498, doi:10.1175/BAMS-D-11-00094.1, <http://dx.doi.org/10.1175/BAMS-D-11-00094.1>, 2012.
- Tebaldi, C. and Arblaster, J. M.: Pattern scaling: Its strengths and limitations, and an update on the latest model simulations, *Climate Change*, 122, 459–471, doi:10.1007/s10584-013-1032-9, <http://link.springer.com/article/10.1007/s10584-013-1032-9>, 2014.
- Vicente-Serrano, S. M., Beguería, S., and López-Moreno, J. I.: A Multiscalar Drought Index Sensitive to Global Warming: The Standardized Precipitation Evapotranspiration Index, *Journal of Climate*, 23, 1696–1718, doi:10.1175/2009JCLI2909.1, <http://journals.ametsoc.org/doi/abs/10.1175/2009JCLI2909.1>, 2010.
- Whan, K., Zscheischler, J., Orth, R., Shongwe, M., Rahimi, M., Asare, E. O., and Seneviratne, S. I.: Impact of soil moisture on extreme maximum temperatures in Europe, *Weather and Climate Extremes*, 9, 57–67, doi:10.1016/j.wace.2015.05.001, 2015.

Wilks, D. S.: “The Stippling Shows Statistically Significant Grid Points”: How Research Results are Routinely Overstated and Overinterpreted, and What to Do about It, *Bulletin of the American Meteorological Society*, 97, 2263–2273, doi:10.1175/BAMS-D-15-00267.1, <http://journals.ametsoc.org/doi/abs/10.1175/BAMS-D-15-00267.1>, 2016.

Table 1. List of models used in this study (in alphabetical order). Crosses (circles) indicate availability of simulations of the ensemble member r1i1p1 for the 1861–2099 (1861–2299) period. Note that the number of simulations of other ensemble members is considerably smaller.

Model	Modelling Centre	Historical	RCP2.6	RCP4.5	RCP6.0	RCP8.5
ACCESS1-0	Commonwealth Scientific and Industrial Research Organization (CSIRO) and Bureau of Meteorology (BOM), Australia	x		x		x
bcc-csm1-1	Beijing Climate Center, China Meteorological Administration	x	o	o	x	o
bcc-csm1-1-m		x	x	x	x	x
CanESM2	Canadian Centre for Climate Modelling and Analysis	x	x	x		x
CCSM4	National Center for Atmospheric Research, USA	x		o	o	o
CMCC-CM	Centro Euro-Mediterraneo per i Cambiamenti Climatici, Italy	x		x		x
CMCC-CMS ^a		x		x		x
CNRM-CM5	Centre National de Recherches Météorologiques / Centre Européen de Recherche et Formation Avancées en Calcul Scientifique, France	x	x	x		x
CSIRO-Mk3-6-0	Commonwealth Scientific and Industrial Research Organization / Queensland Climate Change Centre of Excellence, Australia	x	x	o	x	o
FGOALS-s2	LASG, Institute of Atmospheric Physics, Chinese Academy of Sciences	x	x	x	x	x
GFDL-CM3		x	x		x	x
GFDL-ESM2G	NOAA Geophysical Fluid Dynamics Laboratory, USA	x	x	x	x	x
GFDL-ESM2M		x	x	x	x	x
HadGEM2-CC	Met Office Hadley Centre, United Kingdom	x		x		x
HadGEM2-ES		x	o		x	o
inmcm4	Institute for Numerical Mathematics, Russia	x		x		x
IPSL-CM5A-LR		x	o	o	x	o
IPSL-CM5A-MR	Institut Pierre-Simon Laplace, France	x	x		x	x
IPSL-CM5B-LR		x		x		x
MIROC-ESM	Japan Agency for Marine-Earth Science and Technology, Atmosphere and Ocean Research Institute (The University of Tokyo), and National Institute for Environmental Studies	x	x	x	x	x
MIROC-ESM-CHEM		x	x	x	x	x
MIROC5		x	x	x	x	x
MPI-ESM-LR	Max Planck Institute for Meteorology, Germany	x	o	o		o
MPI-ESM-MR		x	x	x		x
MRI-CGCM3	Meteorological Research Institute, Japan	x	x	x	x	x
NorESM1-M	Norwegian Climate Centre	x	x	x	x	x

^a not used for calculation of $P - E$

Table 2. List of indices (in alphabetical order) as presented in the DROUGHT-HEAT DROUGHT-HEAT Regional Climate Atlas. Crosses denote indices specifically discussed in this paper as well as indices expressed as percent changes relative to the pre-industrial reference period 1861–1880.

Index	Description	Unit	Expressed as % change	Discussed in this paper	Reference for computation
CDD	Maximum length of dry spell	days		x	Sillmann et al., 2013a, b
CSDI	Cold spell duration index	days			Sillmann et al., 2013a, b
CWD	Maximum length of wet spell	days			Sillmann et al., 2013a, b
DTR	Daily temperature range	°C			Sillmann et al., 2013a, b
FD	Number of frost days	days			Sillmann et al., 2013a, b
GSL	Growing season length	days			Sillmann et al., 2013a, b
ID	Number of icing days	days			Sillmann et al., 2013a, b
P-E	Precipitation - evapotranspiration	mm/day		x	Greve and Seneviratne, 2015
P	Mean precipitation	mm	x	x	Taylor et al., 2012
PRCPTOT	Annual total precipitation in wet days	mm	x		Sillmann et al., 2013a, b
R10mm	Annual count of days when PRCP \geq 10mm	days			Sillmann et al., 2013a, b
R1mm	Annual count of days when PRCP \geq 1mm	days			Sillmann et al., 2013a, b
R20mm	Annual count of days when PRCP \geq 20mm	days			Sillmann et al., 2013a, b
R95pTOT	Annual total PRCP when RR > 95p.	mm			Sillmann et al., 2013a, b
R99pTOT	Annual total PRCP when RR > 99p.	mm			Sillmann et al., 2013a, b
Rx1day	Monthly maximum 1-day precipitation	mm	x		Sillmann et al., 2013a, b
Rx5day	Monthly maximum 5-day precipitation	mm	x	x	Sillmann et al., 2013a, b
SDII	Simple precipitation intensity index	mm/day			Sillmann et al., 2013a, b
SMA	Soil moisture anomalies	1		x	Orlowsky and Seneviratne, 2013
SPI12	Standardized precipitation index (12-month accumulation period)	1		x	Vicente-Serrano et al., 2010
SU	Number of summer days	days			Sillmann et al., 2013a, b
T	Mean temperature	°C		x	Taylor et al., 2012
TN10p	Percentage of days when TN < 10th percentile	% days			Sillmann et al., 2013a, b
TN90p	Percentage of days when TN > 90th percentile	% days			Sillmann et al., 2013a, b
TNn	Monthly minimum of daily min. temperature	°C		x	Sillmann et al., 2013a, b
TNx	Monthly maximum of daily min. temperature	°C		x	Sillmann et al., 2013a, b
TR	Number of tropical nights	days			Sillmann et al., 2013a, b
TX10p	Percentage of days when TX < 10th percentile	% days			Sillmann et al., 2013a, b
TX90p	Percentage of days when TX > 90th percentile	% days			Sillmann et al., 2013a, b
TXn	Monthly minimum of daily max. temperature	°C		x	Sillmann et al., 2013a, b
TXx	Monthly maximum of daily max. temperature	°C		x	Sillmann et al., 2013a, b
WSDI	Warm spell duration index	days			Sillmann et al., 2013a, b

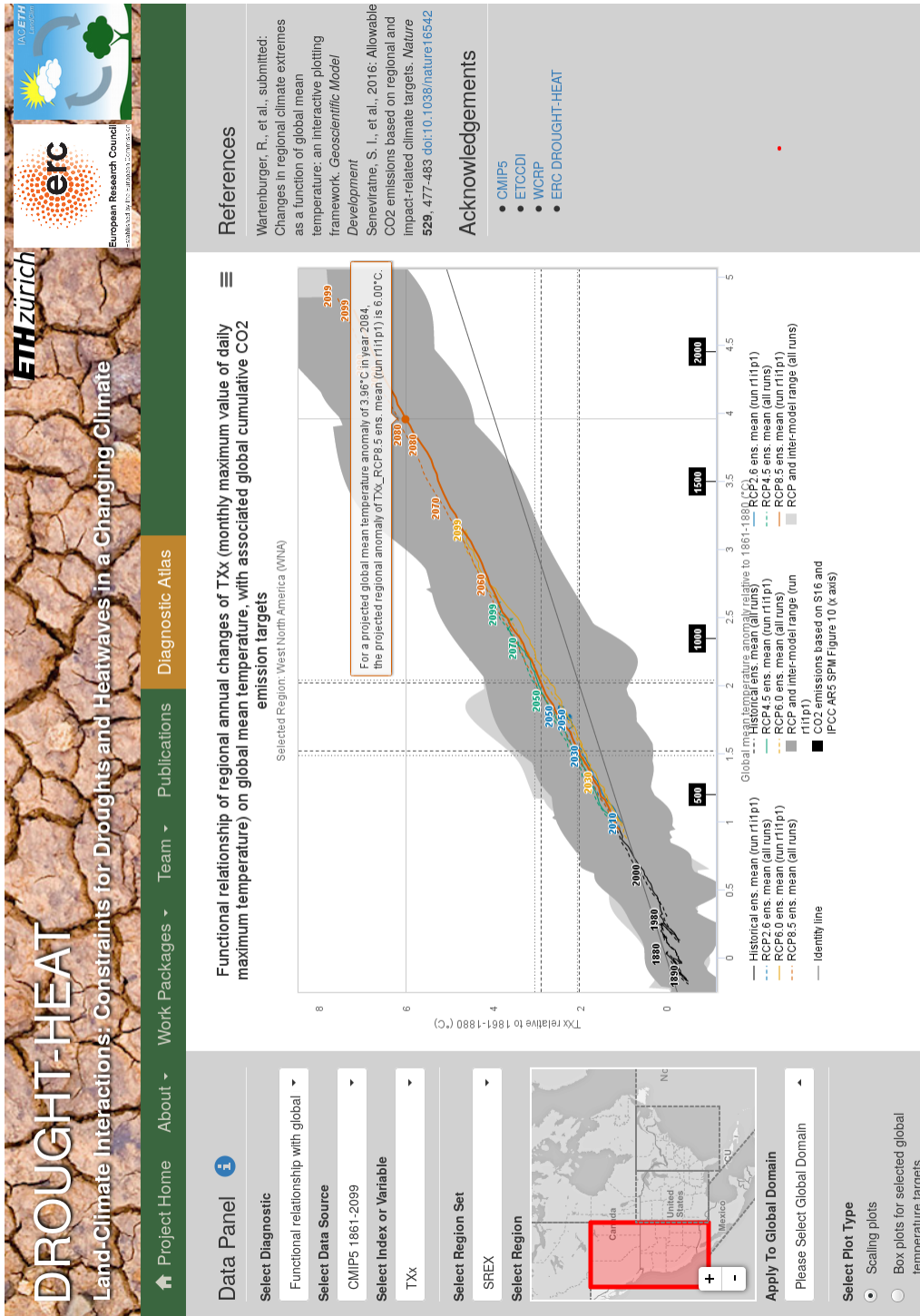


Figure 2. Screen-shot of the DROUGHT-HEAT Regional Climate Atlas. For demonstration, this screen-shot displays the **scaling-plot functional relationship** of ΔT_{glob} against ΔTXx on ΔT_{glob} based on model simulations from 1861–2099 for the SREX region West North America (WNA).

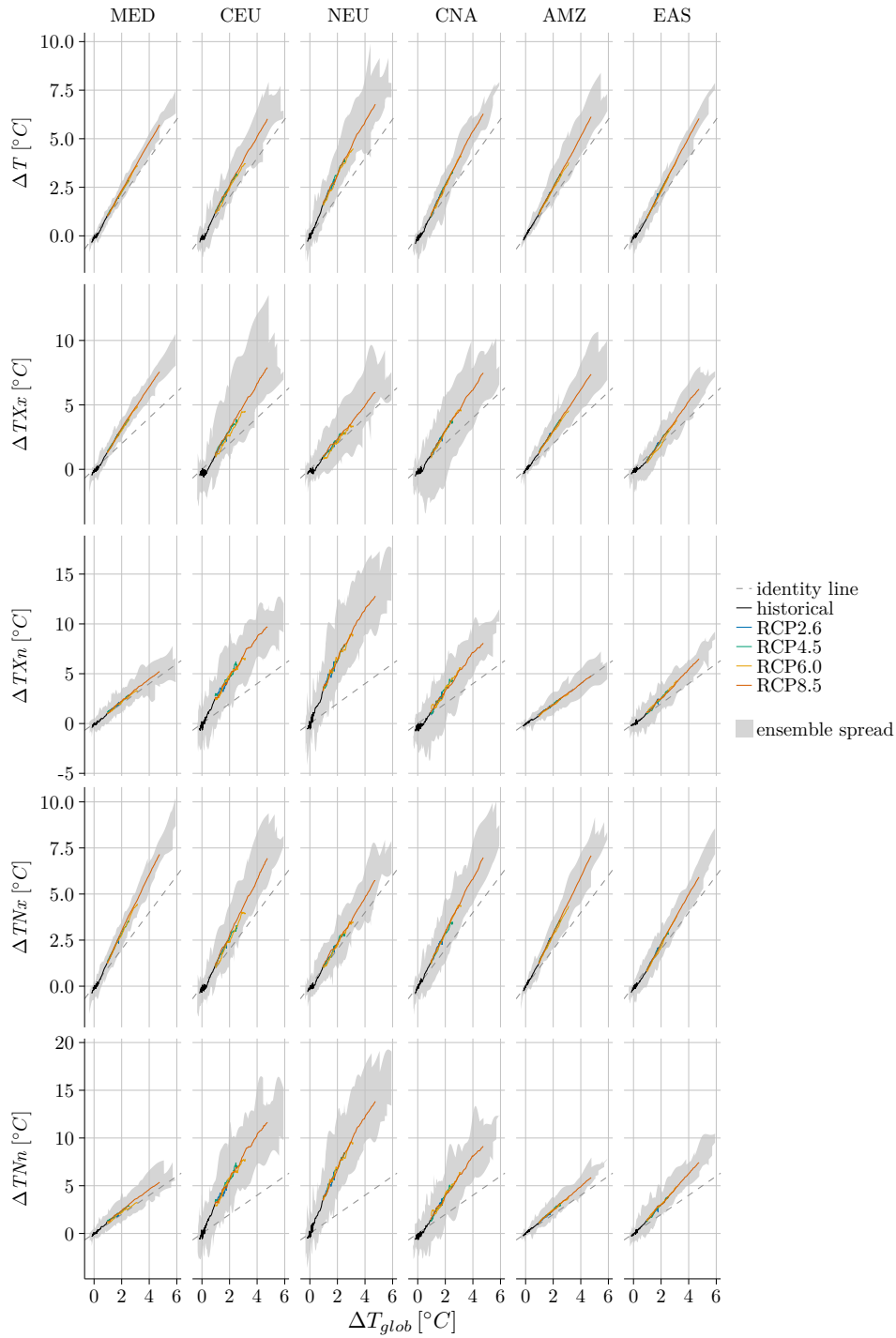


Figure 3. Sealing plots Functional relationships with global mean temperature for the indices ΔT , ΔTXx , ΔTXn , ΔTNx , and ΔTNn , based on CMIP5 simulations of ensemble member r1i1p1 and averaged over the SREX regions MED, CEU, NEU, CNA, **EAS and** AMZ and EAS. See Table 2 for a description of the indices.

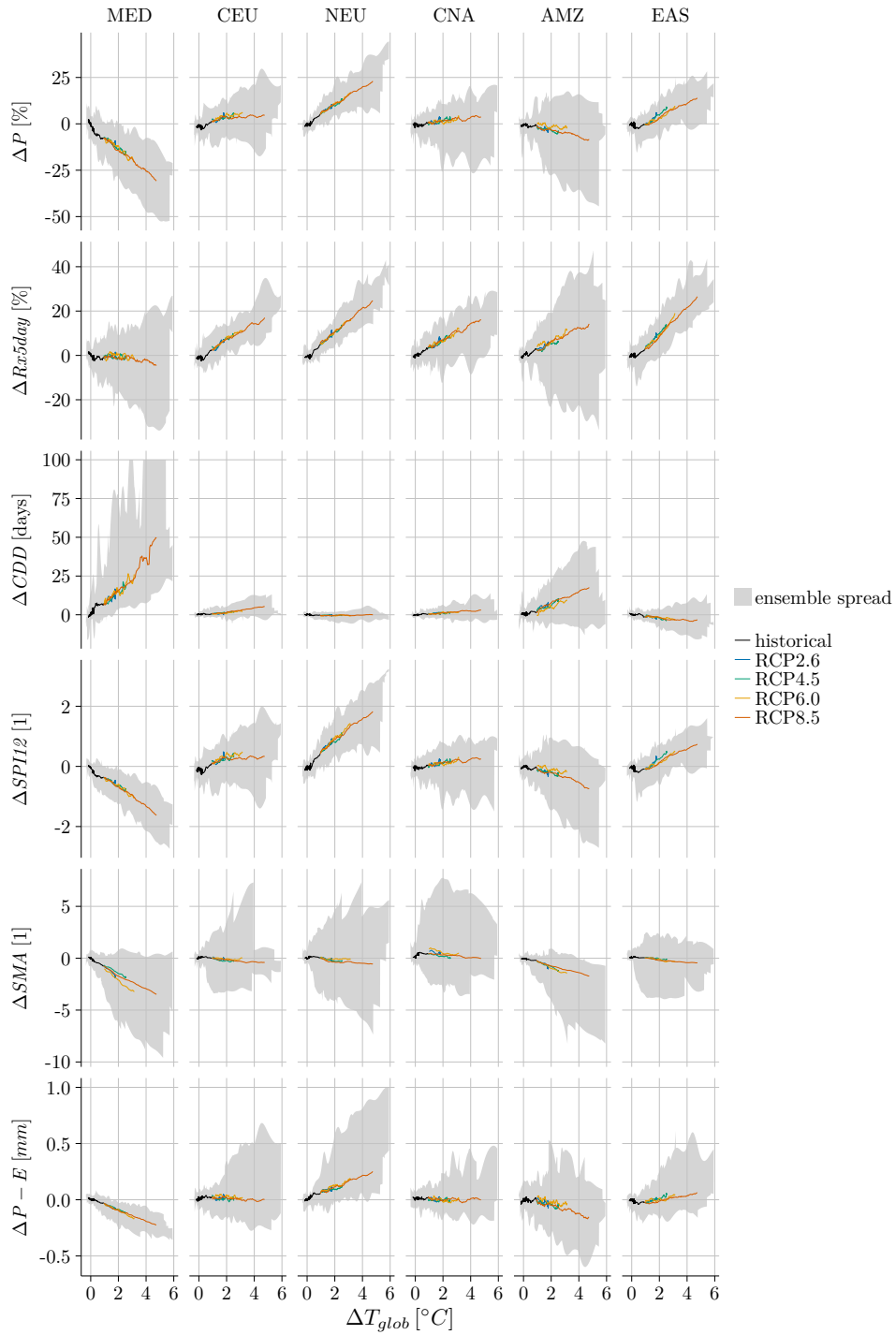


Figure 4. Like Fig. 3, but for the indices ΔP , $\Delta Rx5day$, ΔCDD , $\Delta SPI12$, ΔSMA , and $\Delta P - E$. Values for $\Delta CDD > 100days$ were cut off for readability.

Table 3. Scaling slopes of the RCP8.5 scenario for $\Delta T_{glob} \geq 1^\circ C$ and percent of models with a statistically significant linear scaling (in brackets, $p = 0.01$) for various SREX regions, based on CMIP5 simulations of ensemble member r11p1. Bold values indicate significance for at least 50% of the contributing models for which the sign of the trend is identical to the sign of the ensemble mean trend. [See Table 2 for a description of the indices.](#)

Index	Regions							
	MED	CEU	NEU	CNA	AMZ	EAS	SAU	EAF
$\Delta T / \Delta T_{glob} [^\circ C / ^\circ C]$	1.24 (100)	1.26 (100)	1.36 (100)	1.39 (100)	1.30 (100)	1.36 (100)	0.96 (100)	1.15 (100)
$\Delta TXx / \Delta T_{glob} [^\circ C / ^\circ C]$	1.65 (100)	1.77 (100)	1.30 (96)	1.66 (100)	1.59 (100)	1.49 (100)	1.10 (100)	1.19 (100)
$\Delta TXn / \Delta T_{glob} [^\circ C / ^\circ C]$	1.11 (100)	2.00 (100)	2.53 (100)	1.86 (100)	1.03 (100)	1.45 (100)	0.85 (100)	0.92 (100)
$\Delta TNx / \Delta T_{glob} [^\circ C / ^\circ C]$	1.55 (100)	1.52 (100)	1.21 (100)	1.48 (100)	1.52 (100)	1.34 (100)	1.08 (100)	1.24 (100)
$\Delta TNn / \Delta T_{glob} [^\circ C / ^\circ C]$	1.11 (100)	2.35 (100)	2.77 (100)	2.05 (100)	1.24 (100)	1.61 (100)	0.81 (100)	1.28 (100)
$\Delta P / \Delta T_{glob} [^\circ C / ^\circ C]$	-5.87 (65)	0.62 (23)	4.53 (92)	0.93 (12)	-1.67 (23)	4.13 (92)	-2.10 (8)	5.38 (65)
$\Delta Rx5day / \Delta T_{glob} [^\circ C / ^\circ C]$	-0.83 (8)	3.59 (85)	5.10 (100)	3.42 (77)	3.20 (73)	6.52 (100)	2.10 (12)	7.73 (85)
$\Delta CDD / \Delta T_{glob} [days / ^\circ C]$	10.73 (96)	1.31 (50)	0.15 (12)	0.68 (8)	3.78 (62)	-0.91 (31)	2.75 (58)	-0.93 (8)
$\Delta SPI12 / \Delta T_{glob} [1 / ^\circ C]$	-0.32 (72)	0.05 (28)	0.35 (92)	0.06 (20)	-0.15 (36)	0.23 (92)	-0.10 (24)	0.22 (64)
$\Delta SMA / \Delta T_{glob} [1 / ^\circ C]$	-0.62 (88)	-0.07 (28)	-0.12 (28)	-0.13 (36)	-0.36 (52)	-0.10 (40)	-0.01 (28)	0.34 (68)
$\Delta P - E / \Delta T_{glob} [mm / ^\circ C]$	-0.05 (80)	-0.01 (8)	0.05 (56)	-0.00 (0)	-0.04 (16)	0.03 (32)	-0.01 (8)	0.05 (40)

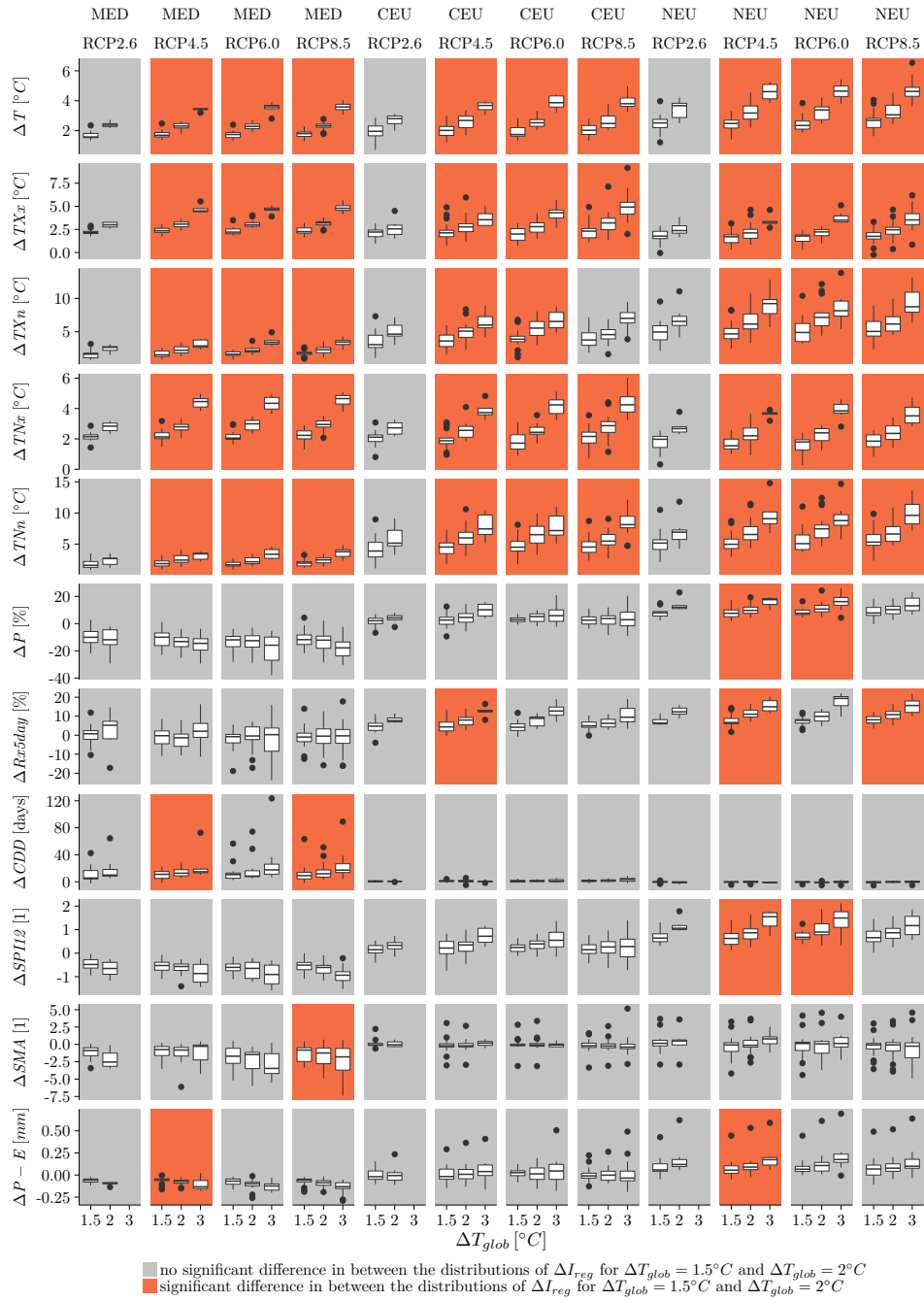


Figure 5. Response of indices ΔT , ΔTXx , ΔTXn , ΔTNx , ΔTNn , ΔP , $\Delta Rx5day$, ΔCDD , $\Delta SPI12$, ΔSMA and $\Delta P - E$ to a global mean temperature increase of $1.5^\circ C$, $2^\circ C$ and $3^\circ C$, based on CMIP5 simulations of ensemble member r11i1p1 and averaged over the European SREX regions MED, CEU and NEU. The upper and lower hinges of the box plots represent the first and third quartile. The whiskers extend to the highest (lowest) value that is within 1.5 times the interquartile range of the upper (lower) hinge. The central line of each box plot indicates the median value. Values outside this range are displayed as dots.

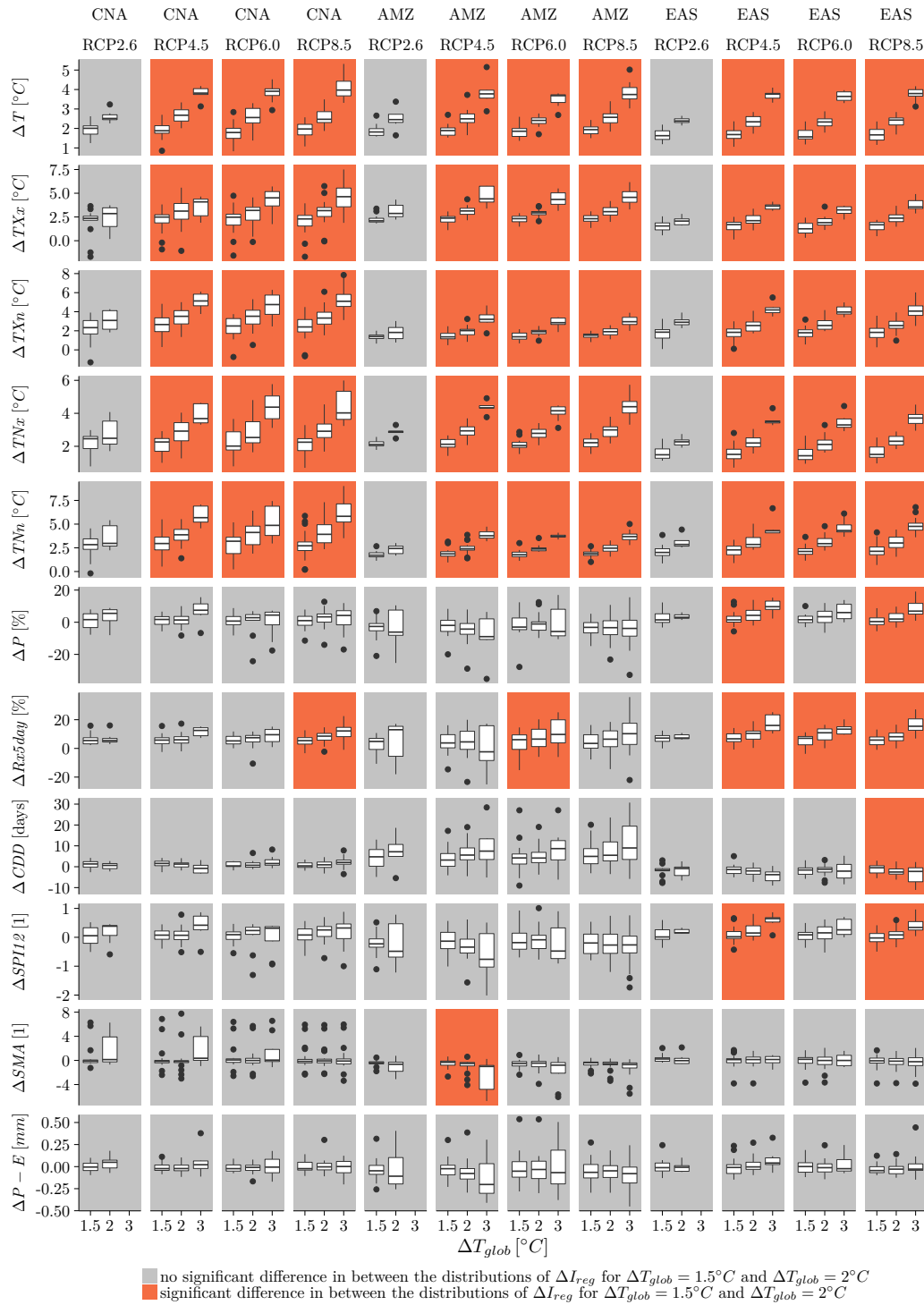


Figure 6. Like Fig. 5, but for SREX regions CNA, AMZ and EAS.

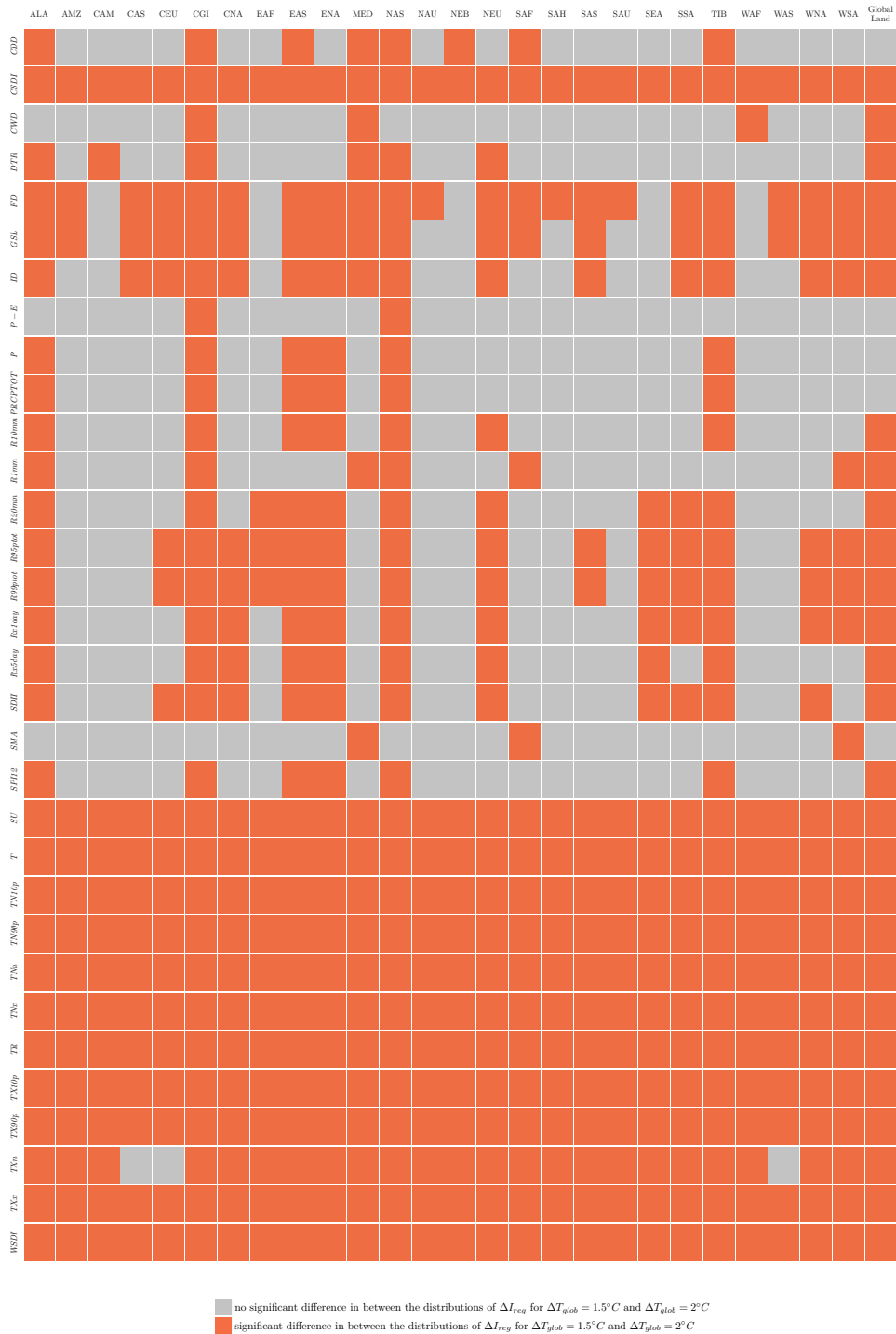


Figure 7. Significance of differences of ΔI_{reg} in between the $1.5^{\circ}C$ and $2^{\circ}C$ global mean temperature targets, based on mean temperature T , mean precipitation P , the drought indices defined in section 2.2 and all ETCCDI indices as defined in Sillmann et al. (2013a) (rows). Columns indicate SREX regions (according to IPCC AR5, http://www.ipcc-data.org/guidelines/pages/ar5_regions.html) and global land.

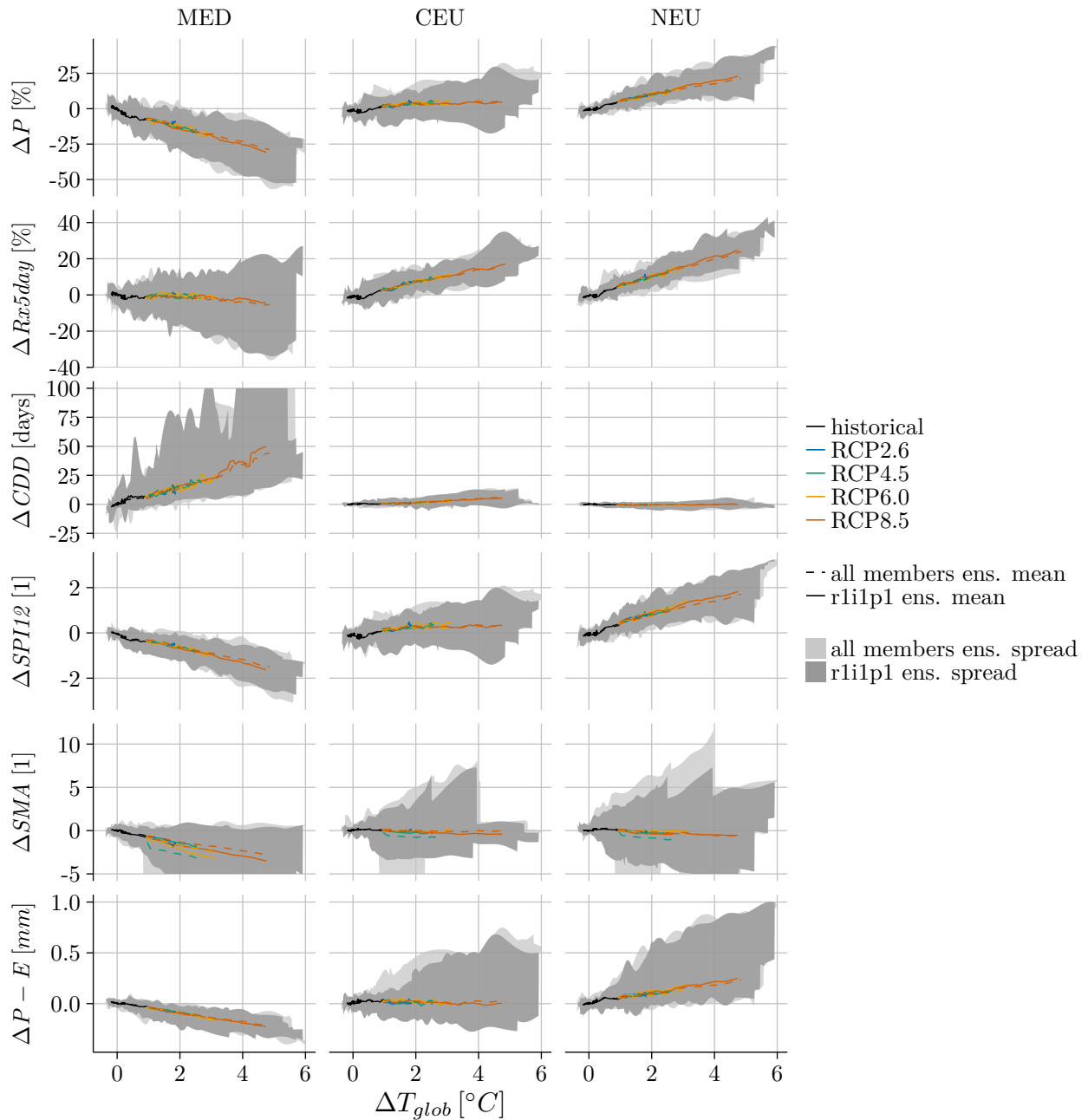


Figure 8. Dependency-Functional relationships with global mean temperature for the indices ΔP , $\Delta Rx5day$, ΔCDD , $\Delta SPI12$, ΔSMA , and $\Delta P - E$, averaged over the SREX regions MED, CEU and NEU. Indices based on all CMIP5 ensemble members available per model (solid lines, dark shading) are compared with indices based on ensemble member r1i1p1 of each model (dashed lines, light shading). Values for $\Delta CDD > 100days$ and $\Delta SMA < -5$ were cut off for readability.

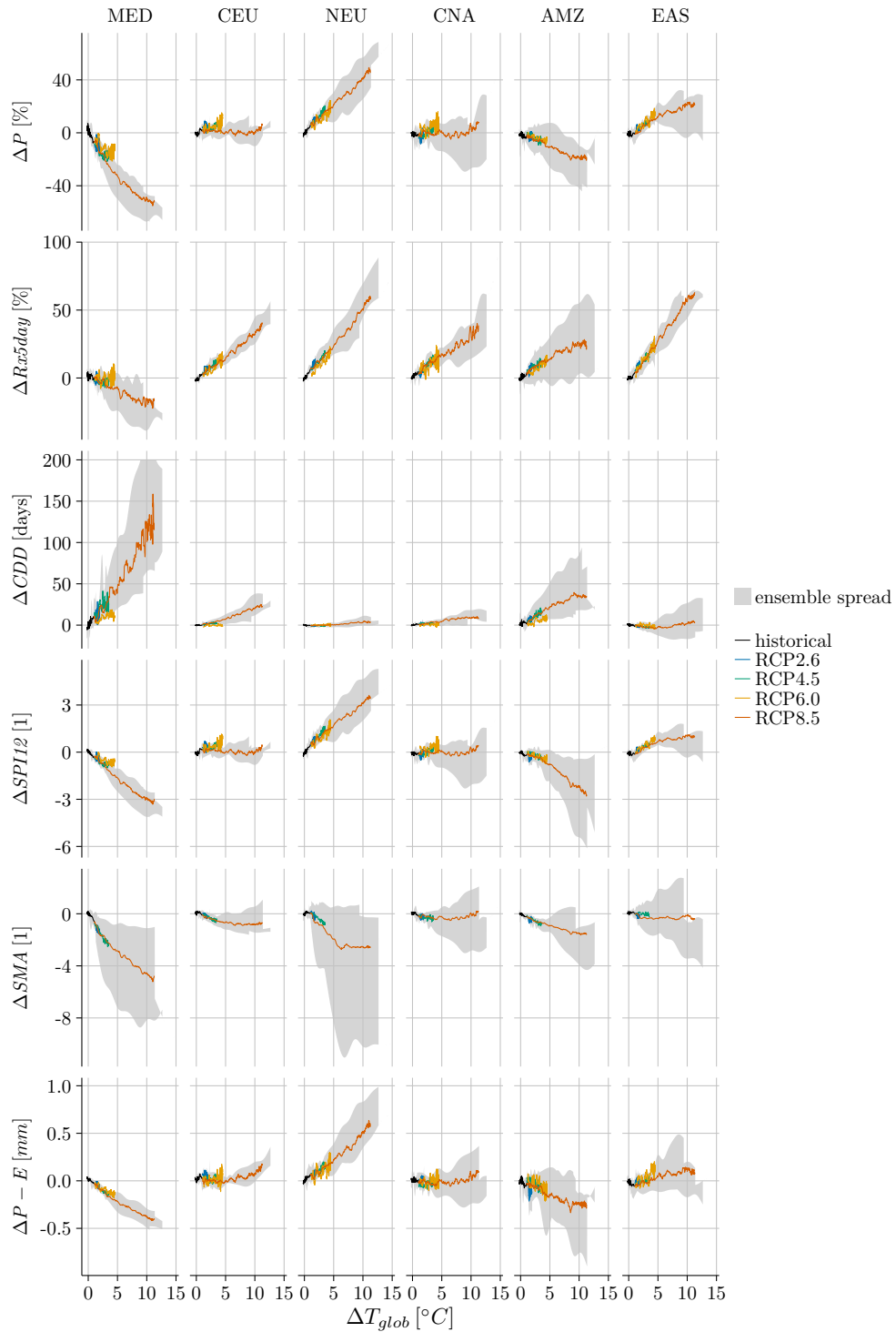


Figure 9. Like Fig. 4, but for the time period 1861–2299. Values for $\Delta CDD > 200$ days were cut off for readability.

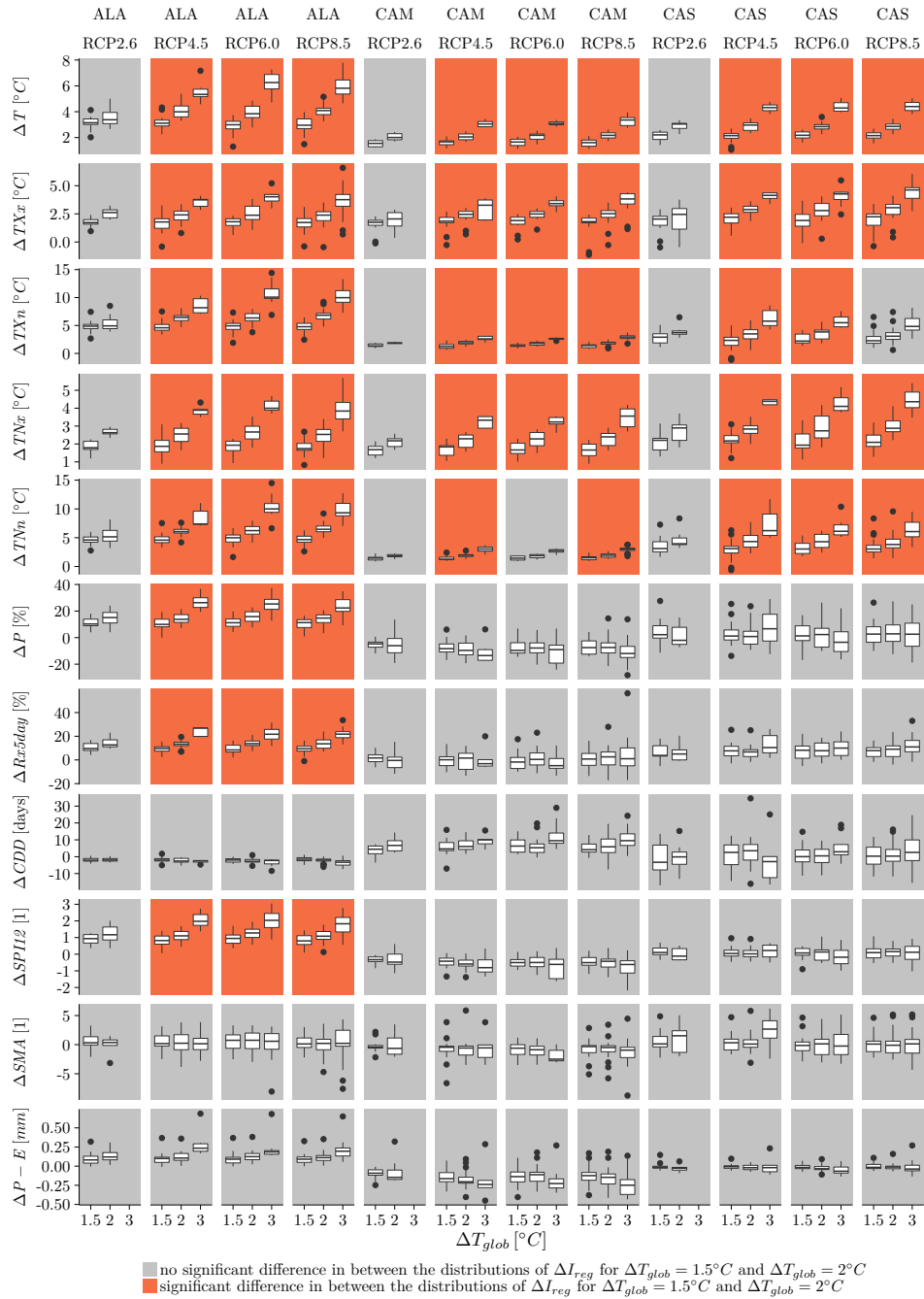


Figure A1. Response of indices ΔT , ΔTXx , ΔTXn , ΔTNx , ΔTNn , ΔP , $\Delta Rx5day$, ΔCDD , $\Delta SPI12$, ΔSMA and $\Delta P - E$ to a global mean temperature increase of 1.5°C, 2°C and 3°C, based on CMIP5 simulations of ensemble member r11i1p1 and averaged over the SREX regions ALA, CAM and CAS. The upper and lower hinges of the box plots represent the first and third quartile. The whiskers extend to the highest (lowest) value that is within 1.5 times the interquartile range of the upper (lower) hinge. The central line of each box plot indicates the median value. Values outside this range are displayed as dots. See Table 2 for a description of the indices.

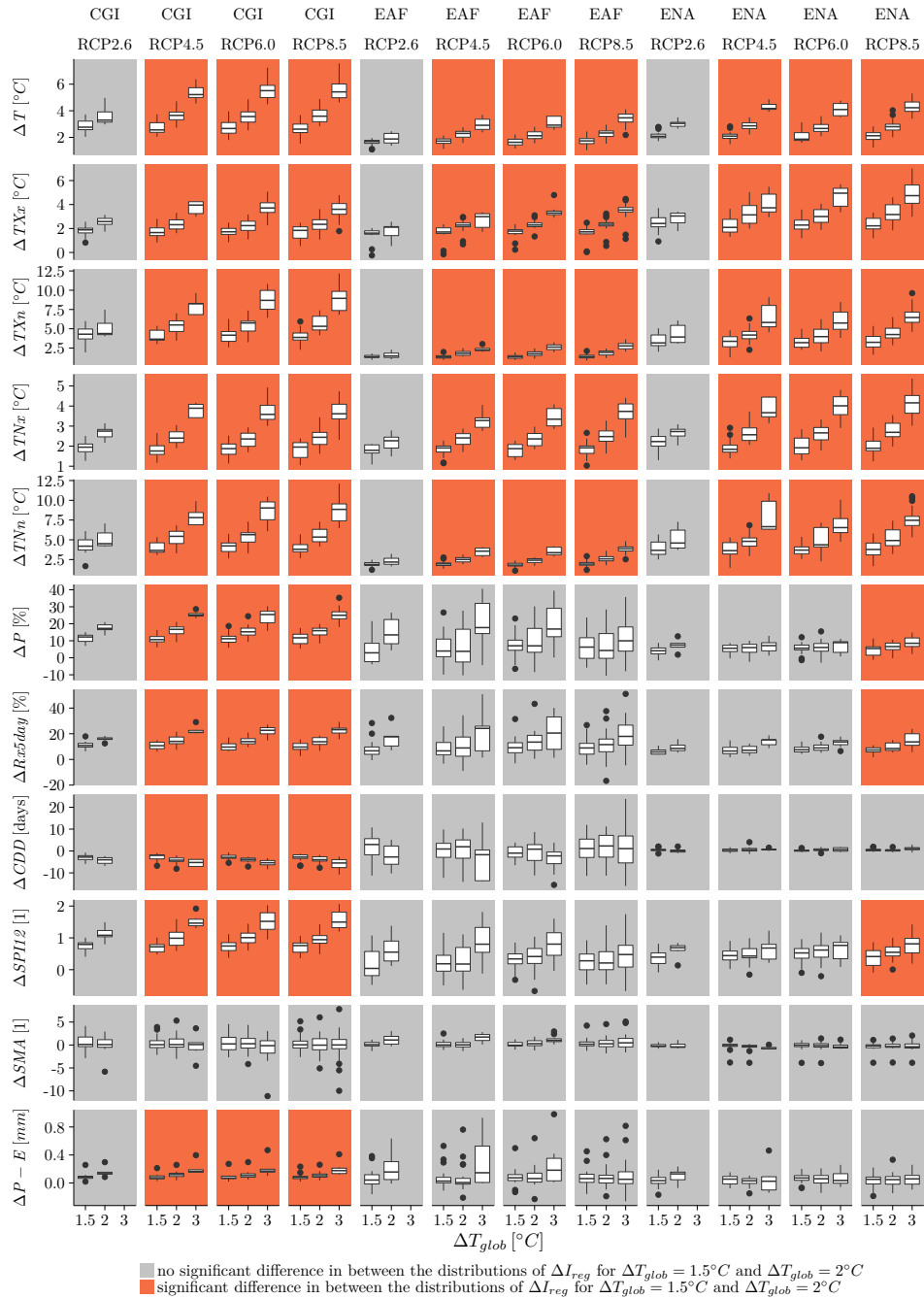


Figure A2. Like Fig. A1, but for SREX regions CGI, EAF and ENA.

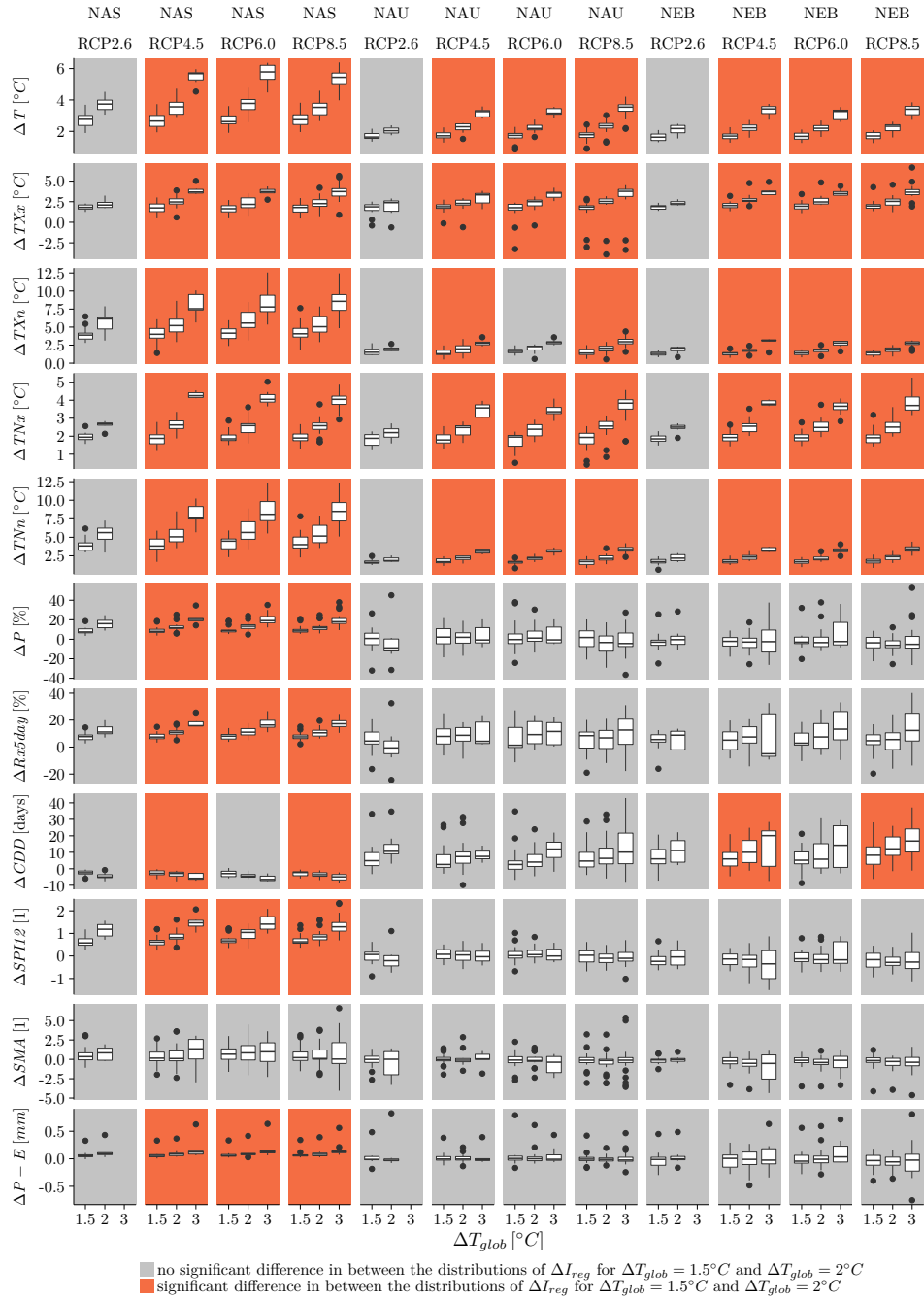


Figure A3. Like Fig. A1, but for SREX regions NAS, NAU and NEB.

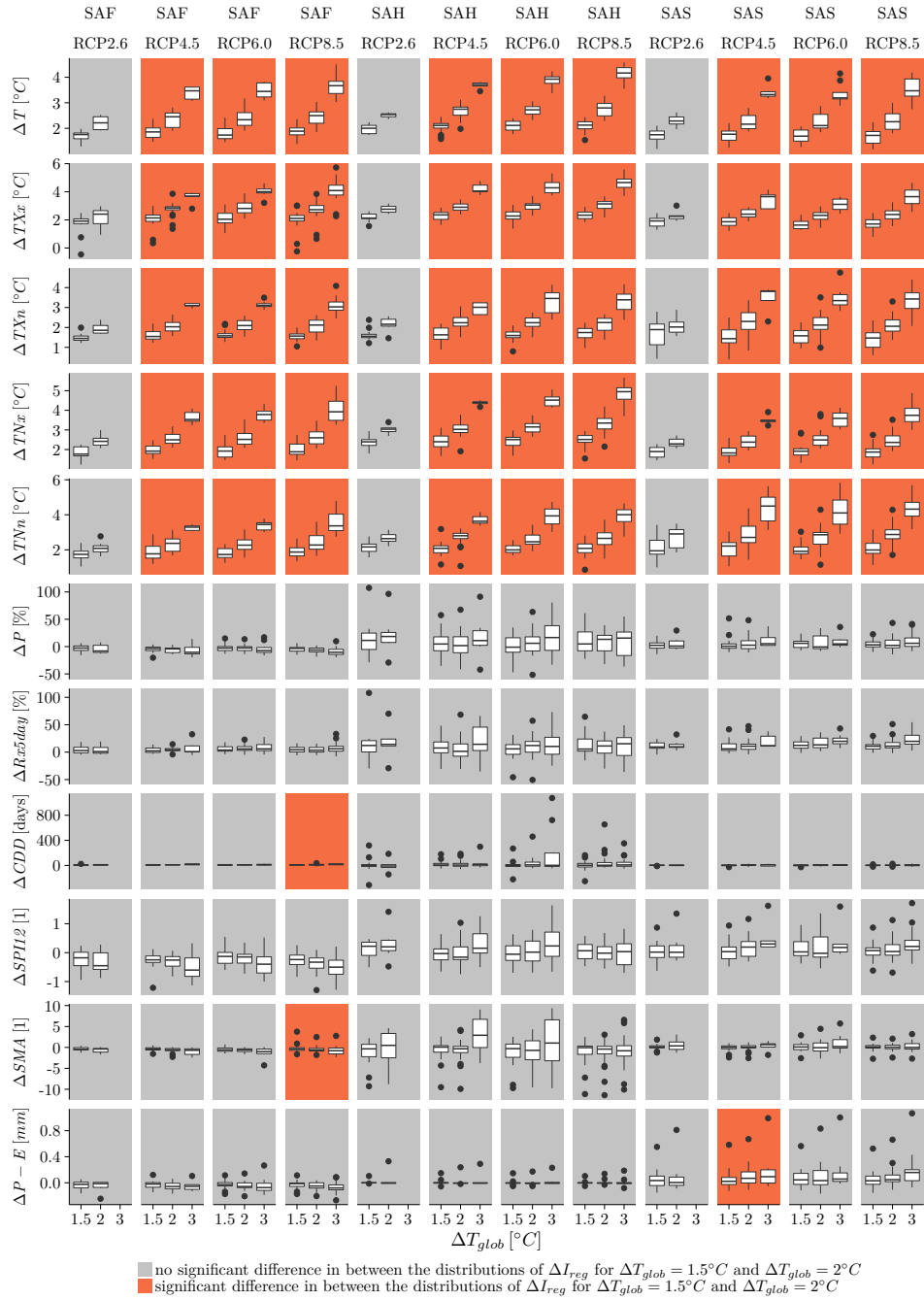
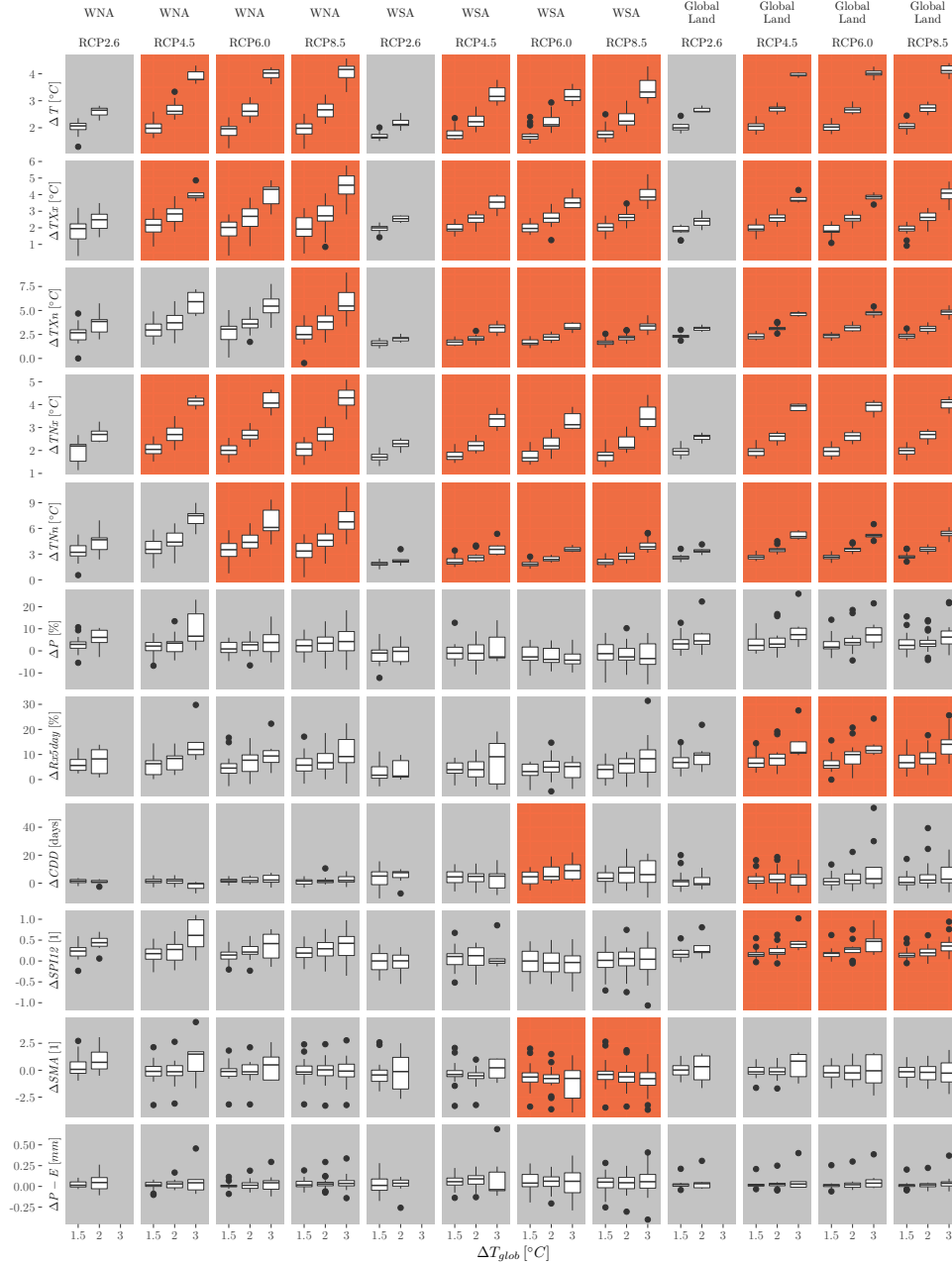


Figure A4. Like Fig. A1, but for SREX regions SAF, SAH and SAS.



Figure A6. Like Fig. A1, but for SREX regions TIB, WAF and WAS.



no significant difference in between the distributions of ΔT_{reg} for $\Delta T_{glob} = 1.5^\circ C$ and $\Delta T_{glob} = 2^\circ C$
 significant difference in between the distributions of ΔT_{reg} for $\Delta T_{glob} = 1.5^\circ C$ and $\Delta T_{glob} = 2^\circ C$

Figure A7. Like Fig. A1, but for SREX regions WNA, WSA and for global land ("Global").

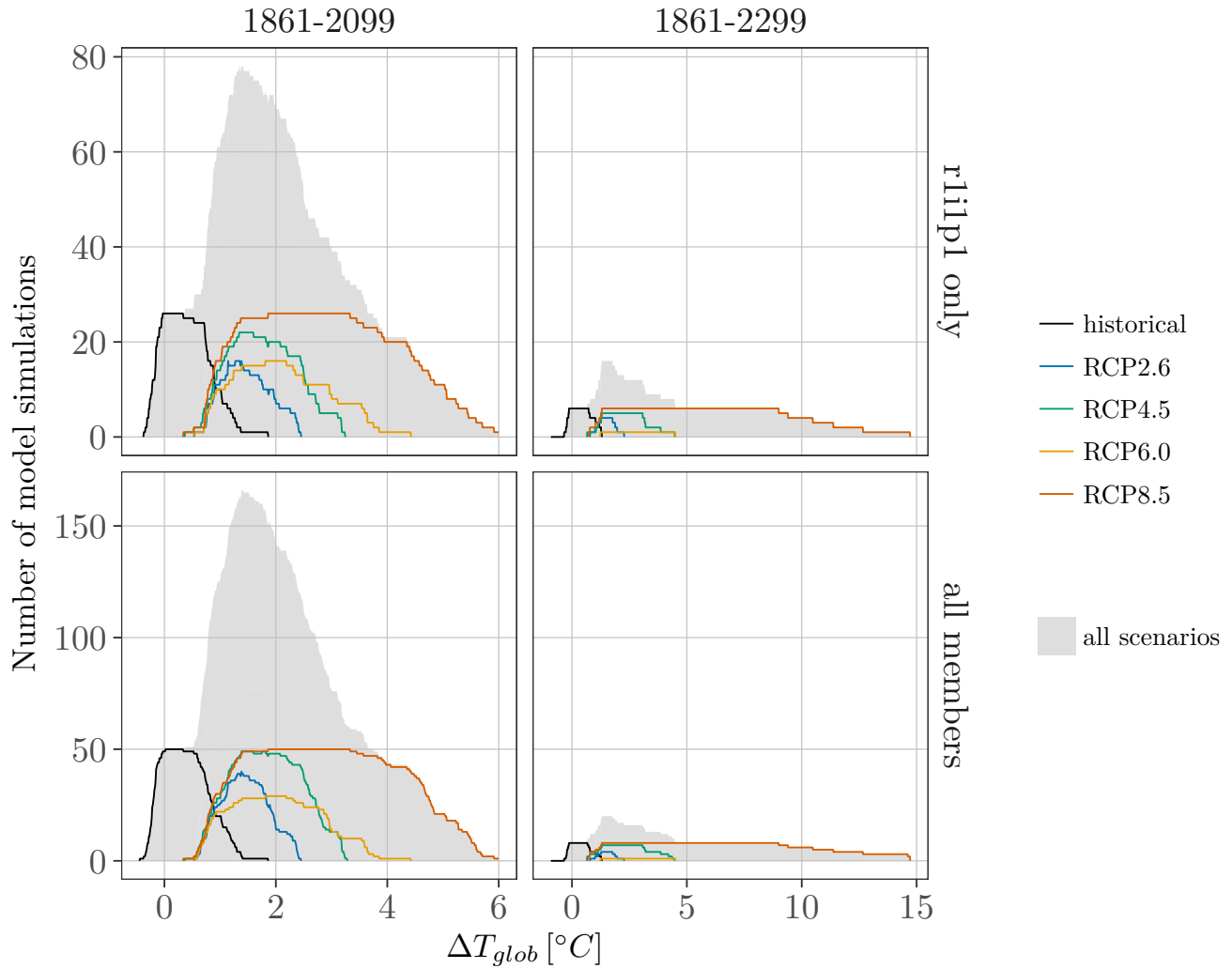


Figure A8. Number of models simulating a specific global mean temperature (x axis) per scenario (coloured lines) and for all scenarios combined (grey shading), sub-divided by the time period covered (columns) and by the number of ensemble members used (rows). The number of data points shown in each sub-plot is the same for each region and index except from $\Delta P - E$, where we do not use simulations from CMCC-CMS, as evaporation is not available from this model (cf. Table 1).