

Author response to the comments from referee #1

We thank the author for their kind comments on the importance of this work and for his constructive comments, which we have addressed as described below.

General comments response:

Page number	Line number	Referee comment	Correction made / Sentence added to the paper	Response
25	6	The whole paper is focused on 'low' yield or 'adverse events'. But what about taking advantage of good seasons? There is value in predicting a good season and TAMSAT ALERT can be used in these scenarios.	Page 25 line 6 onwards: Whilst the emphasis on our study has been on forecasting adverse events, such as low yields, it should be noted that TAMSAT-ALERT is also capable of anticipating favourable conditions, enabling decision makers to maximise the benefits of such years - for example by managing post-harvest storage and markets.	Indeed, the system can help to assess events of favorable conditions like high yield and these values may have importance in relation to market price and post-harvest storage issues. But we are more focused on the adverse events because the risk associated with these events are much greater than that of the "good years" for users. A sentence has been added to highlight this point (Page: 25, Line: 6)
9	8	The authors set up the system using national data but then somehow only focus on Northern Ghana, while specifying that they do not have yield data for that region. There is mention of Tamale but without	Page 9, Line 8 onwards We chose to use Tamale because it is in the Northern part of Ghana (Figure 2) where most of the Maize is grown. The station in Tamale also has a long-term record of the driving data for the crop model. It should be noted that TAMSAT-ALERT can in principle be run using any gridded meteorological data like satellite rainfall estimate (E.g. TAMSAT	The available dataset of yield was a country wide average yield for this we used WFDEI dataset to calibrate the crop model used. But the demonstration of the TAMSAT-ALERT system is done using a point gauge data (Tamale) which is indicated on Figure 2, in order to

		clarifying where that is, and what the agricultural practices are in this town/region. This is all rather confusing, and it would be good if the authors could somehow clarify this issue.	(https://www.tamsat.org.uk/data/rfe/index.cgi) with a resolution of 4 Km (Maidment et al., 2017).	highlight the systems use at the fine scales of relevance for decision makers. A sentence has been added to highlight this point (Page: 9, Line: 8)
19	18	Seasonal forecasts do come with uncertainty and it would be good to at least discuss the impact of forecast skill on these results.	<p>page 19, Line 18 onwards:</p> <p>In summary, Figures 12 and 13 indicate that if meteorological forecasts have sufficient accuracy and precision, they can add information to the decision-making process, especially in the middle to later part of the growing season. However, Figures 14-16 show that the tercile forecasts currently issued in northern Ghana do not have sufficient precision to information to yield risk assessments. A further application of TAMSAT-ALERT could be to investigate the level of skill that is required for meteorological forecasts to contribute useful information to such decision-making processes.</p>	We now comment on this at the end of the seasonal forecasting section (page 19, Line 18 onwards)

25	29	<p>Similarly, agricultural data have some uncertainty, as the authors have indicated in line2 page 5.</p> <p>Discussing the impact on calibrating a crop model using FAO data and thus the impact on the outputs of TAMSAT ALERT should be discussed. Especially, now there is a clear understanding that crop models should not be taken individually (e.g., AgMIP).</p> <p>Additionally, the sensitivity of GLAM to planting/harvest dates could have been included as well. All of this should at least be clearly discussed.</p>	<p>Page 25, Line 29 onwards</p> <p>This modularity and flexibility is important, since the skill of the TAMSAT-ALERT system is constrained by the quality of the model and its calibration. In this study, for example, the evaluation and calibration of GLAM was hampered by quality-control issues with the available yield data. The system would be much improved if used in-house by agencies with access to high quality yield data, and locally calibrated models.</p>	<p>Indeed, the skill of seasonal forecast and the skill of the model used has an impact in the outcome of the risk assessment. Hence, using a well calibrated model is important and a sentence has been added to highlight this point (Page: 25, Line: 29 onwards).</p>
26	1	<p>the authors mention that the forecast is very similar to the climatology, which then obviously results in no clear additional information from the forecast. So, unless I have misunderstood something, I do not believe that the authors can then clearly say that there is limited value in seasonal forecasts.</p>	<p>Page: 26, Line: 1 onwards</p> <p>Our results do not suggest that there is no information available from seasonal forecasts. However, we do show that 90-day tercile forecasts of temperature and rainfall, even if perfectly skillful, provide comparatively little information to risk assessments for low maize yield. This could be because the sensitivity of crops to moisture is on a specific period of their growth and the sensitivity of crops to temperature is also not similar throughout their growth stage. In other words, our findings highlight the</p>	<p>The results shown in Figures 12 and 13 show that even if a perfectly precise tercile forecast is used, the information provided to risk assessments is minimal. This is because the link between the metric being forecast (90 day averages of rainfall/temperature) are not strongly correlated with yield. We are not claiming that seasonal forecasts cannot add information to risk assessment, but</p>

19	18	<p>Ideally, and in order to make a clear suggestion on the usefulness of forecasts, the authors should have used several forecasts that use a variety of tercile distributions. So I encourage the authors to be more cautious with their result descriptions.</p>	<p>necessity of more specific and localized forecasts, if users are to benefit from the inherent skill contained in the forecasts.</p> <p>Page 19 line 18 onwards In summary, Figures 12 and 13 indicate that if meteorological forecasts have sufficient accuracy and precision, they can add information to the decision-making process, especially in the middle to later part of the growing season. However, Figures 14-16 show that the tercile forecasts currently issued in northern Ghana do not have sufficient precision to information to yield risk assessments. A further application of TAMSAT-ALERT could be to investigate the level of skill that is required for meteorological forecasts to contribute useful information to such decision-making processes.</p>	<p>rather we are highlighting the need for seasonal forecast to tailored to their application. Sentence have been added to clarify this point (Page: 26, Line: 1) and (Page: 19, Line: 18).</p>
25	29	<p>the authors focused on 2011 to evaluate this framework. From Fig 5 one can see that GLAM is able to clearly estimate the yield in that year. Is there a way to provide a similar analysis for 2010 where GLAM underperforms? And maybe include more discussion on what the decision-maker needs to do when the year-to-year</p>	<p>page 25 line 29 onwards.</p> <p>This modularity and flexibility is important, since the skill of the TAMSAT-ALERT system is constrained by the quality of the model and its calibration. In this study, for example, the evaluation and calibration of GLAM was hampered by quality-control issues with the available yield data. The system would be much improved if used in-house by agencies with access to high quality yield data, and locally calibrated models. Nevertheless, it is important that model error is taken into account in the decision-making process, and forecasts should therefore be issued in the</p>	<p>Indeed, if it is to provide useful information, TAMSAT-ALERT must incorporate models that are capable of simulating accurately the metric under assessment. This is clarified in the discussion section, along with brief discussion of strategies that users might adopt to deal with model error.</p>

		estimation of this system is only 'moderate'.	context of model evaluations like the one presented in this study. TAMSAT-ALERT's modular structure, moreover, permits forecasts to be produced using an ensemble of crop models/crop model parameterizations - facilitating formal analysis of model uncertainties.	
14	18	<p>A. when including forecast (section 3.3.2), it is unclear whether all forecasts are included simultaneously (i.e., in June, do the authors include forecasts for JJA, JAS, ASO and SON or do they only include JJA and climatology for the rest of the season?</p> <p>B. Also, is there scope to include both the temperature and rainfall forecasts at the same time?</p>	The forecasts are commonly issued at the start of every month. Hence, we have applied the forecasts only to the meteorological season being forecasted with the remaining season not included in the weighting estimation. For example, for running TAMSAT-ALERT on June 4, the seasonal forecast of June-July-August is applied.	<p>A. A sentence has been added to clarify (Page: 14, Line: 18).</p> <p>B. Thank you - this is a good idea! In principle it is possible to include multiple forecasts in the system which we will try to include this in the next version. For now, users can only use a single weighting variable of their choice (not only rainfall or temperature but other forecasts variables available to them like nino3.4). However, as we have showed in the results the weighting variables need to have a very strong correlation with the metric being evaluated for the</p>

				weighting to have an impact on the decision made.
19	14	And finally, it would have been good to see a quick statistical analysis on the usefulness of the forecasted variables in predicting maize yields in Ghana (i.e. run a multiple linear regression on $\text{yield} = f(\text{seasonal rainfall, seasonal mean temperature})$). This could also provide more arguments while discussing the value of seasonal forecasts.	...the relationship between the seasonal cumulative rainfall and seasonal mean temperature with maize yield is very low (see supplementary document Figure S1 and Figure S2).	The figures indicating the correlation between seasonal rainfall and yield as well as seasonal mean temperature with yield have been added to the supplementary document. A sentence has been added referring to this in the paper (Page: 19, Line 14)
25	19	As mentioned before, one key result here is that by using climatology alone, in that one year, TAMSAT ALERT can predict maize yields 6-8 weeks ahead of harvest. This is extremely useful for decision makers and a point that should be highlighted more in this paper.	Page: 25, Line: 19 A key result is that, even in the absence of meteorological seasonal forecasts, low yield can be anticipated 6-8 weeks before with some skill.	Thank you for mentioning this. A sentence has been added to point out this result (Page: 25, Line: 19).

Technical comments response:

Page number	Line number	Referee comment	Correction made / Sentence added to the paper	Response
1	13	page 1 line 13: change to 'which aims to provide early warning'	Which aims to provide early warning	Corrected!
3	2	A. page 3 line 2: should the question only focus on 'adverse events'? or should it be more general? line 15: again, why focus on 'unfavourable' conditions?		A. See above in the general comments!
3	19	B. line 19: 'to assign that assign'		B. Corrected!
4	5	C. rewrite Figure 1: again focus on 'adverse events'. Overall, figure 1 could be improved so that it clearly highlights all the steps mentioned in 2.2		C. We do not want to congests the framework flow; that is why we specify the inputs processes and outputs in the chart (Figure 1) and provide more detailed explanation in section 2,2. In addition, a detailed User manual has been available with the code (https://github.com/tamsat-alert/v1-0) as part of the requirement of the Journal. But we have edited the figure with different colors to highlight inputs, processes and output.

5	15	<p>A. page 5 line 11: what is the metric period?</p> <p>B. line 13: remove TAMSAT ALERT line 18: use " for file name line 22:</p>	<p>A. The metric period is the period on which the weighting will be done, and the probabilistic risk is calculated. For example, if one wants to estimate the metrological risk on available soil moisture the ensembles can be run for a lot longer period to allow spin up of model to equilibrium values for initial condition required but, the main interest for the user might be the first 90 days hence the length of the metric period is only the first 90 days and all the risk analysis is done on this metric period.</p> <p>B. The empirical cumulative distribution function (ECDF)</p>	<p>A. A definition has been added (Page: 5, Line: 15) onwards.</p> <p>B. Corrected!</p>
5	30	<p>C. what is ECDF? line</p> <p>D. 26: use " for file name, and remove comma after <year></p>		<p>C. Full description of the acronym has been mentioned (Page: 5, Line: 30).</p> <p>D. Corrected!</p>
3	19	<p>A. page 7: line 4: no 'amount of yield' in figure. What is that anyway Figure 3: can you explain the peak in 2002?</p>		<p>A. The figure shows only the total production area of maize in Ghana. It was only presented to show that that the production area is increasing to emphasize the importance of maize crop. We do not have any information on the</p>

		B. Figure 4: use same y scale as fig 5		increase in production area in the 2002 season. B. Corrected!
9	26	page 9 line 26: no need to write again what WFDEI stands for		Corrected!
10	5	page 10 lines 5-6: do you have info on all these other suggested factors?		We do not have any detailed information, but TAMSAT-ALERT is only explaining the meteorological risk to yield. But yield can be impacted by the factors suggested hence, the line was added to make users cautious when interpreting the results from TAMSAT-ALERT.
9	8	Where is Tamale and why only northern Ghana?	Page 9 line 8 We chose to use Tamale because it is in the Northern part of Ghana (Figure 2) where most of the Maize is grown. The station in Tamale also has a long-term record of the driving data for the crop model.	This is clarified in the text.
12		A. page 12 (and beyond) you have forgotten to include figure numbers throughout figures 8, 9, 10 all show the same thing, consider using only one		A. This error was on the first manuscript submitted the one available online do not have this error. (this was corrected on the first topical editor comments were corrected!).

		B. Figure 11: not sure what the rationale is to use these dates but I would guess that your figure for Sept 15 would be similar to the one for Oct 4th, and it would indicate the 6-8 week lead time in forecasting yields.		B. There is no limit on the day range to run the TAMSAT-ALERT system. The dates are chosen to show yield changes every 4 weeks starting from planting to harvest. But the general conclusion is we can say something about what the yield is going to be 6 – 8 weeks prior to harvest. A sentence has been added to highlight this see general comment response.
16	10	page 16 lines 3-5: this may be simply due to the fact that early season rainfall may have limited impact on yields (something that could technically be evaluated statistically, or at least acknowledged)	The improvement is less noticeable in June and July, perhaps reflecting the fact that, at least in the GLAM crop model, cumulative rainfall in this part of the season is comparatively less strongly correlated with yield.	A sentence has been added to acknowledge. (Page: 16, Line: 10). Relationship of seasonal rainfall with yield is also shown in the supplementary document (see supplementary document Figure S1 and Figure S2). (See general comment response above).
		A. page 17 line 13: again, and as mentioned before, it is rather confusing to set the system up for all of Ghana and then only use data for Northern Ghana. Would there be a way to include forecasts for all of Ghana?	A. --- B. Page 22 Lines 14 onwards Only 2007-2012 are presented in Figure 17 because the maize variety changed in 2007, making the hindcasts of these years more relevant to the present day	A. Please see the response in the general comment above! B. A sentence has been added to the paper why we only show the last five years (Page: 22, Line: 14). C. Figure 4 shows the Average yield over Ghana, but only Statistical

22	14	B. Fig 17 and 18: they all have different time scales? (and fig 4), add why that is.	than the 1994-2006 period (see supplementary document Figure S3)	analysis was done from 2002 only (Figure 18) because some of the Gauge data in 1998 and 1999 has some missing values so we do not want to include the results in the skill analysis even though we used climatology values to run the system.
----	----	--	--	---

Author response to the comments from referee #2

We thank the reviewer for their recognition of the value of this work and for their constructive comments, which we have addressed as described below.

General comments response:

Page number	Line number	Referee comment	Correction made / Sentence added to the paper	Response
19	18	1. In the abstract, the example of Northern Ghana shows that predictions of rainfall and temperature are of limited use to decision makers, but is not followed up in the paper. Specifically, the paper walks through using different data within the TAMSAT ALERT but does not explain why different datasets were used. It would be useful to know if the mean temperature and precipitation forecasts that are issued are incorporated into the model.	Page 19 Line 18 onwards: In summary, Figures 12 and 13 indicate that if meteorological forecasts have sufficient accuracy and precision, they can add information to the decision-making process, especially in the middle to later part of the growing season. However, Figures 14-16 show that the tercile forecasts currently issued in northern Ghana do not have sufficient precision to information to yield risk assessments. A further application of TAMSAT-ALERT could be to investigate the level of skill that is required for meteorological forecasts to contribute useful information to such decision-making processes.	We used the WFDEI data set to evaluate the GLAM crop model over Ghana since the yield data we got is from all Ghana maize average from FAO. So, we evaluate and calibrate the model, but the evaluation of TAMSAT-ALERT system was evaluated using gauge data from Tamale. The reason is not to introduce more error due to the satellite data estimates of driving forces. But, we will evaluate the system using different data set in the future work. We have also extended the discussion of the use of seasonal forecasts within TAMSAT-ALERT.
1	27	2. It seems like this paper might be highlighting an issue of scale-local forecasts may be of more benefit than large, country-wide forecasts. In the conclusion, the benefit	This finding speaks to the pressing need for meteorological forecast products that are tailored for individual user applications.	Sentences were added in the abstract (Page 1, Line 27). The issue of providing bespoke forecast metrics is also addressed in greater

26	1	of TAMSAT ALERT may also be providing guidance on the design of forecast products (page 24, line 36). Since this may be a secondary use, it might be important to include that at the top of the paper (in both the abstract and the introduction).	Page 26 line 1 onwards: Our results do not suggest that there is no information available from seasonal forecasts. However, we do show that 90-day tercile forecasts of temperature and rainfall, even if perfectly skillful, provide comparatively little information to risk assessments for low maize yield. This could be because the sensitivity of crops to moisture is on a specific period of their growth and the sensitivity of crops to temperature is also not similar throughout their growth stage. In other words, our findings highlight the necessity of more specific and localized forecasts to benefit from inherent skills contained in the forecasts.	detail in the discussion (Page 26 Line 1) to highlight the point.
2	32	3. The target audience of all other early warning platforms are mentioned, but TAMSATALERT's target audience is not mentioned. Perhaps this should be included (page 2 line 22).	The impact model output and the weather risk associated with the output that can be obtained from TAMSAT-ALERT can be used by government, non-governmental organizations involved with providing farming information and aid, and weather index insurance providers can be benefited from continuous assessment of the risk.	Sentence was added to state target audience of the system (Page 2 Line 32).

Technical comments response:

Page number	Line number	Referee comment	Correction made / Sentence added to the paper	Response
-------------	-------------	-----------------	---	----------

1	31	1. The first sentence of the introduction needs a citation (page 1, line 27). My suggestion would be Muller, Cramer, Hare, Lotze-Campen, 2011, "Climate Change Risks for African Agriculture", Proceedings of the National Academy of Sciences. In this paper they talk about naturally high levels of climate variability, reliance on rain-fed agriculture, and limited capacity to cope with climate variability makes Sub-Saharan Africans notably vulnerable.	Many African people depend on rain-fed agriculture, and are thus vulnerable to drought, and other weather-related hazards exacerbated by climate change (Muller et al., 2011).	Corrected!
2		2. The different platforms available for early warning on the 2nd paragraph of the introduction (pages 1-2) should probably have citations and links for them. Within that comment- the IRI platform is "IRI/LDEO Climate Data Library", and the maprooms are "IRI Climate and Society Maproom"	The Rainwatch-AfClix early warning system (RWX) (http://www.rainwatch-africa.org/rainwatch/), Famine Early Warning Systems Network Early Warning Explorer (FEWSNET-EWX) (https://earlywarning.usgs.gov/fews/ewx/index.html) International Research Institute (IRI) data library/map rooms (http://iridl.ldeo.columbia.edu/index.html?Set-Language=en), Africa Flood and Drought Monitor (AFDM) (http://stream.princeton.edu/AWCM/WEBPAGE/interface.php),	Corrected!
4	13 -16	3. Under the Model Specification, Point 1 (page 4 lines 13-16), the type of data that		The TAMSAT-ALERT system we have takes data from text files and reproduce it in the

		<p>ALERT can use is not specified. Must it be converted from .csv to .txt?</p> <p>What is the delimiter? Can it accept geotifs or netCDF files?</p>		<p>format required by the crop model used GLAM. When using a different model the data should be given in the format required by the model incorporated in the system.</p> <p>A user Manual is provided on how to run TAMSAT-ALERT and what data format you can use. See Code Availability: (https://github.com/tamsat-alert/v1-0).</p>
9	8	<p>4. Although TAMSAT-ALERT is designed to be flexible to different inputs, it might be important to include the spatial resolution of TAMSAT precipitation data in this paper, since it seems logical that TAMSAT precipitation data may be one of the most logical inputs?</p>	<p>Page 9, line 8 onwards:</p> <p>We chose to use Tamale because it is in the Northern part of Ghana (Figure 2) where most of the Maize is grown. The station in Tamale also has a long-term record of the driving data for the crop model.</p>	<p>Sentence has been added explaining the possibilities of using gridded data set and the resolution of the TAMSAT rainfall data (Page 9 Line 8).</p>
5	30	<p>5. The first time ECDF is mentioned (empirical cumulative distribution function) is on page 5 line 21, and it is not designated an acronym when it is first mentioned. However, later in the paragraph, (line 22), it is mentioned by acronym. Perhaps the acronym should be designated immediately after the first mention or the acronym on line 22</p>	<p>The empirical cumulative distribution function (ECDF)</p>	<p>Corrected!</p>

		should be replaced with the name since ECDF is not used again in the paper.		
7		6. On Figure 2 (page 7), there is a pre-existing map of Ghana: this might be a useful figure to include where Tamale is, since this is the example mentioned immediately on page 8 (line 10).		Corrected!
		7. On Figures 11e, 12e, 13e, 14e, and 15e - the probability of low yield is at 100%, but the 100% has been cut down to 10. That number should either be scrubbed off or should be 100% and completely visible.		Corrected!

TAMSAT-ALERT v1: A new framework for agricultural decision support

Dagmawi Asfaw¹, Emily Black¹, Matthew Brown², Kathryn Jane Nicklin³, Frederick Otu-Larbi⁴, Ewan Pinnington¹, Andrew Challinor³, Ross Maidment¹, Tristan Quaife¹

¹Department of Meteorology, University of Reading, Reading, UK

²Department of Atmospheric, Oceanic and Planetary Physics, University of Oxford, Oxford, UK

³School of Earth and Environment, University of Leeds, Leeds, UK

⁴Ghana Meteorological Agency, Accra, Ghana

Correspondence to: Dagmawi Asfaw (d.t.asfaw@pgr.reading.ac.uk)

Abstract. Early warning of weather related hazards enables farmers, policy makers and aid agencies to mitigate their exposure to risk. We present a new operational framework, Tropical Applications of Meteorology using SATellite data and ground based measurements-AgricuLtural EaRly warning sysTem (TAMSAT-ALERT), which aims to provide early warning of meteorological risk to agriculture. TAMSAT-ALERT combines information on land surface properties, seasonal forecasts and historical weather to quantitatively assess the likelihood of adverse weather-related outcomes, such as low yield. This article describes the modular TAMSAT-ALERT framework and demonstrates its application to risk assessment for low maize yield in Northern Ghana (Tamale). The modular design of TAMSAT-ALERT enables it to accommodate any impact/land surface model driven with meteorological data. The implementation described here uses the well-established General Large Area Model for annual crops (GLAM) to provide probabilistic assessments of the meteorological hazard to maize yield in Northern Ghana (Tamale) throughout the growing season. The results show that climatic risk to yield is poorly constrained in the beginning of the season, but as the season progresses, the uncertainty rapidly reduces. Based on the assessment for the period 2002 – 2011, we show that TAMSAT-ALERT can estimate the meteorological risk on maize yield six to eight weeks in advance of harvest. The TAMSAT-ALERT methodology implicitly weights forecast and observational inputs according to their relevance to the metric being assessed. A secondary application of TAMSAT-ALERT is thus evaluation of the usefulness of meteorological forecast products for impact assessment. Here, we show that in Northern Ghana (Tamale), the tercile seasonal forecasts of seasonal cumulative rainfall and mean temperature, which are routinely issued to farmers, are of limited value because regional, seasonal temperature and rainfall are poorly correlated with yield. This finding speaks to the pressing need for meteorological forecast products that are tailored for individual user applications.

1 Introduction

Many African people depend on rain-fed agriculture, and are thus vulnerable to drought, and other weather-related hazards exacerbated by climate change (Muller et al., 2011). Anticipation of hazard enables farmers and aid agencies to plan ahead, averting disaster (Boyd et al., 2013). Here, we present a new framework for early warning of high meteorological risk to agriculture, the Tropical Applications of Meteorology using SATellite data and ground based measurements-AgricuLtural EaRly warning sysTem (TAMSAT-ALERT). TAMSAT-ALERT integrates assessment of climatological weather-related risk, with forecasts and real-time monitoring of environmental conditions. The framework is intended to be a decision support system, which when combined with socio-economic assessments, can be used by governmental agencies and NGOs to help farmers manage agricultural risk.

The need for timely information on agricultural risk has motivated the development of a number of drought early warning systems and decision support platforms. The Rainwatch-AfClix early warning system (RWX) (<http://www.rainwatch->

africa.org/rainwatch/), for example, provides time series of cumulative rainfall, which are compared against historical time years. Users value the facility to compare the current season against past years, finding that it enables them to intuitively gauge risk (Tarhule et al., 2009). The severity of drought, however, depends not only on rainfall. It is, furthermore, not straightforward to translate information on meteorological drought (deficit rainfall) into warning of agricultural drought (deficit soil moisture) (Black et al., 2016). The need to consider a range of variables, and to compare data from a variety of sources is addressed by more comprehensive platforms, such as the Famine Early Warning Systems Network Early Warning Explorer (FEWSNET-EWX) (<https://earlywarning.usgs.gov/fews/ewx/index.html>) and International Research Institute (IRI) data library/map rooms (<http://iridl.ldeo.columbia.edu/index.html?Set-Language=en>), which enable users to compare meteorological data with land-surface remote sensing products, such as Normalized Difference Vegetation Index (NDVI) and soil moisture. Such platforms are aimed at expert users, capable of interpreting complex, multivariate data. An alternative approach is to use a land surface model, driven with meteorological time series, to derive snapshots and forecasts of soil moisture. The Africa Flood and Drought Monitor (AFDM) (<http://stream.princeton.edu/AWCM/WEBPAGE/interface.php>), for example, estimates soil moisture using a land surface model. The model is driven with satellite data for monitoring current conditions and with bias-corrected, downscaled forecasts, for predicting future conditions (Sheffield et al., 2014). The Africa Flood and Drought Monitor is implemented continent wide, with the aim of monitoring and forecasting metrics related to drought and flood (soil moisture and streamflow). The AFDM does not, however, attempt to predict crop yield at particular localities. There have been several attempts to forecast yield using crop models, driven by seasonal forecasts (Hansen and Indeje, 2004; Semenov and Doblas-Reyes, 2007). Mismatches between the scales of the input agronomical and climate data, and lack of skill of the seasonal forecasts proved challenging for these early systems (Hansen and Indeje, 2004). In the last few years there have, however, been marked improvements in the skill of sub-seasonal to seasonal forecasts, leading to greater success for forecasting yield, even in the extra-tropics, where predictability is low. A recent study, for example, demonstrated significant skill for predicting wheat yield in France, using a wheat growing model driven with seasonal forecasts (Canal et al., 2017). Previous operational attempts to predict yield using crop models have mainly focused on issuing predictions in advance of sowing. A weather generator approach to providing continually updated assessments was, however, successfully demonstrated for UK winter wheat yield (Bannayan et al., 2003), indicating the potential of this type of approach for operational risk assessment.

TAMSAT-ALERT complements existing systems by providing a means of continually updating yield predictions as the season progresses, in a manner similar to that proposed in Hansen et al., 2006 for characterizing the simulated uncertainty in yield, resulting from climatic variability. The TAMSAT-ALERT methodological approach combines the use of historical information, as encapsulated in the RWX methodology, with a land surface/impact model, as demonstrated in the Africa Drought and Flood Monitor. The system can output any variable or metric that can be generated by the land surface or impact model. The impact model output and the weather risk associated with the output that can be obtained from TAMSAT-ALERT can be used by governmental and non-governmental organizations involved with providing farming information and aid, as well as by weather index insurance providers, who require continuously updated assessment of the risk.

In this study, TAMSAT-ALERT is demonstrated through continually updated seasonal assessments of the meteorological risk to agriculture for Ghana. Although an application of TAMSAT-ALERT has been described elsewhere (Brown et al., 2017), this paper is the first formal description and validation of the methodological approach. Section 2 describes the design of the framework and give brief notes about its implementation. Section 3 describes the implementation of the framework for assessment of meteorological risk to yield in Ghana. The paper concludes with a discussion of the place that TAMSAT-ALERT has in early warning of meteorological hazard, and wider decision-making processes (Section 4). A user manual for TAMSAT-ALERT is included as supplementary information, and all of the TAMSAT-ALERT scripts are freely available on GitHub.

2 Framework concept and design

2.1 Concept

The TAMSAT-ALERT framework provides a means of deriving quantitative agricultural risk assessments from information on the climatology, historical time series and (optionally) meteorological forecasts. In essence, the system addresses the question:

Given the climatology, the state of the land surface, the evolution of the growing season so far, and (optionally) the meteorological forecast, what is the risk of some adverse event?

The ‘adverse event’ is any metric that can be derived either directly from meteorological data, or using a model driven with meteorological data. TAMSAT-ALERT is designed to be modular and flexible, enabling users to choose models and datasets to suit their application. So far it has been applied to risk assessments of agricultural drought using the Joint UK Land Environment Simulator (JULES) model (Brown et al., 2017) and to risk assessments of low yield, using the General Large Area Model for annual crops (GLAM) (section 3.2.2). In addition, code is supplied for assessment of purely meteorological metrics, such as cumulative rainfall (Supplementary information - User Guide).

At a given location and for a given season, the likelihood of an adverse event may depend on past and future weather. Midway through the growing season, for example, the likelihood of low yield depends both on weather in the past and on the likelihood of unfavourable conditions in the coming weeks. In TAMSAT-ALERT, past weather is based on observations, and future weather is based on the climatology. Thus, a 30-year climatology generates a 30-member ensemble of possible yields, based on 30 possible weather futures, each of which can be driven through a crop model and used to derive a possible yield. Statistical comparison between the forecast ensemble yield and the climatological ensemble of yield leads to quantitative assessments of the risk of unfavourable conditions.

In its default set up, for which meteorological forecast information is not included, TAMSAT-ALERT treats all weather futures as equally likely. The risk assessments can, however, be refined by weighting the ensemble members, based on probabilistic forecast information - for example, tercile forecasts of cumulative rainfall or mean temperature, cumulated/averaged over a 90-day period. Specifically, the value of the metric being forecasted for each ensemble is used to assign that ensemble member to a particular tercile. Each ensemble member is then weighted by the appropriate tercile probability (see section 2.2 for further explanation). If there is a weak link between the metric being forecast (for example regional seasonal rainfall) and the risk being assessed (for example local low yield), then the forecast will have little impact on the risk assessments. Conversely, if the link is strong, skilful forecasts can significantly reduce the uncertainty in the risk assessments. TAMSAT-ALERT is thus both a method for downscaling/bias correcting meteorological input into impact models, and a method for accounting for mismatch between forecast variables and metrics of risk.

There are several sources of potential predictive power in TAMSAT-ALERT. Firstly, as the season progresses, the amount of observational information included in the forecast increases, and the range of possible outcomes is thus reduced. Secondly, the antecedent state of the land surface (especially root zone soil moisture) has a significant effect on the likelihood of drought, and hence low yield (Brown et al., 2017). Thirdly, local information on the climatology determines the likelihood that meteorological conditions will be sufficiently favourable during the remainder of the season to offset less favourable past meteorological and land-surface conditions. Finally, skilful meteorological forecasts provide direct information on the likelihood of adverse weather conditions in the remainder of the season. The relative importance of these sources depends on the metric being predicted, along with the local climate and land-surface conditions. The effect of forecast information depends

both on the precision of the forecast and the relevance of the meteorological forecast metric for the metric of hazard assessed by TAMSAT-ALERT.

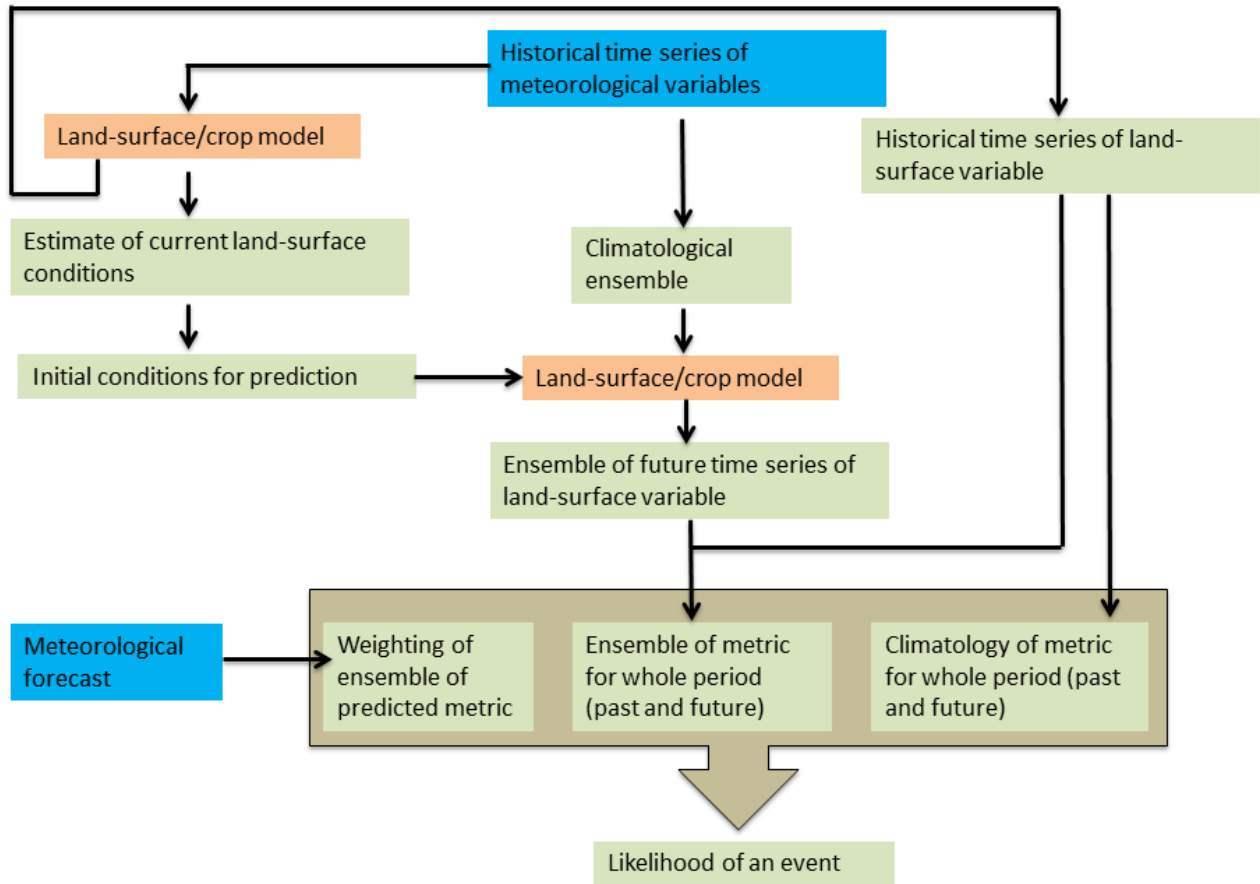


Figure 1: Conceptual overview of the TAMSAT-ALERT system. The blue boxes represent input data sources, the orange color boxes represent the processes involved in the system and the green boxes show the outputs from TAMSAT-ALERT system.

2.2 Model implementation

The TAMSAT-ALERT framework is illustrated in Figure 1. The user provides a time series of driving data, which is long enough to generate a statistically meaningful ensemble and climatology. The driving meteorological data is used in several ways: to generate an ensemble of predictions; to assess the progress of the period of interest so far and to derive initial conditions for the future period (if required for the ensemble predictions); and to generate a climatology against which the forecast ensemble can be compared. Once the climatology and ensemble have been produced, meteorological forecast information is optionally introduced, to weight the ensemble members. The system is modular and thus easily adapted for different impact models, metrics of risk and meteorological forecasts.

The steps for deriving probabilistic assessments of risk of some adverse event on a particular day (the day in question) can be summarized as follows:

1. The user prepares a file containing historical time series of driving data, along with any other parameter files (e.g. agronomical or soil parameters). These should extend at least until the day in question. Note that TAMSAT-ALERT v1.0, only supports daily input. Support for higher/lower resolution data will be introduced in future versions of the framework.

2. The user converts the long daily time series of driving data into the appropriate format for their impact model, and carries out a historical run, in order to derive an annual historical time series of their chosen risk metric. This enables a base line assessment of climatological risk. The risk metric time series should be presented as an annual time series of the form <year> <data>. Here, we will call this time series file 'historical_metric.txt'.

3. For the probabilistic risk assessments, the impact model is driven with an ensemble of meteorological forcing data, generated by TAMSAT-ALERT. As described earlier, the period of interest might contain both the past and the future.

a. For the past, the meteorological driving data for ensemble member includes identical time series, taken from observations.

b. For the future, the meteorological driving data for each ensemble member is based on the historical climatology. Specifically, for a given Day of Year (DoY), the driving data are taken for that DoY for a year in the past. To maintain the daily weather statistics and the consistency between variables, each ensemble member is based on a particular past year. Thus, ensemble member 'x' is based entirely on year 'y'.

To accomplish this, the system converts the daily time series of driving data into multiple files, each containing driving data for one ensemble member. The user is allowed to set the period over which the ensemble system will be run. This is distinct from the period over which the metric is calculated (the metric period). The metric period is the period on which the weighting will be done, and the probabilistic risk is calculated. For example, if one wants to estimate the metrological risk on available soil moisture the ensembles can be run for a lot longer period to allow spin up of model to equilibrium values for initial condition required but, the main interest for the user might be the first 90 days hence the length of the metric period is only the first 90 days and all the risk analysis is done on this metric period. The period over which the ensemble will be run should include sufficient time before the metric period to allow for spin up. The user makes any format changes necessary to convert these TAMSAT-ALERT driving data files into driving data specific to their impact model. The user then carries out the ensemble prediction runs, outputting the time series of driving data through the impact model, outputting the user-defined metric - over whatever period is relevant for that metric. Because of the nature of the TAMSAT-ALERT method, each ensemble member is associated with the year for which the possible weather future was derived (see above). The output can thus be presented in a single file, with two columns: <year> <data> for file name ensemble_metric.txt.

4. The risk assessment is derived by comparing the mean and standard deviation of the climatological baseline distribution (historical_metric.txt derived in (2)) with the mean and standard deviation ensemble distribution (ensemble_metric.txt derived in (3)). Note that an alternative approach, employing an empirical cumulative distribution function can be specified by the user. The empirical cumulative distribution function (ECDF) approach is suitable for non-Gaussian variables but can result in noisy predictions if the ensemble is relatively small.

At this point, meteorological forecast data is incorporated (if available):

a. An annual historical time series of the metric being forecast (e.g. cumulative June-August rainfall) is provided by the user for file name weighting_metric.txt, which is of the form <year> <data>. The data series should be provided for the years used to generate the weather future aspect of the ensemble (i.e. ensemble_metric.txt as described in (3b)). [The TAMSAT-ALERT v1.0 release includes a utility function for extracting forecast metrics from the historical driving meteorological data file supplied by the user.]

b. The annual time series of forecast metric is then ranked. Based on this ranking, each historical year is assigned to a forecast category. In the case of terciles, for example, the bottom third is assigned to tercile 1, the middle third to tercile 2 and the top third to tercile 3.

- c. As was noted in 3b, each ensemble member is associated with a historical year and ensemble_metric.txt is presented in the form <year> <data>. Each data point in this file can thus be associated with a quantile category, using the year assignments described in 4b.
- d. When calculating the mean and standard deviation, the ensemble is weighted by the user-supplied categorical forecast probabilities, which are assigned to each member during 4c.

The TAMSAT-ALERT code is written in Python. All code and documentation (including a user manual) for TAMSAT-ALERT have been released on GitHub (<https://github.com/tamsat-alert/v1-0>). However, users need to have their own working installations of their chosen impact model. The TAMSAT-ALERT v1.0 release consists of scripts to:

- Convert meteorological time series into driving data for both the ensemble forecast.
- Calculate quintile predictions for user defined risk metrics, based on the input files historical_metric.txt, ensemble_metric.txt and weighting_metric.txt.
- Produce a set of plots comparing the ensemble and climatological distribution (see User Guide in supplementary information).

In the GitHub release, in addition to the general TAMSAT-ALERT framework scripts listed above, scripts are provided that set TAMSAT-ALERT up for (i) for the GLAM crop model (the implementation demonstrated in Section 3 of this paper), and (ii) for assessments based purely on time means/cumulations of meteorological variables. A test case is provided so that users can be assured that the system is working as expected.

3 Demonstration of the system: A case study of maize yield prediction in Ghana

This case study demonstrates the use of TAMSAT-ALERT system for forecasting the risk of poor maize harvest in Ghana. The first and second part of the case study describe the study area and the implementation and evaluation of a mechanistic crop model GLAM. The third part demonstrates the implementation of GLAM as part of the TAMSAT-ALERT system for continually updated risk assessments.

3.1 Study area

Ghana is located on the southern coast of West Africa, between latitudes 4° 44' N and 11° 11' N and longitudes 3° 11' W and 1° 11' E. Rainfed agricultural systems are the major component of the Ghanaian economy, accounting for 30 % of the GDP and employing half of the labour force (PARI, 2015). The country is divided into six agro-ecological zones, each with a distinct rainfall pattern (Figure 2). The Northern part is dominated by Guinea Savannah with average annual rainfall of 1000–1100 mm from one rainy season spanning May to September, while in the southern part, moist semi-deciduous agro ecology dominates, with an average annual rainfall of 1500 mm, falling within two rainfall seasons (Owusu and Waylen, 2009; Owusu and Waylen, 2013). Most of the cereal crops (primarily Sorghum, Millet and Maize) are produced in the northern part of Ghana (Martey et al., 2014). Table 1 shows the six agro ecological zones with the average annual rainfall and major crops grown in the agro-ecological zones.

Table 1: Characteristics of agroecological zones in Ghana (source: www.fao.org/nr/water/aquastat/countries_regions/GHA/)

Agro ecological zone	Rainfall (mm annum ⁻¹)	Number of seasons	Major crops grown
Sudan savannah	1000	1	Millet, Sorghum, Maize
Guinea savannah	1100	1	Maize, Sorghum
Transition zone	1300	1	Maize, Roots, Plantain
Moist semi deciduous forest	1500	2	Roots, Plantain
Costal savannah	800	2	Roots, Maize
Rainforest	2200	2	Roots, Plantain

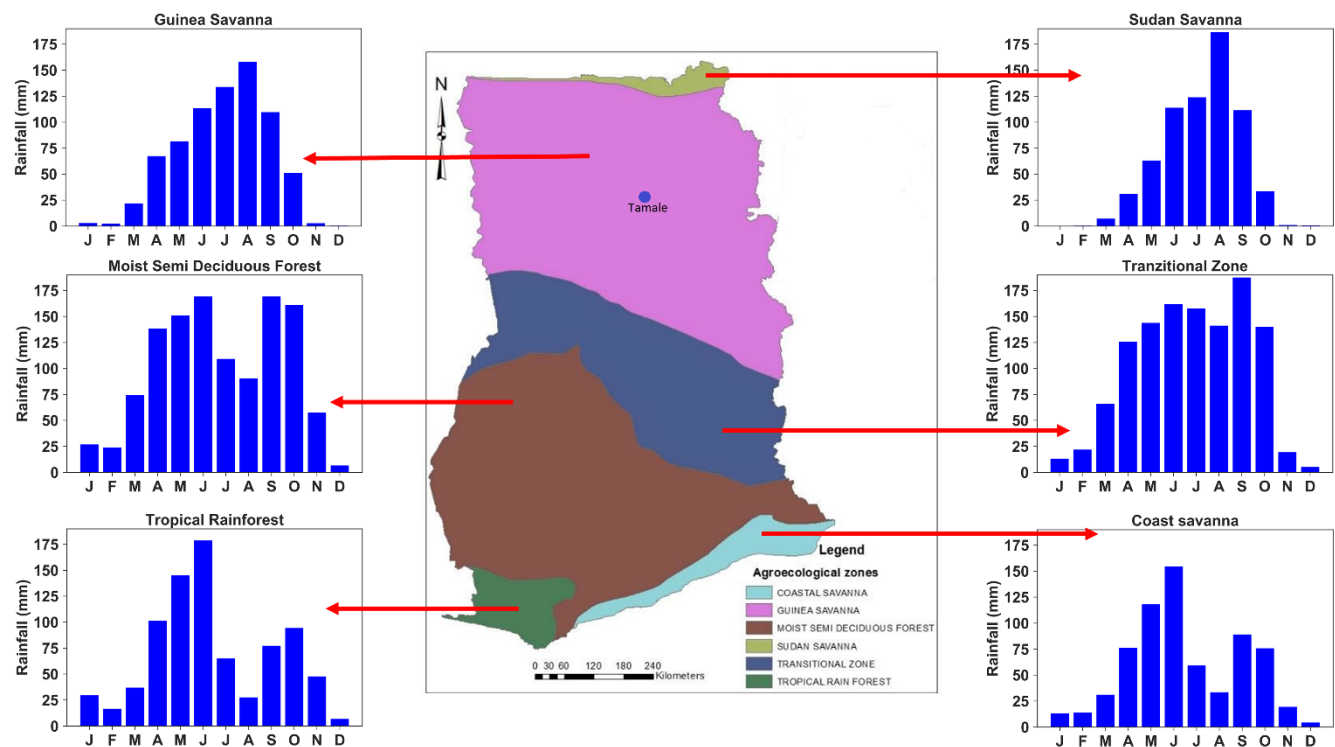


Figure 2: Agro Ecological zones of Ghana (source: Sidibe et al., 2016) and average seasonal rainfall pattern of each agro ecological zone, based on TAMSAT rainfall estimates.

Maize is one of the major crops produced in Ghana. The production area and the amount of yield has been increasing since 1994 (Figure 3). Figure 4 shows a time series of maize yield in Ghana (expressed in Kg ha⁻¹). From 1994–2006 there is no observed trend but after 2007, there is a step change in yield, coinciding with the introduction of a new variety by the Crop Research Institute (CRI) of the Council for Scientific and Industrial Research (CSIR) of Ghana in 2007 (Ragasa et al., 2013).

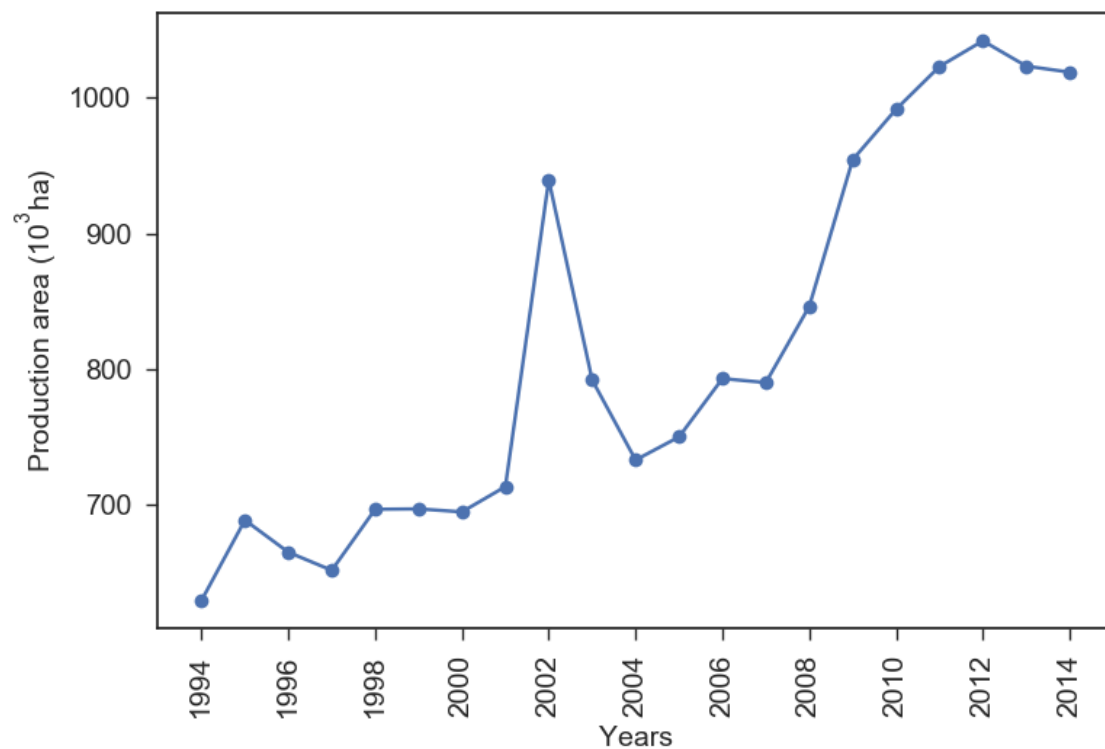


Figure 3: Maize production area over Ghana from 1994 to 2014.

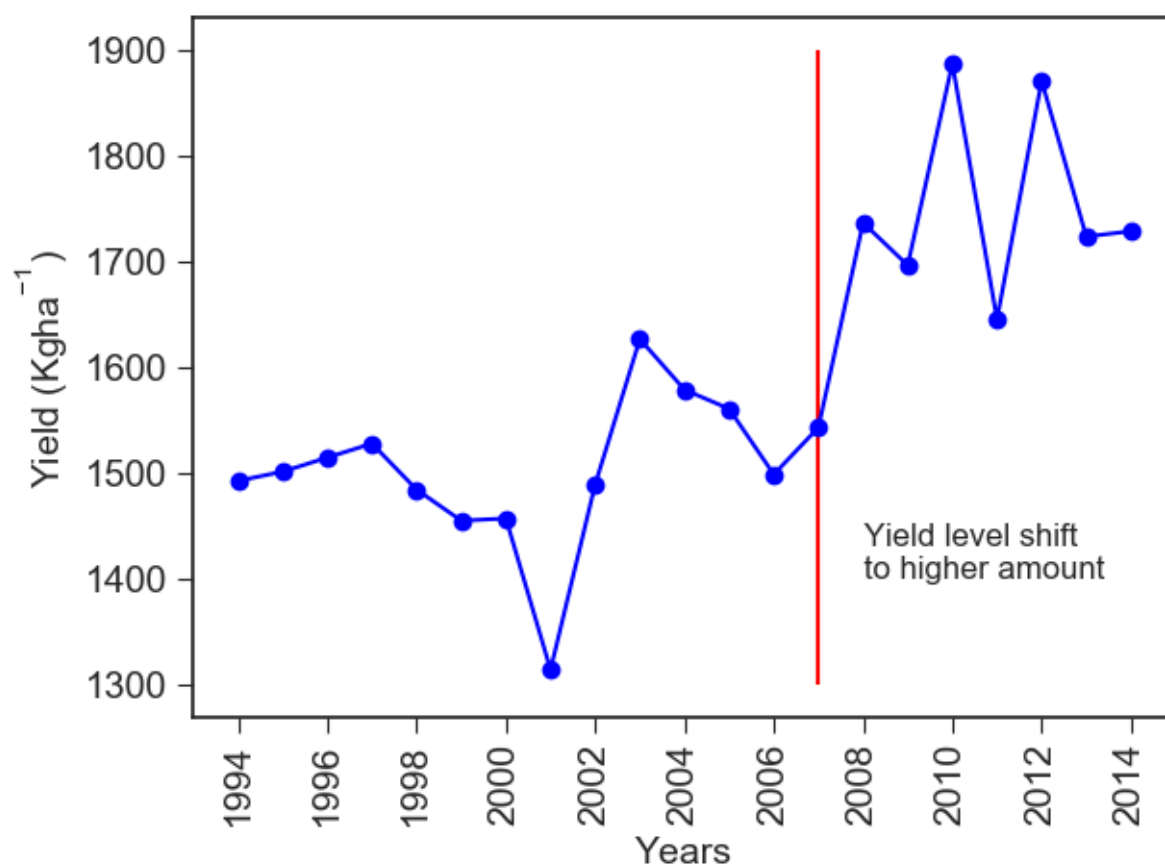


Figure 4: Maize yield in Ghana 1994–2014. There are two separate periods marked by the red lines where we observe changes in yield. 1994–2006 there is no clear trend in the yield produced and 2007–2014 there is a shift in the production where higher yield is observed.

3.2 Data and methods

3.2.1 Datasets used

The driving weather data sets for the evaluation of the model were daily time series extracted from the Watch Forcing Data ERA-Interim (WFDEI) (Weedon et al., 2014) for shortwave radiation, maximum temperature, minimum temperature and rainfall. For the demonstration of the system at a point, the driving data were based on daily, quality-controlled station data provided by the Ghana Meteorological Agency. The station used is Tamale which is located Northern Ghana (9.41° N, 0.85° W) (Figure 2). Precipitation and maximum/minimum temperature were measured directly, and shortwave radiation was derived from sunshine hours. We chose to use Tamale because it is in the Northern part of Ghana (Figure 2) where most of the Maize is grown. The station in Tamale also has a long-term record of the driving data for the crop model. It should be noted that TAMSAT-ALERT can in principle be run using any gridded meteorological data like satellite rainfall estimate (E.g. TAMSAT (<https://www.tamsat.org.uk/data/rfe/index.cgi>) with a resolution of 4 Km (Maidment et al., 2017).

Tercile forecast data was downloaded from the publicly available IRI regional forecasts (<http://iri.columbia.edu/our-expertise/climate/forecasts/seasonal-climate-forecasts/>). The IRI forecasts are based on a hybrid dynamical/statistical method, developed by the U.S National Oceanographic and Atmospheric Administration North American Multi-Model Ensemble Project (NOAA-NMME) (Kirtman et al., 2014). The seasonal forecasts are issued at the beginning of each month for precipitation and temperature at a global scale with a spatial resolution of 2.5° for precipitation and 2° for temperature (Barnston and Tippett, 2014). The IRI forecasts were chosen for this analysis because of their wide use by African meteorological services and regional climate outlook forums. In this study the seasonal forecast data were used in the form they are supplied to farmers - i.e. tercile probabilities of 3-month cumulative rainfall / 3-month mean temperature at a regional level.

In addition to meteorological time series, GLAM requires data on soil type and the agronomical properties of maize (Section 3.2.2). For this study, the soil texture was set to be sandy loam and planting date was set starting from 124th day of the year to 154th day of the year which allows a 30 days planting window. The maize agronomical properties were taken from the published literature and are presented in the supplementary information (Table S1).

GLAM was evaluated against national level maize yield data released by the FAOSTAT (<http://www.fao.org/faostat/>) (see Figure 4). Although the FAO issues guidance on the compilation of these datasets, in practice, there is little quality control and the data should be treated with caution.

3.2.2 The GLAM crop model

As described in section 2.1, the TAMSAT-ALERT system can be used to assess any metric of risk that can be output by a model driven with meteorological data. In this study, the General Large Area Model (GLAM) for annual crops is used to simulate maize yield and subsequently to monitor the probabilistic risk of poor harvest as the growing season progresses.

GLAM is a process based crop simulation model, which incorporates sufficient processes to capture the impact of climate variability on crop yield (Challinor et al., 2004; Ramirez-Villegas et al., 2015b). GLAM uses a limited number of driving data sets and an intermediate complexity of crop development process representation. Nevertheless, previous studies have demonstrated that GLAM has skill in capturing the impact of weather on crops (Challinor et al., 2005; Challinor et al., 2006). Such information enables users to translate time series of weather into a time series of yield estimates (Challinor and Wheeler, 2008). GLAM has also been used to model weather and climate change impact on crop yield and adaptation strategies (Parkes et al., 2015; Ramirez-Villegas et al., 2015a; Ramirez-Villegas and Challinor, 2016).

GLAM requires daily values of precipitation, shortwave radiation, maximum temperature and minimum temperature as driving weather data with additional inputs of soil properties and planting window (Watson et al., 2013). GLAM accumulates the above ground biomass, which is a product of daily transpiration and predetermined transpiration efficiency value, within the growing season to determine total biomass production which is converted into yield using a harvest index (Osborne et al., 2007). Planting date is either prescribed by the user or determined using GLAM's intelligent planting date system (the approach taken in this study). It is important to note that GLAM does not account, in a process-based fashion, for non-meteorological influences on crop growth, such as pests, diseases and fertilizer use. Rather, these factors are encapsulated in the yield gap parameter (YGP), which is determined by calibrating the model yield with observed yield (Challinor et al., 2004). The YGP is assigned a value between zero and one where 'one' represents the potential yield, given the weather conditions, soil texture and crop development parameters (Challinor et al., 2005).

3.2.3 GLAM model evaluation

GLAM was used to simulate the yield from 1994 to 2014 using the WFDEI as a driving dataset. The WFDEI has a 0.5° by 0.5° resolution and so GLAM was output at this resolution. The simulated yield at each grid point was then weighted by the year 2000 season fraction of production area over each grid point to make a country average yield (Weedon et al., 2014; Monfreda et al., 2008). This country average yield was then compared with the FAO maize yield data set for the same period. It was shown on Figure 4 that maize production can be split into two distinct periods: 1994–2006 and 2007–2014. Because of the reported changes in agronomic practice and drought tolerant maize variety introduction through the Drought tolerant maize for Africa (DTMA) project (Obeng-Antwi et al., 2013; Ragasa et al., 2013) the transpiration efficiency (TE) value was increased from 7.0 for the period 1997–2006 to 8.0 for the period 2007–2014. The YGP was maintained at 0.4 for the whole simulation period.

The results of the simulated crop yield are presented on Figure 5 and the statistical values of the comparison are presented with the scatter plot on Figure 6. GLAM was able to maintain the overall mean yield and, as a result, the normalized root mean square error (NRMSE) is very low (0.07). The overall correlation value is found to be 0.67 (Pearson) and the Spearman correlation which is less affected by outliers is 0.8. The difference in the Spearman and Pearson correlation coefficients is mainly due to the severe overestimation of 2001 season yield, probably resulting from a long dry spell, the impact of which on farming practices was not fully accounted for by GLAM (FAO/WFP-GIEWS, 2002). Some of the correlation strength is due to capturing the change in mean yield from 1994–2006 to 2007–2014 period, and this is done by changing transpiration efficiency (TE) value for the two periods. The strength of the correlation of yield suggests that the link between Ghana-wide weather and yield is moderate – an important consideration for policy makers when they make use of information from TAMSAT-ALERT. This is primarily due to the myriad of factors that can affect yield, including agronomical practice, pests and disease and socio-economic problems. Nevertheless, in vulnerable regions, the meteorological risk to yield is, in itself, an important consideration for agricultural agencies because action can be taken to mitigate the hazard. This might include subsidizing drought resistant varieties or encouraging early planting/re-planting.

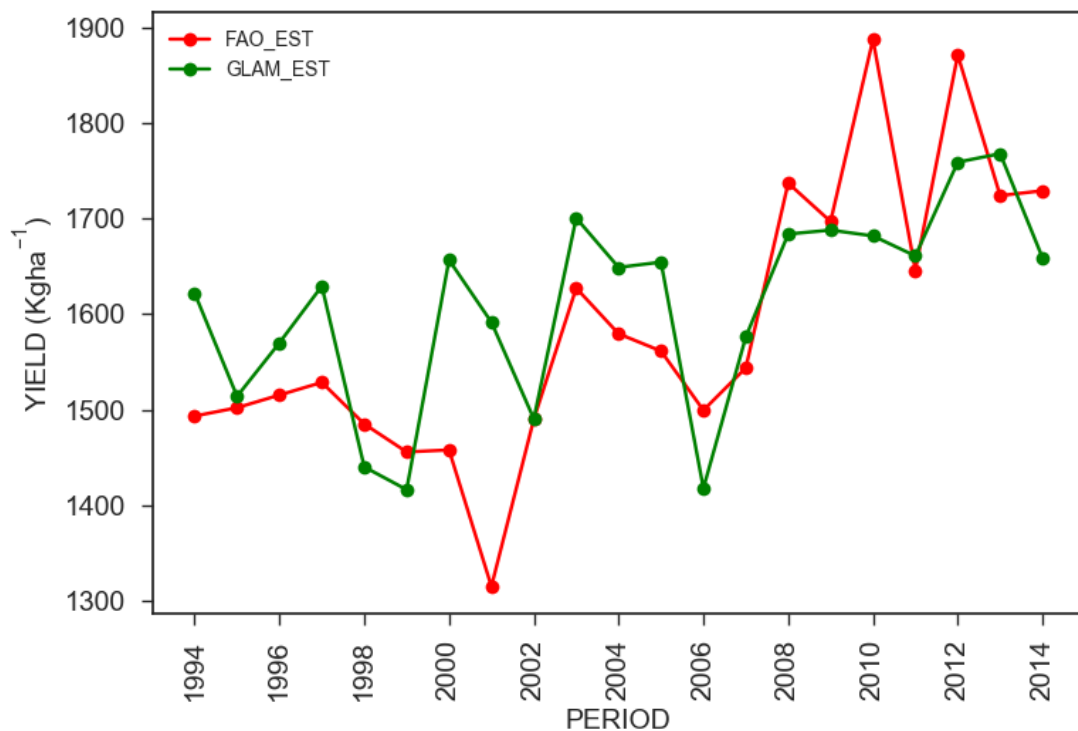


Figure 5: Time series of FAO yield (red line) and GLAM simulated yield (green line).

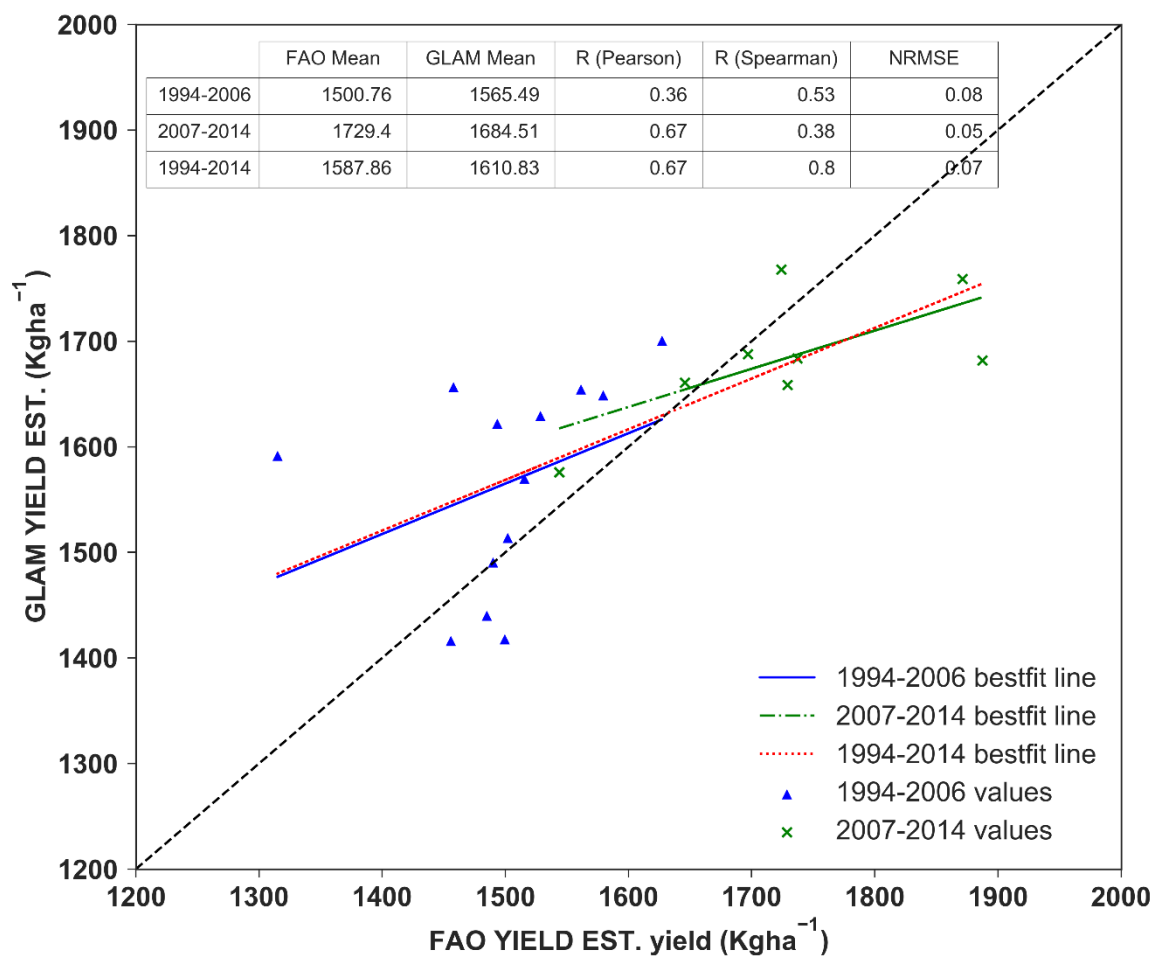


Figure 6: Scatter plot between FAO yield and GLAM simulated yield. The red dotted line is the best fit line for the whole period considered (1994–2014). The blue solid line shows the best fit line for the period 1994–2006. The green line shows the best fit line for the period 2007–2014.

3.2.4 Incorporation of GLAM into TAMSAT-ALERT

Figure 7 shows how GLAM has been incorporated into the TAMSAT-ALERT system. As described in Section 2, time series of driving data based on historical observations are used both to derive climatological yield and to generate an ensemble of predicted yield. Individual planting dates are determined for each ensemble member using GLAM's intelligent planting date system, and the crop is harvested when the growing degree days requirement is fulfilled (Challinor et al., 2004; Challinor and Wheeler, 2008). Because of the way TAMSAT-ALERT is set up to incorporate observational data continually as the season progresses, once the optimum planting time is passed for the year being hindcast, the planting date for each ensemble member converges. Analogously, once the harvest date for the hindcast year has passed in the observations, the harvest date, and indeed the predicted yield, for each ensemble member is identical. In this implementation of GLAM, a climatological period of 30 years (1980–2009) was used for the yield forecast.

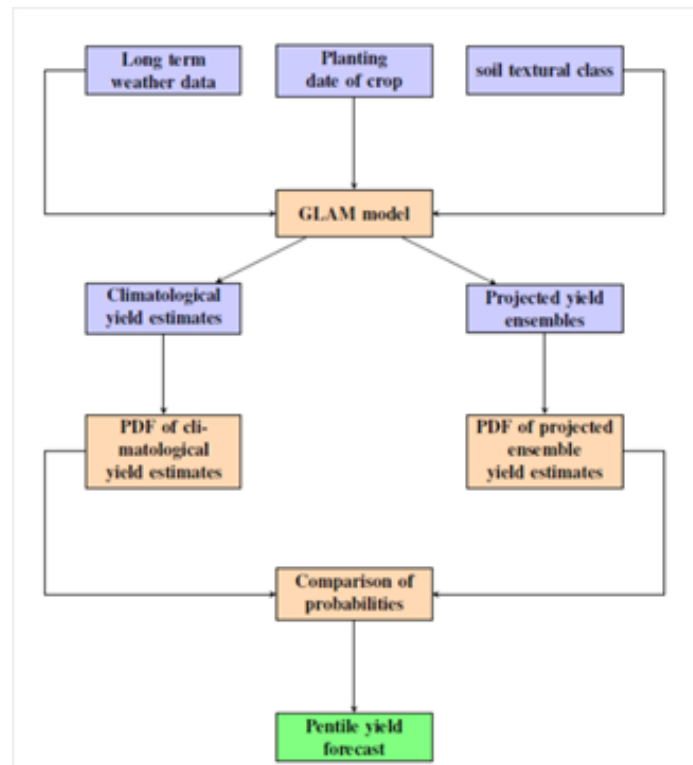


Figure 7: Process flow chart for crop yield forecasting within the TAMSAT-ALERT system. The blue boxes represent input data sources, the orange colour represent the processes involved in the system and the green box show the final probabilistic forecast for the crop yield.

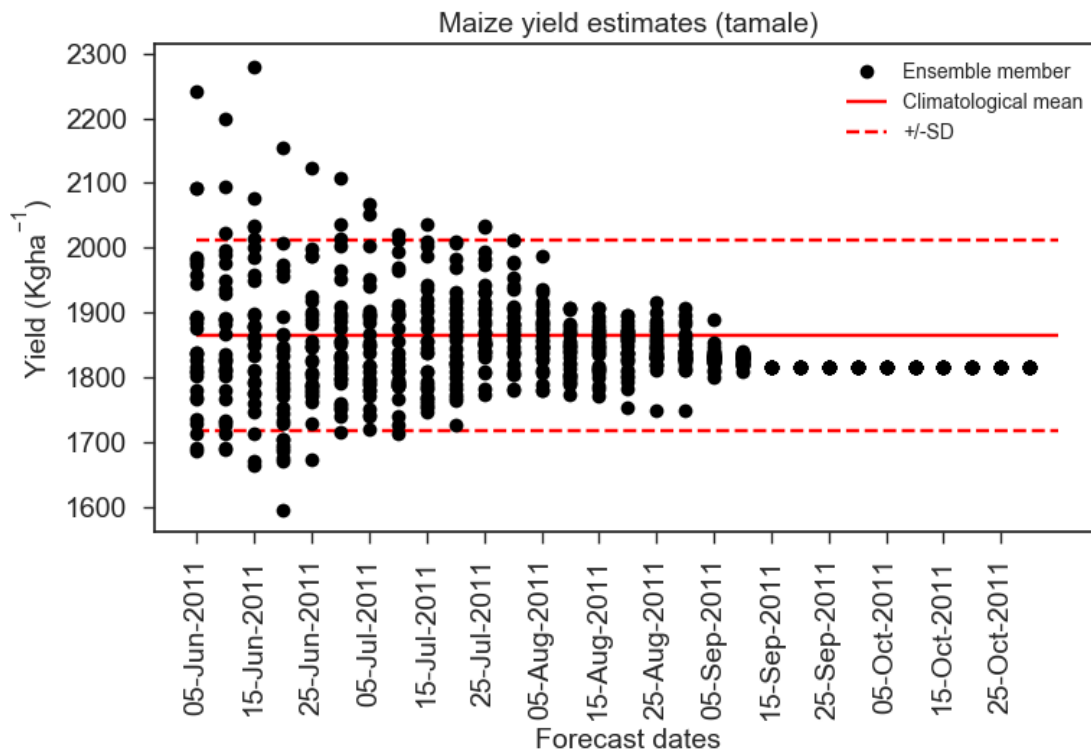
3.3 Case study results

3.3.1 Yield forecasting using GLAM: 2011 season example

Figure 8, Figure 9 and Figure 10 illustrate the implementation of TAMSAT-ALERT for the 2011 growing season – nationally, a low yield year compared to other post-2007 years (noting that we do not have yield data for Tamale). The hindcasts were initiated every 5 days. GLAM infers that planting occurred on 4th June and harvesting on 15th September to 20th September. Figure 8 depicts all ensemble members in the context of the climatological spread in yield. Figure 9 shows histograms of ensemble members at monthly intervals, starting 10 days after planting. Figure 10 shows a time series of ensemble spread (standard deviation of ensemble yield predictions).

At the outset of the season, the yield estimates are derived only from the meteorological climatology; no in-season observational data is incorporated. The spread is thus large (equivalent to the climatology). During the season, as in-season data is incorporated by TAMSAT-ALERT, the meteorological time series driving GLAM become progressively more similar.

As a result, the ensemble rapidly converges. In this example, for instance, two months after planting, the ensemble standard deviation is 34 % of the climatology.



5 **Figure 8: An example of hindcast of maize yield using GLAM implemented into the TAMSAT-ALERT system. Black dots represent individual ensemble members and red lines are the climatology.**

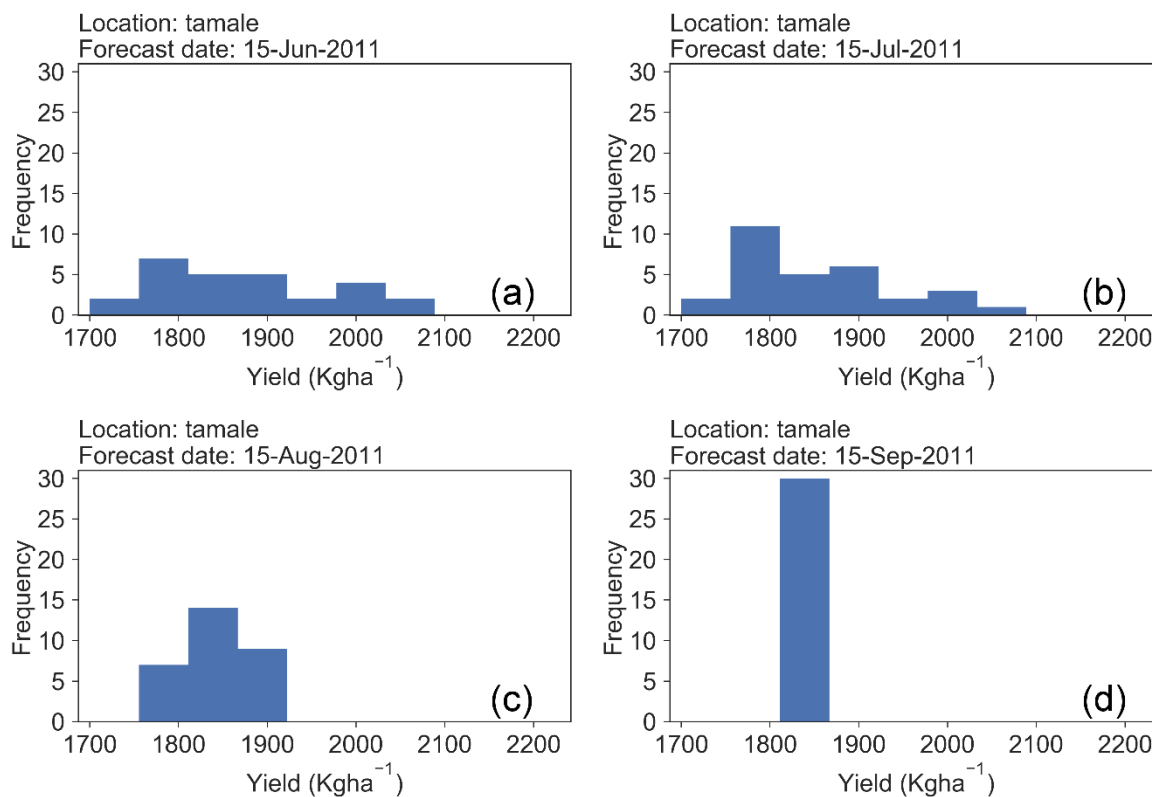


Figure 9: Histograms of yield forecast for (a) 15 June 2011, (b) 15 July 2011, (c) 15 August 2011, and (d) 15 September 2011.

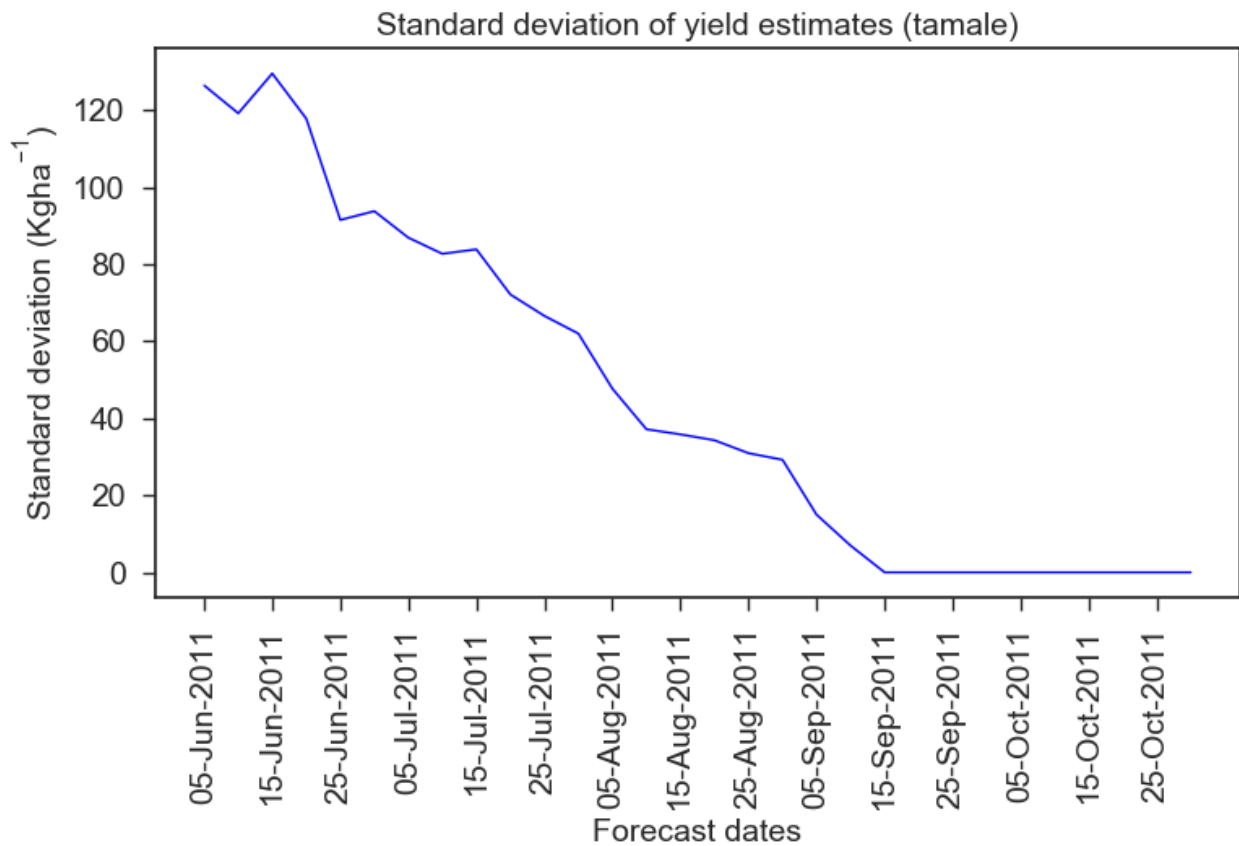


Figure 10: Standard deviation of the yield estimate initiated on the dates displayed on the x-axis.

The yield forecasts can be communicated with end users in a probabilistic form, with the ensemble expressed as quintiles, representing the following categories: above the 80th percentile, 60th–80th percentile, 40th–60th percentile, 20th–40th percentile and below 20th percentile. These categories can be equated to very high, high, average, low, and very low yield respectively. An example of such quintile forecasts at monthly intervals during the 2011 growing season is shown on Figure 11. Consistent with Figures 8 and 9, at the outset of the season, the categories are equally likely except the extreme categories, the difference in probability coming from the change in planting date for some years in the climatological period considered (1980–2009). As the season progresses, the average and low categories become more likely and the extreme categories (very high and very low), less likely.

It is evident from Figure 11 that the ensemble mean tends towards average or low values, even 2 months ahead of the harvest date during 2011 – suggesting a degree of precision, even towards the beginning of the growing season. Section 3.3.3 presents a formal evaluation of skill for the 2002–2011 period.

3.3.2 Incorporation of meteorological forecasts

As described in Section 2.1, the TAMSAT-ALERT framework can use probabilistic information from meteorological forecasts to weight the yield forecast ensemble – providing a means of incorporating forecast information into the decision support system. In this study, we consider tercile forecasts of cumulative 90-day rainfall and mean 90-day temperature to reflect the information currently available to the Ghana Meteorological Agency. The forecasts are commonly issued at the start of every month. Hence, we have applied the forecasts only to the meteorological season being forecasted with the remaining season not included in the weighting estimation. For example, for running TAMSAT-ALERT on June 4, the seasonal forecast of June-July-August is applied. To illustrate the process of including forecasts, we continue with the 2011 case study. We have used idealized tercile seasonal forecasts for total June-July-August (JJA) precipitation to weight the forecast on 4 June 2011, July-August-September (JAS) precipitation to weight the forecast on 4 July 2011, August-September-October (ASO) precipitation

to weight the forecast on 4 August 2011, and September-October-November (SON) precipitation to weight the forecast on 4 September 2011.

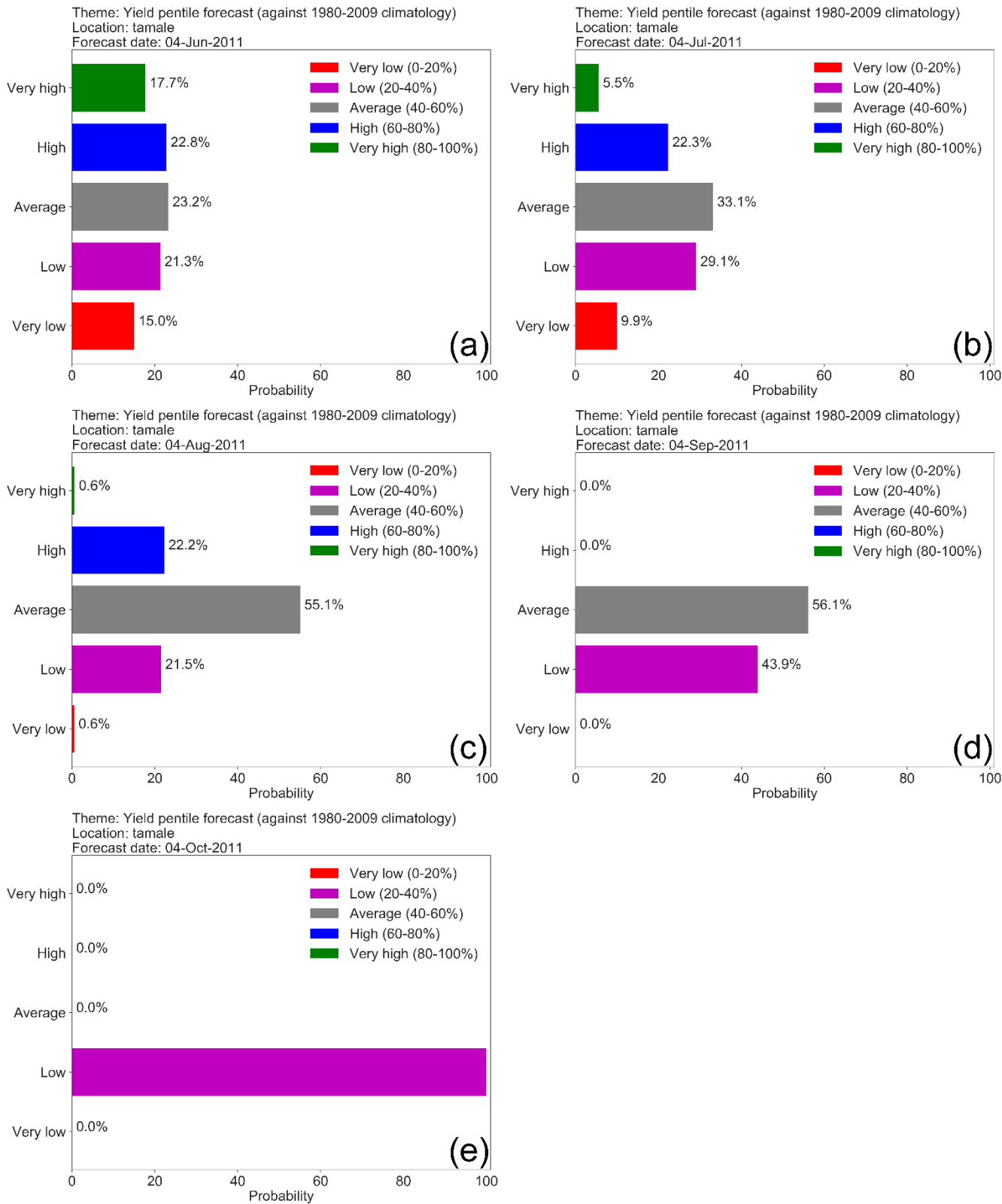


Figure 11: Probabilistic forecasts for maize yield in Northern Ghana (Tamale) for five dates (a) 4 June 2011, (b) 4 July 2011, (c) 4 August 2011 and (d) 4 September 2011 and (e) 4 October 2011. The planting date was 4 June 2011. In the first day of planting the impact of the weather is not indicated well that the yield probabilities are spread more or less equally in all categories but after one month in 4 July 2011 it is indicated that 62 % of the ensembles fall in the average and low categories after two months 4 August 2011 76 % of the ensembles indicate an average and low yield estimate compare to the climatological yield. Few days before harvest on 5 September 2011 100 % of the yield is estimated to be in the average and low quintile category.

To assess the potential value of tercile rainfall and temperature seasonal forecast information, we have weighted the ensemble as if the next 90 days of temperature and cumulative rain are known (i.e. perfect forecast experiment). So, we consider three probabilistic forecasts: tercile weightings of [0,0,1] for the lower, middle and upper tercile respectively (perfect wet forecast), [0,1,0] for the lower, middle and upper tercile respectively (perfect normal forecast) and [1,0,0] for the lower, middle and upper tercile respectively (perfect dry forecast). The ensemble was weighted by these perfect tercile forecasts according to the actual total rainfall (perfect rainfall forecast) or the actual mean temperature (perfect temperature forecast) that ensued in the next 90 days following each TAMSAT-ALERT hindcast.

Figure 12 shows the yield forecast probabilities when the perfect rainfall forecast is used. When a perfect rainfall forecast is used to weight the ensemble, the probabilities of the quintile forecast show more rapid convergence especially two months into the season. The improvement is less noticeable in June and July, perhaps reflecting the fact that, at least in the GLAM crop model, cumulative rainfall in this part of the season is comparatively less strongly correlated with yield.

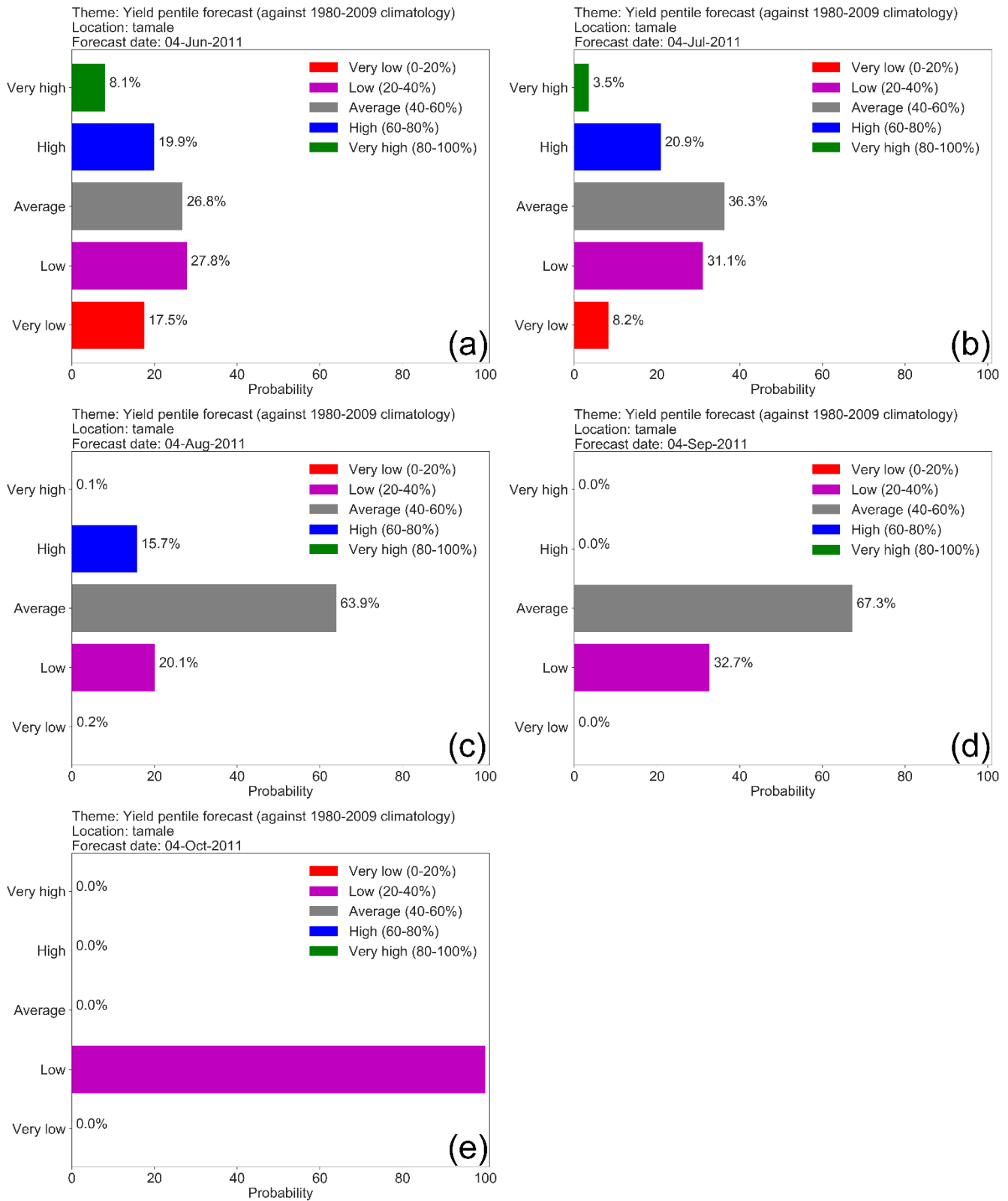


Figure 12: Yield probability forecast for the year 2011 for five forecast dates (a) 4 June, (b) 4 July, (c) 4 August, (d) 4 September and (e) 4 October when ensembles are weighted by a perfect tercile seasonal rainfall forecast.

An alternative approach is to use temperature forecasts to weight the ensemble. To investigate the effect of temperature forecasts, the ensemble was weighted using idealized June-July-August (JJA) tercile temperature forecasts to weight the forecast on 4 June 2011, July-August-September (JAS) tercile temperature forecasts to weight the forecast on 4 July 2011, August-September-October (ASO) tercile temperature forecasts to weight the forecast on 4 August 2011, and September-October-November (SON) tercile temperature forecasts to weight the forecast on 4 September 2011. As with rainfall, the upper, middle and lower terciles are weighted [1,0,0] for a 'perfect cold forecast', [0,1,0] for a 'perfect normal forecast' and

[0,0,1] for a 'perfect warm forecast'. Figure 13 shows the forecast for the 2011 cropping season with a perfect average temperature forecasts. Due to a negative correlation of the average temperature with maize yield, a warmer temperature forecast is associated with predictions of lower yield. Comparison between Figures 12 and 13 suggest that temperature forecasts have greater effect on the risk assessments than rainfall forecasts.

5

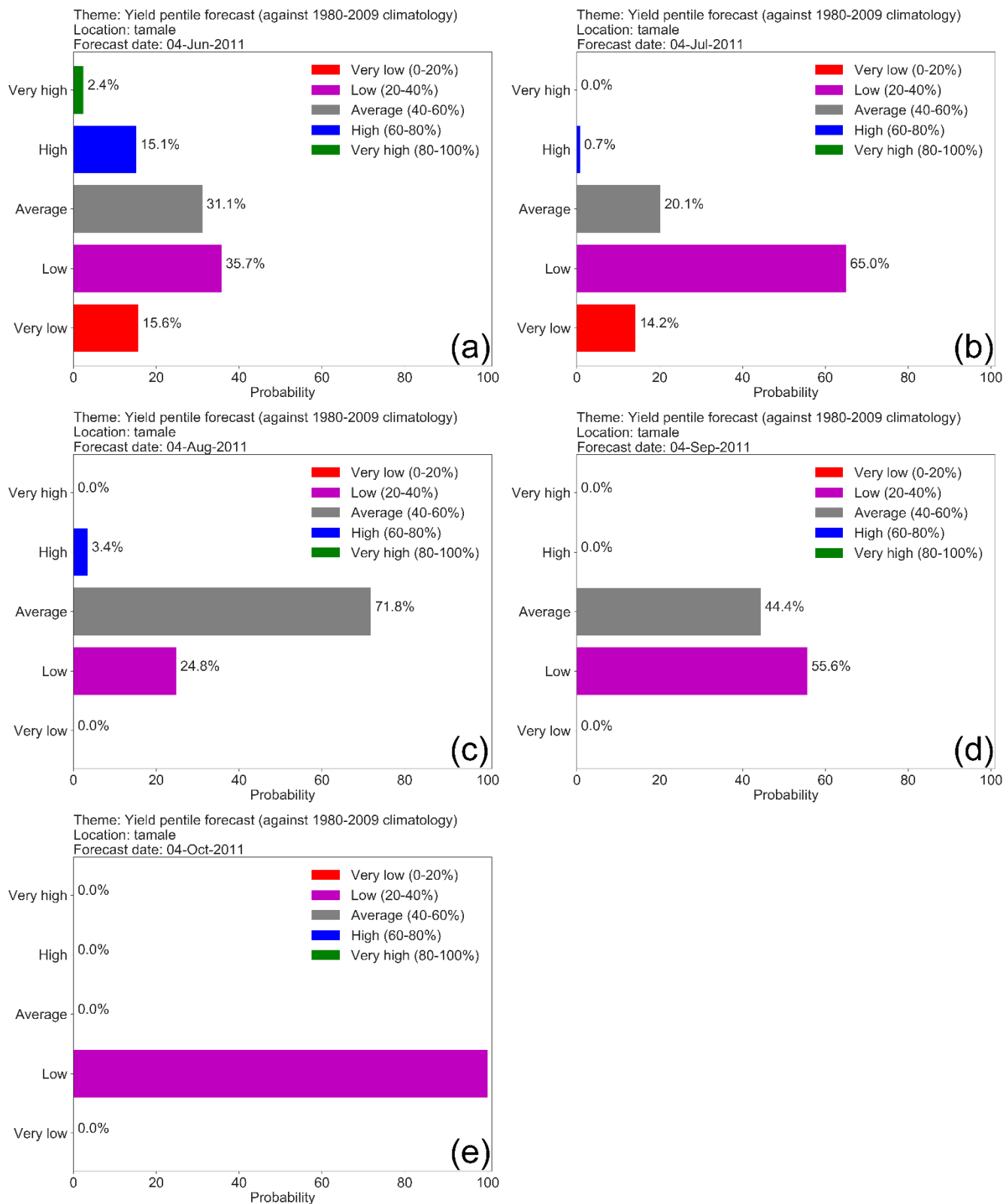


Figure 13: Yield probability forecast for the year 2011 for five forecast dates (a) 4 June, (b) 4 July, (c) 4 August, (d) 4 September and (e) 4 October when ensembles are weighted by a perfect average temperature of seasonal forecast.

So far, only idealized forecasts have been considered. In the next section, we demonstrate the effect of using actual tercile forecast information issued by the International Research Institute (IRI) for rainfall and temperature. The seasonal forecast from IRI for 2011 in northern Ghana are shown on Table 2.

5 **Table 2: IRI tercile seasonal forecast for the 2011 season.**

Season	Rainfall			Temperature		
	Below normal	Normal	Above normal	Below normal	Normal	Above normal
JJA	25	35	40	30	40	30
JAS	33.3	33.4	33.3	30	40	30
ASO	33.3	33.4	33.3	45	35	20
SON	33.3	33.4	33.3	33.3	33.4	33.3

Figure 14 shows the yield forecast probabilities based on weighting the yield ensembles by seasonal rainfall forecasts from IRI. Comparison with Figure 11 suggests that the weighting has little effect. Figure 15 shows the quintile yield predictions when temperature forecast weightings from IRI are applied. As with rainfall, comparison with Figure 15 shows that the
10 weighting has little effect.

The results are summarized on Figure 16, which represents the probability of each yield pentile at different lead time of the 2011 season yield forecast, with no seasonal forecast, precipitation forecast, and temperature forecast applied. For all lead time periods indicated weighting by IRI seasonal forecast for the 2011 season showed no improvement in predicting the final yield compared to the non-weighted values. This is not surprising because the relationship between the seasonal cumulative rainfall
15 and seasonal mean temperature with maize yield is very low (see supplementary document Figure S1 and Figure S2). The tercile weightings for the IRI forecast (Table 2) are close to climatology, and the previous discussion, moreover, showed that even a perfect and precise seasonal forecast has relatively little impact.

In summary, Figures 12 and 13 indicate that if meteorological forecasts have sufficient accuracy and precision, they can add information to the decision-making process, especially in the middle to later part of the growing season. However, Figures
20 14-16 show that the tercile forecasts currently issued in northern Ghana do not have sufficient precision to information to yield risk assessments. A further application of TAMSAT-ALERT could be to investigate the level of skill that is required for meteorological forecasts to contribute useful information to such decision-making processes.

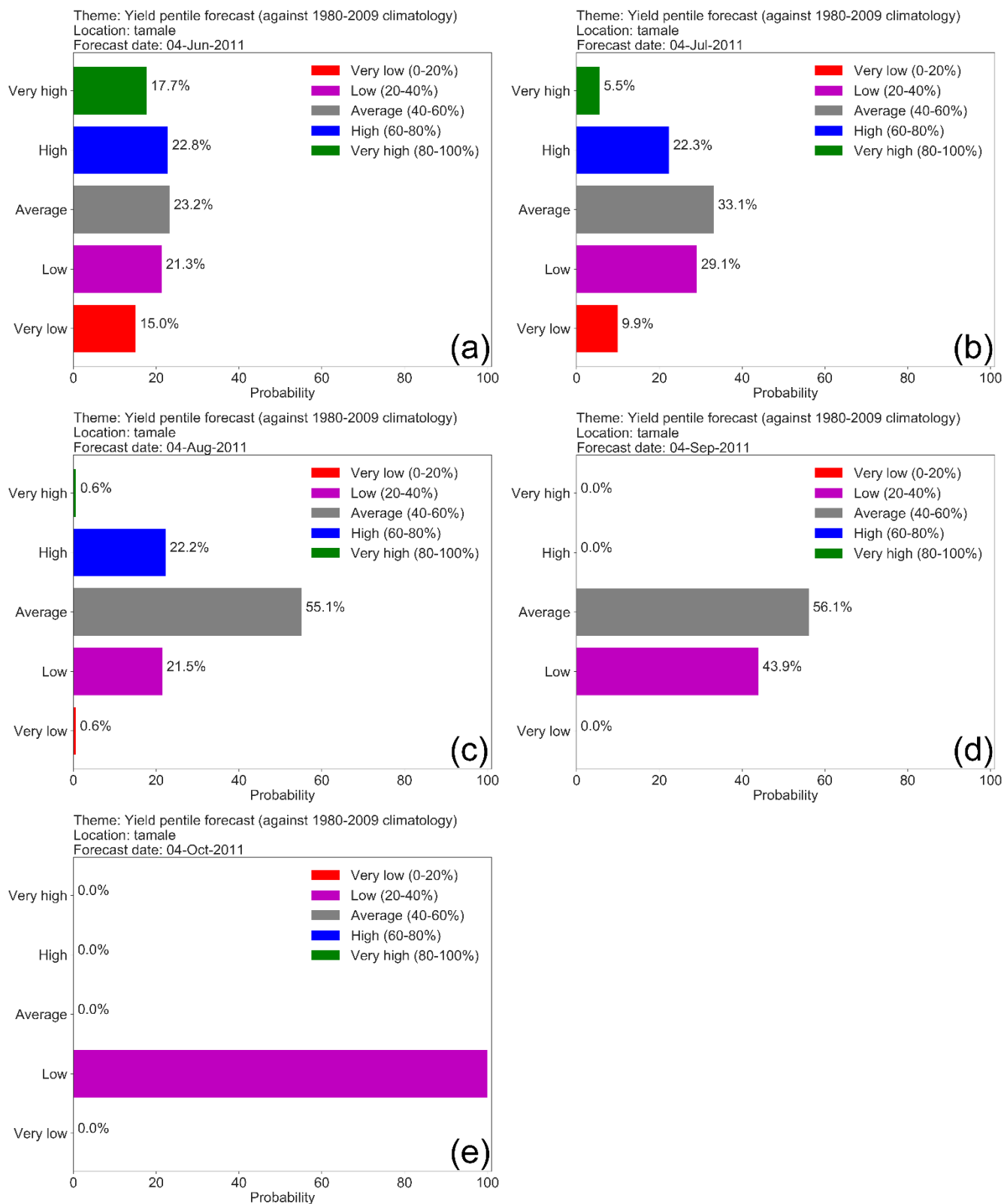


Figure 14: Yield probability forecast for the year 2011 for five forecast dates (a) 4 June, (b) 4 July, (c) 4 August, (d) 4 September and (e) 4 October when ensembles are weighted by IRI seasonal rainfall forecast.

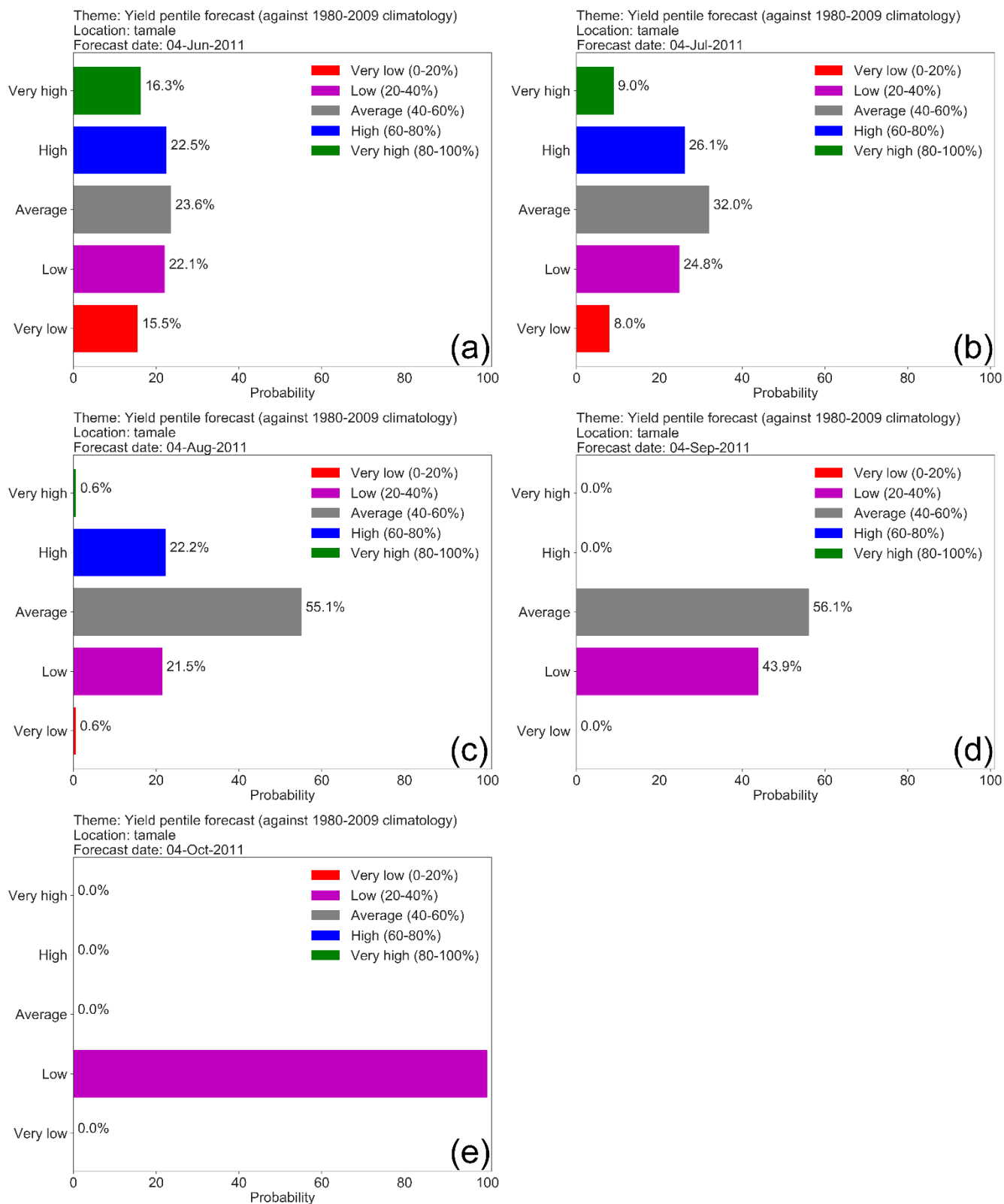


Figure 15: Yield probability forecast for the year 2011 for five forecast dates (a) 4 June, (b) 4 July, (c) 4 August, (d) 4 September and (e) 4 October when ensembles are weighted by IRI seasonal forecast average temperature.

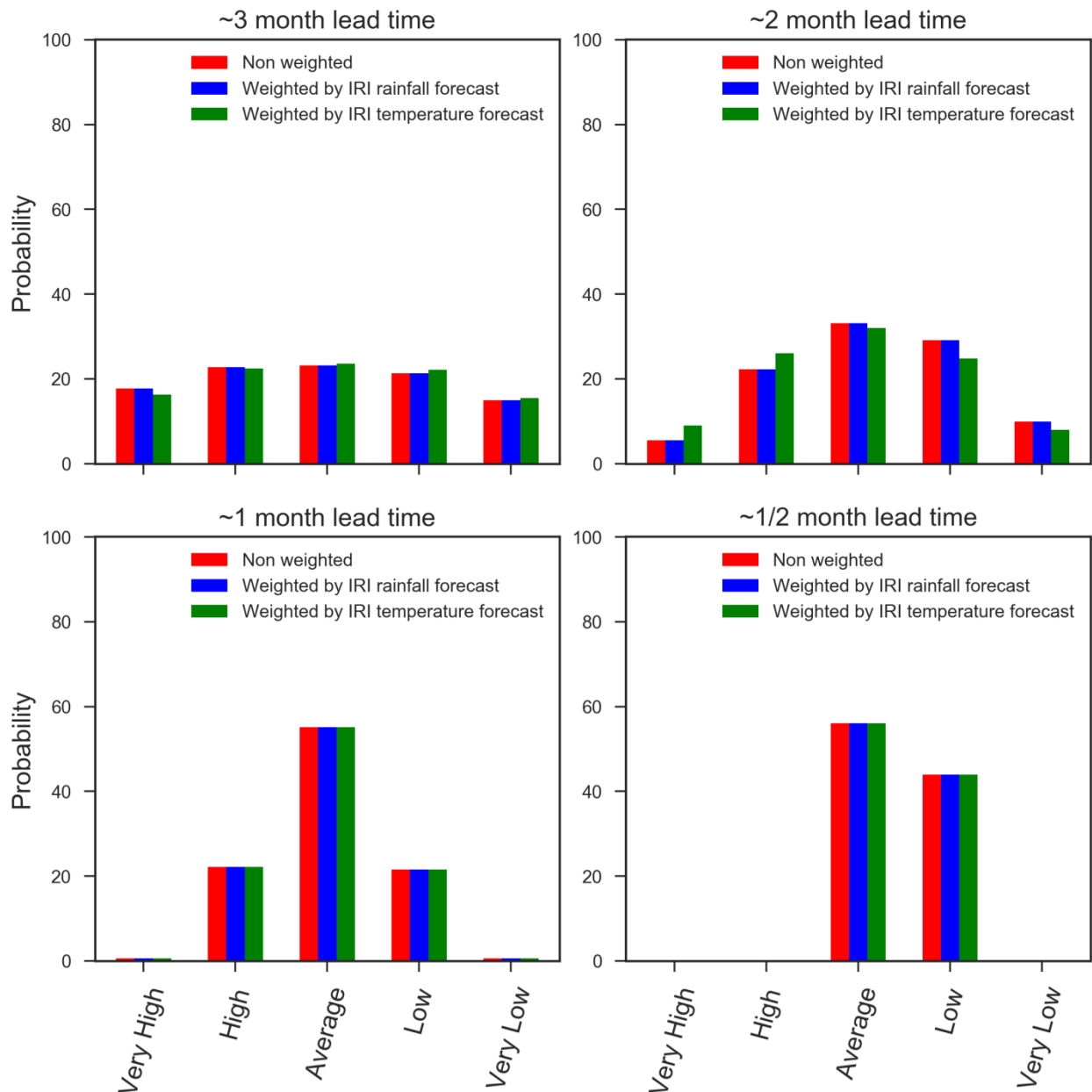


Figure 16: Probability of yield forecast for 2011 growing season when weighted by IRI seasonal forecast of rainfall (blue), when weighted by IRI seasonal forecast of temperature (green) and no weightings are used (red). The x-axis represents the pentile categories used in the yield forecast.

5 3.3.3 Formal skill evaluation

The objective of TAMSAT-ALERT is to provide early warning of the meteorological risk to yield, which is not an observable quantity. For this reason, the evaluations of TAMSAT-ALERT's skill are carried out in a 'perfect model' framework, in which we attempt to forecast the yield simulated by GLAM forced with observed weather data. It is important not to confuse these skill assessments with evaluation of GLAM (Section 3.2.3) – although the usefulness of the framework depends, to a large extent, on the quality of the model and data incorporated within it.

Figure 17 shows GLAM hindcasts at four approximate lead times (i.e. ~3, ~2, ~1, ~1/2 months ahead of harvest), for five years. Towards the outset of the season, the hindcasts for each year are similar, and close to the climatology, with the minor differences explained by variation in planting date. For all the lead times considered the spread of the ensembles reduces as the season progresses. Only 2007-2012 are presented in Figure 17 because the maize variety changed in 2007, making the hindcasts of these years more relevant to the present day than the 1994-2006 period (see supplementary document Figure S3).

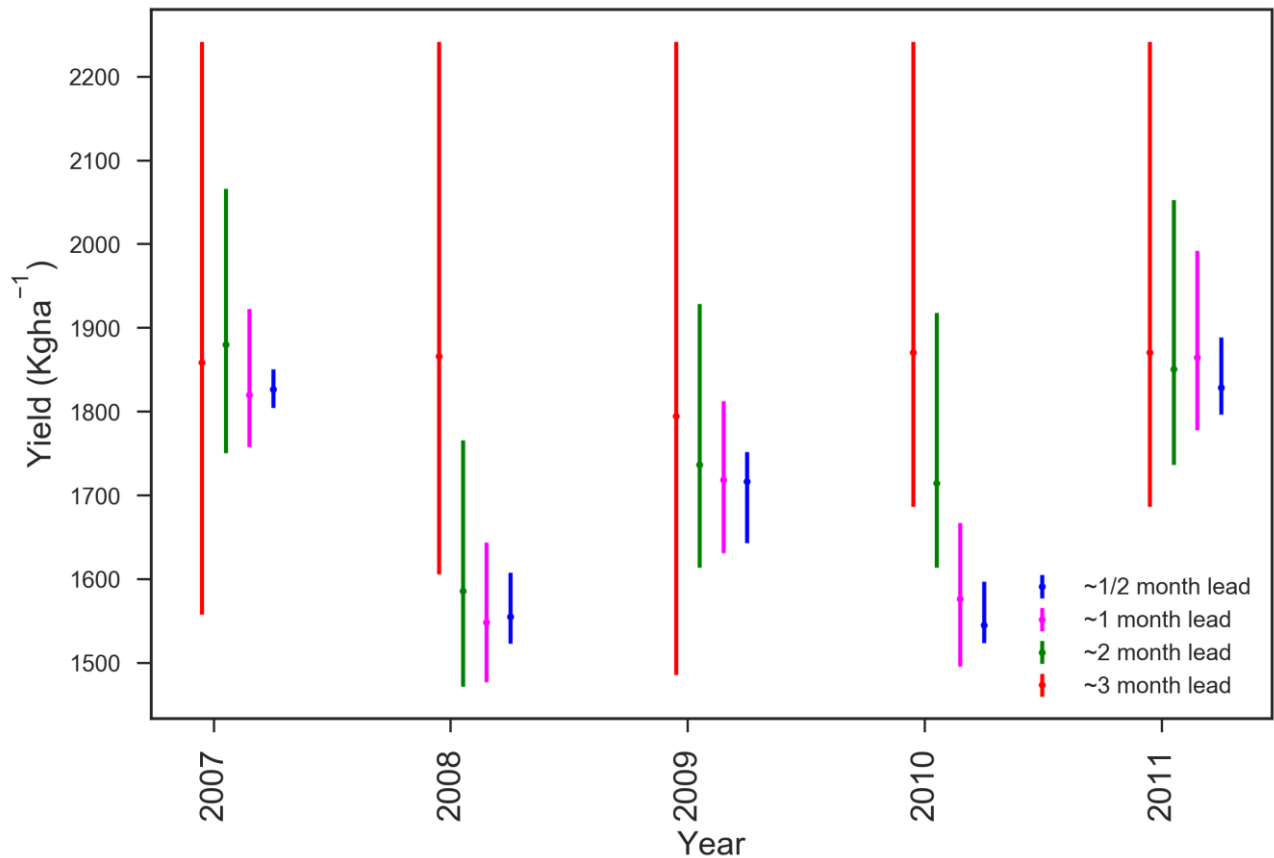


Figure 17: Time series of maize yield forecast in Ghana from 2007 to 2011 with four lead time of forecast. This is done using a hindcast for each year and comparing the plots of ~3-month lead time (red), ~2-month lead time (green), ~1-month lead time (magenta) and ~1/2-month lead time (blue).

- 5 As described in Section 3.3.1, the probabilistic ensemble forecasts will be presented as the likelihood of quintile categories. The skill of the probabilistic forecast was assessed using the ranked probability skill score (RPSS). The ranked probability skill score is a skill score formulated from the ranked probability score (RPS) that compares the cumulative squared probability error for forecasts and climatological forecast for each category identified. The RPSS is negatively biased with smaller ensemble sizes (< 40) and due to this a correction was done on the reference RPS used before calculating the final RPSS. The
- 10 bias corrected RPSS is called the discrete ranked probability skill score (RPSS_D). Details of the calculation and bias correction are given in (Muller et al., 2005; Weigel et al., 2007). Positive values indicate better skill than the climatology; a unit value represent a perfect score and zero or below zero values indicate no skill in the forecast.

The RPSS_D for Tamale was derived for the period 2002–2011. This period is used because IRI seasonal forecasts for precipitation and temperature issued on monthly basis are only available from 2002. Figure 18 indicates the skill scores for the four lead times for the forecasts made using the TAMSAT-ALERT system. The skill scores are generally above 0.4 for ~2-month lead time and over 0.6 for ~1-month lead time over the 10-year period considered. There are some years where the skill score was lower than the stated values and this is mainly because of shifts in forecast categories towards the end of the season, which tends to happen if the yield is near a category boundary. For example, 2011 final yield was in the low category

20 but one month earlier than harvest the ensembles indicate 56 % in the average category and 44 % in the low category (see Figure 11), which results in a low skill score for that year. The overall skill of the system is presented in Figure 19 where it shows a good skill even two months ahead of harvest. The average RPSS_D shows an increase of skill as the lead time decreases, which is expected. Comparison of similar period skill scores for yield forecasted weighted by the IRI seasonal weather forecast of rainfall and temperature showed a similar result to that of the non-weighted forecast. This indicates that the seasonal

forecasts have little impact in predicting the maize yield in the region, which is associated both with the low correlation of seasonal weather values and maize yield and with the vague nature of the forecasts.

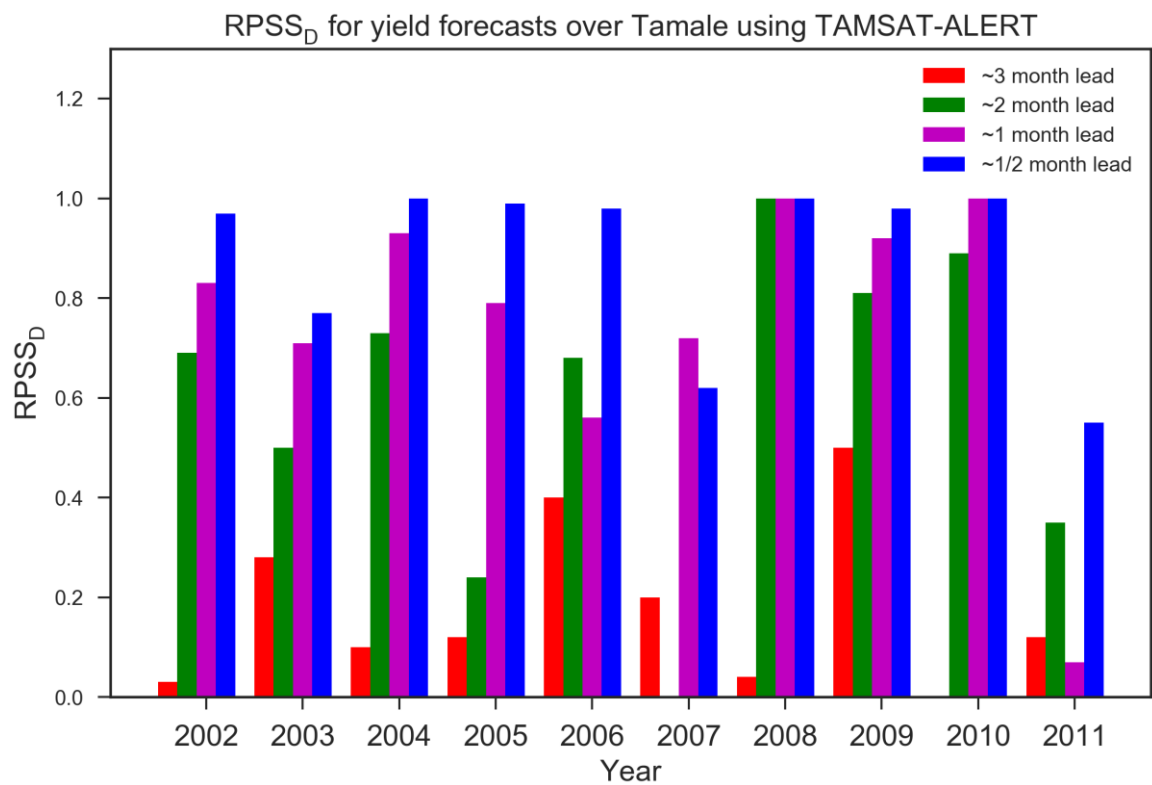


Figure 18: Discrete ranked probability skill score for the yield forecasts over Tamale using TAMSAT-ALERT system at different lead time.

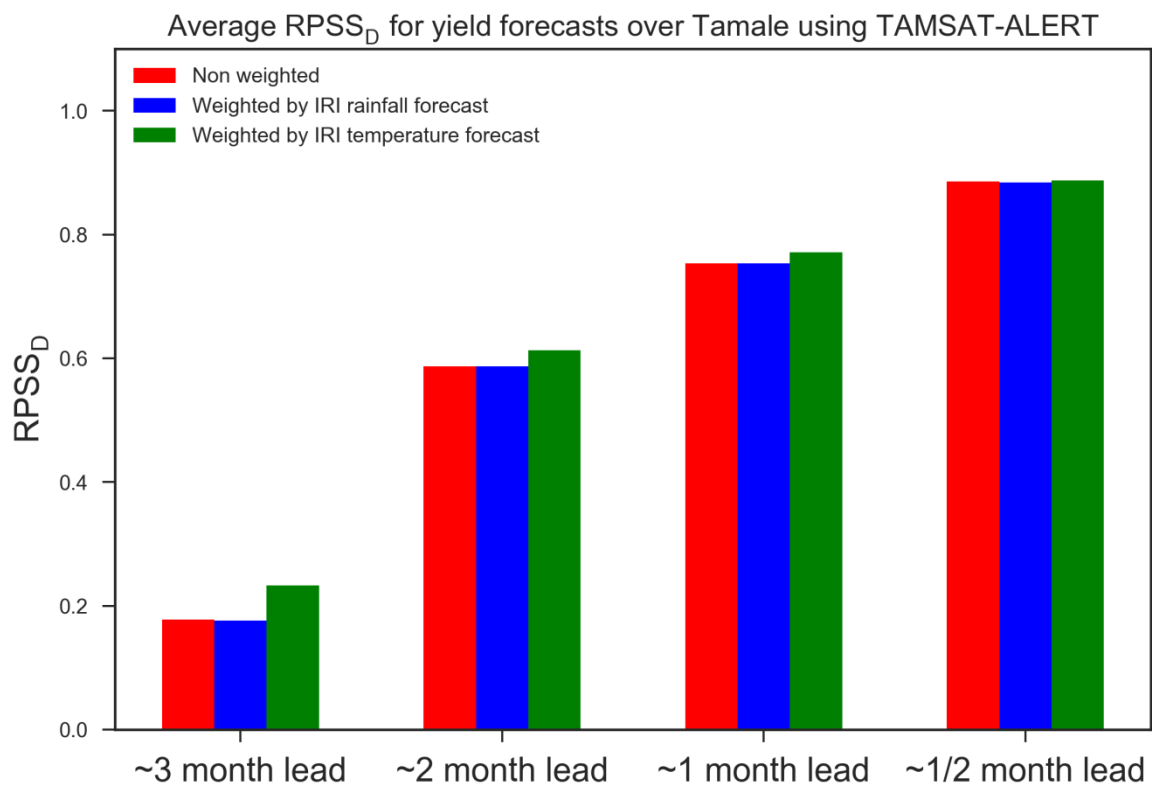


Figure 19: Discrete ranked probability skill score for the yield forecasts over Tamale using TAMSAT-ALERT system at different lead time averaged for 2002–2011.

4 Discussion and conclusions

The TAMSAT-ALERT framework complements and extends previous systems by driving impact models with ensembles based on observed weather rather than weather generators or direct forcing with seasonal forecasts. This provides a simple means both of combining information at different scales, and of bias correcting seasonal forecasts. The framework is thus capable of integrating multiple sources of environmental observations/forecasts into continually updated assessments of the likelihood of a user defined adverse event, such as unfavourable weather conditions for maize yield. Whilst the emphasis on our study has been on forecasting adverse events, such as low yields, it should be noted that TAMSAT-ALERT is also capable of anticipating favourable conditions, enabling decision makers to maximise the benefits of such years - for example by managing post-harvest storage and markets. The system can, moreover, work at any spatial scale for which driving data is available, including for individual communities.

The use of decision support tools for agricultural activities in Africa is low because of low capacity for model use, lack of funding from governments in the development of agricultural decision support tools, lack of data availability for validation and calibration of models and low knowledge among decision makers about the use of decision making tools (MacCarthy et al., 2017b). Nevertheless, the demand for meteorologically driven crop models, such as Decision Support System for Agrometeorology Transfer (DSSAT), World Food Studies (WOFOST) and Crop Environment Resource Synthesis–Maize (CERES–Maize) for Sub Saharan Africa, speaks to a need for quantification of the meteorological hazard to yield (Dzotsi et al., 2003, Kassie et al., 2014, Kassie et al., 2015, MacCarthy et al., 2017a). The implementation of TAMSAT-ALERT described in this study quantifies the meteorological risk to agriculture, and as such potentially provides information for government, aid agencies and nongovernmental organizations working in agriculture. A key result is that, even in the absence of meteorological seasonal forecasts, low yield can be anticipated 6-8 weeks before with some skill.

In the example described in this paper, we have used the GLAM crop model. It is clear from the validation of GLAM against national yield statistics presented in Section 3.2.3, that the model's ability to simulate year to year variation in Ghana-wide yield in maize is moderate. Nevertheless, previous studies have demonstrated that GLAM can capture the meteorological hazard to yield (Challinor et al., 2007; Challinor et al., 2010; Osborne et al., 2013), when the model is driven with high quality meteorological data and is compared against robust information on yield. The provision of the scripts for the GLAM implementation will enable further studies to be carried out at locations with more robust information on yield and agronomical characteristics.

This study used the GLAM crop model, as an illustration of the implementation of the system. The strength of TAMSAT-ALERT, however, is its modularity. TAMSAT-ALERT can be implemented for any impact model driven with meteorological data. There is now demand for TAMSAT-ALERT in locations throughout East and West Africa, with the system adapted to implement trusted metrics and models. This modularity and flexibility is important, since the skill of the TAMSAT-ALERT system is constrained by the quality of the model and its calibration. In this study, for example, the evaluation and calibration of GLAM was hampered by quality-control issues with the available yield data. The system would be much improved if used in-house by agencies with access to high quality yield data, and locally calibrated models. Nevertheless, it is important that model error is taken into account in the decision-making process, and forecasts should therefore be issued in the context of model evaluations like the one presented in this study. TAMSAT-ALERT's modular structure, moreover, permits forecasts to be produced using an ensemble of crop models/crop model parameterizations - facilitating formal analysis of model uncertainties.

A key finding from our study is that tercile seasonal forecasts have little impact on TAMSAT-ALERT's skill, for the case study considered. This is not unexpected. The correlation of 90-day total rainfall with GLAM simulated maize yield, in this region, is low. The low correlation means that we do not expect precipitation seasonal forecasts to improve the yield forecasts

even if they are skilful. Our results do not suggest that there is no information available from seasonal forecasts. However, we do show that 90-day tercile forecasts of temperature and rainfall, even if perfectly skillful, provide comparatively little information to risk assessments for low maize yield. This could be because the sensitivity of crops to moisture is on a specific period of their growth and the sensitivity of crops to temperature is also not similar throughout their growth stage. In other words, our findings highlight the necessity of more specific and localized forecasts, if users are to benefit from the inherent skill contained in the forecasts. These findings are consistent with anecdotal evidence that the tercile seasonal forecasts of rainfall routinely issued by forecasting organizations are of little practical benefit for decision making. A secondary application of TAMSAT-ALERT could be to provide guidance on forecasts that would, potentially, be of use for decision makers, should they have sufficient skill. Such analyses are currently underway as part of a major national capability programme being carried out at the National Centre for Atmospheric Science.

In summary, TAMSAT-ALERT is a light-weight system, which can be run either using the computing facilities available in house at meteorological services, or on the cloud. Its modular design enables it to work alongside existing systems to combine multiple sources of data into quantitative assessments of risk. Together with socio-economic assessments, this information could be of significant value for government, policy makers and humanitarian service providers tasked with mitigating the effect of drought on Africa's poorest farmers.

5 Code availability

The TAMSAT-ALERT v1.0 frame work code and the user manual are openly available on GitHub (<https://github.com/tamsat-alert/v1-0>). The GLAM-v3 crop model is provided under a license agreement, so it is not possible to directly release it on GitHub but it is possible to obtain it through the contacts form in the following link (<http://www.see.leeds.ac.uk/research/icas/research-themes/climate-change-and-impacts/climate-impacts/glam/>).

6 Acknowledgements

Dagmawi Asfaw is supported by a studentship implemented by CIMMYT as part of Taking Maize Agronomy to Scale in Africa (TAMASA), made possible by the generous support of the Bill and Melinda Gates Foundation (BMGF). Any opinions, findings, conclusion, or recommendations expressed in this publication are those of the author(s) and do not necessarily reflect the view of the BMGF.

Emily Black is supported by the NERC/GCRF Official Development Assistance programme, ACREW, which forms part of the core programme of the National Centre for Atmospheric Science - Climate Division. She also gratefully acknowledges support from the BRAVE (NE/M008983/1) and HyCristal (NE/M020371/1) projects. Matthew Brown's and Frederik Otu-Larbi's work on this project was supported by the University of Reading impact programme. Ewan Pinnington and Tristan Quaife were funded by the UK Natural Environment Research Council project ERADACS (NE/P015352/1) and the National Centre for Earth Observation. Kathryn Jane Nicklin and Andrew Challinor were funded by the NERC/DFID Future Climate for Africa program under the AMMA-2050 project, grant number NE/M020126/1.

7 References

- Bannayan, M., Crout, N. M., and Hoogenboom, G.: Application of the CERES-Wheat model for within-season prediction of winter wheat yield in the United Kingdom, *Agronomy Journal*, 95, 114–125, doi:10.2134/agronj2003.0114, 2003.
- 5 Barnston, A. G. and Tippet, M. K.: Climate information, outlooks, and understanding-where does the IRI stand?, *Earth Perspectives*, 1, 20, doi:10.1186/2194-6434-1-20, 2014.
- Black, E., Greatrex, H., Young, M., and Maidment, R.: Incorporating satellite data into weather index insurance, *Bulletin of the American Meteorological Society*, 97, ES203–ES206, doi:10.1175/BAMS-D-16-0148.1, 2016.
- 10 Boyd, E., Cornforth, R. J., Lamb, P. J., Tarhule, A., L'el'e, M. I., and Brouder, A.: Building resilience to face recurring environmental crisis in African Sahel, *Nature Climate Change*, 3, 631–638, doi:10.1038/NCLIMATE1856, 2013.
- Brown, M., Black, E., Asfaw, D., and Otu-larbi, F.: Monitoring drought in Ghana using TAMSAT-ALERT: a new decision support system, *Weather-Royal Meteorology Society*, 72, 201–205, doi:10.1002/wea.3033, 2017.
- 15 Canal, N., Deudon, O., Le Bris, X., Gate, P., Pigeon, G., Regimbeau, M., and Calvet, J.-C.: Anticipation of the winter wheat growth based on seasonal weather forecasts over France, *Meteorological Applications*, 24, 432–443, doi:10.1002/met.1642, 2017.
- 20 Challinor, A., Wheeler, T. R., Osborne, T. M., and Slingo, J. M.: Assessing the vulnerability of crop productivity to climate change thresholds using an integrated crop-climate model, Cambridge University Press, doi:10.2277/0521864712, 2006.
- Challinor, A. J. and Wheeler, T. R.: Crop yield reduction in the tropics under climate change: Processes and uncertainties, *Agricultural and Forest Meteorology*, 148, 343–356, doi:10.1016/j.agrformet.2007.09.015, 2008.
- 25 Challinor, A. J., Wheeler, T. R., Craufurd, P. Q., Slingo, J. M., and Grimes, D. I. F.: Design and optimisation of a large-area process-based model for annual crops, *Agricultural and Forest Meteorology*, 124, 99–120, doi:10.1016/j.agrformet.2004.01.002, 2004.
- 30 Challinor, A. J., Slingo, J. M., Wheeler, T. R., and Doblas-Reyes, F. J.: Probabilistic simulations of crop yield over western India using the DEMETER seasonal hindcast ensembles, *Tellus, Series A: Dynamic Meteorology and Oceanography*, 57, 498–512, doi:10.3402/tellusa.v57i3.14670, 2005.
- 35 Challinor, A. J., Wheeler, T. R., Craufurd, P. Q., Ferro, C. A. T., and Stephenson, D. B.: Adaptation of crops to climate change through genotypic responses to mean and extreme temperatures, *Agriculture, Ecosystems and Environment*, 119, 190–204, doi:10.1016/j.agee.2006.07.009, 2007.
- 40 Challinor, A. J., Simelton, E. S., Fraser, E. D. G., Hemming, D., and Collins, M.: Increased crop failure due to climate change: assessing adaptation options using models and socio-economic data for wheat in China, *Environmental Research Letters*, 5, 034 012, doi:10.1088/1748-9326/5/3/034012, 2010.
- Dzotsi, K., Agboh-Noameshie, A., Struif Bontkes, T., Singh, U., and Dejean, P.: Using DSSAT to derive optimum combinations of cultivar and sowing date for maize in southern Togo, in: *Decision Support Tools for Smallholder Agriculture in Sub-Saharan Africa; A Practical Guide*, edited by Bontkes, T. and Wopereis, M., pp. 100–112, IFDC Muscle Shoals, USA, and CTA, Wageningen, 2003.
- 45 FAO/WFP-Global Information and Early Warning System on food and agriculture (FAO/WFP-GIEWS): Special report FAO/WFP crop and food supply assessment mission to northern Ghana, <http://www.fao.org/docrep/005/y6325e/y6325e00.htm>, 2002.
- 50 Hansen, J.W. and Indeje, M.: Linking dynamic seasonal climate forecasts with crop simulation for maize yield prediction in semi-arid Kenya, *Agricultural and Forest Meteorology*, 125, 143–157, doi:10.1016/j.agrformet.2004.02.006, 2004.
- 55 Hansen, J. W., Challinor, A., Ines, A., Wheeler, T., and Moron, V.: Translating climate forecasts into agricultural terms: Advances and challenges, *Climate Research*, 33, 27–41, doi:10.3354/cr033027, 2006.
- Kassie, B. T., Van Ittersum, M. K., Hengsdijk, H., Asseng, S., Wolf, J., and R'otter, R. P.: Climate-induced yield variability and yield gaps of maize (*Zea mays* L.) in the Central Rift Valley of Ethiopia, *Field Crops Research*, 160, 41–53, doi:10.1016/j.fcr.2014.02.010, 2014.
- 60

- Kassie, B. T., Asseng, S., Rotter, R. P., Hengsdijk, H., Ruane, A. C., and Van Ittersum, M. K.: Exploring climate change impacts and adaptation options for maize production in the Central Rift Valley of Ethiopia using different climate change scenarios and crop models, *Climatic Change*, 129, 145–158, doi:10.1007/s10584-014-1322-x, 2015.
- 5 Kirtman, B. P., Min, D., Infanti, J. M., Kinter, J. L., Paolino, D. A., Zhang, Q., Van Den Dool, H., Saha, S., Mendez, M. P., Becker, E., Peng, P., Tripp, P., Huang, J., Dewitt, D. G., Tippet, M. K., Barnston, A. G., Li, S., Rosati, A., Schubert, S. D., Rienecker, M., Suarez, M., Li, Z. E., Marshak, J., Lim, Y. K., Tribbia, J., Pegion, K., Merryfield, W. J., Denis, B., and Wood, E. F.: The North American multimodel ensemble: Phase-1 seasonal-to-interannual prediction; phase-2 toward developing intraseasonal prediction, *Bulletin of the American Meteorological Society*, 95, 585–601, doi:10.1175/BAMS-D-12-00050.1, 2014.
- 10 MacCarthy, D. S., Adiku, S. G. K., Freduah, B. S., and Gbeto, F.: Using CERES-Maize and ENSO as Decision Support Tools to Evaluate Climate-Sensitive Farm Management Practices for Maize Production in the Northern Regions of Ghana, *Frontiers in Plant Science*, 8, 1–13, doi:10.3389/fpls.2017.00031, 2017a.
- 15 MacCarthy, D. S., Kihara, J., Masikati, P., and Adiku, S. G. K.: Decision support tools for site-specific fertilizer recommendations and agricultural planning in selected countries in sub-Saharan Africa, *Nutrient Cycling in Agroecosystems*, doi:10.1007/s10705-017-9877-3, 2017b.
- 20 Maidment, R. I., Grimes, D., Black, E., Tarnavsky, E., Young, M., Greatrex, H., Allan, R. P., Stein, T., Nkonde, E., Senkunda, S., and Alcantara, E. M. U.: A new, long-term daily satellite-based rainfall dataset for operational monitoring in Africa. *Scientific Data*, 4:1–19, DOI: 10.1038/sdata.2017.63, 2017.
- 25 Martey, E., Wiredu, A. N., Etwire, P. M., Buah, S. S. J., Fosu, M., Bidzakin, J., Ahiabor, B. D. K., and Kusi, F.: Fertilizer Adoption and Use Intensity Among Smallholder Farmers in Northern Ghana: A Case Study of the AGRA Soil Health Project, *Sustainable Agriculture Research*, 3, 24–36, doi:10.5539/sar.v3n1p24, 2014.
- 30 Monfreda, C., Ramankutty, N., and Foley, J. A.: Farming the planet. Part 2: Geographic distribution of crop areas, yields, physiological types, and net primary production in the year 2000, *Global Biogeochemical Cycles*, 22, GB1022, doi:10.1029/2007GB002947, 2008.
- 35 Muller, W. A., Appenzeller, C., Doblas-Reyes, F. J., and Liniger, M. A.: A debiased ranked probability skill score to evaluate probabilistic ensemble forecasts with small ensemble sizes, *Journal of Climate*, 18, 1513–1523, doi:10.1175/JCLI3361.1, 2005.
- Muller, C., Cramer W., Hare W. L., and Lotze-Campen H.: Climate change risks for African agriculture, *Proceedings of the National Academy of Sciences*, 108 (11), 4313–4315, doi:10.1073/pnas.1015078108, 2011.
- 40 Obeng-Antwi, K., Manfred Ewool, A. H., Abate, T., Menkir, A., Badu-Apraku, B., and Abdoulaye, T.: New Drought Tolerant Maize Varieties for Ghana, *A Quarterly Bulletin of the Drought Tolerant Maize for Africa Project*, 2, 1–4, URL <http://dtma.cimmyt.org>, 2013.
- 45 Osborne, T., Rose, G., and Wheeler, T.: Variation in the global-scale impacts of climate change on crop productivity due to climate model uncertainty and adaptation, *Agricultural and Forest Meteorology*, 170, 183–194, doi:10.1016/j.agrformet.2012.07.006, 2013.
- 50 Osborne, T. M., Lawrence, D. M., Challinor, A. J., Slingo, J. M., and Wheeler, T. R.: Development and assessment of a coupled crop-climate model, *Global Change Biology*, 13, 169–183, 2007.
- Owusu, K. and Waylen, P.: Trends in spatio-temporal variability in annual rainfall in Ghana (1951–2000), *Weather*, 64, 115–120, doi:10.1002/wea.255, 2009.
- 55 Owusu, K. and Waylen, P. R.: The changing rainy season climatology of mid-Ghana, *Theoretical and Applied Climatology*, 112, 419–430, doi:10.1007/s00704-012-0736-5, 2013.
- PARI: Potentials and Possibilities for German Collaboration in Agriculture, Program of Accompanying Research for Agricultural Innovation, URL <http://research4agrinnoation.org/wp-content/uploads/2016/03/Ghana.pdf>, 2015.
- 60 Parkes, B., Challinor, A., and Nicklin, K.: Crop failure rates in a geoengineered climate: impact of climate change and marine cloud brightening, *Environmental Research Letters*, 10, 084 003, doi:10.1088/1748-9326/10/8/084003, 2015.
- Ragasa, C., Dankyi, A., Acheampong, P., Wiredu, A. N., Chapoto, A., Asamoah, M., and Tripp, R.: Patterns of adoption of improved rice technologies in Ghana, *Ghana Strategy Support Program (GSSP) Working Paper*, 36, 1–33, doi:10.13140/2.1.5093.4727, 2013.
- 65

- Ramirez-Villegas, J. and Challinor, A. J.: Towards a genotypic adaptation strategy for Indian groundnut cultivation using an ensemble of crop simulations, *Climatic Change*, 138, 223–238, doi:10.1007/s10584-016-1717-y, 2016.
- 5 Ramirez-Villegas, J., Koehler, A. K., and Challinor, A. J.: Assessing uncertainty and complexity in regional-scale crop model simulations, *European Journal of Agronomy*, 88, 84–95, doi:10.1016/j.eja.2015.11.021, 2015a.
- Ramirez-Villegas, J., Watson, J., and Challinor, A. J.: Identifying traits for genotypic adaptation using crop models, *Journal of Experimental Botany*, 66, 3451–3462, doi:10.1093/jxb/erv014, 2015b.
- 10
- Semenov, M. A. and Doblas-Reyes, F. J.: Utility of dynamical seasonal forecasts in predicting crop yield, *Climate Research*, 34, 71–81, doi:10.3354/Cr034071, 2007.
- 15 Sheffield, J., Wood, E. F., Chaney, N., Guan, K., Sadri, S., Yuan, X., Olang, L., Amani, A., Ali, A., Demuth, S., and Ogallo, L.: A drought monitoring and forecasting system for sub-Saharan African water resources and food security, *Bulletin of the American Meteorological Society*, 95, 861–882, doi:10.1175/BAMS-D-12-00124.1, 2014.
- 20 Sidibe, Y., Williams, T. O., and Kolavalli, S.: Flood recession agriculture for food security in Northern Ghana: Literature review on extent, challenges, and opportunities, *Ghana Strategy Support Program working paper 42*, doi:10.13140/RG.2.1.3250.8405, 2016.
- Tarhule, A., Saley-Bana, Z., and Lamb, P. J.: RainWatch: A prototype GIS for rainfall monitoring in West Africa, *Bulletin of the American Meteorological Society*, 90, 1607–1614, doi:10.1175/2009BAMS2697.1, 2009.
- 25 Watson, J. and Challinor, A.: The relative importance of rainfall, temperature and yield data for a regional-scale crop model, *Agricultural and Forest Meteorology*, 170, 47–57, doi:10.1016/j.agrformet.2012.08.001, 2013.
- 30 Weedon, G. P., Balsamo, G., Bellouin, N., Gomes, S., Best, M. J., and Viterbo, P.: Data methodology applied to ERA-Interim reanalysis data, *Water Resources Research*, 50, 7505–7514, doi:10.1002/2014WR015638, Received, 2014.
- Weigel, A. P., Liniger, M. a., and Appenzeller, C.: Generalization of the Discrete Brier and Ranked Probability Skill Scores for Weighted Multimodel Ensemble Forecasts, *Monthly Weather Review*, 135, 2778–2785, doi:10.1175/MWR3428.1, 2007.
- 35