

Interactive comment on BrAHMs V1.0: A fast, physically-based subglacial hydrology model for continental-scale application

Mark Kavanagh and Lev Tarasov

April 26, 2018

1 Appreciation and One Brief Note on Changes to Paper

We thank both reviewers for their thoughtful and detailed reviews.

Before addressing the issues raised, it should be noted that the validation tests have been changed from a parabolic bed to a normally-distributed profile since the initial submission. The flatter edges of the normally-distributed bed allow for better analysis of lake formation (as discussed in the updated paper).

2 Discussion with Dr. J. Seguinot

Referee I would like to apologize to the authors for this much delayed review. M. Kavanagh and L. Tarasov present a new model to compute water flow under ice sheets, and study feedback processes between subglacial water flow and the much slower dynamics of overlying glacier ice. Thus, the model physics and numerics have been tailored for coupling to ice sheet models which typically operate on continental (thousands of kilometres), and glacial cycle (multi-millennial) scales that characterise the spatio-temporal evolution of the Earth's largest flowing ice masses.

The need for coupled models of ice dynamics and subglacial hydrology has been identified for decades, however it has been subject to two major limitations. First, subglacial water flows much faster than glacier ice, which is an issue for both physical and numerical model implementations. Second, although subglacial hydrology theories are available, physical parameters are largely unconstrained due to the difficulty of observations. In the present manuscript, M. Kavanagh and L. Tarasov address these issues by using simplified physics, a semi-implicit discretization scheme, and a parameter sensitivity study.

The paper contains an introduction summarizing recent advances in modelling subglacial hydrology, a description of the model's physics, an application to a synthetic test case where the model yields expected results, and a more realistic application on the modelled Last Glacial Maximum and early deglacial North American ice sheet complex, including a sensitivity study to the most important model parameters. Discretization schemes for subglacial hydrology are explicated in Appendix.

BrAHMs is coupling subglacial hydrology model to ice dynamics in ways that will facilitate its application to continental-scale ice sheet dynamics. Publication of the model physics, numerics, and the presented test cases in Geoscientific Model Development makes a lot of sense and I fully support it. Nevertheless, I am concerned by the fact that source code has not yet been made publicly available, and I think that the manuscript need a few crucial changes before publication in order to ensure reproducibility.

Below I provide comments regarding the points for which I believe changes will improve the manuscript. I hope the authors will find these helpful in revising their manuscript and wish them success with final publication and future applications of this innovative model.

I think it is policy of Geoscientific Model Development that all computing code accompanying publications should be made publicly available, unless reasons against that are clearly stated. Since BrAHMs is one of the first subglacial hydrology models allowing coupling to an ice sheet model, I think code publication would be strongly beneficial to both the authors and the ice sheet modelling community.

Actually I would even recommend a platform that allows version control and issue tracking. For instance PISM (<https://github.com/pism/pism>) is another coupled ice dynamics and subglacial hydrology model for which source code publication and public bug tracking has been highly beneficial.

Authors The senior author (Lev Tarasov) has to date relied on offering open code availability via email queries which has the added benefit of making it easier to help potential users. GDM policy also permits this (though prefers availability via a public server). And our submitted paper clearly stated that the BrAHMs source code is freely available upon request. However, given that the referee found this inadequate, we have now deposited the BrAHMs code on a public server (<http://doi.org/10.5281/zenodo.1230046>).

Referee In the present manuscript, Table 1 lists hydrological parameter ranges used in the sensitivity test. However, values for parameters kept fixed in the sensitivity test are not given in the manuscript. These include glacial system model parameters (Eq. 1), subglacial hydrology model fixed parameters (Eqs. 25), and parameters defining the synthetic ice surface geometries and melt distributions for the first test case (Eqs. 68). For instance, the scale of the synthetic ice sheet and the amplitude of bed perturbations used in the test case are crucial information currently missing from the manuscript.

For the sake of reproducibility, including future reproduction of the synthetic test case by other models, I think all parameter values should be included in the manuscript before publication. I would suggest a separate table containing all fixed parameter values.

Authors As requested, tables have been added that list the BrAHMs parameters used in this paper's analysis. Table 1 contains a list of the parameters used to describe the synthetic ice sheet from equations 5 - 8. Table 2 lists the baseline values for the hydrology parameters that are used in the validation and GSM modelling sections.

Note, we presume the reviewer was just referring to BrAHMs parameters. The main focus of this paper is on the development of a new subglacial hydrology. The cited references for the GSM describe the GSM in much more appropriate detail. The GSM has dozens of parameters and concepts that would weight down this paper and remove focus from the hydrology model.

To require inclusion of all GSM parameters would be akin to requiring every GCM based modelling paper to list the literally 100's of parameters in a regular GCM.

However, as detailed in the response to Dr. Johnson's comments below, we have added a bit more information about how basal sliding is implemented.

Referee I found that the current figures dont reflect the scientific quality of the work undertaken by the authors. This is especially destructive given that the manuscript text is actually very well written. Below I suggest a few simple changes that I believe will enhance the readability of figures.

On Figs. 13, the choice of colours does not serve the results at all. Since non-null water thickness and pressure is localized around the ice sheet margins, it is very hard to discern the individual colour bands. Instead I would suggest monochromatic (e.g. white-to-blue, white-to-red) colourmaps, preferably different for water thickness and pressure.

Also on Figs. 13, contour lines are so thin that they became invisible on my print. Overlaid basal and surface topography contours (Fig. 1b) are also hard to distinguish. I suggest to remove basal topography contours, and slightly thicken surface topography contours.

Finally, Figs. 45 are hard to read because many markers overlap. Here my suggestion would be a different presentation, using volume errors instead of total water volume, a logarithmic scale to discern small errors, and perhaps different colours for positive and negative errors.

Authors The figures in the paper have been modified to be clearer, but not with colour scheme suggested, as we find it does not best present the data. The standard high contrast "Jet" colour scheme is now used where red is meant to show high water levels or high basal pressure (low effective pressure), which are likely to be areas of fast flowing ice (were the GSM and BrAHMs fully coupled).

The contours have been made thicker, and the font size was increased to improve readability. We retained the linear scale on the sensitivity plots (formerly 4-5, now 5-6) as this clearly conveys the relevant information. The overlapping markers indicate that the model is insensitive to a particular parameter, as discussed in the text. Extracting minute differences via a logarithmic grid would erroneously convey significance in differences where currently plot symbols overlap.

Referee p. 2, l. 47: "Only a few subglacial hydrology models have been described in the literature for continental-scale ice sheets. [...] These models take various approaches to simulate the flow of basal water using physically-based equations."

This paragraph introduces a short review of recent developments in subglacial hydrology modelling (decoupled from ice dynamics), which I found very useful to guide the reader in understanding choices made by the authors in designing their own model. However, one of the first questions I had when opening the manuscript was how BrAHMs differs from the approach employed by Bueler and van Pelt (2015), to my knowledge the first functional model of coupled subglacial hydrology and ice sheet dynamics. I think this review is be the right place to address this point.

Authors Good point. That paper is now cited and a discussion has been added on how BrAHMs and the model of Bueler and van Pelt (2015) differ. For the context of glacial cycle integrations, the

key differences are the inclusion of channelized drainage in BrAHMs and a different treatment for determining pressure in Bueler and van Pelt.

Referee p. 4, l. 27-28: “We use an empirical relation for water pressure from Flowers (2000).”

Here I think it would help to shortly explain the type of measurements and time scale used to develop this empirical relation (Eq. 4), or at least give a page number.

Authors A page number has been added to the reference that can guide interested readers to the source more quickly, as the original author(Dr. Gwen Flowers) provides more detail in developing the pressure equation.

Also, the following text has been added

“Flowers (2000) derived this equation by considering sub-grid variation in bed elevation and associated sediment thickness (and therefore water thickness, all for the context of 40 m x 40 m grid-cell modelling of Trapridge Glacier). A further consideration (without the overburden limit) was that the nonlinearity would address dynamic adjustments in porosity and prevent stiffness in the dynamic equations caused by unrealistic heterogeneity in the modelled water distribution. Though derived for glacier-scale flow through a heterogenous macroporous sediment layer, our working hypothesis is that this empirical relation approximately captures large scale pressure response for subglacial distributed flow through any heterogenous structure (be it a mix of cavities of different size, patchy sediment, Nye channels...). The limiting of water pressure to overburden is justified by the low likelihood of water pressure exceeding the overburden pressure for any significant amount of time on glacial cycle timestep scales.”

Referee p. 5, l. 12: “P is limited to ice overburden pressure. h_c equals till thickness times porosity and is effectively the water thickness that the till can hold before becoming over-saturated.”

I understand that P is capped at overburden, but additional water could be stored in the till, resulting in $w > h_c$. Is this correct? A short sentence to clarify what is happening over saturation would help here.

Authors Correct. Edits to the text were made to clarify this:

“where P_I is the ice overburden pressure. P is limited to ice overburden pressure when $w \geq h_c$. Saturated sediment water thickness, h_c , equals till thickness times porosity and is effectively the water thickness that the till can hold before becoming over-saturated (at which point the excess water is stored between the till and the ice).”

Referee p. 5, l. 1114: “From here the model employs a down hydraulic gradient solver (Tarasov and Peltier, 2006) that looks at the neighbours of a tunnel cell and allows water to flow instantaneously down the path of steepest potential gradient (channelizing cells along that path) until there is no cell with a lower hydraulic potential (forms subglacial lake) or the water exits the ice sheet.”

I assume that the down gradient solver is the computational bottleneck of the model. I guess that ‘instantaneously’ means that the hydrological solver is ran offline while the ice model

pauses. Here it would help to clarify whether that is the case (or if only the tunnel solver is ran offline at regular intervals), and (already here in the methods) how often would one presumably need to run the hydrology model, and what are the consequences of this assumption in terms of the domain of application of the coupled model.

Authors Dr. Seguinot comments indicate that there may be some confusion as to when and how the down gradient solver is implemented. This issue has been addressed by the revised text:

“To simulate the change between different drainage systems, at regular user-defined intervals, the channel flow subroutine is called. Grid cells for which the water flux exceeds the distributed flow stability criterion (equation 5) are marked as tunnel grid cells. A down hydraulic gradient solver (Tarasov and Peltier, 2006) instantaneously¹ moves water down the path of steepest potential gradient (channelizing grid cells along that path) until there is no grid cell with a lower hydraulic potential (so forms subglacial lake) or the water exits the ice sheet. The solver considers all adjacent grid cells (including corner adjacency) when searching for the lowest hydraulic potential. Once the tunnel water transport is complete, the tunnels are assumed closed and the distributed flow algorithm continues.”

The frequency at which the tunnel solver is called is subject to sensitivity analysis via variations in dt_{tun} .

Referee p. 6, Figs. 1 caption: “The symmetric results in a) are due to a known issue with the tunnel solver being slightly asymmetric.”

The results in a) look symmetric indeed, but I wonder if the authors meant to write about the asymmetric results in b), which would make more sense.

Authors Indeed. Fixed as suggested by referee.

Referee p. 6, Figs. 12:

Eq. 6 – 8 are given in polar (or at least radius) coordinate. The discretization performed in the appendix also uses polar coordinates. However Figs. 12 appear to use a regular grid. Labelling the x and y axes would help to resolve this ambiguity.

Authors To clear up any confusion between polar and Cartesian grids, the accompanying text to the figures has been modified to include the following text:

“It should be noted that the model is based on spherical polar coordinates (as it is designed for modelling large sections of the Earth’s surface), and so the figures presented here are akin to the Mercator projection...”

Referee p. 7, l. 7: “The next test placed an ice sheet flattened near the edges on a dilating (sinusoidally-wavy) bed.”

Could the authors please include a formula for the sinusoidally-wavy bed?

p. 7, l. 20: “Next, the ice dome was placed on an incline to test the flow of water.”

Could the authors please include a formula for the inclined bed?

¹During the tunnel flow, no model time is stepped as tunnel drainage is computed diagnostically.

Authors As suggested by Dr. Seguinot, equations for the bed have been added (equations 9 and 10)

Referee p. 8, l. 56: “The simplified aquifer drainage of Johnson (2002), uses an aquifer that simply drains a percentage of the present water in a cell. The percentage of water drained in this model is represented by the D_r parameter.”

I wonder how this new parameter D_r relates to $d_{s:a}$ (Eq. 2)

Authors A note has been made in Section 6.1, where D_r is introduced, that $d_{s:a} = D_r * w$.

Referee p. 8, l. 1213: “The water flux between cells is directly proportional to the hydraulic conductivity of the sediment. For each run, the conductivity was allowed to vary between a minimum and maximum value defined in the range of K_m .”

Here it would be nice to have a short explanation as to why this approach (Eq. 9) is superior to a constant conductivity, and whether it is backed up by measurements or theory.

Authors New text has been added to explain the origin of the hydraulic conductivity equation.

“which is a constitutive equation of the logarithmic form of the upstream area of a grid cell (Flowers, 2000, page 80). Data from Trapridge Glacier shows a similar relation between upstream area and water pressure as the hydraulic conductivity equation (a high and low regime with a transition zone). Flowers (2000) assumes that the upstream area is related to the connectivity in the grid cell (the more connected a grid cell is, the more upstream area it should have). This would suggest that the hydraulic conductivity (its connectivity) is dependent on the water level, and is of the form of equation 12.”

Referee p. 9, l. 48: “In the hydrology model, this is represented by parameter T_c , which acts to reduce the conductivity as a function of temperature. When the basal temperature is close to the pressure melting point (PMP), there is little change in the hydraulic conductivity. Conductivity decreases to an extremal low value as the temperature approaches the value of T_c .”

I wonder if the decrease in conductivity could be described by a function? An equation would be very useful here.

Authors This was erroneously stated in the text. The model simply assumes that the frozen bed has a really small conductivity value 10^{-14} . The text has been modified to include:

“As a simplifying assumption, the hydraulic conductivity of a frozen grid is set to $10^{-14} \frac{m}{s}$, but can be easily modified to follow a temperature-dependent profile to capture sub-grid variation in basal temperatures.”

Referee p. 14, l. 12: “The results of these tests show that the model is mass conserving.”

This is not very obvious from the rest of the manuscript. I would suggest to add a plot of mass conservation errors (claimed on the order of 10^{12} m) or remove this statement.

Authors A figure (Figure 2) has been added that shows how well the model conserves mass. The figure shows that it conserves mass on the order of machine precision and any deviations are likely due to rounding errors.

Referee p. 1, Affiliations: “St. Johns / St Johns”

The spelling probably needs to be homogenised here.

p. 1, l. 1314: “Channel formation [...] display the arborescent”

An ‘s is missing here.

p. 7, l. 3031: “As such, there are a number of poorly constrained parameters in the model.”

This is a good place to reference to Table 1.

Authors These were changed as suggested.

3 Discussion with Dr. J. V. Johnson

Referee This paper presents a model for subglacial hydrology suitable for continental scale ice sheets. Here, concerns are different from the glacier scale hydrologic models that have seen significant change in recent years. Time steps are longer (days vs hours) and spatial scale is larger (tens of kilometers vs hundreds of meters). The paper is novel in that it defines a set of physical processes related to channelized and distributed flow that can be efficiently and robustly solved using numerical methods. After describing the model, the authors conduct experiments on an idealized, parabolic ice sheet on a flat bed, and conclude with a sensitivity study conducted on a reconstruction of the North American ice sheet complex during the last glacial maximum (18 and 22 kybp).

The model represents worthwhile contribution to the literature because its lower fidelity physics are well suited to the problem ice sheet reconstruction via simulation of 100 ky glacial cycles. Before it is ready for publications, I see a number of issues for the authors to address. I believe that they are significant enough that I've called them ‘major - mostly to assure that something is done to address them. In short, my primary criticism is that I do not think that the results are reproducible because important aspects of model setup are omitted. I also think the work should be better scoped so that readers understand the distinctions between this model and other, recent works related to subglacial hydrology.

Referee The simulations, especially those having to do with the LGM (last glacial maximum), have to be described in more detail. Enough is missing that I'm struggling to evaluate the conclusions of the paper. In particular: How are model runs set up, and how does the ISM (ice sheet model) get to the point where hydrology is called? I hoped that citing some of the Tarasovs prior work could be used, but didn't find it.

Authors First, the code archive (which is now on a public server and which as stated in the submitted text was already available upon request) would enable replication of any of the synthetic ice sheet experiments in the paper.

The North American runs are from full glacial cycle runs starting with ice free conditions at 122 ka. We have inserted the following text: ‘The North American ice sheet model is from a large ensemble Bayesian calibration as detailed in Tarasov et al (2012) . Model runs start from 122 ka under ice free conditions.’

Referee I understand that this is a one-way coupling (ISM forces basal hydro), but that is not sufficient. What are the fields that force the basal hydro model (ice sheet thickness, basal temperature, and basal melt rate?)

Authors Dr. Johnson points out that the paper failed to link BrAHMs to the GSM. A paragraph in a new “Model coupling” subsection clarifies the connection between the two models:

“BrAHMs is highly modular and designed for asynchronous coupling at user specified timesteps. Aside from basic grid information, for each call, the hydrology model requires the following input fields: ice thickness, basal elevation, sea-level, basal ice temperature, basal melt rate, and basal sliding velocity of the ice. For two-way coupling, the relevant outputs from BrAHMS are basal water pressure and thickness.”

Referee How is the melt-rate computed?

Authors From conservation of energy and we don’t fathom what other possible option there is. We do not understand why this is being asked given that in the text, we already state: “The GSM is composed of a thermo-mechanically coupled ice sheet model (using the shallow ice approximation), permafrost resolving bed thermal model (Tarasov and Peltier, 2007),”; “The evolving temperature field (T) of the ice sheet is determined from conservation of energy:” eq 1; “The ice thermodynamics is fully coupled to a 1D (vertical heat diffusion) bed-thermal model”; “Basal temperature is limited to a maximum of the pressure melting point, with excess heat used to melt basal ice”. In case this addresses the source of the question, we have replaced the 2nd last quoted sentence above with: “The fully coupled ice and bed thermodynamics are solved via an implicit finite volume discretization in the vertical and explicitly for the horizontal advection component of the ice thermodynamics”.

Referee Is melt on the surface of the ice sheet routed to the bed?

Authors There is no routing though it would be easy to crudely add as a tunable parameter (presumably dependent on ice thickness, longitudinal stress, and ice temperature...). The topic of englacial hydrologic transmission is very non-trivial and beyond the scope of this paper. We have however, added the following text to raise this important issue:

“For the scope of this initial investigation, we assume no transmission of ice surface melt to the base. Observationally this is known to be false (Zwally et al., 2002), but the dependence on ice thickness, ice temperature profile, and ice strain profile makes this an issue deserving of its own focused study.”

Referee How is basal traction determined in the absence of two-way coupling?

Authors We have inserted the following: “Basal sliding uses Weertman type sliding relations (i.e., function of driving stress) with power law 3 for hard bed and power law 1 for soft bed with sliding onset linearly ramped up starting from $0.2^{\circ} C$ below the pressure melting point.”

Referee Finally, see my next point on the stability of a nonlinear system. This is perhaps my greatest concern.

The system of equations includes a number of strong non-linearities in terms of the key prognostic variable - w (effective water depth). Specifically we have Flux, Q , depends on w and K , conductivity, which has w dependence ** Water pressure, or the potential surface that water is routed down, depends on w ** A critical flux, dependent upon w , can have a rapid and strong impact on w .

Authors Good point. To address this issue we have added resolution convergence tests using rapidly changing meltwater inputs . The results show convergence and stability (cf new figure 4 and surrounding associated text).

Referee What is the interrelation between the time stepping of the ISM and the basal hydrology model?

Authors The GSM and BrAHMs are asynchronously coupled. The following is now in the new “Model coupling” subsection:

BrAHMs is highly modular and designed for asynchronous coupling at user specified timesteps. ...

Given that there is no lower limit to coupling timesteps, synchronous coupling can also be implemented. For two-way coupling, sensitivity tests are recommended to determine the appropriate coupling timestep for the relevant context.

Referee Does the hydrology model achieve steady state between ISM updates? If not, are the larger changes in the potential field on ISM time steps sufficient to produce shocks to the transient hydromodel? Are these shocks captured in a numerically robust way?

Authors Cf above note about convergence tests which use basal water supply shocks. Given the asynchronous coupling with user specified timesteps, we see no point in further shock tests (eg change in ice load). Our example results for the North American setup use 5 year timesteps, but 1 (or shorter) year timesteps could also have been carried out and we see no basis for the possibility of a large ice load shock on continental scale ice sheets occurring within a year. The appropriate asynchronous coupling timestep will depend on the modelling context and the revised version of the paper makes it clear that the user needs to carry out sensitivity tests to determine the appropriate timestep.

The numerical stability of BrAHMs comes from both the Heun/Leapfrog-trapezoidal scheme and CFL dependent dynamic timestep setting. The dynamic time stepping that ensures CFL conditions are respected (as already indicated in the abstract). We have also reformulated a relevant section of the text to make this clearer. The beginning of Section 4 now states:

“The appendix provides detail on the spatial discretization of the equations and the time stepping using the Heun/Leapfrog-trapezoidal scheme. This scheme is second order accurate. The model dynamically adjusts its internal timestep to ensure the CFL criteria is satisfied (with timestep set to $F_{CFL} \times$ minimum CFL timestep). Both of these features contribute to the stability of the model.”

Referee How does the rapid drainage mechanism, and its impact on the effective pressure, impact the system?

Authors The tunnel solver drains the water (the distributed system is paused temporarily... see previous discussion). Once the tunnel solver is finished, the model system continues to run with the new water levels. Since the tunnel solver transports water down hydraulic potentials, hydraulic potential gradients will be reduced under tunnel solver action and therefore numerical stability will not be decreased for the Darcy flow solver (and likely increased).

Referee Does it give rise to rapid oscillations in streaming behavior?

Authors This is beyond the bounds of this paper. This paper is about the hydrology model, BrAHMS. It does not examine 2-way coupled dynamics. The tunnel solver will evacuate all water from affected grid-cells, so this would shutdown streaming if the basal drag had relevant water pressure dependence.

Referee Are any of these non-linear couplings and effects sensitive to the spatial/temporal discretization?

Authors The above described convergence tests show minimal sensitivity aside from a low resolution bias that is eliminated in the medium resolution run. Furthermore, the figure 6 sensitivity plots (for North American ice sheet tests) shows no discernable sensitivity to F_{CFL} over a 0.1 to 0.9 range (cognizant that the metric is a bulk measure, ie total water volume).

Referee If the ISM is forcing the hydromodel at each ISM time step - then how sensitive is the hydro model to the initial conditions? In particular the distribution of basal water. There are mentions of stability and robust solutions in the text, but they are just that - mentions. I'd like to see more on this, to assure the reader the results are stable across discretizations of space and time.

Authors The added oscillating water supply convergence test addresses the stability issue. Furthermore, for any glacial cycle modelling, the coupled ISM and basal hydrology would presumably start with the same initial conditions of no water (unless working from a restart file). So we do not understand the point of this question.

Referee Continuing with the issue of reproducibility, the code should be more accessible. Publication should include a URL repository where the code can be accessed. Tag the branch used in the publication

Authors As noted above, this has now been done.

Referee The distinctive features of this model need to be contrasted to the wealth of recent publications in the area of subglacial hydrology. (eg Schoof, Werder, Hewitt, and Hoffmann). There is a need for a continental scale model like this, but it should be established by documenting how and why other models are not suitable to this task. Similarly, the authors claim that other continental scale models do not include sub-glacial hydrology. I don't think this is true. PISM has some accounting for basal water, and so does SICPOLIS. Pollard and DeConto treat hydrology as it relates to sediment. ISSM and Elmer ICE both have hydrology models. CISM contains an ISM, and it contains some subglacial hydrological components developed by Hoffman. It is possible that none of these are good tools for continental/glacial cycle scale studies that are the specialty of Tarasov, but this should be argued persuasively in the paper. Much more should be done here.

Authors Clearly, BraHMs is not the most complex model that exists. It is designed to provide both distributed and channelized flow for large ensemble continental-scale modelling over glacial cycles, and is therefore meant to be fast and robust. The continental scale models listed above (used in CISM and PISM and SICOPOLIS, we could find no description of Pollard and DeConto’s treatment), either lack channelized flow or are otherwise too computationally expensive for our stated context.

Dr. Johnson’s comments also make clear that our original submission inadequately describe the design context of BraHMs. Revised and new paragraphs briefly describing these models and clarifying BraHMs design criteria/context have been added:

“Subglacial basal hydrology is a potentially critical control on basal drag and therefore ice streaming. It is also a clear control for subglacial sediment production/transport/deposition processes (Benn and Evans, 2010; Melanson, 2012). Subglacial water flows can also leave clear geological imprints. For instance, eskers are a geological footprint of past channelized subglacial drainage (Benn and Evans, 2010) that can in turn be used to better constrain past ice sheet evolution...

Bueler and van Pelt (2015) developed a subglacial hydrology model for the PISM model. Similar to BraHMs, their hydrology model simulates the subglacial water flow using a Darcian flux and limit the basal pressure to the ice overburden pressure (due to long time scales). Their model consists of several basal components, including a water-filled till layer and an effective cavity-based water storage. The model presented by Bueler and van Pelt (2015) does not have any channelized flow mechanisms, which is a major source of water flow/drainage beneath ice sheets, as discussed in Section 2. It is unclear as to how well this model compares to BraHMs in terms of speed due to the vast difference in model grid and computer usage. The model of Bueler and van Pelt (2015) incorporates the opening and closure of cavities which is necessary for high resolution modelling of present-day glaciers and ice sheets, but can be replaced by low-resolution physics for longer time scales and larger spatial scales, where data is sparse. The incorporation of cavity opening and closure would require computation resources that may be prohibitive for long-term, continental-scale models.

Calov et al. (2018) uses SICOPOLIS in their study on the future sea level contributions of the Greenland ice sheet. The basal hydrology model used in SICOPOLIS is for large-scale grid cells like BraHMs. The model assumes a thin film of water, resulting in zero effective pressure (meaning the hydraulic potential is simply related to bed elevation and ice sheet thickness). The model first determines a down gradient path from each grid cell to the ocean/boundary. Any depressions are filled with water (akin to lakes) and is given a small gradient so the down gradient solver can continue. From this the water level can be calculated based on the input of meltwater and the hydraulic gradient. This is a rather different approach than BraHMs as BraHMs attempts to model the physical evolution of the water, allowing for varied flow of water, non-zero effective pressures, and the time-evolution of lake growth under Darcy flow.

Hoffman and Price (2014) also developed a physically-based model to be used as a part of CISM. This model is rather detailed in combining cavity formation (providing water storage) and a method to form Röthlisberger channelized flow. Analysis of

this model looked at fine (100 m x 100m) grids and for shorter periods of time (on the order of days). While they do not mention the speed of their model, given that they model the growth and decay of channels, it is unlikely that the model would be suitable for longer time scales as the time stepping must be small to capture the transient nature of channelized flow. Likewise, for larger grid sizes, the effects of distributed systems (cavities, thin films, etc..) can be averaged out, saving on computation with minimal loss of generality in the results.”

Referee Axially symmetric experiments should be presented with bivariate plots. Not much is gained by inspecting these highly symmetric solutions. Something is lost in the color map, which might hide high frequency oscillations in the solution.

Authors The plots are left unchanged (aside from editing the colours). The aim of these plots were to show the symmetry, as that was the point of the series. The grouping of the colours (as opposed to a continuous scale), was to aid in quickly identifying zones of water height. While not presented in the paper (for brevity), a continuous plot of the data shows no such oscillations exist. The lack of spurious oscillations is even clearer in the now added resolution sensitivity test with time varying meltwater inputs.

Referee The focus for the sensitivity study should be streaming behavior, that is the point of the hydro model. Averaging quantities across the entire ice sheet diminishes the importance of changes to parameters. Why not consider the impact of parameter changes to a set of grid cells that are characterized by low effective pressure at 18 and 22 kybp?

Authors Our clarification of design criteria hopefully makes it clearer that the point of the basal hydrology model is not just for basal drag (ice streaming), but also for subglacial sediment process modelling and for ice sheet evolution constraint (eg, via tunnel correlation to eskers). Yes, a bulk metric like total water volume hides spatial detail but it still gives a first order measure of model response to parametric uncertainty. Eg, 4 of the 11 parameters have no discernable impact on mean basal water pressure and the net rate of subglacial water evacuation from the ice sheet. We are skeptical that focusing on a few grid cells would be of worthwhile value especially when other uncertainties in interpretation would arise (such as the impact of the cell choice and whether some of the sensitivities might be due to one grid cell changes in flow routing taking flow outside the cell mask).

To our mind, the better sensitivity test would still use bulk measures but a larger set thereof in the context of fully coupled ice sheet and basal hydrology modelling. Feedbacks between the two models could strongly amplify parameter sensitivities hidden by one way coupled studies. This is again beyond the bounds of this study but is the intent of ongoing work in Tarasov’s group. The following has been added to the end of the relevant section.

“As a caveat, these initial sensitivity tests likely hide spatially localized parametric sensitivities. More critically, feedbacks in a two-way coupled ice sheet and basal hydrology model configuration may strongly change relative sensitivities to basal hydrology parameters. These analyses will be better placed in a future study examining fully coupled dynamics.”

References

- Benn, D. I. and Evans, D. J. A. (2010). *Glaciers and Glaciation*. Hodder Education, London, 2nd edition.
- Bueler, E. and van Pelt, W. (2015). Mass-conserving subglacial hydrology in the parallel ice sheet model version 0.6. *Geoscientific Model Development*, 8:1613–1635.
- Calov, R., Beyer, S., Greve, R., Beckmann, J., Willeit, M., Kleiner, T., Rückamp, M., Humbert, A., and Ganopolski, A. (2018). Simulation of the future sea level contribution of greenland with a new glacial system model. *The Cryosphere Discussions*, 2018:1–37.
- Flowers, G. E. (2000). *A multicomponent coupled model of glacier hydrology*. PhD thesis, The University of British Columbia.
- Hoffman, M. J. and Price, S. (2014). Feedbacks between coupled subglacial hydrology and glacier dynamics. *Journal of Geophysical Research: Earth Surface*, 119:414–436.
- Melanson, A. (2012). Numerical modelling of subglacial erosion and sediment transport and its application to the north american ice sheets over the last glacial cycle. Unpublished masters thesis, Memorial University of Newfoundland, St. John's, Canada.
- Tarasov, L. and Peltier, W. R. (2006). A calibrated deglacial drainage chronology for the north american continent: evidence of an arctic trigger for the younger dryas. *Quaternary Science Review*, 25:659–688.
- Zwally, H. J., Abdalati, W., Herring, T., Larson, K., Saba, J., and Steffen, K. (2002). Surface melt-induced acceleration of greenland ice-sheet flow. *Science*, 297(5579):218–222.

BrAHMs V1.0: A fast, physically-based subglacial hydrology model for continental-scale application.

Mark Kavanagh¹ and Lev Tarasov²

¹Faculty of Engineering and Applied Science, Memorial University of Newfoundland, St. John's, NL, Canada

²Dept. of Physics and Physical Oceanography, Memorial University of Newfoundland, St. John's, NL, Canada

Correspondence to: Lev Tarasov

(lev@mun.ca)

Abstract. We present BrAHMs (Basal Hydrology Model): a ~~new~~ physically-based basal hydrology model which represents water flow using Darcian flow in the distributed drainage regime and a fast down-gradient solver in the channelized regime. Switching from distributed to channelized drainage occurs when appropriate flow conditions are met. The model is designed for long-term integrations of continental ice sheets. The Darcian flow is simulated with a robust combination of the Heun and leapfrog-trapezoidal predictor-corrector schemes. These numerical schemes are applied to a set of flux-conserving equations cast over a staggered grid with water thickness at the centres and fluxes defined at the interface. Basal conditions (e.g. till thickness, hydraulic conductivity) are parameterized so the model is adaptable to a variety of ice sheets. Given the intended scales, basal water pressure is limited to ice overburden pressure, and dynamic time-stepping is used to ensure that the CFL condition is met for numerical stability.

The model is validated with a synthetic ice sheet geometry and different bed topographies to test basic water flow properties and mass conservation. Synthetic ice sheet tests show that the model behaves as expected with water flowing down-gradient, forming lakes in a potential well or reaching a terminus and exiting the ice sheet. Channel formation occurs periodically over different sections of the ice sheet and, when extensive, ~~display~~ displays the arborescent configuration expected of R othlisberger Channels. The model is also shown to be stable under high frequency oscillatory meltwater inputs.

1 Introduction

Subglacial basal hydrology is a potentially critical control on basal drag and therefore ice streaming ~~as well as~~. It is also a clear control for subglacial sediment production/transport processes (Benn and Evans, 2010). However, to date this component is absent in most continental-scale ice sheet models. deposition processes (Benn and Evans, 2010; Melanson, 2012). Subglacial water flows can also leave clear geological imprints. For instance, eskers are a geological footprint of past channelized subglacial drainage (Benn and Evans, 2010) that can in turn be used to better constrain past ice sheet evolution.

Many models relating to basal hydrology are either meant for short time scales (e.g., on the order of weeks to centuries), or are missing a key component of basal water flow (channelized flow). We present a computationally-fast, ~~r~~-physics-based subglacial ~~hydrological hydrology~~ model for continental-scale ~~glacial systems modelling ice sheet systems modelling over~~

glacial cycles that is meant to capture the relevant features of basal water flow for the above three contexts (including both distributed and channelized flow components).

~~The context of continental-scale subglacial hydrology over glacial cycle timescales places a higher~~ This large spatio-temporal scale context places a high requirement on computational speed and justifies certain simplifications compared to glacier-scale models (Bartholomaus et al., 2011; Werder et al., 2013; de Fleurian et al., 2016). Glacial cycle models do not resolve daily or even weekly mean changes in basal drag and spatial scales are relatively coarse (10-50 km). As such, the detailed physics of cavity evolution and tunnel formation cannot be resolved (given their dependence on basal sliding velocities) nor, we posit, need they be resolved. The latter is justified on the large space-time scale difference between cavities and model grid. Furthermore, the lack of adequate constraint data for this scale dictates a more simplified approach to minimize the number of tunable parameters.

Only a few subglacial hydrology models have been described in the literature for continental-scale ice sheets. Of these models, some of the more advanced include the models developed by Flowers (2000, 2008), Johnson (2002), Arnold and Sharp (2002), Goeller et al. (2013), Bueler and van Pelt (2015), and Gudlaugsson et al. (2017). These models take various approaches to simulate the flow of basal water using physically-based equations.

The original work of Flowers (2000) developed a physics-based, multi-component model that included englacial, subglacial, and groundwater (aquifer) hydrology. The subglacial component of this model simulated the flow of water as a distributed system via Darcian flux. The equations were cast in a finite-volume discretization (Patankar, 1980) and advanced in time using an iterative Newton-Krylov method on a 40x40 metre grid. Later work on that model included a channelized flow that coexisted alongside the distributed system and allowed exchange between the two systems (Flowers, 2008).

Johnson (2002) developed a continental-scale model with a 5 km grid resolution. In this model, the water is transported underneath the ice sheet via a tunnel (channelized) system solved using the turbulent Manning pipe flow equation. The aquifer in this model was simply a parameter that drained a percentage of the available water in the grid cell. The equations of Johnson (2002) were solved using the Galerkin method for finite-element discretization.

The work of Arnold and Sharp (2002) attempts to model the flow of water with both distributed and channelized systems. The model determines the type of system operating in each grid cell based on the water flux in the grid cell. When the flux allows the grid cell to exceed the “orifice stability parameter” (Kamb, 1987), then the grid cell has a channelized system, otherwise, it is a distributed system. The model integrates the basal water fluxes down the hydraulic potential. From the fluxes, the model determines the drainage system present, which is a different method employed from those used in the previous two models and the one developed herein.

Goeller et al. (2013) considers a distributed system that covers the base of the ice sheet. As a simplification, the basal water pressure is assumed to be approximately equal to the ice overburden pressure. This simplifies the hydraulic gradient to follow the bed and ice geometries. Water flux out of a grid cell is limited in the case that it would lead to negative water by applying a multiplier to the out-fluxes that lower their values to the desired limit. Their model does not consider any channelized system. A similar model was used in Gudlaugsson et al. (2017) applied to the Eurasian ice sheets that covered Northern Europe and parts of Asia during the last ice age.

Carter et al. (2017) created a 1D-model for the simulation of lake drainage beneath Antarctica. Their model did a detailed comparison to the rate and frequency of water drainage from a subglacial lake via R-Channels and canals cut into the underlying sediment. Their model showed that the canal drainage system provided better estimations for cold ice, whereas R-Channels would be more common in warm, temperate ice, such as near the terminus of Greenland that is also fed by surface run-off.

5 Similar conclusions were drawn from Dow et al. (2015).

The basal hydrology model described here combines features from the above models to create a relatively fast subglacial hydrology model for continental-scale contexts. Following the work of Arnold and Sharp (2002), the basal drainage system is allowed to have both distributed and channelized drainage systems with a condition for determining which basal system is present. While conceptually similar, the implementation is rather different. In this model, the drainage system is initially assumed to be distributed, as in Flowers (2000), with basal fluxes computed under the same Darcy flow approximation. The distributed system in a grid cell is switched to a channelized drainage system when the flux exceeds a critical value developed in Schoof (2010). The switching condition explained in Schoof (2010) is for a R-Channel, but the model can allow for other conditions to be used that better suit other channelized drainage types. Starting at the grid cells that meet the switching condition, channelized systems are created by following the path of steepest hydraulic gradient until a potential well or exit is reached. R-Channel drainage is imposed instantaneously. For developmental expediency, the aquifer physics of Flowers (2000) are replaced with the drainage parameter from Johnson (2002).

Bueler and van Pelt (2015) developed a subglacial hydrology model for the PISM model. Similar to BraHMs, their hydrology model simulates the subglacial water flow using a Darcian flux and limit the basal pressure to the ice overburden pressure (due to long time scales). Their model consists of several basal components, including a water-filled till layer and an effective cavity-based water storage. The model presented by Bueler and van Pelt (2015) does not have any channelized flow mechanisms, which is a major source of water flow/drainage beneath ice sheets, as discussed in Section 2. It is unclear as to how well this model compares to BrAHMs in terms of speed due to the vast difference in model grid and computer usage. The model of Bueler and van Pelt (2015) incorporates the opening and closure of cavities which is necessary for high resolution modelling of present-day glaciers and ice sheets, but can be replaced by low-resolution physics for longer time scales and larger spatial scales, where data is sparse. The incorporation of cavity opening and closure would require computation resources that may be prohibitive for long-term, continental-scale models.

Calov et al. (2018) uses SICOPOLIS in their study on the future sea level contributions of the Greenland ice sheet. The basal hydrology model used in SICOPOLIS is for large-scale grid cells like BrAHMS. The model assumes a thin film of water, resulting in zero effective pressure (meaning the hydraulic potential is simply related to bed elevation and ice sheet thickness). The model first determines a down gradient path from each grid cell to the ocean/boundary. Any depressions are filled with water (akin to lakes) and is given a small gradient so the down gradient solver can continue. From this the water level can be calculated based on the input of meltwater and the hydraulic gradient. This is a rather different approach than BrAHMs as BraHMs attempts to model the physical evolution of the water, allowing for varied flow of water, non-zero effective pressures, and the time-evolution of lake growth under Darcy flow.

Hoffman and Price (2014) also developed a physically-based model to be used as a part of CISM. This model is rather detailed in combining cavity formation (providing water storage) and a method to form R othlisberger channelized flow. Analysis of this model looked at fine (100 m x 100m) grids and for shorter periods of time (on the order of days). While they do not mention the speed of their model, given that they model the growth and decay of channels, it is unlikely that the model would be suitable for longer time scales as the time stepping must be small to capture the transient nature of channelized flow. Likewise, for larger grid sizes, the effects of distributed systems (cavities, thin films, etc.) can be averaged out, saving on computation with minimal lost of generality in the results.

A distinguishing feature of this model is the numerical time stepping scheme. The model uses a combination of Heun's method and the leapfrog-trapezoidal schemes, which are iterative predictor-corrector schemes. The latter scheme has been used in the more demanding case of ocean modelling (Shchepetkin and McWilliams, 2005). The combination of these two methods (see appendix A2) proves to be robust and stable with quick convergence to the final solution.

The hydrological model has been incorporated into the Glacial System Model (Tarasov and Peltier, 1999; Tarasov et al., 2012). Below, we further detail and validate the subglacial model. We document water pressure and thickness sensitivity to hydrological parameters. Example results for the past North American ice complex are presented. Conclusions are summarized in Section 7.

2 Subglacial Drainage Systems

Subglacial drainage systems can be ~~characterised~~ characterized as belonging to one of two categories.

2.1 Distributed Drainage System

There are several ways that water can be distributed underneath the ice: Water can be stored via a thin film (Weertman, 1972) between the bed and the ice; water can be stored on the lee side of bed protrusions to form a linked-cavity system (Kamb et al., 1985); braided canals (Clark and Walder, 1994) are formed as water cuts into underlying sediment; and water can flow through a porous medium via Darcian flow (Flowers, 2000). Distributed systems are inefficient at draining water. These types of systems, therefore, lead to a build-up of basal water pressure under the ice sheet.

2.2 Channelized Drainage Systems

The channelized drainage system is, to a certain degree, the obverse of the distributed drainage system. This system has a lot of water concentrated in a small area of the glacial bed and transports water quickly. Since channelized systems are efficient at draining water, they tend to decrease the water pressure, thereby increasing basal friction between the ice and the bed. Thus, channelized systems are associated with slow flowing ice regimes and are often seasonal. Bartholomew et al. (2011) provides evidence that sliding velocities near the margins of the Greenland Ice Sheet are lower in the late summer than earlier in the summer, likely as an indication of a switch from a distributed to a channelized drainage system. There are two types

of channelized drainage systems: Nye Channels that are incised down into the substrate (Walder and Hallet, 1979), and R-channels that are incised up into the ice (Röthlisberger, 1972).

3 Glacial System Model

For the analyses presented herein, the subglacial hydrology model is passively coupled to the Glacial Systems Model (GSM).

5 Full two-way coupling was turned off to isolate the dynamical response of the basal hydrology model. The GSM is composed of a thermo-mechanically coupled ice sheet model (using the shallow ice approximation), locally 1D diffusive permafrost resolving bed thermal model (Tarasov and Peltier, 2007), fully coupled diagnostic surface drainage and lake storage module (Tarasov and Peltier, 2006), visco-elastic bedrock response, positive degree-day surface mass-balance with refreezing, and both marine and lacustrine calving parameterizations (Tarasov and Peltier, 1999, 2002, 2004; Tarasov et al., 2012).

10 The evolving temperature field (T) of the ice sheet is determined from conservation of energy:

$$\rho_i c_i(T) \frac{\partial T}{\partial t} = \frac{\partial}{\partial z} \left\{ K_T(T) \frac{\partial T}{\partial z} \right\} - \rho_i c_i(T) \mathbf{u} \cdot \nabla T + E_d \quad (1)$$

with c_i representing the specific heat of ice, ρ_i is the density of ice (910 kg/m³), K_T is the thermal conductivity of ice, \mathbf{u} is the sliding velocity of the ice, and E_d is the heat created from the deformation of ice. As is standard, the horizontal diffusion component is ignored given the scales involved. The ~~ice thermodynamics is fully coupled to a 1D (vertical heat diffusion)~~

15 ~~bed thermal model~~ fully coupled ice and bed thermodynamics are solved via an implicit finite volume discretization in the vertical and explicitly for the horizontal advection component of the ice thermodynamics. Basal temperature is limited to a maximum of the pressure melting point, with excess heat used to melt basal ice.

Basal sliding uses Weertman type sliding relations (i.e., function of driving stress) with power law 3 for hard bed and power law 1 for soft bed with sliding onset linearly ramped up starting from 0.2° C below the pressure melting point.

20 4 Subglacial Hydrology Model

For brevity and clarity, this section discusses the physical and numerical concepts of the hydrology model developed in ~~this study~~ Kavanagh (2012). The appendix provides ~~detail details~~ on the spatial discretization of the equations and the time stepping using the Heun/Leapfrog-trapezoidal scheme. This scheme is second order accurate. The model dynamically adjusts its internal timestep to ensure the CFL criteria is satisfied (with timestep set to $F_{CFL} \times$ minimum CFL timestep). Both of these features

25 contribute to the stability of the model.

The dynamical evolution of distributed drainage is extracted from the mass continuity equation. Written in conservative form, the equation is

$$\frac{\partial w}{\partial t} + \nabla \cdot \mathbf{Q} = \dot{b} + d_{s;a} \quad (2)$$

with w being the water thickness, τ

\dot{b} is the meltwater source from the ice (negative if water refreezes to the ice), For the scope of this initial investigation, we assume no transmission of ice surface melt to the base. Observationally this is known to be false (Zwally et al., 2002), but the dependence on ice thickness, ice temperature profile, and ice strain profile makes this an issue deserving of its own focused study. The other source term, $d_{s;a}$, represents the drainage into the underlying aquifer, and,

5 The water flux, Q is the water flux, is given by Darcy's law:

$$Q = -\frac{Kw}{\rho_w g} \nabla \{P + \rho_w g z_b\} \quad (3)$$

where K is the hydraulic conductivity of the underlying till, ρ_w is the density of water (1000 kg/m³), g is the acceleration due to gravity (9.81 m/s²), z_b is the topographical bed elevation, and P is the water pressure beneath the ice. ~~We use~~

10 The distributed flow of water beneath the ice sheet can come in many forms (such as cavities, Nye-channels, thin film, and flow through porous sediment). It is unclear however, the extent to which the details of these flow mechanisms matter under large spatial scale separation and mechanistic heterogeneity. We therefore use the large difference in scale between glacial cycle ice sheet model grid cells (O(10km)) and distributed sub-glacial flow structures (O(10 m) or less) to justify the choice of the diffusive Darcy flow equation for BrAHMs.

We use an empirical relation for water pressure from (Flowers, 2000, page 68) given by

$$15 \quad P = P_I \min \left[\left(\frac{w}{h_c} \right)^{7/2}, 1 \right] \quad (4)$$

where P_I is the ice overburden pressure. P is limited to ice overburden pressure when ~~$w > h_c w > h_c$~~ . Saturated sediment water thickness, h_c , equals till thickness times porosity and is effectively the water thickness that the till can hold before becoming over-saturated (at which point the excess water is stored between the till and the ice). Flowers (2000) derived this equation by considering sub-grid variation in bed elevation and associated sediment thickness (and therefore water thickness, all for the

20 context of 40 m x 40 m grid-cell modelling of Trapridge Glacier). A further consideration (without the overburden limit) was that the nonlinearity would address dynamic adjustments in porosity and prevent stiffness in the dynamic equations caused by unrealistic heterogeneity in the modelled water distribution. Though derived for glacier-scale flow through a heterogenous macroporous sediment layer, our working hypothesis is that this empirical relation approximately captures large scale pressure response for subglacial distributed flow through any heterogenous structure (be it a mix of cavities of different size, patchy

25 sediment, Nye channels...). The limiting of water pressure to overburden is justified by the low likelihood of water pressure exceeding the overburden pressure for any significant amount of time on glacial cycle timestep scales. ~~The pressure in this model has been limited to overburden pressure due to the large time scales involved in modelling over a full glacial cycle.~~

The channelized system is likened to a system of R-Channels (tunnels incised upward into the ice). Numerically, the model first calculates the water flux from the Darcian flow (equation 3). Channelized flow is invoked when that flux exceeds a critical

30 value for the stability of the distributed regime given in Schoof (2010) as

$$|Q| < \frac{|\mathbf{u}_b| Z_h}{(\rho_i L)^{-1} (\alpha - 1) \nabla (P + \rho_w g z)} \quad (5)$$

where u_b is the basal sliding velocity of ice, Z_h is the bedrock protrusion height, L is the latent heat of fusion of ice, and $\alpha = 5/4$.

To simulate the change between different drainage systems, at regular user-defined intervals, ~~grid~~ the channel flow subroutine is called. Grid cells for which the water flux ~~exceeds~~ exceeds the distributed flow stability criterion (equation 5) are marked as tunnel ~~cells. During these intervals, the distributed flow of water is paused. From here the model employs a~~ grid cells. A down hydraulic gradient solver (Tarasov and Peltier, 2006) ~~that looks at the neighbours of a tunnel cell and allows water to flow instantaneously~~ instantaneously¹ moves water down the path of steepest potential gradient (channelizing grid cells along that path) until there is no grid cell with a lower hydraulic potential (so forms subglacial lake) or the water exits the ice sheet. ~~Once the hydraulic gradient solver~~ The solver considers all adjacent grid cells (including corner adjacency) when searching for the lowest hydraulic potential. Once the tunnel water transport is complete, the tunnels are assumed closed and the distributed flow algorithm continues.

4.1 Model coupling

BrAHMs is highly modular and designed for asynchronous coupling at user specified timesteps. Aside from basic grid information, for each call, the hydrology model requires the following input fields: ice thickness, basal elevation, sea-level, basal ice temperature, basal melt rate, and basal sliding velocity of the ice. For two-way coupling, the relevant outputs from BrAHMS are basal water pressure and thickness.

Given that there is no lower limit to coupling timesteps, synchronous coupling can also be implemented. For two-way coupling, sensitivity tests are recommended to determine the appropriate coupling timestep for the relevant context.

5 **Model Validation**

The basal hydrology model was subject to several validation tests with synthetic axisymmetric ice sheets. The continental-scale ice sheet model used in ~~most of these tests has a parabolic profile~~ these tests have a profile that follows a normal distribution from the centre of the ice sheet to the terminus and is symmetric around the centre (i.e., ~~bowl-shaped~~ bell-shaped ice sheet), according to the equation

$$\underline{H(d) \equiv \frac{(-4H_{mid} + 2H_{max} + 2H_{min}) \left(\frac{d}{r_t}\right)^2 + (4H_{mid} - 3H_{max} - H_{min}) \left(\frac{d}{r_t}\right) + H_{max}}{\quad} \quad \text{For } (d < r_t)}$$

$$H(d) = (H_{max} - H_{min}) * \exp \left[- \left(\frac{d}{\sqrt{2}H_d r} \right)^2 \right] + H_{min} \quad \text{For } (d < r_t) \quad (6)$$

where H_{max} is the ice thickness at the ice divide (the centre), H_{min} is the thickness at the terminus, ~~H_{mid} is the thickness~~ at half-way down the glacier (used to define how sharply the glacier decreases from H_{max} to H_{min}), H_d is a normalized (by

¹During the tunnel flow, no model time ~~will pass~~ is stepped as tunnel drainage ~~will happen on shorter time scales than considered~~ is computed diagnostically.

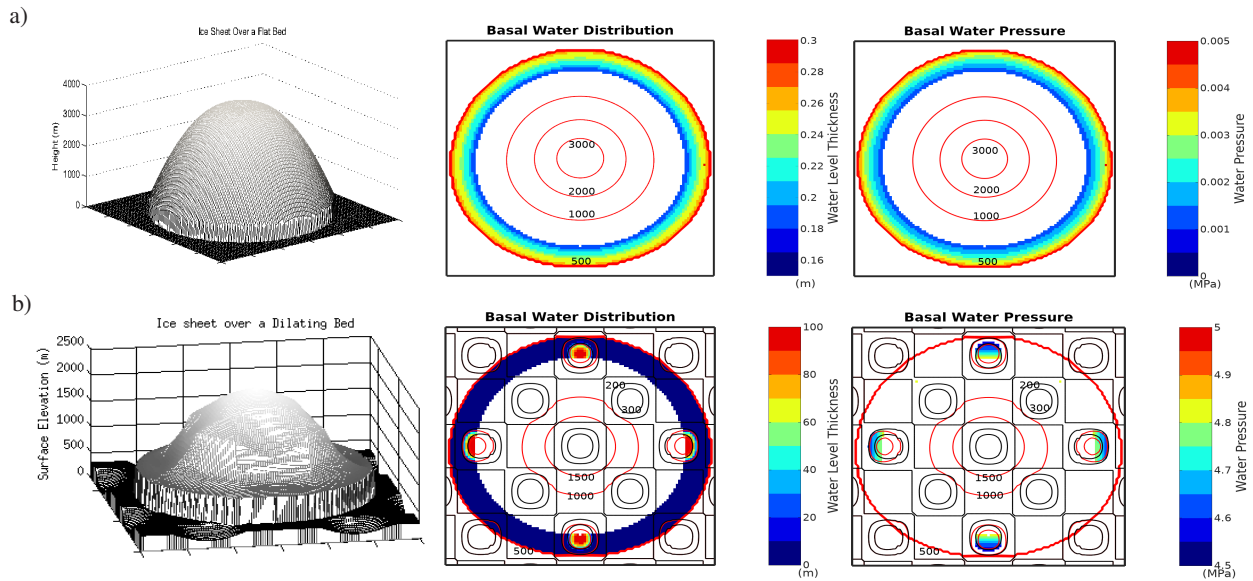


Figure 1. Simple synthetic ice sheet testing scenarios. a) plots a dome-shaped ice sheet placed on a flat bed resulting in symmetric results. The ~~anti-symmetric~~ ~~slightly asymmetric~~ results in b) are due to a known issue with the tunnel solver being slightly asymmetric. The results in b) show the ice dome on a dilating bed. Lake formation occurs where the ice sheet is relatively flat and the topography dips.

radius) standard deviation that defines how the profile spreads out, r_t is the distance to the terminus, and d is the distance from the ice divide, and r_t is the distance to the terminus given by

$$d(\theta, \phi) = \cos^{-1} [\sin(\theta_c) \sin(\theta) + \cos(\theta_c) \cos(\theta) \cos(\phi - \phi_c)] R_e \quad (7)$$

where θ and ϕ are the latitude and longitude, and R_e is the radius of the Earth (parameter values listed in Table 1). It should be noted that the model is based on spherical polar coordinates (as it is designed for modelling large sections of the Earth's surface), and so the figures presented here are akin to the Mercator projection² (mapping polar coordinates to Cartesian).

Tables 1 and 2, at the end of this section, list the parameters used in the validation analysis. For Table 2, the values used for the validation tests are listed in the "Value" column.

In the model runs, the ice sheets starts from the ground (at $t_{now} = 0$) and grows until 50% of the model ~~runtime~~ ~~run-time~~ (t_{half}). The ice thickness grows according to eqn. 6 multiplied by the ratio t_{now}/t_{half} . When t_{now} is greater than t_{half} , the ice sheet is at its maximum size (as shown in fig. 1a).

To facilitate the growth of the subglacial hydraulic system, a constant melting at the base of the ice is applied in a 'ring' of uniform thickness near the terminus, with 0.6 m/yr of melting at the terminus and decreasing linearly to 0.4 m/yr at the inside of the 'ring'. However, if there is no ice where the ring of meltwater is defined, then the value of melt, M_d , is set to zero until

²set ~~around 40~~ ~~between 17-40~~°N for the simplicity of avoiding any issues ~~near such as having negative values for generating the poles like crossing the International Date Line~~ ~~synthetic geometry~~.

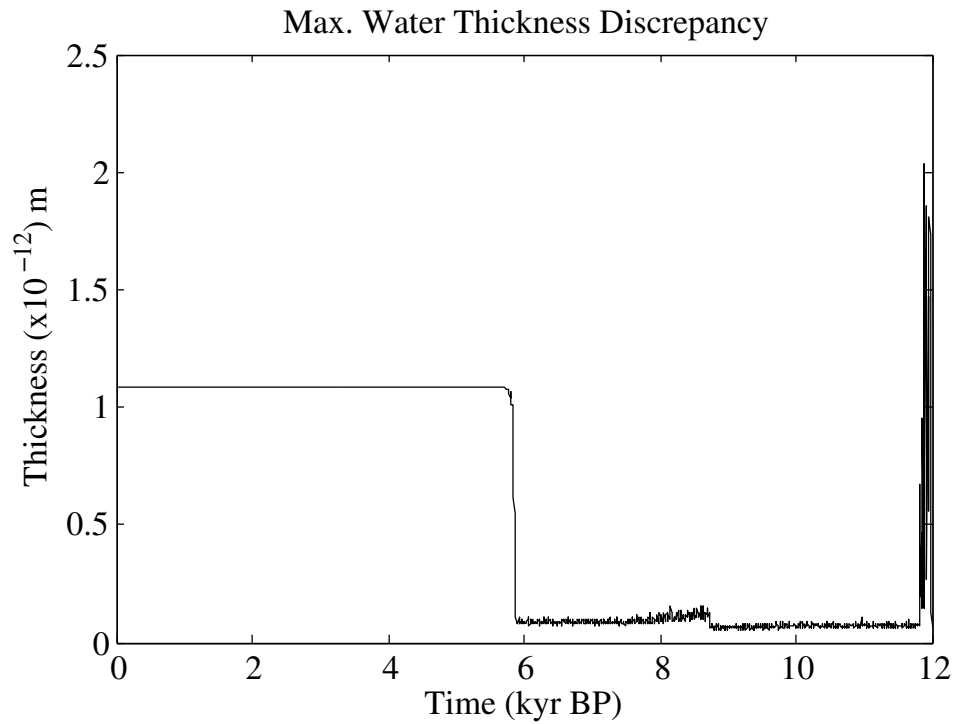


Figure 2. Maximum mass balance discrepancy over time.

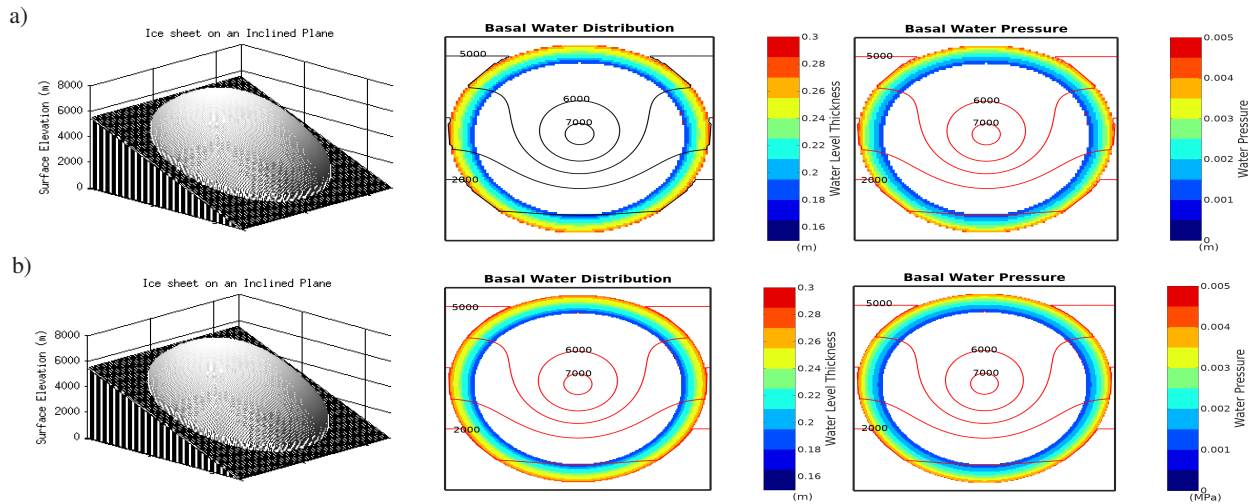


Figure 3. Plots of the ~~dome-shaped~~ bell-shaped ice sheet on an inclined plane. a) uses the same resolution as the runs in Figure 1. b) uses the same set-up as a), but the resolution has been doubled. As a result of the ice sheet being placed on an inclined plane, water flows more easily downhill as evident of water build up at the top of the plane in both runs.

there is ice, in which case it would take the value defined by the equation

$$M_d(d) = M_t - (M_t - M_i) \left(\frac{r_t - d}{c_r} \right) \quad \text{For } (r_t - c_r < d < r_t) \quad (8)$$

where M_t is the melt rate at the terminus, M_i is the melt rate on the inside of the melt ring, and c_r is the thickness of the ring from the terminus into the innermost melting point.

- 5 For a ~~dome-shaped~~ bell-shaped ice sheet on a flat surface (see Figure 1a), the model is mass conserving on the order of 10^{-12} m of water thickness within a grid cell (Figure 1a2). For this case, the water drains radially away from the ice sheet under the influence of the basal water pressure. ~~There is a slight asymmetry that arises in the solution. Under perfect symmetries, the tunnel solver will break symmetry in its down-slope search algorithm. While the results are not shown here for brevity, when the tunnel solver is turned off, the results do not show any discernible asymmetry. The asymmetry due to the inclusion of the~~
 10 ~~tunnel solver is unlikely to be an issue in more realistic cases where the ice sheet would lack such symmetry.~~ The average water thickness was 0.0801 ± 0.1357 m for the grid cells that contained water.

The next test placed an ice sheet ~~flattened near the edges~~ on a dilating (sinusoidally-wavy) bed ~~given by~~

$$z(\theta, \phi) = \min \left[(Z_{min}) \cos \left(\frac{(\theta - \theta_C) R_e}{5} \right) \cos \left(\frac{(\phi - \phi_C) R_e}{5} \right), 0 \right] \quad (9)$$

where $Z_{min} = -300$ m is the maximum depth of the bed.

- 15 The ice sheet for this study, as seen in fig. 1b, is ~~different from the others because it uses a decaying exponential curve to~~ similar to the other ice sheets, but has its centre height (H_{max}) lowered from 3500 m to 2000 m to smooth out the ice sheet toward the terminus, as the previous ~~dome profile~~ was too steep - leading to no lake formations. ~~The ice sheet profile is given by the original sheet from eqn. 6, with the modification-~~

$$\underline{H(d) = \frac{\left(\frac{(H_s - H_d)^2}{(H_{min} + H_s - 2H_d)} \right) \exp \left[\frac{-1}{c_c} \log \left(\frac{(H_s - H_d)^2}{(H_{min} + H_s - 2H_d)^2} \right) \times (d + c_c - r_t) + \frac{(H_{min} H_s - H_d^2)}{(H_{min} + H_s - 2H_d)} \right]}{\text{For } (r_t - c_c < d < r_t)}$$

20

For $(r_t - c_c < d < r_t)$

~~with H_s is the ice thickness at the top of the curve, H_d is the ice thickness halfway down the curve, c_c is the radial length of the curve (akin to melt 'ring' thickness above)-~~

- Figure 1b shows that in areas where the ice is relatively flat and there is a dip in the bed, the hydrology model does allow for the build-up of water into subglacial lakes. The topographical depressions (the magenta-coloured circles in Figure 1b are
 25 300 m deep at the centre and rise to the otherwise flat topography (set at 0 m). The lakes, on the order of ~~10-100~~ m, are ~~much~~ smaller than the topographical depressions due to the build-up of water pressure. The high water pressure eventually allows tunnel formation in the lakes, which periodically drains the water ~~as is seen in the northern and eastern lakes.~~

- There is a slight asymmetry that arises in the solution. Under perfect symmetries, the tunnel solver will break symmetry in its down-slope search algorithm. While the results are not shown here for brevity, when the tunnel solver is turned off, the
 30 results do not show any discernible asymmetry. The asymmetry due to the inclusion of the tunnel solver is unlikely to be an issue in more realistic cases where the ice sheet would lack such symmetry.

Parameter	Flat Bed Test	Incline Test	Dilating Bed Test
ϕ_c	-90°		
θ_c	17.71°		
θ_N	40°		
H_{max}	3500 m	<u>2000 m</u>	
H_{min}	500 m		
H_d	0.3 m		
T_i	1592.8 km		
R_e	6371 km		
M_t	0.6 m/yr		
M_i	0.4 m/yr		
c_r	318.55 km		
Z_{min}	0 m		<u>-300 m</u>
Z_{max}	<u>0 m</u>	<u>6000 m</u>	<u>0 m</u>

Table 1. Model parameters used in validation studies.

Next, the ice dome was placed on an incline, given by

$$d_N = \cos^{-1}[\sin(\theta_N) \sin(\theta) + \cos(\theta_N) \cos(\theta)] R_e$$

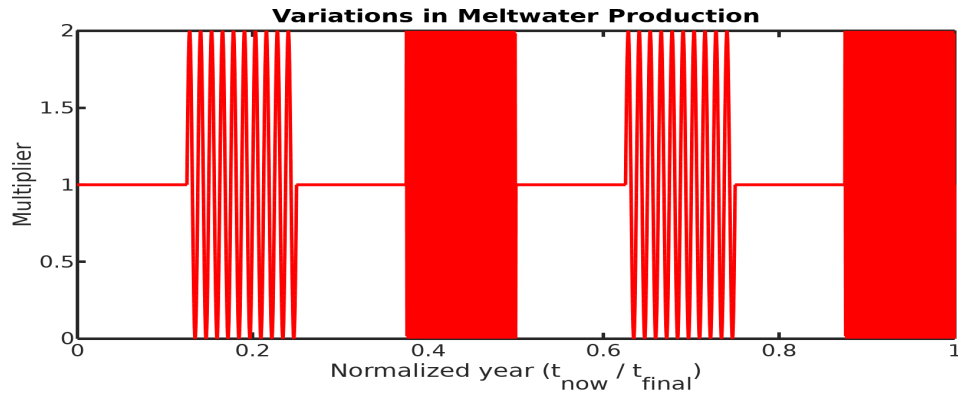
$$d_c = \cos^{-1}[\sin(\theta_N) \sin(\theta_c) + \cos(\theta_N) \cos(\theta_c)] R_e$$

$$z = Z_{max} - \frac{Z_{max} d_N}{d_c} \quad (10)$$

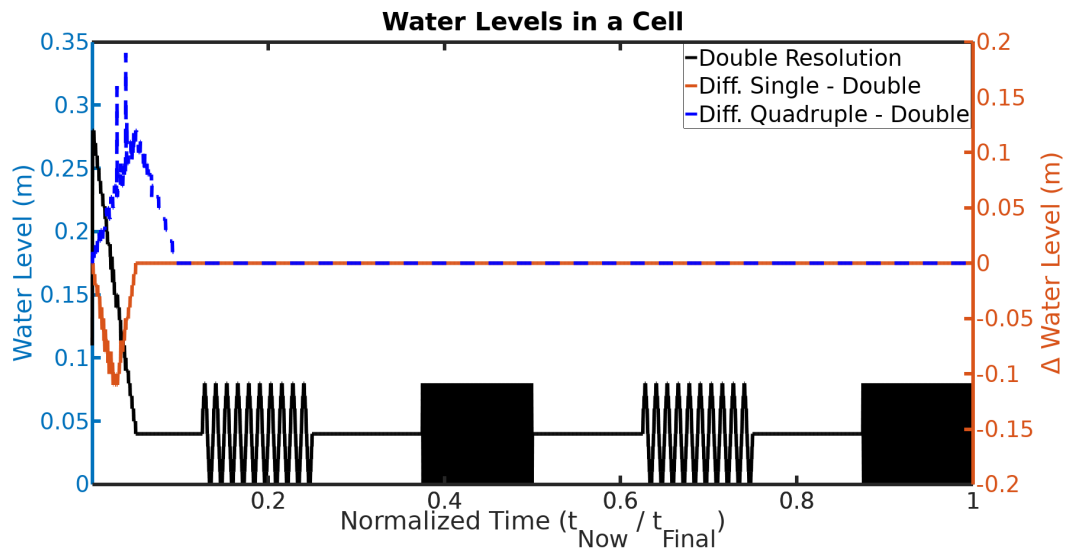
to test the flow of water. ~~Figure 1~~, where Z_{max} is the maximum elevation and the slope is calculated such that $z = 0$ at the south ($d_N = d_c$). Figure 3a indicates that the water has a harder time flowing out the top of the ice sheet due to the adverse bed slope. The water is still able to flow out the top as the water pressure rises and is able to overcome the potential caused by the bed. The average water thickness in this scenario is ~~4.0653 ± 1.2716~~ 0.0802 ± 0.1357 m.

The plot in Figure 3b shows the ice sheet on an inclined plane, as in Figure 3a, but with the resolution doubled. These two plots are nearly identical, except the basal water is slightly thicker in the higher resolution plot (~~4.2266 ± 1.0778~~ 0.0805 ± 0.1365 m). This suggests that the model is convergent at finer grid resolutions.

10 Lastly, the model was tested for stability by shocking the system with sudden changes in the meltwater production. For this test, the base case of the ice dome lying on a flat bed (the same scenario as Figure 1a), only the meltwater production from



(a)



(b)

Figure 4. Time series analysis of basal water level response to time-varying meltwater production, showing that the dynamic time-stepping of the model is capable of providing stable, realistic results under sudden changes.

equation 8 was modified by a time-dependent multiplier

$$M_d^*(d, t') = \xi(t') \times M_d(d)$$

$$\xi(t') = 1 + \sin \left[2\pi \left(\frac{t' - 1/8}{80} \right) \right] \left(\Delta[t' - \frac{1}{8}] - \Delta[t' - \frac{1}{4}] \right) + \sin \left[2\pi \left(\frac{t' - 3/8}{800} \right) \right] \left(\Delta[t' - \frac{3}{8}] - \Delta[t' - \frac{1}{2}] \right) + \sin \left[2\pi \left(\frac{t' - 5/8}{80} \right) \right] \left(\Delta[t' - \frac{5}{8}] - \Delta[t' - \frac{3}{4}] \right) + \sin \left[2\pi \left(\frac{t' - 7/8}{800} \right) \right] \left(\Delta[t' - \frac{7}{8}] \right) \quad (11)$$

where $t' = t_{now}/t_{final}$ is the normalized time ($t_{final} = 800$ years), and $\Delta(t')$ is the Heaviside step function. $\xi(t')$ is plotted in Figure 4a. Each impulse lasts for 1/8-th (100 years) of the model run. The lower frequency impulses contain 10 wavelengths each (period of 10 years), and the higher frequency impulses contain 100 complete wavelengths (period of 1 year). Each impulse will vary the meltwater production from a range of 0–2 times the base value.

The Figure 4b show how BrAHMs is affected by the varying meltwater production for changes in the CFL condition affecting time step size and to changing the resolution of the grid. The analysis showed that there was no discernible difference from halving the CFL condition, so the results of changing the CFL condition were omitted. While there are some differences (along this particular transect) related to changes of the grid resolution, none of the plots exhibit any unrealistic behaviour due to the cycling of the meltwater production.

6 Model Results Coupled to the GSM

The North American ice sheet model used herein is from a large ensemble Bayesian calibration as detailed in Tarasov et al (2012). Model runs start from 122 ka under ice free conditions.

6.1 The Model Parameter Set

Due to the complex nature of basal hydrology and the spatial and temporal scales for the current context, there are many processes that are approximated through ~~parameterizations~~ parameterizations. As such, there are a number of poorly constrained parameters in the ~~model~~ hydraulic model (these are listed in Table 2).

The first parameter, F_{CFL} , is used to control the time-stepping of the model. As the model runs an explicit time scheme, it is subject to the CFL condition for stability. To help prevent the model from breaking the CFL condition, the model time step is dynamically altered to prevent the maximum basal water velocity from exceeding the CFL velocity. F_{CFL} determines the maximum allowable basal water velocity as a fraction of the CFL velocity. Should a time-step exceed the CFL condition (potentially leading to instabilities), the last time-step is redone with a smaller Δt such that the CFL condition is not broken.

The simplified aquifer drainage of Johnson (2002), uses an aquifer that simply drains a percentage of the present water in a grid cell. The percentage of water drained in this model is represented by the D_r parameter ($d_{s;a} = D_r w$).

Due to the small time steps (relative to glacial modelling) involved in the basal hydrology model, it would become computationally expensive to check for tunnels at each time step. As such, dt_{tun} determines the frequency at which the model checks for the formation of channelized flow.

List of Model Parameters				
	Represents	Value	Range	Reference
F_{CFL}	Prevents breaking CFL	0.50	0.1–0.9	N/A
dt_{max}	Maximum allowable time step	1/12 yr	1/36–1 yr	N/A
D_r	Percent of water drained to aquifer	2.00%	0–0.07	Johnson (2002)
dt_{tun}	Time interval between tunnel checks	1/4 yr	1/12–1 yr	N/A
h_c	Saturated sediment water thickness	1.00 m	0.1–2 m	Person et al. (2012)
k_a	Steepness of conductivity transition	15	5–60	Flowers et al. (2005)
k_b	Affects when conductivity transitions	0.65	0.25–0.95	Flowers et al. (2005)
K_{min}	Minimum hydraulic conductivity	$10^{-7} \frac{m}{s}$	10^{-9} – 10^{-5}	Flowers et al. (2005)
K_{max}	Maximum hydraulic conductivity	$10^{-5} \frac{m}{s}$	10^{-7} – 10^{-3}	Flowers et al. (2005)
Q_{sc}	Tunnel formation condition multiplier	1.00	10^{-4} – 10^4	N/A
T_c	Basal freezing temperature below PMP	$-2.00^\circ C$	-3 – $-0.5^\circ C$	N/A
Z_h	Bedrock bump height	0.10 m	0.01–0.5 m	Kamb (1987)

Table 2. Chosen values for the baseline model run [for synthetic and North American test runs](#).

For clarity of this initial analysis, results presented herein are with a uniform basal sediment cover over the whole bed for the duration of the run. The sediment cover was specified by h_c .

The water flux between [grid](#) cells is directly proportional to the hydraulic conductivity of the sediment. For each run, the conductivity was allowed to vary between a minimum and maximum value defined in the range of K_m . The [hydraulic conductivity is allowed to vary to account for the fact that the till will expand as it is filled with water, allowing for the water to flow with less resistance](#). The transition between low and high conductivity is controlled by the parameters k_a and k_b given by the equation [\(Flowers, 2000\)](#)

$$\log(K) = \frac{1}{\pi} (\log[\frac{K_{max}}{K_{min}}]) \tan^{-1} \left[k_a \left(\frac{w}{h_c} - k_b \right) \right] + \frac{1}{2} (\log[K_{max}K_{min}]) \quad (12)$$

[which is a constitutive equation of the logarithmic form of the upstream area of a grid cell \(Flowers, 2000, page 80\)](#). Data from [Trapridge Glacier shows a similar relation between upstream area and water pressure as the hydraulic conductivity equation \(a high and low regime with a transition zone\)](#). Flowers (2000) assumes that the upstream area is related to the connectivity in the grid cell (the more connected a grid cell is, the more upstream area it should have). This would suggest that the hydraulic conductivity (its connectivity) is dependent on the water level, and is of the form of equation 12.

[In equation 12](#), k_b affects, as a fraction of h_c , when the transition between begins (k_b/h_c is the halfway point of the transition). k_a affects the slope of the transition curve. For larger values of k_a the transition becomes sharper, leading to quicker transitions. Lower values of k_a lead to slower transitions with more intermediate values for the conductivity between the two extremes (See Figure A1). [Equation 12 is meant to capture the dependence of hydraulic conductivity on the pore size of the till, which is related to the amount of water in the till](#).

As the base of the ice sheet becomes colder, the ice should begin to freeze to the bed, preventing water from flowing there. Due to the 40 km resolution of the grid, it is unlikely that the entire bed in a grid cell would be frozen completely when the grid cell basal temperature crosses the pressure melting point. Water could therefore potentially flow through a frozen grid cell (in the unfrozen places), but the water should have a harder time as it has fewer pathways to flow across. In the hydrology model, this is represented by parameter T_c , which acts to reduce the conductivity as a function of temperature. When the basal temperature is close to the pressure melting point (PMP), there is little change in the hydraulic conductivity. Conductivity decreases to an extremal low value as the temperature approaches the value of T_c . In the model simulations, the value of T_c , relative to PMP, is tested from $-0.5^\circ C$ to $-3.0^\circ C$. As a simplifying assumption, the hydraulic conductivity of a frozen grid is set to $10^{-14} \frac{m}{s}$, but can be easily modified to follow a temperature-dependent profile to capture sub-grid variation in basal temperatures.

Tunnel formation has a direct impact on basal water pressure. To further test this impact, an enhancement factor, Q_{sc} , was introduced to equation 5 as a multiplier to the condition for tunnel flow. Higher values of Q_{sc} will increase the switching condition, leading to less tunnel formation, whereas lower Q_{sc} will increase the amount of tunnel formation.

6.2 The Baseline Model

Our choice of baseline model for the sensitivity analysis was solely based on mid-range values for parameter uncertainty ranges and not on any sort of tuning. As such, results presented here have an exploratory instead of predictive focus. Basal hydrology fields for the baseline model near last glacial maximum (LGM) are shown in Figure 5. There is a greater extent and generally thicker basal water at 22 ka than at 18 ka. Regions of low basal effective pressure (defined as ice overburden pressure minus basal water pressure) in the model are generally associated with ice streaming. As the results are for a model configured with no basal drag dependence on basal water, this correlation is potentially due to two factors. First, high basal velocities will increase basal heating and thereby basal meltwater production. Second, the basal flux trigger threshold for initiation of tunnel drainage (equation 5) is proportional to basal velocity.

As the water is removed from 22 ka to 18 ka, some of the areas experience a large increase in basal effective pressure. To account for dependence on baseline amounts of basal water, our sensitivity tests consider both the 22 and 18 ka ~~timeslices~~ time-slices. Figure 6a shows model sensitivity at 22 ka when the baseline model total water volume is higher. The most important parameter is the aquifer drainage parameter, which is the proportion of water drained locally out of the system. This simplified parameterization of the aquifer can quickly drain a lot of water as it does not have to flow to the terminus to escape and does not return it to the ice-bed interface. In Figure 6b, at 18 ka, the aquifer drainage is still the most important parameter, but its impact is less noticeable since there is less water to drain away from the bed.

The sediment thickness parameter (h_c) shows a 28% drop in water volume over the range of values at 22 ka. At 18 ka the impacts of h_c are greatly reduced and has no effect on water volume when raised above the baseline value. This is due to the nonlinear relation between water pressure and the sediment thickness from equation 4. In areas where the water level is only a small fraction of the sediment thickness, the basal water pressure will be practically zero. At 18 ka, when the water level is low, an increase in sediment will have little effect on the results.

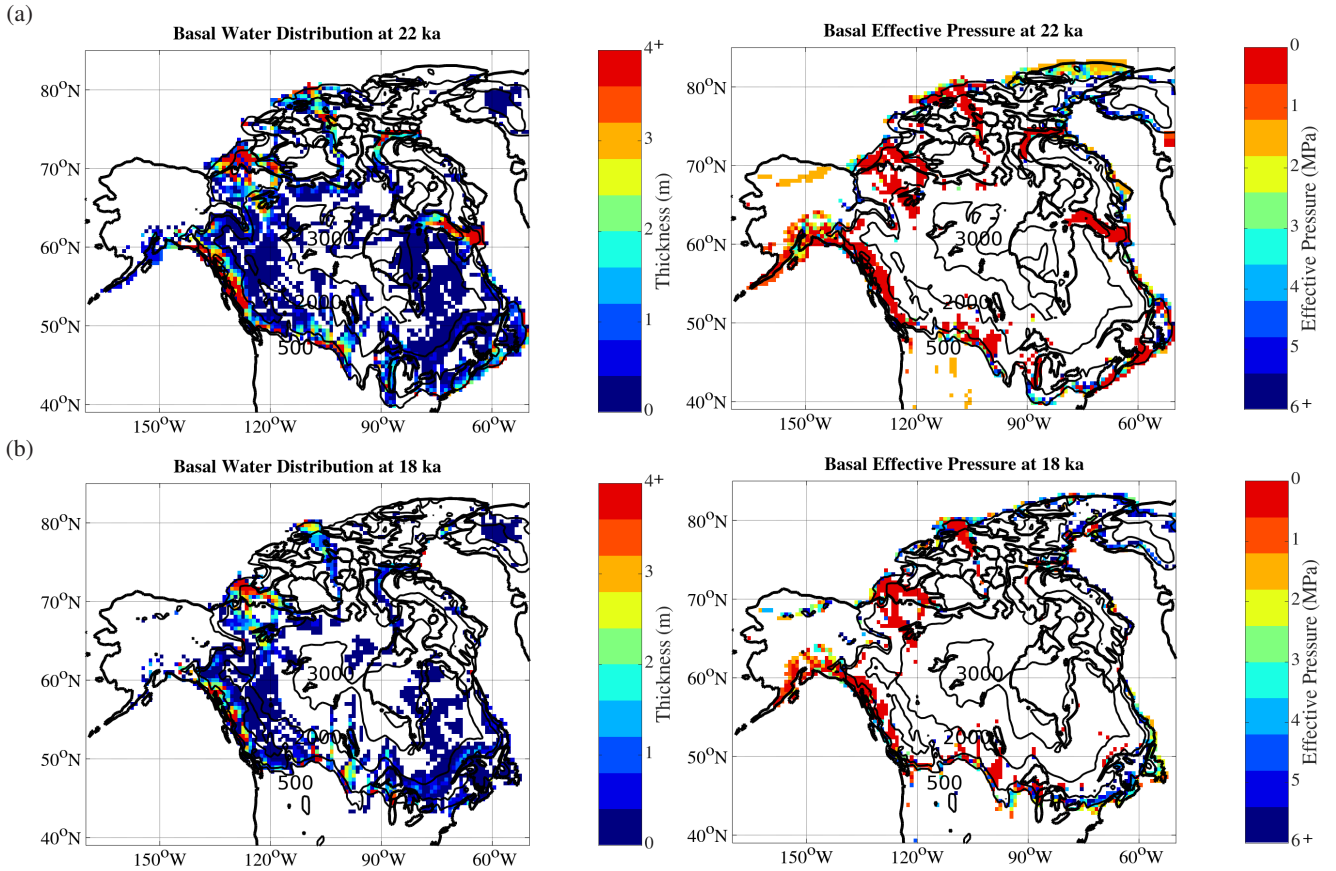
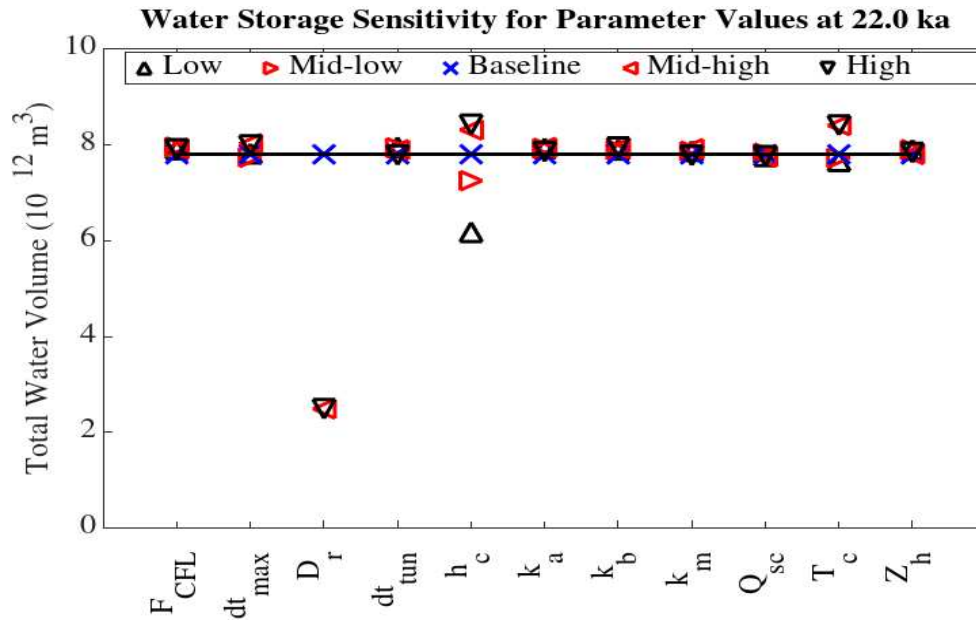


Figure 5. Basal water profiles for a) 22 ka when the total water volume is high (mean thickness: 1.0644 ± 2.8317 m, max thickness: 86.40 m), and b) 18 ka, after a large reduction in total basal water volume (mean thickness: 0.6918 ± 1.3160 m, max thickness: 24.91 m). 500 m contours intervals for surface elevation are also shown.

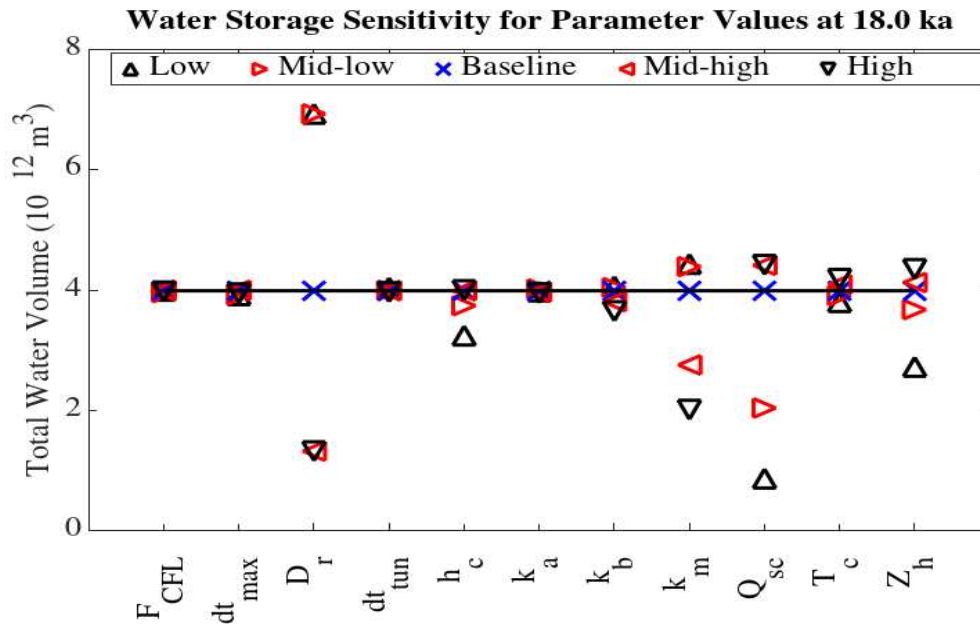
The runs with the basal freezing value closer to the PMP have about a 12% increase in basal water volume, as expected due to the increased likelihood of ice frozen to the bed hindering the flow of water. In comparison to other parameter results, varying the value of the basal freezing parameter, T_c , does not alter the water storage significantly. This is expected as regions where the basal temperature is below the PMP have no subglacial meltwater production.

- 5 The tunnel criterion scaling factor Q_{sc} , show almost no impact in times of high water storage, but shows a drop of up to 80% in water volume at 18 ka. During this time, the model is sensitive to Q_{sc} because the lower water levels are less likely to form tunnels than the thicker values at 22 ka. Lowering Q_{sc} allows more tunnels to form, which drains the water, keeping the water volume down.

The bedrock bump height, Z_h , has a similar effect to Q_{sc} since it affects tunnel formation as well. Larger values of Z_h allow the cavity system to retain more water before filling up and becoming unstable. This allows the runs with higher Z_h to have thicker basal water (Schoof, 2010).



(a)



(b)

Figure 6. Sensitivity plot at a) 22 ka and b) 18 ka. Water storage for lowest D_r value is off the scale ($221 \times 10^{12} m^3$ and $60 \times 10^{12} m^3$ for 22 and 18 ka respectively).

The results of changing the range of hydraulic conductivity (K_m), show little difference in the results at higher water volumes for the different runs. However, at 18 ka there is a big difference in the results. The results show that as hydraulic conductivity increases, the total water volume decreases. This is expected since increasing the conductivity increases the water flow and tunnel formation, allowing the water to evacuate from the ice sheet. The variation of k_a and k_b has little impact on model results. This is rather fortuitous since they are not physical parameters that can be easily measured, whereas the range of hydraulic conductivity values can be constrained based on the type of sediment from field studies.

The plot of the average basal effective pressure, in Figure 7, shares similar properties to the water storage sensitivity in Figure 6. During periods of high water volume, the two most important parameters are the aquifer drainage and saturated sediment thickness. Their effects are much closer in terms of effective pressure due to the limiting of the pressure to ice overburden, thus limiting the effects of the aquifer drainage.

During the low water storage times, the other parameters become important to the basal effective pressure. The impact of saturated sediment thickness on basal effective pressure appears to be relatively insensitive to the amount of water storage, as the two plots in Figure 7 show similar results for both cases. Otherwise, the parameter values that lead to higher basal effective pressure are the same values that prevent the water from flowing out of the ice sheet in Figure 6.

Figures 6 and 7 both show the lack of importance of frequency of tunnel formation checks (dt_{tun}) which stems from the time scale of grid cell water refill (typically greater than the largest value for dt_{tun}). The effect of lowering dt_{tun} may have a minor effect on when the tunnels form, but not how often.

One important test result is the low sensitivity of the average basal water thickness and effective pressure to the maximum allowable time step (dt_{max}). There is only a 10% water volume drop in the range of values chosen. Also, as the time steps become smaller (the lowest value was 1/3 of the baseline value), they begin to converge to an answer somewhere in the vicinity of the baseline values. This shows model stability and convergence for decreasing time steps.

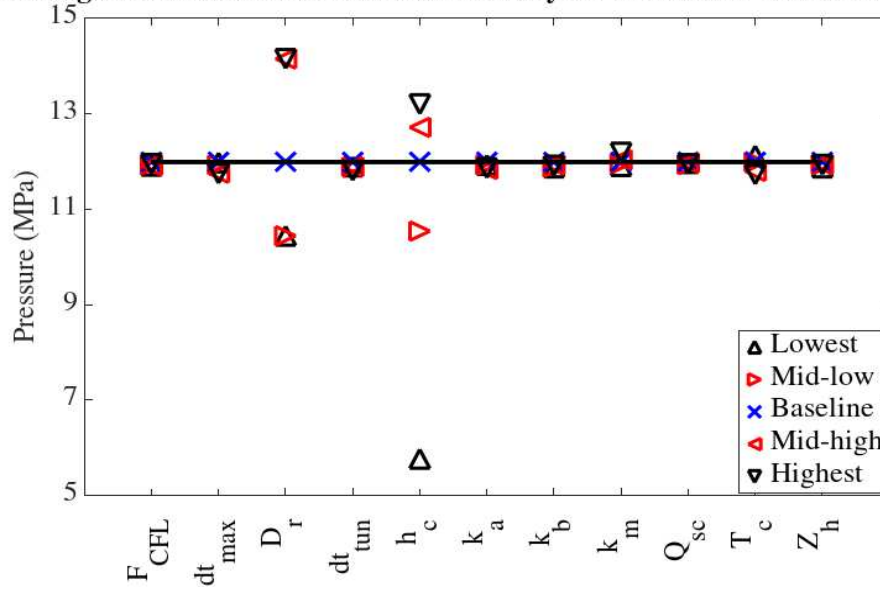
As a caveat, these initial sensitivity tests likely hide spatially localized parametric sensitivities. More critically, feedbacks in a two-way coupled ice sheet and basal hydrology model configuration may strongly change relative sensitivities to basal hydrology parameters. These analyses will be better placed in a future study examining fully coupled dynamics.

7 Conclusions

This paper presents a physically-based hydrology model for numerical simulations over a glacial cycle at continental scales. The model considers two types of drainage systems: a distributed system that slowly drains basal water, and a ~~quickly~~ fast draining channelized system. The distributed hydrology system is modelled with Darcy's law (Flowers, 2000) while the channelized system is likened to R-channels and solved using a fast down-gradient ~~tunnel-routing and lake~~ solver (Tarasov and Peltier, 2006).

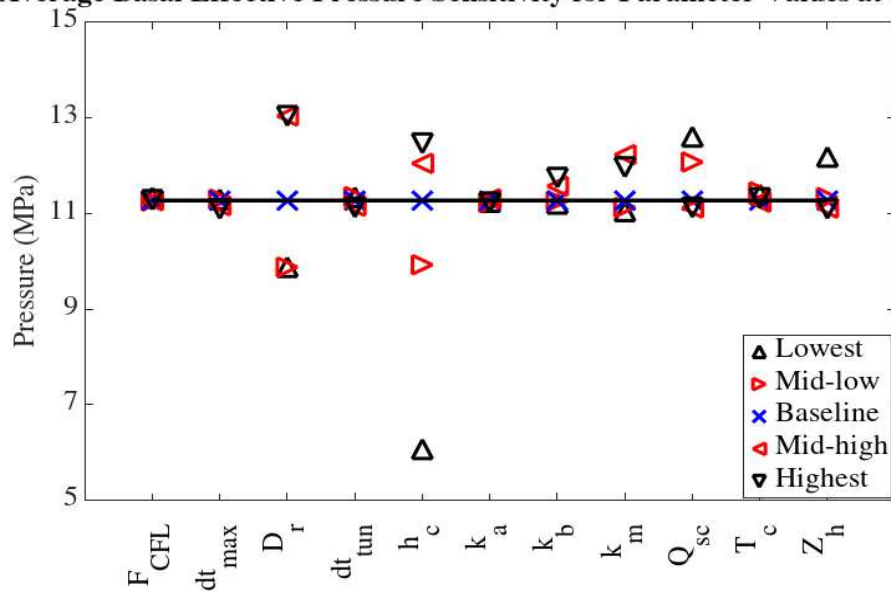
The model was tested over a set of synthetic ice profiles and topography. The results of these tests show that the model is mass conserving and that the water flows down the hydraulic potential gradient where it can exit the ice sheet or form subglacial lakes.

Average Basal Effective Pressure Sensitivity for Parameter Values at 22.0 ka



(a)

Average Basal Effective Pressure Sensitivity for Parameter Values at 18.0 ka



(b)

Figure 7. Sensitivity plot at a) 22 ka and b) 18 ka.

With the model validated using the synthetic ice sheets, the model was then one-way coupled to the GSM for testing on the North American Ice Complex at LGM. The sensitivity results in Figures 6 and 7 show that the significance of each parameter varies in time as the amount of basal water in the system changes. In times of high water input, the only significantly influential parameters are sediment pore space and aquifer drainage parameters. During times of lower water levels, other parameters begin to impact the basal water thickness and pressure as well. These parameters are related to tunnel formation, such as the bedrock bump height, tunnel criterion scaling factor, and the hydraulic conductivity.

The hydrology model also identified areas of low effective pressure, indicating areas of potentially fast flowing ice. These results were self-consistent with the GSM's parameterized areas of the fast-flowing ice.

The hydrology model presented here has been shown to be stable and robust for the range of parameters used in this study. The coupled model generally takes 5-8 hours to run for a North American glacial cycle (0.5° longitude by 1.0° latitude resolution). This time includes the full GSM, suggesting that the hydrology model only contributes an hour or two of extra run-time over a full glacial cycle. The longest runs are those with the smallest time steps (1/120 year) or frequent calls to the tunnel solver, both of which show insignificant changes to the model results. This shows that the combined Heun's method and Leapfrog-trapezoidal scheme can be a viable numerical method for subglacial hydrology modelling.

As an initial implementation of a 2-D basal hydrology solver, there were several simplifications made to facilitate the initial study of the basic properties of the subglacial water dynamics. One simplification was the aquifer drainage parameter was used instead of a real aquifer drainage system (Flowers, 2000; Lemieux et al., 2008) which would provide a more realistic drainage and allow water to flow back into the subglacial system. The sediment thickness was simplified as a constant over the entire bed. Realistically, the sediment thickness would vary over different parts of the bed (e.g.; thinly-covered Canadian Shield bedrock as opposed to the thick cover of the prairies), as well as varying in time as the sediment cover changes due to sediment deformation (Melanson, 2012).

Code availability. Basal hydrology code with validation drivers is freely available on <http://doi.org/10.5281/zenodo.1230046>

Appendix A: Model Numerics

A1 Discretization of the Mass Balance Equation

The model uses the mass continuity equation (equation 2) for subglacial water. Expanding the divergence of the flux terms from the mass balance equation gives

$$\frac{\partial w}{\partial t} = \frac{1}{r \cos \theta} \left[\frac{\partial(Q_\phi)}{\partial \phi} + \frac{\partial(Q_\theta \cos \theta)}{\partial \theta} \right] + \dot{b}_s + \underline{b_{zb}} + d_{s:a} \quad (\text{A1})$$

with θ representing the latitudinal direction, and ϕ representing the longitudinal direction.

Equation A1 is integrated over a finite-control volume

$$\iint \frac{\partial w}{\partial t} dV = \iint \left\{ \frac{1}{r \cos \theta} \left[\frac{\partial(Q_\phi)}{\partial \phi} + \frac{\partial(Q_\theta \cos \theta)}{\partial \theta} \right] + \dot{b}_s + \underline{b_{zb}} + d_{s:a} \right\} dV \quad (\text{A2})$$

using $dV = r^2 \cos \theta d\phi d\theta$, equation A2 becomes

$$\iint \frac{\partial w}{\partial t} dV = \int_n^s \left\{ \int_e^w \frac{\partial(Q_\phi)}{\partial \phi} d\phi \right\} r d\theta + \int_e^w \left\{ \int_n^s \frac{\partial(Q_\theta \cos \theta)}{\partial \theta} d\theta \right\} r d\phi + \iint \left\{ \dot{b}_s + \underline{b_{zb}} + d_{s:a} \right\} dV \quad (\text{A3})$$

5 This then simplifies to

$$\iint \frac{\partial w_P}{\partial t} dV_P = \int_n^s \{Q_w - Q_e\} r d\theta + \int_e^w \{Q_s \cos \theta_s - Q_n \cos \theta_n\} r d\phi + \iint \left\{ \dot{b}_s + \underline{b_{zb}} + d_{s:a} \right\} dV_P \quad (\text{A4})$$

where the subscripts n, e, s, w stand for north, east, south, and west interfaces respectively, and P represents the central grid point.

Using the approximation $V_P = r^2 \cos \theta_P \Delta \phi \Delta \theta$, equation A4 can be approximated as

$$10 \frac{\partial w_P}{\partial t} = \frac{1}{r \cos \theta_P \Delta \theta} \{Q_s \cos \theta_s - Q_n \cos \theta_n\} + \frac{1}{r \cos \theta_P \Delta \phi} \{Q_w - Q_e\} + \dot{b}_s + \underline{b_{zb}} + d_{s:a} \quad (\text{A5})$$

A2 Model ~~Time-stepping~~ Time-stepping

A2.1 ~~Heun's Method~~ Predictor Time Steps

The model presented in this paper uses two predictor-corrector methods ~~—We use with different predictors but identical corrector. The first predictor method, based on~~ Heun's method (Mathews and Fink, 2004) ~~to generate the~~, is used when only ~~the current water thickness field is self-consistently available. It generates the~~ first time step during each call of the basal hydrology subroutine. ~~We then apply the leapfrog trapezoidal scheme to advance the model to~~, and for any grid cell that has ~~been activated as a tunnel just prior to the end of the call timestep. Explicit values for the source terms are used throughout the discretization~~ current Darcy flow time step. The first of these two conditions could be easily amended to just the first timestep ~~of the whole model run if desired (and would be required for the case of synchronous model coupling). We chose the current formulation to simplify module coupling with configurations that involved multiple ice sheets on separate grids.~~

The first step in Heun's method is to take some initial conditions (w_P^0, w_P^m), and ~~to do a Euler Forward scheme for the first do~~ an Euler Forward time step,

$$25 \quad w_P^{1*(m+1)*} = w_P^{0m} + \frac{\Delta t}{r \cos \theta_P \Delta \theta} \{Q_s^0 \cos \theta_s - Q_n^0 \cos \theta_n\} \frac{\Delta t}{r \cos \theta_P} \left\{ \frac{Q_s^m \cos \theta_s - Q_n^m \cos \theta_n}{\Delta \theta} \right. \\ \left. + \frac{\Delta t}{r \cos \theta_P \Delta \phi} \{Q_w^0 - Q_e^0\} \frac{Q_w^m - Q_e^m}{\Delta \phi} \right\} + (\dot{b}_s^0 + \underline{b_{zb}^0} + d_{s:a}^0) \Delta t \quad (\text{A6})$$

where w_P^{1*} where $w_P^{(m+1)*}$ is the tentative (predicted) values for the first value for the next time step. The source terms ($b^0 + d_{s;a}^0$) do not change within a call to BrAHMs and therefore retain the 0 time index (a positivity constraint ensures that $w_P > 0$).

- 5 With the predicted values for the first time step (w_P^{1*}), the model can be iterated with a trapezoidal scheme between w_P^0 and w_P^{1*} to convergence to give the final (corrected) w_P . When the previous timestep value of w_P is self-consistently available, we use the second order accurate Leapfrog-Trapezoidal scheme (the Heun scheme is only first order accurate). The Leapfrog predictor for this scheme calculates the intermediate predicted value

$$w_P^1 = w_P^0 + \frac{\Delta t}{2r \cos \theta_P} \left\{ \frac{Q_w^0 - Q_e^0}{\Delta \phi} + \frac{Q_s^0 \cos \theta_s - Q_n^0 \cos \theta_n}{\Delta \theta} \right\} + \frac{\Delta t}{2r \cos \theta_P} \left\{ \frac{Q_w^{1*} - Q_e^{1*}}{\Delta \phi} + \frac{Q_s^{1*} \cos \theta_s - Q_n^{1*} \cos \theta_n}{\Delta \theta} \right\} + (b_s^0 + b_{zb}^0 + d_{s;a}^0) \frac{\Delta t}{2}$$

10 A2.2 Leapfrog-Trapezoidal Scheme

With values for the initial and next time step (w_P^0 and w_P^1), the model then uses the leapfrog trapezoidal scheme. This scheme is considered to be stable and robust (Shepetkin and McWilliams, 2005). It calculates the predicted values for the next time step, $w^{(m+1)*}$, as

$$w_P^{(m+1)*} = w_P^{m-1} + \frac{2\Delta t}{r \cos \theta_P} \left\{ \frac{Q_s^m \cos \theta_s - Q_n^m \cos \theta_n}{\Delta \theta} + \frac{Q_w^m - Q_e^m}{\Delta \phi} \right\} + 2(b_s^0 + b_{zb}^0 + d_{s;a}^0) \Delta t \quad (A7)$$

- 15 where $m = 2, 3, 4, \dots$. From the predicted values

A2.2 Trapezoidal Corrector

Regardless of which predictor equation is active, the trapezoidal scheme is applied to give the corrected values value, w^{m+1} , as

$$w_P^{m+1} = w_P^m + \frac{\Delta t}{2r \cos \theta_P} \left\{ \frac{Q_w^{(m+1)*} - Q_e^{(m+1)*}}{\Delta \phi} + \frac{Q_s^{(m+1)*} \cos \theta_s - Q_n^{(m+1)*} \cos \theta_n}{\Delta \theta} + \frac{Q_w^m - Q_e^m}{\Delta \phi} + \frac{Q_s^m \cos \theta_s - Q_n^m \cos \theta_n}{\Delta \theta} \right\} + (b_s^0 + b_{zb}^0 + d_{s;a}^0) \Delta t \quad (A8)$$

20 A3 Discretization of the Darcian Flux

The Darcian flux, Q , is given in equation 3. The values for hydraulic conductivity, basal water thickness, and pressure, along with bed topography are calculated at the grid cell centres. To calculate Q at the grid cell interfaces, the aforementioned values must be assigned values at the interfaces.

- If we consider the case of the flux on the westward edge of the grid cell, Q_w , then the pressure gradient ($\nabla\{P + \rho_w g z_b\}$ from equation 3) is simply the difference between the pressure values at the grid cell centres

$$Q_w = \frac{Kw}{\rho_w g} \frac{P_W - P_P + \rho_w g (z_{b_W} - z_{b_P})}{r \cos(\theta_P) \Delta \phi} \quad (A9)$$

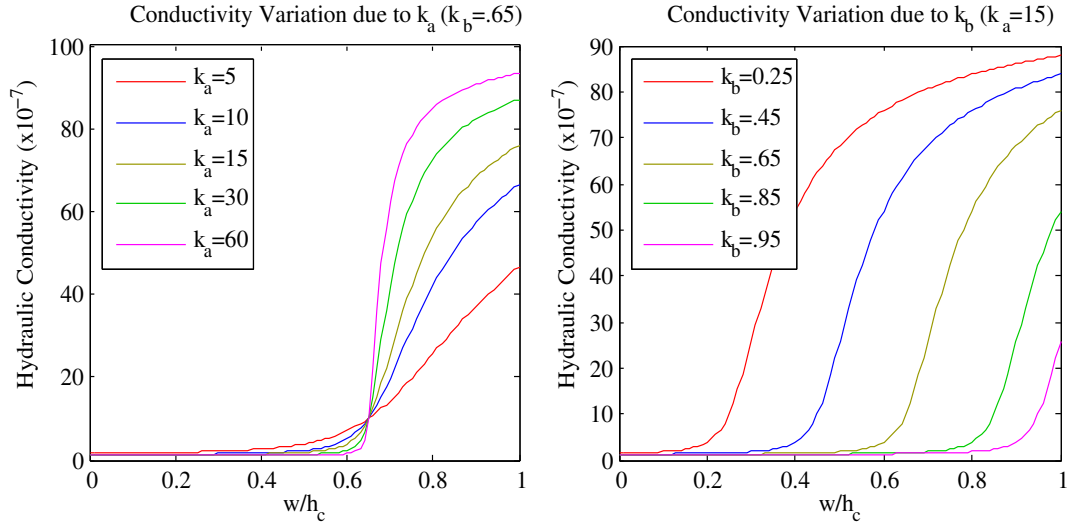


Figure A1. Variations of subglacial hydraulic conductivity K with respect to changes in hydraulic parameters k_a and k_b for values of K ranging between 1.0×10^{-7} – 1.0×10^{-5} .

where the W subscript indicates the value of the grid point to the west of the central point, and the P subscript represents the grid cell of interest.

Following the rules of Patankar (1980), the hydraulic conductivity at the grid cell interface is set to the geometric mean of the values at the adjacent grid cell centres

$$5 \quad Q_w = \left(\frac{2K_W K_P}{K_W + K_P} \right) \frac{w}{\rho_w g} \frac{P_W - P_P + \rho_w g(z_{b_W} - z_{b_P})}{r \cos(\theta_P) \Delta \phi} \quad (\text{A10})$$

To simplify the flux equation, the upwind scheme (Patankar, 1980) was used to give the value of the water at the interface (i.e.; the value of w is equal to the water thickness of the grid cell with the highest pressure). This gives the final equation of the flux as

$$10 \quad Q_w = \left(\frac{2K_W K_P}{K_W + K_P} \right) \left(\frac{1}{\rho_w g r \cos(\theta_P) \Delta \phi} \right) \left[\max\{w_W [P_W - P_P + \rho_w g(z_{b_W} - z_{b_P})], 0\} \right. \\ \left. - \max\{-w_P [P_W - P_P + \rho_w g(z_{b_W} - z_{b_P})], 0\} \right] \quad (\text{A11})$$

where Q_w is positively defined if water flows eastward into the centre grid cell. Likewise all the other fluxes can be defined in a similar fashion. Outgoing fluxes are limited to ensure positive basal water thickness.

A4 Flowchart of Model Procedure

Competing interests. There are no competing interests.

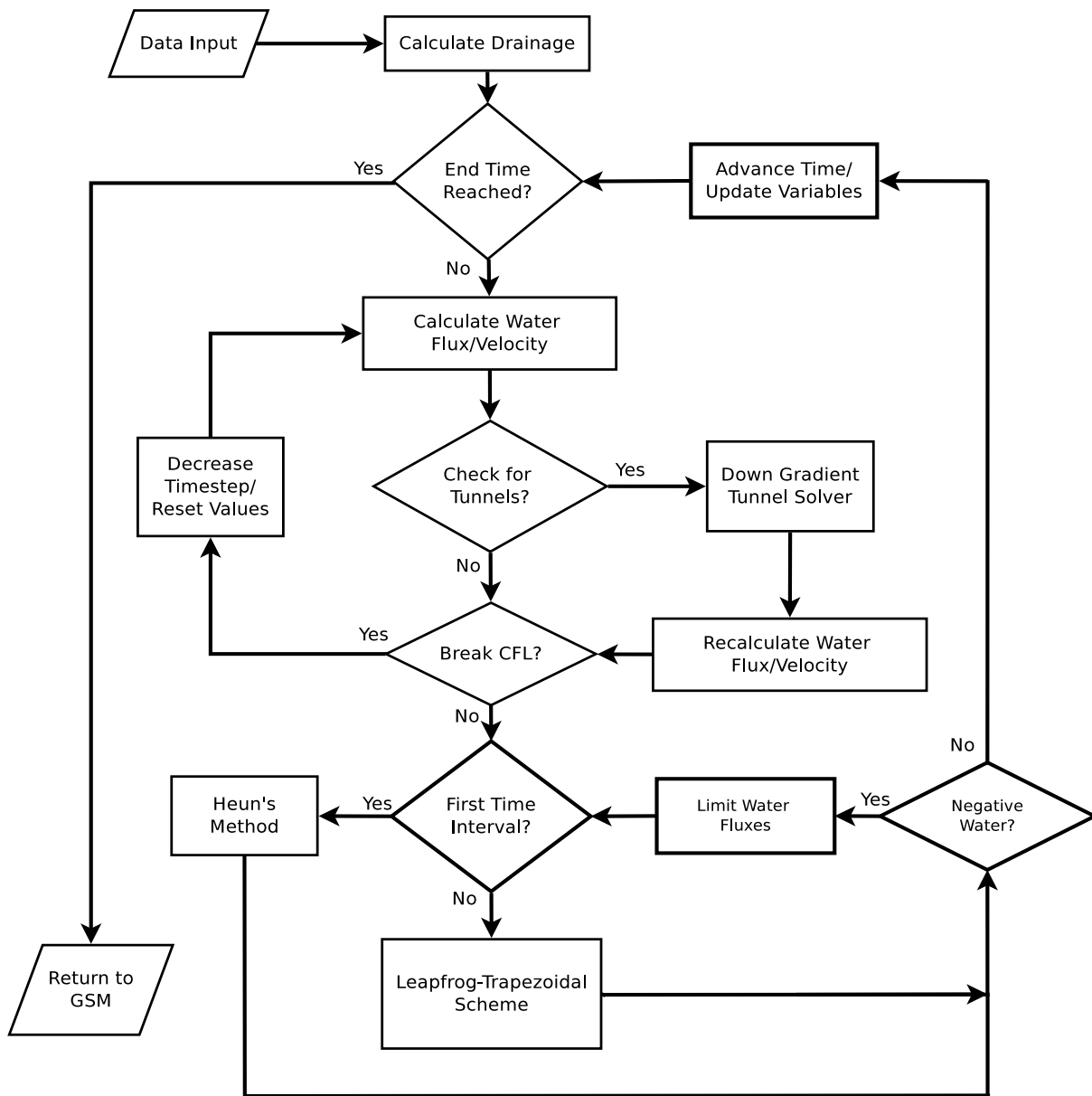


Figure A2. Hydrology model flow chart highlighting the processes involved in simulating basal water flow.

Acknowledgements. ~~This work significantly benefitted~~ We thank J. Johnson and J. Seguinot for thoughtful and helpful reviews. This work also significantly benefited from a review of the associated Thesis by ~~Jesse J.~~ Johnson. Entcho Demirov offered some helpful numerical suggestions. This work was supported by a NSERC Discovery Grant (LT), the Canadian Foundation for Innovation (LT), and the Atlantic Computational Excellence Network (ACEnet).

References

- Arnold, N. and Sharp, M.: Flow variability in the Scandinavian ice sheet: modelling the coupling between ice sheet flow and hydrology, *Quaternary Science Review*, 21, 485–502, 2002.
- Bartholomaeus, T. C., Anderson, R. S., and Anderson, S. P.: Growth and collapse of the distributed subglacial hydrologic system of Kennicott
5 Glacier, Alaska, USA, and its effects on basal motion, *Journal of Glaciology*, 57, 985–1002, 2011.
- Bartholomew, I. D., Nienow, P., Sole, A., Mair, D., Cowton, T., King, M. A., and Palmer, S.: Seasonal variations in Greenland Ice Sheet motion: Inland extent and behaviour at higher elevations, *Earth and Planetary Science Letters*, 307, 271–278, 2011.
- Benn, D. I. and Evans, D. J. A.: *Glaciers and Glaciation*, Hodder Education, London, 2nd edn., 2010.
- Bueler, E. and van Pelt, W.: Mass-conserving subglacial hydrology in the Parallel Ice Sheet Model version 0.6, *Geoscientific Model Development*, 8, 1613–1635, 2015.
10
- Calov, R., Beyer, S., Greve, R., Beckmann, J., Willeit, M., Kleiner, T., Rückamp, M., Humbert, A., and Ganopolski, A.: Simulation of the future sea level contribution of Greenland with a new glacial system model, *The Cryosphere Discussions*, 2018, 1–37, 2018.
- Carter, S. P., Fricker, H. A., and Siefried, M. R.: Antarctic subglacial lakes drain through sediment-floored canals: theory and model testing on real and idealized domains, *The Cryosphere*, 11, 381–405, 2017.
- 15 Clark, P. U. and Walder, J. S.: Subglacial drainage, eskers, and deforming beds beneath the Laurentide and Eurasian ice sheets, *Geological Society of America Bulletin*, pp. 304–314, 1994.
- de Fleurian, B., Morlighem, M., Seroussi, H., Rignot, E., van den Broeke, M. R., Munneke, P. K., Mouginit, J., Smeets, P. C. J. P., and Tedstone, A. J.: A modeling study of the effect of runoff variability on the effective pressure beneath Russell Glacier, West Greenland, *Journal of Geophysical Research: Earth Surface*, 121, 2016.
- 20 Dow, C. F., Kulesa, B., Rutt, I. C., Tsai, V. C., Pimentel, S., Doyle, S. H., van As, D., and Lindbäck, K.: Modeling of subglacial hydrological development following rapid supraglacial lake drainage, *Journal of Geophysical Research: Earth Surface*, 120, 1127–1147, 2015.
- Flowers, G. E.: A multicomponent coupled model of glacier hydrology, Ph.D. thesis, The University of British Columbia, 2000.
- Flowers, G. E.: Subglacial modulation of the hydrograph from glacierized basins, *Hydrological Processes*, 22, 3903–3918, 2008.
- Flowers, G. E., Marshall, S., Björnsson, H., and Clarke, G. K. C.: Sensitivity of Vatnajökull ice cap hydrology and dynamics to climate
25 warming over the next 2 centuries, *Journal of Geophysical Research*, 110, 2005.
- Goeller, S., Thoma, M., Grosfeld, K., and Miller, H.: A balanced water layer concept for subglacial hydrology in large-scale ice sheet models, *The Cryosphere*, 7, 1095–1106, 2013.
- Gudlaugsson, E., Humbert, A., Andreassen, K., Clason, C. C., Kleiner, T., and beyer, S.: Eurasian ice-sheet dynamics and sensitivity to subglacial hydrology, *Journal of Glaciology*, 63, 556–564, 2017.
- 30 Hoffman, M. J. and Price, S.: Feedbacks between coupled subglacial hydrology and glacier dynamics, *Journal of Geophysical Research: Earth Surface*, 119, 414–436, 2014.
- Johnson, J. V.: A Basal Water Model for Ice Sheets. Doctorate Thesis Abstract, Ph.D. thesis, The University of Maine, 2002.
- Kamb, B.: Glacier surge mechanism based on linked-cavity configuration of basal water conduit system, *Journal of Geophysical Research*, 92, 9083–9100, 1987.
- 35 Kamb, B., Raymond, C. F., Harrison, W. D., Engelhardt, H., Echelmeyer, K. A., Humphrey, N., Brugman, M. M., and Pfeffer, T.: Glacier Surge Mechanism: 1982-1983 Surge of Variegated Glacier, Alaska, *Science*, 227, 469–479, 1985.

- Kavanagh, M.: A fast, physically-based subglacial hydrology model applied to the North American ice complex over the last glacial cycle., Master's thesis, Memorial University of Newfoundland, 2012.
- Lemieux, J. M., Sudicky, E. A., Peltier, W. R., and Tarasov, L.: Dynamics of groundwater recharge and seepage over the Canadian landscape during the Wisconsinian glaciation, *Journal of Geophysical Research*, 113, 2008.
- 5 Mathews, J. H. and Fink, K. K.: *Numerical Methods Using Matlab*, chap. 9, Prentice-Hall Inc., 4th edn., 2004.
- Melanson, A.: Numerical modelling of subglacial erosion and sediment transport and its application to the North American ice sheets over the last glacial cycle, unpublished masters thesis, Memorial University of Newfoundland, St. John's, Canada, 2012.
- Patankar, S. V.: *Numerical Heat Transfer and Fluid Flow*, Series in computational methods in mechanics and thermal sciences, Hemisphere Publishing Corporation, Washington, 1980.
- 10 Person, M., Bense, V., Cohen, D., and Banerjee, A.: Models of ice-sheet hydrogeologic interactions: a review, *Geofluids*, 12, 58–78, 2012.
- Röthlisberger, H.: Water Pressure in Intra- and Subglacial Channels, *Journal of Glaciology*, 11, 177–203, 1972.
- Schoof, C.: Ice-sheet acceleration driven by melt supply variability, *Nature*, 468, 803–806, 2010.
- Shchepetkin, A. F. and McWilliams, J. C.: The regional oceanic modeling system (ROMS): a split-explicit, free-surface, topography-following-coordinate oceanic model, *Ocean Modelling*, 9, 347–404, 2005.
- 15 Tarasov, L. and Peltier, W. R.: Impact of Thermomechanical ice sheet coupling on a model of the 100 kyr ice age cycle, *Journal of Geophysical Research*, 104, 9517–9545, 1999.
- Tarasov, L. and Peltier, W. R.: Greenland glacial history and local geodynamic consequences, *Geophys. J. Int.*, 150, 198–229, 2002.
- Tarasov, L. and Peltier, W. R.: A Geophysically constrained large ensemble analysis of the deglacial history of the North American ice-sheet complex, *Quaternary Science Review*, 23, 359–388, 2004.
- 20 Tarasov, L. and Peltier, W. R.: A calibrated deglacial drainage chronology for the North American continent: evidence of an Arctic trigger for the Younger Dryas, *Quaternary Science Review*, 25, 659–688, 2006.
- Tarasov, L. and Peltier, W. R.: The co-evolution of continental ice cover and permafrost extent over the last glacial-interglacial cycle in North America, *Journal of Geophysical Research*, 112, 2007.
- Tarasov, L., Dyke, A. S., Neal, R. M., and Peltier, W. R.: A data-calibrated distribution of deglacial chronologies for the North American ice complex from glaciological modeling, *Earth and Planetary Science Letters*, pp. 1–29, 2012.
- 25 Walder, J. S. and Hallet, B.: Geometry of former subglacial water channels and cavities, *Journal of Glaciology*, 23, 335–346, 1979.
- Weertman, J.: General theory of water flow at the base of a glacier or ice sheet, *Reviews of Geophysics and Space Physics*, 10, 287–333, 1972.
- Werder, M. A., Hewitt, I. J., Schoof, C. G., and Flowers, G. E.: Modeling channelized and distributed subglacial drainage in two dimensions, *Journal of Geophysical Research: Earth Surface*, 118, 1–19, 2013.
- 30 Zwally, H. J., Abdalati, W., Herring, T., Larson, K., Saba, J., and Steffen, K.: Surface Melt-Induced Acceleration of Greenland Ice-Sheet Flow, *Science*, 297, 218–222, <https://doi.org/10.1126/science.1072708>, 2002.