

Response to Editor

During the process of responding to the reviews and re-examining our data sets for submission as supplementary material, we have discovered that the vertical water vapor profile in the reference atmosphere was mistakenly averaged over 2 km blocks. This blocky profile is the cause for the zig-zag shapes of the clear sky heating profiles in Fig. 2(c) and the erroneous cirrus heating profile with Fu's parameterization in Fig. 5(d).

We have now adopted a profile from the ECMWF forecast fields that is similar to the old one – but without the averaging – and redone all of our calculations for Solar-J and RRTMG-SW. We have updated all numbers (Tables 3, 4 and 5) and figures (Fig. 2, 4, 5 and 6). The basic results – the differences between RRTMG and Solar-J – were unchanged as were the major conclusions. The only change is that the paper became simpler because we were able to strike out discussion of the zig-zag shapes and the Fu' cirrus heating profiles. Fu's parameterization works as it should be. Overall, there is much better consistency.

This correction to the water vapor profile has negligible effect on the clear-sky radiative budget for each spectral band ($<0.1 \text{ Wm}^{-2}$; Tables 4). However, there is a slight vertical re-arrangement of solar energy absorbed by H_2O since there is more water vapor at the surface but less in the mid-troposphere for the new profile. The impact on the stratus cloud radiative forcing under 1360 Wm^{-2} solar flux at $\text{SZA}=0^\circ$, for example, is about 4 Wm^{-2} more reflected sunlight, 3 Wm^{-2} less absorbed in the atmosphere and 1 Wm^{-2} less reaching to the surface (Table 5). This does not impact the comparison of Solar-J and RRTMG-SW since the same degree of correction applies both to RRTMG-SW and Solar-J, for all cases. Nevertheless, we have gone through the manuscript carefully to update all the tables, figures and text.

Please find our point-by-point reply to the reviewers in the pages below, which is followed by tracked changes of the manuscript. We have extensively revised the abstract, introduction and conclusion to make the presentation better per Reviewer #2's comments.

Response to Reviewers

The authors wish to thank the two anonymous reviewers for their encouraging comments. Below is our response (blue, Italic) to each reviewer's comments. We have improved the presentation following reviewer #2's suggestions, particularly improving on the presentation in the abstract, introduction and conclusions. The revised manuscript with tracked changes is also included.

Reviewer #1

This is a well written paper describing original research of high significance. I recommend the publication of the manuscript in its current form.

Thanks for the encouragement. We hope that this work will indeed have a long-term impact on climate modeling.

Reviewer #2

This paper is generally very well written providing substantial details on methods and scientific explanation of comparative results, and limitations. It addresses needs for a more complete fast radiative transfer model for climate (and forecast) models by extending the Fast-J/Cloud-J code mainly by extending infrared spectral bin coverage to 12 microns following the RRTMG-SW model. The resulting model, called Solar-J, appears to combine the best features of both packages. I recommend the publication of the manuscript following minor revisions. P.S. Access to Solar-J worked fine.

We thank for the positive, encouraging, detailed, and constructive review. We have revised the manuscript per your suggestions below and provided a point-by-point response to each comment.

Scientific presentation:

1. While this referee has some gaps regarding the scientific background of all aspects involved in this work, the scientific content, descriptions, and justifications appear well done and very detailed and extensive. This is very commendable. No needed revisions have been identified on that front.

Thanks.

2. Minor revisions are needed regarding the presentation of Solar-J in the context of its inheritance from Fast-J, Fast-J2 and Cloud-J. In the conclusion section, it is indicated that 8-stream scattering, semi-spherical geometry, UV transmission, and cloud quadrature were taken from Cloud-J. This referee did not find any clear prior mention that the 8-stream and semi-spherical geometry were already present in the original code from which Solar-J began. Actually, the 8-stream code would have been from Fast-J2 while the spherical earth consideration for solar radiation would have been in Fast-J. There is much discussion in the introduction and elsewhere on the merit of the 8-stream approach, giving the initial impression that this is a new added feature, i.e. while it was present in Fast-J2.

There are back and forth references to Fast-J and Cloud-J which tends to confuse if one was not already familiar with both. It would be best to present the contributions and relations of each to Solar-J in the introduction (e.g. in the second paragraph of the introduction) and, from that point, maybe just refer to Cloud-J afterwards which would have been the starting point of Solar-J.

For clarity, it would be needed to indicate, from the beginning, likely in the introduction since the 8-stream approach is highlighted here, all components and features stemming from Fast-J and its successors Fast-J2 and Cloud-J, prior to the additions made to generate Solar-J. It is acknowledged that this is done regarding the spectral configuration and also, but only later, the Cloud-J cloud quadrature. The mention of both 2-stream and 8-stream is provided in the introduction to highlight (it needs to be made explicit in the introduction) the advantage of “continuing with the 8-stream approach from Cloud-J” vs. the 2-stream approach of RRTMG-SW.

The mention of both 2-stream and 8-stream is provided in the introduction to highlight (it needs to be made explicit in the introduction) the advantage of “continuing with the 8-stream approach from Cloud-J” vs. the 2-stream approach of RRTMG-SW.

Considering the above comments, there might be some benefit in correspondingly revising the introduction (and related text locations here and there such as the abstract – see (3) below).

Thanks. We agree. We have rewritten the 2nd paragraph of the introduction in the revised manuscript to include a comprehensive overview of the development and relationship between the work done previously known as Fast-J, Fast-J2, Fast-JX and Cloud-J. We more carefully explain what Cloud-J entails. And we made it clear that Cloud-J will serve as the starting point of Solar-J. We also went through the manuscript to replace Fast-J with Cloud-J.

3. The quality of the abstract and conclusions section is not as high generally as that of the remainder of the paper. Comments on the composition of the conclusions section is provided later. A few comments mostly on the scientific presentation of the abstract follows below. - As alluded to in (2) above, there is mention of Solar-J including the 8-stream scattering a few other features without indicating that these were inherited from Fast-J/Cloud-J. The sentence ‘Solar-J is a . . .’ in lines 15-16 could moved to line 11 with mention of Cloud-J. The following sentence needs to then attribute these mentioned features as inherited from Cloud-J. - A new paragraph could then begin from line 17 indicating the extension based on RRTMG-SW. - Lines 18-19.

Thanks. We have followed your advice by moving the sentence from Line 15-16. to Line 11 and beginning a new paragraph starting on Line 17. We further have edited the abstract for clarity based on the restructure.

The statement “successfully matches RRTMG’s atmospheric heating profile” does not seem consistent with Fig 2b unless this is meant to refer to the general features of Fig 2a in addition to F2c,d. One might consider adding another comment pointing to the level of difference (e.g. “with maximum differences of 3 K in the upper stratosphere stemming from the absence of radiation below 200 microns and the coarse UV-bin resolution of RRTMG-SW”)

That is a good point. We only meant tropospheric. We edited “atmospheric heating profiles” to “tropospheric heating profiles”. The stratospheric heating difference is caused by the different methods in simulating the UV absorption of O₂ and O₃. We only adopted RRTMG-SW’s gas absorption bins from the infrared range.

- Lines 23-24. “less systematic” is unclear – to remove if not clarified. Meaning of “larger” is also unclear.

We now indicate the magnitude, “about 20-40 % depending on...”.

- Line 24-25. There a missing link between the previous sentence referring to discrepancies/differences for the cirrus cloud example (not indicating if Solar-J is better) and the following sentence referring to Solar-J combining the best of both models. Maybe this has to do with the phrasing of the previous sentence (referring to lines 23-24)

We did not mean to link these two sentences, and we now break between these sentences to begin a new paragraph.

- Line 28 and also line 367 (conclusion). “about 5x” is for clear-sky only. Another 2.8x should be indicated the cloud quadrature (see page 14).

We realize now that there might be a misunderstanding on this part. The 2.8x additional cost from using cloud quadrature scheme is relative to a single atmosphere in Solar-J, not relative to RRTMG-SW’s cloud overlapping scheme in parallel. We don’t know the costs of RRTMG-SW if their McICA is used, but presume it would be similar to using a single atmosphere. We now make it clear in the conclusion in Lines 583-584: “A simple comparison shows the cost of Solar-J is 5x that of RRTMG-SW for a single atmosphere, and if the cloud quadrature scheme for overlapping cloud fields (Neu et al., 2007; Prather, 2015) is applied to either code, the cost increases additionally by 2.8x”. In the abstract, we added, “for a single atmosphere”.

3. Line 352. For completeness, may be best to indicate “biases relative to Solar-J results” or something like “differences relative to Solar-J results identified here are errors caused by the 2-stream approximation used with RRTMG.”)

We believe the usage of “bias” in referring to these specific RRTMG-SW results is well justified, not only by the principal of physics (8-stream by nature is more accurate than 2-stream), but also the low bias has been documented in the literature (e.g. Li et al., 2015).

4. There is referencing to applicability of Solar-J with climate and chemistry-climate models. This should/could be extended at least to weather prediction models (if not also air quality models as well - CTMs and coupled chemistry- weather).

Good. “Weather” is included in the revised introduction on Line 71.

Composition corrections and suggestions:

- Both RRTMG vs RRTMG-SW are used in the abstract and various places in this work. If the short version RRTMG is preferred, would be best to indicate, in the introduction, that it will be used from that point onwards. In the abstract, likely best to just use RRTMG-SW.

Agreed. We mostly use RRTMG-SW throughout the text. There are places that we use RRTMG for easy reading. We now added a sentence on Line 103 in the introduction, “In this paper, we use RRTMG as shorthand for RRTMG-SW “

- Line 39. Suggest replacing “The major” by “Major” since other major challenges are also present as indicated later in the introduction. [fixed](#).
- Line 45. Replacing “, however” by “. However” [fixed](#).
- Line 46. “Thus” unnecessary. Can start with “In terms of . . .” [fixed](#).
- Line 269. Replace “into stratosphere” by “into the stratosphere” [fixed](#).
- Line 280. Suggested rephrasing. “The benefit of moving the Solar-J (and Cloud-J) band edge to 442 nm should be investigated.” [fixed](#).
- Line 329. Should “Figure 3(a)” be indicated as “Figure 3a” for consistency with this paper or is it the labelling used in Painemal et al. (2016). [fixed](#).
- Line 358. Suggest “One other source” [fixed](#).

- Line 369. The mention of EC92, Fu96 and Key02 should be accompanied here by the references (which are present in the reference list).
[The notation of EC92, Fu96 and Key02 are introduced in Section 2.3, Lines 232-234, “For ice clouds three different parameterization are available, and all are tested here \(Ebert and Curry, 1992, henceforth EC92; Key, 2002, henceforth Key02; Fu, 1996, henceforth Fu96\).”](#)

- Line 417. Might be good to replace in this proportionality” by “similarly proportional”.
[fixed](#).
- Line 444. Might be best to replace “Fast-J 8-stream” to “Solar-J 8 stream” [fixed](#).
- Line 446. “Feautrier solves” to “Feautrier approach solves”. [fixed](#).
- Line 454. “Cloud-J (and hence Fast-J) has” [fixed](#).
- Line 471. “increases” [fixed](#).
- Lines 484-485. Suggestion of adding commas: “approach, when suitably averaged over time,
[fixed](#).
- Line 489. “of atmospheres” [fixed](#).
- Line 493. Rephrasing needed for “where the number of ICAs per grid cell ranging from 1 to 3,500 and averaged 170.” [Rephrased](#).
- Line 504. Suggest removing the sentence beginning with “Obviously”. [You meant “Of course” on Line 504. We changed it to “Alternatively”.](#)
- Line 517. “of a scattering matrix generator and a block-“ (added “a”s) [fixed](#).
- Line 524. “in a ~4x” [fixed](#).
- Line 537. Rephrase “on long experience”
[Changed to “on previously established experience”](#)

- Line 549. “that that are” to “that are” [fixed](#)
- Line 553. “less that” to “less than [fixed](#).

- Line 574-575. Rephrasing needed with “Ideally, there is a tradeoff . . . in all three ” –
[Yes, we got rid of the ‘trade off’ and simplified the sentence.](#)
 Conclusions section. Composition to use past tense (presented vs present, taken vs was taken, “can focus vs focused, . . .). A revisit of the conclusion composition and content might be beneficial.

[Thanks for the suggestion and the wakeup call. Which tense to use when describing science in a paper is a longstanding issue. We have traditionally kept to the present tense in the paper where possible unless referring clearly to past work. Most importantly, we needed to proof and check that our usage is consistent.](#)

- Line 557. “accurate, consistent with . . . in the atmosphere” seem too much and not precise.

[Have toned it down. Rephrased.](#)

Suggest instead finding a sentence or two referring to Solar-J incorporating strengths of both Cloud-J and RRTMG-SW.

[Yes, agreed. It is now in the first sentence.](#)

- Line 562. Would be better to replace “The components of” by referring to Solar-J combining the best of Cloud-J and RRTMG-SW parameterizations.”

Again, this is mentioned in the first sentence. We have revised this sentence slightly because it did not fit well before, as the reviewer found.

- Line 575. “ and, however, these ..” to “. These . . .” Fixed.

- Line 576. “ are clearly mapped” to “would be mapped” or “would have some impact on climate. ..” or “are expected to impact. . .” or “could have an impact ...”

This ending section was clearly awkward, and we have redrafted it to be simpler, hopefully clearer, and maintain the original intent.

- Lines 577-578. “For Solar-J, the next steps consist of (i) moving the . . . and (ii) developing ..” or something similar. Fixed.

- Line 579. Wonder if “A third opportunity” could be rephrased. Yes. Replaced with “another inquiry”

Tables: Moving the table captions outside the table frames will likely be necessary. Moved.

Figures:

- Figure 4.

(1) Extra space in Fig 4a x-axis title units (g/m^2) to remove. Fixed.

(2) Missing space in Fig 2b legend at the top “Solar-J(solid. . .”. Fixed.

(3) In caption, replace “at fours SZAs” by “at four SZAs” Fixed.

- Figure 5.

(1) In legend of Fig 5c,d replace “Ebert&Kerry” by “Ebert&Curry”. Fixed.

(2) Missing space in Fig 5d title “(d)Cloud. . .” - Figure 6. Numbers below above colour bars in panels seem rather small. However, not much space to increase their size. So maybe ok.

The small-font numbers provide backup for the bar charts that need to be seen together on one page to identify the similarities and differences across models and atmospheric regions. The figure is vectorized and can be blown up If it remains in .eps format in GMD publication.

References: I did not check that all references are accounted for. We checked again, thoroughly.

Additional Comment from Reviewer #2

It appears that a significant part of the introduction deals with scattering while section two deals does not refer to it as much and focusses on other aspects. For improved balance, it might be worthwhile to consider moving some discussion on scattering from the introduction to section two and dwell more on the range of aspects to be covered in section two (and some background on the motivation) in the introduction.

Thanks for the suggestion. It is a good idea, but we would rather keep the discussion of scattering in the introduction to provide a strong motivation for the community to migrate to a multi-stream algorithm. Rearrangements like that suggested were tried, but it became more awkward and disjointed. Section 2 is already the longest section in this manuscript. Its purpose is to provide enough details for any party whom wants to reproduce our results and can do so.

A Radiative Transfer Module for Calculating Photolysis Rates and Solar Heating in Climate Models: Solar-J 7.5

Juno Hsu¹, Michael Prather¹, Philip Cameron Smith², Alex Veidenbaum³ and Alex Nicolau³

¹ Department of Earth System Science, University of California Irvine

² Lawrence Livermore National Laboratory

³ Department of Computer Science, University of California Irvine

Correspondence to: Juno Hsu (junoh@uci.edu)

Style Definition: Heading 1: Font:(Default) +Theme Headings Asian (Times New Roman), 10 pt, Bold, Space Before: 24 pt, After: 12 pt

Deleted: model for
Deleted: over
Deleted: and solar heating
Deleted: Solar-J includes

Deleted: makes no
Deleted: that are
Deleted: It calculates
Deleted: chemical photolysis rates
Deleted: the absorption of
Deleted: the
Deleted: Solar-J is a spectral extension of Fast-J, a standard in many chemical models that calculates photolysis rates in the 0.18-0.85 μm region. For solar heating, Solar-J extends its calculation out to 12 μm using
Deleted: in the infrared
Deleted: RRTMG's atmospheric
Deleted: in the RRTMG-SW
Deleted: ,
Deleted: RRTMG's
Deleted: larger, less systematic,
Deleted: Fast

Deleted: , but there
Deleted: balanced errors across components and
Deleted: Page Break
Formatted: Space Before: 0 pt, After: 0 pt, No bullets or numbering
Formatted: Font:+Theme Headings Asian (Times New Roman)
Formatted: Font:+Theme Headings Asian (Times New Roman), Font color: Text 1

Abstract. Solar-J is a comprehensive radiative transfer model for the solar spectrum that addresses the needs of both solar heating and photochemistry in Earth system models. Solar-J is a spectral extension of Cloud-J, a standard in many chemical models that calculates photolysis rates in the 0.18-0.8 μm region. The Cloud-J core consists of an 8-stream scattering, plane-parallel radiative transfer solver with corrections for sphericity. Cloud-J uses cloud quadrature to accurately average over correlated cloud layers. It uses the scattering phase function of aerosols and clouds expanded to 8th order and thus avoids isotropic-equivalent approximations prevalent in most solar heating codes. The spectral extension from 0.8 to 12 microns enables calculation of both scattered and absorbed sunlight and thus aerosol direct radiative effects and heating rates throughout the Earth's atmosphere. The Solar-J extension adopts the correlated-k gas absorption bins, primarily water vapor, from the shortwave Rapid Radiative Transfer Model for GCM applications (RRTMG-SW). Solar-J successfully matches RRTMG-SW's tropospheric heating profile in a clear-sky, aerosol-free, tropical atmosphere. We compare both codes in cloudy atmospheres with a liquid-water stratus cloud and an ice-crystal cirrus cloud. For the stratus cloud, both models use the same physical properties, and we find a systematic low bias of about 3 % in planetary albedo across all solar zenith angles caused by RRTMG-SW's 2-stream scattering. Discrepancies with the cirrus cloud using any of RRTMG-SW's three different parameterizations are as large as about 20-40% depending on the solar zenith angles and occur throughout the atmosphere.

Effectively, Solar-J has combined the best components of RRTMG-SW and Cloud-J to build a high-fidelity module for the scattering and absorption of sunlight in the Earth's atmosphere, for which the three major components – wavelength integration, scattering, and averaging over cloud fields – all have comparably small errors. More accurate solutions with Solar-J come with increased computational costs, about 5x that of RRTMG-SW for a single atmosphere. There are options for reduced costs or computational acceleration that would bring costs down while maintaining improved fidelity and balanced errors.

1 Introduction

60 A major challenge in simulating the Earth's climate is the tracking of solar energy, its absorption and scattering within and reflection from the Earth system, in the presence of heterogeneously distributed clouds and aerosols. The fifth assessment of Intergovernmental Panel on Climate Change (IPCC, Chapter 7, Boucher et al., 2013) summarizes that the net radiative feedback due to all cloud types is likely to be positive but with large uncertainty, mostly attributed to the uncertain impact of warming on low clouds. The confidence in the aerosol-climate feedback, through both aerosol and cloud albedo, is even lower and the uncertainty is $\pm 0.2 \text{ W m}^{-2} \text{ }^{\circ}\text{C}^{-1}$.

65 Major modeling challenges naturally point to the sub-grid parameterizations of clouds and cloud-aerosol interactions in coarsely-gridded global models, and the IPCC reports have documented substantial developments in the modeling of the chemical-physical properties of aerosols and clouds (Boucher et al., 2013). In comparison, relatively little attention has been paid to improving the treatment of aerosol and cloud scattering in climate models. This is both surprising and not. Solutions of the radiative transfer (RT) equations in scattering media are well documented with numerous methods and readily available packages such as TUV (Tie et al., 2003; Palancar et al., 2011) and SCIATRAN (Rozanov et al., 2014). However, these more accurate reference codes have always been viewed as too computationally expensive. In terms of climate model development, this is a solved problem with little intellectual interest, but too onerous to improve, and thus low-order

70 approximations remain in place.

We present here Solar-J version 7.5, a radiative transfer model based on the computationally optimized photolysis code, Cloud-J (Prather, 2015). Cloud-J combined an improved cloud overlap algorithm based on observed decorrelation lengths with the cloud quadrature scheme (Neu et al., 2007) for averaging over independent column atmospheres. It includes an 8-stream scattering photolysis code with semi-spherical geometry and wavelength integration over 18 spectral bins from 177-850 nm. In the most recent version 7.4 the spectrum is shortened to 778 nm (See Figure 1). Prior released versions, known in the community as Fast-JX or simply Fast-J (see Sovde et al., 2012; Telford et al., 2013; Sukhodolov et al., 2016), were based on the work of Fast-J2 (Bian and Prather, 2002) and the original Fast-J (Wild et. al, 2000), separately optimizing the absorptions of photon fluxes into 12 stratospheric bins (177-292 nm) and 7 tropospheric bins (292-850 nm).

80 Although this is the first version of Solar-J, we retain the numbering of the released versions of the core photolysis code. For simplicity, we will refer Cloud-J, not Fast-J, as the starting point of Solar-J throughout the text. The accurate treatment of cloud and aerosol scattering has been an essential requirement for atmospheric chemistry modeling, and Cloud-J or alternative models (fast-TUV, Tie et al., 2003) are used standardly in global chemistry models. Solar-J is an extension of Cloud-J wavelength range (0.18-0.8 microns) out to 12 μm and

90 includes an 8-stream scattering solution for the absorption and reflection of sunlight over the full spectrum. Scattering and absorption by large aerosols (dust) and clouds are important for heating rates at these longer wavelengths. The long-term goal is to develop Solar-J as a single module for climate models, albeit with increased computational cost, delivering photolysis rates and more accurate shortwave heating rates, particularly for aerosol and cloud radiative forcing.

95 As finer grid resolutions and massively parallel computing are being pursued to enable more realistic atmospheric interactions with the land, ocean and biosphere in climate modeling, the radiative transfer codes implemented in most of the global models remain in their simplest possible analytical form of 2-stream scattering. With this approximation, all upward and downward scattering occurs at a single angle, and the

Deleted:

Deleted: The major

Deleted:); however

Deleted: Thus, in

Deleted: Fast-J (Wild et al., 2000; Bian and Prather, 2002; Sovde et al. 2012; Sukhodolov et al., 2016).

Deleted: , Cloud-J (Prather, 2015).

Deleted: Fast

Deleted: Fast

Deleted: being marginally more expensive in computation, but

110 scattering must be treated as isotropic, i.e., independent of sun angle. The ubiquitous adoption of 2-stream RT
 codes by the global climate and weather-forecasting models (e.g., DOE's Accelerated Climate Modeling for
 Energy (ACME), NCAR's Community Earth System Model (CESM), the European Centre for Medium-Range
 Weather Forecast (ECMWF) model) has been enabled by standardized packages like the Rapid Radiative
 Transfer Model for GCM Applications (RRTMG), developed based on the correlated-k approach (Mlawer et al.,
 115 1997; Clough et al., 2005). A 2-stream model was certainly necessary at a time when the need for
 computational efficiency exceeded that for accuracy. With the rapid advancement of [massively](#) parallel
 computing, it is time to ask if an upgrade to a higher-order scheme is needed for improved accuracy in climate
 modeling, particularly with regard to cloud and aerosol forcing. The 2-stream scattering approximation has been
 in use for decades in climate models and evaluating its systematic errors remains an active research topic (Li et
 120 al., 2015; Barker et al., 2015). The errors are mostly from the inadequacy of using a single angle to represent
 the scattering of cloud particles and aerosols. For example, the anisotropic, forward-peaked scattering of all
 relevant atmospheric aerosols and cloud particles cannot be represented with the 2-stream approach, and all
 scattering must be reduced to isotropic. To address this problem, a commonly used delta-scaling technique is
 applied by removing the large forward-scattering peak, thus reducing the optical depth (Joseph et al., 1976;
 125 Wiscombe, 1977). In addition, the Henyey-Greenstein (HG) phase function (Henyey and Greenstein, 1941) is
 often used to tune the 2-stream scattering to better represent the scattering of large particles for specific sun
 angles. Unfortunately, the HG phase function lacks the realistic back-scattering peak found for cloud particles,
 particularly ice-crystals (Zhou and Yang, 2015). Li et al. (2015) find biases caused by the HG phase function
 and conclude that higher-order moments of the phase function coupled with a multi-stream radiative transfer
 algorithms are needed to improve accuracy. They demonstrate this point with a 4-stream δ -Eddington code
 developed by Li and Ramaswamy (1996). Wild et al. (2000) tested the accuracy of different-order codes for
 computing the mean radiation field in the presence of thick water clouds, and found that 8-streams were
 necessary to have errors of only a few percent relative to a 160-stream code that resolved the scattering phase
 function. For Solar-J, we adopt the Wild et al. (2000) optimization for water clouds and use Mie (liquid) or
 135 Mishchenko (ice) (Mishchenko et al., 1996; 2004) full phase functions for scattering, truncate the expansion in
 Legendre polynomials to order 8, and solve the scattering with 8 streams with no δ -scaling of the optical depth.

The Solar-J model and tests are described in Section 2. The resulting comparisons with RRTMG-SW are
 presented in Section 3. [In this paper, we use RRTMG as shorthand for RRTMG-SW.](#) Section 4 examines
 computational costs for Solar-J and options for optimization. Conclusions and a path forward are discussed in
 140 Section 5.

2. Methods: model configuration and test cases

2.1 Solar-J spectral configuration

145 The 18 bins of [Cloud-J](#) make up the first 18 bins of Solar-J and were optimized for calculating photolysis rates
 below 64 km (Wild et al, 2000, Bian and Prather 2002). The first 11 bins (177-291 nm) are optimized around
 the Schumann-Runge bands of O₂ and the Hartley bands of O₃, and the next 7 bins optimized for tropospheric

Deleted: massive

Deleted: -

Formatted: Font:+Theme Headings Asian (Times New Roman)

Deleted:

Formatted: Space Before: 0 pt, After: 0 pt

Formatted: Font:+Theme Headings Asian (Times New Roman)

Deleted: -

Formatted: Space Before: 12.25 pt, After: 12.25 pt

Formatted: Font:+Theme Headings Asian (Times New Roman)

Formatted: Font:+Theme Headings Asian (Times New Roman), 10 pt, Font color: Text 1

Formatted: Line spacing: 1.5 lines

Deleted: Fast

photolysis (291-778 nm). The bins were chosen to have relatively uniform opacities for the principal absorbing species O₂ and O₃ across the wavelengths in each bin. In some cases, this includes combining different wavelength regions on either side of the O₃ maximum cross section near 255 nm. Effectively, the 18 bins extend the use of opacity distribution functions used to calculate O₂ photolysis rates in the Schumann-Runge bands (Fang et al. 1974), an equivalent to the correlated-k method in the infrared (Lacis and Oinas 1991). An inherent assumption is that any other scatterers and absorbers are uniform across each wavelength bin, justified by the narrowness of the bins and the lack of sharp spectral features in clouds and aerosols. Because Cloud-J has been optimized against high-resolution spectral data for stratospheric ozone photolysis, and continually updated with new cross sections (Sander et al. 2011), and tested against other codes (Palancar et al. 2011; PhotoComp (Eyring et al., 2010)), we have confidence in our stratospheric photolysis and heating rates. The large bin 18 (412-778 nm) that includes the O₃ Chappuis band is unusual for Cloud-J: it assumes a uniform absorption cross section for O₃, and it has a large factor-of-two change in wavelength. The O₃ cross sections vary smoothly over bin 18 and are $> 0.5 \times 10^{-21} \text{ cm}^2$ over the range 475-725nm with a broad maximum of $5 \times 10^{-21} \text{ cm}^2$ about 600 nm. Overhead opacity ranges from 0.4 to 4% over this band. With optically thin absorption, one can use the flux-weighted average cross section, $1.94 \times 10^{-21} \text{ cm}^2$, for the entire bin. Both the attenuation of sunlight and the absorption of photons to calculate the O₃ photolysis rate use this average. At very large air masses (solar zenith angles of 89-95 degrees) the atmospheric path (vertical optical path $\times 1/\cos(\text{SZA})$) in the Chappuis band approaches 1 and modest errors appear. If highly accurate calculation of the photolysis and heating rates due in the Chappuis band is required, then further analysis of bin 18 is warranted, but otherwise this treatment is sufficiently accurate to follow these rates as the sun sets. Another possible source of error is that these cross sections are photon weighted, and for heating rates the cross sections should be energy weighted (Wm^{-2}). Fortunately, the energy-weighted O₃ cross section, $1.91 \times 10^{-21} \text{ cm}^2$, differs little from the photon-weighted one (with the result of $< 0.04 \text{ K/day}$ difference in clear-sky stratospheric heating).

RRTMG-SW has 9 large bins extending to wavelengths longer than the end point of Cloud-J, and we adopt the flux-weighted average optical properties of clouds and aerosols for these bins as an extension to Cloud-J v7.4 to become Solar-J v7.5. Figure 1 shows the overlap of the spectral bins of Fast-J v7.3, Solar-J v7.5, and RRTMG-SW. Also shown is the revised Cloud-J v7.4 for which the long-wavelength edge of bin 18 has been shortened from 850 nm to 778 nm to match the transition to RRTMG bins. The flux-weighted cross sections for several Cloud-J species have been recalculated to account for this. Be aware that these rescaled cross sections apply to Cloud-J versions 7.4 and later. Cloud-J remains a key component of Solar-J, as it produces representative samples of independent column atmospheres after considering the topology of cloud fractions (Prather, 2015). Solar-J has 27 major bins, referred to here as S-bins, e.g., S1-S27 in Table 4. Bins S1-S17 are taken directly from Cloud-J and have no sub-bins. The transition bin S18 combines Cloud-J's uniform treatment of Chappuis-band O₃ absorption with 4 small non-overlapping sub-bins (17.5 out of a total of 608.7 Wm^{-2}) to include RRTMG's H₂O and O₂ absorptions from their bins B24-B25. These four sub-bins have strong cross sections with their own distinct optical depth structures, and they do not overlap with the major O₃ absorption in bin S18. The rest of the non-ozone sub-bins (weak cross sections) are lumped into one more sub-bin and added to Solar-J's Chappuis band. In all, we take RRTMG's 14 sub-bins from B24 and B25 and optimized these into 5 sub-bins for S18. The last 9 bins, S19-S27, are directly implemented from RRTMG and contain 78 sub-bins. The

Deleted: 850

Deleted: Fast

Deleted: Fast

Deleted: optical depth

Deleted: a

Deleted: Fast

Deleted: Fast-J/

Deleted: 3

Deleted: Figure 1

Deleted: Fast

Deleted: all Fast-J and

Deleted: Table 4.

Deleted: Fast

Deleted: Fast

Deleted: in

Deleted: to

Deleted: total.

logic of having wavelength bins, and then sub-bins within them is to allow the gaseous absorbers with similar opacities to be gathered into one sub-bin, but to treat the scattering and absorption by aerosols and clouds as uniform across the major bin (see below). The fidelity of the spectral extension of Solar-J to match RRTMG-SW is verified with the clear-sky case presented in Section 3.1.

2.2 Clouds and aerosols

Like the photolysis rates calculated in Cloud-J, the heating rates in RRTMG-SW and Solar-J are highly sensitive to the scattering and absorption from tropospheric and stratospheric aerosols, and from liquid-water and ice-water clouds. Cloud-J v7.4 has pre-computed tables of optical properties for typical aerosols and for both liquid- and ice-water clouds. For bins S1-S18, many of these are effectively non-absorbing. With the extension to longer wavelengths, it becomes important to treat the absorption by clouds and the stratospheric sulfate layer. We take the refractive indices for liquid water, ice water and sulfuric acid and calculate solar-flux weighted mean values for each bin S12 – S27. Sunlight over wavelengths for bins S1-S11 does not reach the troposphere in significant amounts and hence the optical properties of bin S12 are used for S1-S11 for simplicity. For the first 18 bins, optical properties are weighted by the solar photon flux (photons $\text{cm}^{-2} \text{s}^{-1}$), and for the last 9 bins they are weighted by the solar energy flux (Wm^{-2}). These refractive indices are combined with a Mie scattering code and a model for the size distribution of particles to calculate the effective radius (r_e), single scattering albedo (SSA), ratio of optical to geometric cross section (Q), and the first 8 terms in the expansion of the scattering phase function (A_{0-7}) that includes the asymmetry parameter ($g = A_1/3$).

For liquid water we take the refractive index from FORTRAN codes developed at the U. Wisconsin-Madison by M.A. Walters for liquid water (NDXWATER: Hale and Querry (1973); Palmer and Williams (1974); Downing and Williams 1975) and ice water (NDXICE, based on Warren (1984)). Liquid water clouds use Deirmendjian's C.1 gamma distribution of drop sizes ($\alpha = 6$, see Deirmendjian 1969) and the Mie code from Hansen and Travis (Hansen; Travis 1974) for a range of effective radii: $r_e = 1.5, 3, 6, 12, 24, 48 \mu\text{m}$, see also Hess et al. (1998). Optical properties (SSA, Q, A_{0-7} , g) are calculated for bins S12-S27 for these effective radii and then individual cloud properties at each bin are interpolated piecewise linearly in r_e .

For ice-water clouds we have two T-matrix computations supplied by M. Mishchenko for Cloud-J (Mishchenko et al. 2004) for warm (irregular) and cold (hexagonal) ice clouds. These included Q and the scattering phase function (including A_{0-7}) for the visible region (~600 nm) and were used at all Solar-J wavelengths. When there is significant absorption, the values of SSA, and to some extent Q, are complex functions of r_e and do not simply scale as total mass. For this first version of Solar-J, we made a simplifying assumption and used the Mie code with the ice-water refractive index to calculate SSA and Q as a function of $r_e = 3, 6, 12, 24, 48, 96 \mu\text{m}$ using the liquid-water cloud's C.1 distribution. Effectively we assumed that the ice particles were spheres. For the phase function A_{0-7} , we kept the two T-matrix results (irregular and hexagonal ice particles) and used them for all r_e of that type of ice cloud. The obvious next upgrade to Solar-J is a redo of the ice-water clouds with a broader, better mix of cloud types (Mishchenko et al. 2016; Yang et al. 2015).

Deleted: .

Formatted: Space Before: 12.25 pt, After: 12.25 pt

Deleted: Bins

Deleted: do

Deleted: they just repeat

Deleted: .

Deleted:

Deleted: Cloud properties for S1-S11, wavelengths where sunlight does not reach the troposphere, just take the values from S12.

Deleted: Fast

Deleted: Fast

Deleted: As with liquid water, optical properties were calculated for S12-S27, and S1-S11 use S12.

The refractive index for mixtures of sulfuric acid and water are also well characterized (Beyer et al. 1996; Biermann et al. 2000; Krieger et al. 2000; Myhre et al. 2003), and we use the tables from Lund-Myhre et al (2003). For the stratospheric sulfate layer, we chose background and volcanic bimodal log-normal size distributions based on Deshler et al. (2003): background has a dominant mode (98%) with $r_e = 0.125 \mu\text{m}$ and a secondary mode with $r_e = 0.432 \mu\text{m}$ for an average of $r_e = 0.131 \mu\text{m}$; volcanic has a dominant mode (81%) with $r_e = 0.487 \mu\text{m}$ and a secondary mode with $r_e = 0.149 \mu\text{m}$ for an average of $r_e = 0.422 \mu\text{m}$. The stratospheric aerosol properties are tabulated for bins S5-S27 for a combination of temperatures (220-250-280K) and weight-percent sulfuric acid (50-70-90%) with 220K and 70% being typical for the stratosphere (McGouldrick et al., 2011). The refractive indices and size distributions of tropospheric aerosols are not as well characterized. Cloud-J has a collection of aerosol optical properties for wavelengths 300-800 nm based on community contributions (e.g., Liou et al. 1996; Martin et al. 2003), and this has been propagated for testing in Solar-J. However, if heating by tropospheric aerosols such as brown and black carbon and dust is to be accurately modeled with Solar-J, then one must go to the specific models to acquire the physical and optical properties, e.g., NCAR's CESM 1.2 (Tilmes et al. 2015).

The Solar-J bins, solar fluxes (S_{phot} in photons $\text{cm}^{-2}\text{s}^{-1}$ and S_{Watt} in Wm^{-2}), and Rayleigh cross-sections (X_{Rayl} cm^2) are summarized in Table 1. The spectral properties for examples of liquid-water clouds ($r_e = 12 \mu\text{m}$), ice-water clouds ($r_e = 48 \mu\text{m}$, cold, hexagonal), background stratospheric 70 wt% sulfuric acid aerosols, and volcanically enhanced stratospheric aerosols for each Solar-J bin are given in Table 2. This table gives wavelength data for the real and imaginary refractive indices based on the flux-weighted means, as well as the Mie-derived values for Q, SSA, and g. The relative importance of cloud heating in each bin can be estimated by multiplying the solar energy by the absorbing fraction, $S_{\text{Watt}} \times (1 - \text{SSA})$. One finds that absorption for bins S1-S20 is negligible, that both types of clouds and stratospheric sulfate aerosols have large absorption in bins S25-S27, and that ice-water clouds have large absorption per optical depth in bins S21-S24 while liquid-water clouds do not. Ice-water and liquid-water have real refractive indices that differ by at most 5%, and imaginary refractive indices that differ typically by a factor of 2 (except for S27). The cause of this difference in specific absorption is the ratio of mass (which controls absorption) to surface area (which controls optical depth), i.e., it is proportional to r_e ; and ice-water clouds typically have 4x greater r_e .

285

2.3 Test cases: clear-sky, clouds and the optical properties

To compare Solar-J and RRTMG-SW, we adopt a standard atmospheric column model, typical of the tropical oceans (surface albedo = 0.06) and define three cases: clear sky, a stratus liquid-water cloud, and a cirrus ice-water cloud. Both cloudy cases assume 100% cloud cover; the cloud overlap algorithms of Cloud-J are not invoked. Neither are aerosols included. Atmosphere and cloud properties are given in Table 3. Each test case is evaluated at four different solar zenith angles (SZAs) at 0° , 21° , 62° , and 84° , whose respective cosine values are 1.0, 0.93, 0.47 and 0.10.

The two cloud profiles are extracted from the 3-hourly, July 2005 ECWMF-Integrated Forecast System (IFS) data. This data set has a horizontal resolution of $1^\circ \times 1^\circ$ in longitude and latitude and 37 vertical layers with

Deleted: Fast

Deleted: Table 1.

Deleted: Table 2.

Formatted: Space Before: 12.25 pt, After: 12.25 pt

Deleted: Table 3.

Deleted: and

about $\sim 1/2$ km vertical resolution in the troposphere. Our example of marine stratus clouds has liquid water content (LWC, g m^{-3}) only below 2 km, while the cirrus example has non-zero ice water content (IWC, g m^{-3}) above 6 km and no liquid water anywhere. The total cloud water content (CWC, g m^{-3}) and effective radius (r_e) are also listed in Table 3. Solar-J has default values for r_e ; for cirrus, they are parameterized as $r_e = 164 \times \text{IWC}^{0.23} \mu\text{m}$, based on a fit to the data described in Heymsfield et al. 2003. For liquid-water clouds, they are based loosely on observations of clean maritime stratus (Boers et al. 1996; Gerber 1996; Miles et al. 2000), with $r_e = 9.6$ micron at pressures greater than 810 hPa and increasing linearly to 12.7 microns at 610 hPa and above. When implemented in an atmospheric model, r_e will ideally be supplied by the atmospheric model driving Solar-J.

Heating rates and the changes in the radiative energy budget due to clouds are evaluated with the clear-sky component subtracted. In both Solar-J and RRTMG-SW, when r_e and CWC are given, the corresponding wavelength-dependent properties are derived from tables or formulae. In Solar-J the scattering phase function is truncated at 8 terms, but in RRTMG-SW's 2-stream model only the first term ($A_1/3 = g$) is retained. For liquid water, RRTMG-SW adopts the parametrization scheme by Hu and Stamnes (1993). For ice clouds three different parameterizations are available, and all are tested here (Ebert and Curry, 1992, henceforth EC92; Key, 2002, henceforth Key02; Fu, 1996, henceforth Fu96).

These parameterization schemes in RRTMG-SW aim to fit the ice-cloud optical properties - extinction coefficient, SSA and g - as a polynomial function of r_e and CWC. Note that Fu's parameterization is based on the generalized effective diameter (D_{ge}) but can be related to the input r_e through Eq. 3.12 of Fu (1996). Ebert and Curry's parameterization has been applied in the Community Atmosphere Model (CAM version 4.0 and prior versions). According to the documentation in RRTMG-SW, Key's parameterization was taken from the Mie-calculated spherical shapes of ice particles from the Streamer radiative transfer codes (Key, 2002), and thus should be similar to the Solar-J approximation. The two-stream solution to the radiative transfer problem, as implemented in RRTMG-SW, requires that the scattering optical depth (τ_{scat}) be reduced with what is described as the δ -Eddington approximation (Huang 1968; Joseph et al., 1976). The purpose is to remove the forward-scattering peak typical of large particles and have only isotropic-equivalent scattering. The absorption optical depth is not changed to ensure correct absorption in the limit of optically thin clouds. The basic problem with these approximations is that the cloud optical depth is reduced by as much as a factor of five, and thus substantially more sunlight is transmitted through the cloud as a direct solar beam rather than as scattered light. In RRTMG-SW (except for the Fu96 ice-cloud approximation) the Henyey-Greenstein (HG) phase function (Henyey and Greenstein, 1941) is further used to approximate the scattering of aerosols and clouds because of its simple power series formulation. The HG phase function does not represent realistic scattering because it does not have backward-scattering peak of real aerosols and clouds. As might be expected, errors in two-stream approximations are ubiquitous and vary widely with solar zenith angle (Boucher 1998).

3. Results: Solar-J versus RRTMG-SW

3.1 Clear sky

Deleted: Table 3.

Deleted: (

Deleted:); and for

Deleted: RRTMG's

Deleted: parameterization

Deleted: .

Deleted:

Formatted: Font:Not Bold

Formatted: Space Before: 0 pt, After: 0 pt

Formatted: Space Before: 12.25 pt, After: 12.25 pt

345 The clear-sky comparison between Solar-J and RRTMG-SW for overhead sun ($\text{SZA} = 0^\circ$) is summarized in
 Table 4 and Figure 2. Table 4 lists the band-by-band radiation budget in Wm^{-2} , with Solar-J's spectral bins
 labeled as S-bins and RRTMG's as B-bands (B16-B29 follow the same band numbers as in RRTMG's codes).
 For easy comparison, several Solar-J's spectral bins of higher resolution from the UV range are lumped together
 to best match the RRTMG's bin of similar range, and vice versa with RRTMG's B24 and B25 bins combined to
 350 compare to Solar-J's S18 bin. The incoming spectral solar irradiance is slightly different for the two codes and
 so for easier comparison we scale each of them to a total of 1360.8 Wm^{-2} (Kopp and Lean, 2011). RRTMG-SW
 adopts the solar source function from Kurucz (1992), while Solar-J integrates high-resolution (0.05 nm) photon
 fluxes (Meier and Stammes, 1992) by wavelength to obtain the solar irradiance. Clear-sky summary
 comparisons for the other three SZAs (21° , 62° , 84°) are shown in Table 5 under Clear-Sky columns.

355 In Table 4, the incoming spectral solar irradiance at top of the atmosphere (TOA down) is balanced by
 components of (1) the reflected flux going back to space (TOA up positive), (2) the absorption in the
 atmosphere, separated into the stratosphere and troposphere, and (3) surface heating. Several differences in the
 configuration of spectral bands between Solar-J and RRTMG-SW affect these results. For one, RRTMG-SW
 360 does not include the small amount of solar irradiance at wavelengths (λ) $< 200 \text{ nm}$ (0.06 Wm^{-2}), and thus
 ignores photodissociation of O_2 molecules in the Schumann-Runge bands and part of the Herzberg continuum
 that heats the upper stratosphere and mesosphere. Second, for $\lambda = 200\text{-}345 \text{ nm}$, Solar-J has 3 Wm^{-2} (6%) less
 solar energy than RRTMG-SW and the difference appears in RRTMG's larger heating of the stratosphere.
 Third, the bin division between 345 and 778 nm is at 412 nm for Solar-J (i.e., between S17 and S18), but at 442
 365 nm for RRTMG-SW (between B26 and B25+B24). This interval, 412-442 nm has very low O_3 absorption,
 significant Rayleigh scattering, and a large amount of solar energy ($\sim 51 \text{ Wm}^{-2}$). Both the shorter-wavelength
 bins (S17 or B26) reflect about 20% of the incoming radiation, but in the adjacent bin with the Chappuis O_3
 band it is only about 9%. Thus, placing the 412-442 nm interval with the Chappuis band results in greater
 atmospheric absorption and less reflection. The benefit of moving the Solar-J (and Cloud-J) band edge to 442
 370 nm should be investigated.

These differences, particularly the 412-442 nm interval, explain most of the total budget difference where,
 overall, Solar-J reflects 4 Wm^{-2} (4%) less back to space, absorbs 2 Wm^{-2} (6%) less in the stratosphere, 3 Wm^{-2}
 (1%) more in the troposphere, and 4 Wm^{-2} (1/2%) more at the surface. For $\text{SZA} = 21^\circ$ and 62° (Table 5), Solar-
 J continues to reflect $3\text{-}4 \text{ Wm}^{-2}$ less energy back to space, but at large $\text{SZA} = 84^\circ$ the two models match closely.
 375 While spherical effects may play some role in this shift, we suspect that Rayleigh scattering may contribute.
 The forward-backward enhancement in Rayleigh scattering is not represented in 2-stream isotropic scattering.
 Thus RRTMG – Solar-J differences will shift as the primary beam shifts from vertical to horizontal as a much
 greater fraction of the visible light is scattered. At low sun the Rayleigh optical slant path along the solar beam
 is much greater than 1 for bin S17 and even ~ 1 for S18.

380 Figure 2 compares the vertical profiles of clear-sky heating rates (K/day) for overhead sun ($\text{SZA} = 0^\circ$) with the
 abscissa axis scaled separately for the stratosphere and the troposphere. Both models produce similar structures
 with the heating maximum of $\sim 30 \text{ K/day}$ in the stratosphere at about 45 km altitude and $\sim 3 \text{ K/day}$ in the lower
 troposphere. The ability of Solar-J to match these structures demonstrates that Solar-J has correctly

Deleted: Table 4

Deleted: Figure 2, Table 4

Deleted: labelled

Deleted: Table 5

Deleted: In Table 4,

Deleted: +B25

Deleted: should investigate moving the

Deleted: the

Deleted: the

Deleted: RRTM

Deleted: Figure 2

Deleted: in the stratosphere about at 45 km altitude and in the troposphere between 2 and 8 km. The unusual zig-zag structures of heating in the troposphere are unphysical and related to the approach of RRTMG and other correlated k-distribution approaches (Lacis and Oinas, 1991) in binning the line-by-line opacities for the sub-bins. Instead of a continuum of water vapor opacities in a large bin, there are a discrete number of monotonically increasing cross sections for the sub-bins.

implemented the RRTMG-SW spectral model. Solar-J minus RRTMG-SW differences are shown in the right two panels of Figure 2. As shown in Figure 2(d), the consistent difference of ≤ 0.1 K/day near the surface comes from Solar-J's simplification of combining RRTMG's 14 sub-bins with O_2 and H_2O absorption in bins B24-B25 into the 5 sub-bins of S18. In the troposphere these are small, but in the stratosphere there is a clear bias with Solar-J producing more heating above 40-50 km and less heating below. Differences at the top, above 50 km, are due in part to the lack of $\lambda < 200$ nm radiation in RRTMG-SW, and in part due to a better resolution of the O_3 and O_2 cross sections in Solar-J. Overall, RRTMG-SW deposits more energy in the lower stratosphere, below 35 km, except at larger SZA where it deposits less. Thus, for the tropics and mid-latitudes, RRTMG will overheat the lower stratosphere, possibly changing the stability and wave propagation to the high latitudes (Hsu et al. 2013). At high latitudes, RRTMG error is in the opposite direction, resulting in a colder polar stratosphere with possibly stronger winter vortices.

Solar-J traces the solar beam through a spherical atmosphere back to the sun. RRTMG assumes a flat Earth. Both then calculate the subsequent scattering and absorption in a plane-parallel, flat atmosphere, but with different solar source terms at each level. Solar-J is able to simulate both photolysis and heating rates throughout twilight, even when the sun is no longer directly visible at the layer. Figure 3a shows the smooth decline in O_3 photolysis rates as the SZA passes from 84° to 95° . Figure 3b shows the corresponding heating rates from both RRTMG-SW and Solar-J. The lack of sphericity in RRTMG leads to large systematic negative biases in the heating rates at low sun. Sphericity errors extend up to $SZA = 80^\circ$ but are largest of course at twilight. The high-latitude atmosphere will have $SZA > 80^\circ$ for much of the day, and thus RRTMG may lead to a cold bias for the high latitudes.

3.2 Low-level marine stratus cloud

For the stratus cloud, the liquid water path (LWP, $g\ m^{-2}$) in each layer is derived from the LWC and height of each layer (Table 3) and is plotted vs. altitude in Figure 4a as described in Section 2.3. The resulting cloud optical depth in each layer, τ , (evaluated at 600 nm) is also written in pairs with Solar-J's as the first number and RRTMG's reduced delta-scaled optical depth (τ') as the second. Both RRTMG and Solar-J start with same value of τ because the Mie-based scattering phase functions for liquid water are unambiguous and both adopt the same values for r_e , Q , and density of liquid water. The r_e is set to $9.6\ \mu m$ through most of this cloud profile. The LWC increases from the surface to a maximum of $0.12\ g\ m^{-3}$ at 1.25 km and falls off to zero by 2.3 km altitude. Because of the increasing thickness of the model layers with altitude, the LWP and layer τ are not as smoothly peaked. We deem this profile realistic from comparing to the observed range for coastal marine low clouds (see Figure 4 of Hu et al., 2007, for July liquid cloud radii distribution and Figure 1a of Painemal et al., 2016, for LWP).

Table 5 summarizes the clear-sky radiative budget and the stratus cloud radiative effect (CRE, $W\ m^{-2}$, calculated as change relative to clear sky) for Solar-J and RRTMG-SW for the four SZAs used here. At overhead sun ($SZA=0^\circ$) with the solar input at $1360.8\ W\ m^{-2}$, the effect of this low-level marine stratus cloud (per Solar-J) is to reflect an additional $473\ W\ m^{-2}$ back to space, absorb an additional $88\ W\ m^{-2}$ in the atmosphere primarily within the cloud, and thus to reduce the surface heating from 969 to $408\ W\ m^{-2}$. As in the clear-sky comparison,

Deleted: The consistent

Deleted:

Deleted: 05

Deleted: in Figure 2d

Deleted: Solar-J minus RRTMG differences are shown in the right two panels.

Deleted: Figure 3a

Deleted: Figure 3b

Deleted: .

Formatted: Space Before: 12.25 pt, After: 12.25 pt

Formatted: Line spacing: 1.5 lines

Deleted: (

Deleted:)

Deleted: 1(a)

Deleted: (

Deleted:)

Deleted: Table 5

Deleted: heating rates

Deleted: SZA

Deleted: 469

Deleted: the

Deleted: 91

Deleted: 409

both models look broadly similar but with some large systematic biases. For $\text{SZA} = 0\text{--}62^\circ$, Solar-J reflects $\sim 10 \text{ W m}^{-2}$ (2-3%) more sunlight back to space; both models calculate about the same increase in atmospheric absorption; RRTMG-SW consistently absorbs less energy within the cloud but more above it; and thus Solar-J calculates greater reduction in surface heating (also about 2-3%) than RRTMG-SW. These differences in solar heating are large compared with anthropogenic climate forcing from greenhouse gases ($\sim 4 \text{ W m}^{-2}$) (Myhre et al., 2013), but of course stratus clouds occupy only a fraction of the surface. Within the atmosphere, there is a large difference in the distribution of CRE, with Solar-J calculating 5% ($\text{SZA}=0^\circ$) to 25% ($\text{SZA}=62^\circ$) more in-cloud heating than RRTMG. The profile of heating rates (Figure 4b) shows a double peak at 1.9 km (visible $\tau \sim 1$) and 1.2 km ($\tau \sim 6$) even though the LWC has a smooth maximum at 1.1 km. The longer wavelength bins (S25-S27) are fully absorbed in the uppermost part of the cloud ($\tau < 1$), while the shorter wavelengths (S19-S24) penetrate the cloud to scattering optical depths of order $\tau \sim 8$. RRTMG consistently calculates lower in-cloud rates, see below. It is possible that Solar-J's greater heating in stratus clouds may change the dynamics of stratus clouds relative to a model using RRTMG-SW (Harrington et al., 2000). At low sun ($\text{SZA}=84^\circ$) Solar-J calculates 4% greater reflectance change; both models calculate less atmospheric heating within the cloud but more heating above it; and the surface heating in Solar-J is about 2 W m^{-2} less than in RRTMG-SW. Both models show enhanced heating only in the uppermost cloud layers above 1.7 km (Figure 4b).

We believe that the RRTMG-SW biases identified here are errors caused by the 2-stream approximation. This is supported by the study of Li et al. (2015, see their Figure 2), who show small negative errors in absorption from the calculation of δ -Eddington (2-stream) approximation in the case of the single-layer liquid cloud ($r_e = 10 \mu\text{m}$, $\tau \sim 4$) with $\cos(\text{SZA}) > 0.2$ (i.e., our $\text{SZA} = 0\text{--}62^\circ$). For our $\text{SZA}=84^\circ$ this absorption bias reverses as is also found by Li et al. (2015) for $\cos(\text{SZA}) < 0.2$. In their study the 2-stream calculations are compared to the 128-stream DISORT (Discrete-Ordinate) benchmark calculations using accurate phase functions and no δ -scaling (similar to the study of Wild et al., 2000). One other source of error in RRTMG's model is the choice of δ -scaling factor, which they base on the HG phase function using only g . Alternatively, one can use the 2nd moment of the true Mie phase function (Wiscombe, 1977). We revised the RRTMG-SW code to do this using Solar-J's scattering phase functions and found a modest reduction in this error from -14 W m^{-2} to -9 W m^{-2} for reflected sunlight ($\text{SZA}=0^\circ$).

3.3 Tropical cirrus cloud

For the cirrus cloud comparison, we use all three ice-water parameterization options in RRTMG-SW and Solar-J's single parametrization. Figure 5ab shows the prescribed profiles of model input of IWC and r_e (Table 3). The cumulative overhead τ at 600 nm is shown in Figure 5c. The δ -scaling varies considerably across the RRTMG parameterizations: Solar-J's unscaled $\tau \sim 0.43$ compares with EC92's $\tau \sim 0.25$, Fu96's $\tau \sim 0.15$, Key02's $\tau \sim 0.09$ (see also Table 6). Thus, the fraction of sunlight scattered by the cloud varies widely across all four. The asymmetry parameter g from Mishchenko's phase functions for hexagonal and irregular ice used in Solar-J ranges from 0.75 to 0.81 (as compared to 0.88 for equivalent-size liquid-water clouds), but g values for all RRTMG ice clouds range from 0.4 to 0.6 for wavelengths where scattering is important (S12-S24). The absorbing optical depth, τ_{abs} , is a very important diagnostic because in an optically thin cloud the overall heating should be proportional to it. Table 6 shows that all four ice cloud models have similar τ_{abs} up to S22, and if we

Deleted: 20

Deleted: .

Deleted: .

Deleted: Figure 5ab

Deleted: Table 6).

Deleted: Table 6

average S23 and S24 (which appears to have been done in EC92), then all four models remain similar in terms of solar absorption. As noted for the stratus cloud, all models predict a large, factor of 5, jump in τ_{abs} for S25-S27 ($\lambda > 2.5 \mu\text{m}$), which are the most important bins for cirrus cloud heating. At these wavelengths, EC92 has the largest absorption τ_{abs} about 0.3, followed by Solar-J's 0.21.

Cloud heating rate profiles at SZA = 0° are shown in Figure 5d, and the large range clearly reflects the τ_{abs} for S25-S27. The cirrus CRE for four SZAs and for five components (reflected at top of atmosphere, absorbed in above-cloud atmosphere, in-cloud atmosphere, below-cloud atmosphere, and absorbed at surface) are shown as a set of 20 bar charts in Figure 6. The CRE percent changes relative to clear-sky are shown as four color bars representing Solar-J (red), EC92 (blue), Fu96 (green) and Key02 (yellow). The clear-sky energy flux (W m^{-2}) averaged over the four models are shown in a larger font in each bar chart. For example, at SZA = 21° the energy absorbed by clear-sky atmosphere over the altitude range of the cirrus cloud is 98.4 W m^{-2} . The CRE in W m^{-2} within the cirrus cloud for Solar-J is then $98.4 \times 10.7\%$ (red bar) = 10.5 . The value of each bar (%) is also written out immediately above/below the bar in a small font. The y-axes in Figure 6 have different scales at different SZA.

A key cirrus CRE is the increase in albedo, the top-of-atmosphere reflected sunlight, as shown for all models and a range of SZAs in Figure 6 (top row). The percent increase across RRTMG models (13-131%) scales in proportion to τ , with EC92 being the largest and Key02, the smallest. This relative order stays the same across all SZAs, but the range across RRTMG models decreases and the relative percent increases for larger SZA. The Solar-J model also increases in percent with SZA, but the pattern is different from that of RRTMG-SW models. At overhead sun, Solar-J has about the same CRE percent as EC92 even though it has 1.7x greater τ . This can be understood in that Solar-J cirrus is highly forward scattering and less of the scattered light is reflected backward and upward. As the SZA increases to 21-62°, however, the peak in backscatter at 180° becomes less important and Solar-J shifts lower relative to EC92 to look like Fu96. At very large SZA = 84°, with most of the sunlight being scattered at least once within the cloud, the Solar-J model again looks like the largest τ , model EC92. To first order the Solar-J model is calculating the correct SZA dependence of the CRE by using both a more realistic scattering phase function and 8-stream scattering. The use of Mishchenko's sample T-matrix phase function may not be a perfect choice for cirrus, but it is clearly more realistic than the isotropic scattering used in RRTMG. Solar-J captures the cirrus albedo curve similar to Figure 2 of Mishchenko et al. (1996) for $\tau = 0.1$ in which the slope increases rapidly as cosine (SZA) approaches 0. While the RRTMG 2-stream models can be tuned to be correct answer at some SZA, they will have errors of 15 W m^{-2} at others. The change in surface heating (5th row) looks like the reverse of the top-of-atmosphere bars with similar relative weighting of the RRTMG models. Again, it shows that 2-stream scattering cannot mimic the correct SZA dependence of reduced surface heating under cirrus.

With greater reflection of sunlight, the atmospheric heating above the cloud increases in all cases. With RRTMG the scattered light has only one angle, and thus the above-cloud heating (2nd row of Figure 6) is strictly proportional to the top of atmosphere increases. With Solar-J the reflected light is calculated at four zenith angles with the flux at larger zenith angles producing more heating (i.e., longer slant-path through the atmosphere). This is most apparent in the SZA = 84° case where the low-angle scattering driven by the low solar elevation produces relatively much more atmospheric heating.

Deleted: Figure 5d

Deleted: Figure 6.

Deleted: 112.8

Deleted: 112.8

Deleted: 8.8

Deleted: 9.9

Deleted: 122

Deleted: than for

In-cloud heating (3rd row) is expected to be proportional to τ_{abs} at high sun (SZA = 0-62°), and for flux-weighted bins S25-S27 these τ_{abs} are 0.31 (EC92), 0.21 (Solar-J), 0.17 (Key02), and 0.16 (Fu96). While the actual heating of the cirrus ice particles may be in [similar](#) proportionality, all we calculate is the total change of heating over the in-cloud layers. As seen in [Figure 6](#) there is substantial clear-sky absorption by atmospheric water vapor in the cloudy layers (~100 W m⁻²) at high sun. Thus, the small perturbation caused by the cloud (<10%, 3rd row) result from in-cloud heating of ice particles (proportional to τ_{abs}) countered by reduced heating of the water vapor in the region because of the increased upward scattered light (top row). The extreme case of SZA = 84° has all models calculating 20-40% reductions in heating because of the reduced sunlight.

4 Computational costs

The major computational costs of Solar-J and similar codes within a chemistry-climate model centers on three key components: matrix operations required for multi-stream scattering; wavelength bins representing the spectrum of optical properties, and approximation of the multitude of independent column atmospheres (ICAs) resulting from a complex overlapping cloud field within a grid cell. What is a reasonable requirement for multi-stream scattering in a climate model? From this work as well as a history of publications noted above, the analytic 2-stream approximation has errors that cannot simply be corrected or averaged over, that create large-scale biases in cloud radiative forcing with latitude, and that significantly misrepresent the direct:diffuse ratio of solar radiation at the surface. The original Fast-J work (Wild et al., 2000) examined a range of multi-stream scattering models and found that for typical clouds, an 8-stream solution was able to match within a few percent that of a hundreds-stream code for the mean intensity above, within and below the cloud. A major advantage of 8-stream was that no δ -scaling is needed and a simply truncated scattering phase function can be used directly. The parent RRTM-SW code has the option of using a more accurate 16-stream scattering code, but would in general be computationally much more expensive than the [Solar-J](#) 8-stream. The basic costs of the matrix inversions (Fast-J via Feautrier, 1964) or eigenvalue solutions (RRTM via DISORT, Stamnes et al., 1988) scale as n^3 . For the same 8-stream solution, DISORT performs eigenvalue decomposition of 8x8 matrices at each level at a cost of order 8³, while the Feautrier [approach](#) solves the finite-difference equations with 4x4 matrices at split levels for a cost of order 2x4³. As a first guess the Feautrier code should run 4x faster than the equivalent DISORT code. We examine the costs and options of wavelength binning and cloud-field approximations below.

4.1 Solar-J vs. RRMTG-SW

Cloud-J (and hence Fast-J) [has](#) been extensively tested in the UCI Irvine Chemistry-Transport Model (CTM). [Cloud-J](#) timings are estimated by comparing full cloud quadrature (2.75 calls per column atmosphere per time step, see below) versus an average-cloud approximation (1 call). We find that 12% of the CTM wall-clock time is spent in [Cloud-J](#) using average clouds and 28% when using cloud quadrature. Because the UCI CTM runs a minimalist tropospheric chemistry and a linearized stratospheric chemistry (see Hsu and Prather, 2010), it keeps track of only 32 species. More complete models like Oslo CTM3 (Sovde et al., 2012) and WACCM (Marsh et

Deleted: this

Deleted: Figure 6

Deleted: We can understand the erratic results of Fu96 (see Figure 5(d) green line and green bars for in-cloud absorption in Figure 6) in that this model's δ -scaling selects altitude-dependent g-values (as a function of ice crystal size) while both EC92 and Key02 derive vertically uniform g-values from δ -scaling. Thus the Fu96 scattering within the cirrus cloud is very different from the other RRTMG models. Artificially fixing Fu96 g-values at a fixed mean value throughout the cirrus profile recovers a heating profile similar to Key02's in several bands where they have similar τ . The lesson here is that the scattering model is critical for calculating in-cloud heating, even for optically thin cirrus.

Formatted: Space Before: 0 pt, After: 0 pt

Formatted: Font:Not Bold

Deleted: Fast

Deleted:

Deleted: .

Deleted: have

Deleted: Fast

Deleted: Fast

al., 2013) calculate transport and chemistry on about 100 species. In CTMs like these, the fractional cost of Cloud-J should be only 4-7%. Comparing Solar-J to [Cloud-J](#) in single-atmosphere tests shows what is expected, Solar-J costs are 3.5x greater because of the much larger number of spectral bands needed for heating (100 vs 18). A minor feature is that cloudy atmospheres cost about 10% more than clear atmospheres because [Cloud-J](#) inserts extra layers at the top of clouds to enhance the accuracy of the finite-difference equations.

Deleted: Fast

Deleted: Fast

In a series of comparisons on a single-socket multi-threaded CPU, we find that Solar-J takes 5x more wall clock time than RRTMG-[SW](#). This is not surprising given the cost of solving an 8-stream vs. 2-stream RT problem. An additional cost of Solar-J (not included above) is spherical geometry. With RRTMG-[SW](#), 50% of the grid cells are in sunlight and require RT solutions. With Solar-J, however, important photochemistry and solar heating occur in the atmosphere when the surface is past sunset (see Figure 3) involving about 56% of the grid cells, a 12 % increase in radiatively active grid cells. One could expect that RRTMG-[SW](#) will correct this error and end up with similar [increases](#) in coverage and cost.

Deleted: .

Deleted: increase

Most climate models, even at the highest resolutions, have individual grid cells with fractional, overlapping cloud layers. Although 3D RT models can be used to solve for the average heating and photolysis rates, most climate models decompose the cloud structures into ICAs, for example, through cloud-resolving models (Khairoutdinov et al., 2005) or from cloud fractional coverage and a decorrelation distance for overlapping cloud layers (Prather, 2015). The ICAs are horizontally homogeneous and can be solved using the 1D RT codes of RRTM-[SW](#) or Solar-J. Comparisons between Solar-J and RRTMG-[SW](#) for clouds in Section 3 are done with a single 1D plane-parallel, ICA-like atmosphere (i.e., 100% cloud fraction in each cloudy layer), an idealized case.

Although the different approaches for fractional cloud cover were not directly tested here, it is worth looking at how Solar-J and RRTMG might treat cloud fields in climate models. The Monte Carlo ICA (McICA, Pincus et al., 2003) method selects both ICAs and spectral intervals randomly in each grid square. Every spectral interval is sampled only once, and each may have a different ICA selected according to its fractional area (frequency of occurrence). With 100+ bins-ICA combinations, the ICAs are well sampled, but there may be instances in which a few, key, large-energy bins are not sampled accurately. The McICA approach, when suitably averaged over time, has no mean bias in average heating rates but very large root-mean-square (rms) errors: e.g., $\pm 105 \text{ W m}^{-2}$ in surface heating with $\text{SZA} = 45^\circ$; $\pm 3 \text{ K/day}$ in layers with partly cloudy atmospheres (Pincus et al., 2003). It is cost efficient in that each wavelength bin requires only 1 ICA calculation. Solar-J uses cloud quadrature, introduced by Neu et al. (2007), selecting up to 4 cloud profiles (QCA) based on total optical depth to represent four types of [atmospheres](#): mostly clear, typical cirrus clouds, typical stratus clouds, and very thick frontal or cumulus clouds. While each grid cell may have up to 4 QCAs, on average there are only 2.75. Solar-J then calculates all wavelength bins using all QCAs to compute the average. Cloud-J (Prather 2015) compared [several](#) approximations for calculating average photolysis rates (J_s) within a sample of 640 tropical atmospheres where the [generated](#) number of ICAs per grid cell [ranged](#) from 1 to 3,500 and averaged 170. Compared to the exact answer defined by separate calculations with all the weighted ICAs, cloud quadrature achieves rms errors in instantaneous cell-averaged J_s of 0 to 3% throughout the troposphere, with most levels being 0-1%. When Cloud-J is run selecting random ICAs (using all wavelengths for each ICA, not the McICA approach), 50 random ICAs (18x more cost) are needed to achieve the accuracy of cloud quadrature.

Deleted:

Deleted: atmosphere

Deleted: a number of

Deleted: ranging

From the point of view of chemistry-climate models, large rms errors in Js cannot be tolerated because the chemistry is non-linear and such errors are not likely to average. In climate models, there are threshold processes, like aerosol and ozone heating preventing cloud formation (e.g., Koch and DelGenio, 2010), for which heating noise may not simply average out. Errors in heating rates do not always have symmetric responses in terms of climate (e.g., Hsu et al., 2013). Although Pincus et al. (2003) tested climate forecasting with an early version of McICA, it is not clear how forecast skill with modern, high-resolution models are impacted by the biases in RRTMG-SW. [Alternatively](#), RRTMG-SW could adopt cloud quadrature with 2.8x greater cost and eliminate most of their rms errors in heating.

Deleted: Of course

All of these standard features of Solar-J (8-streams, spherical geometry, cloud quadrature) increase the computational cost, but one can argue that the improved fidelity in the solar heating of the atmosphere and radiative forcing of the climate is worth the cost. The question is what fraction of the total computational cost of a climate simulation would be used by Solar-J? If we estimate the fractional cost of RRTMG in a full atmosphere-ocean climate simulation to be 1-3%, then replacing it with Solar-J (5x) and including cloud quadrature (2.8x), would increase this to 13-39%. At the low-end of this range, the substantially improved and less noisy physics is probably worth it; but at the upper-end, it is prohibitive. In either case, it is worthwhile to pursue a range of computer science and algorithmic approaches to reduce these costs as discussed in sections 4.2 and 4.3 below.

4.2 Computer science options

A profiling of the Solar-J code shows that the Fast-J core, consisting of a scattering matrix generator and block-tridiagonal solver, is the dominant cost. These two subroutines are already well optimized in terms of single CPU multi-threading; however, porting Fast-J to computers with graphical processing units (GPUs) has shown promise for greater speed up. One effort targeted a single GPU and demonstrated speedups via CUDA (Compute Unified Device Architecture) tuning of ~50x relative to the CPU time if a large number of column atmospheres (200+) were concurrently evaluated (Artico et al., 2015). Another effort used a field-programmable gate array (FPGA) with the advantage that it applies to a single column calculation. The FPGA resulted in a ~4x speedup and a rather dramatic 35x energy savings compared to the multicore processor computation (Rezai et al., 2016). Fast-J was also optimized for the Xeon Phi on the Babbage test platform at DOE NERSC and achieved ~3x speedups with only a subset of the cores.

Great computational acceleration could be realized with GPU systems when a number of column atmospheres are being simultaneously evaluated. For each grid cell Solar-J calculates about 100 wavelength bins and an average of 2.75 ICAs per grid square. Giving each CPU/GPU node a 3x3 grid cell square (~2,500 column atmospheres) could achieve 10x or greater speedups for Solar-J and be appropriate for a massively parallel climate simulation (e.g., 32,000 nodes for a 50-km global grid). With such speedups, Solar-J costs would be comparable or possibly less than those of the current RRTMG-SW, and thus become a marginal cost in the climate simulation.

695 4.3 Other parameterizations for wavelength bins

Solar-J uses its own optimization of wavelength bins at ultra-violet and visible wavelengths (0.18 to 0.8 μm), which is based on [previously established](#) experience with O_2 and O_3 cross sections and the need to calculate accurate J-values. We accept that RRTMG and its parent code RRTM represent current best practice and accuracy in characterizing the absorption of infrared sunlight (0.8 to [42](#) μm) in the Earth's atmosphere and have adopted the RRTMG-[SW](#) code exactly for bins and all gaseous absorbers. Solar-J's computational cost is clearly driven by the additional 82 infrared bins adopted from RRTMG-[SW](#). Alternative methods of parameterizing these infrared bins [need](#) to be examined: e.g., 14 bins (Chu, 1992; Grant and Grossman, 1998); 34 bins (Fu and Liou, 1992); 36 bins (Cole, 2005). Any of these would result in a 1.5x to 2.5x savings for Solar-J. We recognize that the infrared bins adopted in RRTMG-[SW](#) are based on accurate representation of the line-by-line calculations, and thus adopting these reduced-bin parameterizations will introduce new errors, but further research will be needed to determine whether these errors may be an acceptable trade-off for speed gain.

Many of these other parameterizations (e.g., Chu, 1992) are based only on water vapor and do not include the other trace gases that [are represented in RRTMG-SW](#): O_2 in the visible and infrared, CH_4 , and CO_2 . These gases add to the complexity of the RRTM model-[SW](#), and thus we investigate their importance in tropospheric heating rates. For our clear-sky case here ([Table 4](#), Figure 2), we find an average tropospheric heating rate of [2.4](#) K/day. The contribution of CH_4 to this total is 0.1%; that of CO_2 is complex because of the stratospheric self-shielding but is less [than](#) $\pm 1\%$ in the troposphere, and that of O_2 is about 3% uniformly throughout the troposphere. If we can find a way of treating the O_2 heating separately, then the effort to find an abbreviated number of spectral intervals can focus on water vapor.

5 Conclusions

We present a new solar radiation module, [Solar-J version 7.5 aims](#) for consistent calculation of atmospheric photolysis and solar heating rates [by combining the strengths of both Cloud-J and RRTMG-SW](#). In a chemistry-climate model, Solar-J supplies the needs of solar heating of the atmosphere and surface, photolysis rates, and photosynthetic activity. Climate models are increasingly including short-lived gases and aerosols as radiative forcing components, and the accurate simulation of these under different climates requires some level of interactive chemistry and photolysis rates.

The components of Solar-J are chosen [and balanced](#) to achieve the [best possible overall accuracy for](#) a module intended as a standard component of chemistry-climate simulations. From Cloud-J we take the 8-stream scattering model, semi-spherical geometry, ultraviolet transmission, and cloud quadrature. From RRTMG-SW, we take the detailed spectral intervals for the visible and infrared developed from the RRTM reference code. Solar-J matches RRTMG-SW except where the improved physics leads to more accurate results. [Selecting the best physics for all these components comes with a cost](#): A simple comparison shows [the cost of Solar-J is 5x](#) that of RRTMG-SW [for a single atmosphere, and if the cloud quadrature scheme for overlapping cloud fields](#) (Neu et al., 2007; Prather, 2015) is applied to either code, the cost increases additionally by 2.8x. We show that

Deleted: .

Deleted: long

Deleted: 4

Deleted: needs

Deleted: that

Deleted: (Table 4,

Deleted: 1

Deleted: that

Deleted: ;

Deleted: designed

Deleted: accurate,

Deleted: rates

Deleted: in

Deleted: atmosphere: Solar-J version 7.5

Deleted: highest

Deleted: while still providing

Deleted: Trying to use

Deleted: costs

Solar-J can be optimized on GPUs and achieve speeds similar to RRTMG-SW. While this opens up great opportunities for the new generation of high-performance computers, it also complicates the simple implementation of Solar-J in a climate model.

Solar-J is a starting point. In assessing the fidelity of Solar-J in terms of interaction with the many components of the climate system, we can focus on the three major sources of costs/error (spectral intervals, multi-stream radiative transfer, and complex cloud systems) and, in parallel, on the opportunities for accelerated performance with new computational architectures. Ideally, the community would optimize computational costs across modules to have comparable (small) errors in all. In addition, these parameterization errors need to be evaluated for the impact they might have on climate simulations (e.g., Pincus et al., 2003). For Solar-J, the next steps consist of (i) moving the S17-S18 boundary to the beginning of the O₃ Chappuis absorption near 0.5 μm , and (ii) developing a more realistic and diverse range of cirrus clouds and their optical properties (e.g., Yang et al., 2015). Another inquiry is to test some of the published, simpler models for water vapor absorption against RRTMG-SW. A larger project will be to put Solar-J into a climate model and evaluate how errors in modeling solar radiation may affect the climate simulations.

6 Code availability

The most recent version of Solar-J can be found at anonymous ftp://128.200.14.8/public/junoh/Solar-J/. A complete version of Solar-J code and data, along with some standalone test cases, are included in a zip file as a supplement to this article.

7 Acknowledgement

This work is supported by the U.S. Department of Energy, Office of Science, Biological and Environmental Research Program under Award numbers DE-SC0007021 and DE-SC0012536, and by NASA Modeling, Analysis and Prediction (MAP) Program under award number NNX13AL12G. This research used resources of the National Energy Research Scientific Computing Center, a DOE Office of Science User Facility supported by the Office of Science of the U.S. Department of Energy under Contract No. DE-AC02-05CH11231.

Deleted: trying to further increase

Deleted: simulation

Deleted: the

Deleted: of sunlight

Deleted: this is a tradeoff where

Deleted: optimizes

Deleted: cost

Deleted: three parameterizations, and, moreover

Deleted: in treating solar radiation are clearly mapped onto changes in

Deleted: .

Deleted: involve some clear improvements:

Deleted: move

Deleted: 44

Deleted: develop

Deleted: A third opportunity

Deleted: .

Formatted: Space Before: 12.25 pt, After: 24.75 pt

Deleted: Supplement

Deleted: .

Formatted: Space Before: 12 pt, After: 24 pt

Formatted: Line spacing: 1.5 lines

Deleted: .

Formatted: Font color: Auto

- Artico, F., Prather, M.J., Veidenbaum, A.V., Nicolau, A.: Fast Fast-J GPU Codes, CECS technical report, 15-03, posted on November 18, 2015.
- Barker, H. W., Cole, J. N. S., Li, J., Yi, B., and Yang, P.: Estimation of Errors in Two-Stream Approximations of the Solar Radiative Transfer Equation for Cloudy-Sky Conditions, *J. Atmos. Sci.*, 72, 4053–4074, doi:10.1175/JAS-D-15-0033.1, 2015.
- Beyer, K. D., Ravishankara, A. R., and Lovejoy, E. R.: Measurements of UV refractive indices and densities of H₂SO₄/H₂O and H₂SO₄/HNO₃/H₂O solutions, *J. Geophys. Res. Atmos.*, 101, 14519–14524, doi:10.1029/96JD00937, 1996.
- Bian, H. and Prather, M. J.: Fast-J2: Accurate Simulation of Stratospheric Photolysis in Global Chemical Models, *J. Atmos. Chem.*, 41, 281–296, doi:10.1023/A:1014980619462, 2002.
- Biermann, U. M., Luo, B. P., and Peter, T.: Absorption Spectra and Optical Constants of Binary and Ternary Solutions of H₂SO₄, HNO₃, and H₂O in the Mid Infrared at Atmospheric Temperatures, *J. Phys. Chem. A*, 104, 783–793, doi:10.1021/jp992349i, 2000.
- Boers, R., Jensen, J. B., and Krummel, P. B.: Microphysical and short-wave radiative structure of stratocumulus clouds over the Southern Ocean: Summer results and seasonal differences, *Q. J. R. Meteorol. Soc.*, 124, 151–168, doi:10.1002/qj.49712454507, 1998.
- Boucher, O., Randall, D., Artaxo, P., Bretherton, C., Feingold, G., Forster, P., Kerminen, V.-M., Kondo, Y., Liao, H., Lohmann, U., Rasch, P., Satheesh, S., Sherwood, S., Stevens, B., and Zhang, X.: Clouds and Aerosols. In: *Climate Change 2013: The Physical Science Basis. Contribution of Working Group I to the Fifth Assessment Report of the Intergovernmental Panel on Climate Change*, Cambridge University Press, Cambridge, United Kingdom and New York, NY, USA, doi:10.1017/CBO9781107415324.016, 2013.
- Chu, M.-D.: A Solar Radiation Model for Use in Climate Studies, *J Atmos Sci*, 49 762–772, DOI: [http://dx.doi.org/10.1175/1520-0469\(1992\)049<0762:ASRMFU>2.0.CO;2](http://dx.doi.org/10.1175/1520-0469(1992)049<0762:ASRMFU>2.0.CO;2), 1992.
- Clough, S., Shephard, M., Mlawer, E., Delamere, J., Iacono, M., Cady-Pereira, K., Boukabara, S., and Brown, P.: Atmospheric radiative transfer modeling: a summary of the {AER} codes, *J. Quant. Spectrosc. Radiat. Transfer*, 91, 233 – 244, doi:<http://dx.doi.org/10.1016/j.jqsrt.2004.05.058>, 2005.
- Cole, J. N. S. (2005), *Assessing the importance of unresolved cloud-radiation interactions in atmospheric global climate models using the multiscale modelling framework*, Ph.D. thesis, Pa. State Univ., University Park.
- Cole, J. N. S., Barker, H. W., O'Hirok, W., Clothiaux, E. E., Khairoutdinov, M. F. and Randall, D. A.: Atmospheric radiative transfer through global arrays of 2D clouds, *Geophys Res Lett*, 32(19), Art. L19817, Doi 10.1029/2005gl023329, 2005.

- Deirmendjian, D.: Electromagnetic Scattering on Spherical Polydispersions, American Elsevier, New York, 1969.
- Deshler, T., Hervig, M. E., Hofmann, D. J., Rosen, J. M., and Liley, J. B.: Thirty years of in situ stratospheric aerosol size distribution measurements from Laramie, Wyoming (41°N), using balloon-borne instruments, *J. Geophys. Res. Atmos.*, 108, doi:10.1029/2002JD002514, 2003.
- Downing, H. D. and Williams, D.: Optical constants of water in the infrared, *Journal of Geophysical Research*, 80, 1656–1661, doi:10.1029/JC080i012p01656, 1975.
- Ebert, E. E. and Curry, J. A.: A parameterization of ice cloud optical properties for climate models, *J. Geophys. Res. Atmos.*, 97, 3831–3836, doi:10.1029/91JD02472, 1992.
- 835 Eyring, V., Shepherd, T. G., and Waugh, D. W., eds.: SPARC CCMVal Report on the Evaluation of Chemistry-Climate Models, vol. No. 5, SPARC Office, <http://www.sparc-climate.org/publications/sparc-reports/>, 2010.
- Fang, T. M., Wofsy, S.C., and Dalgarno, A.: Opacity Distribution Functions and Absorption in Schumann-Runge Bands of Molecular-Oxygen." *Planetary Space Sci.*, 22, 413-425, 1974.
- Feautrier, P.: Sur la résolution numérique de l'équation de transfert, *Comptes Rendus Acad. Sci. Paris*, 258, 840 3189, 1964.
- Fu, Q., and Liou, K.N.: On the correlated k-distribution method for radiative transfer in nonhomogeneous atmospheres, *J. Atmos Sci*, 49, 2139-2156, 1992.
- Fu, Q.: An Accurate Parameterization of the Solar Radiative Properties of Cirrus Clouds for Climate Models, *J. Climate*, 9, 2058– 2082, doi:10.1175/1520-0442(1996)009<2058:AAPOTS>2.0.CO;2, 1996.
- 845 Gerber, H.: Microphysics of Marine Stratocumulus Clouds with Two Drizzle Modes, *J. Atmos. Sci.*, 53, 1649–1662, doi:10.1175/1520-0469(1996)053<1649:MOMSCW>2.0.CO;2, 1996.
- Grant, K. E., and Grossman, A. S.: Description of a Solar Radiative Transfer Model for Use in LLNL Climate and Atmospheric Chemistry Studies, UCRL-ID(129949), 17 pp., 1998.
- Haladay, T. and Stephens, G.: Characteristics of tropical thin cirrus clouds deduced from joint CloudSat and 850 CALIPSO observations, *J. Geophys. Res. Atmos.*, 114, n/a–n/a, doi:10.1029/2008JD010675, 2009.
- Hale, G. M. and Querry, M. R.: Optical Constants of Water in the 200-nm to 200-μm Wavelength Region, *Appl. Opt.*, 12, 555–563, doi:10.1364/AO.12.000555, 1973.
- Hansen, J. E. and Travis, L. D.: Light scattering in planetary atmospheres, *Space Science Reviews*, 16, 527–610, doi:10.1007/BF00168069, 1974.

- 855 Harrington, J. Y., Feingold, G., and Cotton, W. R.: Radiative impacts on the growth of a population of drops within simulated summertime Arctic stratus, *J. Atmos. Sci.*, 57, 766-785, doi:10.1175/1520-0469(2000)057<0766:Riotgo>2.0.CO;2, 2000.
- Heney, L. G. and Greenstein, J. L.: Diffuse Light in the Galaxy, *Astrophys. J.*, 93, 70–83, doi:10.1086/144246, 1941.
- 860 Hess, M., Koepke, P., and Schult, I.: Optical Properties of Aerosols and Clouds: The Software Package OPAC, *Bull. Am. Meteorol. Soc.*, 79, 831–844, doi:10.1175/1520-0477(1998)079<0831:OPOAAC>2.0.CO;2, 1998.
- Heymsfield, A. J., Matrosov, S., and Baum, B.: Ice Water Path-Optical Depth Relationships for Cirrus and Deep Stratiform Ice Cloud Layers., *J. Appl. Meteor.*, 42, 1369–1390, doi:10.1175/1520-0450(2003)042<1369:IWPDRF>2.0.CO;2, 2003.
- 865 Hsu, J. N., Prather, M. J., Bergmann, D., and Cameron-Smith, P.: Sensitivity of stratospheric dynamics to uncertainty in O₃ production, *J Geophys Res-Atmos*, 118, 8984-8999, Doi 10.1002/Jgrd.50689, 2013.
- Hu, Y. X. and Stamnes, K.: An Accurate Parameterization of the Radiative Properties of Water Clouds Suitable for Use in Climate Models, *J. Climate*, 6, 728–742, doi:10.1175/1520-0442(1993)006<0728:AAPOTR>2.0.CO;2, 1993.
- 870 Hu, Y., Vaughan, M., McClain, C., Behrenfeld, M., Maring, H., Anderson, D., Sun-Mack, S., Flittner, D., Huang, J., Wielicki, B., Min-nis, P., Weimer, C., Trepte, C., and Kuehn, R.: Global statistics of liquid water content and effective number concentration of water clouds over ocean derived from combined CALIPSO and MODIS measurements, *Atmos. Chem. Phys.*, 7, 3353–3359, doi:10.5194/acp-7-3353-2007, 2007.
- Huang, S.-S.: On the Eddington Approximation, *Astrophys. J.*, 152, 841, doi:10.1086/149600, 1968.
- 875 Joseph, J. H., Wiscombe, W. J., and Weinman, J. A.: The Delta-Eddington Approximation for Radiative Flux Transfer, *J. Atmos. Sci.*, 33, 2452–2459, doi:10.1175/1520-0469(1976)033<2452:TDEAFR>2.0.CO;2, 1976.
- Key, J. R., Yang, P., Baum, B. A., and Nasiri, S. L.: Parameterization of shortwave ice cloud optical properties for various particle habits, *J. Geophys. Res. Atmos.*, 107, AAC 7–1–AAC 7–10, doi:10.1029/2001JD000742, 2002.
- 880 Key, J.: Streamer Version 3.0, User's Guide, p. 107pp, 2002.
- Khairoutdinov, M., Randall, D. and DeMott, C.: Simulations of the Atmospheric General Circulation Using a Cloud-Resolving Model as a Superparameterization of Physical Processes, *J. Atmos. Sci.*, 62, 2136-2154, DOI: <http://dx.doi.org/10.1175/JAS3453.1>, 2005.
- Koch, D., and Del Genio, A.D.: Black carbon semi-direct effects on cloud cover: review and synthesis, *Atmos Chem Phys*, 10, 7685-7696, doi:10.5194/acp-10-7685-2010, 2010.
- 885

- Kopp, G. and Lean, J. L.: A new, lower value of total solar irradiance: Evidence and climate significance, *Geophys. Res. Lett.*, 38, doi:10.1029/2010GL045777, 2011.
- Krieger, U. K., Mössinger, J. C., Luo, B., Weers, U., and Peter, T.: Measurement of the refractive indices of H₂SO₄–HNO₃–H₂O solutions to stratospheric temperatures, *Appl. Opt.*, 39, 3691–3703, doi:10.1364/AO.39.003691, 2000.
- Kurucz, R.: Synthetic infrared spectra, in *Infrared Solar Physics*, IAU Symp. edited by D.M. Rabin and J.T. Jefferies, Kluwer, Acad., Norwell, MA, 154, 1992.
- Lacis, A. A. and Oinas, V.: A description of the correlated k distribution method for modeling nongray gaseous absorption, thermal emission, and multiple scattering in vertically inhomogeneous atmospheres, *J. Geophys. Res. Atmos.*, 96, 9027–9063, doi:10.1029/90JD01945, 1991.
- Li, J. and Ramaswamy, V.: Four-Stream Spherical Harmonic Expansion Approximation for Solar Radiative Transfer, *J. Atmos. Sci.*, 53, 1174–1186, doi:10.1175/1520-0469(1996)053<1174:FSSHEA>2.0.CO;2, 1996.
- Li, J., Barker, H., Yang, P., and Yi, B.: On the aerosol and cloud phase function expansion moments for radiative transfer simulations, *J. Geophys. Res. Atmos.*, 120, 12,128–12,142, doi:10.1002/2015JD023632, 2015.
- Lioussé, C., Penner, J. E., Chuang, C., Walton, J. J., Eddleman, H., and Cachier, H.: A global three-dimensional model study of carbonaceous aerosols, *J. Geophys. Res. Atmos.*, 101, 19 411–19432, doi:10.1029/95JD03426, 1996.
- Lund-Myhre, C.E., Christensen, D.H., Nicolaisen, F.M. and Nielsen, C.J.: Spectroscopic Study of Aqueous H₂SO₄ at Different Temperatures and Compositions: Variations in Dissociation and Optical Properties, *J. Phys. Chem. A*, 107, 1979-1991,2003.
- Marsh, D. R., Mills, M.J. Kinnison, D.E. Lamarque, J.-F. Calvo, N. and Polvani, L. M.: Climate change from 1850 to 2005 simulated in CESM1(WACCM), 73727391, *J Clim*, 26, 7372-7391, doi:10.1175/JCLI-D-12-00558.1, 2013.
- Martin, R. V., Jacob, D. J., Yantosca, R. M., Chin, M., and Ginoux, P.: Global and regional decreases in tropospheric oxidants from photochemical effects of aerosols, *J. Geophys. Res. Atmos.*, 108, doi:10.1029/2002JD002622, 2003.
- McGouldrick, K., Toon, O. B., and Grinspoon, D. H.: Sulfuric acid aerosols in the atmospheres of the terrestrial planets, *Planet Space Sci*, 59, 934-941, 10.1016/j.pss.2010.05.020, 2011.
- Meier, R. R., Anderson, G. P., Cantrell, C. A., Hall, L. A., Lean, J., Minschwaner, K., Shetter, R. E., Shettle, E. P., and Stamnes, K.: Actinic radiation in the terrestrial atmosphere, *J. Atmos. Solar-Terr. Phys.*, p. 2111–2157, 1992.

- Miles, N. L., Verlinde, J., and Clothiaux, E. E.: Cloud Droplet Size Distributions in Low-Level Stratiform
920 Clouds, *J Atmos Sci*, 57, 295–311, doi:10.1175/1520-0469(2000)057<0295:CDSDIL>2.0.CO;2, 2000.
- Mishchenko, M. I., Rossow, W. B., Macke, A., and Lacis, A. A.: Sensitivity of cirrus cloud albedo, bidirectional reflectance and optical thickness retrieval accuracy to ice particle shape, *J. Geophys. Res. Atmos.*, 101, 16 973–16 985, doi:10.1029/96JD01155, 1996.
- Mishchenko, M. I., Videen, G., Babenko, V. A., Khlebtsov, N. G., and Wriedt, T.: T-matrix theory of
925 electromagnetic scattering by particles and its applications: a comprehensive reference database *J. Quant. Spectrosc. Radiat. Transfer*, 88, 357 – 406, 2004.
- Mishchenko, M. I., Zakharova, N. T., Khlebtsov, N. G., Videen, G., and Wriedt, T.: Comprehensive thematic T-matrix reference database: A 2014–2015 update, *J. Quant. Spectrosc. Radiat. Transfer*, 178, 276 – 283, doi:http://dx.doi.org/10.1016/j.jqsrt.2015.11.005, 2016.
- 930 Mlawer, E. J., Taubman, S. J., Brown, P. D., Iacono, M. J., and Clough, S. A.: Radiative transfer for inhomogeneous atmospheres: RRTM, a validated correlated-k model for the longwave, *J. Geophys. Res. Atmos.*, 102, 16663–16682, doi:10.1029/97JD00237, 1997.
- Myhre, C. E. L., Christensen, D. H., Nicolaisen, F. M., and Nielsen, C. J.: Spectroscopic Study of Aqueous H₂SO₄ at Different Temperatures and Compositions: Variations in Dissociation and Optical Properties, *J. Phys. Chem. A*, 107, 1979–1991, doi:10.1021/jp026576n, 2003.
- 935 Myhre, G., Shindell, D., Bréon, F.-M., Collins, W., Fuglestad, J., Huang, J., Koch, D., Lamarque, J.-F., Lee, D., Mendoza, B., Nakajima, T., Robock, A., Stephens, G., Takemura, T., and Zhang, H.: Anthropogenic and Natural Radiative Forcing, in: *Climate Change 2013: The Physical Science Basis*, IPCC WGI Contribution to the Fifth Assessment Report, edited by: Stocker, T. F., Qin, D., and al., eds., Cambridge University Press
940 Cambridge, United Kingdom, 659-740, 2013.
- Neu, J. L., Prather, M. J., and Penner, J. E.: Global atmospheric chemistry: Integrating over fractional cloud cover, *J Geophys Res-Atmos*, 112, article D11306, Doi 10.1029/2006jd008007, 2007.
- Painemal, D., Greenwald, T., Cadet, M., and Minnis, P.: First extended validation of satellite microwave liquid water path with ship-based observations of marine low clouds, *Geophys. Res. Lett.*, 43, 6563–6570, doi:10.1002/2016GL069061, 2016.
- 945 Palancar, G. G., Shetter, R. E., Hall, S. R., Toselli, B. M., and Madronich, S.: Ultraviolet actinic flux in clear and cloudy atmospheres: model calculations and aircraft-based measurements, *Atmos. Chem. Phys.*, 11, 5457–5469, doi:10.5194/acp-11-5457-2011, 2011.
- Palmer, K. F. and Williams, D.: Optical properties of water in the near infrared*, *J. Opt. Soc. Am.*, 64, 1107–
950 1110, doi:10.1364/JOSA.64.001107, 1974.

- Pincus, R., Barker, H. W., and Morcrette, J. J.: A fast, flexible, approximate technique for computing radiative transfer in inhomogeneous cloud fields, *J. Geophys. Res.-Atmos.*, 108, article D4376, Doi:10.1029/2002jd003322, 2003.
- 955 Prather, M. J.: Photolysis rates in correlated overlapping cloud fields: Cloud-J 7.3c, 8, 2587–2595, doi:10.5194/gmd-8-2587-2015, 2015.
- Rezaei, S., Hernandez-Calderon, C.A., Mirzamohammadi, S., Bozorgzadeh, E., Veidenbaum, A.V., Nicolau, A., Prather, M.J.: Data-rate-aware FPGA-based Acceleration Framework for Streaming Applications, *ReConFig* 2016.
- 960 Rozanov, V., Rozanov, A., Kokhanovsky, A., and Burrows, J.: Radiative transfer through terrestrial atmosphere and ocean: Software package {SCIATRAN}, *J Quant Spectrosc Radiat Transfer*, 133, 13 – 71, doi:http://dx.doi.org/10.1016/j.jqsrt.2013.07.004,, 2014.
- Sander, S., Friedl, R. R., Abbatt, J. P. D., Barker, J. R., Burkholder, J. B., Golden, D. M., Kolb, C. E., Kurylo, M. J., Moortgat, G. K., Wine, P. H., and Orkin, R. E. H. V. L.: Chemical Kinetics and Photochemical Data for Use in Atmospheric Studies, NASA Panel for Data Evaluation, 2011.
- 965 Søvde, O. A., Prather, M. J., Isaksen, I. S. A., Berntsen, T. K., Stordal, F., Zhu, X., Holmes, C. D., and Hsu, J.: The chemical transport model Oslo CTM3, *Geosci Model Dev*, 5, 1441–1469, doi:10.5194/gmd-5-1441-2012, 2012.
- Stamnes, K., Tsay, S. C., Wiscombe, W., and Jayaweera, K.: Numerically Stable Algorithm for Discrete-Ordinate-Method Radiative-Transfer in Multiple-Scattering and Emitting Layered Media, *Appl. Optics*, 27, 2502-2509, 1988.
- 970 Sukhodolov, T., Rozanov, E., Ball, W. T., Bais, A., Tourpali, K., Shapiro, A. I., Telford, P., Smyshlyaev, S., Fomin, B., Sander, R., Bossay, S., Bekki, S., Marchand, M., Chipperfield, M. P., Dhomse, S., Haigh, J. D., Peter, T., and Schmutz, W.: Evaluation of simulated photolysis rates and their response to solar irradiance variability, *J. Geophys. Res. Atmos.*, 121, 6066–6084, doi:10.1002/2015JD024277, 2016.
- [Telford, P. J., N. L. Abraham, A. T. Archibald, P. Braesicke, M. Dalvi, O. Morgenstern, F. M. O'Connor, N. A. D. Richards, and J. A. Pyle \(2013\). Implementation of the Fast-JX Photolysis scheme \(v6.4\) into the UKCA component of the MetUM chemistry-climate model \(v7.3\). *Geosci Model Dev*, 6\(1\), 161-177.](#)
- 980 Tie, X., Madronich, S., Walters, S., Zhang, R., Rasch, P., and Collins, W.: Effect of clouds on photolysis and oxidants in the troposphere, *J. Geophys. Res. Atmos.*, 108, doi:10.1029/2003JD003659, 2003.
- Tilmes, S., Mills, M. J., Niemeier, U., Schmidt, H., Robock, A., Kravitz, B., Lamarque, J.-F., Pitari, G., and English, J. M.: A new Geoengineering Model Intercomparison Project (GeoMIP) experiment designed for climate and chemistry models, *Geosci. Model Dev.*, 8, 43–49, doi:10.5194/gmd-8-43-2015, 2015.

- Warren, S. G.: Optical constants of ice from the ultraviolet to the microwave, *Appl. Opt.*, 23, 1206–1225, doi:10.1364/AO.23.001206, 1984.
- Wild, O., Zhu, X., and Prather, M. J.: Fast-J: Accurate Simulation of In- and Below-Cloud Photolysis in Tropospheric Chemical Models, *J. Atmos. Chem.*, 37, 245–282, doi:10.1023/A:1006415919030, 2000.
- Wiscombe, W. J.: The Delta–M Method: Rapid Yet Accurate Radiative Flux Calculations for Strongly Asymmetric Phase Functions, *J. Atmos. Sci.*, 34, 1408–1422, doi:10.1175/1520-0469(1977)034<1408:TDMRYA>2.0.CO;2, 1977.
- Yang, P., Liou, K.-N., Bi, L., Liu, C., Yi, B., and Baum, B. A.: On the Radiative Properties of Ice Clouds: Light Scattering, Remote Sensing, and Radiation Parameterization, *Adv. Atmos. Sci.*, 32, 32, doi:10.1007/s00376-014-0011-z, 2015.
- Yue, G. K., Poole, L. R., Wang, P.-H., and Chiou, E. W.: Stratospheric aerosol acidity, density, and refractive index deduced from SAGE II and NMC temperature data, *J. Geophys. Res. Atmos.*, 99, 3727–3738, doi:10.1029/93JD02989, 1994.
- Zhou, C. and Yang, P.: Backscattering peak of ice cloud particles, *Opt. Express*, 23, 11995–12003, doi:10.1364/OE.23.011995, 2015.

Deleted: .

Section Break (Next Page)

... [1]

Table 1. Some key configuration parameters for Solar-J v7.5 wavelength bins: solar-flux weighted wavelength (λ_{eff}) within the range between λ_{beg} and λ_{end} , solar fluxes in photons $\text{cm}^{-2} \text{s}^{-1}$ (S_{phot}) and in W m^{-2} (S_{watt}), Rayleigh cross-section (X_{Rayl}) and yields for photosynthetically active radiation (Y_{par}).

bin	λ_{eff} (μm)	λ_{beg} (μm)	λ_{end} (μm)	S_{phot} ($\text{cm}^{-2} \text{s}^{-1}$)	S_{watt} (W m^{-2})	X_{Rayl} (cm^2)	Y_{par} (/phot)
S01	0.187			1.391E+12	0.0147	5.073E-25	
S02	0.191			1.627E+12	0.0168	4.479E-25	
S03	0.193			1.664E+12	0.0170	4.196E-25	
S04	0.196			9.278E+11	0.0094	3.906E-25	
S05	0.202			7.842E+12	0.0766	3.355E-25	
S06	0.208			4.680E+12	0.0445	2.929E-25	
S07	0.211			9.918E+12	0.0930	2.736E-25	
S08	0.214			1.219E+13	0.1128	2.581E-25	
S09	0.261			6.364E+14	4.818	1.049E-25	
S10	0.267			4.049E+14	2.962	9.492E-26	
S11	0.277			3.150E+14	2.218	8.103E-26	
S12	0.295	0.2910	0.2982	5.893E+14	3.703	6.135E-26	
S13	0.303	0.2982	0.3074	7.670E+14	4.670	5.424E-26	
S14	0.310	0.3074	0.3124	5.041E+14	3.063	4.925E-26	
S15	0.316	0.3124	0.3203	8.895E+14	5.414	4.516E-26	
S16	0.333	0.3203	0.3450	3.852E+15	22.28	3.644E-26	0.0514
S17	0.383	0.3450	0.4124	1.547E+16	77.17	2.082E-26	0.4855
S18	0.599	0.4124	0.7780	1.805E+17	608.68	4.427E-27	0.6760
S19	0.973	0.778	1.242		349.96	5.380E-28	
S20	1.267	1.242	1.299		25.59	1.559E-28	
S21	1.448	1.299	1.626		102.96	9.578E-29	
S22	1.767	1.626	1.942		56.01	4.241E-29	
S23	2.039	1.942	2.151		22.40	2.347E-29	
S24	2.309	2.151	2.500		23.50	1.441E-29	
S25	2.748	2.500	3.077		20.20	7.290E-30	
S26	3.404	3.077	3.846		12.25	3.117E-30	
S27	5.362	3.846	12		12.58	8.053E-31	

Formatted Table

Table 2. Spectral properties of liquid and ice water clouds and stratospheric sulfate aerosols: the real and imaginary refractive indices (n_r and n_i), ratio of optical to geometric cross section (Q), single scattering albedo (SSA), and the asymmetry factor (g).

Deleted: Table 2 .

... [2]

bin	Liquid water cloud: $r_e = 12 \mu\text{m}$, $\rho = 1.00 \text{ g cm}^{-3}$					Ice water cloud: $r_e = 48 \mu\text{m}$, $\rho = 0.917 \text{ g cm}^{-3}$				
	n_r	n_i	Q	SSA	g	n_r	n_i	Q	SSA	g
S12	1.350	1.8E-08	2.054	1.0000	0.867	1.336	5.8E-09	2.021	1.0000	0.812
S13	1.349	1.5E-08	2.053	1.0000	0.869	1.333	5.4E-09	2.021	1.0000	0.812
S14	1.348	1.4E-08	2.052	1.0000	0.869	1.332	5.1E-09	2.022	1.0000	0.812
S15	1.347	1.3E-08	2.055	1.0000	0.869	1.331	4.8E-09	2.022	1.0000	0.812
S16	1.345	9.5E-09	2.057	1.0000	0.869	1.328	4.3E-09	2.023	1.0000	0.812
S17	1.340	3.4E-09	2.062	1.0000	0.869	1.321	3.0E-09	2.025	1.0000	0.812
S18	1.333	3.1E-08	2.089	1.0000	0.863	1.310	1.7E-08	2.034	1.0000	0.812
S19	1.328	2.8E-06	2.118	0.9996	0.858	1.302	1.7E-06	2.047	0.9991	0.812
S20	1.324	1.2E-05	2.144	0.9986	0.852	1.297	1.3E-05	2.055	0.9946	0.812
S21	1.321	1.6E-04	2.155	0.9851	0.854	1.293	2.4E-04	2.060	0.9246	0.812
S22	1.313	3.2E-04	2.179	0.9752	0.852	1.284	2.2E-04	2.069	0.9413	0.812
S23	1.302	9.2E-04	2.197	0.9427	0.858	1.272	1.2E-03	2.076	0.7876	0.812
S24	1.283	6.7E-04	2.220	0.9610	0.855	1.251	4.7E-04	2.083	0.9088	0.812
S25	1.239	1.0E-01	2.211	0.4979	0.970	1.125	1.0E-01	2.071	0.5107	0.812
S26	1.428	5.1E-02	2.268	0.5240	0.939	1.496	1.6E-01	2.102	0.5408	0.812
S27	1.317	2.2E-02	2.409	0.6809	0.861	1.326	2.9E-02	2.144	0.5245	0.812
bin	Strat sulf, volc.: $r_e = 0.422 \mu\text{m}$, $\rho = 1.69 \text{ g cm}^{-3}$					Strat sulf, bkgrd: $r_e = 0.130 \mu\text{m}$, $\rho = 1.69 \text{ g cm}^{-3}$				
	n_r	n_i	Q	SSA	g	n_r	n_i	Q	SSA	g
S05	1.505	0.0E+00	2.612	1.0000	0.732	1.505	0.0E+00	2.966	1.0000	0.698
S06	1.505	0.0E+00	2.638	1.0000	0.728	1.505	0.0E+00	2.936	1.0000	0.698
S07	1.505	0.0E+00	2.620	1.0000	0.735	1.505	0.0E+00	2.919	1.0000	0.699
S08	1.505	0.0E+00	2.628	1.0000	0.734	1.505	0.0E+00	2.904	1.0000	0.699
S09	1.472	0.0E+00	2.604	1.0000	0.718	1.472	0.0E+00	2.435	1.0000	0.711
S10	1.469	0.0E+00	2.606	1.0000	0.710	1.469	0.0E+00	2.379	1.0000	0.711
S11	1.464	0.0E+00	2.556	1.0000	0.707	1.464	0.0E+00	2.271	1.0000	0.711
S12	1.456	0.0E+00	2.500	1.0000	0.695	1.456	0.0E+00	2.087	1.0000	0.709
S13	1.452	0.0E+00	2.474	1.0000	0.690	1.452	0.0E+00	1.998	1.0000	0.708
S14	1.451	0.0E+00	2.461	1.0000	0.686	1.451	0.0E+00	1.940	1.0000	0.706
S15	1.451	0.0E+00	2.449	1.0000	0.683	1.451	0.0E+00	1.892	1.0000	0.704
S16	1.450	0.0E+00	2.432	1.0000	0.676	1.450	0.0E+00	1.766	1.0000	0.698
S17	1.445	0.0E+00	2.475	1.0000	0.675	1.445	0.0E+00	1.432	1.0000	0.683
S18	1.431	1.7E-08	3.017	1.0000	0.723	1.431	1.7E-08	0.620	1.0000	0.593
S19	1.424	1.5E-06	2.212	1.0000	0.663	1.424	1.5E-06	0.193	1.0000	0.434
S20	1.417	8.6E-06	1.431	0.9999	0.605	1.417	8.6E-06	0.090	0.9998	0.336
S21	1.430	9.4E-05	1.173	0.9988	0.570	1.430	9.4E-05	0.065	0.9972	0.291
S22	1.422	4.7E-04	0.724	0.9910	0.511	1.422	4.7E-04	0.033	0.9782	0.225
S23	1.410	1.3E-03	0.475	0.9672	0.456	1.410	1.3E-03	0.021	0.9184	0.182
S24	1.388	2.1E-03	0.305	0.9288	0.397	1.388	2.1E-03	0.013	0.8166	0.148
S25	1.319	5.1E-02	0.253	0.3855	0.302	1.319	5.1E-02	0.040	0.0768	0.106
S26	1.366	1.7E-01	0.424	0.1714	0.214	1.366	1.7E-01	0.098	0.0219	0.074
S27	1.406	2.1E-01	0.274	0.0744	0.091	1.406	2.1E-01	0.073	0.0066	0.033

Deleted: .

... [3]

11/11/2019 11:58:11 AM [View Full Version](#) [View Full Version](#) ... 1/1

Formatted	[... [5]
Formatted Table	[... [4]]
Deleted: (g	
Formatted	[... [6]]
Formatted	[... [8]]
Deleted: 0	
Deleted: 0	
Deleted: 0	
Deleted: 0	
Deleted: 0	
Deleted: 0	
Deleted: 0	
Deleted: 0	
Deleted: 0	
Deleted: 0	
Deleted: 0	
Deleted: 0	
Deleted: 0	
Deleted: 0	
Deleted: 0	
Deleted: 0	
Deleted: 0	
Deleted: 0	
Deleted: 0	
Deleted: 0	
Deleted: 0	
Deleted: 0	
Deleted: 0	
Deleted: 0	
Deleted: 0	
Deleted: 0	
Deleted: 0	
Deleted: 0	
Deleted: 0	
Deleted: 0	
Deleted: 0	
Deleted: 0.01	
Deleted: 0.02	
Deleted: 0.	
Formatted	[... [9]]
Deleted: 0.07	
Deleted: 0.15	
Deleted: 0.29	
Deleted: 0.29	
Deleted: 0.75	

Formatted ... [9]

Deleted: 0.07

Deleted: 0.15

Deleted: 0.29

Deleted: 0.29

Deleted: 0.75

21	6.73	440.3	258.1	5.80E+11	1.31e-03	0	0	2.59E-07	5.01
20	6.10	477.5	262.2	6.21E+11	1.78e-03	0	0	8.58E-08	3.89
19	5.51	515.4	266.0	6.22E+11	2.37e-03	0	0	2.13E-07	4.79
18	4.94	553.7	269.6	6.46E+11	3.13e-03	0	0	5.98E-08	3.58
17	4.41	591.9	272.7	6.84E+11	4.02e-03	0	0	0	0
16	3.91	629.9	275.3	7.23E+11	5.14e-03	0	0	0	0
15	3.44	667.2	278.0	6.80E+11	6.31e-03	0	0	0	0
14	3.00	703.7	280.8	6.19E+11	7.49e-03	0	0	0	0
13	2.60	738.9	282.9	6.46E+11	8.67e-03	0	0	0	0
12	2.22	772.7	284.9	6.72E+11	1.00e-02	0	0	0	0
11	1.88	804.6	286.9	6.97E+11	1.17e-02	2.66E-02	9.60	0	0
10	1.57	834.6	288.6	7.20E+11	1.35e-02	2.05E-02	9.60	0	0
9	1.30	862.3	290.3	7.41E+11	1.45e-02	8.66E-02	9.60	0	0
8	1.05	887.6	291.8	6.30E+11	1.54e-02	1.21E-01	9.60	0	0
7	0.83	910.3	293.0	6.22E+11	1.62e-02	9.67E-02	9.60	0	0
6	0.64	930.3	294.2	6.34E+11	1.71e-02	4.22E-02	9.60	0	0
5	0.49	947.7	295.3	6.45E+11	1.79e-02	1.53E-02	9.60	0	0
4	0.35	962.3	296.1	6.54E+11	1.84e-02	6.62E-03	9.60	0	0
3	0.25	974.3	296.7	6.62E+11	1.89e-02	3.01E-03	9.60	0	0
2	0.10	990.9	297.7	6.69E+11	1.98e-02	5.69E-04	9.60	0	0
1	0.00	1002.0	298.9	6.76E+11	2.09e-02	1.56E-04	9.60	0	0

Table 4. Spectral shortwave radiation energy budget in $W m^{-2}$ under clear aerosol-free July conditions: Solar-J versus RRTMG. The solar constant is set at $1360.8 W m^{-2}$. For easy comparison, some Solar-J bins are combined to best match RRTMG's band of similar range and vice versa.

Table 4a. Clear-Sky Solar Radiation Budget Comparison ($W m^{-2}$)					
Solar-J S-bins	S1-S4	S5-S9	S10-S16	S17	S18
$\lambda(nm)$	177-200	200-275	275-345	345-412	412-778
TOA(down)	0.06	5.14	44.31	77.17	608.68
TOA(up)	0.00	0.01	7.52	16.89	54.36
Atmosphere	0.06	5.14	18.01	0.05	31.96
-Stratosphere	0.06	5.14	16.97	0.04	9.41
-Troposphere	0.00	0.00	1.04	0.01	22.55
Surface	0.00	0.00	18.78	60.23	522.43
RRTMG Bands					
	/	B28	B27	B26	B25+B24
$\lambda(nm)$	/	200-263	263-345	345-442	442-778
TOA(down)	/	3.06	49.88	128.79	562.34

Formatted: Font:+Theme Headings Asian (Times New Roman)
Deleted: 90
Deleted: 90
Formatted
Deleted: 4.07
Deleted: 4.79
Deleted: 79
Formatted
Deleted: 4.79
Deleted: 8.14
Deleted: 11.80
Deleted: 11.80
Deleted: 11.80
Deleted: 11.80
Deleted: 11.80
Deleted: 11.80
Deleted: 11.80
Deleted: 14.79
Deleted: 15.30
Deleted: 15.30
Deleted: 15.30
Deleted: 15.30
Deleted: 15.30
Deleted: 15.30
Deleted: 15.30
Deleted: .
Deleted: 23
Deleted: 32.32
Deleted: 91
Deleted: 13

TOA(up)	/	0.02	7.37	25.75	50.44
Atmosphere	/	3.05	23.24	0.00	28.77
-Stratosphere	/	3.04	22.11	0.00	8.60
-Troposphere	/	0.01	1.13	0.00	20.17
Surface	/	0.00	19.29	103.04	483.13

Table 4b. Clear-Sky Solar Radiation Budget Comparison (W m⁻²)

Solar-J S-bins	S19	S20	S21	S22	S23
λ(μm)	0.78-1.24	1.24-1.30	1.30-1.63	1.63-1.94	1.94-2.15
TOA(down)	349.96	25.59	102.96	56.01	22.40
TOA(up)	15.33	1.28	2.17	1.43	0.6
Atmosphere	87.94	2.36	60.53	29.41	9.48
-Stratosphere	0.00	0.12	0.29	0.20	0.41
-Troposphere	87.95	2.23	60.24	29.21	9.07
Surface	246.69	21.96	40.25	25.17	12.32

RRTMG Bands	B23	B22	B21	B20	B19
λ(μm)	0.78-1.24	1.24-1.30	1.30-1.63	1.63-1.94	1.94-2.15
TOA(down)	343.86	24.16	102.37	55.32	22.31
TOA(up)	14.91	1.20	2.03	1.40	0.57
Atmosphere	86.60	2.22	61.73	29.09	9.52
-Stratosphere	0.00	0.12	0.30	0.20	0.42
-Troposphere	86.60	2.10	61.43	28.89	9.11
Surface	242.35	20.74	38.61	24.85	12.22

Table 4c. Clear-Sky Solar Radiation Budget Comparison (W m⁻²)

Solar-J S-bins	S24	S25	S26	S27	All bands
λ(nm)	2.15-2.50	2.50-3.08	3.08-3.85	3.85-12	0.18-12
TOA(down)	23.50	20.20	12.25	12.58	1360.80
TOA(up)	0.75	0.00	0.19	0.05	100.53
Atmosphere	8.32	20.17	7.28	10.36	291.06
-Stratosphere	0.07	1.65	0.17	1.28	35.80
-Troposphere	8.25	18.52	7.11	9.08	255.26
Surface	14.43	0.03	4.78	2.17	969.23

RRTMG Bands	B18	B17	B16	B29	All bands
λ(nm)	2.15-2.50	2.50-3.08	3.08-3.85	3.85-12	0.20-12
TOA(down)	23.60	20.25	12.04	12.82	1360.80

Deleted: 22

Deleted: 29.70

Deleted: 11

Deleted: 21.10

Deleted: 482.33

Deleted: 29

Deleted: 18

Deleted: 85

Deleted: 44

Deleted: 36

Deleted: 52

Formatted Table

... [13]

Deleted: 85

Deleted: 15

Deleted: 16

Deleted: 11

Deleted: 83

Deleted: 35

Deleted: 22

Deleted: 28

Deleted: 90

Formatted Table

... [14]

Deleted: 49

Deleted: 23

Deleted: 64

Deleted: 01

Deleted: 56

Deleted: 49

Deleted: 11

Deleted: 34

Deleted: 84

Deleted: 15

Deleted: 47

Deleted: 71

Deleted: 91

Deleted: 18

Deleted: 06

Deleted: 43

Deleted: 28

Deleted: 35

TOA(up)	0.76	0.00	0.18	0.05	104.54
Atmosphere	7.96	20.22	7.17	10.57	290.27
-Stratosphere	0.06	1.66	0.16	1.30	37.91
-Troposphere	7.84	18.56	7.01	9.26	252.36
Surface	14.88	0.03	4.69	2.22	965.55

Table 5. Radiation budget comparison ($W m^{-2}$) between Solar-J and RRTMG-SW for top-of-atmosphere (TOA), atmosphere, and surface across four SZAs. Also shown is the cloud radiative effect (CRE) of a typical marine stratus cloud, for which the atmospheric absorption is split into above-cloud, in-cloud, and below-cloud.

SZA	0°		21.2°		62.2°		84.0°	
Flux (Wm ⁻²)	1360.8		1268.4		634.2		149.1	
Clear-Sky Radiation Budget (W m ⁻²)								
	Solar-J	RRTMG	Solar-J	RRTMG	Solar-J	RRTMG	Solar-J	RRTMG
TOA(up)	100.5	104.7	96.2	100.3	63.9	67.3	28.2	28.5
Atmosphere	291.1	290.1	276.6	275.3	166.5	164.0	56.6	54.9
Surface	969.2	966.1	895.7	892.8	403.8	402.9	64.3	65.6
Cloud Radiative Effect (CRE) of a Marine Stratus Cloud (Wm ⁻²)								
	Solar-J	RRTMG	Solar-J	RRTMG	Solar-J	RRTMG	Solar-J	RRTMG
TOA	+473.4	+459.4	452.7	+441.2	+262.7	+255.8	+52.2	+50.3
Atmosphere	+87.8	+88.2	+77.7	+78.2	+20.3	+18.5	-3.2	-3.3
Above-cloud	+21.1	+23.8	+17.7	+22.8	+11.3	+12.0	+3.0	+1.6
In-cloud	+77.5	+73.7	+70.5	+64.7	+16.1	+12.9	-3.9	-3.0
Below-cloud	-10.8	-9.3	-10.6	-9.2	-7.1	-6.4	-2.2	-1.8
Surface	-561.2	-547.6	-530.4	-519.4	-282.9	-274.4	-49.1	-47.0

Table 6: Cirrus ice cloud optical properties: total optical depth τ for Solar-J and δ -scaled τ' for RRTMG-SW, asymmetry factor g , and absorption optical depth, τ_{abs} for bins S18 to S27. See Table 1 for wavelength ranges and RRTMG-SW-equivalent bins.

Sbins	S18	S19	S20	S21	S22	S23	S24	S25	S26	S27
λ_{eff}	599nm	973nm	1.27 μm	1.45 μm	1.77 μm	2.04 μm	2.31 μm	2.75 μm	3.40 μm	5.36 μm
Total Optical Depth (τ for Solar-J and reduced τ' for RRTMG schemes)										
Solar-J	0.4287	0.4322	0.4345	0.4360	0.4383	0.4404	0.4425	0.4380	0.4470	0.4591
EC92	0.2488	0.2462	0.2462	0.2385	0.2385	0.2276	0.2276	0.3313	0.3313	0.3313
Fu96	0.1535	0.1581	0.1563	0.1627	0.1640	0.1575	0.1932	0.3709	0.3382	0.3177
Key02	0.0923	0.0943	0.0950	0.1041	0.1032	0.1277	0.1065	0.1783	0.2159	0.2266
Asymmetry Factor, $g = A_1/3$										
Solar-J	0.7643	0.7642	0.7641	0.7640	0.7639	0.7639	0.7638	0.7639	0.7635	0.7631
EC92	0.4406	0.4425	0.4425	0.4484	0.4484	0.4579	0.4579	0.4907	0.4907	0.4907
Fu96	0.4591	0.4680	0.4803	0.4987	0.5168	0.5670	0.5870	0.6744	0.3411	0.0000
Key02	0.4694	0.4692	0.4691	0.4707	0.4707	0.4757	0.4731	0.4866	0.4807	0.4858
Total absorbing optical depth (τ_{abs})										
Solar-J	0.0000	0.0003	0.0018	0.0257	0.0201	0.0758	0.0317	0.2163	0.2075	0.2126
EC92	0.0000	0.0004	0.0004	0.0247	0.0247	0.0558	0.0558	0.3063	0.3063	0.3063
Fu96	0.0000	0.0003	0.0022	0.0232	0.0231	0.0743	0.0289	0.1294	0.1743	0.1972
Key02	0.0000	0.0001	0.0011	0.0178	0.0162	0.0619	0.0290	0.1491	0.1788	0.1983

Deleted: .

... [18]

Formatted Table

Solar-J spectrum: Merging Fast-J and RRTMG

Fast-J (Wild et. al, 2000)	Bins 1-17 (177-412 nm)	Bin-18 (412-850 nm)		
Cloud-J v7.4 (Prather, 2015)	Bins 1-17 (177-412 nm)	Bin-18 (412-778 nm)		
Solar-J v7.5 (S-bins) (this study)	Bins 1-17 (177 - 412 nm)	Bin-18 ^a (412-778 nm) Cloud-J's O ₃ + weak O ₂ +H ₂ O (1 sub-bin)	Bin-18 ^b (442-778 nm) Surface H ₂ O+O ₂ (4 sub-bins)	Bins 19-27 (778-12195 nm) (78 sub-bins)
RRTMG (Mlawer et. al, 1997)	Band No. 26-28 (200- 442 nm) (20 sub-bins)		Bands 24&25 (442-778 nm) (14 sub-bins)	Bands 16-23+ Band 29 (778-12195 nm) (78 sub-bins)

Figure 1. Solar-J extends Cloud-J's solar wavelength bands by combining and modifying RRTMG-SW's band 24 and 25 (442-778 nm) and adopts all RRTMG's bands longwards of 778 nm (see text for detail).

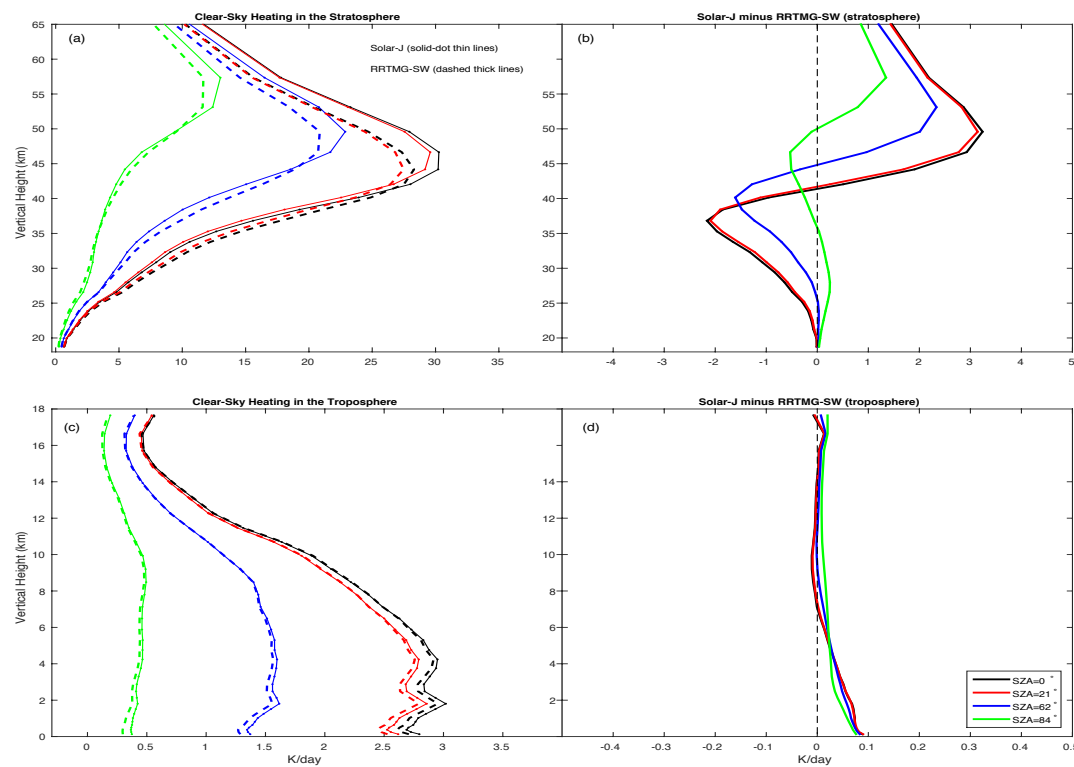


Figure 2. Aerosol-free cloudless atmospheric heating profiles of Solar-J (solid lines) and RRTMG-SW (dashed lines) and the difference, Solar-J minus RRTMG, for a typical July tropical atmosphere at 4 solar zenith angles with Lambertian surface albedo = 0.06 (left and right sides). The plot is further split into the stratosphere and the troposphere (top and bottom rows). Note that the scale of the x-axis, K/day, is 10 times larger for the stratosphere on the top panels.

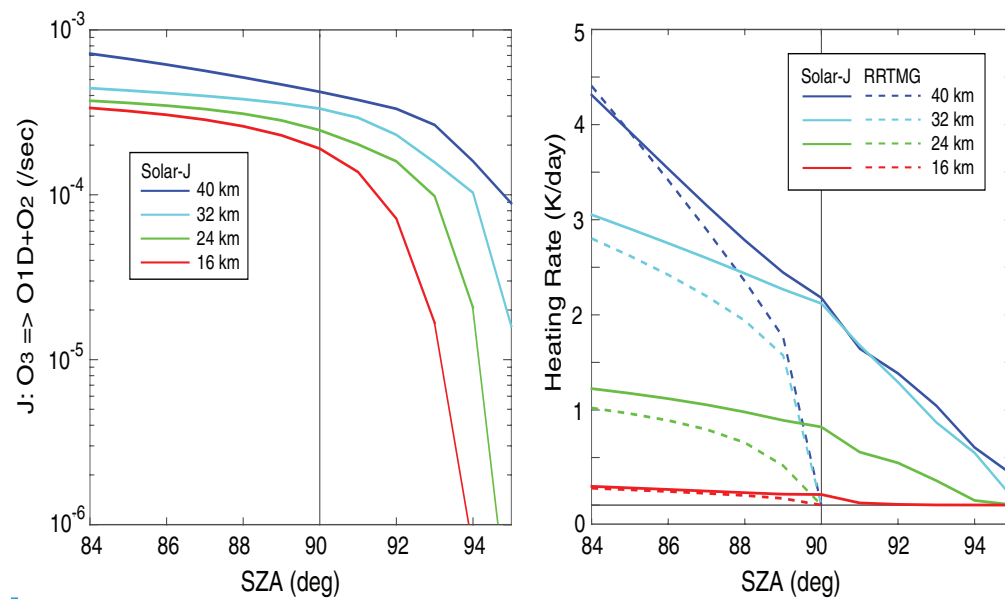


Figure 3: Ozone photolysis rates (J_{O_3}) from Solar-J (left panel) and the corresponding atmospheric heating rates under clear sky (right panel) from Solar-J (solid lines) and RRTMG-SW (dashed lines) for large solar zenith angles at 4 different altitudes. RRTMG's heating rates reduce to zeros at $SZA = 90^\circ$ due to the lack of sphericity correction in the plane-parallel approximation; whereas the impact of sphericity on the direct solar beam path is included in Solar-J.

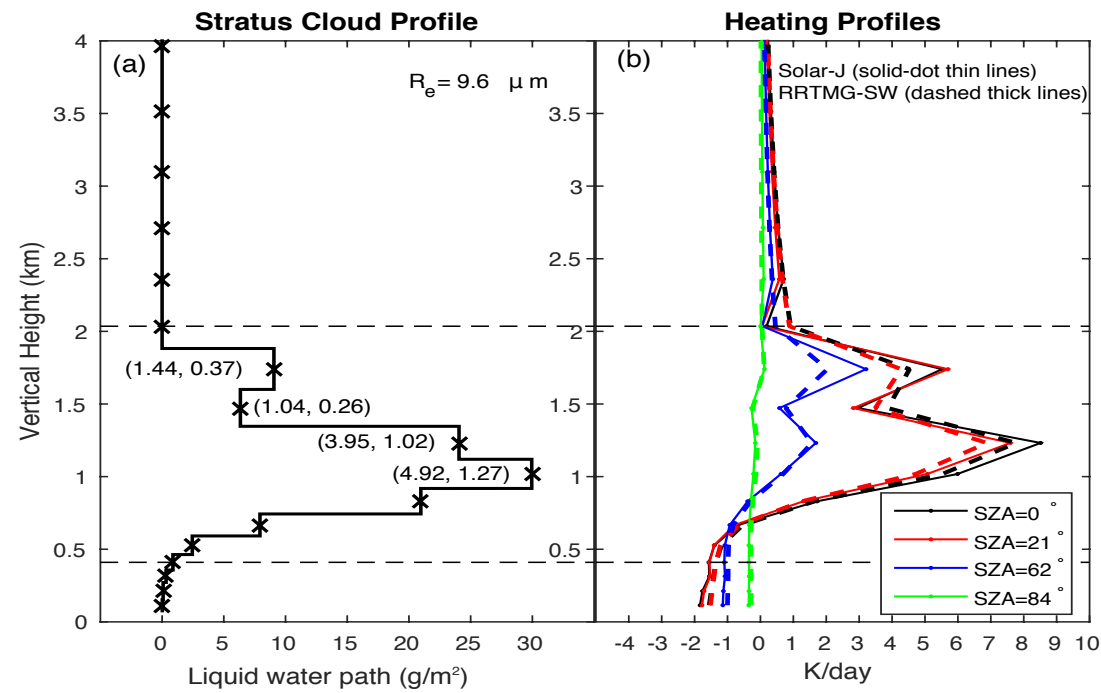


Figure 4: (a) Marine stratus cloud profile in terms of liquid water path (LWP, $g m^{-2}$) and effective radius (r_e , μm). The optical depth and δ -scaled optical depth (τ, τ') are shown in parentheses for the top five cloud layers. (b) Cloud heating profiles from Solar-J (solid lines) and RRTMG-SW (dashed lines) at four SZAs.

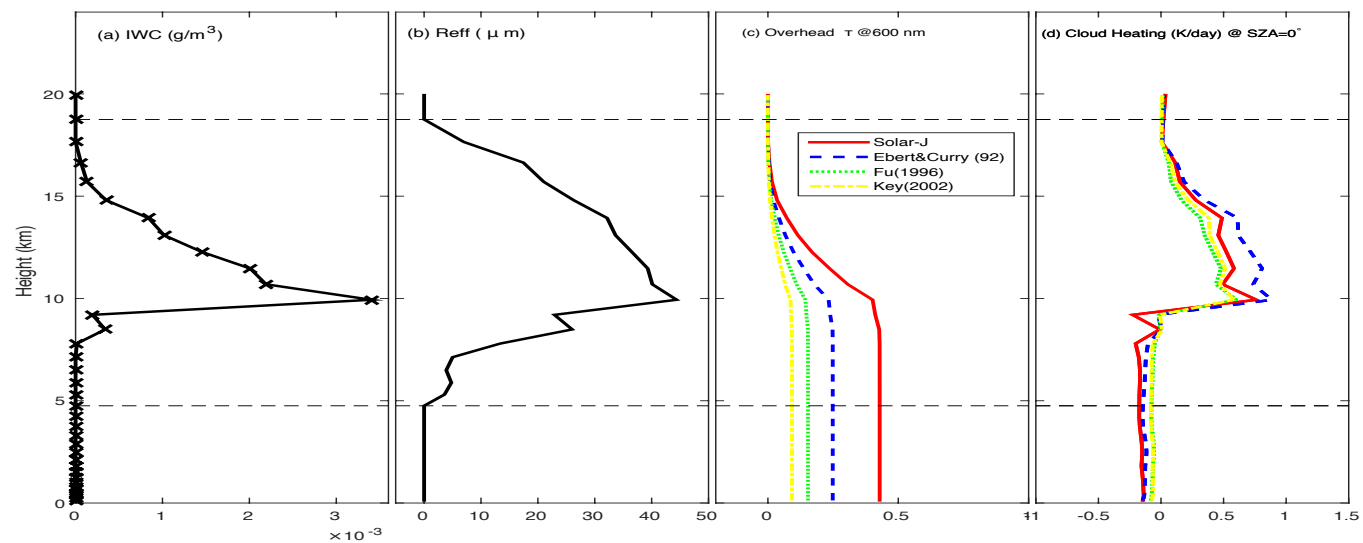


Figure 5: (a) Profiles of ice water content (IWC, g m^{-3}) and (b) effective radius (r_e , μm) as prescribed for both Solar-J and RRTMG-SW. The in-cloud region, about 4-18 km, is enclosed by two horizontal dashed lines. (c) Profiles of cumulative optical depth τ at 600 nm from Solar-J and from the 3 RRTMG-SW parameterizations for which τ is δ -scaled. (d) Cirrus cloud heating rate profiles (K/day) at $\text{SZA}=0^\circ$.

Formatted: Caption, Line spacing: single
Deleted: 5
Page Break
Deleted: (a)

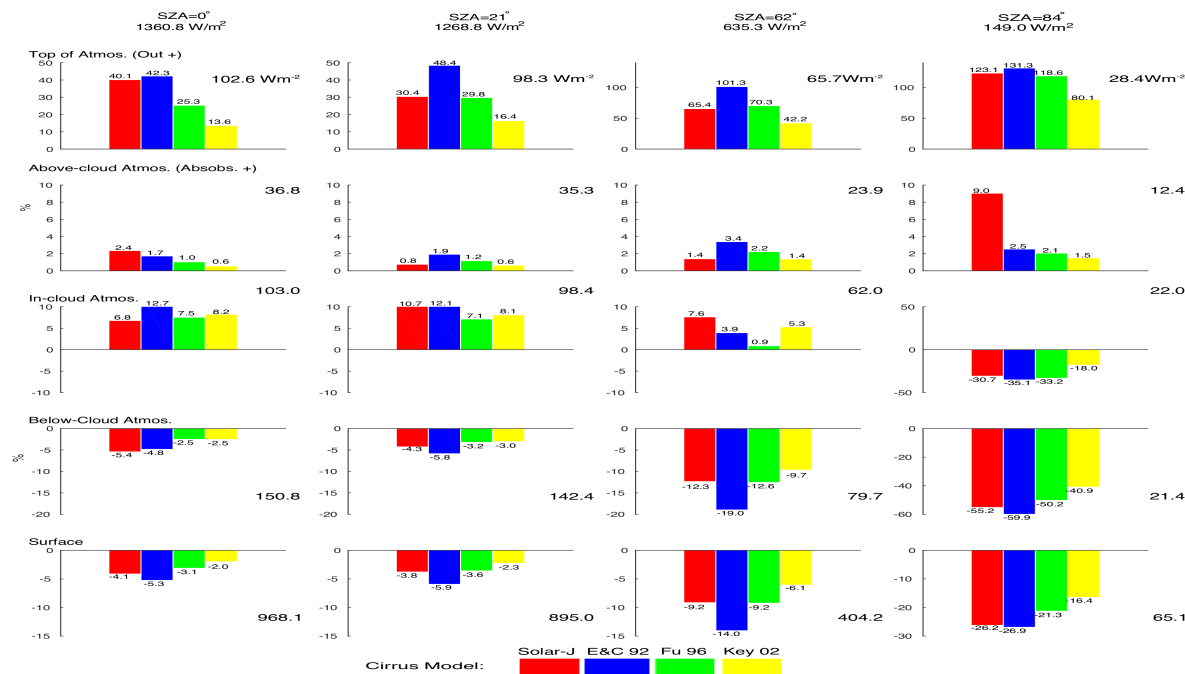


Figure 6. Percent changes (%) in shortwave radiation energy budget relative to the aerosol-free clear sky (surface albedo = 0.06) caused by a cirrus cloud using four different models: Solar-J and the three RRTMG-SW parametrizations for ice clouds. Results are shown for 4 different solar zenith angles. Changes in the vertical column are divided into 5 regions: top of atmosphere, atmospheres above, within and below the cirrus cloud, and at the surface. Single numbers in bold shown in the corner of each panel are the clear-sky energy budget in $W m^{-2}$ averaged over Solar-J and RRTMG-SW for each region. Percentage changes are also shown in text at the end of each color bar. Note that different y-axis scales have been used for large SZAs.

Section Break (Next Page)

Table 1

Table 1: Some key configuration parameters for Solar-J v7.5 wavelength bins: solar-flux weighted wavelength (λ_{eff}) within the range between λ_{beg} and λ_{end} , solar fluxes in photons $\text{cm}^{-2} \text{s}^{-1}$ (S_{phot}) and in Wm^{-2} (S_{watt}), Rayleigh cross-section (X_{Rayl}) and yields for photosynthetically active radiation (Y_{par}).

Page 25: [2] Deleted	JH	5/25/17 11:00:00 AM
----------------------	----	---------------------

Table 2

Table 2. Spectral properties for liquid and ice water clouds and stratospheric sulfate aerosols: the real and imaginary refractive indices (n_r and n_i), ratio of optical to geometric cross section (Q), single scattering albedo (SSA), and the asymmetry factor (g)

Page 25: [3] Deleted	JH	5/25/17 11:00:00 AM
----------------------	----	---------------------

Table 3

Page 26: [4] Formatted Table	JH	5/25/17 11:00:00 AM
------------------------------	----	---------------------

Formatted Table

Page 26: [5] Formatted	JH	5/25/17 11:00:00 AM
------------------------	----	---------------------

Font:+Theme Headings Asian (Times New Roman)

Page 26: [6] Formatted	JH	5/25/17 11:00:00 AM
------------------------	----	---------------------

Font:+Theme Headings Asian (Times New Roman)

Page 26: [7] Deleted	JH	5/25/17 11:00:00 AM
----------------------	----	---------------------

Table 3: Standard tropical atmosphere and the two cloud profiles implemented in both Solar-J and RRTMG. Height (Z) and pressure (P) are edge values; others are layer averages.

Page 26: [8] Formatted	JH	5/25/17 11:00:00 AM
------------------------	----	---------------------

Font:+Theme Headings Asian (Times New Roman)

Page 26: [9] Formatted	JH	5/25/17 11:00:00 AM
------------------------	----	---------------------

Font:+Theme Headings Asian (Times New Roman)

Page 27: [10] Formatted	JH	5/25/17 11:00:00 AM
-------------------------	----	---------------------

Font:+Theme Headings Asian (Times New Roman)

Page 27: [11] Formatted	JH	5/25/17 11:00:00 AM
-------------------------	----	---------------------

Font:+Theme Headings Asian (Times New Roman)

Table 4

Table 4. Spectral shortwave radiation energy budget in W m^{-2} under clear aerosol-free July conditions: Solar-J versus RRTMG. The solar constant is set at 1360.8 W m^{-2} . For easy comparison, some Solar-J bins are combined to best match RRTMG's band of similar range and vice versa.

Formatted Table

Formatted Table

Line spacing: multiple 1.08 li

Formatted Table

Table 5. Comparison of Solar-J and RRTMG for top-of-atmosphere (TOA), atmosphere, and surface radiation budgets (W m^{-2}) across four SZAs. Also shown is the cloud radiative effect (CRE) of a typical marine stratus cloud, for which the atmospheric absorption is split into above-cloud, in-cloud, and below-cloud.

Table 6

Table 6. Cirrus ice cloud optical properties: total optical depth τ for Solar-J and δ -scaled τ' for RRTMG, asymmetry factor g , and absorption optical depth, τ_{abs} for bins S18 to S27. See Table 1 for wavelength ranges and RRTMG-equivalent bins.

Solar-J spectrum: Merging Fast-J and RRTMG

Fast-J (Wild et. al, 2000)	Bins 1-17 (177-412 nm)	Bin-18 (412-850 nm)		
Cloud-J (Prather, 2015)	Bins 1-17 (177-412 nm)	Bin-18 (412-778 nm)		
Solar-J (S-bins) (this study)	Bins 1-17 (177 - 412 nm)	Bin-18 ^a (412-778 nm) Fast-J's O ₃ (+ weak O ₂ +H ₂ O) (1 sub-bin)	Bin-18 ^b (442-778 nm) Surface H ₂ O+O ₂ (4 sub-bins)	Bins 19-27 (778-12195 nm) (78 sub-bins)
RRTMG (Mlawer et. al, 1997)	Band No. 26-28 (200- 442 nm) (20 sub-bins)		Bands 24&25 (442-778 nm) (14 sub-bins)	Bands 16-23+ Band 29 (778-12195 nm) (78 sub-bins)

Page 31: [20] Deleted

JH

5/25/17 11:00:00 AM

Figure 1

Page 32: [21] Deleted

JH

5/25/17 11:00:00 AM

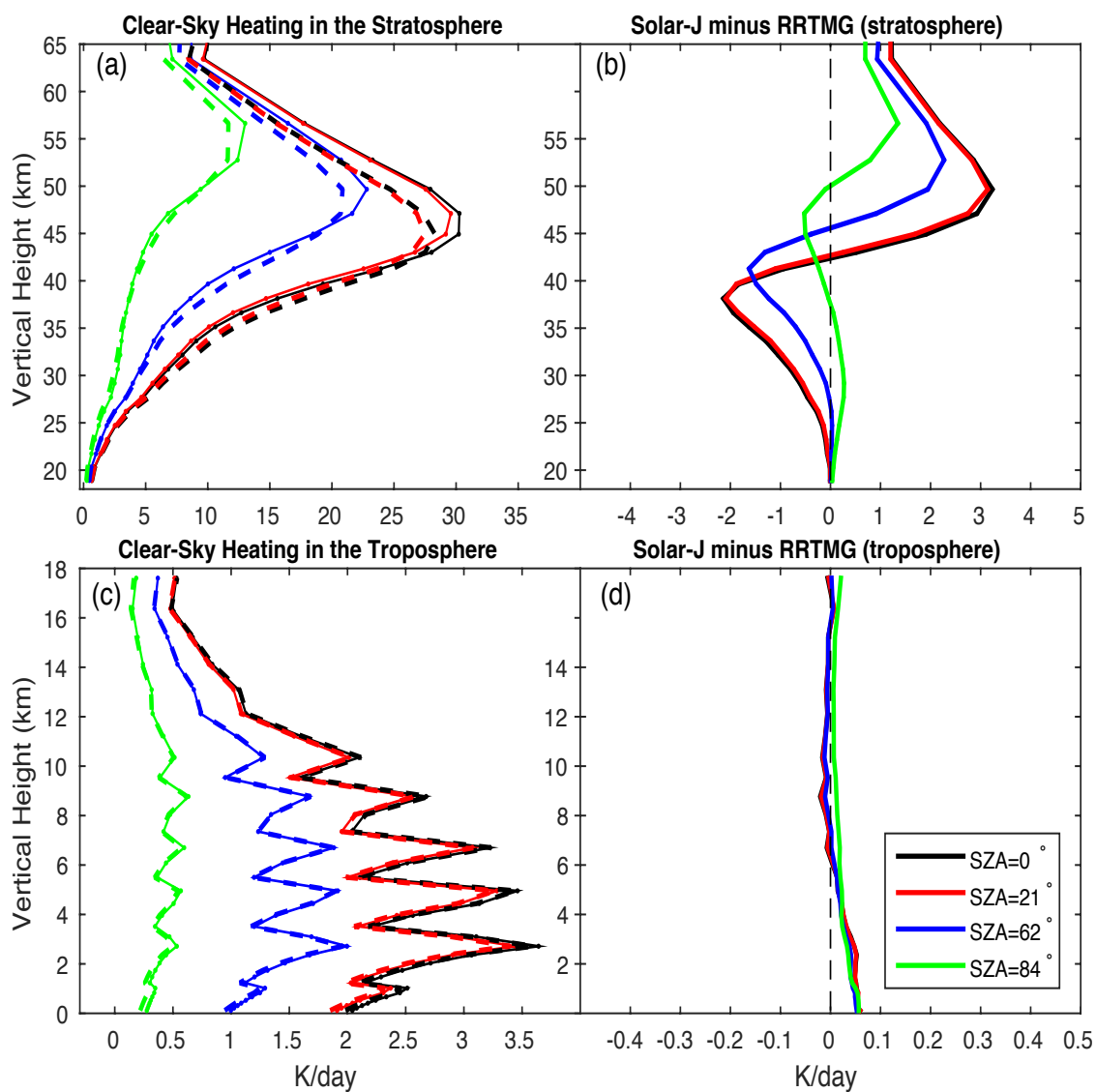


Figure 2.

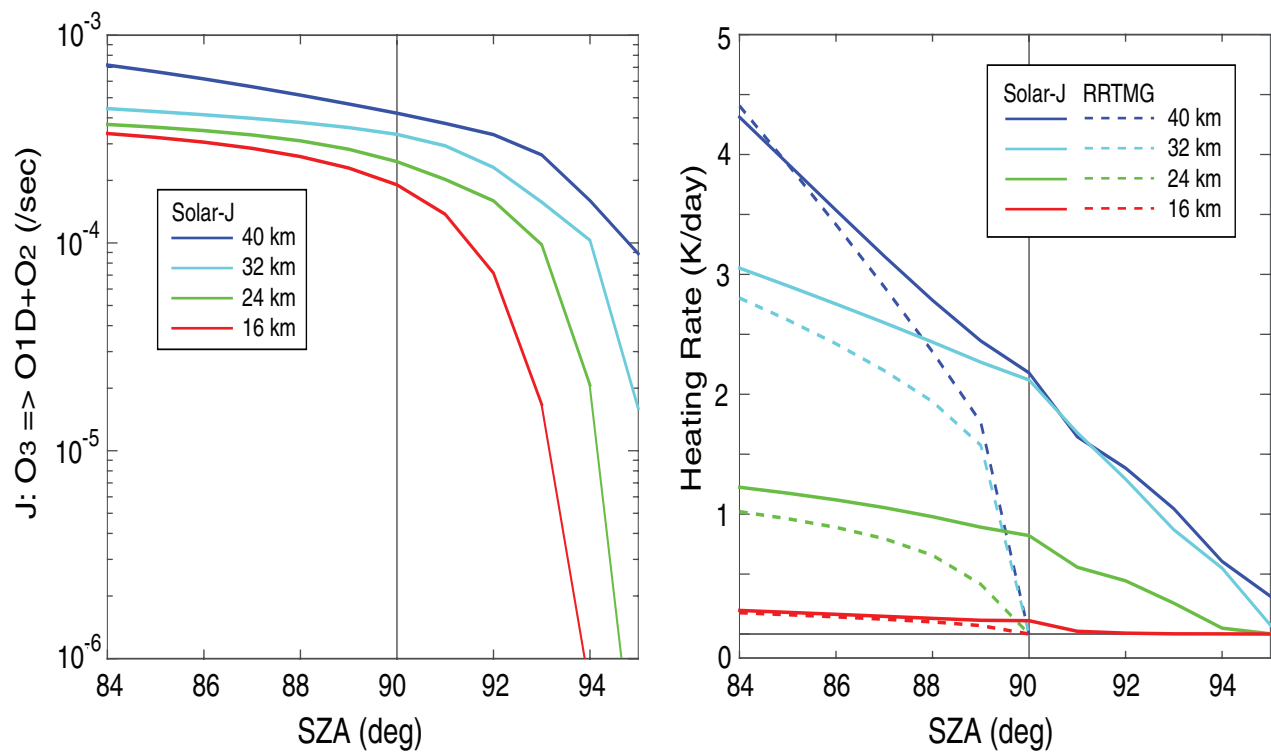
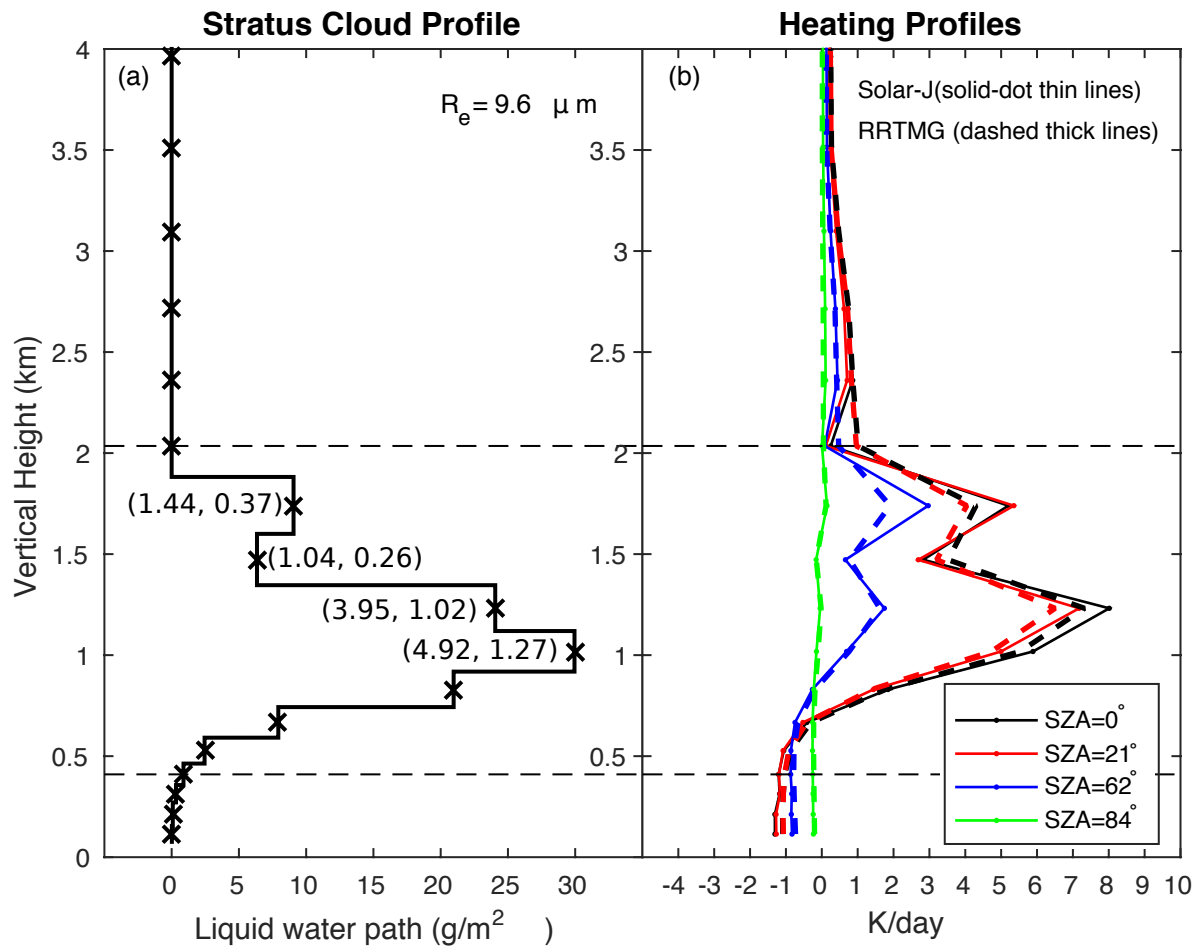


Figure 3.



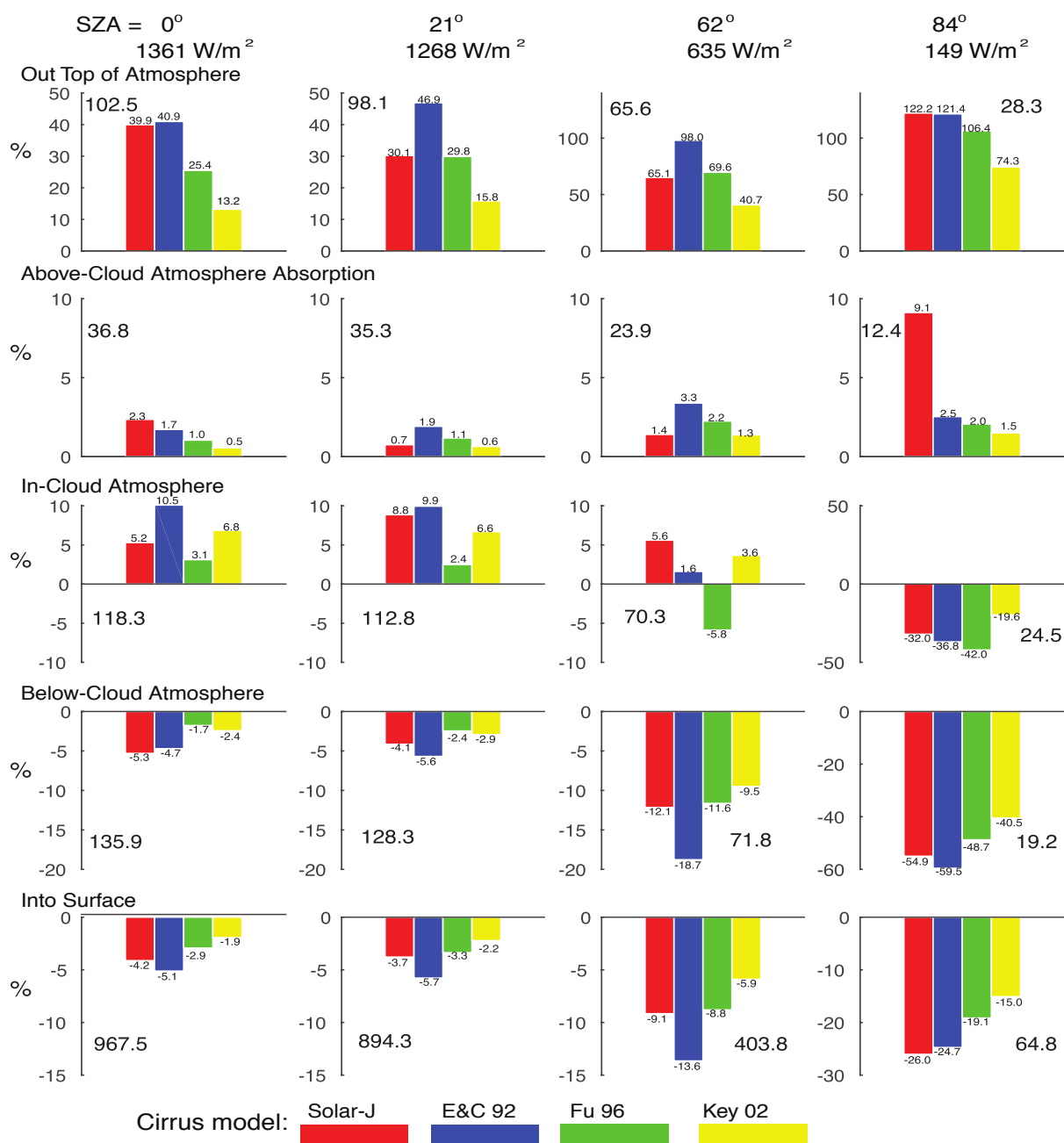


Figure 6