

Letter to the editor

Maarten Krol et al.

March 5, 2018

1 Information for the editor

With pleasure we present the revised manuscript entitled "Age of air as a diagnostic for transport time-scales in global models". We used the comments of the reviewers to improve the manuscript. In the sections below you will find

- The reply to reviewer 1.
- The reply to reviewer 2, M. Prather.
- The markup of the revisions made to the manuscript.

Based on the comments we made some major changes to the document. (i) We reordered the figures and now provide higher-quality eps files (ii) We rewrote the conclusions, and toned down the conclusion that most model-to-model differences are caused by convection. We mention other possibilities such as nudging. We also mention now the main pros and cons of the AoA compared to tracers with a prescribed emission (iii) We added Appendix B to better explain the seasonal rectifier effect. (iv) We included the missing references mentioned by the reviewers.

Apart from these changes, we made some minor improvements, and we addressed all the minor comments made by the reviewers. Also, we placed the AoA protocol and the analysis software on *GitHub*, along with a short description under "Code availability". With these changes, we believe the manuscript is more balanced and complete. We are confident that we now meet the requested standard for publication in GMD.

On behalf of all co-authors,
Maarten Krol

2 Reply to reviewer 1

First of all we would like to thank the reviewer for his/her comments, and careful reading of the manuscript. We will follow most of the suggestions made in the revised manuscript. There are several main points made, which will be addressed as indicated below.

- *I am missing a critical discussion and the connection between the model's difference with the different set-up, such as vertical and horizontal resolution, nudging and reanalyses-driven models.* This point is also raised by Reviewer 2. The main aim of this first paper is to present the protocol and first results. The intercomparison brings a lot of interesting information, however, analysing the exact causes for the inter-model differences would lengthen the paper considerably. We agree with the fact, at the current state, it is too early to diagnose convection as the main source of the differences (see also Reviewer 2). We will rephrase our conclusions accordingly. To make a detailed analysis, models should be run with different convective parameterisations, resolution, and advection scheme. This is partly done by the LMDZ and TM5 models. To analyse the differences in nudging data (ERA-interim vs. JRA25) would require detailed analysis of the driving meteorological fields, and maybe a single model using both data streams. At this stage, we think this is beyond the scope of the paper, which presents the protocol and first analysis. This is fully in line with the scope of the GMD journal, and hopefully many follow-on studies will further analyse the results that are already available.
- *The organisation of the figures:* We will consider re-organising the figures in the revised manuscript.
- *Section 5 (Conclusions) provides mostly a brief summary of things which have been stated before.* We think this is an efficient way to present the main conclusions. We will be more textual in the revised manuscript.

Below we address the other points of the reviewer.

1. *Page 2, line 12: " is only broken down in the upper stratosphere ". Please add citation after "stratosphere" about stratospheric SF6 photodissociation.* Will be included.
2. *Page 2, line 32: " . . upper-tropospheric equatorial westerly duct, . . ". Please cite Waugh and Funatsu, 2003 after "duct".* Will be done.
3. *Page 3, line 1: please replace "again" by "also".* OK.
4. *Page 3, lines 9: ". . . troposphere-stratosphere exchange . . ." please cite Holton et al., 1995 which is the suitable reference for STE.* OK
5. *Page 3, line 12: "Stratospheric age of air and its temporal trend have been determined from SF6 measurements from the MIPAS satellite (Stiller et al., 2012)" and from balloon observations (Engel et al, 2009).* OK.
6. *Page 5, line 21-23: The tracers that are not used in this study don't need to be mentioned or listed in this paper. Please remove this sentence. "Note that we also included a 222 Rn simulation with monthly varying emissions over Europe during 2006–2010,*

based on the high resolution emissions maps presented in Karstens et al. (2015). The current paper will, however, not analyse these simulations.” On this point, we disagree. This paper is intended as a first presentation of the intercomparison exercise, and readers should be made aware of the data that is available for further analysis.

7. Page 9, lines 2: “For this inter-comparison . . .” coma after “inter-comparison”. OK.
8. Page 9, lines 5-7: “Recent analysis (Tsuruta et al., 2016) shows that the mass fluxes produced with the ERA-interim data set (Dee et al., 2011) lead to faster inter-hemispheric transport compared to the old model version using the Tiedtke (1989) scheme that was used in the earlier TransCom study (Patra et al., 2011).” Sentence should be revised “According to Tsuruta et al., 2016, the mass fluxes . . .”. There is also an over citing Dee et al., 2011 in this page. Will be revised.
9. Page 10, line 28: . . . (Austin and Houze Jr, 1973; Belikov et al., 2013a) A modified. . . there is a missing dot before the “A..”. OK.
10. Page 12, line 7: “. . . signalling stratosphere-troposphere exchange.” Please add Holton et al., 1995 at the end of the sentence. OK.
11. Page 12-13, line 12/line 1: “Here, all models agree on an interesting asymmetry: AoA derived from “SHsurface” around the North Pole is older than AoA derived from “NHsurface” around the South Pole.” Why? This is explained in the answer to Reviewer 2. This is likely due to a seasonal rectifier effect, with wintertime trapping and efficient mixing in summer over NH landmasses. In the manuscript (abstract and page 22), we also mention that the asymmetric position of the ITCZ may play a role. In the revised manuscript we aim to add an Appendix in which the seasonal rectifier effect will be further explained.
12. Page 13, line 1: What the cause of the differences between TOMCAT and NIES results? We think this issue is clearly discussed in the remainder of the manuscript, when SF6 and 222Rn results are analysed. The bottomline is that both TOMCAT and NIES are diagnosed with slow vertical transport. NIES still appears to have fast interhemispheric transport, likely related to a diffusive advection scheme.
13. Page 13, line 12: “. . . emission from the NH.” Please replace by “. . . from the NH emissions.” OK.
14. Page 14, line 1: “Indeed, the lowest CH₄ concentrations on the Earth’s surface are found at NOAA site Eastern Island (EIC) (Patra et al., 2009b), which was attributed to “old” air in combination with strong removal of CH₄ by OH at tropical latitudes”. Please rephrase this sentence. Will be rephrased.

15. *Page 14, line 6: How Louis (1979) scheme would impact the transport? Please be more explicit.* We will refer here to earlier studies, e.g. Chipperfield (2006) and Wang (1999) and Section 2.7, where is stated that local BL transport schemes like Louis (1979) lead to slower exchange between the BL and free troposphere.
16. *Page 14, line 10: "Here it should be noted that the TOMCAT and NIES AoA is already systematically older at the tropopause (see Figure 2)." But in the stratosphere, the AoA from LMDZ, TM5, EMAC are even older than TOMCAT and NIES. Therefore, the sentence is not useful here.* We think it is still useful to remark here that the AoA of the surface tracer differs in TOMCAT and NIES. We will slightly rephrase.
17. *Page 15, line 9: "Further analysis on the stratospheric AoA in this model ensemble is left for future exploration." Before this sentence please discuss Garny et al., 2014; Ploeger et al, 2015 concerning the impact of the aging by mixing which play important role.* OK.
18. *Page 17, paragraph 2, line 5-15: Please combine fig. 8 and 9 and rephrase the paragraph. This will make this paragraph easy to follow. Please improve the ticks and legend of actual fig. 8. Enumerating the panel would be helpful.* We will revise the figures.
19. *Page 23, line 21-22: Please rephrase this ". . . five AoA tracers..."* OK.

3 Reference

Wang, K. Y., Pyle, J. A., Sanderson, M. G., & Bridgeman, C. (1999). Implementation of a convective atmospheric boundary layer scheme in a tropospheric chemistry transport model. *Journal of Geophysical Research*, 23729–23745.

4 Reply to reviewer 2. M. Prather

First of all we would like to thank the reviewer for his insightful comments, and starting this discussion. The reviewer makes one big point, and several other points that we address below.

- *The protocol has a fundamental difficulty: for the Age of Air (AoA) tracers with fixed boundary conditions are used, which cannot be compared to real tracers like SF_6 , ^{222}Rn , and $e90$.* In order to derive transport times from transport model simulations, there are several options. In all cases a time scale has to be extracted from simulations, as time is not a transportable quantity. One option is to have tracers with different lifetimes (e.g. ^{222}Rn , $e90$, ..) and fixed emissions. Alternatively, tracers with 'known' emissions and a source-sink imbalance can be used to investigate

the age of air masses (e.g. SF6, CO2). In all cases, time-scales of mixing have to be derived from known decay rates, or from atmospheric accumulation rates. Some tracers have the clear advantage that atmospheric observations are available (SF6, CO2, 222Rn). This protocol is experimenting with boundary conditions with a prescribed growth rate, with the growth rate serving as the 'clock'. This offers advantages, because the boundary conditions can be applied in a flexible way (NH, SH, land, ocean, ...). As the reviewer rightfully remarks, we also face challenges. However, according to us there is not a fundamental difficulty with the protocol, other than the issues we discuss in the manuscript. Yes, we can have a rectifier/diode effect, but studying this in different models may help diagnose model-model differences. For instance, our surface boundary conditions are applied only in the lowest 100 m. This introduces a sensitivity for boundary layer mixing. Models with efficient BL mixing (like TM5) consequently find 'young air' in the upper boundary layer, while other models find 'older air'. With a flux boundary condition, these differences would also appear. Therefore, we do not really get the point made by the reviewer: "*since the emissions cannot be stopped and must get out of the boundary layer daily*". The issue is that some models tend to mix the boundary layer slower than other models, and thus simulate different gradients of emitted species. Most clearly, this is observed for the SF6 and 222Rn comparisons, both having flux boundary conditions, but models have a different rate at which the emissions are distributed vertically. To summarise: With fixed emissions, an identical amount of tracer is mixed differently over the domain, depending on the mixing characteristics of the model. In the AoA protocol, the amount of tracer in the model intentionally depends on mixing. After translation to time, these differences can then be interpreted as different atmospheric mixing time scales. The challenges that we face are: (1) indeed, there are no known tracers with a fixed concentration boundary. However, the protocol is designed to simulate tracers from which transport timescales can be derived, and this advantage is explored here. (2) depending on the forcing volume and location, large gradients in the artificial AoA tracers may occur. Coping with large gradients is a known challenge for advection schemes. We discuss this issue in the manuscript in Section 3.6: Mapping the tropopause. Here we compare the tropopause derived from tracer 'e90' to the tropopause derived from AoA tracer 'surface'. In general, reasonable agreement is found, but differences are larger for some models. One tentative result is that models with less gradient conserving advection schemes (e.g. ACTM, Lin and Rood) show larger differences than the more gradient conserving models (like TM5, Russel and Lerner slopes scheme). In the revised manuscript we will discuss the issues with the protocol more comprehensively.

- *Missing references:* Thanks for pointing these out. We will refer to them in the revised manuscript.

- *Are the monthly mean mixing ratios 3D? Are the hourly station data 1D (profiles) or just layer 1?*: Yes, the monthly mean output is 3D. Modellers were asked to sample the model at 247 stations at hourly time intervals. At 119 station locations, profiles of concentrations and meteorological data were also requested. We will add some more information in the revised manuscript.
- *P8 L14 ? do you mean "adapted" instead of adopted?*: we did intend to use adapted here. Will be corrected.
- *P11 L29 ? is "IH" defined earlier? might be better just spelling it out everywhere, after all you did not define VT for vertical transport?*: IH is used 29 times in the manuscript, while vertical transport is used only 8 times. IH is defined on page 2.
- *P12 L13 ? please give real numbers - how many years older?*: This is quantified in figure 9. We will add the range 0.10 – 0.17 years.
- *S to N transport patterns*: This is an interesting issue. We speculate on page 22 the the asymmetry between Figures 3 and 4 is caused by a 'seasonal rectifier' effect, meaning that over NH landmasses the forcing is strongly coupled to the season. Due to wintertime stabilisation and strong mixing in the summer, the AoA metric shows a larger seasonal variation in the NH compared to the ocean-dominated SH. Indeed, we found much larger seasonal cycles in the time series that make up Figure 3, compared to the time-series on which Figure 4 is based. How this relates to transport patterns that transport the SH air masses to the NH (i.e. the coupling to monsoon circulations), remains to be explored and data to do so are available. We would like to restrict the current manuscript to a description of the first results.
- *The "oldest" tropospheric air noted here was also part of the Prather e90 paper, at least compare*: We will include a comparison in the revised manuscript.
- *Easter Island*: Typo will be corrected.
- *BL differences*: We are pretty sure that BL parameterisation differences are the cause. Instead of adding further analyses, we propose to remove "likely".
- *P15 L7 ? In addition to Diallo et al 2012, check the Prather 2008 PNAS paper that demonstrated the convergence of two schemes with increased vertical resolution.:* Thanks for pointing out this reference. We will include it in the revised manuscript.
- *P16 L7 ? Remember that the SF6 is flux-driven and may show different features than the AoA tracers.:* We will highlight this issue more strongly in the revised manuscript, also in response to the first point raised.

- *P18 L1 ? SF6 accumulation in the BL:* We have been careful here with the wording. We mention SF₆ accumulation over the source regions over land when refer to the top panel of Figure 8, in which a clear enhancement over the source regions is seen in the simulated SF6 fields.
- *P19 ? figures 9 and 10 :* With Figure 9 we try to quantify the interesting asymmetry between the tracers 'NHsurface' and 'SHsurface'. Close to the equator the results become very sensitive to the way the model is sampled at the surface. This was illustrated with Figure 1. When forcing a tracer at the surface, e.g. in the SH, only the lowest 100 m of the grid-cel is forced (Table 1). After forcing, advective processes may transport AoA tracers into the box before sampling is performed. Close to the equator, large gradients in the mixing ratio of these NHsurface and SHsurface AoA tracers are expected, leading to results that depend on the sampling strategy of the models. Concerning the TOMCAT results: Indeed TOMCAT simulates the correct latitudinal gradient over the clean pacific (Figure 8, middle panel). However, the point we try to make is that this is a combined effect of slow vertical mixing (Figure 8, upper panel) and slow IH transport (quantified through the composite AoA in Figure 10). In contrast, NIES is also not "ball-park" in Figure 10. This is attributed to a combination of limited vertical mixing and fast IH transport. In that respect, the comparison to HIPPO data presented in the Appendix is interesting. Shifts to modeled mixing ratios needed to match the HIPPO data are largest for NIES and TOMCAT, but opposite in sign.
- *Please spell out IH and BL etc in the conclusions:* Will be done.
- *The Conclusions are a bit too speculative:* We agree on the fact that more work is needed to separate the effects of advection, convection, mass-fixers etc. We will modify the conclusions accordingly. Concerning the rectifier effect, we will try to explain this better in the revised manuscript. The bottom line is that when mixing is fast in the NH, the surface is in relatively fast contact with the free troposphere. Since inter-hemispheric transport proceeds most efficiently in the free troposphere (as seen in Figures 3 and 4), this implies transport of 'young' air to the SH. In winter, the situation reverses. Averaged over 11 years this leads to an average AoA that is younger than a situation with small seasonal variation in vertical mixing (i.e. the SHsurface tracer). To illustrate this, we build a simple three box model, with the lowest box representing the 'forced' surface layer. This box is in contact with box two, representing the boundary layer. Box two, in turn, is connected to box three, representing the free atmosphere. For this simple example, boxes are taken of equal size. The mixing time between the surface and boundary layer box is taken as 1 day. The mixing time between the boundary layer box and the free atmospheric box is taken as one week. To represent the NH, these times are modulated with a seasonal variation of 50%. To represent the SH, a smaller modulation of 5% is

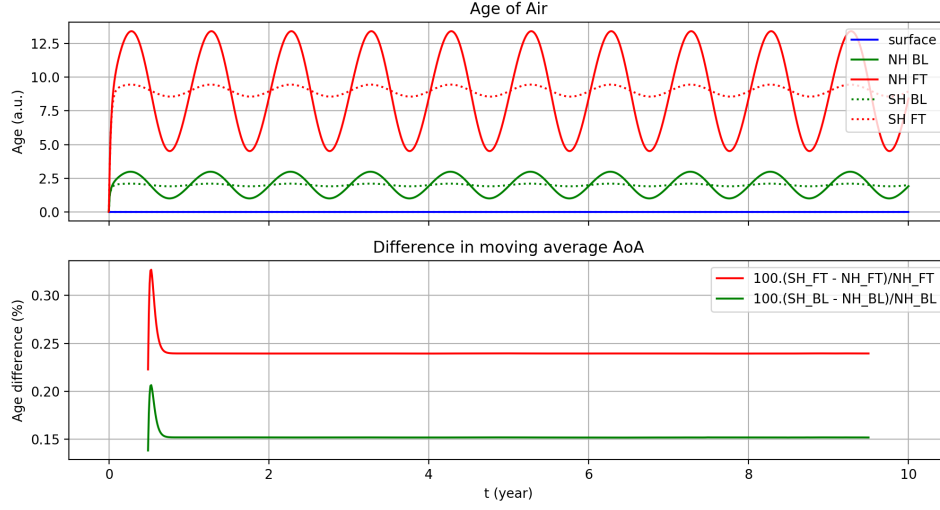


Figure 1: Results of a simple three-box AoA experiment in which the mixing between the boxes is modulated with a seasonal cycle. See main text for a description of the experiment.

chosen. We now conducted the AoA experiments and calculated (in arbitrary units) the AoA in the NH and SH simulations in the three boxes (see Figure 1, upper panel). Logically, seasonal variations are larger in the NH case. If we now compare the running averages in the lower panel, we notice a small rectifier effect: The mean of the upper atmosphere SH boxes is systematically older than the corresponding NH boxes. This rectifier effect is caused by a covariation of the mixing and forcing. For the revised manuscript, we plan to include a worked out example with more realistic values as an Appendix.

Age of ~~Air~~ air as a diagnostic for transport time-scales in global models

Maarten Krol^{1,2,3}, Marco de Bruine², Lars Killaars⁴, Huug Ouwersloot⁵, Andrea Pozzer⁵, Yi Yin^{6,7}, Frederic Chevallier⁶, Philippe Bousquet⁶, Prabir Patra⁸, Dmitry Belikov⁹, Shamil Maksyutov¹⁰, Sandip Dhomse¹¹, Wuhu Feng¹², and Martyn P. Chipperfield^{11,12}

¹Meteorology and Air Quality, Wageningen University, the Netherlands

²Institute for Marine and Atmospheric Research, Utrecht University, the Netherlands

³Netherlands Institute for Space Research SRON, Utrecht, the Netherlands

⁴Faculty of Science and Engineering, University of Groningen, the Netherlands

⁵Max-Planck institute for Chemistry, Mainz, Germany

⁶Laboratoire de Sciences du Climat et de l'Environnement (LSCE), Gif sur Yvette, France

⁷now at: Jet Propulsion Laboratory, Pasadena, California, USA

⁸Japan Agency for Marine-Earth Science and Technology (JAMSTEC), Yokohama City, Japan

⁹Hokkaido University, Sapporo, Hokkaido, Japan

¹⁰Center for Global Environmental Research, National Institute for Environmental Studies, Tsukuba, Ibaraki, Japan

¹¹School of Earth and Environment, University of Leeds, United Kingdom

¹²National Centre for Atmospheric Science, University of Leeds, United Kingdom

Correspondence: Maarten Krol (maarten.krol@wur.nl)

Abstract. This paper presents the first results of an ~~age-of-air~~ age-of-air (AoA) inter-comparison of six global transport models. Following a protocol, three global circulation models and three chemistry transport models simulated five tracers with boundary conditions that grow linearly in time. This allows for an evaluation of the AoA and transport times associated with inter-hemispheric transport, vertical mixing in the troposphere, transport to and in the stratosphere, and transport of air masses between land and ocean. Since AoA is not a directly measurable quantity in the atmosphere, simulations of ²²²Rn and SF₆ were also ~~requested~~ performed. We focus this first analysis on averages over the period 2000–2010, taken from longer simulations covering the period 1988 – ~~2014~~ period: 2014. We find that two models, NIES and TOMCAT, show substantially slower vertical mixing in the troposphere compared to other models (LMDZ, TM5, EMAC, and ACTM). However, while the TOMCAT model, as used here, has slow transport between the hemispheres and between ~~land-and~~ the atmosphere over land and over ocean, the NIES model shows efficient horizontal mixing and a smaller latitudinal gradient in SF₆ compared to the other models and observations. We find consistent differences between models concerning vertical mixing of the troposphere, expressed as AoA differences and modeled ²²²Rn gradients between 950 and 500 hPa. All models agree, however, on an interesting asymmetry in inter-hemispheric mixing, with faster transport from the ~~Northern~~ northern hemisphere surface to the ~~Southern~~ southern hemisphere than vice versa. This is attributed to a rectifier effect caused by a stronger seasonal cycle in boundary layer venting over Northern hemispheric landmasses, and possibly to a related asymmetric position of the inter-tropical convergence zone. The calculated AoA in the ~~upper~~ mid-upper stratosphere varies considerably among the models (4 –7 years). Finally, we find that the inter-model differences are generally larger than differences in AoA that result from using the same model with a

different resolution or convective parameterisation. Taken together, the AoA model inter-comparison provides a useful addition to traditional approaches to evaluate transport ~~time-scales~~timescales. Results highlight that inter-model differences associated with resolved transport (advection, reanalysis data, nudging) and parameterised transport (convection, boundary layer mixing) are still large, and require further analysis. For this purpose, all model output and analysis software is available.

5 1 Introduction

The composition of the atmosphere is determined by exchange processes at the Earth's surface, transport processes within the atmosphere, and chemical and physical conversion processes. For example, the atmospheric mixing ratio distribution of CH₄ is driven by natural and anthropogenic emissions at the Earth's surface, atmospheric transport, and removal that is primarily driven by the atmospheric oxidants OH, Cl, and O(¹D) (Myhre et al., 2013). The estimated atmospheric lifetime of CH₄ is approximately 9 years (~~Prather et al., 2012~~)(Prather et al., 2012) mainly due to oxidation within the troposphere. Although some CH₄ destruction occurs in the stratosphere, as witnessed by the decaying mixing ratios with altitude, the slow atmospheric transport from the troposphere to the stratosphere limits its impact on the atmospheric lifetime of CH₄. Other atmospheric constituents have widely different budgets. SF₆, for instance, has purely anthropogenic sources, mostly in the Northern Hemisphere (NH), and is only broken down in the upper stratosphere (Kovács et al., 2017), resulting in a very long atmospheric lifetime of more than 1000 years(~~Kovács et al., 2017~~). In contrast, ²²²Rn is of purely natural origin. It emanates from land surfaces and quickly decays radioactively with a ~~half-life~~half-life of 3.8 days.

To better understand the changes in the atmosphere, General Circulation Models (GCMs) or Chemistry Transport Models (CTMs) are used to simulate its composition. While CTMs use archived meteorological fields to calculate transport, GCMs calculate their own ~~transport~~meteorology. To track the observed state of the atmosphere, the GCMs can be nudged towards meteorological re-analysis data (~~Law et al., 2008~~)(e.g., Law et al., 2008). Comparing results of these models to atmospheric observations allows assessment of the model performance. Depending on the atmospheric compound, various aspects of atmospheric transport can be investigated. Jacob et al. (1997) used ²²²Rn and other short-lived tracers to evaluate the convective and ~~synoptic-scale~~synoptic-scale transport in CTMs. Since the early 1990s, the atmospheric tracer transport model intercomparison project (TransCom) has carried out studies to quantify and diagnose the uncertainty in inversion calculations of the global carbon budget that result from errors in simulated atmospheric transport. Initially, TransCom focused on non-reactive tropospheric species such as SF₆ (Denning et al., 1999) and CO₂ (Law et al., 1996, 2008). A more recent TransCom model inter-comparison (Patra et al., 2011) focused on the ability of models to properly represent atmospheric transport of CH₄, focussing on vertical gradients, its average long-term trends, seasonal cycles, inter-annual variations (IAVs) and inter-hemispheric (IH) gradients. The study concluded that models that show faster IH exchange for SF₆, also exhibit smaller IH gradients in CH₄. The estimated IH exchange time, calculated based on a time-invariant SF₆ emission rate, remained relatively constant over the period of the analysis (1996–2007). Interestingly, a recent study highlighted the importance of IH transport variations in explaining the CO₂ mixing ratio difference between Mauna Loa in the ~~Northern Hemisphere (NH)~~NH and Cape Grim, Tasmania, in the Southern Hemisphere (SH) (Francey and Frederiksen, 2016). Specifically, the 0.8 ppm step-like increase of

this difference between 2009 and 2010 was attributed to the opening and closing of the upper-tropospheric equatorial westerly duct ([Waugh and Funatsu, 2003](#)), with an open-duct pattern from July 2008 to June 2009 (fast IH exchange), followed by closed-duct conditions between from July 2009 to June 2010 (slow IH exchange). Confirming this mechanism, Pandey et al. (2017) found ~~again~~ also faster IH transport of CH₄ during the strong La Niña in 2011 using the TM5 CTM. The time-scale of

5 IH transport is an important parameter for atmospheric inversion studies. In these studies atmospheric observations are used to infer surface flux magnitude and distribution. For a long-lived greenhouse gas like CH₄ fast IH transport implies that a larger fraction of the emissions will be attributed to the NH (Patra et al., 2014, 2011).

The efficiency of models to mix the planetary boundary and to vent emissions to the overlying free atmosphere has been studied using SF₆ and has generally revealed too slow mixing over mid-latitude continents in the TM5 (Peters et al., 2004)

10 and MOZART models (Gloor et al., 2007). Together with the convective parameterisation, this determines the rate by which emissions (e.g. SF₆ and ²²²Rn) are mixed vertically and inter-hemispherically (Locatelli et al., 2015a).

Another transport ~~time-scale~~ timescale relevant for atmospheric composition studies is troposphere-stratosphere exchange ([Holton et al., 1995](#)), driven by the Brewer-Dobson circulation (Butchart, 2014). Depending on the greenhouse gas scenario, global climate model projections predict an acceleration of this global mass circulation of tropospheric air through the strato-

15 sphere. Stratospheric ~~age-of-air~~ AoA and its temporal trend have been determined from SF₆ measurements from the MIPAS satellite (Stiller et al., 2012) and from balloon observations ([Engel et al., 2009](#)). Using a suite of stratospheric observations, Fu et al. (2015) quantified the acceleration of the Brewer-Dobson circulation as 2.1% per decade for 1980–2009. Other modelling and experimental studies revealed that the atmospheric composition of the tropopause layer strongly depends on the mixing processes that occur on a wide range of spatiotemporal scales ([Hoor et al., 2010](#); [Berthet et al., 2007](#); [Prather et al., 2011](#)) ([Berthet et al., 2007](#);

20 Transport of trace gases in CTMs and GCMs is determined by several factors, for which various choices are possible. First, winds and the choice of advection scheme drive the large-scale dispersion and IH transport of tracers. While CTMs directly use winds from a meteorological re-analysis product, GCMs calculate their own meteorology and optionally apply a nudging scheme to simulate transport of tracers (e.g., Law et al., 2008). Second, parameterised sub-grid-scale processes such

25 as boundary layer mixing and convection determine vertical gradients and the rate of IH transport (e.g., Locatelli et al., 2015a). Finally, other differences may be caused by the horizontal and vertical grid of the model, and other issues related to spatial and temporal integration. For ~~instance~~ example, by just doubling the vertical resolution of their ~~model~~ GCM, Locatelli et al. (2015a) largely improved the representation of SF₆ transport from the troposphere to the stratosphere. ~~Likewise~~ Similarly, Bândă et al. (2015) reported large differences in the stratospheric dispersion of the 1991 Pinatubo plume when increasing the

30 vertical resolution in TM5 from 34 to 60 levels.

To investigate the impact of these choices in the participating models, this paper will present the first results of the TransCom age-of-air (AoA) inter-comparison study. The concept age-of-air originates from stratospheric studies ([Hall and Plumb, 1994](#); [Neu and Plumb, 1998](#)). In brief, the age spectrum in the stratosphere $G(x, t|t_0)$ is calculated as a type of Green’s function that propagates a tropospheric mixing ratio boundary condition into the stratosphere. Given a location x in the stratosphere, $G\delta t$ represents the fraction of

35 air at x that was lost in the troposphere in the time interval between $t - t_0$ and $t - t_0 + \delta t$ (Hall et al., 1999). In practical

Table 1. The five AoA tracers and their forcing volume.

AoA Tracer	Forcing volume
Surface	Surface < 100 m
NHsurface	NH surface <100 m
SHsurface	SH surface <100 m
Land	Land < 100 m
Ocean	Ocean < 100 m

model applications focussing on stratospheric age spectra, $G(x, t|t_0)$ is calculated as the response of a time-dependent boundary condition $\delta(t - t_0)$ specified in a forcing volume in the troposphere. More recently, this concept has also been applied to tropospheric studies (Holzer and Hall, 2000; Waugh et al., 2013; Holzer and Waugh, 2015). In this AoA inter-comparison, we will only analyse the mean ~~age-of-air~~AoA. This property can be easily extracted from model simulations of a passive tracer with linearly growing boundary conditions in a specified atmospheric volume. We will outline the inter-comparison protocol in section 2. The resulting model output focussing on the simulation period ~~2000–2011~~2000–2010 is compared in section 3, and discussed in section 4. Finally, the main conclusions are summarised in section 5.

2 Method

2.1 AoA protocol

- 10 In order to compare transport ~~time-scales~~timescales of a suite of CTMs and GCMs, a protocol was developed that allows a straightforward implementation in existing atmospheric models. We defined five AoA tracers (Table 1) for which linearly growing boundary conditions are applied. These AoA tracers are chosen to study IH transport, transport to the stratosphere, and air mass transport between land and ocean. The mixing ratios of these tracers in the models are initialised to zero on January 1, 1988 and simulations are run to the end of 2014.
- 15 According to the protocol, the mixing ratio ~~in-the-of~~of each AoA tracer in its respective forcing volume is set every time step to a value $B = f \times t$, with t the elapsed time (in s) since January 1988, and f a forcing constant of $1 \times 10^{-15} \text{mol mol}^{-1} \text{s}^{-1}$. As a result, the mixing ratio in the forcing volume will have a value of $852.0768 \text{ nmol mol}^{-1}$ at the end of the simulation, and lower values elsewhere. In theory, numerical issues with advection might lead to small wiggles in the vicinity of strong mixing ratio gradients. This may result in small unphysical negative mixing ratios that cannot be handled by some model transport
- 20 schemes. To remedy this, models may be initialised with a uniform $100 \text{ nmol mol}^{-1}$ initial condition, a value that is subtracted before further analysis.

Modellers are requested to calculate the exact fraction of ~~the-each~~each grid box within the forcing volume. This calculation involves the land mask, the fraction of the grid box ~~on-in~~in either the NH and SH, and the geopotential height. The protocol

provides example code to help with the implementation. Importantly, the mixing ratio of the grid boxes within the forcing volume was set according to:

$$X_{new} = f_{set} \times B + (1 - f_{set}) \times X_{old}, \quad (1)$$

where f_{set} is the fraction of the grid box within the forcing volume, and X_{old} the mixing ratio before the forcing procedure.

5 Note that in locations where $f_{set} = 0$, nothing needs to be changed, and the mixing ratio changes are purely driven by transport from the forcing volume. To diagnose AoA, the simulated mixing ratios X in the atmosphere can be converted into AoA by $L = t - \frac{X}{f}$, with L the AoA in seconds and t the elapsed time of the simulation.

Figure 1 shows the simulated mixing ratios and applied forcing for the tracer "Surface" at the location of the Cabauw tower from May 6 to May 15, 2010, together with the derived AoA. We use here output from the TM5 model on 1×1 degree resolution (see Table 4). At 20 m above the surface during night-time AoA is generally close to zero, due to the fact that the volume is forced in the lowest 100 m, and vertical mixing is limited in a stable nocturnal boundary layer. During daytime, however, older air from aloft is mixed in, and the AoA increases depending on the depth of the mixing layer and the strength of the vertical mixing. At 200 m, outside the forcing volume, air is generally older. ~~In~~ During some nights, e.g. from May 8 to May 9, the surface gets decoupled from the air masses aloft, signalling a stable boundary layer. Note that the depth of the lowest model layer is approximately 20 m, which implies that this layer is entirely within the forcing volume (the applied forcing is indicated by the blue line). However, TM5 still calculates a non-zero AoA in the lowest model layer, because the mixing ratios are sampled after vertical transport, which mixes in older air (Krol et al., 2005). We do not provide recommendations on the sampling strategy. For instance, models that sample right after forcing, simulate a linear mixing ratio increase at 20 m (blue line in the upper panel of Figure 1) and a constant and zero AoA at 20 m (blue line in the lower panel of Figure 1). The current paper will focus on large-scale transport timescales and we found no major influence of this sampling strategy on the results.

To complement the AoA tracers, modellers were also requested to simulate the tracers listed in Table 2. Simulations of ^{222}Rn are intended to study vertical and ~~synoptic-seale~~ synoptic-scale transport (Jacob et al., 1997); SF_6 is used to diagnose IH transport, stratosphere–troposphere exchange, and stratospheric AoA; E90 is used to diagnose the "chemical" tropopause and will be compared to Prather et al. (2011). Note that we also included a ^{222}Rn simulation with monthly varying emissions over Europe during 2006–2010, based on the high resolution ~~emissions~~ emission maps presented in Karstens et al. (2015). The current paper will, however, not analyse these simulations.

Homogeneous surface emissions (in $\text{kg m}^{-2} \text{s}^{-1}$) of E90 (E_{E90}) are calculated such that the mean steady-state atmospheric mixing ratio of E90 will approach $100 \text{ nmol mol}^{-1}$:

$$E_{E90} = \frac{M_{atm} \times 100 \times 10^{-9}}{\tau_{E90} \times 4\pi r^2} \quad (2)$$

30 with M_{atm} the atmospheric mass (kg), r the radius of the Earth (m), and τ_{E90} the e-folding lifetime (90 days in units s) of E90.

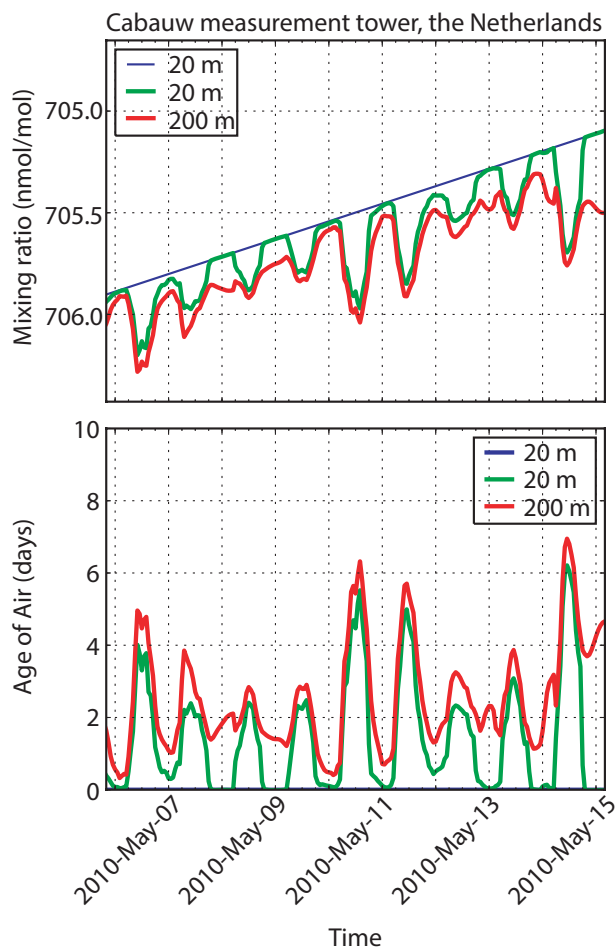


Figure 1. Upper panel: Mixing ratios of an AoA tracer simulated by the TM5 model (TM5_1x1) forced at the surface along the Cabauw measurement tower in the Netherlands during May 2010. The blue line represents the applied forcing. Lower panel: Similar, but transferred into [Age of AirAoA](#).

Emissions of SF_6 based on EDGAR4.0 with corrections suggested by Levin et al. (2010) are given in Table 3. The emission distribution is similar to Patra et al. (2011).

NetCDF-formatted input files were provided with emissions on 1×1 degree resolution and initial SF_6 mixing ratios for January 1, 1988. In terms of output, modellers were requested to provide monthly mean [3D](#) mixing ratios and hourly mixing ratio
 5 time series at 247 atmospheric measurement stations ([interpolated or grid-value](#)). Furthermore, hourly atmospheric profiles of mixing ratios and meteorological variables (u-wind, v-wind, surface pressure, boundary layer height, geopotential height) were requested at 119 locations. In this first analysis we will concentrate on the output of monthly mean mixing ratios that have been provided by six CTMs, some of them running in different configurations. Table 4 lists the participating models along with their horizontal and vertical resolution. Three models (LMDZ, EMAC, ACTM) run in "on-line" mode, meaning that meteorology is

Table 2. Additional tracers in the ~~AoA~~model intercomparison.

Tracer		Remarks
^{222}Rn	Radon tracer, similar to Patra et al. (2011) <u>(Jacob et al., 1997; Law et al., 2008; Patra et al., 2011)</u>	
^{222}RnE	As ^{222}Rn , but with specific monthly emissions over Europe in 2006-2010 (Karstens et al., 2015)	
SF_6	Similar SF_6 tracer, similar to Patra et al. (2011), but with updated yearly emissions (Table 3)	
E90	Tracer with surface emissions and atmospheric lifetime of 90 days (Prather et al., 2011)	

Table 3. Yearly emissions of SF_6 for the period 1988-2015.

Year	Source (mmol s^{-1})	Year	Source (mmol s^{-1})
1988	934	2002	1223
1989	938	2003	1258
1990	1036	2004	1268
1991	1116	2005	1299
1992	1210	2006	1366
1993	1303	2007	1475
1994	1381	2008	1555
1995	1392	2009	1577
1996	1312	2010	1599
1997	1208	2011	1642
1998	1162	2012	1685
1999	1177	2013	1729
2000	1201	2014	1772
2001	1197	2015	1816

calculated by the physics module of the model, and nudged towards data of a reanalysis (~~ECMWF-Era-interim~~European Centre for Medium-Range Weather Forecasts (ECMWF) ERA-Interim, or JMA). Three other models (TM5, NIES, TOMCAT) run in "off-line" mode, and directly read in meteorological driver data from a reanalysis. TM5_EC-Earth reads in meteorological data from the EC-Earth model (Hazeleger et al., 2010) that is nudged to ~~Era-Interim~~ERA-Interim (see Section 2.3)

5 In the next subsections, specific information on the participating models and the measurements is given.

Table 4. Short-hand notation of the models participating in this study, along with model information.

Model submission	Base model	longitude \times latitude	Vertical levels	Meteorological Driver Data
LMDZ3	LMDZ	$3.75^\circ \times 1.875^\circ$	39 hybrid σ -pressure	Nudged to Era-interim ERA-Interim
LMDZ5A	LMDZ	$3.75^\circ \times 1.875^\circ$	39 hybrid σ -pressure	Nudged to Era-interim ERA-Interim
TM5_3x2	TM5	$3^\circ \times 2^\circ$	60 hybrid σ -pressure	Era-interim ERA-Interim
TM5_1x1	TM5	$1^\circ \times 1^\circ$	60 hybrid σ -pressure	Era-interim ERA-Interim
TM5_EC-Earth	TM5	$3^\circ \times 2^\circ$	34 hybrid σ -pressure	EC-Earth, nudged to Era-interim ERA-Interim
EMAC_T63	EMAC	$\approx 1.875^\circ \times 1.875^\circ$	90 hybrid σ -pressure	Nudged to Era-interim ERA-Interim
EMAC_T106	EMAC	$\approx 1.125^\circ \times 1.125^\circ$	90 hybrid σ -pressure	Nudged to Era-interim ERA-Interim
ACTM	ACTM	$\approx 2.81^\circ \times 2.81^\circ$	67* σ up to 90 km	Nudged to JMA Reanalysis
NIES	NIES	$2.5^\circ \times 2.5^\circ$	32 hybrid $\sigma - \theta$ up to 5 hPa	JRA-25/JCDAS
TOMCAT	TOMCAT	$\approx 2.81^\circ \times 2.81^\circ$	60 hybrid σ -pressure	Era-interim ERA-Interim

*Only the lower 50 layers have been submitted

2.2 LMDZ

LMDz, developed at Laboratoire de Météorologie Dynamique with “z” standing for zoom capacity, is the global general circulation model of the IPSL Earth system model (Hourdin et al., 2006, 2012). Here, we include two offline versions of LMDz – LMDZ3 and LMDZ5A –, both with a horizontal resolution of 1.875° (latitude) \times 3.75° (longitude) and a vertical resolution of 39 hybrid sigma-pressure levels, commonly chosen for global inverse studies using LMDz ([Chevallier, 2015](#); [Locatelli et al., 2015b](#); [Yin et al., 2015](#)). These two versions are different in terms of physical parameterisation of deep convection and boundary layer mixing. LMDZ3 uses the deep convection scheme of Tiedtke (1989) and the boundary layer mixing scheme of Louis (1979). LMDZ5A is an updated version that uses the deep convection scheme of Emanuel (1991) and the boundary layer mixing parameterisation from Louis (1979), further adjusted according to Deardorff (1966). More details regarding the configurations of the physics and comparison to other versions are described in Locatelli et al. (2015a). Sea surface temperature and sea ice coverage from the ERA-Interim climate reanalysis (Dee et al., 2011) produced by the ~~European Centre for Medium-Range Weather Forecasts (ECMWF)~~ [ECMWF](#) are used as boundary conditions. Horizontal winds are nudged towards the ERA-Interim wind fields with a relaxation time of 3 hours.

2.3 TM5

The TM5 model (Krol et al., 2005) has different application areas with a common core. TM5 allows for a flexible grid definition with two-way nested zoom regions. This version is mainly used in inverse modelling applications, focussing on CO₂ (Peters et al., 2010), CH₄ ([Houweling et al., 2014](#); [Bergamaschi et al., 2013](#)) ([Bergamaschi et al., 2013](#); [Houweling et al., 2014](#)), and

CO (Krol et al., 2013). The chemistry version of TM5 (Huijnen et al., 2010) was recently ~~adopted~~adapted for massive parallel computing (Williams et al., 2017). The AoA simulations were conducted in this so-called TM5-MP version.

The TM5 model is used in three versions that differ in horizontal resolution and in the way meteorological data is used. The version named TM5_3x2 simulated the AoA experiment at a resolution of $3^\circ \times 2^\circ$ (longitude \times latitude). In the version
5 TM5_1x1, a horizontal resolution of $1^\circ \times 1^\circ$ was used. TM5_1x1 and TM5_3x2 refer to simulations with the off-line TM5-MP version that reads in the meteorological fields from files. Like earlier model versions, TM5_1x1 and TM5_3x2 are driven by the ERA-Interim meteorological re-analysis (Dee et al., 2011) and updated every 3 h, with time-interpolation during time integration. For this inter-comparison, we include all 60 vertical levels provided by the ECMWF ERA-Interim reanalysis. Convective mass fluxes are derived from entrainment and detrainment rates from the ERA-Interim dataset. This replaces the
10 convective parameterisation used in the previous TransCom inter-comparison (Patra et al., 2011), which was based on Tiedtke (1989). ~~Recent analysis (Tsuruta et al., 2016) shows that~~ According to Tsuruta et al. (2016) the mass fluxes produced with the ~~ERA-interim data set (Dee et al., 2011)~~ ERA-Interim data set lead to faster inter-hemispheric transport compared to the old model version using the Tiedtke (1989) scheme that was used in the earlier TransCom study (Patra et al., 2011).

The vertical diffusion in the free troposphere is calculated according to Louis (1979), and in the boundary layer by the ap-
15 proach of Holtslag and Boville (1993). Diurnal variability in the boundary layer height is determined using the parameterisation of Vogelesang and Holtslag (1996). Advective fluxes are calculated using the slopes scheme (Russel and Lerner, 1981), with a refinement in time step whenever the Courant–Friedrichs–Lewy (CFL) criterion is violated.

TM5_EC-Earth is the atmospheric transport model of the Earth System Model EC-Earth version 3.2.2 (Version 2.3 is de-
scribed in Hazeleger et al. (2010, 2012)) The main differences between the two versions are an increased resolution (from
20 T159 with 62 vertical layers in version 2.3 to T255 with 91 vertical layers in version 3.2.2) and updated versions of the separate model components. Only the atmospheric components are used in this study. The dynamical core of EC-Earth is based on the Integrated Forecasting System (IFS), version cy36r4 (Molteni et al., 2011). In contrast to the offline versions of TM5, the dynamical properties of the atmosphere are simulated by EC-Earth in TM5_EC-Earth. EC-Earth was nudged towards ERA-Interim data (~~Dee et al., 2011~~) for temperature, vorticity, divergence, and the logarithm of the surface pressure. The nudging
25 used a relaxation time of 6 hours, allowing for continuous atmospheric dynamics while following the ERA-Interim data. Every 6 hours, the meteorological data is transferred via de OASIS3 coupler (Valcke, 2013) to TM5-MP, which uses this data to calculate the actual atmospheric transport as described above. Apart from the meteorological data, the model code of TM5-ECEarth is similar to TM5_3x2, but with a reduced number of vertical levels (34, i.e. a subset of the 91 levels used in IFS, instead of 60).

30 2.4 EMAC

The EMAC (ECHAM/MESSy Atmospheric Chemistry) model employed in this study, combines an updated version 2.50 of the MESSy (Modular Earth Submodel System) framework (Jöckel et al., 2005, 2010) with version 5.3.02 of the ECHAM5 (European Centre Hamburg) general circulation model (Roeckner et al., 2006). ~~Our~~The version of the EMAC model used
here, first described by Jöckel et al. (2006), incorporates a recent update to convective transport of tracers (Ouwensloot et al.,

2015) and is further improved upon to facilitate nudging of ~~tracers according to Table 1.~~ AoA tracers. These modifications are included in version 2.52 of MESSy.

Dynamical properties are simulated by EMAC itself. The model dynamics ~~has been~~ are weakly nudged in the spectral space, nudging temperature, vorticity, divergence and surface pressure (Jeuken et al., 1996). Different nudging coefficients are used for different vertical levels, with no nudging in the boundary layer and above ~10 hPa, and with maximum nudging in the free troposphere. Convective mass fluxes are diagnosed in the CONVECT submodel (Tost et al., 2006), while the resulting transport is calculated by the CVTRANS model (Tost et al., 2010; Ouwersloot et al., 2015). The simulations with EMAC make use of 90 vertical hybrid sigma pressure levels. Data is available for two horizontal resolutions: T63 (192 × 96 grid) with a fixed time step of 6 min, and T106 (320 × 160 grid) with a fixed time step of 4 min.

10 2.5 ACTM

The CCSR/NIES/FRCGC (Center for Climate System Research/National Institute for Environmental Studies/Frontier Research Center for Global Change) atmospheric general circulation model (AGCM)-based chemistry-transport model (ACTM) ~~is has been~~ developed for simulations of long-lived gases in the atmosphere (Numaguti et al., 1997; Patra et al., 2009a, 2014). The ACTM simulations are performed at a horizontal resolution of T42 spectral truncation (~2.8 ~~×~~ 2.8 deg) with 67 sigma levels in the vertical and model top at ~90 km. The horizontal winds and temperature of ACTM are nudged with Japan Meteorological Agency Reanalysis (JRA) data products (Onogi et al., 2007). The nudging forces the AGCM-derived meteorology towards the reanalysed horizontal winds (~~U and V~~ u and v components) and temperature (T) with relaxation times of 2 and 5 days, respectively, except for the top and bottom model layers.

~~To compute the~~ The heat and moisture exchange fluxes at the Earth's surface ~~, the AGCM is also supplied with~~ are calculated ~~using~~ inter-annually varying monthly-mean sea ice and sea-surface temperature (SST) ~~fields from the Met Office from the~~ Hadley Centre observational ~~datasets (Rayner et al., 2003).~~ ~~Advective transport of moisture and tracers is obtained from~~ data products (Rayner et al., 2003). Tracer advection is performed using a 4th order flux-form advection scheme ~~using a monotonic Piecewise-Parabolic-Method (PPM) comprising of monotonic piecewise parabolic method~~ (Colella and Woodward, 1984) and a flux-form semi-Lagrangian scheme (Lin and Rood, 1996). ~~Mass fluxes around the polar caps are calculated with a semi-Lagrangian scheme in polar stereo projection.~~

Sub-grid-scale vertical fluxes ~~of heat, moisture, and tracers~~ are approximated using a non-local closure scheme based on Holtslag and Boville (1993) ~~used in conjugation with~~ and the level 2 scheme of Mellor and Yamada (1974). The cumulus parameterisation scheme is ~~based on Arakawa and Schubert (1974) with some simplifications described in Numaguti et al. (1997).~~ ~~The simplified from Arakawa and Schubert (1974) and used for calculating the~~ updraft and downdraft of tracers by cumulus convection ~~are calculated by using the cloud mass flux estimated in the cumulus parameterisation scheme.~~

2.6 NIES

The National Institute for Environmental Studies (NIES) Eulerian three-dimensional offline transport model is driven by the Japanese Meteorological Agency Climate Data Assimilation System (JCDAS) datasets (Onogi et al., 2007). It employs a

reduced horizontal latitude–longitude grid with a spatial resolution of $2.5^\circ \times 2.5^\circ$ near the equator (Maksyutov and Inoue, 1999) and a flexible hybrid sigma–isentropic (σ – θ) vertical coordinate, which includes 32 levels from the surface up to 5 hPa (Belikov et al., 2013b). The vertical transport for all levels above tropopause and higher than a potential temperature level of 295 K follows a climatological adiabatic heating rate. The parametrisation of turbulent diffusivity separates transport processes in the planetary boundary layer (provided by the ECMWF ERA-Interim reanalysis) from the free troposphere following the approach by Hack et al. (1993). Vertical mass fluxes due to cumulus convection are based on the convective precipitation rate provided by the reanalysis dataset (Austin and Houze Jr, 1973; Belikov et al., 2013a). A modified Kuo-type parameterization scheme (Grell et al., 1994) is used to set cloud top and cloud bottom height. Transport by convective updrafts and downdrafts includes entrainment and detrainment processes as described by Tiedtke (1989).

2.7 TOMCAT

TOMCAT/SLIMCAT is a global 3-D off-line chemical transport model (Chipperfield, 2006). It is used to study a range of chemistry-aerosol-transport issues in the troposphere (e.g., Monks et al., 2017) and stratosphere (e.g., Chipperfield et al., 2015). The model is usually forced by ECMWF meteorological (re)analyses, although GCM output can also be used. When using ECMWF fields, as in the experiments described here, the model reads in the 6-hourly fields of temperature, humidity, vorticity, divergence and surface pressure. The resolved vertical motion is calculated online from the vorticity. The model has different options for the parameterisations of sub-grid-scale tracer transport by convection (Stockwell and Chipperfield, 1999; Feng et al., 2011) and boundary layer mixing (Louis, 1979; Holtslag and Boville, 1993). Tracer advection is performed using the conservation of second-order moments scheme of Prather et al. (1987). For the experiments the model was run at horizontal resolution of $2.8^\circ \times 2.8^\circ$ with 60 hybrid σ -pressure levels from the surface to ~60 km, ~~which~~. These follow the vertical levels from the meteorological fields from ERA-Interim reanalyses (Dee et al., 2011). ~~The model was forced by ECMWF ERA-Interim reanalyses, which are used to force the model.~~ Convective mass fluxes were diagnosed online using a version of the Tiedtke scheme (Stockwell and Chipperfield, 1999) and mixing in the boundary layer is based on the local scheme of Louis (1979). Previous work with the model has shown that these schemes tend to underestimate the mixing out of the boundary layer and convective transport to the upper troposphere (e.g. Feng et al., 2011) but these were the options available for the multi-decadal runs analysed here.

2.8 Measurement data

We will compare model results to latitudinal SF₆ gradients measured by the National Oceanic & Atmospheric Administration Earth System Research Laboratory (NOAA/ESRL) (Hall et al., 2011). We use the combined data set constructed from flask data measured by the Halocarbons and other Atmospheric Trace Species (HATS) group and hourly ~~CATS Chromatograph~~ for Atmospheric Trace Species (CATS) data (downloaded from <https://www.esrl.noaa.gov/gmd/hats/combined/SF6.html>), and include only stations with a full measurement record in the period 2000–2011. Subsequently, the difference with respect to the South Pole is calculated as an 11-year time series with monthly time resolution. This is done to account for the model-data offset. The mean and standard deviations of these time series are added to the modeled latitudinal gradients below.

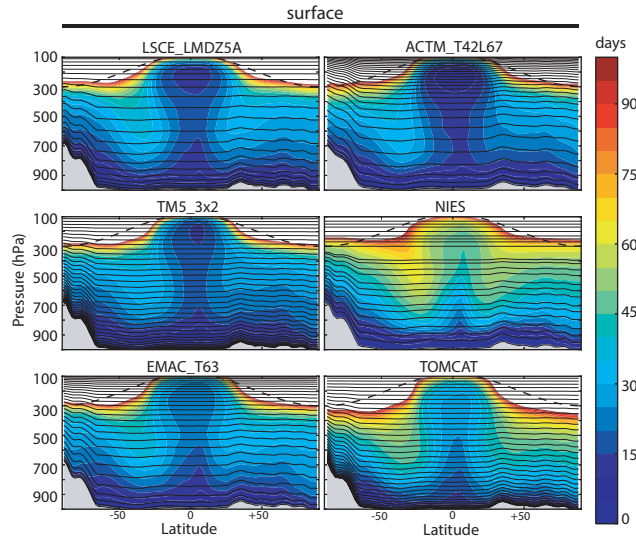


Figure 2. Zonally averaged AoA (days) in the troposphere for tracer "Surface". The results have been averaged over the period 2000–2010 (11 years). The light grey areas correspond to the zonal mean orography in the models. The thin black lines denote the mid-pressure levels of the models. For reference, the dotted black line in all panels denotes the climatological tropopause (Lawrence et al., 2001). The white areas correspond to areas in which the air is older than 100 days.

In Appendix A we further compare the simulated SF_6 latitudinal and vertical gradients to measurements made during the High-performance Instrumented Airborne Platform for Environmental Research (HIAPER) Pole-to-Pole Observation (HIPPO) campaigns (Wofsy et al., 2011), similar to comparisons presented in Patra et al. (2014).

3 Results

5 3.1 Tropospheric AoA

First, we focus on zonal and multi-year averages to investigate differences among the models in IH and vertical transport in the troposphere. Monthly mean mixing ratios (and pressure fields) of the participating models have been averaged zonally and over time, and converted to AoA. Contour plots of these latitude–pressure arrays are presented in ~~Figures 2, ??, and ?? for the AoA tracers Surface, NHsurface, and SHsurface, respectively~~ Figure 2 for AoA tracer Surface, and in Figure 3 for AoA tracers NHsurface and SHsurface (see Table 1).

~~Zonally averaged AoA (years) in the troposphere for tracer "SHsurface". The results have been averaged over the period 2000–2010 (11 years). The light grey areas correspond to the zonal mean orography in the models. The white areas correspond to regions in which the air is older than 1.4 years.~~

The AoA in the troposphere derived from tracer "Surface" is generally younger than 100 days (Figure 2). The 100 day contour sharply marks the transition to the stratosphere at around 300 hPa at the poles. In the tropics this transition is lo-

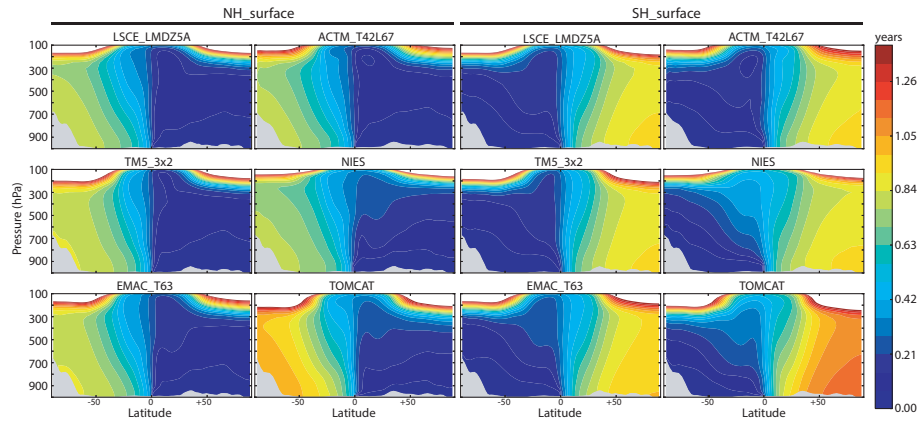


Figure 3. Zonally averaged AoA (years) in the troposphere for ~~tracer-tracers~~ "NHsurface" (left) and "SHsurface" (right). The results have been averaged over the period 2000-2010 (11 years). The light grey areas correspond to the zonal mean orography in the models. The white areas correspond to regions in which the air is older than 1.4 years.

cated at a pressure lower than 100 hPa. ~~This~~, which generally agrees with the definition of the climatological tropopause given by Lawrence et al. (2001). Deep convective transport drives the vertical transport in the tropics, and this deep convective region is bounded by tongues of older air connected to the stratosphere, signalling stratosphere-troposphere exchange (Holton et al., 1995). Although all models agree on this general pattern, clear differences are also present. Deep convective mixing in the tropics is strongest in ACTM, while TOMCAT and NIES generally show slower vertical mixing and larger AoA gradients between the surface and the upper troposphere.

Tracers "NHsurface" (Figure 223, left) and "SHsurface" (Figure 223, right) are used to diagnose IH transport. Generally, the air at high latitudes has an age between 0.6 and 1.2 years in the hemisphere opposite to the forcing volume. Here, all models agree on an interesting asymmetry: AoA derived from "SHsurface" around the North Pole is 0.10 – 0.17 years older than AoA derived from "NHsurface" around the South Pole. TOMCAT, diagnosed with slow vertical mixing, has ~~old~~ older air around at high latitudes, while NIES (also slow vertical mixing) has high-latitude ages more in line with other models, indicating fast horizontal transport near the surface. Figures ?? and ?? illustrate Figure 3 illustrates the fact that exchange of air between the hemispheres proceeds faster at higher altitudes (200-500 hPa) (Prather et al., 1987), and consequently steep AoA gradients are observed close to the surface in the tropics.

~~Latitude-longitude plot of the AoA (days) derived from tracer "Land" evaluated in the lowest model layer. The results have been averaged over the period 2000-2010 (11 years). Ages older than 120 days appear in dark red.~~

3.2 AoA derived from "Land" and "Ocean" tracers

3.3 AoA derived from "Land" and "Ocean" tracers

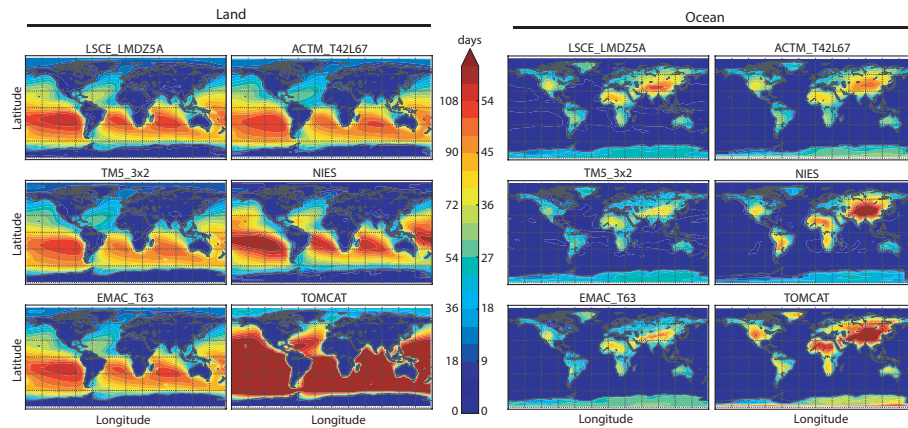


Figure 4. Latitude-longitude plot of the AoA (days) derived from ~~tracer~~-tracers "Land" (left) and "Ocean" (right), evaluated in the lowest model layer. The results have been averaged over the period 2000-2010 (11 years). Ages older than 120 days (land tracer) or 60 days (ocean tracer) appear in dark red.

~~Figures ?? and ?? show~~ Figure 4 shows AoA derived from tracers "Land" (left) and "Ocean" (right) evaluated in the lowest model level. Oldest air related to "last contact with land" is found over the Southern Oceans, with ages older than 100 days. Models generally agree on the fact that old air is found in the stationary high-pressure areas over the ocean that are related to the Hadley and Walker circulations. This agrees qualitatively with previous findings using the E90 tracer (Prather et al., 2011).

- 5 The TOMCAT model, in the configuration used here, has systematically larger AoA at the surface. Dominant land-ocean transport patterns are easily discerned ~~in Figure ??~~ from the simulations with the "Land" tracer. Young air over oceans is found south-east of South America, north-west of Australia, and towards the north-east of North-America and Asia, associated with the position of the upper-air jet-stream. The oldest air in the southern East Pacific for tracer "Land" indicates that this region is most isolated from the ~~emission from the NH~~. Indeed NH emissions. In accordance with this, the lowest CH₄ ~~concentrations~~ mixing ratios on the Earth's surface are found at ~~NOAA site Eastern~~ the NOAA site Easter Island (EIC) ~~(Patra et al., 2009b);~~ which was attributed. Patra et al. (2009b) attributed these to "old" air in combination with strong removal of CH₄ by OH at tropical latitudes.

- 15 The AoA derived from tracer "Ocean" (~~Figure ??~~ right-hand panels in Figure 4) generally shows ages less than 60 days over land, with the older ages logically located in areas deep inland. Its AoA over land is strongly determined by dominant circulation patterns such as the monsoon, trade winds, and jet-streams. Although these patterns are similar in all models, the spread is considerable, with TOMCAT again showing the oldest air, and TM5 showing the youngest air over land surfaces. These differences are ~~likely~~ related to the boundary layer parameterisations in the models, and in the case of TOMCAT the use of the simple local Louis (1979) scheme. ~~The AoA of tracer "Ocean" over land is strongly determined by dominant circulation patterns such as the monsoon, trade winds, and jet-streams~~ Earlier studies (Wang et al., 1999; Chipperfield, 2006) revealed that this type of BL mixing scheme leads to slower exchange between the BL and the free atmosphere.
- 20

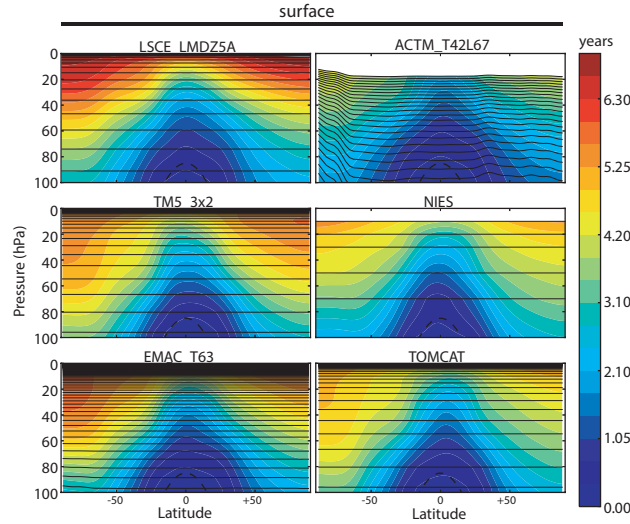


Figure 5. Zonally averaged AoA (years) in the stratosphere for tracer "Surface". The results have been averaged over the period 2000–2010 (11 years). The thin black lines denote the mid-pressure levels of the model. For the ACTM model, this level is at around 17 hPa for the uppermost 50th layer. The dotted black line denotes the climatological tropopause. Note the linear y-scale that starts at 100 hPa.

3.3 Stratospheric AoA

We use tracer "Surface" to compare the simulated stratospheric AoA. Here it should be noted that the differences in tropospheric mixing influence the results. For instance, the TOMCAT and NIES AoA is already are systematically older at the tropopause (see Figure 2). In Figure 5 the stratospheric AoA is plotted for all models from 100 hPa to the top of the atmosphere, averaged over the period 2000–2010 (11 years). As expected, oldest AoA is found at the high-altitude poles. Considerable model spread is found with the oldest air (up to 7 years) in LMDZ5A and the youngest air in ACTM (< 5 years). The transport in EMAC, TOMCAT, LMDZ, and TMS is driven by – or nudged to – ERA-interim-ERA-Interim meteorology (see Table 4), and one would expect similar stratospheric AoA in these models. However, AoA in the stratosphere is not only determined by the driving meteorological data, but also by the treatment of advection (specifically vertical transport), nudging parameters, and the number of vertical layers in the model (Prather et al., 2008). According to a stratospheric AoA study by Diallo et al. (2012) the use of instantaneous wind fields at 3 or 6-hourly time intervals in CTMs may under-sample fast vertical variations during these time intervals. For GCMs that are nudged to reanalysis meteorological data, gravity wave noise may influence the stratospheric AoA. Finally, the vertical coordinate system may influence numerical transport effects (Diallo et al., 2012). (Chipperfield, 2006; Diallo et al., 2012). Other studies into stratospheric AoA (Garny et al., 2014; Ploeger et al., 2015) highlighted the importance to separate stratospheric mixing between a (slow) residual circulation and (fast) eddy mixing. Further analysis on the stratospheric AoA in this model ensemble is, however, left for future exploration.

3.4 Interhemispheric transport

In this section, we compare the inter-hemispheric transport times using tracers "NHsurface" and "SHsurface" to the simulated latitudinal gradients of SF₆. To this end, we show in Figure 6 (~~upper-panel-panel~~ panel (a)) the simulated zonal average latitudinal SF₆ gradient at the surface. All gradients have been scaled relative to the South Pole SF₆ mixing ratio. Also included in the figure are the latitudinal gradients measured by NOAA/ESRL (Hall et al., 2011). Since the selected model results are averages over all longitudes, including the land masses with high emissions, modeled zonal averages exceed the observations at NH mid-latitudes. Most notably, high altitude stations such as Niwot Ridge (3523 ~~masl~~ m above sea level (masl)) and Mauna Loa (3397 ~~m above sea level~~ masl) show much smaller ~~concentration-mixing ratio~~ differences with respect to the South Pole than ~~e.g., for example,~~ Cape Kumukahi at sea level. This is confirmed by ~~the middle-panel-panel~~ panel (b) of Figure 6, in which the modeled SF₆ fields are zonally averaged over the Pacific Ocean only (from 150°E to 210°E). In this average all models except NIES agree well within 0.1 pmol mol⁻¹ on the latitudinal gradient. Due to too reduced vertical mixing combined with fast latitudinal transport, the NIES model underestimates the latitudinal SF₆ gradient. The TOMCAT model simulates the observed latitudinal gradient of SF₆ on clean background stations well, but also shows high accumulation over land (see Figures ~~??~~ 4 and ~~6, upper panel~~).

a). In Appendix A we further compare the simulated SF₆ latitudinal and vertical gradients to measurements made during the HIPPO campaigns (Wofsy et al., 2011).

~~The lower-panel~~ Panel (c) of Figure 6 depicts a composite of the AoA of tracer "NHsurface" at the SH surface, and of tracer "SHsurface" at the NH surface. Again, all results are zonal averages over 2000–2010 (11 years) and include all longitudes ~~in the zonal-average~~. The lower panel confirms the NH–SH asymmetry noted earlier in Section 3.1, but also makes it clear that the asymmetry differs ~~per model. Figure ??~~ with model. Panel (d) of Figure 6 highlights the NH–SH asymmetry by subtracting the "NHsurface" AoA sampled at the SH surface from the "SHsurface" AoA sampled at the NH surface. In all models, differences grow gradually from 10° latitude to the pole, where the AoA differences range between 0.10 year (TM5_3x2) and 0.17 year (EMAC_T106). The model versions with higher spatial resolution (TM5_1x1, EMAC_T106) show larger AoA differences compared to the lower resolution versions. The TM5_EC-Earth version differs from the other TM5 versions, likely because the physics of the EC-Earth model (IFS version cy36r4) leads to differences in boundary layer mixing and convection, compared to the IFS model version that was used for the ~~ERA-interim~~ ERA-Interim simulation (cy31r2).

~~AoA difference (years) calculated from the values in the lower panel of Figure 6. The AoA at the SH of tracer "NHsurface" is subtracted from the AOA at the NH of tracer "SHsurface", and plotted against latitude. AoA is evaluated at the surface and averaged over 2000–2010 (11 years).~~

~~From the~~ From Figure 6 (~~upper and lower-panel~~ panels (a) and (c)) it is obvious that the TOMCAT model shows the strongest SF₆ gradient, along with the slowest IH transport as diagnosed from the tracers "NHsurface" and "SHsurface". NIES shows smaller SF₆ gradients, but IH AoA values in line with other models. Differences between the other models are less pronounced. The gradient of SF₆ is driven by emissions that take place mainly at midlatitude land masses in the NH. In contrast, tracers "NHsurface" and "SHsurface" are forced at the entire surface of both hemispheres. To make a meaningful comparison to

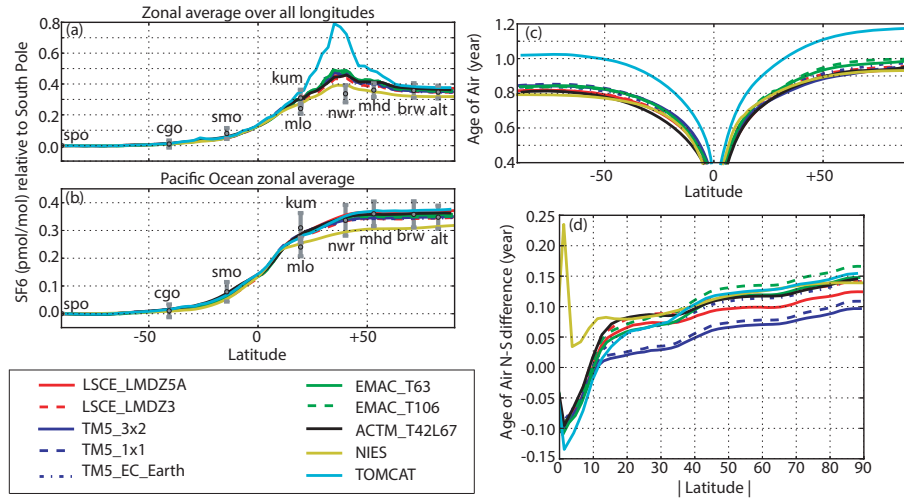


Figure 6. Upper two panels Panels (a) and (b): Latitudinal gradient of SF₆ (pmol mol⁻¹) at the surface, averaged over 2000–2010 (11 years). The upper panel Panel (a) includes all longitudes in the modeled zonal average. The middle, while panel (b) includes only longitudes over the Pacific Ocean (150°E to 210°E). Modeled gradients have been scaled with respect to the South Pole. The grey symbols and their variability are calculated from the combined dataset constructed from flask data measured by the Halocarbons and other Atmospheric Trace Species (HATS) group from NOAA/ESRL and hourly CATS data (<https://www.esrl.noaa.gov/gmd/hats/combined/SF6.html>). Three letter codes at the bottom refer to the stations (alt = Alert, Canada; brw = Pt. Barrow, Alaska, USA; mhd = Mace Head, Ireland; nwr = Niwot Ridge, Colorado, USA; brw = Pt. Barrow, Alaska, USA; kum = Cape Kumukahi, Hawaii, USA; mlo = Mauna Loa, Hawaii, USA; smo = Cape Matatula, American Samoa; cgo = Cape Grim, Tasmania, Australia; spo = South Pole; mhd = Mace Head, Ireland). Variability is calculated as the standard deviation of monthly time series of the station data relative to the South Pole station. Lower panel Panel (c): Composite of the AoA (years) of tracer "NHsurface" at the SH and tracer "SHsurface" at the NH (see main text, averaged over 2000–2010). Panel (d): AoA difference (years) calculated from the values of panel (c). The AoA at the SH of tracer "NHsurface" is subtracted from the AOA at the NH of tracer "SHsurface", and plotted against latitude.

the simulated latitudinal gradients of SF₆, we evaluate the AoA of tracers "NHsurface" and "SHsurface" at 50°S and 50°N, respectively, and at the surface of the models. By adding these two ages, we align the resulting composite AoA with the bulk of the calculated latitudinal SF₆ gradient between the South Pole and 50°N in the middle panel-panel (b) of Figure 6. The result is shown in Figure 7. In this representation, the NIES model deviates by simulating weaker latitudinal SF₆ gradients. TOMCAT

5 simulates a similar SF₆ gradient compared to other models, but differs in the composite AoA. Both models have weak vertical mixing (see Figure 2), but NIES has fast horizontal transport, while TOMCAT accumulates SF₆ over the source regions over land (see upper panel in Figure 6(a)). Different model versions cluster together in this representation, but differences between the LMDZ5A and LMDZ3 are larger. This illustrates the impact of the parameterisation of convective mixing in the LMDZ models (see Section 2.2).

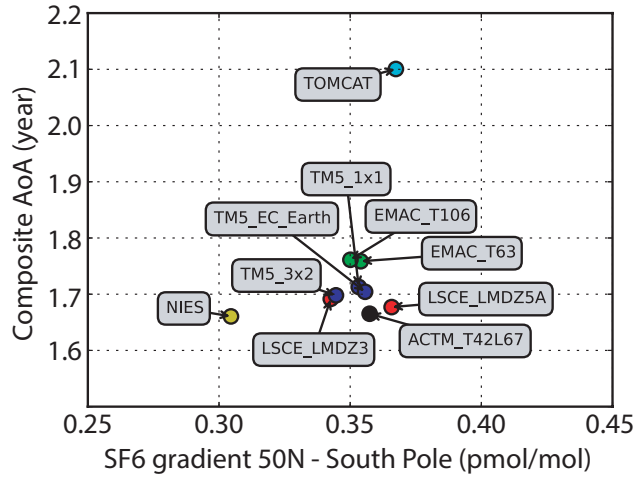


Figure 7. Composite AoA (years) plotted against the modelled SF_6 gradient. The composite AoA is calculated as the sum of the 50°N AoA of tracer "SHsurface" and the 50°S AoA of tracer "NHsurface". The SF_6 gradient is taken as the concentration difference between 50°N and the South Pole from the middle panel of Figure 6. Results are averaged over 2000–2010 (11 years).

3.5 Vertical transport

In this section, we focus on the vertical transport in the troposphere, as diagnosed from tracer "Land" and the simulated vertical gradients of ^{222}Rn . To this end, we show in Figure 8 (left-hand-left panel) the simulated mean vertical profiles, area weighted between 60°S and 60°N on a log-scale. Clearly, the TOMCAT and NIES models retain the ^{222}Rn closer to the surface, because of slower vertical mixing. The other models mix the ^{222}Rn to higher altitudes, but larger differences are found at pressures smaller than 400 hPa, where some models exhibit stronger increases at 150–300 hPa (e.g. ACTM, LMDZ5A), associated with the parameterisation of convective mixing. The right-hand panel of Figure 8 shows the vertical profiles of the AoA of tracer "Land", averaged in the same manner.

To investigate ~~consistent~~ the consistency of differences in vertical mixing between the models, Figure 9 compares the simulated vertical gradient in ^{222}Rn to the simulated AoA profiles of tracer "Land". Because ^{222}Rn decays ~~radio-actively~~ radioactively with a half-life of 3.8 days, we convert the vertical gradient of ^{222}Rn mixing ratio as:

$$\Delta = \ln ^{222}\text{Rn}(950 \text{ hPa}) - \ln ^{222}\text{Rn}(500 \text{ hPa}), \quad (3)$$

where we do not sample directly at the surface to avoid differences in sampling strategies between models (see Section 2). Here we quantify the gradient with respect to the 500 hPa level. In Figure 9 we plot the AoA gradient between 500 hPa and 950 hPa against Δ . The results of the different models show a high degree of linear correlation, indicating that models with efficient vertical mixing (e.g. TM5, ACTM) have small AoA differences between the boundary layer and 500 hPa along with a flatter ^{222}Rn profile. Models with slow vertical mixing (NIES, TOMCAT) show steeper ^{222}Rn profiles along with larger Δ values.

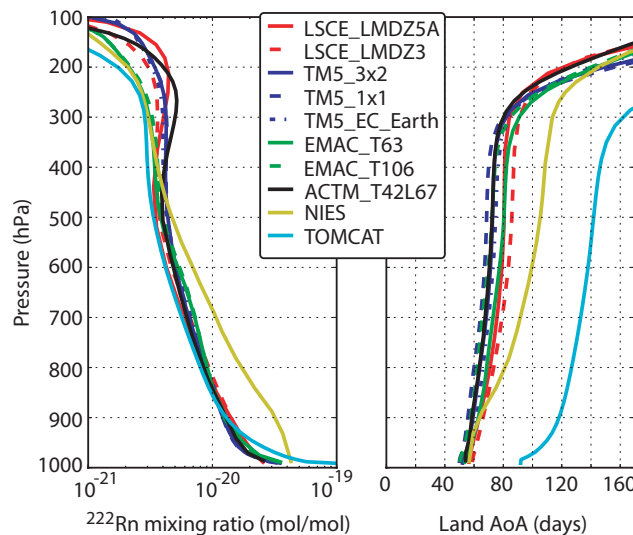


Figure 8. Vertical profiles of ^{222}Rn (left, mol mol^{-1} , logarithmic axis) and the AoA of the "land" tracer (right, in days) simulated by the different models. The vertical profiles have been weighted-averaged-area-weighted-averaged between 60°N and 60°S and over the years 2000–2010 (11 years).

Interestingly, the TM5 and EMAC models show that higher spatial resolution models lead to faster vertical mixing. This is different to the results found for IH transport and likely due to the fact that deep convective mixing is a sub-grid scale process. Numerics of such sub-grid scale processes are less prone to numerical diffusion compared to the advection process that drives the IH gradient. As expected, the two model versions of LMDZ that differ by their convective parameterisation show distinct

3.6 Mapping the tropopause

Prather et al. (2011) introduced an idealised tracer (E90) to delineate the boundary between troposphere and stratosphere in transport models. Driven by surface emissions and a decay rate of 90 days^{-1} , tracer E90 is meant to quantify the rate of mixing of tropospheric air. Through numerical experiments, the tropopause in the UCI CTM (Prather et al., 2011) was defined as the surface on which the mixing ratio of E90 is 90 nmol mol^{-1} . Note that emissions of E90 are defined such that the global stationary state concentration of E90 is $100 \text{ nmol mol}^{-1}$ (see Section 2). Mixing ratios in the stratosphere are lower, due to the long transport times. As alternative for E90, the AoA tracer "Surface" may also be used to delineate the stratosphere from the troposphere, as shown in Figure 2. In order to compare the tropopause pressure calculated by either E90 or the AoA surface tracer, we plot the tropopause pressure as a function of latitude in Figure 10. The tropopause pressure is calculated based on 2000–2010 zonal averages of E90 (unit nmol mol^{-1}) and "Surface" AoA (unit days). For each latitude the tropopause pressure is determined by interpolation to $\text{E90} = 90 \text{ nmol mol}^{-1}$ (dotted lines in Figure 10) and to "Surface" AoA = 90 days (solid lines in Figure 10). Results show a high level of consistency for these two metrics, although larger differences occur for several

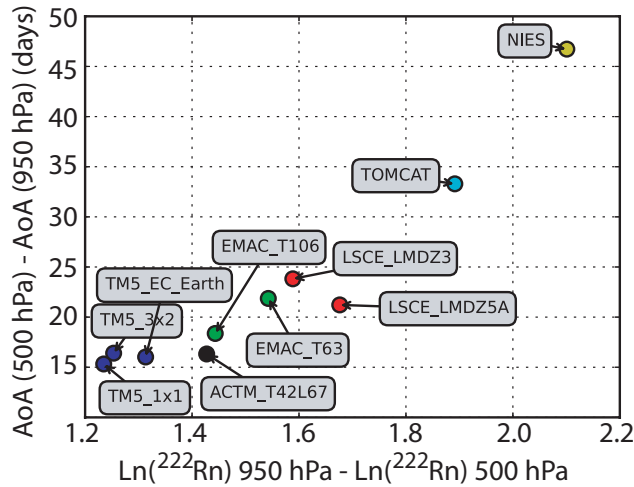


Figure 9. The 500 hPa - 950 hPa difference in AoA (days) of the "land" tracer plotted against Δ : a measure for the vertical gradient in ^{222}Rn (see main text). The vertical profiles used for the calculations are shown in Figure 8.

models. Differences in tropopause pressure based on E90 and tracer "Surface" are likely caused by the transport characteristics of the models. The "Surface" AoA simulation is forced by linearly increasing boundary conditions which are ~~calculated back~~ as-converted to AoA, while the E90 simulation is driven by surface emissions and a decay process with a 90-day turnover time. This causes different tracer gradients and hence difference in advective and convective transport. As a result, ACTM calculates systematically higher tropopause pressures for E90, while for NIES the reverse is observed. Other models show similar estimates for both tracers. When models are compared, both tracers calculate similar tropopause pressure differences, with NIES showing a very deep tropopause at higher latitudes and TOMCAT a shallower tropopause. Off-line models that use the same driver meteorological data (e.g. TOMCAT and TM5) would be expected to have a similar tropopause based on common temperature fields. However, since the tropopause pressures derived here depend on the transport of tracers by advection and convection, substantial differences are found that also depend on the choice of concentration (for tracer E90) and AoA (for tracer "Surface") at which the tropopause is evaluated. Finally, all models agree on a hemispheric asymmetric average tropopause with a tropopause pressure maximum around 55°S, likely associated with enhanced stratosphere–stratosphere exchange in the SH (Holton et al., 1995). In most models, this pressure maximum is more pronounced for tracer E90.

4 Discussion

This TransCom AoA inter-comparison shows that the tropospheric AoA concept provides useful information on model transport characteristics. It was shown that the IH transport timescale in a particular model is strongly connected to the efficiency of vertical mixing and hence to the specific implementation of sub-grid-scale convective transport. Thus, the AoA metric may be used to better understand flux differences derived from CO_2 and CH_4 flux inversions (Patra et al., 2011; Law et al., 2008) (Law et al., 2008;

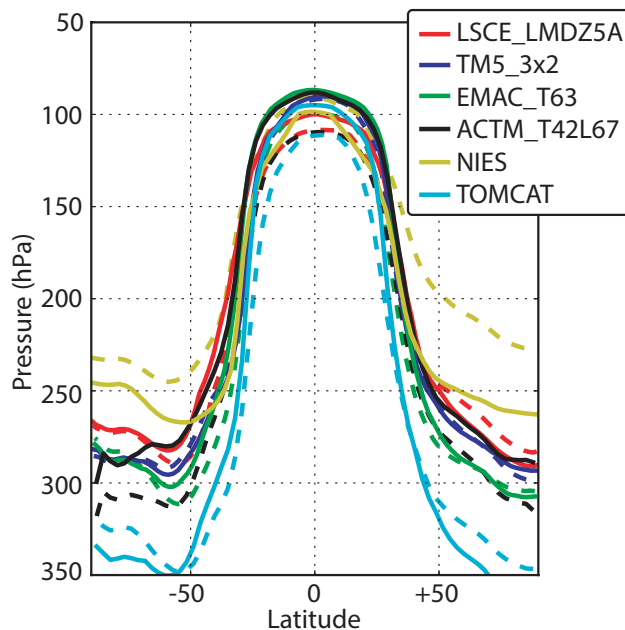


Figure 10. Zonal average tropopause pressure (averaged over 2000–2010) as a function of latitude, obtained from AoA tracer "surface" (solid lines) and E90 (dashed lines) for different models (see legend). Tropopause pressure is obtained from 1D linear interpolation to 90 days for AoA tracer "surface" and to 90 nmol mol⁻¹ for E90.

The NIES model, which has slow convective mixing, still shows fast IH mixing, a small IH SF₆ gradient, and a deep extra-tropical tropopause. In contrast, the TOMCAT model in the configuration used here combines weak vertical mixing with a stronger SF₆ gradient between land and ocean, and a shallower tropopause. The TM5 model, which was diagnosed with slow IH transport in the TransCom methane [inter-comparison-intercomparison](#) (Patra et al., 2011), now uses the convective fluxes stored in the ECMWF [ERA-interim-ERA-Interim](#) archive, which are based on Gregory et al. (2000) and other changes (Tsuruta et al., 2016; Dee et al., 2011). This brings the IH transport times close to other models (see Figure 7). This confirms the fact that the parameterisation of sub-grid convective fluxes in CTMs deserves attention, specifically when used in atmospheric inversion studies. This is in line with the study of Stephens et al. (2007), who showed that the attribution of the global CO₂ land sink depends strongly on the vertical mixing in models.

We found an interesting hemispheric asymmetry in the IH transport times, with "older" NH air diagnosed with an AoA tracer forced at the SH surface, compared to the age of SH air, diagnosed with an AoA tracer forced at the NH surface. We tentatively attribute this to the effect of land-masses in the NH, which lead to an atmospheric stabilisation in winter, decoupling the boundary layer (BL) from the overlying free troposphere (FT). [This is partly compensated by more effective mixing. In the AoA protocol, this affects the surface forcing. The situation is reversed in summer, but the with more efficient mixing over land-masses. The](#) resulting net effect is well known as the "seasonal rectifier" (Denning et al., 1995). [In Appendix B we present a simplified numerical experiment that shows that the mean AoA in the upper atmosphere shortens with a larger seasonal cycle](#)

in near-surface mixing, in line with the asymmetry in IH transport as found in all models. Thus, the AoA metric can also be used to quantify the strength of these rectifier effects in CTMs. Another (related) factor that might be responsible for this asymmetry is the mean position of the Inter Tropical Convergence Zone (ITCZ) north of the equator (Schneider et al., 2014).

~~Another~~ A further important timescale in GCMs and CTMs is the mixing time of the BL and its coupling with the overlying

5 FT. Together with the aforementioned "convection" timescale, these two quantities ~~seem appear~~ responsible for the main model diversity in this ~~inter-comparison~~ intercomparison. For instance, the TM5 model shows a relatively strong coupling between the BL and the FT, witnessed by (i) relatively young air of the ocean AoA tracer over land (Figure ??4), (ii) only a small IH difference in the AoA (Figure ??6d), and (iii) a small 950 hPa – 500 hPa vertical gradient in ²²²Rn and the land AoA tracer (Figure 9). Differences with the EMAC, LMDZ, and ACTM models seem to be determined by the strength of this BL–FT

10 coupling. Differences with NIES and TOMCAT, however, seem to be driven by differences in the convective parameterisation.

Other model differences, such as resolution, advection scheme, the meteorological driver data, nudging, and the vertical coordinate system may also play a role and may become more apparent on the smaller spatial and temporal scales that are not part of this first analysis. In mapping the tropopause with either E90 or the AoA derived from the surface tracer (Figure 10) model-dependent differences appeared that may be related to the treatment of atmospheric transport. AoA tracers with a linearly

15 growing boundary ~~conditions~~ condition lead to different concentration gradients than tracers with surface emissions and first-order decay, such as E90. In regions with large gradients, such as the planetary boundary layer and the tropopause, differences in the numerical treatment of advection may lead to different transport characteristic of AoA tracers, compared to tracers with physical sources and sinks.

Our multi-model results agree qualitatively with the study of Waugh et al. (2013) that focused on SF₆ and a AoA tracer in

20 a single model (GMI-MERRA). They found "older" AoA than the age derived from SF₆ observations. The AoA simulations presented here allow for more detailed analyses in the future, including comparisons to earlier efforts to quantify tropospheric AoA based on observations (e.g., Holzer and Waugh, 2015).

The simple AoA concept exploited here is easily implemented in CTMs and GCMs, and other modellers are encouraged to implement AoA tracers in their CTM models. The AoA protocol is also useful as benchmark for model development—similar to Prather et al. (2008). Analysis of AoA simulations performed with a single model with different advection schemes, convective parameterisations, or nudging schemes can be used to study their impact on large scale transport features, such as IH and vertical transport. Finally, the entire time series (1988–2015) may be used to study trends in the Brewer Dobson circulation (Fu et al., 2015) or IH transport timescales.

25

5 Conclusions

30 This paper presents the first results of the TransCom AoA ~~inter-comparison with six participating models simulating~~ intercomparison. Six models simulated five AoA tracers and four additional tracers over the time period 1988–2015. AoA tracers were forced by linearly growing boundary conditions in a predefined atmospheric volumes. Advantages of this approach are that (i) the forcing volume can be flexibly chosen, and (ii) transport time-scales can easily be derived based on simulated mixing ratios that indicate

when an air mass was "last in contact" with the boundary. Disadvantages are that (i) there are no known atmospheric species with linear growing boundary conditions, and (ii) artificial mixing ratio gradients introduced close to the forcing volume may be challenging for advection schemes. Successful implementation of the protocol in six global models revealed interesting differences in large-scale transport features. In this paper we mainly analysed averages over the 2000–2010 period(~~11~~ years).

5 The main ~~conclusions~~ findings of this study are:

1. The ~~HH~~ inter-hemispheric transport time depends strongly on the strength of the convective parameterisation in the participating models. Although convective mixing is identified as a major cause for inter-model differences, other causes, such as the source of re-analysis data, nudging, and advection scheme, cannot be ruled out at the moment. It is recommended to apply the AoA protocol in a single model with different set-ups to study the impact on large-scale transport features.
- 10 2. ~~HH~~ Inter-hemispheric transport proceeds faster from the NH to the SH than from the SH to the NH. This is attributed to the seasonal rectifier effect caused by NH landmasses~~—~~, with strong mixing in summer and weak mixing in winter as shown in Appendix B.
3. ~~BL~~ Boundary layer mixing and venting to the ~~FT~~ free troposphere over land varies among models, which leads to consistent differences in modeled vertical gradients. The TM5 model shows fast vertical mixing, with consequently relatively young air of the ocean AoA tracer over land (Figure 4). In contrast, the TOMCAT model shows slow vertical mixing, and old air of the ocean AoA tracer over land.
- 15 4. The AoA concept can be used to map the tropopause. At the tropopause the air has last been in contact with the surface 90 days ago (AoA = 90 days). For most models, the derived tropopause pressure is in good agreement with the E90 tracer (Prather et al., 2011).
- 20 5. Upper stratospheric AoA ranges considerably among the participating models (4–7 years).

In general, further analysis is required to fully exploit the simulations presented in this paper. For instance, the analysis of inter-annual variations in inter-hemispheric transport and stratospheric AoA may reveal interesting differences between the models. Most of all, further analysis should focus on the causes of the still large spread in the participating models.

6 Code availability

- 25 The AoA protocol and analysis software in the form of a Jupyter Notebook (python) are available to the community through github: <https://github.com/maartenkrol/AoA>. The python notebook *aoa_paper.ipynb* needs *AoA_tools.py*. The model output, converted to a standard format, can be downloaded from the ftp location mentioned in *AoAprotocol.pdf*. Apart from the AoA tracers discussed in this paper, also AoA tracers are available that are forced in the troposphere and stratosphere. These tracers are forced above and below a climatological pressure surface given by Lawrence et al. (2001). Results are not discussed, because not all models used the correct definition. Information on the availability of source code for the models featured in this paper is tabulated in Table A1.
- 30

Appendix A: Comparison with HIPPO SF₆

~~Figure A1~~ Figure A1 compares monthly mean SF₆ output from the models to observations made during the High-performance Instrumented Airborne Platform for Environmental Research (HIAPER) Pole-to-Pole Observation (HIPPO) campaigns (Wofsy et al., 2011). Only HIPPO flights over the Pacific Ocean are included, and the corresponding model mixing ratios are averaged over the Pacific Ocean only (from 150°E to 210°E). Hippo 1 observations are compared to monthly means of January 2009, Hippo 2 to November 2009, Hippo 4 to June and July 2011 averages, and Hippo 5 to August 2011. The left panels show the latitudinal gradients averaged over 1–3 km. Since models used different SF₆ 1988 mixing ratios as initial fields and show different accumulation rates in the lower atmosphere, models have been shifted to match the 2009 observations. Note that the shifts (mentioned in the caption) range from +1.3 ppt for TOMCAT to –0.4 ppt for NIES. During the 2009–2011 Hippo period differences between these two models gradually increase further. This is likely related to fast accumulation in NIES due to limited vertical mixing, combined with fast horizontal transport in the lower atmosphere. TOMCAT was also diagnosed with slow vertical transport (see Figure 2) but also with slow horizontal mixing (signalled by "old" air over the ocean for AoA tracer "Land" in Figure ~~??4~~ ??4). Other models agree on a faster increase of SF₆ in the models compared to observations, signalling a likely overestimate of the emissions in 2009–2011 (see Table 3). The latitudinal gradients are very similar among the models (except for NIES as in Figure 6) and generally agrees well with observations. The right-hand panels show the modeled and measured vertical SF₆ gradients, calculated by ~~taken-taking~~ the difference between 5–7 km averages and 1–3 km averages, like-as in Patra et al. (2014). Modeled and measured vertical gradients are very small and measurement noise hampers us from drawing firm conclusions about the ability of models to correctly simulate SF₆ vertical gradients.

Appendix B: Seasonal rectifier effect

The intention of this Appendix is to calculate the effect of seasonal vertical mixing over land on the calculated mean AoA in the upper atmosphere. In the main manuscript it is speculated that a seasonal rectifier effect partly explains why the AoA derived from "SHsurface" around the North Pole in the models is 0.10 – 0.17 years older than AoA derived from "NHsurface" around the South Pole (Figure 6(d)). With more land cover, seasonality in mixing is stronger on the NH compared to the SH. To illustrate the seasonal rectifier effect, we implemented the AoA protocol in a simplified three box model. To this end, we force a surface box of 100 m (pressure difference Δp_1 between bottom and top = 13 hPa) with a linearly growing mixing ratio as boundary condition. The surface box mixes with an overlying boundary layer box ($\Delta p_2 = 137$ hPa). This boundary layer box additionally mixes with the overlying free atmosphere ($\Delta p_3 = 600$ hPa). Mixing timescales between the boundary layer and the forced surface layer (τ_1), and between the boundary layer and free atmosphere (τ_2) vary with season according to:

$$\tau_1 = (a_1 \sin(2\pi t) + 1.0) \frac{1}{365} \quad (\text{B1})$$

$$\tau_2 = (a_2 \sin(2\pi t) + 1.0) \frac{7}{365} \quad (\text{B2})$$

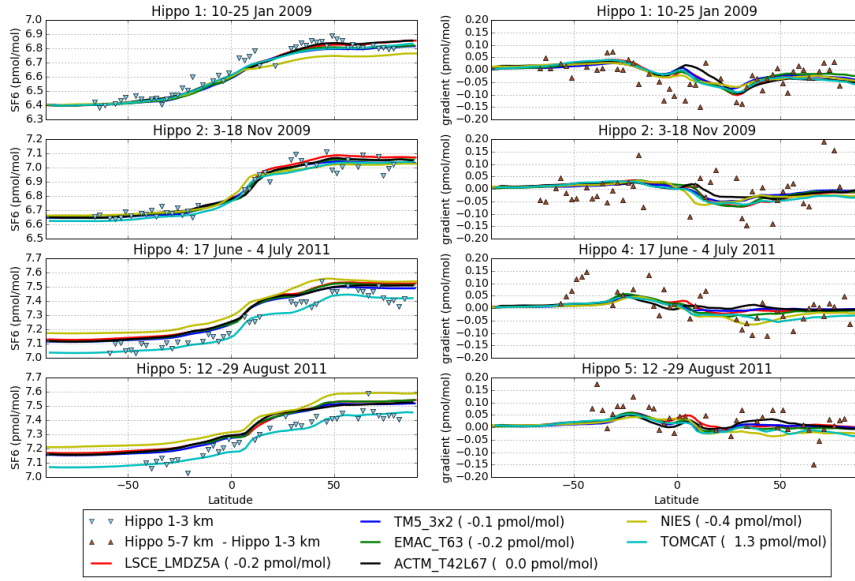


Figure A1. Comparison of modeled monthly-mean SF_6 (averaged over the Pacific Ocean only: from 150°E to 210°E) to the High-performance Instrumented Airborne Platform for Environmental Research (HIAPER) Pole-to-Pole Observation (HIPPO) campaigns (Wofsy et al., 2011), similar to comparisons presented in Patra et al. (2014). Left panels show models and observations averaged over 1-3 km altitude. Right panels are the gradient between 5-7 km averages and 1-3 km averages. Models have been shifted to match the HIPPO latitudinal gradients in 2009. Magnitudes of the shifts are indicated in the caption.

where time t is measured in years, and a_1 and a_2 are the amplitudes of the seasonal cycles imposed on the standard mixing timescales τ_1 and τ_2 of 1 and 7 days, respectively. The following set of differential equations is solved to simulate the mixing ratios x_1 , x_2 , and x_3 according to the AoA protocol:

$$\begin{aligned}
 \frac{dx_1}{dt} &= 1 \\
 \frac{dx_2}{dt} &= \frac{x_1 - x_2}{\tau_1} - \frac{x_2 - x_3}{\tau_2} \\
 \frac{dx_3}{dt} &= \frac{\Delta p_2}{\Delta p_3} \frac{x_2 - x_3}{\tau_2}
 \end{aligned}$$

where $\frac{\Delta p_2}{\Delta p_3}$ accounts for the fact that boxes 2 and 3 have different pressure thicknesses. We now performed two simulations, one representing the SH with no seasonal cycle in mixing ($a_1 = a_2 = 0$), and one representing the NH, with a 50% amplitude in seasonal mixing ($a_1 = a_2 = 0.5$). Results of the simulations, with mixing ratios converted into AoA units ($\text{AoA} = t - x$), are plotted in the upper panel of Figure B1. As expected, NH AoA (solid lines) shows a seasonal cycle in the boundary layer

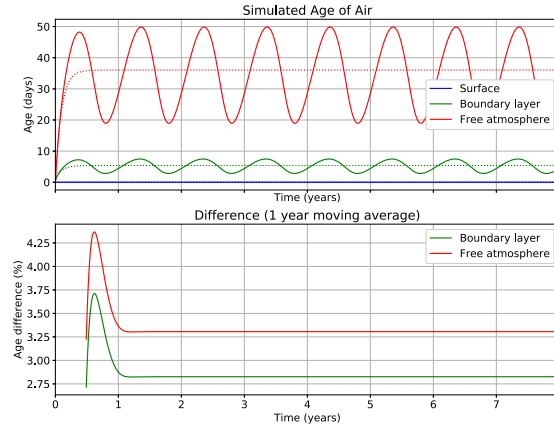


Figure B1. Upper panel: Simulated AoA in the simple three-box model described in the main text. The solid lines show the NH simulation with a 50% seasonal cycle in vertical mixing. The dotted lines show the SH simulation with no seasonal cycle in vertical mixing. Lower panel: Difference in the one-year moving average AoA calculated as $100 \times \frac{SH - NH}{NH}$.

and free atmosphere, while the SH simulation (dotted lines) reaches a steady-state AoA in the free atmosphere of about 37 days, roughly in line with the multi-year averaged AoA of tracer "Surface" in Figure 2. The lower panel of Figure B1 shows the percentage difference in the one-year moving average of the NH and SH simulations, calculated as $100 \times \frac{SH - NH}{NH}$. Indeed, the average AoA in the free atmosphere and boundary layer is younger by about 3% when a seasonal cycle is applied to the vertical mixing. Thus, even when the mean mixing timescales between the boxes are the same, the resulting mean AoA in the upper atmosphere is different. In a real atmosphere, other factors may also play a role, such as convection and the asymmetry in the mean position of the ITCZ north of the equator (Schneider et al., 2014). Nevertheless, this simple example shows that a rectifier effect may partly explain the asymmetry in inter-hemispheric mixing as seen in all models (Figure 3).

Comparison of modeled monthly-mean SF_6 (averaged over the Pacific Ocean only: from 150°E to 210°E) to the High-performance Instrumented Airborne Platform for Environmental Research (HIAPER) Pole-to-Pole Observation (HIPPO) campaigns (Wofsy et al., 2011) similar to comparisons presented in Patra et al. (2014). Left panels show models and observations averaged over 1–3 km altitude. Right panels are the gradient between 5–7 km averages and 1–3 km averages. Models have been shifted to match the HIPPO latitudinal gradients in 2009. Magnitudes of the shifts are indicated in the caption.

Author contributions. M.K. wrote the manuscript and incorporated revisions and comments from all co-authors. M.d.B performed the TM5 simulations, L.K. the TM5_EC-Earth simulations. H.O. and A.P. were responsible for EMAC, Y.Y., F.C., and P.B. for LMDZ, P.P. for ACTM, D.B. and S.M. for NIES, and S.D, W.F, and M.P.C for TOMCAT. The protocol was initiated by M.K. and P.P.

Table A1. Availability of source code for the models featured in this paper.

<u>Short Name</u>	<u>Code availability</u>
<u>LMDZ</u>	<u>LMDZ is open source free software under licence CeCILL (http://www.cecill.info/licences/Licence_CeCILL_V2-en.html). The versions used here are available online via http://svn.lmd.jussieu.fr/LMDZ.</u>
<u>TM5</u>	<u>TM5 version control is performed on the SVN server of the Dutch Met Office (KNMI). The AoA simulations are performed using TM5-MP, revision r182, committed on 29-05-2017. Access to the SVN server is granted to researchers actively participating in model development.</u>
<u>TM5_EC-Earth</u>	<u>TM5_EC-Earth is the TM5-MP version incorporated in EC-Earth version 3.2.2. Information about the model and access to the code is available at http://www.ec-earth.org. The specific version used for this study can be found under the branch r4353-Age of-Air. This version consists of the main developmental version of EC-Earth updated until 04-07-2017, supplemented with the AoA code of TM5.</u>
<u>EMAC</u>	<u>The ECHAM/MESSy Atmospheric Chemistry (EMAC) model is a configuration of MESSy, which is being continuously further developed and applied by a consortium of institutions. The usage of MESSy and access to the source code is licensed to all affiliates of institutions that are members of the MESSy Consortium. Institutions can be a member of the MESSy Consortium by signing the Memorandum of Understanding. More information can be found on the MESSy Consortium website (http://www.messy-interface.org).</u>
<u>ACTM</u>	<u>The ACTM code is not open source. The model code is based on CCSR/NIES/FRCGC AGCM5.7b. The copyright belongs to the developers at CCSR (Univ. Tokyo), NIES and FRCGC (JAMSTEC).</u>
<u>NIES</u>	<u>The NIES source code is proprietary. The model copyright is owned by developers at NIES.</u>
<u>TOMCAT</u>	<u>The TOMCAT code is not open source. The model is available to all UK researchers funded by the Natural Environment Research Council (NERC) and other UK research councils. The model is also available to other scientists with an interest in active collaboration with existing users, subject to limitations of resources to support the collaborations.</u>

Competing interests. The authors declare that they have no conflict of interest.

Acknowledgements. We thank the HIPPO science team and the crew and support staff at the NCAR Research Aviation Facility, and all the laboratory staff working for AGAGE and NOAA measurement networks. The TM5 model simulations and analysis was carried out on the Dutch national e-infrastructure with the support of SURF Cooperative. Marco de Bruine is supported by the Netherlands Organization for

Scientific Research (NWO), project number GO/13-01. The TOMCAT simulations were performed on the UK Archer and Leeds ARC HPC facilities. Dmitry Belikov is supported by the Japan Society for Promotion of Science, Grant-in-Aid for Scientific Research (S) 26220101. Maarten Krol is supported by ERC AdG grant 742798. Paul Palmer is acknowledged for support of the initial ~~Age of Air~~ AoA initiative.

References

- Arakawa, A. and Schubert, W. H.: Interaction of a Cumulus Cloud Ensemble with the Large-Scale Environment, Part I, *Journal of the Atmospheric Sciences*, 31, 674–701, 1974.
- Austin, P. M. and Houze Jr, R. A.: A technique for computing vertical transports by precipitating cumuli, *Journal of the Atmospheric Sciences*, 30, 1100–1111, 1973.
- Bândă, N., Krol, M., Noije, T., Weele, M., Williams, J. E., Sager, P. L., Niemeier, U., Thomason, L., and Rockmann, T.: The effect of stratospheric sulfur from Mount Pinatubo on tropospheric oxidizing capacity and methane, *Journal of Geophysical Research: Atmospheres*, 120, 1202–1220, 2015.
- Belikov, D. A., Maksyutov, S., Krol, M., Fraser, A., Rigby, M., Bian, H., Agusti-Panareda, A., Bergmann, D., Bousquet, P., Cameron-Smith, P., Chipperfield, M. P., Fortems-Cheiney, A., Gloor, E., Haynes, K., Hess, P., Houweling, S., Kawa, S. R., Law, R. M., Loh, Z., Meng, L., Palmer, P. I., Patra, P. K., Prinn, R. G., Saito, R., and Wilson, C.: Off-line algorithm for calculation of vertical tracer transport in the troposphere due to deep convection, *Atmospheric Chemistry and Physics*, 13, 1093–1114, 2013a.
- Belikov, D. A., Maksyutov, S., Sherlock, V., Aoki, S., Deutsch, N. M., Dohe, S., Griffith, D., Kyro, E., Morino, I., Nakazawa, T., Notholt, J., Rettinger, M., Schneider, M., Sussmann, R., Toon, G. C., Wennberg, P. O., and Wunch, D.: Simulations of column-averaged CO₂ and CH₄ using the NIES TM with a hybrid sigma-isentropic (σ - θ) vertical coordinate, *Atmospheric Chemistry and Physics*, 13, 1713–1732, 2013b.
- Bergamaschi, P., Houweling, S., Segers, A., Krol, M., Frankenberg, C., Scheepmaker, R. A., Dlugokencky, E., Wofsy, S. C., Kort, E. A., Sweeney, C., Schuck, T., Brenninkmeijer, C., Chen, H., Beck, V., and Gerbig, C.: Atmospheric CH₄ in the first decade of the 21st century: Inverse modeling analysis using SCIAMACHY satellite retrievals and NOAA surface measurements, *Journal of Geophysical Research*, 118, 7350–7369, 2013.
- Berthet, G., Esler, J. G., and Haynes, P. H.: A Lagrangian perspective of the tropopause and the ventilation of the lowermost stratosphere, *Journal of Geophysical Research*, 112, D18 102–14, 2007.
- Butchart, N.: The Brewer-Dobson circulation, *Reviews of Geophysics*, pp. 1–28, 2014.
- Chevallier, F.: On the statistical optimality of CO₂ atmospheric inversions assimilating CO₂ column retrievals, *Atmospheric Chemistry and Physics*, 15, 11 133–11 145, 2015.
- Chipperfield, M. P.: New version of the TOMCAT/SLIMCAT off-line chemical transport model: Intercomparison of stratospheric tracer experiments, *Quarterly Journal Of The Royal Meteorological Society*, 132, 1179–1203, 2006.
- Chipperfield, M. P., Dhomse, S. S., Feng, W., McKenzie, R. L., Velders, G. J. M., and Pyle, J. A.: Quantifying the ozone and ultraviolet benefits already achieved by the Montreal Protocol, *Nature Communications*, 6, 7233, 2015.
- Colella, P. and Woodward, P. R.: The Piecewise Parabolic Method (PPM) for gas-dynamical simulations, *Journal of computational physics*, 54, 174–201, 1984.
- Deardorff, J. W.: The Counter-Gradient Heat Flux in the Lower Atmosphere and in the Laboratory, *Journal of the Atmospheric Sciences*, 23, 503–506, 1966.
- Dee, D. P., Uppala, S. M., Simmons, A. J., Berrisford, P., Poli, P., Kobayashi, S., Andrae, U., Balmaseda, M. A., Balsamo, G., Bauer, P., Bechtold, P., Beljaars, A. C. M., van de Berg, L., Bidlot, J., Bormann, N., Delsol, C., Dragani, R., Fuentes, M., Geer, A. J., Haimberger, L., Healy, S. B., Hersbach, H., Hólm, E. V., Isaksen, I., Kållberg, P., Köhler, M., Matricardi, M., McNally, A. P., Monge-Sanz, B. M., Mor-

- crette, J. J., Park, B. K., Peubey, C., de Rosnay, P., Tavolato, C., Thépaut, J. N., and Vitart, F.: The ERA-Interim reanalysis: configuration and performance of the data assimilation system, *Quarterly Journal Of The Royal Meteorological Society*, 137, 553–597, 2011.
- Denning, A. S., Fung, I. Y., and Randall, D.: Latitudinal gradient of atmospheric CO₂ due to seasonal exchange with land biota, *Nature*, 376, 240–243, 1995.
- 5 Denning, A. S., Holzer, M., Gurney, K. R., Heimann, M., Law, R. M., Rayner, P. J., Fung, I. Y., Fan, S. M., Taguchi, S., Friedlingstein, P., Balkanski, Y., Taylor, J., Maiss, M., and Levin, I.: Three-dimensional transport and concentration of SF₆, *Tellus Series B-Chemical And Physical Meteorology*, 51, 266–297, 1999.
- Diallo, M., Legras, B., and Chédin, A.: Age of stratospheric air in the ERA-Interim, *Atmospheric Chemistry and Physics*, 12, 12 133–12 154, 2012.
- 10 Emanuel, K. A.: A Scheme for Representing Cumulus Convection in Large-Scale Models, *Journal of the Atmospheric Sciences*, 48, 2313–2329, 1991.
- Engel, A., Moebius, T., Boenisch, H., Schmidt, U., Heinz, R., Levin, I., Atlas, E., Aoki, S., Nakazawa, T., Sugawara, S., Moore, F., Hurst, D., Elkins, J., Schauffler, S., Andrews, A., and Boering, K.: Age of stratospheric air unchanged within uncertainties over the past 30 years, *Nature Geoscience*, 2, 28–31, 2009.
- 15 Feng, W., Chipperfield, M. P., Dhomse, S., Monge-Sanz, B. M., Yang, X., Zhang, K., and Ramonet, M.: Evaluation of cloud convection and tracer transport in a three-dimensional chemical transport model, *Atmospheric Chemistry and Physics*, 11, 5783–5803, 2011.
- Francey, R. J. and Frederiksen, J. S.: The 2009–2010 step in atmospheric CO₂ interhemispheric difference, *Biogeosciences*, 13, 873–885, 2016.
- Fu, Q., Lin, P., Solomon, S., and Hartmann, D. L.: Observational evidence of strengthening of the Brewer-Dobson circulation since 1980, *Journal of Geophysical Research: Atmospheres*, 120, 10,214–10,228, 2015.
- 20 Garny, H., Birner, T., Boenisch, H., and Bunzel, F.: The effects of mixing on age of air, *Journal of Geophysical Research*, 119, 7015–7034, 2014.
- Gloor, M., Dlugokencky, E., Brenninkmeijer, C., Horowitz, L., Hurst, D. F., Dutton, G., Crevoisier, C., Machida, T., and Tans, P.: Three-dimensional SF₆ data and tropospheric transport simulations: Signals, modeling accuracy, and implications for inverse modeling, *Journal of Geophysical Research*, 112, 266–17, 2007.
- 25 Gregory, D., Morcrette, J. J., Jakob, C., Beljaars, A. C. M., and Stockdale, T.: Revision of convection, radiation and cloud schemes in the ECMWF integrated forecasting system, *Quarterly Journal Of The Royal Meteorological Society*, 126, 1685–1710, 2000.
- Grell, A., Dudhia, J., and Stauffer, D.: A description of the fifth-generation Penn State/NCAR Mesoscale Model (MM5), 1994.
- Hack, J. J., Boville, B. A., Briegleb, B. P., Kiehl, J. T., Rasch, P. J., and Williamson, D. L.: Description of the NCAR community climate model (CCM2), Tech. rep., NCAR, Boulder, USA, 1993.
- 30 Hall, B. D., Dutton, G. S., Mondeel, D. J., Nance, J. D., Rigby, M., Butler, J. H., Moore, F. L., Hurst, D. F., and Elkins, J. W.: Improving measurements of SF₆ for the study of atmospheric transport and emissions, *Atmos Meas Tech*, 4, 2441–2451, 2011.
- Hall, T. M. and Plumb, R. A.: Age as a diagnostic of stratospheric transport, *Journal of Geophysical Research*, 99, 1059–1070, 1994.
- Hall, T. M. and Prather, M. J.: Simulations of the trend and annual cycle in stratospheric CO₂, *Journal of Geophysical Research: Atmospheres*, 98, 10 573–10 581, 1993.
- 35 Hall, T. M., Waugh, D. W., Boering, K., and Plumb, R. A.: Evaluation of transport in stratospheric models, *Journal of Geophysical Research*, 104, 18 815–18 839, 1999.

- Hazeleger, W., Severijns, C., Semmler, T., Ștefănescu, S., Yang, S., Wang, X., Wyser, K., Dutra, E., Baldasano, J. M., Bintanja, R., Bougeault, P., Caballero, R., Ekman, A. M. L., Christensen, J. H., van den Hurk, B., Jimenez, P., Jones, C., Kållberg, P., Koenigk, T., McGrath, R., Miranda, P., van Noije, T., Palmer, T., Parodi, J. A., Schmith, T., Selden, F., Storelvmo, T., Sterl, A., Tapamo, H., Vancoppenolle, M., Viterbo, P., and Willén, U.: EC-Earth: A Seamless Earth-System Prediction Approach in Action, *Bulletin of the American Meteorological Society*, 91, 1357–1363, 2010.
- Hazeleger, W., Wang, X., Severijns, C., Ștefănescu, S., Bintanja, R., Sterl, A., Wyser, K., Semmler, T., Yang, S., van den Hurk, B., van Noije, T., van der Linden, E., and van der Wiel, K.: EC-Earth V2.2: description and validation of a new seamless earth system prediction model, *Climate Dynamics*, 39, 2611–2629, 2012.
- Holton, J. R., Haynes, P. H., McIntyre, M. E., Douglass, A. R., Rood, R. B., and Pfister, L.: Stratosphere-troposphere exchange, *Reviews of Geophysics*, 33, 403–439, 1995.
- Holtstlag, A. A. M. and Boville, B. A.: Local Versus Nonlocal Boundary-Layer Diffusion in a Global Climate Model, *Journal Of Climate*, 6, 1825–1842, 1993.
- Holzer, M. and Hall, T. M.: Transit-Time and Tracer-Age Distributions in Geophysical Flows, *Journal of the Atmospheric Sciences*, 57, 3539–3558, 2000.
- Holzer, M. and Waugh, D. W.: Interhemispheric transit time distributions and path-dependent lifetimes constrained by measurements of SF₆, CFCs, and CFC replacements, *Geophysical Research Letters*, 42, 4581–4589, 2015.
- Hoor, P., Wernli, H., Hegglin, M. I., and Bönisch, H.: Transport timescales and tracer properties in the extratropical UTLS, *Atmospheric Chemistry and Physics*, 10, 7929–7944, 2010.
- Hourdin, F., Musat, I., Bony, S., Braconnot, P., Codron, F., Dufresne, J.-L., Fairhead, L., Filiberti, M.-A., Friedlingstein, P., Grandpeix, J.-Y., Krinner, G., LeVan, P., Li, Z.-X., and Lott, F.: The LMDZ4 general circulation model: climate performance and sensitivity to parametrized physics with emphasis on tropical convection, *Climate Dynamics*, 27, 787–813, 2006.
- Hourdin, F., Grandpeix, J.-Y., Rio, C., Bony, S., Jam, A., Cheruy, F., Rochetin, N., Fairhead, L., Idelkadi, A., Musat, I., Dufresne, J.-L., Lahellec, A., Lefebvre, M.-P., and Roehrig, R.: LMDZ5B: the atmospheric component of the IPSL climate model with revisited parameterizations for clouds and convection, *Climate Dynamics*, 40, 2193–2222, 2012.
- Houweling, S., Krol, M., Bergamaschi, P., Frankenberg, C., Dlugokencky, E. J., Morino, I., Notholt, J., Sherlock, V., Wunch, D., Beck, V., Gerbig, C., Chen, H., Kort, E. A., Röckmann, T., and Aben, I.: ACP - Abstract - A multi-year methane inversion using SCIAMACHY, accounting for systematic errors using TCCON measurements, *Atmospheric Chemistry and Physics*, 14, 3991–4012, 2014.
- Hsu, J. and Prather, M. J.: Is the residual vertical velocity a good proxy for stratosphere-troposphere exchange of ozone?, *Geophysical Research Letters*, 41, 9024–9032, 2014.
- Huijnen, V., Williams, J., van Weele, M., van Noije, T., Krol, M., Dentener, F., Segers, A., Houweling, S., Peters, W., de Laat, J., Boersma, F., Bergamaschi, P., van Velthoven, P., Le Sager, P., Eskes, H., Alkemade, F., Scheele, R., Nedelec, P., and Paetz, H.-W.: The global chemistry transport model TM5: description and evaluation of the tropospheric chemistry version 3.0, *Geoscientific Model Development*, 3, 445–473, 2010.
- Jacob, D. J., Prather, M. J., Rasch, P. J., Shia, R. L., Balkanski, Y. J., Beagley, S. R., Bergmann, D. J., Blackshear, W. T., Brown, M., Chiba, M., Chipperfield, M. P., Grandpré, J., Dignon, J. E., Feichter, J., Genthon, C., Grose, W. L., Kasibhatla, P. S., Köhler, I., Kritz, M. A., Law, K., Penner, J. E., Ramonet, M., Reeves, C. E., Rotman, D. A., Stockwell, D. Z., van Velthoven, P. F. J., Verver, G., Wild, O., Yang, H., and Zimmermann, P.: Evaluation and intercomparison of global atmospheric transport models using ²²²Rn and other short-lived tracers, *Journal of Geophysical Research: Atmospheres*, 102, 5953–5970, 1997.

- Jeuken, A. B. M., Siegmund, P. C., Heijboer, L. C., Feichter, J., and Bengtsson, L.: On the potential of assimilating meteorological analyses in a global climate model for the purpose of model validation, *Journal of Geophysical Research: Atmospheres*, 101, 16 939–16 950, 1996.
- Jöckel, P., Sander, R., Kerkweg, A., Tost, H., and Lelieveld, J.: Technical Note: The Modular Earth Submodel System (MESSy)-a new approach towards Earth System Modeling, *Atmospheric Chemistry and Physics*, 5, 433–444, 2005.
- 5 Jöckel, P., Tost, H., Pozzer, A., Brühl, C., Buchholz, J., Ganzeveld, L., Hoor, P., Kerkweg, A., Lawrence, M. G., Sander, R., Steil, B., Stiller, G., Tanarhte, M., Taraborrelli, D., van Aardenne, J., and Lelieveld, J.: The atmospheric chemistry general circulation model ECHAM5/MESSy1: consistent simulation of ozone from the surface to the mesosphere, *Atmospheric Chemistry and Physics*, 6, 5067–5104, 2006.
- Jöckel, P., Kerkweg, A., Pozzer, A., Sander, R., Tost, H., Riede, H., Baumgaertner, A., Gromov, S., and Kern, B.: Development cycle 2 of the
10 Modular Earth Submodel System (MESSy2), *Geoscientific Model Development*, 3, 717–752, 2010.
- Karstens, U., Schwingshackl, C., Schmithüsen, D., and Levin, I.: A process-based 222radon flux map for Europe and its comparison to long-term observations, *Atmospheric Chemistry and Physics*, 15, 12 845–12 865, 2015.
- Kovács, T., Feng, W., Totterdill, A., Plane, J. M. C., Dhomse, S., Gómez-Martín, J. C., Stiller, G. P., Haenel, F. J., Smith, C., Forster, P. M., Garcia, R. R., Marsh, D. R., and Chipperfield, M. P.: Determination of the atmospheric lifetime and global warming potential of sulfur
15 hexafluoride using a three-dimensional model, *Atmospheric Chemistry and Physics*, 17, 883–898, 2017.
- Krol, M., Houweling, S., Bregman, B., van den Broek, M., Segers, A., van Velthoven, P., Peters, W., Dentener, F., and Bergamaschi, P.: The two-way nested global chemistry-transport zoom model TM5: algorithm and applications, *Atmospheric Chemistry and Physics*, 5, 417–432, 2005.
- Krol, M., Peters, W., Hooghiemstra, P., George, M., Clerbaux, C., Hurtmans, D., McInerney, D., Sedano, F., Bergamaschi, P., El Hajj, M., J W
20 Kaiser, Fisher, D., Yershov, V., and Muller, J. P.: How much CO was emitted by the 2010 fires around Moscow?, *Atmospheric Chemistry and Physics*, 13, 4737–4747, 2013.
- Law, R. M., Rayner, P. J., Denning, A. S., Erickson, D., Fung, I. Y., Heimann, M., Piper, S. C., Ramonet, M., Taguchi, S., Taylor, J. A., Trudinger, C. M., and Watterson, I. G.: Variations in modeled atmospheric transport of carbon dioxide and the consequences for CO₂ inversions, *Global Biogeochemical Cycles*, 10, 783–796, 1996.
- 25 Law, R. M., Peters, W., Rödenbeck, C., Aulagnier, C., Baker, I., Bergmann, D. J., Bousquet, P., Brandt, J., Bruhwiler, L., Cameron-Smith, P. J., Christensen, J. H., Delage, F., Denning, A. S., Fan, S., Geels, C., Houweling, S., Imasu, R., Karstens, U., Kawa, S. R., Kleist, J., Krol, M. C., Lin, S. J., Lokupitiya, R., Maki, T., Maksyutov, S., Niwa, Y., Onishi, R., Parazoo, N., Patra, P. K., Pieterse, G., Rivier, L., Satoh, M., Serrar, S., Taguchi, S., Takigawa, M., Vautard, R., Vermeulen, A. T., and Zhu, Z.: TransCom model simulations of hourly atmospheric CO₂: Experimental overview and diurnal cycle results for 2002, *Global Biogeochemical Cycles*, 22, n/a–n/a, 2008.
- 30 Lawrence, M. G., Jöckel, P., and von Kuhlmann, R.: What does the global mean OH concentration tell us?, *Atmospheric Chemistry and Physics*, 1, 37–49, 2001.
- Levin, I., Naegler, T., Heinz, R., Osusko, D., Cuevas, E., Engel, A., Ilmberger, J., Langenfelds, R. L., Neining, B., Rohden, C. v., Steele, L. P., Weller, R., Worthy, D. E., and Zimov, S. A.: The global SF₆ source inferred from long-term high precision atmospheric measurements and its comparison with emission inventories, *Atmospheric Chemistry and Physics*, 10, 2655–2662, 2010.
- 35 Lin, S.-J. and Rood, R. B.: Multidimensional Flux-Form Semi-Lagrangian Transport Schemes, *Mon. Wea. Rev.*, 124, 2046–2070, 1996.
- Locatelli, R., Bousquet, P., Hourdin, F., Saunois, M., Cozic, A., Couvreux, F., Grandpeix, J. Y., Lefebvre, M. P., Rio, C., Bergamaschi, P., Chambers, S. D., Karstens, U., Kazan, V., van der Laan, S., Meijer, H. A. J., Moncrieff, J., Ramonet, M., Scheeren, H. A., Schlosser,

- C., Schmidt, M., Vermeulen, A., and Williams, A. G.: Atmospheric transport and chemistry of trace gases in LMDz5B: evaluation and implications for inverse modelling, *Geoscientific Model Development*, 8, 129–150, 2015a.
- Locatelli, R., Bousquet, P., Saunois, M., Chevallier, F., and Cressot, C.: Sensitivity of the recent methane budget to LMDz sub-grid-scale physical parameterizations, *Atmospheric Chemistry and Physics*, 15, 9765–9780, 2015b.
- 5 Louis, J. F.: A parametric model of vertical eddy fluxes in the atmosphere, *Boundary Layer Meteor.*, 17, 187–202, 1979.
- Maksyutov, S. and Inoue, G.: Global tracer transport model simulations of CO₂ variations over Eurasia, Tech. Rep. v.6-1997, CGER, NIES, Japan, 1999.
- Mellor, G. L. and Yamada, T.: A Hierarchy of Turbulence Closure Models for Planetary Boundary Layers, *Journal of the Atmospheric Sciences*, 31, 1791–1806, 1974.
- 10 Molteni, F., Stockdale, T., Balmaseda, M. A., Balsamo, G., Buizza, R., Ferranti, L., Magnusson, L., Mogensen, K., Palmer, T. N., and Vitart, F.: The new ECMWF seasonal forecast system (System 4), European Centre for Medium-Range Weather Forecasts, Reading, UK, 2011.
- Monks, S. A., Arnold, S. R., Hollaway, M. J., Pope, R. J., Wilson, C., Feng, W., Emmerson, K. M., Kerridge, B. J., Latter, B. L., Miles, G. M., Siddans, R., and Chipperfield, M. P.: The TOMCAT global chemical transport model v1.6: description of chemical mechanism and model evaluation, *Geoscientific Model Development*, 10, 3025–3057, 2017.
- 15 Myhre, G., Shindell, D., Bréon, J.-M., Collins, W., Fuglestad, J., Huang, J., Koch, D., Lamarque, J.-F., Lee, D., Mendoza, B., Nakajima, T., Robock, A., Stephens, G., Takemura, T., and Zhang, H.: Anthropogenic and Natural Radiative Forcing, in: *Climate Change 2013 - The Physical Science Basis*, edited by Stocker, T. F., Qin, D., Plattner, G. K., Tignor, M., Allen, S. K., Boschung, J., Nauels, A., Xia, Y., Bex, V., and Midgley, P. M., pp. 659–740, Cambridge University Press, Cambridge, 2013.
- Neu, J. L. and Plumb, R. A.: Age of air in a “leaky pipe” model of stratospheric transport, *Journal of Geophysical Research: Atmospheres*, 20 104, 19 243–19 255, 1999.
- Numaguti, A., Takahashi, M., Nakajima, T., and Sumi, A.: Description of CCSR/NIES Atmospheric General Circulation Model. , Tech. rep., Center for Global Environmental Research. National Institute for Environmental Studies, 1997.
- Onogi, K., Tsutsui, J., Koide, H., Sakamoto, M., Kobayashi, S., Hatsushika, H., Matsumoto, T., Yamazaki, N., Kamahori, H., Takahashi, K., Kadokura, S., Wada, K., Kato, K., Oyama, R., Ose, T., Mannoji, N., and Taira, R.: The JRA-25 Reanalysis, *Journal of the Meteorological Society of Japan. Ser. II*, 85, 369–432, 2007.
- 25 Ouwersloot, H. G., Pozzer, A., Steil, B., Tost, H., and Lelieveld, J.: Revision of the convective transport module CVTRANS 2.4 in the EMAC atmospheric chemistry–climate model, *Geoscientific Model Development*, 8, 2435–2445, 2015.
- Pandey, S., Houweling, S., Krol, M., Aben, I., Monteil, G., Nechita-Banda, N., Dlugokencky, E. J., Detmers, R., Hasekamp, O., Xu, X., Riley, W. J., Poulter, B., Zhang, Z., McDonald, K. C., White, J. W. C., Bousquet, P., and Rockmann, T.: Enhanced methane emissions from tropical wetlands during the 2011 La Niña, *Nature Publishing Group*, 7, 1–8, 2017.
- 30 Patra, P. K., Takigawa, M., Dutton, G. S., Uhse, K., Ishijima, K., Lintner, B. R., Miyazaki, K., and Elkins, J. W.: Transport mechanisms for synoptic, seasonal and interannual SF₆ variations and “age” of air in troposphere, *Atmospheric Chemistry and Physics*, 9, 1209–1225, 2009a.
- Patra, P. K., Takigawa, M., Ishijima, K., Choi, B.-C., Cunnold, D., Dlugokencky, E. J., Fraser, P., Gomez-Pelaez, A. J., Goo, T.-Y., Kim, J.-S., Krummel, P., Langenfelds, R., Meinhardt, F., Mukai, H., O’Doherty, S., Prinn, R. G., Simmonds, P., Steele, P., Tohjima, Y., Tsuboi, K., Uhse, K., Weiss, R., Worthy, D., and Nakazawa, T.: Growth Rate, Seasonal, Synoptic, Diurnal Variations and Budget of Methane in the Lower Atmosphere, *Journal of the Meteorological Society of Japan. Ser. II*, 87, 635–663, 2009b.

- Patra, P. K., Houweling, S., Krol, M., Bousquet, P., Belikov, D., Bergmann, D., Bian, H., Cameron-Smith, P., Chipperfield, M. P., Corbin, K., Fortems-Cheiney, A., Fraser, A., Gloor, E., Hess, P., Ito, A., Kawa, S. R., Law, R. M., Loh, Z., Maksyutov, S., Meng, L., Palmer, P. I., Prinn, R. G., Rigby, M., Saito, R., and Wilson, C.: TransCom model simulations of CH₄ and related species: linking transport, surface flux and chemical loss with CH₄ variability in the troposphere and lower stratosphere, *Atmospheric Chemistry and Physics*, 11, 12 813–12 837, 5 2011.
- Patra, P. K., Krol, M. C., Montzka, S. A., Arnold, T., Atlas, E. L., Lintner, B. R., Stephens, B. B., Xiang, B., Elkins, J. W., Fraser, P. J., Ghosh, A., Hints, E. J., Hurst, D. F., Ishijima, K., Krummel, P. B., Miller, B. R., Miyazaki, K., Moore, F. L., Mühle, J., O'Doherty, S., Prinn, R. G., Steele, L. P., Takigawa, M., Wang, H. J., Weiss, R. F., Wofsy, S. C., and Young, D.: Observational evidence for interhemispheric hydroxyl-radical parity, *Nature*, 513, 219–223, 2014.
- 10 Peters, W., Krol, M. C., Dlugokencky, E. J., Dentener, F. J., Bergamaschi, P., Dutton, G., van Velthoven, P., Miller, J., Bruhwiler, L., and Tans, P. P.: Toward regional-scale modeling using the two-way nested global model TM5: Characterization of transport using SF₆, *Journal of Geophysical Research*, 109, D19 314, 2004.
- Peters, W., Krol, M. C., van der Werf, G. R., Houweling, S., Jones, C. D., Hughes, J., Schaefer, K., Masarie, K. A., Jacobson, A. R., Miller, J. B., Cho, C. H., Ramonet, M., Schmidt, M., Ciattaglia, L., Apadula, F., Helta, D., Meinhardt, F., di Sarra, A. G., Piacentino, S., Sferlazzo, 15 D., Aalto, T., Hatakka, J., Strom, J., Haszpra, L., Meijer, H. A. J., van der Laan, S., Neubert, R. E. M., Jordan, A., Rodó, X., Morgu, J. A., Vermeulen, A. T., Popa, E., Rozanski, K., Zimnoch, M., Manning, A. C., Leuenberger, M., Uglietti, C., Dolman, A. J., Ciais, P., Heimann, M., and Tans, P. P.: Seven years of recent European net terrestrial carbon dioxide exchange constrained by atmospheric observations, *Global Change Biology*, 16, 1317–1337, 2010.
- Ploeger, F., Abalos, M., Birner, T., Konopka, P., Legras, B., Mueller, R., and Riese, M.: Quantifying the effects of mixing and residual 20 circulation on trends of stratospheric mean age of air, *Geophysical Research Letters*, 42, 2047–2054, 2015.
- Prather, M., McElroy, M., Wofsy, S., Russell, G., and Rind, D.: Chemistry of the global troposphere: Fluorocarbons as tracers of air motion, *Journal of Geophysical Research*, 92, 6579–6613, 1987.
- Prather, M. J., Zhu, X., Strahan, S. E., Steenrod, S. D., and Rodriguez, J. M.: Quantifying errors in trace species transport modeling, *Proceedings of the National Academy of Sciences*, 105, 19 617–19 621, 2008.
- 25 Prather, M. J., Zhu, X., Tang, Q., Hsu, J., and Neu, J. L.: An atmospheric chemist in search of the tropopause, *Journal of Geophysical Research: Atmospheres*, 116, D04 306, 2011.
- Prather, M. J., Holmes, C. D., and Hsu, J.: Reactive greenhouse gas scenarios: Systematic exploration of uncertainties and the role of atmospheric chemistry, *Geophysical Research Letters*, 39, L09 803, 2012.
- Rayner, N. A., Parker, D. E., Horton, E. B., Folland, C. K., Alexander, L. V., Rowell, D. P., Kent, E. C., and Kaplan, A.: Global analyses 30 of sea surface temperature, sea ice, and night marine air temperature since the late nineteenth century, *Journal of Geophysical Research: Atmospheres*, 108, 2003.
- Roeckner, E., Brokopf, R., Esch, M., Giorgetta, M., Hagemann, S., Kornblueh, L., Manzini, E., Schlese, U., and Schulzweida, U.: Sensitivity of Simulated Climate to Horizontal and Vertical Resolution in the ECHAM5 Atmosphere Model, *Journal Of Climate*, 19, 3771–3791, 2006.
- 35 Russel, G. and Lerner, J.: A new finite-differencing scheme for the tracer transport equation, *J. Appl. Meteorol.*, 20, 1483–1498, 1981.
- Schneider, T., Bischoff, T., and Haug, G. H.: Migrations and dynamics of the intertropical convergence zone, *Nature*, 513, 45–53, 2014.

- Stiller, G. P., Clarmann, T., Haenel, F., Funke, B., Glatthor, N., Grabowski, U., Kellmann, S., Kiefer, M., Linden, A., Lossow, S., and Lopez-Puertas, M.: Observed temporal evolution of global mean age of stratospheric air for the 2002 to 2010 period, *Atmospheric Chemistry and Physics*, 12, 3311–3331, 2012.
- Stockwell, D. Z. and Chipperfield, M. P.: A tropospheric chemical-transport model: Development and validation of the model transport schemes, *Quarterly Journal Of The Royal Meteorological Society*, 125, 1747–1783, 1999.
- 5 Tiedtke, M.: A Comprehensive Mass Flux Scheme for Cumulus Parameterization in Large-Scale Models, *Mon. Wea. Rev.*, 117, 1779–1800, 1989.
- Tost, H., Jöckel, P., Kerkweg, A., Sander, R., and Lelieveld, J.: Technical note: A new comprehensive SCAVenging submodel for global atmospheric chemistry modelling, *Atmospheric Chemistry and Physics*, 2006.
- 10 Tost, H., Lawrence, M. G., Brühl, C., Jöckel, P., Team, T. G., and Team, T. S.-O.-D. A.: Uncertainties in atmospheric chemistry modelling due to convection parameterisations and subsequent scavenging, *Atmospheric Chemistry and Physics*, 10, 1931–1951, 2010.
- Tsuruta, A., Aalto, T., Backman, L., Hakkarainen, J., van der Laan-Luijkx, I. T., Krol, M. C., Spahni, R., Houweling, S., Laine, M., Dlugokencky, E., Gomez-Pelaez, A. J., van der Schoot, M., Langenfelds, R., Ellul, R., Arduini, J., Apadula, F., Gerbig, C., Feist, D. G., Kivi, R., Yoshida, Y., and Peters, W.: Development of CarbonTracker Europe-CH₄; Part 2: global methane emission estimates and their evaluation for 2000-2012, *Geoscientific Model Development Discussions*, pp. 1–52, 2016.
- 15 Valcke, S.: The OASIS3 coupler: a European climate modelling community software, *Geoscientific Model Development*, 6, 373–388, 2013.
- Vogelezang, D. H. P. and Holtslag, A. A. M.: Evaluation and model impacts of alternative boundary-layer height formulations, *Boundary-Layer Meteorology*, 81, 245–269, 1996.
- Wang, K. Y., Pyle, J. A., Sanderson, M. G., and Bridgeman, C.: Implementation of a convective atmospheric boundary layer scheme in a tropospheric chemistry transport model, *Journal of Geophysical Research*, pp. 23 729–23 745, 1999.
- 20 Waugh, D. W. and Funatsu, B. M.: Intrusions into the tropical upper troposphere: Three-dimensional structure and accompanying ozone and OLR distributions, *Journal of the Atmospheric Sciences*, 60, 637–653, 2003.
- Waugh, D. W., Crotwell, A. M., Dlugokencky, E. J., Dutton, G. S., Elkins, J. W., Hall, B. D., Hints, E. J., Hurst, D. F., Montzka, S. A., Mondeel, D. J., Moore, F. L., Nance, J. D., Ray, E. A., Steenrod, S. D., Strahan, S. E., and Sweeney, C.: Tropospheric SF₆: Age of air from the Northern Hemisphere midlatitude surface, *Journal of Geophysical Research: Atmospheres*, 118, 11,429–11,441, 2013.
- 25 Williams, J. E., Boersma, K. F., Le Sager, P., and Verstraeten, W. W.: The high-resolution version of TM5-MP for optimized satellite retrievals: description and validation, *Geoscientific Model Development*, 10, 721–750, 2017.
- Wofsy, S. C. et al.: HIPER Pole-to-Pole Observations (HIPPO): fine-grained, global-scale measurements of climatically important atmospheric gases and aerosols., *Philosophical Transactions of the Royal Society of London A: Mathematical, Physical and Engineering Sciences*, 369, 2073–2086, 2011.
- 30 Yin, Y., Chevallier, F., Ciais, P., Broquet, G., Cozic, A., Szopa, S., and Wang, Y.: On biases in atmospheric CO inversions assimilating MOPITT satellite retrievals, *Atmospheric Chemistry and Physics Discussions*, 2017, 1–33, 2017a.
- Yin, Y., Chevallier, F., Ciais, P., Broquet, G., Cozic, A., Szopa, S., and Wang, Y.: On biases in atmospheric CO inversions assimilating MOPITT satellite retrievals, *Atmospheric Chemistry and Physics Discussions*, pp. 1–33, 2017b.