

Supplement of

An advanced method of contributing emissions to short-lived chemical species (OH and HO₂): The TAGGING 1.1 submodel based on the Modular Earth Submodel System (MESSy 2.53)

Vanessa S. Rieger^{1,2}, Mariano Mertens¹, and Volker Grewe^{1,2}

¹Deutsches Zentrum für Luft- und Raumfahrt, Institut für Physik der Atmosphäre, Oberpfaffenhofen, Germany

²also at: Delft University of Technology, Aerospace Engineering, Section Aircraft Noise and Climate Effects, Delft, Netherlands

Correspondence to: Vanessa S. Rieger (vanessa.rieger@dlr.de)

This document provides additional material to the article: *Rieger et al., An advanced method of contributing emissions to short-lived chemical species (OH and HO₂): The TAGGING 1.1 submodel based on the Modular Earth Submodel System (MESSy 2.53), 2017*. The following figures compare the contributions of the tagging method V1.0 and the advanced tagging method V1.1 for the ten source categories: emissions from anthropogenic non-traffic (e.g. industry and households), road traffic, ship traffic, air traffic, biogenic sources, biomass burning, lightning, methane and nitrous oxide decomposition and stratospheric ozone production.

OH

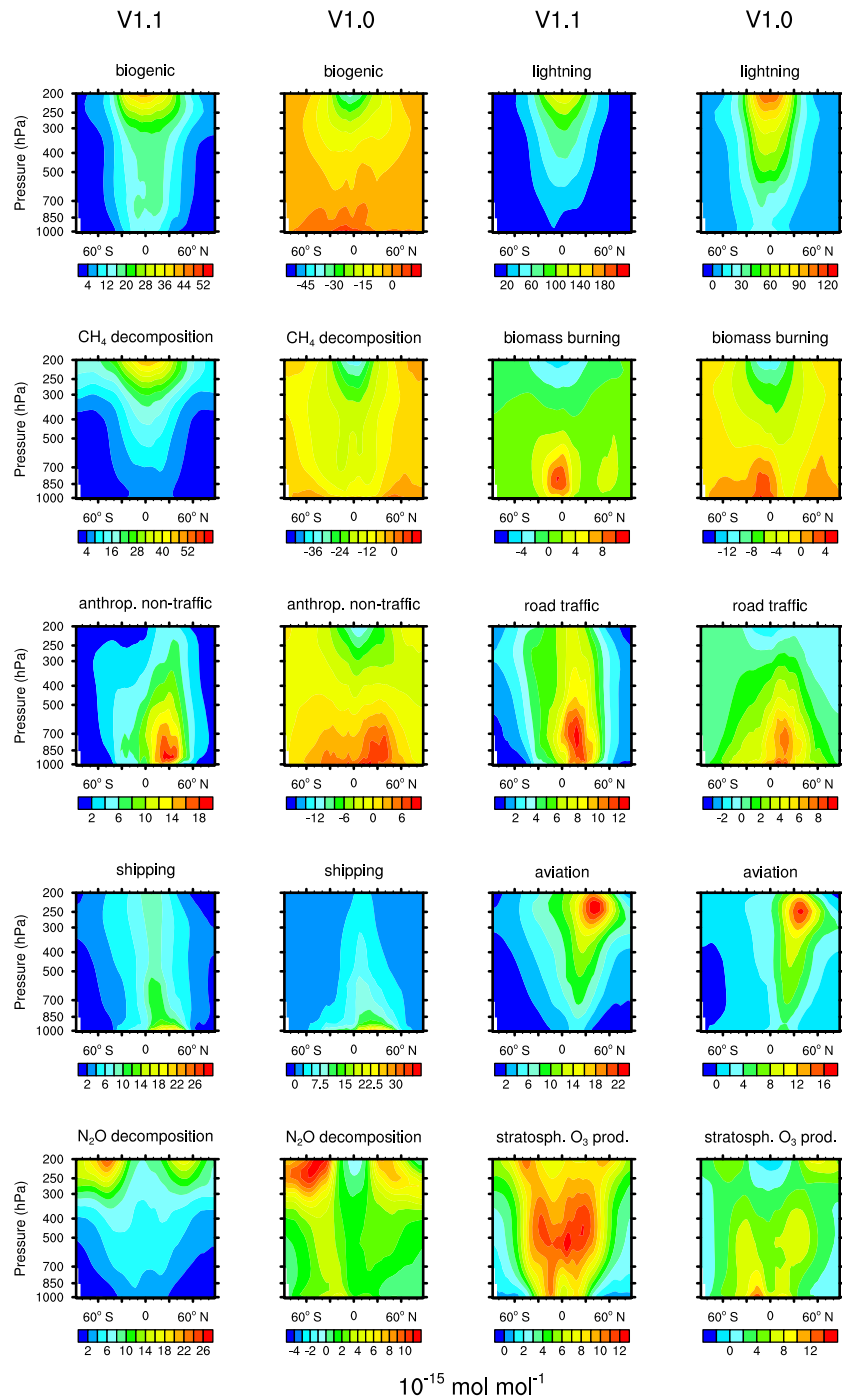


Figure 1. Comparison of tagging method V1.1 and V1.0 for OH. First and third columns show the tagging method V1.1. Second and fourth columns show the tagging method V1.0.

HO₂

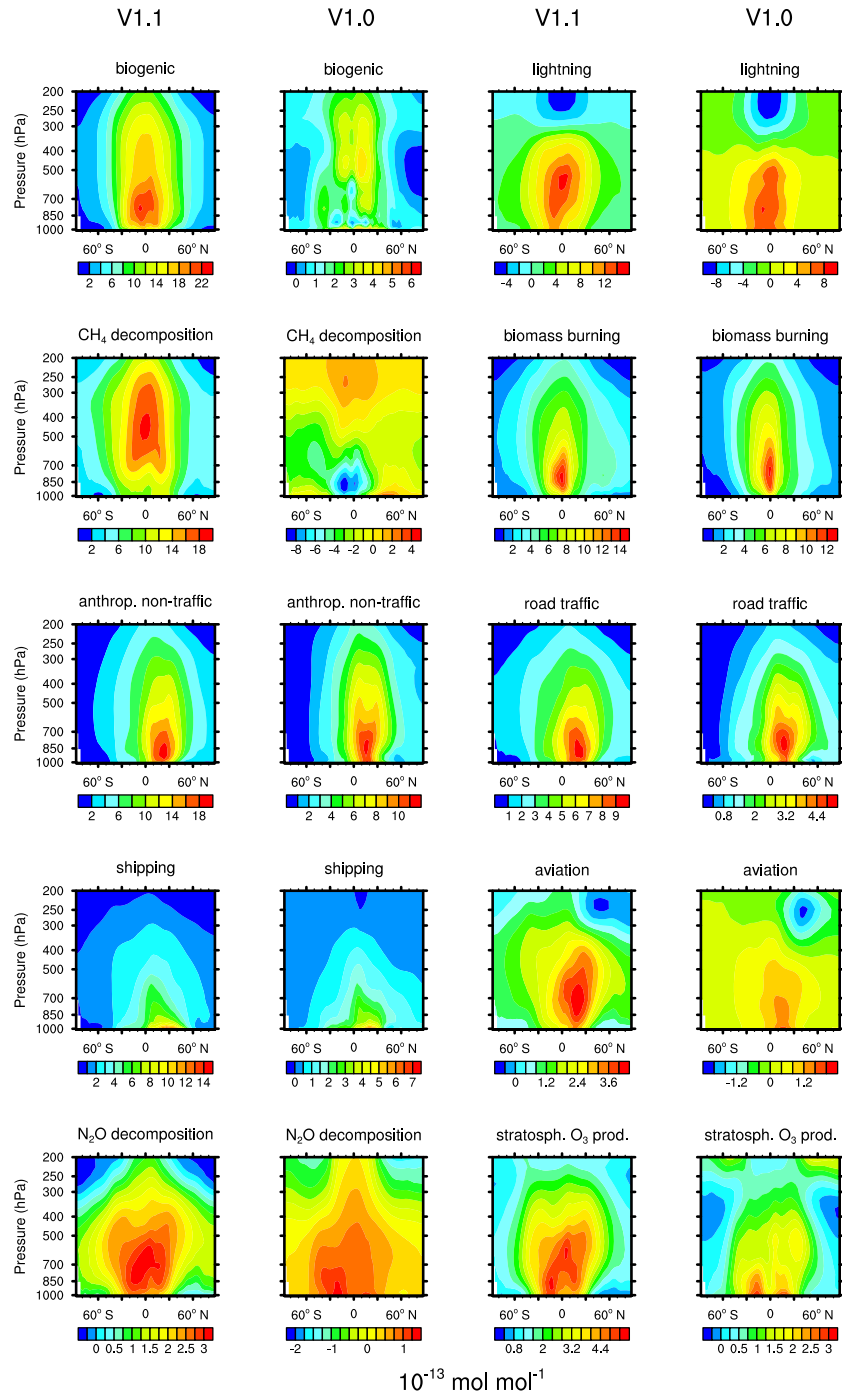


Figure 2. Comparison of tagging method V1.1 and V1.0 for HO₂. First and third columns show the tagging method V1.1. Second and fourth columns show the tagging method V1.0.

O₃

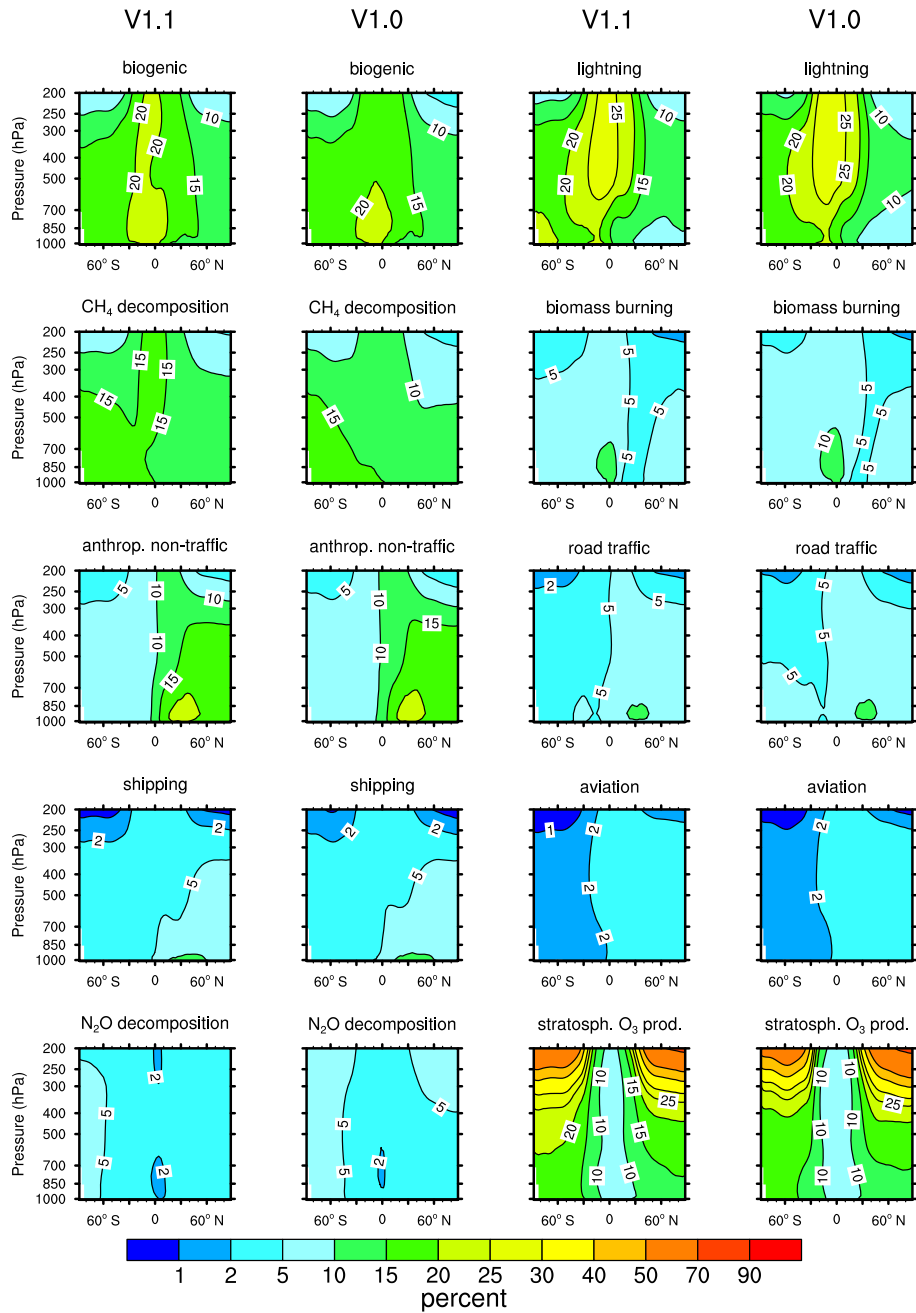


Figure 3. Comparison of tagging method V1.1 and V1.0 for O₃. First and third columns show the tagging method V1.1. Second and fourth columns show the tagging method V1.0.

CO

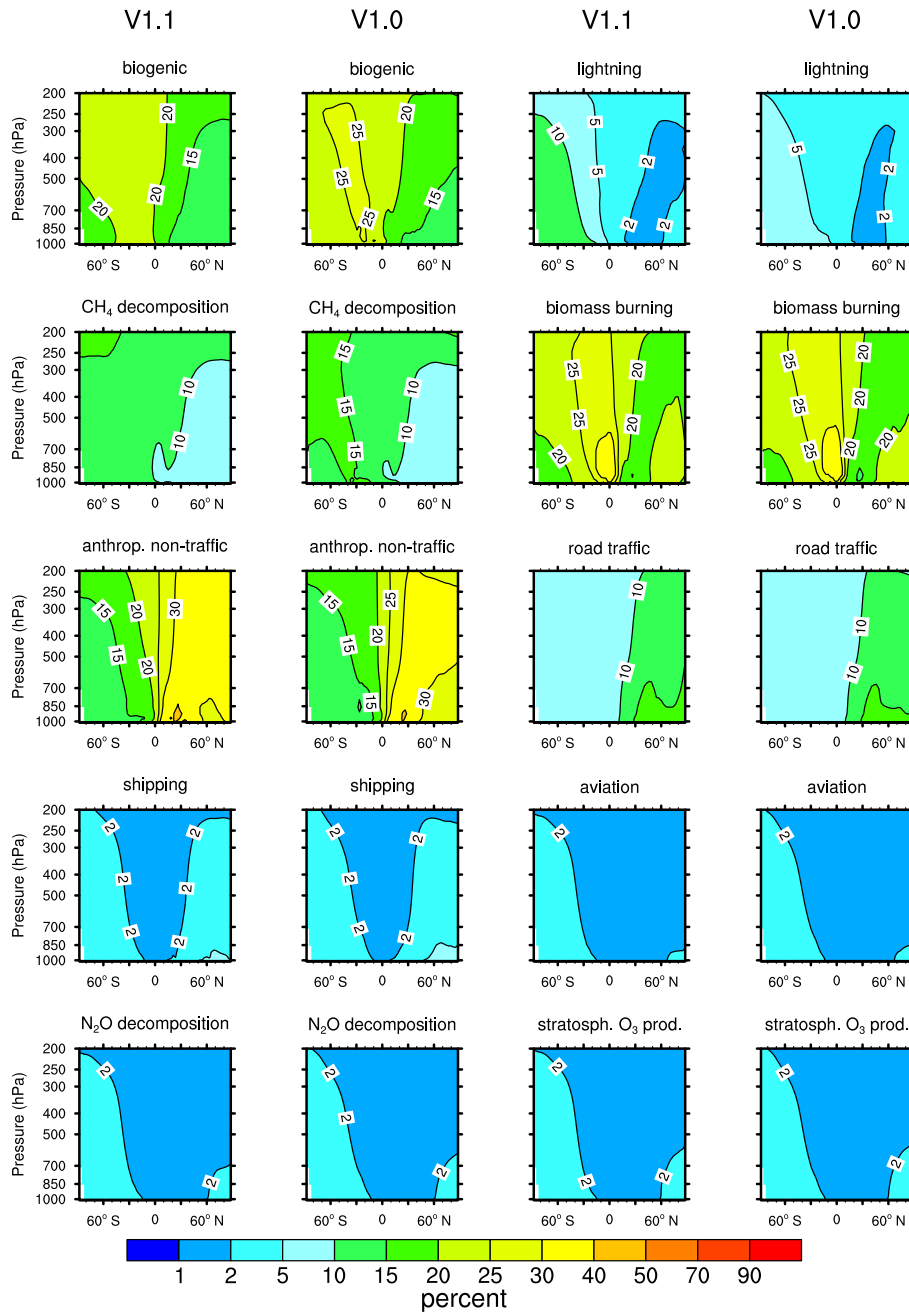


Figure 4. Comparison of tagging method V1.1 and V1.0 for CO. First and third columns show the tagging method V1.1. Second and fourth columns show the tagging method V1.0.

NO_y

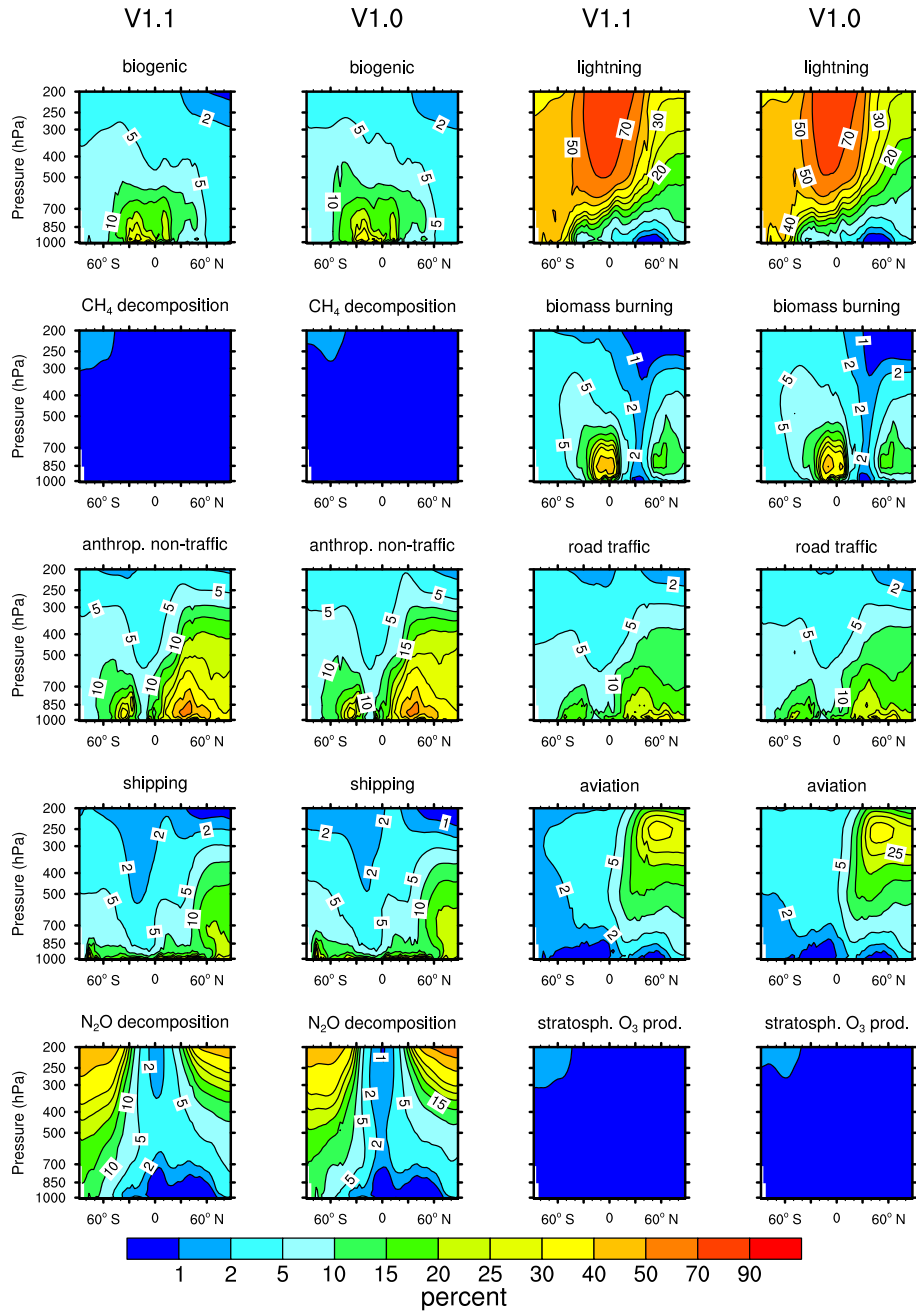


Figure 5. Comparison of tagging method V1.1 and V1.0 for NO_y. First and third columns show the tagging method V1.1. Second and fourth columns show the tagging method V1.0.

NMHC

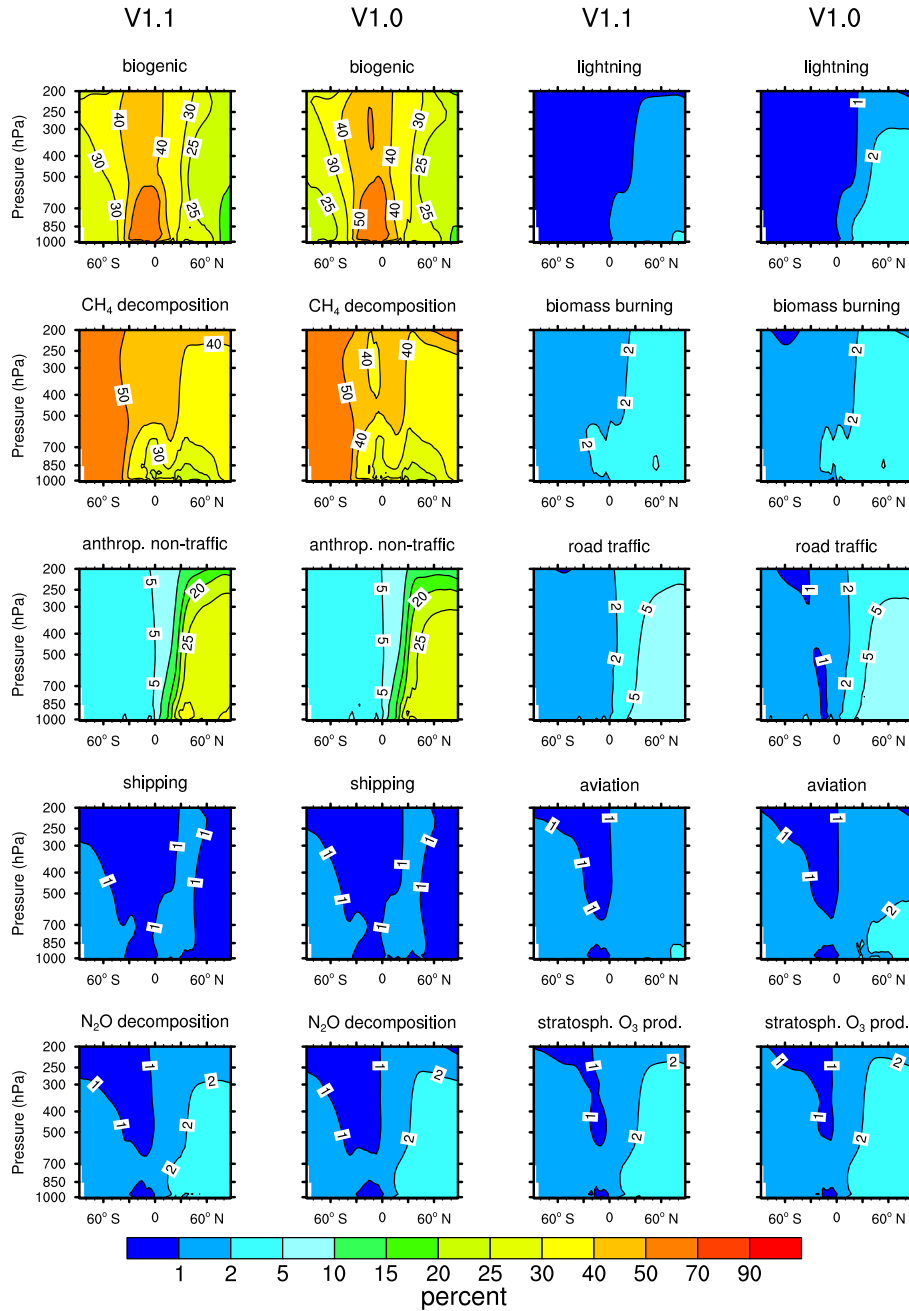


Figure 6. Comparison of tagging method V1.1 and V1.0 for NMHC. First and third columns show the tagging method V1.1. Second and fourth columns show the tagging method V1.0.

PAN

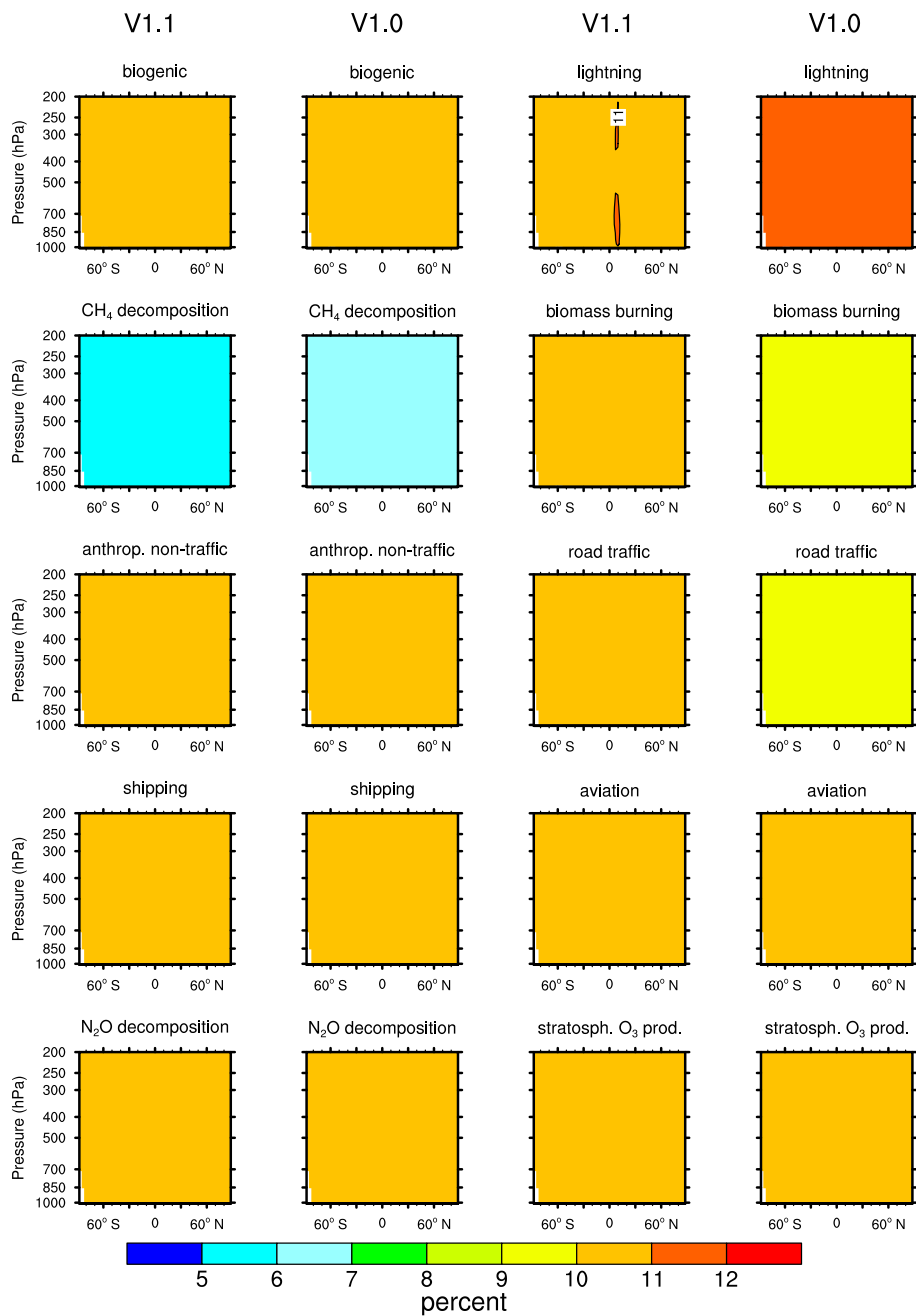


Figure 7. Comparison of tagging method V1.1 and V1.0 for PAN. First and third columns show the tagging method V1.1. Second and fourth columns show the tagging method V1.0.