

Technical corrections Review1:

P1-L19: "present day" instead of "nowadays"

P1-L19: "Particular" deleted

P1-L20: "were" instead of "ruled"

P1-L21: "be substantially improved" instead of "improve substantially"

P1-L21: "would" instead of "were"

P1-L24: "to model" instead of "for the modelling of"

P2-L9: "essential" deleted

P2-L10: "20th century" instead of "last century"

P15-L1: ", which is next to the process understanding the motivation for our model development" deleted

P15-L6-8: "There are no measurement data to validate it but hopefully will be collected in the near future (see future tasks). Legacy data in form of maps also do not exist, point measurements for other mapping projects (soil mapping campaigns) are only of limited use. Nevertheless," deleted

P18-L2: "(and hopefully soon into the nearest future)" deleted

Your comments in the supplement of review 1:

Sticky note R1: "why are you introducing this tool then? to answer this question? This needs to be made much clearer"

AR: should be clear now after restructuring

Sticky note R1: "why is it only applicable to this area? Is this a suggestion of the models weakness or a lack of confidence? Its not really clear why this is said here."

AR: the sentence in question was deleted

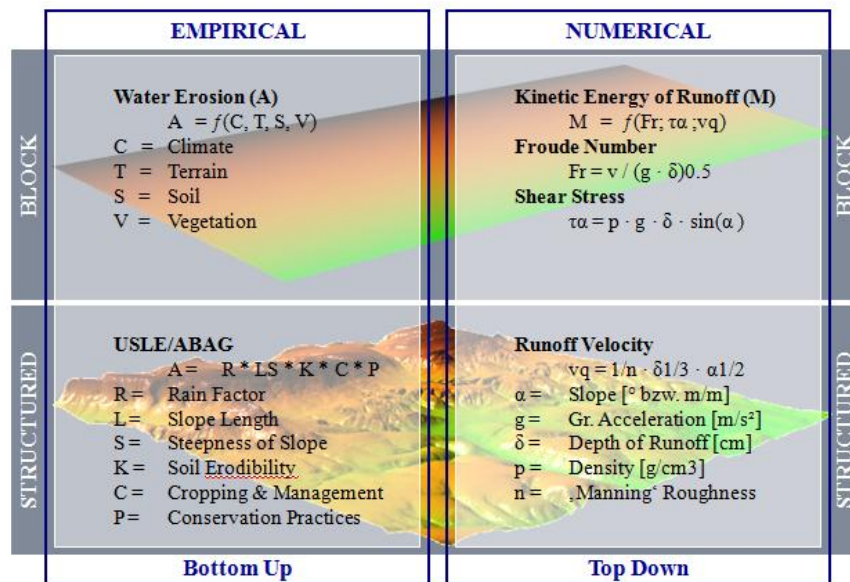
Sticky note R1: "OK - but you've already said that your model is site specific! so...."

AR:

Sticky note R1: "this sentence is weak and needs clarification - what do you mean by deductive models here? As in induction/vs deduction or a different definition?"

AR: Exactly, it's meant as in induction/deduction. In deductive models according to Boehner (2006) dynamic processes are represented by physical laws resp. physical analogies whereas inductive models point out relations by statistically analyzing empirical data.

I provide the translation of a figure of one of Boehners publications. Here he uses empirical (for inductive) and numerical (instead of deductive).



Sticky note R1: "in what sense? Clearly define what the model aims to solve"

AR: See next one

Sticky note R1: "as a general comment on the introduction: All the main parts are there - but the order and structure needs work. There is a mixture of descriptions of previous work and processes with descriptions of what the model will do. This would be much clearer if the issue/problem to be addressed were clearly described - then looking at previous work/models that have looked at pedogenesis in LEM's - and then on to why there is a niche/gap for this model. Then finally what you plan to do in the paper etc..

AR: I restructured the introduction according to your suggestions and added some recent works to complete the framework of soil-landscape models I mention here.

Sticky note R1: "This sentence needs re-working its not clear whether you are talking about world records, or global data.. also needs a reference."

AR: I limited it to the modeling of global paleo data and added Kageyama (2016) as a reference.

Sticky note R1: So salem is over predicting regolith depth by c.3m? Could this not be calibrated out by altering parameters in the rock>soil components? It would appear that the relationship between summit, slope and bottom is correct (e.g. the dynamics of the model are correct) but the amounts are wrong...

AR: In my opinion the model prediction of estimated values up to 3m in valley floors is plausible. Only the validation data does not reflect this due to the limitations of that data source. No one has drilled manually deep enough that he reached the bedrock. In the meantime a drilling campaign with heavy equipment was carried out by the federal state agency LBEG. The results showed even deeper values (1.5m to 13.4m) in the valley floors. This new data source contains ten boreholes in the site Ebergoetzen, but only two in the validation rectangle. To avoid confusion I did not mix this data with the manually drilled data source I analyzed in this paper. The new data source is publically available so you may have a look at <https://nibis.lbeg.de/cardomap3/?lang=en#> and type in one of these numbers into the search window of the site: 4426GE0049, 4426GE0050, 4426GE0051, 4426GE0055, 4426GE0056, 4426GE0059, 4426GE0061, 4426GE0062, 4426GE0103, 4426GE0104. When you click "further information" you get the depth values of each.

My idea is to carry on with SaLEM by calibrating the model especially the composition of the unconsolidated layer reflected in the tracer by means of this new data source.

Sticky note R1: what did Perron do/say? You need to explain!

AR: Added half of a sentence to make clear that Perron follows a more comprehensive approach of landscape evolution simulating the branches of river networks.

Sticky note R1: I'm not sure what this section adds to the paper... I would consider removing it unless the point is a central one of the model reporting (which I don;t think it is...?)

AR: Removed

Technical corrections Review#2:

P2 L4: authors (they are 2!) –

AR: corrected

P2 L5: give detailed information about scale of time and area, see also repetition of this fact at page 6 line 5-8 –

AR: over longer geologic time periods (added “several Ma”) for large areas (added “thousands of square kilometers”).

P5 L16: During the glacial periods ...

AR: corrected

P5 L23: distinct thickness : If it is distinct give accurate amount of thickness!

AR: changed to “different but considerable thickness”.

P6 L16: .. considered as highly evident ..

AR: changed

P6 L17: . However, for the period ..

AR: corrected

P6 L18: .. for the initial topography

AR: corrected

P 6 L19: .. covering the bedrock, is the results of various natural processes

AR: changed

P6 L20: Solid bedrock is weakened by ..

AR: corrected

P6 L23: “discrete periods”: Please give detailed information about time and naming of the periods

AR: I changed “Pleistocene” to late Pleistocene and added this information: “during the Middle and Upper Weichselian when aeolian sediments like loess were accumulated and reworked with autochthonous material (Frechen 2003).”

P6 L24 .. material are evident, in particular aeolian sediments like loess.

AR: changed

P6 L25: There are several multi-material-layers covering the solid rock ..

AR: I replaced “a” with “several”

P6 L26: “coat” change to “cover”

AR. Changed

P6 L30: .. not available for all ...

AR: changed

P7 L3: .. it became ..

AR: corrected

P7 L5-6: Give literature or internet source for high resolution data

AR: I changed "Palaeo-climate modeling data of world records" to "Palaeo climate modeling of global data" and cited Kageyama, 2016

P7 L10: "calibrated"; Calibration would mean more computing than only constantly increasing the values. I would prefer to say "adapted" or "transformed".

AR: decided to use „adapted“

P7 L17: What is the required temporal resolution of the model? Please give information.

AR: It is conducted with a time step of 100 years at the moment. But it is a flexible parameter for users with different data for climate input.

P7 L19: What is the amount of the temperature value increase for the study area? Please inform.

AR: The curve was adapted to meet the annual mean temperature value of 8 degrees at the test site "Ebergoetzen"

P7 L20: Revise sentence, because you begin talking about the temperature signal, which has nothing to do with the spatial resolution of the precipitation data.

AR: "and precipitation" was deleted

P9 L14: Erase point behind (2008)

AR: OK

P9 L20: Explain the parameters T, Tmin, Tmax, is it daily, annual, seasonal temperature? In the formula you use an "a" and in the text an "α" for the buffering parameter.

AR: added "T is the Mean Annual Average Temperature (MAAT) in °C, Tmax is the maximum MAAT in °C, Tmin is the minimum MAAT in °C within the time step", the a in the formula was replaced by "α"

P12 L15: Describe the constitution of the initial regolith cover in detail. How it was designed?

AR: Here I describe only the initial depth of the regolith cover. The user can decide for a general value (5cm, 10cm,...) or include a grid with spatially distributed depth values. I replaced "definition" with "depth".

P13 L14-17: This sentence about the three variants of modelling should appear in the beginning of the paragraph because it needs to be explained first that the result shown in figure 7 is computed without aeolian deposits.

AR: I shifted the sentences so that the paragraphs starts with a description of the variants.

P13 L14: .. sediment cover (7), ..

AR: not sure what is meant...

P15 L14: I think you used the variation 3 of the generated model data for validation. This information is missing and need to be given here.

AR: You're right. The missing information was added!

P17 L6, L10, L13: Space between number and m, cm or points

AR: Corrected!

Figure 1c): Black lines in the map need to be explained in the legend, where is the mm, middle Muschelkalk?

AR I completed the legend of figure 1c). The Middle Muschelkalk fell victim to the simplification of the Geological data when the transformation to the geological model was conducted. There were only very small areas anyway.

Figure 2: .. (dashed line) (after Alley, 2000) and the ...

AR: corrected

Figure 3a): Give more space for the coordinates in the map frame. The geographic coordinates in the map should be placed more systematically.

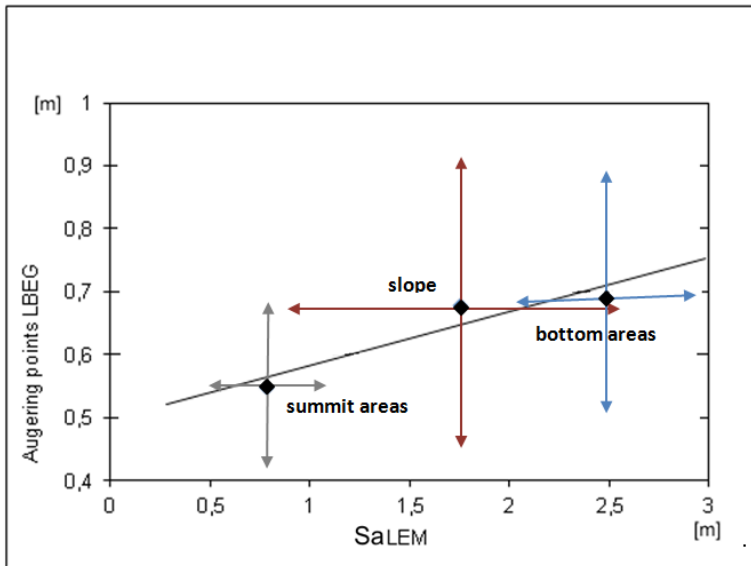
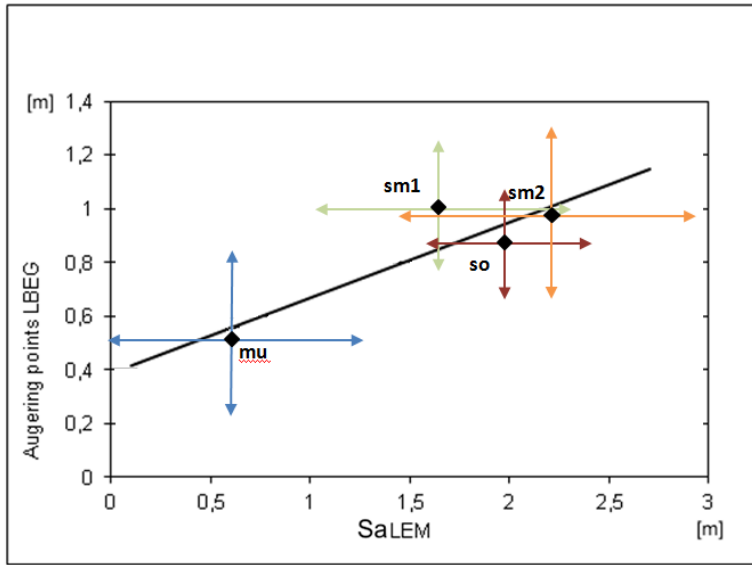
AR: I decided to produce the map without map frame with coordinates. Instead the map now has a scale bar and systematic annotation of the graticule.

Figure 3b) and c) are inverted in the legend, the x-axes as time scale should be divided into 4 seasons

AR: Corrected. I introduced a new partitioning of the x axis.

Figures 11, 13: Please indicate the statistical background in the diagrams, for example maximum and minimum values, standard deviation along x and y-axes.

AR: I produced the figures 11 and 13 again with arrows that indicate the standard deviation for both the augering points from LBEG and the modeling results. Min / max values seemed to me not very meaningful in this case.



SaLEM (v1.0) - A Soil and Landscape Evolution Model for simulation of regolith depth in periglacial environments

Michael Bock¹, Olaf Conrad¹, Andreas Günther², Ernst Gehrt³, Rainer Baritz², and Jürgen Böhner¹

¹Institute for Geography, University of Hamburg, Germany

5 ²Federal Institute for Geosciences and Natural Resources (BGR), Hannover, Germany

³State Authority for Mining, Energy and Geology (LBEG), Hannover, Germany

Correspondence to: Michael Bock (michael.bock@uni-hamburg.de)

Abstract. We propose the implementation of a soil and landscape evolution model (SaLEM) for the spatiotemporal investigation of soil parent material evolution following a lithologically differentiated approach. Relevant parts of the established model GOLEM have been adapted for an operational GIS tool within the open source software framework SAGA, thus taking advantage of SAGA's capabilities for geomorphometric analyses. The model is driven by paleo-climatic data (temperature, precipitation) representative for periglacial areas in Northern Germany over the last 50.000 years. The initial conditions have been determined for a test site by a digital terrain model and a geological model. Weathering, erosion and transport functions are calibrated using extrinsic (climatic) and intrinsic (lithologic) parameter data. First results indicate that our differentiated SaLEM approach shows some evidence for the spatiotemporal prediction of important soil parental material properties particularly its depth. Future research will focus on the validation of the results against field data, and the influence of discrete events (mass movements, floods) on soil parent material formation has to be evaluated.

1 Introduction

20 The properties of present day soils rely to a large extent on their development under past climatic conditions. Especially if these conditions are very different from today's regime, the origin of soil properties can only be explained very vaguely. In areas of the world where periglacial conditions were the dominant soil forming processes during the Pleistocene, our understanding of soils could be substantially improved, if more reliable information about the historical formation of their parent material would be available.

25 The significance of the geological parent material for the general formation of soils is widely recognized since the first half of the 20th century. Jenny (1941) was the first to formulate a functional relationship between important soil parameters and various local site factors, such as the climate, organisms, topography, time and parent material in his famous soil equation. Even though this functional relationship was not expressed numerically; the theoretical considerations of Jenny (1941) are the basis of today's process-oriented modeling in soil sciences.

30 Holocene soil formation, however, takes place on exactly this parent material and therefore adapts the properties of the regolith as for example grain size composition, bulk density, mineral composition, porosity, permeability, etc., that all

depend directly on the physical properties of the parent material. In most cases, the weathered part of the geological substratum on which soil develops is considerably thicker than the soil itself. For water balance models, simulations for migration and filtering of pollutants, shallow groundwater flow modeling or erosion and terrain stability modeling, information on physical and chemical properties of the total regolith is mandatory.

Unfortunately, data on soil parental material consisting either of in-situ weathered rocks, weathered loose sediments or even weathered paleosoils are highly underrepresented in geoscientific data sets. While geological maps in mountainous terrains mostly display petrographical and stratigraphical properties of solid (unweathered) bedrock and loose quaternary sediments are often underrepresented and undifferentiated, soil maps indicate the spatial distribution of genetic soil types which also do not allow for spatial identification of regolithic or sedimentary features. This gap between spatially distributed data for soils and bedrock can be found in almost all databases held by Geological Surveys. Filling this gap has been perceived as important nowadays because this critical zone has been recognized as the place where the “Earth’s weathering engine provides nutrients to nourish ecosystems and human society, controls water runoff and infiltration, mediates the release and transport of toxins to the biosphere, and conduits for the water that erodes bedrock” (Brantley et al., 2006, p 4).

During the last decades numerous methods and tools were created that can be applied on gap filling of spatial data. Digital soil mapping (see Lagacherie, et al. 2007, McBratney et al. 2003, Behrens & Scholten 2006) developed mostly statistical and geostatistical models to indirectly predict specific physical or chemical properties of soils incorporating specific spatial uncertainties. However, the majority of these approaches are not process based, therefore being capable for site-specific soil property data regionalization but do not contribute to the understanding of the factor correlations.

In contrast, process oriented deductive models represent dynamic processes by mapping the functional relationship of the sub-processes and thus can contribute in addition to data delivery to the particular process understanding (Böhner, 2006). Recent and very promising examples for such models focussing on feedbacks between soil and landscape related processes are the more conceptual works of Cohen et al (2013, model mARM3D) and Temme & Vanwallegghem (2016, model LORICA, the successor of MILESD by Vanwallegghem et al., 2013). In the same sense, the process-oriented SaLEM tries to model the parent material of soils for natural environments.

Thus we introduce an operational tool designed for the spatiotemporal prediction of parent material depth of soil formations utilizing a landscape evolution model (LEM). The model has been developed to operate in a GIS environment allowing for lithologically differentiated surface process simulations. More specifically, it has been designed to model the spatial distribution and properties of periglacial sediments and regolith formation processes in central European mountainous areas that were unglaciated during the Pleistocene.

The model has been implemented within the framework of SAGA, System for Automated Geoscientific Analyses, which is an open source Geographical Information System (GIS) platform (Conrad, 2007, Conrad et al., 2015). To emphasize its focus on soil formation processes we call it Soil and Landscape Evolution Model (SaLEM). Compared to GOLEM (Geomorphic/Orogenic Landscape Evolution Model; Tucker & Slingerland, 1997), which has been chosen as a starting point for our own developments, SaLEM represents a very specialized type of LEM in terms of time scale, spatial domain and

landscape forming processes. With respect to soil forming processes the original GOLEM code was substantially revised, transferred and expanded with the permission of the authors into the SAGA environment. GOLEM's original intention was to model the interaction between landscape evolution and geodynamic processes over longer geologic time periods (several Ma) for large areas (thousands of square kilometers). In turn, SaLEM aims to model the formation of weathering layers in lithologically differentiated terrains interacting between processes as erosion, transport and sedimentation that all together govern the development of soil parent material over the last several ten thousand years.

We describe the background of SaLEM and the state of its development. Special emphasis is given to the site-specific modeling of regolith depth and sediment formations in a periglacial geo-environmental setting as this is highly influenced by the supply of allochthonous, aeolian sediments (loess). We discuss the climatic factors driving soil and landscape evolution in north-central Germany during the Pleistocene. We suggest a parameterization for weathering rates. The final model has been applied and evaluated in a case study for a pilot area in northwest Germany. The results show that there is a need to improve the spatiotemporal identification and quantification of regolith forming processes, and the prediction of first-order geomechanical and chemical properties of parent material of soils.

~~The properties of nowadays soils rely to a large extent on their development under past climatic conditions. Particular in areas of the world, where periglacial conditions ruled the soil forming processes during the pleistocene our understanding of soils could improve substantially, if more reliable information about their historical formation would be available. Thus we introduce an operational tool designed for the spatiotemporal prediction of parent material depth of soil formations utilizing a landscape evolution model (LEM). The model has been developed to operate in a GIS environment allowing for lithologically differentiated surface process simulations. More specifically, it has been designed for the modelling of the spatial distribution and properties of periglacial sediments and regolith formation processes in central European mountainous areas that were unglaciated during the Pleistocene, and is currently solely applicable to this particular geoenvironmental setting.~~

~~The model has been implemented within the framework of SAGA, System for Automated Geoscientific Analyses, which is an open source Geographical Information System (GIS) platform (Conrad, 2007, Conrad et al., 2015). To emphasize its focus on soil formation processes we call it Soil and Landscape Evolution Model (SaLEM). Compared to GOLEM (Geomorphic/Orogenic Landscape Evolution Model; Tucker & Slingerland, 1997), which has been chosen as a starting point for our own developments, SaLEM represents a very specialized type of LEM in terms of time scale, spatial domain and landscape forming processes. With respect to soil forming processes the original GOLEM code was substantially revised, transferred and expanded with the permission of the author into the SAGA environment. GOLEM's original intention was to model the interaction between landscape evolution and geodynamic processes over longer geologic time periods for large areas. In turn, SaLEM aims to model the formation of weathering layers in lithologically differentiated terrains interacting between processes as erosion, transport and sedimentation that all together govern the development of soil parent material over the last several ten thousand years.~~

The essential significance of the geological parent material for the general formation of soils is widely recognized since the first half of the last century. Jenny (1941) was the first to formulate a functional relationship between important soil parameters and various local factors, such as the climate, organisms, topography, time and parent material in his famous soil equation. Even though this functional relationship was not expressed numerically, the theoretical considerations of Jenny (1941) are the basis of today's process-oriented modeling in soil sciences. Digital soil mapping (see Lagacherie, et al. 2007; McBratney et al., 2003; Behrens & Scholten, 2006) developed mostly statistical and geostatistical models to indirectly predict specific physical or chemical properties of soils incorporating specific spatial uncertainties. However, the majority of these approaches are not process-based, therefore being capable for site-specific soil property data regionalization but do not contribute to the understanding of the factor correlations.

In contrast, deductive models represent dynamic processes by mapping the functional relationship of the sub-processes and thus can contribute in addition to data delivery to the particular process understanding (Böhner, 2006). In this sense, the process-oriented SaLEM tries to model the parent material of soils for natural environments.

Data on soil parental material consisting either of in situ weathered rocks, weathered loose sediments or even weathered paleosols are highly underrepresented in geoscientific data sets. While geological maps in mountainous terrains mostly display petrographical and stratigraphical properties of solid (unweathered) bedrock and loose quaternary sediments are often underrepresented and undifferentiated, soil maps indicate the spatial distribution of soil types which also do not allow for spatial identification of regolith or sedimentary features. This gap between spatial distributed data to soils and bedrock is significant in almost all data held by Geological Surveys. Filling this gap has been perceived as important nowadays because this critical zone has been recognized as the place where the "Earth's weathering engine provides nutrients to nourish ecosystems and human society, controls water runoff and infiltration, mediates the release and transport of toxins to the biosphere, and conduits for the water that erodes bedrock." (Brantley et al., 2006, p 4)

Holocene soil formation, however, takes place on exactly this material and therefore adapts the material properties of the regolith as for example grain size composition, bulk density, mineral composition, porosity, permeability, etc., that all depend directly on the physical properties of the parent material.

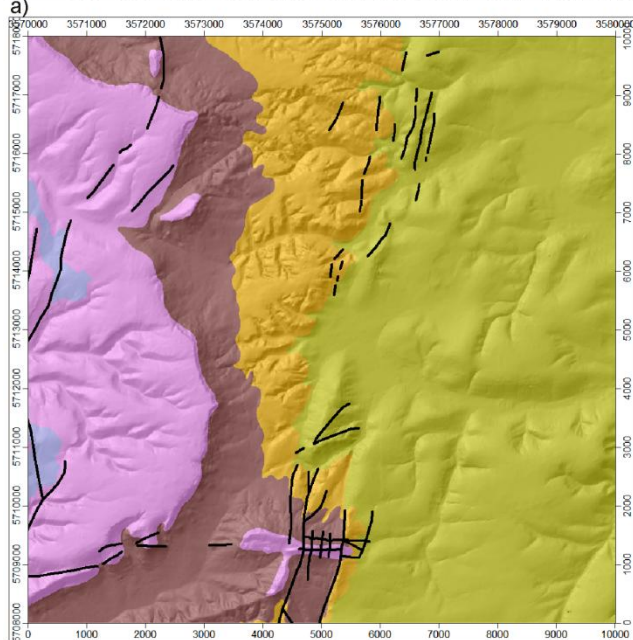
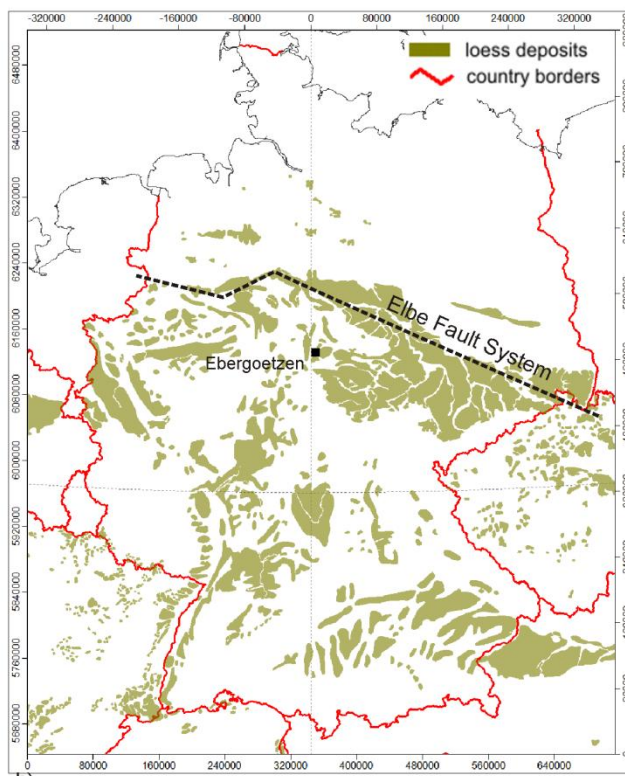
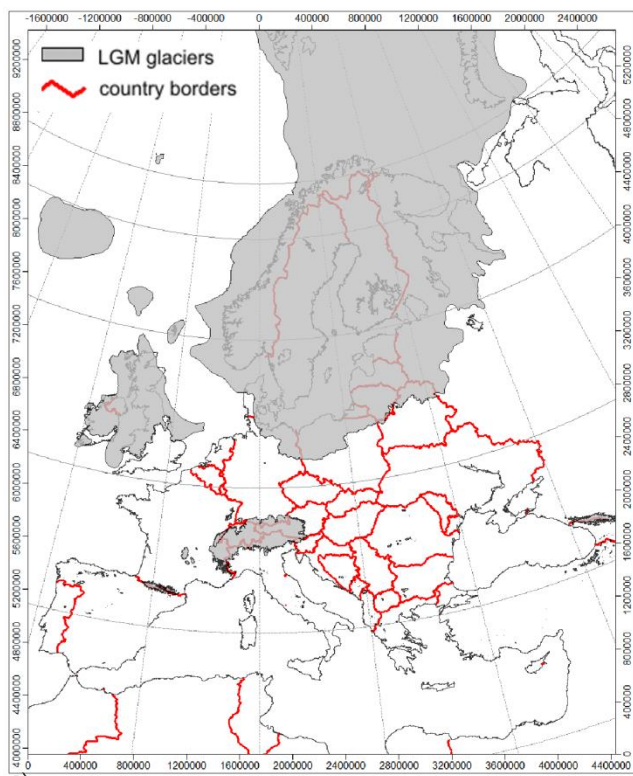
In most cases, the weathered part of the geological substratum on which soil develops is considerably thicker than the soil itself. For water balance models, simulations for migration and filtering of pollutants, shallow groundwater flow modeling or erosion and terrain stability modeling, information on physical and chemical properties of the total regolith is mandatory.

We describe the background of SaLEM and the state of its development. Special emphasis is given to the site specific modeling of regolith depth and sediment formations in a periglacial geo-environmental setting as this is highly influenced by the supply of allochthonous, aeolian sediments (loess). We discuss the climatic factors driving soil and landscape evolution in north-central Germany during the Pleistocene. We suggest a parameterization for weathering rates. The final model has been applied and evaluated in a case study for a pilot area in northwest Germany. The results show that there is a need to improve the spatiotemporal identification and quantification of regolith forming processes, and the prediction of first-order geomechanical and chemical properties of parent material of soils.

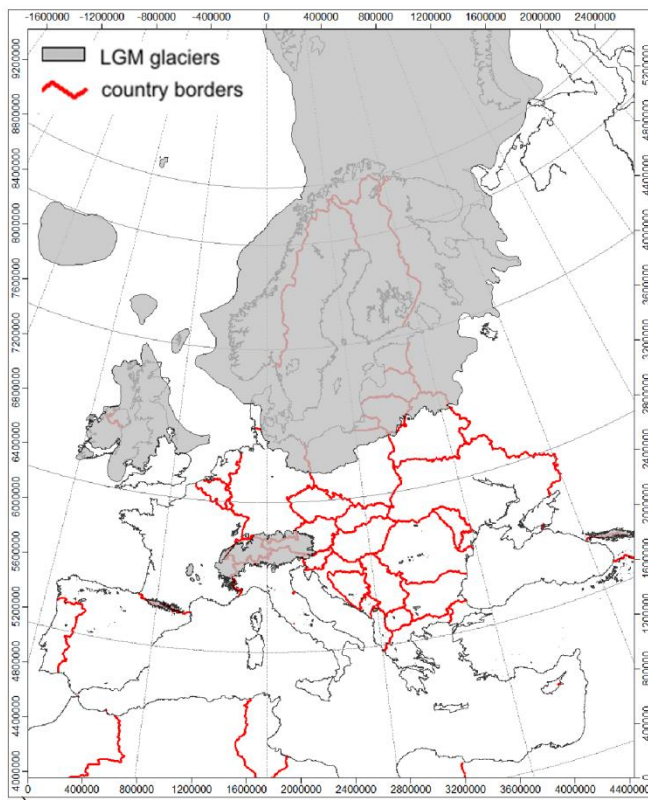
2 Study area

The study area Ebergoetzen is part of the German low mountain range, which is bordered to the north by a major continental fault system (“Elbe fault system, Fig. 1b). This mountainous area was free of ice during the Younger Pleistocene (Fig. 1a), but it was exposed to periglacial climatic conditions. To the north it is adjacent to the glacier-formed North German

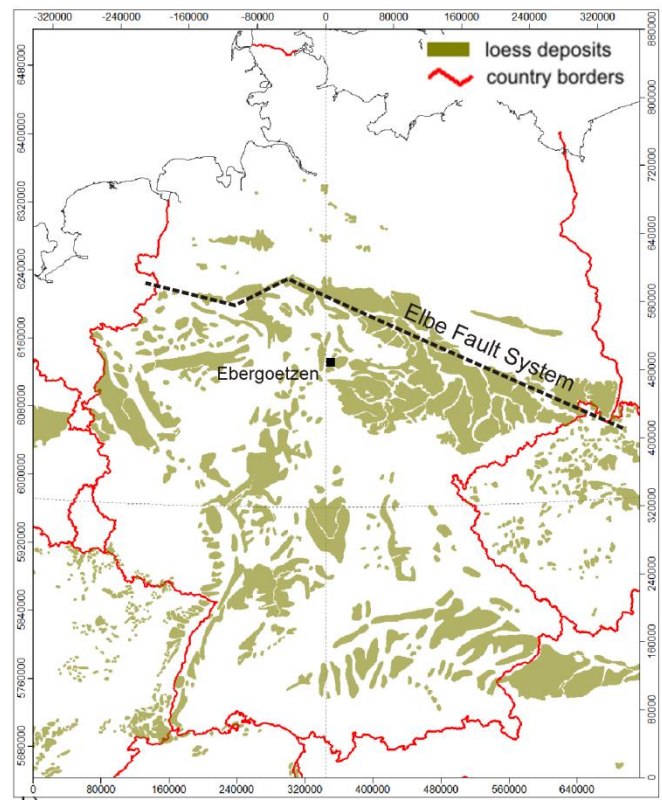
5 Lowland.



- Upper Muschelkalk
- Lower Muschelkalk
- Upper Buntsandstein
- Middle Buntsandstein
- Middle Buntsandstein



a)



b)



c)

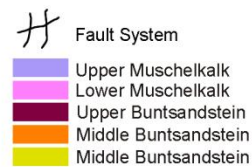


Figure 1. Location of the study site: a) Glacial ice sheets of LGM in Europe, data from Ehlers & Gibbard, 2004, b) Loess deposits in Germany, data from Haase et al., 2007, test site ‘Ebergoetzen’ as black rectangle, c) Simplified Geological map of test site ‘Ebergoetzen’, according to Ehlbracht, 2000. For our purpose the areas with quaternary deposits were removed.

The study area is geomorphologically characterized by escarpments formed by Triassic sedimentary rocks of the Germanic Basin. The north German escarpment setting is shaped by NNE-SSW striking major fault zones of paleozoic (Variscan) origin that were reactivated as sinistral transcurrent fault systems during Mesozoic (Alpidic) deformations (Mazur & Scheck-Wenderoth, 2005, Fig. 1b). Mesozoic transtensional deformations accompanied by salt tectonics led to development of half graben structures and tilting of discrete upper crustal segments forming escarpments.

Specifically, the study area ‘Ebergoetzen’ (location in Fig. 1b, simplified Geological Map (Ehlbracht, 2000, Fig. 1c) is formed by two escarpments with corresponding flats and slopes. Roughly speaking, this can be described as follows:

- The western part of the area is dominated by a gently westward inclined surface built of Triassic limestones of the “Lower Muschelkalk” in relatively high altitudes (about 420m above sea level). The “Lower Muschelkalk” is underlain by Lower Triassic claystones and siltstones of the “Upper Buntsandstein” that forms the escarpment of the “Göttinger Wald”.
- To the East, a slightly westward inclined surface (elevation about 290m above sea level) consisting of red sandstones of the “Middle Buntsandstein 2” is exposed. This surface is bordered by a steeply sloping section at the base of the escarpment which is made of sequences of sand- and siltstones of the “Middle Buntsandstein 1”.
- Further to the East, in general the importance and thickness of loess rises. Partly as insular very thick resources can be found (> 10 meters).

During the ~~glaciated~~ glacial periods of the Pleistocene, the periglacial environment of our study site was characterized by intensive weathering, erosion and transport processes. Frost weathering of numerous freeze-thaw-cycles resulted in loosening of the exposed sedimentary bedrock mainly along joint surfaces. Additionally, extensive dissolution of the calcareous rocks of the “Muschelkalk” fragmented these lithological successions. The crushed rock was released from the rock mass and - dependent on the local terrain situation - remained in situ or was moved downhill by solifluction, creeping and mass wasting processes. The intensity of the weathering processes as well as the speed of the transport processes depends on the material properties of the rock resp. rock debris but is also altered by allochthonous input of loess material.

Figure 1b shows that the spatial distribution of loess deposits of ~~distinct~~ different but considerable thickness is a general phenomenon in wide areas of Germany.

3 Materials and Methods

The general purpose of LEM is a better understanding of landscape history through a simulation of landforming processes and process interactions (Tucker & Hancock, 2010). The main purpose of SaLEM is the mapping of regolith properties according to known physical relationships. In absence of reliable data for certain process variables these have to be substituted by suitable parameterizations.

3.1 Methodological Background

SaLEM has been developed using the SAGA (System for Automated Geoscientific Analyses) framework, which is an open source software that provides an extensive application programming interface dedicated to spatial data analysis and visualization (Conrad et al., 2015). SaLEM simulates the dynamics of selected landscape-forming processes (weathering, erosion, transport and deposition), thus representing an operational GIS tool for numerical process modeling. Differential equations used in the model are based on simplified physical models, such as the description of weathering or transport processes. The original C-code of GOLEM (Tucker & Slingerland, 1997) was ported to the C++ based environment of SAGA. Tucker & Slingerland (1997) describe the aim of GOLEM as the exploration of the interaction of tectonics (uplift) and erosion for the landscape over long geological timescales (several Ma). The goal of SaLEM is the lithologically differentiated modeling of weathering, erosion, transport and deposition of unconsolidated material covering the bedrock for comparably shorter periods (recent 50-100 ka). The part of GOLEM that in particular is relevant for these objectives, is the sub-model for diffusive regolith creep. With the focus on the prediction of parent material for soil formation it does not consider landscape compartments that are beyond this scope. Accordingly, the modeling of fluvial incision and transport as tectonic uplift was not adopted. GOLEM's function for regolith production (or weathering) was replaced by a set of rock specific and climate sensitive equations considering frost and chemical weathering separately. The simulation time is free selectable and depends only on the availability of climate data, which ~~are necessary~~ considered as highly evident to drive the model.

One problem for LEM based forward modeling is the impossibility to reconstruct the initial paleo-topographic situation. This problem is known as equifinality or convergence of landforms and was discussed many times in geomorphographic papers (e.g. Odoni, 2007, Peeters et al., 2006). It must be considered highly evident when modeling over longer geological time spans (several Ma), however for the ~~time frame~~ period considered here (50 ka) it can be proposed as less important (Peeters et al., 2006). Therefore, we use the actual topography as predefined by the DEM ~~as for~~ the initial topography ~~for of~~ our modeling.

The layer of unconsolidated material, which today can be found omnipresent covering the bedrock is the result of ~~many~~ various natural processes that interacted for many thousands of years. Solid bedrock is ~~attacked~~ weakened by two categories of weathering processes: loosening of the rock mass by physical weathering, and rebuilding of the mineral constituents by chemical weathering. When individual fragments are separated from the bedrock, the unconsolidated material (regolith) is exposed to downhill transportation by gravitational processes. During the late Pleistocene, discrete episodes of intense mixing of the unconsolidated layer with allochthonous materials are evident, in particular ~~the~~ during the Middle and Upper Weichselian, when aeolian sediments ~~known as like~~ were accumulated and reworked with autochthonous material (Frechen 2003). This took place under the influence of vegetation and resulted in ~~a~~ several multi-material-layers covering the solid rocks of the mountainous areas with a thin ~~coat~~ cover of regolith. The thickness of this coat may range from a few

centimeters up to several meters. Due to its physico-chemical properties its proportion in regolith influences current soil properties significantly.

Basically all weathering and transport-related processes follow physical and chemical laws that should be reflected by the model. However, this can only be done in an approximation to the real world phenomena due to several reasons: Input data are not available ~~to~~for all factors of the involved processes, the spatial resolution is not applicable to model all processes realistically, and still physical modeling of some of the involved processes would be too complex and beyond the scope of SaLEM. Thus modeling is limited to processes that can be depicted and empirically described. This general feature of reduction becomes especially clear in the case of modeling the periglacial layer as parent material, because many processes, such as the influence of vegetation on erosion, transport and allochthonous deposits, remain unconsidered.

3.2 Climate data

The climatic development of the northern hemisphere during the Pleistocene is fairly well known nowadays due to recent methodological developments in paleoclimatology. Through the introduction of ice core analysis as proxies it ~~has become~~became possible to reconstruct the course of long time series of climatic elements, although the derived information applies only to the locations where the data is taken from (Bubenzner & Radtke, 2007). Palaeo-climate modelling ~~data~~of world-global data records is now available in relatively high spatial and temporal resolution (e.g. Kageyama, 2016).

For the calibration of chemical and physical (frost) weathering two climate data sets are considered, one for the long term temperature signal and one as scenario representing the annual/seasonal climate.

The long term signal has been taken from the ice core project GISP2 (Alley, 2000). It provides 30 years temperature averages for the last 50.000 years. These temperatures have been ~~calibrated~~adapted to the annual mean temperatures of our study site. Figure 2 shows the course of temperature, which was derived for the location from the O16/O18 isotope ratio.

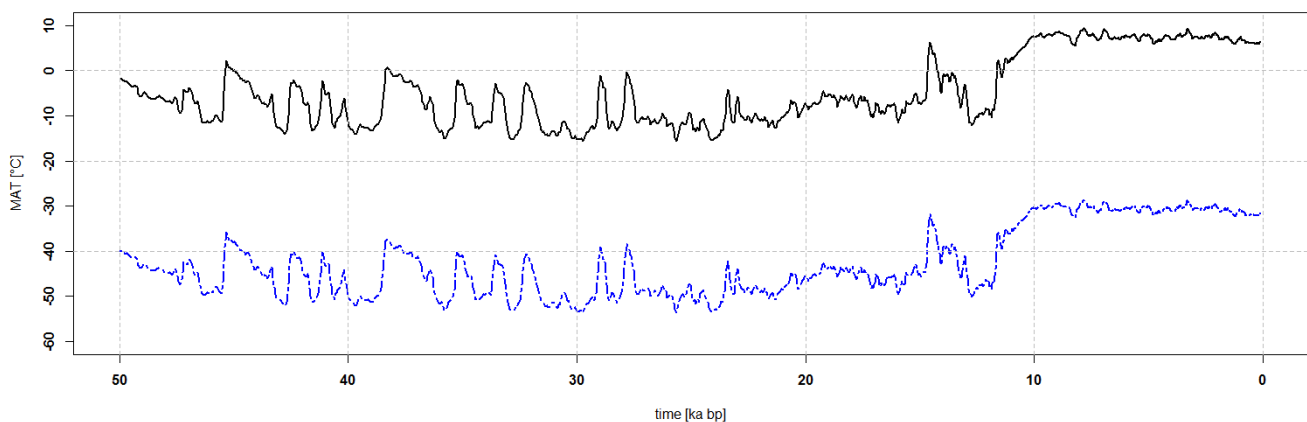
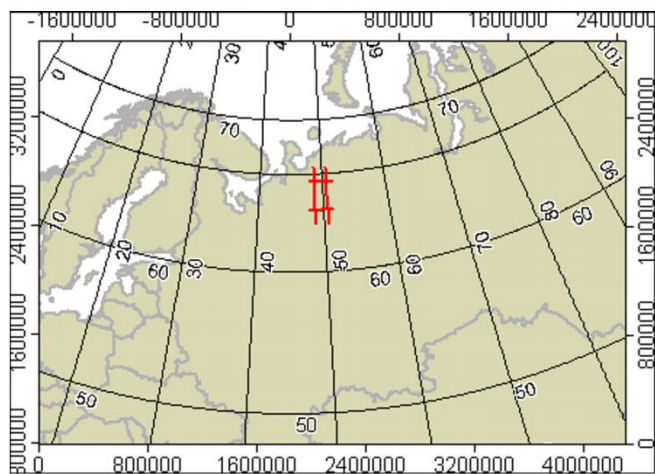


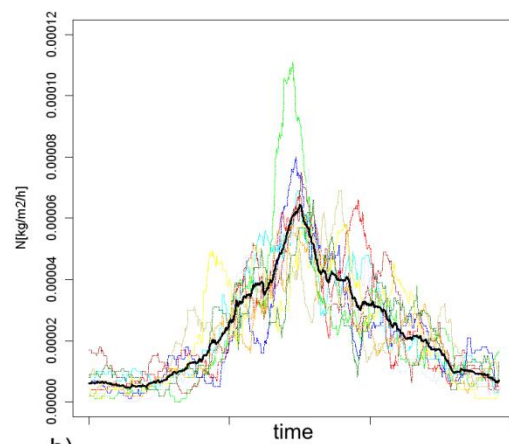
Figure 2 Derived mean annual temperature (MAT) data for the GISP2 location (dashed line) (after Alley, 2000) and the assumed curve for the test site 'Ebergoetzen' (solid line) (~~after Alley, 2000~~)

1631 values are available for a period of 50,000 years, which means an average of 30 years resulting in one mean temperature value. Although these are unevenly distributed: 17 values for the most past 1000 years, 115 values for the most recent 100 years. The average shown in the data is still more accurate than the required temporal resolution of the model which is conducted with a time step of 100 years at the moment. The curve ends up with the value of minus 31°C as the current mean annual temperature of the GISP2 location. SaLEM raises the entire curve to the actual mean annual temperature level (Ebergoetzen 8°C) of the respective working area via the user interface.

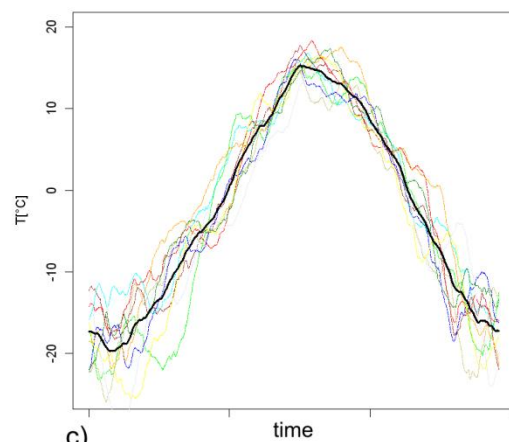
For the annual variation of the temperature signal, a temporal resolution of 6 hours and spatial resolution of about 210 km temperature ~~and precipitation~~ data was extracted from the global NCEP/NCAR reanalysis programme covering the last 40 years (Kalnay et al., 1996). From this data set a time series of a recent periglacial environment (Timan Ridge, Russia) has been chosen to act as analogue for the annual ~~p~~Pleistocene temperature and precipitation pattern at our study site (Fig. 3). The average of nine annual variations of the NCEP/NCAR data was then referenced to each temperature datum of the calibrated GISP2 curve.



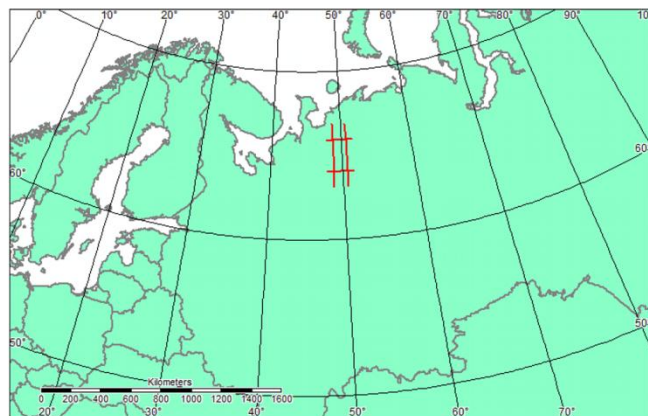
a)



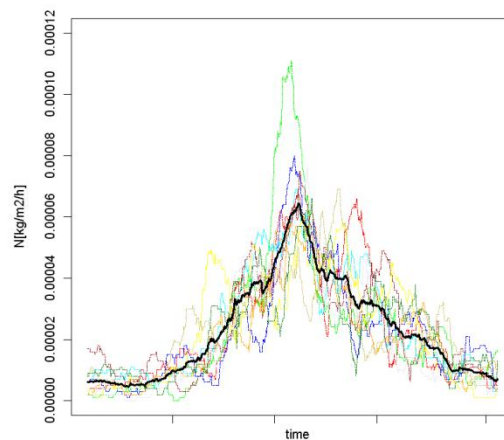
b)



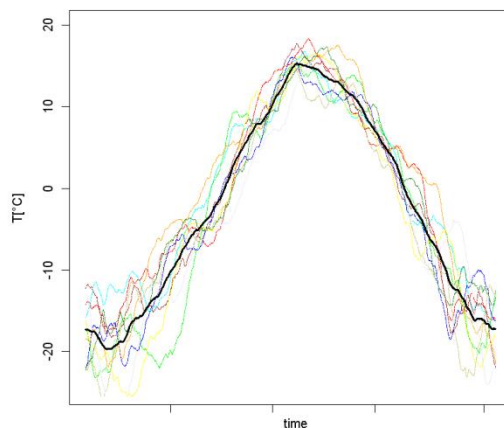
c)



a)



b)



c)

Figure 3. Location (3a) and annual variations of ~~precipitation~~ temperature (3b) and ~~precipitation~~ temperature (3c) for 9 years of the Timan Ridge, Russia, derived from NCEP/NCAR Reanalysis data, Kalnay et al., 1996. The model uses the average curves (bold black line).

- 5 Both the GISP2 data for paleo-temperatures and the NCEP/NCAR reanalysis data including the annual variations of precipitation and temperatures are provided to the user of SaLEM. Via a temperature offset, the level of the GISP2 curve can be moved up or down to calibrate it to different sites.

3.3 Bedrock geology and weathering indices

- 10 SaLEM operates on a geological model consisting of elevation-registered grids representing lithological contacts and topography (DEM). For simplification, the model uses the current topography represented by a DEM (50m spatial resolution) as the initial starting point. For our study, a geological subsurface model was constructed from geological map

information (Ehlbracht, 2000), two geological cross-sections, a deep borehole and DEM data (Fig. 4b). For model construction, first the outcrop lines of the geological units were elevation-registered with the DEM data, and the geological cross-sections were vectorized and transferred into 3-D space (Fig. 4a). Subsequently, geological surfaces were constructed with the outcrop line and cross-section line data using the geomodeller GOCAD® (Paradigm, 2015). Last, thickness raster data for each lithological unit were calculated on the same resolution as the DEM data and assigned to each geological unit. This data then serves as geometrical lithological input information for SaLEM.

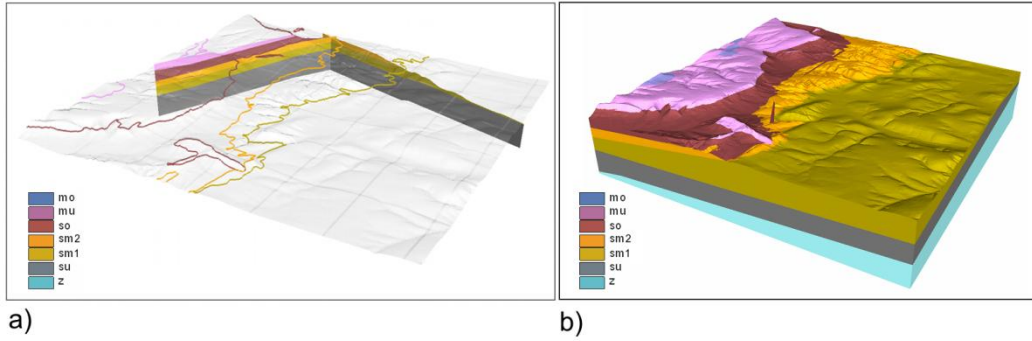


Figure 4. Geological units in test site ‘Ebergoetzen’, elevation-registered with the DEM data (4b) and the geological cross-sections (4a) derived from Ehlbracht, 2000. Upper Muschelkalk (mo), Lower Muschelkalk (mu), Upper Buntsandstein (so), Middle Buntsandstein2 (sm2), Middle Buntsandstein1 (sm1), Lower Buntsandstein (su), Zechstein (z)

The weathering susceptibility of the different lithological model units was assigned through expert-derived chemical- and physical weathering indices as proposed by Gehrt (2008), for the lithological successions of Northern Germany. Gehrt (2008) arranged the 75 stratigraphic units occurring in Lower Saxony regarding their resistance against weathering of their rock types at an ordinal scale (1: very resistant to 5: least resistant). Since the indexes are not calculated from measured data, only the relative differences of the different rock types are used here. From this knowledge, the weathering equations adapted from Temme & Veldkamp (2009), were calibrated for each model time step to obtain the weathering rate through equations like the well known “humped model” (for chemical weathering) inter alia.

The applied weathering equations go back to Bloom (1998) (1) resp Cox (1980) (2):

$$F_0 * \frac{(T + (\alpha * R)) - T_{\max}}{(T_{\min} - T_{\max}) * \cos \beta} \quad (1)$$

Equation 1 for frost weathering in mm year⁻¹, where F_0 is the maximum frost weathering on a flat surface, α is the buffering parameter for thickness of the regolith layer, R the thickness of the regolith layer, $\cos \beta$ is the cosine of slope, T is the Mean Annual Average Temperature (MAAT) in °C, T_{\max} is the maximum MAAT, T_{\min} is the minimum MAAT within the time step

$$-(P_0(e^{-k_1} - e^{-k_2}) + P_a) \quad (2)$$

Equation 2 for chemical weathering in mm year^{-1} , where P_0 is the maximum chemical weathering rate, P_a is the chemical weathering in steady state, k_1 is the weathering rate constant before the maximum rate is reached. With further increasing regolith thickness the rate of chemical weathering decreases again, k_2 is the weathering rate constant after the maximum rate.→

5 F_0 , a , P_a , k_1 and k_2 are constants which are dependent on the material. In a lithological differentiated approach like SaLEM the values for these constants were changed relative to each other according to Gehrt (2008) (see table 1):

Table 1: Resistance against weathering (frost weathering and chemical weathering) of different triassic bedrock types occurring in site ‘Ebergoetzen’ after Gehrt (2008) and derived initial values for the parameters of SaLEMs weathering equations (1) and (2)

	Upper Muschelkalk	Lower Muschelkalk	Upper Buntsandstein	Middle Buntsandstein 2	Middle Buntsandstein 1
Resistance after Gehrt (2008)	1	3	5	5	5
F_0	0.002	0.005	0.010	0.010	0.010
a	0.0010	0.0015	0.003	0.003	0.003
P_a	0.0006	0.0008	0.0020	0.0020	0.002
k_1	4	4	4	4	4
k_2	6	6	6	6	6

10 3.4 Allochthonous deposits

One formative phenomenon of the periglacial deposits in Central Europe is their partly large proportion of not in-situ produced materials. These are designated as "allochthonous" materials consisting of the terrestrial, aeolian sediment loess.

In the absence of real measurement data describing spatially distributed loess deposition rates, a simple model was developed to indicate loess accumulation rates per year for each grid cell. These rates were derived from work done by

15 Frechen et al. (2003), who calculated accumulation rates from loess profiles all over Central Europe. The rates determined

by Frechen et al. (2003) differ from 100 to more than 7000 $\text{g m}^{-2} \text{ year}^{-1}$ for a period from 28 – 18 ka BP resp. 300 to more than 4000 $\text{g m}^{-2} \text{ year}^{-1}$ for a period 13 – 18 ka BP. To apply the discrete accumulation rates to the spatial SaLEM context, the

SAGA module Wind Effect (Windward / Leeward Index, Böhner & Antonic, 2008) is parameterized on the basis of windward and leeward effects derived from a DEM taking into account a prevailing wind direction. In other words the relief

20 information is recalculated to index values dependent on the exposure to the assumed wind direction. As a prevailing wind direction during LGM in Central Europe the direction was set to ENE going back to Roche et al. (2007). The literature values for loess accumulation by Frechen et al. (2003) were translated in thickness per grid cell and stretched on the result of the index calculation (Fig. 5).

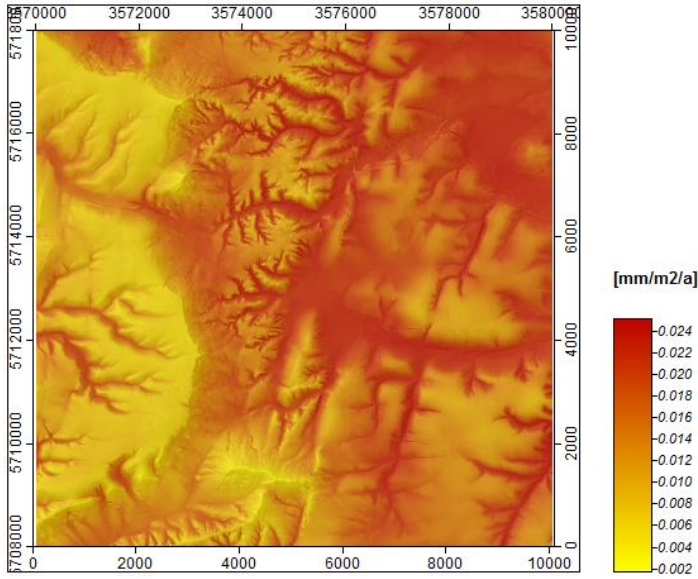


Figure 5. Parameterization of loess accumulation rate for Ebergoetzen: DEM derived parameter windward/leeward effect (Böhner & Antonic, 2008) combined with mass accumulation rates after Frechen et al. (2003) for period 28-18 ka BP.

For each time step in the modelling, the allochthonous input is simulated after the weathering process and before the downhill transport of the material. A spatially differentiated amount of loess material is accumulated on the grid cells. This information is passed to the model for each specific grid cell.

3.5 Transport

The simulation of hillslope sediment transport is modelled as a diffusion process, a concept that is commonly used for sediment flux modelling (e.g. Tucker & Slingerland, 1997, Pelletier, 2008, Anderson & Anderson, 2010, Gillespie, 2011). It relates to Fick's law of diffusion and is used to describe the sediment flow in dependence of time and slope gradient and results in a rate of change in elevation, expressed as

$$\frac{\partial h}{\partial t} = k_d \nabla^2 h \quad (3)$$

where h is the elevation, t is the time, and k_d the hillslope diffusivity coefficient, which determines the speed of the diffusive sediment transport. Because sediment fluxes should be restricted to the unconsolidated regolith cover, the maximum allowed rate of change in elevation has been limited to the regolith thickness. Here SaLEM closely follows the original GOLEM implementation.

While the quantification of sediment transport and its associated denudation and deposition follows a well established approach, it does not give information about the sediment composition. In order to overcome this restriction we developed a

tracer concept for the model. Such tracers represent soil particles, which are released evenly distributed in the regolith layer. The information that a tracer stores is its geographical position, the depth at which it is buried, and the geological unit from which it was released. The closer a tracer is to the surface, the higher is the probability that it becomes moved by diffusive hillslope transport. The decision if a tracer is moved in a simulation time step is made with a depth dependent random function. If a tracer is moved, it follows the direction of the slope aspect. The covered distance is estimated as a function of slope and hillslope diffusivity coefficient. To reflect uncertainties in the tracer path simulation, a degree of randomness can be added to the direction, distance and depth at which it will be deposited again. For each tracer its path can be stored in an additional data set. Further information can be collected about the time and the duration of its transportation (Fig. 6).

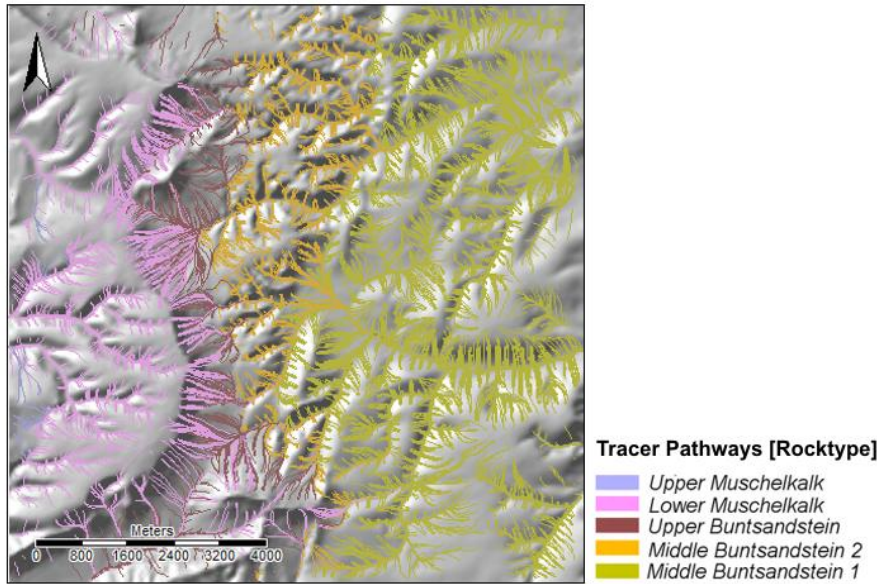


Figure 6. Transport pathways in Ebergoetzen of the virtual tracer particles from the location of their release from the rock via weathering and erosion to the place where the transport stops.

3.6 Model run

A model run is executed for the specified time range using a discrete time step size, typically 100 years. Initializations done before the model run comprise the loading of the climate data base, the validation of weathering equations and the definition of an initial regolith cover. Now the same processing scheme is applied for each time step. At first allochthonous input, if specified, is added to the regolith cover. This also increases the surface elevation. Next step is the bed rock weathering, which will increase the regolith cover without changing the surface elevation. The weathering rate depends on regolith thickness, climate variables and rock type specific equations. Weathering rates are determined in monthly steps for one annual scenario, thus reflecting seasonally changing weathering conditions, and then multiplied with the time step size. Finally the diffusive hillslope transport is simulated.

The repetition of the sub-processes weathering, allochthonous supply, erosion, transport and accumulation leads to a growing regolith layer whose thickness in turn influences the weathering equations via the humped model: initially the weathering rate intensifies, from a certain thickness on it decreases again.

4. Results and evaluation

Results on thickness of regolith are available achieved via simulation of processes such as lithologically differentiated weathering of bedrock, erosion, transport and accumulation, as well as loess material supply from the last 50,000 years. The modeling was carried out for three variants: without initial sediment cover (Fig. 7), with sediment cover of 50 centimeter thickness in general (Fig. 8) and finally with simulation of loess input (Fig. 9) according to accumulation rates proposed by Frechen et al. (2003).

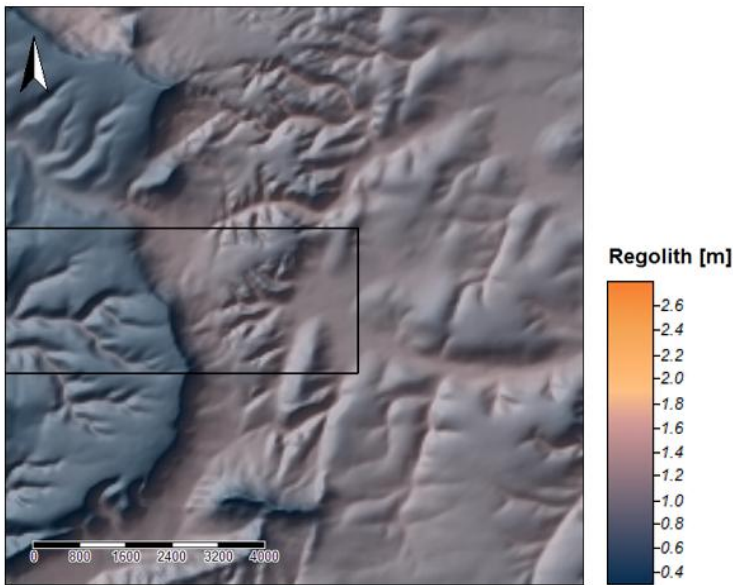
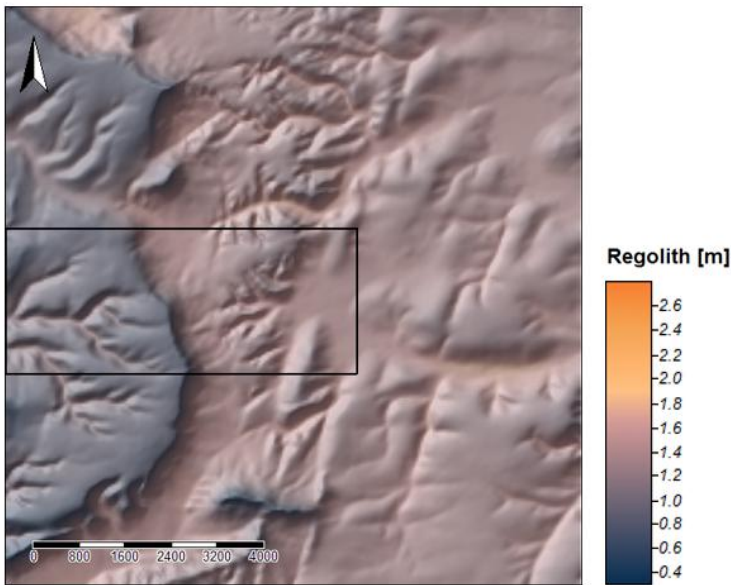


Figure 7: First results of the SaLEM simulation in Ebergoetzen showing distributed regolith thicknesses resulting from 50 ka modeling. The rectangle indicates the area where a first validation of the results was conducted.

These modelling data provide a picture of the spatial differentiation of regolith thickness for the study area ~~(Fig. 7)~~: valley areas are equipped with a massive filling up to several meters, whereas on ridges and nearby to steep slopes the thickness of the regolith tends towards zero. To the East of the study area the total thickness generally increases. Small tributary valleys have fillings thicker than the large main valley (in the center of the area), which drains to the ~~east~~East. Spatial differentiation within the slope areas clearly can be seen. This general picture is shown by all of the three variants, ~~the modeling was carried out for: without initial sediment cover, with sediment cover of 50 centimeter thickness in general (Fig. 8) and finally with~~

~~simulation of loess input according to accumulation rates (Fig. 9) proposed by Frechen et al. (2003).~~ In detail the three variants differ significantly.



5 | **Figure 8.** First results of the SaLEM simulation in Ebergoetzen showing distributed regolith thicknesses resulting from 50 ka modeling with initial 50cm regolith cover. The rectangle indicates the area where a first validation of the results was conducted.

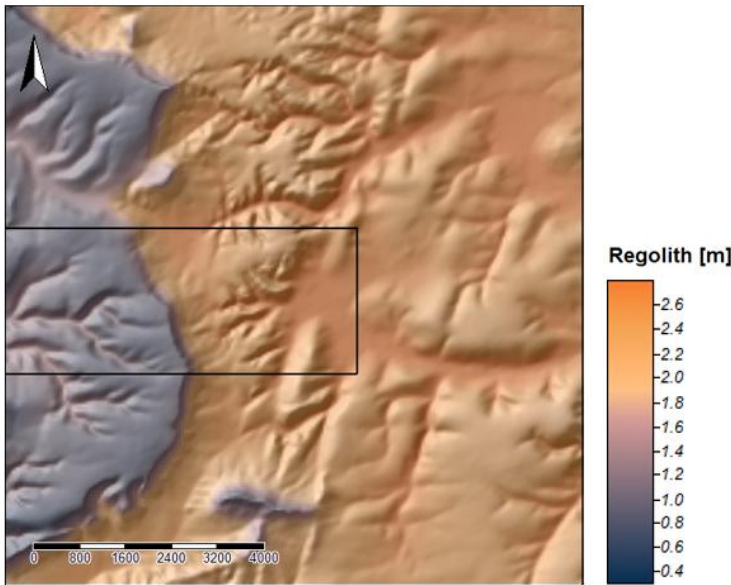


Figure 9. First results of the SaLEM simulation in Ebergoetzen showing distributed regolith thicknesses resulting from 50 ka modeling including allochthonous input (loess). The rectangle indicates the area where a first validation of the results was conducted.

Due to the lack of spatial data on properties of the regolith, ~~which is next to the process understanding the motivation for our model development,~~ the validation of the model results is not easy. ~~There are no measurement data to validate it but hopefully will be collected in the near future (see future tasks). Legacy data in form of maps also do not exist, point measurements for other mapping projects (soil mapping campaigns) are only of limited use. Nevertheless,~~ To give a first impression, a compilation of available drilling point data from soil surveys is used to validate the trend of the results of the model regarding regolith thickness within a limited validation rectangle.

All available soil data for the area from the Lower Saxony State Office for Mining, Energy and Geology (LBEG) were collected (1141 point data within the validation rectangle, source: LBEG, soil profile data base, Fig. 10). However, since these are manually collected data for soil mapping projects, in most cases the total thickness of the regolith cover is not completely recorded. Therefore, the depth of the weathered C-horizon was extracted for each profile although this value was set rather arbitrarily to 100cm for many locations due to the applied method (manual drilling) which cannot drill in deeper.

The depths of the C-horizons of the profiles were averaged for different process areas (separately for the stratigraphic units of the simplified Geological Map (Fig. 10, Elbracht, 2000) and for terrain positions of the simplified Geomorphographic map (Fig. 12, LBEG & scilands GmbH, 2008) and then compared with the generated model data of the version with allochthonous input (Fig. 9), also averaged for the process areas.

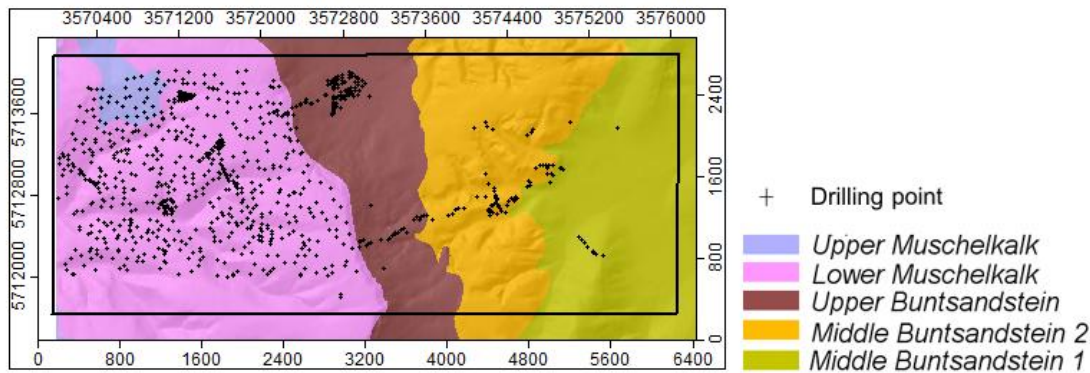
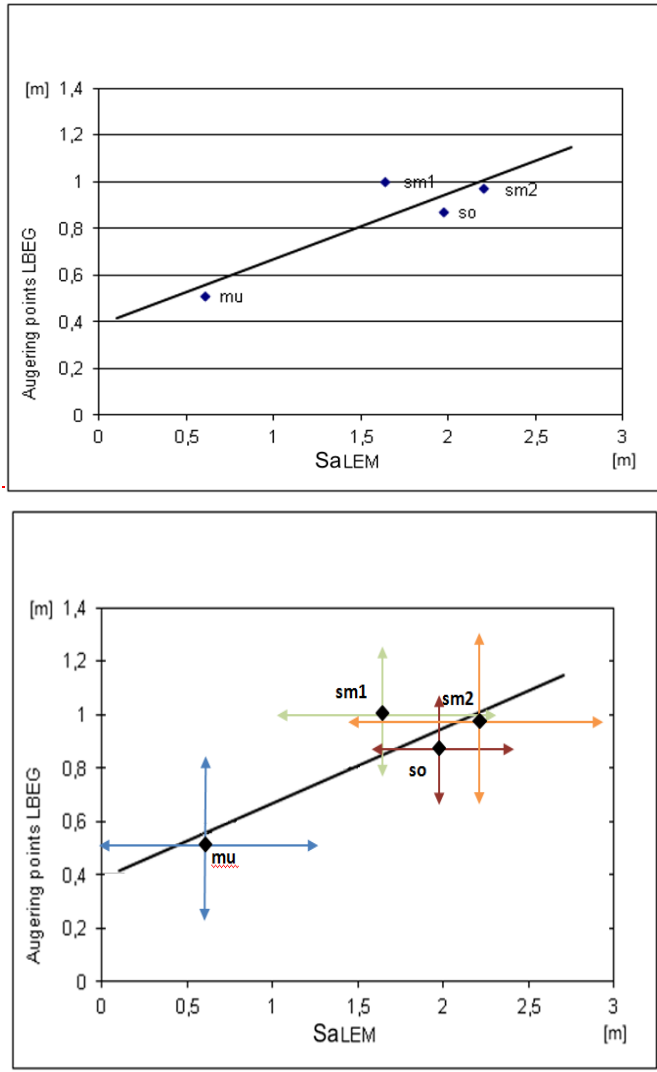


Figure 10. Drilling points (n = 1141) from LBEG soil profile data base on the simplified geological units within the validation rectangle.

The trend read in the profile data could be confirmed: in the process area, which is defined by the occurrence of the stratigraphic unit of the Lower Muschelkalk limestone, the lowest average regolith thickness was modelled. For the three units of Buntsandstein on the other hand substantially higher mean thicknesses appeared. The modelled differentiation between Upper Buntsandstein, Middle Buntsandstein1 and Middle Buntsandstein2 could not be confirmed by the profile data

because here the average values of all the units slightly fluctuate in a similar manner around the at least partly artificial maximum value of the profile depth (Fig. 11).



5 **Figure 11.** The average thickness values [m] of the augering points compared to the average values of the SaLEM model run within the geological units of the validation rectangle. Lower Muschelkalk (mu), Upper Buntsandstein (so), Middle Buntsandstein2 (sm2), Middle Buntsandstein1 (sm1). The arrows indicate the standard deviation values of the respective data sets.

For the hierarchically higher units of the geomorphographic map (bottom areas, slopes, summit areas stand for the relative bottom, middle and top, Fig. 12), also the trends in the profile data are reproduced in the model data: the lowest mean thicknesses was measured and also modelled in the summit areas of the terrain, higher mean thicknesses in slope and bottom area positions (Fig. 13). The fact that most profile data were set to an artificial depth of 100 cm is even more evident here: for slopes and bottom areas SaLEM clearly produces different average thicknesses, in profile data this difference is far less obvious.

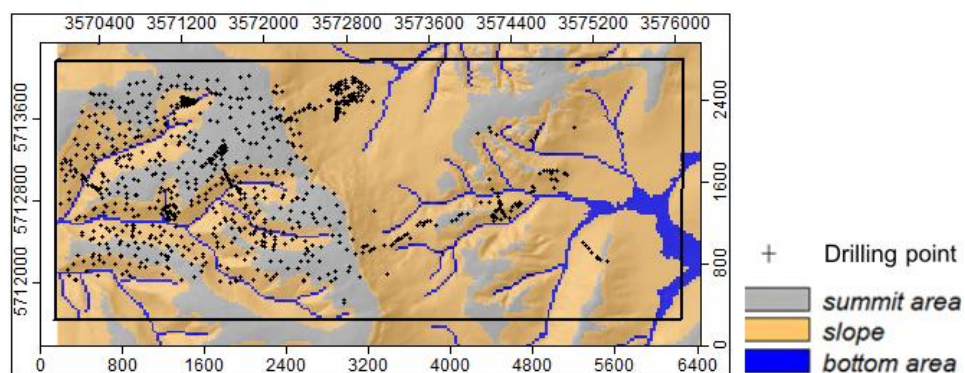
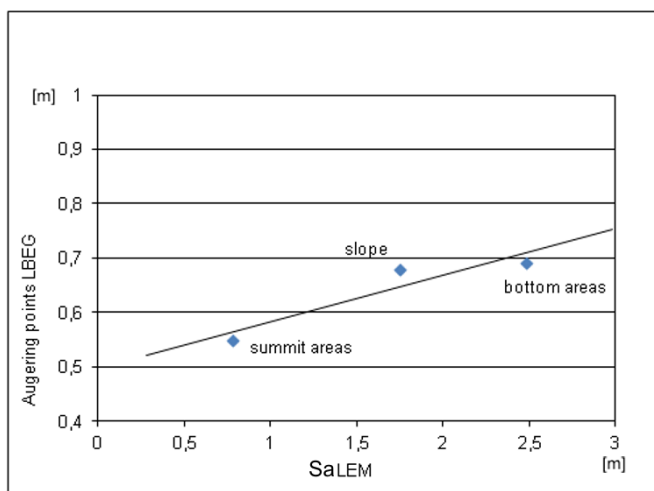


Figure 12. Drilling points from LBEG soil profile data base on the units of the simplified geomorphological map within the validation rectangle.



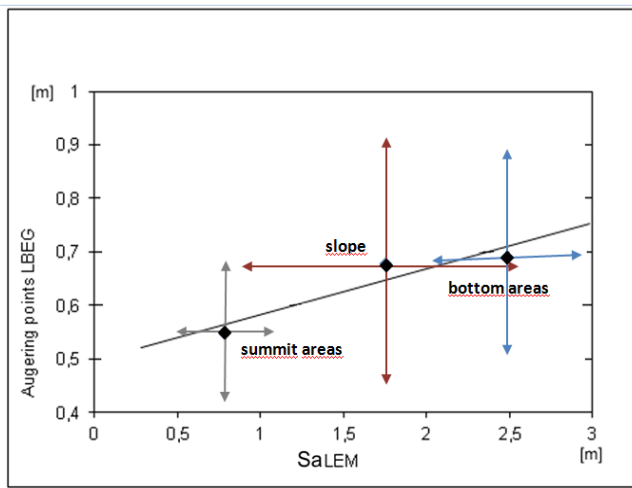


Figure 13. The average regolith thickness values [m] of the drilling points compared to the average values of the SaLEM model run within the units of the geomorphological map of the validation rectangle. The arrows indicate the standard deviation values of the respective data sets.

5 The spatial differentiation of the model data within the individual process areas is not confirmed by the profile data. There are several possible reasons for this:

- The spatial resolution of 50_m grid cell size due to computing performance during the model development makes it impossible to reproduce the natural variability of regolith properties. Of course the natural variability is present in the measured data points instead.
- 10 • The point data usually come with decimeters units, depths between full decimetres rarely occur. The focus is on the value of 100_cm, which was set when the hand drill device could not reach the final depth of the profile.
- The distribution of point data is not regular (Fig. 10). Approx. 74% of all points are located in the area of the Muschelkalk limestone, corresponding to a point density of about 32 points per km², only 15% are in the area of the Upper Buntsandstein (point density approx. 12_points per km²), only 9% of the points fall into the Middle Buntsandstein2 area
- 15 (point density 6 points per km²), in Middle Buntsandstein1 area only 1% (point density 0.6 points per km² only). For the areas of the stratigraphic units of Buntsandstein no spatial differentiation corresponding to the grid size of the model is possible.

As a further result, the transport distances as well as the spatial distribution of the various rock types are assessed (Fig. 6), which is simulated by the tracer pathways. The kilometer-wide paths of Lower Muschelkalk and Upper Buntsandstein

20 material are regarded as particularly plausible in the thicker regolith cover of the valleys. These data will soon be validated by means of deep drilling, but their evaluation is not yet available.

5 Discussion and outlook

The landscape evolution modelling approach (review article, see Tucker & Hancock, 2010) we introduce here is to create spatially differentiated modeling data of soil parent material properties. To make things clear it is not designed to explain the shape of a landscape as universal and comprehensive as Perron et al. (2012) did when he simulated the form of an entire landscape with its feathered valley networks. In this approach ~~here~~ we're looking into the recent past ~~(and hopefully soon into the nearest future)~~ and start from an existing landscape to predict the properties of soil parent materials by simulating a set of processes involved.

Spatio-temporal modeling of these first-order processes of regolith-formation in SaLEM makes use of known physical relationships if possible. When there is no data available for calculation of process variables the modeling relies on parameterizations. For instance data of climate variables are used for weathering equations; the weathering resistance of different rock layers instead is parameterized by rank data from Gehrt (2008). Another example is the assumption about the spatial distribution of loess accumulation rate, which is composed out of a DEM-derived index and the in situ loess accumulation rate determined by Frechen et al. (2003). In later phases of expansion of the model, these parameterizations might be substituted by measured data or data from other sources.

~~A central problem of landscape evolution modeling is the lack of knowledge about the shape of the earth's surface in the geological past. An important part of the model starting situation cannot be derived: the topography of today's landscape may be the result of an infinite number of starting situations. A backward modeling therefore is excluded. In the case of modeling regolith properties, which is controlled by lithological, climatic and topographic conditions, the difference to the current appearance of the landscape for us is seen as less serious.~~

The process of regolith-evolution during the LGM is a complicated intermeshing of many different subprocesses. With SaLEM, initial results are obtained with certain validity. However SaLEM covers only a few sub-processes at this stage. We therefore have concrete ideas for the next steps:

In the near future we will strive for more realistic parameterization of the weathering properties of the lithological units using field (rock mass strength) and laboratory data (mineralogy). This aims to objectify the assessment of the lithologically differentiated weathering resistance. We will further modify the transport functions for different lithological materials and elaborate a suitable approach to dynamically model textural changes in the regolith-evolution. The latter is a challenge, especially for the computational implementation. We will lay emphasis on the calibration of the existing model parameters by considering the results of a deep drilling campaign conducted in 2012 and 2013. Unconsolidated fillings of valleys were sampled at different positions in the area. With these data we have an occasional glimpse into regolith development. Another focus of future research will be the creation of validation data basis. Recent developments of non-invasive geophysical measurements give hope that at least for some areas we can generate validation data to prove our modeling results in the future. To reflect the recognition that also suddenly occurring events affecting the evolution of regolith, we will incorporate existing models of discrete events (landslides, floods).

6 Code availability

The SAGA source code repository, including SaLEM version 1.0, is hosted at <https://sourceforge.net/projects/saga-gis/> using a git repository. Read only access is possible without login. Alternatively, the source code and binaries can be downloaded directly from the files section at <https://sourceforge.net/projects/saga-gis/>. SaLEM has been included here with SAGA version 6.0.0 (DOI: <https://doi.org/10.5281/zenodo.1063915>). Within the source code tree it is located at 'src/tools/simulation/sim_landscape_evolution'. The data for the test site used in this study can be downloaded from the files section too.

References

- 10 Alley R.: The Younger Dryas cold interval as viewed from central Greenland. *Quaternary Science Reviews* 19, 213-226, 2000
- Anderson R. S., Anderson S. P.: *Geomorphology: the mechanics and chemistry of landscapes*. Cambridge University Press, 2010
- Behrens T., Scholten T.: Digital soil mapping in Germany—a review. *Journal for Plant Nutrition and Soil Sciences* 169, 434-443, 2006
- 15 Bloom A. L.: *Geomorphology*. Upper Saddle River, 1998.
- Böhner J.: Modelle und Modellierungen, in: Gebhard H., Glaser R., Radtke U., Reuber P. (eds.): *Geographie*, 533-538, Heidelberg, 2006
- Böhner J., Antonic O.: Land-Surface Parameters Specific to Topo-Climatology, in: Hengl T. & Reuter H.I. (eds.). *Geomorphometry: Concepts, Software, Applications, Developments in Soil Science* 33, Amsterdam, 2008
- 20 Brantley S. B., White T. S., White A. F., Sparks D., Richter D., Prigitz K., Derry, L., Chorover J., Chadwick O., April R., Anderson S., Amundson R.: *Frontiers in exploration of the Critical Zone: Report of a workshop sponsored by the National Science Foundation (NSF), October 24–26, Newark, DE, 2006*
- Bubenzer O., Radtke U.: Natürliche Klimaänderungen im Laufe der Erdgeschichte, in: Endlicher W., Gerstengarbe F.-W.: *Der Klimawandel. Einblicke, Rückblicke und Ausblicke*, Potsdam, 2007
- 25 [Cohen, S., Willgoose, G., Hancock, G.: Soil-landscape response to mid and late Quaternary climate fluctuations based on numerical simulations. *Quaternary Research*, 79, 452–457, 2013](#)
- Conrad O.: *SAGA - Entwurf, Funktionsumfang und Anwendung eines Systems für Automatisierte Geowissenschaftliche Analysen*, Göttingen, 2007.
- 30 Conrad O., Bechtel B., Bock M., Dietrich H., Fischer E., Gerlitz L., Wehberg J., Wichmann V., Böhner J.: *System for Automated Geoscientific Analyses (SAGA) v. 2.1.4. Geosci. Model Dev.*, 8, 1991-2015, 2015

- Cox N. J.: On the relationship between bedrock lowering and regolith thickness. *Earth Surface Processes and Landforms* 5, 271–274, 1980
- Ehlers J., Gibbard P. L. (eds.): *Quaternary Glaciations - Extent and Chronology, Part I: Europe . Developments in Quaternary Science* 2a. Amsterdam, 2004
- 5 Elbracht J.: Geological Map 1:25.000 sheet 4426 Ebergötzen. Niedersächsisches Landesamt für Bodenforschung: Hannover [unpublished], 2000
- Frechen M., Oches E. A., Kohfeld K. E.: Loess in Europe—mass accumulation rates during the Last Glacial Period. *Quaternary Science Reviews* 22, 1835-1857, 2003.
- Gehrt E.: Verwitterungsresistenzen niedersächsischer Festgesteine. [unpublished], 2008
- 10 Gillespie A. R.: Glacial Geomorphology and landforms evolution, in: Singh V D, Singh, P, Haritashya U K (eds.): *Encyclopedia of snow, ice and glaciers*. Dordrecht, 2011.
- Haase D., Fink J., Haase G., Ruske R., Pecsí M., Richter H., Altermann M., Jäger K.-D.: Loess in Europe—its spatial distribution based on a European Loess Map, scale 1:2,500,000. *Quaternary Science Reviews* 26, Issues 9–10, 1301–1312, 2007
- 15 Jenny H.: *Factors of soil formation: a system of quantitative pedology*. New York, 1941
- Kageyama, M., Albani, S., Braconnot, P., Harrison, S. P., Hopcroft, P. O., Ivanovic, R. F., Lambert, F., Marti, O., Peltier, W. R., Peterschmitt, J.-Y., Roche, D. M., Tarasov, L., Zhang, X., Brady, E. C., Haywood, A. M., LeGrande, A. N., Lunt, D. J., Mahowald, N. M., Mikolajewicz, U., Nisancioglu, K. H., Otto-Bliesner, B. L., Renssen, H., Tomas, R. A., Zhang, Q., Abe-Ouchi, A., Bartlein, P. J., Cao, J., Li, Q., Lohmann, G., Ohgaito, R., Shi, X., Volodin, E., Yoshida, K., Zhang, X., and Zheng, W.: The PMIP4 contribution to CMIP6 – Part 4: Scientific objectives and experimental design of the PMIP4-CMIP6 Last Glacial Maximum experiments and PMIP4 sensitivity experiments, *Geosci. Model Dev.*, 10, 4035-4055, <https://doi.org/10.5194/gmd-10-4035-2017>, 2017.
- 20 Kalnay E., Kanamitsu M., Kistler R., Collins W., Deaven D., Gandin L., Iredell M., Saha S., White G., Woollen J., Zhu Y., Chelliah M., Ebisuzaki W., Higgins W., Janowiak J., Mo K. C., Ropelewski C., Wang J., Leetmaa A., Reynolds R., Jenne R., Dennis J. The NCEP/NCAR 40-year Reanalysis Project. *Bulletin of the American Meteorological Society* 77 (3), 437-471, 1996
- Lagacherie P., Mcbratney A., Voltz M. (eds.): *Digital Soil Mapping. An Introductory Perspective*. Amsterdam, 2006.
- LBEG & scilands GmbH: Analysis of DGM25, corrected and calculated by LBEG/scilands GmbH. Data source: DGM5 of land-surveying and geoinformation Lower Saxony (LGN), Hannover, [unpublished], 2008
- 30 Mazur S., Scheck-Wenderoth M.: Constraints on the tectonic evolution of the Central European Basin System revealed by seismic reflection profiles from Northern Germany. *Netherlands Journal of Geosciences* 84: 389, 2005.
- McBratney A. B., Mendonça Santos M. L., Minasny B.: On digital soil mapping. *Geoderma* 117: 3– 52, 2003.
- Ododni N. A.: *Exploring Equifinality in a Landscape Evolution Model*. Southampton, 2007
- Paradigm: GOCAD <http://www.pdgm.com/Products/Gocad/>, 2015

- Pelletier, J. D.: Quantitative modeling of earth surface processes. Cambridge, 2008
- Perron J. T., Richardson P. W., Ferrier K. L., Lapotre M.: The root of branching river networks. *Nature* 492, 100-103. 2012
- Peeters I., Rommens T., Verstraeten G., Govers G., Van Rompaey A., Poesen J., Van Oost K.: Reconstructing ancient topography through erosion modelling. *Geomorphology* 78, 250–264, 2006
- 5 Roche D. M., Dokken T. M., Goosse H., Renssen H., Weber S. L.: Climate of the Last Glacial Maximum: sensitivity studies and model-data comparison with the LOVECLIM coupled model. *Climate of the Past* 3, 205–224, 2007
- [Temme, A. J. A. M., Vanwalleghe, T.: LORICA – A new model for linking landscape and soil profile evolution: Development and sensitivity analysis. *Computers & Geosciences*, 90, 131–143, 2016](#)
- 10 Temme A. J. A. M., Veldkamp A.: Multi-process Late Quaternary landscape evolution modelling reveals lags in climate response over small spatial scales. *Earth Surface Processes and Landforms* 34(4), 573-589, 2009
- Tucker G. E.: Modeling the large-scale interaction of climate, tectonics, and topography, Pennsylvania State University, University Park, PA, 1996
- Tucker G. E., Hancock G. R.: Modelling landscape evolution. *Earth Surface Processes and Landforms* 35, 28–50, 2010
- 15 Tucker G. E., Slingerland R.: Erosional dynamics, flexural isostasy, and long-lived escarpments: A numerical modeling study. *Journal of Geophysical Research* 99, 12229-12243, 1994.
- Tucker G. E., Slingerland R.: Drainage basin responses to climate change. *Water Resources Research* 33 (8), 2031-2047, 1997
- [Vanwalleghe, T., Stockmann, U., Minasny, B., McBratney, A. B.: A quantitative model for integrating landscape evolution and soil formation. *Journal Of Geophysical Research: Earth Surface*, 118, 331–347, 2013](#)