

# Radiative-Convective Equilibrium Model Intercomparison Project

Allison A. Wing <sup>1</sup>, Kevin A. Reed <sup>2</sup>, Masaki Satoh <sup>3</sup>, Bjorn Stevens <sup>5</sup>, Sandrine Bony <sup>4</sup>, and Tomoki Ohno <sup>6</sup>

<sup>1</sup>Florida State University, Tallahassee, FL USA

<sup>2</sup>Stony Brook University, Stony Brook, NY USA

<sup>3</sup>Atmosphere and Ocean Research Institute, University of Tokyo, Kashiwa, Japan

<sup>4</sup>Laboratoire de Météorologie Dynamique, IPSL, CNRS, Paris, France

<sup>5</sup>Max Planck Institute for Meteorology, Hamburg, Germany

<sup>6</sup>Japan Agency for Marine-Earth Science and Technology, Yokohama, Japan

*Correspondence to:* Allison A. Wing (awing@fsu.edu)

**Abstract.** *RCEMIP*, an intercomparison of multiple types of models configured in radiative-convective equilibrium (RCE), is proposed. RCE is an idealization of the climate system in which there is a balance between radiative cooling of the atmosphere and heating by convection. The scientific objectives of *RCEMIP* are three-fold. First, clouds and climate sensitivity will be investigated in the RCE setting. This includes determining how cloud fraction changes with warming and the role of self-aggregation of convection in climate sensitivity. Second, *RCEMIP* will quantify the dependence of the degree of convective aggregation and tropical circulation regimes on temperature. Finally, by providing a common baseline, *RCEMIP* will allow the robustness of the RCE state across the spectrum of models to be assessed, which is essential for interpreting the results found regarding clouds, climate sensitivity, and aggregation, and more generally, determining which features of tropical climate a RCE framework is useful for. A novel aspect and major advantage of *RCEMIP* is the accessibility of the RCE framework to a variety of models, including cloud-resolving models, general circulation models, global cloud-resolving models, single column models, and large-eddy simulation models.

## 1 Introduction

Radiative-convective equilibrium (RCE) has long been used as an idealization of the climate system. In a greenhouse atmosphere convection must balance the radiative heat-loss of the atmosphere making radiative-convective equilibrium the simplest possible description of the climate system (Dines, 1917). For this reason there is a rich history of modeling RCE, mostly as a one dimensional problem (e.g., Möller, 1963; Manabe and Strickler, 1964; Satoh and Hayashi, 1992; Renno et al., 1994). These early studies of RCE helped formulate an understanding of the basic characteristics of climate and the first estimates of climate sensitivity (Manabe and Wetherald, 1967; Ramanathan and Coakley, 1978; Charney et al., 1979). Early work with two-dimensional simulations of RCE studied the relationship between convection and environmental structures (Nakajima and Matsuno, 1988; Held et al., 1993; Sui et al., 1994; Randall et al., 1994; Grabowski et al., 1996). In recent years, as it became possible to perform more computationally intensive numerical simulations of RCE, there has been a revival in the use of RCE to study a variety of problems in tropical meteorology and climate. One common configuration is to simulate RCE with a

three-dimensional numerical model with explicitly resolved convection over domain lengths of 100-1000 km (e.g., Tompkins and Craig, 1998; Bretherton et al., 2005). The RCE state is achieved by prescribing uniform solar insolation and a horizontally uniform boundary condition (constant sea surface temperature (SST) or a slab ocean model) and initializing the model with random noise. There is also a growing body of work employing RCE in general circulation models (GCMs) with parameterized clouds and convection (e.g., Held et al., 2007; Popke et al., 2013; Bony et al., 2016; Silvers et al., 2016).

The popularity of RCE arises from the fact that it remains the simplest way to phrase many important questions about the climate system. RCE has been extensively used to help answer questions such as how the representation of subgrid-scale processes influences the coupling of clouds and convection to the climate system (e.g., Satoh and Matsuda, 2009; Becker et al., 2017), and how this coupling depends on temperature (e.g., Muller et al., 2011; Romps, 2011; Singh and O’Gorman, 2013, 2014, 2015; Seeley and Romps, 2015, 2016; Hohenegger and Stevens, 2016). RCE has been used to study the predictability of mesoscale rainfall (e.g., Islam et al., 1993), tropical anvil clouds (Bony et al., 2016; Seeley et al., 2017; Cronin and Wing, 2017), precipitation extremes (e.g., Muller et al., 2011; Romps, 2011; Muller, 2013; Singh and O’Gorman, 2014; Pendergrass et al., 2016), as well as how the land surface influences the climate state (Rochetin et al., 2014; Becker and Stevens, 2014), or the rectifying effects of surface heterogeneity in the form of islands (e.g., Cronin et al., 2015). RCE has also been used as a background state for tropical cyclone studies (e.g., Nolan et al., 2007; Chavas and Emanuel, 2014; Reed and Chavas, 2015). A central theme arising in many of these studies, and related to the formation of tropical cyclones (Wing et al., 2016) and the Madden-Julian Oscillation (Arnold and Randall, 2015; Satoh et al., 2016), is the role of convective aggregation, which often arises spontaneously in studies of RCE using explicit and parameterized convection (Wing et al. (2017), and references therein). It remains an open question as to how and whether the real atmosphere self aggregates, and to what extent this is important for the properties of the climate system (Bony et al., 2015) in part because these aspects of the simulations appear sensitive to how the models are formulated (e.g., Muller and Held, 2012).

Assessing the structural sensitivity of simulations of RCE is hindered by the absence of a common baseline. Past studies differ in many, seemingly unessential details, which makes them hard to compare and determine which aspects of the simulations are robust. These range from different prescriptions of boundary conditions, such as incoming solar radiation, to different specifications of atmospheric composition, to different treatments of the upper atmosphere, or surface properties such as albedo. To provide context for the many studies that have been performed so far, and to provide a starting point for the many studies to come, a common baseline would be helpful. In this paper we propose such a baseline in the form of a model inter-comparison study, *RCEMIP*. A standard configuration of RCE is a useful framework for model development and evaluation (Held et al., 2007; Reed and Medeiros, 2016), but in addition to providing a fixed point for past and future studies, such an intercomparison can itself address important questions related to RCE, such as establishing which features of the RCE state are consistent across models and which vary across configurations. Already groups are beginning to compare RCE solutions using general circulation models with parameterized physics on large-domains, to simulations on smaller domains with finer grids, to solutions using cloud resolving models (e.g., Hohenegger and Stevens, 2016). No other framework is accessible by so many of the varied models used to study the climate system, as in addition to cloud-resolving models, general circulation models, and single column models, large-eddy simulation models and even Earth System Models of Intermediate Complexity

(Claussen et al., 2002) could be applied to the problem of RCE. Hence through the definition of a common baseline it should be possible to encourage the study of this canonical representation of the climate system using an even wider range of models, which is important for evaluating the generality of previous work on RCE. In addition to the simplicity and accessibility of the RCE framework, its importance lies in its similarities to substantial aspects of the real atmosphere; in general, RCE states are thought to correspond to convective regions over the tropical western Pacific warm pool, in terms of thermal structure (RCE has also been considered to represent the whole tropical belt, in which there is no large-scale vertical motion on average over the tropics and a moist adiabatic thermal structure). There have already been some efforts to consider RCE simulations within a hierarchy of models; for example, Held et al. (2007) and Popke et al. (2013) compared cloud feedbacks between a GCM in a realistic configuration and in RCE and Satoh et al. (2016) compared the structure of tropical convective systems between Earth-like aquaplanet experiments and RCE. A standard configuration of RCE would enable more of these types of comparisons.

Given this backdrop, in what follows we describe the proposed model intercomparison study, *RCEMIP* and more specifically detail the questions it will be used to address. In Sect. 2 we state the main scientific questions that this initiative will address. Subsequent sections specify the experimental design, including the required output and diagnostics. Finally, to give a flavor and better guide to those who wish to participate in this study, in Sect. 5 we present some sample results from three different models.

## 2 Science Objectives

The three themes that *RCEMIP* has been designed for are:

1. **What is the response of clouds to warming and the climate sensitivity in RCE?**
- 20 2. **What is the dependence of convective aggregation and tropical circulation regimes on temperature in RCE?**
3. **What is the robustness of the RCE state, including the above results, across the spectrum of models?**

The first theme of *RCEMIP*, clouds and climate sensitivity, is motivated by the fact that cloud feedbacks are the largest source of uncertainty in estimates of climate sensitivity and depend on processes that are largely parameterized in global climate models (e.g., Boucher et al., 2013). The role of convection in cloud feedbacks is central to a better understanding of global and regional climate changes, as pointed out by the WCRP Grand Challenge on Clouds, Circulation, and Climate Sensitivity (Bony et al., 2015). *RCEMIP*, which includes both CRMs and GCMs, is uniquely situated to determine the response of certain types of clouds to warming, without the complications of topography, latitudinal insolation gradients, and the associated dynamical disturbances. Recent work has suggested a thermodynamic mechanism for a decrease in anvil cloud fraction with warming in several GCMs (Bony et al., 2016) and a CRM (Cronin and Wing, 2017), but the robustness of this response across a wider range of models has yet to be determined. For example, one other CRM finds the opposite response, an increase in anvil cloud fraction with warming (Singh and O’Gorman, 2015). Changes in the amount and height of anvil clouds with warming have strong implications for cloud feedbacks, and the coupling between temperature, cloud amount, and circulation

may contribute to a narrowing of convective areas – both of which could lead to a type of iris effect (Mauritsen and Stevens, 2015; Bony et al., 2016; Byrne and Schneider, 2016, 2017). Given the changes in cloud fraction with warming, the climate sensitivity (or net feedback parameter) of the RCE state can be computed. This is reminiscent of the use of single column model simulations of RCE for the very first estimates of climate sensitivity, but now RCE can be simulated in much more advanced models that allow relative humidity and clouds to vary, including models that allow for the generation of large-scale circulations by self-aggregation. The climate sensitivity of RCE simulations would reflect the fundamental characteristics of each model’s representation of tropical clouds and convection, as opposed to CMIP-type simulations, which include many additional complexities such as ice-albedo feedbacks and interactions between clouds and midlatitude baroclinic eddies. A potentially important factor in determining the climate sensitivity of RCE is the extent to which a given model’s convection self-aggregates and how the aggregation changes with warming. Self-aggregation has been hypothesized to be important for climate and climate sensitivity (Khairoutdinov and Emanuel, 2010; Mauritsen and Stevens, 2015) because both numerical simulations (e.g., Bretherton et al., 2005) and observational analyses (e.g., Tobin et al., 2013) indicate the mean atmospheric state is drier and more efficient at radiating heat to space when convection is more aggregated. Much remains to be understood, however, about how the self-aggregation in idealized simulations is borne out in the real atmosphere (Holloway et al., 2017). The role of self-aggregation in climate is therefore an aspect of climate sensitivity that *RCEMIP* will target.

The manner and extent to which self-aggregation is temperature dependent is strongly related to the impact of aggregation on climate sensitivity but remains unresolved (Wing and Emanuel, 2014; Emanuel et al., 2014; Wing and Cronin, 2016; Coppin and Bony, 2015; Bony et al., 2016; Cronin and Wing, 2017). Therefore, the second theme of *RCEMIP* is about the dependence of the degree of convective self-aggregation on temperature; for instance, whether convection becomes more or less aggregated in a warmer climate. Not only does the degree of self-aggregation have implications for climate feedbacks, changing convective organization has also been shown to be one mechanism for increases in extreme precipitation with warming (Pendergrass et al., 2016). Changes in the amount of organized convection have also been linked to observed regional tropical precipitation increases (Tan et al., 2015). In addition, the fact that self-aggregation generates large-scale overturning circulations allows us to ask the more general question of how tropical circulation regimes change with climate. In CRMs with domain geometries capable of containing multiple self-aggregated regions, there is the additional possibility of examining interactions between clouds, convection, and circulation in a framework that explicitly simulates both convection and the large-scale circulation in which it is embedded, which is a rare combination (Cronin and Wing, 2017). Across both CRMs and GCMs, *RCEMIP* will be able to assess how circulation strength depends on temperature.

The final theme of *RCEMIP*, and the most critical, is the robustness of the RCE state, its changes with warming, and representation of self-aggregation across the spectrum of models. The broader implications of the results from the first two themes, regarding clouds and aggregation, depend in part on our ability to establish a consistent picture of the RCE state; identifying which features and responses are robust across models is essential. The evaluation of the robustness of the RCE state should include a comparison of baseline characteristics, such as profiles of humidity and cloudiness and the radiative cooling rate and mean surface precipitation rate at which equilibrium is reached, but could have a more lasting impact on theories of tropical climate by also including a determination of the universality of theoretical invariances or relationships

found in a single model. For example, relative humidity has been argued to be a function of temperature only by Romps (2014) and radiative flux divergence has been found to be a nearly universal function of temperature (Ingram, 2010; Jeevanjee and Romps, 2017; Cronin and Wing, 2017). Such invariances could simplify thinking about the response of RCE, and perhaps the actual tropics, to warming, but there is a lack of understanding of their robustness across models. In addition, a comparison of the inter-model spread in climate sensitivity of the RCE simulations with the inter-model spread of CMIP6 simulations would be informative. Despite the simplicity of the RCE setup, there is the potential for a wide range of behavior given how essential clouds and convective processes are to determining the RCE state, and the myriad of different ways these processes are represented in models. Further, while multiple common features and mechanisms have emerged across different studies of self-aggregation (Wing et al., 2017), the behavior of self-aggregation of convection across a wide range of models set up in a consistent manner has not been fully characterized. *RCEMIP* will enable us to truly determine the robustness of self-aggregation and its sensitivities, an important step to understanding its role in climate.

### 3 Simulation Design

The experimental design of *RCEMIP* is to require a small set of experiments that are designed to maximize the utility of the *RCEMIP* simulations in answering the questions about clouds, climate sensitivity, and self-aggregation posed above while minimizing the effort required by the modeling groups.

#### 3.1 Required Simulations

We propose the following two sets of simulations to form the basis of *RCEMIP*, each to be performed at three different values of uniform, fixed sea surface temperatures (SST):

1. *RCE\_small*: RCE simulation on small, square domain (for CRMs) or single column (for GCMs)
  - (a) *RCE\_small*295: uniform, fixed SST of 295 K.
  - (b) *RCE\_small*300: uniform, fixed SST of 300 K.
  - (c) *RCE\_small*305: uniform, fixed SST of 305 K.
2. *RCE\_large*: RCE simulation on large, rectangular domain (for CRMs) or global (for GCMs)
  - (a) *RCE\_large*295: uniform, fixed SST of 295 K.
  - (b) *RCE\_large*300: uniform, fixed SST of 300 K.
  - (c) *RCE\_large*305: uniform, fixed SST of 305 K.

The domain specifications are provided in Section 3.3. *RCE\_small* will serve as a spin-up simulation for *RCE\_large* (see Sect. 3.2.3) but will also serve as a control simulation that represents “conventional” RCE without convective self-aggregation (which might occur in *RCE\_large*). The surface temperatures for these simulations have been chosen so that *RCEMIP* spans

a relatively wide range (10 K) of SST near the current climate with a limited number of simulations. Additional, optional simulations at intermediate SSTs or warmer or cooler SSTs could be performed by modeling groups if desired. Models with parameterized convection with the capability also have the option of performing `RCE_small` and `RCE_large` on planar domains.

## 5 3.2 RCE Setup

RCE is simulated in a modeling setting by imposing a homogeneous lower boundary representing the thermodynamic state of a sea surface with a fixed (i.e., spatially uniform) temperature and spatially uniform insolation as a forcing. The model is initialized with the same temperature and moisture sounding at every grid point and zero wind, and convection is generated by prescribing some symmetry-breaking random noise. The model is then run to stationarity, at which time irradiances, precipitation, and other variables have stopped trending up or down and exhibit variability about an approximately constant value. Here, we consider RCE in a non-rotating setting; i.e., the Coriolis parameter,  $f$ , or Earth’s angular velocity,  $\Omega$ , is zero. Recommendations for geophysical constants and parameters are given in Table 1; models should use standard Earth values, following the convention of the Aqua-Planet Experiment (APE; <http://climate.ncas.ac.uk/apc/design.html>).

### 3.2.1 Surface Boundary Condition

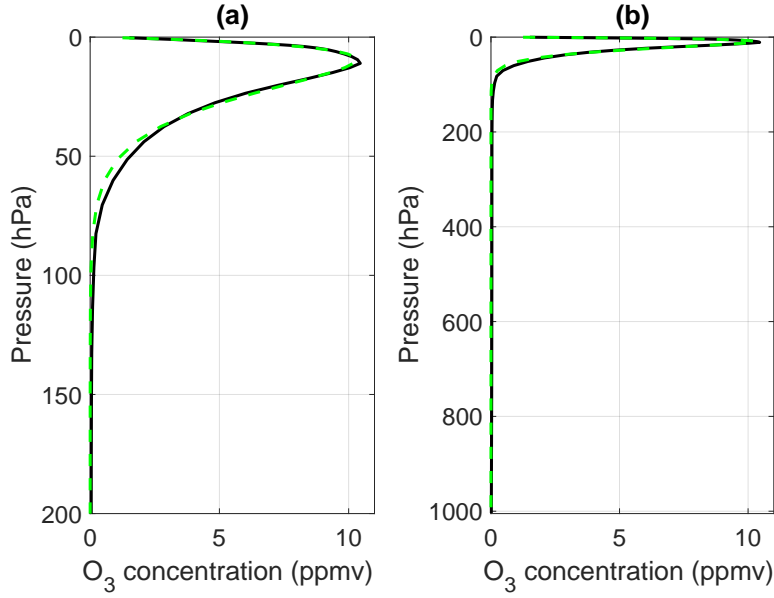
15 The lower boundary condition is to be a spatially uniform, fixed sea surface temperature. If a skin temperature equation is employed, the skin temperature should be equal to the prescribed surface temperature. There is no sea ice and no land.

The surface enthalpy fluxes are to be calculated interactively from the resolved surface wind speed and air-sea enthalpy disequilibrium. Models should compute surface exchange coefficients following their normal formulation, for instance implying stability corrections, gustiness parameterizations, or sea-state dependent roughness formations as is standard for their model tropics. If allowed by a models surface layer formulation, a minimum wind speed of  $1 \text{ ms}^{-1}$  should be enforced (either as  $V = \max(V_{\text{resolved}}, 1)$  or in quadrature as  $V = \sqrt{V_{\text{resolved}}^2 + 1}$ ). We recognize that biases may result from the lack of boundary layer closure in some CRMs, but here ask models to simply use their standard boundary layer scheme, if one exists.

### 3.2.2 Radiative Processes

25 The shortwave and longwave radiative heating rates are to be calculated interactively from the modeled state using a radiation scheme. GCMs that participate in CMIP6 (Eyring et al., 2016) should use the same radiation scheme as in CMIP6.

The climatologies of trace-gases are to be adjusted so that they do not have any longitudinal and latitudinal dependencies, and their values should be fixed according to Table 2. The  $\text{CO}_2$  concentration is to be set to 348 ppmv,  $\text{CH}_4$  is to be 1650 ppbv, and  $\text{N}_2\text{O}$  is to be 306 ppbv, following the convention of the Aqua-Planet Experiment (APE; <http://climate.ncas.ac.uk/apc/design.html>). Chloroflourocarbon (CFC) concentrations are to be set to zero (following Popke et al. (2013)). The ozone climatology is to be an analytic approximation of the horizontally uniform equatorial profile derived from the Aqua-Planet Experiment ozone climatology (Eqn 1, Fig. 1). The ozone volumetric mixing ratio, in units of parts per million, is to be computed from pressure



**Figure 1.** Ozone concentration (ppm) from the Aqua-Planet Experiment (black) and gamma distribution given by Eqn 1 (green-dashed), as a function of pressure above 200 hPa (a), as a function of pressure over the whole atmosphere (b).

using a gamma distribution:

$$O_3 = g_1 * p^{g_2} \exp(-p/g_3) \quad (1)$$

where  $g_1 = 3.6478$ ,  $g_2 = 0.83209$ ,  $g_3 = 11.3515$ ,  $p$  is in hPa, and  $O_3$  is in ppmv.

Aerosol effects are to be ignored by zero-ing the aerosol concentrations. In some GCMs, aerosol effects may be ignored by excluding aerosol from the radiative transfer calculation and fixing the cloud droplet number concentration (we suggest  $N_c = 1.0 \times 10^8 \text{ m}^{-3}$ ) and ice crystal number concentration (we suggest  $N_i = 1.0 \times 10^5 \text{ m}^{-3}$ ) within the microphysics parameterizations, following Reed et al. (2015). Cloud optical properties should be determined by the microphysics parameterization. If specification of number concentrations or condensation nuclei is required (as in two-moment schemes), GCMs should use the Aqua-Planet configuration of their microphysics. For those models that do not have an aquaplanet configuration (i.e., CRMs), if the microphysics scheme uses fixed cloud droplet and ice crystal number concentration, we recommend these be set to the above values  $N_c$  and  $N_i$ . For those schemes that instead specify cloud condensation nuclei (CCN) and ice nuclei (IN), or CCN and IN sources, they should set values consistent with the above specifications of  $N_c$  and  $N_i$ .

Importantly, the incoming solar radiation is to be adjusted such that every model grid point sees the same incident radiation. It is to be spatially uniform and constant in time; there is to be *no* diurnal cycle and *no* seasonal cycle. A reduced solar constant of  $551.58 \text{ W/m}^2$  and a fixed zenith angle of  $42.05^\circ$  should be used (Table 2); these values yield an insolation of  $409.6 \text{ W/m}^2$ , equal to the tropical ( $0^\circ - 20^\circ$ ) annual mean. The zenith angle is equal to the average insolation-weighted zenith angle between the equator and  $20^\circ$  (c.f. Cronin, 2014). The surface albedo is to be fixed at a value of 0.07, corresponding to its insolation

weighted globally averaged value. As an aside, we note that if simulations with interactive surface temperature are done in the future, an implied ocean heat transport (“Q-flux”) will need to be applied to prevent a runaway greenhouse effect with this value of insolation. A formulation that adjusts for heat export through the ocean is preferred to one that reduces the solar constant to mimic the combined heat transport of the ocean and atmosphere because this is believed to better represent the competition between longwave cooling and water vapor absorption in the lower troposphere.

### 3.2.3 Initialization Procedure

RCE\_large, the large domain/global set of simulations, are to be initialized from the horizontally-averaged equilibrium sounding of the corresponding RCE\_small small domain/single column simulation. We request that RCE\_small be initialized with the below analytic moisture (Eqn. (2)), temperature (Eqn. (4)) and pressure (Eqn. (5)) profile and zero wind. The analytic sounding approximates the moist tropical sounding of Dunion (2011), enabling the use of an observed sounding while eliminating the need for interpolation to different vertical grids. The parameter values for the analytic profile are found in Table 2. The analytic initial specific humidity profile  $q(z)$  is given, as a function of height ( $z$ ) as

$$q(z) = q_0 \exp\left(-\frac{z}{z_{q1}}\right) \exp\left[-\left(\frac{z}{z_{q2}}\right)^2\right] \text{ for } 0 \leq z \leq z_t \quad q(z) = q_t \text{ for } z > z_t \quad (2)$$

where  $z_t = 15$  km approximates the tropopause height as seen in the Dunion (2011) sounding;  $q_0$  is the specific humidity at the surface ( $z = 0$  km), which is taken to be 12 g/kg for the simulation at 295K, 18.65 g/kg for the simulation at 300 K, and 18 g/kg for the simulation at 305 K; and  $q_t$  is the specific humidity in the upper atmosphere set to a constant value of  $10^{-11}$  g/kg. The values of  $q_0$  have been adjusted so that the relative humidity is near 80% in the lower atmosphere for each SST value. The constant  $z_{q1}$  is set to 4000 m and the constant  $z_{q2}$  is set to 7500 m. The analytic initial virtual temperature profile is given by

$$T_v(z) = T_{v0} - \Gamma z \text{ for } 0 \leq z \leq z_t \quad T_v(z) = T_{vt} \text{ for } z > z_t \quad (3)$$

where the virtual temperature at the surface  $T_{v0} = T_0 (1 + 0.608q_0)$ , the virtual temperature lapse rate  $\Gamma$  is  $0.0067 \text{ Km}^{-1}$ , and the virtual temperature in the upper atmosphere is the constant  $T_{vt} = T_{v0} - \Gamma z_t$ .  $T_0$  is to be set to the SST value for each simulation (295 K, 300 K, or 305 K, respectively). The analytic initial temperature profile  $T(z)$  is thus

$$T(z) = \frac{T_v(z)}{1 + 0.608q(z)}. \quad (4)$$

The initial pressure profile  $p(z)$  is computed using the hydrostatic equation and ideal gas law:

$$p(z) = p_0 \left(\frac{T_{v0} - \Gamma z}{T_{v0}}\right)^{g/(R_d \Gamma)} \text{ for } 0 \leq z \leq z_t \quad p(z) = p_t \exp\left(-\left[\frac{g(z - z_t)}{R_d T_{vt}}\right]\right) \text{ for } z > z_t \quad (5)$$

where

$$p_t = p_0 \left(\frac{T_{vt}}{T_{v0}}\right)^{g/(R_d \Gamma)} \quad (6)$$

and where  $p_0$  is the surface pressure 1014.8 hPa, and  $R_d$  and  $g$  are given in Table 1. Code to compute this sounding from a specified set of height or pressure levels is provided on the RCEMIP website (<http://myweb.fsu.edu/awing/rcemip.html>). This



analytic sounding shown in Fig. 2 is to be used *only* to begin the small domain/single column model simulations (RCE\_small), not the large domain/global simulations (RCE\_large). It is worth noting that this analytic setup is similar to that from Reed and Jablonowski (2011) used to initialize tropical environments in GCMs.

RCE\_large, the large domain/global simulations, should be initialized with average equilibrium profiles from the RCE\_small simulations (at the corresponding SST). These equilibrium profiles should be derived by taking a horizontal and time mean of the RCE\_small simulations, over the last 30 days of the 100-day simulation (i.e., after the simulation has reached statistical equilibrium). By starting from an equilibrium profile from the more computationally efficient RCE\_small simulations, each RCE\_large simulation will begin from that model’s own RCE state and thus eliminate the necessity of a lengthy spin-up period with large adjustments. Self-aggregation (which can be thought of as the instability of the RCE state; Emanuel et al., 2014) would be manifest as a large divergence away from the initial state. Care should be taken to ensure the settings of the RCE\_small simulations match those of the RCE\_large simulations.

For both RCE\_small and RCE\_large, symmetry is to be broken by prescribing a small amount of thermal noise in the five lowest layers (an amplitude of 0.1 K in the lowest layer, decreasing linearly to 0.02 K in the fifth layer). This will allow convection to start within the first few hours of each simulation.

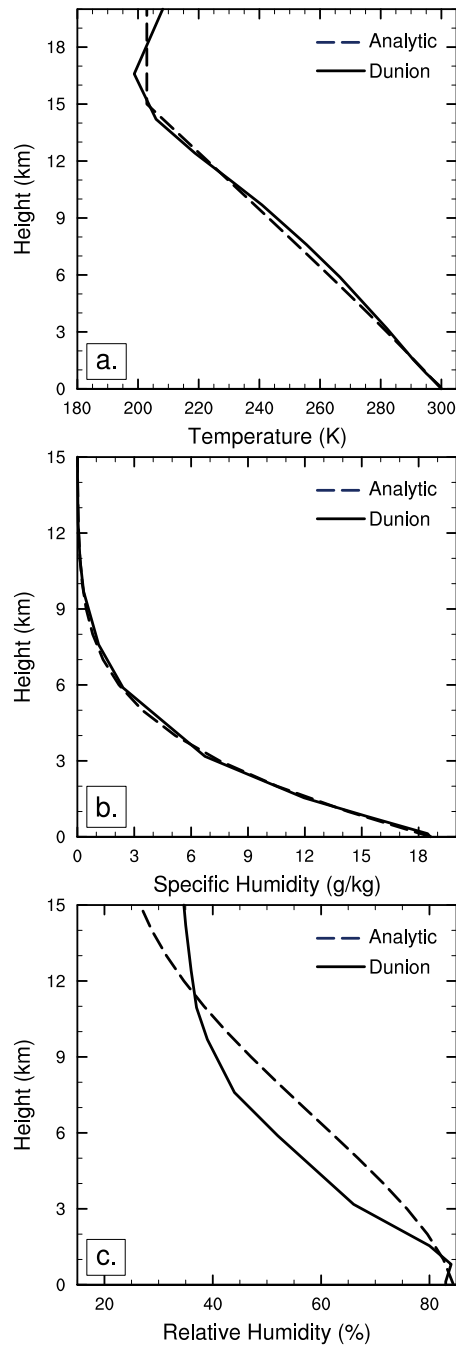
We note that this procedure implies that stratospheric water vapor will be initialized with very small, but non-zero, specific humidities. It is unlikely that the stratospheric water vapor will be properly equilibrated by the end of the *RCEMIP* simulations, and so it is possible that this could affect the sensitivity of radiative fluxes to warming. The stratospheric water vapor will thus need to be monitored and assessed in the evaluation of the simulations.

### 3.3 Model-type specific settings

The RCE setup described above is to be employed across all models, but we recognize that the domain and numerical details will necessarily be different between CRMs and GCMs, which we describe below. CRMs will employ a limited area planar domain, while GCMs will run on the sphere. We encourage modeling groups (with the capability) to simulate both RCE on the sphere and on the plane, which will help bridge the gap between CRMs and GCMs. Global cloud resolving models (GCRMs) are an additional model type that may participate in *RCEMIP* and represent an important midpoint between CRMs and GCMs. Participation of single column models (SCMs), including those not tied to a parent GCM, is also possible. Below, we specify domain sizes and grid spacings for the required simulations, but also encourage optional additional simulations with other grid spacings. In particular, we encourage large eddy simulations (LES) with sub-kilometer grid spacings (see details in Sect. 3.3.2).

#### 3.3.1 CRMs

For all experiments, cloud resolving model (CRM) simulations, that is, model simulations with explicit convection run on a limited-area planar domain, are to employ a three-dimensional domain with doubly periodic lateral boundary conditions. The RCE\_small simulations are to employ a square domain of  $\sim 100$  km length in each horizontal dimension and a horizontal grid spacing of  $\sim 1$  km, which approximates the size of a GCM grid box.



**Figure 2.** Comparison of the analytic vertical profiles at 300 K to the observed Dunion (2011) moist tropical soundings of (a) temperature, (b) specific humidity and (c) relative humidity (over liquid).

The `RCE_large` simulations are to use a horizontal grid spacing of  $\sim 3$  km, to resolve deep convection and cloud systems but reduce the computational cost. An elongated channel geometry of  $\sim 6000$  km in the zonal direction and  $\sim 400$  km in the meridional direction (an aspect ratio of approximately 16:1) will allow for the possibility of multiple convectively active regions (if the convection self-aggregates) and the development of large-scale circulations while still simulating three-dimensional convection. Self-aggregation is sensitive to domain size and other numerical details in square geometries (Muller and Held, 2012), but may be more robust in domains with elongated geometries (Wing and Cronin, 2016); this will make comparison across models easier.

The vertical grid will be stretched with at least 74 vertical levels with a model top no lower than 33 km and a sponge layer in the top model layers to damp gravity waves, following a given models usual prescription. Table 3 indicates the recommended vertical grid. The simulations should be run for at least 100 days.

### 3.3.2 GCMs

General circulation models (GCM) that is, models with parameterized convection, should first be run in single column mode for `RCE_small`, from which the equilibrium profile used to initialize the `RCE_large` global simulations is derived.

For `RCE_large`, GCM simulations should employ a three-dimension spherical global domain using whichever dynamical core and grid is standard for each given model. Each model should use the horizontal resolution and vertical coordinate and grid of one of their CMIP6 configurations. The simulations should be run for at least 3 years ( $\sim 1000$  days). If the GCM has the capability to run in a planar configuration, it should also be run on the CRM grid described in Sect. 3.3.1, but with the GCM grid spacing and physics parameterizations.

### 3.3.3 GCRMs

Global cloud resolving models (GCRMs), or models with explicit convection run on a non-rotating sphere, are an important category bridging between CRMs and GCMs. Ideally, GCRMs should be run with the same grid spacing as CRMs and the same domain size as GCMs; that is, 3km resolution and the real Earth radius  $R_E$ , respectively. Although recently more computer resources have become available for running GCRMs at such resolutions, we opt to define a more moderate specification of GCRM experiments such that more research groups running GCRMs are able to join *RCEMIP*. We propose two options: GCRM1: arbitrary horizontal resolution for the sphere with the Earth radius, and GCRM2:  $\sim 3$  km horizontal grid spacing for an arbitrary radius of the sphere. Required integration time is the same as that of CRMs (100 days), and the other settings are also the same as CRMs or GCMs, as appropriate.

In practice, relatively coarser resolutions than 3 km are used from GCRMs, though the resolution required to “resolve” clouds explicitly is ambiguous. Resolutions of 7 km and 14 km are frequently used for NICAM, and even coarser resolutions have been used without convective parameterizations in NICAM (Yoshizaki et al., 2012; Takasuka et al., 2015) and other models (e.g., Webb et al. (2015); Becker et al. (2017)). In addition, the definition of the horizontal resolution depends on grid structure and details of discretization which varies among GCRMs, so we recognize that it may not be possible for all groups to use precisely the same resolution. If a smaller Earth radius is used, it can be  $R_E/2$ ,  $R_E/4$ ,  $R_E/8$ , or  $R_E/16$  and so on (about

3200 km, 1600 km, 800km, or 400km, respectively). The reduction of the Earth’s radius for global RCE studies has also been used in GCMs at hydrostatic scales (Reed and Medeiros, 2016).

The GCRM `RCE_large` simulations should be initialized from a non-aggregated state, which can be obtained either from a simulation on a much smaller horizontal domain (i.e., less than 200 km) or a simulation with horizontally homogenized radiative heating rates. We encourage GCRM groups to contact the *RCEMIP* organizers to discuss appropriate model setups and coordinate with other groups.

### 3.3.4 SCMs

Single column models (SCMs), or models with parameterized convection and a single grid column (no circulation), should be initialized using the analytic sounding described in Sect. 3.2.3, and should use whatever vertical grid is standard. If run in tandem with a parent GCM, care should be taken to ensure the settings and parameterizations are the same as in the global model. The simulations should be run for at least 3 years ( $\sim 1000$  days). While SCM simulations are not able to address questions about convective aggregation itself, they may be compared to a parent GCM to determine the impact of convective aggregation on the RCE state (should aggregation occur in the global model). SCM simulations may also be compared to the other `RCE_small` simulations (that is, to other SCMs and to non-aggregated small-domain CRM or LES simulations), to determine the robustness of the RCE state and the effectiveness of the SCM convective parameterization.

### 3.3.5 LES

Large eddy simulations (LES), that is, models with explicit convection and sub-kilometer grid spacings that resolve the energy containing "large" turbulent eddies, may participate in *RCEMIP* by providing a set of 50-day simulations on a small square domain of  $\sim 100$  km length in each horizontal dimension with a horizontal grid spacing of  $\sim 50$ -100 m and  $\sim 100$  vertical levels. The setup is similar to the CRM set-up except any boundary layer parameterization should be turned off and any LES subgrid model should be turned on. The LES model may be initialized from the analytic sounding provided in Sect. 3.2.1, so that it can be compared to the corresponding `RCE_small` at 1 km grid spacing. We encourage LES modelers to contact the *RCEMIP* organizers to discuss appropriate model setups and facilitate coordination with other groups.

## 4 Output Specification

We request output following the conventions of CMIP6 (see <http://clipc-services.ceda.ac.uk/dreq/index.html> for variable descriptions). If possible, the output should be “CMOR-ized”, such that the output variable names and units are the same as in CMIP6. All variables should be saved for the entirety of each `RCE_small` and `RCE_large` simulation. For CRMs, the variables should be output on the model levels and on the native x-/y- grid. For GCMs, the variables should be output on model levels and the native grid (groups may additionally interpolate to the standard CMIP6 pressure levels if they desire). If the native GCM grid is not latitude-longitude, then the output should also be interpolated to a latitude-longitude grid. The output

format should be NetCDF, and will be uploaded to a shared data server, which will facilitate analysis and comparison of the simulations.

## 4.1 Variables

Table 4 indicates the list of one-dimensional statistics and domain-averaged profiles that are to be computed and output as hourly averages. The first half of the table is variables that are profiles (function of  $z$  and  $t$ ) while the second half is variables that are only a function of time. The italicized variables are non-standard outputs, all others are standard CMIP6 output. The condensed water path, *clwvi\_avg*, includes condensed (liquid + ice) water, and includes precipitating hydrometeors only if the precipitating hydrometeors affect the calculation of radiative transfer in the model. The ice water path, *clvi\_avg*, includes precipitating frozen hydrometeors only if the precipitating hydrometeors affect the calculation of radiative transfer in the model. The vertical coordinate and time coordinate should also be output. Relative humidity (*hur\_avg*) should be computed with respect to liquid and ice, according to each model’s microphysics scheme. We recommend that the Bolton formulation for equivalent potential temperature (*thetae\_avg*) be used (Bolton (1980), his equation 43).

Table 5 indicates the list of two-dimensional variables (functions of  $x$ ,  $y$ , and  $t$ ) to output, as hourly averages. The italicized variables are non-standard outputs, all others are standard CMIP6 output. The starred variables are outputs for CRMs only. The variables with a  $(-)^!$  symbol are outputs for GCMs only. Each model should output one or the other of the variables indicated with a symbol, depending on if they are in height (^) or pressure-based (~) coordinates). The horizontal coordinates and time coordinate should also be output.

Table 7 indicates the list of three-dimensional variables to output, as instantaneous 6-hourly snapshots. It is optional to upload these variables to the shared data server (we suggest uploading the last 25 days of 3D output), but the 3D variables *must* be saved and stored locally by each modeling group. The italicized variables are non-standard outputs, all others are standard CMIP6 output. The variables with a  $(-)^!$  symbol are outputs for GCMs only. Note that each model should output omega *or* vertical velocity, and geopotential height *or* pressure, depending on whether the model is in pressure-based or height coordinates. Generally CRMs are in height coordinates and GCMs are in a pressure-based coordinate such as hybrid sigma-pressure levels. Each model should output one or the other of the variables indicated with a symbol, depending on if they are in height (^) or pressure-based (~) coordinates). The horizontal, vertical, and time coordinates should also be output.

## 4.2 Diagnostics

### 4.2.1 Cloud Fraction

We request the diagnosis of a global cloud fraction profile that includes all clouds and is the fraction of the entire domain covered by cloud at a given height (it is a function of  $z$  and  $t$ ). The presence of a cloud should be defined by an appropriate threshold value of cloud condensate (for CRMs,  $1 \times 10^{-5}$  g/g, or 1% of the saturation mixing ratio over water, whichever is smaller) or output from cloud parameterizations. This variable should be output along with the other 1D variables (Table 4)

under the variable name “cldfrac\_avg”, for all simulations. For GCMs, we also request the output of a total cloud fraction for each grid column as a 2D variable (Table 5) under the variable name “cl”, which is a function of  $x, y$ , and  $t$ .

#### 4.2.2 Moist Static Energy Budgets

We request that each modeling group estimate the moist static energy budget, as accurately as is possible. Specifically, we request the diagnosis and output of the additional 2D instantaneous variables listed in Table 6. This (along with the other 2D variables) will enable the quantification of the physical mechanisms related to self-aggregation (using the moist static energy variance budget as in Wing and Emanuel (2014)).

Frozen moist static energy is given by  $h = c_p T + gz + L_v q + L_f q_{ice}$ . The values of  $c_p$ ,  $g$ ,  $L_v$ , and  $L_f$  used by the model formulation should be used to compute  $h$ .  $q_{ice}$  is the mass fraction of cloud ice. The mass-weighted vertical integral of frozen moist static energy (fmse) is given by:

$$\hat{h} = \int_0^{z_{\text{top}}} (c_p T + gz + L_v q + L_f q_{ice}) \rho dz, \quad (7)$$

or, in pressure coordinates,

$$\tilde{h} = \frac{1}{g} \int_{p_{\text{top}}}^{p_{\text{sfc}}} (c_p T + gz + L_f q_{ice}) dp. \quad (8)$$

Care should be taken to make sure the same limits of integration are used at all times/locations. The mass-weighted vertical integral of horizontal advective tendency of frozen moist static energy (hadvfmse) is given by

$$\int_0^{z_{\text{top}}} \left( u \frac{\partial h}{\partial x} + v \frac{\partial h}{\partial y} \right) \rho dz \quad (9)$$

and the mass-weighted vertical integral of the vertical advective tendency off frozen moist static energy (vadvfmse) is given by

$$\int_0^{z_{\text{top}}} w \frac{\partial h}{\partial z} \rho dz. \quad (10)$$

Ideally, frozen moist static energy would be diagnosed online and each model’s advection scheme used to advect it, but if this is not possible we ask that groups make their best effort to estimate these terms. The spatial variance of the mass-weighted vertical integral of frozen moist static energy is computed using the squared anomalies from the horizontal mean of the mass-weighted vertical integral of moist static energy ( $\hat{h}$ ). Its tendency (tnfmsevar) is given by

$$\frac{\partial}{\partial t} \left( \int_0^{z_{\text{top}}} h \rho dz \right)^{\prime 2} \quad (11)$$

where  $'$  indicates an anomaly from the horizontal mean.

### 4.2.3 Aggregation Metrics

We expect that the phenomenon of self-aggregation may occur in some simulations, and therefore request the diagnosis of the following metrics that may be used to characterize the degree of aggregation. Code for these (and other) diagnostics will be provided on the RCEMIP website (<http://myweb.fsu.edu/awing/rcemip.html>).

5

**1. Organization index ( $I_{\text{org}}$ ):**  $I_{\text{org}}$  was introduced by Tompkins and Semie (2017) as an index of aggregation in CRM simulations based on the distribution of nearest neighbor distance between convective entities. If the system exhibits random convection behaving as a Poisson point process,  $I_{\text{org}}$  would be equal to 0.5. Therefore, values of  $I_{\text{org}}$  greater than 0.5 indicate aggregated convection, with higher values indicating a higher degree of organization. Tompkins and Semie (2017) used a vertical velocity threshold of  $1 \text{ ms}^{-1}$  at 730 hPa to define updraft grid cells in CRM simulations of self-aggregation. Cronin and Wing (2017) compared using a vertical velocity threshold and a cloud top temperature threshold to define  $I_{\text{org}}$  in simulations of self-aggregation and found that, while the absolute values of  $I_{\text{org}}$  differed, their tendencies were the same. Therefore, given that *RCEMIP* includes both CRM and GCM simulations and that a vertical velocity threshold may not be appropriate for GCM simulations, here we suggest defining convective grid cells as grid boxes with values of outgoing longwave radiation less than  $173 \text{ Wm}^{-2}$ .

**2. Subsidence fraction (SF):** The degree of aggregation can be characterized by the fractional area of the globe covered by large-scale subsidence in the mid troposphere ( $w < 0$  or  $\omega > 0$  at 500 hPa), referred to as the subsidence fraction (SF) (Coppin and Bony, 2015). SF is less than 0.6 when convection is unorganized and greater than 0.6 when it is aggregated. For CRM simulations, the vertical velocity at 500 hPa should be averaged over one day and over a suitably large area ( $\sim 100 \text{ km}$ , to approximate the size of a GCM grid cell).

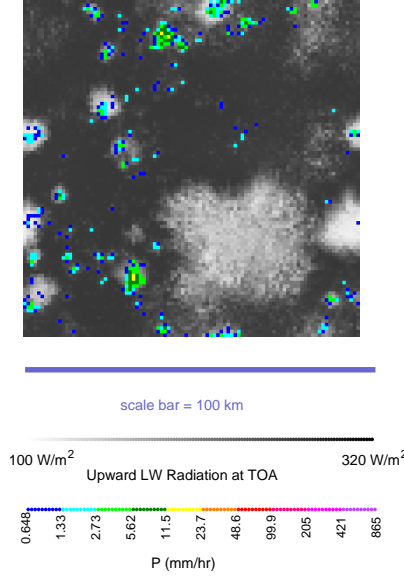
## 5 Sample Results

Table 8 shows a preliminary list of models that are confirmed to participate in *RCEMIP*. We expect this list to grow with participation from other modeling groups and scientists across the world.

Several preliminary simulations using the *RCEMIP* configuration have been performed using the System for Atmospheric Modeling (SAM), version 6.8.2 (Khairoutdinov and Randall, 2003), a CRM, NICAM, version 15, a GCRM (Satoh et al., 2014), and the Community Atmosphere Model (CAM), version 5 (Neale et al., 2012), a GCM. We show here sample results from those test simulations as an example of what the *RCEMIP* simulations might look like; this is not intended as a comprehensive comparison.

Figures 3-7 show example results from a cloud-resolving model simulation of RCE, using SAM with the settings configured as described in Sect. 3.3.1, (with the exception of the  $q_0$  values in the analytic profiles used to initialize the `RCE_small` simulations at 295 K and 305 K;  $q_0 = 18.65 \text{ g/kg}$  was used for all simulations shown here). Figure 3 shows outgoing longwave

Cloud Top Temperature and Precipitation, Day 90.7083

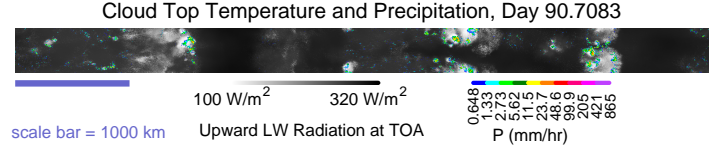


**Figure 3.** Hourly average outgoing longwave radiation (gray shading) and precipitation (color shading) in small domain SAM simulation at  $T_s = 300\text{K}$ .

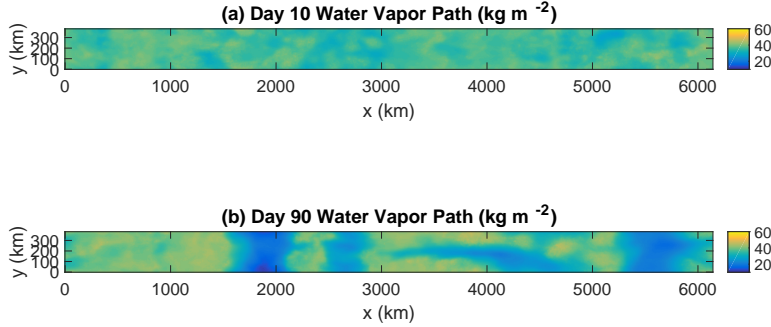
radiation (indicating deep convective clouds) and precipitation rate from the end of a `RCE_small` simulation at 300 K; the convection is quasi-random in space and time. Figure 4 shows outgoing longwave radiation and precipitation rate from a `RCE_large` simulation at 300 K. The convection is aggregated into several large clusters. Self-aggregation is characterized by the development of anomalously moist and dry regions, as can be seen by plots of daily mean water vapor path at day 10 (Fig. 5a) and day 90 (Fig. 5b) of the large-domain SAM simulation. This does not occur in the small domain simulation (Fig. 6); while the domain dries out slightly, the daily mean water vapor path is spatially homogenous. The moist static energy variance budget can be used to diagnose the physical mechanisms contributing to self-aggregation (Fig. 7). The domain average moist static energy variance increases over two orders of magnitude over the course of the simulation, indicating the moistening of moist areas and drying of dry areas (Fig. 7a). Figure 7b shows the contributions of different feedbacks to that growth in moist static energy variance; in this case, it is the surface flux and longwave radiation feedbacks.

Figure 8 shows an example result from a global simulation of RCE with explicit convection, using NICAM in a global, non-rotating, spherical configuration with real Earth radius and a 14-km horizontal grid spacing. Figure 8 shows a snapshot of outgoing longwave radiation (OLR) and precipitation rate, which is similar to Figs. 3-4. The convection has spontaneously organized into clusters. Differences in aggregation properties, such as cluster sizes, can be seen between the results shown in Fig. 4 and 8, which may stem from the domain geometry, the horizontal resolution, or other details, as mentioned in Sect. 3.3.1. Note that, in this example simulation, slightly different values of the solar constant, zenith angle, surface albedo, and minimum





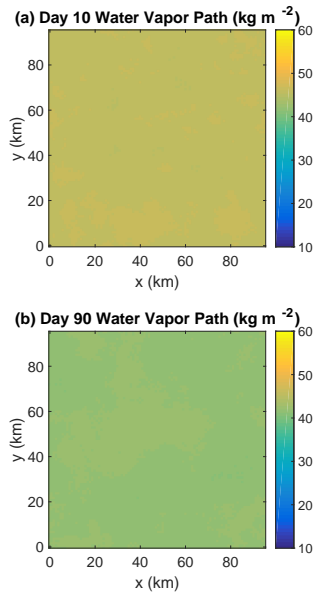
**Figure 4.** Hourly average outgoing longwave radiation (gray shading) and precipitation (color shading) in large domain SAM simulation at  $T_s = 300\text{K}$ . Note that the scale bar is an order of magnitude larger than in Figure 3.



**Figure 5.** Daily mean water vapor path (computed from hourly averages) at day 10 (a) and day 90 (b) of large domain SAM simulation at  $T_s = 300\text{ K}$ .

wind speed in the surface flux calculation were used than those described in the *RCEMIP* protocol ( $434\text{ Wm}^{-2}$ ,  $0^\circ$ , and  $2\text{ ms}^{-1}$ , respectively). The simulation was initialized from zonally-averaged profiles of a coarser resolution simulation.

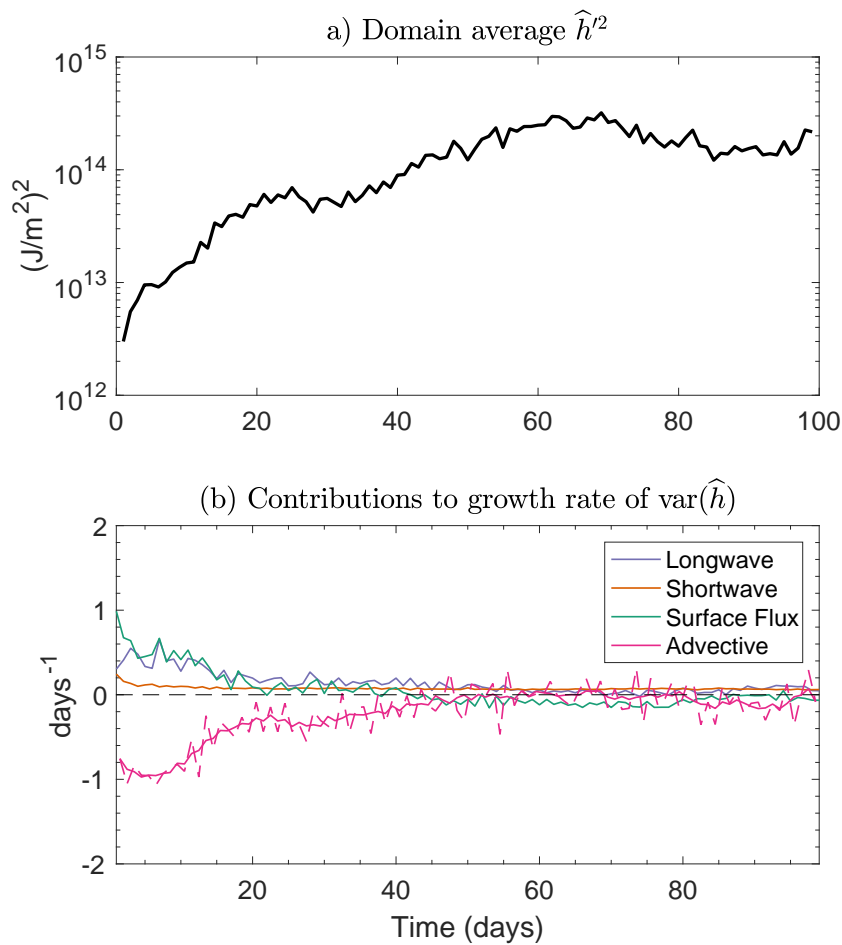
Figures 9-10 show example results from a series of GCM simulations of RCE, using CAM5 with the spectral element dynamical core on a cubed-sphere grid with ne30 resolution, which corresponds to  $\sim 100\text{ km}$  grid spacing. More details on the version of CAM5 (including the physics packages) used for these simulations can be found in Reed et al. (2015). Figure 9 shows a snapshot of OLR and precipitation rate for the set of three *RCEMIP* experiments, which can be compared to Figs. 3, 4, and 8. Figure 10 shows a snapshot of water vapor path (at the same time as displayed in Fig. 9). There is a large cluster of clouds and precipitation in each of the simulations at  $300\text{ K}$  and  $305\text{ K}$ , while the precipitation in the simulation at  $295\text{ K}$  is somewhat more scattered. The simulation at  $305\text{ K}$  appears to be the most aggregated, with a single hemisphere-scale



**Figure 6.** Daily mean water vapor path (computed from hourly averages) at day 10 (a) and day 90 (b) of small domain SAM simulation at  $T_s = 300$  K.

intensely precipitating cluster and little cloud cover or precipitation elsewhere on the globe. It is also evident from Fig. 10 that the range of water vapor path values is largest in the simulation at 305 K, with the largest values occurring where the clouds and precipitation are clustered.

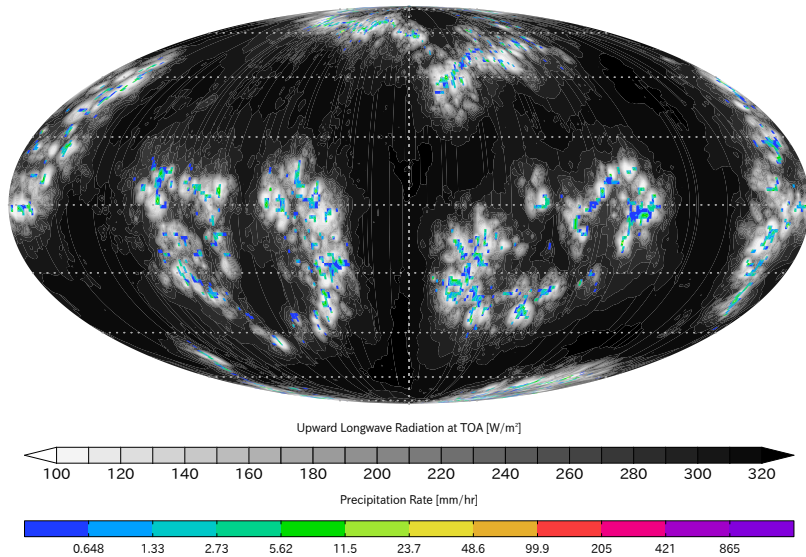
The above results indicate what *RCEMIP* simulations might look like in three different model types. Here, we provide a brief example of how the simulations can be compared to each other to determine the robustness of the RCE state and its response to warming across the spectrum of models. One of the objectives of *RCEMIP* is to examine the changes in clouds with warming. Figure 11 shows that high clouds shift upward with warming and decrease in extent in the SAM and CAM simulations, but increase in extent in the NICAM simulations. The decrease in high cloud fraction in the SAM simulations occurs in both the small and large domain simulations (without and with convective aggregation). The degree of convective aggregation can be diagnosed using the subsidence fraction metric, for example (SF; Sect. 4.2.3). In the SAM CRM simulation, the subsidence fraction increases over the first  $\sim 40$  days of each simulation, indicating the increasing aggregation of convection and development of large areas of subsiding air (Fig. 12). The mean subsidence fraction over the last 25 days decreases with increasing SST, but there is large variability in the subsidence fraction. The equilibrium value of the subsidence fraction is between  $\sim 0.65 - 0.7$  in the SAM simulations, while it is higher ( $\sim 0.7 - 0.8$ ) in the NICAM and CAM simulations, indicating that the convection is more aggregated in the global simulations. The subsidence fraction does not depend monotonically on SST in either the NICAM nor CAM simulations.



**Figure 7.** Domain average MSE variance (a) and terms in domain average MSE variance budget, normalized by domain average MSE variance (b) from large domain SAM simulation at  $T_s = 300$  K.

## 6 Extensions of *RCEMIP*

*RCEMIP* has been designed to be as simple as possible in order to maximize participation, foster a community of modelers of RCE, and allow for scientific progress on each of our three themes with a minimum of simulations. We recognize that the initial simulations will not necessarily be a definitive representation of the RCE state, for reasons such as lack of boundary closure in some CRMs, distortions of shallow clouds, sensitivity to microphysical formulations, and other sources of bias that we might not be aware of yet. Our vision for the evolution of *RCEMIP* is that the simulations proposed here serve as a starting point that will allow us to establish a baseline, enable progress on the scientific objectives presented in Sect. 2, and based on the results, inform subsequent experimentation. *RCEMIP* presents an exceptional opportunity for the participants to explore

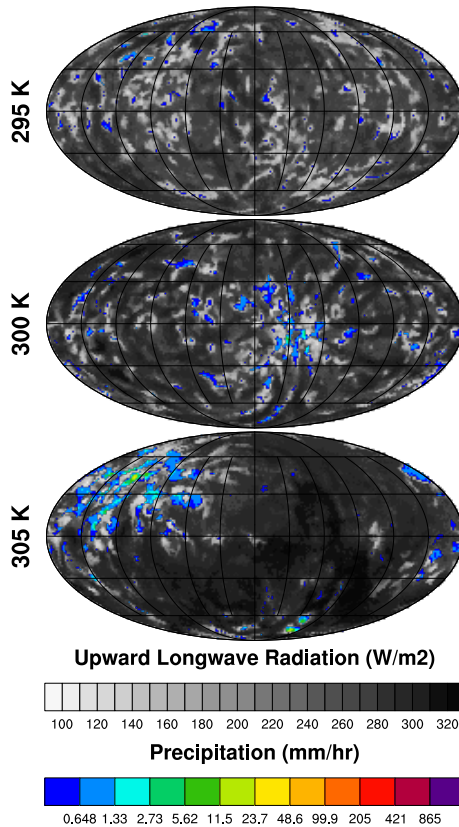


**Figure 8.** Hourly averaged outgoing longwave radiation (OLR) at the top of atmosphere (gray shading) and precipitation rate (color shading) in a NICAM simulation at  $T_s = 300$  K. Note that several parameters do not precisely follow the *RCEMIP* protocol.

other issues, which we hope will form the basis for a second phase of *RCEMIP*. Here we provide a few suggestions that we think are promising avenues forward but leave open the possibility for other directions that could evolve from the results of the first *RCEMIP* simulations.

**Robustness of RCE results to experimental design:** Additional simulations could be performed to assess the sensitivity of the results to the model setup/configuration; for example, the impact of the lower boundary conditions, dependence on domain size and resolution, and dependence on the initial conditions of convective organization.

**Sensitivity to the model physics and dynamics:** Additional simulations could be performed to assess the sensitivity to dynamical core, radiation scheme, microphysics scheme, boundary layer scheme, convective scheme (in the case of models with parameterized convection), and the sensitivity to various parameters in those schemes (such as the entrainment parameter in a convective scheme). In some cases this could be done within a single model, but *RCEMIP* provides a means of organizing such sensitivity tests across multiple models. For example, a suite of simulations with cloud radiative effects turned off could be performed. One promising avenue forward to determine the sensitivity of the RCE state to model setup, dynamics, and physics is to design unified and simple representations of parameterized processes, as for instance was used to study stratocumulus clouds in the GCSS intercomparison study (Bretherton et al., 1999). Such a setup would reduce the ever increasing complexity of parameterizations and thus may be useful for identifying the origin of differences between models. In particular, we expect large differences to occur based on the diversity in the treatment of microphysics, and because of the neglect of the boundary

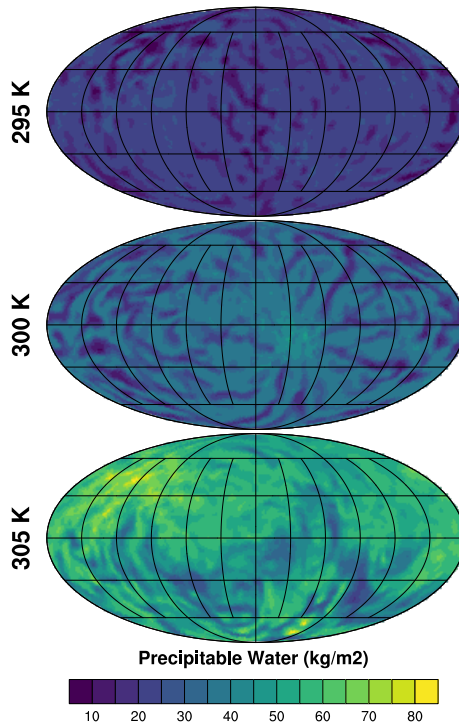


**Figure 9.** Hourly averaged snapshot of upward longwave radiation at the top of atmosphere (OLR; gray shading) and precipitation rate (color shading) from the last day (day 1095) of the three CAM simulations at  $T_s = 295$  K (top), at  $T_s = 300$  K (middle), and at  $T_s = 305$  K (bottom).

layer in some CRMs. Jeevanjee et al. (2017), in arguing for an “elegant” RCE configuration, suggested that the adoption of a simple, warm-rain, Kessler-type microphysics scheme would ease comparison between models with regards to cloud fraction and cloud radiative effects, for example. Simplified treatments of cloud optical properties for radiative transfer and boundary layer closures could also be designed, as could a simple microphysics scheme that includes frozen precipitation.

- 5 **Mechanisms of convective aggregation:** More in-depth investigation into how the mechanisms of convective aggregation vary across models, including its spatial scale and hysteresis, would be valuable. The initial simulations of *RCEMIP* (Sect. 3) are a good starting point for studying self-aggregation, but further experiments could be defined to leverage the opportunity afforded by *RCEMIP* to make progress on some of the unanswered questions laid out by Wing et al. (2017). These questions include the behavior of self-aggregation when subjected to mean winds and/or vertical wind shear, simulated over a land
- 10 surface, or simulated over an ocean mixed layer with interactive SST.

**Impact of ocean-atmosphere interactions:** The base simulations of *RCEMIP* (Sect. 3) are atmosphere-only with a fixed SST, but by coupling the atmospheric model to an ocean mixed layer, it would be possible to study the influence of air-sea coupling on the interplay between surface temperature and convective aggregation, which has found to be critical in some



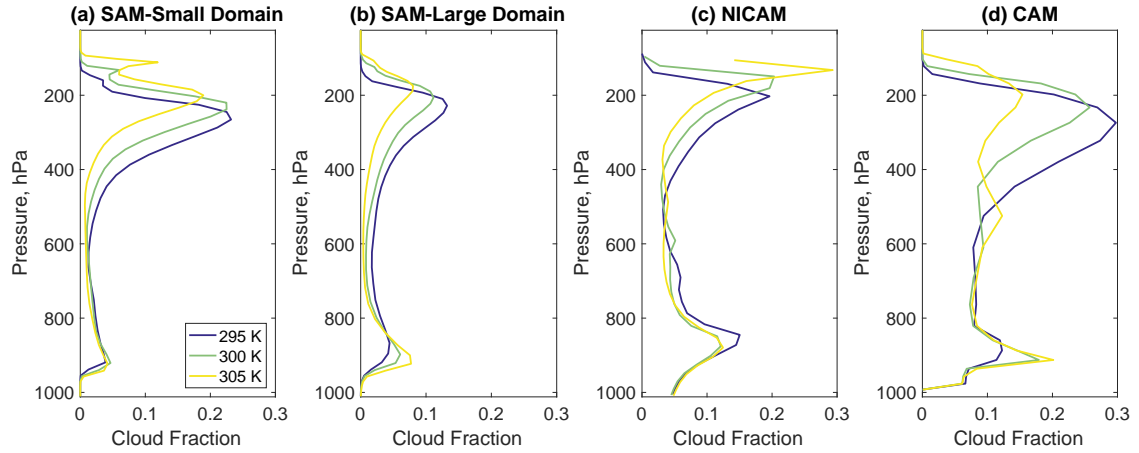
**Figure 10.** Hourly averaged water vapor path from the last day (day 1095) of the three CAM simulations at  $T_s = 295$  K (top), at  $T_s = 300$  K (middle), and at  $T_s = 305$  K (bottom).

models (e.g., Coppin and Bony, 2015). An abrupt  $4\times\text{CO}_2$  experiment run with such a model would also help assess the RCE response to  $\text{CO}_2$  forcing, including the adjustment of tropospheric clouds, and the climate sensitivity.

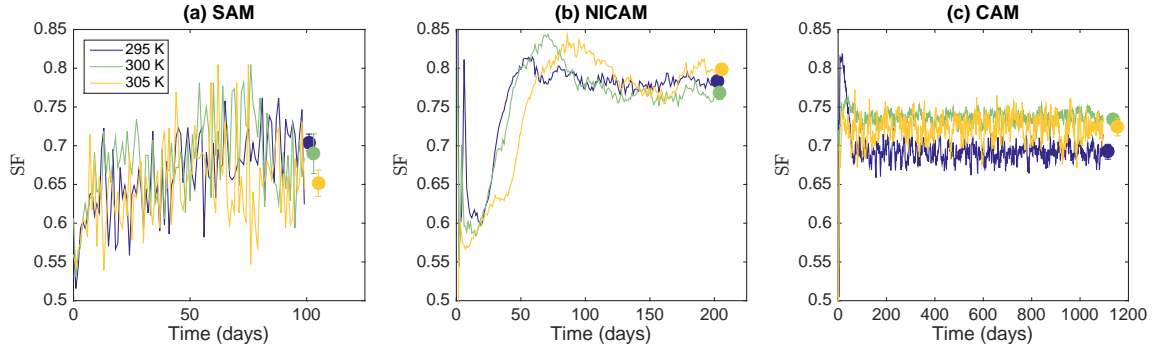
**Impact of rotation:** *RCEMIP* has been designed to simulate RCE in a non-rotating framework, but there is a growing body of work simulating *rotating* RCE, in which convective aggregation takes the form of spontaneous genesis of tropical cyclones (e.g., Held and Zhao, 2008; Khairoutdinov and Emanuel, 2013; Zhou et al., 2014; Shi and Bretherton, 2014; Reed and Chavas, 2015; Wing et al., 2016). Such simulations can be performed on a limited-area domain with uniform rotation, a global domain with uniform rotation, or a global domain with spherically varying rotation.

## 7 Conclusions

Radiative-convective equilibrium is an idealization of the tropical atmosphere that, over the past five decades, has led to advances in our understanding of the vertical temperature structure of the tropics, the scaling of the hydrological cycle with warming, climate sensitivity, interactions between convection and radiation, and the development of large-scale circulations. With a coordinated intercomparison including both cloud-resolving models and general circulation models with parameterized convection, *RCEMIP* will help answer important questions surrounding changes in clouds and convective activity with warm-



**Figure 11.** Profiles of total global cloud fraction from the (a) small domain SAM simulations, (b) large domain SAM simulations, (c) NICAM simulations, and (d) CAM simulations. The SAM data is averaged over the last 25 days of simulation, the NICAM data is averaged over the last 20 days of simulation, and the CAM data is averaged over the last two years of simulation. Note that the NICAM simulations do not precisely follow the *RCEMIP* protocol, and the NICAM simulations labeled 295 K and 305 K are actually performed at surface temperatures of 296 K and 304 K, respectively.



**Figure 12.** Subsidence fraction (SF) as a function of time in the (a) large domain SAM simulations, (b) NICAM simulations and (c) CAM simulations. The circles indicate the mean subsidence fraction over the last 25 days of simulation, the error bars indicate the bounds of the 5-95% confidence interval. Note that the time axes are different in each panel. Also note that the NICAM simulations do not precisely follow the *RCEMIP* protocol, and the NICAM simulations labeled 295 K and 305 K are actually performed at surface temperatures of 296 K and 304 K, respectively.

ing, cloud feedbacks and climate sensitivity, and the aggregation of convection and its role in climate. In addition, the simple premise of RCE will allow the results of *RCEMIP* to be connected to theory, as well as serve as a useful framework for model development and evaluation. *RCEMIP* distinguishes itself from many other intercomparisons because of its ability to involve many model types (SCMs, CRMs, GCRMs, GCMs, LES); the comparison between model types is vital as increasingly higher

resolutions are possible in climate-scale global modeling. *RCEMIP* is specifically designed to determine how models of different types represent the same phenomena, and thus provides a basis for testing models with parameterized convection against models that simulate convection directly. In doing so, *RCEMIP* will help us answer some of the most important questions in climate science.

## 5 8 Code and Data availability

Scripts to calculate the analytic sounding described in Sect. 3.2.3 and the diagnostics described in Sect. 4.2 will be available on the *RCEMIP* website at <http://myweb.fsu.edu/awing/rcemip.html>. The model output from *RCEMIP* will be made publicly available through the WDCC/CERA archive at DKRZ, accessible at <https://cera-www.dkrz.de/WDCC/ui/cerasearch/>.

*Author contributions.* AAW led the writing of the text. All authors contributed to editing the text and discussing the goals and specifications of *RCEMIP*.

*Competing interests.* The authors declare that they have no conflict of interest.

*Acknowledgements.* *RCEMIP* arose from discussion at the Model Hierarchies Workshop, sponsored by the Working Group on Climate Modeling of the World Climate Research Programme and held in Princeton, NJ in November 2016. The authors thank Nadir Jeevanjee, Timothy Cronin, Kerry Emanuel, George Bryan, and Travis O’Brien for helpful feedback and discussion, as well as Isaac Held, Levi Silvers, and two anonymous reviewers for constructive reviews that improved the design and presentation of *RCEMIP*. The System for Atmospheric Modeling (SAM) cloud resolving model, from which results were shown in Sect. 5, is maintained and provided by Marat Khairoutdinov.



## References

- Arnold, N. P. and Randall, D. A.: Global-scale convective aggregation: Implications for the Madden-Julian Oscillation, *J. Adv. Model. Earth Sys.*, doi:10.1002/2015MS000498, 2015.
- Becker, T. and Stevens, B.: Climate and climate sensitivity to changing CO<sub>2</sub> on an idealized land planet, *J. Adv. Model. Earth Sys.*, 6, 1205–1223, doi:10.1002/2014MS000369, 2014.
- Becker, T., Hohenegger, C., and Stevens, B.: Imprint of the convective parameterization and sea-surface temperature on large-scale convective self-aggregation, *J. Adv. Model. Earth Sys.*, in review, 1–45, 2017.
- Bolton, D.: The Computation of Equivalent Potential Temperature, *Mon. Wea. Rev.*, 108, 1046–1053, 1980.
- Bony, S., Stevens, B., Frierson, D. M. W., Jakob, C., Kageyam, M., Pincus, R., Shepherd, T. G., Sherwood, S. C., Siebesma, A. P., Sobel, A. H., Watanabe, M., and Webb, M. J.: Clouds, circulation and climate sensitivity, *Nature Geoscience*, 8, 261–268, doi:10.1038/ngeo2398, 2015.
- Bony, S., Stevens, B., Coppin, D., Becker, T., Reed, K. A., Voigt, A., and Medeiros, B.: Thermodynamic control of anvil cloud amount, *Proc. Nat. Acad. Sci.*, 113, 8927–8932, doi:10.1073/pnas.1601472113, 2016.
- Boucher, O., Randall, D., Artaxo, P., Bretherton, C., Feingold, G., Forster, P., Kerminen, V.-M., Kondo, Y., Liao, H., Lohmann, U., Rasch, P., Satheesh, S., Sherwood, S., Stevens, B., and Zhang, X.: Climate Change 2013: The Physical Science Basis, chap. Clouds and aerosols, pp. 571–657, IPCC, Cambridge Univ. Pres, 2013.
- Bretherton, C., Macvean, M., Bechtold, P., Chlond, A., Cotton, W. R., Cuxart, J., Cuijpers, H., Khairoutdinov, M., Kosovic, B., Lewellen, D., Moeng, C.-H., Siebesma, P., Stevens, B., Stevens, D., Sykes, I., and Wyant, M.: An intercomparison of radiatively- driven entrainment and turbulence in a smoke cloud, as simulated by different numerical models, *Quart. J. R. Meteor. Soc.*, 125, 391–423, 1999.
- Bretherton, C. S., Blossey, P. N., and Khairoutdinov, M.: An energy-balance analysis of deep convective self-aggregation above uniform SST, *J. Atmos. Sci.*, 62, 4237–4292, doi:10.1175/JAS3614.1, 2005.
- Byrne, M. P. and Schneider, T.: Narrowing of the ITCZ in a warming climate: Physical mechanisms, *Geophys. Res. Lett.*, 43, 11 350–11 357, doi:10.1002/2016GL070396, 2016.
- Byrne, M. P. and Schneider, T.: Atmospheric dynamics feedback: concept, simulations and climate implications, *J. Climate*, p. in review, 2017.
- Charney, J. G., Arakawa, A., Baker, D. J., and Bolin, B.: Carbon dioxide and climate: a scientific assessment, National Research Council, 1979.
- Chavas, D. R. and Emanuel, K. A.: Equilibrium tropical cyclone size in an idealied state of radiative-convective equilibrium, *J. Atmos. Sci.*, 71, 1663–1680, doi:10.1175/JAS-D-13-0155.1, 2014.
- Claussen, M., L. M., , A. W., M. C., T. F., F. L. M., S. W., J. A., V. A., A. B., R. C., A. G., H. G., G. L., F. L., I. M., V. P., P. S., and Z. W.: Earth system models of intermediate complexity: closing the gap in the spectrum of climate system models, *Climate Dynamics*, 18, 579–586, 2002.
- Coppin, D. and Bony, S.: Physical mechanisms controlling the initiation of convective self-aggregation in a General Circulation Model, *Journal of Advances in Modeling Earth Systems*, 7, 2060–2078, doi:10.1002/2015MS000571, 2015.
- Cronin, T. W.: On the choice of average solar zenith angle, *Journal of the Atmospheric Sciences*, 71, 2994–3003, doi:10.1175/JAS-D-13-0392.1, 2014.

- Cronin, T. W. and Wing, A. A.: Clouds, circulation, and climate sensitivity in a radiative-convective equilibrium channel model, *J. Adv. Model. Earth Sys.*, doi:10.1002/2017MS001111, 2017.
- Cronin, T. W., Emanuel, K., and Molnar, P.: Island precipitation enhancement and the diurnal cycle in radiative-convective equilibrium, *Q. J. R. Meteorol. Soc.*, 141, 1017–1034, doi:10.1002/qj.2443, 2015.
- 5 Dines, W. H.: The heat balance of the atmosphere, *Q. J. R. Meteorol. Soc.*, 43, 151–158, 1917.
- Dipankar, A., Stevens, B., Heinze, R., Moseley, C., Zängl, G., Giorgetta, M., and Brdar, S.: Large eddy simulation using the general circulation model ICON, *J. Adv. Model. Earth Sys.*, 7, 963–986, doi:10.1002/2015MS000431, 2015.
- Dufresne, J.-L., Foujols, M.-A., Denvil, S., Caubel, A., Marti, O., Aumont, O., Balkanski, Y., Bekki, S., Bellenger, H., Benshila, R., Bony, S., Bopp, L., Braconnot, P., Brockmann, P., Cadule, P., Cheruy, F., Codron, F., Cozic, A., Cugnet, D., de Noblet, N., Duvel, J.-P., Ethé, C.,  
10 Fairhead, L., Fichefet, T., Flavoni, S., Friedlingstein, P., Grandpeix, J.-Y., Guez, L., Guilyardi, E., Hauglustaine, D., Hourdin, F., Idelkadi, A., Ghattas, J., Joussaume, S., Kageyama, M., Krinner, G., Labetoulle, S., Lahellec, A., Lefebvre, M.-P., Lefevre, F., Levy, C., Li, Z., Lloyd, J., Lott, F., Madec, G., Mancip, M., Marchand, M., Masson, S., Meurdesoif, Y., Mignot, J., Musat, I., Parouty, S., Polcher, J., Rio, C., Schulz, M., Swingedouw, D., Szopa, S., Talandier, C., Terray, P., Viovy, N., and Vuichard, N.: Climate change projections using the IPSL-CM5 Earth System Model:from CMIP3 to CMIP5, *Climate Dynamics*, 40, 2123–2165, doi:10.1007/s00382-012-1636-1, 2013.
- 15 Dunion, J.: Rewriting the Climatology of the Tropical North Atlantic and Caribbean Sea Atmosphere, *J. Climate*, 24, 893–908, doi:10.1175/2010JCLI3496.1, 2011.
- Emanuel, K., Wing, A. A., and Vincent, E. M.: Radiative-convective instability, *J. Adv. Model. Earth Syst.*, 6, 75–90, doi:10.1002/2013MS000270, 2014.
- Eyring, V., Bony, S., Meehl, G. A., Senior, C. A., Stevens, B., Stouffer, R. J., and Taylor, K. E.: Overview of the Coupled Model Intercomparison Project Phase 6 (CMIP6) experimental design and organization, *Geoscientific Model Development*, 9, 1937–1958, doi:10.5194/gmd-9-1937-2016, 2016.
- 20 Grabowski, W., Moncrieff, M., and Kiehl, J.: Long-term behavior of precipitating tropical cloud systems: A numerical study, *Q. J. R. Meteorol. Soc.*, 122, 1019–1042, 1996.
- Held, I. M. and Zhao, M.: Horizontally homogeneous rotating radiative-convective equilibrium at GCM resolution, *J. Atmos. Sci.*, 65,  
25 2003–2013, doi:10.1175/2007JAS2604.1, 2008.
- Held, I. M., Hemler, R. S., and Ramaswamy, V.: Radiative-convective equilibrium with explicit two-dimensional moist convection, *J. Atmos. Sci.*, 50, 3909–3927, 1993.
- Held, I. M., Zhao, M., and Wyman, B.: Dynamic radiative-convective equilibria using GCM column physics, *J. Atmos. Sci.*, 64, 228–238, doi:10.1175/JAS3825.11, 2007.
- 30 Hohenegger, C. and Stevens, B.: Coupled radiative convective equilibrium simulations with explicit and parameterized convection, *J. Adv. Model. Earth Sys.*, 8, doi:10.1002/2016MS000666, 2016.
- Holloway, C. E., Wing, A. A., Bony, S., Muller, C., Masunaga, H., L’Ecuyer, T. S., Turner, D. D., and Zuidema, P.: Observing convective aggregation, *Surveys in Geophysics*, 38, 1199–1236, 2017.
- Ingram, W.: A very simple model for the water vapour feedback on climate change, *Quarterly Journal of the Royal Meteorological Society*,  
35 136, 30–40, doi:10.1002/qj.546, 2010.
- Islam, S., Bras, R. L., and Emanuel, K. A.: Predictability of mesoscale rainfall in the tropics, *J. Appl. Meteor.*, 32, 297–310, 1993.
- Jeevanjee, N. and Romps, D. M.: Invariant radiative cooling and mean precipitation change, *Atmospheric and Oceanic Physics*, <https://arxiv.org/abs/1711.03516v1>, 2017.

- Jeevanjee, N., Hassanzadeh, P., Hill, S. A., and Sheshadri, A.: A perspective on climate model hierarchies, *J. Adv. Model. Earth Sys.*, doi:10.1002/2017MS001038, 2017.
- Khairoutdinov, M. and Randall, D.: Cloud resolving modeling of the ARM Summer 1997 IOP: Model formulation, results, uncertainties, and sensitivities, *J. Atmos. Sci.*, 60, 607–625, 2003.
- 5 Khairoutdinov, M. F. and Emanuel, K.: Rotating radiative-convective equilibrium simulated by a cloud-resolving model, *J. Adv. Model. Earth Sys.*, 5, doi:10.1002/2013MS000253, 2013.
- Khairoutdinov, M. F. and Emanuel, K. A.: Aggregation of convection and the regulation of tropical climate. Preprints., 29th Conference on Hurricanes and Tropical Meteorology, pp. Tucson, AZ, Amer. Meteorol. Soc., Tucson, AZ, Amer. Meteorol. Soc., 2010.
- Manabe, S. and Strickler, R. F.: Thermal equilibration of the atmosphere with a convective adjustment, *J. Atmos. Sci.*, 21, 361–385, 1964.
- 10 Manabe, S. and Wetherald, R. T.: Thermal equilibrium of the atmosphere with a given distribution of relative humidity, *Journal of the Atmospheric Sciences*, 24, 241–259, 1967.
- Mauritsen, T. and Stevens, B.: Missing iris effect as a possible cause of muted hydrological change and high climate sensitivity in models, *Nature Geoscience*, 8, 346–351, doi:10.1038/ngeo2414, 2015.
- Miyamoto, Y., Kajikawa, Y., Yoshida, R., Yamaura, T., Yashiro, H., and Tomita, H.: Deep moist atmospheric convection in a subkilometer global simulation, *Geophys. Res. Lett.*, 40, 4922–4926, doi:doi:10.1002/grl.50944, 2013.
- 15 Möller, F.: On Influence of Changes in CO<sub>2</sub> Concentration in Air on Radiation Balance of Earths Surface and on Climate, *J. Geophys. Res.*, 68, 3877–&, 1963.
- Muller, C. J.: Impact of convective organization on the response of tropical precipitation extremes to warming, *J. Climate*, 26, 5028+5043, doi:10.1174/JCLI-D-12-00655.1, 2013.
- 20 Muller, C. J. and Held, I. M.: Detailed investigation of the self-aggregation of convection in cloud resolving simulations, *J. Atmos. Sci.*, 69, 2551–2565, doi:10.1175/JAS-D-11-0257.1, 2012.
- Muller, C. J., O’Gorman, P. A., and Back, L. E.: Intensification of precipitation extremes with warming in a cloud resolving model, *J. Climate*, 24, 2784–2800, doi:10.1175/2011JCLI3876.1, 2011.
- Nakajima, K. and Matsuno, T.: Numerical experiments concerning the origin of cloud clusters in the tropical atmospheres, *J. Meteor. Soc. Japan*, 66, 309–329, 1988.
- 25 Neale, R., Chen, C.-C., Gettelman, A., Lauritzen, P., Park, S., Williamson, D., Conley, A., Garcia, R., Kinnson, D., Lamarque, J.-F., Marsh, D., Mills, M., Smith, A., Tilmes, S., Vitt, F., Morrison, H., Cameron-Smith, P., Collins, W. D., Iacono, M. J., Easter, R. C., Ghan, S. J., Liu, X., Rasch, P. J., and Taylor, M.: Description of the NCAR Community Atmosphere Model (CAM 5.0), Rep., p. 274 pp, 2012.
- Nolan, D. S., Rappin, E. D., and Emanuel, K. E.: Tropical cyclonegenesis sensitivity to environmental parameters in radiative-convective equilibrium, *Q. J. R. Meteorol. Soc.*, 133, 2085–2107, doi:10.1002/qj.170, 2007.
- 30 Pendergrass, A. G., Reed, K. A., and Medeiros, B.: The link between extreme precipitation and convective organization in a warming climate: Global radiative-convective equilibrium simulations, *Geophys. Res. Lett.*, 43, 11,445–11,452, doi:10.1002/2016GL071285, 2016.
- Popke, D., Stevens, B., and Voigt, A.: Climate and climate change in a radiative-convective equilibrium version of ECHAM6, *J. Adv. Model. Earth Sys.*, 5, 1–14, doi:10.1029/2012MS000191, 2013.
- 35 Ramanathan, V. and Coakley, J.: Climate modeling through radiative-convective models, *Reviews of Geophysics and Space Physics*, 16, 465–489, 1978.
- Randall, D., Hu, Q., Xu, K.-M., and Krueger, S.: Radiative-convective disequilibrium, *Atmospheric Research*, 31, 315–327, 1994.

- Reed, K. and Medeiros, B.: A reduced complexity framework to bridge the gap between AGCMs and cloud-resolving models, *Geophys. Res. Lett.*, 43, 860–866, doi:10.1002/2015GL066713, 2016.
- Reed, K. A. and Chavas, D. R.: Uniformly rotating global radiative-convective equilibrium in the Community Atmosphere Model, version 5, *Journal of Advances in Modeling Earth Systems*, 7, 1938–1955, doi:10.1002/2015MS000519, 2015.
- 5 Reed, K. A. and Jablonowski, C.: An Analytic Vortex Initialization Technique for Idealized Tropical Cyclone Studies in AGCMs, *Monthly Weather Review*, 139, 689–710, doi:10.1175/2010MWR3488.1, 2011.
- Reed, K. A., Medeiros, B., Bacmeister, J. T., and Lauritzen, P. H.: Global radiative-convective equilibrium in the Community Atmosphere Model 5, *J. Atmos. Sci.*, 72, 2183–2197, doi:10.1175/JAS-D-14-0268.1, 2015.
- Renno, N. O., Emanul, K. A., and Stone, P. H.: A radiative-convective model with an explicit hydrological cycle. Part I: Formulation and  
10 sensitivity to model parameters, *J. Geophys. Res.*, 99, 14 429–14 441, 1994.
- Rochetin, N., Lintner, B., Findell, K., Sobel, A., and Gentine, P.: Radiative-Convective Equilibrium over a Land Surface, *J. Climate*, 27, 8611–8629, doi:10.1175/JCLI-D-13-00654.1, 2014.
- Romps, D.: An analytical model for tropical relative humidity, *Journal of Climate*, 27, 7432–7449, doi:10.1175/JCLI-D-14-00255.1, 2014.
- Romps, D. M.: Response of tropical precipitation to global warming, *J. Atmos. Sci.*, 68, 123–138, doi:10.1175/2010JAS3542.1, 2011.
- 15 Satoh, M. and Hayashi, Y.-Y.: Simple cumulus models of one-dimensional radiative convective equilibrium problems, *J. Atmos. Sci.*, 49, 1202–1220, 1992.
- Satoh, M. and Matsuda, Y.: Statistics on high-cloud areas and their sensitivities to cloud microphysics using single-cloud experiments, *J. Atmos. Sci.*, 66, 2659–2677, doi:10.1175/2009JAS2948.1, 2009.
- Satoh, M., Tomita, H., Yashiro, H., Miura, H., Kodama, C., Seiki, T., Noda, A. T., Yamada, Y., Goto, D., Sawada, M., Miyoshi, T., Niwa, Y.,  
20 Hara, M., Ohno, T., Iga, S.-I., Inoue, T. A. T., and Kubokawa, H.: The Non-hydrostatic ICosahedral Atmospheric Model: Description and development, *Progress in Earth and Planetary Science*, 1, 18, doi:10.1186/s40645-014-0018-1, 2014.
- Satoh, M., Arakami, K., and Sawada, M.: Structure of tropical convective systems in aqua-planet experiments: Radiative-convective equilibrium versus the Earth-like experiments, *SOLA*, 12, 220–224, 2016.
- Seeley, J. T. and Romps, D. M.: Why does tropical convective available potential energy (CAPE) increase with warming?, *Geophys. Res. Lett.*, 42, 10 429–10 437, doi:10.1002/2015GL066199, 2015.
- 25 Seeley, J. T. and Romps, D. M.: Tropical cloud buoyancy is the same in a world with or without ice, *Geophys. Res. Lett.*, 43, 3572–3579, doi:10.1002/2016GL068583, 2016.
- Seeley, J. T., Jeevanjee, N., Langhans, W., and Romps, D. M.: A new paradigm for tropical anvil clouds, *Proceedings of the National Academy of Sciences*, p. in revision, 2017.
- 30 Shi, X. and Bretherton, C. S.: Large-scale character of an atmosphere in rotating radiative-convective equilibrium, *J. Adv. Model. Earth Sys.*, 6, 616–629, doi:10.1002/2014MS000342, 2014.
- Silvers, L. G., Stevens, B., Mauritsen, T., and Giorgetta, M.: Radiative convective equilibrium as a framework for studying the interaction between convection and its large-scale environment, *J. Adv. Model. Earth Sys.*, 8, doi:10.1002/2016MS000629, 2016.
- Singh, M. and O’Gorman, P.: Influence of entrainment on the thermal stratification in simulations of radiative-convective equilibrium, *Geophys. Res. Lett.*, 40, 4398–4403, doi:10.1002/2013GL018596, 2013.
- 35 Singh, M. and O’Gorman, P.: Influence of microphysics on the scaling of precipitation extremes with temperature, *Geophys. Res. Lett.*, 41, 6037–6044, doi:10.1002/2014GL061222, 2014.

- Singh, M. and O’Gorman, P.: Increases in moist-convective updraft velocities with warming in radiative-convective equilibrium, *Q. J. R. Meteorol. Soc.*, 141, 2828–2838, doi:doi:10.1002/qj.2567, 2015.
- Sui, C. H., Lau, K. M., Tao, W. K., and Simpson, J.: The tropical water and energy cycles in a cumulus ensemble model. Part I: Equilibrium climate, *J. Atmos. Sci.*, 51, 711–728, 1994.
- 5 Takasuka, D., Miyakawa, T., Satoh, M., and Miura, H.: Topographical effects on the internally produced MJO-like disturbances in an aqua-planet version of NICAM, *SOLA*, 11, 170–176, doi:10.2151/sola.2015-038, 2015.
- Tan, J., Jakob, C., Rossow, W. B., and Tselioudis, G.: Increases in tropical rainfall driven by changes in frequency of organized deep convection, *Nature*, 519, 451–454, doi:10.1038/nature14339, 2015.
- Tobin, I., Bony, S., Holloway, C. E., Grandpeix, J. Y., Seze, G., Coppin, D., Woolnough, S. J., and Roca, R.: Does convective aggregation need to be represented in cumulus parameterizations?, *J. Adv. Model. Earth Syst.*, 5, 692–703, doi:10.1002/jame.20047, 2013.
- 10 Tompkins, A. and Craig, G.: Radiative-convective equilibrium in a three-dimensional cloud-ensemble model, *Q. J. R. Meteorol. Soc.*, 124, 2073–2097, 1998.
- Tompkins, A. M. and Semie, A. G.: Organization of tropical convection in low vertical wind shears: Role of updraft entrainment, *J. Adv. Model. Earth Syst.*, 9, doi:10.1002/2016MS000802, 2017.
- 15 Webb, M. J., Lock, A. P., Bretherton, C. S., Bony, S., Cole, J. N. S., Idelkadi, A., Kang, S. M., Koshiro, T., Kawai, H., Ogura, T., Roehrig, R., Shin, Y., Mauritsen, T., Sherwood, S. S., Vial, J., Watanabe, M., Woelfle, M. D., and Zhao, M.: The impact of parametrized convection on cloud feedback, *Philosophical Transactions A*, 373, 20140414, doi:10.1098/rsta.2014.0414, 2015.
- Wing, A. A. and Cronin, T. W.: Self-aggregation of convection in long channel geometry, *Q. J. R. Meteorol. Soc.*, 142, 1–15, doi:10.1002/qj.2628, 2016.
- 20 Wing, A. A. and Emanuel, K. A.: Physical mechanisms controlling self-aggregation of convection in idealized numerical modeling simulations, *J. Adv. Model. Earth Syst.*, 6, 59–74, doi:10.1002/2013MS000269, 2014.
- Wing, A. A., Camargo, S. J., and Sobel, A. H.: Role of radiative-convective feedbacks in spontaneous tropical cyclogenesis in idealized numerical simulations, *J. Atmos. Sci.*, 73, 2633–2642, doi:10.1175/JAS-D-15-0380.1, 2016.
- Wing, A. A., Emanuel, K., Holloway, C. E., and Muller, C.: Convective self-aggregation in numerical simulations: A review, *Surveys in*
- 25 *Geophysics*, 38, 1173–1197, doi:10.1007/s10712-017-9408-4, 2017.
- Yoshizaki, M., Iga, S., and Satoh, M.: Eastward-propagating property of large-scale precipitation systems simulated in the coarse-resolution NICAM and an explanation of its formation, *SOLA*, 8, 21–24, doi:doi:10.2151/sola.2012-006, 2012.
- Zhou, W., Held, I. M., and Garner, S. T.: Parameter study of tropical cyclones in rotating radiative-convective equilibrium with column physics and resolution of a 25 km GCM., *J. Atmos. Sci.*, 71, 1058–1068@ARTICLEzhoul2014, author = Zhou, W. and I. M. Held and
- 30 S. T. Garner, title = Parameter study of tropical cyclones in rotating radiative–convective equilibrium with column physics and resolution of a 25 km GCM., journal = *J. Atmos. Sci.*, year = 2014, volume = 71, pages = 1058–1068, doi = 10.1175/JAS-D-13-0190.1, owner = awing, timestamp = 2015.10.12 , doi:10.1175/JAS-D-13-0190.1, 2014.

**Table 1.** Geophysical constants

Parameter	Value
Earth rotation rate	$\Omega = 0$
Coriolis parameter	$f = 0$
Mean Earth radius	$R_E = 6371.0 \text{ km}$
Mean surface gravity	$g = 9.79764 \text{ ms}^{-2}$
Gas constant for dry air	$R_d = 287.04 \text{ J kg}^{-1} \text{ K}^{-1}$
Specific heat capacity for dry air	$C_{pd} = 1004.64 \text{ J kg}^{-1} \text{ K}^{-1}$
Water vapor gas constant	$R_v = 461.50 \text{ J kg}^{-1} \text{ K}^{-1}$
Water vapor specific heat capacity	$C_{pv} = 1846.0 \text{ J kg}^{-1} \text{ K}^{-1}$
Latent heat of vaporization at $0^\circ\text{C}$	$L_{v0} = 2.501 \times 10^6 \text{ J kg}^{-1}$
Latent heat of fusion at $0^\circ\text{C}$	$L_{f0} = 3.337 \times 10^5 \text{ J kg}^{-1}$
Latent heat of sublimation at $0^\circ\text{C}$	$L_{s0} = 2.834 \times 10^6 \text{ J kg}^{-1}$

**Table 2.** Radiation and Initialization Parameters

Parameter	Value
<i>Radiation Parameters</i>	
CO <sub>2</sub> concentration	348 ppmv
CH <sub>4</sub> concentration	1650 ppbv
N <sub>2</sub> O concentration	306 ppbv
CFC11 concentration	0
CFC12 concentration	0
CFC22 concentration	0
CCL4 concentration	0
O <sub>3</sub> fit parameter $g_1$	3.6478 ppmv hPa <sup>-<math>g_2</math></sup>
O <sub>3</sub> fit parameter $g_2$	0.83209
O <sub>3</sub> fit parameter $g_3$	11.3515 hPa
Solar constant	551.58 W/m <sup>2</sup>
Zenith angle	42.05°
Surface albedo	0.07
<i>Analytic Sounding Parameters</i>	
$z_t$	15 km
$q_{0,295}$	12.00 g/kg
$q_{0,300}$	18.65 g/kg
$q_{0,305}$	24.00 g/kg
$q_t$	10 <sup>-11</sup> g/kg
$z_{q1}$	4000m
$z_{q2}$	7500m
$\Gamma$	0.0067 Km <sup>-1</sup>
$p_0$	1014.8 hPa

**Table 3.** CRM Vertical Grid for Scalar Variables

Level	Height (m)	Level	Height (m)	Level	Height (m)
1	37	26	9000	51	21500
2	112	27	9500	52	22000
3	194	28	10000	53	22500
4	288	29	10500	54	23000
5	395	30	11000	55	23500
6	520	31	11500	56	24000
7	667	32	12000	57	24500
8	843	33	12500	58	25000
9	1062	34	13000	59	25500
10	1331	35	13500	60	26000
11	1664	36	14000	61	26500
12	2055	37	14500	62	27000
13	2505	38	15000	63	27500
14	3000	39	15500	64	28000
15	3500	40	16000	65	28500
16	4000	41	16500	66	29000
17	4500	42	17000	67	29500
18	5000	43	17500	68	30000
19	5500	44	18000	69	30500
20	6000	45	18500	70	31000
21	6500	46	19000	71	31500
22	7000	47	19500	72	32000
23	7500	48	20000	73	32500
24	8000	49	20500	74	33000
25	8500	50	21000		



**Table 4.** 1D hourly-averaged variables ( $z,t$ ) or ( $t$ )

Variable Name	Description	Units
<i>ta_avg</i>	domain avg. air temperaure profile	K
<i>ua_avg</i>	domain avg. eastward wind profile	$\text{m s}^{-1}$
<i>va_avg</i>	domain avg. northward wind profile	$\text{m s}^{-1}$
<i>hus_avg</i>	domain avg. specific humidity profile	kg/kg
<i>hur_avg</i>	domain avg. relative humidity profile	%
<i>clw_avg</i>	domain avg. mass fraction of cloud liquid water profile	kg/kg
<i>cli_avg</i>	domain avg. mass fraction of cloud ice profile	kg/kg
<i>plw_avg</i>	domain avg. mass fraction of precipitating liquid water profile	kg/kg
<i>pli_avg</i>	domain avg. mass fraction of precipitating ice profile	kg/kg
<i>theta_avg</i>	domain avg. potential temperature profile	K
<i>thetae_avg</i>	domain avg. equivalent potential temperature profile	K
<i>tntrs_avg</i>	domain avg. shortwave radiative heating rate profile	$\text{K s}^{-1}$
<i>tntrl_avg</i>	domain avg. longwave radiative heating rate profile	$\text{K s}^{-1}$
<i>tntrscs_avg</i>	domain avg. shortwave radiative heating rate profile - clear sky	$\text{K s}^{-1}$
<i>tntrlcs_avg</i>	domain avg. longwave radiative heating rate profile - clear sky	$\text{K s}^{-1}$
<i>cldfrac_avg</i>	global cloud fraction profile	%
<i>pr_avg</i>	domain avg. suface precipitation rate	$\text{kg m}^{-2} \text{s}^{-1}$
<i>hfls_avg</i>	domain avg. surface upward latent heat flux	$\text{W m}^{-2}$
<i>hfss_avg</i>	domain avg. surface upward sensible heat flux	$\text{W m}^{-2}$
<i>prw_avg</i>	domain avg. water vapor path	$\text{kg m}^{-2}$
<i>clwvi_avg</i>	domain avg. condensed water path	$\text{kg m}^{-2}$
<i>clivi_avg</i>	domain avg. ice water path	$\text{kg m}^{-2}$
<i>spwr_avg</i>	domain avg. saturated water vapor path	$\text{kg m}^{-2}$
<i>rlds_avg</i>	domain avg. surface downwelling longwave flux	$\text{W m}^{-2}$
<i>rlus_avg</i>	domain avg. surface upwelling longwave flux	$\text{W m}^{-2}$
<i>rsds_avg</i>	domain avg. surface downwelling shortwave flux	$\text{W m}^{-2}$
<i>rsus_avg</i>	domain avg. surface upwelling shortwave flux	$\text{W m}^{-2}$
<i>rsdscs_avg</i>	domain avg. surface downwelling shortwave flux - clear sky	$\text{W m}^{-2}$
<i>rsuscs_avg</i>	domain avg. surface upwelling shortwave flux - clear sky	$\text{W m}^{-2}$
<i>rldscs_avg</i>	domain avg. surface downwelling longwave flux - clear sky	$\text{W m}^{-2}$
<i>rluscs_avg</i>	domain avg. surface upwelling longwave flux - clear sky	$\text{W m}^{-2}$
<i>rsdt_avg</i>	domain avg. TOA incoming shortwave flux	$\text{W m}^{-2}$
<i>rsut_avg</i>	domain avg. TOA outgoing shortwave flux	$\text{W m}^{-2}$
<i>rlut_avg</i>	domain avg. TOA outgoing longwave flux	$\text{W m}^{-2}$
<i>rsutcs_avg</i>	domain avg. TOA outgoing shortwave flux - clear sky	$\text{W m}^{-2}$
<i>rlutcs_avg</i>	domain avg. TOA outgoing longwave flux -clear sky	$\text{W m}^{-2}$

**Table 5.** 2D hourly averaged variables ( $x, y, t$ )

Variable Name	Description	Units
pr	surface precipitation rate	$\text{kg m}^{-2} \text{s}^{-1}$
pr_conv <sup>†</sup>	surface convective precipitation rate	$\text{kg m}^{-2} \text{s}^{-1}$
evspsbl	evaporation flux	$\text{kg m}^{-2} \text{s}^{-1}$
hfls	surface upward latent heat flux	$\text{W m}^{-2}$
hfss	surface upward sensible heat flux	$\text{W m}^{-2}$
rlds	surface downwelling longwave flux	$\text{W m}^{-2}$
rlus	surface upwelling longwave flux	$\text{W m}^{-2}$
rsds	surface downwelling shortwave flux	$\text{W m}^{-2}$
rsus	surface upwelling shortwave flux	$\text{W m}^{-2}$
rsdscs	surface downwelling shortwave flux - clear sky	$\text{W m}^{-2}$
rsuscs	surface upwelling shortwave flux - clear sky	$\text{W m}^{-2}$
rldscs	surface downwelling longwave flux - clear sky	$\text{W m}^{-2}$
rluscs	surface upwelling longwave flux - clear sky	$\text{W m}^{-2}$
rsdt	TOA incoming shortwave flux	$\text{W m}^{-2}$
rsut	TOA outgoing shortwave flux	$\text{W m}^{-2}$
rlut	TOA outgoing longwave flux	$\text{W m}^{-2}$
rsutcs	TOA outgoing shortwave flux - clear sky	$\text{W m}^{-2}$
rlutcs	TOA outgoing longwave flux -clear sky	$\text{W m}^{-2}$
prw	water vapor path	$\text{kg m}^{-2}$
clwvi	condensed water path	$\text{kg m}^{-2}$
clivi	ice water path	$\text{kg m}^{-2}$
psl	sea level pressure	Pa
tas	2m air temperature	K
<i>tabor*</i>	air temperature at lowest model level	K
uas	10m eastward wind	$\text{m s}^{-1}$
vas	10m northward wind	$\text{m s}^{-1}$
<i>uabor*</i>	eastward wind at lowest model level	$\text{m s}^{-1}$
<i>vabor*</i>	northward wind at lowest model level	$\text{m s}^{-1}$
<i>wa500^</i>	vertical velocity at 500 hPa	$\text{m s}^{-1}$
<i>wap500~</i>	omega at 500 hPa	$\text{Pa s}^{-1}$
<i>spwr</i>	saturated water vapor path	$\text{kg m}^{-2}$
cl <sup>†</sup>	total cloud fraction of grid column	%

**Table 6.** 2D instantaneous hourly variables ( $x, y, t$ )

Variable Name	Description	Units
fmse	mass-weighted vertical integral of frozen moist static energy	$\text{J m}^{-2}$
hadvfmse	mass-weighted vertical integral of horizontal advective tendency of frozen moist static energy	$\text{J m}^{-2} \text{s}^{-1}$
vadvfmse	mass-weighted vertical integral of vertical advective tendency of frozen moist static energy	$\text{J m}^{-2} \text{s}^{-1}$
tnfmse	total tendency of mass-weighted vertical integral of frozen moist static energy	$\text{J m}^{-2} \text{s}^{-1}$
tnfmsevar	total tendency of spatial variance of mass-weighted vertical integral of frozen moist static energy	$\text{J}^2 \text{m}^{-4} \text{s}^{-1}$

**Table 7.** 3D instantaneous hourly variables ( $x, y, z, t$ )

Variable Name	Description	Units
clw	mass fraction of cloud liquid water	$\text{g/g}$
cli	mass fraction of cloud ice	$\text{g/g}$
<i>plw</i>	mass fraction of precipitating liquid water	$\text{g/g}$
<i>pli</i>	mass fraction of precipitating ice	$\text{g/g}$
mc <sup>!</sup>	convective mass flux	$\text{kg m}^{-2} \text{s}^{-1}$
ta	air temperature	K
ua	eastward wind	$\text{m s}^{-1}$
va	northward wind	$\text{m s}^{-1}$
hus	specific humidity	$\text{g/g}$
hur	relative humidity	%
wap <sup>~</sup>	omega	$\text{Pa s}^{-1}$
$\hat{w}a$	vertical velocity	$\text{m s}^{-1}$
$\tilde{z}g$	geopotential height	m
$\hat{p}a$	pressure	Pa
tntr	tendency of air temperature due to radiative heating	$\text{K s}^{-1}$
tntc <sup>!</sup>	tendency of air temperature due to moist convection	$\text{K s}^{-1}$
<i>tntrs</i>	tendency of air temperature due to shortwave radiative heating	$\text{K s}^{-1}$
<i>tntrl</i>	tendency of air temperature due to longwave radiative heating	$\text{K s}^{-1}$

**Table 8.** Preliminary List of Participating Models

Model	Acronym	Model Type	Citation
Community Atmosphere Model, version 5	CAM5	GCM	Neale et al. (2012)
Community Atmosphere Model, version 6	CAM6	GCM	TBD
ECHAM6	ECHAM6	GCM	Popke et al. (2013)
ICOsahedral Nonhydrostatic Model	ICON	CRM/GCRM/GCM	Dipankar et al. (2015)
IPSL-CM5A-LR	IPSL-CM5A-LR	GCM	Dufresne et al. (2013)
IPSL-CM6	IPSL-CM6	GCM	TBD
Nonhydrostatic ICosahedral Atmospheric Model, version 15	NICAM.15	GCRM	Satoh et al. (2014)
System for Atmospheric Modeling	SAM	CRM	Khairoutdinov and Randall (2003)
UCLA Large-Eddy Simulation Model	UCLA-LES	CRM	Hohenegger and Stevens (2016)