

Global high-resolution simulations of tropospheric nitrogen dioxide using CHASERV4.0: Response to reviewer #1

We would like to thank anonymous reviewer #1 for his or her careful reading and valuable comments, which have helped to significantly improve the manuscript. We revised the manuscript and responded to the reviewer's comments. The main changes are as follows:

- 1) Validation results of meteorological fields have been extended and moved to Section 3
- 2) An analysis of the impacts of convection and lightning NO_x has been added to Section 5.
- 3) An extended discussion has been added on the trade-off between horizontal model resolution and computational costs.

Individual comments (in black) and specific responses to them (in blue) are listed below. *Text (Italicized)* from the revised manuscript is in quotes.

This manuscript describes results from a decent study of the impact of horizontal resolution on model simulations, with focus on NO₂ evaluated against mainly satellite observations. It illustrates the gain in performance when moving from 2.8° towards 1.1° and 0.56°, showing on global scale a relatively limited improvement in performance. Nevertheless, on a local scale generally significantly improved performance was shown mostly for the 1.1° vs the 2.8° resolution model experiments. A difficulty encountered in this system is that not only chemistry changes, but also the meteorology changes in this online system, as documented briefly by the authors. A more detailed analysis of differences (e.g.: to what extent are photolysis rates different on a high-resolution model run compared to a reference run, e.g. due to differences in clouds) would be interesting, although I can see that this may be beyond the scope of the current manuscript.

To discuss the impacts on meteorological fields more intensively, we have added validation results of outgoing longwave radiation (OLR) in Figure 1. The relevant discussion in

Section 3 has been expanded in the revised manuscript as follows:

(p. 7, l. 32–p. 8, l. 3)

“The global mean positive bias was 80% and 50% lower at 1.1° and 0.56° resolutions, respectively, than at 2.8° resolution (Figures 1e–h), suggesting improved photolysis calculations in the high-resolution simulations. Among different regions, the positive model bias at 2.8° resolution was largest over the Maritime continent, which was reduced by 86% at 1.1° resolution and by 75% at 0.56° resolution. Over northern South America, in contrast, most of the positive biases remain at 1.1° and 0.56° resolutions.”

Also it was shown that in particular for the O₃-HO_x-NO_x chemistry the resolution makes a difference, considering that with NO_x confined in smaller grid boxes, leads to an overall reduced efficiency in ozone chemical production, but increased stratosphere-troposphere exchange. Whereas the authors focus mainly on changes in NO_x chemistry over megacity and biomass burning regions, I miss a more detailed analysis of effect of lightning NO_x emissions as applied on different spatial resolution: Is it correct that with higher horizontal resolution the lightning NO_x emissions will result in less efficient ozone production, and would simulations suggest that a retuning of total NO_x emissions (apart from uncertainties in profile shape) may be necessary?

To discuss the impacts of convection and lightning NO_x on NO₂ and O₃ chemical production, we have added Figure 14 and the following discussions:

(p. 15, l. 34–p. 16, l. 13)

“Figure 14 shows the spatial distributions of NO₂ partial column in the free troposphere, convective cloud updraft mass flux at 500 hPa, and vertically integrated lightning NO_x production. The simulated NO₂ partial column in the free troposphere was smaller by 17% at 1.1° resolution and by 14% at 0.56° resolution than at 2.8° resolution over the northern subtropics and midlatitudes, primarily because of smaller NO₂ concentrations above 400 hPa. These changes in the free tropospheric NO₂ were in contrast to the changes in the lower tropospheric NO₂, which were associated with suppressed

convective cloud updraft over the continents by up to 76% at 1.1° and 0.56° resolutions over the northern subtropics and mid-latitudes. In contrast, over the Maritime continent, South America, and Central Africa, the free tropospheric NO₂ column was larger at 1.1° resolution by up to 18% and at 0.56° resolution by up to 20% than at 2.8° resolution, primarily reflecting increased NO₂ concentration between 600—800 hPa. Lightning NO_x productions are also largely different between the simulations in the tropics. Over the tropics, although the mean convective cloud updraft was weaker at 1.1° and 0.56° resolutions than at 2.8° resolution, the high resolution simulations revealed increased ice cloud in the upper troposphere and stronger (but less frequent) convection, thus increasing lightning NO_x sources especially over Asia. Meanwhile, given the same amount of lightning NO_x production (using a commonly prescribed lightning NO_x field in all the simulations), the high-resolution simulations revealed a slightly smaller ozone chemical production (by 1%) through representation of local high-concentrated NO_x plumes in July 2008 (figure not shown).”

To obtain a reasonable lightning NO_x, we optimized the cumulus convection parameterization at each resolution to match with observed lightning flash rate, OLR, and precipitation rate based on sensitivity calculations, without applying any adjustment factors to the global lightning NO_x source amount directly.

P 9. L17: the authors relate the larger negative biases in comparison to GOME-2 observations than to OMI to difficulties in the model to capture the nocturnal thin boundary layers, associated to vertical resolution. Indeed, the number of vertical model layers is relatively small (32), but still I wonder if authors can substantiate this conclusion. Couldn't there be other reasons (missing chemistry, uncertainties in diurnal cycle in emissions, biases between OMI and GOME-2?) that could explain the discrepancies seen?

The vertical model resolution is considered to be insufficient to reproduce a thin

nocturnal PBL. At the same time, as suggested by the reviewer, other factors could also contribute to the model bias. The sentences have been rewritten as follows:

(p. 10, l. 6–9)

“The differences suggest that all model simulations underestimated high NO₂ concentrations in the morning. The underestimations could be associated with insufficient vertical model resolution for capturing thin nocturnal boundary layers, as well as uncertainties in HO_x-NO_x-CO-VOCs chemistry, NO₂ photolysis rates, and emission diurnal cycles.”

With regard to the biases between OMI and GOME-2, the following sentence has been added:

(p. 10, l. 9–11)

“The different model biases with respect to OMI and GOME-2 could also be attributed to the bias between these retrievals. Irie et al. (2012) concluded that the bias between these retrievals is small and insignificant for East Asia, whereas the bias between these retrievals is unclear for other regions.”

In my opinion the Discussion section is a bit on the long side, and contains elements that may fit better in the introduction, mainly sec. 5.3 and 5.4. Also authors state in P17, L17 that high-resolution CTM's will be able to assimilate observations at nearly measurement resolution. I believe this is too optimistic, at least for global CTM's, considering the horizontal resolution of TROPOMI observations.

Some text in Sections 6.3 and 6.4 has been removed or moved to the introduction.

Meanwhile, Sections 6.3 and 6.4 have been combined to reduce the text length as follows:

(p. 18, l. 26–p. 19, l. 13)

“6.3 Application for satellite retrieval and data assimilation

An important application of high-resolution tropospheric NO₂ simulations is to provide a priori profile information on satellite retrieval and chemical data assimilation (Liu et al.,

2017). Here, we would like to discuss the potentials of the obtained results for these applications.

Current satellite retrievals of the tropospheric NO₂ column use a priori NO₂ profiles obtained from global model simulations at relatively coarse resolutions: from TM5 at 3° × 2° in DOMINO-2 (Boersma et al., 2011) and GEOS-Chem at 2.5° × 2° in OMNO2 (Bucsela et al., 2006; Celarier et al., 2008), whereas the TROPOMI retrieval product will employ 1° × 1° resolution simulation fields from TM5 (Williams et al., 2017). To provide high-resolution (ranging from 4 km to 50 km) a priori information, several regional retrievals have employed regional models (Heckel et al., 2011; Russell et al., 2011; Lin et al., 2014), showing improvements in the retrieved fields in comparison to independent observations. High-resolution a priori fields from global CTMs are important in providing consistent global datasets.

To avoid spatial representation gaps between satellite measurements and coarse-resolution global models, super-observation techniques have been employed to produce representative data before assimilation (e.g., Miyazaki et al., 2012). The average of averaging kernel over a number of retrievals within a super observation grid does not hold any physical meaning. This may inhibit effective improvement by assimilating over regions with varying conditions. High-resolution CTMs allow assimilation of satellite measurements, with reduced representation gaps without any averages.

Because of distinct non-linearity in chemical reactions, high-resolution assimilation of satellite measurements, considering small-scale variations in background error covariance, would be essential in making the best use of observational information. High-resolution chemical data assimilation could also benefit air pollutant emission estimates (e.g., Miyazaki et al., 2014, 2017, Liu et al., 2017), especially using high-resolution measurements from future satellite missions such as TROPOMI and geostationary satellites (e.g., Sentinel-4, GEMS, TEMPO), even when model resolution is still coarser than measurement resolution through improved model processes and spatial representativeness for megacities as demonstrated by this study.”

The relevant descriptions in Section 1 have been expanded as follows.

(p. 3, l. 6–16)

“The authors demonstrated improvements in these regional retrievals using high-resolution a priori fields in comparison to the ARCTRAS aircraft observation and ground-based remote sensing MAX-DOAS through, for instance, clearer separation of NO₂ profiles between urban, rural, and ocean regions, and improved representations of altitude-dependent sensitivities (i.e., averaging kernels).

Global chemical data assimilation (e.g., Inness et al., 2015; Miyazaki et al., 2015) and emission inversion (e.g., Stavrou et al., 2013; Miyazaki et al., 2017) would also benefit from high-resolution global CTMs, through improvements in model performance (e.g., Arellano Jr. et al., 2007) and reduced spatial representation gaps between observed and simulated fields. Several previous studies (Mijling and van der A, 2012; Ding et al., 2017b; Liu et al., 2017) demonstrated the importance of high-resolution modeling in detecting small-scale NO_x emission sources such as urban, new power plants, and ship emissions. A systematic evaluation of high-resolution model enables us to discuss application potentials of global high-resolution models to satellite retrievals and data assimilation.”

P4, L10: A nudging to 12-hourly ERA-Interim re-analysis data is applied. Here I wonder why the authors don't use 6-hourly EI data. Are authors convinced that 12-hourly nudging is sufficiently accurate?

We have evaluated the impact of changing nudging data interval, and found that the annual RMSE of tropospheric NO₂ column against OMI retrievals differed by less than 6% between 1.1° resolution simulations with 12- and 6-hourly reanalysis over most regions. By using 12-hourly nudging interval, the model performance did not significantly worsen, whereas the computational costs (data processing and input) were reduced. Therefore, we employed a nudging to 12-hourly reanalysis.

Technical comments:

P2, L18: Suggest to change to: “High-resolution simulations can lead to improvements in two ways:”

Changed as suggested.

P3, L31: suggest to change to “...deposition is calculated...”

Changed.

P4. L6: remove ‘The’ in ‘this 43 vertical layers...’ P4. L15: “for the 2008 simulations”

Corrected.

P4.L18 “for the two study years”

Corrected.

P8, L29: “we found an increased error...”

Corrected.

P8, L30: “convection”

Corrected.

P8,L34 to P9, L17: check missing use of word “the” at several instances

We added “the” to the following sentences.

(p. 9, l. 22–23)

“Over South Africa, the negative annual mean bias was reduced by 37% at 1.1° resolution and by 43% at 0.56° resolution, compared to 2.8° resolution, ...”

(p. 9, l. 30–31)

“Over South America, negative bias for the annual mean concentration was 15% lower at 1.1° resolution and 12% lower at 0.56° resolution than at 2.8° resolution.”

(p. 10, l. 2–3)

“Over Southeast Asia, RMSE for the annual mean fields was reduced by 7% at 1.1° resolution and by 5% at 0.56° resolution, compared to 2.8° resolution.”

P9, L18: suggest to reformulate to “Negative biases with respect to GOME-2 were larger than to OMI ...”

Modified as suggested.

P9, L16-31: repetition of text, can be removed here.

Repetitions of text were removed.

P11, L10: “In comparison with OMI retrievals, with increasing model resolution **the** slope **for East Asia** became...”

Corrected.

P11, L33: “The negative...”

Corrected.

P12, L4: change “chemical concentrations” to “trace gases”

Changed.

P12, L6: change “The 1.1 and 0.56” to “All”, and change “while” to “but”

Changed.

P12, L13: “within 0.5%”: are you sure about this accuracy against the observations?

The described number “0.5%” is accuracy against the observation at 800 hPa. Because the accuracies against observations vary between 800 hPa and 750 hPa, we modified this number to the corresponding accuracy range “0.5%–7%”. (p. 13, l. 4)

P15, L21: “a significant”

Corrected.

P15, L27: “simulations”

Corrected.

P15, L29: “Improve the tropospheric...”

Corrected.

P15, L32: “calculations”

Corrected.

P17, L1: Note that the TropOMI retrieval product will use TM5 on a global 1x1 horizontal resolution (Williams et al., 2017).

The sentence has been modified as follows:

(p. 18, l. 32–33)

“, whereas the TROPOMI retrieval product will employ $1^\circ \times 1^\circ$ resolution simulation fields from TM5 (Williams et al., 2017).”

P18, L27: “captures the regional”

Corrected.

P18, L31 “points”

Corrected.

P18, L35: what is the Post-K computer?

We added the description of the post-K computer:

(p. 20, l. 28–30)

“A post-petascale supercomputer, also known as a post-K computer, is being developed by Japan's FLAGSHIP 2020 project (e.g., Miyoshi et al., 2015), and will facilitate future studies...”

Global high-resolution simulations of tropospheric nitrogen dioxide using CHASER V4.0: Response to reviewer #2

We would like to thank anonymous reviewer #2 for his or her careful reading and valuable comments, which have helped to significantly improve the manuscript. We revised the manuscript and responded to considering reviewer's comments. The main changes are as follows:

- 1) Validation results of meteorological fields have been extended and moved to Section 3
- 2) An analysis of the impacts of convection and lightning NO_x has been added to Section 5.
- 3) An extended discussion has been added on the trade-off between horizontal model resolution and computational costs.

Individual comments (in black) and specific response to them (in blue) are listed below. *Text (Italicized)* from the revised manuscript is in quotes.

Major comments:

1. Conclusion

Realistically, the computational time is trade-off. What is the authors' conclusion found through this study? On global scale comparison (judged from global RMSE), the authors concluded that 'The improvement when increasing resolution from 1.1_ to 0.56_ was limited' (P7, L27; Figs. 2-6; Table 1). On megacity levels, the authors concluded that 'These validation results demonstrate the capability of the 0.56_ simulation to represent high concentrations over strong local sources' (P11, L25-26; Figs. 7-8). I suppose that these results can be expected one, so what (or which) is the desired resolution at the current computational resources. We do not conduct 2.8_ resolution simulation? The conclusion described at Section 6 (P18, L27-31) conveys essential point in this study, so I would like to recommend this including also on Abstract.

We have added the discussion on the trade-off between horizontal model resolution and computational resource to the conclusion as follows:

(p. 20, l. 21–24)

“The computational cost largely increases at 0.56° resolution, while the overall improvements were small at 0.56° resolution compared to 1.1° resolution except over megacities. Therefore, we consider that horizontal resolution of approximately 1° is a realistic option to obtain improved overall performance of global tropospheric NO₂ simulations.”

The conclusion described in Section 6 (P18, L27—31) has been added to the Abstract as follows:

(p. 1, l. 6–8)

“The 1.1° simulation generally captured well regional distribution of the tropospheric NO₂ column, whereas 0.56° resolution was necessary to improve model performance over areas with strong local sources with mean bias reductions of 67% over Beijing and 73% over San Francisco in summer.”

In Section 5.2, the authors mention the relative computational burden compared to 2.8_ resolution simulation. The actual computational time (NOT compared as relative time) might bring us the valuable information.

We have added the actual computer time in Section 5.2 as follows:

(p. 18, l. 19–22)

“High-resolution chemical transport modeling requires huge computational resources. Compared to the simulation at 2.8° resolution (approximately 480 s computer time for a 1-day simulation), the computational cost increased by a factor of 67 at 0.56° resolution (approximately 32000 s computer time) and by a factor of 14 at 1.1° resolution (approximately 6700 s computer time).”

2. Model evaluation on 2014

In Section 3.3, the authors presented the model evaluation with FRAPPE aircraft measurement. This campaign is conducted on summer 2014 (P6, L29); however, the model

simulation was based on 2010 emission intensity (P4, L16-17). The model evaluation should take into account the differences of emission intensity from 2010 to 2014. Detailed and careful discussion and possible differences are needed.

Based on an analysis of optimized NO_x emissions from an assimilation of satellite observations for the past decade (Miyazaki et al., 2017), we have added a discussion about NO_x emission differences between 2010 and 2014.

(p. 13, l. 31–35)

“The 2014 simulations used the anthropogenic emission inventory for the year 2010 (c.f., Section 2.1). The optimized NO_x emission from an assimilation of multiple species satellite measurements (Miyazaki et al., 2017) suggest that surface NO_x emissions over the DMA in July-August increased by 7% from 2010 to 2014. The temporal variation, together with large uncertainties in the emission inventories, could explain part of the negative biases of NO and NO₂ at 800 hPa, which also affects OH, HO₂, and O₃ through subsequent chemistry processes.”

Minor comments:

P1, L2: The expression of ‘ranging from 0.56_ to 2.8_’ impresses the resolution were varied with some intervals; but the simulation was conducted on 2.8_, 1.1_, and 0.56_. Please revise the expression to the correct usage.

The sentence has been rewritten as follows:

(p. 1, l. 2)

“... at horizontal resolutions of 0.56°, 1.1°, and 2.8°.”

P2, L9-31: In this context, ‘high resolution’ will mean ‘high horizontal resolution’. Do the authors have some suggestion regarding ‘vertical resolution’?

To discuss vertical model resolution, the following sentence has been added to the

introduction in the revised manuscript:

(p. 2, l. 33–35)

“Vertical model resolution could also be important through, for instance, vertical mixing between planetary boundary layers and the free troposphere (e.g., Menut et al., 2013).”

(p. 3, l. 18)

“We focus on impacts of horizontal model resolution on global tropospheric NO₂ simulations.”

P3, L10: Also, the expression of ‘Three horizontal resolutions, varying from 2.8_ to 0.56_’ is ambiguous. Please revise the expression to the correct usage.

This part has been rewritten as follows:

(p. 3, l. 19)

“Three horizontal resolutions of 2.8°, 1.1°, and 0.56° ...”

P3, L19: What is the update(s) on this version 4.0 of global chemical transport model CHASER?

We have added the description on the differences between version 3.0 and 4.0 as follows:

(p. 3, l. 31–p. 4, l. 2)

“Several updates were made from CHASER V3.0 (Sudo et al., 2002) to CHASER V4.0, which include the consideration of aerosol species (sulfate, nitrate, ammonium, black and organic carbon, soil dust, and sea salt) and the implementation of related chemistry, radiation, and cloud processes. AGCM was also updated from the NIES/CCSR AGCM 5.7b to the MIROC-AGCM. Detailed information on the AGCM updates are provided by K-1 model developers (2004).”

P4, L17-18; P4, L26-28: GFED version 4.1 provides three-hourly fields, but the authors

applied diurnal cycles described here? Why?

The model simulations employed monthly mean total emissions as a boundary condition. This is partly because we aim to optimize emission diurnal variations from data assimilation, as conducted by Miyazaki et al. (2017). We confirmed that the applied diurnal emission variability is similar to variability from GFED v4.1 3-hourly data over Central Africa and South America (Figure 1 in this document). Meanwhile, distinct differences in the diurnal emission variability functions around the GOME-2 overpass time (9:30LT) suggest that model performance could differ when using the GFED v4.1 3-hourly data in the comparison with the GOME-2 retrievals. The use of the GFED v4.1 3-hourly data is expected to decrease model negative biases against GOME-2 over Central Africa and increase model negative biases over South America. To discuss them, the following discussion has been added in the revised manuscript:

(p. 5, l. 10–13)

“Over biomass burning regions, emission diurnal variability applied in this study is generally similar to variability from the 3-hourly GFED4.1 data, while distinct differences in relative magnitude around the GOME-2 overpass time suggest that model performance could differ in comparison with the GOME-2 retrievals when using the 3-hourly GFED4.1 data.”

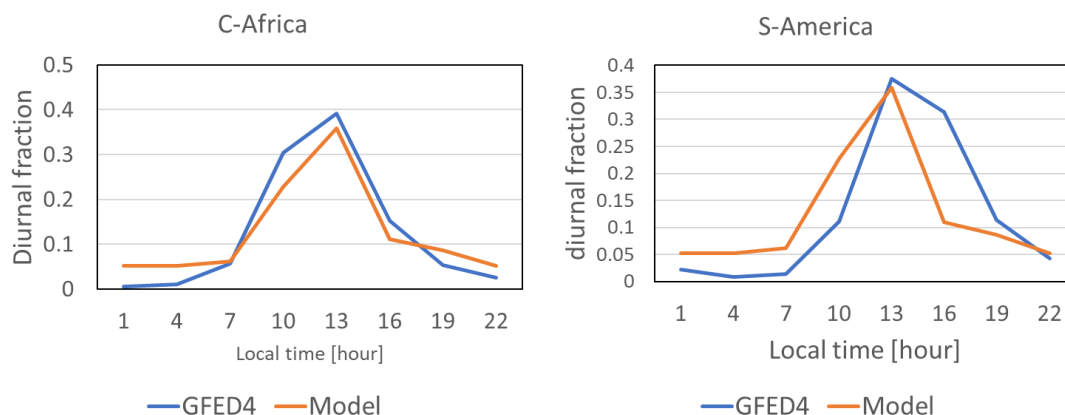


Figure 1. Diurnal emission variability functions applied for surface NO_x emissions in our model simulation (red) and those provided from GFED4.1 during June-August 2008.

P4, L29-30: Did the authors confirm that the application of the diurnal cycles of surface NO_x emission can improve the simulation results on 1.1_ and 0.56_ resolution?

We confirmed the impact at 1.1° resolution but not at 0.56° resolution. A sensitivity calculation at 1.1° resolution for July 2008 suggests that the application of the diurnal cycle improves the model performance with respect to OMI over polluted and biomass burning regions (e.g., mean bias reduction by 21% over eastern China and by 32% over Central Africa). The sentences have been rewritten as follows:

(p. 5, l. 8–10)

“Miyazaki et al. (2012) confirmed that the application of this scheme leads to improvements in global tropospheric NO₂ simulation at 2.8° resolution. Improvements were commonly found in the 1.1° resolution simulation, whereas we did not evaluate the impact at 0.56° resolution.”

P5, L3-27: This part includes not ‘methodology’ but ‘results/discussion’. Some parts should be moved to appropriate locations, and reorganized as ‘methodology’ section. As the discussion of meteorological field, the authors showed the precipitation data with GPCP. I agree that the precipitation is one of the important parameter should be discussed; however, for gas-phase species of NO₂ focused in this study, radiation will be more important because the photolysis reaction can determine the NO₂ lifetime and NO_x cycles. In my opinion, the discussion on meteorology can be only documented, and might not be needed as figure(s)/table(s).

The result and discussion parts in Section 2.1 have been moved to Section 3 (Validation of meteorological field) and revised as follows:

(p. 7, l. 10–11)

“In the CTM-AGCM online framework, meteorological fields vary among different model resolutions. From sensitivity calculations, the strength and distribution of the cumulus

convection were found to be sensitive to model resolution...”

Following the comment by another reviewer, who suggested adding a more detailed analysis on meteorological fields, we have revised Figure 1 and discussion as follows. This revision contradicts your suggestion (to remove the figure), but we would appreciate your understanding.

(p. 7, l. 32–p. 8, l. 3)

“The global mean positive bias was 80% and 50% lower at 1.1° and 0.56° resolutions, respectively, than at 2.8° resolution (Figures 1e–h), suggesting improved photolysis calculations in the high-resolution simulations. Among different regions, the positive model bias at 2.8° resolution was largest over the Maritime continent; it was reduced by 86% at 1.1° resolution and by 75% at 0.56° resolution. Over northern South America, in contrast, most of the positive biases remain at 1.1° and 0.56° resolutions.”

P7, L18: The illustration of these analyzed regions in figure (e.g., on Fig. 2) is helpful.

The regions used for the model evaluation are shown in Figure 2a. The corresponding description has been added to the figure caption:

(p. 31)

“The white square line in (a) represents the region used for the model evaluation.”

P11, L28-29: The illustration of the Denver Metropolitan area (DMA) in figure (e.g., on Fig. 7) is helpful.

The DMA area is shown in Figure 9a in the revised manuscript. The corresponding description has been added to the figure caption:

(p. 38)

“The DMA area is shown by the blue square line in (a).”

P12, L16-P13, L4; Figure 11: What observation is used for these probability distributions? Please specify.

The FRAPPÉ aircraft-campaign observation of NO at 800 hPa over the Denver Metropolitan area (DMA) is used for the probability distribution. We have modified this part to specify the observation used for the probability distribution:

(p. 13, l. 8–9).

“Figure 11a shows the probability distribution function of NO from the FRAPPÉ aircraft observation and the model simulations at 800 hPa over the DMA.”

P13, L6-7: From Table 2, the analyzed period will be 2008. Please specify the period in the main text.

The analyzed period has been specified as follows:

(p. 14, l. 2–3)

“We analyzed simulated global distribution of O₃, OH, and NO_x for 2008 to characterize the resolution dependence of NO₂-related chemistry.”

P14, L5-13: Why the tropospheric NO₂ column were shown here? If the authors discussed the differences in OH and NO₂, NO₂ should be shown as lowermost five layers partial column as was OH.

Figure 13(a–c) has been replaced by lowermost five layers partial NO₂ column to discuss the difference between OH and NO₂ for the lower troposphere. The related description has also been modified as follows:

(p. 15, l. 6–8)

“Figure 13 compares the spatial distribution of NO₂ and OH in the lower troposphere between model simulations. Lower tropospheric NO₂ partial columns were larger around strong source areas and smaller over rural and coastal areas around polluted regions at

1.1° and 0.56° resolutions, ...”

(p. 15, l. 11–12)

“The differences in OH and NO₂ exhibited similar spatial patterns over polluted and biomass burning regions: e.g., $r = 0.53$ over the western United States, $r = 0.61$ over India, and $r = 0.57$ over South America.”

P15, L11-12: So updated version 4.0 is not related to the improvement on the chemical kinetics?

The update does not include any improvements on chemical kinetics.

P15, L15-16: What means the differences? Anthropogenic amounts from China? What is the analyzed period?

This means a difference in the total amount of anthropogenic NO_x emission in China in 2008 between the lowest and highest inventories among the four selected inventories (REASv2.1, MEIC, EDGARv4.2, and the inventory produced by Nanjing University). This description has been clarified as follows:

(p. 16, l. 30–31)

“The total amounts of anthropogenic NO_x emission in China in 2008 differ by 27% between two (highest and lowest) bottom-up inventories; EDGAR4.2 and MEIC (Saikawa et al., 2017).”

P16, L17-19: Did the authors claim ‘high-resolution modeling’ on global scales (this will be related to Section 5.3 and 5.4)? In this manuscript, the downscaling approach was not mentioned. If we offer the improvement on megacity levels, the downscaling approach seems to be the alternate way. Especially, NO₂ column is strongly related to surface NO_x emissions, high-resolution over oceans might not be required (suggested from Fig. 2). Do the authors have some comments?

We have extended the discussion on advantages of global high-resolution models over methods such as downscaling and two-way nesting between global and regional models as follows:

(p. 17, l. 33–p. 18, l. 13)

“Most previous high-resolution modeling studies have used regional models to simulate NO₂ concentration fields at high-spatial resolution, primarily focusing on urban regions, with reduced or equivalent computational costs compared to global models. Several studies demonstrated that a better representation of long-range transport of NO_x reservoir species such as peroxyacetyl nitrate (PAN) are important on simulated NO₂ in the free troposphere in remote areas (e.g., Hudman et al., 2004; Fischer et al., 2010, 2014; Jiang et al., 2016). A two-way nesting between regional and coarse-resolution global models (e.g., Yan et al., 2016) is able to consider both small-scale processes inside focusing regions and long-range transport over the globe, which has an advantage over regional models. An important advantage of global models over regional models and two-way nesting systems is the ability to simulate NO₂ concentration fields at high resolutions over the entire globe across urban, biomass burning, and remote regions in a consistent framework. Even over remote regions, a high-resolution simulation has the potential to improve model performance through considering the effects of non-linear chemistry in high-concentrated NO_x plumes emitted from ships and lightning (Charlton-Perez et al., 2009; Vinken et al., 2011; Gressent et al., 2016). These NO_x emission sources in remote regions have significant impacts on climate and air quality (Eyring et al., 2010; Holmes et al., 2014; Banerjee et al., 2014; Finney et al., 2016). It is thus important to clarify the importance of resolving small-scale sources and plumes within a global modeling framework for better understanding of the global atmospheric environment and chemistry-climate system.”

Figure 10: This figure presented the comparison with observation over the Denver metropolitan area, so please specify the simulation period explicitly.

We have added the period to the caption of figure 10 as follows:

(p. 39)

“... over the Denver metropolitan area (39-41°N and 103-105.5°W) during the FRAPPE period (from July 16 to August 18, 2014).”

Figure 12: What makes the OH increment over high altitude over southern hemisphere?

We have added this explanation to the revised manuscript:

(p. 15, l. 4–5)

“A large relative OH increment was found over the Antarctic, because weak ultraviolet radiation led to small OH concentrations during a polar night.”

Table 2: These statistical scores averaged over global might be helpful to understand the improvement according to the resolution change. Why so large MB and RMSE are found on 100 hPa comparison?

We have added the statistical scores averaged over all available ozonesonde, and the corresponding description:

(p. 14, l. 17–20)

“Overall, RMSE with respect to the globally available ozonesondes was reduced with increasing resolution (by up to 8.1 ppbv) at 850 hPa and 500 hPa. In contrast, at 300 hPa, RMSE increased at 0.56° (by 1.2 ppbv) and 1.1° (by 9.4 ppbv) resolutions, reflecting larger RMSE at 0.56° and 1.1° resolutions in the high-latitudes of both hemispheres.”

The observed and simulated ozone concentrations are large at 100 hPa. The relative values of MB and RMSE with respect to the observed concentrations are comparable between 100 hPa and the other pressure surfaces, except at the southern high latitudes, where the relative MB is larger by a factor of 2 at 100 hPa than that at the other altitudes.

Technical comments:

Figure 1: The color bars might be understood, but it will be better to fit the corresponded figures.

Modified.

Figure 2: The color bars might be understood, but it will be better to fit the corresponded figures. Specific indication by using (a) to (h) will be better.

Modified.

Figure 3 to Figure 6: Specific indication by using (a) to (h) will be better not using column and row expressions, or remove (a) to (k) because (a) to (k) were not used in the main text (P8, L1-P9, L17)

Removed the specific indications.

Figure 7: The color bars might be understood, but it will be better to fit the corresponded figures. Specific indication by using (a) to (h) will be better. The coastline of map in first column should be emphasized to be distinguished. Typo of 'Dever' on (i).

Modified.

Figure 8: Typo of 'Shengzhen' in the figure.

Corrected.

Figure 9: Specific indication by using (a) to (h) will be better.

Modified.

Figure 10: Specific indication by using (a) to (j) will be better.

Modified.

Figure 13: The color bars might be understood, but it will be better to fit the corresponded figures.

Modified.

References

Miyazaki, K., Eskes, H., Sudo, K., Boersma, K. F., Bowman, K., and Kanaya, Y.: Decadal changes in global surface NO_x emissions from multi-constituent satellite data assimilation, *Atmos. Chem. Phys.*, 17, 807–837, doi:10.5194/acp-17-807-2017, 2017.

Global high-resolution simulations of tropospheric nitrogen dioxide using CHASER V4.0: Response to the Executive Editor

We would like to thank the Executive Editor for his comment. We revised the manuscript and responded to considering reviewer's comments. The main changes are as follows:

- 1) Validation results of meteorological fields have been extended and moved to Section 3
- 2) An analysis of the impacts of convection and lightning NO_x has been added to Section 5.
- 3) An extended discussion has been added on the trade-off between horizontal model resolution and computational costs.

Individual comments (in black) and specific response to them (in blue) are listed below. *Text (Italicized)* from the revised manuscript is in quotes.

As explained in https://www.geoscientific-model-development.net/about/manuscript_types.html GMD is encouraging that authors upload the program code of models (including relevant data sets) as a supplement or make the code and data available at a data repository preferable with an associated DOI (digital object identifier) for the exact model version described in the paper. If for some reason the code and/or data cannot be made available in this form authors need to state the reasons, for why access is restricted (e.g licensing restriction), in the code availability section. In the case of this manuscript I would like to encourage the authors to provide the source code as a supplement and also add some statements on the environment required to run the model (e.g. programming language, code dependencies).

Lutz Gross GMD Executive Editor

We cannot provide the CHASER V4.0 source codes as a supplement because of license restriction. The sentences have been rewritten as follows:

(p. 21, l. 2–3)

“The source codes for CHASER V4.0 are not publicly available because of license restriction. The source codes can be obtained from K. Sudo (kengo@nagoya-u.jp) upon request. Most of the source codes are written in Fortran 77 and 90.”

Global high-resolution simulations of tropospheric nitrogen dioxide using CHASER V4.0

Takashi Sekiya¹, Kazuyuki Miyazaki^{1,2}, Koji Ogochi¹, Kengo Sudo^{3,1}, and Masayuki Takigawa¹

¹Japan Agency for Marine-Earth Science and Technology, Yokohama, Japan

²Jet Propulsion Laboratory-California Institute of Technology, Pasadena, CA, USA

³Graduate School of Environmental Studies, Nagoya University, Nagoya, Japan

Correspondence to: Takashi Sekiya (tsekiya@jamstec.go.jp)

Abstract. We evaluate global tropospheric nitrogen dioxide (NO₂) simulations using the CHASER V4.0 global chemical transport model (CTM) at horizontal resolutions ~~ranging from of~~ 0.56° ~~to~~, 1.1°, and 2.8°. Model evaluation was conducted using satellite tropospheric NO₂ retrievals from the Ozone Monitoring Instrument (OMI) and the Global Ozone Monitoring Experiment-2 (GOME-2), and aircraft observations from the 2014 Front Range Air Pollution and Photochemistry Experiment (FRAPPÉ). Agreement against satellite retrievals improved greatly at ~~0.56~~ 1.1° and ~~+1.056~~ 0.56° resolutions (compared to 2.8° resolution) over polluted and biomass burning regions. ~~A resolution of~~ The 1.1° simulation generally captured well regional distribution of the tropospheric NO₂ column, whereas 0.56° resolution was necessary to improve model performance over areas with strong local sources, with mean bias reductions of 67% over Beijing, ~~62% over Tokyo,~~ and 73% over San Francisco in summer. Validation using aircraft observations indicated that high-resolution simulations reduced negative NO₂ biases below 700 hPa over the Denver metropolitan area. These improvements in high-resolution simulations were attributable to (1) closer spatial representativeness between simulations and observations and (2) better representation of large-scale concentration fields (i.e., at 2.8°) through consideration of small-scale processes. Model evaluations conducted at 0.5°- and 2.8°-bin grids indicated that the contributions of both these processes were comparable over most polluted regions, whereas the latter effect (2) made a larger contribution ~~(of up to 90%)~~ over eastern China and biomass burning areas. The evaluations presented in this paper demonstrate the potential of using a high-resolution global CTM for studying megacity-scale air pollutants across the entire globe, potentially also contributing to global satellite retrievals and chemical data assimilation.

1 Introduction

Nitrogen oxides (NO_x ≅ NO + NO₂) play a key role in air quality, tropospheric chemistry, ecosystem, and climate change. NO_x is one of the main precursors of tropospheric ozone, a major pollutant and greenhouse gas (IPCC, 2013). Oxidation products from NO_x including nitric acid (HNO₃), alkyl nitrates (RONO₂), and peroxy nitrates (RO₂NO₂), are partitioned to particulate nitrates, which cause respiratory problems, degrade visibility, and affect the radiative budget by scattering solar radiation. Wet and dry deposition of nitrogen compounds affects the productivities and diversities of terrestrial and marine ecosystems on global scale (e.g., Gruber and Galloway, 2008; Duce et al., 2008). Increasing NO_x also reduces quantities of

long-lived greenhouse gases, such as methane, due to chemical destruction via hydroxyl radicals (OH) through O_3 - HO_x - NO_x chemistry (e.g., Shindell et al., 2009).

Major anthropogenic sources of NO_x are ground transport and power generation, with these accounting for more than half of total global anthropogenic emissions (Janssens-Maenhout et al., 2015). NO_x is also emitted from natural sources: biomass burning, microbial activity in soil, and lightning. Main NO_x sinks are oxidation with OH during daytime and hydrolysis of dinitrogen pentoxide (N_2O_5) on aerosols during nighttime (Platt et al., 1984; Dentener and Crutzen, 1993; Evans and Jacob, 2005; Brown et al., 2006). Lifetime of NO_x , which is a function of OH concentration and NO_2 photolysis during daytime (Prather and Ehhalt, 2001), is of the order of hours to days. It also depends on aerosol surface area and composition during nighttime (e.g., Brown et al., 2006). Because of this short lifetime and heterogeneous source distribution, tropospheric NO_x is highly variable in space and time over the globe.

Satellite observations of tropospheric NO_2 columns from the Global Ozone Monitoring Experiment (GOME), the SCanning Imaging Absorption SpectroMeter for Atmospheric CHartographY (SCIAMACHY), the Ozone Monitoring Instrument (OMI) (e.g., Duncan et al., 2016; Krotkov et al., 2016), and GOME-2 (e.g., Valks et al., 2011; Zien et al., 2014) have been used for evaluations of chemical transport models (CTMs) (e.g., Kim et al., 2009; Huijnen et al., 2010a; Miyazaki et al., 2012; Yamaji et al., 2014). Previous model validation studies revealed general underestimation of simulated tropospheric NO_2 columns over polluted areas in global CTMs (van Noije et al., 2006; Huijnen et al., 2010a, b; Miyazaki et al., 2012). Global CTMs typically have a horizontal resolution of 2° – 5° . Meanwhile, high-resolution simulations have been conducted using regional models, which have shown the ability to simulate observed high tropospheric NO_2 columns over major polluted regions such as East Asia, North America, and Europe (e.g., Uno et al., 2007; Kim et al., 2009; Huijnen et al., 2010a; Itahashi et al., 2014; Yamaji et al., 2014; Canty et al., 2015; Han et al., 2015; Harkey et al., 2015). High-resolution simulations can ~~be improved~~ lead to improvements in two ways: (1) through reduced spatial representation gaps between observed and simulated fields, and (2) via improved representation of large-scale concentration fields through consideration of small-scale processes. Using a regional CTM, Valin et al. (2011) suggested that insufficient model resolution leads to enhanced OH, shortened NO_2 lifetime, and too low NO_2 over strong local emissions. The authors also suggested that 4- and 12-km resolutions are sufficient to accurately simulate the non-linear effects of O_3 - HO_x - NO_x chemistry on NO_2 lifetime over power plants in Four Corners and San Juan, and Los Angeles. Yamaji et al. (2014) estimated up to 60% error reduction in simulated tropospheric NO_2 columns at 20-km resolution over East Asia, as compared to 80-km resolution. Using a global CTM, Wild and Prather (2006) reported that NO_x lifetime over East Asia increased by 22% over when increasing model resolution from $5.6^\circ \times 5.6^\circ$ to $1.1^\circ \times 1.1^\circ$. Williams et al. (2017) conducted a comprehensive evaluation of NO_2 , SO_2 , and CH_2O simulated in TM5-MP, revealing that increasing horizontal model resolution from $3^\circ \times 2^\circ$ to $1^\circ \times 1^\circ$ reduced negative NO_2 bias by up to 99%, against 35% of the surface-measurement sites (33 stations) in Europe. Horizontal model resolution could also be a crucial factor even for biomass burning areas, because of highly varying emission sources and non-linear chemical processes. However, previous studies have mostly focused on urban regions. Further investigations are required for both urban and biomass burning regions. Vertical model resolution could also be important through, for instance, vertical mixing between planetary boundary layers and the free troposphere (e.g., Menut et al., 2013).

5 Simulated global NO₂ fields provide important information on satellite retrieval and data assimilation, as well as contributing to a better understanding of the atmospheric environment (e.g., Boersma et al., 2011; Valks et al., 2011; Miyazaki et al., 2012; Williams et al., 2017). The quality of *a priori* fields is important for retrieval of the tropospheric NO₂ column (Russell et al., 2011). For instance, low resolution global CTMs poorly represent NO₂ variations across urban and rural regions, degrading the spatial variation of retrieved concentrations at high resolution. Several retrieval studies (Heckel et al., 2011; Russell et al., 2011; Lin et al., 2014) have employed high-resolution *a priori* fields from regional CTM simulations, ~~with these improving retrieval quality.~~ The authors demonstrated improvements in these regional retrievals using high-resolution *a priori* fields in comparison to the ARCTRAS aircraft observation and ground-based remote sensing MAX-DOAS through, for instance, clearer separation of NO₂ profiles between urban, rural, and ocean regions, and improved representations of altitude-dependent sensitivities (i.e., averaging kernels).

10 Global chemical data assimilation (e.g., Inness et al., 2015; Miyazaki et al., 2015) and emission inversion (e.g., Stavrou et al., 2013; Miyazaki et al., 2017) would also benefit from high-resolution global CTMs, through improvements in model performance ~~and representativeness~~ (e.g., Arellano Jr. et al., 2007) and reduced spatial representation gaps between observed and simulated fields. ~~Mijling and van der A (2012)~~ Several previous studies (Mijling and van der A, 2012; Ding et al., 2017b; Liu et al., 2017) the importance of high-resolution modeling ~~to detect in detecting~~ small-scale NO_x emission sources such as urban, new power plants, and ship emissions. A systematic evaluation of high-resolution model enables us to discuss application potentials of global high-resolution models to satellite retrievals and data assimilation.

In this study, we conduct a systematic evaluation of global high-resolution simulations of tropospheric NO₂ and related chemistry using CHASER V4.0. We focus on impacts of horizontal model resolution on global tropospheric NO₂ simulations. 20 Three horizontal resolutions ~~, varying from of~~ 2.8° to 0.56, 1.1°, and 0.56° are evaluated using satellite and aircraft measurements. The remainder of this paper is structured as follows. Section ~~2 describes the model and~~ 2.1 describes model configuration and simulation settings, and optimizes simulated meteorological fields at different horizontal resolution. Section 2.2 describes observations used for validations. Section 3-4 presents the model evaluation results of tropospheric NO₂ using satellite-derived retrievals for the year 2008 and aircraft-campaign observations from the 2014 Front Range Air Pollution and Photochemistry Experiment (FRAPPÉ). Section 4-5 discusses the resolution dependence of tropospheric chemistry. In section 5-6, we then discuss the implications of this evaluation and the potential benefits of applying global high-resolution CTMs. Finally, section 6-Section 7 provides concluding remarks.

2 Methodology

2.1 CHASER V4.0 model and simulations

30 2.1 CHASER V4.0 model and simulations

CHASER V4.0 (Sudo et al., 2002; Sudo and Akimoto, 2007; Sekiya and Sudo, 2014) is a global chemical transport model developed in the framework of the MIROC-ESM earth system model (Watanabe et al., 2011), which is coupled online with

the MIROC-AGCM atmospheric general circulation model (AGCM) (K-1 model developers, 2004) and the SPRINTARS aerosol transport model (Takemura et al., 2005, 2009). Several updates were made from CHASER V3.0 (Sudo et al., 2002) to CHASER V4.0, which includes the consideration of aerosol species (sulfate, nitrate, ammonium, black and organic carbon, soil dust, and sea salt) and the implementation of related chemistry, radiation, and cloud processes. AGCM was also updated from the NIES/CCSR AGCM 5.7b to the MIROC-AGCM. Detailed information on the AGCM updates are provided by K-1 model developers (2004).

CHASER calculates gaseous, aqueous, and heterogeneous chemical reactions (93 species and 263 reactions), including the O_3 - HO_x - NO_x - CH_4 -CO system with oxidation of non-methane volatile organic compounds (NMVOCs). Major chemical reactions related to NO_2 are considered, including: (1) the photochemical cycle of NO and NO_2 , (2) oxidation of NO_2 with OH, (3) heterogeneous hydrolysis of N_2O_5 , (4) formation, thermal decomposition, and photolysis of peroxyacetyl nitrates (PANs), and (5) formation of isoprene nitrates. CHASER also calculates stratospheric O_3 chemistry including Chapman mechanisms and catalytic reactions related to HO_x , NO_x , ClO_x , and BrO_x below 50 hPa. Above 50 hPa, prescribed concentrations of O_3 , nitrogen, and halogen species are used. Monthly ozone climatology is obtained from UGAMP (Li and Shine, 1995), whereas monthly climatologies of nitrogen and halogen species are taken from the Chemistry-Climate Model Initiative (CCMI) REF-C1SD simulation using NIES CCM (Akiyoshi et al., 2009, 2016; Morgenstern et al., 2016). Dry and wet (rain-out and wash-out) ~~depositions are~~ deposition is calculated based on the resistance-based parameterization (Wesely, 1989), and cumulus convection and large-scale condensation parameterizations, respectively. Advective tracer transport is calculated using the piecewise parabolic method (Colella and Woodward, 1984) and the flux-form semi-Lagrangian scheme (Lin and Rood, 1996). The model also incorporates tracer transport on a sub-grid scale in the framework of the prognostic Arakawa-Schubert cumulus convection scheme (Emori et al., 2001) and the vertical diffusion scheme (Mellor and Yamada, 1974).

We evaluated two one-year global simulations for tropospheric NO_2 in 2008 and 2014 with a one-year spin-up calculation for each simulation. In each case, three model calculations were conducted at different horizontal resolutions: T42 (i.e., $2.8^\circ \times 2.8^\circ$; hereinafter referred as the 2.8° simulation), T106 (i.e., $1.1^\circ \times 1.1^\circ$; hereinafter the 1.1° simulation), T213 (i.e., $0.56^\circ \times 0.56^\circ$; hereinafter the 0.56° simulation). The 32 vertical layers from the surface to approximately 40 km altitude were used across the three simulations. To meet the Courant-Friedrich-Levy (CFL) condition, different maximal time steps were used for each resolution: i.e., 20 min at 2.8° resolution, 8 min at 1.1° resolution, and 4 min at 0.56° resolution. Sea-surface temperatures (SSTs) and sea-ice concentrations (SICs) were prescribed by HadISST for the corresponding year (Rayner et al., 2003). Simulated air temperature and horizontal wind were nudged to 12-hourly ERA-Interim re-analysis data (Dee et al., 2011). ERA-Interim re-analysis data at $0.75^\circ \times 0.75^\circ$ horizontal resolution with 37 pressure levels were linearly interpolated to each model grid, possibly degrading simulated meteorological fields at finer resolution (i.e., 0.56°). We specified 5 and 0.7 days nudging time for temperature and horizontal wind, respectively.

NO_x emissions from anthropogenic, biomass burning, lightning, and soil sources were considered. Anthropogenic emissions from the HTAP_v2.2 inventory for the year 2008 (Janssens-Maenhout et al., 2015) were employed for the 2008 simulations, with these originally having $0.1^\circ \times 0.1^\circ$ resolution. For the 2014 simulation, anthropogenic emissions for the latest available year 2010 of the HTAP_v2.2 inventory were used. Biomass burning emissions were taken from the Global Fire Emissions

Database (GFED) version 4.1 ($0.25^\circ \times 0.25^\circ$ resolution) (Giglio et al., 2013) for the two study years. Soil emissions were obtained from the Global Emission Initiative (GEIA) database ($1^\circ \times 1^\circ$) (Yienger and Levy, 1995). Model of Emissions of Gases and Aerosols from Nature (MEGAN) version 2 data ($0.5^\circ \times 0.5^\circ$) were used for biogenic NMVOCs emissions (Guenther et al., 2006). Annual mean total global NO_x emissions from the surface were $45.3 \text{ Tg N yr}^{-1}$ and $45.9 \text{ Tg N yr}^{-1}$ in 2008 and 2014, respectively. Lightning NO_x sources were calculated as a function of cloud top height in the cumulus convection parameterization (prognostic Arakawa-Schubert scheme) at each time step of CHASER, following Price and Rind (1992).

We considered diurnal cycles of surface NO_x emissions following Miyazaki et al. (2012). Different diurnal cycles were assumed, depending on the dominant source category of each region: anthropogenic-type diurnal cycles (with maxima in the morning and evening, with a factor of about 1.4) over Europe, eastern China, Japan, and North America; biomass burning-type diurnal cycles (with a rapid increase in the morning and maximum mid-day, with a factor of about 3) over central Africa and South America; and soil-type diurnal cycles (with maxima in the afternoon, with a factor of about 1.2) in the grasslands or sparse vegetated areas of Australia, Sahara, and western China. Miyazaki et al. (2012) confirmed that the application of this scheme leads to improvements in global tropospheric NO_2 simulations ~~using a at 2.8° resolution model resolution.~~ Improvements were commonly found in the 1.1° resolution simulation, whereas we did not evaluate the impact at 0.56° resolution. Over biomass burning regions, emission diurnal variability applied in this study is generally similar to variability from 3-hourly GFED4.1 data, while distinct differences in relative magnitude around the GOME-2 overpass time suggest that model performance could differ in comparison with the GOME-2 retrievals when using the 3-hourly GFED4.1 data.

The CTM-AGCM on-line coupling framework used in this study has advantages over the off-line CTM framework driven by meteorological analysis/reanalysis data. First, the on-line framework is able to simulate short-term non-linear variations in chemical and transport processes at every time step of the model (1–20 min in this study), in contrast to off-line CTM driven by meteorological data typically with 6-hourly intervals. Second, grid-scale and sub-grid-scale transport processes (e.g., convection, turbulent mixing) are represented in a consistent manner based on AGCM physics (e.g., mass balance) at short time intervals. Third, the on-line framework allows a flexible choice of CTM resolution, whereas the off-line framework requires matching (or interpolations without physically meaningful variations) between CTM and meteorological data resolutions.

~~From sensitivity calculations, the strength and distribution of the cumulus convection were found to be sensitive to model resolution. The cumulus convection parameterization for 2.8° resolution was optimized following Watanabe et al. (2011). We then attempted to optimize the relevant model parameters (critical relative humidity for cumulus convection and ice fall speed) for 1.1° and 0.56° resolutions. The criterion was to minimize the root-mean-square error (RMSE) of annual global total flash against Lightning Imaging Sensor (LIS), outgoing longwave radiation (OLR) against the NOAA-18 satellite observations (Liebmann, 1996), and precipitation against the Global Precipitation Climatology Project (GPCP) (Adler et al., 2003; Huffman et al., 2009) the year 2008. The obtained minimum values of RMSE for annual mean flash rate were $0.010 \text{ flashes km}^{-2} \text{ day}^{-1}$, $0.011 \text{ flashes km}^{-2} \text{ day}^{-1}$, and $0.011 \text{ flashes km}^{-2} \text{ day}^{-1}$ at 2.8° , 1.1° , and 0.56° resolutions, respectively. Optimizing the cumulus convection setting reduced positive bias of annual global mean OLR by 80% at 1.1° resolution and by 50% at 0.56° resolution. Simulated global flash frequency and annual global lightning sources (in brackets) varied slightly: $43 \text{ flashes s}^{-1}$ (5.4 Tg~~

N-yr^{-1}) at 2.8° resolution, $47 \text{ flashes s}^{-1}$ (5.6 Tg N-yr^{-1}) at 1.1° resolution, and $46 \text{ flashes s}^{-1}$ (5.5 Tg N-yr^{-1}) at 0.56° resolution.

We also evaluated relevant meteorological fields (i.e., precipitation and cloud) that have large impacts on chemistry simulations in the on-line CTM framework (e.g., Hess and Vukicevic, 2003). In comparison with GPCP precipitation data, all simulations showed similar spatial error patterns after optimization (Figure 1), having positive biases (typically by a factor of 2) north and south of the Intertropical convergence zone (ITCZ) over the Pacific, Indian Subcontinent, and Central Africa, and negative biases in the Southern Pacific convergence zone (SPCZ), west of maritime continents, over the Amazon, and over the southeast United States, because of the use of the same physical package (e.g., cumulus convection scheme). Meanwhile, increasing model resolution led to large error reductions by up to 70% at 1.1° and 0.56° resolutions over the northwest Pacific and Atlantic oceans (negative biases) and over the northern part of China and the western part of the North American continent (positive biases). All simulations also showed reasonable agreement with OLR derived from the NOAA-18 satellite. The global mean positive bias was 80% and 50% lower at 1.1° and 0.56° resolutions, respectively, than at 2.8° resolution (not shown). Model simulations were thus appropriately set up at all resolutions, while various features of the high-resolution framework were improved. Further validation at various spatial-temporal scales for different meteorological parameters will be helpful to evaluate detailed AGCM performance, even if this is beyond the scope of this current study.

2.2 Observations

2.2.1 Satellite tropospheric NO_2 retrievals

We used tropospheric NO_2 column retrievals from OMI and GOME-2. OMI, on board the Aura satellite, is an ultraviolet/visible nadir-scanning solar-backscatter spectrometer covering the spectral range of 270–500 nm (Levelt et al., 2006). The Aura satellite, launched in 2004, is in a sun-synchronous polar orbit at 705-km altitude with a local equator crossing time of approximately 13:40 LT. The ground pixel size of OMI ranges from $13 \times 24 \text{ km}^2$ to $26 \times 128 \text{ km}^2$, depending on the satellite viewing angle. OMI tropospheric NO_2 column retrievals have daily global coverage. We used DOMINO version 2.0 data product (Boersma et al., 2011) obtained from TEMIS website (<http://www.temis.nl/>). Observations with cloud radiance fraction < 0.5 , surface albedo < 0.3 , and quality flag = 0 were used. Retrievals from 2014 affected by row anomalies were screened using a quality flag.

Tropospheric NO_2 retrievals from GOME-2 on MetOP-A and MetOP-B were used to compare the years 2008 and 2014, respectively. GOME-2 is a nadir-scanning ultraviolet/visible spectrometer covering the spectral range of 240–790 nm. MetOp-A, launched in 2007, and MetOp-B, launched in 2013, are on a sun-synchronous polar orbit at 817 km with a local equator crossing time of 09:30 LT. The ground pixel size is $80 \times 40 \text{ km}^2$. We used TM4NO2A version 2.3 product obtained from the TEMIS website (Boersma et al., 2004). The GOME-2 retrievals were derived with the same basic algorithm as in DOMINO version 2 (Boersma et al., 2011).

For model-retrieval comparisons, we first sampled simulated NO_2 profiles at the closest times to measurement using two-hourly model outputs; these were then linearly interpolated to the center of each measurement from the four surrounding

model grids. Second, averaging kernels (AKs) were applied to the interpolated model profiles in order to consider the altitude-dependent sensitivity of retrievals. Third, retrieved and simulated NO₂ columns were averaged on 0.5°- and 2.8°-bin grids for model evaluation. In order to identify the drivers of model-retrieval differences and causes of NO₂ error reductions in high-resolution simulations, we conducted model evaluations at 0.5°- and 2.8°-bin grids (i.e., the model and retrieval fields were interpolated to 0.5°- and 2.8°-bin grids). Improved agreement in high-resolution simulations can be attributed to two factors: (1) closer spatial representativeness between simulations and satellite retrievals (up to approximately 0.5°), and (2) improvements in mean concentration fields at large scale (i.e., at 2.8°) through consideration of small-scale processes. The error reductions evaluated at 0.5°-bin grid should reflect both effects, whereas error reductions evaluated at 2.8°-bin grid should mainly be attributed to the latter effect (2). When error reductions evaluated at 2.8°-bin grid are about half the error reductions evaluated at 0.5°-bin grid, the contributions of the two effects should be identical. When error reductions evaluated at 2.8°- and 0.5°-bin grids are comparable, the latter effect (2) should be dominant.

It should be noted that tropospheric NO₂ retrievals from SCIAMACHY were also available for 2008. The model evaluation results are generally similar between GOME-2 and SCIAMACHY. Results using SCIAMACHY are not discussed in this paper.

2.2.2 Aircraft observation data

Vertical profiles of NO, NO₂, OH, HO₂, O₃, H₂O, and the photolysis rate of O₃ to O(¹D) were obtained from the 2014 Front Range Air Pollution and Photochemistry Experiment (FRAPPÉ) campaign (Vu et al., 2016). The FRAPPÉ campaign was conducted using the NSF/NCAR C130 aircraft during the period from July 16 through August 18, 2014. The C130 flight track covered the northern Colorado plains and foothills, and the area west of the Continental Divide. NO, NO₂, and O₃ concentrations were measured by two-channel (for NO and NO₂) and one-channel (for O₃) chemiluminescence instruments (Ridley et al., 2004). OH and HO₂ were analyzed using a CIMS-based instrument that is part of the Mauldin/Cantrell HO_x CIMS instrument (e.g., Mauldin et al., 2003). Water vapor was measured by a Wavelength-Scanned Cavity Ring-Down Spectroscopy (WS-CRDS) analyzer. Photolysis rate of O₃ to O(¹D) data, calculated from NCAR HARP/CFAS (CCD-based Actinic Flux Spectroradiometer), were used. We used 1-min merged data obtained from the NASA LaRC Airborne Science Data for Atmospheric Composition (<http://www-air.larc.nasa.gov/>). For comparison purposes, we sampled simulated profiles at the closest time to measurement using two-hourly model outputs; these were then linearly interpolated to measurement from the four surrounding model grids in the horizontal. The observed and simulated vertical profiles were compared by averaging data within each vertical pressure bin: 850 hPa (using data between the surface–825 hPa), 800 hPa (825–775 hPa), 750 hPa (775–725 hPa), 700 hPa (725–675 hPa), 650 hPa (675–625 hPa), 600 hPa (625–575 hPa), 550 hPa (575–525 hPa), and 500 hPa (525–475 hPa).

2.2.3 Ozonesonde

Simulated vertical profiles of tropospheric ozone were also evaluated using ozonesonde observations. The observed vertical profiles of ozone were obtained from the World Ozone and Ultraviolet Data Center (WOUDC, <http://www.woudc.org/>), the Southern Hemisphere ADDitional OZonesondes (SHADOZ, <https://tropo.gsfc.nasa.gov/shadoz/>) (Thompson et al., 2003a, b), and the NOAA Earth System Research Laboratory (ESRL) Global Monitoring Division (GMD, <ftp://ftp.cmdl.noaa.gov/ozwv/ozone/>).

All available data from these sources were used. The observed and simulated ozone profiles were compared at ozonesonde locations by averaging data within each vertical pressure bin: 850 hPa (875–825 hPa), 500 hPa (550–450 hPa), 300 hPa (350–275 hPa), and 100 hPa (112.5–92.5 hPa).

3 Validations of meteorological fields

5 In the CTM-AGCM online framework, meteorological fields vary among different model resolutions. From sensitivity calculations, the strength and distribution of the cumulus convection were found to be sensitive to model resolution. The cumulus convection parameterization for 2.8° resolution was optimized following Watanabe et al. (2011). We then attempted to optimize the relevant model parameters (critical relative humidity for cumulus convection and ice-fall speed) for 1.1° and 0.56° resolutions. The criterion was to minimize the root-mean-square error (RMSE) of annual global total flash against the Lightning Imaging
10 Sensor (LIS), outgoing longwave radiation (OLR) against the NOAA 18 satellite observations (Liebmann, 1996), and precipitation against the Global Precipitation Climatology Project (GPCP) (Adler et al., 2003; Huffman et al., 2009) for the year 2008. The obtained minimum values of RMSE for annual mean flash rate were 0.010 flashes km⁻² day⁻¹, 0.011 flashes km⁻² day⁻¹, and 0.011 flashes km⁻² day⁻¹ at 2.8°, 1.1°, and 0.56° resolutions, respectively. Optimizing the cumulus convection setting reduced positive bias of annual global mean OLR by 80% at 1.1° resolution and by 50% at 0.56° resolution. Simulated global
15 flash frequency and annual global lightning NO_x sources (in brackets) varied slightly: 43 flashes s⁻¹ (5.4 Tg N yr⁻¹) at 2.8° resolution, 47 flashes s⁻¹ (5.6 Tg N yr⁻¹) at 1.1° resolution, and 46 flashes s⁻¹ (5.5 Tg N yr⁻¹) at 0.56° resolution.

We also evaluated relevant meteorological fields (i.e., precipitation and cloud) that have large impacts on chemistry simulations in the on-line CTM framework (e.g., Hess and Vukicevic, 2003). In comparison with the GPCP precipitation data, all simulations showed similar spatial error patterns after optimization (Figures 1a–d), having positive biases (typically by a factor of 2) north
20 and south of the intertropical convergence zone (ITCZ) over the Pacific, Indian Subcontinent, and Central Africa; and negative biases in the Southern Pacific convergence zone (SPCZ), west of the Maritime continent, over the Amazon, and over the southeast of the United States, because of the use of the same physical package (e.g., cumulus convection scheme). Meanwhile, increasing model resolution led to large error reductions by up to 70% at 1.1° and 0.56° resolutions over the northwest Pacific and Atlantic oceans (negative biases), and over the northern part of China and the western part of the North American continent
25 (positive biases). All simulations also showed reasonable agreement with OLR derived from the NOAA 18 satellite. The global mean positive bias was 80% and 50% lower at 1.1° and 0.56° resolutions, respectively, than at 2.8° resolution (Figures 1e–h), suggesting improved photolysis calculations in the high-resolution simulations. Among different regions, the positive model bias at 2.8° resolution was largest over the Maritime continent, which was reduced by 86% at 1.1° resolution and by 75% at 0.56° resolution. Over northern South America, in contrast, most of the positive biases remained at 1.1° and 0.56° resolutions.
30 The model simulations were thus appropriately set up at all resolutions, while various features of the high-resolution framework were improved. Further validation at various spatial-temporal scales for different meteorological parameters will be helpful to evaluate detailed AGCM performance, even if it is beyond the scope of the current study.

4 Validations of tropospheric NO₂ columns and profiles

4.1 Global and regional distributions

Figure 2 compares simulated annual mean tropospheric NO₂ column with satellite retrievals. Both OMI and GOME-2 retrievals showed high tropospheric NO₂ columns over eastern China, the United States, Europe, India, Southeast Asia, Central and South Africa, and South America. For most of these regions, observed concentrations were higher in GOME-2 than OMI, reflecting the difference in overpass time and diurnal variations of tropospheric chemistry (Boersma et al., 2008). All model simulations captured well observed global spatial variation, with $r > 0.9$ in comparison with both OMI and GOME-2 for annual mean concentration fields. In terms of global averages, the 2.8° simulations were biased on the low side by 40% compared to OMI, and by 47% compared to GOME-2. This negative global mean bias has commonly been reported using other global CTMs (van Noije et al., 2006; Huijnen et al., 2010b; Miyazaki et al., 2012). As summarized in Table 1, the negative annual global mean bias compared to OMI (GOME-2) was slightly reduced by 5% (3%) at 1.1° resolution and by 2% (1%) at 0.56° resolution compared to the 2.8° resolution. Global RMSE was reduced by 15% compared to OMI and GOME-2 by increasing model resolution from 2.8° to 1.1°. The improvement when increasing resolution from 1.1° to 0.56° was limited.

Figures 3 and 4 (5 and 6) compare seasonal variations of regional and monthly mean tropospheric NO₂ column (regional RMSEs) against OMI and GOME-2 in 2008, using data incorporated at 0.5°-bin grid. Because the validation results are similar for OMI and GOME-2 for most cases, the results using OMI are discussed below.

Over eastern China, negative model biases at 2.8° resolution were reduced at 1.1° and 0.56° resolutions from February to July. In December, model bias varied with model resolution: -14% at 2.8° resolution, +23% at 1.1° resolution, and -7% at 0.56° resolution. Negative annual mean bias was reduced by 90% from 2.8° to 1.1° resolution and by 64% from 2.8° to 0.56° resolution, with increasing spatial correlations (from $r = 0.80$ at 2.8° resolution to $r = 0.86$ at 1.1° resolution and 0.91 at 0.56° resolution). Annual mean RMSE was also reduced by 32% from 2.8° to 1.1° resolution, and by 9% from 1.1° to 0.56° resolution.

Over the eastern United States, negative annual mean bias was reduced by 87% at 1.1° resolution and by 65% at 0.56° resolution, compared to 2.8° resolution. The seasonal bias reduction reached 95% at 0.56° resolution in summer. Annual RMSE was reduced by 37% at 1.1° resolution and by 40% at 0.56° resolution as compared to 2.8° resolution. Larger monthly RMSE at 1.1° than at 2.8° resolution during December is attributed to large positive biases over New Jersey and Ohio, although the reason for these is unclear. The spatial correlation for annual mean concentration fields increased from $r = 0.83$ at 2.8° resolution to $r = 0.93$ at 1.1° resolution and 0.96 at 0.56° resolution.

Over the western United States, negative annual mean bias was 13% lower at 1.1° resolution and 14% lower at 0.56° resolution compared to 2.8° resolution. In summer, the negative seasonal mean bias at 0.56° resolution was slightly larger, reflecting negative biases over rural areas. RMSE for annual mean fields was reduced by 20% from 2.8° to 1.1° resolution and by 23% from 1.1° to 0.56° resolution. The spatial correlation for annual mean fields increased from $r = 0.65$ at 2.8° resolution to $r = 0.82$ at 1.1° resolution and 0.91 at 0.56° resolution.

Over Europe, negative model bias for annual mean concentrations was reduced by 23% from 2.8° to 1.1° resolution, but was 46% larger at 0.56° resolution than at 1.1° resolution. Large negative bias over the Po Valley at 2.8° resolution was reduced by 13% at 1.1° resolution, and further reduced by 10% from 1.1° to 0.56° resolution. In contrast, negative bias over London was larger at 0.56° resolution than at 1.1° resolution by a factor of 4, leading to larger negative regional mean bias at 0.56° resolution. Simulated planetary boundary layer (PBL) height in the 0.56° simulation was substantially higher (by 20%) than ERA-Interim over London, which may partially contribute to the large NO₂ bias. Annual RMSE was also lower by 16% at 1.1° resolution and by 9% at 0.56° resolution than at 2.8° resolution. The spatial correlation for annual mean fields increased from 0.87 at 2.8° resolution to 0.91 at 0.56° resolution.

Over India, negative model biases were smaller at 1.1° and 0.56° resolutions than at 2.8° resolution during January-May, but were larger during June-September. RMSE for annual mean fields was reduced at 1.1° and 0.56° resolutions (except during summer), with 16% and 6% reductions, respectively. When comparing against OLR and precipitation observations, we found an increased error at 0.56° resolution over India during summer. This suggests the need to further optimize model parameters relevant to tropical convections-convective (c.f., Section 2.1), in order to improve high-resolution NO₂ simulations.

Over Mexico, the spatial correlation for annual mean fields increased substantially at 1.1° ($r = 0.82$) and 0.56° resolutions ($r = 0.93$), compared to 2.8° resolution ($r = 0.61$). Increasing model resolution was important to reduce negative biases around Mexico City, reducing annual RMSE by 17% at 1.1° resolution and by 38% at 0.56° resolution, compared to 2.8° resolution.

Over South Africa, the negative annual mean bias was reduced by 37% at 1.1° resolution and by 43% at 0.56° resolution, compared to 2.8° resolution, while annual RMSE was reduced by 46% and 56% at 1.1° and 0.56° resolutions, respectively. The spatial correlation was 0.93 and 0.97 at 0.56° resolution, in contrast with 0.61 at 2.8° resolution. Model resolution higher than 1.1° was thus important for reproducing megacity-scale air pollution over the Highveld region of South Africa, which is a complex source area of coal mining, thermal power generation, metal mining and metallurgical industry as discussed by Duncan et al. (2016).

Over the selected biomass burning regions (South America, North Africa, Central Africa, and Southeast Asia), all model simulations showed negative biases throughout the year. In most cases, bias reduction with increasing model resolution was limited, because most forest fires burn over large extents. Over South America, negative bias for the annual mean concentration was 15% lower at 1.1° resolution and 12% lower at 0.56° resolution than at 2.8° resolution. Annual RMSE was reduced by 15% at 1.1° resolution and by 12% at 0.56° resolution. The smaller spatial correlation at high resolutions reflects an increased positive bias over a major biomass burning hot spot (12°S, 50°W). Over North Africa, annual RMSE was smaller by 9% at 1.1° resolution and by 3% at 0.56° resolution (compared to 2.8° resolution), whereas changes in mean bias and spatial correlation were small. Over Central Africa, negative annual mean bias was reduced by 24% at 1.1° resolution and by 30% at 0.56° resolution, while RMSE increased during the biomass burning season (by 11% at 1.1° resolution and by 24% at 0.56° resolution). The increased RMSE is associated with increased positive biases around 10°–20°S. Over Southeast Asia, RMSE for the annual mean fields was reduced by 7% at 1.1° resolution and by 5% at 0.56° resolution, compared to 2.8° resolution. The increased errors over strong biomass burning hot spots in high-resolution simulations could be a result of more pronounced influences of largely uncertain inventories for individual burning points (e.g., Castellanos et al., 2015).

~~In comparison with Negative biases with respect to GOME-2, negative biases were larger against were larger than to OMI~~ in all simulations over most regions. The differences suggest that all model simulations underestimated high NO₂ concentrations in the morning. ~~The underestimations could be~~ associated with insufficient vertical model resolution for capturing ~~nocturnal thin boundary layers. thin nocturnal boundary layers, as well as uncertainties in HO_x-NO_x-CO-VOCs chemistry,~~
5 NO₂ ~~photolysis rates, and emission diurnal cycles. The different model biases between OMI and GOME-2 could also be attributed to the bias between these retrievals. Irie et al. (2012) concluded that the bias between these retrievals is small and insignificant for East Asia, whereas the bias between these retrievals is unclear for other regions.~~ For the most anthropogenically polluted regions, bias reductions at 0.56° (compared to 2.8° resolution) were similarly found for OMI and GOME-2. For South America and Central Africa, reductions of the negative bias at 0.56° resolution were larger in the comparison against
10 OMI than GOME-2 during the biomass-burning season, suggesting that the high-resolution simulation improves representation of daytime photochemistry in the presence of enhanced biomass burning emissions.

For the evaluations, we used simulated and observed concentrations interpolated to 0.5°-bin grid. To identify the main drivers of improvements in the high-resolution simulation ~~in these evaluations~~, we conducted further comparisons using two concentration fields interpolated to 2.8°- and 0.5°-bin grids. The drivers consist of (1) closer spatial representativeness between
15 observations and simulations (up to approximately 0.5° resolution), and (2) better representation of large-scale (i.e., at 2.8°) concentration fields through consideration of small-scale processes. Error reductions at 0.5°-bin grid include effects of both drivers. In contrast, error reductions at 2.8°-bin grid are mainly attributed to the latter effect (2). When error reductions at 2.8°-bin grid are about half those at 0.5°-bin grid, the contributions of the two effects should be identical. ~~When error reductions at 2.8°- and 0.5°-bin grids are comparable, the latter effect (2) should be dominant. The~~ ~~For annual RMSE reductions, the~~ contri-
20 butions of the two effects ~~to annual RMSE reductions~~ were almost identical over the eastern United States, the western United States, and South Africa (by up to -1.9 and -0.9×10^{15} molecules cm⁻² at 0.5°- and 2.8°-bin grids respectively). In contrast, over eastern China, improved representations at large scale (2) contributed up to 90% (i.e., reductions by 1.1×10^{15} ~~molecules~~
~~cm⁻² at 0.5°-bin grid and by and~~ 1.0×10^{15} molecules cm⁻² at ~~0.5°- and 2.8°-bin grid grids, respectively,~~ at 1.1° resolution) ~~to annual RMSE reductions~~. In this region, the large contribution of effect (2) reflected spatially homogeneous error reductions
25 over Hebei and Henan Provinces. Over most biomass burning areas, improved representations at large scale (2) dominated improvements in high-resolution modeling, with RMSE reductions of up to 0.072×10^{15} molecules cm⁻² ~~at for the~~ 2.8°-bin grid and 0.071×10^{15} molecules cm⁻² ~~at for the~~ 0.5°-bin grid. These results imply that, even for areas with homogeneous concentration/emission fields, high-resolution modeling can have significant impacts through better representation of large-scale fields.

30 4.2 Tropospheric NO₂ over strong local sources

Figure 7 compares the detailed spatial distribution of the tropospheric NO₂ column in summer, as represented by OMI measurements and model simulations over four selected polluted areas: East Asia, South Asia, the western United States, and South Africa. Over East Asia, high concentrations were observed over the North China Plain, the Yangtze River Delta, the Pearl River Delta, Seoul, and Tokyo, which could mainly be attributed to emissions from traffic (Zheng et al., 2014) and large coal-fired

power plants in the North China Plain (Liu et al., 2015). The 2.8° simulation underestimated these high concentrations and overestimated low concentrations over surrounding areas, probably associated with artificial mixing at coarse model resolution. The 1.1° and 0.56° simulations reduced negative biases over Central Eastern China, the Pearl River Delta, Seoul, Tokyo, and the western part of Japan. Over the Yellow Sea, the East China Sea, and off the Pacific coast of Japan, the positive biases at 5 2.8° resolution were mostly removed at 1.1° and 0.56° resolutions. Consequently, regional RMSE was 32% lower at 0.56° resolution. In contrast, high-resolution simulations led to overestimation over Beijing and the Yangtze River Delta.

Over South Asia, high concentrations were observed over large cities such as New Delhi, Chennai, Mumbai, and Kolkata in India, and over Lahore and Multan in Pakistan, and around reported coal-based thermal power plants at 24°N, 83°E and 22°N, 83°E in India (Lu and Streets, 2012; Prasad et al., 2012). The 2.8° simulation was biased on the low side by up to 50% over 10 these areas, except westward of New Delhi, as commonly reported using another coarse-resolution model at 2.8° resolution (Sheel et al., 2010). These negative biases were reduced by up to 50% at 1.1° and 0.56° resolutions, whereas high-resolution simulations reveal excessively high concentrations over New Delhi. Over rural areas, negative biases were larger at 1.1° and 0.56° resolutions, resulting in larger regional RMSE than at 2.8° resolution (c.f., Section 4.1).

Over the western United States, high concentrations were observed around Los Angeles, San Francisco, Seattle, Phoenix, 15 Salt Lake City, Denver, and the Four Corners and San Juan power plants. Negative biases were reduced with increasing model resolution over most of these regions. In contrast, negative biases remained at 0.56° resolution around strong local sources. Over rural areas, negative biases increased with model resolution, partly reflecting suppressed artificial dilution from strong local sources. As a result, regional RMSE was reduced by 18% and 27% at 1.1° and 0.56° resolutions, compared to 2.8° resolution. Errors, for instance, in soil NO_x emissions in summer (e.g., Oikawa et al., 2015; Weber et al., 2015) could contribute to 20 underestimations over rural areas.

Over South Africa, high concentrations were observed over the Highveld region of South Africa, a complex source area, as noted in Section 4.1. Large negative bias (92% at 2.8° resolution) in peak concentration over power plant region in Mpumalanga Province (29.5°E, 26.2°S) was reduced to 69% at 1.1° resolution and 53% at 0.56° resolution. Negative bias (75% at 2.8° resolution) in the Johannesburg-Pretoria megacity area (28°E, 25.7°-26.2°S) was also reduced to 54% at 1.1° resolution and 25 50% at 0.56° resolution. High-resolution simulations are thus important for regions with complex and strong local sources. At the same time, the remaining negative bias at 0.56° suggests that power plant and industrial emissions are underestimated, as suggested by Miyazaki et al. (2017), or model resolution higher than 0.56° is essential.

Figure 8 compares simulated high NO₂ concentrations with satellite retrievals at selected megacities. Eight strong source points were selected from East Asia and seven points from the western United States during June-July-August (JJA). We 30 consider that summertime is suitable for evaluating local NO₂ pollution, because of short NO₂ lifetime. For the comparisons, retrieved and simulated tropospheric NO₂ columns were averaged within a 50-km distance from the selected points, while applying a distance-based weighting function (i.e., the inverse of the distance was applied to each retrieval).

In comparison with OMI retrievals, with increasing model resolution, ~~slope~~ the slope for East Asia became closer to 1 (0.67 at 0.56° resolution and -0.19 at 2.8° resolution), and intercept number became smaller (2.8 at 0.56° resolution and 6.4 at 2.8° resolution). Correlation coefficient also increased ($r = 0.36$ at 0.56° resolution, in contrast to $r = -0.31$ at 2.8° resolution). 35

Large negative biases were reduced at 0.56° resolution by 67% over Beijing, by 73% over Tianjin, by 18% Shanghai, by 90% over Nanjing, by 62% over Guangzhou, by 48% over Shenzhen, by 47% over Seoul, and by 62% over Tokyo (compared to 2.8° resolution). The estimated biases at 0.56° resolution are within mean OMI retrieval errors. Reductions in negative biases at 0.56° resolution against GOME-2 were also observed: by 91% over Beijing, by 70% over Tianjin, by 76% over Shanghai, by 5 67% over Nanjing, by 32% over Guangzhou, by 50% over Shenzhen, by 40% over Seoul, and by 58% over Tokyo. However, there is more degradation of slope and intercept against GOME-2 than against OMI, reflecting large negative biases over Guangzhou, Shenzhen, Seoul, and Tokyo.

Over the western United States, NO₂ columns in all model simulations were in agreement with OMI retrievals ($r > 0.9$). The 0.56° model reduced negative biases with respect to OMI by 30% over Los Angeles, by 74% over San Francisco, by 98% 10 over Seattle, by 58% over Salt Lake City, by 83% over Phoenix, by 44% over Denver, and by 78% over the Four Corners and San Juan power plants (compared to the 2.8° model). These bias reductions resulted in improved slope number at 0.56° resolution (0.31) compared to 2.8° resolution (0.15). In this region, comparison results were generally similar between OMI and GOME-2. These validation results demonstrate the capability of the 0.56° simulation to represent high concentrations over strong local sources.

15 4.3 Validations using FRAPPÉ aircraft measurements

In this section, we evaluated model performance in relation to O₃-HO_x-NO_x chemistry over the Denver Metropolitan area (DMA; defined as 39–41°N and 103–105.5°W) in the western United States using the FRAPPÉ campaign-observation data and satellite retrievals from July-August 2014. Figure 9 compares the spatial distribution of the tropospheric NO₂ columns between simulations and satellite retrievals around the FRAPPÉ locations. OMI and GOME-2 observed high tropospheric 20 NO₂ columns over the DMA, around 40°N, 105°W. All models underestimated high concentrations: by about 50% at 2.8° resolution compared to OMI, with this declining by 37% at 1.1° resolution and by 56% at 0.56° resolution. ~~Negative~~The negative bias over the DMA was larger for GOME-2 than OMI, suggesting larger underestimations in simulated fields during mornings as compared to afternoons. Outside the DMA, negative biases increased by 16% for OMI and by 11% for GOME-2 at 0.56° resolution, compared to 2.8° resolution. As a result, RMSE against OMI and GOME-2 for the entire domain area was 25 almost constant with varying model resolution.

Figure 10 compares mean vertical profiles of ~~chemical concentrations~~trace gases and reaction rates over the DMA. Large negative biases of NO and NO₂ at 2.8° resolution were mostly removed at 1.1° and 0.56° resolutions below 650 hPa (by up to 88%), except at 800 hPa during daytime (09:00–16:00 LT). ~~The 1.1° and 0.56°~~All simulations revealed large negative biases at 800 hPa during mornings (09:00–12:00 LT), ~~while~~but the bias was greater by 30% at 2.8° resolution than at 1.1° and 30 0.56° resolutions. Afternoon lower tropospheric high concentrations (13:00–16:00 LT) were captured well in high-resolution simulations. Strong morning-afternoon variations in the lower troposphere were underestimated by 32% at 0.56° resolution, by 48% at 1.1° resolution, and by 62% at 2.8° resolution. The remaining large bias in the morning at 0.56° resolution could be associated with insufficient vertical model resolution to represent mixing within nocturnal thin boundary layers.

Large negative OH biases at 2.8° and 1.1° resolutions at 850 hPa were reduced by 81% at 0.56° resolution. From 800 to 750 hPa, the 1.1° simulation showed closest agreement with observations (~~within 0.5%–7%~~), whereas the 2.8° and 0.56° simulations underestimated OH by 7–21% and overestimated by up to 27%, respectively. Above 700 hPa, all simulations overestimated OH with a factor of up to two. All simulations also underestimated HO₂ by 10–32% below 650 hPa, except at
5 800 hPa.

OH and HO₂ concentrations depend greatly on NO_x concentrations through O₃-HO_x-NO_x chemistry, as well as HO_x production and OH conversion reactions to peroxy radicals (HO₂ and RO₂) with CO and VOCs. Figure 11a shows the probability distribution function of NO. ~~The observations from the FRAPPÉ aircraft observation and the model simulations at 800 hPa over the DMA. The observation~~ revealed a wide range of NO concentrations, from 10–10000 pptv. The 2.8° simulation over-
10 estimated the occurrence of concentrations < 100 pptv, and underestimated the occurrence of concentrations > 100 pptv. The 1.1° and 0.56° simulations captured the observed probability distribution function, although they slightly overestimated the peak frequency concentration and underestimated the occurrence of low (< 100 pptv) and high (> 1000 pptv) concentrations. Figure 11b shows the OH-NO relationship used to validate O₃-HO_x-NO_x chemistry. The ~~observations-observation~~ showed OH increase with increasing NO to 350 pptv and a decrease with increasing NO from 350 pptv; all simulations captured
15 the lower part (NO < 800 pptv) of the observed NO-OH relationship, suggesting that the model realistically simulates non-linear O₃-HO_x-NO_x chemistry. The lack of high NO (> 800 pptv) with low OH resulted in overestimation of mean OH concentrations at 0.56° resolution.

Figure 11c compares the HO₂-NO relationship. All simulations underestimated the occurrence of high HO₂ (> 25 pptv) at low NO (< 100 pptv). This implies underestimation of HO_x chemical production in the simulations. We evaluated HO_x
20 production from the chemical reaction of O(¹D) with H₂O using temperature, specific humidity, O₃ photolysis rate to O(¹D) (J_{O₃→O(¹D)}), and O₃ concentration with assumption of O(¹D) equilibrium (Figures 10g-j). All simulations underestimated HO_x production, with the underestimation being smaller by 13% at 0.56° resolution at 800 hPa. The underestimation of HO_x production was primarily attributable to a negative bias in O₃ by 11% and J_{O₃→O(¹D)} by 2.5% at 0.56° resolution at 800 hPa. The negative biases of O₃ and J_{O₃→O(¹D)} were reduced by 39% and 58% respectively at 0.56° (compared to 2.8°) resolution.
25 Biases in specific humidity also had small impacts on calculated HO_x production. Positive biases of specific humidity at 2.8° resolution above 750 hPa were reduced by up to 83% at 0.56° resolution. The lack of nitrous acid (HONO) in the model could explain a component of the HO_x production underestimation, especially during mornings (e.g., Kanaya et al., 2001). The underestimation of OH conversion to peroxy radicals could also explain simulated errors in OH and HO₂. Griffith et al. (2016) attributed OH overprediction and HO₂ underprediction in a box model simulation to underestimation of total OH reactivity
30 (i.e., missing OH sink) over the United States.

The 2014 simulations used the anthropogenic emission inventory for the year 2010 (c.f., Section 2.1). The optimized NO_x emission from an assimilation of multiple species satellite measurements (Miyazaki et al., 2017) suggest that surface NO_x emissions over the DMA in July-August increased by 7% from 2010 to 2014. The temporal variation, together with large uncertainties in the emission inventories, could explain part of the negative biases of NO and NO₂ at 800 hPa, which also affects OH, HO₂, and O₃ through non-linear chemistry processes.
35

5 Tropospheric NO₂-related chemistry

We analyzed simulated global distribution of O₃, OH, and NO_x [in the year 2008](#) to characterize the resolution dependence of NO₂-related chemistry. Figure 12 compares zonal mean concentrations of O₃ and OH during JJA. O₃ mixing ratios in the mid to high latitudes were 10–60% larger at 1.1° and 0.56° than at 2.8° resolution. As shown in Table 2, at 1.1° and 0.56° resolutions, negative biases against ozonesonde observations were reduced by up to 8 ppbv at 850 hPa from mid- to high-latitudes in both hemispheres, and by up to 13 ppbv at 500 hPa in the southern hemisphere (SH) and northern hemisphere (NH) mid- and high-latitudes. In contrast, positive model biases in the upper troposphere and lower stratosphere (UTLS) mostly increased with model resolution, by up to 46 ppbv at 300 hPa in the SH and NH high-latitudes. The increased positive bias at high-latitudes in the UTLS was associated with strengthened downwelling, as will be discussed below. RMSE against ozonesonde was reduced by up to 8 ppbv at 850 hPa and 500 hPa in mid- and high-latitudes, except at 500 hPa in the NH high-latitudes.

In the tropics and subtropics, in contrast, O₃ concentrations were 5–20% lower at 1.1° and 0.56° than at 2.8° resolution, reducing positive biases against ozonesonde observations from 2.8° resolution by 15 ppbv at 850 hPa in the tropics (30°S–30°N), and by up to 15 ppbv at 300 hPa in the mid-latitudes of both hemispheres. In contrast, negative biases increased by 7 ppbv at 500 hPa and by 9 ppbv at 300 hPa in the tropics. RMSE was smaller by 10 ppbv at 0.56° than at 2.8° resolution at 300 hPa in the SH mid-latitudes. Substantial improvements were achieved from the tropopause to lower stratosphere (i.e., at 100 hPa) by using high-resolution simulations. [Overall, RMSE with respect to the globally available ozonesondes was reduced with increasing resolution \(by up to 8.1 ppbv\) at 850 hPa and 500 hPa. In contrast, at 300 hPa, RMSE increased at 0.56° \(by 1.2 ppbv\) and 1.1° \(by 9.4 ppbv\) resolutions, reflecting larger RMSE at 0.56° and 1.1° resolutions in the high-latitudes of both hemispheres.](#)

Increased concentrations in the extratropics and decreased concentrations in the tropics resulted in only small differences in the global tropospheric ozone burden: –5.4% at 1.1° resolution, and –2.3% at 0.56° resolution (compared to 2.8°). Meanwhile, the budget terms of global tropospheric O₃ differ significantly between simulations. High-resolution models simulated an enhanced stratosphere-troposphere exchange (STE) of O₃ (510 Tg yr^{–1} at 1.1° resolution and 548 Tg yr^{–1} at 0.56° resolution in contrast to 500 Tg yr^{–1} at 2.8° resolution), and smaller O₃ chemical production (4647 Tg yr^{–1} at 1.1° resolution and 4565 Tg yr^{–1} at 0.56° resolution in contrast to 4809 Tg yr^{–1} at 2.8° resolution). Less O₃ chemical production was attributed to decelerating HO₂ + NO, CH₃O₂ + NO, and RO₂ + NO. The estimated global mean O₃ chemical lifetime was longer in high-resolution simulations (26.1 days at 1.1° resolution and 26.3 days at 0.56° resolution, in contrast to 25.3 days at 2.8° resolution), because of decreased water vapor in the middle and upper troposphere. Model resolution dependence on global STE and ozone chemical production has been similarly reported by Wild and Prather (2006), Stock et al. (2014), Yan et al. (2016), and Williams et al. (2017). The latitudinal distributions of O₃ differences between simulations were determined by both chemical (e.g., weakened chemical ozone production in the tropics) and transport (e.g., strengthened downwelling from extratropical stratosphere and upper tropospheric poleward motions from tropics to extratropics) processes.

OH was smaller by 5–30% at 1.1° and 0.56° than at 2.8° resolution in the tropics and subtropics during JJA, resulting in smaller global burdens of tropospheric OH by 13.5% at 1.1° resolution and by 12.4% at 0.56° resolution. These changes were associated with decreased HO_x chemical productions (i.e., O(¹D) + H₂O → 2OH) and HO₂ to OH conversion reaction (i.e., HO₂ + NO → OH + NO₂) by 5% at 1.1° and 0.56° resolutions (compared to 2.8° resolution). [A large relative OH increment was found over the Antarctic, because weak ultraviolet radiation led to small OH concentrations during a polar night.](#)

Figure 13 compares the spatial distribution of NO₂ and OH [in the lower troposphere](#) between model simulations. [Tropospheric Lower tropospheric NO₂ partial](#) columns were larger around strong source areas and smaller over rural and coastal areas around polluted regions at 1.1° and 0.56° resolutions, primarily resulting from suppressed artificial dilution near strong sources and chemical feedback through the O₃-HO_x-NO_x system, as discussed in Section 4. The lower tropospheric OH partial column integrated in the lowermost five model layers (approximately below 800 hPa) was smaller at 1.1° and 0.56° resolutions over most of the continents. [Differences-The differences](#) in OH and NO₂ exhibited similar spatial patterns over polluted and biomass burning regions: e.g., $r = 0.54-0.53$ over the western United States, $r = 0.58-0.61$ over India, and $r = 0.58-0.57$ over South America. NO₂ and OH thus interact with each other through O₃-HO_x-NO_x chemical reactions. Differences in simulated meteorological fields such as cumulus convection, water vapor, and cloud cover, could also cause OH differences.

Table 3 summarizes the chemical budget of NO₂ in the lowermost five model layers over eastern China, the western United States, and South America during summertime of each hemisphere. Over the selected regions, the NO₂ burden increased with model resolution: by 33% over eastern China, by 9% over the western United States, and by 23% over South America. Over eastern China and the western United States, the conversion from NO₂ to HNO₃ with OH (P-L(NO_x)_{HNO₃}) dominated over the net chemical production of NO_x (P-L(NO_x)). The estimated NO₂ lifetime via HNO₃ formation (1/k[OH][M]) was 8% longer at 0.56° than at 2.8° resolution. A longer NO₂ lifetime with increasing model resolution over East Asia is consistently reported by Wild and Prather (2006). Over the western United States, the estimated NO₂ lifetime was longer by 6% at 1.1° than at 2.8° resolution, whereas it was shorter by 6% at 0.56° than at 1.1° resolution. Over South America, the conversion of NO₂ to HNO₃ contributed 13–20% of the total net chemical production of NO_x, resulting from competition against chemical conversion to peroxy acetyl nitrates (PANs) and organic nitrates. The estimated NO₂ lifetime via HNO₃ formation was longer by 18% at 0.56° than at 2.8° resolution. Over other regions, the regional NO₂ burden increased with model resolution, whereas changes in NO₂ lifetime via OH oxidation varied across locations (not shown), reflecting a non-linear chemical system involving NO_x (Valin et al., 2011).

Differences in simulated meteorological fields between simulations could also have effects on NO₂ and related species. Improvements in PBL height are especially expected to improve NO₂ simulations in the lower troposphere (e.g., Lin and McElroy, 2010). Table 3 compares regional mean PBL height over eastern China, the western United States, and South America in summer between ERA-Interim reanalysis and model simulations. The 2.8° simulation overestimated regional mean PBL height in ERA-Interim; the positive bias was reduced at 0.56° resolution by 40% over eastern China, by 62% over the western United States, and by 9% over South America.

[Figure 14 shows the spatial distribution of the NO₂ partial column in the free troposphere, convective cloud updraft mass flux at 500 hPa, and vertically integrated lightning NO_x production. The simulated NO₂ partial column in the free troposphere](#)

was smaller by 17% at 1.1° resolution and by 14% at 0.56° resolution than at 2.8° resolution over the northern subtropics and mid-latitudes, primarily because of smaller NO₂ concentrations above 400 hPa. These changes in the free tropospheric NO₂ were in contrast to the changes in the lower tropospheric NO₂, which were associated with suppressed convective cloud updraft over the continents by up to 76% at 1.1° and 0.56° resolutions over the northern subtropics and mid-latitudes. In contrast, over the Maritime continent, South America, and Central Africa, the free tropospheric NO₂ column was larger at 1.1° resolution by up to 18% and at 0.56° resolution by up to 20% than at 2.8° resolution, primarily reflecting increased NO₂ concentration between 600–800 hPa. Lightning NO_x productions are also largely different between the simulations in the tropics. Over the tropics, although the mean convective cloud updraft was weaker at 1.1° and 0.56° resolutions than at 2.8° resolution, the high-resolution simulations revealed increased ice cloud in the upper troposphere and stronger (but less frequent) convection, thus increasing lightning NO_x sources especially over Asia. Meanwhile, given the same amount of lightning NO_x production (using a commonly prescribed lightning NO_x field in all the simulations), the high-resolution simulations revealed a slightly smaller ozone chemical production (by 1%) through representation of local high-concentrated NO_x plumes in July 2008 (figure not shown).

The obtained evaluation results of multiple-species and meteorological fields suggest that changes in NO₂ with increasing model resolution can be due to complex chemical interactions and different representations of meteorological fields. Further detailed validations of individual components would therefore be helpful to identify causal mechanisms and to further reduce uncertainty in high-resolution simulations.

6 Discussion

6.1 Other model error sources

Various factors other than horizontal model resolution can lead to errors in tropospheric NO₂ simulation. Insufficient vertical model resolution could introduce additional errors in vertical mixing, atmospheric transport and following chemistry processes, for instance, under stable boundary layer conditions during nighttime (Menut et al., 2013). Such errors could also cause large negative NO₂ biases during mornings in the lower troposphere (c.f., Section 4.3). More detailed validation of diurnal variations is required using ground-based observations such as MAX-DOAS and LiDAR in future work.

Chemical kinetics information could also have large uncertainties. Lin et al. (2012) and Stavrakou et al. (2013) suggested that uptake of HO₂ on aerosols is the most important factor but remains largely uncertain. CHASER includes simplified NO_x-VOC chemistry related to PANs and isoprene nitrates (Sudo et al., 2002). Incorporation of more detailed NO_x-VOC chemistry would also be needed to improve simulated peroxy nitrates and organic nitrates, as per Ito et al. (2007, 2009) and Fischer et al. (2014).

Surface emissions are another important error source. ~~Anthropogenic~~ The total amounts of anthropogenic NO_x emissions emission in China in 2008 differ by 27% ~~across REASv2.1, MEIC, EDGARv4~~ between two (highest and lowest) bottom-up inventories; EDGAR4.2, and the inventory produced by Nanjing University for China and MEIC (Saikawa et al., 2017). Ding et al. (2017a) also discussed large diversity in emission inventories over East Asia. Biomass burning NO_x emissions also differ

significantly between inventories: for example, the annual mean emission is 2.293 Tg yr^{-1} in GFASv1.0 in contrast to 2.700 Tg yr^{-1} in GFEDv3.1 over the SH Africa, as reported by Kaiser et al. (2012).

Based on data assimilation of multiple species satellite measurements, Miyazaki et al. (2017) investigated large uncertainty in anthropogenic and fire-related emission factors and ~~an~~a significant underestimation of soil NO_x sources in bottom-up emission inventories. Using a similar approach, Miyazaki et al. (2014) optimized lightning NO_x sources and indicated that the widely used lightning parameterization based on the C-shape assumption (Price and Rind, 1992; Pickering et al., 1998) has large uncertainty. Implementing these optimized emissions could improve model performance, although optimal emissions could also be dependent on model resolution.

Representations of meteorological parameters, such as cloud optical depth, temperature, water vapor, PBL height, and relevant transport and chemical processes are also important in tropospheric NO_2 ~~simulation~~simulations (Lin et al., 2012). Because we employed an AGCM-CTM on-line coupling system, meteorological fields are simulated explicitly at each model resolution. This could help to improve the tropospheric chemistry simulation. For instance, we found that simulated regional mean PBL height is sensitive to the choice of model resolution, with the 0.56° simulation showing closer agreements with ERA-Interim re-analysis, as discussed in Section 4.3. Resolving small-scale cloud distributions may lead to improved photolysis and convective transport ~~calculation~~calculations in high-resolution simulations.

Nevertheless, the AGCM meteorological fields still need to be carefully validated and improved. For instance, cumulus convection and cloud parameterization calculations were sensitive to model resolution. Although the relevant model parameters have been optimized separately for each model resolution, there are still some discrepancies against observed OLR and precipitation distributions (c.f., section 2.1).

20 **6.2 Non-linearity in model error reductions**

Model performance was clearly better at 0.56° and 1.1° resolutions than at 2.8° resolution in most cases. The 0.56° simulation largely improved spatial variations over eastern China, the eastern and western United States, Mexico, and South Africa, as confirmed by large RMSE reductions, especially for megacities and regions with power plants (c.f., Section 4). In most cases, the improvement was smaller from 1.1° to 0.56° resolution than from 2.8° to 1.1° resolution. Meanwhile, regional RMSEs increased at 0.56° from 1.1° resolution for some cases over Europe, India, and the selected biomass burning regions, possibly related to more pronounced errors in meteorological fields for Europe and India, and in biomass burning hot spot emissions.

Comparisons with aircraft measurements showed better performance of NO_x simulation at high resolutions. However, the representation of NO variability (i.e., the probability distribution function) was insufficient even at 0.56° resolution. Further improvements could be obtained using a model with resolution finer than 0.56° . For instance, Valin et al. (2011) noted that 4-km and 12-km resolutions are required for Four Corners and Los Angeles, respectively, to accurately simulate non-linear chemical feedback of the O_3 - HO_x - NO_x system. Yamaji et al. (2014) reported that errors in simulated tropospheric NO_2 column at 20-km resolution did not yet approach convergence over Tokyo.

~~Because most-~~

Most previous high-resolution modeling studies ~~used regional frameworks, it is important to have used regional models to simulate~~ NO₂ concentration fields at high spatial resolution, primarily focusing on urban regions, with reduced or equivalent computational costs compared to global models. Several studies demonstrated that a better representation of long-range transport of NO_x reservoir species such as peroxyacetyl nitrate (PAN) are important on simulated NO₂ in the free troposphere
5 in remote areas (e.g., Hudman et al., 2004; Fischer et al., 2010, 2014; Jiang et al., 2016). A two-way nesting between regional and coarse-resolution global models (e.g., Yan et al., 2016) is able to consider both small-scale processes inside focusing regions and long-range transport over the globe, which has an advantage over regional models. An important advantage of global high-resolution models over regional models and two-way nesting systems is the ability to simulate NO₂ concentration fields at high resolutions over the entire globe across urban, biomass burning, and remote regions in a consistent framework.
10 Even over remote regions, a high-resolution simulation has the potential to improve model performance through considering the effects of non-linear chemistry in high-concentrated NO_x plumes emitted from ships and lightning (Charlton-Perez et al., 2009; Vinken et al., 2014). These NO_x emission sources in remote regions have significant impacts on climate and air quality (Eyring et al., 2010; Holmes et al., 2014). It is thus important to clarify the importance of resolving small-scale sources and plumes within a global modeling framework for better understanding of the global atmospheric environment and chemistry-climate system.

15 Williams et al. (2017) also showed that the differences in NO₂ profiles between TM5-MP model at 3° × 2° and 1° × 1° horizontal resolutions are within a few percentage points below 850 hPa over the Pacific in boreal spring. They also showed much larger differences with changing model resolution over Texas in autumn. Model resolution impact thus varies significantly with location and season. Further investigations using other aircraft measurements would be helpful to evaluate model performance in different cases.

20 High-resolution chemical transport modeling requires huge computational resources: e.g., ~~the computational resource was larger~~ Compared to the simulation at 2.8° resolution (approximately 480 s computer time for a 1-day simulation), the computational cost increased by a factor of 67 at 0.56° resolution (approximately 32000 s computer time) and by a factor of 14 at 1.1° resolution ~~than at 2.8° resolution~~ (approximately 6700 s computer time). High-performance computing (HPC) systems are thus essential for performing high-resolution simulations. At the same time, because the size of a 3D array is large in the high-
25 resolution model, computational efficiency is important: e.g., efficient data throughputs in memory transfer, network communication between multiple nodes, and file input/output. In future, further improvements in computational efficiency will be required, together with development of HPC systems.

6.3 Application for satellite retrieval and data assimilation

An important application of high-resolution tropospheric NO₂ simulations is to provide *a priori* profile information on satellite
30 retrieval ~~and chemical data assimilation~~ (Liu et al., 2017). Here, we would like to discuss the potentials of the obtained results for these applications.

Current satellite retrievals of the tropospheric NO₂ column use *a priori* NO₂ profiles obtained from global model simulations at relatively coarse ~~resolution~~ resolutions: from TM5 at 3° × 2° in DOMINO-2 (Boersma et al., 2011) and GEOS-Chem at 2.5° × 2° in OMNO2 (Bucsela et al., 2006; Celarier et al., 2008), whereas the TROPOMI retrieval product will

employ $1^\circ \times 1^\circ$ resolution simulation fields from TM5 (Williams et al., 2017). To provide high-resolution (ranging from 4 km ~~through to~~ 50 km) *a priori* information, several regional retrievals have employed regional models (Heckel et al., 2011; Russell et al., 2011; Lin et al., 2014), showing improvements in the retrieved fields in comparison to ~~ARCTAS aircraft observations (Russell et al., 2011) and ground-based remote sensing MAX-DOAS (Lin et al., 2014). The improvements obtained~~ using high-resolution *a priori* information can be attributed to, for instance, clearer separation of profiles between urban, rural, and ocean regions, and improved representations of altitude-dependent sensitivities (i.e., averaging kernels) (Heckel et al., 2011; Russell et al., 2014). High-resolution *a priori* fields from global CTMs are important ~~to provide~~ in providing consistent global datasets.

6.4 Application for data assimilation

~~Similar to the application for satellite retrievals, high-resolution CTMs have the potential to contribute to chemical data assimilation (Liu et al., 2017). Forecast model performance is important in chemical data assimilation (e.g., Arellano Jr. et al., 2007).~~ To avoid spatial representation gaps between satellite measurements and coarse-resolution global models, super-observation techniques have been employed to produce representative data before assimilation (e.g., Miyazaki et al., 2012). ~~However, this approach requires assumptions on the error correlation between multiple observations, even if this information is barely known.~~ In addition, the The average of averaging kernel over ~~numbers~~ a number of retrievals within a super observation grid does not hold any physical meaning. This may inhibit effective improvement by assimilating over regions with varying conditions. High-resolution CTMs allow assimilation of satellite measurements ~~nearly at measurement resolution, with reduced representation gaps without any averages.~~

~~In addition, because~~ Because of distinct non-linearity in chemical reactions, ~~especially in highly polluted cases, direct assimilation of individual measurement~~ high-resolution assimilation of satellite measurements, considering small-scale variations in background error covariance, would be essential ~~to make~~ in making the best use of observational information ~~and to improve analyses at both local and remote grid points.~~ High-resolution chemical data assimilation could also benefit ~~of~~ air pollutant emission estimates (e.g., Miyazaki et al., 2014, 2017; Liu et al., 2017), especially using high-resolution measurements from future satellite missions such as TOROPOMI and geostationary satellites (e.g., Sentinel-4, GEMS, TEMPO), even when model resolution is still coarser than measurement resolution through improved model processes and spatial representativeness for mega-cities as demonstrated by this study.

7 Summary and conclusions

We evaluated the performance of high-resolution global NO₂ simulations using CHASER, based on comparisons against tropospheric NO₂ column retrievals from two satellite sensors, OMI and GOME-2, and aircraft observations during the FRAPPÉ aircraft campaign. Three different horizontal resolutions at 0.56°, 1.1°, and 2.8° were evaluated.

The high-resolution models at 1.1° and 0.56° resolutions showed substantial improvements in simulating tropospheric NO₂. With increasing horizontal model resolution from 2.8° to 1.1°, negative regional mean model biases (RMSEs) for annual mean

5 tropospheric NO₂ column were reduced over polluted regions: e.g., by 90% (32%) over eastern China, by 13% (20%) over the western United States, and by 37% (45%) over South Africa. RMSEs were further reduced by increasing model resolution from 1.1° to 0.56° over most of the polluted regions. We emphasize large error reductions from 1.1° to 0.56° resolutions, by 23% over the western United States, by 25% over Mexico, and by 20% over South Africa. The high-resolution simulation at 0.56° was also essential to capture observed high tropospheric NO₂ column over strong sources such as megacities and power plants. In comparison with OMI, increasing model resolution from 2.8° to 0.56° reduced negative biases over strong local sources: by 67% over Beijing, by 47% over Seoul, and by 62% over Tokyo, by 30% over Los Angeles, by 74% over San Francisco, and by 78% over the Four Corners and San Juan power plants in summer. Over biomass burning regions, model performance also improved with increasing model resolution from 2.8° to 1.1° and 0.56°. For instance, RMSE was reduced by 10 15% at 1.1° resolution (compared to 2.8° resolution) over South America. We attempted to distinguish between two different effects that led to improvements in high-resolution modeling: (1) closer spatial representativeness between observations and simulations (up to approximately 0.5° resolution), and (2) better representation of large-scale (i.e., at 2.8°) concentration fields through consideration of small-scale processes, for instance, associated with non-linear O₃-HO_x-NO_x chemistry. The relative contributions of these two effects were mostly identical over the eastern and western United States, and South Africa, whereas 15 the latter effect (2) was dominant over eastern China and biomass burning regions.

The comparison with FRAPPÉ aircraft observations over the DMA indicated that the 0.56° simulation greatly reduced negative biases of NO₂ by up to 88% from the surface to 650 hPa, while improving the representation of morning-afternoon differences below 800 hPa (with a 50% reduction at 1.1° resolution). The high-resolution simulations also improved the probability distribution of NO concentration ranging from 100–1000 pptv. However, all simulations failed to reproduce the observed 20 low (< 100 pptv) and high (> 1000 pptv) NO concentrations, resulting in positive biases of mean OH through non-linear NO-OH relationships.

Changes in NO₂ across model simulations were associated with different representations of the tropospheric chemical and transport system. By increasing model resolution from 2.8° to 0.56°, tropospheric ozone increased by up to 60% in mid-high latitudes during JJA, while ozone decreased by up to 20% in the tropics and subtropics. These changes mostly led to improved 25 agreements against the global ozonesonde measurements. The high-resolution simulation also lowered OH concentrations throughout the troposphere by up to 30%. The regional NO₂ burden was larger at 0.56° than at 2.8° in the lower troposphere, by 33% over eastern China, by 9% over the western United States, and by 23% over South America. Changes in NO₂ lifetime via oxidation with OH varied between locations. These model resolution dependencies suggest that NO₂ and OH interact with each other through non-linear relationships between NO and OH (i.e., O₃-HO_x-NO_x chemistry).

30 In conclusion, the 1.1° simulation generally captures the regional distribution of the tropospheric NO₂ column well, but the 0.56° resolution is essential for simulation of high NO₂ concentrations on megacity scale. Meanwhile, for Europe, India, and the selected biomass burning regions, errors increased with model resolution from 1.1° to 0.56°, possibly related to more pronounced errors in meteorological fields over Europe and India, and to more pronounced influences of largely uncertain inventories for individual burning point-points over the selected biomass burning regions. The computational cost largely increases at 0.56° resolution, while overall improvements were small at 0.56° resolution compared to 1.1° resolution except 35

over megacities. Therefore, we consider that horizontal resolution of approximately 1° is a realistic option to obtain improved overall performance of global tropospheric NO₂ simulations.

The developed high-resolution CTM framework will be a powerful tool when combined with future high-resolution satellite observations, providing valuable information on the atmospheric environment and related long-term changes on megacity scale. We are developing a high-resolution global chemical data assimilation system based on an ensemble Kalman filter data assimilation technique (Miyazaki et al., 2017) and the developed high-resolution CTM. ~~Post-K computer~~A post-petascale supercomputer, also known as a post-K computer, is being developed by Japan's FLAGSHIP 2020 project (e.g., Miyoshi et al., 2015), and will facilitate future studies using the high-resolution global chemical data assimilation system and satellite observations from a new constellation of Low Earth Orbiting sounders (e.g., IASI, AIRS, CrIS, TROPOMI, and Sentinel-5), and geostationary satellites (e.g., Sentinel-4, GEMS, and TEMPO).

8 Code and data availability

The source code for CHASER V4.0 are not publicly available because of license restriction. The source code can be obtained from K. Sudo (kengo@nagoya-u.jp) upon request. Most of the source code is written in Fortran 77 and 90. The simulation data will be available upon request to the corresponding author.

15 *Acknowledgements.* This work was supported by the Post-K computer project Priority Issue 4 - Advancement of meteorological and global environmental predictions utilizing observational Big Data and by the Global Environment Research Fund (S-12) of the Ministry of the Environment (MOE). We acknowledge the use of tropospheric NO₂ column data from GOME-2 and OMI sensors obtained from Tropospheric Emission Monitoring Internet Service (<http://www.temis.nl/index.php>). We would also like to express our thanks for the use of measurement data from the 2014 Front Range Air Pollution and Photochemistry Experiment (FRAPPÉ) campaign through the NASA LaRC Airborne Science Data for Atmospheric Composition (<https://www-air.larc.nasa.gov/>). The GPCP combined precipitation data were provided by the NASA/Goddard Space Flight Center's Laboratory for Atmospheres, which developed the data as a contribution to the GEWEX Global Precipitation Climatology Project. We would like to acknowledge the use of ozonesonde data obtained from the World Ozone and Ultraviolet Data Center (WOUDC), the Southern Hemisphere Additional Ozonesondes (SHADOZ), and the NOAA Earth System Research Laboratory (ESRL) Global Monitoring Division (GMD). Interpolated OLR data were provided by the NOAA/OAR/ESRL PSD from their website 20 (<http://www.esrl.noaa.gov/psd/>). The Earth Simulator was used for simulations as "Strategic Project with Special Support" of Japan Agency Marine-Earth Science and Technology. Some simulations were also conducted by the K computer provided by the RIKEN Advanced Institute for Computational Science through the HPCI System Research Project (Project ID: hp150288, hp160231, hp170232). We would like to thank the two anonymous reviewers for their useful comments.

References

- Adler, R. F., Huffman, G. J., Chang, A., Ferraro, R., Xie, P.-P., Janowiak, J., Rudolf, B., Schneider, U., Curtis, S., Bolvin, D., Gruber, A., Susskind, J., Arkin, P., and Nelkin, E.: The Version-2 Global Precipitation Climatology Project (GPCP) Monthly Precipitation Analysis (1979–Present), *J. Hydrometeorol.*, 4, 1147–1167, doi:10.1175/1525-7541(2003)004<1147:TVGPCP>2.0.CO;2, 2003.
- 5 Akiyoshi, H., Zhou, L. B., Yamashita, Y., Sakamoto, K., Yoshiki, M., Nagashima, T., Takahashi, M., Kurokawa, J., Takigawa, M., and Imamura, T.: A CCM simulation of the breakup of the Antarctic polar vortex in the years 1980–2004 under the CCMVal scenarios, *J. Geophys. Res.*, 114, doi:10.1029/2007JD009261, d03103, 2009.
- Akiyoshi, H., Nakamura, T., Miyasaka, T., Shiotani, M., and Suzuki, M.: A nudged chemistry-climate model simulation of chemical constituent distribution at northern high-latitude stratosphere observed by SMILES and MLS during the 2009/2010 stratospheric sudden
10 warming, *J. Geophys. Res.*, 121, 1361–1380, doi:10.1002/2015JD023334, 2015JD023334, 2016.
- Arellano Jr., A. F., Raeder, K., Anderson, J. L., Hess, P. G., Emmons, L. K., Edwards, D. P., Pfister, G. G., Campos, T. L., and Sachse, G. W.: Evaluating model performance of an ensemble-based chemical data assimilation system during INTEX-B field mission, *Atmos. Chem. Phys.*, 7, 5695–5710, doi:10.5194/acp-7-5695-2007, 2007.
- Banerjee, A., Archibald, A. T., Maycock, A. C., Telford, P., Abraham, N. L., Yang, X., Braesicke, P., and Pyle, J. A.: Lightning NO_x , a
15 key chemistry-climate interaction: impacts of future climate change and consequences for tropospheric oxidising capacity, *Atmos. Chem. Phys.*, 14, 9871–9881, doi:10.5194/acp-14-9871-2014, 2014.
- Boersma, K. F., Eskes, H. J., and Brinksma, E. J.: Error analysis for tropospheric NO_2 retrieval from space, *J. Geophys. Res.*, 109, doi:10.1029/2003JD003962, d04311, 2004.
- Boersma, K. F., Jacob, D. J., Eskes, H. J., Pinder, R. W., Wang, J., and van der A, R. J.: Intercomparison of SCIAMACHY and
20 OMI tropospheric NO_2 columns: Observing the diurnal evolution of chemistry and emissions from space, *J. Geophys. Res.*, 113, doi:10.1029/2007JD008816, d16S26, 2008.
- Boersma, K. F., Eskes, H. J., Dirksen, R. J., van der A, R. J., Veefkind, J. P., Stammes, P., Huijnen, V., Kleipool, Q. L., Sneep, M., Claas, J., Leitão, J., Richter, A., Zhou, Y., and Brunner, D.: An improved tropospheric NO_2 column retrieval algorithm for the Ozone Monitoring Instrument, *Atmos. Meas. Tech.*, 4, 1905–1928, doi:10.5194/amt-4-1905-2011, 2011.
- 25 Brown, S. S., Ryerson, T. B., Wollny, A. G., Brock, C. A., Peltier, R., Sullivan, A. P., Weber, R. J., Dubé, W. P., Trainer, M., Meagher, J. F., Fehsenfeld, F. C., and Ravishankara, A. R.: Variability in Nocturnal Nitrogen Oxide Processing and Its Role in Regional Air Quality, *Science*, 311, 67–70, doi:10.1126/science.1120120, 2006.
- Bucsela, E. J., Celarier, E. A., Wenig, M. O., Gleason, J. F., Veefkind, J. P., Boersma, K. F., and Brinksma, E. J.: Algorithm
30 for NO_2 vertical column retrieval from the ozone monitoring instrument, *IEEE Trans. Geosci. Remote Sens.*, 44, 1245–1258, doi:10.1109/TGRS.2005.863715, 2006.
- Canty, T. P., Hembeck, L., Vinciguerra, T. P., Anderson, D. C., Goldberg, D. L., Carpenter, S. F., Allen, D. J., Loughner, C. P., Salawitch, R. J., and Dickerson, R. R.: Ozone and NO_x chemistry in the eastern US: evaluation of CMAQ/CB05 with satellite (OMI) data, *Atmos. Chem. Phys.*, 15, 10965–10982, doi:10.5194/acp-15-10965-2015, 2015.
- Castellanos, P., Boersma, K. F., Torres, O., and de Haan, J. F.: OMI tropospheric NO_2 air mass factors over South America: effects of biomass
35 burning aerosols, *Atmos. Meas. Tech.*, 8, 3831–3849, doi:10.5194/amt-8-3831-2015, 2015.
- Celarier, E. A., Brinksma, E. J., Gleason, J. F., Veefkind, J. P., Cede, A., Herman, J. R., Ionov, D., Goutail, F., Pommereau, J.-P., Lambert, J.-C., van Roozendaal, M., Pinardi, G., Wittrock, F., Schönhardt, A., Richter, A., Ibrahim, O. W., Wagner, T., Bojkov, B., Mount, G.,

- Spinei, E., Chen, C. M., Pongetti, T. J., Sander, S. P., Bucselá, E. J., Wenig, M. O., Swart, D. P. J., Volten, H., Kroon, M., and Levelt, P. F.: Validation of Ozone Monitoring Instrument nitrogen dioxide columns, *J. Geophys. Res.*, 113, doi:10.1029/2007JD008908, d15S15, 2008.
- Charlton-Perez, C. L., Evans, M. J., Marsham, J. H., and Esler, J. G.: The impact of resolution on ship plume simulations with NO_x chemistry, *Atmos. Chem. Phys.*, 9, 7505–7518, doi:10.5194/acp-9-7505-2009, 2009.
- 5 Colella, P. and Woodward, P. R.: The Piecewise Parabolic Method (PPM) for gas-dynamical simulations, *J. Comput. Phys.*, 54, 174–201, doi:10.1016/0021-9991(84)90143-8, 1984.
- Dee, D. P., Uppala, S. M., Simmons, A. J., Berrisford, P., Poli, P., Kobayashi, S., Andrae, U., Balmaseda, M. A., Balsamo, G., Bauer, P., Bechtold, P., Beljaars, A. C. M., van de Berg, L., Bidlot, J., Bormann, N., Delsol, C., Dragani, R., Fuentes, M., Geer, A. J., Haimberger, L., Healy, S. B., Hersbach, H., Hólm, E. V., Isaksen, I., Kållberg, P., Köhler, M., Matricardi, M., McNally, A. P., Monge-Sanz, B. M., Morcrette, J.-J., Park, B.-K., Peubey, C., de Rosnay, P., Tavolato, C., Thépaut, J.-N., and Vitart, F.: The ERA-Interim reanalysis: configuration and performance of the data assimilation system, *Q. J. R. Meteorol. Soc.*, 137, 553–597, doi:10.1002/qj.828, 2011.
- 10 Dentener, F. J. and Crutzen, P. J.: Reaction of N₂O₅ on tropospheric aerosols: Impact on the global distributions of NO_x, O₃, and OH, *J. Geophys. Res.*, 98, 7149–7163, doi:10.1029/92JD02979, 1993.
- Ding, J., Miyazaki, K., van der A, R. J., Mijling, B., Kurokawa, J.-I., Cho, S., Janssens-Maenhout, G., Zhang, Q., Liu, F., and Levelt, P. F.: Intercomparison of NO_x emission inventories over East Asia, *Atmos. Chem. Phys. Discuss.*, 2017, 1–35, doi:10.5194/acp-2017-265, 2017a.
- 15 Ding, J., van der A, R. J., Mijling, B., and Levelt, P. F.: Space-based NO_x emission estimates over remote regions improved in DECSO, *Atmos. Meas. Tech.*, 10, 925–938, doi:10.5194/amt-10-925-2017, 2017b.
- Duce, R. A., LaRoche, J., Altieri, K., Arrigo, K. R., Baker, A. R., Capone, D. G., Cornell, S., Dentener, F., Galloway, J., Ganeshram, R. S., Geider, R. J., Jickells, T., Kuypers, M. M., Langlois, R., Liss, P. S., Liu, S. M., Middelburg, J. J., Moore, C. M., Nickovic, S., Oschlies, A., Pedersen, T., Prospero, J., Schlitzer, R., Seitzinger, S., Sorensen, L. L., Uematsu, M., Ulloa, O., Voss, M., Ward, B., and Zamora, L.: Impacts of Atmospheric Anthropogenic Nitrogen on the Open Ocean, *Science*, 320, 893–897, doi:10.1126/science.1150369, 2008.
- 20 Duncan, B. N., Lamsal, L. N., Thompson, A. M., Yoshida, Y., Lu, Z., Streets, D. G., Hurwitz, M. M., and Pickering, K. E.: A space-based, high-resolution view of notable changes in urban NO_x pollution around the world (2005–2014), *J. Geophys. Res.*, 121, 976–996, doi:10.1002/2015JD024121, 2016.
- 25 Emori, S., Nozawa, T., Numaguti, A., and Uno, I.: Importance of Cumulus Parameterization for Precipitation Simulation over East Asia in June, *J. Met. Soc. Japan.*, 79, 939–947, doi:10.2151/jmsj.79.939, 2001.
- Evans, M. J. and Jacob, D. J.: Impact of new laboratory studies of N₂O₅ hydrolysis on global model budgets of tropospheric nitrogen oxides, ozone, and OH, *Geophys. Res. Lett.*, 32, doi:10.1029/2005GL022469, 2005.
- 30 Eyring, V., Isaksen, I. S., Berntsen, T., Collins, W. J., Corbett, J. J., Endresen, O., Grainger, R. G., Moldanova, J., Schlager, H., and Stevenson, D. S.: Transport impacts on atmosphere and climate: Shipping, *Atmos. Environ.*, 44, 4735–4771, doi:10.1016/j.atmosenv.2009.04.059, 2010.
- Finney, D. L., Doherty, R. M., Wild, O., Young, P. J., and Butler, A.: Response of lightning NO_x emissions and ozone production to climate change: Insights from the Atmospheric Chemistry and Climate Model Intercomparison Project, *Geophys. Res. Lett.*, 43, 5492–5500, doi:10.1002/2016GL068825, 2016.
- 35 Fischer, E. V., Jaffe, D. A., Reidmiller, D. R., and Jaeglé, L.: Meteorological controls on observed peroxyacetyl nitrate at Mount Bachelor during the spring of 2008, *J. Geophys. Res.*, 115, doi:10.1029/2009JD012776, 2010.

- Fischer, E. V., Jacob, D. J., Yantosca, R. M., Sulprizio, M. P., Millet, D. B., Mao, J., Paulot, F., Singh, H. B., Roiger, A., Ries, L., Talbot, R. W., Dzepina, K., and Pandey Deolal, S.: Atmospheric peroxyacetyl nitrate (PAN): a global budget and source attribution, *Atmos. Chem. Phys.*, 14, 2679–2698, doi:10.5194/acp-14-2679-2014, 2014.
- Giglio, L., Randerson, J. T., and van der Werf, G. R.: Analysis of daily, monthly, and annual burned area using the fourth-generation global fire emissions database (GFED4), *J. Geophys. Res.*, 118, 317–328, doi:10.1002/jgrg.20042, 2013.
- Gressent, A., Sauvage, B., Cariolle, D., Evans, M., Leriche, M., Mari, C., and Thouret, V.: Modeling lightning-NO_x chemistry on a sub-grid scale in a global chemical transport model, *Atmos. Chem. Phys.*, 16, 5867–5889, doi:10.5194/acp-16-5867-2016, 2016.
- Griffith, S. M., Hansen, R. F., Dusanter, S., Michoud, V., Gilman, J. B., Kuster, W. C., Veres, P. R., Graus, M., de Gouw, J. A., Roberts, J., Young, C., Washenfelder, R., Brown, S. S., Thalman, R., Waxman, E., Volkamer, R., Tsai, C., Stutz, J., Flynn, J. H., Grossberg, N., Lefer, B., Alvarez, S. L., Rappenglueck, B., Mielke, L. H., Osthoff, H. D., and Stevens, P. S.: Measurements of hydroxyl and hydroperoxy radicals during CalNex-LA: Model comparisons and radical budgets, *J. Geophys. Res.*, 121, 4211–4232, doi:10.1002/2015JD024358, 2016.
- Gruber, N. and Galloway, J. N.: An Earth-system perspective of the global nitrogen cycle, *Nature*, 451, 293–296, doi:10.1038/nature06592, 2008.
- Guenther, A., Karl, T., Harley, P., Wiedinmyer, C., Palmer, P. I., and Geron, C.: Estimates of global terrestrial isoprene emissions using MEGAN (Model of Emissions of Gases and Aerosols from Nature), *Atmos. Chem. Phys.*, 6, 3181–3210, doi:10.5194/acp-6-3181-2006, 2006.
- Han, K. M., Lee, S., Chang, L. S., and Song, C. H.: A comparison study between CMAQ-simulated and OMI-retrieved NO₂ columns over East Asia for evaluation of NO_x emission fluxes of INTEX-B, CAPSS, and REAS inventories, *Atmos. Chem. Phys.*, 15, 1913–1938, doi:10.5194/acp-15-1913-2015, 2015.
- Harkey, M., Holloway, T., Oberman, J., and Scotty, E.: An evaluation of CMAQ NO₂ using observed chemistry-meteorology correlations, *J. Geophys. Res.*, 120, 11,775–11,797, doi:10.1002/2015JD023316, 2015JD023316, 2015.
- Heckel, A., Kim, S.-W., Frost, G. J., Richter, A., Trainer, M., and Burrows, J. P.: Influence of low spatial resolution a priori data on tropospheric NO₂ satellite retrievals, *Atmos. Meas. Tech.*, 4, 1805–1820, doi:10.5194/amt-4-1805-2011, 2011.
- Hess, P. G. and Vukicevic, T.: Intercontinental transport, chemical transformations, and baroclinic systems, *J. Geophys. Res.*, 108, doi:10.1029/2002JD002798, 2003.
- Holmes, C. D., Prather, M. J., and Vinken, G. C. M.: The climate impact of ship NO_x emissions: an improved estimate accounting for plume chemistry, *Atmos. Chem. Phys.*, 14, 6801–6812, doi:10.5194/acp-14-6801-2014, 2014.
- Hudman, R. C., Jacob, D. J., Cooper, O. R., Evans, M. J., Heald, C. L., Park, R. J., Fehsenfeld, F., Flocke, F., Holloway, J., Hübler, G., Kita, K., Koike, M., Kondo, Y., Neuman, A., Nowak, J., Oltmans, S., Parrish, D., Roberts, J. M., and Ryerson, T.: Ozone production in transpacific Asian pollution plumes and implications for ozone air quality in California, *J. Geophys. Res.*, 109, doi:10.1029/2004JD004974, 2004.
- Huffman, G. J., Adler, R. F., Bolvin, D. T., and Gu, G.: Improving the global precipitation record: GPCP Version 2.1, *Geophys. Res. Lett.*, 36, doi:10.1029/2009GL040000, 2009.
- Huijnen, V., Eskes, H. J., Poupkou, A., Elbern, H., Boersma, K. F., Foret, G., Sofiev, M., Valdebenito, A., Flemming, J., Stein, O., Gross, A., Robertson, L., D'Isidoro, M., Kioutsioukis, I., Friese, E., Amstrup, B., Bergstrom, R., Strunk, A., Vira, J., Zyryanov, D., Maurizi, A., Melas, D., Peuch, V.-H., and Zerefos, C.: Comparison of OMI NO₂ tropospheric columns with an ensemble of global and European regional air quality models, *Atmos. Chem. Phys.*, 10, 3273–3296, doi:10.5194/acp-10-3273-2010, 2010a.

- Huijnen, V., Williams, J., van Weele, M., van Noije, T., Krol, M., Dentener, F., Segers, A., Houweling, S., Peters, W., de Laat, J., Boersma, F., Bergamaschi, P., van Velthoven, P., Le Sager, P., Eskes, H., Alkemade, F., Scheele, R., Nédélec, P., and Pätz, H.-W.: The global chemistry transport model TM5: description and evaluation of the tropospheric chemistry version 3.0, *Geosci. Model Dev.*, 3, 445–473, doi:10.5194/gmd-3-445-2010, 2010b.
- 5 Inness, A., Blechschmidt, A.-M., Bouarar, I., Chabrilat, S., Crepulja, M., Engelen, R. J., Eskes, H., Flemming, J., Gaudel, A., Hendrick, F., Huijnen, V., Jones, L., Kapsomenakis, J., Katragkou, E., Keppens, A., Langerock, B., de Mazière, M., Melas, D., Parrington, M., Peuch, V. H., Razinger, M., Richter, A., Schultz, M. G., Suttie, M., Thouret, V., Vrekoussis, M., Wagner, A., and Zerefos, C.: Data assimilation of satellite-retrieved ozone, carbon monoxide and nitrogen dioxide with ECMWF's Composition-IFS, *Atmos. Chem. Phys.*, 15, 5275–5303, doi:10.5194/acp-15-5275-2015, 2015.
- 10 IPCC: Climate Change 2013: The Physical Science Basis. Contribution of Working Group I to the Fifth Assessment Report of the Intergovernmental Panel on Climate Change, Cambridge University Press, Cambridge, United Kingdom and New York, NY, USA, doi:10.1017/CBO9781107415324, 2013.
- Irie, H., Boersma, K. F., Kanaya, Y., Takashima, H., Pan, X., and Wang, Z. F.: Quantitative bias estimates for tropospheric NO₂ columns retrieved from SCIAMACHY, OMI, and GOME-2 using a common standard for East Asia, *Atmos. Meas. Tech.*, 5, 2403–2411, doi:10.5194/amt-5-2403-2012, 2012.
- 15 Itahashi, S., Uno, I., Irie, H., Kurokawa, J.-I., and Ohara, T.: Regional modeling of tropospheric NO₂ vertical column density over East Asia during the period 2000–2010: comparison with multisatellite observations, *Atmos. Chem. Phys.*, 14, 3623–3635, doi:10.5194/acp-14-3623-2014, 2014.
- Ito, A., Sillman, S., and Penner, J. E.: Effects of additional nonmethane volatile organic compounds, organic nitrates, and direct emissions of oxygenated organic species on global tropospheric chemistry, *J. Geophys. Res.*, 112, doi:10.1029/2005JD006556, d06309, 2007.
- 20 Ito, A., Sillman, S., and Penner, J. E.: Global chemical transport model study of ozone response to changes in chemical kinetics and biogenic volatile organic compounds emissions due to increasing temperatures: Sensitivities to isoprene nitrate chemistry and grid resolution, *J. Geophys. Res.*, 114, doi:10.1029/2008JD011254, d09301, 2009.
- Janssens-Maenhout, G., Crippa, M., Guizzardi, D., Dentener, F., Muntean, M., Pouliot, G., Keating, T., Zhang, Q., Kurokawa, J., Wankmüller, R., Denier van der Gon, H., Kuenen, J. J. P., Klimont, Z., Frost, G., Darras, S., Koffi, B., and Li, M.: HTAP_v2.2: a mosaic of regional and global emission grid maps for 2008 and 2010 to study hemispheric transport of air pollution, *Atmos. Chem. Phys.*, 15, 11 411–11 432, doi:10.5194/acp-15-11411-2015, 2015.
- 25 Jiang, Z., Worden, J. R., Payne, V. H., Zhu, L., Fischer, E., Walker, T., and Jones, D. B. A.: Ozone export from East Asia: The role of PAN, *J. Geophys. Res.*, 121, 6555–6563, doi:10.1002/2016JD024952, 2016.
- 30 K-1 model developers: K-1 Coupled GCM (MIROC) Description, Tech. rep., Center for Climate System Research (Univ. of Tokyo), National Institute for Environmental Studies, and Frontier Research Center for Global Change, http://ccsr.aori.u-tokyo.ac.jp/~hasumi/miroc_description.pdf, 2004.
- Kaiser, J. W., Heil, A., Andreae, M. O., Benedetti, A., Chubarova, N., Jones, L., Morcrette, J.-J., Razinger, M., Schultz, M. G., Suttie, M., and van der Werf, G. R.: Biomass burning emissions estimated with a global fire assimilation system based on observed fire radiative power, *Biogeosciences*, 9, 527–554, doi:10.5194/bg-9-527-2012, 2012.
- 35 Kanaya, Y., Matsumoto, J., Kato, S., and Akimoto, H.: Behavior of OH and HO₂ radicals during the Observations at a Remote Island of Okinawa (ORION99) field campaign: 2. Comparison between observations and calculations, *J. Geophys. Res.*, 106, 24 209–24 223, doi:10.1029/2000JD000179, 2001.

- Kim, S.-W., Heckel, A., Frost, G. J., Richter, A., Gleason, J., Burrows, J. P., McKeen, S., Hsie, E.-Y., Granier, C., and Trainer, M.: NO₂ columns in the western United States observed from space and simulated by a regional chemistry model and their implications for NO_x emissions, *J. Geophys. Res.*, 114, doi:10.1029/2008JD011343, d11301, 2009.
- 5 Krotkov, N. A., McLinden, C. A., Li, C., Lamsal, L. N., Celarier, E. A., Marchenko, S. V., Swartz, W. H., Bucsela, E. J., Joiner, J., Duncan, B. N., Boersma, K. F., Veeffkind, J. P., Levelt, P. F., Fioletov, V. E., Dickerson, R. R., He, H., Lu, Z., and Streets, D. G.: Aura OMI observations of regional SO₂ and NO₂ pollution changes from 2005 to 2015, *Atmos. Chem. Phys.*, 16, 4605–4629, doi:10.5194/acp-16-4605-2016, 2016.
- Levelt, P. F., van den Oord, G. H. J., Dobber, M. R., Malkki, A., Visser, H., de Vries, J., Stammes, P., Lundell, J. O. V., and Saari, H.: The ozone monitoring instrument, *IEEE Trans. Geosci. Remote Sens.*, 44, 1093–1101, doi:10.1109/TGRS.2006.872333, 2006.
- 10 Li, D. and Shine, K.: A 4-dimensional ozone climatology for UGAMP models, *UGAMP Internal Rep*, 35, 35, 1995.
- Liebmann, B.: Description of a complete (interpolated) outgoing longwave radiation dataset, *Bull. Amer. Meteor. Soc.*, 77, 1275–1277, 1996.
- Lin, J.-T. and McElroy, M. B.: Impacts of boundary layer mixing on pollutant vertical profiles in the lower troposphere: Implications to satellite remote sensing, *Atmos. Environ.*, 44, 1726 – 1739, doi:10.1016/j.atmosenv.2010.02.009, 2010.
- Lin, J.-T., Liu, Z., Zhang, Q., Liu, H., Mao, J., and Zhuang, G.: Modeling uncertainties for tropospheric nitrogen dioxide columns affecting satellite-based inverse modeling of nitrogen oxides emissions, *Atmos. Chem. Phys.*, 12, 12 255–12 275, doi:10.5194/acp-12-12255-2012, 15 2012.
- Lin, J.-T., Martin, R. V., Boersma, K. F., Sneep, M., Stammes, P., Spurr, R., Wang, P., Van Roozendaal, M., Clémer, K., and Irie, H.: Retrieving tropospheric nitrogen dioxide from the Ozone Monitoring Instrument: effects of aerosols, surface reflectance anisotropy, and vertical profile of nitrogen dioxide, *Atmos. Chem. Phys.*, 14, 1441–1461, doi:10.5194/acp-14-1441-2014, 2014.
- 20 Lin, S.-J. and Rood, R. B.: Multidimensional Flux-Form Semi-Lagrangian Transport Schemes, *Mon. Wea. Rev.*, 124, 2046–2070, doi:10.1175/1520-0493(1996)124<2046:MFFSLT>2.0.CO;2, 1996.
- Liu, F., Zhang, Q., Tong, D., Zheng, B., Li, M., Huo, H., and He, K. B.: High-resolution inventory of technologies, activities, and emissions of coal-fired power plants in China from 1990 to 2010, *Atmos. Chem. Phys.*, 15, 13 299–13 317, doi:10.5194/acp-15-13299-2015, 2015.
- Liu, X., Mizzi, A. P., Anderson, J. L., Fung, I. Y., and Cohen, R. C.: Assimilation of satellite NO₂ observations at high spatial resolution using OSSEs, *Atmos. Chem. Phys.*, 17, 7067–7081, doi:10.5194/acp-17-7067-2017, 2017.
- 25 Lu, Z. and Streets, D. G.: Increase in NO_x Emissions from Indian Thermal Power Plants during 1996–2010: Unit-Based Inventories and Multisatellite Observations, *Environ. Sci. Technol.*, 46, 7463–7470, doi:10.1021/es300831w, 2012.
- Mauldin, R. L., Cantrell, C. A., Zondlo, M., Kosciuch, E., Eisele, F. L., Chen, G., Davis, D., Weber, R., Crawford, J., Blake, D., Bandy, A., and Thornton, D.: Highlights of OH, H₂SO₄, and methane sulfonic acid measurements made aboard the NASA P-3B during Transport and Chemical Evolution over the Pacific, *J. Geophys. Res.*, 108, doi:10.1029/2003JD003410, 8796, 2003.
- 30 Mellor, G. L. and Yamada, T.: A Hierarchy of Turbulence Closure Models for Planetary Boundary Layers, *J. Atmos. Sci.*, 31, 1791–1806, doi:10.1175/1520-0469(1974)031<1791:AHOTCM>2.0.CO;2, 1974.
- Menut, L., Bessagnet, B., Colette, A., and Khvorostiyannov, D.: On the impact of the vertical resolution on chemistry-transport modelling, *Atmos. Environ.*, 67, 370 – 384, doi:10.1016/j.atmosenv.2012.11.026, 2013.
- 35 Mijling, B. and van der A, R. J.: Using daily satellite observations to estimate emissions of short-lived air pollutants on a mesoscopic scale, *J. Geophys. Res.*, 117, doi:10.1029/2012JD017817, 2012.
- Miyazaki, K., Eskes, H. J., and Sudo, K.: Global NO_x emission estimates derived from an assimilation of OMI tropospheric NO₂ columns, *Atmos. Chem. Phys.*, 12, 2263–2288, doi:10.5194/acp-12-2263-2012, 2012.

- Miyazaki, K., Eskes, H. J., Sudo, K., and Zhang, C.: Global lightning NO_x production estimated by an assimilation of multiple satellite data sets, *Atmos. Chem. Phys.*, 14, 3277–3305, doi:10.5194/acp-14-3277-2014, 2014.
- Miyazaki, K., Eskes, H. J., and Sudo, K.: A tropospheric chemistry reanalysis for the years 2005–2012 based on an assimilation of OMI, MLS, TES, and MOPITT satellite data, *Atmos. Chem. Phys.*, 15, 8315–8348, doi:10.5194/acp-15-8315-2015, 2015.
- 5 Miyazaki, K., Eskes, H., Sudo, K., Boersma, K. F., Bowman, K., and Kanaya, Y.: Decadal changes in global surface NO_x emissions from multi-constituent satellite data assimilation, *Atmos. Chem. Phys.*, 17, 807–837, doi:10.5194/acp-17-807-2017, 2017.
- Miyoshi, T., Kondo, K., and Terasaki, K.: Big Ensemble Data Assimilation in Numerical Weather Prediction, *Computer*, 48, 15–21, doi:10.1109/MC.2015.332, 2015.
- Morgenstern, O., Hegglin, M. I., Rozanov, E., O'Connor, F. M., Abraham, N. L., Akiyoshi, H., Archibald, A. T., Bekki, S., Butchart, N.,
10 Chipperfield, M. P., Deushi, M., Dhomse, S. S., Garcia, R. R., Hardiman, S. C., Horowitz, L. W., Jöckel, P., Josse, B., Kinnison, D., Lin, M., Mancini, E., Manyin, M. E., Marchand, M., Marécal, V., Michou, M., Oman, L. D., Pitari, G., Plummer, D. A., Revell, L. E., Saint-Martin, D., Schofield, R., Stenke, A., Stone, K., Sudo, K., Tanaka, T. Y., Tilmes, S., Yamashita, Y., Yoshida, K., and Zeng, G.: Review of the global models used within the Chemistry-Climate Model Initiative (CCMI), *Geosci. Model Dev. Discuss.*, 2016, 1–49, doi:10.5194/gmd-2016-199, 2016.
- 15 Oikawa, P. Y., Ge, C., Wang, J., Eberwein, J. R., Liang, L. L., Allsman, L. A., Grantz, D. A., and Jenerette, G. D.: Unusually high soil nitrogen oxide emissions influence air quality in a high-temperature agricultural region, *Nat Commun*, 6, 8753, doi:10.1038/ncomms9753, 2015.
- Pickering, K. E., Wang, Y., Tao, W.-K., Price, C., and Müller, J.-F.: Vertical distributions of lightning NO_x for use in regional and global chemical transport models, *J. Geophys. Res.*, 103, 31 203–31 216, doi:10.1029/98JD02651, 1998.
- Platt, U. F., Winer, A. M., Biermann, H. W., Atkinson, R., and Pitts, J. N.: Measurement of nitrate radical concentrations in continental air,
20 *Environ. Sci. Technol.*, 18, 365–369, doi:10.1021/es00123a015, 1984.
- Prasad, A. K., Singh, R. P., and Kafatos, M.: Influence of coal-based thermal power plants on the spatial–temporal variability of tropospheric NO₂ column over India, *Environ. Monit. Assess.*, 184, 1891–1907, doi:10.1007/s10661-011-2087-6, 2012.
- Prather, M. and Ehalt, D.: Atmospheric Chemistry and Green house gases; contribution of working group I to the Third Assessment Report of the IPCC; Eds J T Houghton et al, 2001.
- 25 Price, C. and Rind, D.: A simple lightning parameterization for calculating global lightning distributions, *J. Geophys. Res.*, 97, 9919–9933, doi:10.1029/92JD00719, 1992.
- Rayner, N. A., Parker, D. E., Horton, E. B., Folland, C. K., Alexander, L. V., Rowell, D. P., Kent, E. C., and Kaplan, A.: Global analyses of sea surface temperature, sea ice, and night marine air temperature since the late nineteenth century, *J. Geophys. Res.*, 108, doi:10.1029/2002JD002670, 2003.
- 30 Ridley, B., Ott, L., Pickering, K., Emmons, L., Montzka, D., Weinheimer, A., Knapp, D., Grahek, F., Li, L., Heymsfield, G., McGill, M., Kucera, P., Mahoney, M. J., Baumgardner, D., Schultz, M., and Brasseur, G.: Florida thunderstorms: A faucet of reactive nitrogen to the upper troposphere, *J. Geophys. Res.*, 109, doi:10.1029/2004JD004769, 2004.
- Russell, A. R., Perring, A. E., Valin, L. C., Bucsela, E. J., Browne, E. C., Wooldridge, P. J., and Cohen, R. C.: A high spatial resolution retrieval of NO₂ column densities from OMI: method and evaluation, *Atmos. Chem. Phys.*, 11, 8543–8554, doi:10.5194/acp-11-8543-2011, 2011.
- 35 Saikawa, E., Kim, H., Zhong, M., Avramov, A., Zhao, Y., Janssens-Maenhout, G., Kurokawa, J.-I., Klimont, Z., Wagner, F., Naik, V., Horowitz, L. W., and Zhang, Q.: Comparison of emissions inventories of anthropogenic air pollutants and greenhouse gases in China, *Atmos. Chem. Phys.*, 17, 6393–6421, doi:10.5194/acp-17-6393-2017, 2017.

- Sekiya, T. and Sudo, K.: Roles of transport and chemistry processes in global ozone change on interannual and multidecadal time scales, *J. Geophys. Res.*, 119, 4903–4921, doi:10.1002/2013JD020838, 2014.
- Sheel, V., Lal, S., Richter, A., and Burrows, J. P.: Comparison of satellite observed tropospheric {NO₂} over India with model simulations, *Atmos. Environ.*, 44, 3314 – 3321, doi:10.1016/j.atmosenv.2010.05.043, 2010.
- 5 Shindell, D. T., Faluvegi, G., Koch, D. M., Schmidt, G. A., Unger, N., and Bauer, S. E.: Improved Attribution of Climate Forcing to Emissions, *Science*, 326, 716–718, doi:10.1126/science.1174760, 2009.
- Stavrakou, T., Müller, J.-F., Boersma, K. F., van der A, R. J., Kurokawa, J., Ohara, T., and Zhang, Q.: Key chemical NO_x sink uncertainties and how they influence top-down emissions of nitrogen oxides, *Atmos. Chem. Phys.*, 13, 9057–9082, doi:10.5194/acp-13-9057-2013, 2013.
- 10 Stock, Z. S., Russo, M. R., and Pyle, J. A.: Representing ozone extremes in European megacities: the importance of resolution in a global chemistry climate model, *Atmos. Chem. Phys.*, 14, 3899–3912, doi:10.5194/acp-14-3899-2014, 2014.
- Sudo, K. and Akimoto, H.: Global source attribution of tropospheric ozone: Long-range transport from various source regions, *J. Geophys. Res.*, 112, doi:10.1029/2006JD007992, 2007.
- Sudo, K., Takahashi, M., Kurokawa, J., and Akimoto, H.: CHASER: A global chemical model of the troposphere 1. Model description, *J. Geophys. Res.*, 107, ACH 7–1–ACH 7–20, doi:10.1029/2001JD001113, 2002.
- 15 Takemura, T., Nozawa, T., Emori, S., Nakajima, T. Y., and Nakajima, T.: Simulation of climate response to aerosol direct and indirect effects with aerosol transport-radiation model, *J. Geophys. Res.*, 110, doi:10.1029/2004JD005029, 2005.
- Takemura, T., Egashira, M., Matsuzawa, K., Ichijo, H., Oishi, R., and Abe-Ouchi, A.: A simulation of the global distribution and radiative forcing of soil dust aerosols at the Last Glacial Maximum, *Atmos. Chem. Phys.*, 9, 3061–3073, doi:10.5194/acp-9-3061-2009, 2009.
- 20 Thompson, A. M., Witte, J. C., McPeters, R. D., Oltmans, S. J., Schmidlin, F. J., Logan, J. A., Fujiwara, M., Kirchhoff, V. W. J. H., Posny, F., Coetzee, G. J. R., Hoegger, B., Kawakami, S., Ogawa, T., Johnson, B. J., Vömel, H., and Labow, G.: Southern Hemisphere Additional Ozonesondes (SHADOZ) 1998–2000 tropical ozone climatology 1. Comparison with Total Ozone Mapping Spectrometer (TOMS) and ground-based measurements, *J. Geophys. Res.*, 108, doi:10.1029/2001JD000967, 2003a.
- Thompson, A. M., Witte, J. C., Oltmans, S. J., Schmidlin, F. J., Logan, J. A., Fujiwara, M., Kirchhoff, V. W. J. H., Posny, F., Coetzee, G. J. R., Hoegger, B., Kawakami, S., Ogawa, T., Fortuin, J. P. F., and Kelder, H. M.: Southern Hemisphere Additional Ozonesondes (SHADOZ) 1998–2000 tropical ozone climatology 2. Tropospheric variability and the zonal wave-one, *J. Geophys. Res.*, 108, doi:10.1029/2002JD002241, 2003b.
- 25 Uno, I., He, Y., Ohara, T., Yamaji, K., Kurokawa, J.-I., Katayama, M., Wang, Z., Noguchi, K., Hayashida, S., Richter, A., and Burrows, J. P.: Systematic analysis of interannual and seasonal variations of model-simulated tropospheric NO₂ in Asia and comparison with GOME-satellite data, *Atmos. Chem. Phys.*, 7, 1671–1681, doi:10.5194/acp-7-1671-2007, 2007.
- 30 Valin, L. C., Russell, A. R., Hudman, R. C., and Cohen, R. C.: Effects of model resolution on the interpretation of satellite NO₂ observations, *Atmos. Chem. Phys.*, 11, 11 647–11 655, doi:10.5194/acp-11-11647-2011, 2011.
- Valks, P., Pinardi, G., Richter, A., Lambert, J.-C., Hao, N., Loyola, D., Van Roozendaal, M., and Emmadi, S.: Operational total and tropospheric NO₂ column retrieval for GOME-2, *Atmospheric Measurement Techniques*, 4, 1491–1514, doi:10.5194/amt-4-1491-2011, 2011.
- 35 van Noije, T. P. C., Eskes, H. J., Dentener, F. J., Stevenson, D. S., Ellingsen, K., Schultz, M. G., Wild, O., Amann, M., Atherton, C. S., Bergmann, D. J., Bey, I., Boersma, K. F., Butler, T., Cofala, J., Drevet, J., Fiore, A. M., Gauss, M., Hauglustaine, D. A., Horowitz, L. W., Isaksen, I. S. A., Krol, M. C., Lamarque, J.-F., Lawrence, M. G., Martin, R. V., Montanaro, V., Müller, J.-F., Pitari, G., Prather, M. J., Pyle, J. A., Richter, A., Rodriguez, J. M., Savage, N. H., Strahan, S. E., Sudo, K., Szopa, S., and van Roozendaal, M.: Multi-model

- ensemble simulations of tropospheric NO₂ compared with GOME retrievals for the year 2000, *Atmos. Chem. Phys.*, 6, 2943–2979, doi:10.5194/acp-6-2943-2006, 2006.
- Vinken, G. C. M., Boersma, K. F., Jacob, D. J., and Meijer, E. W.: Accounting for non-linear chemistry of ship plumes in the GEOS-Chem global chemistry transport model, *Atmos. Chem. Phys.*, 11, 11 707–11 722, doi:10.5194/acp-11-11707-2011, 2011.
- 5 Vu, K. T., Dingle, J. H., Bahreini, R., Reddy, P. J., Apel, E. C., Campos, T. L., DiGangi, J. P., Diskin, G. S., Fried, A., Herndon, S. C., Hills, A. J., Hornbrook, R. S., Huey, G., Kaser, L., Montzka, D. D., Nowak, J. B., Pusede, S. E., Richter, D., Roscioli, J. R., Sachse, G. W., Shertz, S., Stell, M., Tanner, D., Tyndall, G. S., Walega, J., Weibring, P., Weinheimer, A. J., Pfister, G., and Flocke, F.: Impacts of the Denver Cyclone on regional air quality and aerosol formation in the Colorado Front Range during FRAPPÉ 2014, *Atmos. Chem. Phys.*, 16, 12 039–12 058, doi:10.5194/acp-16-12039-2016, 2016.
- 10 Watanabe, S., Hajima, T., Sudo, K., Nagashima, T., Takemura, T., Okajima, H., Nozawa, T., Kawase, H., Abe, M., Yokohata, T., Ise, T., Sato, H., Kato, E., Takata, K., Emori, S., and Kawamiya, M.: MIROC-ESM 2010: model description and basic results of CMIP5-20c3m experiments, *Geosci. Model Dev.*, 4, 845–872, doi:10.5194/gmd-4-845-2011, 2011.
- Weber, B., Wu, D., Tamm, A., Ruckteschler, N., Rodríguez-Caballero, E., Steinkamp, J., Meusel, H., Elbert, W., Behrendt, T., Sörgel, M., Cheng, Y., Crutzen, P. J., Su, H., and Pöschl, U.: Biological soil crusts accelerate the nitrogen cycle through large NO and HONO emissions
15 in drylands, *Proc. Natl. Acad. Sci. USA*, 112, 15 384–15 389, doi:10.1073/pnas.1515818112, 2015.
- Wesely, M.: Parameterization of surface resistances to gaseous dry deposition in regional-scale numerical models, *Atmos. Environ.*, 23, 1293–1304, doi:10.1016/0004-6981(89)90153-4, 1989.
- Wild, O. and Prather, M. J.: Global tropospheric ozone modeling: Quantifying errors due to grid resolution, *J. Geophys. Res.*, 111, doi:10.1029/2005JD006605, d11305, 2006.
- 20 Williams, J. E., Boersma, K. F., Le Sager, P., and Verstraeten, W. W.: The high-resolution version of TM5-MP for optimized satellite retrievals: description and validation, *Geosci. Model Dev.*, 10, 721–750, doi:10.5194/gmd-10-721-2017, 2017.
- Yamaji, K., Ikeda, K., Irie, H., Kurokawa, J., and Ohara, T.: Influence of model grid resolution on NO₂ vertical column densities over East Asia, *J. Air Waste Manage. Assoc.*, 64, 436–444, doi:10.1080/10962247.2013.827603, 2014.
- Yan, Y., Lin, J., Chen, J., and Hu, L.: Improved simulation of tropospheric ozone by a global-multi-regional two-way coupling model system,
25 *Atmos. Chem. Phys.*, 16, 2381–2400, doi:10.5194/acp-16-2381-2016, 2016.
- Yienger, J. J. and Levy, H.: Empirical model of global soil-biogenic NO_x emissions, *J. Geophys. Res.*, 100, 11 447–11 464, doi:10.1029/95JD00370, 1995.
- Zheng, B., Huo, H., Zhang, Q., Yao, Z. L., Wang, X. T., Yang, X. F., Liu, H., and He, K. B.: High-resolution mapping of vehicle emissions in China in 2008, *Atmos. Chem. Phys.*, 14, 9787–9805, doi:10.5194/acp-14-9787-2014, 2014.
- 30 Zien, A. W., Richter, A., Hilboll, A., Blechschmidt, A.-M., and Burrows, J. P.: Systematic analysis of tropospheric NO₂ long-range transport events detected in GOME-2 satellite data, *Atmos. Chem. Phys.*, 14, 7367–7396, doi:10.5194/acp-14-7367-2014, 2014.

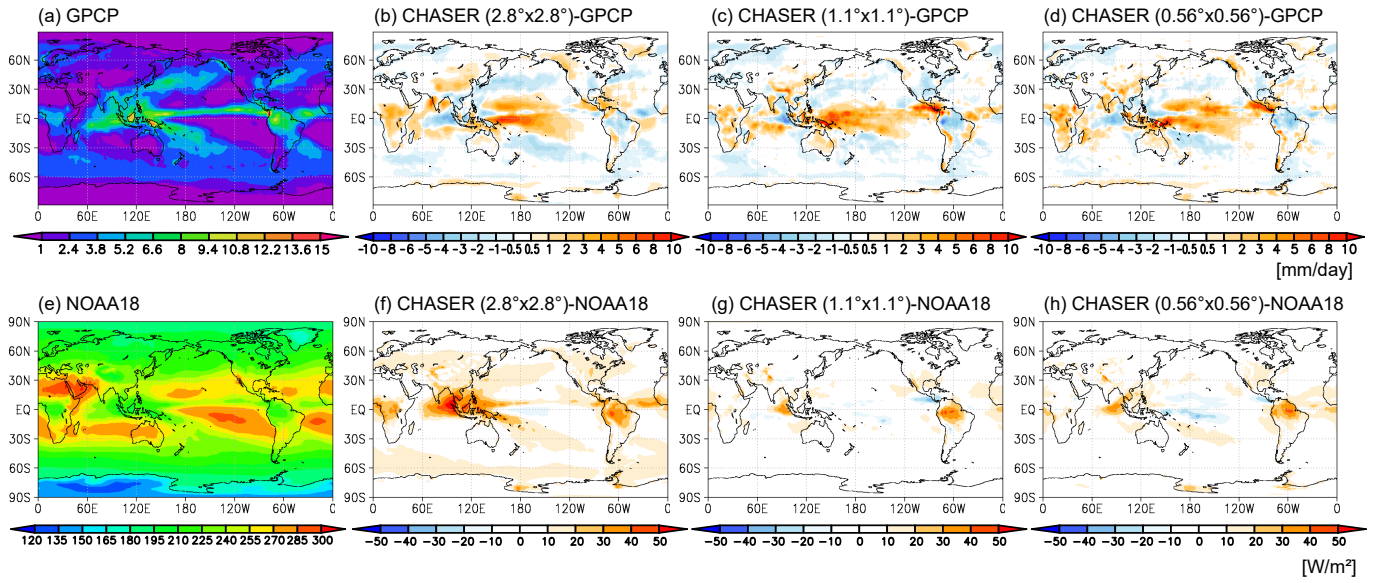


Figure 1. Annual mean precipitation rate (mm day^{-1}) from GPCP (a) and outgoing longwave radiation (OLR) (W m^{-2}) from NOAA 18 satellite (e) for 2008. The second, third, and fourth columns show differences of precipitation (b-d) and OLR (f-h) between the observations and the model simulation-simulations at 2.8° (b, f), 2.8° , 1.1° (c, g), 1.1° , and 0.56° (d, h), 0.56° -resolutions and GPCP for 2008-, respectively. The observations and model results are mapped onto a 2.5° - and 1° -bin grid-grids for precipitation and OLR, respectively.

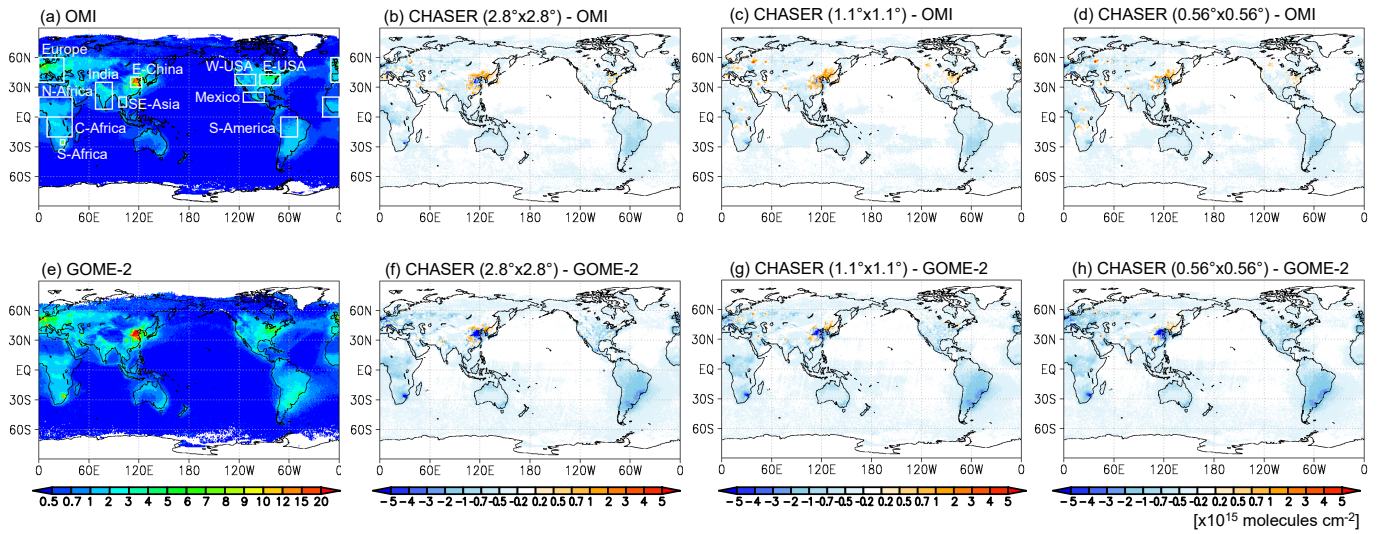


Figure 2. Annual mean tropospheric NO_2 column ($\times 10^{15}$ molecules cm^{-2}) from satellite retrievals (first column; [a, e](#)), and differences between the model simulation at 2.8° (second column; [b, f](#)), 1.1° (third column; [c, g](#)), 0.56° (fourth column; [d, h](#)) resolutions and satellite retrievals from OMI (upper row; [a-d](#)) and GOME-2 (lower row; [e-h](#)) for 2008. The observed and simulated fields are mapped onto a 0.5° -bin grid. [The white square line in \(a\) represents the region used for the model evaluation.](#)

OMI vs. CHASER

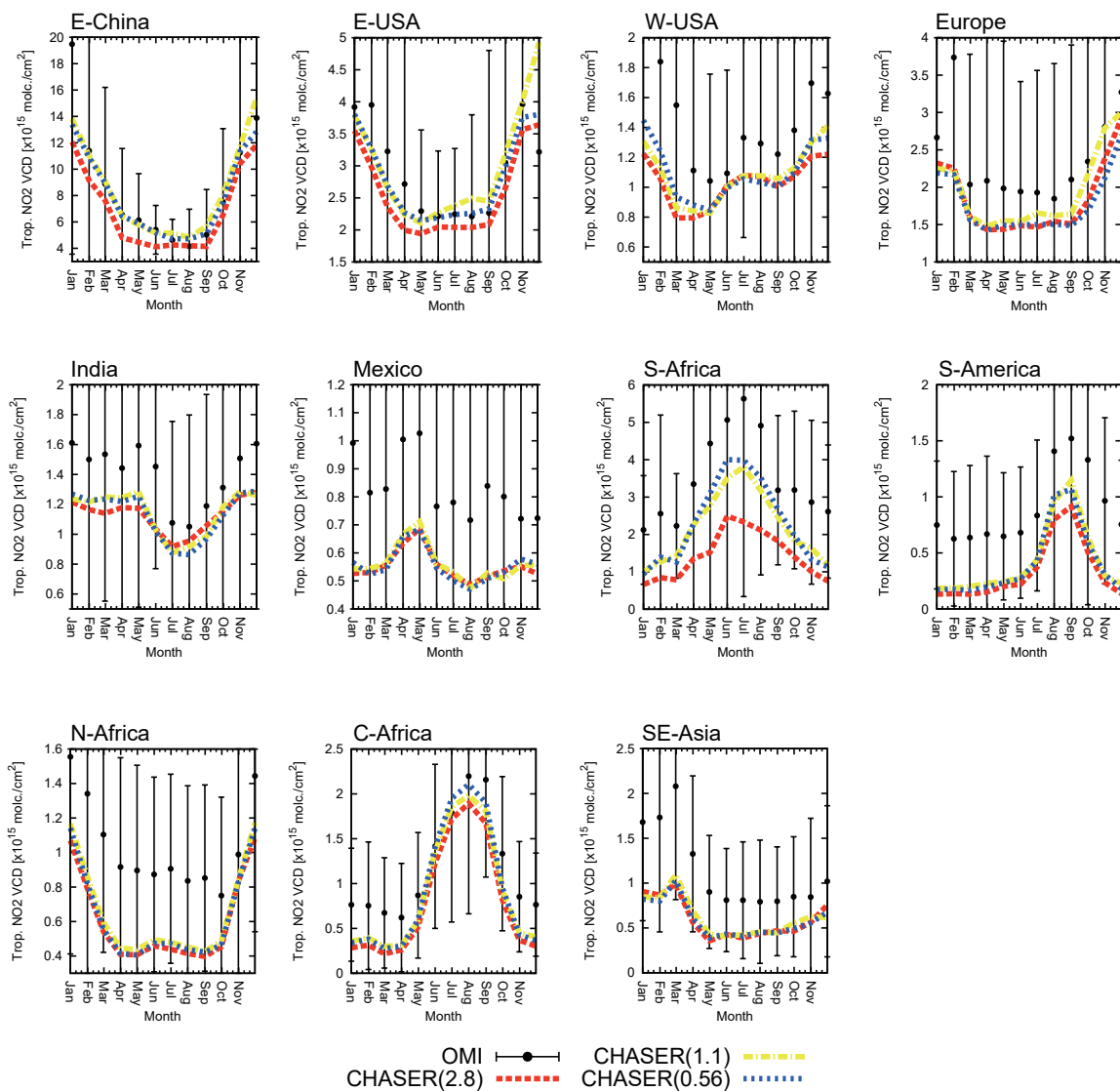


Figure 3. Monthly timeseries of tropospheric NO₂ column ($\times 10^{15}$ molecules cm^{-2}) averaged in E-China (110–123°E, 30–40°N), E-USA (95–71°W, 32–43°N), W-USA (125–100°W, 32–43°N), Europe (10°W–30°E, 35–60°N), India (68–88°E, 8–35°N), Mexico (115–90°W, 15–25°N), N-Africa (20°W–40°E, 0–20°N), C-Africa (10–40°E, 20°S–0), S-Africa (26–31°E, 28–23°S), S-America (70–50°W, 20°S–0), SE-Asia (96–105°E, 10–20°N). The black dots are OMI retrievals, the red dashed line is the model simulation at 2.8° resolution, the yellow dashed-dotted line is the model simulation at 1.1° resolution, and the blue dotted line is the model simulation at 0.56°. The vertical bars indicate mean OMI retrieval errors.

GOME-2 vs. CHASER

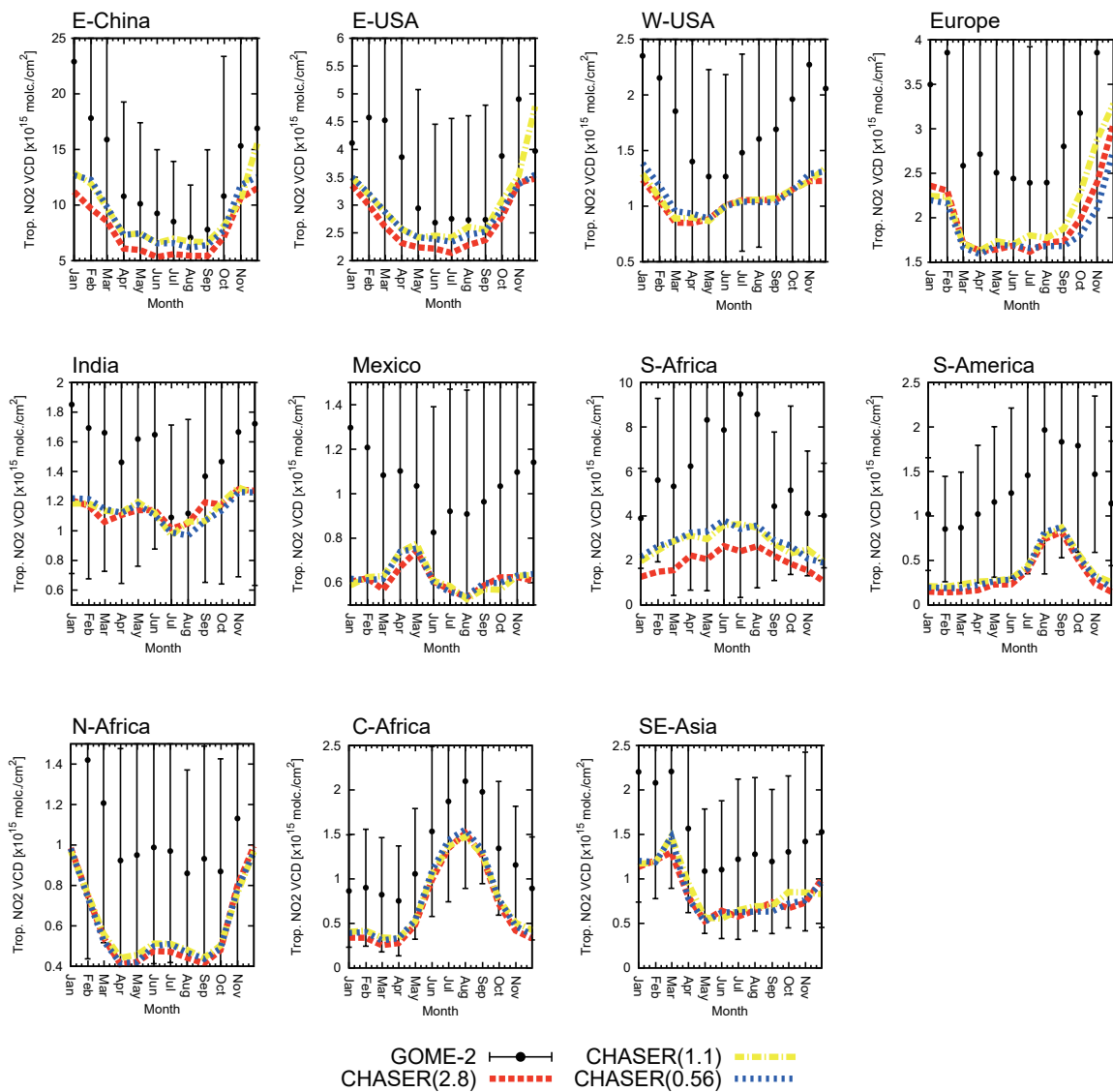


Figure 4. Same as Figure 3, but for GOME-2.

OMI vs. CHASER

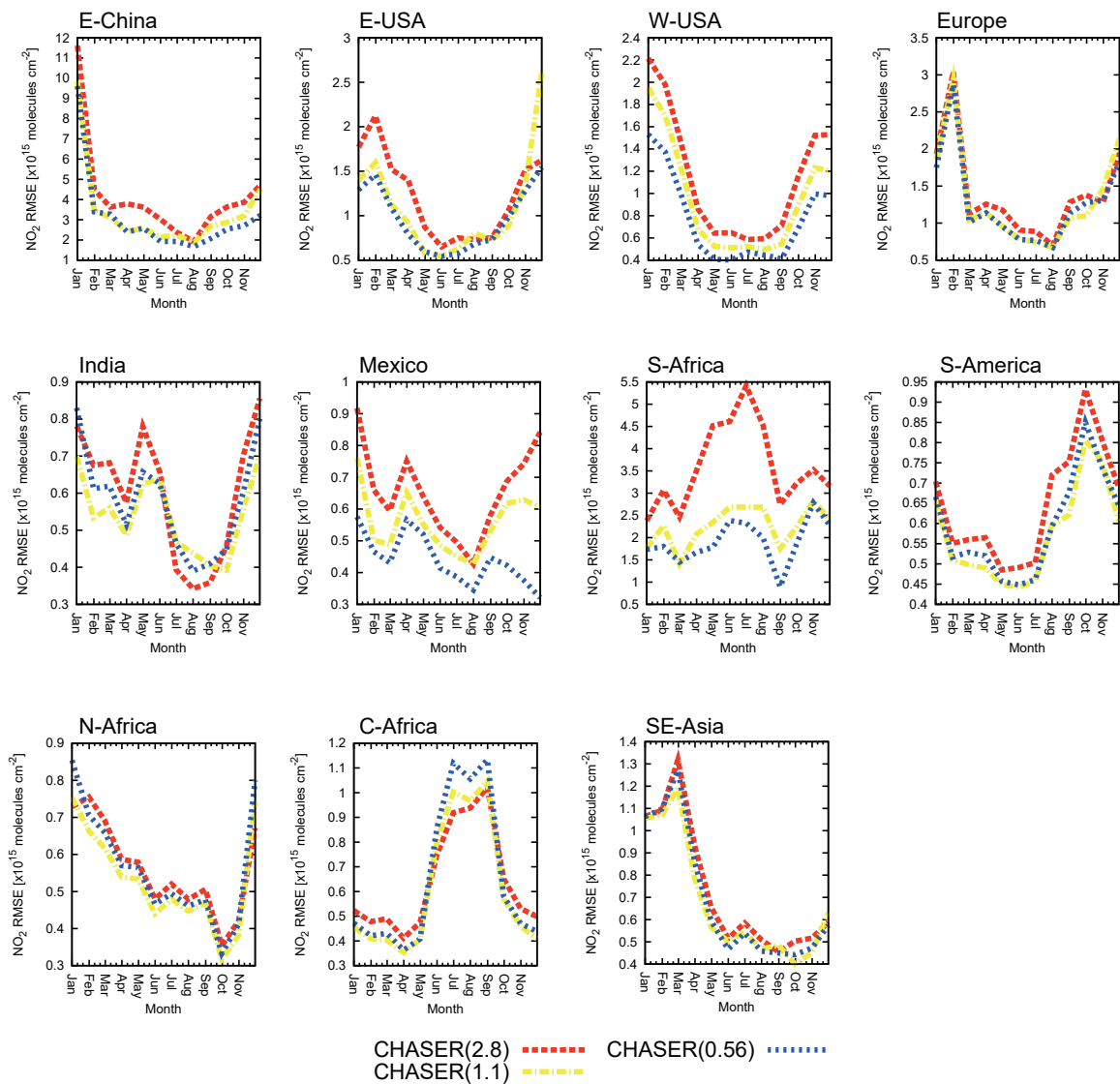


Figure 5. Same as Figure 3, but for root-mean-square error (RMSE) of tropospheric NO_2 column in comparison with OMI.

GOME-2 vs. CHASER

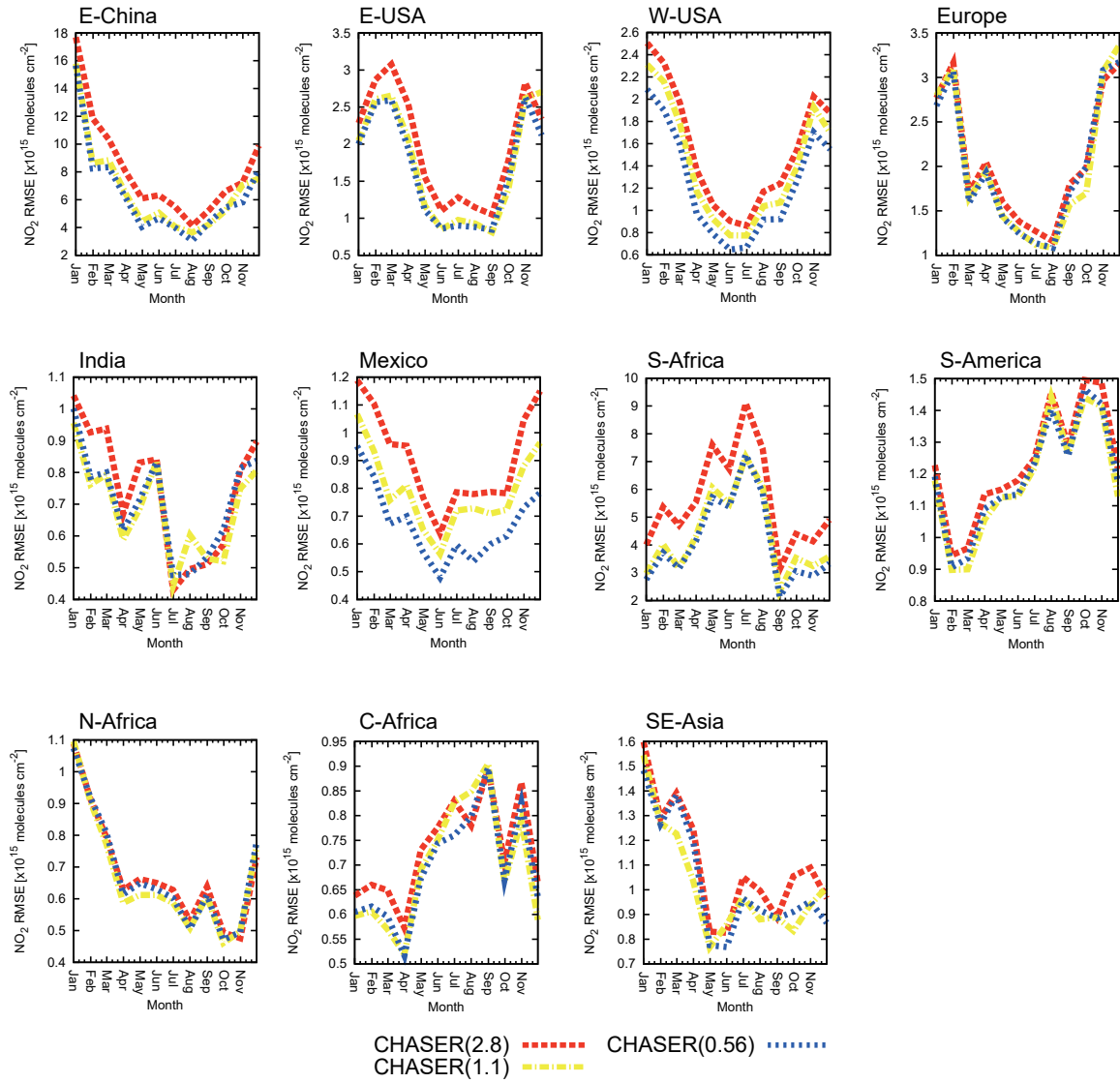


Figure 6. Same as Figure 3, but for RMSE of tropospheric NO_2 column in comparison with GOME-2.

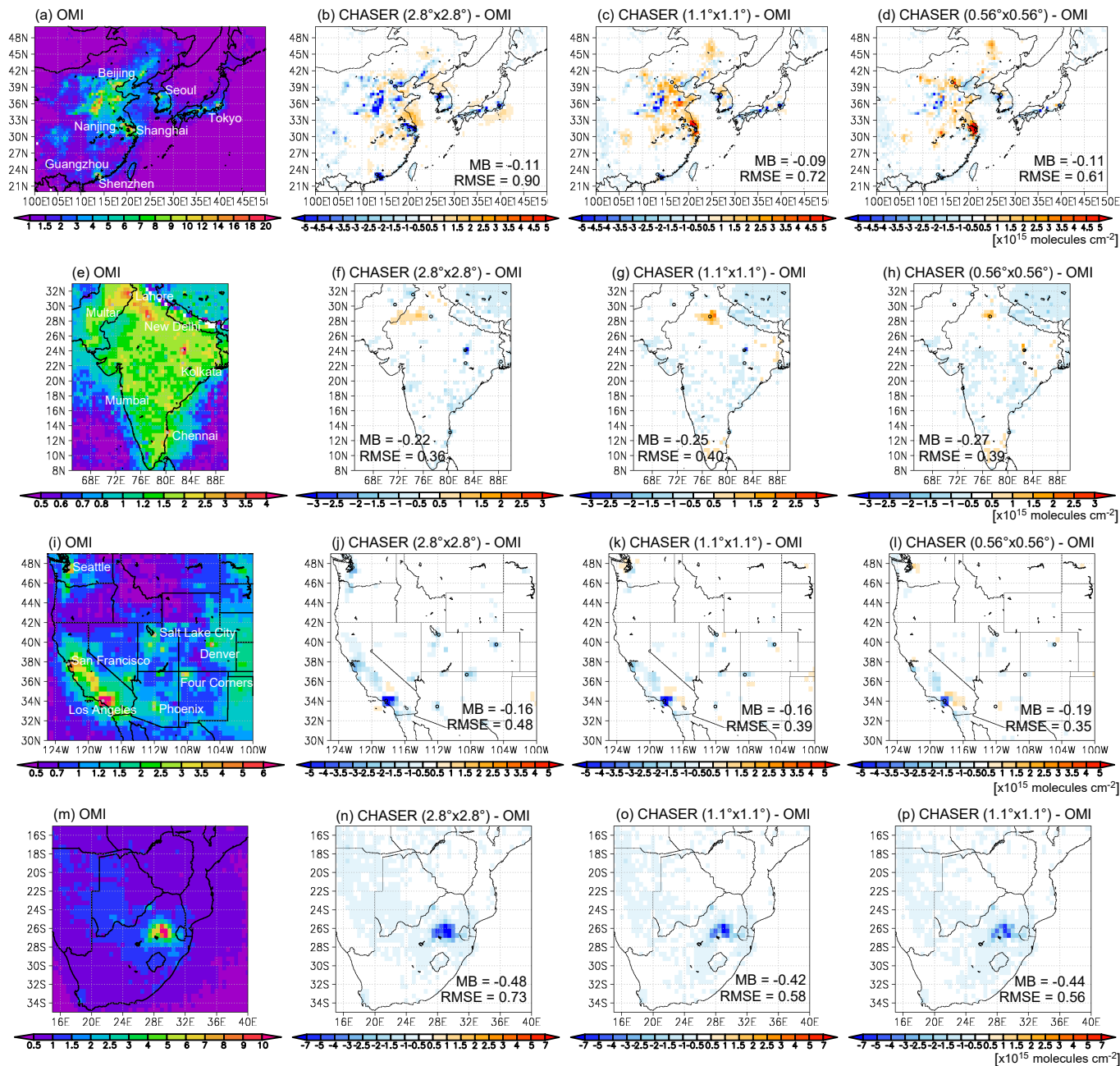
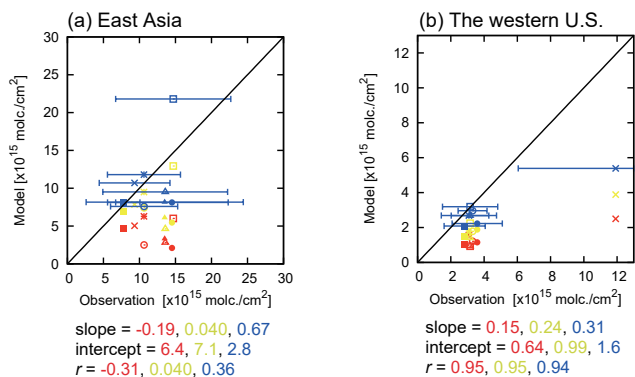


Figure 7. Tropospheric NO₂ column ($\times 10^{15}$ molecules cm⁻²) from OMI retrievals (first column; [a, e, i, m](#)), differences between the model simulation at 2.8° (second column; [b, f, j, n](#)), 1.1° (third column; [c, g, k, o](#)), and 0.56° (fourth column; [d, h, l, p](#)) resolutions and OMI retrievals over East Asia (first row; [a-d](#)), South Asia (second row; [e-h](#)), and western United States (third row; [i-l](#)) during JJA and over South Africa (fourth row; [m-p](#)) during DJF 2008. Observed and simulated fields are mapped onto a 0.5°-bin grid. Regional mean bias (MB) and RMSE are also shown.

OMI vs. CHASER



GOME-2 vs. CHASER

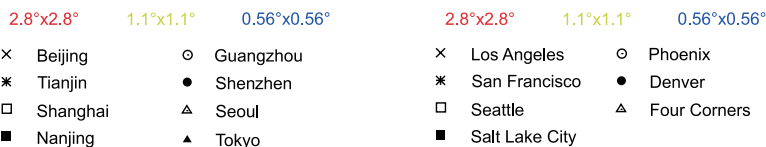
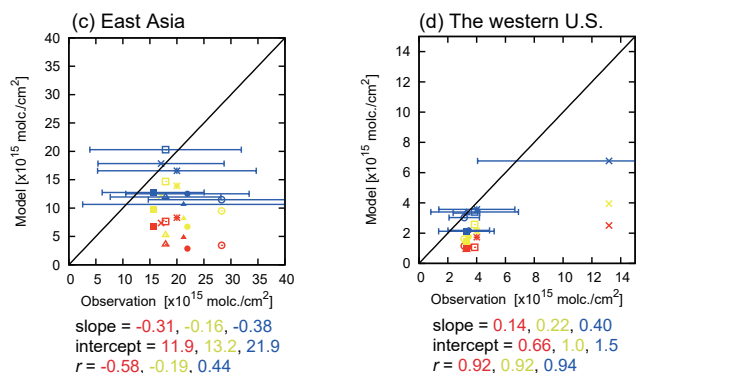


Figure 8. Scatter plots of observed and simulated tropospheric NO₂ column ($\times 10^{15}$ molecules cm $^{-2}$) over strong local sources in East Asia (left column; [a](#), [c](#)) and the western United States (right column; [b](#), [d](#)) during JJA 2008 for the OMI retrievals (upper row; [a](#)–[b](#)) and GOME-2 retrievals (lower row; [c](#)–[d](#)). The red marks are the model simulation at 2.8° resolution, the yellow marks are the model simulation at 1.1° resolution, and the blue marks are the model simulation at 0.56° resolution. The horizontal bars indicate mean retrieval errors in OMI and GOME-2. For East Asia, the results are shown for Beijing (116.38°E, 39.92°N), Tianjin (117.18°E, 39.13°N), Shanghai (121.47°E, 31.23°N), Nanjing (118.77°E, 32.05°N), Guangzhou (113.27°E, 23.13°N), Shenzhen (114.10°E, 22.55°N), Seoul (126.96°E, 37.57°N), and Tokyo (139.68°E, 35.68°N). For the western United States, the results are shown for Los Angeles (118.25°W, 34.05°N), San Francisco (122.42°W, 37.78°N), Seattle (122.33°W, 47.61°N), Salt Lake City (111.88°E, 40.75°N), Phoenix (112.07°W, 33.45°N), Denver (104.88°W, 39.76°N), and the Four Corners and San Juan power plants (108.48°W, 36.69°N). The values and mean retrieval errors are averages within a 50-km distance from each strong source, with weighting function application based on the inverse of the distance from each location.

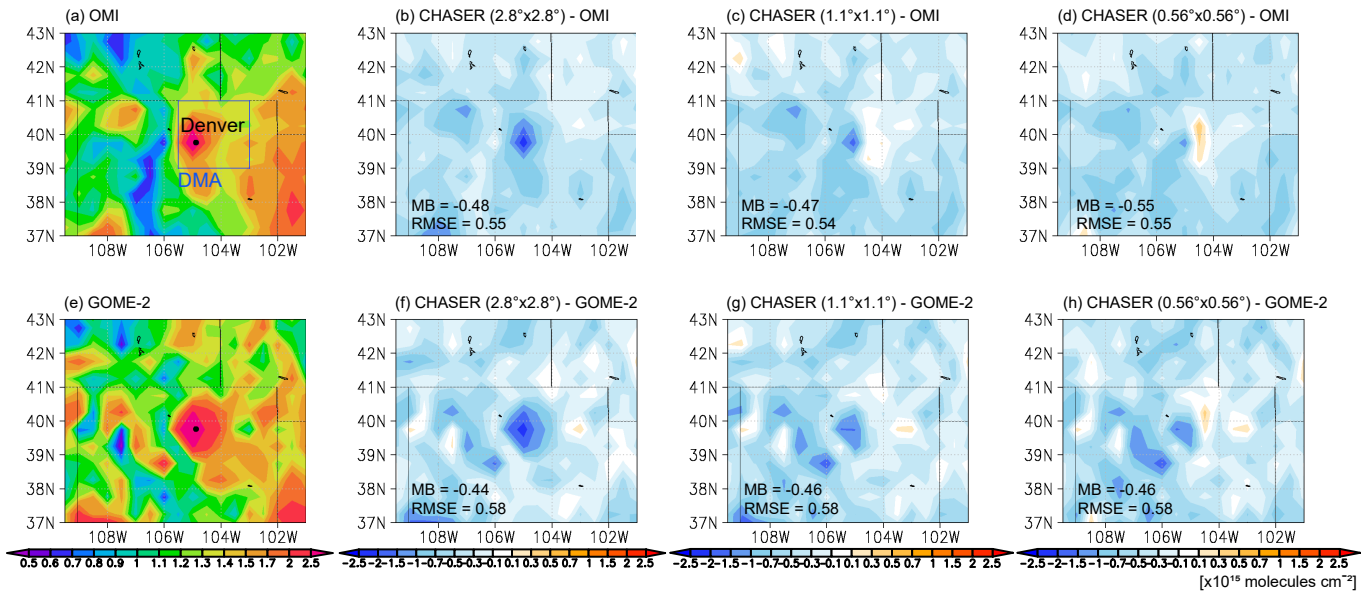


Figure 9. Regional distributions of tropospheric NO₂ column (×10¹⁵ molecules cm⁻²) from satellite retrievals (first column; [a, e](#)), and differences between the model simulation at 2.8° (second column; [b, f](#)), 1.1° (third column; [c, g](#)), and 0.56° (fourth column; [d, h](#)) resolutions and satellite retrievals from OMI (upper row; [a-d](#)) and GOME-2 (lower row; [e-h](#)) over Colorado state during July-August 2014. The observed and simulated fields are mapped onto a 0.5°-bin grid. [The DMA area is shown by the blue square line in \(a\).](#)

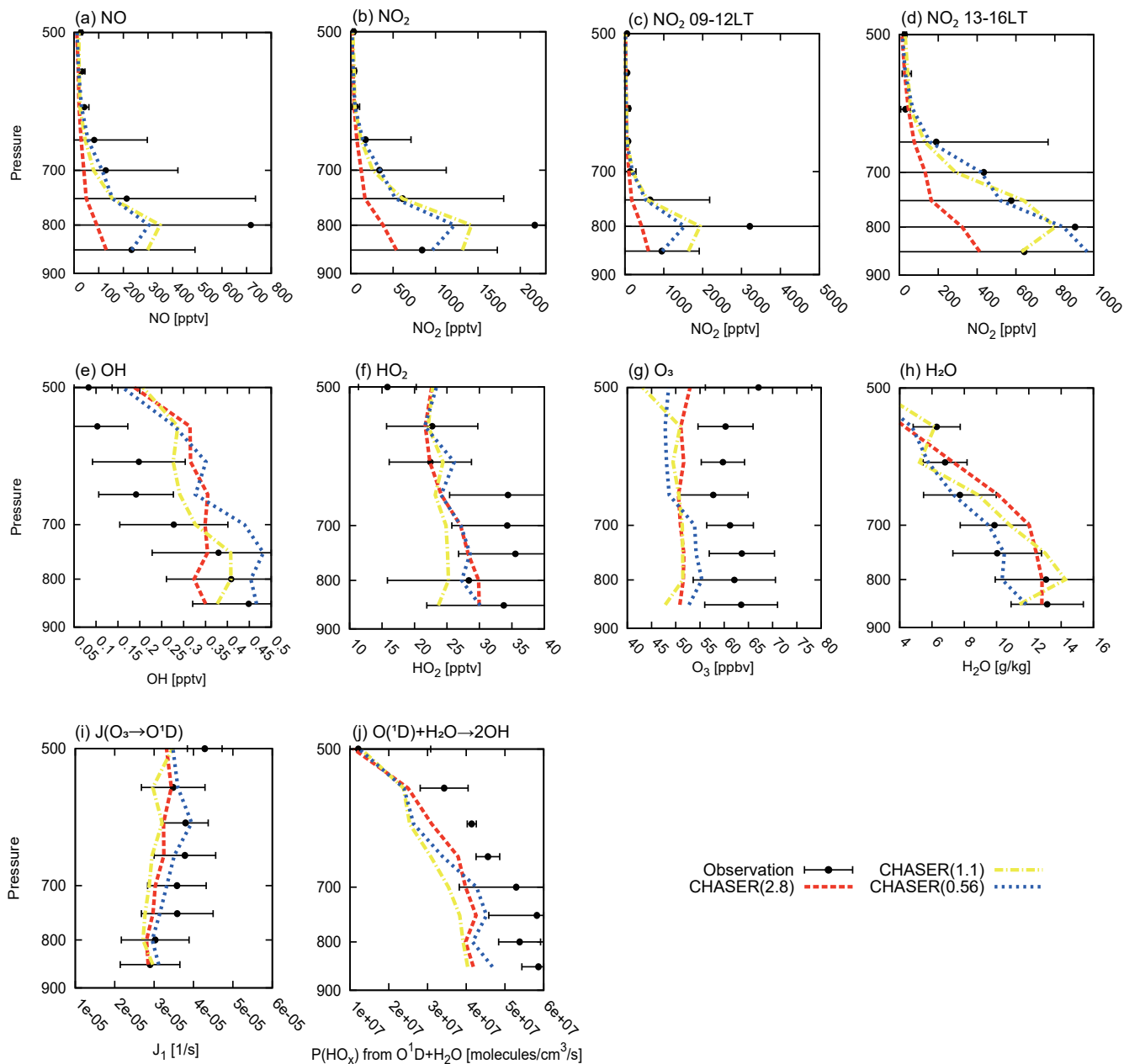


Figure 10. Vertical profiles of NO (pptv) (a), NO₂ (pptv) (b), NO₂ during mornings (09:00–12:00 LT) (c) and afternoons (13:00–16:00 LT) (d), OH (pptv) (e), HO₂ (pptv) (f), O₃ (ppbv) (g), specific humidity (g kg⁻¹) (h), photolysis rate of O₃ (s⁻¹) (i), and OH chemical production rate (molecules cm⁻³ s⁻¹) from O¹D and H₂O (j) over the Denver metropolitan area (39–41°N and 103–105.5°W) during the FRAPPÉ period (from July 16 to August 18, 2014). The black dots represent the measurements, the red dashed line is the model simulation at 2.8° resolution, the yellow dashed-dotted line is the model simulation at 1.1° resolution, and the blue dotted line is the model simulation at 0.56° resolution. The horizontal bars represent standard deviation of the measurements.

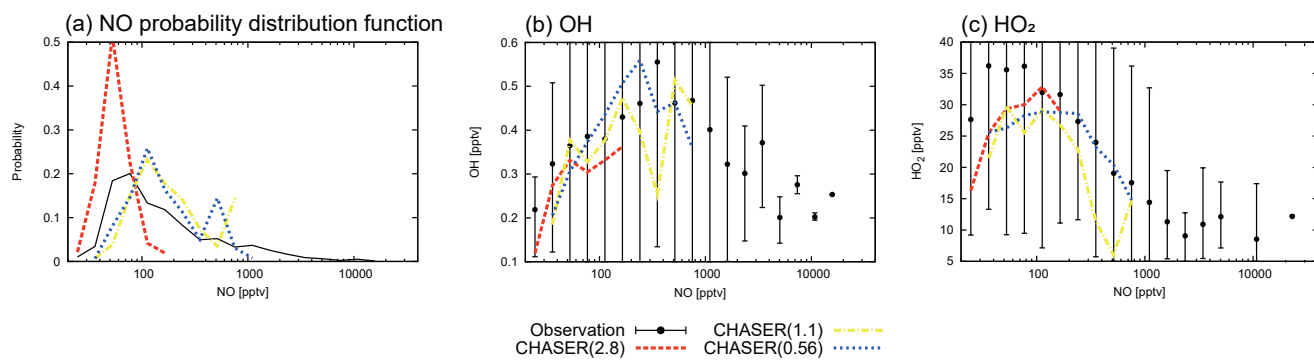


Figure 11. (a) Probability distribution functions of NO, (b) OH and (c) HO₂ as function of NO (pptv). The black dots represent measurements, the red dashed line is the model simulation at 2.8° resolution, the yellow dashed-dotted line is the model simulation at 1.1° resolution, and the blue dotted line is the model simulation at 0.56° resolution. The vertical bars represent standard deviation of the measurements.

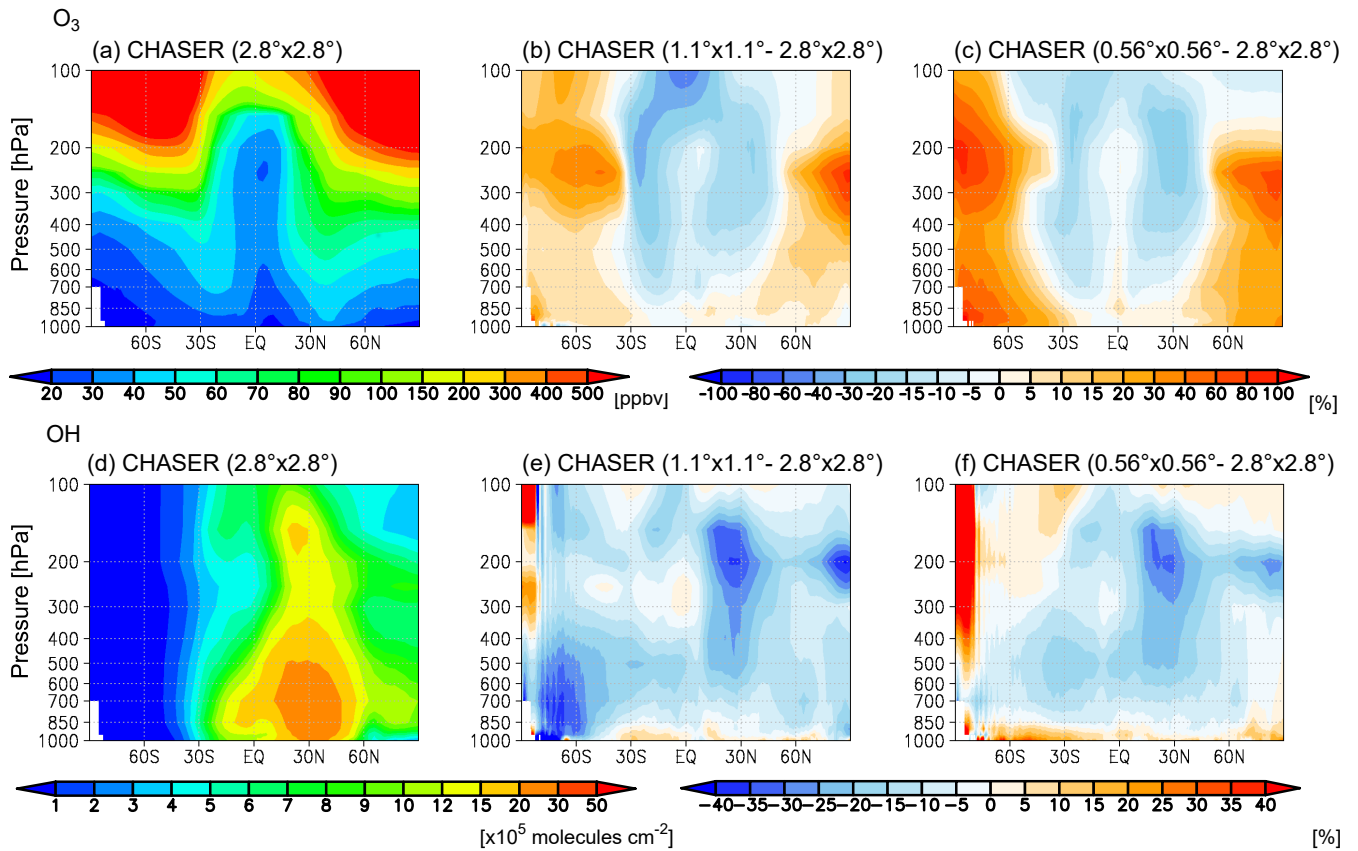
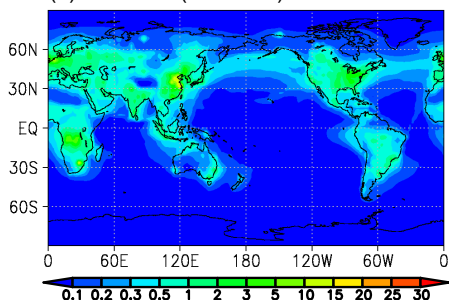


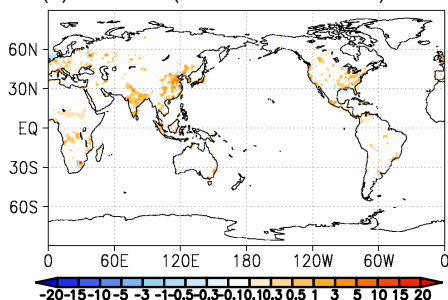
Figure 12. Latitude-pressure distribution of zonal mean (a-c) O_3 (ppbv) and (d-f) OH ($\times 10^5$ molecules cm^{-3}) in the model simulation at 2.8° (left column) during JJA in 2008, and differences between the model simulation at 1.1° (middle column) and 0.56° (right column) resolutions and the model at 2.8° resolution.

NO₂ in the lower troposphere

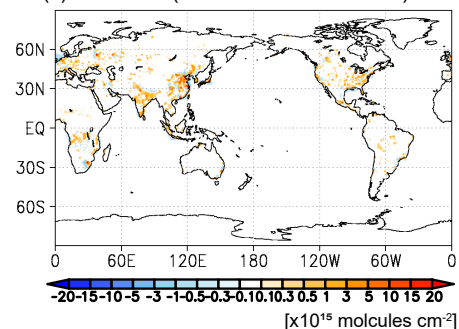
(a) CHASER (2.8°x2.8°)



(b) CHASER (1.1°x1.1° - 2.8°x2.8°)

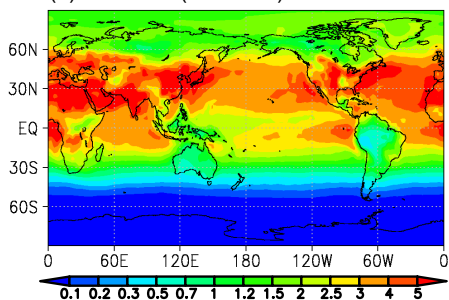


(c) CHASER (0.56°x0.56° - 2.8°x2.8°)

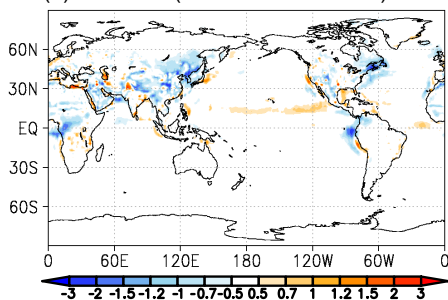


OH in the lower troposphere

(d) CHASER (2.8°x2.8°)



(e) CHASER (1.1°x1.1° - 2.8°x2.8°)



(f) CHASER (0.56°x0.56° - 2.8°x2.8°)

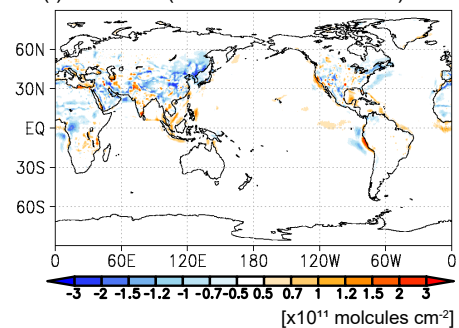
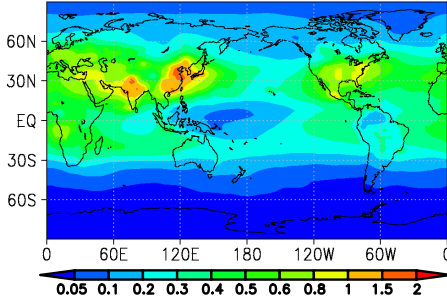


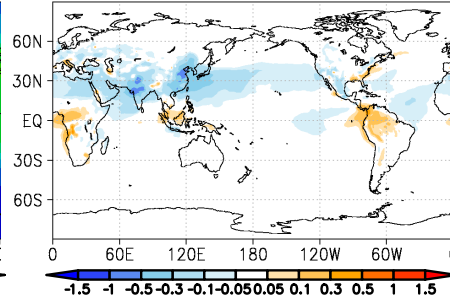
Figure 13. Global distributions of (a-c) tropospheric-NO₂ partial column ($\times 10^{15}$ molecules cm^{-2}) and (d-f) OH partial column integrated in the lowermost five model layers ($\times 10^{11}$ molecules cm^{-2}) integrated in the lowermost five model layers in the model simulation at 2.8° resolution (first column) during JJA in 2008, and differences between the model simulation at 1.1° (second column) and 0.56° (third column) resolutions and the model at 2.8° resolution.

NO₂ in the free troposphere

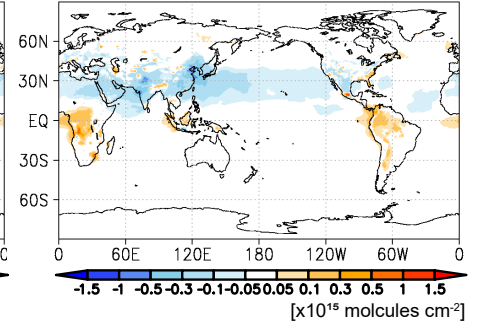
(a) CHASER (2.8°x2.8°)



(b) CHASER (1.1°x1.1° - 2.8°x2.8°)

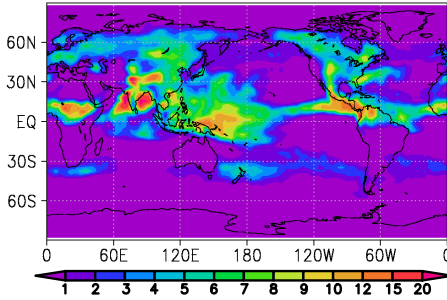


(c) CHASER (0.56°x0.56° - 2.8°x2.8°)

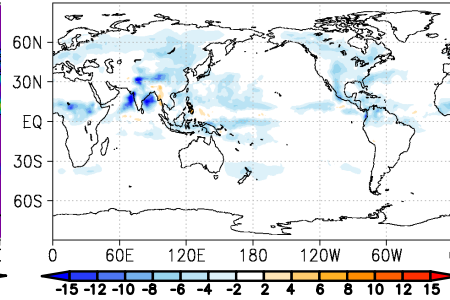


Convective cloud mass flux at 500 hPa

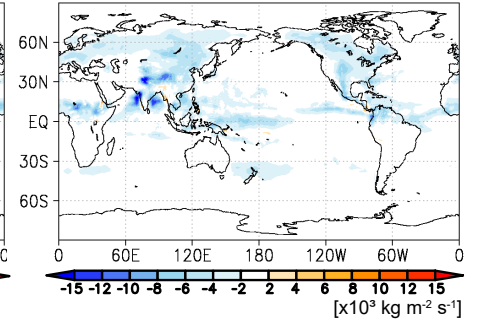
(d) CHASER (2.8°x2.8°)



(e) CHASER (1.1°x1.1° - 2.8°x2.8°)

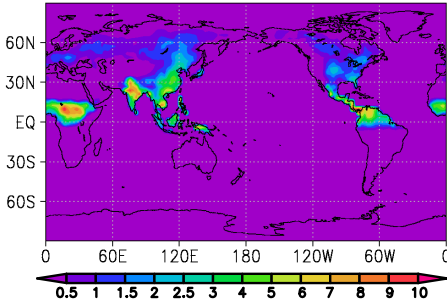


(f) CHASER (0.56°x0.56° - 2.8°x2.8°)

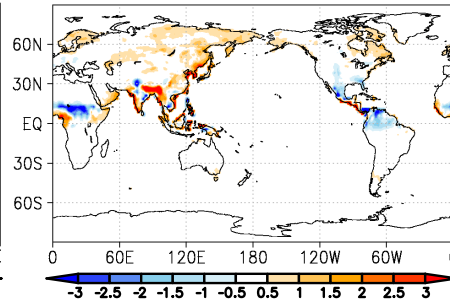


Lightning NO_x production

(g) CHASER (2.8°x2.8°)



(h) CHASER (1.1°x1.1° - 2.8°x2.8°)



(i) CHASER (0.56°x0.56° - 2.8°x2.8°)

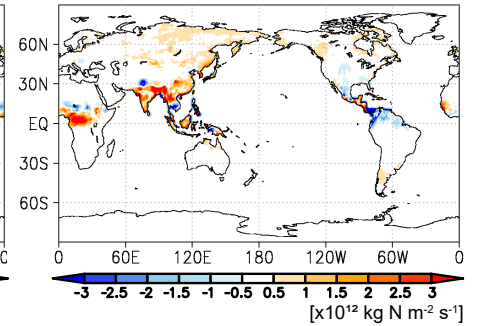


Figure 14. Global distributions of (a-c) NO₂ partial column ($\times 10^{15}$ molecules cm^{-2}) integrated from the sixth layer to the tropopause, (d-f) convective cloud updraft ($\times 10^3$ $\text{kg m}^{-2} \text{s}^{-1}$) at 500 hPa, and (g-i) vertically-integrated lightning NO_x production ($\times 10^{12}$ $\text{kg N m}^{-2} \text{s}^{-2}$) in the model simulation at 2.8° resolution (first column) during JJA in 2008, and differences between the model simulation at 1.1° (second column) and 0.56° (third column) resolutions and the model at 2.8° resolution.

Table 1. Comparisons of annual mean tropospheric NO₂ column between satellite retrievals (OMI and GOME-2) and the model simulation at 2.8°, 1.1°, and 0.56° resolutions. MB is the mean bias. RMSE is the root-mean-square error. S-Corr. signifies spatial correlation coefficient. Units of MB and RMSE are $\times 10^{15}$ molecules cm⁻². The definition of the regions is the same as Figure 3.

Region	Model resolution	OMI			GOME-2		
		MB	S-Corr.	RMSE	MB	S-Corr.	RMSE
Global	2.8° × 2.8°	-0.25	0.90	0.44	-0.36	0.90	0.68
	1.1° × 1.1°	-0.23	0.93	0.37	-0.35	0.93	0.58
	0.56° × 0.56°	-0.24	0.93	0.37	-0.35	0.93	0.58
E-China	2.8° × 2.8°	-1.71	0.80	3.49	-5.03	0.84	6.89
	1.1° × 1.1°	-0.17	0.86	2.35	-3.56	0.89	4.95
	0.56° × 0.56°	-0.60	0.91	2.13	-3.82	0.91	4.87
E-USA	2.8° × 2.8°	-0.36	0.83	0.90	-0.95	0.86	1.45
	1.1° × 1.1°	0.046	0.93	0.56	-0.64	0.93	0.96
	0.56° × 0.56°	-0.13	0.96	0.54	-0.79	0.94	1.02
W-USA	2.8° × 2.8°	-0.38	0.66	1.01	-0.69	0.73	1.35
	1.1° × 1.1°	-0.33	0.82	0.80	-0.67	0.86	1.18
	0.56° × 0.56°	-0.32	0.91	0.62	-0.66	0.93	1.01
Europe	2.8° × 2.8°	-0.53	0.87	1.06	-1.0	0.86	1.54
	1.1° × 1.1°	-0.41	0.89	0.89	-0.92	0.87	1.36
	0.56° × 0.56°	-0.60	0.91	0.96	-1.1	0.90	1.48
India	2.8° × 2.8°	-0.28	0.84	0.49	-0.38	0.86	0.61
	1.1° × 1.1°	-0.26	0.91	0.41	-0.39	0.92	0.54
	0.56° × 0.56°	-0.27	0.91	0.46	-0.40	0.90	0.57
Mexico	2.8° × 2.8°	-0.28	0.61	0.61	-0.44	0.70	0.85
	1.1° × 1.1°	-0.27	0.82	0.50	-0.43	0.88	0.72
	0.56° × 0.56°	-0.28	0.93	0.37	-0.43	0.94	0.59
N-Africa	2.8° × 2.8°	-0.43	0.84	0.48	-0.55	0.91	0.61
	1.1° × 1.1°	-0.38	0.86	0.43	-0.53	0.92	0.59
	0.56° × 0.56°	-0.41	0.83	0.46	-0.54	0.91	0.60
C-Africa	2.8° × 2.8°	-0.38	0.77	0.47	-0.58	0.88	0.63
	1.1° × 1.1°	-0.29	0.81	0.40	-0.53	0.88	0.58
	0.56° × 0.56°	-0.27	0.80	0.41	-0.52	0.86	0.57
S-Africa	2.8° × 2.8°	-2.08	0.61	3.27	-4.17	0.73	5.08
	1.1° × 1.1°	-1.31	0.93	1.76	-3.29	0.91	3.68
	0.56° × 0.56°	-1.21	0.97	1.42	-3.20	0.91	3.51
S-America	2.8° × 2.8°	-0.57	0.87	0.59	-1.00	0.83	1.06
	1.1° × 1.1°	-0.48	0.84	0.50	-0.93	0.79	1.00
	0.56° × 0.56°	-0.50	0.84	0.52	-0.95	0.79	1.01
SE-Asia	2.8° × 2.8°	-0.54	0.68	0.66	-0.67	0.66	0.99
	1.1° × 1.1°	-0.52	0.82	0.61	-0.63	0.80	0.89
	0.56° × 0.56°	-0.55	0.84	0.62	-0.66	0.80	0.90

Table 2. Comparisons of seasonal mean tropospheric O₃ concentration during JJA in 2008 between ozonesonde and the model simulation at 2.8°, 1.1°, and 0.56° resolutions. Units are ppbv.

Pressure level	Model resolution	Global		90°S-60°S		60°S-30°S		30°S-30°N		30°N-60°N		60°N-90°N	
		MB	RMSE	MB	RMSE	MB	RMSE	MB	RMSE	MB	RMSE	MB	RMSE
850 hPa	2.8°×2.8°	<u>-2.0</u>	<u>17.5</u>	-13.5	14.6	-9.7	11.4	16.4	26.6	-5.7	15.2	-4.4	8.5
	1.1°×1.1°	<u>-3.0</u>	<u>12.6</u>	-12.5	13.4	-7.7	9.3	0.4	12.6	-2.2	13.2	-3.7	9.7
	0.56°×0.56°	<u>-0.7</u>	<u>9.4</u>	-4.9	6.7	-3.8	4.8	1.0	10.0	-0.6	10.2	0.1	7.0
500 hPa	2.8°×2.8°	<u>-7.4</u>	<u>19.3</u>	-7.3	10.8	-4.8	8.2	2.7	22.5	-10.3	20.1	-13.2	17.5
	1.1°×1.1°	<u>-8.4</u>	<u>18.8</u>	-5.2	9.8	-3.7	11.2	-9.7	20.9	-8.9	19.8	-8.3	16.9
	0.56°×0.56°	<u>-7.4</u>	<u>17.2</u>	1.1	7.3	-2.3	7.9	-9.6	19.4	-9.4	17.9	0.08	18.3
300 hPa	2.8°×2.8°	<u>9.7</u>	<u>49.3</u>	15.4	32.1	30.5	53.9	0.4	25.3	12.4	48.2	-5.6	91.6
	1.1°×1.1°	<u>4.8</u>	<u>58.7</u>	25.7	41.2	55.4	113.6	-10.1	25.3	-4.4	46.9	47.1	116.2
	0.56°×0.56°	<u>7.4</u>	<u>50.5</u>	41.2	56.0	15.1	42.2	-9.7	21.2	1.2	45.8	51.6	102.1
100 hPa	2.8°×2.8°	<u>399.5</u>	<u>496.9</u>	556.3	703.5	709.2	860.5	172.4	204.1	410.4	478.6	498.9	524.8
	1.1°×1.1°	<u>393.7</u>	<u>536.5</u>	964.4	1054.1	854.7	1091.6	80.6	145.4	356.1	409.6	519.8	559.0
	0.56°×0.56°	<u>355.1</u>	<u>438.2</u>	848.2	901.6	511.0	589.0	122.1	155.6	356.0	395.6	319.6	352.5

Table 3. Regional net chemical productions of NO_x via all reactions and HNO₃ formation (Tg yr⁻¹), NO₂ burden (Gg), NO₂ lifetime via HNO₃ formation reaction (hours) in the lowermost five model layers, and planetary boundary layer (PBL) height (m) in the model simulations and ERA-Interim. The definition of the regions is the same as Figure 3.

Regions	Model resolution	P-L(NO _x) [Tg yr ⁻¹]	P-L(NO _x) _{HNO₃} [Tg yr ⁻¹]	NO ₂ burden [Gg]	$\tau_{NO_2+OH \rightarrow HNO_3}$ [hours]	PBL Height [m]
E-China (JJA)	2.8°×2.8°	-3.01	-3.03	1.49	4.34	847
	1.1°×1.1°	-3.71	-3.75	1.98	4.65	898
	0.56°×0.56°	-3.70	-3.72	1.99	4.69	730
	ERA-Interim					556
W-USA (JJA)	2.8°×2.8°	-0.873	-0.793	0.91	10.0	1316
	1.1°×1.1°	-0.859	-0.820	1.00	10.7	1218
	0.56°×0.56°	-0.891	-0.849	0.97	9.99	1198
	ERA-Interim					1127
S-America (DJF)	2.8°×2.8°	-0.159	-0.0312	0.30	83.4	677
	1.1°×1.1°	-0.204	-0.0283	0.37	116	697
	0.56°×0.56°	-0.189	-0.0320	0.36	98.8	659
	ERA-Interim					489