



# Modular System for Shelves and Coasts (MOSSCO v1.0) – a flexible and multi-component framework for coupled coastal ocean ecosystem modelling

Carsten Lemmen<sup>1</sup>, Richard Hofmeister<sup>1,4</sup>, Knut Klingbeil<sup>2,5</sup>, M. Hassan Nasermoaddeli<sup>3,6</sup>, Onur Kerimoglu<sup>1</sup>, Hans Burchard<sup>2</sup>, Frank Kösters<sup>3</sup>, and Kai W. Wirtz<sup>1</sup>

<sup>1</sup>Institute of Coastal Research, Helmholtz-Zentrum Geesthacht Zentrum für Material- und Küstenforschung, 21502 Geesthacht, Germany

<sup>2</sup>Department of Physical Oceanography and Instrumentation, Leibniz-Institute for Baltic Sea Research, 18119 Rostock-Warnemünde, Germany

<sup>3</sup>Section Estuary Systems I, Bundesanstalt für Wasserbau, 22559 Hamburg, Germany

<sup>4</sup>Institute for Hydrobiology and Fisheries Science, Universität Hamburg, 22767 Hamburg, Germany

<sup>5</sup>Department of Mathematics, Universität Hamburg, 20146 Hamburg, Germany

<sup>6</sup>Landesbetrieb Straßen, Brücken und Gewässer, Freie und Hansestadt Hamburg, 20097 Hamburg, Germany

*Correspondence to:* C. Lemmen  
(carsten.lemmen@hzg.de)

**Abstract.** Shelf and coastal sea processes extend from the atmosphere through the water column and into the sea bed. These processes are driven by physical, chemical, and biological interactions at local scales, and they are influenced by transport and cross strong spatial gradients. The linkages between domains and many different processes are not adequately described in current model systems. Their limited integration level in part reflects lacking modularity and flexibility; this shortcoming hinders the exchange of data and model components and has historically imposed supremacy of specific physical driver models. We here present the Modular System for Shelves and Coasts (MOSSCO, <http://www.mossco.de>), a novel domain and process coupling system tailored – but not limited – to the coupling challenges of and applications in the coastal ocean. MOSSCO builds on the existing coupling technology Earth System Modeling Framework and on the Framework for Aquatic Biogeochemical Models, thereby creating a unique level of modularity in both domain and process coupling; the new framework adds rich metadata, flexible scheduling, configurations that allow several tens of models to be coupled, and tested setups for coastal coupled applications. That way, MOSSCO addresses the technology needs of a growing marine coastal Earth System community that encompasses very different disciplines, numerical tools, and research questions.

## 1 Introduction

Environmental science and management consider ecosystems as their primary subject, i.e. those systems where the organismic world is fundamentally linked to the physical system surrounding it; there exist neither unequivocally defined spatial nor processual boundaries between the components of an ecosystem (Tansley, 1935). Consequently, holistic approaches to ecological



research (Margalef, 1963), to biogeochemistry (Vernadsky, 1998, originally 1926) and to environmental science in general (Lovelock and Margulis, 1974) have been called for.

The need for systems approaches is perhaps most apparent in coastal research. Shelf and coastal seas are described by components from different spatial domains: atmosphere, ocean, soil; and they are driven by a manifold of interlinked processes: biological, ecological, physical, geomorphological, amongst others. Crossing these domain and process boundaries, the dynamics of suspended sediment particles (SPM, see Table 2 for abbreviations) and of living particles, or the interaction between water attenuation and phytoplankton growth, for example, are both scientifically challenging and relevant for the ecological state of the coastal system (e.g., Shang et al., 2014; Maerz et al., 2011; Azhikodan and Yokoyama, 2016).

For historic and practical reasons, the representation of the coastal ecosystem in numerical models has been far from holistic. Most often, ecological and biogeochemical processes are described in modules that are tightly coupled to one hydrodynamic model. For example, the Pelagic Interactions Scheme for Carbon and Ecosystem Studies (PISCES, Aumont et al., 2015) has been integrated into the Nucleus for European Modeling of the Ocean (NEMO, Van Pham et al., 2014). Or, the Biogeochemical Flux Model (BFM) has been integrated in the Massachusetts Institute of Technology Global Circulation Model (MITgcm) (Cossarini et al., 2017). These tight couplings not only exclude important processes at the edges of or beyond the pelagic domain, they also lack flexibility to exchange or to test different process descriptions.

To stimulate the development, application and interaction of ecological and biogeochemical models independently of a single host hydrodynamic model, Bruggeman and Bolding (2014) presented the Framework for Aquatic Biogeochemical Models (FABM), which serves as an intermediate layer between the biogeochemical zero-dimensional process models and the three-dimensional geophysical environment models. FABM has been implemented in the Modular Ocean Model (MOM, Bruggeman and Bolding, 2014), NEMO, the Finite Volume Coastal Ocean Model (FVCOM, Cazenave et al., 2016), or the General Estuarine Transport Model (GETM, Kerimoglu et al., 2017). With more than 20 biogeochemical and ecological models included, FABM has enabled marine ecosystem researchers to describe the system's many aquatic processes.

The process-oriented modularity realized within FABM, however, lacks the means to describe cross-domain linkages. Historically rooted in atmosphere–ocean circulation models (Manabe, 1969), the coupling of earth domains is the standard concept in Earth System Models (ESM). Domain coupling is also a major challenge in coastal modelling and has been used, for example, in the Coupled Ocean-Atmosphere-Wave-Sediment Transport (COAWST, Warner et al., 2010) system. COAWST comprises the Regional Ocean Modeling System (ROMS) with a tightly coupled sediment transport model, the Advanced Research Weather Research and Forecasting (WRF) atmospheric model, and the Simulating Waves Nearshore (SWAN) wave model. Each of the components in domain coupling is usually a self-sufficient model that is run in a special “coupled mode”. Interfacing to other components is done via generic coupling infrastructure, such as the Flexible Modeling System (FMS, Dunne et al., 2012), the Model Coupling Toolkit (MCT, Warner et al., 2008) and/or the Ocean Atmosphere Sea Ice Soil (OASIS) coupler (Valcke, 2013), or the Earth System Modeling Framework (ESMF, Hill et al. 2004, see, e.g., Jagers 2010 for an intercomparison of coupling technologies). Typically, three to five domain components are coupled through one of these technologies (Alexander and Easterbrook, 2015).



The differentiation between domain and process coupling is not a technical necessity: A typical domain coupling software like ESMF can indeed be used to couple processes: with the Modeling, Analysis and Prediction Layer (MAPL, Suarez et al., 2007), the Goddard Earth Observing System version 5 (GEOS-5) encompasses 39 process models coupled hierarchically through ESMF; development of these modules, however, is strictly regulated within the developing laboratory. Vice versa, a typical process coupling infrastructure like the Modular Earth Submodel System (MESSy, Jöckel et al., 2005) has been proposed to link processes across domains, but so far includes mostly atmospheric processes.

Currently, there is no coastal modelling environment that enables a modular and flexible process (model) integration and cross-domains coupling at the same time, and that is open to a larger community of independent biogeochemical and ecological scientists. The underlying long-term goal for increasingly holistic model systems conflicts with the evolving and diverse research needs of individual scientists or research groups to address very specific problems; it remains difficult to link up-to-date research that is delivered at the (local) process scale to the Earth System scale. Thus we here present the Modular System for Shelves and Coasts (MOSSCO, [www.mossco.de](http://www.mossco.de)), a novel domain and process coupling system tailored – but not limited – to the coupling challenges of and applications in the coastal ocean. This new system builds on the flexibility of FABM and on the infrastructure provided by ESMF with its cross-domain and many-component hierarchical capability. We here present the major design ideas of MOSSCO and briefly demonstrate its usability in a series of coastal applications.

## 2 MOSSCO concepts

The modularity and coupling concepts proposed in this paper elaborate the design of a novel software system that emphasizes the needs of researchers who want to make maximum use of their existing knowledge in a specific field (e.g., geomorphology or marine ecology) but wish to conduct integrative research in a wider and flexible context. In strengthening modularity *sensu* independence of specific physical drivers, the new concept should, in addition to addressing the problems listed above, support (1) liaisons between traditionally separated modelling communities (e.g., coastal engineers, physical oceanographers and biologists), (2) inter-comparison studies of, e.g., physical, geological, and biological modules, and (3) up-scaling studies where models developed at the laboratory scale in a non-dimensional context are applied to regional, global and Earth System scales.

The design of MOSSCO is application-oriented and driven by the demands for enabling and improving integrated regional coastal modelling. It is targeted towards building coupled systems that support decision making for local policies implementing the European Union Water Framework Directive (WFD) and Marine Strategic Planning Directive (MSPD). From a design point of view we envisioned a system that is foremost flexible and equitable.

**Flexibility** means that the system itself is able to deal on the one hand with a diverse small or large constellation of coupled model components and on the other hand with different orders of magnitude of spatial and temporal resolutions; it is able to deal equally well with zero-, one-, two- and three-dimensional representations of the coastal system. Flexibility implies the capability to encapsulate also existing legacy models to create one or more different “ecosystems” of models. This feature should allow seamless replacement of individual model components, which is an important procedure in



the continual development of integrated systems. Flexibly replacing components finally creates a test-bed for model intercomparison studies.

**Equitability** means that all models in the coupled framework are treated as equally important, and that none is more important than any other. This principle dissolves the primacy of the hydrodynamic or atmospheric models as the central hub in a coupled system. Also, data components are as important as process components or model output; any de facto difference in model importance should be grounded on the research question, and not on technological legacy. As complexity grows by coupling more and more models, this equitability also demands that experts in one particular model can rely on the functionality of other components in the system without having to be an expert in those models, as well.

The equitability design extends to participation: contributions to the development of components or the coupling framework itself is allowed and encouraged. Anyone can use and modify the coupled framework or parts of both in a legal sense by open source licensing, and in an accessibility sense through template codes and extensive documentation.

## 2.1 Wrapping legacy models – first steps in PARSE

As MOSSCO is built around the ESMF hierarchy of components, any existing code that can be wrapped in an ESMF component can be a component in MOSSCO, too. The ESMF user guide (ESMF Joint Specification Team, 2013) suggests a best practice method PARSE to achieve this componentization of a legacy code.

**P** repare the user code by splitting it into three phases that initialize, run and finalize a model;

**A** dapt the model's data structures by wrapping them in ESMF infrastructure like states and fields;

**R** egister the user's initialize, run, and finalize routines through ESMF;

**S** chedule data exchange between components;

**E** xecute a user application by calling it from an ESMF driver.

This PARSE concept allows a smooth transition from a legacy model to an ESMF component. In this concept, the first three steps have to be performed on the model side, and the latter two on the framework side and have been taken care of by the MOSSCO coupling layer. The *preparation* of the code is independent of the use of ESMF and provides the basic couplability of the model; many existing models already implement this separation into initialize, run, and finalize phases, either structurally or more formally by implementing a Basic Model Interface (BMI, Peckham et al., 2013). For the run phase, it is mandatory that this phase refers to a single model timestep and not to the entire run loop.

The *adaption* of a model's internal structures to ESMF consists of technically wrapping data into ESMF communication objects, and in providing sufficient metadata for communication. Among these are grid definition and decomposition, units and semantics of data, optimally following a metadata scheme like the widespread Climate and Forecast (CF, Eaton et al., 2011) or the more bottom-up Community Surface Dynamics Modeling System (CSDMS, following a scheme like object + [ operation



] + quantity, Peckham 2014). Both are currently being included in the emerging Geoscience Standard Names Ontology (GSN, [geoscienceontology.org](http://geoscienceontology.org)).

ESMF provides the interfaces for models written in either the Fortran or C programming languages; data arrays are bundled together with related metadata in ESMF field objects. All field objects from components are then bundled into exported and imported ESMF state objects to be passed between components. As a third step, the ESMF *registration* facility needs to be added to a user model; this step is achieved by using template code from any one of the examples or tutorials provided with ESMF. The second and third step (*adapt* and *register*) are typical tasks of what Peckham et al. (2013) refers to as a component model interface (CMI); it is very similar between models (and thus easily accessible from template code) and targets the interface of a specific coupling framework.

MOSSCO contains CMIs for ESMF in all of its provided components (Fig. 1). The current naming scheme follows the CF convention for standard names except for quantities that are not defined by CF; these names (often from biological processes) are modeled onto existing CF standard names as much as possible. MOSSCO also allows the specification within other naming schemes and includes a name matching algorithm to mediate between different schemes. For future development, adoption of the GSN ontology is foreseen.

## 2.2 Scheduling in a coupled system – the “S” in PARSE

MOSSCO adds onto ESMF a scheduling system (corresponding to the fourth step in PARSE) that calls the different phases of participating coupled models. The coupling time step duration of this new scheduler relies on the ESMF concept of alarms and a user specification of pairwise coupling intervals between models. The scheduler minimizes calls to participating models by flexibly adjusting time step duration to the greatest common denominator of coupling intervals pertinent to each coupled model. Upon reading the user’s coupling specification, (i) models are initialized in random order but with consideration of special initialization dependencies set by the user; (ii) a list of alarm clocks is generated that considers all pairwise couplings a model is involved in; (iii) special couplers associated with a pairwise coupling are executed; (iv) the scheduler then tells each model to run until that model reaches its next alarm time; (v) advancing of the scheduler to the minimum next alarm time repeats until the end of the simulation.

The MOSSCO scheduler allows for both sequential and for concurrent coupling of model components, or a hybrid coupling mode. In the concurrent mode, components run at the same time on different compute elements; in the sequential mode, components are executed one after another. Recently, Balaji et al. (2016) demonstrated how a hybrid coupling mode and fine granularity could be used to increase the performance of a system that consists of both highly scalable and less scalable components: In their system, they ran an ocean component concurrently with the radiation code of the atmosphere sequentially to all other atmospheric process components.

For both concurrent and sequential modes, the MOSSCO scheduler runs the connectors and mediator components that exchange the data before the components are run, i.e. computations are performed on data with the same timestamp. For sequential mode, the coupling configuration allows also a scheme where consecutive components rely always on the most recently calculated data from all other components (Fig. 2, see also Sect. 3.3.1).



## 2.3 Deployment of the coupled system – the “E” in PARSE

MOSSCO provides a Python-based generator that dynamically creates an ESMF driver component in a star topology that then acts as the scheduler for the coupled system. This generator reads a text-based specification of pairwise couplings (including the coupling interval, dependencies and instantiation under different names) and generates a Fortran source file that represents the scheduler component. The generator takes care of compilation dependencies of the coupled models, and of coupling dependencies, such as grid inheritance; in addition to the basic init–run–finalize BMI scheme, it also honors multi-phase initialization (as in the National Unified Operational Prediction Capability, NUOPC, ESMF extension) and a restart phase.

A MOSSCO command line utility provides a user-friendly interface to generating the scheduler, (re-)compiling all source codes into an executable and submitting the executable to a multi-processor system, including different high-performance computing (HPC) queueing implementations; this is the fifth step in PARSE. MOSSCO has been successfully deployed at several national HPC centers, such as the Norddeutsche Verbund für Hoch- und Höchstleistungsrechnen (HLRN), the German Climate Computing Center (DKRZ), or the Jülich Supercomputing Centre (JSC); equally, MOSSCO is currently functioning on a multitude of Linux and macOS laptops, desktops and multiprocessor workstations using the same MOSSCO (bash-based) command line utility on all platforms.

The MOSSCO coupling layer is coded in Fortran while most of the supporting structure is coded in Python and partially in Bash shell syntax. The system requirements are a Fortran 2003 compliant compiler, the CMake build system, the Git distributed version control system, Python with YAML support (version 2.6 or greater), a Network Common Data Form (NetCDF, Rew and Davis, 1990) library, and ESMF (version 7 or greater). For parallel applications, a Message Passing library (e.g., OpenMPI) is required. Many HPC centers have toolchains available that already meet all of these requirements. For an individual user installation, all requirements can be taken care of with one of the package managers distributed with the operating system, except for the installation of ESMF, which needs to be manually installed; MOSSCO provides a semiautomated tool for helping in this installation of ESMF.

## 3 MOSSCO components and utilities

Driven by user needs, MOSSCO currently entails utilities for I/O, an extensive model library, and coupling functionalities (Fig. 3 and Table 1). As a utility layer on top of ESMF, MOSSCO also extends the Application Programming Interface (API) of ESMF by providing convenience methods to facilitate the handling of time, metadata (attributes), configuration, and to unify the provisioning and transfer of scientific data across the coupling framework. The use of this utility layer is not mandatory; any ESMF based component can be coupled to the MOSSCO provided components without using this utility layer.

One of the major design principles of MOSSCO is seamless scaling from zero-dimensional to three-dimensional spatial representations, while maintaining the coupling configuration to the maximum extent possible. This design principle builds on the dimensional-independency concept of FABM achieved by local description of processes (often referred to as a box model), where the dimensionality is defined by the hydrodynamic model to which FABM is coupled; MOSSCO generalizes this concept to enable especially the developers of new biological and chemical models to scale up from a box-model (zero-dimensional)



to a water-column (one-dimensional), sediment plate or a vertically resolved transect (two-dimensional), and a full atmosphere or ocean (three-dimensional) setup. As a concrete example, upscaling of the novel Model for Adaptive Ecosystems in Coastal Seas (MAECS, Wirtz and Kerimoglu, 2016; Kerimoglu et al., 2017) has been developed in this way going forth and back between the lab scale and the regional coastal ocean scale.

- 5 All utility functions and components, especially the generic I/O facilities from MOSSCO, are able to handle data of any spatial dimension. MOSSCO communicates different dimensional information by grid inheritance: components that implement this are able to obtain the spatial information from another model in the coupled context. Usually (but not necessarily) biological and chemical models inherit the spatial configuration from a hydrodynamic model; equally well, this information can be obtained from data in standardized grid description formats like Gridspec (Balaji et al., 2007) or the Spherical Coordinate  
10 Remapping and Interpolation Package (SCRIP, Jones, 1999).

### 3.1 Model library: Basic Model Interfaces for scientific model components

- The model library (right branch in Fig. 3) includes new models (e.g., for filter feeders and surface waves) and wrappers to legacy models and frameworks such as FABM or GETM. Some of these wrappers are under development (e.g., Hamburg Shelf Ocean Model (HamSOM, Harms, 1997) and a Lagrangian particle tracer model). Here, we briefly document the model  
15 collection in particular with respect to their preparation and functioning within the new coupling context.

#### 3.1.1 Pelagic ecosystem component

- The pelagic ecosystem component (`fabm_pelagic_component`) collects (mostly biological) process models for aquatic systems. This component makes use of the Framework for Aquatic Biogeochemical Models (Bruggeman and Bolding, 2014). FABM is a coupling layer to a multitude of biogeochemical models which provide the source-minus-sink terms for variables,  
20 their vertical local movement (e.g., due to sinking or active mobility), and diagnostic data. Each model variable is equipped with meta data, which is transferred by the ecosystem component into ESMF field names and attributes. Similarly, the forcing required by the biogeochemical models is communicated within the framework and linked to FABM. The pelagic ecosystem component includes a numerical integrator for the boundary fluxes and local state variable dynamics. Advective and diffusive transport are not part of this component but are left to the hydrodynamical model through the `transport_connector`  
25 (Sect. 3.3.2). The close connection between transport and the pelagic ecosystem requires grid inheritance by the pelagic ecosystem model from the hydrodynamic model component.

- Many well known biogeochemical process models have been coded in the FABM standard by various institutes, such as the European Regional Seas Ecosystem Model (ERSEM, Butenschön et al., 2016), ERGOM (Hinnert et al., 2015), PCLake (Hu et al., 2016) and the Bottom RedOx Model (BROM, Yakushev et al., 2017). All biogeochemical models complying with the  
30 FABM standard can equally be used in MOSSCO, while retaining their functionality.



### 3.1.2 Sediment/soil component

The sediment component `fabm_sediment_component` hosts (mostly biogeochemical) process descriptions for aquatic soils. To allow efficient coupling to a pelagic ecosystem, the sediment component inherits a horizontal grid or mesh from the coupled system and adds its own vertical coordinate, a number of layers of horizontally equal height for the upper soil (typical domain heights range from 10–50 cm). State variables within the sediment are defined through the FABM framework within the 3D grid or mesh in the sediment. As in the pelagic ecosystem component, the state variables, meta data, diagnostics and forcings are communicated via the ESMF framework to the coupled system. The sediment component is the numerical integrator for the tracer dynamics within each sediment column in the horizontal grid or mesh, including diffusive transport, driven by molecular diffusion of the nutrients or bioturbative mixing. Additionally, a 3D variable porosity defines the fraction of pore water as part of the bulk sediment, while all state variables are measured per volume pore water in each cell. FABM's infrastructure of state variable properties is used to label the new Boolean property `particulate` in FABM models to define whether a state variable belongs to the solid phase within the domain. A typical model used in applications of the sediment component is the biogeochemical model of the Ocean Margin Exchange Experiment OMEXDIA (Soetaert et al., 1996); a version of this model with added phosphorous cycle is contained in the FABM model library as OMEXDIA\_P (Hofmeister et al., 2014).

### 3.1.3 1D Hydrodynamics: General Ocean Turbulence Model (GOTM))

The General Ocean Turbulence Model (GOTM, Burchard et al., 1999, 2006) is a one-dimensional water column model for hydrodynamic and thermodynamic processes related to vertical mixing. MOSSCO provides a component for GOTM and a component hierarchy that considers a coupled GOTM with internally coupled FABM within one component (`gotm_fabm_component`), as many existing available model setups rely on the direct coupling of FABM to GOTM. This way, the modularization – taking a coupled GOTM/FABM apart and recoupling it through the MOSSCO infrastructure, can be verified; the encapsulation of GOTM is implemented in the `gotm_component`.

### 3.1.4 3D Hydrodynamics: General Estuarine Transport Model (GETM)

MOSSCO provides an interface to the 3D coastal ocean model GETM (Burchard and Bolding, 2002). GETM solves the Navier-Stokes Equations under Boussinesq approximation, optionally including the nonhydrostatic pressure contribution (Klingbeil and Burchard, 2013). A direct interface to GOTM (see Section 3.1.3) provides state-of-the-art turbulence closure in the vertical. GETM supports horizontally curvilinear and vertically adaptive meshes (Hofmeister et al., 2010; Gräwe et al., 2015); the different mesh topologies need to be made accessible as ESMF grid objects. Typically, the GETM component exports its grid and subdomain decomposition to the coupled system where the spatial and parallelization information is inherited by other components. The interface to GETM is provided by the `getm_component`; any model coupled to GETM via the transport component can have its state variables conservatively transported by GETM (see Section 3.3.2).



### 3.1.5 Model components for erosion, sedimentation, and their biological alteration

The erosion/sedimentation routines of the Deltares Delft3D model (EROSSED, van Rijn, 2007) were encapsulated in a MOSSCO component. EROSED uses a Partheniades–Krone equation (Partheniades, 1965) for calculating the net sediment flux of cohesive sediment at the water–sediment interface for multiple SPM size classes. MOSSCO’s `eroded_component` always uses the current version of EROSED maintained by Deltares, and with the help of subsidiary infrastructure isolates the EROSED code from the deeply intertwined dependencies of the original implementation. The functionality of this erosion and sedimentation component is described in more detail by Nasermoaddeli et al. (2014).

Flow and sediment transport can be affected by the presence of benthic organisms in many ways. Protrusion of benthic animals and macrophytes in the boundary layer changes the bed roughness and thus the bed shear stress and consequently the sediment transport. The erodibility of sediment can be modified by the mucus produced by benthic organisms; the erodibility of the upper bed sediment can be altered by bioturbation generated by macrofauna (de Deckere et al., 2001). In the `benthos_component`, these biological effects of microphytobenthos and of benthic macrofauna on sediment erodibility and critical bed shear stress are parameterized. The benthos effect model is described in detail by Nasermoaddeli et al. (submitted to Estuarine, Coastal, and Shelf Science).

### 3.1.6 Filter feeding model

The generic filtration component describes the instantaneous filtration by filter feeders within the water column. The biological filtration model follows Bayne et al. (1993) and describes the filtration rate as a function of food supply; it can be adapted to different species of filter feeders and was recently applied to describing the ecosystem effect of blue mussels on offshore wind farms as the `filtration_component` of MOSSCO (Slavik et al., to be submitted to Hydrobiologia). The filtration model uses an arbitrary chemical species or compound, say phytoplankton carbon as the “currency” for processing. The amount of ambient phytoplankton carbon concentration is sensed by the model organisms and it is filtered along with the other nutrients (in stoichiometric proportion) out of the environment, creating a sink term for subsequent numerical integration in the pelagic ecological model.

### 3.1.7 Wind waves

A simple wind wave model is part of the MOSSCO suite. Based on the parameterization by Breugem and Holthuijsen 2007, significant wave height and peak wave period are estimated in terms of local water depth, wind speed and fetch length. This wave data enable the inclusion of wave effects especially for idealized 1D water column studies, e.g. the consideration of erosion processes due to wave-induced bottom stresses. Coupling to 3D ocean models and the calculation of additional wave-induced momentum forces there, following either the Radiation stress or Vortex Force formulation (Moghimani et al., 2013), is possible as well. For the inclusion of wave–wave or wave–current interaction in realistic 3D applications, the coupling to a more advanced third generation wind wave model like SWAN, WaveWatch III or Wave Atmospheric Model (WAM) would be necessary.



## 3.2 Input/Output utilities

The I/O utilities include generic coupling functionalities that deal with boundary conditions, provide a restart facility, add surface, lateral and point source fluxes (lower left branch in Fig. 3).

### 3.2.1 Generic output

- 5 This utility component of MOSSCO provides a generic output facility `netcdf_component` for any data that is communicated in the coupling framework. The component writes one- to three-dimensional time sliced data into a NetCDF (Rew and Davis, 1990) file and adds metadata on the simulation to this output. Multiple instances of this component can be used within a simulation, such that output of different variables, differently processed data, and output at various output time steps can be recorded. The output component is fully parallelized with a grid decomposition inherited from one of the coupled science components. In order to reduce interprocess communication during runtime, each write process considers only the part of the data that resides within its compute domain. This comes at a cost to the user, who has to postprocess the output tiles to combine for later analysis; a python script is provided with MOSSCO that takes care of joining tiled files.

- 15 The generic output also adds meta data that is collected from the system and the user environment when the output is written to disk. Diagnostics about the processing element and run time between output steps are recorded. The structure of the NetCDF output follows the Climate and Forecast (CF, Eaton et al., 2011) convention for physical variables, geolocation, units, dimensions and methods modifying variables. When (mostly biological) terms are not available in the controlled vocabulary of CF, names are built to resemble those contained in the standard.

### 3.2.2 Generic input

- 20 The generic `netcdf_input_component` of MOSSCO reads from NetCDF files and provides the file content wrapped in ESMF data structures (fields) to the coupling framework. It is parallelized identical to the generic output component, and inherits its decomposition from other components in the coupled system. Data can be read for the entire domain or for all decomposed compute elements separately. Upon reading of data, fields can be renamed and filtered before they are passed on to the coupled system.

- 25 The input component is typically used to initialize other components, for restarting, to provide boundary conditions, and for assimilating data into the coupled system. The generic input facility supports interpolation of data in time upon reading the data, with nearest, most recent, and linear interpolation. It also supports reading climatological data and translates the climatological timestamp to a simulation present time stamp in the coupling framework.

## 3.3 MOSSCO connectors and mediators

- 30 Information in the form of ESMF states that contain the output fields of every component are communicated to the ESMF driver; requests for data by every component are also communicated to the ESMF driver component. MOSSCO connectors are separate components that link output and requested fields between pairwise coupled components. MOSSCO informally



distinguishes between connector components that do not manipulate the field data on transfer at all (or only slightly), and mediator components that extract and compute new data out of the input data.

### 3.3.1 Link, copy and nudge connectors

The simplest and default connecting action between components is to share a reference (i.e. a link) to a single field that resides in memory and can be manipulated by each component; in contrast, the `copy_connector` duplicates a field at coupling time. The consideration of a link or copy connector is important for managing the data flow sequence in a coupled system: the copy mechanism ensures that two coupled components work on the same lagged state of data, whereas the link mechanism ensures that each component works on the most recent data available.

The `nudge_connector` is used to consolidate output from two components by weighted averaging of the connected fields. It is typically used as a simple assimilation tool to drive model states towards observed states, or to impose boundary conditions.

These connectors can only be applied between components that run on the same grid (but maybe with a different subdomain decomposition). The `link_connector` can only be applied between components with an identical subdomain decomposition so that the components have access to the same memory. Components on different grids require regridding, which is currently under development in MOSSCO.

### 3.3.2 Transport connector

A model component qualifies as a transport component when it offers to transport an arbitrary number of tracers in its numerical grid; this facility is present, for example, in the current `gotm_component` and `getm_component`. The `transport_connector` provides generic infrastructure that communicates the tracer fields to be transported to the transporting component based on the availability of both, the tracer concentrations as well as their rate of vertical movement independent of the water currents. This connector is usually called only once per coupled pair of components during the initialization phase.

### 3.3.3 Mediators for soil–pelagic coupling

One aspect of the generalized coupling infrastructure in MOSSCO is the use of connecting components that mediate between technically or scientifically incompatible data field collections. The soil–pelagic coupling of biogeochemical model components with a variety of different state variables raises the need for these mediators. The use of mediators leaves the level of data aggregation and dis-aggregation, and unit conversion to the coupling routine, instead of requiring specific output from a model component depending on its coupling partner component.

For soil–pelagic (or benthic–pelagic) coupling, the `soil_pelagic_connector` mediates the soil biogeochemistry output towards the pelagic ecosystem input and the `pelagic_soil_connector` mediates the pelagic ecosystem output towards the soil biogeochemistry input, e.g.: (i) dis-aggregation of dissolved inorganic nitrogen to dissolved ammonium and dissolved nitrate (ii) filling missing pelagic state fields for phosphate using the Redfield-equivalent for dissolved inorganic



nitrogen (iii) calculation of the vertical flux of particulate organic matter (POM) from the water column into the sediment depending on POM concentrations in the near-bottom water, its sinking velocity and a sedimentation efficiency depending on the near-bottom turbulence. The effective vertical flux is communicated into the pelagic ecosystem component to budget the respective loss, and is communicated to the soil biogeochemistry component to account for the respective new mass of POM.

- 5 The mediator also handles (iv) dis-aggregation of a single oxygen concentration (allowing positive and negative values) into dissolved oxygen concentration, if positive, and dissolved reduced substances, if negative. (v) aggregation of pelagic POM composition (variable nitrogen to carbon ratio) into fixed stoichiometry POM pools in the soil biogeochemistry.

#### 4 Selected applications as feasibility tests and use cases

- MOSSCO was designed for enhancing flexibility and equitability in environmental data and model coupling. These design goals have been helpful in generating new integrated models for coastal research ranging from one-dimensional water- column to three-dimensional, with applications at different marine stations, transects, and sea domains. Below, we describe from a user perspective the added value and success of the design goals obtained from using MOSSCO in selected applications; here, the focus is not on the scientific outcome of the application (these are described elsewhere by, e.g., Nasermoaddeli et al., submitted, Slavik et al., to be submitted, Wirtz and Kerimoglu 2016, Kerimoglu et al. 2017). All setups described in the use cases are available as open source (with limited forcing data due to space and bandwidth constraints).

##### 4.1 Helgoland station

- The seasonal dynamics of nutrients and turbidity emerges from the interaction of physical, ecological and biogeochemical processes in the water column and the underlying sea floor. We resolve these dynamics in a coupled application for a 1D vertical water column for a station near the German offshore island Helgoland. Average water depth around the island is 25 m; tidal currents are affected by the M2 and S2 tides with a characteristic spring–neap cycle, with current velocity not exceeding 1 m s<sup>-1</sup>.

- The Helgoland 1D application is realized by a coupled system consisting of GOTM hydrodynamics, the pelagic FABM component with a nutrient–phytoplankton–zooplankton–detritus (NPZD) ecosystem model (Burchard et al., 2005) and two SPM size classes, interacting with the erosion and sedimentation module, the sediment component with the OMEXDIA\_P early diagenesis submodel, and coupler components for soil–pelagic, pelagic–soil and tracer transport. This system and setup is described in more detail by Hofmeister et al. (2014).

- Simulations with this application show a prevailing seasonal cycle in the model states (Fig. 4). Dissolved nutrients (referred as dissolved inorganic nitrogen) are taken up by phytoplankton, which fills the pool of particulate organic nitrogen during the spring bloom (Fig. 4d). The particulate organic matter sinks into the sediments, where it is remineralized along axis, sub-oxic and anoxic pathways; denitrification, for example, shows a peak in late summer (Fig. 4b). At the end of a year, nutrient concentrations are high in the sediment and diffuse back into the water column up to winter values of 20–25 mmol m<sup>-3</sup>. The seasonal variation of turbidity is a result of higher erosion in winter and reduced vertical transport in summer (Fig. 4c).



## 4.2 Idealized coastal 2D transect

The coastal nitrogen cycle is resolved in an idealized coupled system for a tidal shallow sea. This two-dimensional setup represents a vertically resolved cross-shore transect of 60 km length and 5–20 m water depth and has been used by Hofmeister et al. (2017) to simulate sustained horizontal nutrient gradients by particulate matter transport towards the coast. Within the MOSSCO coupling framework, the 2D transect scenario additionally provides insights into horizontal variability of erosion/sedimentation and benthic biogeochemistry. Its coupling configuration builds on the one used for the 1D station Helgoland (Sect. 4.1); the water-column hydrodynamic model GOTM, however, is replaced by the 3D model GETM; a local wave component and data components for open boundaries and restart has been added.

Figure 5 shows exchange fluxes between the water column and the sediment for one year of simulation. The simulation of turbidity, as a result of pelagic SPM transport and resuspension by currents and wave stress, provides the light climate for the pelagic ecosystem. The flux of particulate organic carbon (POC) into the sediment reflects bloom events in summer during calm weather conditions. Macrobenthic activity in the sea floor brings fresh organic matter into the deeper suboxic layers of the sediment, where denitrification removes nitrogen from the pool of dissolved nutrients. The coupled simulation reveals decoupled signals of benthic respiration, denitrification and nutrient reflux into the water column, which is not resolved in monolithically coded regional ecosystem models of the North Sea (Lorkowski et al., 2012; Daewel and Schrum, 2013).

## 4.3 Southern North Sea bivalve ecosystem applications

A Southern North Sea (SNS) domain was used in two studies concerning the effects of bivalves on the pelagic ecosystem. Slavik et al. (to be submitted) investigated how the accumulation of epifauna on wind turbine structures (Fig. 6d) impacts pelagic primary production and ecosystem functioning in the SNS at larger spatial scales. This study is the first of its kind that extrapolates ecosystem impacts of anthropogenic offshore wind farm structures from a local to a regional sea scale. The authors use a MOSSCO coupled system consisting of the hydrodynamic model GETM, the ecosystem model MAECS as described by Kerimoglu et al. (2017), the transport connector, the filter feeder component, and several input and output components (Fig. 6e). They assess the impact of anthropogenically enhanced filtration from blue mussel (*Mytilus edulis*) settlement on offshore wind farms that are planned to meet the 40-fold increase in offshore wind electricity in the European Union until 2030; they find a small but non-negligible large-scale effect in both phytoplankton stock and primary production, which possibly contributes to better water clarity (Fig. 6f).

Biological activities of macrofauna on the sea floor mediate suspended sediment dynamics, at least locally. In the study by Nasermoaddeli et al. (submitted), the large-scale biological contribution of benthic macrofauna, represented by the key species *Fabulina fabula* (Fig. 6a), to suspension of sediment was investigated. Simulation results for a typical winter month revealed that SPM is increased not only locally but beyond the mussel inhabited zones. This effect is not limited to the near-bed water layers but can be observed throughout the entire water column, especially during storm events (Fig. 6c). In this coupled application, the hydrodynamic model GETM, the pelagic ecosystem component with three SPM size classes, the erosion–



sedimentation and benthic mediation components, several input and one output components, and the transport connector were used (Fig. 6d).

## 5 Discussion and Outlook

In merging existing frameworks that address distinct types of modularity and by developing a super-structure for making the multi-level coupling approach applicable in coastal research, the MOSSCO system largely meets the design goals *flexibility* and *equitability*. In doing so, structural deficiencies of legacy models and the need for practical compromises became very apparent.

For legacy reasons, *equitability* is the harder to achieve design goal. Both the distribution of compute resources as well as the spatial grid definition can be in principle determined by any one of the participating components; de facto, in marine or aquatic research, they are prescribed by the hydrodynamic models that have so far not been enabled to inherit a grid specification or a resource distribution from a coupler or coupled system. With the ongoing development and diversification of hydrodynamic models, and no immediate benefit for the different physical models to outsource grid/resource allocation, this situation is not likely to change. MOSSCO compromises here by its flexible grid inheritance scheme and with the grid provisioning component that delivers this information to the coupled system whenever a hydrodynamic component is not used.

Beyond grid/resource allocation, however, the *equitability* concept is successfully driving independent developments of submodules. We found that indeed experts in one particular model, e.g. the erosion module, could rely on the functionality of the other parts of the system without having to be an expert themselves in all of the constituent models in the coupled application. The limitations to this black-box approach became evident in the scientific application and evaluation of the coupled model system, which was only possible when a collaboration with experts in these other model systems was sought. By taking away the inaccessibility barrier and by enforcing clear separation of tasks the modular system stimulated a successful collaboration. Sustained granularity also helped to align with ongoing development in external packages. These can be integrated fast into the coupled system, which does not rely on specific versions of the externally provided software unless structural changes occur. Long-term supported interfaces on the external model side facilitate MOSSCO being up-to-date with e.g. the fast evolving GETM and FABM code bases.

When legacy codes were equipped with a framework-agnostic interface we encountered four major difficulties:

1. For organizing the data flow between the components, MOSSCO uses standard names and units compatible with the infrastructure and library of standard names and units provided in the pelagic component for the FABM framework (mostly modelled on CF). Other components, such as the BMIs of wrapped legacy models, do not provide such a standard name in their own implementation, and in particular, often do not adhere to a naming standard. We found ambiguity arising, e.g., with temperature to be represented as `temperature` vs. `sea_water_temperature` vs. `temperature_in_water`. While this can be resolved based on CF for temperature, most ecological and biogeochemical quantities currently lack a consistent naming scheme. The forthcoming GSN ontology (building on CSDMS names, Peckham, 2014) could adequately address this coupling challenge.



2. Deep subroutine hierarchies of existing models made it difficult to isolate desired functionality from the structural external overhead. In one example, where a single functional module was taken out of the context of an existing third-party coupled system, the module depended on many routines dispersed throughout that third-party system repository.
3. Components based on standalone models are developed and tested with their own I/O infrastructure and typically supply a BMI implementation only for part of their state and input data fields. A new, coupled application or data provisioning/request within a coupled system can therefore easily require a change in the model's BMI. The implementation potential input and output for all quantities, including replacement of the entire model-specific I/O in the BMI is therefore desirable for new developments and refactoring.
4. Two-way coupling of mass and energy fluxes between components has to be integrated numerically in a conservative way, despite different time discretization schemes used within the different components. We relied on conservative integration of the transferred fluxes within pairwise coupled components for their respective coupling timestep, which is most flexible for asynchronous scheduling. The coupled system itself, however, cannot ensure the conservative integration of mass and energy fluxes between components. Here, the user needs to take care of a correct coupling configuration.

Efforts in making legacy models couplable, either for MOSSCO or similar frameworks, however, leads to additional benefits besides the immediate applicability in an integrated context. Couplability strictly demands for communication of sufficient metadata, which stimulates the quality and quantity of documentation and of scientific and technical reproducibility of legacy models. Indeed, transparency has been greatly increased by wrapping legacy models in the MOSSCO context. All participating components performed introspection and leveraging of a collection of metadata at assembly time of the coupled application and during output. Transparency is expected to be continuously increasing by new coupling demands and more generous metadata provisioning from wrapped science models. MOSSCO is moving towards adopting the Common Information Model (CIM) that is also required by Climate Model Intercomparison Project (CMIP) participating coupled models (Eyring et al., 2016).

With a current small development base of twelve contributors, the openness concept of MOSSCO in terms of including contributions from outside the core developer team has not yet been tested; in the categorization by de Laat (2007) internal governance with simple structure is sufficient at this size. Formally, external contributions can be included in MOSSCO by way of contributor license agreements. The openness concept has been useful in instigating discussions about the need for explicit (and preferably open) licensing of related scientific software and data as demanded in current open science strategies (e.g., Scheliga et al., 2016).

So far, scalability in current MOSSCO applications is excellent: Strong scaling experiments with a coupled application using GETM, FABM with MAECS ( $\approx 20$  additional transported 3D tracers), and FABM with OMEXDIA\_P on Jureca (Krause and Thörnig, 2016) show linear (perfect) speedup from 100 to 1000 cores, and a small leveling-off (to 85% of perfect scaling) at 3000 cores. We have not observed loss of compute time due to the infrastructure and superstructure overhead of ESMF.

Problems of multi-component systems need to be solved in terms of acceptance by the research community. Multi-component systems are much harder to be implemented and maintained by individual groups, where researchers solve coastal ocean problems of a large range of complexity, from purely hydrodynamic applications via coupled hydrodynamic–sediment dynamic



applications to fully coupled systems. Many academic problems focus on specific mechanisms and thus do not require the complete and fully coupled modular system, such that the application of the full system might mean a large structural overhead and additional workload. Most researchers would agree on the potential necessity of following a holistic approach when tackling grand research questions in environmental science such as related to system responses to anthropogenic intervention. Yet, it is not clear whether the up-scaling approach inherent to the addition of many modular components can lead to meaningful results.

As evident from the test cases (Sect. 4), MOSSCO also encourages coupled applications that are far from a complete system level description. With few coupled components, the technical threshold to getting an application running on an arbitrary system is relatively low. The user can reach a fast first success. MOSSCO provides a full documentation, step by step recipes, and a public bug tracker; it adopts abundant error reporting from ESMF and a fail fast design that stops a coupled applications as soon as a technical error is detected (Shore, 2004). Usability is especially high due to an available master script that compiles, deploys, and schedules a coupled application. To address a wide range of users, the system is designed to run on a single processor or on a user's laptop equally well as on a high-performance computer using several thousand compute nodes.

An obvious advantage of modular coupling is the opportunity to bridge the gap between different scientific disciplines. It allows in principle to combine, e.g., hydrodynamic models from oceanography with sediment transport models from coastal engineering. Thus different experts can work on their individual models but benefit from each others' progress. This seeming advantage, however, poses also a drawback for modular coupling approaches: An initial effort which is necessary for individual models to meet the requirements of a modular modelling framework has to be invested. This will only happen if there is either an urgent pressure to include specific model capabilities, which will be difficult to include otherwise, or if convincing examples of possible benefits can be presented. It cannot be expected that the coastal ocean modelling community will agree about one coupler or one way of interfacing modules, such that it will still require considerable implementation work to transfer a module from one modular system to another. To solve this problem, coupling standards need to become more general, but in turn this might even increase the structural overhead in using these systems.

Offsetting these concerns, the separate design of basic and component interfaces (BMI/CMI) ensures that the effort spent on wrapping an existing model, or on equipping a new model with a basic model interface is not tied to a particular coupling framework, or even a particular coupling framework technology. A model that follows BMI principles will be more easily interfaced to other models no matter what coupler is used. Wrapped legacy models from MOSSCO can thus be useful in non-ESMF contexts, as well; and models with an existing BMI can be integrated in MOSSCO more easily, in turn.

One demand for integrative modeling, which is likely best practised in open and flexible system approaches, arises from current European Union legislation. The Water Framework Directive and the Marine Strategic Planning Directive require the description of marine environmental conditions and the development of action plans to achieve a good environmental status. These objectives can initially be met by a monitoring program to determine present-day conditions but ultimately rely on numerical model studies to evaluate anthropogenic measures. This ecosystem based approach to management (e.g., Ruckelshaus et al., 2008) demands modelling systems which are capable of taking into account hydrodynamics, biogeochemistry, sedimentology and their interactions to properly describe the environmental status. As further legal requirements can be expected for



many coastal seas worldwide, numerical modelling systems applied for this task need to be flexible in terms of integrating additional (e.g., site-specific) processes. In this ongoing process, the initial effort of creating a modular system may be the only way forward that can take into account all relevant processes in the long run.

## 5.1 Outlook

- 5 The suite of components provided or encapsulated so far meets the demands that were initially formulated by our users; they already allow for a wide range of novel coupled applications to investigate the coastal sea. To stimulate more collaboration, however, and to bring forward a general “ecosystem” of modular science components, several legacy models could interface to MOSSCO components in the near future by building on complementary work at other institutions. For example, the Regional Earth System Model (RegESM, Turuncoglu et al., 2013) provides ESMF interfaces for MITgcm, ROMS and WAM, amongst others. Convergence of the development of MOSSCO and RegESM is feasible in the near term. Also, the recently developed Icosahedral Non-Hydrostatic Atmospheric Model (ICON Zängl et al., 2015) is currently being equipped with an ESMF component model interface.

Once ESMF interfaces have been developed for a legacy model, it is desirable that these developments move out of the coupler system and are integrated into the development of the legacy model itself. This has been successfully achieved with the ESMF interface for the hydrodynamic model GETM, which is now distributed with the GETM code. Much of the utility layer developed in MOSSCO, or likewise in MAPL or in the ESMF extension of the WRF model, are expected to be propagated upstream into the framework ESMF itself.

The interoperability of current coupling standards will increase. While currently there are three flavors of ESMF: basic ESMF as in MOSSCO, ESMF/MAPL as in the GEOS-5 system, or ESMF/NUOPC as in the RegESM, only a minor effort would be required to provide the basic ESMF and ESMF/MAPL implementations with a NUOPC cap and make them interoperable with the entire ESMF ecosystem. Even a coupling of ESMF based systems to OASIS/MCT based systems has been proposed; and investigation is ongoing on a coupling of MOSSCO to the formal BMI for CSDMS.

## 6 Conclusions

We problematized both the primacy of hydrodynamic models and the limited modularity in coupled coastal modeling that can stand in the way of developing and applying novel and diverse biogeochemical process descriptions. Such developmental potential is likely needed to progress towards holistic regional coastal systems models. We presented the novel Modular System for Shelves and Coasts (MOSSCO), that is built on coupling concepts centered around equitability and flexibility to resolve the issue of obstructed modularity. These concepts bring about also openness, usability, transparency and scalability. MOSSCO as an actual Fortran implementation of this concept includes the wrapped Framework for Aquatic Biogeochemical Models (FABM) and a usability layer for the Earth System Modeling Framework (ESMF).

MOSSCO’s design principles emphasize basic couplability and rich meta information. Basic couplability requires that models communicate about flow control, compute resources, and about exchanged data and metadata. We demonstrated that the



design principles flexibility and equitability enable the building of complex coupled models that adequately represent the complexity found in environmental modelling. In this first version, the MOSSCO software wrapped several existing legacy models with basic model interfaces (BMI); we added ESMF-specific component model interfaces (CMI) to these wrappers and other models and frameworks to build a suite of ESMF components that when coupled represent a small part of a holistic coastal system. These components deal with hydrodynamics, waves, pelagic and sediment ecology and biogeochemistry, river loads, erosion, resuspension, biotic sediment modification and filter feeding.

In selected applications, each with a different research question, the applicability of the coupled system was successfully tested. MOSSCO facilitates the development of new coupled applications for studying coastal processes that extend from the atmosphere through the water column into the sea bed, and that range from laboratory studies to 3D simulation studies of a regional sea. This system meets an infrastructural need that is defined by experimenters and process modellers who develop biogeochemical, physical, sedimentological or ecological models at the lab scale first and who would like to seamlessly embed these models into the complex coupled three-dimensional coastal system. This upscaling procedure may ultimately support also the global Earth System community.

*Code and data availability.* The MOSSCO software is licensed under the GNU General Public License 3.0, a copyleft open source license that allows the use, distribution and modification of the software under the same terms. All documentation for MOSSCO is licensed under the Creative Commons Attribution Share-Alike 4.0 (CC-by-SA), a copyleft open document license that allows use, distribution and modification of the documentation under the same terms.

Development code and documentation are currently primarily hosted on Sourceforge (<https://sf.net/p/mossco/code>) and mirrored on Github (<https://github.com/platipodium/mossco-code>). The release version 1.0.1 is permanently archived on Zenodo and accessible under the digital object identifier doi:10.5281/zenodo.438922. All wrapped legacy models are open source and freely available from the developing institutions; free registration is required for accessing the Delft3D system at Deltares. Selected test cases are available from a separate Sourceforge repository <https://sf.net/p/mossco/setup>, where all of the data on which the presented use cases are based are freely available, with the exception of the meteorological forcing fields. These are, for example, available at request online at <http://www.coastdat.de>, from the coastDat model based data base developed for the assessment of long-term changes by Helmholtz-Zentrum Geesthacht (Geyer, 2014).

*Author contributions.* C.L., R.H., K.K., H.N developed the MOSSCO components (CMI) and wrappers (BMI). K.W., C.L., and K.K. designed the coupling philosophy, C.L. developed the user interface and the utility library. K.W., H.N., R.H., O.K. and C.L. carried out and analysed simulations, based on contributions from all authors. C.L., K.W. and R.H. wrote the manuscript with contributions from all other authors.

*Competing interests.* The authors declare that they have no conflict of interest.



*Acknowledgements.* MOSSCO is a project funded under the Küstenforschung Nordsee–Ostsee programme of the Forschung für Nachhaltigkeit (FONA) agenda of the German Ministry of Education and Science (BMBF) under grant agreements 03F0667A, 03F0667B, and 03F0668A. This research contributes to the PACES II programme of the Hermann von Helmholtz-Gemeinschaft Deutscher Forschungszentren. Further financial support for K.K. and H.B. was provided by the Collaborative Research Centre TRR181 on Energy Transfers in  
5 Atmosphere and Ocean funded by the German Research Foundation (DFG). We thank those MOSSCO developers that are not co-authors of this paper, amongst them Markus Kreuz, Ulrich Körner and Niels Weiher, and acknowledge the support of Wenyan Zhang in preparing the model setups. This research is based on tremendous efforts by the open source community, including but not limited to the developers of Delft3D, GETM, GOTM, FABM, ESMF, OpenMPI, Python, GCC and NetCDF who share their codes openly.



## References

- Alexander, K. and Easterbrook, S. M.: The software architecture of climate models: a graphical comparison of CMIP5 and EMICAR5 configurations, *Geoscientific Model Development*, 8, 1221–1232, doi:10.5194/gmd-8-1221-2015, 2015.
- Aumont, O., Ethé, C., Tagliabue, A., Bopp, L., and Gehlen, M.: PISCES-v2: an ocean biogeochemical model for carbon and ecosystem studies, *Geoscientific Model Development*, 8, 2465–2513, doi:10.5194/gmd-8-2465-2015, 2015.
- Azhikodan, G. and Yokoyama, K.: Spatio-temporal variability of phytoplankton (Chlorophyll-a) in relation to salinity, suspended sediment concentration, and light intensity in a macrotidal estuary, *Continental Shelf Research*, 126, 15–26, doi:10.1016/j.csr.2016.07.006, 2016.
- Balaji, V., Adcroft, A., and Liang, Z.: Gridspec: A standard for the description of grids used in Earth System models, Tech. rep., National Oceanographic and Atmospheric Administration, Princeton, NJ, 2007.
- 10 Balaji, V., Benson, R., Wyman, B., and Held, I.: Coarse-grained component concurrency in Earth system modeling: parallelizing atmospheric radiative transfer in the GFDL AM3 model using the Flexible Modeling System coupling framework, *Geoscientific Model Development*, 9, 3605–3616, doi:10.5194/gmd-9-3605-2016, 2016.
- Bayne, B. L., Iglesias, J., and Hawkins, A. J. S.: Feeding behaviour of the mussel, *Mytilus edulis*: responses to variations in quantity and organic content of the seston, *Journal of the Marine Biological Association of the United Kingdom*, 73, 813–829, 1993.
- 15 Breugem, W. a. and Holthuijsen, L. H.: Generalized Shallow Water Wave Growth from Lake George, *Journal of Waterway, Port, Coastal, and Ocean Engineering*, 133, 173–182, doi:10.1061/(ASCE)0733-950X(2007)133:3(173), 2007.
- Bruggeman, J. and Bolding, K.: A general framework for aquatic biogeochemical models, *Environmental Modelling and Software*, 61, 249–265, doi:10.1016/j.envsoft.2014.04.002, 2014.
- Burchard, H. and Bolding, K.: GETM – a General Estuarine Transport Model. Scientific Documentation, Tech. Rep. EUR 20253 EN, European Commission, 2002.
- 20 Burchard, H., Bolding, K., and Villarreal, M. R.: GOTM – a General Ocean Turbulence Model. Theory, implementation and test cases, Tech. Rep. EUR 18745 EN, European Commission, 1999.
- Burchard, H., Deleersnijder, E., and Meister, A.: Application of modified Patankar schemes to stiff biogeochemical models for the water column, *Ocean Dynamics*, 55, 326–337, doi:10.1007/s10236-005-0001-x, 2005.
- 25 Burchard, H., Bolding, K., Kühn, W., Meister, A., Neumann, T., and Umlauf, L.: Description of a flexible and extendable physical–biogeochemical model system for the water column, *Journal of Marine Systems*, 61, 180–211, doi:10.1016/j.jmarsys.2005.04.011, 2006.
- Butenschön, M., Clark, J., Aldridge, J. N., Allen, J. I., Artioli, Y., Blackford, J., Bruggeman, J., Cazenave, P. W., Ciavatta, S., Kay, S., Lessin, G., van Leeuwen, S., van der Molen, J., de Mora, L., Polimene, L., Sailley, S., Stephens, N., and Torres, R.: ERSEM 15.06: a generic model for marine biogeochemistry and the ecosystem dynamics of the lower trophic levels, *Geoscientific Model Development*, 9, 1293–1339, doi:10.5194/gmd-9-1293-2016, 2016.
- 30 Cazenave, P. W., Torres, R., and Allen, J. I.: Unstructured grid modelling of offshore wind farm impacts on seasonally stratified shelf seas, *Progress in Oceanography*, 145, 25–41, doi:10.1016/j.pocean.2016.04.004, 2016.
- Cossarini, G., Querin, S., Solidoro, C., Sannino, G., Lazzari, P., Di Biagio, V., and Bolzon, G.: Development of BFMCOUPLER (v1.0), the coupling scheme that links the MITgcm and BFM models for ocean biogeochemistry simulations, *Geoscientific Model Development*, 10, 1423–1445, doi:10.5194/gmd-10-1423-2017, 2017.
- 35



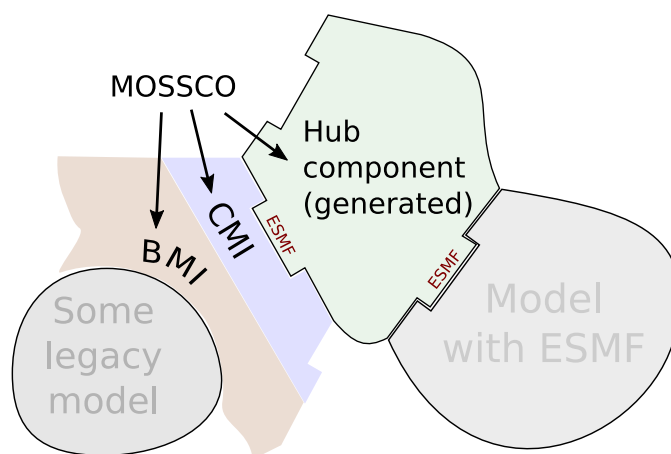
- Daewel, U. and Schrum, C.: Simulating long-term dynamics of the coupled North Sea and Baltic Sea ecosystem with ECOSMO II: Model description and validation, *Journal of Marine Systems*, 119–120, 30–49, doi:10.1016/j.jmarsys.2013.03.008, 2013.
- de Deckere, E. M. G. T., Tolhurst, T. J., and de Brouwer, J. F. C.: Destabilization of cohesive intertidal sediments by infauna, *Estuarine, Coastal and Shelf Science*, 53, 665–669, doi:10.1006/ecss.2001.0811, 2001.
- 5 de Laat, P. B.: Governance of open source software: state of the art, *Journal of Management & Governance*, 11, 165–177, doi:10.1007/s10997-007-9022-9, 2007.
- Dunne, J. P., John, J. G., Adcroft, A. J., Griffies, S. M., Hallberg, R. W., Shevliakova, E., Stouffer, R. J., Cooke, W., Dunne, K. A., Harrison, M. J., Krasting, J. P., Malyshev, S. L., Milly, P. C. D., Philipps, P. J., Sentman, L. T., Samuels, B. L., Spelman, M. J., Winton, M., Wittenberg, A. T., and Zadeh, N.: GFDL's ESM2 Global Coupled Climate–Carbon Earth System Models. Part I: Physical Formulation  
10 and Baseline Simulation Characteristics, *Journal of Climate*, 25, 6646–6665, doi:10.1175/JCLI-D-11-00560.1, 2012.
- Eaton, B., Gregory, J., Centre, H., Office, U. K. M., Drach, B., Taylor, K., Hankin, S., Caron, J., and Signell, R.: NetCDF Climate and Forecast (CF) Metadata Conventions, Tech. rep., cfconventions.org, 2011.
- ESMF Joint Specification Team: Earth System Modeling Framework User Guide Version 6.3.0, Tech. rep., National Oceanic and Atmospheric Administration, Boulder, CO, 2013.
- 15 Eyring, V., Bony, S., Meehl, G. A., Senior, C. A., Stevens, B., Stouffer, R. J., and Taylor, K. E.: Overview of the Coupled Model Intercomparison Project Phase 6 (CMIP6) experimental design and organization, *Geoscientific Model Development*, 9, 1937–1958, doi:10.5194/gmd-9-1937-2016, 2016.
- Geyer, B.: High-resolution atmospheric reconstruction for Europe 1948–2012: coastDat2, *Earth System Science Data*, 6, 147–164, doi:10.5194/essd-6-147-2014, 2014.
- 20 Gräwe, U., Holtermann, P., Klingbeil, K., and Burchard, H.: Advantages of vertically adaptive coordinates in numerical models of stratified shelf seas, *Ocean Modelling*, 92, 56–68, doi:10.1016/j.ocemod.2015.05.008, 2015.
- Harms, I.: Water mass transformation in the Barents Sea — application of the Hamburg Shelf Ocean Model (HamSOM), *ICES Journal of Marine Science*, 54, 351–365, doi:10.1006/jmsc.1997.0226, 1997.
- Hill, C., DeLuca, C., Balaji, V., Suarez, M., and Da Silva, A.: The architecture of the Earth system modeling framework, *Computing in  
25 Science and Engineering*, 6, 18–28, doi:10.1109/MCISE.2004.1255817, 2004.
- Hinners, J., Hofmeister, R., and Hense, I.: Modeling the Role of pH on Baltic Sea Cyanobacteria, *Life*, 5, 1204–1217, doi:10.3390/life5021204, 2015.
- Hofmeister, R., Burchard, H., and Beckers, J.-M.: Non-uniform adaptive vertical grids for 3D numerical ocean models, *Ocean Modelling*, 33, 70–86, 2010.
- 30 Hofmeister, R., Lemmen, C., Kerimoglu, O., Wirtz, K. W., and Naser Moaddeli, M. H.: The predominant processes controlling vertical nutrient and suspended matter fluxes across domains - using the new MOSSCO system from coastal sea sediments up to the atmosphere, in: 11th International Conference on Hydrosience and Engineering, edited by Lehfeldt, R. and Kopmann, vol. 28, Hamburg, Germany, 2014.
- Hofmeister, R., Flöser, G., and Schartau, M.: Estuary-type circulation as a factor sustaining horizontal nutrient gradients in freshwater-influenced coastal systems, *Geo-Marine Letters*, 37, 179–192, doi:10.1007/s00367-016-0469-z, 2017.
- 35 Hu, F., Bolding, K., Bruggeman, J., Jeppesen, E., Flindt, M. R., van Gerven, L., Janse, J. H., Janssen, A. B. G., Kuiper, J. J., Mooij, W. M., and Trolle, D.: FABM-PCLake – linking aquatic ecology with hydrodynamics, *Geoscientific Model Development*, 9, 2271–2278, doi:10.5194/gmd-9-2271-2016, 2016.



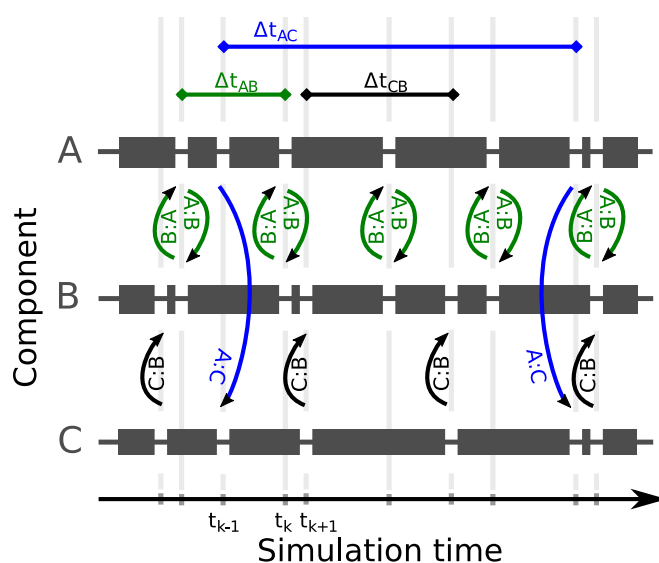
- Jagers, H. R. A. B.: Linking Data , Models and Tools : An Overview, in: International Environmental Modelling and Software, edited by David A. Swayne, Wanhong Yang, A. A. Voinov, A. Rizzoli, T. F., Ottawa, 2010.
- Jöckel, P., Sander, R., Kerkweg, A., Tost, H., and Lelieveld, J.: Technical Note: The Modular Earth Submodel System (MESSy) - a new approach towards Earth System Modeling, *Atmospheric Chemistry and Physics*, 5, 433–444, doi:10.5194/acp-5-433-2005, 2005.
- 5 Jones, P. W.: First- and Second-Order Conservative Remapping Schemes for Grids in Spherical Coordinates, *Monthly Weather Review*, 127, 2204–2210, doi:10.1175/1520-0493(1999)127<2204:FASOCR>2.0.CO;2, 1999.
- Kerimoglu, O., Hofmeister, R., Maerz, J., and Wenzel Wirtz, K.: A novel acclimative biogeochemical model and its implementation to the southern North Sea, *Biogeosciences Discussions*, p. 33, doi:10.5194/bg-2017-104, 2017.
- Klingbeil, K. and Burchard, H.: Implementation of a direct nonhydrostatic pressure gradient discretisation into a layered ocean model, *Ocean Modelling*, 65, 64–77, doi:10.1016/j.ocemod.2013.02.002, 2013.
- 10 Krause, D. and Thörnig, P.: JURECA: General-purpose supercomputer at Jülich Supercomputing Centre, *Journal of large-scale research facilities JLSRF*, 2, A62, doi:10.17815/jlsrf-2-121, 2016.
- Lorkowski, I., Pätsch, J., Moll, A., and Kühn, W.: Estuarine , Coastal and Shelf Science Interannual variability of carbon fluxes in the North Sea from 1970 to 2006 e Competing effects of abiotic and biotic drivers on the gas-exchange of CO<sub>2</sub>, *Estuarine, Coastal and Shelf Science*, 100, 38–57, doi:10.1016/j.ecss.2011.11.037, 2012.
- 15 Lovelock, J. E. and Margulis, L.: Atmospheric homeostasis by and for the biosphere: the gaia hypothesis, *Tellus*, 26, 2–10, doi:10.1111/j.2153-3490.1974.tb01946.x, 1974.
- Maerz, J., Verney, R., Wirtz, K. W., and Feudel, U.: Modeling flocculation processes: Intercomparison of a size class-based model and a distribution-based model, *Continental Shelf Research*, 31, S84–S93, doi:10.1016/j.csr.2010.05.011, 2011.
- 20 Manabe, S.: Climate and the ocean circulation II. The atmospheric circulation and the effect of heat transfer by ocean currents, *Monthly Weather Review*, 97, 775–805, 1969.
- Margalef, R.: On Certain Unifying Principles in Ecology, *The American Naturalist*, 97, 357–374, doi:10.1086/282286, 1963.
- Moghim, S., Klingbeil, K., Gräwe, U., and Burchard, H.: A direct comparison of a depth-dependent Radiation stress formulation and a Vortex force formulation within a three-dimensional coastal ocean model, *Ocean Modelling*, 70, 132–144, doi:10.1016/j.ocemod.2012.10.002, 2013.
- 25 Nasermoaddeli, M. H., Lemmen, C., Hofmeister, R., Kösters, F., and Klingbeil, K.: The Benthic Geocology Model within the Modular System for Shelves and Coasts (MOSSCO), in: 11th International Conference on Hydroinformatics, 2014.
- Nasermoaddeli, M. H., Lemmen, C., Kösters, F., Kerimoglu, O., Hofmeister, R., Klingbeil, K., Burchard, H., and Wirtz, K. W.: Large scale effect of macrofauna *Tellina fabula* on suspended sediment transport in the southern Nord See, *Estuarine, Coastal and Shelf Science*, submitted, 2017.
- 30 Partheniades, E.: Erosion and Deposition of Cohesive Soils, *Journal of the Hydraulics Division*, 91, 105–139, 1965.
- Peckham, S. D.: The CSDMS Standard Names: Cross-Domain Naming Conventions for Describing Process Models, Data Sets and Their Associated Variables, in: International Environmental Modelling and Software Society (iEMSs), 2014.
- Peckham, S. D., Hutton, E. W., and Norris, B.: A component-based approach to integrated modeling in the geosciences: The design of CSDMS, *Computers & Geosciences*, 53, 3–12, doi:10.1016/j.cageo.2012.04.002, 2013.
- 35 Rew, R. and Davis, G.: NetCDF: An Interface for Scientific Data Access, *IEEE Computer Graphics and Applications*, 10, 76–82, doi:10.1109/38.56302, 1990.



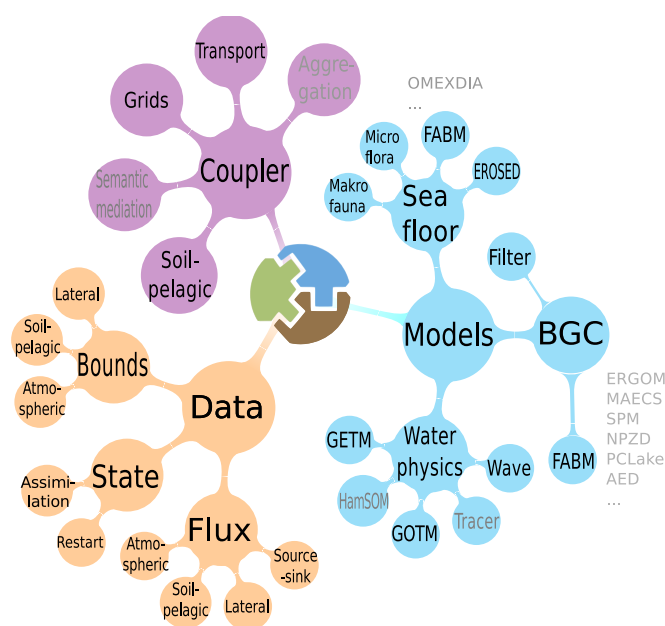
- Ruckelshaus, M., Klinger, T., Knowlton, N., and DeMASTER, D. P.: Marine Ecosystem-based Management in Practice: Scientific and Governance Challenges, *BioScience*, 58, 53, doi:10.1641/B580110, 2008.
- Scheliga, K. S., Pampel, H., Bernstein, E., Bruch, C., zu Castell, W., Diesmann, M., Fritzsche, B., Fuhrmann, J., Haas, H., Hammitzsch, M., Lähnemann, D., McHardy, A., Konrad, U., Scharnberg, G., Schreiber, A., and Steglich, D.: Helmholtz Open Science Workshop „Zugang zu und Nachnutzung von wissenschaftlicher Software“ #hgfos16, Tech. rep., Deutsches GeoForschungsZentrum GFZ, Potsdam, doi:10.2312/lis.17.01, 2016.
- Shang, Q. Q., Fang, H. W., Zhao, H. M., He, G. J., and Cui, Z. H.: Biofilm effects on size gradation, drag coefficient and settling velocity of sediment particles, *International Journal of Sediment Research*, 29, 471–480, doi:10.1016/S1001-6279(14)60060-3, 2014.
- Shore, J.: Fail fast, *IEEE Software*, 21, 21–25, doi:10.1109/MS.2004.1331296, 2004.
- Slavik, K., Lemmen, C., Zhang, W., Kerimoglu, O., and Wirtz, K. W.: The large scale impact of offshore windfarm structures on pelagic primary production in the southern North Sea, *Hydrobiologia*, submitted, 2017.
- Soetaert, K., Herman, P. M. J., and Middelburg, J. J.: Dynamic response of deep-sea sediments to seasonal variations: A model, *Limnology and Oceanography*, 41, 1651–1668, 1996.
- Suarez, M., Trayanov, A., da Silva, A., Hill, C., and Schopf, P.: An Introduction to MAPL, Tech. rep., Goddard Fluid Dynamics Laboratory, Princeton, NJ, 2007.
- Tansley, A. G.: The Use and Abuse of Vegetational Concepts and Terms, *Ecology*, 16, 284–307, doi:10.2307/1930070, 1935.
- Turuncoglu, U. U., Dalfes, N., Murphy, S., and DeLuca, C.: Toward self-describing and workflow integrated Earth system models: A coupled atmosphere-ocean modeling system application, *Environmental Modelling and Software*, 39, 247–262, doi:10.1016/j.envsoft.2012.02.013, 2013.
- Valcke, S.: The OASIS3 coupler: a European climate modelling community software, *Geoscientific Model Development*, 6, 373–388, doi:10.5194/gmd-6-373-2013, 2013.
- Van Pham, T., Brauch, J., Dieterich, C., Frueh, B., and Ahrens, B.: New coupled atmosphere-ocean-ice system COSMO-CLM/NEMO: assessing air temperature sensitivity over the North and Baltic Seas, *Oceanologia*, 56, 167–189, doi:10.5697/oc.56-2.167, 2014.
- van Rijn, L. C.: Unified View of Sediment Transport by Currents and Waves. II: Suspended Transport, *Journal of Hydraulic Engineering*, 133, 668–689, doi:10.1061/(ASCE)0733-9429(2007)133:6(668), 2007.
- Vernadsky, V. I.: *The Biosphere*, Springer, 1998.
- Warner, J. C., Perlin, N., and Skillingstad, E. D.: Using the Model Coupling Toolkit to couple earth system models, *Environmental Modelling & Software*, 23, 1240–1249, doi:10.1016/j.envsoft.2008.03.002, 2008.
- Warner, J. C., Armstrong, B., He, R., and Zambon, J. B.: Development of a Coupled Ocean–Atmosphere–Wave–Sediment Transport (COAWST) Modeling System, *Ocean Modelling*, 35, 230–244, doi:10.1016/j.ocemod.2010.07.010, 2010.
- Wirtz, K. W. and Kerimoglu, O.: Autotrophic Stoichiometry Emerging from Optimality and Variable Co-limitation, *Frontiers in Ecology and Evolution*, 4, doi:10.3389/fevo.2016.00131, 2016.
- Yakushev, E. V., Protsenko, E. A., Bruggeman, J., Wallhead, P., Pakhomova, S. V., Yakubov, S. K., Bellerby, R. G. J., and Couture, R.-M.: Bottom RedOx Model (BROM v.1.1): a coupled benthic–pelagic model for simulation of water and sediment biogeochemistry, *Geoscientific Model Development*, 10, 453–482, doi:10.5194/gmd-10-453-2017, 2017.
- Zängl, G., Reinert, D., Rípodas, P., and Baldauf, M.: The ICON (ICOsahedral Non-hydrostatic) modelling framework of DWD and MPI-M: Description of the non-hydrostatic dynamical core, *Quarterly Journal of the Royal Meteorological Society*, 141, 563–579, doi:10.1002/qj.2378, 2015.



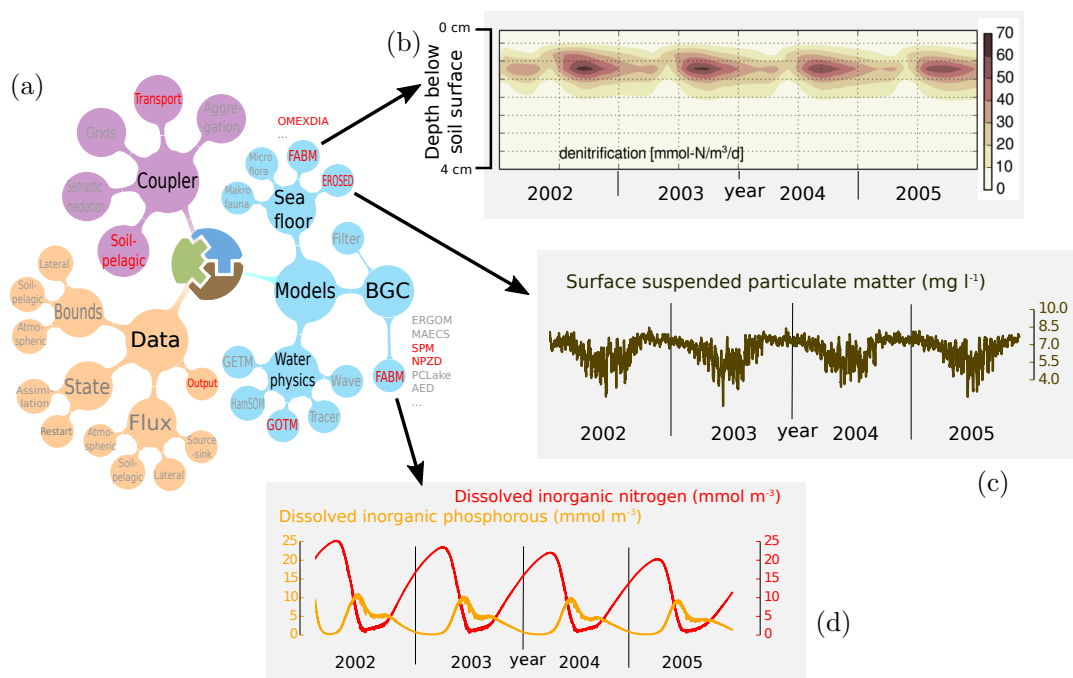
**Figure 1.** MOSSCO’s adoption of legacy code follows the two-layer paradigm of BMI/CMI (basic model interface/ component model interface) suggested by Peckham et al. (2013). An existing legacy code (illustrated by “some model”) is enhanced by model-specific code that exhibits basic coupling functionality (“BMI”) and is framework agnostic. In a second step, a component (“CMI”) is added, that uses the BMI interface in the specific application programming interface of the coupling framework. In addition to model interfaces that can be used in MOSSCO-independent contexts, MOSSCO provides coupling concepts and working implementations for coupled applications.



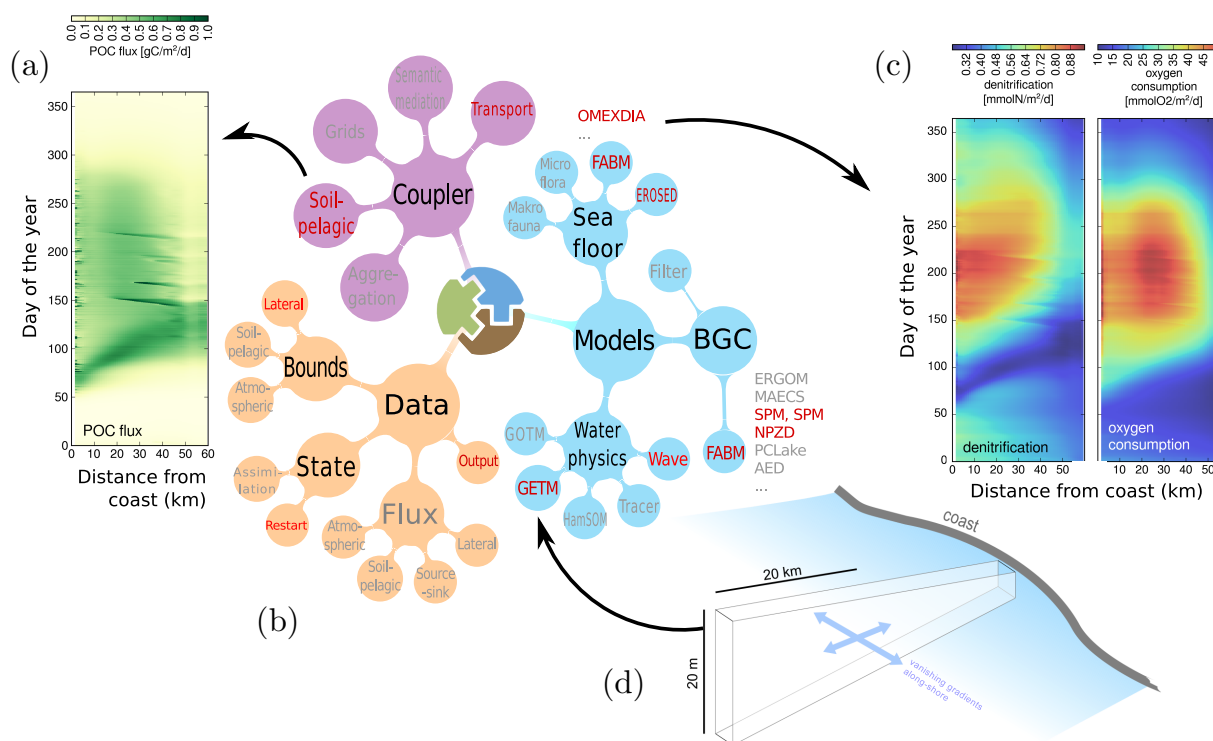
**Figure 2.** Scheduling of three coupled components A, B, C and their data exchanges according to a pairwise coupling specification (see below). Note how each individual component has varying run lengths resulting from the interference of all coupling intervals with this component. The time steps of the scheduler component  $t_{k+n}$  (grey bars) vary according to the interference pattern of all coupling intervals. Coupling specification: A couples bidirectionally to B at interval  $\Delta t_{AB}$  (green), A couples unidirectional to C at interval  $\Delta t_{AC}$  (blue), C couples unidirectionally to B at interval  $\Delta t_{CB}$  (black).



**Figure 3.** Modular components of MOSSCO. The blue branch collects newly created submodels and components that wrap around legacy codes; the violet branch collects coupling functionalities and the orange branch the generic I/O utilities.



**Figure 4.** Coupling setup and exemplary results from a 1D system simulating the nutrient and SPM dynamics near the island of Helgoland, Germany with soil–pelagic coupling from 2002 to 2005. (a) Coupling setup with seven ESMF components (highlighted in red, leaves) and three FABM submodels (side text); (b) soil denitrification rate; (c) surface SPM dynamics resulting from EROSED and pelagic FABM/SPM; (d) middle water column nitrogen and phosphorous dynamics from pelagic FABM/NPZD.



**Figure 5.** A 2D idealized cross-shore transect off the German coastline is used to investigate the feedback loop between estuarine circulation, sediment transport and nutrient cycling across the benthic–pelagic interface. (a,c) Hovmöller diagrams showing the soil–pelagic fluxes of particulate organic carbon (POC) and the soil BGC denitrification and oxygen consumption rates for the 60 km long transect. (b) Coupling diagram including components for hydrodynamics, erosion/sedimentation, waves, pelagic ecology and suspended particles, and soil ecology. This example uses both ESMF modularity (the components) as well as FABM modularity (the different ecological/biogeochemical models within the pelagic and sediment environmental components). (d) spatial setup of the idealized 2D cross-shore transect.



28



**Table 1.** Components currently integrated in MOSSCO and described shortly in this paper. Several other components are under development and not listed here.

Pelagic ecosystem	fabm_pelagic_component	Sect. 3.1.1
Soil ecosystem	fabm_sediment_component	Sect. 3.1.2
1D hydrodynamics	gotm_component	Sect. 3.1.3
3D hydrodynamics	getm_component	Sect. 3.1.4
Filtration	filtration_component	Sect. 3.1.6
Erosion/sedimentation	eroded_component	Sect. 3.1.5
Wind waves	simplewave_component	Sect. 3.1.7
Generic output	netcdf_component	Sect. 3.2.1
Generic input	netcdf_input_component	Sect. 3.2.2
Link connector	link_connector	Sect. 3.3.1
Copy connector	copy_connector	Sect. 3.3.1
Nudge connector	nudge_connector	Sect. 3.3.1
Tracer transport	transport_connector	Sect. 3.3.2
Benthic–pelagic coupling	soil_pelagic_connector	Sect. 3.3.3
	pelagic_soil_connector	Sect. 3.3.3



**Table 2.** Acronyms and model abbreviations used in the text.

BFM	Biogeochemical Flux Model (ecosystem model)	MAECS	Model for Adaptive Ecosystems in Coastal Seas
BGC	Biogeochemistry	MCT	Model Coupling Toolkit
BMI	Basic Model Interface (coupling concept)	MESSy	Modular Earth Submodel System
CC-by-SA	Creative Commons Attribution Share-Alike license	MITgcm	Massachusetts Institute of Technology Global Circulation Model
CF	NetCDF Climate and Forecast convention	MOM	Modular Ocean Model
CIM	Common Information Model (metadata standard)	MOSSCO	Modular System for Shelves and Coasts
CMI	Component Model Interface (coupling concept)	MPI	Message Passing Interface
CMIP	Climate Model Intercomparison Project	MSPD	European Union Marine Strategic Planning Directive
COAWST	Coupled Ocean-Atmosphere-Wave-Sediment Transport	NEMO	Nucleus for European Modeling of the Ocean
CSDMS	Community Surface Dynamics Modeling System	NetCDF	Network Common Data Form
DKRZ	Deutsches Klimarechenzentrum (HPC center)	NPZD	Nutrient, phytoplankton, zooplankton, detritus (ecosystem model)
ESM	Earth System Model	NUOPC	National Unified Operational Prediction Capability
ESMF	Earth System Modeling Framework	OASIS	Ocean Atmosphere Sea Ice Soil coupler
FABM	Framework for Aquatic Biogeochemical Models	OMEXDIA	Ocean Margin Exchange Experiment early diagenetic model
FMS	Flexible Modeling System (coupling technology)	OMEXDIA_P	OMEXDIA with added phosphorous
FONA	Forschung für Nachhaltigkeit (funding scheme)	PARSE	Prepare, Adapt, Register, Schedule, Execute methodology
FVCOM	Finite Volume Coastal Ocean Model	PISCES	Pelagic Interactions Scheme for Carbon and Ecosystem Studies
GCC	GNU Compiler Collection	POM	Particulate organic matter
GETM	General Estuarine Transport Model (3D coastal ocean model)	POC	Particulate organic carbon
GEOS-5	Goddard Earth Observing System version 5	RegESM	Regional Earth System Model
GNU	GNU is Not Unix	ROMS	Regional Ocean Modeling System
GOTM	General Ocean Turbulence Model (1D water column model)	SCRIP	Spherical Coordinate Remapping and Interpolation Package
GPL	General Public License	SNS	Southern North Sea
GSN	Geoscience Standard Names Ontology	SPM	Suspended particulate matter
HLRN	Norddeutscher Verbund für Hoch- und Höchstleistungsrechnen	SWAN	Simulating Waves Nearshore
HPC	High-performance computing	WAM	Wave Atmospheric Model
ICON	Icosahedral Non-Hydrostatic Model	WFD	European Union Water Framework Directive
I/O	Input and output	WRF	Advanced Research Weather Research and Forecasting
JSC	Jülich Supercomputing Centre	YAML	YAML Ain't Markup Language
MAPL	Modeling, Analysis and Prediction Layer		