

Dear Hisashi Sato,

Thank you for editing the manuscript. Please find in this document the responses to reviewer's comments, and the updated manuscript (the main changes have been highlighted)

Best regards,
Yannick Le Page and co-authores.

[General comments] Authors present in this paper a set of algorithm to spatially downscale global land use change dataset that is simulated by GCAM, a regional/AEZ- based integrated assessment model, into gridded formats that are more familiar with Earth system / land ecosystem modelers. The basic idea and overview of the down- scaling algorithm are firstly introduced, and then the detailed procedure in the system is explained in source-code level. They execute sensitivity tests of the downscaling system, by applying the system to a historical land use change. Demonstrations of downscaling for future LULC (land use and land cover) scenarios are also introduced, with discussions on the potential applications and limitations of their systems. The algorithm and system introduced here are clearly important, because land use change is one of the key issues that make linkages between scenario making, climate projection with the Earth system models, and impact assessments by land/agricultural models. The system introduced in this paper will help to bridge the research works between them. Thanks to the authors' careful descriptions on the downscaling procedure, this paper will help to understand the creation of LULC datasets simulated by GCAM. The system is well designed for general usages of downscaling and being available for everyone. No logical fault is found in this paper, but I think there are rooms to be improved, and they are listed below. Most of them will not require so much effort to improve.

We thank the reviewer for his helpful review, please find below our responses to comments and suggestions.

[Detailed comments] p3, L17 “energy demand (biomass crops)” Is “energy demand (bioenergy crops)” more adequate?

Yes indeed, we changed it.

P4, L1 “gridded LULC data” It seems better to note that this data is observation-based, not simulated by GCAM.

We now specify that the initial gridded data for the downscaling are observation-derived.

Fig.2 Figure title is as same as Fig.1, and thus should be changed. Because the figure outlines all downscaling algorithms, I hope enough explanation to be put in the caption. Specifically, readers will read the manuscript more easily if you can put in the caption the linkages between technical words (“reconciliation”, “transition priorities”, “proximity expansion”, etc) and the subsection number: e.g. “land area matching in the reconciliation process is shown in 2.2.2.1”.

We updated the caption accordingly:

“Overview of the downscaling method. The figure shows the successive computational steps to downscale a LULC change scenario from 2005 to 2100 described in the text (Sect. 2). The “Reconciliation” phase is detailed in Sect. 2.1 ; The “Downscaling rules” are detailed in Sect. 2.2, including the “treatment order” (Sect. 2.2.1), Intensification versus expansion ratio” (Sect. 2.2.2), the “Transition priorities” (Sect. 2.2.3) and the spatial constraints (Sect. 2.2.4).”

P5 L8 The subsection number “2.2.2.1” should be replaced by “2.2.2.2”.

This was corrected while re-structuring the manuscript (see other reviewer's comments).

P5 L10 “cropland PFT” should be replaced by “cropland plant functional type (PFT)”, or simply “cropland type”. In my thinking, since you have already used three types of categories (“GLTs”, “SLTs”, and “FLTs”) for land types, additional use of “PFT” will make readers confused.

Indeed, we replaced cropland PFT with “cropland type”.

Table 2 and 3: “Final land types (FLT)s for downscaling” looks better for the column title, and it will be helpful for readers if there are brief explanations in the caption on how to read this table.

Changed

P5 L29-30 In Fig.2, “transition priorities” and “spatial constraints” are shown, but “treatment order” and “intensification versus expansion ratio” likely not. It will be helpful for readers if you can put the latter two items on the figure.

Thanks ! We added the missing downscaling rules in the figure.

P6, L7: “Intensification versus expansion ratio” looks better for the title, as you describe in p5, L31.

Changed

P6 subsection 2.2.3.4: In my view, the definition of index S (“suitability index”), which first appears in 2.2.4, should be done in this subsection, because readers cannot imagine how the KD, NA, and SW work to constrain the spatial distribution. In addition, NA and SW in eq (3) seem to have units with dimensionless: please specify them in the text.

We moved the definition of the suitability index to the “spatial constrain” section as suggested (note the overall change in structure following the other reviewer feedback).

We also specify that S is dimensionless:

“Each spatial constrain being a dimensionless index bound from 0 to 1, the suitability index is dimensionless as well.”

P8, L2: “see Sect. 1.2.3.2” should be changed to “see Sect. 2.2.3.2”.

Corrected in the new structure.

Fig.3: 1) I found no loop for global grid cells. Does the loop represented by “For each land type” correspond to the loop? 2) I can find the terms “lt1” and “lt2” in the figure, but there is no explanation for them. Do they respectively represent “FLT1” and “FLT2”? 3) The figure title is ambiguous for me, and should be replaced by adequate one?

1) There is actually no loop on grid-cells. Once the algorithm reached a given Region/AEZ and FLT to be expanded, it then considers at once all potential grid-cells for the transition. Computations (e.g. suitability, area available for transition) are done with a 1-D array that contains those potential grid-cells.

2) The lt1 and lt2 were left from a previous draft of the figure, sorry about that, they are in fact FLT1 and FLT2.

3) The new title for the figure now reads: “Computation flow of the downscaling code.”

P9, L23- I'm not sure about the target dataset to which the downscaling method was applied. Did you use HYDE information that was aggregated into regional/AEZ map, and then apply the downscaling algorithm to it? Or have you used historical LULC changes simulated by GCAM? In the latter case, it might be better to refer to the existing work that created the LULC changes.

Indeed that was not clear in the manuscript. We did the first case, we aggregated LULC change from HYDE data into Region/AEZ tabular data, from 1700 to 2005, and used these tabular data to run the downscaling. So GCAM was not part of the evaluation. It is now specified in the evaluation section of the manuscript:

“Gridded estimates of historical land use from the HYDE database (version 3.1) were combined to gridded estimates of potential vegetation from the SAGE database to create base-year gridded maps of LULC and Region/AEZ aggregated data of LULC change as inputs to the downscaling code.”

P10, L18- About initial condition for the projection: Did you use HYDE for base-year- map in 2005? Or MODIS?

Again sorry that wasn't well specified, we used MODIS. It is now clearly stated in the text:

“Contrarily to the historical evaluation analysis that was using HYDE data for the base-year gridded LULC, the projection analysis starts in 2005 with observation-derived MODIS LULC. The downscaling is run with the default configuration presented in Sect 2.”

P11, section 3.1 I hope to see some description on the score of the metric in the basic configuration run. Although we can see in Fig. 4 the spatial distribution of the result with the configuration, we are not sure how the basic configuration did reasonable job in the metric.

We now provide a little more detail on the performance metric. However, as mentioned in the text, HYDE is a reconstruction product and shows significant discrepancies with observation-derived LULC. The main application of the metric is for the sensitivity analyses.

“The historical downscaling of LULC change starting from the 1900 base-year is presented in Figure 5. Europe had already acquired most of today's cropland extent by 1900, but all other regions experienced a substantial increase in cropland area, both in the form of intensification (e.g. India) or expansion (e.g. North America). The downscaling algorithm leads to a spatial 2005 cropland distribution that is in general agreement with the HYDE data, yet lacking their smooth patterns (e.g. North America, India in Figure 5b,c). However, this smooth aspect seems to be an artifact of the HYDE data when compared to the MODIS data (Figure 5c and Figure 7a).

The performance metric generally ranges from 0.3 to 0.7 according to the region and configuration considered (Figure 6), indicating that the downscaling allocates fairly well the changes in cropland area (the metric is bound from -1 to 1). Performance and sensitivity to the downscaling parameters are quite different between tropical, temperate and boreal regions, indicating that LULC dynamics differ and cannot be captured by a single downscaling configuration. Overall, however, sensitivity to the intensification versus expansion ratio and to the relative contribution of kernel density are the strongest, suggesting the importance of proximity to pre-existing agricultural areas for the allocation of new crops. The performance of the downscaling is also clearly influenced

by the base-year, especially in the case of tropical regions, and, expectedly, by the aggregation of the output LULC to coarser resolution.”

About figure: it seems slight curious for me that we cannot see any comparison of maps between “before downscaling” and “after-downscaling” throughout this paper, although downscaling is the main topic. In my simple thinking, such maps would attract attention from the readers who are not so familiar with integrated assessment models or creation of LULC scenarios, and would visualize the significance of your downscaling work. I propose the authors to put such maps in supplementary materials (or main body).

Indeed that was clearly missing, thanks ! We now added figure 2 below, showing the Regional/AEZ scale distribution of croplands, which can be compared to the downscaled maps in Figure 5 and Figure 7 as mentioned in caption.

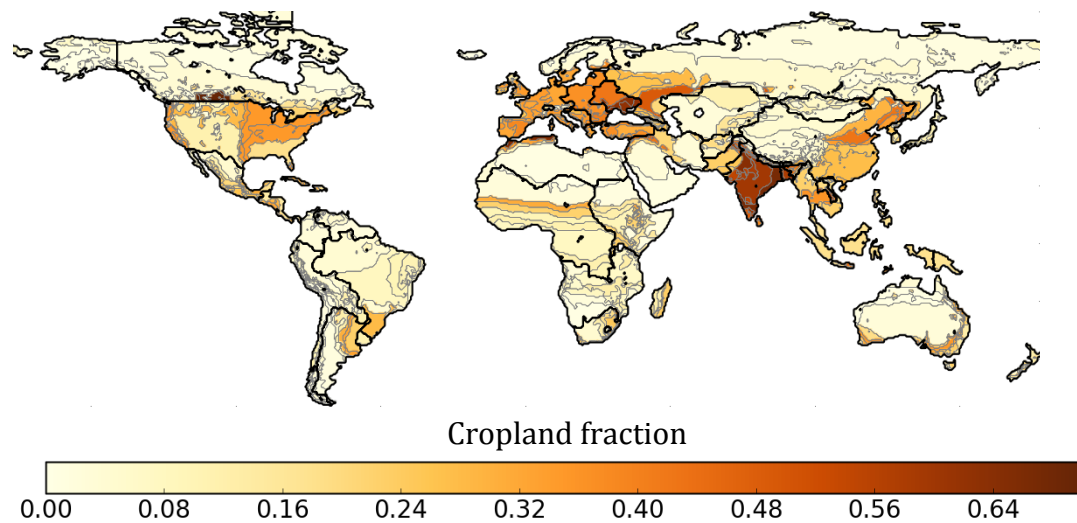


Figure 1. Distribution of 2005 GCAM croplands at the Region/AEZ scale. The algorithm presented in this paper downscales these patterns to a gridded scale (Figure 5 and Figure 7).

[General comment]

This paper describes the downscaling algorithm to generate the gridded data from the regional data calculated by the Global Change Assessment Model. After the explanation of the algorithm, methods of the downscaling evaluation and the sensitivity analysis is described, and finally, the result is evaluated.

Downscaling technique is one of a main topic of climate simulation, this paper will be helpful for understanding the concepts and ideas of this technique. Description of the downscaling algorithm and evaluation methods is so detailed and polite that readers can easily understand it.

But the analysis results seem to be insufficient to show usefulness and advantage of this model. In addition, some more detailed descriptions and modifications seem to be required for better understanding.

We thank the reviewer for his helpful, thorough review of the manuscript. We discuss the suggested changes below and detail their implementation.

[Major comments]

<The result of parameter sensitivity test>

Evaluation of parameter sensitivity summarized in Fig.5 is main topic of this paper. The result, as the author said, is dominated by mainly base year and grid resolution, and sensitivities of other parameters are relatively low. The problem is that, under the default value of base year (1800) and resolution (0.25), the result in Fig.5 can be interpreted that the reproducibility is not so good and this poor reproducibility cannot be improved by changing of any other parameters.

Therefore, I strongly recommend to recompute the parameter sensitivity under the practical base year (1900 or 1950) and resolution (0.25) setting, and redraw the Fig.5 in appropriate color scale without base year and resolution to show the sensitivity of other parameters clearly.

We now perform the sensitivity analysis with the 1900 base year, and made the sensitivity to most parameters more visible by reducing the colormap range. To avoid having two colorbars, we kept the sensitivity to base year and resolution in the same figure, with a text box indicating the metric value when it is out-of-range. The original script to generate the figure had an error, and the results for the sensitivity to base-year are now different. The discussion was updated as follow:

“The historical downscaling of LULC change starting from the 1900 base-year is presented in Figure 5. Europe had already acquired most of today’s cropland extent by 1900, but all other regions experienced a substantial increase in cropland area, both in the form of intensification (e.g. India) or expansion (e.g. North America). The downscaling algorithm leads to a spatial 2005 cropland distribution that is in general agreement with the HYDE data, yet lacking their smooth patterns (e.g. North America, India in Figure 5b,c). However, this smooth aspect seems to be an artifact of the HYDE data when compared to the MODIS data (Figure 5c and Figure 7a).

The performance metric generally ranges from 0.3 to 0.7 according to the region and configuration considered (Figure 6), indicating that the downscaling allocates fairly well the changes in cropland area (the metric is bound from -1 to 1). Performance and

sensitivity to the downscaling parameters are quite different between tropical, temperate and boreal regions, indicating that LULC dynamics differ and cannot be captured by a single downscaling configuration. Overall, however, sensitivity to the intensification versus expansion ratio and to the relative contribution of kernel density are the strongest, suggesting the importance of proximity to pre-existing agricultural areas for the allocation of new crops. The performance of the downscaling is also clearly influenced by the base-year, especially in the case of tropical regions, and, expectedly, by the aggregation of the output LULC to coarser resolution.”

The author shows only the result of crop, but it seems to be insufficient to insist that the downscaling algorithm is really useful. I think that it is necessary to show the result of other land use, at least, the forest case that strongly affects on carbon cycle. Author mentioned about results of parameter sensitivities at P11, L19-L23, but this explanation seems to be too simple. A more detailed description is desired after there-calculation and re-drawing.

The evaluation for forest change is now provided in supplementary material and discussed in the text:

“Performance was also evaluated for the downscaling of forests (Figure S2), which is a critical aspect for many environmental studies (e.g. carbon cycle, biodiversity). The results are mostly relevant for the tropical biome, where the evaluation shows similar patterns of sensitivity to those of croplands. Both temperate and boreal biomes experienced relatively little forest change from 1900 to 2005.”

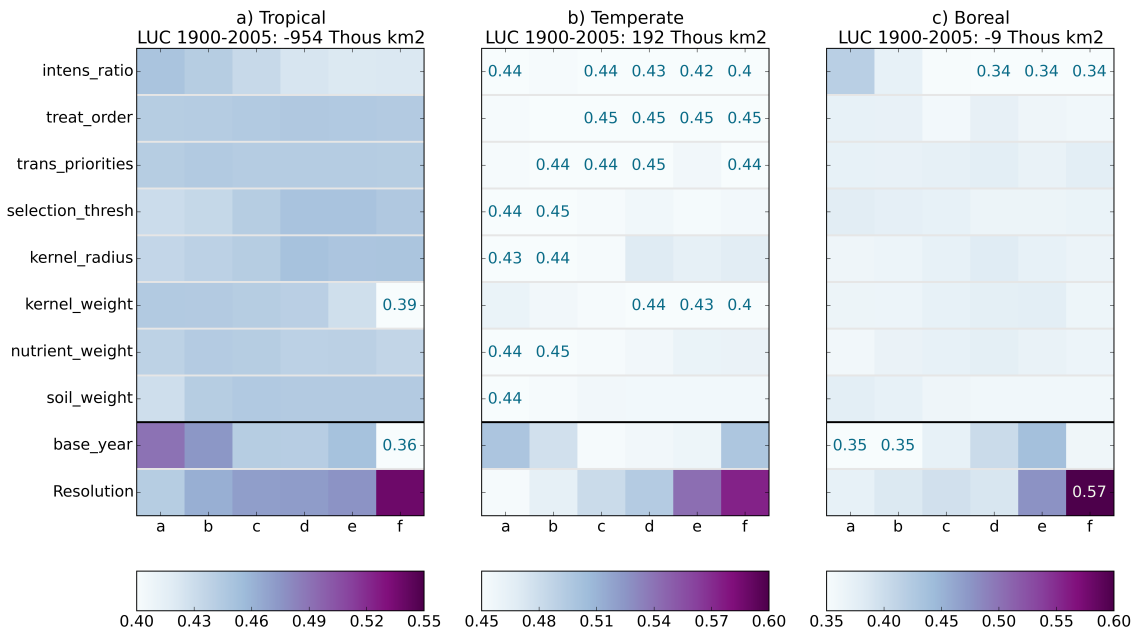


Figure S2. Results of the performance and sensitivity analysis for forests.

Note that we removed the 32 region sensitivity plots as they were not of much support to the results and discussion.

<model description>

Model overview is described in section 2.1. But the description is totally insufficient. For example, the phrase “the terrestrial modules” (P2, L28) suddenly

appears in the section title. Before this section, the author mentioned about “GCAM” and reader did not be given any information about module structure of GCAM. The phrase “Over the spin-up period” (P3, L13) is also the same. The readers not familiar to GCAM cannot prefigure the existence of spin-up period. For better understanding of GCAM and downscaling system, at least, the whole structure of GCAM and the computational flow should be shown in some figures.

An overview of the GCAM model is now part of the main manuscript, complementing the introduction paragraph and giving more details on the representation of the terrestrial biosphere. There is a figure showing the structure of GCAM and the overall computational flow (Figure S1) in supplementary materials, which we suggest to leave there given the more detailed description now part of the manuscript.

<configuration of chapters>

Both downscaling methods and evaluation method are described in section 2. But these methods are essentially different and both are respectively important, and, despite the importance, section number indent seems to be too deep.

Therefore, I think that it is better to separate the description of the downscaling method and evaluation method and summarize the evaluation method and results into new section. Also, model overview is important and is required more detailed description as mentioned above.

As a result, it is preferable to modify the structure of chapters as follows.

before	after
1 Introduction	1 Introduction
2 .1 Overview of the terrestrial	2 Model Overview
2.2 Downscaling method	3 Downscaling algorithm
	4 Evaluation and sensitivity analysis
2.3 Downscaling evaluation and	4.1 method
3.1 Evaluation and sensitivity	4.2 results
	5 Future projections
2.4 Configuration for future projection	5.1 Objective and configuration
3.2 Future land use change scenarios	5.2 results

Thanks! We updated the manuscript with the proposed structure.

<Introduction>

This is a model description paper, so originality is not required so strongly. But generality of the problem and solution is also important for scientific and technical progress, and should not be ignored even in a model description paper.

The author mentioned that spatial resolution is a technical challenge (P2, L11), but only from this explanation, reader cannot judge how this challenge has generality on climate science. Therefore, I ask a presentation of previous studies and an explanation of more detailed background of this study.

The paper clearly lacked a paragraph introducing the importance of land use change projections for environmental studies, which we now address in the revised paper:

“LULC change is a key component of environmental change studies. More than 50% of the terrestrial biosphere has now been transformed to urban areas, croplands or rangelands by anthropogenic activities (Ellis, 2011). Estimates of the carbon budget from historical LULC change range from 12.5% to 33% of all anthropogenic carbon emissions depending on the time period and method considered (Houghton et al., 2012). These emissions combined to LULC-induced albedo and moisture dynamic alterations are a significant – albeit poorly constrained - climate forcing (e.g. Brovkin et al., 2013; Mahmood et al., 2010; Pongratz et al., 2010). The array of LULC changes impacts extends to many other environmental aspects, including biodiversity, freshwater resources and air quality (Foley et al., 2005), hence the importance of projecting future land use scenarios for impacts assessments.”

Regarding the issue of spatial resolution, this is really a problem specific to GCAM, and can't be much more discussed than it is. We illustrate the sub-regional, non-regular spatial scale of the terrestrial component in GCAM (the combination of the 32 regions and 18 AEZs), present the approach developed to downscale GCAM LULC to a grid for the IPCC 5th assessment (Hurtt et al., 2011), and discuss the need for a GCAM-specific, flexible downscaling tool.

[Minor comments]

P2,L19: Meaning of the brackets (Kraucunas et al., 2014) is not clear.

Corrected

P2,L31: Correspondence of the brackets is wrong.

Corrected

P3,L13: Does “ (1700-2005)” have a specific meaning? If so , description is required. If not, it is an extra information.

This was removed with the mention to the spin-up period (see former comment).

P3,L29: land use and land cover -> LULC

Done

P4,L15-L19: This paragraph should be moved to "Data availability" section.

Done

P6,L16: The code can easily be modified.... If it is so easy, why do not you do so?

We had to stop developing at some point, as there are many other additions that would be of interest for some users and applications (e.g. adding other constraints, having other regional or AEZ-specific parameterizations, etc). It wouldn't be an instant edit to the code though, so we removed “easily”.

P8,L2: Sect. 1.2.3.2 -> Sect. 2.2.3.2.

Sorry about that, this was now changed according to the new structure of the manuscript.

P24,Table 7: This table summarizes the parameters about a key topic of this paper. So, it is desirable to show all information without omission. Authors should not expect that readers are so diligent as to refer to supplementary material while reading a paper.

The tables have been moved from supplementary to the main manuscript (Table 8 and 9).

Downscaling land use and land cover from the Global Change Assessment Model for coupling with Earth system models.

5 Yannick Le Page^{1,2}, Tris O. West¹, Robert Link¹, Pralit Patel¹

¹ Centro de Estudos Florestais, Instituto Superior de Agronomia, Universidade de Lisboa Department Tapada da Ajuda, 1349-017 Lisbon, Portugal

² Pacific Northwest National Laboratory, Joint Global Change Research Institute, University of Maryland, College Park, MD 20740, USA

10

Abstract

The Global Change Assessment Model (GCAM) is a global integrated assessment model used to project future societal and environmental scenarios, based on economic modeling and on a detailed representation of food and energy production systems. The terrestrial
15 module in GCAM represents agricultural activities and ecosystems dynamics at the sub-regional scale, and must be downscaled to be used for impact assessments in gridded models (e.g. climate models). In this study, we present the downscaling algorithm of the GCAM model, which generates gridded time series of global land use and land cover (LULC) from any GCAM scenario. The downscaling is based on a number of user-defined rules and
20 drivers, including transition priorities (e.g. crop expansion preferentially into grasslands rather than forests) and spatial constraints (e.g. nutrient availability). The default parameterization is evaluated using historical LULC change data, and a sensitivity experiment provides insights on the most critical parameters and how their influence changes regionally and in time. Finally, a reference scenario and a climate mitigation scenario
25 are downscaled to illustrate the gridded land use outcomes of different policies on agricultural expansion and forest management. Several features of the downscaling can be modified by providing new input data or changing the parameterization, without any edits to the code. Those features include spatial resolution as well as the number and type of land classes being downscaled, thereby providing flexibility to adapt GCAM LULC scenarios to
30 the requirements of a wide range of models and applications. The downscaling system is version controlled and freely available.

Introduction

LULC change is a key component of environmental change studies. More than 50% of the terrestrial biosphere has now been transformed to urban areas, croplands or rangelands by anthropogenic activities (Ellis, 2011). Estimates of the carbon budget from historical LULC change range from 12.5% to 33% of all anthropogenic carbon emissions depending on the time period and method considered (Houghton et al., 2012). These emissions combined to LULC-induced albedo and moisture dynamic alterations are a significant – albeit poorly constrained – climate forcing (e.g. Brovkin et al., 2013; Mahmood et al., 2010; Pongratz et al., 2010). The array of LULC changes impacts extends to many other environmental aspects, including biodiversity, freshwater resources and air quality (Foley et al., 2005), hence the importance of projecting future land use scenarios for impacts assessments.

The Global Change Assessment Model (GCAM) has been developed to better understand interactions between natural and human systems and anticipate their co-evolution in the future. It combines representations of the global economy, energy systems, agriculture and land use with a representation of terrestrial, ocean and atmospheric biogeochemical, ice-melt and climate processes (Clarke et al., 2007; Kim et al., 2006). GCAM is extensively used to explore the direct effects of changes in exogenous assumptions, such as population, technology, yield improvements, economic and environmental policies, as well as their system-wide repercussions. These analyses are performed using GCAM as a standalone model or coupled to specialized models with greater capabilities for impact assessments. For example, GCAM provided greenhouse gas emissions and land use/land cover (LULC) projections for one of the 4 scenarios of the IPCC 5th Assessment Report, the Representative Concentration Pathways 4.5 (RCP4.5, Thomson et al., 2011). Those data were used as inputs to climate models to generate climate projections and perform a wide range of impact, adaptation and vulnerability assessments (Pachauri et al., 2014).

Coupling models involves adapting the data and models so that the flow of information is consistent with the source model and can be assimilated by the destination model. In the case of GCAM, spatial resolution is a technical challenge for coupling studies looking at the impacts of LULC change. GCAM represents these dynamics at sub-regional scale while Earth system models and regional natural resource (i.e., agriculture and forestry) models typically operate at gridded scales. For example, the U.S. is divided into 8 agro-ecological zones (AEZs, Monfreda et al., 2009), of various sizes (up to 2.5 Million km²) and shapes. GCAM tracks the share of land categories in each AEZ, but not where they are actually located within each zone. This issue was addressed for the IPCC 5th Assessment Report with

a downscaling algorithm designed specifically for coupling to climate models (Hurt et al., 2011). However, gridded LULC scenarios are needed for a variety of models and applications, each requiring specific data attributes (e.g. resolution, land categories, management practices, Kraucunas et al., 2014). A flexible downscaling component within the GCAM modeling framework is thus needed to meet these multiple applications.

This paper presents LULC downscaling capabilities, code, and parameters developed for the GCAM model. An evaluation analysis with historical land use data is performed to quantify the spatial accuracy of land use change allocation, and a sensitivity analysis is conducted to identify critical parameters. Finally, the downscaling method is applied to scenarios of future land use change projected by GCAM, generating gridded land use projections that can be used for impact assessments in coupling experiments.

1. Overview of the GCAM model

GCAM is global in scope and spatially disaggregated into geopolitical regions that interact through international trade. GCAM computes supply, demand and prices in 5-year intervals for a variety of primary energy carriers, secondary energy carriers, and agricultural and forest products. Economic behavior in GCAM is determined as a result of markets in which the supplies and demands for economic goods and services are assumed to clear on the model's time step. As supplies and demands shift in GCAM's regions, market clearing prices change as do production, consumption and trade patterns.

The terrestrial system is represented in GCAM to account for its role in food, wood, and energy production (Calvin et al., 2014) and in the carbon and water cycles (Hejazi et al., 2014; Le Page et al., 2013), providing capabilities to explore interactions and the implications of environmental policies (Figure S1 in Supp. Material, Kraucunas et al., 2014; Thomson et al., 2011). While we focus here on describing the spatial scale and land types in GCAM because they are essential aspects for the downscaling, a more technical description of the terrestrial module is available in the literature (Kyle et al., 2011; Wise et al., 2014; Wise and Calvin, 2011).

GCAM represents the world terrestrial biosphere into 283 spatial units, the result of the intersection of two spatial scales. First, the world countries are aggregated into 32 geopolitical and socio-economic regions (Figure 1a), a scale at which most economic sectors are represented (e.g. industrial production, energy use, trade, and natural resources). Second, global land area is split into 18 agro-ecological zones (AEZs, Figure 1b) to represent natural ecosystems and agricultural activities, providing a climate-based zoning to better account for

vegetation and crop productivity. These 18 AEZs are intersected with the 32 regions to get the 283 unique combinations of region and AEZ.

Each of these 283 region/AEZ can have up to 22 types of land cover: five types of natural ecosystems and 17 types of managed lands (Table 1). Initial land areas for the first GCAM time step (2005) are inferred from the History Database of the Global Environment (HYDE, Klein Goldewijk et al., 2011), the FAO RESOURCESTAT database (FAO, 2010) and potential vegetation data (Ramankutty and Foley, 1999a), as detailed in Kyle et al. (2011). For future time steps, GCAM integrates a range of drivers to determine LULC change, including food demand (population growth, diet changes), region/AEZ level crop productivity and costs (e.g. labour, fertilizer), energy demand (bioenergy crops) and environmental policies, among others. A major application of GCAM consists in exploring LULC projections under alternative configurations of these drivers (Calvin et al., 2014; Thomson et al., 2010, 2011). For example, while the reference scenario projects continuing deforestation and expansion of global agriculture in response to growing food demand, implementing a terrestrial carbon market shifts the economics of land use decisions towards agriculture intensification and afforestation. These scenarios are depicted at the region/AEZ scale, as illustrated in Figure 2 for croplands, but can be gridded with the downscaling algorithm detailed below.

2. Downscaling algorithm

The GCAM LULC downscaling method is based on previous work by West et al. (2014) at the national scale for the U.S. It consists of allocating tabular land areas from a relatively coarse set of spatial units to a higher resolution land cover grid (West et al., 2010). In the case of GCAM, these spatial units are defined by the intersection between regions and AEZs (Figure 1), and the resolution of the final grid for the global analysis presented here is 0.25 degrees (~28km at the equator). The algorithm relies on gridded observations of LULC and on a set of user-defined rules to spatially allocate land types within each region/AEZ (Figure 3).

The algorithm starts with a pre-processing phase of the GCAM and observation-derived gridded LULC data to harmonize their attributes. It is labeled the reconciliation phase, and consists of (1) aligning total land areas of each region/AEZ from both data sources, and (2) converting their respective land schemes to a common set of land types that are ultimately downscaled.

Following data reconciliation, the actual downscaling is performed. The algorithm starts in the base-year (first time step, e.g. 2005), and modifies the observed gridded data until land shares in each region/AEZ are equal to the shares in the GCAM model. If a given region/AEZ has 100km² of crops in GCAM but only 80km² in the observation, 20km² of crops will be created by converting other land types that are in excess. The geospatial allocation of the additional 20km² of cropland depends on a number of downscaling rules that are described in the next section, including land use transition priorities and spatial constraints (e.g., nutrient availability for agriculture). Once completed, the base-year downscaled data consists in gridded LULC that is consistent with GCAM at the region/AEZ scale with spatial patterns similar to observed LULC (Figure 3). This gridded GCAM LULC in the base-year then becomes the starting point to which LULC change of the following time step is attributed, following the same downscaling rules. This process is repeated for each time step until the entire scenario is downscaled (e.g. 2005-2100).

The next sections describe the code and its user-defined parameters in more details. For the sake of clarity, it is based on a relatively simple configuration of the downscaling, referred to as “default configuration”, but many aspects are flexible as specified in the text. The spatial LULC data used in the default configuration are from the MODIS MCD12Q1 version 5.1 product for the year 2005, PFT Type 5 classification (Friedl et al., 2010), aggregated from 500m to 0.25 degree resolution.

2.1 Reconciliation phase

2.1.1 Matching land areas

Although the downscaling aims at maintaining consistency with the original GCAM land outputs, the total land area in each region/AEZ has to be adjusted to match the observation data. Otherwise, expansion on water (case of more land in GCAM) and removal of observed terrestrial land (case of less land) would be necessary, which was considered unrealistic. All GCAM land types (GLTs) are adjusted by the same ratio within a given region/AEZ:

$$A_{R,Z,L}^{GC} = A_{R,Z,L}^G \times \frac{A_{R,Z}^O}{A_{R,Z}^G} \quad \text{Equation 1}$$

Where A^G and A^O are the GCAM and observed areas, A^{GC} the final, adjusted GCAM areas, R and Z the region/AEZ and L the GCAM land type considered. When compared to MODIS, total area of most regions/AEZs differs by less than 3%. Globally, total land area is 126.9 Million km² in GCAM and 128.1 Million km² in MODIS (not including small islands

and other territories that are not represented in GCAM and thus remain equal to observations throughout the downscaling).

2.1.2 Aggregation to common land type categories

Once total land areas are the same, both the GCAM and spatial land types (GLTs and SLTs) are aggregated to a common scheme of final land types (FLT's). For example, the MODIS data have only one cropland type, while GCAM has 13 different types. All GCAM crop types are thus aggregated to a single crop category to enable the downscaling: if GCAM corn was kept as an individual land type, there would be no indication of where those corn crops should be allocated from the MODIS data. In the default configuration, the common scheme includes 7 FLT's: forests, shrubs, grass, crops, urban land, snow, and sparse vegetation.

Aggregation of the spatial data is user-defined with an input table (Table 2). For a given SLT, a number from 0 to 1 determines the share of that land type that goes to each of the FLT's. Typically, the share is either 0 or 1, meaning that an SLT is entirely attributed to a single FLT (Table 2). However, some land cover classification products include mixed land types (e.g. mosaic of crops and forests). In such a case, the area under that type could be split into crops and forests by using shares of 0.5.

Aggregation of the GCAM data at the region/AEZ scale follows the same concept (Table 3), only with a different approach when a given GLT has to be split into 2 or more FLT's: the shares received by each FLT are determined by the spatial data in that region/AEZ. For example, the GLT *RockIceDesert* can qualify to both the *snow* and the *sparse* FLT's. However, the fraction that should go to each depends on the region/AEZ considered: most would go to *snow* in Greenland, and to *sparse* in central Australia. The table is thus filled with 1s for both (Table 3) to indicate that this GLT needs to be split, and the code computes the actual split as the share of *snow* and *sparse* seen in the spatial data (e.g. MODIS) for each region/AEZ.

2.2 Downscaling rules

Once the GCAM and spatial data are reconciled and aggregated to the same land type categories (i.e. FLT's), downscaling is performed based on a set of user-defined rules: a "treatment order" defining which FLT's are downscaled first, an "intensification versus expansion ratio", "transition priorities" defining what type of land swaps are favored, and "spatial constraints" which attribute to each grid-cell a likelihood to receive an expanding FLT. All these rules influence the spatial patterns of the final downscaled GCAM data (see sensitivity analysis in Sect. 3).

2.2.1 Treatment order

The algorithm downscales all FLT's one after the other; an order thus has to be defined. The input files include a table where users specify that order (Table 4).

2.2.2 Intensification versus expansion ratio

5 When the GCAM projections indicate that the area of a given FLT is increasing, the additional area can be downscaled on grid-cells where the FLT already exists – which is referred to as *intensification*, or on grid-cells where it does not yet exist – referred to as *expansion*. In the real world, the ratio of intensification versus expansion varies in space and time. In North America for example, land giveaways, infrastructure development and a
10 number of other factors led to a large-scale westward *expansion* of agricultural activities from 1800 to 1950, then to their *intensification* until today, with most of the Corn Belt now featuring more than 80% crop cover (Ramankutty and Foley, 1999b). In the default configuration presented here, the intensification ratio (*intens_ratio*) is set to 0.8 globally, and is part of the sensitivity analysis (Sect. 3). The code can be modified to define specific ratios for
15 different regions or time periods, however. Note that the ratio is a target, which sometimes cannot be met. In the extreme case where croplands exist in all grid-cells of a region/AEZ for example, *expansion* is impossible. The code then applies the desired *expansion* target as *intensification* instead.

2.2.3 Transition priorities

20 At each time step, GCAM computes LULC change at the region/AEZ scale, but does not give any indication on land use transitions. For example, if crops and forests increase while shrubs and grass decrease, the share of each possible conversion - or transition - is not known (shrubs to crops, grass to crops, shrubs to forests, grass to forests). It is however an aspect we have to represent when downscaling LULC change to a spatial grid, and is also
25 relevant information for Earth System modelers (see Discussion). A preference order for land use transitions is thus user-defined in the parameter files, for each FLT (Table 5). In the default configuration, crops are set to preferentially replace urban land, then grasslands, then shrublands, then forests, etc. This is a preference only: specific transitions can only happen if the FLT to be converted is projected to decrease in GCAM. In the example given above,
30 crops could not be increased into forested land because forests are also projected to increase. This is related to the concepts of “net” versus “gross” LULC change (see discussion).

2.2.4 Spatial constraints

Any kind of spatial constraints can be used to influence the downscaling. For a constraint to be implemented, users must provide the input data at the resolution considered and parameterize its influence. The input data must be bound from 0 (fully constraining) to 1 (no constraint). Then the parameterization defines the relative contribution of that specific constraint in influencing the downscaling, and is specific to each FLT. In the default configuration illustrated in Table 6, three spatial constraints are listed: kernel density, soil workability and nutrient availability.

Kernel density represents the proximity and density of a given FLT around a given grid-cell. It is computed by default in the code, adjusting to the new FLT distribution at each time step. It was implemented under the assumption that new areas of a given FLT tend to appear close to where it already is (e.g. desertification and crop expansion around agricultural areas).

$$KD_{FLT} = \frac{1}{n} \times \sum_{gc=1}^n \frac{F_{FLT,gc}}{(D_{gc})^2} \quad \text{Equation 2}$$

where KD is the kernel density, n the number of neighboring grid-cells included in the computation, F_{FLT} the fraction of the FLT in the grid-cell considered, and D the distance of that grid-cell to the grid-cell for which the kernel density is being computed. A user-defined parameter – *radius* – represents the size of the moving window used to compute KD for each grid-cell, thus controlling the number n . Note that the kernel density depends on land types in the surrounding grid-cells, thus has a different influence on the downscaling than intensification, which is activated based on the considered grid-cell only.

Soil workability and nutrient availability are two indicators of agricultural suitability from the Harmonized World Soil Database (HWSD, Fischer et al., 2008). In Table 6, kernel density contributes 100% of the spatial constrain for all FLT's but for crops, for which it contributes 40% while nutrient availability contributes 40% and soil workability the remaining 20%. Note that the parameterization can include negative numbers to indicate that a constraint has the opposite influence: one could for example favor desertification in low nutrient areas by having a negative value in the cell at the intersection of the “nutrient availability” row and “sparse” column in Table 6. Based on those spatial constraints contributions, each grid-cell is attributed an index S from 0 to 1 assessing how suitable they are to receive the considered FLT. In the case of crops and the default configuration:

$$S = \frac{40}{|40+40+20|} \times KD + \frac{40}{|40+40+20|} \times NA + \frac{20}{|40+40+20|} \times SW \quad \text{Equation 3}$$

where KD is the kernel density, NA the nutrient availability, and SW the soil workability, which relative contributions (40, 40 and 20, respectively) are specified in Table 6. Each spatial constrain being a dimensionless index bound from 0 to 1, the suitability index is dimensionless as well.

5 2.3 Computational flow and implementation of the downscaling rules to allocate land use change

A stylized overview of the code structure is shown in Figure 4. Not included in this overview are a number of functions which can be activated in the user-input files to perform optional tasks such as mapping FLT distributions, saving statistics and converting the output data (.csv files by default) to netcdf format. A break down of run time and output sizes as a function of resolution, number of FLTs and optional tasks activated are provided in the user-manual. Downscaling all 5-year time steps of a 2005-2100 scenario at 0.25 degree resolution with 7 FLTs takes a few minutes on a standard desktop computer and produces around 100Mb of output data when all optional tasks are turned off.

To better illustrate how the downscaling is actually computed, we provide a specific example: in a given region/AEZ, crops are projected by GCAM to increase by 100km² from 2015 to 2020, while grasslands and forests decrease by 70km² and 30km², respectively. All other FLTs remain unchanged. Of the 100km² cropland increase, 80km² are set to occur as intensification and 20km² as expansion (user-defined intensification versus expansion ratio of 0.8, see Sect. 2.2.2).

The code goes through the first intensification loop (Figure 4), following the treatment order (Table 4). Urban, snow and sparse land types are skipped as they remain unchanged, then the loop goes to crops, which have to be intensified by 80km². The code thus goes through the land use transition priorities for crops (Table 5), starting with urban land, which does not have any area to spare and therefore remains unchanged. The second priority is grass, which does have land to spare as it is projected to decrease by 70km². All grid-cells in that region/AEZ containing both crops and grass (intensification is for grid-cells which already have crops) are thus selected, and their suitability index (S , sect. 2.2.4) is computed. Assuming that the more suitable a grid-cell the more intensification it will receive, the 70km² of potential conversion are tentatively distributed to the selected grid-cells according to their suitability index:

$$TC_{gc} = 70km^2 \times \frac{S_{gc}}{\sum_{gcs} S} \quad \text{Equation 4}$$

where TC stands for tentative conversion, gc the grid-cell and gcg the group of grid-cells selected because they contain both crops and grass. The actual conversion is the minimum value between TC and the area of grass on each grid-cell:

$$AC = \min(TC|GA) \quad \text{Equation 5}$$

5 where AC stands for actual conversion and GA for grass area. Given that the tentative conversion might not be possible because the existing grass area is lower, the total conversion achieved after the first computation can be less than 70km² while some grid-cells might still have grass to spare. The computation is therefore repeated until 70km² is reached, or until there are no more grid-cells with pre-existing crops and with grass to spare. For this
10 example, we will assume that 60km² of grass was converted to crops. The total intensification target being 80km², 20km² has to be done on non-grass areas. The code thus goes to the next crop transition priority (Table 5): shrublands is skipped as it remains unchanged, but forests are projected to decrease by 30km². The intensification computation is repeated to convert forests to crops. We will assume that only 7km² of forest-to-crop
15 conversion could be achieved. At the end of the intensification, 67km² of the projected 100km² cropland increase has been allocated, 60km² by converting grasslands, 7km² by converting forests, leaving 33km² to be done by expansion. Of those 33km², 10km² have to replace grasslands as they are projected to decrease by 70km² total, 60 of which have been converted by crop intensification. The remaining 23km² have to replace forests as they are
20 projected to decrease by 30km², 7 of which have been converted by crop intensification.

The expansion function is similar to the intensification function, except that only a fraction of the pre-selected grid-cells are selected to receive the remaining crop area, to avoid patterns of ubiquitous expansion, especially for croplands which generally expand in clusters around newly cultivated lands. Continuing with the applied example, the code goes through
25 the same treatment order and transition priorities, thus first expanding crops into grasslands. Because crop expansion can only occur on grid-cells that do not yet have crops, all grid-cells in the considered region/AEZ containing grass but not crops are pre-selected as “candidate” grid-cells to apply the grass conversion to crops. The candidate grid-cells are then ranked based on their suitability index. The code selects the most suitable candidate grid-cells
30 following a percentage defined by the user (selection threshold, 25% in the default configuration) or - if stochastic selection is turned on - using the suitability index of each grid-cell as the probability it will be selected in a Bernoulli trial. Only the selected grid-cells will be used when computing the tentative and actual conversion, in the same way as for intensification. 10km² of crops are expanded following this scheme into grasslands, and
35 23km² into forests.

The final intensification ratio is thus $67/100 = 0.67$, less than the user-defined target (0.8 in the default configuration) because of a land-driven limitation on the amount of intensification that can be achieved. In other cases, the reverse situation occurs and a larger proportion of LULC change has to be done through intensification, conducted in the second round of intensification (see Figure 4).

At the end of a full downscaling run, gridded LULC areas are obtained for each of the user-defined land types and for each time step, which can be interpolated to annual data. LULC transitions (the amount of land switched between each pair of land types in each grid-cell) are also explicitly tracked by the algorithm given their importance for the carbon cycle (Brovkin et al., 2013). They are however not exported by default given their large size and specific format requirements as input for models capable of using them.

3. Evaluation and sensitivity analysis

3.1 Method

The downscaling code was applied to historical LULC change data with a range of alternative configurations to evaluate how realistic the spatial allocation is and to quantify the sensitivity of the results to the user-defined parameters.

Gridded estimates of historical land use from the HYDE database (version 3.1) were combined to gridded estimates of potential vegetation from the SAGE database to create base-year gridded maps of LULC and Region/AEZ aggregated data of LULC change as inputs to the downscaling code. Although the HYDE data include estimates back to 10000 B.C., we contain the evaluation analysis to the 1700-2005 period. About 81% of today's cropland area in the database has been established within that period. Note that HYDE is a reconstruction product and shows substantial deviations from satellite data such as MODIS, but it is used as what we considered the best option to evaluate the downscaling and sensitivity to the parameters, especially due to the temporal span. Using a satellite product directly (e.g. MODIS) would restrain the evaluation to a 10-20 years period with much less land use change. The ratio of misclassified over real land use change would also be an issue, with for example up to an order of magnitude between apparent versus real change in the MODIS annual land cover product (Friedl et al., 2010).

Six alternative configurations were defined for the 10 parameters shown in Table 7, Table 8 and Table 9. The downscaling was thus run 60 times, each time maintaining the default configuration but changing the value of the considered parameter.

The 2005 downscaled crop distribution was then compared to the HYDE data to compute a performance metric:

$$\mathbf{metric} = \mathbf{1} - \frac{\sum_{gc} |GCAMdc_{gc,2005} - HYDEc_{gc,2005}|}{\sum_{gc} |HYDEc_{gc,2005} - HYDEc_{gc,byear}|} \quad \text{Equation 6}$$

where $GCAMdc$ is the downscaled GCAM crop area, $HYDEc$ the crop area in the HYDE data, and $byear$ is the base-year of the run (first time step). The metric is computed for single or aggregated regions/AEZs and can vary from -1 to +1. It represents the fraction of land use change that was allocated to the “right” grid-cells, i.e. in agreement with the land use change computed from HYDE between the base year and 2005. At the extremes, -1 means the downscaling did exactly the opposite to what was observed (decreasing crops where it was supposed to increase and vice-versa). A value of +1 is a perfect match. The metric was computed for tropical, temperate and boreal biomes separately, as delineated in Figure 1b based on the AEZs.

3.2 Results

The historical downscaling of LULC change starting from the 1900 base-year is presented in Figure 5. Europe had already acquired most of today’s cropland extent by 1900, but all other regions experienced a substantial increase in cropland area, both in the form of intensification (e.g. India) or expansion (e.g. the corn belt in North America). The downscaling algorithm leads to a spatial 2005 cropland distribution that is in general agreement with the HYDE data, yet lacking their smooth patterns (e.g. North America, India in Figure 5b,c). However, this smooth aspect seems to be an artifact of the HYDE data when compared to the MODIS data (Figure 5c and Figure 7a).

The performance metric generally ranges from 0.3 to 0.7 according to the biome and configuration considered (Figure 6), indicating that the downscaling allocates fairly well the changes in cropland area (the metric is bound from -1 to 1). Performance and sensitivity to the downscaling parameters are quite different between tropical, temperate and boreal biomes, indicating that LULC dynamics differ and cannot be captured by a single downscaling configuration. Overall, however, sensitivity to the intensification versus expansion ratio and to the relative contribution of kernel density are the strongest, suggesting the importance of proximity to pre-existing agricultural areas for the allocation of new crops. The performance of the downscaling is also clearly influenced by the base-year, especially in the case of tropical regions, and, expectedly, by the aggregation of the output LULC to coarser resolutions.

Performance was also evaluated for the downscaling of forests (Figure S2), which is a critical aspect for many environmental studies (e.g. carbon cycle, biodiversity). The results are mostly relevant for the tropical biome, where the evaluation shows similar patterns of sensitivity to those of croplands. Both temperate and boreal biomes experienced relatively little forest change from 1900 to 2005.

4. Future projections

4.1 Objectives and configuration

We applied the downscaling to two GCAM scenarios of 2005-2100 LULC projections to illustrate the capabilities of the algorithm and its potential applications for environmental impact studies. In the “reference” scenario, the economy and technological developments are not targeted by any environmental policies, thus driving human- and natural-system dynamics in a business-as-usual fashion. This scenario features substantial crop expansion to meet the increasing food demand (growing population, diet changes, etc). In the Mitigation Policy 4.5 (MP4.5) scenario, an economic policy in the form of a global carbon market applied to industrial, fossil-fuel and terrestrial emissions is implemented to limit radiative forcing in 2100 to $+4.5\text{W.m}^{-2}$. Incentives to carbon sequestration in the MP4.5 lead to afforestation in many regions, while agriculture tends to develop in high-yield areas. It is a replicate of the Representative Concentration Pathways 4.5 scenario (RCP4.5) produced by GCAM for the IPCC 5th assessment report (Thomson et al., 2011, p.4), but instead uses the latest GCAM release (GCAM4).

Contrarily to the historical evaluation analysis that was using HYDE data for the base-year gridded LULC, the projection analysis starts in 2005 with observation-derived MODIS LULC. The downscaling is run with the default configuration presented in Sect 2.

4.2 Results

The downscaled reference and MP4.5 LULC scenarios feature key differences in 2100 due to their specific economic and policy context (Figure 7). Population reaches about 9 billion in 2060 in GCAM (slowly decreasing thereafter), contributing to increasing food demand that cannot be met with the projected yield improvements on current agricultural areas. As a result, global crop area is projected to increase by 10% in the reference scenario (2005-2100), with substantial expansion in tropical and sub-tropical forests (Figure 7c,d), compensated by afforestation in other regions (0.3% deforestation globally). In the MP4.5 scenario, economic incentives for terrestrial carbon sequestration lead to a different solution. Afforestation becomes a profitable option for landowners and global forested area increases

by 34%, replacing agriculture in many regions (Figure 7e,f). To meet global food demand, agricultural production is intensified in high-yield areas (e.g. India, China) and expands into marginal lands with the support of irrigation and other technological developments (e.g. Western US, Middle East). Globally, those changes of agricultural practices enable a reduction of crop area by 10.4%. Note that these general LULC trends are determined by GCAM, including deforestation and afforestation: the downscaling does not make any region/AEZ-scale land use change decision, but instead spatially delineates those decisions to a gridded format. Note also that the downscaled 2005 GCAM crops show much more similar patterns to MODIS than those obtained in the historical evaluation analysis (Figure 7a versus Figure 5b). This is because 2005 was the last year in the evaluation analysis while it is the base-year for the projections.

5. Discussion

GCAM models human and natural systems at the scale of regions and AEZs, but the LULC downscaling system presented here enables a gridded representation of the land. The gridded outputs are consistent with the GCAM projections and can be influenced with a number of user-defined parameters. The optional spatial constraints provide the capability to adjust the downscaling to capture regional land-use change dynamics. One example illustrated in this study consists in using soil characteristics (i.e., nutrients, workability) to drive the allocation of agricultural activities. The downscaling system was primarily developed as an integrating tool, enabling LULC change impact assessments by providing gridded inputs to other models that cannot be run with the original GCAM data at region/AEZ scale. The gridded outputs may also be used to directly analyze spatial patterns within and between GCAM scenarios, albeit with the understanding that realistic results depend on the chosen configuration for the region, time period and aspects of LULC that are being considered.

Models that might be coupled to GCAM through LULC downscaling all have specific input data requirements - different land types or spatial resolution for example. The downscaling system can be easily adapted to meet a number of these requirements, without any edits to the code. Any number of final land types (FLT's) can be downscaled provided that base-year data is available and that parameters specific to each land type are provided (e.g. aggregation rules, transition priorities). For example, in the case of a model requiring separate broadleaf/needle-leaf and deciduous/evergreen forest types – for which base-year distribution is readily available in MODIS - Tables 2-6 need to be modified into Tables S2-S6 (supp. Material) and all 4 types of forests will be downscaled. Another example consists in downsampling specific crop types for agricultural models (instead of a single crop category as

shown in this study), which requires crop-specific base-year data and modified Tables 2-6. The necessary data and configuration tables are provided as a beta-version with the downscaling system (see user manual). Other aspects that are flexible include the downscaling resolution, the spatial domain (e.g. continental, regional focus), and the base-year LULC data (e.g. higher quality regional datasets).

The downscaling method can be used for a number of applications related to LULC change. It contributed to a study assessing global gridded carbon fluxes from agricultural production and consumption (Wolf et al., 2015), by downscaling FAO crop inventory data at the county/state/province level to a 0.05 degree grid. It was also applied to downscale specific crop types as well as irrigation practices from a detailed USA version of GCAM (Huang et al., in prep) to study the response of terrestrial hydrology to future scenarios of LULC change.

Despite the flexibility, some aspects are intrinsic to the GCAM model and the downscaling code and might be a limitation for certain applications. GCAM models net LULC change within each spatial unit (e.g. region/AEZ), as opposed to gross LULC, and thus minimizes the amount of LULC change from one timestep to the other. For example, a crop increase by 100km² in a region/AEZ could be the result of several LULC change storylines, including one where crops increase by 150km² in some part of the region/AEZ and decrease by 50km² elsewhere. In that case 200km² of land are converted (gross change), with consequences for carbon emissions, landscape fragmentation or the water cycle. The downscaling does not try to model those dynamics a posteriori from the GCAM net land use change. A new version of GCAM is currently being developed to represent land use dynamics annually, which the downscaling algorithm can process. The net versus gross LULC change issue will be mostly eliminated for these scenarios as multiple land conversions within the same year are rare. The lack of flexibility to account for specific dynamics through the regional and temporal domain of the downscaling is another limitation, which can be addressed with code changes. As shown in the evaluation and sensitivity analysis, regional performances vary depending on the amount and type of observed LULC change and on the period considered. For example, patterns of agricultural expansion into the Amazon forest will be best downscaled under a specific configuration that would be sub-optimal to represent intensification and encroachment into semi-arid areas in the U.S. Great Plains. Similarly, that same configuration would not be the best to reproduce the move towards intensification and away from deforestation observed in the Amazon basin since 2004. The parameterization is currently common to all regions and for the entire downscaling period, but can be made flexible with relatively simple edits to the code.

6. Data availability

The downscaling system is available on the GitHub open-source software site¹. The repository includes the source code (written in Python 2.7) and a detailed user manual, including software/library requirements. A reference LULC scenario is provided as part of the downscaling system, as well as spatial LULC data from MODIS for the 2005 base-year. Alternative scenarios can be generated with GCAM, which is available from the Joint Global Change Research Institute².

References

- Brovkin, V., Boysen, L., Arora, V. K., Boisier, J. P., Cadule, P., Chini, L., Claussen, M., Friedlingstein, P., Gayler, V., Van Den Hurk, B. and others: Effect of anthropogenic land-use and land-cover changes on climate and land carbon storage in CMIP5 projections for the twenty-first century, *J. Clim.*, 26(18), 6859–6881, 2013.
- Calvin, K., Wise, M., Kyle, P., Patel, P., Clarke, L. and Edmonds, J.: Trade-offs of different land and bioenergy policies on the path to achieving climate targets, *Clim. Change*, 123(3–4), 691–704, doi:10.1007/s10584-013-0897-y, 2014.
- Clarke, L., Lurz, J., Wise, M., Edmonds, J., Kim, S., Smith, S. and Pitcher, H.: Model documentation for the minicam climate change science program stabilization scenarios: Ccsp product 2.1 a, Pac. Northwest Natl. Lab. PNNL-16735, 2007.
- Ellis, E. C.: Anthropogenic transformation of the terrestrial biosphere, *Philos. Trans. R. Soc. Math. Phys. Eng. Sci.*, 369(1938), 1010–1035, doi:10.1098/rsta.2010.0331, 2011.
- FAO: FAOSTAT, [online] Available from: <http://faostat.fao.org/site/348/default.aspx> (Accessed 8 January 2016), 2010.
- Fischer, G., Nachtergaele, F., Prieler, S., Van Velthuisen, H. T., Verelst, L. and Wiberg, D.: Global agro-ecological zones assessment for agriculture (GAEZ 2008), IIASA Laxenburg Austria FAO Rome Italy, 2008.
- Foley, J. A., DeFries, R., Asner, G. P., Barford, C., Bonan, G., Carpenter, S. R., Chapin, F. S., Coe, M. T., Daily, G. C., Gibbs, H. K. and others: Global consequences of land use, *science*, 309(5734), 570–574, 2005.
- Friedl, M. A., Sulla-Menashe, D., Tan, B., Schneider, A., Ramankutty, N., Sibley, A. and Huang, X.: MODIS Collection 5 global land cover: Algorithm refinements and characterization of new datasets, *Remote Sens. Environ.*, 114(1), 168–182, doi:10.1016/j.rse.2009.08.016, 2010.

¹ <https://github.com/JGCRI/GCAMLU>

² <http://www.globalchange.umd.edu/models/gcam/download/>

- Hejazi, M., Edmonds, J., Clarke, L., Kyle, P., Davies, E., Chaturvedi, V., Wise, M., Patel, P., Eom, J. and Calvin, K.: Long-term global water projections using six socioeconomic scenarios in an integrated assessment modeling framework, *Technol. Forecast. Soc. Change*, 81, 205–226, 2014.
- 5 Houghton, R. A., House, J. I., Pongratz, J., Van der Werf, G. R., DeFries, R. S., Hansen, M. C., Quéré, C. L. and Ramankutty, N.: Carbon emissions from land use and land-cover change, *Biogeosciences*, 9(12), 5125–5142, 2012.
- 10 Hurtt, G., Chini, L., Frolking, S., Betts, R., Feddema, J., Fischer, G., Fisk, J., Hibbard, K., Houghton, R., Janetos, A. and others: Harmonization of land-use scenarios for the period 1500–2100: 600 years of global gridded annual land-use transitions, wood harvest, and resulting secondary lands, *Clim. Change*, 1–45, 2011.
- Kim, S. H., Edmonds, J., Lurz, J., Smith, S. J. and Wise, M.: The ObJECTS framework for integrated assessment: hybrid modeling of transportation, *Energy J.*, (Special Issue# 2), 63–92, 2006.
- 15 Klein Goldewijk, K., Beusen, A., Van Dreht, G. and De Vos, M.: The HYDE 3.1 spatially explicit database of human-induced global land-use change over the past 12,000 years, *Glob. Ecol. Biogeogr.*, 20(1), 73–86, 2011.
- 20 Kraucunas, I., Clarke, L., Dirks, J., Hathaway, J., Hejazi, M., Hibbard, K., Huang, M., Jin, C., Kintner-Meyer, M., van Dam, K. K. and others: Investigating the nexus of climate, energy, water, and land at decision-relevant scales: the Platform for Regional Integrated Modeling and Analysis (PRIMA), *Clim. Change*, 129(3–4), 573–588, 2014.
- 25 Kyle, P., Luckow, P., Calvin, K., Emanuel, W., Mayda, N. and Zhou, Y.: GCAM 3.0 Agriculture and Land Use: Data Sources and Methods, [online] Available from: http://wiki.umd.edu/gcam/images/2/25/GCAM_AgLU_Data_Documentation.pdf (Accessed 27 February 2012), 2011.
- Le Page, Y., Hurtt, G., Thomson, A. M., Bond-Lamberty, B., Patel, P., Wise, M., Calvin, K., Kyle, P., Clarke, L., Edmonds, J. and Janetos, A.: Sensitivity of climate mitigation strategies to natural disturbances, *Environ. Res. Lett.*, 8(1), 15018, doi:10.1088/1748-9326/8/1/015018, 2013.
- 30 Mahmood, R., Pielke Sr, R. A., Hubbard, K. G., Niyogi, D., Bonan, G., Lawrence, P., McNider, R., McAlpine, C., Etter, A., Gameda, S. and others: Impacts of land use/land cover change on climate and future research priorities, *Bull. Am. Meteorol. Soc.*, 91(1), 37, 2010.
- 35 Monfreda, C., Ramankutty, N. and Hertel, T. W.: Global agricultural land use data for climate change analysis, *Econ. Anal. Land Use Glob. Clim. Change Policy*, 2009.
- 40 Pachauri, R. K., Allen, M. R., Barros, V. R., Broome, J., Cramer, W., Christ, R., Church, J. A., Clarke, L., Dahe, Q., Dasgupta, P. and others: Climate Change 2014: Synthesis Report. Contribution of Working Groups I, II and III to the Fifth Assessment Report of the Intergovernmental Panel on Climate Change, [online] Available from: <http://epic.awi.de/37530/> (Accessed 5 July 2015), 2014.
- 45 Pongratz, J., Reick, C. H., Raddatz, T. and Claussen, M.: Biogeophysical versus biogeochemical climate response to historical anthropogenic land cover change, *Geophys. Res. Lett.*, 37(8) [online] Available from: <http://onlinelibrary.wiley.com/doi/10.1029/2010GL043010/full> (Accessed 3 August 2016), 2010.

- Ramankutty, N. and Foley, J. A.: Estimating historical changes in global land cover: Croplands from 1700 to 1992, *Glob. Biogeochem. Cycles*, 13(4), 997–1027, 1999a.
- Ramankutty, N. and Foley, J. A.: Estimating historical changes in land cover: North American croplands from 1850 to 1992, *Glob. Ecol. Biogeogr.*, 8(5), 381–396, 1999b.
- 5 Thomson, A. M., Calvin, K. V., Chini, L. P., Hurtt, G., Edmonds, J. A., Bond-Lamberty, B., Frohking, S., Wise, M. A. and Janetos, A. C.: Climate mitigation and the future of tropical landscapes, *Proc. Natl. Acad. Sci.*, 107(46), 19633–19638, doi:10.1073/pnas.0910467107, 2010.
- 10 Thomson, A. M., Calvin, K. V., Smith, S. J., Kyle, G. P., Volke, A., Patel, P., Delgado-Arias, S., Bond-Lamberty, B., Wise, M. A., Clarke, L. E. and Edmonds, J. A.: RCP4.5: a pathway for stabilization of radiative forcing by 2100, *Clim. Change*, 109(1–2), 77–94, 2011.
- 15 West, T. O., Brandt, C. C., Baskaran, L. M., Hellwinckel, C. M., Mueller, R., Bernacchi, C. J., Bandaru, V., Yang, B., Wilson, B. S., Marland, G. and others: Cropland carbon fluxes in the United States: increasing geospatial resolution of inventory-based carbon accounting, *Ecol. Appl.*, 20(4), 1074–1086, 2010.
- West, T. O., Le Page, Y., Huang, M., Wolf, J. and Thomson, A. M.: Downscaling global land cover projections from an integrated assessment model for use in regional analyses: results and evaluation for the US from 2005 to 2095, *Environ. Res. Lett.*, 9(6), 64004, 2014.
- 20 Wise, M. and Calvin, K.: GCAM 3.0 Agriculture and Land Use: Technical Description of Modeling Approach, [online] Available from: https://wiki.umd.edu/gcam/images/8/87/GCAM3AGTechDescript12_5_11.pdf (Accessed 27 February 2012), 2011.
- 25 Wise, M., Calvin, K., Kyle, P., Luckow, P. and Edmonds, J.: Economic and physical modeling of land use in GCAM 3.0 and an application to agricultural productivity, land, and terrestrial carbon, *Clim. Change Econ.*, 5(2), doi:10.1142/S2010007814500031, 2014.
- Wolf, J., West, T. O., Le Page, Y., Kyle, G. P., Zhang, X., Collatz, G. J. and Imhoff, M. L.: Biogenic carbon fluxes from global agricultural production and consumption, *Glob. Biogeochem. Cycles*, 29(10), 2015GB005119, doi:10.1002/2015GB005119, 2015.

Author contributions

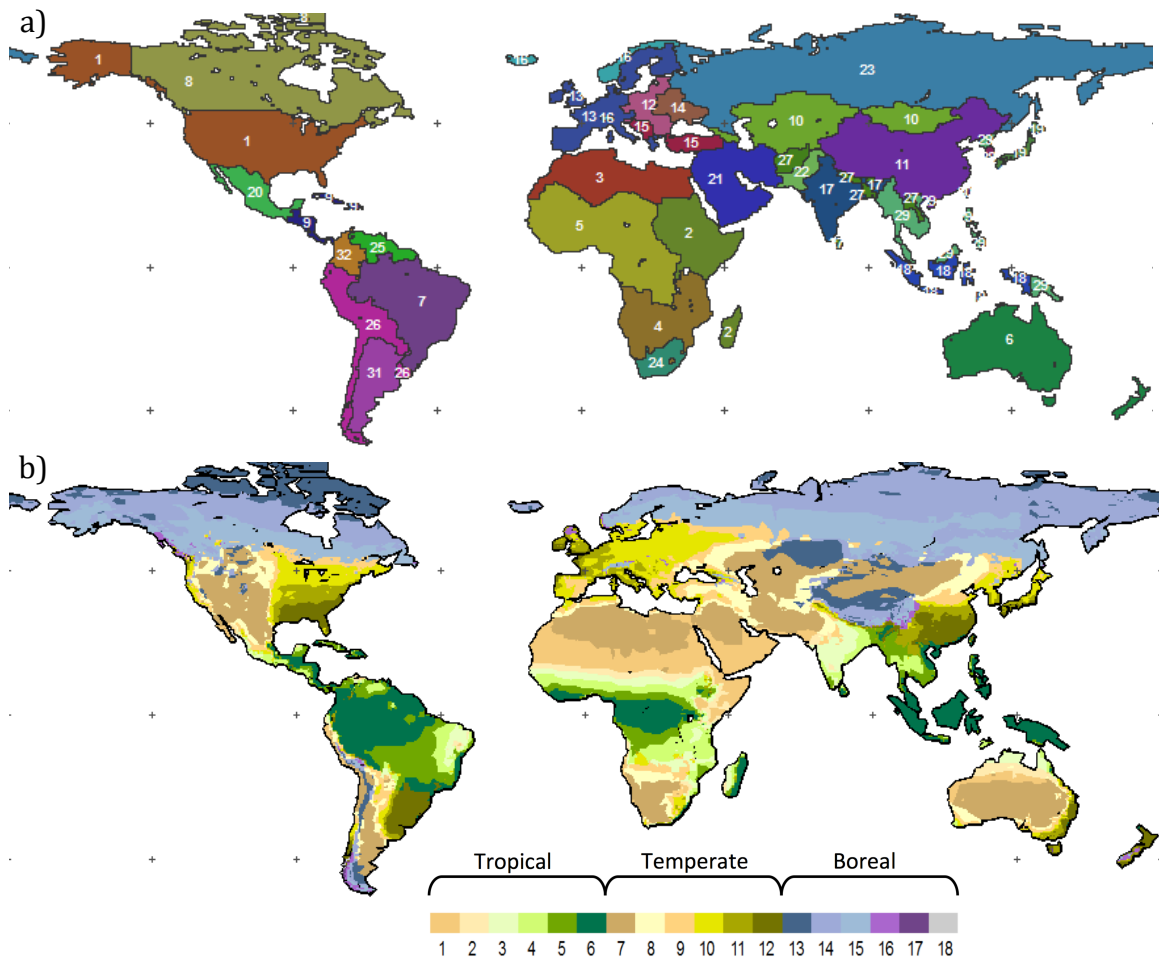
YLP and TW designed the model. YLP developed the model and performed the simulations. YLP prepared the manuscript with contributions from all authors.

Competing Financial Interest statement

5 No competing financial interest, to be signed.

Downscaling of land use and land cover from the Global Change Assessment Model for coupling with Earth System and Agricultural models.

Tables and figures



Regions name for figure a)

1- USA	9- Central America and Caribbean	17- India	25- South America_Northern
2- Africa_Eastern	10- Central Asia	18- Indonesia	26- South America_Southern
3- Africa_Northern	11- China	19- Japan	27- South Asia
4- Africa_Southern	12- EU-12	20- Mexico	28- South Korea
5- Africa_Western	13- EU-15	21- Middle East	29- Southeast Asia
6- Australia_NZ	14- Europe_Eastern	22- Pakistan	30- Taiwan
7- Brazil	15- Europe_Non_EU	23- Russia	31- Argentina
8- Canada	16- European Free Trade Association	24- South Africa	32- Colombia

Figure 1. a) 32 GCAM regions. b) Agro-Ecological Zones (AEZs).

Table 1. Terrestrial land types in GCAM.

Natural land	Forests, Shrublands, Grasslands, Tundra, Deserts
Managed land	Corn, Wheat, Rice, Root & Tubers, Oil crops, Sugar crops, Other grain crops, Fiber crops, Fodder grass, Fodder herb, Biomass crops, Miscellaneous crops, Other Arable Land (e.g. fallow), Palm fruit, Pasture, Urban, Willow, Managed forest.

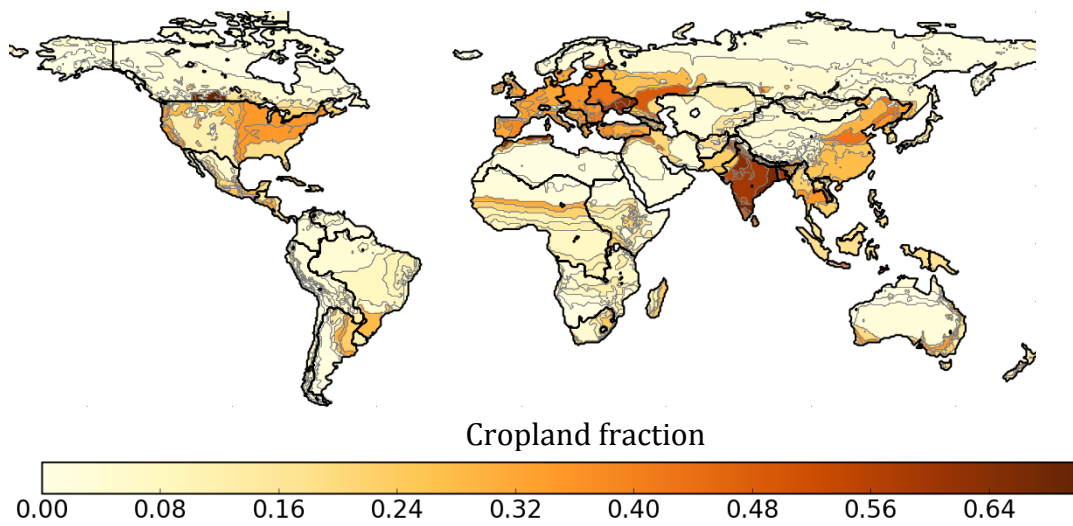


Figure 2. Distribution of 2005 GCAM croplands at the Region/AEZ scale. The algorithm presented in this paper downscales these patterns to a gridded scale (Figure 5 and Figure 7).

New figure

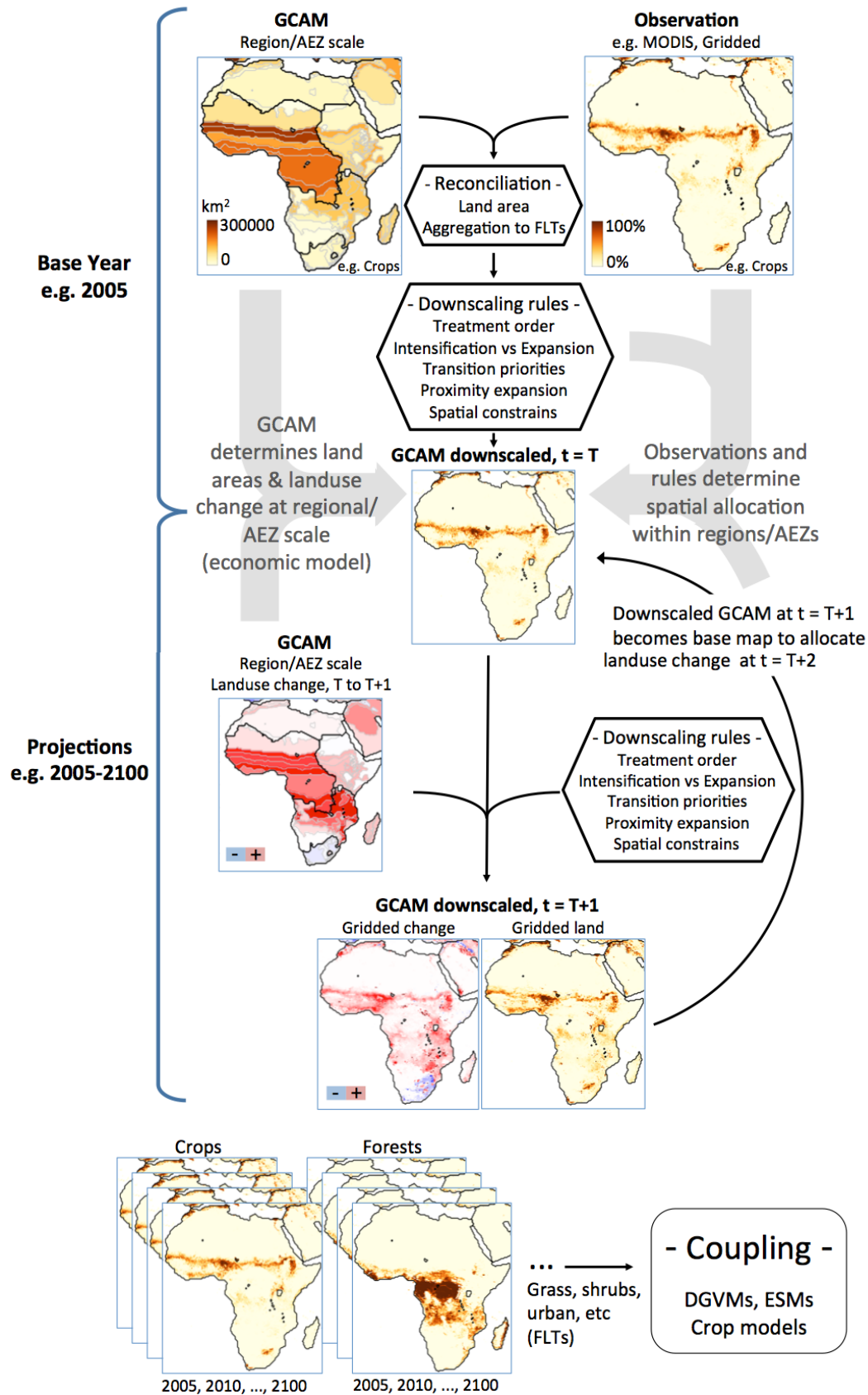


Figure 3. Overview of the downscaling method. The figure shows the successive computational steps to downscale a LULC change scenario from 2005 to 2100 described in the text (Sect. 2). The “Reconciliation” phase is detailed in Sect. 2.1 ; The “Downscaling rules” are detailed in Sect. 2.2, including the “treatment order” (Sect. 2.2.1), Intensification versus expansion ratio” (Sect. 2.2.2), the “Transition priorities” (Sect. 2.2.3) and the spatial constraints (Sect. 2.2.4). **UPDATED FIGURE**

Table 2. User-defined aggregation of the spatial data.

Spatial land types (MODIS PFTs)	Final land types (FLT) for downscaling						
	forest	shrub	grass	crops	urban	snow	sparse
ev. needl. forest	1	0	0	0	0	0	0
ev. broad. forest	1	0	0	0	0	0	0
dec. needl. forest	1	0	0	0	0	0	0
dec. broad. forest	1	0	0	0	0	0	0
shrub	0	1	0	0	0	0	0
grass	0	0	1	0	0	0	0
crops	0	0	0	1	0	0	0
urban	0	0	0	0	1	0	0
snow	0	0	0	0	0	1	0
sparse	0	0	0	0	0	0	1

Table 3. User-defined aggregation of the GCAM data.

GCAM land types	Final land types (FLT) for downscaling						
	forest	shrub	grass	crops	urban	snow	sparse
Corn	0	0	0	1	0	0	0
Wheat	0	0	0	1	0	0	0
Rice	0	0	0	1	0	0	0
Root_Tuber	0	0	0	1	0	0	0
OilCrop	0	0	0	1	0	0	0
SugarCrop	0	0	0	1	0	0	0
OtherGrain	0	0	0	1	0	0	0
FiberCrop	0	0	0	1	0	0	0
FodderGrass	0	0	0	1	0	0	0
FodderHerb	0	0	0	1	0	0	0
Biomass	0	0	0	1	0	0	0
MiscCrop	0	0	0	1	0	0	0
OtherArableLand	0	0	0	1	0	0	0
PalmFruit	0	0	0	1	0	0	0
Pasture	0	0	1	0	0	0	0
UnmanagedPasture	0	0	1	0	0	0	0
UrbanLand	0	0	0	0	1	0	0
willow	1	0	0	0	0	0	0
Forest	1	0	0	0	0	0	0
UnmanagedForest	1	0	0	0	0	0	0
Shrubland	0	1	0	0	0	0	0
Grassland	0	0	1	0	0	0	0
Tundra	0	0	1	0	0	0	0
RockIceDesert	0	0	0	0	0	1	1

Table 4. User-defined treatment order.

Final land types (FLT)	Treatment order
forest	5
shrub	7
grass	6
crops	4
urban	1
snow	2
sparse	3

Table 5. User-defined transition priorities.

Final land types (FLT)	Final land types (FLT) for downscaling						
	forest	shrub	grass	crops	urban	snow	sparse
forest	0	1	2	3	4	6	5
shrub	5	0	4	6	1	3	2
grass	6	5	0	4	1	3	2
crops	4	3	2	0	1	6	5
urban	5	3	2	4	0	6	1
snow	6	5	4	3	2	0	1
sparse	6	4	2	3	5	1	0

Table 6. User-defined spatial constrains.

Spatial constrains	Final land types (FLT) for downscaling						
	forest	shrub	grass	crops	urban	snow	sparse
Kernel density	100	100	100	40	100	100	100
Soil workability	0	0	0	0	0	0	0
Nutrient availability	0	0	0	60	0	0	0

1. Initialization

Reading in data/parameters

Reconciliation (Land area in GCAM and MODIS)

Aggregation to final land types (FLT_s)

2. Main code

. For each timestep:

. For each land type:

Compute kernel density

. For each Region:

. For each AEZ:

. For each land type FLT₁ (treatment order):

. If FLT₁ increases:

. For each one of the other land types FLT₂ (transition priorities):

. If FLT₂ decreases:

Intensification: increase FLT₁ area on grid-cells where FLT₁ and FLT₂ exist, converting FLT₂ to FLT₁, based on spatial constraints.

. When intensification ratio or no more intensification possible:

Break and go to next land type in treatment order

. For each Region:

. For each AEZ:

. For each land type FLT₁ (treatment order):

. If FLT₁ increases:

. For each one of the other land types FLT₂ (transition priorities):

. If FLT₂ decreases:

Expansion: increase FLT₁ area on grid-cells where FLT₁ does not exist and FLT₂ exist, converting FLT₂ to FLT₁, based on spatial constraints.

. When FLT₁ target achieved or no more expansion possible:

Break and go to next land type in treatment order

. For each Region:

. For each AEZ:

. For each land type FLT₁ (treatment order):

. If FLT₁ target has not been achieved yet:

. For each one of the other land types FLT₂ (transition priorities):

. If FLT₂ decreases:

Second round of intensification: increase FLT₁ area on grid-cells where FLT₁ and FLT₂ exist, converting FLT₂ to FLT₁, based on spatial constraints. After this round, all regions/AEZs/land-types targets are achieved.

3. Save downscaled GCAM landuse and landcover

Figure 4. Computation flow of the downscaling code. **UPDATED FIGURE**

Table 7. Parameters and groups of parameters selected for the sensitivity analysis. *stochastic (see text).

Parameter	Default value	Alternative parameterizations					
		a	b	c	d	e	f
intens_ratio	0.8	1	0.8	0.6	0.4	0.2	0
treatment_order	Table 4						Table 8
transition_priorities	Table 5						Table 9
selection_threshold	25%	5	10	25	50	75	stoch*
kernel_density radius	10	2	4	10	25	50	100
kernel_density constrain contribution	40	0	20	40	60	80	100
nutrient_availability constrain contribution	60	0	20	40	60	80	100
soil_workability constrain contribution	0	0	20	40	60	80	100
base_year	1800	1700	1800	1900	1950	1980	2000
evaluation resolution	0.25	0.25	0.5	0.75	1	2	4

Table 8. Configurations of the treatment order for the sensitivity analysis. NEW TABLE MOVED FROM SUPP. MAT.

a) Final land types (FLTs)	Treatment order	e) Final land types (FLTs)	Treatment order
forest	5	forest	3
shrub	7	shrub	2
grass	6	grass	1
crops	4	crops	4
urban	1	urban	5
snow	2	snow	6
sparse	3	sparse	7

d) Final land types (FLTs)	Treatment order	c) Final land types (FLTs)	Treatment order
forest	4	forest	1
shrub	6	shrub	3
grass	5	grass	2
crops	7	crops	4
urban	1	urban	5
snow	2	snow	6
sparse	3	sparse	7

b) Final land types (FLTs)	Treatment order	f) Final land types (FLTs)	Treatment order
forest	2	forest	2
shrub	4	shrub	1
grass	3	grass	3
crops	1	crops	4
urban	5	urban	5
snow	6	snow	6
sparse	7	sparse	7

Table 9. Configurations of the final land types (FLT)s transition priorities for the sensitivity analysis. NEW TABLE MOVED FROM SUPP. MAT.

a) Final land types (FLT)s	Final land types (FLT)s for downscaling						
	forest	shrub	grass	crops	urban	snow	sparse
forest	0	1	2	3	4	6	5
shrub	5	0	4	6	1	3	2
grass	6	5	0	4	1	3	2
crops	4	3	2	0	1	6	5
urban	5	3	2	4	0	6	1
snow	6	5	4	3	2	0	1
sparse	6	4	2	3	5	1	0

b) Final land types (FLT)s	Final land types (FLT)s for downscaling						
	forest	shrub	grass	crops	urban	snow	sparse
forest	0	1	2	3	4	6	5
shrub	5	0	4	6	1	3	2
grass	6	5	0	4	1	3	2
crops	3	2	4	0	1	6	5
urban	5	3	2	4	0	6	1
snow	6	5	4	3	2	0	1
sparse	6	4	2	3	5	1	0

c) Final land types (FLT)s	Final land types (FLT)s for downscaling						
	forest	shrub	grass	crops	urban	snow	sparse
forest	0	1	2	3	4	6	5
shrub	5	0	4	6	1	3	2
grass	6	5	0	4	1	3	2
crops	2	3	4	0	1	6	5
urban	5	3	2	4	0	6	1
snow	6	5	4	3	2	0	1
sparse	6	4	2	3	5	1	0

d) Final land types (FLT)s	Final land types (FLT)s for downscaling						
	forest	shrub	grass	crops	urban	snow	sparse
forest	0	3	2	1	4	6	5
shrub	6	0	5	4	1	3	2
grass	4	5	0	6	1	3	2
crops	4	3	2	0	1	6	5
urban	5	3	2	1	0	6	4
snow	6	5	4	3	2	0	1
sparse	6	4	2	3	5	1	0

e) Final land types (FLTs)	Final land types (FLTs) for downscaling						
	forest	shrub	grass	crops	urban	snow	sparse
forest	0	3	1	2	4	6	5
shrub	4	0	6	5	1	3	2
grass	6	4	0	5	1	3	2
crops	4	3	2	0	1	6	5
urban	5	4	1	2	0	6	3
snow	6	5	4	3	2	0	1
sparse	6	4	2	3	5	1	0

f) Final land types (FLTs)	Final land types (FLTs) for downscaling						
	forest	shrub	grass	crops	urban	snow	sparse
forest	0	3	2	1	4	6	5
shrub	6	0	5	4	1	3	2
grass	4	5	0	6	1	3	2
crops	2	3	4	0	1	6	5
urban	5	3	2	1	0	6	4
snow	6	5	4	3	2	0	1
sparse	6	4	2	3	5	1	0

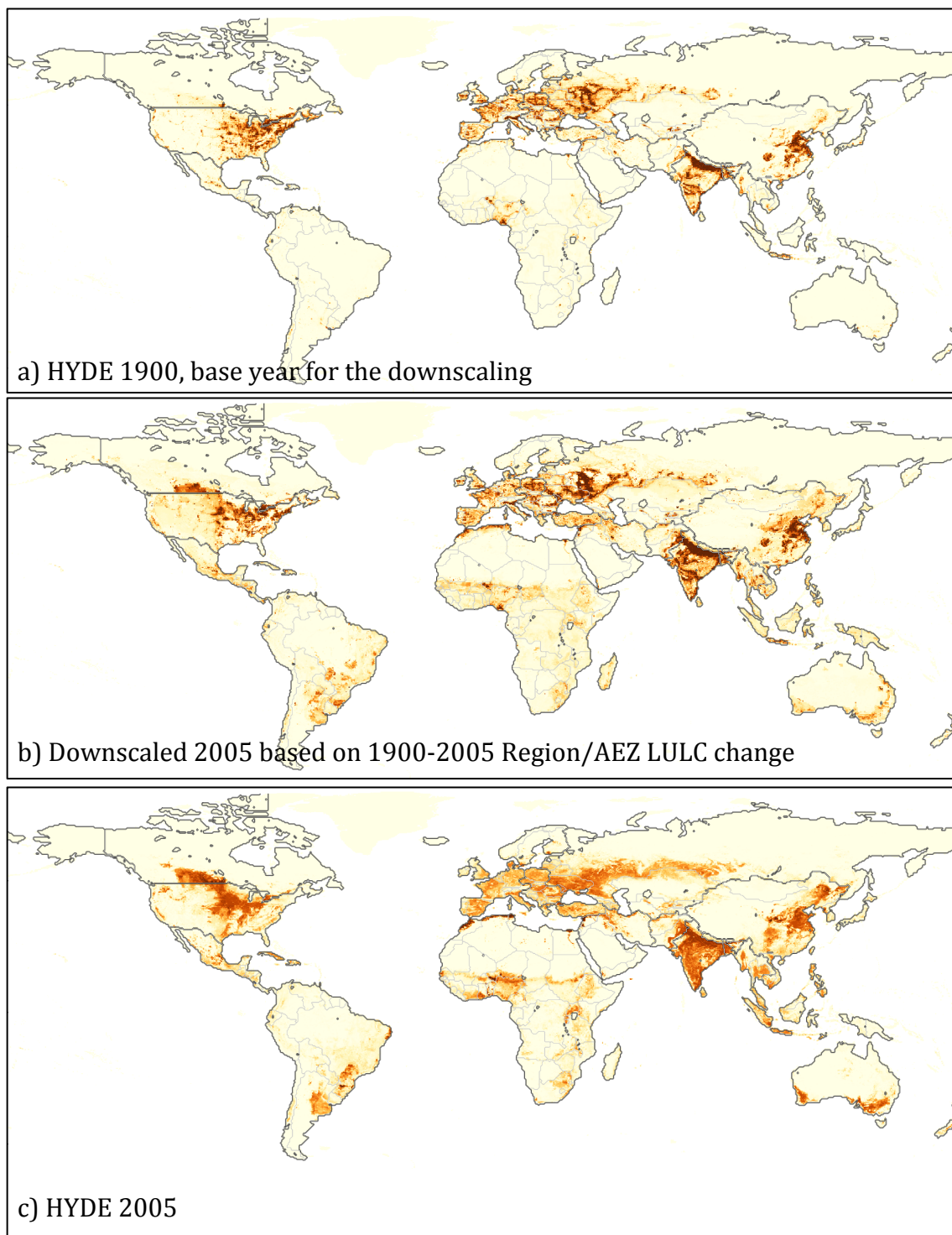


Figure 5. Cropland distribution obtained when downscaling Region/AEZ scale land use change from 1900 to 2005 under the basic configuration. UPDATED FIGURE (1900)

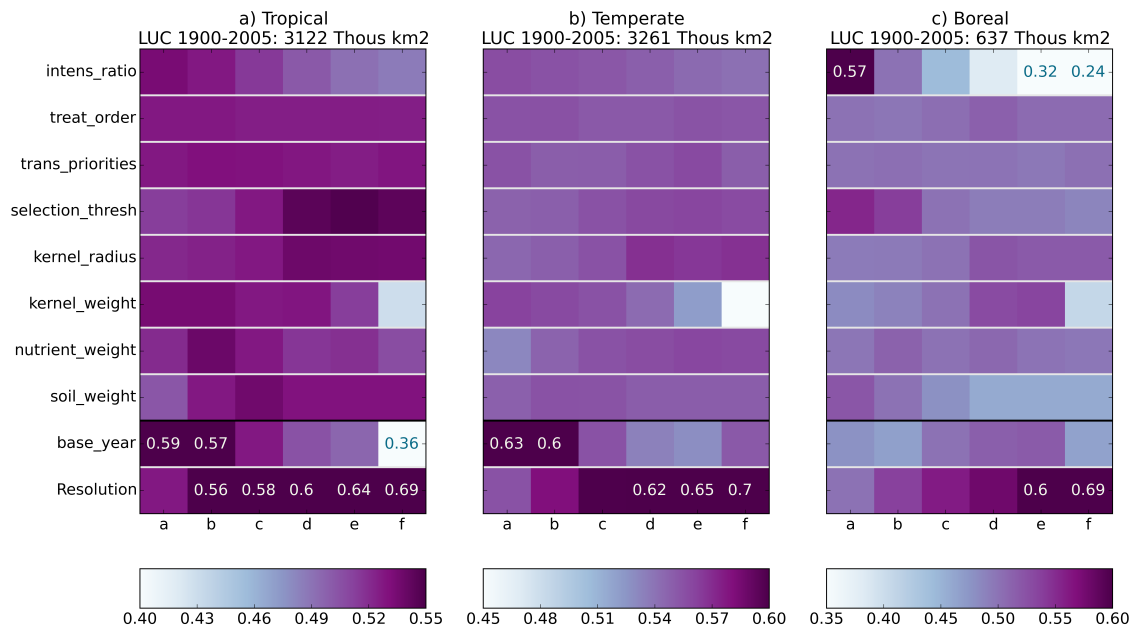


Figure 6. Results of the performance and sensitivity analysis for crops. For the 6 alternative values (x-axis) of each parameter (y-axis), the color scale indicates the land use downscaling performance metric averaged over all grid-cells in the a) tropical, b) Temperate and c) Boreal biomes. Colorbar ranges are different for each biome. Beyond-range values are printed in the corresponding x,y position (the full scale of the metric is [-1 1], see text). Note: the figure uses a “perceptual” colormap with monotonically decreasing lightness throughout the colormap. Equal changes in the evaluation metric anywhere are perceived as equal steps in the color space. **UPDATED FIGURE**

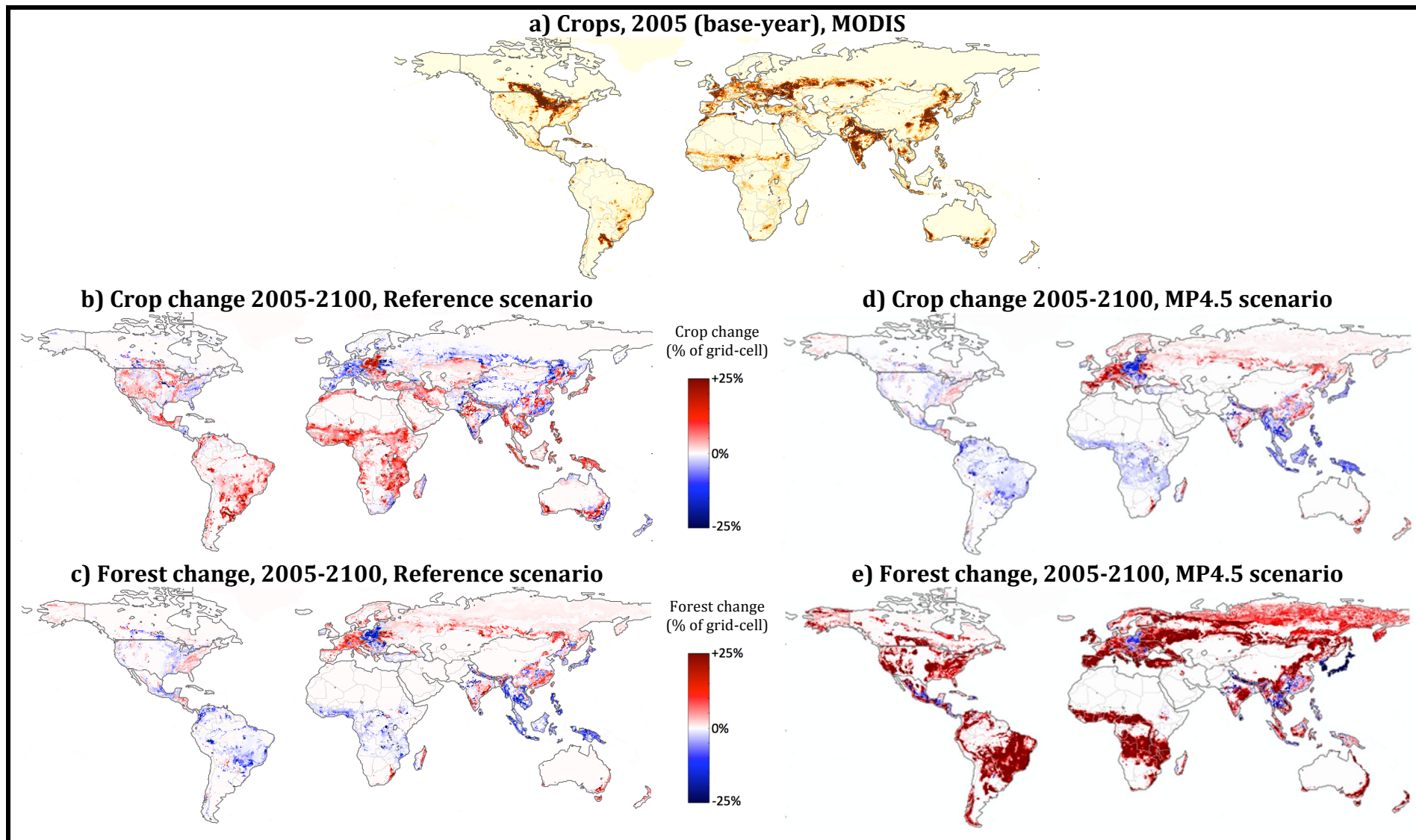


Figure 7. downscaled crop and forest change in the GCAM reference and MP4.5 scenarios.