

Dear Editor,

please find below a revised version of manuscript gmd-2016-68, which we have modified based on the comments provided in the open discussion.

Our response to the reviewers, as well as to the comment by Ingo Bethke and by the CMIP Panel are available in the open discussion. As they were already structured as responses to specific comments, we refer to our contributions in the open discussion as our official responses to the reviewers' comments.

As a major change following the renaming of the VolMIP experiments (see comment AC3), we have reorganized section 2 of the manuscript in order to reflect the new branching of the experiments into "pinatubo", "long" and "cluster". Furthermore, two additional volcanic-perturbation experiments are included in the protocol (volc-cluster-21C and volc-long-hls), following the Reviewers' suggestions. Please note that differently from our replies to the comments in the open discussion, both experiments are included in CMIP6. A "control-slab" experiment has also been added as parent experiment for the volc-pinatubo-slab experiment.

We also polished the text during the revision process.

We have added Eugene Rozanov in the authors list, as he contributed to generate some of the modeling data that are used in Figure 3. Also, we have corrected the details of a couple of affiliations.

Please contact me for any further information or clarification about the revision of the manuscript.

Sincerely,

Davide Zanchettin
On behalf of all co-authors

The Model Intercomparison Project on the climatic response to Volcanic forcing (VolMIP): Experimental design and forcing input data for CMIP6

Davide Zanchettin¹, Myriam Khodri², Claudia Timmreck³, Matthew Toohey^{3,4}, Anja Schmidt⁵, Edwin P. Gerber⁶, Gabriele Hegerl⁷, Alan Robock⁸, Francesco S. R. Pausata⁹, William T. Ball^{10,11}, Susanne E. Bauer¹², Slimane Bekki¹³, Sandip S. Dhomse⁵, Allegra N. LeGrande¹², Graham W. Mann^{5,14}, Lauren Marshall⁵⁺¹⁴, Michael Mills¹⁵, Marion Marchand¹³, Ulrike Niemeier³, Virginie Poulain², Eugene Rozanov¹⁰, Angelo Rubino¹, Andrea Stenke¹¹, Kostas Tsigaridis¹², Fiona Tummon¹¹

Formattato: Apice

¹ Department of Environmental Sciences, Informatics and Statistics, University of Venice, Mestre, Italy

² IRD/IPSL/Laboratoire d'Océanographie et du Climat, Paris, France

³ Max Planck Institute for Meteorology, Hamburg, Germany

⁴ GEOMAR Helmholtz Centre for Ocean Research Kiel, Germany

⁵ Institute for Climate & Atmospheric Science, School of Earth & Environment, University of Leeds, Leeds, UK

⁶ Courant Institute of Mathematical Sciences, New York University, New York, NY, USA

⁷ GeoScience, University of Edinburgh, UK

⁸ Department of Environmental Sciences, Rutgers University, New Brunswick, NJ, USA

⁹ Department of Meteorology (MISU), Stockholm, Sweden

¹⁰ PMOD/WRC, Davos, Switzerland

¹¹ Institute for Atmospheric and Climate Science, Dept. of Environmental Systems Science, ETH Zürich, Switzerland

¹² NASA Goddard Institute for Space Studies and Center for Climate Systems Research,

Columbia University, New York, NY, USA

¹³ LATMOS/IPSL, UVSQ Université Paris-Saclay, UPMC Université Paris 06, CNRS, Guyancourt, FranceLATMOS, Université Pierre et Marie Curie, Paris, Francee

Formattato: Inglese (Stati Uniti)

¹⁴ National Centre for Atmospheric Science, University of Leeds, Leeds, U.K.

¹⁵ Atmospheric Chemistry Division, National Center for Atmospheric Research, Boulder, CO, USA

Abstract. The enhancement of the stratospheric aerosol layer by volcanic eruptions induces a complex set of responses causing global and regional climate effects on a broad range of timescales. Uncertainties exist regarding the climatic response to strong volcanic forcing identified in coupled climate simulations that contributed to the fifth phase of the ~~Climate-Coupled~~ Model Intercomparison Project (CMIP5). In order to better understand the sources of these model diversities, the model intercomparison project on the ~~climate climatic~~ response to volcanic forcing (VolMIP) has defined a coordinated set of idealized volcanic perturbation experiments to be carried out in alignment with the CMIP6 protocol. VolMIP provides a common stratospheric aerosol dataset for each experiment to ~~eliminate-minimize~~ differences in the applied volcanic forcing, ~~and It~~ defines a set of initial conditions to ~~determine-assess~~ how internal climate variability contributes to determining the response. VolMIP will assess to what extent volcanically-forced responses of the coupled ocean-atmosphere system are robustly simulated by state-of-the-art coupled climate models and identify the causes that limit robust simulated behavior, especially differences in the treatment of physical processes. This paper illustrates the design of the idealized volcanic perturbation experiments in the VolMIP protocol and describes the common aerosol forcing input datasets to be used.

2.1. Introduction

Volcanic eruptions that eject substantial amounts of sulfur dioxide (SO₂) into the atmosphere have been one of the dominant natural causes of externally-forced annual to multidecadal climate variability during the last millennium (Hegerl et al., 2003; Myhre et al., 2013; Schurer et al., 2014). Significant advances have been made in recent years in our understanding of the core microphysical, physical, and chemical processes that determine the radiative forcing resulting from volcanic sulfur emissions and the consequent dynamical responses of the coupled ocean-atmosphere system (e.g., Timmreck, 2012). However, the fifth phase of the Climate-Coupled Model Intercomparison Project (CMIP5) has demonstrated that climate models' capability to accurately and robustly simulate observed and reconstructed volcanically-forced climate behavior remains poor.

For instance, the largest uncertainties in radiative forcings (Driscoll et al., 2012) and in lower troposphere temperature trends (Santer et al., 2014) from historical CMIP5 simulations occur during periods of strong volcanic activity. CMIP5 models tend to overestimate the observed post-eruption global surface cooling and subsequent warming during the decay phase (Marotzke and Forster, 2015), although the discrepancy decreases if accounting for the post-eruption phase of the El Niño-Southern Oscillation (ENSO) (Lehner et al., 2016). Driscoll et al. (2012) and Charlton-Perez et al. (2013) found~~There is also~~ large uncertainty across CMIP5 models concerning the short-term average dynamical atmospheric response during the first two post-eruption winters, especially the post-eruption strengthening of the Northern Hemisphere's winter polar vortex and its tropospheric signature (~~Driscoll et al., 2012; Charlton-Perez et al., 2013~~).

Climate models reproduce the main features of observed precipitation response to volcanic forcing, but significantly underestimate the magnitude of the regional responses in particular seasons (Iles and Hegerl, 2014).

Volcanic events during the instrumental period are, however, few and of limited magnitude, and their associated dynamical climate response is very noisy (e.g., Hegerl et al., 2011). Furthermore, there is inter-model disagreement about post-eruption oceanic evolutions, particularly concerning the response of the thermohaline circulation (e.g., Mignot et al., 2011; Hofer et al., 2011; Zanchettin et al., 2012; Ding et al., 2014). Substantial uncertainties still exist about decadal-scale climate variability during periods of strong volcanic forcing and in the role of the ocean in determining the surface air temperature response to volcanic eruptions.

100 Climate-proxy based reconstructions covering the last millennium are a major source of information
about how the climate system responds to volcanic forcing (e.g., D'Arrigo et al., 2009; Corona et al. 2010;
Gennaretti et al., 2014). Recent studies have explored new reconstruction methods applied on high-quality
proxy records to produce more rigorous regional climate reconstructions and allow for an improved
105 evaluation of climate models (e.g., Ortega et al., 2015; Luterbacher et al., 2016). ~~Discrepancies~~ However,
discrepancies ~~also~~ exist between simulated and reconstructed climate variability during periods of the last
millennium characterized by strong volcanic activity, concerning, for instance, the magnitude of post-
eruption surface cooling (e.g., Mann et al., 2012, 2013; Anchukaitis et al., 2012; Stoffel et al., 2015;
Luterbacher et al., 2016) and the interdecadal response to volcanic clusters of tropical precipitation (Winter
et al., 2015) and large-scale modes of atmospheric variability (Zanchettin et al., 2015a).

The lack of robust behavior in climate simulations likely depends on various reasons. First, inter-
model spread can be caused by differences in the models' characteristics, such as the spatial resolution, and
the imposed volcanic forcing. The latter stems from choices about the employed dataset describing
climatically relevant parameters related to the eruption source – especially the mass of emitted SO₂ – and
110 about the stratospheric aerosol properties such as spatial extent of the cloud, optical depth, and aerosol size
distribution (e.g., Timmreck, 2012). As instrumental observations of volcanic eruptions are limited, with
the 1991 eruption of Mt Pinatubo being the best documented event (e.g., Minnis et al., 1993). ~~For eruptions~~
~~that occurred prior to the instrumental period,~~ forcing characteristics must often be reconstructed based on
indirect evidence such as ice-core measurements (e.g., Devine et al., 1984; Sigl et al., 2014). These
115 reconstructions rely on a simplified hypothesis of scaling between ice-core sulfate concentrations and
aerosol optical depths based on the relation observed for the 1991 eruption of Mt Pinatubo (Crowley and
Unterman, 2013). The consideration of aerosol microphysical processes also produces substantial
inconsistencies between available volcanological datasets (Timmreck, 2012). Furthermore, even when the
same volcanic aerosol forcing is ~~prescribed-used to force~~ different models, these may generate different
120 radiative forcing due to the model-specific implementation of the volcanic forcing (Timmreck, 2012;
Toohey et al., 2014).

The simulated climatic response to individual volcanic eruptions also critically depends on the
background climate, including the mean climate state (Berdahl and Robock, 2013; Muthers et al., 2014,
2015), the ongoing internal climate variability (e.g., Thomas et al., 2009; Pausata et al., 2015a;
125 Swingedouw et al., 2015; Zanchettin et al., 2013a; Lehner et al., 2016) and the presence of additional
forcing factors such as variations in solar irradiance (Zanchettin et al., 2013a; Anet et al., 2014). As a
result, different models, forcing inputs, and internal climate variability similarly contribute to simulation-

ensemble spread. This can be seen, for instance, by comparing hemispheric temperature evolutions from a multi-model ensemble and a single-model ensemble of last-millennium simulations during the early 19th century (Figure 1), a period characterized by the close succession of two strong tropical volcanic eruptions in 1809 and 1815.

The individual impact of these sources of uncertainty can be ~~hardly-hard~~ to be distinguished in transient climate simulations. Therefore, the Model Intercomparison Project on the climatic response to Volcanic forcing (VolMIP) – an endorsed contribution to CMIP6 (Eyring et al., 20152016, this issue) – provides the basis for a coordinated multi-model assessment of climate models’ performances under strong volcanic forcing conditions. It defines a set of idealized volcanic-perturbation experiments where volcanic forcing – defined in terms of volcanic aerosol optical properties – is well constrained across participating models. VolMIP will therefore assess to what extent responses of the coupled ocean-atmosphere system to the same applied strong volcanic forcing are robustly simulated across state-of-the-art coupled climate models and identify the causes that limit robust simulated behavior, especially differences in their treatment of physical processes. Ensemble simulations sampling appropriate initial conditions and using the same volcanic forcing dataset accounting for aerosol microphysical processes can help ~~increase-assess~~ the signal-to-noise ratio and reduce uncertainties regarding the magnitude of post-eruption surface cooling (Stoffel et al., 2015). Careful sampling of initial climate conditions and the ~~possibility-opportunity~~ to consider volcanic eruptions of different strengths will allow VolMIP to better assess the relative role of internally generated and externally forced climate variability during periods of strong volcanic activity. VolMIP also contributes toward more reliable climate models by helping to identify the origins and consequences of systematic model biases affecting the dynamical climate response to volcanic forcing. As a consequence, VolMIP will improve our confidence in the attribution and dynamical interpretation of reconstructed post-eruption regional features and provide insights into regional climate predictability during periods of strong volcanic forcing.

VolMIP experiments will provide context to CMIP6-DECK AMIP and ~~historical~~ simulations (Eyring et al., 20152016), the decadal climate prediction experiments of the Decadal Climate Prediction Panel (DCPP) (Boer et al., 2016) and the *past1000* simulations of the Paleoclimate MIP (PMIP) (Kageyama et al., 2016) where volcanic forcing is among the dominant sources of climate variability and inter-model spread. The importance of VolMIP is enhanced as the specification of the volcanic stratospheric aerosol for the CMIP6 ~~Historical-historical~~ experiment is based on “time-dependent observations” (Eyring et al., 20152016), and some modeling groups may therefore perform the simulations using online calculation of volcanic radiative forcing based on SO₂ emissions.

Formattato: Tipo di carattere: Corsivo

Formattato: Tipo di carattere: Corsivo

160 This paper is organized as follows. First, in Section 2 we provide a general description of the
individual experiments included in the VolMIP protocol. Then, Section 3 provides details about the
volcanic forcing for each experiment, including implementation and the forcing input data to be employed,
for which this paper also serves as a reference. We discuss the limitations of VolMIP and potential follow-
up research in Section 4, before summarizing the most relevant aspects of this initiative in Section 5.

165 **3.2. Experiments: rationale and general aspects**

The VolMIP protocol consists of a set of idealized volcanic perturbation experiments based on
historical eruptions. In this context, “idealized” means that the volcanic forcing is derived from radiation or
source parameters of documented eruptions but the experiments generally do not include information about
170 the actual climate conditions when these events occurred. The experiments are designed as ensemble
simulations, with sets of initial climate states sampled from the CMIP6-DECK *PiControl-piControl* (i.e.,
preindustrial control) simulation describing unperturbed preindustrial climate conditions (Eyring et al.,
~~2015~~2016), unless specified otherwise.

VolMIP experiments are designed based on a ~~twofold-multifold~~ strategy. A first set of experiments
175 (~~VolShortvolc-pinatubo~~) focuses on the systematical assessment of uncertainty and inter-model
differences in the seasonal-to-interannual climatic response to an idealized 1991 Pinatubo-like eruption,
chosen as representative of the largest magnitude of volcanic events that occurred during the observational
period. ~~VolShortvolc-pinatubo~~ experiments highlight the role of internal interannual variability for
volcanic events characterized by a rather low signal-to-noise ratio in the response of global-average surface
180 temperature. The short-term dynamical response is sensitive to the particular structure of the applied
forcing (Toohey et al., 2014). Using carefully constructed forcing fields and sufficiently large simulation
ensembles, VolMIP allows us to investigate the inter-model robustness of the short-term dynamical
response to volcanic forcing, and elucidate the mechanisms through which volcanic forcing leads to
changes in atmospheric dynamics. The proposed set of ~~VolShortvolc-pinatubo~~ experiments includes
185 sensitivity experiments designed to determine the different contributions to such uncertainty that are due to
the direct radiative (i.e., surface cooling) and to the dynamical (i.e., stratospheric warming) response.

A second set of experiments (~~VolLongvolc-long~~) is designed to systematically investigate inter-
model differences in the long-term (up to the decadal time scale) dynamical climate response to volcanic
eruptions that are characterized by a high signal-to-noise ratio in the response of global-average surface
190 temperature. A third set of experiments (*volc-cluster*) is designed to investigate the climatic response to a
close succession of strong volcanic eruptions. The main goal of ~~VolLongvolc-long~~ and ~~volc-cluster~~

Formattato: Tipo di carattere: Corsivo

Formattato: Tipo di carattere: Corsivo

experiments is to assess how volcanic perturbation signals propagate within the simulated climates, e.g., into the deep-subsurface ocean, the associated determinant processes and their representation across models.

195 The VolMIP protocol defines criteria for sampling desired initial conditions whenever this is necessary to ensure comparability across different climate models. Desired initial conditions and hence ensemble size are determined based on the state of dominant modes of climate variability, which are specifically defined for each experiment. The ensemble size must be sufficiently large to account for the range of climate variability concomitantly depicted by such modes. As a general rule, three initialization
200 states are determined for each given mode based on an index describing its temporal evolution. Specifically, the predetermined ranges for the sampling are: the lower tercile (i.e., the range of values between the minimum and the 33rd percentile) for the negative/cold state, the mid-tercile (i.e., the range of values between the 33rd and 66th percentiles) for the neutral state, and the upper tercile (i.e., the range of values between the 66th percentile and the maximum) for the positive/warm state. If n modes are sampled
205 concomitantly, this yields an ensemble with 3^n members. For instance, in the case of two modes, an ensemble of at least nine simulations is requested. The choice of the climate modes to be considered for initialization essentially depends on the timescales of interest: seasonal to interannual modes for ~~VolcShort~~volc-pinatubo experiments, and interannual and decadal modes for ~~VolcLong~~volc-long experiments (selection of initialization states are less important for volc-cluster experiments). The sampled
210 years refer to the second integration year of the VolMIP experiment, when the volcanic forcing is generally strongest. Therefore, if, for instance, year Y of the control integration matches the desired conditions for the sampling, then the corresponding VolMIP simulation should start with restart data from year Y-1 of the control, for the day of the year specified for the experiment. Restart files from ~~PiControl~~piControl must be accordingly selected and documented in the metadata of each simulation. If no restart data is-are available
215 for the day of the year when the experiment starts, the control simulation must be re-run based on the first (backward in time) available restart file until the start date of the VolMIP experiment. All experiments except the decadal prediction experiment (section 2.1.4) and the millennium cluster experiment (section 2.4.4) maintain the same constant boundary forcing as the ~~PiControl~~piControl integration, except for the volcanic forcing.

220 VolMIP has defined a new group of variables (Volcanic Instantaneous Radiative Forcing, or VIRE, see Table 4), which includes additional variables that were not in the CMIP5 data request and are necessary to generate the volcanic forcing for the volc-pinatubo-surf/strat experiments (see section 3.3). In particular, all VIRE diagnostics are instantaneous 6h data, so some interpolation in time may be required.

Formattato: Tipo di carattere: Corsivo

Formattato: Tipo di carattere: Corsivo

Formattato: Tipo di carattere: Corsivo

Formattato: Tipo di carattere: Corsivo

Formattato: Tipo di carattere: Corsivo

225 Some experiments are designed in cooperation with the Dynamics and Variability of the Stratosphere–
Troposphere System MIP (DynVarMIP) (Gerber and Manzini, 2016, this issue). DynVarMIP defines
230 requirements for diagnosing the atmospheric circulation and variability in the context of CMIP6. DynVar
diagnostics include a refinement of the vertical resolution of standard variables archived as daily and monthly
means, zonal mean diagnostics focused on the transport and exchange of momentum within the atmosphere
and between the atmosphere and surface, and zonal mean diagnostics describing the interaction between
radiation, moisture and the circulation. For a detailed description of these diagnostics and the output format
requested by DynVarMIP see Gerber and Manzini (2016).

Formattato: Giustificato

The data request is at: <https://www.earthsystemcog.org/projects/wip/CMIP6DataRequest>.

Formattato: Car. predefinito paragrafo

235 An overview of the experimental design of the proposed experiments is provided in Tables 1, 2, and
3, where they are summarized according to their prioritization: Tier 1 experiments are mandatory; Tier 2
and Tier 3 experiments have decreasing priority. The experiments are individually described in the
following sub-sections. Figure 2 sketches how the different experiments included in CMIP6 tackle different
240 aspects of the climate response to volcanic forcing. The codes for the naming conventions of the
experiments are in Tables 1-3.

2.1 ~~VolShort~~volc-pinatubo

2.1.1 ~~VolShort~~volc-pinatubo-Eq-full

245 Tier 1 experiment based on a large ensemble of short-term “Pinatubo” climate simulations aimed at
accurately estimating simulated responses to volcanic forcing that may be comparable to the amplitude of
internal interannual climate variability (Table 1). Initialization is based on equally-distributed predefined
states of ENSO (cold/neutral/warm states) and of the North Atlantic Oscillation (NAO,
negative/neutral/positive states). Sampling of an eastern phase of the ~~Quasi-Quasi~~-Biennial Oscillation
(QBO), as observed after the 1991 Pinatubo eruption, is preferred for those models that spontaneously
250 generate such mode of stratospheric variability. VIRF diagnostics must be calculated for this experiment
for the whole integration and for all ensemble members, as these are required for the volc-pinatubo-
strat/surf experiments (see section 2.1.2). For models participating in DynVarMIP, DynVar diagnostics
shall be calculated for all simulations and for the whole integration period. A minimum length of
integration of three years is requested.

Formattato: Tipo di carattere: Non Corsivo

255 The recommended ENSO index is the Northern Hemisphere (NH) winter (DJF, with January as reference for the year) Nino3.4 sea-surface temperature index, defined as the spatially averaged, winter-average sea-surface temperature over the region bounded by 120°W-170°W and 5°S- 5°N. The recommended NAO index is ~~the~~ calculated based on the latitude-longitude 2-box method by Stephenson et al. (2006) applied on Z500 data, i.e., as the pressure difference between spatial averages over [20-55°N; 90°W-60°E] and [55-90°N; 90°W-60°E], principal component associated to the first empirical orthogonal function of winter average geopotential heights at 500 hPa over the North Atlantic European region bounded by 90°W- 40°E and 20- 70°N.

Formattato: Inglese (Stati Uniti)

2.1.2 ~~VoleShort~~volc-pinatubo-Eq-surf and ~~VoleShort~~volc-pinatubo-Eq-strat

265 Tier 1 simulations aimed at investigating the mechanism(s) connecting volcanic forcing and short-term climate anomalies (Table 1). These experiments aim to disentangle the dynamical responses to the two primary thermodynamic consequences of aerosol forcing: stratospheric heating (~~VoleShort~~volc-pinatubo-Eq-strat) and surface cooling (~~VoleShort~~volc-pinatubo-Eq-surf). Both experiments are built upon ~~VoleShort~~volc-pinatubo-Eq-full, and use the VIRE ~~designed in cooperation with the Dynamics and Variability of the Stratosphere-Troposphere System (DynVar) project. Therefore, DynVar diagnostics calculated from the different realizations of this experiment must be calculated for VoleShort Eq-full/surf/strat. Integration length, ensemble size and restart files are the same as for volc-pinatubo-full. For models participating in DynVarMIP, DynVar diagnostics shall be calculated for both experiments, for all simulations and for the whole integration period.~~

2.1.3 ~~VoleShort~~volc-pinatubo-Eq-slab

275 Non-mandatory slab-ocean experiment, which is proposed to clarify the role of coupled atmosphere-ocean processes (most prominently linked to ENSO) in determining the dynamical response (Table 3). A reference simulation (control-slab) shall be set up using the mixed layer depth climatology of the coupled model, which should include a minimum of 20-year spin-up followed by a 10-year control integration. A minimum length of integration of three years and at least 25 ensemble members are requested for volc-pinatubo-slab. VIRE diagnostics shall be calculated for all simulations and for the whole integration period. For models participating in DynVarMIP, DynVar diagnostics shall be calculated for all simulations and for the whole integration period.

Formattato: Tipo di carattere: Corsivo

Formattato: Tipo di carattere: Corsivo

2.1.4 ~~VoleShort~~volc-pinatubo-Eq-ini

Non-mandatory experiment to address the impact of volcanic forcing on seasonal and decadal climate predictability (Table 3). The experiment will address the climatic implication of a future Pinatubo-like eruption. The experiment is designed in cooperation with ~~the decadal climate prediction panel DCPD(DCPP), and is the same as DCPD experiment C3.4~~ (Boer et al., 2016). It complies with the VolMIP protocol about the forcing and its implementation. The experiment is initialized on 1st November 2015, or any other date in November or December for which initialized hindcasts are available (depending on the modeling center). Ten decadal simulations are requested for this experiment. Calculation of DynVar diagnostics is recommended for the first three years of integration for at least one realization, but preferably for all of them. DCPD diagnostics must be calculated for all realizations and for the whole integration period.

2.2 ~~VolcLongvolc-long~~

2.2.1 ~~VolcLongvolc-long-Single-Eqeq~~

Tier 1 experiment designed to understand the long-term response to a single volcanic eruption with radiative forcing comparable to that estimated for the 1815 eruption of Mt Tambora, Indonesia (e.g., Oppenheimer, 2003) (Table 1). A recent review paper (Raible et al., 2016) describes the 1815 Tambora eruption as a test case for high impacts on the Earth system. Initialization spans cold/neutral/warm states of ENSO and weak/neutral/strong states of the Atlantic Meridional Overturning Circulation (AMOC), resulting in a 9-member ensemble. A minimum length of integration of 20 years is requested to cover the typical duration of the simulated initial post-eruption AMOC anomaly (e.g., Zanchettin et al., 2012). Longer integration times (50 years) are recommended to capture the later AMOC evolution (Swingedouw et al., 2015; Pausata et al., 2015b) and related climate anomalies. The recommended AMOC index is defined as the annual-average time series of the maximum value of the zonally-integrated meridional streamfunction in the North Atlantic Ocean in the latitude band 20°N-60°N. VIRF diagnostics shall be calculated for the first three years of integration and for just one realization. For models participating in DynVarMIP, DynVar diagnostics shall be calculated for the first three years of integration and for all realizations.

2.2.2 ~~VolcLongvolc-long-Single-HLhlN and volc-long-hlS~~

Non-mandatory experiments that ~~applies apply~~ the same approach as ~~VolcLongvolc-long-Single-Eq eq~~ and extends the investigation to the case of ~~an~~ idealized strong high-latitude volcanic eruptions (Tables 2 and 3). ~~This Volc-long-hlN and volc-long-hlS experiment is are~~ designed as a Northern Hemisphere-NH and

Formattato: Tipo di carattere: Corsivo

Formattato: Tipo di carattere: Corsivo

320 a Southern Hemisphere (SH) extra-tropical eruption, respectively, both with SO₂ injection equal to half the
total amount injected for the VolcLongvolc-long-Single-Eq-eq experiment. This choice was based on the
assumption that for an equatorial eruption the injected mass is roughly evenly distributed between the two
hemispheres, increasing comparability between VolcLongvolc-long-Single-Eq-eq and VolcLongvolc-long-
Single-HL-hIN/hIS as both should yield similar forcing over the Northern Hemisphere eruption's hemisphere
(but see Section 3.3). The initialization procedure and required integration length are the same as for
325 VolcLongvolc-long-Single-Eq-eq. Both experiments are expected to contribute to outstanding open
questions about the magnitude of the climatic impact of high-latitude eruptions, especially concerning the
inter-hemispheric response. VIRF diagnostics shall be calculated for the first three years of integration and
for just one realization. For models participating in DynVarMIP, DynVar diagnostics shall be calculated for
the first three years of integration, for all realizations.

330 The eruption strength is about 4 times stronger than that estimated for the Mt Katmai/Novarupta
eruption in 1912 (Oman et al., 2005). The eruption used in VolcLongvolc-long-Single-HL-hIN should not be
considered directly comparable to the 1783-84 Laki eruption – one of the strongest high-latitude eruptions
that occurred in historical times – since the experiment does not try to reproduce the very specific
characteristics of Laki, including multistage releases of large SO₂ mass paced at short temporal intervals
335 (e.g., Thordarson and Self, 2003; Oman et al., 2006; Schmidt et al., 2010; Pausata et al., 2015b).

volc-long-hIN (Tier 2) has a higher priority than volc-long-hIS (Tier 3).

2.3 volc-cluster

2.2.3 2.3.1 VolcLongvolc-Clustercluster-Ctrlctrl

340 A-This non-mandatory “volcanic cluster” experiment to investigate the climatic response to a close
succession of strong volcanic eruptions, so-called “volcanic cluster” (Table 2). The experiment is motivated
by the large uncertainties in the multidecadal and longer-term climate repercussions of multiple eruptions,
including volcanic double events (e.g., Toohey et al., 2016b) and prolonged periods of strong volcanic
activity (e.g., Miller et al., 2012; Schleussner and Feulner, 2013; Zanchettin et al., 2013a; Moreno-
345 Chamarro et al., 2016). The proposed experiment is designed to realistically reproduce the volcanic forcing
generated by the early 19th century volcanic cluster, which included the 1809 eruption of unknown location
and the 1815 Tambora and 1835 Cosigüina eruptions. The early 19th century is the coldest period in the
past 500 years (Cole-Dai et al., 2009) and therefore of special interest for interdecadal climate variability
(Zanchettin et al., 2015a; Winter et al., 2015). In addition, long-term repercussions may be relevant for the
350 initialization of CMIP6 historical simulations.

Formattato: Tipo di carattere: Corsivo

Formattato: Tipo di carattere: Corsivo

Formattato: Tipo di carattere: Grassetto

Formattato: Paragrafo elenco, Struttura + Livello:2 +
Stile numerazione: 1, 2, 3, ... + Comincia da:1 +
Allineamento: A sinistra + Allinea a: 0 cm + Imposta un
rientro di: 0,63 cm

Formattato: Tipo di carattere: Grassetto, Non Corsivo

Formattato: Nessun elenco puntato o numerato

Formattato: Tipo di carattere: Corsivo

At least an ensemble of three 50-year long simulations is requested. Due to the long-term focus of the experiment, selection of initialization states is of second-order importance. Nonetheless, it is recommended to sample initial states pacing them at a minimum 50-year intervals. Initial states ~~should~~ shall be sampled from the ~~PiControl-piControl~~ for consistency with the ~~VoleLongvolc-long-Single~~ experiments.

Formattato: Tipo di carattere: Corsivo

Formattato: Tipo di carattere: Corsivo

2.2.3.42 ~~VoleLongvolc-Clustercluster-Millmill~~

A parallel experiment to ~~VoleLongvolc-Clustercluster-Ctrl-ctrl~~ using restart files from PMIP-~~past1000~~ instead of from ~~PiControl-piControl~~ (see Table 23). Starting from a climate state that experienced realistic past ~~volcanic-natural~~ forcing, this experiment allows to explore the sensitivity of ~~the~~ ocean response to the initial state, ~~which has been highlighted to be significant particularly for preindustrial controls that do not include background volcanic aerosols [e.g., Gregory, 2010; Zanchettin et al., 2013a].~~ ~~VoleLongVolc-Clustercluster-Mill-mill~~ is more suitable for a direct comparison with early instrumental data and paleoclimate reconstructions, and allows one to explore the role of ocean initial conditions on sea ice response, ocean response and surface temperature response by comparison with ~~VoleLongvolc-Clustercluster-Ctrl-ctrl~~.

Formattato: Tipo di carattere: Corsivo

Formattato: Tipo di carattere: Corsivo

Formattato: Tipo di carattere: Corsivo

This non-mandatory experiment requires that at least one PMIP-~~past1000~~ realization has been performed. One simulation is requested, but an ensemble of three simulations is recommended. The proper experiment starts in year 1809 as ~~VoleLongvolc-Clustercluster-Ctrl-ctrl~~. However, the simulation must be initialized in January 1st 1790 to avoid interferences due to the decadal drop of solar activity associated with the Dalton Minimum. Hence, the experiment proper lasts 50 ~~-~~years as ~~VoleLongvolc-Clustercluster-Ctrl-ctrl~~, but a total of 69 years for each ensemble member are actually requested. Different members of the ~~VoleLongvolc-Clustercluster-Mill-mill~~ ensemble can be obtained by either using restart files from different ensemble members of PMIP-~~past1000~~, if available, or through introducing small perturbations to the same restart file. All external forcings, except volcanic forcing, are set as a perpetual repetition of the year 1790 for the full duration of the experiment.

Formattato: Tipo di carattere: Corsivo

2.3.3 ~~volc-cluster-21C~~

A parallel experiment to ~~volc-cluster-ctrl~~ using restart files from the end of the ~~historical simulation~~ instead of from ~~piControl~~, and boundary conditions from the 21st century SSP2-4.5 scenario experiment of ScenarioMIP (O'Neill et al., 2016), except for volcanic forcing during the volcanic cluster period (see Table 3). The experiment is designed to explore the climate response to volcanic eruptions under warmer background conditions compared to preindustrial climates and to investigate the potential uncertainties in

Formattato: Tipo di carattere: Corsivo

Formattato: Tipo di carattere: Corsivo

Formattato: Apice

future climate projections due to volcanic activity. The experiment uses the same volcanic forcing used in *volc-cluster-ctrl/-mill*, with the first eruption of the cluster (i.e., the 1809 eruption) placed on year 2015.

Simulations shall be run to the end of the 21st century for full comparability with the corresponding scenario simulation. At the end of the volcanic cluster, volcanic forcing input shall be kept constant at the same constant value prescribed for the *piControl* simulation for consistency with the SSP2-4.5 scenario experiment.

We encourage modeling groups that are interested in both VolMIP and ScenarioMIP to also coordinate experiments where the same volcanic cluster is placed later on in the scenario integration (e.g., with the first eruption in year 2050).

4.3. Forcing

3.1 Implementation: general aspects

VolMIP identifies a volcanic forcing dataset for each experiment included in the protocol. The forcing parameters ~~can are~~ either ~~be~~ provided in terms of aerosol optical properties and distributions in time and space, as for the case when available data were identified as consensus reference, or ~~can be~~ calculated based on the tool and guidelines described in the protocol. The latter is the case for ~~the *volc-long* and *volc-cluster* experiments~~ that ~~using use~~ forcing input data specifically ~~created generated~~ for VolMIP.

In addition, the implementation of the forcing (e.g., spectral interpolation) is constrained to ensure that the imposed radiative forcing is consistent across the participating models. Surface albedo changes due to tephra deposition and indirect cloud radiative effects are neglected in all the experiments.

~~VolMIP has defined a new group of variables (Volcanic Instantaneous Radiative Forcing, or VIRF, see Table 4), which includes additional variables that were not in the original set provided by CMIP and are necessary to generate the volcanic forcing in some experiments. In particular, all VIRF diagnostics used for *VolcShort-Eq-full/surf/strat* are instantaneous 6h data, so some interpolation in time may be required. The data request is at: <https://www.earthsystemcog.org/projects/wip/CMIP6DataRequest>.~~

3.2 ~~VolcShort~~*volc-pinatubo*

~~*VolcShort*~~*volc-pinatubo-Eq-full* will use the CMIP6 stratospheric aerosol data set (Thomason et al., 2016) for the volcanic forcing of the 1991 Pinatubo eruption, which is ~~set up~~*compiled* for the CMIP6 ~~historical simulation experiment~~. Specifically, the reference stratospheric aerosol forcing dataset for the ~~CMIP6 historical experiment~~ includes model-specific data for aerosol extinction, single scattering albedo and asymmetry factor, all as a function of latitude, height and the spectral bands of the model (see

Formattato: Apice

Formattato: Tipo di carattere: Corsivo

Formattato: Tipo di carattere: Corsivo

Formattato: Tipo di carattere: Corsivo

Codice campo modificato

Formattato: Tipo di carattere: Corsivo

Formattato: Tipo di carattere: Corsivo

415 ftp://iacftp.ethz.ch/pub_read/luo/CMIP6 and <https://pcmdi.llnl.gov/projects/input4mips>). We recommend to
follow the same protocol for implementation of the forcing in the *historical* experiment, and therefore
recommend to replace forcing input data below the model tropopause by the climatological or other values
of tropospheric aerosol used by the models.

Formattato: Car. predefinito paragrafo

Formattato: Tipo di carattere: Corsivo

420 ~~VoleShortvolc-pinatubo-Eq-surf~~ and ~~VoleShortvolc-pinatubo-Eq-strat~~ will not account for forcing
based on imposed aerosol optical properties as is the usual approach in VolMIP. Instead, they will use
output from the corresponding ~~VoleShortvolc-pinatubo-Eq-full~~ experiment. Specifically, ~~VoleShortvolc-~~
~~pinatubo-Eq-surf~~ will specify a prescribed perturbation to the shortwave flux to mimic the attenuation of
solar radiation by volcanic aerosols, and therefore the cooling of the surface. The goal is to isolate the
425 impact of shortwave reflection from the impact of aerosol heating in the stratosphere. The changes must be
prescribed at the top of atmosphere (TOA) under clear sky conditions (variable swtoafluxaeroc of VIRF).
Similarly, ~~VoleShortvolc-pinatubo-Eq-strat~~ will specify a prescribed perturbation to the total (long-wave
plus short-wave) radiative heating rates, seeking to mimic the local impact of volcanic aerosol (variables
zmlwaero and zmswaero of VIRF). This must be implemented by adding an additional temperature
430 tendency. VolMIP does not enforce the same perturbation across all models in ~~VoleShortvolc-pinatubo-Eq-~~
~~surf~~ and ~~VoleShortvolc-pinatubo-Eq-strat~~, as for both ~~mechanistic~~ experiments priority is given to the
consistency with the corresponding ~~VoleShortvolc-pinatubo-Eq-full~~ experiment.

3.3 ~~VoleLongvolc-long and volc-cluster~~

435 These experiments are based on pre-industrial volcanic events for which no direct observation is
available. VolMIP recognizes the need to overcome the uncertainties and the limitations of currently
available volcanic forcing datasets for the pre-industrial period (see Figure 1a), which poses the need to
identify a single, consensus forcing dataset for each one of the ~~VoleLongvolc-long and volc-cluster~~
experiments. Therefore, for the ~~VoleLongvolc-long-Single-Eq-eq~~ experiment, coordinated ~~climate~~
440 simulations of the 1815 eruption of Mt. Tambora (see Table 5) were performed with different climate
models including modules for stratospheric ~~chemistry and~~ aerosol microphysics ~~and chemistry~~ (chemistry
climate models). The imposed SO₂ injection of 60 Tg at the equator used in these simulations is deduced
from reanalysis of bipolar ice-core data used in recent volcanic forcing reconstructions (Stoffel et al., 2015;
Gao et al., 2008) and calculations based on geological data (Self et al., 2004). The easterly QBO phase and
445 altitude of injection are based on satellite and lidar observations of QBO, SO₂, and sulfate after the
Pinatubo eruption (McCormick and Veiga, 1992; Read et al., 1993; Herzog and Graf, 2010). The results

Formattato: Tipo di carattere: Corsivo

show large uncertainties in the estimate of volcanic forcing parameters derived from different state-of-the-art chemistry climate models perturbed with the same sulfur injections (Figure 3a). How these results are traced back to the different treatment of aerosol microphysics and climate physical processes in the different models is the subject of a dedicated study. Here, we only conclude that existing uncertainties prevent the identification, within the time constraints of the CMIP6 schedule, of a single consensus forcing estimate for a given volcanic eruption based on a multi-model ensemble with current chemistry climate models.

Therefore, VolMIP proposes for the *VolcLongvolc-long* and *volc-cluster* experiments forcing data sets constructed with the Easy Volcanic Aerosol (EVA) module (Toohey et al., 2016a). EVA provides an analytic representation of volcanic stratospheric aerosol forcing, prescribing the aerosol's radiative properties and primary modes of spatial and temporal variability. It creates volcanic forcing from a given eruption sulfur injection and latitude with an idealized spatial and temporal structure, constructed so as to produce good agreement with observations of the aerosol evolution following the 1991 Pinatubo eruption. Scaling to larger eruption magnitudes is performed in a manner ~~consistent with~~ similar to the forcing reconstruction of Crowley and Unterman (2013). EVA is also used to construct the volcanic forcing dataset used for ~~the PMIP-past1000 experiment~~ ~~the last millennium experiment of the Paleoclimate MIP (PMIP-past1000)~~ (Kageyama et al., 2016). This augments the comparability between PMIP and VolMIP results concerning those eruptions that are featured by both MIPs. The EVA module outputs data resolved for given latitudes, heights and wavelength bands. It therefore is an improvement compared to previously available volcanic forcing datasets for the pre-observational period. The forcing sets produced with EVA have the same format as the CMIP6 standard forcing files, i.e., aerosol extinction, single scattering albedo and asymmetry factor, all as a function of latitude, height and the spectral bands of the model. The aerosol forcing produced by EVA decays to zero around the tropopause. Therefore, differently from the forcing used in the *volc-pinatubo* experiments, no clipping of the forcing is necessary at the tropopause for experiments using EVA forcing. Toohey et al. (2016a) provide technical details about EVA.

VolMIP requests that all modeling groups use EVA to generate the specific forcing input dataset for their model, using the same sulfur emission estimates to be specified for use in the PMIP-past1000 experiment. Figure 3 provides an overview of the EVA forcing for an estimated SO₂ injection for the 1815 Tambora eruption of 56.2 Tg to be used in ~~*VolcLongvolc-long-Single-Eqeq.*~~ ~~*VolcLongvolc-Clustercluster-Ctrl-ctrl*~~ and ~~*VolcLongvolc-Clustercluster-Mill-mill*~~ include all eruptions represented in the PMIP-past1000 experiment for the overlapping period.

Formattato: Tipo di carattere: Corsivo

Formattato: Tipo di carattere: Corsivo

Formattato: Tipo di carattere: Corsivo

480 The reference SO₂ emission for the *VolcLongvolc-long-Single-HL-hlN/hlS* experiments is equal to one-half the Tambora value. The evolution of aerosol optical depth (AOD) by EVA for a **NH** high-latitude injection of 28.1 Tg of SO₂ is illustrated in Figure 4. The **Northern Hemisphere** average AOD for the *VolcLongvolc-long-Single-HL-hlN* and *VolcLongvolc-long-Single-Eq-eg* experiments are quite similar in magnitude and temporal structure. Differences occur **mainly** due **mainly** to the seasonal dependence of the tropical-to-extratropical transport parameterized in EVA. The reduced stratospheric transport into the Northern Hemisphere in the summer months after the April eruptions leads to a time lag in the peak
485 **Northern Hemisphere** mean AOD for *VolcLongvolc-long-Single-Eq-eg* compared to *VolcLongvolc-long-Single-HL-hlN*. It also leads to generally somewhat less aerosol transported to the Northern compared to the Southern Hemisphere for *VolcLongvolc-long-Single-Eq-eg*, which explains the lower peak AOD for this experiment than for *VolcLongvolc-long-Single-HL-hlN*. *Similar considerations stand for volc-long-hlS.*

Formattato: Tipo di carattere: Corsivo

490 4. Follow-up research and synergies with other modeling activities

We expect the VolMIP experiments not only to generate broad interest within the climate modeling community but also to stimulate research across many different branches of climate sciences.

Cooperation between VolMIP and other ongoing climate modeling initiatives and MIPs increases VolMIP's relevance for climate model evaluation. In particular, synergies between VolMIP and the
495 *WCRP/SPARC* Stratospheric Sulfur and its Role in Climate (SSiRC) coordinated multi-model initiative (Timmreck et al., 2016b) as well as between VolMIP and the Radiative Forcing MIP (RFMIP) (*Pincus et al., 2016, this issue*) will help to building a scientific basis to distinguish between differences in volcanic radiative forcing data and differences in climate model response to volcanic forcing. VolMIP provides a well-defined set of forcing parameters in terms of aerosol optical properties and is thus complementary to
500 SSiRC, which uses global aerosol models to investigate radiative forcing uncertainties associated with given SO₂ emissions. Precise quantification of the forcing to which models are subject is central for both RFMIP and VolMIP: RFMIP has planned transient volcanic and solar forcing experiments with fixed preindustrial sea-surface temperature to diagnose volcanic and solar effective forcing, instantaneous forcing and adjustments, which is complementary to the *Short-pinatubo* experiments of VolMIP.

505 VolMIP has synergies with the Geoenvironment Model Intercomparison Project (GeoMIP; Kravitz et al., 2015), which includes proposals to simulate a long-duration stratospheric aerosol cloud to counteract global warming. Furthermore, PMIP and VolMIP provide complementary perspectives on one of the most important and less understood factors affecting climate variability during the last millennium. Specifically, VolMIP systematically assesses uncertainties in the climatic response to volcanic forcing associated with

510 different initial conditions and structural model differences. In contrast, the PMIP-*past1000* experiment describes the climatic response to volcanic forcing in long transient simulations where related uncertainties are due to the reconstruction of past volcanic forcing, the implementation of volcanic forcing within the models, initial conditions, the presence and strength of additional forcings, and structural model differences. The *past1000_volc_cluster* experiment of PMIP consists of an ensemble of full-forcing simulations covering the early 19th century whose design is aligned with VolMIP-*volc-cluster* experiments (Jungclaus et al., 2016, this issue). This hierarchy of volcanic cluster experiments will allow to investigate the interactions between different natural forcing factors and the role of background climate conditions during one of coldest periods of the last millennium, when discrepancies exist between information from available climate simulations and reconstructions (e.g., Winter et al., 2015; Zanchettin et al., 2015a).

Formattato: Tipo di carattere: Corsivo

520 Modeling groups who participate in both VolMIP and PMIP are encouraged to output the VIRF diagnostics for the following tropical eruptions simulated in the *past1000* experiment: 1257 Samalas, 1453 Kuwae, 1600 Huaynaputina, 1809 Unidentified, and 1815 Tambora. VIRF diagnostic-s ~~should~~ shall be calculated for a period of five years starting from the eruption year, and ~~would~~ will be useful for future studies to expand the investigation based on ~~VolcShortvolc-pinatubo-Eq-strat~~ and ~~VolcShortvolc-pinatubo-Eq-surf~~.

Formattato: Tipo di carattere: Corsivo

Formattato: Apice

Formattato: Tipo di carattere: Corsivo

525 VolMIP and the Detection and Attribution MIP (DAMIP) (Gillet et al., 2016) share the CMIP6 science theme of characterizing forcing. The experiments *histALL*, *histNAT*, *histVLC* and *histALL_aercone* ~~estAER2~~ of DAMIP include the 1991 Pinatubo eruption within transient climate situations and therefore provide context to the ~~VolcShortvolc-pinatubo~~ set of VolMIP experiments. The experiment *volc-cluster-21C* is built on and complement to the SSP2-4.5 scenario experiment of ScenarioMIP.

Formattato: Tipo di carattere: Corsivo

Formattato: Tipo di carattere: Corsivo

530 VolMIP and DCPD are closely working together on the impact of volcanic eruptions on seasonal and decadal predictions, and have designed a common experiment (~~VolcShortvolc-pinatubo-Eq-ini~~ and the DCPD experiment *C3.42* are different labels for the same experiment). ~~The DynVar-activityMIP~~ puts a particular emphasis on the two-way coupling between the troposphere and the stratosphere, and it is therefore deeply involved in the design and analysis of the ~~VolcShortvolc-pinatubo-full/-strat/-surf~~ ~~mechanistic~~ experiments.

We envisage follow-up research stimulated by VolMIP's links to the Grand Challenges of the World Climate Research Program (Brasseur and Carlson, 2015) on:

- 540 • “Clouds ~~and atmospheric~~, circulation and climate sensitivity,” in particular through improved characterization of volcanic forcing and improved understanding of how the hydrological cycle and the large-scale circulation respond to volcanic forcing. Volcanic sulfate aerosols can affect clouds

545 also by acting as cloud condensation nuclei (Graf et al., 1997; see also: Mather et al., 2004; Seifert et al., 2011; Schmidt et al., 2012; Meyer et al., 2015), thereby affecting regional precipitation (e.g., Zhao et al., 2012). Volcanic eruptions are among the natural aerosol sources producing the strongest simulated cloud albedo effect (Rap et al., 2013). Assessments of cloud responses to volcanic forcing in VolMIP must take into account that in all experiments only the radiative effects of volcanic aerosols are represented (see section 3). VolMIP further contributes to the initiative on leveraging the past record through planned experiments describing the climate response, in an idealized context, to historical eruptions that are not (or not sufficiently) covered by CMIP6-DECK, *historical or other* MIPs, in particular through improved characterization of volcanic forcing and improved understanding of how the hydrological cycle and the large-scale circulation respond to volcanic forcing. VolMIP further contributes to the initiative on leveraging the past record through planned experiments describing the climate response, in an idealized context, to historical eruptions that are not (or not sufficiently) covered by CMIP6-DECK, *historical or other* MIPs.

Formattato: Tipo di carattere: Corsivo

Formattato: Tipo di carattere: Corsivo

- 555
- “Climate extremes,” in particular through a more systematical assessment of regional climate variability – and associated predictability and prediction – during periods of strong volcanic forcing at both intraseasonal-to-seasonal (e.g., post-eruption Northern Hemisphere’s winter warming) and interannual-to-decadal (e.g., post-eruption delayed winter warming, Zanchettin et al., 2013b; Timmreck et al., ~~2016b~~2016a) time scales.
 - “Water availability,” in particular through the assessment of how strong volcanic eruptions affect the monsoon systems and the occurrence of extensive and prolonged droughts.
 - “~~Rapid cryosphere changes~~Melting ice and global consequences,” in particular concerning the onset of volcanically forced long-term feedbacks involving the cryosphere which is suggested by recent studies (e.g., Miller et al., 2012, Berdahl and Robock, 2013; Zanchettin et al., 2014).

565 Ocean heating and circulation, annual to decadal timescales, and short-lived climate forcings were identified among those areas where the WCRP’s grand challenges seem most in need of broadened or expanded research (Brasseur and Carlson, 2015). VolMIP is expected to advance knowledge in all such areas.

570 VolMIP is designed based on a limited number of idealized volcanic forcing experiments. We recognize that an eruption’s characteristics are a major source of uncertainty for its climatic impacts. We encourage modeling groups interested in performing sensitivity experiments based on the experiments proposed here and concerning, e.g., the magnitude and the season of the eruption, to use VolMIP as a

platform for coordinating such efforts within a multi-model framework. The flexibility of the EVA module is, to this regard, a valuable advantage.

575 Follow-up research must take ~~also~~ into account ~~the following considerations.~~

~~—That~~ the design of the simulations reflects necessary constraints on the overall resources required to perform the whole set of mandatory experiments. This implies limitations such as the possibly insufficient representation of the whole range of variability of climate modes not explicitly accounted in the design.

580 This includes, for instance, the ~~Southern-Hemispheric~~ annular mode (e.g., Karpechko et al., 2010; Zanchettin et al., 2014) and modes of internal stratospheric variability like the QBO. VolMIP's experiments are designed based on observed or reconstructed forcing characteristics of historical volcanic eruptions (1815 Tambora and 1991 Pinatubo for the Tier 1 experiments). Comparison with observational or reconstructed evidence must, however, take into account the idealized character of VolMIP's experiments, including the simplified setting for generating volcanic forcing parameters provided by the EVA module.

585 Specifically, the evolution of the volcanic aerosol cloud in EVA does not account for the meteorological conditions at the time of the eruption, and cannot represent the aerosol properties at anything other than the largest scales. Eccentricities of the aerosol evolution, due to variations in stratospheric transport such as the QBO, mid-latitude mixing, and the polar vortex, cannot be reliably included in any reconstruction of aerosol forcing which relies only on sparse proxy records. ~~Observations~~ Additionally, observations- 590 ~~simulations assessments cannot also leave asideneed to include~~ the identification of the origins and consequences of systematic model biases affecting the dynamical climate response to volcanic forcing.

5. Summary

595 VolMIP is a coordinated climate modeling activity to advance our understanding of how the climate system responds to volcanic forcing. VolMIP contributes to identifying the causes that limit robustness in simulated volcanically-forced climate variability, especially concerning differences in models' treatment of physical processes. It further allows for the evaluation of key climate feedbacks in coupled climate simulations following relatively well-observed eruptions.

600 The protocol detailed in this paper aims at improving comparability across the participating climate models by (i) constraining the applied radiative forcing, ~~proposing-prescribing~~ for each experiment a consensus set of forcing parameters to be employed, and (ii) constraining the background climate conditions upon which the volcanic forcing is applied. The protocol entails ~~two-three~~ main sets of experiments: the first focusing on the short-term (seasonal to interannual) atmospheric response, ~~and~~ the second focusing on the long-term (interannual to decadal) response of the coupled ocean-atmosphere

605 system, and the third focusing on the climate response to close successions of volcanic eruptions (so-called volcanic clusters). ~~Both Experiments~~ are further prioritized into three tiers ~~of experiments~~. Careful sampling of initial climate conditions and the opportunity to consider volcanic eruptions of different strengths will allow a better understanding of the relative role of internal and externally-forced climate variability during periods of strong volcanic activity, hence ~~both~~ improving both the evaluation of climate models and ~~enhancing~~ our ability to accurately simulate past and future climates.

Data Availability

The model output from the all simulations described in this paper will be distributed through the Earth System Grid Federation (ESGF) with digital object identifiers (DOIs) assigned. As in CMIP5, the model output will be freely accessible through data portals after registration. In order to document CMIP6's scientific impact and enable ongoing support of CMIP, users are obligated to acknowledge CMIP6, the participating modelling groups, and the ESGF centres (see details on the CMIP Panel website at <http://www.wcrp-climate.org/index.php/wgcm-cmip/about-cmip>). Further information about the infrastructure supporting CMIP6, the metadata describing the model output, and the terms governing its use are provided by the WGCM Infrastructure Panel (WIP) in their invited contribution to this Special Issue. Along with the data itself, the provenance of the data will be recorded, and DOI's will be assigned to collections of output so that they can be appropriately cited. This information will be made readily available so that published research results can be verified and credit can be given to the modelling groups providing the data. ~~The WIP is coordinating and encouraging the development of the infrastructure needed to archive and deliver this information. In order to run the experiments, datasets for volcanic forcing are required, which are described in the present paper. In order to run the experiments, data sets for natural and anthropogenic forcings defined for the DECK and the CMIP6 historical simulations are required. These forcing data sets are described in separate invited contributions to this special issue. In addition, specific volcanic forcings are required for the VolMIP experiments that are described in this paper.~~ The forcing datasets or, alternatively, dedicated tools to derive them will be made available through the ESGF with version control and DOIs assigned.

Acknowledgments

VolMIP is dedicated to the memory of Thomas Crowley (1948-2014), whose pioneering work on volcanic forcing on climate has inspired many researchers and strongly contributed to the foundation upon which VolMIP was built. We thank the broad scientific community for the stimulating discussions that motivated

Formattato: Inglese (Stati Uniti)

VolMIP and for their contribution in the definition of the experiments and the comments on this draft. We thank the climate modeling groups who have committed to perform the VolMIP experiments. We are grateful to the CMIP6 Panel who guided our work throughout the endorsement process, in particular concerning their recommendation to upgrade the ~~mechanistic~~ *volc-pinatubo-strat-surf* experiments, which led to a stronger Tier 1 experimental palette. We thank Christoph Raible and an anonymous reviewer for their helpful comments on the manuscript and on the VolMIP protocol. The *volc-cluster-2IC* experiment was added to the VolMIP protocol following a suggestion by Ingo Bethke. We thank Martin Juckes for his assistance in preparing the CMIP6 data request and Karl Taylor for his assistance throughout the endorsement process. We thank Andrew Schurer for discussion about solar forcing. M. Khodri acknowledges grant support from the LABEX L-IPSL, funded by the French Agence Nationale de la Recherche under the “Programme d’Investissements d’Avenir” [Grant no. ANR-10-LABX-18-01], a grant from the Agence Nationale de la Recherche MORDICUS, under the “Programme Environnement et Société” [Grant no. ANR-13-SENV-0002-02] and benefited from the IPSL data access PRODIGUER. C. Timmreck acknowledges support from the German federal Ministry of Education (BMBF), research program “MiKlip” (FKZ: 01LP1517B/01LP1130A) and the European Project 603557-STRATOCLIM under program FP7-ENV.2013.6.1-2; STRAOCLIM also partially supported S. Bekki’s work. M. Toohy acknowledges support from the German federal Ministry of Education (BMBF), research program “MiKlip” (FKZ: 01LP1130B). A. Robock is supported by US National Science Foundation (NSF) grant AGS-1430051. E. P. Gerber acknowledges the US National Science Foundation NSF grant AGS-1264195. A. Schmidt was supported by an Academic Research Fellowship from the University of Leeds and NERC grant NE/N006038/1. A. Robock is supported by NSF grant AGS-1430051. E. P. Gerber acknowledges the US National Science Foundation, grant AGS-1264195. W. T. Ball was funded by the Swiss National Science Foundation projects 149182 and 163206. G. Hegerl is supported by the ERC project TITAN (EC-320691), by NCAS and the Wolfson Foundation and the Royal Society as a Royal Society Wolfson Research Merit Award (WM130060) holder. E. Rozanov was partially supported by the Swiss National Science Foundation under grant CRSII2_147659 (FUPSOL II).

Formattato: Tipo di carattere: Corsivo

Formattato: Tipo di carattere: Corsivo

670

675

References

References

680 [Anchukaitis, K., Breitenmoser, P., Briffa K., Buchwal, A., Büntgen, U., Cook E., D'Arrigo, R., Esper, J., Evans, M., Frank, D., Grudd, H., Gunnarson, B., Hughes, M., Kirilyanov, A., Körner, C., Krusic, P., Luckman, B., Melvin, T., Salzer, M., Shashkin, A., Timmermann, C., Vaganov, E., Wilson, R.: Tree-rings and volcanic cooling, Nature Geoscience, 5, 836-837, doi:10.1038/ngeo1645, 2012.](#)

685 [Anet, J. G., Muthers, S., Rozanov, E. V., Raible, C. C., Stenke, A., Shapiro, A. I., Brönnimann, S., Arfeuille, F., Brugnara, Y., Beer, J., Steinhilber, F., Schmutz, W., and Peter, T.: Impact of solar versus volcanic activity variations on tropospheric temperatures and precipitation during the Dalton Minimum, Clim. Past, 10, 921-938, doi:10.5194/cp-10-921-2014, 2014.](#)

[Bekki, S., Pyle, J. A., Zhong, W., Tourni, R., Haigh, J. D., Pyle, D. M.: The role of microphysical and chemical processes in prolonging the climate forcing of the Toba Eruption, Geophys. Res. Lett., 23, 2669-2672, 1996.](#)

690 [Bekki, S.: Oxidation of volcanic SO₂: a sink for stratospheric OH and H₂O, Geophys. Res. Lett., 22\(8\), 913-916, 1995.](#)

[Berdahl, M., and Robock, A.: Northern Hemispheric cryosphere response to volcanic eruptions in the Paleoclimate Modeling Intercomparison Project 3 last millennium simulations, J. Geophys. Res. Atmos., 118, 12,359-12,370, doi:10.1002/2013JD019914, 2013.](#)

695 [Boer, G. J., Smith, D. M., Cassou, C., Doblas-Reyes, F., Danabasoglu, G., Kirtman, B., Kushnir, Y., Kimoto, M., Meehl, G. A., Msadek, R., Mueller, W. A., Taylor, K., and Zwiers, F.: The Decadal Climate Prediction Project, Geosci. Model Dev. Discuss., doi:10.5194/gmd-2016-78, in review, 2016.](#)

- 700 [Braconnot, P., Harrison, S. P., Kageyama, M., Bartlein, P. J., Masson-Delmotte, V., Abe-Ouchi, A., Otto-Bliesner, B., and Zhao, Y.: Evaluation of climate models using palaeoclimatic data, *Nature Climate Change*, 2, 417–424, doi:10.1038/nclimate1456, 2012.](#)
- [Brasseur, G. and Carlson, D.: Future directions for the World Climate Research Programme, *Eos*, 96, doi:10.1029/2015EO033577, 2015](#)
- 705 [Charlton-Perez, A. J., Baldwin, M. P., Birner, T., Black, R. X., Butler, A. H., Calvo, N., Davis, N. A., Gerber, E. P., Gillett, N., Hardiman, S., Kim, J., Krüger, K., Lee, Y.-Y., Manzini, E., McDaniel, B. A., Polvani, L., Reichler, T., Shaw, T. A., Sigmond, M., Son, S.-W., Toohey, M., Wilcox, L., Yoden, S., Christiansen, B., Lott, F., Shindell, D., Yukimoto, S. and Watanabe, S.: On the lack of stratospheric dynamical variability in low-top versions of the CMIP5 models, *J. Geophys. Res. Atmos.*, 118\(6\), 2494–2505, doi:10.1002/jgrd.50125, 2013.](#)
- 710 [Cole-Dai, J., Ferris, D., Lanciki, A., Savarino, J., Baroni, M., and Thiemens, M. H.: Cold decade \(AD 1810–1819\) caused by Tambora \(1815\) and another \(1809\) stratospheric volcanic eruption, *Geophys. Res. Lett.*, 36, L22703, doi:10.1029/2009GL040882, 2009.](#)
- [Corona, C., Guiot, J., Edouard, J. L., Chalié, F., Büntgen, U., Nola, P., and Urbinati, C.: Millennium-long summer temperature variations in the European Alps as reconstructed from tree rings, *Clim. Past*, 6, 379–400, doi:10.5194/cp-6-379-2010, 2010.](#)
- 715 [Crowley, T. J. and Unterman, M. B.: Technical details concerning development of a 1200 yr proxy index for global volcanism, *Earth Syst. Sci. Data*, 5\(1\), 187–197, doi:10.5194/essd-5-187-2013, 2013](#)
- [D'Arrigo, R., Wilson R., and A. Tudhope, A.: The impact of volcanic forcing on tropical temperatures during the past four centuries, *Nature Geoscience*, 2, 51 – 56, doi:10.1038/ngeo393, 2009.](#)
- [Devine, J. D., Sigurdsson, H.,-Davis, A. N., Self, S.: Estimates of sulfur and chlorine yield to the atmosphere from volcanic eruptions and potential climatic effect, *J. Geophys. Res.*, 89, 6309–6325, 1984.](#)
- 720 [Dhomse, S. S., Emmerson, K. M., Mann, G. W., Bellouin, N., Carslaw, K. S., Chipperfield, M. P., Hommel, R., Abraham, N. L., Telford, P., Braesicke, P., Dalvi, M., Johnson, C. E., O'Connor, F., Morgenstern, O., Pyle, J. A., Deshler, T., Zawodny, J. M., and Thomason, L. W.: Aerosol microphysics simulations of the Mt. Pinatubo eruption with the UM-UKCA composition-climate model, *Atmos. Chem. Phys.*, 14, 11221–11246, doi: 10.5194/acp-14-11221-2014, 2014](#)
- 725

- Ding, Y., Carton, J. A., Chepurin, G. A., Stenchikov, G., Robock, A., Sentman, L. T., and Krasting, J. P.: Ocean response to volcanic eruptions in Coupled Model Intercomparison Project5 (CMIP5) simulations, *J. Geophys. Res., Ocean*, 119, 5622–5637, doi:10.1002/2013JC009780, 2014
- Driscoll, S., Bozzo, A., Gray, L. J., Robock, A., and Stenchikov, G.: Coupled Model Intercomparison Project 5 (CMIP5) simulations of climate following volcanic eruptions, *J. Geophys. Res. Atmos.*, 117, D17105, doi:10.1029/2012JD017607, 2012
- Eyring, V., Bony, S., Meehl, G. A., Senior, C. A., Stevens, B., Stouffer, R. J., and Taylor, K. E.: Overview of the Coupled Model Intercomparison Project Phase 6 (CMIP6) experimental design and organization, *Geosci. Model Dev.*, 9, 1937–1958, doi:10.5194/gmd-9-1937-2016, 2016.
- Frank, D. C., Esper, J., Raible, C. C., Büntgen, U., Trouet, V., B. Stocker, B., Joos, F.: Ensemble reconstruction constraints on the global carbon cycle sensitivity to climate, *Nature*, 463, 527–530, doi:10.1038/nature08769, 2010.
- Gao, C., Robock, A., and Ammann, C.: Volcanic forcing of climate over the past 1500 years: an improved ice core-based index for climate models, *J. Geophys. Res.*, 113, D23111, doi:10.1029/2008JD010239, 2008.
- Gennaretti, F., Arseneault, D., Nicault, A., Perreault, L., and Begin, Y.: Volcano-induced regime shifts in millennial tree-ring chronologies from northeastern North America, *Proceedings of the National Academy of Sciences*, 111: 10077–10082, 2014.
- Gerber, E. P. and Manzini, E.: DynVarMIP: Assessing the Dynamics and Variability of the Stratosphere-Troposphere System, *Geosci. Model Dev. Discuss.*, doi:10.5194/gmd-2016-80, in review, 2016.
- Gillett, N. P., Shiogama, H., Funke, B., Hegerl, G., Knutti, R., Matthes, K., Santer, B. D., Stone, D., and Tebaldi, C.: Detection and Attribution Model Intercomparison Project (DAMIP), *Geosci. Model Dev. Discuss.*, doi:10.5194/gmd-2016-74, in review, 2016.
- Graf, H.-F., Feichter, J., and Langmann, B.: Volcanic sulfur emissions: estimates of source strength and its contribution to the global sulfate burden, *J. Geophys. Res.*, 102, 40727–40738, 1997.
- Gregory, J. M.: Long-term effect of volcanic forcing on ocean heat content, *Geophys. Res. Lett.*, 37, L22701, doi:10.1029/2010GL045507, 2010.
- Hegerl, G. C., Crowley, T. J., Baum, S. K., Kim, K.-Y., and Hyde W. T.: Detection of volcanic, solar and greenhouse gas signals in paleo-reconstructions of Northern Hemispheric temperature, *Geophys. Res. Lett.*, 30 (5), doi:10.1029/2002GL016635, 2003.

Hegerl, G., Luterbacher, J., González-Rouco, F., Tett, S. F. B., Crowley, T. and Xoplaki E.: Influence of human and natural forcing on European seasonal temperatures, *Nat. Geosc.*, 4, 99-103, doi:10.1038/NGEO1057, 2011.

Herzog, M., and Graf, H.-F.: Applying the three-dimensional model ATHAM to volcanic plumes: dynamic of large co-ignimbrite eruptions and associated injection heights for volcanic gases, *Geophys. Res. Lett.*, 37, L19807, doi:10.1029/2010GL044986, 2010.

Hofer, D., Raible, C. C., and Stocker, T. F.: Variations of the Atlantic meridional overturning circulation in control and transient simulations of the last millennium, *Clim. Past*, 7, 133-150, doi:10.5194/cp-7-133-2011, 2011

Iles, C. and Hegerl, G.C.: The global precipitation response to volcanic eruptions in the CMIP5 models, *Environm. Res. Lett.*, 9, 104012, 2014.

Jungclaus, J. H., et al: The PMIP4 simulations of the last millennium (PMIP past1000). In preparation for *Climate of the Past*. 2016.

Kageyama, M., Braconnot, P., Harrison, S. P., Haywood, A. M., Jungclaus, J., Otto-Bliesner, B. L., Peterschmitt, J.-Y., Abe-Ouchi, A., Albani, S., Bartlein, P. J., Brierley, C., Crucifix, M., Dolan, A., Fernandez-Donado, L., Fischer, H., Hopcroft, P. O., Ivanovic, R. F., Lambert, F., Lunt, D. J., Mahowald, N. M., Peltier, W. R., Phipps, S. J., Roche, D. M., Schmidt, G. A., Tarasov, L., Valdes, P. J., Zhang, Q., and Zhou, T. (2016): PMIP4-CMIP6: the contribution of the Paleoclimate Modelling Intercomparison Project to CMIP6, *Geosci. Model Dev. Discuss.*, doi:10.5194/gmd-2016-106, in review, 2016.

Karpechko, A. Y., Gillett, N. P., Dall'Amico, M., and Gray, L. J.: Southern Hemisphere atmospheric circulation response to the El Chichón and Pinatubo eruptions in coupled climate models, *Q. J. Roy. Meteorol. Soc.*, 136, 1813–1822, doi:10.1002/qj.683, 2010.

Kravitz, B., Robock, A., Tilmes, S., Boucher, O., English, J. M., Irvine, P. J., Jones, A., Lawrence, M. G., MacCracken, M., Muri, H., Moore, J. C., Niemeier, U., Phipps, S. J., Sillmann, J., Storelvmo, T., Wang, H., and Watanabe, S.: The Geoengineering Model Intercomparison Project Phase 6 (GeoMIP6): simulation design and preliminary results, *Geosci. Model Dev.*, 8, 3379-3392, doi:10.5194/gmd-8-3379-2015, 2015.

785 Lehner, F., Schurer, A. P., Hegerl, G. C., Deser, C., Frölicher, T. L.: The importance of ENSO phase during volcanic eruptions for detection and attribution, *Geophys. Res. Lett.*, doi:10.1002/2016GL067935, 2016.

790 Luterbacher J., Werner, J. P., Smerdon, J. E., Fernández-Donado, L., González-Rouco, F. J., Barriopedro, D., Ljungqvist, F. C., Büntgen, U., Zorita, E., Wagner, S., Esper, J., McCarroll, D., Toreti, A., Frank, D., Jungclaus, J. H., Barriendos, M., Bertolin, C., Bothe, O., Brázdil, R., Camuffo, D., Dobrovolný, P., Gagen, M., García-Bustamante, E., Ge, Q., Gómez-Navarro, J. J., Guiot, J., Hao, Z., Hegerl, G. C., Holmgren, K., Klimenko, V. V., Martín-Chivelet, J., Pfister, C., Roberts, N., Schindler, A., Schurer, A., Solomina, O., von Gunten, L., Wahl, E., Wanner, H., Wetter, O., Xoplaki, E., Yuan, N., Zanchettin, D., Zhang, H., and Zerefos, C.: European summer temperatures since Roman times, *Environmental Research Letters* 11, 024001, doi: 10.1088/1748-9326/11/1/024001, 2016.

795 Mann, M. E., Rutherford, S., Schurer, A., Tett, S. F., and Fuentes, J. D.: Discrepancies between the modeled and proxy-reconstructed response to volcanic forcing over the past millennium: Implications and possible mechanisms, *J. Geophys. Res. Atmos.*, 118(14), 7617-7627, 2013.

800 Mann, M. E., Fuentes J. D., and Rutherford S.: Underestimation of volcanic cooling in tree-ring based reconstructions of hemispheric temperatures, *Nature Geosciences*, doi 10.1038/ngeo1394, 2012.

~~Mather, T. A., Oppenheimer, C., Allen, A. G., and McGonigle, A. J. S.: Aerosol chemistry of emissions from three contrasting volcanoes in Italy, *Atm. Environ.*, 38, 5637-5649, doi:10.1016/j.atmosenv.2004.06.017, 2004~~

805 Marotzke, J., and Forster, P. M.: Forcing, feedback and internal variability in global temperature trends, *Nature*, 517, 565-570, doi:10.1038/nature14117, 2015.

Mather, T. A., Oppenheimer, C., Allen, A. G., and McGonigle, A. J. S.: Aerosol chemistry of emissions from three contrasting volcanoes in Italy, *Atm. Environ.*, 38, 5637-5649, doi:10.1016/j.atmosenv.2004.06.017, 2004

810 McCormick, M. P., and Veiga, R. E.: SAGE II measurements of early Pinatubo aerosols, *Geophys. Res. Lett.*, 19 (2*), 155-158, doi:10.1029/91GL02790, 1992.

Meyer, A., Vernier, J.-P., Luo, B., Lohmann, U., and Peter, T.: Did the 2011 Nabro eruption affect the optical properties of ice clouds?, *J. Geophys. Res. Atmos.*, 120, 9500-9513, doi:10.1002/2015JD023326, 2015.

Mignot, J., Khodri, M., Frankignoul, C., and Servonnat, J.: Volcanic impact on the Atlantic Ocean over the last millennium, *Clim. Past*, 7, 1439-1455, doi:10.5194/cp-7-1439-2011, 2011.

§15 [Miller, G. H., Geirsdóttir, Á., Zhong, Y., Larsen, D. J., Otto-Bliesner, B. L., Holland, M. M., Bailey, D. A., Refsnyder, K. A., Lehman, S. J., Southon, J. R., Anderson, C., Björnsson, H., and Thordarson, T.: Abrupt onset of the Little Ice Age triggered by volcanism and sustained by sea-ice/ocean feedbacks, *Geophys. Res. Lett.*, 39, L02708, doi:10.1029/2011GL050168, 2012.](#)

§20 [Minnis, P., Harrison, E. F., Stowe, L. L., Gibson, G.G., Denn, F. M., Doelling, D. R., Smith Jr., W. L.: ~~Radiative Climate Forcing by the Mount Pinatubo Eruption. *Science*, 259\(5100\): 1411-1415, doi:10.1126/science.259.5100.1411, 1993.~~](#)

Mills, M. J., Schmidt, A., Easter, R., Solomon, S., Kinnison, D. E., Ghan, S. J., Neely III, R. R., Marsh, D. R., Conley, A., Bardeen, C. G., and Gettelman, A.: Global volcanic aerosol properties derived from emissions, 1990–2014, using CESM1(WACCM). *J. Geophys. Res.– Atmos.*, doi:10.1002/2015JD024290, 2016.

§25 [Minnis, P., Harrison, E. F., Stowe, L. L., Gibson, G.G., Denn, F. M., Doelling, D. R., Smith Jr., W. L.: Radiative Climate Forcing by the Mount Pinatubo Eruption. *Science*, 259\(5100\): 1411-1415, doi:10.1126/science.259.5100.1411, 1993.](#)

§30 [Moreno-Chamarro, E., Zanchettin, D., Lohmann, K., and Jungclauss, J. H.: An abrupt weakening of the subpolar gyre as trigger of Little Ice Age-type episodes. *Clim. Dyn.*, doi:10.1007/s00382-016-3106-7, 2016.](#)

§35 [Muthers, S., Anet, J. G., Raible, C. C., Brönnimann, S., Rozanov, E., Arfeuille, F., Peter, T., Shapiro, A. I., Beer, J., Steinhilber, F., Brugnara, Y., and Schmutz, W.: Northern hemispheric winter warming pattern after tropical volcanic eruptions: sensitivity to the ozone climatology, *J. Geophys. Res.*, 110, 1340–1355, doi:10.1002/2013JD020138, 2014.](#)

§40 [Muthers, S., Arfeuille, F., Raible, C. C., and Rozanov, E.: The impacts of volcanic aerosol on stratospheric ozone and the Northern Hemisphere polar vortex: separating radiative-dynamical changes from direct effects due to enhanced aerosol heterogeneous chemistry, *Atmos. Chem. Phys.*, 15, 11461–11476, doi:10.5194/acp-15-11461-2015, 2015.](#)

[Myhre, G., Shindell, D., Bréon, F. M., Collins, W., Fuglestedt, J., Huang, J., Koch, D., Lamarque, J. F., Lee, D., Mendoza, B., Nakajima, T., Robock, A., Stephens, G., Takemura, T., and Zhang, H.: Anthropogenic and natural radiative forcing, in: *Climate Change 2013: The Physical Science Basis. Contribution of Working Group I to the Fifth Assessment Report of the Intergovernmental Panel on Climate Change*, edited by Stocker, T. F., Qin, D., Plattner, G.-K., Tignor, M., Allen, S. K., Nauels,](#)

Formattato: Tipo di carattere: Corsivo

845 [A., Xia, Y., Bex, V., and Midgley, P. M., Cambridge University Press, Cambridge, United Kingdom and New York, NY, USA, 2013.](#)

[Niemeier, U., Timmreck, C., Graf, H.-F., Kinne, S., Rast, S., and Self, S.: Initial fate of fine ash and sulfur from large volcanic eruptions, Atmos. Chem. Phys., 9, 9043-9057, doi:10.5194/acp-9-9043-2009, 2009.](#)

850 [Oman, L., Robock, A., Stenchikov, G., Schmidt, G. A., and Ruedy, R.: Climatic response to high-latitude volcanic eruptions, Geophys. Res. Lett., 110, D13, doi:10.1029/2004JD005487, 2005.](#)

[O'Neill, B. C., Tebaldi, C., van Vuuren, D., Eyring, V., Friedlingstein, P., Hurtt, G., Knutti, R., Kriegler, E., Lamarque, J.-F., Lowe, J., Meehl, J., Moss, R., Riahi, K., and Sanderson, B. M.: The Scenario Model Intercomparison Project \(ScenarioMIP\) for CMIP6, Geosci. Model Dev. Discuss., doi:10.5194/gmd-2016-84, in review, 2016.](#)

855 [Oppenheimer, C.: Climatic, environmental and human consequences of the largest known historic eruption: Tambora volcano \(Indonesia\) 1815, Progress in Physical Geography, 27, 2, 230-259, 2003.](#)

[Ortega, P., Lehner, F., Swingedouw, D., Masson-Delmotte, V., Raible, C. C., M. Casado, M., Yiou, P.: A multi-proxy model-tested NAO reconstruction for the last millennium, Nature, 523, 71-75, 2015.](#)

860 [Pausata, F. S. R., Grini, A., Caballero, R., Hannachi, A., Seland, Ø.: High-latitude volcanic eruptions in the Norwegian Earth System Model: the effect of different initial conditions and of the ensemble size, Tellus B, 67, 26728, <http://dx.doi.org/10.3402/tellusb.v67.26728>, 2015a.](#)

[Pausata, F. S. R., Chafik, L., Caballero, R., Battisti, D. S.: Impacts of high-latitude volcanic eruptions on ENSO and AMOC, Proc. Nat. Ac. Sc., doi:10.1073/pnas.1509153112, 2015b.](#)

865 [Pincus, R., Forster, P. M., and Stevens, B.: The Radiative Forcing Model Intercomparison Project \(RFMIP\): Experimental Protocol for CMIP6, Geosci. Model Dev. Discuss., doi:10.5194/gmd-2016-88, in review, 2016.](#)

[Raible, C. C., Brönnimann, S., Auchmann, R., Brohan, P., Frölicher, T. L., Graf, H.-F., Jones, P., Luterbacher, J., Muthers, S., Neukom, R., Robock, A., Self, S., Sudrajat, A., Timmreck, C., Wegmann, M.: Tambora 1815 as a test case for high impact volcanic eruptions: Earth system effects, WIREs Clim Change, 7: 569-589, doi: 10.1002/wcc.407, 2016](#)

870 [Rap, A., Scott, C. E., Spracklen, D. V., Bellouin, N., Forster, P. M., Carslaw, K. S., Schmidt, A., Mann, G.: Natural aerosol direct and indirect radiative effects, Geophys. Res. Lett., 40, 3297-3301, doi:10.1002/grl.50441, 2013.](#)

- 875 [Read, W. G., Froidevaux, L., and Waters, J. W.: Microwave limb sounder measurement of stratospheric SO₂ from the Mount Pinatubo volcano, *Geophys. Res. Lett.*, 20, 1299–1302, doi:10.1029/93GL00831, 1993](#)
- 880 [Santer, B. D., Bonfils, C., Painter, J. F., Zelinka, M. D., Mears, C., Solomon, S., Schmidt, G. A., Fyfe, J. C., Cole, J. N. S., Nazarenko, L., Taylor, K. E., and Wentz, F. J.: Volcanic contribution to decadal changes in tropospheric temperature, *Nat. Geosci.*, 7, 185–189, doi:10.1038/ngeo2098, 2014.](#)
- [Schleussner, C. F., and Feulner, G.: A volcanically triggered regime shift in the subpolar North Atlantic Ocean as a possible origin of the Little Ice Age, *Clim. Past*, 9, 1321–1330, doi:10.5194/cp-9-1321-2013, 2013.](#)
- 885 [Schurer, A. P., Tett, S. F. B., and Hegerl, G. C.: Small influence of solar variability on climate over the past millennium, *Nature Geosci.* 7, 104–108, doi:10.1038/ngeo2040, 2014.](#)
- [Schmidt, A., Carslaw, K. S., Mann, G. W., Rap, A., Pringle, K. J., Spracklen, D. V., Wilson, M., and Forster, P. M.: Importance of tropospheric volcanic aerosol for indirect radiative forcing of climate, *Atmos. Chem. Phys.*, 12, 7321–7339, doi:10.5194/acp-12-7321-2012, 2012.](#)
- 890 [Seifert, P., Ansmann, A., Groß, S., Freudenthaler, V., Heinold, B., Hiebsch, A., Mattis, I., Schmidt, J., Schnell, F., Tesche, M., Wandinger, U., and Wiegner, M.: Ice formation in ash-influenced clouds after the eruption of the Eyjafjallajökull volcano in April 2010, *J. Geophys. Res.*, 116, D00U04, doi:10.1029/2011JD015702, 2011.](#)
- 895 [Self, S., Gertisser, R., Thordarson, T., Rampino, M. R., and Wolff, J. A.: Magma volume, volatile emissions, and stratospheric aerosols from the 1815 eruption of Tambora, *Geophys. Res. Lett.* 31, L20608, doi:10.1029/2004GL020925, 2004](#)
- [Sheng, J.-X., Weisenstein, D. K., Luo, B.-P., Rozanov, E., Stenke, A., Anet, J., Bingemer, H., and Peter, T.: Global atmospheric sulfur budget under volcanically quiescent conditions: aerosol–chemistry–climate model predictions and validation, *J. Geophys. Res.-Atmos.*, 120, 256–276, doi:10.1002/2014JD021985, 2015](#)
- 900 [Sigl, M., McConnell, J. R., Toohey, M., Curran, M., Das, S. B., Edwards, R., Isaksson, E., Kawamura, K., Kipfstuhl, S., Krüger, K., Layman, L., Maselli, O. J., Motizuki, Y., Motoyama, H., and Pasteris, D. R.: Insights from Antarctica on volcanic forcing during the Common Era, *Nature Climate Change*, 4, 693–697, doi:10.1038/nclimate2293, 2014.](#)

905 [Sigl, M., Winstrup, M., McConnell, J. R., Welten, K. C., Plunkett, G., Ludlow, F., Büntgen, U., Caffee, M., Chellman, N., Dahl-Jensen, D., Fischer, H., Kipfstuhl, S., Kostick, C., Maselli, O. J., Mekhaldi, F., Mulvaney, R., Muscheler, R., Pasteris, D.R., Pilcher, J. R., Salzer, M., Schüpbach, S., Steffensen, J. P., Vinther, B. M., and Woodruff, T. E.: Timing and climate forcing of volcanic eruptions for the past 2,500 years, *Nature*, 523, 543–549, doi:10.1038/nature14565, 2015.](#)

910 [Stephenson, D. B., Pavan, V., Collins, M., Junge, M. M., and Quadrelli, R.: North Atlantic Oscillation response to transient greenhouse gas forcing and the impact on European winter climate: a CMIP2 multi-model assessment, *Clim. Dyn.*, 27, 401–420, doi:10.1007/s00382-006-0140-x, 2006.](#)

915 [Stoffel, M., Khodri, M., Corona, C., Guillet, S., Poulain, V., Bekki, S., Guiot, J., Luckman, B. H., Oppenheimer, C., Lebas, N., Beniston, M. and Masson-Delmotte, V.: Estimates of volcanic-induced cooling in the Northern Hemisphere over the past 1,500 years, *Nat. Geosci.*, advance on, doi:10.1038/ngeo2526, 2015.](#)

920 [Swingedouw D., Ortega P., Mignot E., Guilyardi E., Masson-Delmotte V., Butler P.G., Khodri M., and Seferian R.: Bidecadal North Atlantic ocean circulation variability controlled by timing of volcanic eruptions, *Nature Comm.*, 6, 6545, doi: 10.1038/ncomms7545, 2015.](#)

925 [Thomas, M. A., Timmreck, C., Giorgetta, M. A., Graf, H.-F., and Stenchikov, G.: Simulation of the climate impact of Mt. Pinatubo eruption using ECHAM5 – Part 1: Sensitivity to the modes of atmospheric circulation and boundary conditions, *Atmos. Chem. Phys.*, 9, 757-769, doi:10.5194/acp-9-757-2009, 2009.](#)

930 [Thomason, L., Vernier, J.-P., Bourassa, A., Arfeuille, F., Bingen, C., Peter, T., and Luo, B.: Stratospheric Aerosol Data Set \(SADS Version 2\) Prospectus. In preparation for Geosc. Model Dev. Discuss., 2016.](#)

[Thordarson, T., and Self, S.: Atmospheric and environmental effects of the 1783–1784 Laki eruption: A review and reassessment, *J. Geophys. Res.*, 108\(D1\), 4011, doi: 10.1029/2001JD002042, 2003.](#)

[Timmreck, C.: Modeling the climatic effects of large volcanic eruptions, *WIREs Clim. Change*, 3, 545–564, doi:10.1002/wcc.192, 2012.](#)

[Timmreck, C., Pohlmann, H., Illing, S., and Kadow, C.: The impact of stratospheric volcanic aerosol on decadal-scale climate predictions, *Geophys. Res. Lett.*, 43\(2\), 834–842, doi:10.1002/2015GL067431, 2016a.](#)

935 [Timmreck, C., Mann, G. W., Aquila, V., Brühl, C., Chin, M., Dhomse, S.S., English, J. M., Lee, L. A., Mills, M. J., Hommel, R., Neely, R., Sheng, J.-X., Toohey, M. and Weisenstein, D.: The Stratospheric Sulphur and its Role in Climate \(SSIRC\) Model intercomparison project. Geophysical Research Abstracts 18, EGU2016-13766, 2016 EGU General Assembly 2016, 2016b](#)

940 ~~[Toohey, M., Stevens, B., Schmidt, H., and Timmreck, C.: Easy Volcanic Aerosol \(EVA v1.0\): An idealized forcing generator for climate simulations. Geosci. Model Dev. Discuss., doi:10.5194/gmd-2016-83, in review, 2016.](#)~~

[Toohey, M., Krüger, K., Bittner, M., Timmreck, C., and Schmidt, H.: The impact of volcanic aerosol on the Northern Hemisphere stratospheric polar vortex: mechanisms and sensitivity to forcing structure. Atmos. Chem. Phys., 14, 13063-13079, doi:10.5194/acp-14-13063-2014, 2014.](#)

945 ~~[Toohey, M., Stevens, B., Schmidt, H., and Timmreck, C.: Easy Volcanic Aerosol \(EVA v1.0\): An idealized forcing generator for climate simulations. Geosci. Model Dev. Discuss., doi:10.5194/gmd-2016-83, in review, 2016a.](#)~~

[Toohey, M., Krüger, K., Sigl, M., Stordal, F. and Svensen, H.: Climatic and societal impacts of a volcanic double event at the dawn of the Middle Ages. Clim. Change, 136\(3-4\), 401–412, doi:10.1007/s10584-016-1648-7, 2016b.](#)

950 [Winter, A., Zanchettin, D., Miller, T., Kushnir, Y., Black, D., Lohmann, G., Burnett, A., Haug, G. H., Estrella-Martínez, J., Breitenbach, S. F. M., Beaufort, L., Rubino, A., and Cheng, H. : Persistent drying in the tropics linked to natural forcing. Nature Communications 6, 7627, doi:10.1038/ncomms8627, 2015.](#)

955 [Zanchettin D., Timmreck, C., O. Bothe, O., Lorenz, S. J., Hegerl, G., Graf, H.-F., Luterbacher, J., and Jungclaus, J. H.: Delayed winter warming: a robust decadal response to strong tropical volcanic eruptions? Geophys. Res. Lett. 40, doi:10.1029/2012GL054403, 2013b.](#)

960 [Zanchettin, D., Bothe, O., Lehner, F., Ortega, P., Raible, C. C., and Swingedouw, D.: Reconciling reconstructed and simulated features of the winter Pacific/North American pattern in the early 19th century. Clim. Past, 11, 939-958, doi:10.5194/cp-11-939-2015, 2015a.](#)

[Zanchettin, D., Timmreck, C., Graf, H.-F., Rubino, A., Lorenz, S., Lohmann, K., Krueger, K., and Jungclaus, J. H.: Bi-decadal variability excited in the coupled ocean–atmosphere system by strong tropical volcanic eruptions. Clim. Dynam., 39, 419–444, doi:10.1007/s00382-011-1167-1, 2012.](#)

965 Zanchettin, D., Timmreck, C., Khodri, M., Robock, A., Rubino, A., Schmidt A., and Toohey, M.: A coordinated modeling assessment of the climate response to volcanic forcing. PAGES Magazine, 32(2): 54-55, 2015b.

970 Zanchettin, D., Bothe, O., Timmreck, C., Bader, J., Beitsch, A., Graf, H.-F., Notz, D., and Jungclaus, J. H.: Inter-hemispheric asymmetry in the sea-ice response to volcanic forcing simulated by MPI-ESM (COSMOS-Mill), Earth Syst. Dynam., 5, 223-242, doi:10.5194/esd-5-223-2014, 2014.

975 Zanchettin, D., Bothe, O., Graf, H. F., Lorenz, S. J., Luterbacher, J., Timmreck, C., and Jungclaus, J. H.: Background conditions influence the decadal climate response to strong volcanic eruptions, J. Geophys. Res.-Atmos., 118, 4090–4106, doi:10.1002/jgrd.50229, 2013a.

980 Zhao, Z., Pritchard, M. S., Russell, L. M.: Effects on precipitation, clouds, and temperature from long-range transport of idealized aerosol plumes in WRF-Chem simulations. J. Geophys. Res., 117, D05206, doi:10.1029/2011JD016744, 2012.

985
990 Anehukaitis K, Breitenmoser P, Briffa K, Buchwal A, Büntgen U, Cook E, D'Arrigo R, Esper J, Evans M, Frank D, Grudd H, Gunnarson B, Hughes M, Kirilyanov A, Körner C, Krusic P, Luckman B, Melvin T, Salzer M, Shashkin A, Timmreck C, Vaganov E, Wilson R. (2012) Tree-rings and volcanic cooling. Nature Geoscience, 5: 836–837 doi:10.1038/ngeo1645

Bekki, S., Pyle J.A., Zhong W., Tourni R., Haigh J.D., Pyle D.M., 1996. The role of microphysical and chemical processes in prolonging the climate forcing of the Toba Eruption. Geophys. Res. Lett. 23, 2669–2672

- Bekki, S., 1995. Oxidation of volcanic SO₂: a sink for stratospheric OH and H₂O. *Geophys. Res. Lett.*, 22(8), 913-916
- Berdahl, M., and A. Robock (2013) Northern Hemispheric cryosphere response to volcanic eruptions in the Paleoclimate Modeling Intercomparison Project 3 last millennium simulations, *J. Geophys. Res. Atmos.*, 118, 12,359–12,370, doi:10.1002/2013JD019914
- Boer, G. J., D. M. Smith, Christophe Cassou, Franciscano Doblas-Reyes, Gokhan Danabasoglu, Ben Kirtman, Yochanan Kushnir, Kimoto Masahide, Jerry Meehl, Rym Msadek, Wolfgang A. Mueller, Karl Taylor, Francis Zwiers, The Decadal Climate Prediction Project, to be submitted to CMIP special issue in *Geosc. Model Dev. Discuss.*
- Braconnot, P., Harrison, S. P., Kageyama, M., Bartlein, P. J., Masson-Delmotte, V., Abe-Ouchi, A., Otto-Bliesner, B., and Zhao, Y. (2012) Evaluation of climate models using palaeoclimatic data, *Nature Climate Change*, 2, 417–424, doi:10.1038/nclimate1456
- Brasseur, G. and Carlson, D. (2015) Future directions for the World Climate Research Programme, *Eos*, 96, doi:10.1029/2015EO033577
- Charlton Perez, A., Baldwin, M. P., Birner, T., Black, R. X., Butler, A. H., Calvo, N., Davis, N. A., Gerber, E. P., Gillett, N., Hardiman, S., Kim, J., Krüger, K., Lee, Y. Y., Manzini, E., McDaniel, B. A., Polvani, L., Reichler, T., Shaw, T. A., Sigmond, M., Son, S. W., Toohey, M., Wileox, L., Yoden, S., Christiansen, B., Lott, F., Shindell, D., Yukimoto, S. and Watanabe, S. (2013) On the lack of stratospheric dynamical variability in low-top versions of the CMIP5 models. *Journal of Geophysical Research: Atmospheres*, 118 (6). pp. 2494-2505. ISSN 2169-8996 doi: 10.1002/jgrd.50125
- Cole Dai J., D. Ferris, A. Lanciki, J. Savarino, M. Baroni, MH Thiemens (2009) Cold decade (AD 1810–1819) caused by Tambora (1815) and another (1809) stratospheric volcanic eruption, *Geophys. Res. Lett.*, 36,L22703 doi:10.1029/2009GL04088.
- Crowley, T. J. and Unterman, M. B. (2013) Technical details concerning development of a 1200-yr proxy index for global volcanism, *Earth Syst. Sci. Data*, 5, 187–197, doi:10.5194/essd-5-187-2013
- Devine, J. D., H. Sigurdsson, A. N. Davis, and S. Self (1984) Estimates of sulfur and chlorine yield to the atmosphere from volcanic eruptions and potential climatic effect. *J. Geophys. Res.* 89:6309–6325.
- Dhomse, S. S., Emmerson, K. M., Mann, G. W., Bellouin, N., Carslaw, K. S., Chipperfield, M. P., Hommel, R., Abraham, N. L., Telford, P., Braesicke, P., Dalvi, M., Johnson, C. E., O'Connor, F., Morgenstern, O., Pyle, J. A., Deshler, T., Zawodny, J. M., Thomason, L. W. (2014) Aerosol microphysics

1025 ~~simulations of the Mt. Pinatubo eruption with the UM-UKCA composition climate model, Atmospheric Chemistry and Physics, 14, 20, 11221–11246, doi:10.5194/acp-14-11221-2014.~~

Ding, Y., J. A. Carton, G. A. Chepurin, G. Stenchikov, A. Robock, L. T. Sentman, and J. P. Krasting (2014) ~~Ocean response to volcanic eruptions in Coupled Model Intercomparison Project 5 (CMIP5) simulations. J. Geophys. Res., 119, 5622–5637, doi:10.1002/2013JC009780.~~

1030 Driscoll, S., Bozzo, A., Gray, L. J., Robock, A., & Stenchikov, G. (2012) Coupled Model Intercomparison Project 5 (CMIP5) simulations of climate following volcanic eruptions. Journal of Geophysical Research: Atmospheres, 117, D17105, doi:10.1029/2012JD017607.

Eyring, V., S. Bony, G. A. Meehl, C. Senior, B. Stevens, R. J. Stouffer, and K. E. Taylor (2015) ~~Overview of the Coupled Model Intercomparison Project Phase 6 (CMIP6) experimental design and organization. Geosci. Model Dev. Discuss., 8, 10539–10583~~

1035 Frank, D. C., J. Esper, C. C. Raible, U. Büntgen, V. Trouet, B. Stocker, and F. Joos (2010), Ensemble reconstruction constraints on the global carbon cycle sensitivity to climate, Nature, 463, 527–530, doi:10.1038/nature08769

Gao, C., A. Robock, C. Ammann (2008) Volcanic forcing of climate over the past 1500 years: An improved ice core-based index for climate models. J. Geophys. Res., 113, D23, doi:10.1029/2008JD010239

1040 Gregory, J. M. (2010) Long-term effect of volcanic forcing on ocean heat content. Geophys. Res. Lett., 37, L22701, doi:10.1029/2010GL045507

Hegerl, G. C., T. J. Crowley, S. K. Baum, K. Y. Kim, and W. T. Hyde (2003) Detection of volcanic, solar and greenhouse gas signals in paleo-reconstructions of Northern Hemispheric temperature. Geophys. Res. Lett. 30 (5), doi:10.1029/2002GL016635

1045 Hegerl, G., J. Luterbacher, F. González-Rouco, S. F. B. Tett, T. Crowley and E. Xoplaki (2011) Influence of human and natural forcing on European seasonal temperatures. Nat. Geosci. 4:99–103, doi:10.1038/NGEO1057

1050 Herzog, M. and Graf, H. F. (2010) Applying the three-dimensional model ATHAM to volcanic plumes: dynamic of large co-ignimbrite eruptions and associated injection heights for volcanic gases. Geophys. Res. Lett., 37, L19807, doi:10.1029/2010GL044986

Hofer, D., C. C. Raible, and T. F. Stocker (2011) Variation of the Atlantic meridional overturning circulation in control and transient simulations of the last millennium. Clim. Past, 7, 133–150, 2011

Hes C. and Hegerl G.C. (2014) The global precipitation response to volcanic eruptions in the CMIP5 models. *Environm. Res. Lett.*, 9, 104012

1055 Kageyama et al., in preparation for the CMIP special issue in *Geosci. Model Dev. Discuss.*

Karpechko A. Y., N. P. Gillett, M. Dall'Amico, and L. J. Gray (2010) Southern Hemisphere atmospheric circulation response to the El Chichón and Pinatubo eruptions in coupled climate models. *Quart. J. Royal Meteor. Soc.* 136(652), 1813–1822, doi:10.1002/qj.683

1060 Kravitz, Ben, Alan Robock, Simone Tilmes, Olivier Boucher, Jason M. English, Peter J. Irvine, Andy Jones, Mark G. Lawrence, Michael MacCracken, Helene Muri, John C. Moore, Ulrike Niemeier, Steven J. Phipps, Jana Sillmann, Trude Storelvmo, Hailong Wang, and Shingo Watanabe (2015) The Geoengineering Model Interecomparison Project Phase 6 (GeoMIP6): Simulation design and preliminary results. *Geosci. Model Dev.*, 8, 3379–3392, doi:10.5194/gmd-8-3379-2015

1065 Lehner, F., A. P. Schurer, G. C. Hegerl, C. Deser 3, and T. L. Frölicher (2016) The importance of ENSO phase during volcanic eruptions for detection and attribution. *Geophys. Res. Lett.*, doi:10.1002/2016GL067935

Mann, M. E., Rutherford, S., Schurer, A., Tett, S. F., & Fuentes, J. D. (2013) Discrepancies between the modeled and proxy reconstructed response to volcanic forcing over the past millennium: Implications and possible mechanisms. *Journal of Geophysical Research: Atmospheres*, 118(14), 7617–7627

1070 Mann, M.E., Fuentes, J.D., Rutherford, S. (2012) Underestimation of volcanic cooling in tree-ring based reconstructions of hemispheric temperatures. *Nature Geosciences*, doi:10.1038/ngeo1394

Marotzke, J., and Forster, P. M. (2015) Forcing, feedback and internal variability in global temperature trends. *Nature*, 517, 565–570. doi:10.1038/nature14117

1075 McCormick, M. P., and R. E. Veiga (1992) SAGE II measurements of early Pinatubo aerosols. *Geophys. Res. Lett.* 19 (2): 155–158, doi:10.1029/91GL02790

Mignot, J., M. Khodri, C. Frankignoul, and J. Servonnat (2011), Volcanic impact on the Atlantic Ocean over the last millennium, *Clim. Past*, 7, 1439–1455, doi:10.5194/cp-7-1439-2011

1080 Miller, G. H., Geirsdóttir, Á., Zhong, Y., Larsen, D. J., Otto-Bliesner, B. L., Holland, M. M., Bailey, D. A., Refsnider, K. A., Lehman, S. J., Southon, J. R., Anderson, C., Björnsson, H., and Thordarson, T. (2012) Abrupt onset of the Little Ice Age triggered by volcanism and sustained by sea ice/ocean feedbacks, *Geophys. Res. Lett.*, 39, L02708, doi:10.1029/2011GL050168

- 1085 Mills, M. J., Schmidt, A., Easter, R., Solomon, S., Kinnison, D. E., Ghan, S. J., R. R. Neely III, D. R. Marsh, A. Conley, C. G. Bardeen, and A. Gettelman (2016) Global volcanic aerosol properties derived from emissions, 1990–2014, using CESM1(WACCM). *J. Geophys. Res.-Atmos.*, doi:10.1002/2015JD024290
- 1090 Myhre, G., D. Shindell, F. M. Bréon, W. Collins, J. Fuglestad, J. Huang, D. Koch, J. F. Lamarque, D. Lee, B. Mendoza, T. Nakajima, A. Robock, G. Stephens, T. Takemura and H. Zhang, 2013: Anthropogenic and Natural Radiative Forcing. In: *Climate Change 2013: The Physical Science Basis. Contribution of Working Group I to the Fifth Assessment Report of the Intergovernmental Panel on Climate Change* [Stocker, T.F., D. Qin, G.-K. Plattner, M. Tignor, S.K. Allen, J. Boschung, A. Nauels, Y. Xia, V. Bex and P.M. Midgley (eds.)]. Cambridge University Press, Cambridge, United Kingdom and New York, NY, USA.
- 1095 Niemeier, U. et al. (2009), Initial fate of fine ash and sulfur from large volcanic eruptions. *Atmos. Chem. Phys.*, 9, 9043–9057.
- 1100 Oman, L., A. Robock, G. Stenchikov, G. A. Schmidt, R. Ruedy (2005) Climatic response to high-latitude volcanic eruptions. *Geophys. Res. Lett.*, 110, D13, doi:10.1029/2004JD005487
- Oman, L., A. Robock, G. L. Stenchikov, T. Thordarson, D. Koch, D. T. Shindell, and C. Gao, 2006: Modeling the distribution of the volcanic aerosol cloud from the 1783–1784 Laki eruption. *J. Geophys. Res.*, 111, D12209, doi:10.1029/2005JD006899.
- 1105 Pausata, F. S. R., A. Grini, R. Caballero, A. Hannachi and Ø. Seland (2015a) High-latitude volcanic eruptions in the Norwegian Earth System Model: the effect of different initial conditions and of the ensemble size. *Tellus B.*, 67, 26728, <http://dx.doi.org/10.3402/tellusb.v67.26728>
- Pausata, F. S. R., L. Chafik, R. Caballero, and D. S. Battisti (2015b) Impacts of high-latitude volcanic eruptions on ENSO and AMOC. *Proc. Nat. Ac. Sc.*, doi:10.1073/pnas.1509153112
- 1110 Read, W. G., Froidevaux, L., and Waters, J. W. (1993) Microwave limb sounder measurement of stratospheric SO₂ from the Mt. Pinatubo Volcano. *Geophys. Res. Lett.*, 20, 1299–1302, doi:10.1029/93GL00831
- Santer, B. D. et al. (2014) Volcanic contribution to decadal changes in tropospheric temperature. *Nature Geosc.*, 7(3), 185–189, doi:10.1038/ngeo2098

Formattato: Tipo di carattere: 11,5 pt

- 1110 ~~Schleussner, C. F. and Feulner, G. (2013) A volcanically triggered regime shift in the subpolar North Atlantic Ocean as a possible origin of the Little Ice Age. *Clim. Past*, 9, 1321–1330, doi:10.5194/cp-9-1321-2013~~
- ~~Schurer, A. P., S. F. B. Tett, and G. C. Hegerl (2014) Small influence of solar variability on climate over the vpast millennium. *Nature Geosci.* 7, 104–108, doi:10.1038/ngeo2040~~
- 1115 ~~Self, S., R. Gertisser,, T. Thordarson, M. R. Rampino, and J. A. Wolff (2004) Magma volume, volatile emissions, and stratospheric aerosols from the 1815 eruption of Tambora. *Geophys. Res. Lett.* 31, L20608, doi:10.1029/2004GL020925~~
- ~~Sheng, J. X., D. K. Weisenstein, B. P. Luo, E. Rozanov, A. Stenke, J. Anet, H. Bingemer, and T. Peter (2015), Global atmospheric sulfur budget under volcanically quiescent conditions: Aerosol-chemistry-climate model predictions and validation, *J. Geophys. Res. Atmos.*, 120, 256–276, doi:10.1002/2014JD021985~~
- 1120 ~~Sigl, M., J.R. McConnell, M. Toohy, M. Curran, S.B. Das, R. Edwards, E. Isaksson, K. Kawamura, S. Kipfstuhl, K. Krueger, L. Layman, O.J. Maselli, Y. Motizuki, H. Motoyama, D.R. Pasteris and M. Severi (2014): Insights from Antarctica on volcanic forcing during the Common Era. *Nature Climate Change*, 4, 693–697.~~
- ~~Sigl, M., M. Winstrup, J. R. McConnell, K. C. Welten, G. Plunkett, F. Ludlow, U. Büntgen, M. Caffee, N. Chellman, D. Dahl-Jensen, H. Fischer, S. Kipfstuhl, C. Kostick, O. J. Maselli, F. Mekhaldi, R. Mulvaney, R. Muscheler, D. R. Pasteris, J. R. Pileher, M. Salzer, S. Schüpbach, J. P. Steffensen, B. M. Vinther, T. E. Woodruff (2015) Timing and climate forcing of volcanic eruptions for the past 2,500 years. *Nature*, 523:543–549, doi:10.1038/nature14565~~
- 1130 ~~Stoffel, M., M. Khodri, C. Corona, S. Guillet, V. Poulain, S. Bekki, J. Guiot, B. H. Luekman, C. Oppenheimer, N. Lebas, M. Beniston, and V. Masson-Delmotte (2015) Estimates of volcanic-induced cooling in the Northern Hemisphere over the past 1,500 years. *Nature Geoscience* 8, 784–788, doi:10.1038/ngeo2526~~
- 1135 ~~Swingedouw D., Ortega P., Mignot E., Guilyardi E., Masson-Delmotte V., Butler P.G., Khodri M., Seferian R. (2015) Bidecadal North Atlantic ocean circulation variability controlled by timing of volcanic eruptions, *Nature Communications*, 6, 6545, doi: 10.1038/ncomms7545.~~

- 1 40 Thomas, M. A., C. Timmreck, M. Giorgetta, H. Graf, and G. Stenchikov (2009). Simulation of the climate impact of Mt. Pinatubo eruption using ECHAM5. Part I: Sensitivity to the modes of atmospheric circulation and boundary conditions, *Atmos. Chem. Phys.*, 9, 757-769, 2009.
- Thomason, L., J. P. Vernier, A. Bourassa, F. Arfeuille, C. Bingen, T. Peter, B. Luo (2016) Stratospheric Aerosol Data Set (SADS Version 2) Prospectus. In preparation for Geosc. Model Dev. Discuss.
- Thordarson, T., and S. Self (2003) Atmospheric and environmental effects of the 1783–1784 Laki eruption: A review and reassessment, *J. Geophys. Res.*, 108(D1), 4011, doi: 10.1029/2001JD002042
- 1 45 ~~Timmreck C. (2012) Modeling the climatic effects of volcanic eruptions, invited review paper Wiley Interdisciplinary Reviews: Climate Change, doi: 10.1002/wcc.192~~
- Timmreck, C., H. Pohlmann, S. Illing and C. Kadow (2016a). The impact of stratospheric volcanic aerosol on decadal scale predictability. *Geophys. Res. Lett.*, 43, doi: 10.1002/2015GL067431
- 1 50 ~~Timmreck, C., H. Pohlmann, S. Illing and C. Kadow (2016a). The impact of stratospheric volcanic aerosol on decadal scale predictability. *Geophys. Res. Lett.*, 43, doi: 10.1002/2015GL067431~~
- Timmreck, C., G. W. Mann, V. Aquila, C. Brühl, M. Chin, S. S. Dhomse, J. M. English, L. A. Lee, M. J. Mills, R. Hommel, R. Neely, J. X. Sheng, M. Toohey and D. Weisenstein (2016b) The Stratospheric Sulphur and its Role in Climate (SSIRC) Model intercomparison project, *Geophysical Research Abstracts Vol. 18, EGU2016-13766, 2016 EGU General Assembly 2016*
- 1 55 ~~Timmreck, C., H. Pohlmann, S. Illing and C. Kadow (2016a). The impact of stratospheric volcanic aerosol on decadal scale predictability. *Geophys. Res. Lett.*, 43, doi: 10.1002/2015GL067431~~
- Toohey, M., B. Stevens, H. Schmidt, and C. Timmreck (2016) Easy Volcanic Aerosol: an idealized forcing generator for climate simulations. To be submitted to *Geosc. Model Dev. Discuss.*
- Toohey M., K. Krüger, M. Bittner, C. Timmreck, H. Schmidt (2014) The impact of volcanic aerosol on the Northern Hemisphere stratospheric polar vortex: mechanisms and sensitivity to forcing structure, *Atmos. Chem. Phys.*, 14, 13063-13079, doi:10.5194/acp-14-13063-2014
- 1 60 Winter, A., D. Zanchettin, T. Miller, Y. Kushnir, D. Black, G. Lohmann, A. Burnett, G. H. Haug, J. Estrella-Martínez, S. F. M. Breitenbach, L. Beaufort, A. Rubino, and H. Cheng. Persistent drying in the tropics linked to natural forcing. *Nature Communications* 6, 7627, doi:10.1038/ncomms8627, 2015
- Zanchettin D., C. Timmreck, O. Bothe, S.J. Lorenz, G. Hegerl, H. F. Graf, J. Luterbacher, and J.H. Jungelaus. Delayed winter warming: a robust decadal response to strong tropical volcanic eruptions? (2013b) *Geophys. Res. Lett.* 40, doi:10.1029/2012GL054403
- 1 65

Zanchettin, D., Bothe, O., Lehner, F., Ortega, P., Raible, C. C., and Swingedouw, D. (2015a) Reconciling reconstructed and simulated features of the winter Pacific/North American pattern in the early 19th century, *Clim. Past*, 11, 939-958, doi:10.5194/cp-11-939-2015

Zanchettin, D., C. Timmreck, H. F. Graf, A. Rubino, S. Lorenz, K. Lohmann, K. Krueger, and J. H. Jungelaus (2012) Bi-decadal variability excited in the coupled ocean-atmosphere system by strong tropical volcanic eruptions. *Clim. Dyn.*, 39:1-2, 419-444, doi:10.1007/s00382-011-1167-4

Zanchettin, D., C. Timmreck, M. Khodri, A. Robock, A. Rubino, A. Schmidt and M. Toohey (2015b) A coordinated modeling assessment of the climate response to volcanic forcing. *PAGES Magazine*, 32(2): 54-55

Zanchettin, D., O. Bothe, C. Timmreck, J. Bader, A. Beitsch, H. F. Graf, D. Notz and J. H. Jungelaus (2014) Inter-hemispheric asymmetry in the sea-ice response to volcanic forcing simulated by MPI-ESM (COSMOS-Mill). *Earth Syst. Dynam.*, 5, 223-242, doi:10.5194/esd-5-223-2014

Zanchettin, D., O. Bothe, H. F. Graf, S. J. Lorenz, J. Luterbacher, C. Timmreck and J. H. Jungelaus (2013a) Background conditions influence the decadal climate response to strong volcanic eruptions, *J. Geophys. Res. Atmos.*, 118, doi:10.1002/jgrd.50229

Formattato: Inglese (Stati Uniti)

Figures

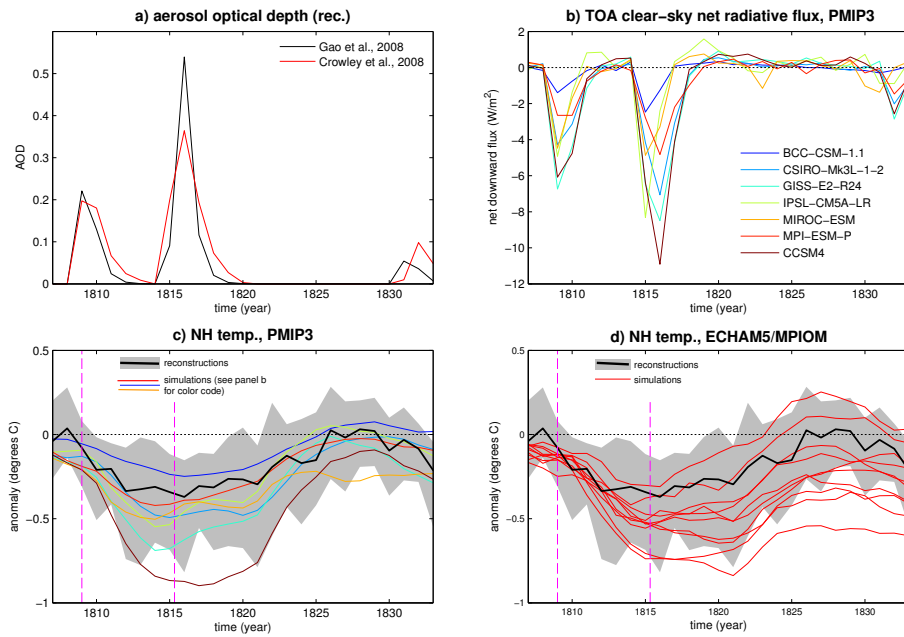


Figure 1: Uncertainty in radiative forcing and climate response for the early-19th-century eruptions. **(a)** two estimates of annual-average global aerosol optical depth at 550 nm (AOD); **(b)** top-of-atmosphere annual-average net clear-sky radiative flux anomalies for a multi-model ensemble of last-millennium simulations (PMIP3; see: Braconnot et al., 2012); **(c)** comparison between simulated (PMIP3, 11-year smoothing, colors) and reconstructed (black line: mean; shading: 5th-95th percentile range) Northern Hemisphere average summer temperature anomalies (relative to 1799-1808); **(d)** same as **(c)**, but for a pre-PMIP3 single-model ensemble (ECHAM5/MPIOM; Zanchettin et al. 2013a,b). Reconstructed data are the full raw calibration ensemble by Frank et al. [2010].

Formattato: Inglese (Stati Uniti)

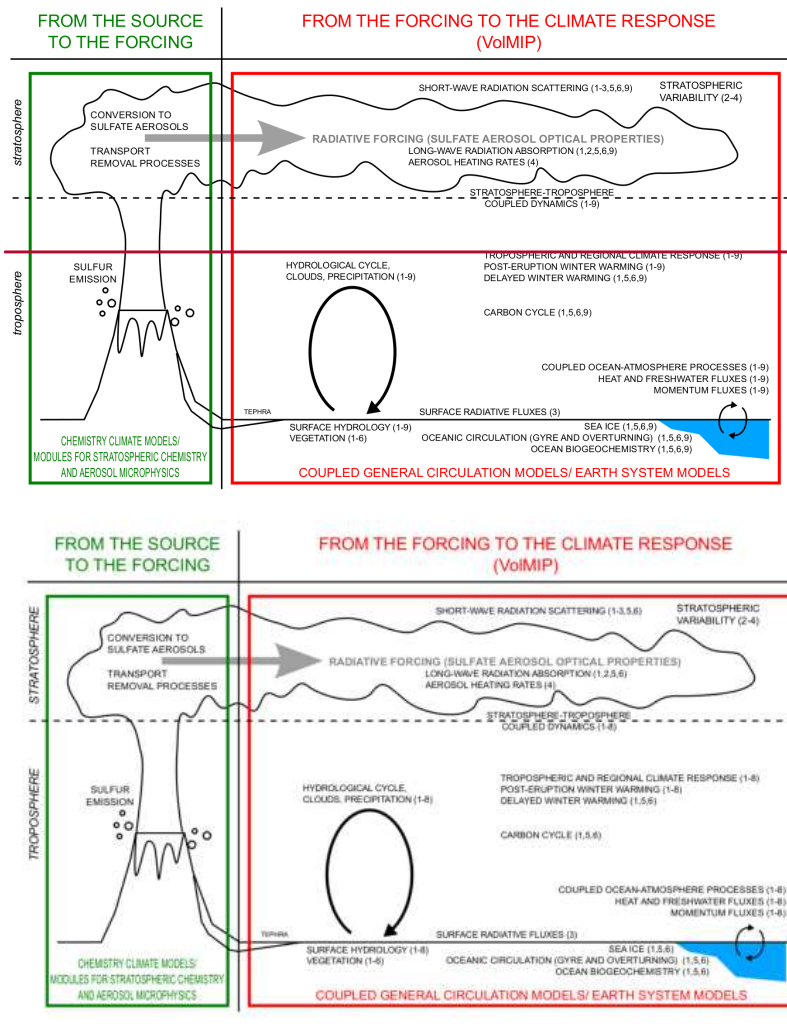


Figure 2: Illustrating the dominant processes linking volcanic eruptions and climate response, with an overview of VoIMIP experiments: 1: ~~VoleLongvolc-long-Single-Eq~~, 2: ~~VoleShortvolc-pinatubo-Eq~~-full, 3: ~~VoleShortvolc-pinatubo-Eq~~-surf, 4: ~~VoleShortvolc-pinatubo-Eq~~-strat, 5: ~~VoleLongvolc-long-Single-HLhN/hlS~~, 6: ~~VoleLongvolc-Clustercluster-Ctrl/ml/-21C~~, 7: ~~VoleShortvolc-pinatubo-Eq~~-slab, 8: ~~VoleShortvolc-pinatubo-Eq~~-ini, 9: ~~VoleLong-Cluster-Mill~~. The red box encompasses the processes related

to the climatic response to volcanic forcing that are accounted for in VolMIP; the green box encompasses the processes regarding volcanic forcing that are neglected by VolMIP.

1210

1215

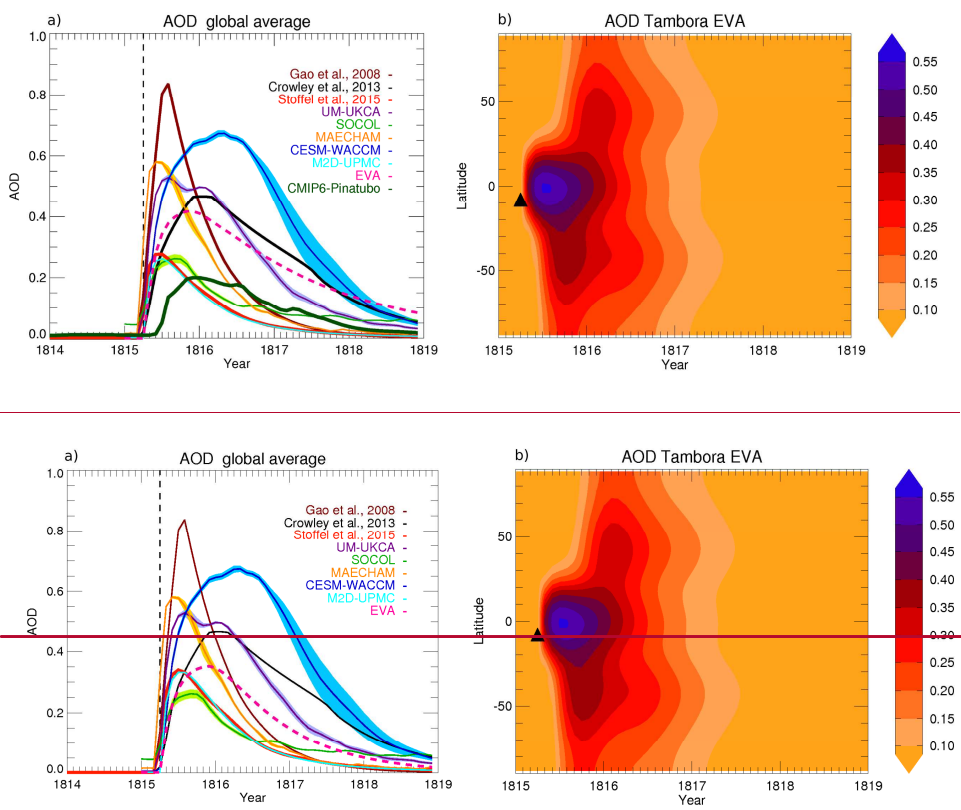


Figure 3: (a) Uncertainty in estimates of radiative forcing parameters for the 1815 eruption of Mt Tambora: global-average aerosol optical depth (AOD) in the visible band from an ensemble of simulations with chemistry climate models forced with a 60 Tg SO₂ equatorial eruption, from the Easy Volcanic Aerosol module (EVA) with 56.2 Tg SO₂ equatorial eruptions (magenta thick dashed line), from Stoffel et

1220

al. (2015), from Crowley and Unterman (2013), and from Gao et al. (2008, [aligned so that the eruption starts on April 1815](#)). The estimate for the Pinatubo eruption as used in the CMIP6 historical experiment is also reported for comparison. (b) Time-latitude plot of the AOD in the visible band produced by EVA for a 56.2 Tg SO₂ equatorial eruption, illustrating the consensus forcing for the *VoteLongvolc-long-Single-eEq* experiment. The black triangle shows latitudinal position and timing of the eruption.

Chemistry climate models are CESM (WACCM) (Mills et al., 2016), MAECHAM5-HAM (Niemeier et al., 2009), SOCOL (Sheng et al., 2015), UM-UKCA (Dhomse et al., 2014), CAMB-UPMC-M2D (Bekki, 1995; Bekki et al., 1995, 1996). For models producing an ensemble of simulations, the line and shading are the ensemble mean and ensemble standard deviation, respectively.

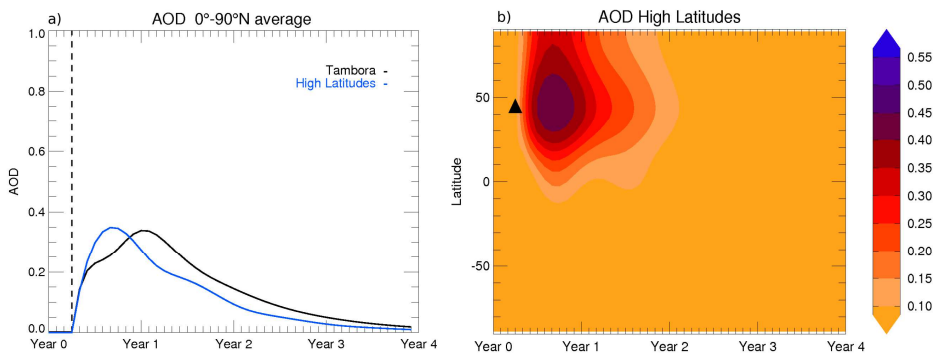


Figure 4: Consensus forcing for the *VoteLongvolc-long-Single-hlNHL* experiment. (a) Northern Hemisphere-average aerosol optical depth (AOD) at 550 nm produced by the Easy Volcanic Aerosol module (EVA) for a 56.2 Tg equatorial eruption (*VoteLongvolc-long-Single-eEq*, black line) and for a 28.1 Tg SO₂ Northern Hemisphere extra-tropical eruption (*VoteLongvolc-long-Single-hlNHL*, blue line). (b) Time-latitude plots of the AOD at 550 nm from EVA for the 28.1 Tg SO₂ Northern Hemisphere extra-tropical eruption. The black triangle shows latitudinal position and timing of the eruption.

Tables

Table 1 – Tier 1 VolMIP experiments

<u>Name</u>	<u>Description</u>	<u>Parent experiment, start date</u>	<u>Ens. Size</u>	<u>Years per simulation (minimum)</u>	<u>Total years</u>	<u>Gaps of knowledge being addressed with this experiment</u>
VoleLongvolc-long-Single-eEq	Idealized equatorial eruption corresponding to an initial emission of 56.2 Tg of SO ₂ . The eruption magnitude corresponds to recent estimates for the 1815 Tambora eruption (Sigl et al., 2015), the largest historical tropical eruption <u>of the last five centuries</u> , which was linked to the so-called “year without a summer” in 1816.	PiControl <u>piControl</u> , April 1 st	9	20	180	Uncertainty in the climate response to strong volcanic eruptions, with focus on coupled ocean -atmosphere feedbacks and interannual to decadal global as well as regional responses. The mismatch between reconstructed and simulated climate responses to historical strong volcanic eruptions, with focus on the role of simulated background internal climate variability.
VoleShortvolc-pinatubo-Eq-full	1991 Pinatubo forcing as used in the CMIP6 historical simulations. Requires special diagnostics of parameterized and resolved wave forcings, radiative and latent heating rates. A large number of ensemble members is required to address internal atmospheric variability	PiControl <u>piControl</u> , June 1 st	25	3	75	Uncertainty in the climate response to strong volcanic eruptions with focus on short-term response. Robustness of volcanic imprints on Northern Hemisphere’s winter climate and of associated dynamics.
VoleShortvolc-pinatubo-Eq-surf	As VoleShortvolc-pinatubo-Eq-full , but with prescribed perturbation to the shortwave flux to mimic the attenuation of solar radiation by volcanic aerosols	PiControl <u>piControl</u> , June 1 st	25	3	75	Mechanism(s) underlying the dynamical atmospheric response to large volcanic eruptions, in particular in Northern Hemisphere’s winters. The experiment considers only the effect of volcanically induced surface cooling. Complimentary experiment to VoleShortvolc-pinatubo-Eq-strat .
VoleShortvolc-pinatubo-Eq-strat	As VoleShortvolc-pinatubo-Eq-full , but with prescribed perturbation to the total (LW+SW) radiative heating rates	PiControl <u>piControl</u> , June 1 st	25	3	75	Mechanism(s) underlying the dynamical atmospheric response to large volcanic eruptions, in particular in Northern Hemisphere’s winter. The experiment considers only the effect of volcanically-induced stratospheric heating. Complimentary experiment to VoleShortvolc-pinatubo-Eq-surf .

Vole = Volcano, Long = long-term simulation, ~~pinatuboShort~~ = short-term simulation of the 1991 Pinatubo eruption, ~~Eq-eq~~ = equator, full = full-forcing simulation, surf = short-wave forcing only, strat = stratospheric thermal (long-wave) forcing only

1245

1250

Table 2 – Tier 2 VolMIP experiments

<u>Name</u>	<u>Description</u>	<u>Parent experiment, start date</u>	<u>Ens. Size</u>	<u>Years per simulation</u>	<u>Total years</u>	<u>Gaps of knowledge being addressed with this experiment</u>
<u>VolLongvolc-long-Single-hlNHL</u>	Idealized <u>Northern Hemisphere</u> high-latitude eruption emitting 28.1 Tg of SO ₂ .	<u>PiControl</u> <u>piControl</u> <i>April 1st</i>	9	20	180	Uncertainty in climate response to strong high-latitude volcanic eruptions (focus on coupled ocean-atmosphere). Outstanding questions about the magnitude of the climatic impact of high-latitude eruptions.
<u>VolLongvolc-Cluster-cCtrl</u>	Early 19th century cluster of strong tropical volcanic eruptions, including the 1809 event of unknown location, and the 1815 Tambora and 1835 Cosigüina eruptions.	<u>PiControl</u> <u>piControl</u> <i>January 1st 1809</i>	3	50	150	Uncertainty in the multi-decadal climate response to strong volcanic eruptions (focus on long-term climatic implications). Contribution of volcanic forcing to the climate of the early 19th century, the coldest period in the past 500 years. Discrepancies between simulated and reconstructed climates of the early 19th century.

Volc-volc = Volcano, Long-long = long-term simulation, HL-hlN = Northern Hemisphere high latitude, cCtrl = initial state from control simulation

1255

1260

1265

1270

Table 3 – Tier 3 VolMIP experiments

Name	Description	Parent experiment, start date	Ens. Size	Years per simulation	Total years	Gaps of knowledge being addressed with this experiment
control-slab	Slab ocean control run, necessary for <u>volc-pinatubo-slab</u>	-	1	30	30	-
<u>VolShortvolc-pinatubo-Eq-slab</u>	As <u>VolShortvolc-pinatubo-Eq-full</u> , but with a slab ocean	<u>control-slab</u> <u>piControl</u> <u>June 1st</u>	25	3	75	Effects of volcanic eruptions on ENSO dynamics.
<u>VolShortvolc-pinatubo-Eq-ini/DCPP C3.4.2</u>	As <u>VolShortvolc-pinatubo-Eq-full</u> , but as decadal prediction runs joint experiment with DCPP. Forcing input and implementation of the forcing fully comply with the VolMIP protocol.	<u>2015</u> <u>(initialization date depends on the system)</u>	10(5)	5	50	Influence of large volcanic eruptions <u>in-on</u> future climate. Influence of large volcanic eruptions on seasonal and decadal climate predictability
<u>VolLongvolc-Clustercluster-MHmill</u>	Parallel experiment to <u>VolLongvolc-cCluster-cCtrl</u> , but with initial conditions taken from last millennium simulation <u>to account for the effects of a more realistic history of past natural forcing in order to avoid ocean drifts due to a climate not in equilibrium with volcanic forcing</u>	<u>PMHP-Past1000pas</u> <u>1000</u> <u>January 1st</u> <u>1809</u>	3(1)	69	207	Contribution of volcanic forcing to the climate of the early 19th century, the coldest period in the past 500 years. Discrepancies between simulated and reconstructed climates of the early 19th century. Effect of history of volcanic forcing on the response to volcanic eruptions.
<u>volc-cluster-21C</u>	Parallel experiment to <u>volc-cluster-ctrl</u> , using restart files from the end of the historical simulation instead of from <u>piControl</u> , and boundary conditions from the 21st century SSP2-4.5 scenario experiment of ScenarioMIP	<u>historical</u> <u>January 1st</u> <u>2015</u>	3(1)	85	255	<u>Contribution of volcanic forcing uncertainty to uncertainty in future climate projections</u> <u>Long-term climate response to volcanic eruptions under warm background climate conditions</u>
<u>volc-long-hIS</u>	Idealized Southern Hemisphere high-latitude eruption emitting 28.1 Tg of SO ₂	<u>piControl</u> <u>April 1st</u>	2	20	180	<u>Uncertainty in climate response to strong high-latitude volcanic eruptions (focus on coupled ocean-atmosphere).</u> <u>Outstanding questions about the magnitude of the climatic impact of high-latitude eruptions.</u>

Volc-volc = Volcano, long = long-term simulation, Short-pinatubo = short-term simulation of the 1991 Pinatubo eruption, Eq=eq = equator, slab = slab ocean simulation, ini = simulation initialized for decadal prediction, MHmill = initial conditions from full forcing transient simulation of the last millennium, 21C= 21st century scenario experiment, hIS = Southern Hemisphere high-latitude eruption

Formattato: Inglese (Stati Uniti)

Formattato: Rientro: Sinistro: 0 cm

Formattato: Italiano (Italia)

Formattato: Tipo di carattere: Corsivo, Inglese (Stati Uniti)

Formattato: Italiano (Italia)

Formattato: Tipo di carattere: Corsivo, Inglese (Stati Uniti)

Formattato: Tipo di carattere: Corsivo, Inglese (Stati Uniti)

Tabella formattata

Formattato: Apice

Formattato: Rientro: Sinistro: 0 cm

Formattato: Apice

1275

1280

1285

1290

1295

Table 4 - Definition of new variables requested by VolMIP. These have not been previously used in CMIP5, CCMI, CORDEX or SPECS. Shape is defined as time (T), longitude (X), latitude (Y) and height (Z)

Short name	Standard name	units	description/comments	Shape	Levels	Time
aod550volso4	stratosphere optical thickness due to volcanic aerosol particles		aerosol optical thickness at 550 nm due to stratospheric volcanic aerosols	YZT	all	instantaneous
zmswaero	tendency of air temperature due to shortwave heating from volcanic aerosol particles	K s ⁻¹	shortwave heating rate due to volcanic aerosols to be diagnosed through double radiation call, zonal average values required	YZT	all	instantaneous
zmlwaero	tendency of air temperature due to longwave heating from volcanic aerosol particles	K s ⁻¹	longwave heating rate due to volcanic aerosols to be diagnosed through double radiation call, zonal average values required	XYT	1	instantaneous
swsffluxaero	surface downwelling shortwave flux in air due to volcanic aerosols	W m ⁻²	downwelling shortwave flux due to volcanic aerosols at the surface to be diagnosed through double radiation call	XYT	1	instantaneous
lwsffluxaero	surface downwelling longwave flux in air due to volcanic aerosols	W m ⁻²	downwelling longwave flux due to volcanic aerosols at the surface to be diagnosed through double radiation call	XYT	1	instantaneous
swtoafluxaerocs	toa outgoing shortwave flux due to volcanic aerosols assuming clear sky	W m ⁻²	downwelling shortwave flux due to volcanic aerosols at TOA under clear sky to be diagnosed through double radiation call	XYT	1	instantaneous
lwtoafluxaerocs	toa outgoing longwave flux due to volcanic aerosols assuming clear sky	W m ⁻²	downwelling longwave flux due to volcanic aerosols at TOA under clear sky to be diagnosed through double radiation call	XYT	1	daily mean

1300

1305

1310

1315

Table 5 - Protocol for the chemistry climate model experiment to assess volcanic forcing uncertainty for the *VolcLongyolc-long-Single-eEq* experiment

<u>SO₂ emission</u>	<u>Eruption length</u>	<u>Latitude</u>	<u>QBO phase at time of eruption</u>	<u>SO₂ height injection</u>	<u>SST</u>	<u>Other radiative forcing</u>	<u>Duration</u>	<u>Ens. size</u>
60 Tg SO ₂	24 hours	Centered at the equator	Easterly phase (as for Pinatubo and El Chichón)	Same as Pinatubo. 100% of the mass between 22 and 26 km, increasing linearly with height from zero at 22 to max at 24 km, and then decreasing linearly to zero at 26 km.	Climatological from preindustrial control run	Preindustrial CO ₂ , other greenhouse gases, tropospheric aerosols (and O ₃ if specified)	5-years long	5 members

1320