

Dear editor,  
Dear Prof. Min-Hui Lo,

We would like to thank you for taking care of the review process and for your positive response. We send our next revision of our manuscript "*The efficient urban-canopy dependency parametrization SURY (v1.0) for atmospheric modelling: description and application with the COSMO-CLM model (v5.0\_clm6) for a Belgian summer*". We have taken into account the additional comments of the reviewers and are confident that the manuscript is ready for final publication in GMD.

Our replies to the author's comments can be found on the next pages below. As before, we provide a version with track changes with respect to the previous revision at the end of this document.

Finally, we would like to thank all the referees for their helpful suggestions.

We are hoping for your positive response.

Yours sincerely,  
Dr. Hendrik Wouters

On behalf of the co-authors.

## **Response to Referee #2 (Report #1)**

The authors would like to thank the referee for his/her positive response to the submission of the manuscript. The manuscript with track changes since the previous version can be found at the end of this document.

## Response to Referee #4 (Report #2)

The authors would like to thank the referee for the review of the manuscript and we appreciate his/her remarks on the manuscript and suggestions for improving the quality of the manuscript. Our answers can be found below, in which we refer to the revised manuscript with track changes at the bottom of this document

### General comments

This study proposed the use of a Semi-empirical Urban-canopy parametrization (SURY) to improve urban simulations. The idea is to better represent urban effects parameterized in bulk urban land surface schemes without employing computational expensive explicit-canyon schemes. Simulation results were evaluated by both in-situ and remote sensing measurements, and the proposed approach was able to improve urban heat island simulated by a bulk urban model.

While the use of SURY shows improvements in urban simulations, there is one thing that needs to be addressed in this manuscript. The proposed SURY does not really carry out the heterogeneous features presented in explicit-canyon schemes, ...

It is true that SURY does not serve to represent the full heterogeneity of the urban canopy as done in more complex schemes. Instead, SURY aims for translating urban canopy parameters into bulk parameters. In this way, SURY introduces the dependency of urban canopy parameters (used to be preserved to explicit-canyon schemes) to bulk parametrizations while preserving their low computational cost. A more extensive description of the novelty of SURY can be found in the abstract (see P1R1-R11) and the introduction (see P3R27-P4R5).

... and there is no comparison between the simulation results from SURY and explicit-canyon schemes.

It is true that no comparison to other parameterizations has been given. Instead, the focus of the paper is the SURY's methodology and the application with the COSMO-CLM model including the urban-canopy parameter sensitivity study. Systematic comparisons between bulk parametrizations employing (or without) SURY and other urban (explicit-canyon) parametrizations should be addressed in future intercomparison studies (such as Karsisto et al., 2015). In fact, an intercomparison study of TERRA\_URB/SURY with explicit-canyon schemes for an urban site in Singapore is currently in preparation by Demuzere et al. (2016). The results indicate that all models included in this intercomparison (Community Land Model – Urban, SURFEX (TEB), SUEWS and

TERRA\_URB/SURY) show comparable skill.

Therefore, it is hard to tell if SURY is able to reasonably serve as an alternative of explicit-canyon schemes with lower computational cost. I suggest that this deficiency be addressed before publication.

The authors agree that SURY does not provide an alternative for explicit canyon schemes when aiming for resolving the full heterogeneity in the urban canopy. Still, we are confident that SURY will have applications in future numerical weather prediction and regional climate studies, given the available urban bulk parametrizations and SURY's several advantages as described in the 'discussion and conclusions' section (see P28R12-P29R25). In order to situate this better in the manuscript, we have reformulated the last paragraph, see P31R29-P32R16.

Page 19, In 8-10: The authors claimed that the temperature overestimation for the rural site is larger for REF than for STD, because of the advection of excess heat from urban areas towards the rural areas. However, there was no result supporting the occurrence of heat "advection" at that time. Why the overestimation is due to heat advection but not the changes with SURY?

Page 24, In 1-2: Similar issue as the previous one. Is there any result suggesting the occurrence of heat advection at that time?

SURY only introduces modifications to the surface-atmospheric interaction formulation in urban areas. Therefore, any changes in the model results regarding the rural areas can only be the result of a propagation of urban effects through the atmosphere. In the case of heating in rural areas, it is postulated that such propagation is established by advection of excess urban heat from the urban areas towards the rural areas. Even though it is dealt with an indirect effect, it should be noted that it is still the result of the urban land-surface scheme. In order to make it more specific, we have reformulated the respective sentences at P20R6-R7 and P25R1-R2.

Demuzere, M., Harshan, S., Jarvi, L., Roth, M., Grimmond, C.S.B, Masson, V., K.W. Oleson, Velasco, E., Wouters, H, 2016. Impact of urban canopy models and external parameters on the modelled urban energy balance. In preparation for Quarterly Journal of the Royal Meteorological Society.

Karsisto, P., C. Fortelius, M. Demuzere, C. S. B. Grimmond, K. W. Oleson, R. Kouznetsov, V. Masson, and L. Järvi. 2015. "Seasonal Surface Urban Energy Balance and Wintertime Stability Simulated Using Three Land-Surface Models in the High-Latitude City Helsinki." Quarterly Journal of the Royal Meteorological Society, n/a – n/a. doi:10.1002/qj.2659.

## **Response to Referee #5 (Report #3)**

The authors would like to thank Dr. Yi-Ying Chen for reviewing the manuscript and for his positive response. We also appreciate the remarks and suggestions for improving the quality of the manuscript. Our answers can be found below, in which we refer to the revised manuscript with track changes at the bottom of this document.

Overall, the authors present a detail model description of SURY and it would be useful for utilizing the urban canopy within climate models with a better representation of land-atmosphere energy exchanges, which improves the capability of climate models or regional weather models to capture the heat island observation. This manuscript also demonstrated that the model can reproduced both SUHI and CLUHI at two selected sites in Belgium, and the work can be extend to the global scale when the global urban dataset from WUDAPT.org is ready. I suppose that this manuscript can be published in GMD library. However, I found a few minor issues which might need to be addressed. Below please see my comments on this manuscript.

General comment:

My primary concerns with this manuscript are the way that SURY applied for resolving the surface temperature (top layer soil temperature) and the physical representation of the rainfall interception loss within the urban-canopy model. For my first concern, SURY re-parameterized the surface characteristic of urban land-cover by making use of a bulk approximation within an existing canopy model, which is based on a signal layer “Big-leaf” assumption. Thus, the physical representation of the surface temperature of the Eq. (1) can be treated as a lump land surface temperature for several tiles including impervious surface, canopy cover, bare soil or grass land. Under this assumption, we might be able to apply the surface energy balance equation to resolve the surface temperature (top layer soil temperature) for different land covers in a modeled grid. Thus, different land-cover tiles share the same surface temperature, which causes the difficulty to validate the model calculated land surface temperature.

It is true that, in principle, one could treat the different land-cover types with a single ground temperature profile (in a single tile) with the presented methodology. However, in the current implementation with TERRA\_URB in the COSMO-CLM model (see appendix A6), a separation is made between the urban canopy (impervious land-cover) and the natural land (bare soil, vegetated land-cover...). Hereby, the two ground tiles are resolved separately (see appendix A5). This way, the urban and natural land-cover tiles provide distinct land surface temperatures (which is also the case for ground temperature and moisture profiles below). The surface temperatures have been validated with LST from satellite data by making and weighting the results of the respective tiles.

Apart from the issue of validating the model predicted land surface temperature, the bulk surface heat conductivity ( $\lambda_{\text{bulk,s}}$ ) was parameterized through a linear approximation by multiplying the original soil heat conductance ( $\lambda_s$ ) with the SAI value (see Eq. (9)). But, in fact, the  $\lambda_s$  itself is a function of the top layer soil moisture content. In other words, the physical characteristic for the building is somewhat like a permeable surface layer. Is this assumption reasonable?

In principle, one could have (partially) permeable surface for the urban canopy with the presented methodology. This could be applicable for roads that are not entirely petrified, for example. This is, however, not considered in the current model implementation, meaning that urban canopy tile (resolved separately, see above) is entirely impervious. In this respect,  $\lambda_s$  for the urban canopy is not a function of the soil moisture content. For details, see P36R10 and further.

Besides, I was confused about the way for solving land surface temperature (top layer soil surface temperature) in the TERRA\_URB/SURY. Does the model incorporate the anthropogenic heat emission to the surface energy budget to resolve the surface temperature? Or it's just a simple source or sink term in the surface energy budget and the land surface received the feedback energy from incoming long-wave radiation.

TERRA\_URB indeed considers the anthropogenic heat emission. Hereby, the anthropogenic heat emission is added to the turbulent heat release to the atmosphere, hence acts as a simple source term to the first atmospheric model layer. This way, the land surface (cfr. The surface energy budget, surface temperature...) is indirectly affected. In order to make this more clear, we have reformulated the last sentence of appendix A4, see P35R21-R22.

For the second comment, canopy can intercept 15% to 85% of total precipitation and can produce a substantial fast feedback to the atmospheric rainfall. SURY used a bulk average building height ( $H$ ) to re-parameterize the original surface roughness ( $z_0$  in Eq. (7)). I can't find the any equation/information regarding to the parameterization of the urban-canopy interception ( $E_{\text{imp}}$ ) in the manuscript. The authors selected a drying period (sunny days) to test the newly proposed parameterization approach (SURY) may not have any impact on the result of the model simulation by making use of the current model configuration. However, the heat island effect can trigger or reinforce the afternoon thunderstorm events. Therefore, it is necessary to improve the physical representation of water budget in the urban-canopy model. I suggest that the authors improve the model description regarding to the urban-canopy water budget (see Eq. A12), the works on re-parametrization of the wet urban-canopy interception loss ( $E_{\text{imp}}$  in Eqs. (A6 and A12) will be appreciated. Besides, evaporative cooling effect from the urban-canopy loss can be studied or quantified. Anyway, the above issue seems outside the scope of this study, it will only become a substantial issue for large scale model simulations, such as long-term climate projections or weather predictions.

It is true that urban-canopy interception ( $E_{\text{imp}}$ ) can be an important term

during rainfall periods. As stated in the end of appendix A2, the calculation of  $E_{imp}$  is covered in the next appendix (A3), particularly by equations A10 and A11. In order to make this more clear, we have reformulated the last line in appendix A2 (see P34R20).

Particularly, the impact of impervious water storage parametrization on urban climate modelling was the main topic of our previous study that has been published recently (Wouters et al., 2015). Hereby, the (offline) effect of water-storage parametrization on the urban energy balance and surface temperatures throughout has been quantified. In principle, it should be straightforward to address the evaporative cooling effect from the urban-canopy loss on the atmospheric fields (or more generally, the impact of urbanization on the water cycle) with the coupled atmospheric modelling setup employed in this study.

Specific comment:

P6L6 and P32L12:

Within the Eq. (1), the symbol  $T$  is the surface temperature. If this description is correct, the notation of “ $T$ ” may have a conflict to the “ $T$ ” in the Eq. (A7). Please make a change for the symbol of “ $T$ ” in the Eq. (1) or Eq. (A7).

We have replaced  $T$  in Eq. (A6 (in the revised manuscript)) by  $T_r$  for indicating vegetation (see P34R3).

P7L3 and P32L31:

The definition of symbol “ $H$ ” in the main context conflicts with the definition of symbol “ $H$ ” in the appendix (see Eq. (A7)).

We have replaced all  $H$ -occurrences for building height with the small letter  $h$ , *including the equations throughout the text*.

P32L32:

Please remove the empty space line in front of Eq. (A8)

We have removed the empty equation (see P33R10-R11); please note that the equation in red is removed in the final manuscript. Hereby, the numbering of the subsequent equations has been shifted.

## **Response to Referee #3 (Report #4)**

The authors would like to thank the referee for reviewing the revision of the manuscript and for his/her positive response. We would also like to thank, once again, for his/her previous suggestions which have substantially contributed to the overall quality of the manuscript. The revision of the manuscript with track changes since the previous version can be found at the bottom of this document.

Technical edits:

P2In28: “Moreover, (Best and Grimmond, 2015) have shown...” should be: “Moreover, Best and Grimmond (2015) have shown...”

P29In25: “between between”

Thank you for the additional comments. We have made the corrections to the manuscript.



# The efficient urban-canopy dependency parametrization SURY (v1.0) for atmospheric modelling: description and application with the COSMO-CLM model (v5.0\_clm6) for a Belgian summer

Hendrik Wouters<sup>1</sup>, Matthias Demuzere<sup>1</sup>, Ulrich Blahak<sup>2</sup>, Krzysztof Fortuniak<sup>3</sup>, Bino Maiheu<sup>4</sup>, Johan Camps<sup>5</sup>, Daniël Tielemans<sup>6</sup>, and Nicole P.M. van Lipzig<sup>1</sup>

<sup>1</sup>KU Leuven, Dept. Earth and Environmental Sciences, Celestijnenlaan 200E, 3001 Heverlee, Belgium

<sup>2</sup>Deutscher Wetterdienst, Frankfurter Straße 135, 63067 Offenbach, Germany

<sup>3</sup>University of Łódź, Department of Meteorology and Climatology, Narutowicza 88, 90-139 Łódź, Poland

<sup>4</sup>VITO, Flemish Institute for Technological Research, Boeretang 200, 2400 Mol, Belgium

<sup>5</sup>SCK•CEN, Belgian Nuclear Research Centre, Boeretang 200, 2400 Mol, Belgium

<sup>6</sup>VMM, Flemish Environmental Agency, Dokter De Moorstraat 24-26, 9300 Aalst, Belgium

*Correspondence to:* Hendrik Wouters (hendrik.wouters@kuleuven.be)

**Abstract.** This paper presents the Semi-empirical URban-canopY parametrization SURY (v1.0), which bridges the gap between bulk urban land-surface schemes and explicit-canyon schemes. Based on detailed observational studies, modelling experiments and available parameter inventories, it offers a robust translation of urban canopy parameters - containing the three-dimensional information - into bulk parameters. As a result, it brings canopy-dependent urban physics to existing bulk urban land-surface schemes of atmospheric models. At the same time, SURY preserves a low computational cost of bulk schemes for efficient numerical weather prediction and climate modelling at the convection permitting scales. It offers versatility and consistency for employing both urban canopy parameters from bottom-up inventories and bulk parameters from top-down estimates. SURY is tested for Belgium at 2.8km resolution with the COSMO-CLM model (v5.0\_clm6) that is extended with the bulk urban land-surface scheme TERRA\_URB (v2.0). The model reproduces very well the urban heat islands observed from in-situ urban-climate observations, satellite imagery and tower observations, which is in contrast to the original COSMO-CLM model without an urban land-surface scheme. As an application of SURY, the sensitivity of atmospheric modelling with the COSMO-CLM model is addressed for the urban canopy parameter ranges from the Local Climate Zones of WUDAPT.org. City-scale effects are found in modelling the land-surface temperatures, air temperatures and associated urban heat islands. Recommendations are formulated for more precise urban atmospheric modelling at the convection permitting scales. ~~Especially, the model results affirm~~ It is concluded that urban canopy parametrizations including SURY, combined with the deployment of the WUDAPT urban database platform and advancements in atmospheric modelling systems, are essential.

## 1 Introduction

Cities over the world are expanding (Seto et al., 2012) and an increasing share of the population tends to live in the cities (United Nations, 2014). The associated changes to the landscape and anthropogenic heating lead to excess temperatures in cities compared to their natural surroundings, which is known as the Urban Heat Island (UHI) effect. The UHI causes a higher exposure to heat stress leading to excess mortality (Laaidi et al., 2011; Gabriel and Endlicher, 2011), damage to infrastructure, higher energy usage (eg., indoor active cooling) intensifying outdoor urban heat and greenhouse gas emissions, and pressure on socio-economic activities. In view of global climate change with more extreme heat waves ahead, vulnerabilities and impacts are increasing for urban centres of all sizes, economic conditions and site characteristics across the world (Revi et al., 2014).

During the past three decades, a vast amount of urban land-surface schemes have been developed. They enable the convection permitting atmospheric models to resolve the heterogeneity of cities with applications for heat stress assessment and the development of urban climate adaptation and mitigation strategies (Prein et al., 2015). Even though their purpose of representing urban physics in land-surface schemes of atmospheric models is the same, intercomparison studies (Karsisto et al., 2016; Best and Grimmond, 2015; Trusilova et al., 2015; Grimmond et al., 2011) demonstrate that they differ in terms of modelling strategy, complexity, input parameters and applicability: On the one hand, the bulk schemes (eg., Meng, 2015; De Ridder et al., 2015; Wouters et al., 2015; Pleim et al., 2014; Grossman-Clarke et al., 2005; Fortuniak et al., 2004) take into account the overall radiative and thermal properties, vegetation sparseness, the surface roughness, the water-storage capacity and the anthropogenic activity in the urban canopy with a set of bulk parameters. These model parameters are estimated from model sensitivity experiments (Wouters et al., 2015; De Ridder et al., 2012; Demuzere et al., 2008; Fortuniak, 2005), observational campaigns (Masson et al., 2008; Rotach et al., 2005; Offerle et al., 2005) and inventories (Flanner, 2009; Pigeon et al., 2007). The bulk schemes are suitable for capturing the general urban climate characteristics at the convection permitting scales. They include the interplay between the excess conversion of incoming radiation into sensible heat, the heat accumulation, reduced wind speeds and the additional anthropogenic heating, which results in the urban heat island effect (Phelan et al., 2015; Zhao et al., 2014). However, they do not explicitly resolve the complex processes depending on the local characteristics and the three-dimensional structure of the urban canopy, which further modulate the urban climate. These processes include shadowing and multiple scattering of radiation, heterogeneous surface-atmospheric interaction in terms of turbulent momentum, heat and moisture transport, and the inner-building energy budget. On the other hand, the more complex ‘explicit-canyon’ schemes (Demuzere et al., 2014; Allegrini et al., 2014; Schubert et al., 2012; Hénon et al., 2012; Oleson et al., 2008; Fortuniak, 2007; Kanda et al., 2005; Martilli et al., 2002; Masson, 2000; Crawley et al., 2000) explicitly capture one or more of these complex physical processes. As a result, they allow for representing the detailed micro-scale features, such as heterogeneous temperatures of the facets and canyon wind gusts. Therefore, their added value compared to the less complex bulk schemes lies in their ability to acquire the more detailed information about urban climate risk and vulnerability at the micro-scales. Moreover, ~~(Best and Grimmond, 2015)~~ Best and Grimmond (2015) have shown that an improved skill in offline model experiments is found when increasing the number of explicitly-resolved urban processes. Yet, the applicability of these explicit-canyon

schemes for convection-permitting atmospheric modelling is generally hindered by either the lack of detailed urban canopy information, computational cost and their model complexity, and these issues are explained in more detail hereafter.

First, the complex schemes are hindered by the lack of urban canopy parameters, which include information about three-dimensional urban morphology and material properties. Detailed parameter inventories are available for specific urban sites. On the one hand, they are suitable for extensive offline evaluations of the urban land-surface schemes (eg., Loridan and Grimmond, 2012; Grimmond et al., 2011). On the other hand, such detailed canopy inventories form a basis for spatially-varying datasets with a world-wide coverage, such as Faroux et al. (2013); Loveland et al. (2010); Jackson et al. (2010); Bartholomé and Belward (2005). These datasets are intended to account for the ~~urban-canopy~~ urban canopy parameter variability at the global scales. Furthermore, more detailed spatially-varying datasets exist, but they only include specific parameters over specific cities. An example here is the use of morphological data from CityGML (Gröger and Plümer, 2012) in urban climate modelling (Schubert and Grossman-Clarke, 2014). Despite those initiatives, expansion and updates of urban canopy information remain challenging (Seto et al., 2011) at the convection permitting scales, not to mention the prognoses from future land-use change scenarios (Prein et al., 2015). Consequently, the spatial detail, accuracy, coverage and variety in those urban canopy parameters datasets are limited, which is also clear from the substantial differences between the datasets (Schneider et al., 2009). However, the first urban model intercomparison project demonstrates that such parameter information is important for improved modelling performance in existing urban land-surface schemes (Best and Grimmond, 2015). For those complex schemes, missing data could deteriorate the model performance (Grimmond et al., 2011). In order to tackle these issues, the WUDAPT (World Urban Database Access Portal Tools) initiative has been developed recently, aiming for a coherent and detailed ~~urban-canopy~~ urban canopy parameter dataset with a world-wide coverage on a 100 m resolution supported by a peer network of researchers. It allows the urban-climate research for taking into account the ~~urban-canopy~~ urban canopy variation in residential, commercial and industrial areas. However, the database is under development and consequently its coverage is still limited.

Second, explicit-canyon schemes are computationally demanding compared to bulk schemes. Complex schemes could lead up to 15% percent of total computational cost of an atmospheric model (eg., Trusilova et al., 2015). In contrast, bulk schemes allow very fast downscaling of ensemble climate projections (eg., Lauwaet et al., 2015). Finally, the complexity of the explicit-canyon schemes sometimes makes a consistent incorporation into the host atmospheric model and its maintenance very challenging.

This paper presents the Semi-empirical URban canopY-parametrization SURY (Section 2.1) that:

1. offers a translation of ~~urban-canopy~~ urban canopy parameters - containing the three-dimensional information - into bulk parameters. The translation is based on detailed observational studies, modelling experiments and available parameter inventories.
2. brings canopy-dependent urban physics - which used to be reserved for the explicit-canyon schemes - to existing urban bulk urban land-surface schemes (eg., Meng, 2015; De Ridder et al., 2015; Wouters et al., 2015; Pleim et al., 2014; Grossman-Clarke et al., 2005; Fortuniak et al., 2004), Therefore, it allows them to take into account the city's heterogeneity in the ~~urban-canopy~~ urban canopy parameters.

3. preserves the low computation cost and low complexity of the bulk schemes.
4. provides versatility in employing either ~~urban-canopy~~ urban canopy parameters from bottom-up inventories or bulk parameters from top-down estimates.

As a result, SURY bridges the gap between bulk schemes and explicit-canyon schemes by ~~simultaneously~~ providing robust canopy-dependent urban physics, ~~computational efficiency~~ and parameter versatility for convection permitting atmospheric modelling at a low computational cost.

SURY is implemented in the COSMO(-CLM) model (Section 2.2). The latter is extended with the bulk urban land-surface scheme TERRA\_URB v2.0 which allows for taking bulk parameters from SURY into account. The model system is set up over Belgium during a mid-summer period in 2012 at 2.8 km resolution (Section 2.3). It is compared with observational data from in-situ urban-climate observations of air temperature and land-surface temperatures from satellite imagery. As shown by Wouters et al. (2013) with an idealized boundary-layer advection model, the nocturnal boundary-layer urban heat island (BLUHI) intensity and its vertical extent, reaching their maximum during the night, are affected by the vertical temperature profile in the lowest few hundreds of metres above the ground. Therefore, an evaluation is also performed against the nocturnal boundary-layer temperatures from tower observations. The meteorological measurements are described in Section 2.4. The COSMO(-CLM) model without an urban land-surface scheme has already been evaluated extensively for numerical weather prediction at the convection-permitting scale (Baldauf et al., 2011) and regional climate modelling applications (Brisson et al., 2016, 2015; Prein et al., 2015; Bucchignani et al., 2015; Thiery et al., 2015; Vanden Broucke et al., 2015; Fosser et al., 2014; Ban et al., 2014; Feldhoff et al., 2014; Dosio et al., 2014; Kotlarski et al., 2014; Lange et al., 2014; Van Weverberg et al., 2014; Panitz et al., 2013; Berg et al., 2012; Keuler et al., 2012, and references herein). Therefore, the evaluation (Section 3.1) focusses on urban-climate modelling, particularly the thermal contrast between cities and the natural surroundings. It is investigated whether the model can reproduce, the canopy-layer UHI (CLUHI; estimated from the urban/rural differences in screen-level temperature), the surface UHI (SUHI; urban/rural differences in the land-surface temperatures) and the nocturnal boundary-layer urban heat island (BLUHI; urban/rural differences in the vertical temperature profiles). As an application of SURY, the effect of urban canopy parameter changes on regional climate modelling with the COSMO(-CLM) model is quantified with an online sensitivity experiment (Section 3.2). The sensitivity allows for addressing the possible effect of the parameters' uncertainty and variability on urban-climate modelling, hence allows for setting priorities in acquiring them. Finally, a discussion and concluding remarks are given in Section 4.

## 2 Methodology

### 2.1 Semi-empirical urban canopy parametrization

In this section, the Semi-empirical URban canopY parametrization SURY is described. The translation of urban canopy parameters into urban bulk parameters is based on the urban physical processes with regard to the ground heat transfer, the surface-radiation exchanges, and the surface-layer turbulent transport for momentum, heat and moisture: the bulk thermal pa-

urban-canopy parameters (input of SURY)		
parameter name	symbol	default values
surface albedo	$\alpha$	0.101
surface emissivity	$\epsilon$	0.86
surface heat conductivity	$\lambda_s$	$0.767 \text{ W m}^{-1} \text{ K}^{-1}$
surface heat capacity	$C_{v,s}$	$1.25 \times 10^6 \text{ J m}^{-3} \text{ K}^{-1}$
building height	$H$	15 m
canyon height-to-width ratio	$\frac{h}{w_c}$	1.5
roof fraction	$R$	0.667

bulk parameters (output of SURY)		
parameter name	symbol	surface values corresponding to the defaults
albedo	$\alpha_{\text{bulk}}$	0.081 (snow-free)
emissivity	$\epsilon_{\text{bulk}}$	0.89 (snow-free)
heat conductivity	$\lambda_{\text{bulk}}$	$1.55 \text{ W m}^{-1} \text{ K}^{-1}$
heat capacity	$C_{v,\text{bulk}}$	$2.50 \times 10^6 \text{ J m}^{-3} \text{ K}^{-1}$
thermal admittance	$\mu_{\text{bulk}} (= \sqrt{C_{v,\text{bulk}} \lambda_{\text{bulk}}})$	$1.97 \times 10^3 \text{ J m}^{-2} \text{ K}^{-1} \text{ s}^{-1/2}$
aerodynamic roughness length	$z_0$	1.125 m
inverse Stanton number	$kB^{-1}$	13.2 [in case that $u_* = 0.25 \text{ ms}^{-1}$ ]

**Table 1.** The upper panel shows the urban canopy parameters. They are taken as input for the Semi-empirical URban canopyY parametrization (SURY). The default urban canopy parameters correspond to the recommended values ~~are adopted from for~~ the medium ~~density~~-urban ~~class~~-category in Loridan and Grimmond (2012), see their Table IV (stage 5b). The lower panel shows the bulk parameters, which is the output of SURY. The parameter  $u_*$  refers to the friction velocity.

parameter values take into account enhanced ground heat transport and storage due to the increased contact surface with the atmosphere (Fortuniak et al., 2004) expressed by the Surface-Area-Index (SAI) in Section 2.1.1. Furthermore, the radiative bulk parameter values take into account the albedo reduction factor resulting from the radiative trapping by the urban canopy in Section 2.1.2. Finally, the enhanced surface drag on the wind by the buildings in the urban canopy take into account the building height in section 2.1.3. As a result, SURY introduces an efficient dependency of bulk urban land-surface schemes on the urban canopy parameters. Throughout the subsections below, the robustness of SURY is verified by comparing bulk parameters from top-down estimates with those translated from bottom-up urban canopy parameter inventories. ~~Default values of the~~ In addition, the default urban canopy parameters ~~and those of the translated~~ are obtained from the recommended values for the medium urban category in Loridan and Grimmond (2012, see their Table IV, stage 5b), for which the respective bulk parameters are determined. An overview of the urban canopy parameters (SURY input) and the bulk parameters (SURY output) is given in Table 1.

### 2.1.1 Ground heat transport

A new methodology is developed for translating the urban canopy parameters into bulk ('effective') thermal parameters for heat capacity and heat conductivity. The latter is taken into account in the 'slab representation', which considers the one-dimensional heat equation of a vertical column commonly used in existing land-surface schemes. In the methodology, the buildings and pavements are considered as massive impermeable structures stacked on the natural soil. It takes into account the three-dimensional surface curvature of the urban canopy, which results in a larger contact surface with the atmosphere than a slab surface enhancing the ground heat flux. As denoted by Fortuniak et al. (2004), this results in generally larger urban bulk thermal admittances  $\mu_{\text{bulk}} = \sqrt{\lambda_{\text{bulk}} C_{v,\text{bulk}}}$  (De Ridder et al., 2012; Demuzere et al., 2008) than the corresponding urban material values (Loridan and Grimmond, 2012; Jackson et al., 2010). The bulk values of the heat capacity and heat conductivity at the surface level are obtained by multiplying the corresponding urban canopy values with the Surface-Area Index (SAI). Hereby, SAI is the ratio between the land-surface area - that envelops the urban canopy - and the plan area. In this way, the ground heat transport is integrated over the land-surface area. Such a multiplication is substantiated in more detail as follows: The vertical surface heat transport through the uppermost layer is calculated by Fourier's law:

$$Q = -\lambda_s \frac{\partial T}{\partial z} \quad (1)$$

where  $\lambda_s$  (units:  $[\text{W m}^{-1} \text{K}^{-1}]$ ) is the surface heat conductivity, and  $\frac{\partial T}{\partial z}$  is the vertical temperature gradient. At the same time, the tendency of the vertical profile is described by the heat equation (assuming that the upper-layer heat conductivity is constant with depth):

$$\frac{\partial T}{\partial t} - \frac{\lambda_s}{C_{v,s}} \frac{\partial^2 T}{\partial z^2} = 0 \quad (2)$$

where  $C_{v,s}$  is the surface heat capacity (units:  $[\text{W m}^{-3} \text{K}^{-1}]$ ). We now consider the case that the surface exposed to the atmosphere is enlarged with the SAI factor, while conserving the original vertical temperature profile of the uppermost layer. On the one hand, more heat goes through the larger surface, hence the total heat flux through the surface is multiplied with the same SAI factor. In order to get such an enhanced heat transport in the slab representation,  $\lambda_s$  needs to be multiplied with the SAI factor as well. On the other hand, the tendency of the vertical temperature profile of the new uppermost layer remains the same as the original (this will be the case if the atmospheric forcing would not change, which is true for an infinitesimal time period after enlarging the surface). For the latter, a heat equation for the slab representation is required that is equivalent to the original equation (ie. Equation 2), hence  $\lambda_s/C_{v,s}$ -ratio needs to be unchanged. In conclusion, the multiplication of the ground heat flux by a factor SAI and the conservation of the original ground temperature tendency are required for the slab representation. These requirements can be attained with the original set of one-dimensional equations and using bulk parameters for which both  $\lambda_s$  and  $C_{v,s}$  are multiplied with the same factor SAI.

In the case of an idealized urban canopy with parallel urban canyons, straight roads and flat roofs, SAI can be obtained from geometrical considerations:

$$\text{SAI} = \left(1 + 2 \frac{h}{w_c}\right) (1 - R) + R \quad (3)$$

where  $\frac{h}{w_c}$  is the canyon height-to-width ratio and  $R$  the roof fraction. The first right-hand term of this equation represents the surface area index of the street canyon. In turn, it is subdivided in  $1 \times (1 - R)$  which is the surface area of the street, and  $2 \frac{h}{w_c} \times (1 - R)$  which is the surface area of the two walls in the street canyon. By adding the roof fraction  $R$ , one obtains the total surface area index of the idealized urban canopy.

- 5 A methodology is presented that simultaneously takes into account the bulk surface thermal properties of the urban canopy (derived above) and those of the natural soil below the urban canopy. Hereby, vertical profiles of the bulk thermal parameters  $C_{v,\text{bulk}}(z)$  and  $\lambda_{\text{bulk}}(z)$  are calculated, with  $z$  the vertical coordinate in the bulk model (ground depth). As explained above, the bulk surface heat capacity is obtained by multiplying the surface heat capacity  $C_{v,s}$  with the surface area index SAI:

$$C_{v,\text{bulk},s} = C_{v,s} \text{SAI} \quad (4)$$

- 10 Below the surface, the urban substrate layer with a thickness equal to the building height  $H$  is considered for representing the thermal mass of the urban canopy in thermal contact with the natural soil below. The bulk heat capacity in this layer considers a vertical linear gradient between the surface value ( $C_{v,\text{bulk},s}$ ) and the value of the natural soil below ( $C_{v,\text{soil}}$ ):

$$C_{v,\text{bulk}}(z) = \left(1 - \frac{z}{H}\right) C_{v,\text{bulk},s} + \frac{z}{H} C_{v,\text{soil}}, \text{ for } 0 < z < H \quad (5)$$

Below the urban substrate layer, the bulk heat capacity is equal to  $C_{v,\text{soil}}$ :

- 15  $C_{v,\text{bulk}}(z) = C_{v,\text{soil}}, \text{ for } z \geq H \quad (6)$

An analogous formulation is considered for the vertical profile of the bulk heat conductivity  $\lambda_{\text{bulk}}(z)$ :

$$\lambda_{\text{bulk}}(z) = \left(1 - \frac{z}{H}\right) \lambda_{\text{bulk},s} + \frac{z}{H} \lambda_{\text{soil}}, \text{ for } z < H \quad (7)$$

$$\lambda_{\text{bulk}}(z) = \lambda_{\text{soil}}, \text{ for } z \geq H \quad (8)$$

where  $\lambda_{\text{soil}}$  is the heat conductivity of the natural soil, and  $\lambda_{\text{bulk},s}$  is the bulk surface heat conductivity:

- 20  $\lambda_{\text{bulk},s} = \lambda_s \text{SAI}. \quad (9)$

~~Default~~ The default urban canopy parameters are derived from (see also Table 1) are set equal to the recommended values for the medium urban density class in Loridan and Grimmond (2012): The surface heat conductivity  $C_{v,s}$  and surface heat capacity  $\lambda_s$  are set equal to  $1.25 \times 10^6 \text{ J m}^{-3} \text{ K}^{-1}$  and  $0.777 \text{ W m}^{-1} \text{ K}^{-1}$ , respectively. The category in Loridan and Grimmond (2012), see their Table IV (stage 5b): Herein, the height of the buildings  $H$  equals to 15 m. Default values for the  $h$ , the canyon

- 25 height-to-width ratio  $\frac{h}{w_c}$  -ratio and a and the roof fraction  $R$  are set to equal to 15 m, 1.5 and 0.667, respectively. According to Equation 3, the values for  $R$  and  $\frac{h}{w_c}$  lead to an SAI of 2.0. The ~~bulk surface thermal admittance is expressed as:~~

$$\mu_{\text{bulk},s} = \sqrt{\lambda_{\text{bulk},s} C_{v,\text{bulk},s}}.$$

The default values for the surface heat conductivity  $C_{v,s}$  ( $1.25 \times 10^6 \text{ J m}^{-3} \text{ K}^{-1}$ ) and the surface heat capacity  $\lambda_s$  ( $0.767 \text{ W m}^{-1} \text{ K}^{-1}$ ) are the respective weighted averages from the values for roof ( $C_{v,\text{roof}} = 1.2 \times 10^6 \text{ J m}^{-3} \text{ K}^{-1}$ ;  $\lambda_{\text{roof}} = 0.4 \text{ W m}^{-1} \text{ K}^{-1}$ ), wall ( $C_{v,\text{wall}} = 1.2 \times 10^6 \text{ J m}^{-3} \text{ K}^{-1}$ ;  $\lambda_{\text{wall}} = 1.0 \text{ W m}^{-1} \text{ K}^{-1}$ ) and road ( $C_{v,\text{road}} = 1.5 \times 10^6 \text{ J m}^{-3} \text{ K}^{-1}$ ;  $\lambda_{\text{road}} = 0.8 \text{ W m}^{-1} \text{ K}^{-1}$ ). Hereby, the weighted averages are calculated according to the surface fractions of roofs, walls and roads in the urban canopy:

$$5 \quad C_{v,s} \cong \frac{1-R}{\text{SAI}} \left( 2 \frac{h}{w_c} C_{v,\text{wall}} + C_{v,\text{road}} \right) + \frac{R}{\text{SAI}} C_{v,\text{roof}} \quad (10)$$

$$\lambda_s \cong \frac{1-R}{\text{SAI}} \left( 2 \frac{h}{w_c} \lambda_{\text{wall}} + \lambda_{\text{road}} \right) + \frac{R}{\text{SAI}} \lambda_{\text{roof}} \quad (11)$$

where the first terms represent the contributions from the street canyon and the second terms those from the roofs. The values for  $C_{v,\text{bulk},s}$  and  $\lambda_{\text{bulk},s}$  and are obtained from Equations 4 and 9 yield a value for  $\mu_{\text{bulk},s}$  of  $1.97 \times 10^3 \text{ J m}^{-2} \text{ K}^{-1} \text{ s}^{-1/2}$ . This value lies within and they yield  $2.5 \times 10^6 \text{ J m}^{-3} \text{ K}^{-1}$  and  $1.53 \text{ W m}^{-1} \text{ K}^{-1}$ , respectively.

10 The bulk surface thermal admittance is expressed as:

$$\mu_{\text{bulk},s} = \sqrt{\lambda_{\text{bulk},s} C_{v,\text{bulk},s}} \quad (12)$$

Given the values for  $C_{v,\text{bulk},s}$  and  $\lambda_{\text{bulk},s}$  above, one obtains  $\mu_{\text{bulk},s} = 1.96 \times 10^3 \text{ J m}^{-2} \text{ K}^{-1} \text{ s}^{-1/2}$ . It lies within the range for the thermal admittance of the ‘compact’ and ‘open’ climate zones in Table 4 of Stewart and Oke (2012), and also within the uncertainty range obtained by De Ridder et al. (2012). Although this is not a formal validation, these correspondences give confidence to the default parameter values of  $C_{v,s}$  and  $\lambda_s$  and above and to the enhanced effective surface heat capacity and heat conductivity expressed by Equations 4 and 9.

It needs to be noted that the presented methodology above assumes a homogeneous surface temperature of the urban canopy. This is also case for the next section with regard to the surface radiation properties. Consequentially, the scheme does not explicitly represent the temperature variety among the different elements in the urban canopy resulting from shadowing and the heterogeneous thermal and radiative properties. Therefore, urban-physical processes resulting from such variety are not explicitly resolved. This choice was made for providing consistency with the bulk urban land-surface schemes employing bulk parameters.

### 2.1.2 Surface radiation

In this section, the methodology for deriving the bulk (or effective) albedo  $\alpha_{\text{bulk}}$  and emissivity  $\epsilon_{\text{bulk}}$  from urban canopy parameters is addressed. The bulk values refer to the portions of reflected incoming short-wave radiation and emitted infra-red radiation by the urban canopy layer to the upper atmosphere, respectively. It also accounts for the modulation of the bulk value according to the increased-albedo effect of snow. The bulk albedo reduction factor of the urban canopy  $\psi_{\text{bulk}}$  is derived from the canyon height-to-width ratio  $\frac{h}{w_c}$  ratio and roof fraction  $R$ :

$$\alpha_{\text{bulk}} \simeq ((1 - f_{\text{snow}})\alpha + f_{\text{snow}} \alpha_{\text{snow}}) \psi_{\text{bulk}} \left( \frac{h}{w_c}, R \right) \quad (13)$$



where  $\alpha$  is the surface albedo and  $f_{\text{snow}}$  is the snow-covered fraction.  $\psi_{\text{bulk}}\left(\frac{h}{w_c}, R\right)$  is calculated by:

$$\psi_{\text{bulk}}\left(\frac{h}{w_c}, R\right) = R + (1 - R) \psi_{\text{canyon}}\left(\frac{h}{w_c}\right) \quad (14)$$

where  $\psi_{\text{canyon}}\left(\frac{h}{w_c}\right)$  is the canyon albedo reduction factor. Hereby, the total albedo reduction factor is calculated from the albedo reduction of the roof weighted with the roof fraction  $R$ , and that of the street-canyon weighted with the canyon fraction  $(1 - R)$ . As stated before, flat roofs are considered, hence the roof fraction  $R$  does not lead to a albedo reduction. In contrast, multiple reflections take place for the street-canyon for which the canyon albedo reduction factor  $\psi_{\text{canyon}}$  is taken into account.

Instead of implementing a computationally demanding explicit canyon radiation scheme, an approximation for  $\psi_{\text{canyon}}$  is proposed to the numerical estimation from Fortuniak (2007). The latter applies an exact solution of the multiple-reflection problem allowing to subdivide the different facets in an urban canyon. The exact solution results in a high accuracy for low solar heights when the lower canyon parts are shaded. It could reproduce the effective-albedo observations from a scale model (Aida, 1982) and from a real canyon very well. The numerical estimation shows that the albedo reduction is most sensitive to the  $\frac{h}{w_c}$ -ratio, hence the following approximation is proposed:

$$\psi_{\text{canyon}}\left(\frac{h}{w_c}\right) = \exp\left(-0.6 \frac{h}{w_c}\right) \quad (15)$$

This closely matches the numerical estimation with a maximal error of  $\pm 7\%$  for the highest excursion of the sun during summer solstice at the mid-latitude ( $55^\circ$ ), a canyon parallel to the solar azimuth, and a an albedo of 0.4 (Fortuniak, 2007, see their Figure 11). With regard to other sun heights, canyon directions relative to the solar azimuth, and  $\frac{h}{w_c}$ -ratios between 0 and 2 (Fortuniak, 2007, see their Figures 8 and 11), the proposed  $\psi_{\text{canyon}}$ -formulation has a maximal error of 45%. It should be noted that the approximation is fitted to the numerical estimation for a perfect urban canyon. Hence, the approximation neglects additional albedo changes due to bending roofs and varying albedos for the different facets.

Optionally, a distinction is made between the albedo of roofs, roads and walls as follows:

$$\alpha_{\text{bulk}} \simeq \frac{\left[\alpha_{\text{road,snow}} + 2 \frac{h}{w_c} \alpha_{\text{wall,snow}}\right]}{\left(1 + 2 \frac{h}{w_c}\right)} \psi_{\text{canyon}}\left(\frac{h}{w_c}\right) (1 - R) + \alpha_{\text{roof,snow}} R \quad (16)$$

with

$$\alpha_{i,\text{snow}} = (1 - f_{\text{snow}}) \alpha_i + f_{\text{snow}} \alpha_{\text{snow}}, \text{ for } i \text{ in } \underline{\text{in (roof, wall, street)in (roof, wall, road)}} \quad (17)$$

and where  $\frac{\left[\alpha_{\text{road,snow}} + 2 \frac{h}{w_c} \alpha_{\text{wall,snow}}\right]}{\left(1 + 2 \frac{h}{w_c}\right)}$  is the averaged albedo of the streets-roads and walls in the urban canyon. The effective bulk infra-red emissivity  $\epsilon_{\text{bulk}}$  takes into account the same bulk albedo reduction factor  $\psi_{\text{bulk}}$  as follows:

$$\epsilon_{\text{bulk}} = 1 - \psi_{\text{bulk}} (1 - ((1 - f_{\text{snow}}) \epsilon + f_{\text{snow}} \epsilon_{\text{snow}})) \quad (18)$$

where  $\epsilon$  is the emissivity and  $\epsilon_{\text{snow}}$  is the snow emissivity.

The robustness of the Equations 15, 16 and 17 is verified for a dense urban area in Toulouse centre: The averaged albedo for walls, roofs and roads are 0.25, 0.15 and 0.08, respectively, whereas the roof fraction and  $\frac{h}{w_c}$ -ratio are 0.59 and 1.4 respectively, see Pigeon et al. (2008). This yields a snow-free **effective-bulk** albedo  $\alpha_{\text{bulk}}$  for the urban canopy of 0.125. This is close to the bulk value of 0.13 for Summer, which is estimated from the averaged ratio between the upward and the downward radiation measured by a mast tower during the ‘CAPITOU’-campaign (Masson et al., 2008).

~~Default values~~The default urban canopy parameters (see also Table 1) for albedo of roofs (0.10), walls (0.10) and roads (0.15) are ~~adopted from (Loridan and Grimmond, 2012). Regarding the default values for  $\frac{h}{w_c}$  and  $R$  of 1.5 and 0.67 set equal to the recommended values from Loridan and Grimmond (2012), see their Table IV (stage 5b). Together with the values for  $\frac{h}{w_c} = 1.5$  and  $R = 0.667$ , Equation 16 yields a (snow-free) **effective albedo for the urban canopy bulk albedo** of  $\alpha_{\text{bulk}} = 0.081$ . ~~Given the values for  $R$  and  $\frac{h}{w_c}$  At the same time,~~ the bulk albedo reduction factor for the urban canopy yields  $\psi_{\text{bulk}} = 0.80$ . ~~Together with (see Equation 14). With respect to~~ the more simple formulation in Equation 13, ~~the value for the albedo for  $\alpha$  of 0.10~~ a surface albedo of  $\alpha = 0.10$  is obtained and used by default. Analogously, the default ~~value is obtained values~~ for the snow-free ~~effective emissivity of 0.89 and the emissivity of 0.86~~ **bulk emissivity of  $\epsilon_{\text{bulk}} = 0.89$  and the surface emissivity of  $\epsilon = 0.86$  are obtained.**~~

### 15 2.1.3 Surface-layer turbulent transport

Following Sarkar and De Ridder (2010), the aerodynamic roughness lengths for the urban canopy is calculated as follows:

$$z_0 = 0.075 H h \quad (19)$$

with  $H-h$  the building height. The thermal roughness length  $z_{0H}$  is obtained with a parametrization of the inverse Stanton number (as in De Ridder, 2006; Demuzere et al., 2008):

$$20 \quad kB^{-1} = \ln \left( \frac{z_0}{z_{0H}} \right) \quad (20)$$

with  $k$  the von Kàrmàn constant. For the urban canopy, a bluff-body thermal roughness length parametrization from Brutsaert (1982) is introduced using parameter values from Kanda et al. (2007):

$$kB^{-1} = 1.29 Re_*^{0.25} - 2.0 \quad (21)$$

25 where  $Re_* = u_* z_0 / \nu$  is the roughness Reynolds number,  $u_*$  is the friction velocity, and  $\nu = 1.461 \times 10^{-5} \text{ m}^2 \text{ s}^{-1}$  the kinematic viscosity of air.

As before, the default value for  $h$  equal to 15 m (see also Table 1) corresponds to the recommended value in Loridan and Grimmond (2012) see their Table IV (stage 5b). It yields  $z_0 = 1.125 \text{ m}$  and  $kB^{-1} = 13.2$  (in case that  $u_* = 0.25 \text{ m s}^{-1}$ ).

## 2.2 The COSMO(-CLM) model

30 The COSMO model (Stappeler et al., 2003) is a full-3D atmospheric numerical model designed for operational and research applications in limited-area weather prediction at high resolution. The model has been developed by the German Weather Service (DWD) and is further improved and maintained by the Consortium for Small-Scale Modelling (COSMO). Members of

this consortium include several meteorological services from inside and outside Europe. The COSMO model has a compressible non-hydrostatic core for atmospheric dynamics, and includes parametrizations for radiative transfer, cloud microphysics, subgrid-scale turbulence and convection. It also includes parametrizations for the ground heat- and water transport and the land-atmosphere interactions, as described in more detail in the next paragraph. The regional climate model COSMO-CLM (COSMO model in CLimate Mode) is based on the COSMO model, and includes modifications allowing the application on time scales up to centuries (Böhm et al. 2006; Rockel et al., 2008). These modifications comprise the introduction of an annual cycle to vegetation parameters like the vegetation cover and the leaf area index as well as an externally prescribed, time-dependent CO<sub>2</sub> concentration in the atmosphere. The COSMO-CLM model is further developed by a vast amount of researchers of the CLM-community in- and outside of Europe (<http://www.clm-community.eu>). It is used extensively for long-term ~~regional-climate~~ regional climate studies (Klutse et al., 2015; Endris et al., 2015; Vanden Broucke et al., 2015; Cavicchia et al., 2014; Davin et al., 2014; Schubert and Grossman-Clarke, 2013) and for downscaling global-climate realizations (Akkermans et al., 2014; Dosio and Panitz, 2015; Lejeune et al., 2014).

The ground heat- and water transport and the representation of vegetation and snow-cover are resolved by the Soil-Vegetation-Atmosphere Transfer (SVAT) module TERRA\_ML (Schulz et al., 2016; Doms et al., 2011; Grasselt, 2008). The COSMO(-CLM) model implements the next generation TKE-based surface-layer transfer scheme (Doms et al., 2011; Buzzi, 2008). The surface layer, which refers to the layer of air between the earth surface and the lowest model level, is divided into a laminar-turbulent sublayer, the roughness layer, and a constant-flux (or Prandtl) layer. The surface layer scheme is also intimately related to the TKE-based closures of the COSMO(-CLM) model, see sections 3.3 and 3.4 of Doms et al. (2011). As a result, the surface layer does not need the empirical Monin-Obukhov stability functions (as in Paulson, 1970; Guo and Zhang, 2007) for which the Obukhov stability parameter needs to be determined from an iterative procedure or a non-iterative approximation (eg., Louis, 1979; Wouters et al., 2012; Li et al., 2014, and references herein). It rather generates these functions by the use of the dimensionless coefficients of the turbulence closure (Mellor and Yamada, 1982), see section 4.2 of Doms et al. (2011). Land-surface parameters including the soil type, vegetation, and orography are specified with the External Parameter tool (EXTPAR), see also Smiatek et al. (2008). These are processed from global land-cover data sets, such as those for orography and coastlines from ‘Global 30 Arc-Second Elevation’ (GTOPO30; see <https://lta.cr.usgs.gov/GTOPO30>) or ASTER (Three Arc-Second Elevation dataset), soil data from the ‘Digital Soil Map of the World’ (DSMW; see <http://data.fao.org/map?entryId=446ed430-8383-11db-b9b2-000d939bc5d8>), and land-use data from ‘Global Land Cover 2000’ (GLC2000, see Bartholomé and Belward, 2005), GLOBCOVER (Loveland et al., 2010) or ECOCLIMAP (Faroux et al., 2013). The vegetation parameters, which include vegetation cover fraction, LAI and rooting depth, are specified with annual minimum and maximum values depending on the land-use (Doms et al., 2011, see their tables 14.3, 14.4, and 14.5). For the extra-tropical northern hemisphere, a growing and resting period is calculated according to the latitude. The roughness length parameter (over land) depends on both land-use and the subgrid-scale orography. The obtained vegetation and soil data are assigned to the natural soil fraction. The methodology for the reduction in vegetation abundance in urban environments compared to the rural surroundings is according to the underlying land-use dataset.

In the original COSMO(-CLM) model, cities are represented by natural land surfaces with an increased surface roughness length and a reduced vegetation cover. However in this representation, urban areas are still treated as water-permeable soil with aerodynamic, radiative and thermal parameters similar to the surrounding natural land. Therefore, this basic representation could not reliably capture the urban physics and associated urban-climatic effects including urban heat islands. In order to tackle this issue, the bulk scheme TERRA\_URB (Wouters et al., 2015) has been introduced for providing an intrinsic representation of urban physics in the COSMO(-CLM) model. The modified ground heat and moisture transport and land-atmospheric exchanges for momentum, heat and moisture found over urban areas are adopted by including modifications to the soil-vegetation module TERRA\_ML (Grasselt, 2008; Schulz et al., 2016), the land-atmosphere interactions (Doms et al., 2011) and to the input data (EXTPAR; Smiatek et al. (2008)). The initial release (version 1) features a non-iterative calculation of surface-layer stability functions accounting for the roughness sublayer (Wouters et al., 2012) and an impervious water-storage parametrization based on a probability density function of water puddles (Wouters et al., 2015). TERRA\_URB v1.0 has been evaluated in offline mode in Wouters et al. (2015) for intensive observation campaigns in Basel (Rotach et al., 2005) and Toulouse (Masson et al., 2008). It has also been employed for acquiring heat-stress scenarios of future climate change and urban land-use change scenarios in Belgium (De Ridder et al., 2015) adopted by the Climate Report of the Flemish Environmental Agency (Brouwers et al., 2015). During the Online Urban Model Intercomparison Project (Trusilova et al., 2015), TERRA\_URB v.1 has been compared to other urban land-surface parametrizations TEB (Trusilova et al., 2013; Masson, 2000) and DCEP-BEP (Schubert et al., 2012; Martilli et al., 2002) coupled to same COSMO-CLM model. The next version (v2.0) of TERRA\_URB introduces several advancements compared to its previous version. The main advancements are the implementation of SURY v1.0 and the application of the TKE-based surface-layer turbulent transfer module of the COSMO(-CLM) model (Doms et al., 2011; Buzzi, 2008). A full description of TERRA\_URB v2.0 can be found in Appendix A.

### 2.3 Model setup

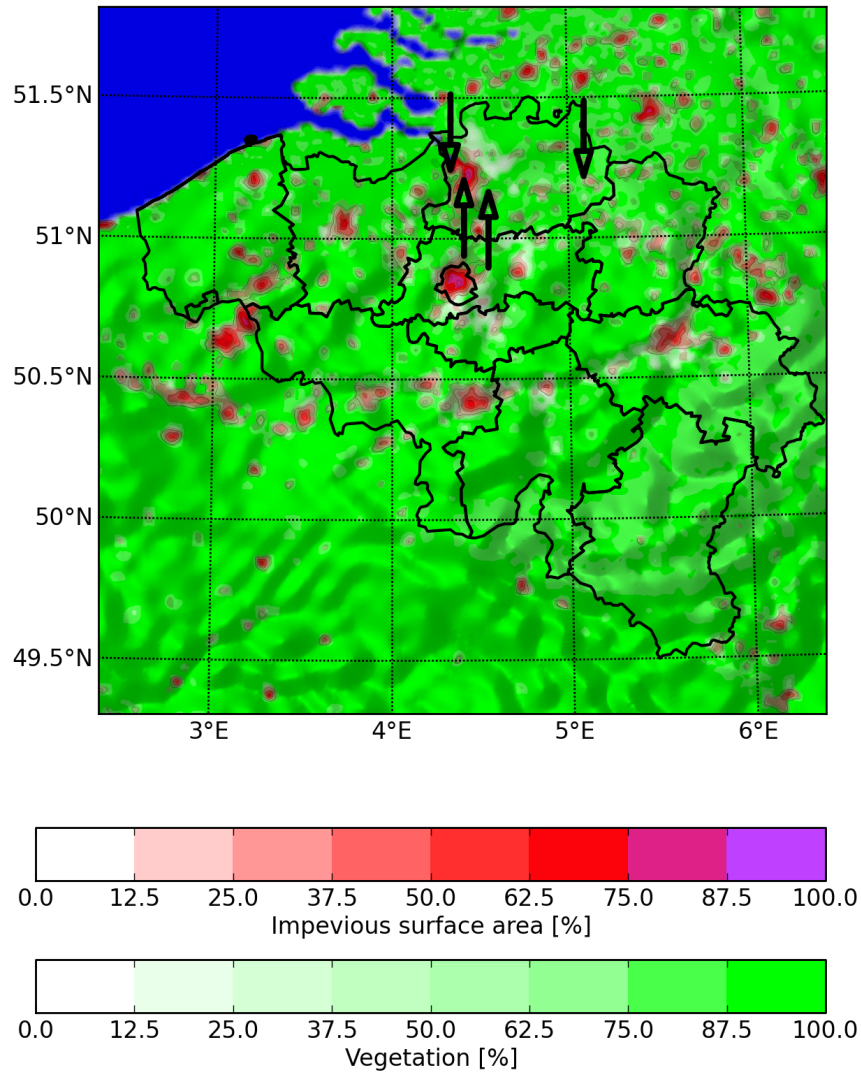
The COSMO(-CLM) model that implements SURY in its urban land-surface module TERRA\_URB v2.0 is setup for the reference simulation over Belgium, see Figure 1. The simulation is performed during a summer period from 2012/7/01 until 2012/08/20 for which the first three weeks are considered as spin-up. The model parameter setup is based on the COSMO-CLM model configurations of Brisson et al. (2016, 2015) and Prein et al. (2015) employing convection resolving climate simulations. The domain covers 175 by 175 grid cells centred over Brussels with a horizontal grid spacing of 2.8km resolution. Forty vertical layers are used with the lowest domain level at 10m above the ground. For the lateral boundaries, the model takes 3-hourly analysis from the operational model of the European Centre for Medium Range Weather Forecasting (ECMWF) at a spatial resolution of 0.125° in latitude and longitude. The reference simulation above, referred to as ‘REF’, is compared with a simulation ‘STD’ that uses the original COSMO-CLM model without urban land-surface parametrization. The surface parameters for TERRA\_URB v2.0 are the spatially detailed Impervious Surface Area (ISA) dataset from the environmental agency (Maucha et al., 2010) and a dataset of Anthropogenic Heat Emission (AHE) inventory modified from Flanner (2009), see [appendix-Appendix A6](#). As indicated in the introduction, existing global databases for the urban canopy parameters are not suitable for the intended scale of cities and neighbourhoods. Even though the first steps have been made by mapping its Local

EXP-ID	urban canopy parameter	symbol	L	H
A	surface albedo	$\alpha$	0.10	0.25
B	surface heat conductivity	$\lambda_s$ [ $\text{W m}^{-1} \text{K}^{-1}$ ]	0.200	0.968
C	surface heat capacity	$C_{v,s}$ [ $1 \times 10^6 \text{ J m}^{-2} \text{ K}^{-1}$ ]	0.321	1.56
D	canyon height-to-width ratio	$\frac{h}{w_c}$	0.75	2.0
E	building height	$h$ [m]	3	30
F	roof fraction	$R$	0.40	0.70
G	anthropogenic heat emission	AHE	0	$2 \times \text{FL09}$

**Table 2.** Overview of parameter sensitivity experiments. Seven couples of experiments (AL, AH, BL, BH, CL, CH, DL, DH, EL, EH, FL, FH, FL, GH) are performed for which the default urban canopy parameters are modified to the values in the ‘L’ow and ‘H’igh column. Except for the anthropogenic heat emission (AHE), L and H correspond to the minimum and maximum values of the urban canopy parameter ranges for the local climate zones of compact ‘low-rise and mid-rise’ defined in Stewart and Oke (2012). For the GL scenario, the AHE is set to  $0 \text{ W m}^{-2}$ . For the GH scenario, AHE multiplied by 2 compared to the default setup for which the dataset and methodology of Flanner (2009, denoted as FL09 in the table).

Climate Zones (Verdonck et al., 2016), more detailed inventories and databases, specifically from WUDAPT.org, do not cover yet the Belgian region. As an intermediate solution, the default ~~urban-canopy~~ urban canopy parameters from section 2.1 are employed (see upper panel of Table 1), which contemplates the combination of available parameter inventories, modelling and observational studies, and SURY’s theoretical framework.

- 5 In addition to the REF and STD setup described above, a range of online-coupled sensitivity experiments are performed. Starting from from REF for each sensitivity simulations, the parameters for the urban canopy are changed according to the minimum (‘L’ow scenarios) and maximum values (‘H’igh scenarios) of the urban canopy parameter ranges derived from the Local Climate Zones of compact ‘low-rise and mid-rise’ in Stewart and Oke (2012). The parameters are respectively the surface albedo ( $\alpha$ ), surface heat conductivity ( $\lambda_s$ ), surface heat capacity ( $C_{v,s}$ ), canyon height-to-width ratio  $\left(\frac{h}{w_c}\right)$ ,  $\left(\frac{h}{w_c}\right)$ , building height ( $h$ ) and roof fraction ( $R$ ). The parameter range for  $\alpha$  is obtained from the range in bulk albedo  $\alpha_{\text{bulk}}$  in Stewart and Oke (2012), while keeping the other (morphological) parameters at their default values. Therefore, Equation 13 is reversed to calculate  $\alpha$  from  $\alpha_{\text{bulk}}$ . In the same way, the urban canopy parameter ranges for the surface heat capacity and heat conductivity are derived from the range of the bulk thermal admittance in Stewart and Oke (2012). In addition, the anthropogenic heat emission (AHE) is set to  $0 \text{ W m}^{-2}$  in the L scenario, and it is multiplied by 2 in the H scenario. These
- 10 building height ( $h$ ) and roof fraction ( $R$ ). The parameter range for  $\alpha$  is obtained from the range in bulk albedo  $\alpha_{\text{bulk}}$  in Stewart and Oke (2012), while keeping the other (morphological) parameters at their default values. Therefore, Equation 13 is reversed to calculate  $\alpha$  from  $\alpha_{\text{bulk}}$ . In the same way, the urban canopy parameter ranges for the surface heat capacity and heat conductivity are derived from the range of the bulk thermal admittance in Stewart and Oke (2012). In addition, the anthropogenic heat emission (AHE) is set to  $0 \text{ W m}^{-2}$  in the L scenario, and it is multiplied by 2 in the H scenario. These
- 15 two scenarios are in agreement with the given uncertainty range in Stewart and Oke (2012) - indicating a range between 0 and  $75 \text{ W m}^{-2}$  - while preserving daily and annual variability in the model, and spatial variability from the input data. As a result, 14 additional simulations are performed for which the L scenarios are respectively AL, BL, CL, DL, EL and FL, GL, and the H scenarios are AH, BH, CH, DH, EH, FH and GH. An overview of the simulations can be found in Table 2.



**Figure 1.** Domain composite of the impervious surface area, vegetation cover and orography (indicated with the shading) for the reference (REF) model setup of the COSMO-CLM model coupled to TERRA\_URB v2.0 at 2.8km resolution over Belgium. The arrows directed upwards indicate the locations of the in-situ observations located in the urban area of Antwerp (left; Royal Lyceum of Antwerp) and in the rural area of Vremde (right; Organic Farm van Leemputten). The arrows directed downwards indicate the locations of the tower observations located at a flat industrial terrain in Zwijndrecht (left arrow) of the Flemish Environmental Agency, and at an rural area (right arrow) of the Belgian Nuclear Research Center (SCK•CEN) in Mol.

## 2.4 Evaluation data

### 2.4.1 In-situ measurements

The modelled screen-level air temperature and the associated CLUHI is evaluated against in-situ measurements for an urban and rural site in Antwerp. These were performed using platinum resistance thermometers supplied by Campbell Scientific. The sensors were mounted in an actively ventilated radiation shield (Young 43503) to reduce heating effects by radiation loading on the sensor and stagnant air inside the shield. The sensor + radiation shield setups were deployed side by side during a test phase during one week at the end of June 2012. The Root-Mean-Square difference on the 15 minute temperature averages during this week was found lower than 0.04°C. The rural station was located on the premises of an organic farm enterprise some 10 km to the south east of Antwerp. The station is situated in pasture land with grass kept short by sheep. The nearest buildings are low rise and about 200 m away. The urban station was located on the premises of the Royal Lyceum in Antwerp, a secondary school. The sensor was mounted in the urban canopy layer on top of the roof of a 3 m high small building in the centre of a fairly large playground. The distance to the nearest adjacent wall is about 15 m. Though the location on top of the roof is probably not ideal in terms of micro-scale effects, comparisons with similar measurements in the vicinity of the lyceum and an analysis of the urban-rural difference suggest that the measurements at the lyceum can be considered representative for the neighbourhood. The position of the in-situ measurements are indicated in Figure 1.

### 2.4.2 MODIS satellite imagery

As demonstrated recently by Hu et al. (2014) and Tomlinson et al. (2012), satellite information can be used for evaluating the models' excess surface heating in urban areas compared to the natural surrounding areas for the entire study domain. The model results are evaluated against land-surface temperatures (LSTs) derived from the MODIS sensor on board of the Terra and Aqua satellite. Providing four overpasses a day with a spatial resolution of approximately 1 km. Hu et al. (2014) compared three methods to evaluate MODIS LST to HRLDAS surface temperatures and the optimal technique is employed for this study. For each Terra and Aqua overpass, the nearest model time is selected resulting in images at 9 and 11 am and 20 and 00 pm. The first two are combined as "day", while the latter two are referred to as "night". Cloudy pixels are removed in MOD11A1 and MYD11A1 Version 5 (Wan, 2008) while potential remaining cloudy pixels are removed by only using MODIS LST data within 1.5 times the interquartile range (Hu et al., 2014; Monaghan et al., 2014). In addition, cloudy pixels from the COSMO-CLM model are removed in both datasets. Finally, in order to minimize view-angle biased MODIS' LSTs while keeping sample sizes large enough, only overpasses between  $-45^\circ$  and  $45^\circ$  from nadir are used. All remaining pixels therefore represent clear-sky conditions and are used to evaluate LST of the COSMO-CLM model.

### 2.4.3 Tower observations

In order to evaluate the nocturnal boundary-layer temperature and BLUHI in the model, observations from two meteorological towers within the province of Antwerp (Belgium) are used. The first tower of the Flemish Environmental Agency (VMM)

is 160 m high and located on an industrial site in Zwijndrecht (Geographical coordinates: 51°14'37.9"N 4°20'3.1"E). Measurements for temperature, humidity, wind speed, pressure and precipitation are performed at 8 m, 24 m, 48 m, 80 , 114 m and 153 m. The temperature measurements are obtained with multi-stage solid state thermistor (Met One 062). The second tower of the Belgian Nuclear Research Centre (SCK•CEN) is 120 m high and located in Mol (Geographical coordinates: 51°13'04"N and 5°05'24"E). Measurements have been done in the framework of determining atmospheric stability according to the turbulence scheme of SCK•CEN (Bultynck and Malet, 1972). It is placed in a rural area on flat terrain with pine trees in the immediate vicinity. Measurements for wind direction, wind speed and temperatures are performed at 8 m, 24 m, 48 m, 69 m, 78 m and 114 m) above ground level. Hereby, the temperature measurements are obtained with a Cu-Constantan thermocouples. The temperature measurements of both towers are placed within a ventilator driven aspirated radiation shield to protect against direct and diffuse solar heating. They are continuously recorded on a 1 minute basis in order to make and store 10-minute averages. For the model evaluation, the available temperature measurements at the heights 8 m, 48 m and 114 m) of both towers have been used. The position of the tower observations are indicated in Figure 1.

### 3 Results

#### 3.1 Evaluation

The averaged LST and screen-level temperatures for the day- and night-time from the REF simulation during the summer evaluation period are shown in Figure 2 . It is found that the SUHI reaching its maximum during the day is typically larger (approximately 4 K for the urban centres) than the CLUHI reaching its maximum during the night (approximately 2 K). The night-time CLUHI is of comparable magnitude as the night-time SUHI. The CLUHI reaches a its minimum at noon. Hereby, the urban heat islands occur at the scale of the cities and magnitude increases with city size. These findings are consistent with existing literature for urban-climate modelling and observational studies (eg., Phelan et al., 2015). Hereby, excess conversion of solar radiation into sensible heat is taking place in cities at day-time. The excess heat is partly stored into the urban canopy which leads to day-time excess land-surface temperatures. In turn, the prolonged excess heat release from the urban canopy substantially affects the shallow nocturnal boundary layer resulting in augmented screen-level temperatures at night-time (Wouters et al., 2013; Bohnenstengel et al., 2011). Modeled temperatures and associated urban heat islands of the REF simulation are evaluated in more detail below against screen-level temperatures from the in-situ measurements (Section 3.1.1), land-surface temperatures (LST) from satellite imagery (Section 3.1.2) and nocturnal boundary-layer temperature from tower observations (Section 3.1.3). Herein, a comparison is also made with the STD simulation that excludes the urban parametrization.

##### 3.1.1 Two-metre air temperatures

The model evaluation of the screen-level air temperature and the CLUHI for Antwerp is displayed in Figure 3 and in Tables 3, 4 and 5. Herein, sensitivity results are also included, which will be addressed in Section 3.2.



Royal Lyceum of Antwerp (urban)			
EXP-ID	L	H	H - L
OBS	293.85 ( - )	-	-
STD/REF	292.90 (-0.95)	294.24 (+0.39)	1.34
A	294.24 (+0.39)	294.11 (+0.26)	0.13
B	294.10 (+0.25)	294.28 (+0.43)	0.18
C	294.08 (+0.23)	294.27 (+0.42)	0.19
D	294.12 (+0.27)	294.31 (+0.46)	0.19
E	294.17 (+0.32)	294.33 (+0.48)	0.16
F	294.38 (+0.53)	294.24 (+0.39)	0.14
G	293.53 (-0.32)	294.77 (+0.92)	1.24

Organic Farm Van Leemputten (rural)			
EXP-ID	L	H	H - L
OBS	292.12 ( - )	-	-
STD/REF	292.26 (+0.14)	292.68 (+0.56)	0.42
A	292.68 (+0.56)	292.71 (+0.59)	0.03
B	292.66 (+0.54)	292.73 (+0.61)	0.07
C	292.65 (+0.53)	292.71 (+0.59)	0.06
D	292.67 (+0.55)	292.71 (+0.59)	0.04
E	292.68 (+0.56)	292.72 (+0.60)	0.04
F	292.73 (+0.61)	292.67 (+0.55)	0.06
G	292.31 (+0.19)	293.01 (+0.89)	0.70

Difference (urban heat island)			
EXP-ID	L	H	H - L
OBS	1.74 ( - )	-	-
STD/REF	0.64 (-1.10)	1.56 (-0.18)	0.92
A	1.56 (-0.18)	1.41 (-0.33)	0.15
B	1.44 (-0.30)	1.55 (-0.19)	0.11
C	1.43 (-0.31)	1.56 (-0.18)	0.13
D	1.44 (-0.30)	1.60 (-0.14)	0.16
E	1.48 (-0.26)	1.61 (-0.13)	0.13
F	1.65 (-0.09)	1.57 (-0.17)	0.08
G	1.22 (-0.52)	1.77 (+0.03)	0.55

**Table 3.** Daily averages for modelled and observed temperatures (unit: [K]) during mid-summer (2012/07/21 until 2012/08/20) at the Royal Lyceum for Antwerp (Urban), the Organic Farm Van Leemputten (Rural), and their difference (the Urban heat island effect of Antwerp). Each first row shows results of the observations. Each second row shows results for COSMO-CLM model without urban parametrization (L column), for COSMO-CLM + TERRA\_URB v2.0 (H column) and their absolute difference ( $|H - L|$  column). The remainder rows show each of the urban-parameter sensitivity simulations in Table 2. Hereby, the Low scenarios are shown in the L column, the High scenarios in the H column and the parameter sensitivity Range (absolute difference between L and H) in the  $|H - L|$  column.

Royal Lyceum of Antwerp (urban)			
EXP-ID	L	H	H - L
OBS	292.27 ( - )	-	-
STD/REF	291.33 (-0.94)	293.21 (+0.94)	1.88
A	293.21 (+0.94)	293.12 (+0.85)	0.09
B	292.81 (+0.54)	293.28 (+1.01)	0.47
C	292.72 (+0.45)	293.29 (+1.02)	0.57
D	292.99 (+0.72)	293.32 (+1.05)	0.33
E	293.10 (+0.83)	293.34 (+1.07)	0.24
F	293.46 (+1.19)	293.19 (+0.92)	0.27
G	292.39 (+0.12)	293.79 (+1.52)	1.40

Organic Farm Van Leemputten (rural)			
EXP-ID	L	H	H - L
OBS	289.60 ( - )	-	-
STD/REF	290.55 (+0.95)	291.05 (+1.45)	0.50
A	291.05 (+1.45)	291.05 (+1.45)	0.00
B	290.95 (+1.35)	291.08 (+1.48)	0.13
C	290.91 (+1.31)	291.09 (+1.49)	0.18
D	290.98 (+1.38)	291.09 (+1.49)	0.11
E	291.05 (+1.45)	291.10 (+1.50)	0.05
F	291.13 (+1.53)	291.04 (+1.44)	0.09
G	290.68 (+1.08)	291.39 (+1.79)	0.71

Difference (urban heat island)			
EXP-ID	L	H	H - L
OBS	2.67 ( - )	-	-
STD/REF	0.78 (-1.89)	2.16 (-0.51)	1.38
A	2.16 (-0.51)	2.07 (-0.60)	0.09
B	1.87 (-0.80)	2.21 (-0.46)	0.34
C	1.81 (-0.86)	2.20 (-0.47)	0.39
D	2.01 (-0.66)	2.24 (-0.43)	0.23
E	2.05 (-0.62)	2.25 (-0.42)	0.20
F	2.33 (-0.34)	2.15 (-0.52)	0.18
G	1.71 (-0.96)	2.41 (-0.26)	0.70

**Table 4.** Idem as Table 3, but averaged values for the night (between 6:00PM and 5:59AM UTC).

Royal Lyceum of Antwerp (urban)			
EXP-ID	L	H	H - L
OBS	295.44 ( - )	-	-
STD/REF	294.47 (-0.97)	295.27 (-0.17)	0.80
A	295.27 (-0.17)	295.10 (-0.34)	0.17
B	295.40 (-0.04)	295.27 (-0.17)	0.13
C	295.44 (+0.00)	295.26 (-0.18)	0.18
D	295.25 (-0.19)	295.29 (-0.15)	0.04
E	295.23 (-0.21)	295.32 (-0.12)	0.09
F	295.30 (-0.14)	295.28 (-0.16)	0.02
G	294.67 (-0.77)	295.75 (+0.31)	1.08

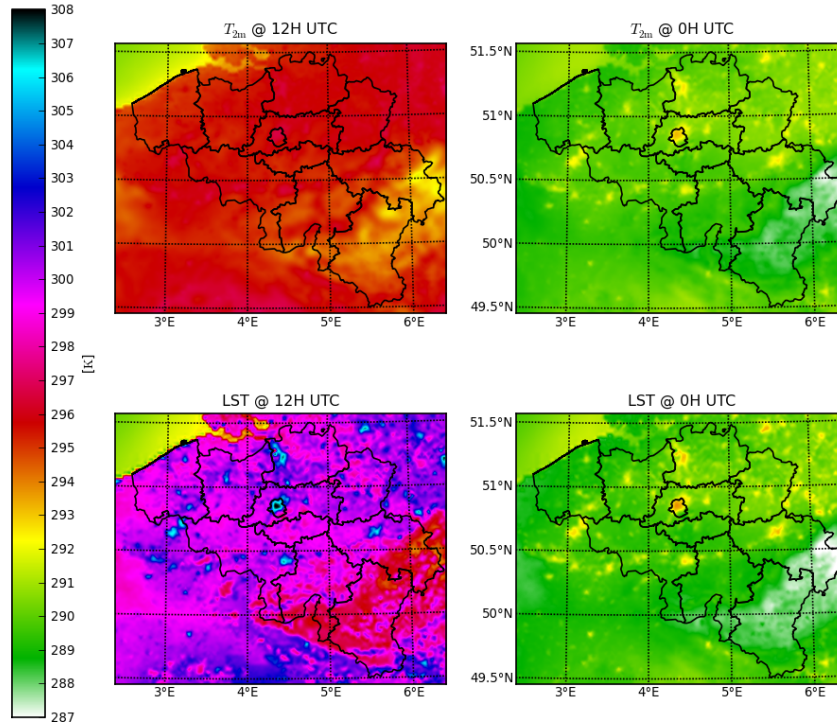
  

Organic Farm Van Leemputten (rural)			
EXP-ID	L	H	H - L
OBS	294.64 ( - )	-	-
STD/REF	293.98 (-0.66)	294.32 (-0.32)	0.34
A	294.32 (-0.32)	294.36 (-0.28)	0.04
B	294.38 (-0.26)	294.38 (-0.26)	0.00
C	294.40 (-0.24)	294.34 (-0.30)	0.06
D	294.37 (-0.27)	294.33 (-0.31)	0.04
E	294.31 (-0.33)	294.34 (-0.30)	0.03
F	294.34 (-0.30)	294.30 (-0.34)	0.04
G	293.95 (-0.69)	294.63 (-0.01)	0.68

Difference (urban heat island)			
EXP-ID	L	H	H - L
OBS	0.80 ( - )	-	-
STD/REF	0.49 (-0.31)	0.96 (+0.16)	0.47
A	0.96 (+0.16)	0.74 (-0.06)	0.22
B	1.02 (+0.22)	0.89 (+0.09)	0.13
C	1.05 (+0.25)	0.92 (+0.12)	0.13
D	0.88 (+0.08)	0.96 (+0.16)	0.08
E	0.92 (+0.12)	0.98 (+0.18)	0.06
F	0.96 (+0.16)	0.98 (+0.18)	0.02
G	0.72 (-0.08)	1.12 (+0.32)	0.40

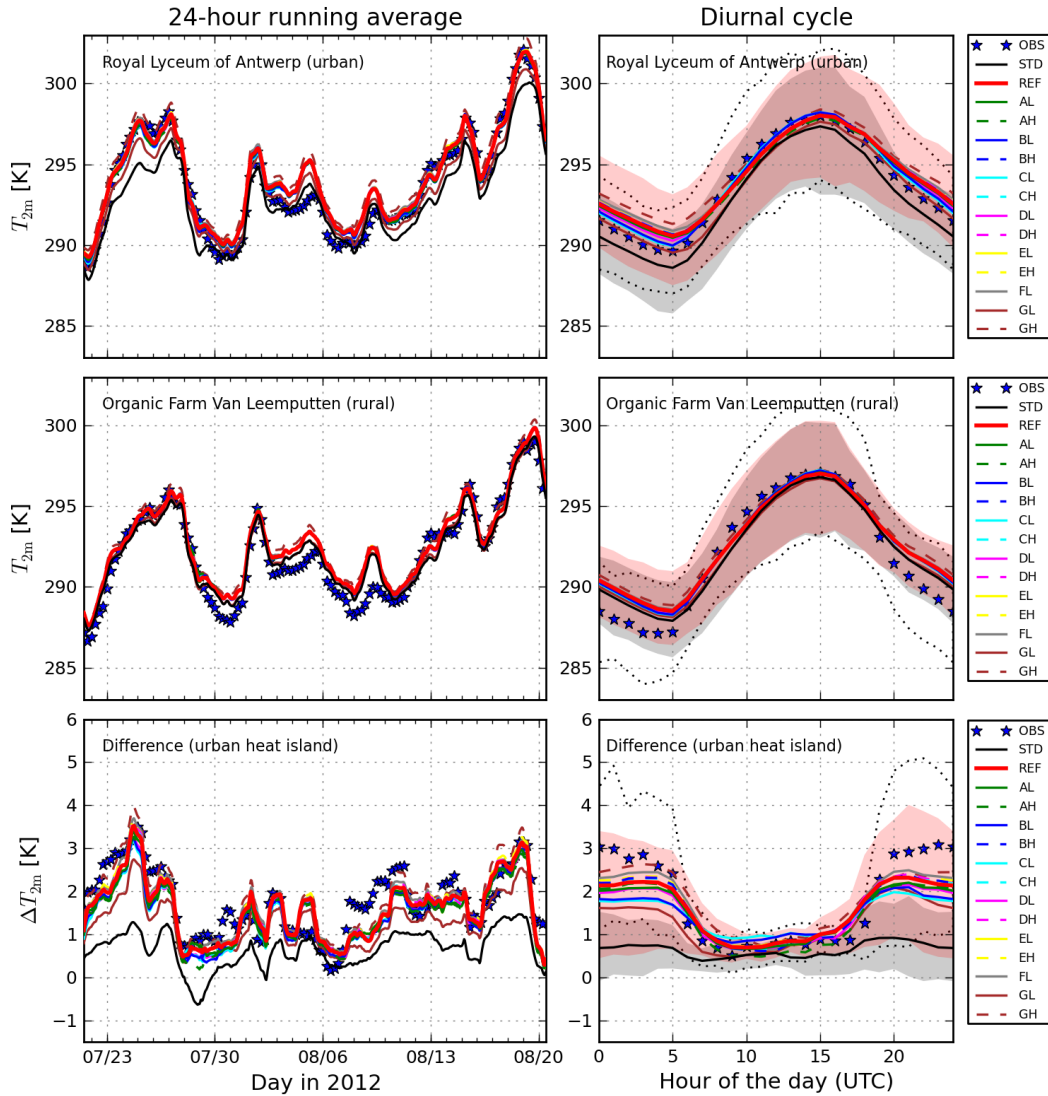
**Table 5.** Idem as Table 3, but averaged values for the day (between 6:00AM and 5:59PM UTC).



**Figure 2.** Modelled horizontal profiles of screen-level (top panels) and surface (bottom panels) temperatures at noon (left panels) and midnight (right panels), averaged for 2012/07/21 until 2012/08/20.

For the urban site, reference model REF agrees well with the observed temperatures with a mean bias (MB) of 0.39 K and a Pearson correlation coefficient (R2) of 0.96. In contrast, the standard model STD results in a general temperature underestimation with a MB of  $-0.95$  K and an R2 of 0.95. For the rural site, the temperature timeseries, daily variability are also well reproduced for both REF and STD with an MB 0.56 K and 0.14 K and an R2 of both 0.95, respectively. However, the model shows an underestimation of the diurnal cycle, particularly an overestimation of the nocturnal temperatures. The overestimation for the rural site is larger for REF than for STD, ~~because of the advection of excess heat from~~. It is postulated that the latter stems from the excess urban heat introduced by the urban land-surface scheme in REF, which is advected from the urban areas towards the rural areas.

The CLUHI intensity (1.74 K), calculated from the observed difference between the urban station and the rural station, is well reproduced by REF (1.56 K) with a very good R2 of 0.80 and a bias of  $-0.18$  K. In contrast, the CLUHI could not be reproduced by the STD model: With an averaged UHI value of 0.64 K, STD has a much larger model bias  $-1.10$  K and a lower R2 of 0.54. Again for the REF simulation, an underestimation of the UHI occurs during the night and a slight overestimation



**Figure 3.** 24-hour running averages and mean diurnal cycle for modelled (thick lines) and observed (OBS; blue stars) temperatures during mid-summer (2012/07/21 until 2012/08/20) at the Royal Lyceum for Antwerp (Urban), the Organic Farm Van Leemputten (Rural), and their difference (the Urban heat island effect of Antwerp). The simulation with the COSMO-CLM model coupled to the standard land-surface module TERRA\_ML without urban parametrization is indicated with STD (black), whereas the reference simulation with the COSMO-CLM model + TERRA\_URB v2.0 with urban parametrization is indicated with REF (red). The dotted lines indicate the range between the 16th and 84th percentile of the observed temperatures, whereas the grey and red areas indicate the ranges for the simulations STD and REF, respectively. An overview of the canopy parameter sensitivity simulations (AL, AH, BL, BH...) can be found in Table 2.

in the late afternoon. The modelled standard deviation of 1.25 K is lower than the observed 1.56 K, which originates from the underestimation of the nocturnal UHI.

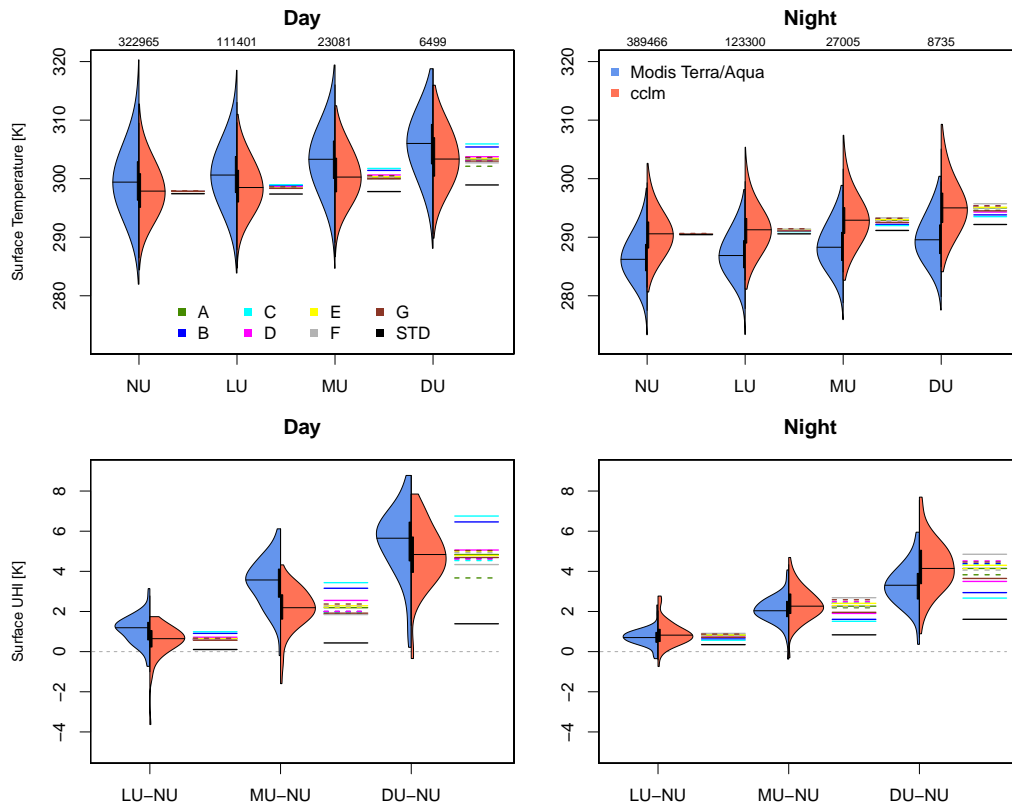
### 3.1.2 Land-surface temperatures

The model is evaluated with LSTs derived from the MODIS satellite described in Section 2.4.2. Hereby, four urban classes are distinguished: no urban (NU) with Impervious Surface Area (ISA)  $\leq 0.05$ ; light urban (LU),  $0.05 < \text{ISA} \leq 0.25$ ; medium urban (MU),  $0.25 < \text{ISA} \leq 0.5$ ; dense urban (DU),  $\text{ISA} > 0.5$ . The results are displayed in Figure 4. As for the screen-level temperature, sensitivity results are included, which will be addressed in Section 3.2. For the NU class, a negative bias of  $-1.53$  K is found for the day-time LST samples and a positive bias of 4.36 K for the night-time samples for both REF and STD. The too low diurnal cycle is consistent with the results for the screen-level air temperatures (see Section 3.1.1). The model results for REF confirm the observed gradual increase of LST with the increasing urban density. At the same time, the day- and night-time SUHI increases as well with the urban density in both REF and the observations. For the day, the modelled SUHI by REF has a negative median bias of  $-1.52$  K and  $-1.14$  K for the MU and DU class respectively, whereas it is  $-0.6$  K for the LU class. For the night, the averaged modelled SUHI by REF matches very well the observations. Hereby, the biases in SUHI for the LU, MU and DU classes are 0.03 K, 0.26 K and 1.09 K, respectively. This general positive nocturnal bias is in contrast to the negative bias for the screen-level air temperatures (see Section 3.1.1). In contrast to REF, STD is not able to capture the SUHI.

### 3.1.3 Nocturnal boundary layer

The model results are evaluated with observations of the nocturnal boundary-layer described in Section 2.4.3. Besides absolute temperature profiles, we also focus on the performance of the nocturnal BLUHI. The latter is calculated from the difference between temperature profiles in an industrial and natural area. The results are shown in Figure 5 and Table 6. As before, sensitivity results are included, which will be addressed in Section 3.2. Because of their height, it needs to be noted that profile differences between the two mast towers also originate from other sources that are not related to the urbanization. In particular for certain wind directions, substantial influence could arise from the Scheldt river nearby the tower of Zwijndrecht.

The REF simulation is capable of capturing the temperature profiles and the variability of both towers. For the industrial site, the model profile matches well that of the observations with a positive bias of 0.41 K. A higher positive temperature bias is found for the rural site (0.73 K), which generally stems from the temperature overestimation near the ground. Hereby, the increasing temperature with height ( $\simeq$  stable profile) in the model output is overestimated. The overestimated temperatures near the ground are consistent with the positive nocturnal bias in the screen-level measurements shown in Section 3.1.1. Still, the model results for REF are able to reproduce the contrast between the urban and rural site, particularly the more stable boundary layer in the rural site compared to the industrial site. As a result, the observed boundary-layer UHI effect (1.02 K), calculated as the difference between the temperature profile between the industrial and the natural site, is well reproduced by REF (0.70 K) with a negative bias of  $-0.32$  K and a correlation of 0.58. The positive bias for STD (0.31 K) for the rural tower is slightly lower than that of REF. ~~This is explained by the advection of urban heat towards the rural site in REF which is not present in~~



**Figure 4.** Evaluation of modelled land-surface temperatures against MODIS satellite observations. A distinction is made between four urban classes: no urban (NU) with Impervious Surface Area (ISA)  $\leq 0.05$ ; light urban (LU) with  $0.05 < \text{ISA} \leq 0.25$ ; medium urban (MU) with  $0.25 < \text{ISA} \leq 0.5$ ; dense urban (DU) with  $\text{ISA} > 0.5$ . The amount of valid pixels are shown above each day and night plot. The violin plots represent the distribution of LST for MODIS in blue and the reference simulation (REF) with COSMO-CLM coupled to TERRA\_URB v2.0 in orange. Full and dashed lines represent the median for the low (AL, BL, ..., GL) and high (AH, BH, ..., GH) scenarios from Table 2, respectively. The upper panels show the sample distributions of the absolute temperatures, whereas the lower panels show the sample distribution of the difference between median of each urban class (LU, MU and DU) with the NU class.

VMM Zwijndrecht (industrial)			
EXP-ID	L	H	H - L
OBS	291.58 ( - )	-	-
STD/REF	290.72 (-0.86)	291.99 (+0.41)	1.27
A	291.99 (+0.41)	291.94 (+0.36)	0.05
B	291.69 (+0.11)	292.04 (+0.46)	0.35
C	291.62 (+0.04)	292.06 (+0.48)	0.44
D	291.82 (+0.24)	292.07 (+0.49)	0.25
E	291.89 (+0.31)	292.13 (+0.55)	0.24
F	292.18 (+0.60)	291.99 (+0.41)	0.19
G	291.35 (-0.23)	292.48 (+0.90)	1.13

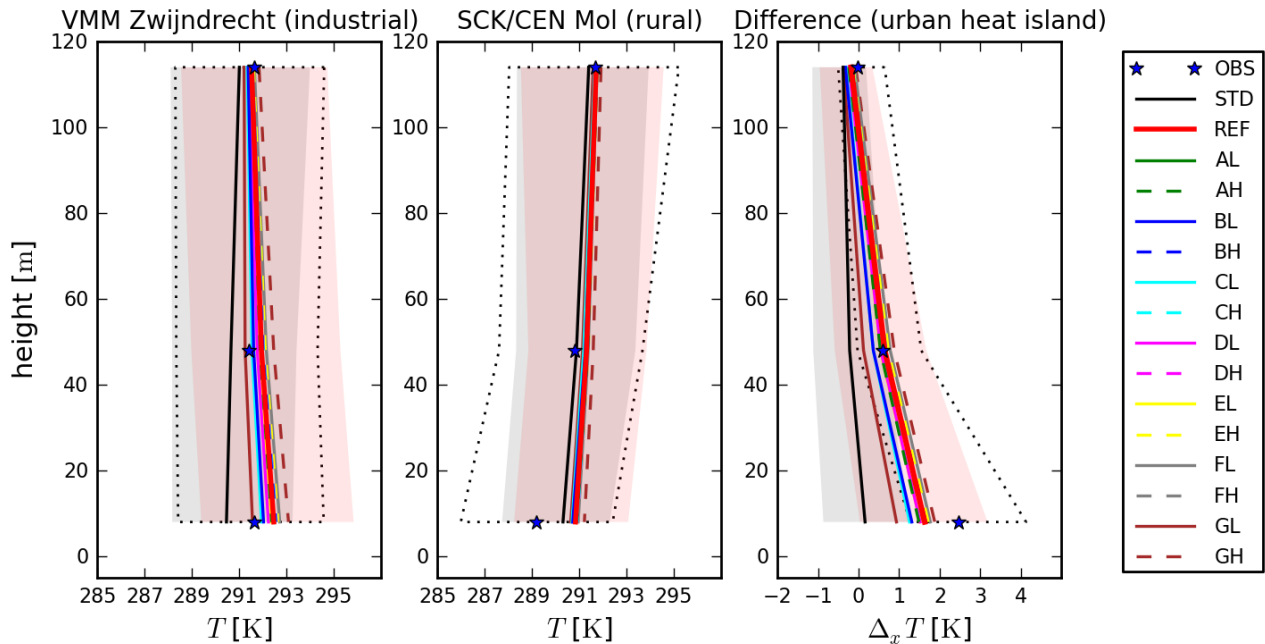
SCK/CEN Mol (rural)			
EXP-ID	L	H	H - L
OBS	290.56 ( - )	-	-
STD/REF	290.87 (+0.31)	291.29 (+0.73)	0.42
A	291.29 (+0.73)	291.34 (+0.78)	0.05
B	291.24 (+0.68)	291.33 (+0.77)	0.09
C	291.19 (+0.63)	291.34 (+0.78)	0.15
D	291.21 (+0.65)	291.35 (+0.79)	0.14
E	291.27 (+0.71)	291.36 (+0.80)	0.09
F	291.37 (+0.81)	291.33 (+0.77)	0.04
G	291.13 (+0.57)	291.58 (+1.02)	0.45

Difference (urban heat island)			
EXP-ID	L	H	H - L
OBS	1.02 ( - )	-	-
STD/REF	-0.15 (-1.17)	0.70 (-0.32)	0.85
A	0.70 (-0.32)	0.59 (-0.43)	0.11
B	0.45 (-0.57)	0.71 (-0.31)	0.26
C	0.44 (-0.58)	0.72 (-0.30)	0.28
D	0.61 (-0.41)	0.72 (-0.30)	0.11
E	0.61 (-0.41)	0.77 (-0.25)	0.16
F	0.82 (-0.20)	0.66 (-0.36)	0.16
G	0.23 (-0.79)	0.89 (-0.13)	0.66

**Table 6.** Modelled and observed temperatures (in K) vertically averaged for the nocturnal (0H) tower profiles at the VMM industrial site in Zwijndrecht and at the SCK/CEN rural site in Mol. The values are averaged for the mid-summer period (2012/07/21 until 2012/08/20). Each first row shows results of the observations. Each second row shows results for COSMO-CLM without urban parametrization (L column), for the COSMO-CLM using TERRA\_URB v2.0 (H column) and their absolute difference ( $|H - L|$  column). The remainder rows show each of the urban-parameter sensitivity simulations in Table 2. Hereby, the Low scenarios are shown in the L column, the High scenarios in the H column and the parameter sensitivity Range (absolute difference between L and H) in the  $|H - L|$  column.





**Figure 5.** Observed (stars) and modelled (lines) nocturnal (0H) vertical profiles for VMM industrial site in Zwijndrecht and the SCK/CEN rural site in Mol, averaged for the summer period 2012/07/21 until 2012/08/20. STD (black) indicates the simulation with standard model COSMO-CLM without urban parametrization. REF uses the same setup as STD, but showing results of TERRA\_URB v2.0 coupled to COSMO-CLM. An overview of the remaining simulations (AL, AH, BL, BH...) can be found in Table 2. The dotted lines indicate the range between the 16 and 84th percentile of the observed profiles, whereas the grey, red and red areas indicate the ranges for the simulations STD and REF, respectively.

STD As similar as in Section 3.1.1, it is postulated that the latter stems from the excess urban heat introduced by the urban land-surface scheme in REF, which is advected from the urban areas towards the rural areas.

A much larger temperature shift between STD and REF occurs for the industrial tower (ZWN). The boundary-layer temperatures in STD are underestimated by  $-0.86$  K, which is in contrast to REF for which it is overestimated. As the tendency towards more neutral/unstable temperature slopes in the industrial site is absent in STD, the boundary-layer UHI could not be reproduced with a negative bias of  $-1.17$  K and a correlation 0.29.

### 3.2 Urban parameter sensitivity

The model sensitivity experiment in response to the different urban input parameters is performed by means of model-bias analysis. Hereby, the model output and performance statistics in terms of the observed temperature quantities (described in 2.4) for the different experiments (AL, AH, ..., GL, GH) described in Section 2.3 are compared with the reference simulation

(REF) and the simulation without urban parametrization (STD). The results of the sensitivity experiments can be found in Figures 3, 4 and 5, and in Tables 3, 4, 5 and 6 (Taylor diagrams are not shown). In general, the different model sensitivities are restricted to the urban areas, and therefore they emerge as changes in the UHIs. The model sensitivity is much smaller than the model changes when including urban parametrization (REF minus STD). This is the case for screen-level temperatures, LST and nocturnal boundary-layer temperatures, except for the change in the screen-level and boundary-layer temperatures when altering AHE.

With respect to the screen-level temperature and CLUHI intensity for Antwerp, the sensitivity range is generally larger during the evening and during the night when the CLUHI remains close to its maximum. The largest sensitivity range for the diurnal cycle is found for the parameters AHE and (to a smaller extent) the thermal parameters, which are the surface heat conductivity and heat capacity. A medium sensitivity range to the diurnal cycle is found for the building height, [-ratio-canyon height-to-width ratio](#) and the roof fraction. The overall lowest model sensitivity is found from the albedo, yet at day-time, when overall sensitivity changes are the lowest, it is higher than the sensitivity from the thermal parameters. For the daily averaged CLUHI, the magnitude of the different sensitivities are comparable. A more detailed description of the different parameter sensitivities is found below:

- 15 – An increased AHE obviously leads to an increase in screen-level urban temperatures and heat island intensity. Even though the AHE is higher during the day, the sensitivity range from AHE is the largest during the night because of the confinement in the nocturnal boundary layer (Wouters et al., 2013; Bohnenstengel et al., 2011).
- A diurnal change in sign of the sensitivity is found for the thermal parameters: Lower thermal parameter values lead to a temperature increase during the day followed by a decrease during the night. This is due to the fact that a smaller portion of excess heat is needed to heat up the urban canopy during the day, hence leads to higher day-time temperatures. At the same time, less excess heat buffering in the urban canopy occurs which lowers the temperatures and night-time. The sign change results in a relatively low sensitivity of the daily-mean temperature, even though the day- and night-time sensitivities are relatively high.
- 25 – An overall decrease in day- and night-time CLUHI appears from the decrease in building height. The consequential lower roughness length (Equation 19) results in higher wind speeds. As a result, the urban excess heat is less accumulated in the urban centres lowering the air temperatures there. Smaller buildings also yield a lower effective heat capacity and heat conductivity of the soil layers below (see Equations 5-8). In the same way as in the previous point concerning the thermal parameters, such a change counteracts (yet not fully) the above-mentioned day-time temperature decrease and enhances the night-time temperature decrease.
- 30 – Both the increase in roof fraction and [surface](#) albedo lead to an overall decrease in nocturnal and day-time UHI, because they both increase effective albedo according to Equation 13. It is remarkable that the sensitivity to the roof fraction is larger than that for the albedo at night-time, whereas this becomes reversed at day-time. This means that another process different from the effective albedo effect is also important: In fact, a larger roof fraction also implies a reduction in

effective heat capacity and heat conductivity (see Equations 3, 4 and 9). Again in the same way as in the previous point concerning the thermal parameters, this counteracts the decrease in day-time UHI, while it enhances the decrease in night-time UHI.

- 5 – A lower ~~ratio~~ canyon height-to-width ratio ( $\frac{h}{w_c}$ ) leads to an overall decrease in screen-level urban temperatures and UHI for the day and for the night. Two mechanisms are at play here: on the one hand, a decrease in short-wave radiative trapping in the canyon (see Equations 13 and 14) leads to a higher effective albedo, hence a reduced conversion of solar radiation into heat. On the other hand, a lower  $\frac{h}{w_c}$ -ratio decreases the heat transfer below the surface due to the lower contact surface (see Equation 3) implying a lower effective heat capacity and conductivity (see Equations 4 and 9). Combined, they lead to an additional decrease in nocturnal urban temperature and UHI, while counteracting the day-time decrease resulting from the higher effective albedo mentioned above.
- 10

The sensitivity results for LST sensitivity are consistent with the sensitivity to the screen-level temperatures. For example, lower surface heat conductivity or heat capacity leads to higher urban LST's and SUHI at day-time, and lower urban LST's and SUHI at night-time. However, the hierarchy of sensitivity to LST and SUHI is different from that of the screen-level temperature: the largest sensitivity range for the urban LST and SUHI now relates to the thermal parameters and not to the change in AHE which now has a medium sensitivity range. This is explained by the fact that AHE is considered as a heat source ~~term~~ to the first ~~model layer in the model~~, atmospheric model layer (see Appendix A4) hence only indirectly influences the LST. Sensitivity of LST to the other urban canopy parameters are similar to that of the screen-level temperatures: The  $\frac{h}{w_c}$ -ratio and roof fraction yield a medium sensitivity range, and the building height yields a low sensitivity range to LST. The sensitivity to the albedo is low for the night-time LST and high for the day-time LST. The sensitivity results for the temperature profiles show a similar sensitivity as for the screen-level temperatures. Hereby, the model sensitivity propagates throughout the nocturnal boundary layer for at least the first 110 m above ground level, hence it modulates the BLUHI.

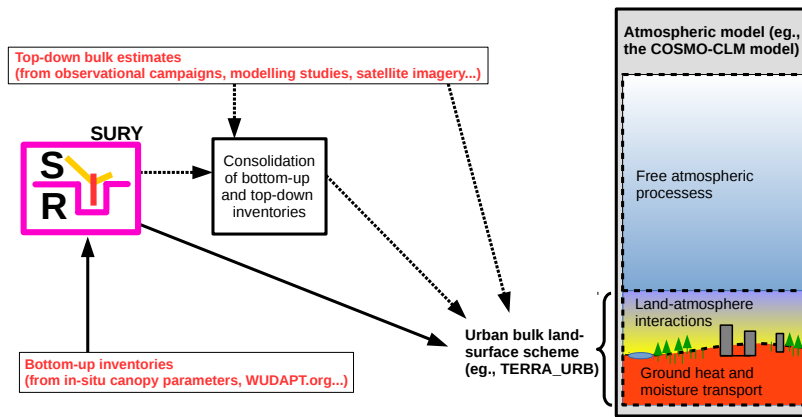
15

20

Analysis of the model biases and Taylor-plots for each of the temperature quantities (not shown) demonstrate that the model performance change for each of the parameter sensitivity runs is ambiguous, and depends on the temperature quantity considered. On the one hand, parameter changes leading to a better performance in CLUHI and BLUHI sometimes lead to worse performance in terms of absolute temperatures. In particular, a decrease in the value of the thermal parameters leads to a lower positive model bias and better model performance in terms of absolute screen-level temperatures, but a larger negative bias and worse model performance in terms of CLUHI. On the other hand, the performance change between the SUHI and CLUHI may lead to a divergent behaviour as well: an overall improvement in the CLUHI (lower positive day-time bias; lower negative night-time bias) by increasing the value of the thermal parameters leads to an overall deterioration of the SUHI (higher day-time negative bias; higher night-time positive bias). Finally, the day- and night-time performance changes are also divergent. For example, increasing the albedo leads to an overall deteriorated performance in day-time LST and SUHI, but leads to an improved night-time performance.

25

30



**Figure 6.** Application outline of the Semi-empirical URban canoY parametrization SURY. The main application flow of SURY is indicated with full arrows, whereas optional application flows are indicated with dashed arrows.

#### 4 Discussion and conclusions

The Semi-empirical URban-canopY parametrization SURY is developed for efficiently representing [canopy-dependent](#) urban physics in atmospheric models. The methodology bridges the gap between bulk and explicit-canyon schemes in atmospheric models. ~~Hereby, the~~ [The](#) urban canopy parameters are translated into bulk parameters. The latter can be easily taken into account in bulk urban land-surface schemes in existing atmospheric models. The urban canopy parameters as input for SURY include the canyon height-to-width ratio, the building height, the roof fraction, the short-wave albedo, thermal emissivity, and the heat conductivity and heat capacity. The output parameters of SURY include bulk albedo, bulk emissivity, aerodynamic and thermal roughness length, and vertical profiles of the bulk heat conductivity and heat capacity. The methodology delivers theoretical and empirically-verified robustness that is based on detailed urban observational and modelling experiments. Additional model robustness has been provided by comparing existing bulk parameters from top-down estimates with those translated from bottom-up urban canopy parameter inventories ~~by the urban canopy parametrization.~~

The outline of SURY implemented in an atmospheric model system is given in Figure 6. SURY in combination with any existing bulk urban-land surface scheme provides several benefits over other methodologies for urban canopy parametrization in atmospheric modelling at the convection permitting scales. They are related to applicability, computational cost and model consistency:

- SURY allows to employ detailed bottom-up datasets representing the variation in residential, commercial and industrial areas, as soon as they are available from WUDAPT or any other newly available dataset. Still, one can fall back on the bulk parameters when the detailed information is missing. Such a parameter versatility enhances the overall applicability

of the bulk land-surface schemes. It also enables the analysis of the propagation of uncertainty in the input parameters by comparing simulations using bulk parameter estimates with those using urban canopy parameter datasets.

- SURY v1.0 enables the comparison and consolidation between from bottom-up urban-canopy parameter datasets (translating them to bulk parameters) and top-down bulk parameter datasets. This provides a way to verify consistency of the parameter datasets. It should be noted that such a parameter consolidation has been done in Section 2.1 on the basis of existing parameter inventories leading to the parameter list in Table 1.
- SURY combined with a bulk urban land-surface parametrization is beneficial for efficient convection-permitting atmospheric modelling applications. In particular, the bulk albedo approximation avoids explicit numerical computation of the complex canyon radiation trapping, hence largely reduces the computational demand compared to other explicit canyon-radiation models. In case of the COSMO(-CLM) model, one only measures a computational overhead of 7% over the original COSMO(-CLM) model without urban land-surface parametrization. The majority of the computational overhead stems from the implementation of the tile approach in TERRA\_URB and the overhead from SURY itself is negligible.
- As SURY translates urban canopy parameters into bulk parameters, it can be easily applied for intrinsic implementation of urban physical processes and their dependency on urban canopy parameters in existing atmospheric models already employing a bulk urban land-surface scheme. An intrinsic implementation instead of an external urban land-surface parametrization preserves consistency between the representation of the different physical process and features in urban environments on the one hand and that of natural environments on the other hand. Hereby, it is assured that the contrasts in model response between urban areas and natural areas only stems from the differential land-surface surface parameter values. In this way, artificial discrepancies that arise from possible different formulations between an external land-surface module resolving the urban areas and an internal land-surface module resolving the natural areas are avoided. Furthermore, it allows for the transparent application of intrinsic features of the host atmospheric model in the urban-physics modelling, such as the representation of vegetation (shading) in the urban canopy. In the case of the COSMO(-CLM) model, these features include the multi-layer snow representation and the TKE-based surface-layer turbulent transfer scheme.

SURY is evaluated in online mode with the COSMO(-CLM) model. To this end, the COSMO(-CLM) model is extended with the bulk urban land-surface scheme TERRA\_URB v2.0, which allows for taking urban bulk parameters from SURY v1.0 into account. An online model evaluation over the Belgian urban extent during summer 2012 demonstrates that the model is capable of capturing urban climate characteristics. The model captures well the daily and diurnal variability of the urban heat islands (UHI) in terms of land-surface temperatures, screen-level temperatures and nocturnal boundary-layer temperatures. Hereby, most of the negative temperature biases occurring for the urban areas in the original COSMO(-CLM) model without urban parametrization are alleviated.

Although TERRA\_URB v2.0 implementing SURY v1.0 offers a general model improvement with regard to urban temperatures and urban heat islands, it could not alleviate other systematic errors in the COSMO(-CLM) model. Such systematic errors

include an overall underestimation of the diurnal cycle of absolute temperatures, particularly an overestimation of the nocturnal temperatures. This is in agreement with previous evaluations (regarding summer) of the COSMO-CLM model (Brisson et al., 2016; Trusilova et al., 2015; Brisson et al., 2015; Lange et al., 2014; Keuler et al., 2012). This is especially the case for the rural absolute temperatures for which the urban effect is small, and can be related to the underestimated stability of the nocturnal temperature profile. One should keep in mind that the systematic errors could be propagated, amplified or compensated by the urban-atmospheric interactions, hence deteriorating urban-climate modelling (assessment). Particularly, an overall underestimation is found for the diurnal cycle of the UHI in agreement with Trusilova et al. (2015). Hereby, an underestimation of the nocturnal UHI is found, which may originate from the overestimation of nocturnal temperatures and underestimation of stable temperature profiles found in rural areas. This can be expected from the fact that a reduced stability of the nocturnal boundary-layer temperature profile upwind of the city leads to a reduction of the canopy-layer UHI, as demonstrated with an idealized boundary-layer advection model in Wouters et al. (2013).

The model sensitivity is investigated for which SURY takes urban canopy parameter ranges of the Local Climate Zones of 'compact low-rise' and 'compact mid-rise' in Stewart and Oke (2012). The model response and performance change to urban canopy parameter changes are generally restricted to the urban areas. They are also smaller than the effect of the introduction of the urban land-surface scheme in the atmospheric model. With regard to the screen-level temperatures, the nocturnal boundary-layers temperature and associated CLUHI and BLUHI, the largest model sensitivity is found for the anthropogenic heat emission (AHE) and the urban thermal parameters, a medium sensitivity for the building height and  $\frac{h}{w_c}$ -ratio, and the lowest sensitivity for roof fraction. With regard to the day- and night-time LST and SUHI, the largest model sensitivity is found for the urban thermal parameters, a low sensitivity for the AHE,  $\frac{h}{w_c}$  and roof fraction, and a very low sensitivity for the building height. For both SUHI and CLUHI, the sensitivity to the albedo is relatively high yet slightly lower than for the thermal parameters during day-time whereas it is slightly lower than AHE,  $\frac{h}{w_c}$  and roof fraction during night-time.

The following recommendations are made with regard to future urban-climate research:

– To date, limitations in either accuracy, detail, variety or coverage exist in urban canopy parameter inventories. The aforementioned city-scale model sensitivity on the urban-canopy parameter uncertainty indicate that climate modulations are expected from city heterogeneity. Therefore, advancements in detailed parameter databases - that represent the ~~urban-canopy~~ urban canopy variation in residential, commercial and industrial areas - support more reliable urban climate modelling and numerical weather prediction systems at the convection permitting scales. This is further supported by the findings from model intercomparison project of Best and Grimmond (2015), for which offline model experiments show improved skill when providing more detail in the urban canopy parameters. With respect to surface temperatures, air temperatures and associated urban heat islands (SUHI, CLUHI and BLUHI) in atmospheric modelling, one should prioritize those parameters that are most sensitive: the thermal parameters and the anthropogenic heat emissions (as addressed in the project <http://urbanfluxes.eu>). It should be noted that those parameters - generally derived from detailed inventories - are more difficult to acquire than radiative or morphological parameters - generally derived from remote sensing techniques.

- Peer-based networks that facilitate the deployment of the spatially-detailed parameter databases have great potential for more precise urban climate modelling. Particularly, such a framework is provided by the World Urban Database and Access Portal Tools WUDAPT.org. In the latter, urban areas are classified in Local Climate Zones (LCZ) distinguishing between (urban) land types with different land use and land form (Stewart and Oke, 2012). Hereby, Bechtel et al. (2015) provide an easy way to perform such classification (level 0 information), which has recently been applied for the three largest cities in Belgium (Verdonck et al., 2016). The combination between ~~between~~-such LCZ mapping and local urban canopy parameter sampling and inventories forms a basis for providing the spatial detail in the urban canopy parameters (See et al., 2015). Such urban canopy parameters can be directly used as input for SURY (see upper panel of Table 1) or any other urban canopy parametrization. In addition, the level 1 and 2 data collection, providing information on the form and function within each LCZ class, can deliver additional parameter detail.
- As SURY allows for verifying consistency between ~~urban-canopy~~ urban canopy parameters and bulk parameters, its application is recommended in the WUDAPT framework. In turn, this allows urban-climate research for more precise climate assessment. Moreover it will lead to more consistency in the comparison of bulk schemes with explicit-canyon schemes in future urban model intercomparison projects.
- The model performance largely depends on the temperature quantity considered. In particular, parameter settings leading to better UHI sometimes lead to worse absolute temperatures and vice versa, which is also the case for day-time temperatures versus night-time temperatures, and land-surface temperatures versus air temperatures. This ambiguity demonstrates that a multi-variable model evaluation is a requirement for improving and comparing urban-climate modelling strategies.
- Some of the aforementioned model errors exceed the model sensitivity range with regard to the urban canopy parameter uncertainty. This demonstrates that the majority of the model uncertainty may not be related to urban canopy parameter uncertainty, but from deficiencies in the land-surface module and other aspects of the coupled atmospheric model. Such systematic errors may also cause the ambiguity in model performance and its sensitivity to the urban parameters. In addition to the advancements of urban canopy parametrizations and the expansion of more detailed parameter databases, ongoing improvements in atmospheric modelling systems are also essential for more precise urban-climate modelling assessment. Regarding the representation of urban heat islands, focus should be given to those components that improve the representation of the surface fields and boundary-layer characteristics, such as the stability of the nocturnal temperature profiles.
- ~~Besides the advantages of SURY combined with~~ In view of the advantages listed above, consideration of employing SURY is recommended for numerical weather prediction and long-term regional climate modelling applications at the convection permitting scales. Besides the presented implementation in the COSMO-CLM model, this can also be achieved by applying SURY in other existing urban bulk land-surface schemes ~~listed above, its~~ for intrinsic implementation in atmospheric models. Herein, it should be kept in mind that SURY's semi-explicit nature ~~also~~ implies some limitations

with respect to complex urban physical processes in an urban environment. ~~The~~ Particularly, the heterogeneity of the urban canopy induces micro-scale dynamic and physical processes in the urban canopy, such as shadowing ~~and buoyancy flows~~, ~~and~~, buoyancy flows and the complex inner-building heat and moisture transfer. As ~~a result, induced SURY does not resolve the full heterogeneity, the propagating~~ micro-scale features ~~;~~ such as heterogeneous temperatures patterns ~~and wind gusts, are not explicitly resolved. In order to explicitly resolve at the street level and canyon wind gusts~~ - ~~are not represented. In case there's need for more detailed urban-climate impact assessment that explicitly accounts for~~ such features, one requires more detailed urban-physics modelling with higher complexity. They include the more explicit radiation schemes allowing heterogeneous temperatures between sun-lit and shaded facets (eg., Schubert et al., 2012), computational fluid dynamics (eg., Allegrini et al., 2014), and inner-building energy models (eg., Bueno et al., 2012; Crawley et al., 2000). ~~Yet, these methodologies obviously~~ It should be noted that these methodologies require much finer meshes, larger computational resources and very detailed information on urban design. ~~With regard to the practical implementation of numerical weather prediction and long-term regional climate modelling at the regional scales nowadays, the advantages of SURY outweigh the limitations. In view of providing uncertainty spread with regard to urban climate change projections in an efficient way, we also recommend SURY for intrinsic implementation in other existing atmospheric numerical models. In case there's need for more detailed urban-climate impact assessment, urban land-surface parametrizations with higher complexity need to be considered.~~

It is concluded that urban canopy parametrizations including SURY, combined with the deployment of the WUDAPT urban database platform and advancements in atmospheric modelling systems, are essential. They allow for more precise urban weather forecasting and assessment of climate change, mitigation and adaptation at the scales of cities.

## 20 **Code availability**

SURY is provided as a documented Python module freely available with this paper and on GitHub at <https://github.com/hendrikwout/sury>. It should work on any platform with Python and NumPy installed. The presented model version for SURY is 1.0. All comments, questions, suggestions and critiques regarding the functioning of the Python routine can be directed to the author of this paper. The modified version of the COSMO-CLM model used in this study with TERRA\_URB that implements SURY is accessible on the CLM-community technical pages at <http://redc.clm-community.eu> with a member login.

## **Appendix A: TERRA\_URB v2.0**

This appendix describes TERRA\_URB v2.0, the bulk urban land-surface scheme of the COSMO(-CLM) model. Modifications to the surface-layer turbulent transport scheme of the COSMO(-CLM) model, the modified surface evaporation and transpiration, the anthropogenic heat emission, the tile approach and the additional surface input parameters are successively given in the subsections below. Bulk parameters are calculated from the urban canopy parameters with the Semi-Empirical URban CanopY parametrization (SURY) described in Section 2.1, see also Table 1.



## A1 Surface-layer turbulent transport

In contrast to its previous version employing the similarity-based turbulent transfer scheme of Monin and Obukhov (1954), TERRA\_URB v2.0 makes use of the TKE-based surface-layer turbulent transfer scheme of the COSMO(-CLM) model. Herein, the exchanges for momentum and heat within the surface layer between the surface and the lowest atmospheric model layer are determined as follows:

$$(\overline{u'w'})_0 = -u_*^2 = -u_A/r_{SA}^M, \quad (A1)$$

$$Q_H = \rho c_p (\overline{w'\theta'})_0 = -\rho c_p u_* \theta_* = -\rho c_p (\theta_A - \theta_s)/r_{SA}^H, \quad (A2)$$

where  $\rho$  and  $c_p$  are the density and the specific heat of the air,  $u_A$  and  $\theta_A$  are the absolute wind speed and potential temperature at the lowest atmospheric model layer,  $\theta_s$  is the potential temperature of the surface,  $u_*$  is the friction velocity, and  $\theta_*$  is the turbulent temperature scale. Stability-dependent transfer-layer resistances (ie., resistances to the surface-layer turbulent transfer between the Surface and the lowest Atmospheric model layer) for momentum ( $r_{SA}^M$ ) and heat ( $r_{SA}^H$ ) are calculated with the TKE-based surface-layer transfer scheme of the COSMO(-CLM) model (Doms et al., 2011). For the urban canopy, aerodynamic roughness length is obtained from Equation 19. For the natural land cover,  $z_0$  is adopted from standard input parameters of the COSMO(-CLM) model, see Section 2.2. The thermal roughness length  $z_{0H}$  is obtained with a parametrization of the inverse Stanton number (as in De Ridder, 2006; Demuzere et al., 2008):

$$kB^{-1} = \ln\left(\frac{z_0}{z_{0H}}\right) \quad (A3)$$

with  $k$  the von Kàrmàn constant. For the natural areas, the inverse Stanton number is diagnosed from the TKE-based surface-layer transfer scheme as follows:

$$kB^{-1} = r_{S0}^H \sqrt{2e} S_H(z_0) \quad (A4)$$

where  $r_{S0}^H$  is the roughness-layer resistance for heat (ie., the resistance to the surface-layer turbulent heat transfer between the surface and  $z_0$ ),  $e = 0.5(u'^2 + v'^2 + w'^2)$  the turbulent kinetic energy, and  $S_H(z_0)$  the stability function for the Prandtl layer. For the urban canopy, the bluff-body thermal roughness length is used from Equation 21 Inserting Equation 21 into Equation A4, it leads to a modified  $r_{S0}^H$ . In turn, this enters the surface-layer heat transfer equation (Equation A2) as follows:

$$r_{SA}^H = r_{S0}^H + r_{0A}^H \quad (A5)$$

where  $r_{0A}^H$  is the free atmospheric resistance (ie., the resistance between the surface-layer turbulent transfer  $z_0$  and the lowest atmospheric model layer).

## A2 Evaporation and transpiration

In contrast to its previous version only considering the water on the impervious surfaces, TERRA\_URB v2.0 is also capable of explicitly representing the water-permeable surfaces (bare soil), vegetation and snow in the urban canopy. The evapotranspiration is obtained in a similar way as for the natural land in the standard soil module TERRA\_ML (see pp. 111 of Doms et al.,

2011) as follows:

$$E = T_r + f_b(E_b + E_i) + f_{\text{imp}} E_{\text{imp}} + E_{\text{snow}} \quad (\text{A6})$$

where  $T_r$  the transpiration from vegetation,  $E_b$  and  $E_i$  are respectively the evaporation rates from the (water-permeable) bare-soil fraction  $f_b$  and that from the intercepted water on the bare soil and vegetation, and  $E_{\text{snow}}$  the snow evaporation. The plant transpiration follows that of the Biosphere-Atmosphere-Transfer Scheme (BATS) of Dickinson (1984). It accounts for both the resistance of water vapour transport from the foliage to the canopy air and the resistance for water vapour transport from the canopy air to the air above the canopy. More details can be found in chapter 10.2.2 of Doms et al. (2011).

In addition to the standard surface module TERRA\_ML, the evaporation from the water storage  $E_{\text{imp}}$  on the impervious surface fraction  $f_{\text{imp}} = 1 - f_b$  is taken into account. Herein,  $E_b$  is calculated as follows:

$$E_b = (1 - f_{\text{snow}}) \min(E_p, F_m) H(E_p),$$

$$E_b = (1 - f_{\text{snow}}) \min(E_p, F_m) H(E_p), \quad (\text{A7})$$

where  $E_p$  is the potential evaporation (when positive) or condensation (when negative),  $H$  is the Heaviside function which yields 1 in case of evaporation ( $E_p \geq 0$ ) and 0 in case of condensation ( $E_p < 0$ ), and  $F_m$  the maximum moisture flux that the soil can sustain (Dickinson, 1984). The potential evaporation  $E_p$  is obtained from:

$$E_p = -\rho_w (q_v - q_{\text{sat}}(T_s)) / r_{\text{SA}}^H \quad (\text{A8})$$

where  $r_{\text{SA}}^H$  is the surface-layer transfer resistance for scalars (heat and moisture),  $q_v$  and  $u_a$  are respectively the specific humidity and absolute wind speed at the half level of the first model layer, and  $q_{\text{sat}}(T_s)$  is the saturated specific humidity at the surface temperature  $T_s$ . The calculation of  $E_{\text{imp}}$  is covered in [the next appendix Appendix A3](#).

### A3 Impervious water storage

The evaporation from the water storage  $E_{\text{imp}}$  on the impervious surface fraction is calculated as follows:

$$E_{\text{imp}} = (1 - f_{\text{snow}}) E_p H(E_p) \delta_{\text{imp}} \quad (\text{A9})$$

The evaporative area fraction  $\delta_{\text{imp}}$  of the impervious area fraction  $f_{\text{imp}}$  is calculated according Wouters et al. (2015):

$$\delta_{\text{imp}} = \delta_m \left( \frac{w}{w_m} \right)^{2/3} \quad (\text{A10})$$

where  $\delta_m$  is the maximum evaporative surface fraction and  $w_m$  the maximum water storage capacity on the impervious surface. Eqn. A10 was obtained by assuming a probability density function of water reservoirs for which the density constantly decreases with increasing reservoir depth.

The amount of water  $w$  on the impervious surface changes as follows:

$$\frac{dw}{dt} = (1 - f_{\text{snow}})(-E_{\text{imp}} + C + P_r) - R_{\text{imp,runoff}} - R_{\text{imp,infil}} \quad (\text{A11})$$

where  $P_r$  is the rain rate,  $C = -E_p H(-E_p)$  is the condensation,  $R_{\text{imp,runoff}}$  is the runoff to sewerage and rivers, and  $R_{\text{imp,infil}}$  is the infiltration rate of water into the natural soil originating from the impervious surface (for example, by means of infiltration tubes). The runoff and/or soil infiltration of water hitting the impervious surface occurs as soon as the maximum water storage  $w_m$  is exceeded:

$$R_{\text{imp,runoff}} = (1 - f_{\text{snow}})H(w - w_m)(C + P_r)c_{\text{imp,runoff}} \quad (\text{A12})$$

$$R_{\text{imp,infil}} = (1 - f_{\text{snow}})H(w - w_m)(C + P_r)(1 - c_{\text{imp,runoff}}) \quad (\text{A13})$$

where  $c_{\text{imp,runoff}}$  is defined as the runoff index of the impervious surface, for which the value depends on the presence of infiltration systems: A value equal to one means that all rainwater exceeding the maximum water-storage threshold from streets and roofs  $w_m$  is directed to the sewerage and rivers, whereas values equal to zero means that it infiltrates into the ground.

Default values for  $w_m = 1.31 \text{ kg m}^{-2}$  and  $\delta_m = 0.12$  are taken from Wouters et al. (2015). By default, all water overshoot is considered as runoff, hence  $c_{\text{imp,runoff}}$  is set to one by default, meaning that all rainwater overshoot from streets and roofs is considered to be directed to sewerage and rivers.

#### 15 **A4 Anthropogenic heat emission**

TERRA\_URB accounts for Anthropogenic Heat Emission (AHE) from human activity, which includes the energy dissipation from combustion and electricity consumption. It originates from heating and cooling (such as air conditioning) of buildings, and traffic, but also from domestic, industrial and agricultural activity (Sailor, 2011). The AHE is calculated following the methodology of Flanner (2009), see also <http://www.cgd.ucar.edu/tss/ahf/>. It takes into account latitudinally-dependent seasonal and diurnal distribution functions (Flanner, 2009, their Figures 1 and 2) that are superimposed on [the](#) annual-mean Anthropogenic Heat Flux (AHF). The AHE is added to the surface [sensible heat flux](#) [turbulent heat release to the atmosphere](#), hence acts as an additional heat source to the [surface first atmospheric model](#) layer.

#### **A5 Tile approach**

TERRA\_URB makes a distinction between the urban canopy and natural land-cover. This is done for each grid-cell with a tile approach. Herein TERRA\_URB is called twice, once for the urban canopy and once for the natural land cover specifying a different set of bulk parameters. On the one hand, the surface input parameters for the urban canopy are obtained from urban canopy parameters with SURY. On the other hand, surface input parameters for the natural land-cover are provided by standard input parameters of the COSMO(-CLM) model. In this way, the ground heat and moisture transport and land-atmosphere exchanges in terms turbulent transport of momentum, heat and moisture are determined separately for each tile. The coupling to the atmospheric model is achieved by weighting each of the land-atmosphere fluxes according to the fractions of the urban

canopy and natural land cover. The radiation exchanges are determined by grid-cell averaged value of albedo and emissivity, which is weighted according to the respective tile fraction.

## A6 Surface input parameters

In addition to the land-surface parameters for the standard COSMO(-CLM) model without urban land-surface parametrization described in Section 2.2, the implementation of TERRA\_URB requires the two additional fields. They include the total Impervious Surface Area (ISA) and annual-mean Anthropogenic Heat Flux (AHF).

The ISA-field is obtained from the European soil sealing dataset representative for the year 2006 of the European Environmental Agency at 100 m resolution (Maucha et al., 2010). Optionally for regions outside Europe, the NOAA dataset (Elvidge et al., 2007) globally available at 1 km resolution can be selected as well. The latter offers flexibility for the extension with upcoming improved global products. In the default configuration of TERRA\_URB v2.0,  $f_{imp}$  equals to one for the urban canopy tile (all impervious) and zero for the natural land-cover tile (none impervious). As a result, the fraction of urban canopy at each grid-cell is equal to the value of ISA and the fraction of the natural land cover is its complement. All vegetation is resolved inside the natural land-cover tile, hence the vegetation abundance from the standard input parameters is increased for the natural land-cover tile according to its fraction, and set to zero for the urban canopy tile. All other parameters values specified for the natural land in TERRA\_URB are in accordance to the original version of TERRA\_ML and the COSMO(-CLM) model. As a result, the processes (regarding the ground-heat and water transport and land-atmosphere interactions) resolved for the natural land-cover have not been altered. The only exception is that the vertical profile formulation of the bulk heat capacity (Equations 5-6) and heat capacity (Equations 7-8) from SURY is also employed for the natural tile. This was done for providing consistency between the urban canopy tile and the natural land-cover tile. Hereby, the height of the natural roughness elements replaces the building height parameter. Default values for the roughness-element height and surface area index (SAI) for the natural land are equal to 0.01 m and 2, respectively. Such a formulation also provides consistency with the TKE-based surface-layer turbulent transfer scheme in which SAI is also equal to 2.

The AHF-field is obtained from the global dataset of Flanner (2009), which is generated from country-specific data of energy consumption from non-renewable sources. This was apportioned according to population density (conserving the national total) and converted to annual-mean gridded energy flux at a resolution of  $2.5 \times 2.5$  minutes. By default, a dataset is used for which these annual-mean values on the model grid are redistributed according to the ISA-field at a scale of 50 km. Hereby, it is assumed that areas with large ISA fraction (including industrial areas with low population densities) have higher anthropogenic heat emissions. For Brussels, the Belgian Capital in the centre of the domain in Figure 1, the AHE reaches an annual-mean value of  $49.16 \text{ W m}^{-2}$  in the city centre. These values are of the same magnitude to that obtained in Van Weverberg et al. (2008), ie.  $43.6 \text{ W m}^{-2}$ . While not considering this as a formal validation, the similarity of magnitude of the results obtained by two very different methods inspires confidence. According to the latitudinally-dependent seasonal and diurnal distribution functions adopted from Flanner (2009), the values for summer (July) vary between  $18.40 \text{ W m}^{-2}$  (night-time) and  $37.7 \text{ W m}^{-2}$  (morning and afternoon). For winter (January), they vary between  $41.1 \text{ W m}^{-2}$  and  $84.1 \text{ W m}^{-2}$ .

*Acknowledgements.* The work described in this paper has received funding from the Belgian Science Policy Office through its Science for a Sustainable Development Programme under Contracts SD/CS/041/MACCBET and BR/143/A2/CORDEX.be. It has also received funding from and from the Flemish regional government through a contract as an FWO (Fund for Scientific Research) post-doctoral position. The computational resources and services used in this work were also provided by the Hercules Foundation and the Flemish Government (department Economics, Sciences and Innovation - EWI). Additional assistance of resources provided at the NCI National Facility systems at the Australian National University through the National Computational Merit Allocation Scheme supported by the Australian Government. We would like to thank Gianluca Mussetti (Swiss Federal Laboratories for Materials Science and Technology - EMPA) and [Dr. Johan Zürger](#) (Austrian Institute of Technology - AIT) for testing TERRA\_URB for regional-climate modelling over Zürich and Vienna. We also acknowledge [Dr. Jürgen Helmert](#) for providing support in extending the EXTPAR input parameter tool, and the COSMO consortium and CLM-community for ~~support in the model setup~~[their support](#). Finally, we wish to thank Dr. Chunlei Meng~~and two anonymous~~, [Dr. Yi-Ying Chen and the other](#) reviewers for their insightful suggestions to the manuscript.

## References

- Aida, M.: Urban albedo as a function of the urban structure ? A model experiment, *Boundary-Layer Meteorology*, 23, 405–413, doi:10.1007/BF00116269, <http://link.springer.com/10.1007/BF00116269>, 1982.
- Akkermans, T., Thiery, W., and Van Lipzig, N. P. M.: The Regional Climate Impact of a Realistic Future Deforestation Scenario in the Congo Basin, *Journal of Climate*, 27, 2714–2734, doi:10.1175/JCLI-D-13-00361.1, 2014.
- Allegri, J., Dorer, V., and Carmeliet, J.: Buoyant flows in street canyons: Validation of CFD simulations with wind tunnel measurements, *Building and Environment*, 72, 63–74, doi:10.1016/j.buildenv.2013.10.021, <http://www.sciencedirect.com/science/article/pii/S0360132313003132>, 2014.
- Baldauf, M., Seifert, A., Förstner, J., Majewski, D., Raschendorfer, M., and Reinhardt, T.: Operational Convective-Scale Numerical Weather Prediction with the COSMO Model: Description and Sensitivities, *Monthly Weather Review*, 139, 3887–3905, doi:10.1175/MWR-D-10-05013.1, 2011.
- Ban, N., Schmidli, J., and Schär, C.: Evaluation of the convection-resolving regional climate modeling approach in decade-long simulations, *Journal of Geophysical Research: Atmospheres*, 119, 7889–7907, doi:10.1002/2014JD021478, <http://doi.wiley.com/10.1002/2014JD021478>, 2014.
- Bartholomé, E. and Belward, A. S.: GLC2000: a new approach to global land cover mapping from Earth observation data, *International Journal of Remote Sensing*, 26, 1959–1977, doi:10.1080/01431160412331291297, 2005.
- Bechtel, B., Alexander, P., Böhner, J., Ching, J., Conrad, O., Feddema, J., Mills, G., See, L., and Stewart, I.: Mapping Local Climate Zones for a Worldwide Database of the Form and Function of Cities, *ISPRS International Journal of Geo-Information*, 4, 199–219, doi:10.3390/ijgi4010199, <http://www.mdpi.com/2220-9964/4/1/199/>, 2015.
- Berg, P., Wagner, S., Kunstmann, H., and Schädler, G.: High resolution regional climate model simulations for Germany: part I—validation, *Climate Dynamics*, 40, 401–414, doi:10.1007/s00382-012-1508-8, <http://link.springer.com/10.1007/s00382-012-1508-8>, 2012.
- Best, M. J. and Grimmond, C. S. B.: Key Conclusions of the First International Urban Land Surface Model Comparison Project, *Bulletin of the American Meteorological Society*, 96, 805–819, doi:10.1175/BAMS-D-14-00122.1, <http://journals.ametsoc.org/doi/abs/10.1175/BAMS-D-14-00122.1>, 2015.
- Bohnenstengel, S. I., Evans, S., Clark, P. a., and Belcher, S.: Simulations of the London urban heat island, *Q.J.R. Meteorol. Soc.*, 137, 1625–1640, doi:10.1002/qj.855, 2011.
- Brisson, E., Demuzere, M., and van Lipzig, N. P.: Modelling strategies for performing convection-permitting climate simulations, *Meteorologische Zeitschrift*, doi:10.1127/metz/2015/0598, 2015.
- Brisson, E., Van Weverberg, K., Demuzere, M., Devis, A., Saeed, S., Stengel, M., and van Lipzig, N.: How well can a convection permitting model reproduce decadal statistics of precipitation, temperature and cloud characteristics, *Climate Dynamics*, 2016.
- Brouwers, J., Peeters, B., Van Steertegem, M., van Lipzig, N., Wouters, H., Beullens, J., Demuzere, M., Willems, P., De Ridder, K., Maiheu, B., De Troch, R., Termonia, P., Vansteenkiste, T., Craninx, M., Maetens, W., Defloor, W., and Cauwenberghs, K.: MIRA Climate Report 2015, about observed and future climate changes in Flanders and Belgium, Tech. rep., Flanders Environment Agency in collaboration with KU Leuven, VITO and RMI, Aalst, Belgium, <http://www.environmentflanders.be>, 2015.
- Brutsaert, W.: *Evaporation into the Atmosphere: Theory, History and Applications*, Environmental Fluid Mechanics, Springer, 1982.

- Bucchignani, E., Montesarchio, M., Zollo, A. L., and Mercogliano, P.: High-resolution climate simulations with COSMO-CLM over Italy: performance evaluation and climate projections for the 21st century, *International Journal of Climatology*, doi:10.1002/joc.4379, <http://doi.wiley.com/10.1002/joc.4379>, 2015.
- 5 Bueno, B., Pigeon, G., Norford, L. K., Zibouche, K., and Marchadier, C.: Development and evaluation of a building energy model integrated in the TEB scheme, *Geoscientific Model Development*, 5, 433–448, doi:10.5194/gmd-5-433-2012, <http://www.geosci-model-dev.net/5/433/2012/>, 2012.
- Bultynck, H. and Malet, L. M.: Evaluation of atmospheric dilution factors for effluents diffused from an elevated continuous point source, *Tellus A*, 24, 455–472, doi:10.3402/tellusa.v24i5.10659, <http://journals.sfu.ca/coaction/index.php/tellusa/article/view/10659>, 1972.
- Buzzi, M.: Challenges in operational numerical weather prediction at high resolution in complex terrain, doi:10.3929/ethz-a-005698833, 10 2008.
- Cavicchia, L., von Storch, H., and Gualdi, S.: Mediterranean Tropical-Like Cyclones in Present and Future Climate, *Journal of Climate*, 27, 7493–7501, doi:10.1175/JCLI-D-14-00339.1, 2014.
- Crawley, D., Lawrie, L., Pedersen, C., Winkelmann, F., and Journal, E. e. s. p. A.: EnergyPlus: Energy Simulation Program, *ASHRAE Journal*, 42, 49–56, <http://citeseerx.ist.psu.edu/viewdoc/summary?doi=10.1.1.122.6852>, 2000.
- 15 Davin, E. L., Seneviratne, S. I., Ciais, P., Oliosio, A., and Wang, T.: Preferential cooling of hot extremes from cropland albedo management., *Proceedings of the National Academy of Sciences of the United States of America*, 111, 9757–61, doi:10.1073/pnas.1317323111, 2014.
- De Ridder, K.: Testing Brutsaert’s temperature roughness parameterization for representing urban surfaces in atmospheric models, 33, 1–4, doi:10.1029/2006GL026572, 2006.
- De Ridder, K., Bertrand, C., Casanova, G., and Lefebvre, W.: Exploring a new method for the retrieval of urban thermophysical properties using thermal infrared remote sensing and deterministic modeling, *Journal of Geophysical Research*, 117, 1—14, 20 doi:10.1029/2011JD017194, 2012.
- De Ridder, K., Lauwaet, D., and Maiheu, B.: UrbClim – A fast urban boundary layer climate model, *Urban Climate*, 12, 21–48, doi:10.1016/j.uclim.2015.01.001, 2015.
- Demuzere, M., De Ridder, K., and van Lipzig, N. P. M.: Modeling the energy balance in Marseille: Sensitivity to roughness length parametrizations and thermal admittance, *J. Geophys. Res.*, 113, 1–19, doi:10.1029/2007JD009113, 2008.
- 25 Demuzere, M., Coutts, A., Göhler, M., Broadbent, A., Wouters, H., van Lipzig, N., and Gebert, L.: The implementation of biofiltration systems, rainwater tanks and urban irrigation in a single-layer urban canopy model, *Urban Climate*, 10, 148–170, doi:10.1016/j.uclim.2014.10.012, 2014.
- Dickinson, R.: Modeling evapotranspiration for three-dimensional global climate models, *Geophysical Monograph Series*, 29, 1984.
- 30 Doms, G., Förstner, J., Heise, E., Herzog, H.-J., Raschendorfer, M., Reinhardt, T., Ritter, T., Schrodin, R., Schulz, J.-P., and Vogel, G.: A description of the nonhydrostatic regional COSMO model. Part II: Physical parameterization, *Deutscher Wetterdienst*, 2011.
- Dosio, A. and Panitz, H.-J.: Climate change projections for CORDEX-Africa with COSMO-CLM regional climate model and differences with the driving global climate models, *Climate Dynamics*, doi:10.1007/s00382-015-2664-4, <http://link.springer.com/10.1007/s00382-015-2664-4>, 2015.
- 35 Dosio, A., Panitz, H.-J., Schubert-Frisius, M., and Lüthi, D.: Dynamical downscaling of CMIP5 global circulation models over CORDEX-Africa with COSMO-CLM: evaluation over the present climate and analysis of the added value, *Climate Dynamics*, 44, 2637–2661, doi:10.1007/s00382-014-2262-x, <http://link.springer.com/10.1007/s00382-014-2262-x>, 2014.

- Elvidge, C. D., Tuttle, B. T., Sutton, P. C., Baugh, K. E., Howard, A. T., Milesi, C., Bhaduri, B. L., and Nemani, R.: Global Distribution and Density of Constructed Impervious Surfaces, Sensors, pp. 1962–1979, <http://core.ac.uk/display/21281789>, 2007.
- Endris, H. S., Lennard, C., Hewitson, B., Dosio, A., Nikulin, G., and Panitz, H.-J.: Teleconnection responses in multi-GCM driven CORDEX RCMs over Eastern Africa, *Climate Dynamics*, doi:10.1007/s00382-015-2734-7, <http://link.springer.com/10.1007/s00382-015-2734-7>, 5 2015.
- Faroux, S., Kaptué Tchuenté, A. T., Roujean, J.-L., Masson, V., Martin, E., and Le Moigne, P.: ECOCLIMAP-II/Europe: a twofold database of ecosystems and surface parameters at 1 km resolution based on satellite information for use in land surface, meteorological and climate models, *Geoscientific Model Development*, 6, 563–582, doi:10.5194/gmd-6-563-2013, <http://www.geosci-model-dev.net/6/563/2013/gmd-6-563-2013.html>, 2013.
- 10 Feldhoff, J. H., Lange, S., Volkholz, J., Donges, J. F., Kurths, J., and Gerstengarbe, F.-W.: Complex networks for climate model evaluation with application to statistical versus dynamical modeling of South American climate, *Climate Dynamics*, 44, 1567–1581, doi:10.1007/s00382-014-2182-9, <http://link.springer.com/10.1007/s00382-014-2182-9>, 2014.
- Flanner, M. G.: Integrating anthropogenic heat flux with global climate models, *Geophysical Research Letters*, 36, L02 801, 2009.
- Fortuniak, K.: Application of a slab surface energy balance model to determine surface parameters for urban areas, *Lund eRep. Phys. Geog.*, 15 5, 90–91, <http://www.nateko.lu.se/Elibrary/LeRPG/LeRPG5Article.pdf>, 2005.
- Fortuniak, K.: Numerical estimation of the effective albedo of an urban canyon, *Theoretical and Applied Climatology*, 91, 245–258, doi:10.1007/s00704-007-0312-6, <http://link.springer.com/10.1007/s00704-007-0312-6>, 2007.
- Fortuniak, K., Offerle, B., and Grimmond, C.: Slab surface energy balance scheme and its application to parameterisation of the energy fluxes on urban areas, vol. 4-15.05, pp. 28–83, NATO ASI, Kiev, Ukraine, 2004.
- 20 Fossier, G., Khodayar, S., and Berg, P.: Benefit of convection permitting climate model simulations in the representation of convective precipitation, *Climate Dynamics*, 44, 45–60, doi:10.1007/s00382-014-2242-1, <http://link.springer.com/10.1007/s00382-014-2242-1>, 2014.
- Gabriel, K. M. A. and Endlicher, W. R.: Urban and rural mortality rates during heat waves in Berlin and Brandenburg, Germany., *Environmental pollution (Barking, Essex : 1987)*, 159, 2044–50, doi:10.1016/j.envpol.2011.01.016, 2011.
- Grasselt, R.: Validation of TERRA-ML with discharge measurements, *Meteorologische Zeitschrift*, 17, 763–773, doi:10.1127/0941-25 2948/2008/0334, 2008.
- Grimmond, C. S. B., Blackett, M., Best, M. J., Baik, J.-J., Belcher, S. E., Beringer, J., Bohnenstengel, S. I., Calmet, I., Chen, F., Coutts, A., Dandou, A., Fortuniak, K., Gouvea, M. L., Hamdi, R., Hendry, M., Kanda, M., Kawai, T., Kawamoto, Y., Kondo, H., Krayenhoff, E. S., Lee, S.-H., Loridan, T., Martilli, A., Masson, V., Miao, S., Oleson, K., Ooka, R., Pigeon, G., Porson, A., Ryu, Y.-H., Salamanca, F., Steeneveld, G. J., Tombrou, M., Voogt, J. A., Younga, D. T., and Zhang, N.: Initial results from Phase 2 of the international urban energy 30 balance model comparison, *Int. J. Climatol.*, 31, 244–272, 2011.
- Gröger, G. and Plümer, L.: CityGML – Interoperable semantic 3D city models, *ISPRS Journal of Photogrammetry and Remote Sensing*, 71, 12–33, doi:10.1016/j.isprsjprs.2012.04.004, 2012.
- Grossman-Clarke, S., Zehnder, J. A., Stefanov, W. L., Liu, Y., and Zoldak, M. A.: Urban Modifications in a Mesoscale Meteorological Model and the Effects on Near-Surface Variables in an Arid Metropolitan Region, *Journal of Applied Meteorology*, 44, 1281–1297, 35 doi:10.1175/JAM2286.1, <http://journals.ametsoc.org/doi/abs/10.1175/JAM2286.1>, 2005.
- Guo, X. and Zhang, H.: A performance comparison between nonlinear similarity functions in bulk parameterization for very stable conditions, *Environmental Fluid Mechanics*, 7, 239–257, 2007.



- Hénon, A., Mestayer, P. G., Lagouarde, J.-P., and Voogt, J. A.: An urban neighborhood temperature and energy study from the CAPITOUL experiment with the SOLENE model, *Theoretical and Applied Climatology*, 110, 177–196, doi:10.1007/s00704-012-0615-0, 2012.
- Hu, L., Brunsell, N. A., Monaghan, A. J., Barlage, M., and Wilhelmi, O. V.: How can we use MODIS land surface temperature to validate long-term urban model simulations?, *Journal of Geophysical Research: Atmospheres*, 119, 3185–3201, doi:10.1002/2013JD021101, <http://doi.wiley.com/10.1002/2013JD021101>, 2014.
- Jackson, T. L., Feddema, J. J., Oleson, K. W., Bonan, G. B., and Bauer, J. T.: Parameterization of Urban Characteristics for Global Climate Modeling, *Annals of the Association of American Geographers*, 100, 848–865, doi:10.1080/00045608.2010.497328, 2010.
- Kanda, M., Kawai, T., Kanega, M., Moriwaki, R., Narita, K., and Hagishima, A.: A simple energy balance model for regular building arrays, *Boundary-Layer Meteorology*, pp. 423–443, doi:10.1007/s10546-004-7956-x, 2005.
- 10 Kanda, M., Kanega, M., Kawai, T., Moriwaki, R., and Sugawara, H.: Roughness Lengths for Momentum and Heat Derived from Outdoor Urban Scale Models, *Journal of Applied Meteorology and Climatology*, 46, 1067–1079, doi:10.1175/JAM2500.1, 2007.
- Karsisto, P., Fortelius, C., Demuzere, M., Grimmond, C. S. B., Oleson, K. W., Kouznetsov, R., Masson, V., and Järvi, L.: Seasonal surface urban energy balance and wintertime stability simulated using three land-surface models in the high-latitude city Helsinki, *Quarterly Journal of the Royal Meteorological Society*, 142, 401–417, doi:10.1002/qj.2659, <http://doi.wiley.com/10.1002/qj.2659>, 2016.
- 15 Keuler, K., Radtke, K., and Georgievski, G.: Summary of evaluation results for COSMO-CLM version 4.8\_clm13 (clm17): Comparison of three different configurations over Europe driven by ECMWF reanalysis data ERA40 for the period 1979-2000, Tech. rep., Brandenburg University of Technology, Cottbus, <http://www.clm-community.eu>, 2012.
- Klutse, N. A. B., Sylla, M. B., Diallo, I., Sarr, A., Dosio, A., Diedhiou, A., Kamga, A., Lamptey, B., Ali, A., Gbobaniyi, E. O., Owusu, K., Lennard, C., Hewitson, B., Nikulin, G., Panitz, H.-J., and Büchner, M.: Daily characteristics of West African summer monsoon precipitation in CORDEX simulations, *Theoretical and Applied Climatology*, 123, 369–386, doi:10.1007/s00704-014-1352-3, <http://link.springer.com/10.1007/s00704-014-1352-3>, 2015.
- 20 Kotlarski, S., Keuler, K., Christensen, O. B., Colette, A., Déqué, M., Gobiet, A., Goergen, K., Jacob, D., Lüthi, D., van Meijgaard, E., Nikulin, G., Schär, C., Teichmann, C., Vautard, R., Warrach-Sagi, K., and Wulfmeyer, V.: Regional climate modeling on European scales: a joint standard evaluation of the EURO-CORDEX RCM ensemble, *Geoscientific Model Development*, 7, 1297–1333, doi:10.5194/gmd-7-1297-2014, <http://www.geosci-model-dev.net/7/1297/2014/gmd-7-1297-2014.html>, 2014.
- 25 Laaidi, K., Zeghnoun, A., Dousset, B., Bretin, P., and Vandentorren, S.: The Impact of Heat Islands on Mortality in Paris during the August 2003 Heatwave, *Environ. Health Perspect.*, 120, 254–259, doi:10.1289/ehp.1103532, 2011.
- Lange, S., Rockel, B., Volkholz, J., and Bookhagen, B.: Regional climate model sensitivities to parametrizations of convection and non-precipitating subgrid-scale clouds over South America, *Climate Dynamics*, 44, 2839–2857, doi:10.1007/s00382-014-2199-0, 2014.
- 30 Lauwaet, D., Hooyberghs, H., Maiheu, B., Lefebvre, W., Driesen, G., Van Looy, S., and De Ridder, K.: Detailed Urban Heat Island Projections for Cities Worldwide: Dynamical Downscaling CMIP5 Global Climate Models, *Climate*, 3, 391–415, doi:10.3390/cli3020391, <http://www.mdpi.com/2225-1154/3/2/391/htm>, 2015.
- Lejeune, Q., Davin, E. L., Guillod, B. P., and Seneviratne, S. I.: Influence of Amazonian deforestation on the future evolution of regional surface fluxes, circulation, surface temperature and precipitation, *Climate Dynamics*, doi:10.1007/s00382-014-2203-8, 2014.
- 35 Li, Y., Gao, Z., Li, D., Wang, L., and Wang, H.: An improved non-iterative surface layer flux scheme for atmospheric stable stratification conditions, *Geoscientific Model Development*, 7, 515–529, doi:10.5194/gmd-7-515-2014, <http://www.geosci-model-dev.net/7/515/2014/gmd-7-515-2014.html>, 2014.

- Loridan, T. and Grimmond, C.: Multi-site evaluation of an urban land-surface model: intra-urban heterogeneity, seasonality and parameter complexity requirements, *Quarterly Journal of the Royal Meteorological Society*, 138, 1094–1113, doi:10.1002/qj.963, <http://doi.wiley.com/10.1002/qj.963>, 2012.
- Louis, J.-F.: A Parametric Model of the Vertical Eddy Fluxes in the Atmosphere, *Boundary-Layer Meteorol*, 17, 187–202, 1979.
- 5 Loveland, T. R., Reed, B. C., Brown, J. F., Ohlen, D. O., Zhu, Z., Yang, L., and Merchant, J. W.: Development of a global land cover characteristics database and IGBP DISCover from 1 km AVHRR data, *International Journal of Remote Sensing*, 21, 1303–1330, doi:10.1080/014311600210191, <http://www.tandfonline.com/doi/abs/10.1080/014311600210191>, 2010.
- Martilli, A., Clappier, A., and Rotach, M. W.: An urban surface exchange parameterisation for mesoscale models, *BoundaryLayer Meteorology*, 104, 261–304, 2002.
- 10 Masson, V.: A physically-based scheme for the urban energy budget in atmospheric models, *BoundaryLayer Meteorology*, 94, 357–397, doi:10.1023/A:1002463829265, 2000.
- Masson, V., Gomes, L., Pigeon, G., Lioussé, C., Pont, V., Lagouarde, J.-P., Voogt, J., Salmond, J., Oke, T. R., Hidalgo, J., Legain, D., Garrouste, O., Lac, C., Connan, O., Briottet, X., Lachéradé, S., and Tulet, P.: The Canopy and Aerosol Particles Interactions in TOulouse Urban Layer (CAPITOUL) experiment, *Meteorology and Atmospheric Physics*, 102, 135–157, doi:10.1007/s00703-008-0289-4, 2008.
- 15 Maucha, G., Büttner, G., and Kosztra, B.: European validation of GMES Data, Soil Sealing Enhancement, <http://www.eea.europa.eu/data-and-maps/figures/eea-fast-track-service-precursor>, 2010.
- Mellor, G. L. and Yamada, T.: Development of a turbulence closure model for geophysical fluid problems, *Reviews of Geophysics*, 20, 851, doi:10.1029/RG020i004p00851, <http://doi.wiley.com/10.1029/RG020i004p00851>, 1982.
- Meng, C.: The integrated urban land model, *Journal of Advances in Modeling Earth Systems*, 7, 759–773, doi:10.1002/2015MS000450, <http://doi.wiley.com/10.1002/2015MS000450>, 2015.
- 20 Monaghan, A. J., Hu, L., Brunzell, N. A., Barlage, M., and Wilhelm, O. V.: Evaluating the impact of urban morphology configurations on the accuracy of urban canopy model temperature simulations with MODIS, *Journal of Geophysical Research: Atmospheres*, 119, 6376–6392, doi:10.1002/2013JD021227, <http://doi.wiley.com/10.1002/2013JD021227>, 2014.
- Monin, A. S. and Obukhov, A. M.: Dimensionless Characteristics of Turbulence in the Surface Layer of the Atmosphere, *Trudy Geofiz Inst Akad Nauk SSSR*, 24, 163–187, 1954.
- 25 Offerle, B., Grimmond, C. S. B., and Fortuniak, K.: Heat storage and anthropogenic heat flux in relation to the energy balance of a central European city centre, *International Journal of Climatology*, 25, 1405–1419, doi:10.1002/joc.1198, 2005.
- Oleson, K. W., Bonan, G. B., Feddema, J., Vertenstein, M., and Grimmond, C. S. B.: An Urban Parameterization for a Global Climate Model. Part I: Formulation and Evaluation for Two Cities, *Journal of Applied Meteorology and Climatology*, 47, 1038–1060, doi:10.1175/2007JAMC1597.1, 2008.
- 30 Panitz, H.-J., Dosio, A., Büchner, M., Lüthi, D., and Keuler, K.: COSMO-CLM (CCLM) climate simulations over CORDEX-Africa domain: analysis of the ERA-Interim driven simulations at 0.44° and 0.22° resolution, *Climate Dynamics*, 42, 3015–3038, doi:10.1007/s00382-013-1834-5, <http://link.springer.com/10.1007/s00382-013-1834-5>, 2013.
- Paulson, C. A.: The Mathematical Representation of Wind Speed and Temperature Profiles in the Unstable Atmospheric Surface Layer, *J Appl Meteorol*, 9, 857–861, 1970.
- 35 Phelan, P. E., Kaloush, K., Miner, M., Golden, J., Phelan, B., Silva, H., and Taylor, R. A.: Urban Heat Island: Mechanisms, Implications, and Possible Remedies, *Annual Review of Environment and Resources*, 40, 285–307, doi:10.1146/annurev-environ-102014-021155, <http://www.annualreviews.org/doi/abs/10.1146/annurev-environ-102014-021155>, 2015.

- Pigeon, G., Legain, D., Durand, P., and Masson, V.: Anthropogenic heat release in an old European agglomeration (Toulouse, France), *International Journal of Climatology*, 27, 1969–1981, 2007.
- Pigeon, G., Moscicki, M. A., Voogt, J. A., and Masson, V.: Simulation of Fall and Winter energy balance over a dense urban area using the TEB scheme, *Meteorology and Atmospheric Physics*, 102, 159–171, doi:10.1007/s00703-008-0320-9, 2008.
- 5 Pleim, J., Gilliam, R., Appel, W., Godowitch, J., Wong, D., Pouliot, G., and Ran, L.: Application and Evaluation of High-Resolution WRF-CMAQ with Simple Urban Parameterization, in: *Air Pollution Modeling and its Application XXIII*, edited by Stein, D. and Mathur, R., chap. 80, pp. 489–493, Springer International Publishing, Cham, doi:10.1007/978-3-319-04379-1\_80, [http://dx.doi.org/10.1007/978-3-319-04379-1\\_80](http://dx.doi.org/10.1007/978-3-319-04379-1_80), 2014.
- Prein, A. F., Langhans, W., Fosser, G., Ferrone, A., Ban, N., Goergen, K., Keller, M., Tölle, M., Gutjahr, O., Feser, F., Brisson, E., Kollet, S., Schmidli, J., van Lipzig, N. P. M., and Leung, R.: A review on regional convection-permitting climate modeling: Demonstrations, prospects, and challenges, *Reviews of Geophysics*, 53, 323–361, doi:10.1002/2014RG000475, 2015.
- 10 Revi, A., Satterthwaite, D. E., Aragón-Durand, F., Corfee-Morlot, J., Kiunsi, R. B. R., Pelling, M., Roberts, D. C., and Solecki, W.: Urban areas, in: *Climate Change 2014: Impacts, Adaptation, and Vulnerability. Part A: Global and Sectoral Aspects. Contribution of Working Group II to the Fifth Assessment Report of the Intergovernmental Panel of Climate Change*, edited by Field, C. B., Barros, V. R., Dokken, D. J., Mach, K. J., Mastrandrea, M. D., Bilir, T. E., Chatterjee, M., Ebi, K. L., Estrada, Y. O., Genova, R. C., Girma, B., Kissel, E. S., Levy, A. N., MacCracken, S., Mastrandrea, P. R., and White, L. L., pp. 535–612, Cambridge University Press, Cambridge, United Kingdom and New York, NY, USA, 2014.
- 15 Rockel, B., Will, A., and Hense, A.: The Regional Climate Model COSMO-CLM (CCLM), *Meteorologische Zeitschrift*, 17, 347–348, 2008.
- Rotach, M. W., Vogt, R., Bernhofer, C., Batchvarova, E., Christen, A., Clappier, A., Feddersen, B., Gryning, S.-E., Martucci, G., Mayer, H., Mitev, V., Oke, T. R., Parlow, E., Richner, H., Roth, M., Roulet, Y.-A., Ruffieux, D., Salmond, J. A., Schatzmann, M., and Voogt, J. A.: BUBBLE – an Urban Boundary Layer Meteorology Project, *Theoretical and Applied Climatology*, 81, 231–261, doi:10.1007/s00704-004-0117-9, 2005.
- 20 Sailor, D. J.: A review of methods for estimating anthropogenic heat and moisture emissions in the urban environment, *International Journal of Climatology*, 31, 189–199, doi:10.1002/joc.2106, 2011.
- 25 Sarkar, A. and De Ridder, K.: The Urban Heat Island Intensity of Paris: A Case Study Based on a Simple Urban Surface Parametrization, *Boundary-Layer Meteorol*, 138, 511–520, doi:10.1007/s10546-010-9568-y, 2010.
- Schneider, A., Friedl, M. A., and Potere, D.: A new map of global urban extent from MODIS satellite data, *Environmental Research Letters*, 4, 044 003, doi:10.1088/1748-9326/4/4/044003, 2009.
- Schubert, S. and Grossman-Clarke, S.: The Influence of green areas and roof albedos on air temperatures during Extreme Heat Events in Berlin, Germany, *Meteorologische Zeitschrift*, 22, 131–143, doi:10.1127/0941-2948/2013/0393, 2013.
- 30 Schubert, S. and Grossman-Clarke, S.: Evaluation of the coupled COSMO-CLM/DCEP model with observations from BUBBLE, *Quarterly Journal of the Royal Meteorological Society*, 140, 2465–2483, doi:10.1002/qj.2311, <http://doi.wiley.com/10.1002/qj.2311>, 2014.
- Schubert, S., Grossman-Clarke, S., and Martilli, A.: A Double-Canyon Radiation Scheme for Multi-Layer Urban Canopy Models, *Boundary-Layer Meteorology*, 145, 439–468, doi:10.1007/s10546-012-9728-3, 2012.
- 35 Schulz, J.-P., Vogel, G., Becker, C., Kothe, S., Rummel, U., and Ahrens, B.: Evaluation of the ground heat flux simulated by a multi-layer land surface 2 scheme using high-quality observations at grass land and bare soil, *Meteorologische Zeitschrift*, 2016.
- See, L., Perger, C., Duerauer, M., Fritz, S., Bechtel, B., Ching, J., Alexander, P., Mills, G., Foley, M., O’Connor, M., Stewart, I., Feddema, J., and Masson, V.: Developing a community-based worldwide urban morphology and materials database (WUDAPT) using remote

- sensing and crowdsourcing for improved urban climate modelling, in: 2015 Joint Urban Remote Sensing Event (JURSE), pp. 1–4, IEEE, doi:10.1109/JURSE.2015.7120501, <http://ieeexplore.ieee.org/lpdocs/epic03/wrapper.htm?arnumber=7120501>, 2015.
- Seto, K. C., Fragkias, M., Güneralp, B., and Reilly, M. K.: A meta-analysis of global urban land expansion., *PloS one*, 6, e23777, doi:10.1371/journal.pone.0023777, <http://journals.plos.org/plosone/article?id=10.1371/journal.pone.0023777>, 2011.
- 5 Seto, K. C., Güneralp, B., and Hutya, L. R.: Global forecasts of urban expansion to 2030 and direct impacts on biodiversity and carbon pools., *Proceedings of the National Academy of Sciences of the United States of America*, 109, 16083–8, doi:10.1073/pnas.1211658109, <http://www.pnas.org/content/109/40/16083.full>, 2012.
- Smiatek, G., Rockel, B., and Schättler, U.: Time invariant data preprocessor for the climate version of the COSMO model (COSMO-CLM), *Meteorologische Zeitschrift*, 17, 395–405, doi:10.1127/0941-2948/2008/0302, 2008.
- 10 Steppeler, J., Doms, G., Schättler, U., Bitzer, H. W., Gassmann, A., Damrath, U., and Gregoric, G.: Meso-gamma scale forecasts using the nonhydrostatic model LM, *Meteorology and Atmospheric Physics*, 82, 75–96, doi:10.1007/s00703-001-0592-9, 2003.
- Stewart, I. D. and Oke, T. R.: Local Climate Zones for Urban Temperature Studies, *Bulletin of the American Meteorological Society*, 93, 1879–1900, doi:10.1175/BAMS-D-11-00019.1, 2012.
- Thiery, W., Davin, E. L., Panitz, H.-J., Demuzere, M., Lhermitte, S., and van Lipzig, N.: The Impact of the African Great Lakes on the Regional Climate, *Journal of Climate*, 28, 4061–4085, doi:10.1175/JCLI-D-14-00565.1, <http://journals.ametsoc.org/doi/abs/10.1175/JCLI-D-14-00565.1>, 2015.
- 15 Tomlinson, C. J., Chapman, L., Thornes, J. E., and Baker, C. J.: Derivation of Birmingham’s summer surface urban heat island from MODIS satellite images, *International Journal of Climatology*, 32, 214–224, doi:10.1002/joc.2261, 2012.
- Trusilova, K., Früh, B., Brienens, S., Walter, A., Masson, V., Pigeon, G., and Becker, P.: Implementation of an Urban Parameterization Scheme into the Regional Climate Model COSMO-CLM, *Journal of Applied Meteorology and Climatology*, 52, 2296–2311, doi:10.1175/JAMC-D-12-0209.1, 2013.
- 20 Trusilova, K., Schubert, S., Wouters, H., Früh, B., Grossman-Clarke, S., Demuzere, M., and Becker, P.: The urban land use in the COSMO-CLM model: a comparison of three parameterizations for Berlin, *Meteorologische Zeitschrift*, doi:10.1127/metz/2015/0587, 2015.
- United Nations: World Urbanization Prospects: The 2014 Revision, Tech. rep., United Nations, Department of Economic and Social Affairs, Population Division, ST/ESA/SER.A/366, 2014.
- 25 Van Weverberg, K., De Ridder, K., and Van Rompaey, A.: Modeling the Contribution of the Brussels Heat Island to a Long Temperature Time Series, *J. Appl. Meteor. Climatol.*, 47, 976–990, doi:10.1175/2007JAMC1482.1, 2008.
- Van Weverberg, K., Goudenhoofdt, E., Blahak, U., Brisson, E., Demuzere, M., Marbaix, P., and van Ypersele, J.-P.: Comparison of one-moment and two-moment bulk microphysics for high-resolution climate simulations of intense precipitation, *Atmospheric Research*, 30, 147–148, 145–161, doi:10.1016/j.atmosres.2014.05.012, <http://www.sciencedirect.com/science/article/pii/S0169809514002130>, 2014.
- Vanden Broucke, S., Luyssaert, S., Davin, E. L., Janssens, I., and van Lipzig, N.: New insights in the capability of climate models to simulate the impact of LUC based on temperature decomposition of paired site observations, *Journal of Geophysical Research: Atmospheres*, 120, 5417–5436, doi:10.1002/2015JD023095, <http://doi.wiley.com/10.1002/2015JD023095>, 2015.
- Verdonck, M.-L., Okujeni, A., van der Linden, S., Demuzere, M., De Wulf, R., and Vancoillie, F.: A contribution to WUDAPT: influence of neighbourhood on Local-Climature Zone mapping in heterogeneous cities, *Remote Sensing* (submitted), 2016.
- 35 Wan, Z.: New refinements and validation of the MODIS Land-Surface Temperature/Emissivity products, *Remote Sensing of Environment*, 112, 59–74, doi:10.1016/j.rse.2006.06.026, 2008.

Wouters, H., De Ridder, K., and Lipzig, N. P. M.: Comprehensive Parametrization of Surface-Layer Transfer Coefficients for Use in Atmospheric Numerical Models, *Boundary-Layer Meteorology*, 145, 539–550, doi:10.1007/s10546-012-9744-3, 2012.

Wouters, H., De Ridder, K., Demuzere, M., Lauwaet, D., and van Lipzig, N. P. M.: The diurnal evolution of the urban heat island of Paris: a model-based case study during Summer 2006, *Atmospheric Chemistry and Physics*, 13, 8525–8541, doi:10.5194/acp-13-8525-2013, 2013.

5

Wouters, H., Demuzere, M., Ridder, K. D., and van Lipzig, N. P.: The impact of impervious water-storage parametrization on urban climate modelling, *Urban Climate*, 11, 24–50, doi:10.1016/j.uclim.2014.11.005, 2015.

Zhao, L., Lee, X., Smith, R. B., and Oleson, K.: Strong contributions of local background climate to urban heat islands, *Nature*, 511, 216–219, doi:10.1038/nature13462, 2014.