

## Responses to the Editor, Dr. Müller

Dear Dr. Malek and co-authors,

- 5 I'm happy to now have 2 reviews for your revised paper (one of the original ones and a new reviewer). I apologize for the long turnaround time this revision needed. However, both referees are now largely content with your revisions and only referee #3 raises 2 last points. On top of these points, I have some more minor points, all with respect to your discussion of other approaches.
- 10 I do see that referee #3's first point may be somewhat difficult to address, as deciding which model to use under which circumstances is often hypothetical and would require some testing and model (setup) evaluation. So maybe you can discuss this with some specific examples where some models may be fit for purpose by addressing relevant processes and others may not as they don't.

We would like to thank the topical editor for these careful review and insightful comments which have improved the quality of the paper.

Specific comments:

- As I happen to know the gridded crop model development to some extent, and LPJmL in particular, I noticed that you list JULES and ORCHIDEE as simplified model, which is not always true, see
- 20 \* Wang et al. 2016 <http://www.geosci-model-dev.net/9/857/2016/>  
\* Williams et al. 2017 <http://www.geosci-model-dev.net/10/1291/2017/>

Thanks for the comment, we deleted that part

- Also, the Fader et al. 2015 reference is not the best one for discussing the hydrology-crop linkage in LPJmL, maybe better try
- 25 \* Rost et al. 2008 <http://onlinelibrary.wiley.com/doi/10.1029/2007WR006331/abstract>  
\* Biemans et al. 2011 <http://onlinelibrary.wiley.com/doi/10.1029/2009WR008929/abstract>  
\* Jägermeyr et al. 2015 <http://www.hydrol-earth-syst-sci.net/19/3073/2015/hess-19-3073-2015.html>

- 30 We replaced Feder et al. (2015) with the references that you mentioned.

and the LPJmL model has been used and tested for regional studies (contrary to your claim on page 6), see

\* Biemans et al. 2013 <http://www.sciencedirect.com/science/article/pii/S0048969713006451>  
\* Langerwisch et al. 2013 <http://www.hydrol-earth-syst-sci.net/17/2247/2013/hess-17-2247-2013.html>

and it is also no longer true that LPJmL uses country-specific efficiency data, but explicitly simulates the loss terms

\* Jägermeyr et al. 2015 <http://www.hydrol-earth-syst-sci.net/19/3073/2015/hess-19-3073-2015.html>

\* Jägermeyr et al. 2016 <http://iopscience.iop.org/article/10.1088/1748-9326/11/2/025002/meta>

5

Thanks for pointing this out, we removed that sentence.

Lastly, the sentence on page 6 reads as if LPJmL had a simpler implementation of LAI and root development than EPIC, but in fact it uses the EPIC scheme for that.

10 Again, thanks for the insightful comment, we removed that statement.

I'm confident that all of the issues raised by referee #3 and myself can be easily addressed and look forward to the final version of the manuscript.

Best regards

15 Christoph Müller

## Responses to Reviewer # 3

20 This is a well written paper describing an interesting coupling of cropland and vegetation. The authors have clearly put in a large effort in revising the paper based on the comment of the reviewers. In general the authors have responded well to the issues raised by the reviewers. There are two issues where to my opinion the response to the review comments could be improved.

First and foremost, we would like to thank reviewer #3 for her/his helpful comments and suggestions.

25 **1. Both issues raised the issue that the paper did not discuss other models which also simulated crop and hydrology. In response the authors have written a review of the existing models this helps. But I think this also needs to come back in the discussion. Based on the evaluation of the model in which cases in this the best model to use and in which circumstances other model might be better.**

**ADDED/MODIFIED:**

30 *Model Selection Considerations*

*Which model to apply for a specific research question at hand is dependent on a variety of factors, including geographical considerations but also the level of sophistication needed to address the question. For example, areas with significant*

irrigation activities can be more precisely simulated with mechanistic irrigation models or areas with cold climate would necessitate models with more sophisticated cold season processes. Also, regional agricultural economic studies require a reliable simulation of crop yield for economically-significant crops grown in the region. Therefore, models that simulate generic C3/C4 crops are not the best option for this type of question. VIC-CropSyst and LPJML are two examples of models that can be used to answer this type of question. Moreover, some of the models have been already tested and used for a particular region and resolution, which naturally makes them more reliable for that specific situation.

**2. The deficit irrigation paragraph is confusing because not it almost seems that deficit irrigation is included in the described version of the model. I think it is better to clearly state that the current version of the model and the results presented do not include deficit irrigation and the current version is not connected to a routing module. Maybe in the discussion section this could be addressed and there you could shortly describe how you deficit irrigation can be included.**

We would like to thank the reviewer for this helpful suggestion, we moved the deficient irrigation section to the discussion/application part of the paper and added a sentence that clearly states that deficit scenarios are not included in this manuscript.

#### **Added/Modified:**

##### *Simulation of Deficit Irrigation Scenarios*

Although the results presented in this article do not include results related to deficit irrigation during times of water shortage, VIC-CropSyst is able to simulate the impacts of deficit irrigation on hydrologic and cropping systems. VIC-CropSyst's deficit irrigation module requires two main inputs: a) a first approximation to the irrigation water demand obtained by generating time series of irrigation in a zero water stress condition using VIC-CropSyst, and b) deficit fractions that indicate the actual water availability as a function of the crop water requirement. VIC-CropSyst then reads the amount of recorded irrigation from step one and applies the deficit fraction to simulate the agricultural and hydrologic processes under realistic water deficit conditions. The deficit fraction can be either homogenously applied across the entire basin or separately specified for each farmer depending on water rights or other considerations. Also, VIC-CropSyst can apply the deficit fraction during different times of the year. For example, if the water deficit happens later in the season, VIC-CropSyst can adjust irrigation amounts according to the timing of water shortage.

VIC-CropSyst has also been used in conjunction with reservoir models (e.g., ColSim: Hamlet and Lettenmaier, 1999, and YAK-RW: Zagona et al., 2001) to calculate the deficit irrigation fraction (e.g., Barik et al., 2017; Malek, et al., in prep; and Rajagopalan et al., in preparation). In general, the following six steps can be used to calculate and apply a deficit fraction: 1) VIC-CropSyst simulates the hydrologic states such as runoff and base flow as well as the irrigation water demand, 2) a routing model (Lohmann et al., 1998) is used to simulate streamflow, 3) simulated flow is bias-corrected against observed flow, 4) a river system model is used to include operation of dams and reservoir and estimate water availability, 5) the

availability of water is compared with water demand, and 6) a deficit fraction is calculated and VIC-CropSyst is run to simulate the impacts of irrigation deficit on the hydrologic cycle and on crop yields.

**Some other minor issues.**

5 **1. Is the impact of elevated atmospheric CO<sub>2</sub> concentration on transpiration included in this model and if yes how?**

CropSyst simulates the impacts of changes in CO<sub>2</sub> on crop transpiration, growth and yield; this is done through empirical relationships developed based on results of chamber and open air experiments (Stockle et al., 1992).

**Added/Modified:**

10 *CropSyst uses empirical relationships (Stockle et al., 1992) to simulate the impact of elevated CO<sub>2</sub> concentrations on yield, crop growth, and transpiration.*

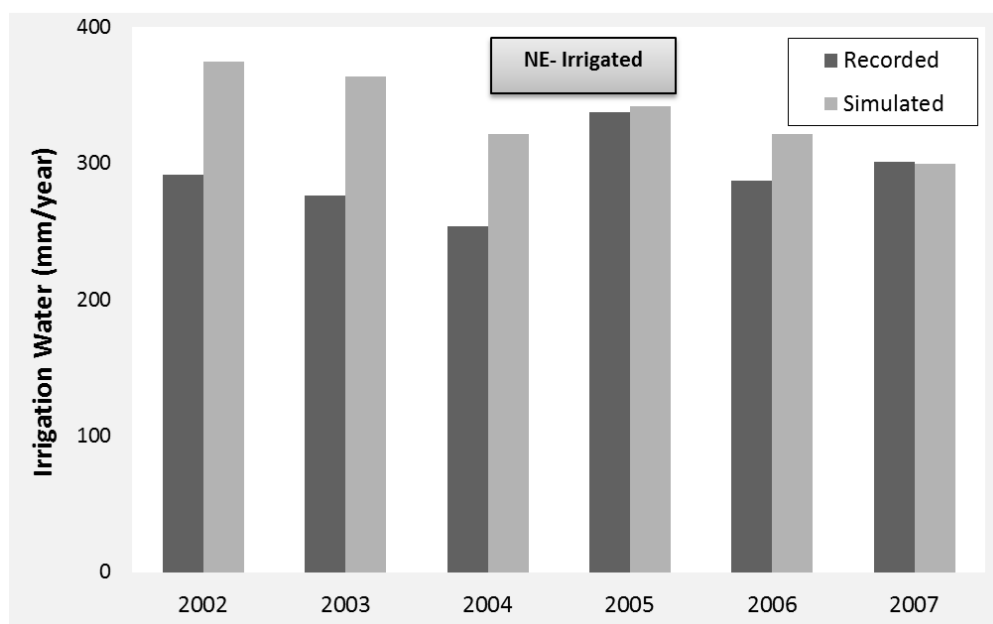
**2. The figure legends and axis description could be improved.**

**For example. Figure 5 – add to legend that it is total seasonal irrigation, at the Y axis add mm/year**

We thank the reviewer for pointing out these issues; we have corrected them in the manuscript.

15 **Added/Modified:**

*Figure 5-Simulated versus recorded total seasonal irrigation water in an irrigated corn field at the NE flux tower site.*



20 **In figure 6 – I think it is average monthly evaporation, the unit is probable mm/day add this to Y axis legend**

Thanks for the comment we corrected the Y-axis label and mentioned it in the legend as well

Added/Modified:

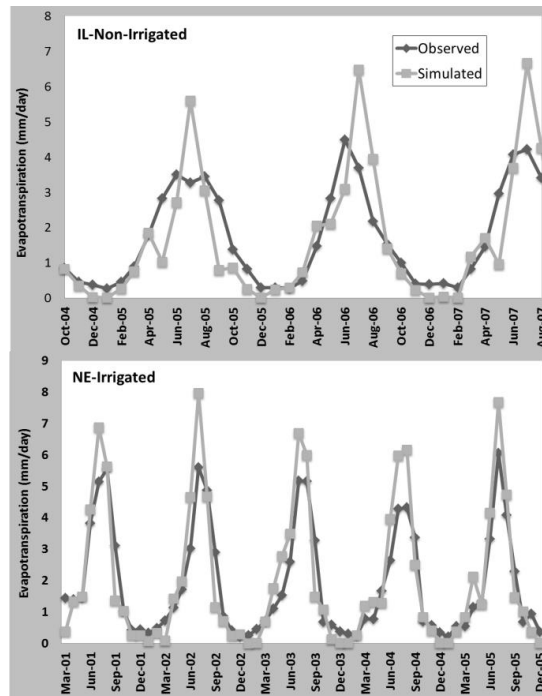
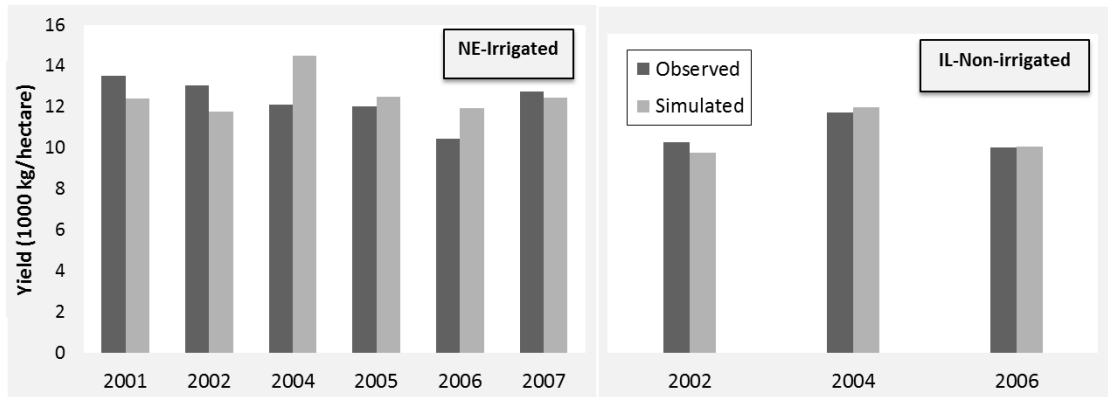


Figure 6- Comparison of simulated and observed corn evapotranspiration (ET; mm/day) at two flux tower sites located in NE and IL. The NE site is irrigated while IL is a non-irrigated field.

5

**Figure 7 use metric values not tons!**

We have corrected this issue.



10 **In general white backgrounds work the best for figures.**

We changed the backgrounds to white.

# VIC-CropSyst-v2: A regional-scale modeling platform to simulate the nexus of climate, hydrology, cropping systems, and human decisions

5

Keyvan Malek <sup>1</sup>, Claudio Stockle <sup>1</sup>, Kiran Chinnayakanahalli <sup>3</sup>, Roger Nelson <sup>1</sup>, Mingliang Liu <sup>2</sup>, Kirti Rajagopalan <sup>2</sup>, Muhammad Barik <sup>2</sup>, Jennifer Adam <sup>2</sup>

<sup>1</sup>Department of Biological Systems Engineering at Washington State University

10 <sup>2</sup>Department of Civil and Environmental Engineering at Washington State University

<sup>3</sup>Air Worldwide Corp.

*Correspondence to:* Jennifer Adam ([jcadam@wsu.edu](mailto:jcadam@wsu.edu)) and Keyvan Malek ([keyvanmalek@gmail.com](mailto:keyvanmalek@gmail.com))

## Abstract

15 Food supply is affected by a complex nexus of land, atmosphere, and human processes, including short- and long-term stressors (e.g., drought and climate change, respectively). A simulation platform that captures these complex elements can be used to inform policy and best management practices to promote sustainable agriculture. We have developed a tightly-coupled framework using the macroscale Variable Infiltration Capacity (VIC) hydrologic model and the CropSyst agricultural model. A mechanistic irrigation module was also developed for inclusion in this framework. Because VIC-  
20 CropSyst combines two widely-used and mechanistic models (for crop growth phenology, growth, and management; and macroscale hydrology), it can provide realistic and hydrologically-consistent simulations of water availability, crop water requirement for irrigation, and agricultural productivity for both irrigated and dryland systems. This allows VIC-CropSyst to provide managers and decision makers with reliable information on regional water stresses and their impacts on food production. Additionally, VIC-CropSyst is being used in conjunction with socio-economic models, river system models and  
25 atmospheric models to simulate feedback processes between regional water availability, agricultural water management decisions, and land-atmospheric interactions. The performance of VIC-CropSyst was evaluated at both regional (over the U.S. Pacific Northwest) and point scales. Point-scale evaluation involved using two flux tower sites located in agricultural fields in the U.S. (Nebraska and Illinois). The agreement between recorded and simulated evapotranspiration (ET), applied irrigation water, soil moisture, leaf area index (LAI), and yield indicated that, although the model is intended to work at  
30 regional scales, it also captures field scale processes in agricultural areas.

**Keywords:** integrated platform, hydrologic model, agricultural model, adaptation strategies, irrigation management, regional scale, climate change

5

Nomenclature			
$E_{si}$	Evaporation from soil during irrigation	$D$	Droplet size
$E_c$	Evaporation from intercepted water	$V_0$	Initial velocity of droplets
$E_d$	Evaporation from irrigation droplets	$MAD$	Maximum allowable depletion
$T$	Transpiration	$g$	Acceleration of gravity
$ET_p$	Potential evapotranspiration	$Y_0$	Height of nozzle
$A_w$	Soil wetted area	$Y$	Canopy height
$T_i$	Time of irrigation	$S$	Sorptivity coefficient
$D_p$	Deep percolation	$b_i$	Runoff calibration parameter
$K_s$	Saturated hydraulic conductivity	$D_s$	VIC base flow calibration parameter
$R_o$	Runoff loss	$D_{s_{max}}$	VIC base flow calibration parameter
$q$	Drip irrigation emitter discharge rate	$W_s$	VIC base flow calibration parameter
$LAI$	Leaf area index	$GDD$	Growing degree days
$K_c$	Crop coefficient	$E_s$	Evaporation from soil

## 10 1. Introduction

Projected increases in food demand (Godfray et al., 2010) along with other stressors such as droughts and extreme heat events contribute to threats on global food supply (Wheeler and Braun, 2013). Despite existing research on food scarcity, there are still unanswered questions about the relationship between food supply and the nexus of water resources, agriculture and human decisions. For example, how expectations of future climatic conditions influence farmer behaviour, such as capital intensive switches in technology or cropping systems, is not well understood. Such scenarios require a simulation tool that can capture large-scale hydrologic processes while accurately simulating the impacts of climate, management, and water availability on different crop types. Moreover, regional consequences of decisions intended to mitigate the damages of future stressors are not well understood (Robertson and Swinton, 2005). For example, improvement in the efficiency of irrigation

systems may increase consumptive water uses and lead to a reduction in return flow from irrigated areas (Causapé et al., 2004; Gosain et al., 2005). Return flow plays a significant role in the water availability of many agricultural regions; e.g., 40% of the water availability at the Yakima River's Parker Gauge in an average year is generated through return flows from upstream lands (USBR, 2010). Ecosystems and hydroelectric generation are also impacted as return flow changes. These knowledge gaps limit our ability to explore viable adaptation strategies, particularly in understanding unintended consequences. Integrated modeling platforms can contribute to the systems-level understanding of dynamics between agricultural processes, large-scale water resources management decisions, and land-atmospheric interactions.

The overall goal of this study is to develop a computational modeling platform that mechanistically captures the interactions between hydrology, crop growth and phenology, and crop and water resource management decisions in the context of global change. Such a platform allows for investigation around multiple objectives: 1) understanding how climate dynamics and land-atmosphere interactions affect water and agricultural sustainability; and (conversely) 2) exploring the role of agricultural (biophysical and socioeconomic) processes in driving land-atmosphere interactions, including climate feedback mechanisms at larger scales.

### **1.1. Future Food Demand and Supply**

While over 800 million people throughout the world suffer from undernourishment (FAO, 2013), global change is expected to exacerbate food security problems. The demand for food is increasing due to population growth and changes in food dietary tendency towards higher consumption of meat products (Long et al., 2015). Food supply, on the other hand, may not increase as fast as demand (Wheeler and Braun, 2013), as it is affected by complicated interactions between climate, the hydrologic cycle, cropping systems, and human decisions. Table 1 shows the variety of ways that climate change can impact crop yield, with some impacts being positive and others negative; the net result is dependent on region, crop, and future time period. Mechanistic integrated modeling platforms are necessary to assess the net impact of global change on crop production.

[TABLE 1]

### **1.2. Interactions between Cropping Systems, the Hydrologic Cycle, Climate, and Human Decisions**

Although agricultural productivity is affected by disturbances in the regional cycles of water and energy (Pielke Sr. et al., 2007), agriculture itself feeds back to alter the hydrological cycle by changing evapotranspiration (ET), and the magnitude and temporal regime of soil moisture, infiltration and runoff generation (Haddeland et al., 2006; Harding et al., 2015; Lu et al., 2015; Sorooshian et al., 2012). The impact of irrigated agriculture on energy and water cycles is particularly important (Ferguson and Maxwell, 2011; Lobell et al., 2009; Pokhrel et al., 2016; Puma and Cook, 2010; Scanlon et al., 2007; Sridhar, 2013). Irrigation uses 70% of total global water withdrawals (Rost et al., 2008) and boosts soil moisture storage available for crop uptake, and ultimately increases ET. Irrigation losses also increase the amount of deep percolation and runoff.



While farmers can adjust their management decisions to reduce the negative impacts of climate change (e.g., switching to more-efficient irrigation technologies, planting more drought-tolerant crop types or varieties with longer growing periods, and implementing precision agriculture), these human decisions can result in unintended impacts on regional water and energy cycles. The consequences of anthropogenic disturbances (e.g., irrigation withdrawal and dam construction) on the regional water cycle can be greater than the impacts of climate change (Haddeland et al., 2014). Irrigation management and changes in cropping patterns are two examples of management decisions influencing the amount of ET, runoff, deep percolation, and soil moisture, all of which can alter timing and magnitude of return flow. In many agricultural basins, the availability of water for downstream users depends greatly on the return flow from upstream lands, which mainly comes from non-evaporative, reusable loss of water through conveyance systems and field-level application of irrigation water. Therefore, regional-scale simulation of the hydrologic cycle is crucial to the analysis of the impacts of water management in large river basins with significant agricultural activities.

VIC-CropSyst provides an advantage over the stand-alone CropSyst model when run over larger scales. Here, we define large-scale results as regionally-aggregated responses of agriculture to changes that can impact scales greater than a single cultivated field, such as a policy change (e.g., water law), climate-related impacts (e.g., warming-induced reductions in summer water availability), or development of large-scale infrastructure (e.g., a large reservoir). Allen et al. (2015) interviewed around twenty stakeholders, including governmental and non-governmental agency staff and producers, to understand their priorities, concerns and decision-making processes. They found that many of these stakeholders, including individual producers, are interested in local and basin-scale information about the impacts of climate change, infrastructural developments, and land management practices on the quantity, quality and temporal regimes of water resources. Therefore, large-scale integrated modeling platforms are also needed to inform regional natural and agricultural resource management policies and actions.

### **1.3. Agricultural Processes within Macroscale Hydrologic Models**

#### **1.3.1. Capturing Cropping Systems within Land Surface Models**

Land Surface Models (LSMs) are used for regional to global-scale simulations of water and energy cycles, often providing terrestrial boundary conditions to general circulation models (GCMs). Results of modeling studies have indicated that, despite the tremendous advances in earth system modeling, the current state of LSMs is not capable of capturing agricultural processes in a detailed manner (e.g., Chang et al., 2014; Haddeland et al., 2006; Hansen et al., 2006; Lobell et al., 2009, 2008; and Ozdogan et al., 2010a). In many of them, agricultural processes are similar to natural vegetation (Chang et al., 2014); due to phenological similarities, agricultural lands are often represented by grass vegetation (Elliott et al., 2014). Also, management or harvesting activities as well as CO<sub>2</sub> fertilization effects may be ignored (Drewniak et al., 2013). Mitchell et al. (2004) compared the results of four different models and reported poor overall performance among LSMs in capturing warm season ET. In most cases, this inconsistency can be explained by weak representation of agricultural

processes. For example, Schwalm et al. (2010) compared 22 terrestrial biosphere models with North American flux tower sites and found the performance of models in natural vegetation areas to be better than in cropland areas.

Bierkens (2015) reviewed twenty three global/large-scale hydrological models (GHMs; e.g. WaterGAP, Verzano et al., 2012; WBMPlus, Wisser et al., 2010; Mac-PDM.09, Gosling and Arnell, 2011; and H08, Hanasaki et al., 2010), LSMs (VIC, Liang et al., 1994; MATSIRO, Takata et al., 2003; LM3, Milly et al., 2014; NOAH, Liu et al., 2016; JULES, Best et al., 2011; CLM, Fisher et al., 2015; SiB, Baker et al., 2008; and ORCHIDEE, Vérant et al., 2004) and dynamic vegetation models (DVMs; e.g. LPJmL; [Biemans et al., 2011](#); [Jägermeyr et al., 2015](#); and [Rost et al., 2008](#)). Among these models, H08, MATSIRO, ~~JULES~~, ~~ORCHIDEE~~, and SiB use simple crop growth modules to simulate natural vegetation or generic C3 and/or C4 crops. NOAH, CLM, and LPJmL have more sophisticated crop growth schemes; these are further discussed below.

Using prescribed seasonally and spatially variable leaf area index (LAI) and root density, Wei et al. (2013) modified aerodynamic and soil deficit thresholds in the NOAH land surface model, thereby improving the simulation of warm season processes. In their model, however, crop growth and development does not mechanistically respond to climate, CO<sub>2</sub> concentrations, and soil moisture; this limits the accuracy of model simulation over agricultural areas where the feedback between agricultural processes and hydro-climatic conditions is significant. Liu et al. (2016) improved simulation of crop processes in the NOAH-MP-Crop model but their model only simulated corn and soybean and did not capture irrigation processes.

Drewniak et al. (2013) enhanced the Community Land Model (CLM) in agricultural areas by using an improved representation of crop processes, but CO<sub>2</sub> fertilization effects, irrigation, and other common management activities were neglected. In their simulations, they considered only three crop species (wheat, corn and soybean) and used a fixed planting date, which can lead to a discrepancy with observations in that actual planting dates vary in time as a function of weather (Zeng et al., 2013), and can result in an over-estimation of the negative impacts of warming on crop yield, as an earlier planting date is a viable adaptation strategy in many regions of the world (Waha et al., 2013). While a newer version of CLM (CLM4-Crop; Lu et al., 2015) simulates irrigation events and CO<sub>2</sub> fertilization as well as biomass and vegetation growth processes, its application is also limited to three crop types (Chen et al., 2015) and is not able to mechanistically simulate irrigation efficiency.

Elliott et al. (2014) compared ten GHMs and six global gridded crop models (GGCMs); they reported that the performance of GHMs is generally poor in the simulation of future irrigation water demand. Many of them use prescribed crop growth parameters and did not capture CO<sub>2</sub> fertilization nor sensitivity to heat and water stresses; the only exception was the Lund-Potsdam-Jena Managed Land Dynamic Global Vegetation and Water Balance Model (LPJmL), which is a hydrologic model that ~~can~~ mechanistically simulates both hydrologic and agricultural processes. However, [there are some areas where LPJmL is limited for application at finer scales, depending on the research question. First](#), LPJmL simulates a limited number of crops (Elliott et al., 2014) ~~and~~, as compared to specialized crop models (e.g., CropSyst; [and](#) the Decision Support System for

Agrotechnology Transfer, DSSAT, Jones et al., 2003) Jones et al., 2003; and the Environmental Policy Integrated Climate Model; EPIC, Williams et al., 1989, 1983), uses more simplistic methods to simulate crop processes such as LAI development, root distribution, and the number of stressors considered (Rosenzweig et al., 2014; Stöckle et al., 2003). Moreover, although LPJmL is a grid-based model that can potentially be run at relatively fine spatial resolutions, so far it has primarily been used to address global-scale issues at coarser scale resolutions (0.5 °), and has not been tested and used for regional studies. Also Secondly, LPJmL uses prescribed country-specific irrigation efficiency (Biemans et al., 2011; Fader et al., 2015; Rosenzweig et al., 2014), which can cause biases when LPJmL is applied at finer spatial scales. It is also worth mentioning that the scientific community has already benefited from watershed-scale hydrologic-agricultural models. For example, the Soil Water Assessment Tool (SWAT Arnold et al., 1998; Neitsch et al., 2011) is coupled to a simplified version of the EPIC model (Williams et al., 1989, 1983) and is able to capture agricultural processes and management decisions. SWAT's shortcoming is the fact that it has seven crop classes and does not differentiate among crops within a class (e.g., tree fruits). Furthermore, SWAT uses predefined irrigation losses and does not simulate irrigation processes mechanistically.

### 1.3.2. Capturing Irrigation Systems within Land Surface Models

Irrigation is one of the important but under-appreciated processes in LSMs (Gordon et al., 2008; Ozdogan et al., 2010; Pokhrel et al., 2016). Normally, irrigation processes are treated in LSMs with one of the followings approaches. **1- Irrigation time and amount are not mechanistically simulated:** In most modeling studies, irrigation requirements are calculated using published irrigation guidelines or a time series of satellite observations (Pokhrel et al., 2011). In other models, irrigation water scarcity is not captured (e.g., Ozdogan et al., 2010), which can result in less realistic irrigation management during droughts. **2- Irrigation is included but with unrealistic assumptions of irrigation efficiency:** For example, CLM v4 simulates the time of irrigation based on soil deficit but does not consider irrigation losses (Leng et al., 2013). This can cause poor representation of hydrologic processes in agricultural areas and underestimation of irrigation demand. **3- Partitioning of overall efficiency into different losses through prescribed ratios:** Pokhrel et al. (2011) developed an irrigation module and coupled it to the Minimal Advanced Treatments of Surface Interaction and RunOff (MATSIRO) model. The irrigation module considers soil moisture deficit to calculate the time of irrigation, but their irrigation module did not consider the partitioning of the overall efficiency into different losses and did not simulate the dynamics between irrigation losses and the hydrologic cycle. Haddeland et al. (2006) implemented a simple irrigation module into the VIC model. This irrigation module, however, was limited to prescribed losses of sprinkler systems. Also, because the stand-alone VIC model does not mechanistically simulate crop processes, the timing and amount of the irrigation water is not responsive to crop growth, management, and phenology.

These shortcomings, simplifying assumptions, and lack of a mechanistic way to simulate irrigation processes in LSMs lead to inaccurate ET and water demand simulations (Pokhrel et al., 2011; Sridhar, 2013). Also, because LSMs are often coupled to atmospheric models, this lack of capturing mechanistic irrigation processes will cause biases in turbulent heat flux simulations, leading to GCM errors.

## 2. Approach

Here, we introduce the newly integrated model VIC-CropSyst, which is a coupling between the VIC hydrologic model and the CropSyst crop growth, phenology, and management model. VIC-CropSyst can be used for regional to global-scale simulations of water and energy cycles over natural and managed terrestrial ecosystems. A process-based irrigation module was also developed to simulate the interactions between irrigation management decisions and the hydrologic cycle in this integrated model (see Malek et al. (in review) for further information on the irrigation module).

### 2.1. Descriptions of Stand Alone Models

#### 2.1.1. VIC

The VIC model is a process-based large-scale hydrologic model developed initially by Liang et al. (1994). VIC uses the variable infiltration capacity curve introduced by Zhao et al. (1980) to simulate infiltration and surface runoff, and Franchini and Pacciani's (1991) formula to calculate base flow. Liang et al. (1996) further developed the model to represent multiple soil moisture layers (the original version only had two). Cherkauer et al. (2003) added additional sophistication for cold season processes; further information on the simulation of the snowpack can be found in Andreadis et al. (2009). While the simulation time-step of the stand-alone VIC model can be specified to be daily, hourly or sub-daily (e.g., three hour), in the version of VIC-CropSyst described herein, the simulation time-step is currently limited to daily time-steps. Subsequent VIC-CropSyst model developments will allow for sub-daily time-steps. VIC also has the flexibility to be implemented over multiple resolutions (generally at or greater than  $1/16^{\text{th}}$  °), and captures sub-grid heterogeneity in vegetation, elevation, snow depth, and a variety of other variables. The stand-alone VIC model uses prescribed monthly LAI values to represent seasonal variations of vegetation cover, and so does not simulate agricultural processes such as crop development and biomass production and the impacts of water, heat and nutrient stresses on crop growth. Also, the VIC model does not mechanistically simulate irrigation losses and only includes one type of irrigation (sprinkler; [Haddeland et al., 2006](#)). This limits VIC's ability to accurately simulate water demand, transpiration and agricultural productivity. VIC has been applied and evaluated by several researchers over a variety of areas; e.g., Elsner et al., (2010) and Hamlet and Lettenmaier (1999) over the Columbia River basin ([CRB](#)); Adam et al. (2007) in the Eurasian arctic; Maurer et al. (2002) over the contiguous U.S.; and Yuan et al. (2004) over China.

#### 2.1.2. CropSyst

CropSyst (Stockle et al., 1994, Stockle et al., 2003) is a process-based cropping system model, capturing water, nitrogen and carbon cycles as well as the key processes related to crop phenology, root and shoot growth, and biomass production and yield. CropSyst simulates field operations including irrigation, fertilization, tillage, residue management and crop rotation. It also captures the effects of CO<sub>2</sub> concentration and stressors such as water limitation, temperature extremes and soil salinity on crop development. CropSyst has been applied over a range of climatic conditions worldwide, as well as for climate

change studies (e.g., Confalonieri and Bocchi (2005) for rice in Italy; Ferrer et al. (2000) for corn in Spain; Pala et al. (1996) for wheat in Syria; Karimi et al., (2017) and Pannkuk et al., (1998) for wheat in the U.S. Pacific Northwest; and Alva et al. (2010) for potatoes in the U.S. Pacific Northwest). In CropSyst, the daily biomass production is restricted to the minimum of the two following biomass generation routines: i) radiation-based biomass production, and ii) transpiration-based biomass production. After simulation of potential biomass, CropSyst takes water, heat, freezing and nutrient stresses into account to calculate the actual yield. These stresses also modify other crop processes such as transpiration and LAI. Stress sensitivity varies during different phenological periods (e.g., from flowering to maturity). Root occurrence varies in each of the soil layers and depends on the root growth deeper into the soil during biomass development; thus, crop water and nutrient uptake also varies by soil layer. While the start and last date of the growing period is an input to the model, actual crop growth starts after a certain amount of thermal accumulation has been achieved during this user-specified growing period. Crop growth and development is also a function of thermal accumulation, affecting actual harvest date and other growth stages. [Additionally, CropSyst uses empirical relationships \(Stockle et al., 1992\) to simulate the impact of elevated CO<sub>2</sub> concentrations on yield, crop growth, and transpiration.](#)

## 2.2. Model Integration

We coupled the VIC version 4.1.2-e with CropSyst-v4.15, although the coupled model will be updated with new versions of VIC and CropSyst as they become available. In a spatially-explicit manner, VIC-CropSyst is able to capture a large variety of crop groups: 1- cereal grains (e.g., winter and spring wheat, corn, barley, oats, and sorghum), 2- vegetables and melons (e.g., dill, radish, mint, broccoli, cauliflower, cabbage, carrot, onion, cucumber, pumpkins, and watermelon), 3- fruits and nuts (e.g., plum, apricot, cherry, grape, walnut, pear, peaches, apples, blueberry, strawberry, and cranberry), 4- root crops (e.g., potato and sugar beet), 5- leguminous crops (e.g., green and dry bean, lentil, chickpea, and pea), 6- forages (e.g., pasture, alfalfa, hay, grass, clover, and grass), and 7- oil seeds (e.g., soybean, mustard, and sunflower). In the tightly coupled VIC-CropSyst model (Figure 1), all hydrologic processes except for transpiration are handled by VIC, while crop growth, transpiration, phenology, and management are handled by CropSyst. In the following section we explain the structure of the VIC-CropSyst coupling ([Figure 1](#)~~Figure 4~~). Then we discuss some of the changes we have made to each model to support this integration. Finally, we briefly discuss the irrigation module that we have developed and implemented in VIC-CropSyst; full details on the irrigation module can be found in Malek et al. (in review).

[FIGURE 1]

### 2.2.1. Water and Energy Balances in VIC-CropSyst

[Figure 2](#)~~Figure 2~~ shows how VIC-CropSyst handles the water and energy budgets. VIC first simulates the energy balance (explained by Cherkauer et al., (2003) and Liang et al., (1994)). It estimates available energy per time step and uses an

iterative approach to partition the available energy into each of the energy components (e.g., snowmelt and sublimation heat fluxes, ground heat flux, and sensible heat flux). After these terms are calculated, the remaining energy will be available to potential evapotranspiration (ET<sub>p</sub>). Evaporation can happen from at least one of the five following processes (Thompson et al., 1993): 1- directly from irrigation water ( $E_d$ ), 2- from intercepted water by the canopy ( $E_c$ ), 3- from the wetted soil surface during irrigation ( $E_{si}$ ), 4- from the soil surface when irrigation is not occurring ( $E_s$ ), and 5- through transpiration ( $T$ ).

CropSyst is called while VIC is simulating the energy balance, but after ET<sub>p</sub> is portioned into each of its terms. Following this, potential transpiration and availability of soil moisture are passed to CropSyst (Figure 2). Actual transpiration depends on the availability of soil water. When the soil does not have enough water to meet crop demand, actual crop transpiration is less than potential. In the coupled model, CropSyst simulates actual transpiration, soil water extraction from each layer, water stress, and crop growth; it then passes the extracted soil water amount to VIC to calculate the water balance. VIC updates soil moisture and simulates the rest of the hydrologic components such as runoff and baseflow.

[FIGURE 2]

15

### 2.2.2. Significant Changes to Each Model

**Soil Hydrology:** In the integrated VIC-CropSyst model, CropSyst's soil hydrology is turned off, allowing VIC to simulate soil hydrologic processes, including the movement of water in soil, bare soil evaporation, and the generation of runoff and baseflow. We did this to retain consistency in all of the hydrologic processes. Stand-alone VIC and CropSyst use different soil hydrologic assumptions to simulate processes related to soil water movement and the generation of runoff and baseflow; these inconsistencies can lead to an inaccurate simulation of irrigation demand and crop productivity. Because crop processes are sensitive to soil moisture availability, we have modified the VIC soil structure. While VIC previously had the capacity to handle an indefinite number of soil moisture layers, the majority of VIC applications utilize three layers, where runoff and baseflow are generated from the top and bottom layers, respectively, while the middle layer is the root zone where plant water uptake occurs. Because the availability of water where roots are concentrated is central to unstressed crop growth, and because the dynamic simulation of root growth is sensitive to the vertical distribution of soil moisture, VIC's conventional three layering system is too coarse to accurately represent this condition, particularly during droughts and over rain-fed cropland. Therefore, we expanded the middle layer of VIC to 15 layers. Finally, the minimum soil moisture in VIC-CropSyst is set to the wilting point (except in the top evaporative layer where soil evaporation can result in soil moisture levels below wilting point).

30

**Soil File:** The conventional versions of VIC directly read soil properties (e.g., soil hydraulic conductivity, field capacity, wilting point, and bulk density) from input files. For a more consistent way (between VIC and CropSyst) of inputting soil

input information, empirical functions developed by Saxton et al. (1986) were implemented in the model and VIC-CropSyst internally estimates the necessary soil parameters using soil textural characteristics (i.e., sand and clay percentages).

## 5        **2.3. Irrigation Module**

The irrigation module ([Figure 3](#)) is briefly explained below, while a more detailed description can be found in Malek et al (in review). The irrigation module calculates irrigation frequency, amount, and losses.

[FIGURE 3]

10        Currently, VIC-CropSyst simulates four major categories of irrigation systems: surface, center pivot, sprinkler, and drip. Each category includes subcategories. Drip systems include surface and subsurface drip irrigation. In surface drip irrigation, water is applied on the soil surface, while in subsurface drip irrigation, water is applied below the surface and will not lead to any soil evaporative losses. Surface irrigation includes furrow, rill, and border irrigation, and the main difference between these three systems is in their wetted surface area, which is smaller in a furrow system. Center pivots are represented by  
15        eighteen different types of sprinklers that fall into two subcategories: impact and spray sprinklers. Impact sprinklers generally have a greater discharge rate and wetted radius. Sprinkler systems in VIC-CropSyst include seventeen nozzles from three major subcategories: solid set, big gun, and moving wheels. The subcategories differ in terms of discharge, wetted diameter, height, droplet size, and other aspects. The characteristics of these systems have been collected from different scientific papers, reports, and commercial catalogs, including Nelson Co. (2014) and RainBird (2014). This level of detail  
20        offers a more accurate representation of irrigation practices, and it will help users to simulate the adaptation of different irrigation and management scenarios.

### 25        **2.3.1. Irrigation Frequency**

Evaporation, transpiration, and deep percolation cause reductions in root-zone soil water content. When soil moisture deficit reaches one of the following two thresholds, VIC-CropSyst triggers an irrigation event: 1- capacity of the irrigation system, which sets the maximum amount of water that can be applied in an irrigation event, and 2- the Maximum Allowable Depletion (MAD), which determines what degree of soil dryness causes water stress in each crop. To define crop-specific  
30        MADs, we created a table of parameters using FAO-56 (Allen, 1998).

### 2.3.2. Evaporative Losses

In the drip and surface categories, evaporative losses happen only from the soil surface because irrigation happens below the canopy level. Irrigation takes place above the canopy in sprinkler and center pivot systems; therefore, evaporation from canopy-intercepted water ( $E_c$ ) and the direct loss from droplets ( $E_d$ ) are considered as major irrigation losses. VIC-CropSyst neglects evaporative losses from soil ( $E_{si}$ ) for sprinkler and center pivot systems because energy is more readily available for water above the canopy and it suppresses the below-canopy evaporation (Uddin et al., 2013; Yonts et al., 2000). Evaporative losses from drip and surface irrigation systems are based on the following formula,

$$E_{si} = ET_p A_w T_i / 24 \quad (1)$$

10

where  $ET_p$  is potential ET [mm/ $\Delta t$ ];  $A_w$  is the wetted surface fraction during irrigation; and  $T_i$  is the time of irrigation [hr]. While  $A_w$  is assumed to be 1.0, 1.0 and 0.5 for border, basin and farrow irrigation, respectively, we used Malek and Peters (2011)'s equation to estimate the wetted radius of drip irrigation and calculate the wetted percentage.

15 The following formulas are used to calculate  $E_c$  and  $E_d$  from sprinkler and center pivot irrigation systems. *Evaporation from Irrigation Intercepted Water ( $E_c$ ):* To calculate  $E_c$ , VIC-CropSyst uses the original VIC method (Liang et al., 1994). To avoid overestimation of  $E_c$  in agricultural areas, we used the equation developed by Kang et al. (2005) to set the maximum value of  $E_c$ . *Evaporation from Irrigation Droplets ( $E_d$ ):* Users have the option to calculate  $E_d$  using one of two methods of:

20 1- Malek et al. (in review)

$$E_d = ET_p \times \left(\frac{1}{D}\right)^{0.52} \times \left(\frac{V_0 \sin(\theta)}{g} + \frac{\sqrt{V_0^2 \sin^2(\theta) + 2g(Y_0 - Y)}}{g}\right)^{1.57} \quad (2)$$

where  $Y_0$ (m) is height of nozzle;  $Y$  (m) is canopy height;  $V_0$  (m/sec) is initial velocity of the irrigation water which depends on irrigation system pressure ( $H_p$ (m), nuzzle coefficient ( $c_d$ ), and initial angle of sprinkler ( $\theta$ );  $A_p$  is irrigated area;  $D$  (mm) is the droplet diameter; and  $ET_p$  (mm/ $\Delta t$ ) is potential ET.

25

2- Playán et al., (2005):

$$\text{For sprinkler: } E_d = 20.3 + 0.214 U^2 - 0.00229 RH^2 \quad (3)$$

where RH (%) is the relative humidity and  $U$  ( $m s^{-1}$ ) is wind speed.

30 For moving laterals and center pivot:

$$E_d = -2.1 + 1.91 U^2 + 0.231 T \quad (4)$$



where  $T$  ( $^{\circ}\text{C}$ ) is the air temperature.

### 2.3.3. Deep Percolation Loss ( $D_p$ )

5  $D_p$  is defined as irrigated water which penetrates below the root zone. Therefore, after an irrigation event the amount of water that enters the base flow layer and becomes inaccessible for crop roots is considered a deep percolation loss.

### 2.3.4. Runoff Losses ( $R_o$ )

10  $R_o$  depends on soil infiltration rate and irrigation intensity. Whenever irrigation intensity is higher than soil infiltration capacity, runoff is generated as follows,

$$R_o = \frac{I_r}{t_{irr}} - f \quad (5)$$

15 where  $f$  is the infiltration rate ( $\frac{mm}{hr}$ ),  $I_r$  is the amount of irrigation water applied in each event ( $mm$ ), and  $t_{irr}$  is the duration of irrigation ( $hr$ ). Although irrigation intensity is usually a management decision, soil texture and hydraulic conductivity are assumed to be the key considerations in a well-managed irrigation system; therefore, in the beginning of simulation, VIC-CropSyst estimates the irrigation duration ( $I_{du}$ ) using the soil characteristics of each grid cell. The calculated  $I_{du}$  is used to estimate the infiltration opportunity time of surface irrigation, rotation time in center pivot, and overlap and layout of sprinklers in solid-set, wheel move and big-gun irrigation systems. If approximated irrigation intensity exceeds the irrigation 20 infiltration rate ( $f$ ), the extra water generates runoff. VIC-CropSyst uses the equation developed by Philip, (1957) to estimate the infiltration rate,

$$f = \frac{1}{2}ST_i^{-0.5} + K_s \quad (6)$$

25 Where  $T_i$  ( $min$ ) is the elapsed time from the beginning of irrigation,  $K_s$  ( $\frac{mm}{hr}$ ) is the hydraulic conductivity and  $S$  is the sorptivity which is estimated using the Rawls et al., (1992) formula and is calculated based on soil texture and initial water content. Therefore, in VIC-CropSyst,  $R_o$  depends on irrigation system, soil type, initial soil moisture as well as the intensity of water reaching the soil. Details of the runoff calculations are presented by Malek, et al. (in review).

30

## 2.4. Previous versions of VIC-CropSyst

VIC-CropSyst v1.0 was originally developed and used to forecast the impact of climate change on CRB water supply and irrigation water demand (Yorgey, et al., 2011; Rajagopalan, et al., in review). This version was created using VIC (v4.0.7) and CropSyst (v4.15). This version is a lower coupling in terms of hydrology; i.e., both models simulate their own soil moisture with different soil parameters and soil layers. While VIC provides the water and cropping information and available energy for ET, partitioning of energy to different evaporative losses (i.e., evaporation from soil and transpiration) is separately done in each model and irrigation evaporative losses are not considered in VIC's energy balance. The irrigation efficiencies were hard coded in this earlier version. VIC-CropSyst v1.1 was slightly modified and used by Liu et al. (2013). Rajagopalan et al. (in review) also used VIC-CropSyst v1.1 to evaluate the impact of climate change on agricultural productivity in the CRB. This manuscript describes the fully coupled version of the VIC-CropSyst model (version 2). This version is tightly connected in which VIC handles all of the soil hydrologic processes; to do this, some VIC soil processes were altered to be more compatible with CropSyst. Furthermore, the influence of crop transpiration on energy balance is captured in this new version. Finally, this version mechanistically simulates irrigation processes and losses (e.g., irrigation evaporative losses) and is able to apply deficit irrigation.

## 2.5. Data and Study Sites/Areas

VIC-CropSyst's simulated soil moisture, ET, yield and irrigation water demand were compared to observed data obtained from the FLUXNET network (Baldocchi et al., 2001). Simulated LAI was evaluated against Moderate Resolution Imaging Spectroradiometer (MODIS) remote sensing observations (Cohen et al., 2006). We also evaluated regional performance of VIC-CropSyst in simulation of ET over the U.S. Pacific Northwest, including the states of Washington, Idaho and Oregon. Other studies such as Malek et al. (in preparation), Rajagopalan, et al., (in preparation), Barik et al., (2017), Hall et al., (2017), Yorgey et al., (2011) evaluated VIC-CropSyst in its capability to capture regional irrigation demand, naturalized streamflow, observed streamflow, county-level yield, snow water equivalent, and irrigation efficiency.

### 2.5.1. Site Description

The flux tower stations considered in this study are located in two U.S. states of Nebraska (NE) and Illinois (IL) ([Figure 4](#)). Available environmental and agricultural information include latent heat, soil moisture and meteorological data, crop type, LAI, and biomass production. The towers are all in agricultural fields and have relatively long periods of available data. The station in the IL is not irrigated and the site in NE is irrigated with recorded irrigation frequency and amount.

### 2.5.2. Meteorological, Soil, Land Cover, and Topographic Data

Daily meteorological data were acquired from the DAYMET (Thornton et al., 2012) gridded data source. Soil files were taken from Maurer et al. (2002) for associated grid cells. We replaced its sand content with data available at the study site. We also added the clay percentages to Maurer et al. (2002)'s soil file. In our simulation, VIC-CropSyst reads the sand and clay content and uses pedo-transfer functions developed by Saxton et al. (1986) to generate saturated hydraulic conductivity, bulk density, air entry potential, the  $b$  coefficient of Campbell's (1974)'s soil retention curve, field capacity, wilting point, and porosity. [Table 2](#) shows soil texture calculated using the United States Department of Agriculture's soil triangle (Garcia-Gaines and Frankenstein, 2015).

10 [TABLE 2]

[FIGURE 4]

### 2.5.3. Calibration Parameters for Point Scale Evaluation

15 As with other hydrological models, the VIC model needs to be calibrated for optimized performance over a specific region. [Table 3](#) shows VIC's key calibration parameters; more information on calibration parameters and methods can be found in past VIC studies (e.g., Elsner et al., 2010; Liang et al., 1994; and Maurer et al., 2002). We used calibrated parameters determined by Maurer et al. (2002) for each flux tower station (the last two columns of Table 3). We also tested the sensitivity of soil moisture content, crop growth, and irrigation demand and losses to different calibration parameters using the ranges available in Column 3 of [Table 3](#); differences were negligible.

20 [TABLE 3]

### 2.5.4. Parametrization of Growth Stages in CropSyst

25 Thermal accumulation time in CropSyst is used to represent crop phenological development and the rate of biological activity (McMaster and Wilhelm, 1997). Specifically, the sum of growing degree days (GDD) is used to specify the time needed to reach specific phenological periods. We parameterized VIC-CropSyst for each site using published dates of crop growth stages ([Table 4](#)); meteorological information was used to convert calendar days to GDDs. Peak LAI was acquired from the MODIS LAI product (Cohen et al., 2006). Missing phenological information was estimated from the MODIS-derived peak LAIs as follows: -i) flowering is 2-7 days after peak LAI, ii) filling starts 7-14 days after flowering,

and iii) maturity happen 30-45 days into the filling period. [Table 4](#) shows estimated/observed dates of the growing stages.

[TABLE 4]

5

### 2.5.5. Pacific Northwest Climate, Soil and Crop Information

We used the gridded historical climate data developed by Abatzoglou and Brown (2012), including precipitation, minimum and maximum temperature and wind speed (Table 5). The soil input file was developed using the STATSGO dataset (Schwarz and Alexander, 1995); to develop the soil file we used the same parameters as Elsner et al (2010) except we added the clay percentage because, as mentioned earlier, VIC-CropSyst uses Saxton et al (1986)'s Pedotransfer functions and can internally calculate the soil parameters (e.g., hydraulic conductivity, field capacity, and bulk density). The calibration parameters ([Table 3](#)) used for simulation of ET over the Pacific Northwest were taken from Yorgey et al. (2011). Crop distribution information over the region was developed using the Washington State's Department of Agriculture for Washington State and the United State Department of Agriculture (USDA)'s cropping information for outside of the Washington State (Boryan et al., 2011). More information on crop types and crop input parameters (e.g., phenological periods, radiation use efficiency, transpiration use efficiency, maximum LAI, etc.) can be found in Barik et al. (2017), Hall et al. (2017) and Rajagopalan, et al. (in review).

TABLE [5]

20

## 3. Evaluation and Application

### 3.1. Point Scale Evaluation

25

#### 3.1.1. Applied Irrigation Water

[Figure 5](#) compares recorded and simulated irrigation water (mean error=13%). Discrepancies may be due to reduction of crop yield in the field due to stresses that are not captured in the model such as impacts of weed or pests. Also, yields measured in small plots are subject to sampling uncertainty. In addition, simulated irrigation events are likely to include an extra event at the end of the season when irrigation managers stop irrigating earlier due to crop senescence.

30

[FIGURE 5]

### 3.1.2. Evapotranspiration (ET)

Figure 6 depicts the comparisons between monthly simulated and observed ET over irrigated and non-irrigated sites. While the model tends to overestimate ET, particularly during the month with larger ET, simulations are more accurate at the NE irrigated site. Root mean squares errors (RMSEs) for the NE and IL stations were 8.0 and 1.0 (mm/day), respectively. In general, the deviation between observed and simulated ET is higher in the summer months. One explanation for this bias is that we do not consider the feedback of evaporative losses from irrigation droplets ( $E_d$ ) and canopy-intercepted water ( $E_c$ ) to the local microclimate system, while in reality these evaporative losses will lower ambient temperature and decrease vapor pressure deficit (VPD) (Kohl and Wright, 1974; Liu and Kang, 2006), thereby reducing irrigation demand. In the Biosphere-relevant Earth system model (BioEarth) project (Adam et al., 2014) this shortcoming is being addressed through coupling of VIC-CropSyst to atmospheric models. Inaccuracy of the meteorological data or uncertainties related to unrecorded management practices, such as deficit irrigation, can be other sources of error. This deviation can also be explained by a typical 20% systematic error in flux tower ET observations, which tend to underestimate the latent heat fluxes. This energy imbalance issue has been discussed in many studies by the microclimatological community (Frank et al., 2013; Leuning et al., 2012; Mahrt, 1998; and Wilson et al., 2002).

[FIGURE 6]

### 3.1.3. Corn Yield

Figure 7 compares simulated and observed corn yield over the two sites. The mean error of simulated yield for NE (irrigated) and IL (non-irrigated) were 9% and 3%, respectively. Although Figure 7 does not show a systematic overestimation by the model, a combination of inaccurate meteorological data, missing processes (e.g., lack of VPD feedback as discussed in section 3.1.2) and unrecorded conditions such as insufficient irrigation water or heat stress may contribute to these discrepancies. The fact that the error is smaller over the non-irrigated site can be explained by the fact that irrigation management did not have to be simulated, thereby reducing the opportunity for introducing model error.

[FIGURE 7]

### 3.1.4. Soil Moisture

Figure 8 compares simulated and observed soil moisture over the two sites. Because the soil moisture sensors were placed at 10 and 25 cm depths at the NE site and at 2.5 and 10 cm depths at the IL site, we aggregated the first three VIC soil moisture layers (for a total thickness of 30 cm) for comparison against observations at the NE site. We compared just the first VIC soil moisture layer (10 cm depth) against observed at the IL site. The mean errors were 18% and 16% for the NE and IL sites, respectively. As with crop yield, soil moisture simulations are better for the non-irrigated site, particularly in terms of variability. The discrepancies may relate to the use of Pedotransfer functions that convert soil textural characteristics to soil hydraulic properties (e.g., field capacity, permanent wilting point, and hydraulic conductivity) for use in VIC-CropSyst (Pachepsky and Rawls, 1999; Tietje and Hennings, 1996). Also, scale discrepancies between the sensors' point-scale observation and the grid-scale simulation (Crow et al., 2012; Robinson et al., 2008) and inaccuracy of meteorological and soil data can be other sources of error. Additionally, imperfections in model processes such as soil water movement, ET, and irrigation loss calculation can contribute to the error.

[FIGURE 8]

15

### 3.1.5. Leaf Area Index (LAI)

Figure 9 shows that VIC-CropSyst is able to capture the magnitude and seasonality of observed LAI, with a slight underestimation of peak LAI. The information we used for calibration of phenological periods ([Figure 9](#)~~Figure 9~~) are not specifically collected for the two study sites, but instead were based on state-scale studies and reports; this is a potential source of error in the simulation of LAI. Because of limited information at flux tower sites, we did not consider all of the crop-related parameters (e.g., radiation use efficiency, maximum crop coefficient, and maximum crop coverage) during calibration, which can also lead to some discrepancies (e.g., Jalota et al., 2010 and Klein et al., 2012).

[FIGURE 9]

25

## 3.2. Regional Evaluation of Evapotranspiration (ET)

We used VIC-CropSyst to simulate ET over the CRB portions of three states: Washington, Idaho and Oregon ([Figure 10](#)~~Figure 10~~). Simulated ET was aggregated from the original model resolution of 1/16<sup>th</sup> to 0.5 ° for comparison against the upscaled ET product derived from the FLUXNET eddy tower network (Baldocchi et al., 2001). Liu et al (2013) described the details of the creation of the empirically-derived or “observed” ET map. They also compared the observed ET with an offline (from CropSyst) version of VIC-simulated ET and reported a systematic underestimation of simulated ET over warm

irrigated areas. Our ET results show that VIC-CropSyst's simulated ET in general produces a lower error as compared to VIC-offline, especially over irrigated areas; error over irrigated landscapes was reduced from about 28% to 17%, a 40% reduction. However, it is important to note that another source of the discrepancy is due to inaccuracy of the observed ET product because it was developed using a limited number of flux tower stations as well as empirical formulas that also have inherent errors (see Liu et al. 2013 for details).

[FIGURE 10]

### 3.3 Regional Evaluation of crop yields and irrigation demands.

Rajagopalan et al. (in review) performed an evaluation of county level aggregated irrigated crop yields against NASS crop yield statistics, and comparison of average modelled irrigation demands from the Columbia Basin Project area to irrigation diversions. The mean annual yields between observed and simulated values are in agreement with relative errors less than +/- 5%. On average, the model simulated annual irrigation demands were about 20% less than diversions. Part of this difference can be explained by the fact that diversions account for conveyance and seepage losses in the distribution system.

## 4. Discussion

### 4.1. Examples of VIC-CropSyst Application

#### 4.1.1. Simulation of Agricultural Adaptation in Response to Climate Change

Farmers adapt their agricultural management to minimize unfavourable impacts of stressors such as climate change (Kurukulasuriya and Rosenthal., 2003). Possible agricultural adaptation strategies have been discussed (e.g., Anwar et al., 2013; Howden et al., 2007; Kurukulasuriya and Rosenthal., 2003; Smit and Skinner., 2002; and Smith et al., 2000). However, lack of appropriate simulation tools to assess the effectiveness of an adaptation decision while capturing complex regional impacts is a significant shortcoming. VIC-CropSyst simulates common adaptation strategies used by farmers, and captures the consequences of these adaptation strategies on local and regional hydrology and land-atmosphere interactions. Table 6 shows a list of adaptation decisions that can be handled by VIC-CropSyst. These decisions range from short-term tactical (T) to long-term strategic (L) decisions.

[TABLE 6]

## 4.1.2. Foundation for Integration within Other Modeling Platforms

VIC-CropSyst can be used with other modeling frameworks such as river routing, water management, atmospheric, and socio-economic models. Many of these integrations simulate the human-land-climate nexus and provide scientists, stakeholders and policy makers with a broader understanding of the interactions of and feedbacks between human decisions and the Earth system. VIC-CropSyst has been already used and implemented in various projects; examples are as follows.

### 4.1.2.1. Water Resources Management and Socio-Economic Studies

VIC-CropSyst has been used in conjunction with reservoir operation models in the CRB. For example, Rajagopalan et al. (2017a in review; 2017b in prep.) utilize such a platform to assess the impacts of climate change on agricultural production; this includes both the direct impacts of climate change (precipitation, temperature, and CO<sub>2</sub>) and the indirect impacts through changes in the availability of surface water used for irrigation. In assessing the indirect effects through changes in water availability, the authors have incorporated water rights curtailment into the integrated platform (Rajagopalan et al. 2017b, in prep.). The current version of VIC-CropSyst (v2, as described herein) was also used in the most recent CRB water supply and demand long-term for the 2030s (Barik et al., 2017; Hall et al., 2017). These water supply and demand studies were submitted to the Washington State Legislature in the years of 2011 (Yorgey et al. 2011) and 2016 (Hall et al. 2016) and provide detailed information for each watershed in eastern Washington in addition to the entire CRB as a whole. This information is being used by the Legislature for long-term water supply planning.

VIC-CropSyst has been used to investigate different scenarios for renegotiation of the Columbia River Treaty (Rushi et al., 2016). Existing modeling efforts to date have focused primarily on the impact that treaty renegotiation would have on flood risk, hydropower generation, and environmental flows (Cosens, 2010; Hamlet and Lettenmaier, 1999a); assessment of the impact of CRT changes on irrigated agriculture along the Columbia Mainstem is a knowledge gap. Therefore, Rushi et al. (2016) applied VIC-CropSyst linked to ColSim (Hamlet and Lettenmaier, 1999) to simulate the complex impacts of climate change and the Columbia River Treaty on hydrology and agriculture in the river basin and concluded that climate change i) shifts water supply towards earlier in the season, ii) reduces flood risk in the upper CRB while increases frequency and magnitude of floods in the middle and lower parts of the basin, iii) shifts water demand towards earlier in the season in some locations with mixed effects on water rights curtailment risk, and iv) reduces hydropower generation. The authors found that the considered CRT scenarios can improve power generation and agricultural water demand while preventing floods in an altered climate.

VIC-CropSyst is an effective tool for studying the large-scale aggregated impacts of local management decisions and phenomena. For example, VIC-CropSyst was applied by Malek et al. (in review) who found that climate change-induced increases in evaporative (consumptive) losses from irrigation systems and decreases in non-evaporative irrigation losses (i.e., runoff and deep percolation) would lead to a decrease in reusable return flow, which would negatively affect basin-wide water availability and productivity.



VIC-CropSyst has also been used over the Yakima River basin (YRB) to evaluate the impacts of climate change on decisions related to investment in irrigation technology (Malek et al., in prep.). Economic damages of future more frequent droughts (Vano et al., 2010) are considered the main incentive to invest in more efficient irrigation technology (Berger and Troost, 2014). To analyze future changes in regional irrigation patterns, Malek et al. (in prep.) used VIC-CropSyst in conjunction with an economic model and the RiverWare model (Zagona et al., 2001). Figure 11 shows a result of this integration to simulate historical (1981-2006) drought frequency and severity, and the percentage of the YRB's perennial crop growers who are simulated to switch to more efficient irrigation systems to minimize the negative consequences of droughts during the two decades of 1990-2000 and 2050-2060. Also, any changes in agricultural activities (e.g., switching to a new irrigation system) directly impacts the hydrology of agricultural fields, thus changing return flow timing and magnitude and the availability of water for downstream users; these downstream consequences can also be simulated by this modeling platform. This is an example of how the human-land-climate nexus can be captured through a modeling framework that simulates large-scale hydrologic processes and regional water availability in a highly cultivated basin, while capturing the dynamics of farm-level irrigation decisions.

15

[FIGURE 11]

#### 4.1.2.2. Land-Atmosphere Interactions

Irrigation and other agricultural decisions modify local to regional climate through changes in land surface conditions such as temperature, water vapor content and albedo (Fernández et al., 2001 ~~and~~; Liu and Kang, 2006). This phenomena can be used to compensate the negative impacts of heat stress (Lobell et al., 2008), which will be especially important in the future if there are more severe and frequent extreme events related to climate change (Long and Ort, 2010). These management decisions will also impact the regional water cycle, potentially leading to disruption in water availability (Adamson and Loch, 2014) and modifying fluxes of water to the atmosphere (Pielke Sr. et al., 2007). As a part of the BioEarth platform (Adam et al., 2014), VIC-CropSyst is being coupled to an atmospheric model, the Weather Research and Forecast model (WRF; Michalakes et al., 2005; Skamarock et al., 2008) that can be used to quantify the impacts of irrigation and other agricultural management on atmospheric processes, as well as to assess how irrigation management can be used to mitigate heat stress.

30

#### [4.2. Simulation of Deficit Irrigation Scenarios](#)

[Although the results presented in this article do not include results related to deficit irrigation during times of water shortage, VIC-CropSyst is able to simulate the impacts of deficit irrigation on hydrologic and cropping systems. VIC-CropSyst's](#)

deficit irrigation module requires two main inputs: a) a first approximation to the irrigation water demand obtained by generating time series of irrigation in a zero water stress condition using VIC-CropSyst, and b) deficit fractions that indicate the actual water availability as a function of the crop water requirement. VIC-CropSyst then reads the amount of recorded irrigation from step one and applies the deficit fraction to simulate the agricultural and hydrologic processes under realistic water deficit conditions. The deficit fraction can be either homogeneously applied across the entire basin or separately specified for each farmer depending on water rights or other considerations. Also, VIC-CropSyst can apply the deficit fraction during different times of the year. For example, if the water deficit happens later in the season, VIC-CropSyst can adjust irrigation amounts according to the timing of water shortage.

VIC-CropSyst has also been used in conjunction with reservoir models (e.g., ColSim: Hamlet and Lettenmaier, 1999, and YAK-RW: Zagona et al., 2001) to calculate the deficit irrigation fraction (e.g., Barik et al., 2017; Malek, et al., in prep; and Rajagopalan et al., in preparation). In general, the following six steps can be used to calculate and apply a deficit fraction: 1) VIC-CropSyst simulates the hydrologic states such as runoff and base flow as well as the irrigation water demand, 2) a routing model (Lohmann et al., 1998) is used to simulate streamflow, 3) simulated flow is bias-corrected against observed flow, 4) a river system model is used to include operation of dams and reservoir and estimate water availability, 5) the availability of water is compared with water demand, and 6) a deficit fraction is calculated and VIC-CropSyst is run to simulate the impacts of irrigation deficit on the hydrologic cycle and on crop yields.

#### **4.3. Model Selection Considerations**

Which model to apply for a specific research question at hand is dependent on a variety of factors, including geographical considerations but also the level of sophistication needed to address the question. For example, areas with significant irrigation activities can be more precisely simulated with mechanistic irrigation models or areas with cold climate would necessitate models with more sophisticated cold season processes. Also, regional agricultural economic studies require a reliable simulation of crop yield for economically-significant crops grown in the region. Therefore, models that simulate generic C3/C4 crops are not the best option for this type of question. VIC-CropSyst and LPJML are two examples of models that can be used to answer this type of question. Moreover, some of the models have been already tested and used for a particular region and resolution, which naturally makes them more reliable for that specific situation.

## **5. Conclusions**

Meeting future food demand will require an extensive understanding of the interactions between agricultural and other systems, such as water resources planning and management, socioeconomic, and atmospheric processes. The main purpose of this study was to develop the VIC-CropSyst platform that provides tightly-integrated and mechanistic representation of both cropping systems and water/energy cycles at regional to global scales. Tight integration between VIC and CropSyst

necessitated modification of both models, including how the models handle soil movement and vertical distribution, transpiration, LAI, and irrigation. Evaluation of VIC-CropSyst over two flux tower sites shows that the coupled model captures key agronomic and hydrologic states and fluxes at the field scale. Furthermore, implementation of VIC-CropSyst over the U.S. Pacific Northwest region reduced ET simulation error by 40% over irrigated landscapes.

5

The VIC-CropSyst platform enables the land surface modeling community to investigate a variety of agricultural management decisions, including crop choice, planted acreage, planting and harvesting date, and multiple irrigation management options. In particular, the new mechanistic irrigation model, which is tightly coupled with both the energy and water cycles, can be used to address questions related to the interaction of climate, hydrology, river basin water management, and irrigation management strategies.

10

VIC-CropSyst can be integrated with different modeling platforms to capture the dynamics of the human-land-climate nexus. This can potentially improve the understanding of environmental processes in highly-cultivated basins and can be used to investigate best management practices to promote future sustainability of agricultural production while preserving water resources and minimizing the negative intended and unintended consequences of human actions. Some examples of these implementations are as follows:

15

*Coupling with water resource management and socioeconomic models:* This involves simulating regional water availability and agricultural productivity, adaptive responses of farmers to climate change, and unintended consequences of these adaptation decisions.

20

*Coupling with weather and climate models:* VIC-CropSyst will also provide capabilities to investigate the dynamics of agricultural management decisions on local to regional weather and climate patterns through modifications of energy and water fluxes (Barnston and Schickedanz, 1984; Douglas et al., 2009; [and](#) Kohl and Wright, 1974). This promotes the understanding of, for example, how irrigation management and technology can control negative impacts of heat and water stresses on crop yield.

25

VIC-CropSyst is being used in earth system models (EaSMs) such as BioEarth (Adam et al., 2014) and can be implemented in other EaSMs such as the Platform for Regional Integrated Modeling and Analysis (PRIMA; Kraucunas et al., 2014). Implementation of VIC-CropSyst in EaSMs facilitates a powerful representation of large-scale interactions between different biophysical and socioeconomic components over areas with significant agricultural activities. This is a transformational step in the understanding of the food-energy-water nexus which can lead to efficient and more sustainable management decisions that co-balance and benefit all three sectors.

30

## Code and/or data availability

The VIC-CropSyst is a freeware open source community model; source codes, user manual and test cases will be distributed through contact to Keyvan Malek ([keyvan.malek@wsu.edu](mailto:keyvan.malek@wsu.edu)), Jennifer Adam ([jcadam@wsu.edu](mailto:jcadam@wsu.edu)) and Mingliang Liu ([mingliang.liu@wsu.edu](mailto:mingliang.liu@wsu.edu)).

## 5 Acknowledgments

We would like to express our gratitude to two anonymous reviewers for their comments that improved this manuscript. This research was funded by Washington State Department of Ecology's Office of Columbia River Basin and the [United States](#) Department of Agriculture's National Institute of Food and Agriculture Grant Number 2011-67003-30346 (Biosphere Relevant Earth System Model; BioEarth). This research is also financially supported by Washington State University's Graduate School.

## References

- Abatzoglou, J.T., Brown, T.J., 2012. A comparison of statistical downscaling methods suited for wildfire applications. *Int. J. Climatol.* 32, 772–780. doi:10.1002/joc.2312
- 15 Adam, J.C., Haddeland, I., Su, F., Lettenmaier, D.P., 2007. Simulation of reservoir influences on annual and seasonal streamflow changes for the Lena, Yenisei, and Ob' rivers. *J. Geophys. Res. Atmospheres* 112, n/a–n/a. doi:10.1029/2007JD008525
- Adam, J.C., Hamlet, A.F., Lettenmaier, D.P., 2009. Implications of global climate change for snowmelt hydrology in the twenty-first century. *Hydrol. Process.* 23, 962–972. doi:10.1002/hyp.7201
- 20 Adam, J.C., J.C. Stephens, M.P. Brady, S.H. Chung, R.D. Evans, C.E. Krugere, B.K. Lamb, M.L. Liu, C.O. Stöckle, J.K. Vaughan, K. Rajagopalan, J.A. Harrison, C.L. Tague, A. Kalyanaramani, Y. Chenj, A. Guentherk, F.Y. Leung, L.R. Leung, A.B. Perleberg, J. Yoder, E. Allen, S. Anderson, B. Chandrasekharan, K. Malek, T. Mullis, C. Miller, T. Nergui, J. Poinatte, J. Reyes, K.J. Chinnayakanahalli, M. J. Choate, X. Jiang, R. Nelson, J.H. Yoon, G.G. Yorgey, J. Zhu, A.F. Hamlet, B.
- 25 Nijssen, 2013. BioEarth: A Regional Biosphere-Relevant Earth System Model for Understanding the Consequences of Agricultural and Natural Resource Management Decisions. *Clim. Change*.
- Adam, J.C., Stephens, J.C., Chung, S.H., Brady, M.P., Evans, R.D., Kruger, C.E., Lamb, B.K., Liu, M., Stöckle, C.O., Vaughan, J.K., Rajagopalan, K., Harrison, J.A., Tague, C.L., Kalyanaraman, A., Chen, Y., Guenther, A., Leung, F.-Y., Leung, L.R., Perleberg, A.B., Yoder, J., Allen, E., Anderson, S.,
- 30 Chandrasekharan, B., Malek, K., Mullis, T., Miller, C., Nergui, T., Poinatte, J., Reyes, J., Zhu, J., Choate, J.S., Jiang, X., Nelson, R., Yoon, J.-H., Yorgey, G.G., Johnson, K., Chinnayakanahalli, K.J., Hamlet, A.F., Nijssen, B., Walden, V., 2014. BioEarth: Envisioning and developing a new regional earth system model to inform natural and agricultural resource management. *Clim. Change* 129, 555–571. doi:10.1007/s10584-014-1115-2
- 35 Adamson, D., Loch, A., 2014. Possible negative feedbacks from 'gold-plating' irrigation infrastructure. *Agric. Water Manag.*, Exploring some of the socio-economic realities of sustainable water management in irrigation 145, 134–144. doi:10.1016/j.agwat.2013.09.022
- Ainsworth, E.A., Rogers, A., 2007. The response of photosynthesis and stomatal conductance to rising [CO<sub>2</sub>]: mechanisms and environmental interactions. *Plant Cell Environ.* 30, 258–270. doi:10.1111/j.1365-3040.2007.01641.x
- 40

- Allen, E., Forney, W., Harrison, J., Kruger, C., Saari, B., Stephens, J., Yorgey, G., 2015. BioEarth Water Quality Stakeholder Advisory Workshop Synthesis Report. Washington State University. Groups not represented at the stakeholder workshop, but recommended for future inclusion by attending stakeholders: USDA Natural Resources Conservation Service and Agricultural Research Service, tribal governments.
- 5 Allen, R.G., 1998. Crop evapotranspiration—Guidelines for computing crop water requirements FAO Irrigation and drainage paper 56.
- Alva, A.K., Marcos, J., Stockle, C., Reddy, V.R., Timlin, D., 2010. A Crop Simulation Model for Predicting Yield and Fate of Nitrogen in Irrigated Potato Rotation Cropping System. *J. Crop Improv.* 24, 142–152. doi:10.1080/15427520903581239
- 10 Anwar, M.R., Liu, D.L., Macadam, I., Kelly, G., 2013. Adapting agriculture to climate change: a review. *Theor. Appl. Climatol.* 113, 225–245. doi:10.1007/s00704-012-0780-1
- Baldocchi, D., Falge, E., Gu, L., Olson, R., others, 2001. FLUXNET: A new tool to study the temporal and spatial variability of ecosystem-scale carbon dioxide, water vapor, and energy flux densities. *Bull. Am. Meteorol. Soc.* 82, 2415.
- 15 Barnett, T.P., Adam, J.C., Lettenmaier, D.P., 2005. Potential impacts of a warming climate on water availability in snow-dominated regions. *Nature* 438, 303–309. doi:10.1038/nature04141
- Barnston, A.G., Schickedanz, P.T., 1984. The Effect of Irrigation on Warm Season Precipitation in the Southern Great Plains. *J. Clim. Appl. Meteorol.* 23, 865–888. doi:10.1175/1520-0450(1984)023<0865:TEOIOW>2.0.CO;2
- 20 Biemans, H., Haddeland, I., Kabat, P., Ludwig, F., Hutjes, R.W.A., Heinke, J., von Bloh, W., Gerten, D., 2011. Impact of reservoirs on river discharge and irrigation water supply during the 20th century. *Water Resour. Res.* 47, W03509. doi:10.1029/2009WR008929
- Boryan, C., Yang, Z., Mueller, R., Craig, M., 2011. Monitoring US agriculture: the US Department of Agriculture, National Agricultural Statistics Service, Cropland Data Layer Program. *Geocarto Int.* 26, 341–358. doi:10.1080/10106049.2011.562309
- 25 Chang, K.-H., Warland, J.S., Bartlett, P.A., Arain, A.M., Yuan, F., 2014. A Simple Crop Phenology Algorithm in the Land Surface Model CN-CLASS. *Agron. J.* 106, 297. doi:10.2134/agronj2013.0164
- Cherkauer, K.A., Bowling, L.C., Lettenmaier, D.P., 2003. Variable infiltration capacity cold land process model updates. *Glob. Planet. Change* 38, 151–159. doi:10.1016/S0921-8181(03)00025-0
- 30 Cohen, W.B., Maieresperger, T.K., Turner, D.P., Ritts, W.D., Pflugmacher, D., Kennedy, R.E., Kirschbaum, A., Running, S.W., Costa, M., Gower, S.T., 2006. MODIS land cover and LAI collection 4 product quality across nine sites in the western hemisphere. *IEEE Trans. Geosci. Remote Sens.* 44, 1843–1857. doi:10.1109/TGRS.2006.876026
- Confalonieri, R., Bocchi, S., 2005. Evaluation of CropSyst for simulating the yield of flooded rice in northern Italy. *Eur. J. Agron.* 23, 315–326. doi:10.1016/j.eja.2004.12.002
- 35 Crow, W.T., Berg, A.A., Cosh, M.H., Loew, A., Mohanty, B.P., Panciera, R., de Rosnay, P., Ryu, D., Walker, J.P., 2012. Upscaling sparse ground-based soil moisture observations for the validation of coarse-resolution satellite soil moisture products. *Rev. Geophys.* 50, RG2002. doi:10.1029/2011RG000372
- Douglas, E.M., Beltrán-Przekurat, A., Niyogi, D., Pielke Sr., R.A., Vörösmarty, C.J., 2009. The impact of agricultural intensification and irrigation on land–atmosphere interactions and Indian monsoon precipitation — A mesoscale modeling perspective. *Glob. Planet. Change, Changes in land use and water use and their consequences on climate, including biogeochemical cycles* 67, 117–128. doi:10.1016/j.gloplacha.2008.12.007
- 40 Drewniak, B., Song, J., Prell, J., Kotamarthi, V.R., Jacob, R., 2013. Modeling agriculture in the Community Land Model. *Geosci. Model Dev.* 6, 495–515. doi:10.5194/gmd-6-495-2013
- 45

- Dukes, J.S., Mooney, H.A., 1999. Does global change increase the success of biological invaders? *Trends Ecol. Evol.* 14, 135–139. doi:10.1016/S0169-5347(98)01554-7
- Elliott, J., Deryng, D., Müller, C., Frieler, K., Konzmann, M., Gerten, D., Glotter, M., Flörke, M., Wada, Y., Best, N., Eisner, S., Fekete, B.M., Folberth, C., Foster, I., Gosling, S.N., Haddeland, I., Khabarov, N., Ludwig, F., Masaki, Y., Olin, S., Rosenzweig, C., Ruane, A.C., Satoh, Y., Schmid, E., Stacke, T., Tang, Q., Wisser, D., 2014. Constraints and potentials of future irrigation water availability on agricultural production under climate change. *Proc. Natl. Acad. Sci.* 111, 3239–3244. doi:10.1073/pnas.1222474110
- Elsner, M.M., Cuo, L., Voisin, N., Deems, J.S., Hamlet, A.F., Vano, J.A., Mickelson, K.E.B., Lee, S.-Y., Lettenmaier, D.P., 2010. Implications of 21st century climate change for the hydrology of Washington State. *Clim. Change* 102, 225–260. doi:10.1007/s10584-010-9855-0
- FAO, I., 2013. WFP (2013) The state of food insecurity in the world 2013. *Mult. Dimens. Food Secur.*
- Ferguson, I.M., Maxwell, R.M., 2011. Hydrologic and land–energy feedbacks of agricultural water management practices. *Environ. Res. Lett.* 6, 014006. doi:10.1088/1748-9326/6/1/014006
- Fernández, J.E., Palomo, M.J., Díaz-Espejo, A., Clothier, B.E., Green, S.R., Girón, I.F., Moreno, F., 2001. Heat-pulse measurements of sap flow in olives for automating irrigation: tests, root flow and diagnostics of water stress. *Agric. Water Manag.* 51, 99–123. doi:10.1016/S0378-3774(01)00119-6
- Ferrer, F., Villar, J.M., Stockle, C.O., 2000. Evaluation of CropSyst, a cropping systems simulation model, for irrigated corn in the Ebro Valley. *Investig. Agrar. Prod. Protección Veg.* 15, 237–251.
- Franchini, M., Pacciani, M., 1991. Comparative analysis of several conceptual rainfall-runoff models. *J. Hydrol.* 122, 161–219. doi:10.1016/0022-1694(91)90178-K
- Frank, J.M., Massman, W.J., Ewers, B.E., 2013. Underestimates of sensible heat flux due to vertical velocity measurement errors in non-orthogonal sonic anemometers. *Agric. For. Meteorol.* 171–172, 72–81. doi:10.1016/j.agrformet.2012.11.005
- Garc a-Gaines, R.A., Frankenstein, S., 2015. USCS and the USDA Soil Classification System: Development of a Mapping Scheme. DTIC Document.
- Godfray, H.C.J., Beddington, J.R., Crute, I.R., Haddad, L., Lawrence, D., Muir, J.F., Pretty, J., Robinson, S., Thomas, S.M., Toulmin, C., 2010. Food Security: The Challenge of Feeding 9 Billion People. *Science* 327, 812–818. doi:10.1126/science.1185383
- Gordon, L.J., Peterson, G.D., Bennett, E.M., 2008. Agricultural modifications of hydrological flows create ecological surprises. *Trends Ecol. Evol.* 23, 211–219. doi:10.1016/j.tree.2007.11.011
- Haddeland, I., Heinke, J., Biemans, H., Eisner, S., Flörke, M., Hanasaki, N., Konzmann, M., Ludwig, F., Masaki, Y., Schewe, J., Stacke, T., Tessler, Z.D., Wada, Y., Wisser, D., 2014. Global water resources affected by human interventions and climate change. *Proc. Natl. Acad. Sci.* 111, 3251–3256. doi:10.1073/pnas.1222475110
- Haddeland, I., Lettenmaier, D.P., Skaugen, T., 2006. Effects of irrigation on the water and energy balances of the Colorado and Mekong river basins. *J. Hydrol.* 324, 210–223. doi:10.1016/j.jhydrol.2005.09.028
- Hamlet, A.F., Lettenmaier, D.P., 1999. Effects of Climate Change on Hydrology and Water Resources in the Columbia River Basin. *JAWRA J. Am. Water Resour. Assoc.* 35, 1597–1623. doi:10.1111/j.1752-1688.1999.tb04240.x
- Hansen, J., Challinor, A., Ines, A., Wheeler, T., Moron, V., 2006. Translating climate forecasts into agricultural terms: advances and challenges. *Clim. Res.* 33, 27–41. doi:10.3354/cr033027
- Harding, K.J., Twine, T.E., Lu, Y., 2015. Effects of Dynamic Crop Growth on the Simulated Precipitation Response to Irrigation. *Earth Interact.* 19, 1–31. doi:10.1175/EI-D-15-0030.1
- Howden, S.M., Soussana, J.-F., Tubiello, F.N., Chhetri, N., Dunlop, M., Meinke, H., 2007. Adapting agriculture to climate change. *Proc. Natl. Acad. Sci.* 104, 19691–19696. doi:10.1073/pnas.0701890104

- Hubble, J.D., 2012. Yakima River Basin Integrated Water Resource Management Plan: Final Programmatic Environmental Impact Statement. Fish Benefits Anal. Tech. Memo. US Bur. Reclam.
- Jägermeyr, J., Gerten, D., Heinke, J., Schaphoff, S., Kumm, M., Lucht, W., 2015. Water savings potentials of irrigation systems: global simulation of processes and linkages. *Hydrol Earth Syst Sci* 19, 3073–3091. doi:10.5194/hess-19-3073-2015
- 5 Jalota, S.K., Singh, S., Chahal, G.B.S., Ray, S.S., Panigrahy, S., Bhupinder-Singh, Singh, K.B., 2010. Soil texture, climate and management effects on plant growth, grain yield and water use by rainfed maize–wheat cropping system: Field and simulation study. *Agric. Water Manag.* 97, 83–90. doi:10.1016/j.agwat.2009.08.012
- 10 Jones, J.W., Hoogenboom, G., Porter, C.H., Boote, K.J., Batchelor, W.D., Hunt, L.A., Wilkens, P.W., Singh, U., Gijssman, A.J., Ritchie, J.T., 2003. The DSSAT cropping system model. *Eur. J. Agron., Modelling Cropping Systems: Science, Software and Applications* 18, 235–265. doi:10.1016/S1161-0301(02)00107-7
- Kang, Y., Wang, Q.-G., Liu, H.-J., 2005. Winter wheat canopy interception and its influence factors under sprinkler irrigation. *Agric. Water Manag.* 74, 189–199. doi:10.1016/j.agwat.2004.11.004
- 15 Karimi, T., Stockle, C.O., Higgins, S.S., Nelson, R.L., 2017. Projected Dryland Cropping System Shifts in the Pacific Northwest in Response to Climate Change. *Front. Ecol. Evol.* 5. doi:10.3389/fevo.2017.00020
- Klein, T., Calanca, P., Holzkämper, A., Lehmann, N., Roesch, A., Fuhrer, J., 2012. Using farm accountancy data to calibrate a crop model for climate impact studies. *Agric. Syst.* 111, 23–33. doi:10.1016/j.agsy.2012.05.001
- 20 Kohl, R.A., Wright, J.L., 1974. Air Temperature and Vapor Pressure Changes Caused by Sprinkler Irrigation1. *Agron. J.* 66, 85. doi:10.2134/agronj1974.00021962006600010024x
- Kraucunas, I., Clarke, L., Dirks, J., Hathaway, J., Hejazi, M., Hibbard, K., Huang, M., Jin, C., Kintner-Meyer, M., Dam, K.K. van, Leung, R., Li, H.-Y., Moss, R., Peterson, M., Rice, J., Scott, M., Thomson, A., Voisin, N., West, T., 2014. Investigating the nexus of climate, energy, water, and land at decision-relevant scales: the Platform for Regional Integrated Modeling and Analysis (PRIMA). *Clim. Change* 129, 573–588. doi:10.1007/s10584-014-1064-9
- 25 Kurukulasuriya, P., Rosenthal, S., 2003. Climate change and agriculture: a review of impacts and adaptations. Leakey, A.D.B., Ainsworth, E.A., Bernacchi, C.J., Rogers, A., Long, S.P., Ort, D.R., 2009. Elevated CO<sub>2</sub> effects on plant carbon, nitrogen, and water relations: six important lessons from FACE. *J. Exp. Bot.* 60, 2859–2876. doi:10.1093/jxb/erp096
- 30 Leng, G., Huang, M., Tang, Q., Sacks, W.J., Lei, H., Leung, L.R., 2013. Modeling the effects of irrigation on land surface fluxes and states over the conterminous United States: Sensitivity to input data and model parameters. *J. Geophys. Res. Atmospheres* 118, 9789–9803. doi:10.1002/jgrd.50792
- 35 Leuning, R., van Gorsel, E., Massman, W.J., Isaac, P.R., 2012. Reflections on the surface energy imbalance problem. *Agric. For. Meteorol.* 156, 65–74. doi:10.1016/j.agrformet.2011.12.002
- Liang, X., Lettenmaier, D.P., Wood, E.F., 1996. One-dimensional statistical dynamic representation of subgrid spatial variability of precipitation in the two-layer variable infiltration capacity model. *J. Geophys. Res. Atmospheres* 101, 21403–21422. doi:10.1029/96JD01448
- 40 Liang, X., Lettenmaier, D.P., Wood, E.F., Burges, S.J., 1994. A simple hydrologically based model of land surface water and energy fluxes for general circulation models. *J. Geophys. Res. Atmospheres* 99, 14415–14428. doi:10.1029/94JD00483
- Liu, H.-J., Kang, Y., 2006. Effect of sprinkler irrigation on microclimate in the winter wheat field in the North China Plain. *Agric. Water Manag.* 84, 3–19. doi:10.1016/j.agwat.2006.01.015
- 45 Liu, M., Adam, J.C., Hamlet, A.F., 2013. Spatial-temporal variations of evapotranspiration and runoff/precipitation ratios responding to the changing climate in the Pacific Northwest during 1921-2006:

TRENDS IN ET AND R/P ACROSS THE PNW. *J. Geophys. Res. Atmospheres* 118, 380–394.  
doi:10.1029/2012JD018400

- Lobell, D., Bala, G., Mirin, A., Phillips, T., Maxwell, R., Rotman, D., 2009. Regional Differences in the Influence of Irrigation on Climate. *J. Clim.* 22, 2248–2255. doi:10.1175/2008JCLI2703.1
- 5 Lobell, D.B., Bonfils, C.J., Kueppers, L.M., Snyder, M.A., 2008. Irrigation cooling effect on temperature and heat index extremes. *Geophys. Res. Lett.* 35, n/a–n/a. doi:10.1029/2008GL034145
- Long, S.P., Marshall-Colon, A., Zhu, X.-G., 2015. Meeting the Global Food Demand of the Future by Engineering Crop Photosynthesis and Yield Potential. *Cell* 161, 56–66. doi:10.1016/j.cell.2015.03.019
- Long, S.P., Ort, D.R., 2010. More than taking the heat: crops and global change. *Curr. Opin. Plant Biol.* 13, 240–247. doi:10.1016/j.pbi.2010.04.008
- 10 Lu, Y., Jin, J., Kueppers, L.M., 2015. Crop growth and irrigation interact to influence surface fluxes in a regional climate-cropland model (WRF3.3-CLM4crop). *Clim. Dyn.* 45, 3347–3363. doi:10.1007/s00382-015-2543-z
- Mahrt, L., 1998. Flux Sampling Errors for Aircraft and Towers. *J. Atmospheric Ocean. Technol.* 15, 416–429. doi:10.1175/1520-0426(1998)015<0416:FSEFAA>2.0.CO;2
- 15 Malek, K., Adam, J. C., Stockle, C. O., Brady, M., Rajagopalan, K., 2016. When should irrigators invest in more water-efficient technologies as an adaptation to climate change?
- Malek, K., Peters, R., 2011. Wetting Pattern Models for Drip Irrigation: New Empirical Model. *J. Irrig. Drain. Eng.* 137, 530–536. doi:10.1061/(ASCE)IR.1943-4774.0000320
- 20 Malek, K., Stockle, C., Adam, J., Peters, T., 2016. Climate change reduces water availability for agriculture by decreasing non-evaporative irrigation losses.
- Maurer, E.P., O'Donnell, G.M., Lettenmaier, D.P., Roads, J.O., 2001. Evaluation of the land surface water budget in NCEP/NCAR and NCEP/DOE reanalyses using an off-line hydrologic model. *J. Geophys. Res. Atmospheres* 106, 17841–17862. doi:10.1029/2000JD900828
- 25 Maurer, E.P., Wood, A.W., Adam, J.C., Lettenmaier, D.P., Nijssen, B., 2002. A Long-Term Hydrologically Based Dataset of Land Surface Fluxes and States for the Conterminous United States\*. *J. Clim.* 15, 3237–3251. doi:10.1175/1520-0442(2002)015<3237:ALTHBD>2.0.CO;2
- McMaster, G.S., Wilhelm, W.W., 1997. Growing degree-days: one equation, two interpretations. *Agric. For. Meteorol.* 87, 291–300. doi:10.1016/S0168-1923(97)00027-0
- 30 Michalakes, J., Dudhia, J., Gill, D., Henderson, T., Klemp, J., Skamarock, W., Wang, W., 2005. The weather research and forecast model: software architecture and performance, in: *Proceedings of the 11th ECMWF Workshop on the Use of High Performance Computing in Meteorology*. pp. 156–168.
- Mitchell, K.E., Lohmann, D., Houser, P.R., Wood, E.F., Schaake, J.C., Robock, A., Cosgrove, B.A., Sheffield, J., Duan, Q., Luo, L., Higgins, R.W., Pinker, R.T., Tarpley, J.D., Lettenmaier, D.P., Marshall, C.H., Entin, J.K., Pan, M., Shi, W., Koren, V., Meng, J., Ramsay, B.H., Bailey, A.A., 2004. The multi-institution North American Land Data Assimilation System (NLDAS): Utilizing multiple GCIP products and partners in a continental distributed hydrological modeling system. *J. Geophys. Res. Atmospheres* 109, D07S90. doi:10.1029/2003JD003823
- 35 Mote, P.W., Hamlet, A.F., Clark, M.P., Lettenmaier, D.P., 2005. Declining mountain snowpack in western North America. doi:10.1175/BAMS-86-1-39
- Nafziger, E., 2013. Illinois Agronomy Handbook now online | ACES News :: College of ACES, University of Illinois [WWW Document]. URL <http://news.aces.illinois.edu/news/illinois-agronomy-handbook-now-online> (accessed 2.1.16).
- 40 Nijs, I., Ferris, R., Blum, H., Hendrey, G., Impens, I., 1997. Stomatal regulation in a changing climate: a field study using Free Air Temperature Increase (FATI) and Free Air CO<sub>2</sub> Enrichment (FACE). *Plant Cell Environ.* 20, 1041–1050. doi:10.1111/j.1365-3040.1997.tb00680.x
- 45



- Ozdogan, M., Rodell, M., Beaudoin, H.K., Toll, D.L., 2010. Simulating the Effects of Irrigation over the United States in a Land Surface Model Based on Satellite-Derived Agricultural Data. *J. Hydrometeorol.* 11, 171–184. doi:10.1175/2009JHM1116.1
- 5 Pachepsky, Y.A., Rawls, W.J., 1999. Accuracy and Reliability of Pedotransfer Functions as Affected by Grouping Soils. *Soil Sci. Soc. Am. J.* 63, 1748–1757. doi:10.2136/sssaj1999.6361748x
- Pala, M., Stockle, C.O., Harris, H.C., 1996. Simulation of durum wheat (*Triticum turgidum* ssp. durum) growth under different water and nitrogen regimes in a mediterranean environment using CropSyst. *Agric. Syst.* 51, 147–163. doi:10.1016/0308-521X(95)00043-5
- 10 Pannkuk, C.D., Stockle, C.O., Papendick, R.I., 1998. Evaluating CropSyst simulations of wheat management in a wheat-fallow region of the US pacific northwest. *Agric. Syst.* 57, 121–134. doi:10.1016/S0308-521X(97)00076-0
- Parry, M., Rosenzweig, C., Livermore, M., 2005. Climate change, global food supply and risk of hunger. *Philos. Trans. R. Soc. B Biol. Sci.* 360, 2125–2138. doi:10.1098/rstb.2005.1751
- Philip, J.R., 1957. The Theory of Infiltration [WWW Document]. URL  
 15 [http://journals.lww.com/soilsci/Fulltext/1957/05000/THE\\_THEORY\\_OF\\_INFILTRATION\\_\\_1\\_\\_THE\\_INFILTRATION.2.aspx](http://journals.lww.com/soilsci/Fulltext/1957/05000/THE_THEORY_OF_INFILTRATION__1__THE_INFILTRATION.2.aspx) (accessed 10.20.14).
- Pielke Sr., R.A., Adegoke, J.O., Chase, T.N., Marshall, C.H., Matsui, T., Niyogi, D., 2007. A new paradigm for assessing the role of agriculture in the climate system and in climate change. *Agric. For. Meteorol., The Contribution of Agriculture to the State of Climate* 142, 234–254. doi:10.1016/j.agrformet.2006.06.012
- 20 Playán, E., Salvador, R., Faci, J.M., Zapata, N., Martínez-Cob, A., Sánchez, I., 2005. Day and night wind drift and evaporation losses in sprinkler solid-sets and moving laterals. *Agric. Water Manag.* 76, 139–159. doi:10.1016/j.agwat.2005.01.015
- Pokhrel, Y., Hanasaki, N., Koirala, S., Cho, J., Yeh, P.J.-F., Kim, H., Kanae, S., Oki, T., 2011. Incorporating Anthropogenic Water Regulation Modules into a Land Surface Model. *J. Hydrometeorol.* 13, 255–269. doi:10.1175/JHM-D-11-013.1
- 25 Pokhrel, Y.N., Hanasaki, N., Wada, Y., Kim, H., 2016. Recent progresses in incorporating human land–water management into global land surface models toward their integration into Earth system models. *Wiley Interdiscip. Rev. Water* 3, 548–574. doi:10.1002/wat2.1150
- Puma, M.J., Cook, B.I., 2010. Effects of irrigation on global climate during the 20th century. *J. Geophys. Res. Atmospheres* 115, D16120. doi:10.1029/2010JD014122
- 30 Robinson, D.A., Campbell, C.S., Hopmans, J.W., Hornbuckle, B.K., Jones, S.B., Knight, R., Ogden, F., Selker, J., Wendroth, O., 2008. Soil Moisture Measurement for Ecological and Hydrological Watershed-Scale Observatories: A Review. *Vadose Zone J.* 7, 358–389. doi:10.2136/vzj2007.0143
- Rosenzweig, C., Iglesias, A., Yang, X.B., Epstein, P.R., Chivian, E., 2001. Climate Change and Extreme Weather Events; Implications for Food Production, Plant Diseases, and Pests. *Glob. Change Hum. Health* 2, 90–104. doi:10.1023/A:1015086831467
- 35 Rost, S., Gerten, D., Bondeau, A., Lucht, W., Rohwer, J., Schaphoff, S., 2008. Agricultural green and blue water consumption and its influence on the global water system. *Water Resour. Res.* 44, W09405. doi:10.1029/2007WR006331
- 40 Rowan, T.S.C., Maier, H.R., Connor, J., Dandy, G.C., 2011. An integrated dynamic modeling framework for investigating the impact of climate change and variability on irrigated agriculture. *Water Resour. Res.* 47, n/a–n/a. doi:10.1029/2010WR010195
- Rushi, B.R., Barik, M.G., Lee, S.Y., Rajagopalan, K., Petrie, J., Barber, M.E., Boll, J., Adam, J.C., 2016. Columbia River Treaty Renegotiation: Potential Impacts on Agriculture, Hydropower and Flood Risk in the Context of an Altered Climate. *AGU Fall Meet. Abstr.* 43.
- 45

- Sakamoto, T., Wardlow, B.D., Gitelson, A.A., Verma, S.B., Suyker, A.E., Arkebauer, T.J., 2010. A Two-Step Filtering approach for detecting maize and soybean phenology with time-series MODIS data. *Remote Sens. Environ.* 114, 2146–2159. doi:10.1016/j.rse.2010.04.019
- 5 Saxton, K.E., Rawls, W.J., Romberger, J.S., Papendick, R.I., 1986. Estimating Generalized Soil-water Characteristics from Texture1. *Soil Sci. Soc. Am. J.* 50, 1031. doi:10.2136/sssaj1986.03615995005000040039x
- Scanlon, B.R., Jolly, I., Sophocleous, M., Zhang, L., 2007. Global impacts of conversions from natural to agricultural ecosystems on water resources: Quantity versus quality. *Water Resour. Res.* 43, W03437. doi:10.1029/2006WR005486
- 10 Schwalm, C.R., Williams, C.A., Schaefer, K., Anderson, R., Arain, M.A., Baker, I., Barr, A., Black, T.A., Chen, G., Chen, J.M., Ciais, P., Davis, K.J., Desai, A., Dietze, M., Dragoni, D., Fischer, M.L., Flanagan, L.B., Grant, R., Gu, L., Hollinger, D., Izaurrealde, R.C., Kucharik, C., Lafleur, P., Law, B.E., Li, L., Li, Z., Liu, S., Lokupitiya, E., Luo, Y., Ma, S., Margolis, H., Matamala, R., McCaughey, H., Monson, R.K., Oechel, W.C., Peng, C., Poulter, B., Price, D.T., Riciutto, D.M., Riley, W., Sahoo, A.K., Sprintsin, M., Sun, J.,
- 15 Tian, H., Tonitto, C., Verbeeck, H., Verma, S.B., 2010. A model-data intercomparison of CO<sub>2</sub> exchange across North America: Results from the North American Carbon Program site synthesis. *J. Geophys. Res. Biogeosciences* 115, G00H05. doi:10.1029/2009JG001229
- Schwarz, G.E., Alexander, R.B., 1995. State Soil Geographic (STATSGO) Data Base for the Conterminous United States. Open-File Rep.
- 20 Skamarock, W.C., Klemp, J., Dudhia, J., Gill, D.O., Barker, D.M., Duda, M.G., Huang, X.-Y., Wang, W., Powers, J., 2008. A Description of the Advanced Research WRF Version 3.
- Smit, B., Skinner, M.W., 2002. Adaptation options in agriculture to climate change: a typology. *Mitig. Adapt. Strateg. Glob. Change* 7, 85–114. doi:10.1023/A:1015862228270
- Smith, B., Burton, I., Klein, R.J.T., Wandel, J., 2000. An Anatomy of Adaptation to Climate Change and Variability. *Clim. Change* 45, 223–251. doi:10.1023/A:1005661622966
- 25 Sorooshian, S., Li, J., Hsu, K., Gao, X., 2012. Influence of irrigation schemes used in regional climate models on evapotranspiration estimation: Results and comparative studies from California's Central Valley agricultural regions. *J. Geophys. Res. Atmospheres* 117, D06107. doi:10.1029/2011JD016978
- Sridhar, V., 2013. Tracking the Influence of Irrigation on Land Surface Fluxes and Boundary Layer Climatology. *J. Contemp. Water Res. Educ.* 152, 79–93. doi:10.1111/j.1936-704X.2013.03170.x
- 30 Tao, F., Yokozawa, M., Hayashi, Y., Lin, E., 2003. Changes in agricultural water demands and soil moisture in China over the last half-century and their effects on agricultural production. *Agric. For. Meteorol.* 118, 251–261. doi:10.1016/S0168-1923(03)00107-2
- Thompson, A.L., Gilley, J.R., Norman, J.M., 1993. A sprinkler water droplet evaporation and plant canopy model. II. Model application. *Trans. ASAE USA.*
- 35 Thornton, P., Thornton, M., Mayer, B., Wilhelmi, N., Wei, Y., Cook, R., 2012. DAYMET: Daily Surface Weather on a 1 km Grid for North America. 1980–2008. Oak Ridge Natl. Lab. Distrib. Act. Arch. Cent. Oak Ridge TN Doi 10.
- Tietje, O., Hennings, V., 1996. Accuracy of the saturated hydraulic conductivity prediction by pedo-transfer functions compared to the variability within FAO textural classes. *Geoderma* 69, 71–84. doi:10.1016/0016-7061(95)00050-X
- 40 Uddin, J., Smith, R.J., Hancock, N.H., Foley, J.P., 2013. Evaporation and sapflow dynamics during sprinkler irrigation of cotton. *Agric. Water Manag.* 125, 35–45. doi:10.1016/j.agwat.2013.04.001
- Wheeler, T., Braun, J. von, 2013. Climate Change Impacts on Global Food Security. *Science* 341, 508–513. doi:10.1126/science.1239402
- 45

Wilson, K., Goldstein, A., Falge, E., Aubinet, M., Baldocchi, D., Berbigier, P., Bernhofer, C., Ceulemans, R., Dolman, H., Field, C., Grelle, A., Ibrom, A., Law, B.E., Kowalski, A., Meyers, T., Moncrieff, J., Monson, R., Oechel, W., Tenhunen, J., Valentini, R., Verma, S., 2002. Energy balance closure at FLUXNET sites. *Agric. For. Meteorol., FLUXNET 2000 Synthesis* 113, 223–243. doi:10.1016/S0168-1923(02)00109-0

5 Yonts, C.D., Kranz, W.L., Martin, D.L., 2000. Water Loss from above-canopy and in-canopy sprinklers. Cooperative Extension, Institute of Agriculture and Natural Resources, University of Nebraska-Lincoln.

Yorgey, G.G., Rajagopalan, K., Chinnayakanahalli, K., Brady, M.P., Barber, M.E., Nelson, R., Stockle, C.O., Kruger, C.E., Dinesh, S., Malek, K., others, 2011. Columbia River Basin Long-Term Water Supply and Demand Forecast. *Wash. State Legis. Rep.*

10 Yuan, F., Xie, Z., Liu, Q., Yang, H., Su, F., Liang, X., Ren, L., 2004. An application of the VIC-3L land surface model and remote sensing data in simulating streamflow for the Hanjiang River basin. *Can. J. Remote Sens.* 30, 680–690. doi:10.5589/m04-032

Zagona, E.A., Fulp, T.J., Shane, R., Magee, T., Goranflo, H.M., 2001. Riverware: A Generalized Tool for Complex Reservoir System Modeling. *JAWRA J. Am. Water Resour. Assoc.* 37, 913–929. doi:10.1111/j.1752-1688.2001.tb05522.x

15

## 20 Tables

**Table 1- Impacts of climate change on crop yield, as discussed by Kurukulasuriya and Rosenthal, 2003; Leakey et al., 2009; Reilly, 2002; Rosenzweig et al., 2001; and Rowan et al., 2011.**

Impact factors	Mechanism of impact	Direction of impact on yield	References
CO <sub>2</sub> concentration	More efficient photosynthesis	+	Kurukulasuriya and Rosenthal, 2003; Leakey et al., 2009
	Crop water use efficiency	+	Leakey et al., 2009
	Nutrient use efficiency	+	Ainsworth and Rogers, 2007
Temperature	Crop growing period length	-	Kurukulasuriya and Rosenthal, 2003; Dukes and

			Mooney, 1999
	Planting date	+/-	Parry et al., 2005
	Timing and rate of crop growth and phenology	+/-	Tao et al., 2003
	Pest and weed growth and development	-	Kurukulasuriya and Rosenthal, 2003
	Fruit quality	-	
Humidity	Changes in stomata functioning	+	Leakey et al., 2009; Nijs et al., 1997
Precipitation	Changes in soil moisture and irrigation water resources	-/+	Rowan et al., 2011
Frequency of climate extreme events (droughts and heat waves)	Crop productivity	-	Rosenzweig et al., 2001
Temperature + Precipitation	Water availability for irrigated agriculture over snow dominant basins	-	Adam et al., 2009; Barnett et al., 2005; Elsner et al., 2010; Mote et al., 2005

Table 2 – Two flux tower stations used for evaluation of the VIC-CropSyst. ~~The NE~~ Nebraska site is irrigated using a center pivot system and the Illinois flux tower station is rain-fed.

Stations	State	Irrigated	Cropping pattern	Period	Soil type	Average Precipitation (mm)	Average Temperature (°C)
Mead Irrigated	Nebraska (NE)	Yes	Corn	2001-2008	Silty clay loam	789	10.1
Fermi National Laboratory	Illinois (IL)	No	Corn/Soybean	2002-2007	Silty clay loam	929	9.2

5

10 Table 3–Calibration parameters used for VIC-CropSyst over the two study sites (columns 5 to 6) and over the Columbia River Basin (CRB). Column 3 represents the ranges of these parameters used for the sensitivity studies.

parameter	Description	Range	CRB	NE	IL
$b_{iS}$	Adjusts partitioning of precipitation to runoff and infiltration	0.001-0.4	0.1-0.3	0.2	0.31
Ds	Base flow parameter- fraction of base flow parameter	0.001-0.99	0.001-0.88	0.005	0.72
Ws	A fraction of maximum base flow indicating where the base flow curve starts	0.4-0.9	0.51-0.91	0.8	0.53
Ds-Max	Maximum daily base flow generation	0.1-30	0.2-10	10	28.61

5 **Table 4- Estimated calendar days correspond to each of the growing stages in two study sites. Some of the information is from references listed for each site.**

	crop type	planting	emergence	peak LAI	flowering	filling	maturity	reference
NE	corn	127	140	195	205	225	255	(Sakamoto et al., 2010)
IL	corn	125	137	200	208	212	250	(Nafziger, 2013)

**Table 5- Soil, climate, vegetation and crop information used for regional evaluation of VIC-CropSyst over the U.S. Pacific Northwest. The resolution of the input data was 1/16th °.**

Input	Source	Information used by VIC-CropSyst
Weather	Abatzoglou and Brown (2012)	precipitation, minimum and maximum temperature and wind speed
Soil	STATSGO (Schwarz and Alexander, 1995)	latitude, longitude, sand and clay content, hydraulic conductivity, field capacity, bulk density, etc.
Crop/Vegetation	USDA/WSDA vegetation distribution maps (Boryan et al., 2011; Yorgey et al., 2011)	crop type, acreage, irrigation systems, etc.

10

15 **Table 6- Summary of adaptation strategies that can be handled by VIC-CropSyst: the modeling platform is able to simulate the impacts of local decisions on agricultural productivity and at the same time capture the impacts of these decisions on regional land-atmospheric interactions and surface hydrological-water availability in the basin.**

Adaptation strategy	Timing*	Duration**
---------------------	---------	------------

<b>1 Crop-related adaptation strategies</b>		
i- Crop choice and rotation	R*	L
ii- Cropping acreage and location of cropping activities	R and A	L
iii- Timing of planting and harvesting date	C and A	T
iv- Using <u>a</u> new variety of the same crop	R	L
<b>2 Long term strategic water management adaptations</b>		
i- Irrigation system or nozzle	R and A	L
<b>3 Seasonal adaptations to respond to altered water deficit and temporal availability of water</b>		
i- Deficit irrigation magnitude	C	T
ii- Deficit irrigation timing in a season	C	T
<b>4 Short term tactical adaptation to minimize the impacts of heat stress</b>		
i- Supplementary/over irrigation		T
ii- Irrigation frequency	C	T
iii- Irrigation intensity	C	T

\*According to Smit and Skinner (2002), the timing of adaptation decision can be A-Anticipatory (proactive), C-Concurrent (during) or R-Responsive (reactive)

\*\*Duration of adaptive actions can be short term-tactical (T) and long-term strategic (L)(Smit and Skinner, 2002)

5

## Figures

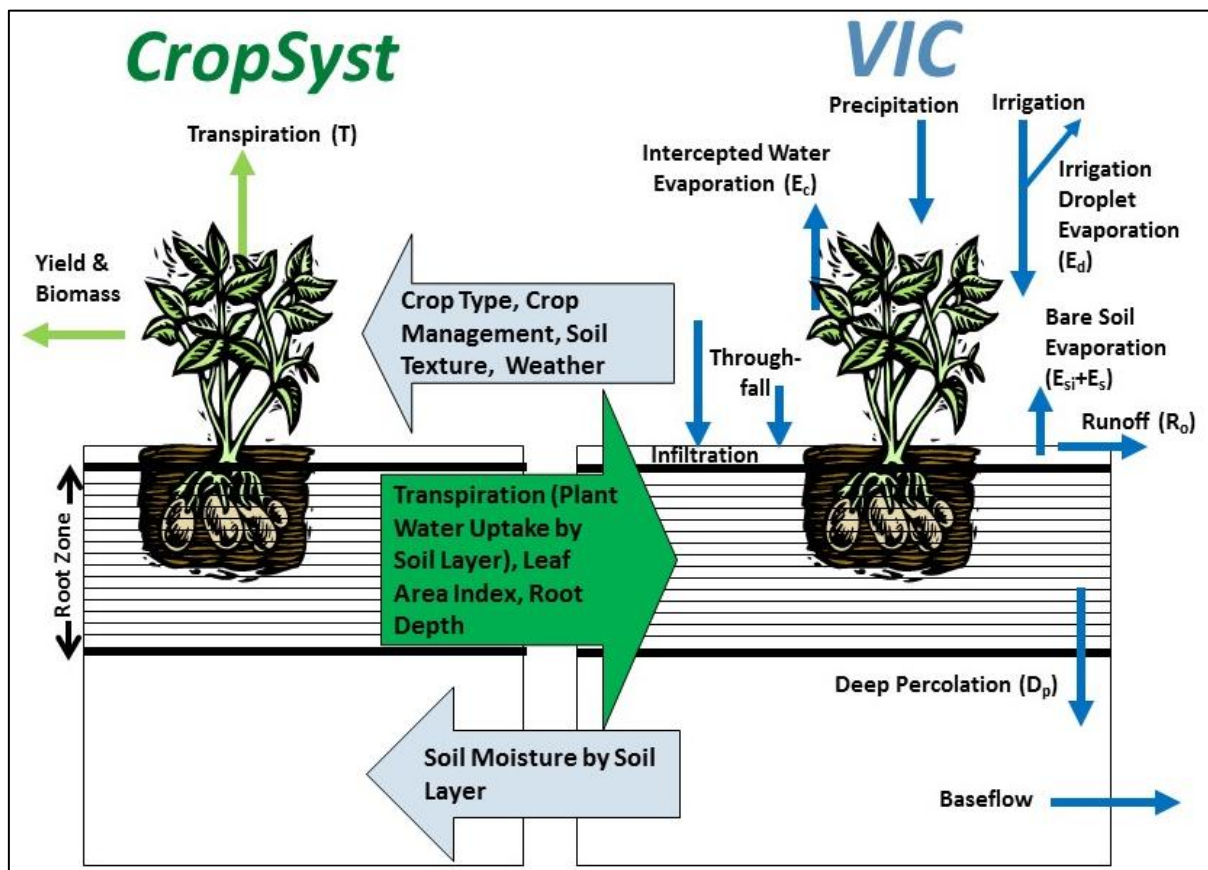


Figure 1- This schematic shows how VIC and CropSyst are coupled. VIC provides the availability of water and energy to CropSyst. CropSyst uses this information to grow the crop, produce biomass and yield, and simulate transpiration. CropSyst passes back the information that is needed by VIC (e.g., the distribution of transpiration uptake in different soil layers, LAI, and root depth) to simulate the hydrologic and energy cycle and the scheduling of irrigation.

5



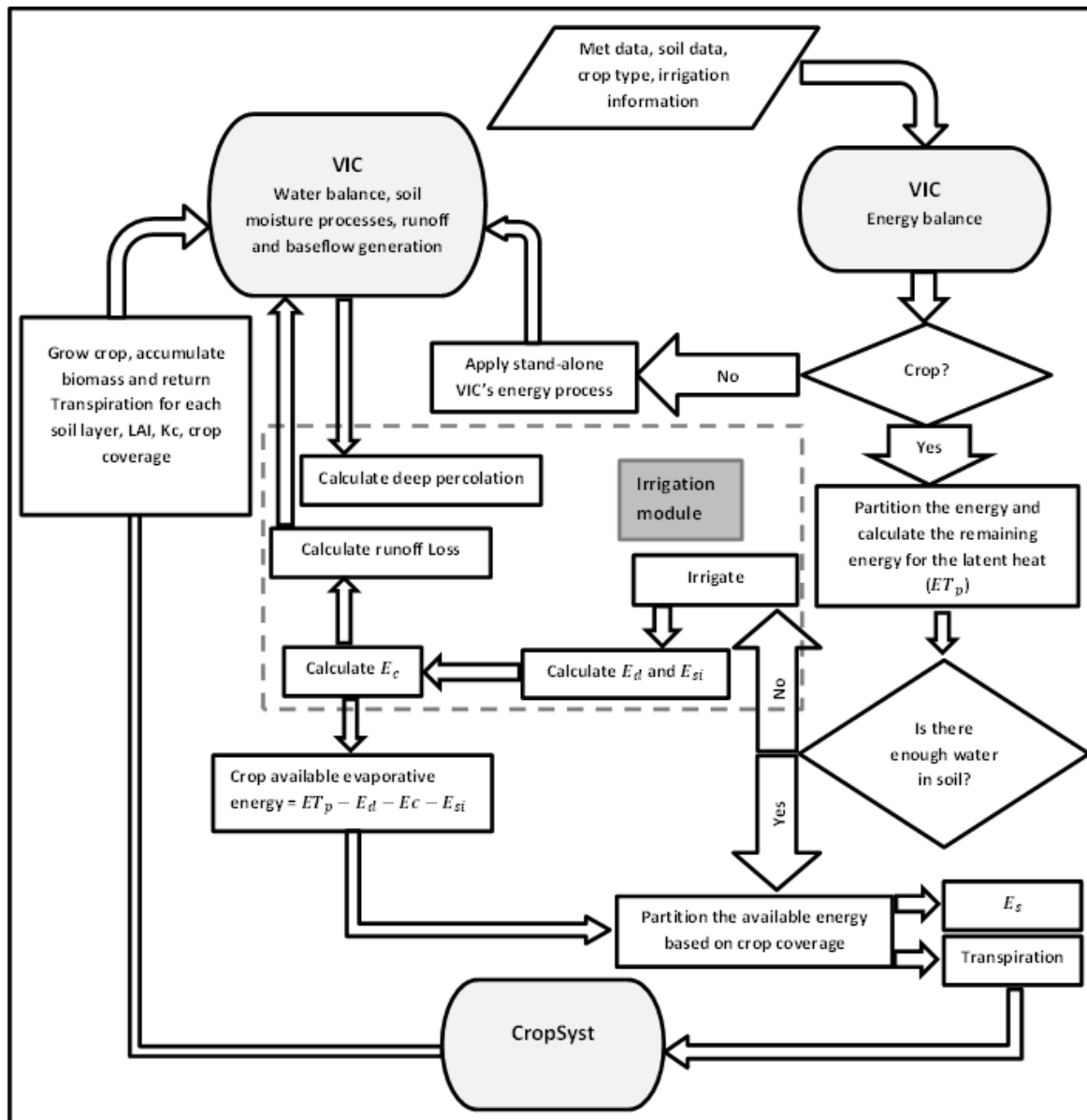


Figure 2 – Algorithm used in VIC-CropSyst to partition available energy into different evaporative components. The energy and water balances are handled by the VIC model. CropSyst receives the amount of energy available for transpiration and the availability of water in the soil to determine crop water uptake. VIC needs actual transpiration in different layers of the soil to close the water cycle. Communication between the two models happens for every time-step.

5

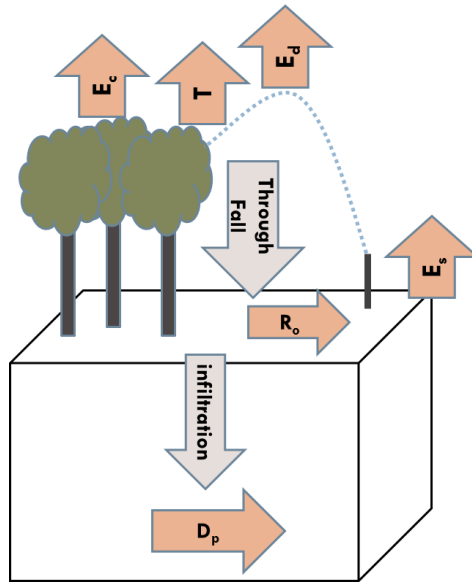
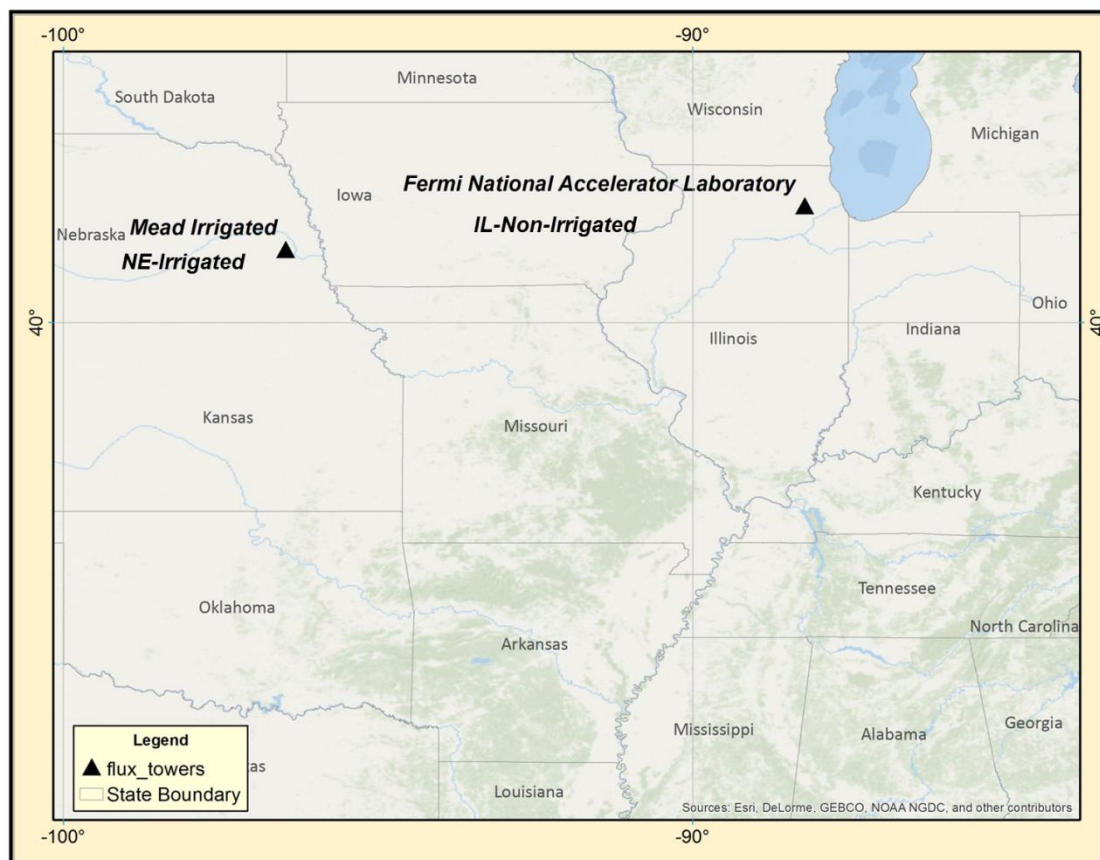


Figure 3 –Pathways of irrigation water loss simulated in the irrigation module.  $E_d$ : evaporation from irrigation droplets,  $E_c$ : evaporation from irrigation water intercepted by canopy,  $E_s$ : evaporative loss from soil surface,  $D_p$ : Deep percolation loss and  $R_o$ : Irrigation runoff loss. The efficiency of irrigation water is calculated by considering total applied water and all loss terms.

5

$$Ef = 100 \times \left( 1 - \frac{E_d + E_s + E_c + R_o + D_p}{\text{total irrigation water}} \right)$$



**Figure 4 - Location of the two flux tower sites in the U.S. two flux tower sites are all in agricultural fields. Mead irrigated site (NE) is located in the Nebraska; Fermi National lab site (IL) is located in the Illinois; NE is irrigated and the IL is a non-irrigated agricultural site.**

5

10

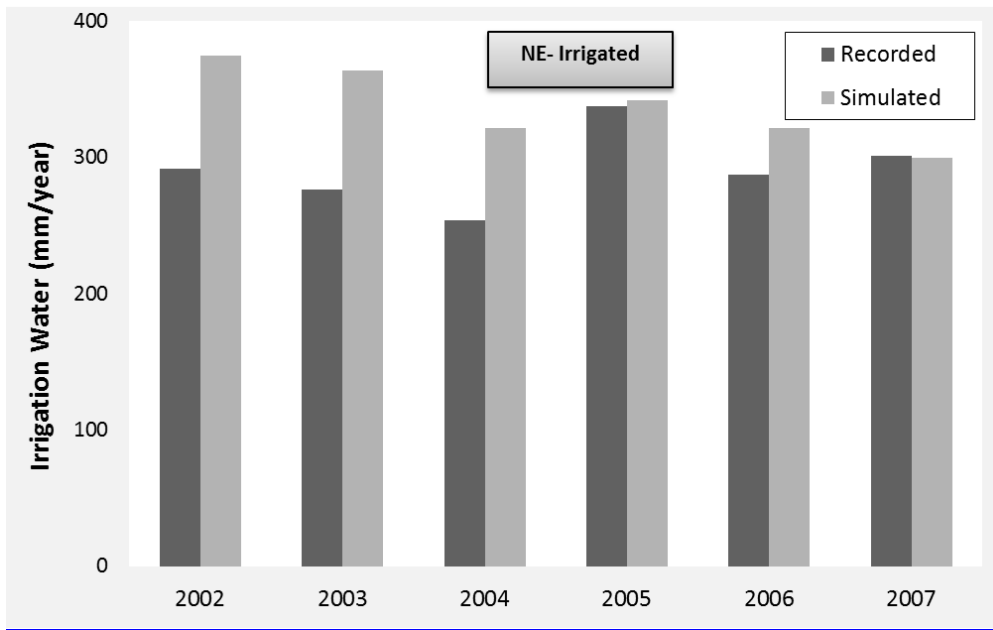


Figure 5 - Simulated versus recorded total seasonal irrigated water in an irrigated corn field at the NE flux tower site.

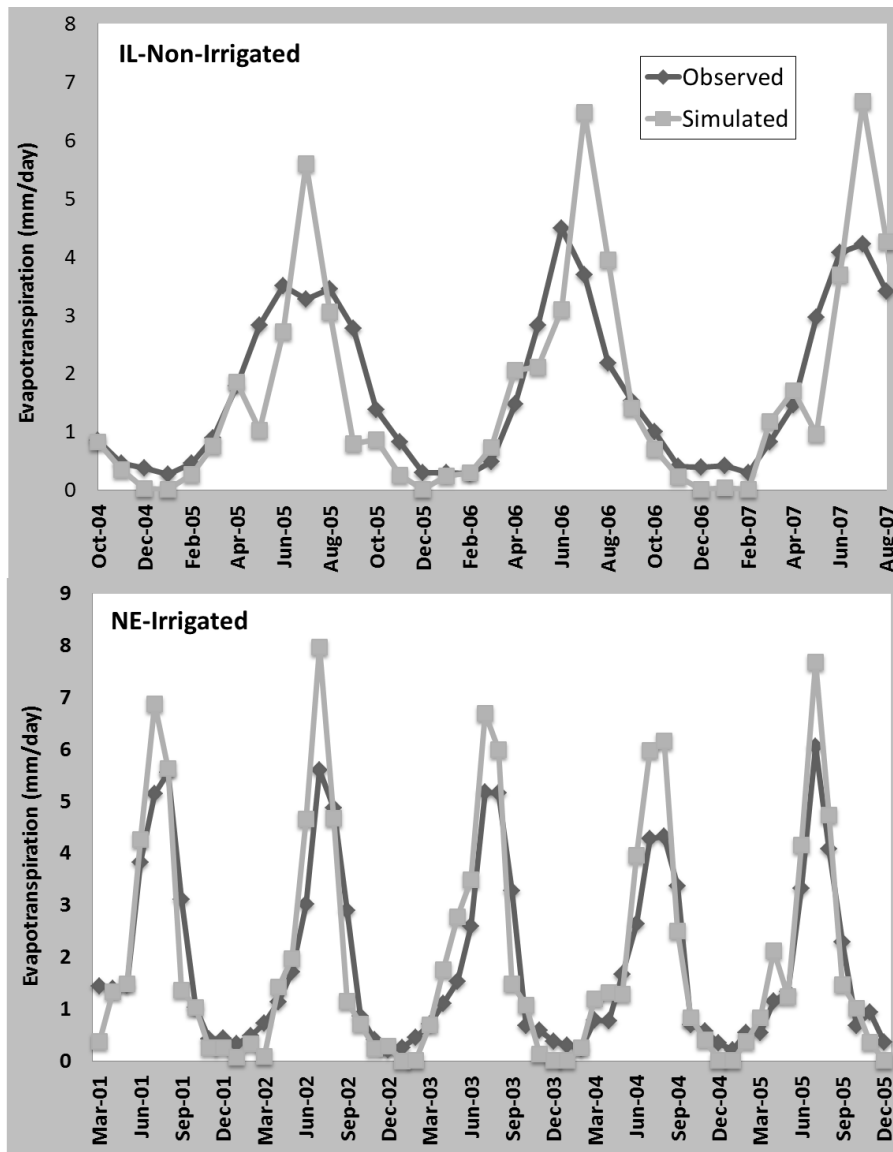


Figure 6- Comparison of simulated and observed corn evapotranspiration (ET; [mm/day](#)) at two flux tower sites located in NE and IL. The NE site is irrigated while IL is a non-irrigated field.

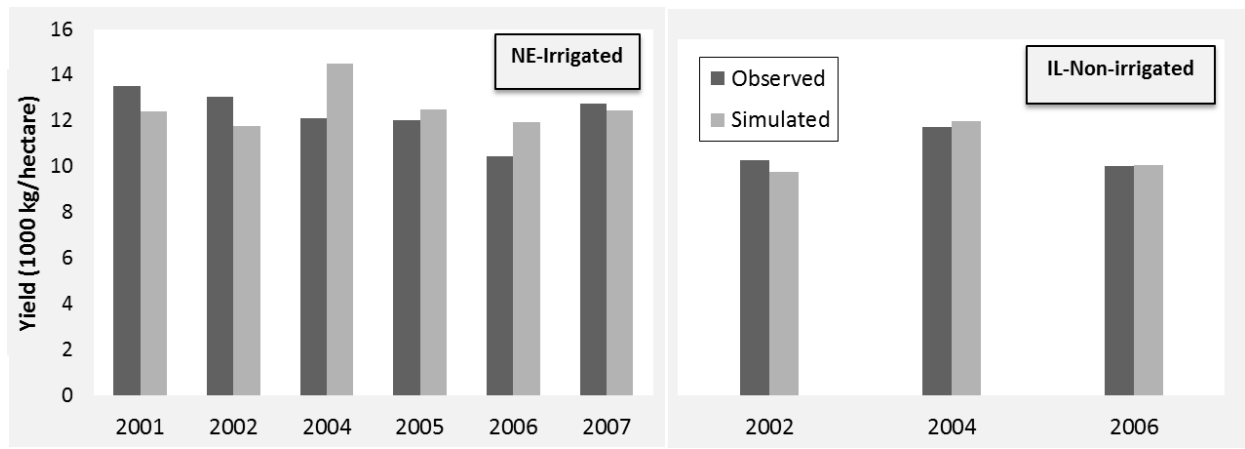


Figure 7 – Comparison of simulated and observed corn yield at two flux tower sites for the years during which yield observations were ~~taken~~ recorded.

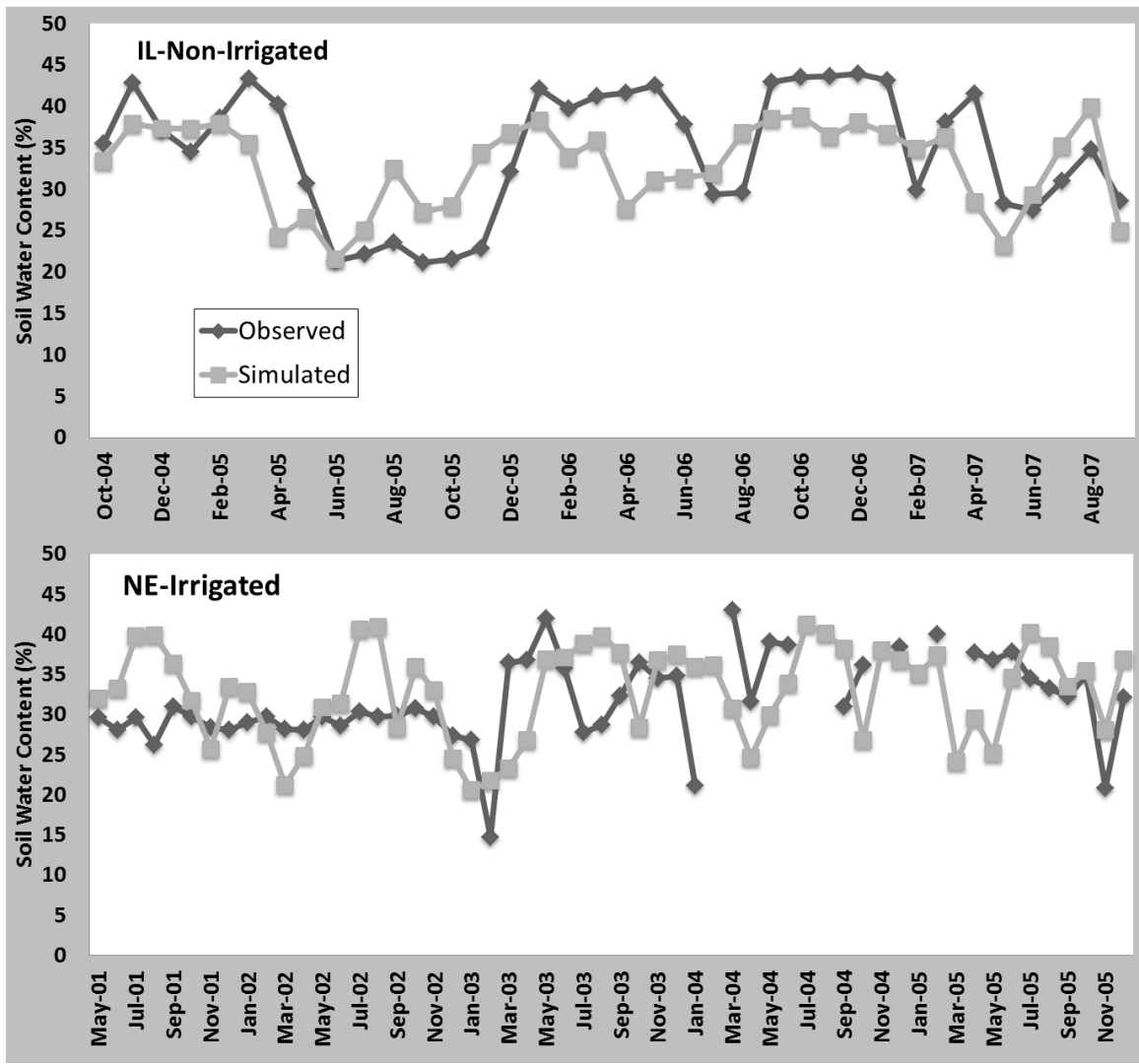


Figure 8- Comparison of simulated and observed soil moisture at the flux tower sites located in IL (top) and NE (bottom).

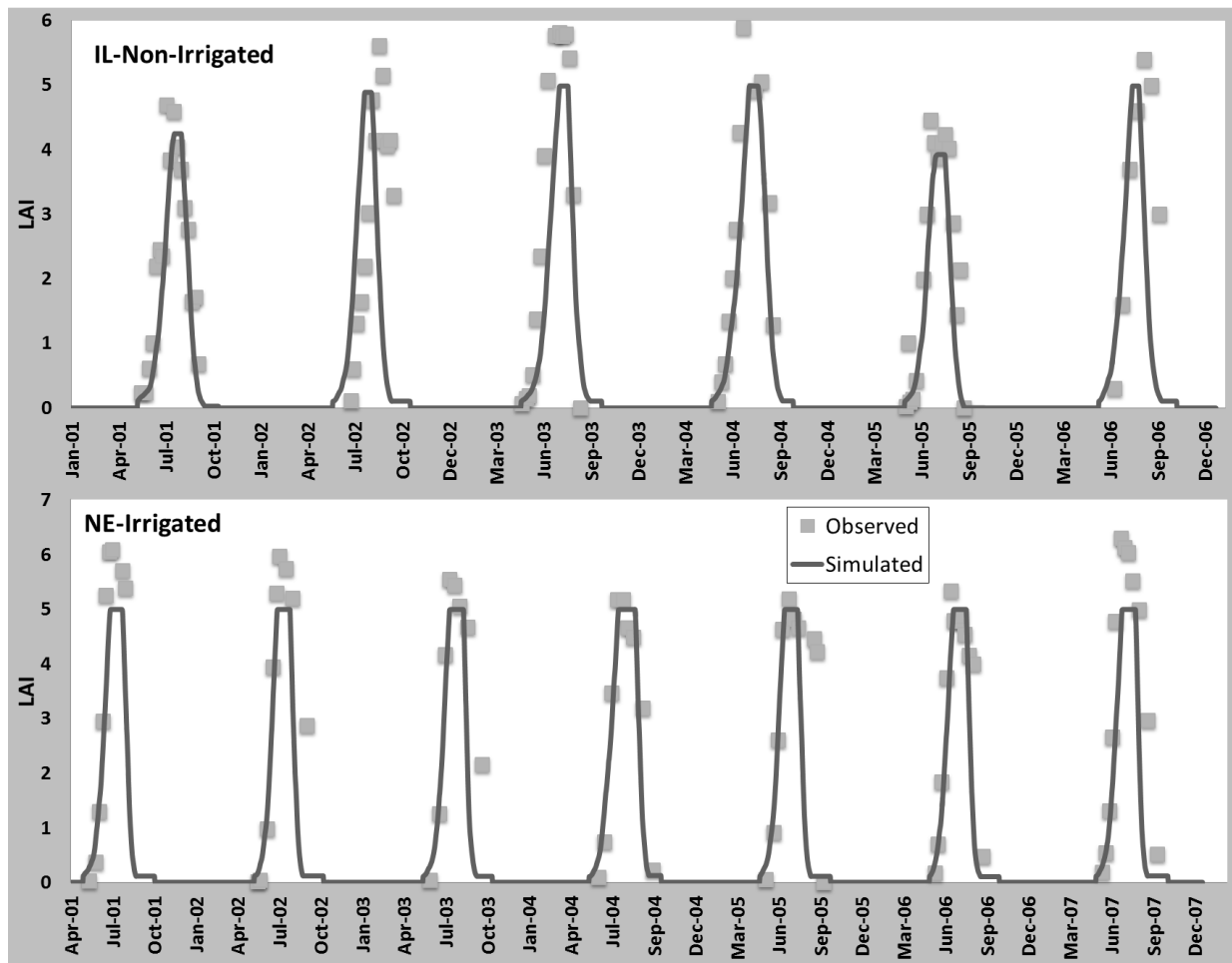


Figure 9- Comparison of simulated and observed corn LAI over two flux tower sites located in IL (top) and NE (bottom).



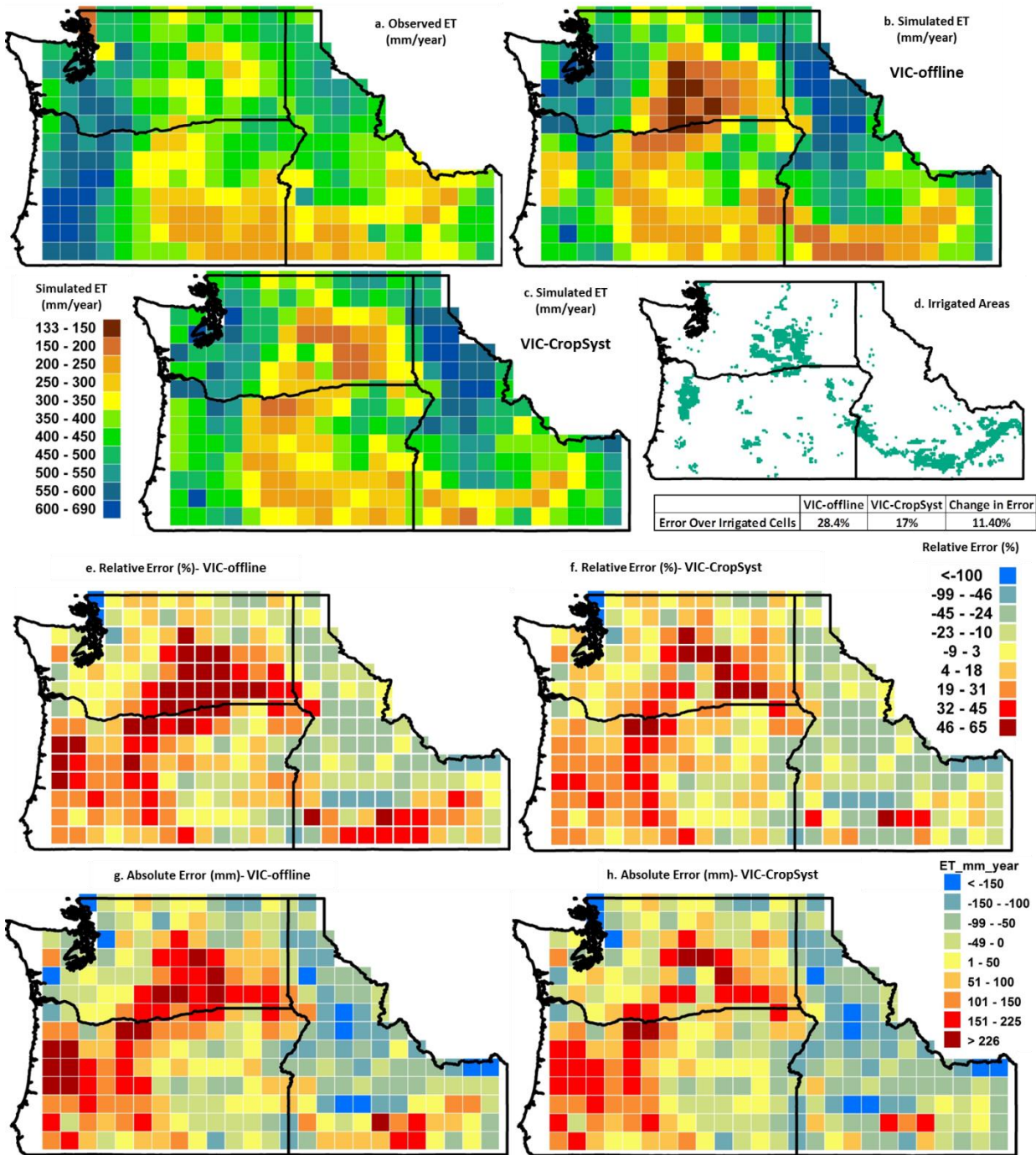


Figure 10 – Comparison of simulated and empirically-derived ET over the U.S. Pacific Northwest. The simulation and observation period is 1982-2008. [Panel a shows observed ET \(Liu et al., 2013\)](#), [panels b and c show the simulated ET using VIC-offline and VIC-CropSyst, respectively.](#) [Panel d shows where the irrigated areas are located in these three states.](#) [Panels e to h show relative and absolute errors of simulated ET by VIC-offline and VIC-CropSyst.](#)

5

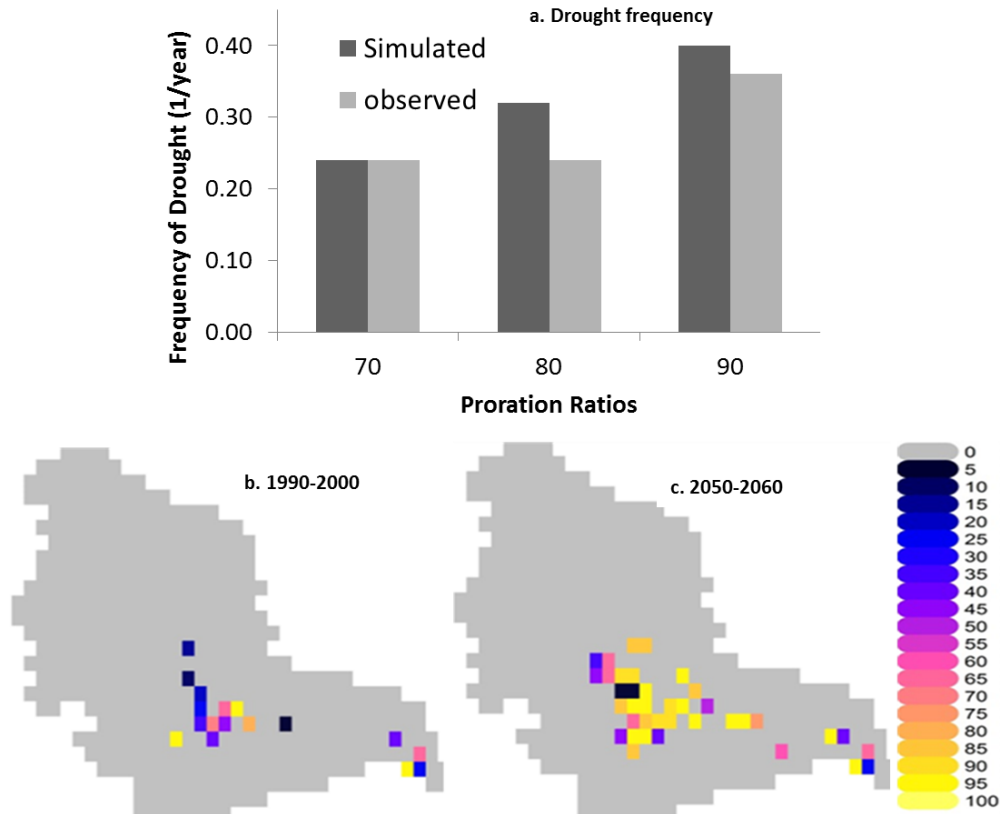


Figure 11- Regional application of VIC-CropSyst in conjunction with a river system model (YAK-RW; Hubble, 2012; Zagona et al., 2001) and an economic model to simulate historical (1981-2006) drought frequency (panel a), when the percentage of the water right allocated for the irrigation season (i.e., proration rate) is lower than 70%, 80% and 90%. Panels b and c (Malek, K et al., 2016 in prep) show the percentage of farmers (perennial crop growers) who invest in new efficient irrigation technologies in response to simulated droughts during the two decades of 1990-2000 (panel b) and 2050-2060 (panel c).