

Figure 1: Tangent linear sensitivity (left) and adjoint sensitivity (right) at Kewanee, Illinois (top), and Centerville, Iowa (bottom). The units of the sensitivities are explained as in Fig. 5 of the manuscript.

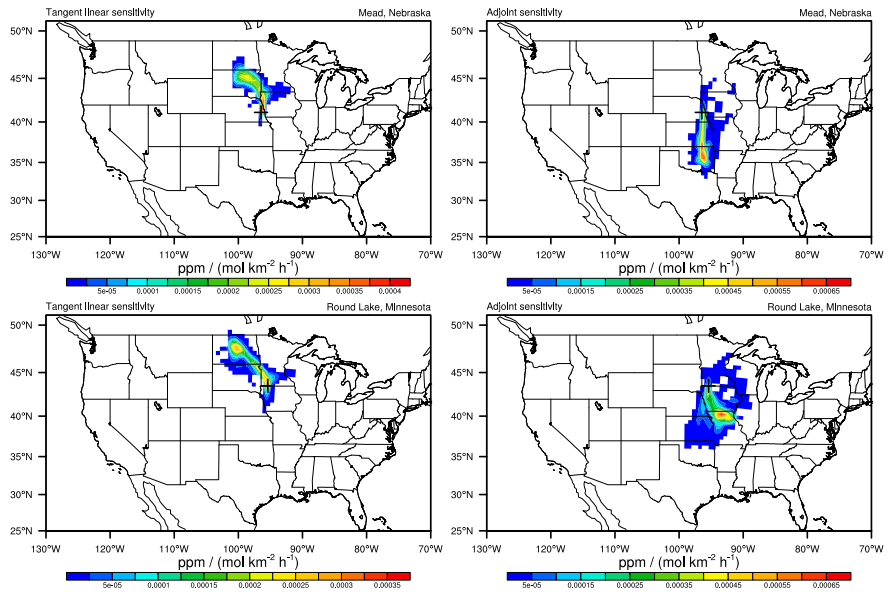


Figure 2: Same as Fig. 1 but for Mead, Nebraska (top), and Round Lake, Minnesota (bottom).

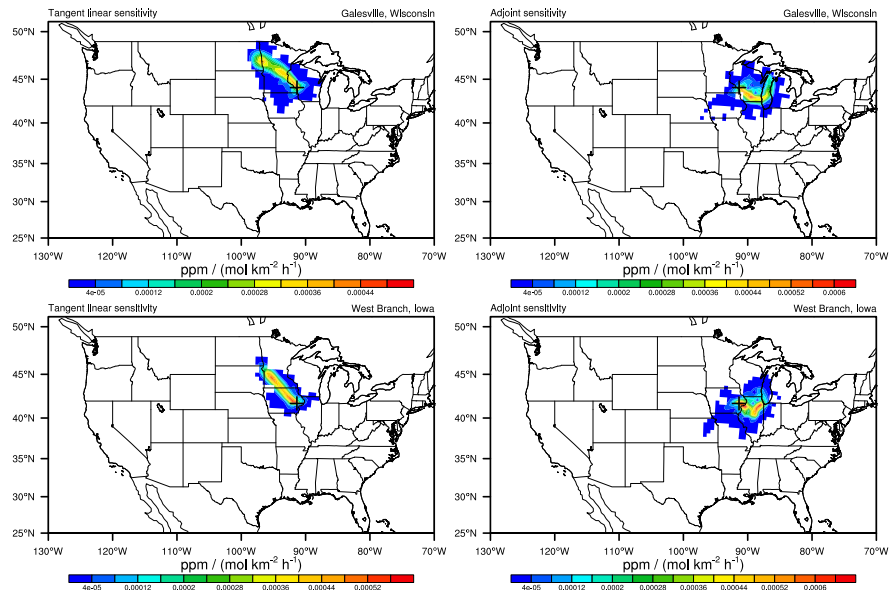


Figure 3: Same as Fig. 1 but for Galeville, Wisconsin (top), and West Branch, Iowa (bottom).

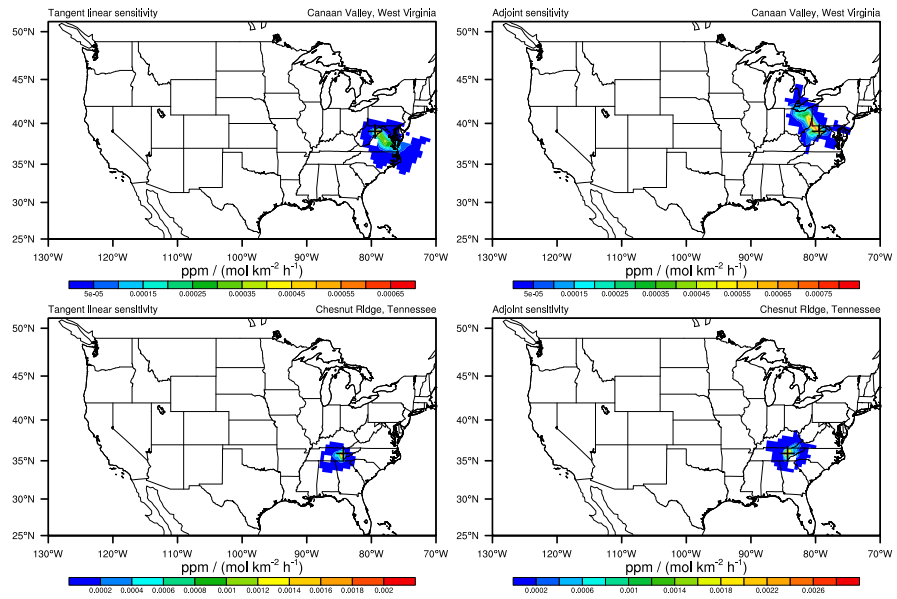


Figure 4: Same as Fig. 1 but for Canaan Valley, West Virginia (top), and Chestnut Ridge, Tennessee (bottom).

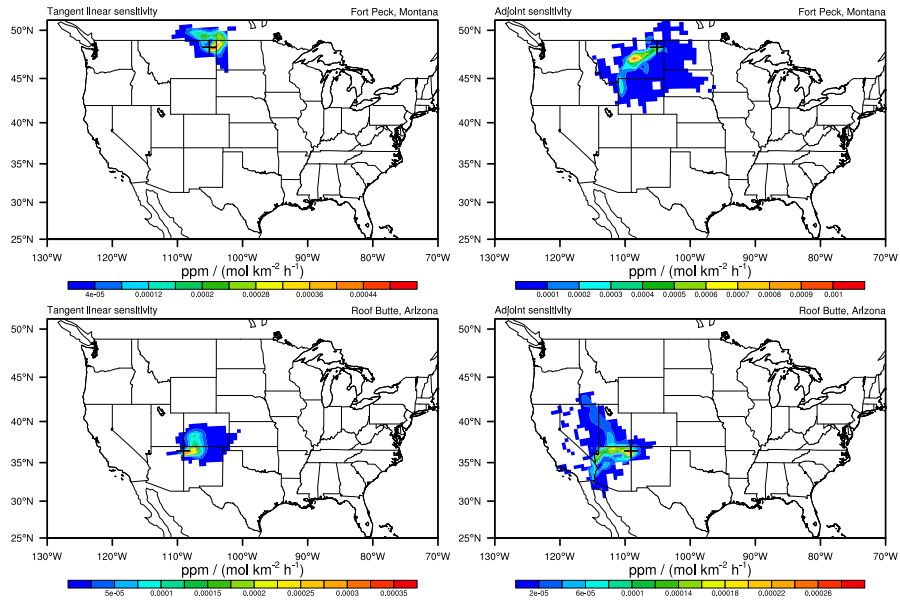


Figure 5: Same as Fig. 1 but for Fort Peck, Montana (top), and Rooft Butte, Arizona (bottom).

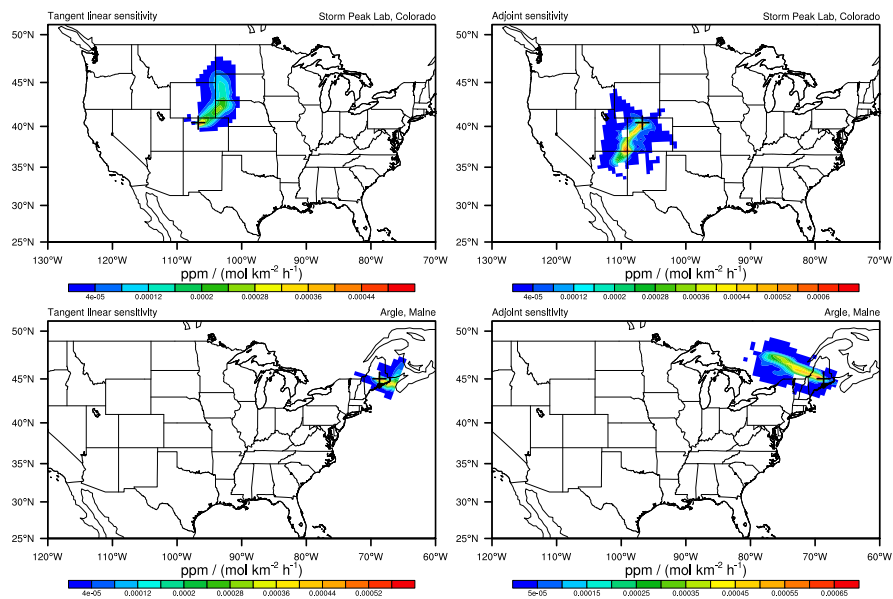


Figure 6: Same as Fig. 1 but for Storm Peak Lab, Colorado (top), and Argle, Maine (bottom).

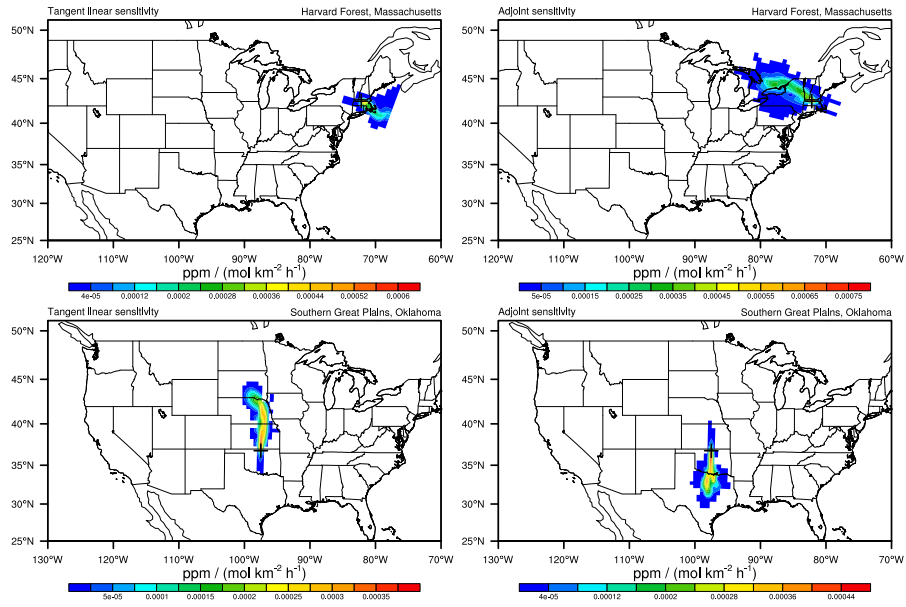


Figure 7: Same as Fig. 1 but for Harvard Forest, Massachusetts (top), and Southern Great Plains, Oklahoma (bottom).

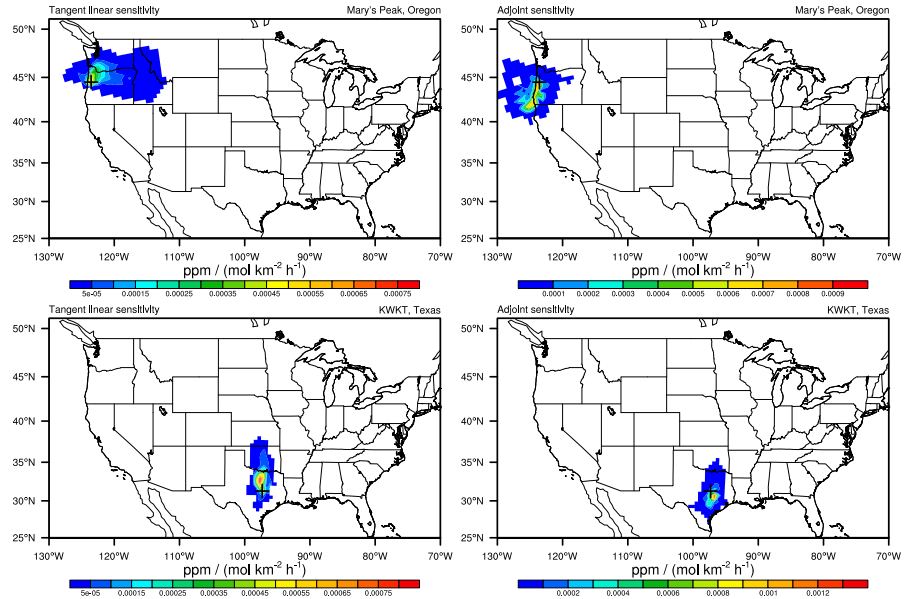


Figure 8: Same as Fig. 1 but for Mary's Peak, Oregon (top), and KWKT, Texas (bottom).