

Interactive comment on “Community Intercomparison Suite (CIS) v1.3.2: A tool for intercomparing models and observations” by D. Watson-Parris et al.

Anonymous Referee #2

Received and published: 22 July 2016

This study describes the development and use of the Community Intercomparison Suite (CIS). CIS represents a novel and significant model development, allowing intercomparison of diverse climate model output and observations in both gridded and ungridded formats. In general the paper is well written with methods described clearly and thoroughly. In particular section 5 (Example scientific workflow) stands out as a very useful ‘how to’ guide to using the CIS.

Given the above I therefore recommend publication after the authors address the (pre-dominantly) minor points outline below:

Page 5 Line 25: ‘These arrays make take on any shape, though they must all be the same’. This line took me some time to understand. I presume what the authors mean

C1

is that the structure of the arrays can be any shape but all the data values (lon,lat etc) need to conform to that structure? Please could the authors clarify and amend. I would also reference Figure 2b here.

Formula 1 (page 6): Please could the authors explain this formula more fully. I understand the inequality but what is $x \times y$ (Likewise in algorithm 1). I understand the need to adopt a consistent notation but this notation needs to be more clearly described (particularly if its not standard vector or set but a mixture)

Page 6 Line 4: change ‘Øto’ to ‘∅ to’

Algorithm 1 (page 8) change ‘iff’ to ‘if’

Page 8 Line 13: change font on ‘5°’

Page 11 Line 17: Could the authors define h_{sep} and a_{sep} to aid the reader in understanding this example.

Table 4 (page 12): Equations for the arithmetic mean and standard deviation are not formatted correctly.

Page 12 Lines 17-18 to Page 13 Lines 1-2: ‘... , those dimensions are ignored for the purposes of the collocation, and will be present in the output’ Could the authors please clarify this (important) point perhaps using a example. It’s my understanding that if (for example) you want to collocate a 2D array (data) onto a 3D sample array you will end up with a 2D result but if you collocate a 3D data array onto a 2D sample array you get a 3D array (i.e. your resulting array will always have the same dimensions as your data array). Could the authors also discuss the consequences of mis-matching the sample and data array dimensions.

Page 17 Line 27-28: ‘, but the total number of variables declared in all the datagroups must be exactly two’. The number of variables is integer so ‘exactly two’ is redundant.

Page 19 Line 13: Based on the filename, the authors use AERONET data from

C2

Agoufou I would suggest here referring to 'AERONET data from the Agoufou station' to aid readers unfamiliar with the AERONET stations.

Page 19 Line 25: 'Note that the model data can't be plotted. . . .' Throughout the paper you note when the CIS commands will not work. It would be useful to would-be users to include likely error messages when these mistakes are made.

Page 20 Line 10: Please could the authors add some description of what the results look like when you use the stats command.

Figure 11 (Page 21): Could the authors also include the commands to plot this map. This last step (plotting) seems to be missing from section 5. If possible it would also be useful to add a few more examples of the plotting capabilities of the system.

Appendix A: I feel that table 5 could be expanded to include (among others), collocation. I would also suggest adding a table defining the common inputs in CIS commands (i.e. datagroup, samplegroup etc)

Interactive comment on Geosci. Model Dev. Discuss., doi:10.5194/gmd-2016-27, 2016.

Response to Anonymous Referee #2

Thank you for your helpful feedback. We have implemented each of the suggestions you mentioned with the exception of a few which are responded to individually below:

Formula 1 (page 6): We have reworded this formula to hopefully be clearer

Page 6 Line 4, Algorithm 1 (page 8), Page 8 Line 13 and Table 4 (page 12): These are formatting errors which we can't reproduce – perhaps it is a problem with the particular PDF viewer being used?

Appendix A: We have extended the table of definitions to include collocation, though we feel that a table of the common CIS inputs best belongs in the online user manual.

We have also made a few small changes unrelated to the reviewer comments to reflect the latest version of CIS available (1.4.0) and expand on the acknowledgments.

Kind Regards

Community Intercomparison Suite (CIS) v1.3.2.4.0: A tool for intercomparing models and observations

Duncan Watson-Parris^{1,2}, Nick Schutgens², Nicholas Cook¹, Zak Kipling², Philip Kershaw^{3,4}, Edward Gryspeerdt⁵, Bryan Lawrence^{3,6,7}, and Philip Stier²

¹Tessella Ltd, Abingdon, Oxford, OX14 3YS

²Atmospheric, Oceanic and Planetary Physics, Department of Physics, University of Oxford, Oxford, UK

³Centre for Environmental Data Analysis, STFC Rutherford Appleton Laboratory, Didcot, United Kingdom

⁴National Centre for Earth Observation, United Kingdom

⁵Institute for Meteorology, Universität Leipzig, Leipzig, Germany

⁶Department of Meteorology, University of Reading, Reading, United Kingdom

⁷National Centre for Atmospheric Science, United Kingdom

Correspondence to: Duncan Watson-Parris (duncan.watson-parris@physics.ox.ac.uk)

Abstract. The Community Intercomparison Suite (CIS) is an easy-to-use command-line tool which has been developed to allow the straightforward intercomparison of remote sensing, in-situ and model data. While there are a number of tools available for working with climate model data, the large diversity of sources (and formats) of remote sensing and in-situ measurements necessitated a novel software solution. Developed by a professional software company, CIS supports a large number of gridded and ungridded data sources ‘out-of-the-box’, including climate model output in NetCDF or the UK Met Office pp file format, [CloudSat](#), CALIOP (Cloud-Aerosol Lidar with Orthogonal Polarization), MODIS (MODerate resolution Imaging Spectroradiometer), Cloud and Aerosol CCI (Climate Change Initiative) level 2 satellite data, and a number of in-situ aircraft and ground station datasets. The open-source architecture also supports user defined ‘plugins’ to allow many other sources to be easily added. Many of the key operations required when comparing heterogeneous datasets are provided by CIS, including subsetting, aggregating, collocating and plotting the data. Output data is written to CF-compliant NetCDF files to ensure interoperability with other tools and systems. The latest documentation, including a user manual and installation instructions can be found on our website (<http://cistools.net>). Here we describe the need which this tool fulfils, followed by descriptions of its main functionality (as at version [1.3.2.1.4.0](#)) and plugin architecture which make it unique in the field.

1 Introduction

Modern Global Climate Models (GCMs) produce huge amounts of prognostic and diagnostic data covering every aspect of the system being modelled. The upcoming CMIP-6 (Coupled Model Intercomparison Project Phase 6) is likely to produce **more than 50Pb as much as 40Pb** of data alone. ([Eyring et al., 2016a](#)).

Analysis of the data from these models forms the cornerstone of the IPCC (Stocker et al., 2013) (Intergovernmental Panel on Climate Change) and subsequent UNFCCC (United Nations Framework Convention on Climate Change) reports on anthropogenic climate change, but there exist large differences across the models in a number of key climate variables (e.g. Boucher

et al., 2013; Suzuki et al., 2011). In order to understand these differences and improve the models the model data must be compared not only with each other – which is relatively straightforward for large intercomparison projects such as CMIP which provide the model data in a common data standard, but also with observational data – which can be much harder.

Observational data can also be extremely voluminous. For example modern Earth Observation (EO) satellites can easily produce petabytes of data over their lifetime. There are dozens of EO satellites being operated by the National Aeronautics and Space Administration (NASA), the European Space Agency (ESA), and other international space agencies. While modern missions use common data standards there are many valuable datasets stored in unique formats and structures which were designed when storage was at more of a premium, and so are not particularly user-friendly. Ground based EO sites, and in-situ measurement of atmospheric properties are also areas where many different groups and organisations produce data in a wide variety of formats.

The process of model evaluation typically involves a relatively small set of common operations on the data: reading, sub-setting, aggregating, analysis and plotting. Many of these operations are currently written as a bespoke analysis for each type of data being compared. This is time consuming and error prone. While a number of tools currently support the comparison and analysis of model data in standard formats, such as NetCDF Operators (NCO) (Zender, 2008), Climate Data Operators (CDO) (<http://www.mpimet.mpg.de/cdo>), Iris (<https://metoffice.github.io/iris/>) (Met Office, 2016), and cf-python (<http://cfpython.bitbucket.org>) there are few if any which support raw observational data. A tool described by Langerock et al. (2015) provides some of this functionality for a specific set of observational data, [ESMValTool provides a framework for comparison against standardised observations \(Eyring et al., 2016b\)](#) and [PMP provides some comparisons with globally averaged observations \(Gleckler et al., 2016\)](#). There are also some websites which allow a pre-defined analysis of specific datasets (for example Giovanni: <http://giovanni.sci.gsfc.nasa.gov>), but do not give the flexibility of a tool which can be installed and run locally. The Community Intercomparison Suite (CIS) seeks to fill this gap: the primary goal of CIS is to provide a single, flexible tool for the quantitative and qualitative intercomparison of remote-sensing, in-situ and model data.

~~Further, primarily because of this lack of appropriate tools, many intercomparisons and evaluations are carried out using aggregated data (Comparing global model data with observations that can be considered point measurements may introduce substantial errors in any analysis (Schutgens et al., 2016a). Aggregation of observations may reduce these errors, and facilitate intercomparisons of model data and (now gridded) observations (see Appendix A for a definition of ‘aggregated data’, and other terms). While gridded Aggregated observational data is often available (e.g. Teixeira et al., 2014), and can be much easier to work with, considerable error can be introduced during the aggregation, particularly for from the obs4MIPS project (Teixeira et al., 2014). However, errors may be introduced through sub-optimal aggregation procedures, when using sparse datasets (?). Further, point-wise comparison (Levy et al., 2009) or when aggregating over long time periods (Schutgens et al., 2016b) A comparison of data that is most similar in its spatio-temporal sampling can be shown to provide improved confidence when constraining aerosol processes in climate models compared to an aggregated comparison (e.g. Kipling et al., 2013; ?). However, this point-wise comparison requires the collocation of the datasets on to a common spatio-temporal sampling, which can be a complex operation. By providing collocation tools (Kipling et al., 2013). Thus there is a need for a flexible aggregation and~~

[collocation tool](#) for both gridded and ungridded data [CIS that](#) allows straightforward point-wise comparison between ~~all of the supported~~ [a variety of](#) data formats.

In this paper we first describe the development of this new tool (Sect. 2) and the architecture designed to allow maximum flexibility in the data types and functionality supported (Sect. 3). Then tables of the specific types of data CIS supports and detailed descriptions of the operations which can be performed on them are provided (Sect. 4), followed by an example of the scientific workflow which this tool enables (Sect. 5). Information about downloading and installing CIS, or accessing the source code, can be found in Sect. 7. A brief description of the plugin architecture and the steps needed for a user to create their own plugins are provided in Appendix B, and a table of definitions in Appendix A. A reference card providing a one-page summary of the various CIS commands is also available as a supplement to this paper.

10 2 Development

CIS has been developed by a professional software development consultancy (Tessella Ltd.) working closely with the Centre for Environmental Data Analysis (CEDA) and the Department of Physics at the University of Oxford to ensure a high quality tool which meets the need of a broad range of users. The use of modern development practices such as Test Driven Development (TDD) ~~(?)~~ [\(Beck, 2003\)](#) and Continuous Integration (CI) [\(Beck, 2000\)](#) has ensured that each component is automatically tested against hundreds of Unit Tests before it is deployed. These test each individual function within the code to ensure defects are kept to a minimum, and particularly reduce regressions (defects introduced into code which was previously working)

The development was also carried out in an Agile fashion, specifically using Scrum ~~(?)~~ [\(Schwaber and Beedle, 2001\)](#). In this approach regular working releases were made at the end of two-week implementation ‘sprints’, each delivering a prioritised set of fully functioning requirements adding immediate value to the users (scientists). The developers were supported by a Subject Matter Expert (SME) who worked with the scientists to define and prioritise each area of development (User Stories); a dedicated testing specialist who was responsible for defining and performing independent testing; and a Project Manager (PM) who oversaw progress and managed the overall development process from the Tessella perspective.

CIS is completely written in Python, which provides a good balance between speed, versatility, and maintainability, and allows easy installation across many platforms (see Sect. 7 for more details). Python also has many open-source libraries available to build on, and in particular CIS makes heavy use of the Iris ~~(?) library for it's~~ [\(Met Office, 2016\) library for its](#) internal representation of gridded data types. Many of the more numerically intensive operations within CIS are performed by Python libraries with interfaces to C implementations to keep the run-time as fast as possible.

Much consideration was given to the need for parallelisation and optimisation of the functions within CIS, particularly around collocation where long runtimes for large datasets can be expected. Significant development time was devoted to optimisations in these functions and many of the run-times now scale very well with size of the data. However, we deemed it a lower priority to devote development time to parallelising these operations, as they are usually trivially parallelised by the user by performing the operation on each input file separately across the available compute nodes (using a batch script for

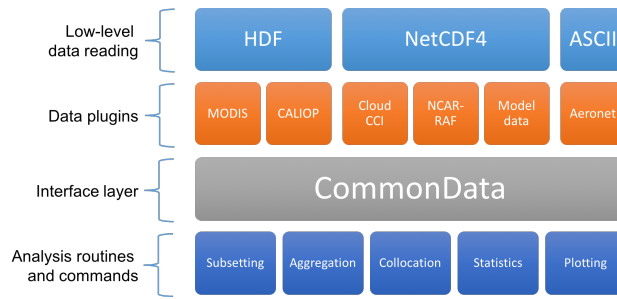


Figure 1. An illustration of the architecture of CIS demonstrating the different components in the modular design.

example, and subsetting the data first as needed). Such a script is pre-installed alongside CIS on the UK JASMIN big-data analysis cluster (Lawrence et al., 2012) and could be easily ported to other clusters.

All of the source code for CIS is freely available under the GNU Lesser General Public License v3, which it is hoped will promote widespread uptake of the tool, and also encourage wider collaboration in its development.

5 3 Extensible architecture

One of the key features of CIS is the flexible and extensible architecture. From the outset it was obvious that there was no way for a single, unextendable, tool to provide compatibility with the wide variety of data sources available and support all of the various analyses which would be performed on them. A modular design was therefore incorporated which allowed user-defined components to be swapped in as easily as possible.

10 At the heart of the design is the ‘CommonData’ interface layer which allows each of the analysis routines and commands to work independently of the actual data being provided, as shown in Fig. 1. The top row of modules in this figure represent the low-level reading routines which are used for actually reading and writing data to the different data formats. The orange components are the data products which interpret the data for CIS and can be swapped out by the user (using ‘plugins’, as described in Sect. B1). The CommonData block represents the internal CIS data structure which abstracts the CIS functionality
 15 (shown in the bottom row) from the different data formats above. Specifically, CommonData is an abstract base class (a class defines an object in object oriented programming) which defines a number of methods which the analysis routines can assume will exist regardless of the underlying data. The two main concrete types of CommonData are GriddedData and UngriddedData, which represent gridded and ungridded data respectively.

There are an extensive number of data sources which are supported by CIS, which can be broadly categorised as either
 20 ‘gridded’ or ‘ungridded’ data. Gridded data is defined as any regularly gridded data-set for which points can be indexed using (i, j, k, \dots) where i, j and k are integer indexes on a set of orthogonal coordinates (see Fig. 2a). Here we define the gridded data values as an n -dimensional matrix \mathbf{G} and n coordinate vectors $\mathbf{x}, \mathbf{y}, \dots$, which we will use in the algorithmic descriptions of the operations in Sect. 4. Ungridded data is anything which does not meet this criteria, and in general it is assumed each (x, y, z) point is independent of every other point (Fig. 2b). Then we can define a data value u_j and set of coordinates \mathbf{r}_j at each point

j . Note that although this independence may not strictly be true for some of the data sources (for example satellite mounted LIDAR instruments where many altitude points will be present for each latitude/longitude point) this strict definition applies within CIS. This allows significant optimisations to be made for operations on gridded data, and flexibility in dealing with ungridded data, at the expense of performance for some operations on those ungridded datasets which do have some structure.

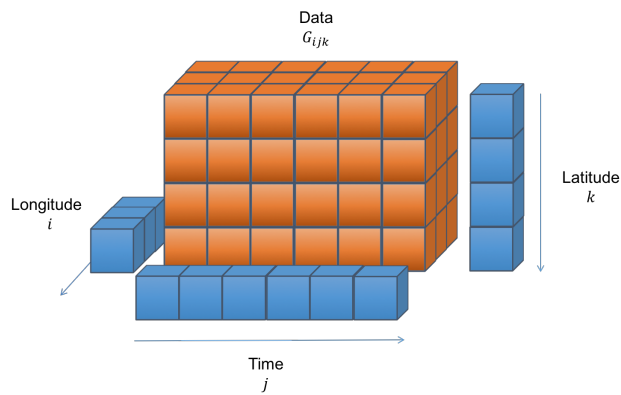


Figure 2a. An illustration of the design of the *gridded* data objects used internally by CIS – based heavily on the Iris ‘cube’. The n -dimensional data array \mathbf{G} is accompanied by n 1-dimensional coordinate arrays. Note that hybrid height and pressure coordinates can also be created and used as needed.

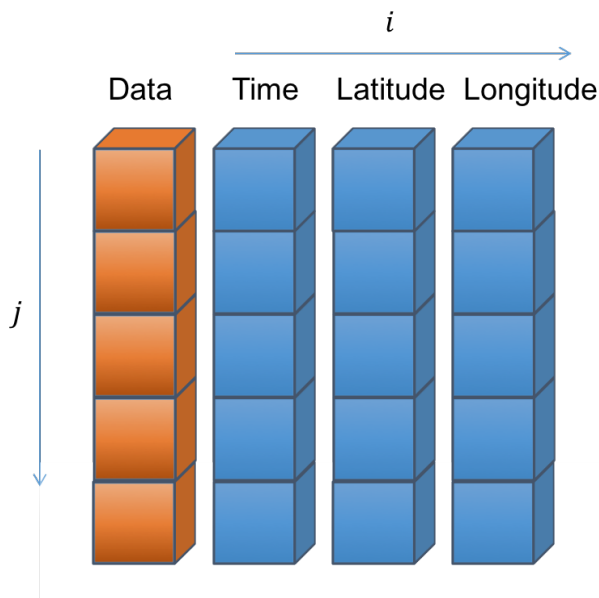


Figure 2b. An illustration of the design of *ungridded* data objects used internally by CIS. All j points are assumed to be independent of each other. The data and associated coordinates are represented as a series of 1-dimensional arrays.

In CIS the gridded data type is really just a thin wrapper around the ‘cube’ provided by the Iris [\(?\) \(Met Office, 2016\)](#) library. All of the ungridded routines are however bespoke and include a number of useful features (besides the main analysis routines) including multi-file and multi-variable operations, hierarchical NetCDF file reading and automatic recognition of file-types. The ungridded data is stored internally as one numpy [\(?\) \(van der Walt et al., 2011\)](#) array of values and a set of associated metadata. There is one such structure for the data values themselves, and each of the latitude, longitude, time and altitude coordinates (as needed). ~~These arrays~~ The data array may take on any shape ~~, though they must all be the same but all of the corresponding coordinate arrays (lat, lon, etc as shown in Fig. 2b) must have the same shape.~~

4 Core functionality

In this section we describe the core functionality of CIS. Each sub-section gives a brief description of an operation; the command line syntax and expected output; a formal algorithmic description of the operation (where appropriate); and a short example.

In order to keep the formal algorithmic descriptions concise without any loss of accuracy we adopt a mixture of set and vector notation, and define that notation here. It is useful to define vector inequalities as:

$$\text{If } \mathbf{x} \leq \mathbf{y} \text{ then } x_i \leq y_i \text{ for } i = 1, \dots, n \quad (1)$$

Similar identities can be defined for the other inequalities. We use \emptyset to denote an empty set, \forall should be read as ‘for all’, $:$ as ‘such that’, and \wedge as logical ‘and’. Some operations involve the use of a kernel to reduce a set to a single value, we denote these as \mathcal{K} .

Although data reading is something a user is rarely aware of when using CIS, the flexibility offered in this regard is an important distinguishing feature. All of the functions described in the following sections are possible with any of the supported datasets, and any datasets supported by user written plugins (as described in Sect. B1).

A list of the ungridded data sources supported by CIS out-of-the-box is presented in Table 1, and gridded data sources in Table 2. As CIS uses Iris for gridded data support, any Climate and Forecast (CF) compliant (<http://cfconventions.org/Data/cf-conventions/cf-conventions-1.6/build/cf-conventions.pdf>) NetCDF4 data can be read in with CIS, as well as the other formats listed.

For all supported datasets any missing_value and FillValue attributes (or the equivalent for that dataset) are automatically taken into account, as well as any valid_min, valid_max and valid_range attributes to mask out invalid data values. Scaling factors and offsets are also applied as appropriate for each dataset.

4.1 Subsetting

Subsetting allows the reduction of data by extracting variables and restricting them to user specified ranges in one or more coordinates. Both gridded and ungridded datasets can be reduced in size by specifying the range over which the output data should be included, and points outside that range are removed.

Table 1. A list of the ungridded data sources supported by CIS [1.3.21.4.0](#). The file signature is used by CIS to automatically determine the correct product to use for reading a particular set of data files, although this can easily be overridden by the user. (Internally these signatures are represented as Python regular expressions, here they are shown as standard wildcards for ease of reading.) [The Global Aerosol Synthesis and Science Project \(GASSP\) datasets are large collections of harmonised in-situ aerosol observations from groups around the world \(<http://gassp.org.uk>\)](#).

Dataset	Product name	Type	File Signature
MODIS L2	MODIS_L2	Satellite	*MYD06_L2*.hdf, *MOD06_L2*.hdf, *MYD04_L2*.hdf, *MOD04_L2*.hdf, *MYDATML2*.hdf, *MODATML2*.hdf
Aerosol CCI	Aerosol_CCI	Satellite	*ESACCI*AEROSOL*
Cloud CCI	Cloud_CCI	Satellite	*ESACCI*CLOUD*
CALIOP L1	Caliop_L1	Satellite	CAL_LID_L1-ValStage1-V3*.hdf
CALIOP L2	Caliop_L2	Satellite	CAL_LID_L2_05kmAPro-Prov-V3*.hdf
CloudSat	CloudSat	Satellite	*_CS_*GRANULE*.hdf
NCAR-RAF	NCAR_NetCDF_RAF	Aircraft	*.nc containing the attribute Conventions with the value NCAR-RAF/nimbus
GASSP	NCAR_NetCDF_RAF	Aircraft	*.nc containing the attribute GASSP_Version
GASSP	NCAR_NetCDF_RAF	Ship	*.nc containing the attribute GASSP_Version, with no altitude
GASSP	NCAR_NetCDF_RAF	Ground-station	*.nc containing the attribute GASSP_Version, with attributes Station_Lat, Station_Lon and Station_Altitude
AERONET	Aeronet	Ground-stations	*.lev20
CSV datapoints	ASCII_Hyperpoints	N/A	*.txt
CIS ungridded	cis	CIS output	eis-*.ne*.nc containing a source attribute which starts with "CIS"

Table 2. A list of the gridded data sources supported by CIS [1.3.21.4.0](#). The file signature is used by CIS to automatically determine the correct product to use for reading a particular set of data files. This can always be overridden by the user.

Dataset	Product name	Type	File Signature
Net_CDF Gridded Data	NetCDF_Gridded	Any CF-NetCDF4 compliant gridded data	*.nc (this is the default for NetCDF Files that do not match any other signature)
MODIS L3 daily and 8-day	MODIS_L3	Satellite	*MYD08_D3*.hdf, *MOD08_D3*.hdf, *MOD08_E3*.hdf
UK Met Office pp data	HadGEM_PP	Gridded Model Data	*.pp

The basic structure of the subset command is:

```
$ cis subset <datagroup> <limits> [-o output_file]
```

Where ‘subset’ is the sub-command to invoke in ‘cis’ and the ‘output_file’ is the (optional) filename to be used for outputting the result. If none is specified then a default is used. The two main arguments ‘datagroup’ and ‘limits’ are more complex and will be discussed below.

The ‘datagroup’ is a common concept across the various CIS commands. It represents a collection of variables (from a collection of files) sharing the same spatio-temporal coordinates, which takes the form:

```
variables:filenames[:product=...]
```

Here, the ‘variables’ element specifies the variables to be operated on and can be a single variable, a comma separated list, a wildcarded variable name, or any combination thereof. The ‘filenames’ element specifies the files to read the variables from and can be a single filename, a directory of files to read, a comma separated list of files or directories, wildcarded filenames, or any combination thereof. The optional ‘product’ element can be used to manually specify the particular product to use for reading this collection of data. See Tables 1 and 2 for a full list of initially available product names.

The ‘limits’ are a comma separated list of the upper and lower bounds to be applied to specific dimensions of the data. The dimensions may be identified using their variable names (e.g. ‘latitude’) or by choosing a shorthand from ‘x’, ‘y’, ‘z’, ‘p’, or ‘t’ which refer to longitude, latitude, altitude, pressure and time respectively. The limits are then defined simply using square brackets, e.g. $x=[-10,10]$. The use of square brackets is a useful reminder that the intervals are inclusive, as discussed below. A time dimension can be specified as an explicit window as $t=[2010-01-01T00, 2010-12-31T23:59:59]$, or more simply as a single value: $t=[2010]$. In this case the value is interpreted as both the start and the end of the window and all points which fall within 2010 would be included. For all other dimensions the ~~units used are~~ values are compared directly with those from the datafile (although these can be converted to standard units during reading if required).

The detailed algorithm used for subsetting ungridded data is outlined in Algorithm 1, and for gridded data in Algorithm 2. The algorithms use a mix of pseudo-code and mathematical notation to try to present the operations in a clear, but accurate way. The operations themselves will involve other checks and optimisations not shown in the algorithms, but the code is available for those interested in its exact workings. See Sect. 3 for definitions of the gridded and ungridded entities.

Algorithm 1 Subset an ungridded dataset given lower and upper bounds (\mathbf{a} and \mathbf{b} respectively) and return the subset as o .

```
INITIALIZE  $o = \emptyset$   
for  $j=1, \dots, J$  do  
   $o_j = u_j$  iff  $\mathbf{a} \leq \mathbf{r}_j \leq \mathbf{b}$   
end for
```

For example the following command would take the variable ‘aod550’ from the file ‘satellite_data.hdf’ and output the data contained in a lat/lon region around North America for the 4th of February 2010 to a file called ‘subset_of_satelite_data.nc’:

Algorithm 2 Subsetting a gridded dataset G . Here we define the algorithm for a two-dimensional dataset, although it can trivially be extended to higher dimensions. Given lower and upper bounds, a and b respectively for each dimension, return the subset as O .

if cells have upper and lower bounds x^u and x^l respectively **then**

$O = \{G_{ij} \forall i, j : (a_x \leq x_i^u \vee x_i^l \leq b_x) \vee (a_y \leq y_j^u \vee y_j^l \leq b_y)\}$

else

$O = \{G_{ij} \forall i, j : (a_x \leq x_i \leq b_x) \vee (a_y \leq y_j \leq b_y)\}$

end if

```
$ cis subset aod550:satellite_data.hdf x=[-170,-60],y=[30,85],t=[2010-02-04] -o
subset_of_satelite_data
```

The output file is stored as a CF compliant NetCDF4 file.

4.2 Aggregation

- 5 CIS also has the ability to aggregate both gridded and ungridded data along one or more coordinates. For example, it can aggregate a model dataset over the longitude coordinate to produce a zonal mean, or aggregate satellite imager data onto a 5° lat/lon grid.

The aggregation command has the following syntax:

```
$ cis aggregate <datagroup>[:options] <grid> [-o outputfile]
```

- 10 Where ‘aggregate’ is the sub-command; ‘datagroup’ specifies the variables and files to be aggregated (see Sect. 4.1 for more details); the ‘options’ define a number of choices available for fine tuning the aggregation which are detailed below; and ‘grid’ defines the grid which the data should be aggregated onto.

- The optional arguments should be given as `keyword=value` pairs in a comma separated list. The only currently available option (other than the ‘product’ option described in the datagroup summary above) is the ‘kernel’ option. This allows the user to specify the exact aggregation kernel to use. If not specified the default is ‘moments’ which returns the number of points in each grid cell, their mean value, and the standard deviation in that mean. Other options include ‘max’ and ‘min’ which return the maximum and minimum value in each grid cell respectively.

- 15 The mandatory ‘grid’ argument specifies the coordinates to aggregate over. The detail of this argument, and the internal algorithms applied in each case are quite different when dealing with gridded and ungridded data so they will be described separately below. This difference arises primarily because gridded data can be completely averaged over one or more dimensions, and also often requires area weights to be taken into account.
- 20

4.2.1 Ungridded aggregation

In the case of the aggregation of ungridded data the mandatory ‘grid’ argument specifies the structure of the ‘binning’ to be performed for each coordinate. The user can specify the start, end and step size of those bins in the form `coordinate=[start, end, step]`. The ‘step’ may be missed out, in which case the bin will span the whole range given. Coordinates may be identified using their variable names (e.g. ‘latitude’) or by choosing from ‘x’, ‘y’, ‘t’, ‘z’, ‘p’ which refer to longitude, latitude, time, altitude and pressure respectively. Multiple coordinates can be aggregated over, in which case they should be separated by commas.

The output of an aggregation is always regularly gridded data, so CIS does not currently support the aggregation over only some coordinates. If a coordinate is not specified (or is specified, but without a step size) then that coordinate is completely collapsed. That is, we average over its whole range, so that the data is no longer a function of that coordinate. Specifically, one of the coordinates of the gridded output would have a length of one, with bounds reflecting the maximum and minimum values of the collapsed coordinate.

The algorithm used for the aggregation of ungridded data is identical to ungridded to gridded collocation (as this is essentially an a collocation operation with the grid defined by the user) described in Algorithm 4.

An example of the aggregation of some satellite data which contains latitude, longitude and time coordinates is shown below. In this case we explicitly provide a one degree by one degree latitude and longitude grid, and implicitly average over all time values.

```
$ cis aggregate AOT500:satellite_data.nc:kernel=mean x=[-180,180,1],y=[-90,90,1] -o  
agg-out.nc
```

4.2.2 Gridded aggregation

For gridded data the binning described above is not currently available, this is partly because there are cases where it is not clear how to apply area weighting. The user is able to perform a complete collapse of any coordinate however, simply by providing the name of the coordinate(s) as a comma separated list – e.g. ‘x,y’ will aggregate data completely over both latitude and longitude, but not any other coordinates present in the file.

The algorithm used for this collapse of gridded dimensions is more straightforward than that of the ungridded case. First the area weights for each cell are calculated, and then the dimensions to be operated on are averaged over simultaneously. That is, the different moments of the data in all collapsed dimensions are calculated together, rather than independently (Using the Iris routines described here: <http://scitools.org.uk/iris/docs/latest/iris/iris/cube.html#iris.cube.Cube.collapsed>), as values such as the standard deviation are non-commuting.

A full example of gridded aggregation, taking the time and zonal average of total precipitation from the HadGEM3 (Hewitt et al., 2011) GCM is shown below. A plot of the resulting data is shown in Fig. 3.

```
$ cis aggregate rsutcs:model_data.nc:kernel=mean t,x -o agg-out.nc
```

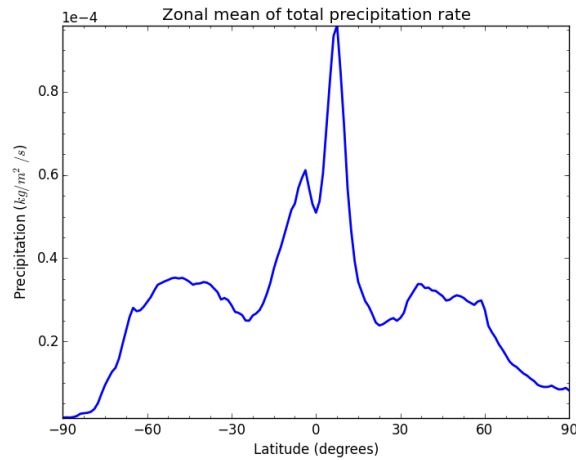


Figure 3. A plot of the zonal average of global rainfall, demonstrating the simple aggregation of global model outputs using CIS. See the text for the exact command used to produce this output.

4.3 Collocation

Point-wise quantitative inter-comparisons require the data to be mapped onto a common set of co-ordinates before analysis, and CIS provides a number of straightforward ways of doing this. One of the key features of CIS is the ability to collocate one or more arbitrary datasets onto a common set of coordinates, for example collocating aircraft data onto hybrid-sigma model levels, or satellite data with ground-station data. The options available during collocation depend on the types of data being analysed as demonstrated in Table 3. The points which are being mapped on to are referred to as sample points, and the points which are to be mapped as data points.

Table 3. An outline of the permutations of collocations types, as a function of the structure of the data and sampling inputs. The available kernels are described in Table 4. Each collocation algorithm is described in more detail in sections 4.3.1 – 4.3.4.

Sample Data	Gridded	Ungridded
Gridded	linear interpolation (lin), nearest neighbour (nn), box	nearest neighbour (nn) <u>linear interpolation (lin),</u> linear interpolation nearest neighbour <u>(linnn)</u>
Ungridded	bin, box	box

The basic structure of the collocation command is:

```
$ cis col <datagroup> <samplegroup> [-o outputfile]
```

Where the ‘datagroup’ specifies the data variables and files to read as described above. The ‘samplegroup’ is analogous to a datagroup, except in this case the data being specified is that of the *sample* data. That is, the points which the data should be collocated onto.

5 The samplegroup has a slightly different format to the datagroup, as the sample variable is optional, and all of the collocation options are specified within this construct. It is of the format `filename{:options}`. The ‘filename’ is one or more filenames containing the points to collocate onto. The available options (which should be specified in a comma separated list) are listed below:

10 – `variable` is used to specify which variable’s coordinates to use for collocation. This is useful if a file contains multiple coordinate systems (common in some model output). Note, that if a variable is specified, missing variable values will not be used as sample points.

15 – `collocator` is an optional argument that specifies the collocation method. Parameters for the collocator, if any, are placed in square brackets after the collocator name, for example, `collocator=box[h_sep=1km,a_sep=10m]`. Here ‘h_sep’ and ‘a_sep’ are parameters which define the size of the collocation box, and stand for horizontal separation and altitude separation respectively. Full details of all of the available parameters can be found in the documentation. If not specified, a default collocator is identified for the data / sample combination. The collocators available, and the one used by default, for each sampling combination of data structures are laid out in Table 3.

20 – `kernel` is used to specify the kernel to use for collocation methods that create an intermediate set of points for further processing, that is ‘box’ and ‘bin’. The default kernel in both cases is ‘moments’. The built-in kernel methods currently available are summarised in Table 4.

A full example would be:

```
$ cis col rain:mydata??.* mysamplefile.nc:collocator=box[h_sep=50km,t_sep=6000S],  
kernel=nn_t -o my_col
```

25 There are also many other options and customisations available. For example, by default all points in the sample dataset are used for the mapping. However (as CIS provides the option of selecting a particular variable as the sampling set) the user is able to disregard all sample points whose values are masked (whose value is equal to the corresponding `fill_value`). The many different options available for collocation, and each collocator can be found in the user manual (see <http://cis.readthedocs.org/en/stable/collocation.html>).

30 In the following sections we describe each mode of collocation in more detail, including algorithmic representations of the operations performed.

Table 4. A list of the different kernels available. Note that not all of the kernels are compatible with all of the collocators.

Kernel	Description	Compatible collocators
mean	The arithmetic mean of the sampled values: $\bar{y} = \frac{1}{n} \sum_{i=1}^n y_i$	bin, box
stddev	The corrected sample standard deviation of the mean: $\sigma_y = \sqrt{\frac{1}{n-1} \sum_{i=1}^n (y_i - \bar{y})^2}$	bin, box
moments	This kernel returns three variables: The number of points in each data sampling; their mean value; and the standard deviation in that mean.	bin, box
min	The lowest of all of the sampled values	bin, box
max	The highest of all of the sampled values	bin, box
nn_horizontal	The value of the data point with the smallest haversine distance from the sample point	box
nn_altitude	The value of the data point with the smallest separation in altitude from the sample point	box
nn_pressure	The value of the data point with the smallest (relative) separation in pressure from the sample point	box
nn_time	The value of the data point with the smallest separation in time from the sample point	box

4.3.1 Gridded to gridded

For a set of gridded data points which are to be mapped on to some other gridded sample the operation is essentially a re-gridding and the user is able to use either: linear interpolation (lin), where the data values at each sample point are linearly interpolated across the cell which the sample point falls; nearest neighbour, for which the data cell nearest to the sample cell can be uniquely chosen in each dimension for every point; and ‘box’ for which an arbitrary search area can be manually defined for the sampling using Algorithm 3. The interpolations are carried out using the Iris interpolation routines which are described in detail elsewhere (see <http://scitools.org.uk/iris/docs/latest/iris/iris/cube.html#iris.cube.Cube.interpolate>). [Support for an area-conservative regridding option is planned for a future release.](#)

CIS can also collocate gridded datasets with differing dimensions. Where the sample array has dimensions that do not exist in the data, those dimensions are ignored for the purposes of the collocation and will not be present in the output. Where the data has dimensions that do not exist in the sample array, those dimensions are ignored for the purposes of the collocation, and *will* be present in the output. [Therefor the output dimensionality is always the same as that of the input data, as shown in Fig. 4.](#)

4.3.2 Ungridded to ungridded

CIS is also able to collocate ungridded data. For ungridded to ungridded collocation the user is able to define a ‘box’ to constrain the data points which should be included for each sample point. The schematic in Fig. 5 shows this box and its relation to the sample and data points. This box can be defined as a distance from the sample point in any of time, pressure, altitude or horizontal (haversine, or great-circle) distance. In general there may be many data points selected in this box. The user also has control over the kernel to be applied to these data values. The default kernel, if none is specified, is the ‘moments’ kernel which

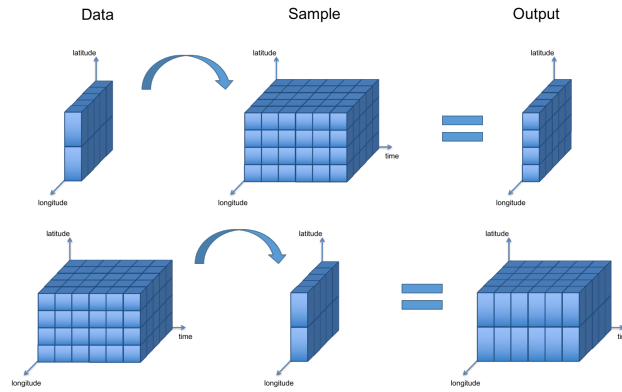


Figure 4. This schematic shows the collocation of gridded data onto an gridded sampling with differing dimensionality. The output dimensionality is always the same as that of the input data.

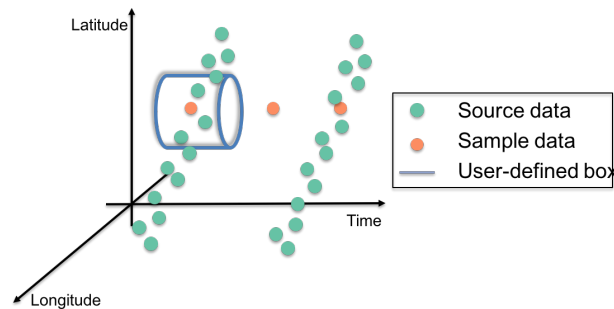


Figure 5. This schematic shows the components involved in the collocation of ungridded data onto an ungridded sampling. The user-defined box around each sampling point provides a selection of data points which are passed to the kernel. Note that the resampled data points lie exactly on top of the sample points (which aren't visible).

returns the number of points selected, their mean value and the standard deviation on that mean as separate NetCDF variables in the output. Otherwise the user can select only the mean, or the nearest point in either time, altitude, pressure or horizontal distance. In this way the user is able to find, for example, the nearest point in altitude within a set horizontal separation cut-off.

The specific process is outlined in Algorithm 3. For simplicity we have assumed the dimensionality of the datasets is the same, in reality this need not be the case. CIS will collocate two datasets as long as both have the coordinates necessary to perform the constraint and kernel operations. Note also that this algorithm only outlines the basic principles of the operations of the code, a number of optimisations are used in the code itself.

One particular optimisation involves the use of Kd-Trees (Bentley, 1975) for the efficient comparison of distances. Our implementation is an extension of the SciPy algorithm (Jones et al., 2001), which uses the sliding midpoint rule to ensure a well balanced tree (Maneewongvatana and Mount, 1999), to enable comparison of haversine distances. This provides a significant performance improvement on the naive point by point comparison (which is shown in Algorithm 3, for simplicity).

Algorithm 3 The ‘box’ collocation of an ungridded dataset onto a sampling set of coordinates s_k of K points. By definition the output o is defined on the same spatio-temporal sampling as s . The distance metrics \mathcal{D} are defined for each coordinate and compared with the user defined maximum \mathbf{a} (the edge of the ‘box’).

```
INITIALIZE  $o = \emptyset$ 
for  $k=1,\dots,K$  do
   $Q = \{u_j \forall j : \mathcal{D}(s_k, r_j) < \mathbf{a}\}$ 
   $o_k = \mathcal{K}(Q)$ 
end for
```

4.3.3 Ungridded to gridded

For ungridded data points which are mapped onto a gridded sample there are two options available. Either the ungridded data points can be ‘binned’ into the bounds defined by each cell of the sample grid using the ‘bin’ option, or the points can be constrained to an arbitrary area centred on the gridded sample point using the box option as described above. Either way, the moments kernel is used by default to return the number of points in each bin or box, the mean of their values and the standard deviation in the mean.

Algorithm 4 describes this process in more detail. As with Algorithm 3, we show here the operations performed, but not the exact code-path. In reality a number of optimisations are made to ensure efficient calculations.

Algorithm 4 The ‘bin’ collocation of an ungridded dataset onto a gridded sample set of M multi-dimensional cells, as defined by the input file. Upper and lower bounds for each of the cells of the dataset (\mathbf{b} and \mathbf{a} respectively) are automatically deduced if not present in the data.

```
INITIALIZE  $O = \emptyset$ 
for  $m=1,\dots,M$  do
   $Q = \{u_j \forall j : \mathbf{a}_m \leq r_j < \mathbf{b}_m\}$ 
   $O_m = \mathcal{K}(Q)$ 
end for
```

4.3.4 Gridded to ungridded

10 When mapping gridded data onto ungridded sample points the options available are for the nearest neighbour value, or a linearly interpolated value.

The methods used to perform the interpolation are provided by the [Iris package \(see for more details\)](#) [SciPy library \(Jones et al., 2001\)](#), although CIS provides extended functionality by allowing users to interpolate over hybrid pressure or altitude coordinates as needed. CIS first [uses Iris to interpolate in](#) [interpolates over](#) all coordinates other than hybrid altitude or pressure, then a linear

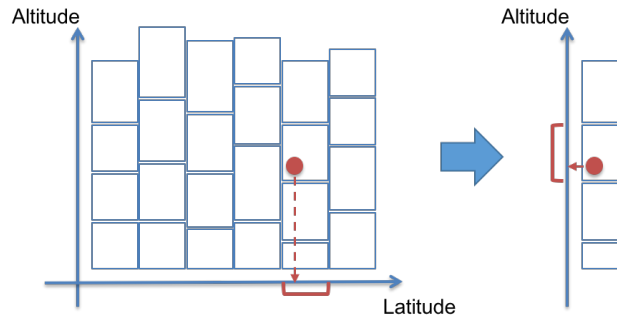


Figure 6. This schematic shows the collocation of gridded data onto an ungridded sampling where the altitude component of the data is defined on a hybrid height grid. CIS will first collocate the data in the coordinate dimensions (latitude, longitude, etc), to extract a single altitude column, and then perform a second interpolation on the altitude coordinate.

interpolation in the hybrid coordinate is performed (see Fig. 6). [CIS also caches the interpolation weights and indices so that collocation over multiple variables with the same spatio-temporal coordinates only takes roughly as long as one variable.](#)

4.4 Plotting

CIS also includes a comprehensive set of plotting capabilities, allowing the analysis and comparison of the whole variety of data which can be read. This includes plots of aircraft flight tracks (see e.g. Fig. 7) and satellite imagers (Fig. 8). It also allows the plotting of heatmaps for gridded data as shown in the annual averages of AOT (Aerosol Optical Thickness) plotted in Fig. 10. It also allows more detailed analysis of combined datasets, for example by plotting collocated variables against each other as a scatter plot, and even as a 2-D histogram – for highlighting the distributions when there are many thousands of points, such as in Fig. 9.

The plotting output is highly customisable, with more than 35 different options available for specifying everything from the axes labels, to the colour of the coastlines. The user is also able to output the plots directly to screen, for interactive visualisation, including zooming and panning, or straight to image file (including .png, .jpg, .eps, or .pdf) for publication ready plots. A full description of the plotting syntax and available options is provided in the user manual (<http://cis.readthedocs.org/en/stable/plotting.html>) [along with an extended gallery of example plots](http://cis.readthedocs.io/en/stable/plotting.html) (<http://cis.readthedocs.io/en/stable/plotting.html>).

15 4.5 Analysis

In addition to standard analysis options as described above, CIS allows general arithmetic operations to be performed between different variables using the ‘eval’ command. The two variables must be on the same spatio-temporal sampling, CIS will check the data has the same dimensions but not that the points correspond to the same sampling. There are limitless possibilities, but it enables, for example, the calculation of the difference between two collocated variables as demonstrated in Fig. 10. It also

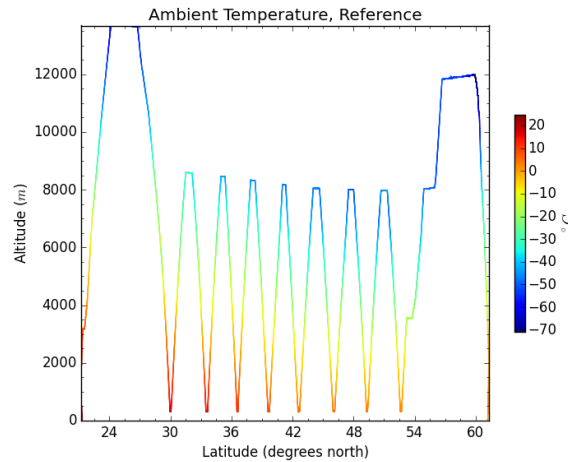


Figure 7. An example scatter plot from a particular aircraft measurement of ambient temperature as a function of latitude (x-axis) and altitude (y-axis) produced directly by CIS. Note the representation of temperature as the colour of the scatter points.

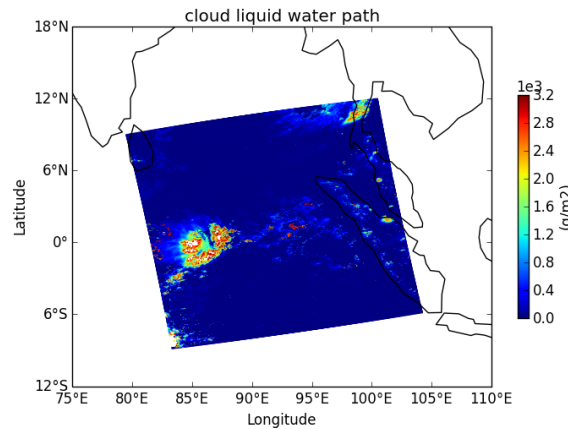


Figure 8. An example plot showing the cloud liquid path over the Indian Ocean just off Malaysia, retrieved by the ESA Cloud CCI product MODIS Aqua [\(Hollmann et al., 2013\)](#).

allows users to easily create a mask for a dataset, for example masking all of the mean output values from a collocation for which fewer than 5 points were used.

The basic structure of the eval command is as follows:

```
$ cis eval <datagroup>... <expr> <units>
```

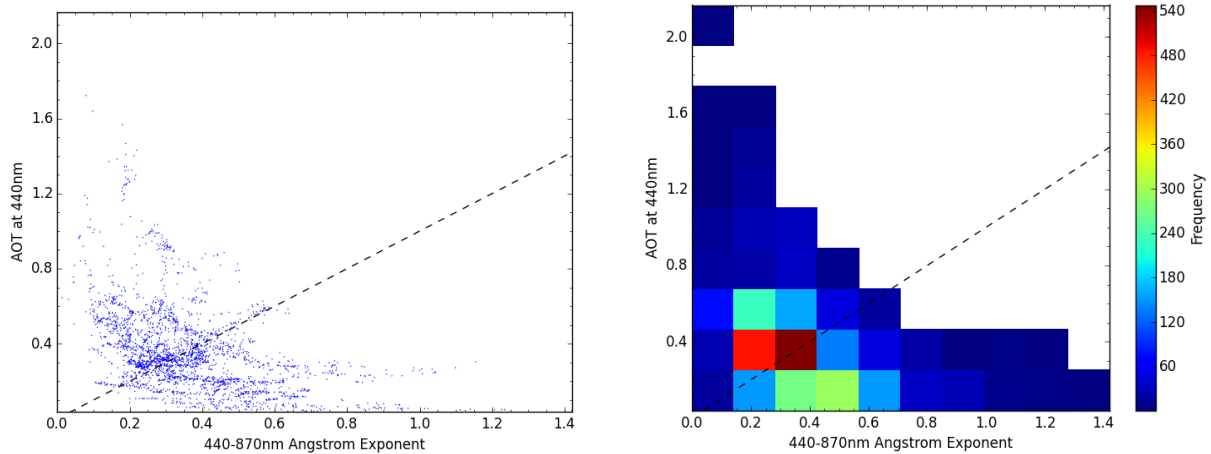


Figure 9. An example of plotting two collocated variables against one another as a scatter plot, and also as a 2-D histogram. This can be useful for inspecting dense scatter plots.

Where ‘datagroup’ has already been described above (but variables can optionally take an alias to simplify the expression), ‘expr’ is the expression to evaluate, and ‘units’ is a string describing the units which should be assigned to the new variable (and must be CF-compliant). Note that, it is actually possible to evaluate any python expression with this command, including using the numpy library, but that for security ([in case CIS is being run as a different user, or with elevated permissions for some reason](#)) many built-in modules are unavailable.

This flexibility allows for some quite complex analysis. For example, consider the case of calculating the Ångström Exponent (α) for AOT (τ_λ) as measured by AERONET (AEROSOL ROBOTIC NETWORK) (<http://aeronet.gsfc.nasa.gov/>) at 870 nm and 440 nm, where α is given by:

$$\alpha = -\frac{\log \frac{\tau_{\lambda_1}}{\tau_{\lambda_2}}}{\log \frac{\lambda_1}{\lambda_2}}. \quad (2)$$

10 This can be straightforwardly calculated using the following CIS command:

```
$ cis eval AOT_440,AOT_870:agoufou.lev20 " (-1) * (numpy.log(AOT_870/AOT_440) / numpy.log(870./440.)) " 1 -o alpha
```

Note that we have used the numpy library to calculate the log of each of the variable arrays, and have used the (AOT) variable names in the file for τ . The resulting α is then output to a CF compliant NetCDF4 file for further analysis or processing.

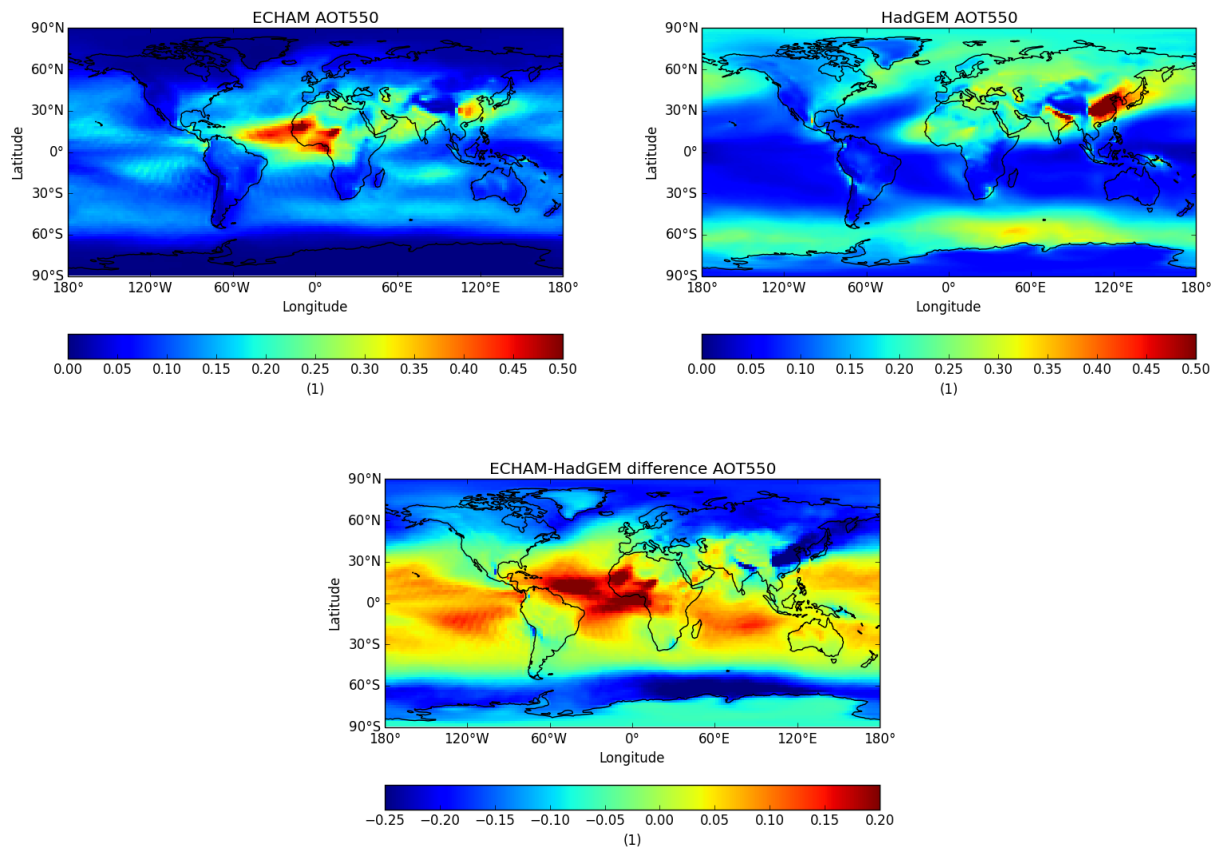


Figure 10. A comparison of annual average AOT at 550 nm between ECHAM and HadGEM3 across the globe.

4.6 Statistics

Users are also able to perform a basic statistical analysis on two variables using the ‘stats’ command. This command has a very basic structure:

```
$ cis stats <datagroup>...
```

- 5 More than one datagroup may be specified, but the total number of variables declared in all the datagroups must be **exactly** two. Again, they must both be on the same spatio-temporal sampling.

For example, the user might wish to examine the correlation between a model data variable and actual measurements, or (as in the Ångström Exponent example above) the correlation between a calculated and measured variable. The ‘stats’ command will calculate:

- 10 1. Number of data points used in the analysis.

2. The mean and standard deviation of each dataset (separately).
3. The mean and standard deviation of the absolute difference ($v_2 - v_1$).
4. The mean and standard deviation of the relative difference $((v_2 - v_1)/v_1)$.
5. The Linear Pearson correlation coefficient.
- 5 6. The Spearman Rank correlation coefficient.
7. The coefficients of linear regression (i.e. $v_2 = av_1 + b$), r -value, and standard error of the estimate.

Many of these values are calculated using the SciPy library(?) ([Jones et al., 2001](#)). The values are displayed on screen and can optionally be saved to a NetCDF4 file.

4.7 CIS as a Python library

- 10 CIS was primarily designed as a command line tool, however it is also straightforward to use some of the power of CIS in other Python modules or scripts. In particular CIS provides an interface for reading any of the datasets which CIS supports (either built-in or through user supplied plug-ins). The data is returned in a well documented data structure which provides straightforward access to the raw data, the coordinates and all associated meta-data.

- Further, because the data structure returned by these routines are built on Numpy arrays, it is trivial to build these into existing Python based data analysis routines. There is also an option to return the data as a Pandas (<http://pandas.pydata.org>) dataframe. Pandas is an open-source data analysis package providing, amongst other things, in-depth and easy to use time-series analysis.

[Version 2.0 of CIS is planned to include full support for all of the main CIS commands through the Python interface. For an outline of our future plans for CIS please see \[www.cistools.net/roadmap\]\(http://www.cistools.net/roadmap\).](#)

5 Example scientific workflow

- 20 Consider the comparison of a set of AERONET data [from the Agoufou station](#) with model AOT data over a given time period, for example, in order to help inform and constrain the approximations and assumptions used in the model. For the sake of this example we use ECHAM6-HAM2 (first described by [Stier et al. \(2005\)](#)), but as no scientific interpretation of the comparison will be sought or offered, the details of the setup are not important.

- As a first step it is often useful to inspect the contents of a datafile to determine which variables it contains. This is straight-
25 forward using the ‘info’ command:

```
$ cis info 920801_091128_Agoufou.lev20
```

This will return a list of the variables in the file, exactly as they should be passed to other commands. The ‘-v’ flag can be used to get more detailed information about any specific variables. Next, we might plot each of the datasets in order to examine

their spatio-temporal extents, and get a feel for the magnitudes of the AOT. We can plot the AERONET data with the following command:

```
$ cis plot AOT_675:920801_091128_Agoufou.lev20
```

An example output plot is shown in Fig. 11. Note that the model data can't yet be plotted using CIS as it is extended in
5 latitude, longitude and time. It could however be subsetted, or aggregated to reduce the dimensionality before plotting.

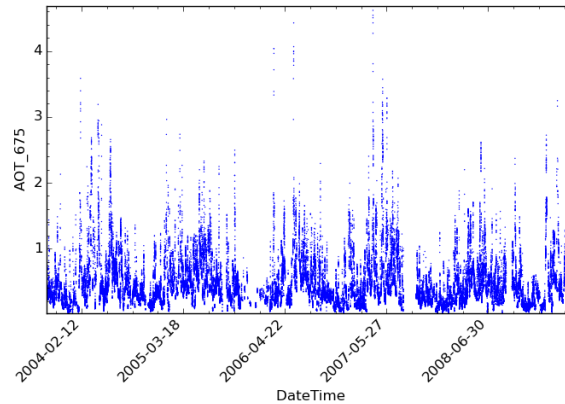


Figure 11. CIS plot with default options for AOT observed from a single AERONET station.

Next we might decide to subset the AERONET data to cover the same temporal range as the model data (which is for 2007):

```
$ cis subset AOT_675:920801_091128_Agoufou.lev20 -t=[2007]
```

In order to quantitatively compare the values we need to bring the model data onto the AERONET spatio-temporal sampling, this is straightforward using the collocation command:

```
10 $ cis col TAU_2D_670nm:ECHAMHAM_AOT550_670.nc 920801_091128_Agoufou.lev20 -o  
    echam_on_agoufou.nc
```

Note that this will ~~find-the-nearest-neighbour~~ linearly interpolate model data values in both space and time by default, though we could have chosen to use a ~~linear interpolation~~ nearest neighbour algorithm instead. Once we have two collocated datasets we can calculate the point-wise difference between the observations and the collocated model data using:

```
15 $ cis eval TAU_2D_670nm:echam_on_agoufou.nc AOT_675:920801_091128_Agoufou.lev20 "  
    TAU_2D_670nm_-_AOT_675" -o echam_aeronet_agoufou_diff.nc
```

We can also use the built in analysis routines to give us an overview of the correlations between the two datasets using the stats command:

```
$ cis stats TAU_2D_670nm:echam_on_agoufou.nc AOT_675:920801_091128_Agoufou.lev20
```

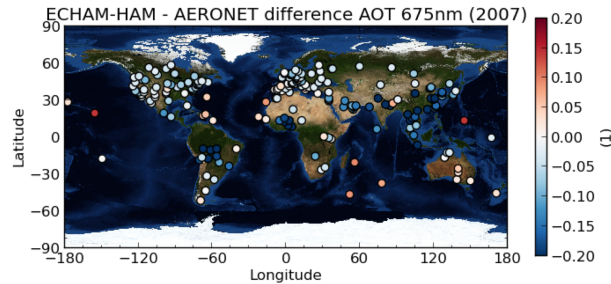



Figure 12. The difference between the annual average AOT measured at AERONET stations around the world and ECHAM6-HAM2 modelled values. This plot only demonstrates a type of analysis which is easy to perform with CIS, no scientific critique of these differences is offered.

This will print out to screen the mean and standard deviation in each dataset, the absolute and relative differences between them, and the linear Pearson and Spearman Rank correlation coefficients, as described in Sect. 4.6. And finally, in order to ensure a robust statistical comparison we can then aggregate the collocated data in time to provide a yearly average:

```
5 $ cis aggregate TAU_2D_670nm:echam_aeronet_agoufou_diff.nc t -o
    echam_on_agoufou_diff_2007.nc
```

This provides the average difference of the *collocated* data values. Furthermore, because ~~these are straightforward command-line commands~~, CIS commands can take multiple filenames as input we can easily ~~script this process and repeat it~~ extend this process for multiple AERONET stations to produce a plot of the annual difference across the globe. ~~Assuming we have performed the collocation and differencing over all of the stations, the aggregation step above is only slightly changed:~~

```
10 $ cis aggregate TAU_2D_670nm:echam_all_aeronet_diff.nc t, x=[-180,180,0.5], y
    =[-90,90,0.5] -o echam_on_aeronet_diff_2007.nc
```

We have had to define a sufficiently fine spatial grid to maintain the spatial component of the difference. It is anticipated that future versions of CIS will support aggregation of ungridded datasets over only time, to support exactly this kind of workflow without the need to define an arbitrary grid (see <http://cistools.net/roadmap> for more details). Nevertheless we can now plot this difference using a scatter plot as shown in Fig. 12 using the following command:

```
$ cis plot TAU_2D_670nm:echam_on_aeronet_diff_2007.nc --type scatter --
    nasablue_marble --cmap "RdBu_r"
```

Note that all of the cells in the aggregation with no points (where there are no AERONET stations) are masked in the output and so not shown in the scatter plot.

6 Conclusions and summary

The intercomparison of observational and model data is a crucial aspect of modern climate science. There exist a few tools to work with gridded NetCDF datasets, but very few in support of process studies using assorted data sources, and none which allow generic intercomparison of multiple ungridded ~~and/or gridded datasets~~ datasets, multiple gridded datasets - or any combination thereof.

Here we have demonstrated the power and use of CIS – a new universal tool for the inter-comparison of model, remote sensing and in-situ climate data. The open and extensible nature of the tool allows for the easy and reproducible collocation, aggregation, subsetting and analysis of a huge variety of data sources on everything from laptops to large processing clusters. Further, the ability to extend the data sources compatible with CIS through user developed plugins provides the opportunity for a shared tool to serve a diverse community.

Further development of CIS is ongoing and we hope to include a number of new features in the future, such as an extended Python Application Programming Interface (API) interface, hybrid gridded/ungridded data structures and improved time-series analysis, as outlined in our roadmap (www.cistools.net/roadmap). However, the growth of a user community (centred around our website) will help decide on the priority and best implementation of such features through user feedback and users actively engaging in development. All descriptions of functionality are correct as of version 1.3.21.4.0 (Watson-Parris et al., 2016), future releases and announcements can be found on the CIS website: <http://cistools.net>.

7 Code availability

The CIS source code is available on GitHub at <https://github.com/cedadev/cis>, and the binary is available for easy installation on Windows, OS X and Linux through conda using the 'conda-forge' or 'cistools' channel (see <http://cistools.net/get-started#installation> for more details). CIS is also pre-installed on the UK JASMIN analysis platform (JASMIN runs a number of Red hat Enterprise Linux 6 scientific computing virtual machines for which CIS is pre-installed. See <http://www.jasmin.ac.uk> for more details). Getting started documentation and the community plugin library is available at <http://www.cistools.net>. Detailed documentation and help pages can be found at <http://cis.readthedocs.org>.

CIS is a tool for working with-with a wide variety of data, however none of the datasets used or described within this paper are supplied with the tool and should be obtained directly through their respective providers.

Acknowledgements. We would like to acknowledge the guidance and support of Stephen Pascoe through his role in CEDA during the first phases of development, and Caroline Poulsen (Remote Sensing Group, EOAS Division, RAL Space) who provided invaluable user feedback. Each development phase has been supported by STFC JASMIN capital grants, and a NERC Big Data call. The first phase of development was supported by e-infrastructure capital grants for JASMIN from the Science and Technology Facilities Council (ST/K000594/1). Subsequent development was supported by Natural Environment Research Council capital funding for JASMIN. Scientific support has been provided by the Global Aerosol Synthesis and Science Project (GASSP), Natural Environment Research Council (NE/J022624/1). The research leading to these results has received funding from the European Research Council under the European Union's Seventh Framework Programme

(FP7/2007–2013)/ERC grant agreement no. FP7-280025. We thank the AERONET principal investigators (PI) and their staff for establishing and maintaining the AERONET sites used in the examples here. We are also grateful to the ESA Cloud CCI project, and to NASA for the underlying MODIS datasets which went into one of the examples used.

References

- Beck, K.: *Extreme Programming Explained: Embrace Change*, An Alan R. Apt Book Series, Addison-Wesley, 2000.
- Beck, K.: *Test-Driven Development by Example*, Addison-Wesley, 2003.
- Bentley, J. L.: *Multidimensional Binary Search Trees Used for Associative Searching*, *Commun. ACM*, 18, 509–517, 1975.
- 5 Boucher, O., Randall, D., Artaxo, P., Bretherton, C., Feingold, G., Forster, P., Kerminen, V. M., Kondo, Y., Liao, H., Lohmann, U., Rasch, P., Satheesh, S. K., Sherwood, S., Stevens, B., and Zhang, X. Y.: *Clouds and Aerosols*, in: *Climate Change 2013: The Physical Science Basis. Contribution of Working Group I to the Fifth Assessment Report of the Intergovernmental Panel on Climate Change*, edited by Stocker, T. F., Qin, D., Plattner, G. K., Tignor, M., Allen, S. K., Boschung, J., Nauels, A., Xia, Y., Bex, V., and Midgley, P. M., pp. 571–658, Cambridge University Press, Cambridge, United Kingdom and New York, NY, USA, 2013.
- 10 Eyring, V., Bony, S., Meehl, G. A., and Senior, C. A.: *Overview of the coupled model intercomparison project phase 6 (CMIP6) experimental design and organisation*, *Geoscientific Model . . .*, 2016a.
- Eyring, V., Righi, M., Lauer, A., Evaldsson, M., Wenzel, S., Jones, C., Anav, A., Andrews, O., Cionni, I., Davin, E. L., Deser, C., Ehbrecht, C., Friedlingstein, P., Gleckler, P., Gottschaldt, K.-D., Hagemann, S., Juckes, M., Kindermann, S., Krasting, J., Kunert, D., Levine, R., Loew, A., Mäkelä, J., Martin, G., Mason, E., Phillips, A. S., Read, S., Rio, C., Roehrig, R., Senftleben, D., Sterl, A., Ulft, L. H. v., Walton, J., Wang, S., and Williams, K. D.: *ESMValTool (v1.0) – a community diagnostic and performance metrics tool for routine evaluation of Earth system models in CMIP*, *Geoscientific Model Development Discussions*, 9, 1747–1802, 2016b.
- 15 Gleckler, P., Doutriaux, C., Durack, P., Taylor, K., Zhang, Y., Williams, D., Mason, E., and Servonnat, J.: *A More Powerful Reality Test for Climate Models - Eos*, *Eos*, 97, 2016.
- Hewitt, H. T., Copsey, D., Culverwell, I. D., Harris, C. M., Hill, R. S. R., Keen, A. B., McLaren, A. J., and Hunke, E. C.: *Design and implementation of the infrastructure of HadGEM3: the next-generation Met Office climate modelling system*, *Geoscientific Model Development*, 4, 223–253, doi:10.5194/gmd-4-223-2011, <http://www.geosci-model-dev.net/4/223/2011/>, 2011.
- Hollmann, R., Merchant, C. J., Saunders, R., Downy, C., Buchwitz, M., Cazenave, A., Chuvieco, E., Defourny, P., de Leeuw, G., Forsberg, R., Holzer-Popp, T., Paul, F., Sandven, S., Sathyendranath, S., van Roozendael, M., and Wagner, W.: *The ESA Climate Change Initiative: Satellite Data Records for Essential Climate Variables*, *Bulletin of the American Meteorological Society*, 94, 1541–1552, 2013.
- 25 Jones, E., Oliphant, T., Peterson, P., and others: *SciPy: Open source scientific tools for Python*, 2001.
- Kipling, Z., Stier, P., Schwarz, J. P., Perring, A. E., Spackman, J. R., Mann, G. W., Johnson, C. E., and Telford, P. J.: *Constraints on aerosol processes in climate models from vertically-resolved aircraft observations of black carbon*, *Atmos. Chem. Phys.*, 13, 5969–5986, 2013.
- Langerock, B., De Mazière, M., Hendrick, F., Vigouroux, C., Desmet, F., Dils, B., and Niemeijer, S.: *Description of algorithms for co-locating and comparing gridded model data with remote-sensing observations*, *Geosci. Model Dev.*, 8, 911–921, 2015.
- 30 Lawrence, B. N., Bennett, V. L., Churchill, J., Juckes, M., Kershaw, P., Oliver, P., Pritchard, M., and Stephens, A.: *The JASMIN super-data-cluster*, arXiv:1204.3553 [physics], 2012.
- Levy, R. C., Leptoukh, G. G., Kahn, R., Zubko, V., Gopalan, A., and Remer, L. A.: *A Critical Look at Deriving Monthly Aerosol Optical Depth From Satellite Data*, *IEEE Transactions on Geoscience and Remote Sensing*, 47, 2942–2956, 2009.
- Maneewongvatana, S. and Mount, D. M.: *It’s Okay to Be Skinny, If Your Friends Are Fat*, in: *Center for Geometric Computing 4th Annual Workshop on Computational Geometry*, 1999.
- 35 Met Office: *Iris*, doi:10.5281/zenodo.51860, <http://dx.doi.org/10.5281/zenodo.51860>, 2016.

- Schutgens, N. A. J., Gryspeerdt, E., Weigum, N., Tsyro, S., Goto, D., Schulz, M., and Stier, P.: Will a perfect model agree with perfect observations? The impact of spatial sampling, *Atmos. Chem. Phys.*, 16, 6335–6353, 2016a.
- Schutgens, N. A. J., Partridge, D. G., and Stier, P.: The importance of temporal collocation for the evaluation of aerosol models with observations, *Atmos. Chem. Phys.*, 16, 1065–1079, 2016b.
- 5 Schwaber, K. and Beedle, M.: *Agile Software Development with Scrum*, Prentice Hall PTR, Upper Saddle River, NJ, USA, 1st edn., 2001.
- Stier, P., Feichter, J., Kinne, S., Kloster, S., Vignati, E., Wilson, J., Ganzeveld, L., Tegen, I., Werner, M., Balkanski, Y., and others: The aerosol-climate model ECHAM5-HAM, *Atmos. Chem. Phys.*, 5, 1125–1156, 2005.
- Stocker, T. F., Qin, D., Plattner, G. K., Tignor, M., Allen, S. K., Boschung, J., Nauels, A., Xia, Y., Bex, V., and Midgley, P. M., eds.: *Climate Change 2013: The Physical Science Basis. Contribution of Working Group I to the Fifth Assessment Report of the Intergovernmental Panel on Climate Change*, Cambridge University Press, Cambridge, United Kingdom and New York, NY, USA, 2013.
- 10 Suzuki, K., Stephens, G. L., van den Heever, S. C., and Nakajima, T. Y.: Diagnosis of the Warm Rain Process in Cloud-Resolving Models Using Joint CloudSat and MODIS Observations, *Journal of the Atmospheric Sciences*, 68, 2655–2670, 2011.
- Teixeira, J., Waliser, D., Ferraro, R., Gleckler, P., Lee, T., and Potter, G.: *Satellite Observations for CMIP5: The Genesis of Obs4MIPs*, vol. 95, American Meteorological Society, 2014.
- 15 van der Walt, S., Colbert, S. C., and Varoquaux, G.: The NumPy Array: A Structure for Efficient Numerical Computation, *Computing in Science Engineering*, 13, 22–30, 2011.
- Watson-Parris, D., Schutgens, N. A. J., Cook, N., Kipling, Z., Kershaw, P., Gryspeerdt, E., Stier, P., and Lawrence, B.: CIS: v1.4.0, doi:10.5281/zenodo.59939, <http://dx.doi.org/10.5281/zenodo.59939>, 2016.
- Zender, C. S.: Analysis of self-describing gridded geoscience data with netCDF Operators (NCO), *Environmental Modelling & Software*, 20, 1338–1342, 2008.

Appendix A: Table of definitions

Table 5. A table of terms in this paper

Term	Definition
Aggregate	The process taking ungridded data and performing averaging over time and/or space to produce a gridded output.
<u>Collocate</u>	<u>The process of bringing two datasets on to the same spatial and temporal coordinates.</u>
Point-wise operation	An operation carried out on each data point individually, usually on ungridded data.
Gridded	Any regularly gridded data-set for which points can be indexed using (i, j, k, \dots) where i , j and k are integers.
Ungridded	Any data which is not regularly gridded, in general it is assumed each (x, y, z) point is independent of every other point.

Appendix B: Plugin development

In this section we describe two specific ways that users are able to easily extend the functionality provided by CIS. The plugins are short pieces of Python code that users can write themselves and which CIS will then automatically incorporate. Our website offers functionality for users to upload new plugins to be shared with the wider CIS community. Submitted plugins won't be automatically included in the base CIS install, but can easily be downloaded and included by other users. If certain plugins prove popular then they will be tested, documented and included in the base install.

A detailed description of the development of CIS plugins, and a number of increasingly in-depth tutorials can be found in the CIS documentation (http://cis.readthedocs.org/en/stable/plugin_development.html), here we provide only an overview of the basic plugin structures.

10 B1 Data plugins

CIS uses the notion of a 'data product' to encapsulate the information about different types of data. Users can write their own products for reading in different types of data – referred to as 'plugins'. These products (or plugins, if provided by the user) are concerned with interpreting the raw data and its coordinates and producing a single self describing data object conforming to the CommonData interface (see Fig. 1). They follow a defined structure so that they can be automatically included and used by the tool. We briefly describe that structure here.

All plugins must subclass the `AProduct` abstract class (this class defines the structure described here, and indicates to CIS the type of plugin the user has supplied), and are therefore forced to provide an implementation for the following methods:

- `get_file_signature(self)` This method returns a list of regular expressions to match the product's file naming convention. CIS will use this to decide which data product to use for a given file. The first product with a signature that matches the filename will be used.
- `create_coords(self, filenames)` Return the coordinates from one or more files. Note that this method may have to make certain assumptions about the file in order to return a single coordinate set.
- `create_data_object(self, filenames, variable)` Creates and returns a `CommonData` object for a given variable from a list of filenames.

The underlying I/O layers are also available for the plugins to use (such as NetCDF reading) which ensures the writing of plugins is as straightforward as possible.

B2 Collocation

Users can also write their own plugins for performing the collocation of two datasets. There are three main objects used in the collocation which the user is free to override: The collocator; the constraint; and the kernel. The basic design is that the collocator loops over each of the sample points, calls the relevant constraint to reduce the number of data points, and then calls the kernel which returns a single value for the collocator to store.

The main plugin which is available is the collocation method itself. A new one can be created by subclassing `Collocator` and providing an implementation for the main 'collocate' method. This method takes a number of points and applies the given constraint and kernel methods on the data for each of those points. It is responsible for returning the new data object to be written to the output file.

- 5 The constraint object limits the data points for a given sample point somehow. The user can also add a new constraint method by subclassing `Constraint` and providing an implementation for the method `constrain_points`. The final plugin type is the `Kernel` which is used to convert the constrained points into values in the output, many examples of which are listed in Table 4.

- 10 Although we provide an outline here please see the technical documentation for more details (http://cis.readthedocs.org/en/stable/analysis_plugin_development.html).