

We would like to thank both reviewers for their detailed and constructive comments on our manuscript. It is very much appreciated that both reviewers took such obvious care and gave excellent comments. It is our hope that they agree that the changes introduced in the new version based on their comments and suggestions, have helped improve the work. Where comments from both reviewers address the same issue, one answer is given for both comments. Below, we list the reviewer comments and our corresponding replies (in blue) as well as excerpts from the new draft (blue italic). A supplement of tracked changes is also provided.

RC #1

General comments: This paper describes the incorporation of a new aerosol wet scavenging scheme into the FLEXPART model. The authors included a new parameterization for wet removal within and below clouds considering the physical state of water in the clouds and the precipitation type. This parameterization was set for three different types of aerosols and compared against available measurements. A series of sensitivity analysis were also performed to test the range of results obtained under different parameterization assumptions.

Specific comments:

- Although it is very commendable the inclusion of comparisons between measurements and model results, I have serious concerns regarding the uncertainties in other processes (e.g. emissions) that might hinder the conclusions reached by this work. Consequently, to give the readers a sense of the relative changes introduced by the new parameterizations, I would suggest including the results from the old parameterization for each of the three applications presented in this work.

This is a good and valid concern. Therefore, as suggested we have added some results from version 9 of FLEXPART to each of the 3 sensitivity studies. The following changes were done to accommodate this:

1. In Figure 5c: The ratio of $^{137}\text{CS}/^{133}\text{Xe}$ from Kristiansen et al., (2015) using FLEXPART version 9 has been added to show the difference in e-folding timescale from previous versions. In Figure 5d: a fit to the latitudinal bias of FLEXPART v9 is now also shown.
2. For mineral dust, a line was added to Table 2 that reports τ_F using the standard removal in FLEXPART v9.
3. In Figure 9, we have replaced simulation #7 concentrations obtained with version 9 of FLEXPART. The removal used is however, the removal used for BC in previous publications, which is a modified version of the existing scheme in FLEXPART.

When adding these results, also some small changes to text were made throughout the document to incorporate the results in the text (see supplement).

- Line 160. How did you come up with a value of 6.1 for i_{cr} ? Is this basically an empirical factor?

The empirical nature of the value of i_{cr} used was perhaps not expressed explicitly enough. Though i_{cr} should be representative of that there is cloud water replenishment, linking the time averaged cloud water fields to precipitation rates, the value of 6.1 is a purely empirical factor in FLEXPART. Values suggested in literature for cloud water replenishment suggest 15-120 min for warm marine stratiform drizzle (Wood et al., 2009). The value of replenishment is closely tied to cloud droplet autoconversion rates (Khairoutdinov and Kogan 2000) which are not as well constrained for mixed and ice phase clouds and not resolved in FLEXPART.

In text it was clarified that i_{cr} indeed is an empirical value:

where F_{nuc} , the nucleation efficiency, is the fraction of the aerosol within the cloud that is in the cloud water (see Fig. 1). While i_{cr} represents the cloud water replenishment rate, it cannot be determined from the ECMWF output data. Therefore, the determination of the constant i_{cr} was done on the basis of empirical testing in FLEXPART and must be considered a tuning parameter.

Compared to the previous FLEXPART scheme described in Stohl et al., 2005, i_{cr}/PCW replaces the cloud water representation that was calculated based on an empirical relationship with precipitation rate ($cl = 2 \cdot 10^{-7} I^{0.36}$). The overall best results were obtained for i_{cr} set to a value of 6.1 for the ECMWF cloud water fields, which is used for all simulations in this paper. This resulted in a somewhat slower in-cloud removal rate with the new compared to the old parametrisation. Comparison of the two parametrisations also shows that using i_{cr}/PCW gives overall weaker dependence on I , compared to cl in the old removal scheme. For simulations where in-cloud removal constitutes a large fraction of the removal, i.e. especially for soluble accumulation mode aerosols, the empirical value of i_{cr} has a large impact on overall removal rates.

- Including a list of recommended values for the parameterizations for different aerosols will enhance the value of this work.

This is a good suggestion which we wholeheartedly agree to. A paragraph has been added in “Conclusions” to this effect:

Simulations for the accumulation mode particles with FLEXPART are highly sensitive to the choice of CCN_{eff} and IN_{eff} values, which describe the particles’ efficiency to serve as cloud condensation and ice nuclei. Overall, it was found that the sum of $CCN_{eff} + IN_{eff}$ is more important for the removal efficiency than the individual choice of values for CCN_{eff} or IN_{eff} . For the three aerosol types, we recommend the following values: Regarding insoluble aerosols, Zwaafink et al., 2016 found good agreement between modeled and observed concentrations when using $CCN_{eff} = 0.15$ and $IN_{eff} = 0.02$ for mineral dust.

For BC, $CCN_{eff} = 0.9$ and $IN_{eff} = 0.1$ gave the overall best results, and these values are also comparable with what was found by Cozic et al., 2007. Soluble aerosol (^{137}Cs) concentrations compared best with $CCN_{eff} = 0.9$ and $IN_{eff} = 0.9$. The latter value is somewhat higher than IN_{eff} values suggested by measurements of e.g. Henning et al., 2004.

Technical corrections:

Line 40. Please add chemical processes for completeness in the sentence.

Thank you, this is now changed.

Line 85-86. HYSPLIT has a new option for in-cloud wet scavenging parameterization (See Stein et al 2015, supplement). NAME has also updated its wet deposition scheme (see <http://www.metoffice.gov.uk/media/pdf/c/a/FRTR584.pdf>)

The paragraph has been updated so that it now more correctly reflects that the wet removal of NAME and HYSPLIT has been updated. We now write:

The aerosol removal scheme in FLEXPART Hertel et al., 1995 has remained relatively unchanged since its incorporation in the late 1990s. Other, similar Lagrangian models like NAME and HYSPLIT have had recent updates to their aerosol removal (Webster et al., 2014; Stein et al., 2015). However, the overall level of detail also in these models remains low compared to known theory (e.g. Feng 2007). One reason for this is the limiting factors that constrain the possible ways of treating aerosol removal within the Lagrangian model framework.

Line 91 non-linear chemistry has been included in this kind of models (e.g. Chock, D. P., and S. L. Winkler, 1994: A particle grid air quality modeling approach: 1. The dispersion aspect. J. Geophys. Res., 99, 1019–1031, doi:10.1029/93JD02795. Chock, D. P., and S. L. Winkler, 1994b: A particle grid air quality modeling approach: 2. Coupling with chemistry. J. Geophys. Res., 99 (D1), 1033–1041, doi:10.1029/93JD02796.)

We have rephrased the paragraph to show that more extensions to the linear model concept exist. We now write:

A main consideration within this framework is that each transported computational particle is independent of others. Extensions of this concept to allow for non-linear chemistry exist (Chock et al., 1994a,b), also for FLEXPART (Cassiani et al., 2013), but the reference version of FLEXPART is a purely linear transport model. Within such a linear model, it is impossible to include aerosol processes which depend on the aerosol concentration (e.g., coagulation or non-linear chemical reactions). Furthermore, to facilitate consistency between forward and backward runs of FLEXPART, parameterizations that depend on the age of the aerosol (i.e. time after emission for primary aerosols) should be avoided as well. This limits the level of sophistication that can be incorporated into an aerosol removal scheme. Nevertheless, a realistic treatment of aerosols

is possible even with these limitations.

Line 247. Sulfate is not a primary aerosol. Please correct the sentence.

Yes that is correct, thank you, this is now changed so it no longer reads that sulphate is a primary aerosol.

Line 520- 524 This is very speculative. There is no empirical evidence that this is why the model shows a latitudinal bias.

Agreed. Results presented in the paper do not show any evidence for this, and it is thus a speculation. The paragraph has changed to reflect this. “The probable cause” is changed to “One of the possible causes”. Also added a further sentence on other possible causes of the latitudinal dependence of model/measurement bias to highlight that the reason for the latitudinal bias. We have now written:

In Fig. 5d the mean model / observed concentration ratios at the different stations are plotted against latitude. A prominent feature of FLEXPART and indeed most models used by Kristiansen et al., 2015 is a tendency to over-predict concentrations at low latitudes and underpredict concentrations at high latitudes. This tendency is also present with the new removal scheme, where model / observation ratios decrease with latitude. The green line shows a logarithmic fit to the station median data. The same fit was done to the mean from a simulation using FLEXPART version 9 (pink). This shows that the new model, while still having a systematic latitudinal dependence, represents a clear improvement over the old version. One possible explanation of the decreasing model/observation ratios with latitude might be that in-cloud scavenging in ice clouds is too effective. However, sensitivity simulations where only IN_{eff} was reduced (not shown) revealed that this change had only a small effect in further reducing the latitudinal bias. One of the possible causes of this is the high proportion of mixed phase clouds (77%) which reduces the impact of the latitudinal dependence of the frequency of ice-phase clouds after that much time for an emission pulse. Another possibility is that cloud phase is not well captured by the ECMWF model, as in many other models Cesana et al., 2015. It may also be relevant that the clouds have on average higher cloud tops near the equator, so that temperature and thus the mixing state of clouds does not have a strong enough latitudinal dependence in the Northern Hemisphere at the time of this simulation (March-May).

RC #2

1 general comments

The authors discuss a new parametrization for FLEXPART of both in-cloud and below-cloud wet scavenging of aerosols. The parametrization has revised the way that cloud information is obtained and processed and considers both size dependent, aerosol dependent and phase dependent scavenging. Results from

the scheme are compared against observations and results from other published studies for three different aerosols. The sensitivity of the parametrization to the various parameters of the scheme is further assessed.

I found this an interesting paper which is well written and comprehensive.

2 specific comments

1. There is a good, explicit and easy to understand summary of what the new aerosol wet removal scheme includes but I'd like the authors to emphasise further what improvements this new scheme gives over the previous scheme (i.e., which of the features discussed are new), particularly since some discussion of results with the old and new schemes are included.

It is apparent that some further discussion and comparison with the old removal scheme is needed. This is in line with RC#1 and warrants minor changes several places throughout the paper, including adding some results from FLEXPART version 9. We agree that this improves the clarity of what changes have actually been done.

In section 2.1 "Clouds and precipitation in FLEXPART" it is now clearly stated that the reading of clouds from the prescribed meteorology is a new feature. The advantage of using these ECMWF clouds over the old, RH based scheme are discussed in section "4.1 Wet scavenging event statistics"

The new features of the in-cloud removal scheme are now presented as new features, and it is inserted what they are in section 2.3. The new details added to in-cloud removal are related to the components that make up F_{nuc} (IN_{eff} , CCN_{eff} and α). It is also stated that i_{cr} and PCW replaces the old parameterization for cloud water content

It is also clearly stated now that the new below cloud scheme is in fact introduced in FLEXPART model version 10 and is a new feature.

In terms of comparison of the two model versions with observations we have added text and results (see our reply to RC#1)

2. I would disagree with the authors' comments regarding aerosol schemes in Lagrangian models (lines 83-86). Whilst these schemes may have remained constant for some time, developments and reviews have taken place since their first introduction. For example, NAME has recently had a new size dependent wet deposition scheme added for particles.

The paragraph has been updated so that it now more correctly reflects that the wet removal of NAME and HYSPLIT has been updated (see our reply to RC#1).

3. Presumably some critical value of CTWC is used to determine cloud (CTWC some value). What is this value and how much certainty is there in it? How sensitive are results to this value?

see our response below (RC#2 specific comment 4.)

4. Scavenging from multiple layers of cloud may be difficult to accurately model with only surface precipitation data. For example, the precipitation rates / intensities are likely to be different from clouds at different layers. Furthermore, what happens between layers? Is this considered as “below cloud” scavenging given that all layers of cloud are considered to be precipitating?

3 & 4. Indeed, it is difficult to accurately model these processes with only surface precipitation data. 3-d precipitation fields would be needed to better capture this, but those are not available in FLEXPART. Therefore, we had to implement a relatively simple scheme. The “some critical value” is >0 . The main reason for this is that any value chosen here would be incorrect. The value chosen would have to be dependent on factors such as; cloud extent in the grid, whether you are close to the top or bottom of the cloud, type of precipitation, temperature. Some testing was done initially, where the main aim to remove clouds with multiple layers. Though partly successful in this, having the critical value >0 had other unintended consequences such as precipitation without clouds which was deemed harder to correct for than actual problems imposed by having it set to 0. If there are two inconsecutive layers of cloud there would be below cloud removal in between the cloud layers. We have clarified the criteria for determining in-cloud or below-cloud scavenging by adding the sentence:

If $PCW > 0$ in-cloud scavenging is applied.

5. Where does the value of 6.1 for i_{cr} come from (line 160)? Is it tuned to data? It sounds like results are quite sensitive to the value of i_{cr} (lines 162-163).

For the empirical nature of i_{cr} , see our answer to #RC1 comment 2
As you correctly point out, results for aerosols with a large fraction of in-cloud removal are quite sensitive to the set value of i_{cr} . However, it is a linear parameter affecting all in-cloud removal the same. The water washout ratio i.e. the fraction of a clouds’ water that is precipitating at a given time will vary between individual clouds. As is discussed already in text, if only in-cloud removal rate is efficient, lifetime, and thus atmospheric concentrations is very sensitive to in-cloud removal rate. For aerosols where also other removal mechanisms are efficient this sensitivity is much lower.

6. The authors might like to mention the Greenfield gap (i.e., that there is a range of particle sizes which are neither efficiently collected by Brownian motion nor impaction) (lines 202-203).

Yes this is now explicitly mentioned, and not just referred to by citation.

7. The authors use either the surface precipitation type or a surface temperature to determine whether the Laakso or Kyro parametrization should be used. However, precipitation which is rain at the surface may be snow at the point of impaction (or vice versa). Hence it would seem more appropriate to use the temperature at the aerosol height. Also, how is the water phase of the clouds determined (lines 357-361)? Is this determined from the temperature and/or

precipitation type? And if so, can the authors comment on the height of data that is used and the appropriateness of this data if surface data is used to determine the phase of elevated clouds?

There was a misunderstanding. Indeed, local temperature at the aerosol altitude is used to calculate both the cloud phase and the precipitation phase of water. If CTWC (=CLWC + CIWC) is used the cloud ice – water partition is temperature dependent, and shown in Fig. 1 as α . If CLWC + CIWC fields are used, the α in eq (3) is instead taken directly from these fields. We have now written that we:

In this study we have used a local temperature threshold of 0°C is to distinguish between rain and snow, but it is also possible to use rain and snow precipitation intensity read directly into the model from ECMWF analysis data.

8. Where do the values for CCNeff and INeff come from? Can the authors add some references in addition to those given for black carbon? For soluble aerosols Croft et al. (Atmos. Chem. Phys., 10, 1511–1543, 2010) have a large difference between values for liquid and ice stratiform clouds (albeit similar values for convective) which contrasts here to the default values in Table 3 for ^{137}Cs attached to sulfate. I refer the authors to their comment on lines 517-518 questioning whether their in-cloud scavenging in ice clouds is too effective for this aerosol. And lastly, how is it possible for CCNeff (a fraction) to take values > 1 (Table 4)?

Indeed, the reviewer is right that INeff and CCNeff are fractions and should strictly have values between 0 and 1. All our recommended values are also in this range. However, for the purpose of a sensitivity study we artificially increased CCNeff to a value of 9. We do not claim that this is a realistic value that should be used in FLEXPART simulations. This was done only to explore what would happen if there was a mechanism that makes aerosols extremely effective as CCN (e.g., a mechanism that increases the number of aerosols).

The high IN_{eff} (=0.9) applied for soluble aerosols are indeed higher than what was used in ECHAM5. Building mostly on the same Jungfraujoch measurements the in-cloud removal by (Hoose et al., 2008) used in this ECHAM version has a much lower scavenging efficiency for ice than water for soluble aerosols. However, for our comparison with measurements (^{137}Cs), this resulted in a significant overestimation of observed concentrations.

3 Technical corrections

1. Line 121 – There is no paper by Stohl et al. from 2016 listed in the references. Is the date here incorrect?

It is a technical description of FLEXPART v10 in preparation, and the year was missing from the reference. The paper will be submitted to GMD soon. While not submitted, we did not want to repeat all technical aspects given in that paper (e.g., on reading input data), also here, and thus refer to it despite

the current status.

2. An explanation of C_* should be given when equation 4 is introduced.

The scalar C_* is now introduced with the equation.

3. BRW should be BAR (line 321) and Table 4 (or maybe BAR should be BRW on lines 315 and 321).

Thank you. We will stick to the station acronyms used in GAW (global atmospheric watch), BRW should now be applied everywhere.

4. Could the authors label day 7 on Figure 4.

x-axis label inserted.

5. A couple of comments regarding Table 2: (i) For $18.2\mu\text{m}$ the lifetime for the default parameter settings is given to 2 decimal places, whereas for all other parameter settings, it is only given to 1 decimal place. Furthermore, if the lifetime for the default parameter settings was given to 1 decimal place, it would be the same (0.3) as the lifetimes given for other parameter settings so it is not obvious that there is any change. Is there? Perhaps there should be a consistent use of decimal places here. (ii) The longest lifetime if only one deposition process is reduced is indicated in blue but yet there are many such cases with the same lifetimes. Should these also be indicated in blue?

(i) The number of decimal places has been changed so that all numbers are consistently given to the accuracy of 1 decimal place.

(ii) We have however left the colouring even though the difference in lifetime is smaller (sometimes very small indeed) than the accuracy of the listed value in the paper. We feel that this is an acceptable illustration as it also indicate that removal by warm phase precipitation has growing importance with growing aerosol size, a new feature of the removal scheme.

6. I think the reference to Table 1 on line 421 should be to Table 2.

Yes, you are correct, thank you, this is now corrected.

7. There is an inconsistency in the lifetime increases on line 424. The 20% increase ($6.2\mu\text{m}$ particles) means that the end result is 120%. The comparison is for a 350% increase (not a 450% increase as stated – this is the end result).

Thank you, this inconsistency have now been corrected.

8. The footnote on page 13 states that $\text{icr} = 6.2$ is used in this paper, whereas the value stated on line 160 is 6.1

$\text{Icr} = 6.1$ is correct this has been changed.

9. Is there a typo in the figure caption of Figure 5b? Should “surface area distribution” be “size distribution”?

Yes, but surface area distribution is correct. To compare the surface activity distribution, surface area distribution was calculated from the aerosol particle

mass distribution. Figure caption has been updated.

10. There is a typo in line 473. 10.8 days is for the $0.65\ \mu m$ bin size (or alternatively 11.7 days for the $0.4\ \mu m$ bin size).

Yes, that was a typo, this is now corrected.

11. Table 4: The column header refers to “mean” concentration, whereas the caption refers to the “median” concentration.

The caption was correct the column headers are now corrected, so it all displays ”median”. Thank you.

12. Line 550: “concentration” should be “column burden”.

Yes, thank you, this is now corrected.

13. Line 574: Reference to Fig 6 should be Fig 7.

Yes, thank you, this is now corrected.

4 Minor issues

Some further minor issues and questions which the authors may also like to address.

1. Lines 4-6 implies that differentiating between cloud water phases allows an aerosol type dependent removal scheme. These seem two independent things.

Sentence has been clarified, so this should now be clear that these are indeed separate. We now write:

The new in-cloud nucleation scavenging depends on cloud water phase (liquid, ice or mixed-phase), based on the aerosol’s prescribed efficiency to serve as ice crystal nuclei and liquid water nuclei, respectively.

2. It is not clear whether the reference to “dry deposition” in most places includes “gravitational settling”. In the abstract (lines 19-20) the two are referred to separately (Dry deposition and gravitational settling) but gravitational settling isn’t always referred to elsewhere and hence one is unclear whether references to dry deposition intend to include gravitational settling.

Throughout the text now dry deposition and gravitational settling are used independently, and “dry removal” is used for both collectively.

3. It would help to briefly define “aerosols” as this term is sometimes misused and confused with the generic term “particles”.

Throughout text, the term “Aerosol particle” now replaces “particle” when in fact an aerosol particle is meant. In general, ”particle” now only refers to FLEXPART particles. We hope this improve the readability of the documnet.

4. What is the meaning of “outside a cloud” (line 328)? In particular, are not ‘below’ or ‘above’ clouds ‘outside’ of clouds?

Replaced “*Outside a cloud*” with “*cloud free column*”

5. It seems a little counter-intuitive that there could be more below-cloud impaction scavenging events around 5000 m using the FLEXPART relative humidity parametrization (Figure 3b) when the cloud-top height is, in general, lower using this scheme. The authors mention multiple cloud layers being the reason for the small peak in the below cloud impaction events at this height using the ECMWF parametrization, and that in reality there is probably not scavenging at this level due to the upper level clouds being non-precipitating. Do the same reasons apply to the peak in below-cloud scavenging events at 5000 m seen when using the FLEXPART relative humidity parametrization and why does this scheme give a larger count? The smaller count for the ECMWF parametrization, if the below cloud scavenging events at 5000 m are not real, may be indicative of better performance of the ECMWF parametrization.

When there is surface precipitation, scavenging is applied in FLEXPART from the topmost grid box that contains cloud water (or $RH > 80\%$) to the surface. Therefore the number of total removal events will be decreasing with altitude. However the density correction of each layer done, may slightly alter this count in Fig 3(right). Below the cloud top, the partitioning between in-cloud and below-cloud is thus solely dependent on whether a cloud is defined inside each individual grid box. The decreased number of both “surface clouds” and high altitude “below-cloud removal” does indeed, in our opinion, indicate a better performance of the ECMWF scheme.

In this context we also found it worth noting that from 5 to 15km altitude the vertical extent of the grid boxes increase significantly and so the count of the highest altitude clouds of the RH based scheme falls outside the 25-75 percentile of the cloud tops (in Figure 3 (left)) as they are distributed on most latitudes and not concentrated in the tropics like in the clouds of the ECMWF defined clouds.

6. Is mention of “particles in the $0.2 - 0.6 \mu m$ ” (line 404) intended to be a general reference to accumulation mode particles or a reference to particle sizes modelled here? If it is the latter, I am having trouble matching this with the numbers in Table 2 which gives a diameter of $0.2 \mu m$ but the next size up is $2.2 \mu m$.

Thanks for pointing this out, it is indeed the $0.2 \mu m$ mineral dust particles lifetime we are referring to.

7. Nanometre and micrometre are used interchangeably (e.g. $0.2 \mu m$ and 200 nm are both used). Some consistency referring to particles of the same size would be better.

A good suggestion, throughout the document μm are now used.

8. In the comparison of the measured and model size distribution (lines 447-448), the authors say that the measured peak at $1 \mu m$ matched the model well. The aged model peak is at a little lower particle size distribution.

We agree the peak is a bit lower than the measured peak. Rewritten to:

The measured size distribution of ^{137}Cs is bimodal with peaks around $1\mu\text{m}$ and $0.02\mu\text{m}$. The larger peak at $1\mu\text{m}$ fits well the released size distribution in FLEXPART. The peak of the aged size distribution dominated by particles of $0.6\mu\text{m}$.

9. What are the upside down black triangles in Figure 5c? Are these the “daily median ratios” (line 455)?

see below pt. 11.

10. The mention of “aerosol type” on line 512 refers, I think, to splitting the aerosol size distribution up into bins with different particle sizes and scavenging rates. If this is correct, I find this terminology confusing since I would say that it is one aerosol type (i.e. ^{137}Cs attached to sulphate) and not more than one aerosol type.

We would agree with your definition of type. “Type” was used here as it is not only size that can change, but also the properties of an aerosol particle. I.e BC can have very different hygroscopicity depending on the co-emitted gases and material (Huang et al., 2013). Though not applied in this study, it is possible to have separate types of BC particles (with different removal efficiencies) that both makes up “BC”. Changed “aerosol type” to “specific aerosol kind”

11. Is the dotted black line in Figure 5d the 1-1 line or the line of best fit to the ^{133}Xe (or both)?

9 & 11 Alongside addition of FLEXPART version 9 result, an explanation of the upside down black triangles as the median daily station concentration values. Also that it is the 1:1 line (black dotted) that is shown is added to Fig 5d, together with the log-fit to FLEXPART v9 data from Kristiansen et al., 2015

12. I don’t follow the final sentence of the paragraph on lines 559-561. I cannot see a burden with a substantially different dependence on latitude in Figure 6. Furthermore, simulations 5 and 8 also have a phase dependent change to the removal parameters.

You are perhaps correct in saying that a “substantially” changed latitudinal dependence is not seen anywhere. The latitudinal column burden is dominated by the emission latitude, thus it is not ideal to make too strong statements from this figure. Therefore “substantially” has been replaced by “noticeable”. A sentence was added to the discussion regarding surface concentrations of figure 7 where changes in the Arctic are better displayed. The new sentence now reads:

Only simulations #5 to #8, which have phase dependent changes to removal parameters, produce burdens with a noticeable different dependence on latitude when compared to simulation #1.

13. Lines 570-571. The authors refer to an increase in remote areas like the

Arctic but the increase seems much larger near the equator.

Thank you for pointing this out, you are absolutely correct. When describing this *"remote areas like the Arctic"* has been changed to *"remote Tropical areas"*

14. It is difficult to see the black circles in Figure 7, particular since the coastlines are also black

We changed markers to white and increased size somewhat.

References

- Wood, R., Kubar, T.L. and Hartmann, D.L.: Understanding the importance of microphysics and macrophysics for warm rain in marine low clouds. Part II: Heuristic models of rain formation. *Journal of the Atmospheric Sciences*, 66(10), pp.2973-2990., 2009.
- Khairoutdinov, M., and Y. Kogan, 2000: A new cloud physics parameterization in a large-eddy simulation model of marine stratocumulus. *Mon. Wea. Rev.*, 128, 229–243, doi:10.1175/ 1520-0493(2000)128
- Huang, Y., Wu, S., Dubey, M. K., and French, N. H. F.: Impact of aging mechanism on model simulated carbonaceous aerosols, *Atmos. Chem. Phys.*, 13, 6329-6343, doi:10.5194/acp-13-6329-2013, 2013.
- Hoose, C., Lohmann, U., Stier, P., Verheggen, B., and Weingartner, E.: Aerosol processing in mixed-phase clouds in ECHAM5- HAM: Model description and comparison to observations, *J. Geophys. Res.*, 113, D07210, doi:10.1029/2007JD009251, 2008b

A new aerosol wet removal scheme for the Lagrangian particle model FLEXPART v10

Henrik Grythe^{1,2,3}, Nina I. Kristiansen², Christine D. Groot Zwaafink², Sabine Eckhardt², Johan Ström¹, Peter Tunved¹, Radovan Krejci^{1,4}, and Andreas Stohl²

¹Department of Applied Environmental Science (ITM), Atmospheric Science Unit, Stockholm University, S 106 91 Stockholm, Sweden

²Norwegian Institute for Air Research (NILU), P.O.Box 100, 2027 KJELLER

³Finnish Meteorological Institute (FMI), Air Quality Research, Erik Palmenin aukio 1, P.O.Box 503, FI-00101 Helsinki

⁴Division of Atmospheric Sciences, Department of Physics, University of Helsinki, P.O.Box 64 (Gustaf Hållströmin katu 2a) FI-00014 University of Helsinki, Finland

Correspondence to: H. Grythe (zhg@nilu.no)

Abstract. A new, more physically based wet removal scheme for aerosols has been implemented in the Lagrangian particle dispersion model FLEXPART. It uses three-dimensional cloud water fields from the European Centre for Medium-Range Weather Forecasts (ECMWF) to determine cloud extent and distinguishes between in-cloud and below-cloud scavenging. The new in-cloud nucleation scavenging ~~differentiates between cloud water phases~~ depends on cloud water phase (liquid, ice or mixed-phase) ~~to allow for aerosol and cloud type specific removal, based on the aerosol's prescribed efficiency to serve as ice crystal nuclei and liquid water nuclei, respectively.~~ The impactation scavenging scheme now parameterizes below-cloud removal as a function of aerosol particle size and precipitation type (snow or rain) and intensity.

Sensitivity tests with the new scavenging scheme and comparisons with observational data were conducted for three distinct types of primary aerosols, which pose different challenges for ~~modelling~~ modeling wet scavenging due to their differences in solubility, volatility and size distribution: 1) ¹³⁷Cs released during the Fukushima nuclear accident attached mainly to highly soluble sulphate aerosol particles, 2) black carbon (BC) aerosol particles, and 3) mineral dust. Calculated e-folding lifetimes of accumulation mode aerosols for these three aerosol types were ~~7~~ 11.7, 16.0, and 31.6 days respectively, when well mixed in the atmosphere. ~~The long lifetimes of~~ These are longer lifetimes than those obtained by the previous removal scheme, and, for mineral dust in particular ~~are primarily a result of,~~ primarily result from very slow in-cloud removal ~~which,~~ which globally is the primary removal mechanism for these accumulation mode particles.

Calculated e-folding lifetimes in FLEXPART also have a strong size dependence, with the longest lifetimes found for the accumulation-mode aerosols. For example, for dust particles emitted at the surface the lifetimes were 13.8 days for particles with 1 µm diameter and a few hours for 10 µm particles. A strong size dependence in ~~below-cloud~~ below-cloud scavenging, combined with increased

dry ~~deposition and gravitational settling~~removal, is the primary reason for the shorter lifetimes of the larger particles. The most frequent removal is in-cloud scavenging (85% of all scavenging events) but it occurs primarily in the free troposphere, while below-cloud removal is more frequent below 1000 m (52% of all events) and can be important for the initial fate of species emitted at the surface, such as those examined here.

For assumed realistic in-cloud removal efficiencies, both BC and sulphate have a slight overestimation of observed atmospheric concentrations (a factor of 1.6 and 1.2 respectively). However, this overestimation is largest close to the sources and thus appears more related to overestimated emissions rather than underestimated removal. The new aerosol wet removal scheme of FLEXPART incorporates more realistic information about clouds and aerosol properties and it compares better with both observed lifetimes and concentration than the old scheme.

1 Introduction

Aerosols are of concern for urban air quality, but also an important part of the climate system. Aerosol particles are liquid or solid particles that are suspended in the atmosphere for some time, and range from about 0.02 μm to several tens of μm . Aerosols enter the atmosphere through primary production (e.g., dust or sea salt emissions) or by nucleation and condensation of gases in the atmosphere, and have both natural and anthropogenic sources (e.g., Seinfeld and Pandis, 2004). Climate is impacted by aerosols both directly by their influence on the radiation budget and indirectly by their influence on cloud optical properties and precipitation (e.g., Lohmann and Feichter, 2005). Accurate multi-scale modeling of aerosols is difficult due to the variety of processes involved, and thus aerosol-related processes remain the largest source of uncertainty in assessments of anthropogenic radiative forcing (Myhre et al., 2013). Consequently, achieving the best possible representation of the complex processes related to aerosols in models is an important task.

The atmospheric aerosol burdens are controlled by the aerosol sources, chemical processes and rates of removal from the atmosphere. Removal can be through transformation of aerosols (e.g. coagulation to form larger particles; volatilization) or their complete removal from the atmosphere which occurs by dry ~~deposition~~removal (dry deposition and gravitational settling) at the surface and through wet deposition, i.e. removal by precipitation, which is the focus of this study. While dry ~~deposition~~removal occurs only at the Earth's surface, wet deposition can remove aerosols efficiently from the whole troposphere. Clouds can form when moist air is cooled below the saturation point of water vapor (e.g., Rogers and Yau, 1989). Within saturated air, ~~aerosols~~aerosol particles can act as nuclei for the water vapor to condense upon. The efficiency of ~~aerosols~~aerosol particles in serving as cloud condensation nuclei (CCN) depends on their size and chemical properties as well as on the ambient conditions. At low temperatures, ice crystals may also form on ambient particles, which then act as ice nuclei (IN) (Seinfeld and Pandis, 2004). The critical level of relative humidity

~~determining which aerosols are activated to~~ (RH) determining which aerosol particles are activated

60 as CCN is described by Köhler theory (Köhler, 1928).

When a droplet evaporates completely, non-volatile material is returned back to the atmosphere, but often as transformed CCN or IN with different physicochemical properties compared to the original particles. On the other hand, if the cloud water precipitates to the surface~~any original~~, CCN or IN contained in the droplets or ice crystals are also removed from the atmosphere. Since
65 each drop of precipitation can account for millions of cloud droplets, nucleation scavenging is the most important mechanism for wet removal (Rogers and Yau, 1989). Nucleation removal of ~~aerosols~~ aerosol particles within clouds is thought to account for more than 50% of the aerosol particle mass removal from the atmosphere globally (Textor et al., 2004).

Aerosol particles can also be collected by falling precipitation (Greenfield, 1957; Andronache et al., 2003) through impaction (below-cloud scavenging). The rate at which removal by impaction happens is dependent on the probability of a collision of a falling hydrometeor with an aerosol particle and the efficiency of subsequent collection of the particle by the hydrometeor.
70

This paper describes and tests a new scheme for aerosol wet removal implemented into the Lagrangian particle dispersion model FLEXPART. It is based on the mechanisms of nucleation removal within the cloud and ~~the~~ impaction removal below the cloud. Section 2 of this paper provides a short
75 description of FLEXPART in general, and introduces the new wet removal scheme. In Section 3, we describe how the new scheme was tested and compared with observations, and section 4 describes the results of these tests. Finally, in Section 5 conclusions are drawn.

2 Model description

80 The Lagrangian particle dispersion model FLEXPART (Stohl et al., 1998; Stohl et al., 2005) computes the transport and turbulent diffusion of atmospheric tracers (e.g., gases or aerosols). The model calculates trajectories based on meteorological input data and can be used from local to global scales. Computational particles follow the flow of the atmosphere resolved in the meteorological input data, with random motions describing parameterized turbulence superimposed on the particles' trajectories.
85 Furthermore, a stochastic particle column redistribution scheme is used to describe convection (Forster et al., 2007). The meteorological data are usually taken from operational analysis or re-analysis products. The reference version of FLEXPART can ingest data from European Centre for Medium-Range Weather Forecasts (ECMWF) or the National Centers of Environmental Prediction (NCEP). Other versions of FLEXPART use e.g. data from the Weather Research and Forecasting
90 (WRF) model (Brioude et al., 2013) or the Norwegian Earth System Model (NorESM) (Cassiani et al., 2016). We base our following discussion on the reference version 10.0 in its configuration for ECMWF data products.

Aerosol removal schemes in Lagrangian models like FLEXPART (Hertel et al., 1995) and indeed other similar models, such as NAME (Jones et al., 2007) or HYSPLIT (Stein et al., 2015; Draxler and Hess, 1998),

95 ~~have remained relatively unchanged since their incorporation~~ The aerosol removal scheme in FLEXPART (Hertel et al., 1995) ~~has remained relatively unchanged since its incorporation in the late 1990s. Other, similar Lagrangian models like NAME and HYSPLIT have had recent updates to their aerosol removal (Webster et al., 2014; Stein et al., 2015). However, the overall level of detail also in these models in the 1990s (Webster et al., 2014). A~~ remains low compared to known theory (e.g. Feng, 2007).

100 One reason for this ~~may be~~ is the limiting factors that constrain the possible ways of treating aerosol removal within the Lagrangian model framework. A main consideration within this framework is that each transported computational particle is independent of others. Extensions of this concept ~~exist to allow for non-linear chemistry exist (Chock et al., 1994a, b).~~ also for FLEXPART (Cassiani et al., 2013), but the reference version of FLEXPART is a purely linear transport model. Within ~~this~~ ~~concepts~~ such a linear model, it is impossible to include aerosol processes which depend on the aerosol concentration (e.g., coagulation or non-linear chemical reactions). Furthermore, to facilitate consistency between forward and backward runs of FLEXPART, parameterizations that depend on the age of the aerosol (i.e. time after emission for primary aerosols) should be avoided as well. This limits the level of sophistication that can be incorporated into an aerosol removal scheme. Nevertheless, a
110 realistic treatment of aerosols is possible even with these limitations.

Each computational particle released in FLEXPART represents an aerosol population with a log-normal size distribution. While gravitational settling is calculated only for the mass mean diameter of this aerosol population and applied as an additional vertical velocity component when particles are advected, dry deposition (for details about the dry deposition in FLEXPART, see Stohl et al.,
115 2005) is calculated for several weighted bins of the size distribution a particle represents. The particle mass is then reduced by the dry deposition for the computational particle as a whole, thus not changing its size distribution. This simplified treatment of aerosol size distribution can be extended easily by simulating several different types of computational particles, each with its own size distribution (or discrete size, if this is preferred). Removal processes acting differently for the different
120 aerosol particle sizes will then also modify the overall size distribution.

The calculation of wet removal in FLEXPART can be divided in two parts: One regarding the definition of the location of clouds, cloud water and precipitation, and the other regarding the parameterization of the physical removal of aerosols and gases during precipitation events. Both parts have been revised and results will be presented in this paper.

125 2.1 Clouds and precipitation in FLEXPART

For a particle residing in a column with precipitation, it must first be determined whether it is located within the cloud, above the cloud, or below the cloud, before its wet scavenging can be calculated. Above the cloud, no scavenging occurs; within the cloud, nucleation scavenging is used; and below

the cloud, the impaction scavenging scheme is activated. ~~The~~ A new option has been implemented in FLEXPART, so that the cloud vertical extent can either be derived from three-dimensional ECMWF fields of specific cloud liquid water content (CLWC) and specific cloud ice water content (CIWC) or from the summed quantity specific cloud total water content (CTWC = CLWC+CIWC). CTWC can be calculated by FLEXPART's ECMWF pre-processor to save storage space required for the FLEXPART input data. Details of how the cloud water is computed by the ECMWF Integrated Forecast System (IFS) model can be found in Tiedtke (1993); Forbes et al. (2011); Bechtold et al. (2014) and the processing of these data is described in ~~?~~Kristiansen et al. (2017). If no cloud water content data are available in the FLEXPART input files, cloud vertical extent can be diagnosed from the vertical distribution of ~~relative humidity RH~~ as in previous versions of FLEXPART (Stohl et al., 2005). However, this is considered much less accurate.

Multiple layers of clouds may appear both in the ~~relative humidity RH~~ based parameterization and in the ECMWF CTWC data. Not all of these cloud layers may be precipitating but, because of lack of detailed information, in FLEXPART we assume that all levels of clouds contribute to surface precipitation. An inspection of the ECMWF cloud fields suggests that this assumption is of minor importance as cloud layers with significant gaps in between account for ~~less~~ fewer than 10% of ~~the~~ large scale precipitation events.

Meteorological information in FLEXPART is available only at the resolution of the ECMWF input data. However, a grid cell with precipitation may, in reality, also contain areas without precipitation, and this can reduce the efficiency of aerosol wet scavenging substantially (Sato et al., 2016). The grid surface precipitation intensity (I_t) is the sum of the advective precipitation intensity I_l and convective precipitation intensity I_c from the meteorological input files. To scale this to sub-grid precipitation intensity (I) the empirical relationship for the fraction of a grid cell experiencing precipitation (F) is maintained from previous versions of FLEXPART, described in Stohl et al. (2005). If a particle is found to be in or below a cloud with precipitation, the scavenging coefficient Λ is determined by either the in-cloud or below-cloud scheme described in the following two sections.

2.2 In-cloud removal in FLEXPART

The nucleation scavenging in FLEXPART is activated only for particles residing in the precipitating fraction of a grid cell (F , see Stohl et al., 2005), and only at altitudes where cloud water is present. For consistency with I , the column cloud water is also scaled by the precipitating fraction of the clouds, to get the sub-grid precipitating cloud water (PCW):

$$PCW = CTWC \frac{F}{cc} \quad (1)$$

Here, cc is the surface cloud cover and so F/cc is the fraction of cloud water in the precipitating part of the cloud. If $PCW > 0$ in-cloud scavenging is applied.

An important intermediate quantity to determine is the in-cloud removal rate of aerosols due to the removal of cloud water by precipitation, which is given by the cloud water washout ratio I/PCW .

165 To obtain accurate values for I/PCW , it is important that I and PCW are consistent. Both values are derived from ECMWF data, however, I is derived from accumulated precipitation values (i.e., precipitation accumulated during one ECMWF data output interval, typically 1 or 3 hours), whereas PCW is an instantaneous quantity, and this can cause small inconsistencies. Furthermore, I/PCW does not take into account the efficacy of turbulent overturning and the replenishment rate of cloud
170 water from condensing water ~~vapour~~vapor. The aerosol scavenging coefficient Λ (s^{-1}) is now given as

$$\Lambda = F_{nuc} \frac{I}{PCW} \frac{I}{PCW} ic_r \quad (2)$$

where F_{nuc} , the nucleation efficiency, is the fraction of ~~a given aerosol within a cloud volume~~ aerosol within the cloud that is in the cloud water (see Fig. 1). ~~The constant $ic_r > 1$ is related to~~
175 ~~While ic_r represents~~ the cloud water replenishment rate. ~~It must be noted, however, that ic_r is based on model testing, as the replenishment rate, it cannot be determined from the ECMWF output data. It is currently~~ Therefore, the determination of the constant ic_r was done on the basis of empirical testing in FLEXPART and must be considered a tuning parameter.

~~Compared to the previous FLEXPART scheme described in Stohl et al. (2005), ic_r/PCW replaces~~
180 ~~the cloud water representation that was calculated based on an empirical relationship with precipitation rate ($cl = 2 \cdot 10^{-7} I^{0.36}$). The overall best results were obtained for ic_r set to a value of 6.1 for the ECMWF cloud water fields, which is used for all simulations in this paper. This resulted in a somewhat slower in-cloud removal rate with the new compared to the old parametrisation. Comparison of the two parametrisations also shows that using ic_r/PCW gives overall weaker~~
185 ~~dependence on I , compared to cl in the old removal scheme.~~ For simulations where in-cloud removal constitutes a large fraction of the removal, i.e. especially for soluble accumulation mode aerosols, the empirical value of ic_r has a large impact on overall removal rates.

In reality, F_{nuc} depends on many different variables such as aerosol size, chemical composition, surrounding aerosols, temperature and cloud phase and microphysical properties. However, a
190 complete parameterization of F_{nuc} is not possible in FLEXPART because of a lack of information. What can be constrained within FLEXPART is that most aerosols have very different nucleation efficiency for liquid, mixed-phase and ice clouds. ~~We therefore consider~~ Therefore, we introduced as a new feature that for determining the nucleation efficiency (~~F_{nuc} to depend on~~), we now distinguish the efficiency of aerosols to serve as cloud condensation nuclei (CCN_{eff}) and
195 ice nuclei (IN_{eff}). ~~By contrast, in the old scheme all aerosols had $F_{nuc} \equiv 0.9$.~~ For ice clouds, F_{nuc} is set equal to IN_{eff} , for liquid water clouds, F_{nuc} is set equal to CCN_{eff} , and for mixed-phase clouds, we use α , the fraction of the cloud water in ice phase shown in Fig. 1 as a black line

(see ~~?, for details on calculations of α~~)(see Kristiansen et al., 2017, for details on calculations of α),
to interpolate between F_{nuc} and CCN_{eff} :

$$F_{nuc} = (1 - \alpha) CCN_{eff} + \alpha IN_{eff} \quad (3)$$

There are no unique globally representative values for CCN_{eff} or IN_{eff} because they depend not only on the aerosol particle itself, but vary also with aerosol concentrations and cloud properties (e.g., updraft velocities). Some general considerations can however be made. In a review of measurements conducted at the high alpine station Jungfraujoch, Bukowiecki et al. (2016) showed that F_{nuc} varies significantly with both aerosol size and cloud phase. Henning et al. (2004) found that the fraction of particles with ~~$d_p > 100$~~ $d_p > 0.1$ μm activated in a cloud dropped from 56% in liquid summer clouds to 0.08% in winter ice clouds. The lower ice phase values are attributed to the Bergeron-Findeisen process (Bergeron, 1935; Findeisen, 1938), by which relatively few ice crystals grow at the expense of many more liquid droplets. When the droplets evaporate the non-volatile aerosol content is released back to the atmosphere. This temperature dependent effect is illustrated in Fig. 1, where the partitioning between cloud water and surrounding air of total aerosol number according to Henning et al. (2004) is shown (magenta dots). Also shown in Fig. 1 are the similar results of Verheggen et al. (2007) (red line) and the BC partitioning (blue line) reported by Cozic et al. (2007). Hence it is generally assumed that for most aerosol particles $CCN_{eff} > IN_{eff}$.

Gieray et al. (1993) found that the average scavenged fractions in clouds during spring in Cumbria, U.K., were 0.77 for sulphate and 0.57 for soot in clouds formed in continental air, and 0.62 and 0.44 respectively, for clouds formed in marine air. The time and place for these measurements suggest that these were mainly liquid phase clouds. In other studies (Noone et al., 1992; Gillani et al., 1995; Hallberg et al., 1994), it was found that larger aerosol particles have a higher nucleation efficiency than smaller particles. Such information can be used by FLEXPART users to prescribe appropriate CCN_{eff} and IN_{eff} values for different aerosol particle types and sizes.

2.3 Below-cloud removal in FLEXPART

Raindrops and snow flakes fall at approximately terminal velocity through the air (Pruppacher and Klett, 1978) and may scavenge aerosol particles as they collide with them in the ambient air below the cloud base. This below-cloud scavenging process depends both on the probability that the falling hydrometeor collides with an aerosol particle (collision efficiency) and the probability of attachment (coalescence efficiency). Both probabilities together determine the collection efficiency. Collection efficiencies of both snow and rain have a minimum for aerosol particle sizes near 0.1-0.2 μm in what is known as the Greenfield gap (Greenfield, 1957). Notice that dry deposition is also least efficient for such particles. For aerosol particles of these sizes, neither Brownian diffusion nor impaction is efficient. Whilst Brownian diffusion is the dominant process of attachment for sub-micron particles,

inertial impaction is the dominant process for ~~aerosol sizes above~~ larger aerosol sizes and becomes dominant above $\sim 1 \mu\text{m}$, though there are large discrepancies between theoretical predictions and observations (e.g., Volken and Schumann, 2007). The collection efficiency is strongly dependent on the sizes of both the falling hydrometeors (and their terminal velocity) and the aerosol particles. It also depends on the precipitation type.

The below-cloud scavenging parameterization in FLEXPART differentiates between rain and snow because especially for large aerosol particles a large difference in scavenging efficiency is found between the two, where snow is more efficient than rain (Kyrö et al., 2009; Paramanov et al., 2011). Of many possible parameterizations for liquid precipitation, the one of Laakso et al. (2003) was chosen, for which all the required information is available in FLEXPART. The parameterization takes into account rain intensity I (used to parameterize droplet size) and the aerosol dry diameter and is based on field measurements over six years in Hyytiälä, Finland. The scavenging coefficient λ (s^{-1}) for particles below a cloud is given by

$$\log_{10}\left(\frac{\lambda}{\lambda_0}\right) = C_*(a + b d_p^{-4} + c d_p^{-3} + d d_p^{-2} + e d_p^{-1} + f\left(\frac{I}{I_0}\right)^{0.5}) \quad (4)$$

where C_* is a scalar, $d_p = \log_{10}\frac{D_p}{D_{p0}}$, $\lambda_0 = 1 \text{ s}^{-1}$, $I_0 = 1 \text{ mm hr}^{-1}$, and $D_{p0} = 1 \mu\text{m}$. Coefficients for factors $a-f$ are given in Table 1. While originally intended for particles of size ~~10-510~~ 0.01-0.51 μm , the parameterization by Laakso et al. (2003) is one of few parameterizations that takes into account data for larger aerosol particles up to $10 \mu\text{m}$ diameter, and should thus provide reasonable results also for these larger particles. For rain $C_* = C_{rain}$ and is a preset scalar variable that makes modifications to the removal scheme possible. The suggested default value for C_{rain} is 1.

For snow scavenging, we use a parameterization reported by Kyrö et al. (2009), which was also derived from Hyytiälä data, but during snowfall. It is fitted with the same function as given by Eq. 4 but with coefficients derived for snow and also given in Table 1. ~~A threshold surface (2-m) temperature~~ In this study we have used a local temperature threshold of 0°C is ~~used~~ to distinguish between rain and snow, ~~unless but it is also possible to use~~ rain and snow precipitation intensity ~~is~~ read directly into the model from ECMWF analysis data. The Kyrö function is independent of precipitation intensity or type of falling snow as is common for snow scavenging parameterizations (see e.g., Paramanov et al., 2011; Zhang et al., 2013). The shape of the snow crystals is very important for the scavenging efficiency, but cannot be derived from the ECMWF data. This aspect is thus ignored, and the Kyrö function is averaged over many different types of snow crystal shapes instead.

Fig. 2 shows the below-cloud scavenging parameterizations for rain and for snow for different precipitation rates and compares them with the old parameterization used in FLEXPART, which was based on Hertel et al. (1995). The aerosol removal rate is increased relative to previous versions of FLEXPART for almost all precipitation rates. Aerosol chemical properties may also influence the below-cloud scavenging coefficient. In FLEXPART, this influence can – to some extent – be

accounted for by setting the parameters C_{rain} and C_{snow} (C_* in Eq. 4), which are scalars used to scale the collection efficiency for rain and snow, to values different from 1. For example, with $C_{rain} = 0$ ($C_{snow} = 0$), no below-cloud scavenging for rain (snow) would occur in FLEXPART.

As parameterizations by both Laakso et al. (2003) and Kyrö et al. (2009) are based on bulk aerosol there may be differentiating factors for certain aerosol types, though very little specific evidence of this exists (Zhang et al., 2013). Comparisons with other impaction scavenging parameterizations (see e.g., Zikova and Zdimal, 2016) for rain show that the Laakso et al. (2003) scavenging values are on the middle to low side of existing parameterizations and that differences between different parameterizations cover at least one order of magnitude. Choosing values for C_{rain} and C_{snow} between 0.1-10 should cover this uncertainty range.

3 Model simulations

Three different global model experiments were set up to test the new scavenging parameterizations for different types of ~~primary~~-aerosols: BC, mineral dust and sulphate. The main purpose of these experiments is to explore the performance of simulations that cover a broad range of aerosol particle types and sizes, evaluate simulated atmospheric concentrations against observations, and calculate e-folding lifetimes.

3.1 Mineral dust

Mineral dust arguably constitutes the largest mass of aerosols in the atmosphere. Dust particles span a wide range of sizes and can be found far from their source (Reid et al., 2003). Small dust particles have been found to mix somewhat with volatile aerosol components but particles larger than $0.5\ \mu\text{m}$ are inert in the atmosphere (Weinzierl et al., 2006). Mineral dust is thus well suited to model with FLEXPART. Model experiments were set up to examine the role of impaction and nucleation scavenging as well as dry deposition and gravitational settling for different sizes of mineral dust.

Emission of mineral dust was calculated based on a module presented by Groot Zwaaftink et al. (2016). In short, dust emission was initiated from bare land when friction velocity exceeded a threshold value for initiation of saltation, depending on soil properties and soil moisture content. The soil fraction available for erosion was determined from land cover data (GLCNMO version 2, Tateishi et al., 2014) based on MODIS images. Vertical fluxes of mineral dust were derived according to Marticorena and Bergametti (1995). Particles were subsequently released in FLEXPART over a layer of 300 m height, at a 0.5 degree resolution in 6-hourly time steps. We assumed a-an aerosol particle size distribution in ten particle size bins, varying between 0.2 and $18.2\ \mu\text{m}$, as suggested by Kok (2011). FLEXPART simulations were run in forward mode for the year 2010.

3.2 Radionuclide tracers attached to sulphate aerosols

An evaluation of ~~modelled~~modeled aerosol lifetimes was recently performed by Kristiansen et al. (2015) who made use of measurements of radioactive isotopes released during the Fukushima Dai-Ichi nuclear power plant (FD-NPP) accident in March 2011. The radionuclide cesium-137 (^{137}Cs) was released in large quantities during the accident and measurements suggested that they mainly attached to the ambient accumulation-mode sulphate aerosols (Kaneyasu et al., 2012). Another radionuclide, the noble gas xenon-133 (^{133}Xe) was also released during the accident and can serve as a passive transport tracer. Both radioactive isotopes were transported and measured across the Northern Hemisphere for more than three months after their release, providing a unique constraint on ~~modelled~~modeled aerosol lifetimes (Kristiansen et al., 2015).

We have used measurements of the aerosol-bound ^{137}Cs and the noble gas isotope ^{133}Xe from March to June 2011 at 11 different measurement stations of the Comprehensive Nuclear-Test-Ban Treaty Organization (CTBTO) network (see Figure 1 of Kristiansen et al., 2015). All measured radionuclide concentrations were corrected for their radioactive decay and converted to activity per cubic meter for comparison with the model data. Detailed descriptions of these measurements and how they can be used to determine aerosol e-folding lifetimes were provided by Kristiansen et al. (2012, 2015).

Over the 46 days of measurements (starting 14 days after the initial emission) used to evaluate e-folding times of ^{137}Cs (and, implicitly, of the accumulation mode sulphate aerosol to which it attached), Kristiansen et al. (2015) found FLEXPART concentrations to decrease by three orders of magnitude more than the measurements. The decrease started from an initial overestimation of the ^{137}Cs concentrations but later the concentrations were underestimated at all but one CTBTO stations. Consequently, a too short e-folding lifetime of 5.8 days was calculated for FLEXPART as compared to 14.3 days derived from the measurements. In this paper, we repeat the simulations of Kristiansen et al. (2015) but with the new removal scheme for aerosols.

3.3 Black carbon

FLEXPART has been used in several recent studies to model BC with a focus on the Arctic (Stohl et al., 2013; Yttri et al., 2014; Eckhardt et al., 2015). All these studies used a FLEXPART version where the in-cloud scavenging efficiency of the reference FLEXPART version had been reduced by one order of magnitude. This has produced realistic concentrations for the Arctic. In this study, we tested the new scheme against measurements at Arctic and mid-latitude stations to assess how well BC concentrations are captured.

For BC, simulations were made both in forward and backward mode, and results were compared to test model consistency. When run in backward mode, FLEXPART output is a gridded emission sensitivity that can be coupled with emission fluxes to obtain the concentrations at the release point.

For all simulations, concentrations obtained by forward and backward simulations by FLEXPART
335 differ only due to statistical noise.

Emissions used for BC simulations were ECLIPSE v4.0 (Stohl et al., 2015) available through
the website <http://eclipse.nilu.no>. Added to these are shipping emissions from AEROCOM (Den-
tener et al., 2006) and GFEDv3.1 emissions for forest and savannah fires (Randerson et al., 2013;
Van der Werf et al., 2006), all resolved monthly and on a $0.5^\circ \times 0.5^\circ$ grid. European measurements
340 of aerosol absorption were collected from the Database for Atmospheric Composition Research
(EBAS) ~~database~~ with the aim of using data from stations with similar particle soot absorption pho-
tometer (PSAP) instruments. The stations were selected to represent different environments, rang-
ing from locations close to pollution sources in Central Europe to remote locations in the Arc-
tic. We chose the sites Melpitz (MEL, 51.32° N 12.56° E) in Germany which is surrounded by
345 strong BC sources, Pallas (PAL, 67.80° N 27.16° E) in Finland and Southern Great Plains (SGP,
 36.50° N 98° W) in the US at intermediate distances from the sources, and Zeppelin (ZEP, 78.93° N
N, 11.92° E), Barrow (~~BAR~~BRW, 71.30° N, 156.76° W) and Alert (ALT, 82.50° N, 62.34° W) as
remote sites.

PSAPs measure the particle light absorption coefficient. Conversion of this coefficient to equiva-
350 lent BC (eBC) mass concentrations is not straightforward and requires certain assumptions (Petzold
et al., 2013), leading to site-specific uncertainties on the order of a factor of two. We have used con-
version factors of $6.50 \text{ m}^2 \text{ g}^{-1}$ for PAL and $5.50 \text{ m}^2 \text{ g}^{-1}$ for ZEP, where site-specific information was
available and $10 \text{ m}^2 \text{ g}^{-1}$ for MEL, ALT, ~~BAR~~BRW and SGP. For ALT and BRW a gap with more
than a month of missing data for 2007 was filled with climatological values of all available data after
355 year 2000. For PAL only climatological observations were used.

4 Results

4.1 Wet scavenging event statistics

To explore how frequent in-cloud and below-cloud scavenging events are and where they occur, we
used a three-months (December 2006 to February 2007) global ECMWF data set ($1^\circ \times 1^\circ$ with 92
360 vertical layers) and classified each grid cell as being either ~~outside a cloud, in a cloud, below a cloud~~
~~or above a~~ in a cloud-free column or, if clouds exist in the column, in, below or above the cloud.
The vertical extent of each layer increases with altitude, which emphasises lower altitudes when a
raw count of events is done, so for a more realistic representation the numbers presented here are
weighted by the mass of each model layer (using a standard atmosphere). Convective and large scale
365 precipitation events were differentiated using surface precipitation and for each event classified as
the larger of the two.

Cloud top heights and the frequency of scavenging events are shown in Fig. 3, both using the
ECMWF cloud water information (blue) and the cloud parameterization based on relative humidity

(red). Close to the equator, the precipitating clouds from ECMWF have on average high cloud tops, often extending all the way to the tropopause. For the period examined, more than 96% of the in-cloud removal events in the tropical band (15°S - 15°N) are convective. For the 15 - 60° latitude range the cloud tops are markedly lower and the frequency of convective removal events drops markedly to 46% which is a result of both more stratiform clouds and fewer and lower convective clouds. This can be seen in the left panel of Fig. 3 as an extension of the 25-75% percentile range, which indicates that there are both low stratiform and high convective cloud tops. The fraction of large scale in-cloud events in this area is 46%. Poleward of 60° , stratiform precipitation dominates with 76% of all events.

Globally, in-cloud scavenging accounts for 85% (91% above 1000 m) of the aerosol wet removal events, of which 57% occur in convective clouds (for ECMWF clouds). The global fraction of in-cloud (solid line), below-cloud (dashed) and total (dotted) removal events as a function of altitude is shown in Fig. 3 (right). For the ECMWF defined clouds (blue) there are very few below-cloud scavenging events above 1000 m. There is however a slight increase in the frequency of such events around 5000 m, which is due to multiple layers of clouds. In the instances where precipitation was predominantly large scale (21%), at altitudes above 5000 m, in reality most clouds are likely non-precipitating cirrus clouds, and the ECMWF precipitation is actually originating from lower cloud layers. This could also be related to both convective and large scale clouds residing in the same grid cell, but without information about the three-dimensional distribution of hydrometeors, a correct diagnosis is not possible and many of the high-altitude below-cloud scavenging events are probably not real. However, in total this accounts for only 4% of all below-cloud scavenging events. Defining clouds on the basis of relative humidity produces an almost 4 times higher occurrence (15%) of such high altitude (>1000 m) below-cloud removal events, which is likely unrealistic.

The water phase of clouds influences the removal efficiency for aerosols that are inefficient IN but efficient CCN (or vice versa). The phase partitioning is temperature dependent and varies with season, latitude and altitude. For the three months examined, globally 16% of the in-cloud removal events were liquid only, 7% were ice only, whereas the remaining 77% were defined as mixed-phase cloud removal events.

In previous versions of FLEXPART, clouds were parameterized using relative humidity. As can be seen in Fig. 3, this leads to several differences in the distribution of scavenging events from the ice and liquid water based cloud distribution. For instance, the high frequency of clouds extending all the way to the surface seems unrealistic, and often no clouds could be found in a grid cell with precipitation (not shown). Altogether, in the new scheme the cloud distribution is more consistent with the precipitation data and thus it produces a more realistic distribution of seavenging-events. below-cloud and in-cloud scavenging events with 52% of the removal-events below 1000 m as-being below-cloud removal events.

While Fig. 3 shows the global distribution of scavenging events, the actual relative probability of in-cloud versus below-cloud scavenging events versus dry ~~deposition-removal~~ events for a given particle depends on the distribution of the aerosol. To illustrate this, we released a pulse of 1 million particles representing dust of five different sizes (see Table 2) at 10 m.a.g.l over Central Europe on 14 April 2007. Fig. 4 shows the relative frequency of the different removal events for these aerosol particles as a function of time after the release. For the purpose of clearer illustration, we show a polynomial fit through the daily total number of events of each removal type. Initially, below-cloud scavenging and dry ~~deposition-removal~~ are the most frequent removal types. Exact numbers at the beginning will vary depending on the location and time of the release. However, as particles are transported to higher altitudes, the relative frequency of in-cloud removal events increases, exceeding that of the other event types from day 4. On day 7 after the emission pulse, the relative frequencies are already similar to the global distribution of scavenging events in the troposphere, where below-cloud scavenging accounts for only 15% and dry ~~deposition-removal~~ for only 3% of the number of events. Notice that in terms of aerosol mass removed, the importance of below-cloud scavenging and dry ~~deposition-removal~~ will decrease even more quickly because the mass of particles remaining in the lower troposphere will also decrease rapidly. This effect has been discussed in Cassiani et al. (2013). The time dependence of scavenging is an important feature as most primary aerosols are emitted at or near the surface. Figure 4 also shows that, despite the global dominance of in-cloud scavenging events, below-cloud scavenging or dry ~~deposition-removal~~ may be most important, at least for aerosol types for which these removal mechanisms are efficient. The dependence in the efficiency and nature of scavenging also means that aerosol lifetimes are different for fresh and aged aerosols, as discussed in Kristiansen et al. (2012, 2015).

4.2 Mineral dust

Since the below-cloud scavenging scheme has a strong size dependency, an important goal for our mineral dust simulations was to investigate the differences in lifetime for aerosol particles with a large range of different sizes. Also, mineral dust particles are ineffective CCN (e.g., Mahowald et al., 2014) and, therefore, below-cloud scavenging is very important for dust. To investigate the sensitivity of dust scavenging to various components of the scavenging scheme, we performed simulations for a range of parameter settings.

The resulting lifetimes (τ_F) are shown in Table 2. Lifetimes were calculated as the times when the dust mass has decreased to 1/e of the emitted mass. Values of τ_F are equivalent to e-folding times if the removal rate is constant. While this is not the case - as shown in the previous section -, it allows a simplified lifetime calculation and is sufficient for our purpose of investigating the systematic dependence of lifetime on aerosol particle size and choice of scavenging parameters. It also emphasizes the initial phase of removal when most of the emitted mass is lost.

440 The accumulation mode particles of mineral dust are in the 0.2-0.6 μm size ~~range are located in~~
bin, which is located close to the minimum of both impaction efficiency (Fig. 2) and dry ~~deposition~~
~~velocity removal~~. Consequently, and especially since dust particles are also inefficient CCNs, ~~they the~~
0.2 μm sized particles have very long lifetimes. With the standard parameter settings in FLEXPART
for dust ($C_{\text{snow}} = C_{\text{rain}} = 1$; $CCN_{\text{eff}} = 0.15$; $IN_{\text{eff}} = 0.02$, highlighted in green in Table 2),
445 the lifetime of accumulation mode-sized (~~2000.2~~ 0.2 μm) dust is almost 32 days. Even though dust
particles are inefficient as CCN, wet removal dominates the total removal for the two smaller reported
size bins and nucleation scavenging in liquid water clouds is the dominant removal process. Only
if CCN_{eff} is decreased further by one order of magnitude, its importance is diminished and the
lifetime increases to >50 days. Compared to τ_F obtained from the old scavenging scheme, the 0.2 μm
450 size bins have significantly increased τ_F . The increase is in part due to fewer clouds extending all
the way to the surface (Fig. 3 left), thus decreasing the low altitude removal most important initially.
However, most of the increase is due to the decreased CCN_{eff} and IN_{eff} . The version 9 simulation
with $CCN_{\text{eff}} = IN_{\text{eff}} = 0.09$ is equivalent to the parameters used for BC v9 simulation in section
4.4 (Fig. 9).

455 The loss of particles of size 2.2 μm is more strongly affected by ~~dry deposition~~ gravitational
settling, but still dominated by wet removal. Impaction scavenging is also about four times more
efficient for aerosols of this size than for ~~2000.2~~ 0.2 μm particles, and thus has a large impact on the at-
mospheric lifetime. This is important especially close to the sources, when the aerosols are predom-
inantly in the lower troposphere where below-cloud removal occurs most frequently. Consequently,
460 the lifetime τ_F , 11.6 days, is substantially shorter than for the ~~2000.2~~ 0.2 μm particles. There is also
a strong sensitivity to the choice of the C_{snow} value for scavenging due to ice, which is probably
related to the strong size dependence of the Kyrö et al. (2009) scheme.

For the even larger particles shown in Table 1, ~~gravitational settling and dry deposition~~ 2, dry
deposition combined with relatively fast gravitational settling take over as the most important re-
465 moval mechanisms and thus very little effect is seen from altering the wet removal parameters. For
the 6.2 μm particles, reducing all wet removal parameters by one order of magnitude, only increases
the simulated lifetime by 20%, compared to the ~~450~~ 350% increase in lifetime for the accumulation
mode particles. For the 18.2 μm particles, wet scavenging has virtually no impact on the lifetime,
which is entirely controlled by ~~dry removal~~ gravitational settling.

470 A multi-year study of mineral dust, using FLEXPART with the same removal as here (Groot
Zwaafink et al., 2016)¹ found very good correlation between observations and model concentrations
using a global network of observations positioned at various distances from major source regions.
While the 32-day lifetime τ_F obtained for the ~~2000.2~~ 0.2 μm particles seems long, the emission to col-
umn burden estimate of lifetime for the full dust size distribution is only 4.3 days, which is ~~even on~~

¹The values stated in Groot Zwaafink et al. (2016), have been changed in Table 2 to correspond to the settings of ~~$ic_r = 6.2$~~
 ~~$ic_r = 6.1$~~ used here.

475 the low side of commonly reported estimates (e.g., Zender et al., 2004). Notice that the mass fraction of dust aerosols with diameter $< 1 \mu\text{m}$ is very low in our emission scheme (Kok, 2011).

4.3 Radionuclide tracers representative of sulphate aerosols

The FLEXPART model set-up for simulating the aerosol-bound cesium transport after the Fukushima accident was the same as in Kristiansen et al. (2015), except for the updates in the cloud and wet
480 scavenging schemes described in this paper. Furthermore, Kristiansen et al. (2015) used only one aerosol size mode, with $d=0.4 \mu\text{m}$. Here, a more realistic aerosol size distribution was used, and compared to the measurements of ^{137}Cs surface activity by Kaneyasu et al. (2012). For these simulations, the mass was emitted in six different size bins (Table 3) ranging from $0.4 \mu\text{m} - 6.2 \mu\text{m}$. The size bins with logarithmic mean diameters of $[0.4, 0.65, 1.2, 2, 4, \text{ and } 6.2] \mu\text{m}$ received 1, 2,
485 10, 40, 32, and 15 % of the emitted mass. The resulting relative aerosol surface size distribution is shown in Fig. 5b at the time of the release (green) and for an aged distribution after 40 days (cyan) together with the measured ^{137}Cs aerosol surface activity size distribution (red) of Kaneyasu et al. (2012). It is worth noting that Kaneyasu et al. (2012) started their measurements 47 days after the largest emission but probably sampled mainly ^{137}Cs from small later releases. The measured size
490 distribution of ^{137}Cs is bimodal with peaks around $1 \mu\text{m}$ and $0.02 \mu\text{m}$. The larger peak at $1 \mu\text{m}$ fits well ~~with both the aged and the~~ released size distribution in FLEXPART. The peak of the aged size distribution is dominated by particles of $0.6 \mu\text{m}$. While the initial release included a significant fraction of particles larger than $1 \mu\text{m}$ (52% by mass and 7% by aerosol number), their fraction is reduced considerably by day 40 (3% by mass and $<0.1\%$ by number). The smaller mode around
495 $0.02 \mu\text{m}$ is not represented in the model but it accounts for only 5-6% of the total mass.

For evaluating the ~~modelled~~modeled aerosol lifetimes in the same way as Kristiansen et al. (2015), we calculate the ratio of the aerosol (^{137}Cs) to the passive tracer (^{133}Xe) at each measurement station shown in Fig. 5a. The ratios decrease with time due to removal of aerosols. We further calculate the daily median ratios (median concentration for each day over all stations), and fit an exponential
500 decay model (grey lines in Fig. 5c) to these daily ratios. The fit is done over days 15 to 65 after the start of emissions, for which sufficient measurement data exist (see Kristiansen et al., 2015, for details). This excludes the initial phase of removal (as shown in Fig. 4) and thus emphasizes the role of in-cloud scavenging. We therefore use the e-folding time of the exponential decay model as an estimate for the aerosol lifetime (τ_e).

505 The e-folding lifetime estimate obtained by Kristiansen et al. (2015) for the previous version of FLEXPART was 5.8 days, indicating a too quick removal of the aerosols compared to the measurement-derived τ_e value of 14.3 days. However, there was only a slight underestimation of the atmospheric concentrations, partly explained by an initial overestimation. The new scavenging scheme produces a longer e-folding lifetime of 10.0 days (Fig. 5c). The longer lifetime is mainly due to slower in-cloud
510 scavenging and a broader range of aerosol particle sizes emitted, which have different removal effi-

ciencies. Both the below-cloud scavenging as well as the dry ~~deposition-removal~~ are size-dependent. This also explains the shift towards smaller particle sizes from the initial distribution to the aged distribution in Fig. 5b.

The e-folding times calculated individually for the different size bins are reported in Table 3. Simulation #1 in the top row (green) show the results with scavenging parameters set to values believed to be valid for sulfate, which are also used in the simulation shown in Fig. 5. The e-folding lifetimes range from ~~10.8~~ 11.7 days for the 0.4 μm size bin, to 5.4 days for the 4 μm bin. Even the smallest two aerosol size bins have a shorter e-folding lifetime than what is derived from the CTBTO measurements. For the largest size bin, concentrations after 15 days were too low for a robust estimate of lifetime.

The second column in Table 3 for each aerosol size bin reports the ratio of modeled to observed concentrations averaged over the whole period, assuming that all ^{137}Cs was attached to aerosols of that size bin. Assuming that ^{137}Cs attached exclusively to particles smaller than 1 μm (first two size bins), which have the most realistic lifetimes compared to the observation-derived lifetime, leads to a large overestimate of the observed concentrations (ratios of 18.7 and 11). This might to some extent be due to an overestimate of the emissions used here, by Stohl et al. (2012). Indeed, other authors (e.g. Morino et al., 2011) have found smaller emissions, but the source term uncertainty of about a factor of two cannot alone explain the overestimates by the smaller modes. Assuming that all ^{137}Cs attached to particles larger than 2.2 μm , on the other hand, leads to underestimates of both the concentrations and the lifetimes compared to the observations.

From the differences between the simulations for different aerosol sizes, it is also possible to investigate the relative importance of different removal mechanisms for the different aerosol sizes. Furthermore, several different in-cloud parameters IN_{eff} and CCN_{eff} were tested. In simulations #2 and #3 in Table 3, IN_{eff} and CCN_{eff} were reduced to values of 0.4 and 0.15, respectively. In simulations #4 and #5, in-cloud and below-cloud scavenging were separately turned off completely. For these simulations, only one aerosol size was used. Comparison of the lifetimes and ratio of these simulations with the original ^{137}Cs simulation #1 (Table 3) shows that for submicron particles the governing removal process is in-cloud scavenging. For particles in the range ~~$\sim 50-8000$~~ $0.05-0.8$ μm , dry deposition is slow and also the below cloud removal in FLEXPART is not very efficient, which leaves in-cloud scavenging to control the lifetime. This is apparent from how changes in removal efficiency influence the model values and lifetimes differently for different aerosol sizes. When CCN_{eff} and IN_{eff} are reduced by 60% to 0.4 in simulation #2, the atmospheric burden is increased by a factor of 5 for 0.4 μm particles. The lifetime however, only changes from 11.7 to 17.9 days, i.e. by a factor of ~ 1.6 . For the four larger aerosol size bins much smaller changes are found between #1 and #2 in concentration, lifetime and ratio, due to the less dominant role of in-cloud scavenging for these particles.

The measurement data during the first 15 days after the start of the emissions are insufficient to derive an aerosol lifetime. However, for the model simulation #1, the intermittent e-folding time for the full size distribution of ^{137}Cs during the first 15 days is 6.1 days, compared to the 10 days found over the 45 day period in Table 3. This is due to the reduction of below-cloud scavenging and dry deposition-removal events (shown in Fig. 4) combined with a reduction of in-cloud scavenging as well, as after 15 days a large and increasing fraction of the left-over aerosol particles reside above the cloud tops. As particles with more efficient removal are lost, the lifetime is more and more influenced by the longer-lived particles over time and thus the model e-folding lifetime estimate increase with time. This last effect applies in FLEXPART only when the aerosol size distribution consist-consists of more than one aerosol-type-specific aerosol kind (i.e. modal size or different removal parameters).

In Fig. 5d the mean model / observed concentration ratios at the different stations are plotted against latitude. A prominent feature of FLEXPART and indeed most models used by Kristiansen et al. (2015) is a tendency to overpredict concentrations at low latitudes and underpredict concentrations at high latitudes. This tendency is also present with the new removal scheme, where model / observation ratios decrease with latitude. ~~A plausible explanation of this~~ The green line shows a logarithmic fit to the station median data. The same fit was done to the mean from a simulation using FLEXPART version 9 (pink). This shows that the new model, while still having a systematic latitudinal dependence, represents a clear improvement over the old version. One possible explanation of the decreasing model/observation ratios with latitude might be that in-cloud scavenging in ice clouds is too effective. However, sensitivity simulations where ~~IN_{eff} only~~ only IN_{eff} was reduced (not shown) revealed that this change had little effect, and only a small effect in further reducing the latitudinal bias ~~was not reduced significantly. The probable cause of~~. One of the possible causes of this is the high proportion of mixed phase clouds (77%) which reduces the impact of the latitudinal dependence of the frequency of ice-phase clouds ~~after that much time for an emission pulse. Another possibility is that cloud phase is not well captured by the ECMWF model, as in many other models (Cesana et al., 2015).~~ It may also be relevant that the clouds have on average higher cloud tops near the equator, so that temperature and thus the mixing state of clouds does not have a strong enough latitudinal dependence in the Northern Hemisphere at the time of this simulation (March-May).

4.4 Black carbon

~~BC has been proven~~ It has been notoriously difficult to model BC accurately. For example, Arctic seasonal variations and Arctic haze periods are not captured well in most models (Lee et al., 2013). Some of this can be accredited to BC aerosol undergoing stages of transformation after its release to the atmosphere from a hydrophobic to a hydrophilic state (e.g., Bond et al., 2013). The aerosol ageing processes that would influence in-cloud scavenging are not readily included in FLEXPART and the constant removal parameters cannot account for this transformation. Therefore, several aerosol

parameter combinations were tested with FLEXPART both in backward and forward mode. There are observations that urban BC is transformed very quickly into particles with aged, hydrophilic characteristics (Wittbom et al., 2014). Therefore, a representation resembling physical properties of aged BC (BC #1 in Table 4) was selected as our reference set-up for BC. Our assumptions regarding the values of CCN_{eff} and IN_{eff} were based on the findings of Cozic et al. (2007) that BC is much more efficiently removed in liquid water clouds than in ice clouds. Noone et al. (1992) showed that aerosol composed of mainly elemental carbon had the highest fraction of non activated particles. A size distribution with a modal mean diameter of ~~1500~~15 μm was assumed.

In addition to our simulations for our reference BC species, seven other simulations were performed to test the sensitivity of model results at different latitudes, altitudes and times of the year to changes in the parameters describing the different removal mechanisms. For this, parameter settings were varied within ranges thought to be suitable for BC. Table 4 summarizes the parameter choices for these simulations.

Column burdens and vertical distribution of the eight simulations are shown in Fig. 6. The concentrations are FLEXPART output from five vertical layers with upper borders of 100, 1000, 5000, 10000 and 50000 m. The BC column burdens (shown with white lines in Fig. 6 on the right hand side y-axis) are overall somewhat high when compared to other studies (e.g., Lee et al., 2013; Eckhardt et al., 2015), with the exception of simulation #4, which has strongly enhanced in-cloud removal. The dashed black line shown in all the panels is the ~~concentration~~column burden of the reference simulation (#1).

All simulations produce a quite similar latitudinal distribution. The strongest sources of BC are at mid latitudes and most of BC at high altitudes is also found in this region for all simulations. Thus, the highest column burdens are found near 35°N in all simulations. The two simulations with reduced in-cloud scavenging (#2 and #8), have the highest column burdens. While increasing C_{rain} by a factor of 10 (simulation #5) reduces the burden significantly, a similar, but an even stronger effect can be achieved with a reduced aerosol size (simulation #3), as smaller particles have higher dry deposition velocities. This shows that in the absence of efficient wet removal, dry ~~deposition~~removal can be important as well. Though it generally accounts for less than 10% of total removal in our simulations for particles with $d < 1\ \mu\text{m}$, in simulation #3 it accounts for 48% of the removal. Only simulations ~~#6 and #5~~to #7, which have phase dependent changes to removal parameters, produce burdens with a ~~substantially~~noticeable different dependence on latitude when compared to simulation #1.

Annual average calculated BC concentrations in the surface layer (0-100 m) in the northern hemisphere are shown in Fig. 7 for the reference simulation (top left) and as differences from this reference for the other seven simulations. Overall, there are only small differences between the various model runs in the major BC source regions, where the concentrations are strongly influenced by local emissions. Further away from the source regions, differences in removal have a stronger ef-

fect. Simulation #4, with enhanced in-cloud scavenging in both liquid and ice clouds, stands out with very low concentrations in the Arctic and other remote regions. The remaining simulations have concentrations within $\pm 50\%$. It is worth noting that there are quite a few distinct geographical features in Fig. 7. For example, ~~for simulations turning off the below-cloud removal by snow (simulation #2, and 6) only has a small effect that can be seen north of 60° N. In simulation #8,~~ where liquid in-cloud removal is reduced, ~~modelled-modeled~~ surface concentrations are increased in remote ~~areas like the Arctic. Turning off the below-cloud removal by snow (simulation tropical areas. Simulation #6), however, only has a small effect north of 60° N~~7, where the overall removal efficiency is maintained, but no differentiation of cloud phase is made, illustrates the relative effect of the cloud phase dependency of in-cloud removal.

The monthly measured (black) and ~~modelled-modeled~~ (blue; simulation #1 in Table 4) BC concentrations at six measurement stations are shown in Fig. 8. The station locations are marked in Fig. 6-8 and are at different distances from major source areas. The aerosols measured at the different stations thus have very different ages. For simulation #1, at Melpitz the mean mass weighted FLEX-PART aerosol age is 1.3 days, at Pallas it is 3.8 days and at Zeppelin it is 7.7 days. The age is defined as the time it takes for the aerosol to reach the station after its emission. The aerosol age depends not only on the transport, but also on the removal between emission and observation.

Increased removal efficiency would, on average, reduce aged BC more than fresh BC, resulting in a less aged aerosol population. Systematic differences in model bias for stations close to and stations far away from source regions can thus allow to separate errors in emissions versus errors in simulated aerosol lifetimes. In Table 4 the median ~~modelled-modeled~~ concentrations at the six stations are reported for all the sensitivity simulations. Seven of the eight simulations overestimate the concentrations at Melpitz by a factor of almost 2, especially in summer (Fig. 8). This suggests that local emissions around Melpitz are too high, as changes in the removal parametrisation have little effect on the concentrations (Tab. 4).

Moving away from the source regions, stations Southern Great Plains and Pallas have model concentrations close to the observed average for all the simulations except for simulation #4 which underpredicts the concentration at these two stations by a factor of 2.1 and 8, respectively. Annual mean BC concentrations at the three Arctic stations Alert, Barrow and Zeppelin are underpredicted by the model (mainly due to very low simulated summertime concentrations, see Fig. 8). This alone would indicate a too fast removal and thus a too short BC lifetime. However, indicative of total global removal rates, the column burden is, also for the Arctic, on the high side of most current model estimates (Breider et al., 2014) and therefore also burden / emission estimates of the BC lifetime of 9.0 days is higher than in many other models (Samset et al., 2014).

Observations at all stations except Southern Great Plains have a seasonal cycle, with lowest concentrations during summer and higher concentrations during winter. The Southern Great Plains station has a somewhat different seasonality than the other stations, with a peak in autumn, and this is

quite well captured by the model. The four higher-latitude stations all show a pronounced winter / spring peak, which is well reproduced by the model.

In Fig 9 (bottom panel) a comparison between the observations and model ~~simulations~~simulation #1 and ~~#7~~a simulation using FLEXPART v9 is shown as a 48 hr moving average. With a Pearson's squared correlation coefficient of $r^2=0.44$, simulation #1 captures nearly half of the variability of the observations with generally higher concentrations during December to May, and large peaks in the observations in January and December. ~~The difference between~~There are noticeable differences between the two simulations, but not all of them are due to wet removal as FLEXPART v10 includes also other changes than the removal. Also, the concentration simulated using v9 is a point estimate from a backward simulation and simulation #1 and 1 a (1° x 1°) grid average from a forward simulation, so they are not directly comparable. Of most significance however is the higher concentrations in the spring months Apr-May, where simulation #7 is about 10% and only visible in winter, where the effect of removal differences between the two setups is largest. The difference between the other simulations (not shown) is rather constant throughout the year and thus can be gleaned from the average bias (Table 4) ~~1 capture the observed high levels of BC and the v9 does not. On average for the year, v10 concentrations are about twice as high as the v9 data with annual median (9.5 µg and 6.8 µg), median (9.5 µg and 6.8 µg) and mean (47.6 µg and 21.1 µg) values for the two respectively.~~

FLEXPART aerosol age at Zeppelin was also used to examine the role of the removal processes in the variability. Tunved et al. (2013) showed observed concentrations of aerosol submicron mass had a strong dependence on trajectory accumulated precipitation. Shown in the top panel in Fig. 9 is the mean model age corresponding to six-hourly observations. Also a smoothed 48 hr fit is shown in red. Depending on the season, the youngest BC aerosols are found in combination with either the highest observed concentrations (winter) or very low concentrations (summer) and have two different explanations. The high aerosol episodes with low age in winter (e.g., peak on 15 January) are related to fast transport from the Yamal Peninsula and the Kara Sea. In this area there are large emissions from the gas and oil industry (Stohl et al., 2013), and if these emissions are transported quickly and nearly without removal to Zeppelin, concentrations there increase strongly. In summer, there is a persistent background of relatively low aerosol concentrations. Occasionally, this background is reduced further by scavenging events occurring close to the station. This removal only leaves BC from the small local sources of BC on Svalbard, leading to both a low age and low concentrations of the simulated BC.

5 Summary and conclusions

This paper has presented the new FLEXPART aerosol wet scavenging scheme. Firstly, a more realistic distribution of clouds was achieved by incorporating three-dimensional cloud information from

ECMWF. Secondly, a new parameterization of wet removal within and below clouds was introduced, considering also the water phase of the clouds and the precipitation type.

Reading of cloud liquid and ice water data from stored ECMWF data leads to fewer inconsistencies with the ECMWF precipitation data than using the old relative humidity-based cloud scheme, and is an important improvement of FLEXPART. Using the ECMWF cloud water data, we diagnosed the frequency of different types of removal events, and we found a dominance of in-cloud scavenging events (91% of all events) above 1000 m. At lower altitudes than 1000 m, below-cloud scavenging events are slightly more important (52% of all events) than in-cloud scavenging events.

We performed model simulations for three different types of aerosols (mineral dust, ^{137}Cs attached to sulfate, and BC), to test different aspects of the removal scheme. For each of these aerosol types, we performed sensitivity simulations to explore the size dependence of the aerosol removal, to determine atmospheric e-folding times, and to investigate the water phase dependency of the aerosol removal scheme. We also compared simulation results to observations of ^{137}Cs and BC.

For both mineral dust and ^{137}Cs simulations, the aerosol lifetime had a maximum in the accumulation mode of 31.8 and 11.7 days, respectively. For the BC particles, which are also in the accumulation mode, an e-folding lifetime of 16 days was found. These lifetimes are long compared to lifetimes typically reported in the literature. However, this can be explained by differences in the definition of lifetime (see discussion in Kristiansen et al., 2015). For instance, estimating the lifetime by dividing the aerosol burden with its emission rate - a common definition of lifetime used by global aerosol modelers - results in a BC lifetime of 9 days. This is quite comparable to lifetime values reported for BC in the literature, though perhaps still somewhat longer than in most models (Samset et al., 2014; Cape et al., 2012; Ogren and Charlson, 1983).

In our scheme, the lifetime of accumulation mode particles is controlled mainly by in-cloud removal, as dry ~~deposition-removal~~ and below-cloud scavenging are inefficient for these aerosol particle sizes. Therefore, the longer e-folding lifetime is due mainly to transport of aerosols above clouds, where they cannot be scavenged. This process is less important for the burden/emission lifetime estimate, which depends mostly on the ~~partiele-particles'~~ removal rate in the first few days after the emission.

Simulations for the accumulation mode particles with FLEXPART are highly sensitive to the choice of CCN_{eff} and IN_{eff} values, which describe the particles' efficiency to serve as cloud condensation and ice nuclei. Overall, it was found that the sum of $CCN_{eff} + IN_{eff}$ is more important for the removal efficiency than the individual choice of values for CCN_{eff} or IN_{eff} . For the three aerosol types, we recommend the following values: Regarding insoluble aerosols, Groot Zwaaftink et al. (2016) found good agreement between modeled and observed concentrations when using $CCN_{eff} = 0.15$ and $IN_{eff} = 0.02$ for mineral dust. For BC, $CCN_{eff} = 0.9$ and $IN_{eff} = 0.1$ gave the overall best results, and these values are also comparable with what was found by Cozic et al. (2007). Soluble aerosol (^{137}Cs) concentrations compared best with $CCN_{eff} = 0.9$ and $IN_{eff} = 0.9$. The

latter value is somewhat higher than IN_{eff} values suggested by measurements of Henning et al. (e.g. 2004).

730

On the other hand, for particles larger than $1\text{ }\mu\text{m}$, both below-cloud scavenging and dry ~~deposition~~ removal have a strong impact on the lifetime. Consequently, these larger aerosols all have much shorter e-folding times. CCN (and IN) efficiency has also been shown to increase with aerosol particle size, thus contributing to the shorter lifetimes of particles larger than $1\text{ }\mu\text{m}$. However, as their lifetime is mostly controlled by ~~dry-deposition~~ gravitational settling and below-cloud scavenging, the choice of values for IN_{eff} and CCN_{eff} is not particularly critical for super-micronic particles.

735

There are large uncertainties tied to the efficiency of impaction scavenging. Nevertheless, the chosen schemes of Laakso et al. (2003) and Kyrö et al. (2009) capture the overall size dependence predicted by impaction theory. For BC, for which the removal by snow is generally more efficient (especially at low precipitation intensities), taking into account the precipitation water phase leads to relatively stronger removal of BC at high latitudes and so enhances the underestimation of BC concentrations at the Arctic stations. This effect is however small compared to the aerosol size dependence of below-cloud scavenging.

740

Despite all efforts to explore and correct this issue in FLEXPART, there is still a tendency to underpredict BC measurements in the Arctic. Similarly, in simulations of ^{137}Cs from the Fukushima accident there is a latitudinal gradient in model bias, with underprediction of observations at high latitudes. For BC, assuming a larger efficiency of the particles to serve as CCN than as IN reduced the Arctic underprediction and also produced a seasonal cycle of BC concentrations that is closer to the observed one, compared to simulations assuming equal CCN and IN efficiency. For ^{137}Cs , however, ~~no-noticeable~~ only a small improvement in the latitudinal gradient of model bias was found. A reason for this may be that in the large fraction of clouds defined as mixed phase (77%), the Bergeron-Findeisen effect, as represented in Fig. 1, may not be sufficiently strong.

750

Though there are limitations to the level of sophistication possible for aerosol removal in linear Lagrangian models, the wet removal scheme introduced in FLEXPART is capable of distinguishing and treating most aspects of wet removal for aerosols with many different characteristics. Our results show that the new scheme produces aerosol lifetimes and concentrations that are realistic when compared with observations.

755

6 Code Availability

FLEXPART is a free software, and can be freely redistributed or modified under the terms of the GNU General Public License. The FLEXPART v10, coded in Fortran 95 used in this study and also prior versions of FLEXPART are available through <http://www.flexpart.eu/>.

760

Acknowledgements. We would like to thank all the scientists who produced the CTBTO measurement data and made them available to us. All absorption data was downloaded through <http://ebas.nilu.no/> and we thank the DOE/ARM program and NOAA (J. Ogren), Environment and Climate Change Canada (S. Sharma), Leibniz
765 Institute for Tropospheric Research (T. Tuch), and Finnish Meteorological Institute (H. Lihavainen) for use of their aerosol light absorption data. This work was supported by NordForsk as part of the Nordic Centres of Excellence "Cryosphere Atmosphere Interactions in an Arctic Changing Climate" (CRAICC) and "eScience Tools for Investigating Climate Change at High Northern Latitudes" (eSTICC). C. Groot Zwaaftink was funded by the Swiss National Science Foundation (P2ELP2_155294). We also thank J. Ogren for valuable discussion
770 and insights.

References

- Andronache, C.: Estimated variability of below-cloud aerosol removal by rainfall for observed aerosol size distributions, *Atmos. Chem. Phys.*, 3, 131–143, 2003.
- Bergeron, T.: On the physics of clouds and precipitation. *Proces Verbaux de l'Association de Météorologie*,
775 *International Union of Geodesy and Geophysics*, 156–178, 1935.
- Bechtold, P., N. Semane, P. Lopez, J.-P. Chaboureau, A. Beljaars, and N. Bormann: Representing equilibrium and nonequilibrium convection in large-scale models. *J. Atmos. Sci.*, 71, 734–753, doi:10.1175/JAS-D-13-0163.1, 2014.
- Bond, T., Doherty, S., Fahey, D., Forster, P., Berntsen, T., DeAngelo, B., Flanner, M., Ghan, S., Kärcher, B.,
780 Koch, D., Kinne, S., Kondo, Y., Quinn, P., Sarofim, M., Schultz, M., Schulz, M., Venkataraman, C., Zhang, H., Zhang, S., Bellouin, N., Guttikunda, S., Hopke, P., Jacobson, M., Kaiser, J., Klimont, Z., Lohmann, U., Schwarz, J., Shindell, D., Storelvmo, T., Warren, S. and Zender, C.: Bounding the role of black carbon in the climate system: A scientific assessment, *Journal of Geophysical Research: Atmospheres*, 118(11), 53805552, doi:10.1002/jgrd.50171, 2013.
- 785 Breider, T. J., Mickley, L. J., Jacob, D. J., Wang, Q., Fisher, J. A., Chang, R. Y. W., and Alexander, B.: Annual distributions and sources of Arctic aerosol components, aerosol optical depth, and aerosol absorption, *J. Geophys. Res.-Atmos.*, 119, 4107–4124, 2014.
- Brioude, J., D. Arnold, A. Stohl, M. Cassiani, D. Morton, P. Seibert, W. Angevine, S. Evan, A. Dingwell, J. D. Fast, R. C. Easter, I. Pissò, J. Burkhardt, and G. Wotawa (2013): The Lagrangian particle dispersion model
790 FLEXPART-WRF version 3.1. *Geosci. Model Dev.* 6, 1889–1904, doi:10.5194/gmd-6-1889-2013.
- Bukowiecki, N., Weingartner E., Gysel M., Coen M. C., Zieger, P., Herrmann, E., M. Steinbacher, G'aggeler H. W., Baltensperger U. A Review of More than 20 Years of Aerosol Observation at the High Altitude Research Station Jungfraujoch, Switzerland (3580 m asl) Aerosol and Air Quality Research, 16: 764–788, 2016.
- Cape, J. N., Coyle, M., and Dumitrean, P.: The atmospheric lifetime of black carbon, *Atmos. Environ.*, 59,
795 256–263, doi:10.1016/j.atmosenv.2012.05.030, 2012.
- Cassiani M.: The volumetric particle approach for concentration fluctuations and chemical reactions in Lagrangian particle and particle-grid models. *Boundary-Layer Meteorol* 146:207–233, 2013.
- Cassiani, M., Stohl, A., Olivie, D., Seland, Ø., Bethke, I., Pissò, I., & Iversen, T. The ~~off-line~~ offline Lagrangian particle model FLEXPART-NorESM/CAM (V1): model description and comparisons with the on-line NorESM transport scheme and with the reference FLEXPART model. *Geosci. Model Dev.* ~~Discuss.~~, 9,
800 2029–4048, doi:10.5194/~~gmd-2016-86~~gmd-9-4029-2014, 2016.
- Cesana, G., Waliser, D. E., Jiang, X., and Li, J.-L. F.: Multimodel evaluation of cloud phase transition using satellite and reanalysis data. *J. Geophys. Res. Atmos.*, 120, 7871–7892. doi: 10.1002/2014JD022932, 2015.
- Chock, D. P., and Winkler, S. L.: A particle grid air quality modeling approach: 1. The dispersion aspect. *J. Geophys. Res.*, 99, 1019–1031. doi:10.1029/93JD02795, 1994a.
- 805 Chock, D. P., and Winkler, S. L.: A particle grid air quality modeling approach: 2. Coupling with chemistry. *J. Geophys. Res.*, 99, 1033–1041. doi:10.1029/93JD02796, 1994b.
- Cozic, J., Verheggen, B., Mertes, S., Connolly, P., Bower, K., Petzold, A., Baltensperger, U. and Weingartner, E.: Scavenging of black carbon in mixed phase clouds at the high alpine site Jungfraujoch, *Atmospheric Chemistry and Physics*, 7(7), 17971807, doi:10.5194/acp-7-1797-2007, 2007.
- 810

- Dentener, F., S. Kinne, T. Bond, O. Boucher, J. Cofala, S. Generoso, P. Ginoux, S. Gong, J. Hoelzemann, A. Ito, L. Marelli, J. Penner, J.-P. Putaud, C. Textor, M. Schulz, G.v.d. Werf, and J. Wilson: Emissions of primary aerosol and precursor gases in the years 2000 and 1750 -prescribed data-sets for AeroCom, *Atmos. Chem. Phys.*, 6, 4321-4344, 2006.
- 815 Draxler, R. and Hess G.D.: An Overview of the HYSPLIT_4 Modelling System for Trajectories, Dispersion, and Deposition. *Australian Meteorological Magazine*, 47 (1998) 295-308, 1998.
- Eckhardt, S., Quennehen, B., Oliví, D. J. L., Berntsen, T. K., Cherian, R., Christensen, J. H., Collins, W., Crepinsek, S., Daskalakis, N., Flanner, M., Herber, A., Heyes, C., Hodnebrog, Ø., Huang, L., Kanakidou, M., Klimont, Z., Langner, J., Law, K. S., Lund, M. T., Mahmood, R., Massling, A., Myriokefalitakis, S.,
820 Nielsen, I. E., Nøjgaard, J. K., Quaas, J., Quinn, P. K., Raut, J.-C., Rumbold, S. T., Schulz, M., Sharma, S., Skeie, R. B., Skov, H., Uttal, T., von Salzen, K., and Stohl, A.: Current model capabilities for simulating black carbon and sulfate concentrations in the Arctic atmosphere: a multi-model evaluation using a comprehensive measurement data set, *Atmos. Chem. Phys.*, 15, 9413-9433, doi:10.5194/acp-15-9413-2015, 2015.
- [Feng, J.: A 3-mode parameterization of below-cloud scavenging of aerosols for use in atmospheric dispersion models, *Atmos. Environ.*, 41, 6808–6822, 2007](#)
825 [Feng, J.: A 3-mode parameterization of below-cloud scavenging of aerosols for use in atmospheric dispersion models, *Atmos. Environ.*, 41, 6808–6822, 2007](#)
- Findeisen, W.: Kolloid-meteorologische Vorgänge bei Neiderschlags-bildung. *Meteor. Z.*, 55, 121–133, 1938.
- [Forbes, R.M., A.M. Tompkins and A. Untch: A new prognostic bulk-microphysics scheme for the IFS. ECMWF Tech. Memo. No. 649](#)
[Forbes, R.M., A.M. Tompkins and A. Untch, 2011: A new prognostic bulk-microphysics scheme for the IFS. ECMWF Tech. Memo. No. 649, 2011.](#)
- 830 Forster, C., Stohl, A., and Seibert, P.: Parameterization of convective transport in a Lagrangian particle dispersion model and its evaluation, *J. Appl. Met. Clim.*, 46, 403–422, 2007.
- Gillani, N. V., et al. "Field observations in continental stratiform clouds: Partitioning of cloud particles between droplets and unactivated interstitial aerosols." *Journal of Geophysical Research: Atmospheres* (1984–2012) 100.D9 18687-18706, 1995.
- 835 ~~Hallberg, A., Noone, K. J., Ogren, J. A., Svenningsson, I. B., Flossmann, A., Wiedensohler, A. and Maser, R.: Phase partitioning of aerosol particles in clouds at Kleiner Feldberg. *Journal of atmospheric chemistry*, 19(1-2), 107-127, 1994.~~
- Gieray, Rainer, et al.: "Size dependent single particle and chemical bulk analysis of droplets and interstitial particles in an orographic cloud." *Atmospheric research* 30.4, 263-293, 1993.
- 840 Greenfield, S.: Rain scavenging of radioactive particulate matter from the atmosphere., *J. Meteor.*, 14, 115–125, 1957.
- ~~Groot-Zwaaftink, C.D., H. Grythe, H. Skov and A. Stohl. Significant contribution of, Skov, H., Stohl, A.: Substantial contribution of northern high-latitude sources to mineral dust in the Arctic(accepted *Journal of Geophysical Research*). *J. Geophys. Res.*, 21, 13678-13697, doi:10.1002/2016JD025482, 2016.~~
- 845 ~~Forbes, R. M., A. M. Tompkins and A. Untch: A new prognostic bulk-microphysics scheme for the IFS. ECMWF Tech. Memo. No. 649~~
~~Forbes, R. M., A. M. Tompkins and A. Untch, 2011: A new prognostic bulk-microphysics scheme for the IFS. ECMWF Tech. Memo. No. 649, 2011.~~
- ~~Hallberg, A., Noone, K. J., Ogren, J. A., Svenningsson, I. B., Flossmann, A., Wiedensohler, A. and Maser, R.: Phase partitioning of aerosol particles in clouds at Kleiner Feldberg. *Journal of atmospheric chemistry*, 19(1-2), 107-127, 1994.~~
850 ~~Hallberg, A., Noone, K. J., Ogren, J. A., Svenningsson, I. B., Flossmann, A., Wiedensohler, A. and Maser, R.: Phase partitioning of aerosol particles in clouds at Kleiner Feldberg. *Journal of atmospheric chemistry*, 19(1-2), 107-127, 1994.~~

- Henning, S., Bojinski, S., Diehl, K., Ghan, S., Nyeki, S., Weingartner, E., Wurzler, S., and Baltensperger, U.: Aerosol partitioning in natural mixed-phase clouds, *Geophys. Res. Lett.*, 31, L06101, doi:10.1029/2003GL019025, 2004.
- Hertel, O., Christensen, J. Runge, E. H., Asman, W. A. H., Berkowicz, R., Hovmand, M. F. and Hov, O.:
855 Development and testing of a new variable scale air pollution model - ACDEP. *Atmos. Environ.*, 29, 1267–1290, 1995.
- Kaneyasu, N., Ohashi, H., Suzuki, F., Okuda, T., and Ikemori, F.: Sulfate aerosol as a potential transport medium of radiocesium from the Fukushima nuclear accident, *Environ. Sci. Technol.*, 46, 5720–5726 doi:10.1021/es204667h, 2012.
- 860 Köhler, H.: Untersuchungen über die Elemente des Nebels und der Wolken, *Meddelanden Från Statens Meteorologisk-Hydrografiska Anstalt*, 2, 1–73, 1925.
- Kok, J. F.: Does the size distribution of mineral dust aerosols depend on the wind speed at emission?. *Atmospheric Chemistry and Physics*, 11(19), 10149–10156, 2011.
- Kristiansen, N. I., A. Stohl, and G. Wotawa, Atmospheric removal times of the aerosol-bound radionuclides
865 ¹³⁷Cs and ¹³¹I measured after the Fukushima Dai-ichi nuclear accident – a constraint for air quality and climate models, *Atmos. Chem. Phys.*, 12, 10759–10769, doi:10.5194/acp-12-10759-2012, 2012.
- Kristiansen, N. I., A. Stohl, Y. Balkanski, S. E. Bauer, T. Bergman, T. Christoudias, B. Croft, G. Di Genova, R. C. Easter, N. Evangeliou, H. Klein, H. Kokkola, D. Kunkel, S. J. Leadbetter, Y.H. Lee, X. Liu, P-L. Ma, R. V. Martin, D. J. L. Olivié, J. R. Pierce, G. Pitari, P. J. Rasch, M. Schulz, D. Shindell, O. A. Søvde, H. Tost,
870 K. Tsigaridis, H. Wang, H. Zhang, K. Zhang, and S. Y. Zhao, Evaluation of observed and modelled aerosol lifetimes using radioactive tracers of opportunity and an ensemble of 19 global models, 2015.
- [Kristiansen, N. I., Stohl, A., Sollum, E., Grythe, H., Cassiani, M., Thompson, R. L., Pisso, I., Hamburger, T., Eckhardt, S., Evangeliou, N., Groot Zwaftink, C., Sodemann, H., Henne, S., Brunner, D., Wotawa, G., Frank, A., and Seibert, P.: The Lagrangian particle dispersion model FLEXPART version 10.0 Manuscript in prep \(for Geosci. Model Dev. Discuss\).](#)
875
- Kyrö, E.-M., T. Grönholm, H. Vuollekoski, A. Virkkula, M. Kulmala and L. Laakso: Snow scavenging of ultrafine particles: field measurements and parameterization. *Boreal Env. Res.*, 14, 527–538, 2009.
- Jones, A. R., Thomson, D. J., Hort, M. C., and Devenish, B. J.: The U.K. Met Office's Next-Generation Atmospheric Dispersion Model, NAME III, in *Air Pollution Modeling and Its Application XVII*, vol. 6, edited by
880 C. Borrego and A.-L. Norman, pp. 580–589, Springer, New York, 2007.
- Laakso, L., Grönholm, Rannika, Ü., Kosmalea, M., Fiedlera, V., Vehkamäki, H., Kulmalaa, M.: Ultrafine particle scavenging coefficients calculated from 6 years field measurements. *Atm. Env.* 37, 3605–3613, doi:10.1016/S1352-2310(03)00326-1, 2003.
- Lee, Y. H., Lamarque, J.-F., Flanner, M. G., Jiao, C., Shindell, D. T., Bernsten, T., Bisiaux, M. M., Cao, J.,
885 Collins, W. J., Curran, M., Edwards, R., Faluvegi, G., Ghan, S., Horowitz, L. W., McConnell, J. R., Ming, J., Myhre, G., Nagashima, T., Naik, V., Rumbold, S. T., Skeie, R. B., Sudo, K., Takemura, T., Thevenon, F., Xu, B., and Yoon, J.-H.: Evaluation of preindustrial to present-day black carbon and its albedo forcing from Atmospheric Chemistry and Climate Model Intercomparison Project (ACCMIP), *Atmos. Chem. Phys.*, 13, 2607–2634, doi:10.5194/acp-13-2607-2013, 2013.

- 890 Lohmann, U. and Feichter, J.: Global indirect aerosol effects: a review, *Atmos. Chem. Phys.*, 5, 715-737, doi:10.5194/acp-5-715-2005, 2005.
- Mahowald, N., Albani, S., Kok, J. F., Engelstaeder, S., Scanza, R., Ward, D. S., & Flanner, M. G.: The size distribution of desert dust aerosols and its impact on the Earth system, *Aeolian Research*, Volume 15, December 2014, Pages 53-71, ISSN 1875-9637, <http://dx.doi.org/10.1016/j.aeolia.2013.09.002>, 2014.
- 895 Marticorena, B., Bergametti, G.: Modelling the atmospheric dust cycle, 1, Design of a soil-derived dust emission scheme. *J. Geophys. Res.* 100, 16415– 16430, 1995.
- Morino, Y., T. Ohara, and M. Nishizawa: Atmospheric behavior, deposition, and budget of radioactive materials from the Fukushima Daiichi nuclear power plant in March 2011, *Geophys. Res. Lett.*, 38, L00G11, doi:10.1029/2011GL048689, 2011.
- 900 Myhre, G., Shindell, D., Breon, F.-M., Collins, W., Fuglestad, J., Huang, J., Koch, D., Lamarque, J.-F., Lee, D., Mendoza, B., Nakajima, T., Robock, A., Stephens, G., Takemura, T., and Zhang, H.: Anthropogenic and Natural Radiative Forcing, in: *Climate Change 2013: The Physical Science Basis. Contribution of Working Group I to the Fifth Assessment Report of the Intergovernmental Panel on Climate Change*, edited by: Stocker, T. F., Qin, D., Plattner, G.-K., Tignor, M., Allen, S. K., Boschung, J., Nauels, A., Xia, Y., Bex, V., and Midgley, P. M., Cambridge University Press, Cambridge, United Kingdom and New York, NY, USA, 659–740, 2013.
- 905 Noone, K. J., Ogren, J. A., Hallberg, A., Heintzenberg, J., Ström, J., Hansson, H.-C., Svenningsson, I. B., Wiedensohler, A., Fuzzi, S., Facchini, M. C., Arends, B. G. and Berner, A.: Changes in aerosol size- and phase distributions due to physical and chemical processes in fog. *Tellus* 44B, 489-504, 1992.
- 910 Noone, K. J., Ogren, J. A., Hallberg, A., Hansson, H.-C., Wiedensohler, A. and Swietlicki, E.: A statistical examination of the chemical speciation between interstitial and scavenged aerosol. *Tellus* 44B, 581-592, 1992.
- Ogren, J. A., and Charlson, R. J.: Elemental Carbon in the Atmosphere: Cycle and Lifetime, *Tellus* 35B, 241-254, 1983.
- 915 Paramonov, M., Grönholm, T., and Virkkula, A.: Below-cloud scavenging of aerosol particles by snow at an urban site in Finland, *Boreal Environ. Res.*, 16, 304–320, 2011.
- Petzold, A., Ogren, J. A., Fiebig, M., Laj, P., Li, S.-M., Baltensperger, U., Holzer-Popp, T., Kinne, S., Pappalardo, G., Sugimoto, N., Wehrli, C., Wiedensohler, A., and Zhang, X.-Y.: Recommendations for the interpretation of "black carbon" measurements, *Atmos. Chem. Phys. Discuss.*, 13, 9485-9517, 2013.
- 920 Pruppacher, H. R. and Klett, J. D.: *Microphysics of clouds and precipitation*. D. Reidel Publishing Company, Dordrecht, 714p., 1978.
- Randerson, J.T., G.R. van der Werf, L. Giglio, G.J. Collatz, and P.S. Kasibhatla. Global Fire Emissions Database, Version 3 (GFEDv3.1). Data set. Available on-line [<http://daac.ornl.gov/>] from Oak Ridge National Laboratory Distributed Active Archive Center, Oak Ridge, Tennessee, USA. doi:10.3334/ORNLDAAAC/1191, 925 2013.
- Reid, J. S., et al.: Comparison of size and morphological measurements of coarse mode dust particles from Africa, *J. Geophys. Res.*, 108, 8593, doi:10.1029/2002JD002485, D19, 2003.
- Rogers, R. R., M. K. Yau, *A Short Course in Cloud Physics* 3rd ed., 12–27, Pergamon, Tarrytown, N.Y., 1989.

- 930 Samset, B. H., Myhre, G., Herber, A., Kondo, Y., Li, S.-M., Moteki, N., Koike, M., Oshima, N., Schwarz, J.
P., Balkanski, Y., Bauer, S. E., Bellouin, N., Bernsten, T. K., Bian, H., Chin, M., Diehl, T., Easter, R. C.,
Ghan, S. J., Iversen, T., Kirkevåg, A., Lamarque, J.-F., Lin, G., Liu, X., Penner, J. E., Schulz, M., Seland, Ø.,
Skeie, R. B., Stier, P., Takemura, T., Tsigaridis, K., and Zhang, K.: Modelled black carbon radiative forcing
and atmospheric lifetime in AeroCom Phase II constrained by aircraft observations, *Atmos. Chem. Phys.*,
935 14, 12465–12477, doi:10.5194/acp-14-12465-2014, 2014.
- Sato, Y., Miura, H., Yashiro, H., Goto, D., Takemura, T., Tomita, H., and Nakajima, T.: Unrealistically
pristine air in the Arctic produced by current global scale models, *Scientific Reports* 6, 26561,
doi:10.1038/srep26561, 2016.
- Seinfeld, John H., and Spyros N. Pandis. *Atmospheric chemistry and physics: from air pollution to climate*
940 *change*. John Wiley & Sons, 2004.
- Stein, A.F., Draxler, R.R., Rolph, G.D., Stunder, B.J.B., Cohen, M.D., and Ngan, F.: NOAA's HYS-
PLIT atmospheric transport and dispersion modeling system, *Bull. Amer. Meteor. Soc.*, 96, 2059–2077,
http://dx.doi.org/10.1175/BAMS-D-14-00110.1, 2015.
- Stohl, A., Hittenberger, M., and Wotawa, G.: Validation of the Lagrangian particle dispersion model FLEX-
945 PART against large scale tracer experiment data, *Atmos. Environ.*, 32, 4245–4264, 1998.
- Stohl, A., Forster, C., Frank, A., Seibert, P., and Wotawa, G.: Technical note: The Lagrangian particle dispersion
model FLEXPART version 6.2, *Atmos. Chem. Phys.*, 5, 2461–2474, doi:10.5194/acp-5-2461-2005, 2005.
- Stohl, A., P. Seibert, G. Wotawa, D. Arnold, J. F. Burkhart, S. Eckhardt, C. Tapia, A. Vargas, and T. J. Yasunari:
Xenon-133 and caesium-137 releases into the atmosphere from the Fukushima Dai-ichi nuclear power plant:
950 determination of the source term, atmospheric dispersion, and deposition, *Atmos. Chem. Phys.*, 12, 2313–
2343, doi:10.5194/acp-12-2313-2012, 2012.
- Stohl, A., Klimont, Z., Eckhardt, S., Kupiainen, K., Shevchenko, V. P., Kopeikin, V. M., and Novigatsky, A.
N.: Black carbon in the Arctic: the underestimated role of gas flaring and residential combustion emissions,
Atmos. Chem. Phys., 13, 8833–8855, doi:10.5194/acp-13-8833-2013, 2013.
- 955 Stohl, A., Aamaas, B., Amann, M., Baker, L. H., Bellouin, N., Bernsten, T. K., Boucher, O., Cherian, R.,
Collins, W., Daskalakis, N., Dusinska, M., Eckhardt, S., Fuglestad, J. S., Harju, M., Heyes, C., Hodnebrog,
Ø., Hao, J., Im, U., Kanakidou, M., Klimont, Z., Kupiainen, K., Law, K. S., Lund, M. T., Maas, R., MacIn-
tosh, C. R., Myhre, G., Myriokefalitakis, S., Olivie, D., Quaas, J., Quennehen, B., Raut, J.-C., Rumbold, S.
T., Samset, B. H., Schulz, M., Seland, Ø., Shine, K. P., Skeie, R. B., Wang, S., Yttri, K. E., and Zhu, T.: Eval-
960 uating the climate and air quality impacts of short-lived pollutants, *Atmos. Chem. Phys.*, 15, 10529–10566,
doi:10.5194/acp-15-10529-2015, 2015.
- ~~Stohl, A., Solhum, E., Grythe, H., Kristiansen, N. I., Cassiani, M., Thompson, R. L., Pisso, I., Hamburger,
T., Eckhardt, S., Evangeliou, N., Groot Zwaafink, C., Sodemann, H., Henne, S., Brunner, D., Wotawa, G.,
Frank, A., and Seibert, P.: The Lagrangian particle dispersion model FLEXPART version 10.0 (GMD in prep)~~
- 965 Tateishi, R., Hoan, N. T., Kobayashi, T., Alsaideh, B., Tana, G., & Phong, D. X.: Production of Global Land
Cover Data – GLCNMO2008. *Journal of Geography and Geology*, 6(3), 99–122. doi:10.5539/jgg.v6n3p9,
2014.

- Textor, C., Schulz, M., Guibert, S., Kinne, S., Balkanski, Y., Bauer, S., Bernsten, T., Berglen, T., Boucher, O.,
 970 Chin, M., Dentener, F., Diehl, T., Easter, R., Feichter, H., Fillmore, D., Ghan, S., Ginoux, P., Gong, S.,
 Grini, A., Hendricks, J., Horowitz, L., Huang, P., Isaksen, I., Iversen, I., Kloster, S., Koch, D., Kirkevåg, A.,
 Kristjansson, J. E., Krol, M., Lauer, A., Lamarque, J. F., Liu, X., Montanaro, V., Myhre, G., Penner, J., Pitari,
 G., Reddy, S., Seland, Ø., Stier, P., Takemura, T., and Tie, X.: Analysis and quantification of the diversities
 of aerosol life cycles within AeroCom, *Atmos. Chem. Phys.*, 6, 1777–1813, doi:10.5194/acp-6-1777-2006,
 975 2006.
- Tiedtke, M.: Representation of clouds in large-scale models. *Mon. Wea. Rev.*, 121, 3040-3061, 1993.
- Tunved, P., Ström, J., and Krejci, R.: Arctic aerosol life cycle: linking aerosol size distributions observed be-
 tween 2000 and 2010 with air mass transport and precipitation at Zeppelin station, Ny-Ålesund, Svalbard,
Atmos. Chem. Phys., 13, 3643-3660, doi:10.5194/acp-13-3643-2013, 2013.
- 980 Van der Werf, G. R., J. T. Randerson, L. Giglio, G. J. Collatz, and P. S. Kasibhatla.: Interannual variability in
 global biomass burning emission from 1997 to 2004, *Atmospheric Chemistry and Physics*, 6, 3423-3441.
 SRef-ID: 1680-7324/acp/2006-6-3423, 2006.
- Verheggen, B., Cozic, J., Weingartner, E., Bower, K., Mertes, S., Connolly, P., Gallagher, M., Flynn, M.,
 Choularton, T. and Baltensperger, U. : Aerosol partitioning between the interstitial and the condensed phase
 985 in mixed phase clouds, *J. Geophys. Res.*, 112: doi: 10.1029/2007JD008714, 2007.
- Volken, M., Schumann, T., A critical review of below-cloud aerosol scavenging results on Mt. Rigi. *Water, Air,
 and Soil Pollution* 68, 15-28. 2007.
- ~~Helen N. Webster and David J. Thomson~~ Webster, H. N. and Thomson, D. J.: The NAME wet deposition scheme
 Forecasting Research Technical Report No: 584 22 04, 2014.
- 990 Weinzierl, B., Petzold, A., Esselborn, M., Wirth, M., Rasp, K., Kandler, K., Schütz, L., Koepke, P. and Fiebig,
 M.: Airborne measurements of dust layer properties, particle size distribution and mixing state of Saharan
 dust during SAMUM 2006. *Tellus B*, 61: 96–117. doi: 10.1111/j.1600-0889.2008.00392.x, 2009.
- Wittbom, C., Eriksson, A. C., Rissler, J., Carlsson, J. E., Roldin, P., Nordin, E. Z., Nilsson, P. T., Swietlicki,
 E., Pagels, J. H., and Svenningsson, B.: Cloud droplet activity changes of soot aerosol upon smog chamber
 995 ageing, *Atmos. Chem. Phys.*, 14, 9831-9854, doi:10.5194/acp-14-9831-2014, 2014.
- Yttri, K. E., Lund Myhre, C., Eckhardt, S., Fiebig, M., Dye, C., Hirdman, D., Ström, J., Klimont, Z., and Stohl,
 A.: Quantifying black carbon from biomass burning by means of levoglucosan – a one-year time series at the
 Arctic observatory Zeppelin, *Atmos. Chem. Phys.*, 14, 6427-6442, doi:10.5194/acp-14-6427-2014, 2014.
- Zender, CS; Miller, and Tegen, I.: Quantifying mineral dust mass budgets: Terminology, constraints, and current
 1000 estimates. *Eos, Transactions American Geophysical Union*, 85(48), 509 - 512. doi: 10.1029/2004EO480002.
 UC Irvine: 502063, 2004.
- Zhang, L., Wang, X., Moran, M. D., and Feng, J.: Review and uncertainty assessment of size-resolved scaveng-
 ing coefficient formulations for below-cloud snow scavenging of atmospheric aerosols, *Atmos. Chem. Phys.*,
 13, 10005-10025, doi:10.5194/acp-13-10005-2013, 2013.
- 1005 Zikova, N., Zdimal, V.: Precipitation scavenging of aerosol particles at a rural site in the Czech Republic. *Tellus*
 B, [S.l.], v. 68, mar. 2016. ISSN 1600-0889, doi:http://dx.doi.org/10.3402/tellusb.v68.27343, 2016.

Table 1. Parameters used in Eq. 4 for below cloud scavenging from Laakso et al. (2003) and Kyrö et al. (2009).

	a	b	c	d	e	f	C_*	I_o	λ_o
Laakso	274.36	332839.6	226656	58005.9	6588.38	0.24498	C_{rain}	1	1
Kyrö	22.7	0	0	1321	381	0	C_{snow}	1	1

Table 2. Sensitivity analysis of lifetimes τ_F for dust particles of different sizes (diameter d) and with different settings of the removal parameters. (Green: default parameter settings, blue: the longest lifetime if only one deposition process is reduced and red the changed parameter(s) relative to the default settings). The last two rows, denoted by "*", reports results obtained with FLEXPART v9 with the old removal scheme, where below cloud scavenging was parameterized as $\Lambda = AI^B$, with $A = 1e^{-4}$ and $B = 0.62$.

Parameters				Lifetime (days)				
C_{rain}	C_{snow}	CCN_{eff}	IN_{eff}	d=0.2 μm	d=2.2 μm	d=6.2 μm	d=10.2 μm	d=18.2 μm
1.00	1.00	0.15	0.02	31.8	11.6	1.8	0.8	0.25 0.3
1.00	1.00	0.07	0.02	39.1	12.5	1.9	0.8	0.3
1.00	1.00	0.01	0.02	51.6	13.7	1.9	0.8	0.3
1.00	1.00	0.15	0.01	32.7	11.6	1.8	0.8	0.3
1.00	1.00	0.15	0.00	33.4	11.7	1.8	0.8	0.3
1.00	0.50	0.15	0.02	35.8	12.6	1.8	0.8	0.3
1.00	0.10	0.15	0.02	40.5	16.3	1.8	0.8	0.3
0.50	1.00	0.15	0.02	34.1	12.5	1.9	0.9	0.3
0.10	1.00	0.15	0.02	36.4	13.6	2.0	0.9	0.3
0.10	0.10	0.01	0.00	141	31.9	2.2	0.9	0.3
A*	B*	0.9*	0.9*	5.4	3.7	1.7	0.8	0.2
A*	B*	0.09*	0.09*	19.2	9.4	1.8	0.8	0.3

Table 3. Sensitivity analysis of e-folding lifetimes τ_e for particles of different sizes (diameter d) and with different settings of removal parameters, for the Fukushima case study. The lifetime is also calculated for the total size distribution (Distr., last column). In addition to the lifetime, the relative bias (bias), calculated as the average of all the daily mean concentrations simulated with FLEXPART divided by the observed daily mean concentrations for all days after day 15, is also reported. Cases where the simulated concentrations were too low to reliably estimate lifetime or bias are denoted with LC*.

Removal Coefficients					d=0.4 μm		d=0.65 μm		d=1.0 μm		d=2.2 μm		d=4.0 μm		d=6.2 μm		Distr.	
#	C_{rain}	C_{snow}	CCN_{eff}	IN_{eff}	τ_e	bias	τ_e	bias	τ_e	bias	τ_e	bias	τ_e	bias	τ_e	bias	τ_e	bias
1	1.00	1.00	0.90	0.90	11.7	18.7	10.8	11	9.6	5	7.6	0.2	5.4	0.01	LC*	LC*	10.08	0.99
2	1.00	1.00	0.40	0.40	17.9	103	15.2	55.5	12.0	21.3	7.9	0.8	5.5	0.02	3.0	LC*	13.4	4.6
3	1.00	1.00	0.15	0.15	25.2	192	19.2	109	13.8	38	8.1	1.1	4.8	0.02	2.8	LC*	18.6	96
4	1.00	1.00	0.00	0.00	66.0	>10 ³												
5	0.00	0.00	0.90	0.90							11.0	1.3						

Table 4. Aerosol specifications for the eight simulations done for BC. The first four columns report the aerosol removal parameters used, the following columns show the median concentration (ng m^{-3}) at each station and the last column reports the median of all ~~modelled~~-modeled values. (blue: the value for each station that is closest to the observed values (bottom row), green: default coefficients, and red: changed parameters)

#	Coefficients				Annual median Concentration (ng m^{-3})						
	C_{rain}	C_{snow}	CCN_{eff}	IN_{eff}	MEL	SGP	PAL	BRW	ZEP	ALT	ALL
1	1.00	1.00	0.90	0.10	700.4	234.1	33.9	7.4	9.5	6.2	33.3
2	1.00	1.00	0.30	0.03	736.8	252.2	61.6	10.5	16.0	8.09	58.6
3*	1.00	1.00	0.30	0.03	713.2	245.2	45.4	8.5	9.4	7.5	45.4
4	1.00	1.00	9.00	1.00	428.8	113.6	4.8	<0.01	<0.01	<0.01	1.0
5	10.0	1.00	0.90	0.10	615.6	194.1	20.8	3.4	4.4	3.3	22.0
6	1.00	0.00	0.90	0.10	690.85	232.6	36.0	8.9	10.3	6.9	40.3
7	1.00	1.00	0.60	0.60	673.2	219.8	30.6	6.0	8.9	6.3	31.5
8	1.00	1.00	0.45	0.10	727.2	244.2	37.8	8.5	10.2	7.5	41.3
OBSERVED					366.9	211.6	36.35	17.8	11.8	19.8	19.8

* Aerosol diameter was reduced to $0.02 \mu\text{m}$

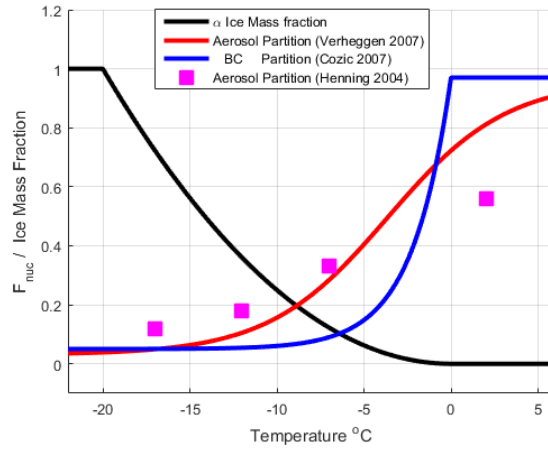


Figure 1. The fraction of cloud water that is in the ice phase (α) according to equation 1 if CTWC is used (black line) and the fraction of aerosols that reside within cloud droplets (F_{nuc}) (colored lines and dots) as a function of temperature. For F_{nuc} , partitioning values for aerosol number from Verheggen et al. (2007) (red line), from Henning et al. (2004) (magenta dots) and from Cozic et al. (2007) (valid for black carbon (BC) particles) (blue line) are shown. For the BC partitioning, ice fraction was converted to temperature using α .

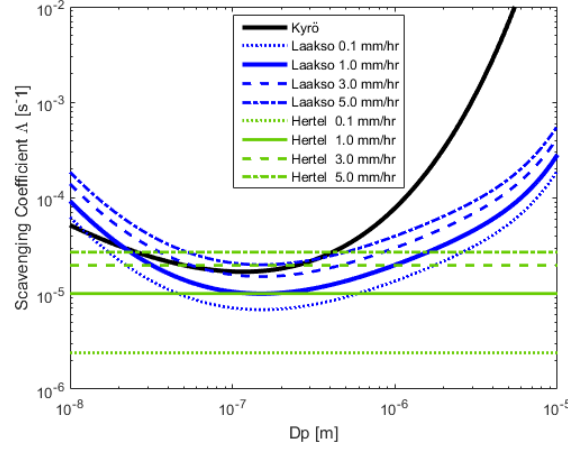


Figure 2. Below-cloud scavenging coefficients as a function of aerosol size. Shown are the new parameterizations of Laakso et al. (2003) (blue lines) for rain and Kyrö et al. (2009) (black line) for snow, and the old parameterization of Hertel et al. (1995) used in previous FLEXPART versions with the parameters $A=1e-5$ and $B=0.62$ (green). Values are shown for four different precipitation intensities: 0.1 (dotted lines), 1 (solid lines), 3 (dashed lines) and 5 mm/hr (stippled lines).

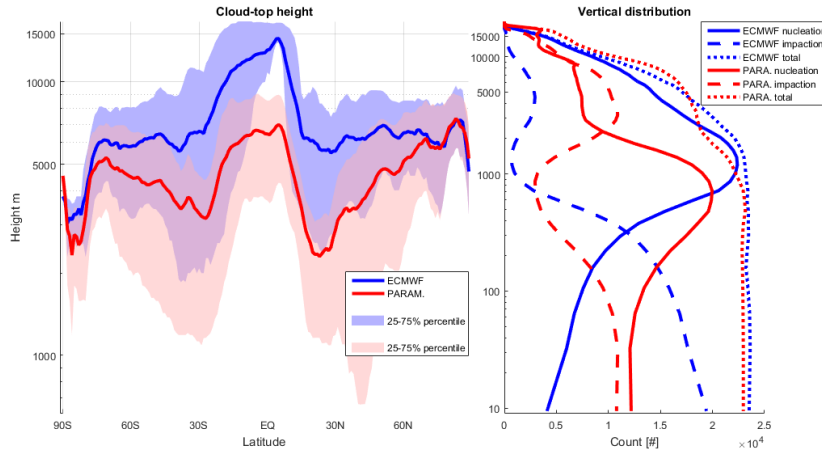


Figure 3. Left: The zonally averaged median cloud top heights of precipitating clouds as a function of latitude, averaged over a 90-day period starting in December 2006. Clouds are defined using either the FLEXPART relative humidity-based parameterization (red line) or by CTWC data (blue line). The shaded areas span the 25-75 percentiles. Right: Number of potential removal events globally, for in-cloud nucleation scavenging (solid lines), below-cloud impaction scavenging (dashed lines) and the sum of the two (dotted lines), for both the parameterized clouds (red lines) and when ECMWF cloud water fields are used (blue lines). Note that the height scales are different for the left and right panels.

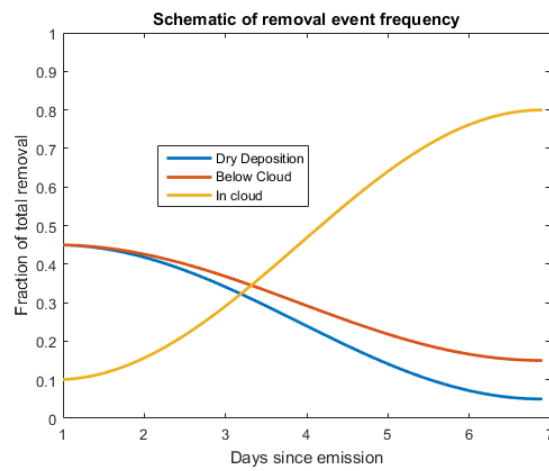


Figure 4. Relative frequency of removal events for a pulse of dust emitted in Central Europe on 14 April 2007. For illustration purposes, daily frequencies were fitted with a polynomial.

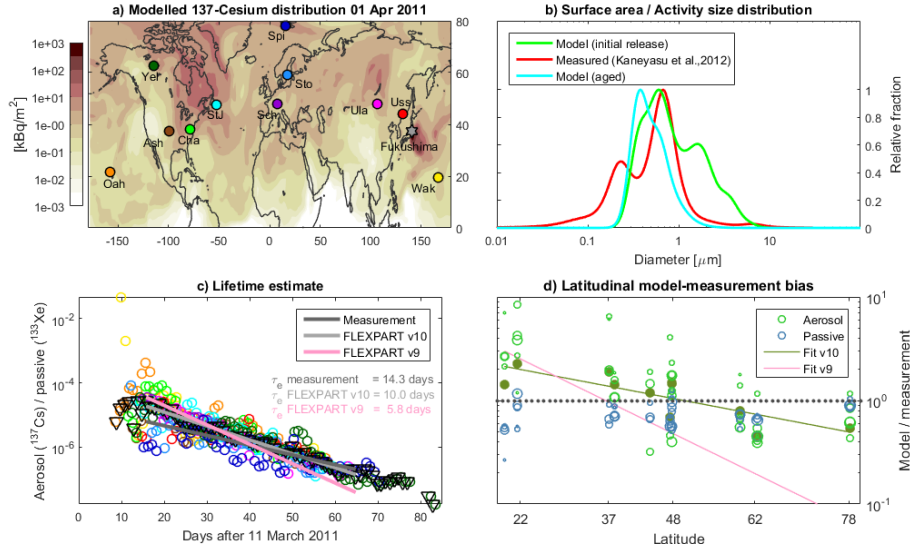


Figure 5. a) The concentration of ^{137}Cs in the Northern Hemisphere on day 15 after the initial release. The locations of the observational sites used in this paper are marked with colored circles. b) Normalized initial (green) and aged (cyan) aerosol surface area distribution of the aerosols used in the simulation. For comparison the measured aerosol size distribution of Kaneyasu et al. (2012) is shown in red. c) Simulated $^{137}\text{Cs}/^{133}\text{Xe}$ concentration ratios for the different stations as a function of time after the accident: upside down black triangles represent median daily ratio values over all stations. The circle ~~colors~~ colours used for the different stations correspond to those used in panel a. The ~~light-dark~~ gray line shows the ~~log-linear~~ fit to the ~~model-data~~observed concentrations (see Kristiansen et al., 2015). The ~~dark-light~~ gray line shows the ~~log-linear~~ fit to FLEXPART version 10 model data, and the ~~observed-concentrations~~ (see Kristiansen et al., 2015) pink line the fit to version 9 data. d) Ratio of modeled to observed concentrations as a function of latitude for the passive tracer ^{133}Xe (blue circles) and the aerosol-bound ^{137}Cs (green circles). For reference also a 1:1 line is shown (dotted black) and a fit to the FLEXPART version 9 data is shown in pink.

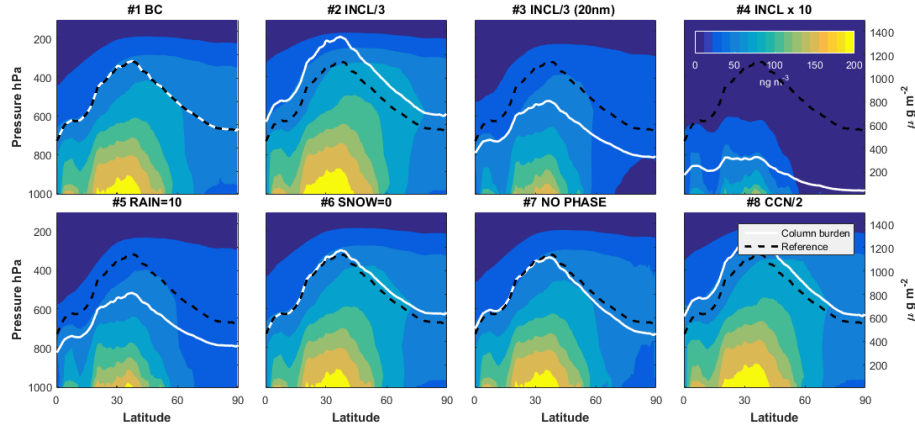


Figure 6. Northern Hemisphere vertical distribution of BC for eight different settings of the removal parameters. Top left panel shows the concentrations for the reference settings for BC. The other panels show results of the sensitivity simulations (see Table 4 for details). Five vertical layers were used and the horizontal resolution is 0.5 degrees. The white line is the latitudinal column burden for each simulation and the dashed black line repeats the results for the reference BC simulation, for comparison purposes.

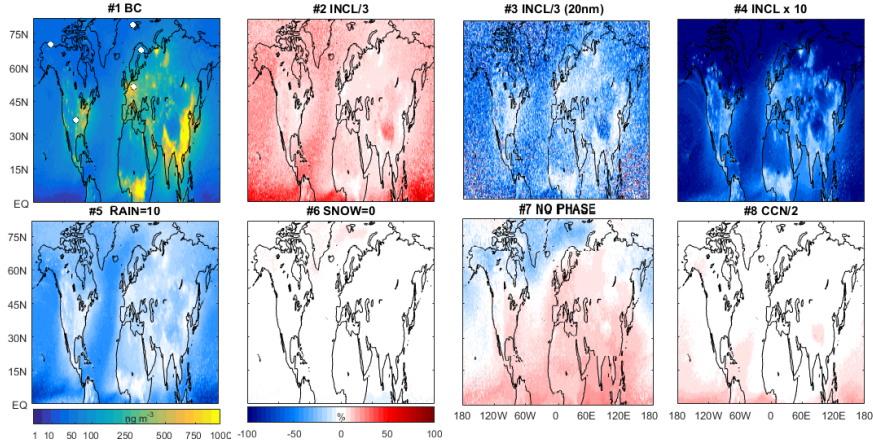


Figure 7. Annual average BC concentration in the lowest model layer (0-100 m) for the reference simulation (top left) for the year 2007. Black-White circles mark the locations of the measurement stations used for model comparisons. The other panels show the relative difference to this reference version (in %) for the seven other simulations using parameter settings from Table 4.

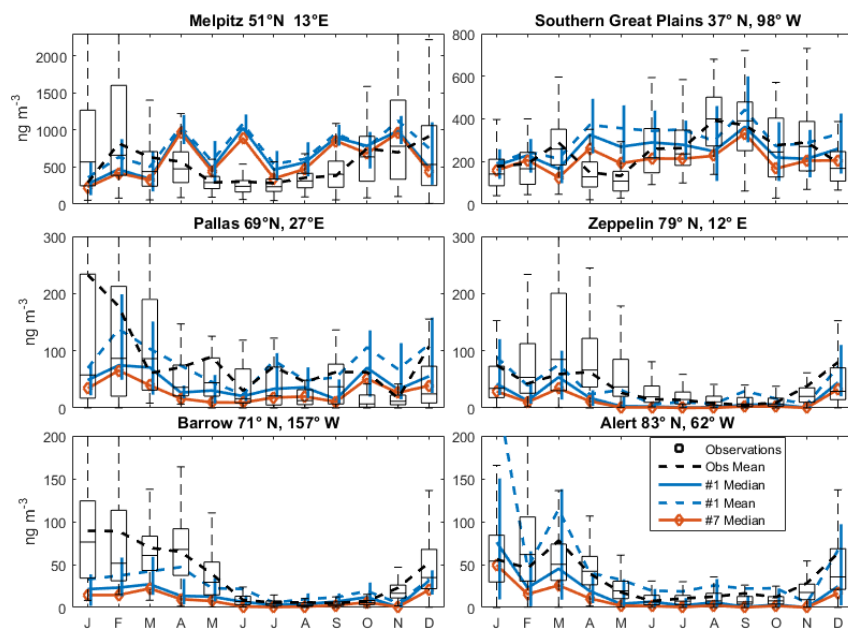


Figure 8. Modeled and observed monthly BC concentrations at six different measurement stations for the reference BC simulation. The black boxes cover the 25-75% percentile range, the black horizontal line the median, and the black whiskers the 10-90% percentile range of the observations. Modeled median values are plotted in blue with vertical lines showing the 25-75% percentile range. The stippled blue line shows the model mean. Also shown are the median values obtained from simulation #7.

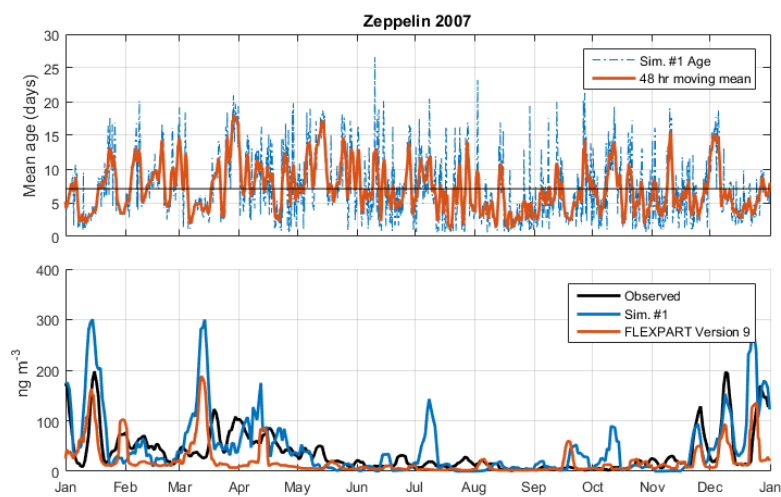


Figure 9. Top panel: Age of FLEXPART BC aerosol for simulation #1 at Zeppelin every 6 hours (blue) and smoothed with a 48-hour running mean (red) for the year ~~2007 (top panel): 2007~~. The black line shows the annual mean age of 7.7 days. The bottom ~~Bottom~~ panels ~~shows:~~ Observed (black) BC concentrations at Zeppelin and the simulated FLEXPART concentrations for simulation #1 and FLEXPART version 9 (blue) and observed (black red respectively) BC concentrations, All data are smoothed with a 48-hour running mean, for 2007.