

Response to reviewers: Evaluation of JULES-crop performance against site observations of irrigated maize from Mead, Nebraska

Karina Williams¹, Jemma Gornall¹, Anna Harper², Andy Wiltshire¹, Debbie Hemming¹, Tristan Quaife³, Tim Arkebauer⁴, and David Scoby⁴

¹Met Office Hadley Centre, Exeter, UK

²College of Engineering, Mathematics, and Physical Sciences, University of Exeter, Exeter, UK

³National Centre for Earth Observation, Department of Meteorology, University of Reading, UK.

⁴Department of Agronomy and Horticulture, University of Nebraska-Lincoln, Lincoln, USA

Correspondence to: Karina Williams (karina.williams@metoffice.gov.uk)

Note: reviewer comments are denoted by shaded text.

1 Response to referee 1

Why the model have limited capability in representing the interannual variability of LAI and GPP have not been explored and discussed. If the model simply cannot reproduce the interannual variability, I can let go the paper if the author honestly admitted that and discussed the reasons. Otherwise, it seems intentionally ignoring my previous suggestion.

Suggested changes to manuscript:

Change the section discussing this issue from

5 However, in some years (2006, 2010, 2011 for US-Ne1 and 2011 for US-Ne2), the LAI is too small in the crop season up to anthesis. This is due to the high sensitivity of the plant in its early life to parameter settings, due to the feedback between NPP and LAI. In these site and year combinations (2006, 2010, 2011 for US-Ne1 and 2011 for US-Ne2), temperatures between DVI 0.1 and DVI 0.2 are higher on average, and so DVI is increasing more rapidly, which gives the plant less time to accumulate NPP, leading to a reduced rate of increase of LAI with respect to DVI in the model runs at this growth stage. On the other hand, 10 the SLA observations for these years in the early crop season are particularly high compared to the rest of the distribution, which means that the observations do not show this reduced rate of increase of LAI at this growth stage. Fitting γ and δ to the SLA observations in just these site and year combinations (2006, 2010, 2011 for US-Ne1 and 2011 for US-Ne2) gives 18.0 and -0.45 respectively. Using these parameters in JULES runs with the crop model gives much better agreement with LAI observations (Figure 24). This is also consistent with the result from US-Ne2 in 2010: since the crop emerges 9 days after 15 the crop in US-Ne1, the period of relatively high temperatures mostly falls before the crop is initialised. It is possible that parametrising SLA with day after emergence rather than with DVI might improve the fit between model and observed LAI by reducing the sensitivity of the SLA parametrisation to temperature.

to the following

However, **it is also clear that the interannual variability of LAI is not reproduced by the model; in particular**, in some years (2006, 2010, 2011 for US-Ne1 and 2011 for US-Ne2), the LAI is too small in the crop season up to anthesis. This is due to the high sensitivity of the plant in its early life to parameter settings, due to the feedback between NPP and LAI. In these site and year combinations (2006, 2010, 2011 for US-Ne1 and 2011 for US-Ne2), temperatures between DVI 0.1 and DVI 0.2 are higher on average, and so DVI is increasing more rapidly, which gives the plant less time to accumulate NPP, leading to a reduced rate of increase of LAI with respect to DVI in the model runs at this growth stage. On the other hand, the SLA observations for these years in the early crop season are particularly high compared to the rest of the distribution, which means that the observations do not show this reduced rate of increase of LAI at this growth stage. Fitting γ and δ to the SLA observations in just these site and year combinations (2006, 2010, 2011 for US-Ne1 and 2011 for US-Ne2) gives 18.0 and -0.45 respectively. Using these parameters in JULES runs with the crop model gives much better agreement with LAI observations (Figure 24). This is also consistent with the result from US-Ne2 in 2010: since the crop emerges 9 days after the crop in US-Ne1, the period of relatively high temperatures mostly falls before the crop is initialised. It is possible that parametrising SLA with day after emergence rather than with DVI might improve the fit between model and observed LAI by reducing the sensitivity of the SLA parametrisation to temperature.

there are a few similar parameterization efforts made by land surface modellers, many of which even published in GMD. For the convenience of readers, it is necessary to put these progresses in context.

Suggested changes to manuscript:

We have added this paragraph to the introduction

Other land surface models include specific representations of key crops. CLM-crop has been evaluated at the site level for several crop types (maize, soybean and spring wheat (Drewniak, 2013); winter wheat (Lu et al, 2016)) and physiology parameters were calibrated to optimize productivity (Bilionis et al, 2015). Globally, the model is being developed to include transient land cover and land use for the Land Use Model Intercomparison Project (LUMIP) contribution to CMIP6 (Lawrence et al, 2016). ORCHIDEE-CROP has been evaluated for maize and winter wheat at a number of European sites (Wu et al, 2016) and was shown to reproduce the seasonality of leaf area index and carbon and energy fluxes. Similarly, the incorporation of a phenology scheme into the SImple Biosphere (SIB) model improved the prediction of both leaf area index and carbon fluxes for maize, soybean, and wheat crops at a number of sites in North America (Lokupitiya et al, 2009). Song et al (2013) implemented crop-specific phenology and carbon allocation schemes into the Integrated Science Assessment Model (ISAM) land surface model and calibrated against observational data from a corn-soybean rotation at Mead and Bondville (US) sites. This model was able to reproduce the diurnal and seasonal variability of carbon, water and energy fluxes.

2 Response to referee 2

It would benefit the reader if the authors did a better job framing the manuscript with the introduction. The introduction

highlights previous work with JULES-crop that could be improved with better crop parameters (P2, L 12-13 and L18-19). But the paper also focused on the non-crop version of JULES and how driving the model with prescribed LAI and height could help tease out feedbacks on GPP. In fact, that goal doesn't become clear until the results section. The other goal that becomes clear late in the manuscript is that this study is really presenting a methodology to tune parameters at other sites and understand possible structural uncertainty within JULES, not necessarily to improve parameters for use in JULES-crop. The authors claim they have clarified the aim of the manuscript, but I see no evidence of this until the end of the conclusions. The introduction needs to clearly set up the problem that is being addressed by this manuscript.

Suggested change to the manuscript:

In the introduction, change

In this model evaluation paper, we use the observations available at the Mead FLUXNET sites US-Ne1, US-Ne2 and US-Ne3 to investigate how well each individual component of JULES performs for maize and how much of an improvement can be achieved by using more appropriate parameter values, taking into account advances in the JULES code since the Osborne et al. (2015) study. We will use these new sets of parameters in JULES-crop runs for irrigated maize at Mead.

to

In this model evaluation paper, we use the observations available at the Mead FLUXNET sites US-Ne1, US-Ne2 and US-Ne3 to investigate how well each individual component of JULES performs for maize and how much of an improvement can be achieved by using more appropriate parameter values, taking into account advances in the JULES code since the Osborne et al. (2015) study. **This investigation splits into three distinct parts. We initially look at which processes and parameters can be tuned directly to maize observations from the Mead sites, without running the model. Secondly, for parts of the code shared between natural PFTs and crops in the model (the calculation of gross primary productivity and respiration), we test the performance of the tuned parameters by running JULES with the crop model switched off and forcing with observed leaf area index (LAI) and canopy height, to remove the feedback between net primary productivity and LAI. Finally, we will use the tuned parameters in JULES runs for irrigated maize at Mead with the JULES-crop parametrisation switched on.**

In Section 3.2 (Model setup), I suggest the authors indicate that the 1st run includes the crop parameters earlier than at the end of the section; otherwise it appears that maize is being run as a natural PFT.

As described in the Model set-up section there are two types of JULES runs used in this paper. In the first type, maize is being run as a natural PFT, with LAI and crop height constrained to be the same as the observations. In the second type, the JULES-crop parametrisation is switched on.

Suggested change to the manuscript: Hopefully the text added to the introduction (above) also clarifies this second point.

If testing the model performance at the rain fed site is outside the scope of the study, why is the site used for parameter estimation? It should be eliminated from the manuscript to focus on the irrigated sites only.

We would like to keep observations from the rainfed site in some plots in the parameter tuning sections. In many cases, the processes and parameters that can be tuned outside of the rest of JULES are independent of the JULES water stress parameter (which multiplies GPP and/or NPP and is the only way that plants in JULES are affected by switching the irrigation on). For example, the allometric relation in the model between crop height and stem biomass is not influenced by the water stress parameter. In addition, for tuning the canopy properties, we also used DVI up until flowering only, and the observations did not show significant water stress at the rainfed site during this time. It therefore makes sense to consider observations from all maize sites at Mead - irrigated and rainfed - when tuning these parameters. For some plots, e.g. Fig 15, removing the rainfed observations removes a significant amount of the available observations. In reality, there are more ways that a crop can be affected by water stress than is captured by the model e.g. the partition fractions would change to prioritise root growth. Therefore, in all plots where the rainfed sites contribute, the rainfed observations are distinguished by the line colour or the symbol type. In each case, we were able to confirm whether the observations from the rainfed site were consistent with the observations from the irrigated sites. We therefore decided to use rainfed observations throughout the parameter tuning section. There is one exception to this: Figure 8, since we would expect the initialisation to be dependent on planting density, which is different in the irrigated and rainfed fields.

However, as a result of the referee comments, we have now removed all rainfed observations from the plots in the Results section. This has meant removing the rainfed data from the two plots in Figure 19 and the four plots in Figure 20. We had included these data points in the previous versions of the manuscript because only data for LAI 3.5-4.5 before flowering was considered, and we checked that there was no significant influence of soil water stress on these results. However, since the purpose of this section is to investigate the model runs for the irrigated sites, it makes sense to edit Fig 19 (right) so that it only includes model results for the irrigated sites (we had actually used a toy model to mimic JULES at both the irrigated and rainfed sites), in which case we also need to remove the rainfed observations in Fig 19 (left) and Fig 20. Because these plots use hourly observations there is a sufficient quantity of data that the conclusions drawn from these plots in the text are still valid. The text has been changed accordingly.

Note that Figure 21 already only used observations from the irrigated sites, because the values are derived from season totals of NPP and GPP, which are strongly affected by water stress.

Suggested change to the manuscript: We have redone 6 plots to remove data for the rainfed site. In the observations section, we have added

Observations from all three sites were considered in the input parameter tuning, whereas only observations from the irrigated sites were used to drive and validate the model runs.

We have added this text to the model setup section:

Observations from both the irrigated sites at Mead and the rainfed site at Mead were considered when tuning the model input parameters that were designed to take the same value whether irrigation is switched on or off in the model. However, in

these cases, observations from the rainfed site are clearly denoted on the plots, in order to check for cases where these model approximations break down.

In the carbon partitioning section, we have added:

In addition, in reality, water stress can also increase the fraction of NPP going to the roots (see discussion in e.g. de Vries et al. (1989) and Song et al. (2013)), but this effect is not taken into account in JULES-crop. **However, we do not see a notable difference between the irrigated sites US-Ne1 and US-Ne2 (blue and green lines respectively) and rainfed site US-Ne3 (red lines) in Figure 1.**

We have also added this text to the caption of Fig 14 (this was omitted by accident from the earlier draft):

and all data are between emergence (DVI=0) and flowering (DVI=1)

Sometimes the variables in an equation are not defined in the text and it is up to the user to search for them in the tables (for example, the T_o , T_b and T_m in equation 1, α and β in equation 3, μ and ν in equation 4). Please go through all the equations and make sure they are well described for the reader in the text.

The parameters given as examples here (T_o , T_b , T_m , β , μ and ν) are those defined by the equations they appear in and have no physical interpretation outside these equations. We will change the manuscript to make this more explicit.

Suggested change to manuscript: We have changed

effective temperature is defined by ... i.e. a triangular function, peaking at $T = T_o$, which is zero below $T = T_b$ and above $T = T_m$. T_o , T_b and T_m are parameters specified by the user for each crop. T_o , T_b and T_m are given in Kelvin and thermal time in units of degree days.

to

effective temperature is defined by ... i.e. a triangular function, peaking at **an optimal temperature** T_o , which is zero below **a base temperature** T_b and above **a maximum temperature** T_m . T_o , T_b and T_m are parameters specified by the user for each crop. T_o , T_b and T_m are given in Kelvin and thermal time in units of degree days.

We have changed

α_{harv} and β_{harv} are both set to zero. All other α_i and β_i are set by the user for each crop. Note that $\sum_j p_j = 1$.

to

α_i and β_i are numerical constants that are tuned to observational data. α_{harv} and β_{harv} are both set to zero. All other α_i and β_i are set by the user for each crop. Note that $\sum_j p_j = 1$.

We have added

ν and μ are numerical constants that are tuned to observational data.

3 Response to referee 3

The main point of referee #3 was that the paper would contain unnecessary detail that could be easily found in the cited literature. One suggestion was to make section 2 more concise, e.g. by compiling a table with the parameters described in the text with a column for the original JULES parameter, one for the JULES-crop parameter (if that distinction is helpful), one for the parameter used in your study and one column with remarks and the relevant equation.

We find it difficult to see how we can reduce the contents of the model description without losing information that we later refer to in the experimental set-up section. The two published articles which contain some of this information are Clark et al (2011) (parameterisations used for both natural PFT and crop tiles) and Osborne et al. (2015) (parameterisations that just get used for crops). However, in both cases, the experimental set-up section relies on details that have not been covered by these papers. Furthermore, the JULES model (a community model) has had many features added since these two publications (e.g. all parameters with asterisks in table 1, table 2 and table 3). To our knowledge, with the exception of the `l_trait_phys` option (which we set to false here anyway, so that we default to the ‘old’ behaviour), these have not been described in any published literature. We feel that it is essential to have all relevant parts of the model clearly defined somewhere in the manuscript if we are to unambiguously tune the parameters in Section 3, and there would not be sufficient space in the existing tables[†], nor the possibility of showing how different sections of the model fit together. This is needed for the discussion on which parts of the model can be picked apart and tested in isolation and which parts of the model can only be tested within the rest of the model.

[†] Table 1, Table 2, Table 3 and Table 4 include the notation used in the JULES namelists, the notation used in this paper, the parameter values used in the Osborne et al. 2015 study, the values used in this study and a brief text summary of the parameter, including the section where the discussion of this parameter can be found in the text. These tables already cover 5 1/2 pages at present (in the GMDD manuscript format).

Suggested change to manuscript: Given the concerns of the referee, we have moved this section to the appendix in this version of the manuscript, so that the length of this section does not affect the flow of the paper.

Another point of referee #3 was that figures 3 and 4 are too busy. I would recommend to also indicate what site was modeled by the same colors as used for the observations in figure 4 and to use dashed lines for modeled values in both panels. The distinction between the Osborne parameterization and yours is already given by the two panels.

Suggested change to manuscript: We would prefer to keep the convention of using solid lines using Osborne et al 2015 parameters and dashed lines using new parameters if possible, to keep consistent with the other figures in experimental set-up section of the manuscript. We have attempted to improve the clarity of Figure 4 by increasing it from two panels (left: obs and ‘old’ model and parameters, right: obs and ‘new’ model and parameters) to three panels (left: obs, middle: ‘old’ model and parameters, right: ‘new’ model and parameters) and normalising the y axis, and have updated the text accordingly.

Evaluation of JULES-crop performance against site observations of irrigated maize from Mead, Nebraska

Karina Williams¹, Jemma Gornall¹, Anna Harper², Andy Wiltshire¹, Debbie Hemming¹, Tristan Quaife³, Tim Arkebauer⁴, and David Scoby⁴

¹Met Office Hadley Centre, Exeter, UK

²College of Engineering, Mathematics, and Physical Sciences, University of Exeter, Exeter, UK

³National Centre for Earth Observation, Department of Meteorology, University of Reading, UK.

⁴Department of Agronomy and Horticulture, University of Nebraska-Lincoln, Lincoln, USA

Correspondence to: Karina Williams (karina.williams@metoffice.gov.uk)

Abstract.

The JULES-crop model (Osborne et al., 2015) is a parametrisation of crops within the Joint UK Land Environment Simulator (JULES), which aims to simulate both the impact of weather and climate on crop productivity and the impact of crop-lands on weather and climate. In this evaluation paper, observations of maize at three FLUXNET sites in Nebraska (US-Ne1, US-Ne2, US-Ne3) are used to test model assumptions and make appropriate input parameter choices. JULES runs are performed for the irrigated sites (US-Ne1 and US-Ne2) both with the crop model switched off (prescribing leaf area index (LAI) and canopy height) and with the crop model switched on. These are compared against GPP and carbon pool FLUXNET observations. We use the results to point to future priorities for model development and describe how our methodology can be adapted to set up model runs for other sites and crop varieties.

1 Introduction

The Joint UK Land Environment Simulator (JULES) (Best et al., 2011; Clark et al., 2011) is a process-based model that simulates the fluxes of carbon, water, energy and momentum between the land surface and the atmosphere. It is used in carbon cycle, climate change and impacts studies, and can be run on its own ('standalone' mode) or as a component of a coupled Earth system model. As described in the model description paper Osborne et al. (2015), JULES-crop is a parametrisation of crops that has been added to JULES in order to improve land-atmosphere interactions in areas where crops predominate in addition to enabling the simulation of the effect of weather and climate on food and water resources.

JULES treats each vegetation type as existing on a separate tile within a gridbox. Energy and carbon flux calculations are performed separately for each tile and prognostics such as leaf area index (LAI) and canopy height are calculated and stored for each tile separately. Each vegetation tile has a different set of input parameters and leaf-level carbon assimilation is calculated differently depending on whether the tile is modelling a plant with a C3 or a C4 plant photosynthetic pathway. JULES-crop introduces a distinction between natural plant functional types (PFT) and crops. Crop tiles have their growth and development parametrised by a crop development index (DVI) and have different calculations for the allocation to plant carbon pools, leaf

area index and height compared to natural PFTs. However, in most other respects, such as the calculation of gross primary productivity (GPP) and respiration, natural PFTs and crops are modelled in the same way within the JULES code. In its current stage of implementation, JULES-crop is available only in offline JULES runs, although there are plans to extend it for use in coupled runs in the future.

- 5 Other land surface models have also been extended include specific representations of key crops. For example, CLM-crop has been evaluated at the site level for several crop types (maize, soybean and spring wheat (Drewniak et al., 2013); winter wheat (Lu et al., 2016) and physiology parameters were calibrated to optimize productivity (Bilionis et al., 2015). ORCHIDEE-CROP has been evaluated for maize and winter wheat at a number of European sites (Wu et al., 2016) and was shown to reproduce the seasonality of leaf area index and carbon and energy fluxes. Similarly, the incorporation of a phenology scheme into the Simple Biosphere (SIB) model improved the prediction of both leaf area index and carbon fluxes for maize, soybean, and wheat crops at a number of sites in North America (Lokupitiya et al., 2009). Song et al. (2013) implemented crop-specific phenology and carbon allocation schemes into the Integrated Science Assessment Model (ISAM) land surface model and calibrated against observational data from a corn-soybean rotation at Mead and Bondville (US) sites. This model was able to reproduce the diurnal and seasonal variability of carbon, water and energy fluxes.
- 10 In Osborne et al. (2015), global runs using JULES-crop ~~of the model~~ were carried out for four generic crop types - maize, soybean, wheat and rice - and the effect of including the new crop parametrisation was shown on sensible heat flux, moisture flux and net primary productivity (NPP) for some key countries. The model yield was also compared against global and country FAO crop yields. Site runs were performed at four FLUXNET sites with maize-soybean rotation: Mead (US-Ne2 and US-Ne3), Bondville (US-Bo1) and Fermi (US-IB1). For input parameters which applied to both natural vegetation and crop
- 15 tiles, C3 crops were given the parameter values of a standard C3 grass tile within JULES and C4 crops were given the values of a standard C4 grass tile. Osborne et al. (2015) speculated that an improved fit to observations could be obtained if these parameters were tuned to be more crop-specific.
- 20

The other published study using JULES-crop to date, Williams and Falloon (2015), used the global set up and the generic parametrisation of the four main crops from Osborne et al. (2015) to investigate the sensitivity of the yield from JULES-crop

25 to the driving data variables, assessing both the relative importance of different variables and whether there is an advantage to using subdaily driving data rather than using daily driving data and performing an internal disaggregation to subdaily timescales. It also investigated the effect on the yield of initialising the model from climatology. No attempt was made to find more appropriate crop parameter values.

- In this model evaluation paper, we use the observations available at the Mead FLUXNET sites US-Ne1, US-Ne2 and US-
- 30 Ne3 to investigate how well each individual component of JULES performs for maize and how much of an improvement can be achieved by using more appropriate parameter values, taking into account advances in the JULES code since the Osborne et al. (2015) study. This investigation splits into three distinct parts. We initially look at which processes and parameters can be tuned directly to maize observations from the Mead sites, without running the model. Secondly, for parts of the code shared between natural PFTs and crops in the model (the calculation of gross primary productivity and respiration), we test the performance of the tuned parameters by running JULES with the crop model switched off and forcing with observed leaf area index (LAI) and
- 35

canopy height, to remove the feedback between net primary productivity and LAI. Finally, we will use the tuned parameters in JULES. We will use these new sets of parameters in JULES-crop runs for irrigated maize at Mead with the JULES-crop parametrisation switched on.

This paper is organised as follows. ~~describes the JULES-crop model and the other relevant parts of the JULES code.~~ Section 3 gives information about the observations and the model set-up used for the JULES runs presented in this paper, both those with and without the JULES-crop parametrisation ~~crop-model~~ switched on. Particular attention is paid to the choice of input parameter values, which are tuned to the available observations. Section 4 compares the results from the model runs ~~model~~ against the observations. Section 5 contains an overall assessment about the suitability of the model for modelling maize at these sites and discusses ways that the model could be improved. It also comments on the more general applicability of the parameters and methods used in this paper for tuning JULES ~~JULES-crop~~ for other sites and crop varieties. A summary of varieties.

2 ~~Model description (section moved to appendix)~~

3 Experimental set-upSet-up

3.1 Observations

There are three FLUXNET sites at the University of Nebraska Agricultural Research and Development Center near Mead, Nebraska, which are located within 1.6 km of each other: US-Ne1, US-Ne2 and US-Ne3. Both US-Ne1 and US-Ne2 are irrigated with a central pivot system, whereas US-Ne3 is entirely rainfed (Verma et al., 2005; Suyker et al., 2004, 2005). US-Ne1 grows maize, whereas US-Ne2 and US-Ne3 are maize-soybean rotations. The observations span 2001 to 2015 (although not all variables were available for this entire period).

The observations of the biomass of green leaves, yellow leaves, stem and reproductive parts of maize (kernel, cob, husk, ear shank, silk) were made after the plant material was dried to a constant temperature of 105 degrees Celsius. In the observations, green leaves encompasses all green leaf material from the collar to the leaf tip, yellow leaves are defined as greater than 50% necrotic (or entirely yellow) leaf and the stem includes stem, leaf sheaths, immature or undeveloped ears and unfurled leaves.

Hourly incident and absorbed PAR (400 to 700 nm) observations are available from the Mead FLUXNET sitessite. Absorbed PAR was calculated using two point quantum sensors above the canopy, pointing up and down, and two line quantum sensors below the canopy, pointing up and down. The line quantum sensors below the canopy integrate over an area 1cm by 1m, in order to even out effects such as sunflecks.

The observations were used in three ways: to determine the input parameters to the JULES runs (air temperature, carbon pools, leaf nitrogen, absorbed PAR, canopy height, LAI), to drive the JULES runs themselves (meteorological variables, LAI, canopy height) and to compare the JULES run results against (GPP, carbon pools, LAI, canopy height). Observations from all three sites were considered in the input parameter tuning, whereas only observations from the irrigated sites were used to drive and validate the model runs.

3.2 Model ~~set-up~~setup

The relevant features of the JULES land-surface model, including the JULES-crop parametrisation, are described in Section A. Two types of JULES runs were used in this study:

1. Maize is treated as a natural PFT tile (i.e. crop model is switched off), with LAI and crop height prescribed from observations (linearly interpolated to create a daily time series).
2. Maize is considered as a crop tile (i.e. crop model is switched on).

The runs were driven by hourly observations of downward shortwave radiation, downward longwave radiation, precipitation, air temperature, wind speed, pressure, specific humidity and diffuse radiation fraction. Each year and site was modelled as a separate run, each starting on the 1st March. Annual global CO₂ atmospheric concentrations were taken from Dlugokencky and Tans (2016).

~~A summary of the model input parameters used in both types of runs are given in , , , , .~~ The following sections describe in more detail how the choice of input parameters was made. Observations from both the irrigated sites at Mead and the rainfed site at Mead were considered when tuning the model input parameters that were designed to take the same value whether irrigation is switched on or off in the model. However, in these cases, observations from the rainfed site are clearly denoted on the plots, in order to check for cases where these model approximations break down. It ~~In setting these parameters, it was~~ assumed that there was no limitation from nitrogen availability. A summary of the model input parameters used in both types of runs are given in Table 1, Table 2a, Table 2b, Table 3a, Table 3b, Table 4, or water availability.

3.3 Parameters required for crop tiles only

3.3.1 Crop development parameters

The cardinal temperatures T_b , T_o , T_m in this analysis have been kept the same as Osborne et al. (2015), which were chosen based on the literature review in Sánchez et al. (2014). As in Osborne et al. (2015), there was assumed to be no dependence of thermal time on the photoperiod.

The thermal times were calculated using the available Mead data for the sowing date, the date at which 50% of the plants had emerged¹, the date at which 50% of the plants were at the R1 or ‘estimated R1’ growth stage (i.e. had begun the reproductive phase), the date at which 50% of the plants had reached the R6 growth stage (maturity) and the harvest date, together with the observed hourly air temperature and Eq. A1. These thermal times are given in Table 5. In the runs presented in Section 4, the thermal times for sowing to emergence, emergence to flowering and flowering to harvest for each year at a site are used in JULES-crop directly, to simulate the crop development as closely as possible for a finished crop season, where the harvest date is known.²

¹emergence dates for 2001-3 were estimated by the site investigator based on weather.

²Since these thermal times are meant to represent intrinsic properties of the cultivar, it would be interesting to investigate the use of the mean thermal times. However, unlike the date of physiological maturity, the harvest date depends more practical management conditions. In situations where modelling the yield is

The sowing date is prescribed (i.e. `l_prescsow=T`). An option for sowing date to be calculated dynamically using rate of change of day length and soil temperature and moisture does exist (`l_prescsow=F`), but this is not considered here as it is still under development and not recommended for use (Osborne et al., 2015).

Since harvest dates are available, T_{mort} was set low enough that it did not trigger harvest.

more important than modelling the time series of the fluxes, for example, it might be more appropriate to recalibrate the DVI such that the crop reaches DVI=2 at physiological maturity and is harvested immediately.

3.3.2 Carbon partitioning

The carbon partitioning parameters α_i, β_i were tuned to observations of the biomass of green leaves, yellow leaves, stem and reproductive parts of maize. The ratio of carbon to biomass in each part of the plant was assumed to be the same and constant in time. The C_{leaf} pool in the model contains green leaves only (since C_{leaf} is directly linked to LAI and photosynthesis) and the C_{harv} pool consists of both the reproductive parts of the plants and the yellow leaves. Stem carbon in the model is split between the C_{stem} and C_{resv} pools. The biomass observations were linearly interpolated to get a daily time series and then differentiated with respect to time. Ratios of these rates were then plotted as a function of DVI (Figure 1). Using these plots alongside the function for root carbon from de Vries et al. (1989) (since there were no direct measurements of root biomass available from the Mead sites), new, tuned values for α_i, β_i were found. These tuned parameters (dashed lines) show an improvement in the proportion of the increase in above-ground carbon that goes to the green leaves (Figure 1, top) and the proportion of the increase in above-ground carbon that goes to the stem (Figure 1, middle) for $\text{DVI} < 0.8$ as compared to the parameters used in Osborne et al. (2015) (solid line). However, note that, even after the tuning, the proportion of the increase in above-ground carbon that goes to the green leaves does not drop off sharply enough for $\text{DVI} > 0.8$ compared to the observations. The tuned partition fractions are shown more clearly in Figure 2 (colours), together with the functions given in de Vries et al. (1989) (the α_i, β_i in Osborne et al. (2015) were fitted to these functions with minor adjustments as a result of global runs). It was not possible to fit p_{root} accurately to the expression from de Vries et al. (1989) for approximately DVI 1.0 to 1.4 given the constraints above. In addition, in reality, water stress can also increase the fraction of NPP going to the roots (see discussion in e.g. de Vries et al. (1989) and Song et al. (2013)), but this effect is not taken into account in JULES-crop. However, we do not see a notable difference between the irrigated sites US-Ne1 and US-Ne2 (blue and green lines respectively) and rainfed site US-Ne3 (red lines) in Figure 1.

3.3.3 Remobilisation of stem carbon

The stem biomass observations were used to tune the value for the stem reserve remobilisation constant τ . The relation governing the stem reserve remobilisation can be rearranged to

$$1 - \frac{M_{\text{stem}}}{M_{\text{stem}}^{\text{max}}} = \tau (1 - 0.9^{d_{\text{max}}}), \quad (1)$$

where M_{stem} is stem biomass (including reserves), $M_{\text{stem}}^{\text{max}}$ is the maximum value of M_{stem} in that site in that year and d_{max} is the day since $M_{\text{stem}}^{\text{max}}$ occurred.

Therefore, plotting $1 - \frac{M_{\text{stem}}}{M_{\text{stem}}^{\text{max}}}$ against $(1 - 0.9^{d_{\text{max}}})$ should give a straight line with gradient τ . Using the assumption that the day with maximum stem biomass was approximately the same day as the day with the maximum stem biomass measurement, a straight line was fitted to the observations and an approximate value of $\tau = 0.12$ was obtained. However, as can be seen in Figure 3 (which displays both the new, tuned value $\tau = 0.12$ (black, dashed line) and the value used in Osborne et al. (2015) of $\tau = 0.35$ (black, solid line), which was obtained from de Vries et al. (1989)), this parametrisation does not capture the large spread in the observations (blue, green and red lines). The uncertainty this introduces into the model is not critical, since there

are no strong feedbacks involved (unlike, for example, uncertainty in SLA just after emergence), but it will affect the outputted yield.

3.3.4 Senescence

The observations of green leaf biomass and above-ground biomass were used to tune the senescence parameters μ , ν and DVI_{sen}. The above-ground biomass measurements were combined with the partition fractions from Section 3.3.2 and the carbon to biomass ratios from Section 3.3.7 and the senescence parametrisation from Eq. A4 to get a time series for green leaf biomass (Figure 4, centre and right plots, black lines), normalised to the maximum value in each year. This could then be compared to the normalised observed time series for green leaf biomass (Figure 4, left, coloured lines). It is clear that, if the parametrisation from Osborne et al. (2015) is used (Figure 4, centre left-plot, solid black lines), senescence starts late and then progresses too abruptly as compared to the observations. However, with the new parametrisation, with the new free parameters μ , ν and DVI_{sen}, it is possible to get a much better fit to the observations (Figure 4, right plot, dashed black lines). Note that this tuning partially compensates for the bias in the proportion of carbon going to the leaves between DVI 0.8 and 1.0 in Figure 1 (top). If this bias was not present, senescence could start more gradually, which would enable a better fit to leaf carbon around DVI=1.75. Also, the tuned lines underestimate the leaf biomass at around DVI=1.75, which will help to compensate for the model being unable to capture the drop in photosynthetic capacity in the green maize leaves towards the end of the season.

3.3.5 Crop height

Stem biomass measurements up until the maximum in each year and the corresponding crop height measurements from the Mead FLUXNET sites were used to fit the allometric constants κ and λ , through rearranging Eq. A5 to $h = \kappa' M_{\text{stem}}^{\lambda}$ where $\kappa' = \kappa(1 - \tau)^{\lambda}$. For consistency, it is important that the τ used in this expression is the same value as the τ used in Eq. A2. Figure 5 shows the observations (points), along with the fit using parameters from Osborne et al. (2015) (solid black line, $\lambda = 0.4$, $\kappa' = 3.06$) and a tuned fit (dashed black line, $\lambda = 0.38$, $\kappa' = 3.43$).

3.3.6 Specific leaf area

The allometric constants γ and δ relating specific leaf area to DVI (Eq. A7) are tuned using Figure 6, which plots SLA observations against DVI (points), the tuned fit (dashed line) and the parameters used in Osborne et al. (2015) (solid line). The crop in the model is very sensitive to SLA for low values of DVI because of the feedback between leaf area index and leaf carbon. The model lines in Figure 6 have the steepest gradient for low values of DVI, where there is also a greater spread of observations.

3.3.7 Carbon to biomass ratio in stem and leaves

The observations of carbon fraction of the green leaf biomass (canopy mean) against day after sowing is shown in Figure 7. The mean of all of these observation together is 0.43, although there are possible indications of a slight downward trend in

each site in each year with time, which would indicate that this value might be sensitive to the dates on which the carbon is measured and all three sites in 2001 have lower values. In these runs we have used $f_{C,leaf} = f_{C,stem}=0.439$. For comparison, de Vries et al. (1989) gives the carbon fraction of leaves and stems for non-leguminous and no-rice crops as 0.459 and 0.494 respectively and Osborne et al. (2015) used $f_{C,leaf} = f_{C,stem}=0.5$.

5 3.3.8 Initial amount of carbon in crops

Assuming that, near emergence, approximately half of the plant carbon is above ground (Figure 2), values for the parameters governing initialisation of $C_{init} = 8.0 \times 10^{-4}$ and $DVI_{init} = 0.1$ can be derived from the above-ground biomass measurements plotted in Figure 8 and the carbon to biomass ratios. Since there are no measurements below $DVI=0.1$, and the model is very sensitive to these parameters, we do not attempt to set a DVI_{init} below 0.1 and extrapolate. Note also that the initial value of carbon is very sensitive to the thermal time for emergence. ~~Theoretically, the initial amount of carbon should also be proportional to the planting density, although this difference is not apparent in~~ Figure 8 ~~also shows that the value $C_{init} = 1.0 \times 10^{-2}$ which was used in Osborne et al. (2015) to initialise the crop at $DVI_{init} = 0.0$ is too high to be consistent with the above-ground biomass observations.~~

3.3.9 Yield fraction

As discussed above, the C_{harv} pool in JULES contains both the reproductive parts of the maize crop (kernel, cob, husk, ear shank and silk) and the yellow leaf carbon and the proportion of this carbon pool that contributed to yield carbon f_{yield} is set by the user. The value of f_{yield} can be derived using the latest observations in each season of the biomass of the reproductive part of the crop, the proportion of this reproductive biomass which is composed of kernels, and the yellow leaf biomass. The yield fraction is then calculated as the kernel fraction of the sum of the reproductive part of the crop and the yellow leaves, leading to an approximate value of $f_{yield} = 0.74$ (Figure 9). This assumes that there is no significant change in f_{yield} between the last measurement of the season and the harvest and also that the carbon fraction of the biomass in the both the reproductive parts and the yellow leaves is the same. Typically, an accurate value of f_{yield} is not important in impact studies, since this constant can be incorporated into a yield gap parameter.

3.4 Parameters required by natural pft tiles only

To obtain the allometric parameters required to relate the plant carbon pools to plant height and LAI when the crop model is switched off, LAI_{bal} was assumed to be approximately equal to LAI up to the maximum LAI at the site for each year. As discussed in Section A2, a_{ws} is assumed to be equivalent to $1-\tau$ i.e. $a_{ws}=0.88$. The stem biomass observations can be used to obtain values for a_{wl} , b_{wl} and η_{sl} , for a set ratio of carbon to biomass in the stem (see Section 3.3.7). First, a value for η_{sl} of $0.017 \text{ kg C m}^{-1} (\text{m}^2 \text{ leaf})^{-1}$ was obtained by plotting the stem biomass observations against LAI multiplied by crop height for points up until the maximum LAI for each site in a particular year (Figure 10, left). Secondly, a_{wl} and b_{wl} simultaneously fitted to (a) the stem biomass observations against LAI for points up until the maximum LAI for each site in a particular year

(Figure 10, right), (b) crop height against stem biomass observations, up until the maximum stem biomass measurement for each site in a particular year (Figure 11) and (c) LAI_{bal} against LAI up until the maximum LAI for each site in a particular year (Figure 12). This gave $a_{wt}=9.5\times 10^{-3} \text{ kg C m}^{-2}$ and $b_{wt}=1.767$.

As we saw in Figure 6, Eq. A12 is not a good approximation for maize, particularly when DVI is less than 0.5. For the purposes of these runs, an approximate value at $\text{DVI}=1$ was used.

3.5 Parameters required by both crop tiles and natural pft tiles

3.5.1 Canopy radiation scheme

The JULES default C4 grass settings for the PAR leaf scattering coefficient $\omega_{\text{PAR}} = 0.17$ and the PAR leaf reflection coefficient $\alpha_{\text{refl,PAR}} = 0.1$ were used (these are very similar to the values quoted in Sellers (1985) for live maize leaves: $\omega_{\text{PAR}} = 0.175$, $\alpha_{\text{refl,PAR}} = 0.105$) and a spherical angle distribution. These are the same parameter values and options that were used in Osborne et al. (2015) to model maize. The soil albedo was set to 0.133, which was the value from the nearest gridbox in the ancillary used in the HadGEM2-ES model (Collins et al., 2011; Jones et al., 2011), which was used in the Osborne et al. (2015) global runs.

The canopy clumping factor was tuned by comparing the fraction of incident PAR absorbed by the canopy (FAPAR), using absorbed and incident PAR observations and interpolated LAI observations, to the model FAPAR, using observed diffuse radiation fraction and interpolated LAI observations up until flowering. The python package `pySellersTwoStream` (see Section 6) was used to calculate the model FAPAR since it is able to reproduce the results of the JULES radiation scheme exactly but can be called directly from our (python) analysis scripts, without the need for extra JULES runs for each combination of parameters tested.

Absorbed PAR through the canopy in the model closely follows an exponential decay function. Calculating FAPAR involves integrating this exponential decay over the canopy: Figure 13 (centre row) shows the resulting FAPAR distribution against total LAI for a uniform canopy (canopy clumping factor $a = 1$). For mostly direct radiation (diffuse radiation fraction 0.2-0.3), the rate of decay with layer LAI in the model shows a clear dependence on the zenith angle (Figure 13, centre right), whereas for mostly diffuse radiation (diffuse radiation fraction 0.8-0.9), this zenith angle dependence is greatly reduced (Figure 13, centre left). While the observations (Figure 13, top row) also show a strong zenith angle dependence as the fraction of diffuse radiation decreases, the observations are, in general, consistent with a much lower effective decay constant (in particular, the model FAPAR values are higher than the observations at intermediate LAI values ~ 2). The observed FAPAR values also have a much larger scatter than seen in the model FAPAR.

Decreasing the canopy clumping factor is equivalent to decreasing the effective decay constant in the model. Figure 14 shows the value of the clumping factor that would be needed to reproduce each FAPAR observation, given the observed LAI and diffuse radiation fraction. While there is a large spread in clumping values derived in this way, these results appear to indicate that a clumping factor between 0.5 and 0.8 would be consistent with the majority of the observations. In this study, we

therefore set $a = 0.65$. Figure 13 (bottom row) shows that using this clumping factor value to calculate model FAPAR gives a better fit to the observations, particularly for the intermediate LAI values.

Erectile, vertical and horizontal leaf angle distributions (for a uniform canopy) were also investigated, but the spherical distribution gave the best fit to the FAPAR observations.

- 5 The FAPAR observations can not be used to tune the model once green leaf area index has started to drop significantly, as the observations include PAR absorbed by any part of the plant, whereas the JULES canopy scheme models the PAR absorbed by photosynthesising leaves only. Whether the model canopy scheme needs to be extended to include the shading of green leaves by yellow leaves and other non-root biomass depends on the distribution of the remaining green leaves through the canopy (essentially, the model is roughly assuming that all the green LAI is at the top of the plant and so does not get shaded by other
- 10 plant material). Different approaches have been used in the literature. For example, Sellers (1985) models maize assuming that green and dead leaves are evenly distributed throughout the canopy, whereas de Vries et al. (1989) says that "maximum leaf photosynthesis in a senescencing crop declines with time. The oldest leaves in the base of the canopy are affected first".

3.5.2 Photosynthesis light response curve

- In the literature, the photosynthetic capacity of maize leaves (per leaf area) declines with age and the older leaves are lower in
- 15 the canopy Dwyer and Stewart (1986); Stirling et al. (1994). As discussed in Section A4, change in photosynthetic capacity through the canopy can be modelled in JULES by a non-zero k_{nl} , which we assume is due to change in nitrogen per unit leaf area through the canopy.

- The nitrogen per unit leaf area as a function of layer LAI at anthesis (60 days after sowing) in Massignam et al. (2001) for the highest nitrogen availability level (150 kg N ha^{-1} , residual soil nitrate 31 kg ha^{-1}) was consistent with a k_{nl} of approximately
- 20 0.07. Since this is low, in this study, the variation of nitrogen per unit leaf area through the canopy is neglected i.e. $k_{nl} = 0.0$. The inclusion of a non-zero k_{nl} would have the effect of increasing GPP, as the plant would be able to make more efficient use of the incoming radiation.

- In this study, trait-based physiology was switched off (i.e. `l_trait_phys = F`). However, the same results could be obtained by switching trait-based physiology on and choosing values for the new parameters that are equivalent to the ones
- 25 used here.

Figure 15 shows the observations of the nitrogen mass per unit carbon mass (left) and per unit leaf area (right) averaged over the canopy. In both plots, nitrogen rapidly decreases with time at the beginning and end of the season, which cannot be captured by JULES. The inclusion of a non-zero k_{nl} would also not solve this problem, as this would simply increase the nitrogen per leaf area mid-season, as can be seen in Figure 16 for $k_{nl} = 0.2$.

- 30 In this study, the temperature dependence of V_{cmax} is fixed by fitting Eq. A14 to the expression given in de Vries et al. (1989) (Figure 17). The default JULES C4 grass parametrisation of V_{cmax} is more sharply peaked, has its maximum at a higher temperature and is more asymmetrical. Also plotted is the expression for the temperature dependence for maize V_{cmax} from Massad et al. (2007). Puntel (2012) modelled V_{cmax} for maize at the Mead site and fit the results with MaizeGro, using the default temperature dependence, which gives a peak at approximately 33°C . Puntel (2012) verified this relation by

successfully fitting the model to results from modern maize cultivars from Kim et al. (2007), Crafts-Brandner and Salvucci (2002) and Naidu et al. (2003), which all show the peak in V_{cmax} at approximately the same temperature. Puntel (2012) related the normalisation of V_{cmax} to the leaf nitrogen per biomass, for example, at 30 g N kg⁻¹ at the V14 growth stage, maximum assimilation at 25 °C was 37 $\mu\text{mol m}^{-2} \text{s}^{-1}$. The temperature dependence of maize at high temperatures was looked at in more detail in Crafts-Brandner and Salvucci (2002), which included an investigation into the dependence on the rate of temperature change. The experiment with the more gradual temperature change in Crafts-Brandner and Salvucci (2002) corresponds well to the high temperature dependence of the de Vries et al. (1989) expression.

The canopy average $V_{\text{cmax, norm}}$ was tuned using the value of V_{cmax} at 25 °C at 340 vppm CO₂ at a specific leaf weight of 450 kg h⁻¹, which is the canopy average at DVI=1 (for maize cv Pioneer) from de Vries et al. (1989). n_{l0} was set to the approximate value of the observations in Figure 15(left) at DVI=1, which then constrains n_e (since $n_e = V_{\text{cmax, norm}}/n_{l0}$ when $k_{nl} = 0$). The quantum efficiency α was set to the value from de Vries et al. (1989) of 0.055 $\mu\text{mol C m}^{-2} \text{s}^{-1}$ ($\mu\text{mol photons m}^{-2} \text{s}^{-1}$)⁻¹ for maize, which was quoted for temperatures lower than 45 °C (above this temperature, it drops sharply - an effect which is not reproduced in JULES). This is consistent with values in the literature (e.g. Massad et al. (2007) and references therein) and consistent with the fitted values of α from Puntel (2012). The value of α for maize is not dependent on leaf age or position (Dwyer and Stewart, 1986). This method of tuning the JULES parameters has assumed that the two limiting rates are predominantly W_c and W_{light} , not W_e .

Note, however, that the photosynthesis light response curve in de Vries et al. (1989) has an exponential dependence on the absorbed radiation, which causes the shape to vary slightly from the non-rectangular hyperbolae used in JULES (with hard-wired values of curvature from Collatz et al. (1992)), leading to lower values of photosynthesis below approximately 1500 $\mu\text{mol photons m}^{-2} \text{s}^{-1}$.

The parameters involved in calculating the leaf internal carbon dioxide partial pressure, Δq_{crit} and f_0 (in Eq. A19), were not expected to strongly limit the results since this current study focusses on carbon fluxes rather than water fluxes, the runs are irrigated and the rate W_e is not expected to be limiting. Δq_{crit} was left at its default C4 grass value (as in Osborne et al. (2015)) and f_0 was set to 0.4 (consistent with the range of maize measurements quoted in de Vries et al. (1989)).

3.5.3 Respiration

Values for μ_{rl} and μ_{sl} (from Eq. A22) were obtained for maize from de Vries et al. (1989) of $\mu_{rl} = 0.39$ and $\mu_{sl} = 0.43$ (note that this assumes one constant value for the nitrogen per carbon in leaves over the crop season and $\tau = 0.12$).

Fixing the value for the dark respiration coefficient f_{dr} (used in Eq. A20) is complicated by the inclusion in the code of inhibition of leaf respiration in the light. Also, Atkin et al. (1997) demonstrates that the dark respiration in darkness decreases as the time the leaf has been in darkness increases. This complicates the use of the light response curves for fitting this parameter, since this means that parameters measured during the day will not necessarily correspond to those needed in JULES for modelling the average dark respiration over a 24 hour period. Using de Vries et al. (1989) values for the maximum rate of leaf photosynthesis at 450 kg biomass per hectare and maintenance respiration at 25°C for maize gives $f_{dr}^{24h} = 0.0081$ over the course of 24 hours. Even with a correction for inhibition of dark respiration in the light, this is inconsistent with the spread

of fitted values of dark respiration to maximum assimilation to light response curves measured at the site between 10:00 and 14:00 local time, presented in Puntel (2012) (leaf is exposed to ambient light pre-measurements), which are much higher, unless the dark respiration derived from the light curves is assumed to have a contribution from what JULES considers the ‘growth respiration’. In general, the dark respiration coefficient estimated from light response curves for maize appears to be higher than the value derived from the maintenance respiration measurement in de Vries et al. (1989) (e.g. Collatz et al. (1992), Dohleman and Long (2009)), which is consistent with there being a component from growth respiration. In our JULES runs, we will use f_{dr} derived from the maintenance respiration observation in de Vries et al. (1989), corrected assuming that in the day of measurement 50% of leaves experienced inhibition of the dark respiration by light i.e. f_{dr} is set to $0.0081/0.85=0.0095$ (this assumption was later tested, and found to be accurate to within 2%).

de Vries et al. (1989) gives a growth respiration coefficient of 0.22, 0.18, 0.19, 0.18 for maize leaves, stem, roots and cob/grain respectively. These values can not be used directly in JULES since, as described earlier, the growth respiration coefficient in JULES is a constant for each carbon pool. Here, we set r_g is set to 0.25 for every PFT, as in the JULES Global Land (GL4.0) configuration (Walters et al., 2013) (note however that this approximation of a constant r_g for each plant carbon pool would break down for other crops e.g. soybean).

It is also worth noting that Puntel (2012) found that the maximum assimilation rate had a much stronger relationship with leaf nitrogen than the leaf dark respiration rate. In addition, Stirling et al. (1994) shows a strong dependence in dark respiration in maize over time (using fits to light response curves), which can not be captured in JULES: at degree day 220 (roughly where the leaf area reaches a maximum), it is approximately twice as high at degree day 50. As we have discussed, maintenance respiration and V_{cmax} co-vary in JULES, but the growth respiration is linked to net primary productivity, which increases in the crop up until approximately anthesis. Therefore, the total leaf respiration in the model will vary in time, and will have a different dependence on time to V_{cmax} . However, the issues we have already identified with the modelling of the evolution of V_{cmax} over time will impact the accuracy of the modelling of the maintenance component of the leaf respiration over time. Leaf dark respiration rates also differs between different maize hybrids (Earl and Tollenaar, 1998). There is therefore a large uncertainty in the parameter f_{dr} and the overall determination of growth respiration.

25 4 Results

In this section we present the results from the JULES runs and compare with observations from the Mead sites. The runs with the crop model switched off and prescribed LAI and height are useful for evaluating the parameter choices for photosynthesis and respiration, without the additional complication of the feedback between LAI and NPP, so will be discussed first. The results from the full crop model configuration will then be evaluated.

30 4.1 Results from JULES runs without the crop model

4.1.1 Gross primary productivity

Figure 1. Top: ratio of rate of change of C_{leaf} to rate of change of above-ground carbon C_{ag} , middle: ratio of rate of change of $C_{\text{stem}} + C_{\text{resv}}$ to rate of change of above-ground carbon, bottom: ratio of rate of change of C_{harv} to rate of change of above-ground carbon. Solid black line uses the original crop parameters from Osborne et al. (2015), dashed black line uses the tuned parameters. Blue, green, red lines are derived from US-Ne1, US-Ne2 and US-Ne3 observations respectively.

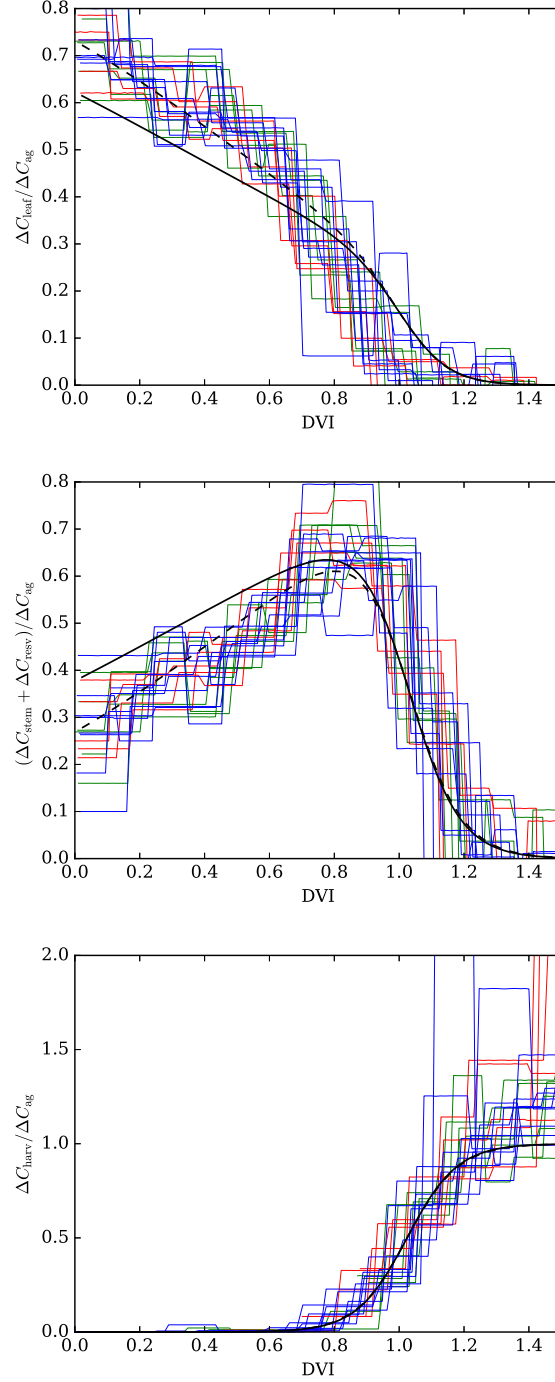


Figure 2. Partition fractions as a function of DVI using the tuned parameters. The dotted lines are from de Vries et al. (1989).

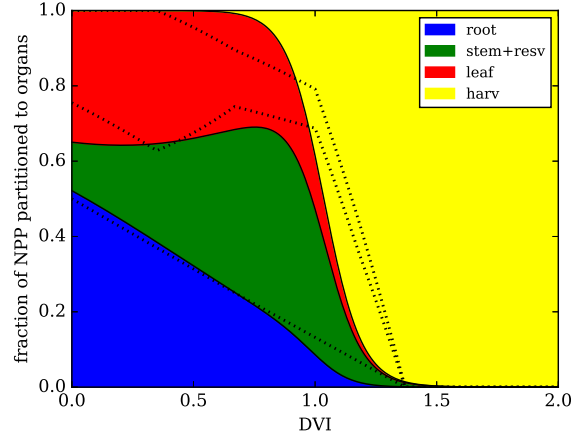


Figure 3. Stem biomass measurements (M_{stem}) normalised to the maximum measurement for that site in that year ($M_{\text{stem}}^{\text{max}}$) against day since the maximum measurement (d_{max}). Blue, green, red lines are derived from US-Ne1, US-Ne2 and US-Ne3 observations respectively. The dashed black line uses the tuned value $\tau = 0.12$, whereas the solid black line uses the Osborne et al. (2015) value $\tau = 0.35$.

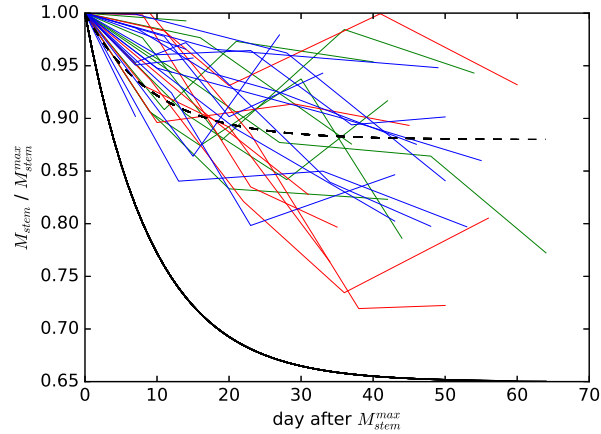


Figure 4. Normalised green leaf biomass against DVI. Blue, green, red lines (left plot) are derived from US-Ne1, US-Ne2 and US-Ne3 observations respectively. Solid black lines (centre plot) are generated using model parameters from Osborne et al. (2015) and dashed black lines (right plot, solid lines) are generated using the new, tuned parametrisation parameters (right plot, dashed lines).

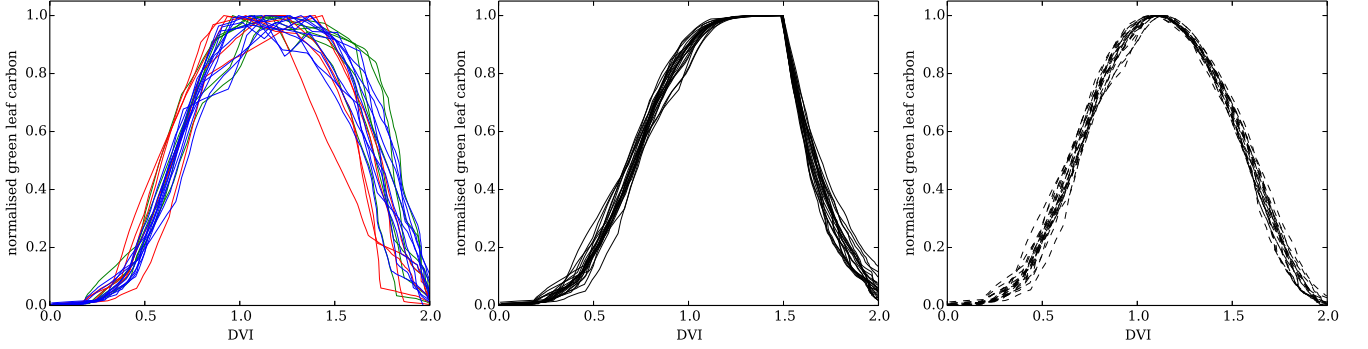


Figure 5. Crop height against dry stem biomass (including reserves). Dots, vertical crosses (+) and diagonal crosses (x) are US-Ne1, US-Ne2 and US-Ne3 observations respectively. Solid line shows the fit using parameters from Osborne et al. (2015) ($\lambda = 0.4$, $\kappa' = 3.06$) and dashed line shows a tuned fit ($\lambda = 0.38$, $\kappa' = 3.43$). Only points up until the maximum stem biomass for that site in that year are plotted.

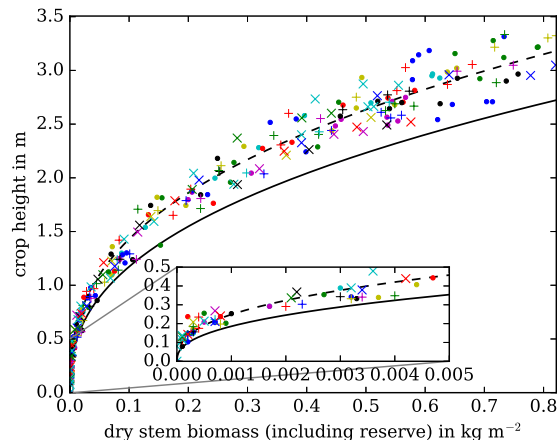


Figure 6. Specific leaf area against DVI. Dots, vertical crosses (+) and diagonal crosses (x) are US-Ne1, US-Ne2 and US-Ne3 observations respectively. Solid line shows the fit using parameters from Osborne et al. (2015) ($\gamma = 22.5$, $\delta = -0.2587$) and dashed line shows a tuned fit ($\gamma = 17.6$, $\delta = -0.33$).

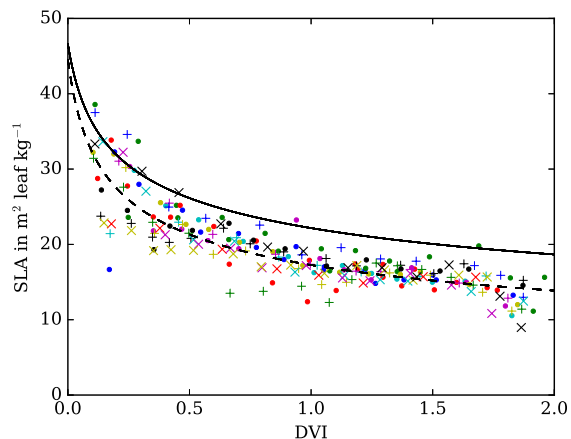


Figure 7. Carbon to biomass ratio in leaves against day after sowing. Dots, vertical crosses (+) and diagonal crosses (x) are US-Ne1, US-Ne2 and US-Ne3 observations respectively. The years 2001-4 are magenta, blue, cyan and yellow respectively. Solid black line shows the value used in Osborne et al. (2015), dashed black line shows the value used in this analysis.

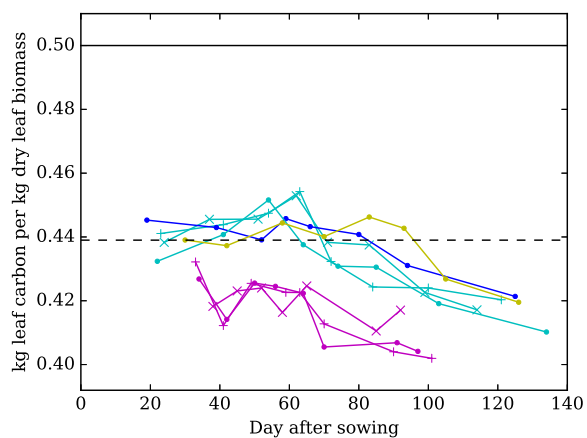


Figure 8. Above-ground biomass measurements against DVI. Dots, vertical crosses (+) are US-Ne1 and US-Ne2 observations respectively. Points from US-Ne3 are not shown. Intersection of the solid black line shows the initialisation used in Osborne et al. (2015), intersection of dashed black line shows the initialisation used in this study.

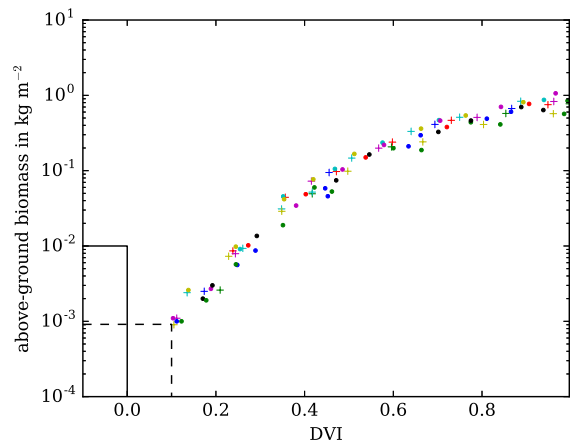


Figure 9. Yield fraction against the sum of the biomass in the reproductive parts of the maize crop (kernel, cob, husk, ear shank and silk) and the yellow leaf biomass, using the last measurement of the season. Dots, vertical crosses (+) and diagonal crosses (x) are US-Ne1, US-Ne2 and US-Ne3 observations respectively. Solid black line shows the value used implicitly in Osborne et al. (2015) and dashed black line shows the new, tuned value.

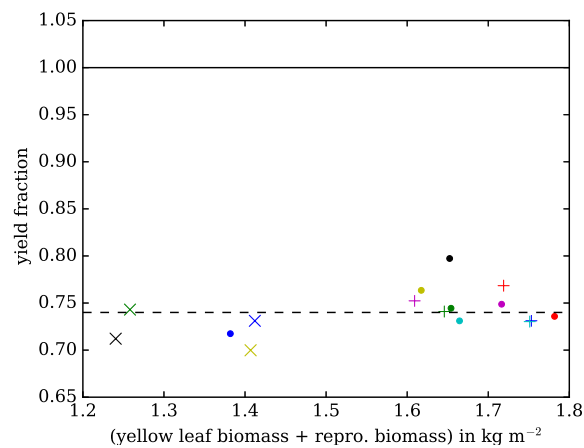


Figure 10. Stem biomass against the product of height and LAI (left) and stem biomass against the LAI (right). Dots, vertical crosses (+) and diagonal crosses (x) are US-Ne1, US-Ne2 and US-Ne3 observations respectively. Solid line shows the fit using the natural PFT parameters from Osborne et al. (2015) and dashed line shows a tuned fit using the relations for natural vegetation described in Section A2. Only points up until the maximum LAI measurement for that site in that year are shown.

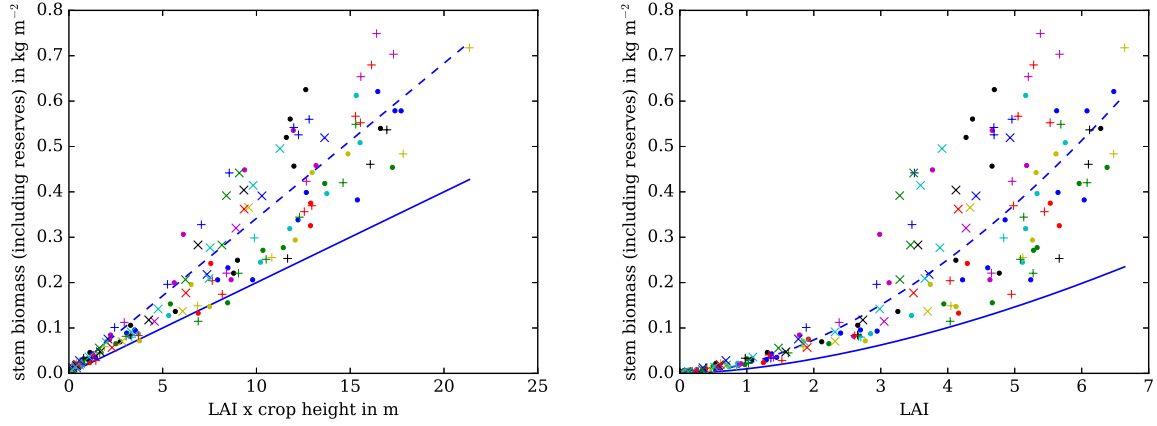


Figure 11. Height against stem biomass. Dots, vertical crosses (+) and diagonal crosses (x) are US-Ne1, US-Ne2 and US-Ne3 observations respectively. Solid line shows the fit using natural PFT parameters from Osborne et al. (2015) and dashed line shows a tuned fit using the relations for natural vegetation described in Section A2. Only points up until the maximum stem biomass for that site in that year are plotted.

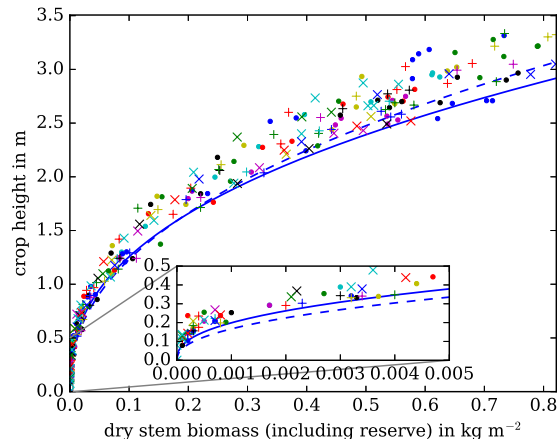


Figure 12. Balanced LAI (calculated from canopy height) against LAI. Dots, vertical crosses (+) and diagonal crosses (x) are US-Ne1, US-Ne2 and US-Ne3 observations respectively. Red: uses natural PFT parameters from Osborne et al. (2015), blue: uses new, tuned parameters. Dotted line shows $x = y$. Only points up until the maximum LAI measurement for that site in that year are shown.

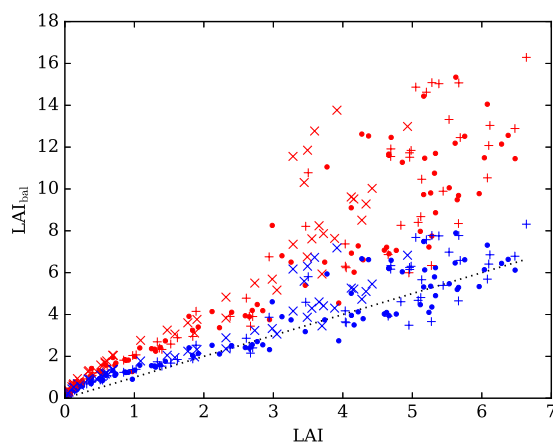


Figure 13. FAPAR against interpolated LAI observations. Top row uses FAPAR observations, while middle row and bottom rows use model FAPAR with $a = 1$ and $a = 0.65$ respectively, using observed LAI and diffuse radiation fractions. Dots, vertical crosses (+) and diagonal crosses (x) show US-Ne1, US-Ne2 and US-Ne3 respectively and all data are between emergence (DVI=0) and flowering (DVI=1). Colours show the cosine of the zenith angle.

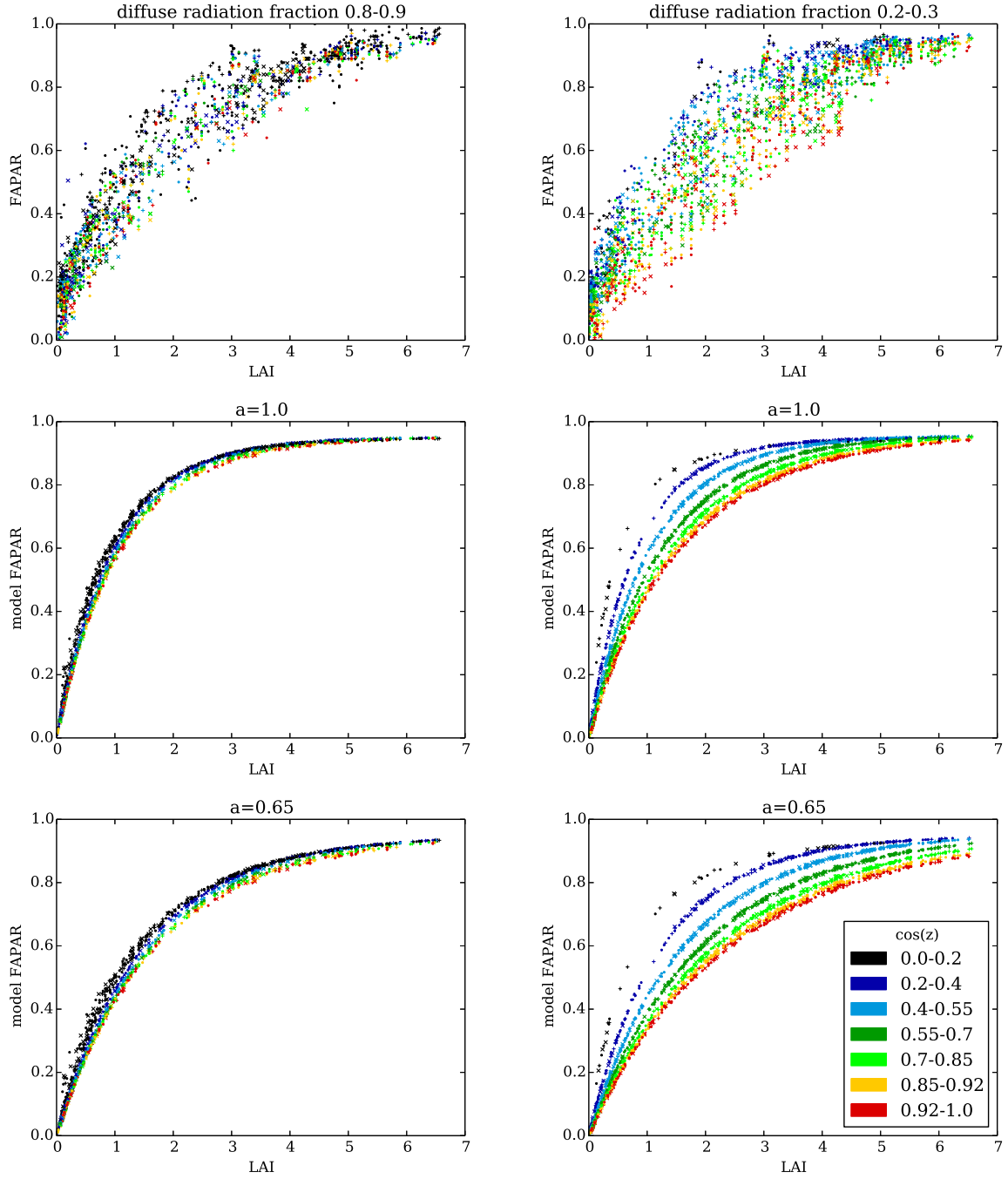


Figure 14. Derived value of the clumping factor a against LAI for each combination of FAPAR and observed diffuse radiation fraction. Dots, vertical crosses (+) and diagonal crosses (x) use US-Ne1, US-Ne2 and US-Ne3 LAI observations respectively and all data are between emergence (DVI=0) and flowering (DVI=1). Colours show the cosine for the zenith angle (for legend, see Figure 13). Solid black line indicates $a = 1$ and dashed black line indicates $a = 0.65$.

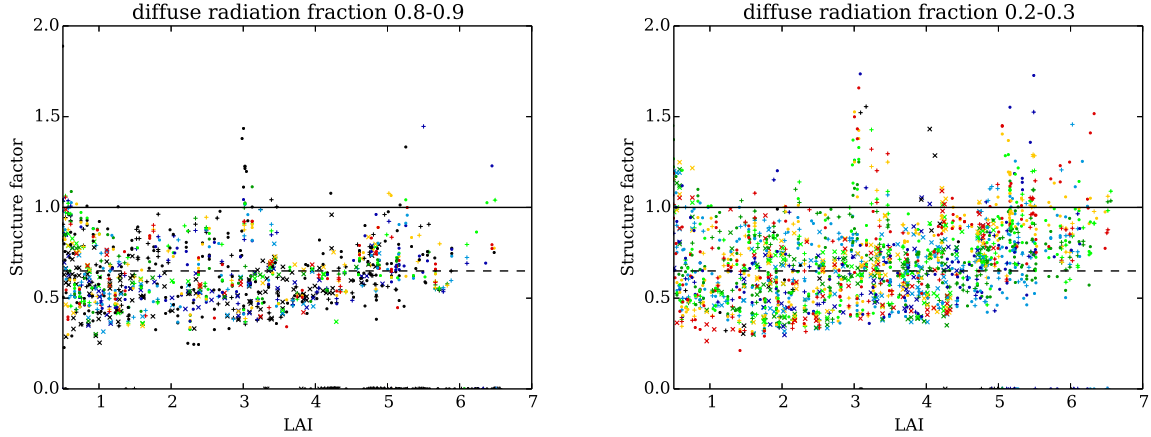


Figure 15. Observed ratio of nitrogen mass to carbon mass in leaves (left) and leaf nitrogen per leaf area (right) against day after sowing. Dots, vertical crosses (+) and diagonal crosses (x) are US-Ne1, US-Ne2 and US-Ne3 respectively. The years 2001-4 are magenta, blue, cyan and yellow respectively. $k_{nl} = 0$ i.e. leaf properties are assumed constant through the canopy.

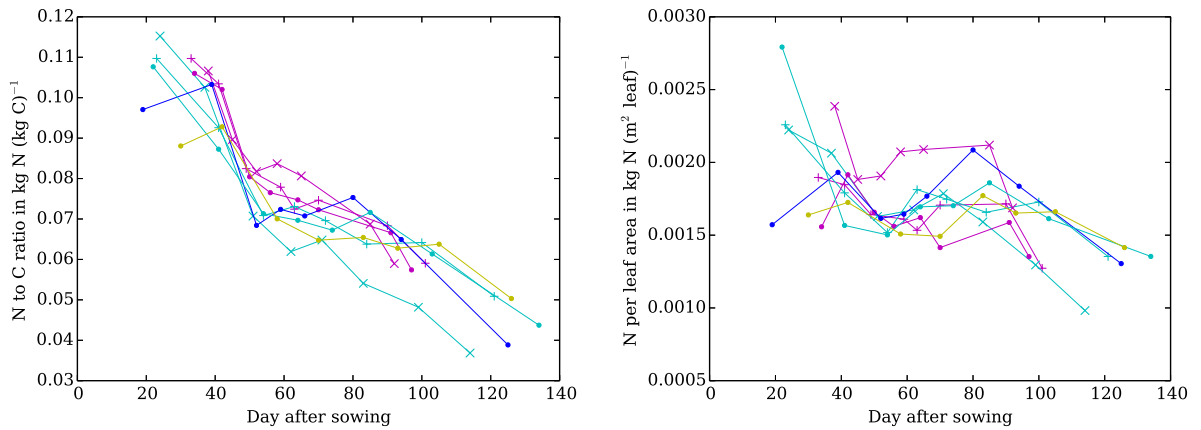


Figure 16. Observed leaf nitrogen per leaf area at top of canopy against day after sowing assuming a decay through the canopy with decay constant $k_{nl} = 0.2$. Dots, vertical crosses (+) and diagonal crosses (x) are US-Ne1, US-Ne2 and US-Ne3 respectively. The years 2001-4 are magenta, blue, cyan and yellow respectively.

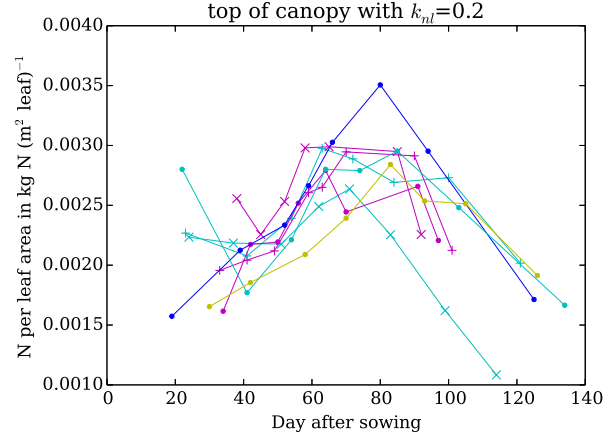


Figure 17. Parametrisations of V_{cmax} against leaf temperature. Solid black line shows default C4 grass in JULES. Dotted line shows the parametrisation for maize given in de Vries et al. (1989), black dashed line shows a fit to this using the JULES parametrisation. Blue dot-dashed shows the parametrisation for maize in Massad et al. (2007).

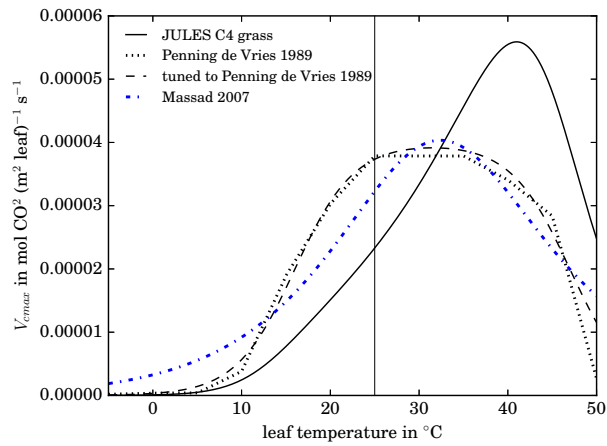


Figure 18. Time series of GPP for irrigated maize at the Mead FLUXNET sites US-Ne1 and US-Ne2. Blue: model, green: observations. JULES runs have the crop model switched off, LAI and canopy height prescribed and the input parameters in Table 1, Table 2a, Table 2b, Table 3a, Table 3b and Table 4.

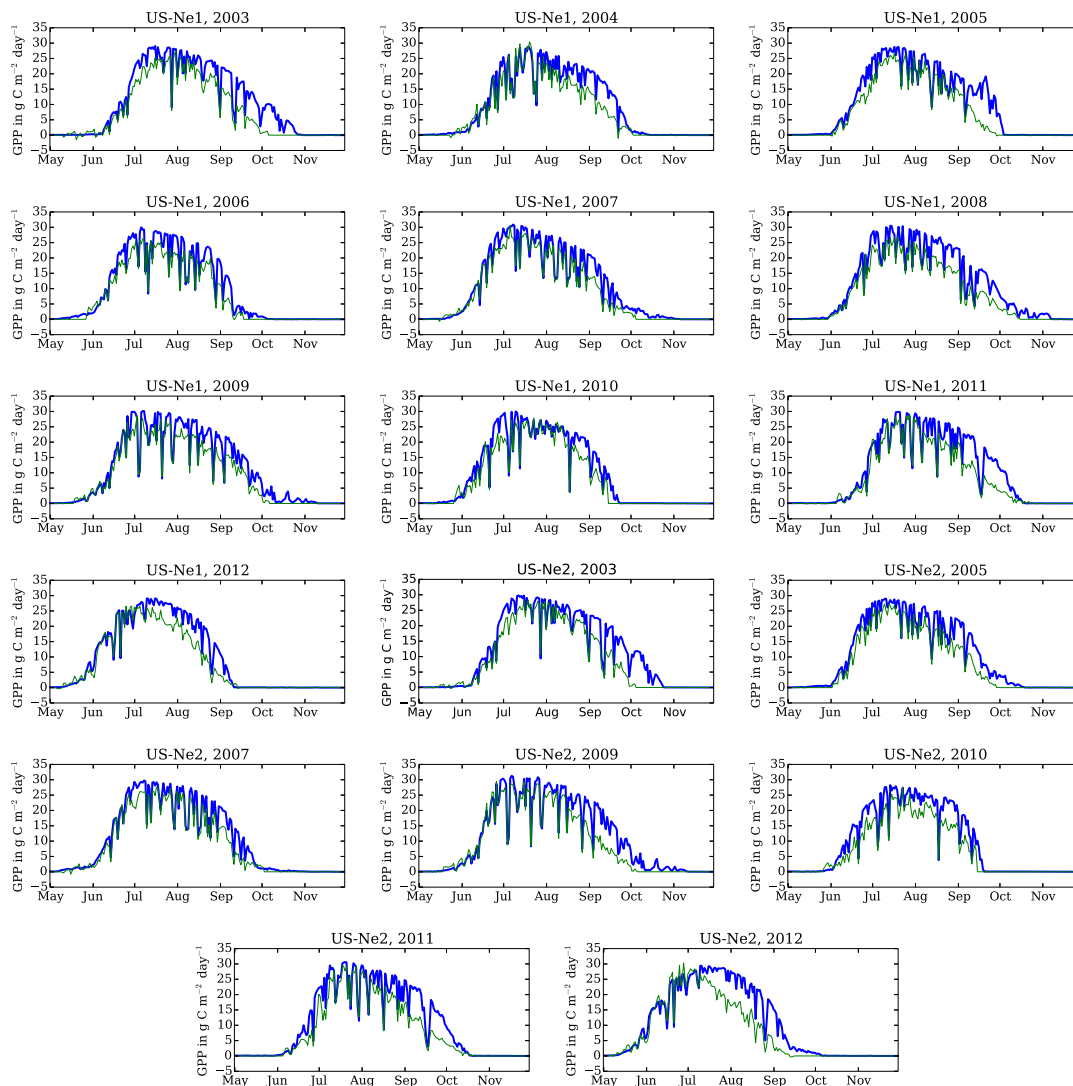
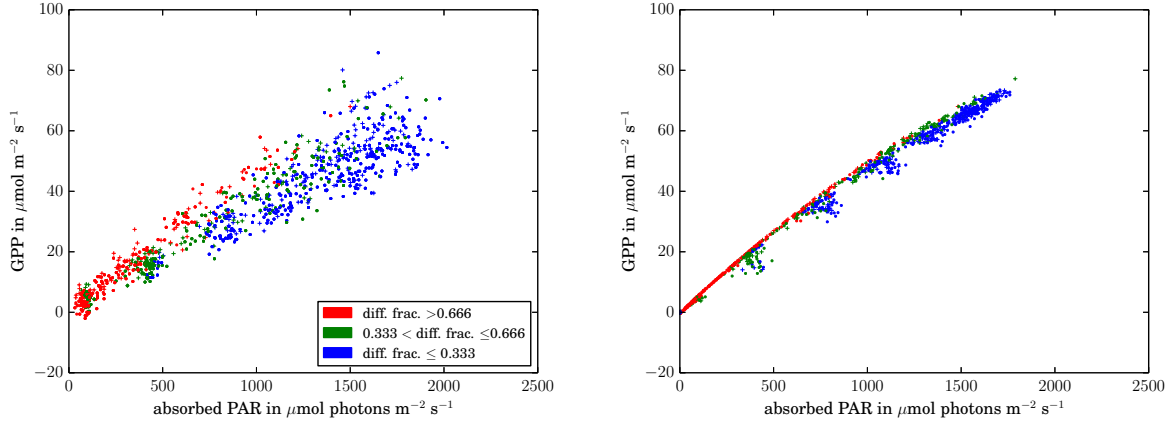


Figure 19. GPP (in $\mu\text{mol CO}_2(\text{m}^2\text{ground})^{-1}\text{s}^{-1}$) against absorbed PAR (in $\mu\text{mol photons}(\text{m}^2\text{ground})^{-1}\text{s}^{-1}$) for the hourly FLUXNET data (left) and hourly output from the model runs (right). LAI is between 3.5 and 4.5 and all points have DVI less than 1. Dots and vertical crosses (+) indicate US-Ne1, US-Ne2 and US-Ne3 respectively. Colour: diffuse radiation fraction. JULES runs have the crop model switched off, LAI and canopy height prescribed and the input parameters in Table 1, Table 2a, Table 2b, Table 3a, Table 3b and Table 4.



Plots of modelled GPP (blue) against observed GPP (green) are shown in Figure 18 for years in which irrigated maize was grown at the Mead FLUXNET sites US-Ne1 and US-Ne2. While the overall shape of the plots is good, it is clear that GPP in the model is significantly overestimated after the mid-season peak in observed GPP (corresponding to where LAI declines as the crop leaves senesce). As discussed earlier, the model V_{cmax} at a certain temperature stays constant whereas in reality it would decline over the crop season. Implementing this decline into JULES would result in a much closer fit between the model GPP and observed GPP.

To a lesser extent, there also appears to be an overestimation of GPP in the model before senescence. This was investigated in more detail by comparing plots of FLUXNET GPP against observed APAR with plots of model GPP against APAR, for hourly measurements before the crop reaches DVI=1, for LAI bins of size 1, 1 for all sites. Figure 19 shows the LAI bin 3.5 to 4.5.

There is a clustering of points due to the hourly resolution of the data, which is most clearly seen in the model output. Hours with high diffuse radiation fractions (red) are similar in both the FLUXNET data and the model output, although the scatter in the FLUXNET data is higher, as expected from the plots of observed FAPAR (Figure 13). For lower diffuse radiation fractions in the model, GPP decreases due to a combination of the effect of sunflecks and an increase in the effective decay constant of absorbed PAR through the canopy at the beginning and end of the day. Even when the scatter in the FAPAR observations is taken into account, the decrease in GPP for lower diffuse radiation fractions does not appear to be as large in the model as in the GPP observations, and this is the source of the overestimation of GPP we saw in the model output in Figure 18 before the onset of senescence.

This effect was investigated further by considering the dependence on air temperature and vapour pressure deficit in the FLUXNET GPP data. As expected, the lower temperature points (Figure 20, top left) and lower VPD points (Figure 20, top

right) are clustered at low values of APAR. However, there does not seem to be a dependence on temperature or VPD at a constant APAR across the range of GPP observations.

Soil moisture stress is a factor that we have neglected in our runs [\(since we have assumed perfect irrigation\)](#), which could, if implemented, reduce GPP when the soil moisture is low. However, as Figure 20 shows for soil moisture content at a depth of 10cm (bottom left) and 25cm (bottom right), at higher APAR values, points below a threshold of 30% appear to be distributed evenly across the range of GPP observations for a constant APAR.

Including a decrease in leaf nitrogen concentration through the canopy (while keeping the total amount of nitrogen constant) would have the effect of making the light use of the plant more efficient, which would increase model GPP still further. Decreasing $V_{\text{cmax,norm}}$ would have the effect of decreasing model GPP at higher APAR values, but this would not solve the issue at mid-range APAR points $\sim 800 \mu\text{mol photons (m}^2\text{ground)}^{-1}\text{s}^{-1}$ and would also worsen the fit of the points with high diffuse radiation fractions.

It is therefore difficult to see a clear way in which the model parameter settings or processes should be improved. It would be possible to improve the validation against observations by decreasing α or changing the curvature parameter in the non-rectangular hyperbola implemented for light response within JULES (currently hard-wired) but it is difficult to justify this theoretically.

4.1.2 Respiration

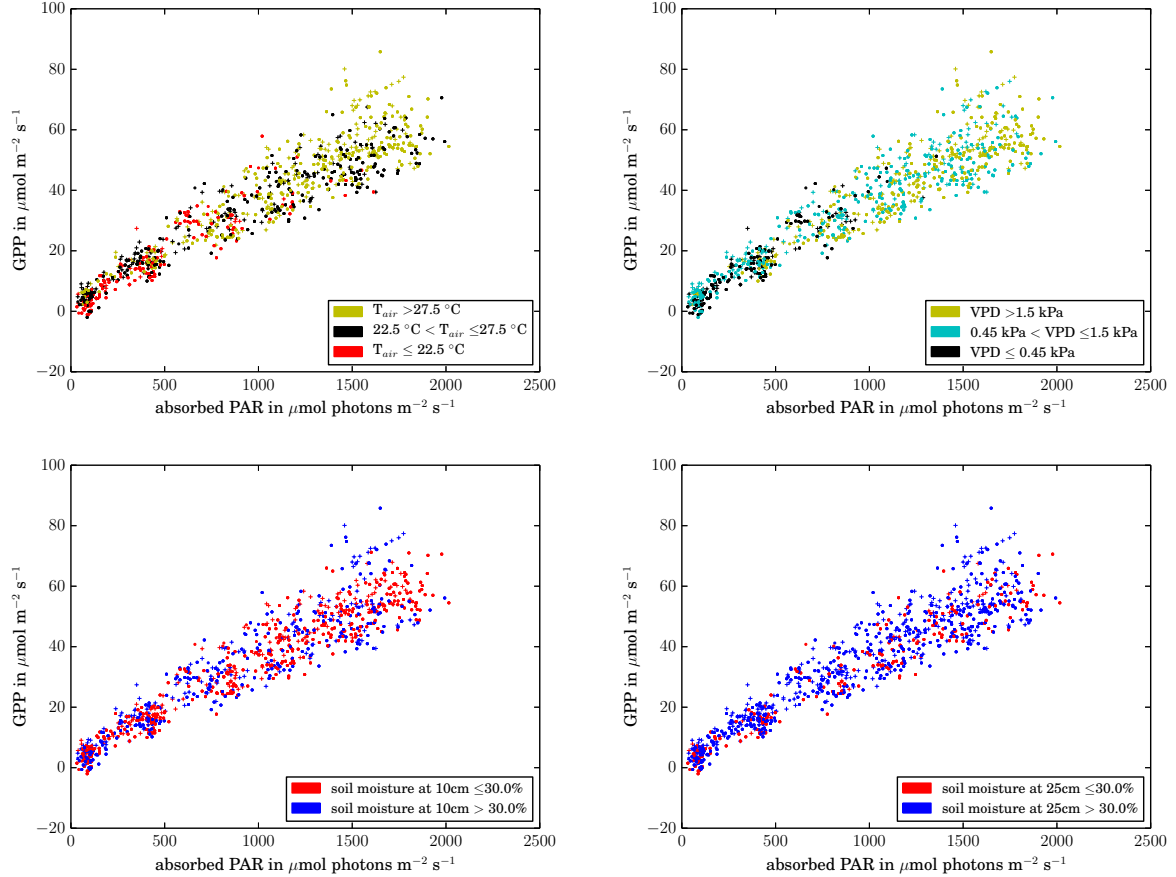
The results from the model runs without the crop model can also be used to test the parametrisation of respiration.

Using a number of assumptions, the measurements from Mead can be used to get an approximate value for leaf maintenance respiration. First, approximate values for NPP were obtained by linearly interpolating the Mead above-ground biomass measurements to get a daily time series, and then differentiating. The fraction of NPP directed to the roots at each DVI was calculated from the expression for maize in de Vries et al. (1989) (plotted in Figure 2) and then used to obtain the total NPP. Combining these NPP values with the GPP observations and assuming a value for the growth respiration coefficient of $r_g = 0.25$ and summing over the crop season leads to an estimation of the plant maintenance respiration R_{pm} . It is necessary to sum over the whole season, since the NPP and GPP calculated in this way appear to be slightly out of step with each other, and this effect dominates the daily time series of derived maintenance respiration.

The interpolated carbon pool observations were used to calculate the factor $\left(1 + \mu_{rl} \frac{C_{\text{root}}}{C_{\text{leaf}}} + \mu_{sl} \frac{C_{\text{stem}}}{C_{\text{leaf}}}\right)$ that converts between the leaf maintenance respiration and the total plant maintenance respiration. Note that the stem carbon observations had to be corrected using τ to get C_{stem} . This factor was used to convert the leaf maintenance respiration outputted by the model to the total plant maintenance respiration.

Figure 21 shows the R_{pm} derived from observed GPP against R_{pm}/f_{dr} derived from the outputted model leaf maintenance respiration. The x-axis therefore is independent of f_{dr} , which can be obtained from the gradient. Data from 2010 is not included (since the crop was damaged by hail). Both the default JULES C4 grass f_{dr} (solid line) and the f_{dr} used in our maize configuration (dashed line) are shown. It can clearly be seen that the new maize f_{dr} is a better fit than the default C4 grass

Figure 20. Hourly FLUXNET GPP data (in $\mu\text{mol CO}_2(\text{m}^2\text{ground})^{-1}\text{s}^{-1}$) against observed APAR (in $\mu\text{mol photons}(\text{m}^2\text{ground})^{-1}\text{s}^{-1}$). LAI is between 3.5 and 4.5 and all points have DVI less than 1. Dots and vertical crosses (+) indicate and diagonal crosses (x) are US-Ne1, US-Ne2 and US-Ne3 observations respectively. Colour indicates air temperature (top left), vapour pressure deficit (top right), soil water content at 10cm (lower left) and soil moisture content at 25cm (lower right).



value. While there are many model and parameter assumptions (r_g , μ_{rl} , μ_{sl} , $\beta = 1$, C_{root} , τ) that have gone into this plot, this is still an important consistency check of our parameters.

4.2 Results from JULES runs with the crop model

This section describes the results from the runs for the irrigated maize seasons from the Mead sites, with the crop model switched on and the parameter settings summarised in Table 1, Table 2a, Table 2b, Table 3a, Table 3b and Table 4

Figure 21. R_{pm} derived from observed GPP against R_{pm}/f_{dr} derived from the outputted model leaf maintenance respiration. Dots and vertical crosses (+) are US-Ne1 and US-Ne2 respectively. JULES runs have the crop model switched off, LAI and canopy height prescribed and the input parameters in Table 1, Table 2a, Table 2b, Table 3a, Table 3b and Table 4. Black lines pass through the origin and have gradient 0.025 (solid line) and 0.0096 (dashed line), corresponding to the value of f_{dr} used in Osborne et al. (2015) and this study respectively.

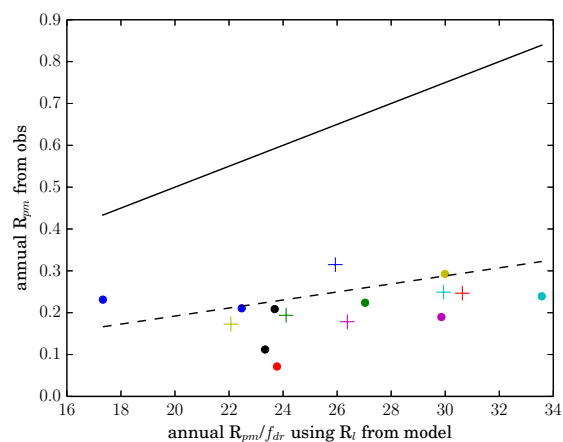


Figure 22. Time series of GPP for irrigated maize at the Mead FLUXNET sites US-Ne1 and US-Ne2. Blue: model, green: observations. JULES runs have the crop model switched on and the input parameters in Table 1, Table 2a, Table 2b, Table 3a, Table 3b and Table 4.

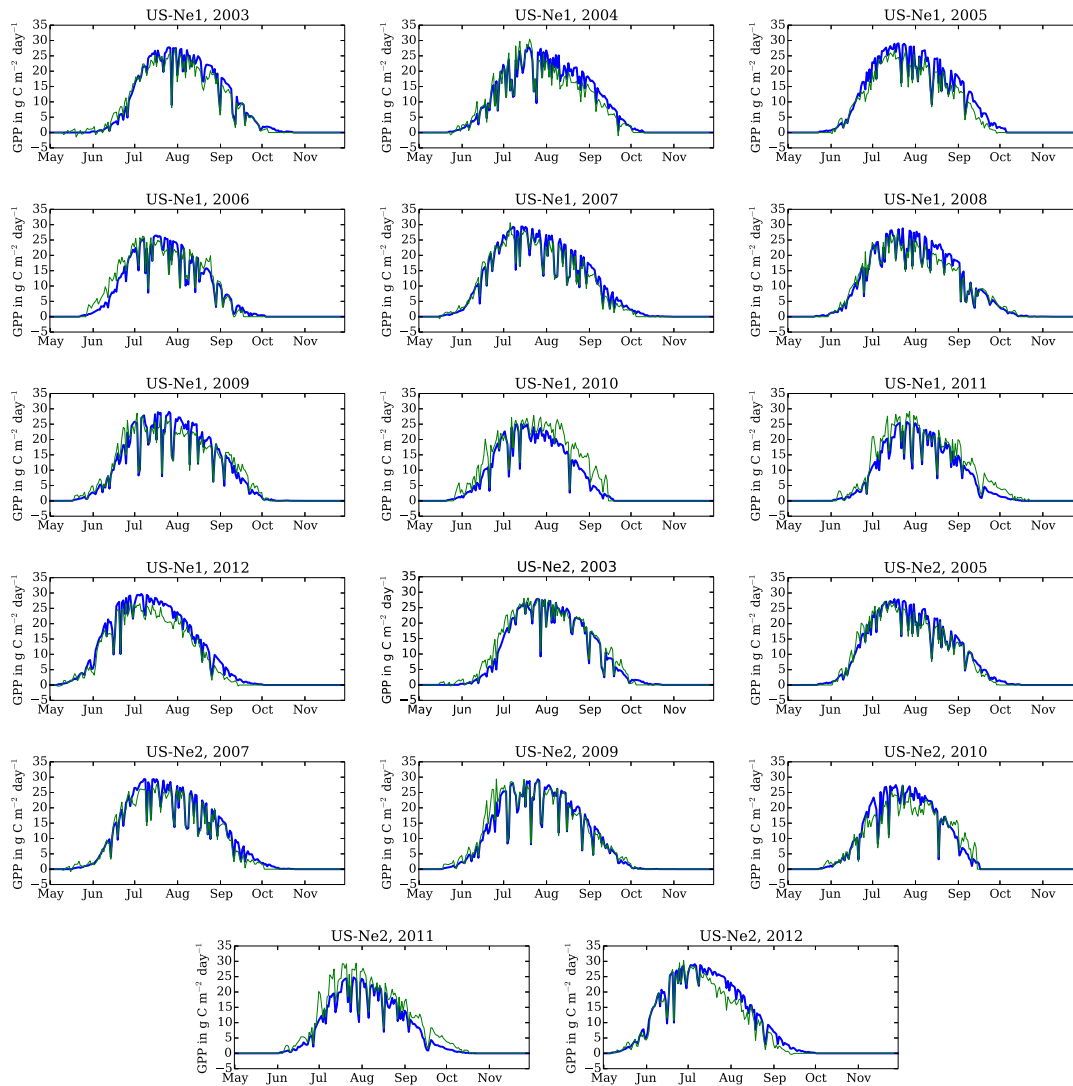


Figure 23. Time series of LAI for irrigated maize at the Mead FLUXNET sites US-Ne1 and US-Ne2. Blue: model, red: observations. JULES runs have the crop model switched on and the input parameters in Table 1, Table 2a, Table 2b, Table 3a, Table 3b and Table 4.

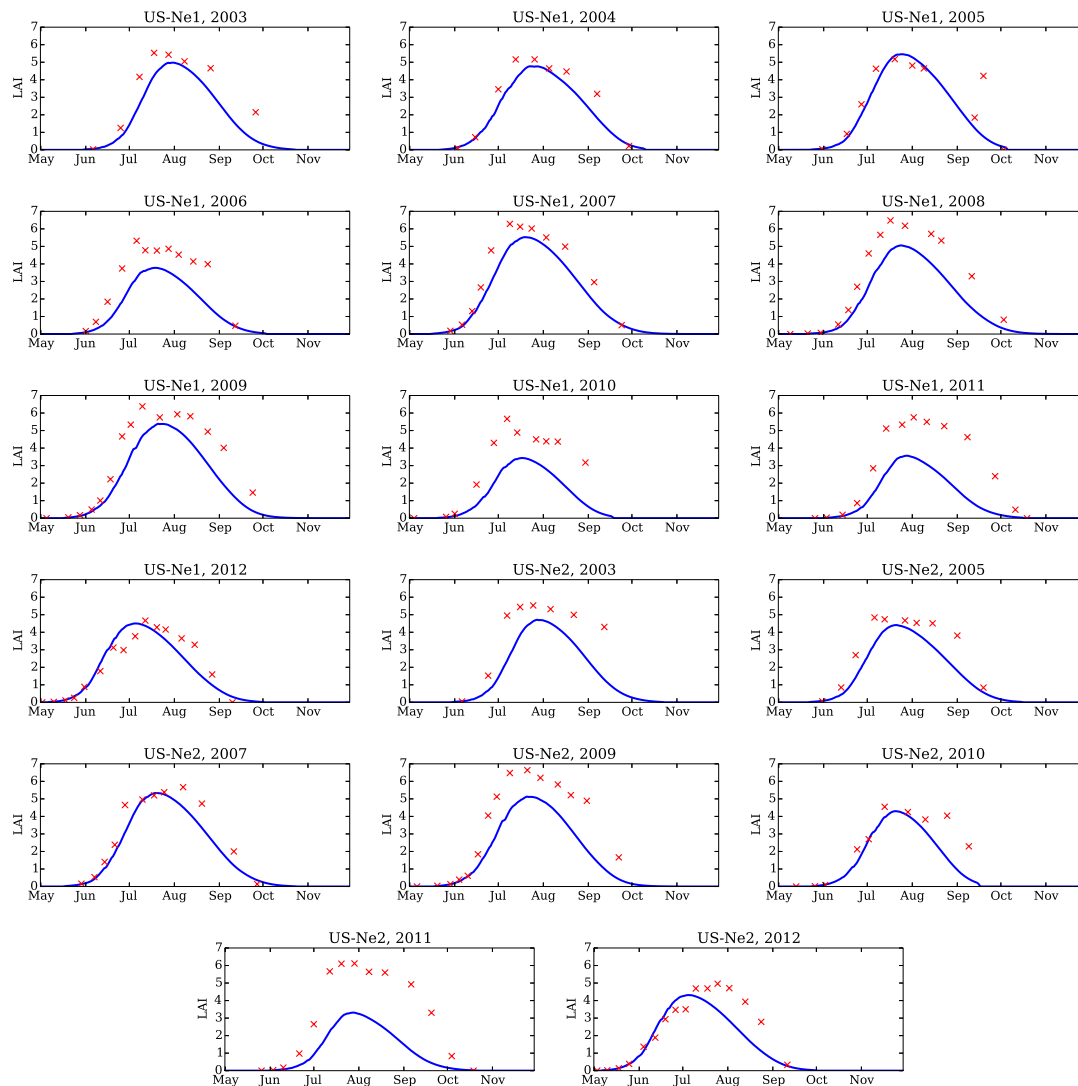


Figure 24. Time series of LAI for irrigated maize at the Mead FLUXNET sites US-Ne1 and US-Ne2. Blue: model, red: observations. JULES runs have the crop model switched on and $\gamma=18.0$ and $\delta=-0.45$. All other input parameters are as described in Table 1, Table 2a, Table 2b, Table 3a, Table 3b and Table 4.

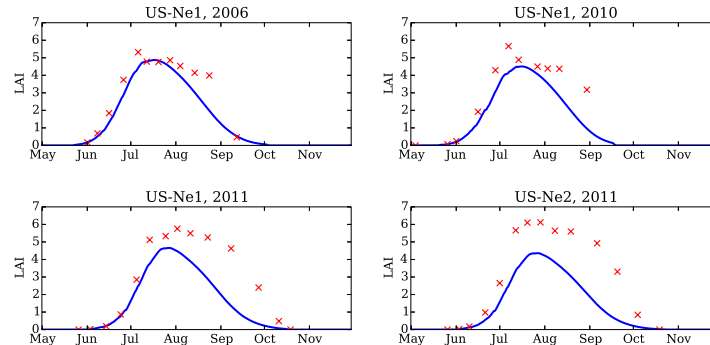


Figure 22 compares the model GPP and the observations, and shows very close agreement. This is influenced by a cancellation of two effects: as identified in the previous section, the GPP per APAR in the model is biased high, whereas the outputted LAI is biased low, shown in Figure 23. In part the reduction in modelled LAI compared to observations was deliberately introduced when tuning the senescence parameters, so that a quicker decrease in LAI compensates partially for the model not including a decrease in leaf photosynthetic capacity. However, it is also clear that the interannual variability of LAI is not reproduced by the model; in particular, in some years (2006, 2010, 2011 for US-Ne1 and 2011 for US-Ne2), the LAI is too small in the crop season up to anthesis. This is due to the high sensitivity of the plant in its early life to parameter settings, due to the feedback between NPP and LAI. In these site and year combinations (2006, 2010, 2011 for US-Ne1 and 2011 for US-Ne2), temperatures between DVI 0.1 and DVI 0.2 are higher on average, and so DVI is increasing more rapidly, which gives the plant less time to accumulate NPP, leading to a reduced rate of increase of LAI with respect to DVI in the model runs at this growth stage. On the other hand, the SLA observations for these years in the early crop season are particularly high compared to the rest of the distribution, which means that the observations do not show this reduced rate of increase of LAI at this growth stage. Fitting γ and δ to the SLA observations in just these site and year combinations (2006, 2010, 2011 for US-Ne1 and 2011 for US-Ne2) gives 18.0 and -0.45 respectively. Using these parameters in JULES runs with the crop model gives much better agreement with LAI observations (Figure 24). This is also consistent with the result from US-Ne2 in 2010: since the crop emerges 9 days after the crop in US-Ne1, the period of relatively high temperatures mostly falls before the crop is initialised. It is possible that parametrising SLA with day after emergence rather than with DVI might improve the fit between model and observed LAI by reducing the sensitivity of the SLA parametrisation to temperature.

The canopy height is well represented in the runs (Figure 25). The above-ground carbon in the model also fits the observations well (Figure 26). The harvest carbon pool (which includes the reproductive parts of the plant and the yellow leaves) is overestimated in the model, which is consistent with the overestimation of GPP during the senescence period.

Figure 25. Time series of canopy height for irrigated maize at the Mead FLUXNET sites US-Ne1 and US-Ne2. Blue: model, red: observations. JULES runs have the crop model switched on and the input parameters in Table 1, Table 2a, Table 2b, Table 3a, Table 3b and Table

4.

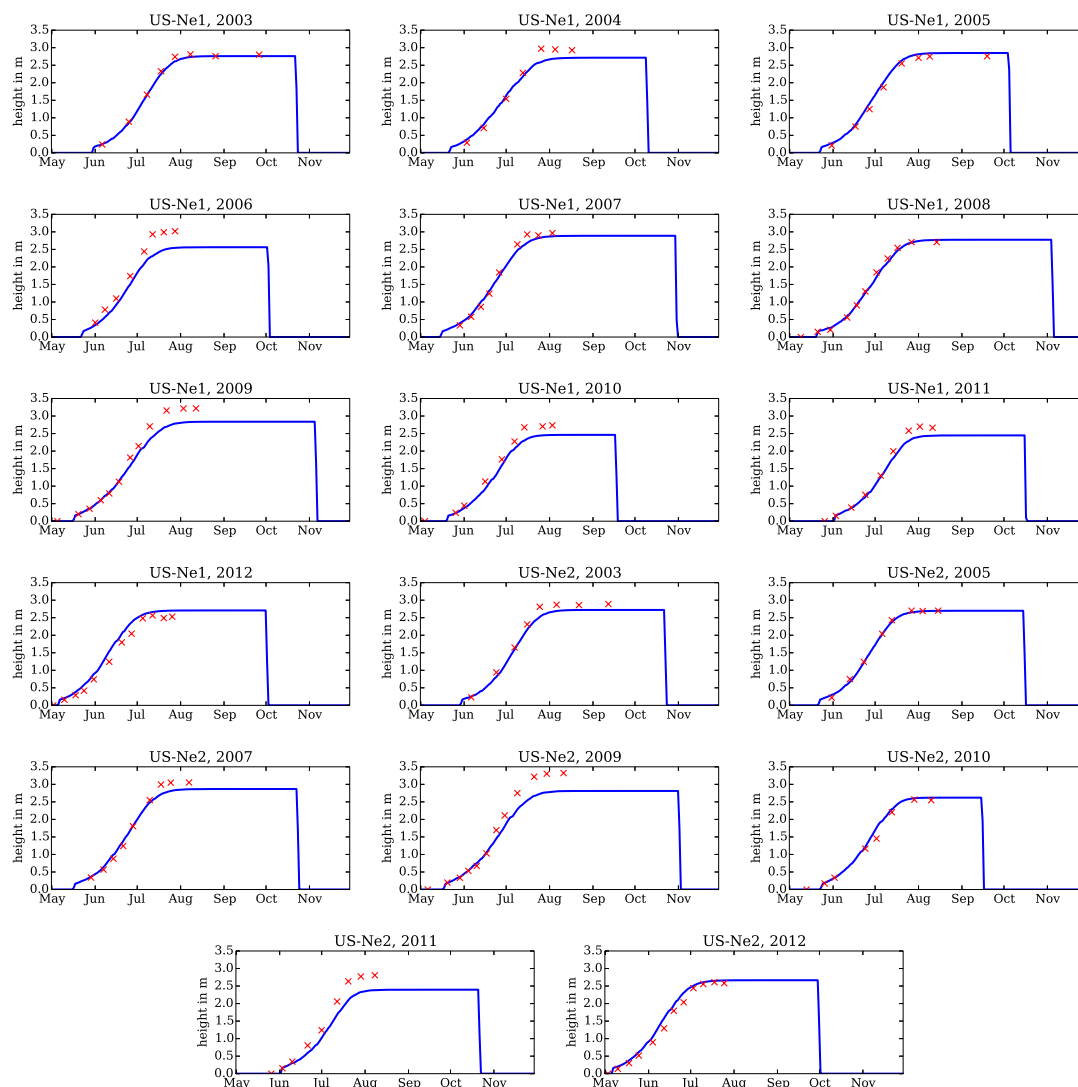


Figure 26. Time series for above-ground carbon for irrigated maize at the Mead FLUXNET sites US-Ne1 and US-Ne2. Blue: model, red: observations. JULES runs have the crop model switched on and the input parameters in Table 1, Table 2a, Table 2b, Table 3a, Table 3b and Table 4.

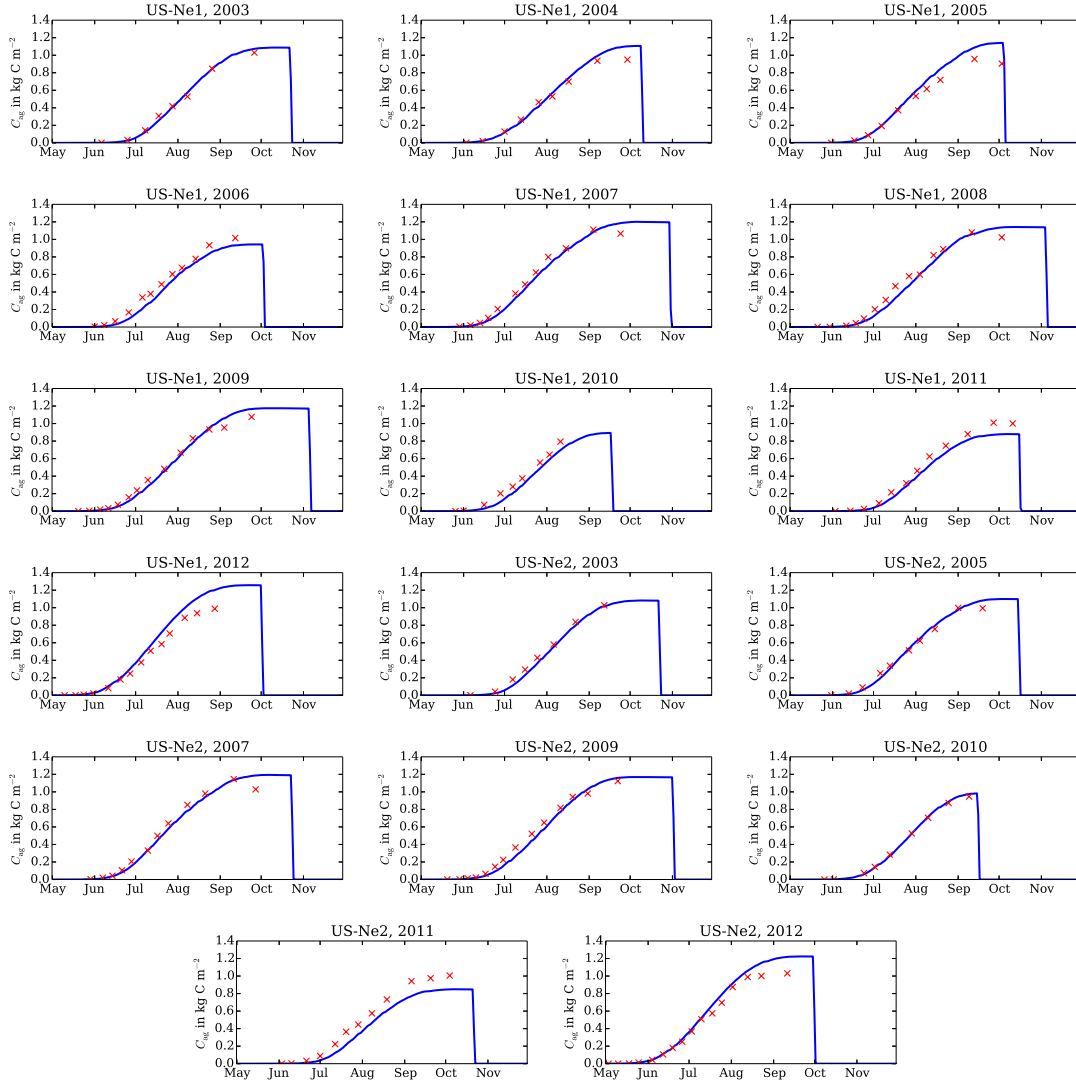
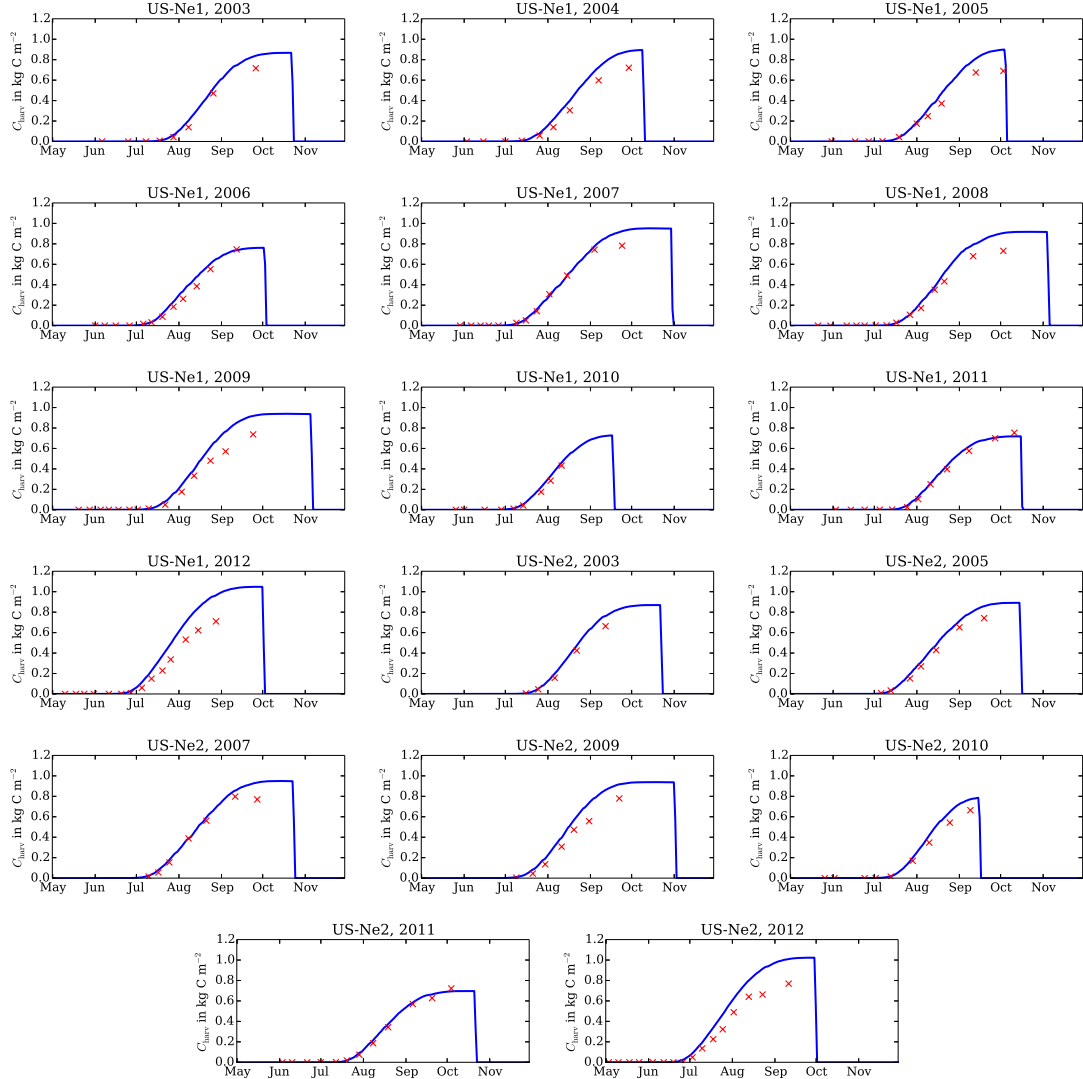


Figure 27. Time series of the carbon in the harvest pool (reproductive parts of the crop and yellow leaves). Irrigated maize at the Mead FLUXNET sites US-Ne1 and US-Ne2. Blue: model, red: observations. JULES runs have the crop model switched on and the input parameters in Table 1, Table 2a, Table 2b, Table 3a, Table 3b and Table 4.



5 Conclusions

The JULES-crop parametrisation of crops within JULES was introduced to improve the carbon and energy fluxes in the model over croplands and to investigate the effect of weather and climate on food and water resources, at global, regional and local scales. In this evaluation paper, we have looked in detail at how the input parameters in this pre-existing model can be tuned for one crop - maize - at one location - Mead, US - where there are a wide variety of observations to probe how the model components perform, both separately and in combination.

In previous analyses with JULES-crop, it has been assumed that model photosynthesis and respiration parameters can be set to the default C3 grass values for C3 crops and the default C4 grass values for C4 crops. We have used literature results and the observations available at this site to improve the maize parameters required in both the crop-model part of JULES (such as partition fractions and allometric constants) and the generic vegetation code.

With the new parameters, there is good agreement between modelled GPP and observed GPP up until anthesis if the feedback between NPP and LAI is removed by switching the crop model off and prescribing LAI (and canopy height) when the skies are mostly overcast. The model tends to overestimate GPP for clearer skies. After anthesis, there is a much greater overestimation of GPP, due to the model being unable to capture the decrease in photosynthetic capability at the leaf level over time in the crop. The respiration parameters were more difficult to test in isolation, but integrating model respiration over the entire crop season produced results that were consistent with the GPP and carbon pool observations.

Running the full crop model, including all the new parameters, produced GPP time series that were very close to the observations. This was helped partially by a cancellation of two biases - the model GPP for a certain LAI was biased high, as we have just discussed, and the LAI in the model was biased low compared to the observations. There were a few anomalous years in which the peak LAI in the model was approximately two thirds of the peak LAI in the observations, which may imply oversensitivity to initial conditions. The amount of above-ground carbon was reproduced well, although the amount of carbon in the harvest pool was overestimated in most cases.

There should be three main priorities for extending this work to improve the representation of maize at these sites. Firstly, work should be done to tune the parametrisation of soil moisture stress of maize, so that the water balance of the irrigated sites could be accurately modelled and runs for the non-irrigated site could also be included. Secondly, a parametrisation of the maximum rate of carboxylation of Rubisco V_{cmax} should be added that allows it to vary over the course of the crop season. Thirdly, these runs have been tightly constrained by using observed sowing, emergence, flowering and harvest dates to generate the thermal times needed as input to JULES. For most regions, and for any climate projections, this sort of data will not be available. Therefore, it would be a useful test of the model to investigate the performance at the Mead sites if the model is given generic values for the thermal time parameters.

While this study has focussed on modelling one crop variety at one site, it also provides a demonstration of how knowledge of the structure of the model can be used to tease apart different components of the model so that they can be tuned or evaluated against observations. This ranged from the tuning of parameters in simple allometric relations such as that relating stem carbon to canopy height, to tuning the canopy parameters using the external representation of the canopy scheme in

pySellersTwoStream, up to running JULES with the crop model switched off and prescribed LAI and canopy height, in order to tune GPP without the complication of the feedback between GPP and LAI. It therefore provides a case study which can be used when setting up and evaluating the model for other crop varieties and sites.

6 Code availability

- 5 This study uses JULES revision 5061, which is between the 4.6 and 4.7 releases. The code can be downloaded from the JULES FCM repository at

<https://code.metoffice.gov.uk/trac/jules/>

(registration required).

The pySellersTwoStream package is available at

- 10 <https://github.com/tquaife/pySellersTwoStream>. The version used in this study was downloaded on 15.09.2016.

7 Data availability

Unless otherwise noted, all site observations discussed in this paper was obtained from the Site Information pages of the AmeriFlux website (<http://public.ornl.gov/ameriflux/> or personal communication with the Mead sites Research Technologist.

15 8 Copyright

The works published in this journal are distributed under the Creative Commons Attribution 3.0 License. This licence does not affect the Crown copyright work, which is re-usable under the Open Government Licence (OGL). The Creative Commons Attribution 3.0 License and the OGL are interoperable and do not conflict with, reduce or limit each other.

©Crown copyright 2016

References

- Atkin, O. K. K., Westbeek, M., Cambridge, M. L. L., Lambers, H., and Pons, T. L. L.: Leaf Respiration in Light and Darkness (A Comparison of Slow- and Fast-Growing Poa Species)., *Plant physiology*, 113, 961–965, <http://view.ncbi.nlm.nih.gov/pubmed/12223656>, 1997.
- Bänziger, M., Maize, I., and Center., W. I.: Breeding for drought and nitrogen stress tolerance in maize : from theory to practice, *International Maize and Wheat Center*, <http://www.worldcat.org/isbn/970648463>, 2000.
- Best, M. J., Pryor, M., Clark, D. B., Rooney, G. G., Essery, Ménard, C. B., Edwards, J. M., Hendry, M. A., Porson, A., Gedney, N., Mercado, L. M., Sitch, S., Blyth, E., Boucher, O., Cox, P. M., Grimmond, C. S. B., and Harding, R. J.: The Joint UK Land Environment Simulator (JULES), model description – Part 1: Energy and water fluxes, *Geoscientific Model Development*, 4, 677–699, doi:10.5194/gmd-4-677-2011, <http://dx.doi.org/10.5194/gmd-4-677-2011>, 2011.
- 10 Bilonis, I., Drewniak, B. A., and Constantinescu, E. M.: Crop physiology calibration in the CLM, *Geoscientific Model Development*, 8, 1071–1083, doi:10.5194/gmd-8-1071-2015, <http://dx.doi.org/10.5194/gmd-8-1071-2015>, 2015.
- Clark, D. B., Mercado, L. M., Sitch, S., Jones, C. D., Gedney, N., Best, M. J., Pryor, M., Rooney, G. G., Essery, R. L. H., Blyth, E., Boucher, O., Harding, R. J., Huntingford, C., and Cox, P. M.: The Joint UK Land Environment Simulator (JULES), model description – Part 2: Carbon fluxes and vegetation dynamics, *Geoscientific Model Development*, 4, 701–722, doi:10.5194/gmd-4-701-2011, <http://dx.doi.org/10.5194/gmd-4-701-2011>, 2011.
- 15 Collatz, Ball, Grievet, C., and Berry, J. A.: Physiological and environmental regulation of stomatal conductance, photosynthesis and transpiration: a model that includes a laminar boundary layer, *Agricultural and Forest Meteorology*, 54, 107–136, doi:10.1016/0168-1923(91)90002-8, [http://dx.doi.org/10.1016/0168-1923\(91\)90002-8](http://dx.doi.org/10.1016/0168-1923(91)90002-8), 1991.
- Collatz, G. J., Ribas-Carbo, M., and Berry, J. A.: Coupled Photosynthesis-Stomatal Conductance Model for Leaves of C4 Plants, *Australian Journal of Plant Physiology*, 19, 519–538, <http://www.publish.csiro.au/?paper=PP9920519>, 1992.
- 20 Collins, W. J., Bellouin, N., Doutriaux-Boucher, M., Gedney, N., Halloran, P., Hinton, T., Hughes, J., Jones, C. D., Joshi, M., Liddicoat, S., Martin, G., O'Connor, F., Rae, J., Senior, C., Sitch, S., Totterdell, I., Wiltshire, A., and Woodward, S.: Development and evaluation of an Earth-System model – HadGEM2, *Geoscientific Model Development*, 4, 1051–1075, doi:10.5194/gmd-4-1051-2011, <http://dx.doi.org/10.5194/gmd-4-1051-2011>, 2011.
- 25 Crafts-Brandner, S. J. and Salvucci, M. E.: Sensitivity of Photosynthesis in a C4 Plant, Maize, to Heat Stress, *Plant Physiology*, 129, 1773–1780, doi:10.1104/pp.002170, <http://dx.doi.org/10.1104/pp.002170>, 2002.
- de Vries, F. W. T. P., Jansen, D. M., Berge, H. F. M. T., and Bakema, A.: Simulation of ecophysiological processes of growth in several annual crops, *Pudoc, Wageningen*, 1989.
- Dlugokencky, E. and Tans, P.: Globally averaged marine surface annual mean data, www.esrl.noaa.gov/gmd/ccgg/trends/, last accessed 02.09.2016, 2016.
- 30 Dohleman, F. G. and Long, S. P.: More productive than maize in the Midwest: How does Miscanthus do it?, *Plant physiology*, 150, 2104–2115, doi:10.1104/pp.109.139162, <http://dx.doi.org/10.1104/pp.109.139162>, 2009.
- Drewniak, B., Song, J., Prell, J., Kotamarthi, V. R., and Jacob, R.: Modeling agriculture in the Community Land Model, *Geoscientific Model Development*, 6, 495–515, doi:10.5194/gmd-6-495-2013, <http://dx.doi.org/10.5194/gmd-6-495-2013>, 2013.
- 35 Dwyer, L. M. and Stewart, D. W.: Effect of leaf age and position on net photosynthetic rates in maize (*Zea Mays* L.), *Agricultural and Forest Meteorology*, 37, 29–46, doi:10.1016/0168-1923(86)90026-2, [http://dx.doi.org/10.1016/0168-1923\(86\)90026-2](http://dx.doi.org/10.1016/0168-1923(86)90026-2), 1986.

- Earl, H. J. and Tollenaar, M.: Differences among commercial maize (*Zea mays* L.) hybrids in respiration rates of mature leaves, *Field Crops Research*, 59, 9–19, doi:10.1016/s0378-4290(98)00098-7, [http://dx.doi.org/10.1016/s0378-4290\(98\)00098-7](http://dx.doi.org/10.1016/s0378-4290(98)00098-7), 1998.
- Jones, C. D., Hughes, J. K., Bellouin, N., Hardiman, S. C., Jones, G. S., Knight, J., Liddicoat, S., O'Connor, F. M., Andres, R. J., Bell, C., Boo, K. O., Bozzo, A., Butchart, N., Cadule, P., Corbin, K. D., Doutriaux-Boucher, M., Friedlingstein, P., Gornall, J., Gray, L.,
5 Halloran, P. R., Hurtt, G., Ingram, W. J., Lamarque, J. F., Law, R. M., Meinshausen, M., Osprey, S., Palin, E. J., Parsons Chini, L., Raddatz, T., Sanderson, M. G., Sellar, A. A., Schurer, A., Valdes, P., Wood, N., Woodward, S., Yoshioka, M., and Zerroukat, M.: The HadGEM2-ES implementation of CMIP5 centennial simulations, *Geoscientific Model Development*, 4, 543–570, doi:10.5194/gmd-4-543-2011, <http://dx.doi.org/10.5194/gmd-4-543-2011>, 2011.
- Kim, S., Gitz, D., Sicher, R., Baker, J., Timlin, D., and Reddy, V.: Temperature dependence of growth, development, and photosynthesis in
10 maize under elevated CO₂, *Environmental and Experimental Botany*, 61, 224–236, doi:10.1016/j.envexpbot.2007.06.005, <http://dx.doi.org/10.1016/j.envexpbot.2007.06.005>, 2007.
- Lokupitiya, E., Denning, S., Paustian, K., Baker, I., Schaefer, K., Verma, S., Meyers, T., Bernacchi, C. J., Suyker, A., and Fischer, M.: Incorporation of crop phenology in Simple Biosphere Model (SiBcrop) to improve land-atmosphere carbon exchanges from croplands, *Biogeosciences*, 6, 969–986, doi:10.5194/bg-6-969-2009, <http://dx.doi.org/10.5194/bg-6-969-2009>, 2009.
- 15 Lu, Y., Williams, I. N., Bagley, J. E., Torn, M. S., and Kueppers, L. M.: Development of a winter wheat model in the Community Land Model (version 4.5), *Geoscientific Model Development Discussions*, pp. 1–24, doi:10.5194/gmd-2016-245, <http://dx.doi.org/10.5194/gmd-2016-245>, 2016.
- Massad, r.-S., Tuzet, A., and Bethenod, O.: The effect of temperature on C₄-type leaf photosynthesis parameters, *Plant, Cell & Environment*, 30, 1191–1204, doi:10.1111/j.1365-3040.2007.01691.x, <http://dx.doi.org/10.1111/j.1365-3040.2007.01691.x>, 2007.
- 20 Massignam, A. M., Chapman, S. C., Hammer, G. L., and Fukai, S.: Canopy architecture and nitrogen utilisation for biomass production: the contrast between maize and sunflower, in: *Proceedings of the 10th Australian Agronomy Conference*, <http://www.regional.org.au/au/asa/2001/6/b/massignam.htm>, 2001.
- Naidu, S. L., Moose, S. P., AL-Shoaibi, A. K., Raines, C. A., and Long, S. P.: Cold Tolerance of C₄ photosynthesis in *Miscanthus × giganteus*: Adaptation in Amounts and Sequence of C₄ Photosynthetic Enzymes, *Plant Physiology*, 132, 1688–1697, doi:10.1104/pp.103.021790,
25 <http://dx.doi.org/10.1104/pp.103.021790>, 2003.
- Osborne, T., Gornall, J., Hooker, J., Williams, K., Wiltshire, A., Betts, R., and Wheeler, T.: JULES-crop: a parametrisation of crops in the Joint UK Land Environment Simulator, *Geoscientific Model Development*, 8, 1139–1155, doi:10.5194/gmd-8-1139-2015, <http://dx.doi.org/10.5194/gmd-8-1139-2015>, 2015.
- Puntel, L. A.: Field characterization of maize photosynthesis response to light and leaf area index under different nitrogen levels: a modeling
30 approach, Master's thesis, Iowa State University, <http://lib.dr.iastate.edu/etd/12673/>, 2012.
- Ray, J., Gesch, R., Sinclair, T., and Hartwell Allen, L.: The effect of vapor pressure deficit on maize transpiration response to a drying soil, 239, 113–121, doi:10.1023/a:1014947422468, <http://dx.doi.org/10.1023/a:1014947422468>, 2002.
- Sánchez, B., Rasmussen, A., and Porter, J. R.: Temperatures and the growth and development of maize and rice: a review, *Glob Change Biol*, 20, 408–417, doi:10.1111/gcb.12389, <http://dx.doi.org/10.1111/gcb.12389>, 2014.
- 35 Sellers, P. J.: Canopy reflectance, photosynthesis and transpiration, *International Journal of Remote Sensing*, 6, 1335–1372, doi:10.1080/01431168508948283, <http://dx.doi.org/10.1080/01431168508948283>, 1985.

- Song, Y., Jain, A. K., and McIsaac, G. F.: Implementation of dynamic crop growth processes into a land surface model: evaluation of energy, water and carbon fluxes under corn and soybean rotation, *Biogeosciences*, 10, 8039–8066, doi:10.5194/bg-10-8039-2013, <http://dx.doi.org/10.5194/bg-10-8039-2013>, 2013.
- Stirling, C. M., Aguilera, C., Baker, N. R., and Long, S. P.: Changes in the photosynthetic light response curve during leaf development of field grown maize with implications for modelling canopy photosynthesis, *Photosynthesis Research*, 42, 217–225, doi:10.1007/bf00018264, <http://dx.doi.org/10.1007/bf00018264>, 1994.
- Suyker, A. E., Verma, S. B., Burba, G. G., Arkebauer, T. J., Walters, D. T., and Hubbard, K. G.: Growing season carbon dioxide exchange in irrigated and rainfed maize, *Agricultural and Forest Meteorology*, 124, 1–13, doi:10.1016/j.agrformet.2004.01.011, <http://dx.doi.org/10.1016/j.agrformet.2004.01.011>, 2004.
- 10 Suyker, A. E., Verma, S. B., Burba, G. G., and Arkebauer, T. J.: Gross primary production and ecosystem respiration of irrigated maize and irrigated soybean during a growing season, *Agricultural and Forest Meteorology*, 131, 180–190, doi:10.1016/j.agrformet.2005.05.007, <http://dx.doi.org/10.1016/j.agrformet.2005.05.007>, 2005.
- Verma, S. B., Dobermann, A., Cassman, K. G., Walters, D. T., Knops, J. M., Arkebauer, T. J., Suyker, A. E., Burba, G. G., Amos, B., Yang, H., Ginting, D., Hubbard, K. G., Gitelson, A. A., and Walter-Shea, E. A.: Annual carbon dioxide exchange in irrigated and rainfed maize-based agroecosystems, *Agricultural and Forest Meteorology*, 131, 77–96, doi:10.1016/j.agrformet.2005.05.003, <http://dx.doi.org/10.1016/j.agrformet.2005.05.003>, 2005.
- 15 Walters, D. N., Williams, K. D., Boutle, I. A., Bushell, A. C., Edwards, J. M., Field, P. R., Lock, A. P., Morcrette, C. J., Stratton, R. A., Wilkinson, J. M., Willett, M. R., Bellouin, N., Bodas-Salcedo, A., Brooks, M. E., Copsey, D., Earnshaw, P. D., Hardiman, S. C., Harris, C. M., Levine, R. C., MacLachlan, C., Manners, J. C., Martin, G. M., Milton, S. F., Palmer, M. D., Roberts, M. J., Rodríguez, J. M., Tennant, W. J., and Vidale, P. L.: The Met Office Unified Model Global Atmosphere 4.0 and JULES Global Land 4.0 configurations, *Geoscientific Model Development Discussions*, 6, 2813–2881, doi:10.5194/gmdd-6-2813-2013, <http://dx.doi.org/10.5194/gmdd-6-2813-2013>, 2013.
- 20 Williams, K. E. and Falloon, P. D.: Sources of interannual yield variability in JULES-crop and implications for forcing with seasonal weather forecasts, *Geoscientific Model Development Discussions*, 8, 4599–4621, doi:10.5194/gmdd-8-4599-2015, <http://dx.doi.org/10.5194/gmdd-8-4599-2015>, 2015.
- 25 Wu, X., Vuichard, N., Ciais, P., Viovy, N., de Noblet-Ducoudré, N., Wang, X., Magliulo, V., Wattenbach, M., Vitale, L., Di Tommasi, P., Moors, E. J., Jans, W., Elbers, J., Ceschia, E., Tallec, T., Bernhofer, C., Grünwald, T., Moureaux, C., Manise, T., Ligne, A., Cellier, P., Loubet, B., Larmanou, E., and Ripoche, D.: ORCHIDEE-CROP (v0), a new process-based agro-land surface model: model description and evaluation over Europe, *Geoscientific Model Development*, 9, 857–873, doi:10.5194/gmd-9-857-2016, <http://dx.doi.org/10.5194/gmd-9-857-2016>, 2016.
- 30 *Acknowledgements.* KW gratefully acknowledges financial support from the European Commission’s 7th Framework Programme for Research (EU/FP7) under Grant Agreement 308291 (EUPORIAS) and 603864 (HELIX). AW was supported by EU/FP7 under Grant Agreement 603542 (LUC4C) and DH was supported by the Joint UK BEIS/Defra Met Office Hadley Centre Climate Programme (GA01101). TQ was funded by the NERC National Centre for Earth Observation, UK. AH was supported by an EPSRC Living With Environmental Change fellowship No EP/N030141/1. We acknowledge the following AmeriFlux sites for their data records: US-Ne1, US-Ne1, US-Ne3. In addition,
- 35 funding for AmeriFlux data resources and core site data was provided by the U.S. Department of Energy’s Office of Science. The authors would like to thank Camilla Mathison and Alberto Martinez de la Torre for useful discussions.

Appendix A: [Model description \(section moved to appendix\)](#)

In this section, we will summarise the relevant features of JULES and the JULES-crop parametrisation within it, paying particular attention to new model features available since the Osborne et al. (2015) study (i.e. post version 4.0). These new options are indicated in Table 1, Table 2a, Table 2b, Table 3a, Table 3b and Table 4.

5 A1 Crop model

In JULES-crop, the development status of each crop within a gridbox is parametrised by a crop development index (DVI). DVI is -2 before sowing, -1 at sowing, 0 at emergence and 1 at flowering. Under favourable conditions, harvest occurs at a DVI of 2. The DVI has three main functions within the JULES-crop model: it determines the harvest date, the partitioning of NPP between the crop carbon pools and the dependence of the specific leaf area on leaf carbon.

- 10 The increase in DVI over the course of the crop's lifetime is determined by crop-specific thermal time parameters, set by the user. If the dependence on photoperiod length is neglected (as in Osborne et al. (2015)), thermal time becomes an accumulation of effective temperature between one development stage and the next, where effective temperature is defined by

$$T_{\text{eff}} = \begin{cases} 0 & \text{for } T < T_b \\ T - T_b & \text{for } T_b \leq T \leq T_o \\ (T_o - T_b)(1 - \frac{T - T_o}{T_m - T_o}) & \text{for } T_o < T < T_m \\ 0 & \text{for } T \geq T_m \end{cases} \quad (\text{A1})$$

i.e. a triangular function, peaking at an optimal temperature T_o , which is zero below a base temperature T_b and above a maximum temperature T_m . T_o , T_b and T_m are parameters specified by the user for each crop. T_o , T_b and T_m are given in Kelvin and thermal time in units of degree days.

- 15 Crop growth is modelled by accumulating net primary productivity over the course of a day (NPP^{acc}) and splitting this carbon between the crop root, stem, leaf, harvest and reserve carbon pools for that tile (C_{root} , C_{leaf} , C_{stem} , C_{harv} , C_{resv} respectively.) according to

$$\begin{aligned} 20 \quad \Delta C_{\text{root}} &= p_{\text{root}} \text{NPP}^{\text{acc}} \\ \Delta C_{\text{leaf}} &= p_{\text{leaf}} \text{NPP}^{\text{acc}} \\ \Delta C_{\text{harv}} &= p_{\text{harv}} \text{NPP}^{\text{acc}} \\ \Delta C_{\text{stem}} &= p_{\text{stem}} \text{NPP}^{\text{acc}} (1 - \tau) \\ \Delta C_{\text{resv}} &= p_{\text{stem}} \text{NPP}^{\text{acc}} \tau, \end{aligned} \quad (\text{A2})$$

- 25 where τ is the fraction of stem carbon that is partitioned into the stem reserve pool (containing the remobilizable carbohydrates) and p_i (for $i = \text{root, stem, leaf, harv}$) are the partition coefficients defined by

$$p_i = \frac{\exp[\alpha_i + \beta_i \text{DVI}]}{\sum_j \exp[\alpha_j + \beta_j \text{DVI}]}, \quad (\text{A3})$$

where $j = \text{root, stem, leaf, harv}$. α_i and β_i are numerical constants that are tuned to observational data. α_{harv} and β_{harv} are both set to zero. All other α_i and β_i are set by the user for each crop. Note that $\sum_j p_j = 1$.

The crop carbon pools are initialised at DVI_{init} , which is at or just after emergence. At initialisation, the crops are given a certain amount of carbon C_{init} , which is distributed between the carbon pools according to the values of p_i at $\text{DVI} = \text{DVI}_{\text{init}}$.

- 5 Once p_{stem} drops below 0.01, carbon from the stem reserve pool is mobilised to the harvest pool, by reducing C_{resv} by 10% each day and adding this carbon to the harvest pool (as proposed in de Vries et al. (1989)). Similarly, once the DVI is above a threshold value DVI_{sen} , carbon from the leaf pool is mobilised to the harvest pool to simulate leaf senescence, by reducing C_{leaf} by a fraction

$$\mu (\text{DVI} - \text{DVI}_{\text{sen}})^\nu \quad (\text{A4})$$

- 10 each day when $\text{DVI} > \text{DVI}_{\text{sen}}$. ν and μ are numerical constants that are tuned to observational data.

After DVI_{init} and if sowing date is prescribed, the model harvests the crop and resets the crop tile if any of the following conditions are satisfied:

1. DVI reaches 2 (i.e. the desired harvest condition)
2. $\text{LAI} > 15$, since once the model reaches such large LAI it is clearly unrealistic,
- 15 3. the temperature of the second soil layer from the top falls below a user defined temperature T_{mort} at any time after $\text{DVI}=1$
4. $\text{DVI} > 1.0$, the carbon in the roots, leaves, stem and stem reserve pool of the crop falls below C_{init} and the amount of carbon in the harvest pool is greater than zero
5. the crop age reaches 1 year, so that a new crop can be sown each year.

- 20 The crop height h is calculated from the C_{stem} pool using

$$h = \kappa \left(\frac{C_{\text{stem}}}{f_{C,\text{stem}}} \right)^\lambda, \quad (\text{A5})$$

where κ and λ are allometric constants and $f_{C,\text{stem}}$ is the fraction of carbon in the dried stem (excluding the stem reserves), all given as input by the user.

- The green (i.e. photosynthesising) leaf area index (LAI) is calculated from the leaf carbon and the specific leaf area (SLA)
25 by

$$\text{LAI} = \frac{C_{\text{leaf}}}{f_{C,\text{leaf}}} \text{SLA}, \quad (\text{A6})$$

where $f_{C,\text{leaf}}$ is the carbon fraction of the dry leaves. The SLA depends on the DVI via

$$\text{SLA} = \gamma (\text{DVI} + 0.06)^\delta, \quad (\text{A7})$$

where γ and δ are allometric constants which are set by the user.

JULES-crop outputs water-limited potential yield if irrigation is switched off and potential yield if irrigation is on, expressed in kg C m^{-2} . This yield is calculated by multiplying the value of C_{harv} on the day of harvest by a parameter f_{yield} supplied by the user, which represents the fraction of C_{harv} that is economically valuable i.e. the maize kernel in our runs.

5 A2 Relationship between LAI, canopy height and plant carbon for natural vegetation

When the crop model is switched off, different allometric functions are used to approximate the carbon in the leaf, stem and root pools based on the prognostics LAI and canopy height h . These allometric functions make use of a ‘balanced’ leaf area index (LAI_{bal}), which is calculated from canopy height using

$$\text{LAI}_{\text{bal}} = \left(\frac{a_{ws}\eta_{sl}}{a_{wl}} h \right)^{\frac{1}{b_{wl}-1}}, \quad (\text{A8})$$

- 10 where a_{ws} , a_{wl} , η_{sl} and b_{wl} are all allometric constants, defined in relation to the respiring stem carbon S and the total stem carbon \mathcal{W} :

$$S = \eta_{sl} h \text{LAI}_{\text{bal}} \quad (\text{A9})$$

$$\mathcal{W} = a_{ws} S \quad (\text{A10})$$

$$\mathcal{W} = a_{wl} (\text{LAI}_{\text{bal}})^{b_{wl}}. \quad (\text{A11})$$

- 15 We assume here that S is equivalent to C_{stem} and \mathcal{W} is equivalent to $C_{\text{stem}} + C_{\text{resv}}$ in the crop model. Therefore, a_{ws} is equivalent to $1 - \tau$ in the crop model and these equations can be compared directly to Eq. A5 until the start of the remobilisation of the crop stem reserve pool.

The size of the leaf carbon pool C_{leaf} is calculated by multiplying the LAI by the canopy-averaged specific leaf density σ_l (in $\text{kg C (m}^2 \text{ leaf)}^{-1}$), which is assumed to be constant i.e.

$$20 \quad C_{\text{leaf}} = \sigma_l \text{LAI}. \quad (\text{A12})$$

The root carbon C_{root} is approximated by

$$C_{\text{root}} = \sigma_l \text{LAI}_{\text{bal}}. \quad (\text{A13})$$

A3 Canopy

- JULES has a number of options for calculating the photosynthetically active radiation (PAR) available to leaves at different depths in the plant canopy. In this discussion, we will focus on the canopy radiation scheme used in Osborne et al. (2015) (can_rad_mod 5) and the canopy radiation scheme currently recommended for layered canopies in JULES (can_rad_mod 6), which both treat the direct and diffuse components of the incident radiation separately (as in Sellers (1985)) and include sunflecks. We also assume a zenith angle dependence ($1_{\text{cos}\theta=T}$). JULES assumes that the incident PAR is half of the incident shortwave radiation. The amount of incident PAR composed of diffuse radiation is given as part of the driving data.

The canopy is split into 10 equal layers of green leaf area index (LAI). The equations for absorption and scattering at each layer for the incident diffuse beam and the incident direct beam are solved separately, taking into account the distribution of leaf angles and the zenith angle. The sunlit fraction of the leaf is also calculated, and absorbs light from the direct component of the direct beam radiation (“sunflecks”), in addition to the diffuse light from the direct beam and light from the diffuse beam.

- 5 The shaded fraction of the leaf absorbs light scattered from the direct beam and light from diffuse beam only (i.e. no direct sunlight). JULES has two leaf angle distributions currently implemented - spherical and horizontal. As of JULES version 4.6, JULES also includes a canopy clumping factor a , which scales LAI within the canopy radiation scheme and represents variation within and across canopy structures.

A4 Modelling C4 photosynthesis

- 10 In JULES, potential leaf-level photosynthesis (unstressed by water availability and ozone effects) is calculated as the smoothed minimum of three rates, following Collatz et al. (1991, 1992): (a) the Rubisco-limited rate W_c , which depends on the maximum rate of carboxylation of Rubisco, (b) the light-limited rate W_{light} and (c) the rate associated with the transport of photosynthetic products for C3 plants or PEP-Carboxylase limitation for C4 plants W_e .

For C4 plants, W_c is set to the maximum rate of carboxylation of Rubisco, V_{cmax} . V_{cmax} is calculated using

$$15 \quad V_{\text{cmax}} = \frac{V_{\text{cmax,norm}} f_T(T_c)}{[1 + e^{0.3(T_c - T_{\text{upp}})}] [1 + e^{0.3(T_{\text{low}} - T_c)}]} \quad (\text{A14})$$

where

$$f_T = Q_{10,\text{leaf}}^{0.1(T_c - 25)} \quad (\text{A15})$$

and T_c is the leaf temperature (which does not vary through the canopy in JULES) and $V_{\text{cmax,norm}}$ is a normalisation constant.

Note that $V_{\text{cmax,norm}}$ is not $V_{\text{cmax}}(T_c=25^\circ\text{C})$ but, for default JULES C3 grass and C4 grass parameters, $V_{\text{cmax,norm}}$ and

- 20 $V_{\text{cmax}}(T_c=25^\circ\text{C})$ are within 5 % of each other. T_{upp} and T_{low} are used to give the leaf an optimum temperature range, which is superimposed on the Q_{10} dependence in f_T .

If trait-based physiology is switched off in JULES (`l_trait_phys=F`),

$$V_{\text{cmax,norm}} = n_e n_l \quad (\text{A16})$$

where n_l is the mass of nitrogen per mass of carbon in the leaf (with units kg N (kg C)^{-1}), which varies through the canopy,

- 25 and n_e is a normalisation constant, fitted to data. The input parameters specified by the user are n_l^0 (n_l at the top of the canopy) and n_e .

In the JULES canopy radiation scheme `can_rad_mod 5`, $V_{\text{cmax,norm}}$ is assumed to vary through the canopy according to $\exp(-k_n \text{LAI}_{\text{layer}}/\text{LAI})$. In `can_rad_mod 6`, $V_{\text{cmax,norm}}$ varies through the canopy according to $\exp(-k_{nl} \text{LAI}_{\text{layer}})$. k_n and k_{nl} are pft-dependent parameters set by the user.

- 30 The light-limited rate of leaf photosynthesis for C4 plants is calculated in JULES using

$$W_{\text{light}} = \alpha I_{\text{APAR}} \quad (\text{A17})$$

where α is the quantum efficiency in mol CO₂ (mol PAR photons)⁻¹ and I_{APAR} is the absorbed photosynthetically active radiation (APAR) in mol PAR photons m⁻² s⁻¹. As discussed, `can_rad_mod 5` and `can_rad_mod 6` include the effect of sunflecks by spitting the leaf into a sunlight and a shaded part, which have different values of I_{APAR} and therefore different W_{light} .

5 The rate associated with PEP-Carboxylase limitation W_e in JULES is

$$W_e = 2 \times 10^4 V_{\text{cmax}} \frac{c_i}{P_*} \quad (\text{A18})$$

where P_* is the surface air pressure and c_i is the leaf internal carbon dioxide partial pressure, which is calculated for C4 plants using

$$c_i = (c_a - \Gamma) f_0 \left(1 - \frac{\Delta q}{\Delta q_{\text{crit}}} \right) + \Gamma \quad (\text{A19})$$

- 10 where Γ is the photorespiration point (zero for C4 plants) and c_a is canopy CO₂ pressure. Δq is the canopy level specific humidity deficit, Δq_{crit} is the critical specific humidity deficit and f_0 is the ratio of c_i to c_a at which the canopy level specific humidity deficit is zero. c_a is calculated from $R_{\text{CO}_2} P_*/\epsilon$, where R_{CO_2} is the atmospheric CO₂ mass mixing ratio and $\epsilon = 1.5194$ is the ratio of molecular weights of CO₂ and dry air. As an example, for zero specific humidity deficit, an atmospheric CO₂ mass mixing ratio of 5.6×10^{-4} (2003 global average, Dlugokencky and Tans (2016)), $f_0 = 0.8$ (JULES C4 grass default),
- 15 the value of W_e is $5.9 V_{\text{cmax}}$.

- The rate of gross leaf photosynthesis W is the smoothed minimum of W_c , W_{light} and W_e (calculated using non-rectangular hyperbolic functions with the curvature parameters hard-wired). The net potential (i.e. unstressed) leaf photosynthetic carbon uptake A_p is the gross leaf photosynthesis minus the dark leaf respiration R_d . The potential leaf photosynthesis is converted to a net photosynthesis by multiplying by a soil water stress parameter β . Stomata at points with negative or zero net photosynthesis
- 20 or where the leaf resistance exceeds its maximum value are closed (i.e. leaf gross photosynthesis is zero). Leaf resistance is calculated from the net (i.e. water-limited) rate of photosynthesis, $(c_a - c_i)$, the leaf temperature and the ratio of leaf resistance for CO₂ to leaf resistance for H₂O (=1.6).

A5 Respiration

In JULES, the (non-water limited) leaf dark respiration R_d (in mol CO₂ (m² leaf)⁻¹ s⁻¹) is calculated by

$$25 \quad R_d = \begin{cases} 0.7 f_{dr} V_{\text{cmax}} & \text{for } I_{\text{APAR}} \Delta \text{LAI} > 10 \mu\text{mol CO}_2 (\text{m}^2 \text{ground})^{-1} \text{s}^{-1} \\ f_{dr} V_{\text{cmax}} & \text{otherwise} \end{cases} \quad (\text{A20})$$

to allow for the inhibition of dark respiration during daylight. R_d is summed over the canopy levels for sunlit and shaded leaves to get R_{dc} , the canopy dark respiration in (in mol CO₂ (m² ground)⁻¹ s⁻¹).

The plant maintenance respiration in kg C (m² ground)⁻¹ s⁻¹ is calculated (for the setting `l_scale_resp_pm=T`) using

$$R_{pm} = 0.012 R_{dc} \beta \left(1 + \frac{N_{\text{root}}}{N_{\text{leaf}}} + \frac{N_{\text{stem}}}{N_{\text{leaf}}} \right) \quad (\text{A21})$$

$$30 \quad = 0.012 R_{dc} \beta \left(1 + \mu_{rl} \frac{C_{\text{root}}}{C_{\text{leaf}}} + \mu_{sl} \frac{C_{\text{stem}}}{C_{\text{leaf}}} \right), \quad (\text{A22})$$

where $N_{\text{root}}, N_{\text{stem}}, N_{\text{leaf}}$ are the nitrogen in the roots, stems and leaves respectively. μ_{rl} is the mass ratio of nitrogen to carbon in the roots divided by the ratio of nitrogen to carbon in the leaves. μ_{sl} is the mass ratio of nitrogen to carbon in the stem (not including stem reserves) divided by the ratio of nitrogen to carbon in the leaves. The factor 0.012 relates mol CO₂ to kg C. If the option `l_scale_resp_pm=F` is set, the root and stem terms do not depend on β .

- 5 In JULES, plant growth respiration R_{pg} is a fixed fraction r_g (the growth respiration coefficient) of the gross primary productivity (Π_G) minus the plant maintenance respiration:

$$R_{pg} = r_g(\Pi_G - R_{pm}). \quad (\text{A23})$$

Note that this relation results in the correct growth respiration on timescales of order of a day or longer (on the model timestep scale, R_{pg} will be negative in the night, which is misleading if taken in isolation). The net primary productivity Π_N is therefore

$$10 \quad \Pi_N = \Pi_G - R_{pm} - R_{pg} \quad (\text{A24})$$

$$= (1 - r_g)(\Pi_G - R_{pm}). \quad (\text{A25})$$

A6 Irrigation

- In JULES, irrigation is implemented such that the water in the top two soil layers is continuously topped up to a critical level (often the field capacity) during the ‘irrigation season’, if sufficient irrigation water is available. We will consider the irrigation
 15 season to last all year (`irr_crop=0`) and treat the supply of irrigation as unlimited (`l_irrig_limit=F`). With these settings, the soil water stress parameter β stays approximately equal to one i.e. the plant is not water-stressed.

When irrigation is on, the root distribution has a negligible influence on model performance.

A7 Nitrogen limitation

- Although JULES has a nitrogen cycle implemented (as of version 4.4), it can not yet be used in conjunction with the crop
 20 model. We therefore make the assumption here that the crops are not nitrogen limited.

Table 1. JULES flags relevant to this study. These parameters are all specified in the JULES_VEGETATION namelist.

JULES notation	Osborne et al. (2015)	This study	Remarks
can_rad_mod	5	6	Selects canopy radiation scheme. See Section A3.
l_irrid_dmd	F*	T	Switch for turning the irrigation demand model on. See Section A6.
irr_crop	-	0	Selects which method to use to determine the irrigation season. See Section A6.
l_trait_phys	F*	F	Switch for using trait-based physiology. See Section 3.5.2.
l_scale_resp_pm	F*	T	Switch for whether all plant maintenance respiration is scaled by water stress factor. See Section A5.
l_leaf_n_resp_fix	F*	-	Switch for bug fix for leaf nitrogen in plant maintenance respiration. Affects can_rad_mod=5 but not can_rad_mod=6.
l_prescsow	T	T	Switch for whether sowing date is prescribed. See Section 3.3.1.
l_phenol	T,F	F	Switch for turning the phenology model on. Only relevant in runs where the crop model is switched off.

* parameter was hard-wired

Table 2a. JULES plant functional type parameters extended to represent maize. V_{cmax} is the maximum rate of carboxylation of Rubisco. Units are given in brackets, (-) denotes dimensionless. These parameters are all specified in the JULES_PFTPARM namelist.

	JULES notation	Osborne et al. (2015)	This study	Remarks
-	c3_io	0	0	Integer specifying whether plant is C3 or C4. 0 indicates C4.
-	rootd_ft_io	0.5	1.7	Parameter determining the root depth (m). Not important in irrigated runs.
dq_{crit}	dq_crit_io	0.075	0.075	Critical humidity deficit (kg H ₂) per kg air See Section 3.5.2.
f_{dr}	fd_io	0.025	0.0096	Scale factor for dark respiration (-). See Section 3.5.3.
f_0	f0_io	0.8	0.4	Ratio of internal to external CO ₂ pressure when canopy level specific humidity deficit is zero (-). See Section 3.5.2.
n_e	neff_io	4.0E-4	5.7E-4	Scale factor in the V_{cmax} calculation (mol CO ₂ m ⁻² s ⁻¹ kg C (kg N) ⁻¹) See Section 3.5.2.
$n_l(0)$	nl0_io	0.06	0.07	Mass of nitrogen per mass of carbon in the leaf at top of canopy (kg N (kg C) ⁻¹). See Section 3.5.2.
T_{low}	tlow_io	13.0	16.0	Lower temperature parameter in the V_{cmax} calculation (°C). See Section 3.5.2.
T_{upp}	tupp_io	45.0	47.0	Upper temperature parameter in the V_{cmax} calculation (°C). See Section 3.5.2.
k_n	kn_io	0.78	-	If can_rad_mod=5, parameter determines canopy nitrogen profile (-). See Section 3.5.2.
k_{nl}	knl_io	-	0.0	If can_rad_mod=6, parameter determines canopy nitrogen profile (-). See Section 3.5.2.
$Q_{10,\text{leaf}}$	q10_leaf_io	2.0	1.0	Q_{10} factor in the V_{cmax} calculation (-). See Section 3.5.2.
μ_{rl}	nr_nl_io	1.0	0.39	Ratio of root nitrogen concentration to leaf nitrogen concentration (-). See Section 3.5.3.
μ_{sl}	ns_nl_io	1.0	0.43	Ratio of stem nitrogen concentration to leaf nitrogen concentration (-). See Section 3.5.3.
r_g	r_grow_io	0.25	0.25	Growth respiration fraction (-). See Section 3.5.3.
-	orient_io	0	0	Integer specifying leaf angle distribution. 0 is spherical. See Section 3.5.1.

* parameter was hard-wired

Table 2b. JULES plant functional type parameters extended to represent maize. Units are given in brackets, (-) denotes dimensionless. These parameters are all specified in the JULES_PFTPARM namelist.

	JULES notation	Osborne et al. (2015)	This study	Remarks
α	alpha_io	0.06	0.055	Quantum efficiency ($\text{mol CO}_2 (\text{mol PAR photons})^{-1}$). Section 3.5.2
ω_{PAR}	omega_io	0.17	0.17	Leaf scattering coefficient for PAR (-). Section 3.5.1
α_{PAR}	alpar_io	0.1	0.1	Leaf reflection coefficient for PAR (-). Section 3.5.1
-	fsmc_mod_io	0*	1	Integer indicating weighting of soil layers in water stress factor. Not important in irrigated runs.
-	fsmc_p0_io	0.0*	0.65	Scaling factor in water stress factor calculation (-). Not important in irrigated runs. 0.65 is consistent with e.g. Ray et al. (2002), Bänziger et al. (2000).
a	can_struct_a_io	1.0*	0.65	Canopy clumping factor (-). Section 3.5.1
a_{ws}	a_ws_io	1.0	0.88	Allometric constant relating respiring stem carbon to total stem carbon (-). Section 3.4
η_{sl}	eta_sl_io	0.01	0.0170	Live stemwood coefficient (kg C m^{-3}). Section 3.4
a_{wl}	a_wl_io	0.005	9.5E-3	Allometric constant in relation between total stem carbon and LAI (kg C m^{-2}) Section 3.4
b_{wl}	b_wl_io	1.667	1.767	Allometric constant in relation between total stem carbon and LAI (-) Section 3.4
σ_l	sigl_io	0.05	0.0244	Specific leaf density (kg C m^{-2}). Section 3.4

* parameter was hard-wired

Table 3a. Values of the crop-specific JULES parameters used to represent maize. Units are given in brackets, (-) denotes dimensionless. These parameters are all specified in the JULES_CROPPARM namelist.

	JULES notation	Osborne et al. (2015)	This study	Remarks
T_b	t_bse_io	281.15	281.15	Base temperature parameter in thermal time calculation (K). See Section 3.3.1.
T_o	t_opt_io	303.15	303.15	Optimum temperature parameter in thermal time calculation (K). See Section 3.3.1.
T_m	t_max_io	315.15	315.15	Maximum temperature parameter in thermal time calculation (K). See Section 3.3.1.
TT_{emr}	tt_emr_io	80	Table 5	Thermal time between sowing and emergence (degree days). See Section 3.3.1.
TT_{veg}	tt_veg	Osborne et al. (2015) fig.3	Table 5	Thermal time between emergence and flowering (degree days). See Section 3.3.1.
TT_{rep}	tt_rep	Osborne et al. (2015) fig.3	Table 5	Thermal time between flowering and harvest (degree days). See Section 3.3.1.
-	pp_sens_io	0.0	0.0	Sensitivity of development rate to photoperiod (h^{-1}). 0.0 indicates no photoperiod dependence.
-	crit_pp_io	24	-	Critical photoperiod (h). Not used when pp_sens_io=0.0.
-	rt_dir_io	0.0	0.0	Coefficient determining relative growth of roots vertically and horizontally (-). Not important in irrigated runs.
α_{root}	alpha1_io	13.5	13.5	Coefficient for determining partitioning (-). See Section 3.3.2.
α_{stem}	alpha2_io	12.5	12.1	Coefficient for determining partitioning (-). See Section 3.3.2.
α_{leaf}	alpha3_io	13.0	13.1	Coefficient for determining partitioning (-). See Section 3.3.2.
β_{root}	beta1_io	-15.5	-15.0	Coefficient for determining partitioning (-). See Section 3.3.2.
β_{stem}	beta2_io	-12.5	-12.1	Coefficient for determining partitioning (-). See Section 3.3.2.
β_{leaf}	beta3_io	-14.0	-14.1	Coefficient for determining partitioning (-). See Section 3.3.2.

* parameter was hard-wired

Table 3b. Values of the crop-specific JULES parameters used to represent maize. Units are given in brackets, (-) denotes dimensionless. These parameters are all specified in the JULES_CROPPARM namelist.

	JULES notation	Osborne et al. (2015)	This study	Remarks
γ	gamma_io	22.5	17.6	Coefficient for determining specific leaf area ($\text{m}^2 \text{kg}^{-1}$). See Section 3.3.6.
δ	delta_io	-0.2587	-0.33	Coefficient for determining specific leaf area (-). See Section 3.3.6.
τ	remob_io	0.35	0.12	Remobilisation factor (-). See Section 3.3.3.
$f_{C,\text{root}}$	cfrac_r_io	0.5	0.439	Carbon fraction of dry matter for roots (-). Not important in irrigated runs.
$f_{C,\text{stem}}$	cfrac_s_io	0.5	0.439	Carbon fraction of dry matter for stems (-). See Section 3.3.7.
$f_{C,\text{leaf}}$	cfrac_l_io	0.5	0.439	Carbon fraction of dry matter for leaves (-). See Section 3.3.7.
κ	allo1_io	3.5	3.6	Allometric coefficient relating stem carbon to canopy height (-). See Section 3.3.5.
λ	allo2_io	0.4	0.38	Allometric coefficient relating stem carbon to canopy height (-). See Section 3.3.5.
μ	mu_io	0.05*	0.02	Allometric coefficient for calculation of senescence (-). See Section 3.3.4.
ν	nu_io	0.0*	4.0	Allometric coefficient for calculation of senescence (-). See Section 3.3.4.
DVI_{sen}	sen_dvi_io	1.5*	0.4	DVI at which leaf senescence begins (-). See Section 3.3.4.
C_{init}	initial_carbon_io	0.01*	8.0E-4	Carbon in crop at emergence (kg C m^{-2}). See Section 3.3.8.
DVI_{init}	initial_c_dvi_io	0.0*	0.1	DVI at which the crop carbon is set to initial_carbon_io (-). See Section 3.3.8 .
T_{mort}	t_mort_io	t_bse_io *	273.15	Soil temperature (second level) at which to kill crop if $\text{DVI} > 1$ (K). See Section 3.3.1.
f_{yield}	yield_frac_io	1.0*	0.74	Fraction of the harvest carbon pool converted to yield carbon (-). See Section 3.3.9.

* parameter was hard-wired

Table 4. Other relevant JULES parameter values. Units are given in brackets, (-) denotes dimensionless.

JULES notation	Osborne et al. (2015)	This study	Remarks
diff_frac	0.0	Hourly observations	Diffuse radiation fraction (-). See Section 3.2.
co2mmr	5.241E-4 (JULES default)	Annual observations from Dlugokencky and Tans (2016)	Concentration of atmospheric CO ₂ as MMR (-). See Section 3.2.

Table 5. Thermal times in degree days based on crop dates recorded at the Mead FLUXNET sites, combined with hourly observed temperatures.

year	sowing DOY	sowing-emergence	emergence-flowering	flowering-maturity	flowering-harvest	sowing-harvest
US-Ne1						
2002	130	85.55	-	-	-	2011
2003	135	59.71	868.6	-	1001	1938
2004	125	113.0	844.1	784.7	977.0	1945
2005	124	107.3	923.2	869.4	1083	2129
2006	124	59.32	819.8	883.6	1086	1973
2007	121	84.84	865.7	932.6	1331	2281
2008	120	64.48	888.4	967.3	1138	2102
2009	110	89.44	903.6	836.2	959.3	1961
2010	109	84.62	808.3	935.5	1011	1917
2011	137	69.71	819.9	827.1	980.1	1885
2012	114	58.90	718.3	961.6	1275	2062
US-Ne2						
2003	134	53.41	830.0	-	1005	1887
2005	122	95.51	822.8	923.9	1218	2153
2007	121	96.33	849.6	932.3	1300	2254
2009	111	93.63	853.0	801.6	884.72	1837
2010	110	108.2	846.2	-	908.4	1874
2011	137	67.10	792.0	864.3	1039	1912
2012	115	55.92	694.1	993.0	1282	2042
US-Ne3						
2003	133	58.81	802.0	-	999.9	1870
2005	116	85.06	922.0	875.0	1163	2178
2007	122	117.66	806.0	919.5	1329	2263
2009	112	90.88	820.1	786.8	1032	1953
2011	122	112.7	802.5	923.6	1125	2051