

**[Reviewer Request]** It's clear to me that this work is very late in getting published, probably the first author has moved on to other type of work. That does not justify however the treatment of this submission in such evident cursory manner. The new paragraph inserted repeats the first sentence twice. There is nothing in the discussion that considers this new important result. There are references within the manuscript that still refer to AR4 as if AR5 and the corresponding new understanding of precipitation projection variability hadn't not come to fruition in the meantime. I will not mention the fact that we have cmip3 results in here. So my last request is not for additional work but for some due diligence in going through this article one more time, update references and most importantly clearly discuss the results of the exercise in comparison of runoff, and not by saying " we should pattern scale runoff" too. But by discussing the role of impact models as an additional and important source of variation, and clearly state that what IMOGEN supplies is something that aides the treatment of (by now outdated unfortunately) climate model uncertainty only. User beware.

**[General Response]** Dear reviewer – thank you for agreeing to look at our manuscript one further time. We answer in general terms first and then repeat below this the detailed additional text added to the manuscript.

The request to study IMOGEN projections of an impact of interest – we selected total runoff – has led to a more complete study. Comparing IMOGEN estimates against those directly from the GCMs introduces another level of uncertainty (at present, IMOGEN is only coupled to the JULES land surface model). To build the new Figure 7, illustrating implications for runoff of IMOGEN estimates versus direct GCM estimates, was done carefully and thoroughly. I'm sorry typos appeared when carrying things over to the paper itself. I accept myself responsibility for that.

What we didn't realise is the extent to which the reviewer wanted the discussion of the impact of runoff to be discussed through the paper. We are very happy to now correct for that. It is now mentioned explicitly in the Abstract, and has more prominence in the discussion part of the paper. Having presented the IMOGEN framework at various meetings, then it has been a serious suggestion made by many to actually scale impact changes directly against level of global warming. Hence, I would like to retain that as a discussion point if the reviewer is agreeable. The paper has been re-worded, though, so it no longer appears as a "throwaway" comment.

We have updated the manuscript with more recent and relevant references that we missed. A version of the paper has been uploaded with track changes so all changes can be identified. We respond with details in full to the reviewer below. In addition, we have worked through the paper careful to pick up some final points of clarity and other last small typos. These can also be seen in track changes of the new version.

**[New text related to runoff]**

In the Abstract, we now write: [“We also provide an example assessment of a terrestrial impact: changes in mean runoff, and compare projections by the IMOGEN system which has one land surface model, versus direct GCM outputs which all have alternative representations of land functioning. The latter is noted as an additional source of uncertainty.”](#)

The main part of the paper, discussing the runoff findings, is repeated in full here, as: [“In order to exemplify the ability of IMOGEN to project changes to impacts, we report results of the mean annual](#)

total runoff ( $R_{\text{tot}}$ , mm day<sup>-1</sup>) simulation based on the SRESA1B emissions forcing scenario (Figure 7), and compare them directly to GCM estimates of change in the same quantity. Hence this is comparing the IMOGEN simulations that emulate multiple GCMs but with a single land surface model (JULES), versus runoff values directly from the GCMs. The latter therefore contain alternative estimates of climate change, as well as the responses of different land surface models. During modelled pre-industrial control “spin-up” period, and modelled period centred on year 2090, total runoff values are recorded for each GCM (both emulated in IMOGEN, and directly from GCMs). Then in each case, the change is calculated. In the top panels of Figure 7, the mean of these changes are shown, whilst the bottom panels are the standard deviations of these change values. Although there are similarities between left and right-hand panels (over northern latitudes, in particular), there are important differences too, and notably the drying signal in GCM output for Africa and Australia is not reflected in the IMOGEN framework. For SDs, in some locations there is higher variability for IMOGEN than for the GCMs themselves; however, this pertains mainly to the regions where IMOGEN predicts higher runoff. The latter may be surprising, as considering that GCMs directly introduce another level of uncertainty i.e. inter-land surface model differences. Our finding is suggestive that JULES has a particularly sensitive response of runoff to imposed climatic changes. Runoff provides a challenge for comparison, as it is frequently a relatively small number between two larger fluxes of precipitation and evapotranspiration (transpiration, plus soil evaporation and interception losses) and so sensitive to change in those fluxes. Any direct comparison also needs to account for IMOGEN being initialised with a climatology based on the CRU dataset, and temporal dis-aggregation to sub-daily drivers of JULES having not been calibrated against any particular GCM. Nevertheless, to be a useful tool for impacts assessment, then IMOGEN must capture the general features of GCM projections of quantities such as runoff when operated for similar emissions scenarios. “

The component of the paper suggesting that direct scaling of impacts might be beneficial is written out in the manuscript as: “Looking ahead to further model development, one possibility is, for different GCMs, to pattern-scale directly impact variables of interest such as runoff against global land temperature change. This could be beneficial for two reasons. First, it would remove the current IMOGEN mismatch of many GCMs emulated based on their climate projections only, while the emulating system is coupled to just one land surface model. Instead, a more accurate representation would be gained of the spread of runoff uncertainty. Second, it would make model calculations computationally very fast, as full operation of the JULES system would not be required. Such an approach would be applicable when using IMOGEN to estimate changes for different future greenhouse gas concentrations, rather than land surface modelling development. A further possibility is to connect the meteorological pattern-scaling structure to alternative land surface models.”

### **[New References]**

The recent application of the IMOGEN framework to assess climate-permafrost thaw feedbacks is noted by citing: Burke, E.J., Ekici, A., Huang, Y., Chadburn, S.E., Huntingford, C., Ciais, P., Friedlingstein, P., Peng, S.S. and Krinner, G.: Quantifying uncertainties of permafrost carbon-climate feedbacks, *Environ. Res. Lett.*, 14, 3051-3066, doi:10.5194/bg-14-3051-2017, 2017.

More recent information on the latest form of CRU data (CRU data provides the background climate to which anomalies are added) is now cited as: Harris, I., Jones, P.D., Osborn, T.J. and Lister, D.H.: Updated high-resolution grids of monthly climatic observations – the CRU TS3.10 Dataset., *Int. J. Climatol.*, 34, 623-642, doi:10.1002/joc.3711, 2014.

In the Discussion, we now describe more extensively future enhancements to the pattern-scaling system. We write: “There are a number of potential methodological enhancements that can be implemented in the next IMOGEN version and beyond just fitting to the CMIP5 dataset (Taylor et al 2012). For example, so far the natural variability around the trend in IMOGEN is simulated through a daily “weather generator” component with invariant properties, and with no representation of inter-annual variability. However variability might also change in a warming world, and at a range of timescales from sub-daily through to major alteration at inter-annual timescales (e.g. Huntingford et al., 2013a). This suggests that in future research, at least for some variables, additional patterns might be added that capture such variability changes, and including any inter-annual variability and adjustment for different warming levels.” Huntingford, C., Jones, P.D., Livina, V.N., Lenton, T.M. and Cox, P.M.: No increase in global temperature variability despite changing regional patterns, *Nature*, 500, 327-330, doi:10.1038/nature12310, 2013a.

IMOGEN has strong potential to be used for analysis of climate and terrestrial land surface implications of stabilization of warming at either 1.5°C or 2.0°C. It allows interpolation from GCMs to any new temperature scenarios. This makes the paper timely, given the new IPCC report specifically on such stabilization temperature limits. For this, we write in the paper: “The IMOGEN modelling system is available to determine future climate change, now with uncertainty, and forced by either a future pathway in either CO<sub>2</sub> emissions or CO<sub>2</sub> concentrations. A further and rapidly emerging application is to understand regional climate impacts during transition to different global thermal limits, with an emphasis on eventual stabilisation at 1.5°C or 2.0°C of global warming above pre-industrial levels. In this instance, most of the EBM in IMOGEN is overridden with a global temperature pathway (the land-ocean contrast and oceanic fraction cover only used to obtain  $\Delta T_1$ ), but relying on the remaining spatial and monthly patterns to give detailed local climatic implications. It is planned to use different global temperature pathways to those two stabilised limits (Huntingford et al, 2017) to force IMOGEN in this configuration” Huntingford, C., Yang, H., Harper, A., Cox, P.M., Gedney, N., Burke, E.J., Lowe, J.A., Hayman, G., Collins, W.J., Smith, S.M. and Comyn-Platt, E.: Flexible parameter-sparse global temperature time profiles that stabilise at 1.5 and 2.0 degrees, *Earth Syst. Dynam.*, 8, 617-626, doi:10.5194/esd-8-617-2017, 2017.

Related to the above is also a recent paper (James et al), offering the range of scientific approaches to 1.5°C or 2.0°C. Pattern-scaling is presented as a key tool. In the introduction, we write: “...potentially to investigate pre-defined future temperature thresholds such as two degrees of global warming above pre-industrial levels. Pattern-scaling has been suggested as a key methodology to understand the differences between climate stabilisation at either 1.5°C or 2.0°C (James et al. 2017).” James, R., Washington, R., Schleussner, C.-F., Rogelj, J., and Conway, D.: Characterizing half-a-degree difference: a review of methods for identifying regional climate responses to global warming targets, *WIREs Clim. Change*, 8, e457, doi:10.1002/wcc.457, 2017.

A recent overall assessment of pattern-scaling appeared in a far-reaching 2014 paper, which we now cite. Tebaldi, C and Arblaster, J.M.: Pattern scaling: Its strengths and limitations, and an update on the latest model simulations, *Climatic Change*, 122, 459-471, doi: 10.1007/s10584-013-1032-9, 2014.

**[Acknowledging CMIP5 & AR5].** We are now very clear in the paper that the next step is IMOGEN with patterns from CMIP5. We write: “The [pattern] set, available for download, is derived from 22 GCMs of the WCRP CMIP3 database, setting the basis for similar eventual pattern development for the CMIP5 ensemble”.

We also write: “RCPs were used to inform the 5<sup>th</sup> IPCC report (IPCC, 2013), via the set of climate model simulations available at that time in the CMIP5 dataset (Taylor et al 2012). CMIP5 has evolved further since year 2013 and to hold more simulations; the exercise to calibrate an EBM and patterns-scaling set for CMIP5 is under way.”

The paper ends with: “Ultimately, the CMIP5 ensemble, which formed the basis of the recent 5th IPCC report (IPCC, 2013) using diagnostics available at that time, has much potential to improve the performance of the described pattern-scaling framework. Aside from the fact that the models themselves have improved, more scenarios are available, allowing better assessment of forcings other than CO<sub>2</sub>. With preparations now starting for the 6th IPCC report, and new simulations being made for that, it is timely to consolidate, and calibrate a new set of patterns for the CMIP5 family of GCMs, building on the analysis presented in this paper.”

# Climate pattern scaling set for an ensemble of 22 GCMs – adding uncertainty to the IMOGEN vn 2.0 impacts system

Przemyslaw Zelazowski<sup>1,2</sup>, Chris Huntingford<sup>3</sup>, Lina M Mercado<sup>4,3</sup> and Nathalie Schaller<sup>1,5</sup>

<sup>1</sup>Oxford University Centre for the Environment, University of Oxford, Oxford, OX1 3QY, UK

5 <sup>2</sup>Centre of New Technologies, University of Warsaw, Warsaw, 02-097, Poland

<sup>3</sup>Centre for Ecology and Hydrology, Wallingford, OX10 8BB, UK

<sup>4</sup>Geography, College of Life and Environmental Sciences, University of Exeter, Exeter, EX4 4RJ, UK

<sup>5</sup>Center for International Climate and Environmental Research (CICERO), Oslo, NO-0318, Norway

Correspondence to: Chris Huntingford (chg@ceh.ac.uk)

10 **Abstract.** Global Circulation Models (GCMs) are the best tool to understand climate change, as they attempt to represent all the important Earth system processes, including anthropogenic perturbation through fossil fuel burning. However, GCMs are computationally very expensive, which limits the number of simulations that can be made. Pattern-scaling is an emulation technique that takes advantage of the fact that local and seasonal changes in surface climate are often approximately linear in amount of warming over land and globe. This allows interpolation away from a limited number of available GCM simulations, to assess alternative future emissions scenarios. In this [paper](#), we present a pattern-scaling set consisting of spatial climate change patterns along with parameters for an energy balance model that calculates the amount of global warming. The set, [available for download](#), is derived from 22 GCMs of the WCRP CMIP3 database, setting the basis for similar eventual pattern development for [the CMIP3](#) ensemble. Critically, it extends the use of the IMOGEN (Integrated Model Of Global Effects of climatic aNomalies) framework to enable scanning across full uncertainty in GCMs for impacts studies. Across models, the presented climate patterns represent consistent global mean trends, with maximum four GCMs exhibiting opposite sign of the [global](#) trend per variable (relative humidity). The described new climate regimes are generally warmer, wetter (but with less snowfall), cloudier and windier, and with decreased relative humidity. Overall, when averaging individual performance across all variables, and without considering co-variance, the patterns explain one-third of regional change in decadal averages (mean Percentage Variance Explained, PVE, 34.25±5.21), but [the](#) signal in some models exhibits much more linearity (e.g. MIROC3.2(hires):41.53) than in others (GISS\_ER: 22.67). The two most often considered variables: near-surface temperature and precipitation have a PVE of 85.44±4.37 and 14.98±4.61, respectively. [We also provide an example assessment of a terrestrial impact; changes in mean runoff, and compare projections by the IMOGEN system, which has one land surface model, versus direct GCM outputs which all have alternative representations of land functioning. The latter is noted as an additional source of uncertainty. Finally, current and potential future applications of the IMOGEN vn 2.0 modelling system in the areas of ecosystem modelling and climate change impact assessment are presented and discussed.](#)

20

25

30

also mention CMIP3 release

Deleted: and

Deleted: paper

new?!

Deleted:

Deleted: consider implications for

Deleted: , here

Deleted: gridbox

Deleted: allowing comparison of

Deleted: with

Deleted: is

Deleted: The pattern dataset is available for download and researchers in the areas of ecosystem modelling and climate change impact assessment are already starting to use it. Besides allowing time-efficient assessment for non-standard future scenarios of changed greenhouse gas (GHG) concentrations, it enables understanding of new representations of land surface processes, and including their implications for climate-carbon cycle feedbacks. Current

Deleted: such

## 1 Introduction

Global Climate Models (GCMs) are the primary tool to understand and to estimate future climate regimes resulting from anthropogenic Greenhouse Gas emissions (GHGs). However, the use of these tools is limited by their requirements for computing power, and the complexity of the task, in particular when wishing to scan across different future scenarios. “Pattern-scaling” (Huntingford & Cox 2000, Mitchell et al 2003), is a methodology that takes advantage of the fact that, to a reasonable approximation, local and seasonal changes in surface climate are linear in amount of warming over land and globe. It allows interpolation away from a limited number of available GCM simulations, enabling a time-efficient assessment of surface meteorological changes for alternative non-standard future scenarios of changed GHG concentrations. This can include, for example, new scenarios that fall between the current Representative Concentration Pathways (RCP, Taylor et al., 2012), and potentially to investigate pre-defined future temperature thresholds such as two degrees of global warming above pre-industrial levels. Pattern-scaling has been suggested as a key methodology to understand the differences between climate stabilisation at either 1.5°C or 2.0°C (James et al. 2017).

“Climate-change patterns” (or “patterns”) are coefficients of the regression between areal mean warming over Earth’s land regions,  $\Delta T_1$  (K) and local changes in surface climatology. They are derived by comparison against outputs from GCMs, and presented as local monthly mean changes over land per degree of mean warming over land. “Pattern-scaling” is a simple procedure in which these patterns are multiplied by  $\Delta T_1$  to give local monthly changes in climatology. A global Energy Balance Model (EBM; e.g. Wigley et al. 2000) is applied to model how the GHG concentrations translate in to changes in radiative forcing,  $Q$  ( $Wm^{-2}$ ) and then in to required temperature increase over land regions ( $\Delta T_1$ ).

The IMOGEN framework (Intégrated Model Of Global Effects of climatic aNomalies; Huntingford et al. 2010) is a computationally efficient tool for modelling impacts of future climate change on terrestrial ecosystems. It consists of the JULES land surface model (Best et al., 2011; Clark et al., 2011) linked to a pattern-scaling module (Huntingford and Cox, 2000). The scaling provides monthly mean changes in climate variables over land, notably temperature, relative humidity, precipitation, shortwave and longwave radiation, wind speed and pressure, quantities used to drive ecosystem models such as JULES. In addition, a simple oceanic global carbon cycle model is included (Joos et al., 1996 and Appendix of Huntingford et al., 2004), which expands the typical usage of pattern-scaling by allowing consideration of oceanic climate-carbon cycle feedbacks, alongside land-based feedbacks. All simulations use an hourly time step and a spatial resolution of 2.5° latitudinal x 3.75° longitudinal, or 72 by 96 grid boxes, as in the UKMO-HadCM3 GCM. Over land, but excluding Antarctica, this corresponds to 1631 grid-boxes.

Linking forcings to mean warming over land,  $\Delta T_1$ , is achieved with the IMOGEN EBM which requires five parameters (Huntingford and Cox (2000), also listed in Section 2.2) which, as in the case of patterns, are also derived by fitting to GCM runs. These calibration parameters and the previously-described patterns together form a “patterns-scaling set”.

IMOGEN was originally established to allow rapid assessment of a range of alternative GHG emission scenarios, e.g. corresponding to any standard Special Report on Emissions Scenarios, (SRES, Nakićenović et al, 2000) or Representative

Deleted: source of  
Deleted: our  
Deleted: ing of  
Deleted: ability  
Deleted: in the case of multi-model assessments

Deleted: global

Deleted: then

Deleted: and

Deleted: -

Deleted: seven

Deleted: s

Deleted: . These are, a climate sensitivity of land, and over ocean, along with the ratio of land warming to ocean warming, and oceanic thermal diffusivity and fraction of the global as ocean described in the Methods section. The relevant EBM equations in which these parameters remain as those are

Deleted: presented in

Deleted:

Deleted: . The five parameters are referred to as IMOGEN EBM calibration parameters (or simply “calibration parameters”), and

Deleted: they

Deleted: from

Deleted: “

Deleted: ”

Deleted: and “calibration parameters”

Deleted: GCM-specific

Deleted: the

→ impact of

→ reference?

CMIP6 and SSPs should be mentioned now

Concentration Pathways (RCP, Taylor et al., 2012) for which a GCM simulation is unavailable. Hence, IMOGEN enables interpolation away from what GCM simulations do exist to new user-prescribed emissions or concentration pathways.

The general application of IMOGEN is to prescribe carbon dioxide (CO<sub>2</sub>) emissions, along with further prescription of non-CO<sub>2</sub> radiative forcings for other GHGs and aerosols. From this, the model calculates evolving atmospheric CO<sub>2</sub> concentrations as a consequence of driving CO<sub>2</sub> emissions. The related and also evolving overall radiative forcing  $Q$  (Wm<sup>-2</sup>) is calculated to drive the EBM. This has similarities to how GCMs have been forced with the SRES scenarios and in the third Coupled Model Intercomparison Project (CMIP3) archive, upon which this analysis is based. Alternatively, the full radiative forcing  $Q$  can be prescribed directly as a future forcing pathway, dependent on prescription of all atmospheric gas changes and in which case CO<sub>2</sub> concentrations are therefore given. This has similarities to the more recent forcing of GCMs with RCPs, in part recognising that not all climate models have a fully interactive carbon cycle. RCPs were used to inform the 5<sup>th</sup> IPCC report (IPCC, 2013), via the set of climate model simulations available at that time in the CMIP5 dataset (Taylor et al 2012). CMIP5 has evolved further since year 2013 and to hold more simulations: the exercise to calibrate an EBM and patterns-scaling set for CMIP5 is under way.

In practice, though, IMOGEN has been used much more to assess the effects of new parameterisations, adjustment or inclusion of new processes into the JULES land surface model. This is as a precursor for any eventual placement of land surface model improvements in to a full GCM. IMOGEN allows easy and fast assessment of ranges of parameterisations, numerical stability checks and critically the relative importance of new understanding of ecological and hydrological responses globally, and including feedbacks on the carbon cycle. Examples include the impacts of changes in diffuse radiation on the land carbon sink (Mercado et al., 2009), the effects of ozone damage on plant productivity (Sitch et al., 2007) and climate-carbon cycle feedbacks by permafrost melt (Burke et al., 2017).

Until recently, offline studies were performed with patterns of climate change from a single model, UKMO-HadCM3 (IMOGEN version 1.0, Huntingford et al., 2010). The purpose of this paper is to present a patterns-scaling set which emulates a broad range of GCMs, and nearly the complete set of those held in the WCRP CMIP3 database (Meehl et al., 2007). This extends the use of IMOGEN for assessment of climate change, or land surface response, to scan across uncertainty in both global response and local features of climate models. Such uncertainty can then be readily evaluated against the magnitude of any further uncertainty in any terrestrial surface impacts of interest. In Section 2 we describe the methods which lead to the patterns-scaling set. Section 3 describes the actual set, including discussion of inter-GCM differences. We include metrics describing the accuracy of the linearity assumption of meteorological changes against level of global warming, as implicit in the scaling method. Section 4 reviews existing applications of the IMOGEN pattern-scaling system and comments on the future general benefits of inclusion of climate model uncertainty in impacts assessments. Finally, Section 5 discusses the strengths and caveats of the pattern-scaling approach.

Deleted: where ...or which a GCM simulations...isare

Deleted: Perhaps more usefully...ence,

Deleted: ...as well as...nables interpolating

Deleted: and quite different

Moved down [1]: RCPs were used to inform the recent 5<sup>th</sup> IPCC

Deleted: ...CPs were used to inform the recent 5<sup>th</sup> IPCC report

Formatted: Subscript

Deleted: Normally...olving atmospheric carbon dioxide (...O<sub>2</sub>)...concentrations are calculated as a consequence of ...s a consequence of prescribed ...riving CO<sub>2</sub> emissions, along with prescription of non-CO<sub>2</sub> forcings for other GHGs and aerosol...s.

Deleted: Then an

Formatted: Superscript

Deleted: is...as similar

Deleted: Then an overall radiative forcing  $Q$  is calculated to drive the EBM... Alternatively, all

Deleted: s'...pathways... dependent on prescription of all atmospheric gas changes and in which case CO<sub>2</sub> concentrations are therefore prescribed

Deleted: , again for scenarios that differ from the standard ones.

Moved (insertion) [1]

Deleted: recent ...<sup>th</sup> IPCC report (IPCC, 2013), via the set of climate model simulations available at that time in the CMIP5 dataset (Taylor et al 2012). CMIP5 has evolved further since year 2013 and to hold more simulations; the exercise to calibrate an EBM and patterns-scaling set for CMIP5 is under way. A further and rapidly emerging application is to understand regional climate impacts during transition to different global thermal limits, with an emphasis on eventual stabilisation at 1.5°C or 2.0°C of global warming above pre-industrial levels. In this instance, most of the EBM in IMOGEN is overridden with a global temperature pathway (the land-ocean contrast and oceanic fraction cover only used to obtain  $\Delta T$ ), but relying on the remaining spatial and monthly patterns to give detailed local climatic implications. It is planned to use different global temperature pathways to those two stabilised limits (Huntingford et al, 2017) to force IMOGEN in this configuration.

Deleted: ¶

Deleted: practise

Deleted: inclusion

Deleted: or ...he effects of ozone damage on plant productivity (Sitch et al., 2007) and climate-carbon cycle feedbacks by permafrost melt (Burke et al., 2017)..

Deleted: these ...ffline studies were performed with patterns of climate change from a single model, UKMO-HadCM3 (IMOGEN version 1.0, Huntingford et al., 2010). The purpose of this paper is to present a patterns-scaling set which emulates a broad range of GCMs, and nearly the complete set of those held in the WCRP CMIP3 database (Meehl et al., 2007). This extends the use of IMOGEN for assessment of climate change, or land surface response, to scan

## 2. Data and Methods

### 2.1 The WCRP CMIP3 multi-model dataset and data pre-processing

Spatial patterns (i.e. maps) of climate change and energy balance model calibration parameters, together forming the “climate-patterns set”, are derived from GCM data available through the World Climate Research Programme Coupled Model

Deleted: (

Deleted: )

5 Intercomparison Project, phase three (WCRP CMIP3; Meehl et al., 2007). The WCRP CMIP3 multi-model dataset resulted from an international effort to run a coordinated set of twentieth- and twenty-first-century climate GCM simulations for a limited number of future scenarios, covering many aspects of climate variability and change. All these simulations were subsequently analysed and formed the basis of much that is reported in the Fourth Assessment (AR4) of the Intergovernmental Panel on Climate Change (IPCC, 2007). The dataset consists of data from 24 GCMs, representing 17 modelling groups from

10 12 countries. The climate patterns set presented here (Table 1) corresponds to 22 GCMs, because GISS\_AOM is an atmosphere-ocean model without surface meteorological projections over land and key data from CGCM3.1(T63) GCM were missing (see below). In the case of GISS-EH and GISS-ER GCM, WCRP CMIP3 data were supplemented with the formally associated pool provided by National Aeronautics and Space Administration Goddard Institute for Space Studies (<http://data.giss.nasa.gov/pub/pcmdi>).

Deleted: small prescribed

15 The analysed model runs represent scenarios of four types: (i) control experiments: either pre-industrial or present day (Pinctrl, or Pdcntrl; the codes are the file name conventions used in the WCRP database), (ii) the idealized 1% yr<sup>-1</sup> CO<sub>2</sub> increase up to doubled and quadrupled levels (1pcto2x, 1pcto4x), (iii) the twentieth-century run (20C3M) representing modelled period from pre-industrial to present-day and (iv) the high- (A2) and mid-emission (A1B) future scenarios defined by the Special Report on Emission Scenarios (SRES, Nakicenovic et al. 2000). When multiple simulations are available of any particular

20 scenario, then the analysis is limited to the first available, as the inter-run variability has been reported to be small (Frieler et al 2012).

Variables analysed for each GCM are those representing land surface climatology: 1.5 m air temperature (TAS), 1.5 m relative humidity (HURS), 10 m wind speed (UAS and VAS, combined into a direction-less “UA”), precipitation (PR, including snow PRSN), downward shortwave (RSDS) and long-wave (RLDS) radiation fluxes and surface pressure (PS). The codes in brackets are the file name conventions used in the WCRP database for individual variables. These seven variables are required to run the JULES land surface scheme inside the IMOGEN framework. Additionally, Net Radiative Flux at the top of the atmosphere (positive downwards); Top of Model (RTMT); is also processed. This is required to drive the global energy balance model.

*daily? monthly?*

Deleted: It is t

Deleted: that

Deleted: .

Deleted: as t

25 There were some discrepancies between data requirements to run the IMOGEN system and the actual data availability in WCRP CMIP3. They are listed in Table 1. For all GCMs, surface relative humidity (HURS) data were not available, but a 4D representation of this variable at pre-defined pressure levels (HUR) was generally available. This allowed extrapolation of surface relative humidity from two nearest available pressure levels. In the case of INGV-SXG, PCM and CCSM3 GCMs, surface wind was obtained in the same procedure. For two cases, the required surface data was available, but suffered from

30

Deleted: as

Deleted: highest

Deleted: which are near the land surface



quality and other issues. In UKMO-HadGEM1 dataset, the last month of the SRES A2 simulation was missing (and in this study it was filled-in with interpolated values), and surface wind data was presented on non-standard grid (and it was interpolated onto a standard UKMO-HadGEM1 grid). For MRI-CGCM2.3.2, many values in snow precipitation data (PRSN) were missing (the data were not used in this study) and there was no land mask available (SFTLF, later obtained from the Japanese modelling group). [Additional details are given in Table 1](#).

GCMs differ significantly between each other in the spatial grid resolution and generally how they represent the Earth surface's detail, as represented in the land mask variable SFTLF which reports gridbox land fraction. Spatial resolution varies between hundreds of kilometres (e.g. GISS models, or INM-CM3.0) to around 100 km (e.g. MIROC3.2hires model, mid-latitudes, Table 1). Data are mapped on to either a regular or a Gaussian grid, and gridbox classification into land and water is either binary (100% or 0%) or continuous. [Furthermore, only some GCMs explicitly depict freshwater bodies in their land masks.](#)

This diversity of output spatial properties alone imposes a challenge for data end-users, including policymakers, especially when it comes to multi-model assessments of a pre-defined geographical domain. [Hence, to force our common land surface model within the IMOGEN system using alternative GCM-based estimates of climate change, we harmonised all types of WCRP CMIP3 grids into one, which is chosen to be the UKMO-HadCM3, although land points for Antarctica are excluded.](#) This ensures compatibility with previous applications of the IMOGEN tool, with resolution of 2.5° latitudinal x 3.75° longitudinal. The common grid allows, in a systematic way, to capture the impact of climate uncertainty that remains within GCMs. [Details of the re-gridding procedure is provided in the Supplementary Material.](#)

## 2.2 Climate pattern scaling set and post-processing

The presented climate patterns are a set of regression coefficients, each representing the change in a given meteorological variable per degree of mean global warming over land, while the fitting is done with decadal averages, as predicted by each GCM. The simple form of the analogue model for an anomaly ( $\Delta$ ) that is changing over decade and in one of the considered land surface variables  $V$  is described as:

$$\Delta V(c, g, m, i) = \Delta T_l(c, i) V_x(g, m, i) \quad (1)$$

where the anomaly is linked to a single location on the UKMO-HadCM3 grid ( $g$ ), month of the annual cycle ( $m$ ), GCM ( $i$ ) and decadal time index ( $c$ ). Regressions to find (time-invariant) patterns  $V_x$  use global land warmings  $\Delta T_l$  directly from original GCMs to regress against. When the IMOGEN model is used predictively, then these values are derived using an Energy Balance Model (EBM) component, calibrated against different climate models (see below).

Regressing local climate with mean land warming is done with the assumption that climate is stable before the anthropogenic impact – often referred to as the pre-industrial period. This implies that the regression line starts at the origin of the coordinate system, so the intercept equals zero. [Hence, there is a fit with just one regression co-efficient, the slope fitted to modelled perturbed climate.](#) This starting point is represented by an average of three decades from the twentieth-century run (20C3M, years 1961-1990, Figure 1, panel C). [This is also a period corresponding to the Climate Research Unit's Time Series 2.1 \(CRU](#)

Deleted: Finally, in the case of four GCMs certain non-critical variables were entirely missing

Deleted: (

Deleted: )

Deleted: l (

Deleted: “

Deleted: ”

Deleted: )

Deleted: c.

Formatted: Font: Not Italic

Formatted: Font: Not Italic

Deleted: either

Deleted: .

Deleted: with

Deleted: a part of

Deleted: ing

Deleted: T

Deleted: was

Deleted: .

Deleted: More information about this

Deleted: changes against the global mean warming over land, a

Deleted: in the climate regime in the decade  $c$  can be

Deleted: , but

Deleted: w

Deleted: .

Deleted: and

Deleted: .

Deleted: ) which

→ *pre-industrial*

TS 2.1) dataset describing Earth's climatology (or "climate normals", Mitchell and Jones 2005), patterns calculated by Eqn.

(1) are generally added to the CRU dataset, rather than individual GCM estimates of pre-industrial times. In the WCRP CMIP3 dataset, the historical 20C3M GCM simulations are normally followed by a future transient run, driven by one of SRES scenarios that describe potential pathways ahead in emissions. In the presented work, for most of GCMs, a high-emissions "business-as-usual" SRES A2 run was analysed to give patterns  $\Delta V$  of Eqn (1). In a few cases when these data were not available the SRES A1B run was used (Table 2), which represents relatively lower levels of warming (Nakicenovic et al. 2000).

Emulating an ensemble of GCMs requires that the relationship between anthropogenic climate forcings, global warming and mean warming over land is established for each GCM separately. The EBM employed for this task, described in full in

Huntingford and Cox (2000), requires the fitting of five calibration parameters: (i) an ocean effective thermal diffusivity,  $\kappa$  ( $\text{Wm}^{-1}\text{K}^{-1}$ ), (ii) a constant ratio of mean land and ocean surface (SST) rate of warming,  $v$ , (iii-iv) climate sensitivity over land  $\lambda_l$  and ocean  $\lambda_o$  ( $\text{W m}^{-2} \text{K}^{-1}$ ), and (v) land fraction  $f$  (based on variable SFTLF, including Antarctica). All the energy retained in the planetary system, as seen in any difference in top-of-the-atmosphere radiation, is assumed to enter the oceans in a diffusive process, thus changing SSTs and then  $\Delta T_1$  via  $v$ . Estimation of EBM parameters was done by fitting them against an independent set of scenarios: the idealised  $\text{CO}_2$  increase scenario (1pctto2x or 1pctto4x), preceded by a control experiment: (Picntrl or Pdcntrl). Subsequently, functioning of the parameterised EBM was validated by using it predictively against data from one of the available runs corresponding to SRES scenarios (SRES A2 or SRES A1B, Table 2). Figure 1 illustrates the key components of the process of deriving a pattern-scaling set in the case of the example UKMO-HadGEM1 GCM.

In general, our climate patterns represent absolute changes. However, for precipitation, we make one additional calculation which results in data normalisation. This is to circumvent the problem of particularly large biases in the description of the current precipitation regime by some GCMs (Ines and Hansen 2006). For each calculated precipitation pattern ( $\Delta P$ ), this is then multiplied by the ratio of the observed precipitation ( $P_{\text{CRU,XXc}}$ ) from the CRU TS 2.1 dataset (Mitchell and Jones 2005) and the one simulated by the GCM ( $P_{\text{GCM,XXc}}$ ) for the control period. This follows Ines and Hansen (2006), and Malhi et al. (2009):

$$\Delta P'(g, m, i) = \Delta P(g, m, i) \times \frac{P_{\text{CRU,XXc}}(i, m_s, g_s)}{P_{\text{GCM,XXc}}(i, m_s, g_s)} \quad (2)$$

Furthermore, the adjustment described by Eqn. (2) was performed for each grid box  $g$ , month  $m$  and GCM  $i$ , after smoothing in time and space (averaging over the grid box and its immediate neighbourhood:  $g_s$ , and across three months  $m_s$ ). This smoothing mitigates the minor shifts in seasonality and spatial positioning of climatic phenomena and reduces significantly the number of artefacts caused by occasional division by near zero. The remaining few cases of high and low divergence (i.e.  $P_{\text{CRU,XXc}}/P_{\text{GCM,XXc}}$ ) were capped at 5 and 0.2. Snow was scaled according to the same scaling factor as for total precipitation. The final patterns set is available in two versions: with precipitation normalised by Eqn. (2), and without this.

Deleted: .

Deleted: while i

Formatted: Font: Italic

Deleted: ,

Deleted: .

Deleted: to a simple global energy balance model

Deleted: and

Deleted: and

Deleted: – that is, it was used

Deleted: -

Formatted: Font: Italic

Deleted: of

Deleted: 0

As a last step, in four cases when available GCMs data had one or two non-key variables missing (Table 1), the gaps were filled in with across-ensemble means.

### 3 Results

#### 3.1 Energy balance parameters

5 The five key EBM parameters are presented in Table 2. In most cases (17) climate sensitivity over ocean ( $\lambda_o$ ,  $\text{Wm}^{-2}\text{K}^{-1}$ ) is higher than over the land ( $\lambda_l$ ,  $\text{Wm}^{-2}\text{K}^{-1}$ ). The reverse trend is well pronounced in three models (CSIRO-Mk3.5, MIROC3.2highres, MRI-CGCM2.3.2). Climate sensitivity over land varies five-fold between models and is the lowest in ECHO-G, UKMO-HadCM3, CGCM3.1(T47) and the highest in BCCR-BCM2.0, PCM, FGOALS-g1.0, although 2/3rds of the models have a much narrower range 0.9-1.7  $\text{Wm}^{-2}\text{K}^{-1}$ . The most varying variable is ocean diffusivity ( $\kappa$ ,  $\text{Wm}^{-1}\text{K}^{-1}$ ), which  
10 determines the ability of the ocean to extract heat from the climate system through diffusion. Even after excluding the two most extreme cases, the range remains high: from 270 (HadCM3, CGCM3.1(T47)) to 2800  $\text{Wm}^{-1}\text{K}^{-1}$  (CSIRO-Mk3.0). The most extreme value of 11000  $\text{Wm}^{-1}\text{K}^{-1}$  is for the FGOALS-g1.0 GCM, which clearly stands out from the ensemble. This spread reflects the fact that a full understanding of oceanic flows and deeper overturning, which affects mean vertical heat transport, is still required to reduce model spread. In comparison, the land/ocean temperature increase contrast ( $v$ ) is a remarkably stable  
15 parameter, with a range 1.40-1.78 across all models.

#### 3.2. Patterns across models, space and seasons

Across models, patterns of particular variables represent consistent trends when averaged spatially and across months (Table 3), with maximum four exceptions per variable (relative humidity), i.e. cases when average pattern is of opposite sign than in the majority of GCMs. The patterns capture the nature of a new emerging climate regimes, which can be characterised as  
20 warmer, wetter (but with less snowfall), cloudier and windier, with decreased relative humidity, and increased atmospheric pressure. Globally, relative humidity is the variable with the highest uncertainty in the magnitude of change, with standard deviation (SD) of the across-ensemble mean exceeding the mean. In the case of other variables, apart from longwave downward radiation and air temperature near surface (RLDS, TAS, with very small spread), the magnitude of SD is similar (62-88 % of the mean).

25 In the case of each GCM, the patterns represent a unique regional and seasonal distribution of change in surface climatology in a greenhouse-gas enriched atmosphere. To present these differences, we focus on two of the strongest drivers of terrestrial ecosystems change (and co-incidentally, which also have strong influence on society in general) – that is adjustments to temperature and precipitation. The annual mean rate of warming per degree of global warming over land (Figure 2) in some models is much more evenly distributed geographically (e.g. BCCR-BCM2.0) than in others (e.g. NCAR-PCM1). However,  
30 all of the models exhibit the majority of warming in northern latitudes. The smallest warming occurs in tropical Africa and

*FGOALS is an outlier in many studies. (could refer to those)*

Formatted: Superscript  
Formatted: Superscript

Deleted: stands out as  
Deleted: across the models  
Deleted: standard deviation

Deleted: an  
Deleted: are also having  
Deleted: the largest  
Deleted: Northern

*is similar to what?*

Asia, while in tropical South America the magnitude is much more uncertain. The spatial pattern of warming is either well stratified with latitude (e.g. FGOALS-g1.0 model), or more nuanced (GISS models). The patterns of precipitation change (Figure 3) are more complex than in the case of temperature. The lack of across-ensemble consistency is particularly apparent in parts of the Tropics, e.g. in South America. However, in other areas the signal is very consistent, such as drying of Southern Europe, or more precipitation in high northern latitudes.

Across-model seasonal averages (Figure 4 and 5, for temperature and precipitation, respectively) reveal a more spatially and temporally consistent picture than when considering models individually. These figures show that the majority of warming occurs at Northern latitudes and during colder seasons. Moreover, there is a strong summer warming trend over mid-West North America, Mediterranean region, Middle East and Central Asia. The seasonal patterns of precipitation change appear as linked to those of temperature, but are generally more uncertain. Winter warming in the North is accompanied by more precipitation which contrasts with lower summer warming and reduced rainfall. Changes in tropical rainfall appear as much more uncertain. Western and Central Africa north of equator is a zone with particularly high uncertainty regarding summer warming.

Stippling in Figure 5 provides additional measure of uncertainty - it indicates when there is agreement in 90% of the models, as to whether precipitation is going to increase or decrease. This is the case over most of the land area and seasons. However, in many dry areas and seasons where this measure is not robust due to low precipitation levels (and the signal is difficult to detect), the agreement is uncertain. Some areas stand out in this regard: large parts of South America in northern winter and summer, high northern latitudes in the summer and central Asia in autumn. That rainfall changes remain a large uncertainty in climate model projections is noted in the 4<sup>th</sup> IPCC report (IPCC 2007).

### 3.3. Performance of linear approximation assumption in “pattern-scaling” for individual variables

The robustness of climate patterns is assessed by their ability to reproduce the decadal GCM data. Such ability varies widely between variables, which can be split into four categories, according to the mean Percentage Variance Explained (PVE) metric (Table 3). PVE is a simple way to assess each variable separately through the analysis of decadal means against the pattern. The most robust are the patterns which represent the drivers of global warming: temperature (TAS) and long-wave radiation (RLDS; PVE 85.44±4.37, and 84.74±4.97, respectively). The next group consists of variables, which explain around one quarter of variance: short-wave radiation (RSDS) and air pressure (PS). Variables linked to availability of water: precipitation (PR), snowfall (PRSN), relative humidity (HURS), form the third group (PVE 14.98±4.61, 17.96±4.67, 16.92±5.71, respectively). The last category is represented by wind patterns (of combined variables UAS and VAS), which represent only 7.11±3.32 PVE. Wind patterns also contain the highest proportion of negative PVE (4.9%) cases, for which a one-parameter regression line is a worse fit than a multi-decadal mean (bottom row of Table 3).

Overall (i.e. when per-variable results are averaged, without considering co-variance), climate patterns explain one-third of regional climate change (PVE 34.25±5.21); however, the signal in some models exhibits much more linearity (e.g.

Commented [HC4]: Not quite sure what this is saying – re-word?

Commented [PZ5]: Ups, this is indeed strange. I'm not sure what it supposed to mean. Re-worded.

Deleted: and in some regions they exceed the uncertainty in regional warming

Deleted: (

Deleted: );

Deleted: however

Deleted: on

refer to IPCC where this is assessed.  
and still an issue in AR5

Deleted: It

Deleted: ),

Deleted: -

Deleted: (

Deleted: .

MIROC3.2(hires): 41.53) than in others (GISS\_ER: 22.67). These estimates exclude cases where the PVE statistic could not be calculated due to either a lack of data (2.8%, Table 1), or null (e.g. short-wave radiation during polar night) or extremely low values (e.g. precipitation in the dry season), accounting for 6.7% of cases.

In terms of spatial distribution of robustness of the two key variables: temperature and precipitation (Figure 6), it is generally the opposite. For temperature, lower PVE values occur in the North, with minimum over Greenland and North-West North America (but still above 50%). The highest values occur across the Tropics. In the case of precipitation, the highest PVE occurs over the northern latitudes (above 50°N), particularly in Asia. In some tropical regions (sub-saharan Africa, South-East Amazon), areas with relatively robust signal (PVE ~20%) are adjacent to regions where the robustness could not be estimated due to very small and erratic rainfall in the dry season.

#### 10 4. Applications

The “pattern-scaling” concept was originally designed as a tool for scientists to inform policymakers, enabling investigation of expected changes in surface climatology for a broader range of scenarios of atmospheric greenhouse gas concentrations than are available in archived GCM runs. The technique has been studied in depth, and one study recently concluded that “Overall, the well-established validity of the technique in approximating the forced signal of change under increasing concentrations of greenhouse gases is confirmed” (Tebaldi and Arblaster, 2014). The first version of the framework presented here, was based around a single climate model. That is, to interpolate to new future greenhouse gas scenarios from the existing simulations by the UKMO-HadCM3 GCM (Huntingford and Cox, 2000). However, once the IMOGEN system (Huntingford et al., 2010) linked such scaling of meteorological drivers to force directly a land surface model (JULES), the main application of this system has been predominantly to undertake global analyses of new ecosystem process responses in a changing climate. This is often for similar forcing scenarios as GCMs have been operated for, but with the full climate models not yet running with the new land surface descriptions modelled in IMOGEN. Particular examples include quantification of wetland methane feedbacks (Gedney et al., 2004), the impacts of changes in diffuse radiation to the land carbon sink (Mercado et al., 2009), the effects of tropospheric ozone on plant productivity (Sitch et al., 2007), the significance of energy crop planting on future atmospheric CO<sub>2</sub> concentration (Hughes et al., 2010), how alternative mixtures of changes in atmospheric composition, even corresponding to identical radiative forcing changes, can have very contrasting impacts on land surface carbon stocks (Huntingford et al., 2011), and permafrost climate-carbon cycle feedbacks in a warming world (Burke et al., 2017).

The potential for Amazon forest collapse, or “die-back”, remains an iconic concern for potential climate change impacts. Such a possibility has been identified in a combined climate-carbon cycle climate model UKMO-HadCM3LC (Cox et al., 2000, 2004). Later, the robustness of predictions of Amazon ‘dieback’ were investigated with IMOGEN (version 1.0) and the original UKMO-HadCM3 patterns (Huntingford et al. 2008), by analysing the vegetation response to (i) some limited uncertainty via prescribed bounds in the parameterisations of the atmospheric component of UKMO-HadCM3 (related to HadCM3LC), (ii)

Deleted: and

Deleted: Tropical

Deleted: areas

Deleted: original

Deleted: a

Deleted: this

Deleted: .

Deleted: capturing, in effect an interpolation methodology,

Deleted: .

Deleted: O

Deleted: such framework

Deleted: and

Deleted: .

description of canopy radiation interception – “big leaf” versus “multilayer” (Mercado et al., 2007) and (iii) representation of vegetation dynamics using an area based model and an individual based model (Moorcroft et al., 2001). All simulations show a fairly robust risk of dieback. More recently, a set of the climate patterns described in this paper were used to re-analyse the potential for tropical rainforest “die-back”. Zelazowski et al. (2011) combined the patterns and global contemporary climatology to produce high resolution maps of the future extent of humid tropical forests, while Huntingford et al. (2013) forced the IMOGEN framework with the full set of patterns. Both studies found that climate models other than UKMO-HadCM3 are less likely to project such rainforest losses, which reflects the particularly strong climatic signal for the Amazon region temperature and precipitation changes for UKMO-HadCM3, as noted in Figures 2 and 3.

In order to exemplify the ability of IMOGEN to project changes to impacts, we report results of the mean annual total runoff ( $R_{tot}$ , mm day<sup>-1</sup>) simulation based on the SRESA1B emissions forcing scenario (Figure 7), and compare them directly to GCM estimates of change in the same quantity. Hence this is comparing the IMOGEN simulations that emulate multiple GCMs but with a single land surface model (JULES), versus runoff values directly from the GCMs. The latter therefore contain alternative estimates of climate change, as well as the responses of different land surface models. During modelled pre-industrial control “spin-up” period, and modelled period centred on year 2090, total runoff values are recorded for each GCM (both emulated in IMOGEN, and directly from GCMs). Then in each case, the change is calculated. In the top panels of Figure 7, the mean of these changes are shown, whilst the bottom panels are the standard deviations of these change values. Although there are similarities between left and right-hand panels (over northern latitudes, in particular), there are important differences too, and notably the drying signal in GCM output for Africa and Australia is not reflected in the IMOGEN framework. For SDs, in some locations there is higher variability for IMOGEN than for the GCMs themselves; however, this pertains mainly to the regions where IMOGEN predicts higher runoff. The latter may be surprising, as considering that GCMs directly introduce another level of uncertainty i.e. inter-land surface model differences. Our finding is suggestive that JULES has a particularly sensitive response of runoff to imposed climatic changes. Runoff provides a challenge for comparison, as it is frequently a relatively small number between two larger fluxes of precipitation and evapotranspiration (transpiration, plus soil evaporation and interception losses) and so sensitive to change in those fluxes. Any direct comparison also needs to account for IMOGEN being initialised with a climatology based on the CRU dataset, and temporal disaggregation to sub-daily drivers of JULES having not been calibrated against any particular GCM. Nevertheless, to be a useful tool for impacts assessment, then IMOGEN must capture the general features of GCM projections of quantities such as runoff when operated for similar emissions scenarios.

Looking ahead to further model development, one possibility is, for different GCMs, to pattern-scale directly impact variables of interest such as runoff against global land temperature change. This could be beneficial for two reasons. First, it would remove the current IMOGEN mismatch of many GCMs emulated based on their climate projections only, while the emulating system is coupled to just one land surface model. Instead, a more accurate representation would be gained of the spread of runoff uncertainty. Second, it would make model calculations computationally very fast, as full operation of the JULES system

Deleted:

Deleted: b

Deleted: er

Deleted: above

Deleted: In Figure 7,

Deleted: This is for the SRESA1B emissions scenario

Deleted: .

Deleted: , we consider the ability of IMOGEN to project runoff changes and compare the result to such changes taken directly from the GCMs themselves.

Deleted: and additionally

Deleted: (

Deleted: by

Deleted: )

Deleted: .

Deleted: Looking ahead to new forms for IMOGEN, one possibility to additionally capture the different land surface responses is to pattern-scale directly impact variables of interest such as runoff.

Deleted: D

Deleted: -

Deleted: for

Deleted: but

Deleted: only

isn't this relevant for ISIMIP?

would not be required. Such an approach would be applicable when using IMOGEN to estimate changes for different future greenhouse gas concentrations, rather than land surface modelling development. A further possibility is to connect the meteorological pattern-scaling structure to alternative land surface models. The analysis of Sitch et al. (2008) used the IMOGEN system to diagnose uncertainty in representation of future plant biogeography and climate-carbon cycle feedbacks using five Dynamical Global Vegetation Models (DGVMs), but then combined with only a single set of climate model patterns based on UKMO-HadCM3. This could be re-visited. If each DGVM modelling centre could operate their latest DGVM configuration, across the range of emulated GCMs, then this would give a fuller estimate of the balance between implications of uncertainty in climate and uncertainty in terrestrial ecosystem response and its feedbacks on the global carbon cycle. A full set of calculations would entail 5 times 22 simulations, for a single future atmospheric greenhouse gas concentration pathway or emissions pathway.

In some regards, land surface models in GCMs are still in their infancy, considering the growing knowledge of how vegetation responds physiologically to imposed climatic changes. For this reason, there are future plans to use IMOGEN as an intermediate step, before inclusion in a full GCM, to test and demonstrate the relative importance of new process descriptions. For example, we have used the patterns derived in this paper on an analysis of the sensitivity of the future land carbon storage to thermal acclimation of plant photosynthesis (Mercado et al., in preparation). This is a noted major deficiency in current large-scale terrestrial models (Booth et al 2012; Huntingford et al., 2013; Smith and Dukes 2013). In addition, the assessment of newly available enhanced description of leaf dark respiration (Atkin et al., 2015) is needed, as well as the inclusion of both Nitrogen and Phosphorus constraints to plant productivity in tropical ecosystems (e.g. Mercado et al., 2011), and inclusion of a full representation of a coupled Carbon-Nitrogen cycle in JULES (Zaehle et al 2010). Furthermore, it is desirable to test the effects of adding height competition into the vegetation dynamics module of JULES, in order to add ecological succession modelling (Smith et al 2001; Moorecroft et al 2001), along with assessing the impacts of improved representation of stomatal conductance (Medlyn et al 2011; Kala et al 2015) and plant hydraulics (Sperry et al. 2015) on simulated land carbon and water cycles couplings to climate. The latter could extend as far as testing any hormonal signalling in the hydraulic linkages between soil moisture and stomata response; an effect well known by the physiological community but hereto never tested in a full large-scale gridded land surface model (Huntingford et al., 2015). Finally, impacts of introducing a better representation of plant functional types and plant trait variation across space and time (Verheijen et al 2015) on simulated land carbon could also be considered.

## 5. Discussion

In this paper we present a "pattern scaling set", consisting of spatially explicit climate change patterns and EBM calibration parameters, which together represent 22 GCMs of the WCRP CMIP3 database (Meehl et al., 2007). This data set extends the use of the IMOGEN climate impacts assessment tool to scan across uncertainty in climate models. Despite relying on a set of

Deleted: ¶  
Whilst IMOGEN framework allows testing hypotheses in more advanced land surface configurations, such as JULES (Mercado et al., 2007), the major advantage of routine utilisation of the full set of patterns described in this paper is that any assessment of uncertainty in how the land surface may function, for different levels of atmospheric greenhouse gases, can be now understood in the context of the full spectrum of uncertainty implicit in climate models from different GCM research centres. To aid this even further, ultimately

Deleted: t

Deleted: .

Deleted: in which the

Deleted: is used

Deleted: s

Deleted: .

Deleted: can be

Deleted: x

Deleted: many

Deleted: a particular

Deleted: understanding

Deleted: o

Deleted: a

Deleted: -

Deleted: -

Deleted: should

Moved down [3]: A final advantage of the IMOGEN system is that the projected anomalies of meteorological change are generally added to known gridded climatologies, rather than to any GCM-based baseline estimates. One such dataset is the routinely updated Climate Research Unit (CRU) climatology (Harris et al., 2014). A typical estimate of pre-industrial conditions may be regarded as the mean climatology of a period such as 1960-1989, a time when weather stations had become much more available worldwide to guide the dataset construction. Although this will fail to capture warming effects between pre-industrial times and that period, such offsets may be much smaller than the biases removed by not using GCMs to estimate a baseline climatology to which IMOGEN anomalies are added.¶

simple assumptions, the tool can capture a significant part of the predicted changes in surface climatology. Terrestrial ecosystem response studies have used this modelling framework to gain new insights into how the land surface component of the Earth system functions. A new version of the pattern scaling set, based on the CMIP5 dataset, will build on those available here.

5 The IMOGEN modelling system is available to determine future climate change, now with uncertainty, and forced by either a future pathway in either CO<sub>2</sub> emissions or CO<sub>2</sub> concentrations. A further and rapidly emerging application is to understand regional climate impacts during transition to different global thermal limits, with an emphasis on eventual stabilisation at 1.5°C or 2.0°C of global warming above pre-industrial levels. In this instance, most of the EBM in IMOGEN is overridden with a global temperature pathway (the land-ocean contrast and oceanic fraction cover only used to obtain  $\Delta T_1$ ), but relying on the remaining spatial and monthly patterns to give detailed local climatic implications. It is planned to use different global temperature pathways to those two stabilised limits (Huntingford et al., 2017) to force IMOGEN in this configuration. A further

10 advantage of the IMOGEN system is that the projected anomalies of meteorological change are generally added to known gridded climatologies, rather than to any GCM-based baseline estimates. One such dataset is the routinely updated Climate Research Unit (CRU) climatology (Harris et al., 2014). A typical estimate of pre-industrial conditions may be regarded as the

15 mean climatology of a period such as 1960-1989, a time when weather stations had become much more available worldwide to guide the dataset construction. Although this will fail to capture warming effects between pre-industrial times and that period, such offsets may be much smaller than the biases removed by not using GCMs to estimate a baseline climatology to which IMOGEN anomalies are added. An important aspect of the presented work is the comprehensive study of the pattern's robustness, i.e. their ability to capture variability of climate simulated by GCMs. That across all variables considered, 1/3rd of

20 decadal variability in monthly averages is captured, suggests that it is a technique with a significant potential. This is, especially since it allows a large reduction in input data and computation requirements compared to full GCMs. Overall, the presented patterns are in good agreement with the results presented in the Fourth Assessment Report of the Intergovernmental Panel on Climate Change (e.g. for precipitation SI Fig. 2 and Figure 10.9 in Meehl et al., 2007). This applies to both the multi-model mean changes in surface climate, as well as the degree of agreement between the models (stippling in Figure 5).

25 However, the ability of climate patterns to capture the course of changes varies significantly between the modelled climate variables. In contrast to temperature change (85.44±4.37% of variability explained by climate patterns), change in precipitation is usually more difficult to capture in this linear methodology. Overall 85% of precipitation variability remains unexplained, although it should be noted that in some regions seasonal precipitation patterns explain up to 75% of variability (generally at high northern latitudes). The relatively weak explanatory power of the precipitation patterns can be partly explained by poor

30 trend estimation over dry zones. In these areas, the mean change over decades gives low PVE values, as any change in very small current absolute precipitation can result in high relative deviations from preindustrial levels. In such circumstances, precipitation is very much dominated by inter-annual fluctuations,

Assumption of linearity of life cycle, like a tune on bins correction, low impact studies

- Deleted: can use
- Deleted: is under way
- Formatted: Subscript
- Formatted: Subscript
- Moved (insertion) [3]
- Deleted: final
- Deleted: be
- Deleted: ¶
- Deleted: ¶
- Deleted: The fact that together the set of
- Deleted: variables capture
- Deleted: .
- Deleted: through removal of the time dimension
- Deleted: see SI and
- Deleted: S3
- Deleted: , which is among critical aspects of climate change.
- Deleted: generally
- Deleted: relatively
- Deleted: Into a large extent this is a consequence of the fact that the original GCM results are also relatively inconsistent as regards precipitation. In climate patterns this uncertainty is further exacerbated, and in consequence
- Deleted: o
- Deleted: very
- Deleted: poor
- Deleted: inefficient
- Deleted: performance in
- Deleted: precipitation estimation over dry zones is in part because it is not possible to capture the
- Deleted: through what are very low precipitation levels
- Deleted: which mean scaling cannot be captured well

How useful is this?



How do you capture extremes? (weather generation)

In addition to uncertainty linked to methods and assumptions (such as linearity), there is some uncertainty linked directly to driving and calibrating input data. The decision to use 20C3M and SRES scenarios to derive patterns, and the idealised scenario of 1% annual CO<sub>2</sub> increase to calibrate the EBM model, reflects a compromise between the accuracy of patterns and forcings. It could be argued that both the patterns and the EBM parameters should be derived from the same set of GCM runs. However, since the SRES runs are on average longer (12 decades, with part of the 20C3M run), therefore they are a better source for linear fitting of the spatial patterns (Mitchel 2003). However the idealised CO<sub>2</sub> increase scenarios are a better basis for energy balance model calibration as the definition of SRES forcings varies between modelling groups (they often encompass atmospheric aerosols) and are less well documented.

Although placing climate data on a common grid brings strong benefits to the IMOGEN tool, there is also a compromise. For the re-gridding method combined with land mapping (see Supplementary Material), the calculated regional patterns represent areas that are comprised fully of land, while in much of original GCM data grid-boxes represents a mix of land and ocean. The total land fraction in the presented spatial patterns is slightly increased due to this (see Figure S1). This increases the average grid-box warming, due to diminished representation of the oceanic heat uptake. As a result, the fitting procedure yields regional warming patterns (column "TAS" in Table 3) which, when area-weighted, overall return a value slightly larger than 1.0 K/K. However, this effect has no impact on the global energy budget in the IMOGEN framework, which is resolved independently with EBM.

OR CMIP6  
 There are a number of potential methodological enhancements that can be implemented in the next IMOGEN version and beyond just fitting to the CMIP5 dataset (Taylor et al 2012). For example, so far the natural variability around the trend in IMOGEN is simulated through a daily "weather generator" component with invariant properties, and with no representation of inter-annual variability. However variability might also change in a warming world, and at a range of timescales from sub-daily through to major alteration at inter-annual timescales (e.g. Huntingford et al., 2013a). This suggests that in future research, at least for some variables, additional patterns might be added that capture such variability changes, and including any inter-annual variability and adjustment for different warming levels.

In IMOGEN, global temperature changes due to atmospheric gas composition that adjusts radiative forcing is achieved through a small number of parameters in a global energy balance model. However aerosols in particular cause problems for this, as they are not well-mixed, unlike greenhouse gases. Instead, they show strong spatial variation and thus make strong regional variation in radiative forcing. Shioyama et al. (2010) showed that pattern-scaling is less reliable in the case of precipitation than for temperature, in part because precipitation is more sensitive to aerosol forcing. A potential improvement in the presented method in this regard is to use additional spatial masks for aerosol-affected regions. Other limitations to linear scaling have been identified (Good et al., 2015). For example, local climatic feedbacks are not constant in time, and different components of the climate system respond on different timescales (Chadwick & Good, 2013). This implies that should IMOGEN be used to test significantly different land surface parameterisations, projected local and regional meteorological changes might no longer be compatible.

- Deleted: which is
- Deleted: quality
- Deleted: For example, t
- Deleted: ideally
- Deleted: calibration
- Deleted: relatively
- Deleted: detection of the
- Deleted: linear trend
- Deleted: On the other hand,
- Deleted: for rigorous studies on the impacts of various CO<sub>2</sub> emission pathways, because
- Deleted: they are generally poorly
- Deleted: To conclude, rigorous description of forcings applied in each GCM run is required to maximise the potential of derived climate pattern scaling.
- Deleted: The presented work is an attempt to unify the spatially heterogeneous GCM data resource.
- Deleted: P
- Deleted: However
- Deleted: However, as a result of the applied procedure for
- Deleted: ,
- Deleted: mainly because some mixed land/ocean areas are replaced by land-only estimates to match the UKMO-HadCM3 grid with grid-boxes of either pure land or ocean (
- Deleted: of the dataset
- Deleted: (based on the
- Deleted:
- Deleted: ;
- Deleted: , including the way it is utilised by the IMOGEN framework
- Deleted: ,
- Deleted: under the assumption that the spread remains within the set bounds
- Deleted: in reality the signal in GCM runs can not only adjust the mean but also the variability itself
- Deleted: needed
- Deleted: Furthermore, an extra set of patterns to capture longer-term inter-annual or inter-decadal variability, over and beyond line...
- Deleted: Global
- Deleted: gases
- Deleted: , unlike the relatively spatially homogenous greenhous...
- Deleted: ¶

Nevertheless, as long as used aware of its limitations, IMOGEN does offer a simple, available and computational fast way to emulate GCMs. This can be operated to estimate surface meteorological changes for different future atmospheric greenhouse pathways. It can also be operated to undertake intermediate analysis with new land surface process descriptions, before their operation in full-complexity GCMs. This paper takes the further step of adding to its capability the scanning across of a large set of GCMs that it now emulates. Ultimately, the CMIP5 ensemble, which formed the basis of the recent 5th IPCC report (IPCC, 2013) using diagnostics available at that time, has much potential to improve the performance of the described pattern-scaling framework. Aside from the fact that the models themselves have improved, more scenarios are available, allowing better assessment of forcings other than CO<sub>2</sub>. With preparations now starting for the 6th IPCC report, and new simulations being made for that, it is timely to consolidate, and calibrate a new set of patterns for the CMIP5 family of GCMs, building on the analysis presented in this paper.

#### Data and Code Availability

The IMOGEN version 2.0 patterns and EBM parameters, along with documentation, are available for full download (under "IMOGEN") from the UK Environmental Information Data Centre (EIDC; <http://eidc.ceh.ac.uk>). The IMOGEN framework (Huntingford et al. 2010) have become a component of the JULES land surface initiative (Best et al., 2011; Clark et al., 2011), and it is available via that route ([jules.jchmr.org](http://jules.jchmr.org)). For the most up-to-date IMOGEN code, please contact the corresponding author.

#### Author Contributions

PZ performed the fitting of the patterns and EBM parameters against the CMIP3 database. CH developed the overall IMOGEN model framework. LMM advised on impacts applications and NS aided with context placing of the analysis in terms of other GCM emulation systems. All authors contributed towards writing the manuscript.

#### Acknowledgements

We acknowledge the modelling groups, the Program for Climate Model Diagnosis and Intercomparison, and the World Climate Research Programme (WCRP) Working Group on Coupled Modelling for their roles in making available the WCRP Coupled Model Intercomparison Project 3 multi-model dataset. This work was financially supported by the Natural Environment Research Council (UK), pilot project Environmental Virtual Observatory (NE/I002200/1), and by the National Science Centre (Poland), grant SONATA 2014/13/D/ST10/00022. CH was also supported by CEH National Capability funds. We thank Seiji Yukimoto of the Climate Research Department, Meteorological Research Institute, Japan, for assistance in processing MRI-CGCM2.3.2 data.

**Moved down [4]:** Nevertheless, as long as used aware of its limitations, its simplicity, availability and computational speed of operation does allow for intermediate analysis before operation of full-complex GCMs with new land surface parameterisation. This paper takes the further step of adding to its capability the scanning across of a large set of GCMs emulated. ¶

**Deleted:** In addition to sources of uncertainty which are linked to methods and the assumptions made, there is uncertainty linked directly to input data quality. For example, the decision to use 20C3M and SRES scenario to derive patterns, and the idealised scenario of 1% annual CO<sub>2</sub> increase to calibrate the EBM model, reflects a compromise between the accuracy of patterns and forcings. It could be argued that ideally both the patterns and the calibration parameters should be derived from the same set of GCM runs. However, since the SRES runs are longer (12 decades with part of the 20C3M run), therefore they are a relatively better source for detection of the linear trend (Mitchel 2003), whereas for one-third of GCMs a necessary alternative would be the idealised scenario of 1% annual CO<sub>2</sub> increase to double levels which provides only 7 decades. On the other hand, the idealised CO<sub>2</sub> increase scenarios are a better basis for energy balance model calibration for rigorous studies on the impacts of various CO<sub>2</sub> emission pathways, because the definition of SRES forcings varies between modelling groups (they often encompass atmospheric aerosols) and they are generally poorly documented. ¶

**Moved (insertion) [4]**

**Deleted:** its

**Deleted:** icity

**Deleted:** ility

**Deleted:** speed

**Deleted:** of operation does allow for

**Deleted:** of

**Deleted:** with new land surface parameterisation

**Deleted:** d

**Deleted:** ¶

**Deleted:** a better dataset is likely to be the CMIP5 ensemble. This

**Deleted:** ,

**Deleted:** and is a database only recently completed,

**Deleted:** considered

**Deleted:** handling

**Deleted:** , and data availability is better.

**Deleted:** For this reason, the main next enhancement of the IMOGEN system is to migrate over to the CMIP5 dataset.

*Good, tip: add DOI via Datacite OR Zenodo*

## References

- Atkin, O. K., Bloomfield, K. J., Reich, P. B., Tjoelker, M. G., Asner, G. P., Bonal, D., Bonisch, G., Bradford, M. G., Cernusak, L. A., Cosio, E. G., Creek, D., Crous, K. Y., Domingues, T. F., Dukes, J. S., Egerton, J. J. G., Evans, J. R., Farquhar, G. D., Fyllas, N. M., Gauthier, P. P. G., Gloor, E., Gimeno, T. E., Griffin, K. L., Guerrieri, R., Heskell, M. A., Huntingford, C., Ishida, F. Y., Kattge, J., Lambers, H., Liddell, M. J., Lloyd, J., Lusk, C. H., Martin, R. E., Maksimov, A. P., Maximov, T. C., Malhi, Y., Medlyn, B. E., Meir, P., Mercado, L. M., Mirotchnick, N., Ng, D., Niinemets, U., O'Sullivan, O. S., Phillips, O. L., Poorter, L., Poot, P., Prentice, I. C., Salinas, N., Rowland, L. M., Ryan, M. G., Sitch, S., Slot, M., Smith, N. G., Turnbull, M. H., VanderWel, M. C., Valladares, F., Veneklaas, E. J., Weerasinghe, L. K., Wirth, C., Wright, I. J., Wythers, K. R., Xiang, J., Xiang, S. and Zaragoza-Castells, J.: Global variability in leaf respiration in relation to climate, plant functional types and leaf traits, *New Phytol.*, 206, 614-636, doi:10.1111/nph.13253, 2015.
- Best, M. J. Pryor, M., Clark, D. B., Rooney, G. G., Essery, R. L. H., Menard, C. B., Edwards, J., Hendry, M. A., Porson, A., Gedney, N., Mercado, L. M., Sitch, S., Blyth, E., Boucher, O., Cox, P. M., Grimmond, C. S. B. and Harding, R. J.: The Joint UK Land Environment Simulator (JULES), model description - Part 1: Energy and water fluxes, *Geosci. Model Dev.*, 4, 677-699, doi:10.5194/gmd-4-677-2011, 2011.
- 15 [Burke, E.J., Ekici, A., Huang, Y., Chadburn, S.E., Huntingford, C., Ciais, P., Friedlingstein, P., Peng, S.S. and Krinner, G.: Quantifying uncertainties of permafrost carbon-climate feedbacks. \*Environ. Res. Lett.\*, 14, 3051-3066. doi:10.5194/bg-14-3051-2017. 2017.](#)
- Cabre, M. F., Solman, S. A. and Nunez, M. N.: Creating regional climate change scenarios over southern South America for the 2020's and 2050's using the pattern scaling technique: validity and limitations, *Climatic Change*, 98, 449-469, doi:10.1007/s10584-009-9737-5, 2010.
- 20 Chadwick, R. and Good, P.: Understanding nonlinear tropical precipitation responses to CO2 forcing, *Geophys. Res. Lett.*, 40, 4911-4915, doi:10.1002/grl.50932, 2013.
- Clark, D. B., Mercado, L. M., Sitch, S., Jones, C. D., Gedney, N., Best, M. J., Pryor, M., Rooney, G. G., Essery, R. L. H., Blyth, E., Boucher, O., Harding, R. J., Huntingford, C. and Cox, P. M.: The Joint UK Land Environment Simulator (JULES), model description - Part 2: Carbon fluxes and vegetation dynamics, *Geosci. Model Dev.*, 4, 701-722, doi:10.5194/gmd-4-701-2011, 2011.
- 25 Cox, P. M., Betts, R. A., Collins, M., Harris, P. P., Huntingford, C. and Jones, C. D.: Amazonian forest dieback under climate-carbon cycle projections for the 21st century, *Theor. Appl. Climatol.*, 78, 137-156, doi:10.1007/s00704-004-0049-4, 2004.

- Cox, P. M., Betts, R. A., Jones, C. D., Spall, S. A. and Totterdell, I. J.: Acceleration of global warming due to carbon-cycle feedbacks in a coupled climate model, *Nature*, 408, 184-187, doi:10.1038/35041539, 2000.
- Frieler, K., Meinshausen, M., Mengel, M., Braun, N. and Hare, W.: A scaling approach to probabilistic assessment of regional climate change, *J. Clim.*, 25, 3117-3144, doi:10.1175/JCLI-D-11-00199.1, 2012.
- 5 Gedney, N., Cox, P. M. and Huntingford, C.: Climate feedback from wetland methane emissions, *Geophys. Res. Lett.*, 31, L20503, doi:10.1029/2004GL020919, 2004.
- Good P., Gregory J. M. and Lowe J. A.: A step-response simple climate model to reconstruct and interpret AOGCM projections, *Geophys. Res. Lett.*, 38, L01703, doi:10.1029/2010GL045208, 2011.
- [Harris, I., Jones, P.D., Osborn, T.J. and Lister, D.H.: Updated high-resolution grids of monthly climatic observations – the CRU TS3.10 Dataset., \*Int. J. Climatol.\*, 34, 623-642, doi:10.1002/joc.3711, 2014.](#)
- 10 Hughes, J. K., Lloyd, A. J., Huntingford, C., Finch, J. W. and Harding, R. J.: The impact of extensive planting of *Miscanthus* as an energy crop on future CO<sub>2</sub> atmospheric concentrations, *Glob. Change Biol. Bioenergy*, 2, 79-88, doi:10.1111/j.1757-1707.2010.01042.x, 2010.
- Huntingford, C., Booth, B. B. B., Sitch, S., Gedney, N., Lowe, J. A., Liddicoat, S. K., Mercado, L. M., Best, M. J., Weedon, G. P., Fisher, R. A., Lomas, M. R., Good, P., Zelazowski, P., Everitt, A. C., Spessa, A. C., Jones, C. D.: IMOGEN: an intermediate complexity model to evaluate terrestrial impacts of a changing climate, *Geosci. Model Dev.*, 3, 679-687, doi:10.5194/gmd-3-679-2010, 2010.
- 15 Huntingford, C. and Cox, P. M.: An analogue model to derive additional climate change scenarios from existing GCM simulations, *Clim. Dynam.*, 16, 575-586, doi:10.1007/s003820000067, 2000.
- 20 Huntingford, C., Cox, P. M., Mercado, L. M., Sitch, S., Bellouin, N., Boucher, O. and Gedney, N.: Highly contrasting effects of different climate forcing agents on terrestrial ecosystem services, *Philos. T. R. Soc. A*, 369, 2026-2037, doi:10.1098/rsta.2010.0314, 2011.
- Huntingford, C., Harris, P. P., Gedney, N., Cox, P. M., Betts, R. A., Marengo, J. A. and Gash, J. H. C.: Using a GCM analogue model to investigate the potential for Amazonian forest dieback, *Theor. Appl. Climatol.*, 78, 177-185, doi:10.1007/s00704-004-0051-x, 2004.
- 25 [Huntingford, C., Jones, P.D., Livina, V.N., Lenton, T.M. and Cox, P.M.: No increase in global temperature variability despite changing regional patterns. \*Nature\*, 500, 327-330, doi:10.1038/nature12310, 2013a.](#)

Huntingford, C., Mercado, L. and Post, E.: Earth Science The timing of climate change, Nature, 502, 174-175, 2013<sup>h</sup>.

Deleted: a

[Huntingford, C., Smith, D. M., Davies, W. J., Falk, R., Sitch, S. and Mercado, L.M.: Combining the ABA and net photosynthesis-based model equations of stomatal conductance. Ecol. Model., 300, 81-88, doi:10.1016/j.ecolmodel.2015.01.005, 2015.](#)

Moved (insertion) [2]

- 5 [Huntingford, C., Yang, H., Harper, A., Cox, P.M., Gedney, N., Burke, E.J., Lowe, J.A., Hayman, G., Collins, W.J., Smith, S.M. and Comyn-Platt, E.: Flexible parameter-sparse global temperature time profiles that stabilise at 1.5 and 2.0 degrees. Earth Syst. Dynam., 8, 617-626, doi:10.5194/esd-8-617-2017, 2017.](#)

Huntingford, C., Zelazowski, P., Galbraith, D., Mercado, L. M., Sitch, S., Fisher, R., Lomas, M., Walker, A. P., Jones, C. D., Booth, B. B. B., Malhi, Y., Hemming, D., Kay, G., Good, P., Lewis, S. L., Phillips, O. L., Atkin, O. K., Lloyd, J., Gloor, E., Zaragoza-Castells, J., Meir, P., Betts, R., Harris, P. P., Nobre, C., Marengo, J., Cox, P. M., Simulated resilience of tropical rainforests to CO2-induced climate change, Nat. Geosci., 6, 268-273, doi:10.1038/NGEO1741, 2013<sup>c</sup>.

Deleted: .

Deleted: b

Deleted: ¶

Ines, A. V. M. and Hansen, J. W.: Bias correction of daily GCM rainfall for crop simulation studies, Agr. Forest Meteorol., 138, 44-53, doi:10.1016/j.agrformet.2006.03.009, 2006.

Moved up [2]: Huntingford, C., Smith, D. M., Davies, W. J., Falk, R., Sitch, S. and Mercado, L.M.: Combining the ABA and net photosynthesis-based model equations of stomatal conductance, Ecol. Model., 300, 81-88, doi:10.1016/j.ecolmodel.2015.01.005, 2015.¶

- 15 IPCC: Climate Change 2007: The Physical Science Basis. Contribution of Working Group I to the Fourth Assessment Report of the Intergovernmental Panel on Climate Change [Solomon, S., D. Qin, M. Manning, Z. Chen, M. Marquis, K.B. Averyt, M.Tignor and H.L. Miller (eds.)], Cambridge University Press, Cambridge, United Kingdom and New York, NY, USA., 2007.

IPCC: Climate Change 2013: The Physical Science Basis. Contribution of Working Group I to the Fifth Assessment Report of the Intergovernmental Panel on Climate Change [Stocker, T.F., D. Qin, G.-K. Plattner, M. Tignor, S.K. Allen, J. Boschung, A. Nauels, Y. Xia, V. Bex and P.M. Midgley (eds.)], Cambridge University Press, Cambridge, United Kingdom and New York, NY, USA, 1535 pp, doi:10.1017/CBO9781107415324, 2013.

- 20 [James, R., Washington, R., Schleussner, C.-F., Rogelj, J., and Conway, D.: Characterizing half-a-degree difference: a review of methods for identifying regional climate responses to global warming targets. WIREs Clim. Change, 8, e457, doi:10.1002/wcc.457, 2017.](#)

- 25 Joos, F., Bruno, M., Fink, R., Siegenthaler, U., Stocker, T.F. and LeQuere, C.: An efficient and accurate representation of complex oceanic and biospheric models of anthropogenic carbon uptake, Tellus B, 48, 397-417, doi:10.1034/j.1600-0889.1996.t01-2-00006.x, 1996.

- Kala, J., De Kauwe, M. G., Pitman, A. J., Lorenz, R., Medlyn, B. E., Wang, Y. P., Lin, Y. S. and Abramowitz, G.: Implementation of an optimal stomatal conductance scheme in the Australian Community Climate Earth Systems Simulator (ACCESS1.3b), *Geosci. Model Dev.*, 8, 3877-3889, doi:10.5194/gmd-8-3877-2015, 2015.
- 5 Malhi, Y., Aragao, L. E. O. C., Galbraith, D., Huntingford, C., Fisher, R., Zelazowski, P., Sitch, S., McSweeney, C. and Meir, P.: Exploring the likelihood and mechanism of a climate-change induced dieback of the Amazon rainforest, *P. Natl. Acad. Sci. USA*, 106, 20610–20615, doi:10.1073/pnas.0804619106, 2009.
- Medlyn, B. E., Duursma, R. A., Eamus, D., Ellsworth, D. S., Prentice, I. C., Barton, C. V. M., Crous, K. Y., de Angelis, P., Freeman, M. and Wingate, L.: Reconciling the optimal and empirical approaches to modelling stomatal conductance, *Glob. Change Biol.*, 17, 2134-2144, doi:10.1111/j.1365-2486.2010.02375.x, 2011.
- 10 Meehl, G. A., Covey, C., Delworth, T., Latif, M., McAvaney, B., Mitchell, J. F. B., Stouffer, R. J. and Taylor, K. E.: The WCRP CMIP3 multimodel dataset – A new era in climate change research, *B. Am. Meteorol. Soc.*, 88, 1383–1394, doi:10.1175/BAMS-88-9-1383, 2007.
- Meehl, G. A., T. F. Stocker, W. D. Collins, P. Friedlingstein, A. T. Gaye, J. M. Gregory, A. Kitoh, R. Knutti, J. M. Murphy, A. Noda, S. C. B. Raper, I. G. Watterson, A. J. Weaver and Z.-C. Zhao: Global Climate Projections. In: *Climate Change 2007: The Physical Science Basis. Contribution of Working Group I to the Fourth Assessment Report of the Intergovernmental Panel on Climate Change* [Solomon, S., D. Qin, M. Manning, Z. Chen, M. Marquis, K. B. Averyt, M. Tignor and H. L. Miller (eds.)], Cambridge University Press, Cambridge, United Kingdom and New York, NY, USA., 2007.
- 15 Mercado, L. M., Bellouin, N., Sitch, S., Boucher, O., Huntingford, C., Wild, M. and Cox, P. M.: Impact of changes in diffuse radiation on the global land carbon sink, *Nature*, 458, 1014-U87, doi:10.1038/nature07949, 2009.
- 20 Mercado, L. M., Huntingford, C., Gash, J. H. C., Cox, P. M. and Jogireddy, V.: Improving the representation of radiation interception and photosynthesis for climate model applications, *Tellus B*, 59, 553-565, doi:10.1111/j.1600-0889.2007.00256.x, 2007.
- Mercado, L. M., Patino, S., Domingues, T. F., Fyllas, N. M., Weedon, G. P., Sitch, S., Quesada, C. A., Phillips, O. L., Aragao, L. E. O. C., Malhi, Y., Dolman, A. J., Restrepo-Coupe, N., Saleska, S. R., Baker, T. R., Almeida, S., Higuruchi, N. and Lloyd, J.: Variations in Amazon forest productivity correlated with foliar nutrients and modelled rates of photosynthetic carbon supply, *Philos. T. R. Soc. B*, 366, 3316-3329, doi:10.1098/rstb.2011.0045, 2011.
- 25 Mercado L. M, et al., Sensitivity of future land carbon storage to thermal acclimation of photosynthesis in climate-carbon cycle models. In Preparation.

- Mitchell, J. F. B., Johns, T. C., Eagles, M., Ingram, W. J. and Davis, R. A.: Towards the construction of climate change scenarios, *Climatic Change*, 41, 547-581, doi:10.1023/A:1005466909820, 1999.
- Mitchell, T. D.: Pattern scaling - An examination of the accuracy of the technique for describing future climates, *Climatic Change*, 60, 217-242, doi:10.1023/A:1026035305597, 2003.
- 5 Mitchell, T. D. and Jones, P. D.: An improved method of constructing a database of monthly climate observations and associated high-resolution grids, *Int. J. Climatol.*, 25, 693-712, doi:10.1002/joc.1181, 2005.
- Moorcroft, P. R., Hurtt, G. C. and Pacala, S. W.: A method for scaling vegetation dynamics: The ecosystem demography model (ED), *Ecol. Monogr.*, 71, 557-585, doi:10.1890/0012-9615(2001)071[0557:AMFSVD]2.0.CO;2, 2001.
- Nakićenović, N., Alcamo, J., Davis, G. et al: IPCC Special Report on Emissions Scenarios, Cambridge University Press,  
10 Cambridge, UK, 570 pp., 2000.
- Shiogama, H., Emori, S., Takahashi, K., Nagashima, T., Ogura, T., Nozawa, T. and Takemura, T.: Emission scenario dependency of precipitation on global warming in the MIROC3.2 model, *J. Climate*, 23, 2404-2417, doi:10.1175/2009JCLI3428.1, 2010.
- Sitch, S., Cox, P. M., Collins, W. J. and Huntingford, C.: Indirect radiative forcing of climate change through ozone effects  
15 on the land-carbon sink, *Nature*, 448, 791-U4, doi:10.1038/nature06059, 2007.
- Sitch, S., Huntingford, C., Gedney, N., Levy, P. E., Lomas, M., Piao, S. L., Betts, R., Ciais, P., Cox, P., Friedlingstein, P., Jones, C. D., Prentice, I. C. and Woodward, F. I.: Evaluation of the terrestrial carbon cycle, future plant geography and climate-carbon cycle feedbacks using five Dynamic Global Vegetation Models (DGVMs), *Glob. Change Biol.*, 14, 2015-2039, doi: 10.1111/j.1365-2486.2008.01626.x, 2008.
- 20 Smith, B., Prentice, I. C., and Sykes, M. T.: Representation of Vegetation Dynamics in the Modelling of Terrestrial Ecosystems: Comparing Two Contrasting Approaches within European Climate Space, *Global Ecol. and Biogeogr.*, 10, 621-637, doi:10.1046/j.1466-822X.2001.t01-1-00256.x, 2001.
- Smith, N. G. and Dukes, J. S.: Plant respiration and photosynthesis in global-scale models: incorporating acclimation to temperature and CO<sub>2</sub>, *Glob. Change Biol.*, 19, 45-63, doi:10.1111/j.1365-2486.2012.02797.x, 2013.
- 25 Sperry, J. S., Wang, Y., Wolfe, B. T., Mackay, D. S., Anderegg, W. R. L., McDowell, N. G. and Pockman, W. T.: Pragmatic hydraulic theory predicts stomatal responses to climatic water deficits, *New Phytol.*, doi: 10.1111/nph.14059, 2016.

Taylor, K. E., Stouffer, R. J. and Meehl, G. A.: An overview of CMIP5 and the experiment design, *B. Am. Meteorol. Soc.*, 93, 485-498, doi:10.1175/BAMS-D-11-00094.1, 2012.

[Tebaldi, C and Arblaster, J.M.: Pattern scaling: Its strengths and limitations, and an update on the latest model simulations, \*Climatic Change\*, 122, 459-471, doi: 10.1007/s10584-013-1032-9, 2014.](#)

- 5 Verheijen L. M., Aerts, R., Brovkin, V., Cavender-Bares, J., Cornelissen, J. H. C., Kattge, J. and Van Bodegom, PM: Inclusion of ecologically based variation in plant functional types reduces the projected land carbon sink in an earth system model, *Glob. Change Biol.*, 21, 3074-3086, doi: 10.1111/gcb.12871, 2015.

Wigley, T. M. L., Raper, S. C. B., Smith, S. and Hulme, M.: The Magicc/ScenGen Climate Scenario Generator: version 2.4, Technical manual. CRU, UEA, Norwich, U.K., 2000.

- 10 Zaehle, S., Friedlingstein, P. and Friend, A. D.: Terrestrial nitrogen feedbacks may accelerate future climate change, *Geophys. Res. Lett.*, 37, L01401, doi:10.1029/2009GL041345, 2010.

Zelazowski, P., Malhi, Y., Huntingford, C., Sitch, S. and Fisher, J. B.: Changes in the potential distribution of humid tropical forests on a warmer planet, *Philos. T. R. Soc. A*, 369, 137-160, doi:10.1098/rsta.2010.0238, 2011.



**Table 1. Availability of WCRP CMIP3 data for the climate patterns study, and characteristics of models' depiction of land and water areas (variable sfidf).** Land/water transition is either continuous (*cont.*) or abrupt (binary mask - *bin.*). The first characteristic in column "Land mask" pertains to coastlines, whereas the second – to inland waters. The codes in column "Data gaps and issues" are: M – missing, E – 4D variable (surface values need to be extrapolated), G – data gaps, R – some data needed resizing.

	<b>GCM name</b>	<b>Origin</b>	<b>Land mask</b>	<b>Resolution</b>	<b>Data gaps and issues</b>
<b>1.</b>	BCCR-BCM2.0	Norway	cont./cont.	64x128	E (HUR)
<b>2.</b>	CGCM3.1(T47)	Canada	bin./bin.	48x96	E (HUR)
<b>3.</b>	CNRM-CM3	France	bin./bin.	64x128	E (HUR)
<b>4.</b>	CSIRO-Mk3.0	Australia	bin./bin.	96x192	<u>E (HUR)</u> , M (UAS, VAS, PS)
<b>5.</b>	CSIRO-Mk3.5	Australia	bin./bin.	96x192	E (HUR)
<b>6.</b>	GFDL-CM2.0	USA	cont./bin.	90x144	E (HUR)
<b>7.</b>	GFDL-CM2.1	USA	cont./bin.	90x144	E (HUR)
<b>8.</b>	GISS-EH	USA	bin./cont.	46x72	E (HUR)
<b>9.</b>	GISS-ER	USA	bin./cont.	46x72	E (HUR), M (RLDS)
<b>10.</b>	FGOALS-g1.0	China	cont./bin.	60x128	E (HUR)
<b>11.</b>	INGV-SXG	Italy	bin./bin.	160x320	E (HUR, UAS, VAS), M (RLDS, RSDS)
<b>12.</b>	INM-CM3.0	Russia	bin./bin.	45x72	E (HUR)
<b>13.</b>	IPSL-CM4	France	cont./bin.	72x96	E (HUR)
<b>14.</b>	MIROC3.2(hires)	Japan	cont./cont.	160x320	E (HUR)
<b>15.</b>	MIROC3.2(medres)	Japan	cont./bin.	64x128	E (HUR)
<b>16.</b>	ECHO-G	Germany-Korea	bin./bin.	48x96	M (HUR)
<b>17.</b>	ECHAM5/MPI-OM	Germany	cont./bin.	96x192	E (HUR)
<b>18.</b>	MRI-CGCM2.3.2	Japan	cont./cont.	64x128	E (HUR) G (PRSN)
<b>19.</b>	CCSM3	USA	cont./bin.	128x256	E (HUR, UAS, VAS)
<b>20.</b>	PCM	USA	cont./bin.	64x128	E (HUR, UAS, VAS)
<b>21.</b>	UKMO-HadCM3	UK	bin./bin.	73x96	E (HUR)
<b>22.</b>	UKMO-HadGEM1	UK	cont./bin.	145x192	E (HUR), R (UAS,VAS)

Formatted: French (France)

**Table 2. Calibration parameters of the simple IMOGEN Energy Balance Model, for each considered Global Circulation Model.** The first column presents which runs (experiments) were used to derive the parameters, listed in the following columns: (i) an ocean effective thermal diffusivity which determines the uptake of energy,  $\kappa$  ( $\text{Wm}^{-1}\text{K}^{-1}$ ), (ii) a constant ratio of mean land and ocean surface (SST) rate of warming,  $\nu$ , (iii-iv) climate sensitivity over land  $\lambda_l$  and ocean  $\lambda_o$  ( $\text{W m}^{-2} \text{K}^{-1}$ ), and (v)  $f$ , which is a land fraction, including Antarctica,  $f$ . The last column presents GCM-specific ratios of warming aver all land per degree of global warming.

GCM	Calibration basis	Pattern basis	$\lambda_l$	$\lambda_o$	$\kappa$	$\nu$	$f$	$\Delta T_l / \nu \text{K}$	
1.	BCCR-BCM2.0	pictrl, 1% to2x	SRES A2	2.00	2.30	350	1.40	0.28	1.26
2.	CGCM3.1(T47)	pictrl, 1% to4x	SRES A2	1.50	1.30	270	1.50	0.31	1.30
3.	CNRM-CM3	pictrl, 1% to4x	SRES A2	1.65	1.58	500	1.46	0.28	1.29
4.	CSIRO-Mk3.0	pictrl, 1% to2x	SRES A2	1.20	1.25	2800	1.69	0.29	1.41
5.	CSIRO-Mk3.5	pictrl, 1% to2x	SRES A2	1.35	0.80	1300	1.58	0.29	1.35
6.	GFDL-CM2.0	pictrl, 1% to4x	SRES A2	1.15	1.70	510	1.53	0.30	1.32
7.	GFDL-CM2.1	pictrl, 1% to4x	SRES A2	1.15	2.05	460	1.58	0.30	1.35
8.	GISS-EH	pictrl, 1% to2x	SRES A1B	1.30	1.65	520	1.48	0.29	1.30
9.	GISS-ER	pictrl, 1% to4x	SRES A2	1.05	1.40	1200	1.61	0.29	1.37
10.	FGOALS-g1.0	pictrl, 1% to2x	SRES A1B	1.80	2.80	11000	1.47	0.30	1.46
11.	INGV-SXG	pictrl, 1% to4x	SRES A2	0.70	1.90	320	1.65	0.28	1.39
12.	INM-CM3.0	pictrl, 1% to4x	SRES A2	1.35	1.70	500	1.50	0.30	1.30
13.	IPSL-CM4	pictrl, 1% to4x	SRES A2	1.00	1.10	700	1.57	0.30	1.34
14.	MIROC3.2(hires)	pictrl, 1% to2x	SRES A1B	1.00	0.70	510	1.38	0.29	1.24
15.	MIROC3.2(medres)	pictrl, 1% to4x	SRES A2	0.83	1.00	720	1.57	0.29	1.35
16.	ECHO-G	pdctrl, 1% to4x	SRES A2	1.05	1.80	50	1.76	0.29	1.45
17.	ECHAM5/MPI-OM	pictrl, 1% to4x	SRES A2	0.86	0.95	500	1.60	0.29	1.36
18.	MRI-CGCM2.3.2	pdctrl, 1% to4x	SRES A2	1.68	1.25	380	1.38	0.30	1.22
19.	CCSM3	pdctrl, 1% to4x	SRES A2	1.10	1.70	1200	1.47	0.29	1.29
20.	PCM	pdctrl, 1% to4x	SRES A2	1.95	2.30	720	1.43	0.29	1.27
21.	UKMO-HadCM3	pictrl, 1% to2x	SRES A2	0.40	1.85	270	1.78	0.29	1.45
22.	UKMO-HadGEM1	pictrl, 1% to4x	SRES A2	0.92	1.46	480	1.60	0.29	1.36
<b>All</b>				1.23±0.40	1.57±0.51	1148±2220	1.55±0.11	0.29±0.01	1.34±0.06

**Table 3. Summary of magnitude, range and robustness of climate change patterns across variables and GCMs.** In each table cell, the first value is the mean, followed by the Percentage Variance Explained statistic (PVE, in brackets, underneath). The values in italics are across-ensemble averages used to fill in data gaps (missing variables for some GCMs). In these cases, the PVE statistic was not calculated. Square brackets in the last column denote average PVE (across-variables) calculated for these incomplete sets of variables. The pre-last row (All GCMs) contains across-ensemble means of the above statistics, plus associated standard deviations. The last row presents an additional diagnostic of the pattern fitting performance - percentage of negative PVE results, which indicate that the one-parameter regression line is a worse fit than the multi-decadal mean.

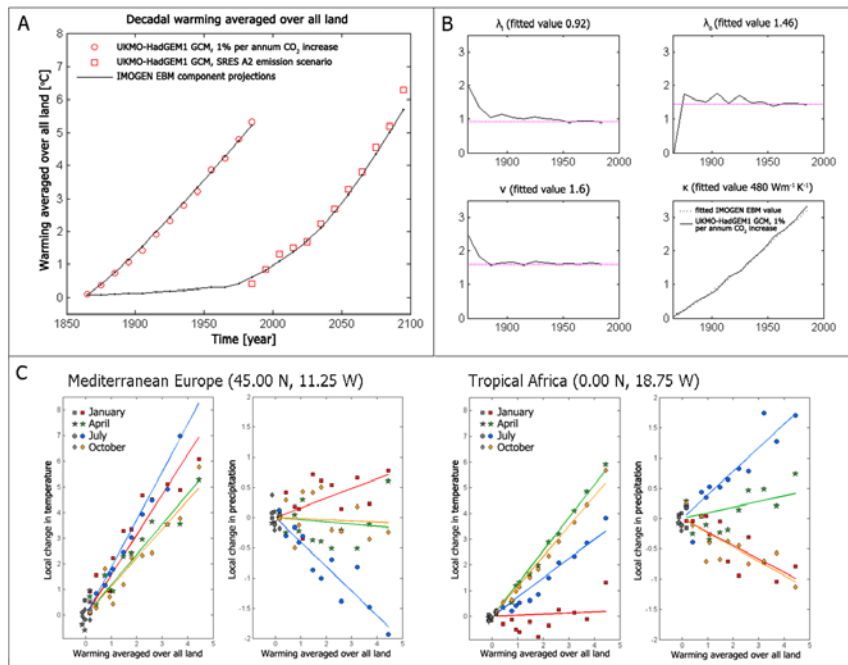
GCM name	TAS	HUR	UAS+VAS	RLDS	RSDS	PR	PRSN	PS	ALL
1. BCCR-BCM2.0	1.0463 (83.04)	-0.0201 (13.29)	0.0089 (2.66)	5.6754 (76.51)	-0.6185 (9.73)	0.0300 (8.16)	-0.0025 (13.14)	0.2324 (30.70)	(29.65)
2. CGCM3.1(T47)	1.0561 (85.79)	0.0974 (19.80)	0.0197 (8.30)	6.0605 (87.28)	-0.4722 (18.82)	0.0448 (18.71)	-0.0015 (16.66)	0.0730 (21.33)	(34.59)
3. CNRM-CM3	1.0371 (86.64)	-0.0111 (24.84)	0.0098 (8.73)	5.7499 (81.41)	-0.4978 (19.65)	0.0255 (17.05)	0.0000 (17.35)	0.1838 (38.48)	(36.77)
4. CSIRO-Mk3.0	1.0740 (82.73)	-0.2354 (13.99)	<i>0.0108</i> (-)	5.9023 (84.39)	-0.6072 (24.46)	0.0165 (9.38)	-0.0032 (25.70)	<i>0.0947</i> (-)	[40.11]
5. CSIRO-Mk3.5	1.0270 (87.73)	-0.2214 (17.04)	0.0059 (6.93)	6.2917 (87.92)	-0.3596 (25.23)	0.0044 (12.42)	-0.0035 (17.22)	0.0138 (21.94)	(34.56)
6. GFDL-CM2.0	1.0731 (83.58)	-0.2653 (14.77)	0.0071 (8.25)	6.0471 (83.69)	-1.8451 (34.58)	0.0042 (16.89)	-0.0041 (21.49)	0.0657 (24.35)	(35.95)
7. GFDL-CM2.1	1.0794 (79.71)	-0.2310 (17.35)	0.0113 (9.59)	6.2023 (82.62)	-1.7225 (33.21)	-0.0017 (17.93)	-0.0067 (18.66)	0.2057 (29.21)	(36.03)
8. GISS-EH	1.0543 (75.71)	0.0080 (10.48)	0.0103 (4.25)	6.6734 (77.09)	-1.4802 (1.95)	0.0415 (11.28)	-0.0016 (8.04)	0.0264 (12.18)	(25.12)
9. GISS-ER	1.0365 (80.07)	-0.1572 (17.25)	0.0099 (7.08)	<i>6.1883</i> (-)	-0.9399 (11.05)	0.0384 (14.76)	-0.0018 (10.16)	0.0251 (18.31)	[22.67]
10. FGOALS-g1.0	1.1180 (83.05)	-0.0980 (4.11)	-0.0031 (1.36)	6.3137 (82.71)	-0.9748 (9.67)	0.0205 (6.70)	-0.0010 (15.52)	0.0836 (13.62)	(27.09)
11. INGV-SXG	1.0863 (88.01)	-0.0209 (22.96)	0.0128 (5.20)	<i>6.2418</i> (-)	-0.7667 (-)	0.0184 (10.68)	-0.0067 (19.10)	0.0217 (18.58)	(35.98)
12. INM-CM3.0	1.0604 (83.51)	-0.0391 (15.44)	0.0130 (4.88)	5.7124 (78.17)	-0.2908 (23.54)	0.0200 (14.32)	-0.0071 (12.97)	0.0124 (16.43)	(31.16)
13. IPSL-CM4	1.1043 (90.18)	-0.6717 (27.46)	0.0059 (9.92)	6.1517 (85.26)	0.0932 (27.85)	0.0166 (15.72)	-0.0089 (23.73)	0.1216 (21.31)	(37.68)
14. MIROC3.2(hires)	1.0801 (94.19)	-0.1528 (16.89)	0.0031 (8.45)	6.2088 (92.28)	-1.0731 (36.21)	0.0271 (20.90)	-0.0052 (25.45)	0.2352 (37.87)	(41.53)
15. MIROC3.2(medres)	1.1281 (91.16)	-0.2819 (15.56)	0.0062 (9.38)	6.4687 (88.97)	-1.7130 (38.30)	0.0272 (22.37)	-0.0032 (23.53)	0.1417 (30.26)	(39.94)
16. ECHO-G	1.1383 (88.41)	<i>-0.1256</i> (-)	0.0165 (9.54)	6.5682 (86.84)	-1.4149 (20.41)	0.0574 (18.77)	-0.0046 (21.54)	-0.0648 (19.65)	[37.88]
17. ECHAM5/MPI-OM	1.0726 (89.81)	-0.2200 (18.66)	0.0173 (8.35)	6.1048 (89.35)	-0.3009 (18.78)	0.0294 (14.08)	-0.0052 (17.45)	0.0714 (22.61)	(34.89)
18. MRI-CGCM2.3.2	1.0641 (84.62)	0.6378 (13.21)	-0.0048 (3.25)	6.5956 (82.92)	-1.2903 (10.43)	0.0387 (7.60)	<i>-0.0063</i> (-)	0.0979 (17.37)	[31.34]
19. CCSM3	1.1182 (87.92)	-0.0307 (15.09)	0.0091 (6.75)	6.8102 (89.67)	-1.2080 (24.48)	0.0477 (21.47)	-0.0071 (20.45)	0.1629 (25.02)	(36.36)
20. PCM	1.1059 (78.64)	0.0704 (9.65)	0.0346 (1.13)	6.2678 (75.20)	-0.9678 (8.34)	0.0573 (12.52)	0.0009 (13.56)	0.1509 (17.32)	(27.04)
21. UKMO-HadCM3	1.0572 (86.57)	-0.7051 (29.40)	0.0137 (9.85)	5.6891 (84.81)	0.2089 (27.15)	0.0096 (16.36)	-0.0036 (15.88)	-0.0542 (23.05)	(36.63)

- Deleted: Mean
- Deleted: (change in quantity per degree of global warming)
- Deleted: .
- Deleted: Values
- Deleted: Percentage Variance Explained
- Deleted: (brackets)
- Deleted: Across-variables summary values
- Deleted: (
- Deleted: )
- Deleted: which concern
- Deleted: are in square brackets
- Formatted Table

22. UKMO-HadGEM1	1.1222 (88.60)	-0.0900 (18.05)	0.0190 (15.49)	6.2180 (89.33)	-1.9194 (37.04)	0.0076 (21.45)	-0.0039 (22.27)	0.1814 (32.21)	(40.55)
<i>All GCMs</i>	1.079 ±0.032 (85.44)	-0.1256 ±0.2579 (16.92)	0.0108 ±0.0080 (7.11)	6.188 ±0.400 (84.74)	-0.9164 ±0.6000 (23.29)	0.0264 ±0.0165 (14.98)	-0.0040 ±0.0025 (17.96)	0.095 ±0.084 (23.33)	(34.25)
<i>% neg. PVE</i>	0.07 %	3.87 %	4.87 %	0.07 %	3.64 %	3.99 %	1.50 %	3.37 %	2.67 %

Deleted: ALL

Formatted: Font: Italic



**Figure 1: Illustration of the process leading to parameterization of the IMOGEN Energy Balance Model and the scaled climate patterns (together forming the “pattern scaling set”), based on the example of the UKMO-HadGEM1 GCM.** **A:** emulation of a warming pathway across time. The 1% to quadrupling atmospheric CO<sub>2</sub> run was used for calibration of the energy balance model while the SRES A2 scenario run was used to validate the results. **B:** Fitting of the individual EBM parameters, underlining the match presented in A. Climate sensitivities over land  $\lambda_l$  and ocean  $\lambda_o$ , as well as the ratio of land to ocean warming rate,  $\nu$ , (pink lines) are derived directly from GCM run data (black curves, 1% run). The fourth parameter, an ocean effective thermal diffusivity,  $\kappa$ , determines modelled oceanic temperature profile. The  $\kappa$  value is selected based upon comparing calculated values of top-of-profile temperature against global mean SST changes projected by UKMO-HadGEM1 1% run (shown). **C:** Example local fitting of patterns of temperature and precipitation, found as regression coefficients (coloured straight lines) against calculated changes in mean temperature over land from UKMO-HadGEM1. Two representative grid-boxes in Mediterranean Europe and Tropical Africa are shown. Coloured symbols are decadal mean monthly values from the UKMO-HadGEM1 SRES A2 run, whilst the grey markers represent data from the 20C3M simulation, which were used to normalize to temperature and precipitation change, and are also corresponding to CRU normals (years 1961–90). Regression “pattern” fit is forced through [0,0] point, as in diagrams.

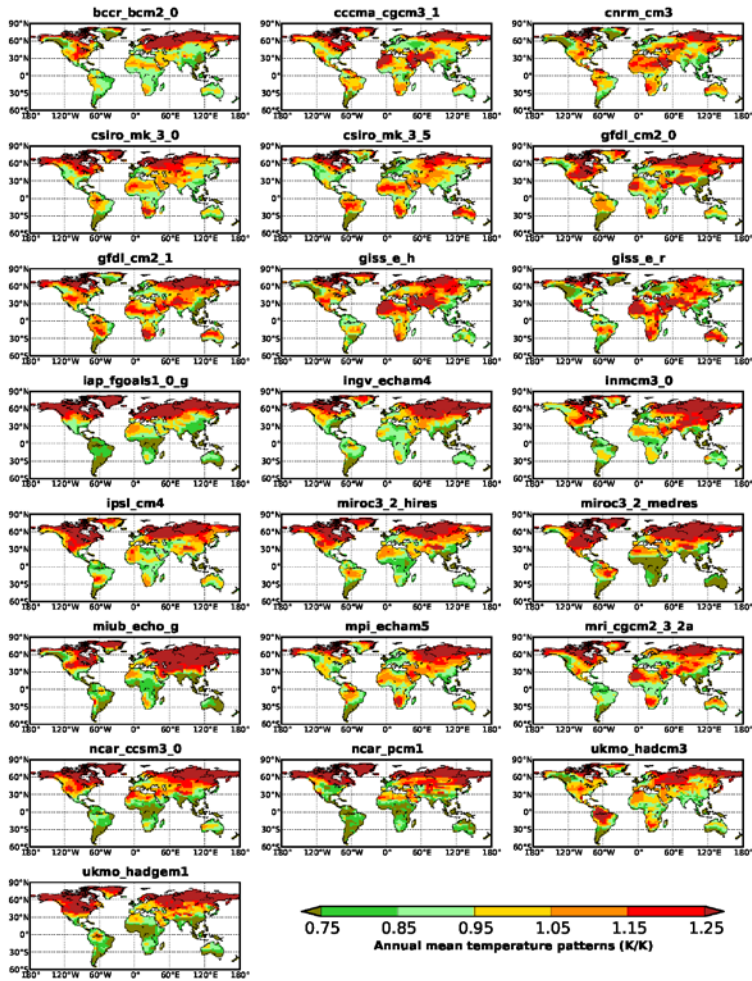


Figure 2: Annual means of the monthly patterns of local temperature change per degree warming over all land (K K<sup>-1</sup>). Data presented for the 22 GCMs considered in this study.

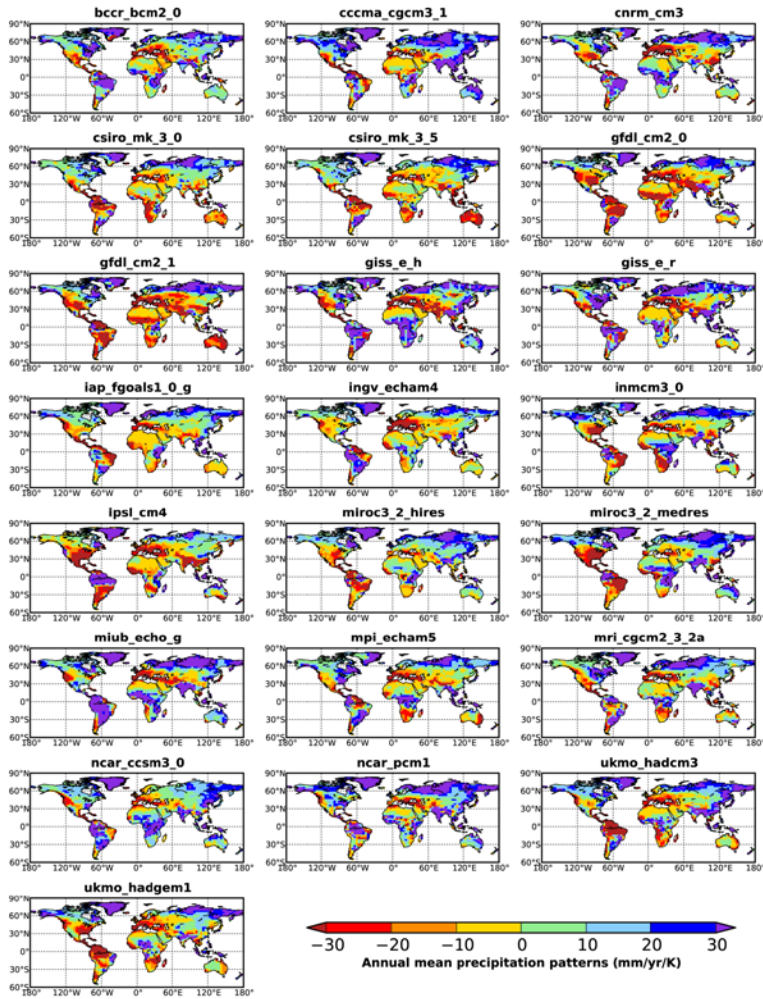
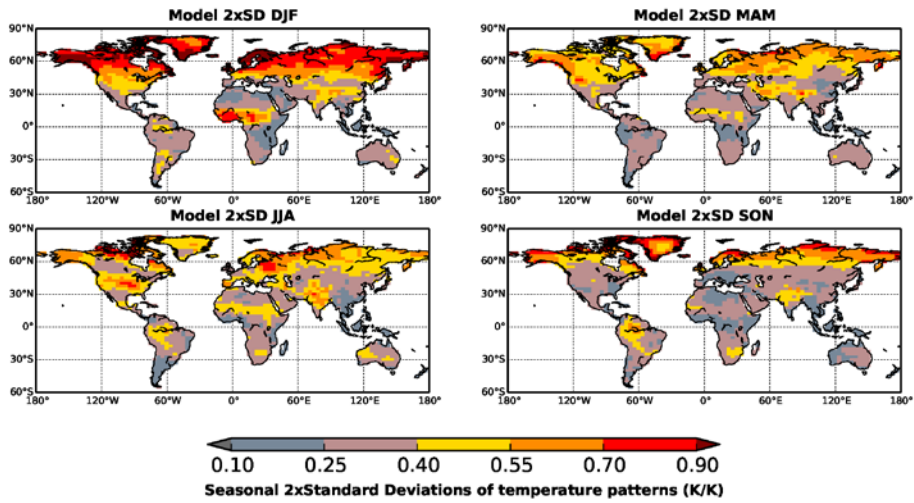
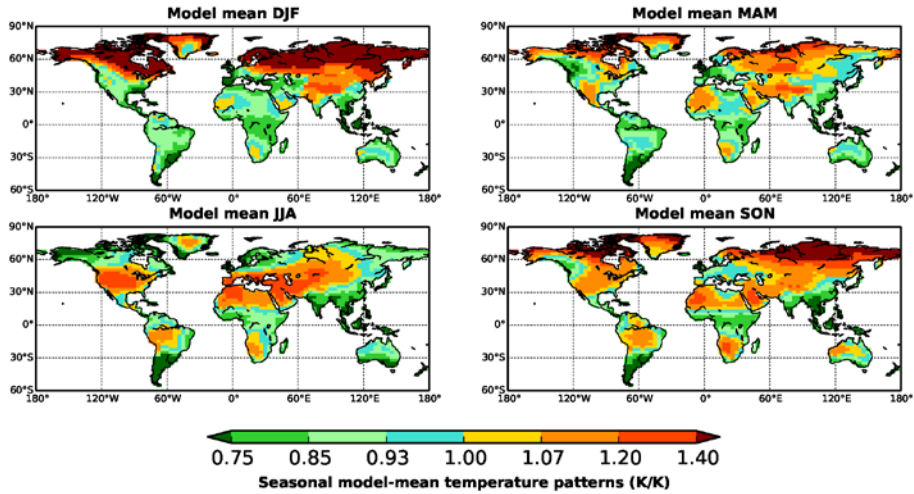


Figure 3: Annual means of the monthly patterns of local precipitation change per degree warming over all land (mm yr<sup>-1</sup> K<sup>-1</sup>). Data presented for the 22 GCMs considered in this study.

Deleted: for

Deleted:





**Figure 4: Seasonal means and variation ( $2\sigma$ ) of the monthly patterns of local temperature change per degree warming over all land ( $K K^{-1}$ ), across 22 GCMs. DJF is December, January and February, MAM is March, April and May, JJA is June, July and August and SON is September, October and November.**

Formatted: Font: Not Bold

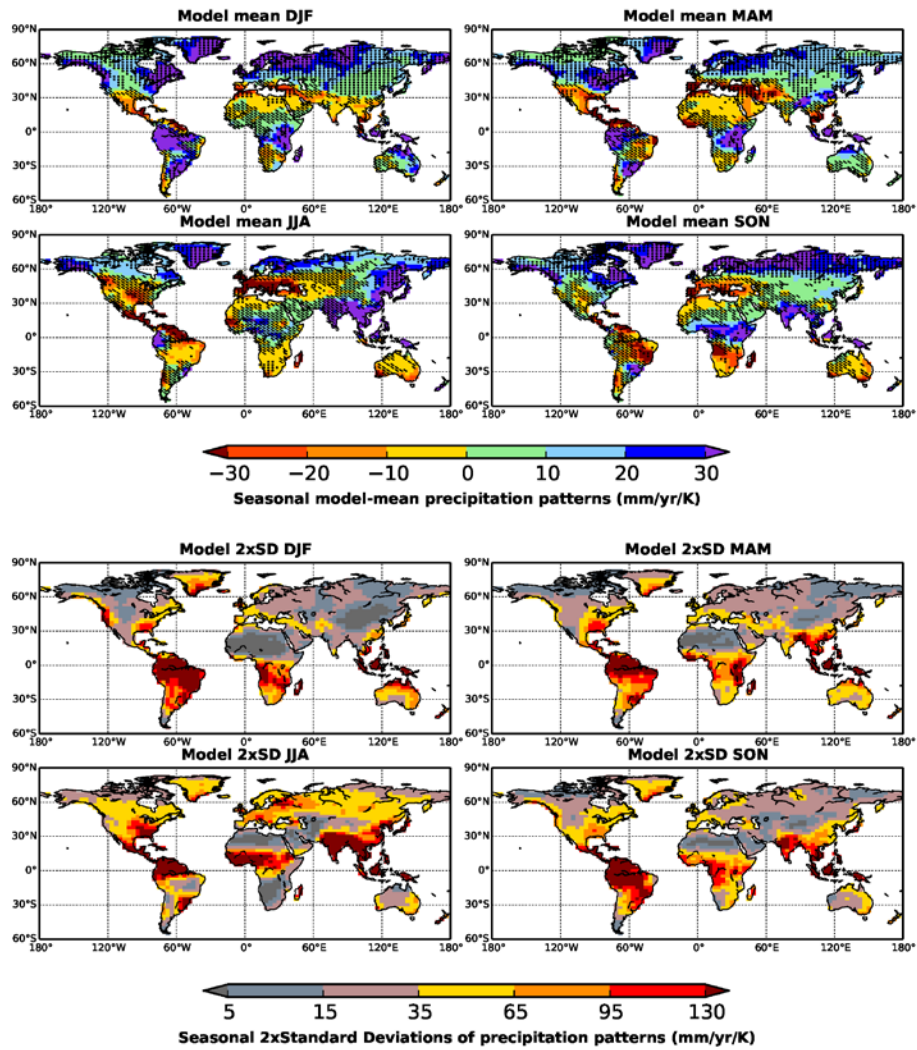
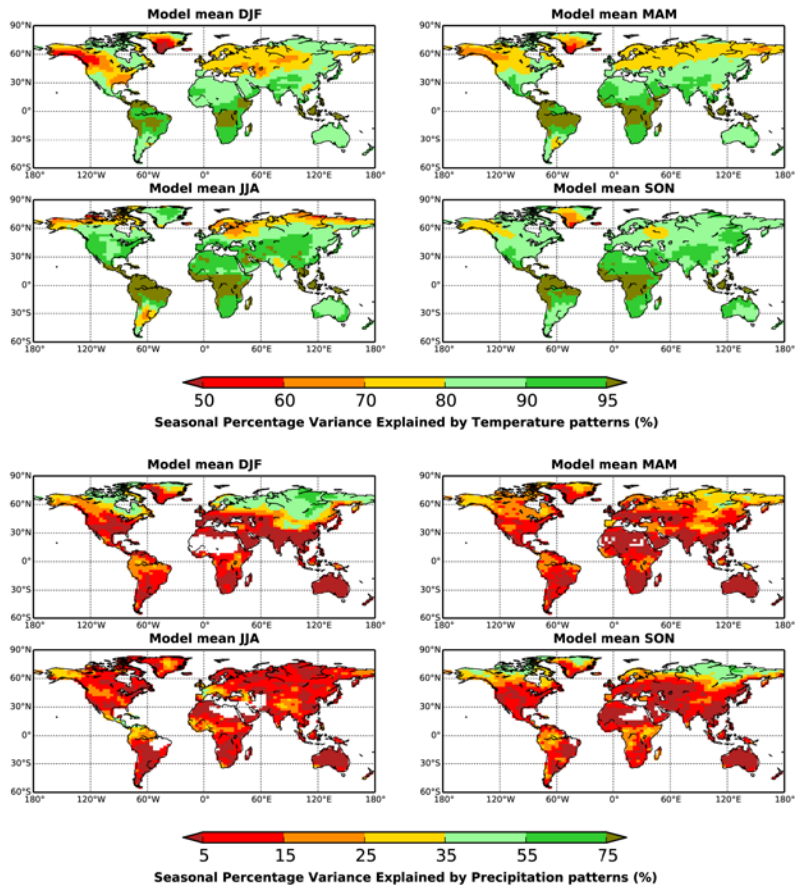


Figure 5: Seasonal means and variation (2\*SD) in the monthly patterns of local precipitation change per degree warming over all land (mm yr<sup>-1</sup> K<sup>-1</sup>), across 22 GCMs. In regions marked with stippling more than 66% of the models agree in the sign of the change. [DJF](#)  
30

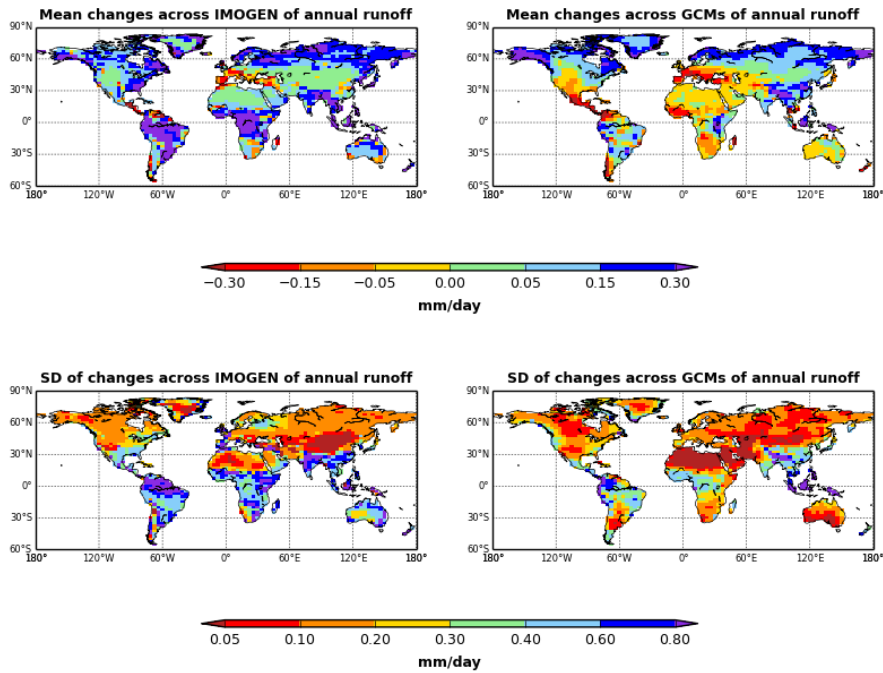
is December, January and February, MAM is March, April and May, JJA is June, July and August and SON is September, October and November.



5 Figure 6: Seasonal percentage of variance explained of the monthly patterns of local temperature and precipitation change per degree warming, across 22 GCMs. DJF is December, January and February, MAM is March, April and May, JJA is June, July and August and SON is September, October and November.

Deleted: coefficient of determination (COD)





**Figure 7. Comparison of IMOGEN and GCM estimates of annual mean runoff changes** This is for 20 years centred 2090 minus 20 years centred 1900, and for emissions scenario SRESA1B. Top left panel is the mean changes in runoff across GCMs emulated in the IMOGEN system, all forcing the JULES land surface model. Top right panel is the mean changes in runoff as taken directly from the GCMs themselves. In the bottom left panel, at each gridbox, presented is the SD of changes in runoff for IMOGEN, again across GCMs emulated. Bottom right panel is SD of changes in runoff taken directly from the GCMs.

5

Formatted: Not Highlight

Deleted: (

Formatted: Font: Bold, Not Highlight

Formatted: Not Highlight

Formatted: Not Highlight

Deleted: )