

Supplementary Material

S1. Additional photosynthesis equations

In JULES, leaf-level photosynthesis (Collatz et al 1991:1992) is calculated based on the limiting factor of three potential photosynthesis rates.

1. A light-limited rate, W_l :

$$W_l = \alpha(1 - \omega)I_{par} \left(\frac{c_i - \Gamma}{c_i + 2\Gamma} \right) \quad \text{for C3 plants} \quad (\text{A.1})$$

$$W_l = \alpha(1 - \omega)I_{par} \quad \text{for C4 plants} \quad (\text{A.2})$$

where α is the quantum efficiency of photosynthesis ($\text{mol CO}_2 \text{ mol PAR}^{-1}$) and ω is the leaf scattering coefficient for PAR. I_{par} is the photosynthetically active radiation hitting the leaf ($\text{mol m}^{-2} \text{ s}^{-1}$), Γ is the CO_2 compensation point in the absence of mitochondrial respiration (Pa), and c_i is the internal CO_2 concentration (Pa).

2. A Rubisco-limited rate, W_c :

$$W_c = V_{cmax} \left(\frac{c_i - \Gamma}{c_i + K_c(1 + O_a/K_o)} \right) \quad \text{for C3 plants} \quad (\text{A.3})$$

$$W_c = V_{cmax} \quad \text{for C4 plants} \quad (\text{A.4})$$

where K_o and K_c are the Michaelis-Menten parameters for O_2 and CO_2 , respectively, and V_{cmax} is the maximum rate of carboxylation of Rubisco ($\mu\text{mol CO}_2 \text{ m}^{-2} \text{ s}^{-1}$).

3. A rate of transport of photosynthetic products for C3 plants, and PEPCarboxylase limitation for C4 plants, W_e :

$$W_e = 0.5V_{cmax} \quad \text{for C3 plants} \quad (\text{A.5})$$

$$W_e = 2 \times 10^4 V_{cmax} \frac{c_i}{P_*} \quad \text{for C4 plants} \quad (\text{A.6})$$

where P_* is the surface air pressure (Pa).

S2. Data for N_{mass} , LMA, and LL. The table shows the data sources for the TRY data used in this study. For each source, the number of measurements for each source is provided for N_{mass} /specific leaf area (SLA) pairs and for leaf lifespan.

Ref.	Contact	N_{mass} + SLA	Leaf lifespan
Atkin et al., 1997; Campbell et al., 2007	Owen Atkin	218	
Xu and Baldocchi, 2003	Dennis Baldocchi	468	
Cavender-Bares et al., 2006	Jeannine Cavender-Bares	x	
unpublished	F. Stuart III Chapin	50	48
Cornelissen et al., 2004; Cornelissen et al., 2003, 1996; Diaz et al., 2004; Quested et al., 2003	Johannes Cornelissen	690	161
	Will Cornwell (+David Ackerly)	53	
Díaz et al., 2004 (maybe didn't use); Diaz et al. 2010 (definitely used)	Sandra Díaz	70	
Han et al., 2005; He et al., 2006, 2007	Jingyun Fang	148	
Freschet and Cornelissen, 2010; Freschet et al., 2010	Gregoire Freschet (+Hans Cornelissen)	40	
	Eric Garnier (+ Sandra Lavorel)	966	
Kattge et al., 2009	Jens Kattge*	1326	204
Kurokawa and Nakashizuka, 2008	Hiroko Kurokawa	399	89
	Daniel Laughlin	139	
Niinemets, 1999; Niinemets, 2001	Ülo Niinemets	264	33
Ordoñez et al., 2010; Ordoñez et al., 2010	Jenny Ordoñez (+Peter van Bodegom)	282	
Ogaya and Peñuelas, 2007a, 2007b, 2003; Ogaya, 2006; Sardans et al., 2008	Josep Peñuelas	808	
Poorter et al., 2009; 2006	Lourens Poorter		x
Reich et al., 2008, 2009	Peter Reich	720	199
Cornwell et al., 2007	Lawren Sack	30	

Shipley and Lechowicz 2000, Ecoscience, 7:183- 194	Bill Shipley	603	
2. Meziane and Shipley, 1999, Plant Cell and Environment			
	Enio Sosinski	66	
Soudzilovskaia et al, 2013, PNAS	Nadia Soudzilovskaia	155	
	Peter van Bodegom	x	x
Wright et al., 2011	S. Joseph (Joe) Wright	204	
Wright et al., 2006, 2004	Ian Wright	1673	442

Data was analysed to calculate the parameters N_m and LMA for the new 9 PFTs (Table 2) and for the original 5 PFTs (Table S2). For JULES users who wish to run the model with the standard 5 PFTs but with updated parameters, the recommended parameters are given in Table S2. Additionally, it is important to set both 'l_trait_phys' and 'l_ht_compete' to True in the jules_vegetation namelist. The former will switch to the trait-based physiology discussed in the main text, and the latter will allow for flexible number of PFTs to compete if the dynamic vegetation mode is used. Results of JULES with the new 9 PFTs and the height-based competition will be discussed in a follow up paper.

References

- Atkin, O. K., Westbeek, M. H., Cambridge, M. L., Lambers, H. and Pons, T. L.: Leaf respiration in light and darkness (a comparison of slow-and fast-growing Poa species), Plant Physiology, 113(3), 961–965, doi:10.1104/pp.113.3.961, 1997.
- Baker, TR, Phillips, OL and Laurance, WF: Do species traits determine patterns of wood production in Amazonian forests?, ... [online] Available from: <http://researchonline.jcu.edu.au/17956/>, 2009.
- Campbell, C., Atkinson, L., Zaragoza-Castells, J., Lundmark, M., Atkin, O. and Hurry, V.: Acclimation of photosynthesis and respiration is asynchronous in response to changes in temperature regardless of plant functional group, New Phytologist, 176(2), 375–389, doi:10.1111/j.1469-8137.2007.02183.x, 2007.
- Cavender-Bares, J., Keen, A. and Miles, B.: PHYLOGENETIC STRUCTURE OF

- FLORIDIAN PLANT COMMUNITIES DEPENDS ON TAXONOMIC AND SPATIAL SCALE, *Ecology*, 87(sp7), S109S122, doi:10.1890/0012-9658(2006)87[109:PSOFPC]2.0.CO;2, 2006.
- COELISSEN, QUESTED, GWYNN-JONES, LOGTESTIJN, V., BEUS, KONDRATCHUK, CALLAGHAN and AERTS: Leaf digestibility and litter decomposability are related in a wide range of subarctic plant species and types, *Functional Ecology*, 18(6), 779–786, doi:10.1111/j.0269-8463.2004.00900.x, 2004.
- Cornelissen, J., Diez, P. C. and Hunt, R.: Seedling growth, allocation and leaf attributes in a wide range of woody plant species and types, *Journal of Ecology* [online] Available from: <http://www.jstor.org/stable/2261337>, 1996.
- Cornelissen, J. H. C., Cerabolini, B., Castro-Díez, P., Villar-Salvador, P., Montserrat-Martí, G., Puyravaud, J. P., Maestro, M., Werger, M. J. A. and Aerts, R.: Functional traits of woody plants: correspondence of species rankings between field adults and laboratory-grown seedlings?, *J Veg Sci*, 14(3), 311–322, doi:10.1111/j.1654-1103.2003.tb02157.x, 2003.
- CORNWELL, W., BHASKAR, R., SACK, L., CORDELL, S. and LUNCH, C.: Adjustment of structure and function of Hawaiian *Metrosideros polymorpha* at high vs. low precipitation, *Funct Ecology*, 21(6), 1063–1071, doi:10.1111/j.1365-2435.2007.01323.x, 2007.
- Diaz, Hodgson, J. G., Thompson, Cabido, Cornelissen, J. H. C., Jalili, Montserrat-Martí, Grime, J. P., Zarrinkamar, Asri, Band, S. R., Basconcelo, Castro-Díez, Funes, Hamzehee, Khoshnevi, Pérez-Harguindeguy, Pérez-Rontomé, M. C., Shirvany, F. A., Vendramini, Yazdani, Abbas-Azimi, Bogaard, Boustani, Charles, Dehghan, Torres-Espuny, Falczuk, Guerrero-Campo, Hynd, Jones, Kowsary, Kazemi-Saeed, Maestro-Martínez, Romo-Díez, Shaw, Siavash, Villar-Salvador and Zak, M. R.: The plant traits that drive ecosystems: Evidence from three continents, *Journal of Vegetation Science*, 15(3), 295–304, doi:10.1111/j.1654-1103.2004.tb02266.x, 2004.
- Add: Diaz 2010: Functional traits of alien plants across contrasting climatic and land use regimes: do aliens join the locals or try harder than them? *Journal of Ecology*. 98:17-27.
- Freschet, G.T. and Cornelissen, J.: Substantial nutrient resorption from leaves, stems and roots in a subarctic flora: what is the link with other resource economics traits?, ... *Phytologist*, doi:10.1111/j.1469-8137.2010.03228.x, 2010.

- Freschet, G., Cornelissen, J., Logtestijn, R. and Aerts, R.: Evidence of the “plant economics spectrum” in a subarctic flora, *Journal of Ecology*, 98(2), 362–373, doi:10.1111/j.1365-2745.2009.01615.x, 2010.
- Fyllas, N., Patiño, S., Baker, T., Nardoto, G., Martinelli, L., Quesada, C., Paiva, R., Schwarz, M., Horna, V., Mercado, L., Santos, A., Arroyo, L., Jiménez, E., Luizão, F., Neill, D., Silva, N., Prieto, A., Rudas, A., Silviera, M., Vieira, I., Lopez-Gonzalez, G., Malhi, Y., Phillips, O. and Lloyd, J.: Basin-wide variations in foliar properties of Amazonian forest: phylogeny, soils and climate, *Biogeosciences*, 6(11), 2677–2708, doi:10.5194/bg-6-2677-2009, 2009.
- Gutiérrez, AG and Huth, A: Successional stages of primary temperate rainforests of Chiloé Island, Chile, *Perspectives in Plant Ecology* [online] Available from: <http://www.sciencedirect.com/science/article/pii/S143383191200011X>, 2012.
- Gutiérrez AG, & Huth A (2012) Successional stages of primary temperate rainforests of Chiloé Island, Chile. *Perspectives in plant ecology, systematics and evolution*. 14: 243–256
- Han, W., Fang, J., Guo, D. and Zhang, Y.: Leaf nitrogen and phosphorus stoichiometry across 753 terrestrial plant species in China, *New Phytologist*, 168(2), 377–385, doi:10.1111/j.1469-8137.2005.01530.x, 2005.
- He, J., Wang, Z., Wang, X., Schmid, B., Zuo, W., Zhou, M., Zheng, C., Wang, M. and Fang, J.: A test of the generality of leaf trait relationships on the Tibetan Plateau, *New Phytologist*, 170(4), 835–848, doi:10.1111/j.1469-8137.2006.01704.x, 2006.
- He, J.-S., Wang, L., Flynn, D., Wang, X., Ma, W. and Fang, J.: Leaf nitrogen:phosphorus stoichiometry across Chinese grassland biomes, *Oecologia*, 155(2), 301–310, doi:10.1007/s00442-007-0912-y, 2007.
- KATTGE, J., KNORR, W., RADDATZ, T. and WIRTH, C.: Quantifying photosynthetic capacity and its relationship to leaf nitrogen content for global-scale terrestrial biosphere models, *Global Change Biology*, 15(4), 976–991, doi:10.1111/j.1365-2486.2008.01744.x, 2009.
- Kleyer, Bekker, R. M., Knevel, I. C., Bakker, J. P., Thompson, Sonnenschein, Poschlod, Groenendaal, J. M., Klimeš, Klimešová, Klotz, Rusch, G. M., Hermy, Adriaens, Boedeltje, Bossuyt, Dannemann, Endels, Götzenberger, Hodgson, J. G., Jackel, A., Kühn, Kunzmann, Ozinga, W. A., Römermann, Stadler, Schlegelmilch, Steendam, H. J., Tackenberg, Wilmann, Cornelissen, J. H. C., Eriksson, Garnier and Peco: The LEDA Traitbase: a database of life-history traits of the Northwest European flora,

- Journal of Ecology, 96(6), 1266–1274, doi:10.1111/j.1365-2745.2008.01430.x, 2008.
- Kurokawa, H. and Nakashizuka, T.: Leaf herbivory and decomposability in a Malaysian tropical rain forest, *Ecology*, 89(9), 2645–2656, doi:10.1890/07-1352.1, 2008.
- Medlyn, BE, Barton, C. and Broadmeadow, M.: Stomatal conductance of forest species after long-term exposure to elevated CO₂ concentration: A synthesis, *New Phytologist*, 150(2), 251–261, doi:10.1046/j.1469-8137.2001.00028.x, 2001.
- Medlyn, BE and Jarvis, PG: Design and use of a database of model parameters from elevated [CO₂] experiments, *Ecological Modelling* [online] Available from: <http://www.sciencedirect.com/science/article/pii/S0304380099001489>, 1999.
- Medlyn, B., Badeck, W., Pury, D., Barton, C., Broadmeadow, M., Ceulemans, A., Forstreuter, J., Jach, K., Kellomäki, M., Laitat, M., Marek, P., Philippot, R., Strassmeyer, L., Liozon, J., Portier, R., Roberntz, W. and Jstbid: Effects of elevated [CO₂] on photosynthesis in European forest species: a meta-analysis of model parameters, *Plant, Cell & Environment*, 22(12), 1475–1495, doi:10.1046/j.1365-3040.1999.00523.x, 1999.
- Niinemets, Ü.: Research review. Components of leaf dry mass per area – thickness and density – alter leaf photosynthetic capacity in reverse directions in woody plants, *New Phytologist*, 144(1), 35–47, doi:10.1046/j.1469-8137.1999.00466.x, 1999.
- Niinemets, Ü.: GLOBAL-SCALE CLIMATIC CONTROLS OF LEAF DRY MASS PER AREA, DENSITY, AND THICKNESS IN TREES AND SHRUBS, *Ecology*, 82(2), 453–469, doi:10.1890/0012-9658(2001)082[0453:GSCCOL]2.0.CO;2, 2001.
- Niinemets Ü. (1999) Research review. Components of leaf dry mass per area - thickness and density - alter leaf photosynthetic capacity in reverse directions in woody plants. *The New Phytologist* **144**, 35-47.
- Niinemets Ü. (2001) Global-scale climatic controls of leaf dry mass per area, density, and thickness in trees and shrubs. *Ecology* **82**, 453-469.
- Ogaya, R and Penuelas, J: Contrasting foliar responses to drought in *Quercus ilex* and *Phillyrea latifolia*, *Biologia Plantarum*, doi:10.1007/s10535-006-0052-y, 2006.
- Ogaya, R and Peñuelas, J: Leaf mass per area ratio in *Quercus ilex* leaves under a wide range of climatic conditions. The importance of low temperatures, *Acta Oecologica* [online] Available from: <http://www.sciencedirect.com/science/article/pii/S1146609X06001482>, 2007a.
- Ogaya, R and Peñuelas, J: Tree growth, mortality, and above-ground biomass accumulation in a holm oak forest under a five-year experimental field drought, *Plant Ecology*

- [online] Available from: <http://link.springer.com/article/10.1007/s11258-006-9184-6>, 2007b.
- Ogaya, R. and Peñuelas, J.: Comparative field study of *Quercus ilex* and *Phillyrea latifolia*: photosynthetic response to experimental drought conditions, *Environmental and Experimental Botany*, 50(2), 137148, doi:10.1016/S0098-8472(03)00019-4, 2003.
- Ordóñez, JC, van Bodegom, PM and Witte, J.: Plant strategies in relation to resource supply in mesic to wet environments: does theory mirror nature?, ... *American Naturalist* [online] Available from: <http://www.jstor.org/stable/10.1086/649582>, 2010.
- Ordoñez, J., Bodegom, P., Witte, J.-P., Bartholomeus, R., Dobben, H. and Aerts, R.: Leaf habit and woodiness regulate different leaf economy traits at a given nutrient supply, *Ecology*, 91(11), doi:10.1890/09-1509.1, 2010.
- Patiño, S, Lloyd, J, Paiva, R and Baker, TR: Branch xylem density variations across the Amazon Basin, ... [online] Available from: <http://escholarship.org/uc/item/81h2v1g5.pdf>, 2009.
- Poorter, H., Niinemets, Ü., Poorter, L., Wright, I. and Villar, R.: Causes and consequences of variation in leaf mass per area (LMA): a meta-analysis, *New Phytologist*, 182(3), 565–588, doi:10.1111/j.1469-8137.2009.02830.x, 2009.
- Poorter, L. and Bongers, F.: LEAF TRAITS ARE GOOD PREDICTORS OF PLANT PERFORMANCE ACROSS 53 RAIN FOREST SPECIES, *Ecology*, 87(7), 17331743, doi:10.1890/0012-9658(2006)87[1733:LTAGPO]2.0.CO;2, 2006.
- Quested, H., Cornelissen, H., Press, M., Callaghan, T., Aerts, R., Trosien, F., Riemann, P., Gwynn-Jones, D., Kondratchuk, A. and Jonasson, S.: DECOMPOSITION OF SUB-ARCTIC PLANTS WITH DIFFERING NITROGEN ECONOMIES: A FUNCTIONAL ROLE FOR HEMIPARASITES, *Ecology*, 84(12), doi:10.1890/02-0426, 2003.
- Reich, P., Oleksyn, J. and Wright, I.: Leaf phosphorus influences the photosynthesis–nitrogen relation: a cross-biome analysis of 314 species, *Oecologia*, 160(2), 207–212, doi:10.1007/s00442-009-1291-3, 2009.
- Reich, P., Tjoelker, M., Pregitzer, K., Wright, I., Oleksyn, J. and Machado, J.: Scaling of respiration to nitrogen in leaves, stems and roots of higher land plants, *Ecol. Lett.*, 11(8), 793–801, doi:10.1111/j.1461-0248.2008.01185.x, 2008.
- Sardans, J, Peñuelas, J and Ogaya, R: Drought-induced changes in C and N stoichiometry in a *Quercus ilex* Mediterranean forest, *Forest Science* [online] Available from: <http://www.ingentaconnect.com/content/saf/fs/2008/00000054/00000005/art00006>,

2008.

- Shiodera, S and Rahajoe, JS: Variation in longevity and traits of leaves among co-occurring understorey plants in a tropical montane forest, *Journal of tropical ...* [online]
Available from: http://journals.cambridge.org/abstract_S0266467407004725, 2008.
- Soudzilovskaia, N.A., Elumeeva, T.G., Onipchenko, V.G., Shidakov, I.I., Salpagarova, F.S., Khubiev, A.B., Tekeev, D.K., Cornelissen, J.H.C.: Functional traits predict relationship between plant abundance dynamic and long-term climate warming, *Proceedings of the National Academies of Science*, 110(45), 18180-18184, 2013.
- Wright, IJ, Reich, PB, Atkin, OK and Lusk, CH: Irradiance, temperature and rainfall influence leaf dark respiration in woody plants: evidence from comparisons across 20 sites, ... *Phytologist*, doi:10.1111/j.1469-8137.2005.01590.x, 2006.
- Wright, I., Reich, P., Westoby, M., Ackerly, D., Baruch, Z., Bongers, F., Cavender-Bares, J., Chapin, T., Cornelissen, J., Diemer, M., Flexas, J., Garnier, E., Groom, P., Gulias, J., Hikosaka, K., Lamont, B., Lee, T., Lee, W., Lusk, C., Midgley, J., Navas, M.-L., Niinemets, U., Oleksyn, J., Osada, N., Poorter, H., Poot, P., Prior, L., Pyankov, V., Roumet, C., Thomas, S., Tjoelker, M., Veneklaas, E. and Villar, R.: The worldwide leaf economics spectrum., *Nature*, 428(6985), 821–7, 2004.
- Wright, S., Yavitt, J., Wurzbarger, N., Turner, B., Tanner, E., Sayer, E., Santiago, L., Kaspari, M., Hedin, L., Harms, K., Garcia, M. and Corre, M.: Potassium, phosphorus, or nitrogen limit root allocation, tree growth, or litter production in a lowland tropical forest., *Ecology*, 92(8), 1616–25, doi:10.1890/10-1558.1, 2011.
- Xu, L. and Baldocchi, D.: Seasonal trends in photosynthetic parameters and stomatal conductance of blue oak (*Quercus douglasii*) under prolonged summer drought and high temperature, *Tree Physiology*, 23(13), 865–877, doi:10.1093/treephys/23.13.865, 2003.

S3. Energy and respiration results at the Fluxnet sites

The TRY-based parameters give a lower N_{root} and N_{stem} for all PFTs, and a lower N_{leaf} for all PFTs except for C_3 grass and BET-Te (Fig. S2). For C_3 grass, the simulated N_{leaf} in JULES9 is higher during the winter than in JULES5, since a moderate LAI is maintained due to the new phenology. N_{leaf} is higher for BET-Te due to thicker leaves than previously. The respiration fluxes at BR-Ma2 provide a good example of the impacts of the new PFT

parameters (Fig. SM3). The lower N_{stem} and N_{root} in JULES9 compared to JULES5 (Fig. SM2) reduced simulated R_{pm} (Eqn. 8). As a result, the average increase in plant respiration ($46 \text{ g C m}^{-2} \text{ yr}^{-1}$) was much smaller than the increase in GPP ($377 \text{ g C m}^{-2} \text{ yr}^{-1}$), and NPP increased from $867 \text{ g C m}^{-2} \text{ yr}^{-1}$ in JULES5 to $1198 \text{ g C m}^{-2} \text{ yr}^{-1}$ in JULES9, which was higher than the observed value at Manaus of $1011 \pm 140 \text{ g C m}^{-2} \text{ yr}^{-1}$ (Mahli et al., 2009). At Santarem, NPP also increased, but it was lower than the observed value of $1440 \text{ g C m}^{-2} \text{ yr}^{-1}$.

The higher ecosystem respiration in JULES9 compared to JULES5 that accompanied the increased GPP was less realistic (in terms of RMSE), with 3 exceptions (Fig. SM3), but the seasonal cycle of total respiration was improved at 8 sites. The RMSE decreased at ES-ES1, where lower GPP and R in the fall and winter were more realistic, at JP-Tom, where the switch from generic needle leaf to deciduous needle leaf improved all aspects of the simulation, and at FI-Kaa, where the new phenology of grass also improved the simulation.

In JULES, latent heat flux (LE) is due to evaporation from water stored on the canopy, evaporation of water from the top layer of soil, transpiration through the stomata, and sublimation of snow. The seasonal cycle of LE was improved at nine sites, however r decreased (by <0.03) at BR-Sa1, ES-ES1, BR-Sa3, US-Bo1, and US-FPe, comparing JULES9_{ALL} to JULES5. The RMSE increased by $>4 \text{ W m}^{-2}$ in JULES9_{TRY} compared to JULES5 at DE-Tha and FI-Hyy, and RMSE increased by a further 4 W m^{-2} at DE-Tha when the photosynthesis/respiration parameters were added due to the higher GPP and stomatal conductance. However, the correlation was >0.91 for both sites. At some forest sites, simulated LE (SH) was too high (low) during the winter and spring (DE-Tha, US-Ha1, and US-MMS), however the LE component contributing to the high bias is site-dependent. For example, from Jan.-Mar. the largest source of LE is evaporation from snow/ice (E_i) at

Harvard, canopy evaporation and E_t at Tharandt, and soil evaporation/transpiration at Morgan Monroe. These springtime errors were not affected by the new PFTs. Another consistent bias in the forests was high mid-summer LE (De-Tha, FI-Hyy, US-Ha1, and US-MMS), which in this case always results from the soil evaporation/transpiration. Because the new PFTs tend to increase GPP and stomatal conductance, the errors in summer LE are higher.

Table SM1. List of parameters and symbols in the text.

Symbol	Units	Equation	Description	Default Value ^a
A_l	kg C m ⁻² s ⁻¹	5	Leaf-level photosynthesis	
a_{wl}	kg C m ⁻²	24	Allometric coefficient	
a_{ws}	--	24	Ratio of total to respiring stem carbon	
b_{wl}	--	24	Allometric exponent	1.667
C_i	Pa	6	Internal leaf CO ₂ concentration	
C_{mass}	kg C [kg biomass] ⁻¹	23	Leaf carbon concentration per unit mass	0.5 for this study
C_s	Pa	6	Leaf surface CO ₂ concentration	
D_{crit}	kg kg ⁻¹	7	Critical humidity deficit	
d_T	--	16	Rate of change of leaf turnover with temperature	
f_0	--	7	Stomatal conductance parameter	
f_d	--	4	Leaf dark respiration coefficient	
g_s	m s ⁻¹	6	Leaf-level stomatal conductance	
i_v	μmol CO ₂ m ⁻² s ⁻¹	19	Intercept for relationship between N _{area} and V _{cmax,25}	
k_n	--	3, 20	Extinction coefficient for nitrogen	0.78
h	m	13, 23, 24	Canopy height	
L_{bal}	m ² m ⁻²	12, 13, 22-24	Balanced leaf area index (maximum LAI given the plant's height)	
L_{max}	m ² m ⁻²		Maximum LAI	
L_{min}	m ² m ⁻²		Minimum LAI	
LMA	kg m ⁻²	18, 21, 22	Leaf mass per unit area (new parameter)	
N_a	kg N m ⁻²	18	Leaf nitrogen per unit area	
n_{eff}	mol CO ₂ m ⁻² s ⁻¹ [kg C [kg N] ⁻¹]	3	Constant relating leaf nitrogen to Rubisco carboxylation capacity	
N_{l0}	kg N [kg C] ⁻¹	3	Top leaf nitrogen concentration (old parameter, mass basis)	
N_m	kg N kg ⁻¹	18, 21-23	Top leaf nitrogen concentration (new parameter)	
N_l	kg N m ⁻²	11, 21	Total leaf nitrogen concentration	
N_r	kg N m ⁻²	12, 22	Total root nitrogen concentration	
N_s	kg N m ⁻²	13, 23	Total stem nitrogen concentration	
p	--	17	Phenological state (LAI/L _{bal})	
$Q_{10,leaf}$	--	2	Constant for exponential term in temperature function of V _{cmax}	2
R_a	kg C m ⁻² s ⁻¹	8	Total plant autotrophic respiration	
R_d	kg C m ⁻² s ⁻¹	4, 5	Leaf dark respiration	
r_g	--	10	Growth respiration coefficient	0.25
$rootd$	m		e-folding root depth	
s_v	μmol CO ₂ g N ⁻¹ s ⁻¹	19	Slope between N _{area} and V _{cmax,25}	
T_{low}	°C	1	Upper temperature parameter for V _{cmax}	
T_{off}	°C	16	Threshold temperature for phenology	
T_{opt}^b	°C		Optimal temperature for V _{cmax}	
T_{upp}	°C	1	Upper temperature parameter for V _{cmax}	
$V_{cmax,25}$	μmol m ⁻² s ⁻¹	1, 9	The maximum rate of carboxylation of Rubisco at 25°C	
W	kg C m ⁻² s ⁻¹	5	Smoothed minimum of the potential limiting rates of photosynthesis	
α	mol CO ₂ [mol PAR photons] ⁻¹		Quantum efficiency	

β	--	5	Soil moisture stress factor	
Γ^*	Pa	7	CO ₂ compensation point	
γ_0	[360 days] ⁻¹	16	Minimum leaf turnover rate	
γ_{lm}	[360 days] ⁻¹	16	Leaf turnover rate	
γ_p	[360 days] ⁻¹	17	Leaf growth rate	20
μ_{rl}	--	12, 22	Ratio of nitrogen concentration in roots and leaves	
μ_{sl}	--	13, 23	Ratio of nitrogen concentration in stems and leaves	
η_{sl}	kg C m ⁻² LAI ⁻¹	13, 23	Live stemwood coefficient	0.01
σ_L	kg C m ⁻² LAI ⁻¹	11, 12	Specific leaf density (old parameter)	

^aDefault values only provided for non-PFT-dependent parameters.

Table SM2. New trait-based parameters for 5 PFTs that are consistent with TRY data and updated parameters used in this study.

	BT	NT	C3	C4	SH
N_m	0.0185	0.0117	0.0240	0.0113	0.0175
LMA	0.1012	0.2240	0.0495	0.1370	0.1023
s_v	25.48	18.15	40.96	20.48	23.15
i_v	6.12	6.32	6.42	0.00	14.71
$V_{cmax,25}$	53.84	53.88	55.08	31.71	56.15
T_{off}	5	-40	5	5	-40
d_T	9	9	0	0	9
γ_0	0.25	0.25	3.0	3.0	0.66
γ_p	20	15	20	20	15
L_{min}	1	1	1	1	1
L_{max}	9	7	3	3	4
D_{crit}	0.09	0.06	0.051	0.075	0.037
f_0	0.875	0.875	0.931	0.800	0.950
f_d	0.010	0.015	0.019	0.019	0.015
<i>rootd</i>	3	2	0.5	0.5	1
T_{low}	5	0	10	13	0
T_{opt}	39	32	28	41	32
T_{upp}	43	36	32	45	36
α	0.08	0.08	0.06	0.04	0.08
μ_{rl}	0.67	0.67	0.72	0.72	0.67

Table SM3. Relationship between WWF ecoregions and the eight biomes used in this study.

WWF ecoregion	Biome for this study
Tropical & Subtropical Moist Broadleaf Forests	Tropical forests
Tropical & Subtropical Dry Broadleaf Forests	Tropical forests
Tropical & Subtropical Coniferous Forests	Tropical forests
Temperate Broadleaf & Mixed Forests	Extratropical mixed forests
Temperate Conifer Forests	Boreal and coniferous forests
Boreal Forests/Taiga	Boreal and coniferous forests
Tropical & Subtropical Grasslands, Savannas & Shrublands	Tropical savannas
Temperate Grasslands, Savannas & Shrublands	Temperate grasslands
Flooded Grasslands & Savannas	Temperate grasslands
Montane Grasslands & Shrublands	Temperate grasslands
Tundra	Tundra
Mediterranean Forests, Woodlands & Scrub	Mediterranean woodlands
Deserts & Xeric Shrublands	Desert
Mangroves	Tropical forests

Supplemental Material: Figures

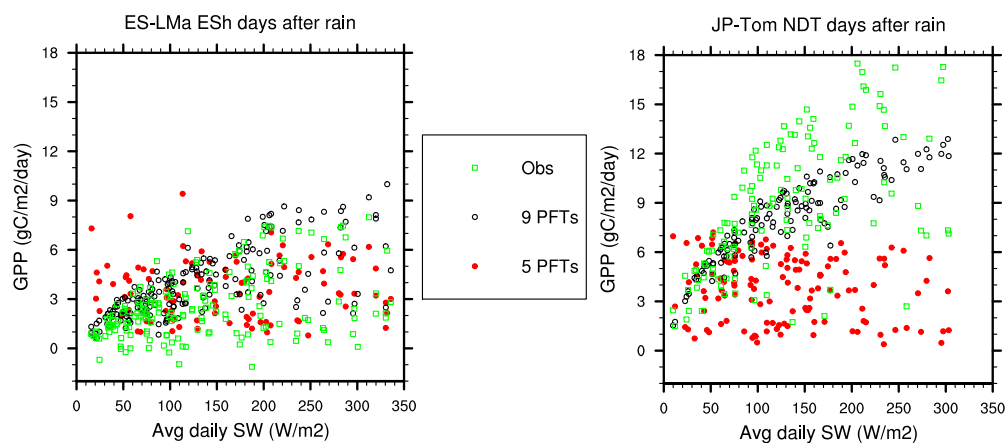


Figure S1. Daily average GPP versus shortwave radiation on days following rainfall when leaf area index is at or near its seasonal maximum.

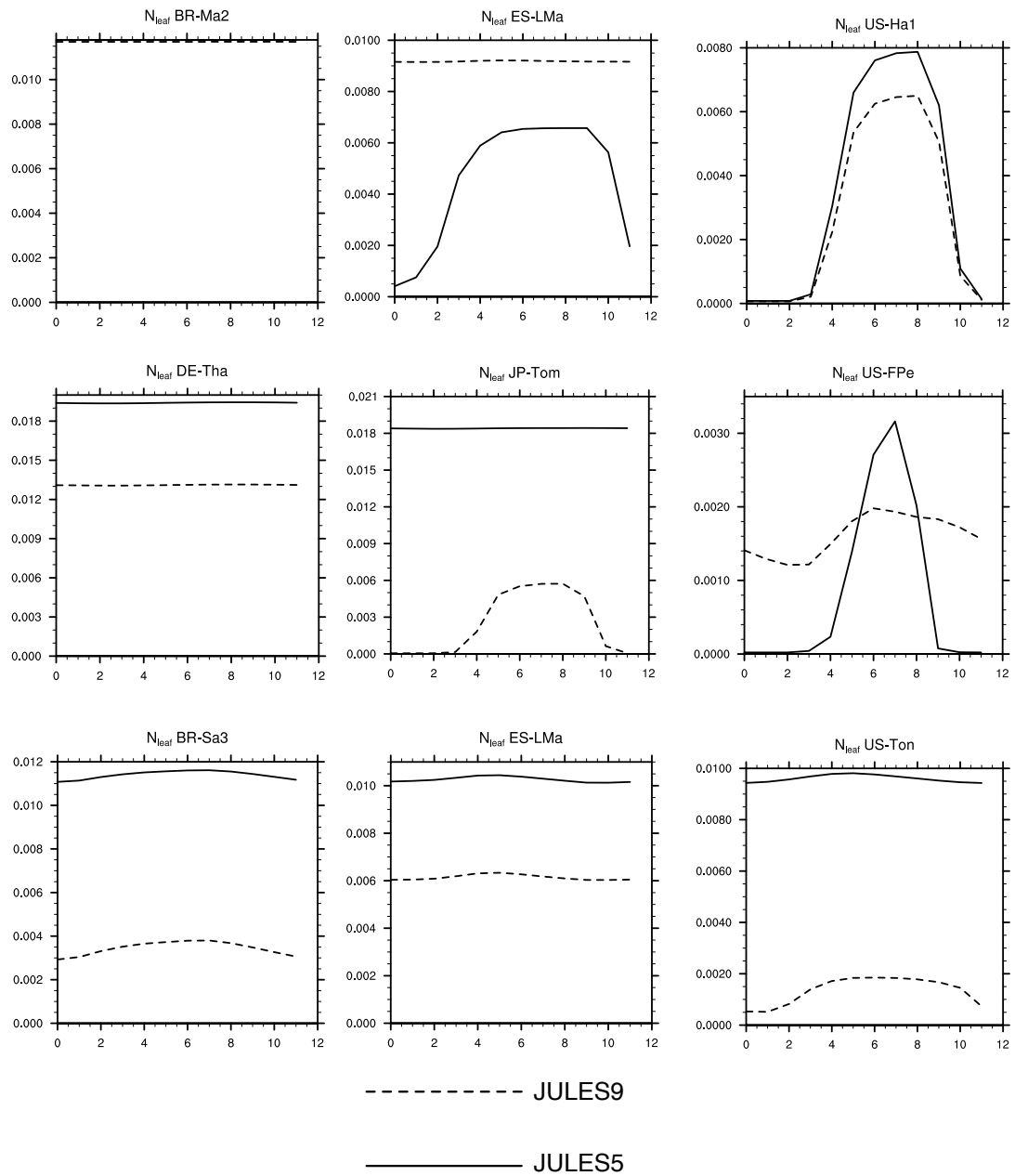


Figure S2. Monthly mean leaf nitrogen content (scaled by LAI) at nine sites representative of each of the new PFTs.

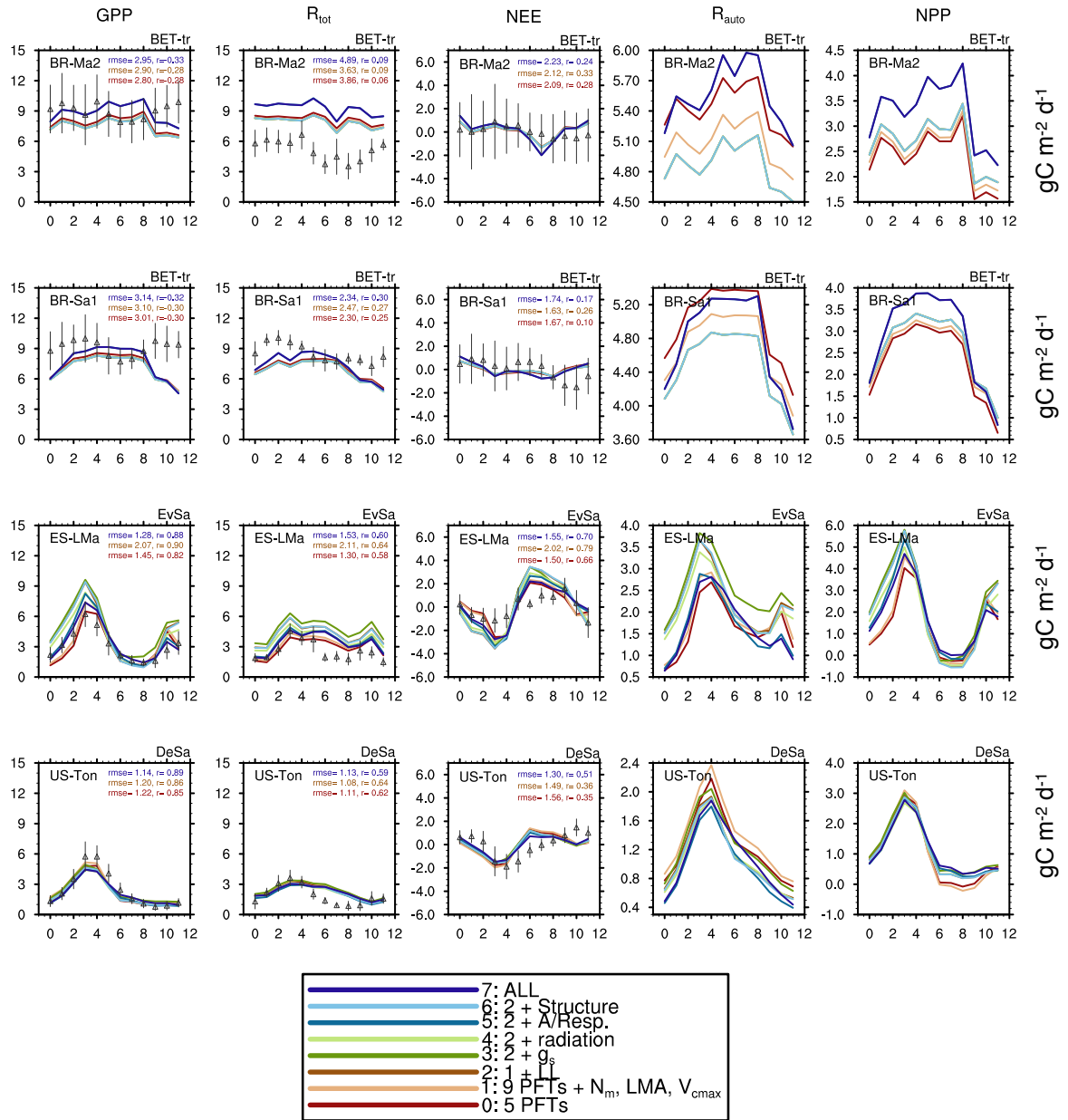


Figure S3a. Monthly mean fluxes of GPP, total ecosystem respiration, NEE, autotrophic respiration, and NPP at two tropical forest sites (BET-tr) and two savannah sites (EvSa=Evergreen Savannah, DeSa=Deciduous Savannah). Observations \pm standard deviation from Fluxnet are shown with triangles and vertical lines. All simulations in Table 4 in the main text are shown. Also shown are the daily root mean square error (rmse) based on daily fluxes and the correlation coefficient (r) based on monthly mean fluxes for all years of the simulations. All units are in $\text{gC m}^{-2} \text{d}^{-1}$.

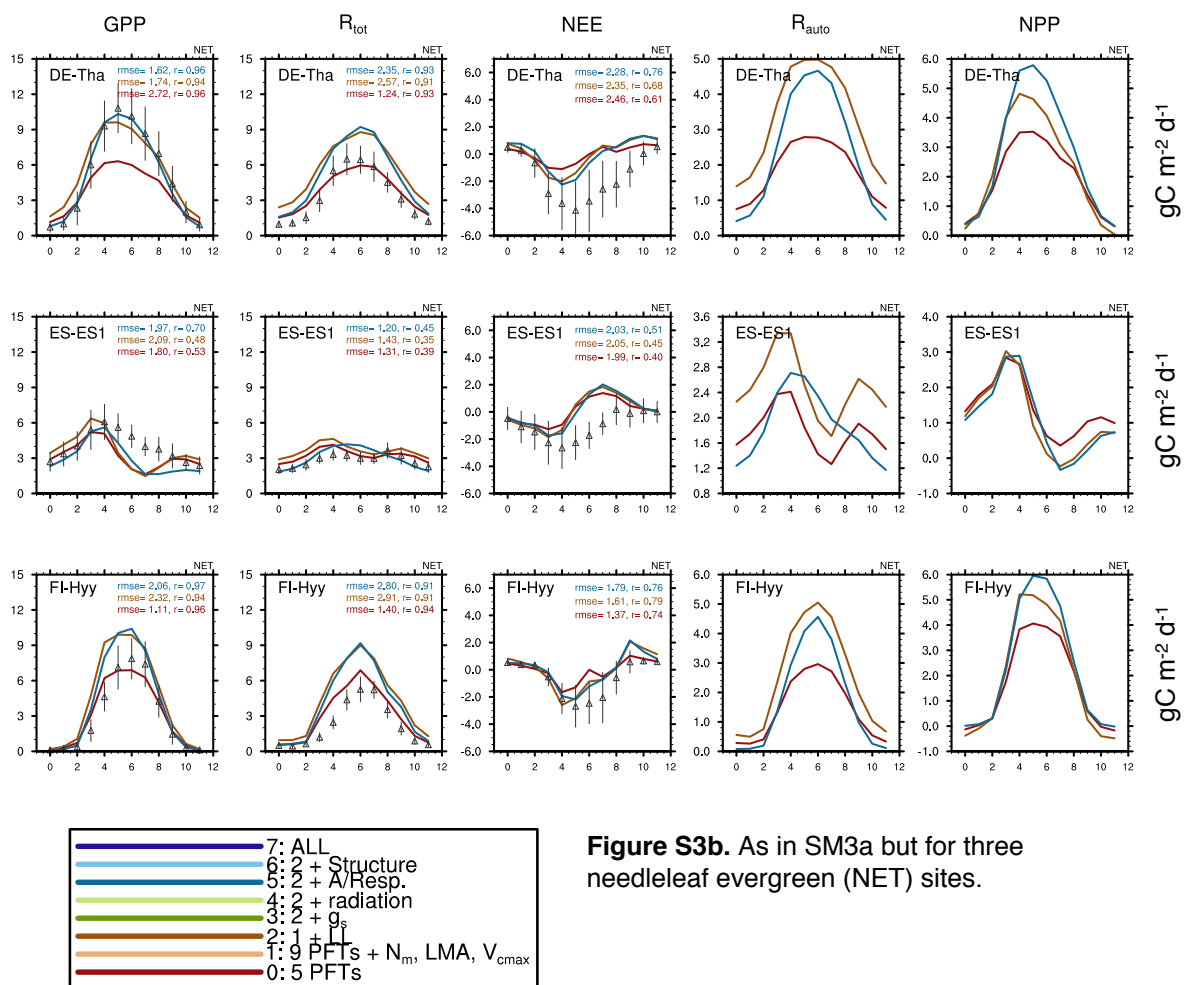


Figure S3b. As in SM3a but for three needleleaf evergreen (NET) sites.

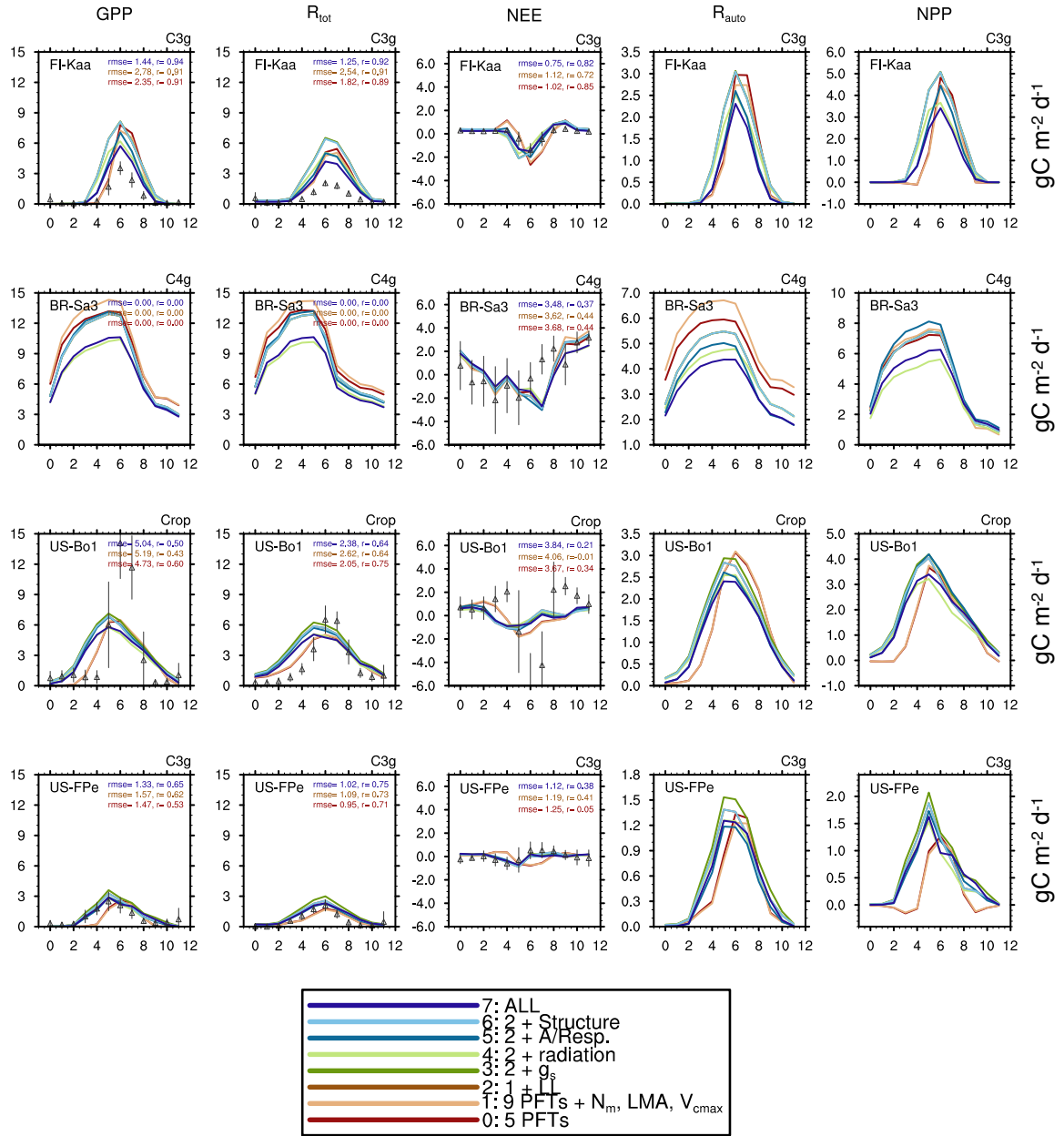


Figure S3c. As in SM3a but for four grass sites.

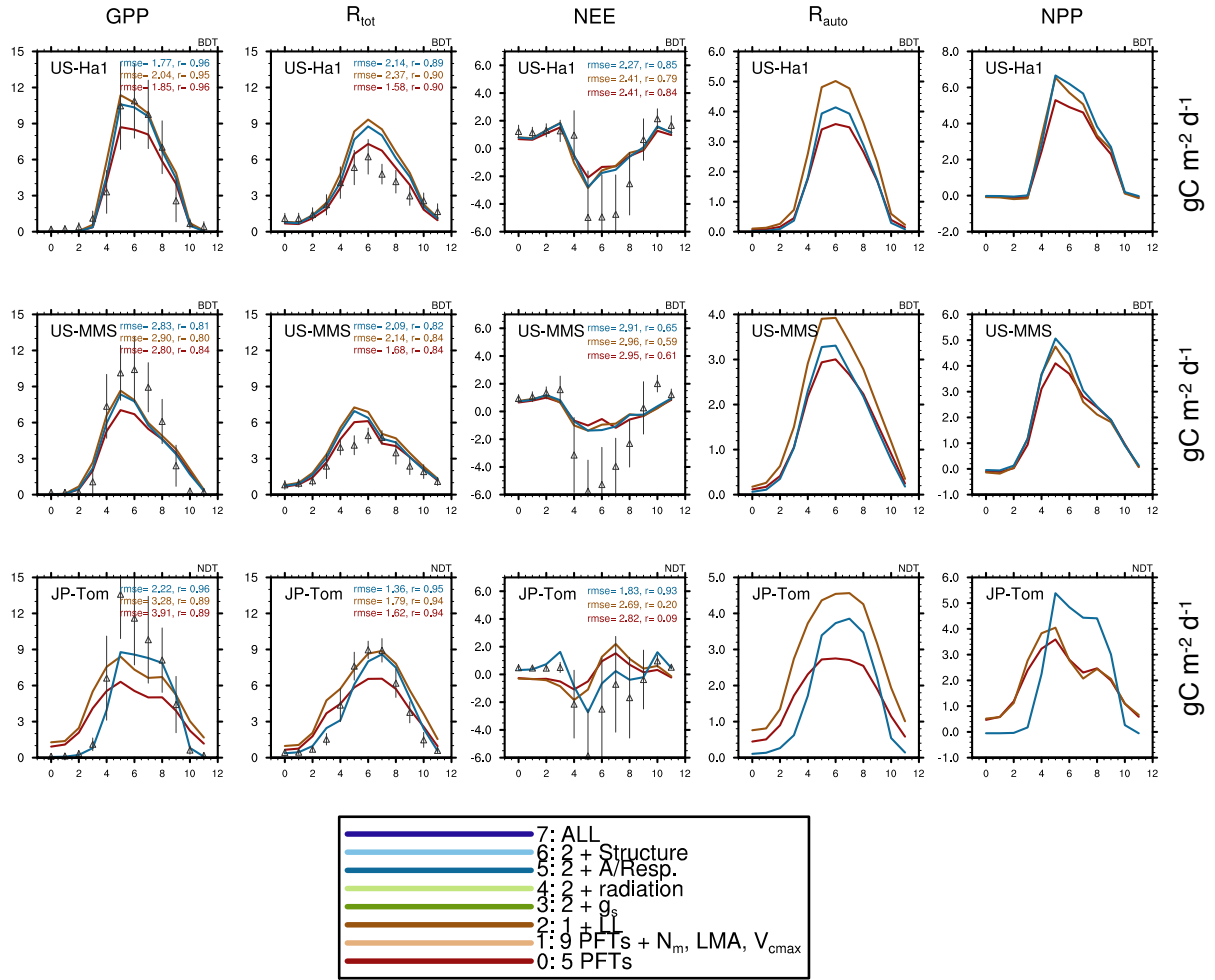


Figure S3d. As in SM3a but for two broadleaf deciduous (BDT) sites and one needleleaf deciduous (NDT) site.

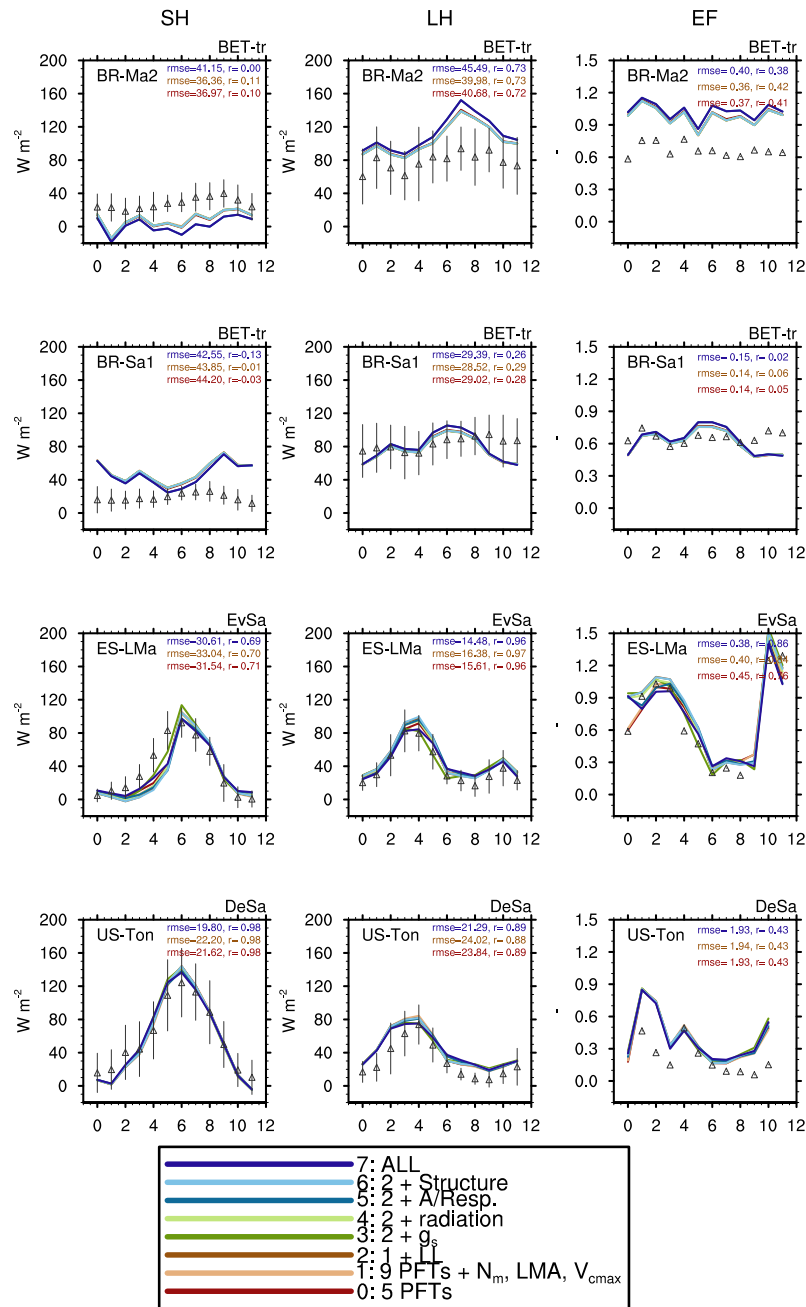


Figure S4a. Monthly mean fluxes of latent heat, sensible heat, and evaporative fraction ($=LE/(SH + LE)$) at two tropical forest sites (BET-tr) and two savannah sites (EvSa=Evergreen Savannah, DeSa=Deciduous Savannah). Observations \pm standard deviation from Fluxnet are shown with triangles and vertical lines.

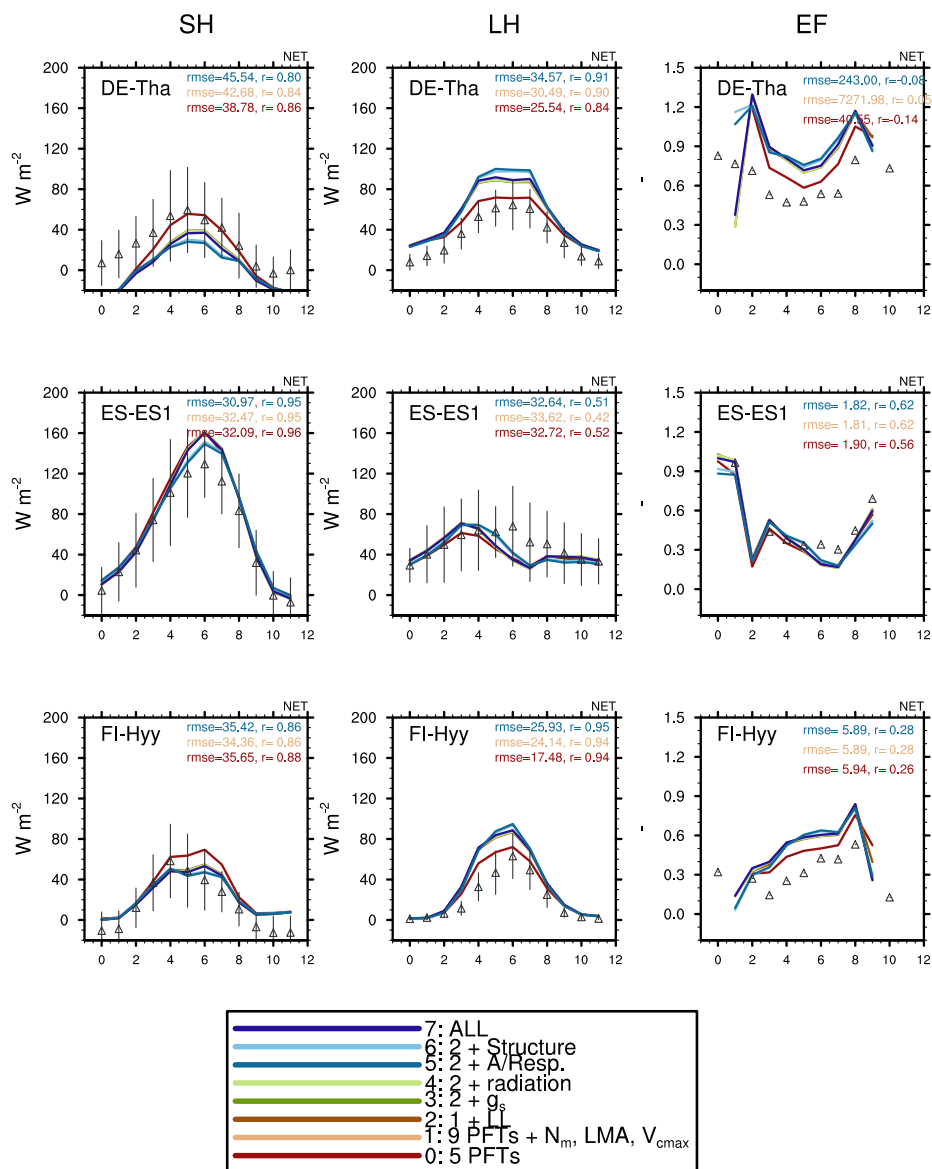


Figure S4b. As in Fig. S4a but for the NET sites.

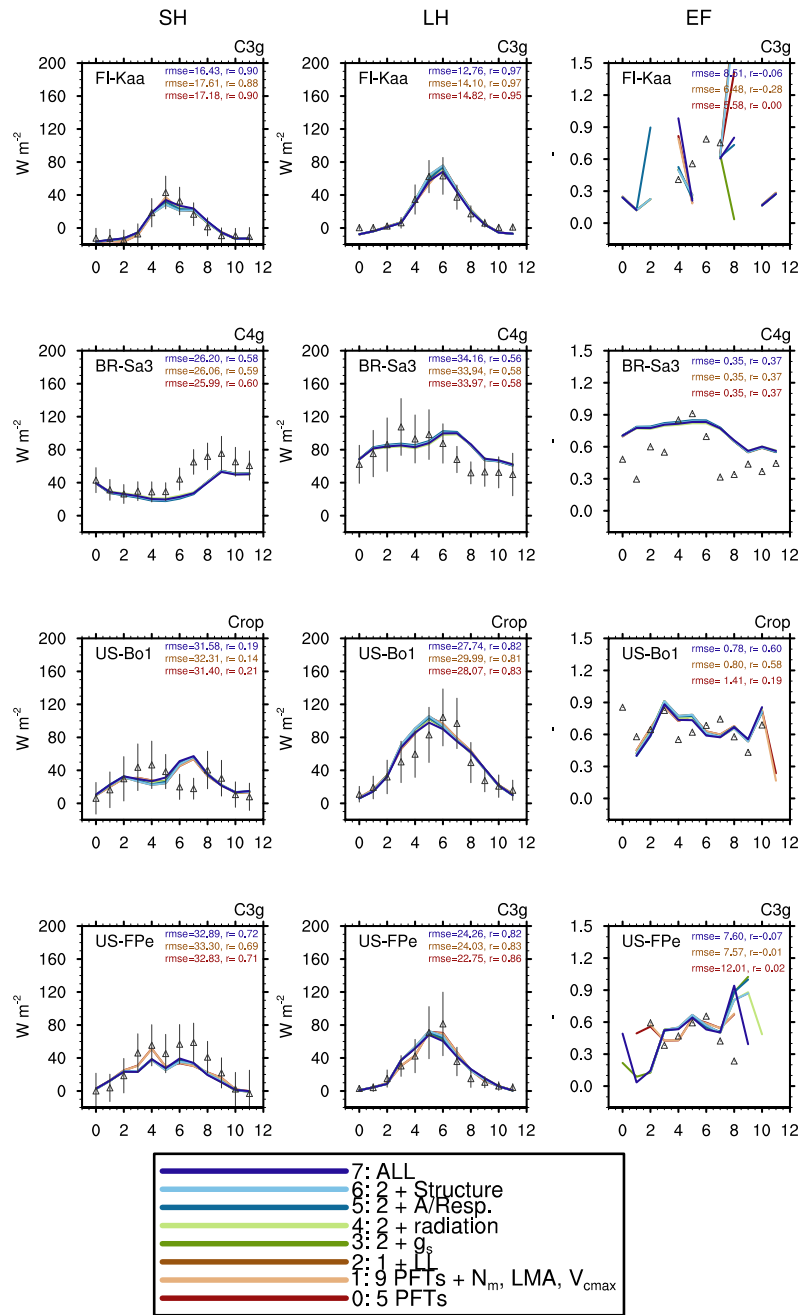


Figure S4c. As in Fig. S4a but for the grass sites.

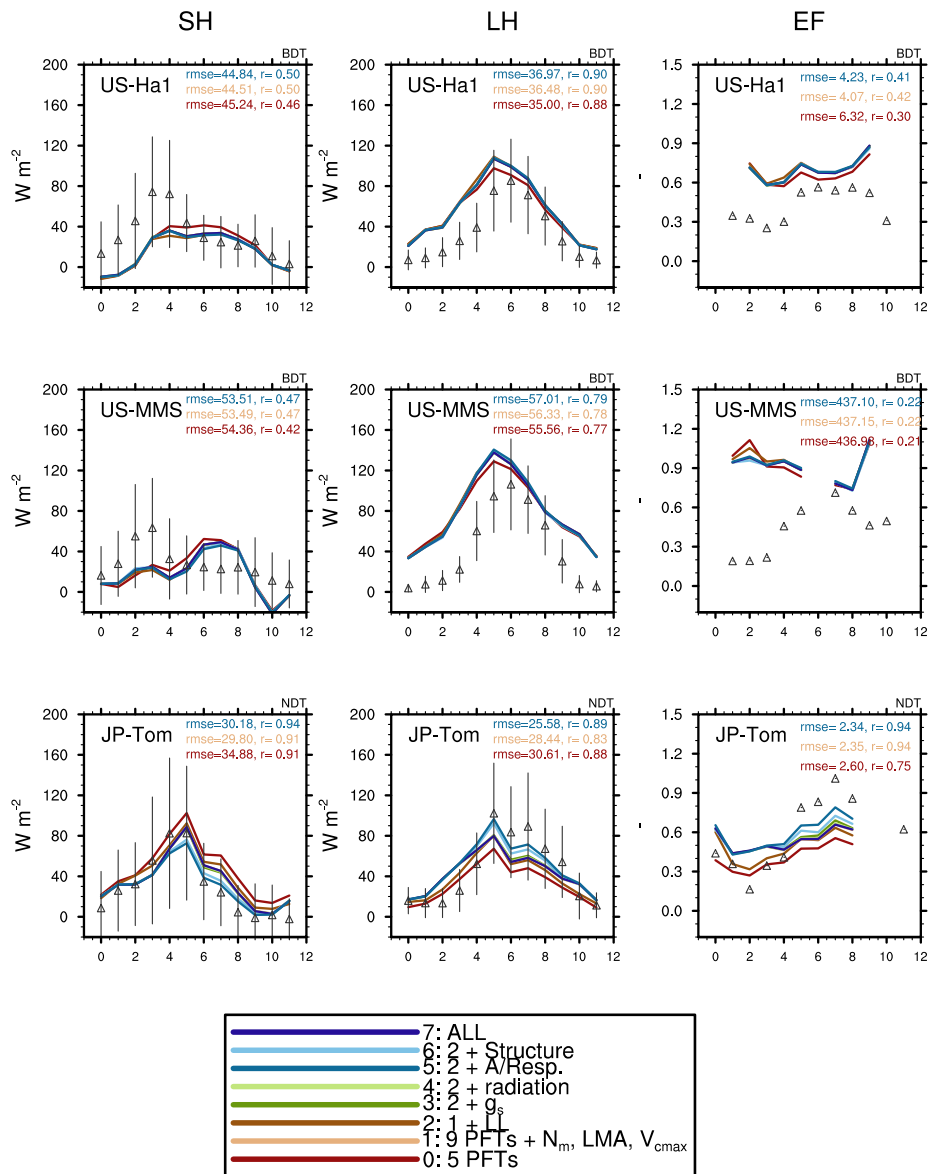


Figure S4d. As in Fig. S4a but for the deciduous tree sites.

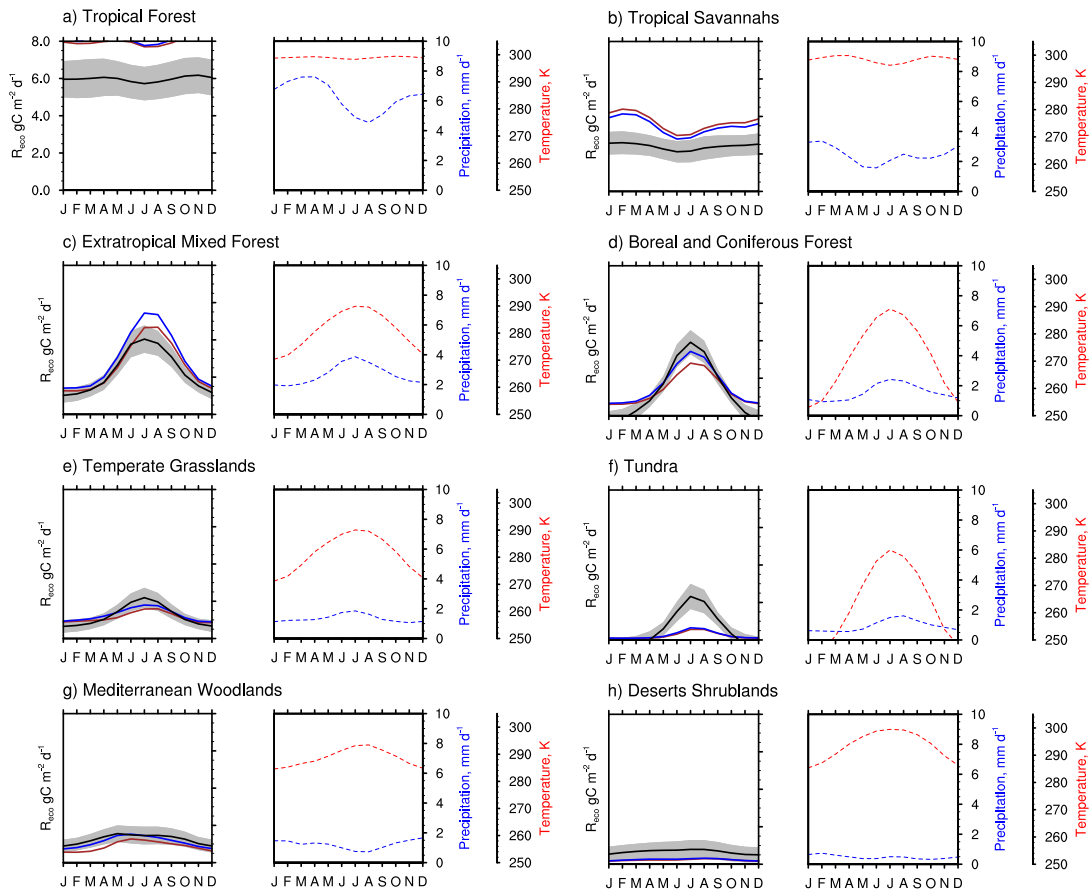


Figure S5. Seasonal cycles of Reco from the biomes shown in Fig. 3, comparing JULES5, JULES9, and the Jung et al. (2011) MTE. Also shown are the temperature and precipitation from the CRU-NCEP dataset used to force the JULES simulations.

— MTE
— JULES9-ALL
— JULES5

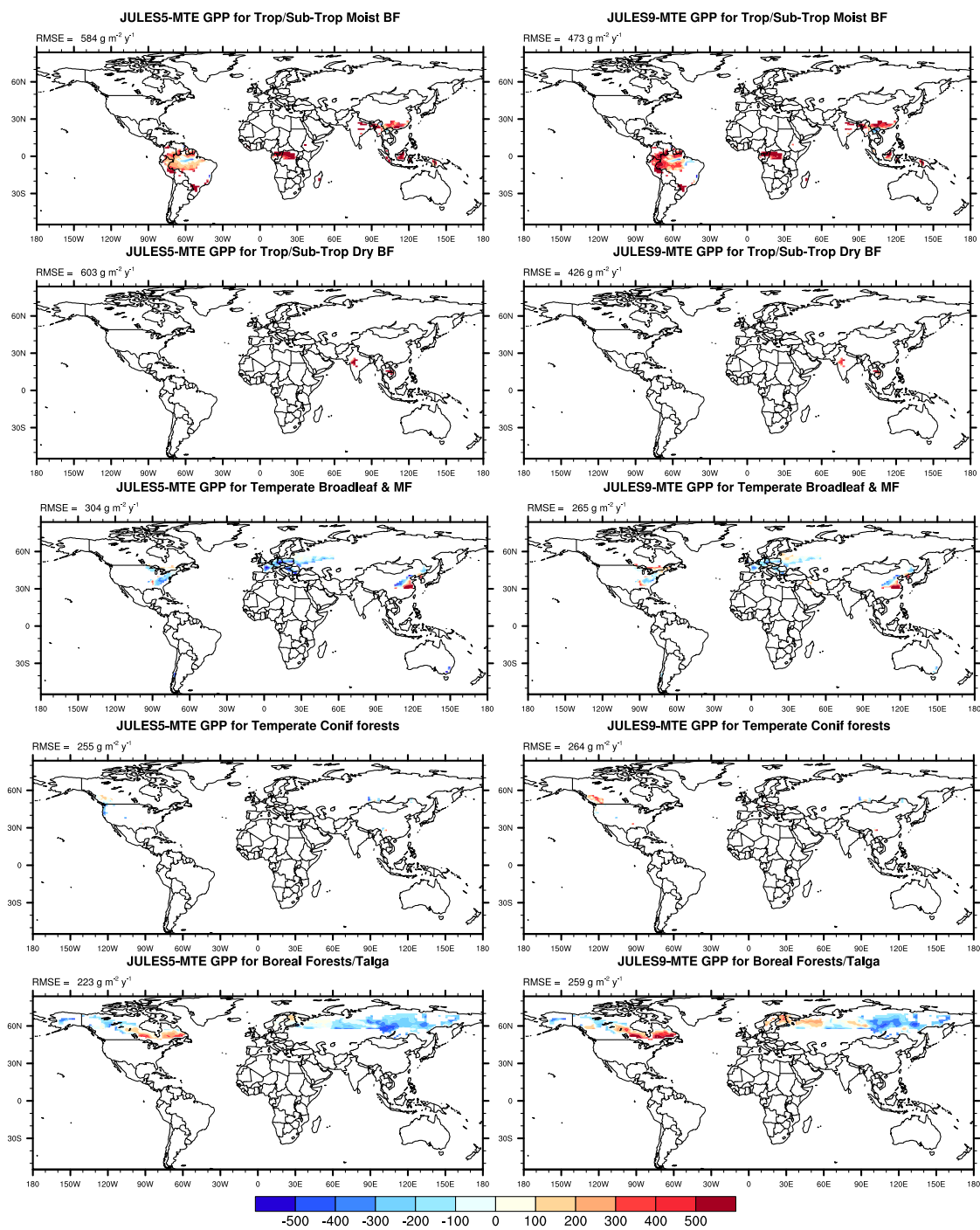


Figure S6a. Differences between JULES5 and JULES9 and the MTE GPP for each of the 11 major biomes from the WWF database (biomes with area > 1,000 km²). The area-average root mean square error is given for each map.

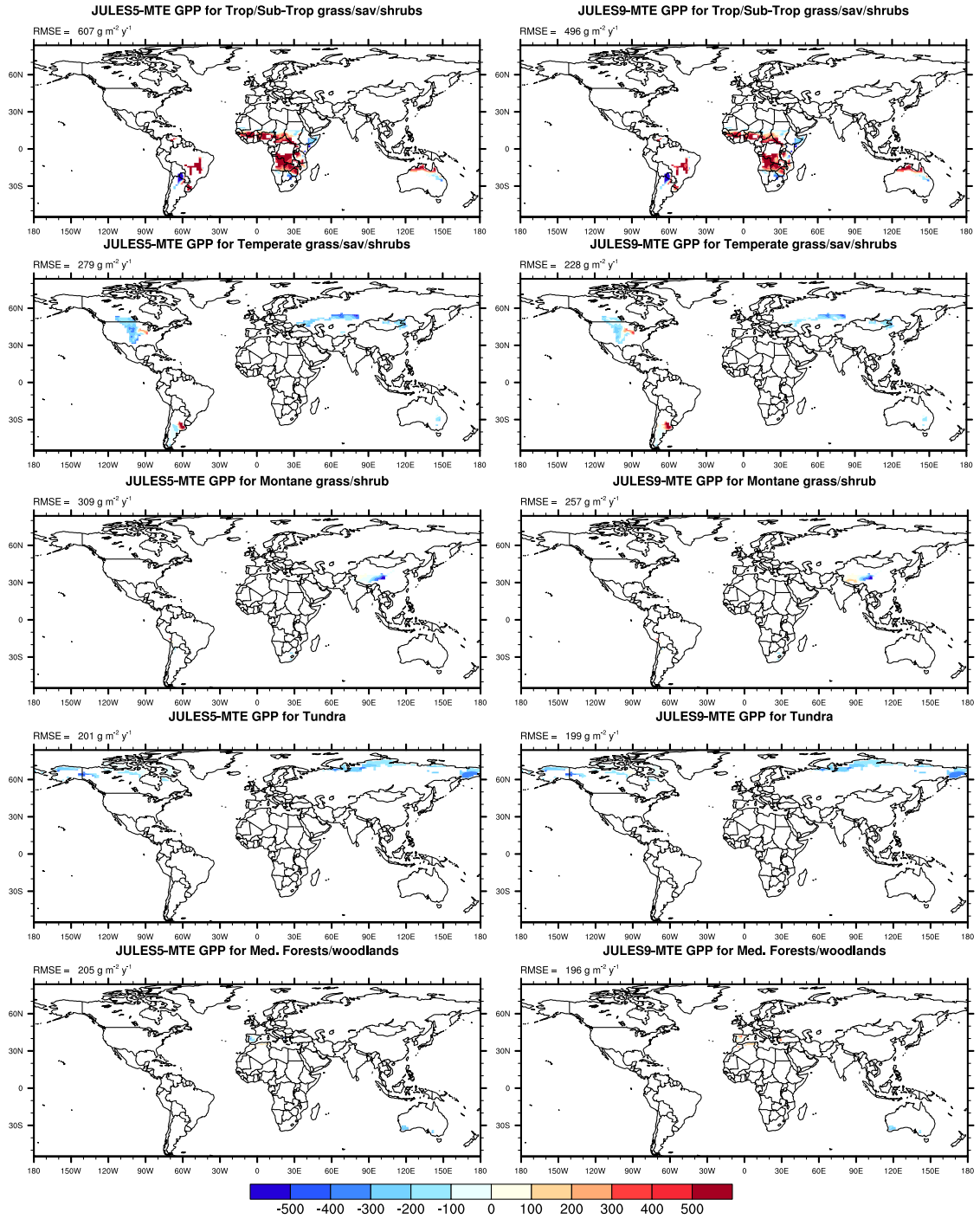


Figure S6b. Differences between JULES5 and JULES9 and the MTE GPP for each of the 11 major biomes from the WWF database (biomes with area > 1,000 km²). The area-average root mean square error is given for each map.

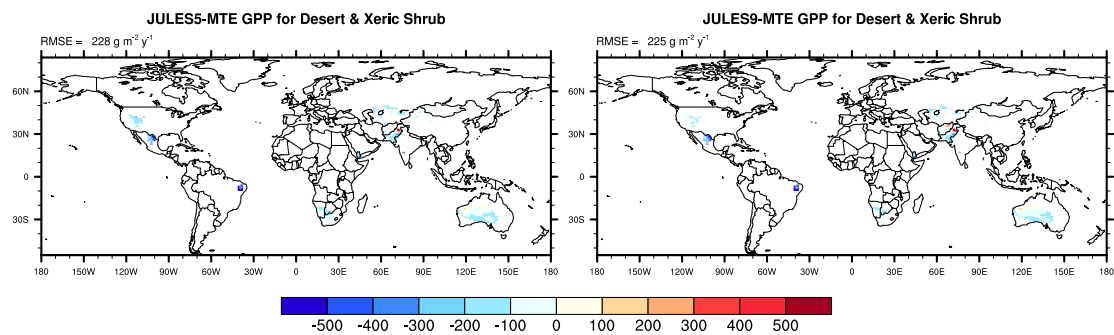


Figure S6c. Differences between JULES5 and JULES9 and the MTE GPP for each of the 11 major biomes from the WWF database (biomes with area $> 1,000 \text{ km}^2$). The area-average root mean square error is given for each map.