

**To:** Anonymous Referee #1

**From:** Mika Rantanen et al.

**Subject:** Author's response for the Referee comments

**Date:** January 12, 2017

---

Dear Referees,

We thank you for your constructive reviews on our manuscript. The comments helped us to express more clearly both the applications and the limitations of our software.

In particular, the referee comments identified (i) the coarse resolution and (ii) the idealized geometry assumed by the current version of OZO as major limitations. We agree that applications to high-resolution real-world simulations would be of obvious interest. However,

i) Although generalization of OZO to real-world spherical geometry and realistic geography is possible and we are indeed planning this for future releases, this is a major effort that goes beyond what is possible with our resources in the short run.

ii) Idealized simulations in cartesian geometry are a powerful and commonly used tool in studies of (e.g.) cyclone dynamics, because their simplicity makes it easier to control and understand the influence of different factors. For the same reason, they are useful for education. This, together with the relative simplicity of the numerical implementation, motivated us to tailor the current version of OZO for this idealized geometry.

In the revised manuscript, we discuss these issues more explicitly and have also added to the end of the paper a section on future development possibilities. In addition, we have run WRF, and show results for OZO, at 25 km horizontal resolution which represents a four-fold upgrade from the original manuscript.

In addition, a large number of smaller changes to the manuscript have been made based on the review comments. Since we have made relatively large revisions to the manuscript, we kindly recommend the referees to read it again.

The point-by-point reply to the comments of reviewer #1 is below. Your comments are marked in *italic* and our responses in **blue**. Furthermore, a marked-up manuscript with tracked changes is attached to the end of this paper.

### **General comments**

*Although the software described here does not provide new or recently developed diagnostic methods to potential end-users, it proposed a complete set of diagnostic equations that could be very useful to the WRF community. My only concern is that, given the information provided in the paper, the software seems adapted only to numerical weather prediction at low resolution ( $\sim 10^2$  km), which is likely to lower considerably the interest in a modelling community focusing nowadays on kilometric-scale ( $\sim 10^0$  km) and sub-kilometric-scale ( $\sim 10^{-1}$  km) applications. I do not consider this to be a showstopper for the publication of this paper but the authors needs to explain more clearly the application limits of their software and why, given these limitations, it is still a relevant tool. Otherwise, this is a well-written and well-organized paper.*

We agree that 100 km horizontal resolution is coarse by today's standards, even though we believe that even this would be useful at least for educational purposes. Therefore, the new version of the manuscript represents results for a 25 km resolution simulation which is state-of-the-art in the type of idealized baroclinic wave simulations that is studied in the paper. In principle, OZO can be run at even higher resolution, although the computing time (which mainly goes to solving the generalized omega equation) increases steeply with increasing number of grid points. However, as the equations of OZO were derived from quasi-geostrophic theory (although with many of the QG approximations except for hydrostatic balance relaxed), the interpretation of the results might become difficult at kilometer- or sub-kilometer-scale resolution.

The results at 25 km resolution are discussed in Sections 6 and 7, whereas results at 100 km resolution are presented briefly in the supplementary material of the revised manuscript. Limitations of the software are discussed in Section 8.

## Major comments

1.

*There are two main reasons why this software does not seem suitable for today's state-of-the-art limited-area applications: the hydrostatic assumption and the choice of the computational grids. The hydrostatic assumption, made in the derivation of the diagnostic equations, is probably not as dramatic given that non-hydrostatic phenomena are, in many cases, a secondary factor in the atmospheric flow. However, adopting horizontal and vertical computational grids different than WRFs computational grids is likely to introduce a significant amount of errors and noises, particularly in the smallest scales. It is the responsibility of the authors to state the limits of application of their software or to provide evidence that the above potential problems can actually be overcome by their software.*

The current version of OZO was tailored for the cartesian grid for two reasons: 1) our own scientific interests related to WRF's idealized baroclinic wave simulations and 2) the relative simplicity of the numerical solution of the equations in the cartesian grid. It is our intention to generalize OZO for more realistic grid geometry in further releases of the software, but this is a time-consuming effort which we cannot realistically achieve within the next few months.

Hydrostatic balance is implicitly assumed when isobaric coordinates are used. We also believe that non-hydrostatic effects play a relatively small role in most cases.

These limitations are discussed in Section 8 of the revised manuscript.

2.

*Even in the idealized simulation presented in the paper using a 100km horizontal grid configuration, numerical errors and noises should be generated by the software. The figures presented in this paper show fields that are generally smooth, but all the chosen fields are resulting from the inversion of a Laplacian operator, which project mostly on the largest scales, thus hiding the small-scale numerical error and noises. Do the authors use a filtering strategy in the software to alleviate this issue? It would be worthwhile to show some forcing fields (like vorticity and temperature advection). In order to study the dynamics of the atmosphere, looking at the forcing themselves is as important as looking at their contribution to different variables.*

In fact, no filtering of any kind was/is used in OZO or in plotting the maps shown in the paper.

We agree that looking at forcings themselves is important when studying the dynamics of the

atmosphere. For this reason, we added a function to OZO software which writes out forcing fields to the output file if it is wanted. In addition, figures of the forcing fields have been added to the supplementary material (Fig. S1 and S2).

### Minor comments

1.

*P.3 L.8-9: It is important to stress the role of the Laplacian operator in (4). Warm (cold) advections do not directly imply rising (sinking) motion; it is the horizontal distribution of the advection that matters. Therefore, I suggests the following modification to the text: ... with height and a maximum of warm (cold) advection should induce rising (sinking) motion*

We agree with you on this. The text has been modified according to your suggestion in page 3 at lines 10-11.

2.

*P.8, Section 3.3: Have you considered taking into the account the orographic forcing? Otherwise, this is likely to reduce considerably the performances of the software over complex terrain...*

The current version of OZO does not include an orographic forcing term. However, as we note in page 4, at lines 13-14, the effects of orographic forcing could be mimicked by including an additional term that results from the lower boundary vertical motion as diagnosed directly from WRF.

3.

*P. 12. L. 4-5: It is unlikely that non-hydrostatic effects where important in this simulation given the low horizontal resolution employed (at this resolution the deep convection scheme should be active well before a column of the simulated atmosphere becomes truly unstable). Given the relative small-scale of the differences, numerical errors are likely to be the main source of discrepancy.*

This issue is no longer present in our 25 km simulation. The related text was deleted.

**To:** Anonymous Referee #2

**From:** Mika Rantanen et al.

**Subject:** Author's response for the Referee comments

**Date:** January 12, 2017

---

Dear Referees,

We thank you for your constructive reviews on our manuscript. The comments helped us to express more clearly both the applications and the limitations of our software.

In particular, the referee comments identified (i) the coarse resolution and (ii) the idealized geometry assumed by the current version of OZO as major limitations. We agree that applications to high-resolution real-world simulations would be of obvious interest. However,

i) Although generalization of OZO to real-world spherical geometry and realistic geography is possible and we are indeed planning this for future releases, this is a major effort that goes beyond what is possible with our resources in the short run.

ii) Idealized simulations in cartesian geometry are a powerful and commonly used tool in studies of (e.g.) cyclone dynamics, because their simplicity makes it easier to control and understand the influence of different factors. For the same reason, they are useful for education. This, together with the relative simplicity of the numerical implementation, motivated us to tailor the current version of OZO for this idealized geometry.

In the revised manuscript, we discuss these issues more explicitly and have also added to the end of the paper a section on future development possibilities. In addition, we have run WRF, and show results for OZO, at 25 km horizontal resolution which represents a four-fold upgrade from the original manuscript.

In addition, a large number of smaller changes to the manuscript have been made based on the review comments. Since we have made relatively large revisions to the manuscript, we kindly recommend the referees to read it again.

The point-by-point reply to the comments of reviewer #2 is below. Your comments are marked in *italic* and our responses in **blue**. Furthermore, a marked-up manuscript with tracked changes is attached to the end of this paper.

### ***General comments***

*The authors state that the software could be useful for studying the dynamics of such important climate features as storms, low level jets, etc. As such, OZO could be very useful for understanding changes in the dynamics of these phenomena due to changes in the environment, say climate change or the transition of tropical cyclones to extratropical cyclones. However, that kind of studies could be more challenging from the numerical point of view than the case presents in the paper and could need a WRF setup with much higher resolution than the presented here. Therefore I would like to see the performance of OZO with a higher resolution, realistic application (i.e. in a 3-10 km grid and simulations for different seasons). If OZO is able to show good results in such applications, it would represent an important tool for the climate and weather prediction modeling community.*

It is clear that applications to real-world cases would be both very interesting and more challenging than the idealized case studied in the paper. It is in our longer-term plan to generalize OZO for use in realistic cases with realistic geometry, but this will require time-consuming work that goes beyond of what we can achieve in the near future. Therefore, the limitations of the current version of the software and avenues for future development are discussed more explicitly in Section 8.

For the revised paper, we have run WRF, and show results for OZO, at 25 km horizontal resolution, which is state-of-the-art in the type of idealized baroclinic wave simulations that is studied in the paper. In principle, OZO can be run at even higher resolution, although the computing time (which mainly goes to solving the generalized omega equation) increases steeply with increasing number of grid points. However, as the equations of OZO were derived from quasi-geostrophic theory (although with many of the QG approximations except for hydrostatic balance relaxed), the interpretation of the results might become difficult at even higher resolution.

The results at 25 km resolution are discussed in Sections 6 and 7, whereas results at 100 km resolution are presented briefly in the supplementary material.

*Another shortcoming of the software is that it is tailored to use input from WRF, while other similar packages (for instance, DIONYSOS, RIP4) can run on other numerical models. Although I guess it would be not too difficult to extend OZO for the use with the output from other regional models.*

We totally agree that the software would gain more users if it was generalized for the most common atmospheric models in addition to WRF. However, with our resources this job would have been too extensive to carry out. Our future goal is to extend OZO to global models, such as OpenIFS, but in this paper we wanted to document the first version of OZO, which is directly applicable only with WRF.

*Although the authors describe similar packages and indicate clearly the differences between OZO and these tools, I miss a more direct comparison of their results.*

We added references to DIONYSOS paper, in which similar kind of RMS - and correlation calculations as in our paper have been done. These comparisons are written in page 10, at lines 11-15, and in page 13, at lines 8-9.

## **Specific comments**

### **1.**

*In Räisänen (1995) the method is applied to the ERA reanalysis. Why this time you choose the idealized case and not the real case of Blazquez et al (2012)? Last generation reanalysis are considered significantly better than these available when Räisänen (1995) was published. Would the use of a state of the art reanalysis improve the correlations for the different regions obtained in that paper?*

There are several reasons why we chose the idealized WRF simulation and not any real case simulation or reanalysis data:

- 1) Our own interest to idealized baroclinic wave simulations, which provide a testbed for studying the dynamics of midlatitude weather systems in a simple context.
- 2) The cartesian geometry in the WRF's idealized barocline wave simulations simplifies the nu-

merical approximations needed in OZO. WRF simulations for real-world cases employ spherical coordinates, which are incompatible with OZO v.1.0. It is our longer-term goal to generalize OZO for realistic geometry but the required work effort goes beyond our short-term possibilities (see the discussion in Section 8).

3) To calculate diabatic heating and friction components in OZO (in both the Omega and Zwack-Okossi equations), parameterized temperature and wind tendency fields are needed. These are not generally available in reanalyses.

2.

*The use of the Coriolis parameter  $f$  would not cause numerical problems if you analyze a real case?*

We are not sure if we understood the question correctly. However, we would not expect the variation of the Coriolis parameter to cause problems, at least if the domain does not cross the equator. Note that, to ensure consistency, OZO reads the values of the Coriolis parameter directly from WRF output.

3.

*Is your software suited for the analysis of long term climate simulations?*

If it would be possible to carry out climate simulations in the geometry used in OZO - then why not. However, the current version of OZO is tailored for Cartesian geometry that cannot be used in global climate models.

4.

*I wonder if the performance of OZO depends on resolution.*

To be precise, the resolution is not the limiting factor in OZO performance but the number of grid points. So, if we decrease the grid spacing, we should decrease also the model domain in order to keep the computational performance same. We added Table 2 to the manuscript which shows the dependence of the computing time on the number of grid points. In addition, this issue is discussed more in Sections 5 and 8.

5.

*Model setup description is not clear, should be as in Blazquez et al (2012)*

We tried to modify the WRF setup section in the paper more clear. See Section 4.

6.

*I am not sure that at 100 km resolution non-hydrostatic effects are relevant*

This problem is no longer present in our simulations. The related text has been deleted.

### **Technical corrections**

*Introduction, paragraph 5: change "to separate individual forcings contributions to vertical motion and height tendency" to "to separate the contributions of each forcing to the vertical motion and height tendency".*

Thank you for the comment. The text has been modified according to your suggestion. (Page 2, Lines 8-9)

*Line 8, page 2: "but the division of the  $\omega$  to contributions of various atmospheric processes is not possible in RIP4" to "but the division of the  $\omega$  tendency into contributions from various atmospheric processes is not possible in RIP4"*

We slightly disagree on this. Precisely said, we don't want to divide  $\omega$  tendency ( $d\omega/dt$ ) to contributions - but  $\omega$  itself. For that reason the text is changed based on your suggestion, but without the word "tendency". (Page 2, Lines 12-13)

*I do not understand the phrase "OZO output explicitly includes  $\omega$  and height tendency contributions of vorticity advection and temperature advection by the full wind field  $V$  and the corresponding contributions associated with the divergent wind  $V_\chi$ " In line 3, page 7. May be it could be changed to "OZO output explicitly includes the vorticity advection and temperature advection terms of the  $\omega$  and height tendency equations due to both the full wind field  $V$  and the the divergent wind  $V_\chi$ "*

The sentence has been rephrased - hopefully it is now more understandable (Page 7, Lines 9-11).

# OZO v.1.0: Software for solving a generalized omega equation and the Zwack-Okossi height tendency equation using WRF model output

Mika Rantanen<sup>1</sup>, Jouni Räisänen<sup>1</sup>, Juha Lento<sup>2</sup>, Oleg Stepanyuk<sup>1</sup>, Olle Rätty<sup>1</sup>, Victoria A. Sinclair<sup>1</sup>, and Heikki Järvinen<sup>1</sup>

<sup>1</sup>Department of Physics, University Of Helsinki, Finland

<sup>2</sup>CSC - IT Center for Science, Espoo, Finland

*Correspondence to:* Mika Rantanen (mika.p.rantanen@helsinki.fi)

**Abstract.** A software package (OZO, Omega-Zwack-Okossi) was developed to diagnose the processes that affect vertical motions and geopotential height tendencies in weather systems simulated by the Weather Research and Forecasting (WRF) model. First, this software solves a generalized omega equation to calculate the vertical motions associated with different physical forcings: vorticity advection, thermal advection, friction, diabatic heating, and an imbalance term between vorticity and temperature tendencies. After this, the corresponding height tendencies are calculated with the Zwack-Okossi tendency equation. The resulting height tendency components thus contain both the direct effect from the forcing itself and the indirect effects (related to the vertical motion induced by the same forcing) of each physical mechanism. This approach has an advantage compared with previous studies with the Zwack-Okossi equation, in which vertical motions were used as an independent forcing but were typically found to compensate the effects of other forcings.

The software is [currently](#) tailored to use input from WRF simulations with Cartesian geometry. As an illustration, results for an idealized 10-day baroclinic wave simulation are presented. An excellent agreement is found between OZO and the direct WRF output for both the vertical motion (correlation [0.97-0.95](#) in the midtroposphere) and the height tendency fields (correlation [0.95-0.98-0.97](#) in the whole troposphere). The individual vertical motion and height tendency components demonstrate the importance of both adiabatic and diabatic processes for the simulated cyclone. OZO is an open source tool for both research and education, and the distribution of the software will be supported by the authors.

## 1 Introduction

Today, high-resolution atmospheric reanalyses provide a three-dimensional view on the evolution of synoptic-scale weather systems (Dee et al., 2011; Rienecker et al., 2011). On the other hand, simulations by atmospheric models allow exploring the sensitivity of both real-world and idealized weather systems to factors such as the initial state (e.g., Leutbecher et al., 2002; Hoskins and Coutinho, 2005), lower boundary conditions (e.g., Elguindi et al., 2005; Hirata et al., 2016) and representation of sub-grid scale processes (e.g., Wernli et al., 2002; Liu et al., 2004; Beare, 2007). Nevertheless, the complexity of atmospheric dynamics often makes the physical interpretation of reanalysis data and model output far from simple. Therefore, there is also



a need for diagnostic methods that help to separate the effects of individual dynamical and physical processes on the structure and evolution of weather systems.

Two variables that are of special interest in the study of synoptic-scale weather systems are the geopotential height tendency and vertical motion (Holton and Hakim, 2012). Height tendencies are directly related to the movement and intensification or decay of low and high pressure systems. Vertical motions affect atmospheric humidity, cloudiness and precipitation. They also play a crucial role in atmospheric dynamics by inducing adiabatic temperature changes, by generating cyclonic or anticyclonic vorticity, and by converting available potential energy to kinetic energy (Lorenz, 1955; Holton and Hakim, 2012).

For the need of diagnostic tools, some software packages have been developed to separate ~~individual forcings contributions~~ to the contributions of each forcing to the vertical motion and height tendency. DIONYSOS (Caron et al., 2006), a tool for analyzing numerically simulated weather systems, provides currently online daily diagnostics for the output of numerical weather prediction models. RIP4 (Stoelinga, 2009) can calculate Q-vectors (Hoskins et al., 1978; Holton and Hakim, 2012) and a quasi-geostrophic (QG) vertical motion (Holton and Hakim, 2012) from WRF model output, but the division of ~~the  $\omega$~~  to contributions of into contributions from various atmospheric processes is not possible in RIP4. Furthermore, many research groups have developed tools for their own needs, but do not have resources to distribute the software.

Here, we introduce a software package (OZO) that can be used for diagnosing the contributions of different dynamical and physical processes to atmospheric vertical motions and height tendencies. OZO calculates vertical motion from a quasi-geostrophic and a generalized omega equation (Räisänen, 1995), while height tendencies are calculated using the Zwack-Okossi tendency equation (Zwack and Okossi, 1986; Lupo and Smith, 1998). The current, first version of OZO has been tailored to use output from the Weather Forecast and Research (WRF) model (Wang et al., 2007; Shamarock et al., 2008) simulations run with idealized Cartesian geometry. Due to the wide use of the WRF model, we expect OZO to be a useful open source tool for both research and education.

In the following, we first introduce the equations solved by OZO: the two forms of the omega equation in Section 2.1 and the Zwack-Okossi height tendency equation in Section 2.2. The numerical techniques used in solving these equations are described in Section 3. We have tested the software using output from an idealized 25 km resolution WRF simulation described in Section 4. Section 5 provides some computational aspects of the software. The next two sections give an overview of the vertical motion (Section 6) and height tendency (Section 7) calculations for this simulation. The Software limitations and plans for future development are presented in Section 8, and information about the data and code availability is given in Section 9. Finally, the conclusions are given in Section 8-10.

## 2 Equations

### 2.1 Omega equation

The omega equation is a diagnostic tool for estimating atmospheric vertical motions and studying their physical and dynamical causes. Its well-known QG form, obtained by combining the QG vorticity and thermodynamic equations, infers vertical motion

from geostrophic advection of absolute vorticity and temperature (Holton, 1992):

$$L_{QG}(\omega) = F_{V(QG)} + F_{T(QG)} \quad (1)$$

where

$$L_{QG}(\omega) = \sigma_0(p) \nabla^2 \omega + f^2 \frac{\partial^2 \omega}{\partial p^2} \quad (2)$$

5 and the two right-hand-side (RHS) terms are

$$F_{V(QG)} = f \frac{\partial}{\partial p} [\mathbf{V}_g \cdot \nabla (\zeta_g + f)] \quad (3)$$

$$F_{T(QG)} = \frac{R}{p} \nabla^2 (\mathbf{V}_g \cdot \nabla T) \quad (4)$$

(the notation is conventional, see Table 1 for an explanation of the symbols).

10 Qualitatively, the QG omega equation indicates that cyclonic (anticyclonic) vorticity advection increasing with height and [a maximum of](#) warm (cold) advection should induce rising (sinking) motion in the atmosphere. However, when deriving this equation, ageostrophic winds, diabatic heating and friction are neglected. In addition, hydrostatic stability is treated as a constant and several terms in the vorticity equation are omitted. Although Eq. (1) often provides a reasonable estimate of synoptic-scale vertical motions at extratropical latitudes (Räisänen, 1995), these approximations inevitably deteriorate the  
15 accuracy of the QG omega equation solution.

The omega equation can be generalized by relaxing the QG approximations (e.g., Krishnamurti, 1968; Pauley and Nieman, 1992; Räisänen, 1995). Here we use the formulation

$$L(\omega) = F_V + F_T + F_V + F_Q + F_A \quad (5)$$

where

$$20 \quad L(\omega) = \nabla^2(\sigma\omega) + f(\zeta + f) \frac{\partial^2 \omega}{\partial p^2} - f \frac{\partial^2 \zeta}{\partial p^2} \omega + f \frac{\partial}{\partial p} \left[ \mathbf{k} \cdot \left( \frac{\partial \mathbf{V}}{\partial p} \times \nabla \omega \right) \right] \quad (6)$$

is a generalized form of (2) and the RHS terms have the expressions

$$F_V = f \frac{\partial}{\partial p} [\mathbf{V} \cdot \nabla (\zeta + f)], \quad (7)$$

$$F_T = \frac{R}{p} \nabla^2 (\mathbf{V} \cdot \nabla T), \quad (8)$$

25

$$F_F = -f \frac{\partial}{\partial p} [\mathbf{k} \cdot (\nabla \times \mathbf{F})], \quad (9)$$

$$F_Q = -\frac{R}{c_p p} \nabla^2 Q, \quad (10)$$

$$F_A = f \frac{\partial}{\partial p} \left( \frac{\partial \zeta}{\partial t} \right) + \frac{R}{p} \nabla^2 \left( \frac{\partial T}{\partial t} \right), \quad (11)$$

5 Apart from the reorganization of the terms in Eq. (6), this generalized omega equation is identical with the one used by Räsänen (1995). It follows directly from the isobaric primitive equations, which assume hydrostatic balance but omit the other approximations in the QG theory. The first four terms on the RHS represent the effects of vorticity advection ( $F_V$ ), thermal advection ( $F_T$ ), friction ( $F_F$ ) and diabating heating ( $F_Q$ ). The last term ( $F_A$ ) describes imbalance between the temperature and vorticity tendencies. For constant  $f$  and constant  $R$ , the imbalance term is directly proportional to the pressure derivative  
10 of the ageostrophic vorticity tendency (Räsänen, 1995).

Because the operators  $L_{QG}$  and  $L$  are linear, the contributions of the various RHS terms to  $\omega$  can be calculated separately if homogeneous boundary conditions ( $\omega = 0$  at horizontal and vertical boundaries) are used. These contributions will be referred to as  $\omega_X$ , where  $X$  identifies the corresponding forcing term. [The contribution of orographic vertical motions could be added by using a non-zero lower boundary condition \(Krishnamurti, 1968\) but is not included in the current version of OZO.](#)

## 15 2.2 Zwack-Okossi height tendency equation

In the Zwack-Okossi method (Zwack and Okossi, 1986; Lupu and Smith, 1998), height tendencies are calculated from the geostrophic vorticity tendency. Neglecting the variation of the Coriolis parameter,

$$\zeta_g = \frac{g}{f} \nabla^2 Z \quad (12)$$

and hence

$$20 \frac{\partial Z}{\partial t} = \nabla^{-2} \left( \frac{f}{g} \frac{\partial \zeta_g}{\partial t} \right). \quad (13)$$

The geostrophic vorticity tendency at level  $p_L$  is obtained from the equation

$$\frac{\partial \zeta_g}{\partial t}(p_L) = \frac{1}{p_s - p_t} \left[ \int_{p_t}^{p_s} \left( \frac{\partial \zeta}{\partial t} - \frac{\partial \zeta_{ag}}{\partial t} \right) dp - \frac{R}{f} \int_{p_t}^{p_s} \left( \int_p^{p_L} \nabla^2 \frac{\partial T}{\partial t} \frac{dp}{p} \right) dp \right] \quad (14)$$

where  $p_s$  (here 1000 hPa) and  $p_t$  (here 100 hPa) are the lower and the upper boundaries of the vertical domain. The vorticity tendency  $\frac{\partial \zeta}{\partial t}$  is calculated from the vorticity equation (Eq. 2 in Räsänen (1997)) and the temperature tendency  $\frac{\partial T}{\partial t}$  from the  
25 thermodynamic equation (Eq. 3.6 in Holton and Hakim (2012)). The ageostrophic vorticity tendency  $\frac{\partial \zeta_{ag}}{\partial t}$  is estimated from time series of vorticity and geostrophic vorticity (Eq. 12) using centered time differences

$$\frac{\partial \zeta_{ag}}{\partial t} \approx \frac{\Delta(\zeta - \zeta_g)}{\Delta t} - \frac{\Delta(\zeta - \zeta_g)}{2\Delta t}. \quad (15)$$

For the calculations shown in this paper,  $\Delta t = 7200 \text{ s}$   ~~$\Delta t = 1800 \text{ s}$~~  was used.

In Eq. (14), the first integral gives the mass-weighted vertical average of the geostrophic vorticity tendency between the levels  $p_s$  and  $p_t$ . The difference between the geostrophic vorticity tendency at level  $p_L$  and this mass-weighted average is obtained from the second double integral. In this latter integral, hydrostatic balance is assumed to link the pressure derivative of the geostrophic vorticity tendency to the Laplacian of the temperature tendency.

Analogously with the vertical motion, the height tendency is divided in OZO to the contributions of different physical and dynamical processes as

$$\frac{\partial Z}{\partial t} = \left( \frac{\partial Z}{\partial t} \right)_V + \left( \frac{\partial Z}{\partial t} \right)_T + \left( \frac{\partial Z}{\partial t} \right)_F + \left( \frac{\partial Z}{\partial t} \right)_Q + \left( \frac{\partial Z}{\partial t} \right)_A. \quad (16)$$

By substituting the vorticity equation and the thermodynamic equation ~~to~~ into Eq. (14), and then combining ~~the result with~~ Eq. (13) ~~and Eq.~~, the expressions for the RHS components of Eq. (16) are derived as follows:

- (i) Vorticity advection (V) and friction (F) have a direct effect on the vorticity tendency in Eq. (14).
- (ii) Thermal advection (T) and diabatic heating (Q) have a direct effect on the temperature tendency in Eq. (14).
- (iii) The ageostrophic vorticity tendency in Eq. (14) is attributed to the imbalance term (A).
- (iv) All five terms also affect the vorticity and temperature tendencies indirectly via vertical motions, which are calculated for each of them separately with the generalized omega equation.

This results in the following new expressions:

$$\begin{aligned} \left( \frac{\partial Z}{\partial t} \right)_V = & \frac{f}{g(p_s - p_t)} \nabla^{-2} \left[ \int_{p_t}^{p_s} \left( -\mathbf{V} \cdot \nabla (\zeta + f) - \omega_V \frac{\partial \zeta}{\partial p} + (\zeta + f) \frac{\partial \omega_V}{\partial p} + \mathbf{k} \cdot \left( \frac{\partial \mathbf{V}}{\partial p} \times \nabla \omega_V \right) \right) dp \right. \\ & \left. - \frac{R}{f} \int_{p_t}^{p_s} \left( \int_p^{p_L} \nabla^2 (S\omega_V) \frac{dp}{p} \right) dp \right] \end{aligned} \quad (17)$$

$$\begin{aligned} \left( \frac{\partial Z}{\partial t} \right)_T = & \frac{f}{g(p_s - p_t)} \nabla^{-2} \left[ \int_{p_t}^{p_s} \left( -\omega_T \frac{\partial \zeta}{\partial p} + (\zeta + f) \frac{\partial \omega_T}{\partial p} + \mathbf{k} \cdot \left( \frac{\partial \mathbf{V}}{\partial p} \times \nabla \omega_T \right) \right) dp \right. \\ & \left. - \frac{R}{f} \int_{p_t}^{p_s} \left( \int_p^{p_L} \nabla^2 (-\mathbf{V} \cdot \nabla T + S\omega_T) \frac{dp}{p} \right) dp \right] \end{aligned} \quad (18)$$

$$\begin{aligned} \left( \frac{\partial Z}{\partial t} \right)_F = & \frac{f}{g(p_s - p_t)} \nabla^{-2} \left[ \int_{p_t}^{p_s} \left( \mathbf{k} \cdot \nabla \times \mathbf{F} - \omega_F \frac{\partial \zeta}{\partial p} + (\zeta + f) \frac{\partial \omega_F}{\partial p} + \mathbf{k} \cdot \left( \frac{\partial \mathbf{V}}{\partial p} \times \nabla \omega_F \right) \right) dp \right. \\ & \left. - \frac{R}{f} \int_{p_t}^{p_s} \left( \int_p^{p_L} \nabla^2 (S\omega_F) \frac{dp}{p} \right) dp \right] \end{aligned} \quad (19)$$

$$\begin{aligned} \left(\frac{\partial Z}{\partial t}\right)_Q &= \frac{f}{g(p_s - p_t)} \nabla^{-2} \left[ \int_{p_t}^{p_s} \left( -\omega_Q \frac{\partial \zeta}{\partial p} + (\zeta + f) \frac{\partial \omega_Q}{\partial p} + \mathbf{k} \cdot \left( \frac{\partial \mathbf{V}}{\partial p} \times \nabla \omega_Q \right) \right) dp \right. \\ &\quad \left. - \frac{R}{f} \int_{p_t}^{p_s} \left( \int_p^{p_L} \nabla^2 \left( \frac{Q}{c_p} + S\omega_T \right) \frac{dp}{p} \right) dp \right] \end{aligned} \quad (20)$$

$$\begin{aligned} \left(\frac{\partial Z}{\partial t}\right)_A &= \frac{f}{g(p_s - p_t)} \nabla^{-2} \left[ \int_{p_t}^{p_s} \left( -\frac{\partial \zeta_{ag}}{\partial t} - \omega_A \frac{\partial \zeta}{\partial p} + (\zeta + f) \frac{\partial \omega_A}{\partial p} + \mathbf{k} \cdot \left( \frac{\partial \mathbf{V}}{\partial p} \times \nabla \omega_A \right) \right) dp \right. \\ &\quad \left. - \frac{R}{f} \int_{p_t}^{p_s} \left( \int_p^{p_L} \nabla^2 (S\omega_A) \frac{dp}{p} \right) dp \right] \end{aligned} \quad (21)$$

5 The equation system used in this study has been adopted partly from Räisänen (1997). However, whereas Räisänen (1997) used the vorticity equation and the nonlinear balance equation to obtain height tendencies, the Zwack-Okossi equation is used here. The main advantage of this choice is its smaller sensitivity to numerical errors. Our method produces quite smooth vertical profiles of height tendencies, because the tendencies at neighbouring levels are bound to each other by the vertical integration in Eq. (14). On the other hand, our method differs from earlier applications of the Zwack-Okossi equation (e.g. Zwack and  
10 Okossi, 1986; Lupu and Smith, 1998) because the use of the generalized omega equation eliminates vertical motion as an independent height tendency forcing. This is an important advantage, because these earlier studies have shown a tendency of compensation between vertical motions and the other forcing terms.

Earlier diagnostic tools have come close to our technique. The most similar approach is probably used in the DIONYSOS (Caron et al., 2006) tool. Regardless of **having** many similarities, there are still three major differences between DIONYSOS  
15 and OZO. First, DIONYSOS eliminates the ageostrophic vorticity tendency as an independent forcing using an iterative procedure. Second, DIONYSOS uses simple parametrizations of diabatic heating and friction, whereas OZO relies directly on model output. Third, DIONYSOS uses the method of Räisänen (1997) to convert vorticity tendencies to height tendencies, whereas the Zwack-Okossi method is used in OZO.

### 2.3 Vorticity and temperature advection by non-divergent and divergent winds

20 Following the Helmholtz theorem, the horizontal wind can be divided to non-divergent ( $\mathbf{V}_\psi$ ) and divergent ( $\mathbf{V}_\chi$ ) parts. Their contributions to vorticity advection and temperature advection can be separated as

$$-\mathbf{V} \cdot \nabla (\zeta + f) = -\mathbf{V}_\psi \cdot \nabla (\zeta + f) - \mathbf{V}_\chi \cdot \nabla (\zeta + f) \quad (22)$$

$$-\mathbf{V} \cdot \nabla T = -\mathbf{V}_\psi \cdot \nabla T - \mathbf{V}_\chi \cdot \nabla T \quad (23)$$

and the same applies to the corresponding  $\omega$  and height tendency contributions. This separation between  $V_\psi$  and  $V_\chi$  contributions is included in OZO because Räsänen (1997) found it to be important for the height tendencies associated with vorticity advection.

OZO calculates the divergent part of the wind ( $V_\chi$ ) from the gradient of the velocity potential  $\chi$  (Eq. 24), which is derived from the horizontal divergence by inverting the Laplacian in Eq. (25).

$$V_\chi = \nabla\chi \quad (24)$$

$$\nabla^2\chi = \nabla \cdot V \quad (25)$$

The non-divergent wind is obtained as the difference between  $V$  and  $V_\chi$ . ~~OZO output explicitly includes  $\omega$  and height tendency contributions of~~ The output of OZO explicitly includes the vorticity advection and temperature advection by terms of the  $\omega$  and height tendency equations due to both the full wind field  ~~$V$  and the corresponding contributions associated with  $V$~~  and the the divergent wind  $V_\chi$ . The contributions associated with the non-divergent wind  $V_\psi$  can be calculated as their residual.

### 3 Numerical methods

The first version of the OZO software package is tailored to use output from WRF simulations in idealized Cartesian geometry. The ~~software computational~~ domain is periodic in the zonal direction whereas symmetric boundary conditions are used at the northern and southern boundaries. Before the calculation, the WRF data needs to be interpolated to pressure coordinates.

#### 3.1 Calculation of right-hand-side terms

All of the right-hand-side terms of the omega equation (Eq. 5) and the Zwack-Okossi equation (Eq. 16) are calculated in grid point space. Horizontal and vertical derivatives are approximated with two-point central differences with the exception at the meridional and vertical boundaries, where one-sided differences are used. In the calculation of the imbalance term of the omega and Zwack-Okossi equations (Eq. 11 and 21), also tendencies of  $T$ ,  $\zeta$  and  $Z$  are needed. These tendencies are approximated by ~~two-hour~~ half-hour central differences of the corresponding variables.

Because the calculations are done in pressure coordinates, the lower boundary of the domain does not correspond to the actual surface. To mitigate the impact of this, vorticity and temperature advection, friction, diabatic heating and the ageostrophic vorticity tendency are all attenuated below the actual surface by multiplying them by a factor varying from zero to one. The ~~value of the~~ multiplication factor at each level depends on how far down the level is below the ground. For example, for a surface pressure of 950 hPa and vertical mass-centered grid spacing of 50 hPa, the multiplication factor is zero at 1000 hPa, 0.5 at 950 hPa, and one at 900 hPa and all higher levels.

### 3.2 Inversion of left-hand-side operators

The omega equation is solved using a multigrid algorithm (Fulton et al., 1986). Each multigrid cycle starts from the original (finest) grid, denoted below with the superscript (1). A rough solution in this grid ( $\tilde{\omega}^{(1)}$ ) is found using  $\nu_1$  iterations of simultaneous underrelaxation, starting either from the previous estimate of  $\omega$  or (in the first cycle)  $\omega = 0$ . The residuals

$$5 \quad Res^{(1)} = F - L(\tilde{\omega}^{(1)}) \quad (26)$$

are then upscaled to a coarser grid (superscript (2)), in which the number of points is halved in all three dimensions. In this grid, the equation

$$L(\omega^{(2)}) = Res^{(1)} \quad (27)$$

is then roughly solved replicating the method used in the first grid. The residual of this calculation is fed to the next coarser grid, and the procedure is continued until the grid only has five points on its longest (meridional) axis. Thus, for an idealized baroclinic wave simulation with horizontal resolution of ~~100-25~~ km, the meridional axis has ~~80-320~~ grid points. That makes ~~four-six~~ coarser resolutions (~~160, 80, 40, 20, 10, and 5~~ points on the meridional axis) in addition to the original one.

Having obtained the estimate  $\tilde{\omega}^{(N)}$  for the coarsest grid, a new estimate for the second coarsest grid is formed as

$$\tilde{\omega}_{NEW1}^{(N-1)} = \tilde{\omega}^{(N-1)} + \alpha \tilde{\omega}^{(N)} \quad (28)$$

15 where  $\alpha$  is a relaxation coefficient. To reduce the effect of regriding errors, this estimate is refined using  $\nu_2$  iterations of simultaneous underrelaxation. The result,  $\tilde{\omega}_{NEW2}^{(N-2)}$ , is then substituted to the next finer grid

$$\tilde{\omega}_{NEW1}^{(N-2)} = \tilde{\omega}^{(N-2)} + \alpha \tilde{\omega}_{NEW2}^{(N-1)} \quad (29)$$

and the sequence is repeated until the original grid is reached.

After each multigrid cycle, the maximum difference between the new and the previous estimate of  $\omega$  in the original (finest) grid is computed. If this difference exceeds a user-defined threshold (by default  $5 \times 10^{-5}$  Pa s<sup>-1</sup>), the multigrid cycle is repeated. Typically, several ~~tens-hundreds~~ of cycles are required to achieve the desired convergence.

OZO has four parameters for governing the multigrid algorithm, with the following default values: the underrelaxation coefficient ( ~~$\alpha = 0.2$~~   $\alpha = 0.017$ ), the number of sub-cycle iterations in the descending ( ~~$\nu_1 = 4$~~   $\nu_1 = 30$ ) and ascending phases of the multigrid cycle ( ~~$\nu_2 = 2$~~   $\nu_2 = 4$ ), and the threshold for testing convergence ( $toler = 5 \times 10^{-5}$  Pa s<sup>-1</sup>). All these parameters can be adjusted via a namelist. ~~Note that the~~ The mentioned default values of  $\alpha$ ,  $\nu_1$  and  $\nu_2$  have been optimized for a ~~10025~~ km grid resolution. At ~~higher-lower~~ resolution,  $\alpha$  ~~may need to be reduced-can be increased~~ and  $\nu_1$  and  $\nu_2$  ~~increased-to ensure the convergence-of the iteration-reduced to speed up the algorithm~~.

In the Zwack-Okossi equation, geostrophic vorticity tendencies are converted to geopotential height tendencies using Eq. (13), which is a two-dimensional Poisson's equation. To solve this equation computationally effectively, we utilize Intel's MKL (Math Kernel Library) Fast Poisson Solver routines, which employ the DFT (Discrete Fourier Transform) method. Intel's MKL is widely spread and freely downloadable(~~see Section 8~~), ~~although a~~, although registration is required.

### 3.3 Boundary conditions

In the omega equation, homogeneous boundary conditions ( $\omega = 0$ ) at both the meridional and the lower and the upper boundaries are used. For the Zwack-Okossi equation, a slightly more complicated procedure is used to ensure that the area means of the individual height tendency components are consistent with the corresponding temperature tendencies. First, for all of V, T, F, Q and A, the height tendency is initially solved from Eq. (13) using homogenous boundary conditions ( $\frac{\partial Z}{\partial t} = 0$ ) at the northern and southern boundaries. Then, the area mean temperature tendencies for these five terms are calculated, taking into account both the direct effect of temperature advection (for T) and diabatic heating (for Q) and the adiabatic warming / cooling associated with the corresponding omega component. These temperature tendencies are substituted to the hypsometric equation to calculate the corresponding area mean height tendencies. In the vertical integration of the hypsometric equation, the area mean height tendency at the lower boundary (1000 hPa) is set to zero, following the expectation that the total atmospheric mass in the model domain is conserved. Horizontally homogeneous adjustments are then made to the initial height tendencies for V, T, F, Q and A, to force their area means to agree with those derived from the hypsometric equation.

## 4 The WRF setup

WRF is a non-hydrostatic model and can generate atmospheric simulations using real data or idealized [simulations-configurations](#) (Wang et al., 2007; Shamarock et al., 2008). The calculations presented in this paper used input data from an idealized moist baroclinic wave simulation, which simulates the evolution of a baroclinic wave within a baroclinically unstable jet in the Northern Hemisphere under the f-plane approximation (Blázquez et al., 2013). The value of the Coriolis parameter was set to  $10^{-4} \text{ s}^{-1}$  in the whole model domain.

The simulation [presented in Sections 6-7](#) was run for ten days with [one-hour-a 30 minute](#) output interval, in a domain of 4000 x 8000 x 16 km, with ~~100 km horizontal resolution and periodic boundary conditions in the zonal direction~~ [25 km grid spacing](#). The horizontal grid was Cartesian and staggered, and 64 sigma levels were used in the vertical direction. [The boundary conditions were symmetric in the meridional direction and periodic in the zonal direction. Cloud microphysics is parameterized using the WRF Single-Moment 3-class scheme \(Hong et al., 2004\). Cumulus convection is treated with the Kain-Fritsch scheme \(Kain and Fritsch, 1993\) and boundary layer turbulence with the YSU scheme \(Hong et al., 2006\). The Radiation scheme was switched off in our model integration.](#)

After running the simulation, data was interpolated from model levels to 19 evenly spaced pressure levels (1000, 950, ..., 100 hPa). The interpolation was done with WRF utility *wrf\_interp*, which is freely available from the WRF website ([see Section 8](#)). During the interpolation, the horizontal data grid was unstaggered to mass points, thus having ~~40~~ [160](#) grid points in the zonal and ~~80~~ [320](#) grid points in the meridional direction.

The model output data contained all the variables needed in solving the generalized omega equation and the Zwack-Okossi equation: temperature, wind components, geopotential height, surface pressure and parametrized diabatic heating and friction components. Diabatic heating and friction in ~~the~~ WRF included contributions from various physical processes, such as cumulus



convection, boundary layer physics and microphysics. The physical tendencies are not in the default WRF output, and need to be added by modifying the WRF Registry file. ~~The Radiation scheme was switched off during the simulation~~

To study the performance of OZO at a resolution that is more similar to that used in several earlier diagnostic studies of synoptic-scale dynamics (Räisänen, 1995, 1997; Caron et al., 2006; Stepanyuk et al., 2016), WRF was also run in the same domain at 100 km grid spacing. Results for this simulation are presented in the supplementary material. An intermediate simulation at 50 km resolution was also made to study the resolution dependence of the computational performance.

## 5 Computational aspects

OZO can be run on a basic laptop with Linux environment, provided that standard NetCDF library, Intel's MKL and some Fortran compiler, preferably GNU's gfortran, are available. The source code of ~~the~~ OZO is written in Fortran 90 standard and can be currently compiled only for a serial version.

The inversion of the left-hand-side operator of the omega equation (Eq. 6) is computationally quite a heavy process. ~~In~~ Hence, in our previously described test runs, the calculation of the ~~all five five plus two~~  $\omega$  components took ~~approximately 2.3 seconds per timestep by a basic laptop almost all of the total computing time.~~ For the height tendencies, the inversion of the horizontal Laplacian (Eq. 13) is much more straightforward to do, and moreover, ~~the solving is employed by~~ MKL Fast Poisson Solver routines. ~~Hence the corresponding time for are employed. For that reason, only a small fraction of the computing time is spent for the~~ height tendency calculation ~~was only 0.05 seconds. Although these numerical values depend to some extent on the used hardware, they illustrate how the majority of the computing time is currently used by the omega equation solver. The goal is.~~ Table 2 provides information on the absolute computing times and how they depend on the number of grid points in the model domain. It is our goal to improve the computational performance by utilizing better scalable solver routines for the omega equation in a future version of the software.

## 6 Results - vertical motion

### 6.1 Comparison between calculated and WRF-simulated vertical motions

Figure 1 compares the solution of the generalized omega equation ( $\omega_{TOT}$ ) with  $\omega$  as obtained directly from the WRF output ( $\omega_{WRF}$ ), at the 700 hPa level after 118 hours of simulation when the cyclone is approaching its maximum intensity. The agreement is excellent. A strong maximum of rising motion ( $\omega \approx -2 \text{ Pas}^{-1}$   $\omega \approx -3 \text{ Pas}^{-1}$ ) occurs near the occlusion point to the east of the surface low in both cases, with somewhat weaker ascent along the cold frontal zone to the southwest and in the northeastern sector of the low. Descent prevails further east of the low and behind the cold front. However, lots of mesoscale details are visible in both the simulated and the calculated  $\omega$ , with some although not perfect agreement between these two. The difference between  $\omega_{TOT}$  and  $\omega_{WRF}$  (Fig. 1c) is noisy, although it suggests ~~a slight positive (downward) bias in~~  $\omega_{TOT}$  to the east of the surface low slightly more discrepancy behind the cold front where shallow convection takes place.

The QG omega equation (Eq. 1) also captures the large-scale patterns of rising and sinking motion reasonably well (Fig. 1d). However, it substantially underestimates the ascent to the east of the low and ~~in particular~~, along the cold front. ~~This behavior probably results from the absence of diabatic processes~~, and there are two bands of strong descent (behind the cold front and to the east of the low) that are much weaker in  $\omega_{WRF}$  and  $\omega_{TOT}$ . Furthermore, many of the mesoscale details shared by  $\omega_{WRF}$  and  $\omega_{TOT}$  are missing in the QG solution.

The majority of the differences between  $\omega_{TOT}$  and  $\omega_{WRF}$  most likely result from numerical errors. One source of these errors is the approximation of the time derivatives in  $F_A$  in Eq. 11 with central differences. As shown in Fig. 2, the agreement between  $\omega_{TOT}$  and  $\omega_{WRF}$  gradually improves when the half-span of these time differences is reduced from two hours to one minute (i.e., the time step in the WRF simulation). The 30-minute output interval used for the other calculations shown in this paper is a compromise between accuracy and the need to control the data volume of the WRF output for the 10-day simulation.

A more comprehensive statistical evaluation of the calculated vertical motions is given in Figs. 3 and 4, by using data from the whole model area and the eight last days of the simulation. The first two days, when both the cyclone and the vertical motions are still weak, are neglected. Fig. 3 shows the time-averaged spatial correlation between  $\omega_{WRF}$  and various omega equation solutions. The correlation between  $\omega_{TOT}$  (line *VTFQA*) and  $\omega_{WRF}$  is excellent, reaching ~~0.97~~ 0.95 in the midtroposphere and exceeding ~~0.85~~ 0.88 at all levels from 250 to ~~900-hPa~~ 850 hPa. However, leaving out  $\omega_A$ , which requires non-synoptic information from the time derivatives of temperature and vorticity, deteriorates the correlation substantially (line *VTFQ*). The solution of the QG omega equation only correlates with  $\omega_{WRF}$  at  ~~$r \sim 0.7$~~   $r \sim 0.6$  in the midtroposphere (line *VT(QG)*), although the correlation approaches ~~0.8~~ 0.65 at 300 hPa where diabatic heating is less important than at lower levels.

Caron et al. (2006) report excellent correlations (at most levels, from 0.9 to 0.96) between the vertical motions calculated by the DIONYSOS tool and their original model output (their Figs. 2a and 3a), for two cases and nine synoptic times at three-hour intervals for both. These correlations are similar to or even higher than those shown in Fig. 3. However, in these tests the horizontal resolution of DIONYSOS was 100 km, whereas we used 25 km resolution in our WRF simulation. In fact, the correlations for OZO are also improved and reach 0.97 in the midtroposphere for a 100 km resolution WRF simulation (see the supplementary material, Fig. S3). Naturally, the performance may also depend on the synoptic case studied.

Figure 4 compares the root-mean-square (RMS) amplitudes of  $\omega_{WRF}$  and  $\omega_{TOT}$ .  $\text{RMS}(\omega_{TOT})$  is typically about ~~105%~~ smaller than  $\text{RMS}(\omega_{WRF})$ . ~~This which~~ is presumably due to the truncation errors that occur when the derivatives in the forcing terms are approximated with second-order central differences. An exception to this is the lower troposphere where vertical motions calculated by OZO ( $\omega_{TOT}$ ) are slightly stronger compared to the direct WRF output ( $\omega_{WRF}$ ). The RMS amplitudes of the individual  $\omega$  components will be discussed in the next subsection.

## 6.2 Contributions of individual forcing terms to $\omega$

Figure 5 shows the contributions of the five individual forcing terms to  $\omega(700\text{ hPa})$  for the situation studied in Fig. 1. Vorticity advection and thermal advection both contribute substantially to the vertical motions (Fig. 5a-b), but the ~~maxima of ascent and descent are both~~ maximum of ascent is further east for  $\omega_T$  (Fig. 5b) than  $\omega_V$  (Fig. 5a). Due to this phase shift, there is a

cancellation between rising motion from  $\omega_V$  and sinking motion from  $\omega_T$  ~~just~~ behind the cold front. This cancellation effect is well-known and typically occurs just behind the cold front, where cold advection and increasing cyclonic vorticity advection with height take place (Lackmann, 2011). On the other hand, these two terms both induce rising motion to the ~~northeast~~ southeast of the centre of the low. Diabatic heating, which is dominated by latent heat release, strongly enforces the ascent along the main frontal zones of the cyclone (Fig. 5d). Compensating subsidence prevails in the surrounding areas, except for spots of localized ascent associated with convective precipitation well behind the cold front. The imbalance term  $\omega_A$  is ~~also not negligible (Fig. 5e), although smaller than  $\omega_V$ ,  $\omega_T$  and  $\omega_Q$ . remarkably large but noisy.~~ Friction induces ascent close to the centre of the low and descent around and to the northeast of the surface high (Fig. 5c), but its contribution is quite weak at the 700 hPa level. Figures S1 and S2 in the supplementary material present the actual forcing fields for the vertical motions fields in Fig. 5a-e.

In terms of the RMS amplitudes evaluated over the whole model area and the last 8 days of the simulation, temperature advection makes the largest contribution to the calculated  $\omega$  (line  $T$  in Fig. 4). ~~However, temperature advection is rivalled by vorticity advection (Vorticity advection (line  $V$ ) in the upper midtroposphere ( $\sim 350 - 600$ ). Diabatic heating (diabatic heating (line  $Q$ ) and the imbalance term (line  $A$ ) are also substantial, particularly in the mid-to-lower troposphere all similar in magnitude in the mid- and upper troposphere. Near the surface, the imbalance term has a tendency to compensate the effects of temperature advection, as their RMS values are even larger than the RMS of the total vertical motion (line  $TOT$ ).  $RMS(\omega_Q)$  peaks at 850 hPa which is mostly due to shallow convection behind the cold front (not shown). This peak is visible also in the  $RMS(\omega_{TOT})$ . Our sensitivity experiments with different output intervals suggest that the half-hour temporal resolution is too sparse for proper estimation of the imbalance term in the presence of fast-moving convection cells, which causes the over-estimation of total vertical motion in the lowest troposphere.~~  $RMS(\omega_F)$  is at its maximum near the top of the boundary layer at ~~850~~900 hPa but remains ~~modest~~weak even at this level.

These results are ~~mostly~~partly consistent with similar calculations made for observation-based analysis data (Räisänen, 1995) and for model data (Stepanyuk et al., 2016) at lower spatial resolution. However, the imbalance term was relatively small in Räisänen's (1995) study, ~~presumably~~ because the 6-hour time resolution of its input data was not sufficient for a proper estimation of this term. ~~To counteract this issue, 1-hour time resolution was used for this paper as well as in Stepanyuk et al. (2016).~~ In addition,  $RMS(\omega_T)$  is more dominant in our study than in Räisänen (1995) and in Stepanyuk et al. (2016). The main reason for this is the improved horizontal resolution. Räisänen (1995) found that the influence of thermal advection compared to vorticity advection increases when the horizontal resolution is improved. This is because vertical motions induced by thermal advection typically have a smaller horizontal scale than those induced by vorticity advection (Räisänen, 1995). In this paper, the horizontal resolution is almost ten times higher than in Räisänen's (1995) study. Conversely,  $RMS(\omega_F)$  is smaller in Fig. 4 than found for the midlatitudes in Räisänen (1995) and Stepanyuk et al. (2016). This may be at least in part because Räisänen (1995) and Stepanyuk et al. (2016) included both land and sea areas, whereas our WRF simulation was made for an idealized ocean surface.

A further division of  $\omega_V$  and  $\omega_T$  to contributions from advection by rotational and divergent wind reveals that they both are largely dominated by the rotational wind (not shown).

## 7 Results - height tendency

### 7.1 Comparison between calculated and WRF-simulated height tendencies

In this subsection, the calculated total height tendencies are compared with height tendencies from the WRF simulation. The latter ~~ones~~ were estimated as ~~two-hour~~ central differences from the 30-minute time series of the simulated geopotential heights.

5 Figure 6 shows the distributions of the calculated height tendency, the WRF height tendency and their difference slightly before the cyclone reaches its maximum intensity ( $t=118$  hours). The values are shown at the 900 hPa level, which is sufficiently low to represent the processes affecting the low-level cyclogenesis. Negative (positive) height tendency over the low centre indicates deepening (weakening) of the low. In general, a very close agreement between the fields is seen, ~~but somewhat larger differences occur along the cold front. To study the origin of these differences, we solved the Zwack-Okossi equation (Eq. 14)~~  
10 ~~using the temperature and vorticity tendencies from the WRF simulation. Because the differences in~~ although somewhat more positive bias is visible behind the cold front ~~area remained largely the same as in Fig. 6c, we suspect that they are related to non-hydrostatic effects that are neglected in the Zwack-Okossi equation.~~

Figure 7 shows the time-averaged RMS error and correlation coefficient between the calculated and WRF height tendency as a function of height. The RMS error is quite constant from 950 hPa up to the 250 hPa level (Fig. 7a). Above this level, the  
15 error grows rapidly towards the stratosphere. This error growth is accompanied by a decrease of correlation coefficient at the same altitude. This deterioration is presumably at least partly due to the 50 hPa vertical resolution in the OZO, which is too coarse for an adequate representation of stratospheric dynamics.

The correlation between the calculated and WRF height tendency is highest in the upper troposphere, being there roughly 0.980.97. The correlation weakens slightly closer the surface, but still exceeds 0.95. Thus, the calculated height tendency is generally in very good agreement with the tendency diagnosed directly from the WRF output. These correlations are comparable but mostly slightly higher than those reported by Caron et al. (2006) for DIONYSOS (their Fig. 6a).

### 7.2 Contributions of individual terms ~~at~~ during the mature stage

The contributions of the individual height tendency components at the 900 hPa level at 118 hours are shown in Fig. 8. Vorticity advection (Fig. 8a) produces a wide and strongly positive height tendency behind the surface low (see Section 7.4 for further  
25 analysis of this term). Thermal advection (Fig. 8b) causes a positive height tendency in the area behind the surface low and a negative height tendency at the opposite side. This large negative height tendency ahead of the low is caused by warm air advection in the mid- and upper troposphere. In this baroclinic life cycle simulation, thermal advection is the main contributor to the movement of the cyclone, which is in agreement with the study of Räisänen (1997).

Friction (Fig. 8c) always acts to damp synoptic-scale weather systems and is thereby inducing a positive (negative) height  
30 tendency over the surface low (high). ~~In contrast to friction, diabatic~~ Diabatic heating (Fig. 8d) is causing uniformly negative lower tropospheric height tendencies in the vicinity of the surface low. ~~As its contribution is also negative at the centre of the surface low, this indicates that diabatic heating plays an essential role in the deepening the cyclone.~~ The largest negative height

tendency due to diabatic heating is located south-east from the low centre, where strong latent heat release occurs in connection with frontal precipitation.

The imbalance term (Fig. 8e) shows more small-scale structure than the other terms. In general, however, it is in phase with the total height tendency near the centre of the low, with negative values to the east and positive values to the west. The reason for this feature is most probably the following: The conversion from geostrophic vorticity tendencies to height tendencies for the other terms was done by assuming a geostrophic balance according to Eq. (13). However, in cyclones the wind is typically subgeostrophic (e.g. Holton and Hakim, 2012). Therefore, the tendency of geostrophic vorticity exceeds the actual vorticity tendency. This implies that height tendencies calculated from the actual vorticity tendency under the geostrophic assumption will be too small. The imbalance term takes care of this and makes the calculated total height tendency to correspond better to the actual change of the geopotential height field.

### 7.3 Height tendencies ~~at~~ in the cyclone centre

Figure 9 shows the 900 hPa level height tendencies induced by the five individual terms in the cyclone centre during the deepening period. The low deepens vigorously roughly between 72 and 120 hours of simulation, as shown by the negative total height tendency (black line) during this period. The total height tendency is also in a good agreement with the WRF height tendency (dotted line), ~~although some positive bias is seen in the end of the period.~~

The deepening is mostly due to vorticity advection (blue line) and the imbalance term (grey line). Later on, roughly from ~~120-96~~ hours onward, ~~as the cyclone reaches its mature stage,~~ diabatic heating (~~magenta-red~~ line) and thermal advection (orange line) together with the imbalance term make the largest ~~contribution~~ contributions to maintaining the intensity of the surface low. Friction (green line) systematically destroys cyclonic vorticity over the cyclone centre and thus produces a slightly positive height tendency during the whole life cycle. ~~The effect of friction becomes larger as the intensity of the cyclone increases~~ After circa 96 hours, vorticity advection also acts a damping mechanism for the surface low (see also the next subsection).

### 7.4 The effect of vorticity and thermal advection by divergent and nondivergent winds

Figure 10 presents the height tendencies associated with vorticity advection by  $V_\chi$  and  $V_\psi$  separately. The divergent wind vorticity advection causes widespread and strong positive height tendency over and around the surface low (Fig. 10a). According to Räisänen (1997), the divergent wind transports anticyclonic vorticity from the surroundings of the surface low, and is thus acting to reduce the cyclonic vorticity at the centre of the low. In the case of the nondivergent wind component (Fig. 10b), positive (negative) height tendencies behind (ahead) of the low originate from the upper troposphere, where the nondivergent wind and thereby vorticity advection is the strongest. Cyclonic vorticity advection ahead of the trough produces negative height tendency in the same area, while anticyclonic vorticity advection ahead of the ridge does the opposite. Furthermore, the nondivergent vorticity advection is substantially contributing to the deepening of the cyclone, since the area of the negative height tendency reaches the centre of the low as well.

In contrast to vorticity advection, thermal advection by divergent winds was found to cause a negligible height tendency (not shown).

## 8 Limitations and plans for future developments

The idealized baroclinic wave simulation provides an effective and widely used tool for studying cyclone dynamics in an easily-controlled model environment. For this reason, we chose to begin the development work of OZO from a relatively simple Cartesian implementation. Nevertheless, the idealized Cartesian geometry obviously reduces the number of potential applications of OZO. We aim to extend OZO to more complex spherical grid applications in the future. However, in principle the use of OZO is possible with some limited-area real cases where spherical geometry has been used, if the data is regridded to Cartesian geometry afterwards. However, in this case, one must change the lateral boundary conditions of OZO since they are tailored for periodic model domain by default.

Another limiting factor in the current version of OZO is the weak scalability in the multigrid omega equation solver together with the lack of parallelization of the source code. For high resolution runs, this means significant slowing of the calculations (Table 2). To reduce the lengthy computing times, we are currently developing a parallel version of OZO, which uses a different solving method for the omega equation. We aim to release this parallel version by the end of the year 2017.

## 9 Data and code availability

The source code of OZO is freely available under MIT license in GitHub (<https://github.com/mikarant/ozo>). OZO v.1.0 described in this manuscript is also archived at <http://doi.org/10.5281/zenodo.157188>. In addition to the source code, the package includes also a makefile for compiling and running the program, a small sample input dataset for testing the functionality and two README-files containing the instructions for both generating input data with WRF and running the OZO program. The WRF model as well as the interpolation utility (*wrf SUBSCRIPTNBinterp*) are downloadable from the WRF users page (<http://www2.mmm.ucar.edu/wrf/users/downloads.html>). Intel's MKL can be downloaded after registration from their web page (<https://software.intel.com/en-us/articles/free-mkl>). OZO v1.0 is guaranteed to work with WRF version 3.8.1.

## 10 **Conclusions**

In this paper, a software package called OZO is introduced. OZO is a tool for investigating the physical and dynamical factors that affect atmospheric vertical motions and geopotential height tendencies, tailored for WRF simulations with idealized Cartesian geometry. As input to OZO, the ~~standard~~ output of the WRF model interpolated to evenly spaced pressure levels is required.

The generalized omega equation diagnoses the contributions of different physical and dynamical processes to vertical motions: vorticity advection, thermal advection, friction, diabatic heating, and imbalance between temperature and vorticity tendencies. Then, analogously with the vertical motion, the height tendencies associated with these forcings are calculated. As an advance over traditional applications of the Zwack-Okossi equation (Zwack and Okossi, 1986; Lupo and Smith, 1998), the

use of the generalized omega equation allows OZO to eliminate vertical motion as an independent forcing in the calculation of height tendencies.

The calculated total vertical motions and height tendencies in the test case are generally in excellent agreement with the vertical motions and height tendencies diagnosed directly from the WRF simulations. The time-averaged correlation between the calculated and the WRF height tendency was 0.95-0.98-0.97 in the troposphere. For the vertical motion as well, a correlation of 0.97-0.95 was found in the midtroposphere. Our analysis further illustrates the importance of both adiabatic and diabatic processes to atmospheric vertical motions and the development of the simulated cyclone.

The OZO software is applicable to different types of WRF simulations, as far as Cartesian geometry with periodic boundary conditions in the zontal direction is used. One example of potential applications are simulations with increased sea surface temperatures as the lower boundary condition. Combined with OZO, such simulations provide a simple framework for studying the changes in cyclone dynamics in a warmer climate.

## 11 Data and code availability

~~The source code of the OZO is freely available under MIT license in GitHub (<https://github.com/mikarant/ozo>). OZO v.1.0 described in this manuscript is also archived at <http://doi.org/10.5281/zenodo.157188>. In addition to the source code, the package includes also a makefile for compiling and running the program, a small sample input dataset for testing the functionality and two README-files containing the instructions for both generating input data with WRF and running the OZO program. The WRF model as well as the interpolation utility (*wrfSUBSCRIPTN**Binterp*) are downloadable from the WRF users page (<http://www2.mmm.ucar.edu/wrf/users/downloads.html>). Intel's MKL can be downloaded after registration from their web page (<https://software.intel.com/en-us/articles/free-mkl>). OZO v1.0 is guaranteed to work with WRF version 3.8.1.~~

## 20 11 Acknowledgments

We thank the Doctoral Programme of Atmospheric Sciences, University of Helsinki for financially supporting the work of MR. The work of OS was supported by the Maj and Thor Nessling foundation (project 201600119) and the work of OR was supported by the Vilho, Yrjö and Kalle Väisälä Foundation. VAS was supported by the Academy of Finland Centre of Excellence Program (grant 272041).

## References

- Beare, R. J.: Boundary layer mechanisms in extratropical cyclones, *Q. J. Roy. Meteor. Soc.*, 133, 503–515, 2007.
- Blázquez, J., Pessacg, N. L., and Gonzalez, P. L.: Simulation of a baroclinic wave with the WRF regional model: sensitivity to the initial conditions in an ideal and a real experiment, *Meteorol. Appl.*, 20, 447–456, 2013.
- 5 Caron, J.-F., Zwack, P., and Pagé, C.: DIONYSOS: A diagnostic tool for numerically-simulated weather systems, *Atmos.-Ocean*, submitted. Technical related document see <http://www.dionysos.uqam.ca/doc/Dionysos.pdf>, 2006.
- Dee, D., Uppala, S., Simmons, A., Berrisford, P., Poli, P., Kobayashi, S., Andrae, U., Balmaseda, M., Balsamo, G., Bauer, P., Bechtold, P., Beljaars, A., van de Berg, L., Bidlot, J., Bormann, N., Delsol, C., Dragani, R., Fuentes, M., Geer, A., Haimberger, L., Healy, S., Hersbach, H., Hólm, E., Isaksen, I., Kållberg, P., Köhler, M., Matricardi, M., McNally, A., Monge-Sanz, B., Morcrette, J.-J., Park, B.-K., Peubey, 10 C., de Rosnay, P., Tavolato, C., Thépaut, J.-N., and Vitart, F.: The ERA-Interim reanalysis: configuration and performance of the data assimilation system, *Q. J. Roy. Meteor. Soc.*, 137, 553–597, 2011.
- Elguindi, N., Hanson, B., and Leathers, D.: The Effects of Snow Cover on Midlatitude Cyclones in the Great Plains, *J. Hydrometeorol.*, 6, 263–279, 2005.
- Fulton, S. R., Ciesielski, P. E., and Schubert, W. H.: Multigrid Methods for Elliptic Problems: A Review, *Mon. Weather Rev.*, 114, 943–959, 15 1986.
- Hirata, H., Kawamura, R., Kato, M., and Shinoda, T.: Response of rapidly developing extratropical cyclones to sea surface temperature variations over the western Kuroshio–Oyashio confluence region, *J. Geophys. Res.-Atmos.*, 121, 3843–3858, 2016.
- Holton, J.: An introduction to dynamic meteorology, Academic Press, 1992.
- Holton, J. R. and Hakim, G. J.: An introduction to dynamic meteorology, vol. 88, Academic press, 2012.
- 20 Hong, S.-Y., Dudhia, J., and Chen, S.-H.: A revised approach to ice microphysical processes for the bulk parameterization of clouds and precipitation, *Mon. Weather Rev.*, 132, 103–120, 2004.
- Hong, S.-Y., Noh, Y., and Dudhia, J.: A new vertical diffusion package with an explicit treatment of entrainment processes, *Mon. Weather Rev.*, 134, 2318–2341, 2006.
- Hoskins, B., Draghici, I., and Davies, H.: A new look at the  $\omega$ -equation, *Q. J. Roy. Meteor. Soc.*, 104, 31–38, 1978.
- 25 Hoskins, B. J. and Coutinho, M. M.: Moist singular vectors and the predictability of some high impact European cyclones, *Q. J. Roy. Meteor. Soc.*, 131, 581–601, 2005.
- Kain, J. S. and Fritsch, J. M.: Convective parameterization for mesoscale models: The Kain-Fritsch scheme, in: *The representation of cumulus convection in numerical models*, pp. 165–170, Springer, 1993.
- Krishnamurti, T.: A diagnostic balance model for studies of weather systems of low and high latitudes, Rossby number less than 1, *Mon. 30 Weather Rev.*, 96, 197–207, 1968.
- Lackmann, G.: *Midlatitude synoptic meteorology*, American Meteorological Society, 2011.
- Leutbecher, M., Barkmeijer, J., Palmer, T. N., and Thorpe, A. J.: Potential improvement to forecasts of two severe storms using targeted observations, *Q. J. Roy. Meteor. Soc.*, 128, 1641–1670, 2002.
- Liu, Y., Wu, G., and Ren, R.: Relationship between the Subtropical Anticyclone and Diabatic Heating, *J. Climate*, 17, 682–698, 2004.
- 35 Lorenz, E. N.: Available Potential Energy and the Maintenance of the General Circulation, *Tellus*, 7, 157–167, 1955.
- Lupo, A. and Smith, P.: The interactions between a midlatitude blocking anticyclone and synoptic-scale cyclones that occurred during the summer season, *Mon. Weather Rev.*, 126, 502–515, 1998.



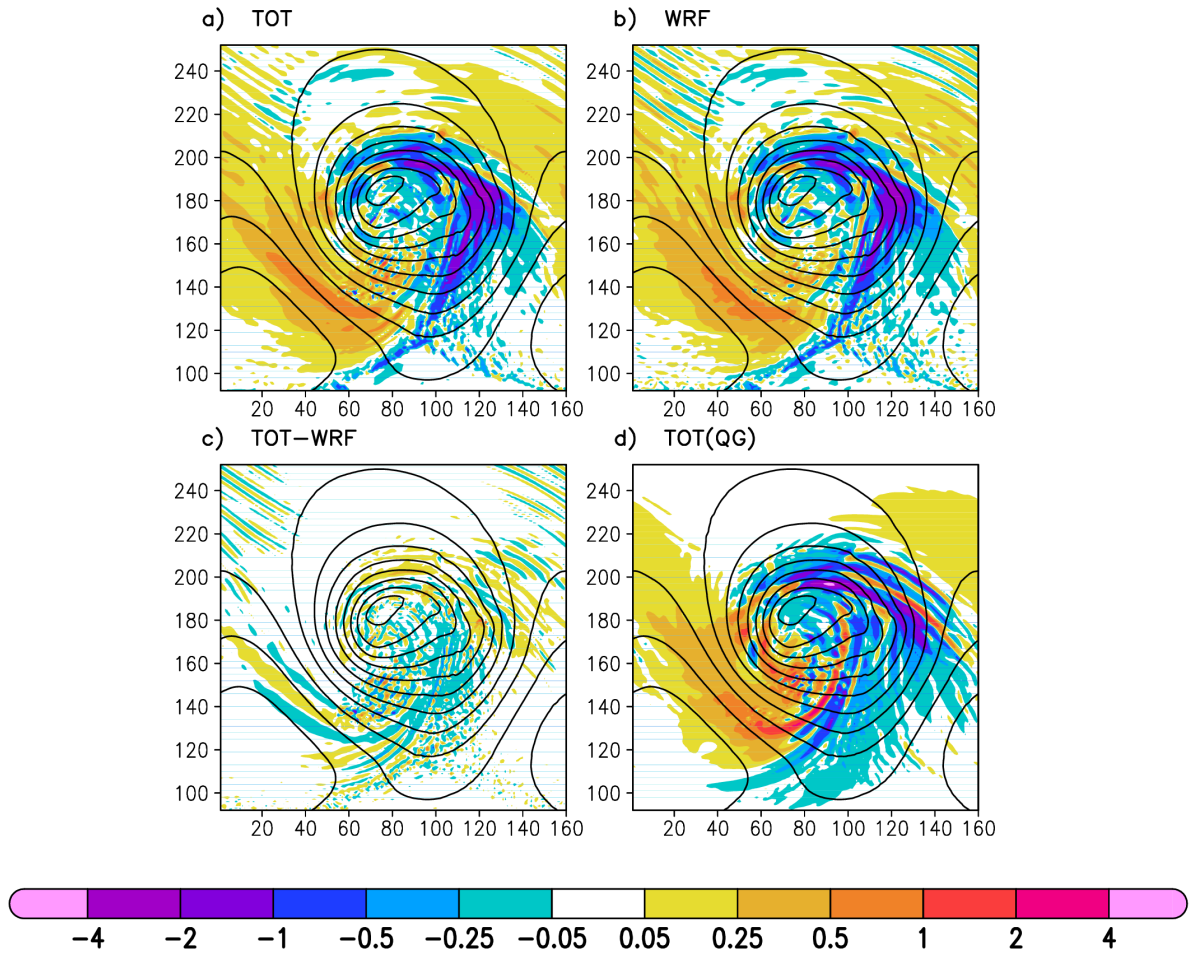
- Pauley, P. M. and Nieman, S. J.: A comparison of quasigeostrophic and nonquasigeostrophic vertical motions for a model-simulated rapidly intensifying marine extratropical cyclone, *Mon. Weather Rev.*, 120, 1108–1134, 1992.
- Rienecker, M. M., Suarez, M. J., Gelaro, R., Todling, R., Bacmeister, J., Liu, E., Bosilovich, M. G., Schubert, S. D., Takacs, L., Kim, G.-K., Bloom, S., Chen, J., Collins, D., Conaty, A., da Silva, A., Gu, W., Joiner, J., Koster, R. D., Lucchesi, R., Molod, A., Owens, T., Pawson, S., Pegion, P., Redder, C. R., Reichle, R., Robertson, F. R., Ruddick, A. G., Sienkiewicz, M., and Woollen, J.: MERRA: NASA's Modern-Era Retrospective Analysis for Research and Applications, *J. Climate*, 24, 3624–3648, 2011.
- Räsänen, J.: Factors affecting synoptic-scale vertical motions: A statistical study using a generalized omega equation, *Mon. Weather Rev.*, 123, 2447–2460, 1995.
- Räsänen, J.: Height tendency diagnostics using a generalized omega equation, the vorticity equation, and a nonlinear balance equation, *Mon. Weather Rev.*, 125, 1577–1597, 1997.
- Shamarock, W., Klemp, J., Dudhia, J., Gill, D., Barker, D., Duda, M., Huang, X., Wang, W., and Powers, J.: A description of the advanced research WRF version 3, NCAR technical note NCAR/TN/u2013475, 2008.
- Stepanyuk, O., Räsänen, J., Sinclair, V. A., and Järvinen, H.: Factors affecting atmospheric vertical motions as analyzed with a generalized omega equation and the OpenIFS model, submitted to *Tellus*, 2016.
- Stoelinga, M. T.: A users' guide to RIP version 4: A program for visualizing mesoscale model output, NCAR.[Available online at <http://www2.mmm.ucar.edu/wrf/users/docs/ripug.htm>.], 2009.
- Wang, W., Barker, D., Bray, J., Bruyere, C., Duda, M., Dudhia, J., Gill, D., and Michalakes, J.: User's Guide for Advanced Research WRF (ARW) Modeling System Version 3, Mesoscale and Microscale Meteorology Division–National Center for Atmospheric Research (MMM-NCAR), 2007.
- Wernli, H., Dirren, S., Liniger, M. A., and Zillig, M.: Dynamical aspects of the life cycle of the winter storm 'Lothar' (24–26 December 1999), *Q. J. Roy. Meteor. Soc.*, 128, 405–429, 2002.
- Zwack, P. and Okossi, B.: A new method for solving the quasi-geostrophic omega equation by incorporating surface pressure tendency data, *Mon. Weather Rev.*, 114, 655–666, 1986.

**Table 1.** List of mathematical symbols.

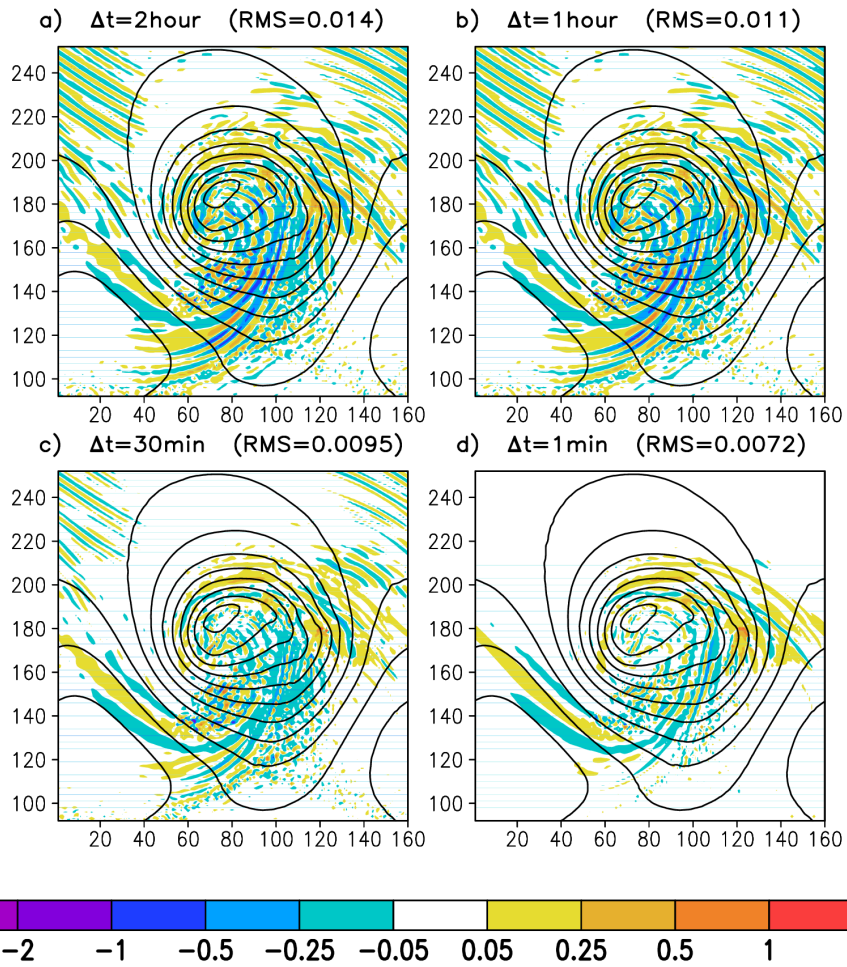
$c_p = 1004 \text{ J kg}^{-1}$	specific heat of dry air at constant volume
$f$	Coriolis parameter
$F$	forcing in the omega equation
$\mathbf{F}$	friction force per unit mass
$g = 9.81 \text{ m s}^{-2}$	gravitational acceleration
$\mathbf{k}$	unit vector along the vertical axis
$L$	linear operator in the left-hand-side of the omega equation
$p$	pressure
$Q$	diabatic heating rate per mass
$R = 287 \text{ J kg}^{-1}$	gas constant of dry air
$S = -T \frac{\partial \ln \theta}{\partial p}$	stability parameter in pressure coordinates
$t$	time
$T$	temperature
$\mathbf{V}$	horizontal wind vector
$\mathbf{V}_g$	geostrophic wind vector
$\alpha$	relaxation coefficient
$\sigma = -\frac{RT}{p\theta} \frac{\partial \theta}{\partial p}$	hydrostatic stability
$\sigma_0$	isobaric mean of hydrostatic stability
$\zeta$	vertical component of relative vorticity
$\zeta_g$	relative vorticity of geostrophic wind
$\zeta_{ag}$	relative vorticity of ageostrophic wind
$\omega = \frac{dp}{dt}$	isobaric vertical motion
$\nabla$	horizontal nabla operator
$\nabla^2$	horizontal laplacian operator

**Table 2.** The dependence of computing time on model resolution. Note that the numbers of grid points are per vertical level whereas the computing times are per 3D domain.

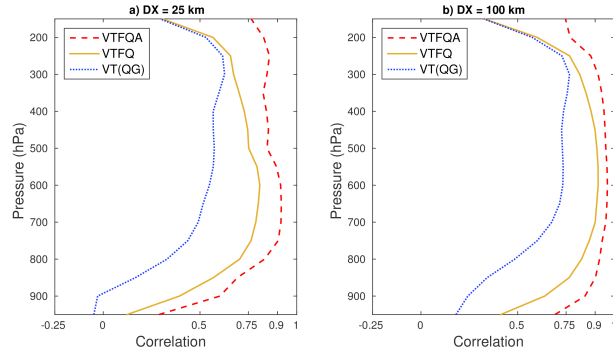
<u><math>\Delta X</math></u>	<u>Number of grid points per vertical level</u>	<u>Average computing time per timestep</u>
<u>100 km</u>	<u>3200</u>	<u>3.1 s</u>
<u>50 km</u>	<u>12800</u>	<u>1.1 min</u>
<u>25 km</u>	<u>51200</u>	<u>19 min</u>



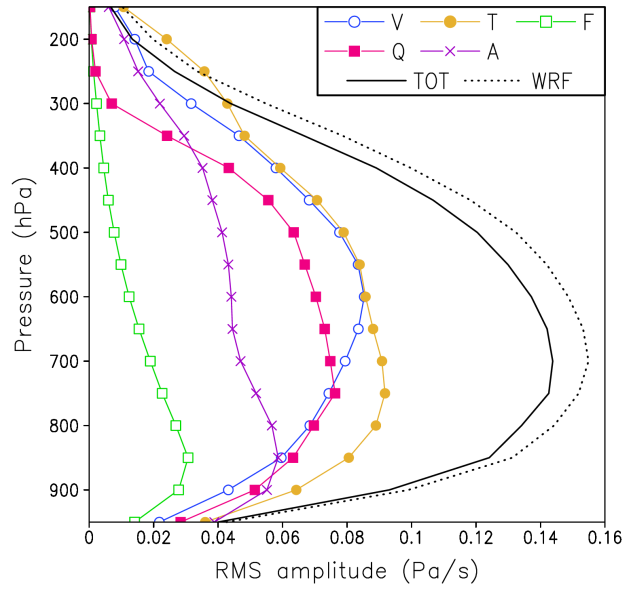
**Figure 1.** a) The sum of all  $\omega$  components from Eq. (5) ( $\omega_{TOT}$ ), b)  $\omega$  from WRF ( $\omega_{WRF}$ ), c) difference ( $\omega_{TOT} - \omega_{WRF}$ ) and d) solution of the QG omega equation ( $\omega_{V(QG)} + \omega_{T(QG)}$ ) at 700 hPa level at time 118 h. Unit is  $\text{Pa s}^{-1}$ . Contours show geopotential height at 900 hPa level with an interval of 50 m. Labels on x- and y-axes indicate grid point numbers. Note that the area covers only half of the model domain in the meridional direction.



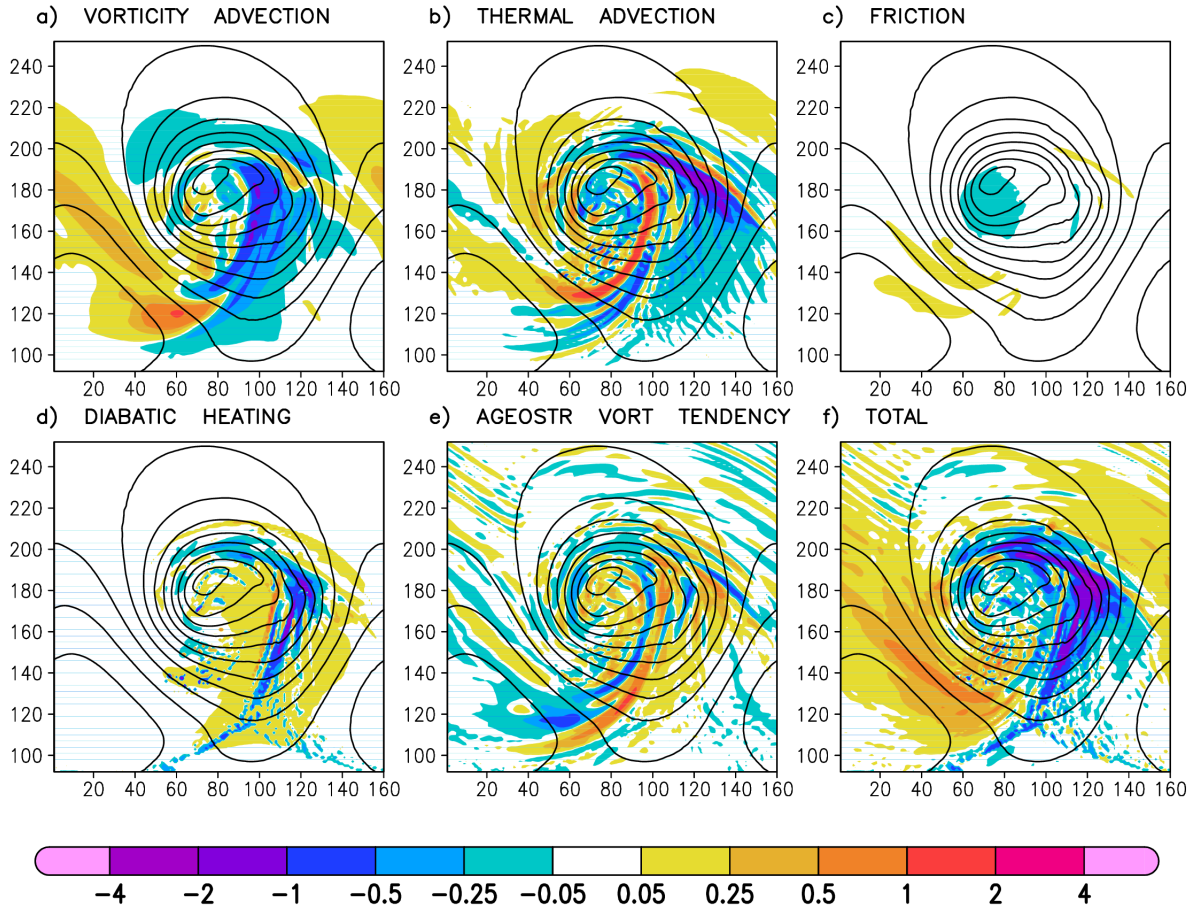
**Figure 2.** The difference  $\omega_{TOT} - \omega_{WRF}$  at 700 hPa level at time 118 h at a) two-hour, b) one-hour, c) 30-min and d) 1-minute time resolution in the computation of the imbalance term. Unit is  $\text{Pa s}^{-1}$ .



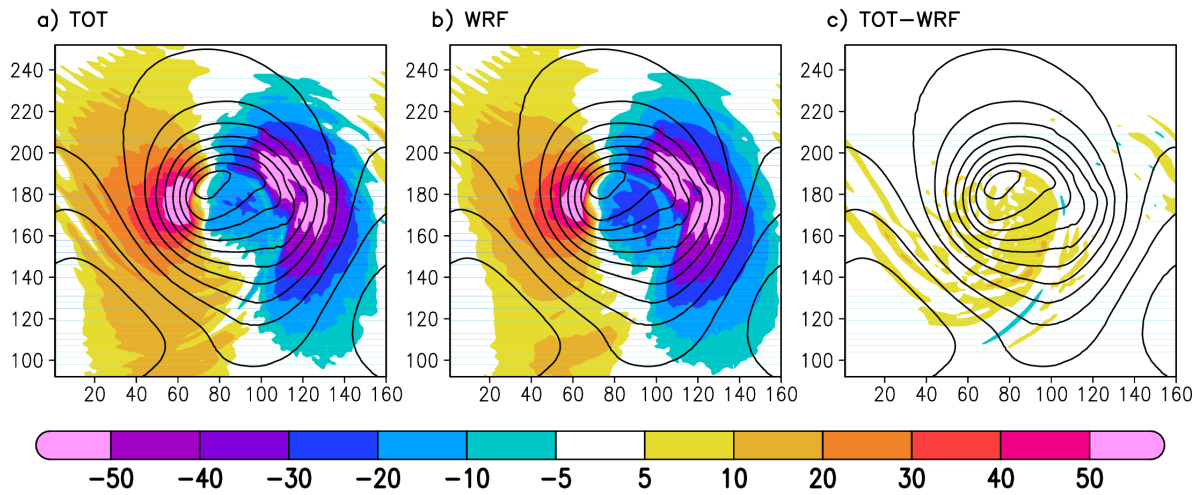
**Figure 3.** Correlation of the omega equation solutions with  $\omega_{WRF}$ .  $VTFQA = \omega_{TOT}$ ,  $VTFQ = \omega_{TOT} - \omega_A$ ,  $VT(QG) = \omega_{V(QG)} + \omega_{T(QG)}$ .



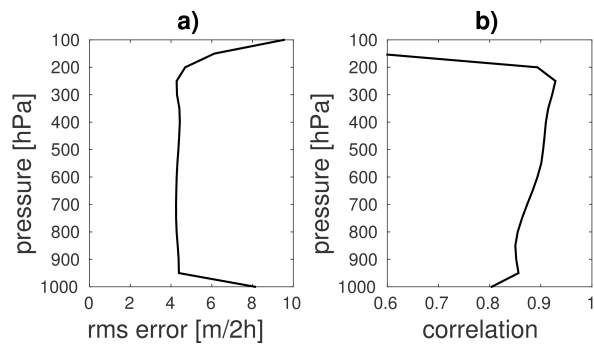
**Figure 4.** RMS amplitudes of  $\omega_{WRF}$ ,  $\omega_{TOT}$ , and the individual  $\omega$  components from (5).



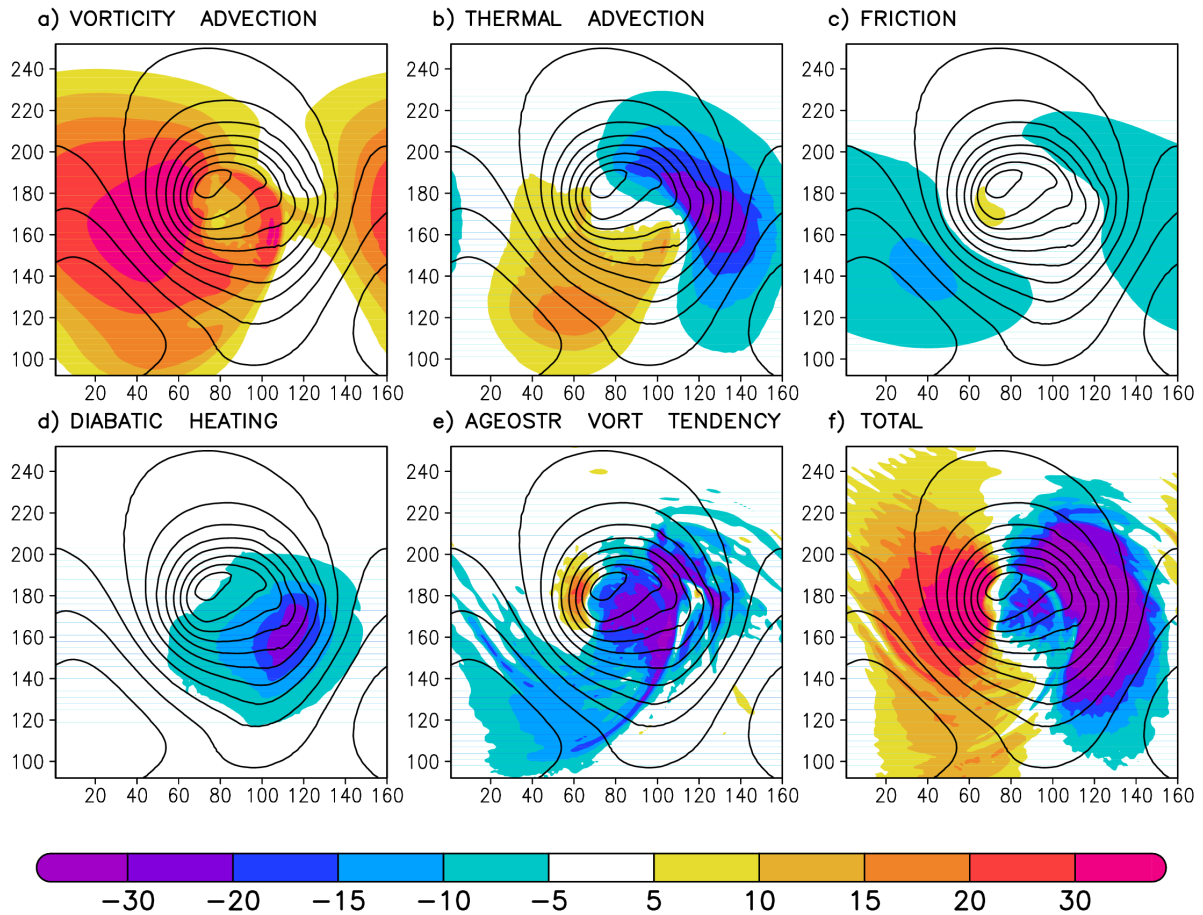
**Figure 5.** Vertical motions induced by individual forcing terms at level 700 hPa at time 118 h. a)  $\omega_V$ , b)  $\omega_T$ , c)  $\omega_F$ , d)  $\omega_Q$ , e)  $\omega_A$  and f)  $\omega_{TOT}$ . Unit is  $\text{Pa s}^{-1}$  and contour lines show 900 hPa geopotential height with 50 m interval.



**Figure 6.** As Fig. 1, but for the height tendency at 900 hPa. Unit is  $\text{m}(2\text{h})^{-1} \text{m h}^{-1}$ .

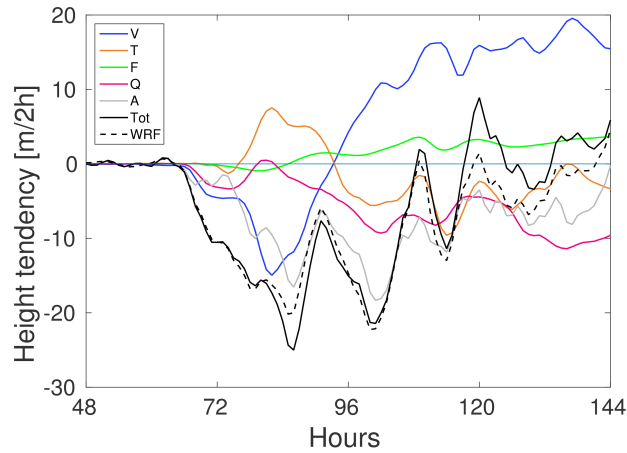


**Figure 7.** Time mean a) rms error and b) spatial correlation coefficient between the calculated and WRF height tendency over the last 8 days of the 10-day simulation.

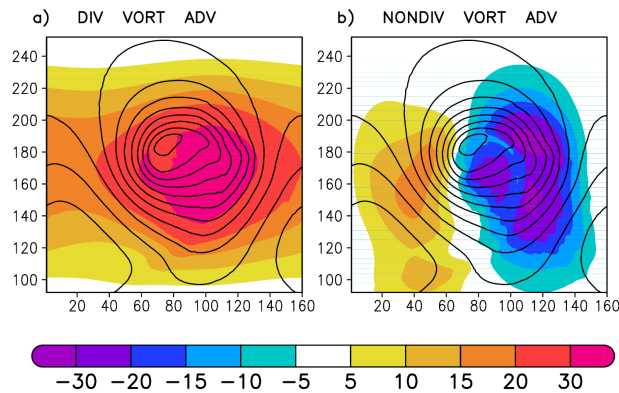


**Figure 8.** As Fig. 5, but for height tendency components at 900 hPa level. Unit is  $\text{m}(\text{2h})^{-1}\text{m h}^{-1}$ . Note that the color scale of f) differs from Fig. 6a.





**Figure 9.** Time series of individual height tendency components at the 900 hPa level from the cyclone centre during the deepening period. V = vorticity advection, T = thermal advection, F = friction, Q = diabatic heating, A = imbalance term, Tot = total and WRF = WRF height tendency. Height tendencies at the cyclone centre were averaged over all grid boxes in which the 900 hPa geopotential height was less than  $10.5$  m above its minimum. In addition, the values are 2.5-hour moving averages.



**Figure 10.** Height tendency associated with vorticity advection by the a) divergent and b) nondivergent winds at 900 hPa at time 118 h. Unit is  $\text{m}(2\text{h})^{-1}\text{m h}^{-1}$ .