

Implementation of aerosol-cloud interactions in the regional atmosphere-aerosol model COSMO-MUSCAT(5.0) and evaluation using satellite data

Sudhakar Dipu¹, Johannes Quaas¹, Ralf Wolke², Jens Stoll², Andreas Mühlbauer³, Odran Sourdeval¹, Marc Salzmann¹, Bernd Heinold², and Ina Tegen²

¹Institute for Meteorology, Universität Leipzig, Germany

²Leibniz Institute for Tropospheric Research, Germany

³FM Global Research, Norwood, MA, U.S.A

Correspondence to: Dipu Sudhakar (dipu.sudhakar@uni-leipzig.de)

Abstract. The regional atmospheric model Consortium for Small Scale Modeling (COSMO) coupled to the MultiScale Chemistry Aerosol Transport model (MUSCAT) is extended in this work to represent aerosol-cloud interactions. Previously, only one-way interactions (scavenging of aerosol and in-cloud chemistry) and aerosol-radiation interactions were included in this model. The new version allows for a microphysical aerosol effect on clouds. For this, we use the optional two-moment cloud microphysical scheme in COSMO and the online-computed aerosol information for cloud condensation nuclei (CCN) concentrations, replacing the constant CCN concentration profile. In the radiation scheme, we have implemented a droplet-size-dependent cloud optical depth, allowing now for aerosol-cloud-radiation interactions. To evaluate the models with satellite data, the Cloud Feedback Model Inter-comparison Project Observational Simulator Package (COSP) has been implemented. A case study has been carried out to understand the effects of the modifications, where the modified modeling system is applied over the European domain with a horizontal resolution of $0.25^\circ \times 0.25^\circ$. To reduce the complexity in aerosol cloud interactions only warm-phase clouds are considered. We found that the online coupled aerosol introduces significant changes for some cloud microphysical properties. The cloud effective radius shows an increase of 9.5%, and the cloud droplet number concentration is reduced by 21.5%.

1 Introduction

The quantification of aerosol cloud interactions in models continues to be a challenge (IPCC, 2013). Estimates of effective radiative forcing and assessments of the radiative effects due to aerosol cloud interactions to a large extent rely on numerical modeling. A large effort has been made to represent such effects in general circulation models (GCMs) (Penner et al., 2006; Quaas et al., 2009; Ghan et al., 2016). However, GCMs do not resolve the processes relevant for cloud dynamics well. Improving the understanding of processes of aerosol-cloud interactions thus largely relies on simulations with cloud-resolving models and large-eddy simulations (LES) (Ackerman et al., 2000, 2004; Xue and Feingold, 2006; Sandu et al., 2008; Seifert et al., 2015; Berner et al., 2013). However, LES often focus on case studies and use idealized boundary conditions and also

an idealized representation of the aerosol. This leads to uncertainties specifically because, when analyzing cloud systems, or cloud regimes, rather than individual clouds, aerosol-cloud-precipitation interaction processes often are buffered (?). Regional climate modeling is a powerful tool to overcome these limitations of small-domain idealized LES, and much higher resolutions are possible than for GCMs. Compared to LES that only simulates individual cloud systems, regional climate models are able to simulate the feedbacks between clouds and aspects of the large-scale circulation and its variability reasonably well. Even though regional models do not describe part of the large-scale feedbacks, may be considered a good optimal compromise (Bangert et al., 2011; Van den Heever and Cotton, 2007; Chapman et al., 2009; Forkel et al., 2015; Yang et al., 2012). A still often applied cloud microphysics parameterization in numerical weather prediction is a bulk, one-moment scheme (Kessler, 1969; Lin et al., 1983), which uses the specific masses for different hydrometeor species as prognostic variables. However, it cannot treat aerosol cloud interactions because it calculates only one moment of the size distribution, and does not carry information about size or number concentration of cloud droplets. In contrast, bin microphysical schemes numerically resolve the size spectrum and are thus able to predict the spatiotemporal behavior of a number of size categories for each hydrometeor type explicitly (Khain et al., 2000; Simmel et al., 2015). However, this approach is numerically very expensive especially when applied for regional atmospheric models. As a compromise between these two approaches, two-moment microphysical schemes can predict the number concentration of the liquid and ice hydrometeors, in addition to mass variables (Cotton et al., 1986; Meyers et al., 1997; Seifert and Beheng, 2006). Furthermore, numerous studies have shown that using two-moment schemes is a promising avenue in future operational forecast models (Reisner et al., 1998; Tao et al., 2003; Seifert and Beheng, 2006) and is also computationally efficient.

At present, several weather prediction and global models apply with two-moment cloud microphysical schemes. For example, the Weather Research and Forecasting (WRF) model is available with different types of two-moment microphysical schemes (Thompson et al., 2008; Morrison and Gettelman, 2008; Lim and Hong, 2010). Morrison et al. (2009) showed that using a two-moment scheme in the WRF model produced more trailing stratiform precipitation in an idealized two-dimensional squall case which is more consistent with observations. In another study, Li et al. (2008) investigated the effect of aerosol on cloud microphysical processes with a two-moment microphysical scheme in WRF model. Also, Lim and Hong (2010) have included a prognostic equation for cloud water and cloud condensation nuclei number concentration (C_{ccn}), which could reduce the uncertainty in investigating the aerosol effect on cloud properties and the precipitation process in WRF model. Seifert et al. (2012) and Weverberg et al. (2014) compared the operational one-moment and two-moment microphysical schemes in the Consortium for Small Scale Modeling atmospheric model (COSMO). Further, some groups previously implemented aerosol-cloud interactions in COSMO, albeit with a different aerosol scheme (Bangert et al., 2011; Zubler et al., 2011; Possner et al., 2015) and very few are coupled to the radiation scheme. Seifert et al. (2012) compared the operational one-moment microphysics scheme to a two-moment scheme. They found that aerosol perturbation have significant effect on radiation and near surface temperature, rather than the resulting surface precipitation.

In this paper, we discuss the improved cloud microphysics parameterization in the COSMO model (Doms and Schättler, 1999), via the online-coupled aerosol model, Multi-Scale Chemistry-Aerosol Transport (MUSCAT, Wolke et al., 2004, 2012). The two-moment cloud microphysical scheme in the COSMO model (Seifert and Beheng, 2006) uses fixed profiles of C_{ccn} .

Rather than this simplification, here we use C_{ccn} predicted on the basis of the simulated aerosol from the MUSCAT module. This will enable the COSMO model to have temporally and spatially varying C_{ccn} at each grid point, which are fully consistent with the cloud and precipitation fields, as well as with dynamics (e.g. scavenging is taken into account, as is vertical transport) to represent aerosol cloud interactions. In two further steps, (i) the radiation scheme is slightly revised to consider the cloud droplet size information (so far considered constant even when applying the two-moment cloud microphysical scheme), and (ii) a diagnostic tool, the Cloud Feedback Model Intercomparison Project Observational Simulator Package (Bodas-Salcedo et al., 2011, 2008; Nam and Quaas, 2012) is implemented that allows for a consistent evaluation using satellite observations. The paper is organized as follows: section 2 gives a brief introduction to the coupled model system COSMO-MUSCAT, data, and methodology. The comparison between the improved two-moment cloud microphysical parameterization with the available two-moment scheme making use of the COSP satellite simulator is discussed in section 3. Finally, concluding remarks are found in section 4.

2 Data and Methodology

2.1 The COSMO-MUSCAT model and revised cloud activation

The non-hydrostatic three-dimensional model, COSMO, which was originally developed for limited-area operational numerical weather predictions (NWP), is used in this study (Doms and Schättler, 1999; Steppeler et al., 2003). This model has been used operationally in convection permitting configurations since 2007 by the German Weather Service (Deutscher Wetterdienst, DWD, Baldauf et al., 2011). In this study, we have used COSMO version 5.0, which is initialized and forced by reanalyzed data provided by the global meteorological model GME (Global Model of the Earth) of DWD, which is a hydrostatic weather prediction model (Majewski et al., 2002). GME operates on an icosahedral-hexagonal grid having a horizontal resolution of approximately 40 km and vertical resolution of 40 layers up to 10 hPa. The COSMO model is initialized with the interpolated GME initial state and nested within GME with hourly updates of lateral boundary values. In this study, the COSMO model has been configured in a non-convection permitting mode with a uniform horizontal grid resolution of 0.25° (≈ 28 km). The two-moment cloud microphysics scheme in the COSMO model (Seifert and Beheng, 2006) distinguishes between five hydrometeors classes, namely cloud droplets, rain, ice crystals, snow, and graupel. Processes in the warm (liquid) phase considered by this scheme include the nucleation of cloud droplets, autoconversion of cloud droplets to form rain, accretion, and self-collection of rain droplets. The formulations have been derived by Seifert and Beheng (2001) from the theoretical formulation of Beheng and Doms (1986). However, the radiation scheme does not yet make use of the additional information about cloud particle sizes provided by the two-moment microphysics. It uses the Ritter and Geleyn (1992) parameterization for the cloud optical properties in radiation scheme. According to Ritter and Geleyn (1992), the cloud optical properties are approximated by the relation between specific liquid water content q_c , and cloud effective radius r_e . Thus cloud optical depth τ_c is expressed as,

$$\tau_c = \left(c_1 + \frac{c_2}{r_e}\right) q_c dz \quad (1)$$

where dz is layer thickness, and c_1 and c_2 are constants. Similarly, the effective radius r_e is related to specific cloud water content and is approximated as,

$$r_e = c_3 + c_4 q_c \quad (2)$$

where c_3 and c_4 are constants (Ritter and Geleyn, 1992). In order to take in to account the two-moment microphysics in radiation scheme the cloud optical properties have to be modified. The cloud effective radius r_e is derived by dividing the third and second moment of the size distribution (Martin et al., 1994; Morrison and Gettelman, 2008) which, after rearranging, yields,

$$r_e = \frac{\Gamma(\mu + 4)}{2\lambda\Gamma(\mu + 3)} \quad (3)$$

where μ is the spectral shape parameter (here, $\mu = 2$), Γ is the gamma distribution function and λ is the slope parameter, which is given by

$$\lambda = \left[\frac{\pi\rho_w N_d \Gamma(\mu + 4)}{6\rho q_c \Gamma(\mu + 1)} \right]^{\frac{1}{3}} \quad (4)$$

where ρ is the density of the air, $\rho_w = 1000 \text{ kg m}^{-3}$ is the bulk density of liquid water, N_d is the droplet number concentration, and q_c is the specific water content. The corresponding cloud optical depth is given by

$$\tau_c = \frac{3\rho q_c dz}{2\rho_w r_e} \quad (5)$$

where, dz is the layer thickness, ρ_w is the bulk density of liquid water and the droplet size spectrum is considered vertically constant in the grid layer.

The online coupled model system COSMO-MUSCAT (Wolke et al., 2004; Renner and Wolke, 2010; Wolke et al., 2012) is used for prognostic cloud condensation nuclei in the cloud microphysics parameterization in COSMO model. The chemistry/aerosol transport model MUSCAT treats atmospheric transport as well as chemical reactions, with the Regional Atmospheric Chemistry Mechanism (RACM, Stockwell et al., 1997). In MUSCAT, all meteorological fields are given with respect to the uniform horizontal meteorological grid from the online coupled COSMO2M (COSMO with two-moment scheme) model, whereas the aerosol information is fed back to the COSMO2M model from MUSCAT. In the previous setting, the interactions only considered the radiative effects of aerosols (scattering and absorption of solar radiation), as well as the scavenging of aerosol and in-cloud aerosol chemistry. A diagram illustrating the COSMO-MUSCAT modeling set up is shown in Figure 1. In the COSMO model with two-moment approach, the nucleation of cloud droplets has been treated explicitly and the aerosol activation parameterization is based on empirical activation spectra, which is in the form of power law,

$$N_{ccn} = C_{ccn} S^k, \text{ S in \%} \quad (6)$$

where S is supersaturation, $C_{ccn} = 1.26 \times 10^9 \text{ m}^{-3}$, and $k = 0.308$ for continental conditions or $C_{ccn} = 1.0 \times 10^8 \text{ m}^{-3}$ and $k = 0.462$ for maritime conditions (Khain et al., 2001). Seifert et al. (2012) investigated the influence of substantially perturbing

C_{ccn} from 100 to 3200 cm^{-3} (see above for a brief discussion of this paper). Accordingly, the grid scale explicit nucleation rate is calculated from the time derivative of the activation relation (Seifert and Beheng, 2006),

$$\left. \frac{\partial N_c}{\partial t} \right|_{nuc} = \begin{cases} C_{ccn} k S^{k-1} \frac{\partial S}{\partial z} w, & \text{if } S \geq 0, w \frac{\partial S}{\partial z} > 0, \\ & \text{and } S < S_{max}, \\ 0 & \text{else} \end{cases} \quad (7)$$

The above parameterization scheme uses constant C_{ccn} , and S_{max} varies with atmospheric conditions (in maritime conditions, C_{ccn} assumes that at $S_{max} = 1.1\%$, all C_{ccn} are already activated). In the above equation, nucleation explicitly depends on grid scale supersaturation in combination with saturation adjustment assumed in the cloud scheme, which has limitations (Seifert and Beheng, 2006). As an initial step, a coupled model simulation is carried out by setting $S_{max} = 2.0\%$, the condition for intermediate aerosols in COSMO model. In a second step, we have used simulated sulfate (SO_4) aerosol mass concentration information from the MUSCAT model. The emission inventory in the MUSCAT model is provided by the TNO (European emissions processing, and stands for Nederlandse Organisatie voor toegepast-natuurwetenschappelijk onderzoek (Netherlands Organisation for Applied Scientific Research)) for the Air Quality Model Evaluation International Initiative (AQMEII) project (Pouliot et al., 2012). C_{ccn} is derived using the following empirical relation (Boucher and Lohmann, 1995),

$$C_{ccn} = 10^{2.21+0.41 \log(mSO_4)} \quad (8)$$

where mSO_4 is the sulfate aerosol mass concentration in $\mu\text{g m}^{-3}$. The constant C_{ccn} in equation (7) is replaced by the spatially and temporally varying C_{ccn} values, derived from equation (8), using the sulfate aerosol mass concentration from the MUSCAT module. This empirical relationship which links sulfate aerosol mass concentration to C_{ccn} is subject to substantial uncertainty. Representing sulfate aerosol as a surrogate for all aerosols is probably too simplistic to capture the complexity of the whole activation process. Future work will introduce a more complex aerosol-cloud coupling, taking into account also other aerosol compounds. The Seifert and Beheng (2006) cloud microphysical scheme considers both phases. Also mixed-phase clouds are affected by the revision of the CCN parameterisation, e.g. via the Bergeron-Findeisen process. Nevertheless, the current analysis focuses on the liquid phase only, investigations on mixed and ice-phase clouds are left for future research.

2.2 Model evaluation method

Satellite retrievals have been used to evaluate the performance of the numerous GCMs and NWP models (e.g., Quaas et al., 2004, 2009; Zhang et al., 2005; Brunke et al., 2010; Cherian et al., 2012; Nam et al., 2014). However, a meaningful evaluation of modeling with satellite observations is challenging because of the difference in the model variables and the satellite retrievals. To address this problem, the integrated satellite simulator COSP (CFMIP Observational Simulator Package, Bodas-Salcedo et al., 2011) has been developed within the framework of the Cloud Feedback Model Intercomparison Project (CFMIP). The COSP satellite simulator produces model diagnostics, which are fully consistent with satellite products such as the International Satellite Cloud Climatology Project (ISCCP; Rossow and Schiffer, 1999), MODerate Resolution Imaging Spectroradiometer (MODIS; Platnick et al., 2003; Pincus et al., 2012), Cloud-Aerosol Lidar and Infrared Pathfinder Satellite

30 Observations (CALIPSO; Chepfer et al., 2010) and the CloudSat cloud radar (Marchand et al., 2009). To produce similar output to satellite data, COSP requires the grid mean vertical profile of temperature, humidity, hydrometer mixing ratios, cloud optical thickness and emissivity, the surface temperature and emissivity from the model. It produces output comparable with satellite data in three steps. First, it addresses the mismatch between model and satellite pixel resolution by generating sub-columns using model information about subgrid-scale variability e.g. from the assumption on vertical overlap of fractional cloudiness, 5 second, vertical profiles of individual sub-columns are passed to each instrument simulator, and third the COSP statistic module gathers the output from all instrument simulators (Bodas-Salcedo et al., 2011). COSP is implemented online in the COSMO model with hourly output. While using COSP facilitates a more consistent comparison between model output and satellite data, differences between the model simulation and the satellite can for example still arise due to displacements in simulated storm tracks. COSP has previously been used with COSMO by Mühlbauer et al. (2014, 2015). The output diagnostics include 10 a variety of cloud properties, which facilitate consistent model-to-observation comparisons as well as consistent inter-model comparisons.

In the next section, we evaluate the model results (derived using MODIS and the ISCCP satellite simulators) with MODIS level-2 and ISCCP satellite observations, in terms of cloud optical and microphysical properties (cloud optical depth, effective radius, liquid water path and cloud fraction). The MODIS satellite simulator uses profiles of particle size for liquid and ice 15 and corresponding optical depths within each layer of sub-column as a function of model levels. Using the cloud overlap assumption, zero or one cloudiness in each sub-column is created in each level. The diagnostics are then integrated over the cloudy sub-columns to obtain in-cloud average cloud optical depth and liquid water path. In turn, cloud effective radius is sampled at the cloud tops, which is not a vertical integral. Further, the ISCCP simulator aggregates pixel scale cloud retrievals (fraction of the sub-column with $\tau \geq 0.3$) to estimate cloud fraction (more details: Pincus et al., 2012).

20 The precision of weather forecasts for longer times is inherently limited by the non-linear nature of the problem. As forecast progresses, the uncertainty in weather prediction also increases. In turn, the earliest forecast time-steps are still substantially affected by the initialization. Hence, we have considered the third day of the simulation for evaluating the model with satellite observations. The synoptic condition which is discussed in the next section. To compare with model simulations, different swath data-sets of MODIS level-2 on 17 February 2007 (daytime overpass only) are combined and gridded to the model domain and 25 model outputs are averaged between 8.00-14.00 UTC (corresponding approximately to the MODIS-Terra overpass time over the domain). Also, MODIS level-2 products and model simulations are screened for liquid phase clouds because in COSMO-MUSCAT only cloud microphysics for liquid clouds was modified. Additionally, MODIS cloud optical depth and effective radius are applied with threshold values of 5 and $2\mu m$ (Sourdeval et al., 2016; Zhang et al., 2012a). Since the analysis is carried out for winter, satellite retrievals can be affected by snow cover on the ground. However, the MODIS retrieval (Platnick 30 et al., 2001) uses a combination of absorbing spectral channels for which the snow/ice albedo is relatively small which makes it suitable for retrieving cloud properties over snow. Furthermore, the COSP diagnosed model clouds are compared to ISCCP daily cloud products. For that, modeled ISCCP cloud products are re-gridded from 28 km to 280 km resolution (ISCCP satellite resolution) using a grid interpolation method and daily averaged. Besides these satellite observations, Clouds and the Earth's Radiant Energy System, (CERES, Loeb et al., 2012) satellite observations are also used for model evaluation, which are daily

35 products (Kato and Loeb, 2003). One should keep in mind that the satellite products, just like models, are prone to biases. Nonetheless, the spatial correlation of the cloud structures is well represented (Noble and Hudson, 2015; Min et al., 2012).

2.2.1 Numerical Simulations

To isolate and analyze the effects of the model modifications, we have performed three different model simulations with the same interpolated GME initial conditions for the time period of 10 days (15 - 24 February 2007). They are (a) a standard
5 COSMO two-moment simulation with fixed C_{ccn} ($3.0 \times 10^8 m^{-3}$) (COSMO2M), (b) a COSMO two-moment simulation with radiation coupled to cloud microphysics (COSMO2MR) which uses equations 3 to 5 in the radiation scheme (here also C_{ccn} is kept fixed as in COSMO2M), and (c) a coupled COSMO-MUSCAT simulation, i.e. using interactive rather than prescribed C_{ccn} and treating radiation in the same way as COSMO2MR (COSMO-MUSCAT). In most of the discussion we have used simulations (a) and (c). In all three model versions (COSMO2M, COSMO2MR, and COSMO-MUSCAT), we make use of the
10 COSP diagnostics for the MODIS and ISCCP satellite simulators.

3 Results

3.1 Synoptic situation

The simulation starts on 15 February and ends on 24 February 2007. At the beginning of the simulation (00:00 UTC), the meteorological condition is dominated by a low-pressure system over the north Atlantic and a high-pressure system over land.
15 The 2-m temperature shows a temperature gradient with a warm ocean and a cool continent, mostly in the northeastern part of the domain. The winds are mostly strong southwesterly over the Atlantic and northerly and northwesterly in the southern region (Figure S1). Since the case study has been conducted for 17 February, the model derived key meteorological parameters at 12:00 UTC are illustrated in Figure 2. On February 17, the low-pressure system has moved to the French Atlantic coast and a cyclonic circulation has set up over the region. Furthermore, a strong high pressure is seen over northeastern Europe. The
20 2-m temperature shows that prominent winter synoptic conditions still exist in the northern part with a warm oceanic region (Atlantic) and cold northeastern part. The southern region has a maximum temperature of $20^\circ C$, whereas the northeastern continental region experiences a minimum temperature of $-20^\circ C$. The cyclonic circulation drives the airmass from the oceanic region and results in the formation of clouds along the frontal systems. Besides, the high pressure in the Eastern part of the domain results in a cloud-free region due to subsidence. However, most of the domain is cloud covered with cloud fraction
25 close to 100%. Furthermore, rainfall around 100 mm (accumulated precipitation over 96 h) on 17 February is observed along with the cyclonic circulation and the south eastern part of Europe, south of the low pressure system. The modeled convective cloud bases are located between 500 to 4000 m over the domain.

3.2 Evaluation with satellite data

The model derived cloud fraction is daily averaged (0:00 to 24:00 UTC) to illustrate the comparison between the model (COSP) and ISCCP satellite retrievals (Figure 3). The observed cloud fraction shows more cloud-free regions compared to the model simulations. Nevertheless, the model derived cloud fraction is in broad agreement with ISCCP satellite retrievals, allowing now for a more detailed analysis of the cloud microphysical properties with a fine resolution which is the center of this study.

5 Furthermore, a comparison of radiative fluxes with CERES (Clouds and the Earth's Radiant Energy System) satellite products is discussed in section 3.3.

Figure 4 shows the comparison between MODIS retrieved (Figure 4a-c) and COSMO-MUSCAT simulated (Figure 4d-f) cloud optical depth, cloud droplet effective radius, and cloud liquid water path. From the figure, it can be noticed that the simulated cloud optical depth exhibits a spatial pattern similar to the observations, albeit higher magnitude in the MODIS level-2 retrievals (Figure 4a and d). In the satellite retrievals, it varies between 5 to 100 and in the model between 5 to 45, with maximum values observed over similar geographical regions. However, the satellite-derived cloud optical depth and liquid water path are larger in comparison with model (COSMO-MUSCAT) outputs. The model derived cloud effective radius exhibits both a similar spatial pattern and magnitude compared to that of the MODIS satellite retrievals (Figure 4b and e). The modeled cloud droplet effective radius varies between 3 to 16 μm , whereas it is in the range between 2 to 30 μm in the satellite retrievals. Similar to cloud optical depth, liquid water path also exhibits comparable spatial patterns for both, model and observations. Whereas the modeled liquid water path varies between 0.025 and 0.425 kgm^{-2} , and in the satellite observation it varies between 0.25 and 1.0 kgm^{-2} . The white regions region (missing values) in satellite retrievals can be explained by the very strict quality-filtering of the MODIS cloud products. The domain averaged cloud optical depth, effective radius and liquid water path are 23.34, 11.30 μm , 0.175 kgm^{-2} , whereas the COSMO-MUSCAT derived values are 7.60, 9.93 μm , and 20 0.056 kgm^{-2} , which illustrates an underestimation of all simulated quantities compared to the satellite derived cloud optical properties. The above cloud optical properties are calculated using equations 3 and 5 in the models, although their correlations are valid only for that particular model layer/levels.

In the following, the statistical distribution of satellite and the model cloud microphysical properties are compared and evaluated in terms of probability density functions (PDFs). Figure 5 represents the probability density function of the spatiotemporal distribution of cloud optical depth, effective radius, and liquid water path, defined as the normalized count of occurrence per bin width of cloud optical property. The cloud optical depth PDF shows that thin clouds (cloud optical depth < 10) in all model versions occur substantially more frequently than in the satellite retrievals, and thick clouds (cloud optical depth > 30), less frequently. The modeled cloud effective radius PDFs is constrained to 3 and 16 μm , where as the satellite retrievals shows a range of 4 to 30 μm . A shift of the PDF is found in the COSMO-MUSCAT derived PDFs, which indicates the increased droplet size for the interactive C_{cen} . For liquid water path, modeled PDFs overestimates the clouds with low liquid water path and underestimates clouds with high water paths. The differences in PDFs largely follow what is found for the cloud optical depth, but model deficiencies compared to the satellite retrievals are substantially larger. The analysis also illustrates an increased in cloud optical PDF from COSMO-MUSCAT simulation. Certainly, the drop and preponderance of modeled cloud optical properties

can be influenced by model tuning, an approach which, however, hasn't been performed yet for the COSMO-MUSCAT model version.

The outcome of the cloud microphysics modifications can be analyzed by considering the difference between the two simulations (COSMO-MUSCAT and COSMO2M), which is shown in Figure 4g-i. The version considering the interactive aerosol number concentration (COSMO-MUSCAT) exhibits an increase in the cloud droplet effective radius by a range of 1-4 μm throughout the domain with an overall increase of 9.5%, although a slight reduction can be noticed in a few areas. For cloud optical depth and liquid water path, both generally show increases despite the reduction in a few areas. The revised parameterization in the coupled model has modified the spatial distribution of the cloud optical depth in the range of ± 15 and the liquid water exhibits a variation in the range of $\pm 0.12 \text{ kgm}^{-2}$. However, the domain averaged cloud optical depth and liquid water path has been increased by 4.1% and 14.2%, which is also observed in PDF analysis.

The cloud droplet number concentration N_d can be used as a diagnostic for aerosol cloud interaction. From satellite observations it can be expressed in terms of cloud optical depth τ_c and effective radius r_e (Quaas et al., 2006), which is given by:

$$N_d = \alpha \tau_c^{0.5} r_e^{-2.5} \quad (9)$$

where $\alpha = 1.37 \times 10^{-5} \text{ m}^{-0.5}$. Likewise, the model derived N_d is also estimated using equation 9, which uses COSP (MODIS simulator) derived cloud optical depth and effective radius. Figure 6 (a-c) shows the comparison between modeled (COSMO2M and COSMO-MUSCAT) and observed N_d . On 17 February 2007, the domain-averaged N_d values are 153, 120, and 378 cm^{-3} for COSMO2M, COSMO-MUSCAT and MODIS, which indicates an underestimation of model derived values (Figure 6a-c) compared to MODIS (Zhang et al., 2012b; Storelvmo et al., 2009). The inter-model comparison (COSMO2M and COSMO-MUSCAT) reveals that COSMO-MUSCAT derived N_d shows a decrease of 21.5%. Figure 6d shows the spatial distribution of sulfate aerosol number concentration (aerosol number concentration proxy) below the convective cloud base (representative of aerosols in the model and it is also averaged for 8-14 hours on 17 February 2007), where high number concentrations are simulated over southeastern Europe. On contrast, N_d are smaller over the same region. This is because the Boucher and Lohmann (1995) parameterization models saturation of N_d over high aerosol or polluted regions (Penner et al., 2001) and the high pressure in this region results in trapping aerosol in the boundary layer. From the above analysis, it can be inferred that COSMO-MUSCAT can be used as a tool for regional aerosol-cloud interaction estimates. The interactive aerosol coupling results show an increase in cloud droplet effective radius by 9.5% and a reduction in N_d by 21.5%.

3.3 Impact on radiative balance

In addition, we have also implemented aerosol-cloud-radiation interactions in the COSMO model by revising the radiation scheme to make use of a droplet-size-dependent cloud optical depth. Incorporating aerosol-cloud-radiation interactions in the model causes significant change in the radiation fluxes. Figure 7 shows the spatial distribution of net downward shortwave flux at the surface, net downward longwave flux at top of the atmosphere (TOA), and the corresponding difference between COSMO2M and COSMO2MR simulations (with fixed C_{ccn}). Similar to the above analysis, we also compare fluxes for 17

February 2007, and are daily averaged. The figure shows that in the radiation modified version (COSMO2MR) there is an increase in the net downward shortwave flux at the surface. Likewise, an overall reduction is observed in the net downward longwave flux at the TOA despite the increase in the northeast part of the domain. The net downward shortwave radiation at the surface shows an increase of about 10 to 60 Wm^{-2} and the net downward longwave flux shows a decrease of 10 to 40 Wm^{-2} . This illustrates the reduction of cloud cover in the COSMO2MR simulations, which implies that reduced cloud cover results in more shortwave radiation reaching the surface and less longwave radiation reflected back to TOA. This can be inferred by
5 considering the cloud optical depth, and liquid water path difference between the COSMO2M and COSMO2MR simulations, which is also daily averaged (Figure 8). From the figure, the regions with reduced cloud optical depth and liquid water path are correlated with increased net shortwave flux at the surface and decreased net longwave flux at the TOA. To illustrate the combined effect of revised radiation scheme and interactive aerosols, COSMO-MUSCAT derived radiative fluxes are compared with CERES satellite observations (Kato and Loeb, 2003; Loeb et al., 2012). For comparison, we have considered computed
10 CERES fluxes (derived based on state and composition of the atmosphere, surface, and the incoming solar radiation) with spatial resolution $1^\circ \times 1^\circ$ and care must be taken while interpreting the results. Also, during winter the uncertainty in CERES flux observation are slightly higher (Guo et al., 2007). The spatial pattern and the magnitude of model simulated fluxes are comparable with satellite observations, in which the surface net downward shortwave flux ranges between 20 to 26 Wm^{-2} and TOA net downward longwave flux varies between -290 to -140 Wm^{-2} (Figure 9). Additionally, correlations between satellites
15 and models (COSMO2M and COMO-MUSCAT, model outputs are re-gridded to satellite resolution) are illustrated in Figure 9 c and d. The models modifications (revised radiation scheme and interactive aerosols) result in an increase in the correlation coefficient from 0.61 (COSMO2M) to 0.84 (COSMO-MUSCAT) in the case of net shortwave flux at the surface, whereas the modifications do not have much effect on the longwave flux.

4 Conclusions

20 This paper discusses the modification of the Seifert and Beheng (2006) two-moment scheme in COSMO model. This has been done with aerosol information from the online-coupled MUSCAT model, which allows for a microphysical aerosol effect on clouds. It has been achieved by replacing the constant cloud condensation nuclei profile in the COSMO two-moment scheme with gridded aerosol information derived from online-coupled MUSCAT model, using the Boucher and Lohmann (1995) parameterization, which takes sulfate aerosol as a proxy for all aerosols. In addition, the radiation scheme is revised
25 to a droplet-size-dependent cloud optical depth, allowing now for aerosol-cloud-radiation interactions. In order to facilitate an evaluation using satellite retrievals, the COSP satellite simulator has been incorporated into the modeling system, which runs online in the model. The model results are evaluated with satellite observations from the ISCCP, MODIS, and CERES projects and instruments, respectively. Since the cloud microphysics modification has been done for cloud droplet nucleation, the analysis are restricted to the liquid part of clouds in the model and MODIS level-2 cloud products are screened for liquid phase
30 cloud products. Although the two-moment cloud microphysics and radiation scheme in COSMO model has been modified, the model was not re-tuned to get reasonable 2m temperature or precipitation.

A case study has been carried out to compare the model output with observations. The incorporated COSP satellite simulator serves as a link between model and satellite comparisons. Despite the resolution, COSP derived ISCCP cloud fraction shows similar spatial pattern and magnitude. Further, MODIS level-2 cloud optical products such as cloud optical depth, effective radius, and liquid water path are compared. The COSMO-MUSCAT derived cloud optical properties show a similar spatial distribution compared to the MODIS observation. In COSMO-MUSCAT, the cloud optical depth has been increased by 4.1%, cloud droplet effective has been increased by 9.5%, and liquid water path has been increased by 14.2% in comparison to CSOMO2M. In turn, the cloud droplet number concentration estimated from COSMO-MUSCAT model shows a reduction of 21.5% compared to the COSMO2M model. Furthermore, considerable changes in the radiation budget have been found. This analysis indicates that the coupled model (COSMO-MUSCAT) with interactive aerosol treatment results in an increase in cloud droplet size and reduction in cloud droplet number concentration by activation and growth of droplets, which illustrates implicit aerosol-cloud interactions. Also, the cloud properties in COSMO-MUSCAT agree reasonably well with observations, so that it can be used for regional aerosol-cloud interaction studies.

As a next step, further improvement in the two-moment scheme will be carried out through the use of the newly included aerosol model M7 (Vignati et al., 2004) framework in the MUSCAT model, which is able to provide aerosol number concentration information to the COSMO two-moment scheme by replacing Boucher and Lohmann (1995) parameterization. This can result in more precise cloud droplet activation parameterization, involving different aerosol species as C_{ccn} , and thus improving microphysical aerosol effect on clouds (Lohmann et al., 2007). Also, the role of aerosols on ice nucleation will be addressed.

Code and data availability

The COSMO-MUSCAT(5.0) model is freely available under public license policy. The source code, external parameters and documentation can be obtained through Ralf Wolke (wolke@tropos.de).

Acknowledgements. This work was supported by an ERC starting grant “QUAERERE” (GA no 306284). We acknowledge the development work by the COSMO consortium. We thank Axel Seifert and anonymous reviewers for their valuable suggestions.

References

- Ackerman, A. S., Toon, O. B., Stevens, D. E., Heymsfield, A. J., Ramanathan, V., and Welton, E. J.: Reduction of Tropical Cloudiness by Soot, *American Association for the Advancement of Science*, 288, 1042–1047, doi:10.1126/science.288.5468.1042, 2000.
- Ackerman, A. S., Michael, P. K., David, E. S., and Owen, B. T.: The impact of humidity above stratiform clouds on indirect aerosol climate forcing, *Nature*, 432, 1014–1017, doi:10.1038/nature03174, 2004.
- 5 Baldauf, M., Seifert, A., Förstner, J., Majewski, D., Raschendorfer, M., and Reinhardt, T.: Operational Convective-Scale Numerical Weather Prediction with the COSMO Model: Description and Sensitivities, *Monthly Weather Review*, 139, 3887–3905, doi:10.1175/MWR-D-10-05013.1, 2011.
- Bangert, M., Kottmeier, C., Vogel, B., and Vogel, H.: Regional scale effects of the aerosol cloud interaction simulated with an online coupled comprehensive chemistry model, *Atmospheric Chemistry and Physics*, 11, 4411–4423, doi:10.5194/acp-11-4411-2011, 2011.
- 10 Beheng, K. D. and Doms, G.: A general formulation of collection rates of cloud and raindrops using the kinetic equation and comparison with parameterizations, *Contrib. Atmos. Phys*, 59, 66–84, 1986.
- Berner, A. H., Bretherton, C. S., Wood, R., and Muhlbauer, A.: Marine boundary layer cloud regimes and POC formation in a CRM coupled to a bulk aerosol scheme, *Atmospheric Chemistry and Physics*, 13, 12549–12572, doi:10.5194/acp-13-12549-2013, 2013.
- Bodas-Salcedo, A. A., Webb, M. J., Brooks, M. E., Ringer, M. A., William, K. D., Milton, S. F., and Wilson, D. R.: Evaluating cloud systems in the Met Office global forecast model using simulated CloudSat radar reflectivities, *Journal of Geophysical Research: Atmospheres*, 113, doi:10.1029/2007JD009620, 2008.
- 15 Bodas-Salcedo, A. A., Webb, M., Bony, S., Chepfer, H., Dufresne, J., Klein, S., Zhang, Y., Marchand, R., Haynes, J., Pincus, R., and John, V.: COSP: Satellite simulation software for model assessment, *Bulletin of the American Meteorological Society*, 92, 1023–1043, doi:10.1175/2011BAMS2856.1, 2011.
- 20 Boucher, O. and Lohmann, U.: The sulfate-CCN-cloud albedo effect: A sensitivity study with two general circulation models, *Tellus*, 47 Ser.B, 281–300, 1995.
- Brunke, M. A., de Szoeko, S. P., Zuidema, P., and Zeng, X.: A comparison of ship and satellite measurements of cloud properties with global climate model simulations in the southeast Pacific stratus deck, *Atmospheric Chemistry and Physics*, 10, 6527–6536, doi:10.5194/acp-10-6527-2010, 2010.
- 25 Chapman, E. G., Gustafson Jr., W. I., Easter, R. C., Barnard, J. C., Ghan, S. J., Pekour, M. S., and Fast, J. D.: Coupling aerosol-cloud-radiative processes in the WRF-Chem model: Investigating the radiative impact of elevated point sources, *Atmospheric Chemistry and Physics*, 9, 945–964, doi:10.5194/acp-9-945-2009, 2009.
- Chepfer, H., Bony, S., Winker, D., Cesana, G., Dufresne, J. L., Minnis, P., Stubenrauch, C. J., and Zeng, S.: The GCM oriented CALIPSO cloud product (CALIPSO-GOCCP), *Journal of Geophysical Research: Atmospheres*, 115, doi:10.1029/2009JD012251, 2010.
- 30 Cherian, R., Venkataraman, C., Ramachandran, S., Quaas, J., and Kedia, S.: Examination of aerosol distributions and radiative effects over the Bay of Bengal and the Arabian Sea region during ICARB using satellite data and a general circulation model, *Atmospheric Chemistry and Physics*, 12, 1287–1305, doi:10.5194/acp-12-1287-2012, 2012.
- Cotton, W. R., Tripoli, G. P., Rauber, R. M., and Mulvihill, E. A.: Numerical simulation of the effects of varying ice crystal nucleation rates and aggregation processes on orographic snowfall, *Journal of Climate and Applied Meteorology*, 25, 1658–1680, doi:10.1175/1520-0450(1986)025<1658:NSOTEO>2.0.CO;2, 1986.
- 35

- Doms, G. and Schättler, U.: The Nonhydrostatic Limited-Area Model LM (Lokal-Modell) of DWD: Part I: Scientific Documentation (Version LM-F90 1.35), Deutscher Wetterdienst, Offenbach, 1999.
- Forkel, R., Balzarini, A., Baró, R., Bianconi, R., Curci, G., Jiménez-Guerrero, P., Hirtl, M., Honzak, L., Lorenz, C., Im, U., J. L. Pérez, G. P., José, R. S., Tuccella, P., Werhahn, J., and Žabkar, R.: Analysis of the WRF-Chem contributions to AQMEII phase2 with respect to aerosol radiative feedbacks on meteorology and pollutant distributions, *Atmospheric Environment*, 115, 630–645, doi:10.1016/j.atmosenv.2014.10.056, 2015.
- Ghan, S., Wang, M., Zhang, S., Ferrachat, S., Gettelman, A., Griesfeller, J., Kipling, Z., Lohmann, U., Morrison, H., Neubauer, D., Partridge, D. G., Stier, P., Takemura, T., Wang, H., and Zhang, K.: Challenges in constraining anthropogenic aerosol effects on cloud radiative forcing using present-day spatiotemporal variability, *PNAS*, 113, 580–5811, doi:10.1073/pnas.1514036113, 2016.
- Guo, S., Henry, L., and Murray, M.: Surface-Absorbed and Top-of-Atmosphere Radiation Fluxes for the Mackenzie River Basin from Satellite Observations and a Regional Climate Model and an Evaluation of the Model, *Canadian Meteorological and Oceanographic Society*, 45, 129–139, 2007.
- IPCC: Climate change 2013: The physical science basis. Contribution of working group I to the fifth assessment report of the Intergovernmental Panel on Climate Change [Stocker, T.F., D. Qin, G.-K. Plattner, M. Tignor, S.K. Allen, J. Boschung, A. Nauels, Y. Xia, V. Bex and P.M. Midgley (eds.)], Cambridge University Press, Cambridge, United Kingdom and New York, NY, USA, p. 1535 pp, doi:10.1017/CBO9781107415324, 2013.
- Kato, S. and Loeb, N. G.: Twilight irradiance reflected by the Earth estimated from Clouds and the Earth's Radiant Energy System (CERES) measurements, *Journal of Climate*, 16, 2649–2650, doi:10.1175/1520-0442(2003)016<2646:TIRBTE>2.0.CO;2, 2003.
- Kessler, E.: On the distribution and continuity of water substance in atmospheric circulations, *American Meteorological Society*, pp. 1–84, doi:10.1007/978-1-935704-36-2_1, 1969.
- Khain, A., Ovtchinnikov, M., Pinsky, M., Pokrovsky, A., and Krugliak, H.: Notes on the state-of-the-art numerical modeling of cloud microphysics, *Atmospheric Research*, 55, 159–224, doi:10.1016/S0169-8095(00)00064-8, 2000.
- Khain, A. P., Rosenfeld, D., and Pokrovsky, A.: Simulating convective clouds with sustained supercooled liquid water down to -37.5° C using a spectral microphysics model, *Geophysical Research Letters*, 28, 3887–3890, doi:10.1029/2000GL012662, 2001.
- Li, G., Wang, Y., and Zhang, R.: Implementation of a two-moment bulk microphysics scheme to the WRF model to investigate aerosol-cloud interaction, *Journal of Geophysical Research: Atmospheres*, 113, doi:10.1029/2007JD009361, 2008.
- Lim, K. and Hong, S.: Development of an effective double-moment cloud microphysics scheme with prognostic cloud condensation nuclei (CCN) for weather and climate models, *Monthly Weather Review*, 138, 1587–1612, doi:10.1175/2009MWR2968.1, 2010.
- Lin, Y. L., Farley, R. D., and Orville, H.: Bulk parameterization of the snow field in a cloud model, *Journal of Climate and Applied Meteorology*, 22, 1065–1092, doi:10.1175/1520-0450(1983)022<1065:BPOTSF>2.0.CO;2, 1983.
- Loeb, N. G., Lyman, J. M., Johnson, G. C., Allan, R. P., Doelling, D. R., Wong, T., Soden, J. J., and Stephens, G. L.: Observed changes in top-of-the-atmosphere radiation and upper-ocean heating consistent within uncertainty, *Nature Geosci*, 5, 110–113, doi:10.1038/ngeo1375, 2012.
- Lohmann, U., P. S., Hoose, C., Ferrachat, S., Kloster, S., Roeckner, E., and Zhang, J.: Cloud microphysics and aerosol indirect effects in the global climate model ECHAM5-HAM, *Atmospheric Chemistry and Physics*, 7, 3425–3446, doi:10.5194/acp-7-3425-2007, 2007.
- Majewski, D., Liermann, D., Prohl, P., Ritter, B., Buchhold, M., Hanisch, T., Paul, G., Wergen, W., and Baumgardner, J.: The operational global Icosahedral-Hexagonal Gridpoint Model GME: description and high-resolution tests, *Monthly Weather Review*, 130, 319–338, doi:10.1175/1520-0493(2002)130<0319:TOGIHG>2.0.CO;2, 2002.

- Marchand, R., Haynes, J., Mace, G. G., Ackerman, T., and Stephens, G.: A comparison of simulated cloud radar output from the multiscale modeling framework global climate model with CloudSat cloud radar observations, *Journal of Geophysical Research: Atmospheres*, 114, doi:10.1029/2008JD009790, 2009.
- Martin, G. M., Johnson, D. W., and Spice, A. A.: The measurement and parameterization of effective radius of droplets in the warm stratocumulus clouds, *Journal of the Atmospheric Sciences*, 51, 1823–1842, doi:10.1175/1520-0469(1994)051<1823:TMAPOE>2.0.CO;2, 5 1994.
- Meyers, M. P., Walko, R. L., Harrington, J. Y., and Cotton, W. R.: New RAMS cloud microphysics parameterization: Part II: The two-moment scheme, *Atmospheric Research*, 45, 3–39, doi:10.1016/S0169-8095(97)00018-5, 1997.
- Min, Q., Joseph, E., Lin, Y., Min, L., Yin, B., Daum, P. H., Kleinman, L. I., Wang, J., and Lee, Y. N.: Comparison of MODIS cloud microphysical properties with in-situ measurements over the Southeast Pacific, *Atmospheric Chemistry and Physics*, 12, 11 261–11 273, 10 doi:10.5194/acp-12-11261-2012, 2012.
- Morrison, H. and Gettelman, A.: A new two-moment bulk stratiform cloud microphysics scheme in the community atmosphere model, Version 3 (CAM3). Part I: Description and numerical tests, *Journal of Climate*, 21, 3642–3659, doi:10.1175/2008JCLI2105.1, 2008.
- Morrison, H., Thompson, G., and Tatarskii, V.: Impact of cloud microphysics on the development of trailing stratiform precipitation in a simulated squall line: Comparison of one and two-moment schemes, *Monthly Weather Review*, 137, 991–1007, doi:10.1175/2008MWR2556.1, 15 2009.
- Mühlbauer, A., Berry, E., Comstock, J. M., and Mace, G. G.: Perturbed physics ensemble simulations of cirrus on the cloud system-resolving scale, *Journal of Geophysical Research: Atmospheres*, 119, 4709–4735, doi:10.1002/2013JD020709, 2014.
- Mühlbauer, A., Ackerman, T. P., Lawson, R. P., Xie, S., and Zhang, Y.: Evaluation of cloud-resolving model simulations of midlatitude cirrus with ARM and A-train observations, *Journal of Geophysical Research: Atmospheres*, 120, 6597–6618, doi:10.1002/2014JD022570, 2015.
- 20 Nam, C. and Quaas, J.: Evaluation of clouds and precipitation in the ECHAM5 general circulation model using CALIPSO and CloudSat, *Journal of Climate*, 25, 4975–4992, doi:10.1175/JCLI-D-11-00347.1, 2012.
- Nam, C., Quaas, J., Neggers, R., Drian, C. S.-L., and Isotta, F.: Evaluation of boundary layer cloud parameterizations in the ECHAM5 general circulation model using CALIPSO and CloudSat satellite data, *Journal of Advances in Modeling Earth Systems*, 6, 300–314, doi:10.1002/2013MS000277, 2014.
- 25 Noble, S. R. and Hudson, J. G.: MODIS comparisons with northeastern Pacific in situ stratocumulus microphysics, *Journal of Geophysical Research: Atmospheres*, 120, 8332–8344, doi:10.1002/2014JD022785, 2015.
- Penner, J. E., Andreae, M. O., Annegarn, H., Barrie, L., Feichter, J., Hegg, D., Jayaraman, A., Leaitch, R., Murphy, D., Nganga, J., and Pitari, G.: Aerosols, their Direct and Indirect Effects, in: *Climate Change 2001: The Scientific Basis*, Contribution of working group I to the Third Assessment Report of the Intergovernmental Panel on Climate Change, edited by: Houghton, J. T., Ding, Y., Griggs, D. J., Noguer, 30 M., Van der Linden, P. J., Dai, X., Maskell, K., and Johnson, C. A., Cambridge University Press, New York, 881, 2001.
- Penner, J. E., Quaas, J., Storelvmo, T., Takemura, T., Boucher, O., Guo, H., Kirkevåg, A., Kristjánsson, J. E., and Seland, Ø.: Model inter-comparison of indirect aerosol effects, *Atmospheric Chemistry and Physics*, 6, 3391–3405, doi:10.5194/acp-6-3391-2006, 2006.
- Pincus, R., Platnick, S., Ackerman, S. A., Hemler, R. S., and Hofmann, R. J. P.: Reconciling simulated and observed views of clouds: MODIS, ISCCP, and the limits of instrument simulators, *Journal of Climate*, 25, 4699–4720, doi:10.1175/JCLI-D-11-00267.1, 2012.
- 35 Platnick, S., Li, J. Y., King, M. D., Gerber, H., and Hobbs, P. V.: A solar reflectance method for retrieving the optical thickness and droplet size of liquid water clouds over snow and ice surfaces, *Journal of Geophysical Research: Atmospheres*, 106, 15 185–15 199, doi:10.1029/2000JD900441, 2001.

- Platnick, S., King, M. D., Ackerman, S. A., Menzel, W. P., Baum, B. A., Riedi, J. C., and Frey, R. A.: The MODIS cloud products: Algorithms and examples from Terra, *IEEE Transactions on Geoscience and Remote Sensing*, 41, 459–473, doi:10.1109/TGRS.2002.808301, 2003.
- Possner, A., Zubler, E., Lohmann, U., and Schär, C.: Real-case simulations of aerosol-cloud interactions in ship tracks over the Bay of Biscay, *Atmospheric Chemistry and Physics*, 15, 2185–2201, doi:10.5194/acp-15-2185-2015, 2015.
- Pouliot, G., Pierce, T., Denier van der Gon, H., Schaap, M., Moran, M., and Nopmongcol, U.: Comparing emissions inventories and
5 model-ready emissions datasets between Europe and North America for the AQMEII project, *Atmospheric Environment*, 53, 4–14, doi:10.1016/j.atmosenv.2011.12.041, 2012.
- Quaas, J., Boucher, O., and Bréon, F. M.: Aerosol indirect effects in POLDER satellite data and in the Laboratoire de Météorologie Dynamique-Zoom (LMDZ) general circulation model, *Journal of Geophysical Research: Atmospheres*, 109, doi:10.1029/2003JD004317, 2004.
- 10 Quaas, J., Boucher, O., and Lohmann, U.: Constraining the total aerosol indirect effect in the LMDZ and ECHAM4 GCMs using MODIS satellite data, *Atmospheric Chemistry and Physics*, 6, 947–955, doi:10.5194/acp-6-947-2006, 2006.
- Quaas, J., Ming, Y., Menon, S., Takemura, T., Wang, M., Penner, J. E., Gettelman, A., Lohmann, U., Bellouin, N., Boucher, O., Sayer, A. M., Thomas, G. E., McComiskey, A., Feingold, G., Hoose, C., Kristjánsson, J. E., Liu, X., Balkanski, Y., Donner, L. J., Ginoux, P. A., Stier, P., Grandey, B., Feichter, J., Sednev, I., Bauer, S. E., Koch, D., Grainger, R. G., Kirkevåring, A., Iversen, T., Seland, Ø., Easter, R., Ghan, S. J.,
15 Rasch, P. J., Morrison, H., Lamarque, J.-F., Iacono, M. J., Kinne, S., and Schulz, M.: Aerosol indirect effects - general circulation model intercomparison and evaluation with satellite data, *Atmospheric Chemistry and Physics*, 9, 8697–8717, doi:10.5194/acp-9-8697-2009, 2009.
- Reisner, J., Rasmussen, R. M., and Bruintjes, R. T.: Explicit forecasting of supercooled liquid water in winter storms using the MM5 mesoscale model, *Quarterly Journal of the Royal Meteorological Society*, 124, 1071–1107, doi:10.1002/qj.49712454804, 1998.
- 20 Renner, E. and Wolke, R.: Modelling the formation and atmospheric transport of secondary inorganic aerosols with special attention to regions with high ammonia emissions, *Atmospheric Environment*, 44, 1904–1912, doi:10.1016/j.atmosenv.2010.02.018, 2010.
- Ritter, B. and Geleyn, J.: A comprehensive radiation scheme for numerical weather prediction models with potential applications in climate simulations, *Monthly Weather Review*, 120, 303–325, doi:10.1175/1520-0493(1992)120<0303:ACRSFN>2.0.CO;2, 1992.
- Rossow, W. B. and Schiffer, R. A.: Advances in understanding clouds from ISCCP, *Bulletin of the American Meteorological Society*, 80,
25 2261–2287, doi:10.1175/1520-0477(1999)080<2261:AIUCFI>2.0.CO;2, 1999.
- Sandu, I., J. L., B., Geoffroy, O., Thouron, O., and Masson, V.: Aerosol impacts on the diurnal cycle of marine stratocumulus, *Journal of the Atmospheric Sciences*, 65, 2705–2718, doi:10.1175/2008JAS2451.1, 2008.
- Seifert, A. and Beheng, K. D.: A double-moment parameterization for simulating autoconversion, accretion and selfcollection, *Atmospheric Research*, 59-60, 265–281, doi:10.1016/S0169-8095(01)00126-0, 2001.
- 30 Seifert, A. and Beheng, K. D.: A two-moment cloud microphysics parameterization for mixed- phase clouds. Part 1: Model description, *Meteorology and Atmospheric Physics*, 92, 45–66, doi:10.1007/s00703-005-0112-4, 2006.
- Seifert, A., Köhler, C., and Beheng, K. D.: Aerosol-cloud-precipitation effects over Germany as simulated by a convective-scale numerical weather prediction model, *Atmospheric Chemistry and Physics*, 12, 709–725, doi:10.5194/acp-12-709-2012, 2012.
- Seifert, A., Heus, T., Pincus, R., and Stevens, B.: Large-eddy simulation of the transient and near-equilibrium behavior of precipitating
35 shallow convection, *Journal of Advances in Modeling Earth Systems*, 7, 1942–2466, doi:10.1002/2015MS000489, 2015.
- Simmel, M., J., B., A., A., and I., T.: Ice phase in altocumulus clouds over Leipzig: remote sensing observations and detailed modeling, *Atmospheric Chemistry and Physics*, 15, 10453–10470, doi:10.5194/acp-15-10453-2015, 2015.

- Sourdeval, O., C.-Labonnote, L., Baran, A. J., Mülmenstädt, J., and Brogniez, G.: A methodology for simultaneous retrieval of ice and liquid water cloud properties. Part 2: Near-global retrievals and evaluation against A-Train products, *Quarterly Journal of the Royal Meteorological Society*, 142, 3063–3081, doi:10.1002/qj.2889, 2016.
- Steppeler, J., Doms, G., Schüttler, U., Bitzer, H. W., Gassmann, A., Damrath, U., and Gregoric, G.: Meso-gamma scale forecasts using the nonhydrostatic model LM, *Meteorology and Atmospheric Physics*, 82, 75–96, doi:10.1007/s00703-001-0592-9, 2003.
- 5 Stockwell, W. R., Kirchner, F., Kuhn, M., and Seefeld, S.: A new mechanism for regional atmospheric chemistry modeling, *Journal of Geophysical Research: Atmospheres*, 102, 25 847–25 879, doi:10.1029/97JD00849, 1997.
- Storelvmo, T., Lohmann, U., and Bennartz, R.: What governs the spread in shortwave forcings in the transient IPCC AR4 models?, *Geophysical Research Letters*, 36, doi:10.1029/2008GL036069, 2009.
- Tao, W. -K., Simpson, J., Baker, D., Braun, S., Chou, M. D., Ferrier, B., Johnson, D., Khain, A., Lang, S., Lynn, B., Shie, C. L., Starr, D.,
10 Sui, C. H., Wang, Y., and Wetzel, P.: Microphysics, radiation and surface processes in the Goddard Cumulus Ensemble (GCE) model, *Atmospheric Research*, 143, 392–424, doi:10.1016/j.atmosres.2014.03.005, 2003.
- Thompson, G., Field, P. R., Rasmussen, R. M., and Hall, W. D.: Explicit forecasts of winter precipitation using an improved bulk microphysics scheme. part II: Implementation of a new snow parameterization, *Monthly Weather Review*, 136, 5095–5115, doi:10.1175/2008MWR2387.1, 2008.
- 15 Van den Heever, S. C. and Cotton, W. R.: Urban aerosol impacts on downwind convective storms, *Journal of Applied Meteorology and Climatology*, 46, 828–850, doi:10.1175/JAM2492.1, 2007.
- Vignati, E., Wilson, J., and Stier, P.: M7: An efficient size-resolved aerosol microphysics module for large-scale aerosol transport models, *Journal of Geophysical Research: Atmospheres*, 109, doi:10.1029/2003JD004485, 2004.
- Weverberg, V. K., Goudenhoofd, E., Blahak, U., Brisson, E., Demuzere, M., Marbaix, P., and van Ypersele, J. P.: Comparison of one-
20 moment and two-moment bulk microphysics for high-resolution climate simulations of intense precipitation, *Atmospheric Research*, 147–148, 145–161, doi:10.1016/j.atmosres.2014.05.012, 2014.
- Wolke, R., Knoth, O., Hellmuth, O., Schröder, W., and Renner, E.: The parallel model system LM-MUSCAT for chemistry-transport simulations: Coupling scheme, parallelization and application, in: G. R. Joubert, W. E. Nagel, F. J. Peters, and W. V. Walter, Eds., *Parallel Computing: Software Technology, Algorithms, Architectures, and Applications*, Elsevier, Amsterdam, The Netherlands, pp. 363–370,
25 doi:10.1016/S0927-5452(04)80048-0, 2004.
- Wolke, R., Schröder, W., Schrödner, R., and Renner, E.: Influence of grid resolution and meteorological forcing on simulated European air quality: a sensitivity study with the modeling system COSMO-MUSCAT, *Atmospheric Environment*, 53, 110–130, doi:10.1016/j.atmosenv.2012.02.085, 2012.
- Xue, H. and Feingold, G.: Large eddy simulations of trade-wind cumuli: Investigation of aerosol indirect effects, *Journal of the Atmospheric
30 Sciences*, 63, 1605–1622, doi:10.1175/JAS3706.1, 2006.
- Yang, Q., Gustafson Jr., W. I., Fast, J. D., Wang, H., Easter, R. C., Wang, M., Ghan, S. J., Berg, L. K., Leung, L. R., and Morrison, H.: Impact of natural and anthropogenic aerosols on stratocumulus and precipitation in the Southeast Pacific: a regional modelling study using WRF-Chem, *Atmospheric Chemistry and Physics*, 12, 8777–8796, doi:10.5194/acp-12-8777-2012, 2012.
- Zhang, M. H., Lin, W. Y., Klein, S. A., Bacmeister, J. T., Bony, S., Cederwall, R. T., Del Genio, A. D., Hack, J. J., Loeb, N. G., Lohmann,
35 U., Minnis, P., Musat, I., Pincus, R., Stier, P., Suarez, M. J., Webb, M. J., Wu, J. B., Xie, S. C., Yao, M.-S., and Zhang, J. H.: Comparing clouds and their seasonal variations in 10 atmospheric general circulation models with satellite measurements, *Journal of Geophysical Research: Atmospheres*, 110, doi:10.1029/2004JD005021, 2005.

Zhang, Y., Karamchandani, P., Glotfelty, T., Streets, D. G., Grell, G., Nenes, A., Yu, F., and Bennartz, R.: Development and initial application of the global-through-urban weather research and forecasting model with chemistry (GU-WRF/Chem), *Journal of Geophysical Research: Atmospheres*, 117, doi:10.1029/2012JD017966, 2012b.

Zhang, Z., Ackerman, A. S., Feingold, G., Platnick, S., Pincus, R., and Xue, H.: Effects of cloud horizontal inhomogeneity and drizzle on remote sensing of cloud droplet effective radius: Case studies based on large-eddy simulations, *Journal of Geophysical Research: Atmospheres*, 117, doi:10.1029/2012JD017655, 2012a.

5

Zubler, E. M., Folini, D., Lohmann, U., Lüthi, D., Mühlbauer, A., Pousse-Nottelmann, S., Schär, C., and Wild, M.: Implementation and evaluation of aerosol and cloud microphysics in a regional climate model, *Journal of Geophysical Research: Atmospheres*, 116, 10.1029/2010JD014572, 2011.

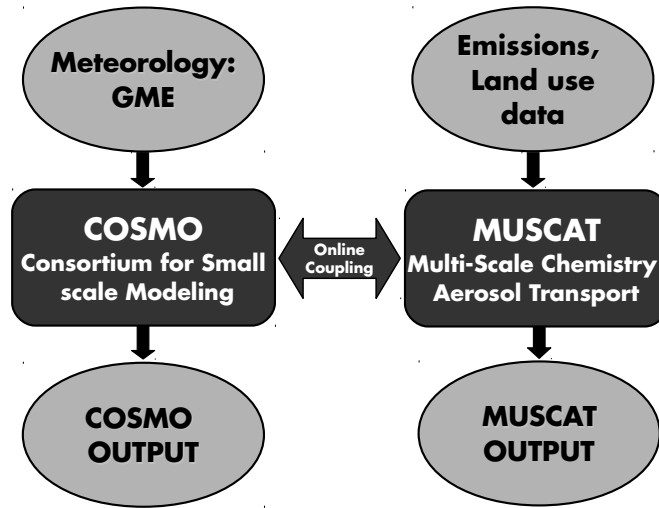


Figure 1. COSMO-MUSCAT modeling system. Left hand side, setup of COSMO modeling system with GME input. Right hand side: MUSCAT modeling system with land use and emissions.

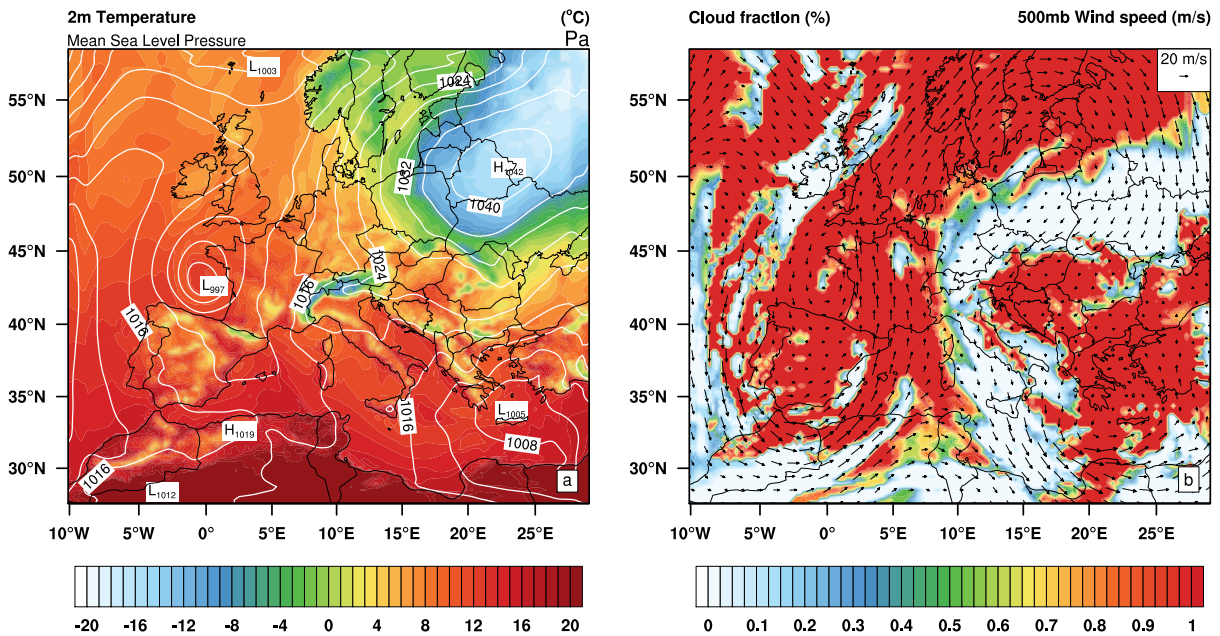


Figure 2. Model synoptic conditions for 17 February 2007 at 12:00 UTC, (a) Surface pressure in contours and 2 m temperature (°C) as colour shading, (b) 500 mb wind vectors and total cloud area fraction as colour shading.

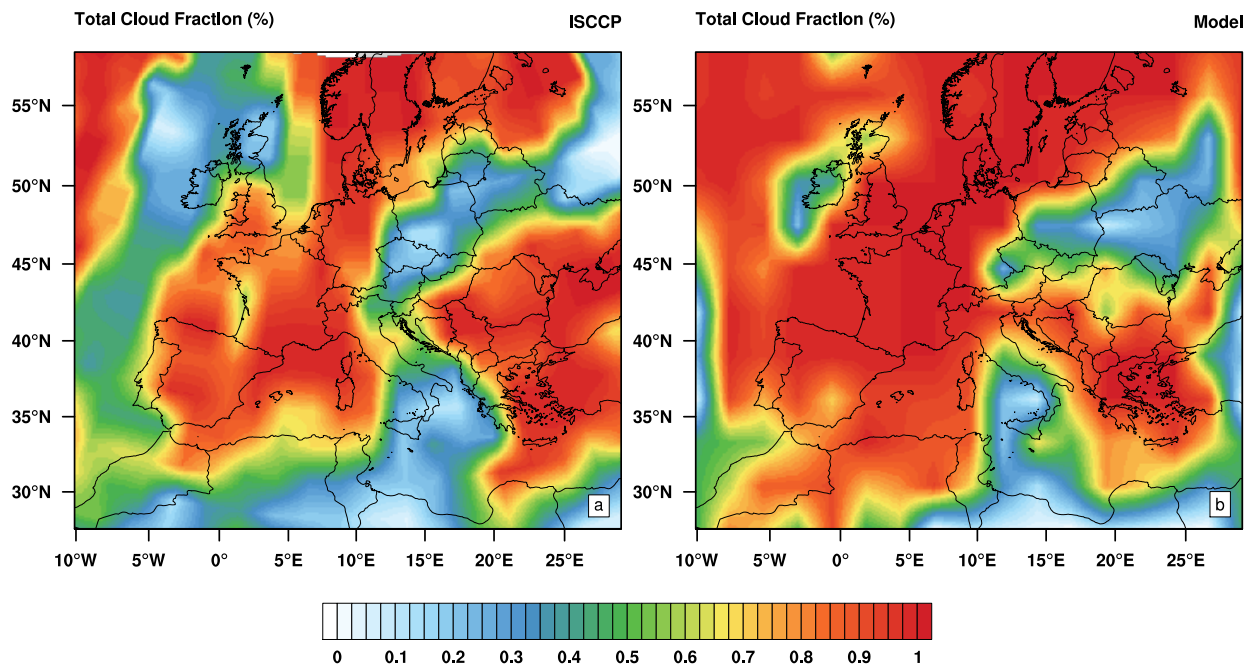


Figure 3. (a) Satellite and (b) model (COSMO-MUSCAT) derived ISCCP cloud fraction, for 17 February 2007 (daily averaged).

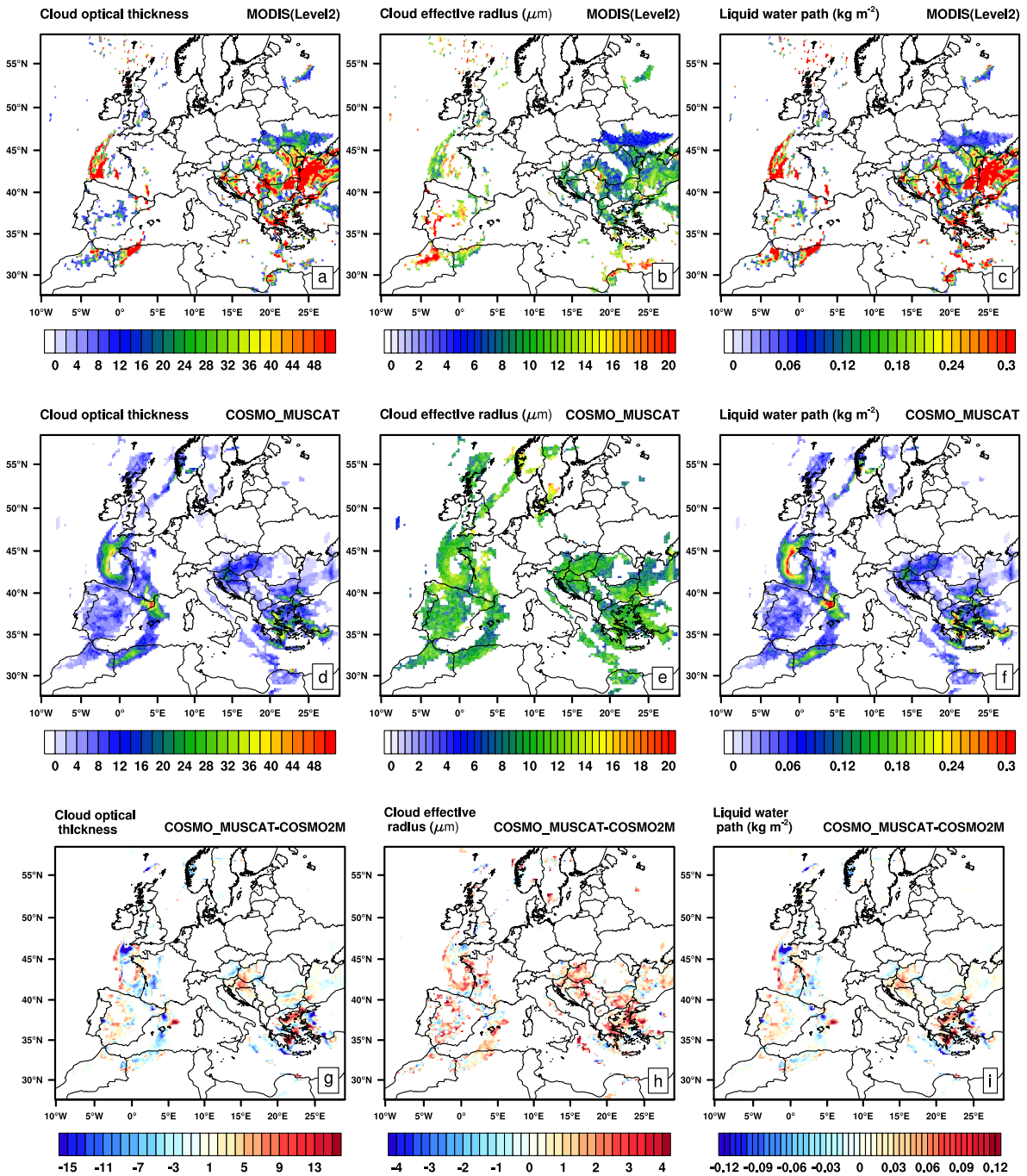


Figure 4. MODIS Level-2 (a) cloud optical depth, (b) cloud effective radius, (c) cloud water path, COSMO-MUSCAT derived (averaged between 8.00 -14.00 UTC, approximate MODIS-Terra overpass time over the domain) (d) cloud optical depth, (e) cloud effective radius, (f) cloud water path, and difference between COSMO-MUSCAT and COSMO2M simulations (g,h,i), for 17 February 2007.

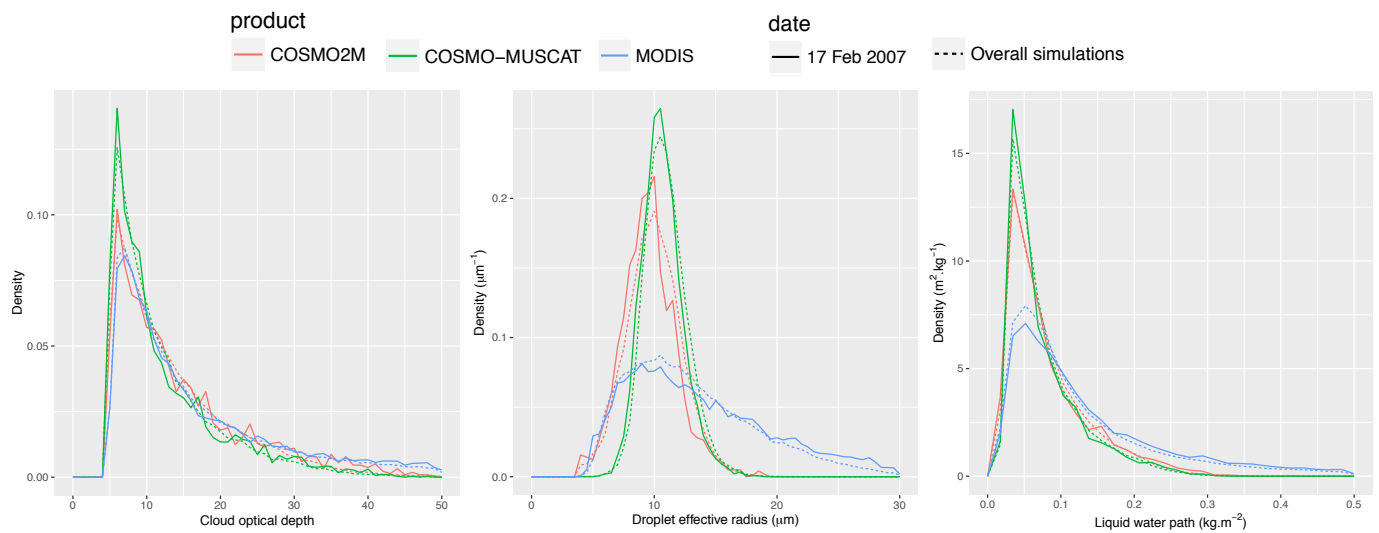


Figure 5. Probability density functions (PDF) of cloud optical depth, cloud effective radius, Liquid water path from COSMO-MUSCAT (green), COSMO2M (red) and MODIS Level-2 products (blue), for 17 February 2007 (solid line) and for 10 day period (15-24 February 2007) simulation (dashed line).

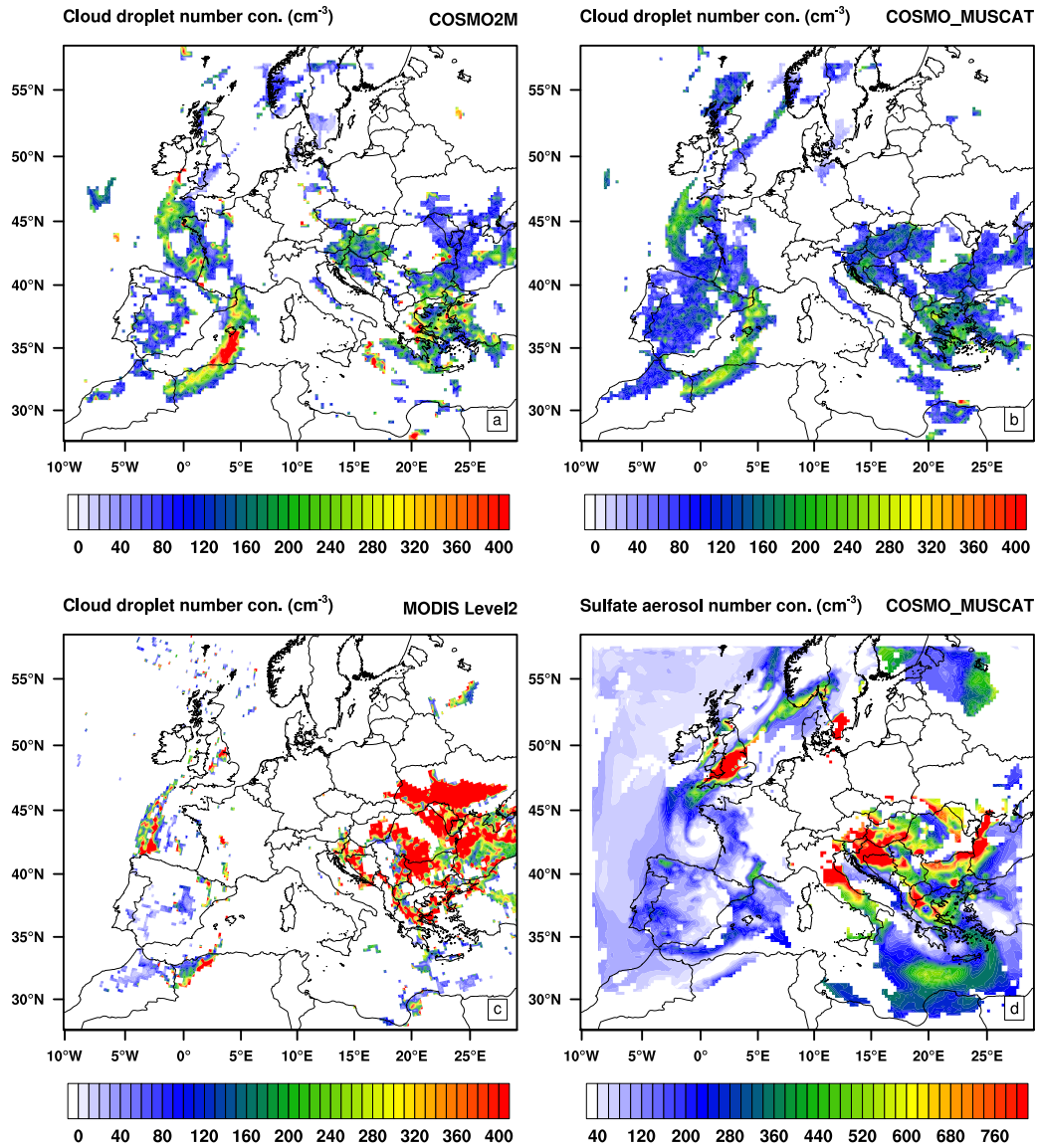


Figure 6. Cloud droplet number concentration (averaged between 8.00 -14.00 UTC, MODIS-Terra overpass time over the domain) for (a) COSMO-2M, (b) COSMO-MUSCAT, (c)MODIS level-2 , and (d) Sulfate aerosol number concentration below the convective cloud base from MUSCAT model, for 17 February 2007.

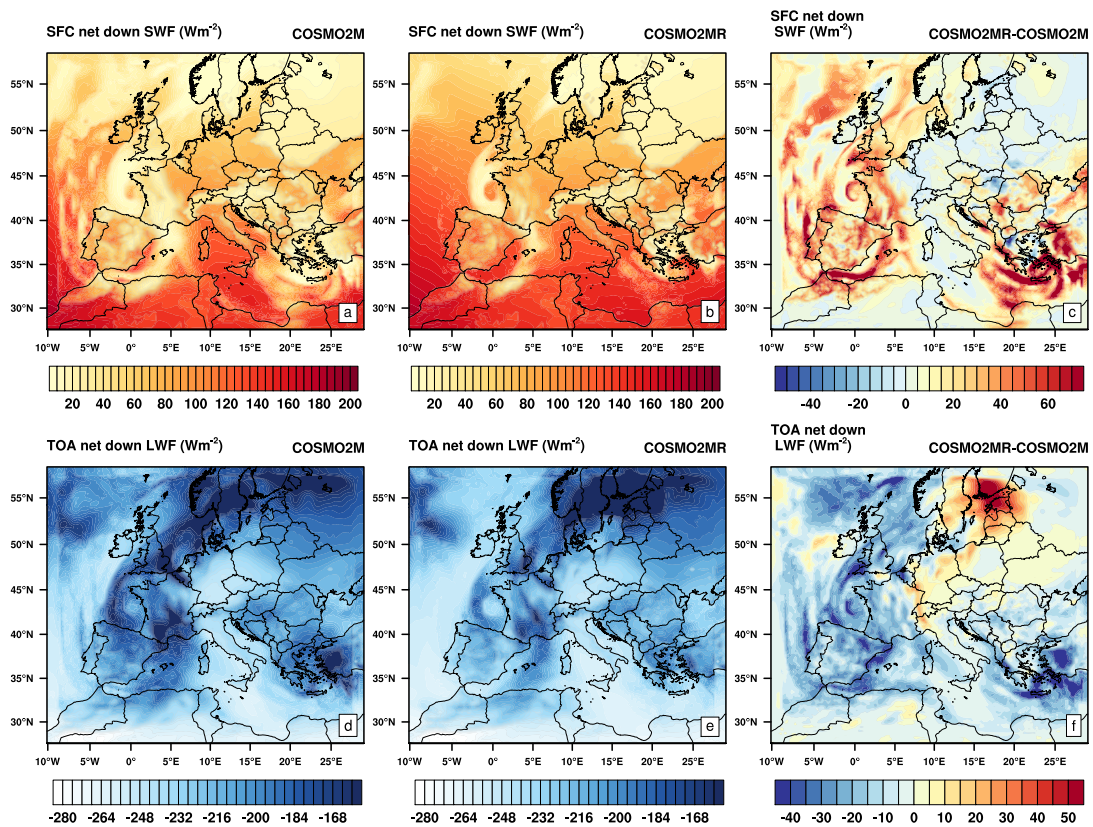


Figure 7. Comparison and difference between short wave and long wave radiation fluxes surface and top of the atmosphere, and its difference between two simulation (COSMO2MR radiation coupled minus COSMO2M).

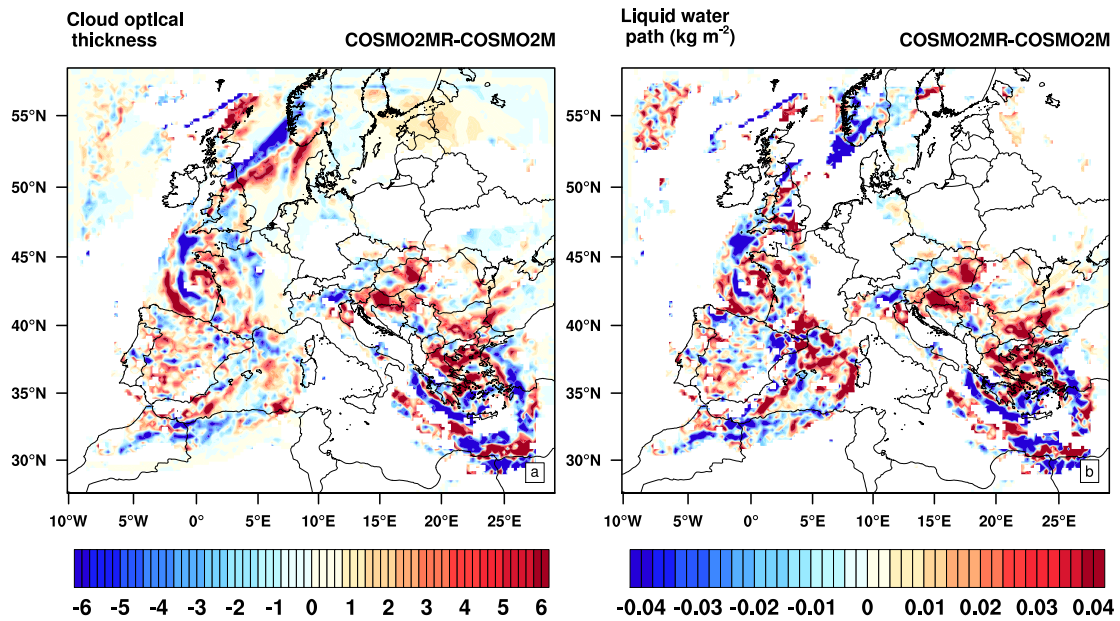


Figure 8. Daily averaged cloud optical depth and liquid water path difference between COSMO2MR and COSMO2M on 17 February 2007.

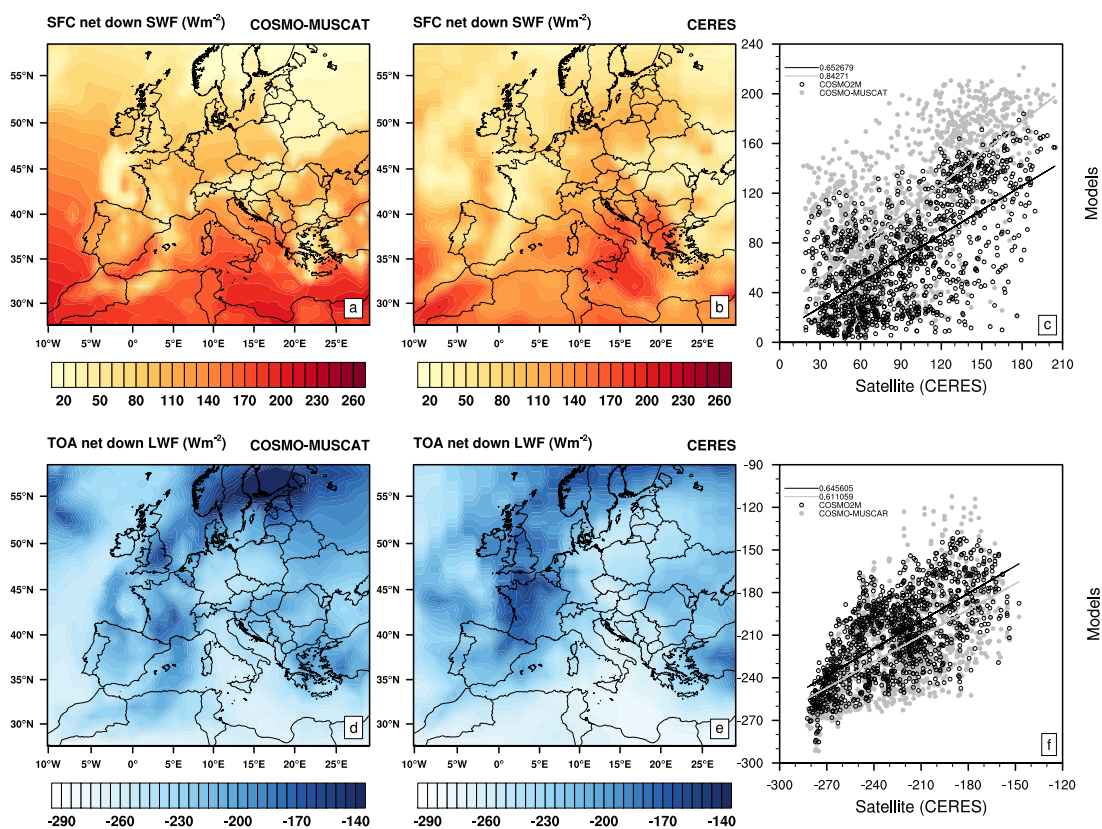


Figure 9. Comparison between short wave and long wave fluxes at surface and top of the atmosphere with CERES satellite fluxes and correlation between satellite (CERES) and models (COSMO2MR and COSMO2M).

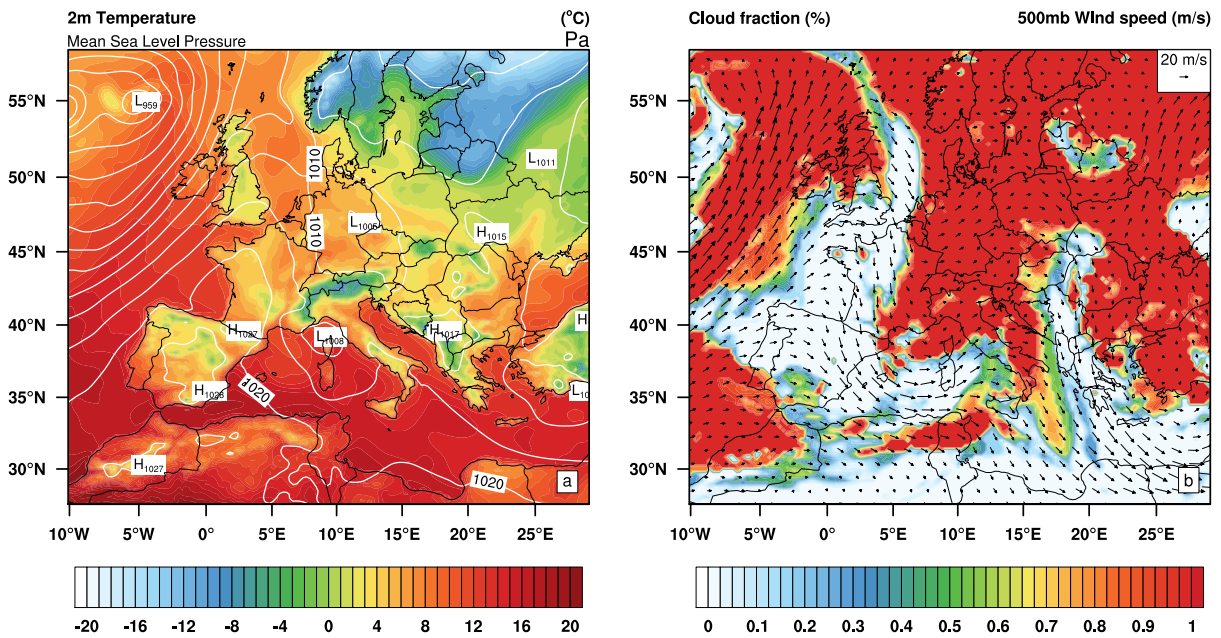


Figure 10. Figure S1: Model synoptic conditions for 15 February 2007 at 00:00 UTC, (a) Surface pressure in contours and 2m (°C) as colour shading, (b) 500 mb wind vectors and total cloud area fraction as colour shading.