

gmd-2016-183

“Spatiotemporal evaluation of EMEP4UK-WRF v4.3 atmospheric chemistry transport simulations of health-related metrics for NO₂, O₃, PM₁₀ and PM_{2.5} for 2001–2010” by C. Lin et al.

5 Note that the track-changed version of the manuscript provided below shows all changes with respect to the original first submission of this paper published as the Discussion article in 2016 (not just the further changes with respect to the first revision submitted in February 2017).

Responses to Anonymous Referee #3 second report

10 The referee’s comments are given below in italics.

The document has improved significantly and all suggested revisions have been accounted for. I would only propose a couple of minor comments to complement the analysis:

15 Response: We thank the reviewer for confirming that the revised document we previously uploaded satisfied all previous reviewer requests. The reviewer has made suggestions for two further analyses and we confirm here that we have undertaken both of these – details below.

20 *1) In figure one, the fac2 lines could be complemented by additional lines indicating the yearly averaged model quality objectives (MQO) as a function of the concentration. An example of application can be found in the report (see example p34)*
http://fairmode.jrc.ec.europa.eu/document/fairmode/WG1/Guidance_MQO_Bench_vs2.1.pdf
To fulfill the MQO, 90% of the stations points should lay between the MQO lines.

25 Response: The reviewer has made a useful further suggestion. We have applied the formulae and variable values given in the above-cited report to the measurement data used in our model-measurement comparisons to calculate the relevant MQO values. We have added these MQO values as an additional column to Table 2 and, as suggested by the reviewer, plotted them as additional lines (in green) on updated versions of each of the 8 panels in Figure 1. We have also provided the number and % of sites in each panel that satisfy this model performance indicator as another column in Table 2. A new paragraph of text describing these new data and their interpretation has been added to the Discussion (beginning L15 on P14).

35 *2) In the same report, uncertainty values can be found for PM_{2.5}. These values could be added to the values in table 3 to complement the values already available for O₃ and PM₁₀*

40 Response: The reviewer suggests that we use the formulae and uncertainty values in the Fairmode report to calculate values of minimum performance criteria for *r*, NMB and RMSE metrics for daily mean PM_{2.5}. We have done this using our dataset of measurement values. We have now also undertaken the calculations of values of minimum performance criteria for *r*, NMB and RMSE for daily mean PM₁₀ and daily maximum 8-h mean O₃ using our dataset of measurement values. Previously we had not undertaken our own calculations of model performance criteria for PM₁₀ and O₃ but had quoted in Table 3 example values from the literature for these model performance criteria. This means that the model performance values given in the right hand columns of Table 3 are now all updated to be based on calculations on measurement values relevant to this study, as well as to include the new values for PM_{2.5}. In the Table we provide model performance criteria values calculated both with the assumption of constant relative uncertainty in each measurement, and with the assumption of a concentration-dependent uncertainty in each measurement. As well as the updates to Table 3, the Discussion text (and captions and footnotes to Table 3) have all been amended to describe the new set of model performance criteria values. It is important to stress, however, that whilst the absolute numbers in Table 3 have changed somewhat, the overall observation has not; namely that the EMEP4UK-WRF model-measurement statistics reported in this paper are for the most part in line with or better than anticipated model performance criteria derived assuming uncertainties in the measurements.

Spatiotemporal evaluation of EMEP4UK-WRF v4.3 atmospheric chemistry transport simulations of health-related metrics for NO₂, O₃, PM₁₀ and PM_{2.5} for 2001-2010

C. Lin¹, M. R. Heal¹, M. Vieno², I. A. MacKenzie³, B. G. Armstrong⁴, B.K. Butland⁵, A. Milojevic⁴, Z. Chalabi⁴, R. W. Atkinson⁵, D. S. Stevenson³, R. M. Doherty³, P. Wilkinson⁴

¹School of Chemistry, University of Edinburgh, Edinburgh, UK

²NERC Centre for Ecology & Hydrology, Penicuik, UK

³School of GeoSciences, University of Edinburgh, Edinburgh, UK

⁴Department of Social and Environmental Health Research, London School of Hygiene and Tropical Medicine, London, UK

⁵Population Health Research Institute and MRC-PHE Centre for Environment and Health, St George's, University of London, London, UK

Correspondence to: M. Heal (m.heal@ed.ac.uk)

Abstract

This study was motivated by the use in air pollution epidemiology and health burden assessment of data simulated at 5 km × 5 km horizontal resolution by the EMEP4UK-WRF v4.3 atmospheric chemistry transport model. Thus the focus of the model-measurement comparison statistics presented here was on the health-relevant metrics of annual and daily means of NO₂, O₃, PM_{2.5} and PM₁₀ (daily maximum 8-hour running mean for O₃). The comparison was temporally and spatially comprehensive covering a 10-year period (2 years for PM_{2.5}) and all non-roadside measurement data from the UK national reference monitor network, which applies consistent operational and QA/QC procedures for each pollutant (44, 47, 24 and 30 sites for NO₂, O₃, PM_{2.5} and PM₁₀, respectively). Two important statistics highlighted in the literature for evaluation of air quality model output against policy (and hence health)-relevant standards – correlation and bias – together with root mean square error, were evaluated by site type, year, month and day-of-week. Model-measurement statistics were generally better than or comparable to values that allow for realistic magnitudes of measurement uncertainties. Temporal correlations of daily concentrations were good for O₃, NO₂ and PM_{2.5} at both rural and urban background sites (median values of *r* across sites in the range 0.70-0.76 for O₃ and NO₂, and 0.65-0.69 for PM_{2.5}), but poorer for PM₁₀ (0.47-0.50). Bias differed between environments, with generally less bias at the background sites and least bias at rural background sites (median normalised mean bias (NMB) values for daily O₃ and NO₂ of 8% and 11%, respectively). At urban background sites there was a negative model bias for NO₂ (median NMB = -29%) and PM_{2.5} (-26%) and a positive model bias for O₃ (26%). The directions of these biases are consistent with expectations of the effects of averaging primary emissions across the 5 km × 5 km model grid in urban areas, compared with monitor locations that are more influenced by these emissions (e.g. closer to traffic sources than the grid average). The biases are also indicative of potential underestimations of primary NO_x and PM emissions in the model, and, for PM, with known omissions in the model of some PM components, e.g. some components of wind-blown dust. There were instances of monthly and weekday/weekend variations in extent of model-measurement bias. Overall, the greater uniformity in temporal correlation than in bias is strongly indicative that the main driver of model-measurement differences (aside from grid vs monitor spatial representivity) was inaccuracy of model emissions – both in annual totals and in the monthly and day-of-week temporal factors applied in the model to the totals – rather than simulation of atmospheric chemistry and transport processes. Since, in general for epidemiology, capturing correlation is more important than bias, the detailed analyses presented here support the use of data from this model framework in air pollution epidemiology.

Deleted: /QA

Deleted: 60, 49, 29

Deleted: 35

Deleted: The two most

Deleted: correlation and bias

Deleted: found in past studies

Deleted: allowed

Deleted: than the grid average. This effect was particularly pronounced for comparison against urban traffic monitors, which are deliberately located close to strong sources of NO_x and PM.

Deleted: representativity

Deleted: (

Deleted:)

1 Introduction

The adverse associations between ambient air pollution – especially particulate matter (PM), ozone (O₃) and nitrogen dioxide (NO₂) – and morbidity and mortality are well documented (WHO, 2006; COMEAP, 2009; WHO, 2013b; WHO, 2013a). Air pollution also causes substantial environmental and economic impact to ecosystems and crops (ROTAP, 2009; LRTAP Convention, 2010; Harmens et al., 2015).

Deleted: (WHO, 2006; WHO, 2013b; WHO, 2013a).

Deleted: (ROTAP, 2009; LRTAP Convention, 2010; Harmens et al., 2015)

Whilst policies and legislation have been put in place to limit and mitigate the impacts of air pollution (Heal et al., 2012), there is increasing recognition that more effective protection of human health may be achieved by not focusing on individual pollutants but by taking a multi-pollutant approach (USEPA, 2008; Dominici et al., 2010). Compared with the traditional single pollutant focus (WHO, 2006), an approach based on pollution mixtures has the advantage of enabling the complexity of exposures and health effects to be characterized more fully: it can help identify harmful emission sources, and it has potential to provide a more effective framework for air-quality regulation, for example by focusing on sources and pathways that influence several pollutants at once. There are analytical complexities in assessing the potential interactions between combinations of pollutants (Kim et al., 2007; Mauderly and Samet, 2009), including the paucity of measured exposure data, which are typically derived from relatively sparse monitoring sites that may measure different combinations of pollutants at different locations. Furthermore, monitor networks are usually established for compliance with legislation (e.g. deliberately sited close to, or away from, pollution sources), so may lack representativeness for characterising population exposure (Duyzer et al., 2015) leading to bias in air pollution epidemiology (Sheppard et al., 2012).

Deleted:

Deleted:

Deleted: (USEPA, 2008; Dominici et al., 2010)

Deleted:

Deleted: (Kim et al., 2007; Mauderly and Samet, 2009)

Deleted: and

Deleted: (Duyzer et al., 2015)

Deleted: (Sheppard et al., 2012)

Modelling can increase the availability of air pollution data (Jerrett et al., 2005). The current gold standard for air-quality modelling are process-based, deterministic atmospheric chemistry models (Colette et al., 2014). These seek to simulate the multitude of complex factors that govern the spatial and temporal variability in air pollutant concentrations, including the distributions of different emissions sources, local and long-range dispersion processes, in situ photochemistry and dry and wet deposition processes.

As part of a multi-institution project on the health impacts of exposure to multiple pollutants, we have derived UK-wide distributions of surface air pollution at hourly temporal resolution over multiple years (2001-2010), at 5 km × 5 km horizontal resolution, using the EMEP4UK-WRF atmospheric chemistry transport model (ACTM) (Butland et al., 2016). This represents a unique dataset of ACTM simulations at this spatial and temporal resolution over this geographical coverage and time duration. The EMEP4UK-WRF model (Vieno et al., 2010; 2014; 2016) is a regional application of the European Monitoring and Evaluation Programme (EMEP) MSC-W model (Simpson et al., 2012). The EMEP model framework has been evaluated and used for many years in scientific support (Fagerli et al., 2015), in, for example, evaluation of emissions regulations within the UNECE framework (e.g. the Gothenburg Protocol) and the European Commission's Clean Air for Europe (CAFE) programme (www.emep.int).

Deleted: , we have undertaken epidemiological studies

Deleted: using

Deleted: derived from the EMEP4UK-WRF atmospheric chemistry transport model (ACTM).

Deleted: (Vieno et al., 2010; 2014; 2016)

Deleted: (Simpson et al., 2012).

Deleted: (Fagerli et al., 2015)

The high temporal and spatial resolution output from the EMEP4UK-WRF model has many advantages for air pollution studies including: (i) provision of data at times and locations where monitoring data are not available; this has the dual benefit of increasing effective sample size in multi-pollutant health epidemiology and of reducing reliance on the assumption that a single monitor is representative of species concentrations over a large area; (ii) provision of data on individual particle chemical components in addition to the aggregated mass concentration of PM that is measured; (iii) the facility to explore many related aspects such as geographical or demographic differences in exposures to air pollutant mixtures (and related issues of environmental justice), and (iv) the impacts of potential future emissions scenarios.

It is important to have an understanding of the performance capabilities of any model, relevant to the use to which the model output is to be put. Much has been written on air quality model evaluation (see, for example, Vautard et al., 2007; Dennis et al., 2010; Derwent et al., 2010; Rao et al., 2011; Thunis et al., 2012; Thunis et al., 2013; Pernigotti et al., 2013), including publications arising out of international collaborative programmes such as AQMEII (Air quality modelling evaluation international initiative, <http://aqmeii-eu.wikidot.com>) and FAIRMODE (Forum for air quality modelling in Europe, <http://fairmode.jrc.ec.europa.eu>). The literature ranges from discussion of epistemological categories of evaluation to development of specific metrics and criteria for comparison between modelled and measured concentrations. Detail is not repeated here, other than to note that there are fundamental limitations to agreement between model and measurements, which include: uncertainties intrinsic to the measurements; limitations in model input data (e.g. emissions) and in other aspects of model descriptions of physical processes; and that models simulate a volume-average concentration whilst monitors measure at a specific location.

Deleted: (see, for example, Vautard et al., 2007; Dennis et al., 2010; Derwent et al., 2010; Rao et al., 2011; Thunis et al., 2012; Thunis et al., 2013; Pernigotti et al., 2013)

The objective of this paper is to record detailed assessment of the modelled surface concentrations of O₃, NO₂ and PM_{2.5} and PM₁₀ using metrics of these pollutants relevant to air pollution epidemiology and health burden assessment, namely the daily (i.e. 24-h) mean for PM and NO₂ and the maximum daily 8-h running mean for O₃. The measurements are taken from the UK's Automatic Urban and Rural Network (AURN) of 'real-time' reference monitors. The key emphasis in this work is comprehensiveness and consistency: the model-measurement evaluation is UK wide, over an extended time period (10 years), and based on measurements subject to a single set of operational and QA/QC procedures for each pollutant. Two important statistics for evaluation of air quality for health studies – correlation and bias (see Discussion) – together with root mean square error, were evaluated by type of monitor location, year, month and day-of-week.

Deleted: QC/QA procedures for each pollutant.

2. Methodology

2.1. Model data

The EMEP MSC-W regional Eulerian ACTM is described in Simpson et al. (2012) and at www.emep.int. The EMEP4UK model providing data in this work (Vieno et al., 2014; 2016) was based on version vn4.3, driven by meteorology from the Weather Research and Forecast model (www.wrf-model.org) version 3.1.1. The WRF model was constrained by boundary conditions from the US National Center for Environmental Prediction (NCEP)/National Center for Atmospheric Research (NCAR) Global Forecast System (GFS) at 1° resolution, every 6 hours. Nesting within the EMEP4UK model reduces horizontal resolution from 50 km × 50 km over a greater European model domain to 5 km × 5 km over an inner domain covering the British Isles plus adjacent parts of France, Belgium, Holland and Denmark, as illustrated in Vieno et al. (2014). Both WRF and EMEP4UK models use 20 vertical layers, with terrain following coordinates, and resolution increasing towards the surface (centre of the surface layer ~45 m). The vertical column extends up to 100 hPa (~16 km). The boundary conditions for the inner domain were taken from 3-hourly output from the European domain in a one-way nested setup, whilst for the European domain they were measurement derived and adjusted monthly (Vieno et al., 2010). Ground-level modelled species concentrations were calculated hourly at 3 m above the surface vegetation or other canopy by making use of the constant-flux assumption and definition of aerodynamic resistance (Simpson et al., 2012).

Deleted: (2012)

Deleted: (Vieno et al., 2014; Vieno et al., 2016)

Anthropogenic emissions of NO_x, NH₃, SO₂, primary PM_{2.5}, primary PM_{coarse} (where PM_{coarse} is the difference between PM₁₀ and PM_{2.5}), CO and non-methane VOC for the UK for each modelled year were taken from the National Atmospheric Emission Inventory (NAEI, <http://naei.defra.gov.uk>) at 1 km² resolution and aggregated to 5 km × 5 km resolution. For the outer domain, the model used the EMEP 50 km × 50 km resolution emission estimates provided by the Centre for Emission Inventories and

Deleted: (Simpson et al., 2012)

Projections (CEIP, <http://www.ceip.at/>). The annual total emissions were temporally split using prescribed monthly, day-of-week, and diurnal hourly emission factors (the latter differing between weekdays, ~~Saturdays~~ and Sundays) for each pollutant and for each of the SNAP (Selected Nomenclature for Sources of Air Pollution) sectors (~~Simpson et al., 2012~~). Methane concentration was prescribed. Emissions estimates for international shipping were those from ENTEC UK Ltd. (now Amec Foster Wheeler) (ENTECC, 2010). Daily emissions from biomass burning were derived from the Fire INventory from NCAR version 1.0 (FINNV1) (Wiedinmyer et al., 2011). Natural emissions of isoprene, monoterpenes, dimethylsulfide (DMS), wind-induced sea salt and NO_x from soils and lightning, were as described in Simpson et al. (~~2012~~). Natural emissions of dust included Saharan dust uplift, but not of windblown dust within the model domain.

Deleted: Saturday

Deleted: (Simpson et al., 2012)

Deleted: (2012).

The default EMEP MSC-W photochemical scheme was used, which contains 72 gas-phase species and 137 reactions; the gas/aerosol partitioning formulation was the model for aerosols reacting system (MARS) (Binkowski and Shankar, 1995). Simulation of secondary organic aerosol (SOA) formation, ageing and partitioning was via the 1-D volatility basis set (Donahue et al., 2006) with its implementation in the model as described by Bergström et al. (~~2012~~). The EMEP4UK model output for PM_{2.5} comprised the sum of the PM_{2.5} fractions of: elemental carbon (EC), ‘other’ primary PM in the emissions inventories (encompasses material such as flyash, and brake and tyre wear), sea salt, mineral dust, primary and secondary organic matter (OM), ammonium (NH₄⁺), sulphate (SO₄²⁻) and nitrate (NO₃⁻). PM₁₀ is the sum of PM_{2.5} plus the PM_{coarse} fractions of EC, ‘other’ primary PM (as above), sea salt, dust, OM and NO₃⁻. The split of NO₃⁻ into PM_{coarse} and PM_{2.5} uses a parameterised approach dependent on relative humidity, as described by Simpson et al. (2012). It is acknowledged this split is somewhat uncertain, as discussed in Vieno et al. (2014). Despite the comprehensiveness of PM composition simulation, some known contributions are missing, in particular wind-blown dust. Traffic-induced road dust resuspension is likely underestimated. Also, as described in the next section, different measurement techniques and conditions incorporate different proportions of the ambient PM water content. Because of uncertainty in what measurements measure, and variability in measurement techniques employed through the time period of interest, we chose to use as model output the dry mass of PM. This contributes some unquantifiable variable negative model bias for PM_{2.5} and PM₁₀.

Deleted: (2012).

2.2. Measurement data

Hourly measurements of the concentrations of NO₂, O₃, PM₁₀ and PM_{2.5} at the AURN stations during 2001-2010 were downloaded and processed using the R package ‘openair’ (Carslaw and Ropkins, 2012) from the R workspaces provided and updated daily by Ricardo-AEA. Because of the emphasis in this study on data for health-related applications, the model-measurement comparisons were principally based on the daily pollutant metrics recommended by the World Health Organisation (WHO, 2006), i.e., daily mean concentrations for NO₂, PM_{2.5} and PM₁₀ (NO₂_daymean, PM_{2.5}_daymean and PM₁₀_daymean), and daily maximum running 8-h mean for O₃ (O₃_max8hmean).

A data capture threshold of 75% was applied throughout the process of calculating statistics from the hourly measurements, as is standard protocol for EU data reporting (http://acm.eionet.europa.eu/databases/airbase/aggregation_statistics.html). For example, daily mean concentrations of NO₂, PM_{2.5} and PM₁₀ were only calculated when there were at least eighteen hourly measurements in a day. For O₃, there had to be at least six hourly measurements in any 8-h window for an 8-h rolling mean to be calculated, and at least eighteen 8-h rolling means for a daily maximum 8-h mean to be valid.

Comparison with model output was only undertaken for AURN sites with ≥75% data capture rate over the whole 10-y period. This means that at least 2,739 out of 3,652 pairs of daily measured and modelled values were required for inclusion. For PM_{2.5},

there were only four sites meeting the 75% data capture requirement over the ten years, so comparisons for PM_{2.5} were restricted to the period 2009-2010.

AURN monitoring sites are classified according to their general location and proximity to particular sources of air pollution (<https://uk-air.defra.gov.uk/networks/site-types>). Sites classified as suburban background (only one or two sites per pollutant), suburban industrial (one site) and urban industrial (four sites or fewer depending on pollutant) were excluded from the model-measurements comparison as being insufficient in number to provide meaningful comparison for these site classifications. Model-measurement comparison therefore focused on potential differences between rural background (RB) and urban background (UB). The numbers of each type of AURN site contributing data to this model-measurement comparison are summarised in Table 1. The names, coordinates, classifications and pollutant data captures of all sites supplying data for this work are given in Supplementary Information Table S1. Measurements at urban traffic sites were not included in the comparisons reported in the main paper because these are deliberately located close to strong sources of NO_x and PM and not at all representative of air in the wider area simulated in a model grid.

The coordinates of each AURN station with valid measurements during the period 2001-10 was used to locate the 5 km × 5 km grid of the EMEP4UK domain whose centroid was closest to the station. The WRF-modelled hourly 2-m surface temperature data at each AURN site were also extracted and converted to daily means.

Measurements from the UK AURN adhere to EU Directives on reference instrumentation and QA/QC procedures. Concentrations of NO₂ and O₃ are derived from chemiluminescence and UV-absorption analysers, respectively. The 'real time' measurement of PM mass concentrations is technically more challenging than for O₃ and NO₂, and the instrumentation used in the UK varied during the 2001-10 period. After about 2008, the majority of measurements of PM₁₀ and PM_{2.5} have been made by TEOM-FDMS (Tapered Element Oscillating Microbalance Filter Dynamics Measurement System) which has been demonstrated as equivalent to the EU reference method (Harrison, 2010). The TEOM-FDMS system records a value for both 'volatile' and 'non-volatile' PM and it is the sum of these values that is used in this work. All the 2009-10 PM_{2.5} measurement data in this study are derived from TEOM-FDMS instruments. However, for PM₁₀, prior to the introduction of the auxiliary FDMS unit, measurements were derived using the TEOM instrument alone. The inlet and element of these instruments were held at 50 °C to limit condensation of water, but this caused loss of some volatile components of PM₁₀. All TEOM values were therefore multiplied by 1.3 before archiving to provide an estimate of the average loss of volatile components, as recommended by the EC Working Group on Particulate Matter (EC, 2001). PM₁₀ values from the few TEOM-only instruments remaining in the AURN after the general introduction of FDMS units in 2008 have been scaled using the more sophisticated Volatile Correction Model (Green et al., 2009), rather than the single 1.3 scaling factor, to account for the loss of volatile components. PM₁₀ data from the few Beta-Attenuation Monitor (BAM) instruments present in the AURN have been scaled by 1.3 if they had a heated inlet and 0.83 if they did not have a heated inlet.

The objective of all these external scaling processes for these PM measurements has been to provide the best practical measure of 'reference equivalent' PM₁₀ (and PM_{2.5}) mass concentrations spatially and temporally across the AURN. Nevertheless, these instrumental issues introduce considerable additional uncertainty to the PM measurement data: first, scaling factors, where applied, are an average scaling in time and space whereas the real scaling that would have been required would have varied between sites and for different times at an individual site; secondly, there may be a discontinuity in the PM₁₀ time series associated with instrument change at a particular site, and dates of instrument change varied across the network. Uncertainty in measurement-model comparison is also introduced by the use of dry mass PM as the model output.

Deleted:),

Deleted:) and urban traffic (UT) sites.

Deleted: (Green et al., 2009)

Irrespective of these changes to PM₁₀ instrumentation, all PM, NO₂ and O₃ instruments in the AURN are maintained and calibrated in accordance with the QA/QC protocol for the UK ambient air quality monitoring network (<http://uk-air.defra.gov.uk/networks/network-info?view=aurn>), and all data are subject to the network data review and ratification process before ‘ratified’ archiving.

5

2.3. Evaluation of spatial aspects of model performance

The coherence between long-term spatial patterns of modelled and measured concentrations was investigated through the correlation across sites of the 10-y (2-y for PM_{2.5}) means of the daily pollutant metrics at each site.

10 2.4. Evaluation of temporal aspects of model performance

The daily pollutant metrics were grouped by day of week, month of year, and year of the 10-y period. Statistics were then calculated on the grouped pairs of daily model simulations and measurements for each pollutant at each site, and summarised by site type. Of the various statistics proposed for quantifying performance of air-quality models, correlation, bias and RMSE are consistently cited for evaluation against policy-relevant metrics of pollutant concentration (USEPA, 2007; Derwent et al., 2010; Thunis et al., 2012). The first two statistics in particular are important for application to health studies (see Discussion).

15

In each of the following, the index *i* runs over the *n* pairs of model (*M_i*) and observation (*O_i*) concentrations per time series at each site. The term ‘observation’ is used, in this section only, synonymously with the term ‘measurement’ used elsewhere in this paper, to avoid ambiguity of an *M* label for model and for measurement.

20

Pearson’s correlation coefficient: $r = \frac{1}{n-1} \sum_{i=1}^n \left(\frac{M_i - \bar{M}}{s_M} \right) \left(\frac{O_i - \bar{O}}{s_O} \right)$

\bar{M} and \bar{O} are the mean of the modelled and observed concentrations respectively, and s_M and s_O are their respective sample standard deviations.

Mean bias: $MB = \frac{1}{n} \sum_{i=1}^n M_i - O_i$ and normalised mean bias: $NMB = \frac{\sum_{i=1}^n M_i - O_i}{\sum_{i=1}^n O_i}$

Root mean square error: $RMSE = \sqrt{\frac{\sum_{i=1}^n (M_i - O_i)^2}{n}}$

25

The FAC2 statistic, the proportion of all pairs of modelled and observed concentrations that are within a factor of two of each other, was also calculated. This statistic provides additional general indication of overall model skill.

3. Results

3.1. Evaluation of spatial aspects of model-measurement statistics

30

Scatter plots of the individual-site model versus measurement 10-y means of NO₂_daymean, O₃_max8hmean, PM₁₀_daymean, and 2-y means for PM_{2.5}_daymean, by site type, are shown in Figure 1 and illustrate the extent of model-measurement spatial correlation across the UK. The data in these plots are additionally categorised according to the latitude of the monitor site. The numerical values of model-measurement correlation, FAC2, NMB, MB and RMSE associated with each plot in Figure 1 are presented in Table 1. The correlation between the normalised bias and the latitude across all sites in a given panel of Figure 1 are given in Table 2. This table also presents the correlation between normalised bias and modelled 10-y mean temperature by site type and pollutant. The equivalent of Figure 1 with data categorised by mean temperature is shown in SI Figure S1.

35

Deleted: ¶

Deleted: bias

Deleted: (USEPA, 2007; Derwent et al., 2010; Thunis et al., 2012). Thus, in this study the following statistics were calculated. (

Deleted: .)

Formatted: Indent: Left: 0 cm, First line: 0 cm

Deleted: (r):¶

Formatted: Indent: Left: 0 cm

Formatted: Left, Don't add space between paragraphs of the same style

Deleted: (MB) and normalised mean bias (NMB):¶
. MB

Deleted:

Deleted: NMB

Formatted: No bullets or numbering

Deleted: .

Deleted: statistics

Deleted: MB

3.1.1. NO₂

Figure 1a shows excellent model-measurement agreement in 10-y mean NO₂ across RB sites (spatial correlation coefficient of 0.98, regression slope and intercept of 1.10 and 0.0045 μg m⁻³, $n = 7$). This is further emphasised by the low bias for 10-y mean NO₂ at these 7 RB sites: MB = 0.7 μg m⁻³, NMB = 0.06, ~~and low scatter: RSME = 1.05 μg m⁻³, FAC2 = 1.00~~ (Table 1). Spatial correlation between modelled and measured 10-y mean NO₂ was also high at UB sites ($r = 0.68$, $n = 37$) (Figure 1a), although modelled NO₂ concentrations were, on average, lower than measured concentrations at urban sites (MB = -9.5 μg m⁻³, NMB = -0.31, FAC2 = 0.84, ~~RSME = 11.9 μg m⁻³~~) (Table 1). The negative model bias at urban sites can be attributed to either or both underestimation of NO_x emissions and the instantaneous dilution of NO_x emissions into a 5 km × 5 km model grid cell irrespective of where the monitor is positioned with respect to emissions of NO_x in reality. If air at the urban monitor is more influenced by NO_x emissions than represented by the model grid average then the model value will underestimate the contributions at the monitor from both primary emitted NO₂ and secondary NO₂ formed by reaction between primary NO and O₃. This model grid dilution effect ~~will be more pronounced, the closer the monitor is sited,~~ to strong sources of NO_x.

For urban sites, model-measurement agreement was generally better at lower latitude sites, i.e. for sites in the south of the UK compared with sites in the north (Figure 1a). The slight increase in model negative bias for NO₂ in the north does not appear to be related to the absolute concentration of NO₂ since the differential is similar across a range of NO₂ concentrations at sites in the south and north. Normalised bias was significantly positively correlated with temperature (Table 2, SI Figure S1b), i.e. less negative at higher temperature, which is consistent with the smaller negative bias for southern UK, since average temperature decreases with increasing latitude in the UK.

3.1.2. O₃

Figure 1b shows that the modelled 10-y mean of daily max 8-h mean O₃ concentration was greater than measured at all except one site (the coastal RB at Weybourne); but that all modelled and measured 10-y mean O₃ concentrations were within a factor of two except at one UT site, London Marylebone Road, which is a kerbside site exposed to very high traffic flows.

As for NO₂, the model-measurement statistics for the 10-y mean O₃ at RB sites were very good (NMB = 0.08, MB = 5.8 μg m⁻³, FAC2 = 1.00, ~~RSME = 8.7 μg m⁻³, $n = 17$~~) and better than at the UB sites (NMB = 0.27, MB = 15.1 μg m⁻³, FAC2 = 1.00, ~~RSME = 15.9 μg m⁻³, $n = 30$~~) (Table 1). The positive model bias for O₃ at UB sites is presumably driven by the same issue as the negative model bias for NO₂ at the UB sites: the dilution of model NO_x emissions in urban areas into the 5 km × 5 km model grid means that the model insufficiently simulates the reactive removal of O₃ by NO close to the urban monitor.

The lack of model-measurement spatial correlation in 10-y mean O₃ concentration across all RB sites ($r = 0.21$, $p = 0.428$, $n = 17$) (Figure 1b) is driven solely by the outlying model-measurement comparison at the Weybourne site, the cause of which is unknown. When this site is excluded, there is highly significant spatial correlation between model and measurement across all remaining RB sites ($r = 0.81$, $p < 0.001$, $n = 16$) (Table 1). There was also highly significant spatial correlation between modelled and measured O₃ concentration at UB sites ($r = 0.73$, $p < 0.001$, $n = 30$) (Figure 1b, Table 1), although the lower than unity gradient indicates a trend for a less positive bias at higher O₃ concentrations. This is again a reflection of the NO + O₃ reaction: higher O₃ at an UB monitor is likely because the monitor is sited further from immediate sources of primary NO and so less susceptible to the localised (sub-model-grid) effect. Normalised bias in 10-y mean O₃ was not correlated with latitude or long-term temperature at either RB or UB sites (Table 2, Figure 1b and SI Figure 1b).

Deleted: and

Deleted: and at UT sites ($r = 0.79$, $n = 16$)

Deleted: both types of

Deleted: . The model-measurement discrepancy was less across all statistics at UB sites

Deleted:) than at UT sites (MB = -34.2 μg

Deleted: , NMB = -0.64, FAC2 = 0.13

Deleted: is particularly

Deleted: for comparison with monitors at UT sites which are deliberately

Deleted: close

Deleted: both types of

Deleted: Only two UT sites measured O₃ so summary model performance statistics for these sites are not illuminating. The large model overestimation of O₃ at the London Marylebone Road UT site is an extreme example of a regional model not being able to simulate the large local NO_x emissions and consequent local NO_x-O₃ chemistry by the kerbside of this central London street with very heavy traffic.

3.1.3. PM₁₀

The 10-y mean of daily-mean simulations of PM₁₀ concentrations were all within a factor of two of the corresponding measurements for all sites (Figure 1c). The 10-y mean PM₁₀ concentrations were well modelled at UB sites in terms of low bias and error (NMB = 0.06, MB = 1.26 µg m⁻³, FAC2 = 1.00, RSME = 2.7 µg m⁻³, *n* = 20) and the spatial correlation across sites, whilst not particularly high, was statistically significant (*r* = 0.58, *p* = 0.007, *n* = 20) (Table 1). Modelled PM₁₀ concentrations were higher than measured at RB sites (NMB = 0.39, MB = 6.6 µg m⁻³, FAC2 = 1.00, RSME = 6.8 µg m⁻³, *n* = 4) (Figure 1c, Table 1) but were also well correlated (*r* = 0.91, *p* = 0.092) despite the small number of comparison sites and small range in 10-y mean PM₁₀ values across the RB sites.

In general there were no strong associations between model-measurement bias for 10-y mean PM₁₀ and latitude, although there was significance for smaller bias at UB sites with higher latitude (*r* = -0.48, *p* = 0.031) (Figure 1c, Table 2) and, correspondingly, a tendency for smaller bias in cooler areas (*r* = 0.40, *p* = 0.078) (SI Figure 1c, Table 2).

3.1.4. PM_{2.5}

Figure 1d shows that all 2-y mean modelled PM_{2.5} concentrations were within a factor of two of the corresponding site measurements, but that at nearly all sites the model yielded lower PM_{2.5} concentrations than were measured. (Even for the shorter time period used for PM_{2.5} comparisons there were only two RB sites with PM_{2.5} monitors so no further comment is made on these data.) Although mean bias at UB sites was negative (NMB = -0.27, MB = -3.5 µg m⁻³, FAC2 = 1.00, *n* = 28) (Table 1), there was a trend for model underestimation to be greater at sites with higher PM_{2.5} concentrations (Figure 1d). This trend is likely for the same reason as given above; that the regional model cannot fully capture the localisation of urban emissions. The lower biases in model simulations of PM₁₀ compared with PM_{2.5} is, at least in part, due to a positive model bias in the simulation of the sea salt component of PM_{coarse}, which is an important component of background PM_{coarse} in the UK (AQEG, 2005). In contrast to the other sites, there was a positive model bias at the RB site at Auchencorth Moss in Scotland. However, the long-term average concentration of PM_{2.5} at this site is very low (~5 µg m⁻³) and only about half the next lowest measured PM_{2.5} concentration. Accurate measurement of these very low concentrations of PM_{2.5} is a considerable challenge (AQEG, 2012).

Model-measurement spatial correlation of PM_{2.5} across UB sites was moderate but statistically significant (*r* = 0.58, *p* = 0.001, *n* = 28). As with PM₁₀, there was no strong association between model bias for PM_{2.5} and geographical location (Table 2, Figure 1d and SI Figure 1d) although there was a tendency for smaller bias with higher latitude (*r* = -0.28, *p* = 0.141) and in cooler areas (*r* = 0.43, *p* = 0.022). This may indicate a negative bias in simulating secondary PM components that have smaller concentrations in the north of the UK compared with the south which is more influenced by transport of these components and of their precursors from continental Europe (Vieno et al., 2014).

Deleted: In contrast, 10-y mean PM₁₀ was lower than measured at UT sites (NMB = -0.25, MB = -7.8 µg m⁻³, FAC2 = 1.00, *n* = 5) (Figure 1c, Table 1) with no evidence of spatial correlation across the sites (*r* = 0.40, *p* = 0.502). The lower modelled values at UT sites is again due to the issue that primary PM emissions associated with traffic and other urban sources close to the UT monitor are in the model diluted and averaged across the 5 km × 5 km grid resolution.

Deleted: The negative

Deleted: was smaller

Deleted: than at UT sites (NMB = -0.38, MB = -5.5 µg m⁻³, FAC2 = 1.00, *n* = 5)

Deleted:). There

Deleted: , and the greater underestimation at UT sites,

Deleted: for PM₁₀: the inability of

Deleted: to

Deleted: , particularly close to traffic sources

3.2. Evaluation of temporal aspects of model-measurement statistics

3.2.1. Statistics for daily metrics across the full simulation period

Table 3 summarises the individual-site model vs measurement r , NMB, RMSE and FAC2 statistics, grouped by site type, for the 10 years of daily NO₂, O₃, PM₁₀ concentrations, and 2 years of daily PM_{2.5} concentrations. Statistics for an individual site are derived from up to 3,652 pairs of daily model-measurement comparisons.

Deleted: FAC2

Deleted: r

Deleted: data

The temporal variability in daily NO₂ and O₃ over the 10 years was well captured by the model at both RB and UB sites. The median (25th percentile, 75th percentile, no. of sites) model-measurement correlation coefficients for NO₂_daymean across RB and UB sites were 0.75 (0.73, 0.78, $n = 7$) and 0.70 (0.63, 0.77, $n = 37$), respectively, whilst for O₃_max8hmean they were 0.73 (0.72, 0.76, $n = 17$) and 0.76 (0.74, 0.78, $n = 30$), respectively. Model-measurement NMB for NO₂ and O₃ at RB sites was also small. The median (25th percentile, 75th percentile) NMB across RB sites for the 10 years of NO₂_daymean and O₃_max8hmean were 0.08 (0.02, 0.12) and 0.11 (0.08, 0.12), respectively. The corresponding NMB data across UB sites were larger, -0.29 (-0.40, -0.12) and 0.26 (0.18, 0.32) for NO₂_daymean and O₃_max8hmean respectively, with the explanations for the negative and positive bias values for NO₂ and O₃, respectively, at urban locations as described above.

Table 3 shows that the agreement between modelled and measured temporal variability in daily PM_{2.5} over the 2 years of available data was also reasonable. The median (25th percentile, 75th percentile, no. of sites) model-measurement temporal correlation coefficients for PM_{2.5}_daymean across RB and UB sites were 0.65 (0.64, 0.65, $n = 2$) and 0.69 (0.67, 0.73, $n = 28$), respectively. The correlations for PM₁₀_daymean were poorer, with corresponding data for correlation coefficients across RB and UB sites for the 10 years of available data of 0.47 (0.46, 0.48, $n = 4$) and 0.50 (0.45, 0.55, $n = 20$). However, although temporal correlation was acceptable for PM_{2.5}_daymean there was substantial bias, with median (25th percentile, 75th percentile) NMB values at RB and UB sites of 0.38 (0.18, 0.59) and -0.26 (-0.33, -0.22), respectively (but note only two sites featured in the RB comparison).

3.2.2. NO₂_daymean grouped by different periods of time

Figure 2 shows box-whisker plots summarising the individual site model-measurement r , FAC2, NMB and RMSE statistics for daily mean NO₂, with the daily data grouped by year, by month, and by day of week. All box plots indicate substantial inter-site variability in model-measurement statistics, but also differences in these statistics between site type and, in some instances, between the individual blocks of time over which the data are averaged.

Formatted: Font: Italic

Deleted: r

By year. Figure 2a shows there were no long-term trends in the model-measurement correlations of daily mean NO₂ across the years, for rural or for urban sites. At RB sites, a high fraction of modelled daily mean NO₂ was within a factor of two of the measurements, without inter-annual trend (10-y mean of the median FAC2 each year = 0.85) (Figure 2b). There was some inter-year variation in the model-measurement NMB at RB sites which, although near zero on average for years 2001-2003 and 2007-10 (mean of median NMB = 0.03) was positive in years 2004-2006 (mean of median NMB = 0.18) (Figure 2c). The model accuracy at both types of urban sites showed a slight trend to lower FAC2 (Figure 2b) and greater negative NMB (Figure 2c) in years 2008-2010. The larger model-measurement bias in the latter, whilst similar values of correlation are retained, is potentially indicative of shortcomings in emissions totals in these latter years of the study. Data for RMSE (Figure 2d) suggest slightly greater imprecision in these latter years also. RMSE was consistently greater at UB sites than at RB sites.

By month. The model-measurement statistics for daily mean NO₂ exhibited some seasonal variability (Figure 2e-h). Figure 2e shows that there was a similar small seasonal variation in model-measurement correlation at all site types, with higher correlation coefficients on average in autumn and winter, and lower correlation coefficients in spring and summer. Correlation was fairly similar across RB and UB sites. The RMSE values were smallest in spring and summer when correlation was lower (Figure 2h) and largest in winter months when correlation was greatest. Model bias was smallest at RB sites, and whilst FAC2 at RB sites was fairly constant between months (Figure 2f), the median NMB at RB sites varied between a median of -0.07 in March and a median of 0.21 in October (Figure 2g). In contrast, in urban areas, model-measurement difference was least in winter months, December-January-February (mean of median FAC2 = 0.72, mean of median NMB = -0.28 for UB sites), and lowest in late spring and early summer (mean of median FAC2 = 0.67, mean of median NMB = -0.33 over May, June and July for UB sites) (Figures 2f and 2g).

These seasonal variations may have a variety of causes. In terms of chemical and meteorological effects, the NO + O₃ titration effect already described will be greater in summer than in winter, and the model grid dilution effect will be exacerbated in summer by greater convective boundary-layer mixing. Some part of the explanation for poorer model-measurement accuracy in summary may also be due to shortcomings in the values of the monthly emission factors used in the model to disaggregate the annual emissions totals of NO_x (and VOC). The more consistent temporal correlations across site types compared with bias is again consistent with issues with the specification of amount and dilution of local emissions into the 5 km model grids rather than issues with describing the meteorology.

By day of week. Model-measurement correlation for daily mean NO₂ was similar for all days of the week at all site types (Figure 2i). On the other hand, there were pronounced differences in NMB between weekday and weekend for both RB and UB sites (Figure 2k). NMB was more positive at weekends at RB sites than during weekdays, and NMB was similarly less negative at weekends compared with weekdays. There was less weekday/weekend contrast in RMSE (Figure 2l). The invariant day-of-week correlation but weekday/weekend differences in NMB again indicates that general meteorology is captured well by the model but that there may be shortcomings in the day-of-the-week factors applied in the model to disaggregate the annual local NO_x (and VOC) emission totals.

3.2.3. O₃_max8hmean grouped by different periods of time

As with daily mean NO₂, Figure 3 reveals some trends in model-measurement statistics for daily maximum 8-h mean O₃ for data grouped by year, month, and day of week.

By year. Figures 3a-d show that there were no long-term trends in the O₃_max8hmean model-measurement statistics at RB and UB sites over the years 2001-2010. Model-measurement correlations were similar at both types of sites (mean of median $r = 0.76$ and 0.77 for RB and UB sites, respectively) (Figure 3a), but bias was less at RB than at UB sites (mean of median FAC2 = 0.98 and 0.87, mean of median NMB = 0.10 and 0.33, respectively) (Figures 3b and 3c). Error was likewise less at RB than at UB sites (mean of median RMSE = 16.7 and 23.0 $\mu\text{g m}^{-3}$, respectively (Figure 3d).

By Month. Model-measurement correlation exhibited a pronounced seasonal variation (but which was similar for both RB and UB sites), with much better correlation in winter and summer than in spring and autumn (Figure 3e). On the other hand, model bias was generally lower in spring and summer than in autumn and winter, with the smallest bias in June, and the greatest in October (Figure 3g). This seasonal variation in bias was more pronounced at UB sites than at RB sites. There was smaller seasonal variation in RMSE (Figure 3h) than for other model-measurement statistics. As discussed above for NO₂, the seasonal

Deleted: 2d-f

Deleted: 2d

Deleted: between site types, better on average for RB and UB sites and slightly poorer at UT sites.

Deleted: 2e

Deleted: 2f

Deleted: and 0.28

Deleted: and -0.59

Deleted: and UT

Deleted: , respectively

Deleted: and 0.06

Deleted: and -0.73

Deleted: and UT

Deleted: , respectively

Deleted: 2e and

Formatted: Subscript

Deleted: 2g

Deleted: 2i

Deleted: There are only two UT sites for O₃ comparisons, and one of these is the 'extreme' kerbside site of London Marylebone Road, so data for UT sites are not discussed further.

Deleted: c

Deleted: remained fairly constant

Deleted: 3d

Deleted: 3f

trends in O₃ model biases may be due to shortcomings in assigning seasonal trends to emissions of NO_x and reactive VOC that together impact on regional O₃ concentrations. However, many factors influence surface concentrations of O₃, acting on different temporal and spatial scales (Royal Society, 2008), so the seasonal patterns in correlation and bias are likely the net consequence of a number of drivers.

By day of week. Model-measurement correlation at both types of background sites did not show variation with day of the week (mean of median $r = 0.74$ and 0.76 for RB and UB sites, respectively) (Figure 3i). Correlation was much poorer at the Weybourne RB site ($r = -0.29$), but, as noted above, the Weybourne comparison (which is only for O₃) is clearly anomalous. Model-measurement bias at RB sites was largely similar across day-of-week (mean of median FAC2 = 0.97, mean of median NMB = 0.11), with slightly reduced positive bias on weekend days (Figures 3j and 3k). At UB sites, bias was greater during Tuesday-Friday (mean of median NMB = 0.30 and mean of median FAC2 = 0.87), but mean NMB reduced to 0.15 on Sundays and mean FAC2 increased to 0.95 (Figures 3j and 3k). The RMSE was also lower at weekends than weekdays (Figure 3l). The positive model bias at the urban sites, plus the improved model bias over the weekend, both indicate the issue of dilution into the 5 km × 5 km model grid of urban NO_x emissions and the consequent lack of capture of the NO reaction with O₃ at sites influenced by traffic emissions (which are lower in the model at weekends).

3.2.4. PM₁₀ daymean grouped by different periods of time

By year. Model-measurement correlations of daily mean PM₁₀, grouped by year, did not show any inter-annual trend across the 10-y evaluation period or across the site types (Figure 4a), except for enhanced correlations, on average, in 2003. Annual averages of model-measurement accuracy in daily PM₁₀ showed some inter-annual variabilities (Figures 4b and 4c for FAC2 and NMB) but no trends across the 10 years. Annual averages of RMSE decreased slightly across the 10 years although inter-site variability in RMSE was somewhat greater in 2010 (Figure 4d).

By month. Model-measurement comparison statistics for daily mean PM₁₀ displayed strong seasonality at both types of sites (Figure 4e-h). Correlations were similar for the RB and UB sites, with the best correlation in summer and the worst in late autumn and winter (Figure 4e). In terms of bias, at RB sites PM₁₀ concentration was best simulated in late summer (mean of median NMB = 0.04 for July and August), and most overestimated in late autumn (NMB = 0.69 for October) (Figure 4g). A similar seasonal pattern was apparent at the UB sites, but superimposed on a lower bias on average: PM₁₀ concentration was underestimated in late summer, but overestimated in late autumn and winter, with better accuracy on average in the summer half of the year. The RMSE values were similar at both RB and UB sites but at both site types there was strong seasonality with substantially lower RMSE values during spring and summer (Figure 4h), when correlation was also better (Figure 4e), than during autumn and winter.

By day of week. Patterns in day-of-week model-measurement statistics for daily mean PM₁₀ (Figure 4i-l) showed some similarity with those for daily mean NO₂ (Figure 2i-l). Model-measurement correlations were fairly consistent throughout the week and similar at all site types (Figure 4i) (a small reduction in correlation on Wednesdays at RB sites is likely simply a statistical artefact, as observed also for RMSE values on a Wednesday, and a Tuesday (Figure 4l)). There was no significant variation in model accuracy at RB with day of the week (Figures 4j and 4k), although there are only 4 sites for this comparison. At UB sites, PM₁₀ concentration was simulated most accurately on weekdays (mean of median NMB = 0.01, mean of median FAC2 = 0.87) (Figures 4j and 4k), but was overestimated at RB sites (mean of median NMB = 0.41). The positive bias at RB sites was probably due to the overestimation of sea salt, as mentioned above. At weekends, positive bias in PM₁₀ concentrations

Deleted: 3g

Deleted: 3h

Deleted: 3i

Deleted: 3h and 3i).

Deleted: three

Deleted: all three

Deleted: 4d-f

Deleted: three types of site

Deleted: 4d

Deleted: 4f

Deleted: urban

Deleted: more general negative

Deleted: . Thus, at UB sites,

Deleted: At UT sites, negative bias for PM₁₀ concentration was greatest in summer (mean of median NMB = -0.42 for July and August) and least in late autumn (NMB = -0.13 for October).

Deleted: 4g-i

Deleted: 2g-i

Deleted: 4g

Deleted: .

Deleted: 4h

Deleted: 4i

Deleted: 4h

Deleted: 4i

Deleted:) and was underestimated at UT sites (mean of median NMB = -0.25

Deleted: , and the underestimation at UT sites could be attributed to the dilution and underestimation of local primary PM₁₀ from traffic sources, e.g., from tyre/brake wear.

increased at UB sites (Figure 4k), yet RMSE did not change (Figure 4l), suggesting that the day-of-week emission factors used in the model might not adequately reflect actual weekday-weekend differences in emissions.

Deleted: , whereas the negative bias at UT sites reduced,

Again, the general consistency in temporal correlation with site type and time period, compared with the variation in bias, is consistent with the main driver of model shortcoming being in accuracy of emissions (totals and temporal disaggregation) rather than in simulation of atmospheric chemistry and transport processes.

3.2.5. PM_{2.5} daymean grouped by different periods of time

By year. Figures 5a-d summarise the model evaluation statistics for PM_{2.5} daily means for the 2-y period of available monitor data (2009-10). The PM_{2.5} model-measurement comparison statistics are generally poorer in 2010 but two years is insufficient to draw any conclusion on inter-annual trend. As for PM₁₀ daily mean comparisons, there was positive bias for daily mean at RB sites (mean of median NMB = 0.39) and negative bias at UB sites (mean of median NMB = -0.26) (Figure 5c). However, PM_{2.5} was measured at only two RB sites, and at one of these, Auchencorth Moss in Scotland, the PM_{2.5} concentrations were substantially lower than at any of the other measurement sites. At least half of the modelled PM_{2.5} daily mean concentrations were within a factor of two of the measurements at all sites, except the RB site of Auchencorth Moss (Figure 5b). Of the two RB sites, the model accurately simulated daily mean PM_{2.5} concentration at Harwell (mean NMB = -0.02, mean FAC2 = 0.90), but there was substantially positive bias at Auchencorth Moss (mean NMB = 0.81, FAC2 = 0.43). As noted above for PM₁₀, RMSE was, for unknown reason, greater in 2010 (Figure 5d).

Deleted: c

Deleted: and UT

Deleted: and -0.41 at UB and UT sites, respectively

Deleted: and the UT site of Bury Roadside

By month. Model-measurement correlation was generally better in the summer half of the year than in the winter half (e.g. mean of median $r = 0.76$ and 0.68 , respectively, at UB sites) (Figure 5e). Similarly, there were greater values of FAC2 in spring and summer than in autumn and winter, particularly at UB sites (mean of median FAC2 = 0.86 and 0.78 , respectively) (Figure 5f). Although model-measurement bias did not vary substantially with season (Figure 5g), as for PM₁₀ there was a seasonal correspondence of lower RMSE values (Figure 5h) and higher correlation (Figure 5e) during spring and summer, and vice versa during autumn and winter.

Deleted: 5d

Deleted: 5e). On the other hand,

Deleted: 5f).

By day of week. In contrast to the other three pollutants, there was no obvious differences in model-measurement statistics between weekdays and weekend at any site type (Figure 5i-l), but there are substantially less comparison data for PM_{2.5} than for the other three pollutants (2 years rather than 10 years).

Deleted: of the three types of

Deleted: 5g-i

Deleted: .

3.2.6. Hourly model-measurement statistics

The focus in this work was model-measurement comparisons at daily and annual averaging resolution, but concentration data were available at hourly resolution and the Supplementary Information presents figures and discussion of the comparison statistics for NO₂ and O₃ averaged by hour of day. These data support the general observations presented above for the longer averaging periods, in particular that correlations between model and measurement hourly data were generally consistent throughout the day but that bias and RMSE showed systematic variation, which is interpreted as error in the hour-of-day emissions factors used to disaggregate the annual NO_x emissions totals in the model (and to over-dilution of the NO_x emissions into the model grid compared to the siting of the monitor, at urban sites).

Deleted: , particularly for UT

4. Discussion

The work presented here was motivated by the use of the EMEP4UK-WRF model output for air pollution epidemiology and health burden assessment; therefore the model-measurement comparison focused on health-relevant metrics for the most important ambient air pollutants: specifically the annual and daily means for PM₁₀, PM_{2.5}, NO₂ and O₃ (the daily maximum 8-h mean for O₃) (WHO, 2013a). The model-measurement comparison was comprehensive; all available data from all non-roadside monitors in the UK's national automated urban and rural network for 2001-2010 were used, which span the range of ambient environments in which people are exposed to air pollution in the UK. Focus was placed on two important statistics for evaluation of air quality model output against health-relevant standards – correlation (temporal and spatial) and bias (e.g. USEPA, 2007; Derwent et al., 2010; Thunis et al., 2012) – and also on the RMSE statistic, as discussed further below.

Even for a well-specified Eulerian model (in terms of input data, transport, chemistry, etc.), model-measurement agreement may not be perfect for (at least) the following two reasons: (i) the model simulates a volume-averaged concentration whereas the monitor records the composition of the air in one part of that volume, which may or may not reflect the average concentration for the whole volume over the relevant time-averaging period; and (ii) the measurement may be in error. A rural background monitor in homogenous terrain and well-away from local sources may be anticipated to be sampling air that is more homogenous over the 5 km × 5 km model grid in which it is located than an urban background monitor. The representativeness of an urban background monitor for the air in the model grid in which it is located will be dependent on the extent of urban area within that grid (and hence to some extent dependent on the absolute size of the particular urban area), as well as the distance of the monitor from specific local pollutant emission sources.

The presence of measurement uncertainty constrains the extent to which model-measurement statistics can be used to evaluate the performance of a model. The FAIRMODE project (fairmode.jrc.ec.europa.eu) has developed a series of relationships, published in Thunis et al. (2012; 2013), Pernigotti et al. (2013) and in documents on the FAIRMODE website, that define minimum values for model-measurement statistics, given values for the measurement uncertainty, U ; for example, $RMSE < 2U$, $|NMB| < 2U/\bar{O}$ and $r > 1 - 2(U/\sigma_O)^2$ (with the O nomenclature representing observations, i.e. measurements). Values for these statistics (termed model performance criteria) can be derived from the dataset of measurements (observations) at each site in two ways. First, it can be assumed that the uncertainty in each measurement is at the maximum level for uncertainty specified in the EU Air Quality Directive for measurement at the limit value of the respective pollutant. These are 15% for daily maximum 8-h mean O₃, 25% for daily mean PM₁₀ and 25% for daily mean PM_{2.5} (EC Directive, 2008). Secondly, the above publications also provide formulae and associated variable values that allow for the measurement uncertainty to vary as a function of the concentration of the metric being measured; i.e., to allow for greater measurement uncertainty than specified in the EU data quality objectives when measuring concentrations lower than the relevant air quality limit value, as is the case for the majority of ambient concentrations. In these circumstances, the calculated MPC for r are lower and the $|NMB|$ and RMSE values are greater than those for the constant relative measurement uncertainty case. The mean MPC values for r , $|NMB|$ and RMSE per site type and pollutant metric, calculated using both approaches of assigning uncertainties to the actual datasets of measurements, are presented in Table 3 for comparison against the r , NMB and RMSE values derived in the present model-measurement comparison. No MPC values are presented for NO₂ because the FAIRMODE data relate to quantification of NO₂ as an hourly average whereas the present study was based on daily average NO₂.

The intention here is to provide an overview of how the EMEP4UK-WRF model-measurement statistics presented here compare with threshold criteria for evaluation of an air quality model in the European air quality context. It is recognised that satisfying the MPC is a necessary but not sufficient part of model validation. Nevertheless, Table 3 shows that in all instances the site-mean model-measurement r , NMB and RMSE values from the EMEP4UK-WRF modelling described here are better

Deleted: the

Deleted: most

Deleted: highlighted in the literature

Deleted: policy (and hence

Deleted:)

Deleted: :

Deleted: (e.g. USEPA, 2007; Derwent et al., 2010; Thunis et al., 2012).

Deleted: first,

Deleted: , secondly,

Deleted: traffic monitor that is deliberately sited close to a major source of air pollutant emissions and therefore not representative of the composition of the atmosphere averaged over the model grid.

Deleted: 5 km × 5 km

Deleted: between these two extremes and

Deleted: ,

Deleted: degrades the values that can be expected from air quality model-measurement statistics. Thunis et al. (2012) developed a series of relationships that define minimum values for model-measurement statistics, given a value, U , for measurement uncertainty; for example, $|NMB| < 2U/\bar{O}$ and $r > 1 - 2(U/\sigma_O)^2$. They then estimated minimum values for these statistics by taking example values for \bar{O} and σ_O from more than 700 monitoring stations around Europe (for 2009) and using the measurement data quality objectives for measurement uncertainty specified in the EU Air Quality Directive as values for U . For daily maximum 8-h mean O₃ and daily mean PM₁₀ these are 15% and 25%, respectively

Deleted: At these levels of measurement uncertainty, model-measurement correlation coefficients for daily mean PM₁₀ as low as 0.40-0.48 (the range reflects the three different types of measurement site) still satisfy the model-measurement performance criterion (Thunis et al., 2012). For daily maximum 8-h mean O₃ the minimum values for r to satisfy the criterion are in the range 0.54-0.69. Minimum values for $|NMB|$ for daily mean PM₁₀ are in the range 0.57 to 0.58, and for daily maximum 8-h mean O₃ are in the range 0.32 to 0.33 (Thunis et al., 2012). Values of these statistics for daily mean PM_{2.5} and daily mean NO₂ are anticipated to be similar to those above for PM₁₀ and O₃, respectively. The above values are presented in Table 3 for comparison against the r and NMB values derived in the present model-measurement comparison. If measurement uncertainty is greater than specified in the data quality objectives, for example for measurement of concentrations lower than the relevant air quality limit value, as the majority of concentrations are, then lower values of r , and greater values of $|NMB|$, than quoted above define satisfactory model-measurement comparison (Thunis et al., 2013; Pernigotti et al., 2013).

Deleted: Table 3 shows that in the large majority of instances the values of model-measurement correlation and NMB from this EMEP4UK-WRF modelling exceed the threshold values described above for satisfactory model performance in the presence of measurement uncertainties at the levels assigned. For example, the 25th percentile across sites of EMEP4UK-WRF model-measurement correlation for daily maximum 8-h mean O₃ at RB and UB sites ($r = 0.72$ and 0.74 , respectively) well exceed the values of 0.54 and 0.69 derived by Thunis et al. (2012). Likewise, the 75th percentile of EMEP4UK-WRF model-measurement NMB values for the O₃ metric (0.12 and 0.32 for RB and UB sites) are lower than the respective Thunis et al. (2012) values of 0.32 and 0.33. The EMEP4UK-WRF model-measurement statistics for O₃ at the two UT sites are, however, poorer (Table 3). For, daily mean PM₁₀ the 25th percentile values of EMEP4UK-WRF model-measurement correlation coefficients are very similar to those of Thunis et al. (2012), but EMEP4UK-WRF model-measurement NMB values are generally much lower than those of Thunis et al. (2012). The situation is similar (better for correlation) for PM_{2.5}, when assigning the PM₁₀ satisfactory performance values to PM_{2.5} also (Table 3). As described in Section 2, instrumentation for 'real time' measurement of PM₁₀ and PM_{2.5} has varied and in some instances has necessitated post hoc application of correction factors, which increases measurement uncertainty for these species compared with measurement of NO₂ and O₃. ¶

than their respective MPC values derived assuming concentration-dependent measurement uncertainty, except for RMSE values for daily PM₁₀ at RB sites. In most cases, the EMEP4UK-WRF model-measurement r , NMB and RMSE values are also better, or comparable with, the MPC values derived assuming constant relative measurement uncertainty. For example, the site-mean model-measurement correlations of 0.73 and 0.76 for daily maximum 8-h mean O₃ at RB and UB sites exceed the estimated mean MPC r values of 0.42 and 0.69 for these sites, respectively; and the site-mean model-measurement NMB values of 0.11 and 0.26 are less than the estimated MPC NMB values of 0.31 and 0.33, for RB and UB sites, respectively. The site-mean model-measurement RMSE values of 17.1 and 21.8 $\mu\text{g m}^{-3}$ for O₃ at RB and UB sites are similar to the estimated MPC values of 21.8 and 18.1 $\mu\text{g m}^{-3}$, respectively at these sites. The pattern is similar when considering model-measurement metrics for PM₁₀ and PM_{2.5} against their respective MPC values derived assuming constant relative measurement uncertainty. Although MPC values cannot be calculated here for daily mean NO₂, example values published for hourly mean NO₂ (Thunis et al., 2012; Pernigotti et al., 2013) suggest that MPC values for daily mean NO₂ are likely to be roughly similar to those for daily maximum 8-h mean O₃. If so, then Table 3 shows that the model-measurement statistics for daily mean NO₂ are also generally in line with or better than their respective MPC values.

FAIRMODE also outlines an approach to defining a model quality objective for bias relative to long-term average pollutant concentration measurement. The absolute values for this MQO bias, calculated using the measurements relevant to this study, are presented in Table 2 for each pollutant and site type, and also demarcated by the green lines in the scatter plots of modelled versus measurement long-term means in Figure 1. Minimum model performance is satisfied if $\geq 90\%$ of sites have model-measurement bias less than the value given in Table 2, i.e. have data markers within the two green lines in the panels of Figure 1. The proportion of sites meeting this condition per pollutant and site type is also given in Table 2. The condition is satisfied in all cases except for NO₂ and O₃ at UB sites, and PM₁₀ at RB sites. For PM₁₀ at RB sites, the one site (out of four) that has bias outside the MQO has a bias very close to the MQO (Figure 1c). Similarly, the biases at the 20% (i.e. 6) of the RB O₃ sites not meeting the MQO are all very close to the MQO (Figure 1b). Non-compliant model-measurement biases at UB NO₂ sites are somewhat greater than the MQO but it should be noted that satisfactory model performance allows for 10% of sites (i.e. 4 sites in this instance) to be outside the MQO. Examining Figure 1a for the UB NO₂ sites reveals that when the 4 sites showing greatest bias are excluded, the biases for the remaining non-compliant sites are again generally quite close to the MQO.

The UK AURN operates as a single network subject to standardised QA/QC procedures (as described in the Section 2) so measurement uncertainty might be lower than the values derived by the FAIRMODE project for measurement across multiple networks. On the other hand, the MPC values in Table 3 show that allowing for increasing measurement uncertainty at lower concentrations very considerably relaxes the threshold of an MPC. Also, as described in Section 2.2, instrumentation for 'real time' measurement of PM₁₀ and PM_{2.5} in the UK has varied and in some instances has necessitated post hoc application of correction factors, which provides additional unaccounted for measurement uncertainty for these species compared with measurement of NO₂ and O₃. It should also be remembered that the above analysis of magnitudes of model-measurement statistics does not allow for uncertainty arising from lack of spatial representativeness of the measurement location within its model grid, as discussed already.

Although the EMEP4UK-WRF model-measurement statistics reported in Tables 2 and 3 are for the most part in line with or better than anticipated model performance criteria, there were also instances of trends in statistics with site type, month-of-year and day-of-week. (In general there were no obvious inter-annual trends across the decade of comparisons.) Bias was least overall for rural sites (e.g. median normalised mean bias values for O₃ and NO₂ of 0.08 and 0.11, respectively), reflecting the smaller likelihood for sub-grid variations in sources, dispersion and deposition to perturb concentrations at the monitor location away from the model grid average. There was a tendency for positive model bias for O₃ at UB sites (median NMB = 0.26) and

Deleted: expected to be lower than the values used by Thunis et al. (2012). On the other hand, this

Deleted: this work

Deleted: expectations

Deleted: trend

Deleted: There was generally less bias at the background sites compared with traffic sites, and bias

Deleted: background

for negative model bias in NO₂ (−0.29) and PM_{2.5} (−0.26) at these sites. The negative biases may reflect both underestimation of primary emissions of NO_x and PM and a tendency for air at urban background monitor locations to be more influenced by the primary emissions in the vicinity than simulated by the model which effectively averages all emissions evenly across the 5 km × 5 km grid in which the monitor is located. Unless the urban area is very large – greater than a few km in linear dimension – then the air even at a background site in the centre of that urban area is likely to be more influenced by local primary emissions than peripheral (suburban) parts of the urban area included in the model grid average. A further contributor to model negative bias for PM are known omissions in the model of some PM components, including particle-bound water and some sources of dust resuspension, as noted in Section 2.1.

Deleted: .

The positive model bias for O₃ at UB sites is consistent with the explanations given above for the negative model biases for NO₂ (and PM_{2.5}). The dilution of the NO_x emissions in urban areas into the 5 km × 5 km model grid means that the model underestimates the reactive removal of O₃ by NO in the vicinity of the urban monitor, an effect that cannot be resolved even by the comparatively high resolution of the EMEP4UK-WRF ACTM.

Deleted: . These sub-grid effects are particularly acute for roadside and kerbside sites which are deliberately sited close to strong sources of NO_x and PM, and which

Instances of trends in model-measurement bias with month or day of the week are described in the Results section. The generally good daily temporal correlations discussed already indicate that the model captured the day-to-day changes in air mass movements which are the strongest influences on surface concentrations of pollutants at this temporal resolution. The observed seasonal and weekday/weekend variations in bias (and of diurnal variations in bias – see Supplementary Information) are therefore strongly suggestive of shortcomings in the monthly and weekday/weekend (and hour-of-day) emissions factors applied in the model to disaggregate the annual total emissions supplied by the emissions inventories.

As stated at the outset, the motivation here was use of the EMEP4UK-WRF model output for health studies. In the context of use of concentration data for epidemiology, in the broadest terms correlation is more important than bias, and for the model output reported here, model-measurement correlations (both temporal and spatial) were generally considerably better, particularly for the gaseous pollutants, than bias statistics. Epidemiological studies of association of ambient air pollution with health require an estimate of exposure for each subject, most usually from measurements from monitors but increasingly from models. The difference between the estimates and a hypothetical gold standard, for example concentration outside the residence of each subject, is called exposure measurement error. (It is assumed here that it is the association of ambient pollution with health outcome at the small-area level that is important, because of the link to regulation (Dominici et al., 2000), rather than exposure at the level of the individual, and therefore issues of disparity between the concentration at a location and true personal exposure are not considered.) The consequences of measurement error are to reduce the power of the study to detect an association and to bias the magnitude of the association (Sheppard et al., 2005; Sheppard et al., 2012; Armstrong and Basagaña, 2015).

Deleted: (Dominici et al., 2000)

Deleted: (Sheppard et al., 2005; Sheppard et al., 2012; Armstrong and Basagaña, 2015)

The agreement statistics determining the magnitude of this ‘blunting’ depends on the specific context. Study power is simplest, depending only on the correlation between the true and estimated exposure. Of the two main types of epidemiological studies of air pollution: in ‘spatial studies’ power is diminished according to the correlation of long-term true and estimated means over space; in ‘time series studies’ it depends on correlations of daily values over space. Thus the model-measurement correlations reported in Sections 3.1 and 3.2 have a fairly direct implication for study power in those two study types except that errors in the measured values as estimates of the mean over the population in the grid square (or wider area) are not allowed for. Because of this, the power of studies using modelled concentrations would be somewhat better than implied by the correlations reported (Butland et al., 2013).

Low correlation of 'true' and estimated exposures also often reduces estimated size of association (e.g. relative risk per unit exposure), but other aspects of the error distribution also matter, notably the extent of Berkson or classical type (Butland et al., 2013; Armstrong and Basagaña, 2015). It is difficult and beyond the scope of this paper, to separate Berkson and classical error, but in the absence of this it would be reasonable to consider the model-measured correlations as broad guides to bias in association as well as power. Perhaps surprisingly, additive bias (e.g. estimating concentration 10 units too high on average) has little effect in epidemiological studies, at least if the exposure-health association is assumed linear, as it usually is (although bias in association is also dependent on relative magnitudes of variance in 'true' and estimated exposures).

Deleted: (Butland et al., 2013; Armstrong and Basagaña, 2015)

As well as the good temporal correlations for daily pollutant metrics, the good spatial correlations between long-term averaged modelled and measured concentrations across urban sites for all four pollutants selected encouragingly suggests that the EMEP4UK-WRF modelled pollutant concentration may broadly reduce exposure measurement error caused by using pollution measurements from air pollution monitors far from the population under consideration. On the other hand, a bias error in the simulations contributes to uncertainty in the investigation of any threshold in concentration-health effect, and in health impact assessments that apply concentration-response functions to estimated concentrations of exposure.

Deleted: UB

This study has worked with the EMEP4UK-WRF v4.3 model. Model-measurement statistics will be different for other models. However, other ACTM are similarly constructed and so the broad discussion points relating to intrinsic limitations to monitor versus grid-volume comparison statistics, unresolved sub-grid variabilities, and shortcomings in magnitudes and temporal trends in emissions are generalizable. Local dispersion models can better represent the sources and dispersion at high spatial resolution but these can only be configured for specific urban areas at a time, are similarly constrained by the accuracy of the spatiotemporal emissions data and require provision of boundary conditions of meteorology and atmospheric composition (often supplied by an ACTM). Dispersion models have also been combined with land-use regression models (Wilton et al., 2010; Michanowicz et al., 2016) but again for individual areas only. Some progress is being made in combining measurement (both ground-based and satellite) and model data through data assimilation (e.g. (MACC-II: Monitoring Atmospheric Composition and Climate - Interim Implementation (www.gmes-atmosphere.eu/about/); Singh et al., 2011) and data fusion (Berrocal et al., 2011; Zidek et al., 2012; Friberg et al., 2016), but these approaches are computationally demanding, particularly for reactive species, and can only be applied to historic data. National-scale air pollution modelling as described here, despite acknowledged limitations for health studies (Butland et al., 2013), has the benefit of providing self-consistent chemical concentration fields, data for air pollutant components that are either not, or only sparsely, measured and provide the capacity to investigate the potential effects of alternative possible futures.

Deleted: (Wilton et al., 2010; Michanowicz et al., 2016)

Deleted: (Berrocal et al., 2011; Zidek et al., 2012; Friberg et al., 2016)

5. Conclusions

This study was motivated by the use in air pollution epidemiology and health burden assessment of data simulated at 5 km × 5 km horizontal resolution by the EMEP4UK-WRF v4.3 atmospheric chemistry transport model. A spatially and temporally comprehensive set of model-measurement comparison statistics are presented for daily and annual concentrations of NO₂, O₃, PM₁₀ and PM_{2.5} across the UK for a 10 year period.

In general for epidemiology, capturing correlation is more important than bias and RMSE, and in this study model-measurement temporal correlation of daily concentrations generally exceeded minimum performance values calculated from methods reported in the literature that take into account potential measurement uncertainties. Model-measurement bias varied according to monitor site classification with generally less bias at rural background compared with urban background sites.

Deleted: was

Deleted: better than expectations

Deleted: the

Deleted: and urban

Deleted: sites

Deleted: traffic sites. Bias was least overall for rural

5 but bias was again better (i.e. smaller) than values that take account of uncertainties in the measurements. The greater consistency in temporal correlation with site type and across months and day of week, compared with variations in bias, is strongly indicative that the main driver of model shortcoming is inaccuracy of emissions (totals and the monthly and day-of-week temporal factors applied in the model to the totals) rather than in simulation of atmospheric chemistry and transport processes.

10 Despite discussed limitations, these detailed analyses support use of model data such as these in air pollution epidemiology. Air pollution modelling at the spatial coverage and spatial resolution described here has the benefit of increasing study power, of providing data for air pollutant components that are either not, or only sparsely, measured and of enabling investigation of the potential effects of alternative future scenarios.

Code and data availability

15 This study used output from the EMEP4UK-WRF model which is a regional application of the European Monitoring and Evaluation Programme (EMEP) MSC-W model (available at www.emep.int, version vn4.3 used here) driven by meteorology from the Weather Research and Forecast model (www.wrf-model.org) version 3.1.1. As described and referenced in Section 2.1, the EMEP4UK model has increased spatial resolution over a British Isles inner domain and uses national emissions data for the UK. All EMEP4UK modifications are included in the official EMEP model. The model [and measurement data used to derive the statistics presented in this work are](#) archived at the University of Edinburgh [at doi:xx.xxx/aaaaaaaaaaaaa](#).

Deleted: output described here is

Deleted: and available on request

Competing Interest

20 The authors declare that they have no conflict of interest.

Acknowledgements

25 This work was supported by funding from the Natural Environment Research Council and Medical Research Council Environmental Exposure and Human Health Initiative (EEHI) grants NE/I007865/1, NE/I007938/1 and NE/I008063/1. The EMEP4UK model is also supported by the UK Department for the Environment, Food and Rural Affairs (Defra) and the NERC Centre for Ecology & Hydrology (CEH). We acknowledge access to the AURN measurement data, which were obtained from uk-air.defra.gov.uk and are subject to Crown 2014 copyright, Defra, licenced under the Open Government Licence (OGL).

Deleted: also

References

- 5 [AQEG: Particulate Matter in the United Kingdom. Second report of the Air Quality Expert Group, UK Department for Environment, Food and Rural Affairs, London. PB10580. \[http://uk-air.defra.gov.uk/library/reports?report_id=269\]\(http://uk-air.defra.gov.uk/library/reports?report_id=269\), 2005.](#)
- 10 [AQEG: Fine Particulate Matter \(PM2.5\) in the United Kingdom. Air Quality Expert Group, UK Department for Environment, Food and Rural Affairs, London. PB13837. \[http://uk-air.defra.gov.uk/library/reports?report_id=727\]\(http://uk-air.defra.gov.uk/library/reports?report_id=727\), 2012.](#)
- [Armstrong, B. and Basagaña, X.: Exposure measurement error: consequences and design issues. In: *Exposure Assessment in Environmental Epidemiology*, \(ed. Nieuwenhuijsen, M. J.\), OUP, Oxford. 978-0199378784, 201-228, 2015.](#)
- [Bergström, R. W., Denier van der Gon, H. A. C., Prévôt, A. S. H., Yttri, K. E. and Simpson, D.: Modelling of organic aerosols over Europe \(2002-2007\) using a volatility basis set \(VBS\) framework: application of different assumptions regarding the formation of secondary organic aerosol, *Atmos. Chem. Phys.*, 12, 8499-8527, 2012.](#)
- [Berrocal, V. J., Gelfand, A. E. and Holland, D. M.: Space-time data fusion under error in computer model output: an application to modeling air quality, *Biometrics*, 2011.](#)
- 15 [Binkowski, F. S. and Shankar, U.: The Regional Particulate Matter Model .1. Model description and preliminary results, *Journal of Geophysical Research-Atmospheres*, 100, 26191-26209, 1995.](#)
- [Butland, B. K., Armstrong, B. G., Atkinson, R. W., Wilkinson, P., Heal, M. R., Doherty, R. M. and Vieno, M.: Measurement error in time-series analysis: a simulation study comparing modelled and monitored data. *BMC Med. Res. Methodol.*, 13, 136, doi:10.1186/1471-2288-13-136, 2013.](#)
- 20 [Butland, B. K., Atkinson, R. W., Milojevic, A., Heal, M. R., Doherty, R. M., Armstrong, B. G., MacKenzie, I. A., Vieno, M., Lin, C. and Wilkinson, P.: Myocardial infarction, ST-elevation and non ST-elevation myocardial infarction and modelled daily pollution concentrations: a case-crossover analysis of MINAP data, *Open Heart*, 3, e000429. doi:10.1136/openhrt-2016-000429, 2016.](#)
- [Carslaw, D. C. and Ropkins, K.: openair - An R package for air quality data analysis, *Environ. Modell. Softw.*, 27-28, 52-61, 2012.](#)
- 25 [Colette, A., Bessagnet, B., Meleux, F., Terrenoire, E. and Rouil, L.: *Frontiers in air quality modelling, Geoscientific Model Development*, 7, 203-210, 2014.](#)
- [COMEAP: Long-term exposure to air pollution: effect on mortality, UK Department of Health Committee on the Medical Effects of Air Pollutants. ISBN 978-0-85951-640-2, <https://www.gov.uk/government/publications/comeap-long-term-exposure-to-air-pollution-effect-on-mortality>, 2009.](#)
- 30 [Dennis, R., Fox, T., Fuentes, M., Gilliland, A., Hanna, S., Hogrefe, C., Irwin, J., Rao, S. T., Scheffe, R., Schere, K., Steyn, D. and Venkatram, A.: A framework for evaluating regional-scale numerical photochemical modeling systems, *Environmental Fluid Mechanics*, 10, 471-489, 2010.](#)
- [Derwent, D., Fraser, A., Abbott, J., Jenkin, M. E., Willis, P. and Murrells, T.: Evaluating the performance of air quality models. A report for Defra and the Devolved Administrations, \[http://www.airquality.co.uk/reports/cat05/1006241607_100608_MIP_Final_Version.pdf\]\(http://www.airquality.co.uk/reports/cat05/1006241607_100608_MIP_Final_Version.pdf\), 2010.](#)
- 35 [Dominici, F., Peng, R. D., Barr, C. D. and Bell, M. L.: Protecting Human Health From Air Pollution Shifting From a Single-pollutant to a Multipollutant Approach, *Epidemiology*, 21, 187-194, 2010.](#)
- [Dominici, F., Zeger, S. L. and Samet, J. M.: A measurement error model for time-series studies of air pollution and mortality, *Biostatistics*, 1, 157-175, 2000.](#)
- 40 [Donahue, N. M., Robinson, A. L., Stanier, C. O. and Pandis, S. N.: Coupled Partitioning, Dilution, and Chemical Aging of Semivolatile Organics, *Environ. Sci. Technol.*, 40, 2635-2643, 2006.](#)
- [Duyzer, J., van den Hout, D., Zandveld, P. and van Ratingen, S.: Representativeness of air quality monitoring networks, *Atmos. Environ.*, 104, 88-101, 2015.](#)

Deleted: AQEG: Particulate Matter in the United Kingdom. Second report of the Air Quality Expert Group, UK Department for Environment, Food and Rural Affairs, London. PB10580. http://uk-air.defra.gov.uk/library/reports?report_id=269, 2005.¶

AQEG: Fine Particulate Matter (PM2.5) in the United Kingdom. Air Quality Expert Group, UK Department for Environment, Food and Rural Affairs, London. PB13837. http://uk-air.defra.gov.uk/library/reports?report_id=727, 2012.¶

Armstrong, B. and Basagaña, X.: Exposure measurement error: consequences and design issues. In: *Exposure Assessment in Environmental Epidemiology*, (ed. Nieuwenhuijsen, M. J.), OUP, Oxford. 978-0199378784, 201-228, 2015.¶

Bergström, R. W., Denier van der Gon, H. A. C., Prévôt, A. S. H., Yttri, K. E. and Simpson, D.: Modelling of organic aerosols over Europe (2002-2007) using a volatility basis set (VBS) framework: application of different assumptions regarding the formation of secondary organic aerosol, *Atmos. Chem. Phys.*, 12, 8499-8527, 2012.¶

Berrocal, V. J., Gelfand, A. E. and Holland, D. M.: Space-time data fusion under error in computer model output: an application to modeling air quality, *Biometrics*, 2011.¶

Binkowski, F. S. and Shankar, U.: The Regional Particulate Matter Model .1. Model description and preliminary results, *Journal of Geophysical Research-Atmospheres*, 100, 26191-26209, 1995.¶

Butland, B. K., Armstrong, B. G., Atkinson, R. W., Wilkinson, P., Heal, M. R., Doherty, R. M. and Vieno, M.: Measurement error in time-series analysis: a simulation study comparing modelled and monitored data, *BMC Med. Res. Methodol.*, 13, 136, doi:10.1186/1471-2288-13-136, 2013.¶

Carslaw, D. C. and Ropkins, K.: openair - An R package for air quality data analysis, *Environ. Modell. Softw.*, 27-28, 52-61, 2012.¶

Colette, A., Bessagnet, B., Meleux, F., Terrenoire, E. and Rouil, L.: *Frontiers in air quality modelling, Geoscientific Model Development*, 7, 203-210, 2014.¶

Dennis, R., Fox, T., Fuentes, M., Gilliland, A., Hanna, S., Hogrefe, C., Irwin, J., Rao, S. T., Scheffe, R., Schere, K., Steyn, D. and Venkatram, A.: A framework for evaluating regional-scale numerical photochemical modeling systems, *Environmental Fluid Mechanics*, 10, 471-489, 2010.¶

Derwent, D., Fraser, A., Abbott, J., Jenkin, M. E., Willis, P. and Murrells, T.: Evaluating the performance of air quality models, A report for Defra and the Devolved Administrations. http://www.airquality.co.uk/reports/cat05/1006241607_100608_MIP_Final_Version.pdf, 2010.¶

Dominici, F., Peng, R. D., Barr, C. D. and Bell, M. L.: Protecting Human Health From Air Pollution Shifting From a Single-pollutant to a Multipollutant Approach, *Epidemiology*, 21, 187-194, 2010.¶

Dominici, F., Zeger, S. L. and Samet, J. M.: A measurement error model for time-series studies of air pollution and mortality, *Biostatistics*, 1, 157-175, 2000.¶

Donahue, N. M., Robinson, A. L., Stanier, C. O. and Pandis, S. N.: Coupled Partitioning, Dilution, and Chemical Aging of Semivolatile Organics, *Environ. Sci. Technol.*, 40, 2635-2643, 2006.¶

Duyzer, J., van den Hout, D., Zandveld, P. and van Ratingen, S.: Representativeness of air quality monitoring networks, *Atmos. Environ.*, 104, 88-101, 2015.¶

EC: Guidance to Member States on PM₁₀ Monitoring and Intercomparisons with the Reference Method. Report by the EC Working Group on Particulate Matter. <http://ec.europa.eu/environment/air/pdf/finalwgreporten.pdf>, 2001.¶

EC Directive: Directive 2008/50/EC of the European Parliament and of the Council of 21 May 2008 on ambient air quality and cleaner air for Europe, <http://eur-lex.europa.eu/LexUriServ/LexUriServ.do?uri=CELEX:32008L0050:EN:NOT>, 2008.¶

Fagerli, H., Tsyro, S., Simpson, D., Schulz, M., Gauss, M., Jonson, J. E., Benedictow, A., Wind, P., Nyíri, A., Steensen, B. M., Valiyaveetil, S., Valdebenito, A., Aas, W., Hjellbrekke, A. G., Solberg, S., Stebel, K., Torseth, K., Yttri, K. E., Mareckova, K., Wankmüller, R., Pinterits, M., Ullrich, B., Posch, M., Denier van der Gon, H. A. C., Alastuey, A. and Theys, N.: Transboundary particulate matter, photo-oxidants, acidifying and eutrophying components. EMEP Status Report 2015., Norwegian Meteorological Institute, Oslo, Norway. ISSN 1504-6192. http://emep.int/publ/reports/2014/EMEP_Status_Report_1_2015.pdf, 2015.¶

Friberg, M. D., Zhai, X., Holmes, H. A., Chang, H. H., Strickland, M. J., Sarnat, S. E., Tolbert, P. E., Russell, A. G. and Mulholland, J. A.: Method for Fusing Observational Data and Chemical Transport Model Simulations To Estimate Spatiotemporally Resolved ...

EC: Guidance to Member States on PM₁₀ Monitoring and Intercomparisons with the Reference Method. Report by the EC Working Group on Particulate Matter., <http://ec.europa.eu/environment/air/pdf/finalwgreporten.pdf>, 2001.

EC Directive: Directive 2008/50/EC of the European Parliament and of the Council of 21 May 2008 on ambient air quality and cleaner air for Europe, <http://eur-lex.europa.eu/LexUriServ/LexUriServ.do?uri=CELEX:32008L0050:EN:NOT>, 2008.

5 Fagerli, H., Tsyro, S., Simpson, D., Schulz, M., Gauss, M., Jonson, J. E., Benedictow, A., Wind, P., Nyiri, A., Steensen, B. M., Valiyaveetil, S., Valdebenito, Á., Aas, W., Hjellbrekke, A. G., Solberg, S., Stebel, K., Torseth, K., Yttri, K. E., Mareckova, K., Wankmüller, R., Pinterits, M., Ullrich, B., Posch, M., Denier van der Gon, H. A. C., Alastuey, A. and Theys, N.: Transboundary particulate matter, photo-oxidants, acidifying and eutrophying components. EMEP Status Report 2015., Norwegian Meteorological Institute, Oslo, Norway. ISSN 1504-6192, http://emep.int/publ/reports/2014/EMEP_Status_Report_1_2015.pdf, 2015.

10 Friberg, M. D., Zhai, X., Holmes, H. A., Chang, H. H., Strickland, M. J., Samat, S. E., Tolbert, P. E., Russell, A. G. and Mulholland, J. A.: Method for Fusing Observational Data and Chemical Transport Model Simulations To Estimate Spatiotemporally Resolved Ambient Air Pollution, *Environ. Sci. Technol.*, 50, 3695-3705, 2016.

15 Green, D. C., Fuller, G. W. and Baker, T.: Development and validation of the volatile correction model for PM₁₀ - An empirical method for adjusting TEOM measurements for their loss of volatile particulate matter, *Atmos. Environ.*, 43, 2132-2141, 2009.

Harmens, H., Mills, G., Hayes, F., Norris, D. A. and Sharps, K.: Twenty eight years of ICP vegetation: an overview of its activities, *Annali di botanica*, 5, 31-43, 2015.

20 Harrison, D.: Assessment of UK AURN particulate matter monitoring equipment against the January 2010 guide to demonstration of equivalence. Bureau Veritas report for Defra, AGG04003328/BV/AQ/DH/2658/V3, http://www.airquality.co.uk/reports/cat14/1101140842_Assessment_of_UK_AURN_PM_Equipment_against_2010_GD_E.pdf, 2010.

Heal, M. R., Kumar, P. and Harrison, R. M.: Particles, air quality, policy and health, *Chem. Soc. Rev.*, 41, 6606-6630, 2012.

25 Jerrett, M., Arain, A., Kanaroglou, P., Beckerman, B., Potoglou, D., Sahuvaroglu, T., Morrison, J. and Giovis, C.: A review and evaluation of intraurban air pollution exposure models, *Journal of Exposure Analysis and Environmental Epidemiology*, 15, 185-204, 2005.

Kim, J. Y., Burnett, R. T., Neas, L., Thurston, G. D., Schwartz, J., Tolbert, P. E., Brunekreef, B., Goldberg, M. S. and Romieu, I.: Panel discussion review: session two - interpretation of observed associations between multiple ambient air pollutants and health effects in epidemiologic analyses, *J. Expos. Sci. Environ. Epidemiol.*, 17, S83-S89, 2007.

30 LRTAP Convention: Mills, G., et al. (Eds.). Chapter 3 of the LRTAP Convention Manual of Methodologies for Modelling and Mapping Effects of Air Pollution. Available at: <http://icpvegetation.ceh.ac.uk/>, 2010.

Mauderly, J. L. and Samet, J. M.: Is There Evidence for Synergy Among Air Pollutants in Causing Health Effects?, *Environ. Health Perspect.*, 117, 1-6, 2009.

35 Michanowicz, D. R., Shmool, J. L. C., Tunno, B. J., Tripathy, S., Gillooly, S., Kinnee, E. and Clougherty, J. E.: A hybrid land use regression/AERMOD model for predicting intra-urban variation in PM_{2.5}, *Atmos. Environ.*, 131, 307-315, 2016.

Pernigotti, D., Gerboles, M., Belis, C. A. and Thunis, P.: Model quality objectives based on measurement uncertainty. Part II: NO₂ and PM₁₀, *Atmos. Environ.*, 79, 869-878, 2013.

40 Rao, S. T., Galmarini, S. and Puckett, K.: Air Quality Model Evaluation International Initiative (AQMEII) Advancing the State of the Science in Regional Photochemical Modeling and Its Applications, *Bulletin of the American Meteorological Society*, 92, 23-30, 2011.

ROTAP: Review of Transboundary Air Pollution (RoTAP): acidification, eutrophication, ground level ozone and heavy metals in the UK. A report for Defra and the Devolved Administrations., <http://www.rotap.ceh.ac.uk/documents>, 2009.

Royal Society: Ground-level ozone in the 21st century: future trends, impacts and policy implications. Science Policy Report 15/08., The Royal Society, London. ISBN: 978-0-85403-713-1. <http://royalsociety.org/policy/publications/2008/ground-level-ozone/>, 2008.

5 Sheppard, L., Slaughter, J. C., Schildcrout, J., Liu, L. J. S. and Lumley, T.: Exposure and measurement contributions to estimates of acute air pollution effects. *Journal of Exposure Analysis and Environmental Epidemiology*, 15, 366-376, 2005.

Sheppard, L., Burnett, R., Szpiro, A., Kim, S. Y., Jerrett, M., Pope, C. A. and Brunekreef, B.: Confounding and exposure measurement error in air pollution epidemiology. *Air Quality, Atmosphere & Health*, 5, 203-216, 2012.

Simpson, D., Benedictow, A., Berge, H., Bergström, R., Emberson, L. D., Fagerli, H., Flechard, C. R., Hayman, G. D., Gauss, M., Jonson, J. E., Jenkin, M. E., Nyiri, A., Richter, C., Semeena, V. S., Tsyro, S., Tuovinen, J. P., Valdebenito, A. and Wind, P.: The EMEP MSC-W chemical transport model - technical description, *Atmos. Chem. Phys.*, 12, 7825-7865, 2012.

10 Singh, K., Sandu, A., Bowman, K. W., Parrington, M., Jones, D. B. A. and Lee, M.: Ozone data assimilation with GEOS-Chem: a comparison between 3-D-Var, 4-D-Var, and suboptimal Kalman filter approaches. *Atmos. Chem. Phys. Discuss.*, 11, 22247-22300, 2011.

Thunis, P., Pederzoli, A. and Pernigotti, D.: Performance criteria to evaluate air quality modeling applications. *Atmos. Environ.*, 59, 476-482, 2012.

15 Thunis, P., Pernigotti, D. and Gerboles, M.: Model quality objectives based on measurement uncertainty. Part I: Ozone. *Atmos. Environ.*, 79, 861-868, 2013.

USEPA: Guidance on the Use of Models and Other Analyses for Demonstrating Attainment of Air Quality Goals for Ozone, PM_{2.5}, and Regional Haze. United States Environmental Protection Agency. EPA -454/B-07-002. <http://www.epa.gov/scram001/guidance/guide/final-03-pm-rh-guidance.pdf>, 2007.

20 USEPA: The multi-pollutant report: technical concepts and examples. United States Environmental Protection Agency. http://www.epa.gov/airtrends/specialstudies/20080702_multipoll.pdf, Washington DC, 2008.

Vautard, R., Builtjes, P. H. J., Thunis, P., Cuvelier, C., Bedogni, M., Bessagnet, B., Honore, C., Moussiopoulos, N., Pirovano, G., Schaap, M., Stern, R., Tarrason, L. and Wind, P.: Evaluation and intercomparison of Ozone and PM₁₀ simulations by several chemistry transport models over four European cities within the CityDelta project. *Atmos. Environ.*, 41, 173-188, 2007.

25 Vieno, M., Dore, A. J., Stevenson, D. S., Doherty, R., Heal, M. R., Reis, S., Hallsworth, S., Tarrason, L., Wind, P., Fowler, D., Simpson, D. and Sutton, M. A.: Modelling surface ozone during the 2003 heat-wave in the UK. *Atmos. Chem. Phys.*, 10, 7963-7978, 2010.

30 Vieno, M., Heal, M. R., Hallsworth, S., Famulari, D., Doherty, R. M., Dore, A. J., Tang, Y. S., Braban, C. F., Leaver, D., Sutton, M. A. and Reis, S.: The role of long-range transport and domestic emissions in determining atmospheric secondary inorganic particle concentrations across the UK. *Atmos. Chem. Phys.*, 14, 8435-8447, 2014.

Vieno, M., Heal, M. R., Williams, M. L., Carnell, E. J., Nemitz, E., Stedman, J. R. and Reis, S.: The sensitivities of emissions reductions for the mitigation of UK PM_{2.5}. *Atmos. Chem. Phys.*, 16, 265-276, 2016.

35 WHO: Air quality guidelines. Global update 2005. Particulate matter, ozone, nitrogen dioxide and sulfur dioxide., World Health Organisation Regional Office for Europe, Copenhagen. ISBN 92 890 2192 6. http://www.euro.who.int/_data/assets/pdf_file/0005/78638/E90038.pdf, 2006.

WHO: Health risks of air pollution in Europe - HRAPIE Project. World Health Organisation, Copenhagen, Denmark. <http://www.euro.who.int/en/health-topics/environment-and-health/air-quality/publications/2013/health-risks-of-air-pollution-in-europe-hrapie-project-recommendations-for-concentrationresponse-functions-for-costbenefit-analysis-of-particulate-matter,-ozone-and-nitrogen-dioxide>, 2013a.

40

WHO: Review of evidence on health aspects of air pollution – REVIHAAP Project: Technical Report, World Health Organisation, Copenhagen, Denmark. http://www.euro.who.int/_data/assets/pdf_file/0004/193108/REVIHAAP-Final-technical-report-final-version.pdf, 2013b.

5 [Wiedinmyer, C., Akagi, S., Yokelson, R., Emmons, L., Al-Saadi, J., Orlando, J. J. and Soja, A. J.: The Fire INventory from NCAR \(FINN\): a high resolution global model to estimate the emissions from open burning, *Geoscientific Model Development*, 4, 625-641, 2011.](#)

[Wilton, D., Szpiro, A., Gould, T. and Larson, T.: Improving spatial concentration estimates for nitrogen oxides using a hybrid meteorological dispersion/land use regression model in Los Angeles, CA and Seattle, WA, *Sci. Total Environ.*, 408, 1120-1130, 2010.](#)

10 [Zidek, J. V., Le, N. D. and Liu, Z.: Combining data and simulated data for space-time fields: application to ozone, *Environmental and Ecological Statistics*, 19, 37-56, 2012.](#)

Table 1: Numbers of UK AURN (Automatic Urban and Rural Network) sites satisfying the data capture criteria described in Section 2.2, together with model-measurement statistics (as defined in Section 2.4) for the 10-y means of NO₂_daymean, O₃_max8hmean, PM₁₀_daymean, and for the 2-y means of PM_{2.5}_daymean. The latter data provide a measure of the spatial agreement between modelled and measured pollutant concentrations across the UK.

	<i>n</i>	<i>r</i>	FAC2	NMB	MB / $\mu\text{g m}^{-3}$	RMSE / $\mu\text{g m}^{-3}$
NO₂_daymean (2001-2010)						
Rural Background	7	0.98	1.00	0.06	0.68	1.05
Urban Background	37	0.68	0.84	-0.31	-9.52	11.85
O₃_max8hmean (2001-2010)						
Rural Background	17	0.21 (0.81 ^a)	1.00	0.08	5.80	8.66
Urban Background	30	0.73	1.00	0.27	15.08	15.91
PM₁₀_daymean (2001-2010)						
Rural Background	4	0.91	1.00	0.39	6.56	6.76
Urban Background	20	0.58	1.00	0.06	1.26	2.74
PM_{2.5}_daymean (2009-2010)						
Rural Background	2	1.00	1.00	0.19	1.32	2.04
Urban Background	28	0.58	1.00	-0.27	-3.51	3.78

^a Value of *r* when the outlier site for RB O₃ measurements (Weybourne) is discounted.

5

10

Deleted: AURN

Deleted: the text, and

Formatted: Font: 10 pt

Inserted Cells

Formatted Table

Inserted Cells

Deleted: Urban Traffic

Formatted: Font: Bold

Deleted: 16

Deleted: 0.79

Deleted: 0.13

Deleted: -0.64

Deleted: -34.16

Deleted: ¶

Formatted Table

Inserted Cells

Deleted: Urban Traffic

Formatted: Font: Bold

Deleted: 2

Deleted: 1.00

Deleted: 0.50

Deleted: 0.78

Deleted: 30.70

Deleted: ¶

Formatted Table

Inserted Cells

Deleted: Urban Traffic

Formatted: Font: Bold

Deleted: 5

Deleted: 0.40

Deleted: 1.00

Deleted: -0.25

Deleted: -7.79

Deleted: ¶

Formatted Table

Inserted Cells

Deleted: Urban Traffic

Table 2: Correlation of the normalised bias between model and measurement 10-y means of pollutant daily metrics (2-y mean for PM_{2.5}) at a site with the latitude or with the 10-y mean temperature at that site. Correlations significant at $p < 0.05$ are highlighted in bold. RB, rural background; UB, urban background. No data for PM_{2.5} (RB) since only $n = 2$ sites. Also presented in the penultimate column is the maximum bias between model and measurement that forms the model quality objective (MQO) for long-term averaged values of the pollutant concentration at the given site type, as calculated using the formulae published in FAIRMODE project WG 1 documents at <http://fairmode.jrc.ec.europa.eu> (as at March 2017) and allowing for variable measurement uncertainty using the measured values from this study. These values define the positions of the green lines in each panel of Figure 1. The final column gives the number (and %) of sites that satisfy this MQO, i.e. which lie within the green lines of Figure 1.

Pollutant	n	Correlation between normalised bias and stated variable		MQO for long-term average concentration / $\mu\text{g m}^{-3}$	Number (and %) of sites satisfying the MQO
		Latitude	Temperature		
NO ₂ (RB)	7	0.20 ($p = 0.671$)	-0.16 ($p = 0.730$)	8.9	7 (100%)
NO ₂ (UB)	37	-0.53 ($p < 0.001$)	0.37 ($p = 0.026$)	12.3	25 (68%)
O ₃ (RB)	17	0.24 ($p = 0.353$)	-0.39 ($p = 0.119$)	20.3	17 (100%)
O ₃ (UB)	30	0.12 ($p = 0.530$)	-0.08 ($p = 0.674$)	20.2	24 (80%)
PM ₁₀ (RB)	4	0.66 ($p = 0.340$)	-0.68 ($p = 0.324$)	7.6	3 (75%)
PM ₁₀ (UB)	20	-0.48 ($p = 0.031$)	0.40 ($p = 0.078$)	7.7	20 (100%)
PM _{2.5} (UB)	28	-0.28 ($p = 0.141$)	0.43 ($p = 0.022$)	11.0	28 (100%)

Formatted: Justified

Deleted: ; UT, urban traffic.

Formatted: Left

Formatted Table

Inserted Cells

Inserted Cells

Deleted: NO₂ (UT)

Deleted: 16

Deleted: -0.48 ($p = 0.058$)

Deleted: 0.51 ($p = 0.045$)

Deleted: ¶

Formatted Table

Inserted Cells

Inserted Cells

Deleted: PM₁₀ (UT)

Deleted: 5

Deleted: -0.35 ($p = 0.558$)

Deleted: 0.38 ($p = 0.532$)

Deleted: ¶

Formatted Table

Inserted Cells

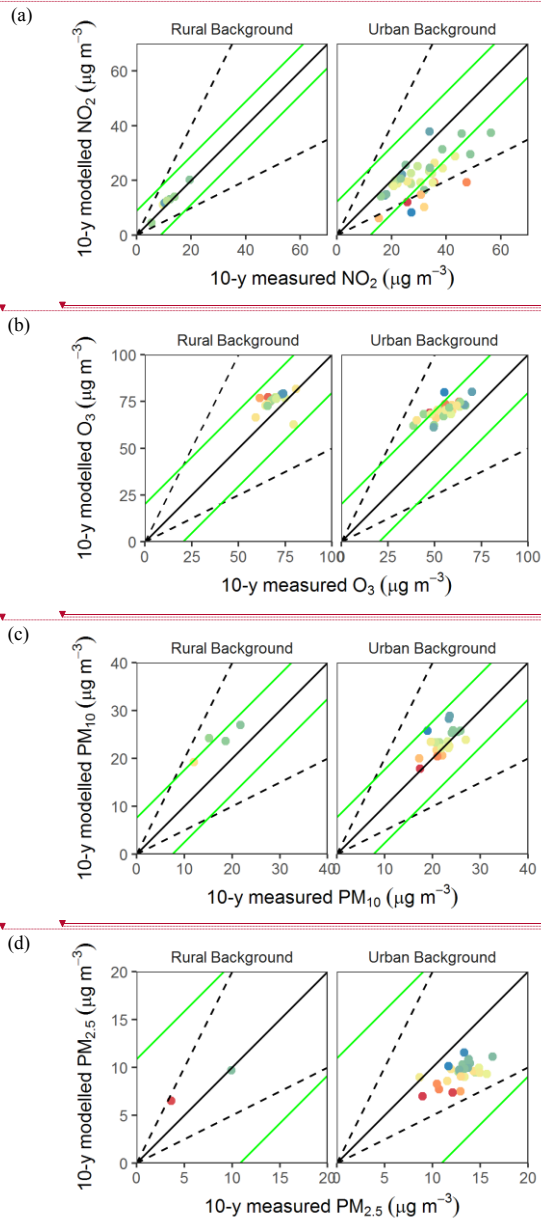
Inserted Cells

Deleted: PM_{2.5} (UT)

15% for the O₃ metric, 25% for the PM₁₀ metric and 25% for the PM_{2.5} metric (these are the maximum allowed measurement uncertainties at the limit values specified in the EU air quality directive). The MPC values given in the table are the mean of the individual-site values for the given pollutant and site type. No values are presented for NO₂ since values for the MPC formulae relate to measurement of hourly average values of NO₂ whereas the present study was based on daily average NO₂.

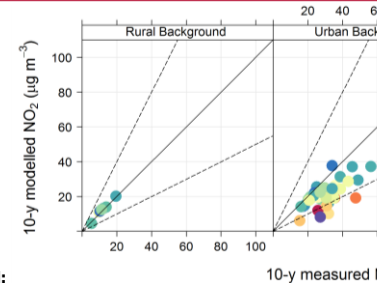
5 ^c As for footnote b but using values of measurement uncertainty that vary with measured concentration according to the formulae and variable values presented by the FAIRMODE project as at March 2017.

Figure 1: Scatter plots of the 10-year means of the modelled and measured pollutant daily metrics at each site, grouped by site type, and with data markers shaded according to the latitude of the measurement site: (a) NO₂; (b) O₃; (c) PM₁₀; (d) PM_{2.5}. The values of *r*, FAC2, NMB and RMSE associated with the data in each plot are given in Table 1. The solid and dashed lines are the 1:1, and the 2:1 and 1:2 lines, respectively. The green lines bound the respective model quality objective calculated using the formulae published in FAIRMODE project WG 1 documents at <http://fairmode.jrc.ec.europa.eu> (as at March 2017) and allowing for variable measurement uncertainty using the measured values in this study. See main text for further details.



Deleted: The values of *r*, FAC2 and NMB associated with the data in each plot are given in Table 1

Deleted: ¶

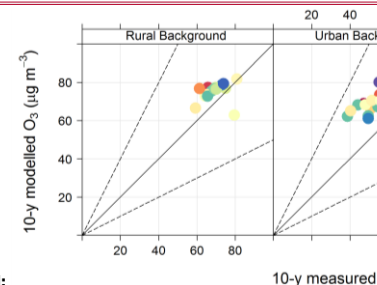


Deleted:

Formatted Table

Deleted: ¶

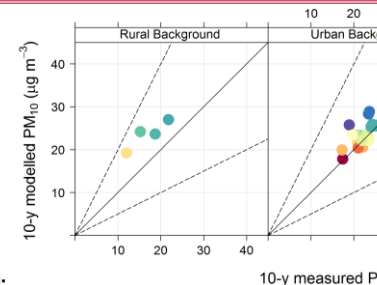
Formatted Table



Deleted:

Deleted: ¶

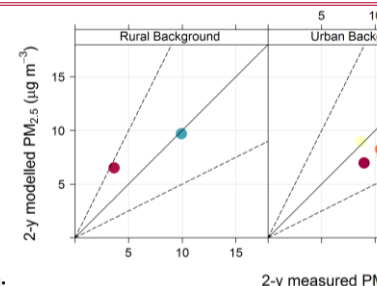
Formatted Table



Deleted:

Deleted: ¶

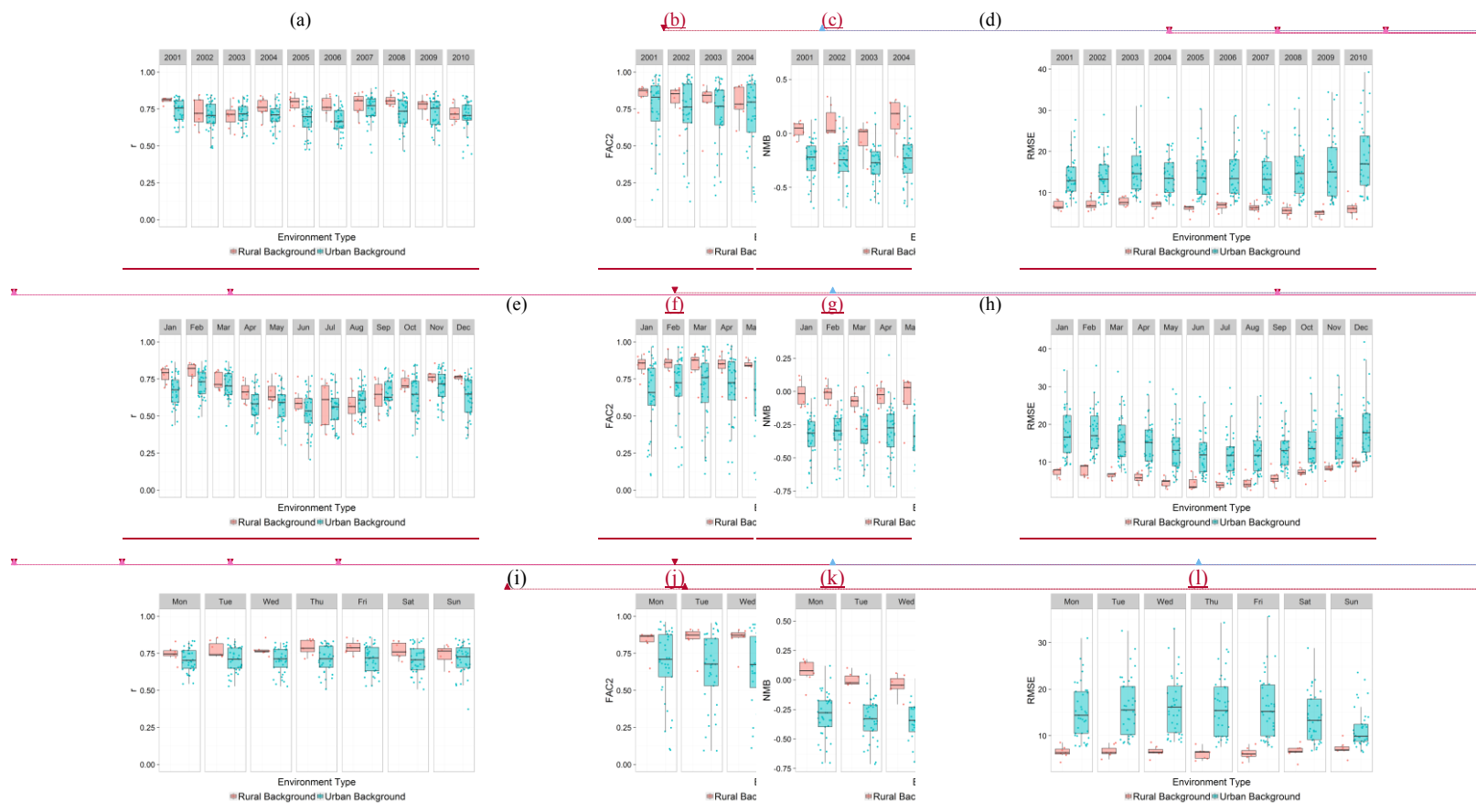
Formatted Table



Deleted:

Deleted: ¶
¶
.....Section Break (Next Page).....

Figure 2: Model-measurement statistics per site for NO₂ daily mean concentrations during 2001-2010, by site type, and by (a-d) year, (e-h) month of year, and (i-l) day of week. (a), (e) and (i) are Pearson's correlation coefficient (r); (b), (f) and (j) are fraction of data pairs within a factor of two (FAC2); (c), (g) and (k) are normalised mean bias (NMB); and (d), (h) and (l) are root mean squared error (RMSE) in $\mu\text{g m}^{-3}$. Dots show individual site statistics ($n = 7$ and 37 for RB and UB sites respectively), which are summarised in the superimposed box-plot whose shading demarcates the interquartile range (IQR) and whose whiskers extend to the largest and smallest value within $1.58 \times \text{IQR}$ from the box hinges.



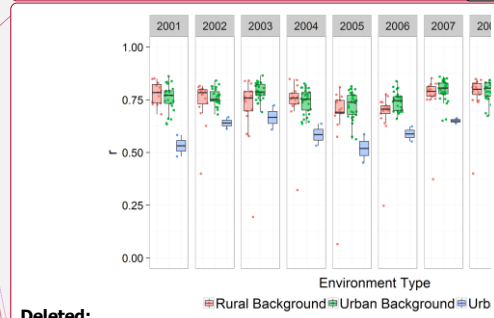
Deleted: c... year, (d-f...-h) month of year, and (g-...-l) day of ...

Deleted: (g)

Inserted Cells

Formatted

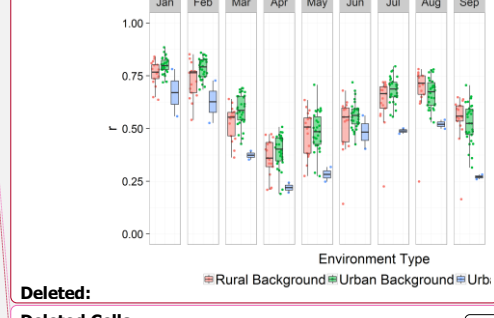
Formatted Table



Deleted: ... Rural Background ... Urban Background ... Urb

Deleted Cells

Formatted



Deleted: ... Rural Background ... Urban Background ... Urb

Deleted Cells

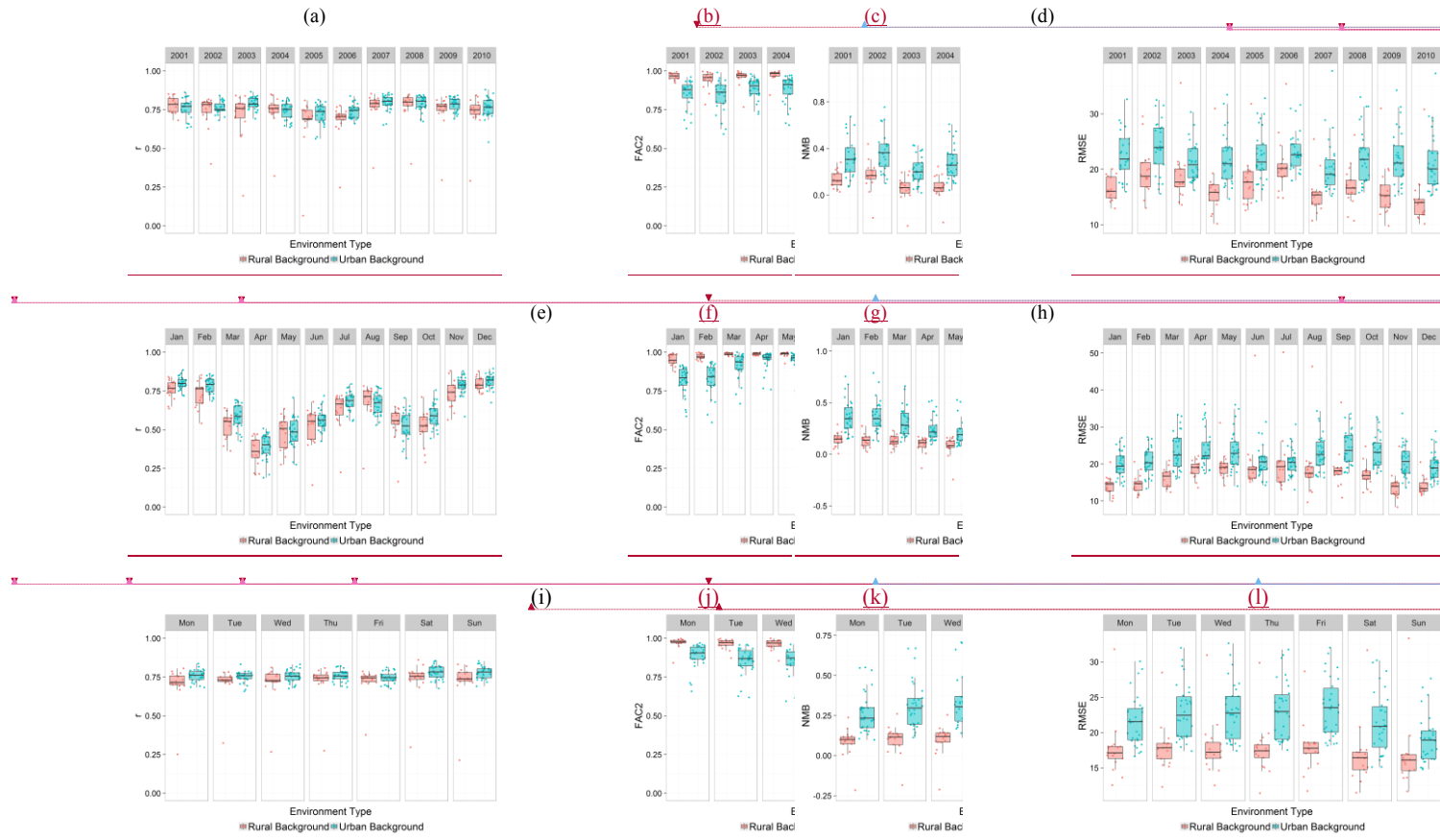


Deleted: ... Rural Background ... Urban Background ... Urb

Deleted Cells



Figure 3: Model-measurement statistics per site for O_3 daily maximum 8-h mean concentrations during 2001-2010, by site type, and by (a-d) year, (e-h) month of year, and (i-l) day of week. (a), (e) and (i) are Pearson's correlation coefficient (r); (b), (f) and (j) are fraction of data pairs within a factor of two (FAC2); (c), (g) and (k) are normalised mean bias (NMB); and (d), (h) and (l) are root mean squared error (RMSE) in $\mu\text{g m}^{-3}$. Dots show individual site statistics ($n = 17$ and 30 for RB and UB sites respectively), which are summarised in the superimposed box-plot whose shading demarcates the interquartile range (IQR) and whose whiskers extend to the largest and smallest value within $1.58 \times \text{IQR}$ from the box hinges.



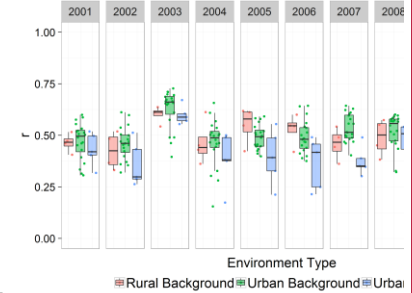
Deleted: 4...: Model-measurement statistics per site for PM₁₀...

Deleted: (g)

Inserted Cells

Formatted

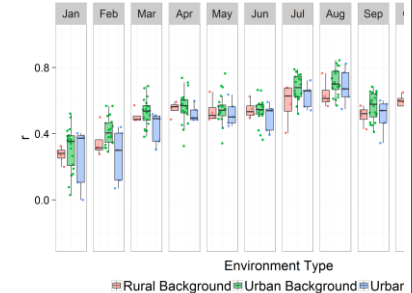
Formatted Table



Deleted:

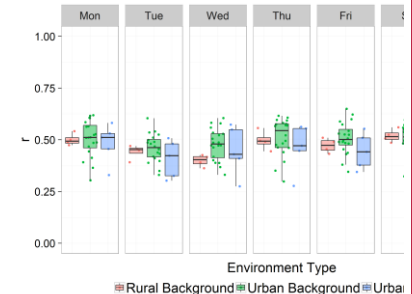
Deleted Cells

Formatted



Deleted:

Deleted Cells

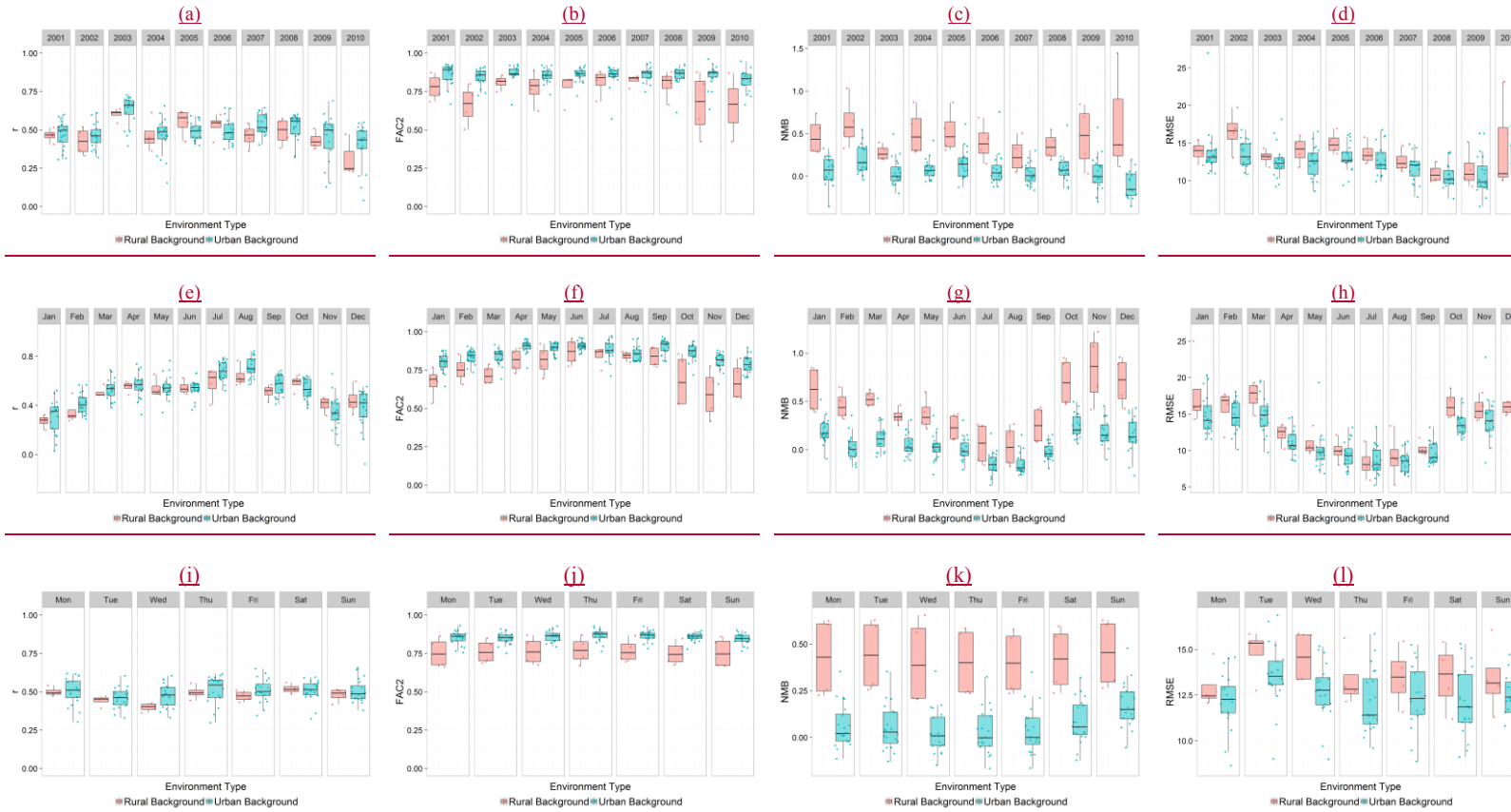


Deleted:

Deleted Cells



Figure 4: Model-measurement statistics per site for PM_{10} daily mean concentrations during 2001-2010, by site type, and by (a-d) year, (e-h) month of year, and (i-l) day of week. (a), (e) and (i) are Pearson's correlation coefficient (r); (b), (f) and (j) are fraction of data pairs within a factor of two (FAC2); (c), (g) and (k) are normalised mean bias (NMB); and (d), (h) and (l) are root mean squared error (RMSE) in $\mu g m^{-3}$. Dots show individual site statistics ($n = 4$ and 20 for RB and UB sites respectively), which are summarised in the superimposed box-plot whose shading demarcates the interquartile range (IQR) and whose whiskers extend to the largest and smallest value within $1.58 \times IQR$ from the box hinges.



Deleted: 5

Deleted: 2009

Formatted: Font: Not Bold

Deleted: $PM_{2.5}$

Deleted: c

Deleted: d-f

Deleted: g-

Deleted: d

Deleted: g

Deleted: e

Deleted: h

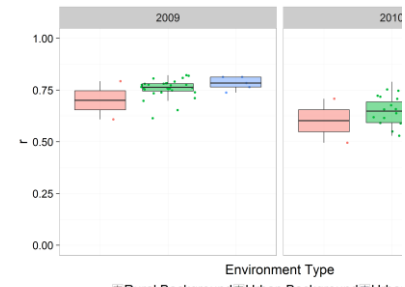
Deleted: c), (f) and (i)

Deleted:).

Figure 5: Model-measurement statistics per site for $PM_{2.5}$ daily mean concentrations during 2009-2010, by site type, and by (a-d) year, (e-h) month of year, and (i-l) day of week. (a), (e) and (i) are Pearson's correlation coefficient (r); (b), (f) and (j) are fraction of data pairs within a factor of two (FAC2); (c), (g) and (k) are normalised mean bias (NMB); and (d), (h) and (l) are root mean squared error (RMSE) in $\mu g m^{-3}$. Dots show individual site statistics ($n = 2$, and 28 for RB and UB sites respectively), which are summarised in the superimposed box-plot whose shading demarcates the interquartile range (IQR) and whose whiskers extend to the largest and smallest value within $1.58 \times IQR$ from the box hinges.



Deleted: ...,and 28 and 5 ...or RB,...and UB and UT



Deleted: Rural Background Urban Background Urban

Deleted: (g)

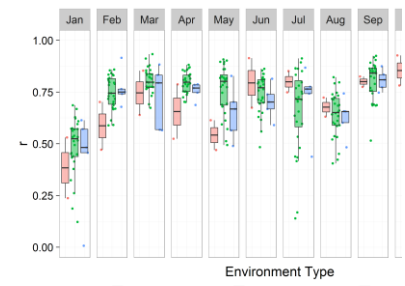
Inserted Cells

Formatted

Deleted Cells

Formatted Table

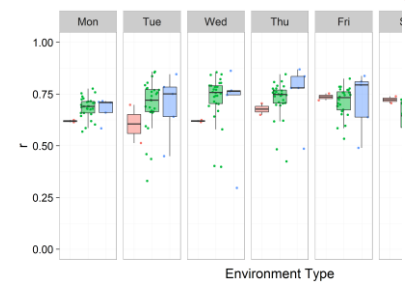
Formatted



Deleted: Rural Background Urban Background Urban

Deleted Cells

Deleted Cells



Deleted: Rural Background Urban Background Urban

Deleted: (g)

