

Summary Of Changes 2
**Implementation of street trees within the solar radiative exchange
parameterization of TEB in SURFEX v8.0** by Redon et al.
gmd-2016-157

Firstly, we would like to express our thankfulness and appreciation to the reviewers for their useful comments to improve the paper. We have addressed all the comments as explained below.

Overview:

Considering the useful comments of the Referees we proceed to some changes in the article in order to provide full explanations of the purpose of our experiment. Details about the comparison work and its relevance have been added. Some assumptions and the associated errors that they induced have been discussed as well as present limitations to the application of the TEB model. Additional perspectives for future works have been mentioned. The vegetation fractions in the reference simulations of TEB have been corrected. Geometrical assumptions about the transmission process of radiation fluxes during multiple reflections by tree crowns have been changed a little for wall-wall exchanges. Figures have been revised in order to improve the understanding of key results. All the figures and text have been adapted throughout.

REFEREE 1 :

« Context in Abstract. P1 L16-18: Since these numbers will presumably depend on latitude as well as season, the mean of solar radiation fluxes over the set of observations should also be reported here (or, conversely, these mean absolute differences can be reported as percentage differences) to give the reported differences context. »

We added the Percentage Differences to the global statistics about the tree layer during summertime, all vegetation layouts combined, in the abstract (P1 L15,18) and the conclusion (P21 L14,20).

« Forward Scattering is neglected. In my understanding, forward scattering is transmission through the actual leaves and radiation that is reflected downward, not simply radiation that travels downward (forward) by virtue of not hitting a leaf/foilage element. In this understanding, forward scattering and transmission are different processes. Please see the second paragraph of Sect. 3.3.1 in Krayenhoff et al. (2014) and associated references, as well as Campbell and Norman (1998). I suggest the authors simply indicate that they neglect forward scattering; and I suspect that they implicitly include its effects to an extent by choosing tree albedos of ~0.15-0.25, which are closer to average values for a forest (individual leaves scatter/reflect approximately 50% of incident broadband shortwave radiation, by comparison), thereby permitting higher transmission and absorption. If you agree, the fact that effects of forward scattering are also implicitly included is probably also worth stating. It is unclear if SOLENE includes forward scattering, and therefore whether testing against SOLENE provides a helpful evaluation of this approximation in TEB. »

Thank you for pointing out the lack of explanations about assumptions of the TEB model concerning the forward scattering. If we consider the transmission process *sensu stricto*, it does not include forward scattering (the radiation that is transmitted through the canopy by reflections from

leaves to leaves before be reflected downward and leave the canopy) but only the radiation that is passing through the canopy without hitting leaves. We omitted to fully mention the following assumptions on which is based the radiative transfer in TEB.

During the first reflection / absorption / transmission of the solar shortwave radiation, the canopy is assumed to be an horizontal partially-transparent surface, characterized by a cover fraction and an extinction coefficient. This vegetated surface is placed at the height of trees because, in reality, most of the sunlit leaves are bordering the top of the canopy. For a rectangular parallelepiped shaped canopy, the maximum of interception is expected at the mid-height of the crown when an homogeneous distribution of foliage elements is respected. This hypothesis implies that we consider the integration of overlapping leaves on Pi (180°) only (that means the upper part of the canopy, from the middle to the top of crown) to represent the attenuation process. The intercepted flux is divided in reflection or absorption processes after, respecting the optical properties of the leaves (albedo). In this system, no more radiation is available below the mid-height of the crown to be forward scattered. Because of the description of the crown as a surface, TEB computes no processes within the crown as interactions leaves-to-leaves and trapping effect inside the canopy. Nonetheless, the forward scattering is implicitly included in attenuation or transmission processes in the upper part of the canopy. The relative importance of attenuation or transmission processes are finally applied to the top of the canopy.

Here, the choice of an albedo of 0.25 is related to the will of controlling the effect of garden fraction on the road fraction in the reference cases (initial version of TEB). It is a value that is acceptable for the two covers. Fixing the same value for these two fractions allows us to analyze the effect of the position of the trees (as a ground-based surface or an explicit canopy within the canyon) and the transparency properties of trees (opaque or partially-transparent cover) between the reference or the implemented simulations without the confusing effect of divergent radiative properties (different albedos).

In SOLENE model, while the forward scattering in the crown is also neglected and the same processes (reflection / absorption / transmission) are represented, the simulations of the received solar radiation fluxes in the two models remain comparable.

See P10 L11-14, P12 L16-17, P21 L 23-24

« Directionality of reflected radiation from trees in SOLENE. P11L31-32: It is not clear how SOLENE deals with reflected radiation. Is it reflected in all directions (i.e., scattered?), or it is directionally reflected? My understanding is that TEB directionally scatters (i.e., reflected radiation from trees is only reflected upward). Does this affect the viability of the comparison? »

SOLENE deals with reflections using the radiosity method, that means omnidirectional reflections. TEB also computes isotropic reflections that are just constrained upwards from the height of the middle of the crown on Pi (180°). In conclusion, the process of reflection is comparable between the two models.

See P11 L22-24, P12 L7-8, P14 L11, P18 L18-19.

« Value and meaning of tree albedo. P12L24-25: Albedo of trees in SOLENE is 0.25, and it is 0.15 in TEB simulations (Table 2), or 0.25? Please clarify. Are the albedo values at the same scale in both models? I.e., in TEB the tree albedo is an integrated value for the whole vegetation layer; since SOLENE represents independent portions of the foliage, what does the foliage albedo mean in

its case (see previous comment)? »

Thank you for pointing out an error in the table 2: the albedo of the high vegetation is 0.25 in both models. In the initial version of TEB, the albedo of the garden fraction (integrated fraction of low and high vegetation) is fixed to 0.25 while we can fix a specific albedo at the high vegetation only in the implemented version. In SOLENE model, the albedo is uniformly applied at the whole vegetated surface of rectangular parallelepipeds. In other words, all the meshes which belong to the surface of vegetation blocks are characterized by the same albedo (=0.25). A transmission factor of 0.5 is also applied to each meshes of vegetation blocks in SOLENE.

See Table 2 and P12 L14-15, P13 L2-3, P13 L23-24

*« **Mean absolute difference.** I suggest using the term MAD (=Mean Absolute Difference) instead of MAE (which I suggested in error), since this is a model difference, not an error. There are no errors calculated in the article as far as I see, only differences. Please correct throughout. »*

We agree with the referee that the term 'difference' is more suitable than 'error' here and we corrected throughout.

*« **Neighbourhoods with trees taller than buildings are common. P6L32:** This paragraph appears to have a strong European bias. I would estimate that perhaps the majority of urban neighbourhoods in North America, being low density, exhibit trees that are taller than buildings. This assumption therefore limits the range of neighbourhoods to which this new TEB tree model can be applied. It is important that this limitation is stated in this paragraph – perhaps it is a good candidate for ‘future work’ at the end of the article. »*

We agree with the referee that the assumption in TEB about the restriction of urban trees to the canyon space, which can not be taller than buildings, constitutes a limitation on the range of neighborhoods to which TEB can be applied. The errors induced by this limitation need to be estimated and future works could remedy this lack by allowing trees taller than buildings when it is necessary.

See P6 L32, P7 L1-11, P22 L11-12.

*« **P8L4:** “...the Beer Lambert law...” »*

We corrected this typing error.

*« **P18L28:** “confounded” is best replaced by “combined” or similar. Please correct throughout. »*

We agree with the referee that the term 'combined' is more suitable than 'confounded' here and corrected throughout.

*« **Unclear model results. Sect. 6.4.1 and Figure 8:** Trees should reduce absorbed shortwave radiation on walls and especially road. If I understand correctly, the divergence from expectation is due to the garden vs. road fraction. Additionally, trees will generally reduce wall shortwave absorption, but we do not see this result in the figure. As such, I am not clear regarding the utility of Fig. 8; what do we learn from it? I wonder if illustration of a few key example scenarios (rather than combining all simulations) might better illustrate the different effects of trees when represented as “high” vs. “low” vegetation. Overall, the clarity of the writing in Sect. 6.4.1 requires*

improvement. »

Section 6.4.1 : As suggested by the Referee 1, we changed the figure 8 in order to demonstrate more clearly the divergent dealing with trees between the initial and the implemented versions of TEB. We took the example of the A configured canopy (for which the cover fraction of the high vegetation in the canyon is 0.90) within a $h/w=1$ canyon, oriented North-South, during a summer day. Globally, we can see that considering the fluxes per squared meters of surface, the artificial surfaces absorb less energy when they are shaded by the high vegetation, while the daily dynamics are similar. For the beginning and the end of the range of lighting hours, trees trap more energy after the implementation of a real canopy within the canyon instead of cases where the foliage is placed at ground. It is explained by the fact that the more the trees are high in the canyon, the more they can receive solar radiation and avoid the shading of buildings. Around the solar noon, the absorption by the trees is substantially corrected by the effect of the partial-transparency of the canopy in regards to the initial version where all the urban vegetation surfaces were opaque.

Comparing the fluxes before and after their weighting based on the canyon surface, the road absorption by squared meters of canyon can extremely vary following the garden fraction at the ground in the initial version, so the contribution of the road to the total absorption of the canyon. Here, the road fraction is only 0.10. For the same version, the differences between before and after the weighting of absorbed fluxes is small because the tree fraction is high ($=0.90$). In this case, there is no differences for the walls according to the unit of the fluxes since the canyon aspect ratio is $h/w=1$. For smaller aspect ratios, the fluxes of walls based on the canyon surface will be lower. On the opposite, for aspect ratios exceeding 1, the fluxes of walls based on the canyon surface will be higher.

« Apparent model error. Sect. 6.4.2 and Figure 9: These differences due to trees appear excessively large. I think something may be incorrect. If you look at Fig. 6c of Krayenhoff et al. (2014) you will see that overall albedo varies little as a function of tree foliage presence (or lack thereof) and tree foliage height – for one point in time. What do your results look like (what is the effect of trees) for one particular point in the middle of a summer day? Do these large differences result from the diurnal averaging or the model implementation? Moreover, I suspect overall albedo should be lower in the TEB reference simulations given input road and wall albedos, and canyon albedo should definitely decrease with increasing H/W. Therefore, there appears to be something incorrect in these TEB reference simulations as well. The last paragraph on P19 contains some errors of interpretation in my opinion: a shallower canyon (lower H/W) yields less radiation trapping, less absorption (per horizontal area), and higher albedo. Trees can have multiple effects; if their greater sky view factor and reflectivity are more important than their trapping of solar radiation deep in the canyon, they can reduce absorption, otherwise they can increase it. Moreover, it has been found that trees have a smaller effect as H/W increases (e.g. Coutts et al. 2016, Theoretical and Applied Climatology). Fig. 9 suggests the opposite. It seems clear that there is a problem with these results. The clarity of the writing in Sect. 6.4.2 also requires improvement. »

Section 6.4.2: We found an error on vegetation fractions used in the initial version of TEB for the comparison of canyon albedos. We also changed the way to calculate the albedo, considering the solar noon albedo only, during a summer day, as suggested by the Referee 1. After this correction, the results are in accordance with the expected tendencies :

- the aspect ratio have a strong effect on the canyon albedo; the more the aspect ratio is high, the lower is the canyon albedo
- for canyons with $h/w=0.5$ aspect ratios, the canyon albedo of streets with an explicit tree canopy is lower than canyons with leaves represented at the ground

- for higher aspect ratios, the effect of trees is depending on the major process impacting the absorption of the canyon, increasing or reducing the total absorption of solar radiation by the canyon, but their relative impact is smaller if the thickness of the crown is not proportionally rescaled in accordance with the height of the buildings (thicker crown)

« **P22EqA6-A8:** *It is not clear what “hcw” represents, nor where these equations derive from. Please provide more details on both fronts. »*

The description of the symbol hcw is in Table 1. We added the symbol just after the associated reference in the text P23 L15 and explanations about the formulation of new view factors related to the high vegetation in Appendix A.

« **Integration limits for view factor calculation. P23EqB1-4:** *The choices of integration limits here appear arbitrary. Are model results sensitive to the choice of these limits? More importantly, the middle of the walls (h/4 to 3h/4) is weighted more heavily in these view factor calculations. It seems critical to me that all parts of the walls be weighted equally in the view factor calculation. So, for example, the 3h/4 to h should be more important for wall-sky view factors than h/2 to 3/4h, if the latter is already used for wall-to-wall view factor calculation. Please address this in the model design, or defend your choice in the article. »*

In order to ensure their geometric consistency, the choice of the limits 0-h, 0-h/2, h/4-3h/4 and h/2-h in the calculation of the mean transmissivity terms are based on sectors already scanned by associated view factors used in isotropic interactions, both from 1- the incoming diffuse solar radiation flux or 2- multiple reflections within the canyon.

For reception of incoming diffuse solar radiation, Psi_rs and Psi_ws are respectively multiplied by tau_rs and tau_ws (see Eq. 8,9). Terms related to RS (or ground – sky) interactions are defined on the entire height of the building (0-h). Terms related to WS (wall -sky) interactions are defined on the upper part of the canyon, from the middle of the building's height (h/2-h).

During multiple reflections, Psi_rw and Psi_ww are respectively multiplied by tau_rw and tau_ww (see Eq. C16, C18 in Appendix C). Terms related to RW (or ground – wall) interactions are defined on the lower part of the canyon, to the middle of the building's height (0-h/2). Terms related to WW (wall -wall) interactions are defined on the entire height of the building (0-h). We tested to restrict the sector used to calculate tau_ww to h/4-3h/4 as Lee and Park (2008) and because this term could be sensitive to the horizontal position of trees in the street, particularly their distance to walls. Since TEB does not take into account this parameter, we corrected the calculation of tau_ww as on the 0-h sector, consistently with the Psi_ww formulation.

Classical sky view factors from sky to road or from sky to wall have parts in common and overlapping each other (Appendix A). In this way, there is no reason to reject transmissivity terms based on overlapping sectors.

To test the sensitivity of results to this parameterization of the impact of trees on radiative transfers of isotropic radiation, we compared four configurations.

Configuration / Area per interaction	3 thirds	Lee and Park, 2008	Former version of article	New version based on view factors
road- sky	0 – h	0 – h	0 – h	0 – h
wall – sky	2h/3 – h	3h/4 – h	h/2 – h	h/2 – h
road -wall	0 – h/3	0 – h/4	0 – h/2	0 – h/2
wall -wall	h/3 – 2h/3	h/4 – 3h/4	h/4 – 3h/4	0 – h

We obtained the following results for the total shortwave absorption by surfaces, averaged by all the vegetation layouts, urban forms and street orientations during a summer day. Scores are calculated in the same way that in the article, and versus SOLENE simulations which simulates digital mock-ups with explicit representation of the tree crowns and allocate fluxes in a directional manner.

Configuration /Scores	3 thirds	Lee and Park, 2008	Former version of article	New version based on view factors
MAD road	17.62	17.89	16.26	16.31
MAPD road	26	27	24	24
Bias road	+16.96	17.27	+15.53	+15.56
MAD walls	11.53	11.18	10.18	9.39
MAPD walls	17	17	15	14
Bias walls	+11.03	+10.66	9.22	8.15
MAD trees	25.42	25.75	22.14	21.12
MAPD trees	28	28	22	21
Bias trees	-23.71	-23.44	-18.29	-15.96

To our knowledge, there is no justification for cutting the canyon in the way of 3 thirds or on the Lee and Park, 2008 way. We need observations to assess which representation of attenuation / transmission is the more close to what is occurring in real cases but processes during multiple reflections can not be tracked easily. Nonetheless, we suggest a new cutting, consistent with our geometric assumptions and view factors used in TEB model.

REFEREE 2 :

Page 2 Line 1 – “The high vegetation, especially the street trees...” does not make grammatical sense. Consider re-writing the sentence as “High vegetation, particularly street trees in densely built urban neighbourhoods, ...”

Done

Page 3 Line 16 – “More especially” is not the correct phrase for the start of a paragraph and doesn’t really fit with the following sentence. Perhaps consider using “Many different approaches are currently applied...”

Done

Page 3 Line 17 – “Among following single-layer models” does not make sense. Do you mean to say “Among single-layer models with integrated vegetation schemes, Lee and Park (2008) were the first...”?

Done

Page 5 Line 28 – Think there is a miss-spelling of the word plane (“plan” is in the text). Do you mean “on a two dimensional plane which...”?

Done

Page 7 Line 11 – Are the trees not technically “cuboids” as opposed to “parallelepipeds”, which are typically formed of 6 parallelograms? In this paper you are only considering rectangular cross sections so maybe cuboid would be a more appropriate term.

Thank you for pointing out this error; a more accurate description of trees is needed. Trees are represented as 'rectangular parallelepipeds' because they are placed along the canyon in the axis of the street without discontinuities. The potential gaps between real crowns are taken into account in the high vegetation fraction. This term is a combination of the high vegetation fraction in the perpendicular plane of the street direction and the real covering of crowns lengthwise along the canyon. In this way, the 'rectangular cross section' remains a proper expression.

See P13 L13-18.

Page 12 Line 11 – Should the word “declined” be “defined”?

Done

Page 12 Line 16 – Consider again using the word “cuboid” as opposed to “parallelepiped”

See answer for Page 7 Line 11 question.

Page 12 Line 16 – Sentence starting “The vegetation blocks...” does not make sense. Does it mean to say “The vegetation blocks are continuous lengthwise along the canyon.”?

We changed the sentence in the following way: “These solid volumes are continuous lengthwise along the canyon. ” in order to avoid the repetition with the previous sentence. See P12 L28.

Page 13 Line 15 – This sentence doesn’t make sense. Should it read along the lines of “In SOLENE, the incident radiation is roughly attenuated by 50% once crossing the mesh containing vegetation”?

We changed the sentence in the following way: “In SOLENE, the incident radiation is roughly attenuated by 50% once crossing a mesh which belongs to a vegetation envelope.”. See P13 L26-27.

Page 15 Line 20 – The link between the example of the daily cycle and the scatterplots is not clear. This could do with some additional sentence explaining some context as to why the scatterplots were created.

We added scatterplots in order to show the extent of discrepancies between the two models according to various meteorological conditions. We know that TEB provides lower performances when the incoming diffuse radiation part is high. Scatterplots are including results for the four season in temperate climate: winter, spring, summer and autumn. Winter is characterized by a high diffuse / direct incoming solar radiation ratio. Despite these different meteorological conditions, the scores remain acceptable. See P16 L1.

Page 15 Line 30 – An additional “the” in this sentence is not required. Should it read “The two walls have different behaviours: the wall most exposed to the sun ...”?

Done

Page 16 Line 1 – This first few sentences don't make sense. You could consider replacing them with something along the lines of "In the calculation of diffuse solar radiation, TEB does not consider the two walls separately. Therefore the diffuse solar radiation flux is compared between the composite wall of TEB, and the average of the diffuse solar radiation fluxes received by separate walls of the SOLENE simulations (Fig. 4)."

Done

Page 18 Line 1 – The word "Remind" does not make sense here? The word "Remembering" is more appropriate.

Done

Page 19 Line 8 – Consider re-referencing figure 8 here so the reader knows which boxplot figure you are referring to. Perhaps include after the word "boxplots"?

Done

Page 19 Line 26 – The start of the sentence "It is expected result.." does not make sense. Should it read "This is expected because...?"

Done

Page 19 Line 30 – The sentence beginning "We observe..." does not make sense. Should it read something like, "We observed greater variability in the mean daily canyon albedo after the implementation of an explicit high vegetation stratum for an urban form with $h/w = 1$ and a high relative tree fraction."?

Done

Page 20 Line 8 – Incorrect use of plural. Use "radiative transfer" instead of "radiative transfers".

Done

Page 21 Line 6 – Should the word "extend" be "extent"?

Done

Page 21 Line 7 – For this sentence to make sense use word "pair" instead of "pairs".

Done

Page 21 Line 7 – Sentence should start "This study demonstrated ..."

Done

Figure Captions

In the figure captions the units for meters should not be in italics.

Done

Implementation of street trees within the solar radiative exchange parameterization of TEB in SURFEX v8.0

Emilie Redon^a, Aude Lemonsu^a, Valéry Masson^a, Benjamin Morille^b, and Marjorie Musy^b

^aCNRM UMR 3589, Météo-France/CNRS, Toulouse, France, 42 avenue Gaspard Coriolis, 31057 Toulouse cedex 1, France

^bEcole nationale supérieure d'Architecture de Nantes, UMR 1563, quai François Mitterrand, 44262 Nantes cedex 2, France

Correspondence to: A. Lemonsu (aude.lemonsu@meteo.fr)

Abstract. The Town Energy Balance (TEB) model has been refined and improved in order to explicitly represent street trees and their impacts on radiative ~~transfer~~transfer: a new vegetated stratum on the vertical plane, which can shade the road, the walls and the low vegetation has been added. This modification led to more complex radiative calculations, but has been done with a concern to preserve a certain level of simplicity and to limit the number of new input parameters for TEB to the cover fraction of trees, the mean height of trunks and trees, their specific Leaf Area Index and albedo. Indeed, the model is designed to be run over whole cities, for which it can simulate the local climatic variability related to urban landscape heterogeneity at the neighborhood scale. This means that computing times must be acceptable, and that input urban data must be available or easy to define. This simplified characterization of high vegetation necessarily induces some uncertainties in terms of the solar radiative exchanges, as quantified by comparison of TEB with a high spatial-resolution solar enlightenment model (SOLENE). On the basis of an idealized geometry of urban canyon with various vegetation layouts, TEB is evaluated regarding the ~~direct and diffuse solar radiation received~~total shortwave radiation flux absorbed by the elements that compose the canyon. TEB simulations in summer gathered best scores for all configurations and surfaces considered, which is precisely the most relevant season to assess the cooling effect of deciduous trees under temperate climate. ~~Biases less than ± 1 Mean Absolute Differences and biases of 6.03 and $+3.50$ W m⁻² related to the direct and diffuse solar radiation fluxes received by road~~for road, respectively, and of 3.38 and $+2.80$ W m⁻² for walls have been recorded ~~for in~~ vegetationless canyons. In view of the important incident radiation flux, exceeding $1\ 000$ W m⁻² at solar noon, the Mean Absolute Percentage Differences of 3 % for both surfaces remain moderate. Concerning the vegetated canyons, we noted a high variability of statistical scores depending on the vegetation layout. The greater uncertainties are found for the solar radiation fluxes received and absorbed by the high vegetation. The Mean Absolute ~~Error~~Differences averaged over the vegetation configurations during summertime is ~~17.27 ± 9.31 21.12 ± 13.39 W m⁻² for the direct component and 3.45 ± 1.93 W m⁻² for the diffuse component or 20.92 ± 10.87 % of Mean Absolute Percentage Differences for the total shortwave absorption~~ but these scores are associated to acceptable biases: ~~-14.44 ± 10.60 -15.96 ± 15.93 W m⁻² and -3.21 ± 2.20 W m⁻², respectively.~~

1 Introduction

For counteracting the adverse environmental effects that can result of continuous process of urban expansion, numerous projects of local urban planning or design support and favor today the preservation and reintroduction of vegetation in the city. From an environmental point of view, the natural soils and vegetation play a important role and bring significant benefits in different sectors (Nowak and Dwyer, 2007; Mullaney et al., 2015). They act at a microclimate level through the processes of soil water evaporation and of transpiration of plants (Qiu et al., 2013). These processes cool the ambient air (Zhang et al., 2013) and mitigate the effect of Urban Heat Island (Feyisa et al., 2014; Önder and Akay, 2014; Alavipanah et al., 2015). ~~The high vegetation, especially the~~ High vegetation, particularly street trees in dense urban ~~neighbourhood~~ neighborhoods, create shadow areas that can locally improve the thermal comfort of pedestrians (Spangenberg et al., 2008; Shashua-Bar et al., 2011; Coutts et al., 2015; de Abreu-Harbich et al., 2015; Joshi and Joshi, 2015) and reduce the radiation penetration in buildings in summer ~~(Akbari et al., 1997, 2001; Simpson, 2002; Ko et al., 2015; Abdel-Aziz et al., 2015)~~ (Akbari et al., 1997, 2001; Simpson, 2002; Abdel-Az

For some years now, green roofs are implemented more intensively in cities. The cooling effects they induce on air temperature at pedestrian level are lesser than in case of trees or ground-based vegetation but they modify the energy budget at roof level (Taleghani et al., 2016). Nonetheless, they help to reduce the temperature fluctuations of structural roofs and to better insulate buildings (Hien et al., 2007; Kokogiannakis et al., 2011). Many studies highlighted their efficiency to significant energy savings for heating and air conditioning (Jim, 2014). The implementation of pervious soils, whether at the ground or on buildings, also enables a more effective and sustainable management of rainwater, by the storage of water in the soil and the decrease of surface water runoff (Armson et al., 2013; Yao et al., 2015; Zhang et al., 2015). Besides micro climatic and hydrological impacts, the urban vegetation is identified as a biodiversity reservoir for fauna and flora in cities (Alvey, 2006). It also plays its part in architectural atmospheres, and more widely in the perception of environmental quality by the population. The green spaces in urban environment are generally perceived very positively by inhabitants because they are places of wellness, detente, and user friendliness (Bertram and Rehdanz, 2014; Bowen and Parry, 2015).

In order to investigate some of the physical processes related to the presence of vegetation in urban environment, e.g. for microclimate, hydrology or building energy consumption issues, the modeling is definitely a necessary tool. It is also pretty relevant and powerful to assess greening strategies by quantifying the potential impacts, and it consequently enables to answer to some important expectations of public stakeholders and urban planners.

The Town Energy Balance (TEB) urban canopy model (Masson, 2000) is today applied for many studies of climate change impacts at city scale. Among the numerous strategies of adaptation to climate change, and attenuation of Urban Heat Island, the benefits of urban environment greening has been investigated through more or less realistic scenarios. Kounkou-Arnaud et al. (2014) and de Munck (2013) have proposed and tested some strategies of ground-based vegetation implementation for the city of Paris (France). They have evaluated the cooling potential of this vegetation through the evapotranspiration process during summer. They investigated and quantified the impacts in terms of decrease of air temperature inside the streets, as well as

improvement of thermal comfort conditions outside and inside buildings. The works of de Munck (2013) have also addressed the issues of building energy consumption and of water resource at multi-year and seasonal scales.

For such modeling exercises, TEB had been previously improved in order to explicitly represent urban vegetation within the canyon and to parameterize at small-scale the radiative and energetic interactions between the built-up covers and the vegetation (Lemonsu et al., 2012). All types of vegetation are however managed as a ground-based layer: leaves can be in shade of buildings but do not create themselves shadow effects on roads or buildings. With the current developments we attempt to remedy this lack by modifying the solar radiation budget of tree-filled canyons. The tree layer can now shade ground-based surfaces and walls. In this way, interception, transmission or absorption of solar radiation by this additional non-opaque surface are computed. These implementations are evaluated by a comparison with simulations provided by a microscale radiation model: SOLENE, developed at the CERMA laboratory, Nantes, France.

2 Urban high vegetation modeling

Until recently, very few urban climate models were able to take into account natural soils and vegetation. This fact constitutes a significant limitation in modeling the radiative and energetic exchanges in urban environments, according to the results of the intercomparison exercise of urban models performed by Grimmond et al. (2011). Most of models that already included vegetation were based on the tiling approach which consists in dealing separately with impervious covers and natural covers with distinct parameterizations and without microscale interactions between vegetation and built-up elements. However, an important effort has been conducted these last years in order to improve the representation of physical processes related to the presence of vegetation in urban climate models. Suburban and residential areas are characterized by an abundant vegetation (all types ~~confounded~~combined) while trees are predominant in cities. This feature of most of cities have motivated the concern of improving urban microclimate modeling in such areas. Krayenhoff et al. (2014) present an exhaustive literature review of existing models and their characteristics.

~~More especially, Many~~ different approaches are ~~today~~currently applied for implementing high vegetation and its implication in calculation of radiative and energetic exchanges. Among ~~following~~ single-layer models with integrated vegetation ~~scheme, Lee and Park (2008) have been~~schemes, Lee and Park (2008) were the first to deal with effects of trees in urban canyons in their vegetated urban canopy model (VUCM). The foliage layer is explicitly represented in the middle of the canyon above the ground. It is characterized by a cover fraction of the canyon, a thickness, and a vertical profile of Leaf Area Density (LAD). The trunks are assumed to be transparent as it is often the case in vegetation models. Radiation budget is computed for short-wave radiation (direct and diffuse components) by accounting for shadowing effects of trees on buildings and ground-based surfaces and of buildings on trees, as well as multiple reflections, and for longwave radiation with one reflection. The hypothesis of lambertian reflectance is applied by considering each element of the canyon as a uniform surface (with uniform albedo, emissivity and temperature). For each of them, the view factors in relation to surrounding elements are computed at

the center of the surface. The attenuation of radiation by leaves is included in equations when short- or long-wave radiation crosses the foliage. It depends on transmissivity properties of foliage - inspired by works of Yamada (1982) for forest canopies - that follow an exponential law based on the LAD profile and a modulation factor depending on vegetation type. More recently, Young et al. (2015) have developed and tested a similar parameterization for street trees (TURban) in the Single Column
5 Reading Urban Model (SCRUM, Harman and Belcher, 2006; Porson et al., 2009). The tree canopy is explicitly described as a rectangle located in the middle of the canyon and assumed to be lower than building height. The view factors for both fully visible and partially occluded facets due to the presence of the foliage are calculated in an analytic manner, based on Hottel's crossed string construction (Hottel, 1954). The model implemented by Ryu et al. (2015) considers two explicit and symmetric trees with circular crowns. The Monte Carlo algorithm developed by Wang (2014) is executed once at the beginning of
10 the simulation and subsequently transformed into simple relations to determine view factors which trees are involved. Short- and long- wave radiation exchanges but also sensible and latent heat exchanges and root water uptake processes are represented.

BEP-Tree is the first multi-layer model of urban energy exchange and flow at the neighborhood scale that includes trees and their both radiative (Krayenhoff et al., 2014) and dynamic (Krayenhoff et al., 2015) effects on buildings. View factors
15 are also computed using a Monte Carlo ray tracing approach. The clustered distribution of tree crowns is taken into account through a unique clumping factor for all the vegetation of the canyon. Tree foliage can be present both within and above the canyon and above the roofs.

For large eddy simulations (LES) in urban environment, a vegetated urban canopy model (VUC) has been integrated by Tavares
20 et al. (2015) in the ARPS model. This ARPS-VUC version distinguishes the tree canopy from natural soils and ground-based vegetation. The radiative calculations are however rather simplified in relation to dynamics. The net radiation flux decreases exponentially from the top of urban canopy to the ground depending on the canopy density which includes both tree vegetation and buildings. For a microscale urban climate model such as ENVI-met (Bruse and Fler, 1998), the fine meshing enables to resolve explicitly each element which composes the urban environment by distinguishing buildings, impervious and natural
25 ground-based surfaces, vegetation, and air. Absorption coefficients of radiation by vegetation (based on an exponential formulation) are calculated at each vertical level, according to the vertical profile of LAD. The SOLENE-microclimat model (based on the SOLENE radiative model) is able to represent the evaporative, shading and insulating characteristics of green walls and roofs, modeled as surfaces (Malys, 2012). The trees are modeled as porous volumes in the airflow model and as semi-transparent crowns in the radiative model; the energy balance (evaporative, convective and radiative fluxes) being coupled to
30 these models (Robitu et al., 2006). This balance leads to the assessment of leaves and air temperatures.

3 General concept of TEB and urban trees representation

3.1 Description of urban areas in TEB

At each mesoscale model grid point, TEB describes the average characteristics of the local environment by a single urban canyon composed of a ground-based surface bordered by two flat-roof buildings of same height. The urban environment is thus described in TEB based on four distinct elements that compose the urban canyons: *roof*, *wall*, and for the ground-based surfaces, a combination of impervious and natural covers referred to as *road* and *garden*, respectively (Fig. 1).

5 A set of geometric parameters are defined to describe the canyon (Table 1): cover fractions of buildings and gardens (the remaining fraction is assumed to be the roadways), mean building height, and wall area density. Impervious covers are also characterized by radiative and thermal properties depending on construction materials: albedo and emissivity are prescribed for outdoor surface coating of roofs, walls, and roads; thermal conductivity and heat capacity are defined for the ensemble of materials composing buildings and roadways. For each urban facet (*roof*, *walls* and *road*) separately, the model computes
10 a radiation budget and a surface energy balance. It also resolves an equation of temperature evolution with a single surface temperature associated to each facet.

For natural soils and vegetation, the radiative and energetic exchanges with atmosphere, as well as the hydrological and thermal processes in the ground are parameterized with the Interaction Soil-Biosphere-Atmosphere model (ISBA) model (Noilhan and
15 Planton, 1989). The vegetation stratum is described in the ISBA model as an aggregation of bare soil, low stratum (grass) and high stratum (trees) of vegetation. This vegetation stratum is characterized by composite descriptive and physiologic properties that are calculated starting from properties of these different types of natural covers. They include albedo and emissivity (depending of proportion of bare soil and vegetation), Leaf Area Index, stomatal resistance, and roughness length. Note that some of those properties can evolve seasonally, but also in case of snowfall which modifies radiative properties. The vegetation
20 stratum is connected with a soil column, to which are associated hydrological and thermal properties depending of soil texture and water content evolution (Boone et al., 1999).

This reference version of TEB is based on two important simplifications. First, there is no explicit spatial arrangement of the garden within the canyon. They are only represented as land cover fractions. In addition, the vegetation stratum, even if it
25 can be composed of trees (through the definition of specific physiological properties), is always placed on the ground without vertical ~~extent~~extend. This means that shadow effects on ground and buildings related to the presence of high vegetation are not taken into account, and that there is no vertical distribution of energy turbulent exchanges between vegetation and atmosphere.

3.2 General principles of solar radiation exchange parameterization in TEB

The present study describes the improvements of the radiation budget calculations in TEB by the implementation of explicit
30 high vegetation. Consequently, this section is focused on the description of the radiative exchanges in the initial version of

TEB. The parameterization of turbulent heat fluxes and of heat conduction processes, as well as the calculations of microclimate parameters within the canyon, are not presented here but they are detailed by Masson (2000); Lemonsu et al. (2004); Hamdi and Masson (2008); Masson and Seity (2009); Lemonsu et al. (2012).

The TEB urban canyons are assumed to be of infinite length so that there is no street intersection. The radiative calculations are consequently done on a two dimensional plan-plane which crosses the canyon according to an axis perpendicular to the street direction. Two main options are available for radiative calculations: (1) a street orientation can be prescribed, so that the two walls of the canyon (referred to *wall A* and *wall B*) are managed separately; or (2) the hypothesis of isotropic orientation of streets is applied, and in this case, walls are managed together (implying that they will have identical temperature evolutions).

The short- and long- wave radiation budgets are resolved in TEB for each element composing the urban canyon (roofs, walls, road, ground-based vegetation, and now tree canopy) with the aim of determining the energy absorbed by each element, that is used afterward to compute the surface energy budget.

10

More specifically for the shortwave radiation budget, three contributions are considered for a given element:

1. The direct solar radiation received before any reflections. This contribution depends on zenith angle since the incident direct radiation is unidirectional, street orientation, and canyon aspect ratio.
2. The diffuse solar radiation received before any reflections. This contribution depends on the sky view factor of the considered element since the diffuse radiation is assumed to be isotropic.
3. The total shortwave radiation received after multiple reflections within the canyon. After a first reflection on one of the elements of the canyon, initial contributions of direct and diffuse radiation are isotropic and are treated the same way. The part of radiation received by a given element then depends on the view factors of all the other elements and on their albedo that determine the reflected radiation part.

Although this paper focuses on resolution and evaluation of the shortwave radiation budget, it is worth to note that the validation of our shortwave radiation scheme contributes to verify our future longwave radiation scheme. Indeed, the same view factors used for the multiple reflections will be applied to the longwave radiation interactions within the canyon. The longwave exchanges are computed following the typical a linear approximation of the Stefan-Boltzmann law. ~~Moreover, because of high longwave emissivities, only one re-emission is computed.~~ For numerical stability purpose, an implicit formulation is applied for longwave radiation budgets; it includes the surface temperatures at the previous numerical time step and at the current time step.

3.3 Inclusion of a high vegetation stratum for solar radiation calculation

To take into account the tree canopy in TEB, it is required to add a new vegetated stratum on the vertical plane, which can shade the road, the walls and the low vegetation. This modification led to more complex radiative calculations, but is done with a

30 concern to preserve a certain level of simplicity and to limit the number of new input parameters for TEB. This is motivated by the type of applications which are conducted with the TEB model, and more generally with the SURFEX land surface modeling platform (Masson et al., 2013) which TEB is part of. The system is frequently applied over domains of several hundred square kilometers with horizontal resolutions between few hundred meters to few kilometers and can be run for long time periods up to several years in case of climatic studies (e.g., Lemonsu et al., 2013; de Munck, 2013, in French). This means that computing times must be acceptable, and that urban input data must be available or easy to define.

5 The arrangement of tree canopy is here described using three parameters only (Fig. 1 and Table 1): its cover fraction (δ_t), i.e. the proportion of canyon which is covered by the foliage stratum on the horizontal plane, as well as the mean height of trees (h_t), and the mean height of trunks (h_{tk}). In the current version of TEB (official SURFEX v8.0 version), urban trees are assumed to be less tall than surrounding buildings and systematically confined inside the canyon so that they cannot provide shade for roofs. This hypothesis is in accordance with [urban planning requirements common urban planning](#) specifications for
10 street trees management [in Europe](#) (in French, Municipality of Toulouse, 2008; City of Westminster, 2009; Barcelona City Council, 2011). These documents ensure a satisfactory juxtaposition of trees with urban structures for dwellers. Minimum distances between trunks or crowns and walls or balconies are strictly imposed to avoid problems such as excessive obstruction of crowns facing windows, disruption of underground services by roots or subsidence of buildings. These widespread practices are also applied in private gardens or suburban areas and tends to avoid shadow on roofs even if street trees can be taller than
15 buildings. Design with trees shading on roofs are statistically sparse and their impact on surface balance ~~limited.~~ [is limited. At this stage, the application of TEB to low density neighborhoods is restricted if trees can significantly shade buildings.](#) They are probably located in high latitudes where incoming fluxes are ~~lesser~~ [lower](#) than in mid or low latitudes and this potential bias would only occur in the early morning or late evening, when the zenith angle is large but the solar radiation flux far lower energetic than around noon.

20 For now, the shape of the foliage and the vertical distribution of leaves are not defined. The crowns of trees are considered as [rectangular](#) parallelepipeds (namely computed as a rectangular ~~2D~~ cross-section [in a two dimensional plane perpendicular to the street axis](#)) with homogeneous foliage which is described by a Leaf Area Index (LAI_t) and an albedo (α_t). It is however possible to vary the LAI during the year, in order to simulate the seasonal cycle of deciduous trees. [The high vegetation cover fraction is a combination of the sum of widths of crowns in the plane perpendicular to the street axis but also takes into account the presence or not of gaps between crowns lengthwise along the canyon.](#) Note that trunks are not taken into account in radiative calculations. The tree vegetation stratum is considered as a partially-transparent element for shortwave radiation. A part of the incident radiation received by trees is transmitted through the foliage. The part of radiation which is not transmitted is consequently reflected or absorbed, depending on albedo. These processes and the associated calculations are detailed
25
30 hereafter.

4 Solar radiation absorption of vegetated street canyon surfaces

In this part, equations related to the implementation of a tree layer into the TEB model are presented. In order to calculate these terms in TEB, the 4.1 and 4.2 following sections describe how direct and diffuse solar ~~radiations~~ radiation fluxes reach canyon surfaces. Then, absorption is obtained by separately resolving the first absorption of total shortwave radiation on each surface and the sum of absorbed shortwave radiation after infinite reflections within the canyon.

4.1 Direct solar radiation received by each element

- 5 The foliage of trees plays a role of obstruction and attenuation of incident direct solar radiation (S_t^\downarrow) for the other elements of the urban canyon. Consequently, to determine the direct solar radiation received by each element of the canyon, we need to solve first the equations related to high vegetation.

The direct solar radiation potentially reaching the top of trees by geometrically taking into account the shading of build-
10 ings depends on buildings height (h), canyon aspect ratio (h/w), street orientation (θ_{can}), zenith and azimuth angles (λ , θ_{sun}), as well as tree height (h_t):

$$S_t^\downarrow = S_t^\downarrow \max \left[0; 1 - \frac{h}{w} \left(\frac{h - h_t}{h} \right) \tan(\lambda) \sin |\theta_{sun} - \theta_{can}| \right] \quad (1)$$

As ~~explained previously~~ previously explained, this radiation flux is partially transmitted through the foliage (S_t^{\gg}), whereas the remaining solar radiation is reflected (S_t^\uparrow) or absorbed (S_t^*):

$$15 \quad S_t^\downarrow = S_t^{\gg} + S_t^\uparrow + S_t^* \quad (2)$$

The proportion of direct solar radiation transmitted through the foliage is estimated by ~~a~~ the Beer Lambert law (Campbell and Norman, 1989) where the Leaf Area Index (LAI_t expressed in m^2 of leaves per m^2 of ground) of tree canopy and an extinction coefficient (k) are involved. The extinction coefficient is fixed to 0.5, a default value corresponding to ~~homogeneous repartition~~ an homogeneous distribution of leaves in terms of density and orientation (in other words, a spherical leaf angle distribution):

$$20 \quad S_t^{\gg} = S_t^\downarrow \exp(-k LAI_t) \quad (3)$$

The reflected radiation part simply depends on the part of incident solar radiation untransmitted through the foliage and on the albedo of trees (α_t):

$$S_t^\uparrow = \alpha_t S_t^\downarrow \left(1 - \exp(-k LAI_t) \right) \quad (4)$$

- Finally, the incident direct solar radiation part absorbed by trees is neither transmitted nor reflected and calculated as the
25 residual term from Eq. 2:

$$S_t^* = (1 - \alpha_t) S_t^\downarrow \left(1 - \exp(-k LAI_t) \right) \quad (5)$$

The direct solar radiation received by the ground (indiscriminately road or garden fraction) is deduced by correcting the incident solar radiation above canyon from the interception of radiation by high vegetation canopy (i.e., reflected and absorbed radiation weighted by high vegetation cover fraction referred to as δ_t), and then from the shading effects of buildings (according to Lemonsu et al., 2012). The same equations are obtained for road (S_r^\downarrow) and garden (S_g^\downarrow):

$$S_r^\downarrow = \left(S^\downarrow - \delta_t \left(S_t^\uparrow + S_t^* \right) \right) \max \left[0; 1 - \frac{h}{w} \tan(\lambda) \sin |\theta_{sun} - \theta_{can}| \right] \quad (6)$$

In this way, tree foliage is assumed to be uniformly distributed across the canyon at the height of the trees (h_t), consistently with the Eq. 1.

5

The direct solar radiation which is not received either by high vegetation, or by road or garden is assigned to the sunlit wall, whereas the opposite wall is in the shadow. By convention in TEB in the case of an oriented canyon, we define *wall A* as the most sunlit wall and *wall B* as the shaded one.

$$S_{w_A}^\downarrow = \left(S^\downarrow - S_r^\downarrow - \delta_t \left(S_t^\uparrow + S_t^* \right) \right) \frac{w}{h} \quad S_{w_B}^\downarrow = 0 \quad (7)$$

10 Note that shading effects of high vegetation on roofs are not represented, since urban trees are less tall than buildings by definition in the current version of TEB (SURFEX v8.0).

4.2 Diffuse solar radiation received by each element

The incoming diffuse solar radiation (S^\downarrow) is assumed to emit isotropically. Each urban surface of the canyon (*wall*, *road*, and *garden*) receives a part of diffuse solar radiation according to the sky view factor of the surface Ψ_* (see Appendix A) and the mean radiative transmissivity between the sky and the given surface τ_{*s} (see Appendix B). Note that the sky view factor of *wall* is defined at mid-height of buildings; for ground-based surfaces *road* and *garden*, a single sky view factor $\Psi_{rs} = \Psi_{gs}$ is defined at the center of the street (Masson, 2000; Lee and Park, 2008). The following equations are obtained for *road* (same expression for *garden*) and for *wall*:

$$S_r^\downarrow = S^\downarrow \Psi_{rs} \tau_{rs} \quad (8)$$

20

$$S_w^\downarrow = S^\downarrow \Psi_{ws} \tau_{ws} \quad (9)$$

We admit that the residual flux of diffuse solar radiation which is not intercepted in the canyon by previous surfaces reaches the tree canopy:

$$S_t^\downarrow = \frac{S^\downarrow - (\delta_r S_r^\downarrow + \delta_g S_g^\downarrow + \frac{2h}{w} S_w^\downarrow)}{\delta_t} \quad (10)$$

25 This method presents two major advantages: (1) the diffuse solar radiation budget is always closed and (2) the computed diffuse solar radiation flux for the high vegetation is already corrected from the transmitted part, reaching the other surfaces.

The fluxes of each surface are here expressed according to the total ground-based surface of the canyon, with δ_r and δ_g the cover fractions of road and garden in the canyon ($\delta_r + \delta_g = 1$), respectively.

4.3 First absorption of total shortwave radiation by each element

The first absorption of total shortwave radiation $S^*(0)$, before any reflections, is only function of the total shortwave radiation received by the considered element and of its albedo (α_*). The same expression is obtained for walls and ground-based surfaces ($*$ which stands for r, g, w_A or w_B):

$$5 \quad S_*^*(0) = (1 - \alpha_*) (S_*^{\downarrow} + S_*^{\uparrow}) \quad (11)$$

For the tree canopy, the part of absorbed direct solar radiation is corrected by the transmitted flux:

$$S_t^*(0) = (1 - \alpha_t) \left[(S_t^{\downarrow} - S_t^{\gg}) + S_t^{\uparrow} \right] \quad (12)$$

S_t^{\downarrow} includes the transmitted flux S_t^{\gg} (see Eq. 2) contrary to S_t^{\uparrow} which is calculated as a residual flux (Eq. 10), corrected from the transmitted flux.

10 4.4 Sum of total shortwave radiation absorbed by each element

Our goal is to compute the total shortwave radiation absorption for each element $S^*(\infty)$ by taking into account an infinite number of reflections between all elements composing the urban canyon. At each reflection, the isotropic radiation intercepted by a given element (1) after reflections on one of the other elements (2) is conditioned by the view factor of (2) from (1) referred to as Ψ_{12} (see Appendix A), the mean radiative transmissivity τ_{12} (see Appendix B) and the absorption is then determined according to reflective properties of (1). Using a single view factor in TEB radiation calculations is obviously a limitation for accurately representing the various contributions of canyon's surfaces to high vegetation. Additionally, we have a poor knowledge of ~~a potential contribution of leaves with each others, within the tree's crown. the forward scattering or trapping effects occurring within the crowns. Because of the description of the canopy as a surface, TEB neglects these processes but the attenuation and transmission applied at the top of the canopy (see Eq. 3, 4, 5) arising from Eq. 1) could be adjusted in order to implicitly include these phenomena.~~ To ensure a closing system, we define the total absorbed shortwave radiation by high vegetation as the remaining shortwave radiation, after accounting for absorption and reflection from the total incident solar radiation by all other elements of the canyon. This requires to calculate the part of shortwave radiation which leaves the canyon towards the sky. The terms R_∞ , G_∞ , A_∞ , B_∞ , and T_∞ make reference to the sum of total shortwave radiation reflected by each surface, respectively, after an infinite number of reflections (see detailed resolution in Appendix C). Here is the expression of the total absorbed solar flux per surface:

$$S_s^*(\infty) = \Psi_{sr}\tau_{sr}(\delta_r R_\infty + \delta_g G_\infty) + \Psi_{sw}\tau_{sw} \frac{A_\infty + B_\infty}{2} + \Psi_{st}\delta_t T_\infty \quad (13)$$

$$S_r^*(\infty) = S_r^*(0) + (1 - \alpha_r) \left[\Psi_{rw} \tau_{rw} \frac{A_\infty + B_\infty}{2} + c_{rt} \Psi_{rt} \delta_t T_\infty \right] \quad (14)$$

$$S_g^*(\infty) = S_g^*(0) + (1 - \alpha_g) \left[\Psi_{rw} \tau_{rw} \frac{A_\infty + B_\infty}{2} + c_{rt} \Psi_{rt} \delta_t T_\infty \right] \quad (15)$$

$$S_{w_A}^*(\infty) = S_{w_A}^*(0) + (1 - \alpha_w) \left[\Psi_{wr} \tau_{wr} (\delta_r R_\infty + \delta_g G_\infty) + \Psi_{ww} \tau_{ww} B_\infty + c_{wt} \Psi_{wt} \delta_t T_\infty \right] \quad (16)$$

$$5 \quad S_{w_B}^*(\infty) = S_{w_B}^*(0) + (1 - \alpha_w) \left[\Psi_{wr} \tau_{wr} (\delta_r R_\infty + \delta_g G_\infty) + \Psi_{ww} \tau_{ww} A_\infty + c_{wt} \Psi_{wt} \delta_t T_\infty \right] \quad (17)$$

$$S_t^*(\infty) = \frac{1}{\delta_t} \left[\left(S_t^\downarrow \text{---} + S_t^{\gg} + S_t^\downarrow \right) - \left(S_s^*(\infty) + \delta_r S_r^*(\infty) + \delta_g S_g^*(\infty) + \frac{2h}{w} \frac{S_{w_A}^*(\infty) + S_{w_B}^*(\infty)}{2} \right) \right] \quad (18)$$

The view factors related to the high vegetation stratum are expressed in Appendix A. Specific coefficients are applied, in the shortwave scheme only, to constrain the reflections from the high vegetation toward sky and top part of walls. In nature, the solar radiation is mainly redirected upwards by the receiving face of sunlit leaves in the top of crown during the first reflection. We suggest here to neglect the small amount of shortwave radiation which the tree stratum is supposed to reflect to the low part of the canyon during multiple reflections in favor of representing realistically the upward isotropic first reflection of solar radiation, which is by far the most energetic reflection. Solar reflections calculations are fully explained in Appendix C. As previously mentioned, view factors used for the multiple reflections in the shortwave radiation scheme will be applied to the longwave radiation interactions within the canyon in future works.

5 Comparative exercise with the SOLENE model

An objective and exhaustive assessment of the new solar radiation calculations in TEB related to the inclusion of tree layer effects is not an easy exercise, essentially due to the lack of experimental data. Indeed, very few measurements for documenting radiative effects of trees in urban environment are available (Park et al., 2012). The objective is here to quantify the performances of TEB in simulating the different contributions of the solar radiation budget for the ensemble of urban facets and vegetation. For this purpose, we compare TEB with the SOLENE software, which is a high spatial-resolution solar and lighting architectural model and which is used in this work as a reference. Various configurations of urban canyons with street trees (that differ in terms of vegetation density and spatial distribution) are studied so that the capacities and limits of the TEB geometric approach can be highlighted and evaluated.

5.1 General presentation of the SOLENE model

The SOLENE model (Miguet and Groleau, 2002; Robitu et al., 2006; Groleau and Mestayer, 2013) incorporates a radiative ~~transfers-transfer~~ scheme based on the radiosity method which is applied to meshed scenes with triangular facets, particularly adapted to complex geometries (Bouyer et al., 2011; Malys et al., 2014). This model provides a good tool to study urban radiation distinguishing solar radiations (separate direct and diffuse components, 0.3-2.5 μm) and infrared thermal radiations (2.5-18 μm).

In this research work, we consider the shortwave radiation scheme only. The incoming direct solar radiation is calculated by considering the sun as a point source, related to solar height (following formula in De Brichambaut (1963)) and angle of incidence of rays at the surface (Miguet, 2000). The incoming diffuse part of solar radiation is represented as a non-uniform distribution coming from a sky vault defined by an hemisphere of infinite radius, which is meshed using a geodesic triangulation. The luminance values that are mapped on the hemisphere are derived from Perez model (Perez et al., 1993). This model, based on five sky clearness and brightness, provides statistical distribution depending on weather type represented. Multiple reflections are computed assuming that the surfaces are lambertian and opaque for urban surfaces while the vegetation surfaces are semi-transparent (Robitu, 2006). Solar simulations are performed in successive stages. The first one, based on geometric procedures, determines the visibility considering solar masks between two mesh elements or a mesh element and a sky patch of the sky vault model (including sun). View factors (including sky view factor) are produced for each mesh. The second stage calculates the solar radiation fluxes received by each mesh element for the time-step. Then, the multiple reflections are computed by the radiosity method. This last stage provides the net solar flux received by each mesh as well as absorbed and reflected parts.

The trees have been implemented from the evolution of SOLENE into the microclimate model named SOLENE-microclimat (Robitu, 2006). In this new model, the trees are geometrically modeled by their external envelope and are considered as semi-transparent. Therefore, a percentage of the solar radiation is transmitted by the tree canopy according to a transmission coefficient (fixed to 0.5) and reaches directionally the other elements of the urban scene. The intercepted part of the solar radiation flux is either reflected or absorbed, depending on the tree albedo. Radiative properties of the high vegetation are homogeneously applied to all the meshes which belong to the surface of vegetation blocks. A separate balance is computed for each mesh using specific view factors. Currently, no explicit foliage elements or intra-canopy processes (as forward scattering) are represented in the radiative model of trees in SOLENE-microclimat.

5.2 Configuration of numerical experiments

5.2.1 Canyon modeling in SOLENE

The urban canyon geometry chosen for building the SOLENE's mock-ups is as simple as possible to reflect the hypotheses of TEB: an infinite street (150 m in length in the mock-ups) bordered by two identical buildings with flat roofs. As shown in Fig. 2, it is ~~declined~~ here defined in three different urban canyon forms corresponding to aspect ratios (referred to as h/w) of 0.5, 1

and 2. For the first two aspect ratios, the building height is 8 m and the width of the street is 16 m for $h/w = 0.5$ and 8 m for $h/w = 1$. For $h/w = 2$, building height is 16 m and width of the street is 8 m.

30 For each of these urban canyons, 13 different vegetation layouts are prescribed (Fig.3), as well as a control case without vegetation. The vegetation blocks are rectangular parallelepipeds representing the three-dimensional tree crowns, without trunk. ~~The vegetation blocks~~ These solid volumes are continuous lengthwise along the canyon. Depending on the configurations, the trees can be organized in single or double rows. According to a cut plan through the canyon, the tree crowns can fill 30, 60, or 90 % of canyon width. For the three aspect ratios, height of trees is prescribed to 5 m or 7.5 m with trunks of 2.5 or 5 m, so that the thickness of tree canopy varies between 2.5 and 5 m. Additional configurations (referred to as $h/w = 2$ rescaled vegetation) are tested for which height of trees is prescribed to 10 m or 15 m with trunks of 5 or 10 m, depending on the thickness and the location of the crown (Cf. Fig. 2). In other words, vegetation layer is doubly thicker and higher than $h/w = 0.5$ and $h/w = 1$ cases for each vegetation configuration in order to rescale it for higher buildings and verify the effect of adapted vegetation layouts regarding the typology of the street. For all experiments, the Leaf Area Index of trees is prescribed to 1, and the albedo is prescribed to 0.25 for road, 0.30 for walls, and 0.25 for trees. All configurations are described in Fig. 1, 2, 3 and Table 2.

To treat the ensemble of configurations, 55 digital mock-ups (52 canyons with vegetation and 3 canyons without vegetation) have been built with the computer-aided-design (CAD) Salome V7_4_0 software. All mock-ups have been meshed by the GMSH software which is a finite element mesh generator. We have applied here a non-uniform meshing with a characteristic length of only 1 m in order to refine the spatial discretization of vegetation blocks, whose smallest ones for some of the vegetation layouts do not exceed 2.4 m of width and 2.5 m of height.

15 Each canyon is projected following the four street orientations 0° , 45° , 90° , and 135° (degrees from geographical north, in the counter trigonometric direction). A specific location (defined by latitude and longitude) must be prescribed for astronomic calculations. The city of Nantes (France) is chosen in an arbitrarily manner (46° N, 1° E). The solar radiation exchanges are then calculated for a single daily cycle, and under sunlight conditions covering the four seasons by selecting dates close to equinoxes and solstices of year 2010, i.e. 20th March, 21st June, 23rd September, and 23rd December of 2010. Note also that 20 the Perez model (see section 5.1) has been parameterized in order to generate perfectly clear cloudless skies.

5.2.2 Canyon modeling in TEB

In the same way, TEB is run for equivalent configurations to SOLENE configurations, respecting hypotheses, approaches, and spatial resolutions differences between the two models. For TEB simulations, the geometrical parameters describing the urban canyon form, as well as the height of trees and trunks are comparable to those of SOLENE simulations. But the different spatial arrangements of trees simulated by SOLENE are simply prescribed as cover fractions in TEB. As a result, some configurations (e.g. B1 and B2 with different horizontal locations or B3 and B4 with different number of tree lines, shown in Fig.3) cannot be distinguished by the TEB approach, and are associated to the same cumulative cover fraction of tree canopy in TEB. In this

manner, interactions between tree lines are not taken into account in TEB, contrary to SOLENE where rays are attenuated at each time crossing a mesh belonging to a vegetated envelope. All geometric features of both sets of simulations with SOLENE and TEB are summarized in Table 2. In SOLENE, the incident radiation flux is roughly attenuated ~~of by 50 % at once when once~~ crossing a mesh ~~of which belongs to~~ a vegetation envelope. In terms of process modeling, the formulation of transmissivity of radiation through the foliage in TEB is here simplified for the evaluation stage. In order to be consistent with the SOLENE approach, the exponential attenuation expressing a maximum interception (including the Leaf Area Index) in Eq. 3, 4, 5 is replaced by 0.5. The same way, the formulation proposed in Appendix B (Eq. B1, B2, B3, B4) for modulating the radiation attenuation depending on the likely path of rays and based on the Leaf Area Density profile, is here substituted by the expression $1 - 0.5(LAD/LAI)$, so that the maximum attenuation is 0.5 when all thickness of tree canopy is passed through. Note also that TEB is forced by the same conditions of incoming solar radiation than those calculated for the roofs in SOLENE. Using a unique forcing for each component (direct or diffuse) of the solar radiation from the SOLENE simulations, TEB forcings do not take into account the non-uniform distribution of incoming diffuse solar radiation. From this imprecision result differences from 1 to 4 % between the fluxes of the two walls, depending on their orientation, for studied aspect ratios during summertime (sensitive analysis not shown).

5.2.3 Comparison method

Finally, 880 solar radiation simulations are performed with both TEB and SOLENE models. For each of them, hourly outputs are stored. They include the direct and diffuse solar radiation received by the separated elements (*road, walls, and tree*) before multiple reflections, as well as the total shortwave radiation absorbed by the separate elements after multiple reflections. The main objective of the comparative exercise is to evaluate the cover fraction approach of TEB against a model (SOLENE) resolving the urban radiation budget at fine scale and with trees explicitly represented by geometrical elements. For this purpose, gaps between the simulations of received direct or diffuse solar radiation fluxes by canyon surfaces have been investigated. ~~Because of divergent physics assumptions, the statistics concerning the absorption by the facets of the canyon need a cautious interpretation.~~ During multiple reflections, the radiation is assumed to be isotropic in ~~TEB while both TEB and SOLENE computes reflections with specular behavior using the method of radiosity. For comparing SOLENE and TEB models. Reflections from the high vegetation in TEB are also omni-directional but just constrained upwards (in other words, they are based on π) in order to represent more realistically the first and, by far, the most energetic reflection (see details in section 4.4. and Appendix C). To compare the simulations of these two models,~~ only the central part of the SOLENE's mock-up is used in order to avoid any boundary effects (see the scheme in Fig. 3). For each flux, the values calculated by SOLENE are summed over all grid points that compose each element of the canyon (separately, the road, the two walls, and the trees). Finally, for both models, the fluxes are weighted to be expressed according to the total ground-based surface of the canyon, so that they can be compared to each other and compared to the incoming radiation. Note that tables with statistical scores presented hereafter have been fulfilled with the same procedure, i.e., the Mean Absolute ~~Error (MAE in Difference (MAD in $W m^{-2}$))~~, the Mean Absolute Percentage ~~Error (MAPE Difference (MAPD in %))~~ computed from the mean daily fluxes, and the mean bias (Bias in

5 W m^{-2}), according to following equations:

$$\text{MAE-MAD} = \frac{\sum_{i=1}^{n_s} \sum_{j=1}^{n_o} \sum_{k=1}^{n_h} \sum_{l=1}^{n_t} |F_{\text{SOL}}(i, j, k, l) - F_{\text{TEB}}(i, j, k, l)|}{n_s \cdot n_o \cdot n_h \cdot n_t} \quad (19)$$

$$\text{MAPE-MAPD} = 100 \cdot \frac{\sum_{i=1}^{n_s} \sum_{j=1}^{n_o} \sum_{k=1}^{n_h} \frac{|F_{\text{SOL}}(i, j, k) - F_{\text{TEB}}(i, j, k)|}{F_{\text{SOL}}(i, j, k)}}{n_s \cdot n_o \cdot n_h} \text{Bias} = \frac{\sum_{i=1}^{n_s} \sum_{j=1}^{n_o} \sum_{k=1}^{n_h} \sum_{l=1}^{n_t} (F_{\text{SOL}}(i, j, k, l) - F_{\text{TEB}}(i, j, k, l))}{n_s \cdot n_o \cdot n_h \cdot n_t} \quad (20)$$

The indexes i, j, k, l refer to as season, street orientation, aspect ratio of the street, and hour of the day, respectively, with $n_s = 4, n_o = 4, n_h = 3, n_t = 24$. We also run simulations of the $h/w = 2$ additional cases where canyons are greened by-with
 10 a rescaled vegetation (see section 5.2.1 and Fig. 2).

6 Results

6.1 General analysis and seasonal effects

Table 3 presents the statistical scores computed for the shortwave radiation absorbed by the different elements of the canyon for both cases, with and without vegetation. Since multiple reflections are treated differently between TEB and SOLENE,
 15 these results are used to show the magnitude of variability of errors-differences related to the presence of vegetation in the canyon or the considered season. Results are presented here by gathering the experiments performed with different street orientations and different vegetation layouts, but by distinguishing the seasons. In the light of the mean biases, the TEB model tends to systematically overestimate the absorption by road and walls compared to SOLENE (up to +16 and +~~10~~ W m^{-2}
 ~~m^{-2}~~ 8.5 W m^{-2} for road and walls, respectively), and to underestimate the absorption by trees (up to ~~-19~~ W m^{-2} ~~m^{-2}~~ 16 W m^{-2}),
 20 m^{-2}), whether the configuration or the season. Considering that the temperate climate is characterized by four distinct seasons with contrasting sunshine, air temperature and humidity conditions, seasonal analysis was undertaken. Analysis of the results for each season separately indicates that relative errors (MAPE) are especially differences (MAPD) are particularly high for wintertime simulations for road and trees, due to a very low incoming solar radiation at that period. Nonetheless, the associated MAE-MAD and biases are acceptable (less than 3.5 and $\pm 3 \text{ W m}^{-2}$, respectively). Summer is the season which provides
 25 the best results in terms of MAPE-MAPD when the canyon is tree-filled (less than 25 %) or not (3 %). This season is also the most relevant to be examined here because our first concern is to improve the simulation of the potential cooling effect of street trees in a urban environment, submitted to a strong Urban Heat Island at this period. The evaluation is focused on

effects of deciduous trees which are typical and widely present in cities under temperate climate. Such trees are leafless during winter, so that they have a negligible impact on thermal comfort and energy demand at this season. That is why we focus on the summertime example hereafter, to assess the TEB performances for simulating the solar radiative exchanges in idealized canyons, vegetated or not.

6.2 Case of urban canyons without vegetation

5 The radiative calculations in TEB are first evaluated for the cases without vegetation. Several comparisons with observations of radiation fluxes at neighborhood-scale have been performed (Masson et al., 2002; Lemonsu et al., 2004, 2010; Pigeon et al., 2008). They have shown a good capacity of the model in computing the upward short- and long- wave radiation at the top of the urban canopy, in real case configurations. But these evaluation exercises have not allowed us to analyze separately the radiative contributions of various elements that compose the urban environment. Such a model-model comparison in a controlled
10 framework is ideal to deeply investigate and evaluate the TEB radiation parameterizations.

Both direct and diffuse solar radiation received by the road and the separate walls before any reflections, as well as the total shortwave radiation absorbed by these surfaces, are studied. An example of daily cycle is presented in Fig. 4 for the case $h/w = 1$ and the four street orientations, for summer season. The scatterplots integrate all the hourly fluxes simulated for the
15 three aspects ratios, the four street orientations, and the four seasons (Fig. 5). As expected, they demonstrate a strong positive linear relationship between fluxes calculated by SOLENE and TEB ($R^2 \geq 0.99$ except for diffuse solar radiation absorbed by roads: $R^2 = 0.979$) [despite various meteorological conditions](#).

The comparison between SOLENE and TEB simulations for the direct solar radiation received by road and walls before any
20 reflections highlights very good results. TEB is able to reproduce the geometrical effects of the canyon on radiation penetration according to the time of the day, as well as the street orientation. For NE-SW and NW-SE oriented streets, TEB simulates correctly the dissymmetry of fluxes between the two walls, as well as the temporal shift in peak of radiation received by the road in comparison with the N-S oriented street. For the E-W street case, the direct radiation received by the road is marked by a plateau effect between 8 am and 7 pm. The two walls have different behaviors: the wall ~~the~~-most exposed to [the](#) sun receives
25 the maximum direct radiation at solar noon, whereas the most shaded wall receives direct radiation only early in the morning and late in the afternoon. The scores confirm the good performances of TEB: [MAE-MAD](#) are 4.39 and 2.49 W m^{-2} , and biases are -0.28 and +0.40 [W m⁻²](#) for road and walls, respectively (Table 4). They are associated with low [MAPE-MAPD](#) of only 1 % for both road and walls.

30 ~~For the~~ In the calculation of diffuse solar radiation ~~calculations, remind that,~~ TEB does not ~~separate~~ consider the two walls
~~Consequently, here are compared in Fig. 4~~ separately. Therefore, the diffuse solar radiation flux ~~received by~~ is compared
between the composite wall of TEB, and the average of the diffuse solar radiation fluxes received by ~~the~~ separate walls of the
SOLENE ~~simulation~~ simulations (Fig. 4). By considering an average surface, TEB underestimates the diffuse solar radiation
received by walls in the morning and the afternoon, and it overestimates it at solar noon. On the opposite, it overestimates the
5 diffuse solar radiation received by the road in the morning and the afternoon, and it underestimates it at solar noon. In this case,
~~MAE~~ MAD and biases remain weak (less than 3.5 and $\pm 1 \text{ W m}^{-2}$, respectively) because the involved fluxes are not very high
(depending on the season, the diffuse component is only 15-25 % of the total incident solar radiation), but ~~MAPE~~ MAPD are
slightly higher than for direct solar radiation, reaching 7 and 5 % for road and walls, respectively (Table 5). However, these
discrepancies have no impact on performances of TEB neither at daily scale on fluxes of walls nor on instantaneous cumulated
10 canyon fluxes. Moreover, the dissymetry of received diffuse solar radiation fluxes is no longer observed in E-W oriented cases.

Finally, the total shortwave radiation absorbed by road and walls is well estimated by TEB despite the simplified hypothe-
ses of the model and the use of a unique sky view factor by surface: ~~MAE~~ MAD and biases are 6.03 and $+3.50 \text{ W m}^{-2}$ for
road, respectively, and 3.38 and $+2.80 \text{ W m}^{-2}$ for walls (Table 6). In view of the important incident radiation flux, exceeding
15 1000 W m^{-2} at solar noon, the ~~MAPE~~ MAPD of 3 % for both surfaces ~~remains~~ remain moderate.

6.3 Case of urban canyons with vegetation

The same evaluations are conducted for vegetated canyons. The statistical scores are computed as previously (see Eq. 19, 5.2.3,
20) but by accounting for the 13 vegetation layouts. We also computed additional cases of vegetation layouts for the config-
urations referred to as " $h/w = 2$ rescaled vegetation" (see section 5.2.1. and Fig. 2 for further explanations). As an example,
20 a comparison of hourly fluxes is presented in Fig. 6, for the layout A and an aspect ratio $h/w = 1$, and for the summer daily
cycle. This configuration is one of the most simple and comparable layouts between the two models: trees are 7.5 m high (i.e.
almost the same height as buildings), tree crowns have a 5 m thickness, they are centered in the middle of the canyon and cover
90 % of the canyon width on the horizontal plane.

25 The daily evolution of direct solar radiation received by the different elements of the canyon can be compared to the case
without vegetation (Fig. 4). The same patterns are obtained, whether for walls or road and the four street orientations, with an
attenuation due to the presence of trees. Here, a significant part of direct incoming solar radiation is intercepted by the foliage.

Due to its partial transparency properties, the foliage allows at least half of radiation fluxes to pass through (see section 5.2.2.). As a result, the urban surfaces (walls and road) receive less incoming direct radiation but are never totally obstructed by trees. These processes are correctly simulated by TEB with some limitations: due to the expression of direct solar radiation intercepted by high vegetation at the top of the crown which is treated as an horizontal surface in TEB (Eq. 1), the fluxes reaching the trees in TEB are globally underestimated compared to the SOLENE fluxes that include contributions on the vertical faces of the crown envelope (Fig. 7 a., all seasons and configurations). Consequently, the solar radiation which is not intercepted by the tree layer in TEB simulations is assigned to the road and the bottom of walls. This leads for ~~the~~ configuration A to ~~MAE of 9.18~~MAD of 9.27, 3.52 and 6.22 W m⁻² for road, walls, and trees, respectively, and ~~MAPE-MAPD~~ of 14, 5, and 4 % only (Table 4). The thicker the crown is, the greater is the ~~error~~difference associated to the tree (D1 vs B1 or D2 vs B2), particularly when the tree rows are away from the walls (B1 vs B2, D1 vs D2 or D3 vs D4), contrary to a continuous tree layer occupying almost the entire width of the canyon (A, C1, C2).

10

As expressed in Eq. 8 and 9, the diffuse solar radiation fluxes received by road and walls (walls are managed together as an average surface), depends on the sky view factor of the given surface and on an attenuation coefficient of the incoming radiation through the foliage. Regarding all seasons and configurations ~~confounded~~combined, the received solar radiation by ground-based surfaces is also overestimated while the diffuse solar radiation flux reaching tree crowns is underestimated in the TEB simulations (Fig. 7 b.). ~~Remind~~Remembering that the diffuse solar radiation received by the trees is calculated in TEB as the residual part of the incoming diffuse solar radiation flux which was not received by road and walls (see Eq. 10). Contrasted results are obtained for the vertical surfaces whether the vegetation layouts, in particular between double-row or centered trees (B3 vs B4). As previously discussed in section 5.4, these defects are related to the use of a single sky view factor for each surface, which is computed at mid-height of buildings for walls and in the middle of the street for road. In addition, the isotropic nature of the diffuse solar radiation leads to an exacerbation of the underestimation of the received flux by the high vegetation, particularly in cases where the side surface of vegetation envelopes is larger: for example, thick crowns with longer sides and vegetation layouts including two rows (~~where~~ the number of sides is doubled (A vs B3, C1 vs C3)). Considering the extremely vegetated canyon A, ~~MAPE-MAPD~~ are 15, 9 and 20 % for road, walls, and tree, respectively, corresponding to ~~MAE of 1.89~~MAD of 1.91, 1.51 and 3.51 W m⁻² (Table 5). Globally, the estimation of the ~~direct~~diffuse solar radiation received by the road and walls are acceptable regarding the ~~MAPE-MAPD~~ which are ≤ 30%. However, the relative ~~errors~~differences associated to the tree layer are contrasted (from 12 % to 49 %), depending on the characteristics of the vegetation layout.

25

For the same configuration, comparing TEB results to the SOLENE simulations as reference, the total shortwave radiation

absorbed by the different elements of the canyon is simulated with correct daily dynamics (Fig. 6). Despite similar tempo-
30 ral behavior of the fluxes, their magnitudes can greatly diverge, especially for the road and tree surfaces with ~~MAPE~~ some
MAPD greater than 30 % and some biases greater than $\pm 25 \text{ W m}^{-2}$ (Table 6). The global scatterplot (Fig. 7 c., all seasons and
configurations) confirms the trends previously found and the absorbed flux by the trees is underestimated. The predictability
based on SOLENE results is also weaker (~~$R^2 = 0.945$~~ $R^2 = 0.954$). These poor performances of TEB regarding the statistical
scores have to be interpreted with caution. This work aims at evaluating the cost in term of performances of TEB to simulate
5 a correct allocation of radiative fluxes for each facet of the canyon in spite of a simple geometric approach based on cover
~~fraction~~ fractions and unique a view factor per interaction. For example, the tree fraction is computed as a cumulative fraction
of all crowns in the street in TEB. Thus, the interactions between tree lines are not allowed, contrary to in SOLENE. However,
~~some physical differences limit the consequences of some other divergent assumptions can alter TEB scores by~~ the comparison
of the absorbed fluxes even if neither one or the other model is the truth (as would have been observations) and SOLENE can
10 not be considered as the reference simulation for these points. Indeed, the way to calculate the transmissivity during multiple
reflections is dissimilar between the two models (see section 5.2.3). TEB code computes infinite isotropic reflections using a
unique view factor for each facet of the canyon and mean radiative transmissivity terms. ~~Remind that~~ The formulation of the
mean radiative transmissivity terms ~~are~~ is based on strong hypotheses on the ~~path of rays considering the studied interaction~~
~~(see Appendix~~ potential attenuation of rays: they express the ratio between the sector of canyon scanned by the view factor
15 associated to the studied interaction and the thickness of crown contained in this canyon sector (see Appendix B). In addition,
reflections from the high vegetation are constrained upwards in TEB (see section 4.4 and Appendix C for full explanations).
On the contrary, SOLENE radiative scheme computes ~~multiple reflections as specular radiation~~ isotropic multiple reflections
within the canyon for each triangular mesh ~~and~~ using the radiosity method. The vegetation envelopes are here strictly semi-
transparent because the penetration of light through the foliage can not be modulated by the Leaf Area Density. Whatever the
20 foliage thickness which is crossed, as soon as a ray reaches a cell of vegetation envelope in SOLENE, this radiation is attenuated
by half.

Further works (not shown) have investigated the sensitivity of TEB results and performances according to the characteris-
tics of the different vegetation layouts. They do not demonstrate clear and systematic patterns when studying the impact of:
25 (1) tree horizontal coverage (or the tree fraction); (2) tree canopy height compared to the building height; (3) tree location -
centered or on side - in the canyon on the ~~MAE and error~~ MAD and difference percentages recorded. It could be explained by
the interaction between opposite effects regarding the vegetation layouts characteristics.

6.4 Benefits of TEB developments

In this section, simulations provided by the initial version of TEB on one hand and by the implemented version on the other hand are compared. For this purpose, we use in the new version equations related to the transmission of radiation fluxes from the high vegetation following the expression presented at Eq. 3, adapted when it required to the considered Leaf Area Density (see Appendix B for further details).

5 6.4.1 Analysis of the mean-daily-behavior of absorbed shortwave radiation by the per canyon surface

The shortwave radiation received and absorbed by the walls and the road can be strongly affected by the presence of tree vegetation. The comparison between the initial version of TEB which deals with vegetation at ground level, and the new version which explicitly includes an additional tree stratum, shows differences. ~~Before weighting the fluxes by the appropriate cover fractions, the shortwave radiation absorbed by the ground-based surfaces are largely overestimated in the initial version of~~
10 ~~TEB (+77for road and +66for the garden in the case A in summer). These defects highlight the lack of representation of the interception of rays before reaching the road related to a reduced absorption of the vegetation by its transparency properties. On the opposite, we observe an underestimation of the absorbed flux regarding the two walls: -41for wall A and -53for wall B. It is explained because during multiple reflections, the tree layer (which is thick in case A) facing walls accentuates the absorption of vertical surfaces in the implemented version. Nonetheless, weighting the fluxes at the canyon scale affects greatly the road and garden fractions. In the reference cases, the high vegetation is treated as a ground-based vegetation fraction which is included in the garden fraction (δ_g). Consequently, the road fraction, which is always defined as $1 - \delta_g$, is varying according to the vegetation layout. In this way, compared to the current version, a larger absorbed shortwave radiation flux in $W m^{-2}$ of road may lead to a lower flux expressed in $W m^{-2}$ of canyon when the garden fraction is high . During the summer and all configurations confounded (Fig. 8), we observe a mean underestimation of the shortwave radiation absorption of -44for~~
15 ~~the road and -10for the walls, compared to the implemented version. This can have a significant impact on thermal comfort conditions for pedestrians as well as on energy consumption of buildings for air-conditioning usage. Moreover, , illustrated by the Figure 8 taking the example of a North-South oriented canyon with an aspect ratio equals to 1, tree-filled by a vegetation layout corresponding to a configuration A, during a summer day. Analyzing the fluxes expressed per squared meters of the reference case presents a strong dispersion in the simulation of solar fluxes absorbed by the vegetation, depending on the~~
20 ~~configurations (aspect ratio of canyon, street orientation and vegetation layout). In some cases especially, this flux is greater than in the new version of TEB. This effect is related to the fact that the reference version does not treat the vegetation as a semi-transparent object and does not take into account its transmissivity properties~~
25 ~~considered surface, artificial surfaces absorb~~

less energy when they are shaded by an explicit tree canopy, while the daily dynamics are similar. At the beginning and the end of the range of lighting hours, trees absorb more energy after the implementation of a real canopy within the canyon instead of initial simulations where the foliage was placed at the ground level. It is explained by the fact that the more the trees are high in the canyon, the more they can receive solar radiation and avoid the shading of buildings. However, around the solar noon, the absorption by the trees is substantially reduced by its transmissivity properties in regards to the initial version where all the urban vegetation surfaces were opaque. As a result, the vegetation absorbs all the solar radiation which is received and not reflected. In the present case, this part is 75 % of the incident solar radiation since $\alpha_t = 0.25$. In the new version, 50 % of the received solar radiation is transmitted through the foliage and 75 % of the remaining flux is absorbed by trees, i.e. only 37.5 % of the total shortwave radiation received by trees. ~~On the other hand, this defect could be counterbalanced by~~

Comparing the fluxes before and after their weighting based on their canyon fraction, the road absorption by squared meters of canyon can extremely vary following the garden fraction at the ground in the initial version. Indeed, in the reference cases, the high vegetation is treated as a ground-based vegetation fraction which is included in the garden fraction (δ_g). This limitation implies that the garden fraction takes the value of the greater fraction between low and high vegetation. Consequently, the road fraction, which is always defined as $1 - \delta_g$, is varying according to ~~the fact that vegetation is much more submitted to shade of buildings since it is assumed to be on the ground in the former version of radiative calculations. The mean underestimation of the initial version is -6 but the boxplots show oppositetendencies regarding the medians because of contrasted results among~~ the latest simulations-vegetation layout. For example, here, the road fraction is only 0.10. For this experiment, the differences between before and after the weighting of absorbed fluxes by trees is small because the tree fraction is high (=0.90). In this case, there is no differences for the walls according to the unit of the fluxes since the canyon aspect ratio is $h/w=1$. For smaller aspect ratios, the fluxes of walls based on the canyon surface will be lower than those calculated by squared meters of wall. On the opposite, for aspect ratios exceeding 1, the fluxes of walls based on the canyon surface will be higher. The new developments have corrected a systematic overestimation bias in the reference version. This can have a significant impact on the simulation of thermal comfort conditions for pedestrians as well as on energy consumption of buildings for air-conditioning usage.

6.4.2 Analysis of an integreted ~~mean-daily~~ canyon albedo

The ~~mean-daily~~ albedo of the canyon (α_{can}) is calculated as the ratio between the outgoing shortwave radiation (which is deduced from the difference between the total incoming radiation $S_{can}^{\downarrow} + S_{can}^{\downarrow}$ and the absorbed radiation S_{can}^*) and the total

25 incoming shortwave radiation:

$$\alpha_{can} = \frac{(S_{can}^{\downarrow} + S_{can}^{\downarrow}) - S_{can}^{*}}{(S_{can}^{\downarrow} + S_{can}^{\downarrow})} \quad (21)$$

For each simulation, these fluxes are ~~integrated over the daily cycle~~ used at the solar noon in order to compute ~~a mean canyon albedo for each case~~ instantaneous canyon albedo. The results in summertime are presented as boxplots (Fig. 9) that gather ~~street orientations, vegetation layouts~~ all the vegetation layouts if any, but that distinguish the canyon aspect ratios. Only North-South canyons are represented here. It is a synthetic indicator of TEB enhancement at the scale of the entire canyon, which is crucial when SURFEX is run coupled with an atmospheric model such as the research MESO-NH model (Lafore et al., 1997) or the operational model named AROME (Seity et al., 2011) to provide climatic simulations.

5

The aspect ratio has a significant impact on the canyon albedo: the canyon albedo decreases with an increasing aspect ratio.

Since the geometry and radiative properties of the vegetationless canyons and ground-based vegetation canyons in the reference version of TEB are comparable, they provide similar canyon albedos. It is explained by the absence of foliage in the vertical plane and identical albedos of road and garden ($\alpha_r = \alpha_g = 0.25$). ~~Their canyon albedos rise with an increasing aspect ratio.~~

10 ~~This demonstrates the impact of greater shading effects of walls on the total absorption by the facets in deep streets, restraining the penetration of the light. No differences are observed between simulations of $h/w = 2$ canyons since the~~ For canyons with $h/w = 0.5$ aspect ratios, the albedo of vegetated canyons with an explicit tree canopy is systematically lower than unobstructed canyons. Trees can more easily absorb the incoming solar radiation than ground-based ~~vegetation have no defined thickness.~~

~~On the opposite, the canyon albedo of the implemented version of TEB strongly decreases with an increasing aspect ratio. It~~
15 ~~is expected results because the absorption is enhanced by correcting the height of the intercepting surface at the first reflection (Eq. 1) which is less shaded by the buildings than a ground-based surface. Moreover, the trapping effect is strengthened by the presence of the canopy within the canyon during the multiple reflections. Adding the processes of attenuation occurring at each interactions between the other facets or the sky (Eq. B1, B2, B3, B4) also contributes to improve the simulation of albedo by the current TEB version. We~~ surfaces. For higher aspect ratios, the impact of trees is depending on the balance between

20 their greater sky view factor and reflectivity regarding artificial surfaces and their trapping effect on solar radiation, reducing or increasing the total solar energy absorption by the canyon, respectively. Note also that their relative impact is smaller when the thickness of the crown is small, proportionally to the height of the buildings. For rescaled vegetation cases in deep streets, we

observe a greater variability of ~~the mean daily canyon albedo after the implementation of an explicit high vegetation stratum for the $h/w = 1$ urban forms for which the weight of the tree fraction is relatively higher. In deep streets, the impact of the~~
25 ~~vegetation layout on the canyon albedo depends on the location of the trees. When the canopy fills the low part of a $h/w = 2$~~

~~canyon, vegetation have a limited influence, contrary to cases with rescaled vegetation in comparable urban forms.~~ canyon albedos compared to the same urban form with thinner tree crowns placed in the lower part of the canyon.

7 Conclusions

In order to investigate some of the physical processes related to the presence of vegetation in urban environment, e.g. for microclimate, hydrology or building energy consumption issues, the modeling is definitely a necessary tool.

The TEB model has been refined and improved in order to explicitly represent street trees and their impacts on radiative ~~transfers~~ transfer. The new parameterization is based on the simple hypotheses of TEB: (1) a little detailed geometry without specific spatial arrangement of ground-based surfaces and (2) a single view factor to each emitting and receiving surface applied for radiative calculations.

To take into account the tree canopy in TEB, it was however required to add a new vegetated stratum on the vertical plane, ~~which can shade the road, the walls and the low vegetation.~~ This modification led to more complex radiative calculations, but has been done with a concern to preserve a certain level of simplicity and to limit the number of new input parameters for TEB. It is important to emphasize that the model is designed to be run over whole cities, for which it can simulate the local climatic variability related to urban landscape heterogeneities at the neighborhood scale. This means that computing times must be acceptable, and that input urban data must be available or easy to define. Consequently, the high vegetation is here ~~described using only five input parameters: cover fraction of trees, height of trees, height of trunks, Leaf Area Index and albedo.~~

This simplified characterization of high vegetation necessarily induces some uncertainties on solar radiative exchanges. We estimated it by carrying out a comparative exercise between TEB and a high spatial-resolution solar and lighting model (SOLENE). On the basis of an idealized geometry of urban canyon with various vegetation layouts, TEB is evaluated regarding the ~~direct and diffuse solar radiation received~~ total shortwave radiation flux absorbed by the elements that compose the canyon. TEB simulations in summer gathered best scores for all configurations and surfaces considered, which is precisely the most relevant season to assess the cooling effect of deciduous trees under temperate climate. Statistical scores have demonstrated a good capacity of TEB to solve the radiative balance of canyons without vegetation despite the use of a unique sky view factor for each facet of the urban scene. ~~Biases less than ± 1~~ Mean Absolute Differences and biases of 6.03 and +3.50 W m⁻² ~~related to the direct and diffuse solar radiation fluxes received by road~~ for road, respectively, and of 3.38 and vertical surfaces +2.80

W m⁻² for walls have been recorded ~~in~~ vegetationless canyons. In view of the important incident radiation flux, exceeding 1 000 W m⁻² at solar noon, the Mean Absolute Percentage Differences of 3 % for both surfaces remain moderate. Additionally, it is necessary to put in perspective obtained scores with the fact that they include the error generated by the treatment of walls as a mean wall in TEB in comparison with separate walls of SOLENE considering the diffuse component of the solar radiation.

30 This identified error is no longer existing at the canyon or daily scales. Concerning the vegetated canyons we noted a high variability of statistical scores depending on the vegetation layout. The greater uncertainties are found for the solar radiation fluxes received and absorbed by the high vegetation. The Mean Absolute ~~Error~~ Difference averaged over the vegetation configurations during summertime is ~~17.27 ± 9.31~~ 21.12 ± 13.39 W m⁻² ~~for the direct component and 3.45 ± 1.93 W m⁻² for the diffuse component~~ or 20.92 ± 10.87 % of Mean Absolute Percentage Difference for the total shortwave absorption but these

5 scores are associated to acceptable biases: ~~-14.44 ± 10.60~~ -15.96 ± 15.93 W m⁻² ~~and -3.21 ± 2.20 W m⁻², respectively.~~ The systematic underestimation of fluxes reaching the new tree stratum is explained by the cover fraction approach in TEB where sides of the crown are not represented. Interactions between potential tree lines or intra-canopy scattering and trapping are also neglected. Presented scores are including the effect of divergent approaches in the formulation of the transmission process through trees between TEB and SOLENE even though neither of the two models could be considered as a reference at

10 this stage for this point.

The parameterization of shortwave radiation exchanges within the canyon is now more realistic: shading effects of trees on vertical and ground-based surfaces but also shading effects of buildings on trees are computed. This is achieved by adding a new specific cover fraction describing the horizontal extend of high vegetation. Infinite reflections within the canyon are also con-

15 ditioned to the transmissivity term calculated per ~~pairs~~ pair of exchanging surfaces. This study ~~demonstrate~~ demonstrated the enhancement of new developments on the computed absorbed shortwave radiation fluxes within the canyon between the former reference version of TEB and the implemented version. In the current version, trees can intercept and absorb the direct solar radiation at the canopy level instead of from the ground. Consequently, the walls and ground are more shaded. ~~The road fraction is now~~ High and low vegetation fractions are now explicitly dissociated. The grass and bare soil fractions only contribute to the

20 garden fraction. In this way, the road fraction, defined as $1 - \delta_g$, is independent of the ~~cover of high vegetation~~ tree cover. This implies that the weighting of fluxes at the canyon scale is correct. The mean daily canyon albedo is lesser than in reference cases in relation with a better representation of the radiation trapping has become realistic. The aspect ratio has a significant impact on the canyon albedo: the canyon albedo decreases with an increasing aspect ratio. For canyons with $h/w = 0.5$ aspect ratios, the albedo of vegetated canyons with an explicit tree canopy is systematically lower than unobstructed canyons. Trees within the

25 canyon can more easily absorb the incoming solar radiation than ground-based surfaces do. For higher aspect ratios, the impact

[of trees is depending on the balance between their greater sky view factor and reflectivity regarding artificial surfaces and their trapping effect on solar radiation, reducing or increasing the total solar energy absorption by the canyon, respectively.](#) Canyon albedo is also more vegetation-responsive for $h/w = 1$ urban forms or in cases with $h/w = 2$ canyons when the [vegetation-tree crown thickness](#) is scaled regarding the depth of the street.

The future developments will focus on the separate calculation of turbulent energy fluxes for ground-based and high vegetation. The aerodynamic effect of trees on air flow within the canyon should also be parameterized. [The adaptation of TEB to trees taller than buildings will broaden the range of potential neighborhoods to which its tree model could be applied.](#) Based on this more sophisticated version of TEB, new impact studies could be conducted and greening adaptation strategies could be evaluated more precisely.

5 8 Code availability

The TEB code is available in open source via the surface modeling platform called SURFEX, downloadable at <http://www.cnrm-game-meteo.fr/surfex/>. This Open-SURFEX will be updated at relatively low frequency (each 3 to 6 months) and developments presented here are not included in the last version yet. If you need more frequent updates, or if you need what is not in Open-SURFEX (DrHOOK, FA/LFI formats, GAUSSIAN grid), we invite you to follow the procedure to get a SVN account and to

10 access real-time modifications of the code (see instructions at the previous link).

Appendix A: Sky view and view factors

Sky view factors for road, garden and wall (Eq. A1, A2) as well as the view factors between elements remain unchanged in relation to initial version of the radiative calculations in TEB (described in Masson (2000) and Lemonsu et al. (2012)):

$$\Psi_{rs} = \Psi_{sr} = \sqrt{\left(\frac{h}{w}\right)^2 + 1} - \frac{h}{w} \quad (\text{A1})$$

15

$$\Psi_{wr} = \Psi_{ws} = \frac{\frac{1}{2} \left(\frac{h}{w} + 1 - \sqrt{\left(\frac{h}{w}\right)^2 + 1} \right)}{\frac{h}{w}} \quad (\text{A2})$$

$$\Psi_{sw} = 1 - \Psi_{sr} \quad (\text{A3})$$

$$20 \quad \Psi_{ww} = 1 - 2\Psi_{ws} = \frac{\sqrt{\left(\frac{h}{w}\right)^2 + 1} - 1}{\frac{h}{w}} \quad (\text{A4})$$

$$\Psi_{rw} = 1 - \Psi_{rs} = 1 - \left(\sqrt{\left(\frac{h}{w}\right)^2 + 1} - \frac{h}{w} \right) \quad (\text{A5})$$

For the tree canopy, the sky ~~view-factor~~ view factor and view factors from road and walls are computed in the middle of the canyon and at mid-height of crown $\div (h_{cw})$:

$$\Psi_{st} = \sqrt{\left(\frac{h}{w} \cdot \frac{h - h_{cw}}{h}\right)^2 + 1} - \left(\frac{h}{w} \cdot \frac{h - h_{cw}}{h}\right) \quad (\text{A6})$$

$$5 \quad \Psi_{rt} = \sqrt{\left(\frac{h}{w} \cdot \frac{h_{cw}}{h}\right)^2 + 1} - \left(\frac{h}{w} \cdot \frac{h_{cw}}{h}\right) \quad (\text{A7})$$

$$\Psi_{wt} = 1 - \frac{1}{2}(\Psi_{st} + \Psi_{rt}) \quad (\text{A8})$$

Ψ_{st} and Ψ_{rt} are calculated in the same way as for Ψ_{sr} in the middle of the canyon but they are adjusted to the $[h_{cw} - h]$ area and the $[0 - h_{cw}]$ area, respectively. Ψ_{wt} is computed as the complementary term of Ψ_{st} and Ψ_{rt} on 2π and for one wall (as
 10 wall as Ψ_{ws} and Ψ_{ww}). We normalized Ψ_{wt} to express it on one π only.

Appendix B: Mean radiative transmissivity of canyon tree canopy

The multiple reflections of solar radiation inside the canyon (as detailed in Masson (2000) and Lemonsu et al. (2012)) are now affected by the presence of trees whose foliage intercepts, reflects and absorbs a part of the energy. The transmissivity of radiation through the foliage of tree canopy is variable according to the way the rays cross the foliage and the distance they travel. According to the location of tree crowns inside the canyon and the dominant orientation of radiation (e.g. emission from sky to ground or from wall to ground do not reach the foliage the same way), these rays can cross all the foliage thickness or only a small portion. The vertical distribution of leaves in the tree crowns has also an impact on transmissivity.

Different transmissivity functions (referred to as τ_{12} for exchanges between element 1 and element 2) are calculated depending of the surfaces involved in radiative exchanges. One distinguishes four cases of radiation exchanges, by hypothesizing that transmissivity functions are symmetric, i.e., exchanges from element 1 to element 2 is equivalent to the reverse way: between ground-based surfaces and sky ($\tau_{rs} = \tau_{sg}$) or wall ($\tau_{rw} = \tau_{gw}$), between wall and sky (τ_{ws}), between wall and wall (τ_{ww}). For each case we admit, according to Lee and Park (2008), that majority of radiation exchanges occurs in a specific zone-area of the canyon, for which the Leaf Area Density (LAD_t expressed in m^2 of leaf area per m^3 of volume) is calculated:

$$\tau_{rs} = 1 - \delta_t \left[1 - \exp\left(-k \int_0^h LAD_t dz\right) \right] \quad (B1)$$

$$\tau_{rw} = 1 - \delta_t \left[1 - \exp\left(-k \int_0^{\frac{h}{2}} LAD_t dz\right) \right] \quad (B2)$$

$$\tau_{ws} = 1 - \delta_t \left[1 - \exp\left(-k \int_{\frac{h}{2}}^h LAD_t dz\right) \right] \quad (B3)$$

5

$$\tau_{ww} = 1 - \delta_t \left[1 - \exp\left(\underbrace{-k \int_{\frac{h}{4}}^{\frac{3h}{4}} LAD_t dz}_{\text{red}}\right) \underbrace{\left(-k \int_0^h LAD_t dz\right)}_{\text{blue}} \right] \quad (B4)$$

The limits of integrals involved in the calculation of the transmissivity functions have been consistently defined with canyon sectors scanned by the associated view factors. For example, Eq. 8 express how the diffuse incoming solar radiation reaches the road from the sky. This formulation is typically based on the sky view factor of the road Ψ_{rs} which scans an area covering the entire height of the building. We added a transmissivity function τ_{rs} describing the ratio between the thickness of the tree crown

[within the canyon and the vertical extent of the area of interest, here \[0 - h\]](#). Note that these expressions are in accordance with the one applied in Eq. 3 in which LAD_t is integrated on the entire thickness of foliage so that it is equivalent to LAI_t . As mentioned above, since the tree crown is described as a [rectangular](#) parallelepiped with a regular distribution of leaves, a uniform vertical profile of LAD is here applied.

15 **Appendix C: Total shortwave radiation absorption by solving infinite reflections**

For solar radiation calculations, the TEB model takes into account an infinite number of reflections between all elements composing the urban canyon. At each reflection, the isotropic radiation intercepted by a given element (1) after reflections on one of the other elements (2) is conditioned by the view factor of (2) from (1) referred to as Ψ_{12} (see Appendix A), the mean radiative transmissivity τ_{12} (see Appendix B) and the reflection is then determined according to reflective properties of (1). As
 20 seen in the section 4.4, the total shortwave radiation absorbed by each elements of the canyon or redirected towards the sky is function of infinite reflections $R_\infty, G_\infty, A_\infty, B_\infty,$ and T_∞ that are still unknowns at this stage. These terms include the first reflection on each element: R_0, G_0, A_0, B_0, T_0 . For road, garden, and walls, R_0, G_0, A_0 and B_0 simply depend on the incident solar radiation on the surface and the albedo. From the equations 14, 15, 16, 17 and 18, we can deduce the reflected part
 25 of the canyon, *road, garden, wall A,* and *wall B,* respectively. As examples, we obtain for road and wall A, respectively:

$$R_0 = \alpha_r (S_r^\downarrow + S_r^\uparrow) \quad (C1)$$

$$R_{n+1} = R_0 + \alpha_r [\Psi_{rw}\tau_{rw}W_n + c_{rt}\Psi_{rt}\delta_t T_n] \quad (C2)$$

$$A_0 = \alpha_w (S_w^\downarrow + S_w^\uparrow) \quad (C3)$$

$$A_{n+1} = A_0 + \alpha_w [\Psi_{ww}\tau_{ww}B_n + \Psi_{wr}\tau_{wr}(\delta_r R_n + \delta_g G_n) + c_{wt}\Psi_{wt}\delta_t T_n] \quad (C4)$$

The specific coefficients associated to the view factors related to the high vegetation in shortwave reflections calculations are
 5 defined as:

$$c_{rt} = 0 \quad (C5)$$

$$c_{wt} = \frac{1 - \Psi_{st}}{2 - \Psi_{st} - \Psi_{rt}} \quad (C6)$$

Only reflections from trees to sky or top part of walls are allowed. As explained in section 4.4, this mode of reflection by the leaves during the first reflection, which is by far the most energetic one, is more likely to occur than in an isotropic way. This
 10 assumption could be easily bypassed by fixing the previous coefficients to 1.

For the first tree canopy reflection, the part of received direct solar radiation is corrected by the transmitted flux (see Eq. 2):

$$T_0 = \alpha_t [(S_t^\downarrow - S_t^{\gg}) + S_t^\downarrow] \quad (C7)$$

Some uncertainties remain about relevance of sky view or view factors which ones could formulate to represent reflective contributions from other surfaces at n^{th} to the absorption or reflection by the tree layer at $n + 1^{th}$, as well as potential absorption of energy within the tree's crown. Consequently, the solar flux reflected by *tree* at $n + 1^{th}$ has been determined as the residual term by assuming that the n^{th} solar reflection coming from each element (*road*, *garden*, *wall A*, and *wall B*) which is not received by *road*, *garden*, *wall A*, *wall B* or which is not returned to *sky* at $n + 1$ is received by *tree*.

During each interreflection, a part of n^{th} reflected flux which is potentially available for the $(n + 1)^{th}$ reflection or absorption is intercepted by high vegetation. This intercepted part related to the presence of foliage on the way of scattered rays towards each receiving element or sky are formulated as following:

$$I_s(n + 1) = \Psi_{sr}(1 - \tau_{sr})(\delta_r R_n + \delta_g G_n) + \Psi_{sw}(1 - \tau_{sw}) \frac{A_n + B_n}{2} \quad (C8)$$

$$I_r(n + 1) = \Psi_{rw}(1 - \tau_{rw}) \frac{A_n + B_n}{2} \quad (C9)$$

$$I_g(n + 1) = \Psi_{rw}(1 - \tau_{rw}) \frac{A_n + B_n}{2} \quad (C10)$$

$$I_{w_A}(n + 1) = \Psi_{wr}(1 - \tau_{wr})(\delta_r R_n + \delta_g G_n) + \Psi_{ww}(1 - \tau_{ww}) B_n \quad (C11)$$

$$I_{w_B}(n + 1) = \Psi_{wr}(1 - \tau_{wr})(\delta_r R_n + \delta_g G_n) + \Psi_{ww}(1 - \tau_{ww}) A_n \quad (C12)$$

Finally, the solar flux which is intercepted by *tree* at $(n + 1)$ is expressed as the sum of interceptions on the way of receiving elements of the canyon or sky:

$$I_t(n + 1) = \frac{1}{\delta_t} \left(I_s(n + 1) + \delta_r I_r(n + 1) + \delta_g I_g(n + 1) + \frac{2h}{w} \frac{I_{w_A}(n + 1) + I_{w_B}(n + 1)}{2} \right) \quad (C13)$$

The solar energy which is reflected by tree at $(n+1)$ is consequently:

$$T_{n+1} = \alpha_t I_t(n + 1) \quad (C14)$$

The formulations can be simplified by gathering the equations for walls in a single expression for a mean wall according to:

$$W(n+1) = \frac{A(n+1) + B(n+1)}{2} \quad (\text{C15})$$

As a result, after an infinite number of reflections, the equation system can be written:

$$R_\infty = R_0 + \alpha_r [\Psi_{rw} \tau_{rw} W_\infty + c_{rt} \Psi_{rt} \delta_t T_\infty] \quad (\text{C16})$$

$$15 \quad G_\infty = G_0 + \alpha_g [\Psi_{rw} \tau_{rw} W_\infty + c_{rt} \Psi_{rt} \delta_t T_\infty] \quad (\text{C17})$$

$$W_\infty = W_0 + \alpha_w [\Psi_{ww} \tau_{ww} W_\infty + \Psi_{wr} \tau_{rw} (\delta_r R_\infty + \delta_g G_\infty) + c_{wt} \Psi_{wt} \delta_t T_\infty] \quad (\text{C18})$$

$$T_\infty = T_0 + \frac{\alpha_t}{\delta_t} [(\Psi_{sw}(1 - \tau_{sw}) + \Psi_{rw}(1 - \tau_{rw}) + \Psi_{ww}(1 - \tau_{ww})) W_\infty \\ + (\Psi_{sr}(1 - \tau_{sr}) + \Psi_{wr}(1 - \tau_{wr})) (\delta_r R_\infty + \delta_g G_\infty)] \quad (\text{C19})$$

As a result, we resolve the linear system of four equations with four unknowns:

$$20 \quad R_\infty = R_0 + \mathcal{F}_{rw} W_\infty + \mathcal{F}_{rt} T_\infty \quad (\text{C20})$$

$$G_\infty = G_0 + \mathcal{F}_{gw} W_\infty + \mathcal{F}_{gt} T_\infty \quad (\text{C21})$$

$$W_\infty = W_0 + \mathcal{F}_{ww} W_\infty + \mathcal{F}_{wr} R_\infty + \mathcal{F}_{wg} G_\infty + \mathcal{F}_{wt} T_\infty \quad (\text{C22})$$

$$T_\infty = T_0 + \mathcal{F}_{tw} W_\infty + \mathcal{F}_{tr} R_\infty + \mathcal{F}_{tg} G_\infty \quad (\text{C23})$$

The geometric and reflective factors are computed as following:

$$25 \quad \mathcal{F}_{rw} = \Psi_{rw} \tau_{rw} \alpha_r \quad (\text{C24})$$

$$\mathcal{F}_{rt} = c_{rt} \Psi_{rt} \delta_t \alpha_r \quad (\text{C25})$$

$$\mathcal{F}_{gw} = \Psi_{rw} \tau_{rw} \alpha_g \quad (\text{C26})$$

$$\mathcal{F}_{gt} = c_{rt} \Psi_{rt} \delta_t \alpha_g \quad (\text{C27})$$

$$\mathcal{F}_{wr} = \Psi_{wr} \tau_{wr} \delta_r \alpha_w \quad (\text{C28})$$

$$5 \quad \mathcal{F}_{wg} = \Psi_{wr} \tau_{wr} \delta_g \alpha_w \quad (\text{C29})$$

$$\mathcal{F}_{ww} = \Psi_{ww} \tau_{ww} \alpha_w \quad (\text{C30})$$

$$\mathcal{F}_{wt} = c_{wt} \Psi_{wt} \delta_t \alpha_w \quad (\text{C31})$$

$$\mathcal{F}_{tw} = [\Psi_{sw}(1 - \tau_{sw}) + \Psi_{rw}(1 - \tau_{rw}) + \Psi_{ww}(1 - \tau_{ww})] \frac{1}{\delta_t} \alpha_t \quad (\text{C32})$$

$$\mathcal{F}_{tr} = [\Psi_{sr}(1 - \tau_{sr}) + \Psi_{wr}(1 - \tau_{wr})] \frac{\delta_r}{\delta_t} \alpha_t \quad (\text{C33})$$

$$10 \quad \mathcal{F}_{tg} = [\Psi_{sr}(1 - \tau_{sr}) + \Psi_{wr}(1 - \tau_{wr})] \frac{\delta_g}{\delta_t} \alpha_t \quad (\text{C34})$$

The resolution of the equation system gives the following expressions for multiple reflections on tree, walls, road, and garden:

$$\begin{aligned}
T_\infty = & \left(\frac{1 - \mathcal{F}_{wr}\mathcal{F}_{rw} - \mathcal{F}_{wg}\mathcal{F}_{gw} - \mathcal{F}_{ww}}{\mathcal{D}} \right) T_0 \\
& + \left(\frac{\mathcal{F}_{tr}(1 - \mathcal{F}_{wg}\mathcal{F}_{gw} - \mathcal{F}_{ww}) + \mathcal{F}_{wr}(\mathcal{F}_{tg}\mathcal{F}_{gw} + \mathcal{F}_{tw})}{\mathcal{D}} \right) R_0 \\
15 \quad & + \left(\frac{\mathcal{F}_{tg}(1 - \mathcal{F}_{wr}\mathcal{F}_{rw} - \mathcal{F}_{ww}) + \mathcal{F}_{wg}(\mathcal{F}_{tr}\mathcal{F}_{rw} + \mathcal{F}_{tw})}{\mathcal{D}} \right) G_0 \\
& + \left(\frac{\mathcal{F}_{tr}\mathcal{F}_{rw} + \mathcal{F}_{tg}\mathcal{F}_{gw} + \mathcal{F}_{tw}}{\mathcal{D}} \right) W_0
\end{aligned} \tag{C35}$$

$$\begin{aligned}
W_\infty = & \left(\frac{\mathcal{F}_{wr}\mathcal{F}_{rt} + \mathcal{F}_{wg}\mathcal{F}_{gt} + \mathcal{F}_{wt}}{\mathcal{D}} \right) T_0 \\
& + \left(\frac{\mathcal{F}_{wr}(1 - \mathcal{F}_{tg}\mathcal{F}_{gt}) + \mathcal{F}_{tr}(\mathcal{F}_{wg}\mathcal{F}_{gt} + \mathcal{F}_{wt})}{\mathcal{D}} \right) R_0 \\
20 \quad & + \left(\frac{\mathcal{F}_{wg}(1 - \mathcal{F}_{tr}\mathcal{F}_{rt}) + \mathcal{F}_{tg}(\mathcal{F}_{wr}\mathcal{F}_{rt} + \mathcal{F}_{wt})}{\mathcal{D}} \right) G_0 \\
& + \left(\frac{1 - \mathcal{F}_{rt}\mathcal{F}_{tr} - \mathcal{F}_{tg}\mathcal{F}_{gt}}{\mathcal{D}} \right) W_0
\end{aligned} \tag{C36}$$

$$\begin{aligned}
R_\infty = & \left(\frac{\mathcal{F}_{rw}(\mathcal{F}_{rt}\mathcal{F}_{wr} + \mathcal{F}_{gt}\mathcal{F}_{wg} + \mathcal{F}_{wt}) + \mathcal{F}_{rt}(1 - \mathcal{F}_{wr}\mathcal{F}_{rw} - \mathcal{F}_{wg}\mathcal{F}_{gw} - \mathcal{F}_{ww})}{\mathcal{D}} \right) T_0 \\
& + \left(1 + \frac{\mathcal{F}_{rw}(\mathcal{F}_{wr}(1 - \mathcal{F}_{tg}\mathcal{F}_{gt}) + \mathcal{F}_{tr}(\mathcal{F}_{wg}\mathcal{F}_{gt} + \mathcal{F}_{wt})) + \mathcal{F}_{rt}(\mathcal{F}_{tr}(1 - \mathcal{F}_{wg}\mathcal{F}_{gw}) + \mathcal{F}_{wr}(\mathcal{F}_{tg}\mathcal{F}_{gw} + \mathcal{F}_{tw}))}{\mathcal{D}} \right) R_0 \\
25 \quad & + \left(\frac{\mathcal{F}_{rw}(\mathcal{F}_{wg}(1 - \mathcal{F}_{tr}\mathcal{F}_{rt}) + \mathcal{F}_{tg}(\mathcal{F}_{wr}\mathcal{F}_{rt} + \mathcal{F}_{wt})) + \mathcal{F}_{rt}(\mathcal{F}_{tg}(1 - \mathcal{F}_{wr}\mathcal{F}_{rw} - \mathcal{F}_{ww}) + \mathcal{F}_{wg}(\mathcal{F}_{tr}\mathcal{F}_{rw} + \mathcal{F}_{tw}))}{\mathcal{D}} \right) G_0 \\
& + \left(\frac{\mathcal{F}_{rt}(\mathcal{F}_{tr}\mathcal{F}_{rw} + \mathcal{F}_{tg}\mathcal{F}_{gw} + \mathcal{F}_{tw}) + \mathcal{F}_{rw}(1 - \mathcal{F}_{tr}\mathcal{F}_{rt} - \mathcal{F}_{tg}\mathcal{F}_{gt})}{\mathcal{D}} \right) W_0
\end{aligned} \tag{C37}$$

$$\begin{aligned}
G_\infty = & \left(\frac{\mathcal{F}_{gw}(\mathcal{F}_{rt}\mathcal{F}_{wr} + \mathcal{F}_{gt}\mathcal{F}_{wg} + \mathcal{F}_{wt}) + \mathcal{F}_{gt}(1 - \mathcal{F}_{wr}\mathcal{F}_{rw} - \mathcal{F}_{wg}\mathcal{F}_{gw} - \mathcal{F}_{ww})}{\mathcal{D}} \right) T_0 \\
& + \left(\frac{\mathcal{F}_{gw}(\mathcal{F}_{wr}(1 - \mathcal{F}_{tg}\mathcal{F}_{gt}) + \mathcal{F}_{tr}(\mathcal{F}_{wg}\mathcal{F}_{gt} + \mathcal{F}_{wt})) + \mathcal{F}_{gt}(\mathcal{F}_{tr}(1 - \mathcal{F}_{wg}\mathcal{F}_{gw}) + \mathcal{F}_{wr}(\mathcal{F}_{tg}\mathcal{F}_{gw} + \mathcal{F}_{tw}))}{\mathcal{D}} \right) R_0 \\
& + \left(1 + \frac{\mathcal{F}_{gw}(\mathcal{F}_{wg}(1 - \mathcal{F}_{tr}\mathcal{F}_{rt}) + \mathcal{F}_{tg}(\mathcal{F}_{wr}\mathcal{F}_{rt} + \mathcal{F}_{wt})) + \mathcal{F}_{gt}(\mathcal{F}_{tg}(1 - \mathcal{F}_{wr}\mathcal{F}_{rw} - \mathcal{F}_{ww}) + \mathcal{F}_{wg}(\mathcal{F}_{tr}\mathcal{F}_{rw} + \mathcal{F}_{tw}))}{\mathcal{D}} \right) G_0 \\
& + \left(\frac{\mathcal{F}_{gt}(\mathcal{F}_{tr}\mathcal{F}_{rw} + \mathcal{F}_{tg}\mathcal{F}_{gw} + \mathcal{F}_{tw}) + \mathcal{F}_{gw}(1 - \mathcal{F}_{tr}\mathcal{F}_{rt} - \mathcal{F}_{tg}\mathcal{F}_{gt})}{\mathcal{D}} \right) W_0
\end{aligned} \tag{C38}$$

5

The denominator is expressed as following:

$$\begin{aligned}
\mathcal{D} = & (1 - \mathcal{F}_{wr}\mathcal{F}_{rw} - \mathcal{F}_{wg}\mathcal{F}_{gw} - \mathcal{F}_{ww})(1 - \mathcal{F}_{tr}\mathcal{F}_{rt} - \mathcal{F}_{tg}\mathcal{F}_{gt}) \\
& - (\mathcal{F}_{wr}\mathcal{F}_{rt} + \mathcal{F}_{wg}\mathcal{F}_{gt} + \mathcal{F}_{wt})(\mathcal{F}_{tr}\mathcal{F}_{rw} + \mathcal{F}_{tg}\mathcal{F}_{gw} + \mathcal{F}_{tw})
\end{aligned} \tag{C39}$$

Acknowledgements. We acknowledge Laurent Malys for his technical support on SOLENE first runs. Thanks are given to the anonymous reviewers for their helpful comments.

10

References

- Abdel-Aziz, D. M., Shboul, A. A., and Al-Kurdi, N. Y.: Effects of Tree Shading on Building's Energy Consumption -The Case of Residential Buildings in a Mediterranean Climate, *American Journal of Environmental Engineering*, 5, 131–140, doi:10.5923/j.ajee.20150505.01, 2015.
- 15 Akbari, H., Kurn, D. M., Bretz, S. E., and Hanford, J. W.: Peak power and cooling energy savings of shade trees, *Energy and Buildings*, 25, 139–148, 1997.
- Akbari, H., Pomerantz, M., and Taha, H.: Cool surfaces and shade trees to reduce energy use and improve air quality in urban areas, *Solar Energy*, 70, 295–310, doi:10.1016/S0038-092X(00)00089-X, 2001.
- Alavipanah, S., Wegmann, M., Qureshi, S., Weng, Q., and Koellner, T.: The Role of Vegetation in Mitigating Urban Land Surface
20 Temperatures: A Case Study of Munich, Germany during the Warm Season, *Sustainability*, 7, 4689–4706, doi:10.3390/su7044689, <http://www.mdpi.com/2071-1050/7/4/4689/>, 2015.
- Alvey, A. A.: Promoting and preserving biodiversity in the urban forest, *Urban Forestry and Urban Greening*, 5, 195–201, doi:10.1016/j.ufug.2006.09.003, 2006.
- Armson, D., Stringer, P., and Ennos, A. R.: The effect of street trees and amenity grass on urban surface water runoff in Manchester, UK,
25 *Urban Forestry and Urban Greening*, 12, 282–286, doi:10.1016/j.ufug.2013.04.001, <http://dx.doi.org/10.1016/j.ufug.2013.04.001>, 2013.
- Barcelona City Council: Street Tree Management in Barcelona, Tech. rep., 2011.
- Bertram, C. and Rehdanz, K.: The role of urban green space for human well-being, 2014.
- Boone, A., Calvet, J.-C., and Noilhan, J.: Inclusion of a Third Soil Layer in a Land Surface Scheme Using the Force–Restore Method, *Journal of Applied Meteorology*, 38, 1611–1630, doi:10.1175/1520-0450(1999)038<1611:IOATSL>2.0.CO;2, 1999.
- 30 Bouyer, J., Inard, C., and Musy, M.: Microclimatic coupling as a solution to improve building energy simulation in an urban context, *Energy and Buildings*, 43, 1549–1559, doi:10.1016/j.enbuild.2011.02.010, <http://linkinghub.elsevier.com/retrieve/pii/S0378778811000545>, 2011.
- Bowen, K. J. and Parry, M.: The evidence base for linkages between green infrastructure, public health and economic benefit, Tech. rep., 2015.
- Bruse, M. and Fleer, H.: Simulating surface-plant-air interactions inside urban environments with a three dimensional numerical model,
35 *Environmental Modelling and Software*, 13, 373–384, doi:10.1016/S1364-8152(98)00042-5, 1998.
- Campbell, G. S. and Norman, J. M.: The description and measurement of plant canopy structure, UK: Cambridge University Press, 1989.
- City of Westminster: Trees and the Public Realm (Draft), Tech. Rep. December, 2009.
- Coutts, A. M., White, E. C., Tapper, N. J., Beringer, J., and Livesley, S. J.: Temperature and human thermal comfort effects of street trees across three contrasting street canyon environments, *Theoretical and Applied Climatology*, pp. 1–14, doi:10.1007/s00704-015-1409-y, <http://link.springer.com/10.1007/s00704-015-1409-y>, 2015.
- 5 de Abreu-Harbach, L. V., Labaki, L. C., and Matzarakis, A.: Effect of tree planting design and tree species on human thermal comfort in the tropics, *Landscape and Urban Planning*, 138, 99–109, doi:10.1016/j.landurbplan.2015.02.008, <http://linkinghub.elsevier.com/retrieve/pii/S0169204615000390>, 2015.
- De Bricambaut, C. P.: Rayonnement solaire et échanges radiatifs naturels: méthodes actinométriques, Gauthier-Villars, 1963.
- de Munck, C.: Modélisation de la végétation urbaine et stratégies d'adaptation pour l'amélioration du confort climatique et de la demande
10 énergétique en ville, Ph.D. thesis, Université Toulouse III, <http://oatao.univ-toulouse.fr/9278/>, 2013.

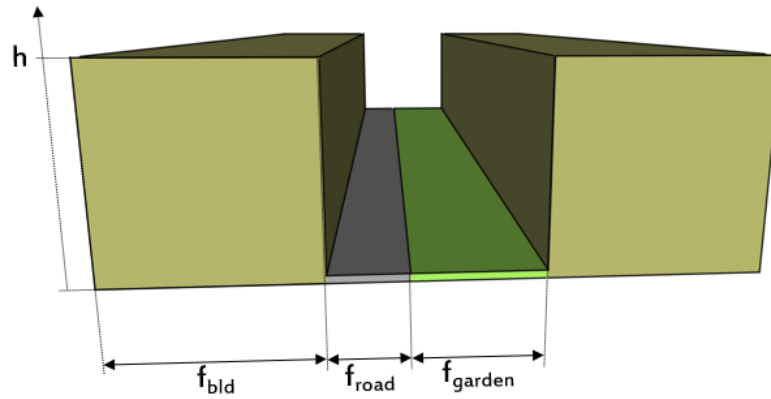
- Feyisa, G. L., Dons, K., and Meilby, H.: Efficiency of parks in mitigating urban heat island effect: An example from Addis Ababa, *Landscape and Urban Planning*, 123, 87–95, doi:10.1016/j.landurbplan.2013.12.008, <http://linkinghub.elsevier.com/retrieve/pii/S0169204613002399>, 2014.
- Grimmond, C. S. B., Blackett, M., Best, M. J., Baik, J.-J., Belcher, S. E., Beringer, J., Bohnenstengel, S. I., Calmet, I., Chen, F., Coutts, A., Dandou, A., Fortuniak, K., Gouvea, M. L., Hamdi, R., Hendry, M., Kanda, M., Kawai, T., Kawamoto, Y., Kondo, H., Krayenhoff, E. S., Lee, S.-H., Loridan, T., Martilli, A., Masson, V., Miao, S., Oleson, K., Ooka, R., Pigeon, G., Porson, A., Ryu, Y.-H., Salamanca, F., Steeneveld, G., Tombrou, M., Voogt, J. A., Young, D. T., and Zhang, N.: Initial results from Phase 2 of the international urban energy balance model comparison, *International Journal of Climatology*, 31, 244–272, doi:10.1002/joc.2227, <http://onlinelibrary.wiley.com/doi/10.1002/joc.2227/full><http://doi.wiley.com/10.1002/joc.2227>, 2011.
- 15 Groleau, D. and Mestayer, P. G.: Urban Morphology Influence on Urban Albedo: A Revisit with the SOLENE Model, *Boundary-Layer Meteorology*, 147, 301–327, doi:10.1007/s10546-012-9786-6, 2013.
- Hamdi, R. and Masson, V.: Inclusion of a Drag Approach in the Town Energy Balance (TEB) Scheme: Offline 1D Evaluation in a Street Canyon, *Journal of Applied Meteorology and Climatology*, 47, 2627–2644, doi:10.1175/2008JAMC1865.1, <http://journals.ametsoc.org/doi/abs/10.1175/2008JAMC1865.1>, 2008.
- 20 Harman, I. N. and Belcher, S. E.: The surface energy balance and boundary layer over urban street canyons, *Quarterly Journal of the Royal Meteorological Society*, 132, 2749–2768, doi:10.1256/qj.05.185, <http://doi.wiley.com/10.1256/qj.05.185>, 2006.
- Hien, W. N., Puay Yok, T. P., and Yu, C.: Study of thermal performance of extensive rooftop greenery systems in the tropical climate, *Building and Environment*, 42, 25–54, doi:10.1016/j.buildenv.2005.07.030, <http://linkinghub.elsevier.com/retrieve/pii/S0360132305003136>, 2007.
- Hottel, H. C.: Radiant-Heat Transmission, in: *Heat Transmission*, edited by Mc Adams, W. H., pp. 55–125, Mc Graw-Hill, 1954.
- 30 Jim, C. Y.: Air-conditioning energy consumption due to green roofs with different building thermal insulation, *Applied Energy*, 128, 49–59, doi:10.1016/j.apenergy.2014.04.055, <http://linkinghub.elsevier.com/retrieve/pii/S0306261914004085>, 2014.
- Joshi, N. and Joshi, A.: Role of Urban Trees in Amelioration of Temperatures, *International Journal of Research Studies in Biosciences*, 3, 132–137, 2015.
- Ko, Y., Lee, J.-H., McPherson, E. G., and Roman, L. a.: Long-term monitoring of Sacramento Shade program trees: Tree survival, growth and energy-saving performance, *Landscape and Urban Planning*, 143, 183–191, doi:10.1016/j.landurbplan.2015.07.017, <http://linkinghub.elsevier.com/retrieve/pii/S0169204615001553>, 2015.
- 35 Kokogiannakis, G., Tietje, A., and Darkwa, J.: The role of Green Roofs on Reducing Heating and Cooling Loads: A Database across Chinese Climates, *Procedia Environmental Sciences*, 11, 604–610, doi:10.1016/j.proenv.2011.12.094, <http://linkinghub.elsevier.com/retrieve/pii/S1878029611009170>, 2011.
- Kounkou-Arnaud, R., Desplat, J., Lemonsu, A., and Salagnac, J.-L.: Epicea : étude des impacts du changement climatique à Paris, *La Météorologie*, 8, 42–48, doi:10.4267/2042/53186, <http://hdl.handle.net/2042/53186>, 2014.
- 5 Krayenhoff, E. S., Christen, A., Martilli, A., and Oke, T. R.: A Multi-layer Radiation Model for Urban Neighbourhoods with Trees, *Boundary-Layer Meteorology*, 151, 139–178, doi:10.1007/s10546-013-9883-1, <http://link.springer.com/10.1007/s10546-013-9883-1>, 2014.
- Krayenhoff, E. S., Santiago, J. L., Martilli, A., Christen, A., and Oke, T. R.: Parametrization of Drag and Turbulence for Urban Neighbourhoods with Trees, *Boundary-Layer Meteorology*, 156, 157–189, doi:10.1007/s10546-015-0028-6, "<http://dx.doi.org/10.1007/s10546-015-0028-6>", 2015.
- 10

- Lafore, J. P., Stein, J., Asencio, N., Bougeault, P., Ducrocq, V., Duron, J., Fischer, C., H??reil, P., Mascart, P., Masson, V., Pinty, J. P., Redelsperger, J. L., Richard, E., and Vil??-Guerau De Arellano, J.: The Meso-NH Atmospheric Simulation System. Part I: Adiabatic formulation and control simulations, *Annales Geophysicae*, 16, 90–109, doi:10.1007/s005850050582, 1997.
- Lee, S.-H. and Park, S.-U.: A Vegetated Urban Canopy Model for Meteorological and Environmental Modelling, *Boundary-Layer Meteorology*, 126, 73–102, doi:10.1007/s10546-007-9221-6, <http://link.springer.com/10.1007/s10546-007-9221-6>, 2008.
- 15 Lemonsu, A., Grimmond, C. S. B., and Masson, V.: Modeling the Surface Energy Balance of the Core of an Old Mediterranean City: Marseille, *Journal of Applied Meteorology*, 43, 312–327, 2004.
- Lemonsu, A., Bélair, S., Mailhot, J., and Leroyer, S.: Evaluation of the Town Energy Balance model in cold and snowy conditions during the Montreal Urban Snow Experiment 2005, *Journal of Applied Meteorology and Climatology*, 49, 346–362, doi:10.1175/2009JAMC2131.1, 2010.
- 20 Lemonsu, A., Masson, V., Shashua-Bar, L., Erell, E., and Pearlmutter, D.: Inclusion of vegetation in the Town Energy Balance model for modelling urban green areas, *Geoscientific Model Development*, 5, 1377–1393, doi:10.5194/gmd-5-1377-2012, <http://www.geosci-model-dev.net/5/1377/2012/>, 2012.
- Lemonsu, A., Koukou-Arnaud, R., Desplat, J., Salagnac, J.-L., and Masson, V.: Evolution of the Parisian urban climate under a global changing climate, *Climatic Change*, 116, 679–692, doi:10.1007/s10584-012-0521-6, <http://link.springer.com/10.1007/s10584-012-0521-6>, 2013.
- 25 Malys, L.: Modélisation de la végétation urbaine et stratégies d’adaptation pour l’amélioration du confort climatique et de la demande énergétique en ville, Ph.D. thesis, Ecole Centrale de Nantes, France, 2012.
- Malys, L., Musy, M., and Inard, C.: A hydrothermal model to assess the impact of green walls on urban microclimate and building energy consumption, *Building and Environment*, 73, 187–197, doi:10.1016/j.buildenv.2013.12.012, <http://linkinghub.elsevier.com/retrieve/pii/S0360132313003685>, 2014.
- 30 Masson, V.: A physically-based scheme for the urban energy budget in atmospheric models, *Boundary-Layer Meteorology*, 94, 357–397, 2000.
- Masson, V. and Seity, Y.: Including Atmospheric Layers in Vegetation and Urban Offline Surface Schemes, *Journal of Applied Meteorology and Climatology*, 48, 1377–1397, doi:10.1175/2009JAMC1866.1, <http://journals.ametsoc.org/doi/abs/10.1175/2009JAMC1866.1>, 2009.
- 35 Masson, V., Grimmond, C. S. B., and Oke, T. R.: Evaluation of the Town Energy Balance (TEB) Scheme with Direct Measurements from Dry Districts in Two Cities, *Journal of Applied Meteorology*, 41, 1011–1026, 2002.
- Masson, V., Le Moigne, P., Martin, E., Faroux, S., Alias, A., Alkama, R., Belamari, S., Barbu, A., Boone, A., Bouysse, F., Brousseau, P., Brun, E., Calvet, J.-C., Carrer, D., Decharme, B., Delire, C., Donier, S., Essaouini, K., Gibelin, A.-L., Giordani, H., Habets, F., Jidane, M., Kerdraon, G., Kourzeneva, E., Lafaysse, M., Lafont, S., Lebeauin Brossier, C., Lemonsu, A., Mahfouf, J.-F., Marguinaud, P., Mokhtari, M., Morin, S., Pigeon, G., Salgado, R., Seity, Y., Taillefer, F., Tanguy, G., Tulet, P., Vincendon, B., Vionnet, V., and Voldoire, A.: The SURFEXv7.2 land and ocean surface platform for coupled or offline simulation of earth surface variables and fluxes, *Geoscientific Model Development*, 6, 929–960, doi:10.5194/gmd-6-929-2013, <http://www.geosci-model-dev.net/6/929/2013/>, 2013.
- 5 Miguet, F.: Paramètres physiques des ambiances architecturales : Un modèle numérique pour la simulation de la lumière naturelle dans le projet urbain, Ph.D. thesis, <https://tel.archives-ouvertes.fr/tel-00546996/>, 2000.
- Miguet, F. and Groleau, D.: A daylight simulation tool for urban and architectural spaces-application to transmitted direct and diffuse light through glazing, *Building and Environment*, 37, 833–843, doi:10.1016/S0360-1323(02)00049-5, 2002.
- 10

- Mullaney, J., Lucke, T., and Trueman, S. J.: A review of benefits and challenges in growing street trees in paved urban environments, *Landscape and Urban Planning*, 134, 157–166, doi:10.1016/j.landurbplan.2014.10.013, 2015.
- Municipality of Toulouse: CAHIER DE L'ESPACE PUBLIC « LES ESPACES VERTS », Tech. rep., Toulouse, France, 2008.
- Noilhan, J. and Planton, S.: A Simple Parameterization of Land Surface Processes for Meteorological Models, *Monthly Weather Review*, 117, 536–549, 1989.
- 15 Nowak, D. J. and Dwyer, J. F.: Understanding the Benefits and Costs of Urban Forest Ecosystems, in: *Handbook of Urban and Community Forestry in the North East*, pp. 25–46, doi:10.1007/978-1-4020-4289-8_2, 2007.
- Önder, S. and Akay, A.: The Roles of Plants on Mitigating the Urban Heat Islands' Negative Effects, *International Journal of Agriculture and Economic Development*, 2, 18–32, 2014.
- 20 Park, M., Hagishima, A., Tanimoto, J., and Narita, K. I.: Effect of urban vegetation on outdoor thermal environment: Field measurement at a scale model site, *Building and Environment*, 56, 38–46, doi:10.1016/j.buildenv.2012.02.015, <http://dx.doi.org/10.1016/j.buildenv.2012.02.015>, 2012.
- Perez, R., Seals, R., and Michalsky, J.: All-weather model for sky luminance distribution-Preliminary configuration and validation, *Solar Energy*, 50, 235–245, doi:10.1016/0038-092X(93)90017-I, 1993.
- 25 Pigeon, G., Moscicki, M. A., Voogt, J. A., and Masson, V.: Simulation of fall and winter surface energy balance over a dense urban area using the TEB scheme, *Meteorology and Atmospheric Physics*, 102, 159–171, 2008.
- Porson, A., Harman, I. N., Bohnenstengel, S. I., and Belcher, S. E.: How many facets are needed to represent the surface energy balance of an urban area?, *Boundary-Layer Meteorology*, 132, 107–128, doi:10.1007/s10546-009-9392-4, 2009.
- Qiu, G. Y., Li, H. Y., Zhang, Q. T., Chen, W., Liang, X. J., and Li, X. Z.: Effects of Evapotranspiration on Mitigation of Urban Temperature by Vegetation and Urban Agriculture, *Journal of Integrative Agriculture*, 12, 1307–1315, doi:10.1016/S2095-3119(13)60543-2, 2013.
- 30 Robitu, M., Musy, M., Inard, C., and Groleau, D.: Modeling the influence of vegetation and water pond on urban microclimate, *Solar Energy*, 80, 435–447, doi:10.1016/j.solener.2005.06.015, <http://linkinghub.elsevier.com/retrieve/pii/S0038092X05002574>, 2006.
- Ryu, Y. H., Bou-Zeid, E., Wang, Z. H., and Smith, J. A.: Realistic Representation of Trees in an Urban Canopy Model, *Boundary-Layer Meteorology*, pp. 1–28, doi:10.1007/s10546-015-0120-y, 2015.
- 35 Seity, Y., Brousseau, P., Malardel, S., Hello, G., Bénard, P., Bouttier, F., Lac, C., and Masson, V.: The AROME-France Convective-Scale Operational Model, *Monthly Weather Review*, 139, 976–991, doi:10.1175/2010MWR3425.1, <http://journals.ametsoc.org/doi/abs/10.1175/2010MWR3425.1>, 2011.
- Shashua-Bar, L., Pearlmutter, D., and Erell, E.: The influence of trees and grass on outdoor thermal comfort in a hot-arid environment, *International Journal of Climatology*, 31, 1498–1506, doi:10.1002/joc.2177, 2011.
- Simpson, J. R.: Improved estimates of tree-shade effects on residential energy use, *Energy and Buildings*, 34, 1067–1076, doi:10.1016/S0378-7788(02)00028-2, 2002.
- 5 Spangenberg, J., Shinzato, P., Johansson, E., and Duarte, D. H. S.: Simulation of the influence of vegetation on microclimate and thermal comfort in the city of São Paulo, *Revista da Sociedade Brasileira de Arborização Urbana*, 3, 1–19, doi:10.1016/j.solener.2005.06.015, 2008.
- Taleghani, M., Sailor, D., and Ban-Weiss, G. A.: Micrometeorological simulations to predict the impacts of heat mitigation strategies on pedestrian thermal comfort in a Los Angeles neighborhood, *Environ. Res. Lett.*, 11, 024003, doi:10.1088/1748-9326/11/2/024003, <http://iopscience.iop.org/1748-9326/11/2/024003>, 2016.
- 10

- Tavares, R., Calmet, I., and Dupont, S.: Modelling the impact of green infrastructures on local microclimate within an idealized homogeneous urban canopy, in: ICUC9 - 9th International Conference on Urban Climate jointly with 12th Symposium on the Urban Environment Modelling, pp. 1–6, 2015.
- 15 Wang, Z.-H.: Monte Carlo simulations of radiative heat exchange in a street canyon with trees, *Solar Energy*, 110, 704–713, doi:10.1016/j.solener.2014.10.012, <http://www.sciencedirect.com/science/article/pii/S0038092X14004988>, 2014.
- Yamada, T.: A numerical study of turbulent airflow in and above a forest canopy, *Journal of the Meteorological Society of Japan*, 60, 439–454, 1982.
- Yao, L., Chen, L., Wei, W., and Sun, R.: Potential reduction in urban runoff by green spaces in Beijing: A scenario analysis, *Urban Forestry & Urban Greening*, 14, 300–308, doi:10.1016/j.ufug.2015.02.014, <http://linkinghub.elsevier.com/retrieve/pii/S1618866715000369>, 2015.
- 1040 Young, D. T., Clark, P., Hendry, M., and Barlow, J.: Modelling Radiative Exchange in a Vegetated Urban Street Canyon Model, in: ICUC9 - 9th International Conference on Urban Climate jointly with 12th Symposium on the Urban Environment Modelling, pp. 1–5, 2015.
- Zhang, B., Xie, G.-d., Li, N., and Wang, S.: Effect of urban green space changes on the role of rainwater runoff reduction in Beijing, China, *Landscape and Urban Planning*, 140, 8–16, doi:10.1016/j.landurbplan.2015.03.014, <http://linkinghub.elsevier.com/retrieve/pii/S0169204615000766>, 2015.
- 1045 Zhang, Z., Lv, Y., and Pan, H.: Cooling and humidifying effect of plant communities in subtropical urban parks, *Urban Forestry and Urban Greening*, 12, 323–329, doi:10.1016/j.ufug.2013.03.010, 2013.

a. Without explicit high vegetation



b. With explicit high vegetation

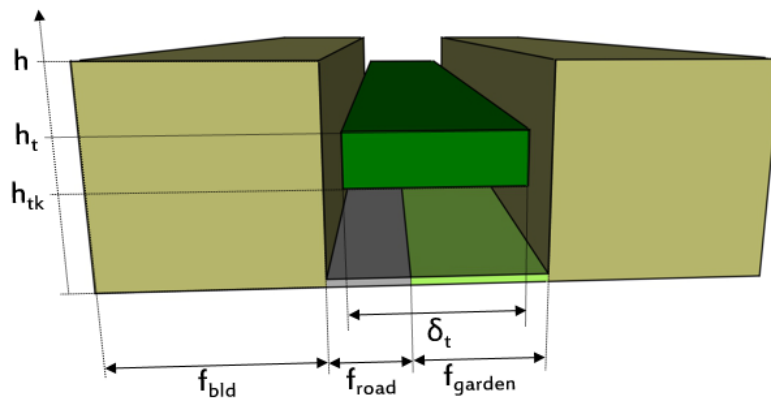


Figure 1. Comparison of the spatial arrangement of elements composing the urban canyon and of associated geometric parameters applied in the TEB model in the reference case (top) and in the case with explicit high vegetation (bottom).

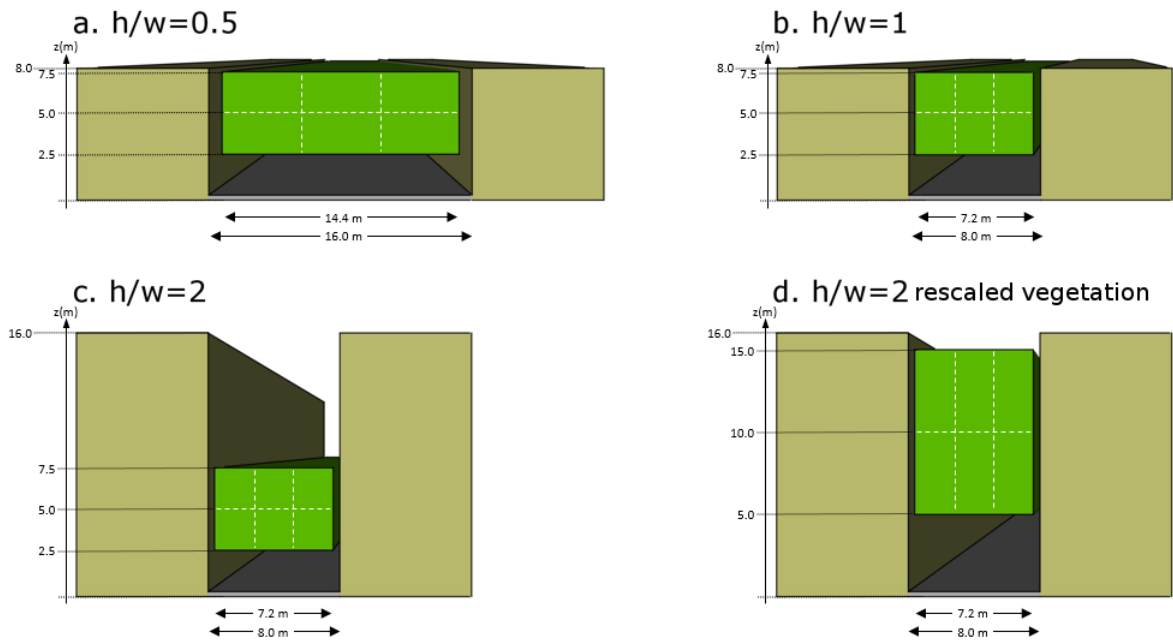


Figure 2. Description of simple geometries of urban canyon selected for the comparison between TEB and SOLENE simulations. For each of them, the potential location of tree canopy is illustrated by dotted rectangles.

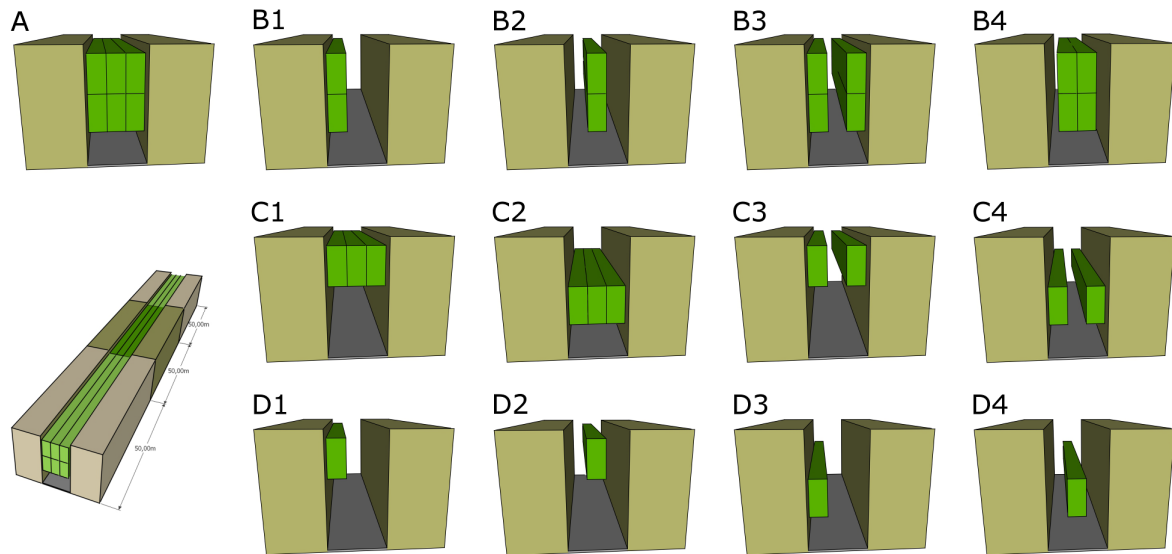


Figure 3. Description of the SOLENE mock-up, and presentation of the ensemble of vegetation layouts selected for the comparison between TEB and SOLENE simulations. The cases are presented here for the example of urban canyon with $h/w = 2$ rescaled vegetation (see section 5.2.1 and Fig. 2 for further explanations).

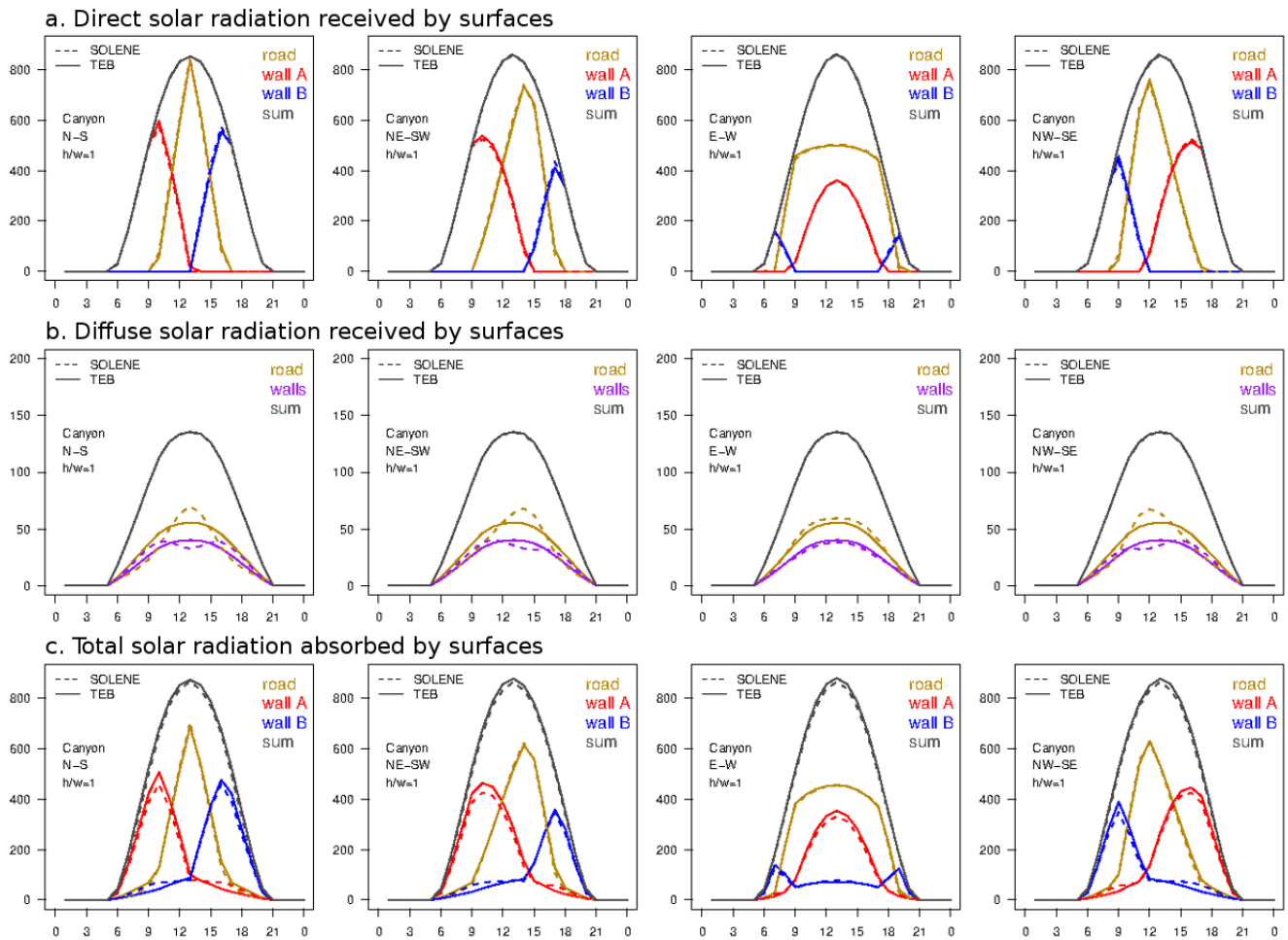


Figure 4. Comparison of TEB and SOLENE simulations of hourly direct (top) and diffuse (middle) solar radiation fluxes (W m^{-2}) received by urban facets before multiple reflections and total shortwave radiation fluxes (W m^{-2}) absorbed by urban facets after interreflections (bottom), for urban canyons without vegetation. The results are presented here only for the aspect ratio equal to 1 and for the four street orientations at summertime during a summer day.

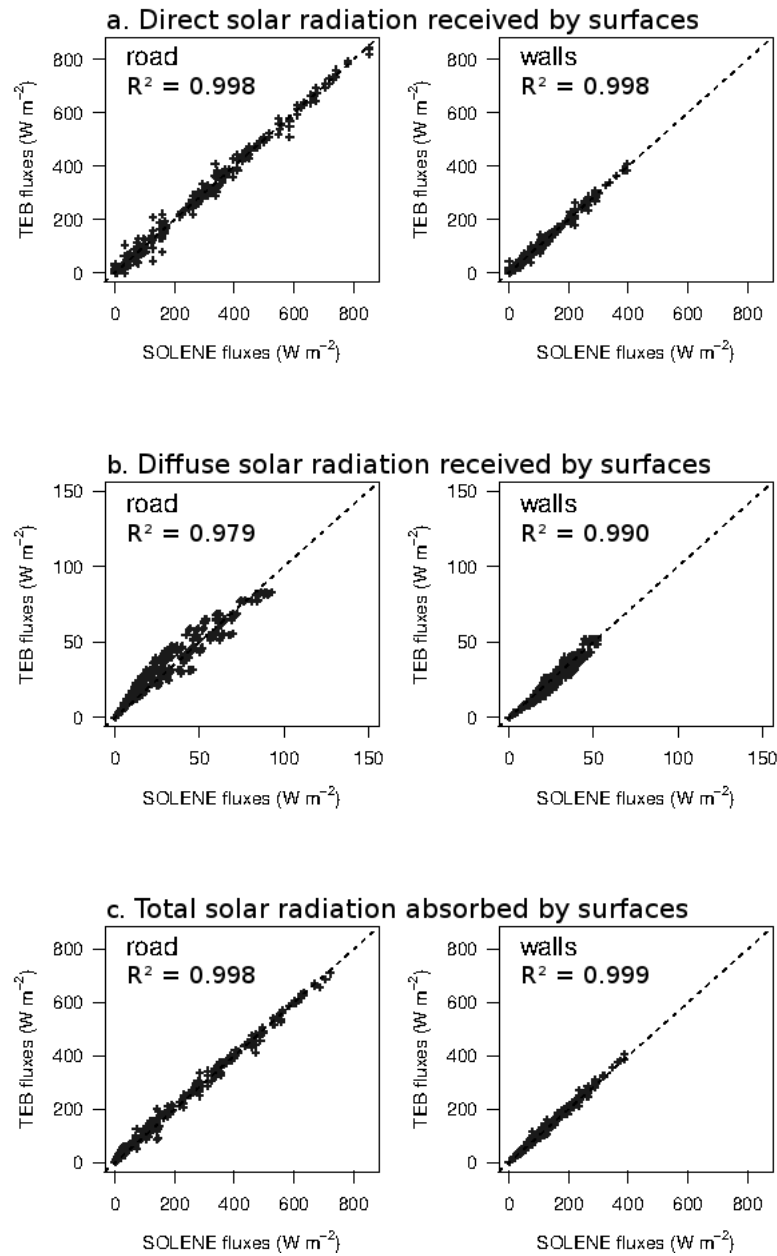


Figure 5. Scatterplots comparing TEB and SOLENE simulations of hourly direct (top) and diffuse (middle) solar radiation fluxes (W m^{-2}) received by urban facets before multiple reflections and total shortwave radiation fluxes (W m^{-2}) absorbed by urban facets after interreflections (bottom), for urban canyons without vegetation. Each scatterplot gathers the hourly fluxes simulated for the four seasons, the three aspect ratios, and the four street orientations.

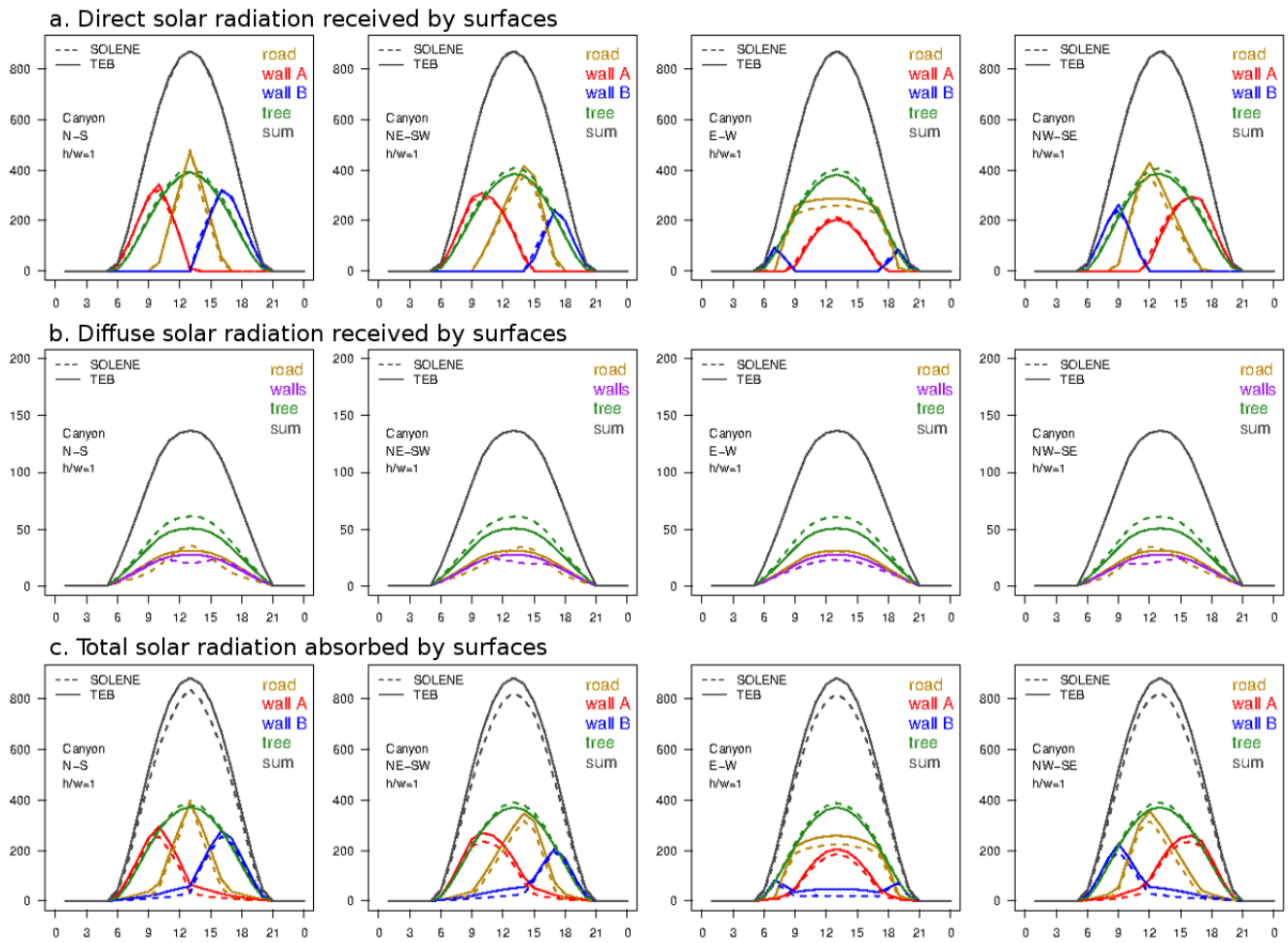


Figure 6. Comparison of TEB and SOLENE simulations of hourly direct (top) and diffuse (middle) solar radiation fluxes ($W\ m^{-2}\ m^{-2}$) received by urban facets before multiple reflections and total shortwave radiation fluxes ($W\ m^{-2}\ m^{-2}$) absorbed by urban facets after interreflections (bottom), for urban canyons with vegetation. The results are presented here only for the aspect ratio equal to 1 and for the four street orientations at summertime during a summer day.

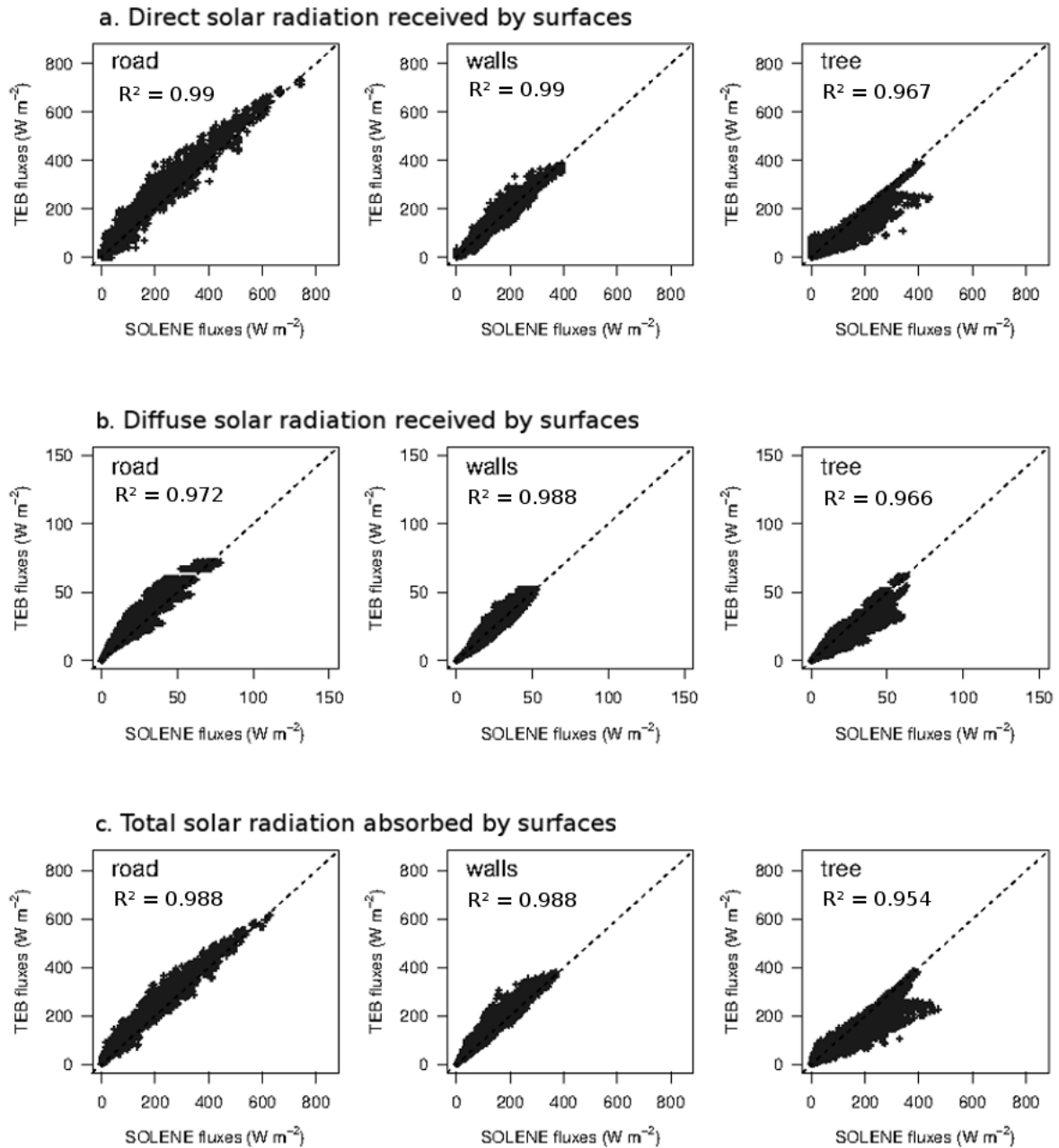


Figure 7. Scatterplots comparing TEB and SOLENE simulations of hourly direct (top) and diffuse (middle) solar radiation fluxes (W m^{-2}) received by facets before multiple reflections and total shortwave radiation fluxes (W m^{-2}) absorbed by facets after inter-reflections (bottom), for urban canyons with vegetation. Each scatterplot gathers the hourly fluxes simulated for the four seasons, the four aspect ratios, and the four street orientations.

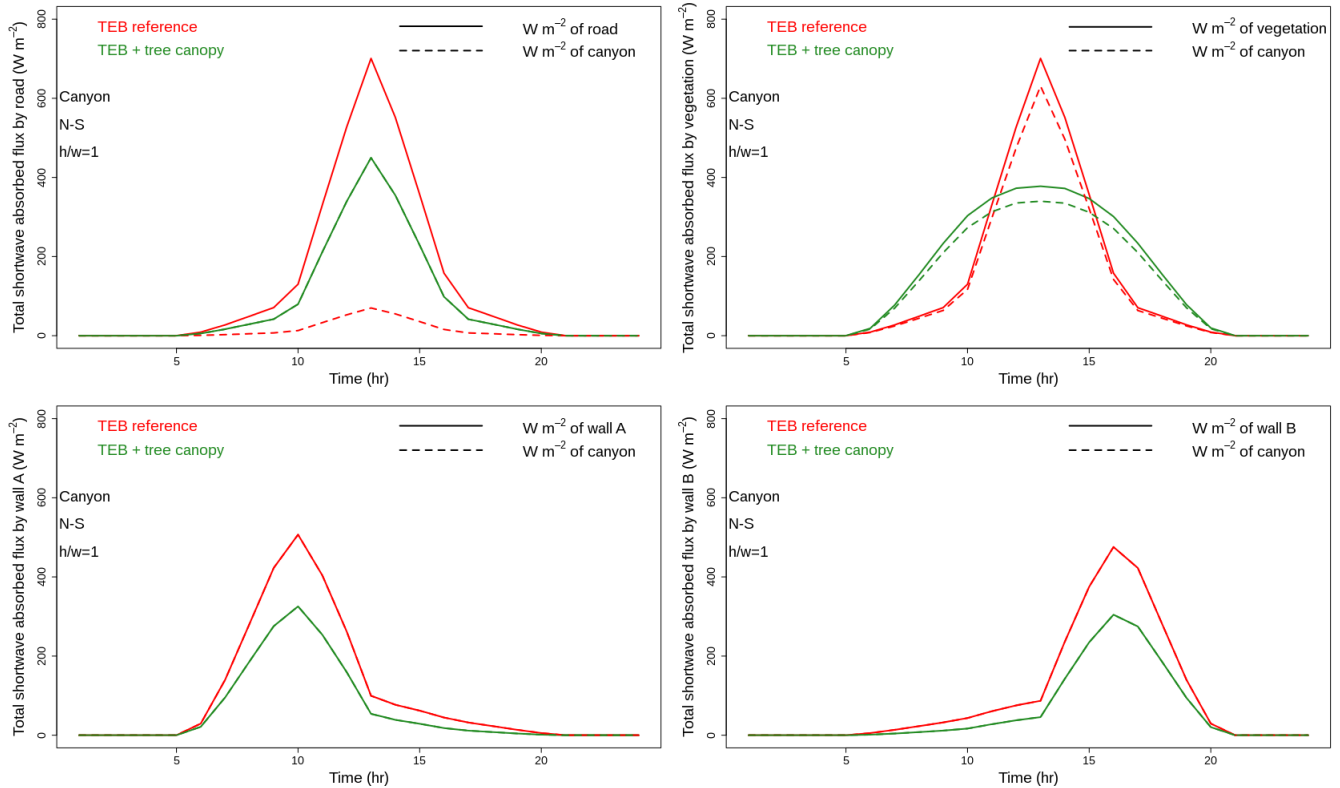


Figure 8. Comparison of mean-daily the total shortwave radiation flux ($W m^{-2} m^{-2}$) absorbed by road, walls, and tree between the reference TEB simulations without distinction between low and high vegetation and the new version including a-an explicit tree canopy by-surface for all-seasons, corresponding to a configuration A within a North-South oriented canyon with an aspect ratios, orientations and vegetation layouts confounded ratio of $h/w = 1$ during a summer day. The fluxes are expressed either in $W m^{-2}$ of the considered surface or in $W m^{-2}$ of canyon.

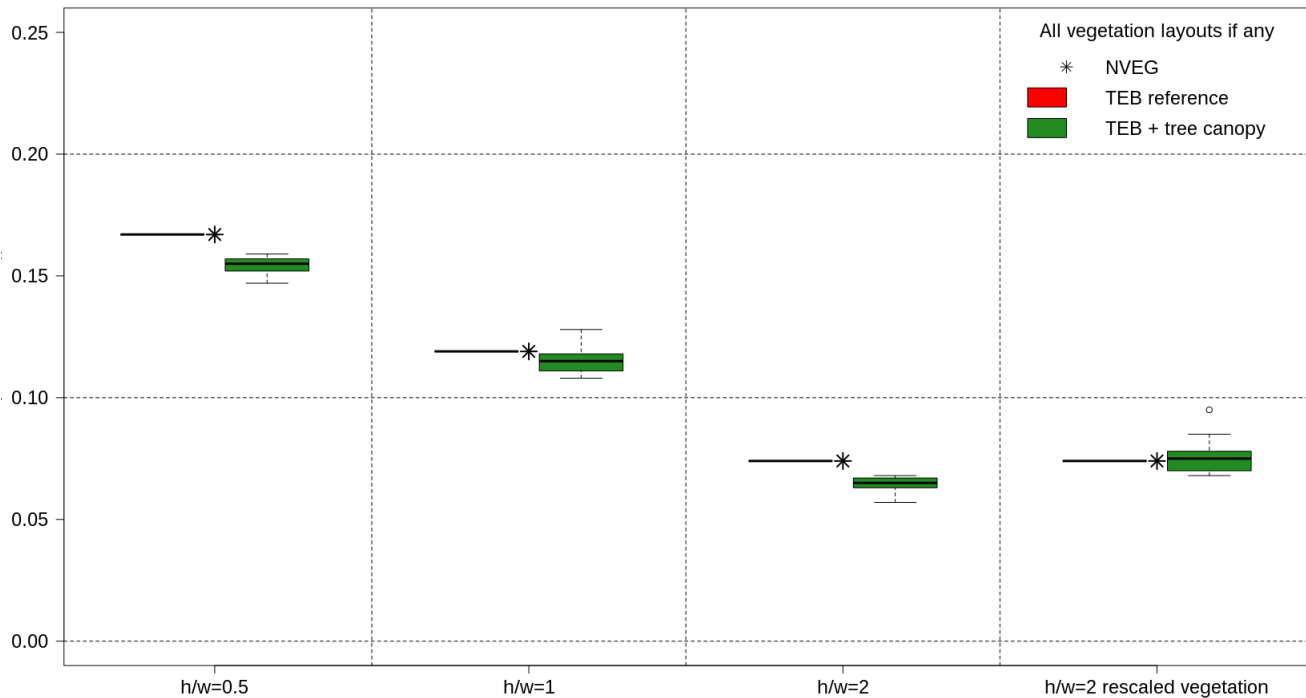


Figure 9. Comparison of the mean-daily canyon albedo at solar noon between the reference TEB simulations without distinction between low and high vegetation and the new version including a tree canopy by aspect ratios for all seasons, orientations and vegetation layouts confounded combined within North-South oriented canyons, during a summer day. See section 5.2.1 and Fig. 2 for further explanations about the $h/w = 2$ rescaled vegetation configurations.

Table 1. Main descriptive parameters of the urban canyon, including vegetation, in the TEB model. The bold parameters are the input data prescribed by user, the other ones are computed in the model using the input parameters.

Parameters	Symbol	Unit
Cover fraction of buildings	f_{bld}	-
Cover fraction of ground-based natural covers (garden)	f_{garden}	-
Proportion of bare soil in gardens	δ_{nv}	-
Proportion of low vegetation in gardens	$\delta_{lv} = 1 - \delta_{nv}$	-
Cover fraction of tree canopy	δ_t	-
Mean building height	h	m
Wall plan area ratio	r_w	-
Canyon aspect ratio	$h/w = 0.5r_w/(1 - f_{bld})$	-
Height of tree canopy	h_t	m
Height of trunk	h_{tk}	m
Mid-height of tree's crown	$h_{cw} = (h_t + h_{tk})/2$	m
Sky view factor of wall, road, garden, tree	$\Psi_{wS}, \Psi_{rS}, \Psi_{gS}, \Psi_{tS}$	-
View factor of road, tree from wall	Ψ_{wr}, Ψ_{wt}	-
View factor of wall, tree from road	Ψ_{rw}, Ψ_{rt}	-
View factor of wall,road from tree	Ψ_{tw}, Ψ_{tr}	-
Leaf Area Index of low vegetation in gardens	LAI_g	m ² m ⁻²
Leaf Area Index of tree canopy	LAI_t	m ² m ⁻²
Leaf Area Density of tree canopy	LAD _t	m ² m ⁻³
Albedo of wall, road, garden, tree	$\alpha_w, \alpha_r, \alpha_g, \alpha_t$	-
Emissivity of wall, road, garden, tree	$\epsilon_w, \epsilon_r, \epsilon_g, \epsilon_t$	-

Table 2. List of input parameters for the ensemble of simulations performed with TEB.

Parameters	A	B1	B2	B3	B4	C1	C2	C3	C4	D1
f_{bid}	0.5	0.5	0.5	0.5	0.5	0.5	0.5	0.5	0.5	0.5
f_{garden}	0.	0.	0.	0.	0.	0.	0.	0.	0.	0.
δ_t	0.9	0.3	0.3	0.6	0.6	0.9	0.9	0.6	0.6	0.3
h	8. (for $h/w = 0.5$, $h/w = 1$, $h/w = 2$ -classical case) / 16. (for $h/w = 2$ -rescaled vegetation)									
r_w	0.5 (for $h/w = 0.5$) / 1.0 (for $h/w = 1$) / 2.0 (for $h/w = 2$ -classical and rescaled vegetation case)									
h_t	7.5	7.5	7.5	7.5	7.5	7.5	5.0	7.5	5.0	7.5
h_{tk}	2.5	2.5	2.5	2.5	2.5	5.0	2.5	5.0	2.5	5.0
LAI_t	1.	1.	1.	1.	1.	1.	1.	1.	1.	1.
τ_{sr}	0.5	0.5	0.5	0.5	0.5	0.5	0.5	0.5	0.5	0.5
α_r	0.25	0.25	0.25	0.25	0.25	0.25	0.25	0.25	0.25	0.25
α_w	0.30	0.30	0.30	0.30	0.30	0.30	0.30	0.30	0.30	0.30
α_t	0.15 <u>0.25</u>	0.15 <u>0.25</u>	0.15 <u>0.25</u>	0.15 <u>0.25</u>	0.15 <u>0.25</u>	0.15 <u>0.25</u>	0.15 <u>0.25</u>	0.15 <u>0.25</u>	0.15 <u>0.25</u>	0.15 <u>0.25</u>

Table 3. Statistical scores for absorbed shortwave radiation flux by surfaces regarding the seasons.

Config - Surf	Winter			Spring			Summer		
	MAE <u>MAD</u>	MAPE <u>MAPD</u>	Bias	MAE <u>MAD</u>	MAPE <u>MAPD</u>	Bias	MAE <u>MAD</u>	MAPE <u>MAPD</u>	
Units	W m^{-2}	%	W m^{-2}	W m^{-2}	%	W m^{-2}	W m^{-2}	%	
NVEG									
Road	2.13	43	+2.02	7.45	18	+4.47	6.03	3	
Walls	0.81	4	+0.42	2.99	2	+0.91	3.38	3	
ALL									
Road	2.67	109 <u>108</u>	+2.63	10.29 <u>10.32</u>	64 <u>63</u>	+9.21 <u>9.22</u>	16.26 <u>16.31</u>	24	
Walls	1.93 <u>1.75</u>	15 <u>13</u>	+1.79 <u>1.58</u>	6.83 <u>6.34</u>	15 <u>13</u>	+5.47 <u>4.77</u>	10.18 <u>9.39</u>	15 <u>14</u>	
Tree	3.11 <u>3.13</u>	43 <u>53</u>	-1.65 <u>1.20</u>	12.43 <u>12.15</u>	28 <u>31</u>	-8.81 <u>7.29</u>	22.14 <u>21.12</u>	22 <u>21</u>	

Table 4. Statistical scores for direct solar radiation received by surfaces before multiple reflections for summertime.

Config Units	Road			Walls			Tree		
	MAE - MAD W m ⁻²	MAPE - MAPD %	Bias W m ⁻²	MAE - MAD W m ⁻²	MAPE - MAPD %	Bias W m ⁻²	MAE - MAD W m ⁻²	MAPE - MAPD %	Bias W m ⁻²
NVEG	4.39	1	-0.28	2.49	1	+0.40	-	-	-
A	9.18 - 9.27	14	+8.64 - 8.73	3.52	5	-1.55	6.22	4	-5.43
B1	10.90 - 11.01	9	+9.02 - 9.11	10.84	6	+2.12	19.22	32	-13.17
B2	22.86 - 23.09	26	+22.28 - 22.51	8.26	8	+2.25	27.71	37	-26.76
B3	16.60 - 16.77	22	+16.30 - 16.47	11.25	20	+10.14	37.07	30	-36.78
B4	20.59 - 20.80	29	+20.22 - 20.42	7.09	8	-0.94	19.44	17	-18.35
C1	9.01 - 9.10	14	+8.46 - 8.55	3.51	5	-1.57	5.96	4	-5.18
C2	13.67 - 13.81	21	+13.33 - 13.47	5.89	9	-4.98	4.13	3	-3.17
C3	8.31 - 8.39	9	+7.72 - 7.79	9.77	16	+8.67	25.58	22	-25.24
C4	11.46 - 11.58	13	+11.04 - 11.15	4.77	4	+1.58	14.13	18	-13.91
D1	11.27 - 11.38	6	+6.34 - 6.40	10.03	5	+1.29	14.95	29	-8.86
D2	15.69 - 15.84	17	+15.14 - 15.29	8.29	8	+2.23	20.52	30	-19.56
D3	6.11 - 6.17	4	+3.86 - 3.90	7.82	4	-1.68	15.14	20	-0.21
D4	19.18 - 19.38	21	+18.43 - 18.62	5.05	5	-3.57	14.10	23	-11.11

Table 5. Statistical scores for diffuse solar radiation received by surfaces before multiple reflections for summertime.

Config Units	Road			Walls			Tree		
	MAE - MAD W m ⁻²	MAPE - MAPD %	Bias W m ⁻²	MAE - MAD W m ⁻²	MAPE - MAPD %	Bias W m ⁻²	MAE - MAD W m ⁻²	MAPE - MAPD %	Bias W m ⁻²
NVEG	3.35	7	+0.87	1.70	5	-0.43	-	-	-
A	1.89 - 1.91	15	+1.36 - 1.37	1.51	9	+1.07	3.51	20	-3.50
B1	2.96 - 2.99	14	+1.89 - 1.91	1.83	8	+1.09	4.10	43	-4.10
B2	3.99 - 4.03	29	+3.75 - 3.79	1.64	7	+0.79	5.38	49	-5.38
B3	3.07 - 3.10	24	+2.72 - 2.75	2.88	27	+2.72	8.22	44	-8.22
B4	3.34 - 3.37	30	+3.18 - 3.21	1.47	6	+0.74	4.71	32	-4.71
C1	1.87 - 1.89	14	+1.30 - 1.31	1.50	11	-0.55	1.73	13	-0.24
C2	1.88 - 1.90	14	+1.34 - 1.35	1.60	4	-0.19	1.94	12	-0.88
C3	2.40 - 2.43	13	+1.51 - 1.52	1.69	12	+1.38	4.36	28	-4.36
C4	2.35 - 2.37	13	+1.49 - 1.50	1.69	5	+0.52	2.61	22	-2.47
D1	2.79 - 2.82	10	+1.30 - 1.31	1.53	3	+0.36	2.05	26	-2.05
D2	3.23 - 3.27	20	+2.71 - 2.73	1.40	5	+0.25	3.25	35	-3.25
D3	2.78 - 2.80	9	+1.09 - 1.10	1.63	3	-0.11	1.20	17	-0.86
D4	3.50 - 3.54	22	+3.04 - 3.07	1.62	5	-0.65	1.84	27	-1.72

Table 6. Statistical scores for total shortwave radiation absorbed by surfaces after multiple reflections for summertime.

Config	Road			Walls			Tree		
	MAE - MAD	MAPE - MAPD	Bias	MAE - MAD	MAPE - MAPD	Bias	MAE - MAD	MAPE - MAPD	
Units	W m ⁻²	%	W m ⁻²	W m ⁻²	%	W m ⁻²	W m ⁻²	%	
NVEG	6.03	3	+3.50	3.38	3	+2.80	-	-	
A	13.32 - 13.30	27 - 26	+13.01 - 12.98	10.55 - 9.30	20 - 17	+10.44 - 8.84	8.85 - 7.76	5	
B1	13.24 - 13.31	14	+11.88 - 11.91	12.29 - 11.64	16 - 15	+11.89 - 11.19	21.69 - 21.15	30 - 28	
B2	24.11 - 24.27	32	+23.64 - 23.79	10.97 - 10.36	12	+10.30 - 9.61	31.72 - 30.82	41 - 38	
B3	21.74 - 21.82	36	+21.56 - 21.64	22.26 - 21.05	47 - 45	+22.26 - 21.04	54.26 - 52.46	38 - 35	
B4	23.03 - 23.13	39	+22.74 - 22.82	10.37 - 9.44	14 - 13	+9.04 - 7.81	22.03 - 20.59	19 - 17	
C1	12.18 - 12.04	23	+11.95 - 11.81	6.83 - 5.26	11 - 8	+5.73 - 3.98	9.46 - 6.31	8 - 5	
C2	16.08 - 16.15	31 - 30	+15.78 - 15.83	3.57 - 3.99	5	+0.06 - 1.43	7.53 - 8.72	3 - 7	
C3	13.31 - 13.23	20 - 19	+13.10 - 13.01	17.52 - 16.10	32 - 29	+17.52 - 16.10	43.16 - 40.15	32 - 29	
C4	15.88 - 15.95	23	+15.61 - 15.67	10.21 - 9.28	14 - 13	+10.21 - 9.15	24.38 - 24.09	25 - 21	
D1	12.41 - 12.45	11	+9.32 - 9.29	8.69 - 8.10	9 - 8	+7.63 - 6.78	15.74 - 14.12	27 - 24	
D2	17.15 - 17.19	21	+16.66 - 16.70	8.73 - 8.05	9 - 8	+7.58 - 6.73	22.15 - 20.32	29 - 27	
D3	9.02 - 9.09	9	+7.22 - 7.24	5.73 - 5.25	5 - 4	+4.58 - 4.02	13.27 - 14.04	8 - 14	
D4	19.91 - 20.06	25	+19.38 - 19.52	4.58 - 4.21	4	+2.65 - 2.09	13.54 - 13.97	23 - 22	