

Interactive comment on “Soil carbon stock estimates in a nationwide inventory: evaluating performance of the ROMUL and Yasso07 models” by Aleksi Lehtonen et al.

Alexsi Lehtonen et al.

aleksi.lehtonen@luke.fi

Received and published: 2 November 2016

Please see the Supplement for our response. This supplement includes replies to the comments from Executive editor, Reviewer #1 and Reviewer #2, updated manuscript with track changes, updated manuscript as a clean version and updated Supplement.

Please also note the supplement to this comment:

<http://www.geosci-model-dev-discuss.net/gmd-2016-144/gmd-2016-144-AC1-supplement.pdf>

Interactive comment on Geosci. Model Dev. Discuss., doi:10.5194/gmd-2016-144, 2016.

Printer-friendly version

Discussion paper



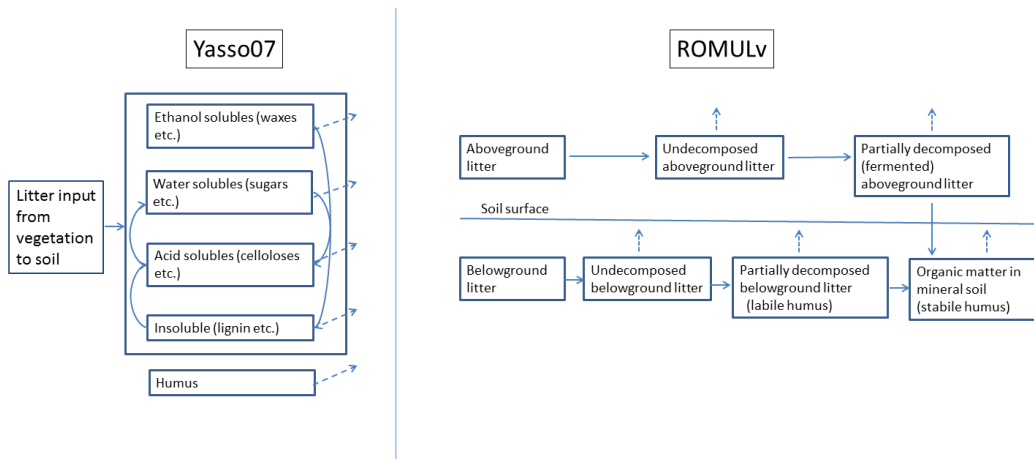


Fig. 1.

Printer-friendly version

Discussion paper



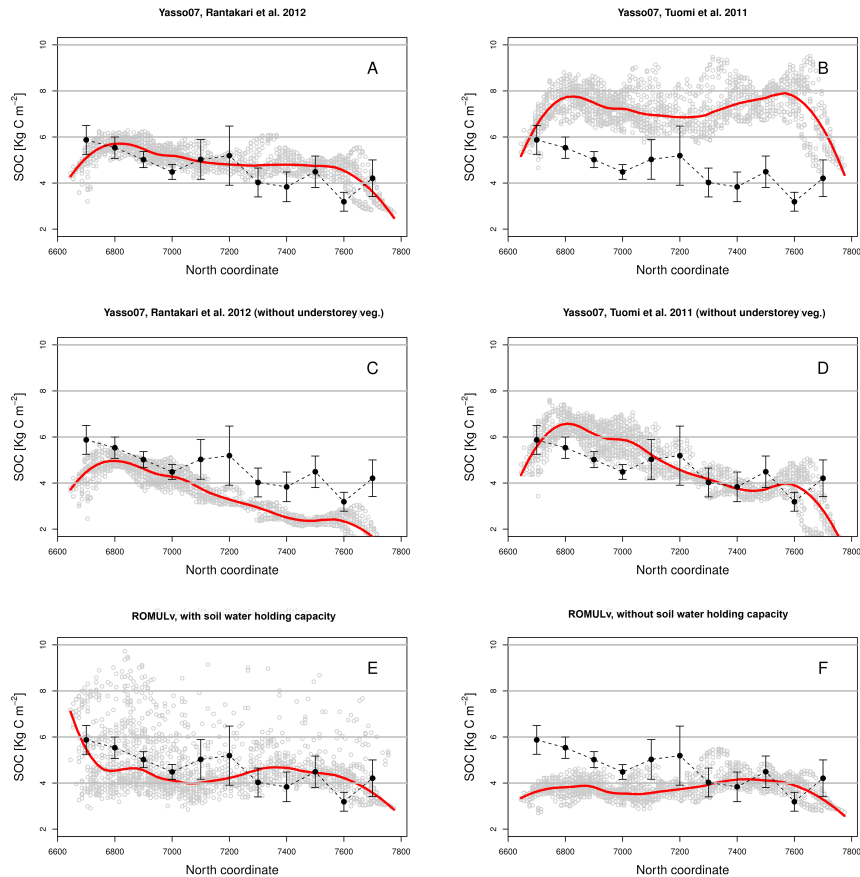


Fig. 2.

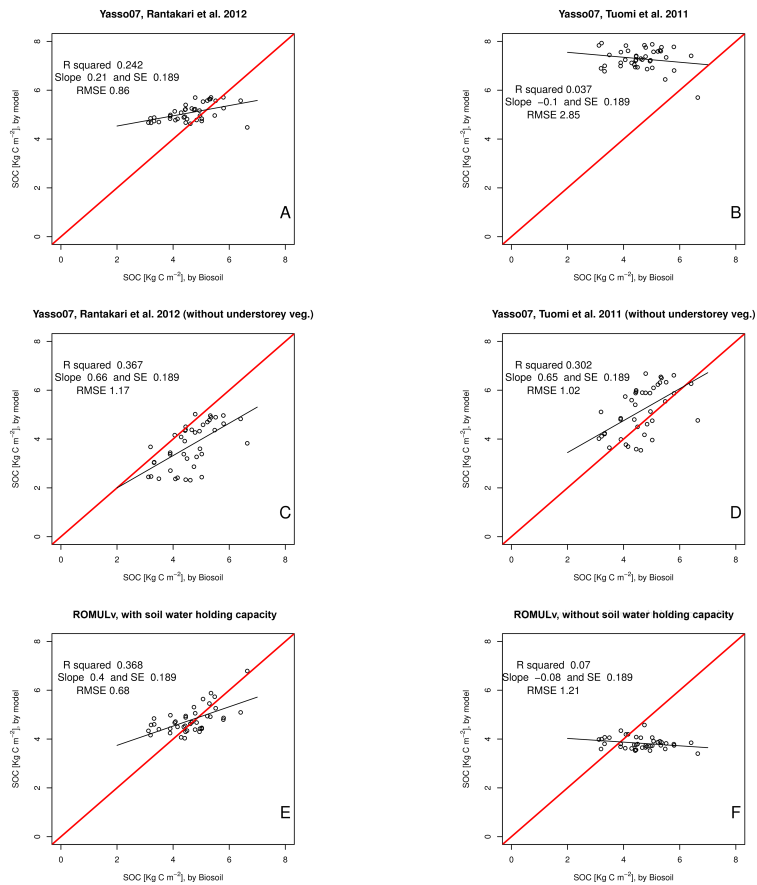


Fig. 3.

Litter input, temperature & precipitation

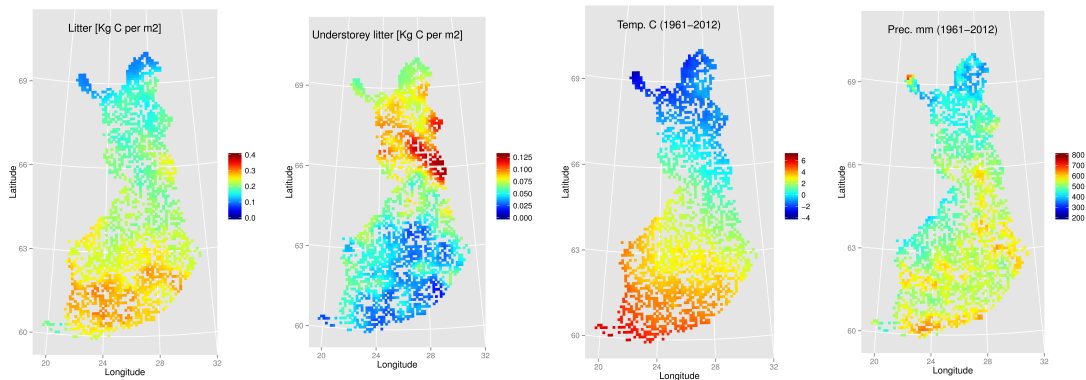


Fig. 4.

Printer-friendly version

Discussion paper



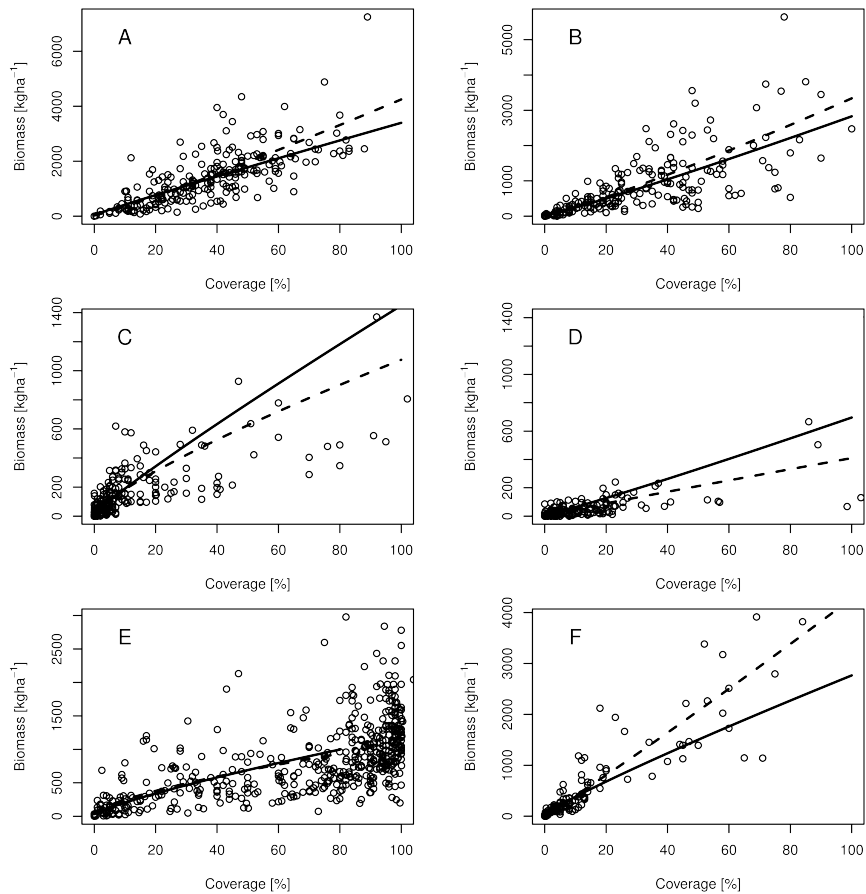


Fig. 5.

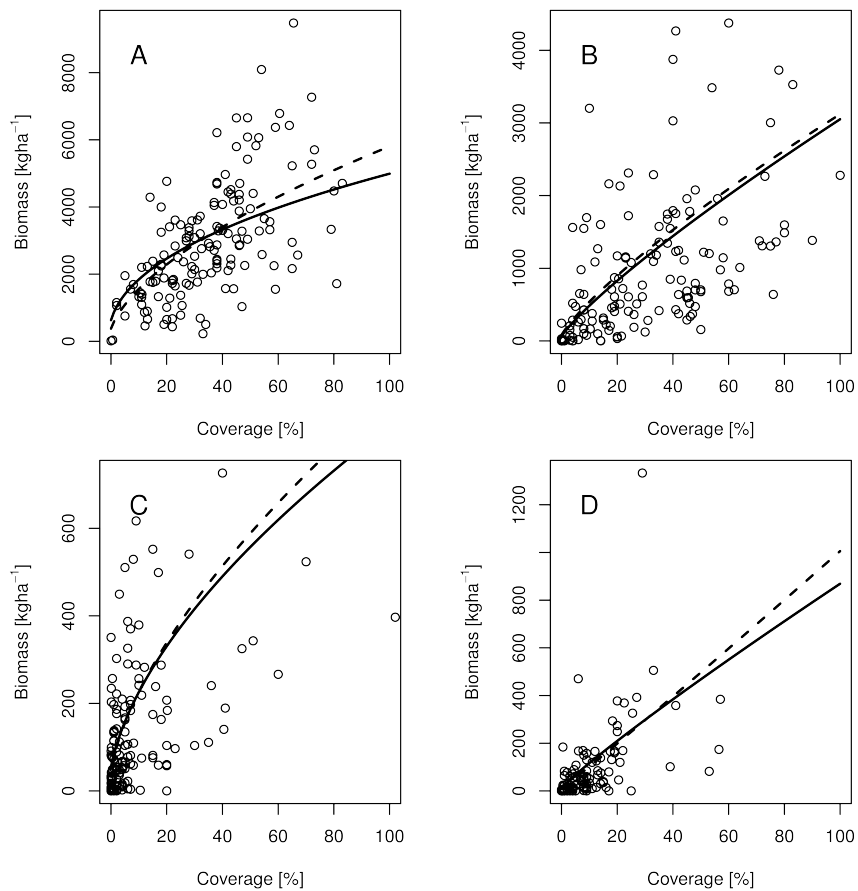


Fig. 6.

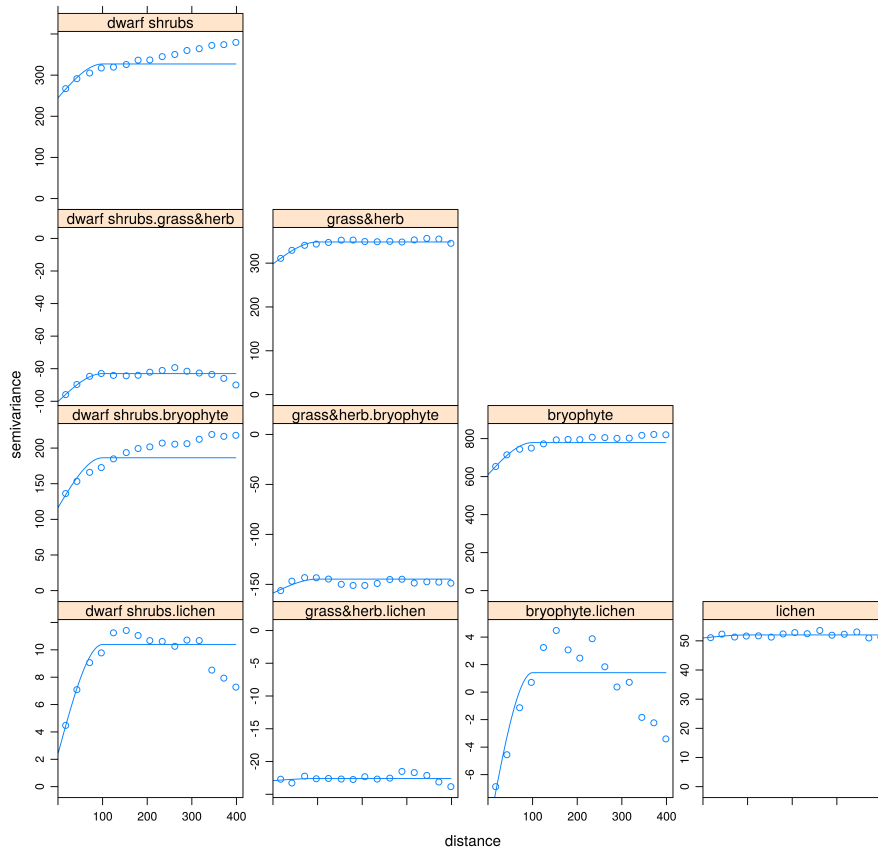


Fig. 7.