

Interactive comment on “Soil carbon stock estimates in a nationwide inventory: evaluating performance of the ROMUL and Yasso07 models” by Aleksi Lehtonen et al.

Aleks Lehtonen et al.

aleksi.lehtonen@luke.fi

Received and published: 2 November 2016

Please see the Supplement for our response. This supplement includes replies to the comments from Executive editor, Reviewer #1 and Reviewer #2, updated manuscript with track changes, updated manuscript as a clean version and updated Supplement.

Please also note the supplement to this comment:

<http://www.geosci-model-dev-discuss.net/gmd-2016-144/gmd-2016-144-AC1-supplement.pdf>

Interactive comment on Geosci. Model Dev. Discuss., doi:10.5194/gmd-2016-144, 2016.

C1

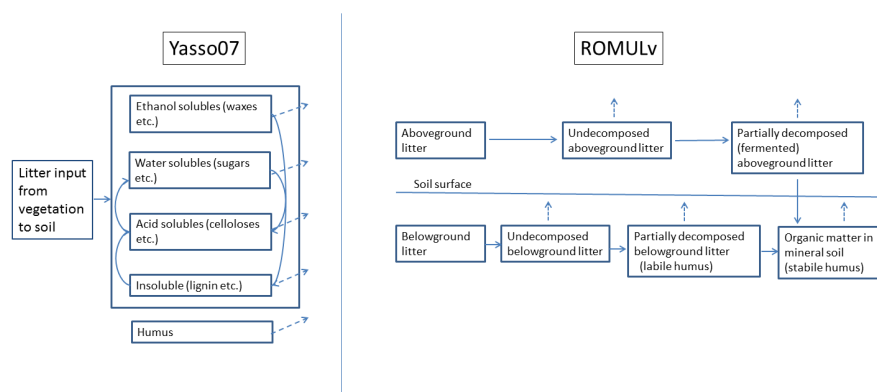


Fig. 1.

C2

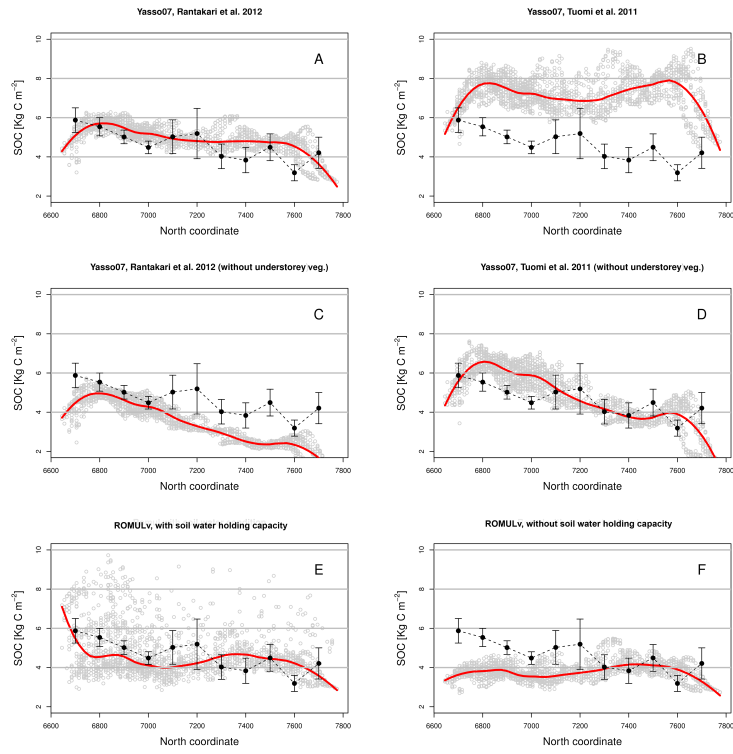


Fig. 2.

C3

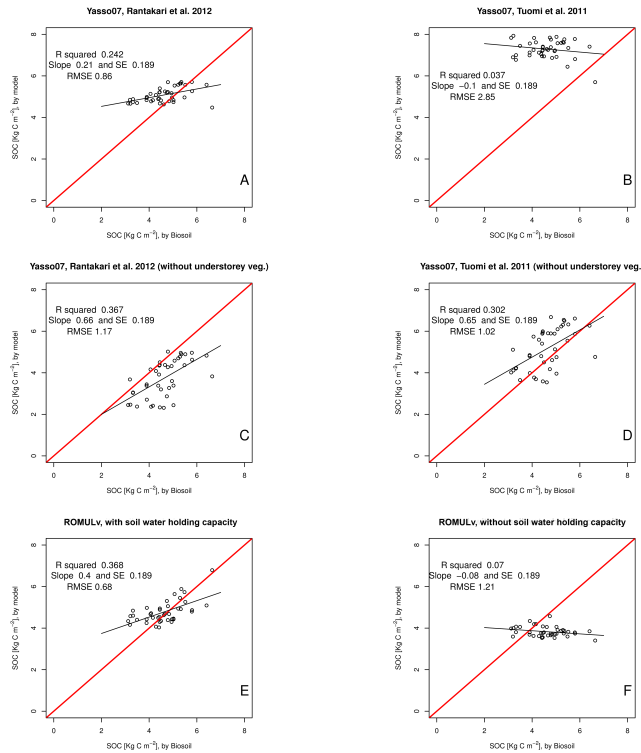


Fig. 3.

C4

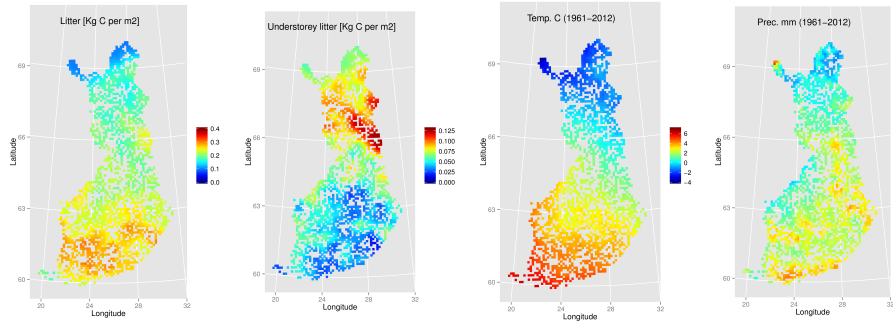


Fig. 4.

C5

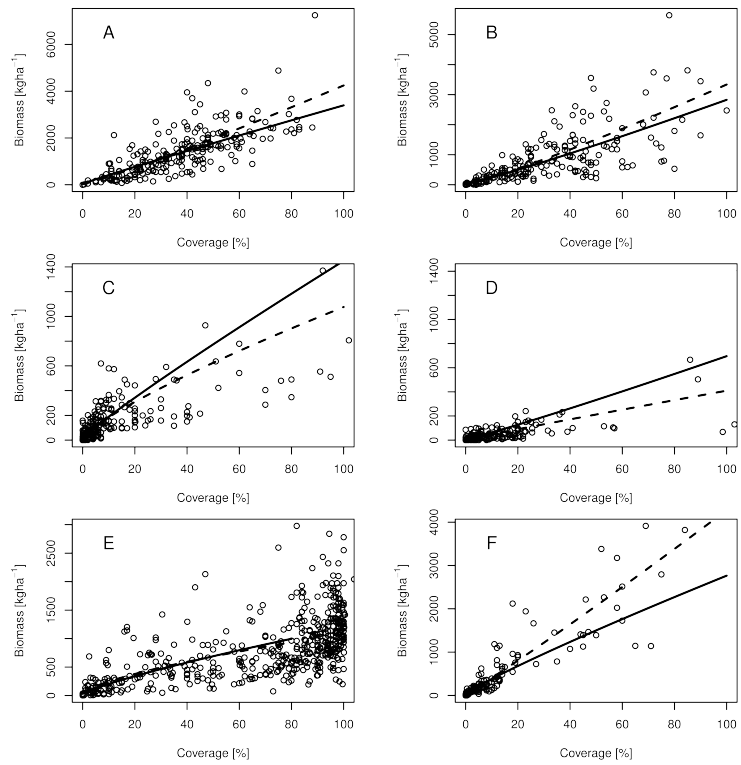


Fig. 5.

C6

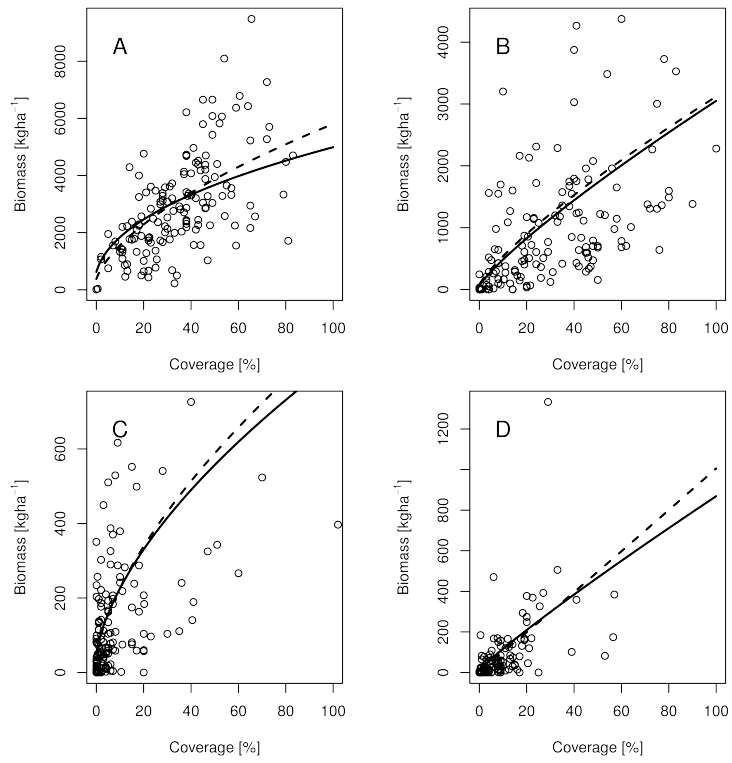


Fig. 6.

C7

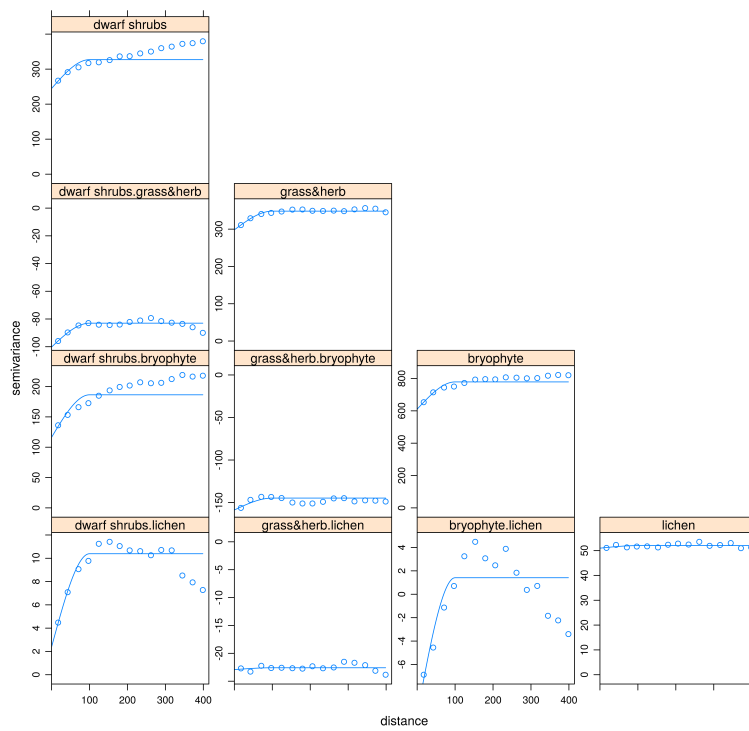


Fig. 7.

C8