

P-CSI v1.0, an accelerated barotropic solver for the high-resolution ocean model component in the Community Earth System Model v2.0

Xiaomeng Huang^{1,2}, Qiang Tang¹, Yuheng Tseng³, Yong Hu¹, Allison H. Baker³, Frank O. Bryan³, John Dennis³, Haohuan Fu¹, and Guangwen Yang¹

¹Ministry of Education Key Laboratory for Earth System Modeling, and Center for Earth System Science, Tsinghua University, Beijing, 100084, China

²Laboratory for Regional Oceanography and Numerical Modeling, Qingdao National Laboratory for Marine Science and Technology, Qingdao, 266237, China

³The National Center for Atmospheric Research, Boulder, CO, USA

Correspondence to: Xiaomeng Huang (hxm@tsinghua.edu.cn), Yuheng Tseng(ytseng@ucar.edu)

Abstract. In the Community Earth System Model (CESM), the ocean model is computationally expensive for high-resolution grids and is often the least scalable component for high-resolution production experiments. The major bottleneck is that the barotropic solver scales poorly at high core counts. We design a new barotropic solver to accelerate the high-resolution ocean simulation. The novel solver adopts a Chebyshev-type iterative method to reduce the global communication cost in conjunction with an effective block preconditioner to further reduce the iterations. The algorithm and its computational complexity are theoretically analyzed and compared with other existing methods. We confirm the significant reduction of the global communication time with a competitive convergence rate using a series of idealized tests. Numerical experiments using the CESM 0.1° global ocean model show that the proposed approach results in a factor of 1.7 speed-up over the original method with no loss of accuracy, achieving 10.5 simulated years per wall-clock day on 16,875 cores.

1 Introduction

Recent progress in high-resolution global climate models has demonstrated that models with finer resolution can better represent important climate processes to facilitate climate prediction. Significant improvements can be achieved in the high-resolution global simulations of Tropical Instability Waves (Roberts et al., 2009), El Niño Southern Oscillation (ENSO) (Shaffrey et al., 2009), the Gulf Stream separation (Chassignet and Marshall, 2008; Kuwano-Yoshida et al., 2010), the global water cycle (Demory et al., 2014), and other aspects of the mean climate and variability. Specifically, Gent et al. (2010) and Wehner et al. (2014) showed that increasing the atmosphere models' resolution results in a better mean climate, more accurate depiction of the tropical storm formation, and more realistic events of extreme daily precipitation. Bryan et al. (2010) and Graham (2014) also suggested

that increasing the ocean models' resolution to the eddy resolving level helps to capture the positive correlation between sea surface temperature and surface wind stress and improves the asymmetry of the ENSO cycle in the simulation.

25 In the High-Resolution Model Intercomparison Project (HighResMIP) for the Coupled Model Intercomparison Project phase 6 (CMIP6), global model resolutions of 25 km or finer at mid-latitudes are proposed to implement the Tier-1 and Tier-2 experiments (Eyring et al., 2015). Because all CMIP6 climate models are required to run for hundreds of years, tremendous computing resources are needed for high-resolution production simulations. To run high-resolution climate models practically, additional algorithm optimization is required to efficiently utilize the large-scale computing
30 resources.

This work improves the barotropic solver performance in the ocean model component (Parallel Ocean Model, POP) of the National Center for Atmospheric Research (NCAR)'s fully coupled climate model: the Community Earth System Model (CESM). The POP solves the three-dimensional
35 primitive equations with hydrostatic and Boussinesq approximations and splits the time integration into two parts: the baroclinic and barotropic modes (Smith et al., 2010). The baroclinic mode describes the three-dimensional dynamic and thermodynamic processes, while the barotropic mode solves the vertically integrated momentum and continuity equations in two dimensions.

The barotropic solver is the major bottleneck in the POP within the high-resolution CESM because
40 it dominates the total execution time on a large number of cores (Jones et al., 2005). This results from the implicit calculation of the free-surface height in the barotropic solver, which scales poorly at high core counts due to an evident global communication bottleneck inherent to the algorithm. The implicit solver allows a large time step to efficiently compute the fast gravity wave mode but requires the solution of a large elliptic system of equations. The conjugate gradient method (CG) and its
45 variants are popular choices for implicit free-surface ocean solvers, such as MITgcm (Adcroft et al., 2014), FVCOM (Lai et al., 2010), MOM3 (Pacanowsky and Griffies, 1999), and OPA (Madec et al., 1997). However, the standard CG method has heavy global communication overhead in the existing POP implementation (Worley et al., 2011). The latest Chronopoulos-Gear (ChronGear) (D'Azevedo et al., 1999) variant of the CG algorithm is currently used in the POP to reduce the number of
50 global reductions. A nice overview of reducing global communication costs for CG method can be found in the work of Ghysels and Vanroose (2014). Recent efforts to improve the performance of CG method include a variant that overlaps the global reduction with the matrix-vector computation via a pipelined approach (Ghysels and Vanroose, 2014). However, the improvement is still limited when using a very large number of cores because of the remaining global reduction operations.
55 For example, when approximately 4,000 cores are used in the POP, the global reduction in PCG (Preconditioned Conjugate Gradient method) and ChronGear takes approximately 74% and 68% of the entire barotropic mode time, respectively (Hu et al., 2015). This situation will get worse with more cores.

Another way to improve the CG method is preconditioning, which has been shown to effectively
60 reduce the number of iterations. The current ChronGear solver in the POP has benefited by using
a simple diagonal preconditioner (Pini and Gambolati, 1990; Reddy and Kumar, 2013). Some par-
allelizable methods such as polynomial, approximate-inverse, multigrid, and block preconditioning
have drawn much attention recently. High-order polynomial preconditioning can reduce iterations
as effectively as incomplete LU factorization in sequential simulations (Benzi, 2002). However, the
65 computational overhead for the polynomial preconditioner typically offsets its superiority to the
simple diagonal preconditioner (Meyer et al., 1989; Smith et al., 1992). The approximate-inverse
preconditioner, although highly parallelizable, requires a linear system that is several times larger
than the original system to be solved (Smith et al., 1992; Bergamaschi et al., 2007), making it less
attractive for the POP.

70 Multigrid methods are well-known scalable and efficient approaches for solving elliptic systems
of equations. Recent works indicated that geometric multigrid is promising in atmosphere and ocean
modeling (Müller and Scheichl, 2014; Matsumura and Hasumi, 2008; Kanarska et al., 2007). How-
ever, geometric multigrid in global ocean models does not always scale ideally because of the pres-
ence of complex topography and non-uniform or anisotropic grids (Fulton et al., 1986; Stüben, 2001;
75 Tseng and Ferziger, 2003; Matsumura and Hasumi, 2008). The current POP, which employs gen-
eral orthogonal grids to avoid the pole singularity, is a typical example. This leads to an elliptic
system with variable coefficients defined on an irregular domain with non-uniform grids. Algebraic
multigrid (AMG) is an alternative to geometric multigrid to handle complex topography. However,
the AMG setup in the parallel environment is more expensive than the iterative solver in climate
80 modeling, which makes it unfavorable as a preconditioner (Müller and Scheichl, 2014).

Block preconditioning has been shown to be an effective parallel preconditioner (Concus et al.,
1985; White and Borja, 2011) and is appealing for the POP because it uses the block structure of
the coefficient matrix that arises from the discretization of the elliptic equations. This advantage
can further improve solver parallel performance. Some other algorithmic approaches also attempt to
85 improve the parallel performance of ocean models. For example, a load-balancing algorithm based
on the space-filling curve was proposed that not only eliminates land blocks but also reduces the
communication overhead due to the reduced number of processes (Dennis, 2007; Dennis and Tufo,
2008). Beare and Stevens (1997) also proposed increasing the number of extra halos and commu-
nication overlaps in the parallel ocean general circulation. Although these approaches improve the
90 performance of ocean models, the global communication bottleneck still exists.

To improve the scalability of the POP at high core counts, we abandon the CG-type approach and
design a new barotropic solver that does not include global communication in iteration steps. The
new barotropic solver, named P-CSI, uses a Classical Stiefel Iteration (CSI) method (proposed origi-
nally in Hu et al., 2015) with an efficient block preconditioner based on the Error Vector Propagation

95 (EVP) method (Roache, 1995). The P-CSI solver is now the default ocean barotropic solver for the upcoming CESM 2.0 release.

This paper is an extension of the work in Hu et al. (2015), which was presented in the 27th International Conference for High Performance Computing, Networking, Storage and Analysis (SC). Note that the main focus here has shifted to emphasize the characteristics of the proposed implemen-
 100 tation and the enhanced performance in the high-resolution POP. In particular, the characteristics of P-CSI are theoretically analyzed via the associated eigenvalues and their impacts on the spectrum, condition number, and convergence rate. In addition, we provide a more comprehensive review of barotropic modes and the existing solvers used in the default POP (only a simplified discussion is provided in the SC paper). Finally, because the target audience is now ocean climate modellers, all
 105 figures have been adjusted to address the major advantages of the proposed method and the overall performance of the high-resolution POP.

The remainder of this paper is organized as follows. Section 2 reviews the existing barotropic solver in the POP. Section 3 details the design of the P-CSI solver, followed by an analysis of the computational complexity and convergence rate of P-CSI in Section 4. Section 5 further compares
 110 the high-resolution performance of the existing solvers and the P-CSI solvers. Finally, conclusions are given in Section 6.

2 Barotropic solver background

We briefly describe the governing equations to formally derive the new P-CSI solver in the POP. The primitive momentum and continuity equations are expressed as:

$$115 \quad \frac{\partial}{\partial t} \mathbf{u} + \mathcal{L}(\mathbf{u}) + f \times \mathbf{u} = -\frac{1}{\rho_0} \nabla p + F_H(\mathbf{u}) + F_V(\mathbf{u}), \quad (1)$$

$$\mathcal{L}(1) = 0, \quad (2)$$

where $\mathcal{L}(\alpha) = \frac{\partial}{\partial x}(u\alpha) + \frac{\partial}{\partial y}(v\alpha) + \frac{\partial}{\partial z}(w\alpha)$, which is equivalent to the divergence operator when $\alpha = 1$; x, y , and z are the horizontal and vertical coordinates; $\mathbf{u} = [u, v]^T$ is the horizontal velocity; w is the vertical velocity; f is the Coriolis parameter; p and ρ_0 represent the pressure and the constant
 120 reference water density, respectively; F_H and F_V are the horizontal and vertical dissipative terms, respectively (Smith et al., 2010). In particular, we emphasize the two-dimensional barotropic mode in the time-splitting scheme, where the P-CSI is implemented.

2.1 Barotropic mode

POP uses the splitting technique to solve the barotropic and baroclinic systems (Smith et al., 2010).
 125 The governing equations for the barotropic mode can be obtained by vertically integrating Eq. (1)

and Eq. (2) from the ocean bottom topography to the sea surface:

$$\frac{\partial \mathbf{U}}{\partial t} = -g\nabla\eta + F, \quad (3)$$

$$\frac{\partial \eta}{\partial t} = -\nabla \cdot H\mathbf{U} + q_w, \quad (4)$$

where $\mathbf{U} = \frac{1}{H+\eta} \int_{-H}^{\eta} dz \mathbf{u}(z) \approx \frac{1}{H} \int_{-H}^0 dz \mathbf{u}(z)$ is the vertically integrated barotropic velocity, g is the gravity acceleration, η is the sea surface height (defined as $p_s/\rho_0 g$, where p_s is the surface pressure associated with undulations of the free surface), H is the depth of the ocean bottom, q_w is the freshwater flux per unit area, and F is the vertical integral of all other terms except the time-tendency and surface pressure gradient in the momentum Eq. (1). When we directly integrate the continuity equation from the bottom to the surface, we will get a form $\int_{-H}^{\eta} dz (\nabla \cdot \mathbf{u} + \frac{\partial w}{\partial z}) = \frac{\partial \eta}{\partial t} + \nabla \cdot (H + \eta)\mathbf{U} - q_w = 0$ under the surface boundary condition $w(\eta) = \frac{dw}{dt} - q_w = \frac{\partial \eta}{\partial t} + \mathbf{u}(\eta) \cdot \nabla \eta - q_w$. The term including η inside the divergence leads to a nonlinear elliptic system, which cannot be solved by many mature numerical methods such as the conjugate gradient methods. To avoid this, POP linearizes the continuity equation by dropping the divergence term in the boundary condition, which becomes $w(\eta) = \frac{\partial \eta}{\partial t} - q_w$. Equation (4) is the resulting barotropic continuity equation, and more details can be found in Smith et al. (2010).

All terms in the Eq. (1) use the explicit scheme, with the exception of the implicit treatment of barotropic mode and the semi-implicit treatment of the Coriolis and vertical mixing terms. Because of the restriction of barotropic CFL number (defined as $CFL = \frac{c\tau}{\Delta x}$, where $c = \sqrt{gH}$ is the fastest speed in barotropic mode, and τ and Δx are the step sizes in time and space, respectively), the implicit treatment of the barotropic mode is necessary to simulate the fast gravity waves with a speed of $c = 200$ m/s so that we can use the same time step as the baroclinic mode, which has a velocity scale of less than 2 m/s (Hu et al., 2015). Solving the barotropic mode with an implicit method allows for a much larger time step than with an explicit method. For example, with the 0.1° POP model, an implicit method can use a time step of 172.8 s; otherwise, it would be only 1.73 s.

Equation (3) and Eq. (4) are then discretized in time using an implicit scheme as follows:

$$\frac{\mathbf{U}^{n+1} - \mathbf{U}^n}{\tau} = -g\nabla\eta^{n+1} + F, \quad (5)$$

$$\frac{\eta^{n+1} - \eta^n}{\tau} = -\nabla \cdot H\mathbf{U}^{n+1} + q_w, \quad (6)$$

where τ is the time step associated with the time advance scheme. By replacing the barotropic velocity in Eq. (6) with the barotropic velocity at the next time step in Eq. (5), an elliptic system of sea surface height η is obtained

$$[-\nabla \cdot H\nabla + \frac{1}{g\tau^2}]\eta^{n+1} = -\nabla \cdot H[\frac{\mathbf{U}^n}{g\tau} + \frac{F}{g}] + \frac{\eta^n}{g\tau^2} + \frac{q_w}{g\tau}. \quad (7)$$

For simplicity, we can rewrite the elliptic Eq. (7) as

$$[-\nabla \cdot H\nabla + \frac{1}{g\tau^2}]\eta^{n+1} = \psi(\eta^n, \tau), \quad (8)$$

where ψ represents a function of the current state of η .

160 Spatially, the POP utilizes the Arakawa B-grid on the horizontal grid (Smith et al., 2010) with the following nine-point stencils to discretize Eq. (8) as follows (see Fig. 1):

$$\nabla \cdot H \nabla \eta = \frac{1}{\Delta y} \delta_x [\overline{\Delta y H \delta_x \eta}]^y + \frac{1}{\Delta x} \delta_y [\overline{\Delta x H \delta_y \eta}]^x, \quad (9)$$

where δ_ξ ($\xi \in \{x, y\}$) are finite differences and Δ_ξ ($\xi \in \{x, y\}$) are the associated grid lengths. The finite difference $\delta_\xi(\psi)$ and average $\overline{\psi}^\xi$ notations are defined, respectively, as follows:

$$165 \quad \delta_\xi \psi = [\psi(\xi + \Delta_\xi/2) - \psi(\xi - \Delta_\xi/2)]/\Delta_\xi, \quad (10)$$

$$\overline{\psi}^\xi = [\psi(\xi + \Delta_\xi/2) + \psi(\xi - \Delta_\xi/2)]/2. \quad (11)$$

Because the POP uses general orthogonal grids, the coefficient matrix varies in space. To demonstrate the properties of the sparse matrix used in the POP, we can simplify Eq. (9) using a special case with uniform grids as follows:

$$170 \quad [\nabla \cdot H \nabla \eta]_{i,j} = -\frac{1}{S_{i,j}} [B^O \overline{H} \eta_{i,j} + B^{NW} H_{i-1,j} \eta_{i-1,j+1} + \frac{1}{2} B^N (H_{i,j} + H_{i-1,j}) \eta_{i,j+1} \\ + B^{NE} H_{i,j} \eta_{i+1,j+1} + \frac{1}{2} B^W (H_{i-1,j} + H_{i-1,j-1}) \eta_{i-1,j} + \frac{1}{2} B^E (H_{i,j} + H_{i,j-1}) \eta_{i+1,j} \\ + B^{SW} H_{i-1,j-1} \eta_{i-1,j-1} + \frac{1}{2} B^S (H_{i,j-1} + H_{i-1,j-1}) \eta_{i,j-1} + B^{SE} H_{i,j-1} \eta_{i+1,j-1}], \quad (12)$$

where $S_{i,j} = \Delta x \Delta y$ and $\overline{H} = \frac{1}{4} (H_{i,j} + H_{i-1,j} + H_{i,j-1} + H_{i-1,j-1})$; the H inside this equation is the ocean bottom depth in the columns of U-points (Smith et al., 2010). The B s are determined

175 using Δx and Δy :

$$\alpha = \frac{\Delta y}{\Delta x}, \quad \beta = 1/\alpha, \\ B^{NW} = B^{NE} = B^{SW} = B^{SE} = -(\alpha + \beta)/4, \\ B^W = B^E = (\beta - \alpha)/2, \quad (13) \\ B^N = B^S = (\alpha - \beta)/2, \\ B^O = \alpha + \beta.$$

To make the discretization of Eq. (8) more succinct, notations are introduced as follows:

$$A_{i,j}^O = B^O \overline{H}, \\ A_{i,j}^N = \frac{1}{2} B^N (H_{i,j} + H_{i-1,j}), A_{i,j}^W = \frac{1}{2} B^W (H_{i-1,j} + H_{i-1,j-1}), \\ A_{i,j}^E = \frac{1}{2} B^E (H_{i,j} + H_{i,j-1}), A_{i,j}^S = \frac{1}{2} B^S (H_{i,j-1} + H_{i-1,j-1}), \quad (14) \\ A_{i,j}^{NW} = B^{NW} H_{i-1,j}, A_{i,j}^{NE} = B^{NE} H_{i,j}, \\ A_{i,j}^{SW} = B^{SW} H_{i-1,j-1}, A_{i,j}^{SE} = B^{SE} H_{i,j-1},$$

These $A_{i,j}^{\chi}$ ($\chi \in \mathcal{Q} = \{O, NW, NE, SW, SE, W, E, N, S\}$) are coefficients between a grid point (i, j) and its neighbours using the nine-point stencil discretization (9). The full discretization of Eq. (8) for any given grid point (i, j) can then be written as

$$\begin{aligned} (A_{i,j}^O + \phi)\eta_{i,j} + A_{i,j}^{NW}\eta_{i-1,j+1} + A_{i,j}^N\eta_{i,j+1} + A_{i,j}^{NE}\eta_{i+1,j+1} + A_{i,j}^W\eta_{i-1,j} \\ + A_{i,j}^E\eta_{i+1,j} + A_{i,j}^{SW}\eta_{i-1,j-1} + A_{i,j}^S\eta_{i,j-1} + A_{i,j}^{SE}\eta_{i+1,j-1} = S_{i,j}\psi_{i,j}, \end{aligned} \quad (15)$$

where $\phi = \frac{S_{i,j}}{g\tau^2}$ is a factor of the time step.

Therefore, the elliptic Eq. (7) leads to a linear system of η , i.e., $Ax = b$, where A is a block tridiagonal matrix composed of coefficients $A_{i,j}^{\chi}$ ($\chi \in \mathcal{Q}$). The simplified equation set of (13), (14) and (15) shows that A is mainly determined by the horizontal grid sizes, ocean depth and time step. These impacts will be further discussed in Section 4.1. Note that Eq. (15) also indicates that the sparsity pattern of A comes directly from the nine nonzero elements in each row (Fig. 2).

POP divides the horizontal domain into small blocks evenly and distributes them to processes. We assume that there are N and M grids along longitude and latitude respectively, and the global domain is divided into $n * m$ small blocks with a size of $\frac{N}{n} * \frac{M}{m}$. These blocks are distributed to processors using simple Cartesian strategy or space-filling curve method (Smith et al., 2010).

2.2 Barotropic solvers

The barotropic solver in the original POP uses the PCG method with a diagonal preconditioner $M = \Lambda(A)$ because of its efficiency in small-scale parallelism (Dukowicz and Smith, 1994) (see Appendix B1 for the details). To mitigate the global communication bottleneck, ChronGear, a variant of the CG method proposed by D’Azevedo et al. (1999), was later introduced as the default solver in the POP. It combines the two separated global communications of a single scalar into a single global communication (see Appendix B2). By this strategic rearrangement, the ChronGear method achieves a one-third latency reduction in the POP. However, the scaling bottleneck still exists in the high-resolution POP using this solver, particularly with a large number of cores (Fig. 3).

To accurately profile the parallel cost of the barotropic solvers, we clearly separate the timing for computation, halo exchange, and global reduction. Operations such as scalar computations and vector scalings are categorized as pure computations, which are relatively cheap due to the independent operations on each process. The extra halo exchange is required for each process to update the boundary values from its neighbors (Fig. 1) after the matrix-vector multiplication. This halo exchange usually costs more than the computation when a large number of cores is used (due to a decreasing problem size per core). The global reduction, which is needed by the inner products of vectors, is even more costly (Hu et al., 2013). Worley et al. (2011) and Dennis et al. (2012) specifically indicated that the global reduction in the POP’s barotropic solver is the main scaling bottleneck for the high-resolution ocean simulation.

Figure 3 confirms that the percentage of execution time for the barotropic mode in 0.1° POP indeed increases with increasing number of processor cores on Yellowstone. When 470 cores are used, the execution time of the barotropic solver is approximately 5% of the total execution time (excludes initialization and I/O). However, when several thousand cores are used, the percentage of time spent in the baroclinic mode decreases, associated with the increasing percentage of time in the barotropic solver. With more than sixteen thousand cores, the percentage of the total execution time due to the barotropic solver is nearly 50%.

220 3 Design of the P-CSI solver

The CG-type solver converges rapidly in the sequential computation (Golub and Van Loan, 2012). However, the bottleneck of global communication embedded in ChronGear still limits the large-scale parallel performance. Here, we design a new solver targeted for reducing global communication so that the speed-up can be as close to unity as possible when a significant number of cores are used.

225 3.1 Classical Stiefel Iteration method

The CSI is a special type of Chebyshev iterative method (Stiefel, 1958). Saad et al. (1985) proposed a generalization of CSI on linearly connected processors and claimed that this approach outperforms the CG method when the eigenvalues are known. This method was revisited by Gutknecht and Röllin (2002) and shown to be ideal for massively parallel computers. In the procedure of preconditioned CSI (P-CSI; details are provided in Appendix B3), the iteration parameters, which control the searching directions in the iteration step, are derived from a stretched Chebyshev function of two extreme eigenvalues (Stiefel, 1958). We demonstrate in Section 4.2 that the stretched Chebyshev function in P-CSI provides a series of preset parameters for iteration directions. As a result, P-CSI requires no inner product operation, thus potentially avoiding the bottleneck of global reduction. This makes the P-CSI more scalable than ChronGear on massively parallel architectures. However, it requires *a priori* knowledge about the spectrum of coefficient matrix A (Gutknecht and Röllin, 2002). It is well known that obtaining the eigenvalues of a linear system of equations is equivalent to solving it. Fortunately, the coefficient matrix A and its preconditioned form in the POP are both positive definite real symmetric matrices. Approximate estimation of the largest and smallest eigenvalues, μ and ν , respectively, of the preconditioned coefficient matrix is sufficient to ensure the convergence of P-CSI.

To efficiently estimate the extreme eigenvalues of the preconditioned matrix $M^{-1}A$ (where M is the preconditioner), we adopt the Lanczos method (Paige, 1980) (see the algorithm in Appendix C). Initial tests indicate that only a small number of Lanczos steps are necessary to reasonably estimate the extreme eigenvalues of $M^{-1}A$ that result in near-optimal P-CSI convergence (Hu et al., 2015). Therefore, the computational overhead of the eigenvalue estimation is very small in our algorithm.

3.2 A block EVP preconditioner

Block preconditioning is quite promising in the POP because parallel domain-decomposition is ideal for the block structure. A block preconditioning based on the EVP method is proposed and detailed in Hu et al. (2015); it improves the parallel performance of the barotropic solver in the POP. To the best of our knowledge, the EVP and its variants are among the least costly algorithms for solving elliptic equations in serial computation (Roache, 1995) and have also been used in several different ocean models (Dietrich et al., 1987; Sheng et al., 1998; Young et al., 2012). The parallel EVP solver was also implemented by Tseng and Chien (2011). The standard EVP is actually a direct solver, which requires two solution steps: preprocessing and solving. In the preprocessing stage, the influence coefficient matrix and its inverse are computed, involving a computational complexity of $\mathcal{C}_{pre} = (2n - 5) * 9n^2 + (2n - 5)^3 = \mathcal{O}(26n^3)$, which is intensive but computed only once at the beginning. The solving stage is computed at every time step and requires only $\mathcal{C}_{evp} = 2 * 9n^2 + (2n - 5)^2 = \mathcal{O}(22n^2)$ (Hu et al., 2015), which is a much lower computational cost than those of other direct solvers, such as LU.

The EVP method is efficient for solving elliptic equations. Although EVP preconditioning may increase the required computation for each iteration, the barotropic solver can greatly benefit from the resulting reduction in the number of iterations, particularly at very large numbers of cores when communication costs dominate (Hu et al., 2015). For large-scale parallel computing, a larger number of processors typically results in smaller domains, which in fact favors the application of the EVP method (Dietrich, 1975; Roache, 1995). If the domain size is too large without using domain decomposition, the computation will be very slow (see the complexity analysis in Section 4.3 when $p = 1$). Using parallel domain decomposition can actually help and speed up the EVP solver.

4 Algorithm analysis and comparison

The extreme eigenvalues of the coefficient matrix are critical to determine the convergence of the iterative solvers (such as P-CSI, PCG and ChronGear). Here, the characteristics of P-CSI are investigated in terms of the associated eigenvalues and their connection with the convergence rate. The computational complexity is also addressed.

4.1 Spectrum and condition number

Because the coefficient matrix A in the POP is symmetric and positive-definite (Smith et al., 2010), its eigenvalues are positive real numbers (Stewart, 1976). We assume that the spectrum (Golub and Van Loan, 2012) of A is $\mathcal{S} = \{\lambda_1, \lambda_2, \dots, \lambda_{\mathcal{N}}\}$, where $\lambda_{min} = \lambda_1 \leq \lambda_i \leq \lambda_{\mathcal{N}} = \lambda_{max}$ ($1 < i < \mathcal{N}$, \mathcal{N} is the size of A) are the eigenvalues of A . The condition number, defined as $\kappa = \lambda_{max}/\lambda_{min}$, is determined based on the spectral radius. Using the Gershgorin circle theorem (Bell, 1965), we know

280 that for any $\lambda \in \mathcal{S}$, there exists a pair of (i, j) satisfying

$$|\lambda - (A_{i,j}^O + \phi)| \leq \sum_{\chi \in \mathcal{Q} - \{O\}} |A_{i,j}^\chi|, \quad (16)$$

where $\phi = \frac{S}{g\tau^2}$ is defined in Section 2.1. With the definition of the coefficients in (13) and (14), we obtain

$$\begin{aligned} \lambda_{max} &\leq (4 \max(\alpha, \frac{1}{\alpha}) + \Phi) \max(H), \\ \lambda_{min} &\geq (2 \min(\alpha - \frac{1}{\alpha}, \frac{1}{\alpha} - \alpha) + \Phi) \max(H). \end{aligned} \quad (17)$$

285 where $\Phi = \frac{\phi}{\max(H)}$, where $\max(H)$ is the maximal depth of the ocean bottom; for more details, refer to Appendix A,

To quantitatively evaluate the impacts of the condition number, we set up a series of idealized test cases to solve Eq. (8) in which the coefficient matrices are derived from Eq. (13), (14) and (15) on an idealized cylinder with an earth-sized perimeter, which is $2\pi R$ (radius R is 6,372 km), and a height
290 of πR . A uniform grid with a size of $N \times M$ is used, where the grid size along the perimeter and height are $\Delta x = 2\pi R/N$ and $\Delta y = \pi R/M$, respectively. The depth H is set as a constant 4 km to simplify the analysis.

The inequalities (17) suggest that the lower bound of the eigenvalues is mostly determined by Φ . If we assume that the grid aspect ratio is unity, we can rewrite $\Phi = \frac{S}{g\tau^2 H}$ as $\Phi = \frac{1}{(CFL)^2}$ in terms
295 of the barotropic CFL number (as defined in Section 2.1). This indicates that, for a given ocean configuration and grid size, the lower bound of the eigenvalues will decrease with increasing CFL number, resulting in a larger condition number. Figure 4 shows the relationship between condition number and the CFL number. In this idealized test case, Φ becomes very large and dominates both λ_{max} and λ_{min} when the CFL number is sufficiently small (smaller than 10^{-1} s). As a result, the
300 condition number approaches 1. When the CFL number is large enough (i.e., approaches 5), the condition number is highly determined by the grid aspect ratio α because of the reduced impact of Φ .

When the aspect ratio of the horizontal grid cell approaches unity, the upper (lower) bound of the largest (smallest) eigenvalue decreases (increases), leading to a reduced spectral radius ($[\lambda_{min}, \lambda_{max}]$).
305 This implies that the condition number is also reduced simultaneously. Figure 5 shows the condition number versus the aspect ratio, which is consistent with the theoretical bounds of the extreme eigenvalues in Eq. (17). As expected, the smallest condition number is found in Fig. 5 when the grid aspect ratio approaches unity regardless of the CFL number. When the aspect ratio equals unity (i.e., $\alpha = \frac{\Delta y}{\Delta x} = 1$), we obtain $\lambda_{max} \leq (4 + \Phi)H$ and $\lambda_{min} \geq \Phi H$.

310 Our analysis suggests that the spectral radius is confined in $(\Phi H, (4 + \Phi)H)$ if the aspect ratio is unity regardless of grid sizes. However, the condition number may vary greatly because of the dependency on the grid size \mathcal{N} and the aspect ratio. When the grid size \mathcal{N} increases, the largest eigenvalue remains close to $4H$, whereas the smallest eigenvalue becomes closer to ΦH . Therefore,

the condition number is significantly affected when the aspect ratio is far from unity. To focus on the
 315 impact of the number of grid points, we choose a constant aspect ratio $\alpha = 1$. Figure 6 shows that
 the condition number increases monotonically with increasing grid size for the four given different
 CFL conditions. It also shows that the CFL number has a large impact on the condition number.

In the 0.1° POP simulation, the CFL number is approximately $c \cdot \Delta t / \Delta x \approx 3.46$ (where $c = 200$
 m/s, $\Delta t = 172.8$ s, and $\Delta x = 10000$ m are the typical gravity wave speed, time step and spatial res-
 320 olution, respectively) and the condition number is approximately 250. For comparison, the condition
 number in the 1° POP simulation is higher, which is approximately 1200.

4.2 Convergence rate

The convergence rate of any elliptic solver relies heavily on the condition number of the precon-
 ditioned coefficient matrix A' . Both PCG and ChronGear have the same theoretical convergence
 325 rate because they are different implementations of the same numerical algorithm (D'Azevedo et al.,
 1999). Their relative residual in the k -th iteration has an upper bound as follows (Liesen and Tichý,
 2004):

$$\frac{\|\mathbf{x}_k - \mathbf{x}^*\|_{A'}}{\|\mathbf{x}_0 - \mathbf{x}^*\|_{A'}} \leq \min_{p \in \mathcal{P}_k, p(0)=1} \max_{\lambda \in \mathcal{S}} |p(\lambda)|, \quad (18)$$

where \mathbf{x}_k is the solution vector after the k -th iteration, \mathbf{x}^* is the solution of the linear equation (i.e.,
 330 $\mathbf{x}^* = A^{-1}b$), λ represents an eigenvalue of A' , and \mathcal{P}_k is the vector space of polynomials with real
 coefficients and a degree less than or equal to k . Applying the Chebyshev polynomials of the first
 type to estimate this min-max approximation, we obtain

$$\|\mathbf{x}_k - \mathbf{x}^*\|_{A'} \leq 2 \left(\frac{\sqrt{\kappa} - 1}{\sqrt{\kappa} + 1} \right)^k \|\mathbf{x}_0 - \mathbf{x}^*\|_{A'}, \quad (19)$$

where $\kappa = \kappa_2(A') = \frac{\lambda'_{max}}{\lambda'_{min}}$ is the condition number of matrix A' with respect to the l_2 -norm. Equa-
 335 tion (19) indicates that the theoretical bound of the convergence rate of PCG decreases with increas-
 ing condition number. PCG converges faster for a well-conditioned matrix (e.g., a matrix with a
 small condition number) than an ill-conditioned matrix.

We now show that the P-CSI has the same order of convergence rate as PCG and ChronGear
 with the additional advantage of fewer global reductions in parallel computing. With the estimated
 340 smallest and largest extreme eigenvalues of coefficient matrix ν and μ , the residual for the P-CSI
 algorithm satisfies

$$\mathbf{r}_k = P_k(A') \mathbf{r}_0, \quad (20)$$

where $P_k(\zeta) = \frac{\tau_k(\beta - \alpha \zeta)}{\tau_k(\beta)}$ for $\zeta \in [\nu, \mu]$ (Stiefel, 1958), $\alpha = \frac{2}{\mu - \nu}$ and $\beta = \frac{\mu + \nu}{\mu - \nu}$. $\tau_k(\xi)$ is a Chebyshev
 polynomial expressed as

$$345 \tau_k(\xi) = \frac{1}{2} [(\xi + \sqrt{\xi^2 - 1})^k + (\xi - \sqrt{\xi^2 - 1})^{-k}]. \quad (21)$$

when $\xi \in [-1, 1]$, the Chebyshev polynomial has an equivalent form

$$\tau_k(\xi) = \cos(k \cos^{-1} \xi), \quad (22)$$

which clearly shows that $|\tau_k(\xi)| \leq 1$ when $|\xi| \leq 1$. $P_k(\zeta)$ is the polynomial satisfying

$$P_k = \min_{p \in \mathcal{P}_k, p(0)=1} \max_{\zeta \in [\nu, \mu]} |p(\zeta)|. \quad (23)$$

350 Assume that $A' = Q^T \Lambda Q$, where Λ is a diagonal matrix having the eigenvalues of A' on the diagonal and Q is a real orthogonal matrix with columns that are eigenvectors of A' . We then have

$$P_k(A') = Q^T P_k(\Lambda) Q = Q^T \begin{bmatrix} P_k(\lambda_1) & & & \\ & P_k(\lambda_2) & & \\ & & \ddots & \\ & & & P_k(\lambda_N) \end{bmatrix} Q. \quad (24)$$

Assuming that ν and μ satisfy $0 < \nu \leq \lambda_i \leq \mu$ ($i = 1, 2, \dots, \mathcal{N}$), Eq. (22) indicates that $|\beta - \alpha \lambda_i| \leq 1$ and $|P_k(\lambda_i)| = \frac{\tau_k(\beta - \alpha \lambda_i)}{\tau_k(\beta)} \leq \tau_k^{-1}(\beta)$. Equations (20) and (24) indicate that

$$355 \frac{\|\mathbf{r}_k\|_2}{\|\mathbf{r}_0\|_2} \leq \tau_k^{-1}(\beta) = \frac{2(\beta + \sqrt{\beta^2 - 1})^k}{1 + (\beta + \sqrt{\beta^2 - 1})^{2k}} \leq 2 \left(\frac{\sqrt{\kappa'} - 1}{\sqrt{\kappa'} + 1} \right)^k, \quad (25)$$

where $\kappa' = \frac{\mu}{\nu}$. Equation (25) shows that P-CSI has the same theoretical upper bound of the convergence rate as PCG and ChronGear when the estimation of eigenvalues is appropriate (e.g., $\kappa' = \kappa$).

The foregoing analysis applies to cases in which a nontrivial preconditioning is used. Assume that the preconditioned coefficient matrix $A' = M^{-1}A$. Note that the preconditioned matrix in the
 360 PCG, ChronGear and P-CSI algorithms is actually $M^{-1/2}A(M^{-1/2})^T$, which is symmetric and has the same set of eigenvalues as $M^{-1}A$ (Shewchuk, 1994). Thus, the condition number of the preconditioned matrix is $\kappa = \kappa_2(M^{-1/2}A(M^{-1/2})^T)$, which is usually smaller than the condition number of A . The closer M is to A , the smaller the condition number of $M^{-1}A$ is. When M is the same as A , then $\kappa_2(M^{-1}A) = 1$.

365 Because the convergence rate of P-CSI is on the same order as that of PCG and ChronGear, the performance between P-CSI and the CG-type solvers should be comparable when a small number of cores is used. When a large number of cores is used for the high-resolution ocean model, P-CSI should be significantly faster than PCG or ChronGear per iteration due to the bottleneck in the CG-type method. This is shown in the following analysis of computational complexity.

370 4.3 Computational complexity

To analyse the computational complexity of P-CSI and compare it with ChronGear, we define p as the number of processes and \mathcal{N} as the number of grid points (using the same notation as in Hu et al. (2015)). Both the ChronGear and P-CSI solver time can then be divided into three major

components: computation \mathcal{T}_c , halo exchanging \mathcal{T}_b , and global communication \mathcal{T}_g . The complexity of
 375 computation varies among different solvers and preconditioners. The halo exchange complexity is
 $\mathcal{T}_b = \mathcal{O}(4\varpi + 8\sqrt{\frac{\mathcal{N}}{p}}\vartheta)$, where ϖ is the ratio of point-to-point communication latency per message
 to the time of one floating-point operation and ϑ is the ratio of the transfer time per byte (inverse
 of bandwidth) to the time of one floating-point operation. All halo exchange times show a similarly
 decreasing trend with increasing number of processes but have a lower bound of 4ϖ . The global
 380 communication exists only in the ChronGear solver and contains one global reduction per iteration,
 resulting from the MPI_Allreduce and a masking operation that excludes land points. The cost of
 the masking operation decreases with increasing processes p , whereas the cost of MPI_Allreduce
 monotonically increases; thus, the global reduction complexity satisfies $\mathcal{T}_g = \mathcal{O}(2\frac{\mathcal{N}}{p} + \log p\varpi)$.

The execution time of one diagonal preconditioned ChronGear solver step can then be expressed
 385 as:

$$\mathcal{T}_{cg} = \mathcal{K}_{cg}(\mathcal{T}_c + \mathcal{T}_b + \mathcal{T}_g) = \mathcal{O}(\mathcal{K}_{cg}(18\frac{\mathcal{N}}{p} + 8\sqrt{\frac{\mathcal{N}}{p}}\vartheta + (4 + \log p)\varpi)), \quad (26)$$

where \mathcal{K}_{cg} is the number of iterations, which does not change with the number of processes (Hu
 et al., 2015). The complexity of P-CSI with a diagonal preconditioner is

$$\mathcal{T}_{pcsi} = \mathcal{O}(\mathcal{K}_{pcsi}(12\frac{\mathcal{N}}{p} + 8\sqrt{\frac{\mathcal{N}}{p}}\vartheta + 4\varpi)), \quad (27)$$

390 where \mathcal{K}_{pcsi} is the number of iterations.

Equation (26) indicates that the computation and halo exchange time decrease with increasing
 numbers of processes. However, the time required for the global reduction increases with increasing
 numbers of processes. Therefore, we can expect the execution time of the ChronGear solver to
 increase when the number of processors exceeds a certain threshold. Our analysis shows that P-
 395 CSI has a lower computational complexity than that of ChronGear due to the lack of a $\log p$ term
 associated with global communications.

We further consider the computational complexity of preconditioning. The EVP preconditioning
 has $\mathcal{O}(22\frac{\mathcal{N}}{p})$. Thus, with the EVP preconditioning, the computational complexity of ChronGear and
 P-CSI becomes $\mathcal{O}(39\frac{\mathcal{N}}{p})$ and $\mathcal{O}(33\frac{\mathcal{N}}{p})$, respectively. As a result, the total complexities of ChronGear
 400 and P-CSI with EVP preconditioning are

$$\mathcal{T}_{cg-evp} = \mathcal{O}(\mathcal{K}_{cg-evp}(39\frac{\mathcal{N}}{p} + 8\sqrt{\frac{\mathcal{N}}{p}}\vartheta + (4 + \log p)\varpi)), \quad (28)$$

$$\mathcal{T}_{pcsi-evp} = \mathcal{O}(\mathcal{K}_{pcsi-evp}(33\frac{\mathcal{N}}{p} + 8\sqrt{\frac{\mathcal{N}}{p}}\vartheta + 4\varpi)). \quad (29)$$

Although the computation time in each iteration doubles with the EVP preconditioning, the total
 405 time may still decrease if the number of iterations is reduced. Indeed, with EVP preconditioning,
 the number of iterations $\mathcal{K}_{pcsi-evp}$ decreases by almost one-half (see Fig. 8). As a result, the total

number of communications, which is the most time-consuming part for a large number of cores, decreases by approximately one-half.

5 Numerical experiments

410 To evaluate the new P-CSI solver, we first demonstrate its characteristics and compare it with PCG (and thus ChronGear) using an idealized test case. The actual performance of P-CSI in the CESM POP is then evaluated and compared with that of the existing solvers using the 0.1° high-resolution simulation.

5.1 Condition number and convergence rate

415 To confirm the theoretical analysis of the convergence in Section 4.2, we created a series of matrices with the idealized setting illustrated in Section 4.1. Instead of a cylindrical grid, we choose a spherical grid with two polar continents (ocean latitude varies from 80°S to 80°N). A uniform latitude-longitude grid is used in which the grid size along the longitude varies with latitude coordinate θ , that is, $\Delta x = (2\pi R/N) \cos \theta$. The barotropic CFL number is set as $CFL = 3.46$ (a typical
420 value for a 0.1° POP simulation, as discussed in the Section 2.1). These cases differ with respect to the number of grid points; thus, the condition numbers vary. We compare the results using PCG and P-CSI solvers with no preconditioning, diagonal preconditioning or EVP preconditioning. Here, the block size in EVP preconditioning is set as 5×5 and the convergence tolerance is $tol = 10^{-6}$. We note that the theoretical convergence rates of ChronGear and PCG are identical; thus, the results
425 here also apply to ChronGear.

As shown in Fig. 7, when the problem size increases, the coefficient matrix becomes more poorly conditioned, thus increasing the number of iterations. For both PCG and P-CSI, the convergence rate varies with different preconditioners. Given the same problem size, the solvers without preconditioning need the largest number of iterations, while those using the EVP preconditioning require the
430 fewest. This confirms that with the EVP preconditioning, the matrix becomes better conditioned than the matrix without preconditioning or with diagonal preconditioning. As shown in the previous section, the P-CSI has the same theoretical lower bound of the convergence rate as PCG and ChronGear when the estimation of extreme eigenvalues is appropriate ($k' = k$). However, P-CSI commonly has a slower convergence rate than that of PCG if the same preconditioning is applied (Fig. 7). Because
435 P-CSI requires that $0 < \nu < \lambda_i < \mu (i = 1, \dots, N)$, which means that $k' = \mu/\nu \geq \lambda_{max}/\lambda_{min} = k$, Eq. (19) and Eq. (25) suggest that the P-CSI will converge more slowly than the PCG unless the estimation of extreme eigenvalues is optimal. Furthermore, the theoretical bound is often too conservative for PCG as the problem size increases in application, which is not completely linear (known as superlinear convergence of the PCG method (Beckermann and Kuijlaars, 2001)). Note that the

440 diagonal preconditioner only slightly improves the convergence in our idealized cases because of the uniform grid and the constant ocean depth configuration.

If the condition numbers are very large, any advanced preconditioner that can quickly reduce the iteration count will be very useful for improving performance. In fact, the EVP solver is a direct fast solver; thus, it is well suitable as the preconditioner within each block. It is also simple enough to
445 effectively reduce the condition number of the coefficient matrix by approximately 5 times in both 1 and 0.1 degree cases, leading to a 2/3 reduction in the number of iterations. Even so, further studies regarding the preconditioner in practical climate models will be very useful and will be our future work.

5.2 A practical application using the high-resolution CESM POP

450 5.2.1 Experiment platform and configuration

We evaluate the performance of P-CSI in CESM1.2.0 on the Yellowstone supercomputer, located at NCAR-Wyoming Supercomputing Center (NWSC) (Loft et al., 2015). Yellowstone uses Intel Xeon E5-2670 (Sandy Bridge: 16 cores @ 2.6 GHz, hyperthreading enabled, 20 MB shared L3 cache) and provides a total of 72,576 cores connected by a 13.6 GBps InfiniBand network. More than 50%
455 of Yellowstone’s cycles are consumed by CESM. Therefore, the ability to accelerate the parallel performance on Yellowstone is critical to support the CESM production simulations.

To emphasize the advantage of P-CSI, we use the finest 0.1° grid and a POP with 60 vertical levels with the “G_NORMAL_YEAR” configuration, which uses active ocean and sea ice components (i.e., the atmosphere and land components are replaced by pre-determined forcing data sets). The
460 I/O optimization is another important issue for the high-resolution POP (Huang et al., 2014) but is not addressed here.

The choice of ocean block size and layout has a large impact on performance for the high-resolution POP because it directly affects the distribution of the workload among processors. To remove the influence of different block distributions on our results, we carefully specify block de-
465 compositions for each core with the same ratio. The time step is set to the default of 172.8 s. For a fair comparison among solvers, the convergence is checked every 10 iterations for all tests. The impacts of CSI and the EVP preconditioner are evaluated separately using several different numerical experiments.

5.2.2 Overall performance of P-CSI

470 This experiment is designed to illustrate the overall performance of P-CSI, which is particularly important for high-resolution production simulations. Figure 8 compares the convergence rate (relative residual versus the number of iterations) among different barotropic solvers with different preconditioners. The P-CSI converges slightly more slowly than PCG and ChronGear with the same diagonal

preconditioner at the beginning and final iteration steps, which is related to the unstable distribution
475 of the coefficient matrix's eigenvalues. However, the slopes are similar for all of these solvers, thus
supporting the same upper bound for the convergence rate, as discussed in Section 4.2.

Figure 9 further evaluates the solver time for the different phases. P-CSI outperforms ChronGear
primarily because it only requires a few global reductions in the convergence check. No significant
differences can be found for the halo exchange and the computation phases when using large core
480 counts, except for the evident reduction in execution time for the halo exchange with the EVP pre-
conditioner. The reduction in global communications will also significantly reduce the sensitivity of
the ocean model component to operating system noise (Ferreira et al., 2008) by increasing the time
interval between global synchronizations.

According to Fig. 8, the P-CSI solver can reach the same relative residual using many fewer
485 iterations with the EVP preconditioner. As a result, it reduces not only the execution time of global
reduction but also the execution time of halo exchange owing to the reduced iterations which is
illustrated in Fig. 9. All of these results are consistent with the theoretical analysis in Section 4.3.
Note that the extra computation operations required by the EVP preconditioner have only a small
impact on the overall performance of the barotropic solver.

490 The overall performance of P-CSI in a realistic 0.1° POP simulation is illustrated in Fig. 10. Using
the EVP preconditioner, P-CSI can accelerate the barotropic calculation from 6.2 SYPD (Simulated
Years Per wall-clock Day) to 10.5 SYPD on 16,875 cores. Dennis et al. (2012) indicated that 5 simu-
lated years per wall-clock day is the minimum requirement to run long-term climate simulations. In
Section 2, we demonstrated that the percentage of the POP execution time required by the barotropic
495 solver increases with increasing number of cores using the original ChronGear solver. In particular,
ChronGear with diagonal preconditioning accounts for approximately 50% of the total execution
time on 16,875 cores (see Fig. 3). In contrast, Fig. 10 also shows that by using the scalable P-CSI
solver, the barotropic calculation time constitutes only approximately 16% of the total execution
time on 16,875 cores. Finally, we note that based on an ensemble-based statistical method for the 1°
500 POP, Hu et al. (2015) verified that the climate is not changed by using our new solver.

6 Conclusions

We accelerated the high-resolution POP in the CESM framework by implementing a new P-CSI
ocean barotropic solver. This new solver adopts a Chebyshev-type iterative method to avoid the
global communication operations in conjunction with an effective EVP preconditioner to improve
505 the parallel performance further. The superior performance of the P-CSI is carefully investigated
using the theoretical analysis of the algorithm and computational complexity. Compared with the
existing ChronGear solver, it significantly reduces the global reductions and realizes a competitive

convergence rate. The proposed alternative has become the default barotropic solver in the POP within CESM and may greatly benefit other climate models.

510 **7 Code availability**

The present P-CSI solver v1.0 is available on <https://zenodo.org/record/56705> and <https://github.com/hxmhuang/PCSI>. This solver is also included in the upcoming CESM public release v2.0. For the older CESM versions 1.2.x, the user should follow these steps indicated in the Readme.md file:

- (1) Create a complete case or an ocean component case.
- 515 (2) Copy our files into the corresponding case path and build this case.
- (3) Add two lines at the end of user_nl_pop2 file to use our new solver.
- (4) Execute the preview_namelists file to activate the solver.
- (5) Run the case.

The user are welcome to see the website mentioned above for more details and use the configuration
520 files to repeat our experiments.

Appendix A: Estimation of extreme eigenvalues with variable ocean depth H

Rewrite the full discretization of Eq. (8) for any given grid point (i, j) :

$$(A_{i,j}^O + \phi)\eta_{i,j} + A_{i,j}^{NW}\eta_{i-1,j+1} + A_{i,j}^N\eta_{i,j+1} + A_{i,j}^{NE}\eta_{i+1,j+1} + A_{i,j}^W\eta_{i-1,j} \\ + A_{i,j}^E\eta_{i+1,j} + A_{i,j}^{SW}\eta_{i-1,j-1} + A_{i,j}^S\eta_{i,j-1} + A_{i,j}^{SE}\eta_{i+1,j-1} = S_{i,j}\psi_{i,j}, \quad (\text{A1})$$

525 According to the Gershgorin circle theorem (Bell, 1965), we know that for any $\lambda \in \mathcal{S}$, there exists a pair of (i, j) satisfying

$$|\lambda - (A_{i,j}^O + \phi)| \leq \sum_{\chi \in \mathcal{Q} - \{O\}} |A_{i,j}^\chi|. \quad (\text{A2})$$

The upper bound of eigenvalues can be deduced as follows

$$\lambda \leq A_{i,j}^O + \phi + \sum_{\chi \in \mathcal{Q} - \{O\}} |A_{i,j}^\chi| \\ = 2(\alpha + \beta)\bar{H} + 2|\alpha - \beta|\bar{H} + \phi \\ = 4\max(\alpha, \frac{1}{\alpha})\bar{H} + \phi \\ \leq (4\max(\alpha, \frac{1}{\alpha}) + \Phi)\max(H) \quad (\text{A3})$$

530 The lower bound of eigenvalues can be deduced as follows

$$\lambda \geq A_{i,j}^O + \phi - \sum_{\chi \in \mathcal{Q} - \{O\}} |A_{i,j}^\chi| \\ = -2|\alpha - \beta|\bar{H} + \phi \\ = 2\min(\alpha - \beta, \beta - \alpha)\bar{H} + \phi \\ \geq (2\min(\alpha - \frac{1}{\alpha}, \frac{1}{\alpha} - \alpha) + \Phi)\max(H) \quad (\text{A4})$$

where \bar{H} is defined in Section 2.1.

Appendix B: Algorithms

B1 PCG algorithm

535 The procedure of PCG is shown as follows (Smith et al., 2010):

Initial guess: \mathbf{x}_0

Compute residual $\mathbf{r}_0 = \mathbf{b} - \mathbf{A}\mathbf{x}_0$

Set $\mathbf{s}_0 = 0$, $\beta_0 = 1$

540 For $k = 1, 2, \dots, k_{max}$ do

1. $\mathbf{r}'_{k-1} = \mathbf{M}^{-1}\mathbf{r}_{k-1}$

$$2. \quad \beta_k = \mathbf{r}_{k-1}^T \mathbf{r}'_{k-1}$$

$$3. \quad \mathbf{s}_k = \mathbf{r}'_{k-1} + (\beta_k / \beta_{k-1}) \mathbf{s}_{k-1}$$

$$4. \quad \mathbf{s}'_k = \mathbf{A} \mathbf{s}_k$$

$$545 \quad 5. \quad \alpha_k = \beta_k / (\mathbf{s}_k^T \mathbf{s}'_k)$$

$$6. \quad \mathbf{x}_k = \mathbf{x}_{k-1} + \alpha_k \mathbf{s}_k$$

$$7. \quad \mathbf{r}_k = \mathbf{r}_{k-1} - \alpha_k \mathbf{s}'_k$$

8. convergence_check(\mathbf{r}_k)

End Do

550

Operations such as β_k / β_{k-1} in line (3) are scalar computations, whereas $\alpha_k \mathbf{s}_k$ in line (6) are vector scalings. $\mathbf{A} \mathbf{s}_k$ in line (4) is a matrix-vector multiplication. Inner products of vectors are $\mathbf{r}_{k-1}^T \mathbf{r}'_{k-1}$ in line (2) and $\mathbf{s}_k^T \mathbf{s}'_k$ in line (5), these inner products use two global reduction operations.

B2 ChronGear algorithm

555 The procedure of ChronGear is shown as follows:

Initial guess: \mathbf{x}_0

Compute residual $\mathbf{r}_0 = \mathbf{b} - \mathbf{A} \mathbf{x}_0$

Set $\mathbf{s}_0 = 0$, $\mathbf{p}_0 = 0$, $\rho_0 = 1$, $\sigma_0 = 0$

560 For $k = 1, 2, \dots, k_{max}$ do

$$1. \quad \mathbf{r}'_k = \mathbf{M}^{-1} \mathbf{r}_{k-1}$$

$$2. \quad \mathbf{z}_k = \mathbf{A} \mathbf{r}'_k$$

$$3. \quad \rho_k = \mathbf{r}_{k-1}^T \mathbf{r}'_k$$

$$4. \quad \sigma_k = \mathbf{z}_k^T \mathbf{r}'_k - \beta_k^2 \sigma_{k-1}$$

$$565 \quad 5. \quad \beta_k = \rho_k / \rho_{k-1}$$

$$6. \quad \alpha_k = \rho_k / \sigma_k$$

$$7. \quad \mathbf{s}_k = \mathbf{r}'_k + \beta_k \mathbf{s}_{k-1}$$

$$8. \quad \mathbf{p}_k = \mathbf{z}_k + \beta_k \mathbf{p}_{k-1}$$

$$9. \quad \mathbf{x}_k = \mathbf{x}_{k-1} + \alpha_k \mathbf{s}_k$$

570 10. $\mathbf{r}_k = \mathbf{r}_{k-1} - \alpha_k \mathbf{p}_k$
 11. convergence_check(\mathbf{r}_k)

End Do

The inner products in ρ_k and σ_k use two global reduction operations. However, these two global
 575 reductions can be combined into one operation thus halving the latency.

B3 P-CSI algorithm

The pseudocode of the P-CSI algorithm is shown as follows:

Initial guess: \mathbf{x}_0 , estimated eigenvalue boundaries $[\nu, \mu]$

580 Set $\alpha = \frac{2}{\mu-\nu}$, $\beta = \frac{\mu+\nu}{\mu-\nu}$, $\gamma = \frac{\beta}{\alpha}$, $\omega_0 = \frac{2}{\gamma}$
 Compute residual $\mathbf{r}_0 = \mathbf{b} - \mathbf{A}\mathbf{x}_0$, $\Delta\mathbf{x}_0 = \gamma^{-1}\mathbf{M}^{-1}\mathbf{r}_0$, $\mathbf{x}_1 = \mathbf{x}_0 + \Delta\mathbf{x}_0$, $\mathbf{r}_1 = \mathbf{b} - \mathbf{A}\mathbf{x}_1$

For $k = 1, 2, \dots, k_{max}$ do

1. $\omega_k = 1 / (\gamma - \frac{1}{4\alpha^2} \omega_{k-1})$

2. $\mathbf{r}'_k = \mathbf{M}^{-1}\mathbf{r}_k$

585 3. $\Delta\mathbf{x}_k = \omega_k \mathbf{r}'_k + (\gamma\omega_k - 1)\Delta\mathbf{x}_{k-1}$

4. $\mathbf{x}_{k+1} = \mathbf{x}_k + \Delta\mathbf{x}_k$

5. $\mathbf{r}_{k+1} = \mathbf{b} - \mathbf{A}\mathbf{x}_{k+1}$

6. convergence_check(\mathbf{r}_k)

End Do

590

Appendix C: Eigenvalue Estimation

The procedure of the Lanczos method to estimate the extreme eigenvalues of the matrix $M^{-1}A$ is
 shown as follows:

595 Initial guess: \mathbf{r}_0

Set $\mathbf{s}_0 = \mathbf{M}^{-1}\mathbf{r}_0$; $\mathbf{q}_1 = \mathbf{r}_0 / (\mathbf{r}_0^T \mathbf{s}_0)$; $\mathbf{q}_0 = \mathbf{0}$; $\beta_0 = 0$; $\mu_0 = 0$; $T_0 = \emptyset$

For $j = 1, 2, \dots, m$ do

1. $\mathbf{p}_j = \mathbf{M}^{-1}\mathbf{q}_j$

2. $\mathbf{r}_j = \mathbf{A}\mathbf{p}_j - \beta_{j-1}\mathbf{q}_{j-1}$

600 3. $\alpha_j = \mathbf{p}_j^T \mathbf{r}_j$

 4. $\mathbf{r}_j = \mathbf{r}_j - \alpha_j \mathbf{q}_j$

 5. $\mathbf{s}_j = \mathbf{M}^{-1} \mathbf{r}_j$

 6. $\beta_j = \mathbf{r}_j^T \mathbf{s}_j$

 7. **if** $\beta_j == 0$ **then return**

605 8. $\mu_j = \max(\mu_{j-1}, \alpha_j + \beta_j + \beta_{j-1})$

 9. $T_j = \text{tri_diag}(T_{j-1}, \alpha_j, \beta_j)$

 10. $\nu_j = \text{eigs}(T_j, 'smallest')$

 11. **if** $|\frac{\mu_j}{\mu_{j-1}} - 1| < \epsilon$ **and** $|1 - \frac{\nu_j}{\nu_{j-1}}| < \epsilon$ **then return**

 12. $\mathbf{q}_{j+1} = \mathbf{r}_j / \beta_j$

610 End Do

In step (9), T is a tridiagonal matrix which contains $\alpha_j (j = 1, 2, \dots, m)$ as the diagonal entries and $\beta_j (j = 1, 2, \dots, m - 1)$ as the off-diagonal entries.

$$T_m = \begin{bmatrix} \alpha_1 & \beta_1 & & & \\ \beta_1 & \alpha_2 & \beta_2 & & \\ & \beta_2 & \ddots & \ddots & \\ & & \ddots & \ddots & \beta_{m-1} \\ & & & \beta_{m-1} & \alpha_m \end{bmatrix}$$

615 Let ξ_{min} and ξ_{max} be the smallest and largest eigenvalues of T_m , respectively. Paige (1980) demonstrated that $\nu \leq \xi_{min} \leq \nu + \delta_1(m)$ and $\mu - \delta_2(m) \leq \xi_{max} \leq \mu$. As m increases, $\delta_1(m)$ and $\delta_2(m)$ will gradually converge to zero. Thus, the eigenvalue estimation of $M^{-1}A$ is transformed to solve the eigenvalues of T_m . Step (8) in eigenvalue estimation employs the Gershgorin circle theorem to estimate the largest eigenvalue of T_m , that is, $\mu = \max_{1 \leq i \leq m} \sum_{j=1}^m |T_{ij}| = \max_{1 \leq i \leq m} (\alpha_i + \beta_i +$

620 $\beta_{i-1})$. The efficient QR algorithm (Ortega and Kaiser, 1963) with a complexity of $\Theta(m)$ is used to estimate the smallest eigenvalue ν in step (9).

Acknowledgements. This work is supported in part by a grant from the National Natural Science Foundation of China (41375102), and the National Grand Fundamental Research 973 Program of China (No. 2014CB347800). Computing resources were provided by the Climate Simulation Laboratory at NCAR's Computational and

625 Information Systems Laboratory (sponsored by the NSF and other agencies).

References

- Adcroft, A., Campin, J., Dutkiewicz, S., Evangelinos, C., Ferreira, D., Forget, G., Fox-Kemper, B., Heimbach, P., Hill, C., Hill, E., et al.: MITgcm user manual, 2014.
- Beare, M. and Stevens, D.: Optimisation of a parallel ocean general circulation model, in: *Annales Geophysicae*, 630 vol. 15, pp. 1369–1377, Springer, 1997.
- Beckermann, B. and Kuijlaars, A. B. J.: Superlinear convergence of conjugate gradients, *SIAM Journal on Numerical Analysis*, 39, 300–329, 2001.
- Bell, H. E.: Gershgorin’s theorem and the zeros of polynomials, *The American Mathematical Monthly*, 72, 292–295, 1965.
- 635 Benzi, M.: Preconditioning techniques for large linear systems: a survey, *Journal of Computational Physics*, 182, 418–477, 2002.
- Bergamaschi, L., Gambolati, G., and Pini, G.: A numerical experimental study of inverse preconditioning for the parallel iterative solution to 3D finite element flow equations, *Journal of Computational and Applied Mathematics*, 210, 64–70, 2007.
- 640 Bryan, F. O., Tomas, R., Dennis, J. M., Chelton, D. B., Loeb, N. G., and McClean, J. L.: Frontal scale air-sea interaction in high-resolution coupled climate models, *Journal of Climate*, 23, 6277–6291, 2010.
- Chassignet, E. P. and Marshall, D. P.: Gulf Stream separation in numerical ocean models, *Ocean Modeling in an Eddying Regime*, pp. 39–61, 2008.
- Concus, P., Golub, G., and Meurant, G.: Block preconditioning for the conjugate gradient method, *SIAM Journal on Scientific and Statistical Computing*, 6, 220–252, 1985.
- 645 D’Azevedo, E., Eijkhout, V., and Romine, C.: Conjugate gradient algorithms with reduced synchronization overhead on distributed memory multiprocessors, 1999.
- Demory, M.-E., Vidale, P. L., Roberts, M. J., Berrisford, P., Strachan, J., Schiemann, R., and Mizielinski, M. S.: The role of horizontal resolution in simulating drivers of the global hydrological cycle, *Climate Dynamics*, 650 42, 2201–2225, 2014.
- Dennis, J.: Inverse space-filling curve partitioning of a global ocean model, in: *Parallel and Distributed Processing Symposium, 2007. IPDPS 2007. IEEE International*, pp. 1–10, IEEE, 2007.
- Dennis, J., Vertenstein, M., Worley, P., Mirin, A., Craig, A., Jacob, R., and Mickelson, S.: Computational performance of ultra-high-resolution capability in the Community Earth System Model, *International Journal of High Performance Computing Applications*, 26, 5–16, 2012.
- 655 Dennis, J. M. and Tufo, H. M.: Scaling climate simulation applications on the IBM Blue Gene/L system, *IBM Journal of Research and Development*, 52, 117–126, doi:10.1147/rd.521.0117, 2008.
- Dietrich, D.: Optimized Block-Implicit Relaxation, *Journal of Computational Physics*, 18, 421–439, 1975.
- Dietrich, D. E., Marietta, M., and Roache, P. J.: An ocean modelling system with turbulent boundary layers and topography: Numerical description, *International journal for numerical methods in fluids*, 7, 833–855, 1987.
- 660 Dukowicz, J. K. and Smith, R. D.: Implicit free-surface method for the Bryan-Cox-Semtner ocean model, *Journal of Geophysical Research: Oceans*, 99, 7991–8014, doi:10.1029/93JC03455, <http://dx.doi.org/10.1029/93JC03455>, 1994.
- Eyring, V., Bony, S., Meehl, G. A., Senior, C., Stevens, B., Stouffer, R. J., and Taylor, K. E.: Overview of the Coupled Model Intercomparison Project Phase 6 (CMIP6) experimental design and organisation, 665

- Geoscientific Model Development Discussions, 8, 10539–10583, doi:10.5194/gmdd-8-10539-2015, <http://www.geosci-model-dev-discuss.net/8/10539/2015/>, 2015.
- 670 Ferreira, K. B., Bridges, P., and Brightwell, R.: Characterizing application sensitivity to OS interference using kernel-level noise injection, in: Proceedings of SC Conference, pp. 1–12, SC Conference, doi:10.1145/1413370.1413390, 2008.
- Fulton, S. R., Ciesielski, P. E., and Schubert, W. H.: Multigrid methods for elliptic problems: A review, *Monthly Weather Review*, 114, 943–959, 1986.
- Gent, P. R., Yeager, S. G., Neale, R. B., Levis, S., and Bailey, D. A.: Improvements in a half degree atmosphere/land version of the CCSM, *Climate Dynamics*, 34, 819–833, 2010.
- 675 Ghysels, P. and Vanroose, W.: Hiding Global Synchronization Latency in the Preconditioned Conjugate Gradient Algorithm, *Parallel Computing*, 40, 224–238, doi:10.1016/j.parco.2013.06.001, 2014.
- Golub, G. H. and Van Loan, C. F.: *Matrix computations*, vol. 3, JHU Press, 2012.
- Graham, T.: The importance of eddy permitting model resolution for simulation of the heat budget of tropical instability waves, *Ocean Modelling*, 79, 21–32, 2014.
- 680 Gutknecht, M. and Röllin, S.: The Chebyshev iteration revisited, *Parallel Computing*, 28, 263–283, 2002.
- Hu, Y., Huang, X., Wang, X., Fu, H., Xu, S., Ruan, H., Xue, W., and Yang, G.: A scalable barotropic mode solver for the parallel ocean program, in: Euro-Par 2013 Parallel Processing, pp. 739–750, Springer, 2013.
- Hu, Y., Huang, X., Baker, A. H., Tseng, Y.-h., Bryan, F. O., Dennis, J. M., and Yang, G.: Improving the scalability of the ocean barotropic solver in the community earth system model, in: Proceedings of the International
- 685 Conference for High Performance Computing, Networking, Storage and Analysis, p. 42, ACM, 2015.
- Huang, X., Wang, W., Fu, H., Yang, G., Wang, B., and Zhang, C.: A fast input/output library for high-resolution climate models, *Geoscientific Model Development*, 7, 93–103, 2014.
- Jones, P. W., Worley, P., Yoshida, Y., and White III, J. B.: Practical performance portability in the Parallel Ocean Program (POP), *Concurrency and Computation: Practice and Experience*, 17, 1317–1327, 2005.
- 690 Kanarska, Y., Shchepetkin, A., and McWilliams, J.: Algorithm for non-hydrostatic dynamics in the regional oceanic modeling system, *Ocean Modelling*, 18, 143–174, 2007.
- Kuwano-Yoshida, A., Minobe, S., and Xie, S.-P.: Precipitation response to the Gulf Stream in an atmospheric GCM*, *Journal of Climate*, 23, 3676–3698, 2010.
- Lai, Z., Chen, C., Cowles, G. W., and Beardsley, R. C.: A nonhydrostatic version of FVCOM: 1. Validation
- 695 experiments, *Journal of Geophysical Research: Oceans*, 115, 2010.
- Liesen, J. and Tichý, P.: Convergence analysis of Krylov subspace methods, *GAMM-Mitteilungen*, 27, 153–173, doi:10.1002/gamm.201490008, 2004.
- Loft, R., Andersen, A., Bryan, F., Dennis, J. M., Engel, T., Gillman, P., Hart, D., Elahi, I., Ghosh, S., Kelly, R., Kamrath, A., Pfister, G., Rempel, M., Small, J., Skamarock, W., Wiltberger, M., Shader, B., Chen, P.,
- 700 and Cash, B.: Yellowstone: A Dedicated Resource for Earth System Science, in: Contemporary High Performance Computing: From Petascale Toward Exascale, Volume Two, edited by Vetter, J. S., vol. 2 of *CRC Computational Science Series*, p. 262, Chapman and Hall/CRC, Boca Raton, 1 edn., 2015.
- Madec, G., Delecluse, P., Imbard, M., and Levy, C.: Ocean general circulation model reference manual, Note du Pôle de modélisation, 1997.

- 705 Matsumura, Y. and Hasumi, H.: A non-hydrostatic ocean model with a scalable multigrid Poisson solver, *Ocean Modelling*, 24, 15–28, 2008.
- Meyer, P. D., Valocchi, A. J., Ashby, S. F., and Saylor, P. E.: A numerical investigation of the conjugate gradient method as applied to three-dimensional groundwater flow problems in randomly heterogeneous porous media, *Water Resources Research*, 25, 1440–1446, 1989.
- 710 Müller, E. H. and Scheichl, R.: Massively parallel solvers for elliptic partial differential equations in numerical weather and climate prediction, *Quarterly Journal of the Royal Meteorological Society*, 140, 2608–2624, 2014.
- Ortega, J. and Kaiser, H.: The LLT and QR methods for symmetric tridiagonal matrices, *The Computer Journal*, 6, 99–101, 1963.
- 715 Pacanowsky, R. and Griffies, S.: The MOM3 manual, Geophysical Fluid Dynamics Laboratory/NOAA, Princeton, USA, p. 680, 1999.
- Paige, C.: Accuracy and effectiveness of the Lanczos algorithm for the symmetric eigenproblem, *Linear Algebra and its Applications*, 34, 235 – 258, doi:10.1016/0024-3795(80)90167-6, 1980.
- Pini, G. and Gambolati, G.: Is a simple diagonal scaling the best preconditioner for conjugate gradients on
720 supercomputers?, *Advances in Water Resources*, 13, 147–153, 1990.
- Reddy, R. S. and Kumar, M. M.: Comparison of conjugate gradient methods and strongly implicit procedure for groundwater flow simulation, *Journal of the Indian Institute of Science*, 75, 667, 2013.
- Roache, P. J.: *Elliptic marching methods and domain decomposition*, vol. 5, CRC press, 1995.
- Roberts, M. J., Clayton, A., Demory, M.-E., Donners, J., Vidale, P. L., Norton, W., Shaffrey, L., Stevens, D.,
725 Stevens, I., Wood, R., et al.: Impact of resolution on the tropical Pacific circulation in a matrix of coupled models, *Journal of Climate*, 22, 2541–2556, 2009.
- Saad, Y., Sameh, A., and Saylor, P.: Solving elliptic difference equations on a linear array of processors, *SIAM Journal on Scientific and Statistical Computing*, 6, 1049–1063, 1985.
- Shaffrey, L. C., Stevens, I., Norton, W., Roberts, M., Vidale, P.-L., Harle, J., Jrrar, A., Stevens, D., Woodage,
730 M. J., Demory, M.-E., et al.: UK HiGEM: the new UK high-resolution global environment model-model description and basic evaluation, *Journal of Climate*, 22, 1861–1896, 2009.
- Sheng, J., Wright, D. G., Greatbatch, R. J., and Dietrich, D. E.: CANDIE: A new version of the DieCAST ocean circulation model, *Journal of Atmospheric and Oceanic Technology*, 15, 1414–1432, 1998.
- Shewchuk, J. R.: An Introduction to the Conjugate Gradient Method Without the Agonizing Pain, *Science* (80-
735), 49, 64, doi:10.1.1.110.418, 1994.
- Smith, R., Dukowicz, J., and Malone, R.: Parallel ocean general circulation modeling, *Physica D: Nonlinear Phenomena*, 60, 38–61, 1992.
- Smith, R., Jones, P., Briegleb, B., Bryan, F., Danabasoglu, G., Dennis, J., Dukowicz, J., Fox-Kemper, C. E. B.,
Gent, P., Hecht, M., et al.: *The Parallel Ocean Program (POP) Reference Manual Ocean Component of the*
740 *Community Climate System Model (CCSM)*, 2010.
- Stewart, J.: Positive definite functions and generalizations, an historical survey, *Rocky Mountain J. Math*, 6, 1976.
- Stiefel, E. L.: Kernel polynomial in linear algebra and their numerical applications, in: *Further contributions to the determination of eigenvalues*, NBS Applied Math. Ser., 49, 1–22, 1958.

- 745 Stüben, K.: A review of algebraic multigrid, *Journal of Computational and Applied Mathematics*, 128, 281–309, 2001.
- Tseng, Y.-h. and Chien, M.-h.: Parallel Domain-decomposed Taiwan Multi-scale Community Ocean Model (PD-TIMCOM), *Computers & Fluids*, 45, 77–83, 2011.
- Tseng, Y.-h. and Ferziger, J. H.: A ghost-cell immersed boundary method for flow in complex geometry, *Journal of computational physics*, 192, 593–623, 2003.
- 750 Wehner, M. F., Reed, K. A., Li, F., Bacmeister, J., Chen, C.-T., Paciorek, C., Gleckler, P. J., Sperber, K. R., Collins, W. D., Gettelman, A., et al.: The effect of horizontal resolution on simulation quality in the Community Atmospheric Model, CAM5. 1, *Journal of Advances in Modeling Earth Systems*, 2014.
- White, J. A. and Borja, R. I.: Block-preconditioned Newton–Krylov solvers for fully coupled flow and geomechanics, *Computational Geosciences*, 15, 647–659, 2011.
- 755 Worley, P. H., Mirin, A. A., Craig, A. P., Taylor, M. A., Dennis, J. M., and Vertenstein, M.: Performance of the community earth system model, in: *Proceedings of 2011 International Conference for High Performance Computing, Networking, Storage and Analysis, SC '11*, pp. 54:1–54:11, ACM, New York, NY, USA, doi:10.1145/2063384.2063457, 2011.
- 760 Young, C.-C., Tseng, Y.-H., Shen, M.-L., Liang, Y.-C., Chen, M.-H., and Chien, C.-H.: Software development of the Taiwan Multi-scale Community Ocean Model (TIMCOM), *Environmental Modelling and Software*, 38, 214–219, 2012.

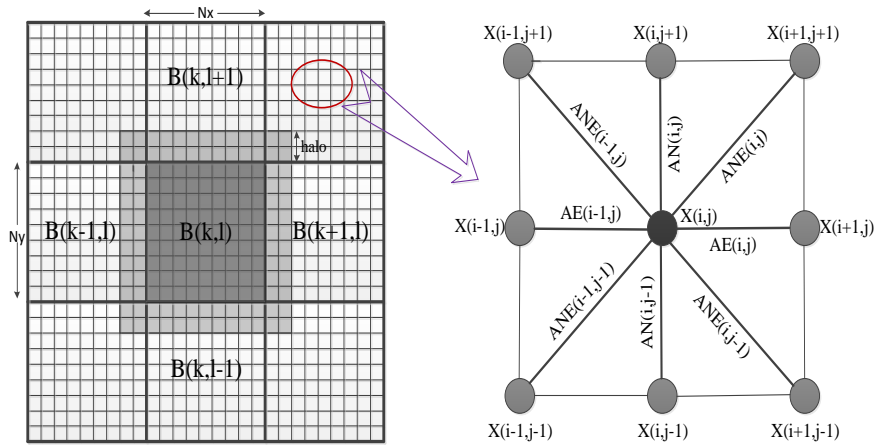


Figure 1. Grid domain decomposition of the ocean model component in CESM.

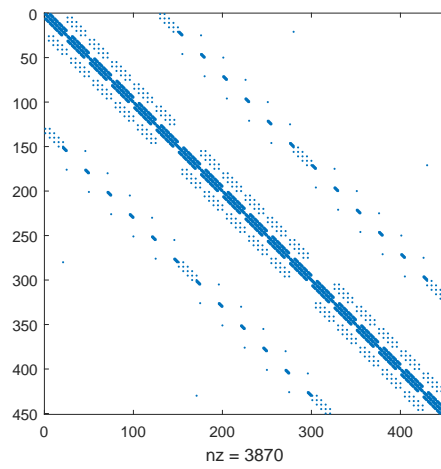


Figure 2. Sparsity pattern of the coefficient matrix in the case with 30×15 grids using nine-point stencils.

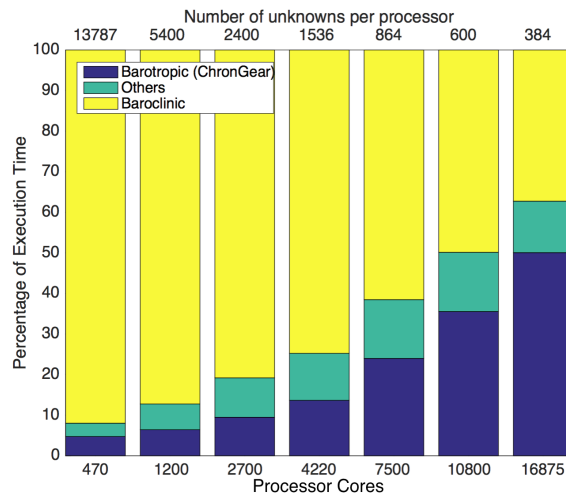


Figure 3. Number of unknowns per processor and percentage of execution time in 0.1° POP using the default diagonal-preconditioned ChronGear solver on Yellowstone.

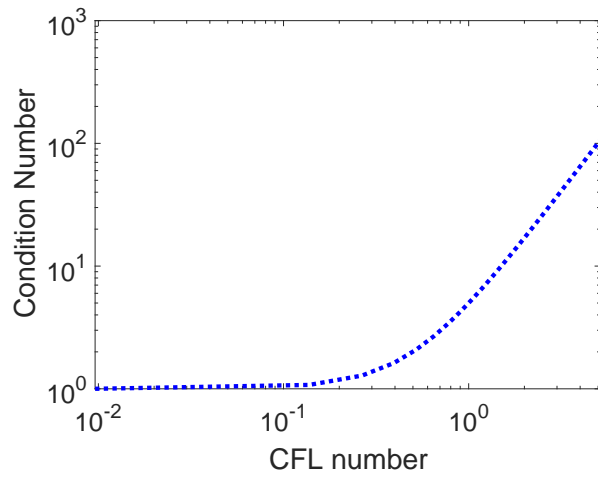


Figure 4. Relationship between the CFL number and the condition number of the coefficient matrix, where the CFL number varies from 10^{-2} to 5.

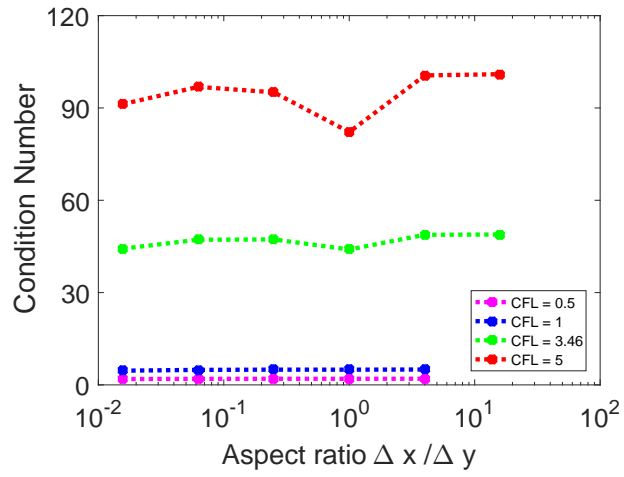


Figure 5. Relationship between aspect ratio and the condition number of the coefficient matrix under the condition of different typical CFL numbers.

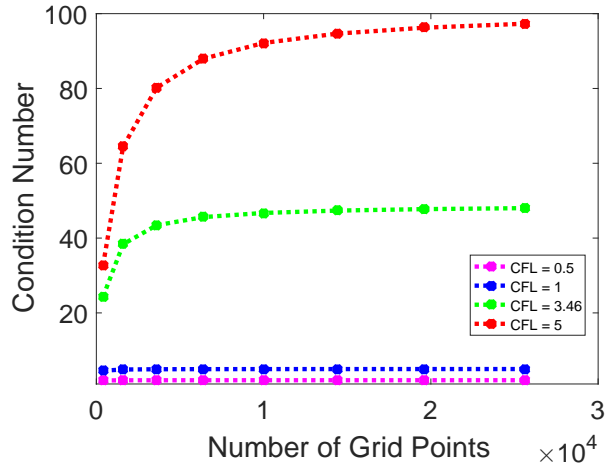


Figure 6. When the aspect ratio is constant $\alpha = 1$, relationship between the number of grid points and the condition number of the coefficient matrix under the condition of different typical CFL numbers.

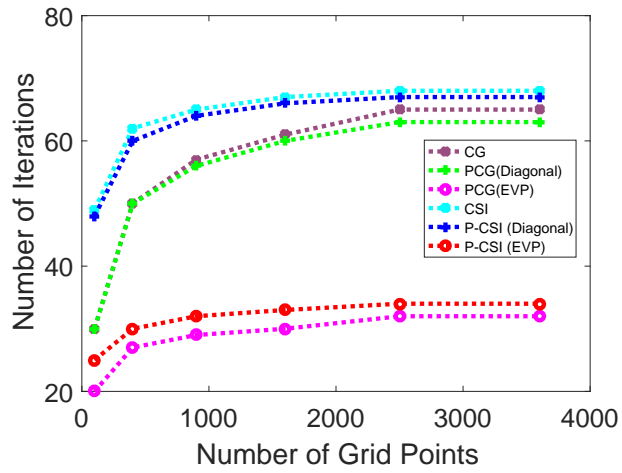


Figure 7. Relationship between grid sizes and number of iterations of different solvers in test cases with the idealized configuration.

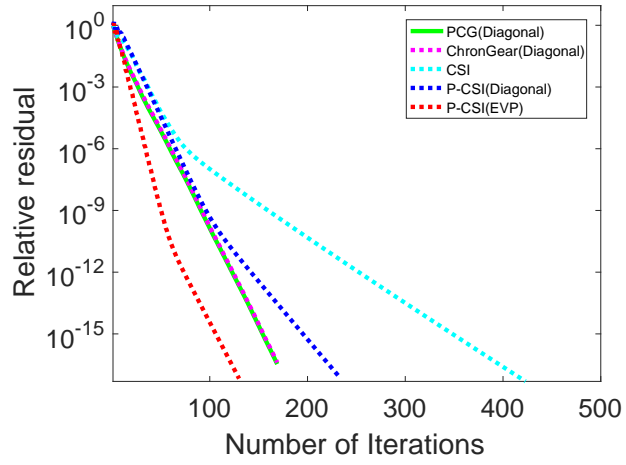


Figure 8. The convergence rate of different barotropic solvers with diagonal preconditioner and the convergence rate of CSI solver with different preconditioners in the 0.1° POP on Yellowstone.

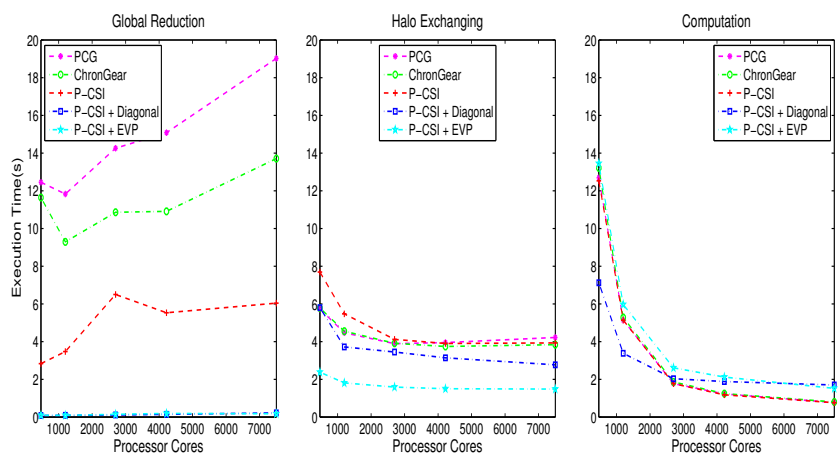


Figure 9. The execution time for different phases using different barotropic solvers and the execution time for different phases with different preconditioners in the P-CSI solver in 0.1° POP.

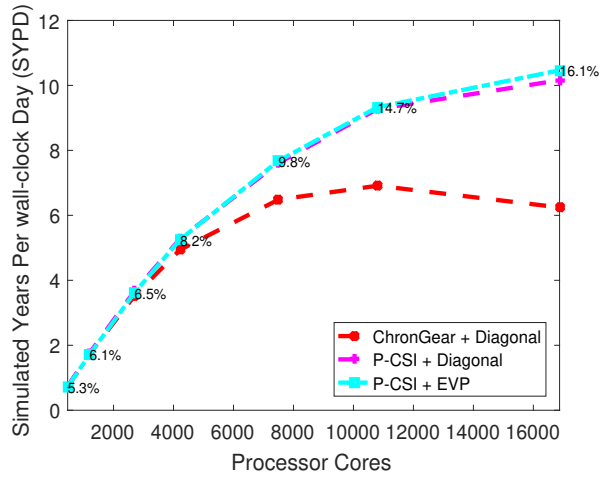


Figure 10. The simulated speed of the 0.1° ocean model component using different barotropic solver. The numbers on the dotted line represent the percentage of execution time spent in barotropic mode with P-CSI(EVP) using different number of processor cores. Information about the number of grid points per processor can be deduced from Fig. 3.