

# ***Interactive comment on “Automatic delineation of geomorphological slope-units and their optimization for landslide susceptibility modelling” by Massimiliano Alvioli et al.***

**Massimiliano Alvioli et al.**

alvioli@pg.infn.it

Received and published: 16 October 2016

The comment was uploaded in the form of a supplement:  
<http://www.geosci-model-dev-discuss.net/gmd-2016-118/gmd-2016-118-AC2-supplement.pdf>

Interactive comment on Geosci. Model Dev. Discuss., doi:10.5194/gmd-2016-118, 2016.

Printer-friendly version

Discussion paper



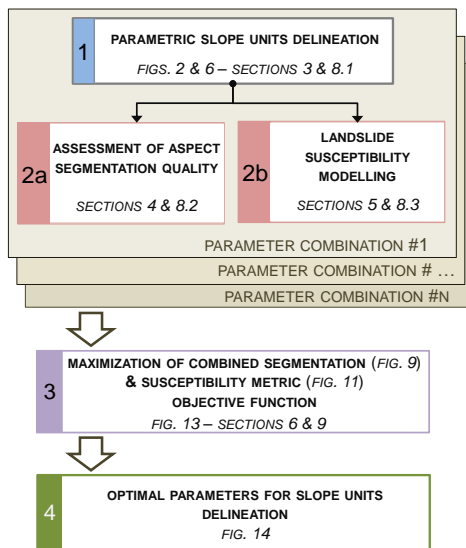


Fig. 1.

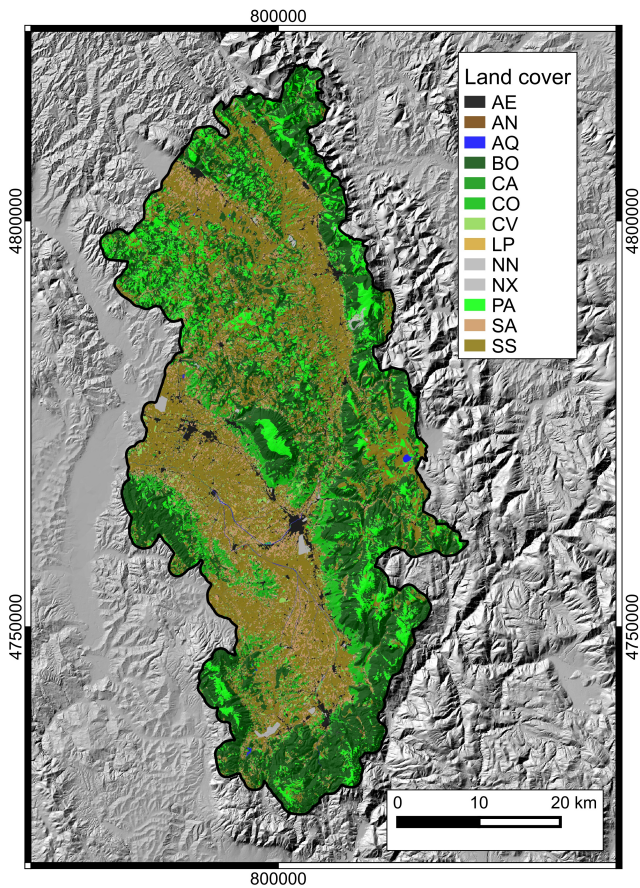


Fig. 2.