

Interactive comment on “Automatic delineation of geomorphological slope-units and their optimization for landslide susceptibility modelling” by Massimiliano Alvioli et al.

Massimiliano Alvioli et al.

alvioli@pg.infn.it

Received and published: 16 October 2016

The comment was uploaded in the form of a supplement:
<http://www.geosci-model-dev-discuss.net/gmd-2016-118/gmd-2016-118-AC2-supplement.pdf>

Interactive comment on Geosci. Model Dev. Discuss., doi:10.5194/gmd-2016-118, 2016.

C1

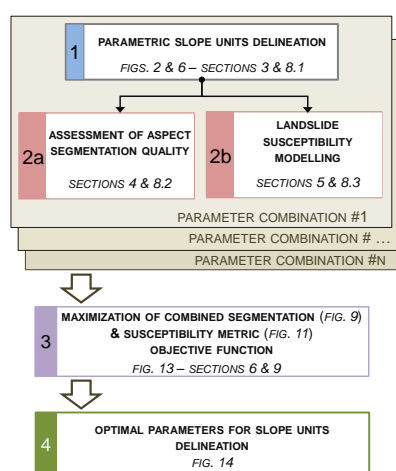


Fig. 1.

C2

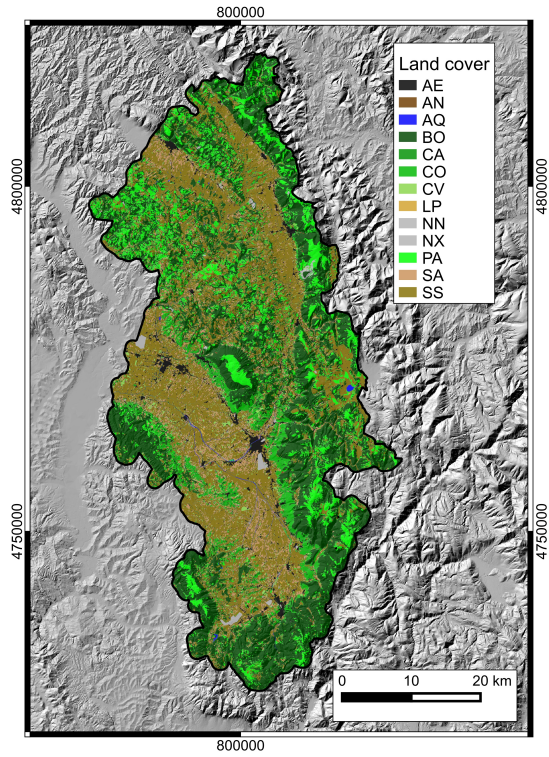


Fig. 2.

C3