

Dear Jatin

The authors would like to thank you for the review, that lead to further improving the manuscript. In general, we see that you seem to think that the paper is not fair with WRF. We acknowledge that the first submitted version had some inaccuracies and ambiguities in this sense, but we believe that these have been fully removed during the two reviews. Please see the comments below.

Best regards

The authors

In response to reviewer 1 about the LST bias in both URBClim and WRF as compared to MODIS, the explanation you provided to that comment also needs to be in the manuscript, rather than just the reply.

The first two sentences of the explanation provided to the reviewer have now been included in the methods section. Emissivity was already mentioned in the results section, but without giving any supporting quantities: *“Determination of emissivity over urban areas is notoriously difficult and subject to large uncertainties, which could explain at least part of model deviation of LST.”* Given the difficulty of the problem and that we are not experts in teledetection, we think that it is better to leave this sentence as it is.

Reviewer 2 described your work as comparing an offline urban canopy model to a fully coupled meso-scale atmospheric model WRF. You disagree in this respect that UrbClim is not an offline model. However, I think you are mis-understanding the point made by the reviewer. In WRF, the inputs to the PBL scheme come from the LSM, SLC, as well as the dynamical core, which provides the prognostic variables. Yes, Urbclim parameterizes the PBL, but the inputs from ERA interim are fixed. This is not the case in WRF where the PBL scheme and the inputs to the PBL scheme have two-way interaction. In this sense, Urbclim is an offline model compared to WRF. You need to better explain the inner-workings of UrbClim and the key differences to WRF to make this clearer (not just refer to the paper which describes Urbclim).

We disagree with your appreciation. As we see it, the definition of what an “offline” model is is unclear here. Neither WRF or UrbClim provide feedback to ERA-Interim. The “offline” term usually refers to isolated parameterizations that run with fixed input data and we are not working under these premises. UrbClim is more complex than that as it does have a simple prognostic equation for the lower 3 km, plus coupled land surface and PBL.

We think that the UrbClim description provided is detailed enough, and it has been extended a bit in the present version of the manuscript. We believe that the different scope of WRF and UrbClim is now clear enough throughout the text.

Reviewer 2 asked for more physical explanation of the processes, which you have not carried out. However, since UrbClim also includes a land surface scheme, a comparison of energy balance from UC-ERA with WRF, e.g., sensible and latent heat, may help shed some light. I think you could try a bit harder in this respect. This is still plenty of room in this paper for a bit more analysis of the processes. I do not disagree that it is hard, but you should try nonetheless.

This would be very interesting. Unfortunately, is beyond the scope of the current study, and too easy to address given the lack of adequate observations to use as reference. However, we would like to stress that the former has been partially addressed in De Ridder et al. (2015) and Lauwaet et al. (2016).

Reviewer 3 made a very good point about the use of statistical downscaling. Your reply needs to be incorporated within the manuscript, perhaps in the introduction.

As suggested, in the new version of the manuscript part of the answer to #reviewer3 has been included in the introduction.

“Statistical downscaling can also be considered as an alternative (or complementary) methodology to assess the urban climate. However, statistical downscaling is observation-dependent, and spatially detailed observations at a city scale covering long periods are very rare. UrbClim, instead, allows for long multi-decadal adaptation experiments where changes in the city surface parameters can be tested (e.g., the color of the roofs or the evaluation of the effects that changes in construction materials in building may have). The main aim of this study is to simulate only the fundamental processes that cause the UHI, so the model is lightweight, but still based on physics, and thus allowing sensitivity experiments to be conducted.”

Title: The main point here is that UrbClim is a “stand-alone” urban boundary layer model which is not coupled to a fully fledged atmospheric model, hence it is fast, which one would infer. I suggest to change the title to “Advantages of using a fast stand-alone urban boundary layer model as compared to a fully coupled mesoscale model to simulate”.

As explained above, the meaning of “offline” or “stand-alone” is unclear and we do not feel comfortable either with the suggested changes. We think that “urban boundary layer model” is a good definition of UrbClim, as formerly stated in De Ridder et al. (2015) and Lauwaet et al. (2016).

The abstract should generally be one paragraph.

In the new version of the manuscript, the abstract is only one paragraph.

Abstract, line 3, it is unclear what you mean by “these simulations”, as the previous lines do not refer to any simulations. I suggest “by high resolution (sub kilometer) fully coupled land-atmosphere simulations using urban canopy parameterizations” – This is more precise.

The sentence has been modified as suggested.

Abstract, line 4, “an urban” not “a urban”.

The mistake has been corrected.

Why do you use upper case for “Urban Heat Island” throughout the abstract? Define the UHI acronym the first time, and use it in the rest of the abstract.

The text has been modified as suggested.

Abstract, line 10, as far as commonly used re-analysis products go (NNRP, FNL,

ERA40, ERA-Interim, etc), 70 km resolution is pretty much as high as it gets! So your use of the term “relatively low resolution reanalysis (70 km)” is what the rest of the climate community considers as high-resolution reanalysis. This needs to be changed.

The sentence has been modified as suggested, and now it reads as follows: *“This comparison is performed with driving data from ERA-Interim reanalysis data (70 km)”*.

Abstract, lines 11-12, simply change to “In addition, the effect of using driving data from a higher resolution forecast model (15 km) is explored in the case of UrbClim.”

The sentence has been changed as suggested.

Abstract, final paragraph. This is where you describe the main results and this lacks detail. I suggest to add 70 km in brackets after “reanalysis data” at line 14 at the end of the sentence. You need to state the actual “problem with the winds” this is too broad, and “day-to-day correlation” of what? I do not like the use of terms such as “the problem disappears” when referring to issues with models. Rather, “errors are substantially reduced from x units to y units” – is a lot more scientific and useful to a reader, rather than “the problem disappears”.

Additionally, provided it fits within the work limit for the abstract, a sentence or two on when it would be appropriate, and more importantly, when it would NOT be appropriate to use UrbClim would be good to mention. This is really important information I would expect in an abstract.

We agree in that this part lacks detail. The final part of the abstract has been re-written to accommodate your suggestions:

“The results show that the performance on reproducing the average UHI in the simple model is generally comparable to the one in the mesoscale model when driven with reanalysis data (70 km). However, the simple model needs higher resolution data from the forecast model (15 km) to correctly reproduce the variability of the UHI at a daily scale, which is related to the wind speed. We conclude that medium-complexity models as UrbClim are a suitable tool to simulate the urban climate, but that they are sensitive to the ability of the input data to represent the local wind regime. UrbClim is well suited to develop impact and adaptation studies at a city scale without high computing requirements, and mesoscale models are yet required to study the two-way interaction between the city and the atmosphere.”

Page 2, line 31, you previously defined the UHI acronym on page 1, yet you use the full term. Please check this through the manuscript and be consistent.

As requested, the mentions to Urban Heat Island have been replaced with UHI here and when necessary to make the text consistent.

Page 2, line 38, “Others have highlighted” rather than “Other authors”, put the reference at the end of the sentence.

The sentence has been modified as suggested.

You generally have too many one-sentence paragraphs, which makes the paper a bit “jumpy”. For example, page 3, lines 63, and 75, there are two paragraphs of one sentence each. You need to improve on the overall structure of your paper in terms of paragraphing.

The paragraphing of the manuscript has been revised as requested.

Page 2, line 49, sentence starting with “Here we show”. This is a result and does not belong in an introduction.

The sentence has been modified so it does not advance the results: *“Here we study, by using a simplified model that only accounts for the Planetary Boundary Layer (PBL) and the surface physics, the possibility to reach resolutions of 250 m with affordable computational resources”*.

Page 2, lines 54 to 56, where you describe the scope of UrbClim versus RCMs. Computational efficiency is only one aspect. You also need to mention that Urbclim, cannot be used to investigate the effect of UHI on atmospheric circulation, such as interactions with the sea breeze and convection/storm initiation, which has been shown by other studies. I think this is very important to make clear, rather than just the computational aspect.

A new sentence has been introduced in the introduction to account for this: *“While this scope covers many applications, it must be mentioned that RCMs are required to reproduce the two-way interaction between the city and the atmosphere affecting the rain, storm initiation and other phenomena, at the expense of a much larger computational cost.”*

Page 3 ,line 60, wrong cite command for Chen et al. (2011).

This mistake has been corrected.

The description of the climatology of Barcelona etc, should be in the methods section, not the introduction.

This paragraph describes the climatology of Barcelona in the context of heat and heat waves hazard and climate change, to explain how it is a especially vulnerable city, which adds relevance to the study. In this sense, we think that the introduction is the proper place for this paragraph.

Page 3 , second dot point, “of the UrbClim simulation” rather than “of this run”.

The sentence has been modified as suggested.

Page 5, line 98, what is a “well maintained” station is subjective, rather, is there any form of Quality control applied to this data before you used it? This may be more useful information to provide.

Yes, there is a routine quality control carried out by the providers. Additionally, we also inspected the data for outliers and bad quality data. This is now mentioned in the text: *“Both data providers carry on a quality control to this data before distributing it”*.

Page 6, line 131, “a minimum” rather than “the minimum”.

The sentence has been corrected as suggested.

Page 6, line 134- “The boundary data needs to be read from a lower resolution model” – This is too broad and not detailed enough. State exactly what inputs UrbClim requires. Your use of the term “boundary data” is rather broad as well. WRF, as any RCM, uses input data at the lateral boundaries, and the influence of this data decreases within the sponge zone. I suspect UrbClim does not have an actual “boundary zone” as RCMs do?

The boundary condition scheme is different in UrbClim than in most of the RCMs, and it is described in detail in De Ridder et al. (2015). This description has been summarized in the manuscript as follows: “*Apart from the variables usually fed to the mesoscale models, UrbClim needs also the radiative fluxes and precipitation. Instead using a relaxation zone, UrbClim imposes the driving model data in the inflow boundary points, and a "zero gradient" condition, that lets the perturbations flow outside the domain, in the outflow points.*”

Page 6, line 136, you state “Mesoscale models are tied to their driving models by the boundary conditions. Yet, they develop internal variability”. To me, this is stating the obvious, of course they will develop internal variability as the influence of the input boundary conditions decreases exponentially within the relaxation zone, and of course the driving data has a large influence.

The sentence is more intended to serve as a definition of the term internal variability than to state nothing new.

Page 6, line 140, not just “wind” but as a consequence the advection of heat and moisture?

Page 6, line 141 to 143, I think the point you should make here, is that conventional RCMs have to use several nests to achieve high resolutions of 1 km or less, whereas this is not an issue with UrbClim.

We agree in that this part (the lines mentioned by the last two comments) is not clear enough and, as we think it is essential for the interpretation of the results, it has been carefully re-written:

“Mesoscale models develop their own variability and structures respect to the lower resolution models driving them, which is called internal variability \citep{giorgi_2000}. By design, UrbClim does produce a significantly smaller internal variability than a mesoscale model. This can be considered as a disadvantage, as it does not permit studying the full two-way interaction of the city with all the regional troposphere. But, on the other hand, it is the key for saving computational power. As the UHI is rooted in the surface properties and the heat storage in the ground, using a model like UrbClim is reasonable. This model does work approximately as a wind tunnel, without creating regional structures in the atmospheric flow, so it is possible to nest it directly in much lower resolution models without creating intermediate nests. Nonetheless, this resolution jump can affect the quality of the simulation if the driving model does not accurately reproduce the local climate. Mesoscale models need these intermediate nests for the inconsistencies between internal variability and driving data not to blow up the numerical stability. This trade-off between the internal variability and the computational efficiency will be key for the interpretation of the results in this study.”

Page 6, line 151, wrong cite command for Ridder and Schayes, (1997) and De Ridder et al. (2015). Please PROOF READ your manuscript.

The mistake has been corrected.

Page 6, line 160. Again here, poor paragraph structure, you cannot start a paragraph with “In contrast”, it does not flow.

The paragraph starting with “in contrast” has been merged with the previous one.

Page 7, line 178, it’s “Forecasting” and Not “Forecast”.

Page 8, line 196, “previous studies” rather than “previous works”.

Both mistakes have been corrected in the new version of the manuscript.

Table 1 shows UC-ERA has consistently larger +ve biases and RMSE as compared to WRF across all stations. This is an important result I would expect to find in the abstract.

The warm biases in UC-ERA are very related to the lack of sea breeze in this run, as explained in the text. This is now also mentioned in the abstract: *“This lack of accuracy on reproducing the wind speed, especially the sea breeze daily cycle, which is strong in Barcelona, causes also a warm bias in the reanalysis driven UrbClim run”*.

Page 9, line 205, “at some stations”, not “in some stations”.

The mistake has been corrected.

Page 9, line 206, rather than “see below”, use “this is discussed later in the manuscript” or something along those lines.

The sentence has been changed as suggested.

Page 9, line 208, you state “Instead, UC-FC and WRF show similar, smaller scores, which indicate the good performance of these simulations”. You are stating the obvious here, of course smaller errors mean improved performance, one can assume the reader will make this connection. Rather, the point here is that UrbClim is very sensitive to the driving data, and you need driving data at 15 km for the errors to be the same order of magnitude as WRF. This is significant as 15 km driving data is not routinely available over long time periods! This is far more important to discuss.

Please note that this is discussed afterwards (see line 277 and forward). Also note that this result is specific for Barcelona, as many other cities do not have this sea breeze problem. The 15 km data can also come from a regional reanalysis or from a RCM, and yet it would be significantly cheaper than to use WRF up to 250 m horizontal resolution. Soon new ERA5 reanalyses will be available with 32 km resolution and they will be likely sufficient enough for driving UrbClim even in more cities than ERA-Interim. In this regard, we think that UrbClim results are an impressive achievement.

Page 10, line 214, wrong cite command again. Line 219, “at both stations” not “in both stations”.

The mistakes mentioned have been corrected in the text.

Your supplementary figures have no captions, so I do not know what I have looking it.

The supplementary figures are now arranged in a single pdf with captions.

Page 12, line 250, I don't really see the point of comparing MAE of 0.8 to 1.11, this is a difference of 0.3C, rather small. UC-FC is only marginally better than WRF.

In our opinion, on the long term, a 0.3°C difference in the MAE is not necessarily small. In this case, the difference between UC-ERA and UC-FC is even smaller, but UC-ERA has large occasional errors which can be relevant for a user, and these are reflected in the MAE difference. In the new version of the manuscript we mention that WRF has a small but persistent error in the daily urban-rural difference: *"This underestimation is small, albeit persistent."*

Page 12, line 22, replace "more biased" with "has slightly larger biases" .

We have considered this and are not going to apply this proposed change to the manuscript. In figure 4 WRF is clearly more biased than UC-FC (not UC-ERA), with up to -2°C in the urban location during the day. As a consequence, we don't consider that "slightly" is the proper word to describe this difference.

A number of studies have compared different PBL schemes in WRF against wind speed observations from Atmospheric soundings. You should actually reference these here and look at the RMSE, MAE and biases they report. I largely suspect that using different PBL and other schemes in WRF would result in changes in biases compared to observations which are larger than the differences you find between WRF and UC-FC, which would imply it would be entirely plausible that different configuration(s) of WRF could easily result in even larger or smaller errors than UC-FC. We cannot tell unless we do the simulations, but you should discuss this in more detail on page 12.

In the last submitted version of the manuscript there is a mention to this: *"As WRF is very customizable, it could be possible, in principle, to find a configuration that removes these biases."* However, as you state, without doing more simulations is difficult to go further in this direction. The WRF configuration used for the paper is not random, as we used the more popular and reliable parameterizations (Yonsei University Scheme in the case of PBL). Anyway, the goal of the paper is not a comprehensive evaluation of WRF, which we do not criticize, but to compare a WRF run with UrbClim to discuss their skill as well as their limitations.

Page 13, below Fig 8 – again here, a one-sentence paragraph which does not really flow.

The paragraph has been merged with the previous one.

Page 13, lines 285-286 – You refer to biases in Figure 8, but figure 8 is not a bias plot? Not sure I follow here.

Figure 8 displays maps with modeled averages and the observation. Thus, despite it is not a bias plot per se, the bias can be clearly appreciated, especially thanks to the strong contrast of the

colorbar. We chose this kind of plot in order to show the spatial patterns of the absolute fields, and not only the difference between the two fields as in a bias plot. The sentence has been modified to clarify this:

“By comparing modeled (panels b and c) and observed (panel a) maps in figure 8, it can be seen that the bias outside the urban areas is found to be relatively small in WRF, and slightly negative in UC-ERA, while the spatial patterns are reasonably similar between the models and the satellite data.”

Page 15, the first dot point is not really a conclusion of your study as the aim was not to quantify the UHI of Barcelona. This should be removed as a conclusion.

While it is not the main goal of the paper, we believe that the result is interesting enough to stress it as a main conclusion, due to the lack of modern modeling studies of this length in the city of Barcelona. Therefore, we advocate decided to keep it as is.

Second dot point – What systematic biases? State them!

As suggested, the warm bias detected in UC-ERA is now mentioned here.

Third dot point – Of course WRF will provide less detailed spatial information, You ran it at a coarser resolution as compared to UC-ERA! This is to be expected and not a conclusion of the study. You fail to mention that UC-ERA had consistently larger biases than WRF, which is far more important, as well as the fact that UrbClim needs inputs at considerably higher resolution than routine available, i.e., 15 km, to really show a distinction from WRF. This is far more important.

This has been corrected in the present version of the manuscript. This point now reads: *“WRF is less biased than the UrbClim run nested in ERA-Interim, and both runs show comparable skill on reproducing the UHI.”*

In your conclusion, you state that this opens the door to running UrbClim with GCMs simulations of future climate. There are several problems here. Firstly, GCMs have much coarser resolution than 70 km, and you have clearly shown the resolution of input data has a large influence on UrbClim. Most GCMs have greater than 150 km resolution. Secondly, you ran UrbClim with a re-analysis, which is completely different to GCM simulations of current and future climate. You are extrapolating too much here.

Please note that is not an hypothesis, as it has already been achieved for some cities as part of the RAMSES project, see Lauwaet et al. (2015). It is not easy, but neither it is easy to run WRF nested in GCMs (in addition of being extremely demanding computationally).

It would be much more useful to have a paragraph which objectively discusses, in which circumstances one should choose UrbClim over an RCM such as WRF, and what the user should be mindful of, rather than trying to extrapolate too much. Some of this needs to be reflected in the abstract.

This was already discussed in the submitted manuscript: *“The choice between UrbClim and WRF for the simulation of the urban environment largely depends on the type of variable and process*

that is to be analysed. WRF has the advantage of providing a more detailed and complete description of atmospheric winds and rainfall, which is required in some applications (e.g. pollutant dispersion, urban effect in rainfall). On the other hand, UrbClim has been proven to be as accurate as WRF on reproducing the UHI of Barcelona during the warm season, and several orders of magnitude faster.”

It the present version, it is also mentioned in the abstract: “*UrbClim is well suited to develop impact and adaptation studies at a city scale without high computing requirements, and mesoscale models are yet required to study the two-way interaction between the city and the atmosphere.*”

Finally, in section 3.3, you provide a lot of detail about compilers etc. I do not think this add much value at all to the paper. One expects that a stand-alone model such as UrbClim would require significantly less computational resources than an RCM such as WRF. You can simply state that given your WRF setup, UrbClim was about 130 times faster than WRF. All this detail on the OS, compiler versions, MPI stuff etc is not really adding much. This detail is only relevant when comparing slightly different versions of the same code, rather than two completely different codes. It would add more value to the paper, to spend more words on physical processes.

In our opinion, these details are important to improve reproducibility of our results, and to exactly quantify how much faster than WRF is UrbClim in a systematic way, for the purposes and with the configurations presented, as this may greatly depend on the hardware and compiler used.

References

- De Ridder, K., Lauwaet, D., Maiheu, B., 2015. UrbClim – A fast urban boundary layer climate model. *Urban Clim.* 12, 21–48. doi:10.1016/j.uclim.2015.01.001
- Lauwaet, D., De Ridder, K., Saeed, S., Brisson, E., Chatterjee, F., van Lipzig, N.P.M., Maiheu, B., Hooyberghs, H., 2016. Assessing the current and future urban heat island of Brussels. *Urban Clim.* 15, 1–15. doi:10.1016/j.uclim.2015.11.008
- Lauwaet, D., Hooyberghs, H., Maiheu, B., Lefebvre, W., Driesen, G., Van Looy, S., De Ridder, K., 2015. Detailed Urban Heat Island Projections for Cities Worldwide: Dynamical Downscaling CMIP5 Global Climate Models. *Climate* 3, 391–415. doi:10.3390/cli3020391

Advantages of using a fast urban boundary layer model as compared to a full mesoscale model to simulate the urban heat island of Barcelona

M. García-Díez ^{*1}, D. Lauwaet², H. Hooyberghs², J. Ballester¹, K. De Ridder², and X. Rodó^{1,3}

¹Institut Català de Ciències del Clima, Barcelona, Catalonia, Spain

²VITO, Antwerp, Belgium

³Institució Catalana de Recerca i estudis Avançats (ICREA), Barcelona

Correspondence to: Markel García-Díez (markel.garcia@ic3.cat)

Abstract. As most of the population lives in urban environments, the simulation of the urban climate has become a key problem in the framework of the climate change impact assessment. However, the high computational power required by ~~these simulations~~ high resolution (sub-kilometer) fully coupled land-atmosphere simulations using urban canopy parameterizations is a severe limitation.

5 Here we present a study on the performance of UrbClim, ~~a~~ an urban boundary layer model designed to be several orders of magnitude faster than a full-fledged mesoscale model. The simulations are evaluated with station data and land surface temperature observations from satellites, focusing on the Urban Heat Island ~~–~~

(UHI). To explore the advantages of using a simple model like UrbClim, the results are compared
10 with a simulation carried out with a state-of-the-art mesoscale model, the Weather Research and Forecasting model, which includes an urban canopy model.

This comparison is performed with driving data from ~~relatively low-resolution~~ ERA-Interim re-analysis data (70 km). In addition, the effect of using ~~different driving data is also explored in the case of UrbClim, with data~~ driving data from a higher resolution forecast model (15 km) ~~–~~

15 is explored in the case of UrbClim. The results show that the performance ~~of the Urban Heat Island on reproducing the average UHI~~ in the simple model is generally comparable to the one in the mesoscale model when driven with reanalysis data ~~–The only exception is found in the winds and the day-to-day correlation, but these problems in UrbClim disappear when we consider the boundary conditions from the higher resolution forecast model. (70 km). However, the simple model~~
20 needs higher resolution data from the forecast model (15 km) to correctly reproduce the variability of the UHI at a daily scale, which is related to the wind speed. This lack of accuracy on reproducing the wind speed, especially the sea breeze daily cycle, which is strong in Barcelona, causes also a warm bias in the reanalysis driven UrbClim run. We conclude that medium-complexity models as

*markel.garcia@ic3.cat

UrbClim are a suitable tool to simulate the urban climate, but that they are sensitive to the ability of the input data to represent the local wind regime. UrbClim is well suited to develop impact and adaptation studies at a city scale without high computing requirements, and mesoscale models are yet required to study the two-way interaction between the city and the atmosphere.

1 Introduction

According to the United Nations, more than 50% of the world population lives in cities, and this percentage is expected to increase in the coming decades. The urban environment is known to modify the local climate in several different ways. The most well-known is the so-called Urban Heat Island (UHI) effect, that consists on temperatures being several degrees higher over the urban area with respect to its rural surroundings. Due to anthropogenic climate change, the frequency of heat waves is expected to undergo a widespread increase (Meehl and Tebaldi, 2004) in the following decades. This raises concerns about the vulnerability of people living in urban areas.

Although the magnitude of the UHI effect does not necessarily increase due to global warming (Lauwaet et al., 2015), it has been shown to be large enough to pose significant impacts. The most important ones are human health, through heat stress (Gabriel and Endlicher, 2011; Dousset et al., 2011) and energy consumption (Kikegawa et al., 2006; Kolokotroni et al., 2012).

The physical causes of the UHI effect were enumerated by Oke (1982), but the relative contribution of each one is still discussed. Zhao et al. (2014) used satellite observations and a model simulation to calculate the relative contribution of the different causes of the ~~Urban Heat Island~~ UHI in 65 cities of North America. They considered contributions from modifications in the radiative balance, evaporation, convection efficiency, heat storage and anthropogenic heat sources. They found that the relative contribution of these factors depends on the local background climate of the city and on the time of the day. In general, during daytime, convection efficiency and evapotranspiration are the main drivers of the UHI, while heat storage is the most relevant during the night. Zhao et al. (2014) used satellite retrieved land surface temperatures, but these can differ from screen level temperatures. ~~Other authors (Arnfield, 2003)~~ Others have highlighted the complexity of the problem of measuring the UHI, given that it is difficult to monitor the urban climate with enough detail and reliability (Arnfield, 2003). Furthermore, the complexity of the urban surface, featuring anisotropy and vertical surfaces, makes it complicated to sample by satellites (Voogt and Oke, 1998). These difficulties with the observations increase the value of numerical simulations, that can produce detailed fields which are not observable. At the same time, the lack of observations hampers the evaluation of these simulations.

Recently, urban canopy models or parameterizations have been included in many Regional Climate Models (RCMs) (see. for example Huszar et al. (2014) and Ching (2013)). RCMs are limited area models used, among many other application, to dynamically downscale climate change pro-

jections from coarse resolution Global Circulation Models. Nevertheless, computational power limitations do not allow RCMs to reach the level of resolution that is required to resolve most of the cities. Here we ~~show how~~study, by using a simplified model that only accounts for the Planetary Boundary Layer (PBL) and the surface physics, ~~it is possible~~the possibility to reach resolutions of 250 m with affordable computational resources. This model, called UrbClim, has been developed by De Ridder et al. (2015), and is described in section 2.3. UrbClim has been already evaluated in a few European cities (De Ridder et al., 2015; Zhou et al., 2015; Lauwaet et al., 2016) and used to generate climate change projections (Lauwaet et al., 2015). Note that UrbClim has a different, more specific scope than the RCMs, being focused on the fast and computationally light simulation of the UHI and the heat stress in the urban environment, so that it can be easily transferred between cities. While this scope covers many applications, it must be mentioned that RCMs are required to reproduce the two-way interaction between the city and the atmosphere affecting the rain, storm initiation and other phenomena, at the expense of a much larger computational cost.

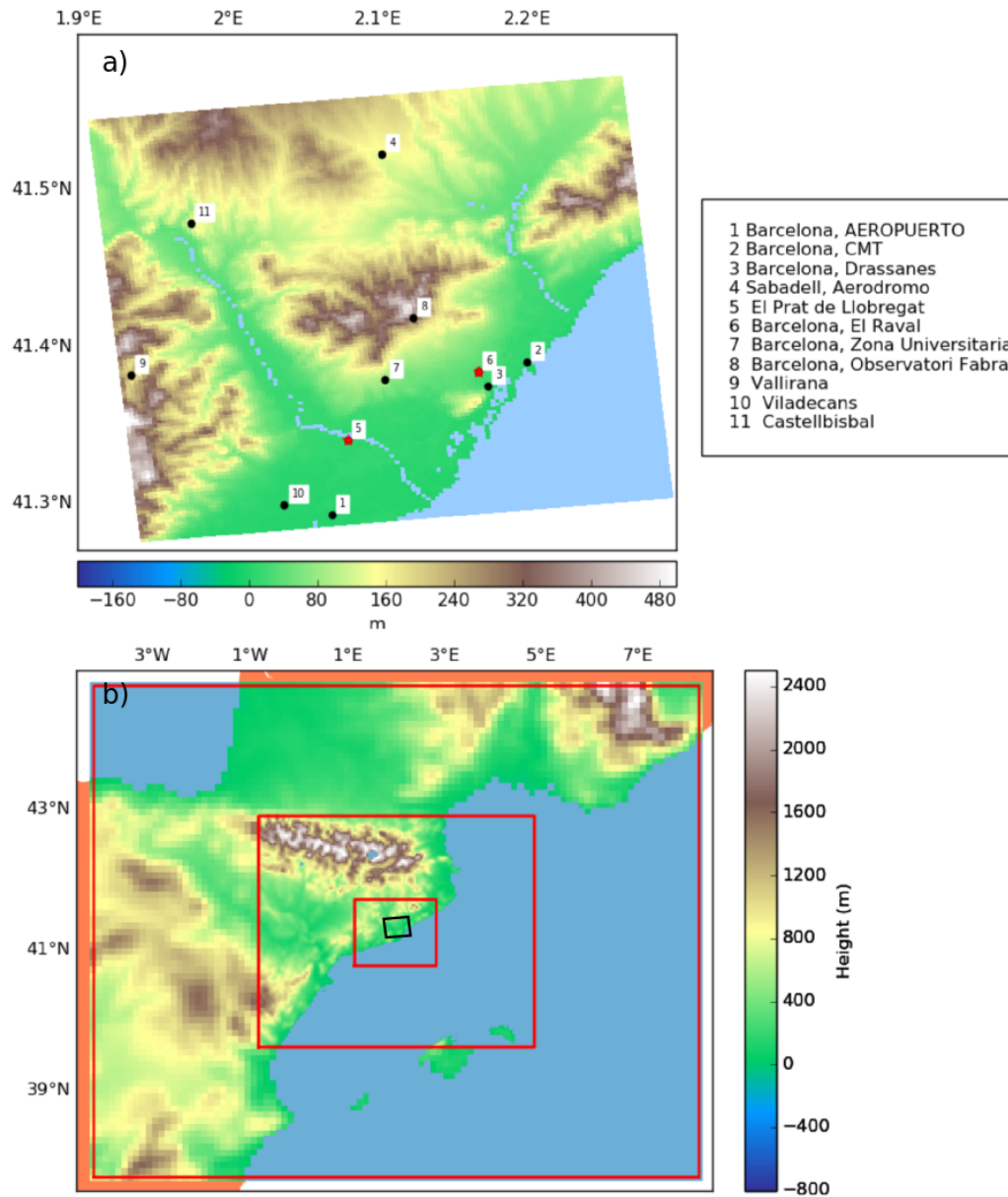
Statistical downscaling can also be considered as an alternative (or complementary) methodology to assess the urban climate. However, statistical downscaling is observation dependent, and spatially detailed observations at a city scale covering long periods are rare. UrbClim allows long multi-decadal adaptation experiments where changes in the city surface parameters can be tested (e.g., the color of the roofs). The idea is to simulate only the fundamental processes that cause the UHI, so the model is lightweight, but still based on physics, and thus allowing sensitivity experiments.

In the present paper, we evaluate UrbClim over the city of Barcelona, and compare it with a standard mesoscale model, the Weather Research and Forecast model (WRF), using a Urban Canopy parameterization. Namely, the Single Layer Urban Canopy Model (SLUCM) was used, which was developed by Kusaka et al. (2001) and coupled to WRF by ~~(Chen et al., 2011)~~Chen et al. (2011). It has been verified in several studies (Lee et al., 2011), and used for future climate change projections (Argüeso et al., 2015; Georgescu et al., 2014; Kusaka et al., 2012).

Barcelona is located in the Euro-Mediterranean region, which has been defined as a primary climate change hot spot (Giorgi, 2006), as it emerges as an especially responsive area to climate change, with more frequent, longer and harsher summer heat waves (Meehl and Tebaldi, 2004; Ballester et al., 2009, 2010a, b).

Taking into account that the Mediterranean countries are currently more vulnerable to environmental summer conditions than other European societies, the larger magnitude of the projected temperature increase is expected to become a major challenge for public health in summer (?). For example, the negative effects of the record-breaking 2003 heat wave in central and southern Europe were particularly damaging in the Euro-Mediterranean arch (Robine et al., 2008). The seasonal mortality excesses were indeed similar in Spain (13.7%), France (11.8%) and Italy (11.6%), although temperature anomalies were twice larger in France than in the southern countries (Ballester et al., 2011).

Figure 1. a) Topography of the UrbClim domain and locations of the meteorological stations. The two stations used as a reference of the urban and rural climates are highlighted with red stars. b) Three WRF domain edges (red squares) and UrbClim domain edges (black contour), together with the topography of the WRF domains with 10, 3.3 and 1.1 km resolution.



This larger sensitivity to environmental conditions is exacerbated by urban pollution especially in old people living in cities with pre-existing or chronic cardiovascular and respiratory diseases (McMichael et al., 2006).

Taking into account all these considerations, the city of Barcelona emerges as a particularly vulnerable area within the continent. Barcelona is located in northeastern Spain, surrounded by the Mediterranean Sea in the south and east, a small 500 m mountain range in the northwest, and two rivers in the southwest and northeast (figure 1, and see also figure 2 for the location of the urbanized area). Its Mediterranean climate (Csa in the Köppen classification) is shaped in summer by the local wind breeze regime, whose diurnal evolution exhibits a clockwise rotation from southerlies in the morning to winds blowing roughly parallel to the southwest-northeast shoreline in the late afternoon (Redaño et al., 1991).

The main goals of the paper are:

- Evaluation of a UrbClim simulation of the urban climate in the city of Barcelona, driven by reanalysis data at 70 km resolution, against station and satellite data.
- Comparison, both in terms of model skill and computational resources, of ~~this run~~ [the UrbClim simulation](#) against a benchmark simulation performed with a state-of-the art mesoscale model, driven with the same reanalysis data.
- Analysis of the sensitivity of the UrbClim simulation to the boundary conditions, comparing the original run against a simulation driven by a higher resolution forecast dataset (15 km).

2 Data and Methodology

2.1 Surface stations

As a first approach in the evaluation of the model performance, we have used data from a set of meteorological stations, four of them belonging to the Spanish Meteorological Agency (AEMET) and seven to the Catalan Meteorological Service (SMC). [Both data providers carry on a quality control to this data before distributing it.](#) All are well maintained automatic stations, that deliver meteorological data with 10 or 20 min frequency. In the present work, only hourly data were used. The locations of these stations, as well as their names, are displayed in figure 1a, together with the topography.

Station number 5 (El Prat de Llobregat) is chosen to be representative of a rural location near the city. This station is surrounded by cereal fields (figure 2), located 300 m from the Llobregat river and 650 m from the closest urban area. Station number 6 (el Raval) is instead chosen as the reference urban station. This station is located on the roof of a building, at the city center of Barcelona, 8.5 km away from the rural station. Pictures for the locations of both el Raval² and el Prat³ stations are available on the internet site of SMC. These two points are almost the closest possible rural-urban points located at a similar height. The rural station is at 8 m above sea level, while the urban station

²<http://www.meteo.cat/observacions/xema/dades?codi=X4>

³<http://www.meteo.cat/observacions/xema/dades?codi=XL>

is at 33 m, which can account for a difference of 0.15-0.25 °C difference in a standard atmospheric profile. The rural station is located in a delta, and therefore the surrounding topography is flat, with no relevant orographic objects between the two stations. Thus, the differences between these two stations are considered to be representative of the UHI effect in the city of Barcelona.

2.2 Satellite data

The spatial pattern of the simulations is evaluated through data from the MODerate Resolution Imaging Spectoradiometer (MODIS) of the National Aeronautics and Space Administration (NASA) of the United States. Following previous works (Schwarz et al., 2011; Zhou et al., 2015), MODIS datasets MOD11A2 and MYD11A2 (version 5) were downloaded and processed. These correspond to the Terra and Aqua satellites respectively, and are 8-day aggregations of the daily MOD11A1 and MYD11A1 datasets, using only the clear-sky days. The variable considered is Land Surface Temperature (LST), which is derived from the infrared radiance and emissivity estimated from land cover types. A more detailed description of the algorithms is available in Wan (2008).

The LST data were processed considering only the data flagged as “good quality, not necessary to examine more detailed QA” in the Quality Flag provided with the data, and with no cloudy days during the 8 day period. This introduces a bias to certain meteorological conditions (clear-sky days), which is unavoidable. MODIS and UrbClim LST data were interpolated to a 0.01 deg. regular grid for direct comparison. Finally, only the images with less than 14% missing values were used (this percentage does not include the data over the sea which are always missing). The days (and the times of the day) considered in the averages are the same in the model data and in the observations. The 8-day averages flagged as containing cloudy days in MODIS were masked before computing the averages in both sides. This process left a total of 15 values for most gridpoints (supplementary figure 1) over the whole period.

2.3 The UrbClim model

The UrbClim model is designed to simulate the temperature and heat-stress fields at a city scale requiring ~~the a~~ minimum amount of computational power, so that it is possible to perform long runs at a resolution of hundreds of metres. A detailed description of the model is available in De Ridder et al. (2015). UrbClim models the lower 3 km of the atmosphere, and consists of a 3-D boundary layer model and land-surface scheme with urban physics. ~~The boundary data needs to be read~~ As in mesoscale models, the boundary data is imposed from a lower resolution model.

~~Mesoscale models are tied to their driving models by, but the boundary conditions. Yet, they develop internal variability (Giorgi and Bi, 2000). In the case of UrbClim, the small size of the domain, and the simplicity of the atmospheric component, greatly reduce the internal variability. The model can be therefore seen as a scheme somewhat differs. Appart from the variables usually fed to the mesoscale models, UrbClim needs also the radiative fluxes and the precipitación. Instead~~

using a relaxation zone, UrbClim imposes the driving model data in the inflow boundary points, and a "~~wind-tunnel~~zero gradient" condition, that lets the perturbations flow outside the domain, in the outflow points.

Mesoscale models develop their own variability and structures respect to the lower resolution models driving them, which is called internal variability (Giorgi and Bi, 2000). By design, UrbClim does produce a significantly smaller internal variability than a mesoscale model. This can be a limitation for the capability of the model to add value to the coarser resolution boundary data, especially for some variables like wind.

~~On~~ considered as a disadvantage, as it does not permit studying the full two-way interaction of the city with all the regional troposphere. But, on the other hand, ~~the small internal variability~~ has also advantages, as the stability of the simulation is not compromised by the difference in the resolutions of the UrbClim and driving models, as it normally occurs with conventional mesoscale models it is the key for saving computational power. As the UHI is rooted in the surface properties and the heat storage in the ground, using a model like UrbClim is reasonable. This model does work approximately as a wind tunnel, without creating regional structures in the atmospheric flow, so it is possible to nest it directly in much lower resolution models without creating intermediate nests. Nonetheless, this resolution jump can ~~sometimes~~ affect the quality of the simulation if the driving model does not accurately reproduce the local climate. Mesoscale models need these intermediate nests for the inconsistencies between internal variability and driving data not to blow up the numerical stability. This trade-off between the internal variability and the computational efficiency will be key for the interpretation of the results in this study.

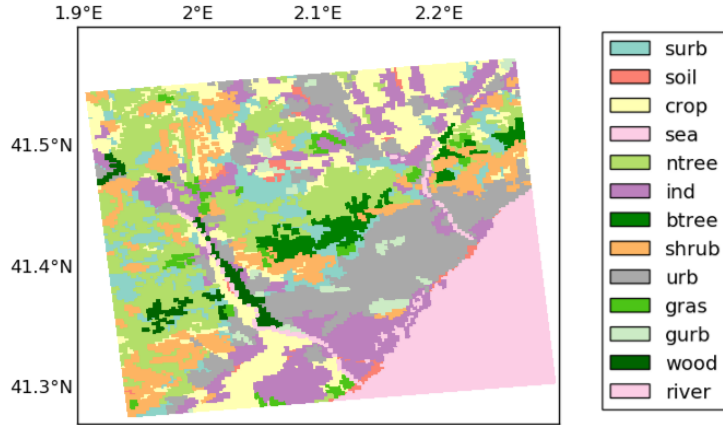
The land use data, which are needed to represent the surface properties, are taken from the CORINE dataset⁴). This dataset is publicly available online, and was produced by the European Environmental Agency at a resolution of 100 m. Figure 2 shows the distribution of the land use classes used by UrbClim.

The land-surface scheme is a standard soil-vegetation-atmosphere model based on (~~Ridder and Schayes, 1997~~)Ridder and Schayes which was extended to fully account for the urban canopy. This updated version is described in detail in (De Ridder et al., 2015). The 3D boundary layer model represents a simplified atmosphere by using the conservation equations for the horizontal momentum, potential temperature, specific humidity and mass. The turbulent vertical diffusion is represented following Hong and Pan (1996). The urban physics use a urban slab, together with a parameterization of the inverse Stanton number. This simple approach is justified in De Ridder et al. (2015), because the heat coefficients can be taken from real-world experiments, rather than the scale experiments that the more detailed urban canopy models use to get the transfer coefficients of walls, roofs and roads.

In contrast, the Single-Layer Urban Canopy Model (SLUCM) included in WRF represents simple symmetrical street canyons with infinite length (Kusaka et al., 2001). It is important to note that the

⁴<http://www.eea.europa.eu/publications/COR0-landcover>

Figure 2. Distribution of the land use types used in the UrbClim simulations, which were derived from the CORINE dataset.



goal of the present study is not no compare this UCM with the one used by UrbClim, but the whole WRF-SUCM modelling system. Thus, the differences found between WRF and UrbClim are not necessarily related to the different approximations used to represent the Urban Canopy.

205 2.4 Experimental setup

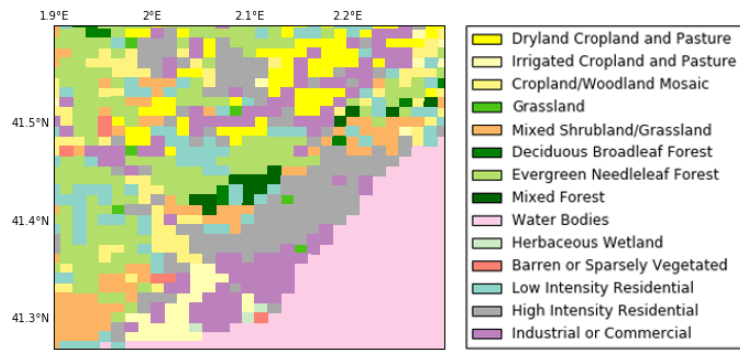
UrbClim

2.3 The UrbClim simulations cover the five warmest months of year 2011, i.e. from May to September. The domain is represented by a horizontal grid with 121x121 points at a resolution of 250 m, with 19 vertical levels within the 3 lower km of the troposphere (figure 1a). The driving model data is updated every 3 hours. Two simulations have been studied, labeled as UC-ERA and UC-FC. The former is driven by the ERA-Interim reanalyses (Dee et al., 2011), while the latter is driven by the Integrated ~~Foreeast~~ Forecasting System (IFS) version 37r2 global forecast model of the European Centre for Medium-Range Weather Forecasts (ECMWF). In 2011, this model ran with a spectral resolution of T1279 ($\simeq 15$ km), in contrast with the T255 ($\simeq 70$ km) of ERA-Interim. Thus, it is able to provide more local details, which can be important given the aforementioned mesoscale-driven weather of Barcelona.

WRF

The Weather Research and Forecast model is an open-source, non-hydrostatic limited area model (Skamarock et al., 2008). Thanks to its availability, it has a large community of users. These contribute to the development of WRF, which is leaded by the National Center for Atmospheric Research (NCAR). One particularity of this model is that it has a large amount of parameterization schemes,

Figure 3. Distribution of the land use types used in the WRF simulation. They were mapped from the CORINE dataset to the USGS classes.



dynamical options and sub-modules, available to the user to choose among them. These options are set up in a namelist file that must be edited for each simulation.

In the present [study](#), we used the version 3.6.1 of WRF, which was configured to run in three nested domains (figure 1b), with 40 vertical levels and horizontal resolutions of 10, 3.3 and 1.1 km. The 250 m of UrbClim were not reached because the computational cost was not affordable. However, the simulations were carefully configured to make them comparable with UrbClim: they were nested in the same dataset (ERA-Interim) and used the same land use (CORINE). WRF land use is taken by default from the United States Geological Survey (USGS) dataset. Thus, the CORINE land classes were mapped to the USGS 33 classes following table 7.1 of Chrysoulakis et al. (2014). The resulting land use class map is shown in figure 3

Despite being nested in a reanalysis, the regional models tend to generate their own internal variability. While this is necessary to the RCM to add value, it is not convenient to let the model to drift too much from the reanalyses, as these incorporate observations and are accurate descriptions of past atmospheric states. There are two approaches to solve this: using nudging, or restarting the model frequently. In this case, based on the experience of previous [works](#) [studies](#) (Menendez et al., 2014; García-Díez et al., 2015), daily 36 hours simulations have been carried out and concatenated, leaving 12 hours as spin-up. These simulations cover the same time span as UrbClim, from May to September 2011. Thus, 153 individual simulations have been carried out. To handle them, the WRF4G framework (Fernández-Quiruelas et al., 2015) has been used.

3 Results

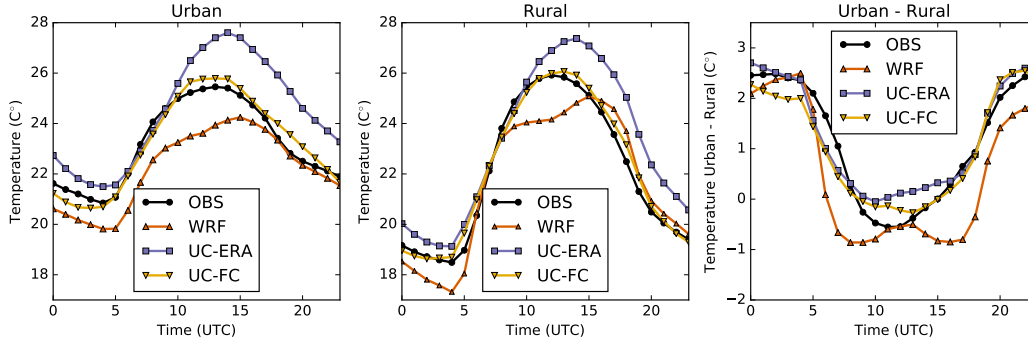
3.1 Time series

Table 1 shows scores of daily mean 2 m temperature for the UC-ERA, UC-FC and WRF simulations and the 11 stations. The largest errors are found in UC-ERA, which generally overestimates

Table 1. Scores of daily mean 2 metre temperature for the UC-ERA, UC-FC and WRF simulations and the 11 stations depicted in figure 1. The scores are: Mean bias (model - observed), Root Mean Squared Error (RMSE), and variance ratio (i.e. the variance of the model divided by the variance of the station).

Station	Bias (°C)			RMSE (°C)			Variance ratio		
	UC-ERA	UC-FC	WRF	UC-ERA	UC-FC	WRF	UC-ERA	UC-FC	WRF
1	1.4	0.1	-0.5	2.0	0.9	0.9	1.1	0.8	0.7
2	2.0	0.7	-0.8	1.9	0.8	0.7	1.6	1.1	0.9
3	1.6	0.3	-0.8	1.9	0.8	0.7	1.5	1.1	0.9
4	2.1	1.1	1.1	2.1	1.2	1.1	1.4	1.0	1.0
5	1.1	0.2	-0.3	1.7	0.6	0.7	1.3	1.1	0.9
6	1.2	0.1	-1.0	1.8	0.7	0.6	1.5	1.1	0.9
7	1.8	0.5	0.6	1.8	0.7	0.8	1.4	1.0	0.9
8	0.6	-0.7	0.6	1.8	1.1	0.9	1.1	0.8	0.8
9	0.5	-0.3	-0.2	1.6	0.7	0.7	1.1	0.9	0.9
10	1.2	-0.2	0.3	1.7	0.6	0.7	1.4	1.0	0.9
11	0.3	-0.5	-0.0	1.7	0.8	0.8	1.2	0.9	0.9

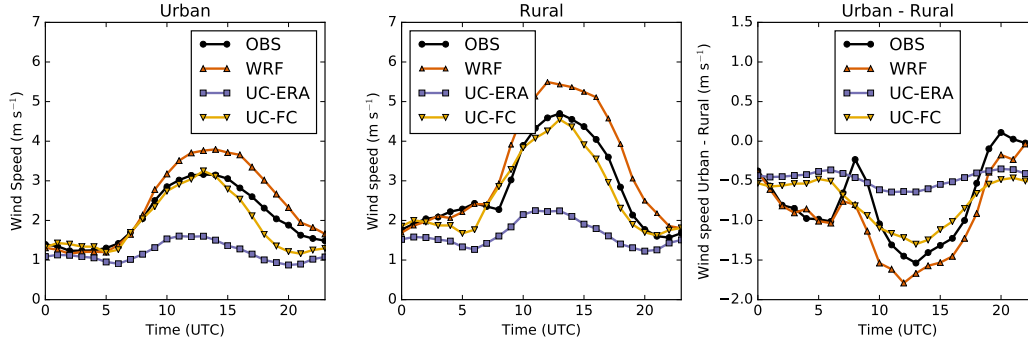
Figure 4. Average daily temperature cycle in the urban (left) and rural (middle) stations. The difference urban minus rural is shown in the panel on the right. The "UC-ERA", "UC-FC" and "WRF" legend codes are defined in section 2, while "OBS" represents the observation.



245 daily temperatures by up to +2°C ~~in~~^{at} some stations. This overestimation is associated with the misrepresentation of the sea breeze, which has larger effect on maximum temperatures(see below).
. This is discussed later in the manuscript. UC-ERA also overestimates the day-to-day variability, having higher Root Mean Square Error (RMSE) than the other runs. Instead, UC-FC and WRF show similar, smaller scores, which indicate the good performance of these simulations.

250 Figure 4 shows the average daily cycles for the urban and rural stations, as well as their difference. The average magnitude of the UHI during the night is found to be 2.5°C, which is large enough to have direct impacts on human health during heat wave episodes (Ye et al., 2012). During daytime hours, the UHI is found to decrease down to -0.5°C. Note that this is in very close agreement with

Figure 5. Same as figure 4, but for wind speed.



the values derived from observational data in (Moreno-García, 1994) Moreno-García (1994), despite
 255 it used two different reference points. The measurement of the UHI with only two points has some
 limitations, as it may be sensitive to very local features such as the land use in the vicinity of the
 stations. However, the representativeness of these points has been carefully checked with high reso-
 lution satellite images. In addition, the agreement with previous studies increases our confidence in
 the results here presented.

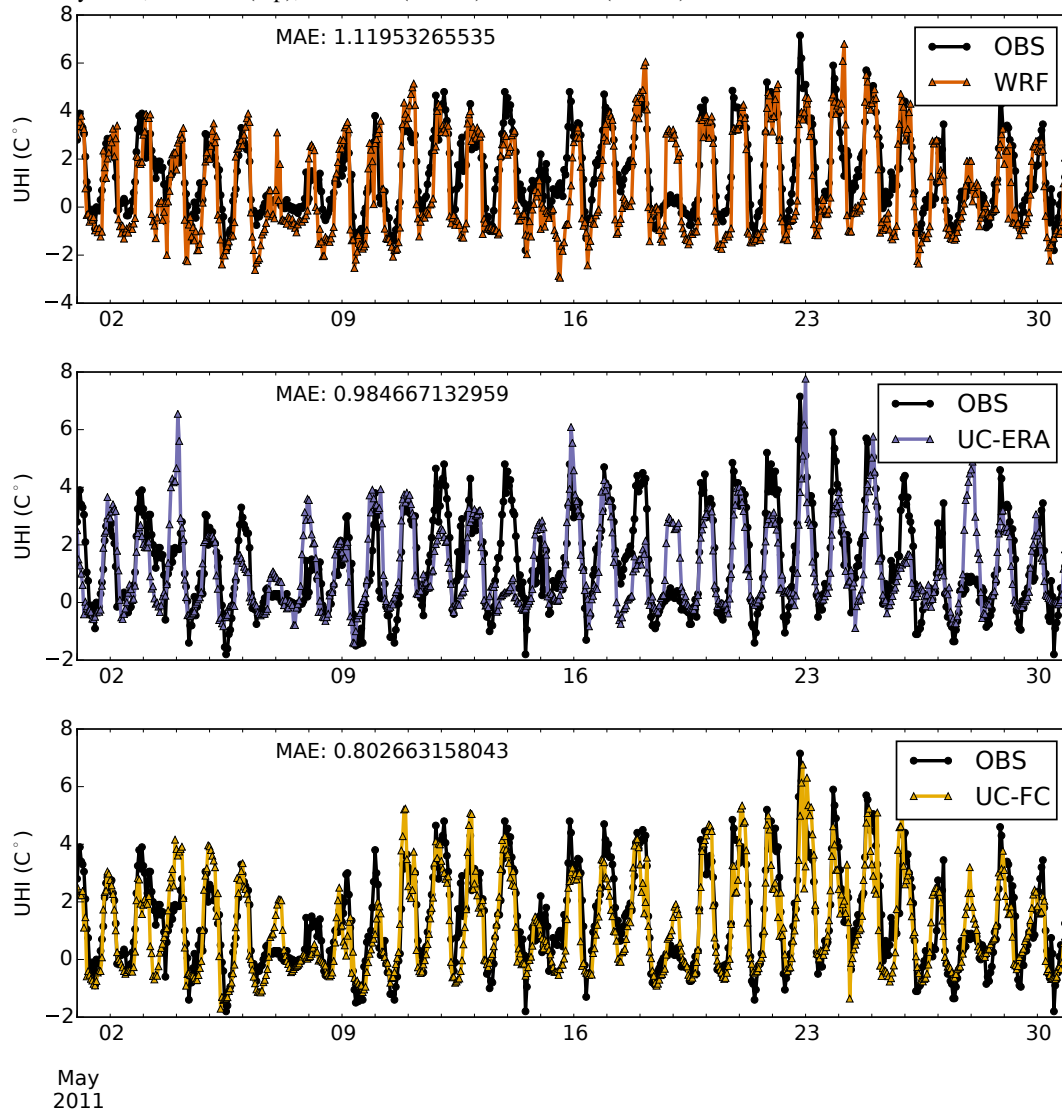
260 UC-ERA tends to overestimate temperatures ~~in~~ at both stations after 10 UTC and particularly
 during daytime hours, but errors in both stations cancel each other, and therefore the UHI magnitude
 is generally well represented with biases smaller than 0.5°C. The UHI average daily cycle is similar
 in UC-FC and UC-ERA, but UC-FC does not show any warm bias, and accurately reproduces the
 observed temperatures of the individual stations.

265 In the case of WRF, we initially considered the nearest gridpoint to the rural and urban stations,
 and biases in the three panels were found to be clearly larger than those in UrbClim (not shown).
 This problem was found to be related to the land use of the gridpoints, which were not representative
 of the land use of the stations. Indeed, the gridpoint representing the rural station was found to
 be classified as urban in the land cover map used by WRF. In order to address this problem, we
 270 considered a more representative, adjacent gridpoint to represent the rural station, which is used
 throughout the paper (see supplementary figures 1 and 2 for the details).

Results show that biases in WRF for the individual stations are large and negative throughout the
 day except in the evening, but comparable in magnitude to those in UC-ERA. In addition, although
 the UHI at noon is correctly reproduced by WRF, its bias is clearly larger at 7 (-1.5°C) and 17 UTC
 275 (-1°C).

Regarding the wind speed (figure 5), the intensity of the sea breeze is clearly underestimated in
 UC-ERA, with a bias of up to -2.5 ms⁻¹ at noon in the rural station. This problem is likely to be
 related with the coarse resolution of the ERA-Interim driving dataset, which is not able to resolve
 the sharp daytime, thermally-driven pressure gradient between the continent and the sea. The lack
 280 of sea breeze in turn explains the nearly constant daily cycle of the rural minus urban difference

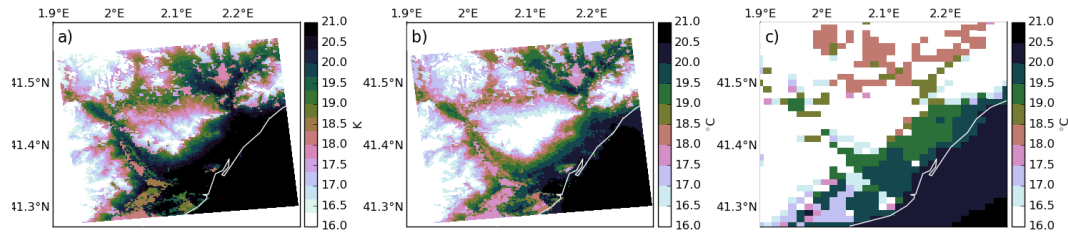
Figure 6. Hourly time series of the 2 meter temperature difference between the urban and the rural locations for May 2011, for WRF (top), UC-ERA (middle) and UC-FC (bottom).



in wind speed in UC-ERA. The wind regime is clearly better reproduced in the other simulations. UC-FC accurately reproduces the daily wind cycle in both the urban and rural stations, while WRF overestimates the wind speed by up to 1 ms^{-1} during daytime hours. Regarding the urban minus rural difference, WRF is the model that better captures the hourly evolution of the wind speed. UC-FC correctly simulates the overall magnitude of the difference, but it is not able to reproduce the secondary minima and maxima at 6 and 8 UTC.

It is interesting to highlight the day-to-day variability of the observed and simulated times series for the month of May (figure 6). The whole period is not shown for clarity, but the same conclusions are applicable for the other months. The daily evolution of the UHI is well represented in UC-FC and

Figure 7. Daily minimum temperature averaged over the period May-September 2011 in a) UC-ERA, b) UC-FC and c) WRF.



WRF, while biases of the order of up to 4°C at noon are found in UC-ERA for some specific days. However, the largest Mean Absolute Error (MAE) is found in WRF (1.11°C), due to the systematic underestimation of the UHI during daytime hours (figure 4). This underestimation is small, but persistent. The best MAE score is found in UC-FC (0.80°C), which shows regular skill with almost no large errors in specific days.

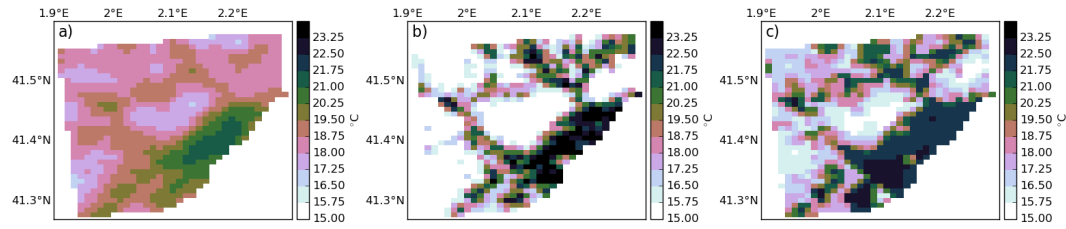
From these results, it is clear that the performance of UrbClim is largely improved as a result of the higher resolution of the ECMWF forecast model compared to ERA-Interim (15 km vs. 70 km). It is however unclear how to understand the comparison of WRF with UrbClim. On one hand, UC-ERA and WRF, which are both nested in the same reanalyses, display comparable scores regarding the magnitude of the UHI, although WRF better represents the wind speed and some spatio-temporal features of temperature.

However, WRF performs a full dynamical downscaling down to a resolution of 1.1 km, and therefore, in principle it should be able to achieve an accuracy similar to UC-FC. But, as we have shown, UC-FC exhibits better scores than WRF. Given the large number of factors involved, it is difficult to find an explanation to this result in physical terms. In general, WRF is more biased than UC-FC (figures 4, 5 and 6) and than the ECMWF forecast itself (not shown). It tends to underestimate temperatures and to overestimate the wind speed during the day. As WRF is very customizable, it could be possible, in principle, to find a configuration that removes these biases. However, WRF biases in wind speed are found to be difficult to correct, and research is yet ongoing in this line (García-Díez et al., 2015; Lorente-Plazas et al., 2016).

3.2 Spatial pattern

The evaluation of the spatial variability simulated by the urban climate model is a challenging issue due to the lack of reliable, high-resolution observations. Figure 7 shows the average daily minimum temperatures for UC-ERA, UC-FC and WRF, for the 5 months considered. Although both models are able to resolve the main features of the UHI of Barcelona, the surrounding cities and the airport, the UrbClim run at a resolution of 250 m provides much more detailed information, e.g. a clear representation of the hill to the southwest of the city centre. UC-ERA is generally warmer than UC-

Figure 8. Land surface temperature averaged during nighttime hours over the period May-September 2011 in MODIS (left), UC-ERA (center) and WRF (right).



FC, due to the mis-representation of winds, but the spatial patterns are very similar. In addition, the temperature difference is similar in the urban and rural sites.

Unfortunately, the scarcity of surface observations did not allow us to evaluate the spatial patterns at the screen level, and therefore we evaluated the spatial variability of the model by analysing the MODIS satellite LST, as described in section 2.2.

During the night, both UC-ERA and WRF have been found to overestimate LST over urban areas, and therefore also the LST UHI (figure 8). This is surprising, given the small error found in the evaluation of the screen level UHI. Other studies (Zhou et al., 2015) found small errors when comparing MODIS and UrbClim LST in and around the city of London. As mentioned in the introduction, measuring LST over urbanised areas is challenging, due to the uncertainties associated with the measurement of both the radiation and the emissivity. The By comparing modeled (panels b and c) and observed (panel a) maps in figure 8, it can be seen that the bias outside the urban areas is found to be relatively small in WRF(figure 8), and slightly negative in UC-ERA, while the spatial patterns are reasonably similar between the models and the satellite data. Determination of emissivity over urban areas is notoriously difficult and subject to large uncertainties, which could explain at least part of model deviation of LST. The spatial Pearson correlations between the observed and simulated fields are 0.77 ± 0.025 for UC-ERA and 0.70 ± 0.03 for WRF, where the confidence bounds were computed with bootstrapping (1000 samples). Thus, the spatial correlation in UC-ERA is higher, and the difference is statistically significant. However, taking into account the above-mentioned differences in the bias, we conclude that the performance of the spatial pattern in WRF and UC-ERA are comparable.

It is worth mentioning that the MODIS LST appears to have an effective resolution coarser than 1 km, given that the spatial patterns are smooth and do not resolve many detailed features. Finally, as mentioned in the introduction, LST and Surface Air Temperature (SAT) Urban-Heat-Islands-UHIs are not equivalent, and are driven by different phenomena. Thus, it is also possible that models that reproduce the SAT UHI correctly generate at the same time a biased LST UHI.

3.3 Computational resources

In this section, the computational resources required by UrbClim and WRF are compared. The comparison is not fully trivial because UrbClim does not currently support running in parallel, which can be seen as an important drawback. However, UrbClim does not require a long spin-up, and therefore the simulations can be parallelised just by splitting the time period in subperiods and run the corresponding simulations simultaneously in different machines or nodes.

For a direct comparison, both models were run in the local cluster of the Institut Català de Ciències del Clima (IC3), while the main UrbClim runs used in the paper were carried out in the VITO cluster. The IC3 cluster is made of 48 homogeneous server blades, having each of them two "quad core" processors, 48GB of memory, 146GB of disk space and fast network interconnect (Infiniband). The blade model is Sun Blade X6270 (see <http://www.oracle.com/us/products/servers-storage/servers/ blades/sun-blade-x6270-m2-ds-080923.pdf> for a full description) equipped with Xeon (Nehalem) X5570 processors. Results are summarized in table 2. With these settings, a WRF simulation of 36 hours took 2.5 hours to finish (using an average of 10 simulations), including the preprocess carried out with the WRF preprocessor (WPS). This preprocess was run in serial, in 1 core, while WRF was run in 16 cores, this is, two blades. Thus, the total serial equivalent wall-time was 40 hours, assuming perfect scaling (the real value will be somewhat below). WRF was compiled using the Intel fortran compiler version 14.0.1 with the Intel MPI Library for Linux OS, Version 4.1 Update 3.

Regarding UrbClim, for this test, it has been compiled with the same compiler and run in the same cluster. A 36-hours simulation with UrbClim took 0.3 hours to finish (average of 10 simulations) running in one core. Thus, UrbClim running at 250 m resolution is found to be 133 times faster than WRF at 1 km resolution. This enables downscaling large climate change ensembles for a big collection of cities.

Note that the UrbClim speed is not only explained by the smaller number of gridpoints (table 2), but especially because of the simplicity of the dynamical core, and the smaller number of parameterizations, compared to WRF.

4 Conclusions

In the present work, we have evaluated the performance of a boundary-layer urban climate model (UrbClim) for the warm season in the city of Barcelona. We were particularly interested in the study of the ~~urban-heat-island (UHI)~~ UHI effect, given that it represents a major source of health problems in summer for vulnerable people living in urban environments (e.g. heat stress, temperature-related mortality, pollution, vector-borne diseases). We have compared this model (UC-ERA) with the output of a regional climate model (WRF), and analysed the effect of the model resolution in the driving simulation (UC-ERA vs. UC-FC). All these simulation have been evaluated against observations

from meteorological stations and satellite data (MODIS), in order to analyse the temporal and spatial variability of the UHI effect, respectively.

The main conclusions of our work can be summarised as follows:

- The average UHI in the city of Barcelona during the warm season (May-September) reaches 2.5°C at night. This is relevant for the study of climate impacts, given that it increases the stress to the vulnerable population and for the health care systems under extreme conditions.
- UrbClim correctly reproduces the UHI of Barcelona when it is nested to the coarse dataset of ERA-Interim, ~~with some systematic biases~~ while it suffers from a general warm bias. When it is nested to a higher resolution model (ECMWF IFS), UrbClim additionally reproduces well the temperature evolution of the individual rural and urban stations used for the calculation of the UHI.
- ~~UC-ERA and WRF reproduce the UHI of Barcelona with comparable skill, but WRF provides less detailed spatial information and it demands much larger computational resources~~ WRF is less biased than the UrbClim run nested in ERA-Interim, and both runs show comparable skill on reproducing the UHI.
- The spatial pattern of LST is similar in UrbClim and WRF, even though significant biases are found in both models when they are evaluated against MODIS data.

In conclusion, UrbClim has been found to be well suited for the numerical description of the UHI of Barcelona, providing an accurate description of the temperature field. The choice between UrbClim and WRF for the simulation of the urban environment largely depends on the type of variable and process that is to be analysed. WRF has the advantage of providing a more detailed and complete description of atmospheric winds and rainfall, which is required in some applications (e.g. pollutant dispersion, urban effect in rainfall). On the other hand, UrbClim has been proven to be as accurate as WRF on reproducing the UHI of Barcelona during the warm season, and several orders of magnitude faster. This opens the door to the performance of multi-decadal simulations of urban heat stress in a large number of cities at a reasonable computational cost, using multi-scenario and multi-GCM ensembles to account for uncertainty, and testing for urban adaptation scenarios.

We found that, in cities affected by strong mesoscale flows (e.g. sea breeze) such as Barcelona, it must be taken into account that UrbClim will be subject to inaccuracies caused by the misrepresentation of the wind, in case that it is nested in a low resolution model.

Note that this is a specific problem of Barcelona, given that it has not been found in other European cities where UrbClim driven by ERA-Interim has been successfully tested (De Ridder et al., 2015; Lauwaet et al., 2016; Zhou et al., 2015). From these results, it is reasonable to infer that the skill of UrbClim, and probably of other similar urban boundary layer models, is constrained by the

Table 2. Summary of the results of the benchmarking. The number of gridpoints represents the total number of gridpoints in the model domain, which is 121*121*19 in UrbClim, and 100*80*40 + 136*112*40 + 121*97*40 in case of WRF (taking into account the three nested domains).

Model	Number of gridpoints	Horizontal resolution	Time step	Wall-time for 36h
UrbClim	278,179	0.25 km	adaptative ⁵	0.3 h
WRF	1,398,760	1.1 km (10x3.3x1.1)	60 s	40 h

410 performance of the driving model, and particularly for variables that are important for the UHI, this is, wind speed and cloudiness.

Code and data availability

The Urbclim source code is not publicly available. In order to access it, a specific agreement needs to be signed with VITO. Please contact koen.deridder@vito.be for more details. The WRF model is an
 415 open source model, and its code is freely available upon registration in http://www2.mmm.ucar.edu/wrf/users/download/get_source.html. Weather station data from the Catalan and Spanish meteorological agencies is available for research purposes upon request in dades@meteo.cat and <https://sede.aemet.gob.es/AEMET/es/GestionPeticones/home> respectively. MODIS data were downloaded from the "Reverb" NASA tool <http://reverb.echo.nasa.gov>, where it is freely available upon registration.
 420 The CORINE land cover is available in the EEA website <http://www.eea.europa.eu/publications/COR0-landcover> free of charge for both commercial and non-commercial purposes.

Acknowledgements. The work described in this paper has received funding from the European Community's 7th Framework Programme under Grant Agreements No. 308299 (NACLIM) and 308291 (EUPORIAS). J. Ballester gratefully acknowledges funding from the European Commission through a Marie Curie International
 425 Outgoing Fellowship (project MEMENTO from the FP7-PEOPLE-2011-IOF call), and from the European Commission and the Catalan Government through a Marie Curie - Beatriu de Pinós Fellowship (project 00068 from the BP-DGR-2014-B call).

⁵20 s for the soil scheme and adaptative for the atmosphere, using the Courant-Friedrichs-Lévy stability criterion.

References

- Argüeso, D., Evans, J. P., Pitman, A. J., and Luca, A. D.: Effects of City Expansion on Heat Stress under Climate Change Conditions, *PLOS ONE*, 10, e0117066, doi:10.1371/journal.pone.0117066, 2015.
- Arnfield, A. J.: Two decades of urban climate research: a review of turbulence, exchanges of energy and water, and the urban heat island, *Int. J. Climatol.*, 23, 1–26, doi:10.1002/joc.859, 2003.
- Ballester, J., Douville, H., and Chauvin, F.: Present-day climatology and projected changes of warm and cold days in the CNRM-CM3 global climate model, *Clim Dyn.*, 32, 35–54, doi:10.1007/s00382-008-0371-0, 2009.
- 435 Ballester, J., Giorgi, F., and Rodó, X.: Changes in European temperature extremes can be predicted from changes in PDF central statistics, *Climatic Change*, 98, 277–284, doi:10.1007/s10584-009-9758-0, 2010a.
- Ballester, J., Rodó, X., and Giorgi, F.: Future changes in Central Europe heat waves expected to mostly follow summer mean warming, *Clim Dyn.*, 35, 1191–1205, doi:10.1007/s00382-009-0641-5, 2010b.
- Ballester, J., Robine, J.-M., Herrmann, F. R., and Rodó, X.: Long-term projections and acclimatization scenarios of temperature-related mortality in Europe, *Nat Commun.*, 2, 358, doi:10.1038/ncomms1360, 2011.
- 440 Chen, F., Kusaka, H., Bornstein, R., Ching, J., Grimmond, C. S. B., Grossman-Clarke, S., Loridan, T., Manning, K. W., Martilli, A., Miao, S., Sailor, D., Salamanca, F. P., Taha, H., Tewari, M., Wang, X., Wyszogrodzki, A. A., and Zhang, C.: The integrated WRF/urban modelling system: development, evaluation, and applications to urban environmental problems, *Int. J. Climatol.*, 31, 273–288, doi:10.1002/joc.2158, 2011.
- 445 Ching, J. K. S.: A perspective on urban canopy layer modeling for weather, climate and air quality applications, *Urban Climate*, 3, 13–39, doi:10.1016/j.uclim.2013.02.001, 2013.
- Chrysoulakis, N., de Castro, E. A., and Moors, E. J.: Chapter 7: Meso-scale meteorological models in the urban context, in: *Understanding Urban Metabolism: A Tool for Urban Planning*, pp. 69–79, Routledge, 2014.
- De Ridder, K., Lauwaet, D., and Maiheu, B.: UrbClim – A fast urban boundary layer climate model, *Urban Climate*, 12, 21–48, doi:10.1016/j.uclim.2015.01.001, 2015.
- 450 Dee, D., Uppala, S., Simmons, A., Berrisford, P., Poli, P., Kobayashi, S., Andrae, U., Balmaseda, M., Balsamo, G., Bauer, P., et al.: The ERA-Interim reanalysis: Configuration and performance of the data assimilation system, *Quarterly Journal of the Royal Meteorological Society*, 137, 553–597, 2011.
- Dousset, B., Gourmelon, F., Laaidi, K., Zeghnoun, A., Giraudet, E., Bretin, P., Mauri, E., and Varentorren, S.: Satellite monitoring of summer heat waves in the Paris metropolitan area, *Int. J. Climatol.*, 31, 313–323, doi:10.1002/joc.2222, 2011.
- 455 Fernández-Quiruelas, V., Fernández, J., Cofiño, A. S., Blanco, C., García-Díez, M., Magariño, M., Fita, L., and Gutiérrez, J. M.: WRF4G: WRF experiment management made simple, *Geosci. Model Dev. Discuss.*, 8, 6551–6582, doi:10.5194/gmdd-8-6551-2015, 2015.
- 460 Gabriel, K. M. and Endlicher, W. R.: Urban and rural mortality rates during heat waves in Berlin and Brandenburg, Germany, *Environmental Pollution*, 159, 2044–2050, doi:10.1016/j.envpol.2011.01.016, 2011.
- García-Díez, M., Fernández, J., San-Martín, D., Herrera, S., and Gutiérrez, J.: Assessing and Improving the Local Added Value of WRF for Wind Downscaling, *J. Appl. Meteor. Climatol.*, doi:10.1175/JAMC-D-14-0150.1, 2015.
- 465 Georgescu, M., Morefield, P. E., Bierwagen, B. G., and Weaver, C. P.: Urban adaptation can roll back warming of emerging megapolitan regions, *PNAS*, 111, 2909–2914, doi:10.1073/pnas.1322280111, 2014.
- Giorgi, F.: Climate change hot-spots, *Geophysical research letters*, 33, 2006.

- Giorgi, F. and Bi, X.: A study of internal variability of a regional climate model, *J. Geophys. Res.*, 105, 29 503–29 521, doi:10.1029/2000JD900269, 2000.
- 470 Hong, S.-Y. and Pan, H.-L.: Nonlocal Boundary Layer Vertical Diffusion in a Medium-Range Forecast Model, *Mon. Wea. Rev.*, 124, 2322–2339, doi:10.1175/1520-0493(1996)124<2322:NBLVDI>2.0.CO;2, 1996.
- Huszar, P., Halenka, T., Belda, M., Zak, M., Sindelarova, K., and Miksovsky, J.: Regional climate model assessment of the urban land-surface forcing over central Europe, *Atmospheric Chemistry and Physics*, 14, 12 393–12 413, doi:10.5194/acp-14-12393-2014, 2014.
- 475 Kikegawa, Y., Genchi, Y., Kondo, H., and Hanaki, K.: Impacts of city-block-scale countermeasures against urban heat-island phenomena upon a building’s energy-consumption for air-conditioning, *Applied Energy*, 83, 649–668, doi:10.1016/j.apenergy.2005.06.001, 2006.
- Kolokotroni, M., Ren, X., Davies, M., and Mavrogiani, A.: London’s urban heat island: Impact on current and future energy consumption in office buildings, *Energy and Buildings*, 47, 302–311, doi:10.1016/j.enbuild.2011.12.019, 2012.
- 480 Kusaka, H., Kondo, H., Kikegawa, Y., and Kimura, F.: A Simple Single-Layer Urban Canopy Model For Atmospheric Models: Comparison With Multi-Layer And Slab Models, *Boundary-Layer Meteorology*, 101, 329–358, doi:10.1023/A:1019207923078, 2001.
- Kusaka, H., Hara, M., and Takane, Y.: Urban Climate Projection by the WRF Model at 3-km Horizontal Grid Increment: Dynamical Downscaling and Predicting Heat Stress in the 2070’s August for Tokyo, Osaka, and Nagoya Metropolises, *Journal of the Meteorological Society of Japan. Ser. II*, 90B, 47–63, doi:10.2151/jmsj.2012-B04, 2012.
- 485 Lauwaet, D., Hooyberghs, H., Maiheu, B., Lefebvre, W., Driesen, G., Van Looy, S., and De Ridder, K.: Detailed Urban Heat Island Projections for Cities Worldwide: Dynamical Downscaling CMIP5 Global Climate Models, *Climate*, 3, 391–415, doi:10.3390/cli3020391, 2015.
- 490 Lauwaet, D., De Ridder, K., Saeed, S., Brisson, E., Chatterjee, F., van Lipzig, N. P. M., Maiheu, B., and Hooyberghs, H.: Assessing the current and future urban heat island of Brussels, *Urban Climate*, 15, 1–15, doi:10.1016/j.uclim.2015.11.008, 2016.
- Lee, S.-H., Kim, S.-W., Angevine, W. M., Bianco, L., McKeen, S. A., Senff, C. J., Trainer, M., Tucker, S. C., and Zamora, R. J.: Evaluation of urban surface parameterizations in the WRF model using measurements during the Texas Air Quality Study 2006 field campaign, *Atmos. Chem. Phys.*, 11, 2127–2143, doi:10.5194/acp-11-2127-2011, 2011.
- 495 Lorente-Plazas, R., Jiménez, P. A., Dudhia, J., and Montávez, J. P.: Evaluating and improving the impact of the atmospheric stability and orography on surface winds in the WRF model, *Mon. Wea. Rev.*, doi:10.1175/MWR-D-15-0449.1, 2016.
- 500 McMichael, A. J., Woodruff, R. E., and Hales, S.: Climate change and human health: present and future risks, *The Lancet*, 367, 859–869, doi:10.1016/S0140-6736(06)68079-3, 2006.
- Meehl, G. A. and Tebaldi, C.: More Intense, More Frequent, and Longer Lasting Heat Waves in the 21st Century, *Science*, 305, 994–997, doi:10.1126/science.1098704, 2004.
- 505 Menendez, M., García-Díez, M., Fita, L., Fernández, J., Méndez, F. J., and Gutiérrez, J. M.: High-resolution sea wind hindcasts over the Mediterranean area, *Clim Dyn*, 42, 1857–1872, doi:10.1007/s00382-013-1912-8, 2014.

- Moreno-García, M. C.: Intensity and form of the urban heat island in Barcelona, *International Journal of Climatology*, 14, 705–710, 1994.
- 510 Oke, T. R.: The energetic basis of the urban heat island, *Q.J.R. Meteorol. Soc.*, 108, 1–24, doi:10.1002/qj.49710845502, 1982.
- Redaño, A., Cruz, J., and Lorente, J.: Main features of the sea-breeze in Barcelona, *Meteorol. Atmos. Phys.*, 46, 175–179, doi:10.1007/BF01027342, 1991.
- Ridder, K. D. and Schayes, G.: The IAGL Land Surface Model, *J. Appl. Meteor.*, 36, 167–182, doi:10.1175/1520-0450(1997)036<0167:TILSM>2.0.CO;2, 1997.
- 515 Robine, J.-M., Cheung, S. L. K., Le Roy, S., Van Oyen, H., Griffiths, C., Michel, J.-P., and Herrmann, F. R.: Death toll exceeded 70,000 in Europe during the summer of 2003, *Comptes Rendus Biologies*, 331, 171–178, doi:10.1016/j.crvi.2007.12.001, 2008.
- Schwarz, N., Lautenbach, S., and Seppelt, R.: Exploring indicators for quantifying surface urban heat islands of European cities with MODIS land surface temperatures, *Remote Sensing of Environment*, 115, 3175–3186, doi:10.1016/j.rse.2011.07.003, 2011.
- 520 Skamarock, W., Klemp, J., Dudhia, J., Gill, D., Barker, D., Duda, M., Wang, W., and Powers, J.: A description of the Advanced Research WRF Version 3, Tech. rep., NCAR, 2008.
- Voogt, J. A. and Oke, T. R.: Effects of urban surface geometry on remotely-sensed surface temperature, *International Journal of Remote Sensing*, 19, 895–920, doi:10.1080/014311698215784, 1998.
- 525 Wan, Z.: New refinements and validation of the MODIS Land-Surface Temperature/Emissivity products, *Remote Sensing of Environment*, 112, 59–74, doi:10.1016/j.rse.2006.06.026, 2008.
- Ye, X., Wolff, R., Yu, W., Vaneckova, P., Pan, X., and Tong, S.: Ambient temperature and morbidity: a review of epidemiological evidence, *Environmental health perspectives*, 120, 19–28, 2012.
- 530 Zhao, L., Lee, X., Smith, R. B., and Oleson, K.: Strong contributions of local background climate to urban heat islands, *Nature*, 511, 216–219, doi:10.1038/nature13462, 2014.
- Zhou, B., Lauwaet, D., Hooyberghs, H., De Ridder, K., Kropp, J. P., and Rybski, D.: Assessing seasonality in the surface urban heat island of London, *J. Appl. Meteor. Climatol.*, doi:10.1175/JAMC-D-15-0041.1, 2015.