

Reply to Review 2

We summarize our answers to the questions of referee #2. We agree with referee #2 that some sections of the manuscript, mainly section 2.1 need clarification. So we explain in more detail the two versions of the shortwave radiation scheme and also the interaction of FUBRAD and RAD_SHORT is clarified (see changed manuscript, attached to this reply; changes are highlighted). The manuscript is changed accordingly (wherever applicable).

General Questions

1) Difference of the two versions of the shortwave radiation schemes

In RAD_SHORT_V1 simplified assumptions for low aerosol loadings in the clear sky conditions are considered. For efficiency reasons, the effects of multiple reflection and the interactions between aerosol scattering and gaseous absorption were neglected (Thomas, 2008). The assumptions in RAD_SHORT_V1 are not valid for high aerosol loadings after volcanic eruptions. Thus, in RAD_SHORT_V2 modifications were made in the model to include these effects, showing that the multiple reflection effect is a dominant effect for scattering particles (Thomas, 2008). Thus, the version RAD_SHORT_V2 is the improved shortwave version. As in the MESSy philosophy several different implementations of processes and diagnostics can coexist in the same model code, RAD_SHORT_V1 coexists, besides the more reliable version RAD_SHORT_V2. Advantage of this coexistence is e.g. the comparison of the two radiation schemes or to recalculation of older setups. So within the MESSy framework it would be also possible to implement the shortwave radiation scheme of Cagnazzo et al. (2007) as an additional alternative to RAD_SHORT_V1 and RAD_SHORT_V2.

2) Interaction RAD_FUBRAD and RAD_SHORT

RAD_FUBRAD is a sub-Submodel to RAD, which increases the resolution in the UV-Vis part of the solar spectrum. Yes, FUBRAD works only in the stratosphere and mesosphere. If FUBRAD is switched on, shortwave radiation fluxes due to ozone and oxygen are calculated at pressures equal or lower than 70hPa in the UV-Vis with FUBRAD (replacing the shortwave radiation scheme of Fouquart and Bonnel). At pressures higher than 70hPa in the UV-Vis shortwave radiation fluxes are calculated in one spectral interval by either RAD_SHORT_V1 or RAD_SHORT_V2. Thus, in regard to content RAD and FUBRAD are clearly separated. Technically there is some overlap between RAD_FUBRAD and RAD in the SMCL in the subroutine rad_sw_SW1S of RAD_SHORT_V1/V2 (more details are given in the text).

RAD_SHORT_CMN is not concerned with FUBRAD: The RAD_SHORT_CMN module contains definitions and an initialization subroutine, which are commonly used in RAD_SHORT_v1 and RAD_SHORT_v2, respectively (as mentioned in chapter 2.1). RAD_FUBRAD calculates heating rates in the middle atmosphere for the UV-Vis part of the solar spectrum. If the sub-submodel FUBRAD is switched on, RAD_FUBRAD is called from the shortwave calculation RAD_SHORT_v1 or RAD_SHORT_v2.

3) several calls of AEROPT and CLOUDOPT

Yes it is possible to combine various setups of AEROPT and CLOUDOPT for diagnostic calls within one simulation. AEROPT and CLOUDOPT can be independently called several times.

Specific comments of Review 2:

Introduction: The introduction clearly states the motivation behind the re-organization. I think it would be very helpful to clearly list the modifications and new diagnostics as well. For example, it is not clear to me whether it was already with RAD4ALL possible to call the radiation n times or with different aerosol or cloud set-ups.

→ *done!* Besides the new structure of the radiation with the resulting independent submodels RAD, ORBIT, AEROPT, and CLOUDOPT, the most important modifications and new diagnostics are listed here:

- In RAD the import of external variables needed for radiation calculation (e.g. prescribed climatologies) is now done via the module IMPORT (data import from external files, Kerkweg and Jöckel, 2015).
- Within the submodel RAD a new important diagnostic feature is the calculation of radiative forcing by diagnostically calling the radiation routines several times.
- AEROPT can be called several times with different settings for the required aerosol optical properties simultaneously. At the time being three options for getting the aerosol optical properties are possible (Tanre climatology, offline input via IMPORT or online calculation).
- CLOUDOPT can be called several times and cloud optical properties of cloud coverages and cloud perturbations can be calculated individually.
- Updated version of FUBRAD with increased spectral resolution.

P3, L19: "the combination of . . . is inconsistent. . ."

→ As text has changed, this is obsolete.

Sect. 2.2: Spectral resolution of RAD_FUBRAD? On P4, L29 it is written that RAD_FUBRAD has 55 or 106 spectral bands in the UV-VIS band (250-690 nm). On P5, L8/9 it is written that the Chappuis band is resolved by either 1 band in the original version of the module or by 6 or 57 bands in the version of Kunze et al. (2014). So I assume that the overall 55 or 106 bands refer to the version of Kunze et al. (2014). How many bands in total does the original version then have? I am a bit confused about the various spectral resolutions. Please clarify.

→ Possible are 55 (default), 106, and 49 spectral bands. The old (original) version has 49 spectral bands, however this version is not recommended as it leads to an inconsistent flux profile and misleading flux diagnostics. The 49 spectral bands of the old version are now mentioned in the text.

P5, L13: Shine and Rickaby (1989)

→ As text has changed, this is obsolete.

P6, top: Please provide a reference for the CCMI stratospheric and volcanic aerosol

→ Done. For CCMI Input data there is no reference in peer reviewed literature. They can be found under the link ftp://iacftp.ethz.ch/pub_read/luo/ccmi. And there is a "Release note" there.

P7, L5: What is the purpose of several calls to the submodel AEROPT with different settings simultaneously?

→ This is the requirement for the (optional) multiple diagnostic calls of the radiation routines with different aerosol properties: AEROPT can be diagnostically called with different settings for aerosol optical properties simultaneously, e.g. with different approaches (internal or external mixture) or with different parametrisations (TANRE vs explicit calculations). Then, by calling the radiation routines with different aerosol optical properties, their radiative forcing can then be determined, including sensitivities with respect to the setting.

P8, L5: I have a general question on the spectral resolution of the shortwave scheme. Here you mention the 4 bands of the standard ECHAM5 shortwave radiation scheme. Cagnazzo et al. (2007) increased the number of shortwave bands from 4 to 6 for the middle atmosphere version of ECHAM5. Is this version of the shortwave scheme also available within the MESSy radiation code?

→ The shortwave radiation scheme of Cagnazzo et al. (2007) is not included in EMAC yet, however with the new, MESSy conform infrastructure of the radiation code, it should be technically easy to extend the MESSy code by an additional shortwave radiation scheme (besides the existing versions RAD_short_v1/v2).

P9, L15: It would be helpful to mention that the first call of the radiative calculation provides the temperature feedback. This information is only given in the supplement material, but I think it would be helpful to mention it in the main part of the paper as well.

→ Done in chapter 2.1.

P9, L21: The statement that the calculated volcanic heating rates are comparable to Stenchikov et al. (1998) needs some more discussion.

→ Done. For August 1991 the heating rates of our model are in structural good agreement with Stenchikov et al. (1998), showing the maximum between 0-10°S at 20 hPa, however values are higher (up to a maximum of 0.9 K/d) in our model. Also January 1992 shows structural good agreement with Stenchikov et al. (1998) (zonally averaged pictures of August 1991 and January 1992 are not shown).

How comparable is the CCMI data set to Stenchikov et al. (1998) in terms of aerosol distribution and optical properties?

→ We did not compare the two data sets explicitly, because this is beyond the scope of this paper. The data set of Stenchikov et al. (1998) is a spectral-, space-, and time-dependent set of aerosol parameters for 2 years after the Pinatubo eruption using a combination of SAGE II aerosol extinctions and UARS-retrieved effective radii, supported by SAM II, AVHRR, lidar and balloon observations. The CCMI data set is primarily based on the SAGE series of measurements, but has been extended in time using CALIPSO and GOMOS, and into the past using volcanic records and simple modeling and now spans 1960 to 2013.

P9, L23-25: Again I am a bit confused about the two versions of RAD_SHORT. . . Which heating rates are more reliable, SW_v1 or SW_v2? Where do the differences between SW_v1 and SW_v2 come from and in which sense are they in agreement with Thomas (2008)?

→ The heating rates of SW_v2 are more reliable, as the effects of multiple reflection and the interactions between aerosol scattering and gaseous absorption (which are important for high aerosol loadings after volcanic eruptions) are neglected in SW_v1 (see Thomas, 2008). That is why, in agreement with Thomas et al. (2008), SW heating rates are overestimated due to the simplified assumptions for low aerosol loadings in the clear sky conditions, which are not valid for high aerosol loadings after volcanic eruptions (see Figure 2). Text changed accordingly.

P11, L27: lead to -> led to ?

→ done

P12, L11: For a better comparability - how large is the estimate by Stevenson et al. (2013)? Please provide the value.

→ Sorry, the citation was wrong. The correct citation is Myhre et al. 2013, their table 8.3. The corresponding value of -0.02 W/m² is now given in the text.

P13, L12: Could you provide the date of the next official MESSy release?

→ There is no regular date of the official MESSy releases. However, all modifications and new diagnostics mentioned in this paper are implemented in the versions 2.51 and 2.52, which are available now.

Figure 1: What is the meaning of the different colors of the arrows? What does the dashed blue arrow to RAD_FUBRAD_E5 mean? The communication among the different shortwave routines is not absolutely clear to me (see major comment above).

→ The blue arrows indicate the input to RAD and RAD_FUBRAD (dashed) via the channel infrastructure and the red arrows indicate the trigger, passed from RAD to ORBIT. The black arrows indicate the dependencies of the Fortran95 modules through Fortran USE statements. The direction of the arrows indicates where the different modules are used. For the communication between the different shortwave routines see answers above. Changed figure caption accordingly.

Table 1, caption: varied -> varied
→ *corrected*

Table 2: net adjusted RF contrail: space missing -> 0.113 (0.113)
→ *corrected*

Specific comments on the supplement

Is the description of the various namelists complete or is there only a subset of namelist parameters described?

→ *Namelists are complete.*

P4: "The namelist entry r_inp(m,n) then contains. . ."

→ *Corrected.*

P4: ". . .decaying with elevation. . ." -> ". . .decaying with altitude. . ."

→ *Corrected.*

P4: #vgrad: How do you specify the vertical gradient of the GHG VMR?

→ *The formula of calculating the vertical gradient of the GHG volume mixing ratio is now given in the text.*

P5: CTRL_FUBRAD, nbands=49: Why is this option still included if there are known bugs/shortcomings related to that specific spectral resolution?

→ *MESSy philosophy: several different implementations of processes and diagnostics can coexist in the same model code (for e.g. for comparison or recalculation).*

P5: Could you please briefly say what the acronym VISO means, for non-MESSy experts?

→ *Yes. The diagnostic submodel, VISO, serves two purposes. First, it is used to diagnose vertically layered, 2-D iso-surfaces in 3-D scalar fields in Eulerian (grid-point) representation. The second application of VISO is for mapping 3-D scalar fields in Eulerian (grid-point) representation on surfaces defined by a level index (and optionally by a fraction of the box), as for instance an iso-surface defined by the same submodel (Jöckel et al., 2010, Sect. 5.1)*

P8: CLOUDOPT, NCALL: Which call of CLOUDOPT is used for the radiative calculations, again the first call? Or can the n calls of CLOUDOPT be combined with n calls of the radiation scheme?

→ *Yes, the n calls of CLOUDOPT can be combined with n calls of the radiation scheme.*

References:

Myhre, G., D. Shindell, F.-M. Bréon, W. Collins, J. Fuglestedt, J. Huang, D. Koch, J.-F. Lamarque, D. Lee, B. Mendoza, T. Nakajima, A. Robock, G. Stephens, T. Takemura and H. Zhang, 2013: Anthropogenic and Natural Radiative Forcing. In: Climate Change 2013: The Physical Science Basis. Contribution of Working Group I to the Fifth Assessment Report of the Intergovernmental Panel on Climate Change [Stocker, T.F., D. Qin, G.-K. Plattner, M. Tignor, S.K. Allen, J. Boschung, A. Nauels, Y. Xia, V. Bex and P.M. Midgley (eds.)]. Cambridge University Press, Cambridge, United Kingdom and New York, NY, USA.

A new radiation infrastructure for the Modular Earth Submodel System (MESSy, based on version 2.51)

Simone Dietmüller^{1,3}, Patrick Jöckel¹, Holger Tost², Markus Kunze³, ~~Cathrin~~ Catrin Gellhorn³, Sabine Brinkop¹, Christine Frömming¹, Michael Ponater¹, Benedikt Steil⁴, Axel Lauer¹, and Johannes Hendricks¹

¹Deutsches Zentrum für Luft- und Raumfahrt (DLR), Institut für Physik der Atmosphäre, Oberpfaffenhofen, Germany

²Johannes-Gutenberg-University Mainz, Institut für Physik der Atmosphäre, Mainz, Germany

³Freie Universität Berlin, Institut für Meteorologie, Berlin, Germany

⁴Max-Planck-Institut für Chemie, Abteilung Atmosphärenchemie, Mainz, Germany

Correspondence to: S. Dietmüller
(simone.dietmueller@dlr.de)

Abstract. The Modular Earth Submodel System (MESSy) provides an interface to couple submodels to a basemodel via a highly flexible data management facility (Jöckel et al., 2010). In the present paper we present the four new radiation related submodels RAD, AEROPT, CLOUDOPT and ORBIT. The submodel RAD (~~with~~ including the shortwave radiation scheme RAD_FUBRAD) simulates the radiative transfer, the submodel AEROPT calculates the aerosol optical properties, the submodel CLOUDOPT calculates the cloud optical properties, and the submodel ORBIT is responsible for Earth orbit calculations. These submodels are coupled via the standard MESSy infrastructure and are largely based on the original radiation scheme of the general circulation model ECHAM5, however, expanded with additional features. These features comprise, among others, user-friendly and flexibly controllable (by namelists) on-line radiative forcing calculations by multiple diagnostic calls of the radiation routines. With this, it is now possible to calculate radiative forcing (instantaneous as well as stratosphere adjusted) of various greenhouse gases simultaneously in only one simulation, as well as the radiative forcing of cloud perturbations. Examples of on-line radiative forcing calculations in the ECHAM/MESSy Atmospheric Chemistry (EMAC) model are presented.

1 Introduction

The ECHAM/MESSy Atmospheric Chemistry (EMAC) model is a numerical chemistry climate model system that includes submodels describing tropospheric and middle atmosphere processes and their interaction with ocean, land, and human influences (Jöckel et al., 2006). The Modular Earth Submodel System (MESSy) is used to link different submodels for physical and chemical processes in the atmosphere (Jöckel et al., 2005). With MESSy2 the second development cycle of the Modular Earth Submodel System (see Jöckel et al., 2010) is available. The core atmospheric model of EMAC is the 5th generation of ECHAM general circulation model, developed by the Max Planck Institute for Meteorology (Roeckner et al., 2006). One of the fundamental concepts of MESSy is the strict separation of process and diagnostic implementations from the overall technical model infrastructure (e.g., run-control, input/output, memory management). To achieve this, the model code is organised in 4 different layers (Jöckel et al., 2010): the basemodel layer (BML), the basemodel interface layer (BMIL), the submodel inter-

face layer (SMIL) and the submodel core layer (SMCL). For process describing submodels, this implies that the code is split into a SMIL module and one or more SMCL modules, at which the SMIL module manages the connections to the overlying standardised model infrastructure, and the SMCL modules contain the actual process descriptions coded independently of the overlying basemodel.

5 The EMAC radiation submodel RAD4ALL is a re-implementation of the ECHAM5 radiation code, calculating radiative temperature tendencies depending on radiatively active parameters (Jöckel et al., 2006). The input parameters needed for the calculation of the shortwave and longwave radiation fluxes are radiatively active trace gases (O_3 , CH_4 , CO_2 , N_2O , CFC-11 and CFC-12), water vapour, cloud cover, clear-sky index, cloud optical properties (shortwave and longwave optical ~~thickness~~depth, asymmetry factor and single scattering albedo of cloud particles), aerosol optical properties (shortwave and
10 longwave optical thickness, single scattering albedo and asymmetry factor of aerosols) and orbital parameters (zenith angle of the sun, distance earth-sun and relative day length). The parametrisation of the radiative transfer in the ultraviolet and visible (UV-Vis, 0.25 μm –0.69 μm) and the near infrared (NIR, 0.69 μm –4.00 μm) is based on the 4 band scheme of Fouquart and Bonnel (1980). For the terrestrial (i.e. longwave) part of the spectrum the RRTM (Rapid Radiative Transfer Model, Mlawer et al., 1997) is used, subdividing the longwave spectrum into 16 bands ranging from 3.33 μm –1000 μm . Optionally, the high-
15 resolution shortwave radiation scheme FUBRAD is available within EMAC (Nissen et al., 2007; Kunze et al., 2014) to increase the spectral resolution of the single UV-Vis band in the stratosphere and mesosphere. ~~FUBRAD~~If activated, FUBRAD replaces the shortwave radiation scheme of Fouquart and Bonnel (1980) in UV-Vis for the layers between TOA and 70 hPa. FUBRAD has an improved spectral resolution of either 55 or 106 bands and is therefore especially suited for solar variability studies in the middle atmosphere, where a sufficiently high spectral resolution leads to an improved solar signal in short wave heating
20 rates and thus temperatures (Nissen et al., 2007; Forster et al., 2011). As it operates in the stratosphere and mesosphere, the relevant radiative processes at this altitude are considered, i.e. the heating due to absorption of UV by oxygen and ozone whereas Rayleigh-scattering, and scattering on aerosols and clouds are not considered (explicitly (for details see chapter 2.2)).

The development of a new EMAC radiation infrastructure was required, as the infrastructure of the radiation submodel
25 RAD4ALL has been associated with many disadvantages:

- In RAD4ALL a multitude of SMIL modules, one for each sub-process, exists.
- The calculation of orbital parameters, aerosol- and cloud optical properties are performed within the radiation submodel RAD4ALL, partly even within in the technically independent SMCL, although these calculations are conceptionally not subject of the radiation calculation itself.
- 30 – In RAD4ALL the import of prescribed gridded climatologies of radiatively active gases is directly utilising the data import interface NCREGRID (see Jöckel, 2006).
- A very cryptic, partly confusing code structure makes the implementation of new code, e.g. alternative radiation schemes, or the option of multiple diagnostic calls in one model time step, difficult and error-prone.

Hence, the model advancement described in this paper has been guided by the intention to re-organise RAD4ALL towards a new, more flexible, easily extendable and basemodel independent concept to couple the radiation submodel to the basemodel: only structural changes have been applied, changes in respect to the radiation calculation have not been addressed in this development. Hence, identical output to RAD4ALL is achieved with the revised radiation submodel called RAD.

5

~~In this paper we present the new modularised EMAC radiation code, which has been derived from RAD4ALL. The new radiation infrastructure, as well as a test case based on it, are presented in Section 2. In the new infrastructure, the new radiation infrastructure,~~ calculations of orbital parameters, aerosol optical properties and cloud optical properties are separated from the radiation code, resulting in the new independent submodels RAD (including the sub-submodel FUBRAD), ORBIT, AEROPT and CLOUDOPT. The most important modifications of these new submodels are:

10

- In RAD the optional import of external variables for the radiation calculation (e.g. prescribed climatologies of radiatively active gases) is now outsourced to the infrastructure submodel IMPORT (unified data import from external files; Kerkweg and Jöckel, 2015).
- Within the submodel RAD ~~online radiative forcing calculations are now possible, representing an important new diagnostic feature in EMAC.~~ An overview over a new important diagnostic feature is the option to calculate radiative forcing by diagnostically calling the radiation routines multiple times within one model time step.
- AEROPT can be called multiple times per model time step, with different settings for the required aerosol optical properties. At the moment three options for the aerosol optical properties are available.
- CLOUDOPT can be called multiple times per model time step, and the cloud optical properties of cloud coverages and cloud perturbations can be calculated individually.
- FUBRAD has been updated with an increased spectral resolution.

15

20

In this paper we present the new modularised EMAC radiation code, which has been derived from RAD4ALL. The new radiation infrastructure (with its new independent submodels), as well as a test case based on it, are presented in Section 2. An overview of the online radiative forcing calculation in EMAC and examples of radiative forcing calculations are given in Section 3. A short summary is provided ~~on~~ in Section 4.

25

2 New infrastructure for the EMAC radiation code

2.1 Submodel RAD

The new submodel RAD now provides a flexible, basemodel independent infrastructure for radiation calculation according to the MESSy standard. Fig. 1 shows the revised structure of RAD and its connection to other submodels. The right side of the diagram displays the relationship of the Fortran95 modules of the SMCL and the SMIL. In the basemodel independent SMCL

30

the Fortran95 modules RAD_ALBEDO, RAD_LONG and RAD_SHORT (RAD_SHORT_v1 and RAD_SHORT_v2, respectively) are USED¹ by the radiation SMCL module RAD. Two alternative shortwave radiation schemes are possible: the standard ECHAM5 radiation scheme (RAD_SHORT_v1) and the ECHAM5 radiation scheme modified according to Thomas (2008, RAD_SHORT_v2). ~~The latter includes modifications in the ECHAM5 near-infrared routines, as the combination of optical properties of different species are inconsistent~~ In RAD_SHORT_v1 simplified assumptions for low aerosol loadings under clear sky conditions are considered. For the sake of efficiency, the effects of multiple reflection and the interactions between aerosol scattering and gaseous absorption were neglected (Thomas, 2008). The assumptions made in RAD_SHORT_v1 are not valid for high aerosol loadings after volcanic eruptions. Thus, in RAD_SHORT_v2 modifications were made in the model to include these effects, showing that multiple reflection is a dominant effect for particle scattering (for details see Thomas, 2008). Thus, RAD_SHORT_v2 is more accurate.

The RAD_SHORT_CMN module contains definitions and an initialisation subroutine, which are commonly used in RAD_SHORT_v1 and RAD_SHORT_v2, respectively (Fouquart and Bonnel, 1980). If the improved high-resolution shortwave radiation sub-submodel FUBRAD (Nissen et al., 2007; Kunze et al., 2014) is switched on, RAD_FUBRAD is ~~used in addition to~~ called besides RAD_SHORT_CMN from the shortwave calculation (RAD_SHORT_v1 or RAD_SHORT_v2). ~~2.~~ Shortwave radiation fluxes due to ozone and oxygen are then calculated at pressures equal or lower than 70 hPa in the UV-Vis with FUBRAD (replacing the shortwave radiation scheme in RAD). At altitudes above 70 hPa the UV-Vis shortwave radiation fluxes are either calculated by RAD_SHORT_v1 in one spectral interval as in the original ECHAM5 code, or modified as in RAD_SHORT_v2. A detailed description of the sub-submodel RAD_FUBRAD is presented in section 2.2.. In the SMIL the modules RAD_E5 and RAD_FUB_E5 are responsible for the data transfer from the ECHAM5 basemodel and other submodels to RAD and from RAD via RAD_E5 to the basemodel. The calculated radiative temperature tendency of the first radiation call provides the temperature feedback (ΔT_{feed}) to the base model (see Fig. 1). The radiative temperature tendencies from multiple diagnostic calls are also available as diagnostic variables (ΔT_{diag}).

The left side of Fig. 1 shows the connections (mainly for RAD input) via the MESSy infrastructure submodel CHANNEL (Jöckel et al., 2010) to other submodels. The RAD input variables are provided by the submodels ORBIT (calculation of orbital parameters), IMPORT (data import from external files, Kerkweg and Jöckel, 2015), AEROPT (calculation of aerosol optical properties), and CLOUDOPT (calculation of cloud optical properties). The input for AEROPT is either provided from the dynamical aerosol models MADE (Lauer et al., 2007), MADE3 (Kaiser et al., 2014), M7 (Vignati et al., 2004), GMXE (Pringle et al., 2010), or from external data via IMPORT. The input for the submodel CLOUDOPT can be selected from the submodel CLOUD or from ~~offline data~~ external data via IMPORT.

The RAD user interface (a specific Fortran95 namelist) allows for a trigger (Δt_{rad}), which explicitly enables radiation calculation, as radiation is not obligatorily called every model time step, as it is computationally intensive. The corresponding time offset is calculated and provided as channel object to the submodel ORBIT. As ORBIT is called every time step, the orbital parameters are calculated with this time offset and are provided as channel objects back to RAD (see Fig. 1).

¹Fortran95 syntax

The submodel RAD is controlled by its namelists, ~~where it is possible~~ which enable to select a wide range of different setups, without re-compiling the code. The supplement of this paper contains a detailed description of the namelist settings of RAD. The main features of the radiation namelist are:

- A logical switch for the FUBRAD shortwave radiation scheme.
- 5 – The specification of the radiation time step.
- The possibility to modify the solar constant.
- Logical switches for diagnostically calling the radiation scheme multiple times ~~for each~~ within one model time step. These switches are required for radiative forcing calculations (see details in section 3).
- The choice between the shortwave radiation scheme RAD_SHORT_v1 and RAD_SHORT_v2.
- 10 – The selection of 18 input variables (listed in the supplement of this paper), required for the radiation calculation. These input variables are given by channel and channel object selection, for instance, from the channels ORBIT, AEROPT, CLOUDOPT and IMPORT, respectively (see Fig. 1). The radiative relevant input variables can either be provided online (via the submodels ORBIT, AEROPT, CLOUDOPT) or offline (e.g. via IMPORT in case the variables are available on a geographical grid). For greenhouse gases (GHGs), besides import of external data fields via IMPORT, two other offline
- 15 options are possible: the import of constant mixing ratios and of mixing ratios decaying with altitude.
- The FUBRAD namelists are included in the radiation namelist file. Here, the solar cycle conditions and the spectral resolution can be set.

2.2 Sub-submodel RAD_FUBRAD

To achieve a higher spectral resolution for the UV-Vis band, the sub-submodel RAD_FUBRAD (Nissen et al., 2007; Kunze et al., 2014) is used. It operates ~~in the stratosphere and mesosphere,~~ at pressure levels ~~below~~ above 70 hPa. ~~–, i.e. in the stratosphere and mesosphere.~~ RAD_FUBRAD substitutes the UV-Vis band (250–690 nm) of the RAD shortwave radiation parametrization by either 49 (original version of FUBRAD, Nissen et al., 2007), 55, or alternatively, by 106 bands (Kunze et al., 2014). The scheme is based on the Beer–Lambert law, and includes the calculation of shortwave heating rates from the absorption of UV by O₂ at the Lyman- α line (121.5 nm, Chabrilat and Kockarts, 1997), the Schumann–Runge continuum and bands (125.5–205 nm, Strobel, 1978), the calculation of shortwave heating rates from the absorption of UV by O₂ and O₃ in the Herzberg continuum (206.2–243.9 nm), and by O₃ in the Hartley (243.9–277.8 nm), Huggins (277.8–362.5 nm), and Chappuis ~~bands-(407.5–690nm) nm) bands.~~ Efficiency factors according to Mlynczak and Solomon (1993) are included to account for energy loss due to airglow for the Lyman- α line, the Schumann–Runge continuum, and the Hartley bands. Instead of using Rayleigh–scattering in a two stream approximation, backscattering of the atmosphere and surface is considered, where

30 the albedo at ~~70 hPa~~ $p = 70 \text{ hPa}$ in the UV-Vis (alb_{tsw}), calculated as the ratio of upward ~~and downward~~ and downward ↓

directed flux in the UV-Vis (F_{UV-Vis}), is used to define the upward directed flux in the Huggins and Chappuis bands within FUBRAD:

$$alb_{tsw} = \frac{F_{UV-Vis} \uparrow (p = 70hPa)}{F_{UV-Vis} \downarrow (p = 70hPa)} \quad (1)$$

The coupling to the single UV-Vis band, operating at ~~pressures larger than altitudes below~~ 70 hPa, is done via a coefficient (F_{UV-Vis_frac}), representing the fraction of downward directed UV-Vis flux at 70 hPa to the respective flux at ~~To~~ Atop of atmosphere (TOA):

$$F_{UV-Vis_frac} = \frac{F_{UV-Vis} \downarrow (p = 70hPa)}{F_{UV-Vis} \downarrow (p = 0hPa)}. \quad (2)$$

When calculating the transmission functions for clear sky and all sky conditions at altitudes below 70 hPa, F_{UV-Vis_frac} is the only parameter determined by FUBRAD that is taken into account to attenuate the TOA UV-Vis fluxes. The updated version of RAD_FUBRAD has an increased spectral resolution of the Chappuis band (407.5 – 690 nm) from one band in the original version (Nissen et al., 2007) to either 6 or 57 in the new version (Kunze et al., 2014). The band widths and the corresponding O_3 absorption cross sections of the additional Chappuis bands are taken from WMO (1986). With the finer spectral ~~resolutions~~ resolution it is now possible to use the observed solar fluxes within each Chappuis band. ~~In the original version (Nissen et al., 2007) the flux in the Chappuis band is scaled to a lower value, as the band width in FUBRAD is reduced, compared to,~~ rather than the original single value, which was scaled to reproduce the correct heating rate in the original version of the parametrisation by (Shine and Riekaby, 1989) (Nissen et al., 2007). The application of non-scaled fluxes allows to create a consistent UV-Vis flux profile of the two combined parametrisations over the complete vertical model domain and consistent flux diagnostics at ~~TOA~~ TOA and the surface. FUBRAD is fully included in RAD with corrected diagnostics as shown in Fig. 1. If the sub-submodel FUBRAD is switched on, RAD_FUBRAD is called from the shortwave calculation RAD_SHORT_v1 or RAD_SHORT_v2. In the SMIL the module RAD_FUBRAD_E5 is responsible for the data transfer from the ECHAM5 basemodel and other submodels to RAD and from RAD via RAD_FUBRAD_E5 to the basemodel. The sub-submodel RAD_FUBRAD is controlled by its namelists, featuring

- the FUBRAD CTRL- and CPL-namelist, included in the radiation namelist file. Here the spectral resolution and the solar cycle conditions can be set.

2.3 Submodel AEROPT

The submodel AEROPT (AERosol OPTical properties) carries out the calculation of aerosol optical properties, which are required as input values for the radiation scheme and are provided by ~~a coupling of~~ coupling the two submodels via the MESSy CHANNEL infrastructure.

AEROPT includes several options to provide these required aerosol optical properties to the radiation scheme, i.e. the aerosol optical thickness per grid cell (the total extinction by scattering and absorption of aerosol particles integrated vertically over

each grid box), the single scattering albedo (i.e. the ratio of scattering to absorption by the aerosol) and the asymmetry factor (describing the angular distribution of scattering intensity).

Currently there are three options to provide the above mentioned variables to the radiation scheme:

- 5 – The first option is using the aerosol climatology TANRE (Tanre et al., 1984) as in the original radiation code of the ECHAM5 and ECHAM6 models. The TANRE climatology provides aerosol concentrations and related aerosol optical properties per unit mass for 5 different aerosol types, which can be individually turned on or off. The climatology is implemented in the form of spectral coefficients, which are converted to grid point space during the model initialisation. During runtime, the model ~~calculated~~calculates relative humidity at each grid cell, which is used in conjunction with the climatological aerosol concentrations from the climatology to calculate the required parameters for the radiation scheme
10 with the help of simplified functions.
- In the second option, the variables can directly be imported from a file via the MESSy submodel IMPORT. ~~For this~~Therefore, the variables are required on a geographical grid as, for instance, provided by the Chemistry-Climate Model Initiative (CCMI) for stratospheric and volcanic aerosols ~~(see~~ ftp://iacftp.ethz.ch/pub_read/luo/ccmi).
- In the third option the ~~variables~~optical properties can be calculated online with the help of aerosol tracer concentrations
15 (component mass and particle number) and their corresponding size distributions. These data can either be provided by external data sources and using passive tracers or calculated online by microphysical aerosol submodels including gas-aerosol partitioning. In the EMAC system there are several aerosol submodels available such as the modal aerosol models MADE (Lauer et al., 2007), MADE3 (Kaiser et al., 2014), M7 (Vignati et al., 2004) or GMXE (Pringle et al., 2010). The online calculation of the aerosol optical properties is then performed with the help of pre-calculated three-dimensional
20 lookup-tables. The look-up tables provide optical properties of aerosol modes as a function of the real and imaginary part of the refractive index and the Mie size parameter (i.e. aerosol size divided by wavelength, $2\pi r/\lambda$). The lookup-tables are calculated with the radiative transfer model code libradtran (Mayer and Kylling, 2005). Libradtran is ~~been~~ used to perform the required Mie calculations for a given aerosol population. Here, it is assumed that the aerosol population is log-normally distributed with a given modal width (σ). The radiation scheme then takes the particle number weighted
25 average of the values for extinction cross section, single scattering albedo and asymmetry factor from the look-up table as input for the radiative transfer calculations. During runtime, a set of ~~lookup-tables~~lookup tables covering all modal widths used within the aerosol submodel is required. For the longwave spectrum only the extinction value is calculated, as the current radiation scheme requires only this parameter.

30 Aerosol species explicitly considered are water soluble inorganic ions (WASO), black carbon (BC), organic carbon (OC), sea salt (SS), mineral dust (DU) and aerosol water (H_2O). The refractive indices for those aerosol species are extracted from various data sources (most of the data are compiled in the HITRAN2004 database) and include wavelength dependencies. The original references are: WASO (mainly using ammonium sulphate values following (~~Hess et al., 1998~~) Hess et al. (1998)), BC (Hess et al., 1998), SS (Shettle and Fenn, 1979), H_2O (Hale and Query, 1973), OC (Hess et al. (1998); Sutherland and Khanna

(1991); S. Kinne, personal communication), DU (Hess et al. (1998); S. Kinne, personal communication).

The refractive indices for each aerosol mode required as input for the ~~look-up tables~~ lookup tables are calculated assuming an internal mixture of the aerosol components for the hydrophilic modes. A mean refractive index is calculated for each mode-wavelength combination by averaging the refractive indices of the individual components weighted with their volume contributions. The corresponding Mie size parameters are derived from the median radii of the log-normally distributed modes and the respective wavelengths. The wavelength-dependent particle extinction cross section, single scattering albedo, and asymmetry parameter for each mode are then obtained from the ~~look-up~~ lookup table for the appropriate modal width (σ). For the hydrophobic modes the same approach can be selected as well as assuming an external mixture which results in an averaging of the optical properties of the individual components. Taking into account the particle number concentrations and the grid box's vertical extension, the extinction cross sections can be converted into aerosol optical thicknesses. The optical thickness of the whole aerosol population in the grid cell is then calculated as the sum over all modes. The mean values of the single scattering albedo and the asymmetry parameter are obtained by averaging over the modes weighted with their optical thickness. To represent mean radiative properties of the aerosol particles for each radiation band, the extinction, single scattering albedo and the asymmetry factor are determined for fixed representative wavelength values and then mapped onto the corresponding radiation bands using a weighting with the solar spectrum.

This technique of calculating the aerosol optical properties ~~on-line~~ online from the simulated aerosol concentrations and ~~look-up~~ lookup tables has been applied earlier by Lauer et al. (2007), Pozzer et al. (2012), Pozzer et al. (2015), de Meij et al. (2012), Tost and Pringle (2012), and Righi et al. (2013, 2015).

~~The~~ As the calculation is fully diagnostic, the AEROPT submodel can be called several times ~~at each~~ per model time step with different settings simultaneously, such as, for instance, different ~~lookup tables~~ lookup tables, the exclusion of individual aerosol species or with the TANRE aerosol climatology, ~~as the calculation is fully diagnostic~~. All values which are required for the radiation calculation are provided via the MESSy CHANNEL interface. Consequently, the coupling structure of the respective radiation call can be provided with the information of aerosol optical properties, which are supposed to be used for the respective radiative transfer calculations. Note, that multiple diagnostic calls of the radiation with different aerosol settings are possible.

As mentioned before AEROPT is equipped with the option to collect data from external sources e.g., imported from files via IMPORT, or from alternative aerosol schemes, which provide their own calculation of the respective values required for aerosol-radiation-interactions. In addition, AEROPT can provide the aerosol optical properties required for the calculation of photolysis rates, as e.g. used by the submodel JVAL (Sander et al., 2014). For this purpose scattering, absorption, and asymmetry factor can be calculated at additional wavelengths required by JVAL and provided as channel objects.

Besides the three options of providing optical properties to AEROPT, it is also possible to merge two different data sets for aerosol optical properties in the vertical, e.g. using prognostic tropospheric aerosol values combined with the values provided by CCMI for the stratospheric aerosol for the radiation calculations. The merging of two data sets can be done at a given height or as a linear interpolation in pressure between two reference values. It is also possible to add two data sets, for instance in case of missing volcanic aerosols, the corresponding aerosol optical properties can be provided by an external data source and

combined with the online calculated values for prognostic aerosols. The user settings are controlled via namelists ~~;~~ (a detailed description of the namelist settings of AEROPT can be found in the supplement of this paper):

- the information (a counting index and the corresponding filenames of the ~~look-up~~ lookup tables) about the desired lookup-tables used (shortwave and longwave spectrum are handled separately),
- 5 – the information about the sets of aerosol radiative properties (e.g., GMXE, M7, MADE, MADE3, TANRE), which explain how the optical properties are going to be calculated (mixing rules, exclusion for certain species, coupling to required input parameters, etc.).
- the option to read a set of aerosol radiative properties from external sources,
- the feature to merge two different datasets of aerosol radiative properties, as required for the RAD submodel, which
10 can either be read in via the external interface or be calculated by AEROPT (or an alternative submodel for calculating aerosol optical properties). Additionally, optional weighting factors can be included.

2.4 Submodel CLOUDOPT

The optical properties of clouds are now calculated in the EMAC submodel CLOUDOPT. The input variables needed for calculating cloud optical properties are cloud cover, cloud liquid and cloud ice water and cloud nuclei concentration. These
15 optical properties are diagnosed at each band to account for their wavelength dependency. The specific relations for the solar spectral bands are based on Mie calculations as given by Rockel et al. (1991). A specific correction for the asymmetry factor is applied to account for the non-sphericity of ice crystals (Roeckner et al., 2003). Coefficients for the single scattering albedo, the asymmetry factor and the mass extinction are given for cloud liquid droplets and ice crystals. These coefficients are provided for 4 bands of the shortwave spectrum and for 16 bands of the longwave spectrum (~~for details see Roesckner et al., 2006~~). Mass
20 absorption coefficients for liquid and ice clouds are parametrized as described by Roesckner et al. (2003) based on classical approaches from Stephens et al. (1990) and Ebert and Curry (1992). Calculated cloud optical properties then serve as input for the radiation calculation comprising the shortwave and longwave optical ~~thickness~~ depth, the asymmetry factor and the single scattering albedo of cloud particles. For the 2-dimensional or total cover in the radiation computation of EMAC the default cloud overlap assumption is maximum-random overlap; maximum overlap and random overlap are also possible.

- 25 The CLOUDOPT namelists (see detailed description in the supplement of this paper) ~~comprises~~ comprise mainly four items:
- The model resolution dependent parameters are set, such as a correction factor for the asymmetry factor of ice clouds, the cloud inhomogeneity factors of ice and liquid water, and a parameter to correct the asymmetry factor of ice clouds ~~are~~ set. The corresponding (hard-wired) default values of these parameters can thus be overwritten without re-compilation of the code.
 - 30 – The channel and channel object names of the required input fields are specified: cloud cover, cloud liquid water, cloud ice and cloud nuclei concentration.

- The effective radii of liquid droplets and/or ice can be calculated internally, or be provided by an external channel object.
- The number of (diagnostic) calls of CLOUDOPT in each model time step is selected. The required input (items 3 and 4) is set individually for each call.

The submodel CLOUDOPT was further adapted to enable the separate or cumulative calculation of radiative properties for different cloud coverage coverages and/or perturbations, e.g. the coverage coverages with natural clouds and additional contrail coverage. Furthermore, properties of artificial coverages can be determined, e.g. the additional coverage of ice clouds in only one vertical level with a constant optical depth. This allows for example the evaluation of the performance of the radiation code with respect to a benchmark test, similar to Myhre et al. (2009, see the example benchmark test in section 3.4).

2.5 Submodel ORBIT

In the new infrastructure of the EMAC radiation calculation the orbital parameters are separated from the radiation calculation. They are now calculated in the submodel ORBIT. Orbital parameters are depending on the time of the day and the year. The basic equations used are the Kepler equation for the eccentric anomaly, and Lacaille’s formula (see Roeckner et al., 2006).

The radiation submodel RAD now accesses the necessary channel objects of the orbital parameters, including the distance sun-earth, the cosines of the zenith angle and the relative day length. As the radiation is not calculated every time step, ORBIT also receives information from RAD (see Fig. 1), namely the offset for the radiation calculation (Δt_{rad}).

The ORBIT namelists (see detailed description of these namelists in the supplement of the paper) comprise:

- the selection/setting of the orbital parameters, such as the eccentric anomaly, the inclination, and the longitude of perihelion,
- the possibility to distinguish between two orbit calculations, for either annual cycle or perpetual month experiments, respectively, and
- the channel object containing the radiation calculation offset Δt_{rad} .

2.6 Example application: volcanic heating rates

To show demonstrate the functionality of the new radiation infrastructure, we show a test case: the eruption of Mt. Pinatubo in June 1991, which injected SO_2 into the stratosphere and thus modified the radiative balance by additional radiative heating. For our simulations with the revised EMAC radiation infrastructure, we chose a 90 layer model setup (up to 0.01 hPa, approx. 80 km) with a spectral truncation T42 of the dynamical ECHAM5 core. Interactive chemistry was not simulated, but AEROPT was used to provide two different sets of aerosol optical properties: (1) the standard TANRE climatology (i.e., without additional volcanic aerosol) and, (2) the standard TANRE climatology combined (MERGED) with the offline stratospheric aerosol data as provided by CCMI. Note, that the gasphase of SO_2 is not radiatively active in our model. In one model simulation, the RAD calculation was performed 4 times every 3rd time-step-per-time-step model time step: each aerosol input (TANRE or MERGED) combined with each shortwave radiation scheme (v1-or-v2SW-v1 or SW-v2). The simulation has been performed

twice, ~~once without and once without and~~ with the FUBRAD scheme, respectively. The resulting 8 different radiation setups are summarised in Table 1.

Fig. 2 shows the resulting simulated volcanic heating rates (in K/d) for the years 1991 to 1993 resulting from the eruption of Mt. Pinatubo. The volcanic heating rates are given as difference between the heating rates simulated with volcanic aerosol (MERGED) and the heating rate simulated without volcanic aerosol (TANRE). The values are averaged for the tropics, i.e., over 5°N-5°S. ~~As to be~~ The comparison of our model results with the study of Stenchikov et al. (1998) shows, that in August 1991 and January 1992 the zonally averaged heating rates (pictures are not shown) are structurally in good agreement: In August 1991 the maximum is between 0° and 10°S at 20 hPa, however values are up to 0.9 K/d larger in our model setup. Also January 1992 shows structurally good agreement with the study of Stenchikov et al. (1998) . As expected, the patterns in

Fig. 2 are similar for the different setups ~~are similar (and comparable to those of Stenchikov et al. (1998))~~, since the aerosol optical properties are prescribed. Nevertheless, ~~differences in the~~ in the pattern for the different setups differences with respect to the absolute values occur. The ~~peak-maximum~~ heating rates are larger for the SW-v1 scheme compared to the SW-v2 scheme ~~in accordance with results from Thomas (2008)~~. Shortwave heating rates are overestimated by SW-v1 as a result of the simplified assumptions for low aerosol loadings under clear sky conditions; these assumptions are not valid for high aerosol loadings after volcanic eruptions. The heating rates from SW-v2 are more accurate, as the effects of multiple reflection and the interactions between aerosol scattering and gaseous absorption (which are important for high aerosol loadings after volcanic eruptions) are considered here, in contrast to SW-v1 (Thomas, 2008).

The application of FUBRAD also decreases the absolute values, as all effects of scattering are not included in FUBRAD. The simulations including FUBRAD, thus only show the effect of volcanic aerosols on the NIR heating rates.

20 3 Calculation of radiative forcing

3.1 Technical implementation of radiative forcing calculation in RAD

A new feature in the radiation submodel RAD is the user-friendly and flexible implementation of the online radiative forcing calculation. It is now possible to determine instantaneous as well as stratosphere adjusted radiative forcing online, i.e., during the model simulation, by multiple calls of the radiation scheme. Instantaneous radiative forcing is defined as the change in the net radiative flux with atmospheric temperatures held fixed to unperturbed values. In contrast, the concept of stratosphere adjusted radiative forcing, also known as the fixed dynamic heating concept (Ramanathan and Dickinson, 1979; Fels et al., 1980), allows stratospheric temperatures to adjust to a new radiative equilibrium, without changes in tropospheric variables and stratospheric dynamics. Since the first IPCC report (Houghton et al., 1990) stratosphere adjusted radiative forcing has been the preferred metric used to quantify and rank the numerous components impacting the global climate.

30 The technical procedure to determine the stratosphere adjusted radiative forcing within a climate model simulation was introduced by Stuber et al. (2001) to the climate model ECHAM4. A second diagnostic temperature field is implemented to calculate the stratosphere adjusted radiative forcing. The reference atmosphere controlled by the first radiation call is not subject to the perturbations, however, the temperature field of the extra diagnostic radiation call experiences additional radiative heating

above the tropopause, with dynamical heating remaining identical to the unperturbed reference atmosphere. In the troposphere, the reference temperature and the perturbed diagnostic temperature are identical. To enable the stratospheric temperature to readjust to the new equilibrium, a spin up period of at least 3 months must be considered (Manabe and Strickler, 1964).

~~It is easy to enable~~ After improving the radiation code structure (see section 2.1), multiple diagnostic calls of the radiation routine ~~can easily be made~~ in order to determine radiative forcing, ~~after improving the radiation code structure (see section 2.1)~~. Via namelist selection (for detailed description of the radiation namelist see supplement) radiation routines can be called several times within one simulation. The first call is always the reference call and provides the temperature feedback ΔT_{feed} (see Fig. 1), the other calls are of diagnostic nature. Either instantaneous or stratosphere adjusted radiative forcing can be selected by a namelist switch. With this setup the radiative forcing of various GHG ~~and aerosol changes~~, aerosol or cloud perturbations can be calculated simultaneously in one model simulation. GHG perturbations can either be given as constant mixing ratios with or without vertical gradient, or as externally prescribed 3-D distributions, or as online calculated, three dimensional fields. All perturbed values are specified via channel object selection in the radiation namelist (see detailed description in the supplement). Hence, radiative forcing can be calculated without extra simulation.

Radiative forcing can be determined either at ToA-TOA or at the tropopause, ~~both possibilities are possible in RAD~~. However, the ~~determination of~~ radiative forcing at an-the respective annual mean tropopause is ~~the usually-usually the~~ preferred metric for comparing the climate impact of different GHG perturbations. The annual mean tropopause is-must be used, as ~~no-the~~ temperature equilibrium can only be archived with variable-a fixed tropopause height. ~~H~~ In RAD it is possible to calculate radiative forcing at the tropopause via the submodel VISO (Jöckel et al., 2010), which maps 3-D scalar fields in Eulerian representation on arbitrary horizontal surfaces. Moreover, by providing a reference state from offline (e.g. from a pre-calculated stationary reference simulation), it is also possible with this framework to perform an analysis of feedback during the course of any climate change simulation by multiple call radiative transfer calculations (Chung and Soden, 2015).

In the following subsections we demonstrate the practical advantage of the extended radiative forcing calculation options by a selection of three show cases.

3.2 Example 1: Radiative forcing of CO₂ increase

The concept of stratosphere adjusted radiative forcing is well known and well established for the case of CO₂ change. Its features and merits are repeated here mainly to set the scene for the more interesting non-CO₂ cases. The first example, thus, forms a radiative forcing calculation with EMAC using a CO₂ increase of 28.8 ppmv, representing the change of CO₂ in 2000 relative to 1980. This CO₂ change was calculated by the EMAC hind-cast simulation RC1-base-08. The model setup of this simulation is described in detail by Jöckel et al. (2016). Table 2 lists global mean values for the instantaneous and stratosphere adjusted radiative forcing, both at ~~the top of the atmosphere (ToA, TOA~~ (given in brackets) and at the annual mean tropopause, while Fig. 3 illustrates the vertical structure of the longwave, shortwave, and net radiative flux changes induced by the CO₂ increase.

The main radiative impact of CO₂ occurs in the longwave part of the spectrum, whereas the shortwave forcing component is almost zero at the tropopause (but about 18% of the net at ToA-TOA because of near infrared absorption in the middle

atmosphere). The stratosphere adjusted net radiative forcing (0.45 Wm^{-2}) is ~~by~~ about 7% smaller than the instantaneous net radiative forcing at the tropopause, qualitatively confirming previous findings. The reason for the dampening ~~is~~, when stratospheric adjustment is included, is the cooling effect of additional CO_2 in the stratosphere, reducing the downward longwave flux into the troposphere. The instantaneous net radiative forcing is considerably smaller at ~~ToA-TOA~~ compared to the tropopause for the CO_2 case (0.27 and 0.48 Wm^{-2} , respectively). The effect of stratospheric temperature adjustment is to create a new balance of shortwave and longwave fluxes, leading to vertically constant net radiative flux changes above the tropopause (Fig. 3, bottom). Hence, the stratosphere adjusted net radiative forcing has the same value at ~~ToA-TOA~~ and at the tropopause. Note, however, that this does not hold for the shortwave and longwave components.

Model dependencies in radiative forcing may not only arise from the specific radiative transfer scheme used in a given model (here: EMAC), but also from methodical aspects as discussed by, e.g., Forster et al. (1997). In particular, as mentioned above, in our show cases a fixed tropopause from an EMAC reference simulation is used to define the domain where stratospheric temperature adjustment takes place. The temperature adjustment evolves seasonally dependent in the EMAC calculation procedure (Forster et al., 1997; Stuber et al., 2001), which may lead to slight deviations from the stratosphere adjustment, that is applied when offline radiative transfer models are used for stratosphere adjusted forcing calculations. A consequence is that the stratosphere adjusted radiative forcing profile above the tropopause is constant only in the annual mean. Yet, as already discussed by Forster et al. (1997), this must not be viewed as a conceptual disadvantage, and the online radiative forcing calculations in a CCM like EMAC may have dedicated advantages for many non- CO_2 forcings (see section 3.3).

3.3 Example 2: Radiative forcing of an ozone-hole like perturbation

~~Selecting a radiative forcing definition that provides a~~ The challenge to provide a meaningful indicator of the expected climate effect of ozone concentration perturbations ~~has been the challenge that~~ lead to establishing stratosphere adjusted radiative forcing as a standard procedure for a long time. This example uses a stratospheric ozone change due to stratospheric ozone destruction evolving between 1980 and 2000, again from the EMAC hind-cast simulation RC1-base-08 (see above). The respective stratospheric ozone change pattern, shown in Fig. 4 as an annual mean, is in good agreement with observations (see Hassler et al. (2013), their fig. 8). However, the seasonal cycle is included in the radiative forcing calculations.

In agreement with previous experience (Ramanathan and Dickinson, 1979; Hansen et al., 1997; Forster and Shine, 1997; Christiansen, 1999) the instantaneous net radiative forcing turns out to be ~~extremely ambiguous~~ very complex for this kind of ~~essentially~~ stratospheric ozone perturbation. It changes sign (see table 2) from ~~ToA-TOA~~ (-0.16 Wm^{-2}) to the tropopause ($+0.06 \text{ Wm}^{-2}$), a feature controlled by the shortwave component: Less ozone absorption above the tropopause means an energy gain for the troposphere/surface system but an energy loss for the whole atmosphere. Less shortwave absorption above the troposphere, as occurring in this case, means a cooling and changes the downward longwave radiative flux at the tropopause to an extent that the net radiative forcing at the tropopause changes sign (Fig. 5), giving a ~~negative (albeit small)~~ small negative value of -0.01 Wm^{-2} for the stratosphere adjusted radiative forcing. As pointed out by Hansen et al. (1997) the negative net forcing has the correct sign to predict a cooling effect in the troposphere/surface system as a result of ozone depletion. Quantitatively our value is smaller than the ~~estimate of this effect~~ respective estimate given in the last two IPCC reports (-0.05

Wm^{-2} , ~~Solomon et al. (2007); Stoecker et al. (2013)~~), which are based on ozone loss over the period where ozone depleting substances have increased. ~~Our~~ However, our value is close ~~, however,~~ to the estimate of ~~Stevenson et al. (2013)~~, ~~-0.02~~ Wm^{-2} provided within the ACCMIP project (Myhre et al. (2013), their table 8.3), where simulated ozone changes induced by various effects ~~over a similar period as considered in our model simulation~~ were used for the calculation. Anyway, in the present paper
5 our key point is to underpin the usefulness of having a method at hand, which allows to calculate the stratosphere adjusted forcing at the tropopause online in a CCM.

3.4 Example 3: Cloud perturbations

The necessity to calculate radiative forcings for cloud changes may arise in context ~~with of~~ direct anthropogenic cloud cover change as induced by contrails or ship tracks. It is ~~particularly useful more realistic~~ to perform such calculations on a time step
10 basis within a CCM rather than using monthly mean input for an offline radiative transfer model. For example, Frömming et al. (2011) ~~find found~~ a reduction of contrail radiative forcing of about 20%, if time-varying (instead of time-averaged) contrail optical depth is used. Rap et al. (2010) even report a reduction of all-sky contrail radiative forcing of more than 35%, if daily correlation of contrails and natural clouds is accounted for rather than using time mean cloud and contrail properties. ~~Here, however, to~~
15 To evaluate the performance of the EMAC radiation parameterisation in comparison to other radiative transfer codes with respect to thin ice clouds (similar to aviation induced contrails), we carried out an experiment similar to Myhre et al. (2009). In this benchmark test we add a 1% homogeneous contrail cover in one model level with a contrail top of 11 km. The contrails have a constant optical depth of 0.3, while the other optical properties are similar to those reported by Myhre et al. (2009). The instantaneous as well as the stratosphere adjusted radiative forcing are calculated at the tropopause and at ~~ToA~~ TOA (see
20 corresponding shortwave, longwave and net forcing in table 2). The global annual mean instantaneous net radiative forcing at ~~ToA~~ TOA is 0.109 Wm^{-2} . This result is at the lower end, but within the range given by Myhre et al. (2009) from 0.097 Wm^{-2} to 0.190 Wm^{-2} . Note that most of the radiation codes tested by Myhre et al. (2009) are more sophisticated than the one presented here which is implemented in a CCM, where a reasonable compromise between accuracy and resource efficiency is essential. In addition to the instantaneous radiative forcing at ~~ToA~~ TOA, we determine the net radiative forcing at the mean
25 tropopause, which is 0.115 Wm^{-2} ~~for the net~~. Furthermore, we calculated the stratosphere adjusted radiative forcing ~~at the ToA~~, which was found to be 0.113 Wm^{-2} (net), ~~and thereby only deviates~~ deviating only by 4% from the instantaneous radiative forcing at TOA.

Fig. 6 shows the geographical distribution of the annual mean net radiative forcing at ~~ToA~~ TOA for 1% homogeneous contrail cover. The spatial pattern is dominated by the distribution of natural clouds. The net radiative forcing of the added
30 contrails is high, where natural cloud cover is low, e.g. over deserts, and is ~~comparably~~ comparatively low, in regions with high natural cloud cover, e.g. over the tropics and mid latitudes. The ~~size of magnitude of the~~ minima and maxima, as well as the spatial pattern of the net radiative forcing looks ~~quite~~ similar to the results presented in the intercomparison study of Myhre et al. (2009). ~~Hence, besides~~ Despite its conceptual advantages over offline radiative transfer ~~model estimates for real~~

~~contrails models~~, this benchmark ~~tests show test confirms~~ the suitability of the submodel RAD ~~to estimate with respect to calculating~~ the radiative effects of thin ice clouds ~~and contrails~~.

4 Summary

The submodel RAD (including the shortwave radiation scheme RAD_FUBRAD) provides a flexible and basemodel independent infrastructure of the radiation transfer calculation according to the MESSy standard. With the new submodels AEROPT, CLOUDOPT and ORBIT the calculations of aerosol and cloud optical properties, as well as the calculation of orbital parameters are now performed within these independent submodels, after having them outsourced from the previous radiation code RAD4ALL. All these new submodels are coupled via the standard MESSy infrastructure to RAD (see Fig. 1).

In the new radiation infrastructure online or offline variables, ~~which are~~ needed for the radiation calculation, are selected via namelists. Offline input as e.g. climatologies of radiatively active gases, are now read via the submodel IMPORT, instead of importing them within the radiation code. Thus, the submodel RAD can be applied to easily define different radiation setups with almost arbitrary ~~input inputs~~. Multiple diagnostic calls of the radiation routine are possible in RAD and, as by-product, radiative forcing can be calculated during the model simulation.

~~Shown~~ ~~In the present paper~~ example applications of the now implemented radiative forcing calculations ~~indicate the spectrum of show the wide spectrum of possible~~ radiative forcing calculations within EMAC.

5 Code and data availability

The Modular Earth Submodel System (MESSy) is continuously further developed and applied by a consortium of institutions. The usage of MESSy and access to the source code is licenced to all affiliates of institutions, which are members of the MESSy Consortium. Institutions can be a member of the MESSy Consortium by signing the MESSy Memorandum of Understanding. More information can be found on the MESSy Consortium Website (<http://www.messy-interface.org>). ~~The developments presented here will be part of the next official release of MESSy~~ ~~All modifications and new diagnostics presented in this paper are implemented in the MESSy versions 2.51 and 2.52.~~

Acknowledgements. We thank Tobias Zinner for providing the radiative transfer model libradtran, which was used to prepare the look-up tables of the Mie size parameters. This work was partly supported by the German Research Foundation (DFG) Research Unit ~~FOR-1095~~ Atmospheric Change and its Role for Climate Prediction (HARP) and the DLR-project „Verkehrsentwicklung und Umwelt“ (VEU). The model simulation RC1-base-08 used for radiative forcing calculations has been performed at the German Climate Computing Centre DKRZ through support from the Bundesministerium für Bildung und Forschung (BMBF).

References

- Chabrillat, S. and Kockarts, G.: Simple parameterization of the absorption of the solar Lyman–alpha line, *Geophys. Res. Lett.*, **24**, 2659–2662, 1997.
- Christiansen, B.: Radiative forcing and climate sensitivity: The ozone experience, *Quart. J. R. Meteorol. Soc.*, **125**, 3011–3035, 1999.
- 5 Chung, E.-S. and Soden, B.: An Assessment of Direct Radiative Forcing, Radiative Adjustments, and Radiative Feedbacks in Coupled Ocean Atmosphere Models, *J. Climate*, **28**, 4152–4170, doi:http://dx.doi.org/10.1175/JCLI-D-14-00436.1, 2015.
- de Meij, A., Pozzer, A., Pringle, K. J., Tost, H., and Lelieveld, J.: EMAC model evaluation and analysis of atmospheric aerosol properties and distribution with a focus on the Mediterranean region, *Atmos. Res.*, **114-115**, 38–69, doi:10.1016/j.atmosres.2012.05.014, 2012.
- Ebert, E. and Curry, J.: A parameterization of cirrus cloud optical properties for climate models, *J. Geophys. Res.*, **97**, 3831–3836, 1992.
- 10 Fels, S., Mahlman, J., Schwarzkopf, M., and Sinclair, R.: Stratospheric sensitivity to perturbations in ozone and carbon dioxide: radiative dynamical response, *J. Atmos. Sci.*, **37**, 2265–2297, 1980.
- Forster, P., Freckleton, R., and Shine, K.: On aspects of the concept of radiative forcing, *Clim. Dyn.*, **13**, 547–560, 1997.
- Forster, P. d. F. and Shine, K.: Radiative forcing and temperature trends from stratospheric ozone changes, *J. Geophys. Res.*, **102**, 10,841–10,855, 1997.
- 15 Forster, P. M., Fomichev, V. I., Rozanov, E., Cagnazzo, C., Jonsson, A. I., Langematz, U., Fomin, B., Iacono, M. J., Mayer, B., Mlawer, E., Myhre, G., Portmann, R. W., Akiyoshi, H., Falaleeva, V., Gillett, N., Karpechko, A., Li, J., Lemennais, P., Morgenstern, O., Oberländer, S., Sigmond, M., and Shibata, K.: Evaluation of radiation scheme performance within chemistry climate models, *J. Geophys. Res.: Atmos.*, **116**, n/a–n/a, doi:10.1029/2010JD015361, d10302, 2011.
- Fouquart, Y. and Bonnel, B.: Computations of solar heating of the Earth’s atmosphere: A new parameterization, *Beitr. Phys. Atmos.*, **53**, 20 35–62, 1980.
- Frömming, C., Ponater, M., Burkhardt, U., Stenke, A., Pechtl, S., and Sausen, R.: Sensitivity of contrail coverage and contrail radiative forcing to selected key parameters, *Atmos. Env.*, **45**, 1483–1490, doi:10.1016/j.atmosenv.2010.11.033, 2011.
- Hale, G. and Query, M.: Optical constants of water in the 200 nm to 200 μ wavelength region, *Appl. Opt.*, **12**, 555–563, 1973.
- Hansen, J., Sato, M., and Ruedy, R.: Radiative forcing and climate response, *J. Geophys. Res.*, **102**, 6831–6864, 1997.
- 25 Hassler, B., Young, P., Portmann, R., Bodeker, G., Daniel, J., Rosenlof, K., and Solomon, S.: Comparison of three vertically resolved ozone data sets: climatology, trends and radiative forcings, *Atmos. Chem. Phys.*, **13**, 5533–5550, 2013.
- Hess, M., Koepke, P., and Schult, I.: Optical Properties of Aerosols and Clouds: The software package OPAC, *Bull. Am. Met. Soc.*, **79**, 831–844, 1998.
- Houghton, J., Jenkins, G., and Ephraums, J.: *Climate Change: The IPCC Scientific Assessment*, Cambridge University Press, Cambridge, 30 UK, 1990.
- Jöckel, P.: Technical note: Recursive discretisation of geo-scientific data in the Modular Earth Submodel System (MESSy), *Atmos. Chem. Phys.*, **6**, 3557–3562, doi:10.5194/acp-6-3557-2006, 2006.
- Jöckel, P., Sander, R., Kerkweg, A., Tost, H., and Lelieveld, J.: Technical Note: The Modular Earth Submodel System (MESSy) - a new approach towards Earth System Modelling, *Atmos. Chem. Phys.*, **5**, 433–444, doi:10.5194/acp-5-433-2005, 2005.
- 35 Jöckel, P., Tost, H., Pozzer, A., Brühl, C., Buchholz, J., Ganzeveld, L., Hoor, P., Kerkweg, A., Lawrence, G., Sander, R., Steil, B., Stiller, G., Tanarhte, M., Taraborrelli, D., van Aardenne, J., and Lelieveld, J.: The atmospheric chemistry general circulation

- model ECHAM5/MESSy1: consistent simulation of ozone from the surface to the mesosphere, *Atmos. Chem. Phys.*, **6**, 5067–5104, doi:10.5194/acp-6-5067-2006, 2006.
- Jöckel, P., Kerkweg, A., Pozzer, A., Sander, R., Tost, H., Riede, H., Baumgaertner, A., Gromov, S., and Kern, B.: Development cycle 2 of the Modular Earth Submodel System (MESSy2), *Geosci. Model Dev.*, **3**, 717–752, doi:10.5194/gmd-3-717-2010, 2010.
- 5 Jöckel, P., Holger, T. O., Pozzer, A., Kunze, M., Kirner, O., Brenninkmeijer, C.A. M., Brinkop, S., Cai, D., Dyroff, C., Eckstein, J., Frank, F., Garny, H., Gottschaldt, K.-D., Graf, G., Grewe, V., Kerkweg, A., Kern, B., Matthes, S., Mertens, M., Meul, S., Neumaier, M., Nützel, M., Oberländer-Hayn, S., Ruhnke, R., Runde, T., Sander, R., Scharffe, D., and Zahn, A.: Earth System Chemistry Integrated Modelling (ESCiMO) with the Modular Earth Submodel System (MESSy, version 2.51), *Geosci. Model Dev.*, **9**, 1153–1200, doi:10.5194/gmd-9-1153-2016, 2016.
- 10 Kaiser, J. C., Hendricks, J., Righi, M., Riemer, N., Zaveri, R. A., Metzger, S., and Aquila, V.: The MESSy aerosol submodel MADE3 (v2.0b): description and a box model test, *Geosci. Model Dev.*, **7**, 1137–1157, doi:10.5194/gmd-7-1137-2014, 2014.
- Kerkweg, A. and Jöckel, P.: The infrastructure MESSy submodels GRID (v1.0) and IMPORT (v1.0), *Geosci. Model Dev. Discuss.*, **8**, 8607–8633, doi:10.5194/gmdd-8-8607-2015, 2015.
- Kunze, M., Godolt, M., Langematz, U., Grenfell, J., Hamann-Reinus, A., and Rauer, H.: Investigating the early Earth faint young Sun problem with a general circulation model, *Planet. Space Sci.*, **98**, 77–92, doi:10.1016/j.pss.2013.09.011, Planetary evolution and life, 2014.
- 15 Lauer, A., Eyring, V., Hendricks, J., Jöckel, P., and Lohmann, U.: Global model simulations of the impact of ocean-going ships on aerosols, clouds, and the radiation budget, *Atmos. Chem. Phys.*, **7**, 5061–5079, doi:10.5194/acp-7-5061-2007, 2007.
- Manabe, S. and Strickler, R.: Thermal equilibrium of the atmosphere with convective adjustment, *J. Atmos. Sci.*, **21**, 361–385, 1964.
- Mayer, B. and Kylling, A.: Technical note: The libRadtran software package for radiative transfer calculations - description and examples of use, *Atmos. Chem. Phys.*, **5**, 1855–1877, doi:10.5194/acp-5-1855-2005, 2005.
- 20 Mlawer, E. J., Taubman, S. J., Brown, P. D., Iacono, M. J., and Clough, S. A.: Radiative transfer for inhomogeneous atmospheres: RRTM, a validated correlated-k model for the longwave, *J. Geophys. Res.*, **102**, 16 663–16 682, 1997.
- Mlynczak, M. G. and Solomon, S.: A detailed evaluation of the heating efficiency in the middle atmosphere, *J. Geophys. Res.: Atmos.*, **98**, 10 517–10 541, doi:10.1029/93JD00315, 1993.
- 25 Myhre, G., Kvalevag, M., Raedel, G., Cook, J., Shine, K., Clark, H., Karcher, F., Markowicz, K., Kardas, A., Wolkenberg, P., Balkanski, Y., Ponater, M., Forster, P., Rap, A., and Rodriguez de Leon, R.: Intercomparison of radiative forcing calculations of stratospheric water vapour and contrails, *Meteorol. Z.*, **18**, 585–596, doi:10.1127/0941-2948/2009/0411, 2009.
- Myhre, G., Shindell, D., Breon, F.-M., Collins, W., Fuglestedt, J., Huang, J., Koch, D., Lamarque, J.-F., Lee, D., Mendoza, B., Nakajima, T., Robock, A., Stephens, G., Takemura, T., and Zhang, H.: Anthropogenic and Natural Radiative Forcing. In Stocker, T.F. et al. (eds.):
- 30 *Climate Change 2013: The Physical Science Basis*, Tech. rep., 2013.
- Nissen, K. M., Matthes, K., Langematz, U., and Mayer, B.: Towards a better representation of the solar cycle in general circulation models, *Atmos. Chem. Phys.*, **7**, 5391–5400, doi:10.5194/acp-7-5391-2007, 2007.
- Pozzer, A., de Meij, A., Pringle, K. J., Tost, H., Doering, U. M., van Aardenne, J., and Lelieveld, J.: Distributions and regional budgets of aerosols and their precursors simulated with the EMAC chemistry-climate model, *Atmos. Chem. Phys.*, **12**, 961–987, doi:10.5194/acp-12-961-2012, 2012.
- 35 Pozzer, A., de Meij, A., Yoon, J., Tost, H., Georgoulias, A. K., and Astitha, M.: AOD trends during 2001-2010 from observations and model simulations, *Atmos. Chem. Phys.*, **15**, 552–5535, doi:10.5194/acp-15-5521-2015, 2015.

- Pringle, K. J., Tost, H., Message, S., Steil, B., Giannadaki, D., Nenes, A., Fountoukis, C., Stier, P., Vignati, E., and Lelieveld, J.: Description and evaluation of GMXe: a new aerosol submodel for global simulations (v1), *Geosci. Model Dev.*, **3**, 391–412, doi:10.5194/gmd-3-391-2010, 2010.
- Ramanathan, V. and Dickinson, R.: The role of stratospheric ozone in the zonal and seasonal radiative energy balance of the Earth-troposphere system, *J. Atmos. Sci.*, **36**, 1084–1104, 1979.
- Rap, A., Forster, P., Jones, A., Boucher, O., Haywood, J., Bellouin, N., and De Leon, R.: Parameterisation of contrails in the UK Met Office Climate Model, *J. Geophys. Res.*, **115**, D10 205, doi:10.1029/2009JD012443, 2010.
- Righi, M., Hendricks, J., and Sausen, R.: The global impact of the transport sectors on atmospheric aerosol: simulations for year 2000 emissions, *Atmos. Chem. Phys.*, **13**, 9939–9970, doi:10.5194/acp-13-9939-2013, 2013.
- 10 Righi, M., Eyring, V., Gottschaldt, K.-D., Klinger, C., Frank, F., Jöckel, P., and Cionni, I.: Quantitative evaluation of ozone and selected climate parameters in a set of EMAC simulations, *Geosci. Model Dev.*, **8**, 733–768, doi:10.5194/gmd-8-733-2015, 2015.
- Rockel, B., Raschke, E., and Weyres, B.: A parameterization of broad band radiative transfer properties of water, ice and mixed clouds, *Beitr. Phys. Atmosph.*, **64**, 1–12, 1991.
- Roeckner, E., Bäml, G., Bonaventura, L., Brokopf, R., Esch, M., Giorgetta, M., Hagemann, S., Kirchner, I., Kornblueh, L., Manzini, E.,
15 Rhodin, A., Schlese, U., Schulzweida, U., and Tompkins, A.: The atmospheric general circulation model ECHAM5. Part I: Model description., Max Planck Institute for Meteorology Rep. 249, p. 127 pp, 2003.
- Roeckner, E., Brokopf, R., Esch, M., Giorgetta, M., Hagemann, S., Kornblueh, L., Manzini, E., Schlese, U., and Schulzweida, U.: Sensitivity of simulated climate to horizontal and vertical resolution in the ECHAM5 atmosphere model, *J. Climate*, **19**, 3771–3791, 2006.
- Sander, R., Jöckel, P., Kirner, O., Kunert, A. T., Landgraf, J., and Pozzer, A.: The photolysis module JVAL-14, compatible with the MESSy
20 standard, and the JVal PreProcessor (JVPP), *Geosci. Model Dev.*, **7**, 2653–2662, doi:10.5194/gmd-7-2653-2014, 2014.
- Shettle, E. and Fenn, R.: Models for the aerosols of the lower atmosphere and the effects of humidity variations on their optical properties, Rep. AFGL-TR-79-0214, Air Force Geophysics Lab., 1979.
- Shine, K. P. and Rickaby, J. A.: Solar radiative heating due to the absorption by ozone, in: *Ozone in the atmosphere*, edited by Bojkov, R. D. and Fabian, P., pp. 597–600, A Deepack Publishing, Hampton, Va, USA, 1989.
- 25 Solomon, S., Qin, D., Manning, M., Chen, Z., Marquis, M., Averyt, K., Tignor, M., and Miller, H.: IPCC, 2007: Climate Change 2007: The Physical Science Basis. Contribution of Working Group I to the Fourth Assessment Report of the Intergovernmental Panel on Climate Change, Cambridge University Press, Cambridge, UK, 2007.
- Stenchikov, G. L., Kirchner, I., Robock, A., Graf, H.-F., Antuña, J. C., Grainger, R. G., Lambert, A., and Thomason, L.: Radiative forcing from the 1991 Mount Pinatubo volcanic eruption, *J. Geophys. Res.: Atmos.*, **103**, 13 837–13 857, doi:10.1029/98JD00693, 1998.
- 30 Stephens, G., Tsay, S.-C., Stackhouse, P., and Flateau, P.: The relevance of the microphysical and radiative properties of cirrus clouds to climate and climate feedback, *J. Atmos. Sci.*, **47**, 1742–1753, 1990.
- Stevenson, D. S., Young, P. J., Naik, V., Lamarque, J.-F., Shindell, D. T., Voulgarakis, A., Skeie, R. B., Dalsoren, S. B., Myhre, G., Berntsen, T. K., Folberth, G. A., Rumbold, S. T., Collins, W. J., MacKenzie, I. A., Doherty, R. M., Zeng, G., van Noije, T. P. C., Strunk, A., Bergmann, D., Cameron-Smith, P., Plummer, D. A., Strode, S. A., Horowitz, L., Lee, Y. H., Szopa, S., Sudo, K., Nagashima, T., Josse, B.,
35 Cionni, I., Righi, M., Eyring, V., Conley, A., Bowman, K. W., Wild, O., and Archibald, A.: Tropospheric ozone changes, radiative forcing and attribution to emissions in the Atmospheric Chemistry and Climate Model Intercomparison Project (ACCMIP), *Atmos. Chem. Phys.*, **13**, 3063–3085, doi:10.5194/acp-13-3063-2013, 2013.

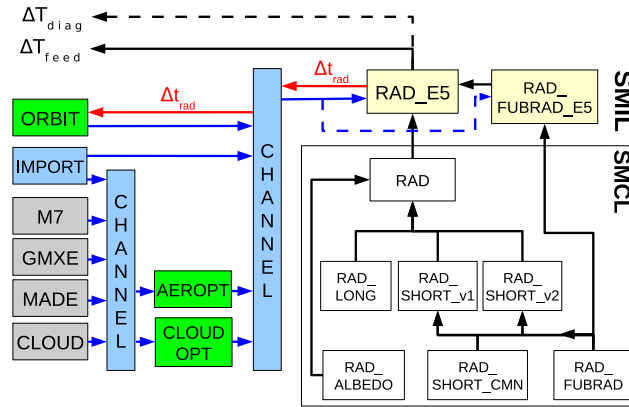


Figure 1. Diagram of the revised radiation structure in EMAC. The relationship between the various Fortran95 modules of RAD is given on the right hand side. The different MESSy layers SMCL and SMIL are indicated. The left hand side shows the connection of RAD to other submodels. The ~~grey-gray~~ boxes indicate existing submodels delivering input for the radiation, whereas the green boxes show new submodels, which are now separated from the radiation code. The blue arrows indicate the input to RAD and RAD SUBSCRIPTNBFUBRAD (dashed) via the channel infrastructure and the red arrows indicate the trigger, passed from RAD to ORBIT. The black arrows indicate the dependencies of the Fortran95 modules through Fortran USE statements. The direction of the arrows indicates where the different modules are used. A detailed description is ~~provided-given~~ in the text.

Stocker, T. F., Qin, D., Plattner, G.-K., Tignor, M., Allen, S. K., Boschung, J., Nauels, A., Xia, Y., Bex, V., and Midgley, P. M.: Climate Change 2013: The Physical Science Basis, Tech. rep., 1535 pp., 2013.

Strobel, D. F.: Parameterization of the atmospheric heating rate from 15 to 120 km due to O₂ and O₃ absorption of solar radiation, *J. Geophys. Res.*, **83**, 6225–6230, 1978.

5 Stuber, N., Sausen, R., and Ponater, M.: Stratosphere adjusted radiative forcing in a comprehensive climate model, *Theor. Appl. Climatol.*, **68**, 125–135, 2001.

Sutherland, R. and Khanna, R.: Optical Properties of Organic-based Aerosols Produced by Burning Vegetation, *Aerosol Science and Technology*, **14**, 3, 331–342, doi:10.1080/02786829108959495, 1991.

10 Tanre, D., Geleyn, J.-F., and Slingo, J.: First results of the introduction of an advanced aerosol-radiation interaction in the ecmwf low resolution global model, In: *Aerosols and their Climatic Effects*, edited by Gerber, H. and Deepak, A., 133–177, 1984.

Thomas, M.: Simulation of the climate impact of Mt. Pinatubo eruption using ECHAM5, *Reports on Earth System Science* 52, Max Planck Institute for Meteorology, Hamburg, 2008.

Tost, H. and Pringle, K.: Improvements of organic aerosol representations and their effects in large-scale atmospheric models, *Atmos. Chem. Phys.*, **12**, 8687–8709, doi:10.5194/acp-12-8687-2012, 2012.

15 Vignati, E., Wilson, J., and Stier, P.: M7: An efficient size-resolved aerosol microphysics module for large-scale aerosol transport models, *J. Geophys. Res.*, 109, doi:10.1029/2003JD004485, 2004.

WMO: Atmospheric ozone 1985, vol. 1, *Global Ozone Res. Monit. Proj. Rep. No. 16*, 505 pp., Geneva, Switzerland, 1986.

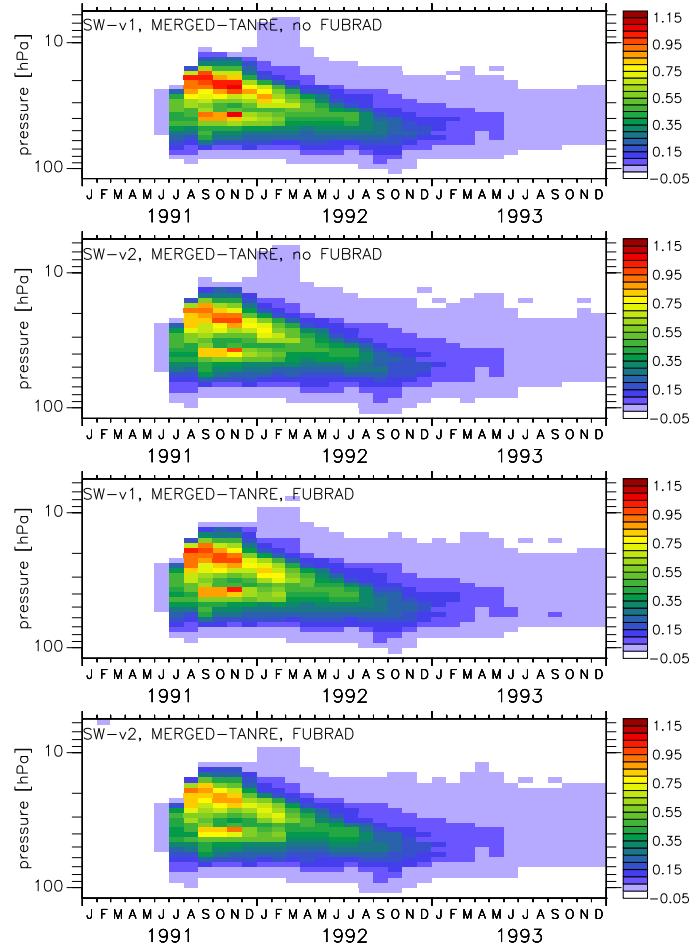


Figure 2. Simulated temporal evolution versus pressure altitude of the volcanic heating rates (in K/day) in the tropics (5°S - 5°N) due to the eruption of Mt. Pinatubo in June 1991. The different panels show the results for v1 and v2 of the short-wave (SW) scheme, both with and without FUBRAD (as indicated).

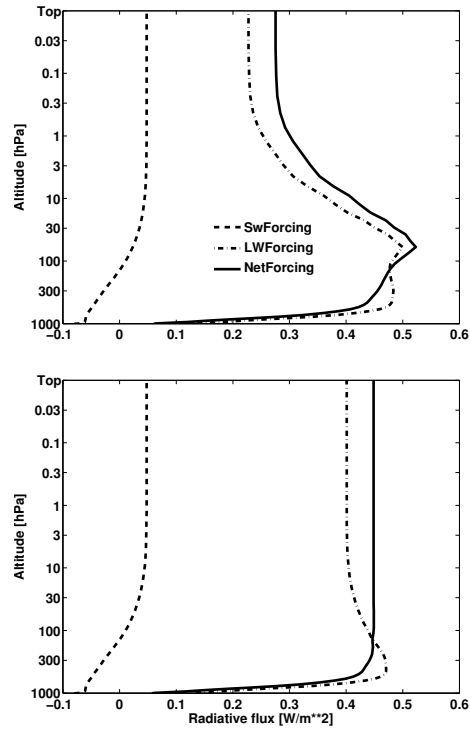


Figure 3. Vertical profile of the global and annual mean net, shortwave, and longwave instantaneous radiative flux change (top) and of the stratosphere adjusted radiative flux change (bottom) in Wm^{-2} resulting from CO_2 change between 1980 and 2000.

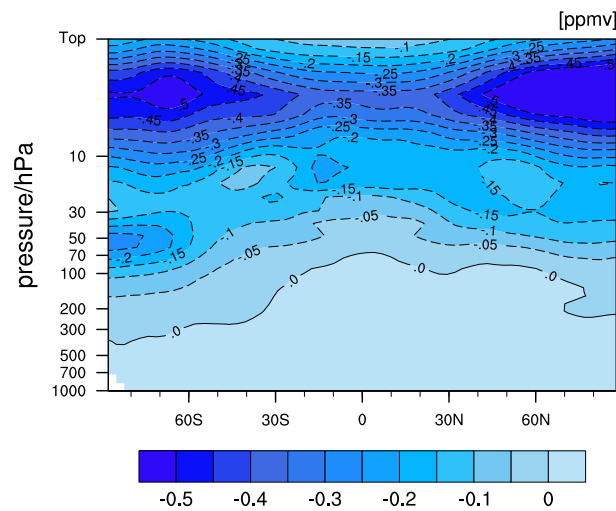


Figure 4. Zonal geographical distribution of the annual mean stratospheric O_3 change between 1980 and 2000.

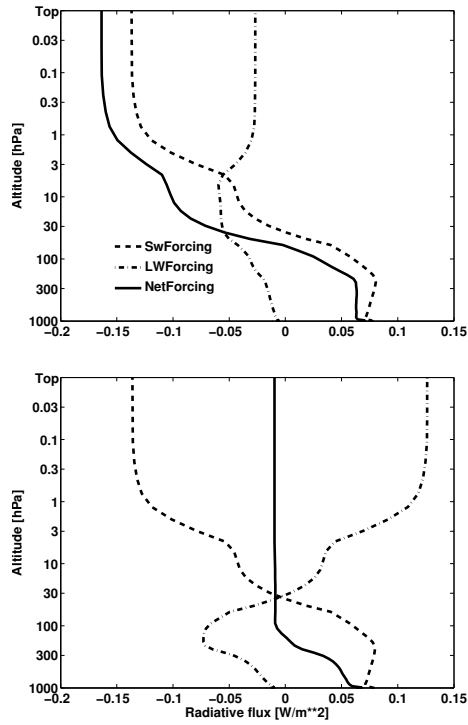


Figure 5. Vertical profile of the global and annual mean net, shortwave, and longwave instantaneous radiative flux change (top) and of the stratosphere adjusted radiative flux change (bottom) in Wm^{-2} resulting from stratospheric O_3 change between 1980 and 2000.

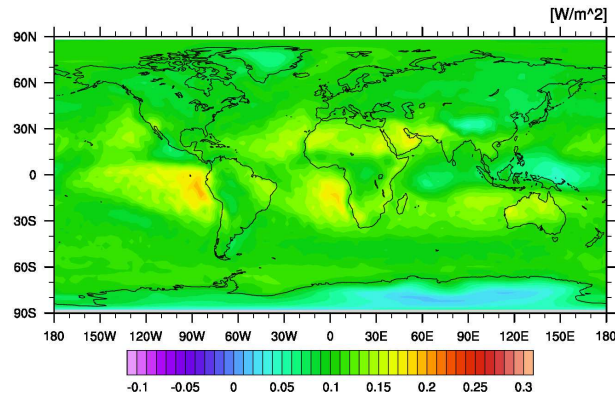


Figure 6. Geographical distribution of the annual mean net instantaneous radiative forcing at ToA-TOA for a homogeneous 1% contrail cover.

Table 1. Radiation setups (modified heating rates due to the eruption of Mt. Pinatubo) used for testing the new radiation infrastructure. Both simulations cover the years 1991-1993. ~~Varieted~~-~~Varied~~ parameters are the shortwave scheme (~~v1~~-~~SW-v1~~ or ~~v2~~-~~SW-v2~~), the selection of the FUBRAD radiation scheme, and the selected aerosol input to AEROPT (TANRE or MERGED).

| simulations | sw scheme | FUBRAD | aerosol |
|-------------|----------------------------------|--------|---------|
| 1 | v1 - SW-v1 | yes | TANRE |
| 1 | v2 - SW-v2 | yes | TANRE |
| 1 | v1 - SW-v1 | yes | MERGED |
| 1 | v2 - SW-v2 | yes | MERGED |
| 2 | v1 - SW-v1 | no | TANRE |
| 2 | v2 - SW-v2 | no | TANRE |
| 2 | v1 - SW-v1 | no | MERGED |
| 2 | v2 - SW-v2 | no | MERGED |

Table 2. Annually and globally averaged shortwave (sw), longwave (lw) and net instantaneous and stratosphere adjusted radiative forcing at the tropopause due to changes in CO₂ and stratospheric O₃ between 1980 and 2000 and due to additional homogeneous 1% contrail cover. The respective values of the radiative forcing at ~~ToA~~-~~TOA~~ are given in parentheses.

| | instantaneous RF | | | adjusted RF | | |
|-----|------------------|-----------------------|-----------------|-----------------|-----------------------|-----------------|
| | CO ₂ | strat. O ₃ | contrail | CO ₂ | strat. O ₃ | contrail |
| sw | 0.002 (0.05) | 0.08 (-0.13) | -0.088 (-0.086) | 0.002 (0.05) | 0.08 (-0.14) | -0.088 (-0.086) |
| lw | 0.48 (0.23) | -0.02 (-0.03) | 0.203 (0.195) | 0.45 (0.40) | -0.09 (0.13) | 0.201 (0.199) |
| net | 0.48 (0.27) | 0.06 (-0.16) | 0.115 (0.109) | 0.45 (0.45) | -0.01 (-0.01) | 0.113 (0.113) |