

Interactive comment on “AROME-WMED, a real-time mesoscale model designed for the HyMeX Special Observation Periods” by N. Fourrié et al.

N. Fourrié et al.

nadia.fourrie@meteo.fr

Received and published: 13 May 2015

We prepared our response to Referee 2 in the form of a pdf file attached to this comment. We have also uploaded the new figures.

Kind regards,

Dr Nadia Fourrié

Please also note the supplement to this comment:

<http://www.geosci-model-dev-discuss.net/8/C725/2015/gmdd-8-C725-2015-supplement.pdf>

C725

Interactive comment on Geosci. Model Dev. Discuss., 8, 1801, 2015.

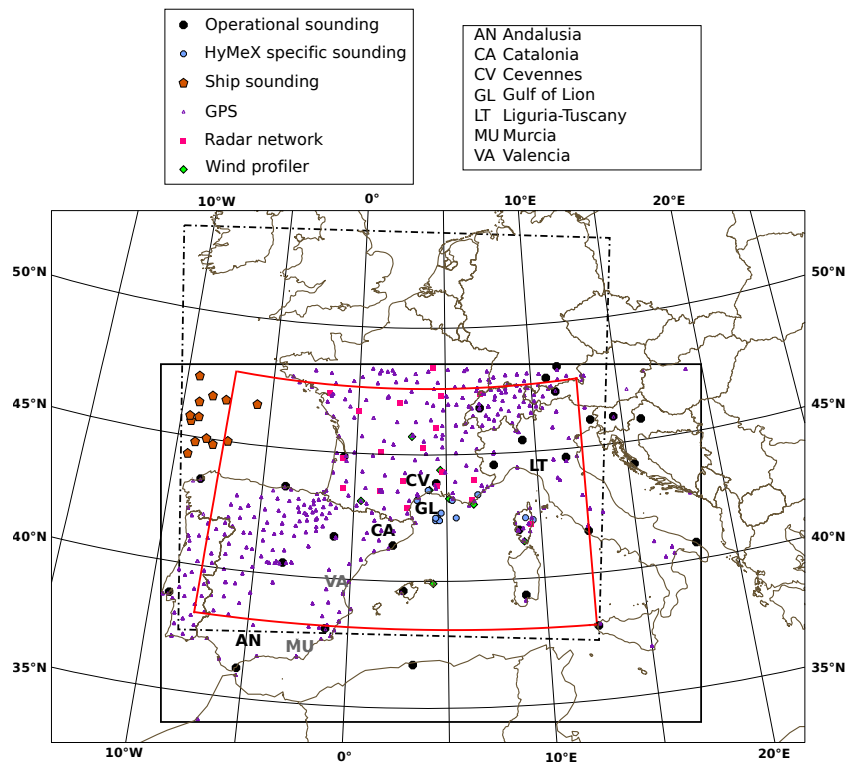


Fig. 1. Figure 1

C727

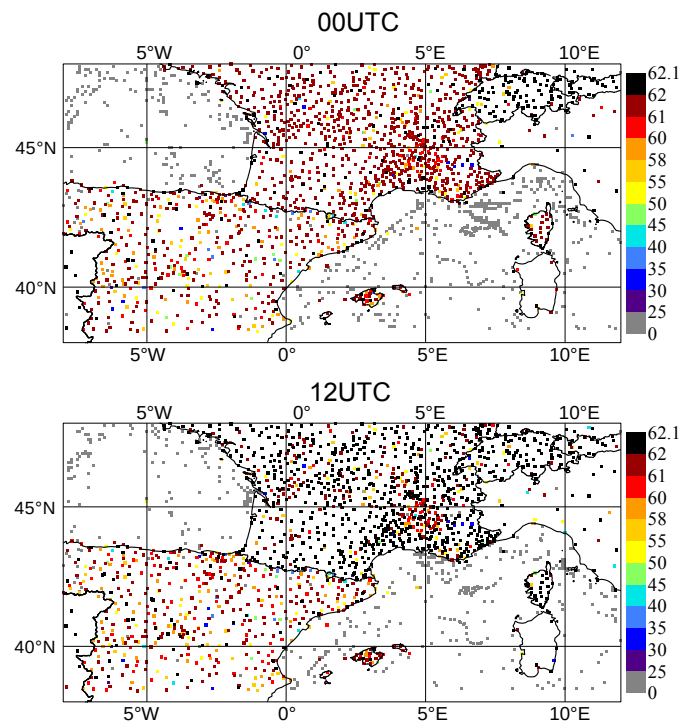


Fig. 2. Figure 6

C728

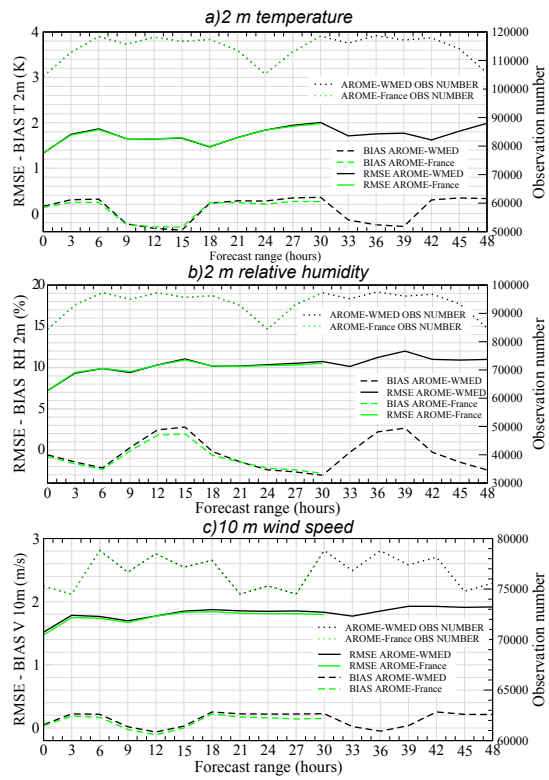


Fig. 3. Figure 7

C729

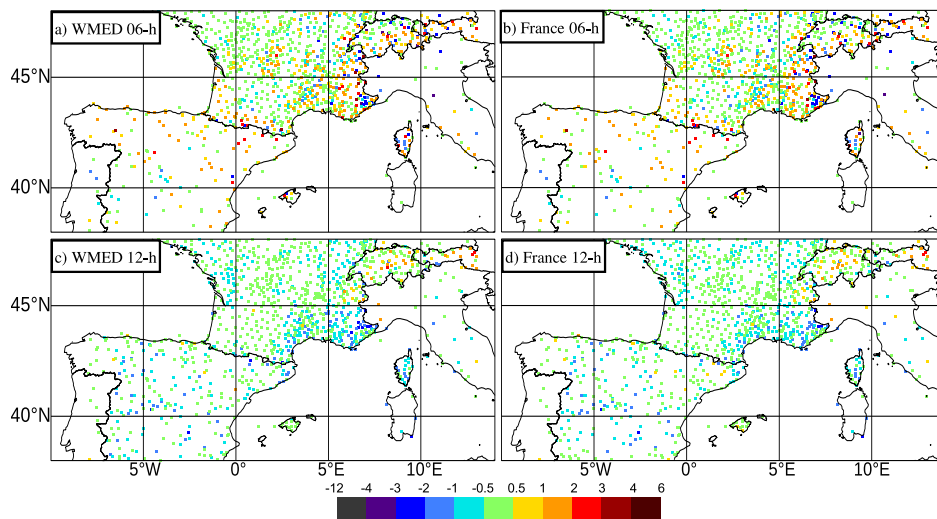


Fig. 4. Figure 8a

C730

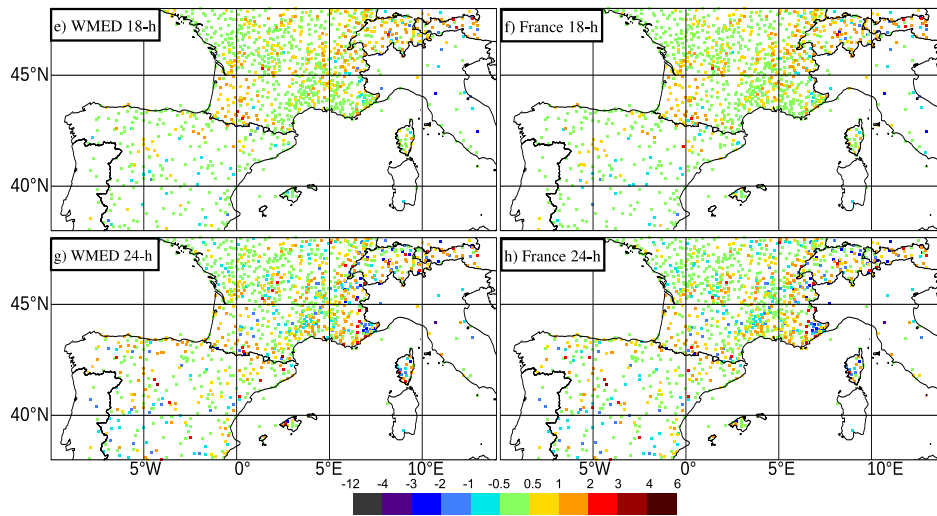


Fig. 5. Figure 8b

C731

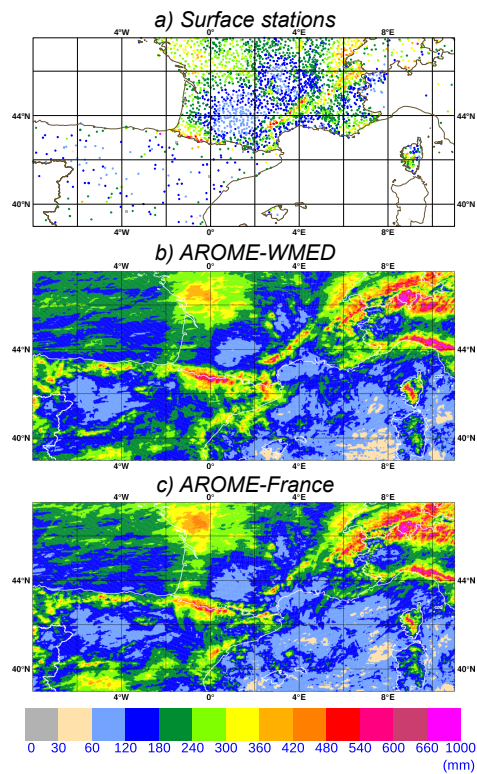


Fig. 6. Figure 12

C732

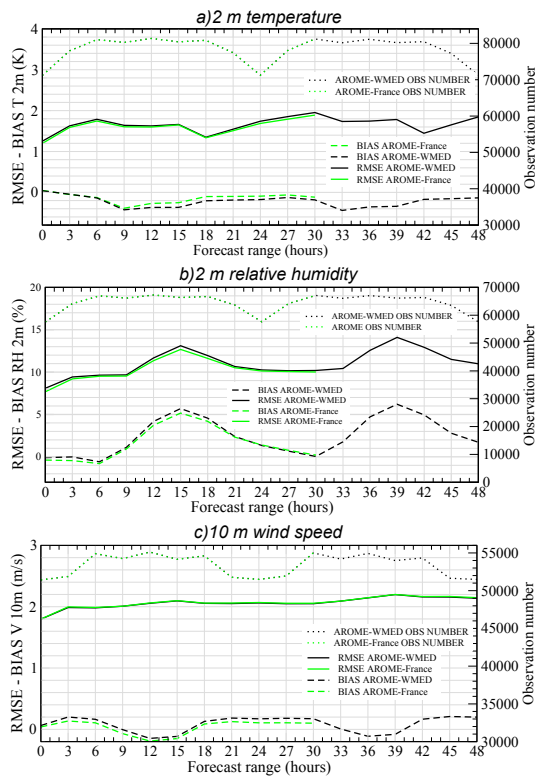


Fig. 7. Figure 15

C733

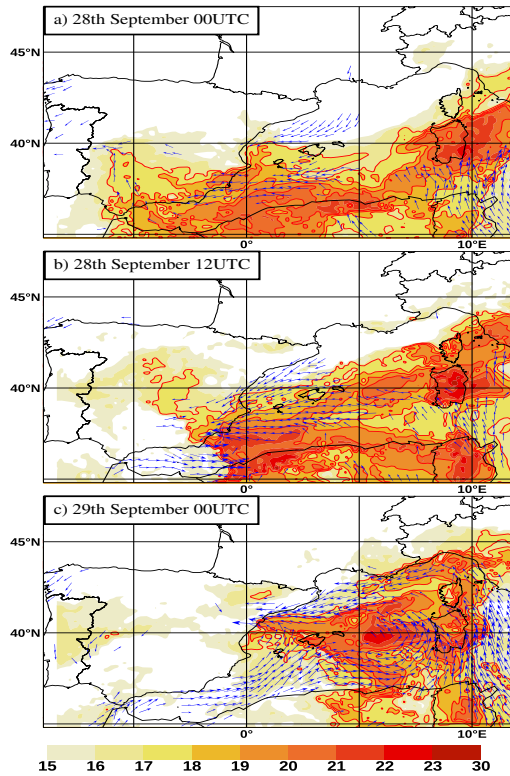


Fig. 8. Figure 20

C734

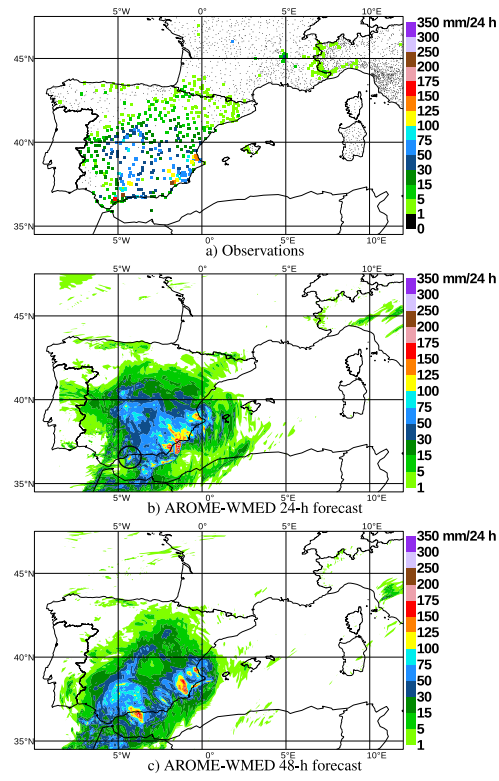


Fig. 9. Figure 21

C735

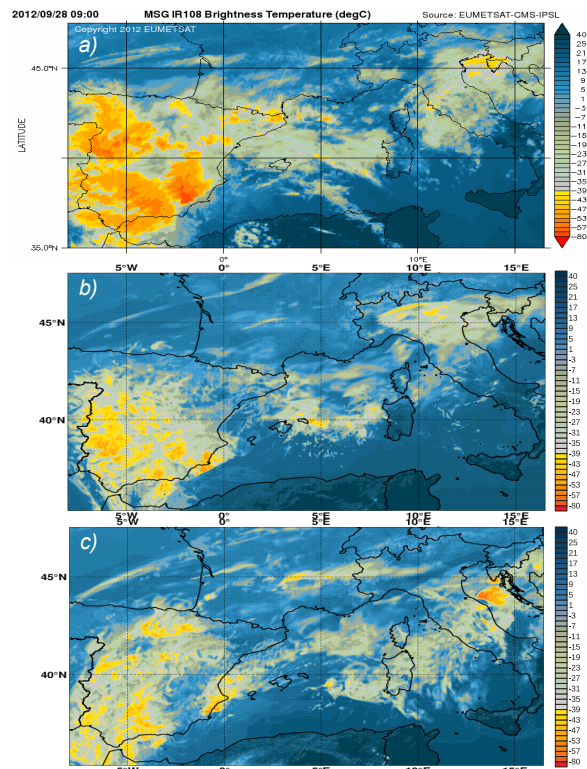


Fig. 10. Figure 22

C736

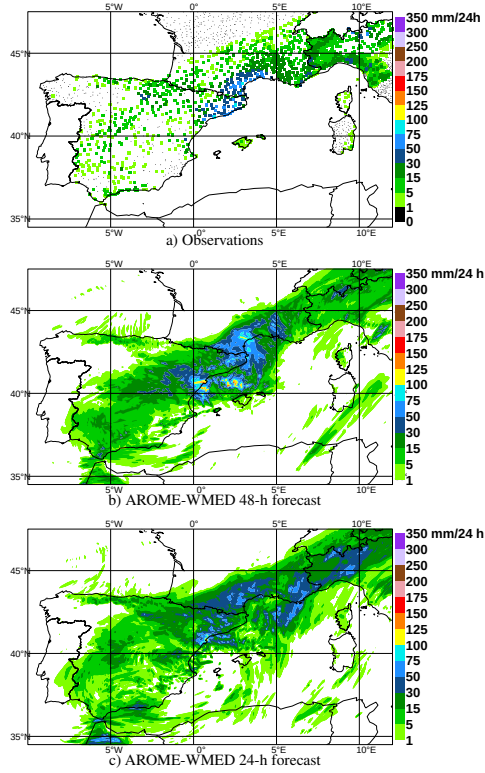


Fig. 11. Figure 23

C737

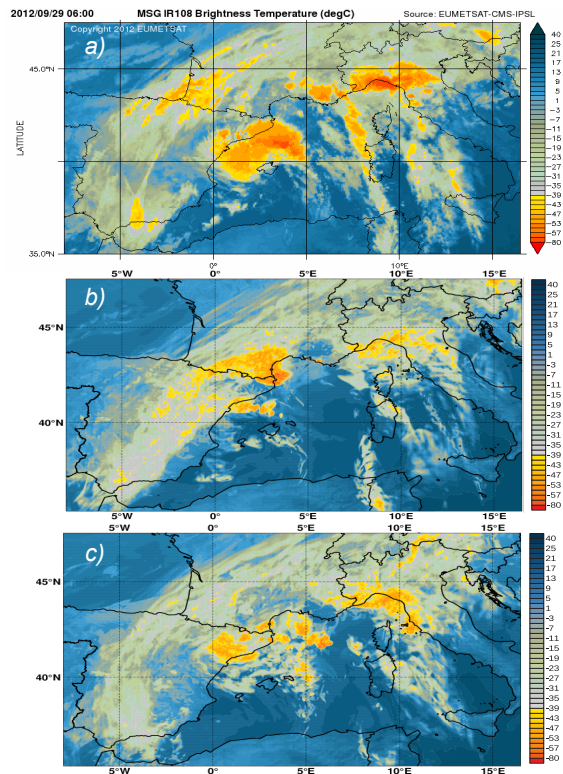


Fig. 12. Figure 24

C738

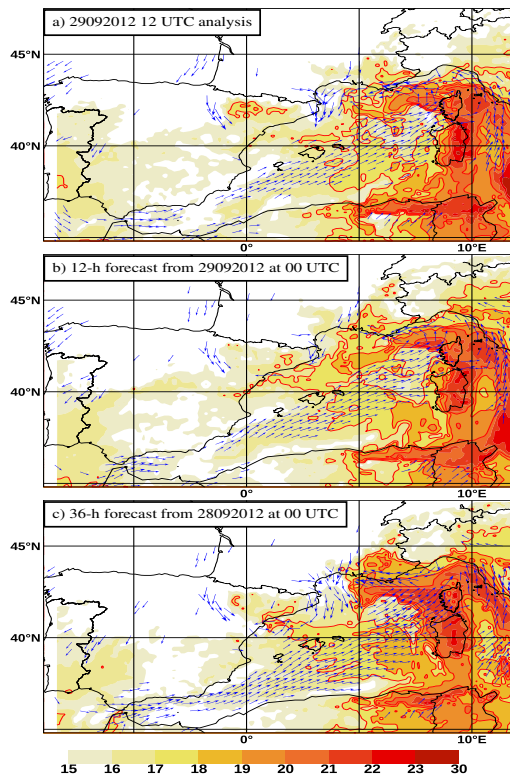


Fig. 13. Figure 25