

Final response to referee comments

We thank the referees for the positive comments on our manuscript. Here we describe our response to referee comments and detail how we have addressed each comment. The original review comments are in black, and our responses in red. Also the tracked version of the manuscript is attached.

RC C3137

Specific comments:

1) Some suggestions on how this model could evolve with respect to present development in current routing model would help promote the routing model in terms of flexibility for further development. In particular, recent developments based on routing model include stream temperature, water quality modeling, inundation, ecohydrology, and reservoir operations and withdrawals. How flexible is this model with respect to this type of development so that future users understand the investment they make?

The channel routing schemes that are part of mizuRoute v1 – kinematic wave tracking (KWT) and an impulse response function (IRF) – are both 1-D approaches that do not explicitly track physical parcels of water. For example, the wave particles that are used in the KWT approach travel at the speed of the wave (celerity) rather than the mean velocity of the fluid. The 1-D approach does not allow for explicit modeling of inundation extent.

Extension of mizuRoute to simulate stream temperature and water quality can be done in one of two ways: Adaptation of the existing routing methods or inclusion of an additional routing scheme that is more directly suitable for tracking water mass and their constituents. Although implementation of both approaches are outside the scope of this paper, we have added the above discussion in the summary and discussion section (P18, L412-420).

2) Please add a reference to literature or justification of why a gamma distribution for deriving the hillslope unit hydrograph.

The two parameter gamma distribution has been widely used in unit-hydrograph-based models for water resources engineering applications. For example, it has been used in the synthetic unit hydrograph approach (e.g., Bhunya et al. 2007; Nadarajah 2007). Kumar et al. (2007) presented methods to estimate the two parameters in the gamma distribution based on geomorphological information. The gamma distribution offers a parsimonious way to describe a wide range of hillslope-to-channel responses in a computationally efficient manner, which is important for the continental-scale domains. We added above the discussion to section 3.1. (P7, L139-144)

3) “The KWT start by ordering all the segments...” How compatible is the routing model with parallel processing?

Our current implementation of mizuRoute does not use parallel processing directives such openMP or MPI, because execution time is relatively small compared to the implementation of the hydrologic model. However, both routing schemes lend themselves well to parallelization. While kinematic wave routing has to be done sequentially from upstream to downstream, the processing can be parallelized through appropriate choices of the domain decomposition. For example, sub-basins that contribute to flow along a mainstream segment can be processed in parallel because the sub-basins are independent. For example, if we route flows on a CONUS-wide river network, individual river basins (e.g. the Colorado River and Mississippi River basins) can be processed simultaneously. For IRF-UH routing, the routing computation is performed for individual river segments independently, therefore the parallelization for river segment loops can be made possible. Finally, routing of an ensemble of runoff outputs such as the CMIP5 projected runoff is easily parallelized. We added this discussion in Summary and discussion section (P18, L421-431).

RC C3807

This manuscript presents a toolbox-type of open-source package for the runoff routing methods. It is generally well written and easy to follow.

We thank the referee for taking time to read our manuscript and for the positive response.

But the introduction part could be significantly improved to clearly bring out the new contributions, i.e., whether and how this study has indeed advanced the science or methodology aspects of runoff routing models.

We discussed the contributions in the beginning of Section 3. We made a slight revision in the introduction to introduce the benefit of mizuRoute (flexibility of routing scheme). However, to maintain the flow of the paper, we have kept the more in-depth discussions regarding mizuRoute's flexibility in section 3, after the review of existing routing models in section 2.

The validation does not seem sufficient either due to the lack of comparison against the observations. I suggest the manuscript to be significantly improved before publication is considered.

As we specified in the last paragraph of Section 5 (p13, L301-307), the accuracy of the simulated streamflow depends greatly on the hydrologic model that is used to simulate the distributed runoff fields that are input to the routing model. These hydrologic simulations can have large errors, which makes a direct comparison with observations less meaningful (since most of the error would stem from the hydrologic simulations). For this reason, we focused on an inter-comparison between the two channel routing schemes. Note that the performance of the IRF approach in routing flows has been discussed in the original papers on IRF-UH (Lohmann et al. 1996). We revised the section 5 as above.

Possible directions to improve include, but not limited to, 1) deeper analysis revealing the advantages of vector-based method, not just on the input data, but theoretical insights; 2) future climate impacts on streamflow variation (e.g., CMIP5 simulations)

We compared the vector-based method with grid-based routing (which used the IRF-UH routing scheme) and found that the differences in streamflow estimates largely result from differences in drainage area associated with the polygon-based and grid-based basin representations. In other words, the difference seems be more due to differences in basin area than differences in channel routing, which is of interest here. We have included this discussion in section 5.5 as a new subsection (P16-17, L372-390).

CMIP5-based flows are simply shown as a demonstration of how the model can be applied. A more in-depth discussion of climate change impacts on future streamflow is out-of-scope for this model description paper. The purpose of illustration of mizuRoute simulation with CMIP5 data is demonstration of the model's *capability* of conducting large domain studies such as climate change impact on streamflow across the US. We started with this statement in the beginning of section 5 (P12, L270-271).

- **Additional Modification of the manuscript**

We have updated the Geospatial Fabric data with an updated and corrected version. The corrected version contains corrections to the river network connectivity. The dataset used in the manuscript contains several "broken connections" between neighboring river segments. Figures 4 and 5 have been updated

References

- Bhunya, P. K., R. Berndtsson, C. S. P. Ojha, and S. K. Mishra, 2007: Suitability of Gamma, Chi-square, Weibull, and Beta distributions as synthetic unit hydrographs, *Journal of Hydrology*, **334**, 28-38,
- Kumar, R., C. Chatterjee, R. D. Singh, A. K. Lohani, and S. Kumar, 2007: Runoff estimation for an ungauged catchment using geomorphological instantaneous unit hydrograph (GIUH) models, *Hydrological Processes*, **21**, 1829-1840,
- Lohmann, D., R. Nolte-Holube, and E. Raschke, 1996: A large-scale horizontal routing model to be coupled to land surface parametrization schemes, *Tellus A*, **48**,
- Nadarajah, S., 2007: Probability models for unit hydrograph derivation, *Journal of Hydrology*, **344**, 185-189,

mizuRoute version 1: a river network routing tool for a continental domain water resources applications

Naoki Mizukami¹, Martyn P. Clark¹, Kevin Sampson¹, Bart Nijssen², Yixin Mao², Hilary McMillan^{3,8}, Roland J. Viger⁴, Steve L. Markstrom⁴, Lauren E. Hay^{4,8}, Ross Woods⁵, Jeffrey R. Arnold⁶, Levi D. Brekke⁷

¹National Center for Atmospheric Research, Boulder CO

²University of Washington, Seattle WA

³National Institute of Water and Atmospheric Research, Christchurch NZ

⁴United States Geological Survey, Denver CO

⁵University of Bristol, Bristol UK

⁶U.S. Army of Corps of Engineers, Seattle WA

⁷Bureau of Reclamation, Denver, CO

⁸[San Diego State University, San Diego, CA](#)

Corresponding to: N. Mizukami (mizukami@ucar.edu)

Abstract

This paper describes the first version of a stand-alone runoff routing tool, mizuRoute, ~~which~~ The mizuRoute tool post-processes runoff outputs from any distributed hydrologic model or land surface model to produce spatially distributed streamflow at various spatial scales from headwater basins to continental-wide river systems. The tool can utilize both traditional grid-based river network and vector-based river network data, ~~which~~ Both types of river network includes river segment lines and the associated drainage basin polygons, but the vector-based river network can represent finer scale river lines than the grid-based network. Streamflow estimates at any desired location in the river network can be easily extracted from the output of mizuRoute. The routing process is simulated as two separate steps. ~~The first is~~ First, hillslope routing, ~~which is performed with~~ uses a gamma distribution ~~to construct a~~ based unit-hydrograph ~~that represents the~~ to transport ~~of~~ runoff from a hillslope to a catchment outlet. The second step is river channel routing, which is performed with one of two routing scheme options: 1) a kinematic wave tracking (KWT) routing procedure; and 2) an impulse response function - unit hydrograph (IRF-UH) routing procedure. The mizuRoute ~~system tool~~ also includes ~~tools scripts~~ (python, NetCDF operators) to pre-process spatial river network data. This paper demonstrates mizuRoute's capabilities ~~with~~ to produce spatially distributed streamflow simulations based on river networks from the United States Geological Survey (USGS) Geospatial Fabric (GF) dataset, ~~which contains in which~~ over 54000 river segments and their contributing areas are mapped across the contiguous United States (CONUS). A brief analysis of model parameter sensitivity is also provided. The mizuRoute tool can assist model-based water resources assessments including studies of the impacts of climate change on streamflow.

1 Introduction

The routing tool described in this paper post-processes runoff outputs from macro-scale hydrologic models or land surface models (hereafter we use “hydrologic model” to refer to both types of model) to estimate spatially distributed streamflow along the river network. The river routing tool is named mizuRoute (“*mizu*” means “*water*” in Japanese). The motivation for ~~mizuRoute’s~~ the development of mizuRoute was to enable continental domain evaluations of hydrologic simulations for water resources assessments, such as studies of the impacts of climate change on streamflow. The mizuRoute tool is suitable for processing ~~of ensembles~~ of ensembles of multi-decadal runoff outputs because the tool is standalone and easily applied in a parallel mode. The mizuRoute tool is also designed to output streamflow estimates at all river segments in the river network across the domain of interest at each time step, facilitating ~~the~~ the further spatial and temporal analysis of the estimated streamflow. As opposed to the other routing models, our goal in developing mizuRoute is of model development is to provide flexibility of in making routing modeling decisions (i.e., river network definition and routing scheme).

The paper proceeds as follows. Section 2 reviews existing river routing models. Section 3 describes ~~further information on how the mizuRoute framework tool provides flexibility of routing modeling decisions as well as and details on~~ the hillslope and river routing schemes used in mizuRoute. Section 4 provides an overview of the workflow of mizuRoute from preprocessing hydrologic model output to simulating streamflow in the river network. Section 5 demonstrates streamflow simulations in river systems over the contiguous United States. Finally, a summary and future work are discussed in Section 6.

2 Existing river routing models

The water resources and ~~Earth-earth System-system Modeling-modeling~~ communities have developed a wide spectrum of river routing schemes of varying complexity (Clark et al. 2015). For example, the U.S. Army Corps of Engineers (USACE) has developed a stand-alone river modeling system called Hydrologic Engineering Center-River Analysis System (HEC-RAS; Brunner 2001).

HEC-RAS offers various hydraulic routing schemes, ranging from simple uniform flow to one-dimensional (1D) Saint-Venant equations for unsteady flow. HEC-RAS has been popular among civil engineers for river channel design and floodplain analysis where surveyed river geometry and physical channel properties are available. At the continental to global scale, unit-hydrograph approaches have been used (e.g., Nijssen et al. 1997; Lohmann et al. 1998; Goteti et al. 2008; Zaitchik et al. 2010; Xia et al. 2012), though more recent, large-scale river models use fully dynamic flow equations (e.g., Miguez-Macho and Fan 2012; Paiva et al. 2013; Clark et al. 2015), simplified Saint-Venant equations such as the kinematic wave or diffusive wave equation (e.g., Arora and Boer 1999; Lucas-Picher et al. 2003; Koren et al. 2004; Yamazaki et al. 2011; Li et al. 2013; Yamazaki et al. 2013; Gochis 2015; Yucel et al. 2015) or non-dynamical hydrologic routing methods such as Muskingum routing (e.g., David et al. 2011). Despite their computational cost, dynamic or diffusive wave models are attractive for relatively flat floodplain regions such as along the Amazon River where backwater effects on the flood wave are significant (Paiva et al. 2011; Yamazaki et al. 2011; Miguez-Macho and Fan 2012). At the other end of the spectrum, simpler, non-dynamic routing schemes, such as the unit hydrograph approach, estimate the flood wave delay and attenuation, but ~~do not simulate~~ other streamflow variables such as flow velocity and flow depth.

One of the key issues for large scale river routing, besides the choice of the routing scheme, is the degree of abstraction in the representation of the river network ([Figure 1](#)). A vector-based representation of the river network refers to a collection of ~~hydrologic~~ Hydrologic response Units (HRUs ~~or~~ -spatially discretized areas defined in the model) that are delineated based on topography or catchment boundary. River segments in the vector-based river network, represented by lines, meander through HRUs and connect upstream with downstream HRUs. On the other hand, in the grid-based river network, the HRU is ~~represented by~~ defined by a grid box and river segments connect neighboring grid boxes based on the flow directions. Vector-based river networks are better than coarser resolution (e.g. > 1km) gridded river networks at preserving fine-

scale features of the river system such as tortuosity, ~~therefore~~ and drainage area, therefore representing more accurate sub-catchment areas and river segment lengths.

For large scale applications, many studies have developed and evaluated methods to upscale fine resolution flow direction grids (~1km or less) to a coarser resolution (~ 10km or more) to match hydrologic model resolution and/or reduce the cost of routing computations (e.g., O'Donnell et al. 1999; Fekete et al. 2001; Olivera et al. 2002; Reed 2003; Davies and Bell 2009; Wu et al. 2011; Wu et al. 2012). Earlier work (e.g., O'Donnell et al. 1999; Fekete et al. 2001; Olivera et al. 2002) focused on preserving the accuracy of the flow direction at the coarser resolution and therefore on an accurate representation of the drainage area. Newer upscaling methods are designed to also preserve fine-scale flow path length (e.g., Yamazaki et al. 2009; Wu et al. 2011). More recent river routing models have also begun to employ vector-based river networks (Goteti et al. 2008; David et al. 2011; Paiva et al. 2011; Lehner and Grill 2013; Paiva et al. 2013; Yamazaki et al. 2013).

3 Runoff routing in mizuRoute

The runoff routing in mizuRoute provides more flexibility in continental domain routing applications. The mizuRoute ~~framework-tool~~ enables model flexibility in two ways: First, mizuRoute can be used to simulate streamflow for both grid- and vector-based river networks. Given either type of river network data, mizuRoute offers an option to route flow along all the river segments in the river network data or route runoff at an outlet segment specified by a user. With the latter option, routing computations ~~is-are~~ performed only ~~in-the~~ upstream ~~river network~~ of the specified outlet, which reduces the computational cost. Second, the modular structure of the mizuRoute ~~framework-tool~~ offers the flexibility to configure multiple routing schemes. The current version of mizuRoute includes two different ~~type-of~~ river routing schemes: 1) kinematic wave tracking (KWT) routing and 2) impulse response function - unit hydrograph (IRF-UH) routing, mimicking the Lohmann et al. (1996) model. This flexibility offers new capabilities not present in existing routing models. ~~One~~ capability is to provide an opportunity to explore routing model

uncertainties originating from the representation of the river system and routing scheme differences (equations and parameters) separately.

The mizuRoute tool uses a two-step process to route basin runoff. First, basin runoff is routed from each hillslope to the river channel using a gamma-distribution-based unit-hydrograph. This allows the representation of ephemeral channels or channels too small to be included in the river network. Second, using one of the two channel routing schemes, the delayed flow from each HRU is routed to downstream river segments along the river network. The routing time step is the same as that of the runoff output from the hydrologic model, typically an hourly or daily time step. The following sub-sections provide descriptions of the two routing steps.

3.1 Hillslope routing

Hillslope routing accounts for the time of concentration (T_c) of ~~a local catchment (i.e., an HRU)~~ to estimate temporally delayed runoff (or discharge) at the outlet of the HRU from runoff computed by a hydrologic model.

For hillslope routing mizuRoute uses a simple two-parameter Gamma distribution as a unit-hydrograph to route instantaneous runoff from a hydrologic model to an outlet of HRU. The Gamma distribution is expressed as:

$$\gamma(t; a, \theta) = \frac{1}{\Gamma(a)\theta^a} t^{a-1} e^{-\frac{t}{\theta}} \quad (1)$$

where t is time [T], a is a shape parameter [-] ($a > 0$), and θ is a time-scale parameter [T]. Both the shape and time scale parameters ~~determine~~ affect the peak time (mean-mode of the distribution: $(a-1)\theta$) and flashiness (variance of the distribution: $a\theta^2$) of the unit-hydrograph and depend on the physical ~~catchment~~ HRU characteristics. Convolution of the gamma distribution with the runoff depth series is used to compute the fraction of runoff at the current time which is discharged to its corresponding river segment at each future time as follows:

$$q(t) = \int_0^{tmax} \gamma(s; a, \theta) \cdot R(t - s) ds \quad (2)$$

where q is delayed runoff or discharge [L^3T^{-1}] at time step t [T], R is HRU total runoff depth [L^3T^{-1}] from the hydrologic model, and t_{max} is the maximum time length for the gamma distribution [T].

This two parameter gamma distribution has been widely used in unit-hydrograph-based models for water resources engineering applications (e.g., Bhunya et al. 2007; Nadarajah 2007). Kumar et al. (2007) presented methods to estimate the two parameters in the gamma distribution based on geomorphological information. The gamma distribution offers a parsimonious way to describe a wide range of hillslope-to-channel responses in a computationally efficient manner, which is important for the continental-scale domains.

3.2 River channel routing

Two different river channel routing schemes are implemented in mizuRoute: 1) ~~the kinematic wave tracking (KWT) routing procedure~~; and 2) ~~the impulse response function—unit hydrograph (IRF-UH) routing procedure~~. Both schemes are based on the 1D Saint-Venant equations that describe flood wave propagation through a river channel. The one-dimensional conservation equations for continuity (Eq. 3) and momentum (Eq. 4) are

$$\frac{\partial q}{\partial x} + \frac{\partial A}{\partial t} = 0 \quad (3)$$

$$\frac{\partial v}{\partial t} + v \frac{\partial v}{\partial x} + g \frac{\partial y}{\partial x} - g(S_0 - S_f) = 0 \quad (4)$$

where q is discharge [L^3T^{-1}] at time step t [T] and location x [L] in a river network, A is cross-sectional flow area [L^2], v is velocity [LT^{-1}], y is depth of flow [L], S_0 is channel slope [-], S_f is friction slope [-], and g is gravitational constant [LT^{-2}]. The continuity equation (Eq. 3) assumes that no lateral flow is added to a channel segment. The following sub-sections describe the two routing schemes.

3.2.1 Kinematic wave tracking (KWT)

In contrast with several other kinematic routing models that solve a kinematic wave equation with ~~the~~ numerical schemes (e.g., Arora and Boer 1999; Lucas-Picher et al. 2003; Koren et al.

2004), the KWT method computes a wave speed or a celerity for the runoff (or discharge) that enters an individual stream segment from the corresponding HRU at each time step using kinematic approximation (Goring 1994; Clark et al. 2008). ~~The runoff, represented as a particle, is This runoff is tracked along~~propagated through the river network ~~with a wave~~based on a travel time (the celerity divided by the segment length) ~~once in the river segment~~. Note that the wave celerity differs from the flow velocity, as the wave typically moves faster than water mass (McDonnell and Beven 2014).

In the kinematic wave approximation with the assumption that the channel is rectangular and hydraulically wide (channel width $\gg y$), the wave celerity C [LT^{-1}] is a function of channel width w [L], Manning's coefficient n [-], channel slope S_0 [-] and discharge q [L^3T^{-1}]. Further details are provided in Appendix A. Among the four variables, the channel slope S_0 is provided ~~in~~by the river network data and discharge is computed with hillslope routing for the headwater basin, or/and updated via routing from the upstream segment. The other two variables, Manning's coefficient n and river width w , are much more difficult to measure or estimate. The river width is determined with the following width-drainage area relationship (Booker, 2010):

$$w = W_a \cdot A_{ups}^b \quad (6)$$

where W_a is a width factor [-], A_{ups} is the total upstream basin area [L^2] and b is an empirical exponent equal to 0.5. The width factor W_a and the Manning's coefficient n are treated as model parameters as shown in Table 1.

The KWT routing starts with ordering all the segments in the processing sequence from upstream to ~~the downstream segments~~. The KWT routing is performed at each segment in the processing order at each time step. The procedures of the KWT routing method are ~~detailed~~as follows:

1. ~~The first routine~~ obtains the information on the waves that reside in the segment at a given time step: ~~This includes~~ the waves routed from the upstream segments, the wave that remains in this current segment from the previous time step, and the wave generated from

the runoff from local HRUs during the current time step. Three state variables of the waves are kept in the memory: (i) discharge; (ii) the time at which the wave enters the segment; and (iii) the time at which the wave is expected to exit the segment (~~assign the missing value to the waves routed from the upstream segment, and computed in step 3~~). At the first time step, only the wave from local HRUs exists. [Figure 2](#) a) visualizes the discharge of waves that reside in the 16 segments (16 river segments are shown in the inserted map) at the beginning of 5 time steps against the wave locations in the segments.

2. ~~The second routine (wave removal routine) reduces~~ Remove waves in order to reduce the memory usage ~~as well as~~ and the processing time for the wave routing (the next step). The number of the waves in the segment is limited to a predefined number (20 by default). In [Figure 2](#), the threshold ~~of~~ for the number of waves ~~in~~ the ~~each~~ segment is set to 100. To determine which waves can be removed ~~the~~ first, difference between the discharge of the wave and the linearly interpolated discharge ~~values~~ between its two neighboring waves is computed for all ~~the~~ waves, ~~and then~~ the wave that produces the least difference (from the interpolated discharge) is removed so that loss of wave mass is minimized. This process is repeated until the number of waves ~~become is lower below than~~ the threshold.
3. ~~The third routine performs the wave routing over~~ Route waves through a given river segment. In the routing routine, the celerity of each wave in the segment is computed with Eq. (A6); and ~~then~~ the time at which each wave is expected to exit the river segment is updated. If the exit time occurs before the end of the time step, the wave is propagated to the downstream segment and flagged as “exited”. The exit time then becomes the time the wave entered the downstream segment. Otherwise, the wave is flagged as “not-exited”, and remains in the current segment. [Figure 2](#) b) shows the discharge of the waves against the exit times of the corresponding waves at segments 4 and 13. As a reference, the end of each time step is shown as a vertical line. ~~In [Figure 2](#) b), the waves situated before the end of time step exits the segments at a given time step.~~

The routing routine checks for (and corrects) the special case of a kinematic shock. A kinematic shock is a sudden rise in the flow depth, and thus an increase in the discharge at a fixed location, and occurs when a faster-moving wave successively overtakes multiple slower-waves to build a steep wave front. It occurs in models due to the kinematic approximation; in reality, diffusion would act to reduce the steepness of the shockwave front. Two neighboring waves are evaluated to check if a slower wave is overtaken by a faster wave before the waves exit the river segment. If this occurs, those two waves are merged into one, and the celerity of the merged wave is updated with the following equation;

$$C_{merge} = \frac{\Delta q}{\Delta A} = \frac{\Delta q}{w\Delta y} \quad (7)$$

where C_{merge} is the merged wave celerity [LT^{-1}], Δq and ΔA are differences in discharge [L^3T^{-1}] and cross-sectional flow area [L^2T^{-1}], respectively, between slower and faster waves. Note that Eq (7) is the mathematical definition of the wave celerity. Since we assume the a rectangular channel whose width is constant for each segment, the merged celerity C_{merge} is a function of the flow depth y , which is computed with Eq. (A3).

3.4. Finally, the time step averaged discharge (streamflow) is computed by temporal integration of the discharge of all the waves that exit the segment during the time step. Temporal integral of wave discharge is visualized in [Figure 2](#) b) as the area enclosed by the discharge curve formed by all the exiting waves between the beginning and end that exit during the of time step.

3.2.2 Impulse response function - unit hydrograph (IRF-UH)

The IRF-UH method mimics the river routing model of Lohmann et al. (1996), which has been used to route flows from gridded land surface models such as the Variable Infiltration Capacity model (VIC; Liang et al. 1994). The only difference between the current tool and the Lohmann routing tool is the way in which the river network is defined. The Lohmann routing model

is designed as a grid-based model as shown in [Figure 1](#) to ease the coupling with grid-based land surface models. In mizuRoute, the same IRF-UH method can be used either on a vector- or grid-based river network. [Here, the](#)~~The~~ descriptions of IRF-UH are given briefly [as follows](#).

The mathematical developments of IRF-UH are based on one-dimensional diffusive wave equation derived from the 1D Saint-Venant equations (Eqs. 4 and 5):

$$\frac{\partial q}{\partial t} = D \frac{\partial^2 q}{\partial x^2} - C \frac{\partial q}{\partial x} \quad (10)$$

where parameters C and D are wave celerity [LT^{-1}] and diffusivity [L^2T^{-1}], respectively. The complete derivation from Eqs. 4 and 5 to Eq. 10 is given in Appendix B.

Equation (10) can be solved using convolution integrals

$$q = \int_0^t U(t-s) h(x,s) ds \quad (11)$$

where

$$h(x,t) = \frac{x}{2t\sqrt{\pi Dt}} \exp\left(-\frac{(Ct-x)^2}{4Dt}\right) \quad (12)$$

and $U(t-s)$ is a unit depth of runoff generated at time $t-s$. This solution is a mathematical representation of the ~~impulse response function (IRF)~~ used in ~~unit-unit~~ hydrograph theory. Wave celerity C and diffusivity D are treated as input parameters for this tool (Table 1), and ideally they can be estimated from observations of discharge and channel geometries at gauge locations.

Given a river segment or outlet segment, a set of unit-hydrographs unique to all the upstream segments is constructed based on the distances between the upstream segment to the outlet segment (Eq. 12). The unit-hydrograph convolution with delayed flow (i.e., hill-sloped routed flow) is computed for each upstream segment and then all the routed flows from the upstream segments are summed to obtain the streamflow at the outlet segment. As opposed to the KWT routing, the IRF-UH routing does not require the segment sequence for the routing computation. In other words, the routing can be performed in any order of the segments within a river network and for a given

segment the unit-hydrograph convolution can be also performed in any order of its upstream segments.

4 mizuRoute workflow

The Overall-overall workflow of mizuRoute is illustrated in [Figure 3](#). There are two main, separate data preprocesses-preprocessing steps that are executed prior to the before-executing the main executable of mizuRoute, routing computation route_runoff.exe.

First, if the hydrologic model simulations are performed with spatial discretization that differs from(i.e., hydrologic model HRU)-different than the HRU used in the river network data, it is necessary to map the runoff output from the hydrologic models to the river network HRUs. This process is done by taking the area-weighted runoff of the intersecting hydrologic model HRUs. We developed the python scripts to identify the intersected hydrologic model HRUs for each river network HRU and their fractional areas to the river network HRU area to assist with this process.

The second data pre-processing step is augmentation of the river network dataset. Typical topological information in this dataset is the immediate downstream segment for each segment. While a river network can be fully defined based on information about the immediate downstream segment, the river routing schemes in mizuRoute require identification of all the upstream river segments. For this purpose, we have developed a program (process_river_topology.exe) that identifies all the upstream segments for each segment in the river network data based on the information on immediate downstream segment. This identification of upstream segments only has to be done once for each unique river network dataset. Therefore, the program (i.e., process_river_topology.exe) can be used as a preprocessor, which improves the efficiency of the main routing tool, especially when the routing is performed for multiple hydrologic model outputs for a large river system. In addition to the identification of all upstream segments, the topology program identifies upstream HRUs, upstream areas (cumulative area of all the upstream HRUs), total upstream distance from each segment to all the upstream segments, etc.

5 CONUS-wide mizuRoute simulations

The purpose of this section is to demonstrate the capabilities of mizuRoute to route multi-decadal runoff outputs from hydrologic model simulations over the continental domain. We use the United States Geological Survey (USGS) Geospatial Fabric (GF) vector-based river network (Viger 2014; http://www.brr.cr.usgs.gov/projects/SW_MoWS/GeospatialFabric.html), applied over the contiguous United States (CONUS). We routed the daily runoff simulations archived by Reclamation (2014) as part of their project “Downscaled CMIP3 and CMIP5 Climate and Hydrology Projections” (http://gdo-dcp.ucllnl.org/downscaled_cmip_projections/dcpInterface.html). In this project, the VIC model was forced by the spatially downscaled temperature and precipitation outputs at $1/8^\circ$ (~12km) resolution from 97 global climate model outputs from 1950 through 2099. The details of the Coupled Model Intercomparison Project Phase 5 (CMIP5) are described by Taylor et al. (2011). Additionally, historical runoff simulations were produced at $1/8^\circ$ resolution by the VIC model forced by meteorological forcings from Maurer et al. (2002) from 1950 through 1999 (Maurer meteorological data and the simulated runoff with Maurer data is referred to as M02 and VIC-M02 runoff, respectively).

The river routing scheme uses both KWT and IRF-UH. The routing parameters for each scheme (see Table 1) need to be predetermined. The channel parameters included in the KWT routing method (Manning's coefficient, n , and river width, w) can be determined by a survey of river channel geometry and river bed condition if the spatial scale of the model domain is very small, but this is usually infeasible for large spatial domains such as the entire CONUS used here. For the IRF-UH method, the determination of celerity and diffusivity with Eq. (B8) requires information on flow and channel geometry, so for simplicity we follow Lohmann et al. (1996) and treat celerity and diffusivity as parameters. For both schemes, parameter estimation methods need to be developed to determine appropriate values for large-scale applications. For this simulation, the parameter values are determined set somewhat arbitrarily to reasonable values, with the objective to

demonstrate the capabilities of mizuRoute to produce spatially distributed streamflow, not to attain the most accurate simulation.

In addition, sensitivity of the streamflow estimates to the river routing parameters is examined at selected locations. Different routing model choices (routing scheme and parameters) will differently affect the attenuation of runoff (i.e., the magnitude of peak and rate of rising and recession limbs) and the timing of the peak flow. We also discuss effect of different river networks (grid-based and vector-based networks) on the results of the runoff routing.

Note that the accuracy of the routed flow is not discussed because it depends largely on the accuracy of runoff estimates from performance of the hydrologic model; that produces the distributed runoff fields and hydrologic model outputs are input to the routing model. The hydrologic simulations can have large errors, which makes a direct comparison with observations less meaningful. For this reason, we focus on an inter-comparison between the two channel routing schemes or two river network definition. The performance of the IRF-UH approach in routing flows compared to observed flows has been discussed by Lohmann et al. (1996).

5.1 The Geospatial Fabric network topology

The GF dataset was developed primarily to facilitate CONUS-wide hydrologic modeling with the USGS Precipitation Runoff Modeling System (PRMS; Leavesley and Stannard 1995). To reduce the computational burden of the hydrologic simulations, the GF dataset is generated by aggregating fine-scale river segments and corresponding ~~catchments or~~ HRUs from the first version of National Hydrography Dataset Plus (NHDPlus v1; HorizonSystemsCorporation 2010), while still representing small catchments (equivalent in area to 12 digit Hydrologic Unit Code ~ 100 km² or smaller basin). The GF dataset includes line and polygon geometries representing river segments and their ~~catchments~~ HRUs, respectively, along with their attribute information including the connectivity between segments (topological information) and their physical attributes such as channel length, ~~and~~ area of the ~~catchment~~ HRU. Table 2 lists the ~~variables of~~ river network vector ~~data information~~ necessary for ~~the~~ mizuRoute. The GF dataset (both geometry and attribute

information) is stored in Environmental System Research Institute (ESRI) Geodatabase Feature Classes and the topological and physical data (Table 2) in the attribute table is converted to NetCDF format to start with the augmentation of ~~river~~ network topology (Figure 3). The GF dataset include 54,929 river segments and 106,973 ~~catchment~~-HRUs (including the right and left bank of each segment). Figure 4 displays distribution of river segments in the GF vector data with color coded by ~~—~~ The total upstream HRU area of each river segment. To use the GF vector-based river network, the 1/8° gridded runoff outputs from VIC forced by CMIP-5 data were mapped to each GF HRU by taking the areal weighted average of the intersecting area between grid boxes and the GF HRUs. ~~shown in Figure 4 is computed based on drainage-based HRU (not shown in the Figure 4) provided in the GF dataset.~~ Although this paper illustrates runoff routing using GF, the mizuRoute tool can work with any other river network data if it is as long as it includes information about the correspondence between HRUs and river segments as well as segment-to-segment topology information.

5.2 Model

~~First, to use the GF vector-based river network, the 1/8° gridded runoff was were mapped to each GF HRU by taking the areal weighted average of the intersecting area between grid boxes and the GF HRUs.~~

~~The routing parameters for each scheme (see Table 1) need to be predetermined. The channel parameters included in the KWT routing method (Manning's coefficient, n , and river width, w) can be determined by a survey of river channel geometry and river bed condition if the spatial scale of the model domain is very small, but this is usually infeasible for large spatial domains such as the entire CONUS used here. For the IRF-UH method, the determination of celerity and diffusivity with Eq. (B8) requires information on flow and channel geometry, so for simplicity we follow Lohmann et al. (1996) and treat celerity and diffusivity as parameters. For both schemes, parameter estimation methods need to be developed to determine appropriate values for large-scale applications. For this simulation, the parameter values are determined arbitrarily, with the objective to demonstrate the~~

~~capabilities of mizuRoute to produce spatially distributed streamflow, not to attain the most accurate simulation.~~

~~The mizuRoute tool outputs the time series of the streamflow estimates at all the river segments in the river network, and modeled streamflow for the point of interest (e.g., streamflow gauge location) can be extracted from the NetCDF output file with the ID of the river segment (i.e., seg_id) where the point of interest is located.~~

5.35.2 Spatially distributed streamflow in the river network

~~Here The first illustration example demonstrates is to show mizuRoute's the capability of mizuRoute to produce we show~~ spatially distributed streamflow estimates over the continental domain using the VIC simulated runoff forced with M02 meteorological data. [Figure 5](#) shows daily mean streamflow distribution estimated with KWT and IFR-UH routing methods for June 15 1986 as an example. As shown in [Figure 5](#), both routing schemes produce qualitatively the same spatial pattern of the daily streamflow.

The mizuRoute tool outputs the time series of the streamflow estimates at all the river segments in the river network in the NetCDF output file, and modeled streamflow for the point of interest (e.g., streamflow gauge location) can be easily extracted from the NetCDF output file with based on the ID of the river segment (i.e., seg_id) where the point of interest is located. [Figure 6](#) shows daily streamflow from Jan 1, 1995 to Dec. 31, 1999 extracted at three locations from the NetCDF output: A) Snake River below Ice Harbor Dam, B) Colorado River at Lees Ferry, C) Apalachicola River Blountstown. Temporal patterns of flow simulations with the two river routing schemes are very similar, but the day-to-day differences in estimated streamflow due to the different routing choices become visible.

~~Another~~ The Nnext demonstration of mizuRoute's capability is to produce an ensemble of projected streamflow estimates from the runoff simulations using CMIP5 data. [Figure 7](#) shows the monthly mean of 28 projected streamflow estimates (using CMIP5 RCP 8.5 scenario) extracted at the three locations over three periods: P1) from 2010 to 2039, P2) from 2040 to 2069, and P3) from

2070 to 2099. In this example, the results from the KWT scheme are shown in [the Figure 7](#). ~~The interpretation of the climate changes impacts on the streamflow is not discussed here and complete analyses are left for the future investigation.~~

5.45.3 Sensitivity of streamflow estimates to river routing parameters

Analysis of the sensitivity of simulated hydrographs to channel routing parameters (Table 1) is performed to examine the effect of parameter values on the streamflow simulations. In this paper, ~~brief qualitative sensitivity simulations analysis were was~~ performed using VIC simulated runoff with M02 data and using different river routing parameter values (two parameters for each scheme). We carried out the parameter sensitivity analysis at the three locations in Figure 6, but found the characteristics of the parameter sensitivity are the same [at all three](#). Therefore, we present the results for [the Colorado River at Lees Ferry](#), ~~where a single, because one distinct snowmelt runoff peak makes it easy to see illustrates the difference the impact of the routing parameter values on the peak timing.~~ [Figure 8](#) shows [the](#) effect of [the](#) width factor W_a in Eq. (12) (top panels) and [the](#) Manning coefficient n (bottom panels) for the KWT scheme. As expected, wider channels ~~width~~ (with larger W_a value) ~~produced delay the later hydrograph, shifts~~ because [the](#) larger flow area ~~produces results in~~ slower velocity ~~to conserve the amount of dischargeies~~. This effect is enhanced with larger ~~m~~Manning coefficient n , ~~because due to~~ more friction ~~slowing slows down the~~ water flow ~~with larger Manning coefficient n~~. A similar effect is seen ~~for in the~~ sensitivity [experiments for](#) ~~of simulated hydrographs to the~~ Manning's coefficient n (bottom panel of [Figure 8](#)).

[Figure 9](#) shows the sensitivity of a simulated hydrograph from Oct 1, 1990 to Sep 30, 1991 to the two IRF-UH parameters at Colorado River at Lees Ferry (top panel for sensitivity to celerity C and bottom panel for sensitivity to diffusivity D). Interestingly, the effect of diffusivity D is [little small](#) while celerity C affects [the](#) timing of [the](#) hydrograph peak. This is because celerity C directly changes peak timing without attenuation of IRF, while diffusivity D has little influence on peak timing of IRF although it changes the degree of flashiness (Eq.12). Due to the low sensitivity of the

hydrograph to diffusivity D , the degree of hydrograph sensitivity to celerity C is consistent across different diffusivity values (bottom panel of Figure 8).

5.4 Comparison between grid-based and vector-based river network

This section illustrates the effect of river network definitions (grid- or vector-based network) on simulated streamflow using the upper Colorado River basin (outlet: Colorado River at Lees Ferry) and its two sub-basins (outlets: Colorado River near Cameo and East River near Almont; See Figure 10). The daily simulated streamflow from March 1999 and to August 1999 are shown in Figure 11. The IRF-UH routing scheme in mizuRoute was used to route the VIC-M02 runoff through both GF river network and 1/8° grid-based river network while the KWT scheme uses only GF river network for a reference. We also verified (not shown) that with (which also uses IRF-UH)

Since the river routing was performed over the entire upper Colorado River basin for both mizuRoute and Lohmann tools, the simulated streamflow time series at the two sub-basins were extracted from the routing results from the routing over the entire upper Colorado River basin. Model elements can have only one downstream outlet, Colorado River at Lees Ferry for this simulation. As a result, fractional areas of model grid cells on internal basin boundaries cannot be accounted for. In other words, note that 12km box area on the boundary for the upper Colorado River basin uses fractional area on internal basin boundaries for a box inside the basin while the sub-basins follow grid box edges and use the entire grid cell is either inside or outside a sub-basin box area on the boundaries (Figure 10 panel B). This leads leading to discrepancies of basin areas for sub-basins and total runoff volume that is routed to the gauge as indicated in Figure 11. Even though the basin areas and therefore flow amounts are similar at Lees Ferry for because the basin areas defined with both networks, they differ for are similar. However, the drainage areas of the two sub-basins defined with GF river network and 12km grid river network are different, therefore, the streamflow magnitudes become are dissimilar basins. For example, the simulated

~~streamflow simulated using GF river network has greater flow magnitude at Colorado River near Cameo is larger for the vector-based network than for the using the 12km-grid-based network river network (middle panel in Figure 11) because of a mismatch in the drainage area at Colorado River near Cameo is larger in the GF river network than in the 12km-grid river network (Figure 10). Moreover, The vector-based river network preserves a more accurate drainage shape or area for sub-basins the 1/8° grid-based network than 12km-grid river network, which is benefit of using vector type river network.~~

6 Summary and Discussion

This paper presents mizuRoute (version 1.0), a river network routing tool that post-processes runoff outputs from any hydrologic or land surface model. We demonstrated the capability of mizuRoute to produce multi-decadal, spatially-spatially-distributed streamflow on a vector-based river network using the USGS GF river network over the CONUS. The streamflow time series are easily extracted at any locations in the network, facilitating hydrologic modeling evaluation, and other hydrologic assessments. The tool is independent of the hydrologic simulations, making it possible to produce ensembles of streamflow estimations from multiple hydrologic models. As an example of a practical application of mizuRoute, an ensemble of streamflow projections was produced at USGS gauge points on the river systems across the CONUS from 97 runoff simulations from Downscaled CMIP5 Climate and Hydrology Projections (Reclamation 2014). Section 5.3 shows some of the streamflow simulations based on the runoff generated with VIC forced by CMIP5 data.

Based on the simulations presented in the Section 5.4, the routing parameters can affect the simulated hydrograph especially for the KWT method. Though more detailed investigations of those effects need to be performed to fully understand the routing model behaviors, the parameter sensitivity is substantial. More sophisticated methods to estimate routing model parameters need to be developed. River physical parameters are difficult to obtain in a consistent way at the continental scale, but recent developments of the retrieval algorithms for river physical properties (channel

width, slope etc.) with remote sensing data are promising (e.g., Pavelsky and Smith 2008; Fisher et al. 2013; Allen and Pavelsky 2015), and we expect to see advances in capabilities to estimate the hydraulic geometry of rivers over the coming years (Clark et al. 2015).

TheOne limitation of mizuRoute is that the channel routing schemes – KWT and IRF-UH – are both 1-Dimensional (1-D) approaches that do not explicitly track physical parcels of water. The 1-D approach does not allow for explicit modeling of inundation extent, which can occur during flood events. Also, the wave particles that are used in the KWT approach travel at the speed of the wave (celerity) rather than the mean velocity of the fluid. Therefore, direct use of KWT for water quality ~~monitoring~~modelling such as stream temperature is not recommended. Extension of mizuRoute to simulate stream temperature and water quality can be done in one of two ways: Adaptation of the existing routing methods or inclusion of an additional routing scheme that is more directly suitable for tracking water masses and their constituents.

Toward future enhancements of mizuRoute performance, both routing schemes lend themselves well for parallelization. Computing speed can be improved by implementing parallel processing directive (e.g., open MP) for routing routines. While kinematic wave routing has to be done sequentially from upstream to downstream, the processing can be parallelized through appropriate choices of the domain decomposition. For example, sub-basins that contribute to flow along a mainstream segment can be processed in parallel because the basins are independent. On a CONUS-wide river network, individual river basins (e.g. the Colorado River and Mississippi River basins) can be processed simultaneously. For IRF-UH routing, the routing computation is performed for individual river segments independently (see section 3.2.2), therefore the parallelization for river segment loops can be made possible. Lastly, routing of an ensemble of runoff outputs such as the CMIP5 projected runoff is easily parallelized.

7 Code Availability

The source codes for the river network topology program and the hillslope and river routing along with test data are available along with the user manual on GitHub (<https://github.com/NCAR/mizuRoute>). Those codes are developed in Fortran90 and require installation of a NetCDF 4 library (<http://www.unidata.ucar.edu/downloads/netcdf/index.jsp>). In addition, there are several pre-processing python scripts to map runoff outputs from hydrologic models to other type of HRUs. These pre-processing scripts are also available in GitHub. Those python scripts process ESRI Shapefiles and NetCDF data and require GDAL, SHAPELY, NetCDF4 packages.

Acknowledgements

This work was financially supported by the U.S Army Corps of Engineers.

Appendix A. Derivation of wave celerity equation used in KWT

The kinematic wave approximation to the full Saint-Venant equations (Eqs. 3 and 4) uses the continuity equation combined with a simplified momentum equation. The simplified momentum equation is based on the assumption that the friction slope is equal to the channel slope and that flow is steady and uniform. Under this assumption, Eq. 4 is reduced to $S_0 = S_f$. In other words, the gravitational force that moves water downstream is balanced with the frictional force acting on the riverbed. With this assumption, the discharge q can be expressed using a uniform flow formula such as Manning's equation:

$$q = A \frac{k}{n} R_h^\alpha S_0^{1/2} \quad (\text{A1})$$

where k is a scalar whose value is 1 for SI units and 1.49 for Imperial units, n is the Manning coefficient, R_h is hydraulic radius [L], which is defined as the cross sectional flow area A [L²] divided by the wetted perimeter P [L], and α is a constant coefficient ($\alpha=2/3$).

We assume the channel shape is rectangular and the geometry is constant throughout one river segment, with width w , $A = wy$ and $P = w + 2y$. Assuming the channel is wide compared to flow depth (i.e., $w \gg y$), the hydraulic radius R_h is expressed as

$$R_h = \frac{A}{P} = \frac{wy}{w + 2y} \cong y \quad (\text{A2})$$

By substituting Eq. (A2) into Eq. (A1), the Manning equation is re-written as

$$q = w \frac{k}{n} y^{\alpha+1} S_0^{1/2} \quad (\text{A3})$$

For each stream segment within which the channel width w is constant, the wave celerity C is given by

$$C = \frac{dq}{dA} = \frac{dq}{d(wy)} \cong \frac{dq}{wdy} \quad (\text{A4})$$

By substituting Manning's equation (Eq. A3) into Eq. A4, the wave celerity C can be given by

$$C = (\alpha + 1) \cdot \frac{k}{n} \sqrt{S_0} \cdot y^\alpha \quad (\text{A5})$$

or expressed as a function of discharge q as

$$C = (\alpha + 1) \cdot (w)^{\frac{-\alpha}{\alpha+1}} \cdot \left(\frac{k}{n} \sqrt{S_0}\right)^{\frac{1}{\alpha+1}} \cdot q^{\frac{\alpha}{\alpha+1}} \quad (\text{A6})$$

Appendix B. Derivation of 1-D diffusive equation

We describe in detail the derivation of diffusive wave equations from Saint-Venant equations (Strum 2001) that are the basis of the IRF-UH method. The development of the IRF-UH method starts with the derivation of the diffusive wave equation from the 1D Saint Venant equations (Eqs. 3 and 4) by neglecting inertia terms (the second term in Eq. 4) and assuming steady flow (eliminating the first term in Eq. 4). The momentum equation (Eq. 4) can therefore be reduced to:

$$\frac{\partial y}{\partial s} = S_0 - S_f \quad (\text{B1})$$

Now, Manning's equation can be expressed in terms of channel conveyance, K_c (carrying capacity of river channel),

$$q = K_c \cdot \sqrt{S_f} \quad (\text{B2})$$

where $K_c = k/n \cdot A \cdot R_h^\alpha$. Substituting S_f from Eq. (B2) into Eq. (B1) and differentiating with respect to time, the momentum equation (Eq. A1) becomes

$$\frac{2q}{K_c^2} \frac{\partial q}{\partial t} - \frac{2q^2}{K_c^3} \frac{\partial K_c}{\partial t} = - \frac{\partial^2 y}{\partial x \partial t} \quad (\text{B3})$$

Also, the continuity equation (Eq. 3) can be re-written by differentiating both sides of the equation with respect to distance x as,

$$\frac{\partial^2 q}{\partial x^2} + w \frac{\partial^2 y}{\partial x \partial t} = 0 \quad (\text{B4})$$

Combining Eq. (B3) and Eq. (B4) results in

$$\frac{2q}{K_c^2} \frac{\partial q}{\partial t} - \frac{2q^2}{K_c^3} \frac{\partial K_c}{\partial t} = \frac{1}{w} \frac{\partial^2 q}{\partial x^2} \quad (\text{B5})$$

Because the channel conveyance, K_c , is a function of flow depth, y , or flow area, A , the differentiation part of the second term of Eq. (B5) can be written as

$$\frac{\partial K_c}{\partial t} = \frac{dK_c}{dA} \frac{\partial A}{\partial t} = - \frac{dK_c}{dA} \frac{\partial q}{\partial x} \quad (\text{B6})$$

Finally, inserting Eq. (B6) into Eq.(B5), results in the one-dimensional diffusive wave equation

$$\frac{\partial q}{\partial t} = D \frac{\partial^2 q}{\partial x^2} - C \frac{\partial q}{\partial x} \quad (\text{B7})$$

where

$$\begin{aligned} C &= \frac{q}{K_c} \frac{dK_c}{dA} = \frac{dq}{dA} \\ D &= \frac{K_c^2}{2qw} = \frac{q}{2wS_0} \end{aligned} \quad (\text{B8})$$

where parameters C and D are wave celerity [LT^{-1}] and diffusivity [L^2T^{-1}], respectively. Here, we assume the flow is uniform (i.e., $S_f = S_0$).

References

- Allen, G. H., and T. M. Pavelsky, 2015: Patterns of river width and surface area revealed by the satellite-derived North American River Width data set, *Geophysical Research Letters*, **42**, 2014GL062764,
- Arora, V. K., and G. J. Boer, 1999: A variable velocity flow routing algorithm for GCMs, *Journal of Geophysical Research: Atmospheres*, **104**, 30965-30979,
- Bhunya, P. K., R. Berndtsson, C. S. P. Ojha, and S. K. Mishra, 2007: Suitability of Gamma, Chi-square, Weibull, and Beta distributions as synthetic unit hydrographs, *Journal of Hydrology*, **334**, 28-38,
- Brunner, G. W., 2001: HEC-RAS, River Analysis Ssystem Users'Manual, US Army Corps of Engineers, Hydrologic Engineering Center. 320.
- Clark, M. P., D. E. Rupp, R. A. Woods, X. Zheng, R. P. Ibbitt, A. G. Slater, J. Schmidt, and M. J. Uddstrom, 2008: Hydrological data assimilation with the ensemble Kalman filter: Use of streamflow observations to update states in a distributed hydrological model, *Advances in Water Resources*, **31**, 1309-1324,
- Clark, M. P., Y. Fan, D. M. Lawrence, J. C. Adam, D. Bolster, D. J. Gochis, R. P. Hooper, M. Kumar, L. R. Leung, D. S. Mackay, R. M. Maxwell, C. Shen, S. C. Swenson, and X. Zeng, 2015: Improving the representation of hydrologic processes in Earth System Models, *Water Resources Research*, n/a-n/a,
- David, C. H., D. R. Maidment, G.-Y. Niu, Z.-L. Yang, F. Habets, and V. Eijkhout, 2011: River Network Routing on the NHDPlus Dataset, *Journal of Hydrometeorology*, **12**, 913-934,
- Davies, H. N., and V. A. Bell, 2009: Assessment of methods for extracting low-resolution river networks from high-resolution digital data, *Hydrological Sciences Journal*, **54**, 17-28,
- Fekete, B. M., C. J. Vörösmarty, and R. B. Lammers, 2001: Scaling gridded river networks for macroscale hydrology: Development, analysis, and control of error, *Water Resources Research*, **37**, 1955-1967,
- Fisher, G. B., B. Bookhagen, and C. B. Amos, 2013: Channel planform geometry and slopes from freely available high-spatial resolution imagery and DEM fusion: Implications for channel width scalings, erosion proxies, and fluvial signatures in tectonically active landscapes, *Geomorphology*, **194**, 46-56,
- Gochis, D. J., W. Yu, D.N. Yates, 2015: The WRF-Hydro model technical description and user's guide, version 3.0. NCAR Technical Document.,NCAR 120 pp.Boulder CO.
- Goring, D. G., 1994: Kinematic shocks and monoclinal waves in the Waimakariri, a steep, braided, gravel-bed river. *Proceedings of the International Symposium on waves: Physical and numerical modelling*, University of British Columbia, Vancouver, Canada, 336-345.
- Goteti, G., J. S. Famiglietti, and K. Asante, 2008: A Catchment-Based Hydrologic and Routing Modeling System with explicit river channels, *Journal of Geophysical Research: Atmospheres*, **113**, D14116,
- HorizonSystemsCorporation, 2010, NHDPlus Version 1 (NHDPlusV1) User Guide, http://www.horizon-systems.com/NHDPlus/NHDPlusV1_documentation.php
- Koren, V., S. Reed, M. Smith, Z. Zhang, and D.-J. Seo, 2004: Hydrology laboratory research modeling system (HL-RMS) of the US national weather service, *J. Hydrol.*, **291**, 297-318,
- Kumar, R., C. Chatterjee, R. D. Singh, A. K. Lohani, and S. Kumar, 2007: Runoff estimation for an ungauged catchment using geomorphological instantaneous unit hydrograph (GIUH) models, *Hydrological Processes*, **21**, 1829-1840,

- Leavesley, G. H., and L. G. Stannard, 1995: The precipitation-runoff modeling system-PRMS. *Computer Models of Watershed Hydrology*, V. P. Singh, Ed., Water Resources Publications, 281-310.
- Lehner, B., and G. Grill, 2013: Global river hydrography and network routing: baseline data and new approaches to study the world's large river systems, *Hydrological Processes*, **27**, 2171-2186,
- Li, H., M. S. Wigmosta, H. Wu, M. Huang, Y. Ke, A. M. Coleman, and L. R. Leung, 2013: A Physically Based Runoff Routing Model for Land Surface and Earth System Models, *Journal of Hydrometeorology*, **14**, 808-828,
- Liang, X., D. P. Lettenmaier, E. F. Wood, and S. J. Burges, 1994: A simple hydrologically based model of land surface water and energy fluxes for general circulation models, *J. Geophys. Res.*, **99**, 14415-14428,
- Lohmann, D., R. Nolte-Holube, and E. Raschke, 1996: A large-scale horizontal routing model to be coupled to land surface parametrization schemes, *Tellus A*, **48**,
- Lohmann, D., E. Raschke, B. Nijssen, and D. P. Lettenmaier, 1998: Regional scale hydrology: I. Formulation of the VIC-2L model coupled to a routing model, *Hydrological Sciences Journal*, **43**, 131-141,
- Lucas-Picher, P., V. K. Arora, D. Caya, and R. Laprise, 2003: Implementation of a large-scale variable velocity river flow routing algorithm in the Canadian Regional Climate Model (CRCM), *Atmosphere-Ocean*, **41**, 139-153,
- Maurer, E. P., A. W. Wood, J. C. Adam, D. P. Lettenmaier, and B. Nijssen, 2002: A Long-Term Hydrologically Based Dataset of Land Surface Fluxes and States for the Conterminous United States, *Journal of Climate*, **15**, 3237-3251,
- McDonnell, J. J., and K. Beven, 2014: Debates—The future of hydrological sciences: A (common) path forward? A call to action aimed at understanding velocities, celerities and residence time distributions of the headwater hydrograph, *Water Resources Research*, **50**, 5342-5350,
- Miguez-Macho, G., and Y. Fan, 2012: The role of groundwater in the Amazon water cycle: 1. Influence on seasonal streamflow, flooding and wetlands, *Journal of Geophysical Research: Atmospheres*, **117**, D15113,
- Nadarajah, S., 2007: Probability models for unit hydrograph derivation, *Journal of Hydrology*, **344**, 185-189,
- Nijssen, B., D. P. Lettenmaier, X. Liang, S. W. Wetzel, and E. F. Wood, 1997: Streamflow simulation for continental-scale river basins, *Water Resources Research*, **33**, 711-724,
- O'Donnell, G., B. Nijssen, and D. P. Lettenmaier, 1999: A simple algorithm for generating streamflow networks for grid-based, macroscale hydrological models, *Hydrological Processes*, **13**, 1269-1275,
- Olivera, F., M. S. Lear, J. S. Famiglietti, and K. Asante, 2002: Extracting low-resolution river networks from high-resolution digital elevation models, *Water Resources Research*, **38**, 1231,
- Paiva, R. C. D., W. Collischonn, and C. E. M. Tucci, 2011: Large scale hydrologic and hydrodynamic modeling using limited data and a GIS based approach, *Journal of Hydrology*, **406**, 170-181,
- Paiva, R. C. D., D. C. Buarque, W. Collischonn, M.-P. Bonnet, F. Frappart, S. Calmant, and C. A. Bulhões Mendes, 2013: Large-scale hydrologic and hydrodynamic modeling of the Amazon River basin, *Water Resources Research*, **49**, 1226-1243,
- Pavelsky, T. M., and L. C. Smith, 2008: RivWidth: A Software Tool for the Calculation of River Widths From Remotely Sensed Imagery, *Geoscience and Remote Sensing Letters, IEEE*, **5**, 70-73,

- Reclamation, 2014: Downscaled CMIP3 and CMIP5 Hydrology Projections – Release of Hydrology Projections, Comparison with Preceding Information and Summary of User Needs, Technical Memorandum No. 86-68210-2011-01, 110 pp, http://gdo-dcp.ucllnl.org/downscaled_cmip_projections/techmemo/BCSD5HydrologyMemo.pdf
- Reed, S. M., 2003: Deriving flow directions for coarse-resolution (1-4 km) gridded hydrologic modeling, *Water Resour. Res.*, **39**, 1238,
- Strum, T. W., 2001: *Open Channel Hydraulics*. 1st ed. McGraw-Hill, 493 pp.
- Taylor, K. E., R. J. Stouffer, and G. A. Meehl, 2011: An Overview of CMIP5 and the Experiment Design, *Bulletin of the American Meteorological Society*, **93**, 485-498,
- Viger, R. J., 2014, Preliminary spatial parameters for PRMS based on the Geospatial Fabric, NLCD2001 and SSURGO, US Geological Survey,, <http://dx.doi.org/doi:10.5066/F7WM1BF7>
- Wu, H., J. S. Kimball, N. Mantua, and J. Stanford, 2011: Automated upscaling of river networks for macroscale hydrological modeling, *Water Resources Research*, **47**, W03517,
- Wu, H., J. S. Kimball, H. Li, M. Huang, L. R. Leung, and R. F. Adler, 2012: A new global river network database for macroscale hydrologic modeling, *Water Resources Research*, **48**, W09701,
- Xia, Y., K. Mitchell, M. Ek, B. Cosgrove, J. Sheffield, L. Luo, C. Alonge, H. Wei, J. Meng, B. Livneh, Q. Duan, and D. Lohmann, 2012: Continental-scale water and energy flux analysis and validation for North American Land Data Assimilation System project phase 2 (NLDAS-2): 2. Validation of model-simulated streamflow, *Journal of Geophysical Research: Atmospheres*, **117**, D03110,
- Yamazaki, D., T. Oki, and S. Kanae, 2009: Deriving a global river network map and its sub-grid topographic characteristics from a fine-resolution flow direction map, *Hydrol. Earth Syst. Sci.*, **13**, 2241-2251, HESS.
- Yamazaki, D., G. A. M. de Almeida, and P. D. Bates, 2013: Improving computational efficiency in global river models by implementing the local inertial flow equation and a vector-based river network map, *Water Resources Research*, **49**, 7221-7235,
- Yamazaki, D., S. Kanae, H. Kim, and T. Oki, 2011: A physically based description of floodplain inundation dynamics in a global river routing model, *Water Resources Research*, **47**, W04501,
- Yucel, I., A. Onen, K. K. Yilmaz, and D. J. Gochis, 2015: Calibration and evaluation of a flood forecasting system: Utility of numerical weather prediction model, data assimilation and satellite-based rainfall, *Journal of Hydrology*, **523**, 49-66,
- Zaitchik, B. F., M. Rodell, and F. Olivera, 2010: Evaluation of the Global Land Data Assimilation System using global river discharge data and a source-to-sink routing scheme, *Water Resources Research*, **46**, W06507,

Table 1. Routing model parameters.

Parameters	Routing methods	Descriptions	Values used in Sect. 5
<i>a</i>	Hillslope	Shape factor [-]	2.5[-]
<i>θ</i>	Hillslope	Time scale factor [T]	86400 [s]
<i>n</i>	KWT	Manning coefficient [-]	0.01[-]
<i>W</i>	KWT	River width scale factor [-]	0.001[-]
<i>C</i>	IRF-UH	Wave velocity [LT ⁻¹]	1.5 [ms ⁻¹]
<i>D</i>	IRF-UH	Diffusivity [L ² T ⁻¹]	800 [m ² s ⁻¹]

Table 2. River network information required in mizuRoute

Variables	Vector data type	Descriptions
seg_id	River segment line	ID of segment
tosegment	River segment line	ID of immediate downstream segment
Length	River segment line	length of segment [m]
Slope	River segment line	Slope of segment [m/m]
hru_id	HRU polygon	ID of HRU
Seg_hru_segment	HRU polygon	ID of segment to which the HRU discharge
hru_area	HRU polygon	Area of HRU [m ²]

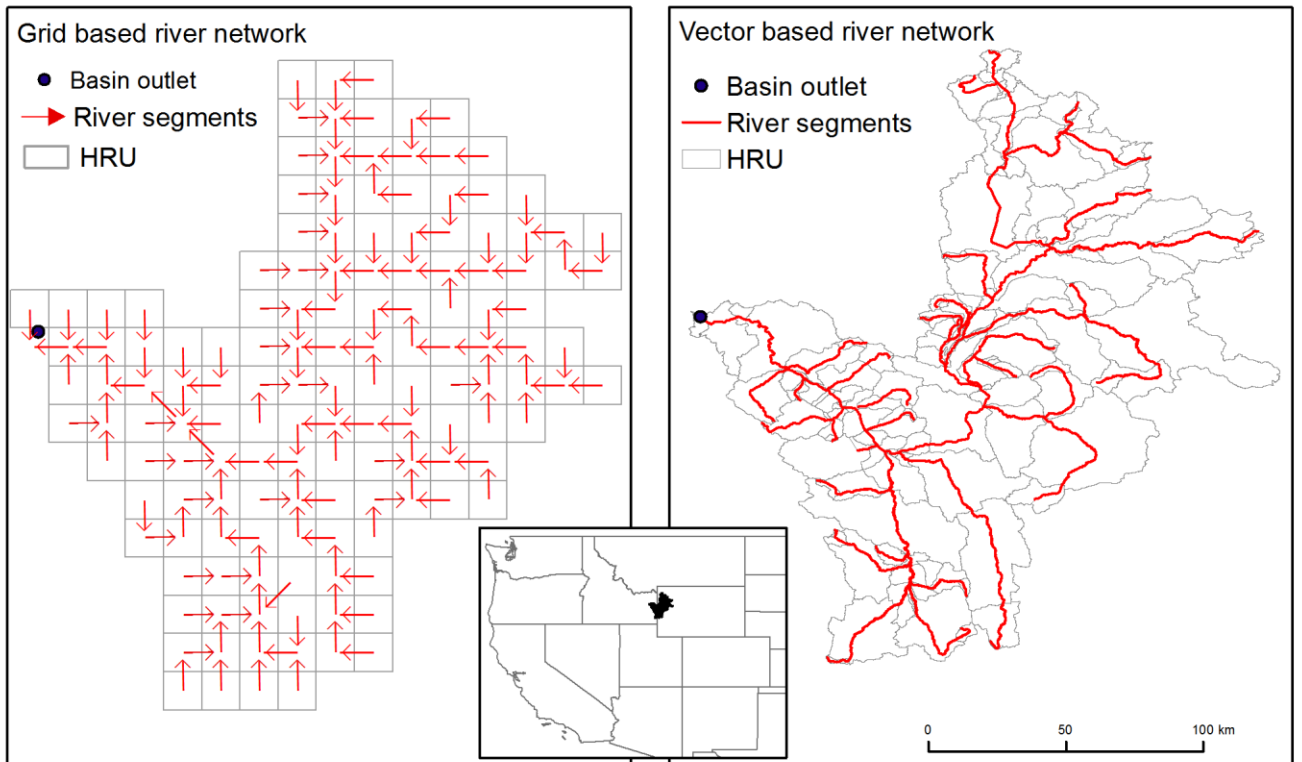
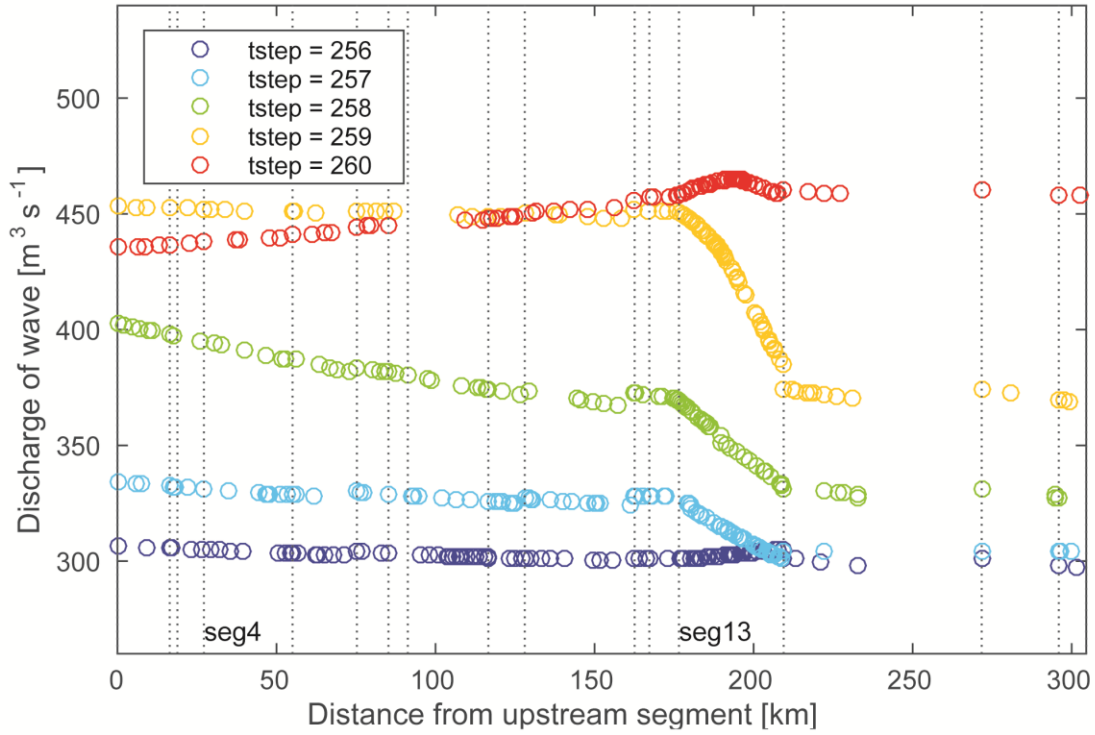
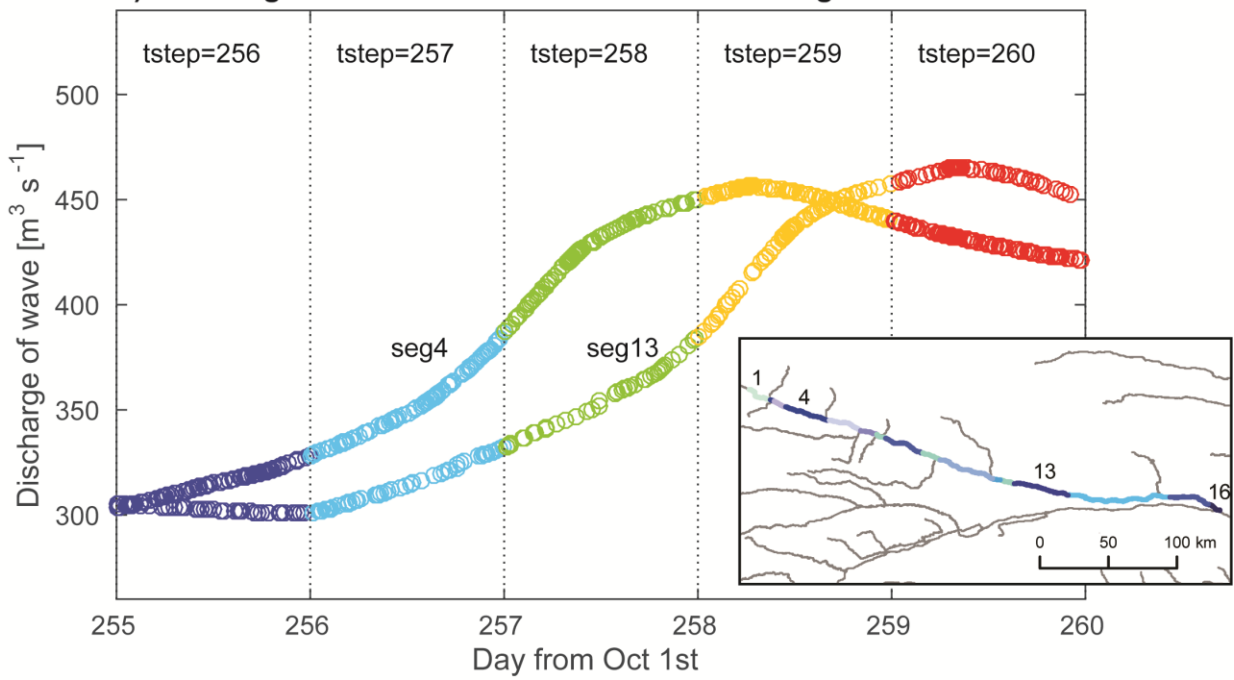


Figure 1. Comparison of $1/8^\circ$ $1/8^{\text{th}}$ degree (~12km) gridded river network and vector river network from United States Geological Survey (USGS) Geospatial Fabric for the upper part of Snake River basin (Vigor Viger 2014).

a) Discharge of wave & wave location at beginning of time steps



b) Discharge of wave & waves exit time at two segments



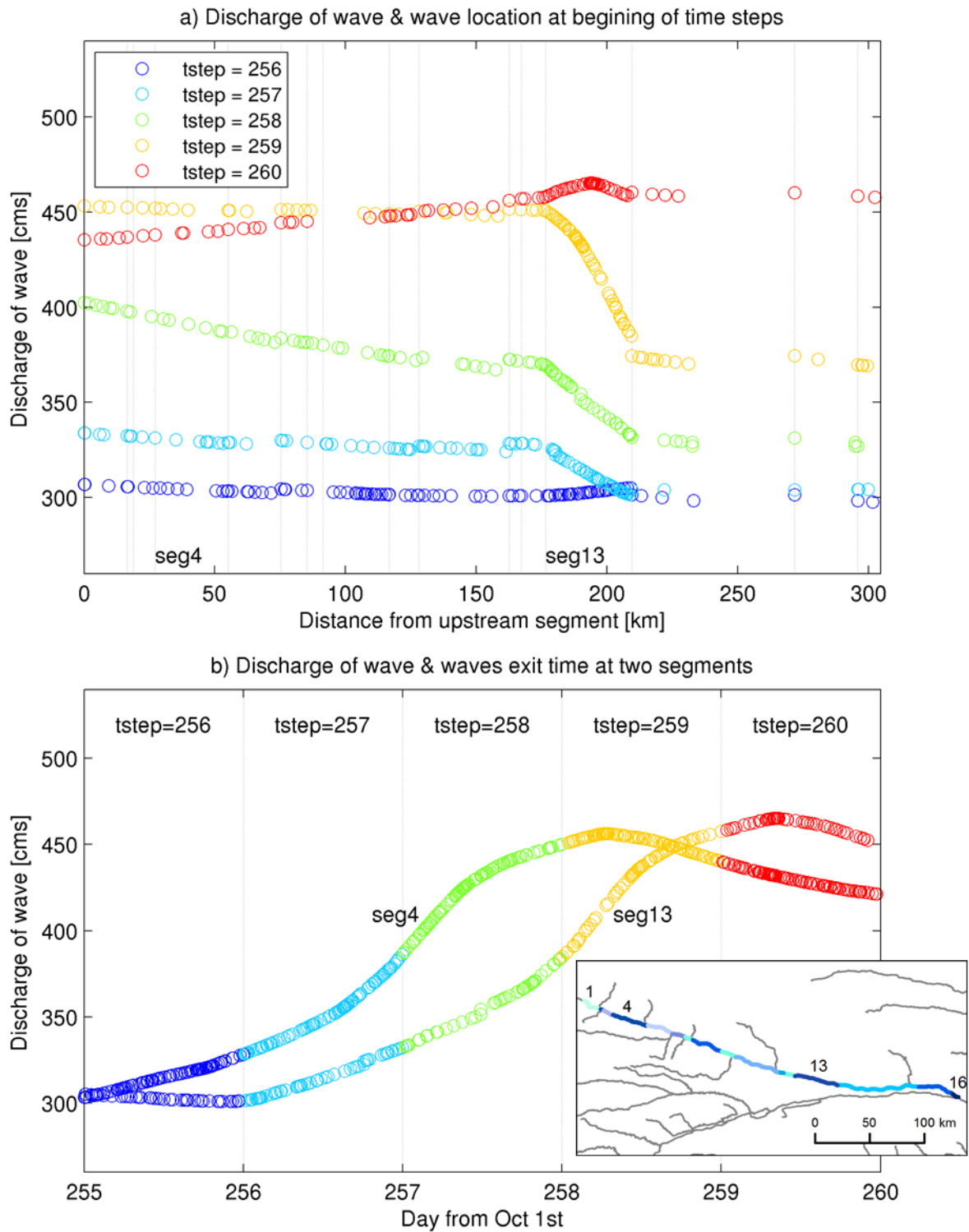


Figure 2. Visualization of waves. The top panel a) plots a discharge of the wave [$\text{cms}=\text{m}^3\text{s}^{-1}$] against its location (distance [km] from the beginning of the 1st segment) at the beginning of 5 consecutive daily time steps. A vertical line indicates the river segment boundary. The bottom panel b) plots a discharge of the wave [$\text{cms}=\text{m}^3\text{s}^{-1}$] against its exit time [day from October 1st] for the 4th and 13th segments. A vertical line indicates the boundary of routing time step. The inserted map shows the 16 river segments used for the plots.

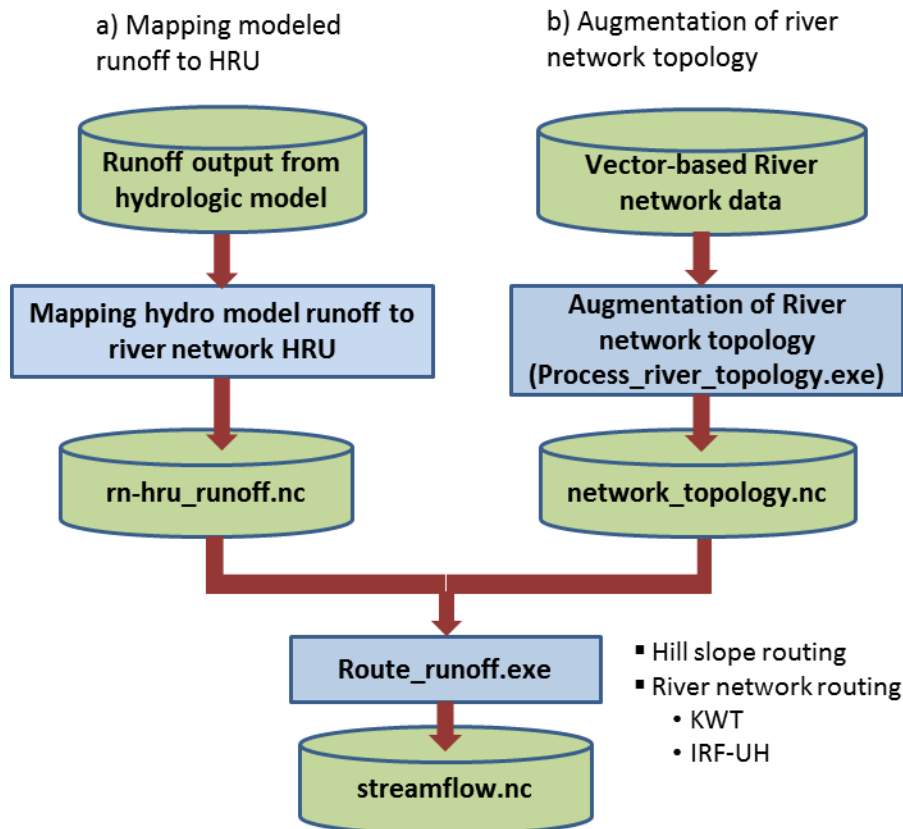
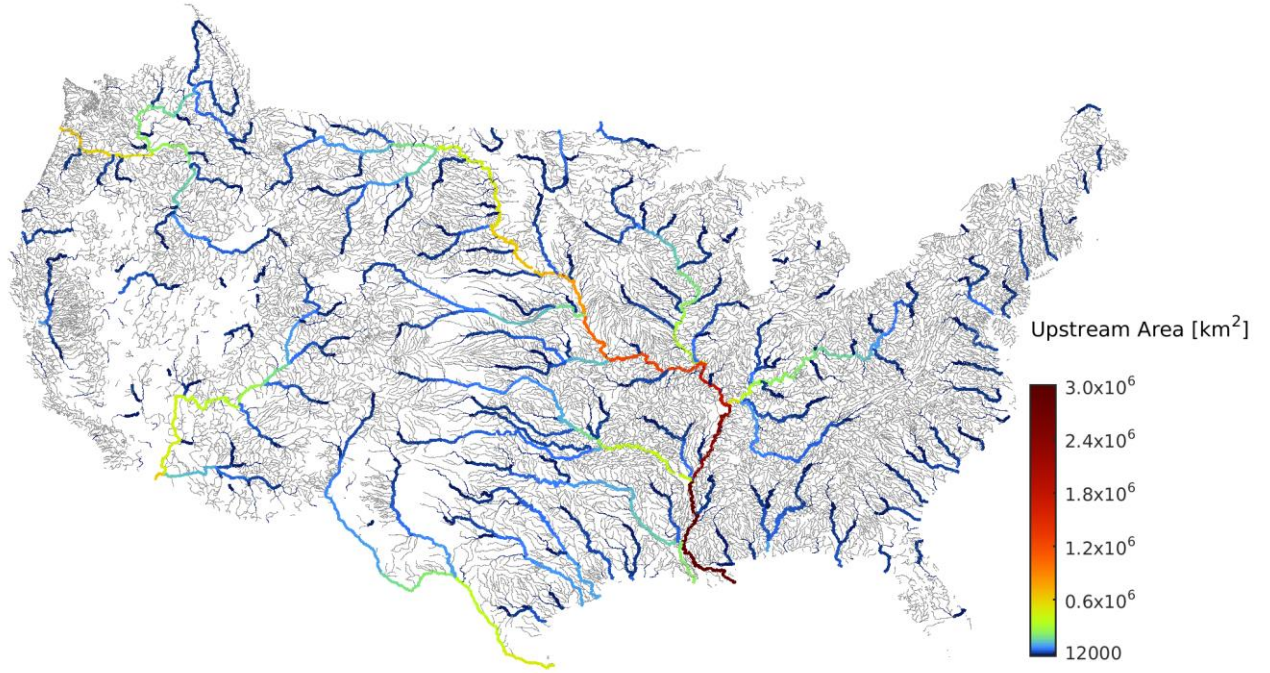


Figure 3. Overview of streamflow simulation with mizuRoute. The green cylinder and blue box denote data and computational process, respectively.

GF River Network



GF River Network

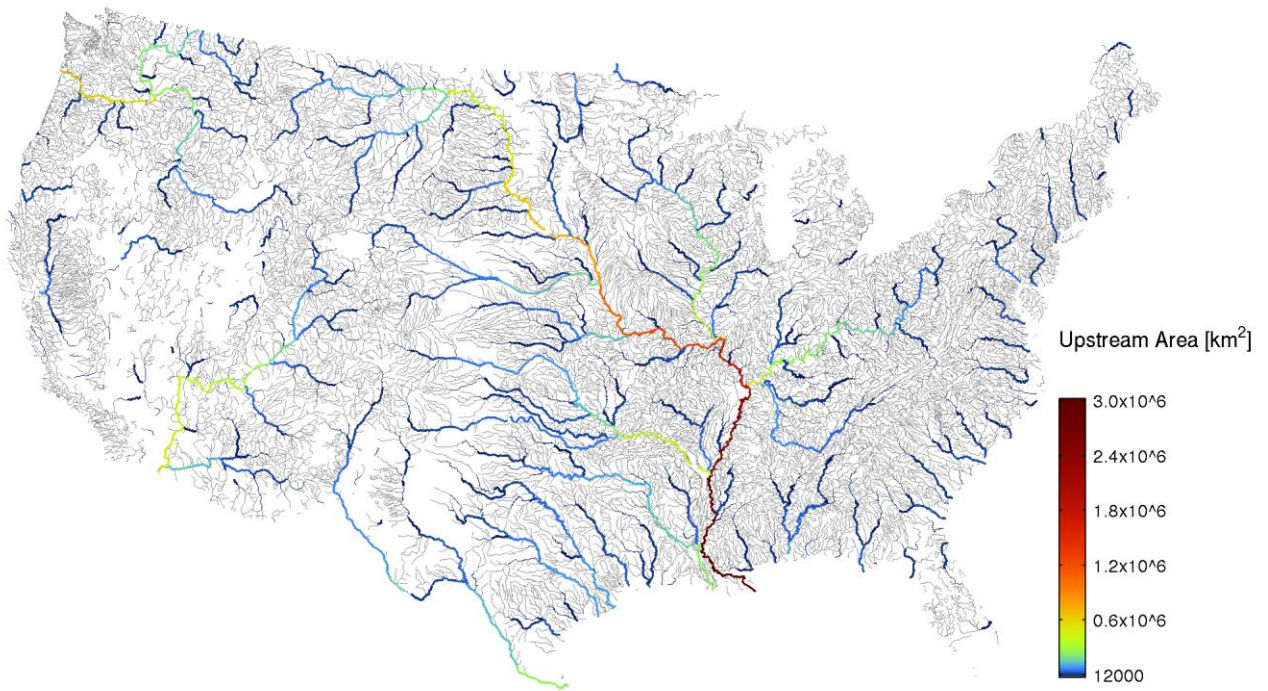
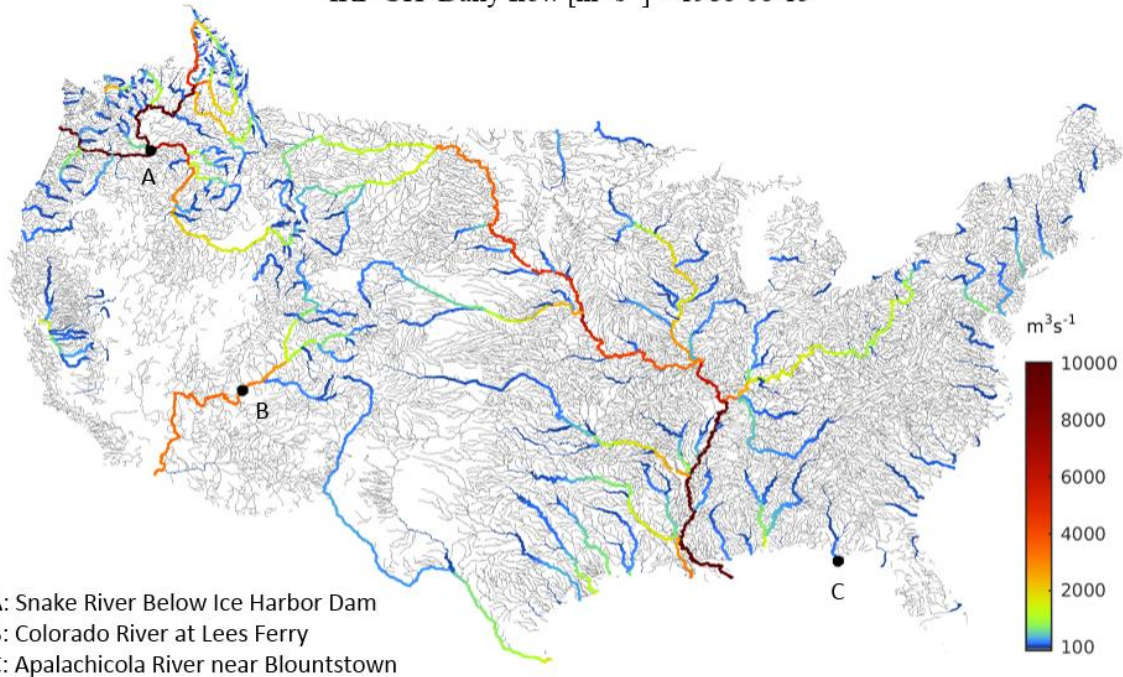


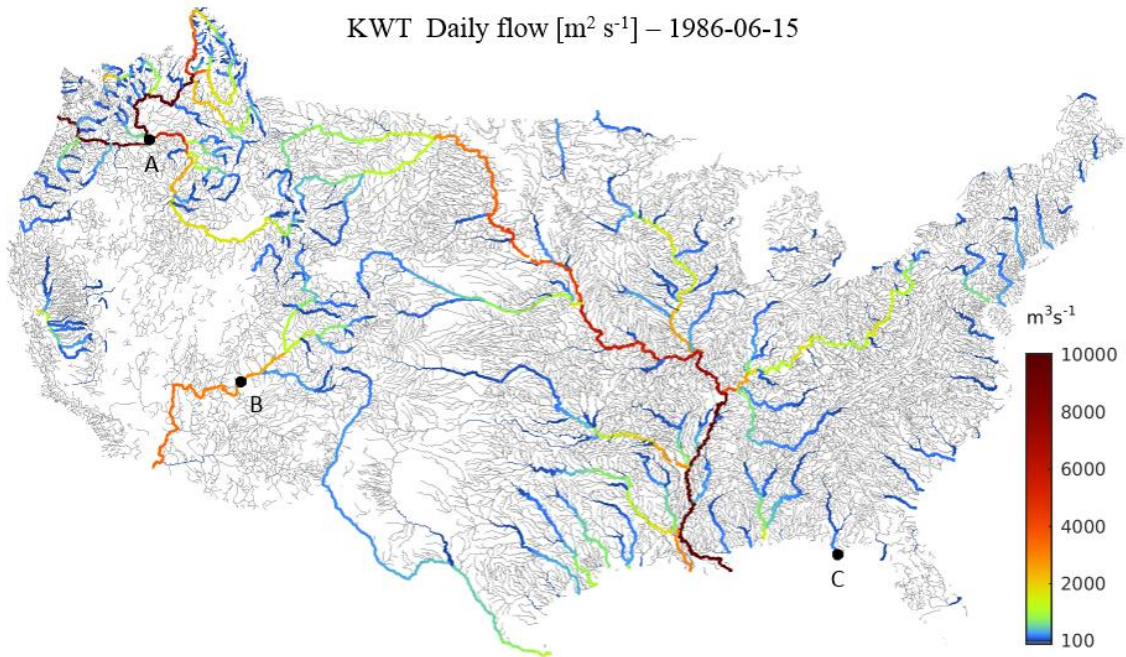
Figure 4. GF river network color coded by upstream drainage areas. Gray lines indicate the total upstream drainage areas less than 12000 km².

IRF-UH Daily flow [$\text{m}^2 \text{s}^{-1}$] – 1986-06-15

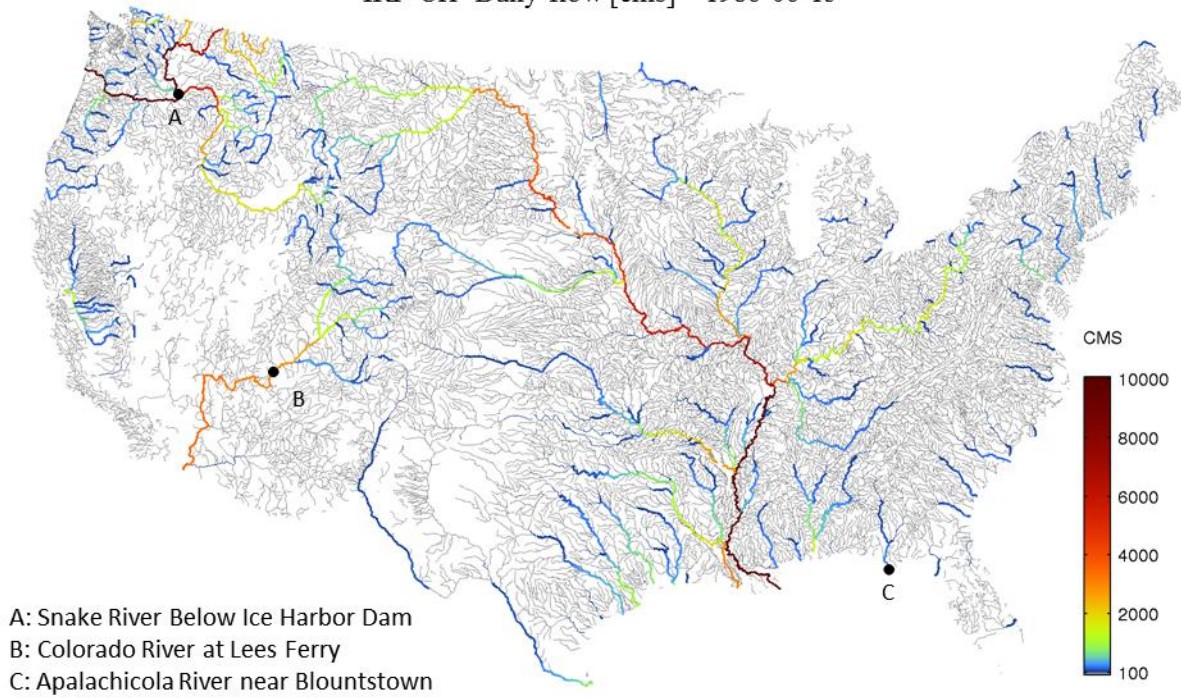


- A: Snake River Below Ice Harbor Dam
- B: Colorado River at Lees Ferry
- C: Apalachicola River near Blountstown

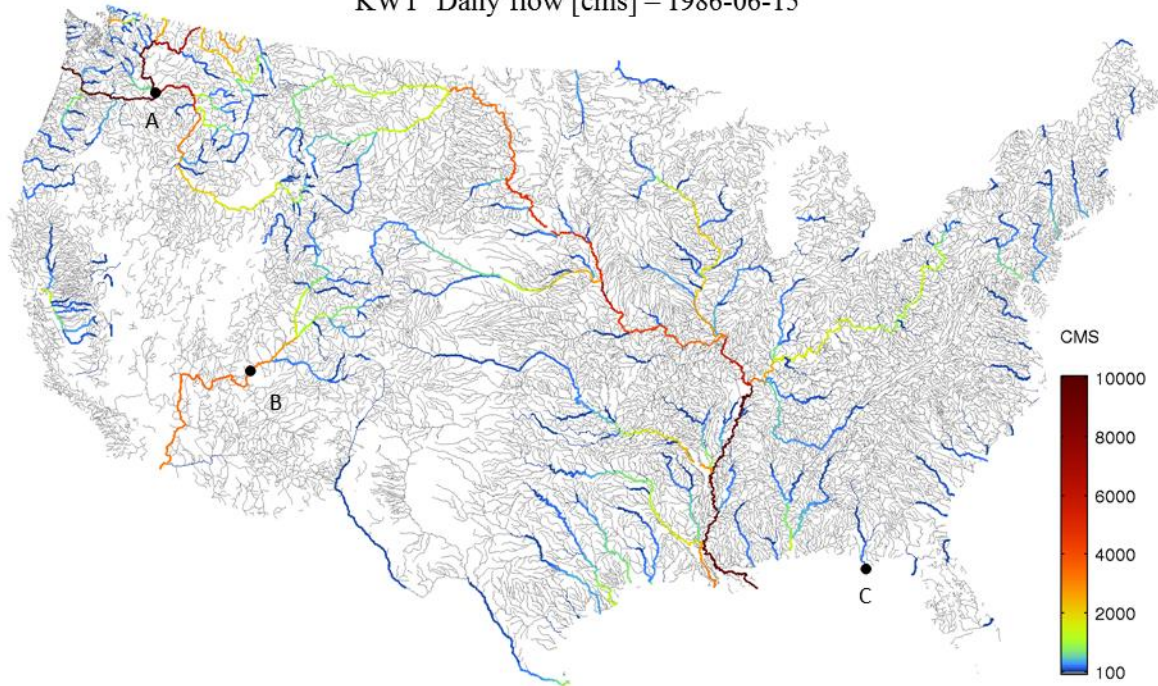
KWT Daily flow [$\text{m}^2 \text{s}^{-1}$] – 1986-06-15



IRF-UH Daily flow [cms] – 1986-06-15

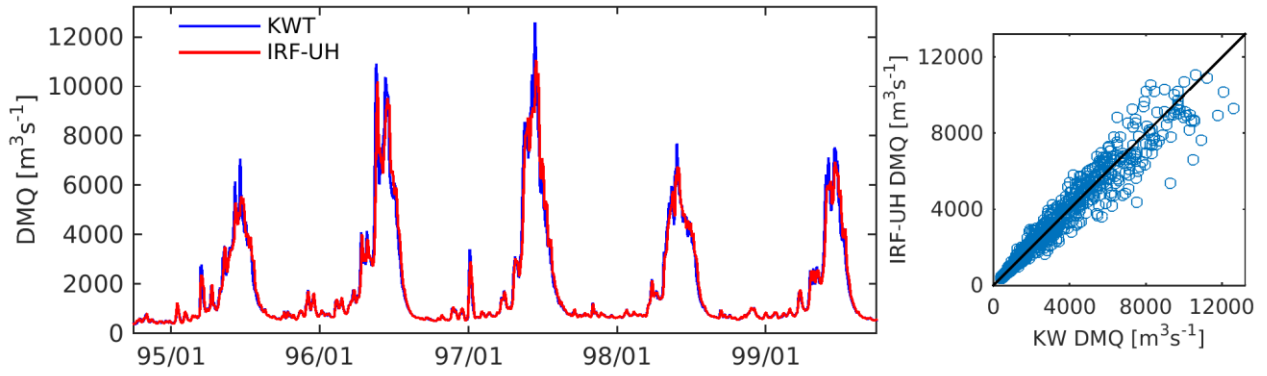


KWT Daily flow [cms] – 1986-06-15

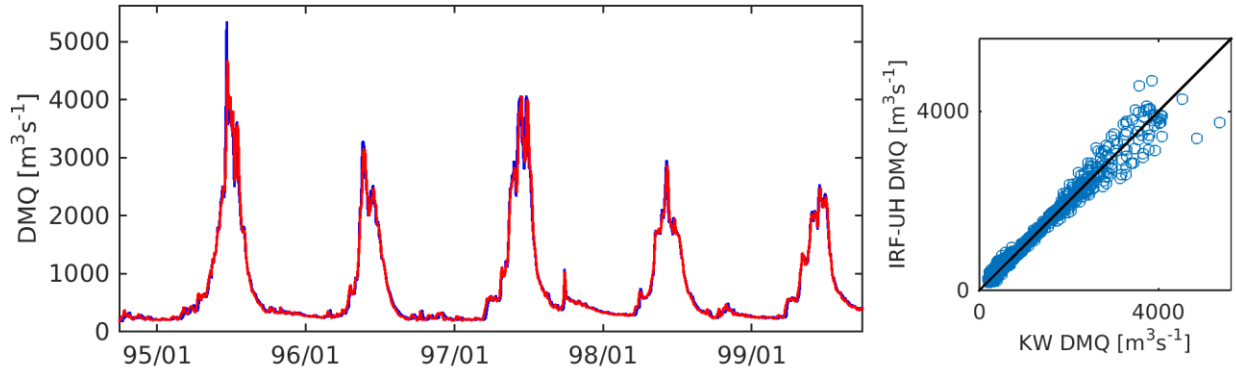


[Figure 5](#). Spatially distributed daily streamflow on July 15, 1986 in the GF river network simulated with mizuRoute. Gray lines indicate flow less than $100 \text{ m}^3\text{s}^{-1}$ cms. The streamflow time series [shown in Figure 6](#) are extracted at three USGS gauges (A-C) [shown in Figure 5](#).

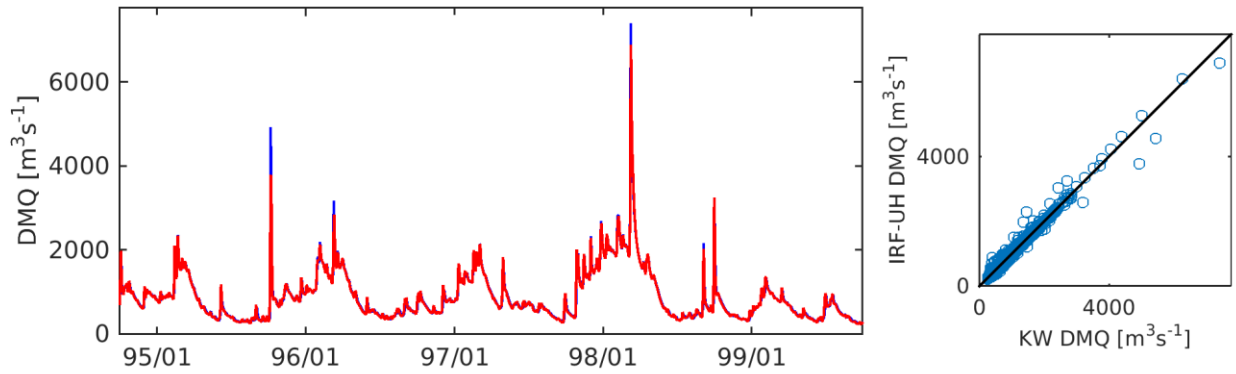
A- Snake River Below Ice Harbor Dam



B- Colorado River at Lees Ferry



C- Apalachicola River Near Blountstown



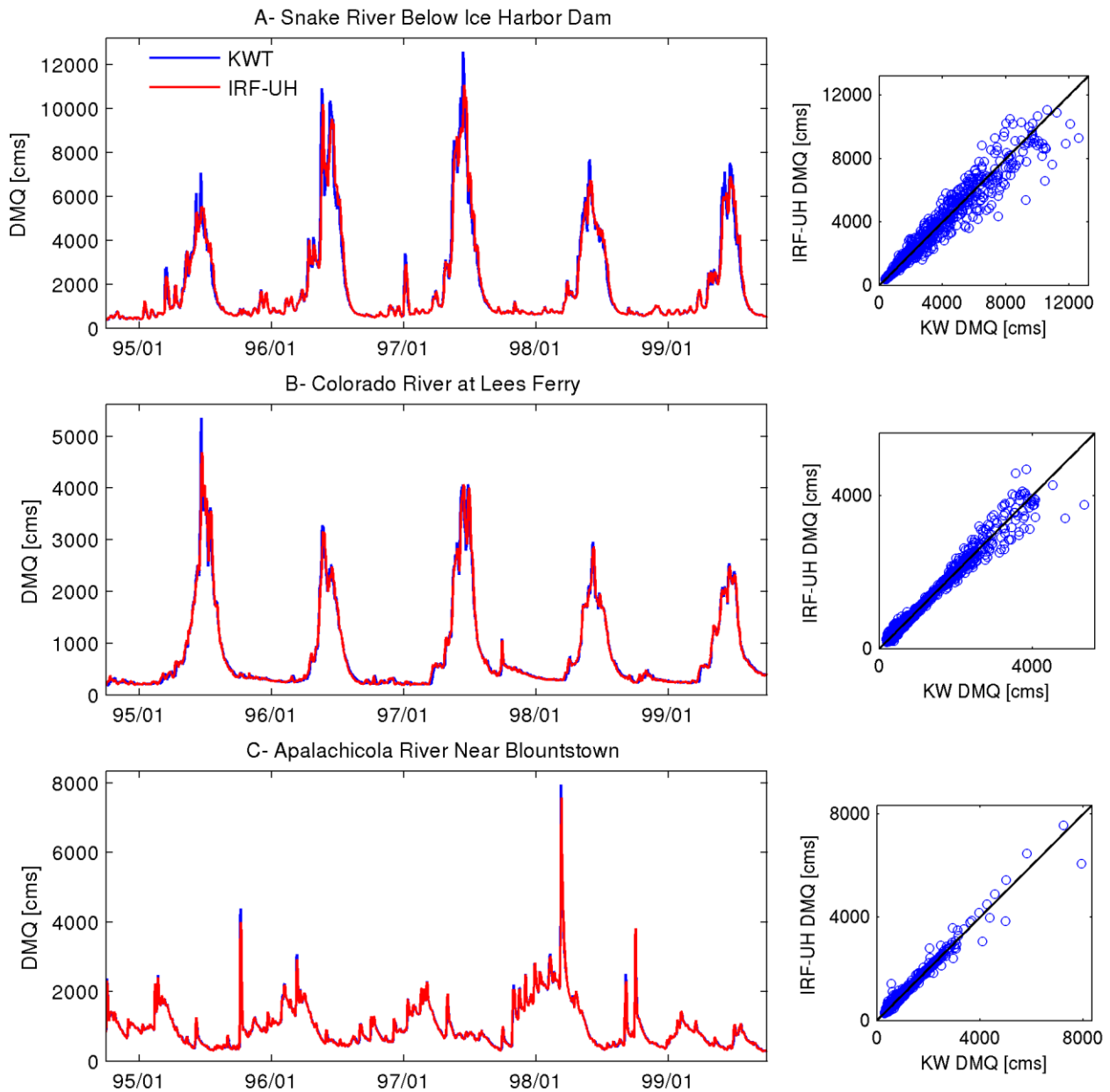


Figure 6. Daily mean streamflow (DMQ) at the three selected gauges location in the GF river network-. See Figure 5 for A Snake River below Ice Harbor Dam, B Colorado River at Lees Ferry, and C Apalachicola River near Blountstown from top to bottom. (The locations of the three gauges are shown in Figure 4.

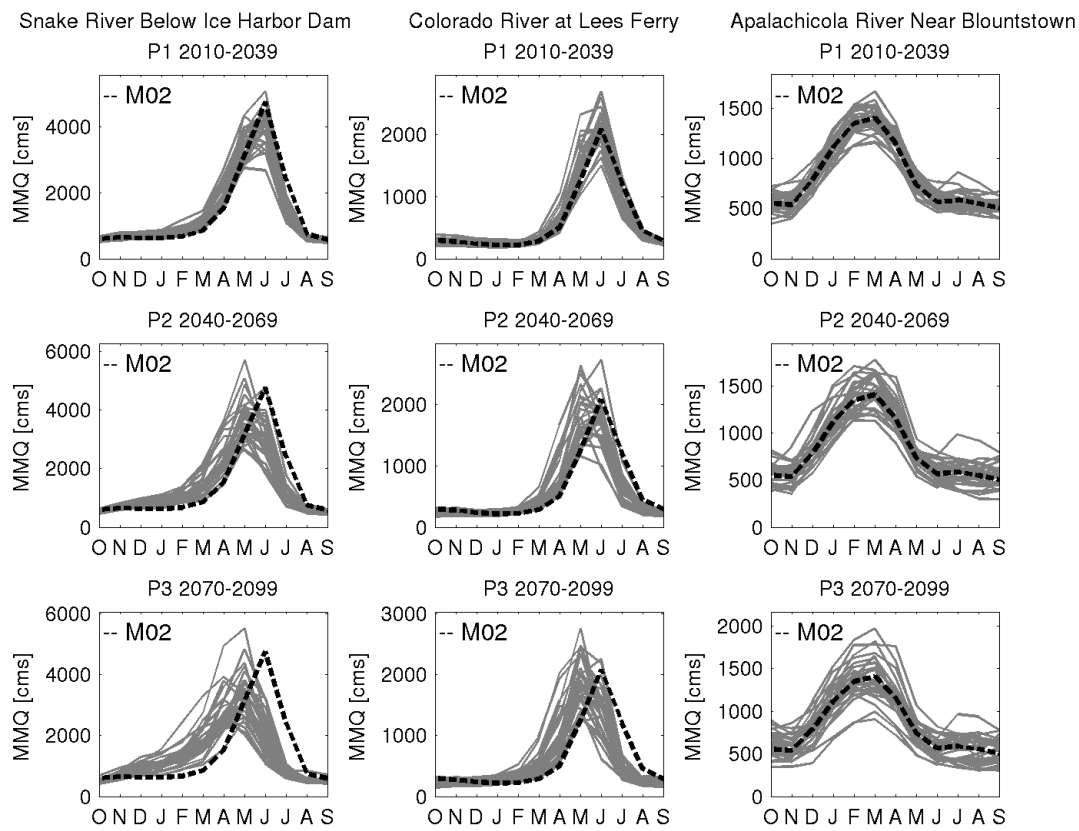
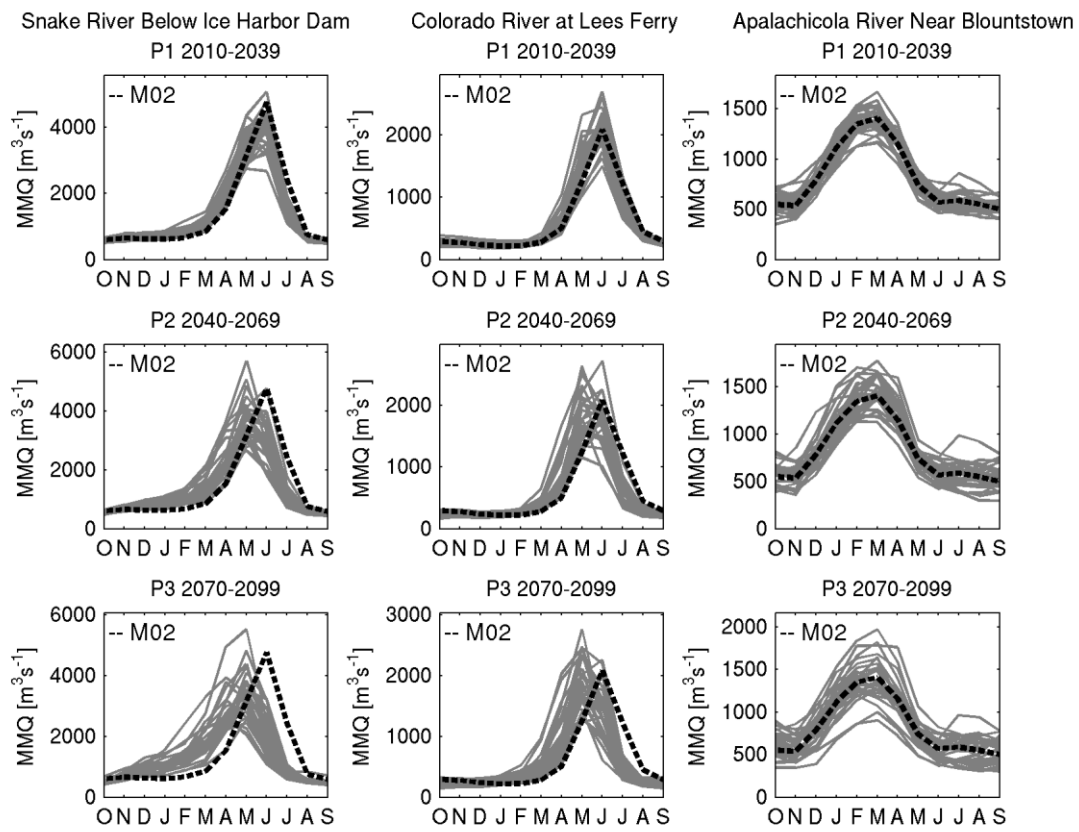
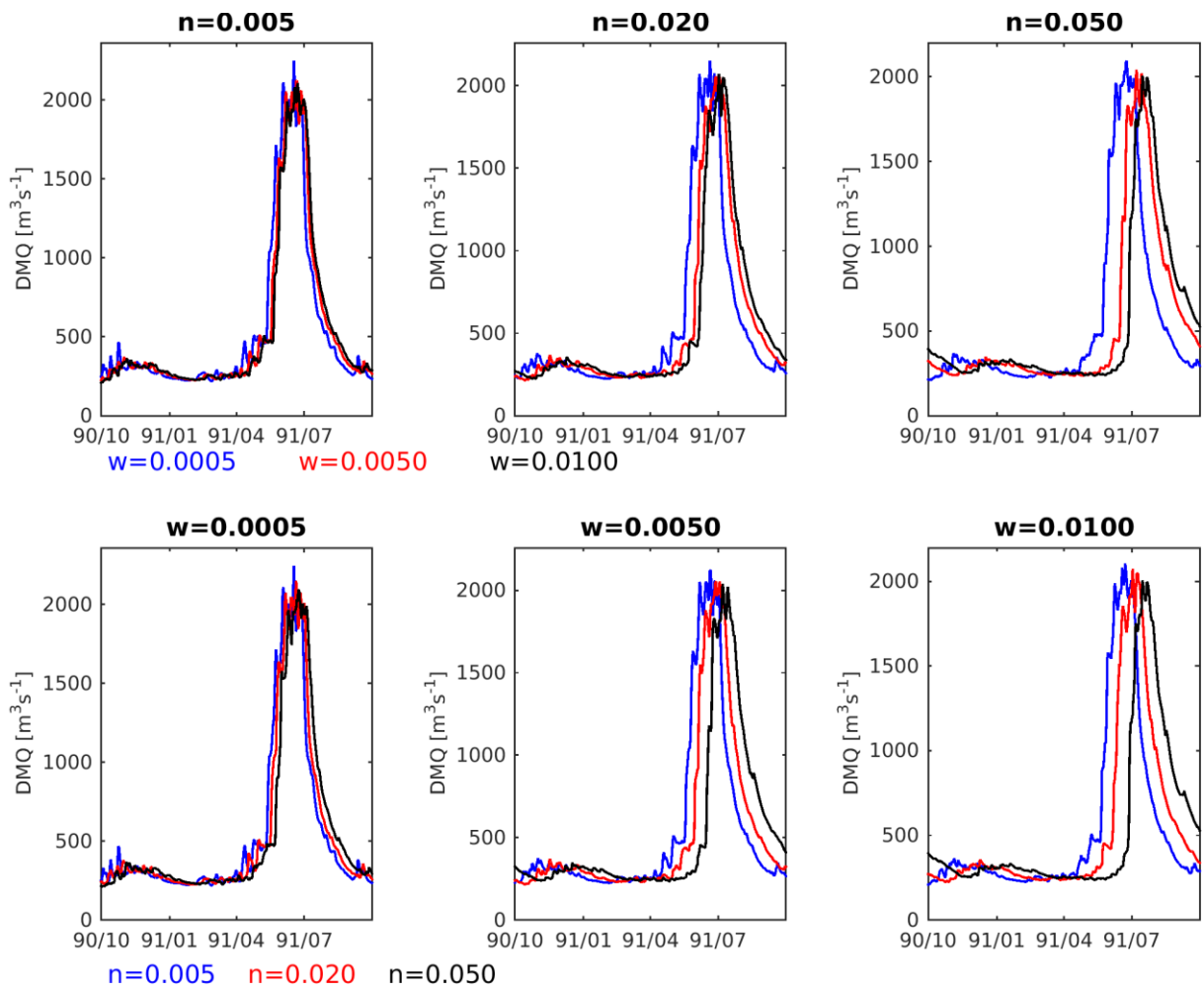


Figure 7. Monthly mean of CMIP5 projected streamflow at three locations indicated in Figure 4. (left column- Snake River Below Ice Harbor Dam, middle column- Colorado River at Lees Ferry,

and right column- Apalachicola River Near Blountstown). The river routing scheme is KWT. Monthly mean values are computed over three future periods (Top- P1 2010-2039, Middle- P2 2040-2069 and bottom- P3 2070-2099). The dash line denotes streamflow estimated from runoff output from VIC forced by M02 historical data while grey lines indicate projected streamflow based on future runoff outputs from VIC forced by 28 CMIP5 RCP8.5 data



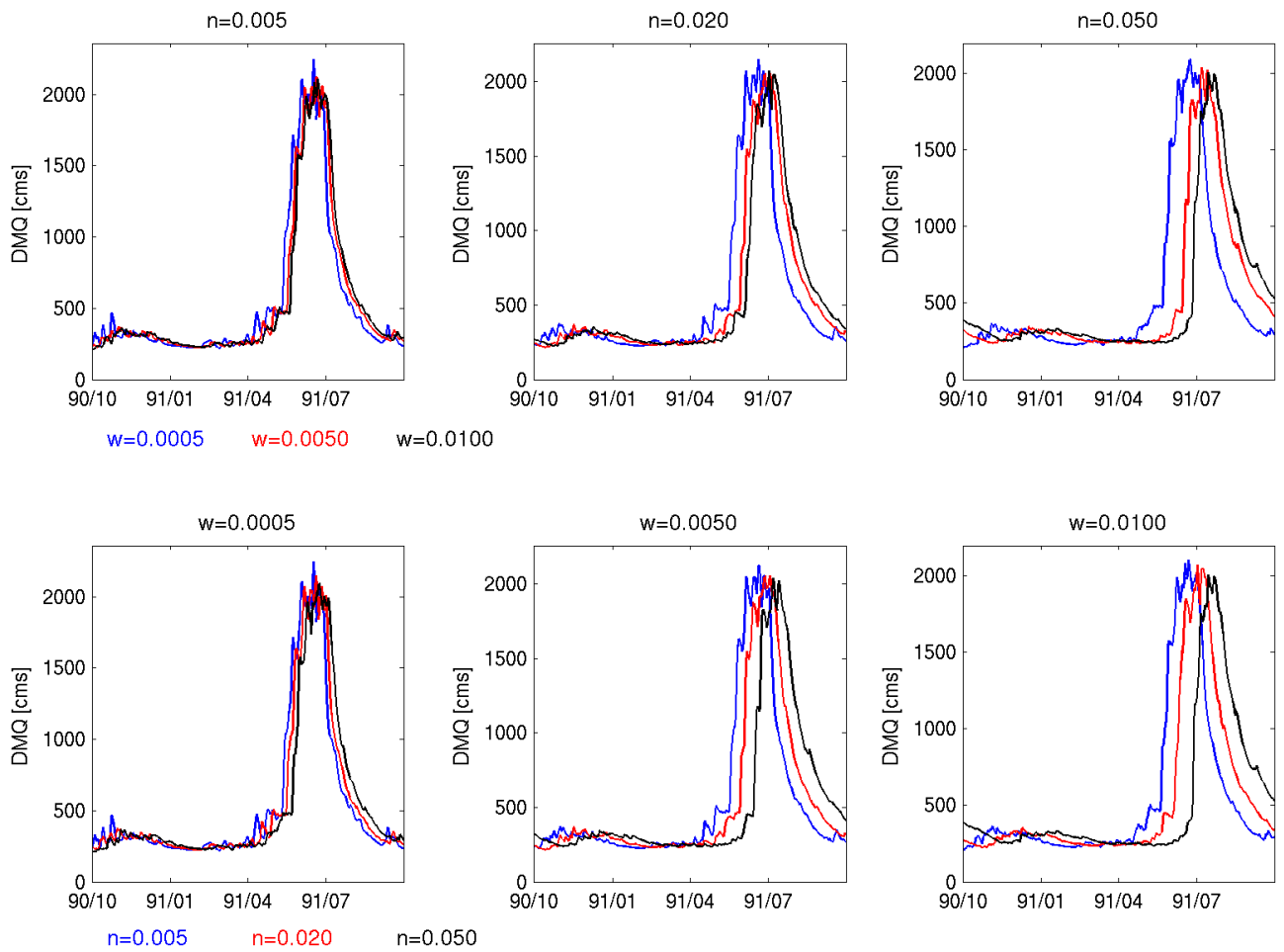
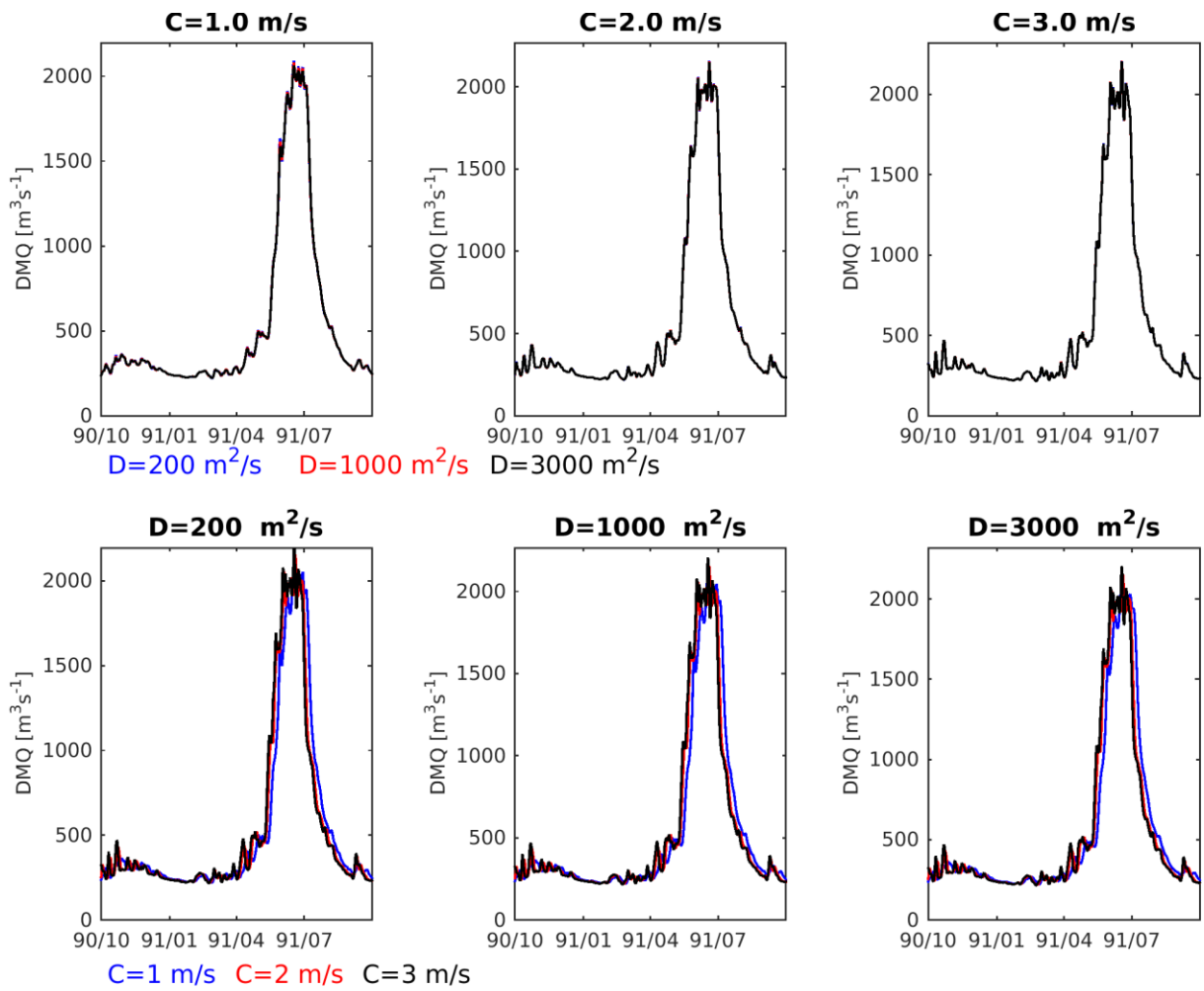


Figure 8. Sensitivity of simulated runoff at Colorado River at Lees Ferry (Location B in Figure 4) to the two KWT parameters. The top panel shows sensitivity to width factor w with three fixed manning coefficients n (from left to right: $n=0.005$, 0.02, and 0.05). The bottom panel shows sensitivity to manning coefficient n with three fixed width factor w (from left to right: $W=0.0005$, 0.0050, and 0.0100).



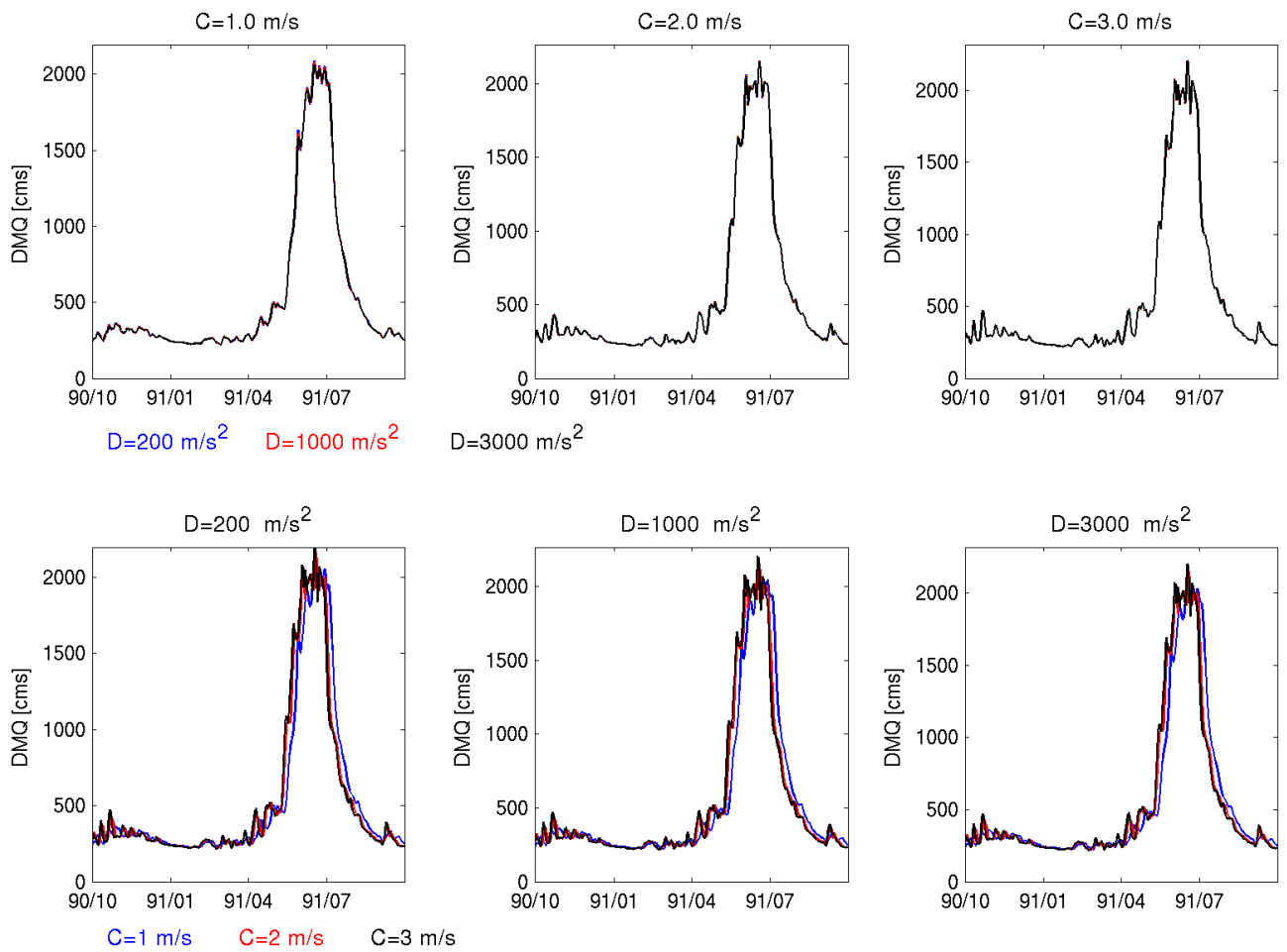


Figure 9. Sensitivity of simulated runoff at Colorado River at Lees Ferry (Location B in Figure 4) to IRF-UH parameters. The top panels show sensitivity to diffusivity D with three fixed celerity C values (from left to right: $C = 1.0, 2.0,$ and 3.0 ms^{-1}). The bottom panels show sensitivity to celerity C with three fixed diffusivity D values (from left to right: $D = 200, 1000,$ and 3000 ms^{-2}).

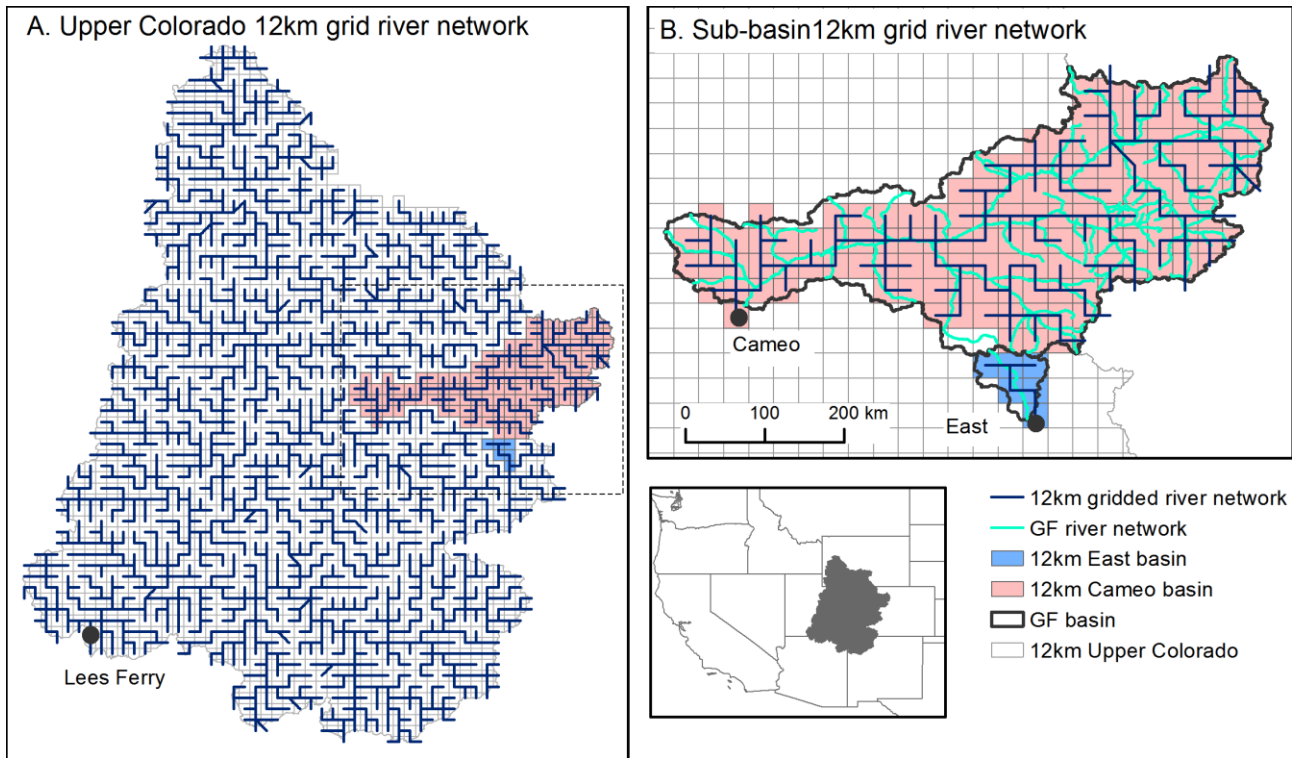


Figure 10. $1/8^\circ$ (~12km) grid-based river network for the upper Colorado River Basin (panel A) and two sub-basins inside the upper Colorado- Colorado River near Cameo and East River at Almont (panel B). HRUs for each GF river segment are not shown for clarity in panel B.

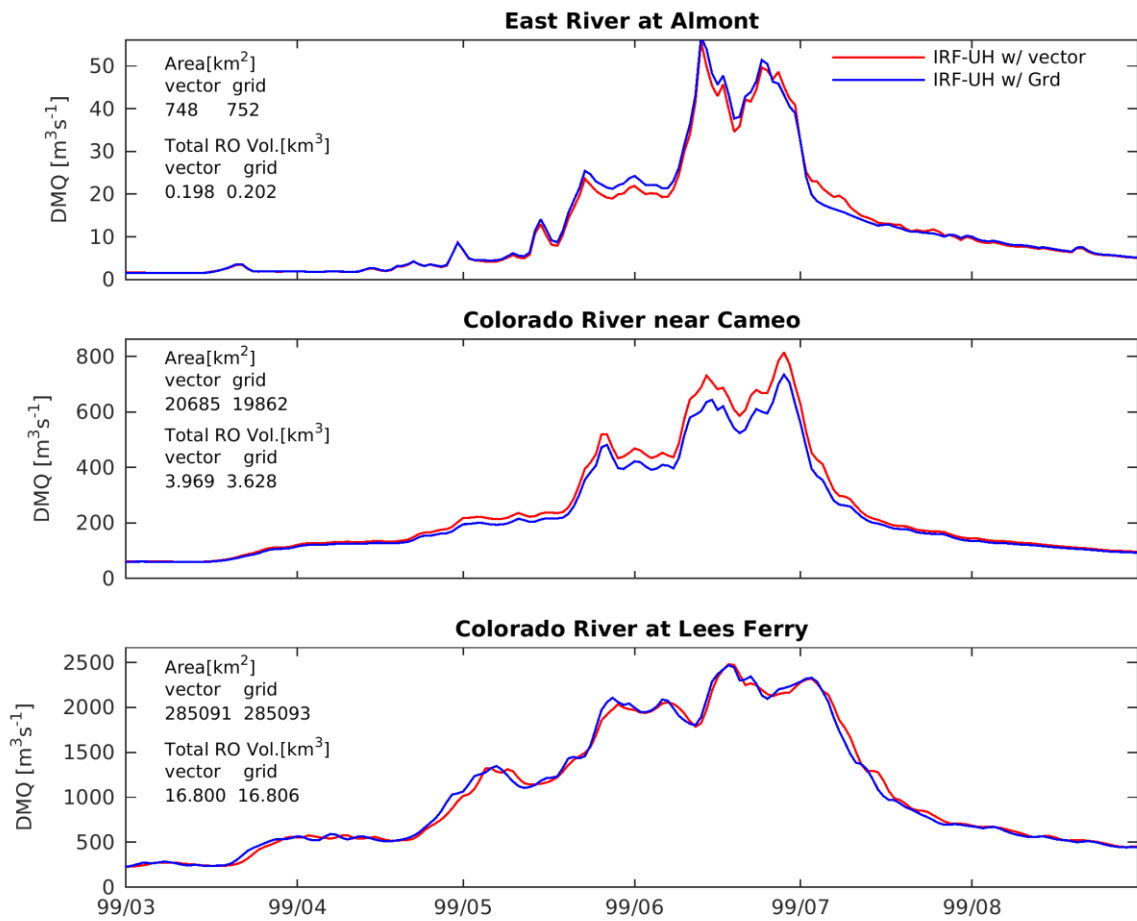


Figure 11. Comparison of IRF-UH routed flow with two river networks ($1/8^\circ$ grid-based river network and GF vector-based river network) at three locations in the upper Colorado River basin (See Figure 10 for river network and basin boundaries).