

Dear Editor,

Thank you for handling our manuscript. We hereby submit a revised version of the paper. Below please find the point-by-point responses to the reviewer comments, the corresponding changes in the manuscript, and a marked-up version of the revised paper.

In addition to addressing the reviewers' comments, we also fixed a bug in the code related to the calculation of $\sigma_{U,d}$ and $\sigma_{U,t}$ over the ocean. The bug-fix resulted in changes in the relative contribution of different mechanisms to the wind variability (and sea salt emission) over the ocean, but did not substantially change the total estimates; It also had negligible impact on dust emission. The major findings of the discussion paper still hold. We have re-run all simulations, and updated the corresponding figures, tables, and text in the revised paper.

We look forward to your favorable decision regarding the revision.

Sincerely,

Kai Zhang
on behalf of all co-authors

Reply to Anonymous Referee #1

Kai Zhang (kai.zhang@pnnl.gov)
Pacific Northwest National Laboratory

We thank the referee for the helpful and constructive comments. Our responses are detailed below.

This manuscript describes a method to estimate subgrid scale variability of surface winds in the global model CAM5 to improve the computation of dust and sea salt emission fluxes. The approach builds upon previous work by various authors. The authors describe a method to quantify wind variability due to small-scale processes like turbulence, and describe the surface wind speeds in terms of a Weibull probability distribution. The global model is modified accordingly and changes in sea salt and dust emissions and distributions are compared to the standard setup.

Parameterization of subgrid scale variability for modelling wind-driven emission of primary aerosol particles is a relevant topic, and the authors present an interesting method how a quantification of the such processes can be achieved. They find that while sea salt aerosol emissions are not substantially changed by subgrid scale wind variability, the changes in dust emission can be important. However, the authors should address several issues in a revised version.

Comment: A major problem is the lack of an appropriate evaluation of the model results using the new wind parameterization used for computing primary aerosol emissions. In section 5.2 a comparison of averaged model results with MISR optical thickness retrievals is shown as sole evaluation of the model results. While the MISR aerosol product is certainly well established and useful, there are undoubtedly more observations that should be used for the model evaluation. E.g., Huneus et al. (2011, ACP) the results from global dust models are compared to standard dust datasets. Evaluation of dust model results with AOD from the AERONET sunphotometer network, in particular the 'coarse mode' aerosol, is a standard method even for global models. Not only annual mean values of model results and observations should be compared, but also time series for different locations. Even if no 1:1 relationship can be expected between model results and observations given the difficulties comparing a model grid value with a point measurement, at least such comparisons can indicate if the new results (e.g. EXP4 vs. Control) improve the model agreement with observations, e.g. in terms of seasonality and regional differences.

Reply: Evaluation is indeed a major challenge of this study due to the lack of direct observation of sea salt and dust emissions on the global scale. The AERONET AOD data are limited in their spatial and temporal coverage when dust is the species of interest. We have selected AERONET sites near dust source regions and compared high-frequency AOD measurements with model simulations in the format of scatter plots, time series, and frequency distributions. It turns out the measurements that

fall in our simulation period are located in regions where the CTRL simulation and the modified model (EXP4) give very similar annual mean dust AOD (Figure R1.1). The frequency distributions (Figure R1.2) and seasonal cycles (Figure R1.3 and R1.4) are also very similar. These figures are not included in the paper because they do not indicate systematic improvement or degradation of model fidelity. In dust source regions where CTRL and EXP4 do give considerably different AOD (Taklamakan Desert, Southeast Iran, and Pakistan), there are unfortunately no AERONET data in the year 2006, and only a few days of measurements in the other years. In the future it would be useful to find other sources of observational data to evaluate the simulations in those regions.

A paragraph is added to the revised manuscript at the end of Section 5.4, "Comparison with AOD observations":

"In addition to MISR, we have compared the simulated AOD with high-frequency measurements from the Aerosol Robotic Network (AERONET) sites close to the dust source regions. It turns out that the AERONET measurements falling in our simulation period are located in regions where CTRL and EXP4 give very similar dust AOD. The comparison thus did not indicate systematic improvement or degradation in terms of the agreement between model results and measurements. In the Taklamakan Desert, Southeast Iran, and Pakistan where AOD in EXP4 is considerably higher than that in CTRL (Fig. 18), it is not yet known how the two simulations compare with observations due to the unfortunate lack of data."

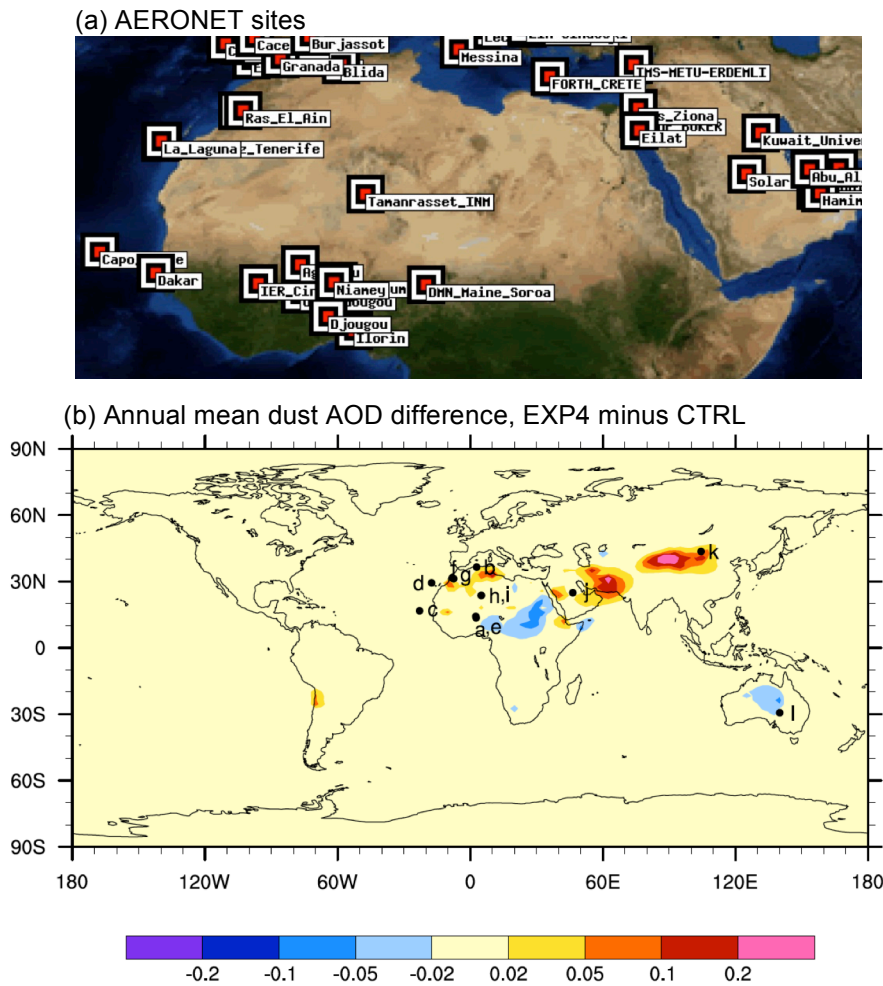


Figure R1.1 (a) AERONET sites in or near North Africa that have measurements available for the year 2006. (b) Simulated annual mean AOD differences between EXP4 and CTRL of the year 2006. The black marks and the labels indicate locations of the AERONET sites where observed and modeled AOD are compared in Figures R1.2, R1.3, and R1.4 below.

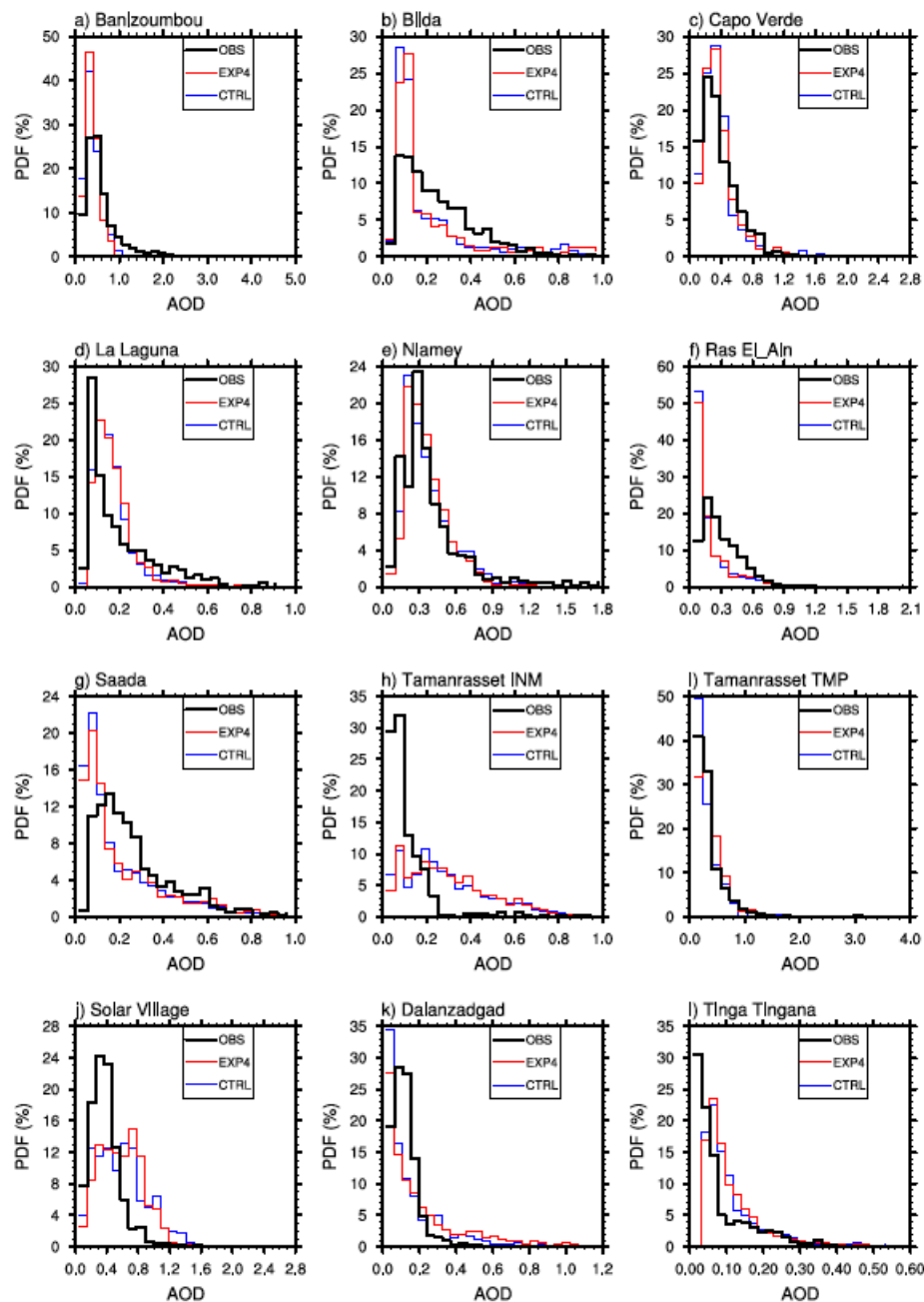


Figure R1.2. Frequency distributions of measured and simulated hourly AOD at the 12 AERONET sites indicated in Figure R1.1. Both measurements and simulations are from the year 2006. Model results are masked out when the AERONET measurements are missing.

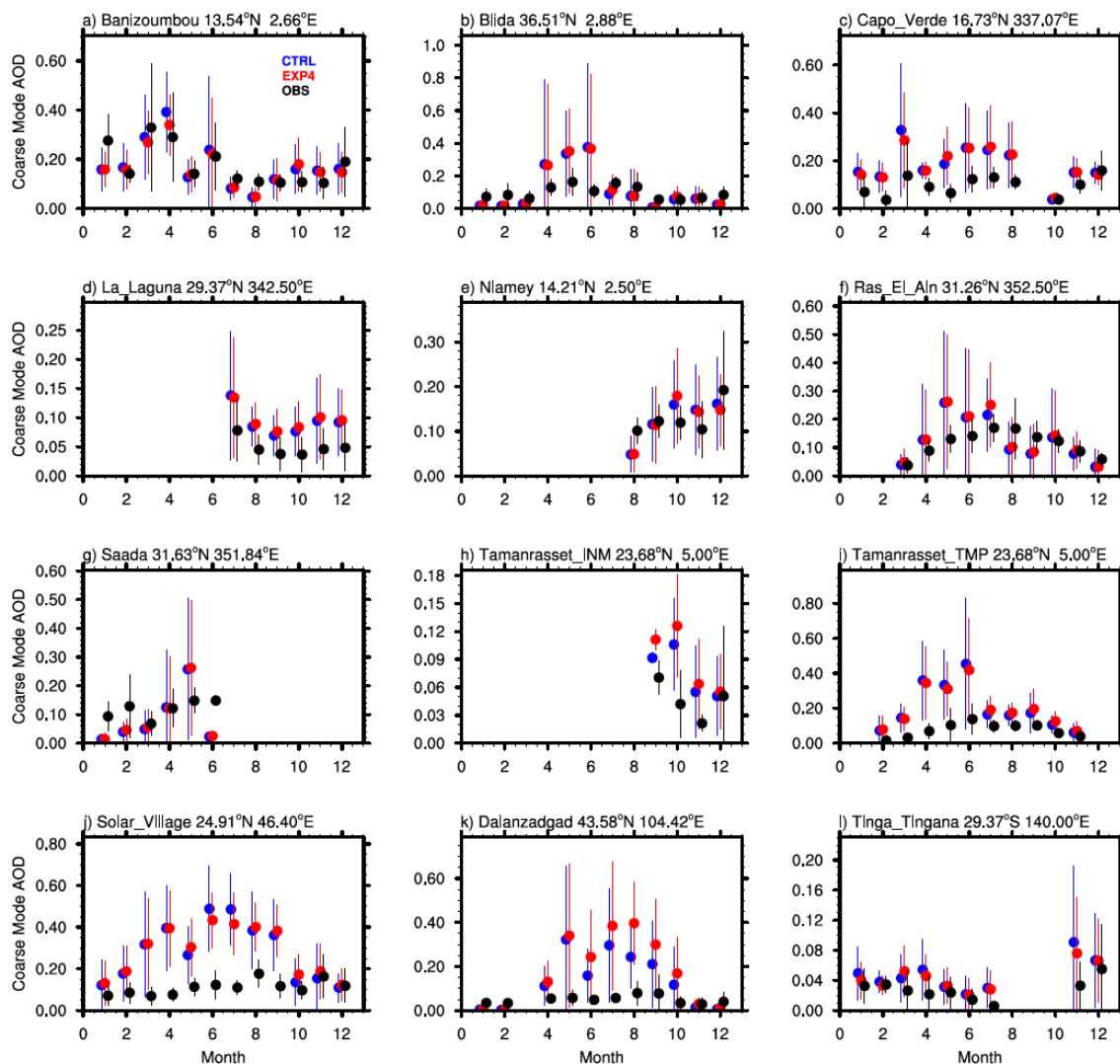


Figure R1.3: Observed and simulated monthly mean *total* AOD at 12 AERONET sites indicated in Figure R1.1. The error bars indicate ± 1 standard deviations of hourly AOD. Model results are masked out when the AERONET measurements are missing.

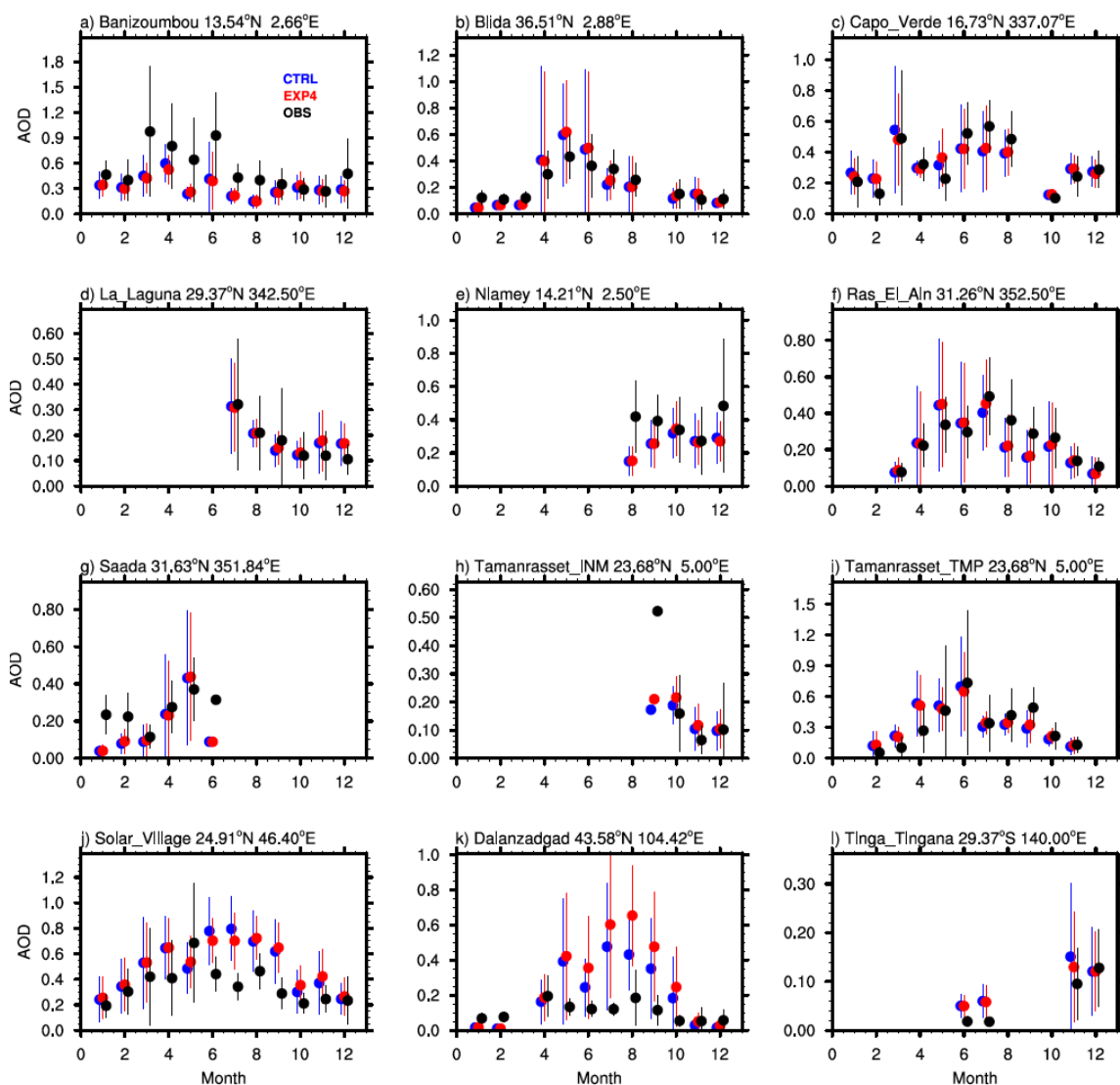


Figure R1.4: As Figure R1.3 but for *coarse mode* AOD.

Comment: In section 5.2 also the impact of the emission changes due to subgrid scale wind variability on radiative forcing is shown. This part is unnecessary and misleading, since the 'best' model version would be EXP 4, which is not shown. Radiative forcing by dust aerosol depends not only on dust AOD but also on optical properties of the particles, which add considerable uncertainties. Given these uncertainties and the lack of new information, this part (including Figure 16) should be removed from the paper. Instead more attention should be given to evaluation of the model changes.

Reply: Following the reviewer's suggestion, we have removed the aforementioned subsection in the revised paper.

Comment: A more important result is provided later in section 5.2. The shift of the frequency of dust events towards smaller but more numerous dust emission events when including the subgridscale parameterisation is quite significant. While it is true that the temporal coverage of aerosol retrievals by polar orbiting satellite instruments provide too little temporal coverage to evaluate the dust emission frequencies, note that are results from geostationary satellites that can provide useful information. E.g., the infrared dust index data for Saharan dust retrieved from the Meteosat SEVIRI instrument provides dust information at 15min intervals (see e.g. Schepanski et al., 2007, GRL).

Reply: We thank the reviewer for the reference. In the revised paper, we have added the following paragraphs and figure in section 5.5, “Dust emission frequency”:

“Ideally it would be nice to use observational data sets to evaluate whether such a shift also makes the simulated emissions more realistic. For example, Schepanski et al. (2007) presented seasonal dust source area maps for the Sahara and Sahel region derived from IR-channel images of Meteosat Second Generation. A quantitative comparison between our simulations and their results is however difficult, because the absolute value of the emission frequency depends strongly on the dust mass flux threshold that is used when identifying an emission event. In the work of Schepanski et al. (2007), dust emission was identified by visually detecting dust plumes, then visually tracing the plume patterns back to their origin by inspecting consecutive images during dust mobilization and transport events. In order to directly compare their maps with our simulations, one would need to implement a satellite simulator in our model, produce the IR-channel images, then apply the same human-involved method of visual dust activation identification. Such an evaluation is impractical in our study; below we limit ourselves to a qualitative comparison with the results of Schepanski et al. (2007).

Maps of seasonal dust emission frequencies in Africa and Asia are presented for CTRL and EXP4 in Fig. 20. Since it is unclear what dust emission flux thresholds the maps of Schepanski et al. (2007) correspond to, we chose a somewhat arbitrary (but low) threshold of $10^{-9} \text{ kg}^{-2} \text{ s}^{-1}$. Fig. 20 indicates that the inclusion of wind SGV generally increases the frequency of dust emission; this is consistent with the PDFs shown in Fig. 19. In addition, EXP4 features enhanced seasonal differences compared to CTRL: wind variability associated with dry convective eddies leads to considerably more frequent dust emission in boreal spring/summer than in autumn/winter.

In terms of geographical distribution, Schepanski et al. (2007). showed seasonal shifts of dust emission patterns in North Africa. In our simulated, however, dust emissions largely occur at the same locations all year round, except in Northwest China where the source regions are larger in spring and summer. The frequency patterns in CTRL and EXP4 are similar, and both differ in the details from the maps of Schepanski et al. (2007). The same turned out to be true when we increased the emission flux threshold to higher values. Our analysis showed that the wind SGV changes the magnitudes of the emission frequency, but does not significantly change the spatial pattern. This is

not surprising since apart from wind speed, the simulated dust emission also depends on other assumptions in the parameterization scheme as well as the surface properties in the model.”

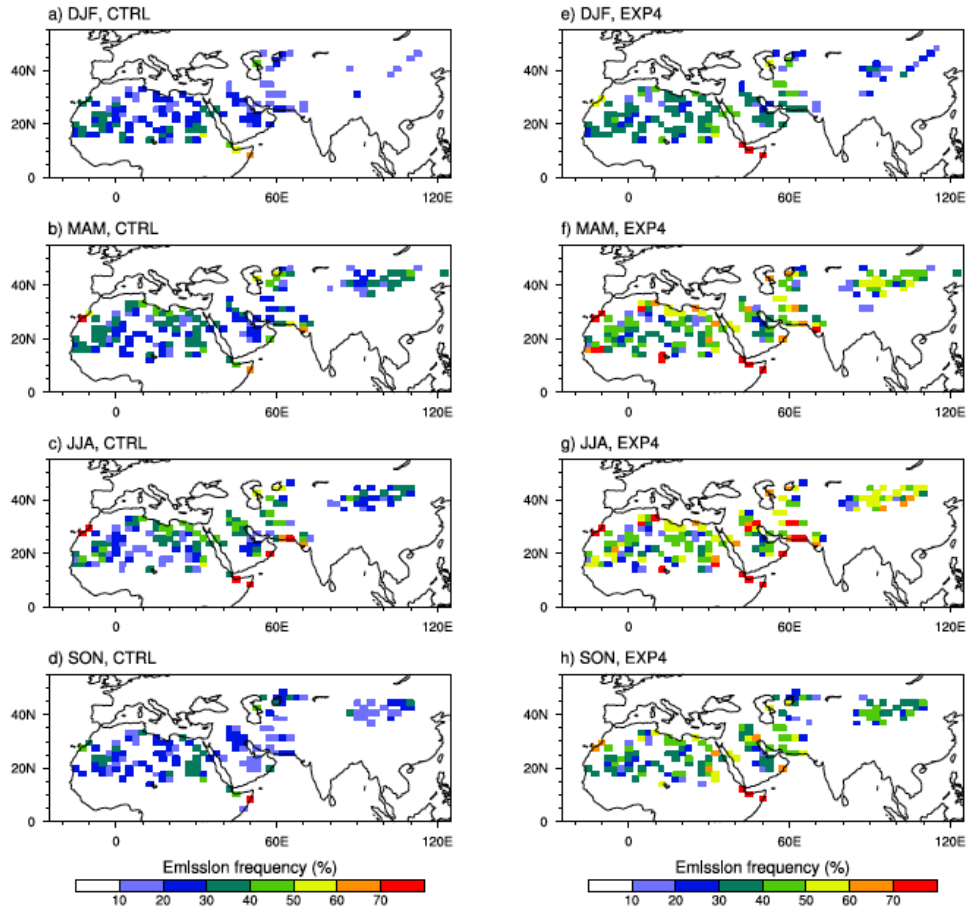


Figure 20. Frequency of occurrence (unit: %) of dust emission fluxes stronger than $10^{-9} \text{ kg}^{-2} \text{ s}^{-1}$ in Africa and Asia in the CTRL simulation (left column) and in EXP4 (right column). Different rows correspond to different seasons: December-January-February (DJF), March-April-May (MAM), June-July-August (JJA), and September-October-November (SON).

Comment: Figure 17 is interesting, here it would be nice if the results could also be shown for larger areas, e.g. for the whole Sahara.

Reply: The figure has been revised as suggested, and copied below. We now show distributions for larger areas in Northwest China, North Africa, and Australia.

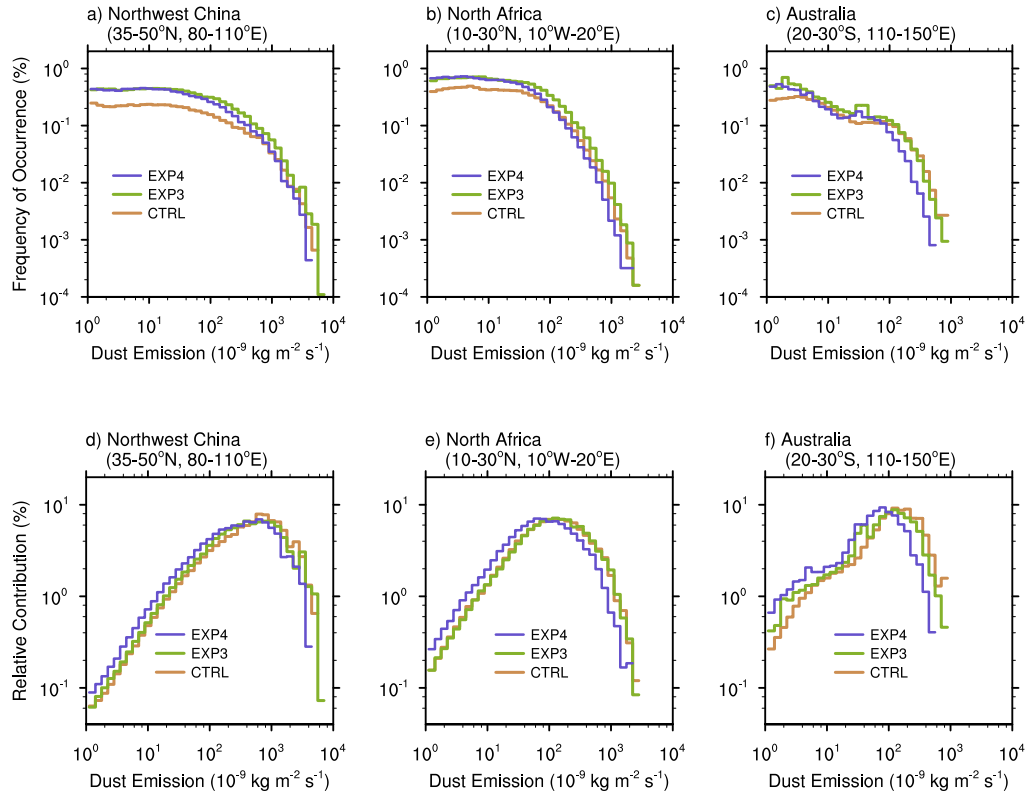


Figure 19. Upper row: frequency distribution of simulated dust emissions in (a) Northwest China, (b) North Africa, and (c) Australia. Lower row: relative contribution of each emission flux bin to the total emission in those three regions. The results were derived from hourly emission fluxes of the year 2006. All grid cells in each region were treated as individual samples.

Comment: Another major concern is that the results of the effects of the subgridscale wind parameterisation are mostly shown by maps of relative changes, particularly in figures 13 and 14. Showing absolute changes would be better at least exemplary, since it would show where the wind modifications actually play an important role for the emissions and AODs.

Reply: For these two figures, we show in the revised paper (1) the emissions and AODs in the CTRL simulation, (2) the absolute differences between EXP3 and CTRL, and (3) the relative differences between EXP3 and CTRL. The new figures are copied below.

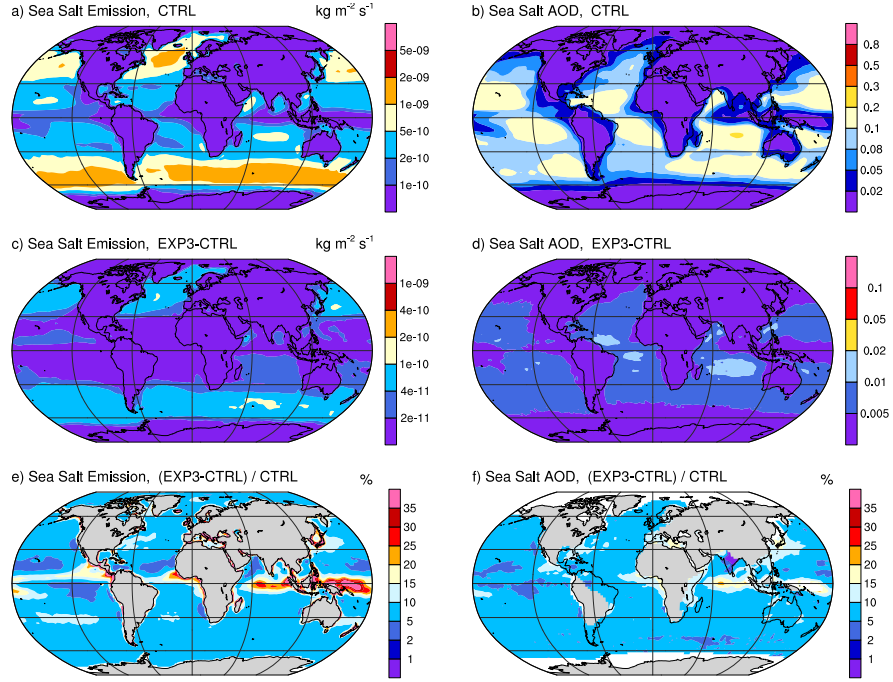


Figure 15. Top row: year 2006 mean sea salt emission flux ($\text{kg m}^{-2} \text{s}^{-1}$) and AOD (unitless, sea salt only) in the nudged CAM5 simulation (CTRL); Second row: differences between EXP3 and CTRL. Bottom row: relative differences between EXP3 and CTRL. In the bottom row, locations that have emission fluxes less than $1 \times 10^{-12} \text{ kg m}^{-2} \text{s}^{-1}$ or sea salt AOD < 0.01 in the CTRL simulation are masked out.

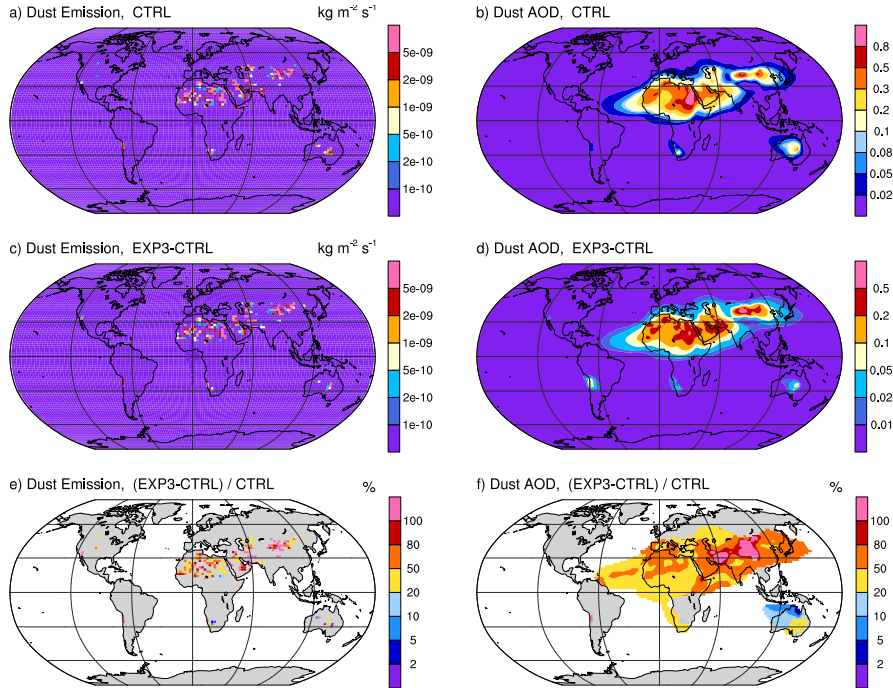


Figure 16. As in Fig. 15 but for dust emission and AOD. The threshold values for masking out differences in the bottom row are $1 \times 10^{-10} \text{ kg m}^{-2} \text{s}^{-1}$ for emission and 0.01 for AOD.

Comment: And at least for EXP4 maps of emissions and AOD (not differences) should be shown together with the results of the Control simulation to show how emission and AOD patterns change when using the new parameterization.

Reply: We have added the following figure and discussion to the revised manuscript to show the dust emission and AOD maps of EXP4 together with the absolute and relative differences from CTRL. The emission and AOD maps of the CTRL simulation are provided in Figure 16 (copied above in response to the previous comment).

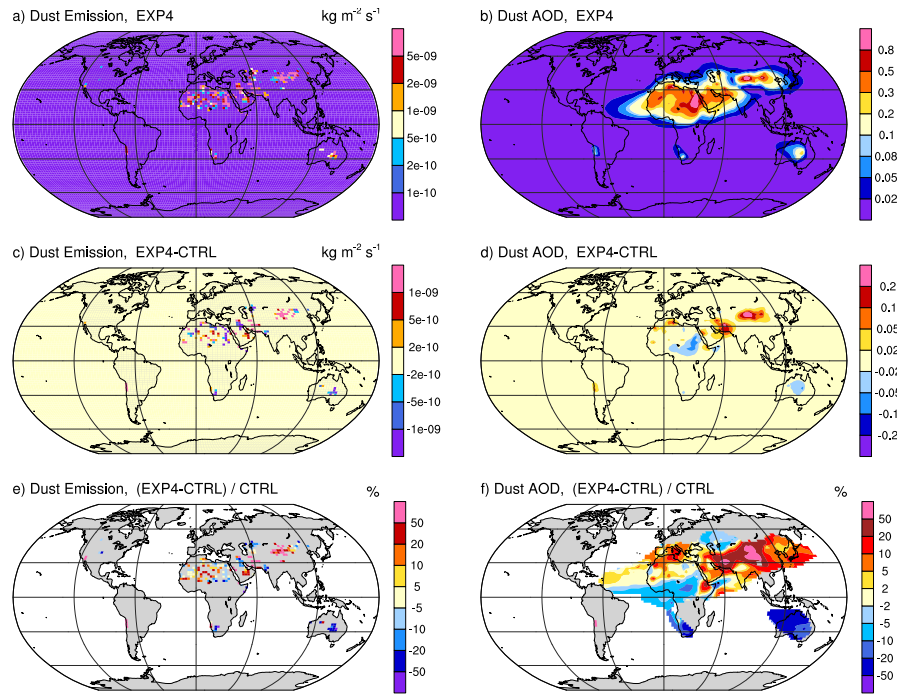


Figure 18. Top row: year 2006 mean dust emission flux ($\text{kg m}^{-2} \text{s}^{-1}$) and AOD (unitless, dust only) in EXP4; Second row: differences between EXP4 and CTRL. Bottom row: relative differences between EXP4 and CTRL. In the bottom row, locations that have emission fluxes less than $1 \times 10^{-10} \text{ kg m}^{-2} \text{s}^{-1}$ or AOD < 0.01 in the CTRL simulation are masked out.

“In Fig.18, annual mean global maps of dust emission and AOD are presented for EXP4. The absolute and relative differences with respect to the default model are also shown. While the geographical distributions are similar in both model versions, taking into account wind SGV then retuning the global mean leads to dust AOD increases in Asia and Northwest Africa, and decreases in Australia and tropical Africa (Fig. 18d and f). A comparison between the emission flux difference in Fig. 18c and e with the wind SGV maps in Fig. 14 suggests that the grid cells with decreased emissions are typically associated with smaller wind variabilities related to unresolved topography, while those grid cells with increased emissions are associated with stronger wind variabilities caused by topography and/or dry convective eddies.”

Minor comments:

Comment: Section 2.4: In the description of the dust emission scheme, please state what the threshold for dust emission is based upon in the scheme (topography, soil type, texture, or anything else?)

Reply: We explained in the discussion paper that in CAM5/CLM, dust emission can occur on bare-ground surfaces in the “vegetated” type of landunits, while glaciers, wetlands, lakes, and urban areas are assumed to not emit dust. In the revised paper, we have added that in the “vegetated” landunits, the threshold friction velocity for dust emission is determined by the size and density of the optimal saltation particles which are assumed to have a diameter of 75 micrometer (Zender et al., 2003). The threshold friction velocity also depends on soil moisture and ambient air density. The detailed formulation can be found in Chapter 10 of the CLM documentation (Oleson et al., 2010).

Comment: Figure 4: not much can be learned from this figure. The differences might be better illustrated by frequency distributions.

Reply: For Figure 4 (sea salt) and Figure 6 (dust), we have added the joint frequency distribution of the relative and absolute errors.

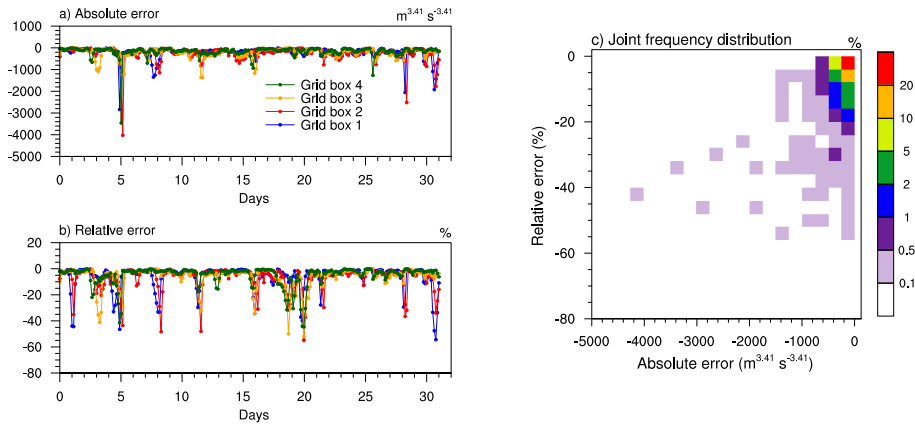


Figure 4. (a)-(b): Time series of the error of $U_{10}^{3,41}$ in the four $225 \text{ km} \times 225 \text{ km}$ grid boxes in the WRF domain over the Southern Ocean (cf. Fig. 1 and Sect. 3). The absolute and relative errors are calculated for Eq. (10) assuming Eq. (11) is the “truth”. (c) Joint frequency distribution of the relative and absolute errors. All the 4 time series shown in panels (a) and (b) are considered as one sample for the calculation.

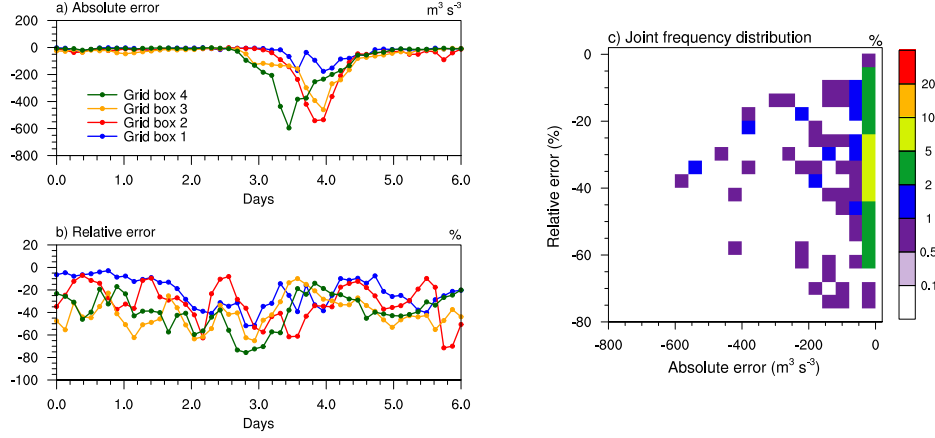


Figure 6. As in Fig. 4 but for the WRF simulation over Western China, and for the error of U_{10}^3 . The errors are calculated for Eq. (12) assuming Eq. (13) is the “truth”.

Comment: Section 4: For the purpose of getting an overview in which area which processes play a role it would be interesting to show maps of σ_d , $\sigma_{U,t}$, $\sigma_{U,m}$, $\sigma_{U,l}$.

Reply: The following figure and text are added to the revised manuscript. When addressing this comment, a bug was found in the calculation of $\sigma_{U,d}$ and $\sigma_{U,t}$ over the ocean. We have fixed the bug and repeated EXP1-4. The major findings still hold, but the relative contribution of dry convective eddies and turbulence over the ocean is changed. The text, figures and tables related to EXP1-4 have been corrected in the revised manuscript.

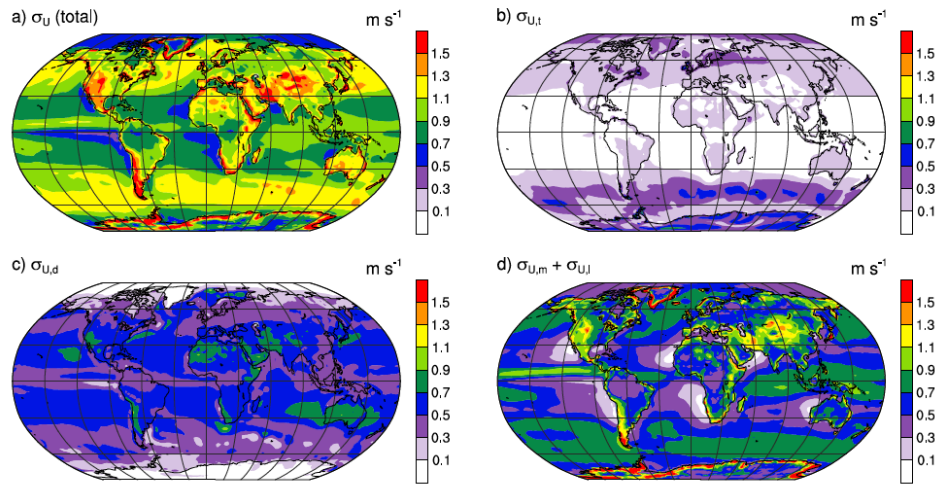


Figure 14. Annual mean sub-grid standard deviation of surface wind speed in CAM5: (a) total (Eqn. 19), (b) neutral/stable turbulent mixing (Eqn. 20), (c) dry convective eddies (Eqn. 21), (d) moist convective eddies over the ocean (Eqn. 23–24) and mesoscale flow over land (Eqn. 27).

“5.1 Online calculated sub-grid scale wind variability

Annual averages of the estimated sub-grid standard deviation of surface wind speed in CAM5 are presented in Fig. 14a, and the individual components are shown in Fig. 14b-d. Strong SGVs are associated with complex topography, mid-latitude storm tracks, the trade winds, and tropical convection. Over the ocean, moist convective eddies are the most important contributor to wind SGV in the tropics (Fig. 14d), while dry convective eddies are the main contributor in the trade wind regions and above warm ocean currents (Fig. 14c). Over the continents, strong wind variabilities are associated with sub-grid topography and dry convective eddies (Fig. 14c-d). The impact of neutral/stable turbulent mixing is seen mainly in middle- and high-latitude regions (Fig. 14b).

Since the empirical parameterizations for $\sigma_{U,m}$ and $\sigma_{U,l}$ were derived from the ECMWF analysis, the wind SGV in Fig.14d agree reasonably well with the diagnostic results shown in Fig.2f for the ECMWF data. The discrepancies over the ocean are attributable to fitting error and differences in the simulated precipitation rates in the two models. Over the continents, the discrepancies are likely caused by the different grid-box mean winds, and the use of a time-independent coefficient D.”

Comment: Section 4.2.3.: Using WRF results, the authors test if the subgridscale variability for the ECMWF 15-km wind fields is appropriate to represent the ‘real’ variability. The WRF model is used at 3 km resolution where usually convection does not need to be parameterized. To test the oceanic surface winds, a test was performed at a location in the southern Pacific. The authors mention that they did not perform such a test in the tropical ocean where major differences can be expected due to strong convective activity. They argue that the sea salt emissions from that regions would weak so that it is not important to test the performance of the 15-km fields there. However this is an implication from computations that neglect subgrid scale wind variability, and not necessarily confirmed by Fig. 2. This problem should be should be discussed

Reply: We have added discussions at two places in the revised paper.

At the end of Section 4.2.3:

“Such a comparison is not included in this paper because as discussed later in Sect. 5.3, CAM5 simulations indicate that sea salt emission fluxes are very low in the tropics; even with Redelsperger's formula which gives stronger wind variability than our fitting does, the absolute increases in sea salt emission and loading remain negligible when compared with higher latitudes.”

In Section 5.3:

“An additional sensitivity experiment was conducted using the formula of Redelsperger et al. (2000) for the moist convective eddies. The strongest enhancement of sea salt

emission exceeded 100% in the ITCZ, while the resulting emission fluxes remained a factor of 5-10 weaker than in the storm tracks, and the increases in sea salt AOD were generally below 50%. Although the Redelsperger et al. (2000) formula leads to higher wind SGV than our empirical fitting derived from the ECMWF analysis, the impact on the simulated sea salt emission and AOD is still small in terms of global mean and geographical distribution."

Comment: Section 4.2.4, Figure 10: Since the $\sigma_{U,l}$ is inversely related to the coefficient C , Figure 1 should depict $1/C$ rather than C , since this would provide a measure of the subgrid scale variability. Also, in Figure 10 the letters indicating the locations of the time series shown in Figure 11 should be indicated next to the appropriate boxes.

Reply: We have revised the figure so that it shows $1/C$, and updated Eqns. (25)–(27) so that they use a new parameter $D=1/C$. The locations of the time series are added to the figure (see below).

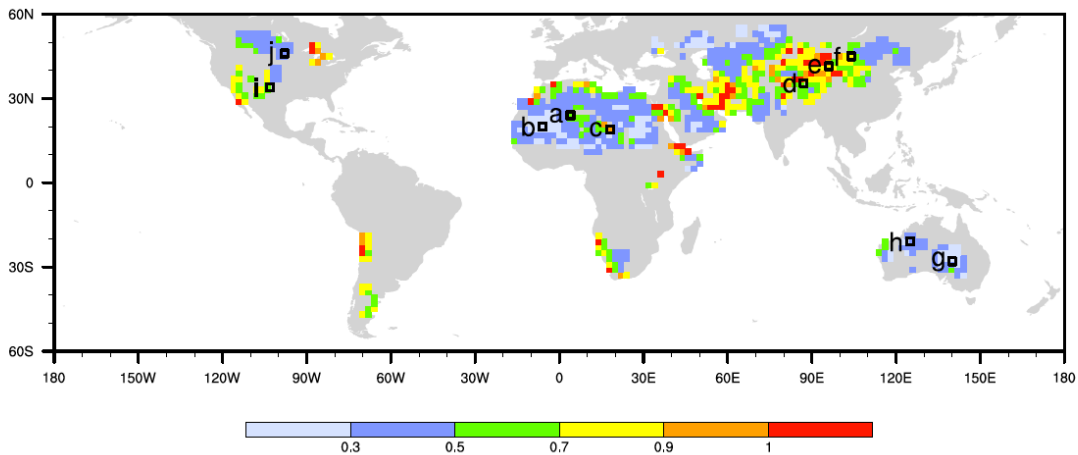


Figure 10. Geographical distribution of the coefficient D (unitless) derived for a $2^\circ \text{ lat} \times 2^\circ \text{ lon}$ GCM grid using the ECMWF 15 km analysis of the year 2011 and Eq. (26). The locations with no results are either covered by land ice or lake, or associated with leaf area indices (LAI) larger than 0.3 throughout the year, thus cannot have dust emission according to the parameterization of Zender et al. (2003) and the land surface characteristics data used in the CAM5 simulations in this paper. The black boxes correspond to the panels in Fig. 11 in which time series of sub-grid wind variability are analyzed.

Comment: Section 4.2.4 : As above for the ocean, the applicability of the 15-km ECMWF wind fields to offer a good measure of wind speed variabilities used to compute dust emissions are tested for a location in the Taklamakan region with a few days of a 3-km WRF simulation. The authors find a good agreement in that region and argue that the differences in the flatter terrain in the Sahara are expected to be minor since the orography would have a small effect. However, note that e.g. Marsham et al. (2011) found considerable subgrid scale wind activity during summer conditions in the Sahara due to wet convective activity using regional

model study at 4 km grid resolution. Neglecting this process will cause an underestimate of subgrid scale surface winds, which should be discussed in the text.

Reply: We removed the original statements on resolution issue over flatter terrain, and added the following discussion:

“It should be mentioned that the reference solution here has limitations in terms of the spatial and temporal coverage, and the horizontal and vertical resolutions. Physical mechanisms of dust emission in the real world and their representation in numerical models are highly complex. For example, Marsham et al. (2011) showed that models with parameterized or resolved convection can give different timings of summer dust uplift in West Africa. The parameterization of wind SGV presented in this paper is very simple and empirical. Process-based representation of different dust emission mechanisms is a topic for future study.”

Comment: Section 4.3: To illustrate the implementation of the subgrid scale processes in the model a flowchart would be helpful.

Reply: A flowchart is added in the revised manuscript.

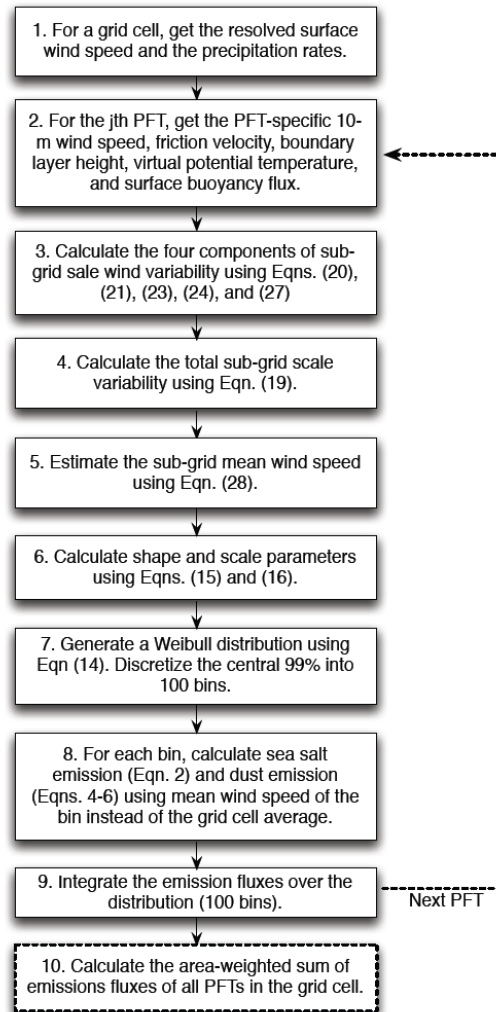


Figure 13. Flowchart illustrating the implementation of wind-distribution-based sub-grid emission calculations in CAM5. Dashed lines indicate steps that are only relevant for the dust emission calculation.

References:

Schepanski, K., I. Tegen, B. Laurent, B. Heinold, and A. Macke (2007), A new Saharan dust source activation frequency map derived from MSG-SEVIRI IR-channels, *Geophys. Res. Lett.*, 34, L18803, doi: 10.1029/2007GL030168

Marshall, J, Knippertz P; Dixon N; Parker DJ; Lister GMS (2011): The importance of deep convection for summertime dust uplift over West Africa, *Geophysical Research Letters*, 38, . doi: 10.1029/2011GL048368

These references have been added to the revised paper.

Reply to Anonymous Referee #2

Kai Zhang (kai.zhang@pnnl.gov)
Pacific Northwest National Laboratory

We thank the referee for the helpful and constructive comments. Our responses are detailed below.

This paper advances the field in performing a novel parameterization and quantification of the effect of subgrid-scale wind variability on fluxes of sea salt and dust aerosols. The result that this subgrid-scale wind variability is important to dust emission, but not particularly important to sea salt emission, is interesting albeit not surprising. The paper is well written and interesting.

Comment: The main deficiency of the paper is the lack of a test of whether including the SGV parameterization actually improves the model fidelity. Without that, the value of this work to the community is limited. I suggest the authors for instance use hourly AERONET AOD measurements for this, or the SEVIRI satellite product.

Reply: Evaluation is indeed a major challenge of this study due to the lack of direct observation of sea salt and dust emissions on the global scale. The AERONET AOD data are limited in their spatial and temporal coverage when dust is the species of interest. We have selected AERONET sites near dust source regions and compared high-frequency AOD measurements with model simulations in the format of scatter plots, time series, and frequency distributions. It turns out the measurements that fall in our simulation period are located in regions where the CTRL simulation and the modified model (EXP4) give very similar annual mean dust AOD (Figure R1.1). The frequency distributions (Figure R1.2) and seasonal cycles (Figure R1.3 and R1.4) are also very similar. These figures are not included in the paper because they do not indicate systematic improvement or degradation of model fidelity. In dust source regions where CTRL and EXP4 do give considerably different AOD (Taklamakan Desert, Southeast Iran, and Pakistan), there are unfortunately no AERONET data in the year 2006, and only a few days of measurements in the other years. In the future it would be useful to find other sources of observational data to evaluate the simulations in those regions.

We have added the following discussions to the revised paper.

Section 5.4, "Comparison with AOD observations", on AERONET measurements:

"In addition to MISR, we have compared the simulated AOD with high-frequency measurements from the Aerosol Robotic Network (AERONET) sites close to the dust source regions. It turns out that the AERONET measurements falling in our simulation period are located in regions where CTRL and EXP4 give very similar dust AOD. The comparison thus did not indicate systematic improvement or degradation in terms of the agreement between model results and measurements. In the Taklamakan Desert,

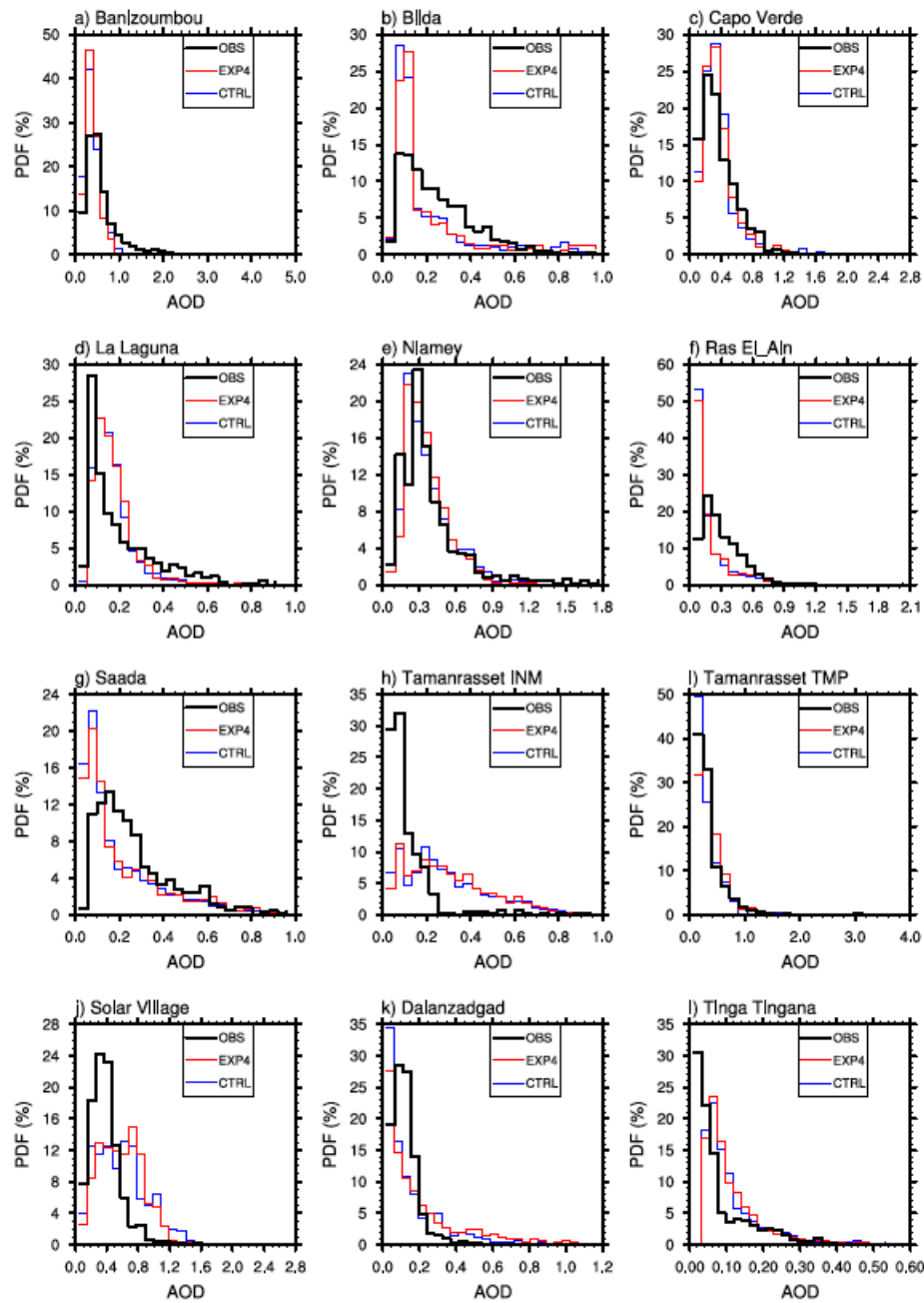


Figure R1.2. Frequency distributions of measured and simulated hourly AOD at the 12 AERONET sites indicated in Figure R1.1. Both measurements and simulations are from the year 2006. Model results are masked out when the AERONET measurements are missing.

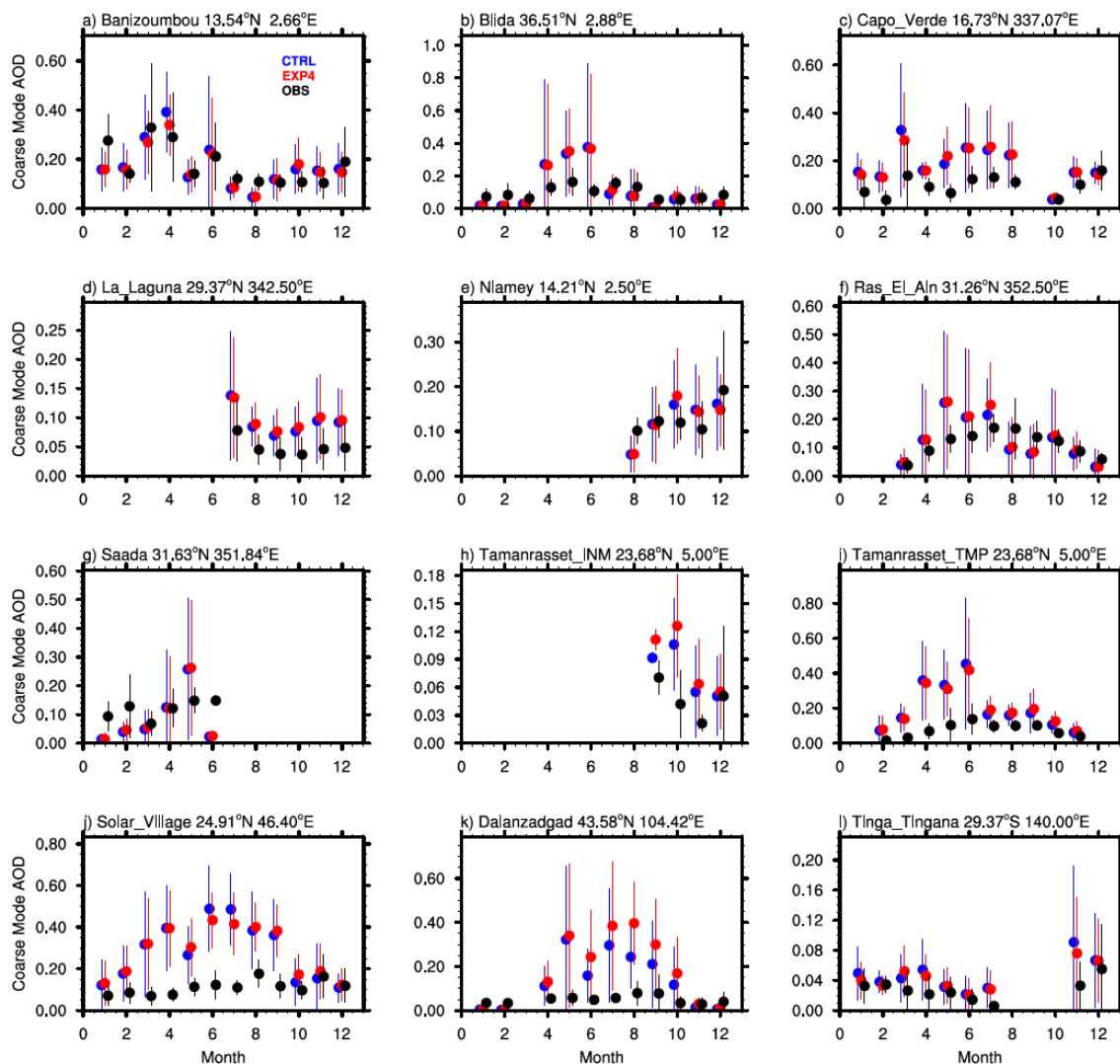


Figure R1.3: Observed and simulated monthly mean *total* AOD at 12 AERONET sites indicated in Figure R1.1. The error bars indicate ± 1 standard deviations of hourly AOD. Model results are masked out when the AERONET measurements are missing.

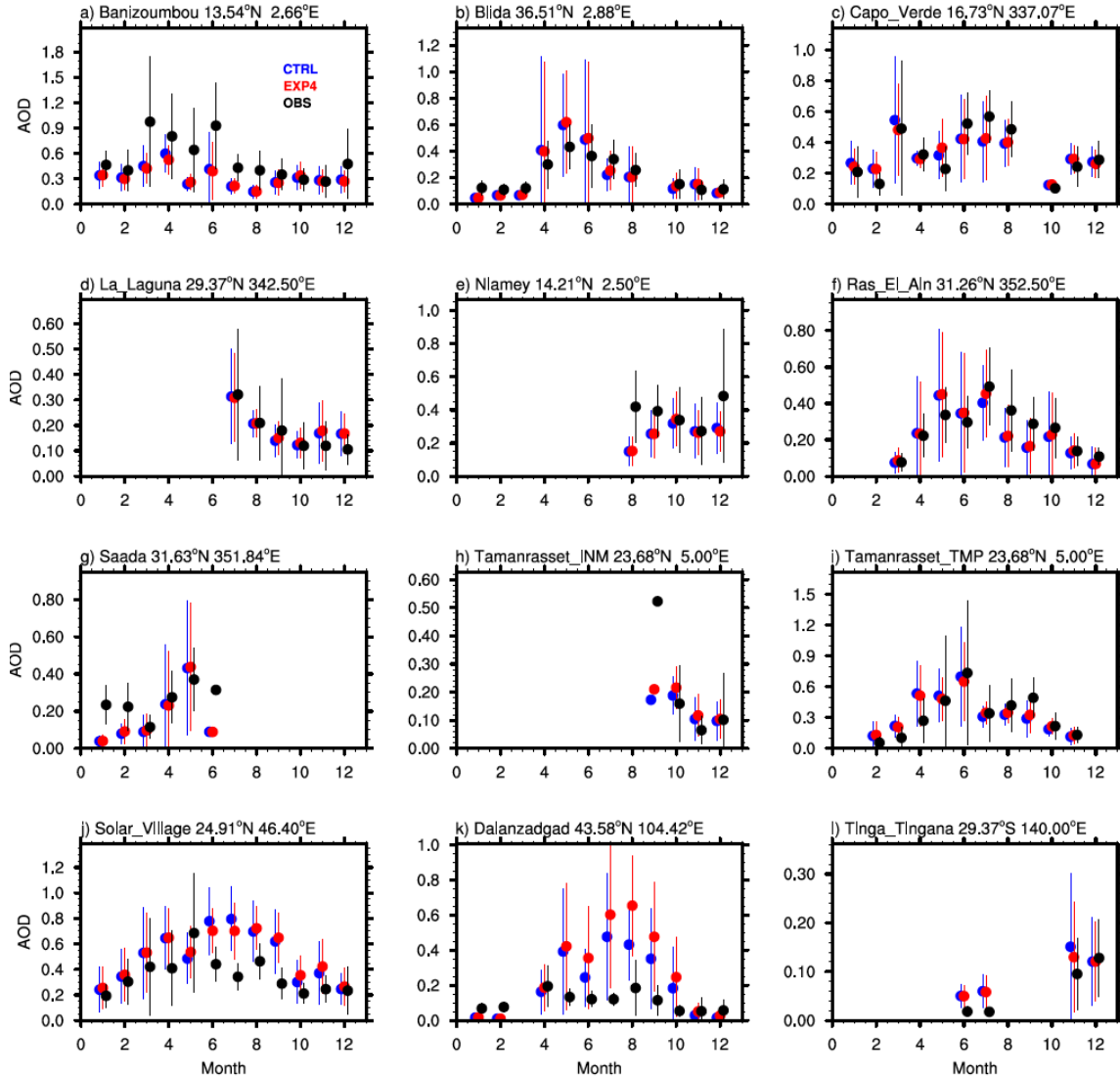


Figure R1.4: As Figure R1.3 but for *coarse mode* AOD.

Section 5.5, “Dust emission frequency”, on the SEVIRI satellite product:

“Ideally it would be nice to use observational data sets to evaluate whether such a shift also makes the simulated emissions more realistic. For example, Schepanski et al. (2007) presented seasonal dust source area maps for the Sahara and Sahel region derived from IR-channel images of Meteosat Second Generation. A quantitative comparison between our simulations and their results is however difficult, because the absolute value of the emission frequency depends strongly on the dust mass flux threshold that is used when identifying an emission event. In the work of Schepanski et al. (2007), dust emission was identified by visually detecting dust plumes, then visually tracing the plume patterns back to their origin by inspecting consecutive images during dust mobilization and transport events. In order to directly compare their maps

with our simulations, one would need to implement a satellite simulator in our model, produce the IR-channel images, then apply the same human-involved method of visual dust activation identification. Such an evaluation is impractical in our study; below we limit ourselves to a qualitative comparison with the results of Schepanski et al. (2007).

Maps of seasonal dust emission frequencies in Africa and Asia are presented for CTRL and EXP4 in Fig. 20. Since it is unclear what dust emission flux thresholds the maps of Schepanski et al. (2007) correspond to, we chose a somewhat arbitrary (but low) threshold of $10^{-9} \text{ kg}^{-2} \text{ s}^{-1}$. Fig. 20 indicates that the inclusion of wind SGV generally increases the frequency of dust emission; this is consistent with the PDFs shown in Fig. 19. In addition, EXP4 features enhanced seasonal differences compared to CTRL: wind variability associated with dry convective eddies leads to considerably more frequent dust emission in boreal spring/summer than in autumn/winter.

In terms of geographical distribution, Schepanski et al. (2007). showed seasonal shifts of dust emission patterns in North Africa. In our simulated, however, dust emissions largely occur at the same locations all year round, except in Northwest China where the source regions are larger in spring and summer. The frequency patterns in CTRL and EXP4 are similar, and both differ in the details from the maps of Schepanski et al. (2007). The same turned out to be true when we increased the emission flux threshold to higher values. Our analysis showed that the wind SGV changes the magnitudes of the emission frequency, but does not significantly change the spatial pattern. This is not surprising since apart from wind speed, the simulated dust emission also depends on other assumptions in the parameterization scheme as well as the surface properties in the model."

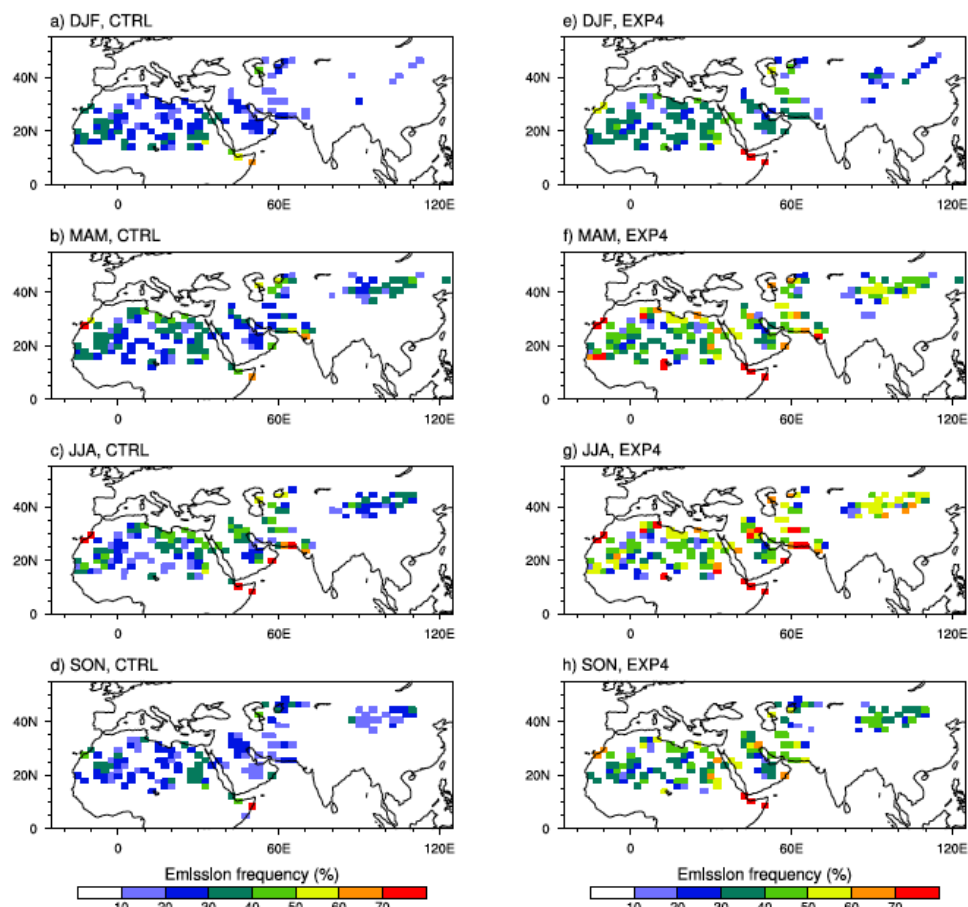


Figure 20. Frequency of occurrence (unit: %) of dust emission fluxes stronger than $10^{-9} \text{ kg}^{-2} \text{ s}^{-1}$ in Africa and Asia in the CTRL simulation (left column) and in EXP4 (right column). Different rows correspond to different seasons: December-January-February (DJF), March-April-May (MAM), June-July-August (JJA), and September-October-November (SON).

Other comments:

Comment: - Equation (5) for the saltation flux repeats an error in the original White (1979) paper. See Namikas and Sherman (1997) for the correction. Please correct.

Reply: Thanks for pointing out this. A clarification has been added to the revised paper:

“Note that there were typographical errors in the original Eqn. (22) of White (1979), and in Eqn. (10) of Zender et al. (2003). Our model uses the formula corrected by Namikas and Sherman (1997, Eqn. (3) therein).”

Comment: - P. 7257: How exactly is the effect of moisture on u^*t accounted for?

Reply: The parameterization (Zender et al. 2003) is based on Fe'can et al (1999). When the soil gravimetric water content (w) exceeds a threshold w_t , the threshold friction velocity for saltation is increased by multiply a scaling factor f_w :

$$f_w = \begin{cases} 1 & : w \leq w_t \\ \sqrt{1 + 1.21[100(w - w_t)]^{0.68}} & : w > w_t \end{cases}$$

w_t is given by

$$w_t = a \left(0.17M_{\text{clay}} + 0.14M_{\text{clay}}^2 \right)$$

where M_{clay} is the mass fraction of clay particles in the parent soil, and a is an adjustable factor chosen to improve model simulations.

Comment: - P. 7261: The simplification here eliminates the threshold dependence of dust fluxes. This threshold dependence makes dust emissions very sensitive to SGV, so eliminating it will cause a substantial underestimate of the effect of SGV on dust emissions. This should be discussed here.

Reply: We agree that the simplified comparison has limitations. The following discussion has been added to the revised paper, immediately below the simplified equations (12) and (13):

"It should be pointed out that unlike the actual parameterization in the model, this simplified comparison does not take into account the dependence of emission flux on the threshold friction velocity. As can be derived from Eqn. (5), the omission will lead to an underestimation of the emission flux and emission error when $u_s^ > 1.6u_t^*$, and an overestimation when u_s^* is close to or smaller than u_t^* . The purpose of using the simplified formulae here is to give a first, rough estimate of the impact of wind SGV. More accurate comparisons using the CAM5 model with the Zender (2003) parameterization are presented in Sect. 5."*

Comment: - P. 7270: I find it non-intuitive that a larger C means a smaller influence of SGV. I would suggest inverting C in its definition in Eq. (25), such that the importance of SGV scales with C .

Reply: We have revised the figure so that it shows $1/C$, and updated Eqns. (25)–(27) so that they use a new parameter $D=1/C$.

Comment: - P. 7277 and 7278: I think the negative values of TOA flux difference

over the ocean has more to do with the low albedo of the ocean surface, and much less with changes in the dust optical properties during mixing. Please correct / discuss this.

Reply: Thanks for the comment. We agree with the reviewer that the low albedo of the ocean surface probably plays a much larger role, given that a very sharp gradient is seen in the figure at the west coast of African continent. The impact of albedo might also apply to land areas downwind of the dust source regions, since with vegetation cover the surface albedo is also lower.

On a different note, following review #1's suggestion, we have removed this section from the paper so as to make the manuscript more focused.

Comment: - Why does the relative error reverse sign at $k \sim 1.5$ in Fig. 7a? That seems odd - please explain.

Reply: We believe the different magnitudes of relative error result from using one formula (Eqns. 15-16) to approximate the entire set of Weibull distributions despite the different shape parameters. The properties of the Weibull PDF change substantially with the shape parameter k (see Figure blow). The PDF is a monotonically decreasing function when $k \leq 1$, and non-monotonic with a peak at the mode when $k > 1$. The PDF's coefficient of skewness approaches zero when k approaches 3.7, and becomes negative when $k > 3.7$. Fig. 7a in our discussion paper indicates that "method 3" of Justus et al. (1978) (Eqns. 15-16 in our paper) for estimating the shape parameter gives excellent accuracy for the negatively skewed Weibull PDFs, but produces larger errors for the positively skewed PDFs, and is particularly not suitable for shape parameters considerably smaller than 1.

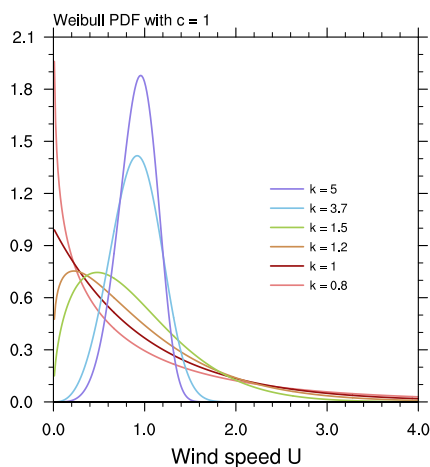


Figure R2.1. Weibull PDFs with different shape parameters.

Quantifying the impact of sub-grid surface wind variability on sea salt and dust emissions in CAM5

K. Zhang¹, C. Zhao¹, H. Wan¹, Y. Qian¹, R. C. Easter¹, S. J. Ghan¹, K. Sakaguchi¹, and X. Liu²

¹Pacific Northwest National Laboratory, Richland, WA, USA

²University of Wyoming, Laramie, WY, USA

Correspondence to: K. Zhang (kai.zhang@pnnl.gov)

Abstract. This paper evaluates the impact of sub-grid variability of surface wind on sea salt and dust emissions in the Community Atmosphere Model version 5 (CAM5). The basic strategy is to calculate emission fluxes multiple times, using different wind speed samples of a Weibull probability distribution derived from model-predicted grid-box mean quantities.

In order to derive the Weibull distribution, the sub-grid standard deviation of surface wind speed is estimated by taking into account four mechanisms: turbulence under neutral and stable conditions, dry convective eddies, moist convective eddies over the ocean, and air motions induced by mesoscale systems and fine-scale topography over land. The contributions of turbulence and dry convective eddy are parameterized using schemes from the literature. Wind variabilities caused by moist convective eddies and fine-scale topography are estimated using empirical relationships derived from an operational weather analysis dataset at 15 km resolution. The estimated sub-grid standard deviations of surface wind speed agree well with reference results derived from one year of global weather analysis at 15 km resolution and from two regional model simulations with 3 km grid spacing.

The wind-distribution-based emission calculations are implemented in CAM5. In terms of computational cost, the increase in total simulation time turns out to be less than 3 %. Simulations at 2° resolution indicate that sub-grid wind variability has relatively small impacts (about 7 % increase) on the global annual mean emission of sea salt aerosols, but considerable influence on the emission of dust. Among the considered mechanisms, dry convective eddies and mesoscale flows associated with topography are major causes of dust emission enhancement. With all the four mechanisms included and without additional adjustment of uncertain parameters in the model, the simulated global and annual mean dust emission increase by about 50 % compared to the de-

fault model. By tuning the globally constant dust emission scale factor, the global annual mean dust emission, aerosol optical depth, and top-of-atmosphere radiative fluxes can be adjusted to the level of the default model, but the frequency distribution of dust emission changes, with more contribution from weaker wind events and less contribution from stronger wind events. In Africa and Asia, the overall frequencies of occurrence of dust emissions increase, and the seasonal variations are enhanced, while the geographical patterns of the emission frequency show little change.

1 Introduction

Atmospheric aerosols are important modulators of cloud formation processes and the energy budget of the climate system. The physical processes associated with aerosol sources and sinks are often nonlinear. In global and regional general circulation models (GCMs), the variabilities of meteorological fields at scales not resolved by the computational mesh have been found to have direct influences on aerosol formation as well as the subsequent microphysical changes and removal processes (Qian et al., 2010; Stevens and Pierce, 2013). Those sub-grid variabilities (SGV) hence eventually affect the simulated aerosol direct and indirect forcing (e.g. Haywood et al., 1997; Ghan and Easter, 1998; Gustafson et al., 2011).

Among the different species of aerosols, sea salt and dust contribute to a large fraction of the total aerosol burden in the atmosphere (Textor et al., 2006). Substantial discrepancies have been seen in the simulated emission fluxes of these two aerosol types in global aerosol model inter-comparison studies (Textor et al., 2006; Huneus et al., 2011). Although different parameterization schemes are used in individual models, the near-surface wind speed is always a major fac-

tor that affects the emission of sea salt and dust. In most global aerosol models, the emission calculations are based on the grid-box mean near-surface wind speed, or the friction velocity derived from that mean speed, despite the fact that wind speed can have large spatial variabilities inside a typical GCM grid box (100–200 km across each edge). Due to the strongly nonlinear dependence of emission flux on wind speed, emission estimates made solely from GCM grid-box mean quantities can differ considerably from the grid-box average of fluxes estimated at a finer spatial scale (Westphal et al., 1988). It is therefore important to take into account sub-grid wind variabilities when calculating wind-driven aerosol emissions in GCMs.

In terms of the physical mechanisms that cause variabilities of near-surface wind at spatial scales of about 100 km or less, earlier studies have shown that processes of scales less than 1 km can have large impacts on wind speed variability in the near-surface layer. For example, turbulence is a major contributor under neutral or stable conditions (Lumley and Panofsky, 1964). When the boundary layer is unstable, dry convective eddies also enhances the wind variability (Deardorff, 1970; Panofsky et al., 1977). Since dry convection events occur often in warm and arid areas (e.g. in deserts), they can strongly affect the emission of dust aerosols. mesoscale atmospheric processes such as topographic gravity waves and moist convection are also important contributors to wind variability. Gusty winds can be generated by topographic gravity waves near mountain downslopes (Durran, 1990), or in thunderstorm outflows over land and ocean (Mahoney, 1988) where strong downdrafts (cold pools) occur in association with strong precipitation events (Zeng et al., 2002; Feng et al., 2015). Jabouille et al. (1996) showed that wind gusts generated by convective outflow can significantly enhance the surface heat fluxes.

Attempts have been made to quantify the wind variability resulting from the above-mentioned mechanisms. For example, Panofsky et al. (1977) and Banta et al. (2006) estimated the turbulence induced sub-grid standard deviation of near-surface wind speed as functions of the turbulent kinetic energy (TKE) or friction velocity (u_*). Studies based on theoretical analysis and large-eddy model simulations showed that impact of dry convection can be linked to the convective velocity scale (e.g. Panofsky et al., 1977; Deardorff, 1970; Schumann, 1988) and estimated from the surface buoyancy flux and boundary layer height. Using a cloud resolving model, Redelsperger et al. (2000) investigated the impact of deep convection and derived parameterizations based on precipitation rates or convective mass fluxes.

The sub-grid wind variability parameterizations have been used in the calculation of surface heat and moisture fluxes (Godfrey and Beljaars, 1991; Redelsperger et al., 2000; Zeng et al., 2002) and dust emission (Lunt and Valdes, 2002; Hourdin et al., 2015) at scales similar to sizes of GCM grid boxes. In these studies, wind variability was used to estimate the grid-box mean wind speed, and the mean speed was used to

do a single calculation of the heat, moisture or dust mass flux. For dust emission, considering that the dependency on wind speed is highly nonlinear, several studies have attempted to further remedy the accuracy issue by constructing a frequency distribution of the surface wind speed for the emission calculation. Different types of probability density functions (PDF) were assumed in the dust modeling studies. For example, Marcella and Eltahir (2010) used Gaussian distribution and Cakmur et al. (2004) used double-Gaussian.

In this work, we introduced a sub-grid treatment for the sea salt and dust emission calculation for the Community Atmospheric Model version 5 (CAM5). Like in Cakmur et al. (2004), the contribution of neutral/stable turbulence, dry convective eddies, and moist convective eddies are considered. In addition to these processes, the impact of wind variabilities induced by mesoscale systems and topography-generated gravity waves over land is parameterized with an empirical method. In contrast to Cakmur et al. (2004) and Marcella and Eltahir (2010), the wind PDF is assumed to follow the Weibull distribution (Justus et al., 1979; Pavia and O'Brien, 1986; Monahan, 2006; Carta et al., 2009).

The present paper presents materials to answer the following scientific questions for the CAM5 model:

1. How can we approximate the wind SGV using the grid-box mean physical quantities provided by an atmospheric GCM?
2. How large is the impact of sub-grid variability of surface wind speeds on the grid-box mean aerosol emission?
3. How does the estimated surface wind SGV affect the sea-salt and dust aerosol distributions ~~and their impact on the top-of-atmosphere energy balance?~~

In the remainder of the paper, we first introduce the CAM5 model and the formulation of its sea salt and dust emission parameterizations (Sect. 2). We then address the three science questions in Sects. 3–5. Each section starts with a description of the methodology and data, then proceeds to a discussion of the results. The conclusions are drawn in Sect. 6.

2 Sea salt and dust emissions in CAM5

The climate model used in this study is CAM5.3 – the atmosphere component of the Community Earth System Model version 1.2.0 (<http://www.cesm.ucar.edu/models/cesm1.2/>). This section introduces the basic features of the model configuration (Sect. 2.1), describes the sea salt and dust emission parameterizations (Sects. 2.3 and 2.4), and introduces the strategy for considering sub-grid wind variability in the emission calculations (Sect. 2.5).

2.1 CAM5 overview

In this study we use CAM5 with the finite-volume dynamical core (Lin, 2004) at 1.9° lat \times 2.5° lon horizontal resolu-

tion and with 30 vertical layers. The modal aerosol module MAM3 (Liu et al., 2012a) represents the tropospheric aerosol life cycle, including various emission and formation mechanisms, microphysical processes, and removal mechanisms. Six aerosol components are considered in the model, including sulfate, black carbon, primary and secondary organic aerosols, sea salt, and mineral dust. The emission fluxes of sea salt and dust are calculated interactively, while the emissions of other aerosol and precursor gas species are prescribed. The stratiform cloud microphysics in CAM5 is represented by a two-moment parameterization (Morrison and Gettelman, 2008; Gettelman et al., 2008). Aerosols can affect the formation and properties of stratiform clouds by acting as cloud condensation nuclei (CCN) or ice nucleating particles. Deep convection and shallow convection are parameterized using the schemes of Zhang and McFarlane (1995) and Park and Bretherton (2009), respectively. Aerosols do not affect microphysics in convective clouds. Moist turbulence is represented by the parameterization of Bretherton and Park (2009). Shortwave and longwave radiative transfer calculations are performed using RRTMG (Rapid Radiative Transfer Model for General circulation model applications, Iacono et al., 2008; Mlawer et al., 1997). Processes related to the mass and energy exchanges at the atmosphere-land interface are described by the Community Land Model version 4 (CLM4, Lawrence et al., 2011). Further details of the CAM5 and CLM4 model formulations can be found in Neale et al. (2010) and Oleson et al. (2010), respectively.

2.2 Notation and terminology

In this paper, the symbol $\bar{\psi}$ denotes the average of a generic variable ψ over a GCM grid box, where ψ can be either scalar or vector.

For the horizontal wind vector \mathbf{v} , we use the capital letter U to denote its magnitude (i.e. the wind speed):

$$U \equiv |\mathbf{v}| \equiv \sqrt{\mathbf{v} \cdot \mathbf{v}} \equiv \sqrt{u^2 + v^2} \quad (1)$$

Since U is a nonlinear function of \mathbf{v} , the grid-box average of wind speed \bar{U} is larger than the magnitude of the resolved grid-box mean wind vector $|\bar{\mathbf{v}}|$, due to the existence of sub-grid wind variation. The estimation of \bar{U} is addressed in Sect. 4 (Eq. 28). Another point to clarify is that throughout the paper, the term “surface wind” is used to refer to the horizontal wind at the lowest model level.

2.3 Sea salt emission scheme

The sea salt emission scheme in CAM5 is based on the work of Mårtensson et al. (2003). The emission flux F ($\text{kg m}^{-2} \text{s}^{-1}$) in the default model is calculated as

$$F = [U_{10}(|\bar{\mathbf{v}}|)]^{3.41} A_{\text{ocn}} E \quad (2)$$

where $U_{10}(|\bar{\mathbf{v}}|)$ is the 10 m wind speed diagnosed from $|\bar{\mathbf{v}}|$ without considering the sub-grid wind variability. A_{ocn} is the

area fraction of open ocean in the grid box, and E is a function of sea surface temperature and the assumed emission size distribution. The detailed expression of E can be found in Supplement of Liu et al. (2012a).

2.4 Dust emission scheme

The parameterization of mineral dust aerosol emission in CAM5 is strongly tied to the land component CLM. CLM considers multiple landunits (vegetated, glacier, wetland, lake, and urban) within a grid box, among which only surfaces of the “vegetated” type can emit dust. Using the Dust Entrainment And Deposition (DEAD) model of Zender et al. (2003), it is assumed that dust sources are located in arid or semi-arid marginally-vegetated regions where strong winds can mobilize dust from the surface. The ~~vegetated~~ “vegetated” landunit in CLM is further categorized by plant functional type (PFT, e.g., tropical broadleaf deciduous tree, boreal needleleaf evergreen). The dust emission flux is first calculated for each PFT,¹ then summed up using the area-weighting to give the grid-box average, i.e.,

$$\bar{F} = \sum_j A_j F_j. \quad (3)$$

For the j th PFT of a grid-box, the vertical flux of dust mass emission (unit: $\text{kg m}^{-2} \text{s}^{-1}$) is calculated by

$$F_j = T S \alpha f_m Q_{s_j}. \quad (4)$$

Here T is an adjustable tuning parameter which is time and space invariant. The source erodibility factor S and the sandblasting mass efficiency α are time-invariant but dependent on geographical location. f_m is the fraction of grid cell area covered by exposed bare soil suitable for dust mobilization. The horizontally saltating mass flux Q_{s_j} is calculated according to White (1979). Note that there were typographical errors in the original Eqn. (22) of White (1979), and in Eqn. (10) of Zender et al. (2003). Our model uses the formula corrected by Namikas and Sherman (1997, Eqn. (3) therein):

$$Q_{s_j} = \begin{cases} \frac{c_s \rho_a u_{*s_j}^3}{g} \left(1 - \frac{u_{*t}}{u_{*s_j}}\right) \left(1 + \frac{u_{*t}}{u_{*s_j}}\right)^2, & u_{*s_j} > u_{*t} \\ 0, & u_{*s_j} \leq u_{*t} \end{cases} \quad (5)$$

¹ It should be noted that the “bare ground” fraction defined in the ~~original~~ dust emission parameterization is different from the “bare ground” land surface type defined in CLM. The In the dust emission parameterization, the “bare ground” fraction decreases linearly as the vegetation area index (LAI+SAI) increases from zero to a prescribed threshold value (Zender et al., 2003). Therefore, even for PFTs that are not bare ground according to the CLM categorization, dust emission is still possible. Furthermore, dust emission is not considered over ice sheets, wetland areas, or lakes in CAM5/CLM4.

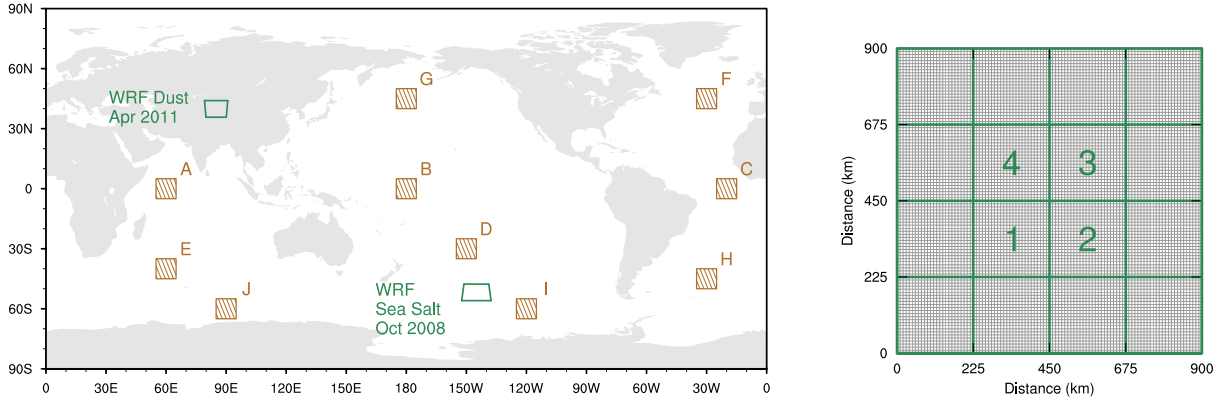


Figure 1. Left panel indicates the two 900 km × 900 km WRF domains (green), and the ten 10° lat × 10° lon regions (brown) in which the estimated sub-grid wind variabilities are evaluated in Fig. 8. Right panel shows the four imagined 225 km grid boxes (label as 1–4) in each of the WRF domains shown in the left panel. The 225 km grid boxes are used for the offline estimates in Figs. 4 and 6, as well as the evaluations in Figs. 9 and 11.

c_s denotes the saltation parameter (time-invariant and globally constant). ρ_a is air density, and g is gravity. The threshold friction velocity u_{*t} is a function of moisture content in the top soil layer (PFT-independent), determined by the size and density of the optimal saltation particles which are assumed to have diameters of 75 μm (Zender et al., 2003). u_{*t} also depends on soil moisture and ambient air density. The PFT-dependent friction velocity u_{*sj} represents the Owen effect (Owen, 1964). In the default model (i.e., without wind SGV), the PFT-dependent u_{*sj} is calculated using

$$u_{*sj} = \begin{cases} u_{*j} + 0.003 U_{10j}^2 \left(1 - \frac{u_{*t}}{u_{*j}}\right)^2 & u_{*j} \geq u_{*t} \\ u_{*j} & u_{*j} < u_{*t} \end{cases} \quad (6)$$

The friction velocity u_{*j} and the 10 m wind speed U_{10j} are functions of surface wind speed, boundary layer stability, and characteristics of the land surface.

Like in earlier studies (e.g., Godfrey and Beljaars, 1991; Lunt and Valdes, 2002), in order to take into account the enhancement of mean wind speed by dry convective eddies, in the default CAM5, the calculation of surface heat, moisture and tracer fluxes over land uses the following approximation for the grid-box mean surface wind speed:

$$\bar{U}_{\text{adj}} = \sqrt{|\bar{v}|^2 + \sigma_{U,d}^2}. \quad (7)$$

Here $\sigma_{U,d}$ is the standard deviation of sub-grid wind speed associated with dry convective eddy (details are given in Sect. 4.2.2). \bar{U}_{adj} is used in the calculation of U_{10} and u_* , which not only affects Eq. (6) and hence the dust emissions, but also all other flux calculations that use U_{10} and u_* over land. On the other hand, the adjustment (Eq. 7) is not applied over the ocean, thus does not affect the sea salt emission in the default model.

2.5 Incorporating surface wind variability in emissions calculations

Equations (2)–(6) reveal that the parameterized sea salt and dust emissions are directly affected by the 10 m wind U_{10} and the friction velocity u_* , both of which depend on the surface wind speed. In this study, the basic approach to introducing sub-grid scale wind variability in the calculation of aerosol emissions is to (1) assume a Weibull PDF for surface wind speed, and calculate the Weibull PDF parameters from existing model quantities, (2) obtain multiple samples of surface wind speed within each GCM grid box, (3) calculate the sea salt and dust emissions for each sample, and (4) provide the average fluxes to the host GCM.

Using a generic notation, we assume M samples of surface wind speed can be obtained in a GCM grid box (i.e., U_i with $i = 1, \dots, M$), each of which represents an area fraction w_i , and has a corresponding 10 m wind U_{10i} and a friction velocity u_{*i} . The grid-box mean sea salt emission flux is then calculated by

$$\bar{F} = A_{\text{ocn}} E \sum_i w_i U_{10i}^{3.41}. \quad (8)$$

For dust, we note that the friction velocity u_* is strongly affected by land surface characteristics, which has partially been taken into account (in the default model) by distinguishing different PFTs. This is different from the dust emission parameterization used in many other global aerosol-climate models (e.g. ECHAM5-HAM2 described in Zhang et al., 2012), in which the calculation of the friction velocity often neglects the impact of sub-grid variation of vegetation type. On the other hand, for a single PFT in a grid cell, u_* can still have strong SGV because of the inhomogeneity in surface wind speed. In this study we take multiple surface wind

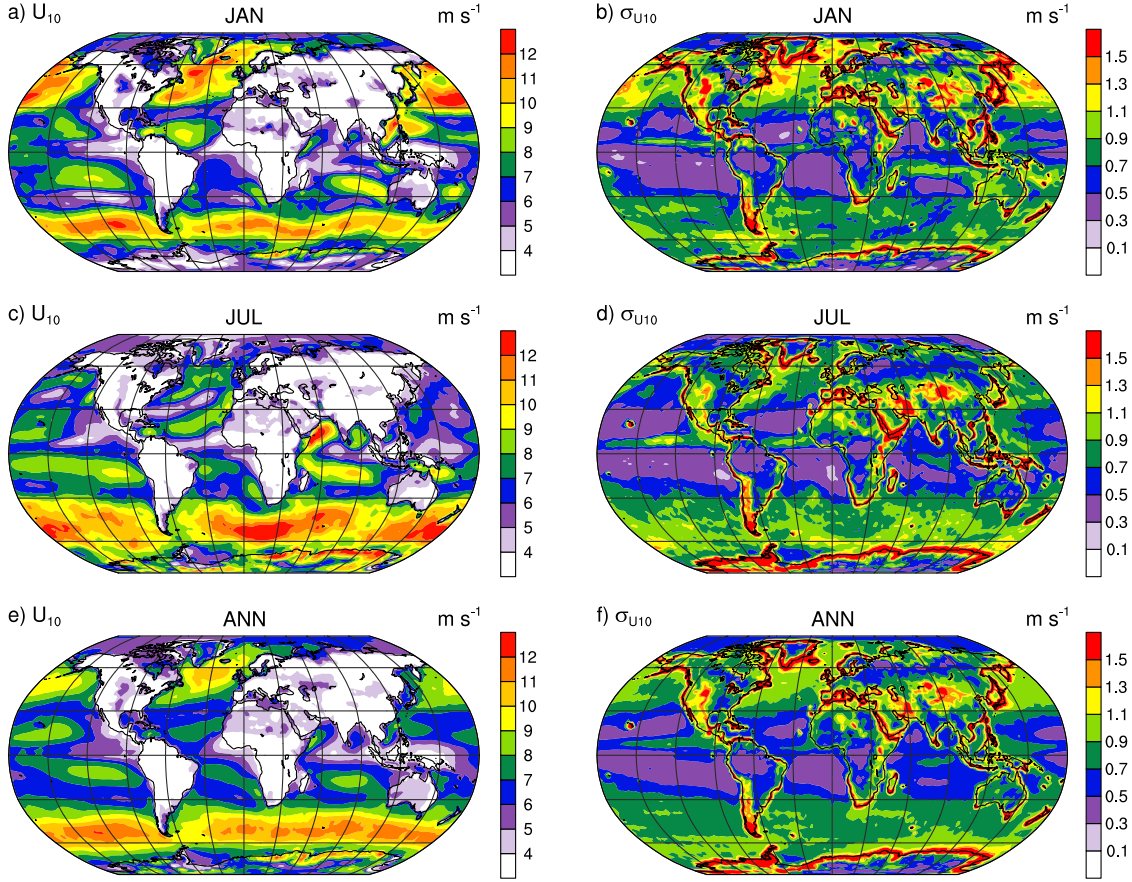


Figure 2. Grid-box average (left column) and sub-grid standard deviation (right column) of the 10 m wind speed, diagnosed on an imagined $2^\circ \times 2^\circ$ horizontal grid from the ECMWF 15 km global analysis of the year 2011. From top to bottom: January average, July average, and annual mean. See Sect. 3 for further details.

samples $(U_i, i = 1, \dots, M)$ for each PFT, calculate $u_{*s_{j,i}}$ and $Q_{s_{j,i}}$ in analogy to Eqs. (6) and (5), respectively, then calculate the grid-box mean dust emission flux as a weighted sum over all PFTs and all surface wind samples, i.e.,

$$\bar{F} = \sum_j A_j \left(\sum_i w_{j,i} F_{j,i} \right). \quad (9)$$

The strategy of doing multiple emission calculations in each grid box is similar to that used by Grini and Zender (2004) and Cakmur et al. (2004), although in our work the wind speed samples are derived differently. The details are explained in Sects. 4 and 5. Before describing the method for estimating sub-grid wind variability, we first present in the next section a diagnostic analysis of the impact of sub-grid wind on aerosol emission, assuming that the sub-grid wind variability is already known.

3 Offline estimate of the impact of wind variability on emissions

~~In this section, we address~~ This section addresses the first science question ~~under the assumption listed in Sect. 1,~~ assuming that the sub-grid variability of surface wind is known to sufficiently high accuracy. Applying a method similar to those used in many recent studies on resolution sensitivities of parameterized physical processes (e.g. Arakawa et al., 2011), we use high-resolution wind data and derive the surface wind statistics in imagined grid boxes that are roughly 200 km by 200 km in size.

Two sources of high-resolution data are used. The first dataset contains one year (2011) of the 6 hourly operational analysis from the European Center for Medium-range Weather Forecasts (ECMWF). The horizontal resolution is T_L1279 , corresponding to grid spacings of about 15 km. A special advantage of this dataset is its global coverage, which is important for estimating the impact of wind SGV on sea salt emission. Our imagined coarse resolution grid

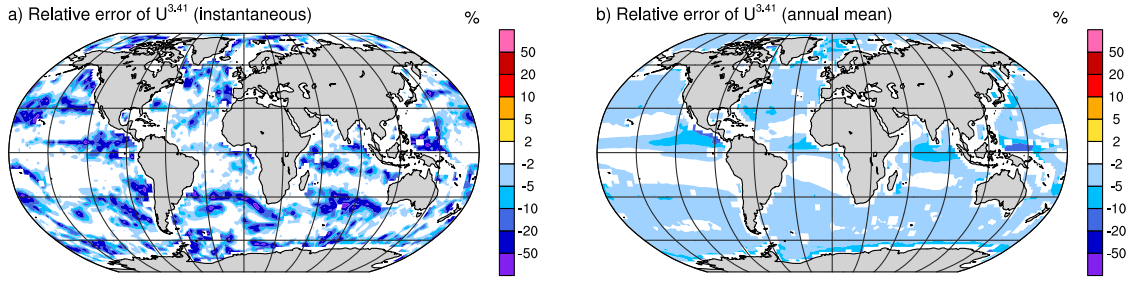


Figure 3. Relative error of $U_{10}^{3,41}$ over the ocean, caused by ignoring sub-grid wind variability. The quantity shown is the relative error of Eq. (10) with respect to Eq. (11), calculated on an imagined $2^\circ \times 2^\circ$ horizontal grid using the ECMWF 15 km global analysis. Left panel shows the instantaneous results at an arbitrarily chosen time (00:00 GMT on 1 January 2011). Right panel shows the relative error of the year 2011 annual mean.

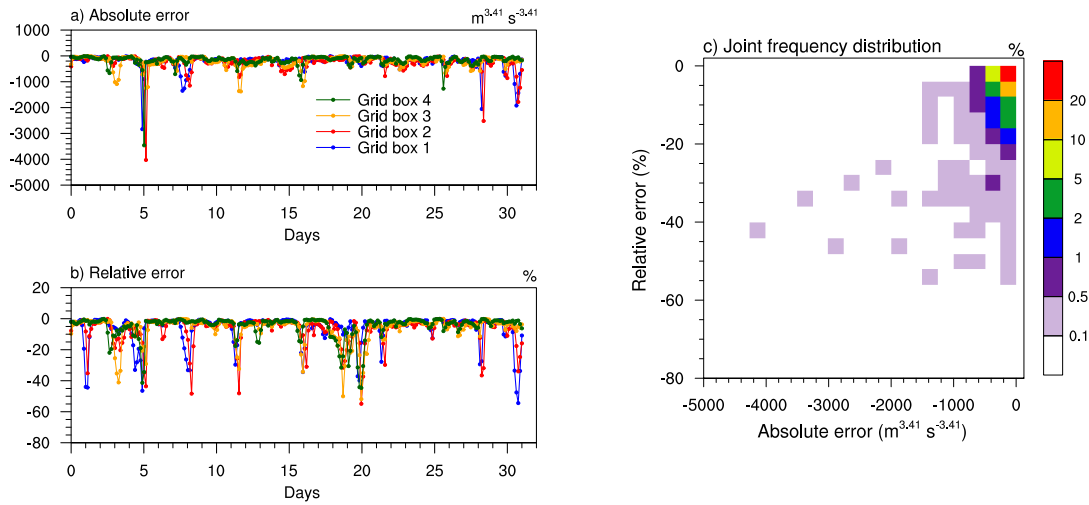


Figure 4. (a)–(b): Time series of the error of $U_{10}^{3,41}$ in the four $225 \text{ km} \times 225 \text{ km}$ grid boxes in the WRF domain over the Southern Ocean (cf. Fig. 1 and Sect. 3). The absolute and relative errors are calculated for Eq. (10) assuming Eq. (11) is the “truth”. (c) Joint frequency distribution of the relative and absolute errors. All the 4 time series shown in panels (a) and (b) are considered as one sample for the calculation.

is a $2^\circ \text{ lat} \times 2^\circ \text{ lon}$ mesh. Each grid box overlaps about 200 points on the $T_L 1279$ grid. The averaging from fine-resolution grid points to coarse-resolution boxes uses an area weighting that takes into account fractional contributions of the ECMWF grid cells in each 2° imagined grid box.

The second wind dataset includes two regional model simulations conducted with the WRF model v3.4.1 (Skamarock and Klemp, 2008) at 3 km resolution: one for October 2008 with a $900 \text{ km} \times 900 \text{ km}$ domain centered at 52° S , 145° W over the Southern Ocean, and one for 1–7 April 2011 with a $900 \text{ km} \times 900 \text{ km}$ domain centered at 40° N , 85° E over western China near the Taklamakan Desert (Fig. 1). Both simulations used the CAM5 physics suite implemented in WRF by Ma et al. (2014). The meteorological initial conditions and lateral boundary conditions are derived from ECMWF analysis at 6 h intervals. For the calculations discussed in this section and in Sect. 4, each WRF domain is

divided into 16 imagined grid boxes of 225 km spacing, and only the 4 inner boxes are used in order to avoid potential impacts of boundary effects on the regional model simulations (Fig. 1b).

A global view of the sub-grid spatial variability of surface wind is presented in Fig. 2 which shows the grid-box mean and sub-grid standard deviation of U_{10} on the 2° coarse mesh. The statistics were first calculated from the 15 km ECMWF data at 6 hourly intervals, then temporally averaged to give the January, July and annual averages. Over the ocean, grid-box mean wind and sub-grid variability are both strong in the storm tracks. In contrast, the trade wind regions have relatively strong winds but weak SGV, while the regions with strong tropical precipitation are associated with weak grid-box mean wind and strong spatial variability. Over land the mean wind is generally low, but there is strong spatial inhomogeneity associated with complex topography (e.g., moun-

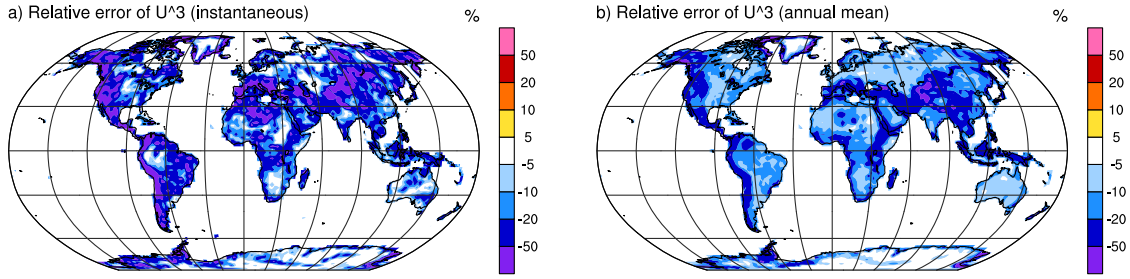


Figure 5. As in Fig. 3 but for the relative errors of U_{10}^3 over land. The errors are calculated for Eq. (12) assuming Eq. (13) is the “truth”.

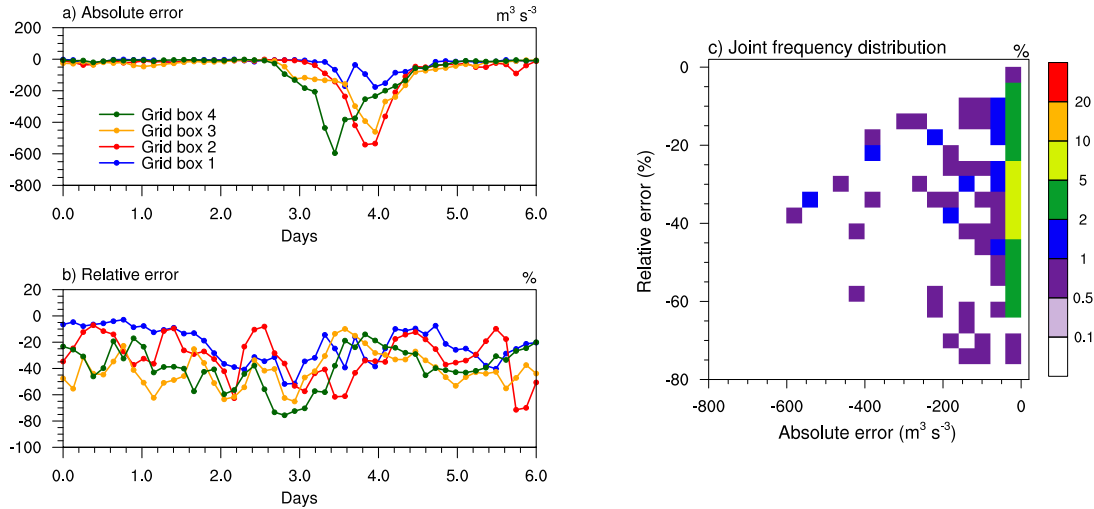


Figure 6. As in Fig. 4 but for the WRF simulation over Western China, and for the error of U_{10}^3 . The errors are calculated for Eq. (12) assuming Eq. (13) is the “truth”.

tains and coastlines). The contrasts in geographical distribution between the grid-box mean and sub-grid variability indicate that the mean wind alone is not a good predictor of variability.

Based on Eq. (8), the impact of sub-grid wind variability on the parameterized sea salt emission can be estimated by comparing the following two quantities for each grid box:

$$U_m^{3.41} = \overline{U}_{10}^{3.41}, \quad (10)$$

$$U_r^{3.41} = \sum_i w_i U_{10_i}^{3.41}. \quad (11)$$

The subscripts “m” (for “mean”) and “r” (for “reference”) denote the quantities calculated without and with the consideration of sub-grid wind variability, respectively. The relative differences diagnosed from the ECMWF data are shown for an arbitrarily chosen time instance in Fig. 3a, and for the annual mean in Fig. 3b. For about 75 % of the ocean grid points, the relative difference is small (less than 10 % in magnitude). On the other hand, local differences exceeding 30 % in magnitude cover about 8 % of the ocean area. The

largest spatial variances are mainly associated with precipitation events driven by convective activities.

In Fig. 4, a similar comparison is presented using the WRF simulation over the Southern Ocean. Results in Fig. 4a–b, results are shown for the four 225 km grid boxes located at the center of the WRF domain, presented as time series for the entire simulation period (October 2008). In Fig. 4c, the joint frequency distribution of the relative and absolute errors are shown, with all four grid boxes considered together. Although the grid spacing of the WRF simulation is a factor of five smaller than that of the ECMWF analysis, the relative differences between $U_m^{3.41}$ and $U_r^{3.41}$ are similar: most of the time, $U_{10}^{3.41}$ calculated from the grid-box mean wind speed agrees within 5 % with the reference result ($U_r^{3.41}$); but there are also events occurring every 3–5 days during which the relative discrepancies can increase to 30 to 50 %, but the absolute differences are generally small.

To get a rough estimate of the impact of sub-grid wind variability on dust emission, we start from Eq. (5) and as-

sume there is only one PFT in each coarse-resolution grid box. Since the dominant term (in terms of sub-grid variability) in the formula is u_*^3 , and u_* is closely related to the 10 m wind U_{10} , we further simplify the analysis by comparing

$$U_m^3 = \bar{U}_{10}^3, \text{ and} \quad (12)$$

$$U_r^3 = \sum_i w_i U_{10_i}^3. \quad (13)$$

(It should be pointed out that unlike the actual parameterization in the model, this simplified comparison does not take into account the dependence of emission flux on the threshold friction velocity. As can be derived from Eqn. (5), the omission will lead to an underestimation of the emission flux and emission error when $u_{*s} > 1.6 u_{*t}$, and an overestimation when u_{*s} is close to or smaller than u_{*t} . The purpose of using the simplified formulae here is to give a first, rough estimate of the impact of wind SGV. More accurate comparisons of the online using the CAM5 simulations model with the Zender et al. (2003) parameterization are presented in Sect. 5.) The-

Figs. 5 and 6 present the emission errors caused by using the grid-box mean wind speed, diagnosed according to the simplified equations (12) and (13) using the ECMWF analysis and the WRF simulation, are shown in Figs. 5 and 6, respectively. The relative differences are typically between -10 and -50% in Western China, Central Asia and Western US, which are important dust source regions (Fig. 5). The WRF simulation in West China contains a strong-wind event around day 4, during which the relative differences between U_m^3 and U_r^3 increase to -20 to -50% . The frequency distributions shown in Figs. 4 and 6 indicate that large absolute errors occur considerably more often for dust emission than for sea salt emission.

The results shown above suggest that considering only the grid-box mean wind speed can lead to substantial inaccuracies on the parameterized aerosol emission, especially for dust. For a more accurate estimate of the impact of surface wind SGV on aerosol emissions and climatology in CAM5, it is worth implementing multiple emission calculations using different wind samples. In the next section, we present and evaluate a method that derives wind speed samples using GCM-predicted mean states.

4 Approximating sub-grid wind variability

Earlier studies have shown that the Weibull distribution is useful and appropriate for representing the temporal frequency distribution of wind speed, for example for wind energy applications (Justus et al., 1978). Ridley et al. (2013) showed that if the sub-grid variance inside a GCM grid box is known, using the Weibull PDF to represent the sub-grid variability of surface wind speed can help improve the accuracy of the emission calculation compared to a simulation

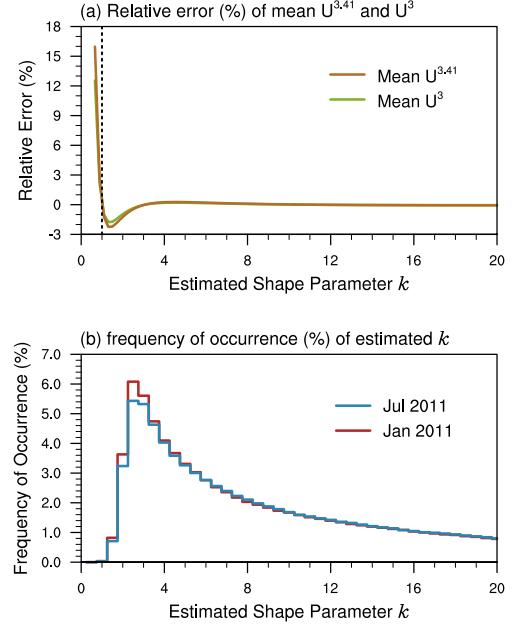


Figure 7. (a) Relative error in $\bar{U}_{10}^{3.41}$ and \bar{U}_{10}^3 as a result of estimating the shape and scale parameters of a Weibull distribution using Eqs. (15) and (16). (b) Histograms of the Weibull shape parameter k estimated with Eq. (15) using 6 hourly ECMWF analysis of January and July 2011 for imagined 2° grid boxes. Further details can be found in Sect. 4.1.

that does not account for the SGV. In this section we discuss empirical methods to estimate the sub-grid wind distribution using GCM-predicted physical quantities.

4.1 Weibull distribution

Assuming the wind speed U is a random variable, the probability density function (PDF) of a Weibull distribution can be written as

$$p(U; k, c) = \left(\frac{k}{c}\right) \left(\frac{U}{c}\right)^{k-1} e^{-(U/c)^k} \quad (14)$$

where k is the shape parameter and c the scale parameter. k and c can be derived from the mean (\bar{U}) and the standard deviation (σ_U) using “method 3” of Justus et al. (1978), i.e.,

$$k = \left(\frac{\bar{U}}{\sigma_U}\right)^{1.086} \quad (15)$$

$$c = \frac{\bar{U}}{\Gamma(1 + 1/k)} \quad (16)$$

where Γ is the Gamma function.

We note that k and c computed from Eqs. (15) and (16) are approximations which define a new Weibull distribution that features exactly the same mean \bar{U} but differs from the original distribution in terms of higher moments. To evaluate the impact of the parameter estimation error on our

study of aerosol emission, we generated a large number of Weibull distributions with the true shape and scale parameters varied in the range (0, 20). Figure 7a shows the relative error of $\overline{U}_{10}^{3.41}$ and \overline{U}_{10}^3 corresponding to the estimated Weibull parameters. The reference values were derived from the original Weibull distributions with known (i.e., true) k and c . The relative errors are independent of the scale parameter c , thus only relationships to the shape parameter are presented here. (The relative errors are plotted against the estimated k , rather than the known true value, to allow for straightforward comparison with Fig. 7b. See below.) Figure 7a shows that the relative errors in $\overline{U}_{10}^{3.41}$ and \overline{U}_{10}^3 are both small (within 3 %) when the estimated shape parameter is larger than 1. The errors are negligible when $k \geq 3$ (corresponding to negative skewness or very small positive skewness). For $k < 1$, Eqs. (15) and (16) give much less accurate results, but this is expected to have negligible impact on our results presented later in this paper, because as Fig. 7b indicates, the shape parameters of 2° grid boxes derived from the ECMWF analysis rarely drop below 1. The two histograms in Fig. 7b were calculated from 6 hourly global data of January and July 2011. The percentages of grid boxes with $k < 1$ were 0.036 % in January and 0.025 % in July.

The usefulness of the Weibull distribution for representing the sub-grid wind variability can be seen in a diagnostic comparison similar to those shown in Figs. 3 and 5. Using the 15 km ECMWF data, we derive the grid-box mean and sub-grid standard deviation of the 10 m wind speed (\overline{U}_{10} and $\sigma_{U_{10}}$, respectively) on the 2° coarse mesh, and calculate the shape and scale parameters k and c using Eqs. (15) and (16). The central 99 % of the resulting Weibull PDF is then divided into 100 bins. The discrete PDFs are used in Eqs. (11) and (13), with w_i being the frequency of occurrence of bin i .

The errors in $\overline{U}_{10}^{3.41}$ and \overline{U}_{10}^3 caused by using the Weibull distribution instead of the true sub-grid wind distribution (not necessarily Weibull) turn out to be very small (not shown). In terms of both instantaneous values and annual averages, the use of Weibull distribution typically gives errors of less than 2 % over the ocean and less than 5 % over land. These errors are substantially smaller than in the case when only the grid-box mean values are included in the calculation (Figs. 3 and 5 in the previous section). This suggests that with sufficiently accurate estimates of the parameters, the Weibull distribution is a very good approximation of the spatial variability of the near surface wind speed.

Fitting the Weibull distribution as discussed above requires the sub-grid mean and standard deviation of wind speed. Typically, a GCM provides only the grid-box mean wind vector $\overline{\mathbf{v}}$. The magnitude of that mean wind vector, $|\overline{\mathbf{v}}|$, is an underestimate of \overline{U} , while a better approximation can be obtained using the standard deviation σ_U . Obtaining σ_U is thus a key step for fitting the sub-grid wind speed distribution. Considering that the SGV is caused by parameterized physical processes and sub-grid scale features such as complex topog-

raphy, the ideal sources of information on σ_U would be the corresponding parameterizations. For example, the representation of cold pool in the Unified Convection Scheme (UNICON, Park, 2014) might be used to estimate the SGV caused by mesoscale organized flow associated with deep convection. A high-order turbulence scheme might provide useful predictions of the Reynold's stress to help estimate the wind variability related to turbulence. Since these are not yet available in the standard version of CAM5, we resort to empirical estimates of σ_U as discussed next.

4.2 Empirical estimate of σ_U

Relatively simple methods have been used in the literature to estimate the parameters needed to determine a Weibull distribution for wind speed. For example, Grini and Zender (2004) and Capps and Zender (2008) used “method 5” of Justus et al. (1978), i.e.,

$$k = C\sqrt{\overline{U}} \quad (17)$$

with C being a constant. In the work of Grini and Zender (2004), C was set to 0.94 to approximate the sub-grid wind variability on land. Their formula effectively estimates σ_U from \overline{U} using

$$\sigma_U = 1.059\overline{U}^{0.54}. \quad (18)$$

Some other studies on dust emission used an even simpler method by assuming k is constant over land (e.g. Menut, 2008).

In this work we are interested in global emissions of sea salt and dust. Preliminary investigations indicated that constant k or Eq. (17) with constant C gave reasonable results over certain locations over land but had large regional discrepancies, and both methods were unsatisfactory over the ocean. Below we use a set of empirical formulae to relate σ_U to four types of physical processes: (i) neutral/stable turbulent mixing ($\sigma_{U,t}$), (ii) dry convective eddy ($\sigma_{U,d}$), (iii) moist convective eddy over the ocean ($\sigma_{U,m}$), and (iv) mesoscale flow associated with sub-grid orography over land ($\sigma_{U,l}$). The total sub-grid standard deviation of surface wind speed is defined as

$$\sigma_U = \sqrt{\sigma_{U,t}^2 + \sigma_{U,d}^2 + \sigma_{U,m}^2 + \sigma_{U,l}^2}. \quad (19)$$

Among those processes, the first two are associated with spatial scales that can only be resolved by Large Eddy Simulations (LES) or Direct Numerical Simulations (DNS). Such simulations, and the related observational data, are still very limited in terms of spatial and temporal coverage (e.g. Dipankar, 2015). We do not have sufficient amount of new, high-resolution data to analyze these processes or evaluate parameterizations. We thus choose to use results from earlier studies in the literature.

Moist convective eddies and orography related mesoscale flows are partially resolved in the ECMWF 15 km analysis.

Since the analysis is available for two years (2011 and 2012), we use the first year to derive empirical relationships for estimating $\sigma_{U,m}$ and $\sigma_{U,l}$, then use the second year to evaluate the fitting. The accuracies of the derived relationships are inherently constrained by the resolution of the analysis data. The fact that the 15 km resolution is too coarse to resolve neutral/stable turbulence and dry convective eddies is an advantage to us, in that the sub-grid wind variability estimated from the ECMWF analysis do not include the impact of neutral/stable turbulence and dry convective eddies. There is hence no double-counting between $\sigma_{U,m}$ and $\sigma_{U,l}$ derived from the 15 km analysis, and the $\sigma_{U,t}$ and $\sigma_{U,d}$ estimated using process-based formulation. One might still raise the concern that the 15 km resolution is also too coarse to fully resolve moist convection and fine-scale topography effect. Although the concern is legitimate, we show in the section that the derived relationships are able to give quite accurate emission estimates when evaluated against the WRF simulations (3 km resolution). This provides good confidence in the empirically fitted relationships, at least for important regions of sea salt and dust emission that are of interest for our purposes. In the future, it will be useful to further evaluate and update the sub-grid wind variability parameterizations using additional high-resolution data (when they become available). Another useful and challenging research topic is to construct process-based parameterizations instead of empirical fitting as discussed here.

4.2.1 Neutral/stable turbulent mixing

To consider the influence of turbulent mixing in a neutral or stable boundary layer, we follow ECMWF (2004) and estimate the resulting wind variability using

$$\sigma_{U,t} = \begin{cases} 2.29 u_* (|\bar{v}|) & \text{when } F_{\theta_v} \leq 0 \\ 0 & \text{when } F_{\theta_v} > 0. \end{cases} \quad (20)$$

Here F_{θ_v} is the surface buoyancy flux (unit: $\text{m}^2 \text{s}^{-1}$) defined in Zeng et al. (2002), θ_v is the virtual potential temperature (unit: K), $u_* (|\bar{v}|)$ is the friction velocity diagnosed from the speed of the grid-box mean wind $|\bar{v}|$. In Eq. (20) the strength of turbulence is represented by the friction velocity u_* , not the turbulent kinetic energy (TKE, cf., e.g. Cakmur et al., 2004). This choice results from the experience that TKE is not provided by all GCMs, and, when available, its characteristic value and spatio-temporal distribution can differ substantially from model to model.

4.2.2 Dry convective eddies

The contribution of dry convective eddies to sub-grid wind variability is estimated using a formulation recommended by Redelsperger et al. (2000) and Lunt and Valdes (2002):

$$\sigma_{U,d} = \begin{cases} 0 & \text{when } F_{\theta_v} \leq 0 \\ \left(\frac{g H F_{\theta_v}}{\theta_v} \right)^{\frac{1}{3}} & \text{when } F_{\theta_v} > 0, \end{cases} \quad (21)$$

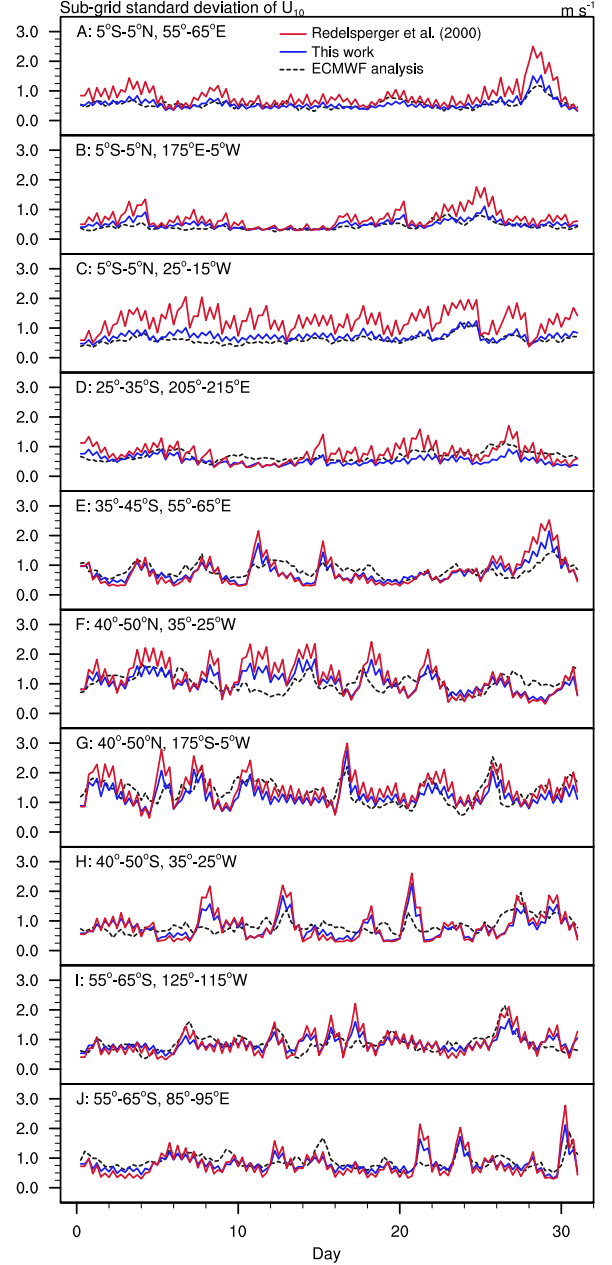


Figure 8. Time series of the sub-grid standard deviation of U_{10} (m s^{-1}) in January 2012 averaged over the $10^\circ \times 10^\circ$ hatched boxes in Fig. 1. Dashed black curves are directly diagnosed from the ECMWF surface wind data. Solid blue and red curves are the $\sigma_{U,m}$ calculated using the ECMWF precipitation rates and the empirical formulas of this study (Eq. 23) and Redelsperger et al. (2000) (Eq. 22), respectively.

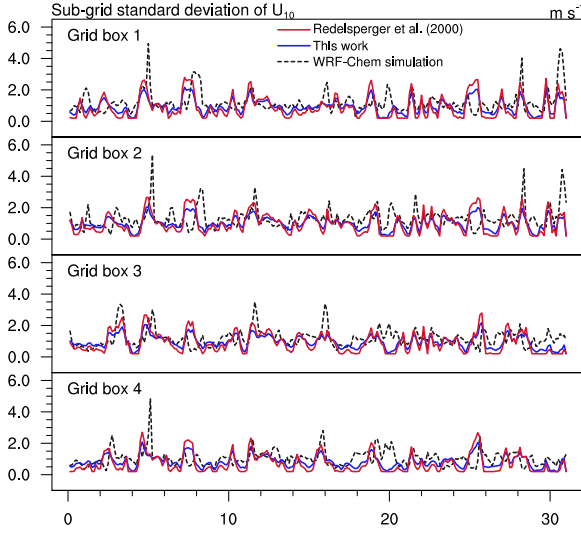


Figure 9. As in Fig. 8 but evaluating Eqs. (23) and (22) using the WRF simulation over the Southern Ocean. The domain of the WRF simulation and the location of the four imagined 225 km \times 225 km grid cells are illustrated in Fig. 1.

H is the boundary layer height (unit: m), and g is gravity.

Note that by using the surface buoyancy flux F_{θ_v} as a criterion, we consider contributions from either neutral/stable turbulence mixing (Eq. 20) or dry convective eddies (Eq. 21), but not both, for the purpose of avoiding double-counting.

4.2.3 Moist convective eddies over the ocean ($\sigma_{U,m}$)

For the influence of moist convective eddies and downdrafts, Redelsperger et al. (2000) constructed an empirical formula based on two 2-D cloud-resolving model (CRM) simulations that covered one week in time and 512 km across the horizontal domain, with a horizontal resolution of 2 km. Their formula uses the surface precipitation rate P (mm day $^{-1}$) as the predictor for sub-grid wind variability:

$$\sigma_{U,m} = \ln(1 + 6.69 P - 0.47 P^2). \quad (22)$$

In this study we are interested in sea salt emissions, the main sources of which are located in the storm tracks (i.e., mid-latitudes). Given that the Redelsperger et al. (2000) equation was derived from simulations of tropical deep convection with very limited temporal and spatial coverage, it was unclear whether the same relationship would be appropriate for our purpose. We attempted to derive a similar relationship using the ECMWF 15 km analysis of 2011, and indeed found it difficult to obtain one good formula for all latitudes. The best-fit formula for a 2 $^\circ \times$ 2 $^\circ$ GCM grid has the form

$$\sigma_{U,m} = \begin{cases} 0.95 \ln(1 + 4.01 \sqrt{P} + 0.31 P^2) & \text{(ocean)} \\ 0 & \text{(land)} \end{cases} \quad (23)$$

where

$$P = \begin{cases} P_{\text{strat+conv}} & \text{where SST} < 295 \text{ K}, \\ 0.2 P_{\text{strat+conv}} & \text{where SST} \geq 295 \text{ K}. \end{cases} \quad (24)$$

The SST criterion essentially distinguishes the tropics and mid-latitudes.

Figure 8 presents time series of the sub-grid standard deviation of surface wind speed calculated with Eqs. (22) and (23), and the values directly derived from the ECMWF analysis. The results are shown for January 2012 for a few arbitrarily chosen 10 $^\circ \times$ 10 $^\circ$ regions (cf. Fig. 1). Results in other months are similar and thus not shown. In the low latitudes, the Redelsperger et al. (2000) formula predicts considerably higher wind variability than both our fitting and the ECMWF analysis. This is consistent with expectation since the CRM simulations which the Redelsperger et al. (2000) is based on are capable of resolving substantially more convective activity than the ECMWF analysis. In the middle latitudes, however, the two formulae give very similar estimates, and both agree reasonably well with the ECMWF analysis.

Given the 15 km resolution, one might still question whether the ECMWF analysis is an appropriate reference for the evaluation here. To address this issue, Fig. 9 evaluates the two empirical formulae by comparing the estimates with the WRF simulation over the Southern Ocean. For each of the 225 km \times 225 km box at the center of the WRF domain, the diagnosed sub-grid variability is shown in black and the estimated values in red and blue. Again, the two empirical formulae give very similar results. Both are able to capture the mean wind variability over the simulated period, and the most frequently occurring high and low values, although the strongest peaks are underestimated. The Redelsperger et al. (2000) formula gives larger peak values than our fitting derived from the ECMWF data, but the differences are relatively small. On the whole, the two empirical formulae have similar ~~predicting skills;~~ predictive skills. This provides confidence that they are both suitable for estimating sub-grid wind variability in mid-latitudes. In principle one could also conduct and analyze a high-resolution WRF simulation of deep convection to get more insight into the discrepancies in the tropics between our fitting and the Redelsperger et al. (2000) formula (Fig. 8). ~~However, since the tropics have relatively small contribution to the global.~~ Such a comparison is not included in this paper because as discussed later in Sect. 5.3, CAM5 simulations indicate that sea salt emission fluxes are very low in the tropics; even with Redelsperger's formula which gives stronger wind variability than our fitting does, the absolute increases in sea salt emission, we have not included such a WRF simulation in this paper and loading remain negligible when compared with higher latitudes.

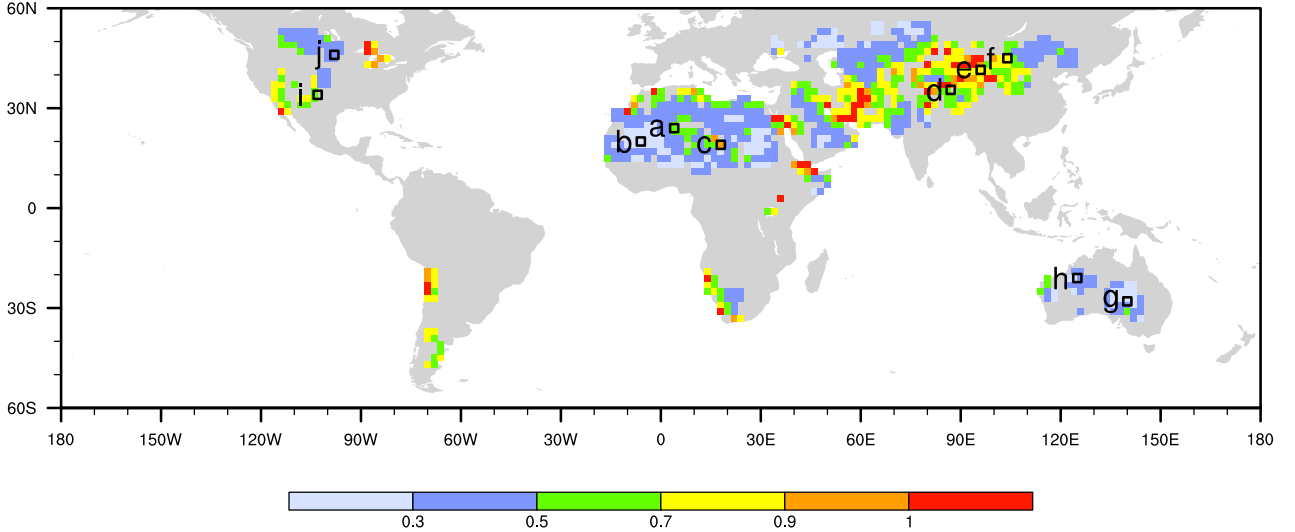


Figure 10. Geographical distribution of the coefficient $C-D$ (unitless) derived for a $2^\circ \text{ lat} \times 2^\circ \text{ lon}$ GCM grid using the ECMWF 15 km analysis of the year 2011 and Eq. (26). The locations with no results are either covered by land ice or lake, or associated with leaf area indices (LAI) larger than 0.3 throughout the year, thus cannot have dust emission according to the parameterization of Zender et al. (2003) and the land surface characteristics data used in the CAM5 simulations in this paper. The red/black boxes correspond to the panels in Fig. 11 in which the time series of sub-grid wind variability are analyzed.

4.2.4 Mesoscale flows over land ($\sigma_{U,1}$)

The sub-grid wind speed variance diagnosed from the ECMWF analysis (Fig. 2 in Sect. 3) indicates clearly that over land, the strongest variabilities are associated with complex topography. Such disturbances can be caused by pure dynamical effects, but they can also involve moist processes (e.g. cumulus convection), and thus are difficult to parameterize. A preliminary investigation showed that for individual locations, the sub-grid wind variance is strongly correlated with the grid-box mean wind speed. We therefore follow the idea of Eq. (17) but, unlike earlier studies in the literature, make C the coefficient a location dependent and time-invariant parameter. Also, in order to have a coefficient that scales with the SGV, we use the reciprocal of the coefficient C (i.e. $D = 1/C$) in the equations and figures below, i.e.,

$$k(x, y, t) = \frac{\sqrt{\bar{U}(x, y, t)}}{D(x, y)} \quad (25)$$

where x and y denote longitude and latitude, respectively. The parameter D is derived from the ECMWF analysis using the following procedure: first, for each 2° grid cell, calculate the grid-box mean wind speed and the sub-grid standard deviation; second, calculate k using Eq. (15); third, derive the time-invariant C using temporally averaged \bar{U} and k , i.e.,

$$D(x, y) = \frac{\sum_{t=1}^n \sqrt{\bar{U}(x, y, t)}}{\sum_{t=1}^n k(x, y, t)}. \quad (26)$$

The time index t goes through all 6 hourly samples of the year 2011. After determining $C-D$, the standard deviation of sub-grid wind speed is calculated by

$$\sigma_{U,1} = \begin{cases} 0 & (\text{ocean}) \\ (D|\bar{v}|^{0.586})^{1/1.086} & (\text{land}) \end{cases} \quad (27)$$

In Fig. 10, the coefficient $C-D$ derived from the 2011 ECMWF analysis is shown in potential dust source regions. The spatial pattern of $C-D$ is strongly correlated with topography. As a result, $C-D$ shows substantial regional variation: the typical values are below 2 in Asia and South America, but above 3 have large areas with $D > 0.5$, while most grid cells in Australia and North Africa have $D < 0.5$. Within these regions, the coefficient also has substantial spatial variation at the thousand-kilometer scale.

Since the coefficient C is inversely correlated with the larger values of D correspond to stronger sub-grid wind speed variance (Eq. 27), the spatial variations in Fig. 10 suggest that using a global constant can lead to large regional biases. This is confirmed by Fig. 11 which evaluates surface wind SGV estimated by Eqs. (26) and (27) with both spatially varying and fixed C fixed or spatially varying D , against SGV derived from the ECMWF data. In the case of fixed $C-D$, the constant value of 0.94 $D = 1.06$ ($C = 0.94$) comes from method 4 of Justus et al. (1978), and has been used by Grini and Zender (2004) and Capps and Zender (2008). Time series of the sub-grid standard deviation of surface wind speed in January 2012 are shown for ten 2° grid boxes in North Africa (Fig. 11a–c), East Asia (Fig. 11d–f),

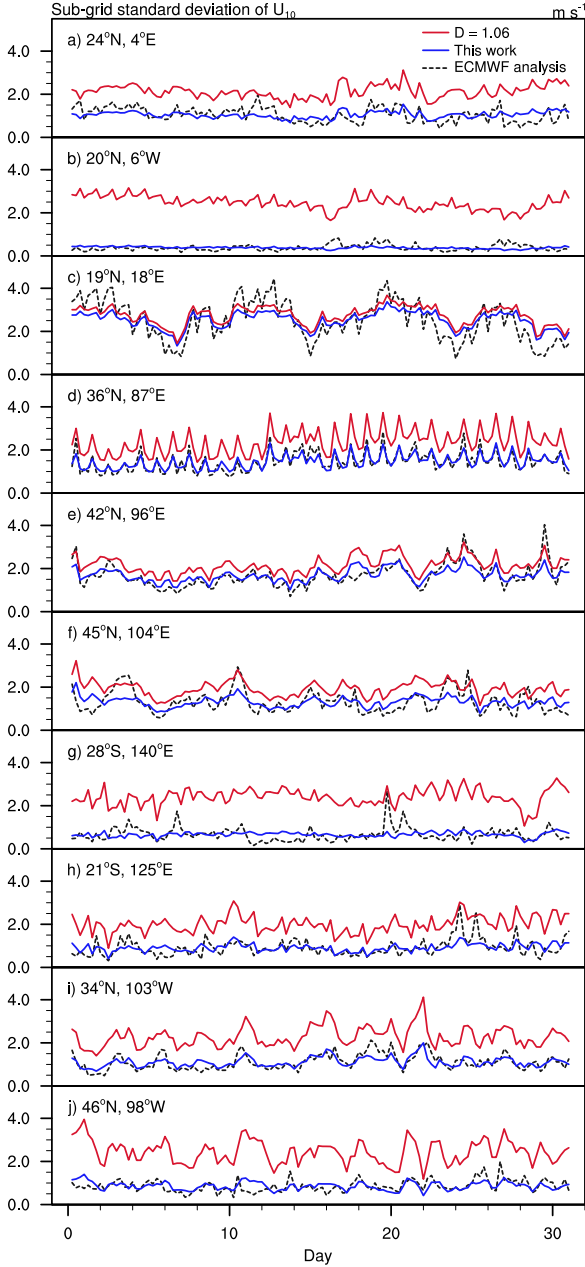


Figure 11. Time series of the sub-grid standard deviation of U_{10} (m s^{-1}) in January 2012 in the $2^\circ \text{ lat} \times 2^\circ \text{ lon}$ grid cells indicated by red boxes in Fig. 10. Dashed black curves are results derived from the ECMWF 15 km analysis. Red curves are results estimated using Eq. (27) with $C=0.94$ $D=1.06$. Blue curves are also estimates using Eq. (27), but with location dependent C - D calculated from Eq. (26).

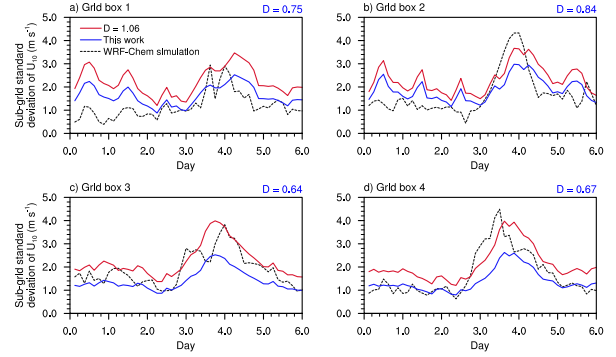


Figure 12. As in Fig. 11, but for the four 225 km boxes at the center of the WRF domain near the Taklamakan Desert. The C - D values used for the blue curves are derived from the ECMWF analysis of year 2011 for $2^\circ \text{ lat} \times 2^\circ \text{ lon}$ grid cells that are closest to the 225 km boxes.

Australia (Fig. 11g and h), and North America (Fig. 11i–h). The empirical formula with spatially ~~variant~~ C - D (blue lines in Fig. 11) is able to capture the characteristic magnitude of the wind variability, as well as main features of the temporal evolution. In contrast, the wind variability estimated with $C=0.94$ $D=1.06$ is about 100–200 % larger than the analysis in Australia, and more than a factor of 3 stronger in Northwest Africa, where the topography is relatively flat.

It is also worth noting that for our empirical estimates shown in Fig. 11, the coefficient C - D is derived from the analysis of 2011 but applied to the year 2012. The agreement between the empirical estimate and the analysis suggests that the relationship between grid-box mean wind speed and sub-grid wind variance is not strongly affected by interannual variability of the general circulation.

In Fig. 12, estimates of sub-grid wind speed variability based on constant ~~and locally fitted~~ C - D or locally fitted D are evaluated using the 7 day WRF simulation near the Taklamakan Desert. The black curves in the figure indicate wind variability in the four $225 \text{ km} \times 225 \text{ km}$ boxes at the center of the WRF domain (cf. Fig. 1), derived from the 3 km model output. The red curves are the estimates based on $C=0.94$ $D=1.06$. The results shown in blue are calculated using the C - D values fitted from the ECMWF analysis for the $2^\circ \text{ lat} \times 2^\circ \text{ lon}$ grid cells that are closest to the 225 km boxes. Although the ECMWF analysis does not resolve scales smaller than 15 km, the coefficient C - D derived from the ECMWF data leads to very reasonable estimates of wind variability compared to the 3 km WRF simulation. ~~Estimates made with $C=0.94$ also agree reasonably with the WRF simulation, and are similar to results obtained with location-dependent C . This is consistent with the fact that our fitted C values are in the range of 1.19 to 1.56 in the four 225 boxes, which are not substantially from the value 0.94.~~

It is worth noting again that the coefficient C fitted from the ECMWF analysis have values close to 1 in providing confidence in the ECMWF analysis and the fitted D values in regions of complex topography (e.g., Western China), and considerably larger values in regions where the surface is relatively flat (e.g., Australia and western part of North Africa, see Fig. 10). The evaluation against the WRF simulation in Western China (Fig. 12) provides confidence in the ECMWF analysis and the fitted C values in regions of fine-scale topographical features. Since the analysis should have less resolution problem with relatively flat and homogeneous topography, one can thus expect the fitted C values to be more accurate in those regions. It follows that using globally uniform $C = 0.94$ would probably cause considerable overestimates of sub-grid wind variability in Australia, North Africa, and Arabia. It should be mentioned that the reference wind data used here have limitations in terms of the spatial and temporal coverage, and the horizontal and vertical resolutions. Physical mechanisms of wind variabilities and dust emission in the real world and their representation in numerical models are highly complex. For example, Marsham et al. (2011) showed that models with parameterized or resolved convection can give different timings of summer dust uplift in West Africa. The parameterization of wind SGV presented in this paper is very simple and empirical. Process-based representation of different dust emission mechanisms is a topic for future study.

4.3 Implementation in CAM5

The wind-distribution-based emission calculations are implemented in CAM5, as illustrated in Fig. 13.

In the previous subsections we have shown that the Eqs. (23) and (24) and (26) and (27) can provide very good estimates of the sub-grid wind speed variability when compared with the ECMWF analysis and WRF simulations. These empirical relationships are combined with Eqs. (20) and (21) to provide an estimate of the total sub-grid variance of surface wind speed σ_U using Eq. (19).

Given the GCM predicted grid-box mean wind vector \bar{v} and the estimated σ_U , we assume that the sub-grid mean wind speed can be approximated by

$$\bar{U} \approx \sqrt{|\bar{v}|^2 + \sigma_U^2}. \quad (28)$$

This is similar to Eq. (7) which originated from Zeng et al. (2002), but takes into account additional sources of wind speed SGV.

\bar{U} and σ_U are used in Eqs. (14)–(16) to determine a Weibull distribution. Surface wind speed samples U_j are obtained by equally divide the central 99 % of the Weibull PDF in to 100 bins. Sensitivity simulations with a 20 bin Weibull PDF show similar results. From the surface wind speed samples, the corresponding values of 10 m wind speed

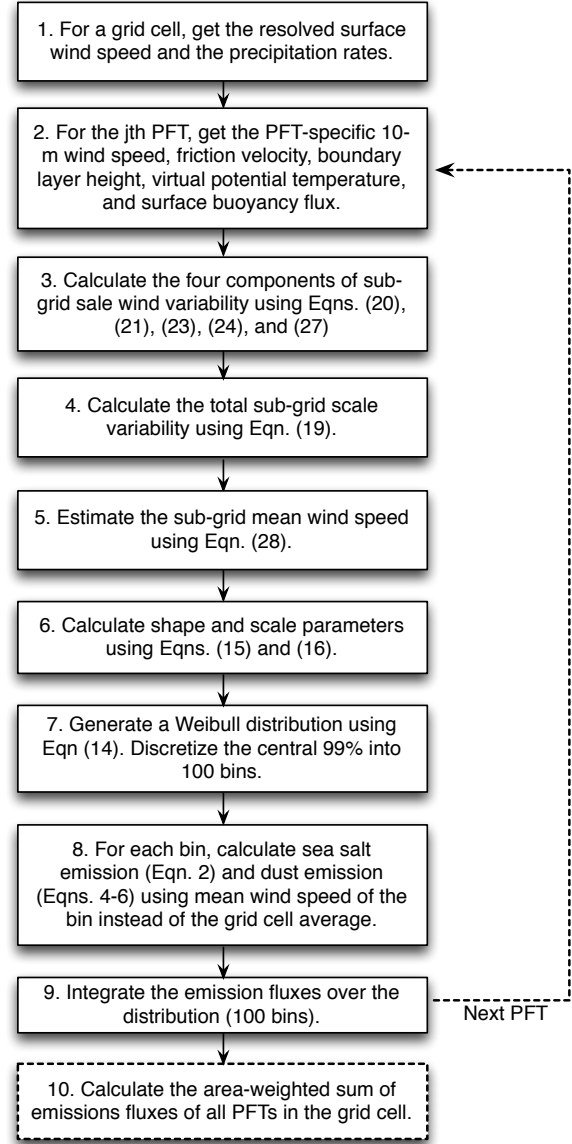


Figure 13. Flowchart illustrating the implementation of wind-distribution-based sub-grid emission calculations in CAM5. Dashed lines indicate steps that are only relevant for the dust emission calculation.

and friction velocity are derived, and used to calculate the grid-box mean sea salt and dust emission fluxes following Sect. 2.5. If the estimated σ_U is smaller than 0.1 m s^{-1} , we skip the derivation of Weibull PDF and wind samples, and use only the mean wind speed for the emission calculations. The computation cost for the sub-grid treatment is small (less than 3 % of the total simulation cost).

The next section presents a series of CAM5 simulations to quantify the impact of sub-grid wind variability on aerosol emission and the model's mean climate. For clarification, we note that the σ_U and \bar{U} (Eq. 28) described above are applied only to the sea salt and dust emission parameterizations. As mentioned at the end of Sect. 2.4, the default model uses an adjusted mean wind speed (Eq. 7) for all calculations related to surface fluxes and boundary layer processes over land. This is unchanged in our simulations except for dust emission. We chose not to modify Eq. (7) so as to cleanly separate the impact of sub-grid variability on aerosol emission from the impacts on other physical processes.

5 Impact on aerosol climatology in CAM5

CAM5 simulations have been conducted for the year 2006. Each simulation includes 2006 after a 3 month spin-up (October–December 2005) which is not included in the analysis in this section. The horizontal winds were nudged to the ERA-Interim reanalysis with a relaxation time scale of 6 h. Temperature and humidity were not nudged, since earlier experiences have shown that directly constraining these two fields might lead to substantially different model climate (Zhang et al., 2014; Jeuken et al., 1996). Details of the nudging implementation are described in Zhang et al. (2014). Nudging effectively constrains the large-scale circulation and suppresses the noise caused by natural variability, thus allowing for detection of changes in the simulated aerosol characteristics and their climate effects using with substantially shorter simulations (see, e.g., Kooperman et al., 2012) (see, e.g. Kooperman et al., 2012).

The control simulation and sensitivity experiments are summarized in

5.1 Online calculated sub-grid scale wind variability

Annual averages of the estimated sub-grid standard deviation of surface wind speed in CAM5 are presented in Fig. 14a, and the individual components are shown in Fig. 14b–d. Strong SGVs are associated with complex topography, mid-latitude storm tracks, the trade winds, and tropical convection. Over the ocean, moist convective eddies are the most important contributor to wind SGV in the tropics (Fig. 14d), while dry convective eddies are the main contributor in the trade wind regions and above warm ocean currents (Fig. 14c). Over the continents, strong wind variabilities are associated with sub-grid topography and dry

convective eddies (Fig. 14c–d). The impact of neutral/stable turbulent mixing is seen mainly in middle- and high-latitude regions (Fig. 14b).

Since the empirical parameterizations for $\sigma_{U,m}$ and $\sigma_{U,l}$ were derived from the ECMWF analysis, the wind SGV in Fig. 14d agree reasonably well with the diagnostic results shown in Fig. 2f for the ECMWF data. The discrepancies over the ocean are attributable to fitting error and differences in the simulated precipitation rates in the two models. Over the continents, the discrepancies are likely caused by the different grid-box mean winds, and the use of a time-independent coefficient D .

5.2 Sensitivity experiments

To evaluate the impact of different sources of wind SGV on the aerosol climatology in CAM5, a series of simulations were performed (Table 1). Experiment CTRL uses the default configuration of CAM5, in which the impact of dry convective eddies is taken into account when estimating the grid-box mean wind speed \bar{U}_{adj} (Eq. 7). \bar{U}_{adj} is used for calculating dust emission, while the parameterization of sea salt emission does not account for sub-grid wind variability (Eq. 2). Simulation EXP1 is similar to CTRL in that only dry convective eddies are considered for the wind SGV. The differences are that (i) the dust emissions are calculated using the wind speed PDF (Eq. 9), and (ii) the same PDF-based method is also applied to sea salt emission (Eq. 8). EXP2 extends EXP1 by adding the contribution of turbulence in neutral and stable boundary layers, and EXP3 further extends EXP2 by including the impact of moist convective eddies over the ocean and topography related small-scale motions over land. For completeness, we also conducted a simulation called NOSG, in which the dust emission is calculated using the speed of ~~grid-box mean wind~~, resolved wind $|\bar{v}|$, instead of \bar{U}_{adj} ; in other words, NOSG does not include any effect of sub-grid wind variability on dust emission. The simulations NOSG, CTRL, EXP1, EXP2 and EXP3 are analyzed in Sect. 5.3 to quantify the contribution of different source of wind variability to the emission and concentration of sea salt and dust aerosols.

As is shown later in Sect. 5.3, EXP3 features considerably stronger dust emission and higher dust AOD (Aerosol Optical Depth) loading. In global aerosol-climate models, it is a common practice to apply a constant scaling factor to the dust emission, for the purpose of adjusting the global mean dust AOD as well as the aerosol induced radiative forcing. The default scaling factor in CAM5 for the 2° finite-volume dynamical core is 0.35^{-1} (here we follow the form of the scaling factor defined in the model). This value is used in NOSG, CTRL, EXP1, EXP2 and EXP3. When discussing the aerosol climatology and radiative forcing in Sect. 5.4, we also present an additional simulation, EXP4, which used the same configuration as EXP3, but the dust emission factor is adjusted to 0.57^{-1} which brings the global and annual

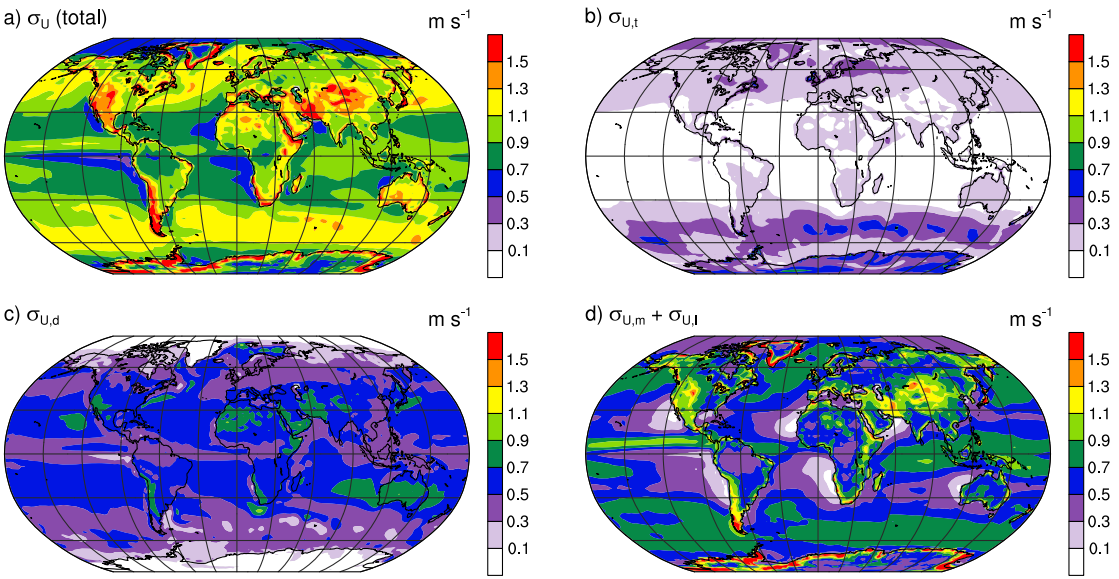


Figure 14. Annual mean sub-grid standard deviation of surface wind speed in CAM5: (a) total (Eqn. 19), (b) neutral/stable turbulent mixing (Eqn. 20), (c) dry convective eddies (Eqn. 21), (d) moist convective eddies over the ocean (Eqn. 23–24) and mesoscale flow over land (Eqn. 27).

Table 1. List of CAM5 simulations discussed in Sect. 5. DU and SS refer to dust and sea salt emissions, respectively. “With PDF” means the Weibull distribution of wind speed is used in the emission calculations (cf. Sect. 2.5). “Without PDF” means the enhancement of grid-box mean wind speed is taken into account, but the emission calculations use only the (enhanced) mean wind speed, not the Weibull PDF.

Simulation	Source of sub-grid wind variability				Dust emission factor
	Turbulence (Eq. 20)	Dry convective eddy (Eq. 21)	Moist convective eddy (ocean, Eqs. 23 and 24)	mesoscale flows over topography (land, Eqs. 26 and 27)	
NOSG	–	–	–	–	0.35^{-1}
CTRL	–	DU; Without PDF	–	–	0.35^{-1}
EXP1	–	DU + SS; With PDF	–	–	0.35^{-1}
EXP2	DU + SS; With PDF	DU + SS; With PDF	–	–	0.35^{-1}
EXP3	DU + SS; With PDF	DU + SS; With PDF	DU + SS; With PDF	DU + SS; With PDF	0.35^{-1}
EXP4	DU + SS; With PDF	DU + SS; With PDF	DU + SS; With PDF	DU + SS; With PDF	0.57^{-1}

mean dust emission flux back to the value of the CTRL simulation.

5.3 Contribution of individual sources of wind variability to aerosol emission and optical depth

Figure 15 depicts geographical distributions of the annual mean sea salt emission and sea salt AOD (Aerosol Optical Depth) in the various simulations; are presented in Figure 15 and Table 2 compares the globally or regionally averaged emission fluxes. In the default model (Fig. 15a and b), the strongest sea salt emission occurs in the mid-latitude storm tracks where the majority of the released particles are subsequently removed by precipitation. The trade wind regions have moderate emission but very

weak wet removal, which leads to high sea salt concentrations. In the deep tropics, the default model predicts very low emission because the impact of frequent and vigorous convective activity on surface wind SGV is not considered, and the grid-box mean wind speed is low. The low emission, in combination with strong removal associated with the parameterized convection, results in low sea salt AOD in regions of strongest convective precipitation.

The impacts of sub-grid wind variability on sea salt emission and optical depth are generally small and spatially homogenous except in the Inter Tropical Convergence Zone (ITCZ). The Taking into account the dry convective eddies lead to negligible ($< 1(\sigma_{U,d})$) leads to a global mean increase of 2.48 % increase in sea salt emission, and the regional increases are of similar magnitude (EXP1 in both

Table 2. Simulated annual mean global and regional sea salt emissions (Tg yr^{-1}) for the year 2006. Numbers in parenthesis are the relative differences with respect to the default model (CTRL). Meanings of the simulation short names are explained in Table 1. NOSG and EXP4 are not included here because they are identical to CTRL and EXP3, respectively, in terms of the sea salt emission parameterization.

Simulation	Global	Northern Hemisphere (30–60° N)	Southern Hemisphere (30–60° S)	Tropics (20° S–20° N)
CTRL	5011.3	854.8	2504.8	925.8
EXP1	5024.8 5135.6 (+0.272.48 %)	856.8 880.5 (+0.243.00 %)	2514.2 2547.3 (+0.381.69 %)	926.4 956.0 (+0.073.27 %)
EXP2	5185.6 5198.9 (+3.483.74 %)	886.7 891.8 (+3.744.33 %)	2580.1 2591.3 (+3.003.45 %)	964.6 958.2 (+4.193.50 %)
EXP3	5372.3 5386.4 (+7.207.48 %)	925.4 929.9 (+8.268.78 %)	2666.2 2678.1 (+6.446.91 %)	1002.5 996.4 (+8.297.63 %)

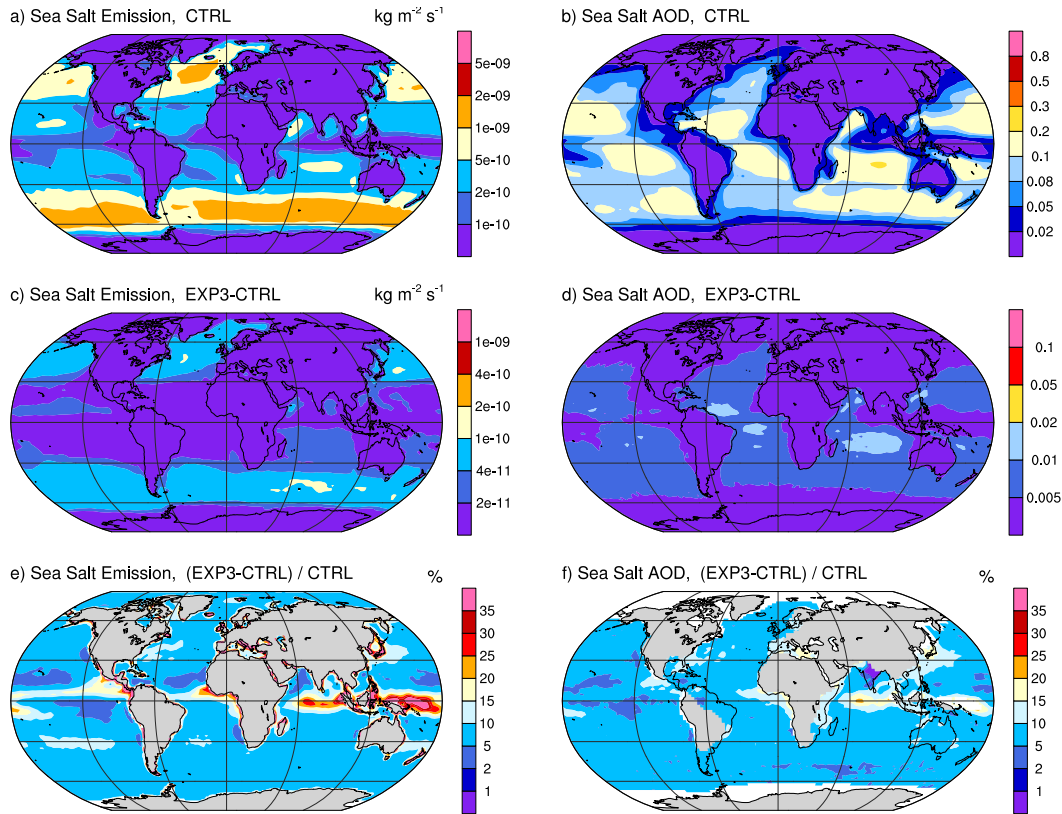


Figure 15. Top row: year 2006 mean sea salt emission flux ($\text{kg m}^{-2} \text{s}^{-1}$) and AOD (unitless, sea salt only) in the nudged CAM5 simulation (CTRL); lower rows: relative differences of sea salt emission between EXP3 and CTRL. Bottom row: relative differences between the sensitivity experiments EXP3 and the CTRL simulation. In the lower three panels of the left column, locations that are masked out (white or gray) have emission fluxes less than $1 \times 10^{-12} \text{ kg m}^{-2} \text{s}^{-1}$ in the default model. In the lower panels of the right column, the masked-out locations have or sea salt AOD < 0.01 in the CTRL simulation are masked out.

the emission and the AOD at most of the ocean grid boxes (Fig. 15e and d, and EXP1-CTRL in Table 2); including the. The impact of neutral and stable turbulence ($\sigma_{U,t}$) increases emission flux by 2–5% smaller, less than 2% (Fig. 15e and f, and EXP2-EXP1 both regionally globally (EXP2 minus EXP1 in Table 2); including. Including moist convective eddies further enhances the impacts to about 5–10% ($\sigma_{U,m}$) further increases the emission fluxes by about 4% outside the ITCZ (Fig. 15g and h, and EXP3-EXP2 (EXP3 minus EXP2 in Table 2).

Within the ITCZ, the sub-grid wind variability estimated using our empirical relationship results in 10–35% increases (compare compared to the default model) in the annual mean sea salt emission (Fig. 15e), and 10–25% increases in sea salt AOD. If we had chosen to use the formula of Redelsperger et al. (2000) for the (Fig. 15f), mainly due to the moist convective eddies, the impacts would be even stronger. However, since the baseline values of emission fluxes are resolved-scale wind speed is low in the ITCZ and the wet removal is strong, the contribution of these regions to the global total sea salt budget is small. In terms of global and annual average, the increase in sea salt emission is about 7.48% (Table 2) when comparing out-EXP3 to CTRL. This number is not expected to change considerably if with CTRL. An additional sensitivity experiment was conducted using the formula of Redelsperger et al. (2000) is applied for the moist convective eddies. The strongest enhancement of sea salt emission exceeded 100% in the ITCZ, while the resulting emission fluxes remained a factor of 5–10 weaker than in the storm tracks, and the increases in sea salt AOD were generally below 50%. Although the Redelsperger et al. (2000) formula leads to higher wind SGV than our empirical fitting derived from the ECMWF analysis, the impact on the simulated sea salt emission and AOD is still small in terms of global mean and geographical distribution.

The simulated dust emission and optical depth are more sensitive to sub-grid wind variability than sea salt. This can be seen in Fig. 16 which shows the geographical distributions of the annual mean dust emission and AOD in the various simulations, and in Table 3 which compares dust emissions in the major source regions. In both the control simulation and EXP1, dry convective eddies are taken into account when estimating the grid-box mean wind speed for dust emission; however, using multiple wind samples instead of the mean value leads to about 30% emission increases in Asia and North Africa Africa and Asia, and even larger differences in North America and South America (Fig. 16e and d, and EXP1 in Table 3). This reflects the strong nonlinearity of the dust emission parameterization. Part of the nonlinearity comes from the fact that the parameterization requires the characteristic friction velocity $u_{*s,j}$ to exceed the threshold value u_{*t} in order for dust emission to occur (cf. Eq. 5).

The neutral/stable turbulence has relatively small impact. This result is consistent with the work of Cakmur et al. (2004). Taking into account neutral/stable

turbulence leads to about a 3% increase in the global mean dust emission (EXP2 minus EXP1 in Table 3). The corresponding AOD changes are negligible (not shown). In contrast, considering the small-scale motions related to sub-grid topography results in a 23% increase of the annual mean global dust emission (comparing EXP3 with EXP2 in Table 3). The regional enhancements are about 13% in North Africa, and 30–40% in Asia. In Table 3 we also included the emission fluxes from the NOSG simulation. Combined with EXP1, these numbers quantify the total impact of dry convective eddies. From the table, it is clear that dry convective eddies and mesoscale flows associated with sub-grid scale topography are the most important factors that affect dust emission in CAM5.

In Fig. 16, the geographical distributions of annual mean dust emission flux and AOD are shown for CTRL, together with the differences between EXP3 and CTRL. For both the emission and the AOD, there is little change in the global patterns, except that the increases in Australia are considerable smaller than those in Africa and Asia.

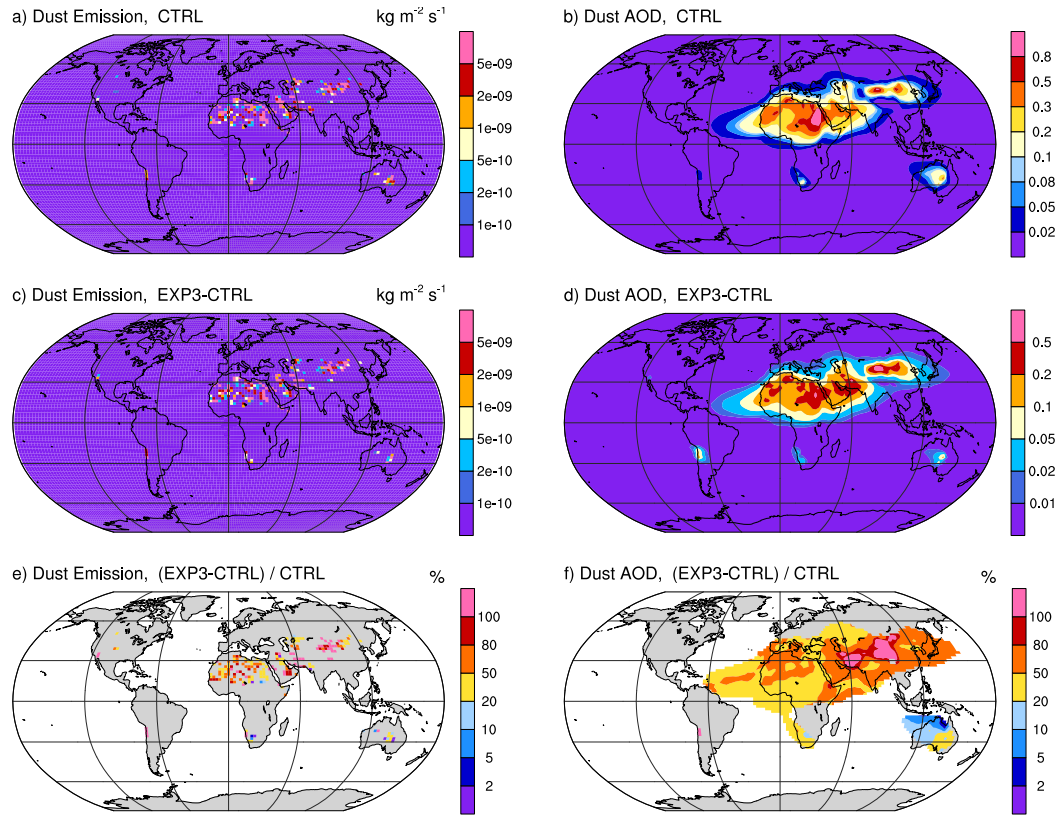
5.4 Comparison with AOD observations

The neutral/stable turbulence has relatively small impact, which is consistent with Cakmur et al. (2004). They cause about a 3% increase in the global mean dust emission. Diagnostics above showed that applying the PDF method to take into account sub-grid wind speed variability leads to considerable increases in the emission and loading of dust aerosols. To evaluate how much the increases affect the agreement and discrepancies between model simulation and observation, the simulated AOD is compared with satellite retrievals in dust source regions.

Fig. 17 compares the annual mean total AOD against satellite retrievals obtained by the Multi-angle Imaging SpectroRadiometer (MISR) in 14 major dust source regions (Table 4). The definition and indexing of the 14 regions follow Zender and Kwon (2005). Model data are sampled at the satellite local overpass time of 13:30, and are masked out when the corresponding MISR record indicates missing data. Note that we modified the model source code to calculate the aerosol optical properties at each model time step, rather than doing the calculation when the radiation calculation is called every two hours as in the standard model. The comparison indicates that, except in regions 3, 8 and 5 (North America and South Africa), the total AOD in EXP3 is higher than that of CTRL by 14–71% increase in the global mean dust emission, and similar increases in Asia, North Africa, and higher than the MISR data by 6–167% (Fig. 17). The largest differences are found in regions 2 and North-9 (North Africa), 7 and South America. The related AOD changes are hardly discernible (13 (China), and 10–12 (Arabia), all of which correspond to relatively large values of the coefficient D in Fig. 16f vs. d). In contrast, considering the small-scale motions related to 10 which reflect the impact of complex sub-grid topography results in a 23% increase in the global mean dust emission. By

Table 3. Simulated annual mean global and regional dust emission (Tg yr^{-1}) for the year 2006. Numbers in parenthesis are the relative differences with respect to the default model (CTRL). The experiment configurations are explained in Table 1.

Simulation	Global	North Africa (10–30° N, 20° W–40° E)	East Asia (30–50° N, 80–120° E)	West Asia (15–50° N, 40–70° E)	Australia (10–40° S, 110–140° E)
NOSG	3365.0 (−14.3 %)	1588.4 (−15.6 %)	551.8 (−13.7 %)	522.4 (−15.6 %)	137.5 (−11.8 %)
CTRL	3927.9	1880.7	639.3	619.3	155.9
EXP1	5000.6 <u>5015.5</u> (+27.327.7 %)	2441.2 <u>2447.3</u> (+29.830.1 %)	864.0 <u>864.0</u> (+35.2876.0 (+37.0 %)	828.4 <u>825.2</u> (+33.833.2 %)	150.5 <u>149.9</u> (−3.53.9 %)
EXP2	5120.9 <u>5124.5</u> (+30.430.5 %)	2492.2 <u>2500.6</u> (+32.533.0 %)	877.5 <u>875.8</u> (+37.3875.8 (+37.0 %)	848.8 <u>848.3</u> (+37.137.0 %)	161.6 <u>174.2</u> (+11.7 %)
EXP3	6023.7 <u>6027.9</u> (+53.453.5 %)	2737.9 <u>2736.1</u> (+45.645.5 %)	1127.4 <u>1133.8</u> (+76.477.4 %)	1048.1 <u>1048.3</u> (+69.269.3 %)	177.7 <u>188.0</u> (+13.920.6 %)
EXP4	4023.5 <u>4024.9</u> (+2.432.47 %)	1826.8 <u>1829.1</u> (−2.872.74 %)	802.1 <u>798.8</u> (+25.525.0 %)	687.0 <u>683.7</u> (+10.910.4 %)	109.8 <u>120.3</u> (−29.622.9 %)

**Figure 16.** As in Fig. 16–15 but for dust emission and AOD. The threshold values for masking out relative differences in the lower-rows bottom row are $1 \times 10^{-10} \text{ kg m}^{-2} \text{ s}^{-1}$ for emission and 0.01 for AOD.

changing the dust emission scale factor from 0.35^{-1} (EXP3) to 0.57^{-1} (EXP4), the global mean emission flux is brought back to the value in CTRL with a less than 5 % increase of the difference. Consequently, the regional AOD values also become similar to those in CTRL (Fig. 17).

In Fig. 18, annual mean global dust emission (comparing EXP3 with EXP2 in Table 3). The regional enhancements are about 13 in North maps of dust emission and AOD are presented for EXP4. The absolute and relative differences with respect to the default model are also shown. While the geographical distributions are similar in both model versions, taking into account wind SGV then retuning the global mean

leads to dust AOD increases in Asia and Northwest Africa, and about 40 in East Asia. The increases in AOD are evident in these source regions and the downwind areas decreases in Australia and tropical Africa (Fig. 18d and f). A comparison between the emission flux difference in Fig. 18c and e with the wind SGV maps in Fig. 14 suggests that the grid cells with decreased emissions are typically associated with smaller wind variabilities related to unresolved topography, while those grid cells with increased emissions are associated with stronger wind variabilities caused by topography and/or dry convective eddies.

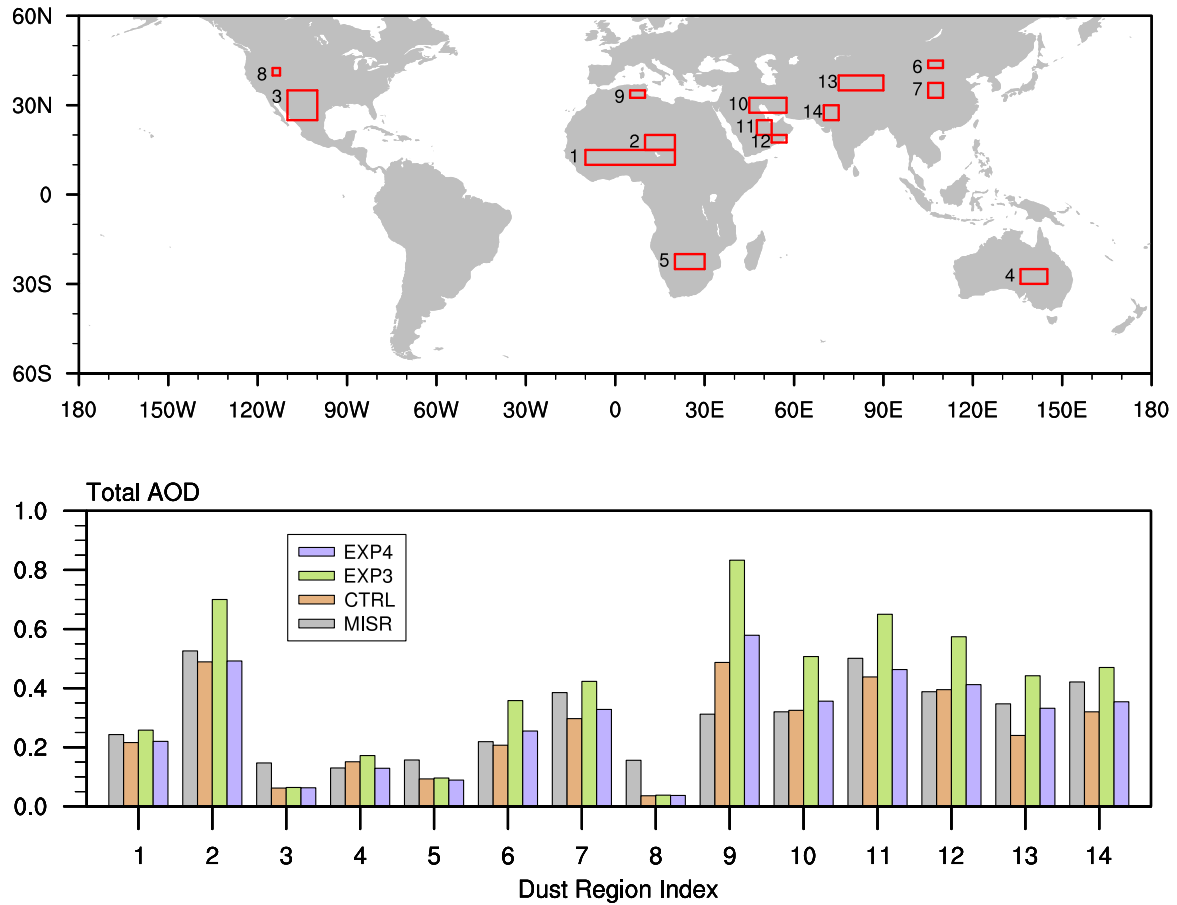


Figure 17. Satellite retrieved AOD from MISR (Multi-angle Imaging Spectro-Radiometer) and simulated regional average AOD at 14 major dust source regions (Tg yr^{-1}) for the year 2006. These regions were defined in the work of Zender and Kwon (2005) based on the dust source regions identified by Prospero et al. (2002) and data from Torres et al. (2002). Region definition and the data used to plot the lower panel are given Table 4.

Table 4. Definition of the 14 major dust source regions in which the simulated and MISR retrieved AOD are compared in Fig. 17. The relative differences between the simulated and MISR retrieved AOD are also shown.

Number	Region	MISR	CTRL vs. MISR	EXP3 vs. MISR	EXP4 vs. MISR
1	Eastern Sahel (10–15° N, 10° W–20° E)	0.243	–11.1 %	+6.17+6.30 %	–9.479.41 %
2	Bodele Depression (15–20° N, 10–20° E)	0.526	–7.03 %	+33.1 %	–6.466.54 %
3	Western US and Mexico (25–35° N, 110–100° W)	0.147	–57.8 %	–56.556.6 %	–57.157.7 %
4	Lake Eyre Basin (30–25° S, 136–145° E)	0.130	+16.2 %	+32.3+39.6 %	–0.770.62 %
5	Botswana (25–20° S, 20–30° E)	0.157	–40.8 %	–38.938.6 %	–43.342.5 %
6	Gobi Desert (42.5–45° N, 105–110° E)	0.219	–5.48 %	+63.5+65.2 %	+16.4+18.4 %
7	Chinese Loess Plateau (32.5–37.5° N, 105–110° E)	0.385	–22.9 %	+9.87+8.22 %	–14.814.9 %
8	Great Salt Lake (40–42.5° N, 115–112.5° W)	0.156	–76.9 %	–75.674.9 %	–76.376.2 %
9	Zone of Chotts (32.5–35° N, 5–10° E)	0.312	+56.1 %	+167.0+170.1 %	+85.6+86.4 %
10	Tigris Euphrates (27.5–32.5° N, 45–57.5° E)	0.320	+1.56 %	+58.4+57.0 %	+11.3+11.9 %
11	Saudi Arabia (20–25° N, 47.5–52.5° E)	0.501	–12.6 %	+29.7+29.9 %	–7.587.63 %
12	Oman (17.5–20° N, 52.5–57.5° E)	0.388	+1.80 %	+47.9+47.6 %	+6.19+5.66 %
13	Tarim Basin (35–40° N, 75–90° E)	0.347	–30.8 %	+27.4+28.4 %	–4.323.91 %
14	Thar Desert (25–30° N, 70–75° E)	0.421	–24.0 %	+11.6+12.4 %	–15.916.1 %

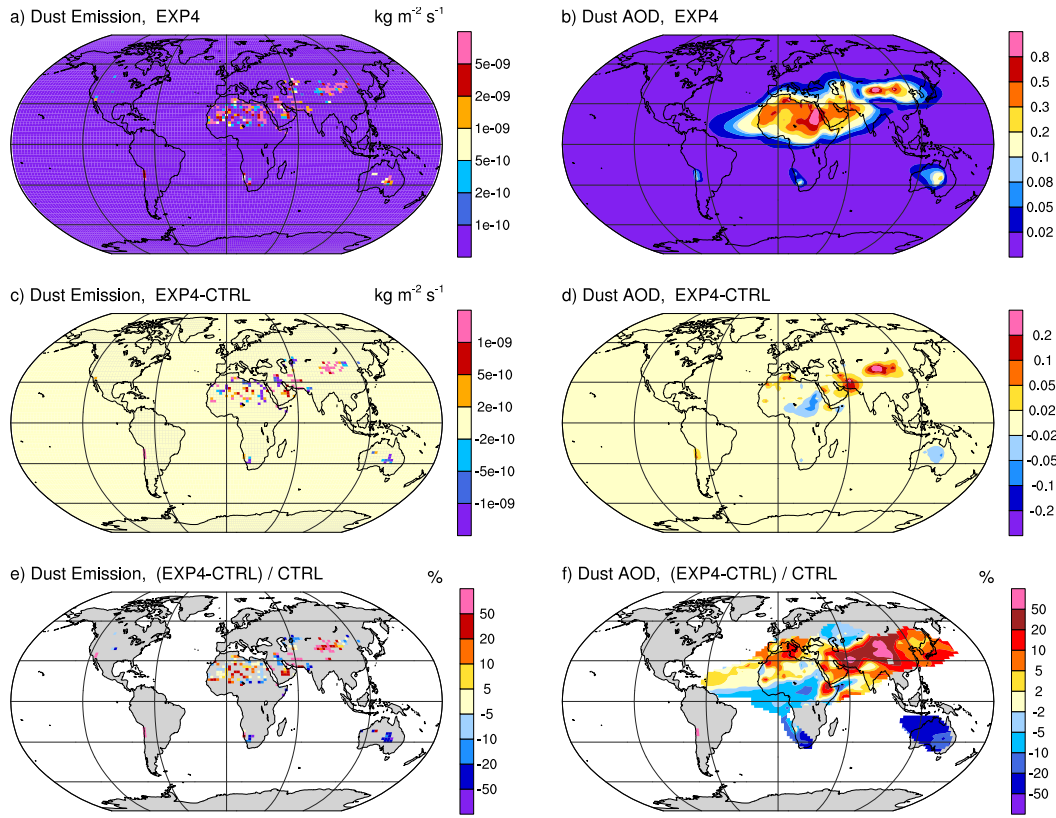


Figure 18. Top row: year 2006 mean dust emission flux ($\text{kg m}^{-2} \text{s}^{-1}$) and AOD (unitless, dust only) in EXP4; Second row: differences between EXP4 and CTRL. Bottom row: relative differences between EXP4 and CTRL. In the bottom row, locations that have emission fluxes less than $1 \times 10^{-10} \text{ kg m}^{-2} \text{s}^{-1}$ or AOD < 0.01 in the CTRL simulation are masked out.

In addition to MISR, we have compared the simulated AOD with high-frequency measurements from the Aerosol Robotic Network (AERONET) sites close to the dust source regions. It turns out that the AERONET measurements falling in our simulation period are located in regions where CTRL and EXP4 give very similar dust AOD. The comparison thus did not indicate systematic improvement or degradation in terms of the agreement between model results and measurements. In the Taklamakan Desert, Southeast Iran, and Pakistan where AOD in EXP4 is considerably higher than that in CTRL (Fig. 46h vs. f). In Table 3 we also included the emission fluxes from 18, it is not yet known how the two simulations compare with observations due to the unfortunate lack of data.

5.5 Dust emission frequency

In Fig. 19a-c, frequency distributions of the simulated dust emission fluxes are shown for three regions: Northwest China ($35^{\circ}\text{--}50^{\circ}\text{N}$, $80^{\circ}\text{--}110^{\circ}\text{E}$), North Africa ($10^{\circ}\text{--}30^{\circ}\text{N}$, $10^{\circ}\text{W--}20^{\circ}\text{E}$), and Australia ($20^{\circ}\text{--}30^{\circ}\text{S}$, $110^{\circ}\text{--}150^{\circ}\text{E}$). To derive those distributions, hourly emission fluxes of the year 2006 at individual grid cells were treated as separate samples.

In Northwest China and North Africa, introducing sub-grid wind variability without tuning the global mean dust emission leads to more frequent dust emission in all non-zero flux bins (Fig. 19a–b, EXP3 versus CTRL). Re-tuning the emission results in less frequent occurrence of stronger emissions and more frequent occurrence of weaker emissions (Fig. 19a–b, EXP4 versus CTRL). Because the re-tuning is implemented globally using a constant scaling factor, the same qualitative change is seen also in regions where the sub-grid wind variability is relatively small (e.g. Australia, Fig. 19c). The lower row of Fig. 19 shows the relative contribution of each flux range to the total dust emission in the three locations, again derived from hourly data of 2006. The three panels further confirm that after the re-tuning, EXP4 features smaller contributions from stronger emission events, and larger contributions from weaker emission events. Given that the flux samples are spatial averages in 2° model grid cells, the NOSG simulation. Combined with EXP1, these numbers quantify the total impact of dry convective eddies. From the table, it is clear that shift of emission distribution seems physically plausible.

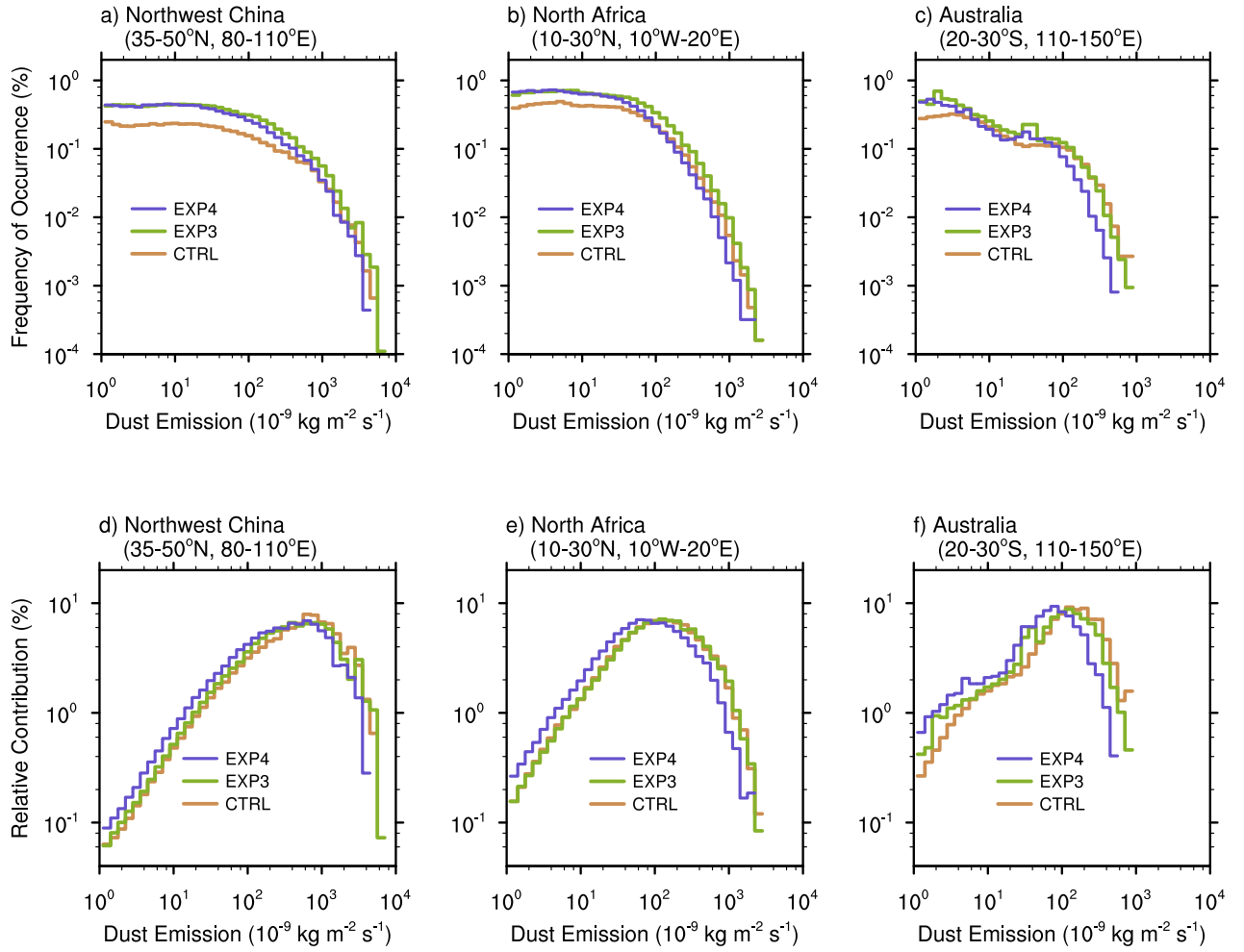


Figure 19. Upper row: frequency distribution of simulated dust emissions in (a) Northwest China, (b) North Africa, and (c) Australia. Lower row: relative contribution of each emission flux bin to the total emission in those three regions. The results were derived from hourly emission fluxes of the year 2006. All grid cells in each region were treated as individual samples.

Ideally it would be nice to use observational data sets to evaluate whether such a shift also makes the simulated emissions more realistic. For example, Schepanski et al. (2007) presented seasonal dust source area maps for the Sahara and Sahel region derived from IR-channel images of Meteosat Second Generation. A quantitative comparison between our simulations and their results is however difficult, because the absolute value of the emission frequency depends strongly on the dust mass flux threshold that is used when identifying an emission event. In the work of Schepanski et al. (2007), dust emission was identified by visually detecting dust plumes, then visually tracing the plume patterns back to their origin by inspecting consecutive images during dust mobilization and transport events. In order to directly compare their maps with

our simulations, one would need to implement a satellite simulator in our model, produce the IR-channel images, then apply the same human-involved method of visual dust activation identification. Such an evaluation is impractical in our study; below we limit ourselves to a qualitative comparison with the results of Schepanski et al. (2007).

Maps of seasonal dust emission frequencies in Africa and Asia are presented for CTRL and EXP4 in Fig. 20. Since it is unclear what dust emission flux thresholds the maps of Schepanski et al. (2007) correspond to, we chose a somewhat arbitrary (but low) threshold of $10^{-9} \text{ kg m}^{-2} \text{ s}^{-1}$. Fig. 20 indicates that the inclusion of wind SGV generally increases the frequency of dust emission; this is consistent with the PDFs shown in Fig. 19. In addition, EXP4 features enhanced seasonal differences compared to CTRL:

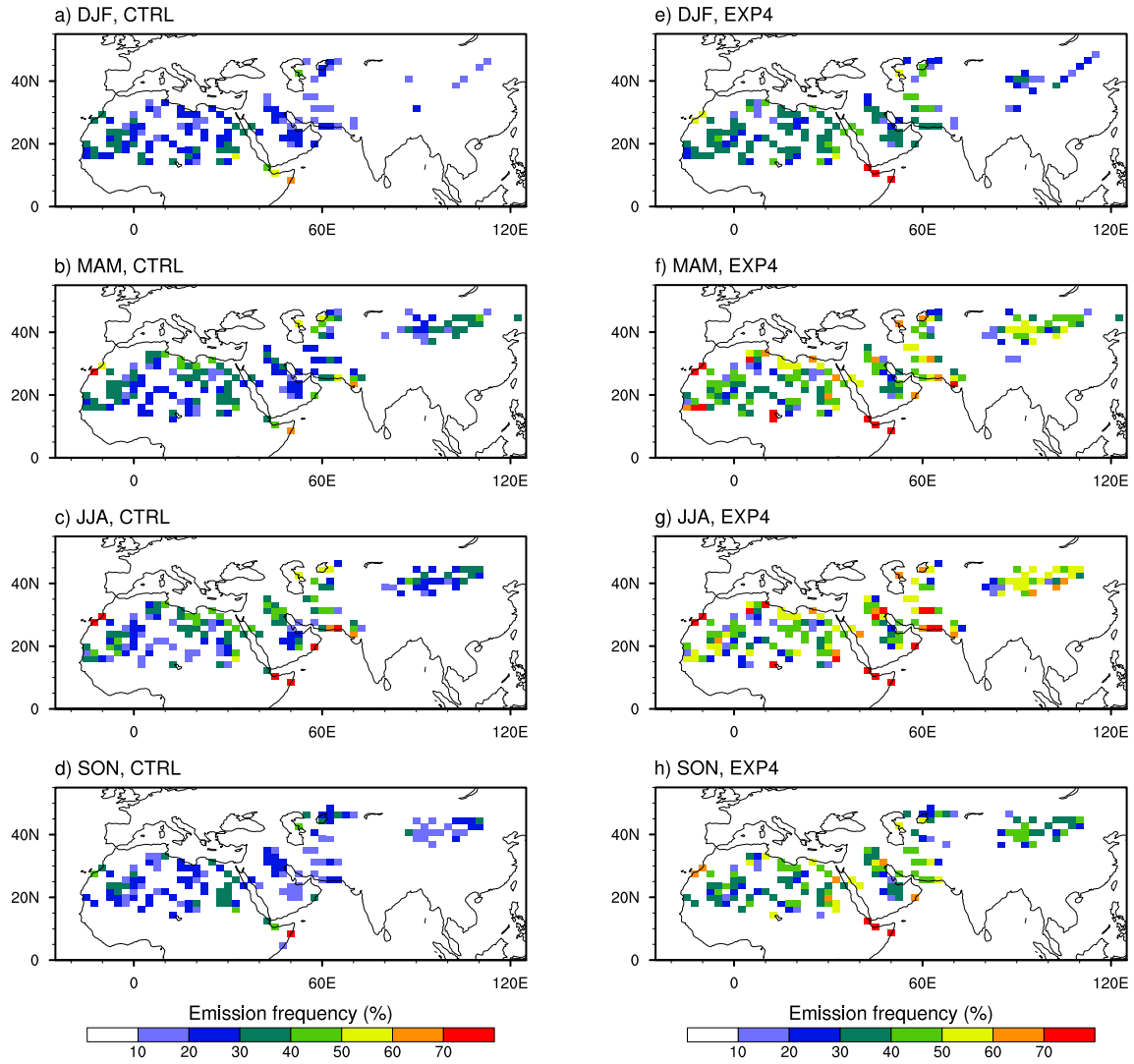


Figure 20. Frequency of occurrence (unit: %) of dust emission fluxes stronger than $10^{-9} \text{ kg}^{-2} \text{ s}^{-1}$ in Africa and Asia in the CTRL simulation (left column) and in EXP4 (right column). Different rows correspond to different seasons: December-January-February (DJF), March-April-May (MAM), June-July-August (JJA), and September-October-November (SON).

wind variability associated with dry convective eddies and meso-scale flows associated with sub-grid scale topography are the most important factors that affect dust emission in CAM5 leads to considerably more frequent dust emission in boreal spring/summer than in autumn/winter.

In terms of geographical distribution, Schepanski et al. (2007) showed seasonal shifts of dust emission patterns in North Africa. In our simulated, however, dust emissions largely occur at the same locations all year round, except in Northwest China where the source regions are larger in spring and summer. The frequency patterns in CTRL and EXP4 are similar, and both differ in the details from the maps of Schepanski et al. (2007). The same turned out to be true when we increased the emission flux threshold to higher values. Our analysis showed that the wind SGV changes the magnitudes of the emission frequency, but does not significantly change the spatial pattern. This is not surprising since apart from wind speed, the simulated dust emission also depends on other assumptions in the parameterization scheme as well as the surface properties in the model.

5.6 Comments on resolution sensitivity

It is a common feature of many global aerosol-climate models (including CAM5) that the simulated surface wind speeds and aerosol emissions are sensitive to model resolution (e.g. Gläser et al., 2012). This is in fact the reason why the dust emission factor in Table 1 was introduced in the first place; and this parameter is often adjusted in simulations at different resolutions for the purpose of achieving the desired energy balance. Now that an empirical method has been developed in this study to account for the impact of sub-grid wind variability, a natural question to ask is whether this PDF-based method makes the dust emission parameterization scale-aware, and hence reduces the resolution sensitivity of the simulated dust emission. To answer this question, we first note that in this study, the sub-grid wind speed PDF is determined by the grid-box mean and standard deviation of the surface wind speed (\bar{U} and σ_U), which in turn depends on

- (i) the GCM resolved ~~grid-box mean~~ surface wind \bar{v} , and
- (ii) the various components of the sub-grid wind variability, namely $\sigma_{U,t}$, $\sigma_{U,d}$, $\sigma_{U,m}$, and $\sigma_{U,l}$.

This study made an attempt to address the second aspect for a GCM resolution of $2^\circ \text{ lat} \times 2^\circ \text{ lon}$. For other resolutions, the coefficient C_D used for estimating the topography related wind variability (Eq. 27) needs to be re-derived using Eq. (26). Similarly, for aerosol emissions over the ocean, the coefficients in Eqs. (23) and (24) also need to be re-derived for different resolutions. In addition to σ_U , the ~~grid-box mean-resolved~~ wind \bar{v} also determines the sub-grid wind speed distribution, and \bar{v} is mainly affected by the large-scale

dynamics, convection parameterization, and surface properties. These aspects of an atmospheric GCM are out of the scope of the current work. The resolution sensitivity of dust emission can be removed when all model components are scale-aware. Since only part of the necessary conditions are addressed in this study, we do not expect the dust emissions simulated at different resolutions to agree with each other.

6 Conclusions

In this paper we evaluated the impact of sub-grid surface wind variability on sea salt and dust emissions in CAM5. The basic strategy is to calculate emission fluxes multiple times in each GCM grid cell, using different samples of a wind speed distribution derived from model-predicted grid-box mean quantities.

Simplified diagnostic calculations were conducted first, using year 2011 of the ECMWF operational analysis (15 km resolution), and two simulations with the WRF model at 3 km resolution, one for a $900 \text{ km} \times 900 \text{ km}$ domain over the Southern Ocean, and the other with the same domain size but located in Western China near the Taklamakan Desert. The high-resolution meteorological data was regridded to coarse resolution grids ($2^\circ \text{ lat} \times 2^\circ \text{ lon}$ for ECMWF and 225 km resolution for WRF), and sea salt and dust emissions were calculated using both high and coarse resolution surface wind speeds then compared.

Sea salt emissions calculated using the coarse resolution grid-box mean wind speed were reasonably accurate (with less than a few percent error) in terms of annual mean, but instantaneous emission fluxes were more severely underestimated at times. For dust emissions, non-negligible errors were seen both in instantaneous emissions and in annual averages, suggesting that the impact of sub-grid wind variability needs to be taken into account. It was also confirmed that when the mean and standard deviation of surface wind speed are known accurately, the Weibull distribution provides a good characterization of the probability distribution of the sub-grid wind speed, from which different samples can be drawn for the emission calculation.

In order to estimate the sub-grid wind speed distribution in the CAM5 global climate model using the available model-predicted physical quantities, we developed a method to approximate the sub-grid standard deviation of surface wind speed using four components. The contributions of neutral/stable turbulence and dry convective eddies were estimated using parameterizations from previous studies. The wind variabilities caused by moist convective eddy over the ocean and small-scale topography over land were estimated using empirical relationships derived from the 15 km ECMWF analysis of 2011. Evaluation against the year 2012 analysis of ECMWF showed that the empirical relationships can capture the sub-grid variability of surface wind speeds reasonably well. Further evaluation using the 3 km WRF

simulations suggested that the formulae derived using the ECMWF analysis are not severely limited by the 15 km horizontal resolution.

The online calculated sub-grid wind speed distributions were used in the sea salt and dust emission parameterizations in CAM5 simulations of the year 2006 at 2° horizontal resolution with 30 vertical levels. In terms of computational cost, the increase in total simulation time turned out to be less than 3 %. The CAM5 simulations confirm conclusions from the simplified diagnostic calculation that sub-grid wind variability has relatively small impacts on the annual mean emission of sea salt aerosols, but considerable influence on the emission of dust. Among the considered mechanisms, dry convective eddies and small-scale topography are the major causes of dust emission increases when sub-grid wind variability is taken into account. With all the four components included and no additional adjustment of uncertain parameters in the model, the simulated global and annual mean dust emission increase by about 50 % compared to the default model. The dust AOD in the source regions in Central and Eastern Asia increases by more than 100 %, while that in North Africa, Arabia, and the downwind regions in East Asia increases between 50 and 100 %. ~~The increased dust loading results in stronger absorption of longwave radiation by 1–5σ higher in the low- and middle-latitude regions in Africa and Asia, both through direct absorption by dust, and because of the increased ice-cloud fraction. In the tropical regions where moist convection is active, higher dust concentrations in the upper troposphere enhances heterogeneous ice nucleation and inhibits homogenous ice nucleation, giving a net effect of weaker longwave absorption.~~

~~When sub-grid wind variability is taken into account, the~~ Consequently, the total AOD simulated in dust source regions is considerably higher than both the default model and the MISR retrieval. By tuning the globally constant dust emission scale factor, the dust emission, AOD, and top-of-atmosphere radiative fluxes can be adjusted to the level of the default model, but the frequency distribution of dust emission changes, with more contribution from weaker events and less contribution from stronger events. ~~This shift seems reasonable for 2-grid cells, but whether it is more realistic is not yet clear due to the lack of observational data for validation.~~ In Africa and Asia, the integrated dust emission frequencies increase, and the seasonal variations are enhanced, while the geographical patterns of the emission frequency show little change.

Code availability

The CESM version 1.2.0 release can be obtained at <http://www.cesm.ucar.edu/models/cesm1.2/>. Code modifications for the sub-grid treatment of wind-driven aerosol emission calculations can be obtained from the corresponding author.

Acknowledgements. This work was supported by the U.S. Department of Energy (DOE) office of Science as part of the Scientific Discovery Through Advanced Computing (SciDAC) project on Multiscale Methods for Accurate, Efficient, and Scale-Aware Models of the Earth System. The Pacific Northwest National Laboratory is operated for DOE by Battelle Memorial Institute under contract DE-AC06-76RLO 1830. We thank Charlie Zender for making the Dust Entrainment and Deposition Model (DEAD) available for public access. We also are grateful to Phil Rasch and Po-Lun Ma (PNNL) for helpful discussions. Computational resources (ark:/85065/d7wd3xhc) at the NCAR-Wyoming Supercomputing Center were provided by the National Science Foundation and the State of Wyoming, and supported by NCAR's Computational and Information Systems Laboratory. Computational resources at the Pacific Northwest National Laboratory were provided by the PNNL Institutional Computing (PIC). The ECMWF operational analysis used in this study were obtained from the Research Data Archive (RDA) maintained by the Computational and Information Systems Laboratory (CISL) at the National Center for Atmospheric Research (NCAR). NCAR is sponsored by the National Science Foundation (NSF). The post-processing of model results was conducted using the Climate Data Operators (CDO, available at <http://www.mpimet.mpg.de/cdo>) and the NCAR Command Language (NCL, available at <http://dx.doi.org/10.5065/D6WD3XH5>).

References

- Arakawa, A., Jung, J.-H., and Wu, C.-M.: Toward unification of the multiscale modeling of the atmosphere, *Atmos. Chem. Phys.*, 11, 3731–3742, doi:10.5194/acp-11-3731-2011, 2011.
- Banta, R. M., Pichugina, Y. L., and Brewer, W. A.: Turbulent velocity-variance profiles in the stable boundary layer generated by a nocturnal low-level jet, *J. Atmos. Sci.*, 63, 2700–2719, doi:10.1175/JAS3776.1, 2006.
- Bretherton, C. S. and Park, S.: A new moist turbulence parameterization in the community atmosphere model, *J. Climate*, 22, 3422–3448, doi:10.1175/2008JCLI2556.1, 2009.
- Cakmur, R. V., Miller, R. L., and Torres, O.: Incorporating the effect of small-scale circulations upon dust emission in an atmospheric general circulation model, *J. Geophys. Res.-Atmos.*, 109, 7201, doi:10.1029/2003JD004067, 2004.
- Capps, S. B. and Zender, C. S.: Observed and CAM3 GCM sea surface wind speed distributions: characterization, comparison, and bias reduction, *J. Climate*, 21, 6569, doi:10.1175/2008JCLI2374.1, 2008.
- Carta, J. A., Ramirez, P., and Velazquez, S.: A review of wind speed probability distributions used in wind energy analysis: case studies in the Canary Islands, *Renew. Sust. Energ. Rev.*, 13, 933–955, doi:10.1016/j.rser.2008.05.005, 2009.
- Deardorff, J. W.: Preliminary results from numerical integrations of the unstable planetary boundary layer, *J. Atmos. Sci.*, 27, 1209–1210, doi:10.1175/1520-0469(1970)027<1209:PRFNIO>2.0.CO;2, 1970.
- Dipankar, A., Stevens, B., Heinze, R., Moseley, C., Zängl, G., Giorgetta, M., and Brdar, S.: Large eddy simulation using the general circulation model ICON, *J. Adv. Model. Earth Syst.*, 07, 963–986, doi:10.1002/2015MS000431, 2015.
- Durran, D. R.: Mountain waves and downslope winds, in: *Atmospheric Processes Over Complex Terrain*, edited by: Blumen, W.,

- vol. 23 of Meteorological Monographs, American Meteorological Society, Boston, Massachusetts, 59–83, 1990.
- ECMWF: European Centre for Medium-Range Weather Forecasts (ECMWF): IFS Documentation – Cy28r1, IV. Physical Processes, Tech. Report, European Centre for Medium-Range Weather Forecasts, ECMWF Research Department, Technical Memorandum Cy28r1, European Centre for Medium-Range Weather Forecast, Reading, UK, available at: <http://old.ecmwf.int/research/ifsdocs/CY28r1/index.html> (last access: 24 August 2015), 2004.
- Feng, Z., Hagos, S., Rowe, A. K., Burleyson, C. D., Martini, M. N., and de Szoeke, S. P.: Mechanisms of convective cloud organization by cold pools over tropical warm ocean during the AMIE/DYNAMO field campaign, *J. Adv. Model. Earth Syst.*, 7, 357–381, doi:10.1002/2014MS000384, 2015.
- Gottelman, A., Morrison, H., and Ghan, S. J.: A new two-moment bulk stratiform cloud microphysics scheme in the community atmosphere model, version 3 (CAM3). Part II: Single-column and global results, *J. Climate*, 21, 3660–3679, doi:10.1175/2008JCLI2116.1, 2008.
- Ghan, S. J. and Easter, R. C.: Comments on “A limited-area-model case study of the effects of sub-grid scale variations in relative humidity and cloud upon the direct radiative forcing of sulfate aerosol”, *Geophys. Res. Lett.*, 25, 1039–1040, doi:10.1029/98GL50357, 1998.
- Gläser, G., Kerkweg, A., and Wernli, H.: The Mineral Dust Cycle in EMAC 2.40: sensitivity to the spectral resolution and the dust emission scheme, *Atmos. Chem. Phys.*, 12, 1611–1627, doi:10.5194/acp-12-1611-2012, 2012.
- Godfrey, J. S. and Beljaars, A. C. M.: On the turbulent fluxes of buoyancy, heat and moisture at the air-sea interface at low wind speeds, *J. Geophys. Res.*, 96, 22043–22048, doi:10.1029/91JC02015, 1991.
- Grini, A. and Zender, C. S.: Roles of saltation, sandblasting, and wind speed variability on mineral dust aerosol size distribution during the Puerto Rican Dust Experiment (PRIDE), *J. Geophys. Res.*, 109, 7202, doi:10.1029/2003JD004233, 2004.
- Gustafson, W. I., Qian, Y., and Fast, J. D.: Downscaling aerosols and the impact of neglected subgrid processes on direct aerosol radiative forcing for a representative global climate model grid spacing, *J. Geophys. Res.-Atmos.*, 116, D13303, doi:10.1029/2010JD015480, 2011.
- Haywood, J. M., Ramaswamy, V., and Donner, L. J.: A limited-area-model case study of the effects of sub-grid scale variations in relative humidity and cloud upon the direct radiative forcing of sulfate aerosol, *Geophys. Res. Lett.*, 24, 143–146, doi:10.1029/96GL03812, 1997.
- Heinold, B., Tegen, I., Schepanski, K., and Banks, J. R.: New developments in the representation of Saharan dust sources in the aerosol-climate model ECHAM6-HAM2, *Geoscientific Model Development Discussions*, 8, 7879–7910, doi:10.5194/gmdd-8-7879-2015, <http://www.geosci-model-dev-discuss.net/8/7879/2015/>, 2015.
- Hourdin, F., Gueye, M., Diallo, B., Dufresne, J.-L., Escribano, J., Menut, L., Marticoréna, B., Siour, G., and Guichard, F.: Parameterization of convective transport in the boundary layer and its impact on the representation of the diurnal cycle of wind and dust emissions, *Atmos. Chem. Phys.*, 15, 6775–6788, doi:10.5194/acp-15-6775-2015, 2015.
- Huneus, N., Schulz, M., Balkanski, Y., Griesfeller, J., Prospero, J., Kinne, S., Bauer, S., Boucher, O., Chin, M., Dentener, F., Diehl, T., Easter, R., Fillmore, D., Ghan, S., Ginoux, P., Grini, A., Horowitz, L., Koch, D., Krol, M. C., Landing, W., Liu, X., Mahowald, N., Miller, R., Morcrette, J.-J., Myhre, G., Penner, J., Perlwitz, J., Stier, P., Takemura, T., and Zender, C. S.: Global dust model intercomparison in AeroCom phase I, *Atmos. Chem. Phys.*, 11, 7781–7816, doi:10.5194/acp-11-7781-2011, 2011.
- Iacono, M. J., Delamere, J. S., Mlawer, E. J., Shephard, M. W., Clough, S. A., and Collins, W. D.: Radiative forcing by long-lived greenhouse gases: calculations with the AER radiative transfer models, *J. Geophys. Res.*, 113, D13103, doi:10.1029/2008JD009944, 2008.
- Jabouille, P., Redelsperger, J. L., and Lafore, J. P.: Modification of surface fluxes by atmospheric convection in the TOGA COARE region, *Mon. Weather Rev.*, 124, 816–837, doi:10.1175/1520-0493(1996)124<0816:MOSFBA>2.0.CO;2, 1996.
- Jeuken, A., Siegmund, P., Heijboer, L., Feichter, J., and Bengtsson, L.: On the potential of assimilating meteorological analyses in a global climate model for the purposes of model validation, *J. Geophys. Res.*, 101, 16939–16950, doi:10.1029/96JD01218, 1996.
- Justus, C. G., Hargraves, W. R., Mikhail, A., and Graber, D.: Methods for estimating wind speed frequency distributions, *J. Appl. Meteorol.*, 17, 350–353, doi:10.1175/1520-0450(1978)017<0350:MFEWSF>2.0.CO;2, 1978.
- Justus, C. G., Mani, K., and Mikhail, A. S.: Interannual and month-to-month variations of wind speed, *J. Appl. Meteorol.*, 18, 913–920, doi:10.1175/1520-0450(1979)018<0913:IAMTMV>2.0.CO;2, 1979.
- Koopman, G. J., Pritchard, M. S., Ghan, S. J., Wang, M., Somerville, R. C. J., and Russell, L. M.: Constraining the influence of natural variability to improve estimates of global aerosol indirect effects in a nudged version of the Community Atmosphere Model 5, *J. Geophys. Res.*, 117, D23204, doi:10.1029/2012JD018588, 2012.
- Lawrence, D. M., Oleson, K. W., Flanner, M. G., Thornton, P. E., Swenson, S. C., Lawrence, P. J., Zeng, X., Yang, Z.-L., Levis, S., Sakaguchi, K., Bonan, G. B., and Slater, A. G.: Parameterization improvements and functional and structural advances in Version 4 of the Community Land Model, *J. Adv. Model. Earth Syst.*, 3, M03001, doi:10.1029/2011MS000045, 2011.
- Lin, S.-J.: A “Vertically Lagrangian” finite-volume dynamical core for global models, *Mon. Weather Rev.*, 132, 2293–2307, doi:10.1175/1520-0493(2004)132<2293:AVLFDC>2.0.CO;2, 2004.
- Liu, X., Easter, R. C., Ghan, S. J., Zaveri, R., Rasch, P., Shi, X., Lamarque, J.-F., Gottelman, A., Morrison, H., Vitt, F., Conley, A., Park, S., Neale, R., Hannay, C., Ekman, A. M. L., Hess, P., Mahowald, N., Collins, W., Iacono, M. J., Bretherton, C. S., Flanner, M. G., and Mitchell, D.: Toward a minimal representation of aerosols in climate models: description and evaluation in the Community Atmosphere Model CAM5, *Geosci. Model Dev.*, 5, 709–739, doi:10.5194/gmd-5-709-2012, 2012a.
- Liu, X., Shi, X., Zhang, K., Jensen, E. J., Gottelman, A., Barahona, D., Nenes, A., and Lawson, P.: Sensitivity studies of dust ice nuclei effect on cirrus clouds with the Community Atmo-

- sphere Model CAM5, *Atmos. Chem. Phys.*, 12, 12061–12079, doi:10.5194/acp-12-12061-2012, 2012b.
- Lumley, J. L. and Panofsky, H. A.: *The Structure of Atmospheric Turbulence*, Interscience Monographs and Texts in Physics and Astronomy, Interscience Publishers, New York, p. 239, 1964.
- Lunt, D. J. and Valdes, P. J.: The modern dust cycle: comparison of model results with observations and study of sensitivities, *J. Geophys. Res.*, 107, 4669, doi:10.1029/2002JD002316, 2002.
- Ma, P.-L., Rasch, P. J., Fast, J. D., Easter, R. C., Gustafson Jr., W. I., Liu, X., Ghan, S. J., and Singh, B.: Assessing the CAM5 physics suite in the WRF-Chem model: implementation, resolution sensitivity, and a first evaluation for a regional case study, *Geosci. Model Dev.*, 7, 755–778, doi:10.5194/gmd-7-755-2014, 2014.
- Mahoney, W. P.: Gust front characteristics and the kinematics associated with interacting thunderstorm outflows, *Mon. Weather Rev.*, 116, 1474–1492, doi:10.1175/1520-0493(1988)116<1474:GFCATK>2.0.CO;2, 1988.
- Marcella, M. P. and Eltahir, E. A. B.: Effects of mineral aerosols on the summertime climate of southwest Asia: incorporating sub-grid variability in a dust emission scheme, *J. Geophys. Res.-Atmos.*, 115, 18203, doi:10.1029/2010JD014036, 2010.
- Marshall, J. H., Knippertz, P., Dixon, N. S., Parker, D. J., and Lister, G. M. S.: *Geophys. Res. Lett.*, 38, L16803, doi:10.1029/2011GL048368, 2011.
- Mårtensson, E. M., Nilsson, E. D., de Leeuw, G., Cohen, L. H., and Hansson, H.-C.: Laboratory simulations and parameterization of the primary marine aerosol production, *J. Geophys. Res.-Atmos.*, 108, 4297, doi:10.1029/2002JD002263, 2003.
- Menut, L.: Sensitivity of hourly Saharan dust emissions to NCEP and ECMWF modeled wind speed, *J. Geophys. Res.-Atmos.*, 113, D16201, doi:10.1029/2007JD009522, 2008.
- Mlawer, E. J., Taubman, S. J., Brown, P. D., Iacono, M. J., and Clough, S. A.: Radiative transfer for inhomogeneous atmospheres: RRTM, a validated correlated-k model for the longwave, *J. Geophys. Res.*, 102, 16663–16682, doi:10.1029/97JD00237, 1997.
- Monahan, A. H.: The probability distribution of sea surface wind speeds. Part II: Dataset intercomparison and seasonal variability, *J. Climate*, 19, 521, doi:10.1175/JCLI3641.1, 2006.
- Morrison, H. and Gettelman, A.: A new two-moment bulk stratiform cloud microphysics scheme in the NCAR Community Atmosphere Model (CAM3), Part I: description and numerical tests, *J. Climate*, 21, 3642–3659, doi:10.1175/2008JCLI2105.1, 2008.
- Namikas, S. and Sherman, D. J.: *Predicting Aeolian Sand Transport: Revisiting the White Model, Earth Surface Processes and Landforms*, 22, 601–604, doi:10.1002/(SICI)1096-9837(199706)22:6<601::AID-ESP783>3.3.CO;2-X, 1997.
- Neale, R. B., Chen, C. C., Gettelman, A., Lauritzen, P. H., Park, S., Williamson, D. L., Conley, A. J., Garcia, R., Kinnison, D., Lamarque, J. F., Marsh, D., Mills, M., Smith, A. K., Tilmes, S., Vitt, F., Morrison, H., Cameron-Smith, P., Collins, W. D., Iacono, M. J., Easter, R. C., Ghan, S. J., Liu, X. H., Rasch, P. J., and Taylor, M. A.: Description of the NCAR Community Atmosphere Model (CAM5.0), Tech. Rep. NCAR/TN-486-STR, National Center for Atmospheric Research, Boulder, CO, USA, available at: <http://www.cesm.ucar.edu/models/cesm1.0/cam/> (last access: 24 August 2015), 2010.
- Oleson, K., Lawrence, D., Bonan, G., Flanner, M., Kluzek, E., Lawrence, P., Levis, S., Swenson, S., Thornton, P., Dai, A., Decker, M., Dickinson, R., Feddes, J., Heald, C., Hoffman, F., Lamarque, J.-F., Mahowald, N., Niu, G.-Y., Qian, T., Randleson, J., Running, S., Sakaguchi, K., Slater, A., Stockli, R., Wang, A., Yang, Z.-L., Zeng, X., and Zeng, X.: Technical Description of version 4.0 of the Community Land Model (CLM), Tech. Rep. NCAR/TN-478+STR, NCAR, National Center for Atmospheric Research, Boulder, CO, USA, available at: <http://www.cesm.ucar.edu/models/cesm1.0/clm/> (last access: 24 August 2015), 2010.
- Owen, P. R.: *Saltation of uniform grains in air, J. Fluid Mech.*, 20, 225–242, doi:10.1017/S0022112064001173, 1964.
- Panofsky, H., Tennekes, H., Lenschow, D., and Wyngaard, J.: The characteristics of turbulent velocity components in the surface layer under convective conditions, *Bound.-Lay. Meteorol.*, 11, 355–361, doi:10.1007/BF02186086, 1977.
- Park, S.: A unified convection scheme (UNICON). part I: formulation, *J. Atmos. Sci.*, 71, 3902–3930, doi:10.1175/JAS-D-13-0234.1, 2014.
- Park, S. and Bretherton, C. S.: The University of Washington shallow convection and moist turbulence schemes and their impact on climate simulations with the Community Atmosphere Model, *J. Climate*, 22, 3449–3469, doi:10.1175/2008JCLI2557.1, 2009.
- Pavia, E. G. and O'Brien, J. J.: Weibull statistics of wind speed over the ocean, *J. Appl. Meteorol.*, 25, 1324–1332, doi:10.1175/1520-0450(1986)025<1324:WSOWSO>2.0.CO;2, 1986.
- Prospero, J. M., Ginoux, P., Torres, O., Nicholson, S. E., and Gill, T. E.: Environmental characterization of global sources of atmospheric soil dust identified with the NIMBUS 7 Total Ozone Mapping Spectrometer (TOMS) absorbing aerosol product, *Rev. Geophys.*, 40, 1002, doi:10.1029/2000RG000095, 2002.
- Qian, Y., Gustafson Jr., W. I., and Fast, J. D.: An investigation of the sub-grid variability of trace gases and aerosols for global climate modeling, *Atmos. Chem. Phys.*, 10, 6917–6946, doi:10.5194/acp-10-6917-2010, 2010.
- Redelsperger, J.-L., Guichard, F., and Mondon, S.: A parameterization of mesoscale enhancement of surface fluxes for large-scale models, *J. Climate*, 13, 402–421, doi:10.1175/1520-0442(2000)013<0402:APOMEO>2.0.CO;2, 2000.
- Ridley, D. A., Heald, C. L., Pierce, J. R., and Evans, M. J.: Toward resolution-independent dust emissions in global models: impacts on the seasonal and spatial distribution of dust, *Geophys. Res. Lett.*, 40, 2873–2877, doi:10.1002/grl.50409, 2013.
- Schepanski, K., Tegen, I., Laurent, B., Heinold, B., and Macke, A.: *A new Saharan dust source activation frequency map derived from MSG-SEVIRI IR-channels, Geophys. Res. Lett.*, 34, 1944–8007, doi:10.1029/2007GL030168, 2007.
- Schumann, U.: Minimum friction velocity and heat transfer in the rough surface layer of a convective boundary layer, *Bound.-Lay. Meteorol.*, 44, 311–326, doi:10.1007/BF00123019, 1988.
- Skamarock, W. and Klemp, J.: A time-split nonhydrostatic atmospheric model for weather research and forecasting applications, *J. Comput. Phys.*, 227, 3465–3485, doi:10.1016/j.jcp.2007.01.037, 2008.
- Stevens, R. G. and Pierce, J. R.: A parameterization of sub-grid particle formation in sulfur-rich plumes for global- and

- regional-scale models, *Atmos. Chem. Phys.*, 13, 12117–12133, doi:10.5194/acp-13-12117-2013, 2013.
- 1635 Stier, P., Seinfeld, J. H., Kinne, S., and Boucher, O.: Aerosol absorption and radiative forcing, *Atmos. Chem. Phys.*, 7, 5237–5261, doi:10.5194/acp-7-5237-2007, 2007.
- 1640 Textor, C., Schulz, M., Guibert, S., Kinne, S., Balkanski, Y., Bauer, S., Bernsten, T., Berglen, T., Boucher, O., Chin, M., Dentener, F., Diehl, T., Easter, R., Feichter, H., Fillmore, D., Ghan, S., Ginoux, P., Gong, S., Grini, A., Hendricks, J., Horowitz, L., Huang, P., Isaksen, I., Iversen, I., Kloster, S., Koch, D., Kirkevåg, A., Kristjansson, J. E., Krol, M., Lauer, A., Lamarque, J. F., Liu, X., Montanaro, V., Myhre, G., Penner, J., Pitari, G., Reddy, S., Seland, Ø., Stier, P., Takemura, T., and Tie, X.: Analysis and quantification of the diversities of aerosol life cycles within AeroCom, *Atmos. Chem. Phys.*, 6, 1777–1813, doi:10.5194/acp-6-1777-2006, 2006.
- 1650 Torres, O., Bhartia, P. K., Herman, J. R., Sinyuk, A., Ginoux, P., and Holben, B.: A long-term record of aerosol optical depth from TOMS observations and comparison to AERONET measurements, *J. Atmos. Sci.*, 59, 398–413, doi:10.1175/1520-0469(2002)059<0398:ALTROA>2.0.CO;2, 2002.
- 1655 Westphal, D. L., Toon, O. B., and Carlson, T. N.: A case study of mobilization and transport of Saharan dust, *J. Atmos. Sci.*, 45, 2145–2175, doi:10.1175/1520-0469(1988)045<2145:ACSOMA>2.0.CO;2, 1988.
- White, B.: Soil transport by winds on Mars, *J. Geophys. Res.*, 84, 4643–4651, doi:10.1029/JB084iB09p04643, 1979.
- 1660 Zender, C. S. and Kwon, E. Y.: Regional contrasts in dust emission responses to climate, *J. Geophys. Res.-Atmos.*, 110, D13201, doi:10.1029/2004JD005501, 2005.
- Zender, C. S., Bian, H., and Newman, D.: The mineral Dust Entrainment And Deposition (DEAD) model: description and 1990s dust climatology, *J. Geophys. Res.*, 108, 4416, doi:10.1029/2002JD002775, 2003.
- 1665 Zeng, X., Zhang, Q., Johnson, D., and Tao, W.-K.: Parameterization of wind gustiness for the computation of ocean surface fluxes at different spatial scales, *Mon. Weather Rev.*, 130, 2125–2133, doi:10.1175/1520-0493(2002)130<2125:POWGFT>2.0.CO;2, 2002.
- Zhang, G. J. and McFarlane, N. A.: Sensitivity of climate simulations to the parameterization of cumulus convection in the Canadian Climate Centre general circulation model, *Atmos. Ocean*, 33, 407–446, doi:10.1080/07055900.1995.9649539, 1995.
- 1675 Zhang, K., O'Donnell, D., Kazil, J., Stier, P., Kinne, S., Lohmann, U., Ferrachat, S., Croft, B., Quaas, J., Wan, H., Rast, S., and Feichter, J.: The global aerosol-climate model ECHAM-HAM, version 2: sensitivity to improvements in process representations, *Atmos. Chem. Phys.*, 12, 8911–8949, doi:10.5194/acp-12-8911-2012, 2012.
- Zhang, K., Liu, X., Wang, M., Comstock, J. M., Mitchell, D. L., Mishra, S., and Mace, G. G.: Evaluating and constraining ice cloud parameterizations in CAM5 using aircraft measurements from the SPARTICUS campaign, *Atmos. Chem. Phys.*, 13, 4963–4982, doi:10.5194/acp-13-4963-2013, 2013.
- 1685 Zhang, K., Wan, H., Liu, X., Ghan, S. J., Kooperman, G. J., Ma, P.-L., Rasch, P. J., Neubauer, D., and Lohmann, U.: Technical Note: On the use of nudging for aerosol-climate model intercomparison studies, *Atmos. Chem. Phys.*, 14, 8631–8645, doi:10.5194/acp-14-8631-2014, 2014.
- 1690