

GO2OGS 1.0: a versatile workflow to integrate complex geological information with fault data into numerical simulation models

T. Fischer¹, D. Naumov³, S. Sattler^{2,a}, O. Kolditz^{1,4}, and M. Walther^{1,5}

¹Helmholtz-Centre for Environmental Research – UFZ Leipzig, Department Environmental Informatics, Permoserstr. 15, 04318 Leipzig, Germany

²LBEG (State Authority for Mining, Energy and Geology), Hannover, Germany

³Hochschule für Technik, Wirtschaft und Kultur Leipzig, Leipzig, Germany

⁴Technische Universität Dresden, Applied Environmental Systems Analysis, Dresden, Germany

⁵Technische Universität Dresden, Contaminant Hydrology, Dresden, Germany

^aformerly at: Thüringer Landesanstalt für Umwelt und Geologie, Jena, Germany

Correspondence to: T. Fischer (thomas.fischer@ufz.de)

Abstract

We offer a versatile workflow to convert geological models built with the software Paradigm™ GOCAD® into the open-source VTU format for the usage in numerical simulation models. Tackling relevant scientific questions or engineering tasks often involves multidisciplinary approaches. Conversion workflows are needed as a way of communication between the diverse tools of the various disciplines. Our approach offers an open-source, platform independent, robust, and comprehensible method that is potentially useful for a multitude of environmental studies. With two application examples in the Thuringian Syncline, we show how a heterogeneous geological GOCAD model including multiple layers and faults can be used for numerical groundwater flow modelling, in our case employing the open-source numerical toolbox OpenGeoSys for groundwater flow simulations. The presented workflow offers the chance to incorporate increasingly detailed data, utilizing growing availability of computational power to simulate numerical models.

1 Introduction

1.1 Problem description and motivation

To gain understanding of phenomena in our environment, it is common practice to develop models (Kolditz et al., 2012b). Since real world problems show a high complexity, it is necessary for various disciplines to cooperate in order to achieve a proper description of different aspects of a model (Wycisk et al., 2009; Refsgaard et al., 2012; Sharpe et al., 2002). Yet, the various scientific disciplines use varying types of models to investigate diverse scientific questions (Laniak et al., 2013). A multitude of techniques, workflows, and tools is applied, which often results in the consequence, that data conversion between separate tools or data sources is necessary (Sharpe et al., 2002; Gichamo et al., 2012; Walther et al., 2012a; Wojda and Brouyère, 2013). Understandably, it is desirable to provide conversion workflows that are effortlessly repeatable for an arbitrary number of applications, while the employed conversion algorithms are reproducible and understandable. Such workflows,

i.e. to integrate various data sources from different sources, are prominent in many disciplines, and have recently been shown in publications like Wu et al. (2005); Hardebol and Bertotti (2013); Shen et al. (2014); Ragettli et al. (2015).

In the following, we present a workflow to convert data between two types of models, i.e. from a *geological structure model* into a *numerical simulation model*. In specific, we propose a workflow to convert geological structure models, created by the GOCAD (Geological Object Computer Aided Design¹) software in the SGrid format, into simulation models usable by the Finite Element simulator OpenGeoSys in the VTK framework format. Geological structure models are used, for instance, to gain better understanding of the development and formation of geological units. Based on the characteristics of the geological units, it is possible to create a hydrogeological simulation model to study the fluid flow in the sub-surface. Thus, a geological structure model can aid to obtain a valid simulation model, by providing the parametrization in a heterogeneous domain. A valid simulation model can help to understand various phenomena and makes predictions of the future possible. Even if a simulation model includes only few parameters, it can be a challenging task to set up the model appropriately and solve it analytically. In most cases of simulation models, analytical solutions are not available at all. To solve such problems, numerical methods need to be utilized; in this case, we use OpenGeoSys. Similar to Park et al. (2014), who show an approach to integrate Petrel data into OpenGeoSys (PET2OGS), we developed the workflow GO2OGS for the transition from GOCAD to an open-source format and finally OpenGeoSys.

1.2 Modelling tools and site description

GOCAD is a sophisticated tool to model complex geological structures, see for example Zanchi et al. (2009). It can be used as a pre-processor to display hydrogeological simulation models to acquire and assess information on the heterogeneity of aquifer systems.

¹<http://www.pdgm.com/products/gocad/> (access date: 16 December 2014)

GOCAD was deployed within the project Influids (INtegrierte FLuiddynamik IN Sedi-
mentbecken) to create a complex, three-dimensional, geological structure model of the
Thuringian Syncline including several layers and multiple faults (see Fig. 1, and Fig. 2 “GO-
CAD Model”). The Thuringian Syncline is located in central Germany and has an exten-
5 sion of approximately [150]km from Northwest to Southeast and [80]km from Southwest
to Northeast. It is surrounded by the Harz and the Kyffhäuser mountains in the North, the
Thuringian Forest in the South and the Thuringian Highlands in the Southeast. On the ba-
sis of the geological structure model, various scientific aspects should be investigated. We
selected two different hydrogeological examples to study the applicability of our workflow.

10 **Setup A: Eolian, Fluvial, Lacustrin and Sandflat Models.** Among other research ques-
tions, scientists of the Influids project are interested in the course of flow paths in distinct
sedimentary depositions. (Kunkel et al., 2013) used GOCAD to create a number of small-
scale geological structure models. In the following, we used one of these setups exemplary.

15 **Setup B: 3-D Geological Overview Model of Thuringian Syncline.** In contrast to
setup A, a second setup (B) features a more complex structure, with a heterogeneous do-
main of layered structures, as well as faults and outcropping layers. A complete description
on the 3-D geological model of the Thuringian Syncline, which is the basis for the GOCAD
model used in this study, and the geological background will be publicly available in the re-
port TLUG (2015). In the following, we will restrain on relevant information for our workflow
20 to acquire a finite element (FE) mesh and set up a simulation model.

We selected OpenGeoSys as a numerical modeling tool, while the presented workflow to
utilize the hydro-geological information from GOCAD (GO2OGS) is not necessarily limited
to the usage of this specific numerical modeling tool. OpenGeoSys (Kolditz et al., 2012a)
is a well established, open source, platform independent simulation package for coupled
25 THM/C processes (thermal, hydraulic, mechanical and chemical processes). The numerical
simulation model utilizes the finite element method (FEM) and has been applied at various
instances in environmental sciences (Sun et al., 2011; Walther et al., 2012b, 2013; Nagel
et al., 2013; Maxwell et al., 2013; Kolditz et al., 2015).

Geological models can be built in several data formats; in this case a GOCAD stratigraphic grid format (SGrid) was generated for further usage. OpenGeoSys makes use of the VTK framework (Visualization Toolkit) to read the mesh files in the VTU format (Visualization Toolkit unstructured grid)

5 1.3 Previous work and literature

As a link between geological and visualization sciences, ParaViewGeo² offers interfaces to many file formats used in the geological community. Amongst others, it is able to read GOCAD ASCII files. However, we were unable to utilize this for our purposes, as not all features of the GOCAD SGrid format, e.g. the so called split nodes, important to integrate the faults, are supported by the reading algorithms. We could also not continue the work of the ParaViewGeo GOCAD SGrid reader as ParaViewGeo, with the last contribution in January 2012, is based on a deprecated ParaView version (3.12.1), while the current ParaView version is 4.2 (access date 17 November 2014).

Maier et al. (2004) use various scripts to convert GOCAD input data to set up a MODFLOW model. Similarly, Luo et al. (2012) describe a way to setup a FEFLOW simulation model using a collection of external scripts and tools. In the study of Ni and Chen (2014), a converting algorithm from GOCAD SGrid models to FLAC3D simulation models is shown. Zehner et al. (2015) describe and compare three GOCAD internal workflows to generate a mesh suitable for numerical simulations of electromagnetic fields. The workflows use external open source meshing tools (e.g. GMSH (Geuzaine and Remacle, 2009)³ or TetGen (Si, 2015)⁴), or an interface to the modeling environment Ansys⁵. Recently, Qu et al. (2015) offered a method to generate volumetric gridded fault zones by adding elements in the respective areas to the existing grids. This method, although shown to be applicable on a multitude of setups, will require an existing base mesh of good quality, requires the

²<http://paraviewgeo.objectivity.ca/> (access date: 16 December 2014)

³<http://www.geuz.org/gmsh/> (access date: 12 October 2015)

⁴<http://www.tetgen.org> (access date: 12 October 2015)

⁵<http://www.ansys.com> (access date: 16 December 2014)

use of additional software, and is not open-sourced. Unfortunately, none of these tools satisfy every criterium mentioned before, i.e. publicly available algorithms, well documented workflows, platform independency, as well as the ability to include faults in an unstructured mesh, which renders them unusable for our purposes.

5 Numerical simulation studies on the hydrogeology in the Thuringian Syncline have been conducted by Rödiger (2005), who created a hydrogeological simulation model for the eastern part of Thuringian Syncline. Rödiger shows awareness of the existence of faults but states that the used numerical modelling software (VISUAL MODFLOW) does not support to incorporate the faults. Furthermore, Zech (2013) investigated transport processes in the
10 subsurface within the Thuringian Syncline. Zech used a workflow provided by Zehner (2011) to obtain two vertical 2-D cross sections from GOCAD for numerical simulations with OpenGeoSys. In this case, the data preparation was solely done within GOCAD. Unfortunately, we were unable to base GO2OGS on this, as the reduced complexity of the 2-D setups did not incorporate the necessary features in a full 3-D domain.

15 As far as the authors are aware, similar groundwater flow simulation codes, e.g. GMS⁶, or FEFLOW, do not have a streamlined interface, that satisfies the afore mentioned requirements, to make use of the GOCAD SGrid format.

1.4 Structure of the paper

20 The conversion workflow to transform a geological structure mesh (SGrid) into a usable simulation mesh (VTU) is sketched in Fig. 2, which simultaneously shows the structure of the paper. In the following, we use the notation ①, ②, ③ and ④ to refer to subfigures of Fig. 2 and steps of the workflow, respectively.

In order to foster and to encourage the interested scientific audience, the equivalent source code for the individual algorithms can be found in an open-access repository⁷, and is available to the community via <https://github.com/envinf/GO2OGS>. In the paper, we will
25 use the style GO2OGS: `algorithm` to refer to a specific algorithm.

⁶<http://www.aquaveo.com/supported-file-types> (access date: 16 December 2014)

⁷Contact for support thomas.fischer@ufz.de, info@opengeosys.org

After a brief description of the underlying mathematical equations, we introduce meshing terms and element quality measures. Based on this, we present an algorithm for the conversion of the GOCAD SGrid ① to an open data format mesh ②. By evaluating the element quality of ②, we propose a reconstruction algorithm to obtain a corrected mesh ③. Finally, in a third section, we utilize ④ to delineate a mesh that is used in an application of a regional scale groundwater flow modelling ④ that makes use of the heterogeneous information initially obtained by the geological modelling in ①.

2 Fundamentals and methods

2.1 Background

Partial differential equations are used as models for natural processes. For instance, a linear elliptic partial differential equation of second order defined on a domain $\Omega \subset \mathbb{R}^3$ can be written as

$$-\sum_{i,j=1}^3 \frac{\partial}{\partial x_i} \left(a_{ij}(\mathbf{x}) \frac{\partial}{\partial x_j} u(\mathbf{x}) \right) = f(\mathbf{x}), \quad \mathbf{x} \in \Omega, \quad (1a)$$

where a_{ij} are coefficients, u is a potential and f describes the sources and sinks of a quantity. Furthermore conditions on the boundary $\Gamma = \partial\Omega$ have to be specified:

$$u(\mathbf{x}) = g_D(\mathbf{x}), \quad \mathbf{x} \in \Gamma_D \subseteq \Gamma \quad \text{or} \quad (1b)$$

$$\partial_n u(\mathbf{x}) = g_N(\mathbf{x}), \quad \mathbf{x} \in \Gamma_N = \Gamma \setminus \Gamma_D, \quad (1c)$$

where Eq. (1b) are denoted first type or Dirichlet boundary conditions and Eq. (1c) describes flow through the surface normal of the boundary, i.e. second type or Neumann boundary conditions. Unfortunately, even for this simple linear problem, an analytical solution does not exist. To solve the equation, a numerical method can be used computing an approximation to the solution.

In the following, we want to apply the Finite Element Method (FEM, Zienkiewicz et al., 2000), which has already been incorporated in the open-source simulation toolbox OpenGeoSys. In order to apply the FEM we need a partition of the domain Ω , where the problem Eq. (1) is defined on, i.e. we need to generate a mesh where the equation can be parametrized.

2.1.1 Meshing and element quality

We used volume elements for the partition of a polyhedral approximation of the problem domain Ω into simpler parts. This partitioning is referred to as meshing.

The FEM performs arithmetic operations based on the mesh cells. Due to the finite representation of real numbers as floating point numbers in a computer, the arithmetic operations are not exact and the operations' (intermediate) results are rounded. For example, two nodes can be such close to each other, that during the computation of their distance, cancellation will occur, i.e. the difference of the operands of the subtraction contains a smaller number of accurate (significant) digits than the original operands. Additionally, the element quality depends on the physical process that should be simulated. For example, in transport process simulations, the Peclet number has to be acknowledged (see Johannsen et al., 2006; Johannsen, 2006; Graf and Degener, 2011).

In general, mesh quality influences both, the accuracy and efficiency of a FEM. Therefore, the quality of the cells has to satisfy specific quality criteria. Knupp (2007) gives an overview on the relevance of quality criteria, among others, for FE methods. The OpenGeoSys DataExplorer (Rink et al., 2013, 2014), a data exploration framework as part of the OpenGeoSys project, provides several quality measures. The OpenGeoSys DataExplorer can be used, for example, to calculate the edge aspect ratio r_{ea} for an element e (face or cell) following

$$r_{\text{ea}}(e) = \frac{\min_{1 \leq i \leq |e|} |\ell_i|}{\max_{1 \leq i \leq |e|} |\ell_i|}, \quad (2)$$

where ℓ_i is the i th straight line segment and $|e|$ is the number of segments of e . As a rule of thumb, elements with $r_{ea} \ll 1$ are unsuitable for the application of the FEM (Zienkiewicz et al., 2000).

2.1.2 Data structures and visualization

5 OpenGeoSys can read and write the file format VTU (Visualization Toolkit unstructured grid) of the well documented Visualization Toolkit (VTK, Schroeder et al., 2006). The documentation for this open data format, as well as the source code of the VTK project is publicly available from the project web site⁸. We use ParaView (Ayachit, 2015) to visualize and evaluate the particular converting steps. ParaView is a widely used open source visualization toolbox, also in hydrogeological sciences (Bilke et al., 2014; Helbig et al., 2014; Walther et al., 2014). ParaView uses the VTK framework to apply various filters in a pipeline combining a large variety of visualization algorithms.

2.2 Converting GOCAD SGrid data to an open data format

15 A GOCAD SGrid data set is comprised of several files. A central file manages all important metadata. This file (extension.sg) may already include the necessary data to describe the geological model and its properties, or may also refer to external data containers. In the following we will describe the methodology to read the GOCAD SGrid data ① and write to an open data format ②.

2.2.1 Read original GOCAD data

20 Algorithm 1 contains the main steps performed to convert the GOCAD SGrid data to an open data format. The algorithm was implemented within the OpenGeoSys project, i.e. it uses its data structures to read and convert the data. The algorithm as well as the definition

⁸www.vtk.org (access date: 16 December 2014)

and implementation of data structures used within the algorithm can be found in GO2OGS: `GocadSGridReader`. Selected intermediate results of the algorithm are depicted in Fig. 4.

Algorithm 1 SGridToVTU: converting ① to ②

- 1: Read structured grid dimension (see Fig. 4a)
 - 2: Parse location and format (ASCII or binary) of point coordinates
 - 3: Read point coordinates (see Fig. 4b)
 - 4: Read and assign properties (e.g., permeability or reservoir units, see Fig. 4c)
 - 5: If split nodes exist, read split nodes and FaceSets which are descriptions of fault surfaces
 - 6: Integrate existing split nodes into structured grid (see Fig. 4d and Fig. 5)
 - 7: Write mesh data to VTU file
 - 8: Generate fault surfaces as meshes and store as VTU files
-

Executing steps 1–3 of the algorithm results in a structured grid (see Fig. 4a and b). After integrating the split nodes (step 7), the mesh becomes an unstructured grid (Fig. 4d). How the split nodes are stored in the GOCAD SGrid format is documented in Bourke, Paul (2008). For the integration of split nodes into the open data format mesh (step 7 of Algorithm 1), we generate new nodes and update the topology of the associated elements. Fig. 5 exemplarily visualizes the integration of a split node, and why the GOCAD created meshes may show such bad element quality: notice the creation of a void within the mesh at node $(1,1)$, or the degeneration of element $(1,0)$, after integration of split nodes $(1,1')$.

We employed Algorithm 1 on setup A, i.e. the small-scale block domains. After converting the hydrogeological models, the resulting meshes of ② could immediately be used as an input for numerical flow simulations with OpenGeoSys (see Kunkel et al. (2013), results not shown here).

Due to the fact, that setup B shows a more complex structure, the application of Algorithm 1 did not yield a mesh which is already suitable for FE simulations. Therefore, in the following we will only attend to further processing work on setup B. In specific, the domain of setup B is comprised of 13, non-continuous stratigraphic units. Furthermore, the model domain contains 54 vertical faults. Converging stratigraphic units and faults, that are realized through the integration of split nodes (compare Fig. 4d), led to corrupted mesh elements in the original GOCAD SGrid model, with e.g. non-planar element faces, or near-zero volume elements. Figure 6 visualizes a discontinuous stratigraphic unit in three levels of detail; at

the finest level (Fig. 6 right), one can recognize an example for a corrupted mesh element in the Rotliegendes (lower, brown layer).

To evaluate the overall quality of the mesh of setup B, we calculated the edge ratio criterion (compare equation 2) for every cell read from the original GOCAD SGrid (Fig. 7, gray bars). About 60% of the mesh elements show an aspect ratio $r_{ea} \leq 10^{-2}$; as mentioned in Sect. 2.1, elements with $r_{ea} \ll 1$ are not suitable for FE simulations. Therefore, we will have to employ further conversion steps on setup B to correct and provide a mesh that can be used in a FE model.

2.3 Re-construction of a complex geological 3-dimensional model

To increase the mesh quality of the original GOCAD SGrid mesh, we will use the method of reconstructing the mesh, converting ② to ③ (see Fig. 2). The method of reconstruction offers the ability to specify element dimensions prior to meshing and, thus, positively influence mesh quality. The aim of the reconstruction is to achieve the closest possible approximation of the geological structures of the original GOCAD SGrid model preferably using a small number of high quality cells.

For reconstruction, one could employ TetGen (Si, 2015), a mesh generator that uses tetrahedra to construct a 3-D domain. In order to mesh the domain with TetGen, one needs to provide piece-wise linear complexes along all outer and internal boundaries. The acquisition of these complexes is especially challenging in areas close to faults, where split nodes constitute discontinuities. Additionally, TetGen will generate an extraordinary number of elements in converging layers (compare Fig. 6 middle and right) to satisfy element quality criteria. This will lead to too many elements to finish the FE simulations and acquire results within reasonable amounts of time. To encounter these challenges, we follow an alternative way for reconstructing the mesh domain by utilizing a hexahedra resampling method.

2.3.1 Reconstruction using hexahedra resampling

For the hexahedra resampling based reconstruction, we use the implementation provided by Algorithm 2.

Algorithm 2 Reconstruct: converting ② to ③

- 1: Convert the unstructured grid into a 3-dimensional image or structured grid
 - 2: Integrate the faults as material parameters into the structured grid
 - 3: Convert back to an unstructured grid
-

In the first step, employing GO2OGS: `resample`, a structured grid within the bounding box of the original unstructured grid ② is generated. Depending on the needs of the simulation, it is possible to adjust the resolution in the x , y , or z dimensions. Properties like the affiliation to a geological unit are transmitted from unstructured cells to the cells of the structured grid. In order to determine the property value of a cell c_s in the structured grid we look for the cell c_u of the unstructured grid that contains the geometric central point of c_s . The cell c_s is assigned the same property value as is assigned to c_u . Cells within the bounding box, but not located in the unstructured grid, are marked as invalid. They are preserved to maintain the structure of the original grid and to simplify the indexing.

In the second step, cells intersecting faults surfaces are marked using GO2OGS: `IntegrateFaultFacesets`. As a consequence, a fault which is represented as an areal element in the GOCAD SGrid model becomes a volume element in the structured grid.

In the last step, in GO2OGS: `removeInvalidCells.py`, cells marked as invalid in the first step are removed. The resulting unstructured grid is stored in the open data format VTU ③. We called this grid “VTU+” in Figure 2 to signify the improvement of the element quality due to the reconstruction algorithm. Fig. 8 compares the GOCAD mesh ② with the resampled mesh ③; notice, how the GOCAD mesh not only shows degenerated elements along the fault, but also the zero-thickness elements at the top of the domain.

The selection of the resolution for the reconstruction influences several aspects, including (1) the element quality, (2) the number of cells needed for the domain approximation, (3) the level of detail of the geological information, and (4) the approximation quality for the investigated processes of the FEM. Issue (1) is relevant to ensure that the generated elements are not corrupted (i.e. $r_{ea} \ll 1$), and most often achieved by increasing the number of elements for the representation of heterogeneous features. Yet, this is contrary to issue (2), which at first depends on the system resources of the computing machine (i.e. whether the

simulation can be run at all), but eventually influences the runtime of the FE model. Furthermore, issue (3) refers to the fact that in order to omit loosing information of the topology of the geological units, an appropriate z resolution depending on the information density of the underlying geological model is required. Exemplary for the representation of the geological features with respect to the resolution, Fig. 9a shows the original GOCAD mesh in comparison with two resolutions after reconstruction (Fig. 9b and c). Finally, (4) is a necessary consideration that will become important after the FE simulation has finished, i.e. whether the investigated processes have been rendered correctly, or that numerical stability criteria were not violated (e.g. Peclet, Courant numbers).

3 Application example

In the preceding sections, we introduced a workflow to convert a heterogeneous GOCAD mesh, as a result of geological modeling, into an input file for numerical simulations (here: OpenGeoSys) for the application of the FEM method. In the following, we want to show how we used the converted mesh of Setup B in a catchment scale modeling, primarily as a proof of concept for the conversion workflow. As a secondary result, we expect first insight into the significance of flow regimes of the different hydrogeological units and faults. This should provide a basis for further investigations within the framework of the project Influids and future work in the study area.

We want to simulate steady state, confined groundwater flow in a catchment of the Thuringian Syncline. The chosen study area, the Unstrut catchment until the gauge Oldisleben (compare Fig. 1), is part of the Thuringian Syncline. Following Eq. (1), and neglecting storage for a long-term mean, the groundwater flow in porous media can be modeled by the equation

$$-\operatorname{div}\left(\frac{\hat{k}(\mathbf{x})\rho g}{\mu}\operatorname{grad}h(\mathbf{x})\right)=q(\mathbf{x}), \quad \mathbf{x}\in\Omega \quad (3a)$$

with the conditions on the boundary:

$$h(\mathbf{x}) = g_D(\mathbf{x}), \quad \mathbf{x} \in \Gamma_D \subseteq \Gamma, \quad (3b)$$

$$\partial_n h(\mathbf{x}) = g_N(\mathbf{x}), \quad \mathbf{x} \in \Gamma_N = \Gamma \setminus \Gamma_D. \quad (3c)$$

Here, $[\hat{\kappa}(\mathbf{x})](L^2)$ is the tensor of permeability of the porous medium at the point $[\mathbf{x}](L)$, $[\rho](M \cdot L^{-3})$ is the fluid density, $[g](L \cdot T^{-2})$ is gravitational acceleration, $[\mu](M \cdot L^{-1} \cdot T^{-1})$ is dynamic viscosity, $[h](L)$ denotes the hydraulic head, and $[q](T^{-1})$ describes sources or sinks of the fluid.

For a solution of Eq. (3a) it is necessary to set the material parameters for each element of the mesh and to prescribe Dirichlet (see Eq. 3b) or Neumann (see Eq. 3c) conditions on the boundaries.

For the model at hand, i.e. setup B, we employed Algorithm 2 on ② and were able to produce a reconstructed mesh ③ considering all issues raised in Sect. 2.3.1. The generated mesh consists of 45.7 mio. cells with a homogeneous cell size of $[250]m \times [250]m \times [10.56]m$ ($x \times y \times z$). This yields an edge aspect ratio $r_{ea} \approx 0.04$, i.e. a much better element quality than the original GOCAD mesh (see green bar in Fig. 7). Figure 9c visualizes the level of detail of the heterogeneous geological information for the chosen resolution.

3.1 Delineation of a catchment domain

To define the border of the numerical model, we had to cut the geological model of the Thuringian Syncline ③ with the catchment boundary of the Unstrut river. Therefore, we established the following workflow: (a) the catchment boundary was derived from the SRTM 90 m digital elevation model (Shuttle Radar Topography Mission, Jarvis et al., 2008) employing ArcGIS watershed delineation algorithms, (b) the resulting shape file was used to flag the properties of the mesh elements outside of the catchment boundary (GO2OGS: `ResetPropertiesInPolygonalRegion`), and subsequently the respective elements were removed (GO2OGS: `removeMeshElements`). The result was the simulation model ④.

3.2 Parametrization of the simulation model

With specified boundaries, we could parametrize Eq. (3), and apply boundary conditions to the domain. For the proof of concept, and out of simplicity, the numerical model was set up and parameterized based on plain, but reasonable assumptions. Doubtlessly, there is potential for improving the model setup and, through calibration techniques the results, to approach more realistic projections. Yet, this is beyond the scope of this work, but we will yield recommendations in an outlook for future modeling endeavours.

3.2.1 Fluid and medium properties

We assumed common constant values for dynamic viscosity $\mu = [1 \times 10^{-3}] Pa \cdot s$, and density $\rho = [1 \times 10^3] kg \cdot m^{-3}$ of water. As our model features a steady state simulation, the only additional parameter group that had to be defined was intrinsic permeability $k^{F,L}$ (with superscript F for faults and L for layers). Within the material groups, the parameters were set to a homogeneous value. We defined two distinct scenarios (S1, S2): S1 is the result ④ of the presented workflow with a heterogeneous domain, with commonly cited values for the inherent geological units (Seidel, 2003). In scenario S1, we treated the faults to be impermeable (i.e. low permeability $\kappa^F \ll \kappa^L$). In contrast to S1, scenario S2 is defined through a homogeneous value for all material groups providing a setup for assessing the importance of heterogeneities and faults within the chosen catchment on regional scale. Table 1 gives an overview for the used values, and scenarios of the parameter permeability.

As the Basement (“G”) layer from the GOCAD model does not significantly contribute to the flow regime (personal communication with J. Geletneky, Thüringer Landesanstalt für Umwelt und Geologie, TLUG), we neglected this material group in the setup. The respective elements were removed following a similar approach as described in Sect. 3.1 (GO2OGS: `removeMeshElements`). The same is probably true for material groups 10–12 (i.e. Zechstein and Upper Rotliegendes), but removing the associated elements resulted in a non-continuous mesh, i.e. holes in the domain; therefore, we did not remove these elements.

3.2.2 Boundary conditions

Assuming that surface and subsurface catchments are identical in this case, and that the basement (“G”) layer is practically impermeable, we can set No-Flow boundary conditions after Eq. (3c), i.e. $\partial_n h(\mathbf{x}) = 0$, $\mathbf{x} \in \Gamma$, at the vertical borders and the bottom of the chosen catchment domain.

A homogeneous groundwater recharge was assumed on the top of the model with $[150]mm \cdot a^{-1}$, which lies within a common bandwidth for the area (Seidel, 2003; Rödiger, 2005). We introduced a top layer (see material group 13 in Table 1) with a high permeability to represent infiltrating capabilities of the soil, which are enforced by weathering processes even on initially low permeable units that strike the ground surface. The top layer comprises all cells which own nodes that are exposed to the upper boundary of the mesh, resembling less than 1 percent of the total thickness of the modelling domain.

We set Dirichlet-type boundary conditions along the main rivers, which are acting as major water sources or sinks in the area. The hydraulic head of the river nodes was set to the respective elevation of the river nodes (compare also light blue dots in Fig. 1 for position of river nodes).

3.3 Simulation results and discussion

3.3.1 Results

Figure 10 shows the simulated hydraulic head in the model domain of the Unstrut catchment for scenario S1 (i.e. heterogeneous setup). The model provides a reasonable distribution of the hydraulic head; larger values can be observed in the higher south-western and northern mountainous regions, while smaller values are calculated for the lower north-eastern area near the catchment outlet. The rivers, as boundary conditions, alternate between loosing and gaining sections. A comparison of the observed and simulated depth from the surface to the groundwater table (Fig. 11) affirms that the model S1 is generally capable to represent the regional groundwater level distribution in the domain; topographical effects are

recognizable through larger distances in elevated areas, and smaller distances in lower regions, whereas additionally, groundwater levels reach the ground surface in the vicinity to rivers.

The difference between the two scenarios S1 and S2, i.e. the influence of a heterogeneous vs. a homogeneous parametrization, can be observed in Fig. 12 that shows the absolute difference of hydraulic heads from S1 and S2 at the top of layer 2. Although, for the many areas of the domain, the differences are mostly small ($< [2]m$), simulation results vary in the northern part of the catchment, where the rivers as boundary conditions dominate the flow regime, and in the southern part, where faults significantly alter the hydraulic head.

The parametrization of the faults and its influence on the scenarios become even more important, when observing flow patterns: Fig. 13 shows a particle tracking within an area where two faults reduce the available flow width (see Fig. 12 for the location of the detailed view). In S1, Fig. 13a, the low-permeable faults act as barriers, limiting the pathways of the particles and directing the flow through a “bottleneck” in lower layers (yellow, green, blue, and purple pathlines). As the Top layer (material group 13) was interpreted as an upper stratum being exposed to weathering processes with increased permeability, the faults are not hindering the flow paths and particles may pass (red pathlines). Contrary, in the homogeneous case S2, Fig. 13b, flow paths are not limited by faults and show an exchange between the rivers as the overall flow regime is primarily governed by the rivers’ boundary conditions.

3.3.2 Discussion

While the simulation generally yields reasonable results for the hydraulic head and its distribution within the model domain, and the comparison to observed values of the depth to the groundwater table shows generally similar values, the model still offers large potential for improvement from a hydrogeological point of view (compare also Sect. 4.1). For example, groundwater levels in the upper elevations (northern areas) are currently governed by the 1st-type river boundary conditions; utilizing a 3rd-type boundary condition might reflect

a more realistic situation. Also, the varying influent and effluent conditions of the streams that are results of the simulations should be compared with observations, and e.g. the near-river hydrogeology adapted. Although the simulated particle flow paths most likely do not represent the local flow regime correctly, more importantly, the comparison of the scenarios underlines the relevance for the usage of available distributed geological information, and the influence of a heterogeneous parametrization on groundwater flow simulations in the study area.

4 Conclusions and outlook

4.1 Conclusions

Dealing with complex subsurface structures, e.g. sedimentary basins such as the Thuringian Syncline, is still a challenge for process modelling, e.g. fluid dynamics of subsurface systems. Even though, sophisticated professional tools for structural modelling exist (e.g. GOCAD, PETREL), the translation of structural to accurate numerical models remains to be a demanding task due to different (i) classic, and even (ii) new aspects. (i) The complex-physics-simple-structure vs. complex-structure-simple-physics paradigm is still valid (Fletcher, 1991), may this concern e.g. data acquisition and model parametrization through data scarcity (Ritzema et al., 2010; Gräbe et al., 2013), or model validity (Nguyen and de Kok, 2007). Also, (ii) modern geophysical exploration methods provide increasingly detailed information and high data accuracy, that adequate numerical representation is required (Thorleifson et al., 2010; Schmelzbach et al., 2011; Van Dam, 2012; Lucia et al., 2015). Thanks to the extending availability of supercomputing facilities, e.g. Peta-Flop architectures, solving numerical models with 10^9 degrees-of-freedom became possible, offering a new dimension of hyper-resolution subsurface modelling (Wang et al., 2014). With respect to numerical modelling, we consider meshing as a non-trivial, complex task that needs special attention in order to provide a sound basis for FE simulations.

With GO2OGS, we provide a complete workflow to utilize complex hydrogeological information of a geological structure model for the setup of numerical subsurface simulation models (Fig. 2). Specifically, important achievements of this work are:

- 5 – It has been shown that output of composite geological modeling tools (here GOCAD) may include elements of bad quality; these meshes cannot directly be used in FEM simulation tools.
- Corresponding conversion algorithms have been developed that generate mesh domains of good quality and arbitrary spatial resolution. The conversion tools use GOCAD SGrid input ① and write VTK framework files (② to ④).
- 10 – The output of ② to ④ are provided in an open data format, making the presented workflow and tools versatile and potentially useful for a multitude of applications, e.g. aiding in fundamental research (McKenna et al., 2003; Pozdniakov et al., 2012), offering easier and straight-forward integration of subsurface heterogeneous information (Walther et al., 2012b), or increasing prediction quality (Sutanudjaja et al., 2011; de Hoyos et al., 2012). Respective readers and conversion methods can easily be written following the VTK framework documentation.
- 15 – Converted results from ② could be directly used for numerical modelling, here for simulation of flow in small-scale sedimentary structures (Kunkel et al., 2013).
- As a proof of concept for ④, we applied the developed workflow on a regional scale catchment (Unstrut river till gauge Oldisleben). Therefore, the VTU output of ④ was used as an input for the OpenGeoSys numerical modeling toolbox. Employing two different scenarios, we could show that the parametrization of faults in the study area is important for the regional and local flow regime. In particular, hydraulic head and particle flow paths are altered by faults, which may effect, e.g. groundwater age, or contaminant spreading. Further investigations are needed to reduce uncertainty of the parametrization and the model.
- 20
- 25

4.2 Outlook

With the presentation and implementation of a general workflow for the setup of high-resolution numerical models based on structural information, this technical paper constitutes a prerequisite for further investigations. With the workflow, we are now able to tackle scientific questions related to a better understanding of the dynamics of the Thuringian Syncline's subsurface systems with accurate numerical subsurface models. Among others, relevant scientific question are:

- What is the influence of tilted fractures, or the anisotropy of fractures on the communication between layers? Can isotope measurements (Matter et al., 2005; Tian et al., 2015) or simulation of groundwater age (Goode, 1996) help to identify the flow paths in the field?
- How will distributed heterogeneous recharge (e.g. from SWAT model) or distributed hydrological models (e.g. mHM, Samaniego et al., 2010) affect the subsurface flow regime?
- How important is the representation of rivers, i.e. 3rd-type boundary conditions to represent colmation of river sediments, or alternatively, what is the impact from the usage of the river network model output?
- In continuation of Zech (2013), can a regional-scale, heterogeneous, three-dimensional subsurface model help to understand thermohaline effects?

In order to improve prediction capabilities and quality of the regional-scale setup, one may instrumentalize one of the following approaches:

- employing automatic calibration methods to obtain better parameter estimates (hydraulic conductivity, porosity, leaching factor of rivers, recharge etc.), e.g. by utilizing PEST (Gallagher and Doherty, 2007) as in Li et al. (2009); Sun et al. (2011);
- in combination with the former, a parameter sensitivity study will help to answer the question what the driving components of the groundwater system are, which in turn

may yield information for future measurement campaigns (i.e. to identify regions with too little data);

- approach numerical improvements, e.g. to include other mesh elements in the reconstruction, which offers the possibility to reduce the mesh size, i.e. the number of elements, while still incorporating relevant structural small-scale features through local grid refinement.

Besides the improvements of the numerical simulation, we see the possibility to extend the workflow itself. These improvements may address the following issues:

- include more complex, non-vertical fault structures;
- use meshes with different element types, e.g. prismatic or tetrahedral elements;
- the latter will enable the option of adaptive meshing, especially in the vicinity of faults;
- introduce meshes with different element dimensions, e.g. using 2D triangles as faults within 3D cubes as the matrix structure.

Finally, as the underlying geological model is subject to an active and constant update process, the state-of-the-art information of a more detailed model may easily be incorporated into future numerical setups employing the workflow GO2OGS.

Code availability

The source code of GO2OGS is available through the open-access repository⁹ via <https://github.com/envinf/GO2OGS>.

Author contributions. Thomas Fischer and Dmitri Naumov developed the model code and performed the simulations together with Marc Walther. Sabine Sattler developed the geological GOCAD model. Thomas Fischer, Marc Walther, Sabine Sattler, and Olaf Kolditz prepared the manuscript.

⁹Contact for support thomas.fischer@ufz.de, info@opengeosys.org

Acknowledgements. This work was funded by the German Ministry of Education and Research (grant no. 03IS2091D). The authors appreciate the sincere cooperation with H. Huckriede, J. Geletneky, I. Zander (Thüringer Landesanstalt für Umwelt und Geologie), C. Kunkel (Friedrich-Schiller Universität Jena), as well as C. Herold (Friedrich-Schiller Universität Jena) and S. Attinger (Helmholtz-Centre for Environmental Research, UFZ – Leipzig and Friedrich-Schiller Universität Jena). The authors would like to thank the three anonymous reviewers for their comments that significantly increased the quality of the publication.

The article processing charges for this open-access publication were covered by a Research Centre of the Helmholtz Association.

References

Ayachit, U.: The ParaView Guide Community Edition, United States of America: Kitware Inc., available at: <http://www.paraview.org/paraview-guide/>, last access: 10 August 2015.

BFN: Bundesamt fuer Naturschutz, Kartendienst Flussauen in Deutschland, available at: <http://www.bfn.de/>, last access: 5 February 2015.

Bilke, L., Fischer, T., Helbig, C., Krawczyk, C., Nagel, T., Naumov, D., Paulick, S., Rink, K., Sachse, A., Schelenz, S., Walther, M., Watanabe, N., Zehner, B., Ziesch, J., and Kolditz, O.: TESSIN VISLab-laboratory for scientific visualization, *Environ. Earth Sci.*, 72, 3881–3899, doi:10.1007/s12665-014-3785-5, 2014.

Paul Bourke: GOCAD developer kit: ASCII file data format, available at: <http://paulbourke.net/dataformats/gocad/gocad.pdf>, last access: 12 October 2015.

de Hoyos, A., Viennot, P., Ledoux, E., Matray, J. M., Rocher, M., and Certes, C.: Influence of thermohaline effects on groundwater modelling – application to the Paris sedimentary Basin, *J. Hydrol.*, 464–465, 12–26, doi:10.1016/j.jhydrol.2012.06.014, 2012.

De Lucia, M., Kempka, T., and Kühn, M.: A coupling alternative to reactive transport simulations for long-term prediction of chemical reactions in heterogeneous CO₂ storage systems, *Geosci. Model Dev.*, 8, 279–294, doi:10.5194/gmd-8-279-2015, 2015.

Fletcher, C.: *Computational Techniques for Fluid Dynamics 1*, Computational Techniques for Fluid Dynamics, Springer, Berlin Heidelberg, 1991.

Gallagher, M. and Doherty, J.: Parameter estimation and uncertainty analysis for a watershed model, *Environ. Modell. Softw.*, 22, 1000–1020, doi:10.1016/j.envsoft.2006.06.007, 2007.

- Geuzaine, C. and Remacle, J.-F.: Gmsh: A 3-D finite element mesh generator with built-in pre- and post-processing facilities, *International Journal for Numerical Methods in Engineering*, 79, 1309–1331, doi:10.1002/nme.2579, 2009.
- 5 Gichamo, T. Z., Popescu, I., Jonoski, A., and Solomatine, D.: River cross-section extraction from the ASTER global DEM for flood modeling, *Environ. Modell. Softw.*, 31, 37–46, doi:10.1016/j.envsoft.2011.12.003, 2012.
- Goode, D. J.: Direct simulation of groundwater age, *Water Resour. Res.*, 32, 289–296, doi:10.1029/95WR03401, 1996.
- 10 Gräbe, A., Rödiger, T., Rink, K., Fischer, T., Sun, F., Wang, W., Siebert, C., and Kolditz, O.: Numerical analysis of the groundwater regime in the western Dead Sea escarpment, Israel + West Bank, *Environ. Earth Sci.*, 69, 571–585, doi:10.1007/s12665-012-1795-8, 2013.
- Graf, T. and Degener, L.: Grid convergence of variable-density flow simulations in discretely-fractured porous media, *Adv. Water Resour.*, 34, 760–769, doi:10.1016/j.advwatres.2011.04.002, 2011.
- 15 Hardebol and Bertotti: DigiFract: A software and data model implementation for flexible acquisition and processing of fracture data from outcrops. *Comput. Geosci.*, 54, 326–336, doi:, 2013.
- Helbig, C., Bauer, H.-S., Rink, K., Wulfmeyer, V., Frank, M., and Kolditz, O.: Concept and workflow for 3D visualization of atmospheric data in a virtual reality environment for analytical approaches, *Environ. Earth Sci.*, 72, 3767–3780, doi:10.1007/s12665-014-3136-6, 2014.
- 20 Jarvis, A., Reuter, H., Nelson, A., and Guevara, E.: Hole-filled SRTM for the globe Version 4, available from the CGIAR-CSI SRTM 90 m Database, available at: <http://srtm.csi.cgiar.org> (last access: 7 May 2015), 2008.
- Johannsen, K.: Numerical aspects of density driven flow in porous media, in: *Proceedings of the CMWR XVI*, vol. 1, Copenhagen, Denmark, 19–22 June, 2006, 1–8, doi:10.4122/1.1000000245, 2006.
- 25 Johannsen, K., Oswald, S., Held, R., and Kinzelbach, W.: Numerical simulation of three-dimensional saltwater-freshwater fingering instabilities observed in a porous medium, *Adv. Water Resour.*, 29, 1690–1704, doi:10.1016/j.advwatres.2005.12.008, 2006.
- Knupp, P. M.: Remarks on mesh quality, in: *45th AIAA Aerospace Sciences Meeting and Exhibit*, Reno, 8–11 January, 2007.
- 30 Kolditz, O., Bauer, S., Bilke, L., Böttcher, N., Delfs, J.-O. O., Fischer, T., Görke, U. J., Kalbacher, T., Kosakowski, G., McDermott, C. I., Park, C. H., Radu, F., Rink, K., Shao, H. B., Sun, F., Sun, Y. Y., Singh, A. K., Taron, J., Walther, M., Wang, W., Watanabe, N., Wu, Y., Xie, M., Xu, W., and

- Zehner, B.: OpenGeoSys: an open-source initiative for numerical simulation of thermo-hydro-mechanical/chemical (THM/C) processes in porous media, *Environ. Earth Sci.*, 67, 589–599, doi:10.1007/s12665-012-1546-x, 2012a.
- 5 Kolditz, O., Görke, U.-J., Shao, H., and Wang, W.: Thermo–Hydro–Mechanical–Chemical Processes in Porous Media: Benchmarks and Examples, *Lecture Notes in Computational Science and Engineering*, Vol. 1, Springer Berlin Heidelberg, 2012b.
- Kolditz, O., Görke, U.-J., Shao, H., Wang, W., and Bauer, S.: Thermo–Hydro–Mechanical–Chemical Processes in Fractured Porous Media: Modelling and Benchmarking, Vol. 2, Springer Berlin Heidelberg, 2015.
- 10 Kunkel, C., Attinger, S., and Gaupp, R.: 3D-small-scale facies models of Buntsandstein formations as foundation for fluid pathway reconstructions in the Thuringian Syncline, in: *Sedimentary Basins Jena – Research Modelling Exploration*, Friedrich-Schiller-Universität Jena, p. 76, 2013.
- Laniak, G. F., Olchin, G., Goodall, J., Voinov, A., Hill, M., Glynn, P., Whelan, G., Geller, G., Quinn, N., Blind, M., Peckham, S., Reaney, S., Gaber, N., Kennedy, R., and Hughes, A.: Integrated environmental modeling: a vision and roadmap for the future, *Environ. Modell. Softw.*, 39, 3–23, doi:10.1016/j.envsoft.2012.09.006, 2013.
- 15 Li, H., Brunner, P., Kinzelbach, W., Li, W., and Dong, X.: Calibration of a groundwater model using pattern information from remote sensing data, *J. Hydrol.*, 377, 120–130, doi:10.1016/j.jhydrol.2009.08.012, 2009.
- 20 Luo, J., Monninkhoff, B., Schätzl, P., Becker, J. K., Gmünder, C., and Jordan, P.: Elaboration of numerical models for the simulation of groundwater flow in Northern Switzerland, tech. rep., in: *FEFLOW User Conference 2012*, Berlin, Germany, 3–7 September, 381–389, 2012.
- Maier, U., Becht, A., Kostic, B., Bürger, C., Bayer, P., Teutsch, G., and Dietrich, P.: Characterization of quaternary gravel aquifers and their implementation in hydrogeological models, in: *GQ2004 International Conference of Groundwater Quality: Bringing Groundwater Quality Research to the Watershed Scale*, Waterloo, Canada, 19–22 July, IAHS Publ. 297, 159–168, 2004.
- 25 Matter, J. M., Waber, H. N., Loew, S., and Matter, A.: Recharge areas and geochemical evolution of groundwater in an alluvial aquifer system in the Sultanate of Oman, *Hydrogeol. J.*, 14, 203–224, doi:10.1007/s10040-004-0425-2, 2006.
- 30 Maxwell, R. M., Putti, M., Meyerhoff, S., Delfs, J.-O., Ferguson, I. M., Ivanov, V., Kim, J., Kolditz, O., Kollet, S. J., Kumar, M., Lopez, S., Niu, J., Paniconi, C., Park, Y.-J., Phanikumar, M. S., Shen, C., Sudicky, E. A., and Sulis, M.: Surface-subsurface model intercomparison: a first set of bench-

- mark results to diagnose integrated hydrology and feedbacks, *Water Resour. Res.*, 50, 1–52, doi:10.1002/2013WR013725, 2013.
- McKenna, S. A., Walker, D. D., and Arnold, B.: Modeling dispersion in three-dimensional heterogeneous fractured media at Yucca Mountain, *J. Contam. Hydrol.*, 62–63, 577–594, doi:10.1016/S0169-7722(02)00189-4, 2003.
- 5 Nagel, T., Shao, H., Singh, A. K., Watanabe, N., Roßkopf, C., Linder, M., Wörner, A., and Kolditz, O.: Non-equilibrium thermochemical heat storage in porous media: Part 1 – Conceptual model, *Energy*, 60, 254–270, doi:10.1016/j.energy.2013.06.025, 2013.
- Nguyen, T. and de Kok, J.: Systematic testing of an integrated systems model for coastal zone management using sensitivity and uncertainty analyses, *Environ. Modell. Softw.*, 22, 1572–1587, doi:10.1016/j.envsoft.2006.08.008, 2007.
- 10 Ni, X. D. and Chen, K.: Study on the conversion of GOCAD models to FLAC3D models, *Appl. Mech. Mater.*, 501–504, 2527–2531, 2014.
- Park, C.-H., Shinn, Y., Park, Y.-C., Huh, D.-G., and Lee, S.: PET2OGS: algorithms to link the static model of Petrel with the dynamic model of OpenGeoSys, *Comput. Geosci.*, 62, 95–102, 2014.
- 15 Pozdniakov, S. P., Bakshevskaya, V. A., Krohicheva, I. V., Danilov, V. V., and Zubkov, A. A.: The influence of conceptual model of sedimentary formation hydraulic heterogeneity on contaminant transport simulation, *Moscow University Geology Bulletin*, 67, 43–51, doi:10.3103/S0145875212010097, 2012.
- 20 Qu, D., Røe, P., and Tveranger, J.: A method for generating volumetric fault zone grids for pillar gridded reservoir models, *Comput. Geosci.*, 81, 28–37, doi:10.1016/j.cageo.2015.04.009, 2015.
- S. Ragettli, F. Pellicciotti, W.W. Immerzeel, E.S. Miles, L. Petersen, M. Heynen, J.M. Shea, D. Stumm, S. Joshi, and a. Shrestha: Unraveling the hydrology of a Himalayan catchment through integration of high resolution in situ data and remote sensing with an advanced simulation model, *Adv. Water Resour.*, 78, 94–111, doi:10.1016/j.advwatres.2015.01.013 2015.
- 25 Refsgaard, J. C., Christensen, S., Sonnenborg, T. O., Seifert, D., Hojberg, A. L., and Trolborg, L.: Review of strategies for handling geological uncertainty in groundwater flow and transport modeling, *Adv. Water Resour.*, 36, 36–50, doi:10.1016/j.advwatres.2011.04.006, 2012.
- Rink, K., Fischer, T., Selle, B., and Kolditz, O.: A data exploration framework for validation and setup of hydrological models, *Environ. Earth Sci.*, 69, 469–477, doi:10.1007/s12665-012-2030-3, 2013.
- 30 Rink, K., Bilke, L., and Kolditz, O.: Visualisation strategies for environmental modelling data, *Environ. Earth Sci.*, 72, 3857–3868, doi:10.1007/s12665-013-2970-2, 2014.

- Ritzema, H., Froebrich, J., Raju, R., Sreenivas, C., and Kselik, R.: Using participatory modelling to compensate for data scarcity in environmental planning: a case study from India, *Environ. Modell. Softw.*, 25, 1450–1458, doi:10.1016/j.envsoft.2010.03.010, 2010.
- 5 Rödiger, T.: Charakterisierung und Modellierung des Buntsandsteinfließsystems im Osten des Thüringer Beckens, PhD thesis, Faculty of Chemistry and Earth Sciences, Friedrich Schiller University Jena, 2005.
- Samaniego, L., Kumar, R., and Attinger, S.: Multiscale parameter regionalization of a grid-based hydrologic model at the mesoscale, *Water Resour. Res.*, 46, 5, doi:10.1029/2008WR007327, 2010.
- 10 Schmelzbach, C., Tronicke, J., and Dietrich, P.: Three-dimensional hydrostratigraphic models from ground-penetrating radar and direct-push data, *J. Hydrol.*, 398, 235–245, doi:10.1016/j.jhydrol.2010.12.023, 2011.
- Schroeder, W., Martin, K., and Lorensen, B.: *The Visualization Toolkit: An Object-oriented Approach to 3D Graphics*, Kitware, 2006.
- 15 Seidel, H. G. (Ed.): *Geologie von Thüringen*, Schweizerbart'sche Verlagsbuchhandlung, Stuttgart, 2003.
- Sharpe, D. R., Hinton, M. J., Russell, H. J., and Desbarats, A. J.: The need for basin analysis in regional hydrogeological studies: Oak Ridges Moraine, southern Ontario, *Geosci. Can.*, 29, 3–20, 2002.
- 20 Shen, Chaopeng, Niu, Jie, and Fang, Kuai: Quantifying the effects of data integration algorithms on the outcomes of a subsurface–land surface processes model, *Environ. Modell. Softw.*, 59, 146–161, doi:10.1016/j.envsoft.2014.05.0062014.
- Si, H.: TetGen, a Delaunay-Based Quality Tetrahedral Mesh Generator, *ACM Trans. Math. Softw.*, 41, 11:1–11:36, doi:10.1145/2629697, <http://doi.acm.org/10.1145/2629697>, 2015.
- 25 Sun, F., Shao, H., Kalbacher, T., Wang, W., Yang, Z., Huang, Z., and Kolditz, O.: Groundwater drawdown at Nankou site of Beijing Plain: model development and calibration, *Environ. Earth Sci.*, 64, 1323–1333, doi:10.1007/s12665-011-0957-4, 2011.
- Sutanudjaja, E. H., van Beek, L. P. H., de Jong, S. M., van Geer, F. C., and Bierkens, M. F. P.: Large-scale groundwater modeling using global datasets: a test case for the Rhine-Meuse basin, *Hydrol. Earth Syst. Sci.*, 15, 2913–2935, doi:10.5194/hess-15-2913-2011, 2011.
- 30 Thorleifson, H., Berg, R. C., and Russell, H. J.: Geological mapping goes 3-D in response to societal needs, *Geol. Soc. Am. Bull.*, 20, 27–29, doi:10.1130/GSATG86GW.1, 2010.

- Tian, Y., Zheng, Y., Wu, B., Wu, X., Liu, J., and Zheng, C.: Modeling surface water-groundwater interaction in arid and semi-arid regions with intensive agriculture, *Environ. Modell. Softw.*, 63, 170–184, doi:10.1016/j.envsoft.2014.10.011, 2015.
- 5 TLUG: Abschlussbericht des Zentralprojektes Koordination und Datenmanagement innerhalb des PROSIN-Projektes INFLUINS, Tech. rep., Thüringer Landesanstalt für Umwelt und Geologie, in preparation, 2015.
- Van Dam, R. L.: Landform characterization using geophysics – recent advances, applications, and emerging tools, *Geomorphology*, 137, 57–73, doi:10.1016/j.geomorph.2010.09.005, 2012.
- 10 Walther, M., Böttcher, N., and Liedl, R.: A 3D interpolation algorithm for layered tilted geological formations using an adapted inverse distance weighting approach, in: *ModelCare2011, Models – Repositories of Knowledge*, IAHS Publ., Leipzig, 119–126, 355 (2012) ISBN 978-1-907161-34-6, 374, 2012a.
- Walther, M., Delfs, J.-O., Grundmann, J., Kolditz, O., and Liedl, R.: Saltwater intrusion modeling: verification and application to an agricultural coastal arid region in Oman, *J. Comput. Appl. Math.*, 15 236, 4798–4809, doi:10.1016/j.cam.2012.02.008, 2012b.
- Walther, M., Solpuker, U., Böttcher, N., Kolditz, O., Liedl, R., and Schwartz, F. W.: Description and verification of a novel flow and transport model for silicate-gel emplacement, *J. Contam. Hydrol.*, 157, 1–10, doi:10.1016/j.jconhyd.2013.10.007, 2013.
- 20 Walther, M., Bilke, L., Delfs, J.-O., Graf, T., Grundmann, J., Kolditz, O., and Liedl, R.: Assessing the saltwater remediation potential of a three-dimensional, heterogeneous, coastal aquifer system, *Environ. Earth Sci.*, 72, 3827–3837, doi:10.1007/s12665-014-3253-2, 2014.
- Wang, W., Fischer, T., Zehner, B., Böttcher, N., Görke, U.-J., and Kolditz, O.: A parallel finite element method for two-phase flow processes in porous media: *OpenGeoSys with PETSc*, *Environ. Earth Sci.*, 73, 2269–2285, doi:10.1007/s12665-014-3576-z, 2014.
- 25 Wikimedia Commons: available at: <http://commons.wikimedia.org/>, last access: 9 February 2015.
- Wojda, P. and Brouyère, S.: An object-oriented hydrogeological data model for groundwater projects, *Environ. Modell. Softw.*, 43, 109–123, doi:10.1016/j.envsoft.2013.01.015, 2013.
- Wu, Qiang, Xu, Hua, and Zou, Xukai: An effective method for 3D geological modeling with multi-source data integration, *Comput. Geosci.*, 31, 35–43, doi:10.1016/j.cageo.2004.09.005, 2005.
- 30 Wycisk, P., Hubert, T., Gossel, W., and Neumann, C.: High-resolution 3D spatial modelling of complex geological structures for an environmental risk assessment of abundant mining and industrial megasites, *Comput. Geosci.*, 35, 165–182, doi:10.1016/j.cageo.2007.09.001, 2009.

Zanchi, A., Francesca, S., Stefano, Z., Simone, S., and Graziano, G.: 3D reconstruction of complex geological bodies: Examples from the Alps, *Comput. Geosci.*, 35, 49–69, doi:10.1016/j.cageo.2007.09.003, 2009.

5 Zech, A.: Impact of Aquifer Heterogeneity on Subsurface Flow and Salt Transport at Different Scales, PhD thesis, Faculty of Chemistry and Earth Sciences, Friedrich Schiller University Jena, 2013.

Zehner, B.: Constructing geometric models of the subsurface for finite element simulation, *Proceedings IAMG 2011 conference*, 5–9 September, Salzburg, Austria, 695–708, doi:10.5242/iamg.2011.0069, 2011.

10 Zehner, B., Börner, J. H., Görz, I., and Spitzer, K.: Workflows for generating tetrahedral meshes for finite element simulations on complex geological structures, *Comput. Geosci.*, 79, 105–117, doi:10.1016/j.cageo.2015.02.009, 2015.

Zienkiewicz, O. C., Taylor, R. L., and Taylor, R. L.: *The Finite Element Method: the Basis*, Butterworth-Heinemann, Burlington, 2000.

Table 1. Isotropic permeability values $p\kappa = -\log \kappa$ of material groups (MatG), i.e. layers and faults, with $[\kappa]$ (m^2).

MatG	Abbrev.	Geological unit	S1	S2
1	ju + ko	Lower Jurassic + Upper Keuper	12	11
2	km	Middle Keuper	12	11
3	ku	Lower Keuper	12	11
4	mo	Upper Muschelkalk	12	11
5	mm	Middle Muschelkalk	11	11
6	mu	Lower Muschelkalk	12	11
7	so	Upper Buntsandstein	14	11
8	sm	Middle Buntsandstein	11	11
9	su	Lower Buntsandstein	11	11
10	z3_7	Zechstein	16	11
11	z1_2	Zechstein	17	11
12	ro	Upper Rotliegendes	17	11
–	G	Basement	–	–
13	Top	Top cells	10	10
14	Faults	Faults	18	11

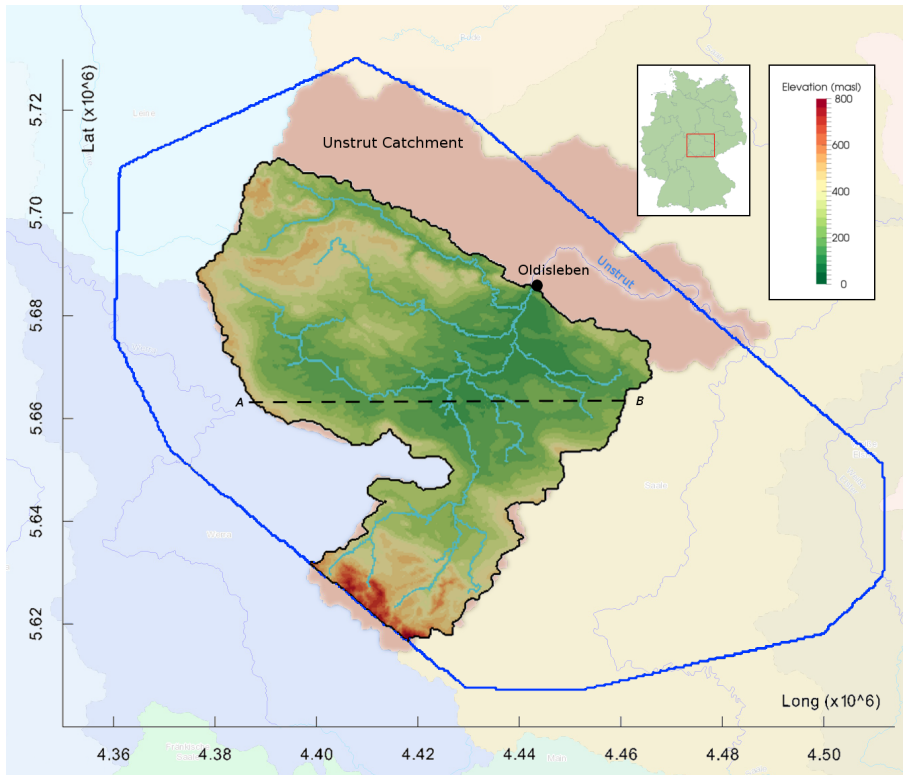


Figure 1. Overview map of Thuringian Syncline region: border of GOCAD geological model (blue line), elevation and rivers (light blue) in simulation model of Unstrut catchment until gauge Oldisleben (border as black line), position of cross section A–B (dashed line); background catchment map from BFN, digital elevation data from SRTM (Jarvis et al., 2008), Germany overview map from Wikimedia Commons (2015).

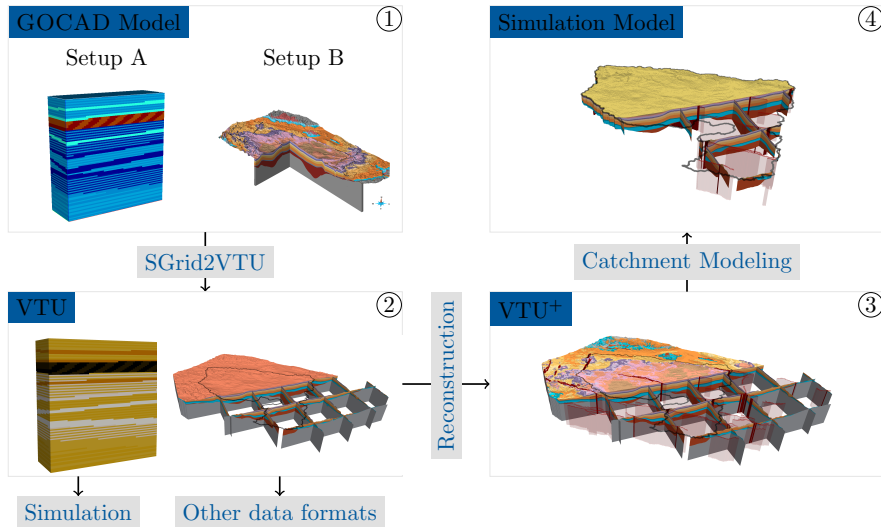


Figure 2. Workflow of GO2OGS for GOCAD to OGS mesh conversion; “Setup A” shows a model of different sedimentary layers; “Setup B” shows a model of the Thuringian Syncline (legend given in Fig. 3); see Sect. 1.2 for description of setups.

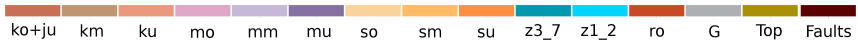


Figure 3. Legend for geological units of “Setup B”; for abbreviations see Table 1.

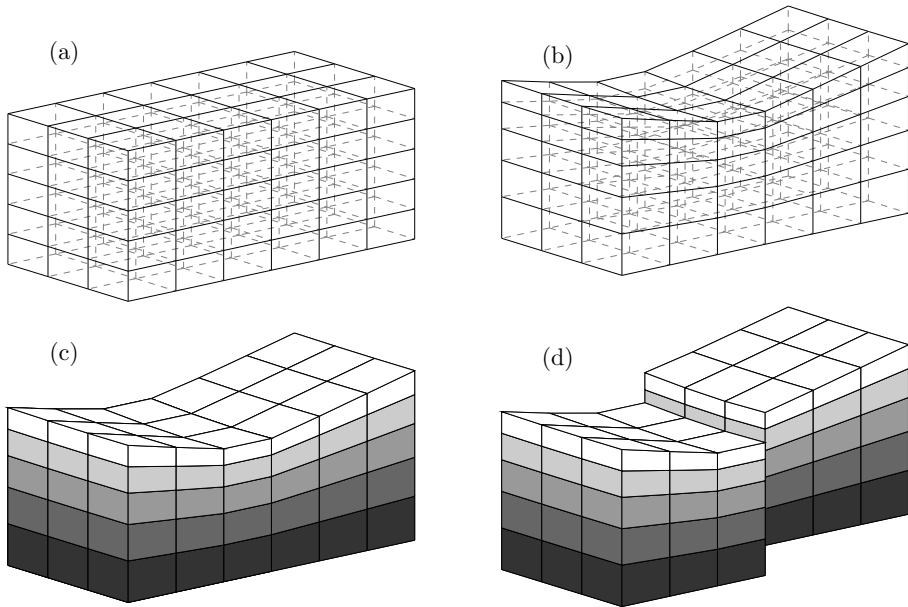


Figure 4. Intermediate results of Algorithm 1: **(a)** definition of structured grid, **(b)** structured grid based on read coordinates, **(c)** applying flag information, e.g. material groups, **(d)** inserted split nodes.

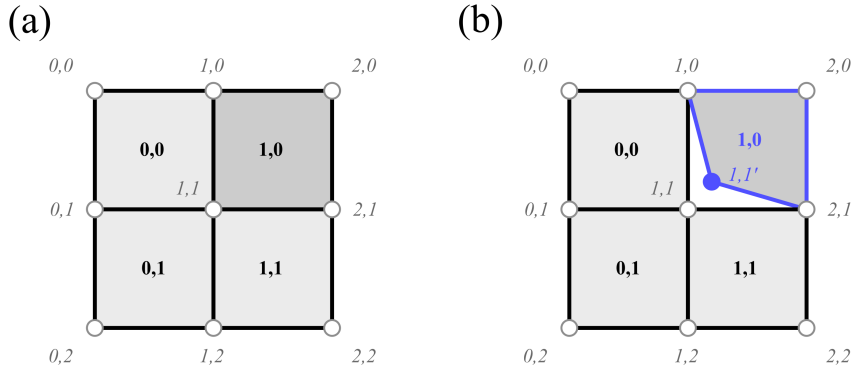


Figure 5. Schematic representation of implementation of split nodes into a structured mesh (a) resulting in an unstructured mesh (b) of quadrilateral elements; grey border hollow dots symbolize element nodes; node indices are represented in italic, element indices are represented in bold.

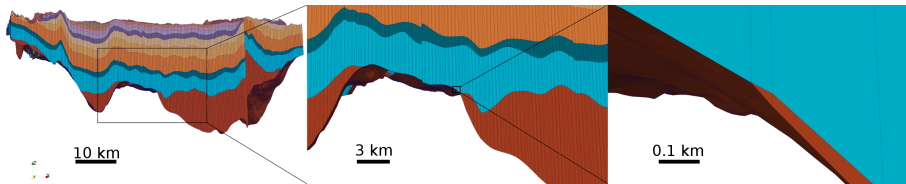


Figure 6. Mesh elements at non-continuous geological units, vertical cross section *A–B* (see Fig. 1) through GOCAD model at different magnification levels, vertical exaggeration $20\times$, legend given in Fig. 3.

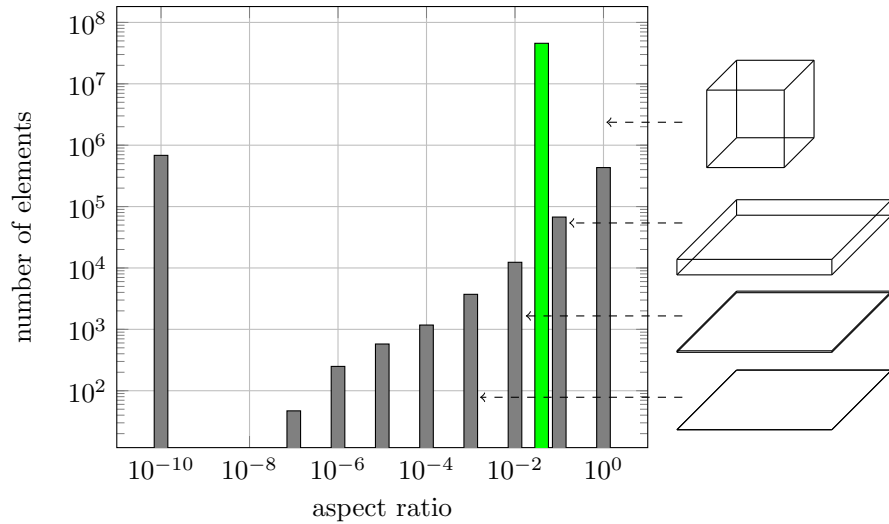


Figure 7. Histogram of aspect ratio classes for read GOCAD SGrid mesh data (gray) and reconstructed mesh data (green), sample elements for selected aspect ratios.

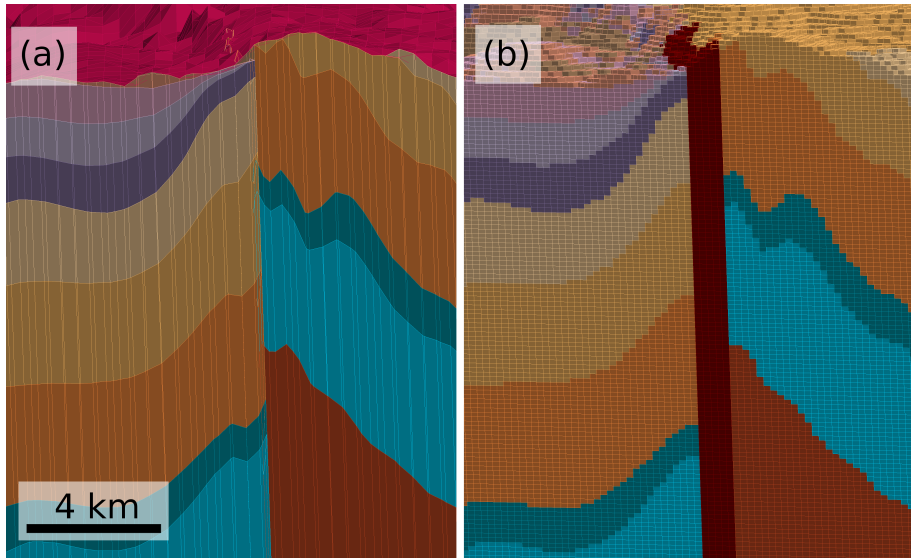


Figure 8. Exemplary comparison of meshes before (a) and after (b) the resampling along a fault; vertical exaggeration $10\times$, legend given in Fig. 3, position of viewpoint shown in Fig. 9.

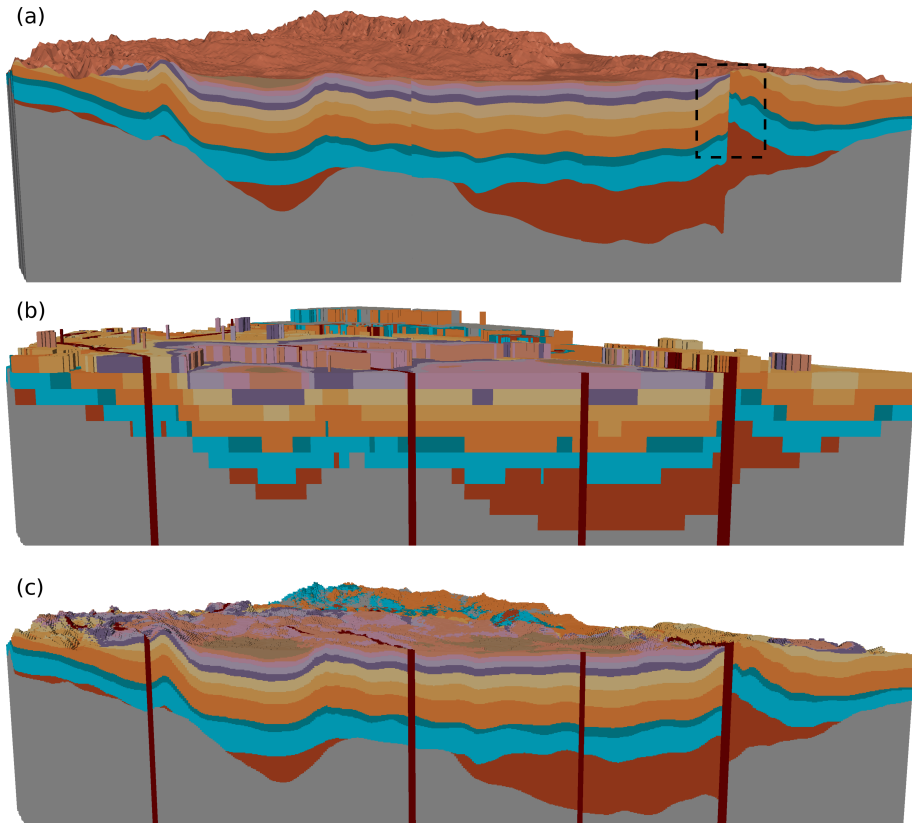


Figure 9. Cross section A–B for comparison of a coarse and a fine reconstruction of geological units to original GOCAD model, vertical exaggeration $20\times$, legend given in Fig. 3, cross section in Fig. 1: **(a)** original structure model, **(b)** after reconstruction using a coarse resolution (vertical resolution $\Delta z \approx [250]$ m), **(c)** after reconstruction using a fine resolution ($\Delta z \approx [11]$ m); dotted frame in (a) shows position of viewpoint in Fig. 8.

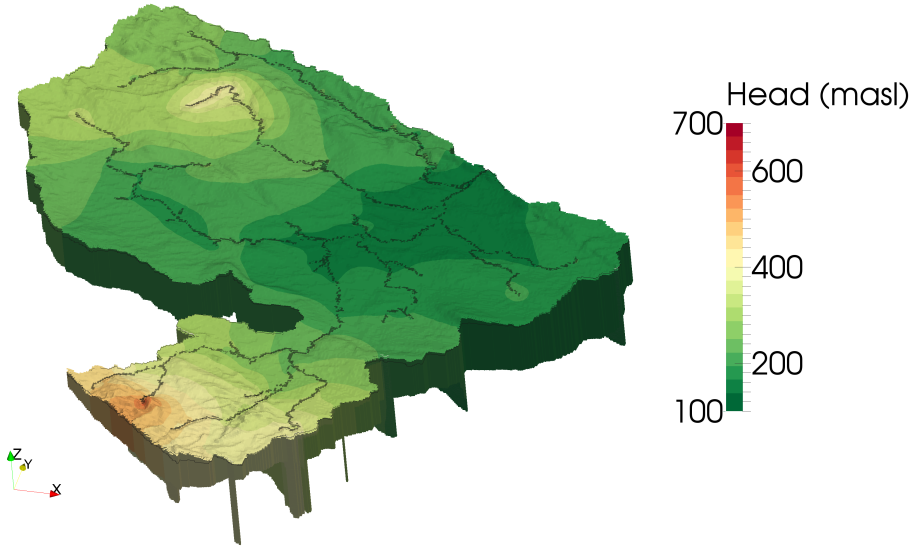


Figure 10. Hydraulic head distribution in simulation model, vertical exaggeration 5 \times ; spiking elements at the bottom of the domain visualize the position of the faults.

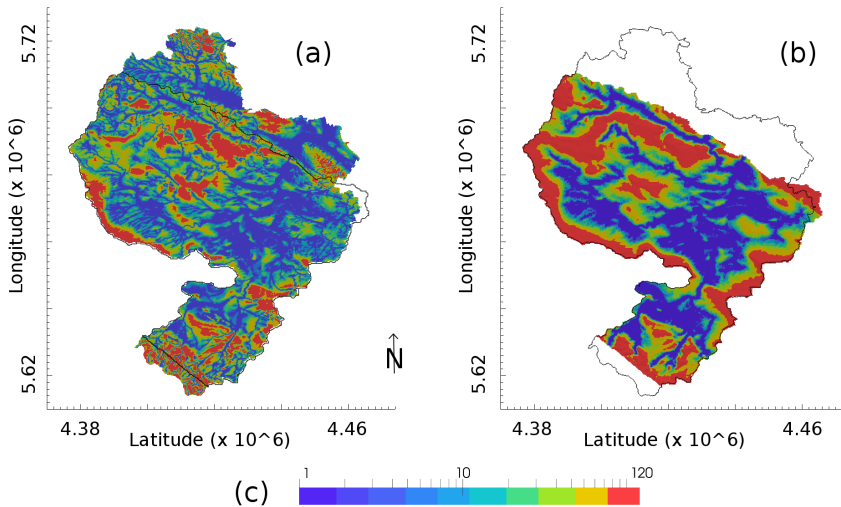


Figure 11. Comparison of observed and simulated depth from surface to groundwater level; observation data courtesy of TLUG, based on regionalized observations of groundwater head measurements: **(a)** observation, resolution 10 m \times 10 m, **(b)** simulation, resolution 250 m \times 250 m, **(c)** legend depth to groundwater surface (m).

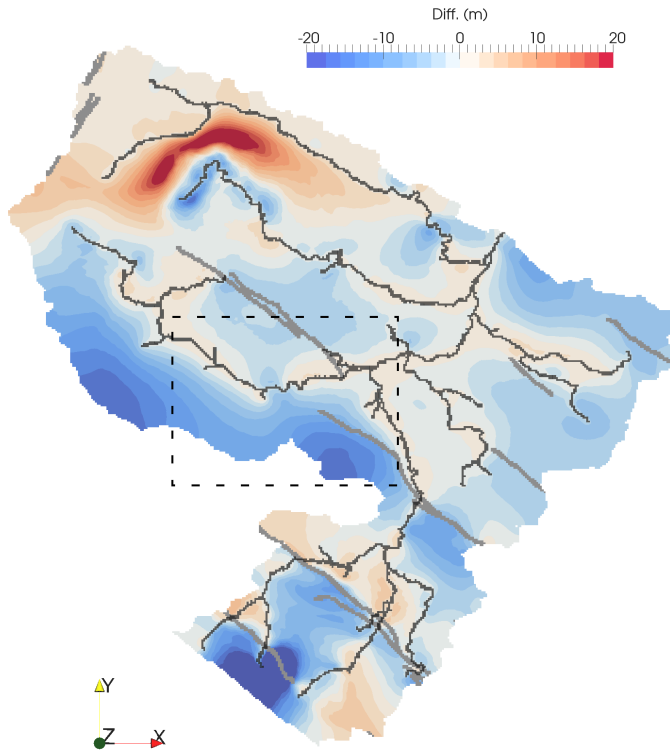


Figure 12. Absolute differences of depth from surface to groundwater level between scenarios S1 and S2. Light grey lines show faults in the domain of S1, dark grey lines show rivers. Dashed rectangle displays frame for Fig. 13.

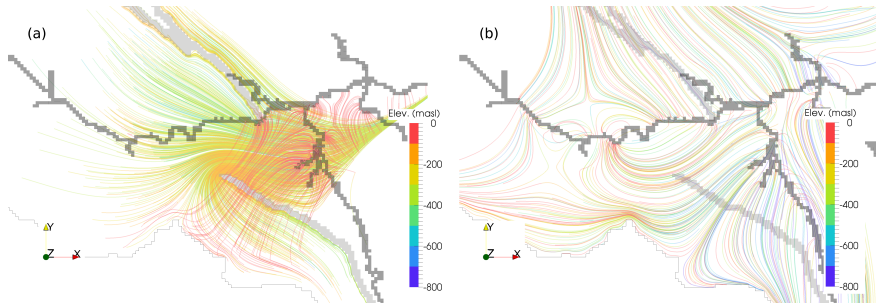


Figure 13. Detail of flow paths near faults and bottleneck structure, pathlines colored by elevation; area shown in Fig. 12: **(a)** heterogeneous simulation S1, **(b)** homogeneous simulation S2.